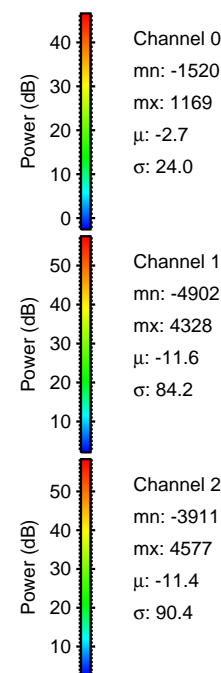
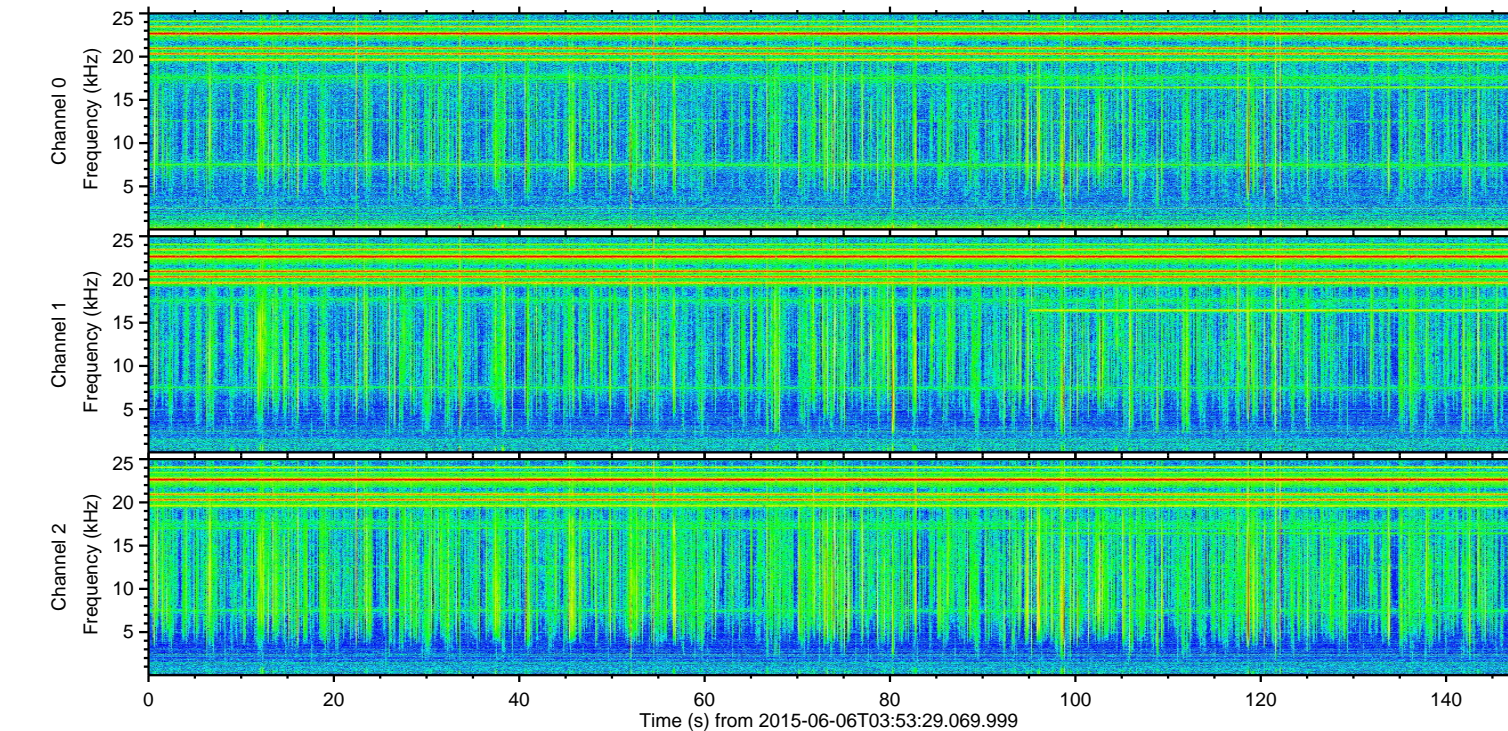
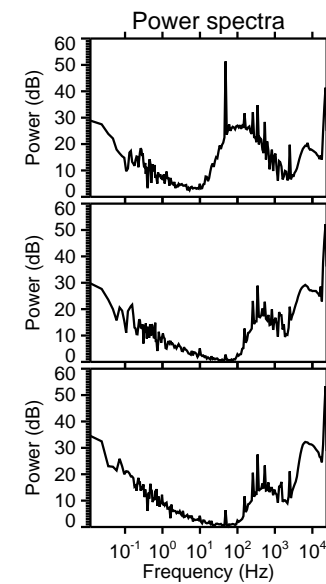
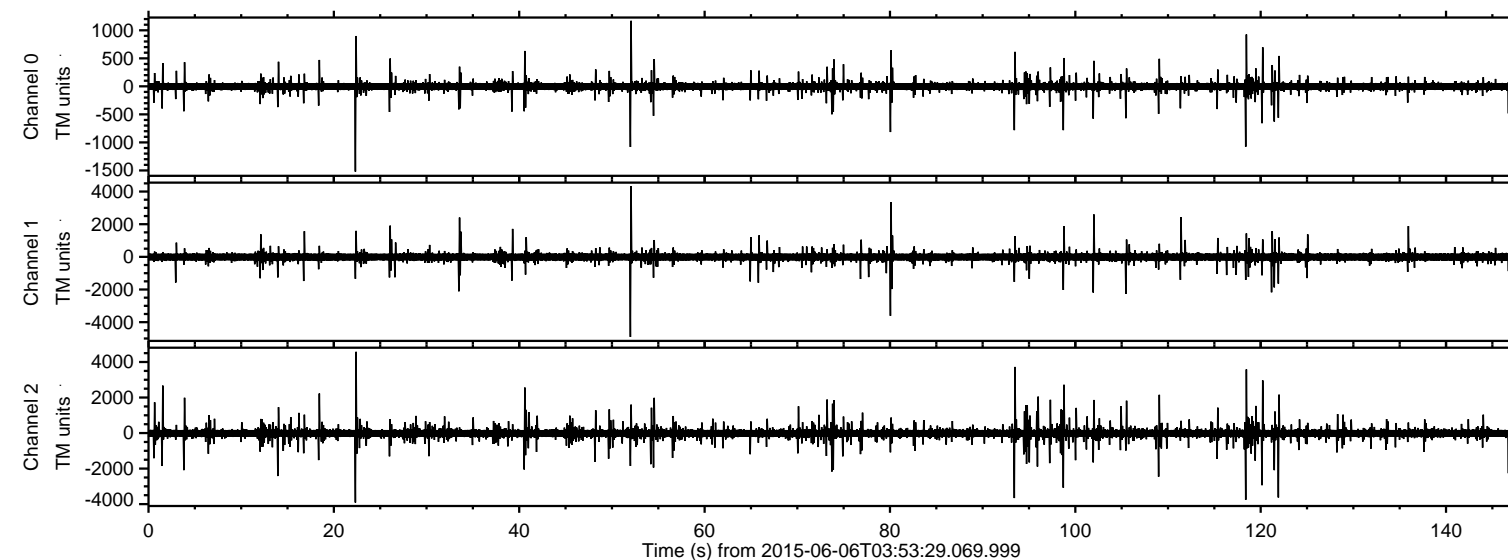
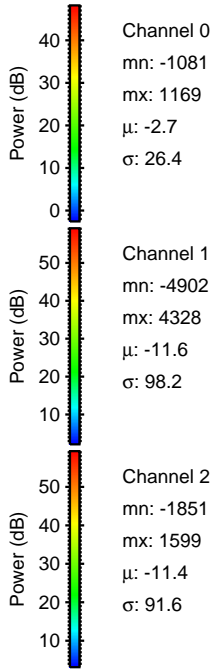
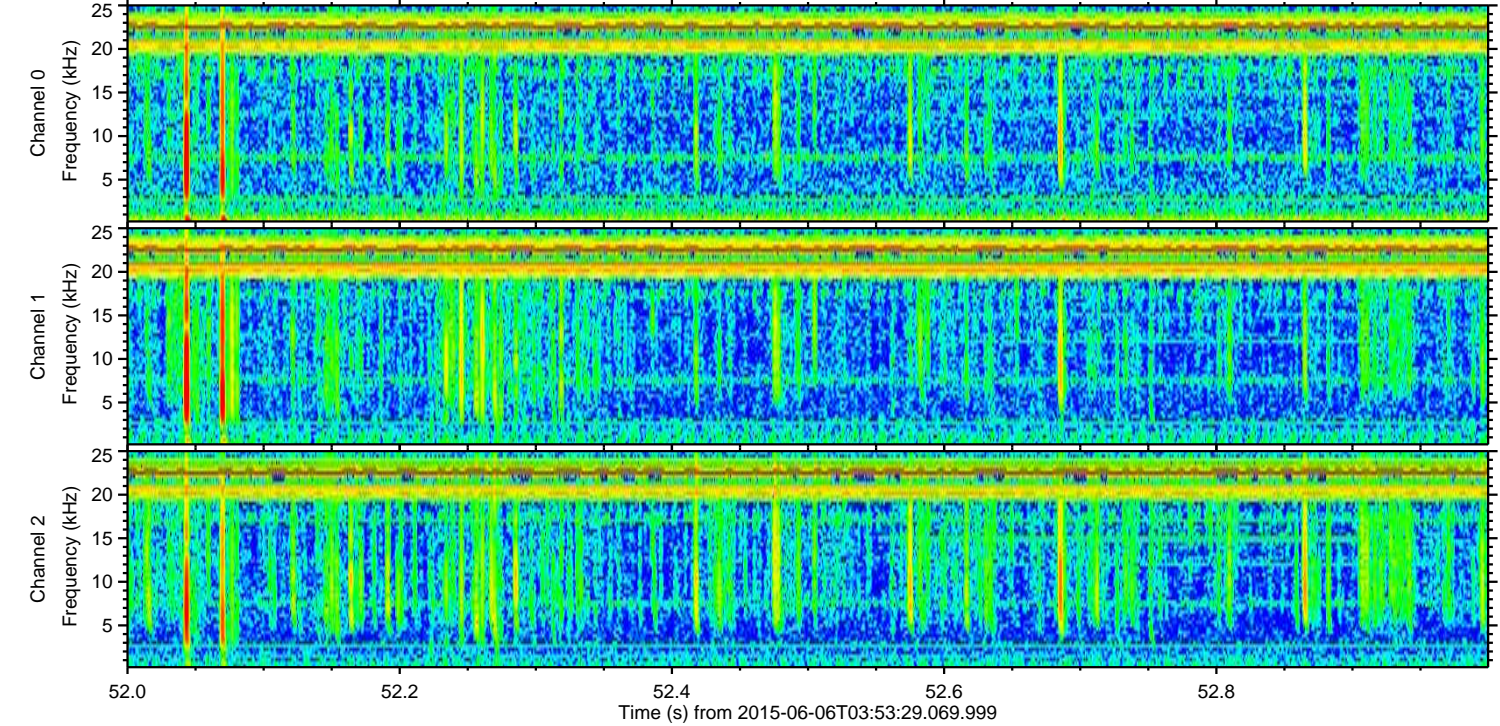
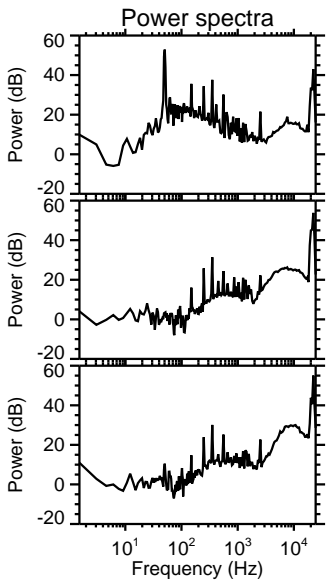
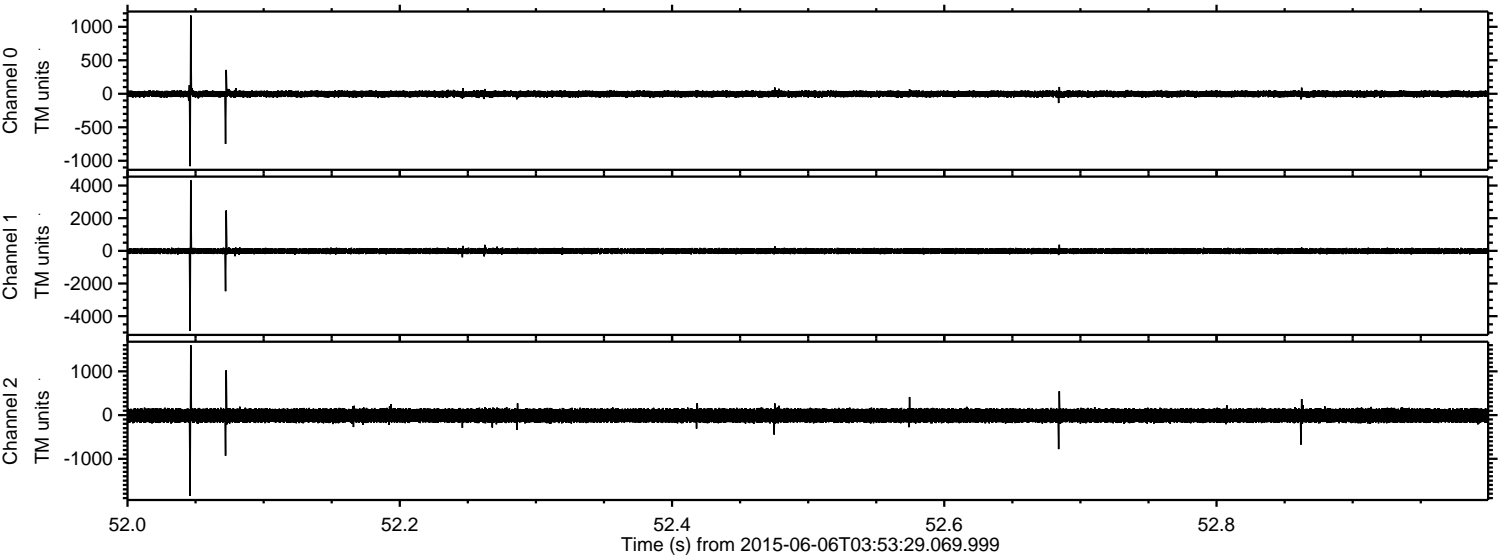


ELMAVAN 3D WAVEFORMS (Measured data sampled at 50 kHz) 51000 packets of 144 samples from 2015-06-06T03:53:29.069.999.

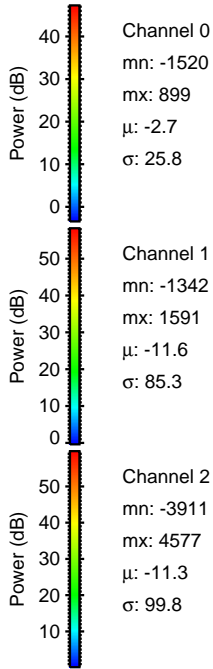
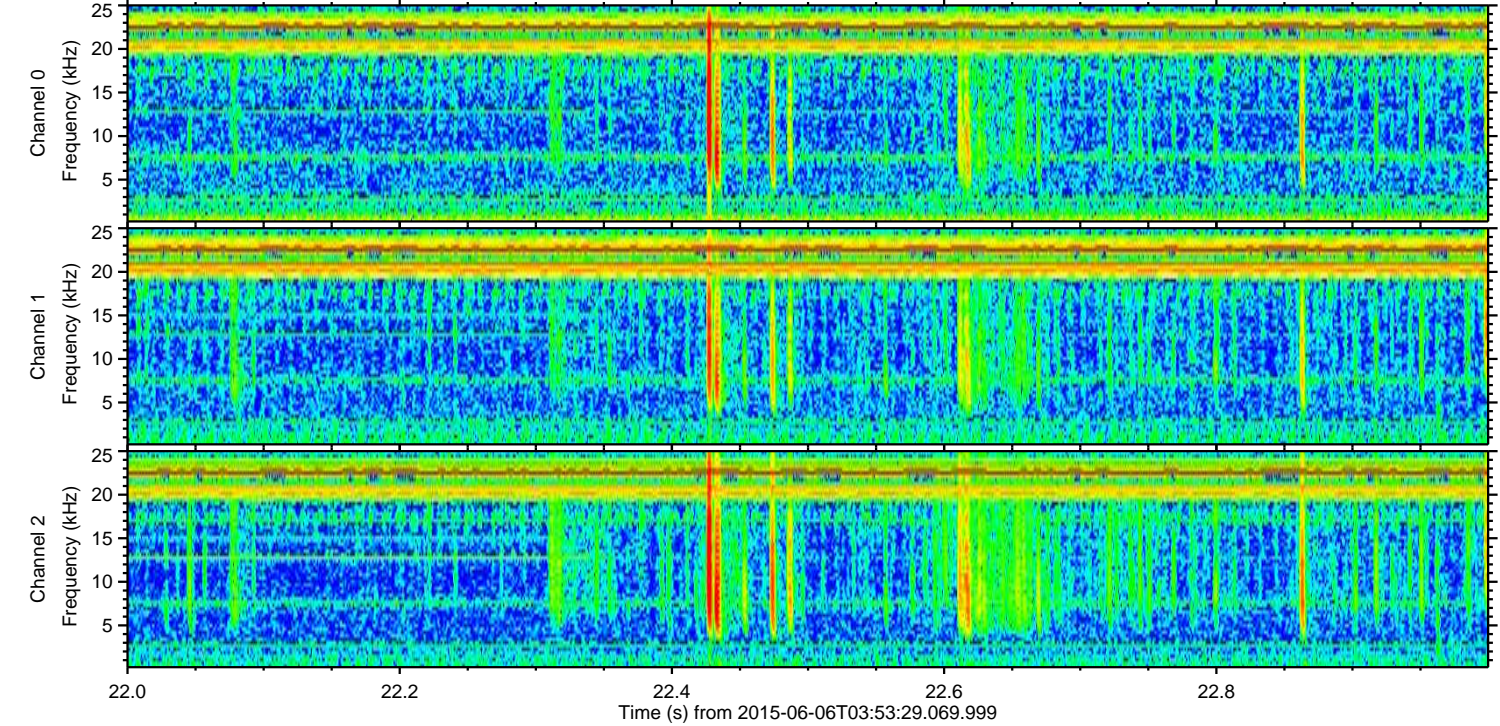
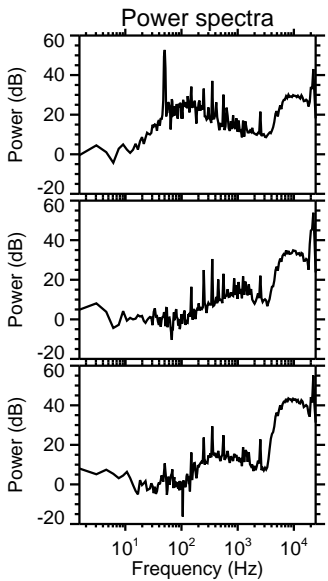
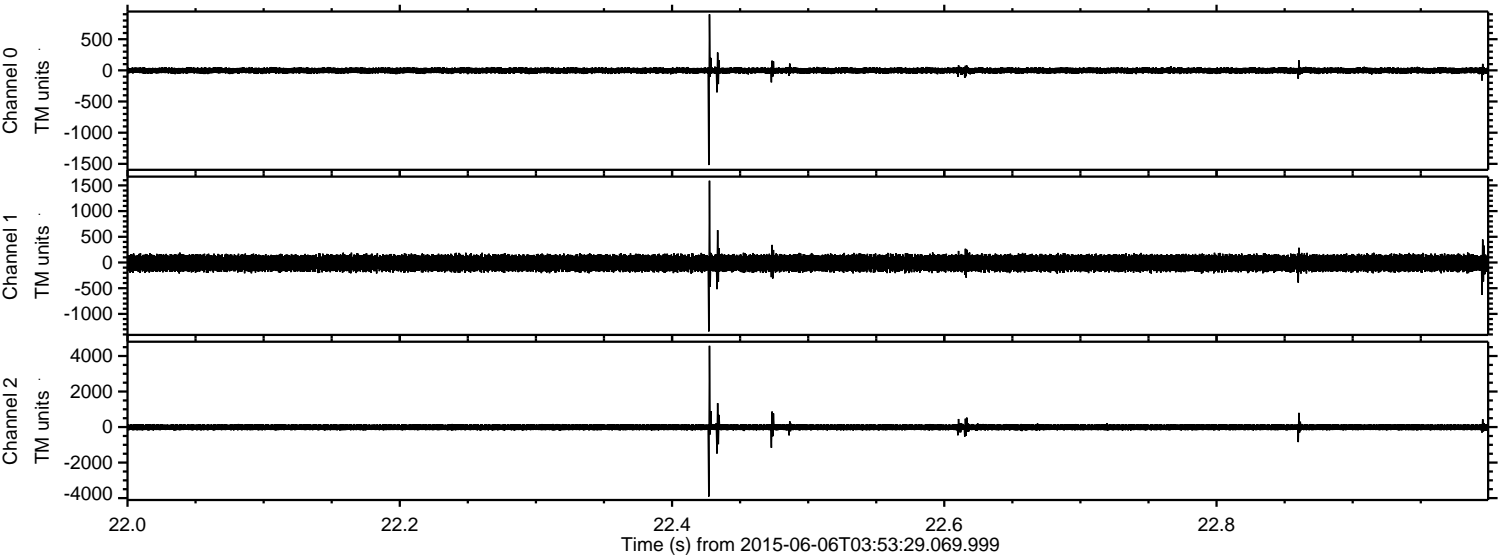
Processed Sat Jun 6 05:59:55 2015 by ELM ver.2012-10-06 from 001__elm20150606_035328__dat00.bin



Processed Sat Jun 6 06:00:07 2015 by ELM ver.2012-10-06 from 001__elm20150606_035328__dat00.bin



Processed Sat Jun 6 06:00:08 2015 by ELM ver.2012-10-06 from 001__elm20150606_035328__dat00.bin



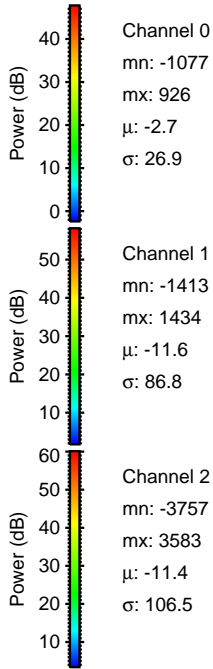
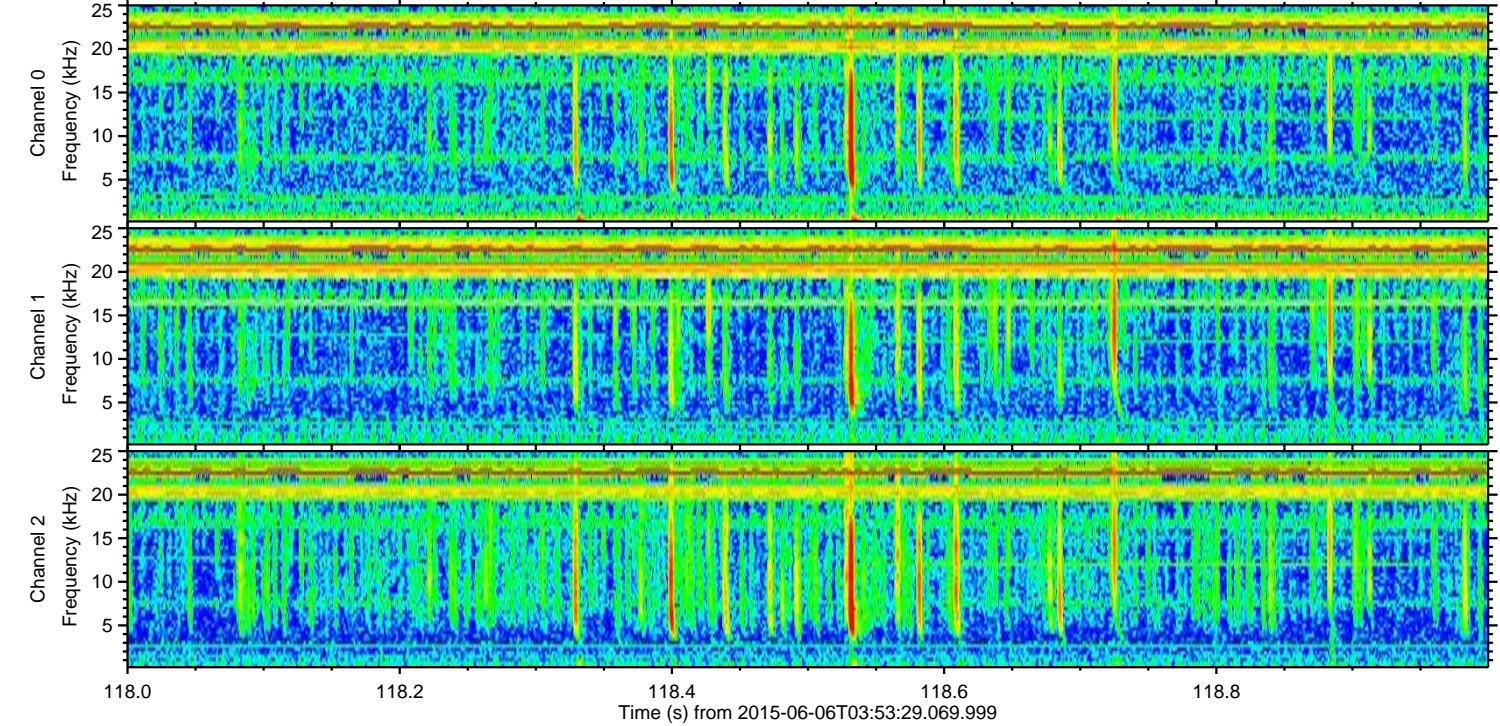
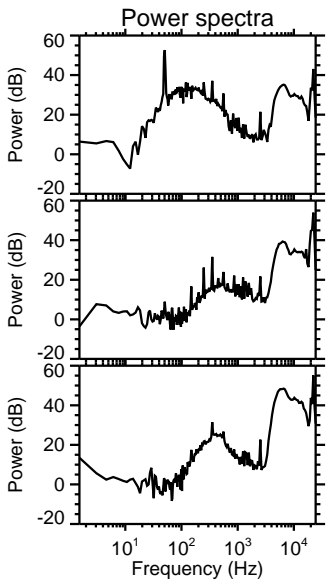
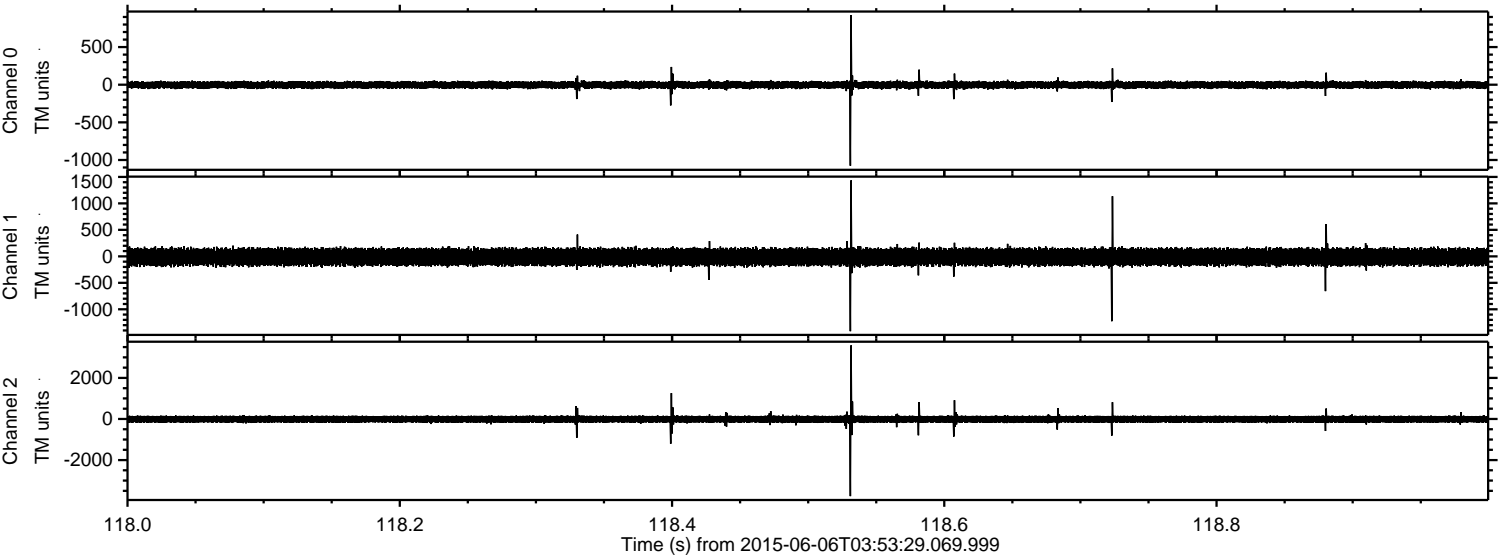
Channel 0
mn: -1520
mx: 899
 μ : -2.7
 σ : 25.8

Channel 1
mn: -1342
mx: 1591
 μ : -11.6
 σ : 85.3

Channel 2
mn: -3911
mx: 4577
 μ : -11.3
 σ : 99.8

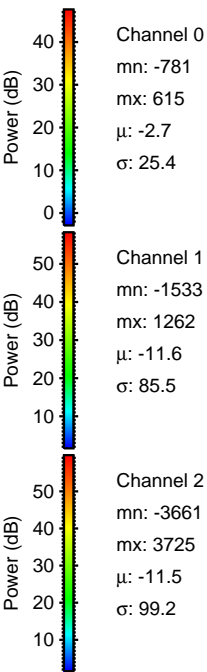
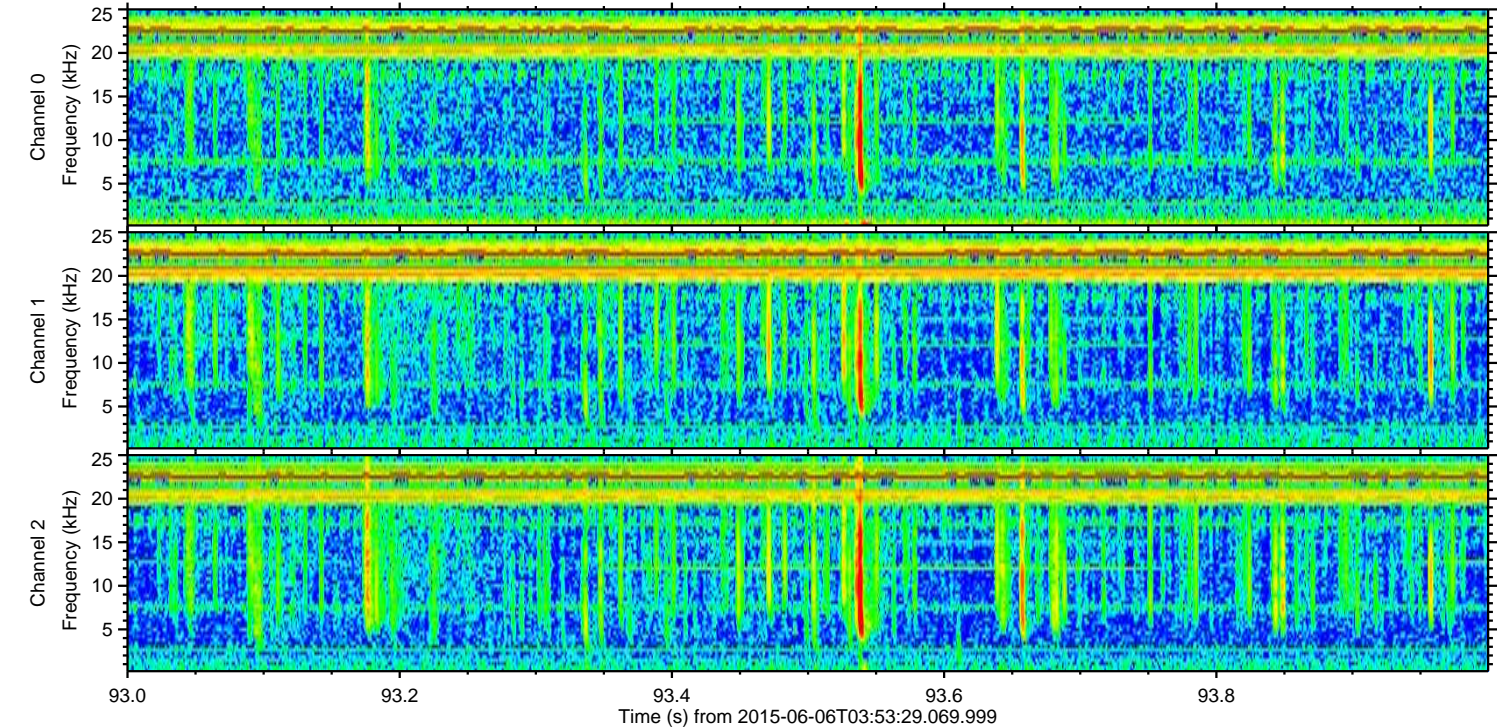
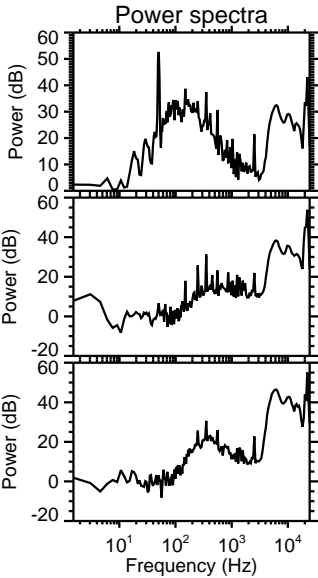
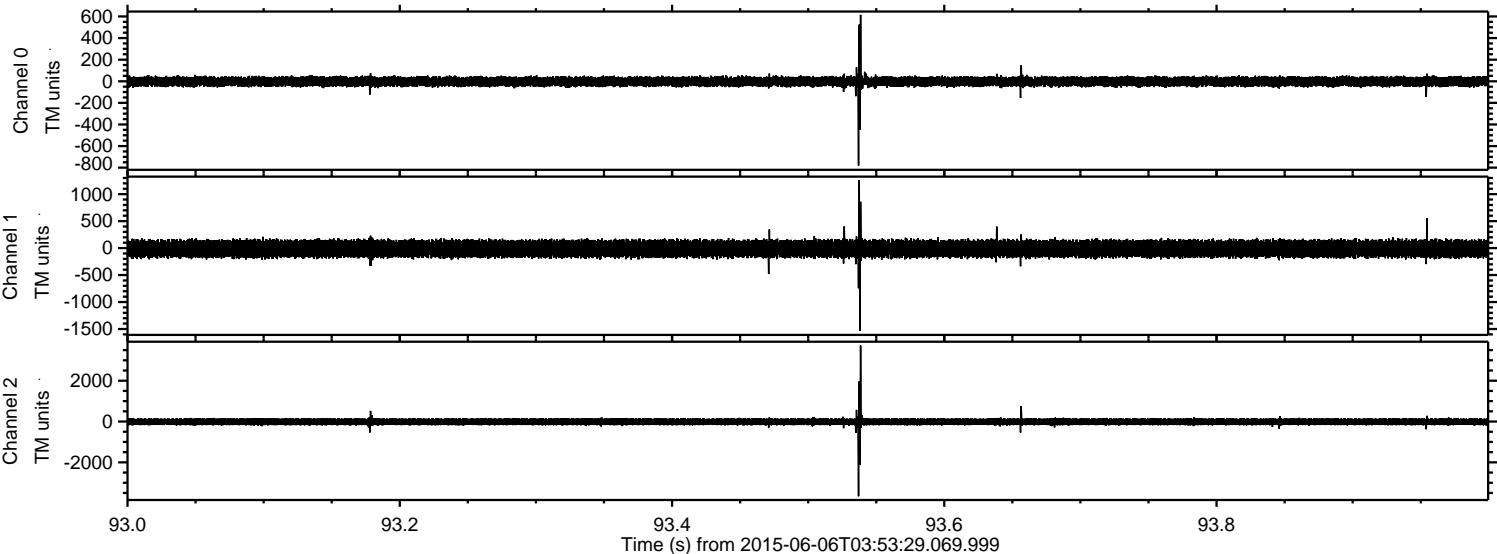
ELMAVAN 3D WAVEFORMS (Measured data sampled at 50 kHz) 51000 packets of 144 samples from 2015-06-06T03:53:29.069.999. Part 119/147

Processed Sat Jun 6 06:00:09 2015 by ELM ver.2012-10-06 from 001__elm20150606_035328__dat00.bin



ELMAVAN 3D WAVEFORMS (Measured data sampled at 50 kHz) 51000 packets of 144 samples from 2015-06-06T03:53:29.069.999. Part 94/147

Processed Sat Jun 6 06:00:10 2015 by ELM ver.2012-10-06 from 001__elm20150606_035328__dat00.bin



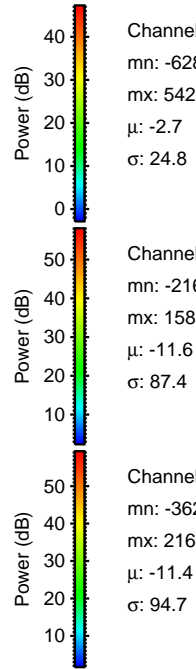
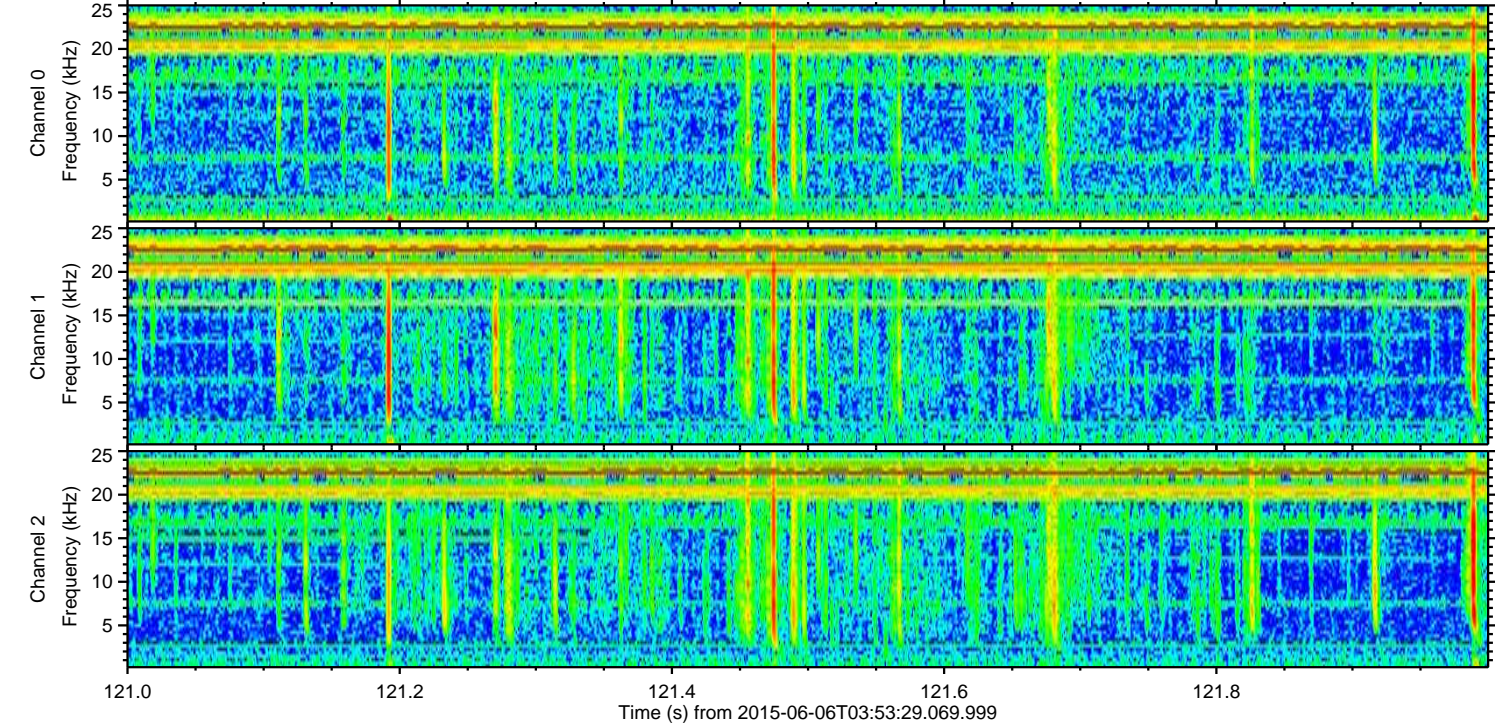
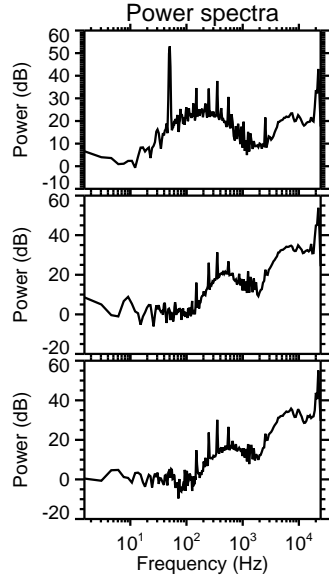
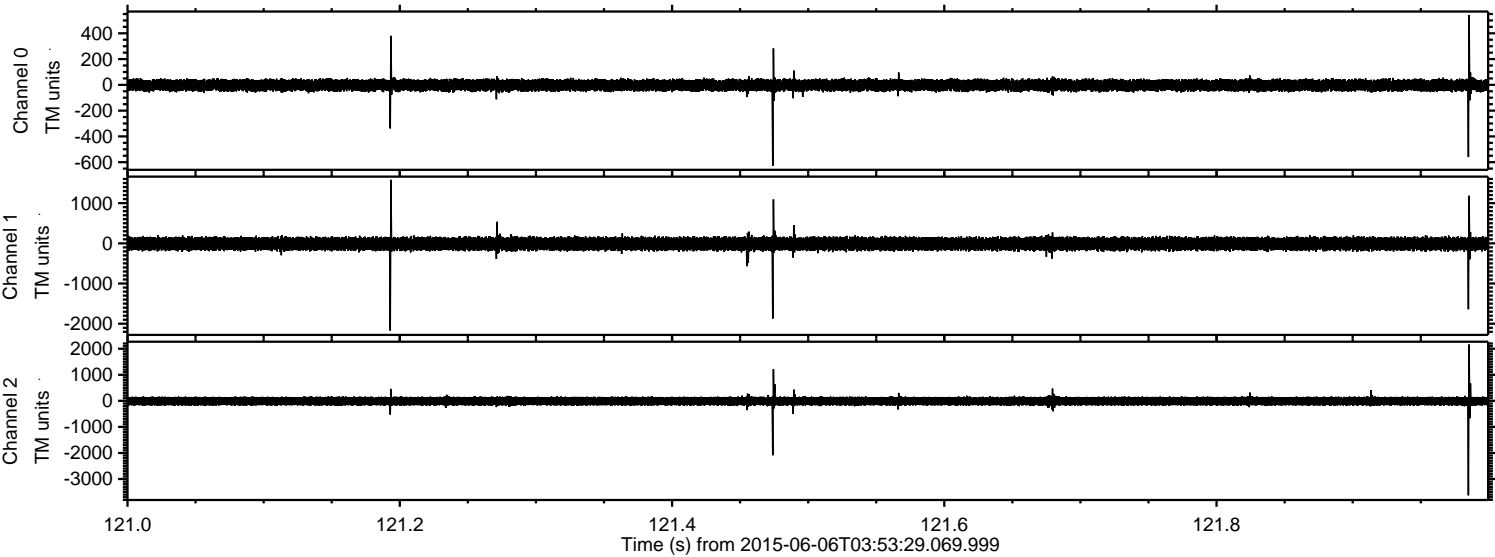
Channel 0
mn: -781
mx: 615
 μ : -2.7
 σ : 25.4

Channel 1
mn: -1533
mx: 1262
 μ : -11.6
 σ : 85.5

Channel 2
mn: -3661
mx: 3725
 μ : -11.5
 σ : 99.2

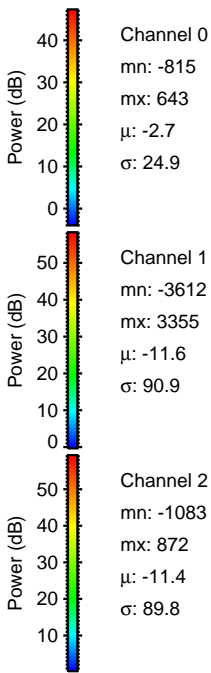
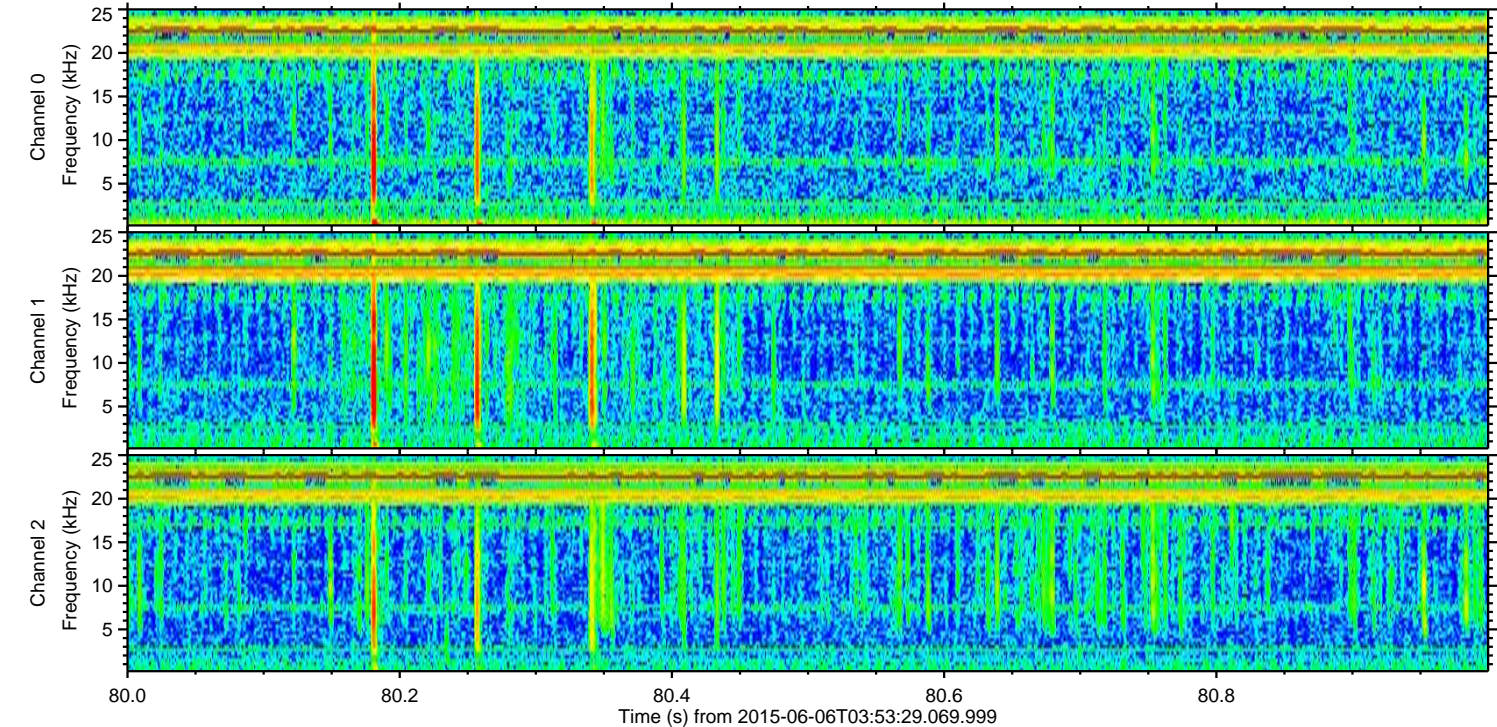
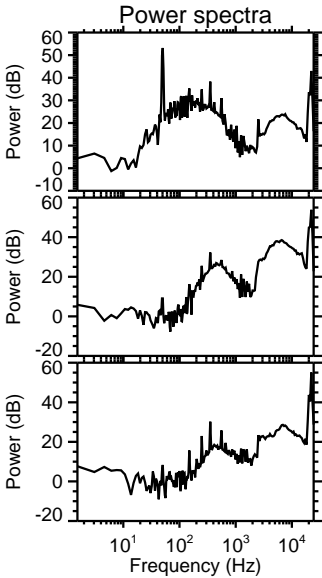
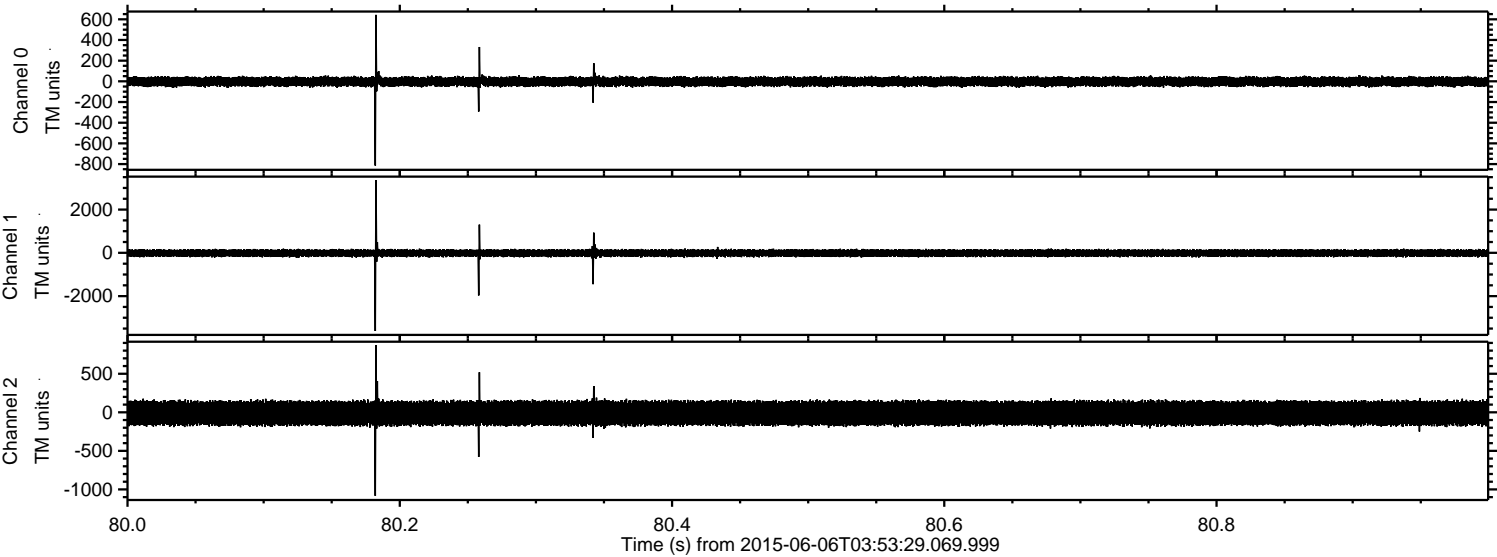
ELMAVAN 3D WAVEFORMS (Measured data sampled at 50 kHz) 51000 packets of 144 samples from 2015-06-06T03:53:29.069.999. Part 122/147

Processed Sat Jun 6 06:00:11 2015 by ELM ver.2012-10-06 from 001__elm20150606_035328__dat00.bin

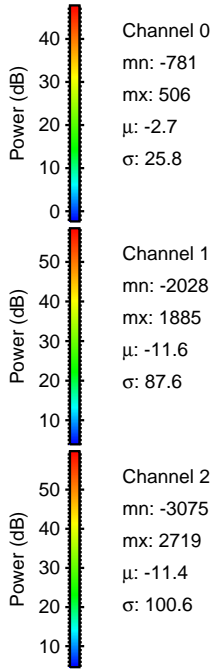
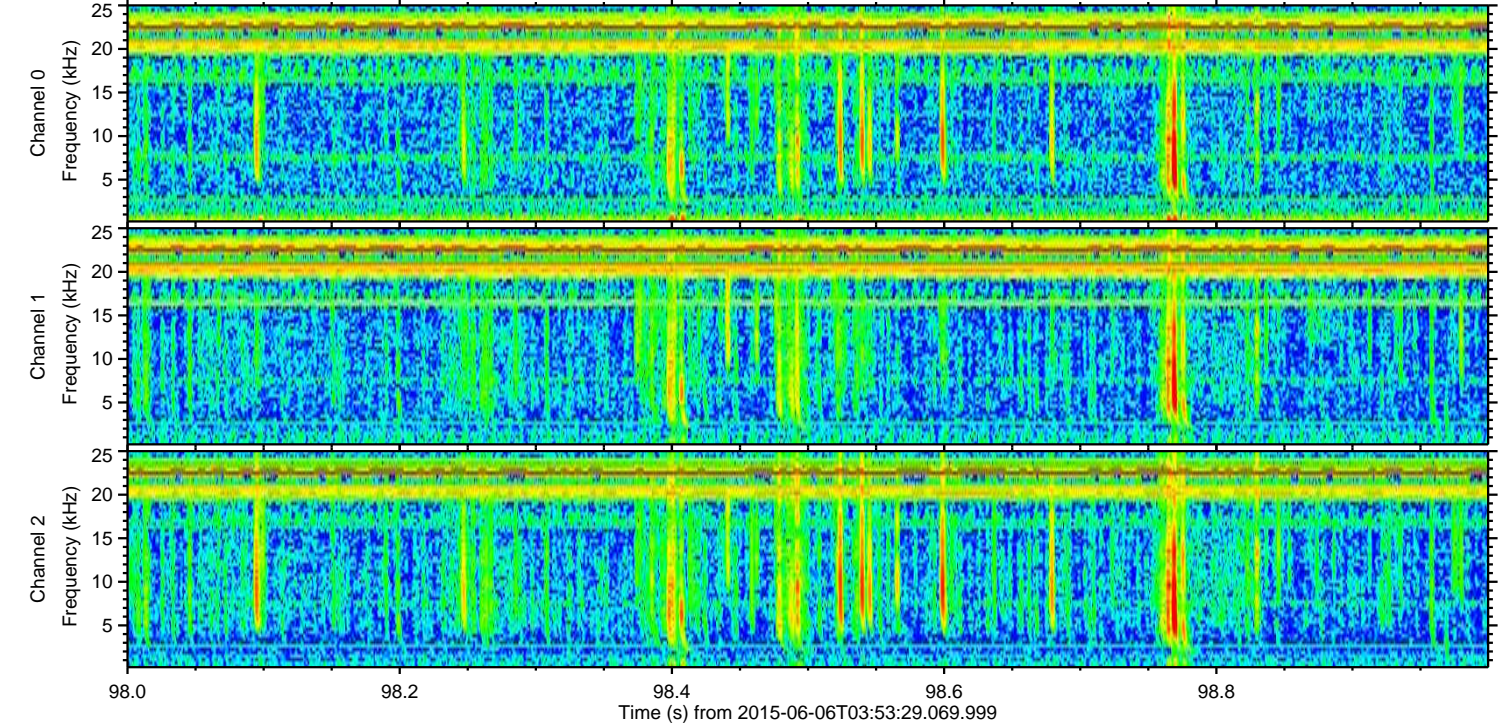
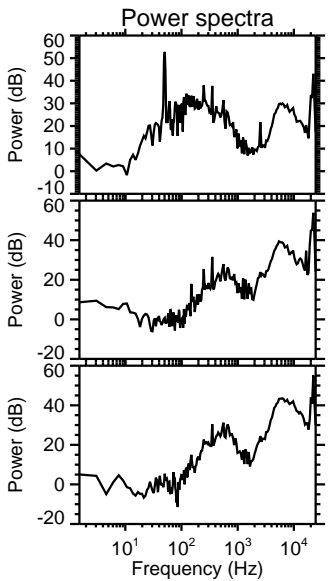
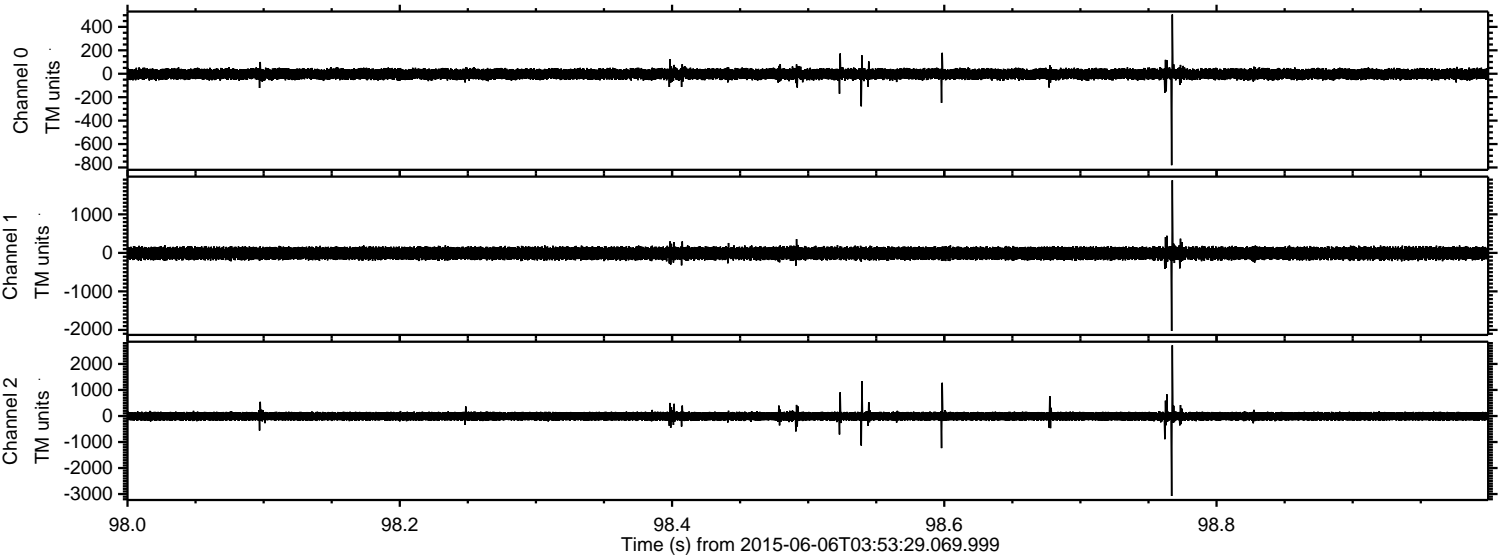


ELMAVAN 3D WAVEFORMS (Measured data sampled at 50 kHz) 51000 packets of 144 samples from 2015-06-06T03:53:29.069.999. Part 81/147

Processed Sat Jun 6 06:00:12 2015 by ELM ver.2012-10-06 from 001__elm20150606_035328__dat00.bin

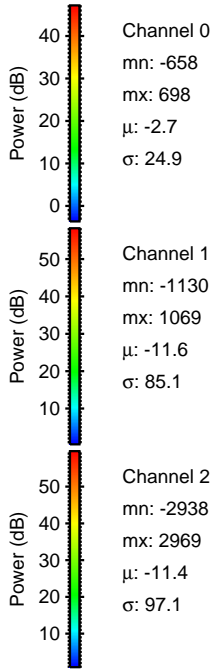
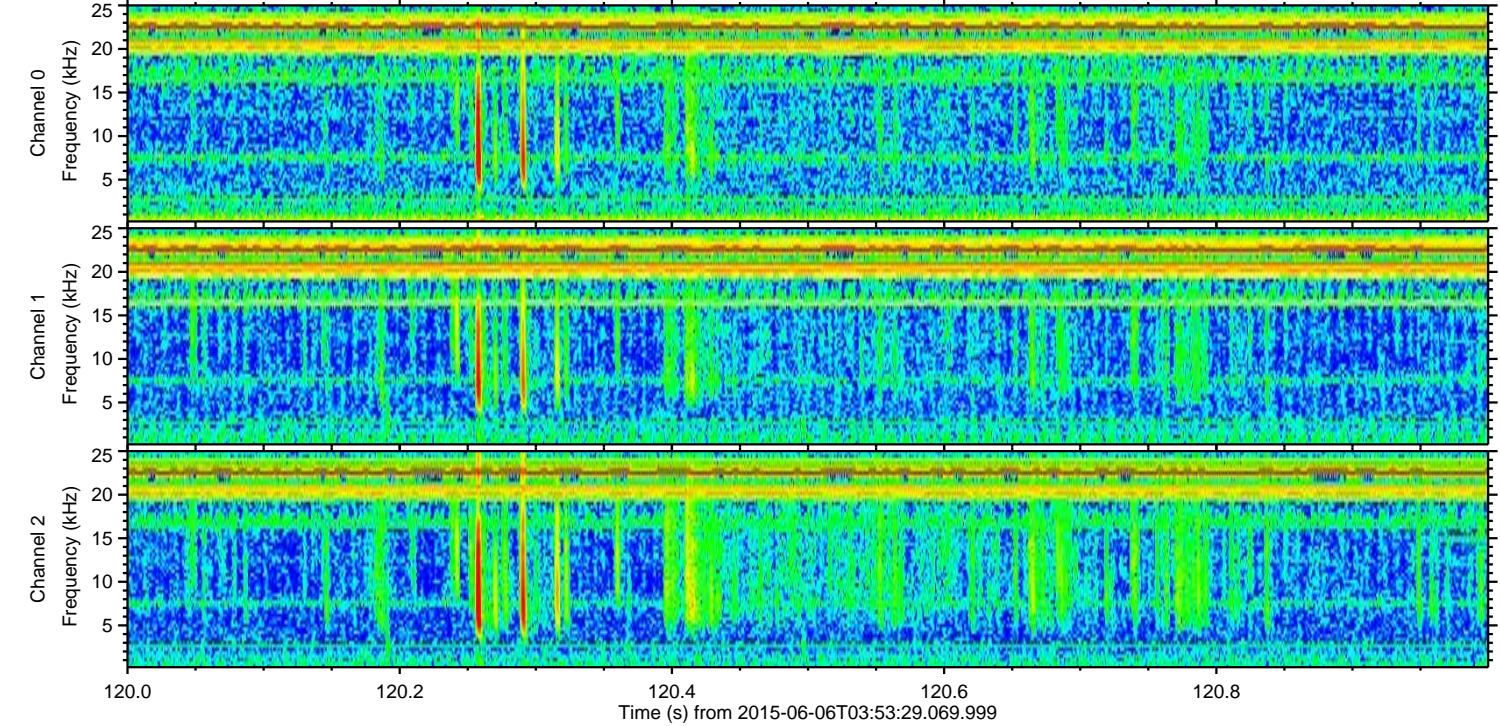
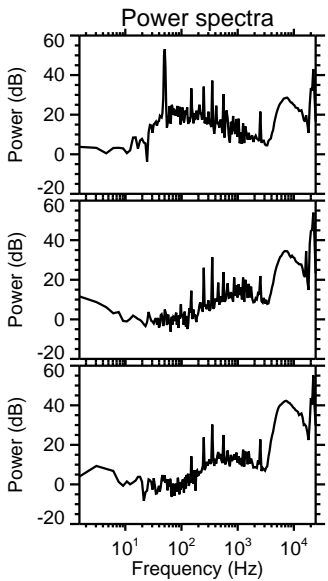
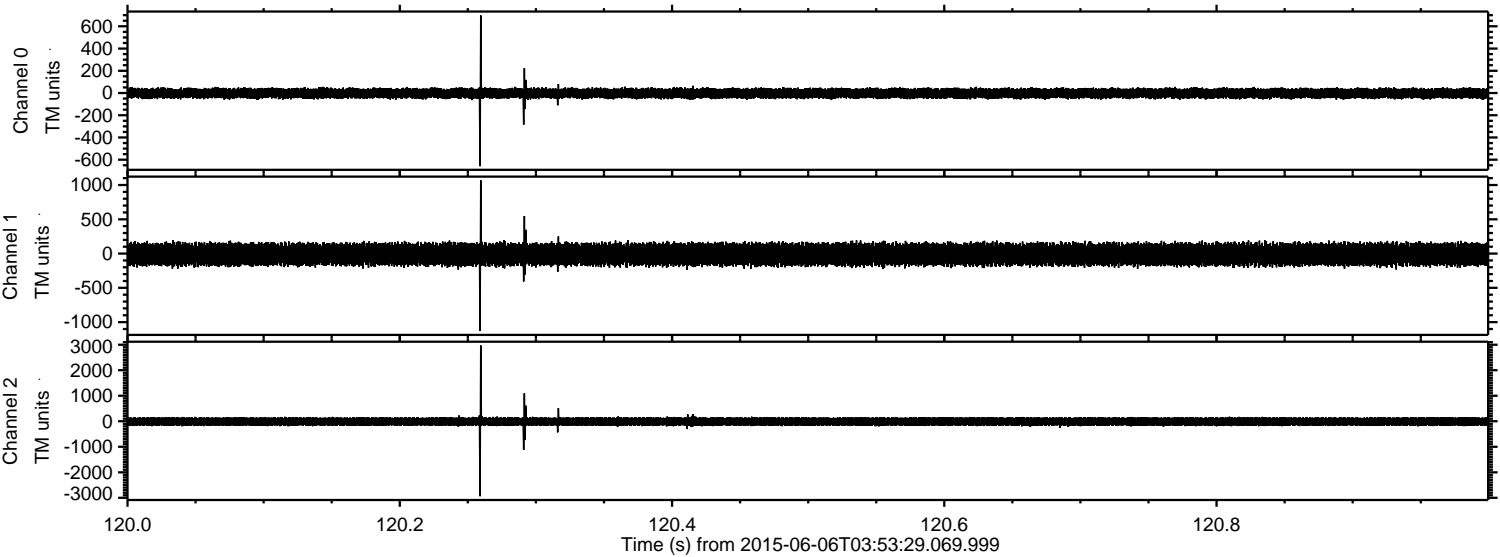


Processed Sat Jun 6 06:00:13 2015 by ELM ver.2012-10-06 from 001__elm20150606_035328__dat00.bin



ELMAVAN 3D WAVEFORMS (Measured data sampled at 50 kHz) 51000 packets of 144 samples from 2015-06-06T03:53:29.069.999. Part 121/147

Processed Sat Jun 6 06:00:14 2015 by ELM ver.2012-10-06 from 001__elm20150606_035328__dat00.bin



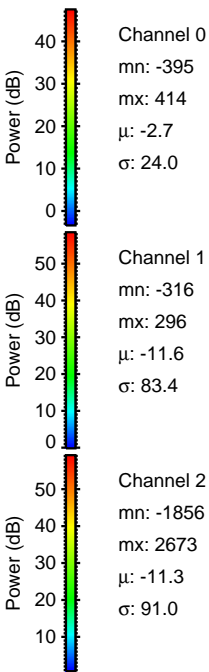
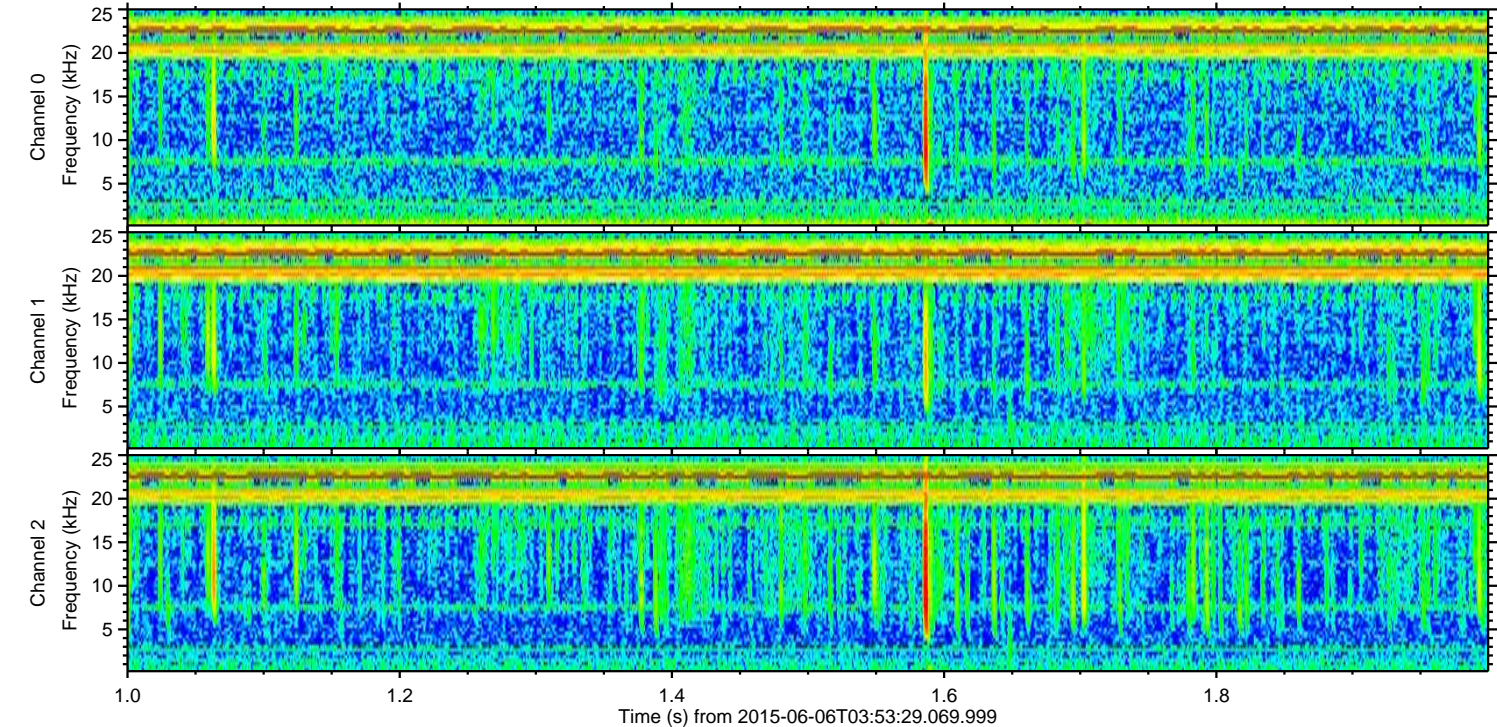
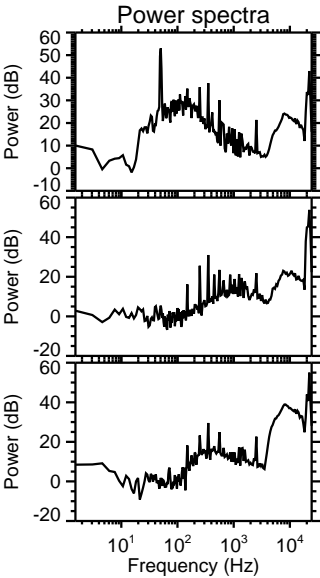
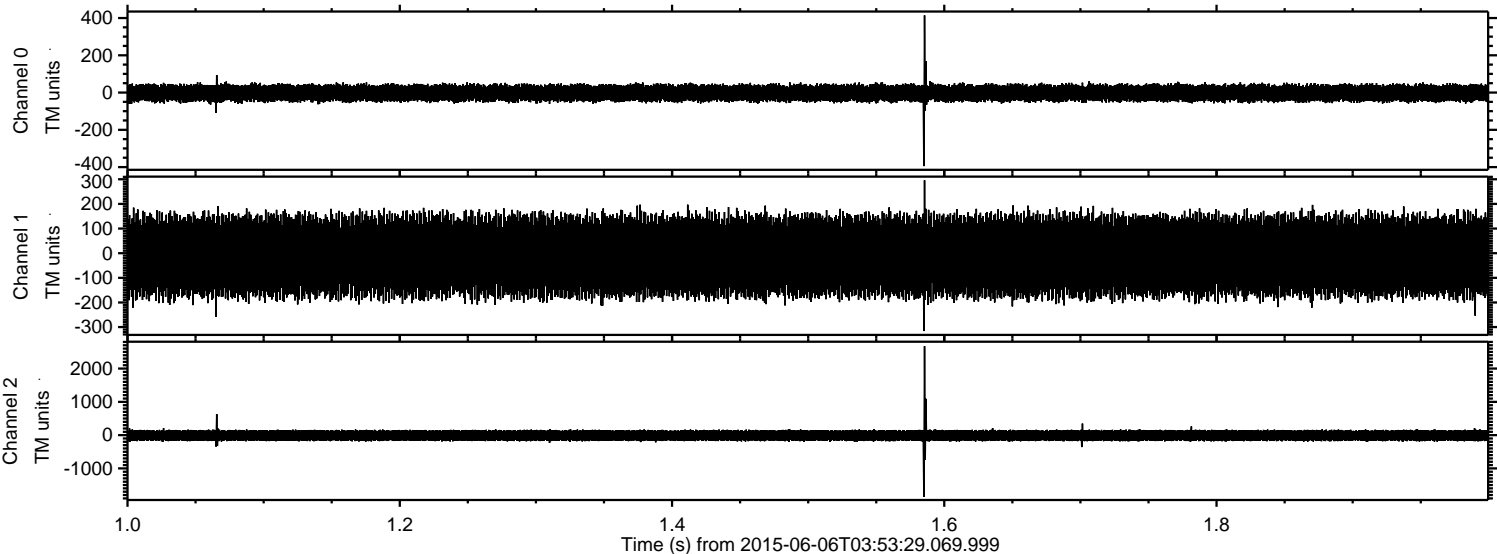
Channel 0
mn: -658
mx: 698
 μ : -2.7
 σ : 24.9

Channel 1
mn: -1130
mx: 1069
 μ : -11.6
 σ : 85.1

Channel 2
mn: -2938
mx: 2969
 μ : -11.4
 σ : 97.1

ELMAVAN 3D WAVEFORMS (Measured data sampled at 50 kHz) 51000 packets of 144 samples from 2015-06-06T03:53:29.069.999. Part 2/147

Processed Sat Jun 6 06:00:14 2015 by ELM ver.2012-10-06 from 001__elm20150606_035328__dat00.bin



ELMAVAN 3D WAVEFORMS (Measured data sampled at 50 kHz) 51000 packets of 144 samples from 2015-06-06T03:53:29.069.999. Part 25/147

Processed Sat Jun 6 06:00:16 2015 by ELM ver.2012-10-06 from 001__elm20150606_035328__dat00.bin

