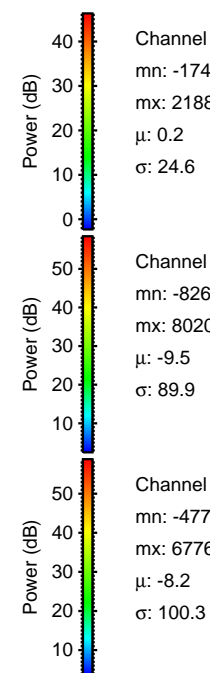
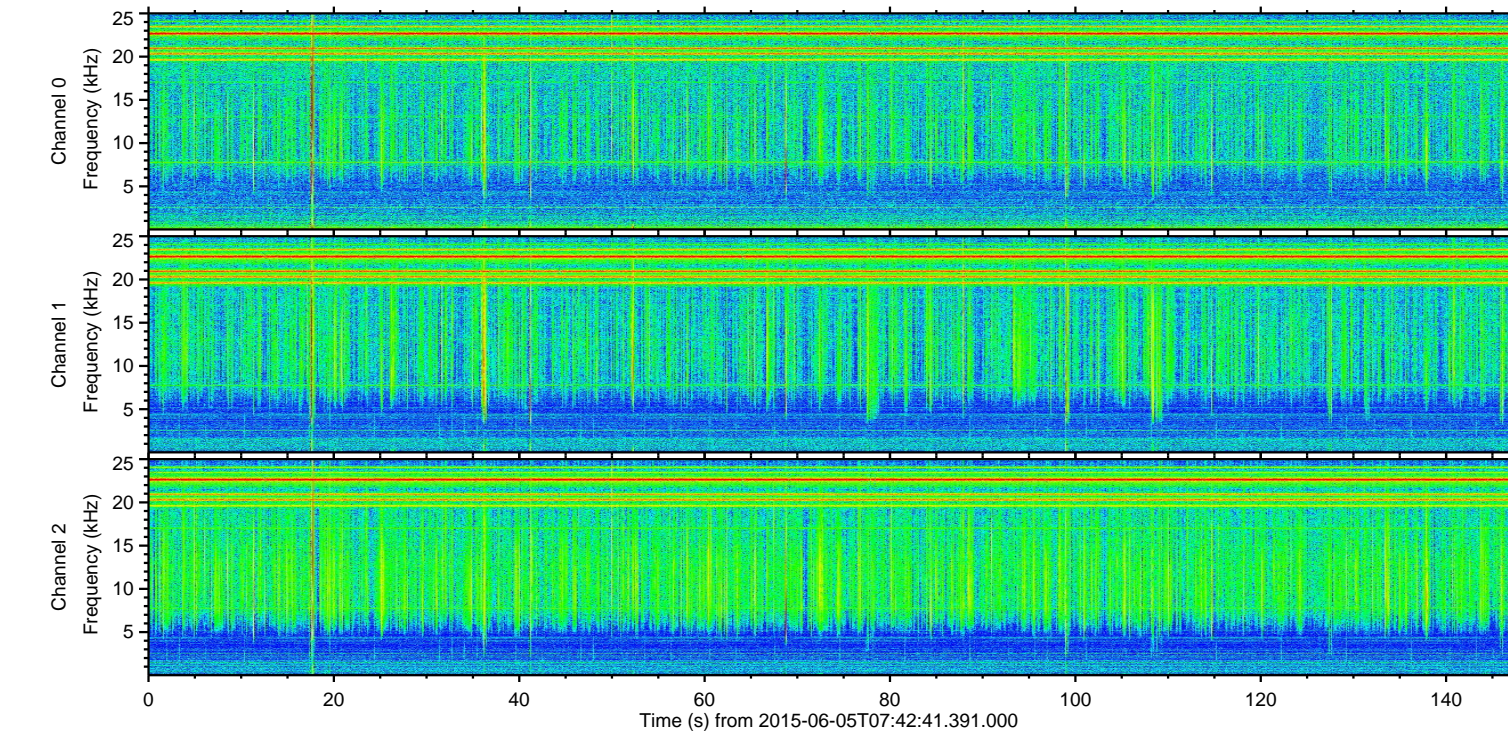
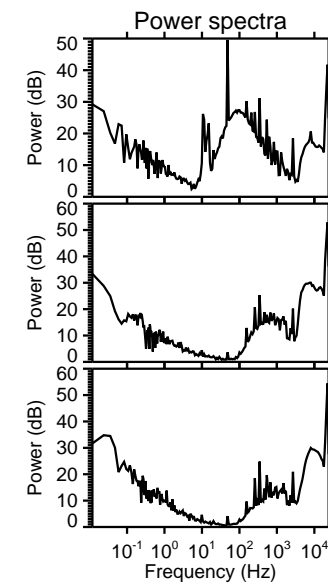
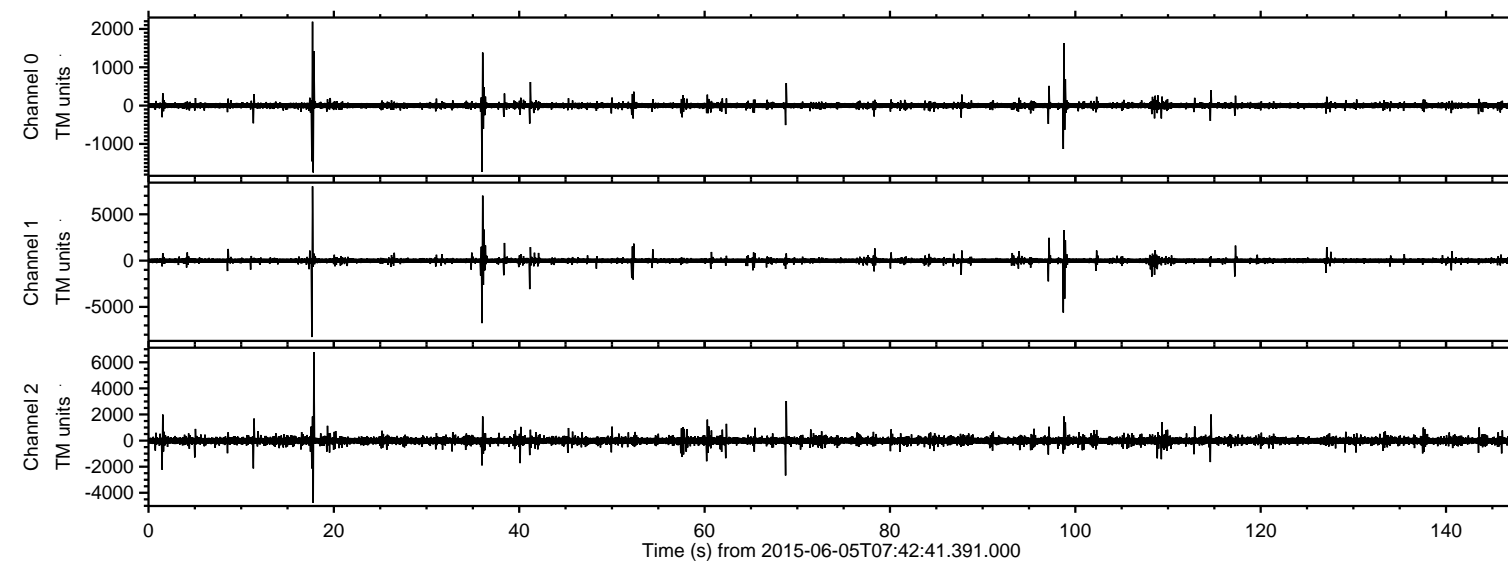
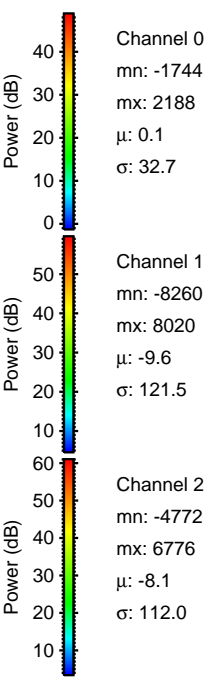
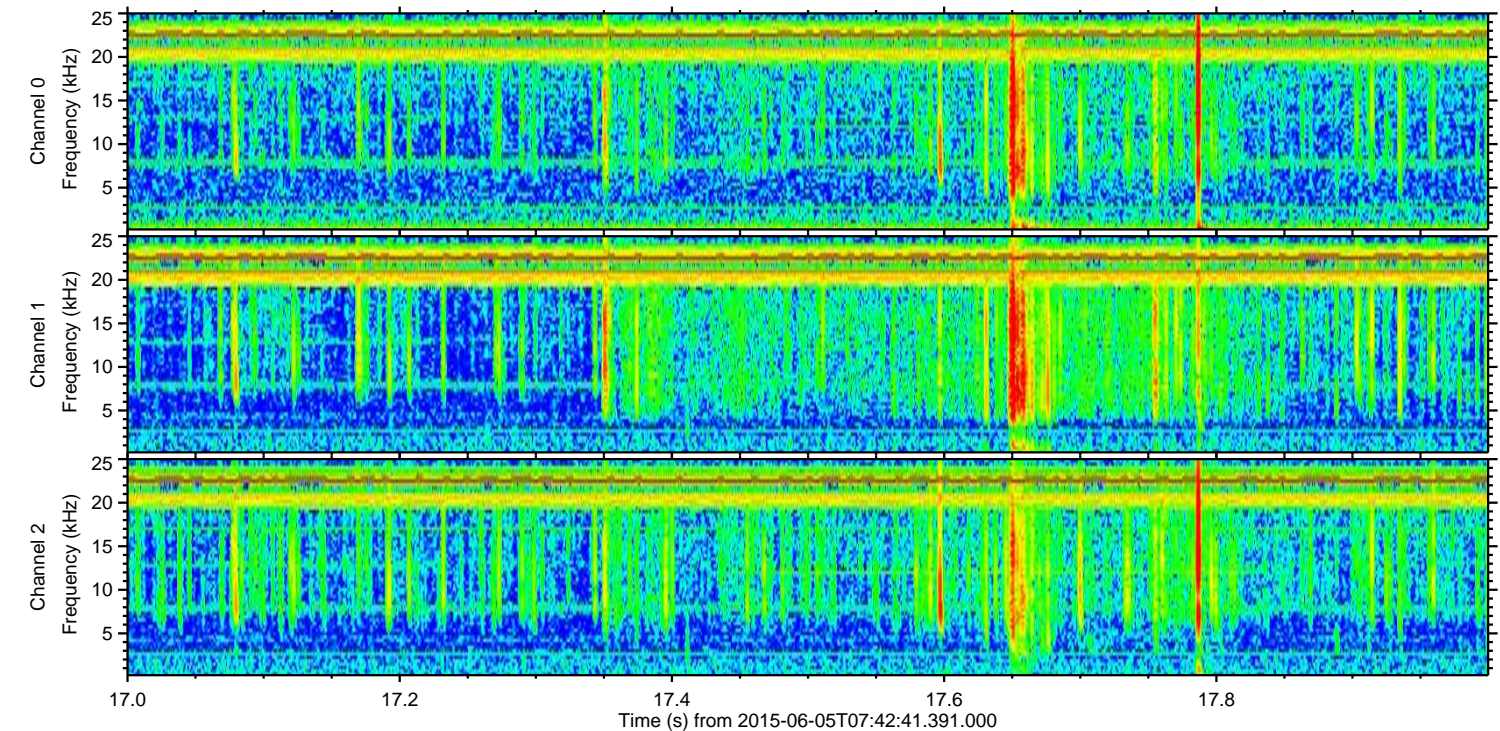
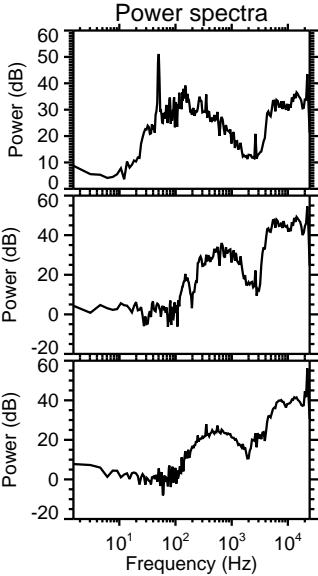
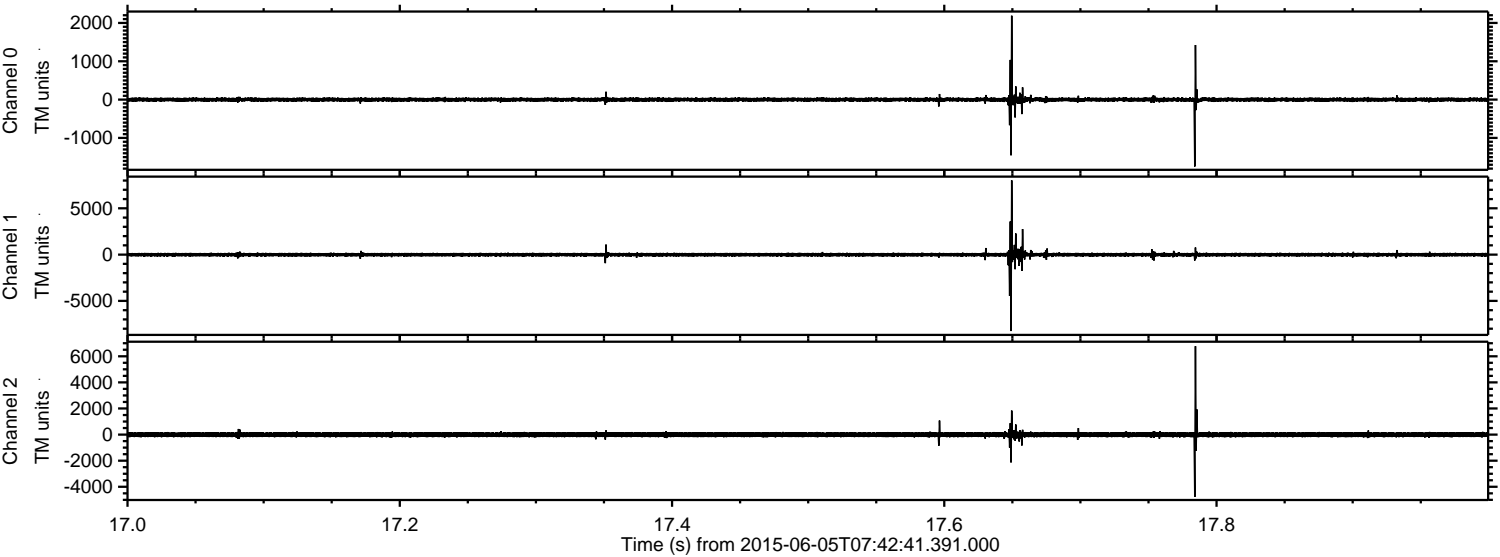


ELMAVAN 3D WAVEFORMS (Measured data sampled at 50 kHz) 51000 packets of 144 samples from 2015-06-05T07:42:41.391.000.

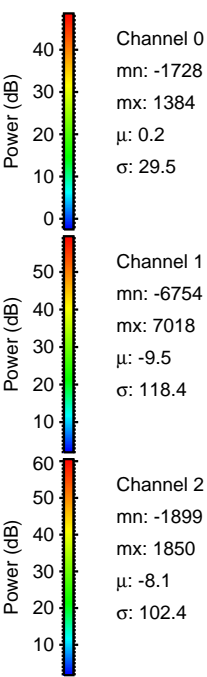
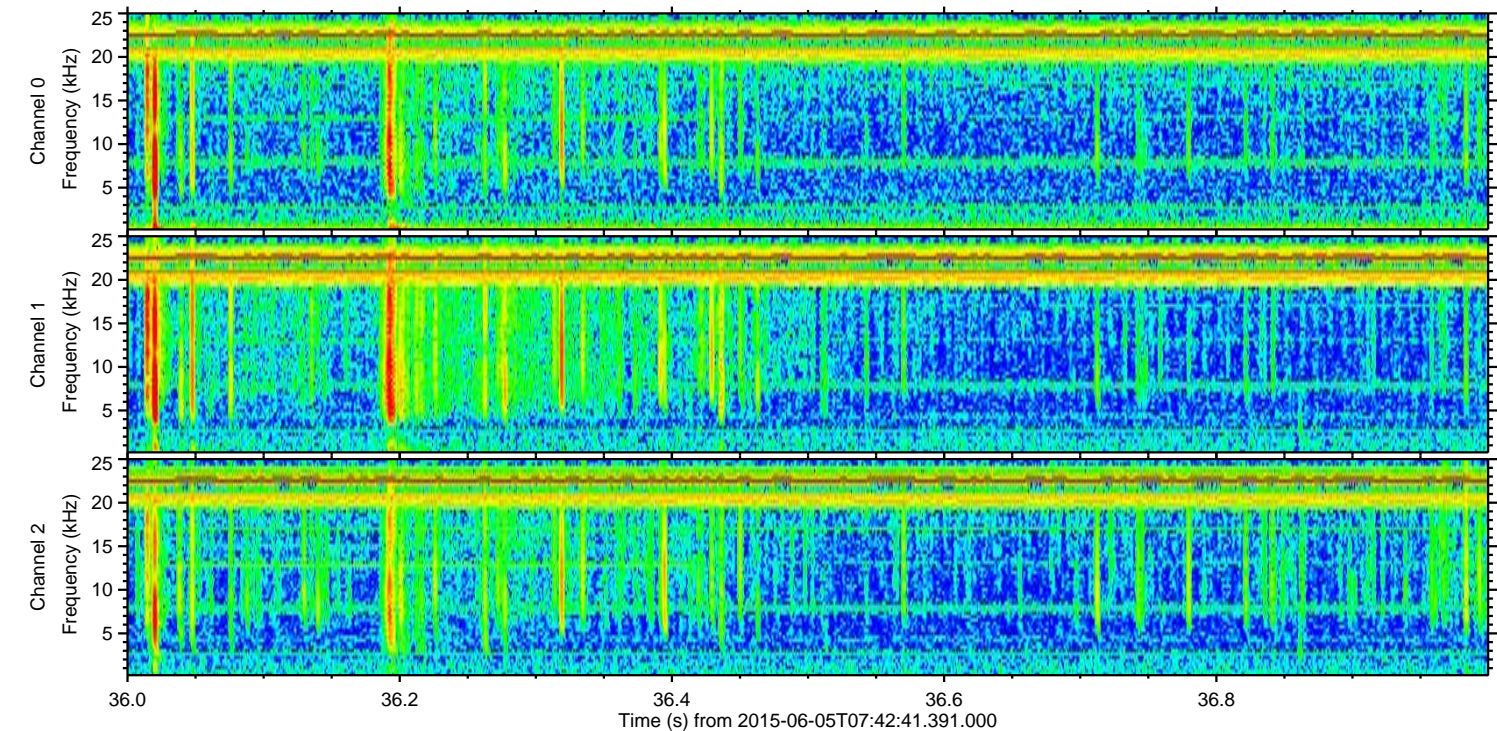
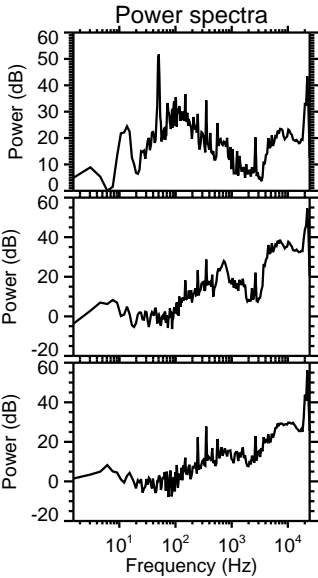
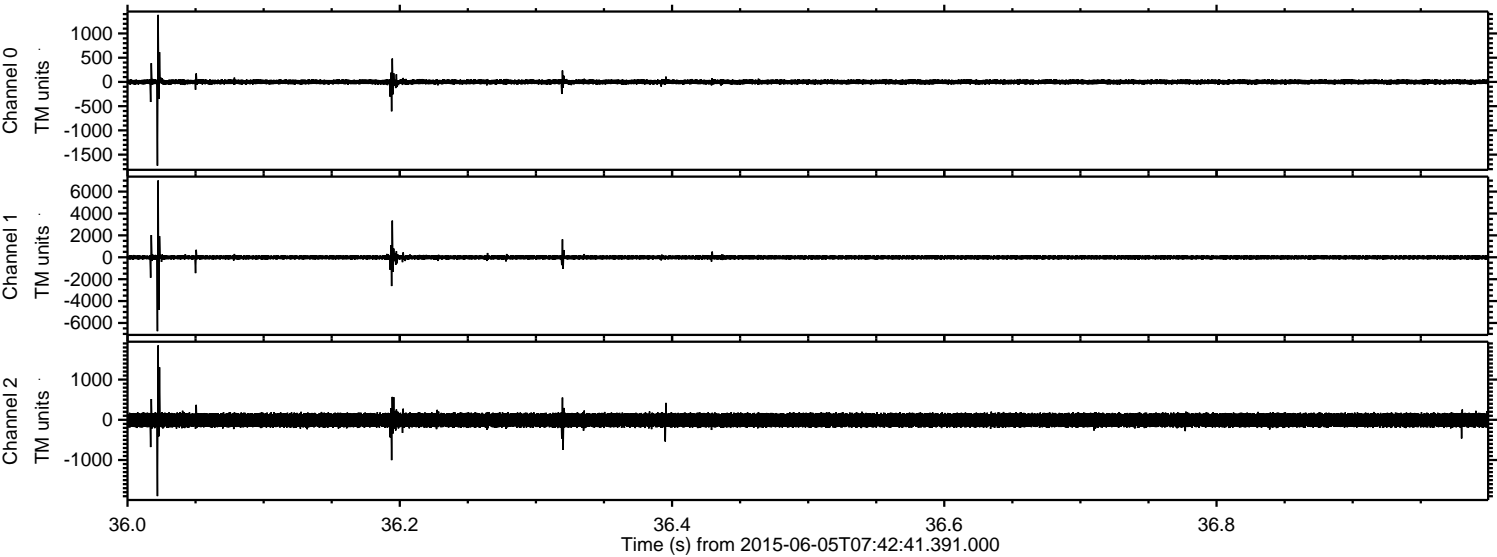
Processed Fri Jun 5 09:48:36 2015 by ELM ver.2012-10-06 from 001__elm20150605_074240__dat00.bin



Processed Fri Jun 5 09:48:48 2015 by ELM ver.2012-10-06 from 001__elm20150605_074240__dat00.bin



Processed Fri Jun 5 09:48:48 2015 by ELM ver.2012-10-06 from 001__elm20150605_074240__dat00.bin

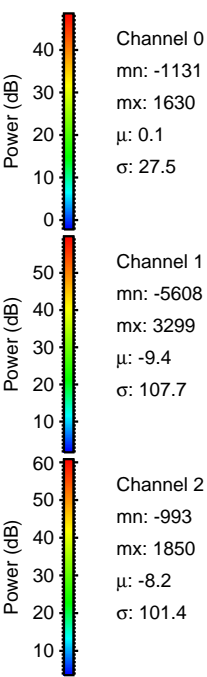
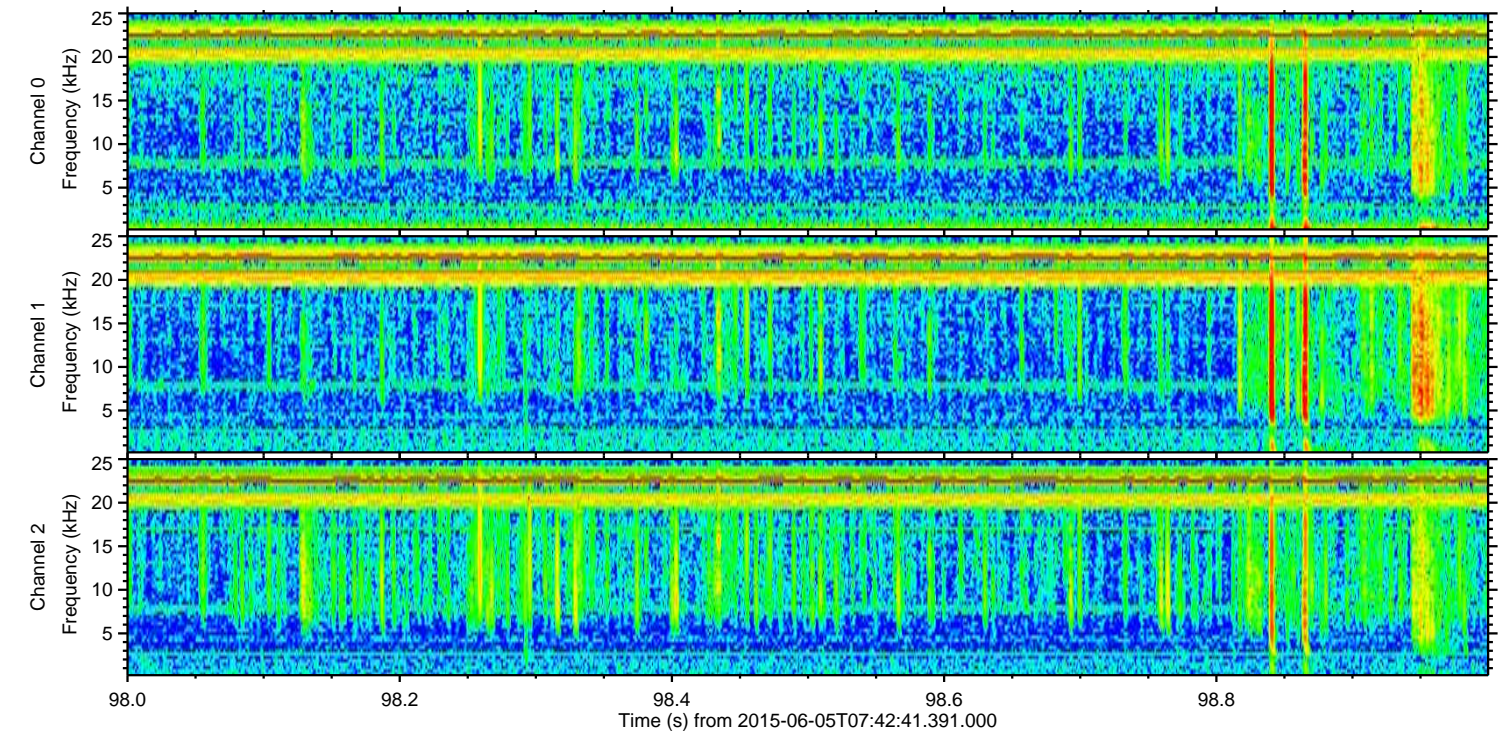
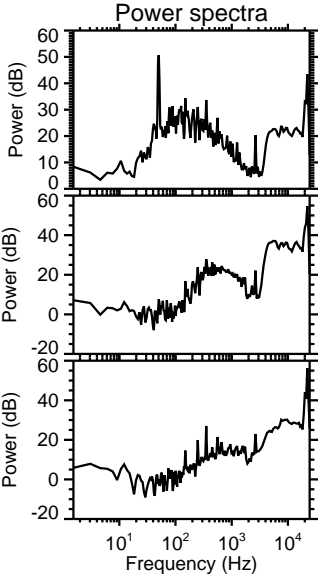
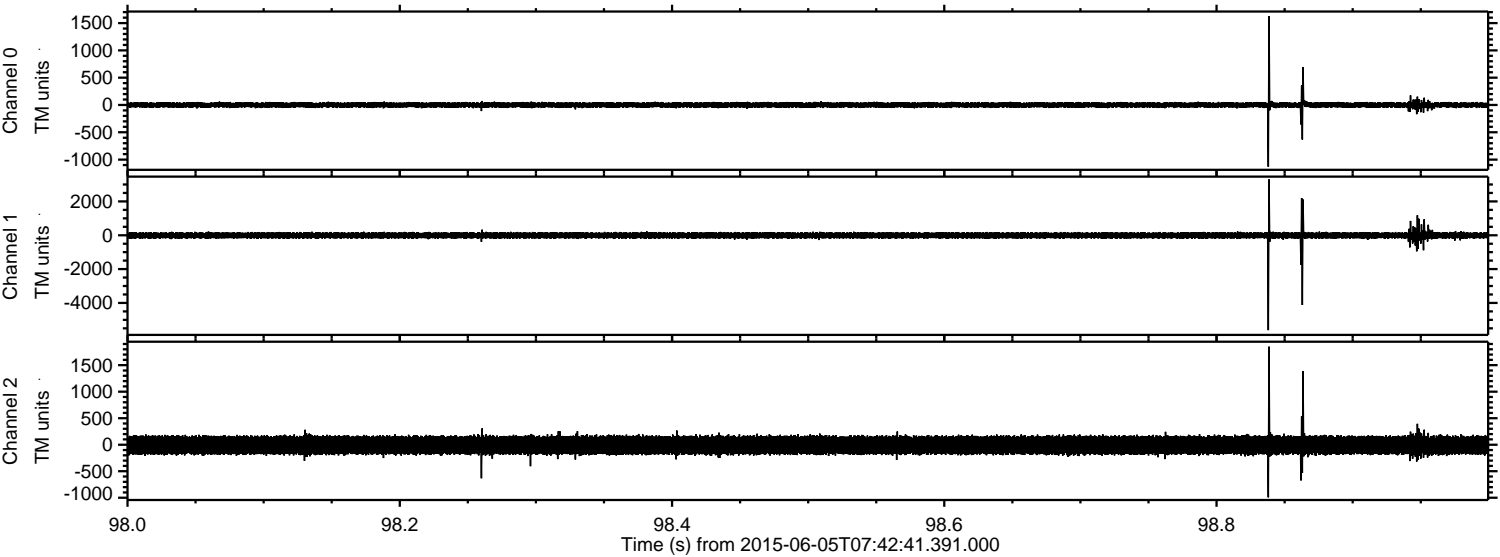


Channel 0
mn: -1728
mx: 1384
 μ : 0.2
 σ : 29.5

Channel 1
mn: -6754
mx: 7018
 μ : -9.5
 σ : 118.4

Channel 2
mn: -1899
mx: 1850
 μ : -8.1
 σ : 102.4

Processed Fri Jun 5 09:48:49 2015 by ELM ver.2012-10-06 from 001__elm20150605_074240__dat00.bin

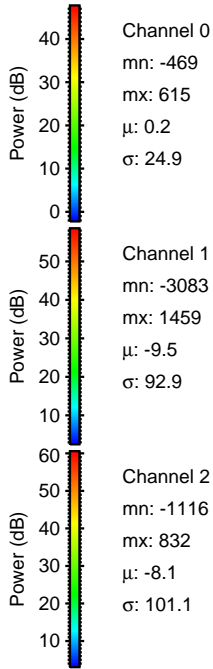
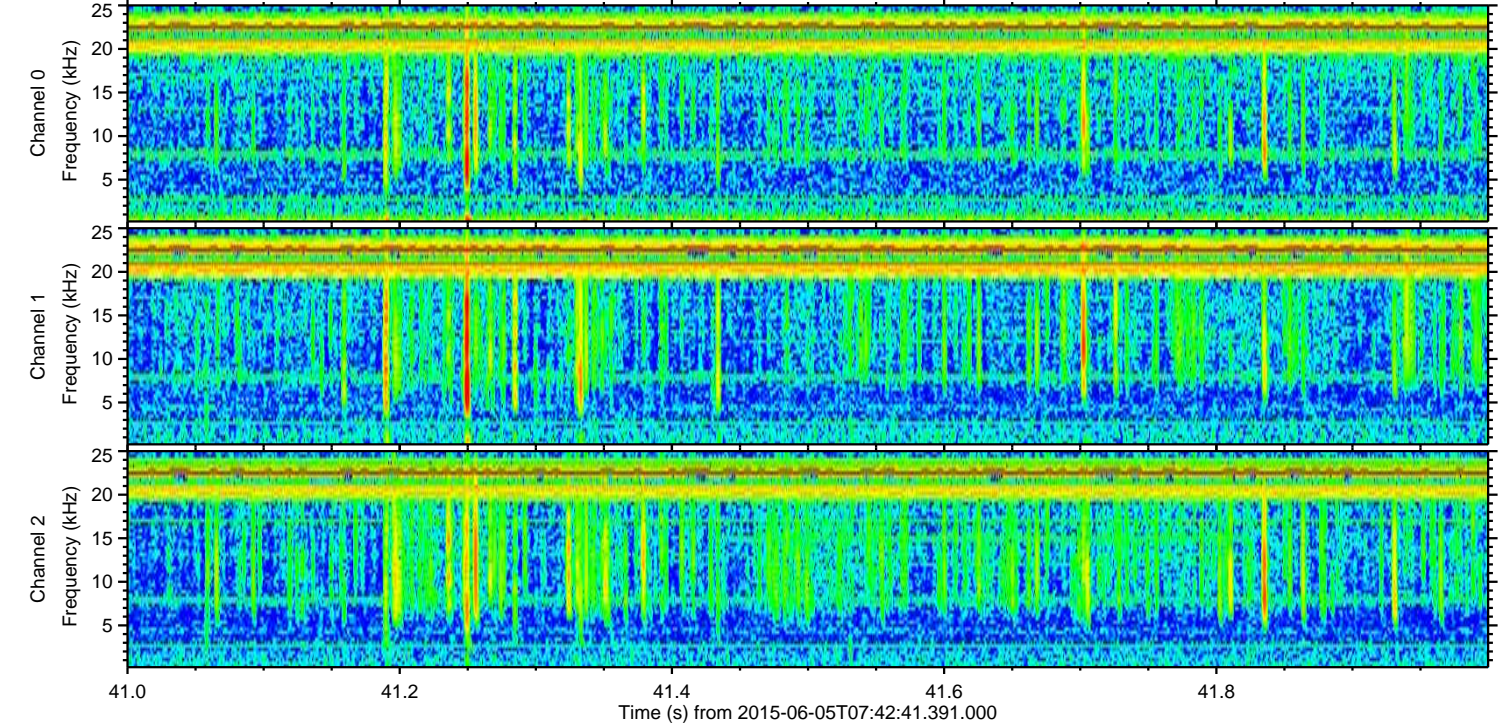
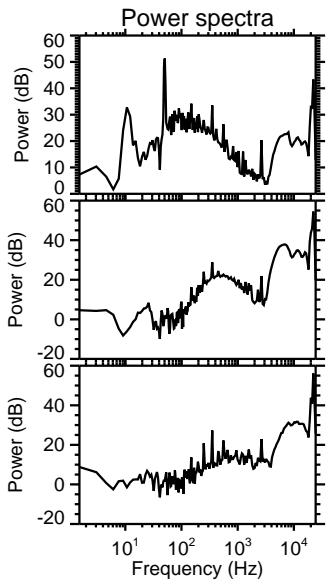
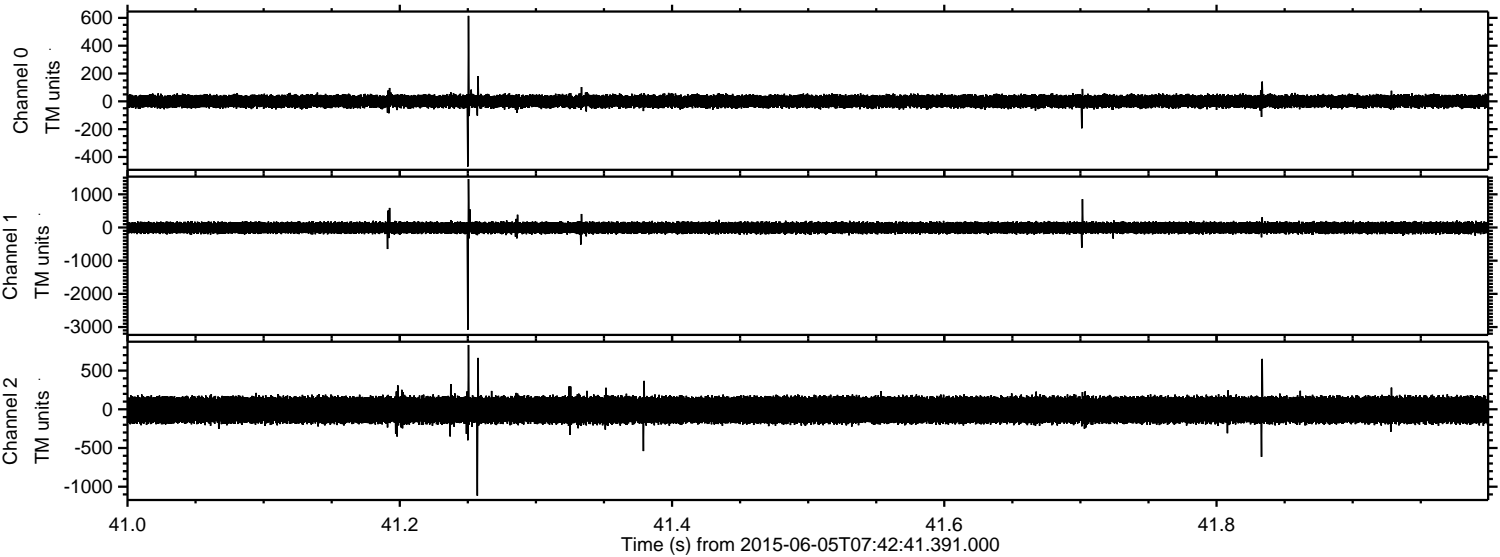


Channel 0
mn: -1131
mx: 1630
 μ : 0.1
 σ : 27.5

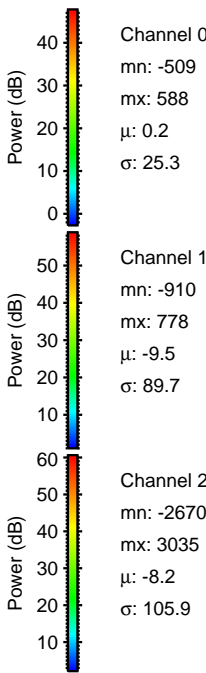
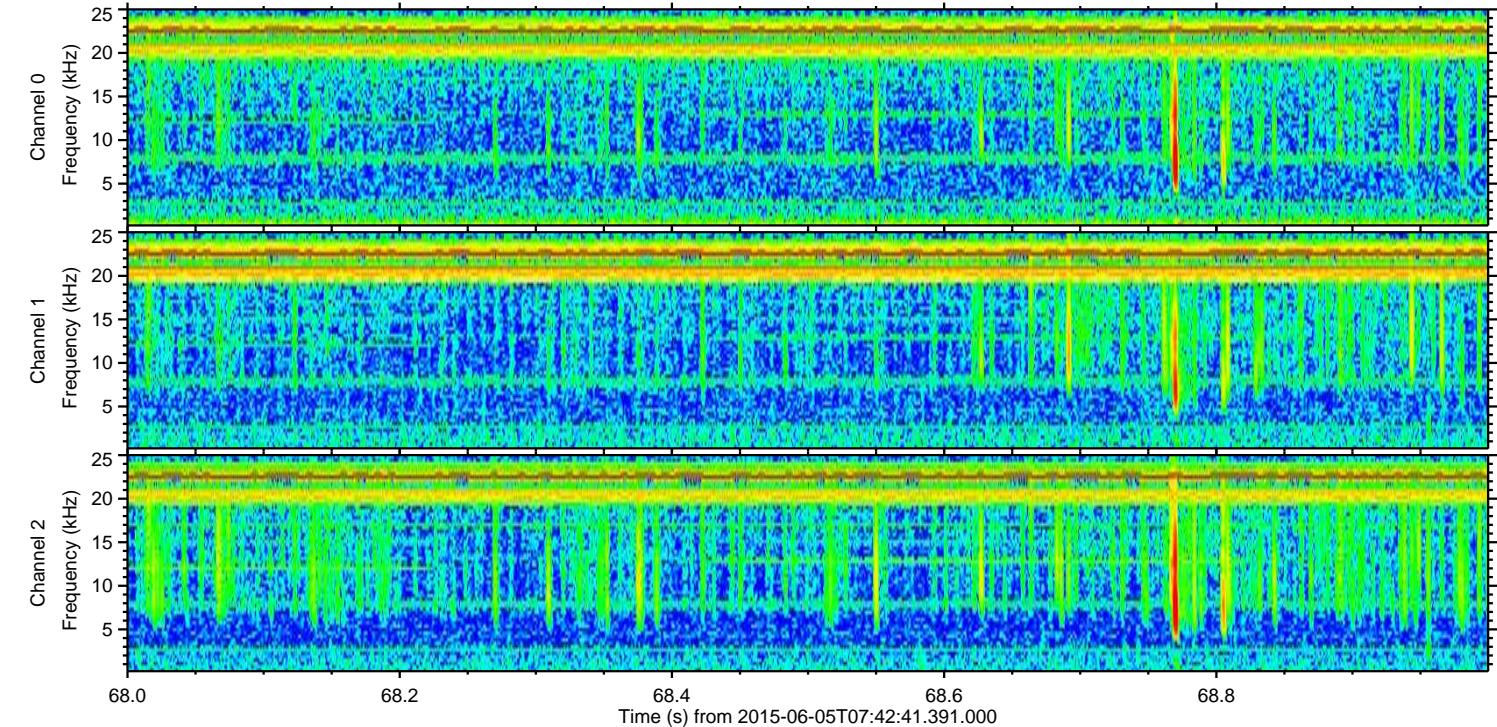
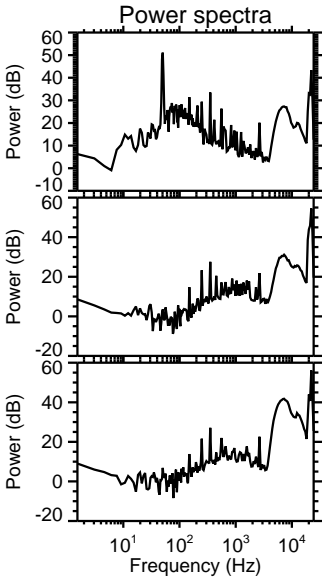
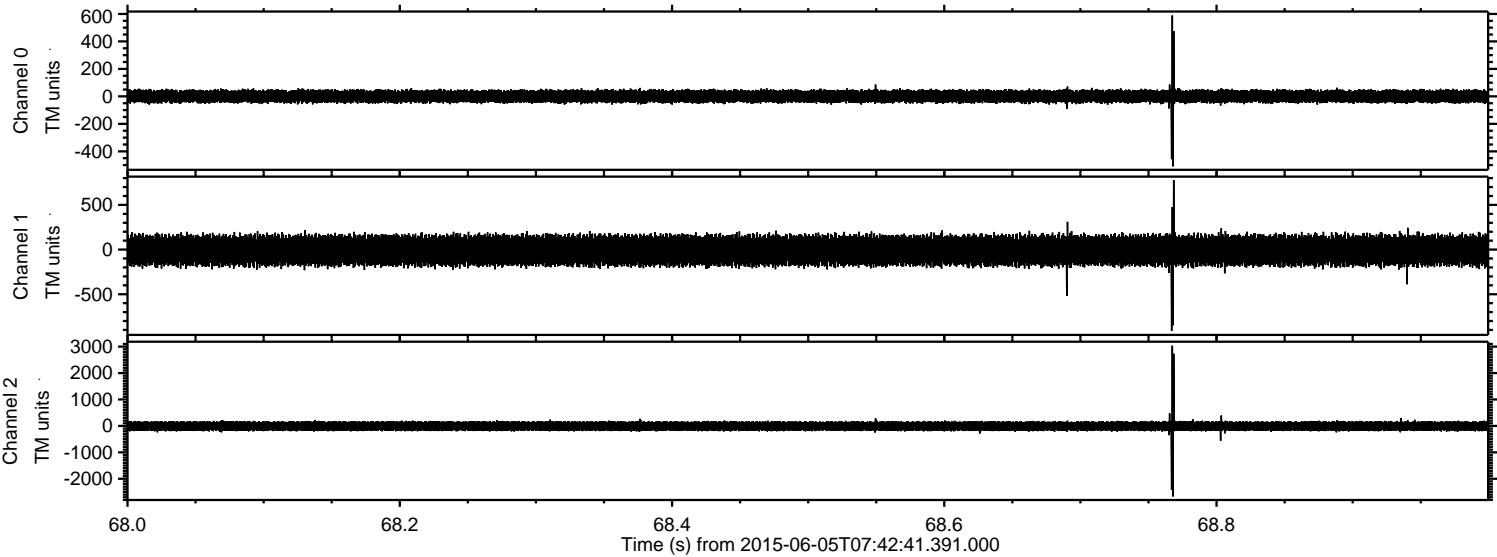
Channel 1
mn: -5608
mx: 3299
 μ : -9.4
 σ : 107.7

Channel 2
mn: -993
mx: 1850
 μ : -8.2
 σ : 101.4

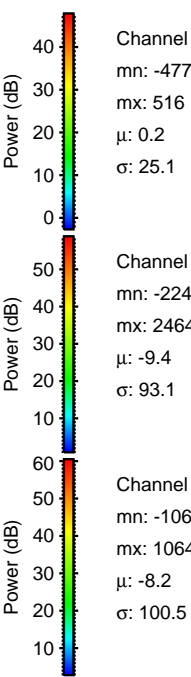
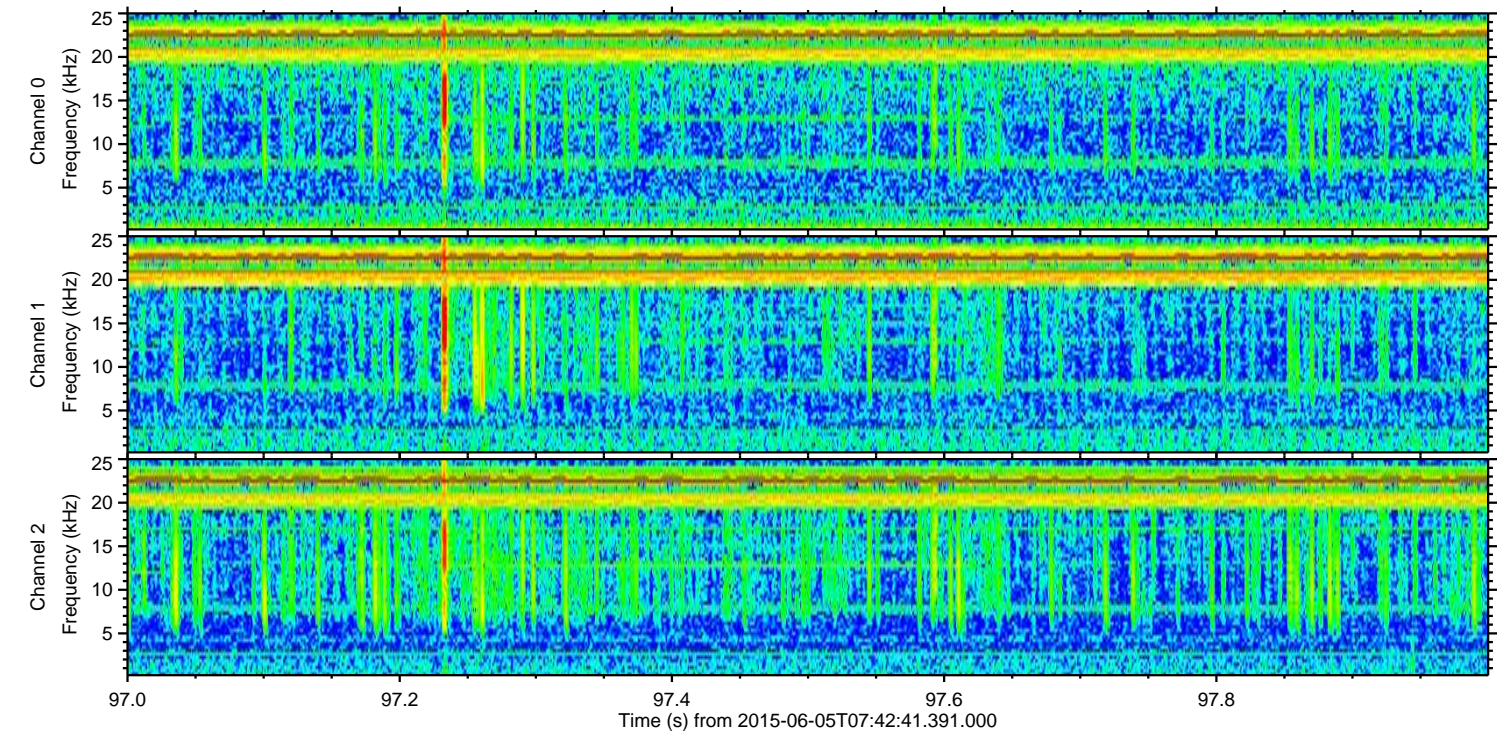
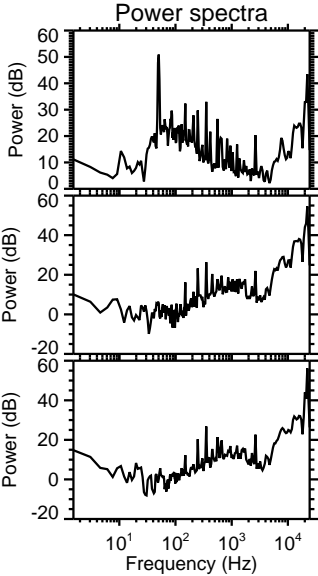
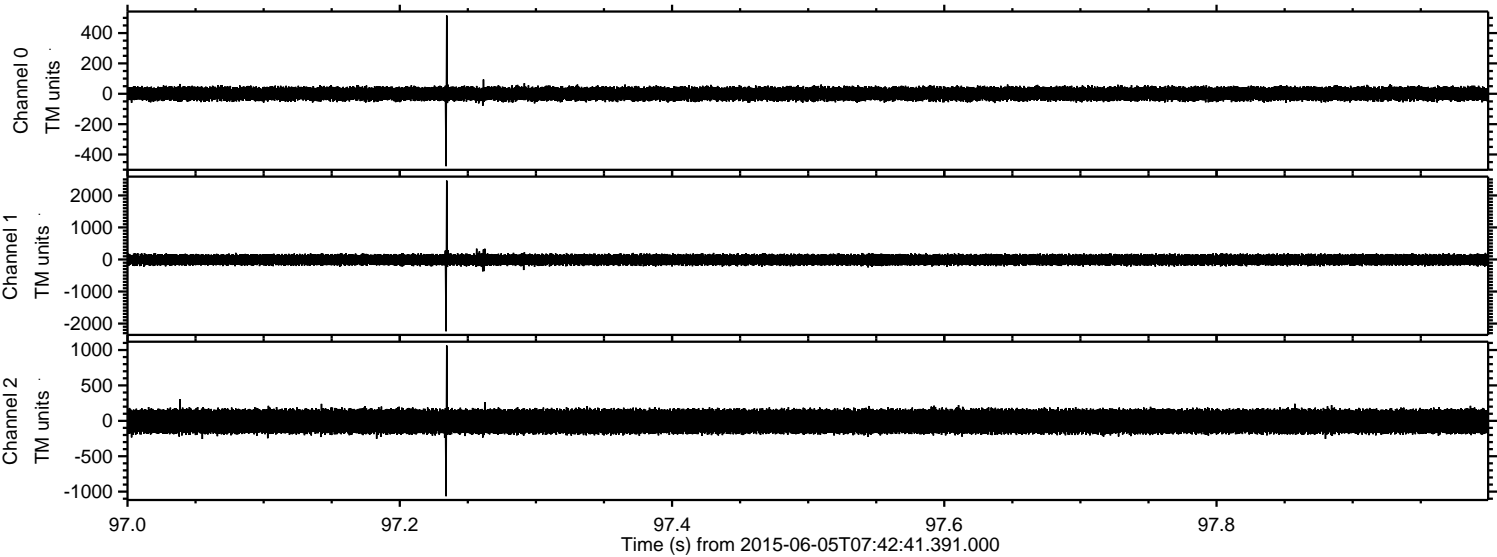
Processed Fri Jun 5 09:48:50 2015 by ELM ver.2012-10-06 from 001__elm20150605_074240__dat00.bin



Processed Fri Jun 5 09:48:51 2015 by ELM ver.2012-10-06 from 001__elm20150605_074240__dat00.bin



Processed Fri Jun 5 09:48:52 2015 by ELM ver.2012-10-06 from 001__elm20150605_074240__dat00.bin



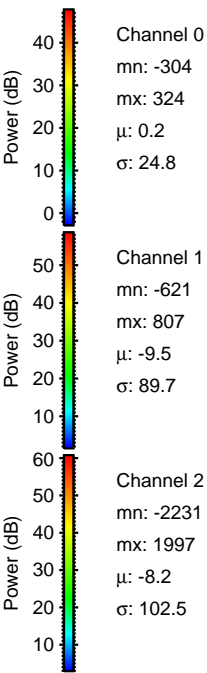
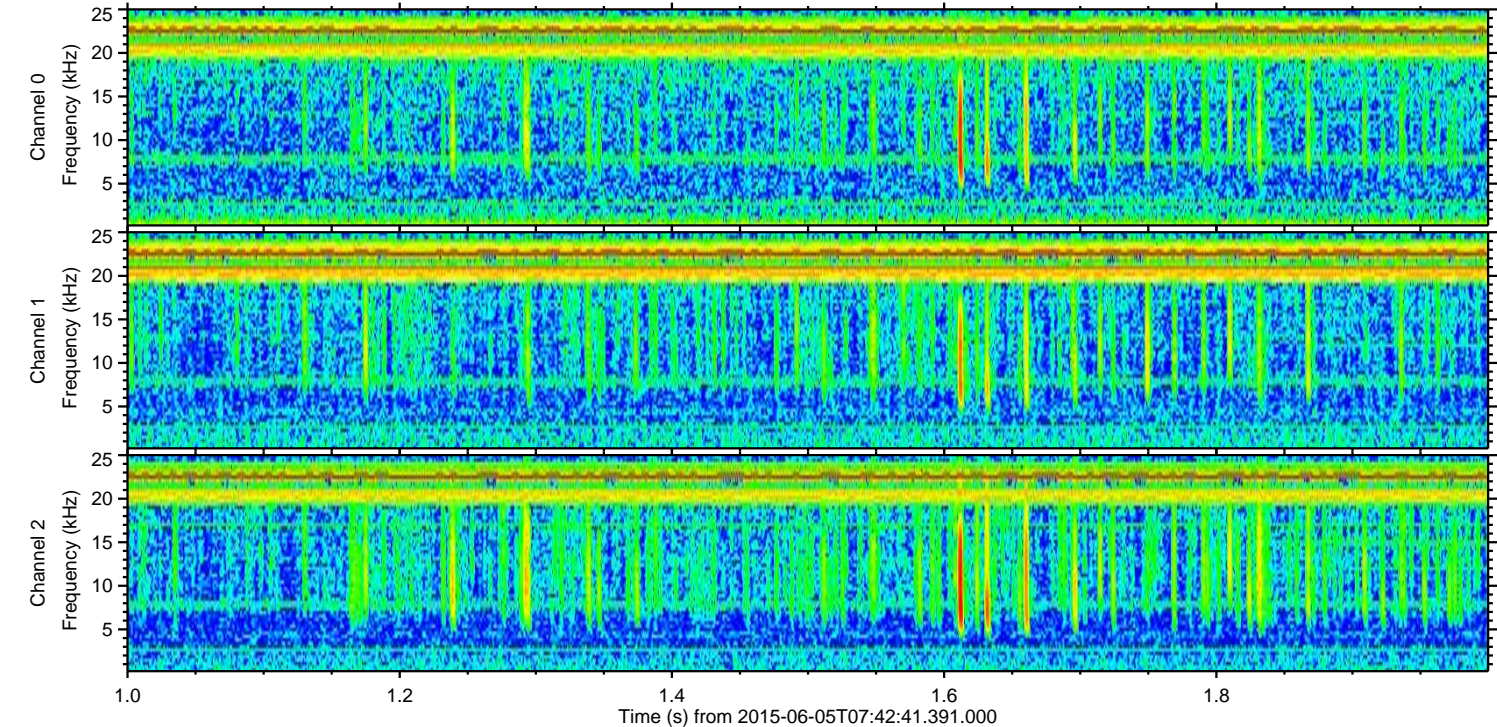
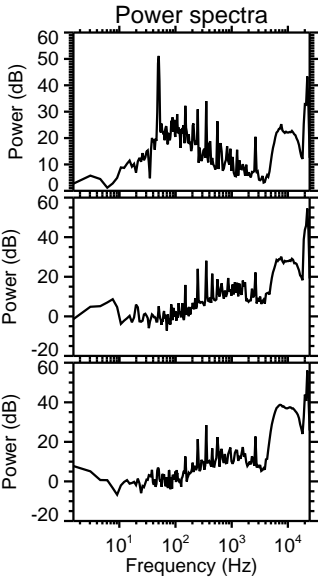
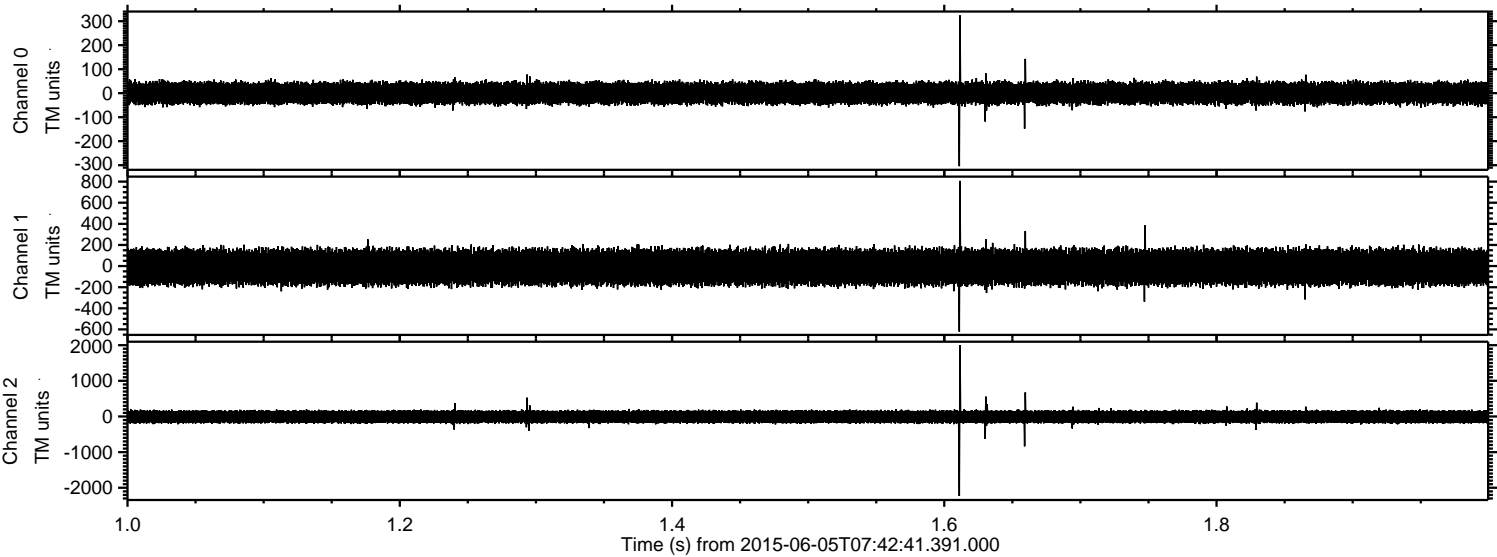
Channel 0
mn: -477
mx: 516
 μ : 0.2
 σ : 25.1

Channel 1
mn: -2243
mx: 2464
 μ : -9.4
 σ : 93.1

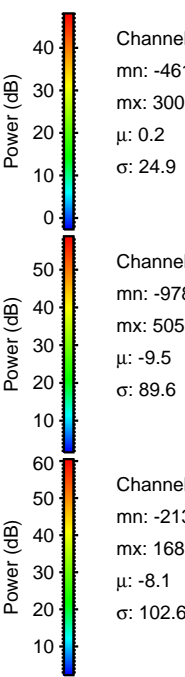
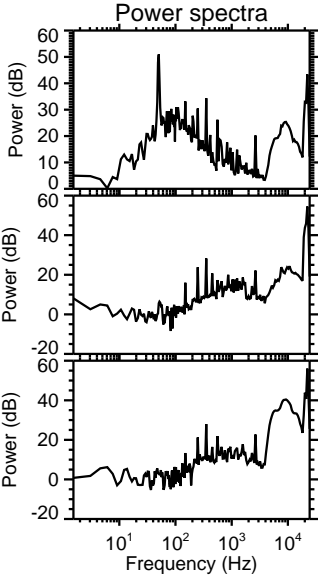
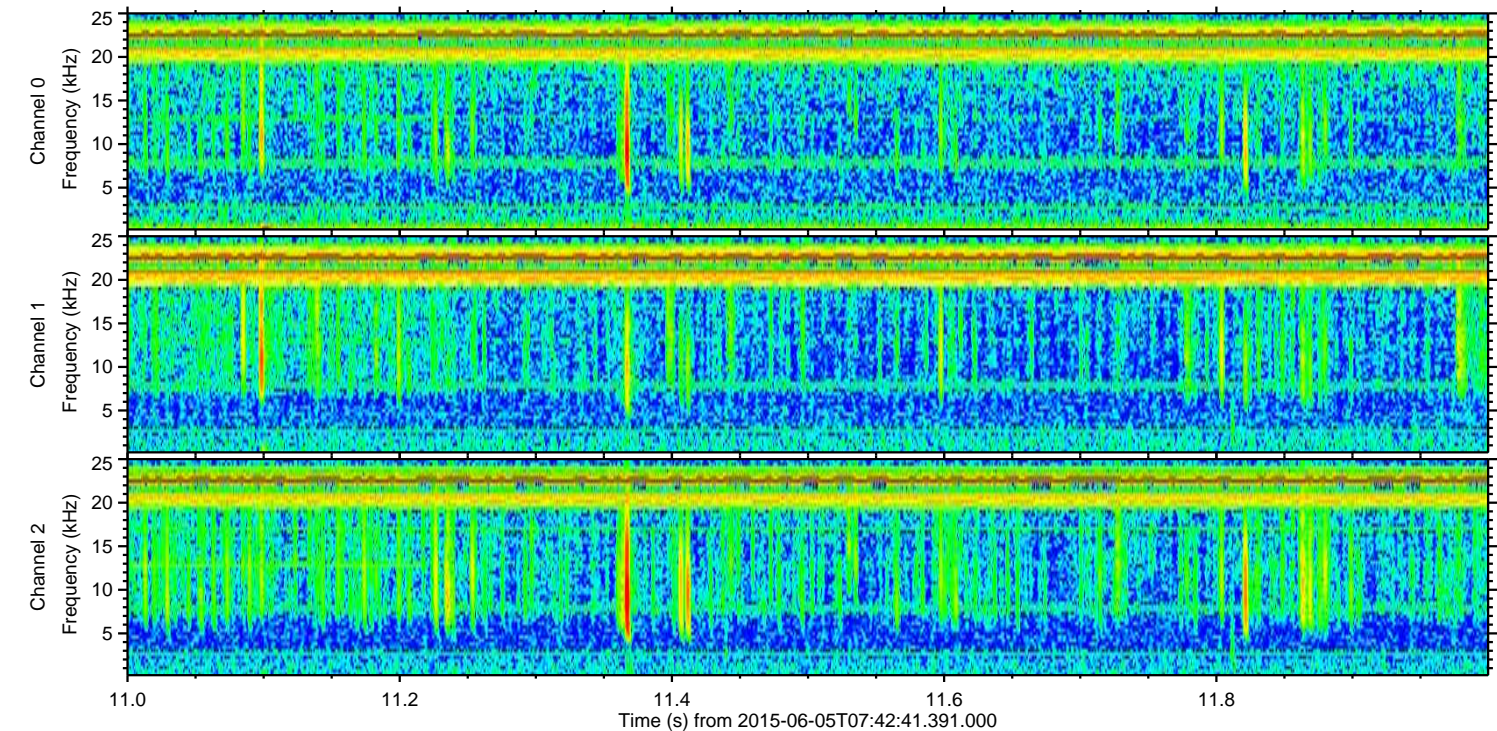
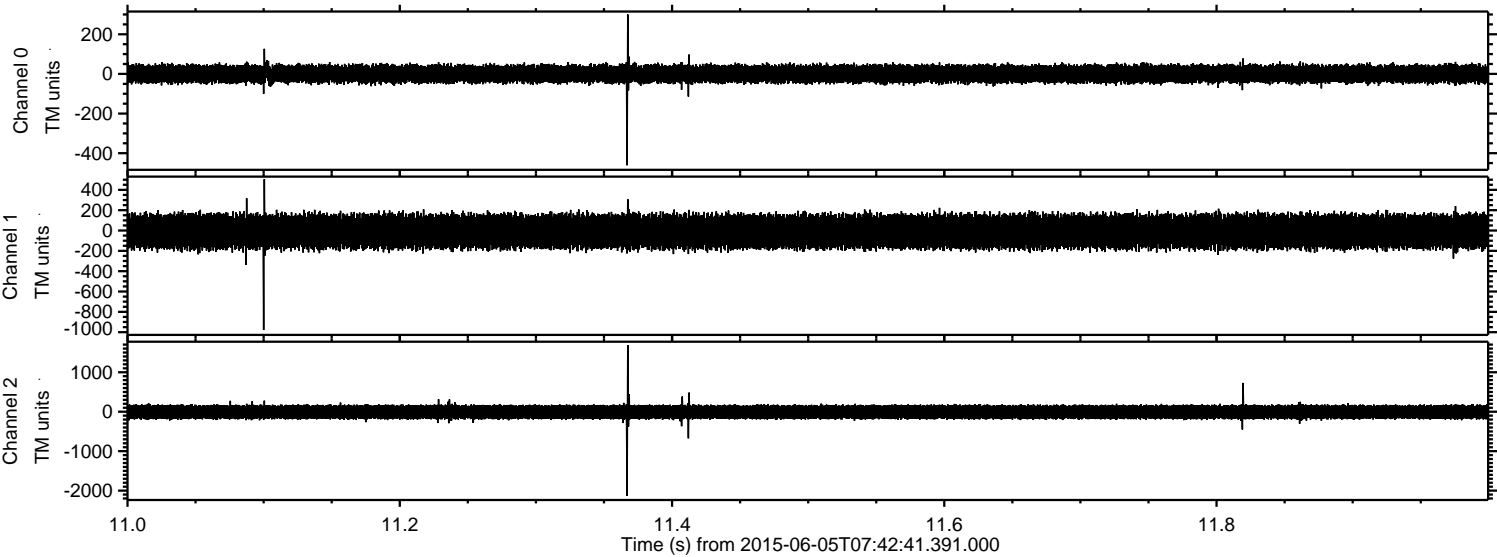
Channel 2
mn: -1065
mx: 1064
 μ : -8.2
 σ : 100.5

ELMAVAN 3D WAVEFORMS (Measured data sampled at 50 kHz) 51000 packets of 144 samples from 2015-06-05T07:42:41.391.000. Part 2/147

Processed Fri Jun 5 09:48:53 2015 by ELM ver.2012-10-06 from 001__elm20150605_074240__dat00.bin



Processed Fri Jun 5 09:48:54 2015 by ELM ver.2012-10-06 from 001__elm20150605_074240__dat00.bin



Channel 0
mn: -461
mx: 300
 μ : 0.2
 σ : 24.9

Channel 1
mn: -978
mx: 505
 μ : -9.5
 σ : 89.6

Channel 2
mn: -2131
mx: 1689
 μ : -8.1
 σ : 102.6

Processed Fri Jun 5 09:48:55 2015 by ELM ver.2012-10-06 from 001__elm20150605_074240__dat00.bin

