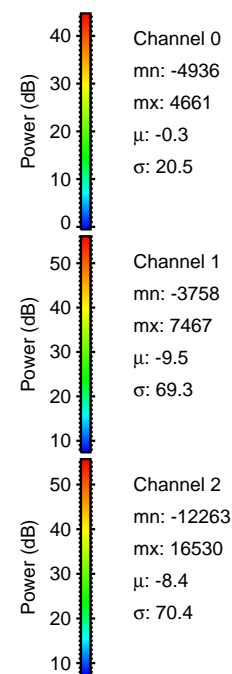
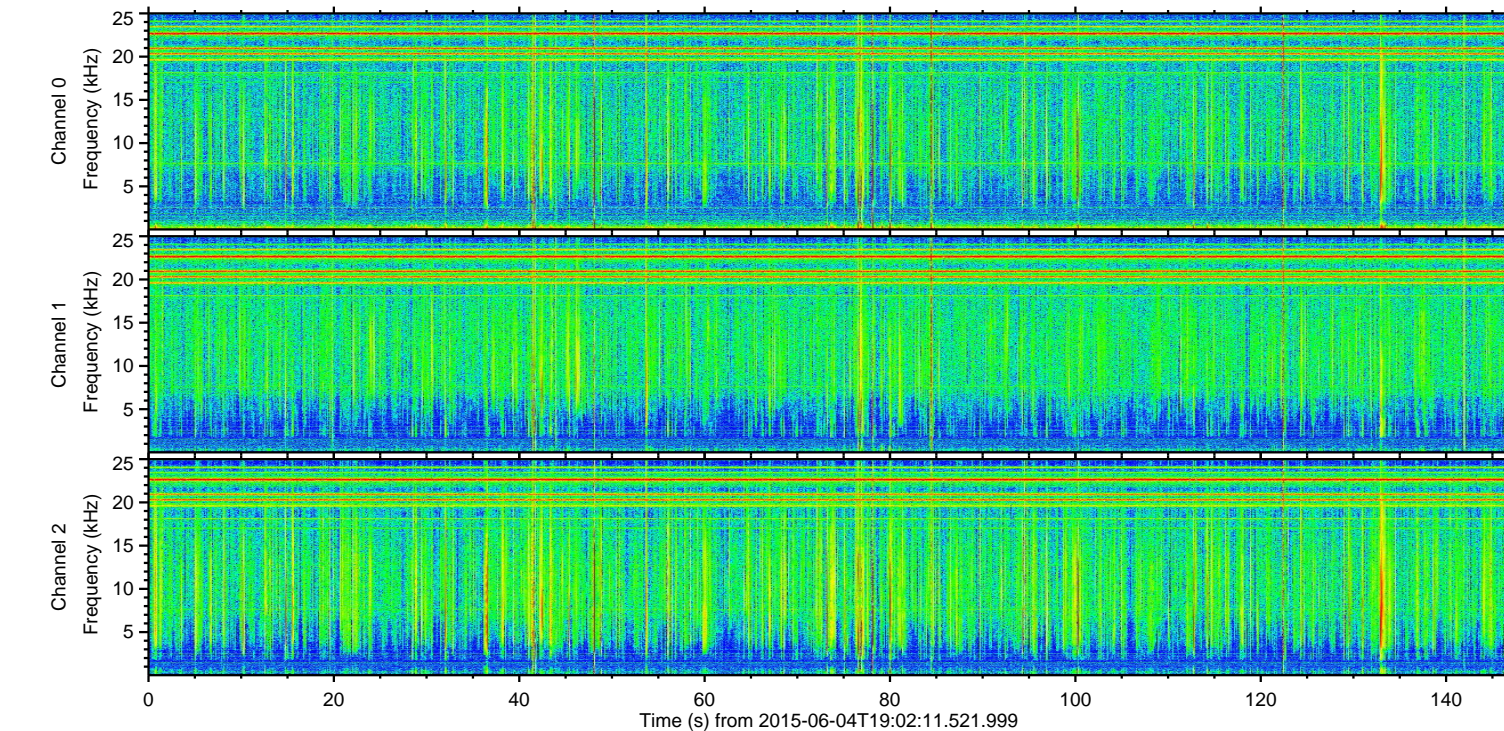
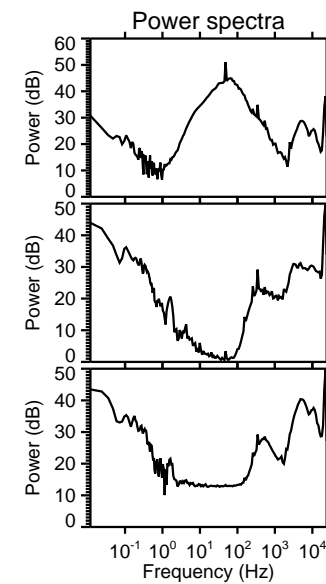
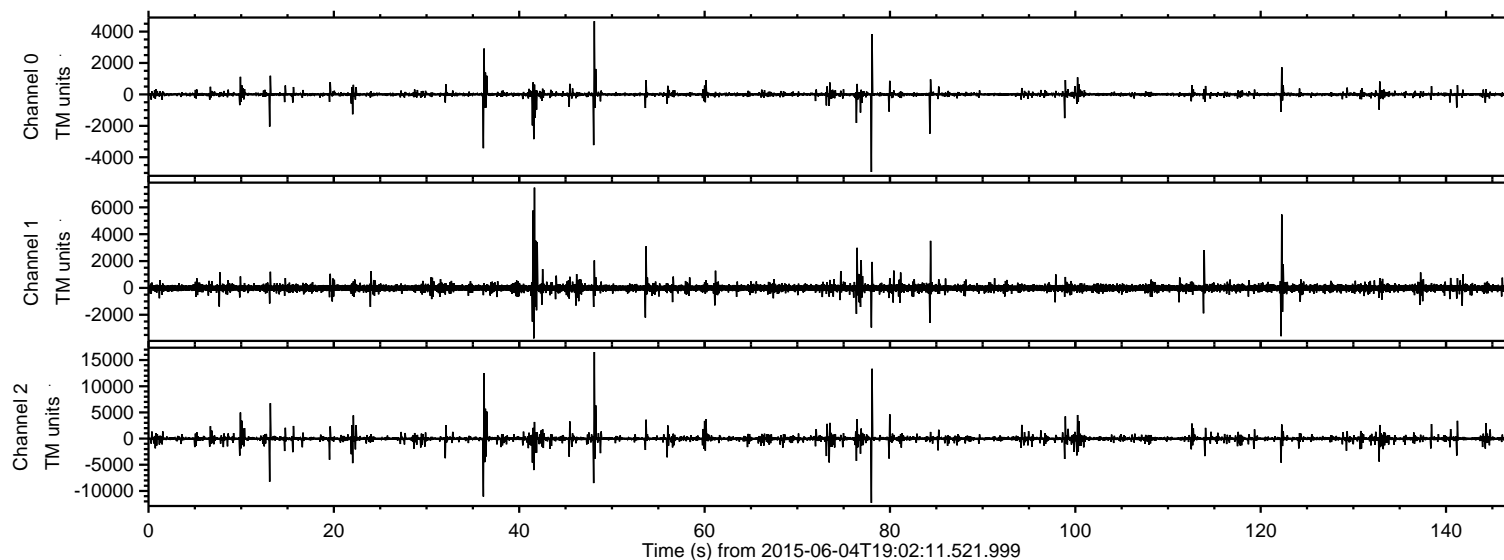
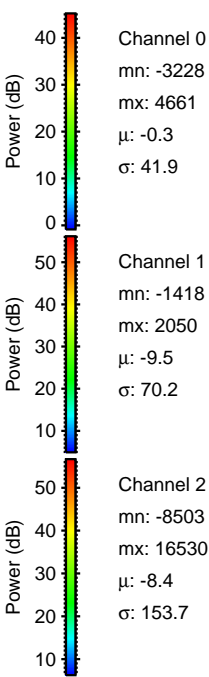
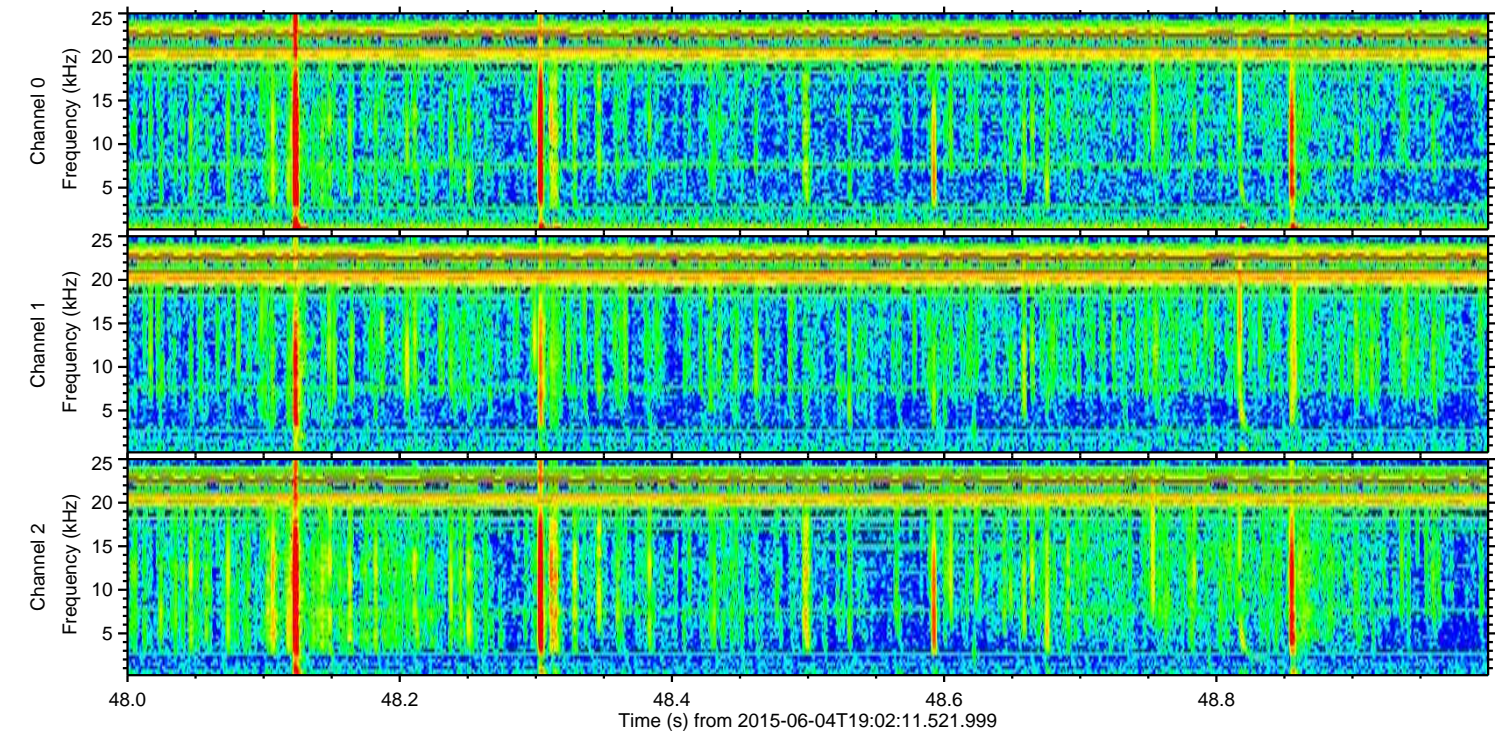
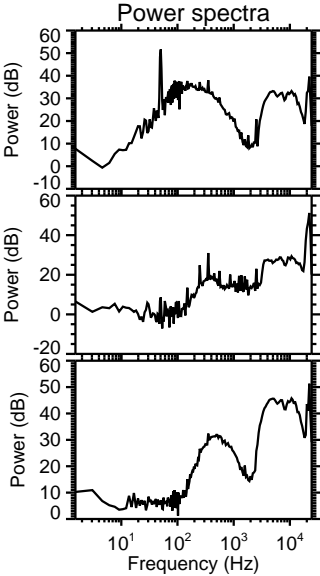
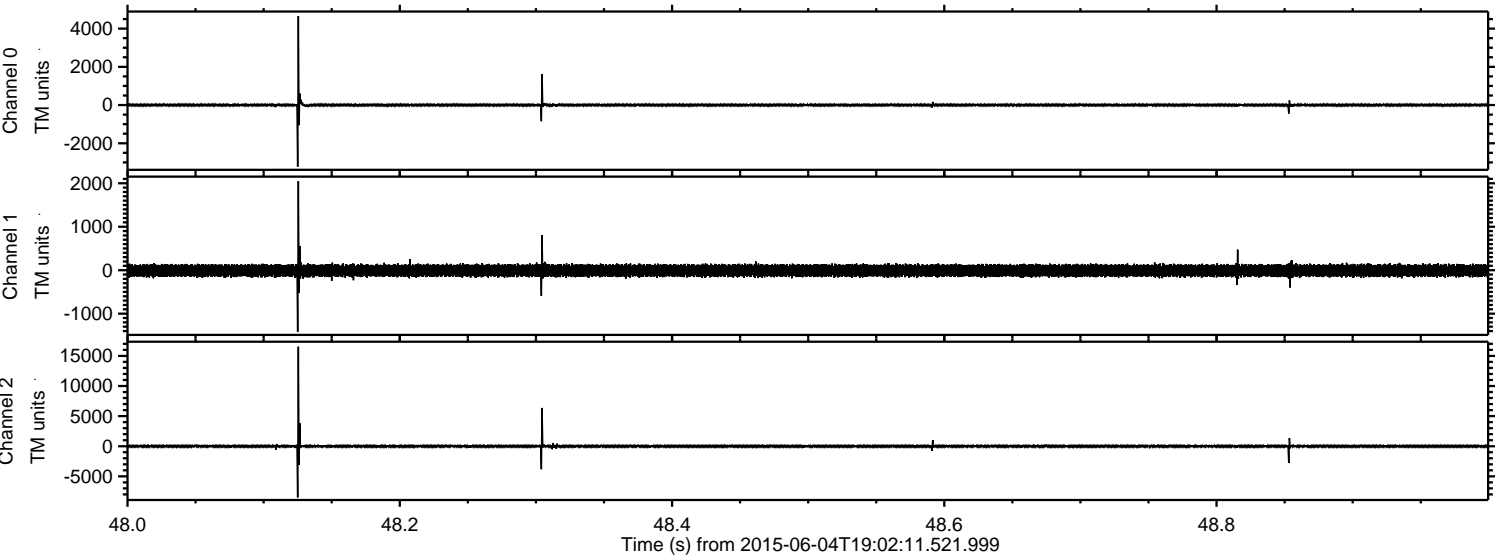


ELMAVAN 3D WAVEFORMS (Measured data sampled at 50 kHz) 51000 packets of 144 samples from 2015-06-04T19:02:11.521.999.

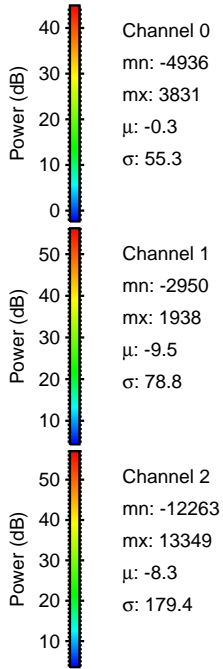
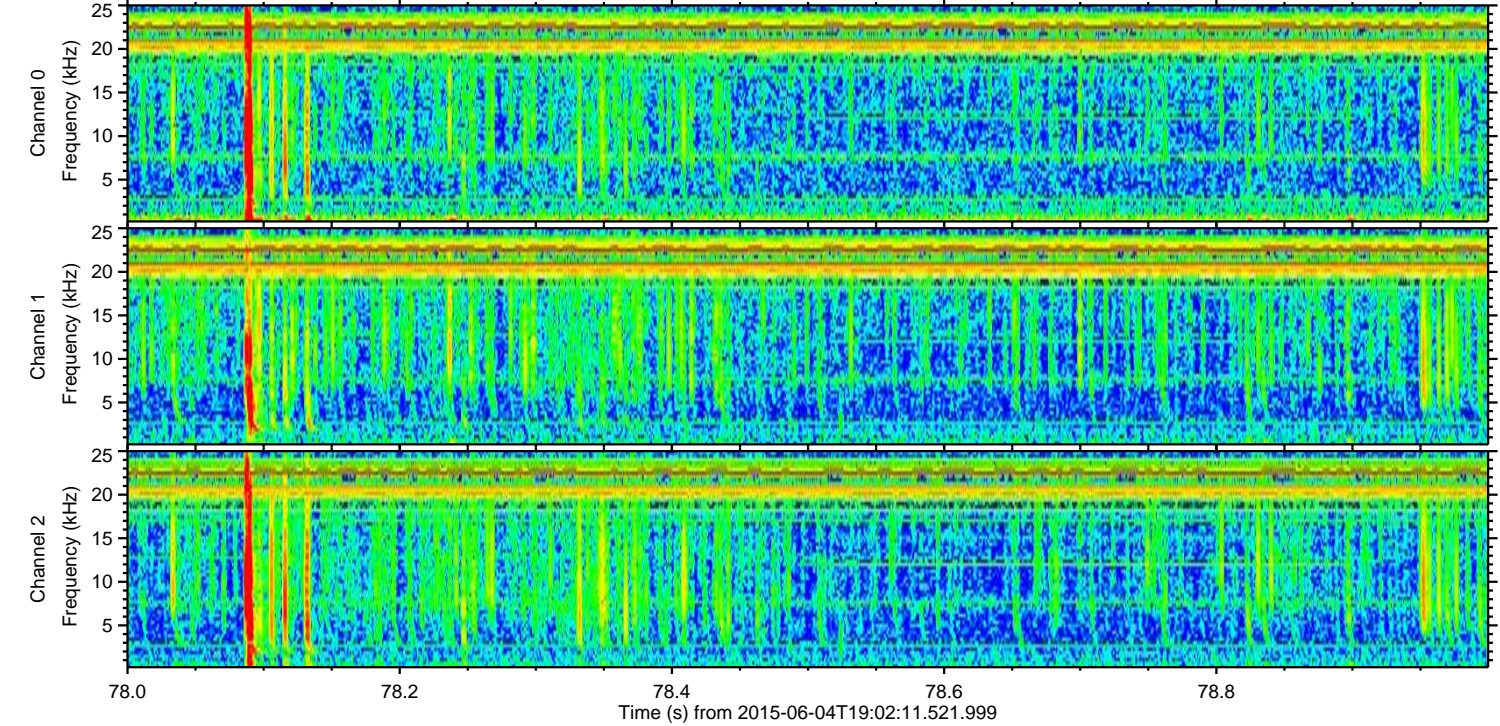
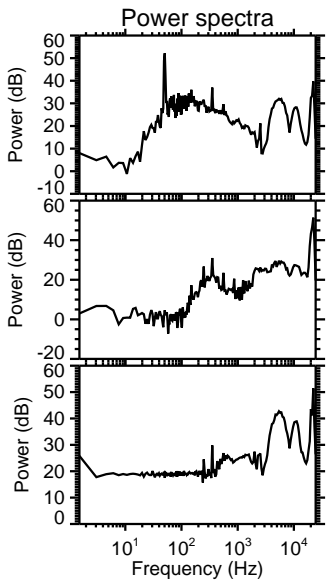
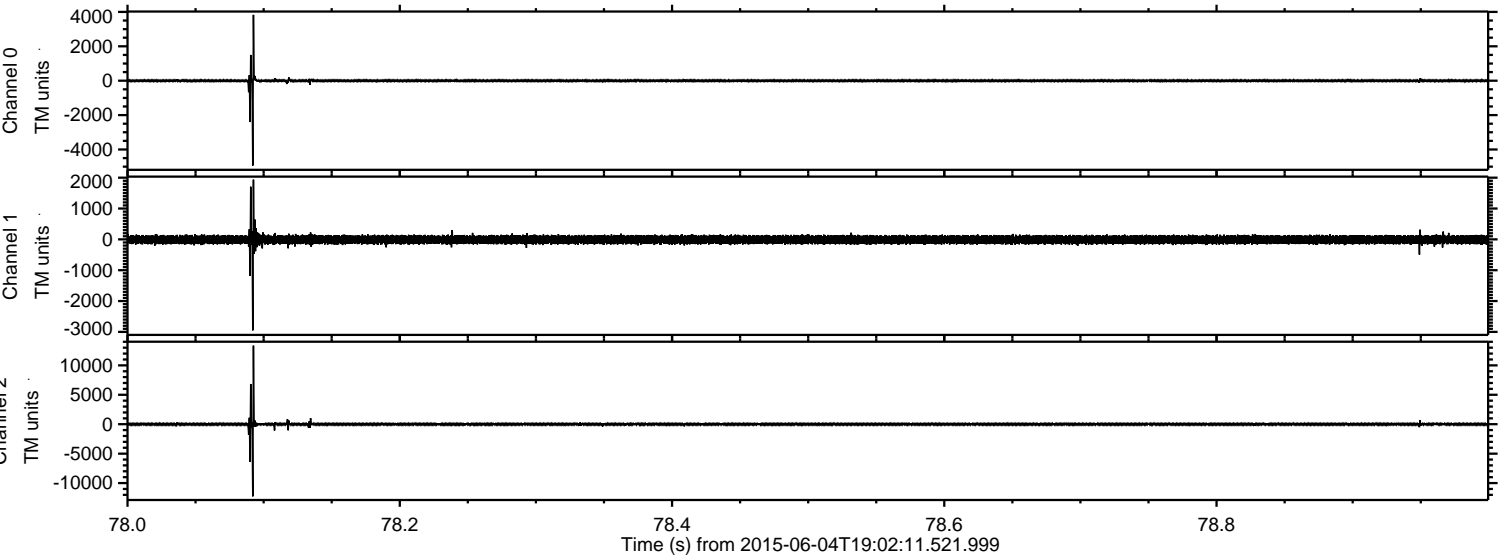
Processed Thu Jun 4 21:08:42 2015 by ELM ver.2012-10-06 from 001__elm20150604_190210__dat00.bin



Processed Thu Jun 4 21:08:53 2015 by ELM ver.2012-10-06 from 001__elm20150604_190210__dat00.bin

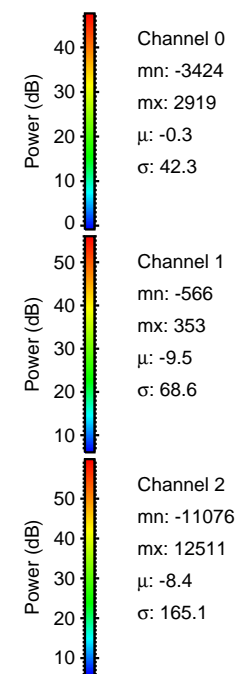
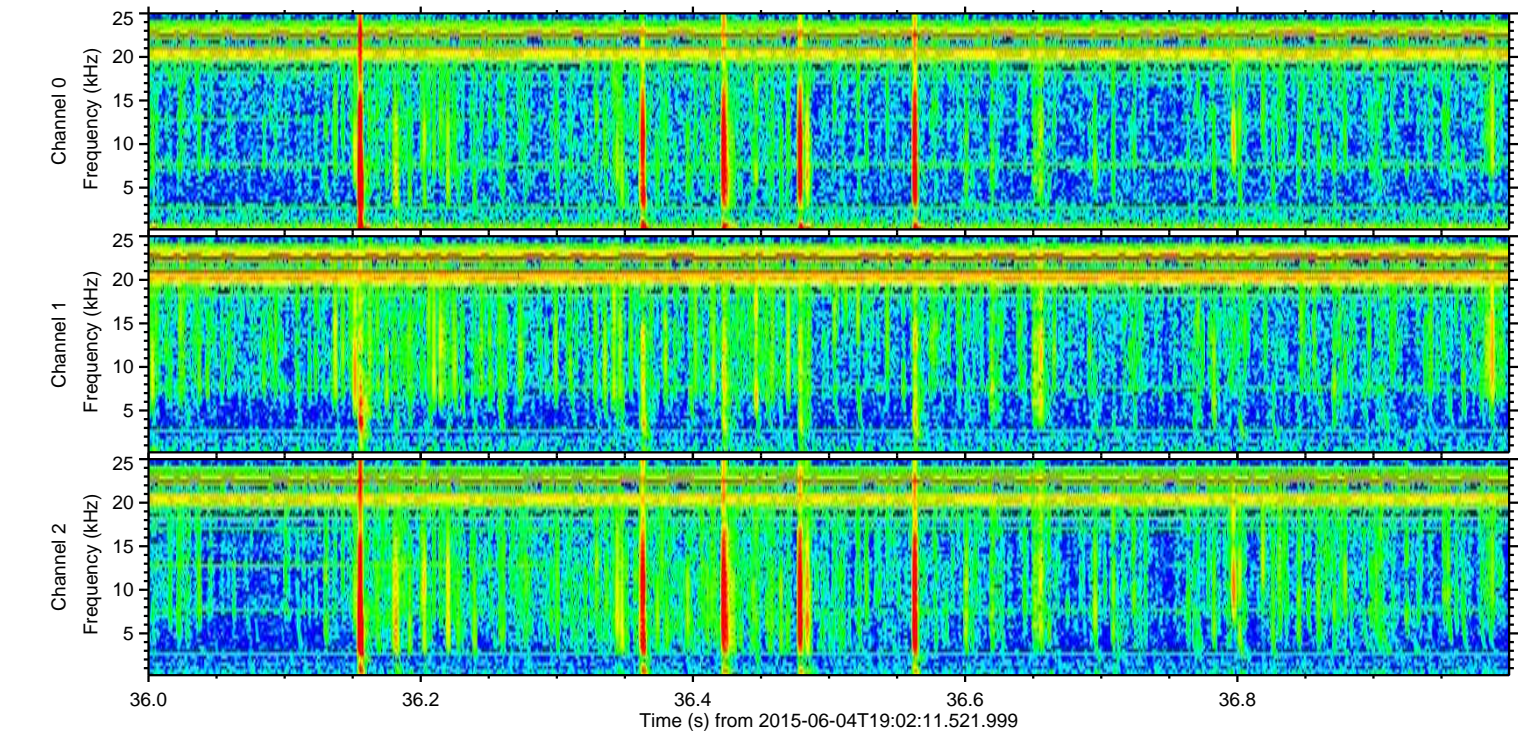
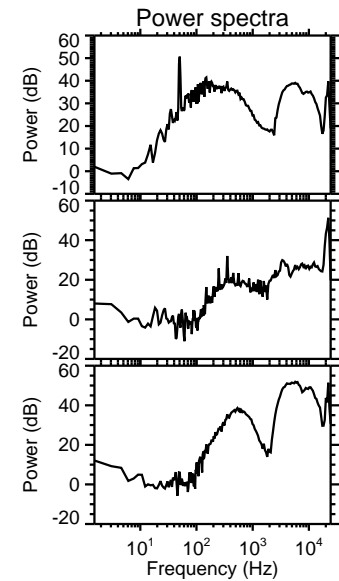
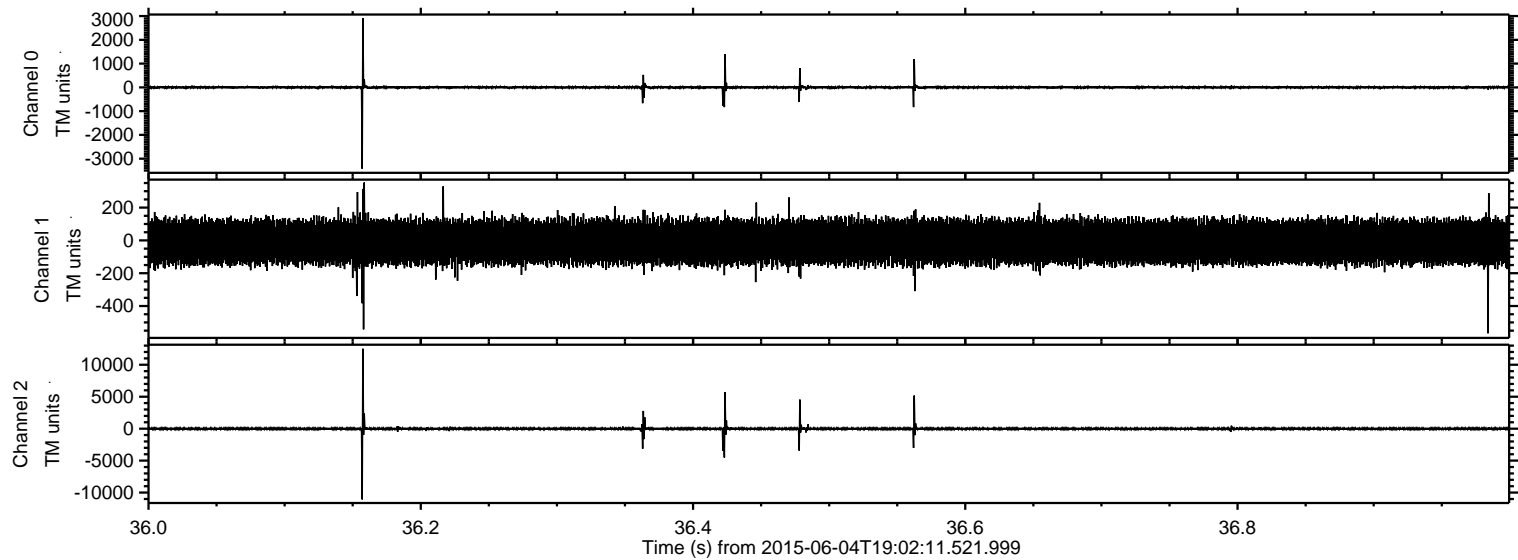


Processed Thu Jun 4 21:08:54 2015 by ELM ver.2012-10-06 from 001__elm20150604_190210__dat00.bin



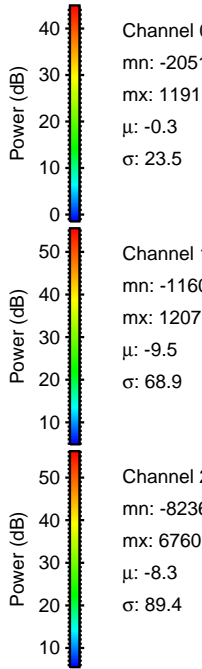
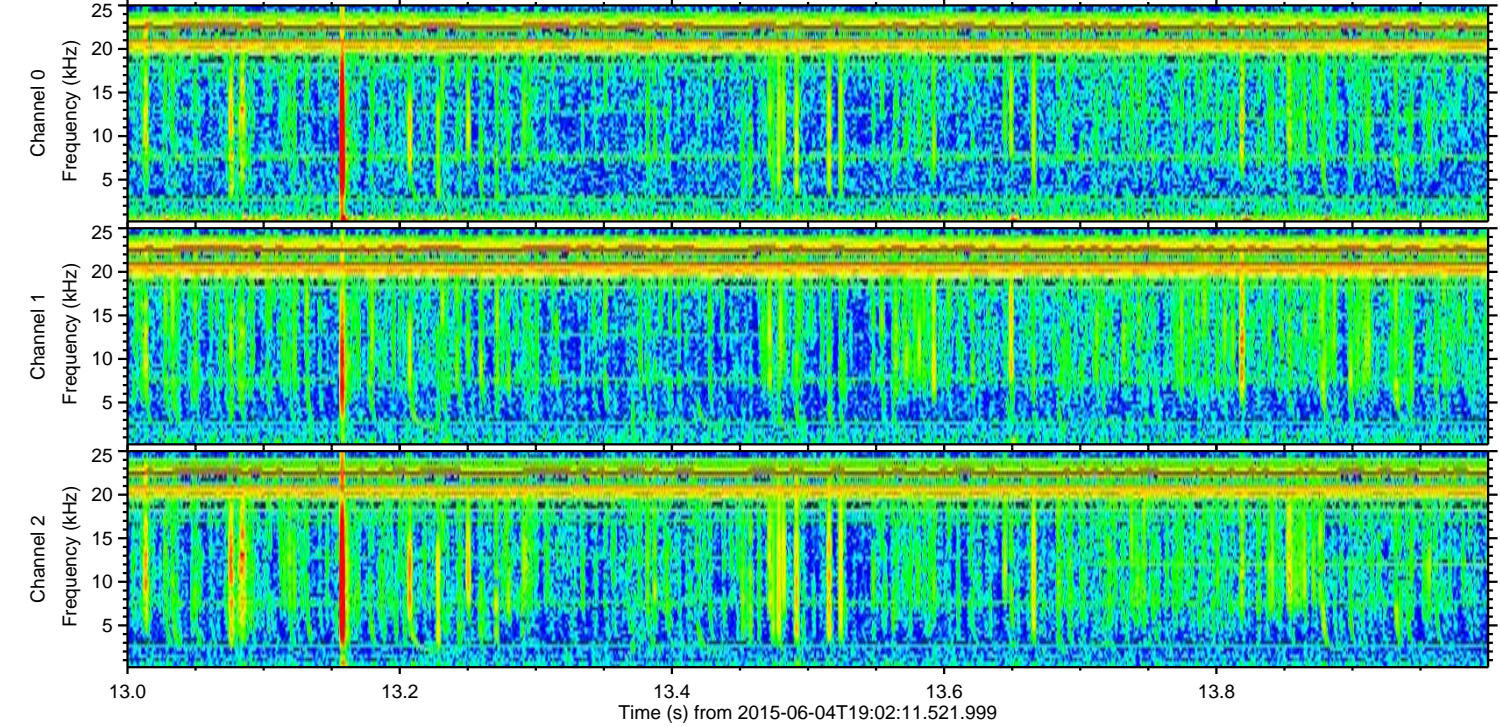
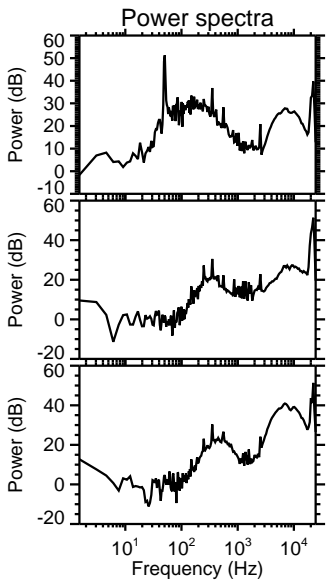
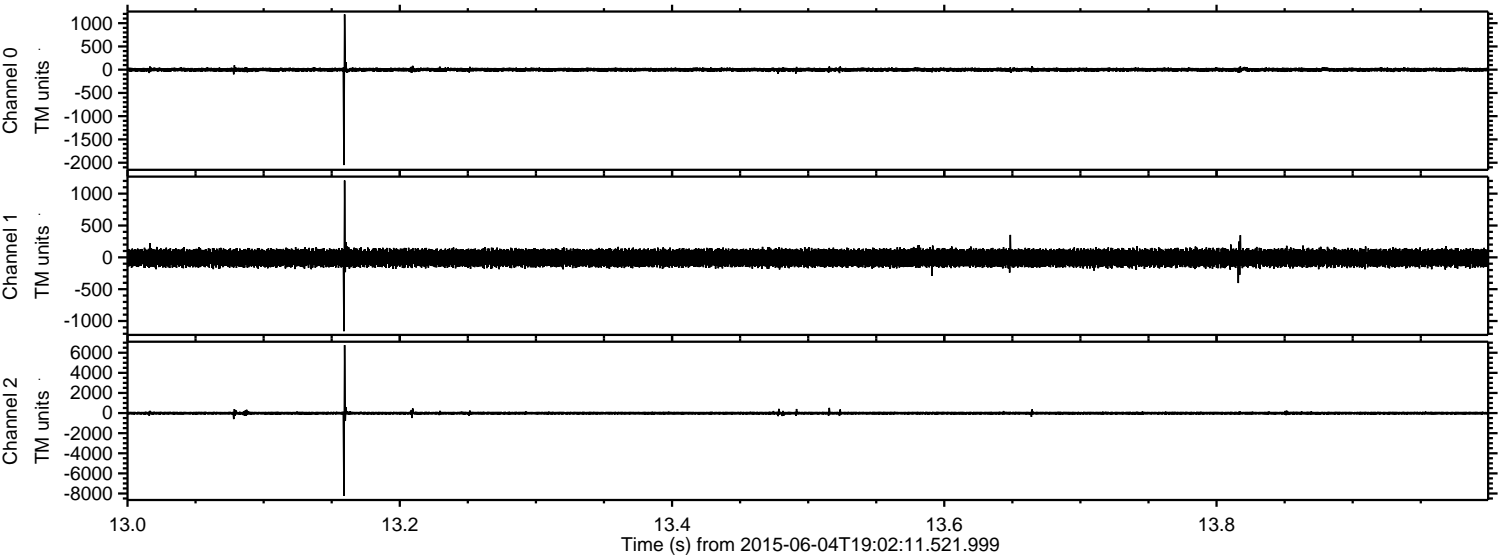
ELMAVAN 3D WAVEFORMS (Measured data sampled at 50 kHz) 51000 packets of 144 samples from 2015-06-04T19:02:11.521.999. Part 37/147

Processed Thu Jun 4 21:08:55 2015 by ELM ver.2012-10-06 from 001__elm20150604_190210__dat00.bin

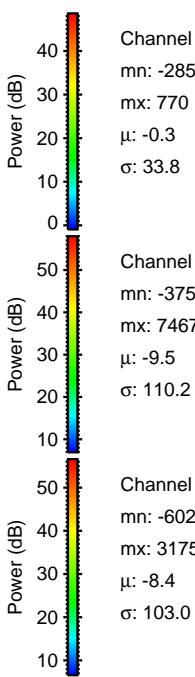
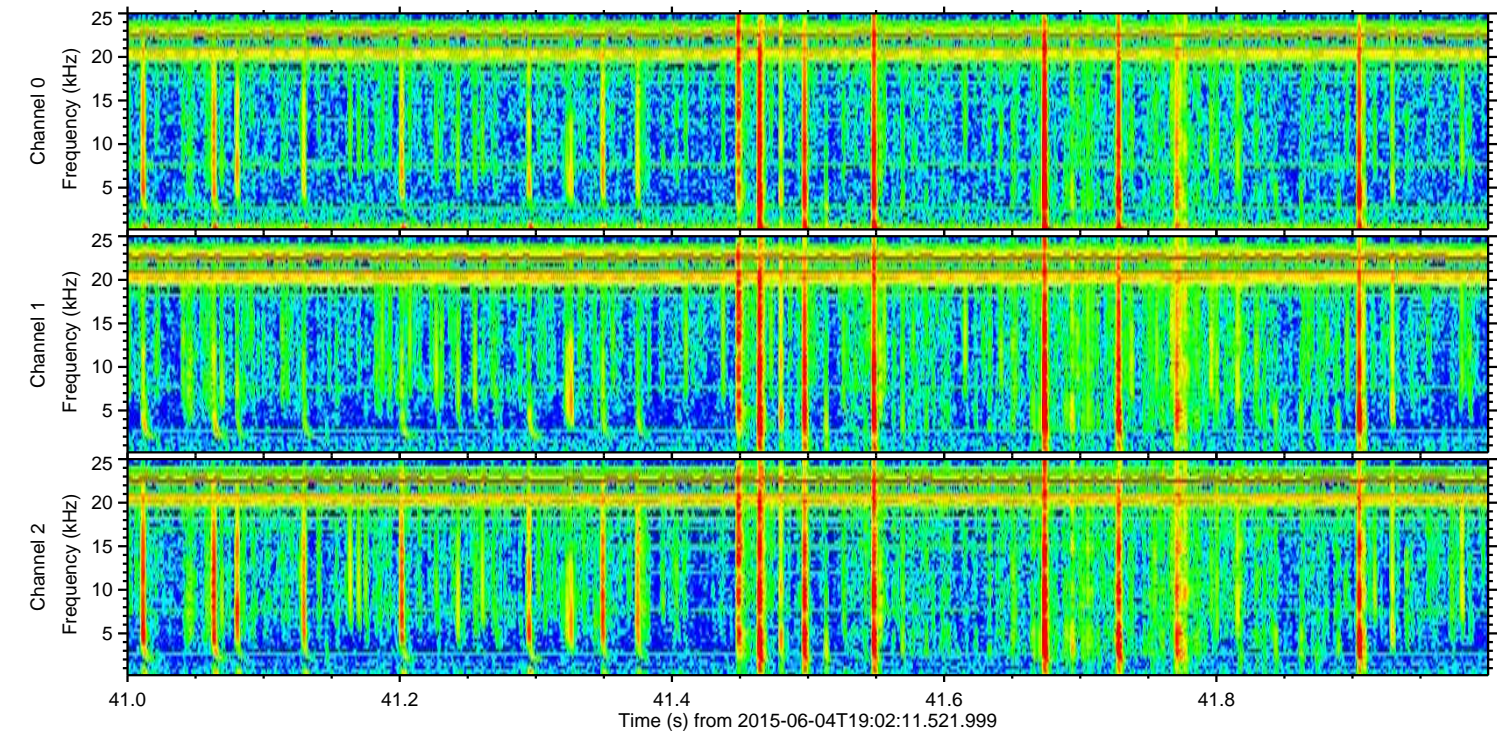
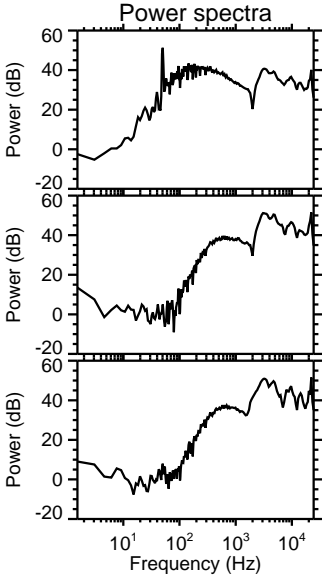
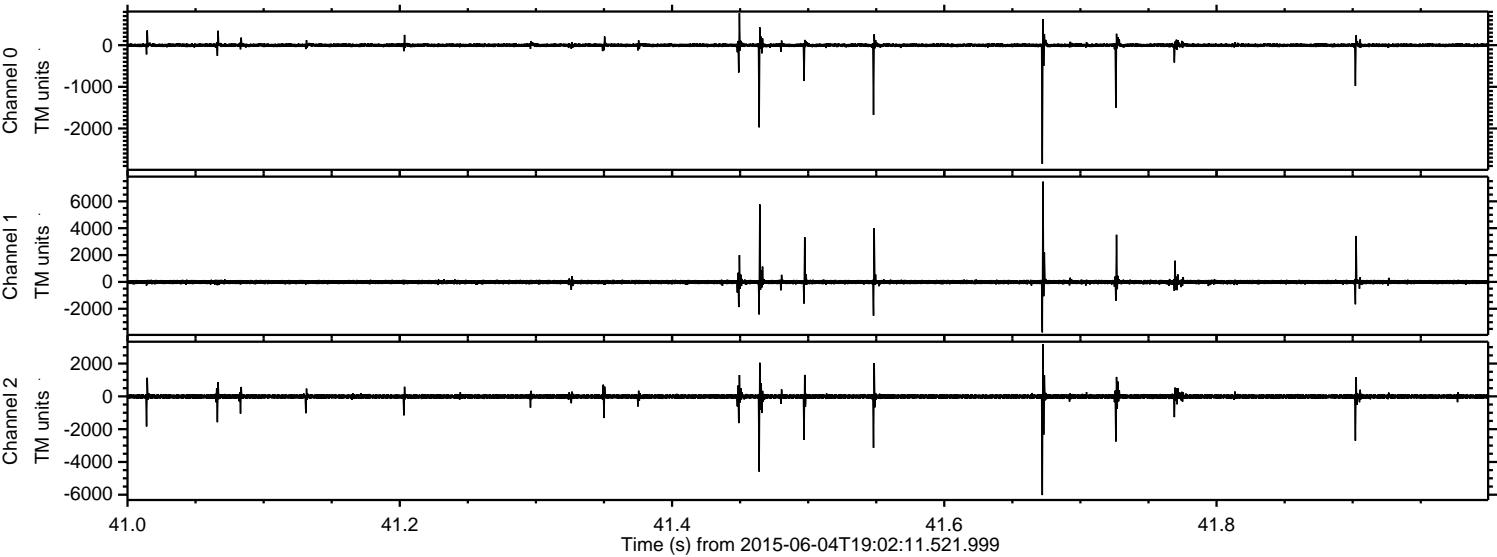


ELMAVAN 3D WAVEFORMS (Measured data sampled at 50 kHz) 51000 packets of 144 samples from 2015-06-04T19:02:11.521.999. Part 14/147

Processed Thu Jun 4 21:08:56 2015 by ELM ver.2012-10-06 from 001__elm20150604_190210__dat00.bin

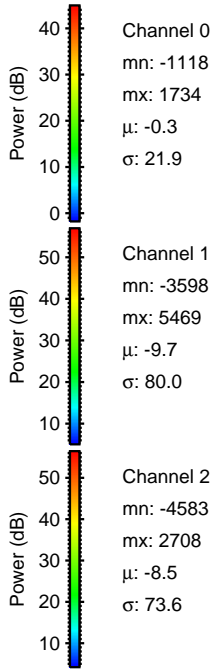
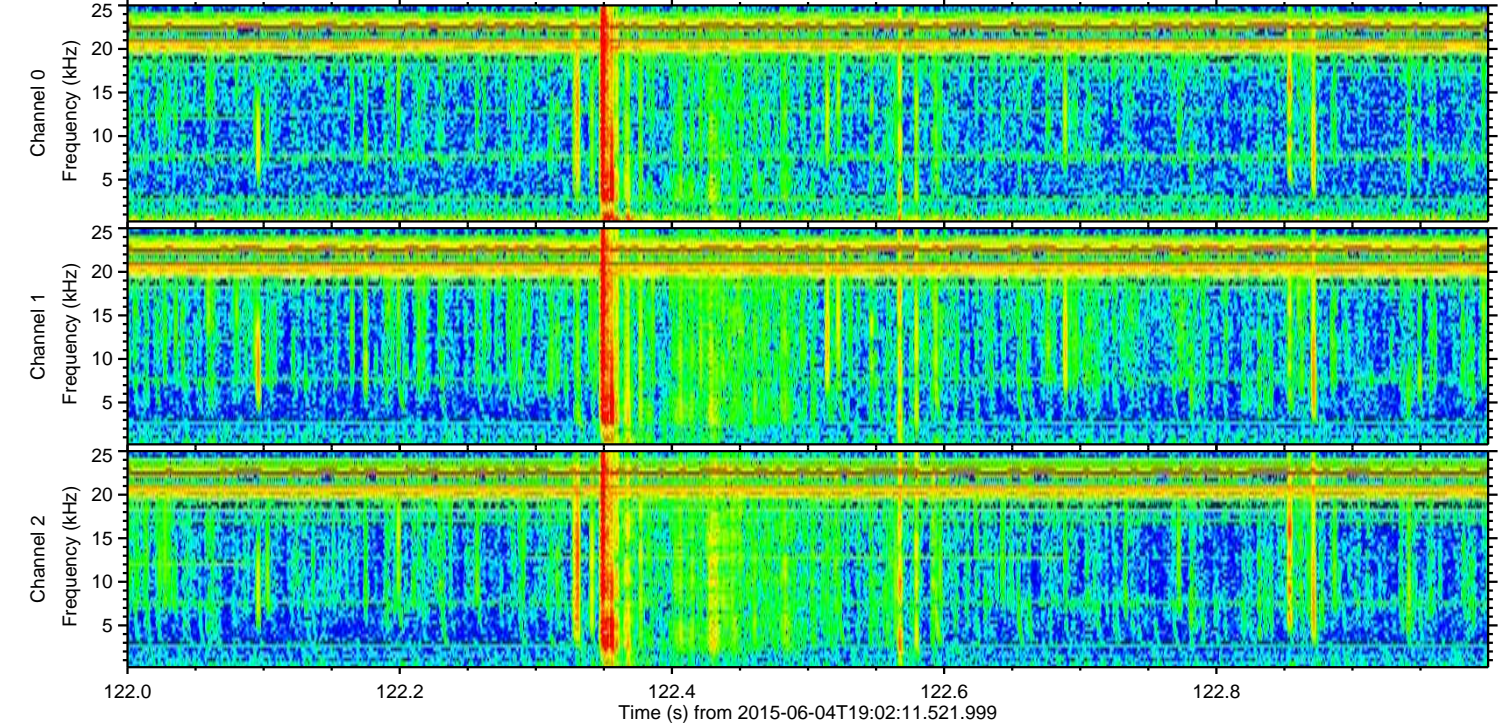
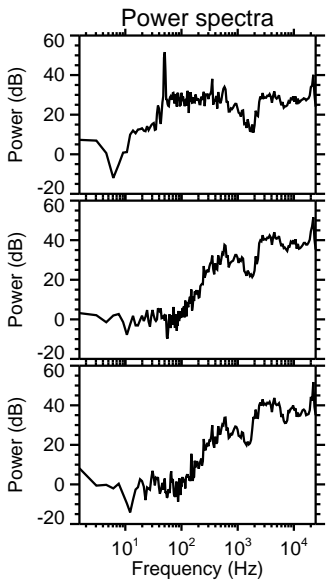
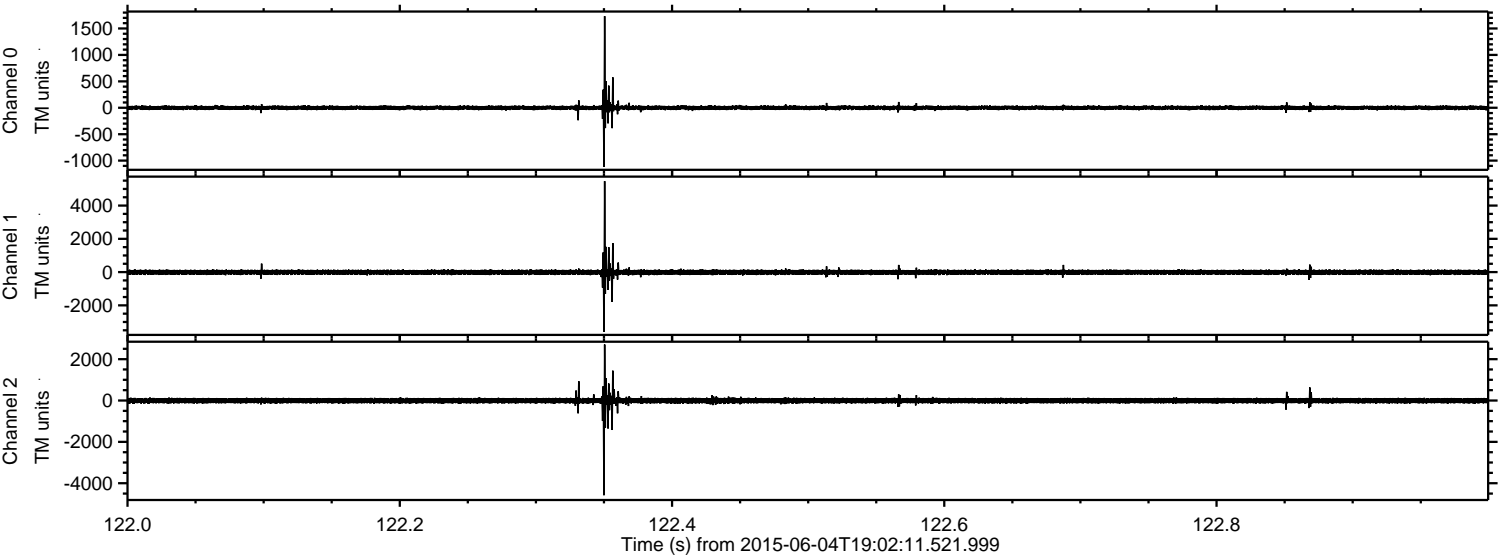


Processed Thu Jun 4 21:08:57 2015 by ELM ver.2012-10-06 from 001__elm20150604_190210__dat00.bin

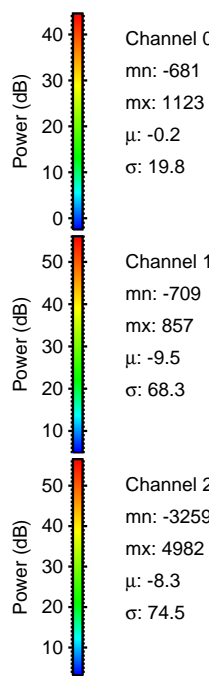
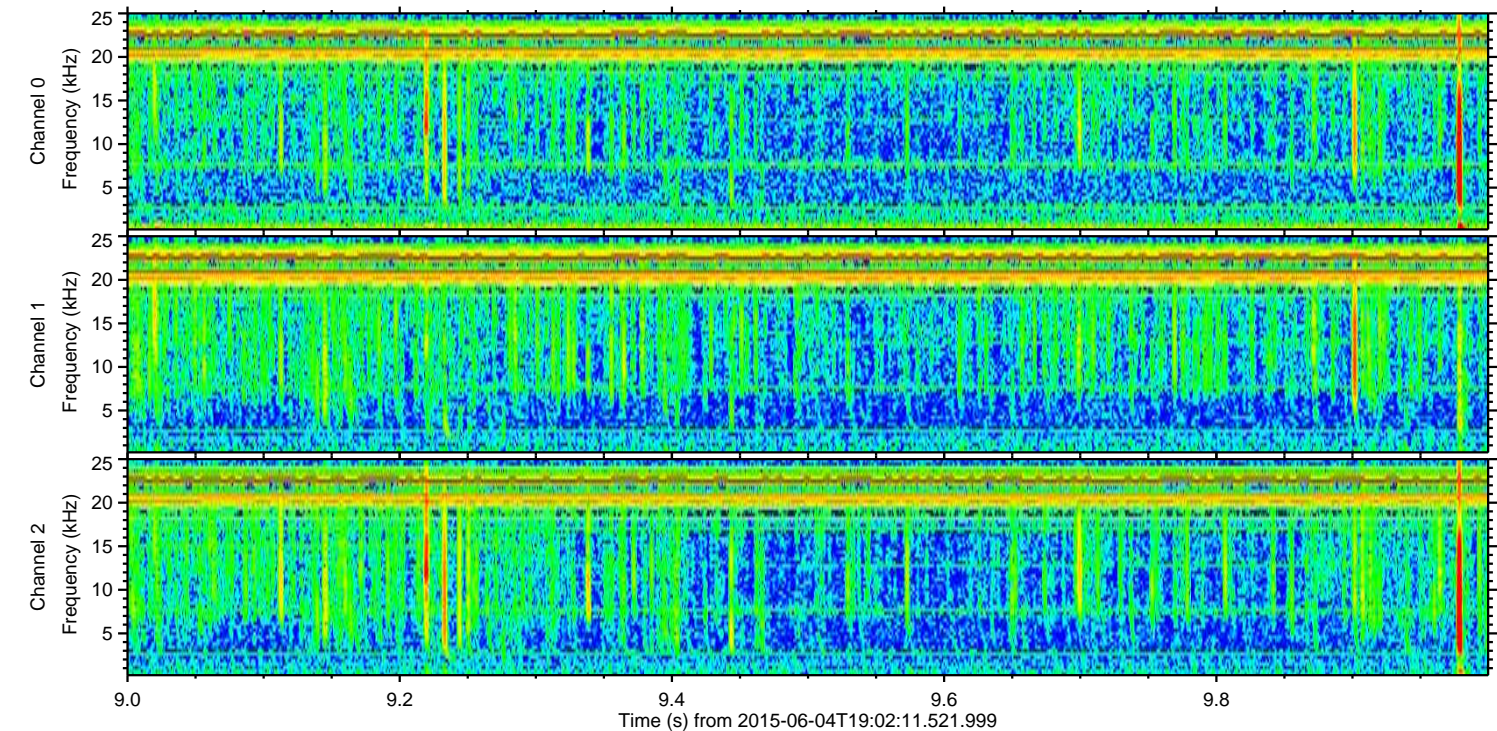
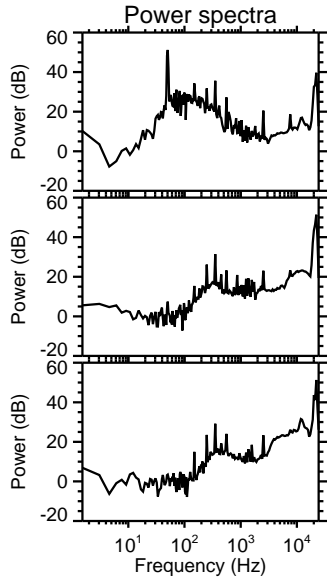
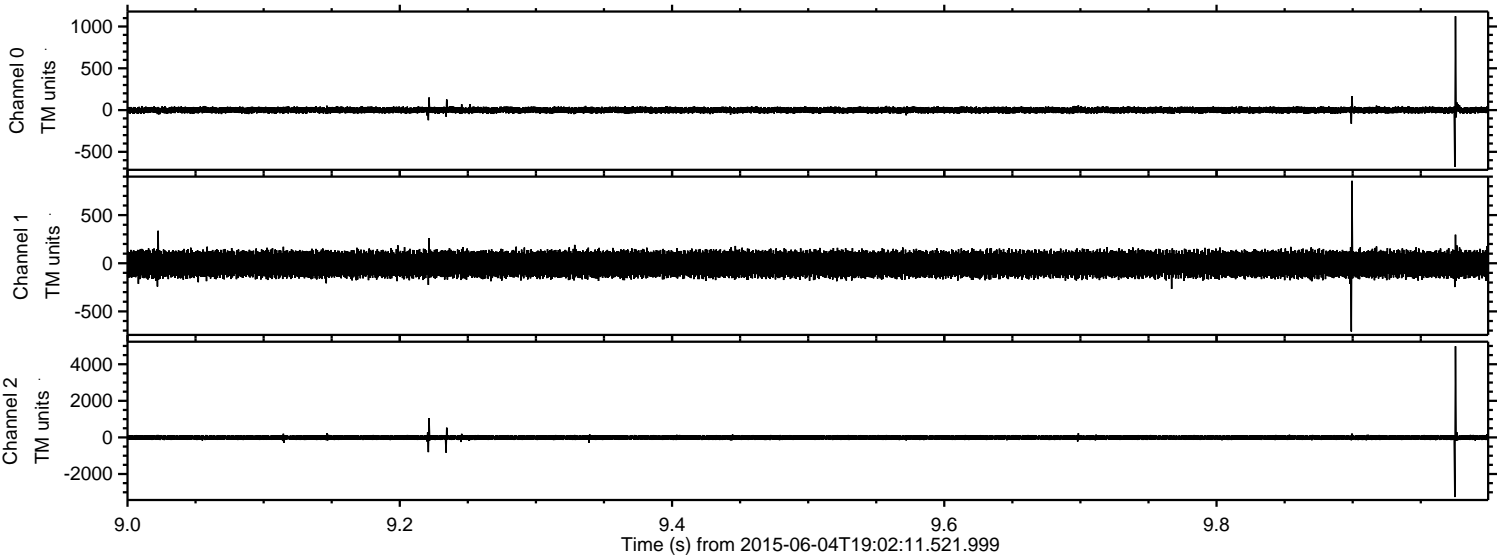


ELMAVAN 3D WAVEFORMS (Measured data sampled at 50 kHz) 51000 packets of 144 samples from 2015-06-04T19:02:11.521.999. Part 123/147

Processed Thu Jun 4 21:08:58 2015 by ELM ver.2012-10-06 from 001__elm20150604_190210__dat00.bin



Processed Thu Jun 4 21:08:59 2015 by ELM ver.2012-10-06 from 001__elm20150604_190210__dat00.bin

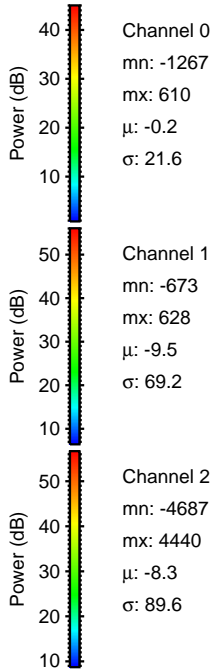
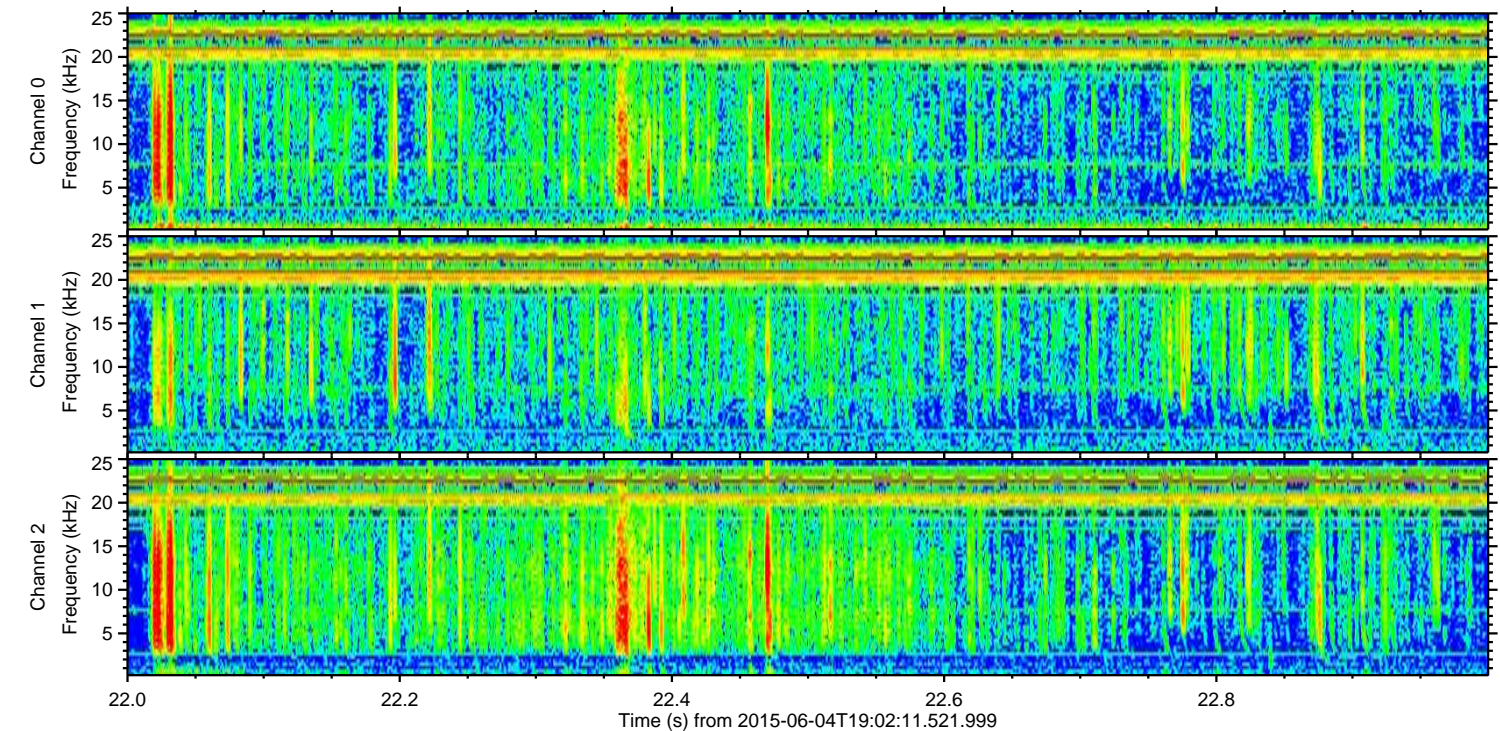
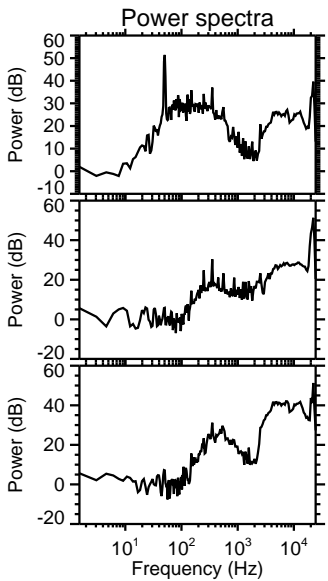
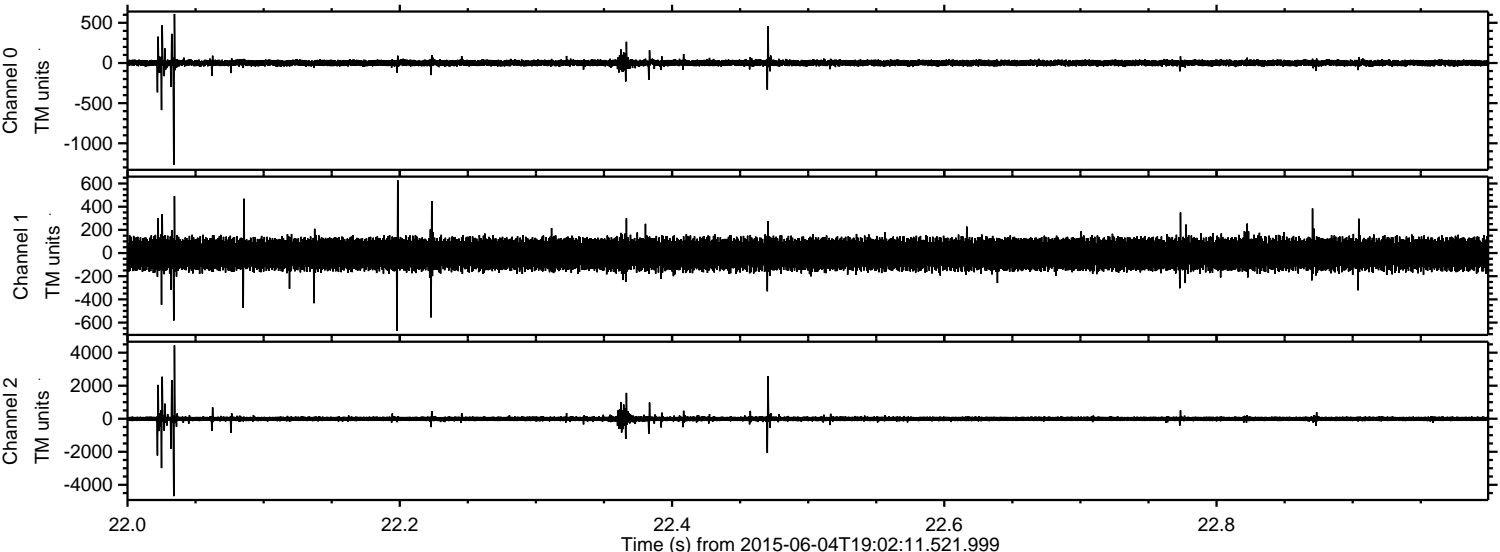


Channel 0
mn: -681
mx: 1123
 μ : -0.2
 σ : 19.8

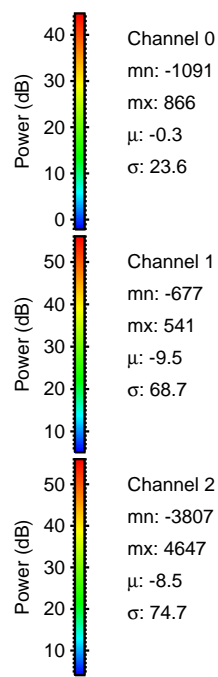
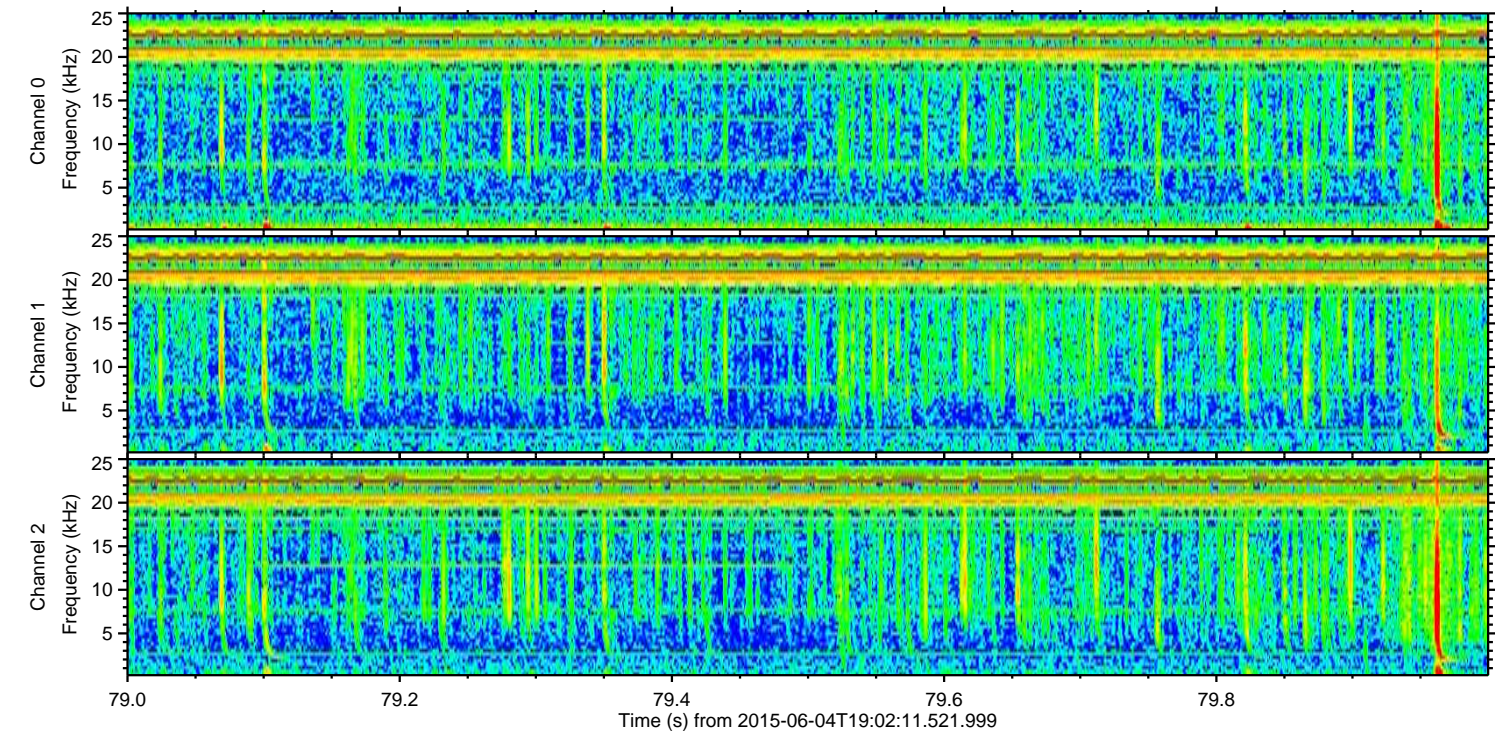
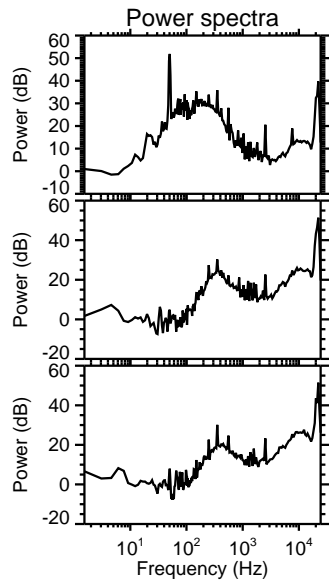
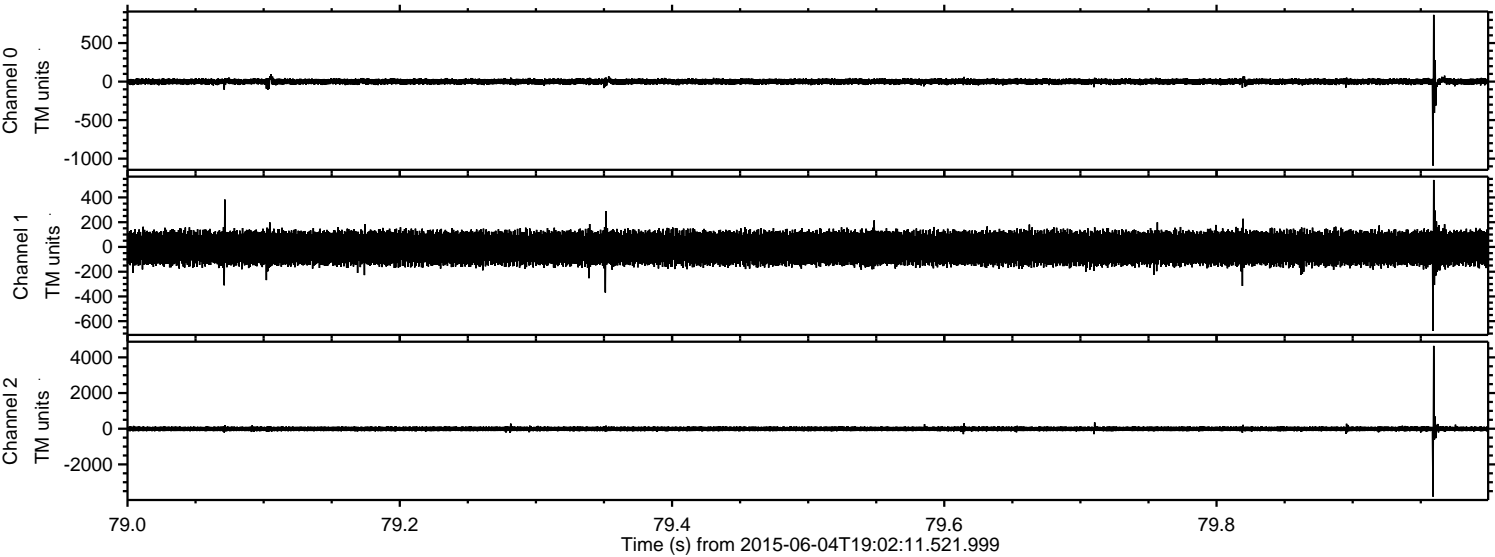
Channel 1
mn: -709
mx: 857
 μ : -9.5
 σ : 68.3

Channel 2
mn: -3259
mx: 4982
 μ : -8.3
 σ : 74.5

Processed Thu Jun 4 21:09:00 2015 by ELM ver.2012-10-06 from 001__elm20150604_190210__dat00.bin



Processed Thu Jun 4 21:09:01 2015 by ELM ver.2012-10-06 from 001__elm20150604_190210__dat00.bin



Processed Thu Jun 4 21:09:02 2015 by ELM ver.2012-10-06 from 001__elm20150604_190210__dat00.bin

