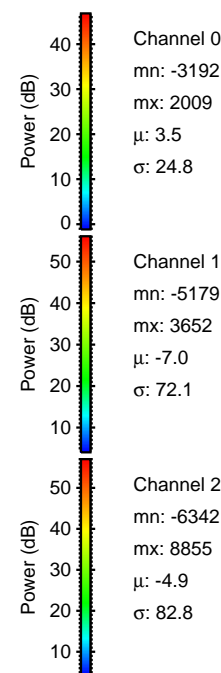
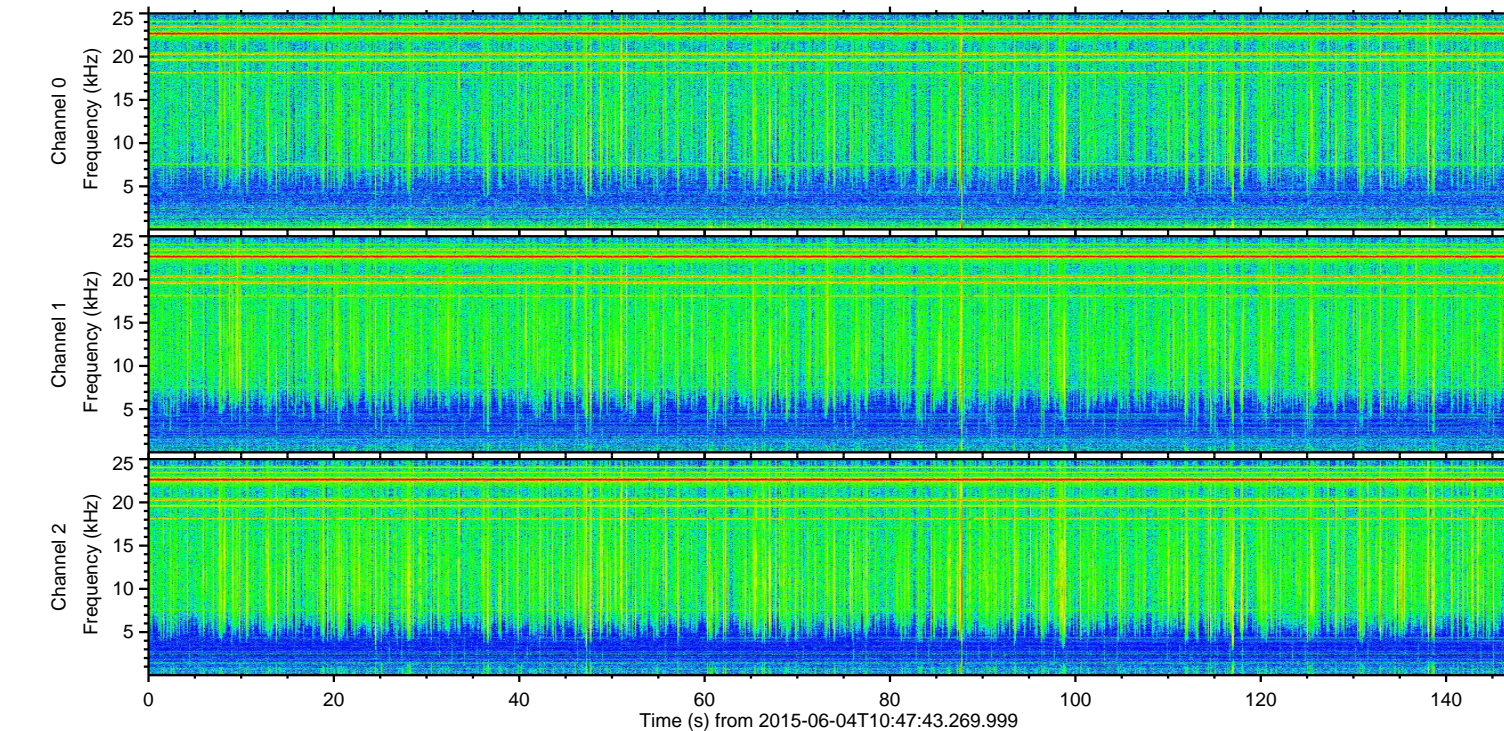
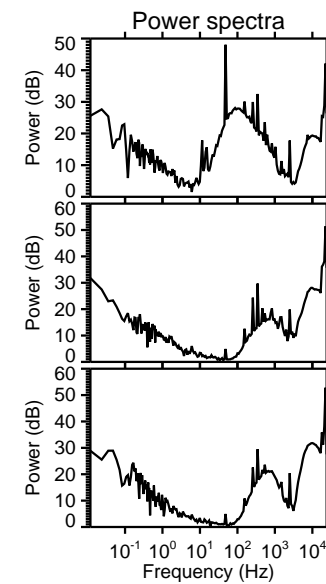
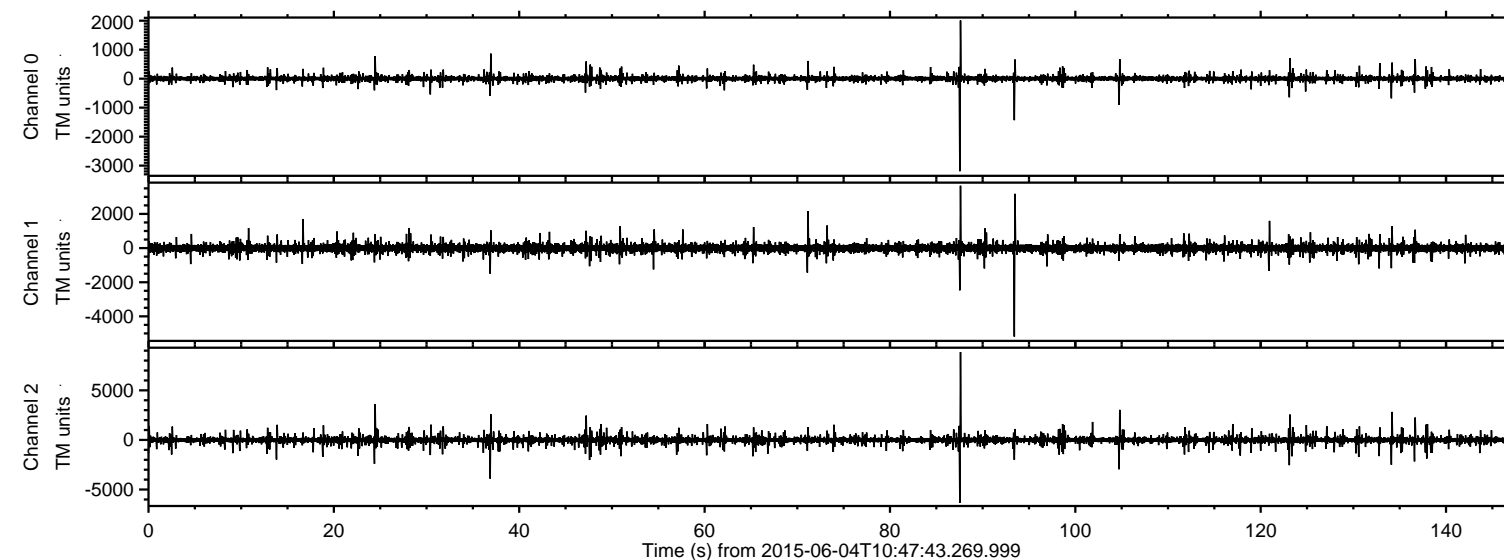


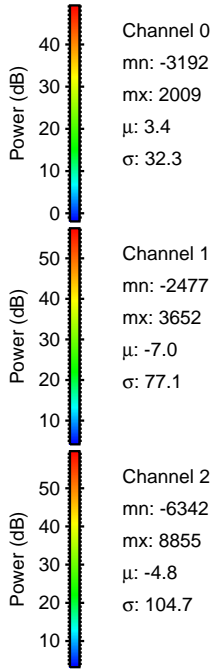
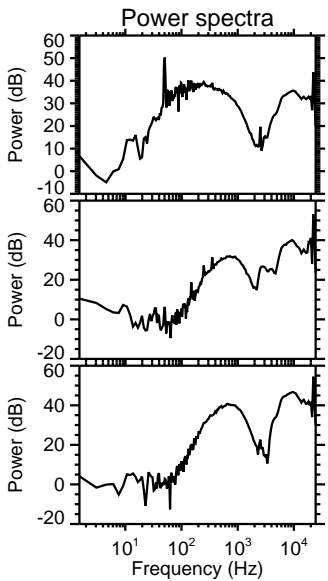
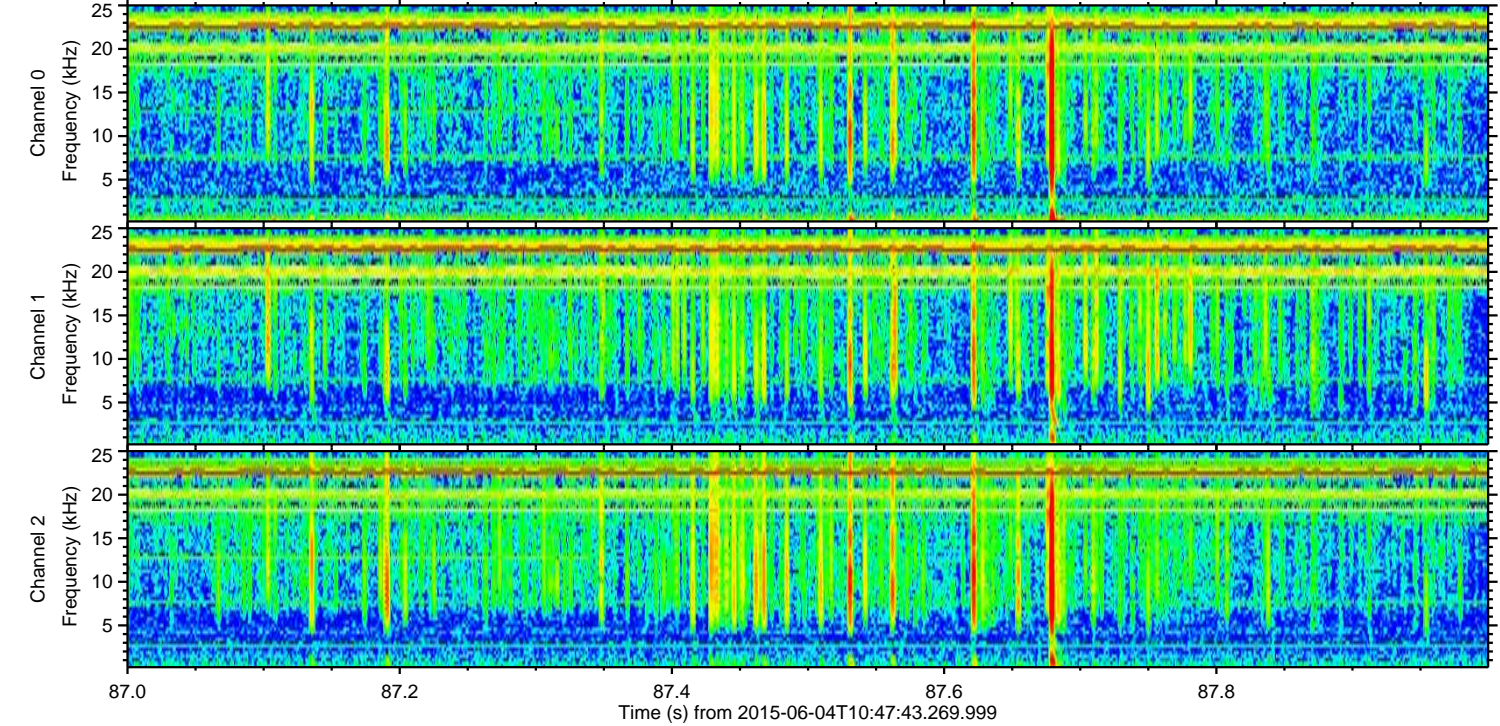
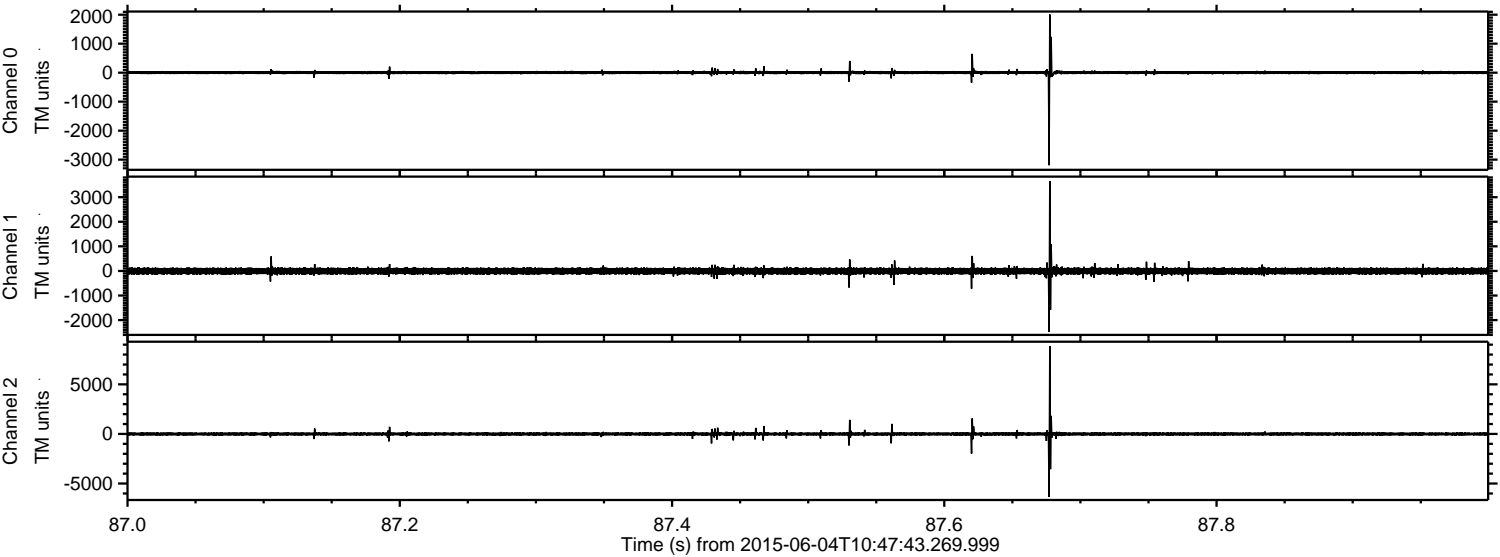
ELMAVAN 3D WAVEFORMS (Measured data sampled at 50 kHz) 51000 packets of 144 samples from 2015-06-04T10:47:43.269.999.

Processed Thu Jun 4 12:54:11 2015 by ELM ver.2012-10-06 from 001__elm20150604_104742__dat00.bin



ELMAVAN 3D WAVEFORMS (Measured data sampled at 50 kHz) 51000 packets of 144 samples from 2015-06-04T10:47:43.269.999. Part 88/147

Processed Thu Jun 4 12:54:22 2015 by ELM ver.2012-10-06 from 001__elm20150604_104742__dat00.bin

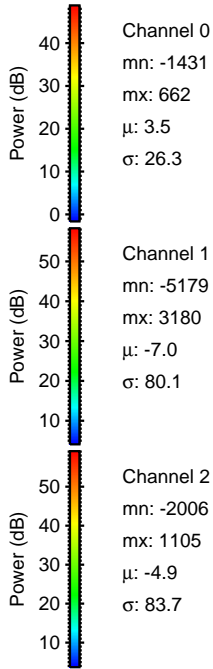
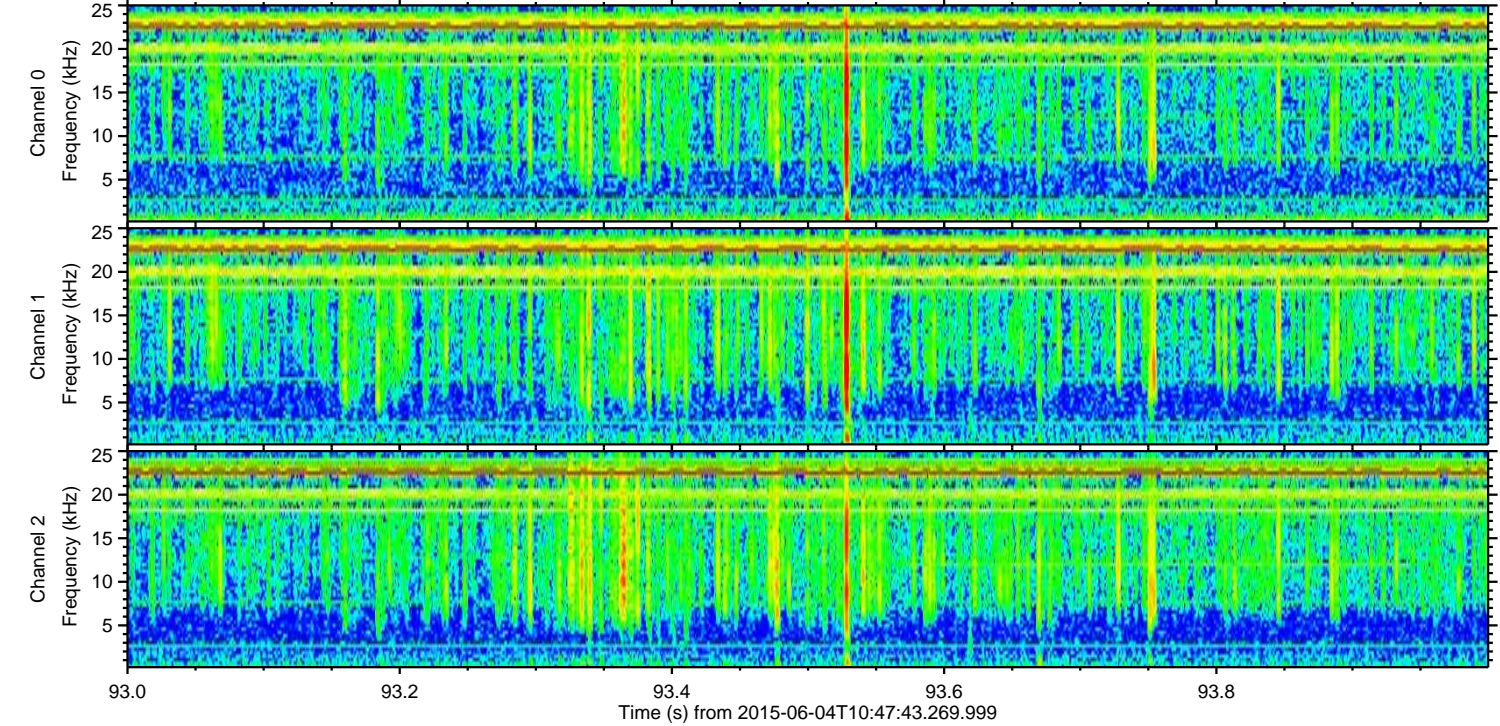
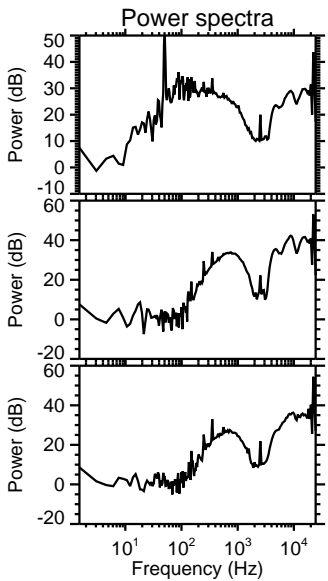
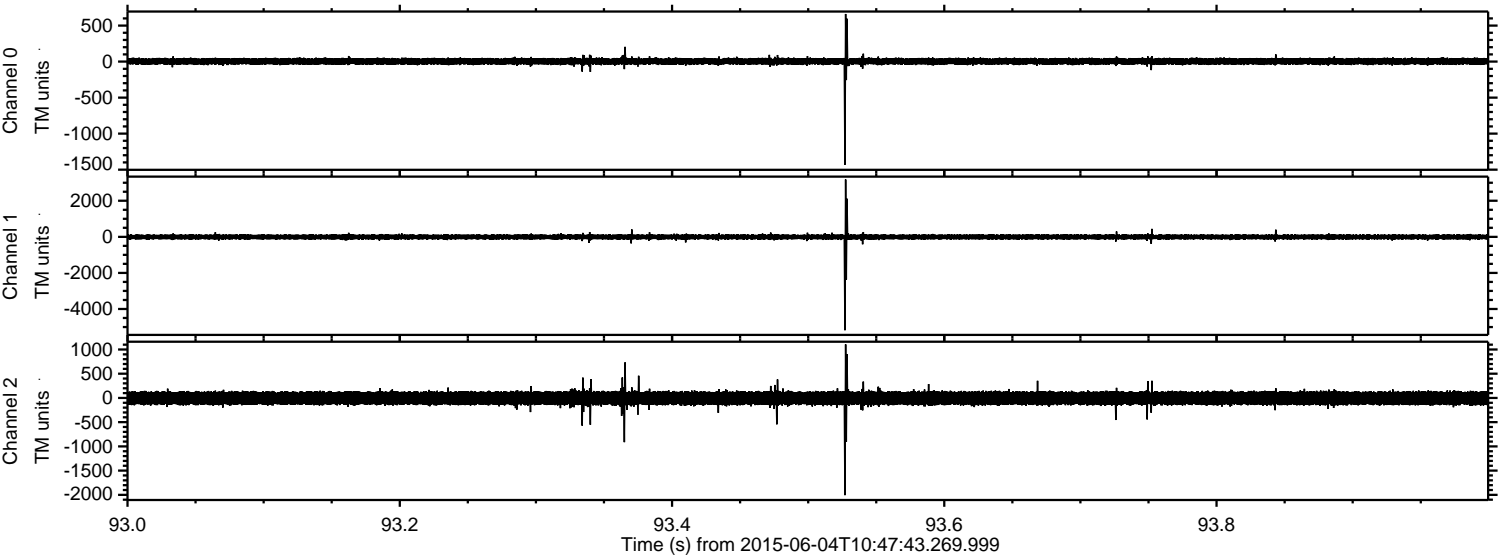


Channel 0
mn: -3192
mx: 2009
 μ : 3.4
 σ : 32.3

Channel 1
mn: -2477
mx: 3652
 μ : -7.0
 σ : 77.1

Channel 2
mn: -6342
mx: 8855
 μ : -4.8
 σ : 104.7

Processed Thu Jun 4 12:54:23 2015 by ELM ver.2012-10-06 from 001__elm20150604_104742__dat00.bin

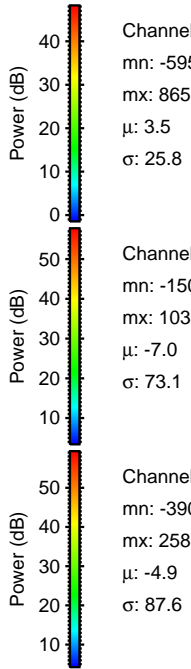
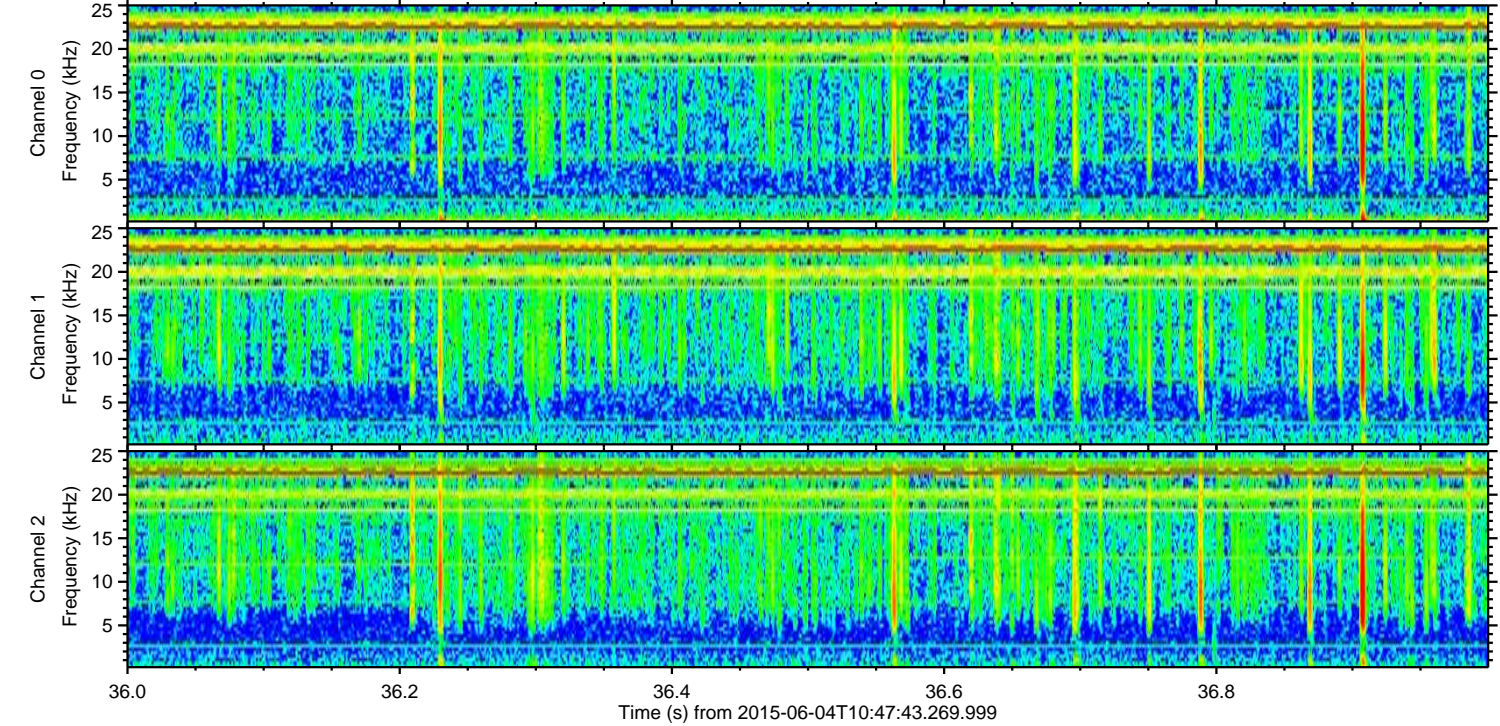
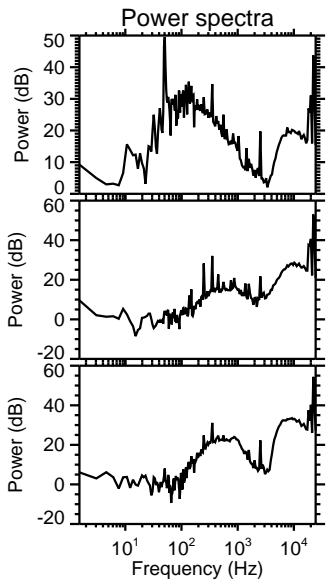
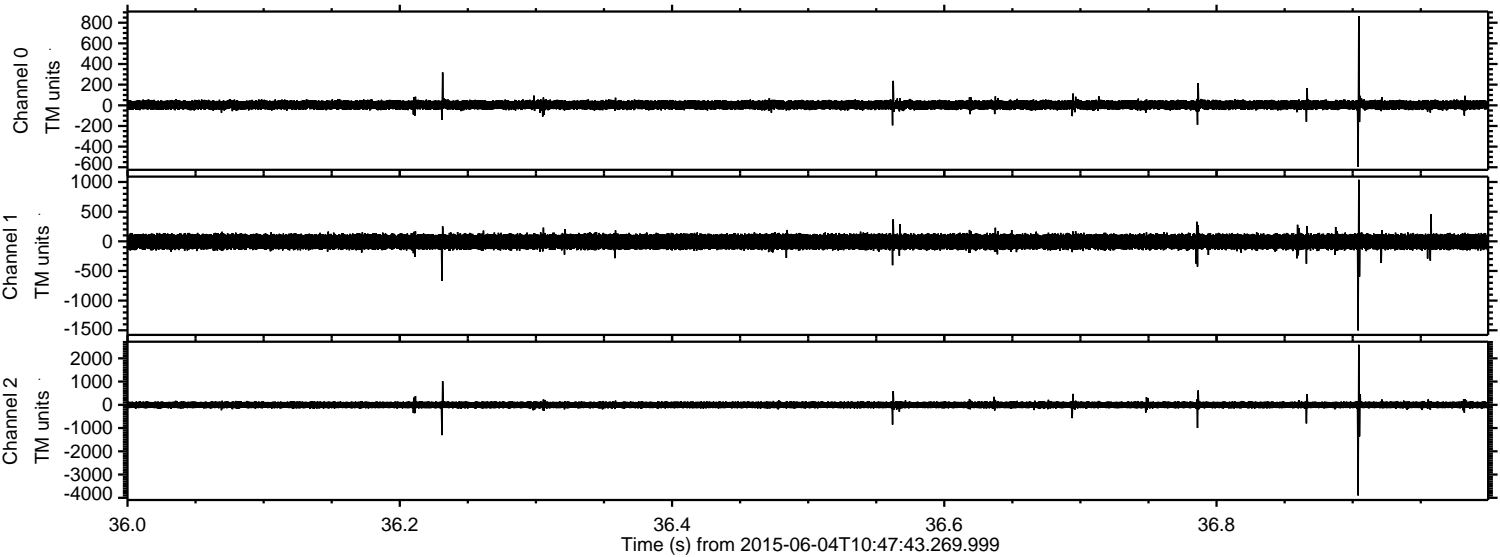


Channel 0
mn: -1431
mx: 662
 μ : 3.5
 σ : 26.3

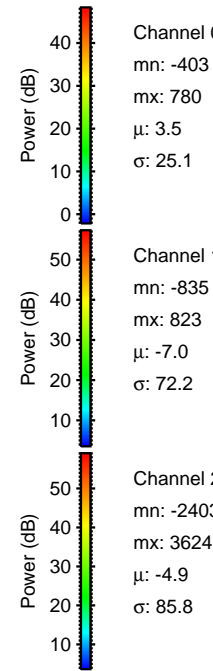
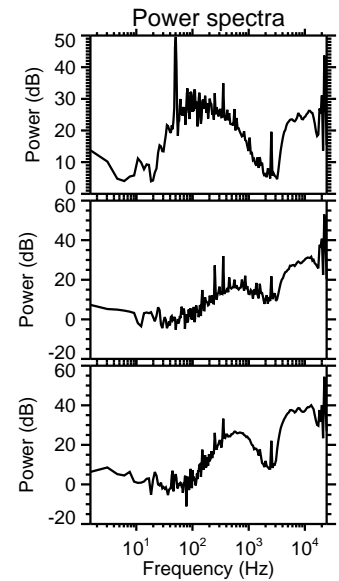
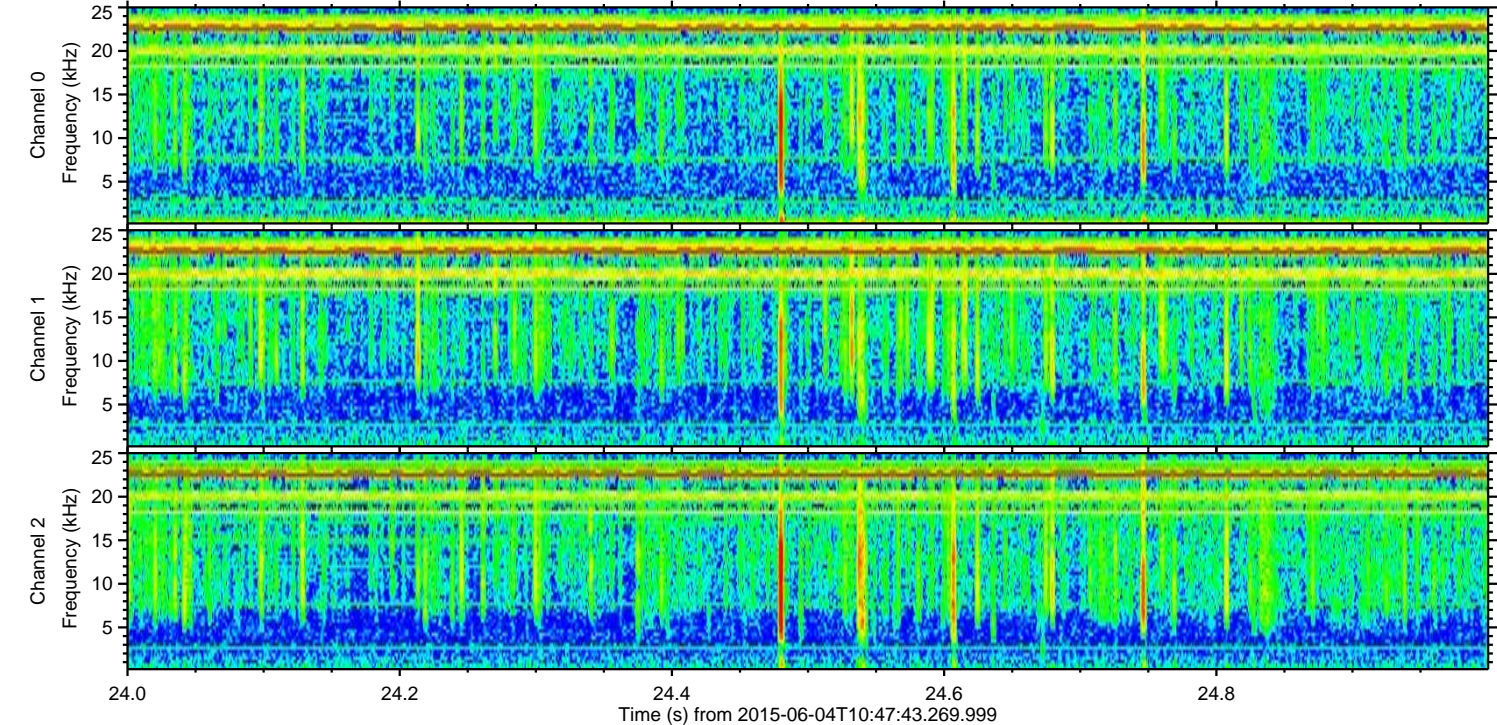
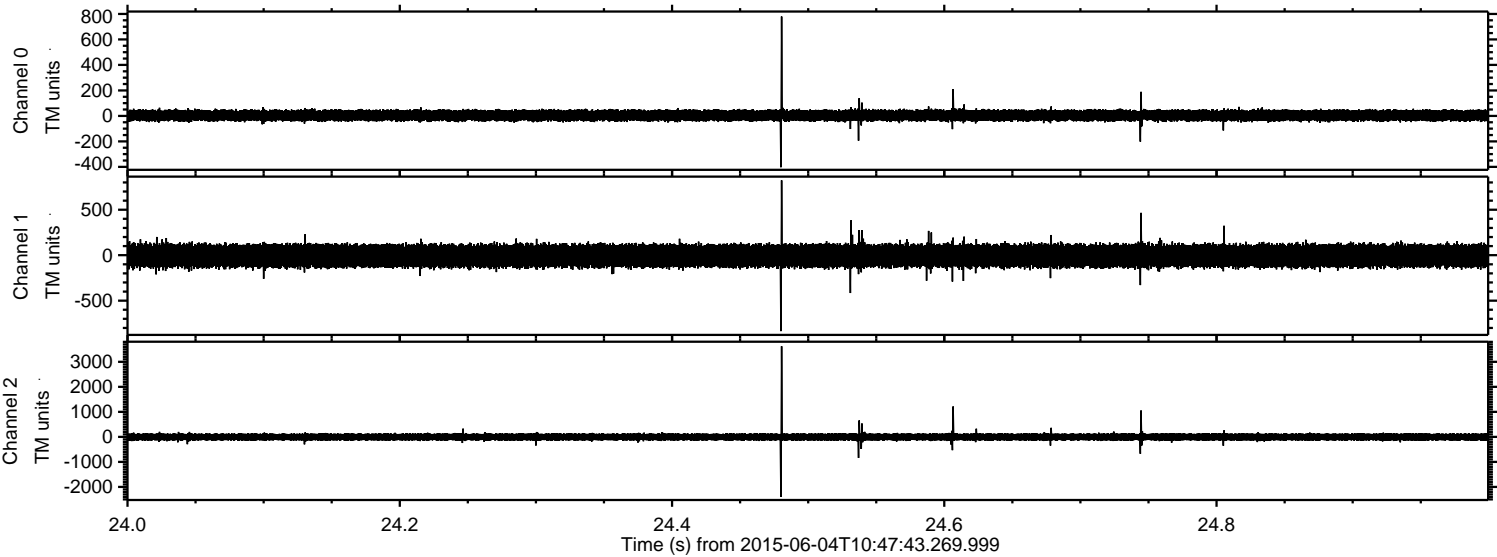
Channel 1
mn: -5179
mx: 3180
 μ : -7.0
 σ : 80.1

Channel 2
mn: -2006
mx: 1105
 μ : -4.9
 σ : 83.7

Processed Thu Jun 4 12:54:24 2015 by ELM ver.2012-10-06 from 001__elm20150604_104742__dat00.bin

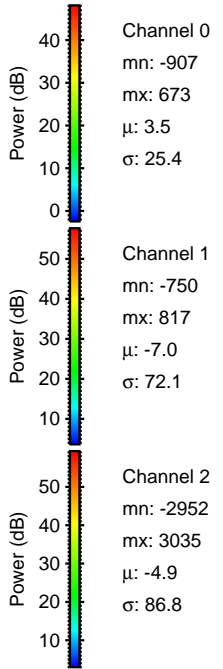
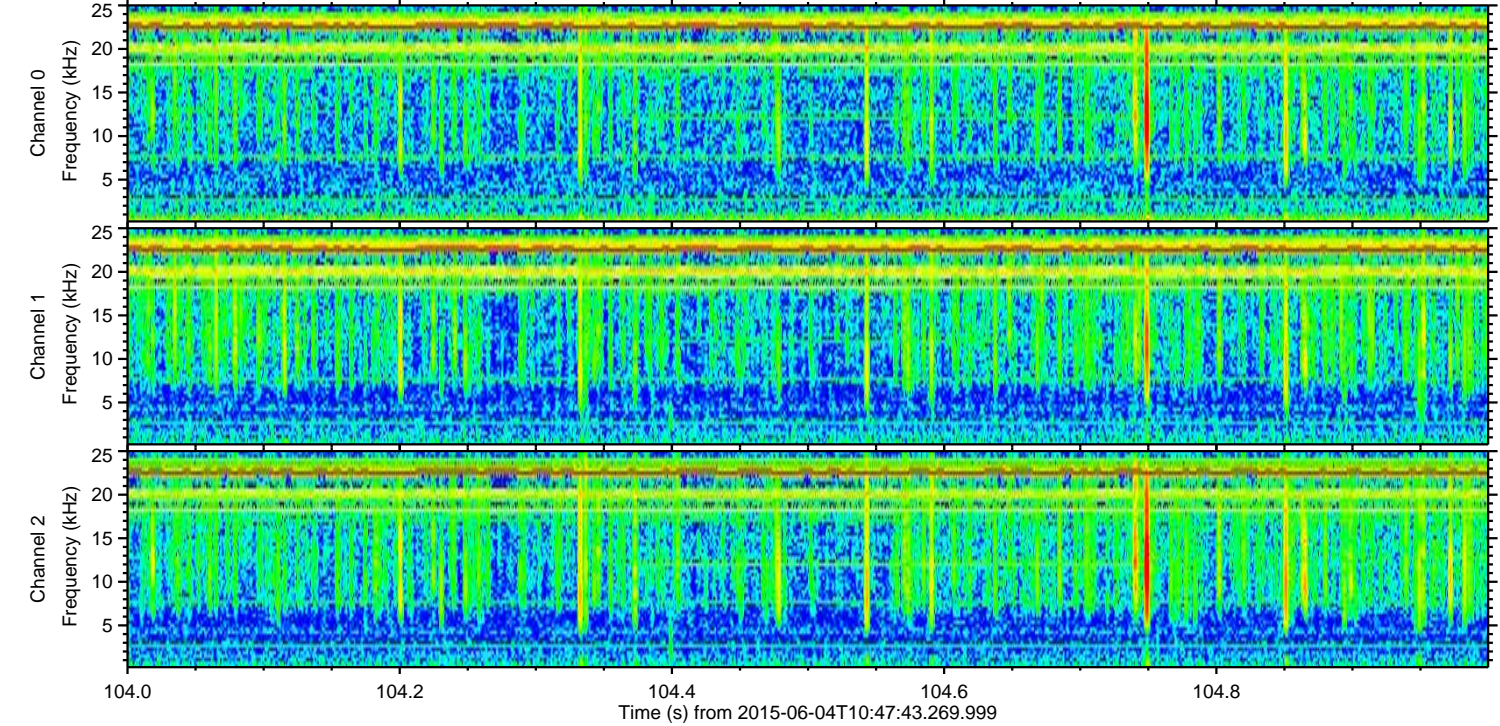
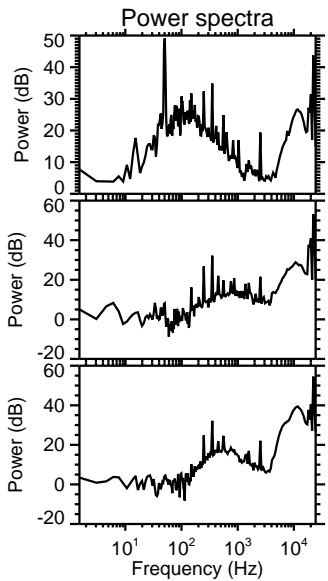
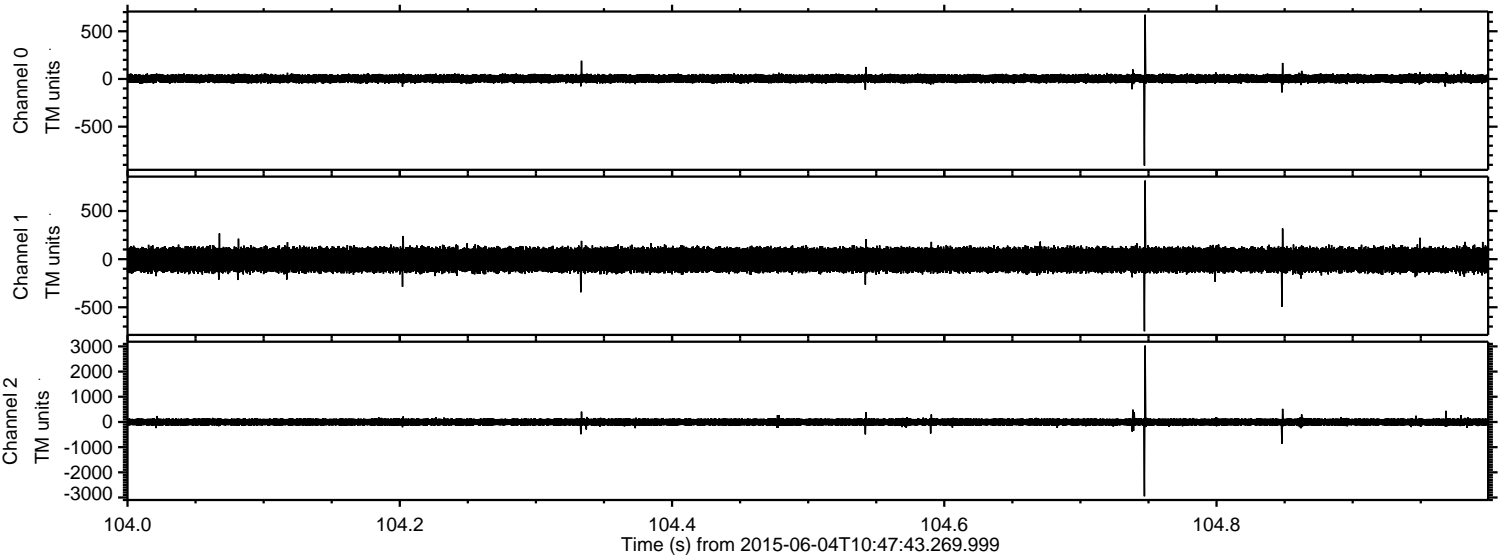


Processed Thu Jun 4 12:54:25 2015 by ELM ver.2012-10-06 from 001__elm20150604_104742__dat00.bin



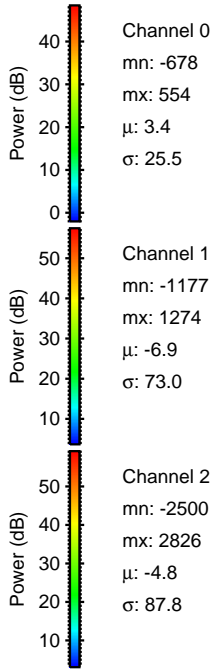
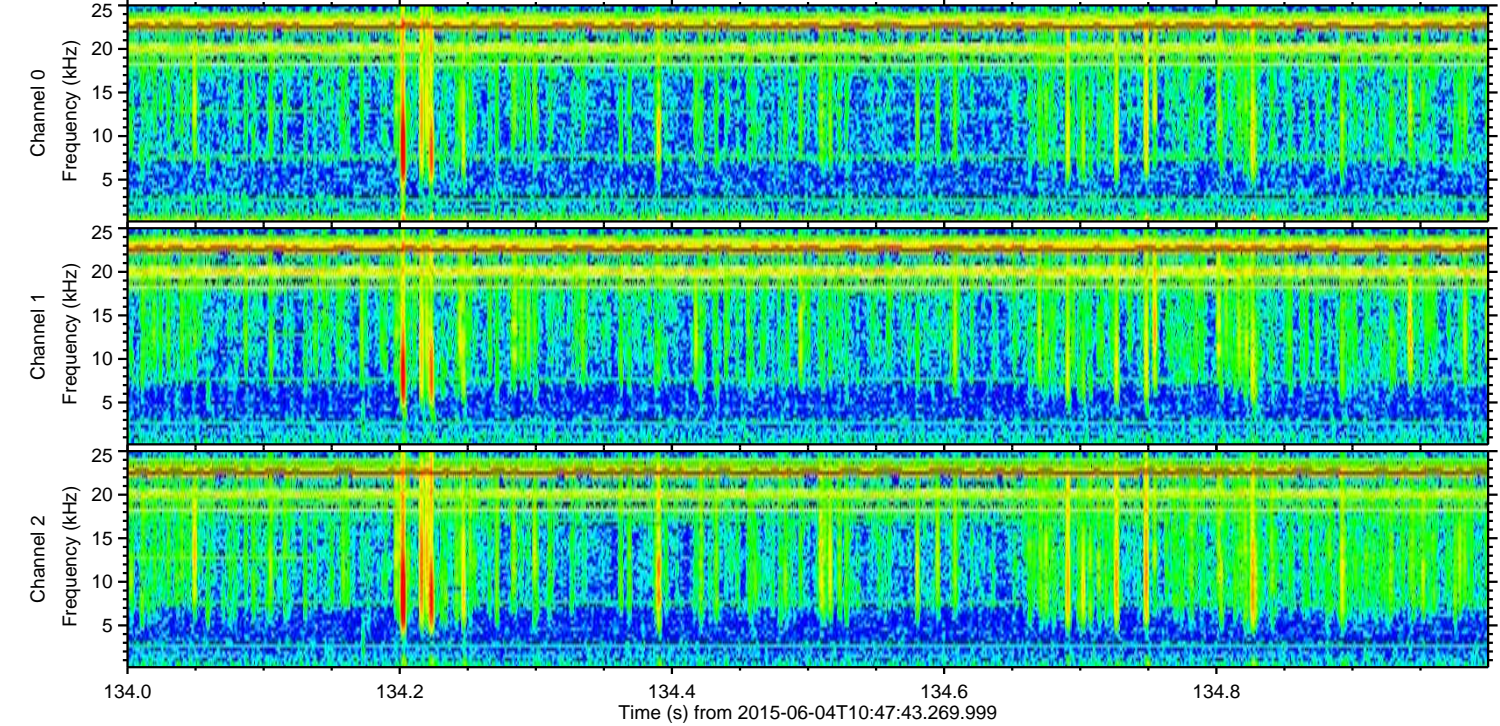
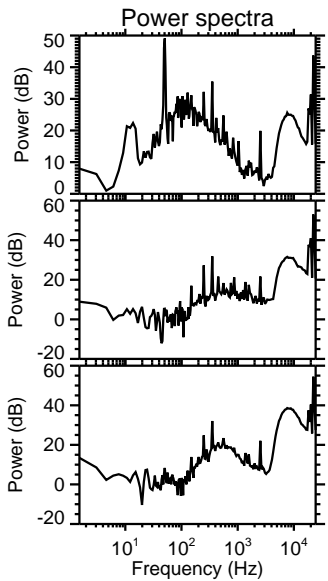
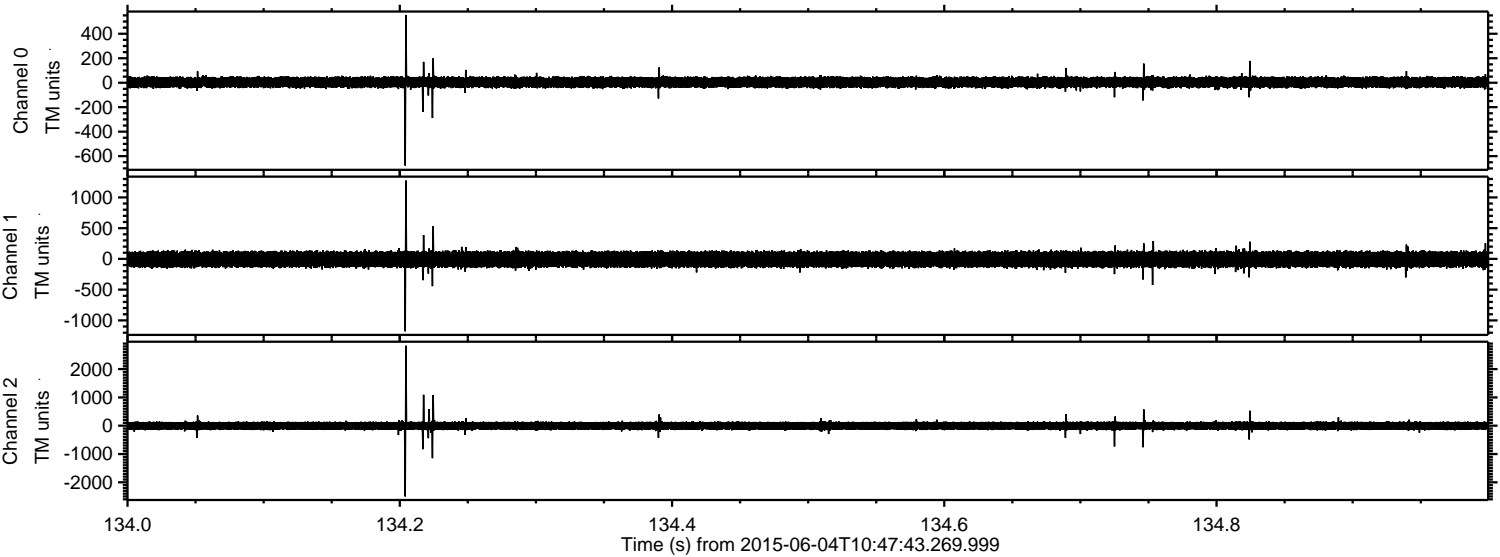
ELMAVAN 3D WAVEFORMS (Measured data sampled at 50 kHz) 51000 packets of 144 samples from 2015-06-04T10:47:43.269.999. Part 105/147

Processed Thu Jun 4 12:54:26 2015 by ELM ver.2012-10-06 from 001__elm20150604_104742__dat00.bin



ELMAVAN 3D WAVEFORMS (Measured data sampled at 50 kHz) 51000 packets of 144 samples from 2015-06-04T10:47:43.269.999. Part 135/147

Processed Thu Jun 4 12:54:27 2015 by ELM ver.2012-10-06 from 001__elm20150604_104742__dat00.bin



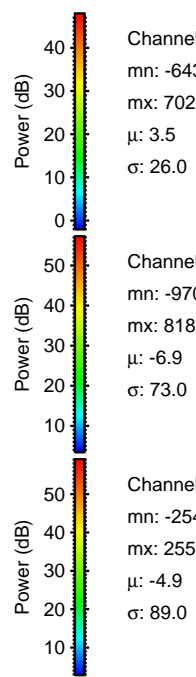
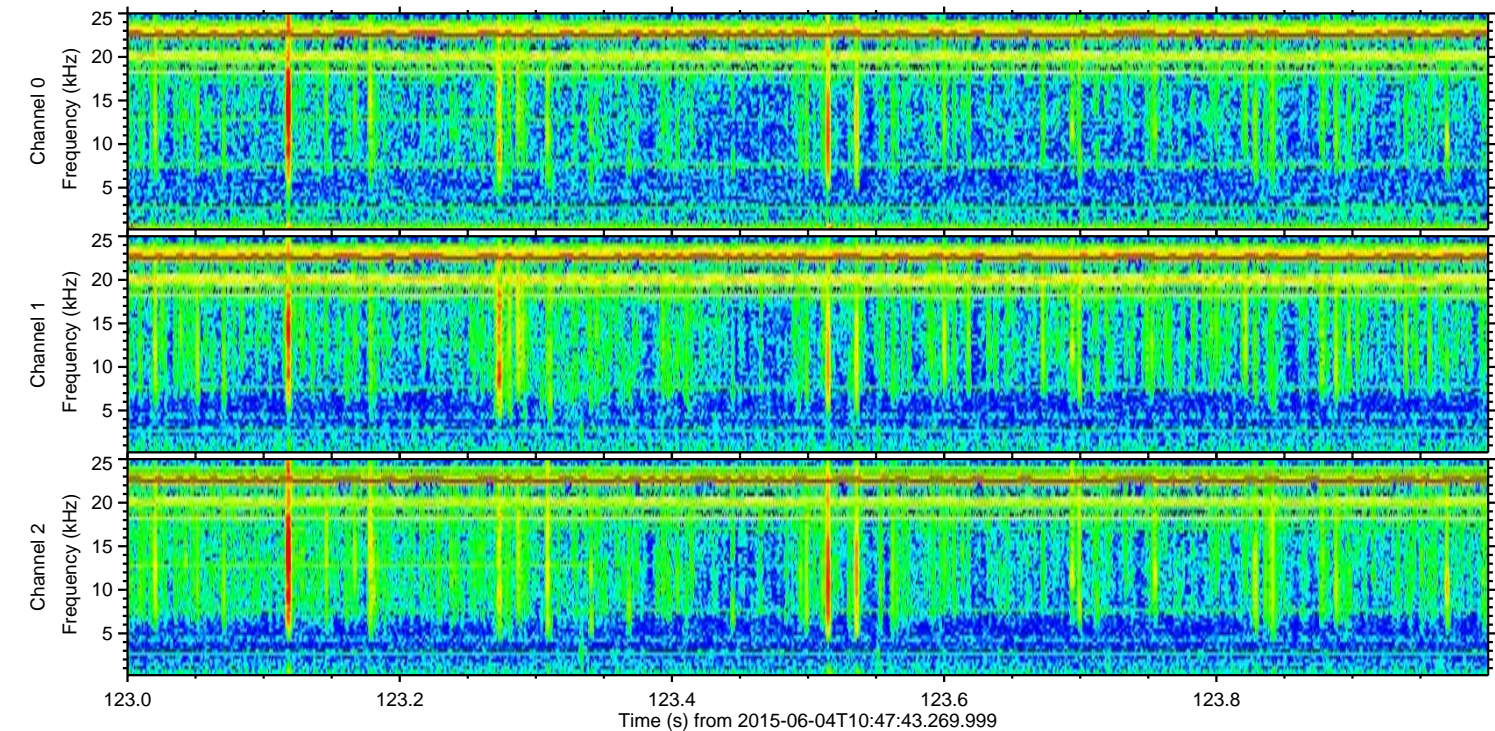
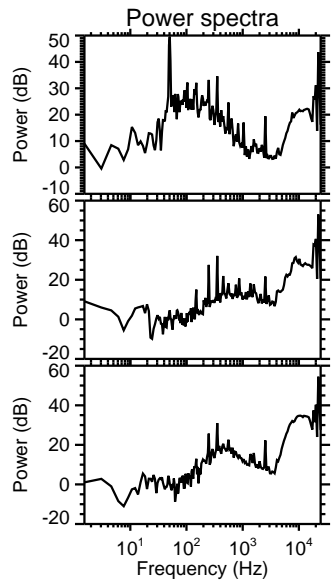
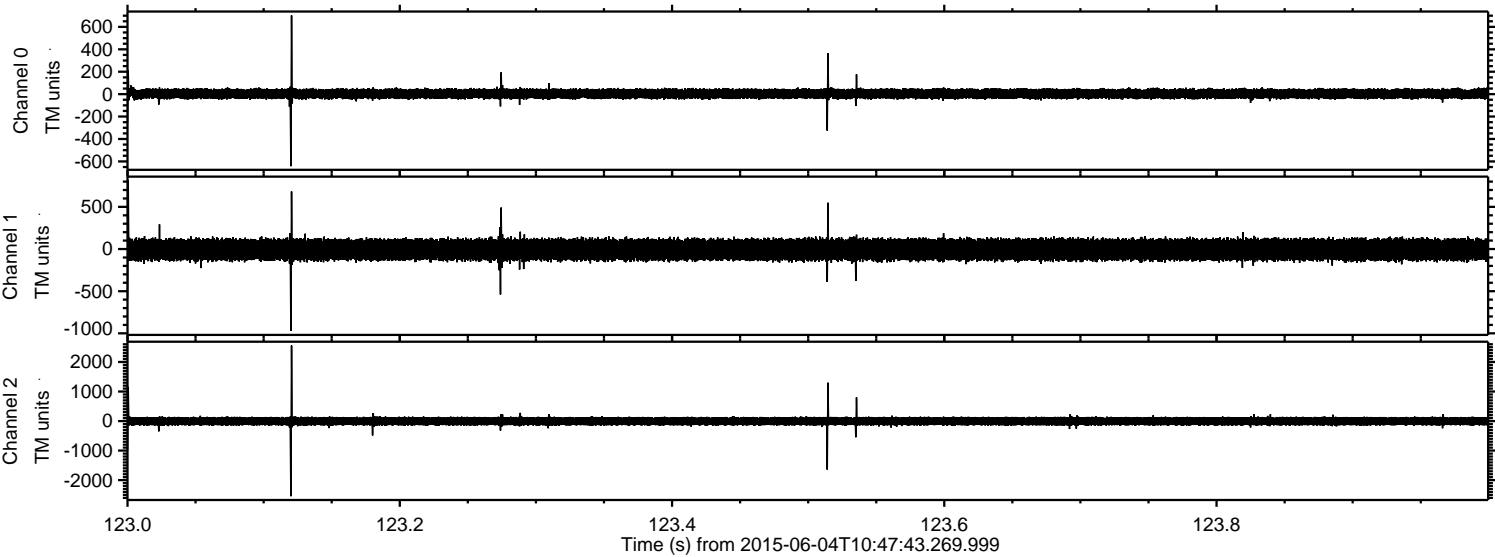
Channel 0
mn: -678
mx: 554
 μ : 3.4
 σ : 25.5

Channel 1
mn: -1177
mx: 1274
 μ : -6.9
 σ : 73.0

Channel 2
mn: -2500
mx: 2826
 μ : -4.8
 σ : 87.8

ELMAVAN 3D WAVEFORMS (Measured data sampled at 50 kHz) 51000 packets of 144 samples from 2015-06-04T10:47:43.269.999. Part 124/147

Processed Thu Jun 4 12:54:28 2015 by ELM ver.2012-10-06 from 001__elm20150604_104742__dat00.bin

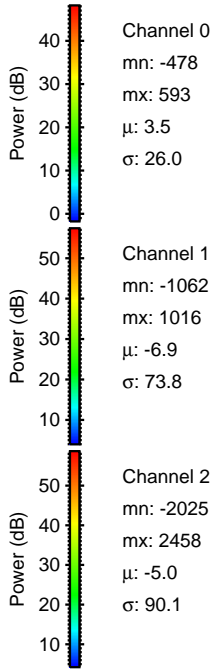
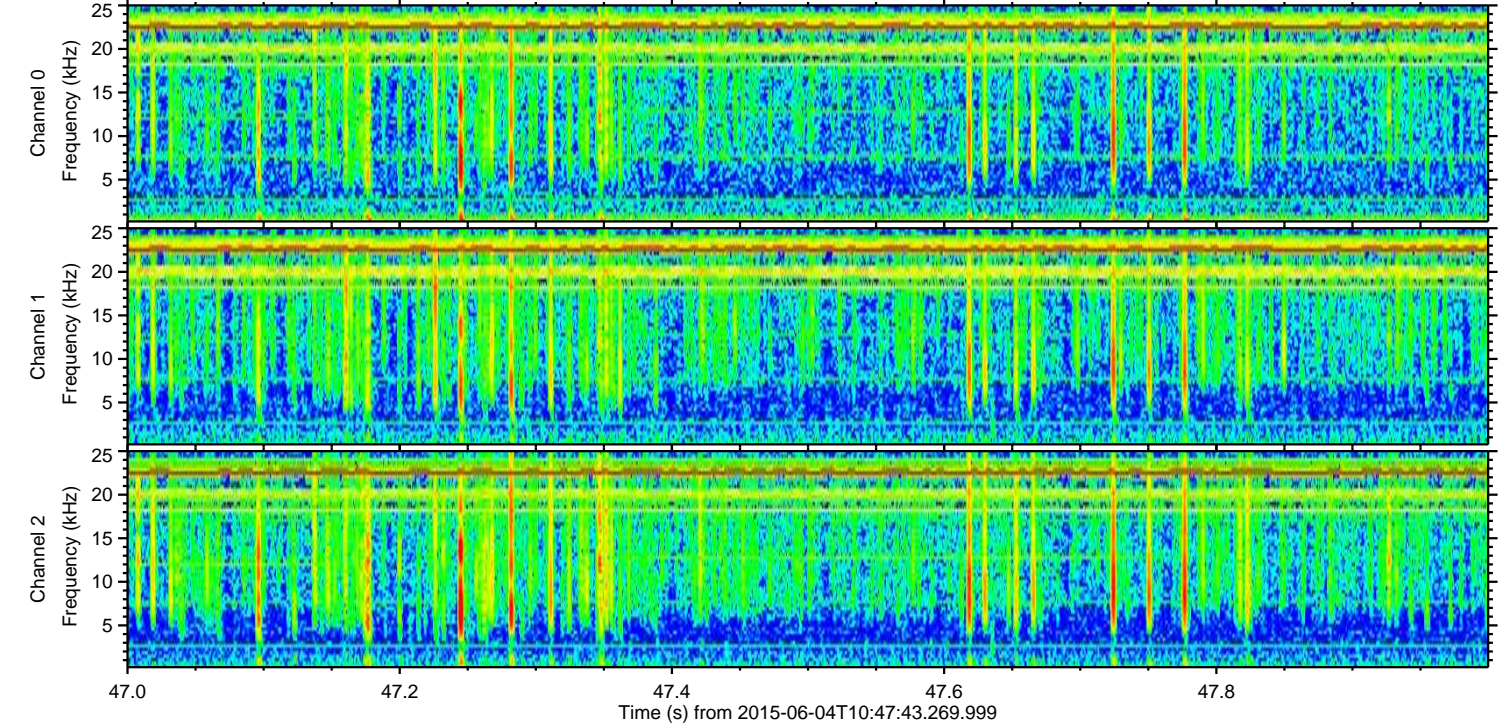
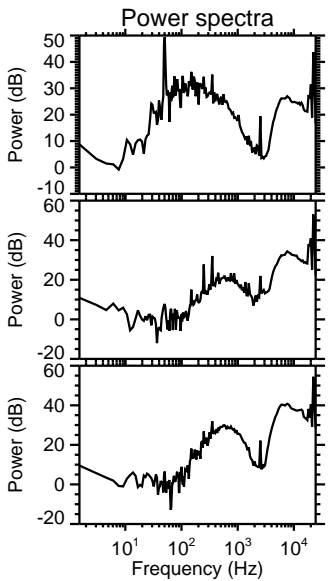
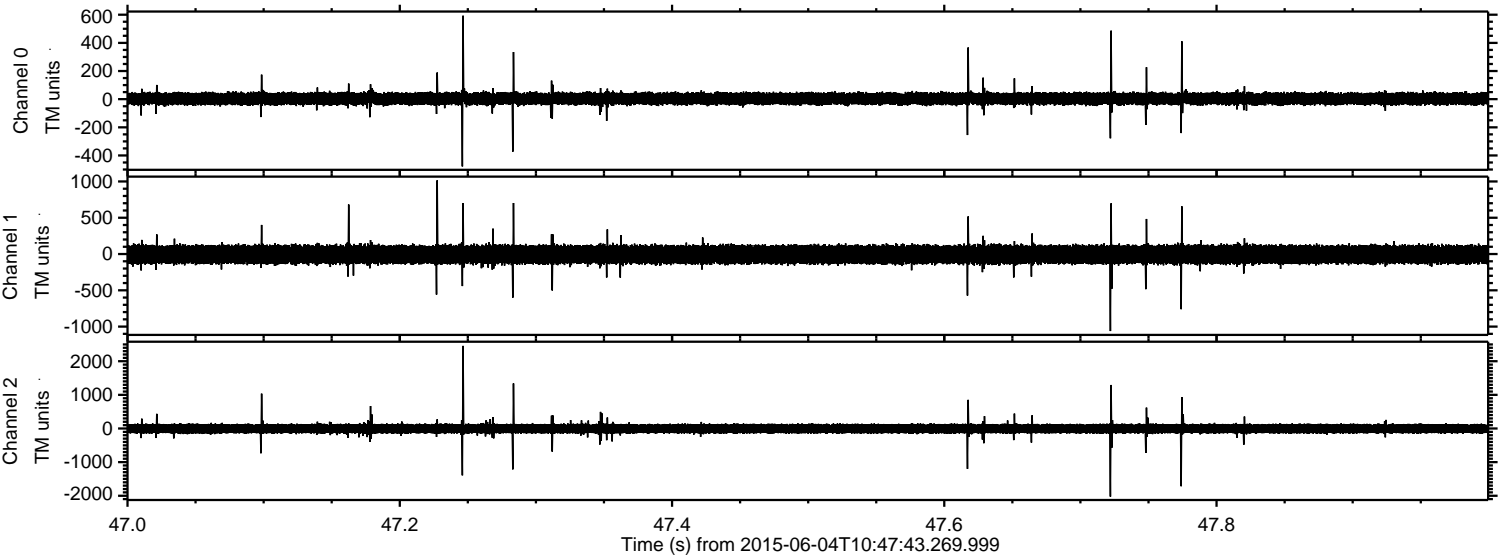


Channel 0
mn: -643
mx: 702
 μ : 3.5
 σ : 26.0

Channel 1
mn: -970
mx: 818
 μ : -6.9
 σ : 73.0

Channel 2
mn: -2545
mx: 2558
 μ : -4.9
 σ : 89.0

Processed Thu Jun 4 12:54:29 2015 by ELM ver.2012-10-06 from 001__elm20150604_104742__dat00.bin



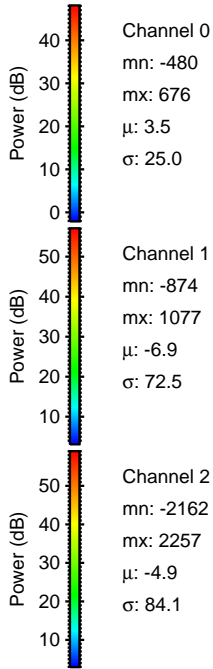
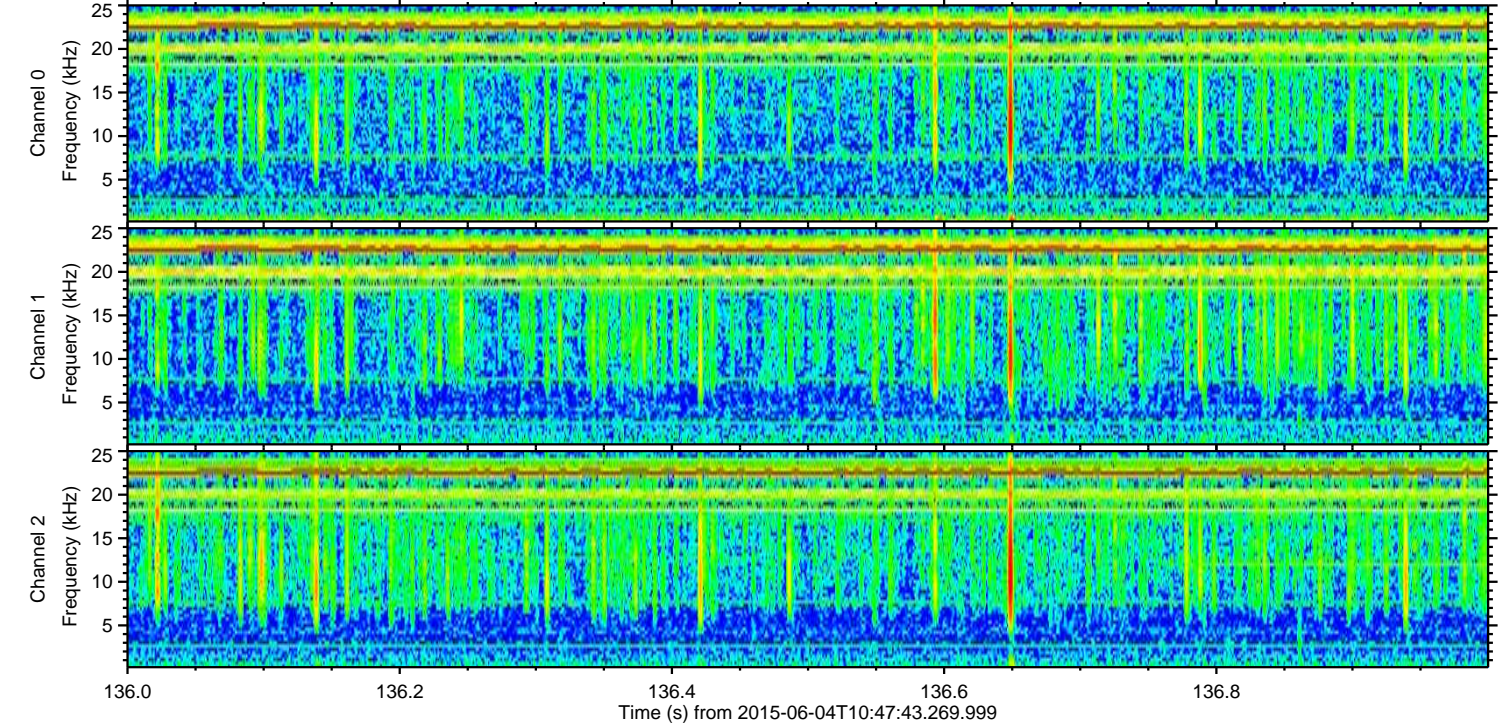
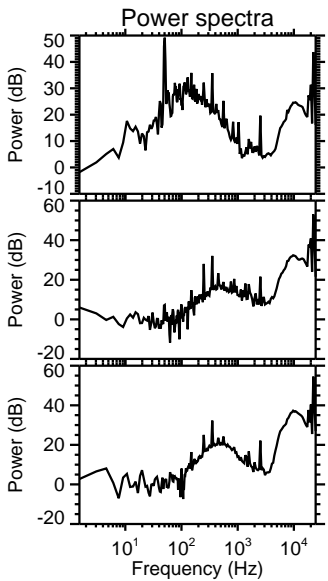
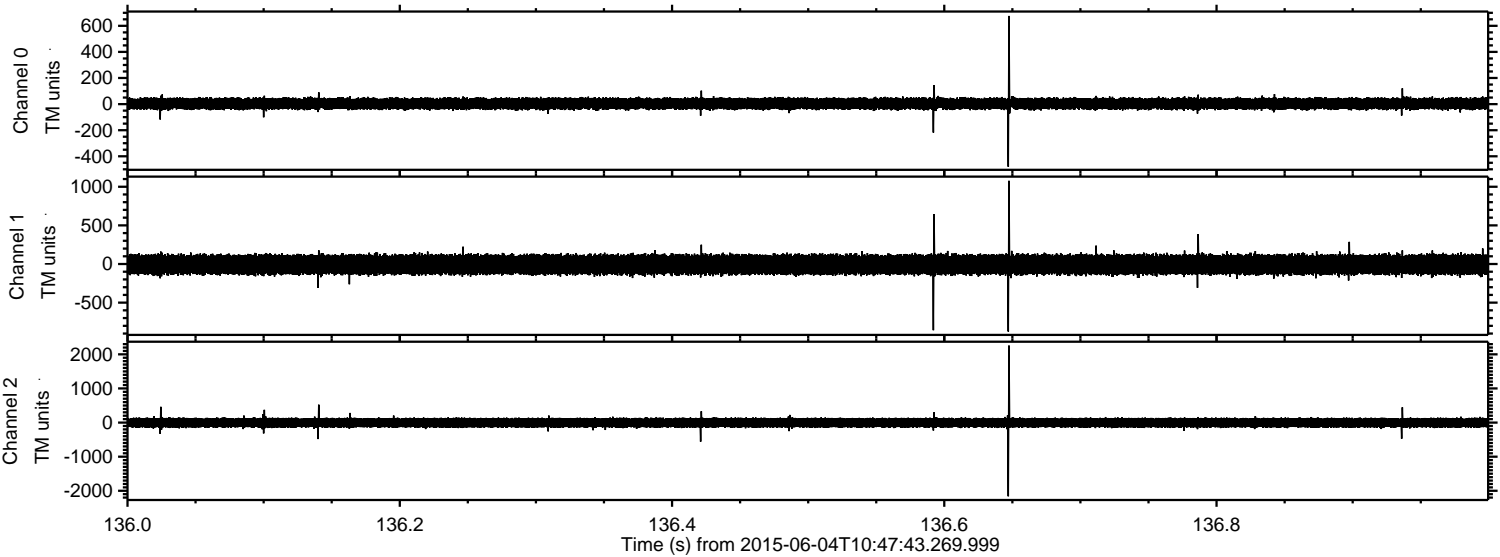
Channel 0
mn: -478
mx: 593
 μ : 3.5
 σ : 26.0

Channel 1
mn: -1062
mx: 1016
 μ : -6.9
 σ : 73.8

Channel 2
mn: -2025
mx: 2458
 μ : -5.0
 σ : 90.1

ELMAVAN 3D WAVEFORMS (Measured data sampled at 50 kHz) 51000 packets of 144 samples from 2015-06-04T10:47:43.269.999. Part 137/147

Processed Thu Jun 4 12:54:30 2015 by ELM ver.2012-10-06 from 001__elm20150604_104742__dat00.bin



ELMAVAN 3D WAVEFORMS (Measured data sampled at 50 kHz) 51000 packets of 144 samples from 2015-06-04T10:47:43.269.999. Part 127/147

