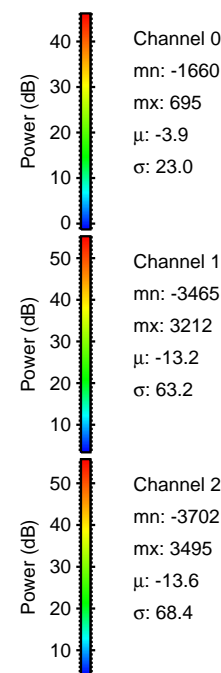
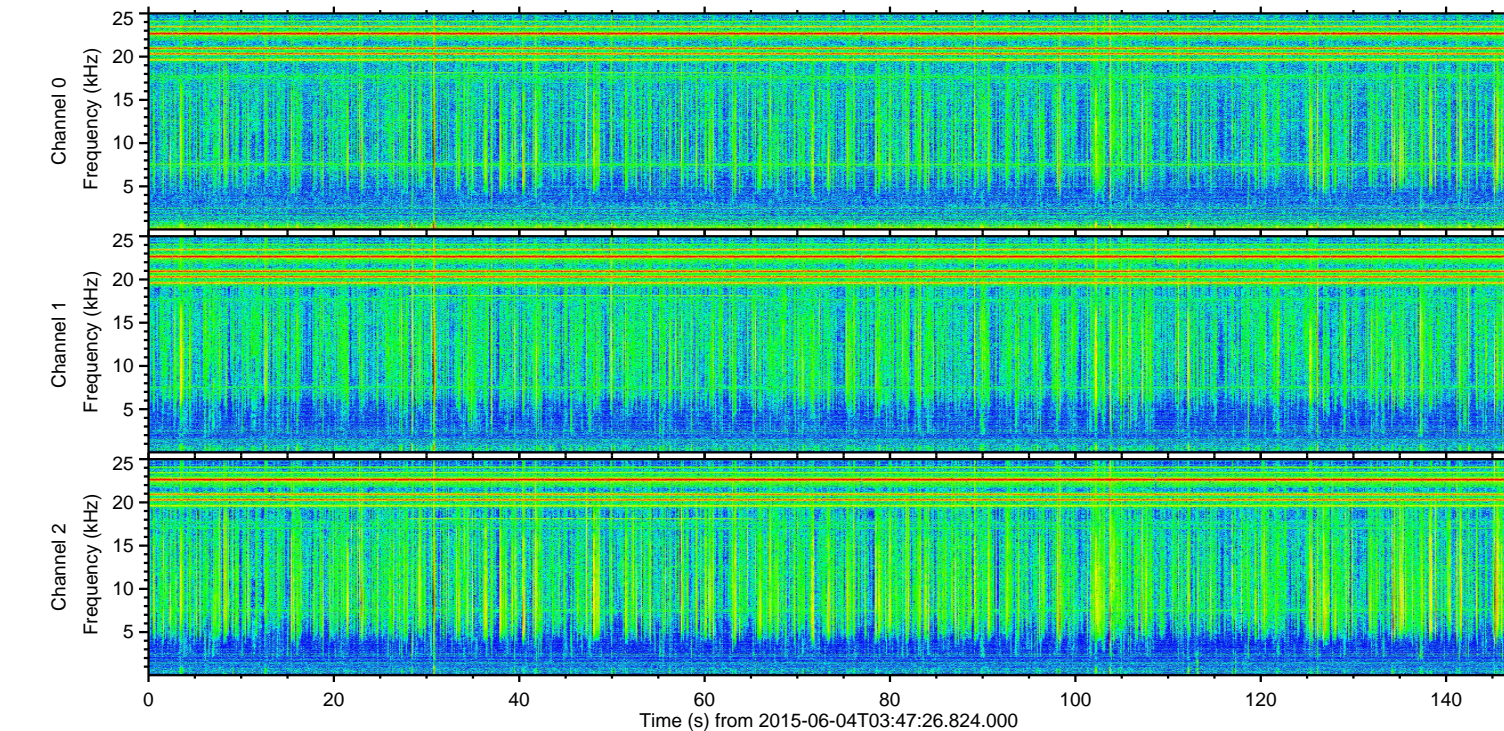
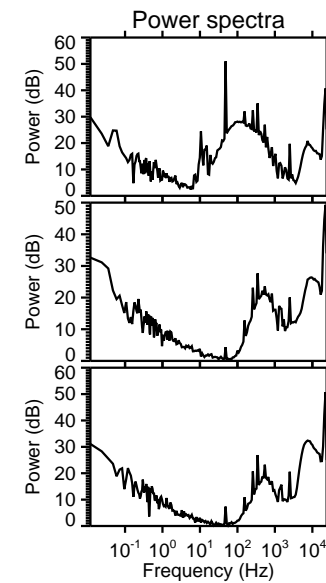
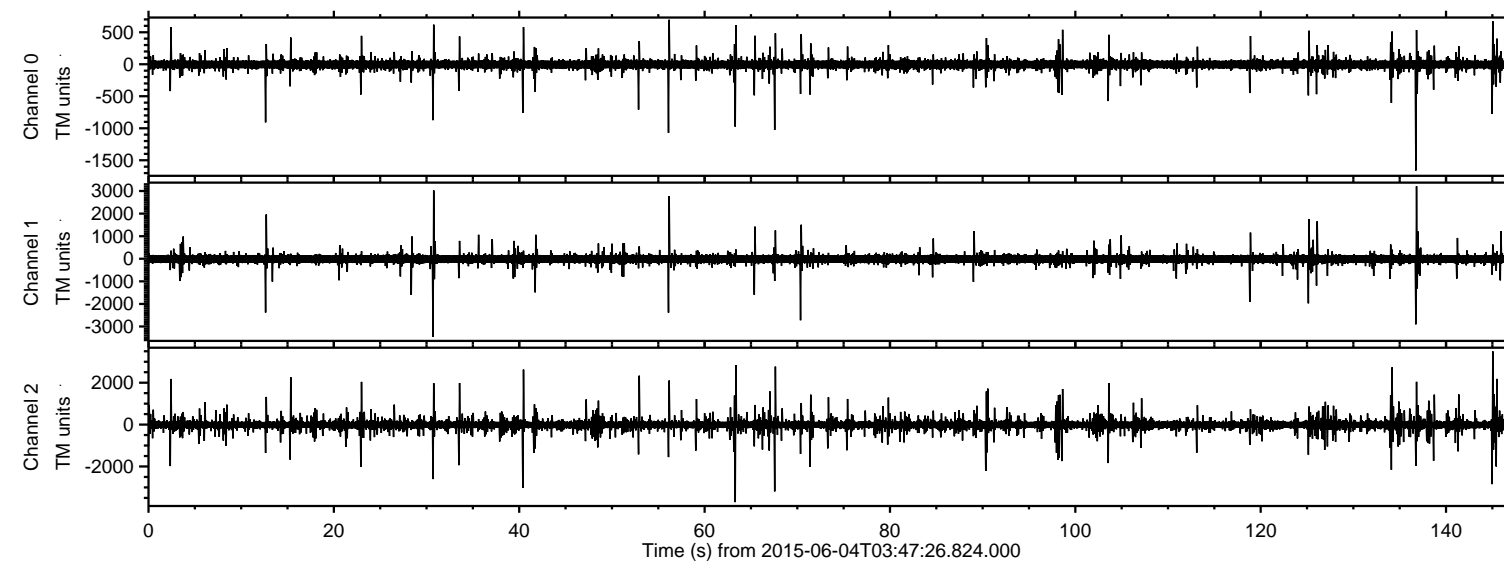


ELMAVAN 3D WAVEFORMS (Measured data sampled at 50 kHz) 51000 packets of 144 samples from 2015-06-04T03:47:26.824.000.

Processed Thu Jun 4 05:53:35 2015 by ELM ver.2012-10-06 from 001\_\_elm20150604\_034725\_\_dat00.bin

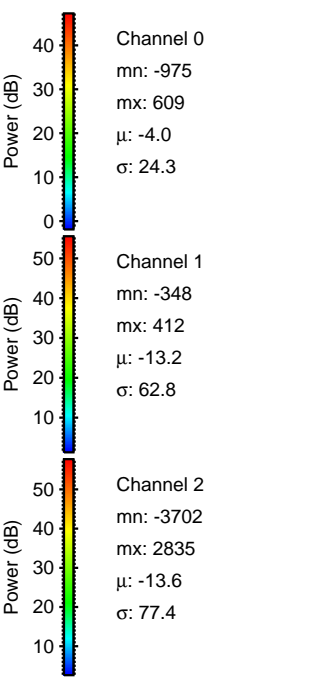
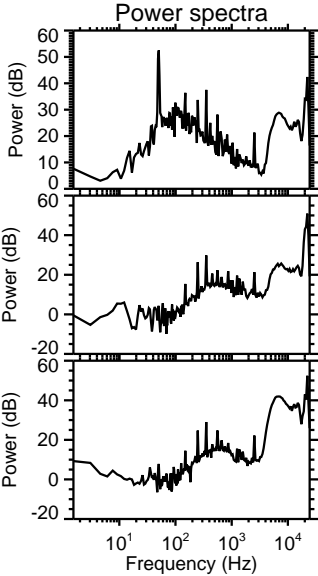
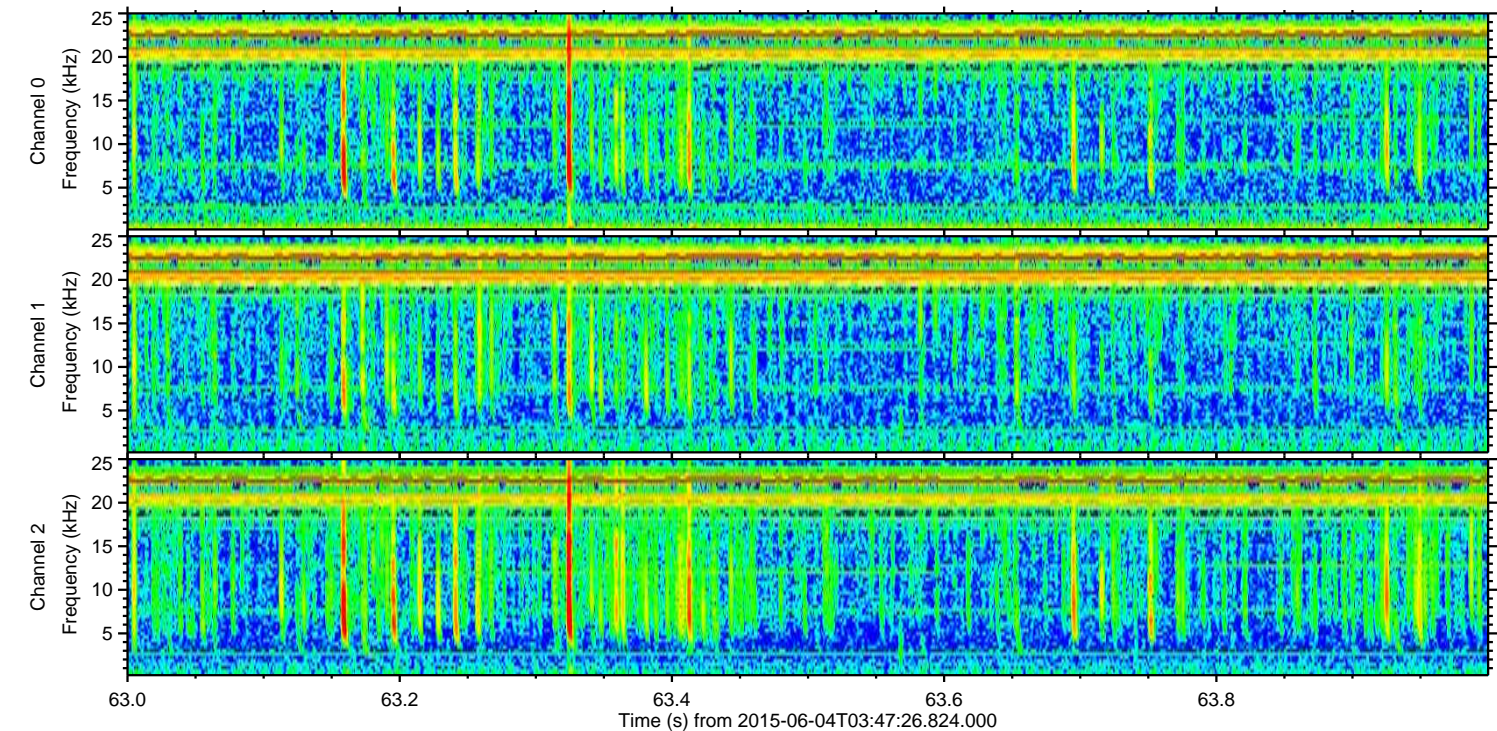
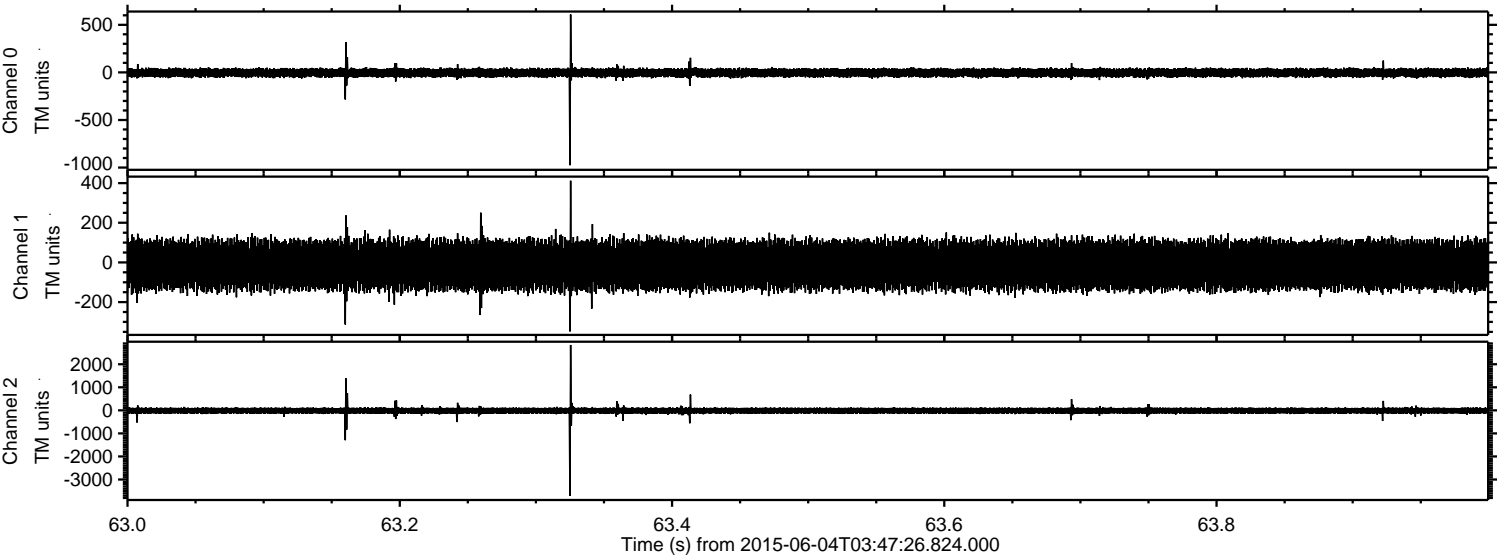


Channel 0  
mn: -1660  
mx: 695  
 $\mu$ : -3.9  
 $\sigma$ : 23.0

Channel 1  
mn: -3465  
mx: 3212  
 $\mu$ : -13.2  
 $\sigma$ : 63.2

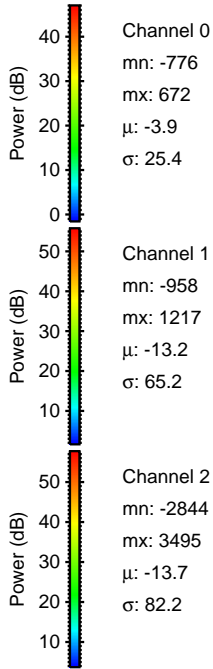
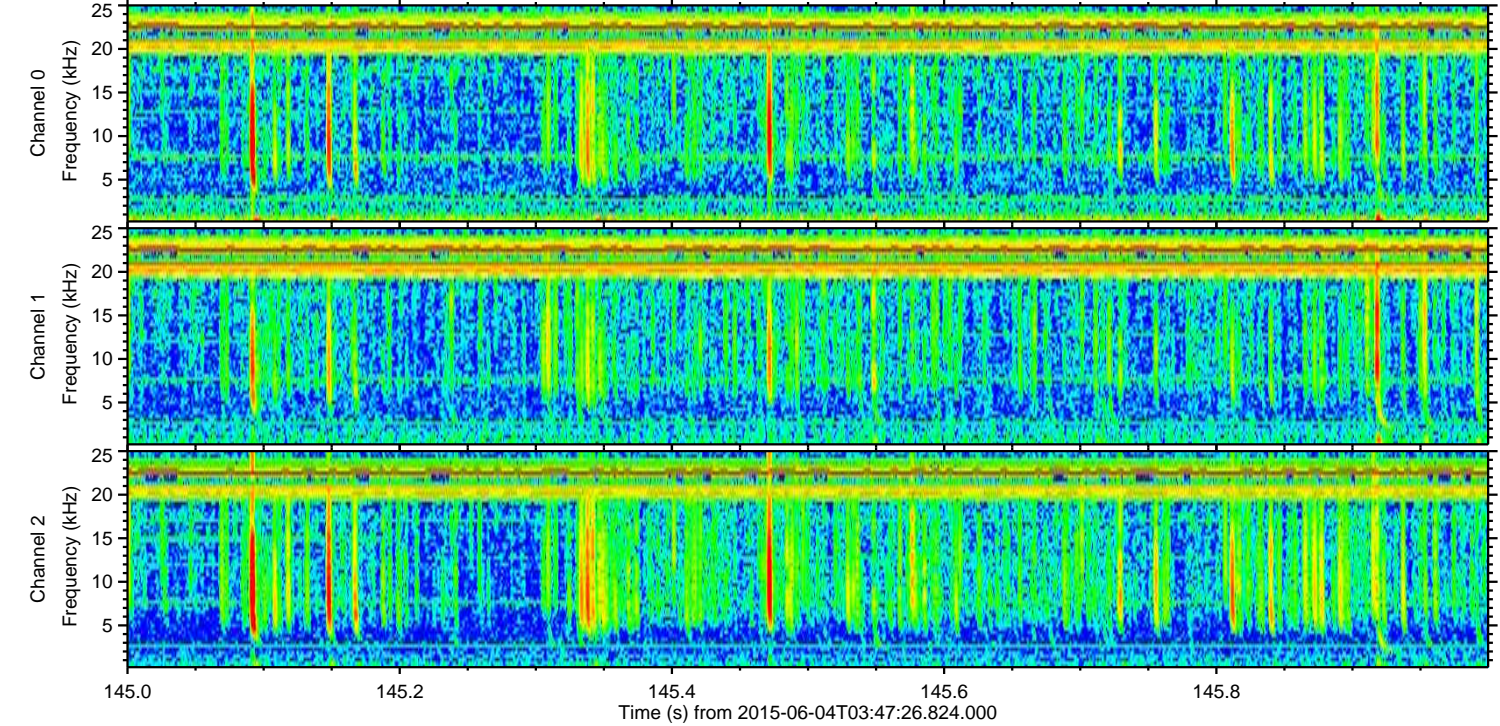
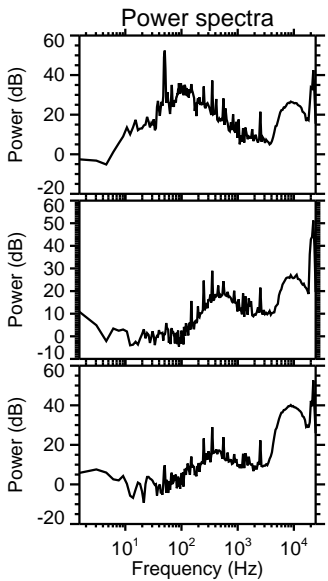
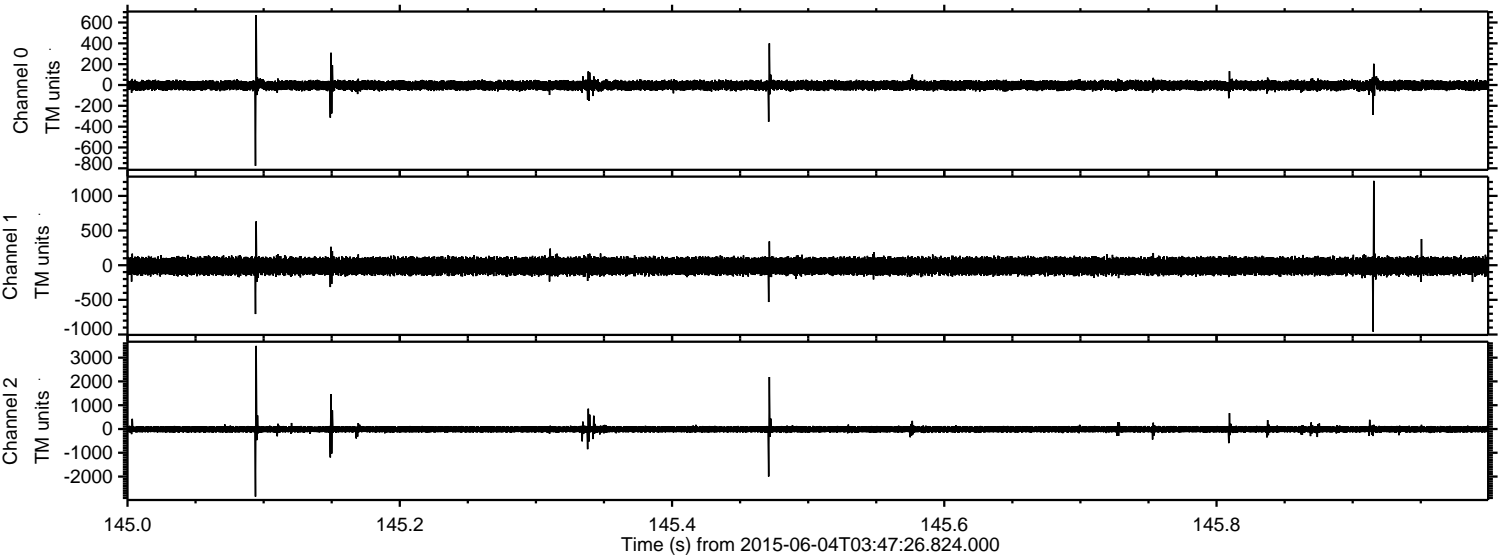
Channel 2  
mn: -3702  
mx: 3495  
 $\mu$ : -13.6  
 $\sigma$ : 68.4

Processed Thu Jun 4 05:53:47 2015 by ELM ver.2012-10-06 from 001\_\_elm20150604\_034725\_\_dat00.bin

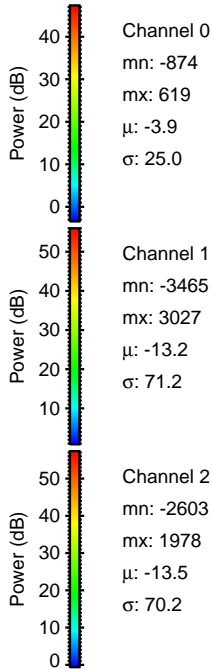
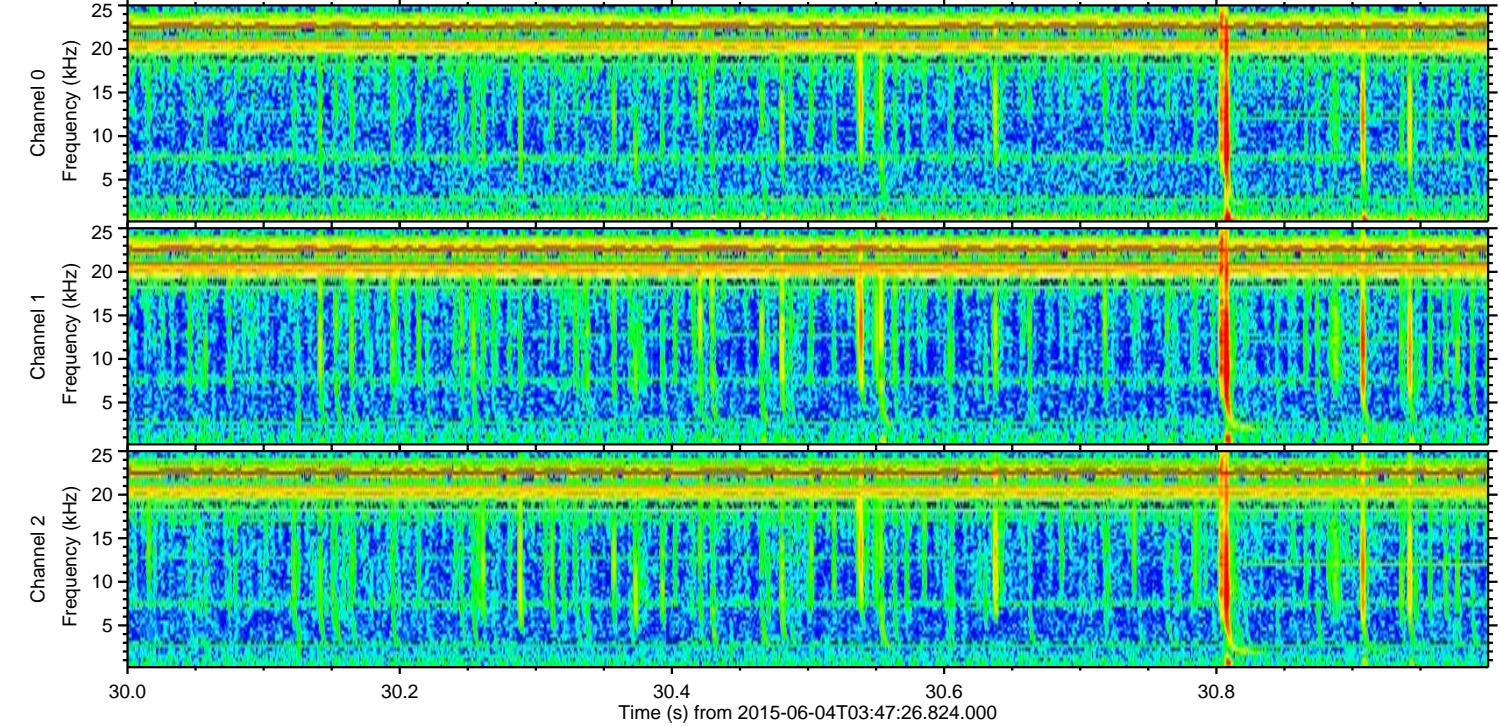
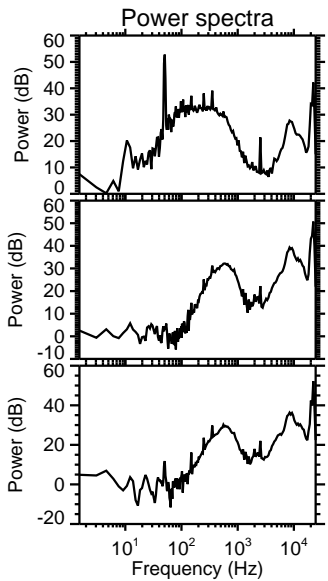
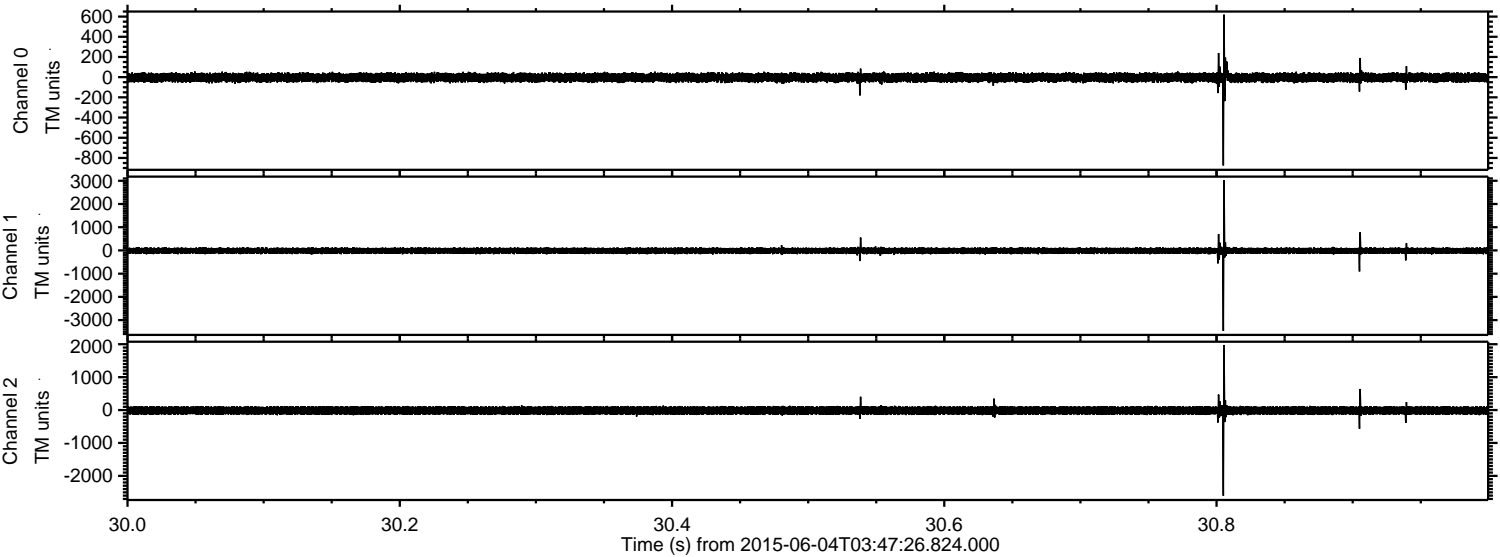


ELMAVAN 3D WAVEFORMS (Measured data sampled at 50 kHz) 51000 packets of 144 samples from 2015-06-04T03:47:26.824.000. Part 146/147

Processed Thu Jun 4 05:53:48 2015 by ELM ver.2012-10-06 from 001\_\_elm20150604\_034725\_\_dat00.bin

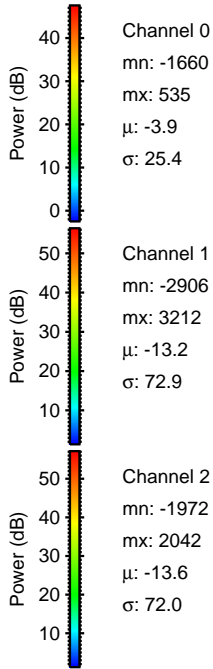
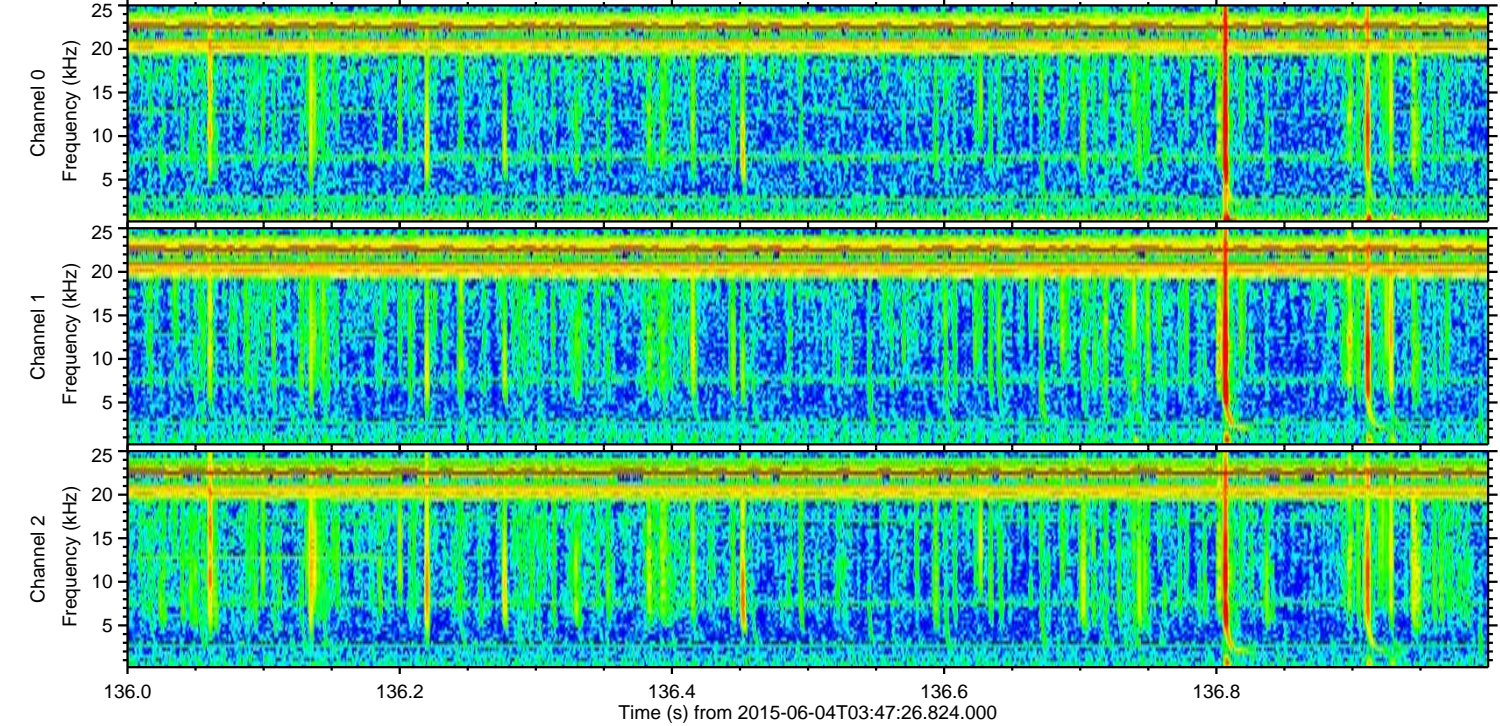
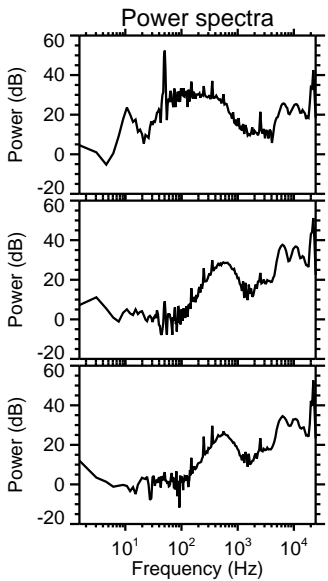
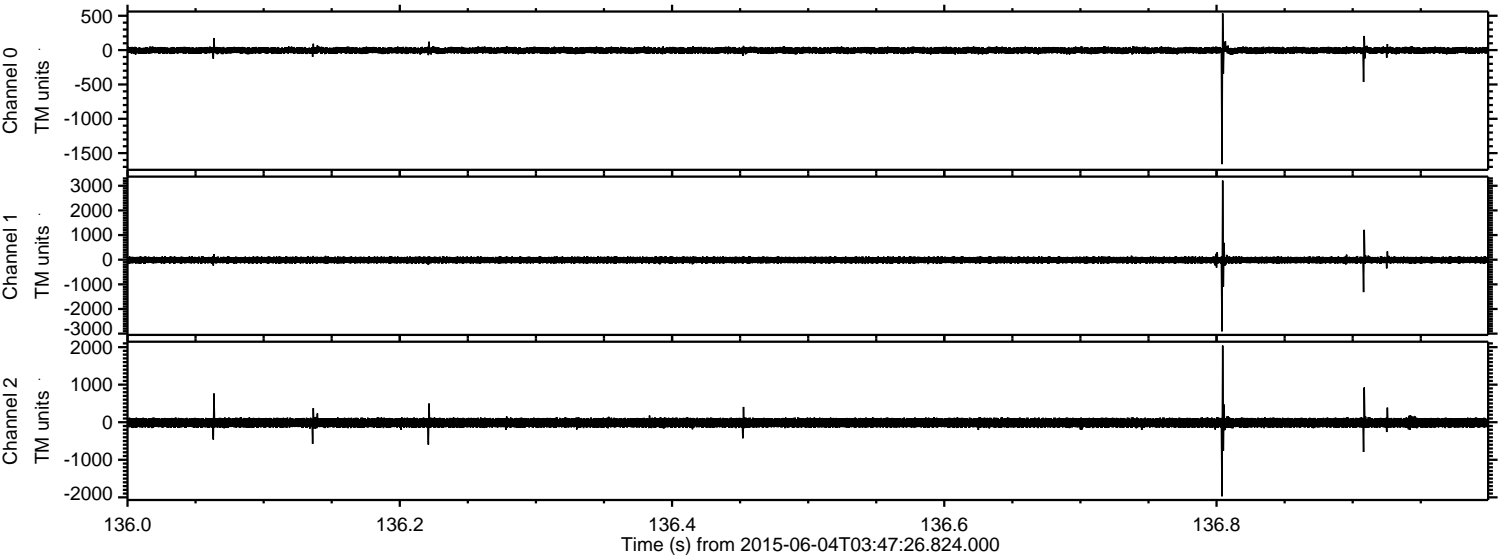


Processed Thu Jun 4 05:53:49 2015 by ELM ver.2012-10-06 from 001\_\_elm20150604\_034725\_\_dat00.bin



ELMAVAN 3D WAVEFORMS (Measured data sampled at 50 kHz) 51000 packets of 144 samples from 2015-06-04T03:47:26.824.000. Part 137/147

Processed Thu Jun 4 05:53:49 2015 by ELM ver.2012-10-06 from 001\_\_elm20150604\_034725\_\_dat00.bin

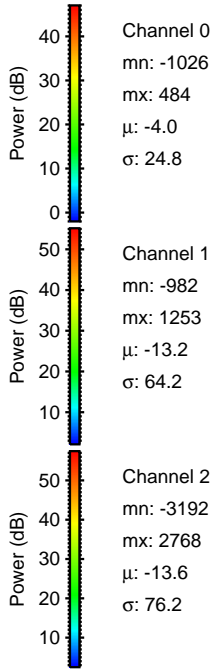
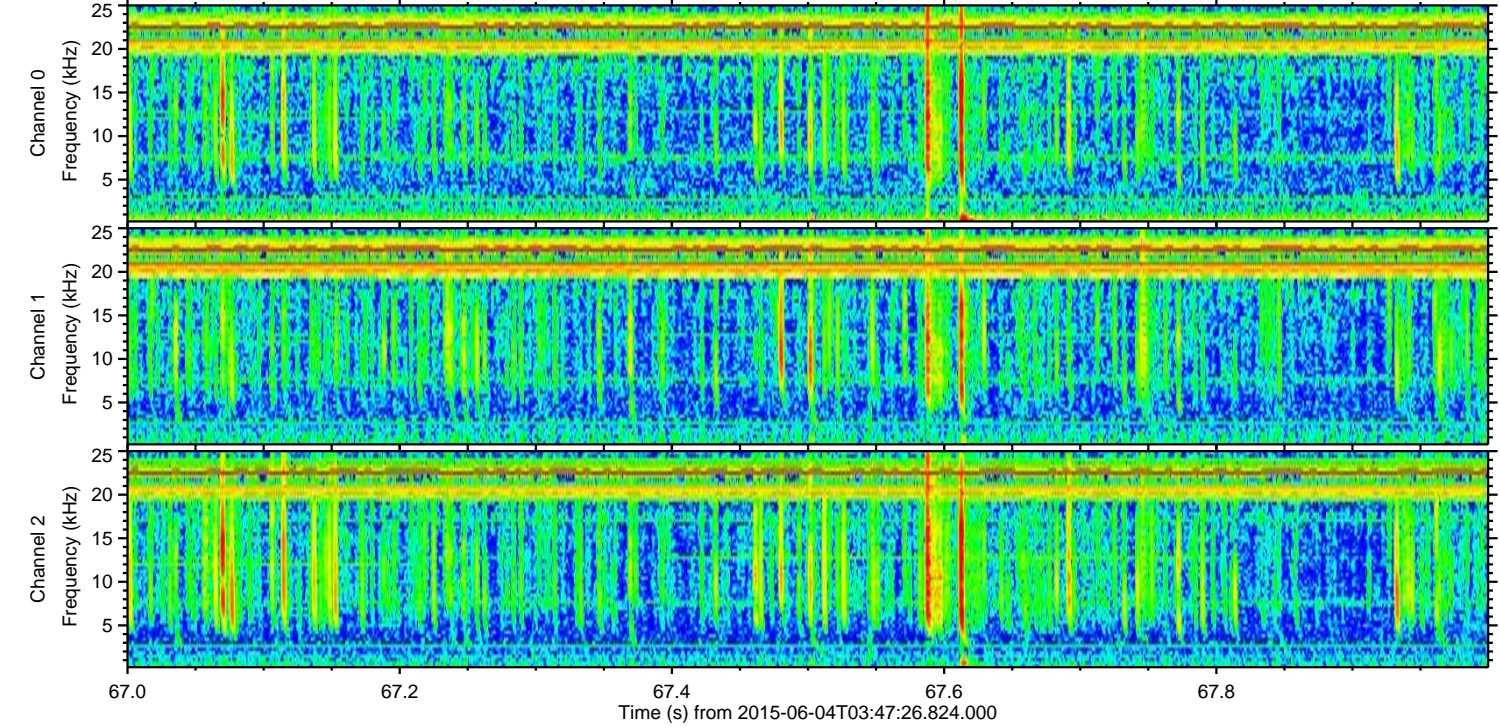
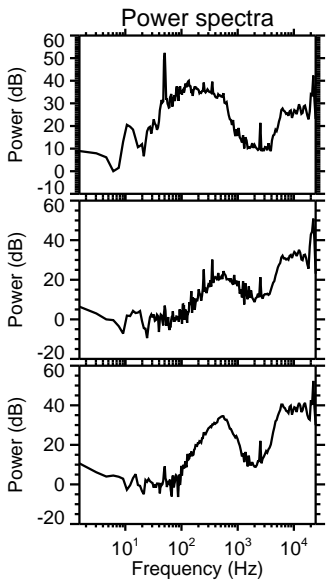
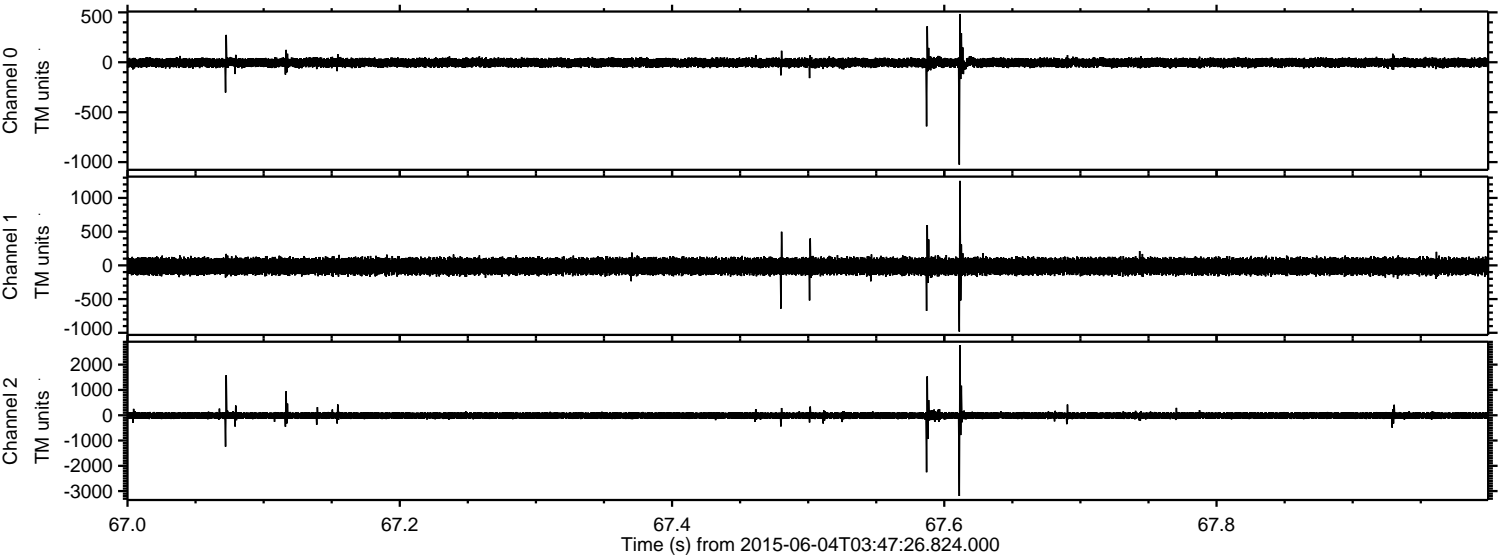


Channel 0  
mn: -1660  
mx: 535  
 $\mu$ : -3.9  
 $\sigma$ : 25.4

Channel 1  
mn: -2906  
mx: 3212  
 $\mu$ : -13.2  
 $\sigma$ : 72.9

Channel 2  
mn: -1972  
mx: 2042  
 $\mu$ : -13.6  
 $\sigma$ : 72.0

Processed Thu Jun 4 05:53:50 2015 by ELM ver.2012-10-06 from 001\_\_elm20150604\_034725\_\_dat00.bin

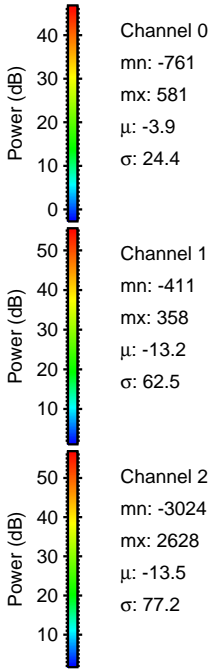
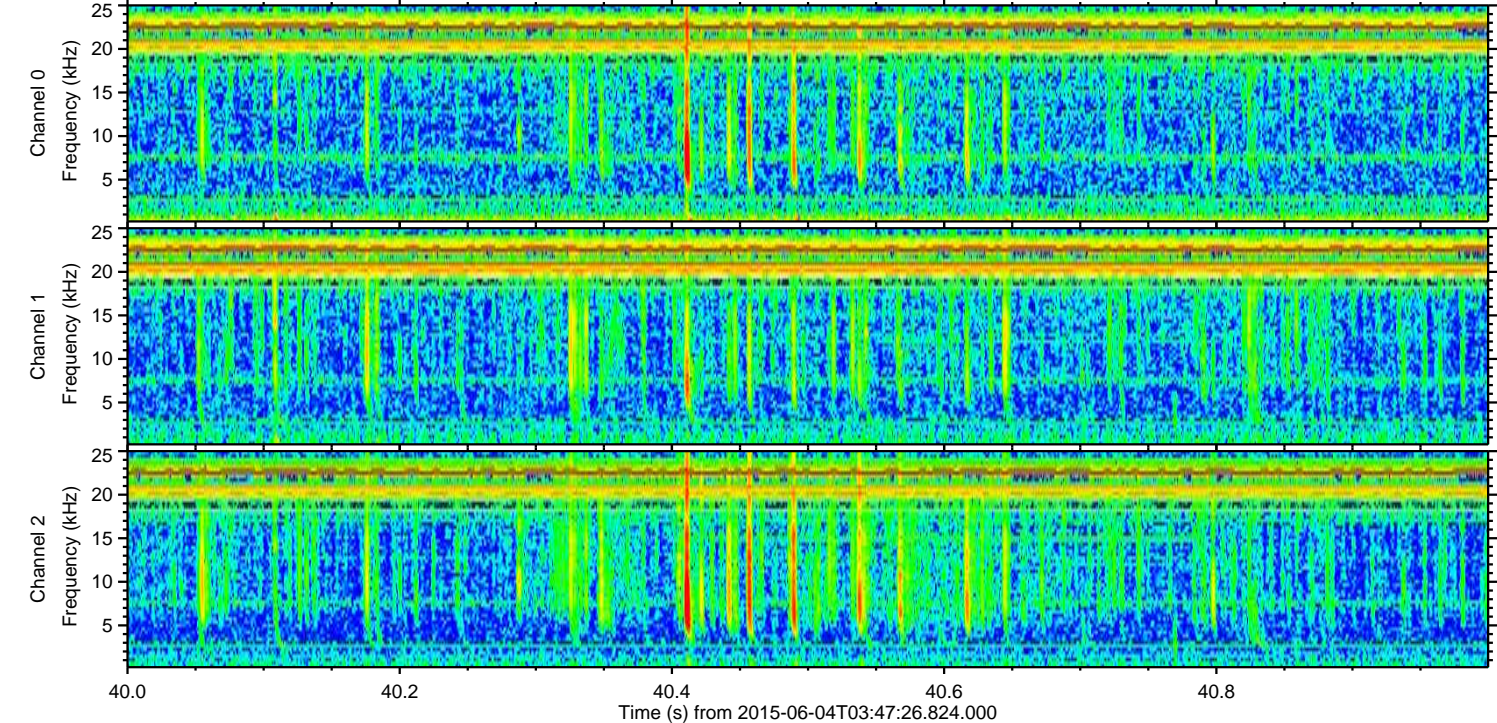
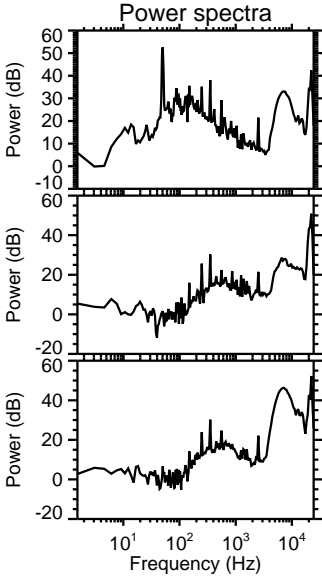
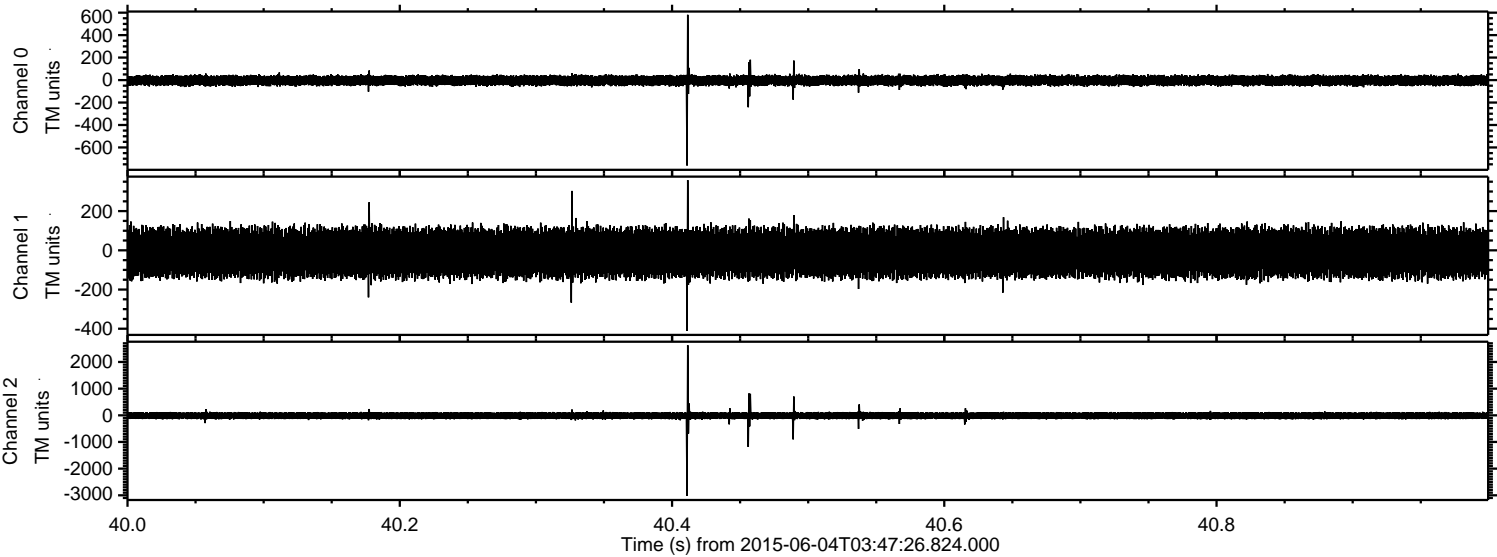


Channel 0  
mn: -1026  
mx: 484  
 $\mu$ : -4.0  
 $\sigma$ : 24.8

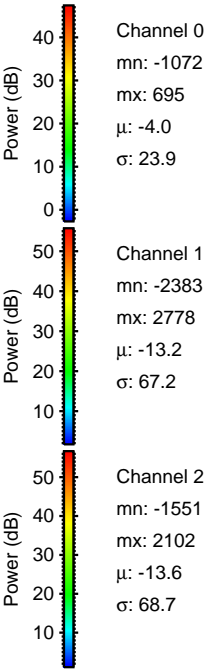
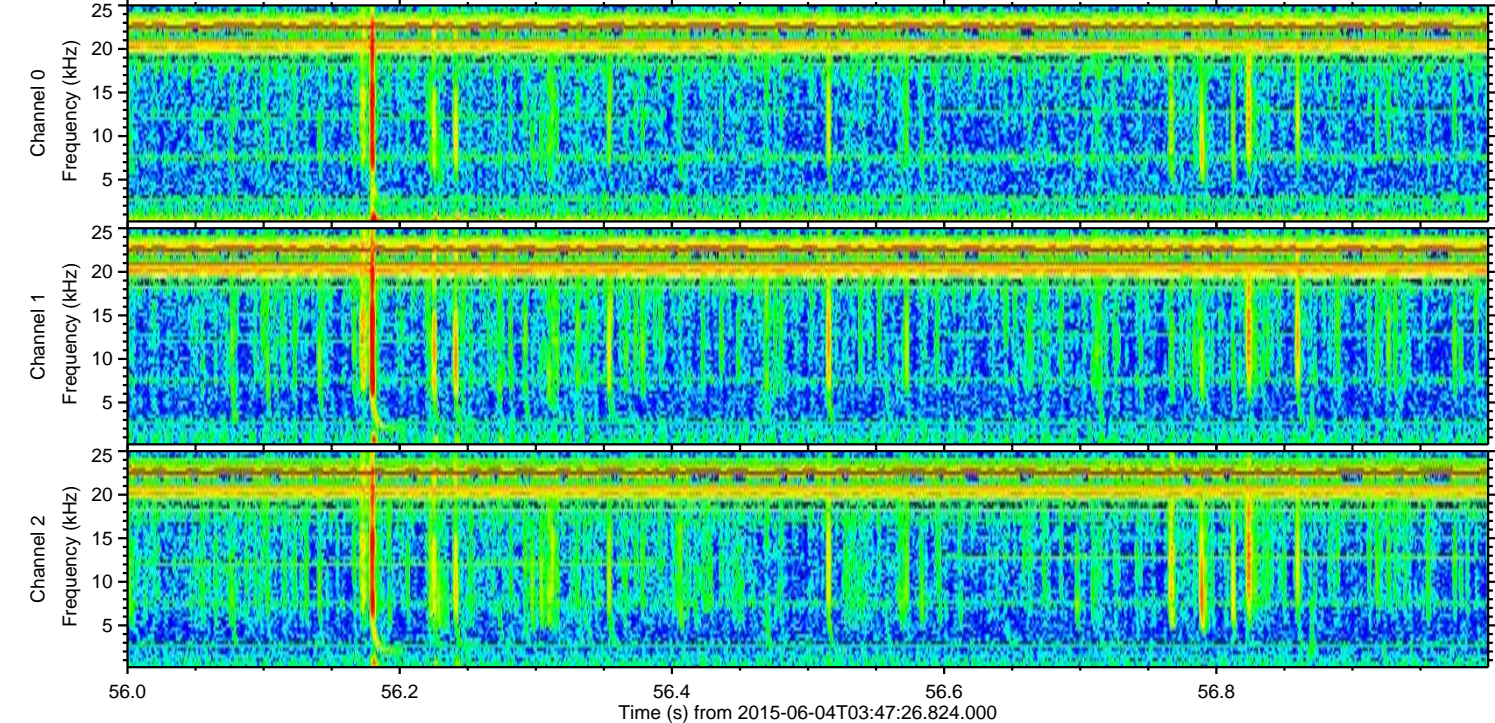
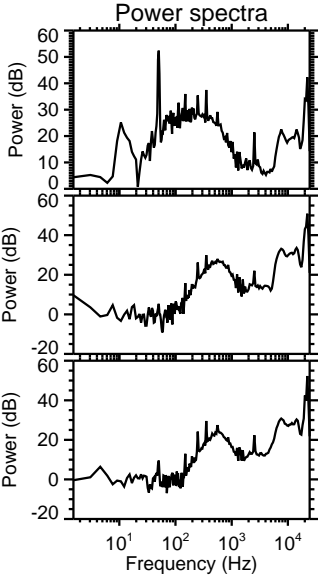
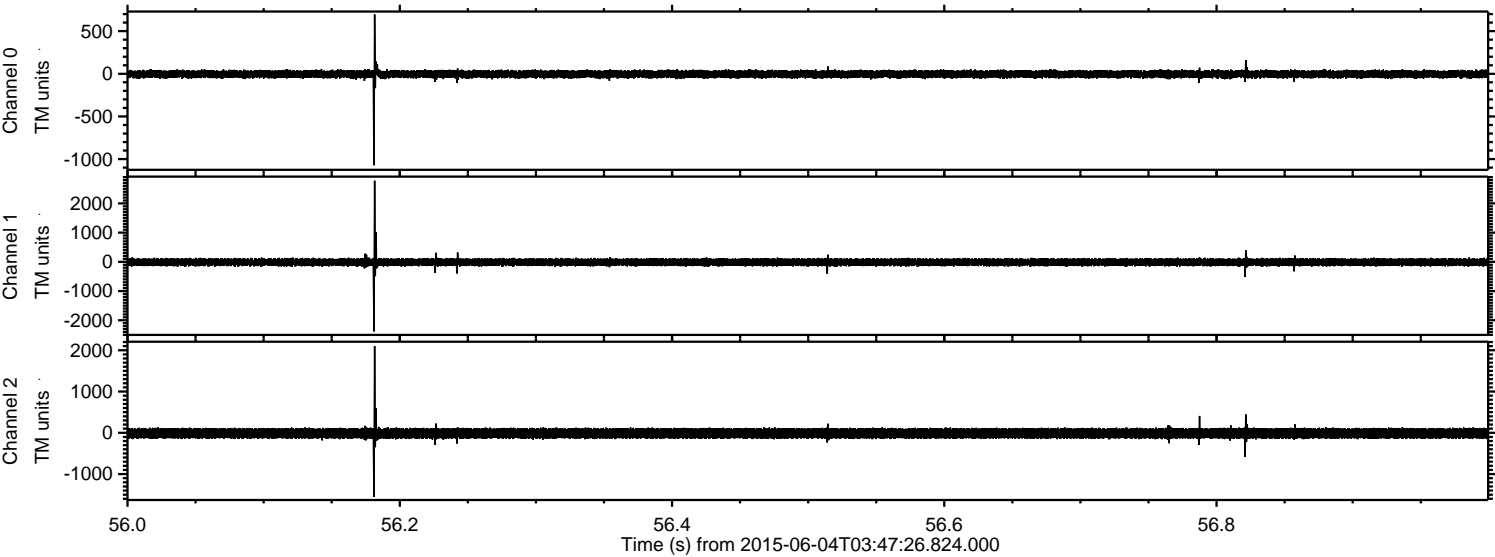
Channel 1  
mn: -982  
mx: 1253  
 $\mu$ : -13.2  
 $\sigma$ : 64.2

Channel 2  
mn: -3192  
mx: 2768  
 $\mu$ : -13.6  
 $\sigma$ : 76.2

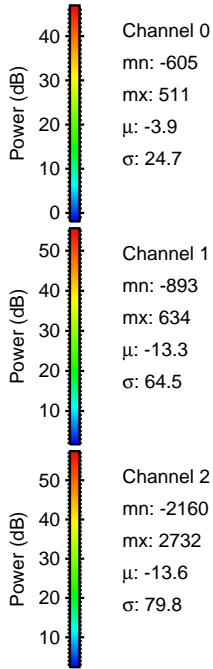
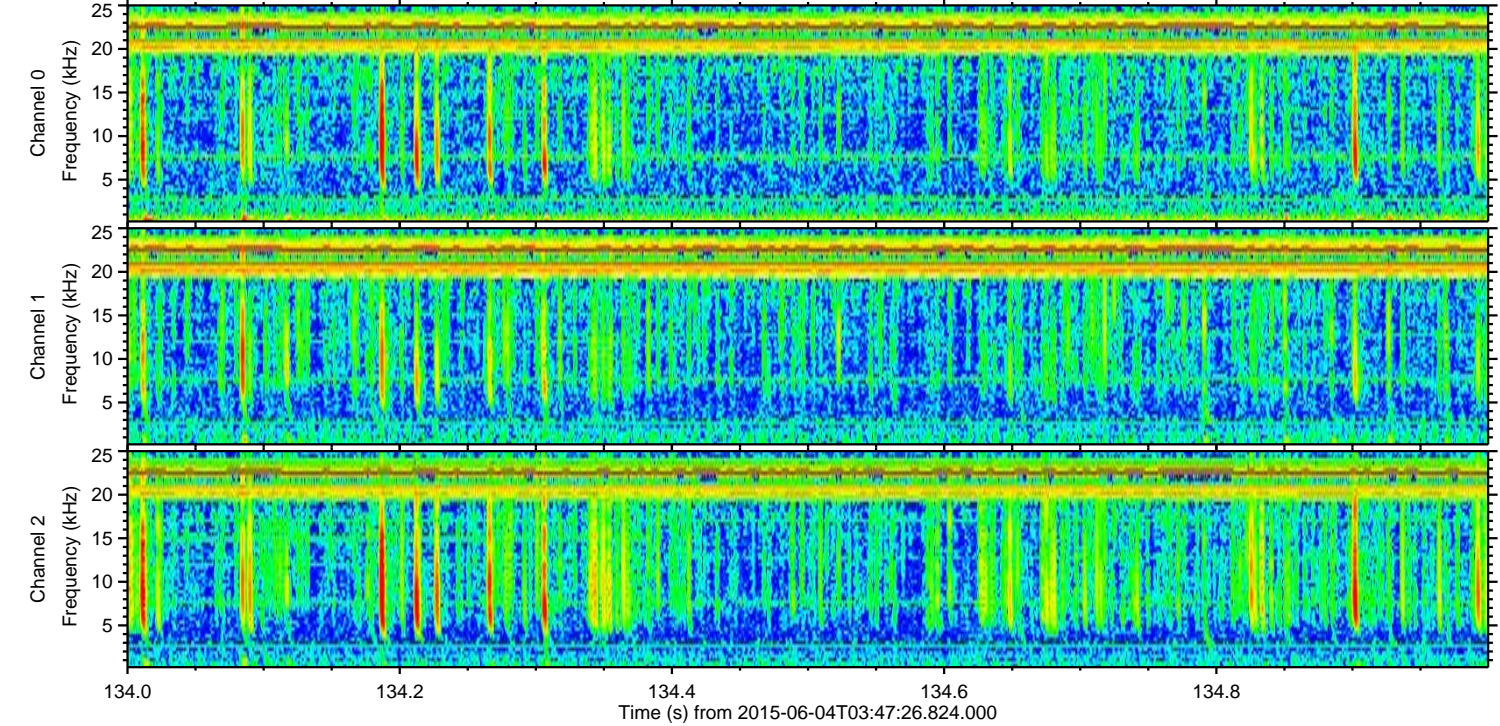
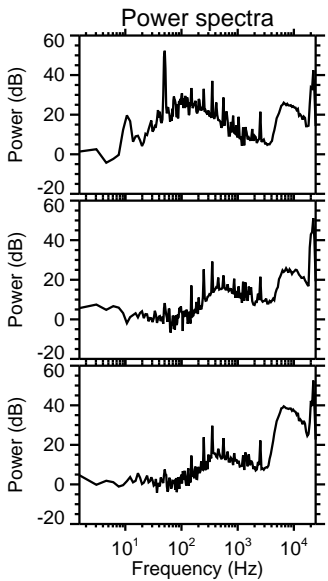
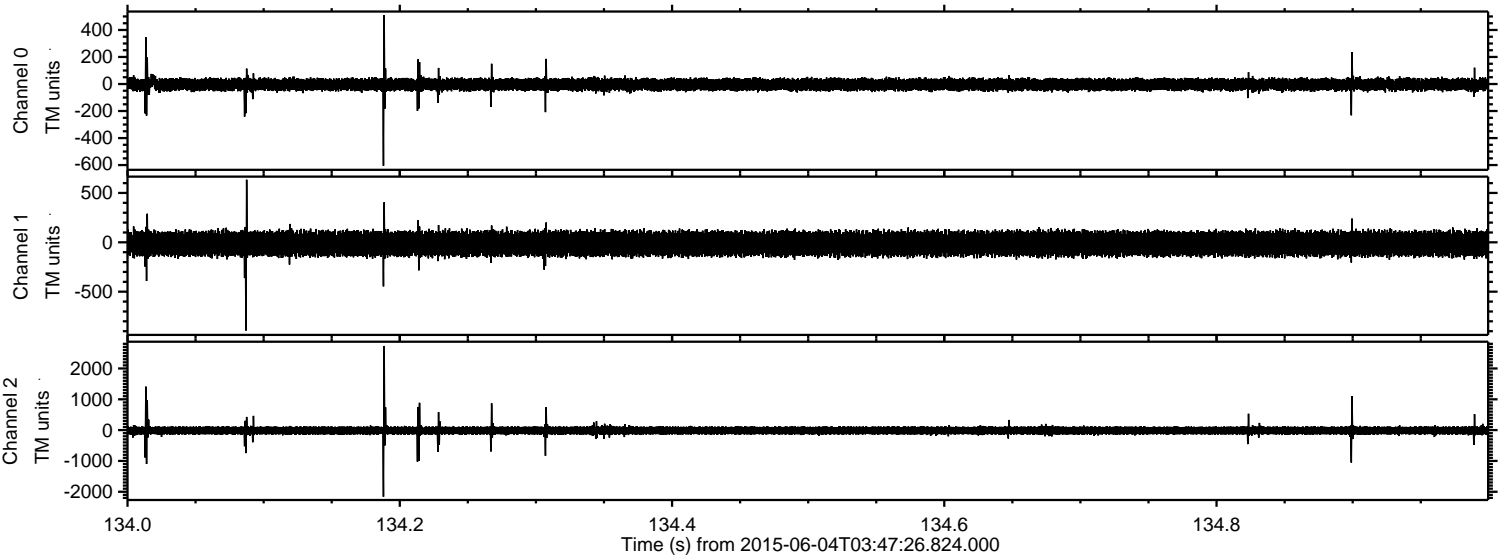
Processed Thu Jun 4 05:53:51 2015 by ELM ver.2012-10-06 from 001\_\_elm20150604\_034725\_\_dat00.bin



Processed Thu Jun 4 05:53:52 2015 by ELM ver.2012-10-06 from 001\_\_elm20150604\_034725\_\_dat00.bin



Processed Thu Jun 4 05:53:53 2015 by ELM ver.2012-10-06 from 001\_\_elm20150604\_034725\_\_dat00.bin

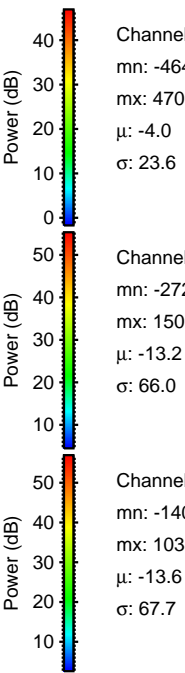
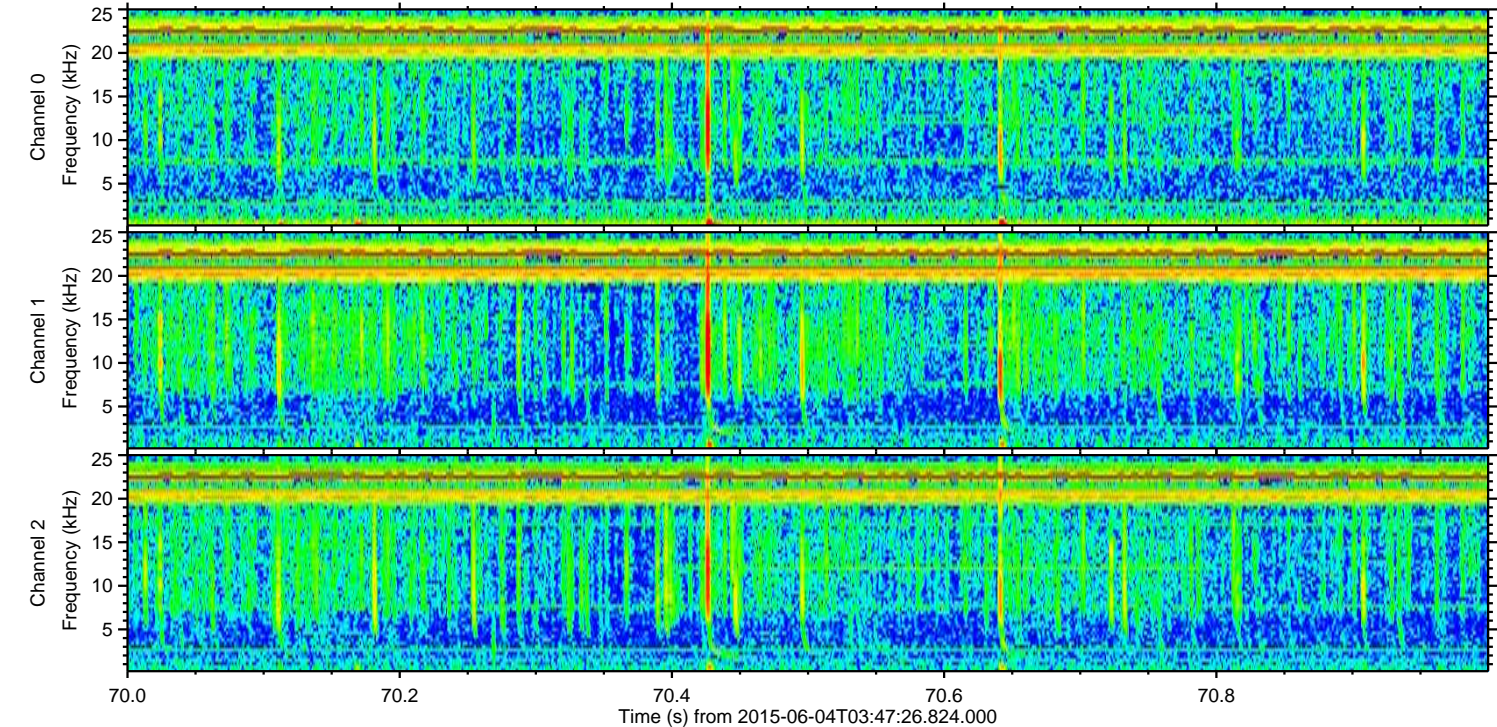
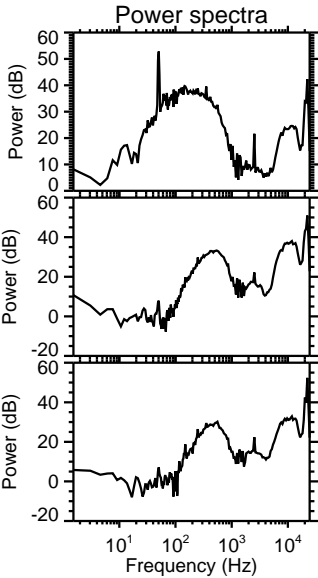
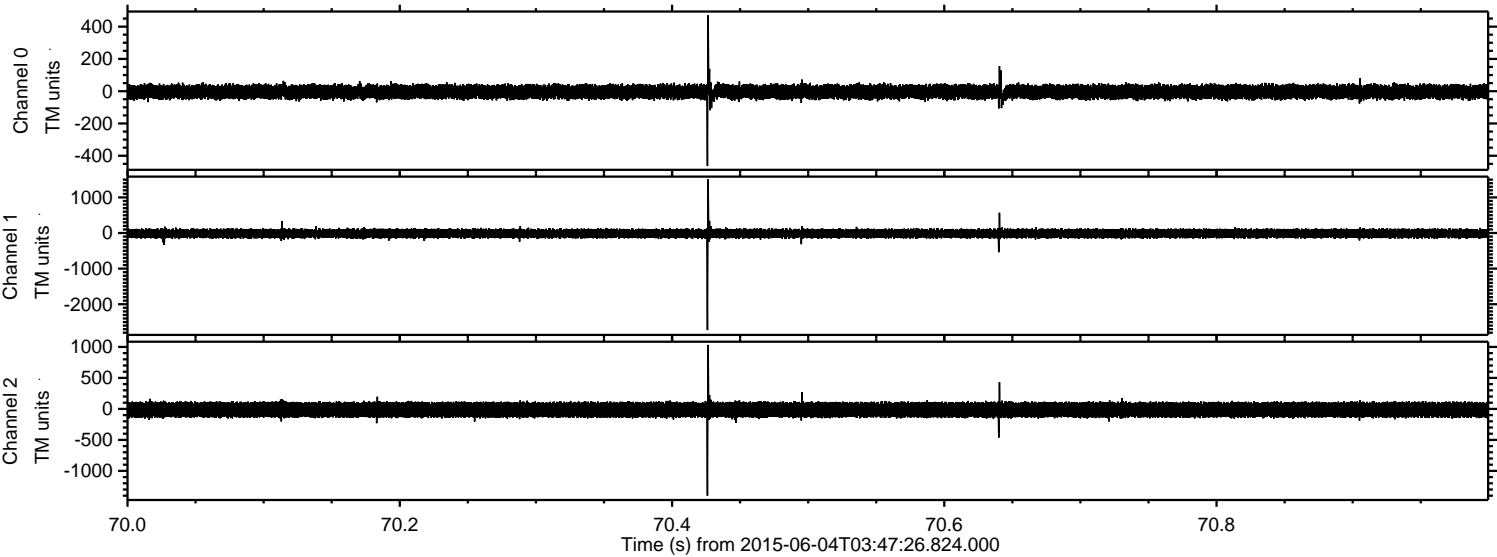


Channel 0  
mn: -605  
mx: 511  
 $\mu$ : -3.9  
 $\sigma$ : 24.7

Channel 1  
mn: -893  
mx: 634  
 $\mu$ : -13.3  
 $\sigma$ : 64.5

Channel 2  
mn: -2160  
mx: 2732  
 $\mu$ : -13.6  
 $\sigma$ : 79.8

Processed Thu Jun 4 05:53:54 2015 by ELM ver.2012-10-06 from 001\_\_elm20150604\_034725\_\_dat00.bin



Channel 0  
mn: -464  
mx: 470  
 $\mu$ : -4.0  
 $\sigma$ : 23.6

Channel 1  
mn: -2725  
mx: 1509  
 $\mu$ : -13.2  
 $\sigma$ : 66.0

Channel 2  
mn: -1400  
mx: 1033  
 $\mu$ : -13.6  
 $\sigma$ : 67.7

ELMAVAN 3D WAVEFORMS (Measured data sampled at 50 kHz) 51000 packets of 144 samples from 2015-06-04T03:47:26.824.000. Part 110/147

