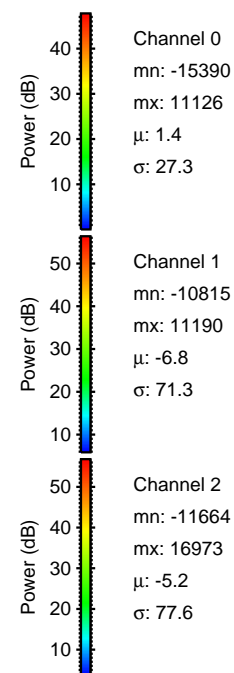
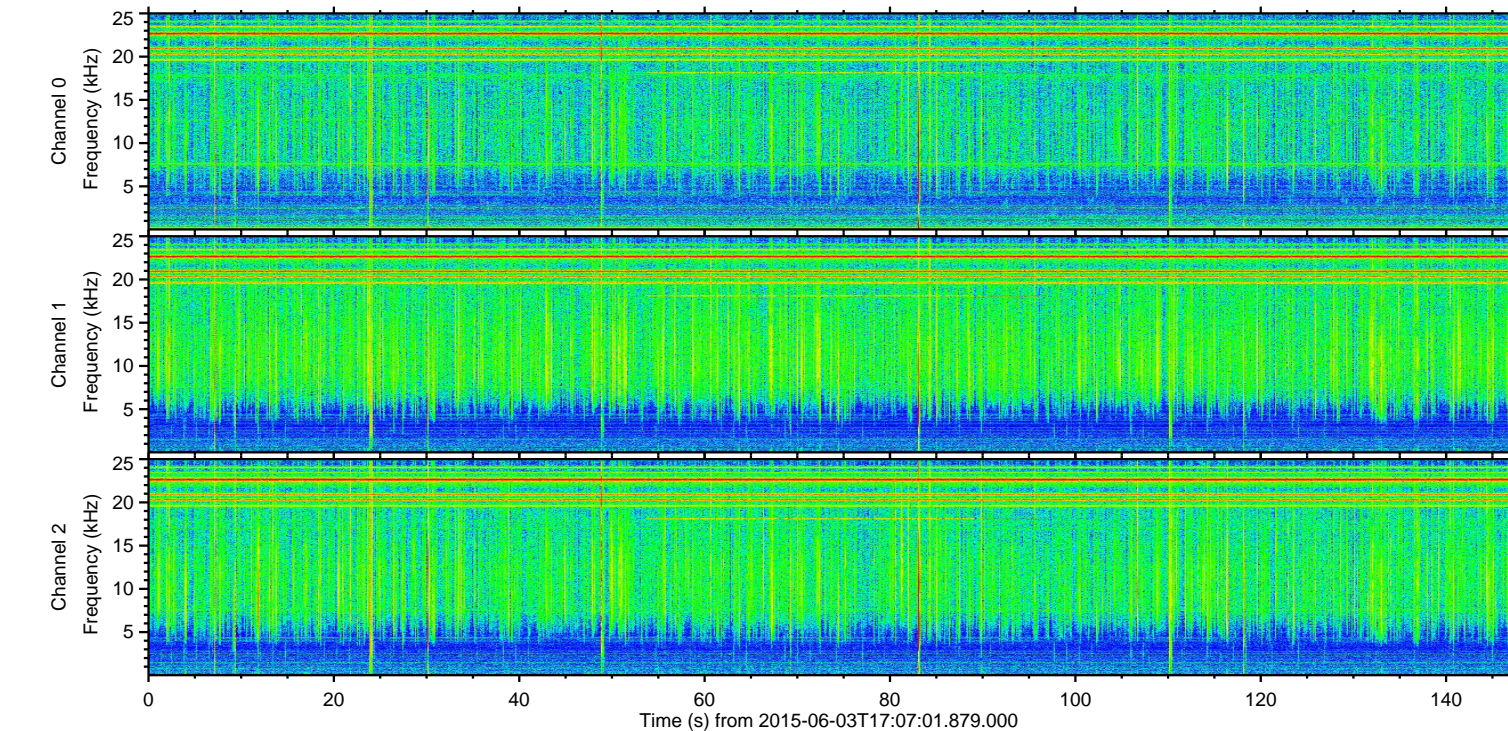
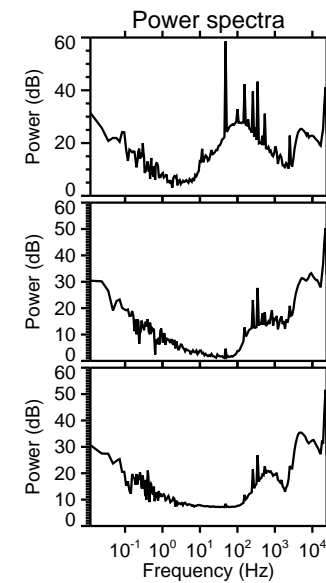
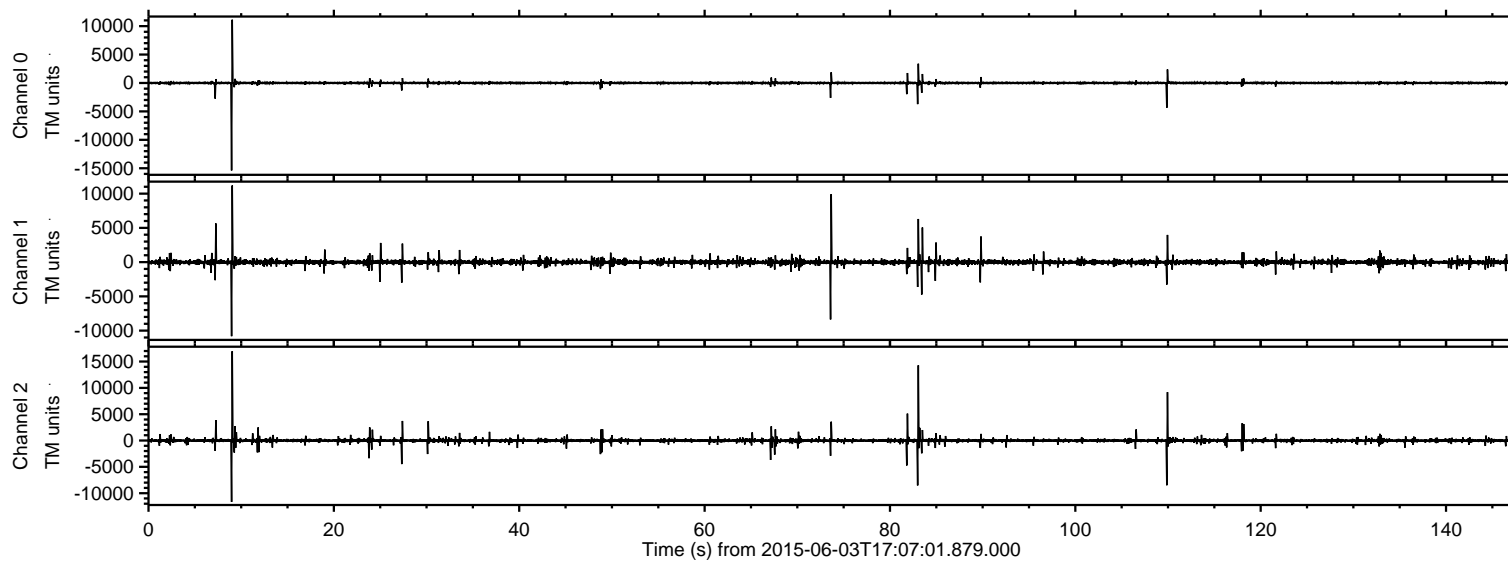


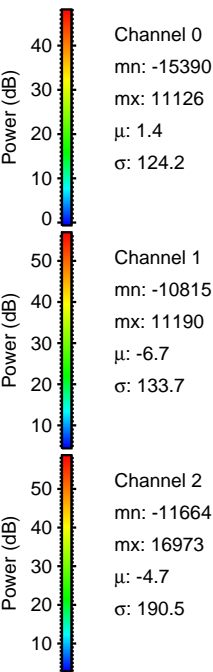
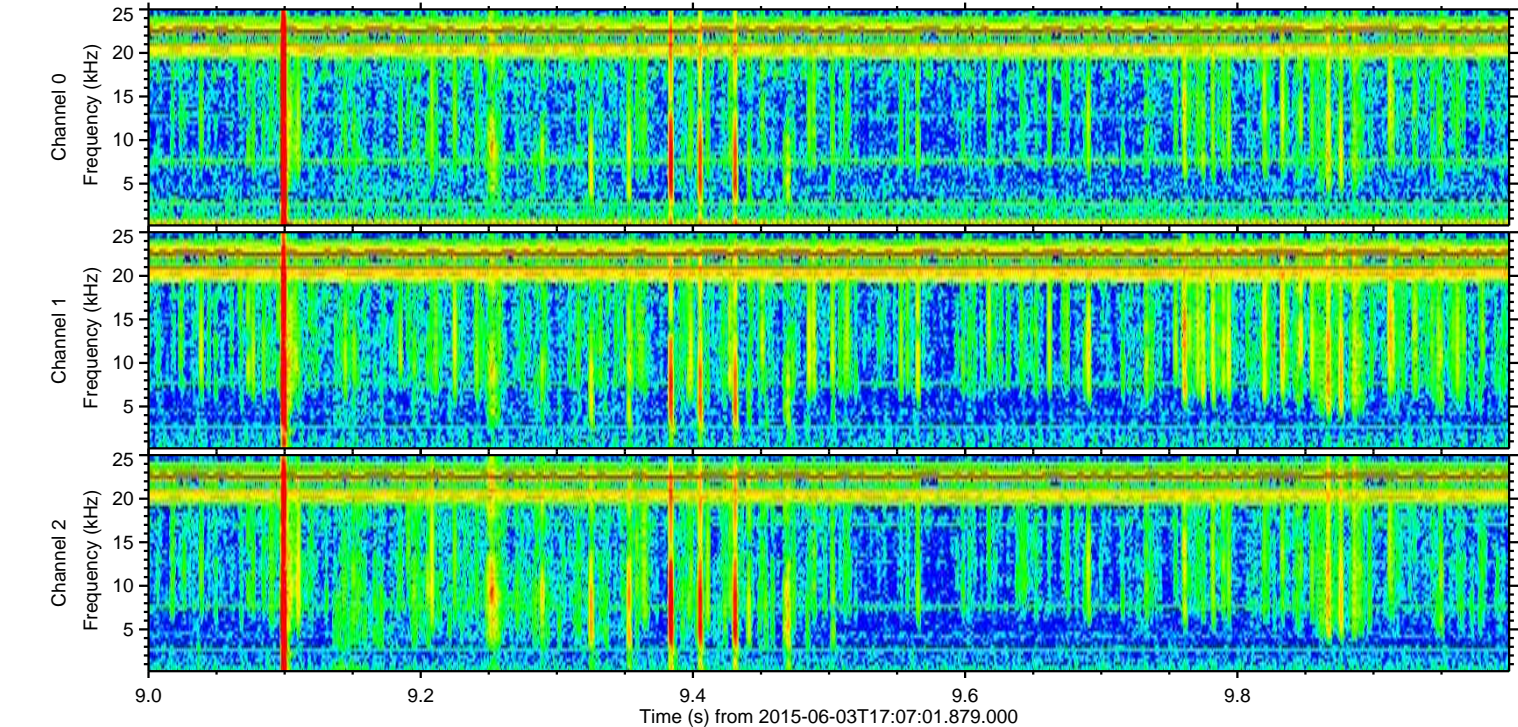
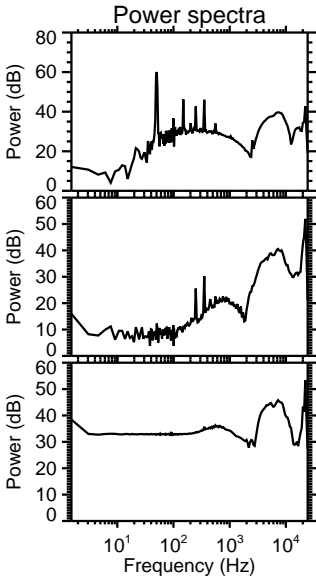
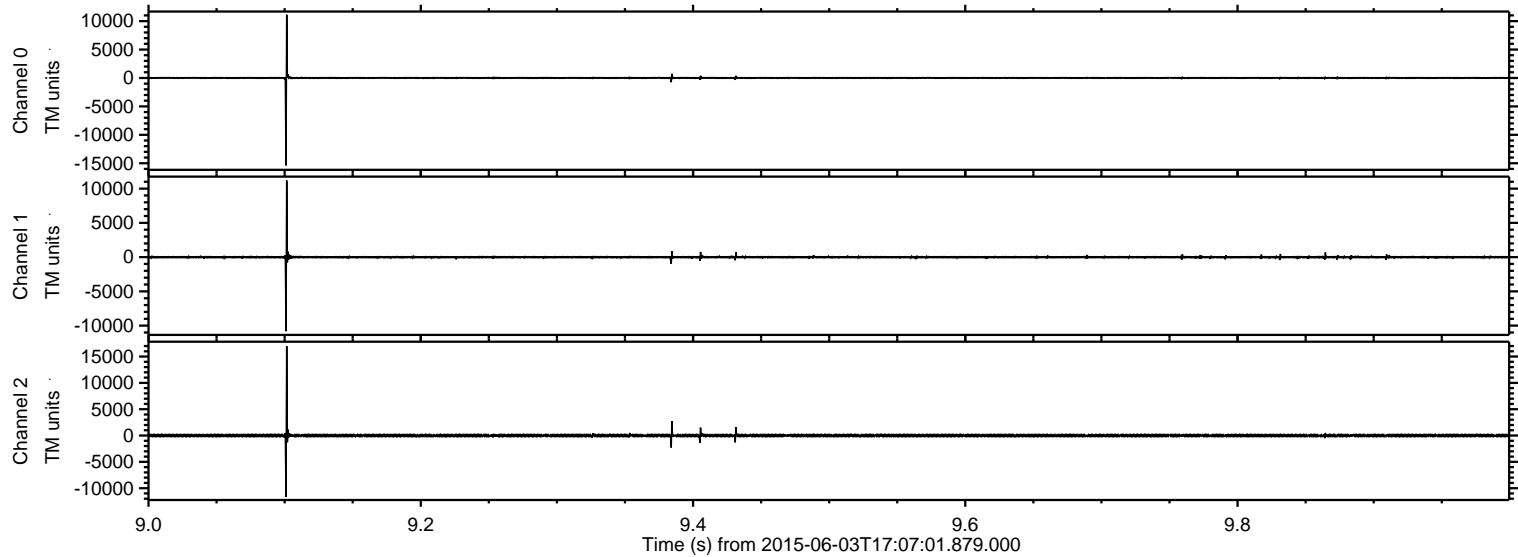
ELMAVAN 3D WAVEFORMS (Measured data sampled at 50 kHz) 51000 packets of 144 samples from 2015-06-03T17:07:01.879.000.

Processed Wed Jun 3 19:13:17 2015 by ELM ver.2012-10-06 from 001__elm20150603_170700__dat00.bin

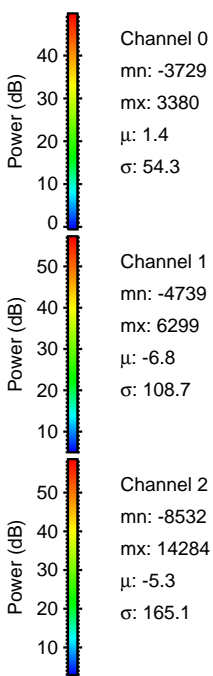
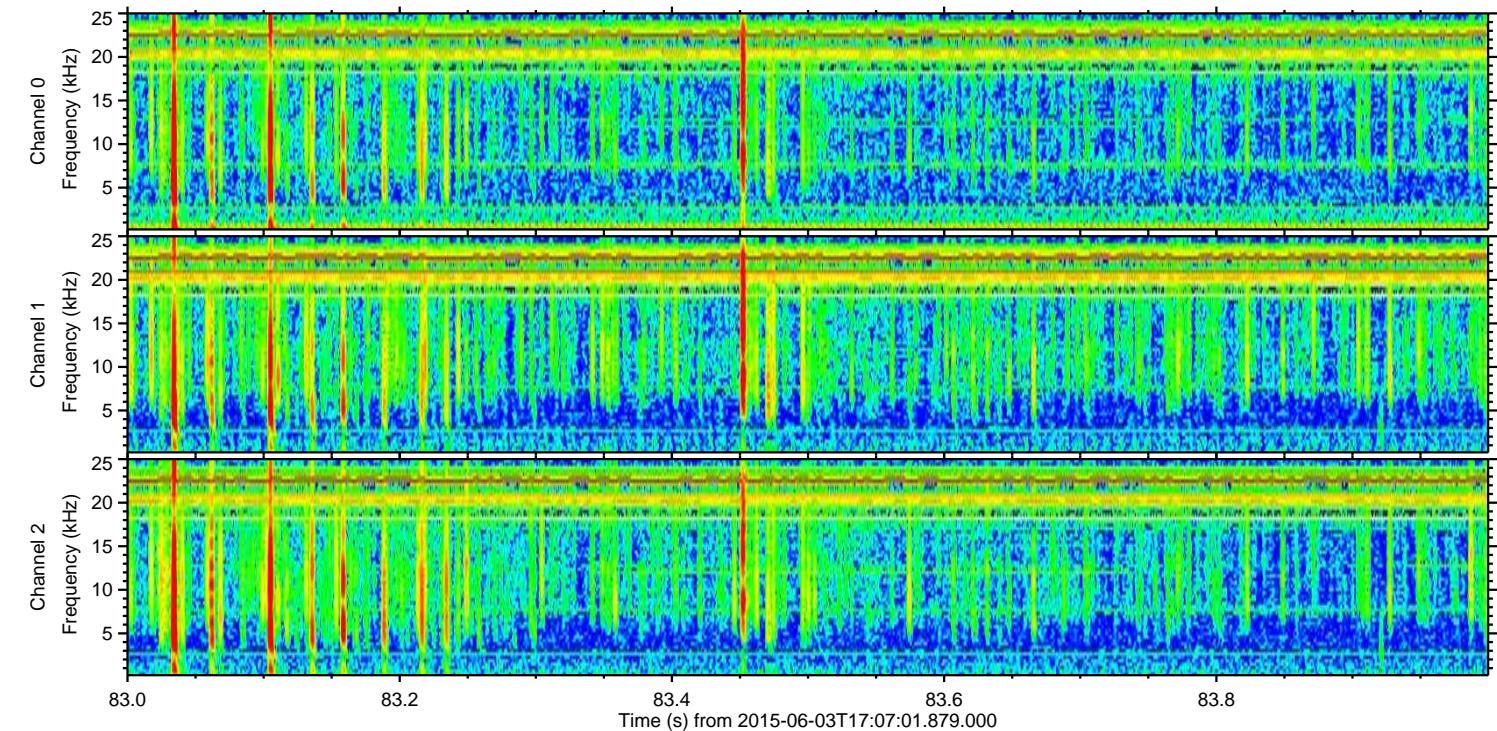
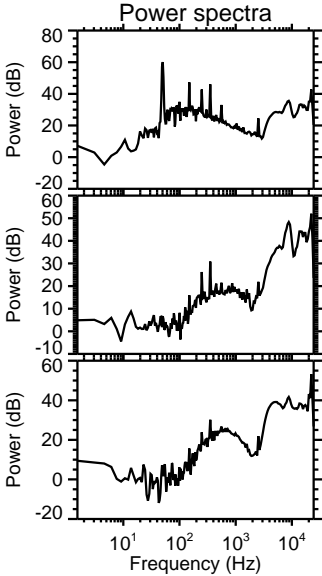
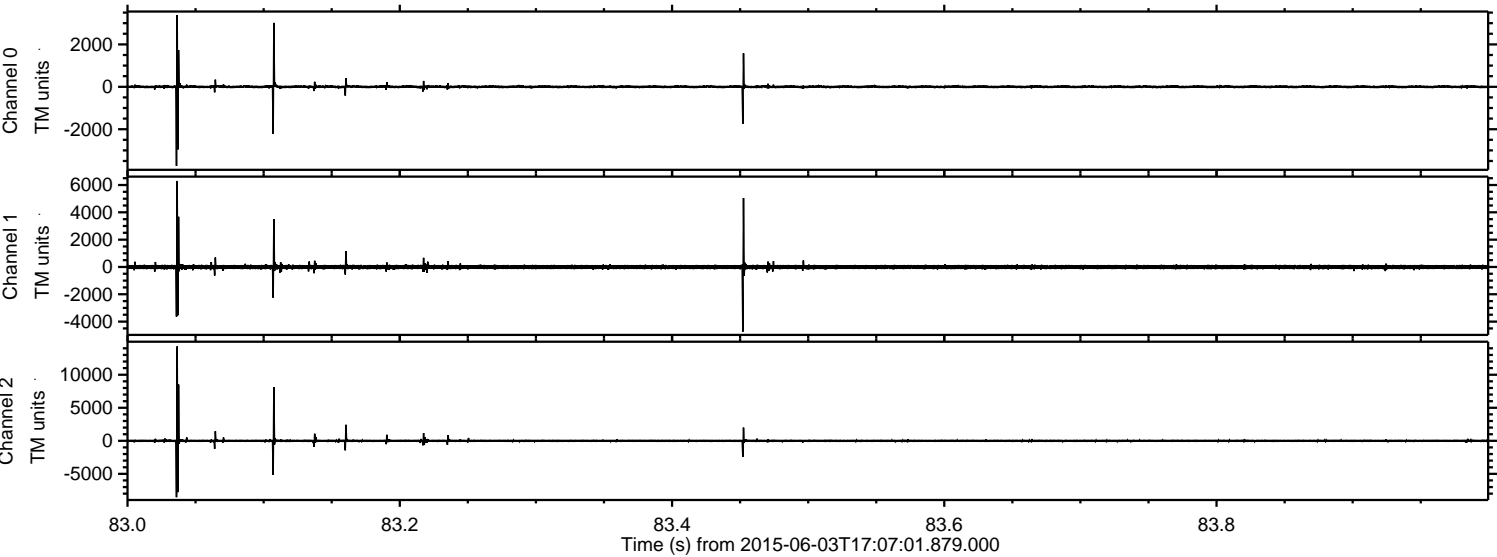


ELMAVAN 3D WAVEFORMS (Measured data sampled at 50 kHz) 51000 packets of 144 samples from 2015-06-03T17:07:01.879.000. Part 10/147

Processed Wed Jun 3 19:13:29 2015 by ELM ver.2012-10-06 from 001__elm20150603_170700__dat00.bin

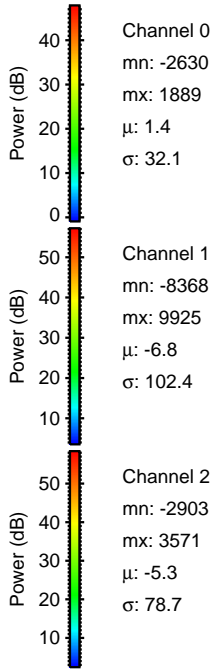
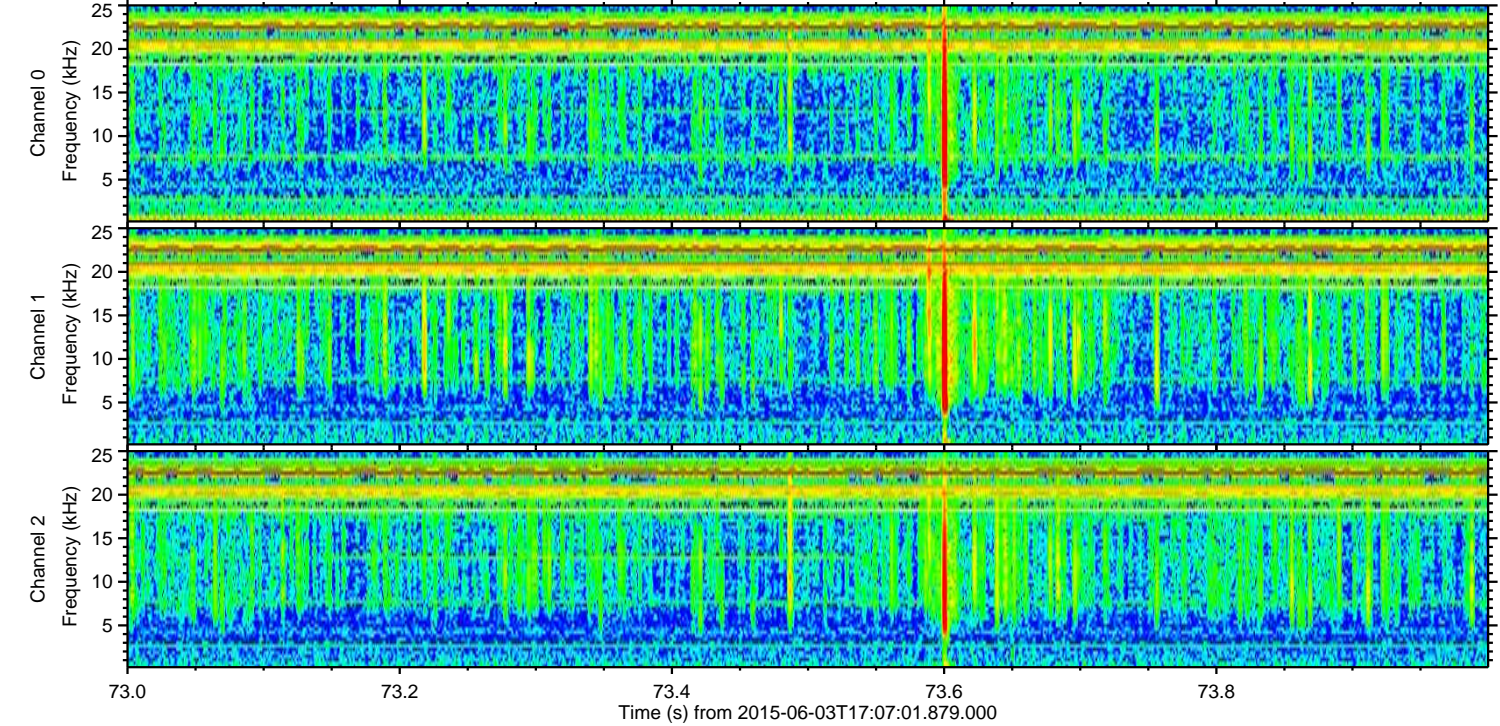
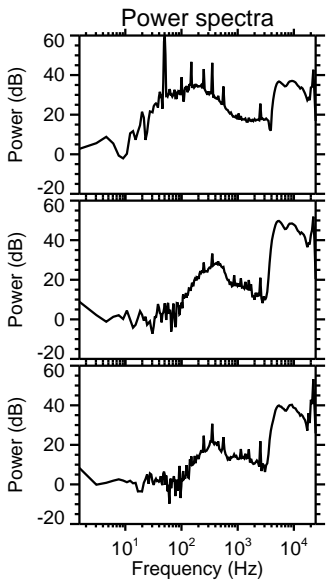
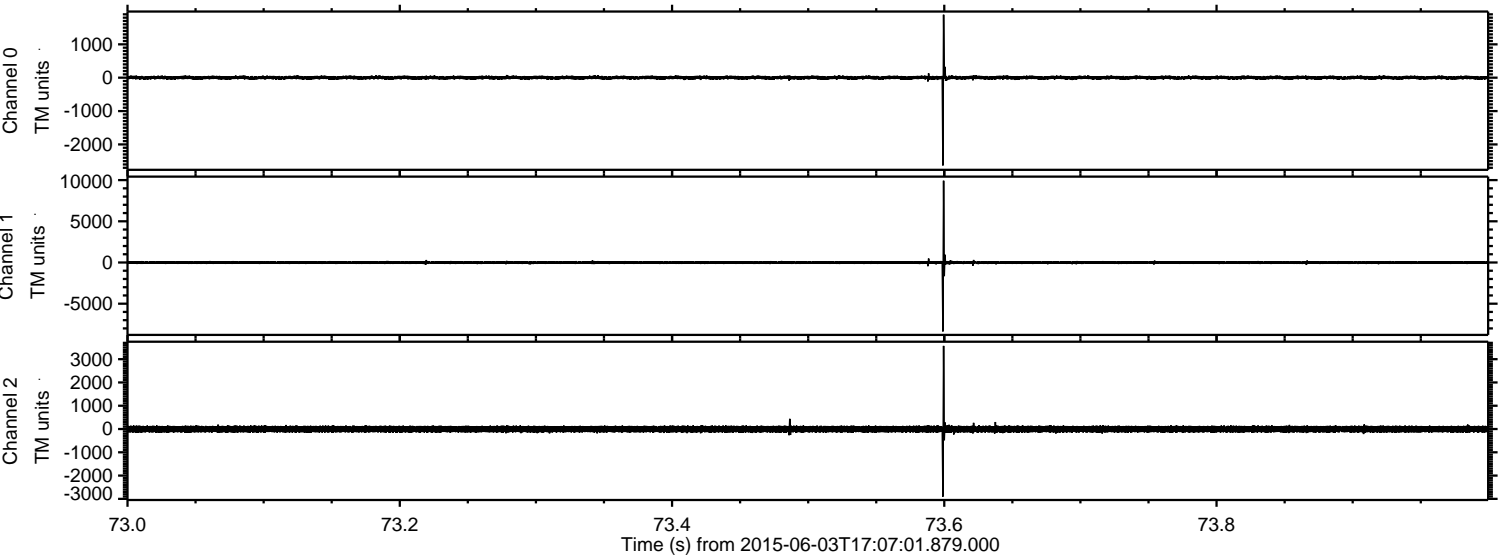


Processed Wed Jun 3 19:13:30 2015 by ELM ver.2012-10-06 from 001__elm20150603_170700__dat00.bin



ELMAVAN 3D WAVEFORMS (Measured data sampled at 50 kHz) 51000 packets of 144 samples from 2015-06-03T17:07:01.879.000. Part 74/147

Processed Wed Jun 3 19:13:31 2015 by ELM ver.2012-10-06 from 001__elm20150603_170700__dat00.bin



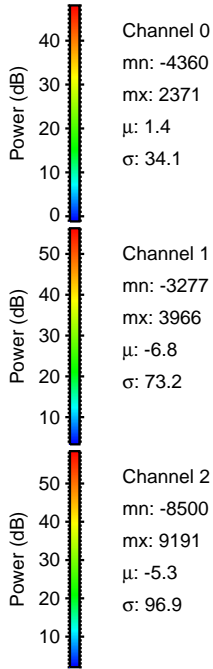
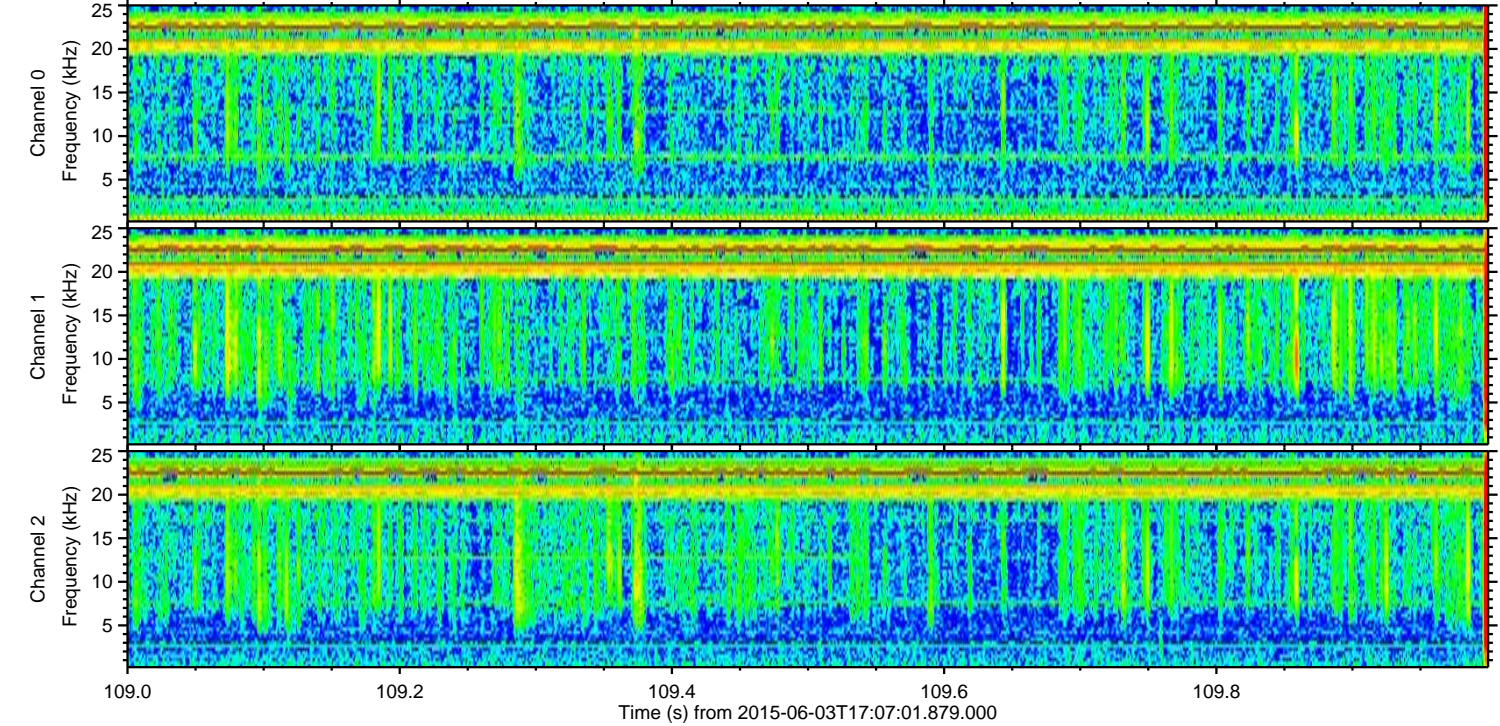
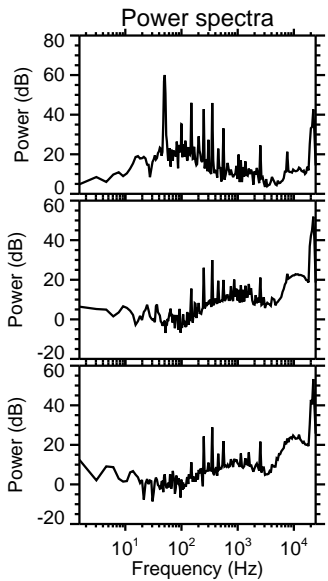
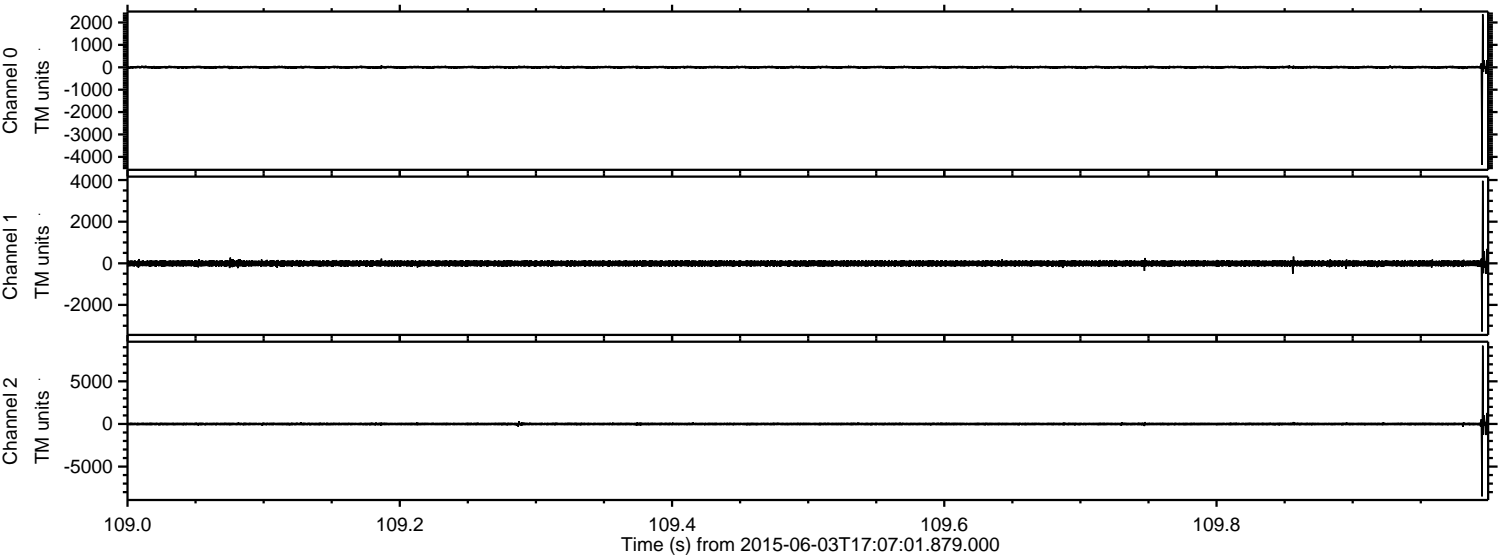
Channel 0
mn: -2630
mx: 1889
 μ : 1.4
 σ : 32.1

Channel 1
mn: -8368
mx: 9925
 μ : -6.8
 σ : 102.4

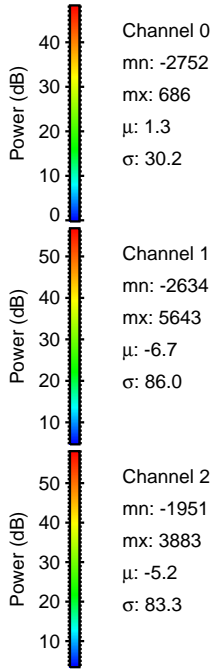
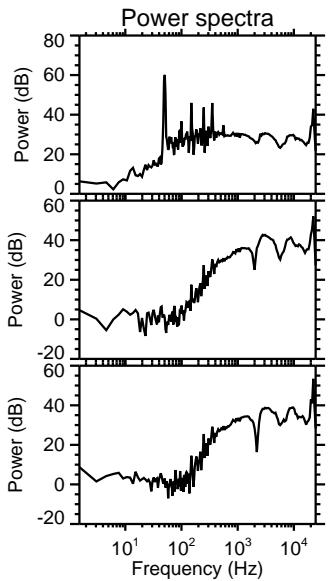
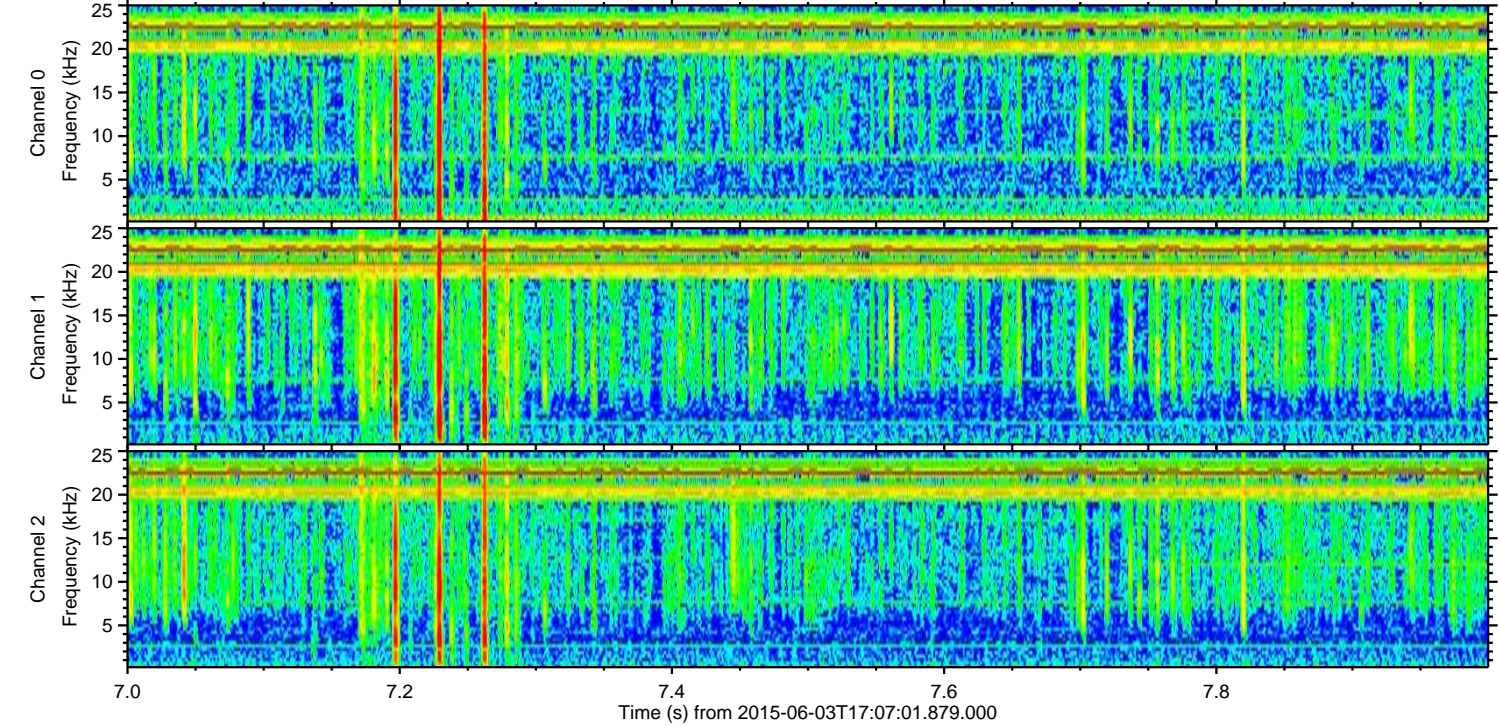
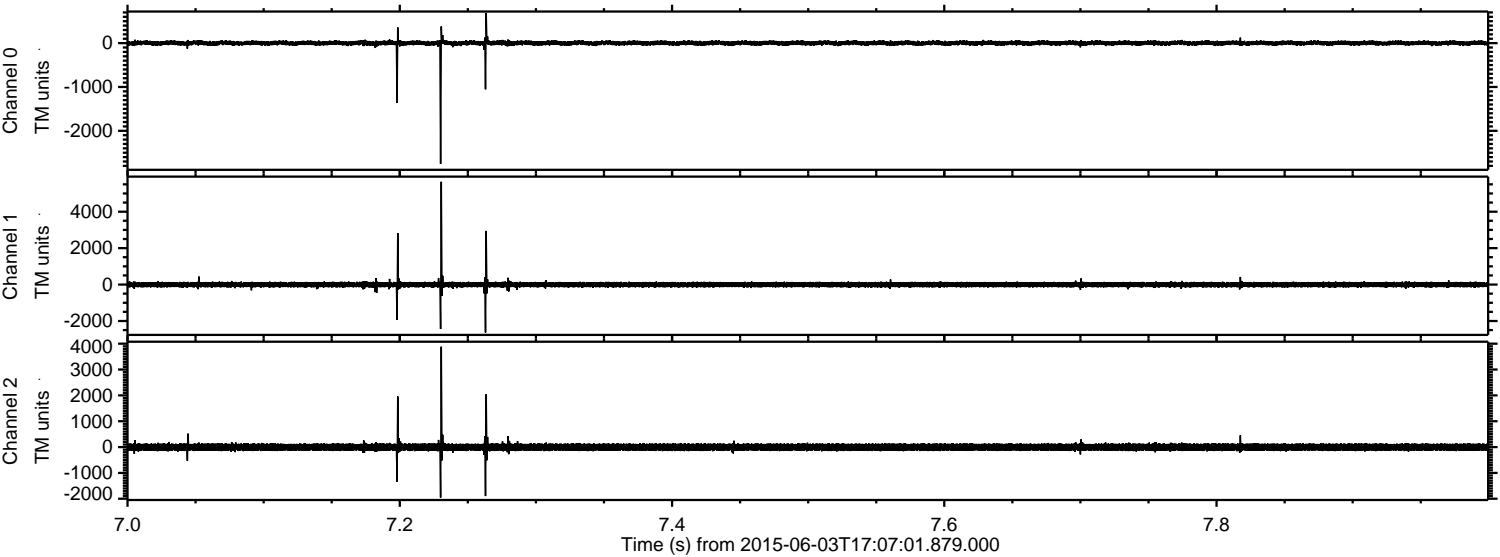
Channel 2
mn: -2903
mx: 3571
 μ : -5.3
 σ : 78.7

ELMAVAN 3D WAVEFORMS (Measured data sampled at 50 kHz) 51000 packets of 144 samples from 2015-06-03T17:07:01.879.000. Part 110/147

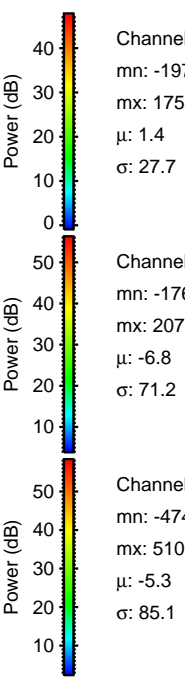
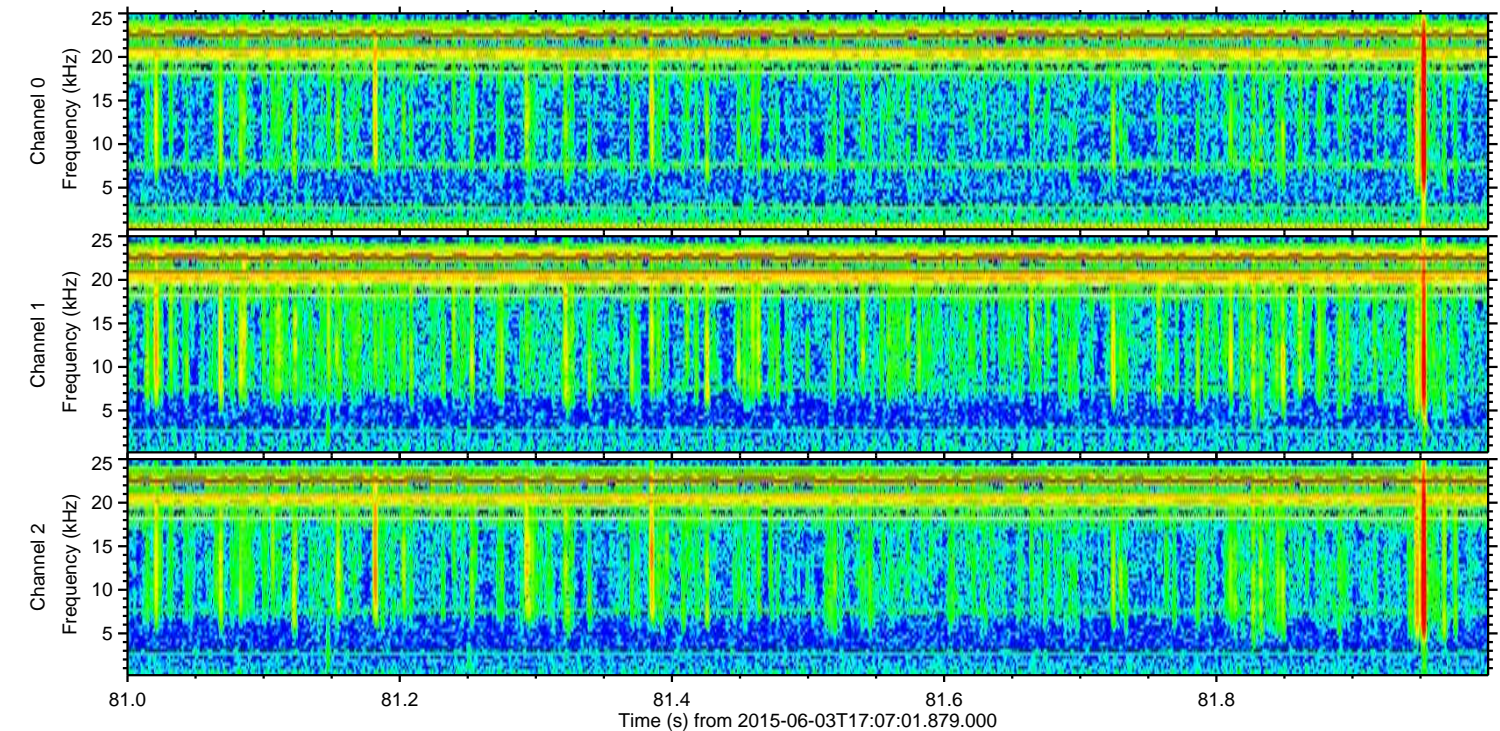
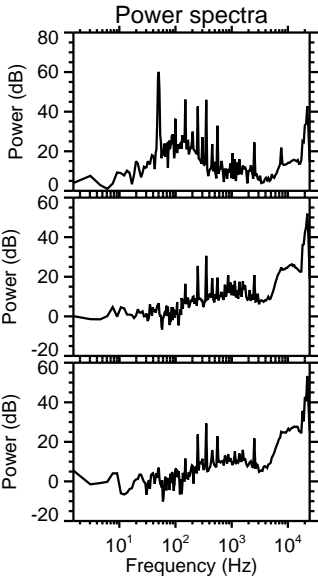
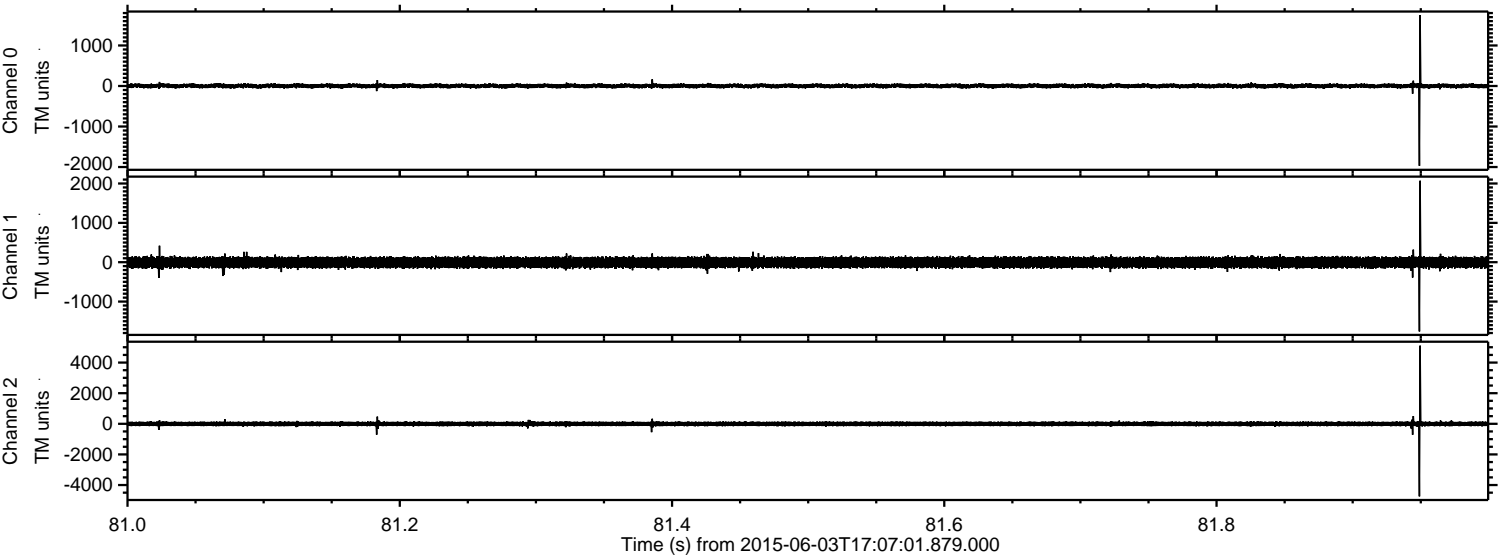
Processed Wed Jun 3 19:13:32 2015 by ELM ver.2012-10-06 from 001__elm20150603_170700__dat00.bin



Processed Wed Jun 3 19:13:33 2015 by ELM ver.2012-10-06 from 001__elm20150603_170700__dat00.bin

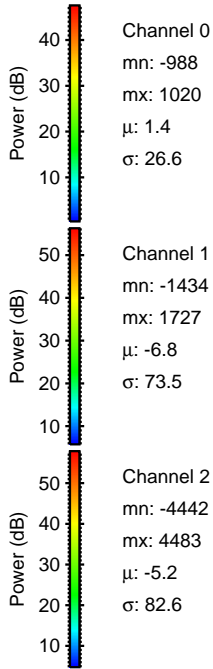
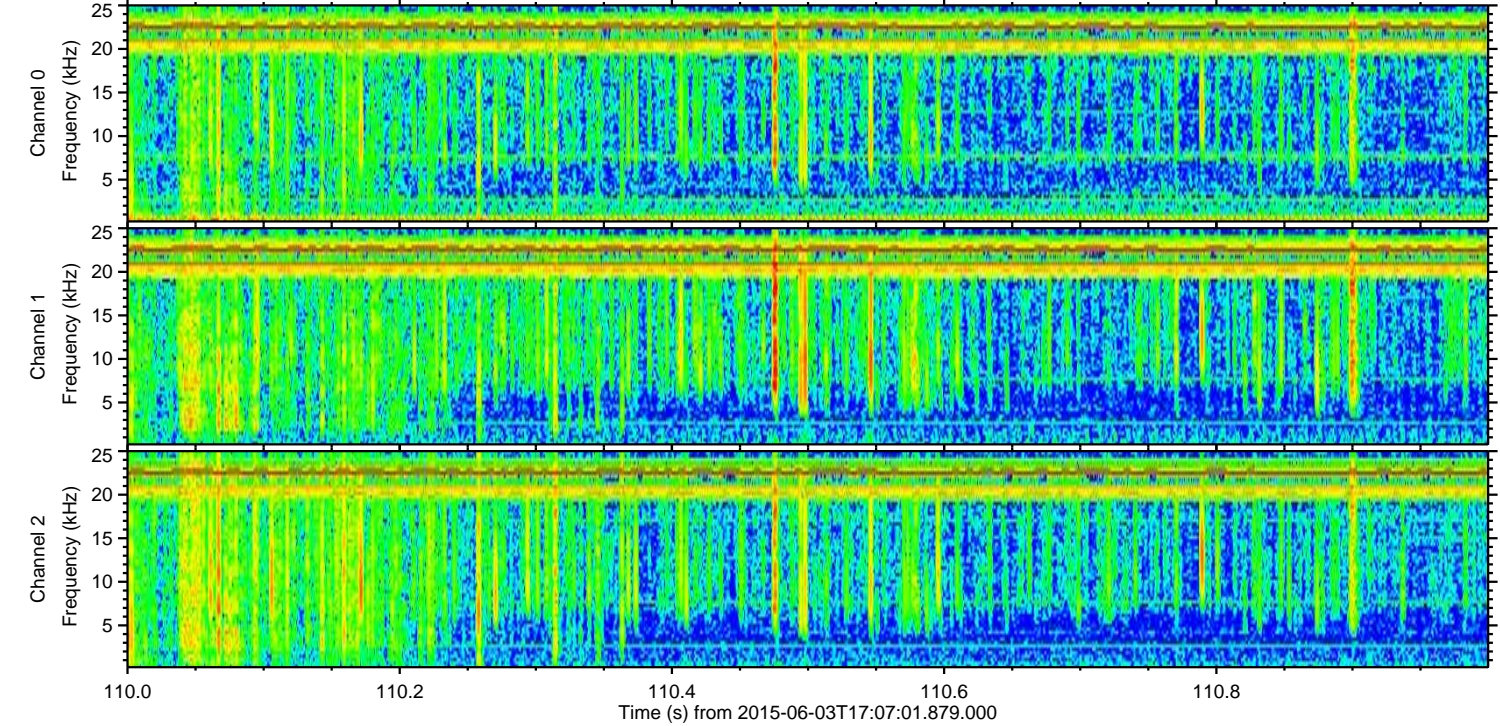
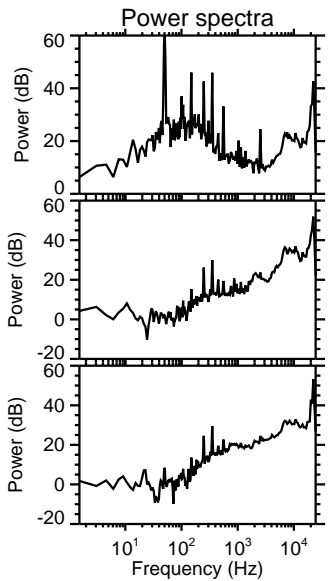
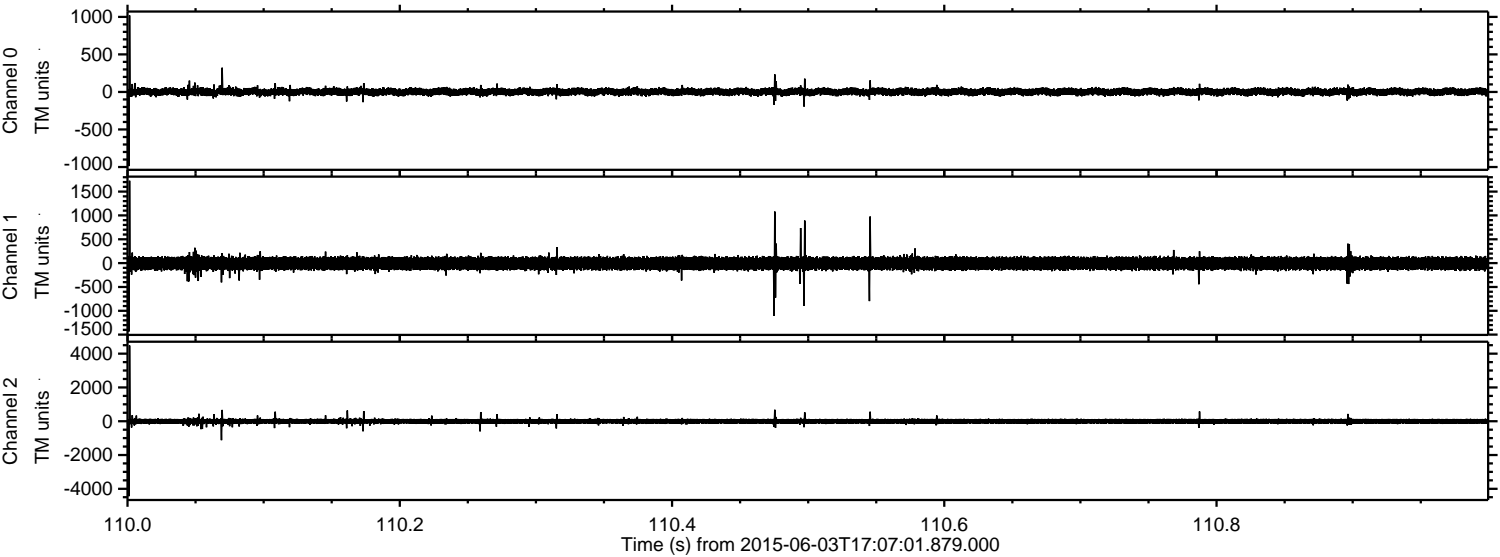


Processed Wed Jun 3 19:13:34 2015 by ELM ver.2012-10-06 from 001__elm20150603_170700__dat00.bin



ELMAVAN 3D WAVEFORMS (Measured data sampled at 50 kHz) 51000 packets of 144 samples from 2015-06-03T17:07:01.879.000. Part 111/147

Processed Wed Jun 3 19:13:35 2015 by ELM ver.2012-10-06 from 001__elm20150603_170700__dat00.bin

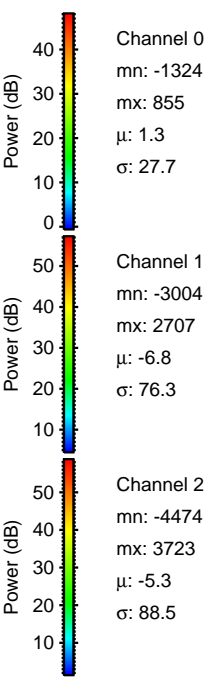
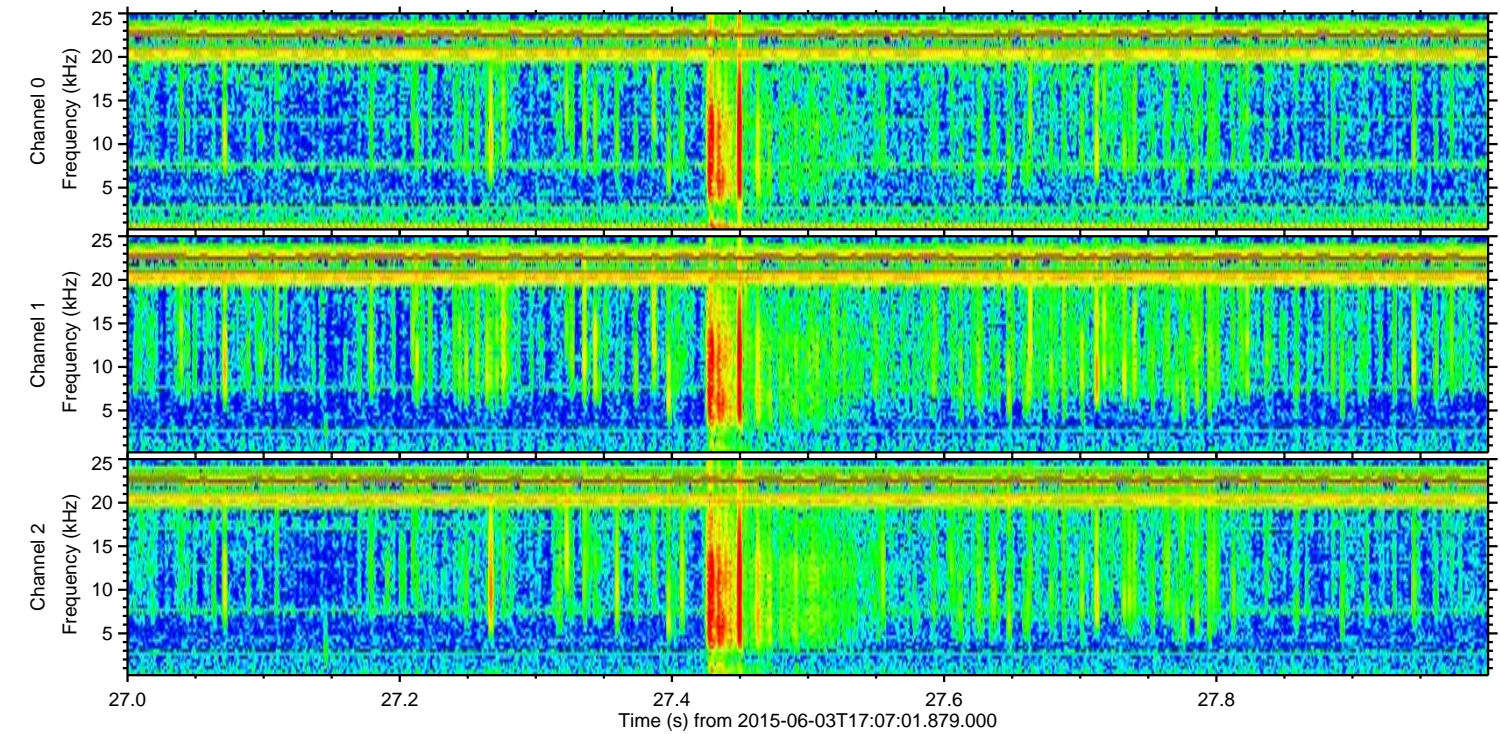
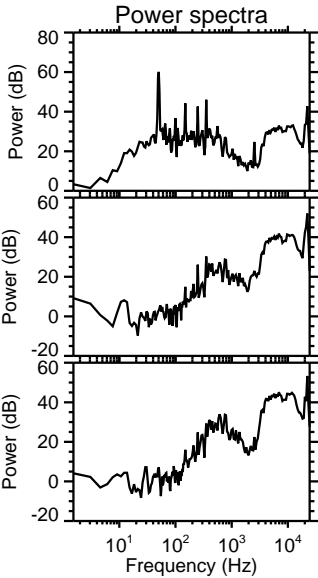
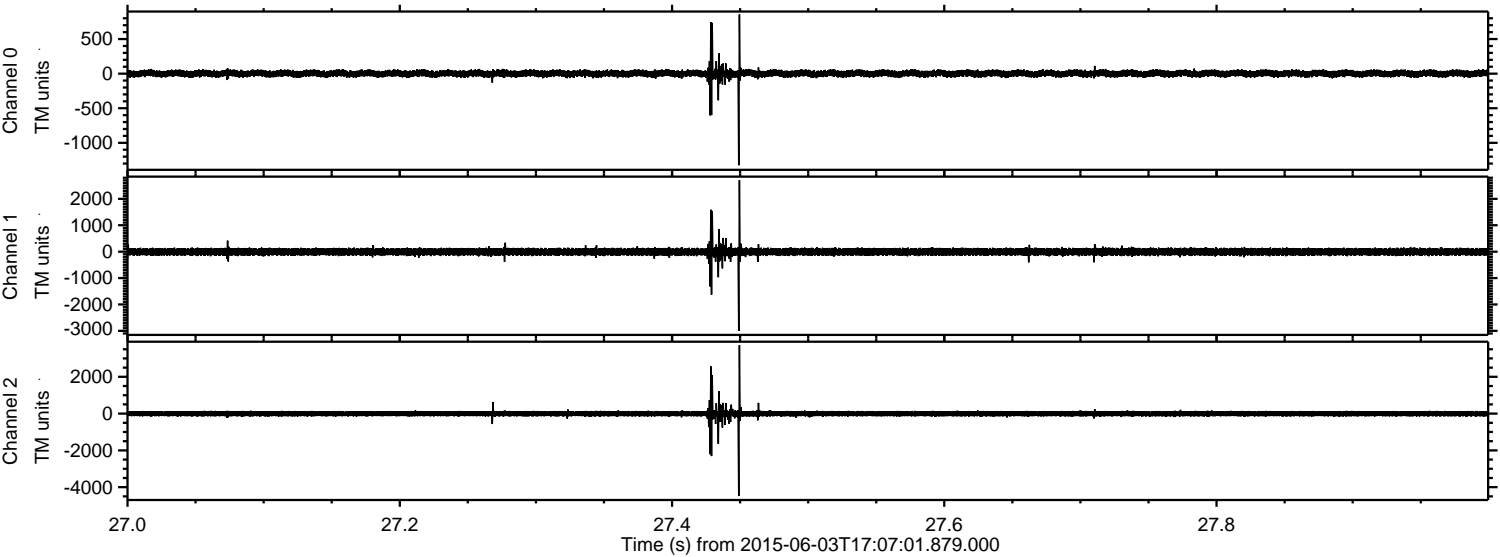


Channel 0
mn: -988
mx: 1020
 μ : 1.4
 σ : 26.6

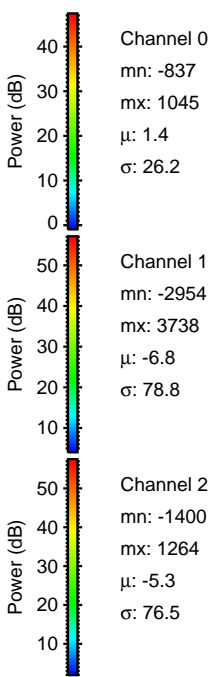
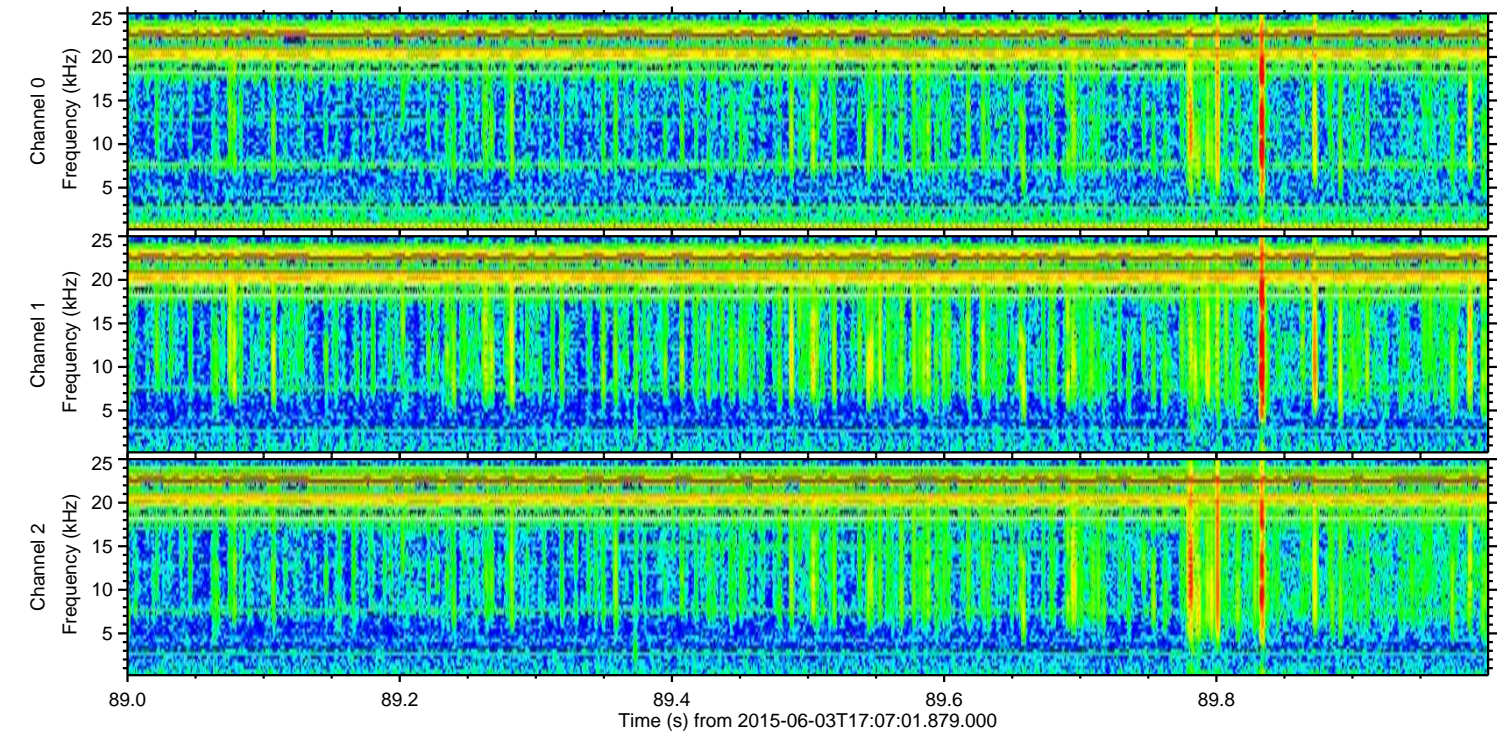
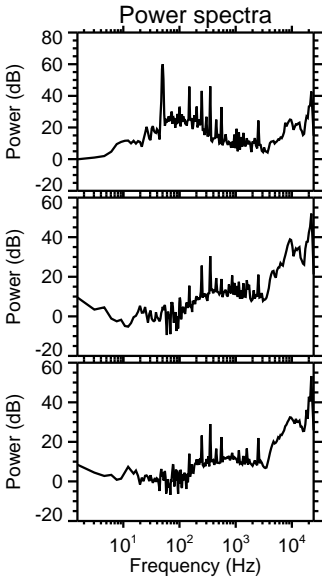
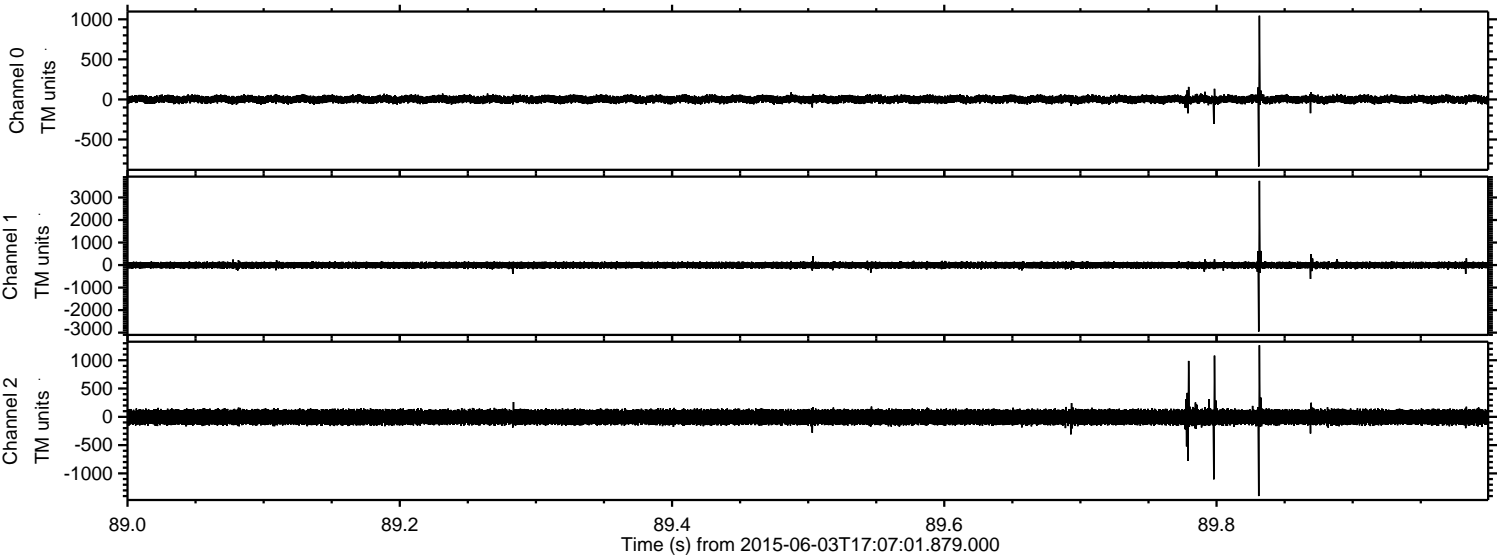
Channel 1
mn: -1434
mx: 1727
 μ : -6.8
 σ : 73.5

Channel 2
mn: -4442
mx: 4483
 μ : -5.2
 σ : 82.6

Processed Wed Jun 3 19:13:36 2015 by ELM ver.2012-10-06 from 001__elm20150603_170700__dat00.bin



Processed Wed Jun 3 19:13:36 2015 by ELM ver.2012-10-06 from 001__elm20150603_170700__dat00.bin



Processed Wed Jun 3 19:13:37 2015 by ELM ver.2012-10-06 from 001__elm20150603_170700__dat00.bin

