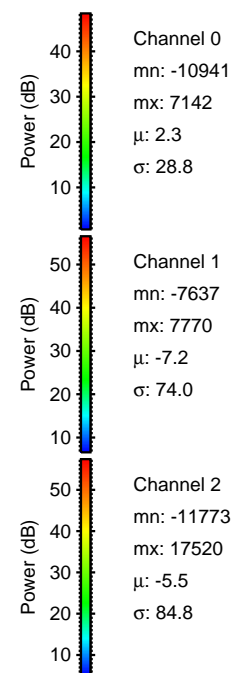
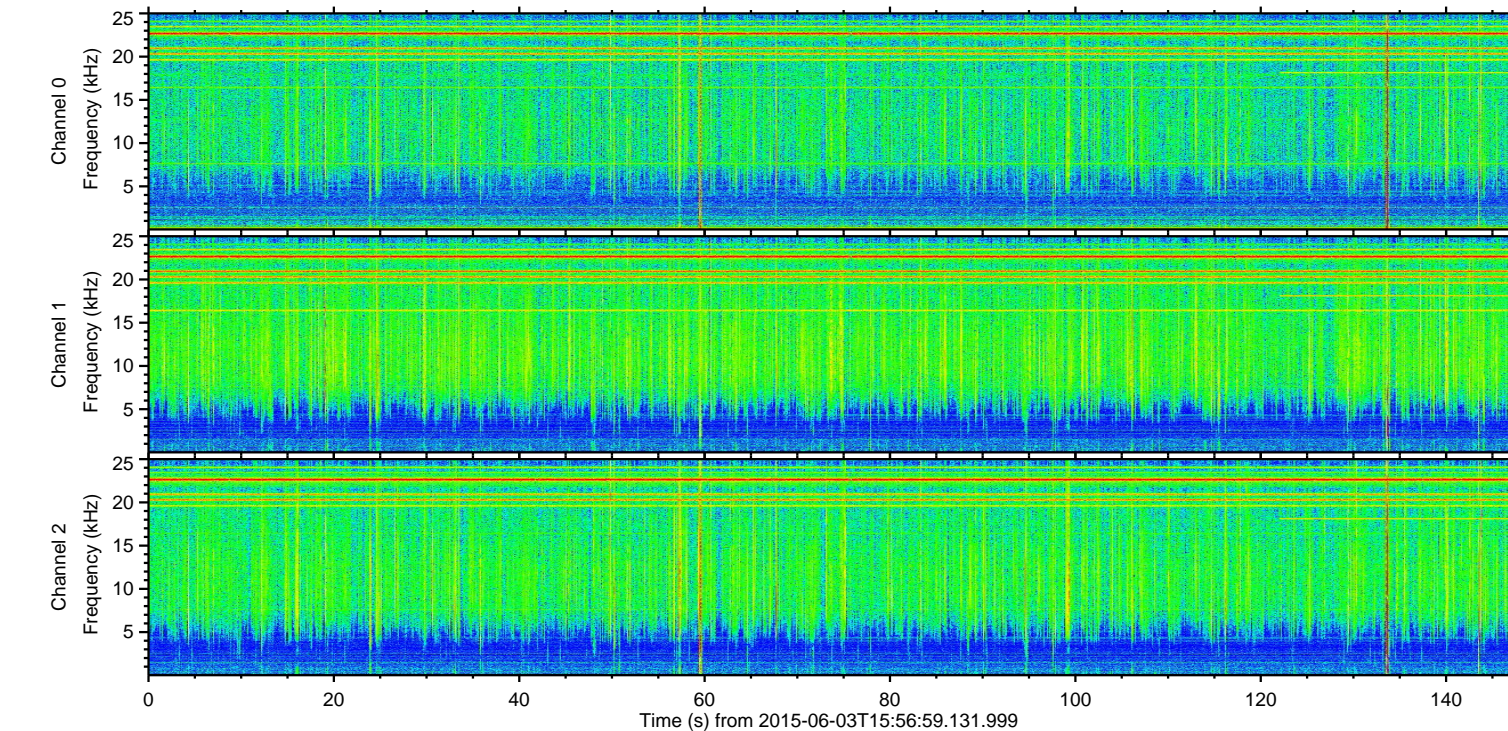
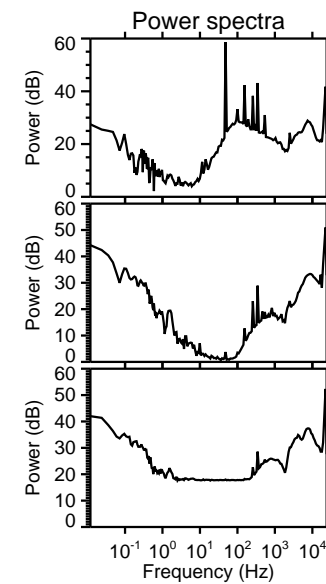
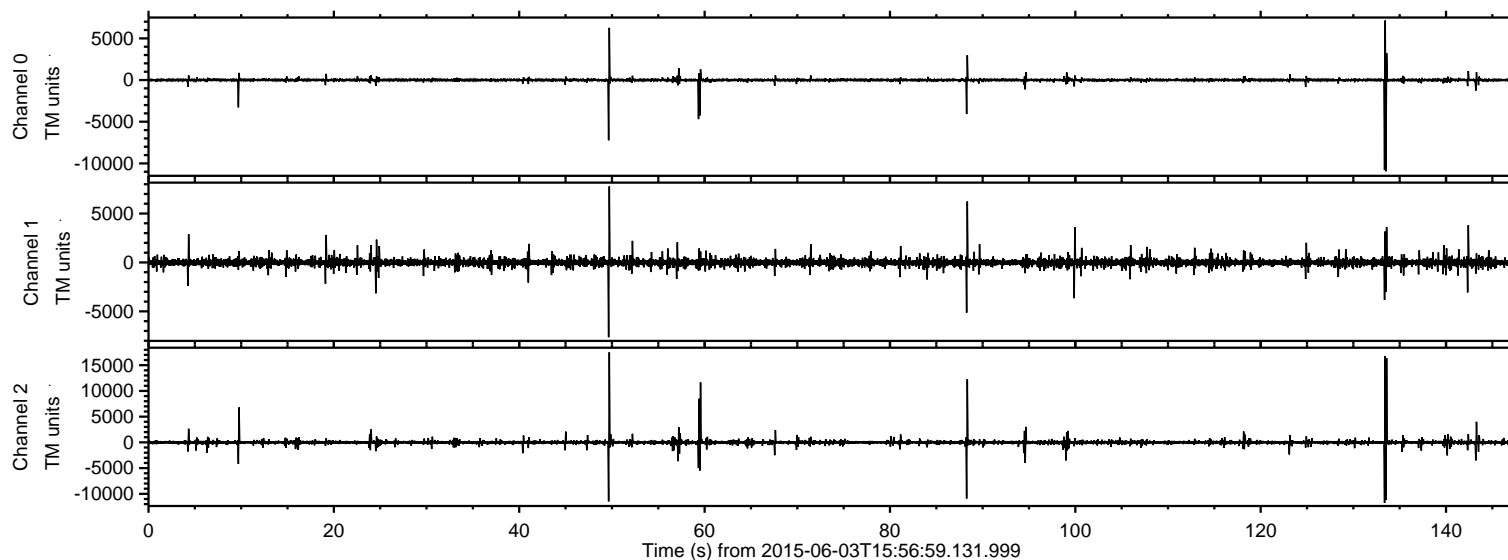


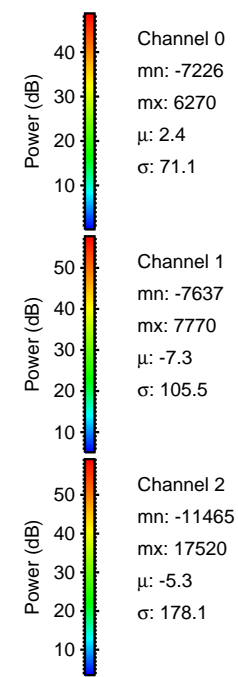
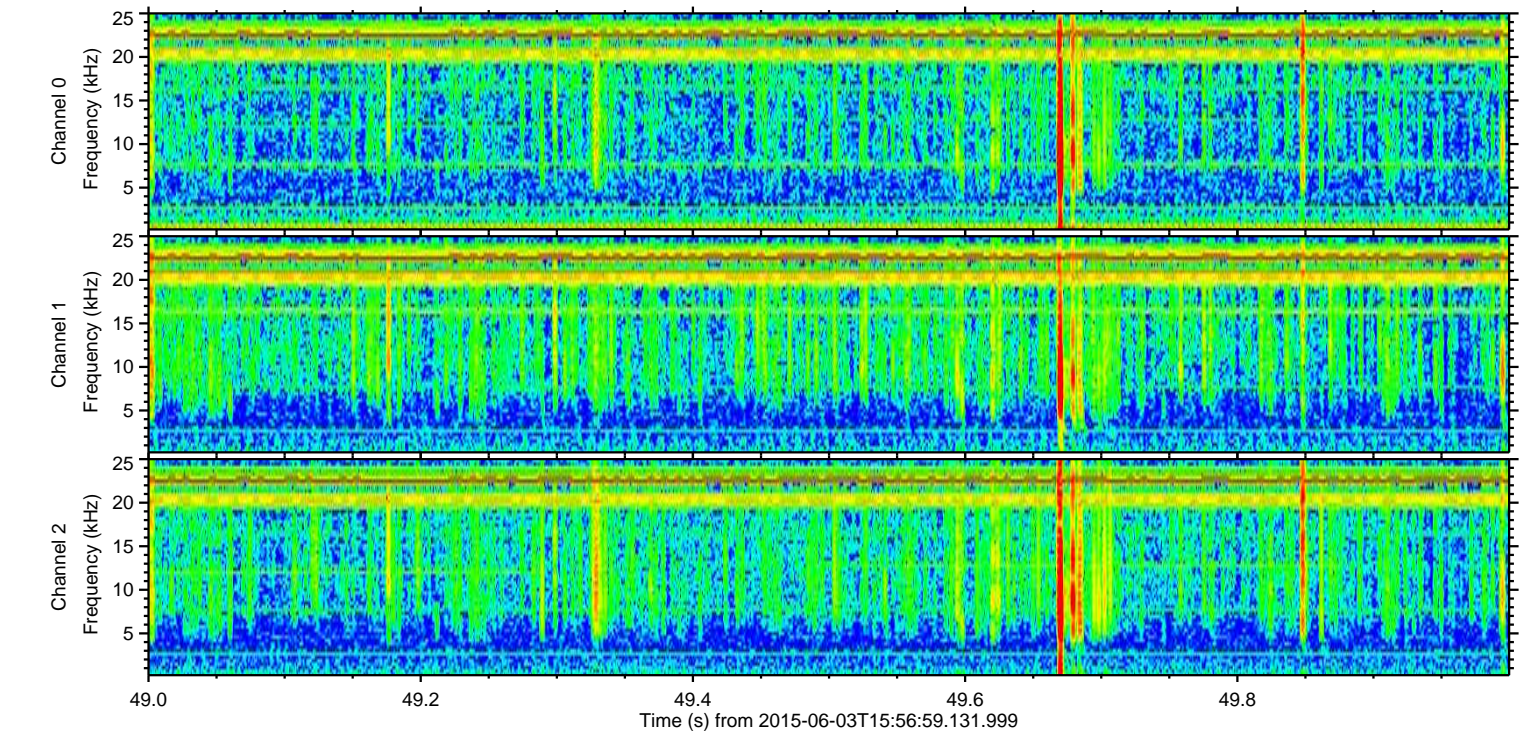
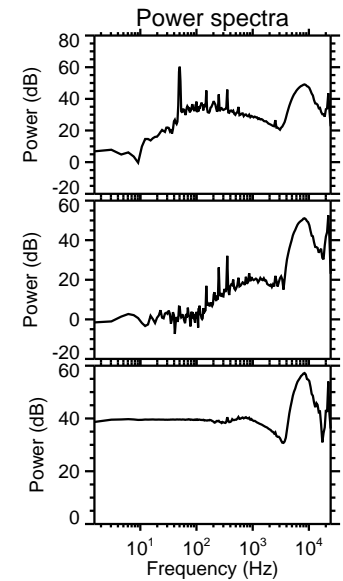
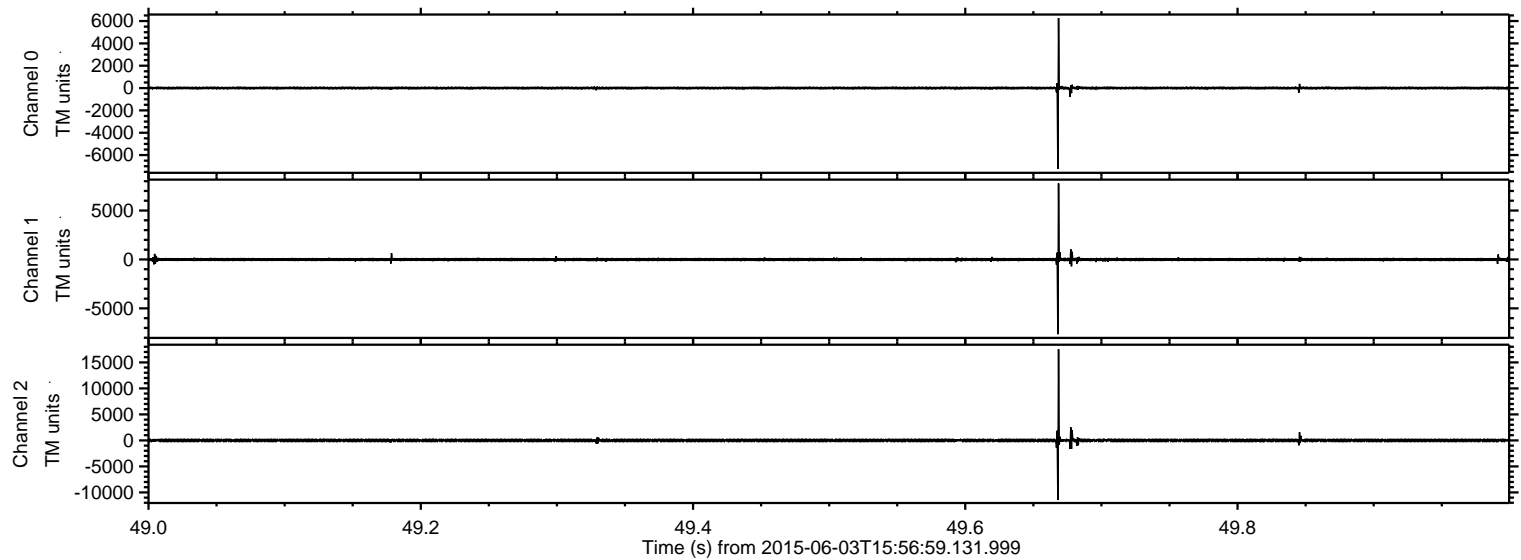
# ELMAVAN 3D WAVEFORMS (Measured data sampled at 50 kHz) 51000 packets of 144 samples from 2015-06-03T15:56:59.131.999.

Processed Wed Jun 3 18:03:06 2015 by ELM ver.2012-10-06 from 001\_\_elm20150603\_155658\_\_dat00.bin





Processed Wed Jun 3 18:03:18 2015 by ELM ver.2012-10-06 from 001\_\_elm20150603\_155658\_\_dat00.bin



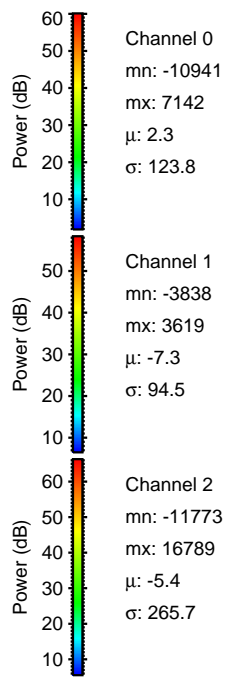
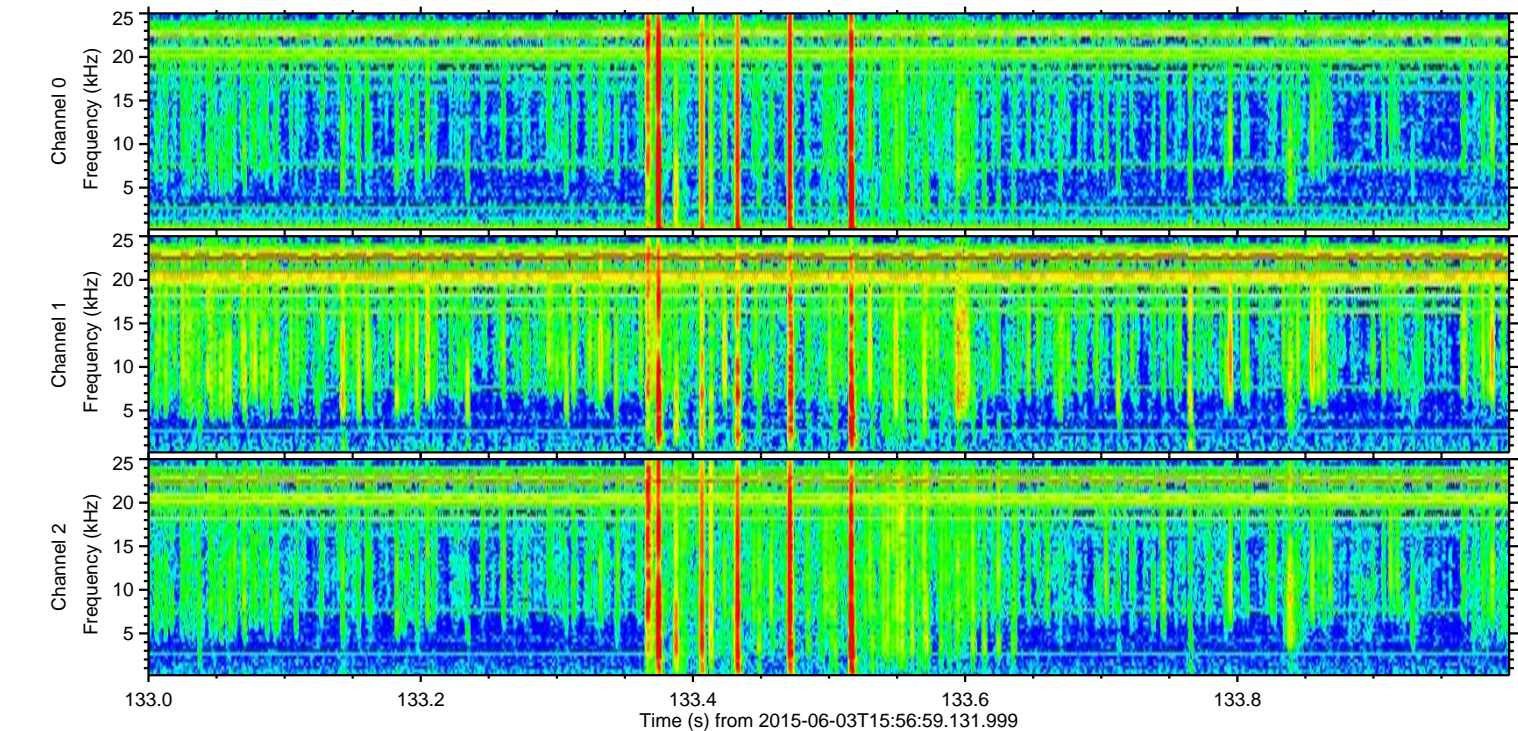
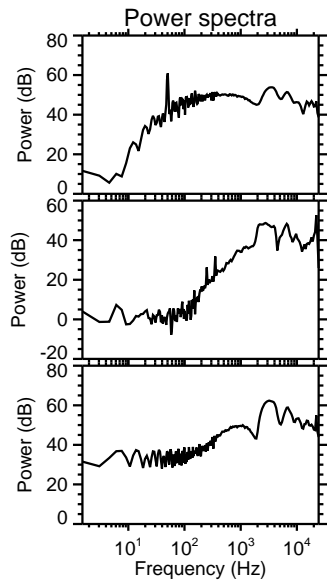
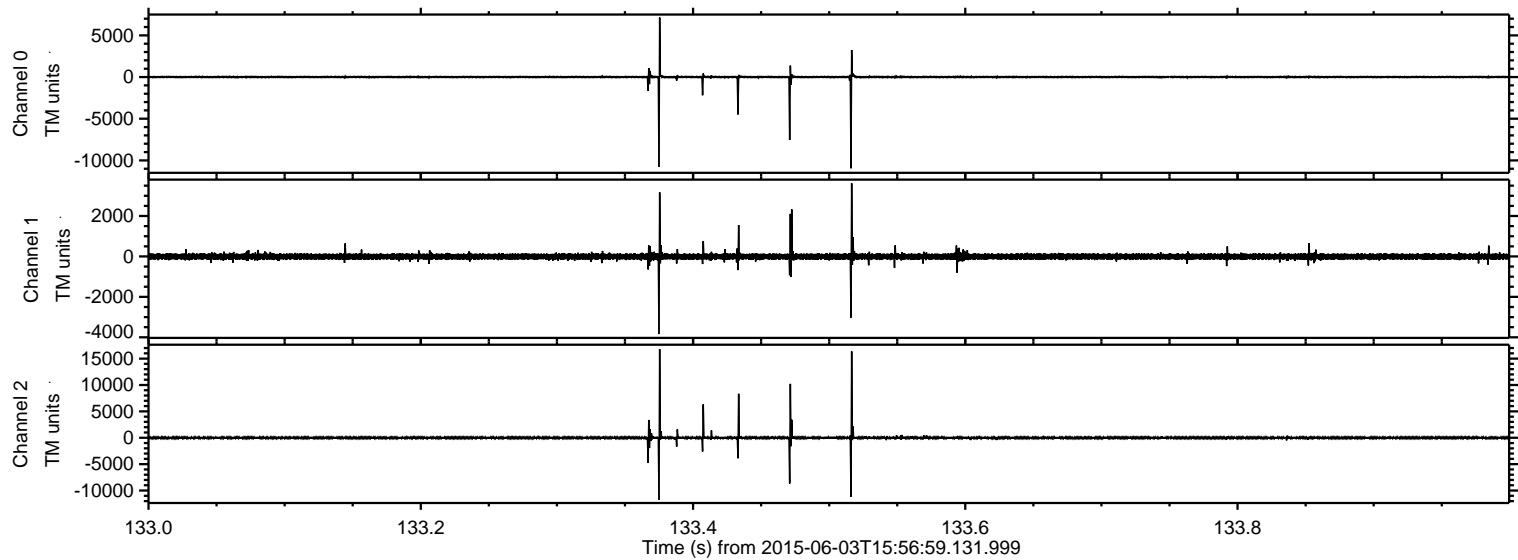
Channel 0  
mn: -7226  
mx: 6270  
 $\mu$ : 2.4  
 $\sigma$ : 71.1

Channel 1  
mn: -7637  
mx: 7770  
 $\mu$ : -7.3  
 $\sigma$ : 105.5

Channel 2  
mn: -11465  
mx: 17520  
 $\mu$ : -5.3  
 $\sigma$ : 178.1

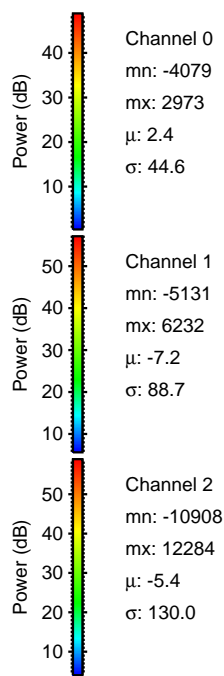
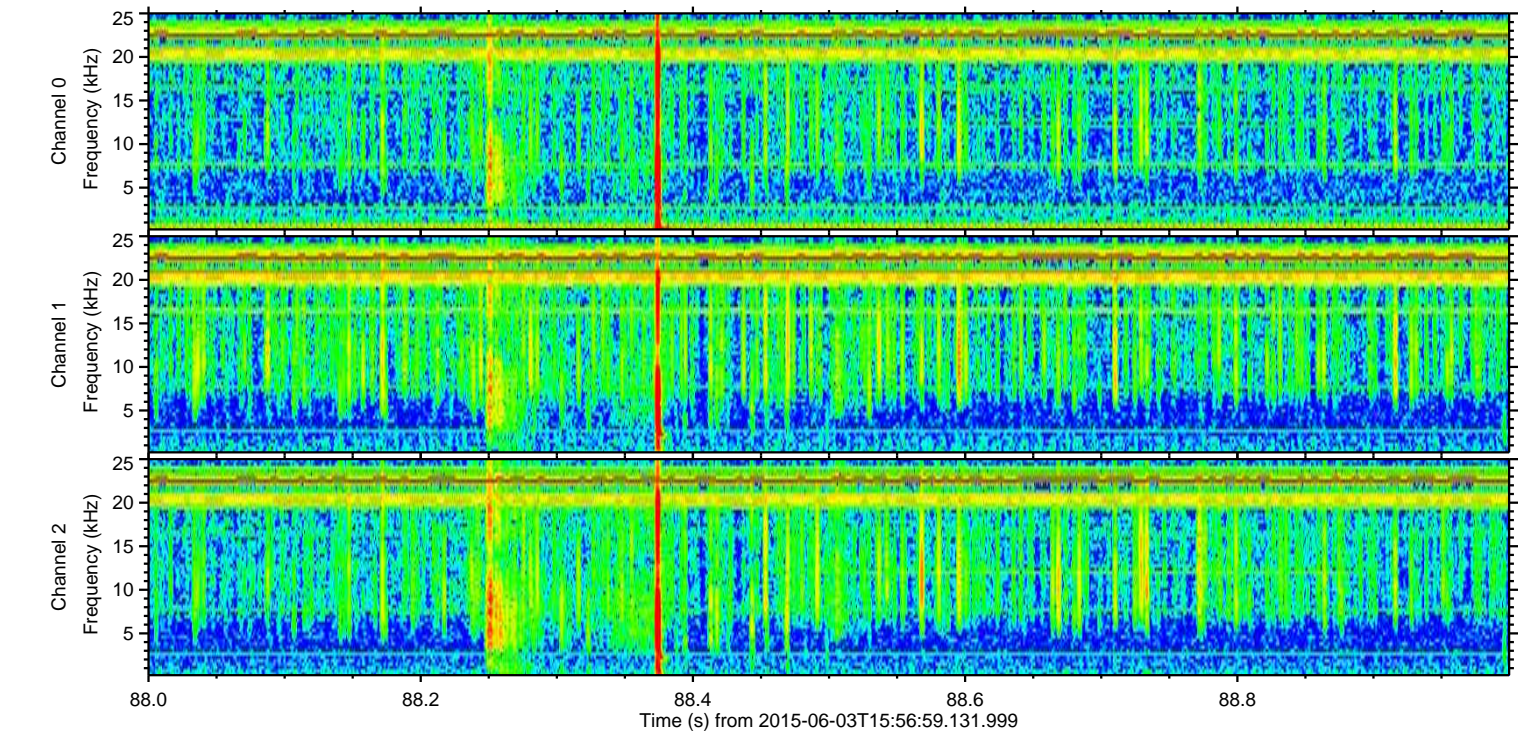
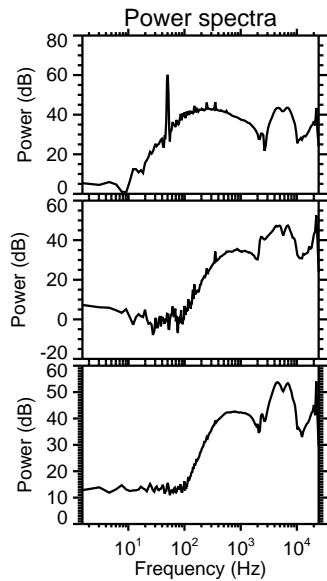
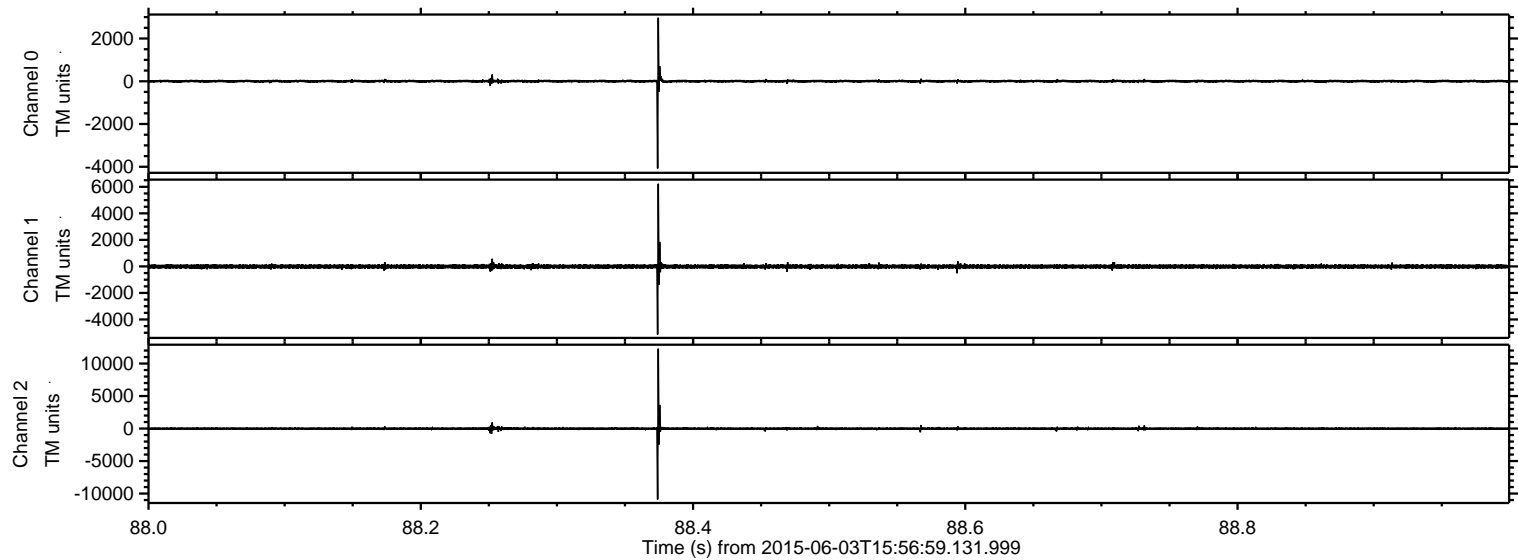
ELMAVAN 3D WAVEFORMS (Measured data sampled at 50 kHz) 51000 packets of 144 samples from 2015-06-03T15:56:59.131.999. Part 134/147

Processed Wed Jun 3 18:03:19 2015 by ELM ver.2012-10-06 from 001\_\_elm20150603\_155658\_\_dat00.bin

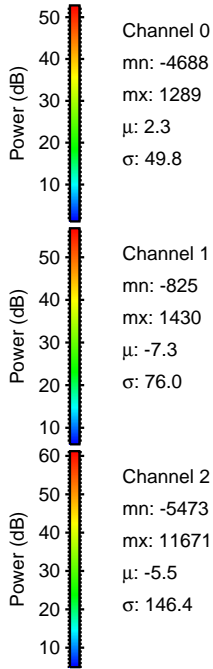
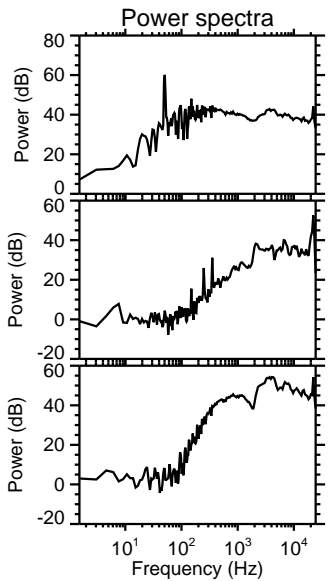
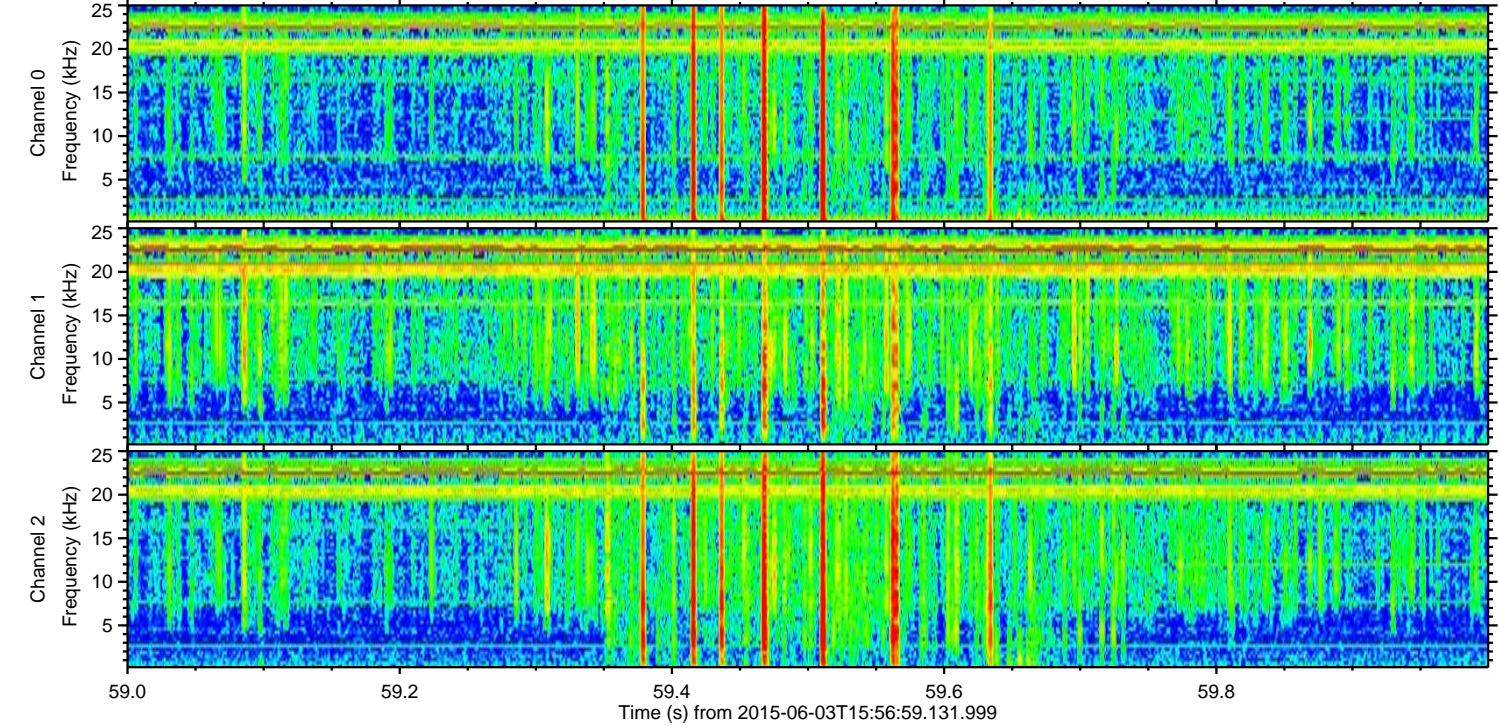
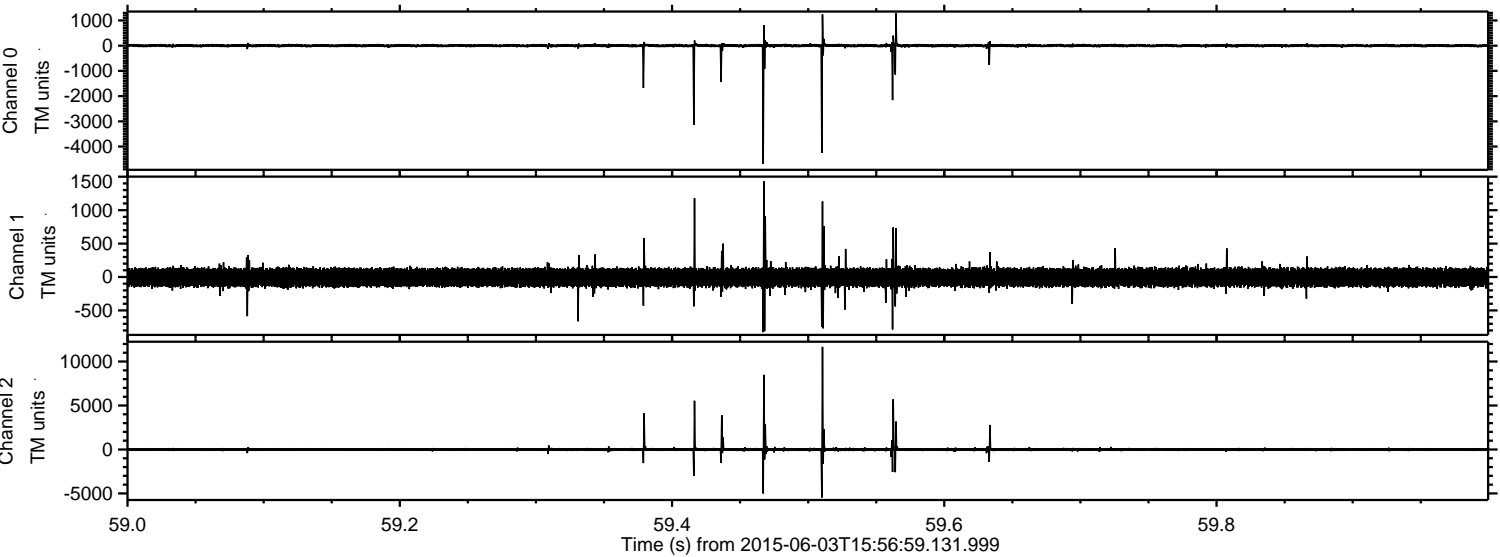




Processed Wed Jun 3 18:03:20 2015 by ELM ver.2012-10-06 from 001\_\_elm20150603\_155658\_\_dat00.bin



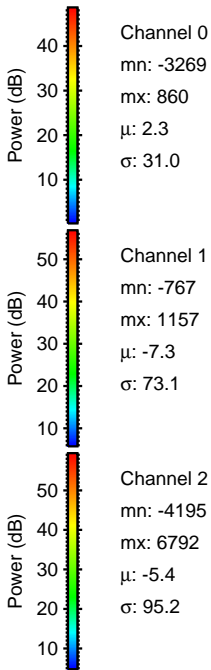
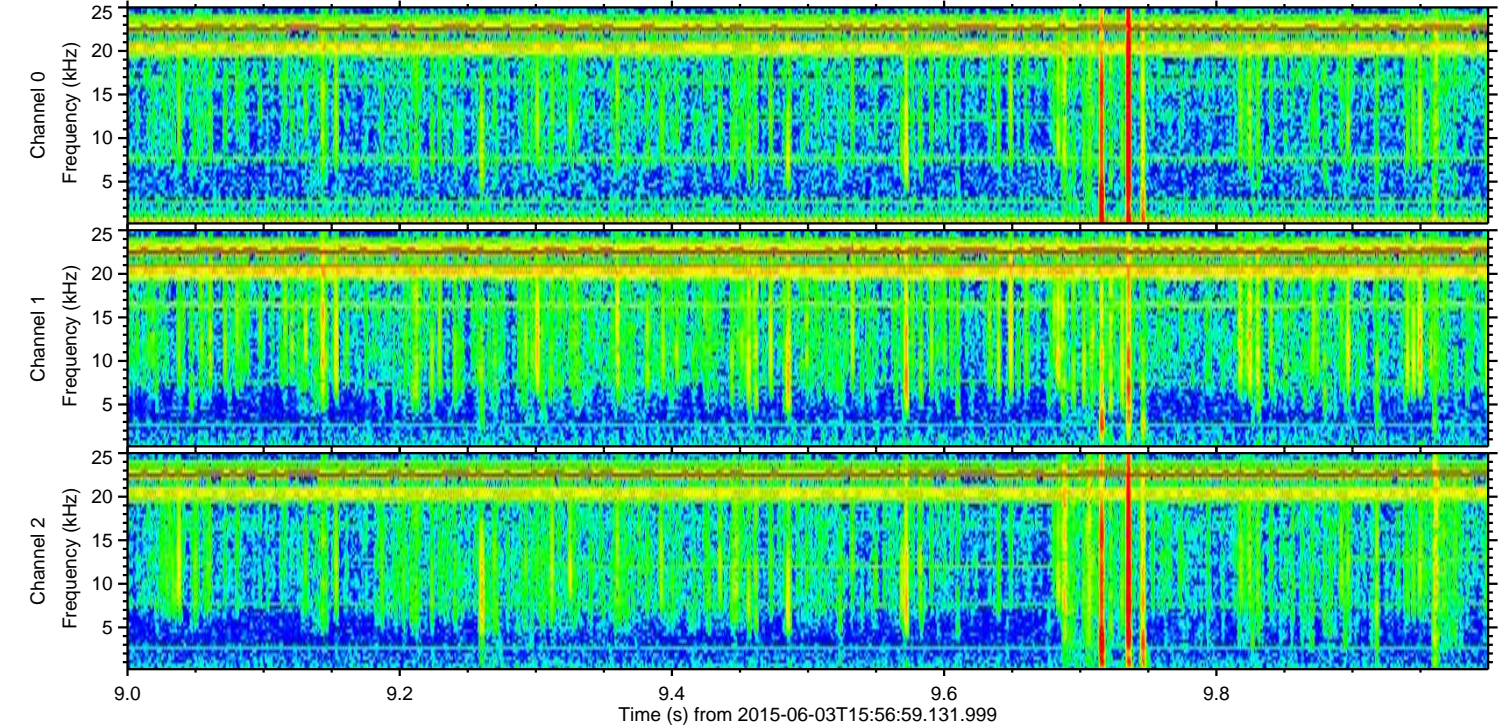
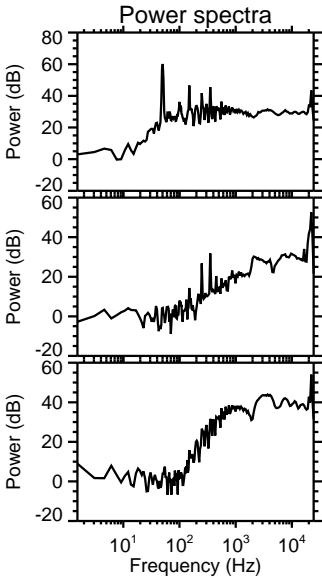
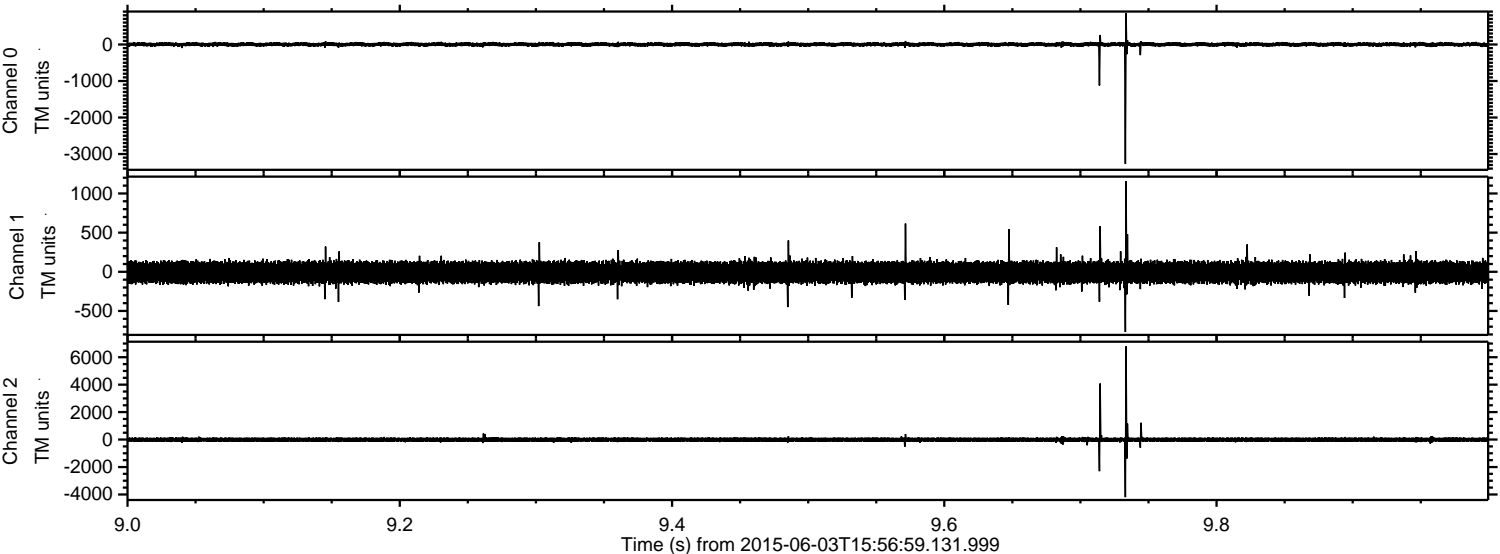
Processed Wed Jun 3 18:03:21 2015 by ELM ver.2012-10-06 from 001\_\_elm20150603\_155658\_\_dat00.bin





ELMAVAN 3D WAVEFORMS (Measured data sampled at 50 kHz) 51000 packets of 144 samples from 2015-06-03T15:56:59.131.999. Part 10/147

Processed Wed Jun 3 18:03:22 2015 by ELM ver.2012-10-06 from 001\_\_elm20150603\_155658\_\_dat00.bin



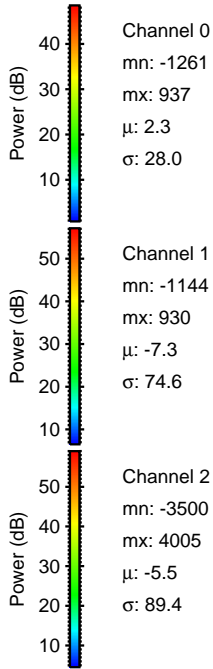
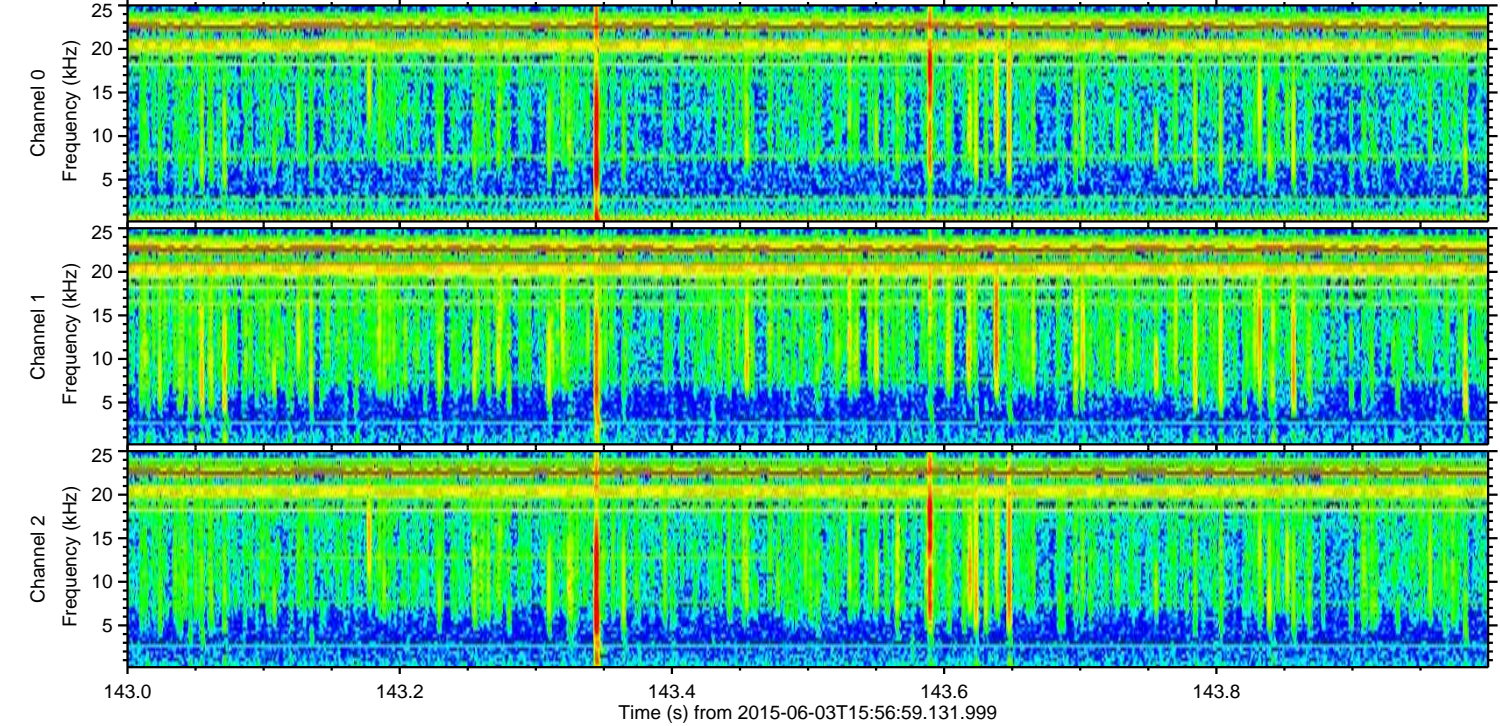
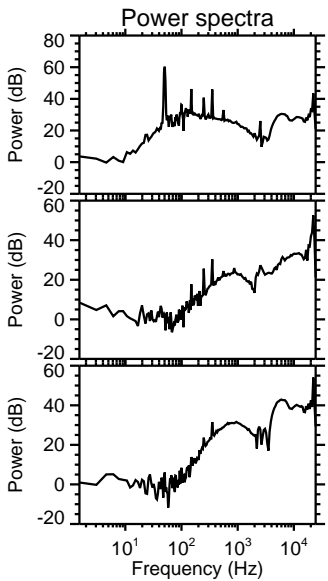
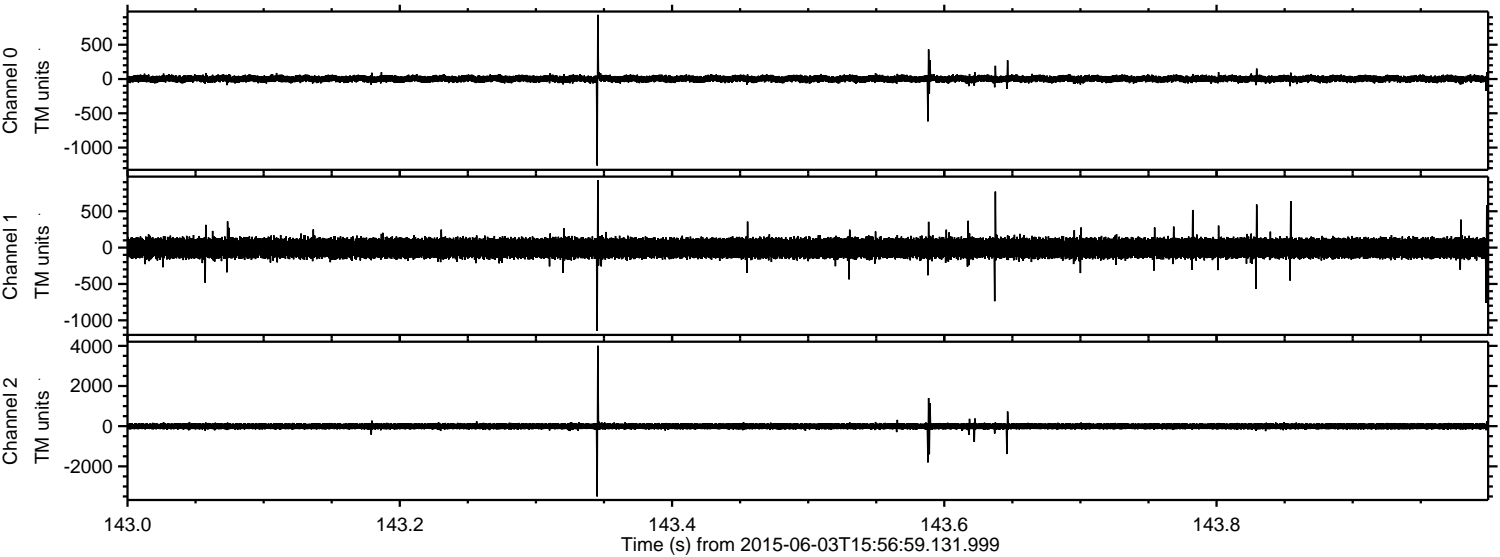
Channel 0  
mn: -3269  
mx: 860  
 $\mu$ : 2.3  
 $\sigma$ : 31.0

Channel 1  
mn: -767  
mx: 1157  
 $\mu$ : -7.3  
 $\sigma$ : 73.1

Channel 2  
mn: -4195  
mx: 6792  
 $\mu$ : -5.4  
 $\sigma$ : 95.2

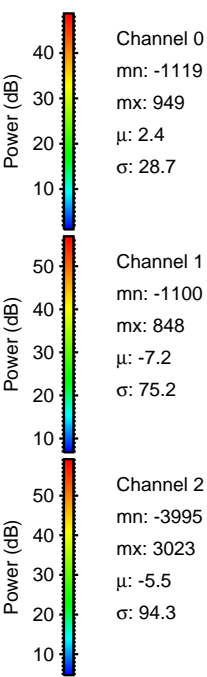
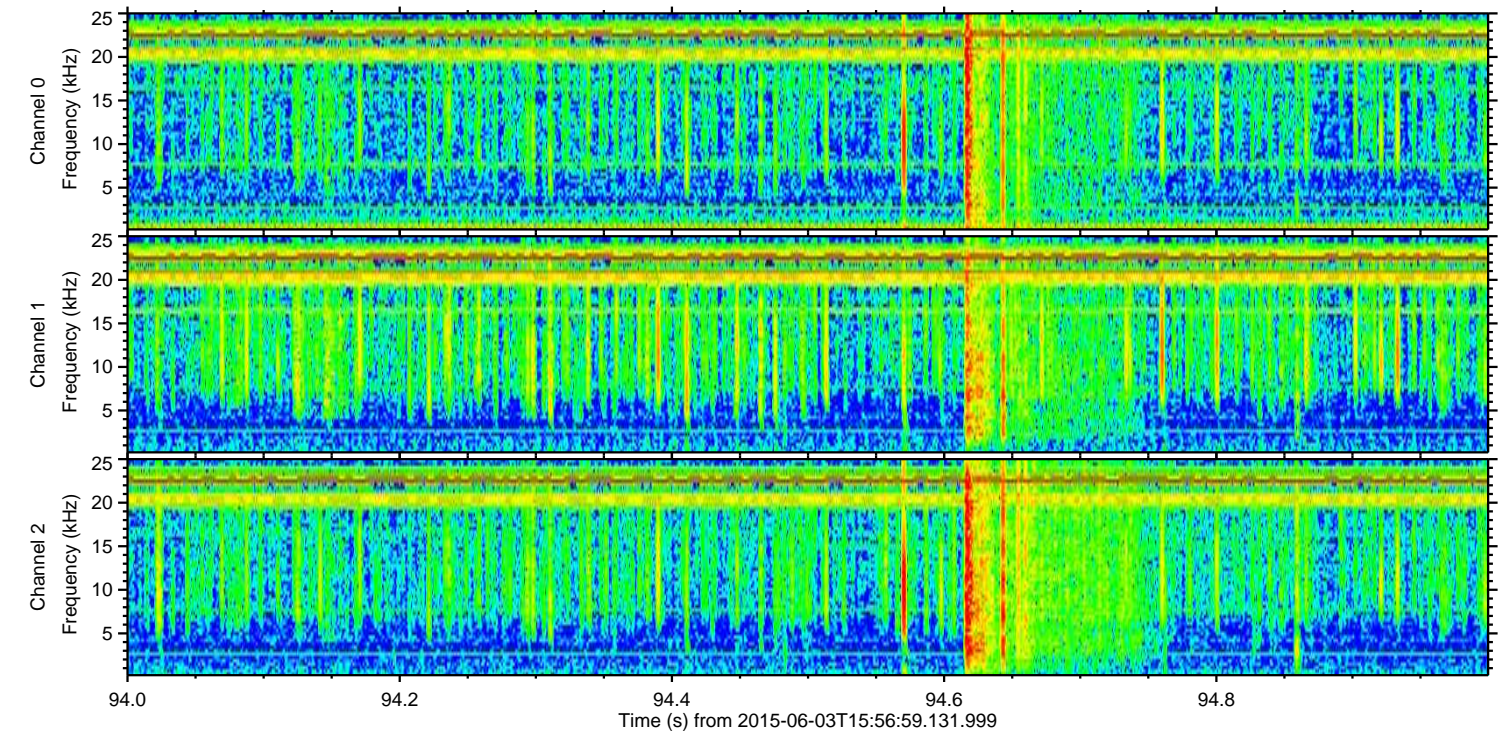
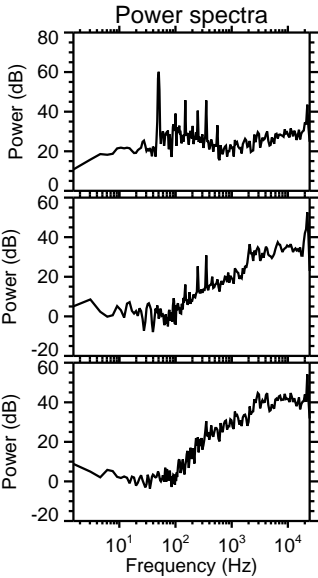
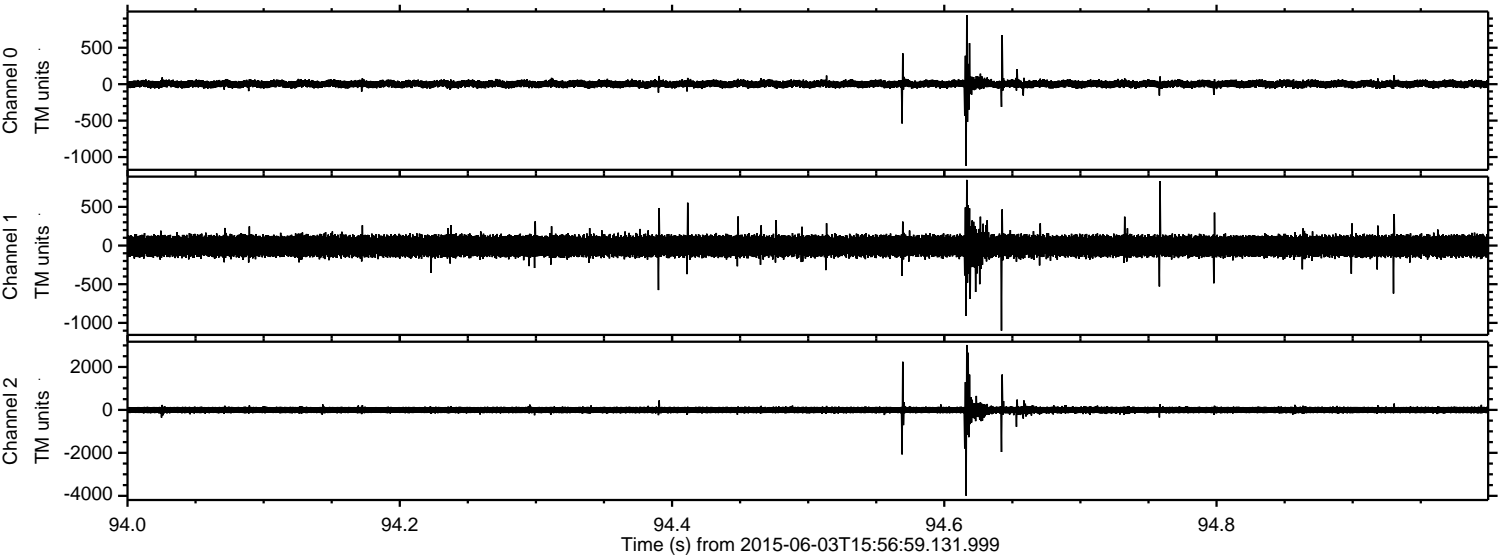
ELMAVAN 3D WAVEFORMS (Measured data sampled at 50 kHz) 51000 packets of 144 samples from 2015-06-03T15:56:59.131.999. Part 144/147

Processed Wed Jun 3 18:03:23 2015 by ELM ver.2012-10-06 from 001\_\_elm20150603\_155658\_\_dat00.bin





Processed Wed Jun 3 18:03:24 2015 by ELM ver.2012-10-06 from 001\_\_elm20150603\_155658\_\_dat00.bin



Channel 0  
mn: -1119  
mx: 949  
 $\mu$ : 2.4  
 $\sigma$ : 28.7

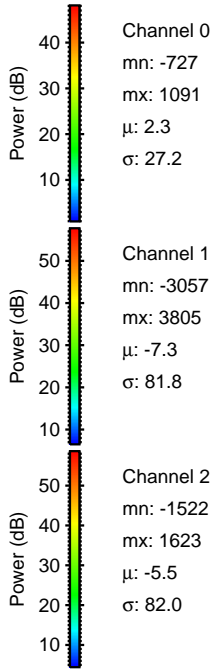
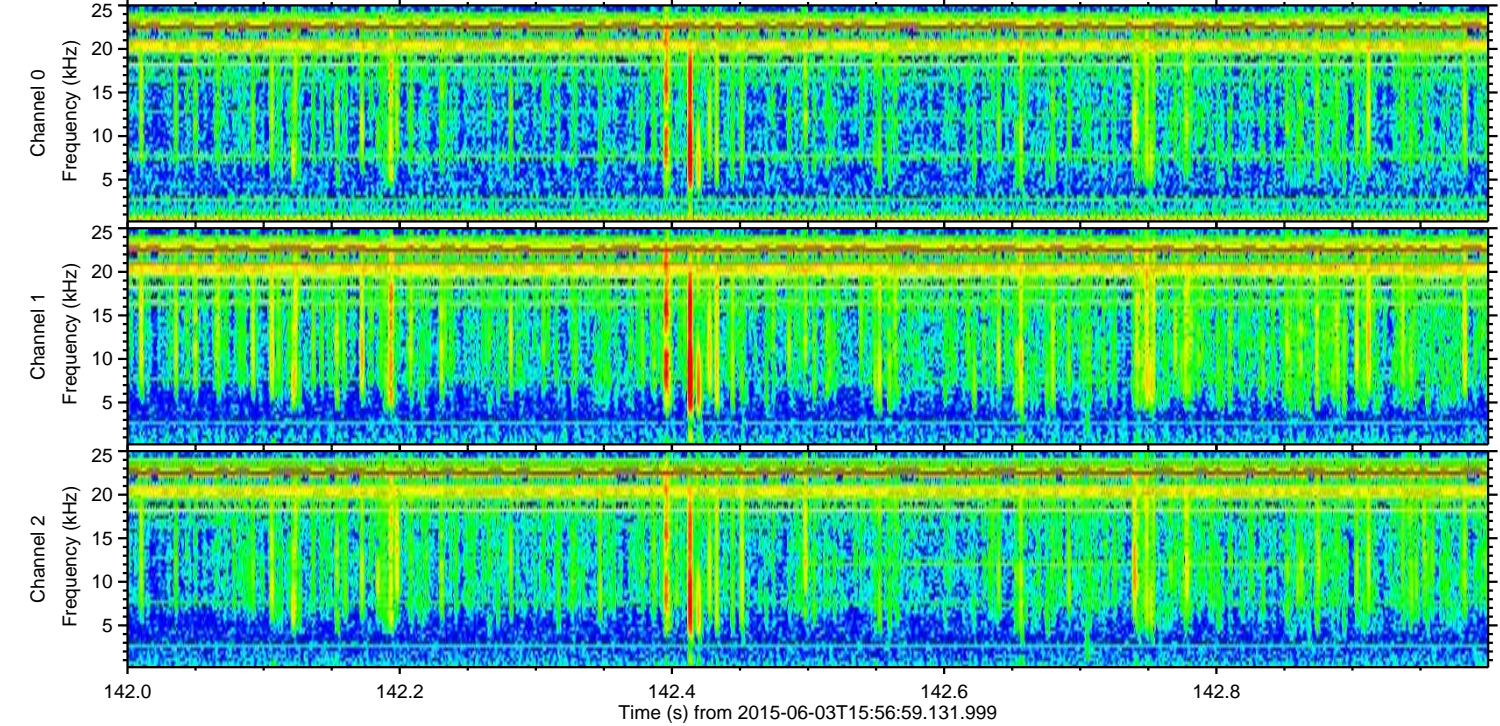
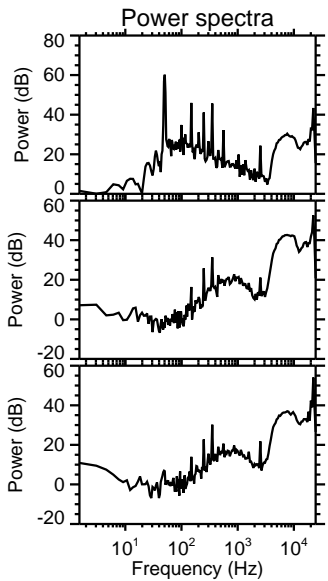
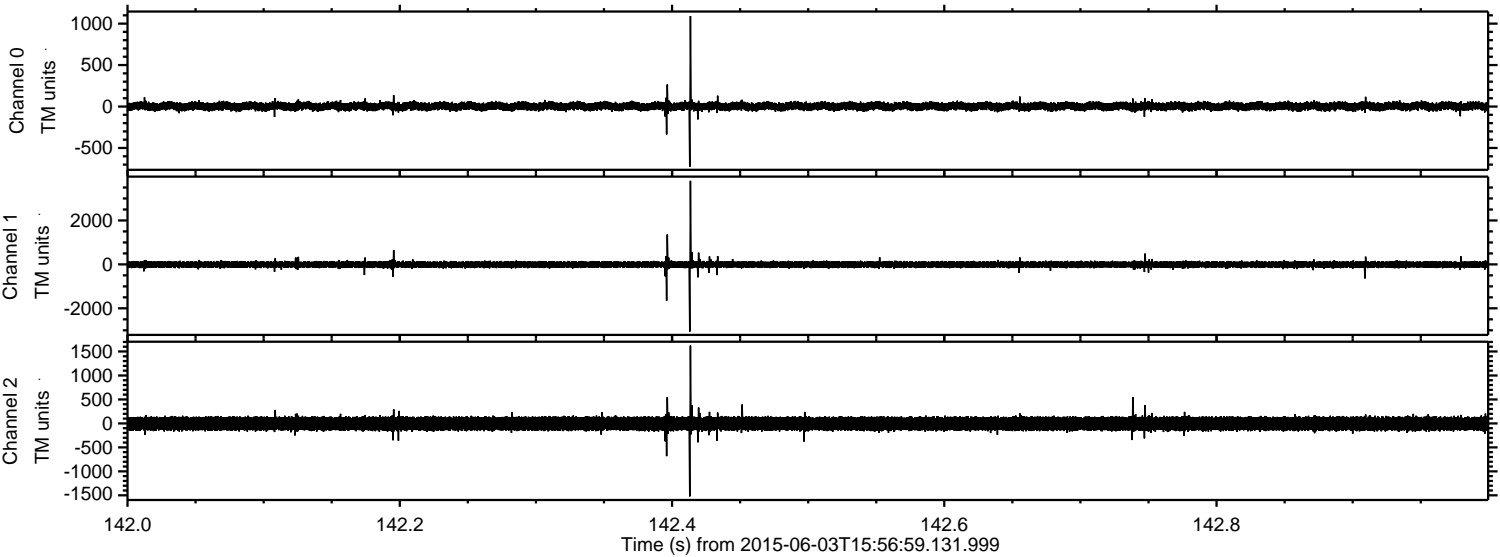
Channel 1  
mn: -1100  
mx: 848  
 $\mu$ : -7.2  
 $\sigma$ : 75.2

Channel 2  
mn: -3995  
mx: 3023  
 $\mu$ : -5.5  
 $\sigma$ : 94.3



ELMAVAN 3D WAVEFORMS (Measured data sampled at 50 kHz) 51000 packets of 144 samples from 2015-06-03T15:56:59.131.999. Part 143/147

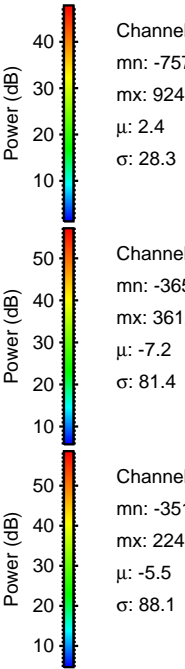
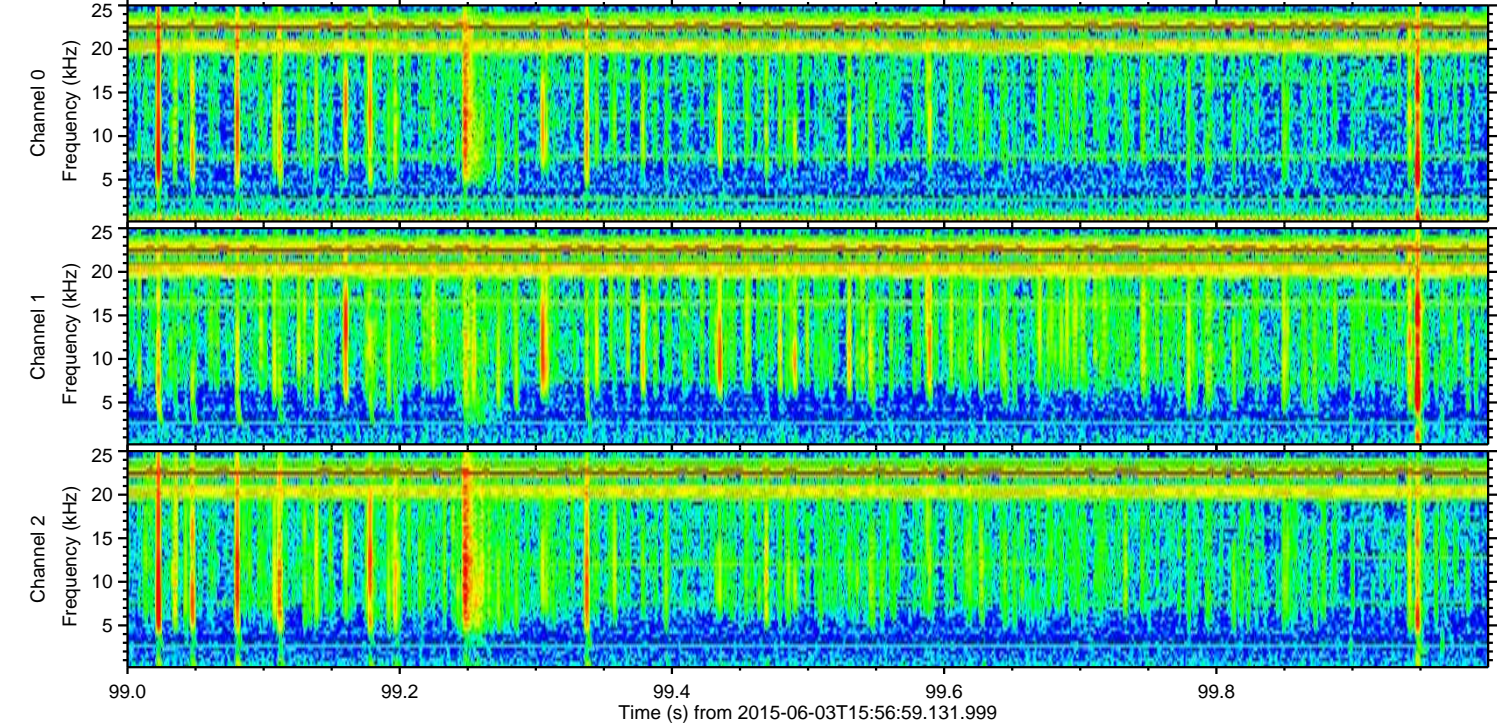
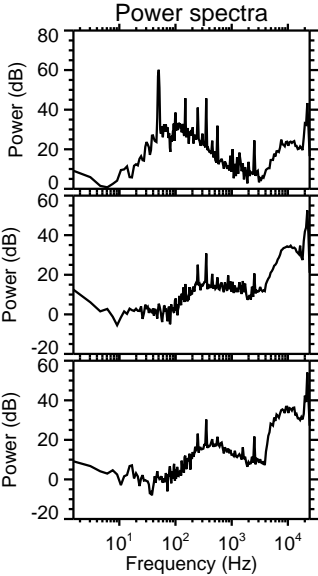
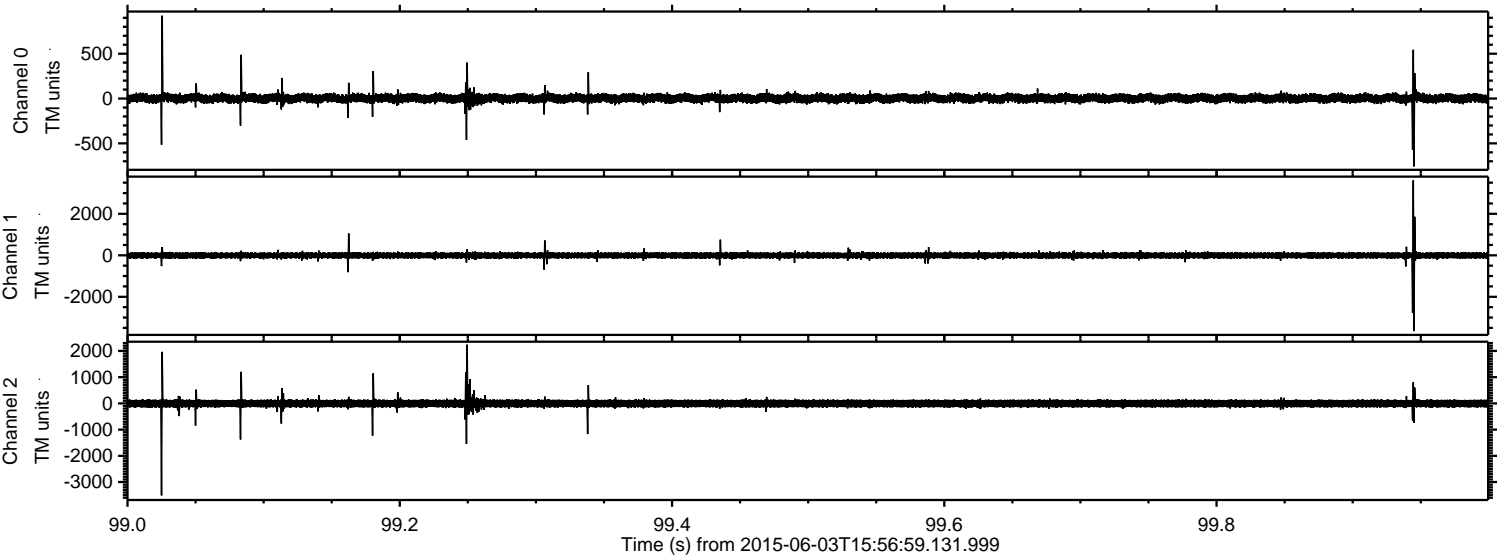
Processed Wed Jun 3 18:03:25 2015 by ELM ver.2012-10-06 from 001\_\_elm20150603\_155658\_\_dat00.bin





ELMAVAN 3D WAVEFORMS (Measured data sampled at 50 kHz) 51000 packets of 144 samples from 2015-06-03T15:56:59.131.999. Part 100/147

Processed Wed Jun 3 18:03:26 2015 by ELM ver.2012-10-06 from 001\_\_elm20150603\_155658\_\_dat00.bin





ELMAVAN 3D WAVEFORMS (Measured data sampled at 50 kHz) 51000 packets of 144 samples from 2015-06-03T15:56:59.131.999. Part 3/147

Processed Wed Jun 3 18:03:27 2015 by ELM ver.2012-10-06 from 001\_\_elm20150603\_155658\_\_dat00.bin

