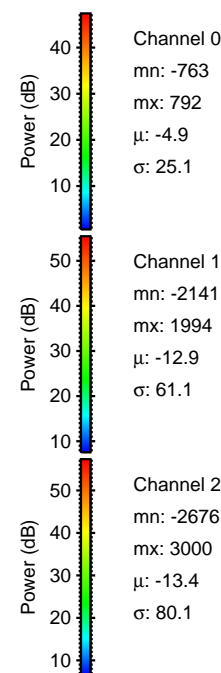
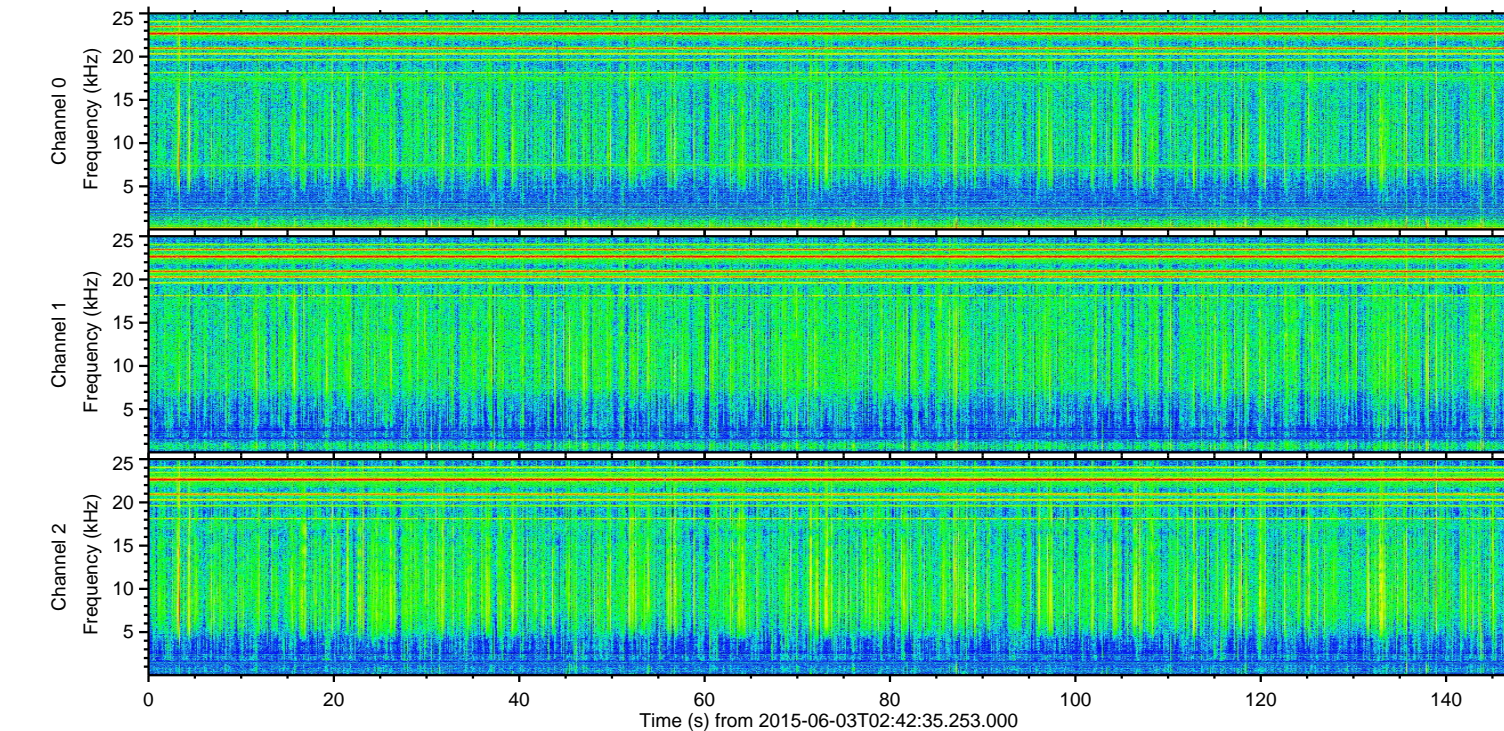
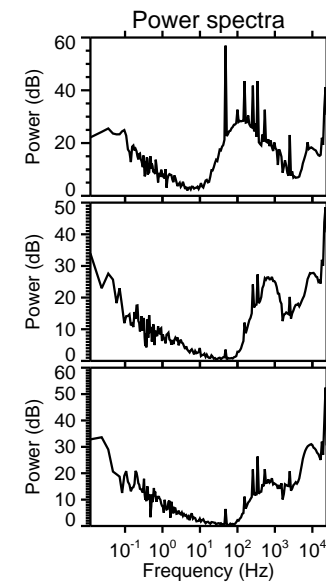
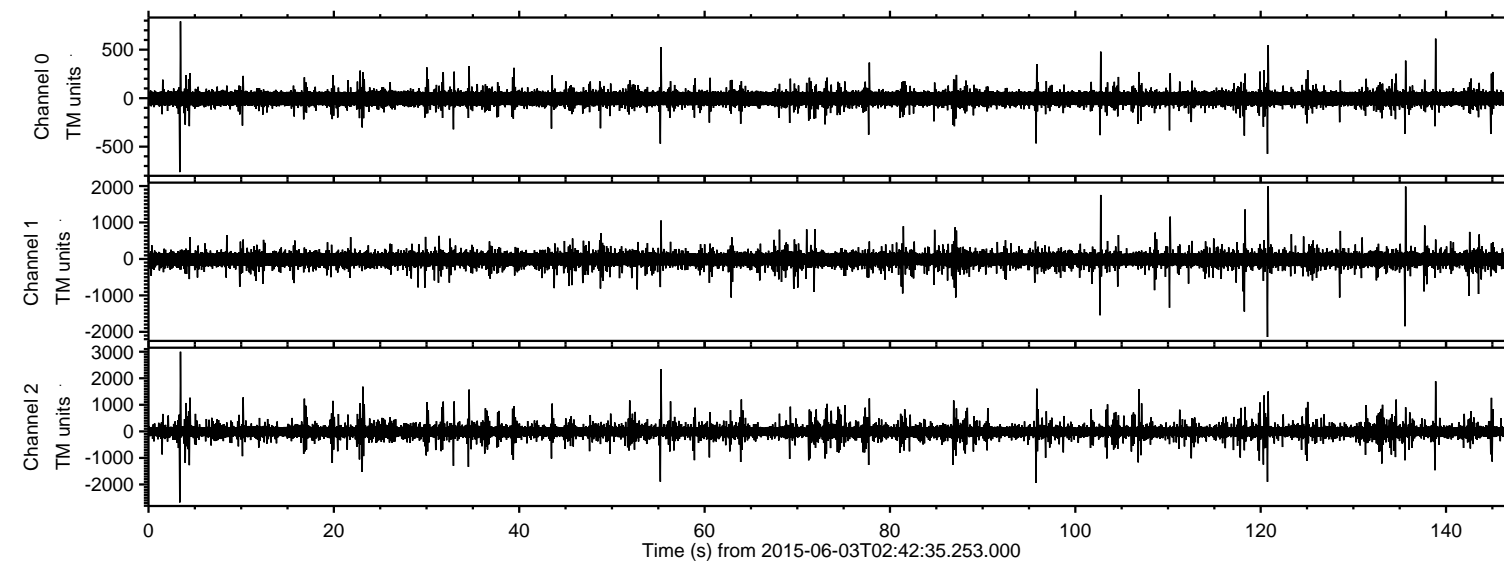


# ELMAVAN 3D WAVEFORMS (Measured data sampled at 50 kHz) 51000 packets of 144 samples from 2015-06-03T02:42:35.253.000.

Processed Wed Jun 3 04:49:05 2015 by ELM ver.2012-10-06 from 001\_\_elm20150603\_024234\_\_dat00.bin



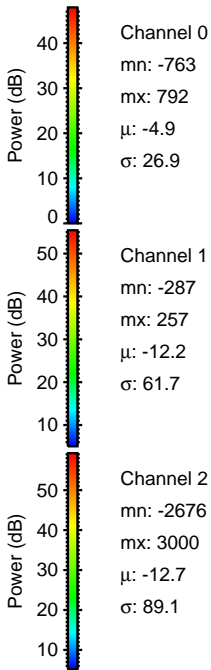
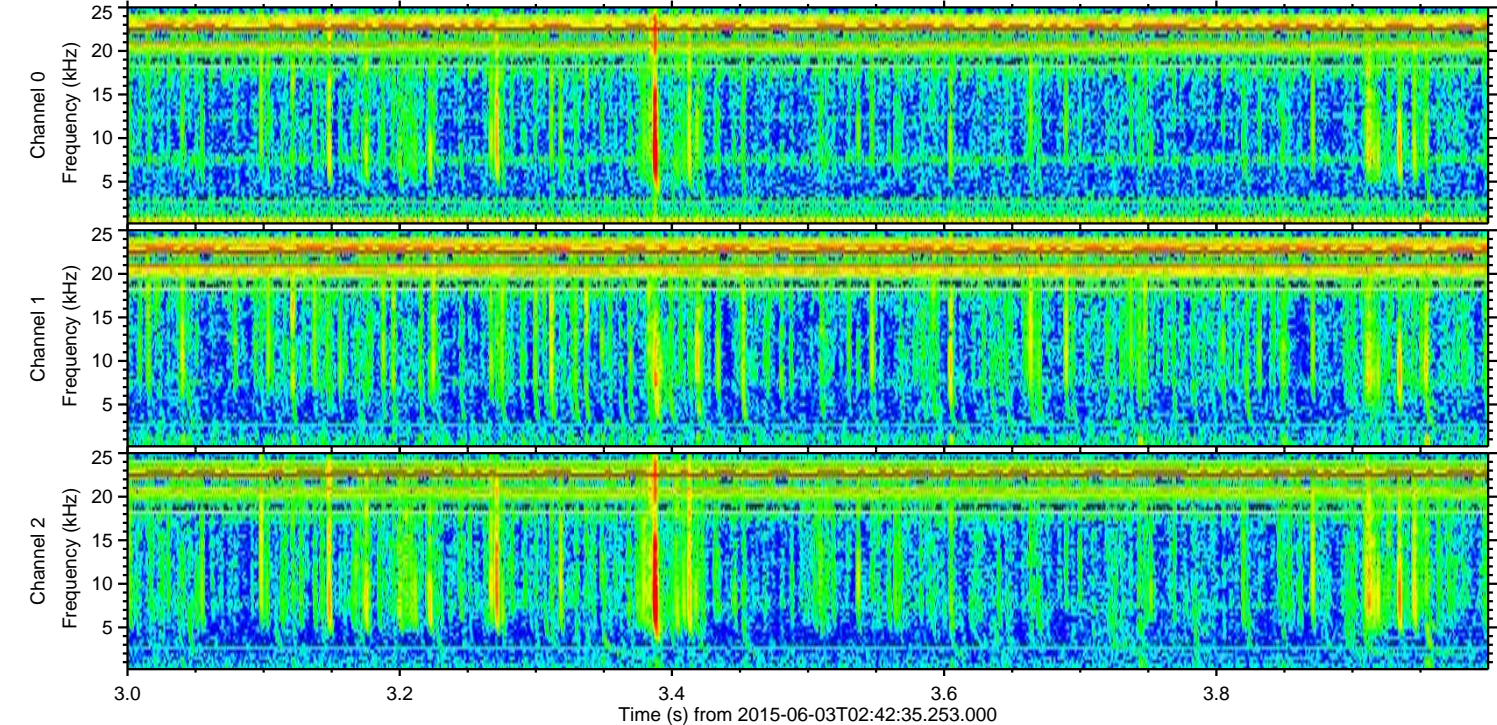
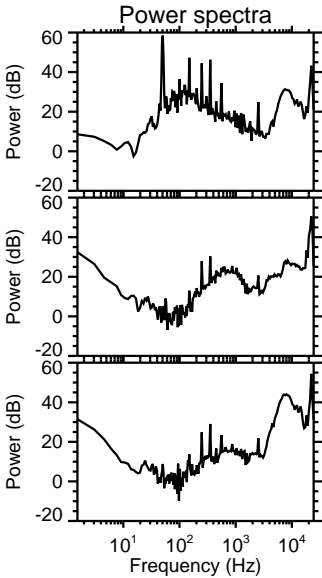
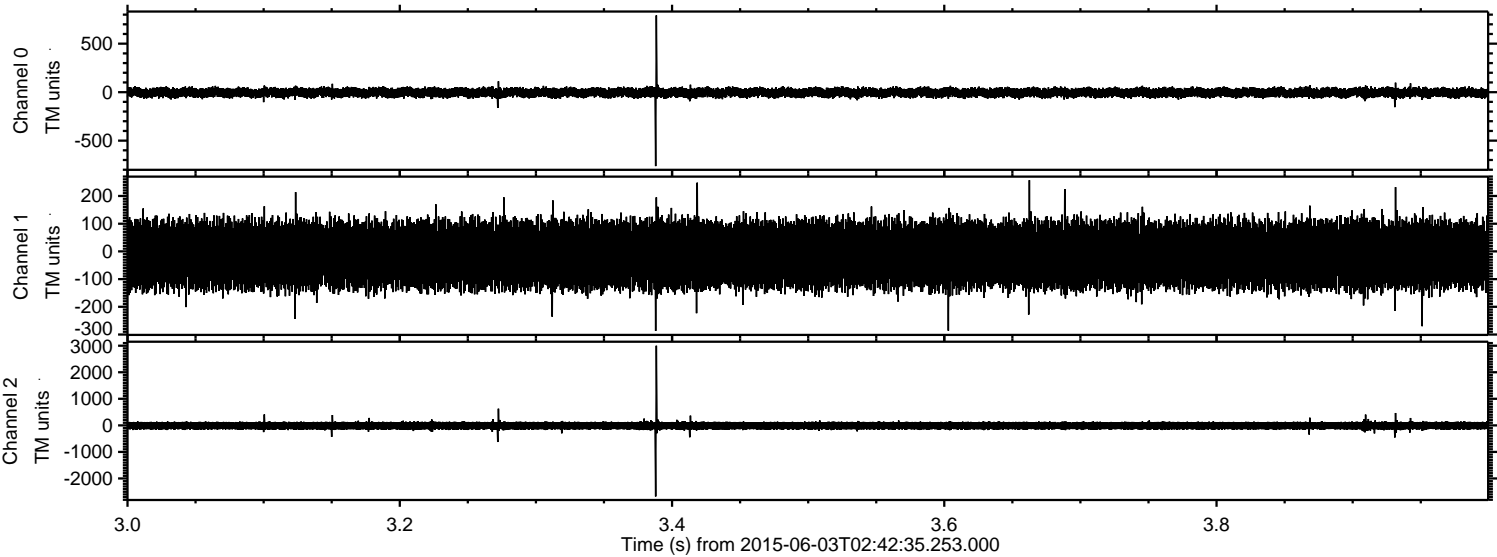
Channel 0  
mn: -763  
mx: 792  
 $\mu$ : -4.9  
 $\sigma$ : 25.1

Channel 1  
mn: -2141  
mx: 1994  
 $\mu$ : -12.9  
 $\sigma$ : 61.1

Channel 2  
mn: -2676  
mx: 3000  
 $\mu$ : -13.4  
 $\sigma$ : 80.1

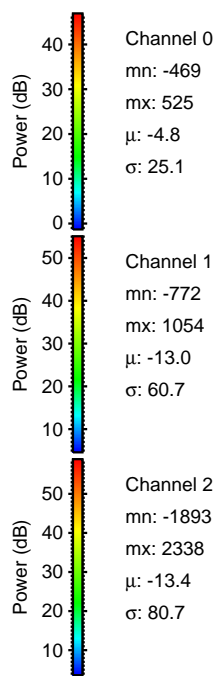
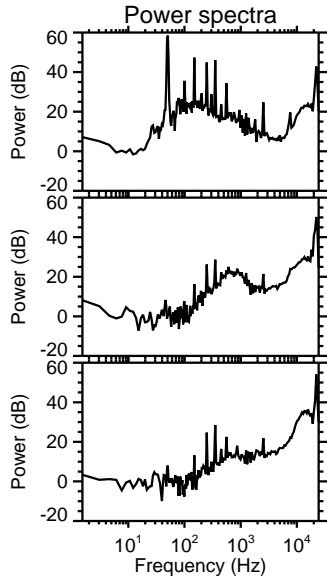
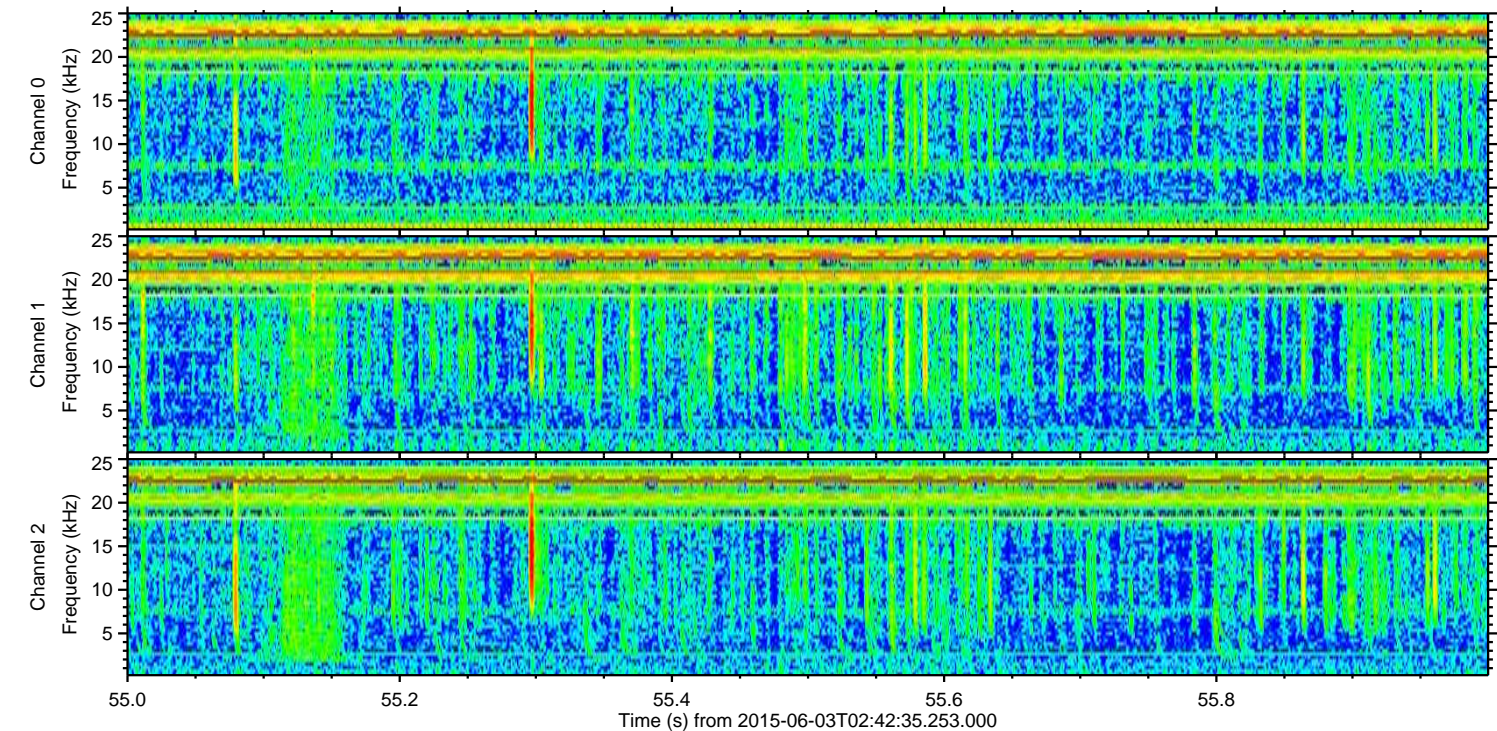
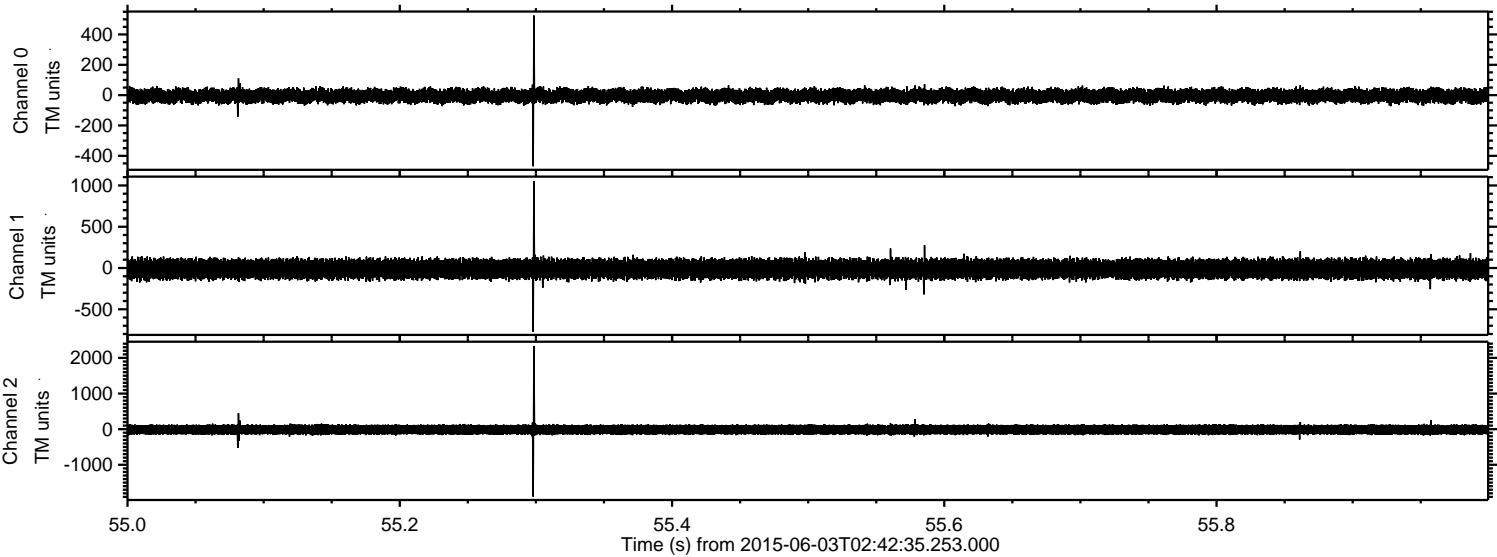


Processed Wed Jun 3 04:49:17 2015 by ELM ver.2012-10-06 from 001\_\_elm20150603\_024234\_\_dat00.bin





Processed Wed Jun 3 04:49:18 2015 by ELM ver.2012-10-06 from 001\_\_elm20150603\_024234\_\_dat00.bin



Power spectra

Channel 0  
mn: -469  
mx: 525  
 $\mu$ : -4.8  
 $\sigma$ : 25.1

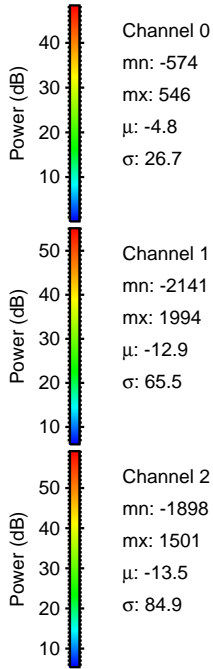
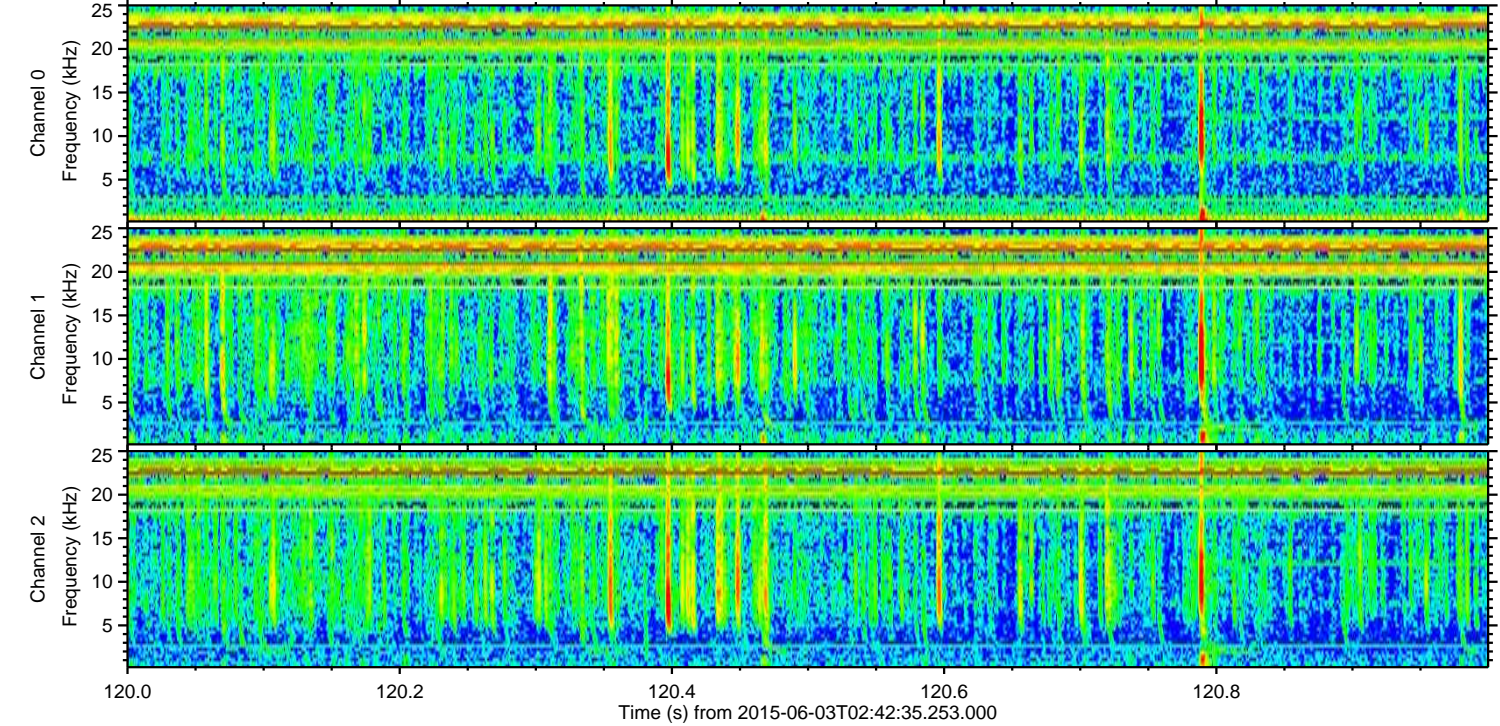
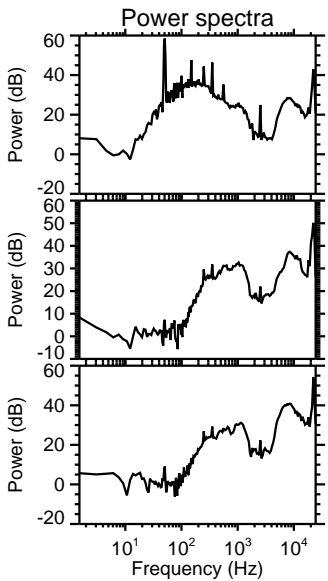
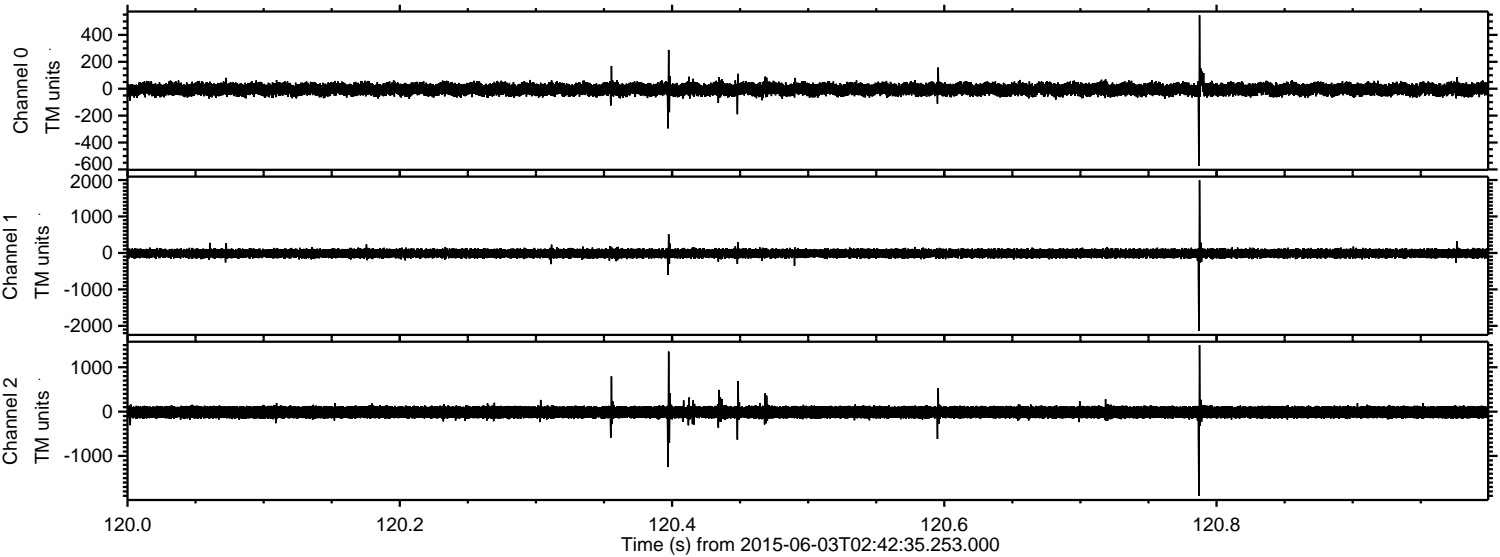
Channel 1  
mn: -772  
mx: 1054  
 $\mu$ : -13.0  
 $\sigma$ : 60.7

Channel 2  
mn: -1893  
mx: 2338  
 $\mu$ : -13.4  
 $\sigma$ : 80.7



ELMAVAN 3D WAVEFORMS (Measured data sampled at 50 kHz) 51000 packets of 144 samples from 2015-06-03T02:42:35.253.000. Part 121/147

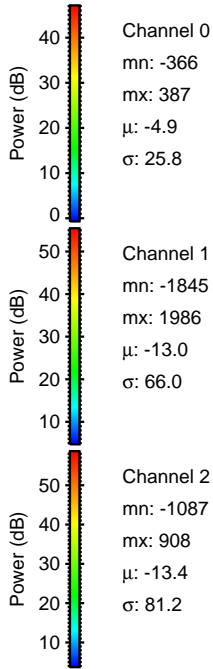
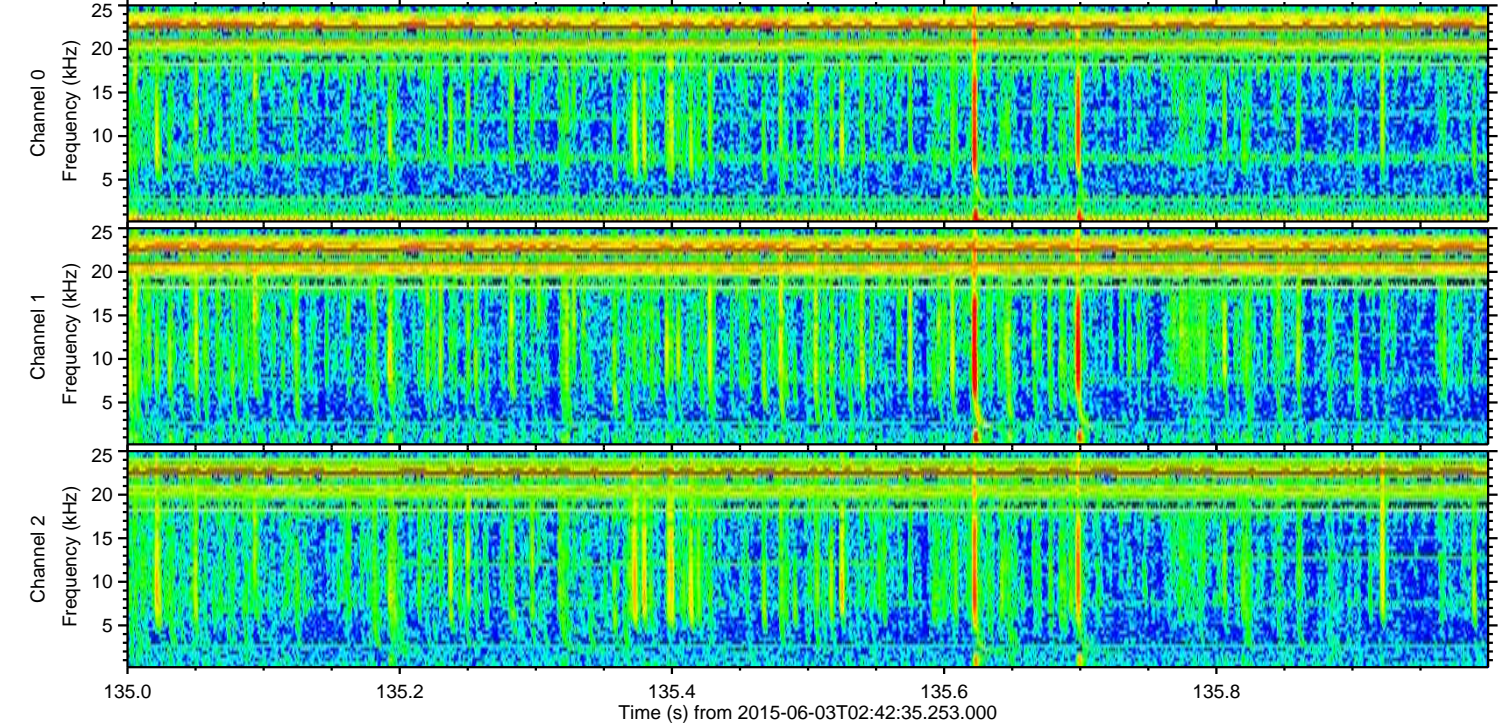
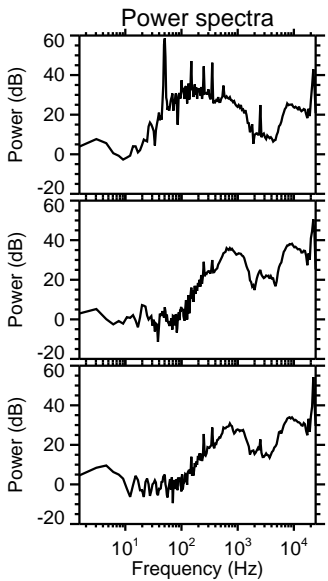
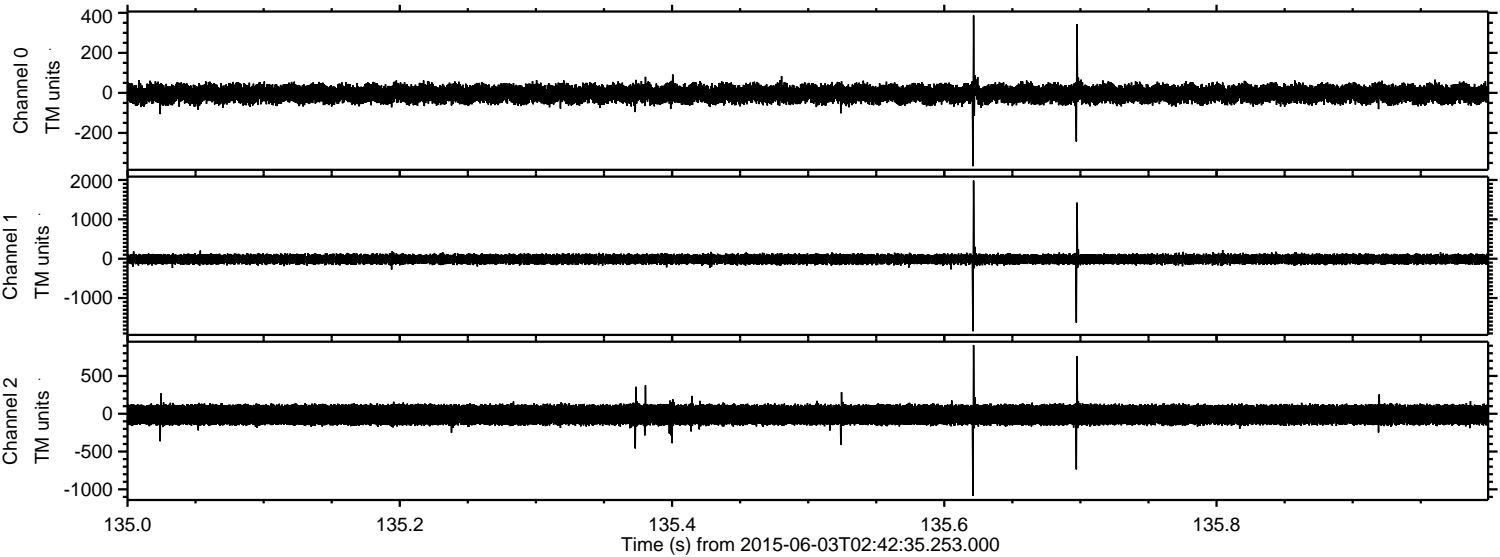
Processed Wed Jun 3 04:49:19 2015 by ELM ver.2012-10-06 from 001\_\_elm20150603\_024234\_\_dat00.bin





ELMAVAN 3D WAVEFORMS (Measured data sampled at 50 kHz) 51000 packets of 144 samples from 2015-06-03T02:42:35.253.000. Part 136/147

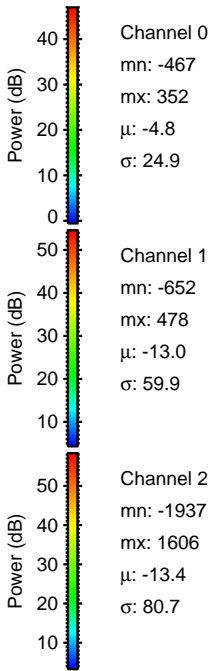
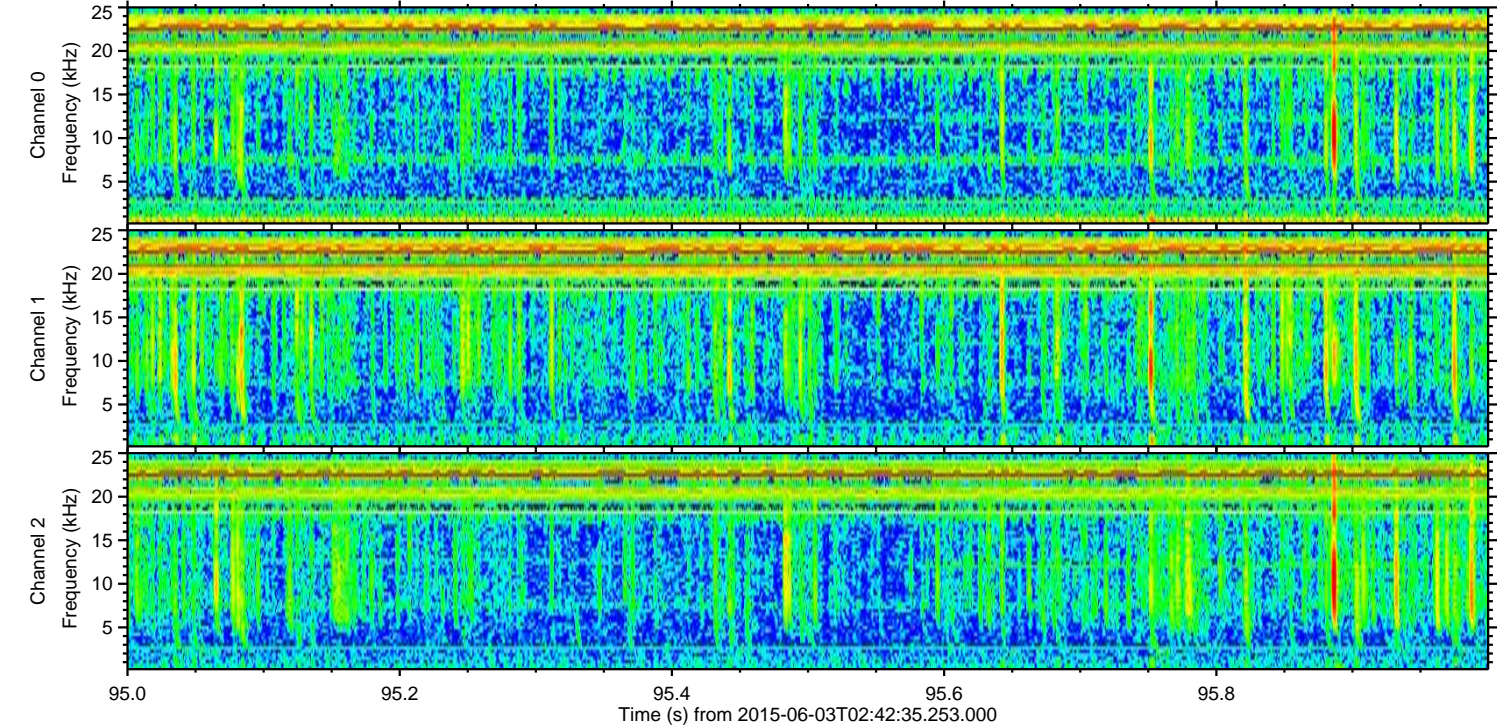
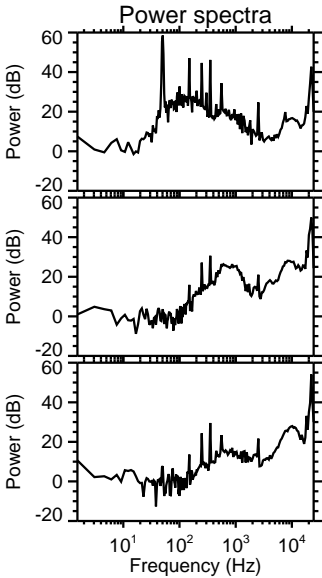
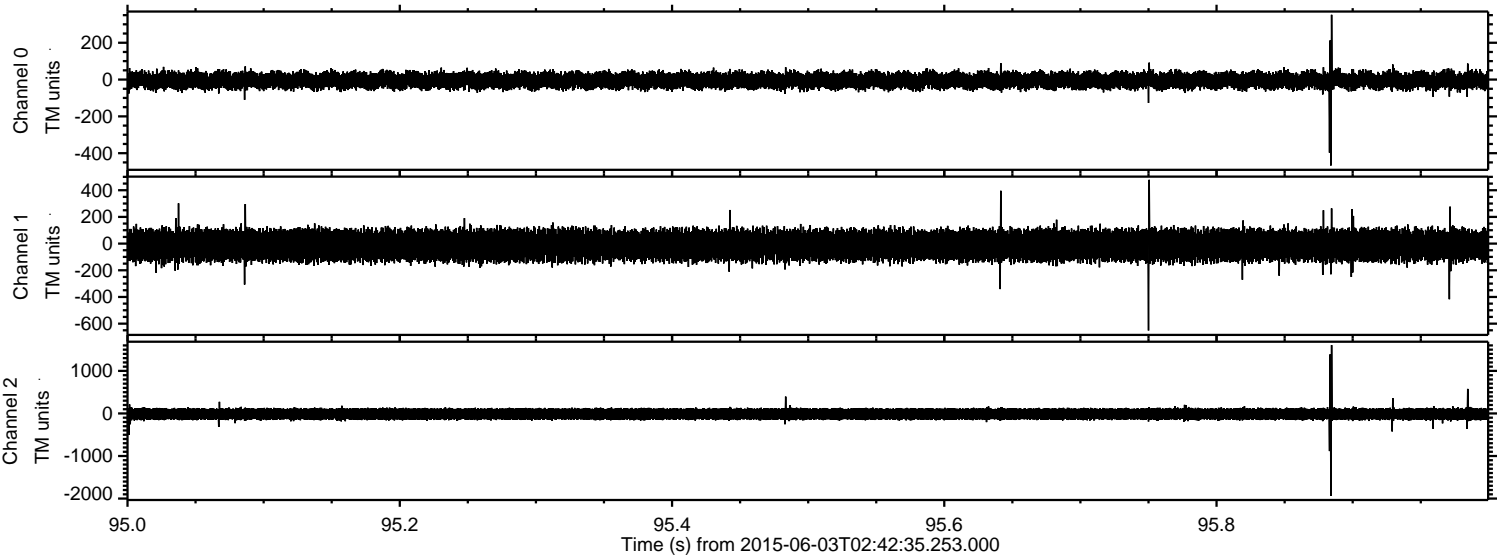
Processed Wed Jun 3 04:49:20 2015 by ELM ver.2012-10-06 from 001\_\_elm20150603\_024234\_\_dat00.bin





ELMAVAN 3D WAVEFORMS (Measured data sampled at 50 kHz) 51000 packets of 144 samples from 2015-06-03T02:42:35.253.000. Part 96/147

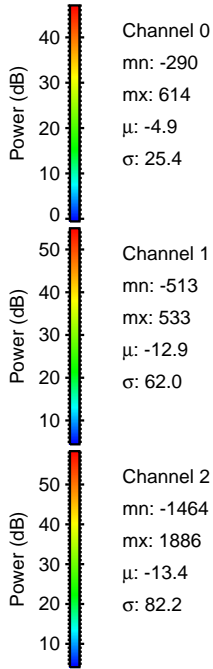
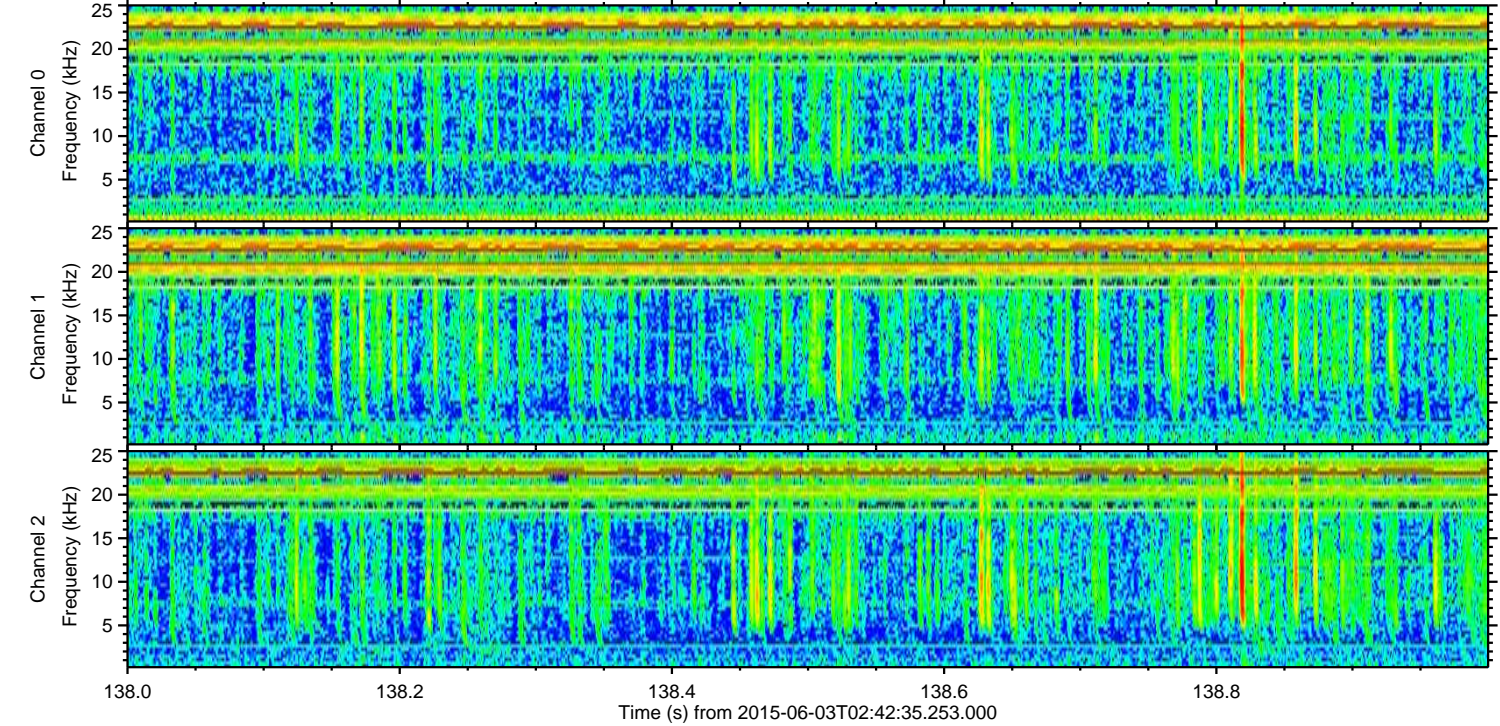
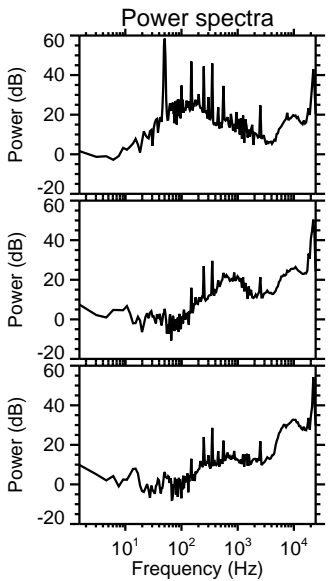
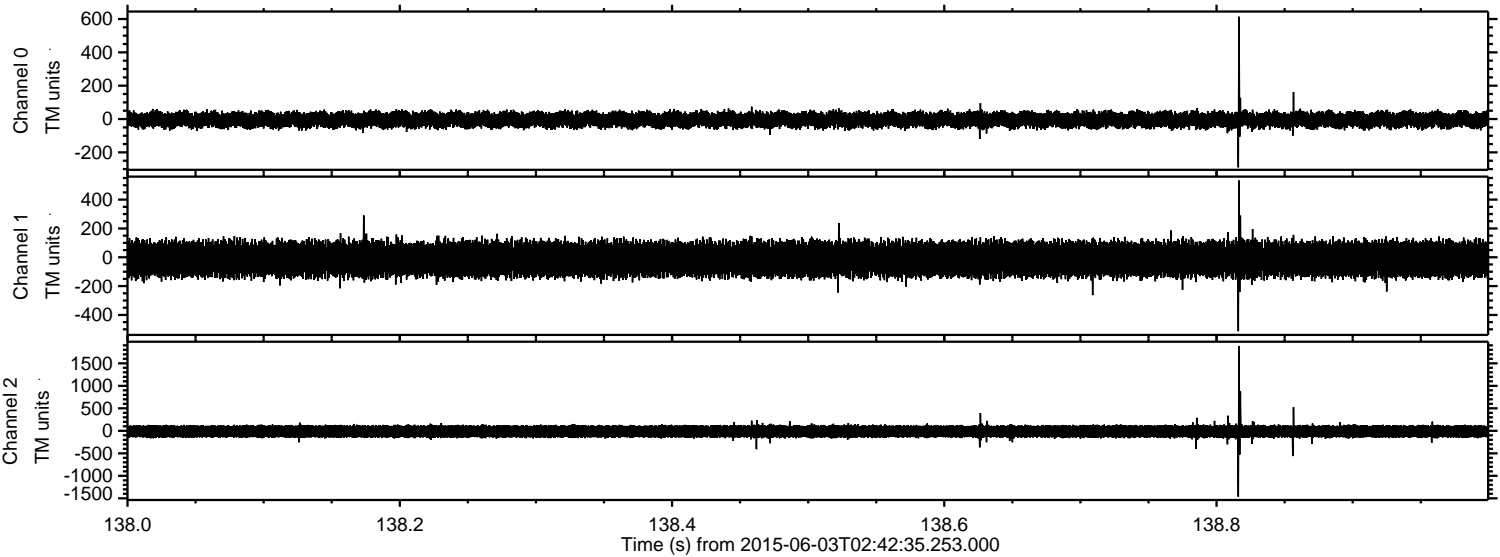
Processed Wed Jun 3 04:49:21 2015 by ELM ver.2012-10-06 from 001\_\_elm20150603\_024234\_\_dat00.bin





ELMAVAN 3D WAVEFORMS (Measured data sampled at 50 kHz) 51000 packets of 144 samples from 2015-06-03T02:42:35.253.000. Part 139/147

Processed Wed Jun 3 04:49:22 2015 by ELM ver.2012-10-06 from 001\_\_elm20150603\_024234\_\_dat00.bin



Channel 0  
mn: -290  
mx: 614  
 $\mu$ : -4.9  
 $\sigma$ : 25.4

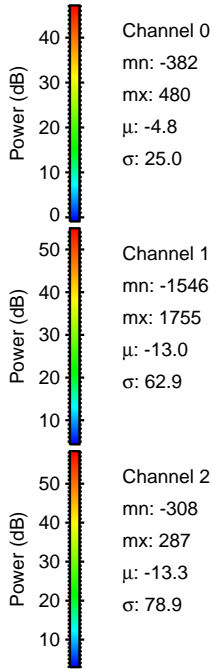
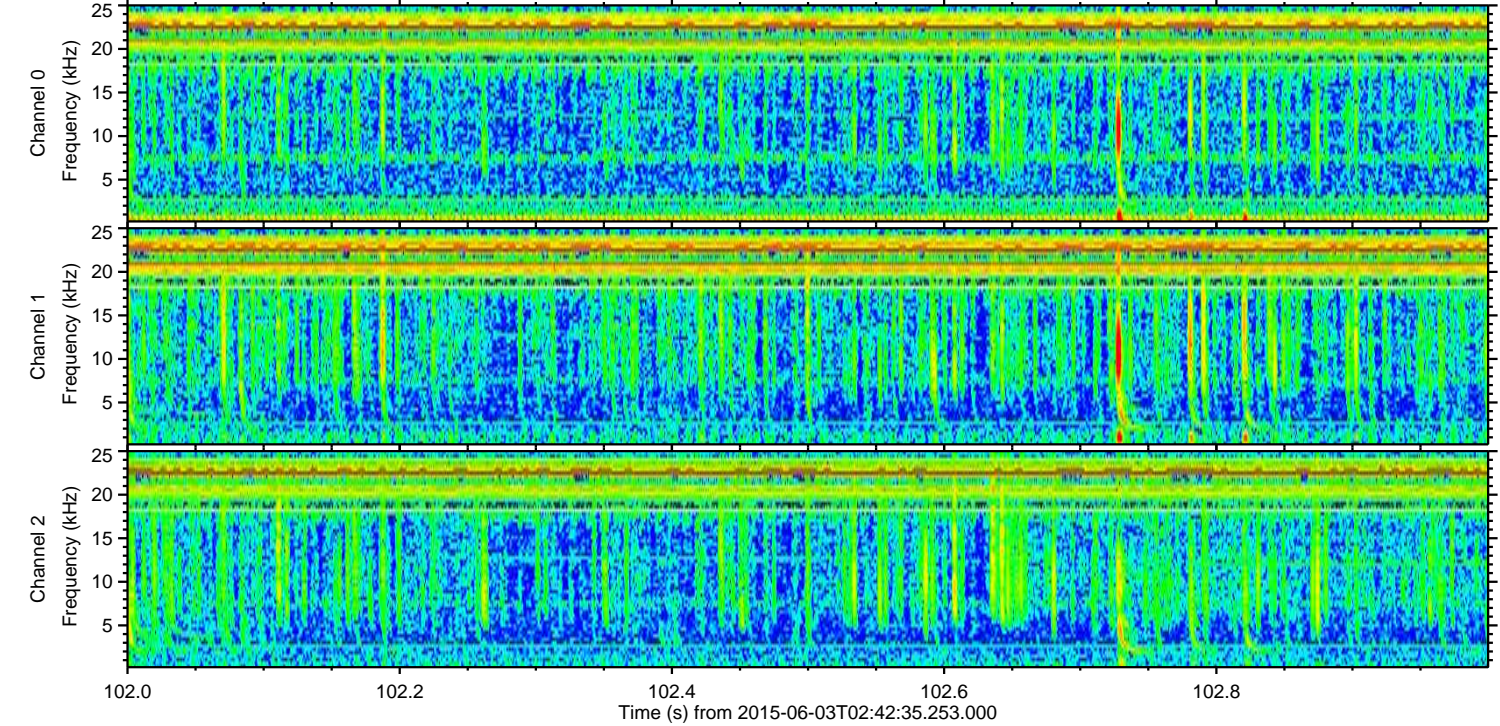
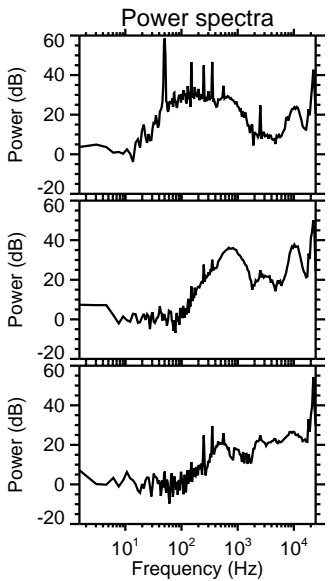
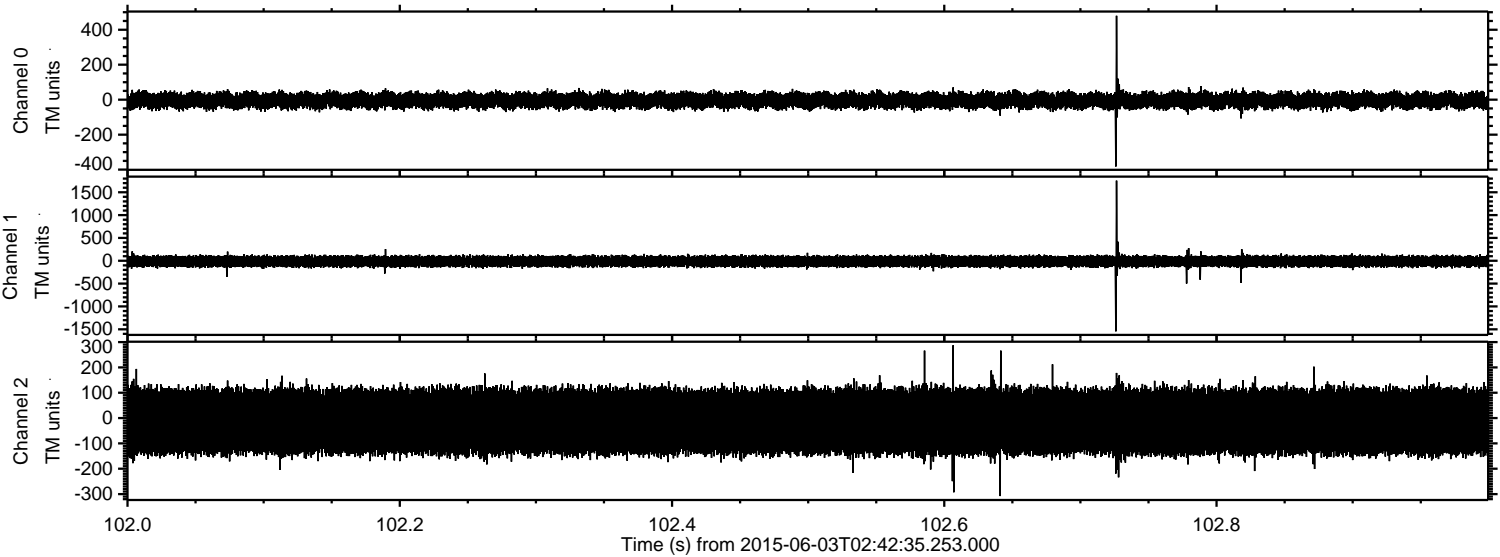
Channel 1  
mn: -513  
mx: 533  
 $\mu$ : -12.9  
 $\sigma$ : 62.0

Channel 2  
mn: -1464  
mx: 1886  
 $\mu$ : -13.4  
 $\sigma$ : 82.2



ELMAVAN 3D WAVEFORMS (Measured data sampled at 50 kHz) 51000 packets of 144 samples from 2015-06-03T02:42:35.253.000. Part 103/147

Processed Wed Jun 3 04:49:23 2015 by ELM ver.2012-10-06 from 001\_\_elm20150603\_024234\_\_dat00.bin



Channel 0  
mn: -382  
mx: 480  
 $\mu$ : -4.8  
 $\sigma$ : 25.0

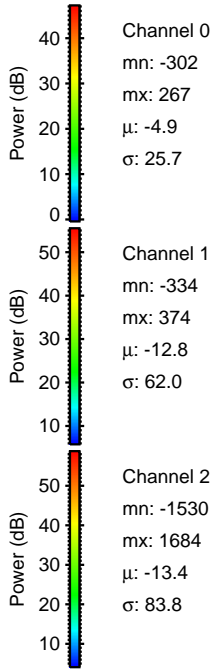
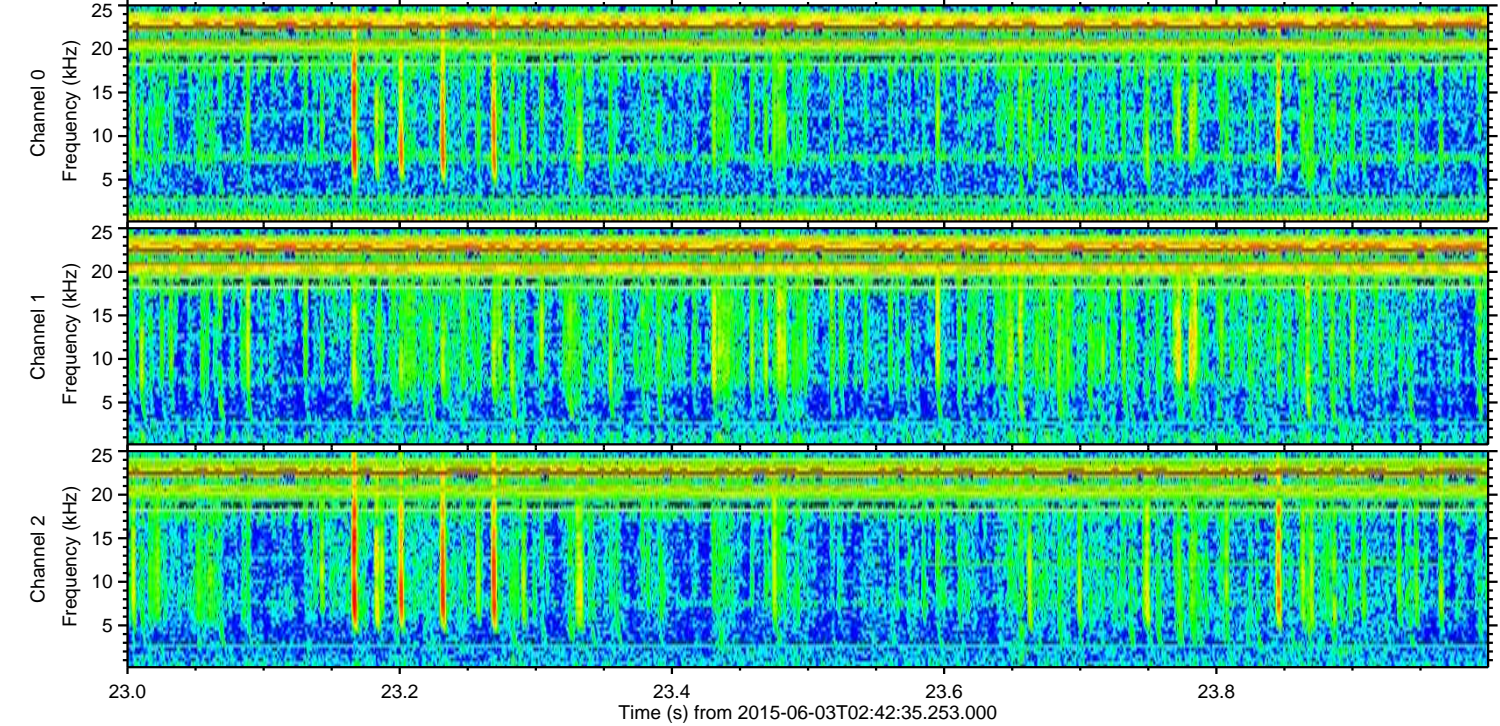
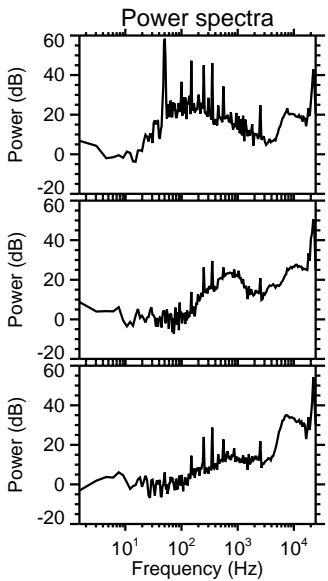
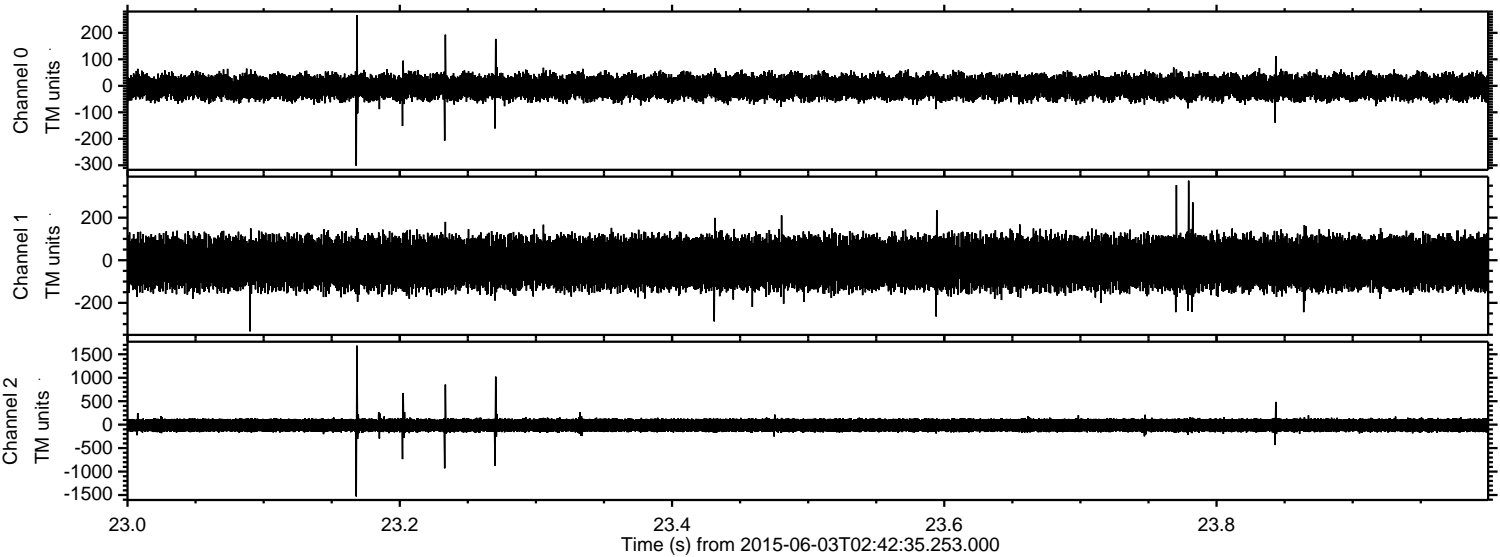
Channel 1  
mn: -1546  
mx: 1755  
 $\mu$ : -13.0  
 $\sigma$ : 62.9

Channel 2  
mn: -308  
mx: 287  
 $\mu$ : -13.3  
 $\sigma$ : 78.9



ELMAVAN 3D WAVEFORMS (Measured data sampled at 50 kHz) 51000 packets of 144 samples from 2015-06-03T02:42:35.253.000. Part 24/147

Processed Wed Jun 3 04:49:24 2015 by ELM ver.2012-10-06 from 001\_\_elm20150603\_024234\_\_dat00.bin



Channel 0  
mn: -302  
mx: 267  
 $\mu$ : -4.9  
 $\sigma$ : 25.7

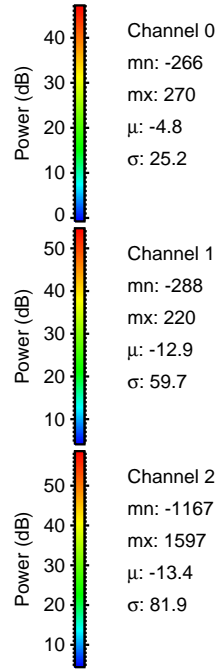
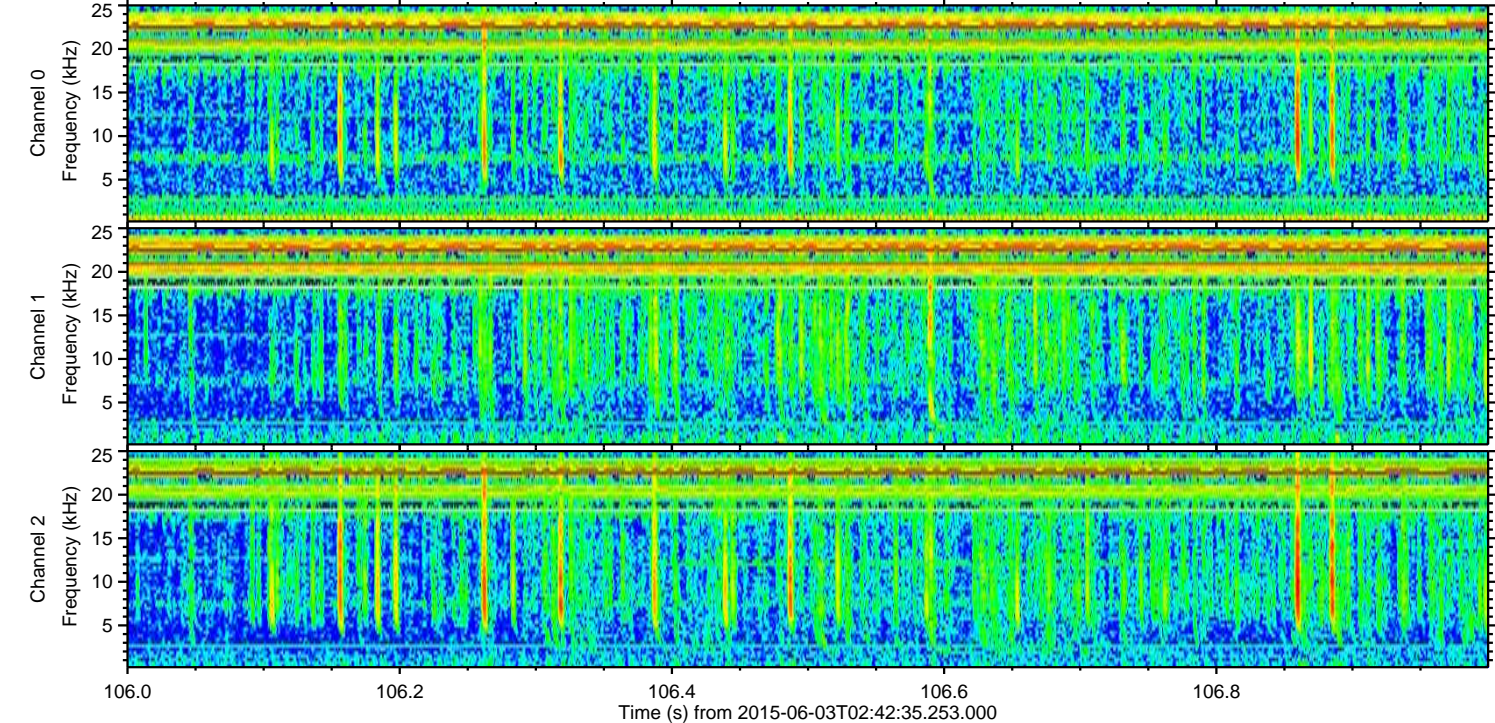
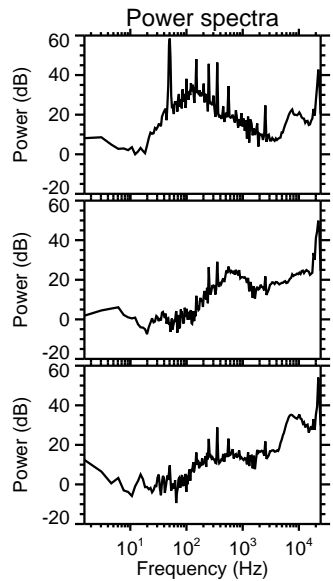
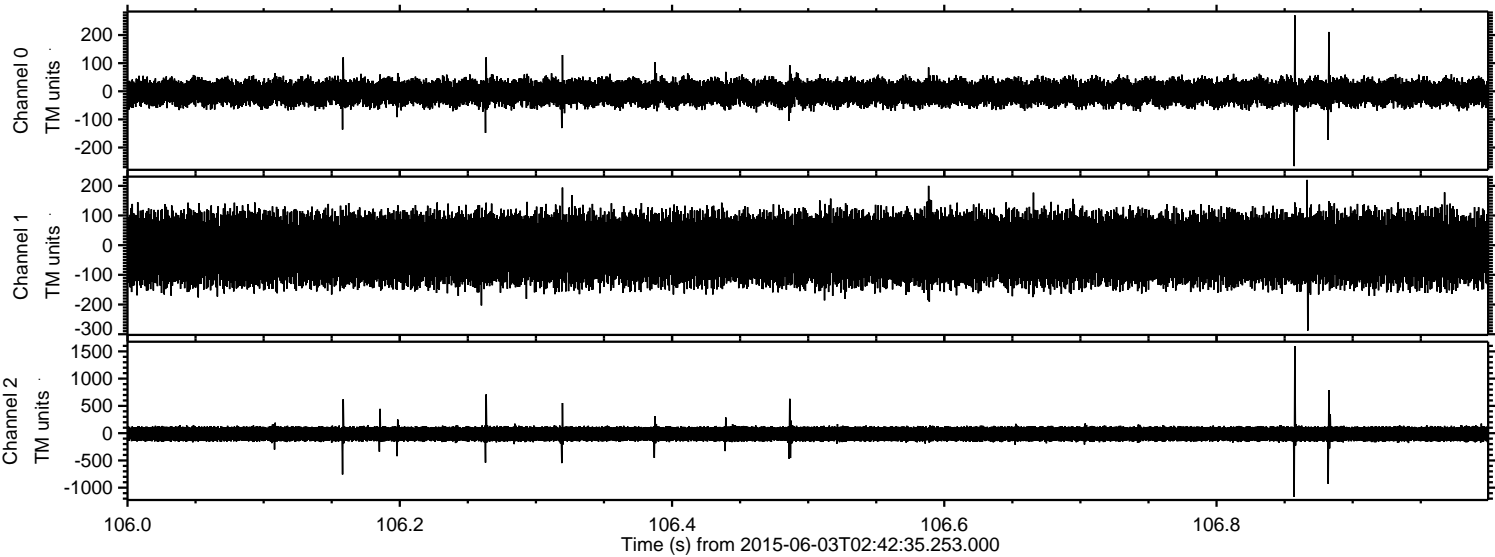
Channel 1  
mn: -334  
mx: 374  
 $\mu$ : -12.8  
 $\sigma$ : 62.0

Channel 2  
mn: -1530  
mx: 1684  
 $\mu$ : -13.4  
 $\sigma$ : 83.8



ELMAVAN 3D WAVEFORMS (Measured data sampled at 50 kHz) 51000 packets of 144 samples from 2015-06-03T02:42:35.253.000. Part 107/147

Processed Wed Jun 3 04:49:25 2015 by ELM ver.2012-10-06 from 001\_\_elm20150603\_024234\_\_dat00.bin





Processed Wed Jun 3 04:49:25 2015 by ELM ver.2012-10-06 from 001\_\_elm20150603\_024234\_\_dat00.bin

