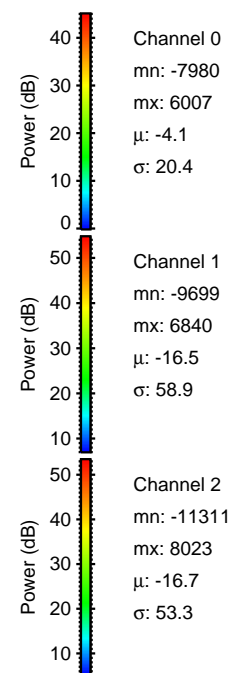
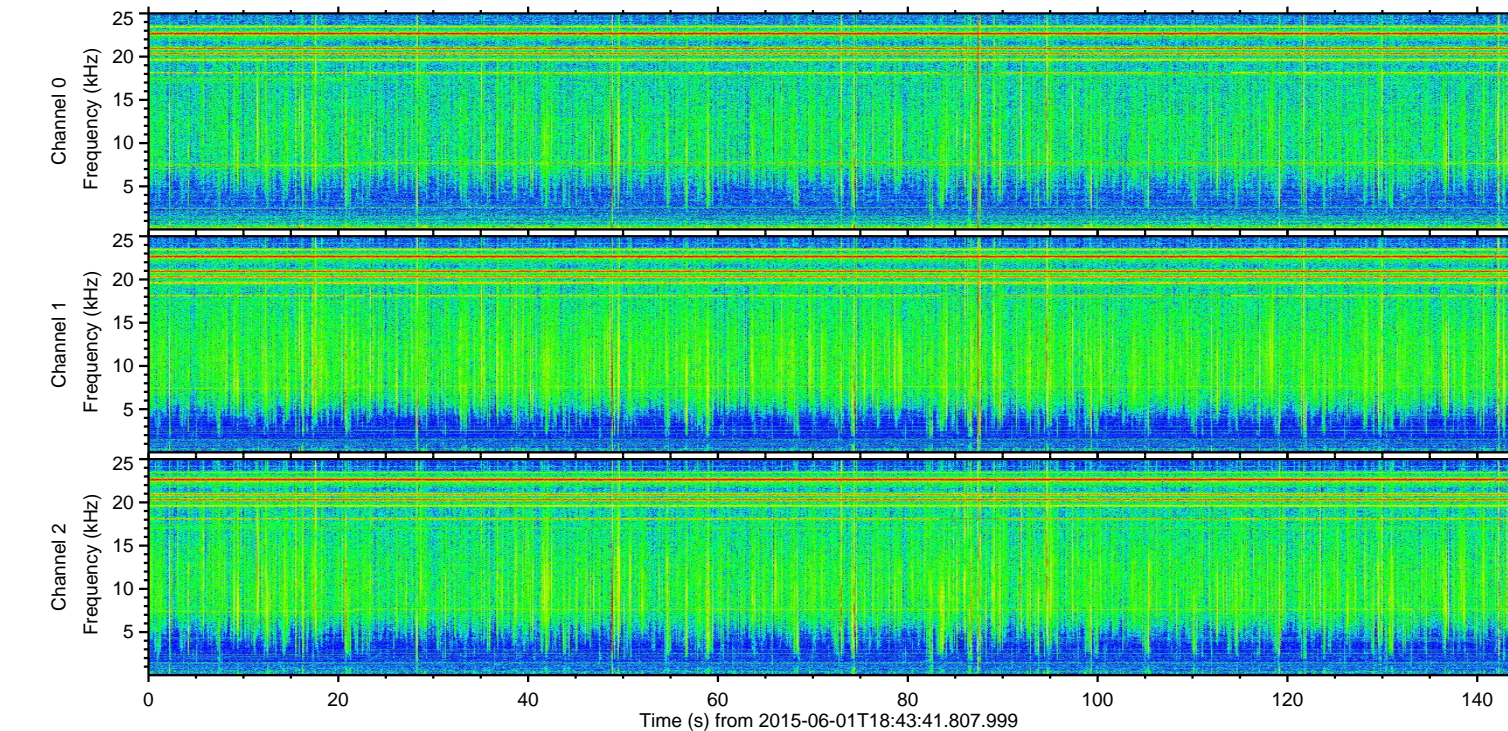
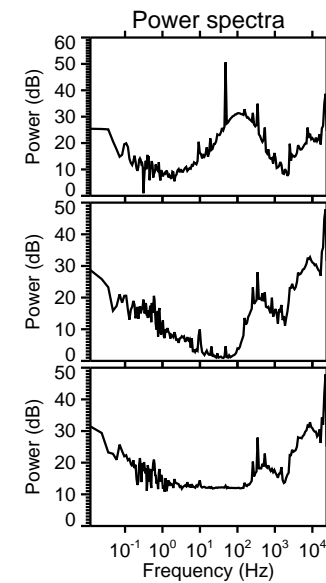
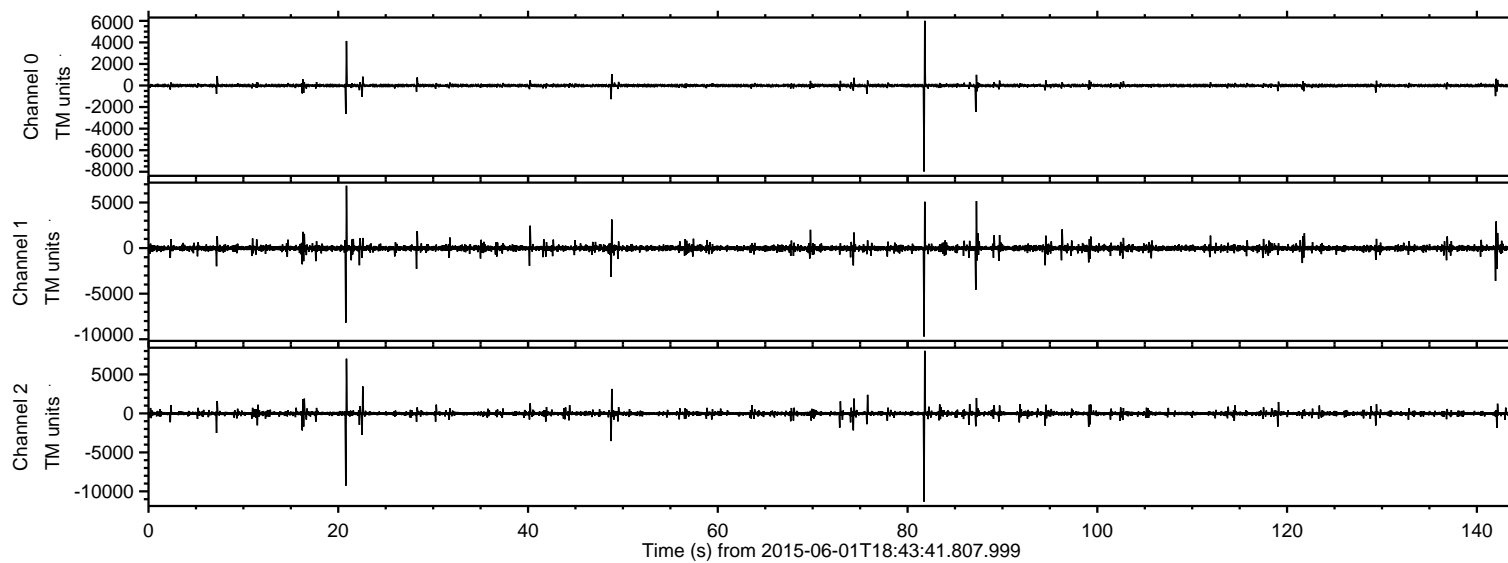
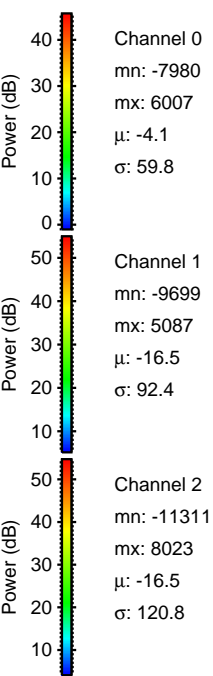
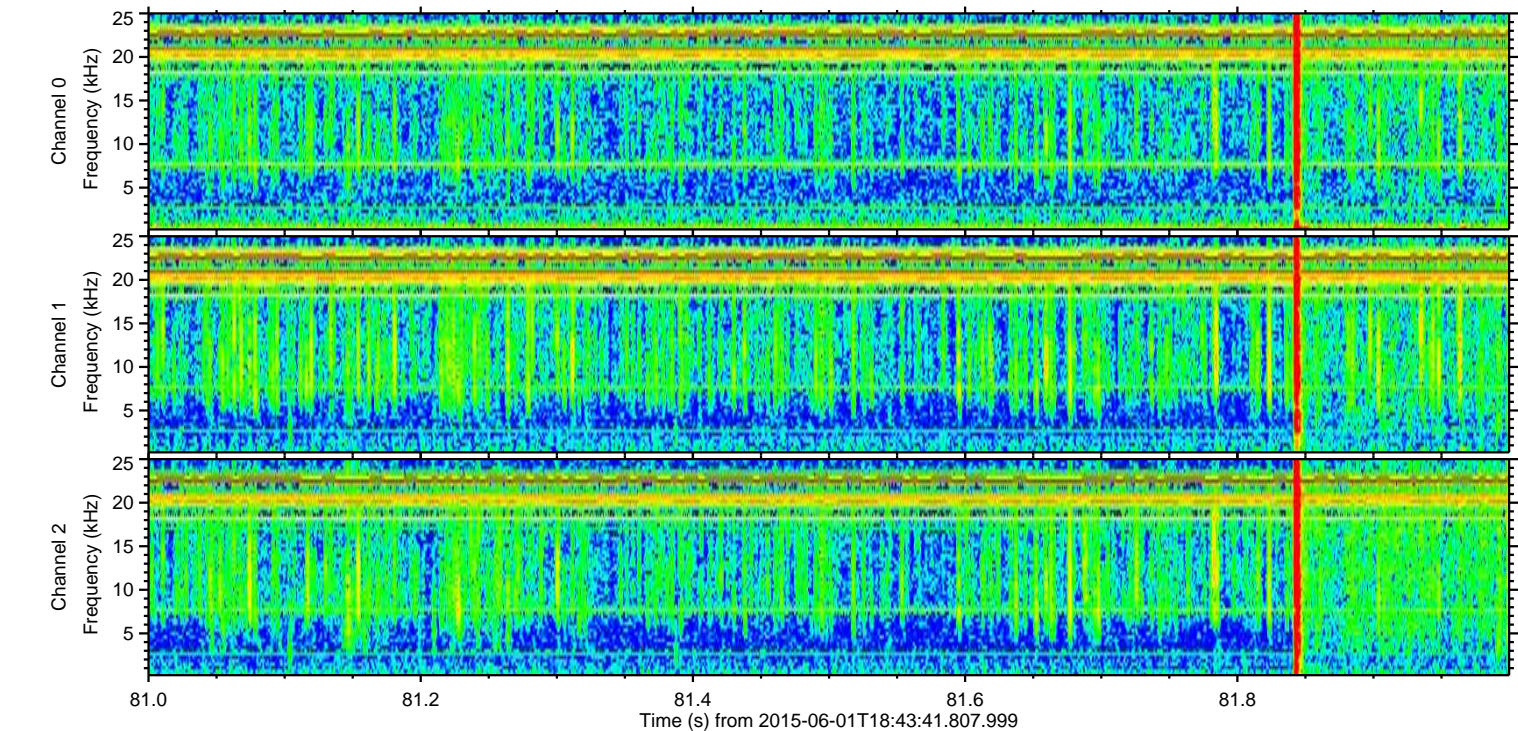
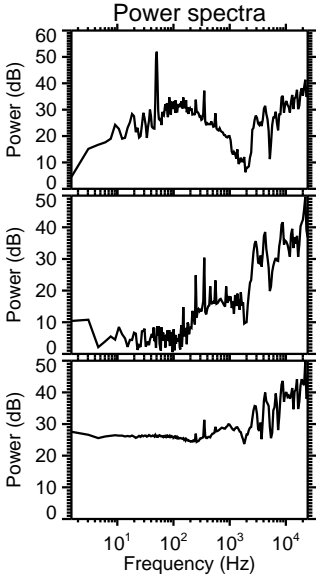
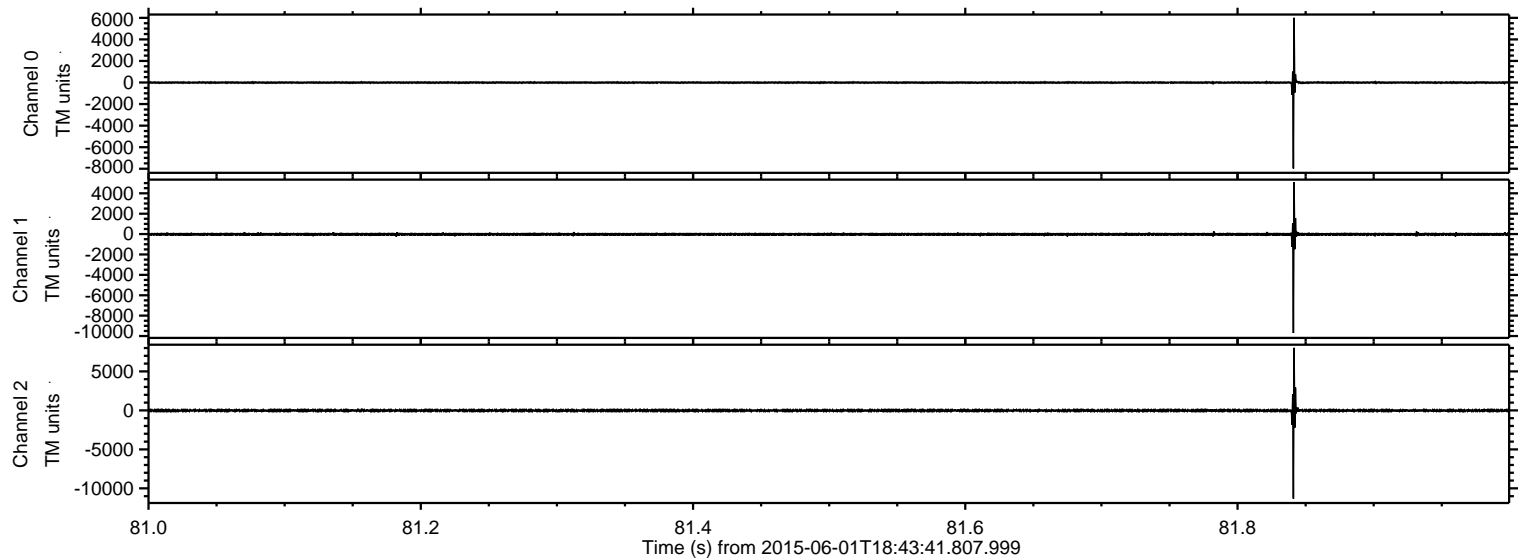


ELMAVAN 3D WAVEFORMS (Measured data sampled at 50 kHz) 49793 packets of 144 samples from 2015-06-01T18:43:41.807.999.

Processed Mon Jun 1 20:51:28 2015 by ELM ver.2012-10-06 from 001__elm20150601_184340__dat00.bin

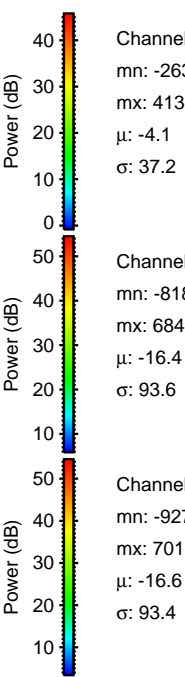
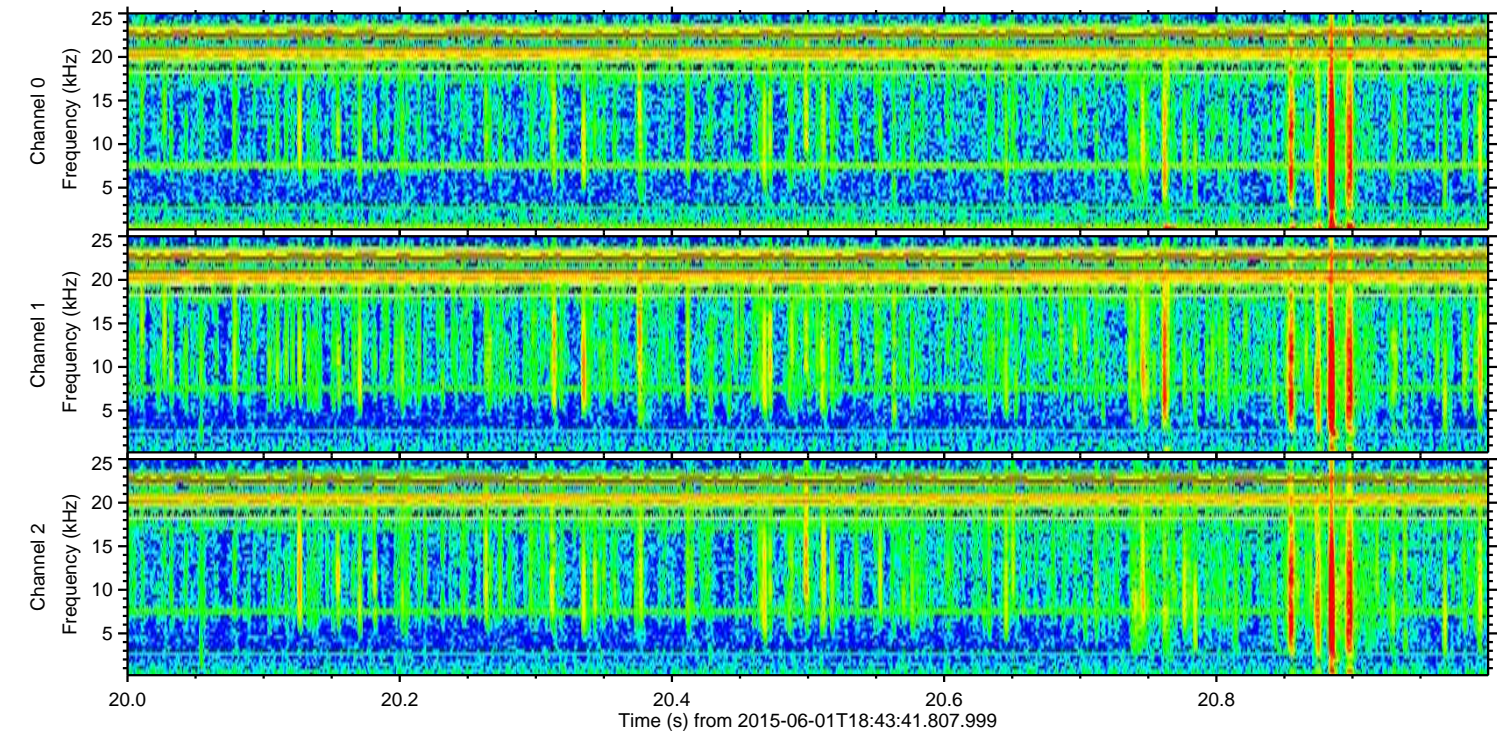
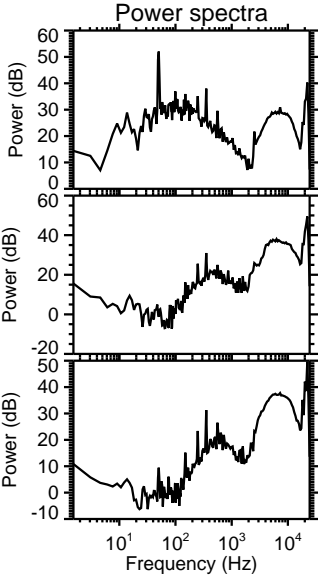
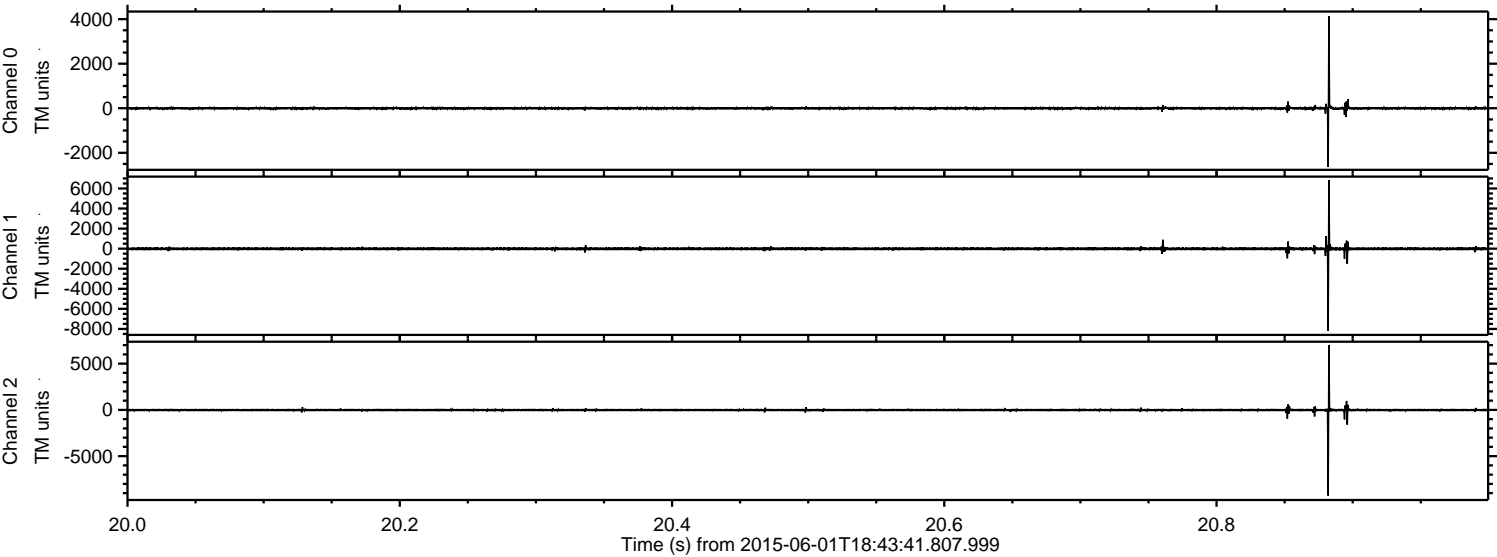


Processed Mon Jun 1 20:51:39 2015 by ELM ver.2012-10-06 from 001__elm20150601_184340__dat00.bin



ELMAVAN 3D WAVEFORMS (Measured data sampled at 50 kHz) 49793 packets of 144 samples from 2015-06-01T18:43:41.807.999. Part 21/144

Processed Mon Jun 1 20:51:40 2015 by ELM ver.2012-10-06 from 001__elm20150601_184340__dat00.bin

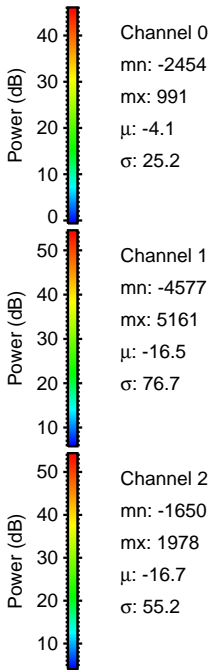
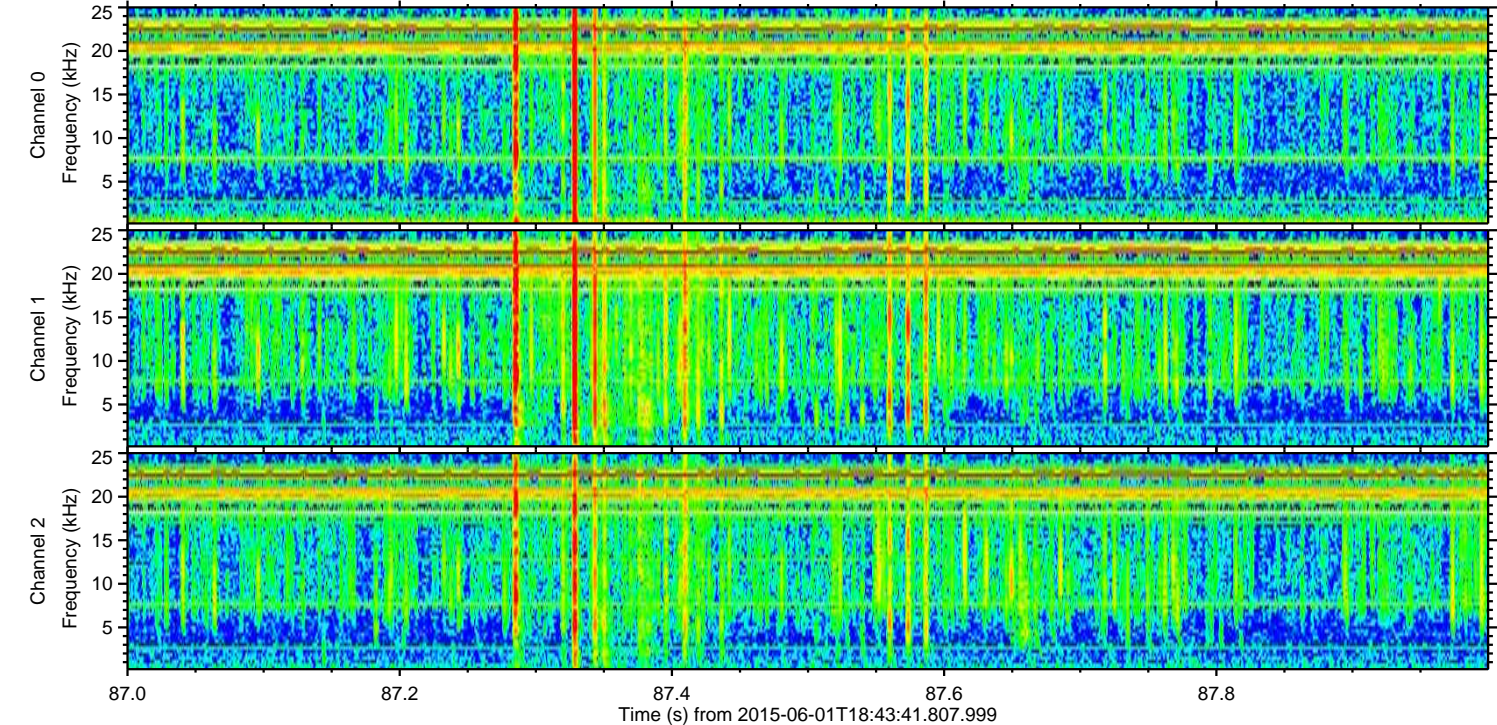
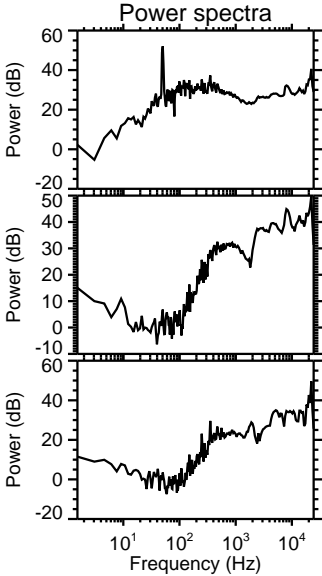
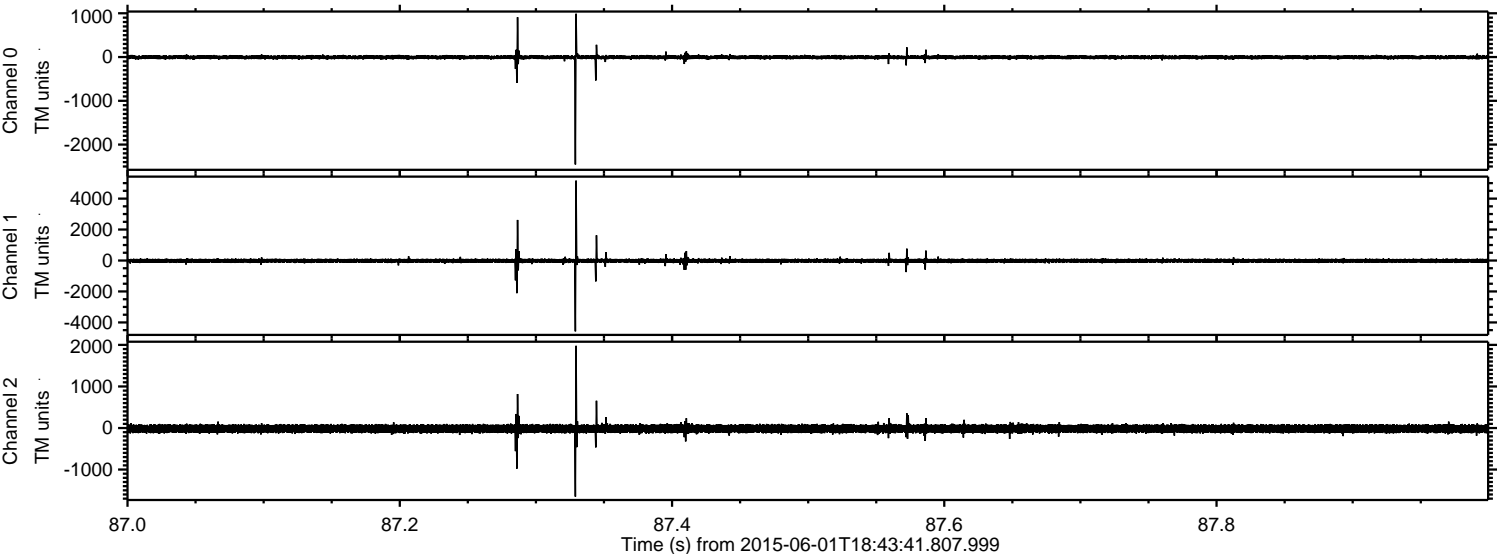


Channel 0
mn: -2633
mx: 4136
 μ : -4.1
 σ : 37.2

Channel 1
mn: -8188
mx: 6840
 μ : -16.4
 σ : 93.6

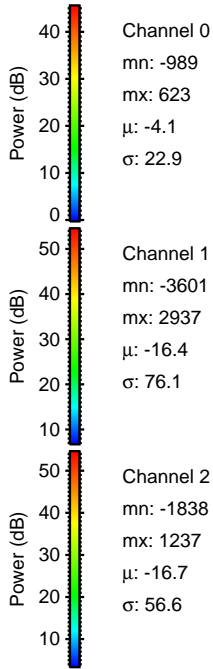
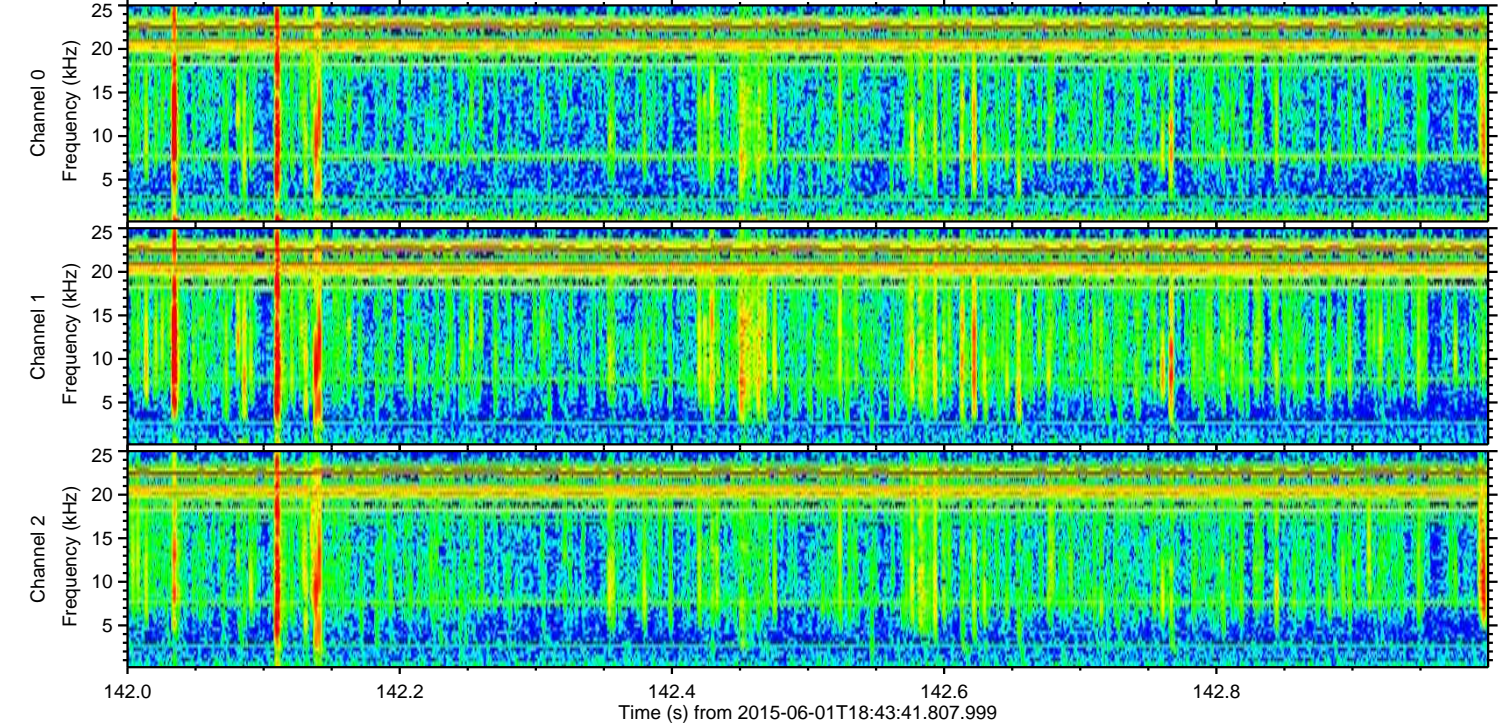
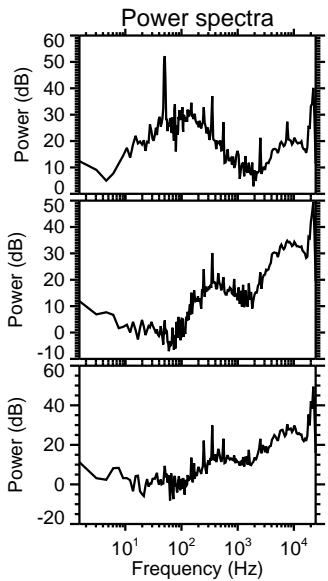
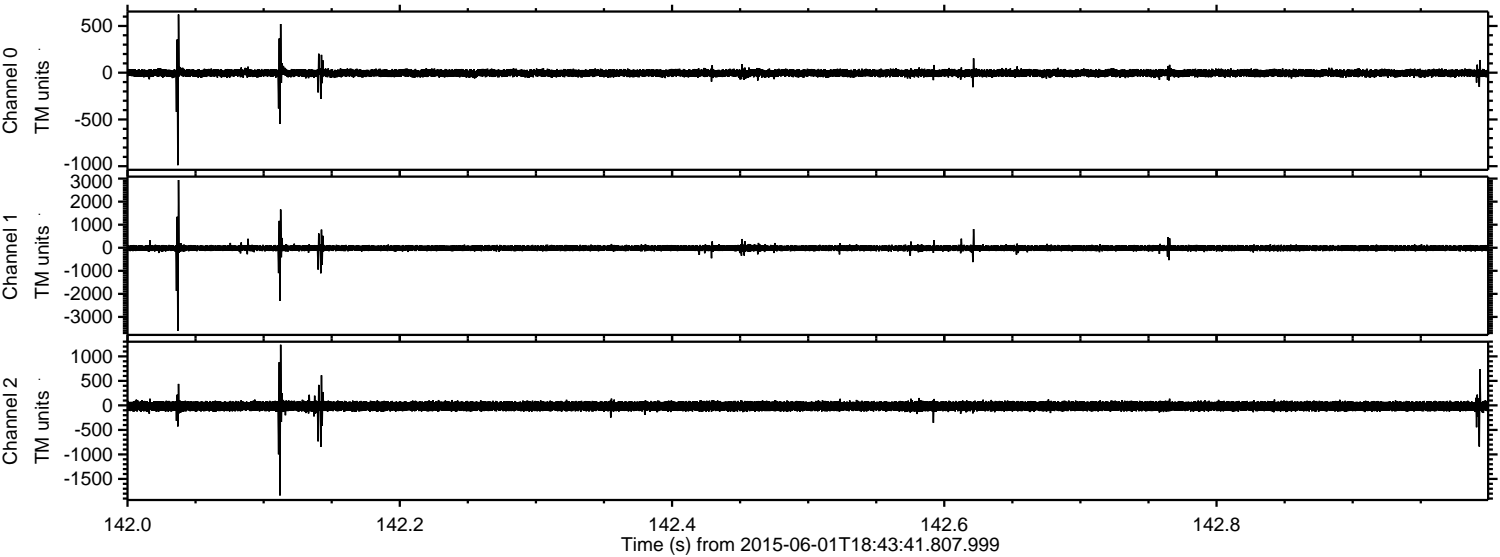
Channel 2
mn: -9277
mx: 7019
 μ : -16.6
 σ : 93.4

Processed Mon Jun 1 20:51:41 2015 by ELM ver.2012-10-06 from 001__elm20150601_184340__dat00.bin



ELMAVAN 3D WAVEFORMS (Measured data sampled at 50 kHz) 49793 packets of 144 samples from 2015-06-01T18:43:41.807.999. Part 143/144

Processed Mon Jun 1 20:51:42 2015 by ELM ver.2012-10-06 from 001__elm20150601_184340__dat00.bin



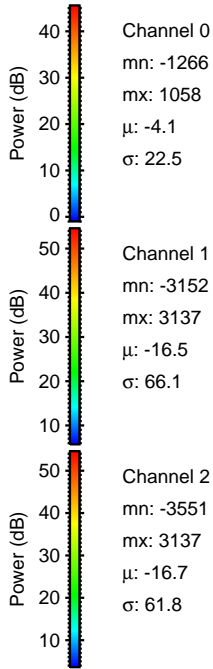
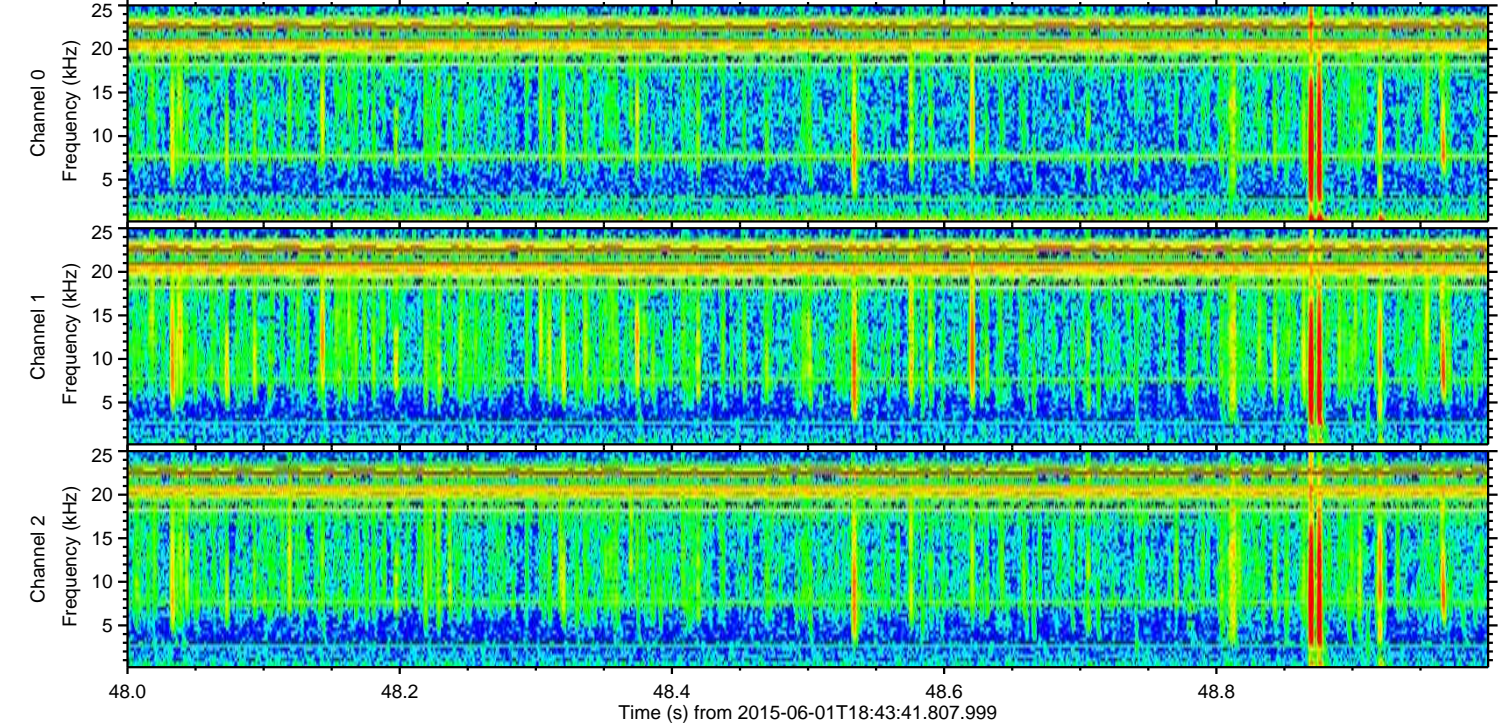
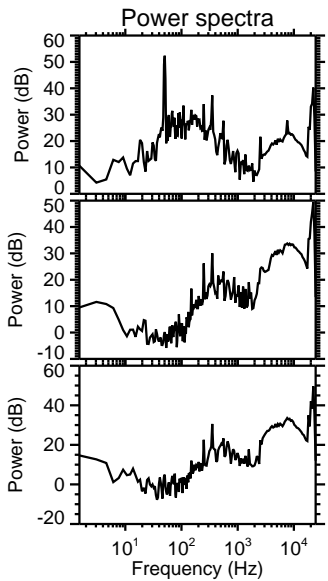
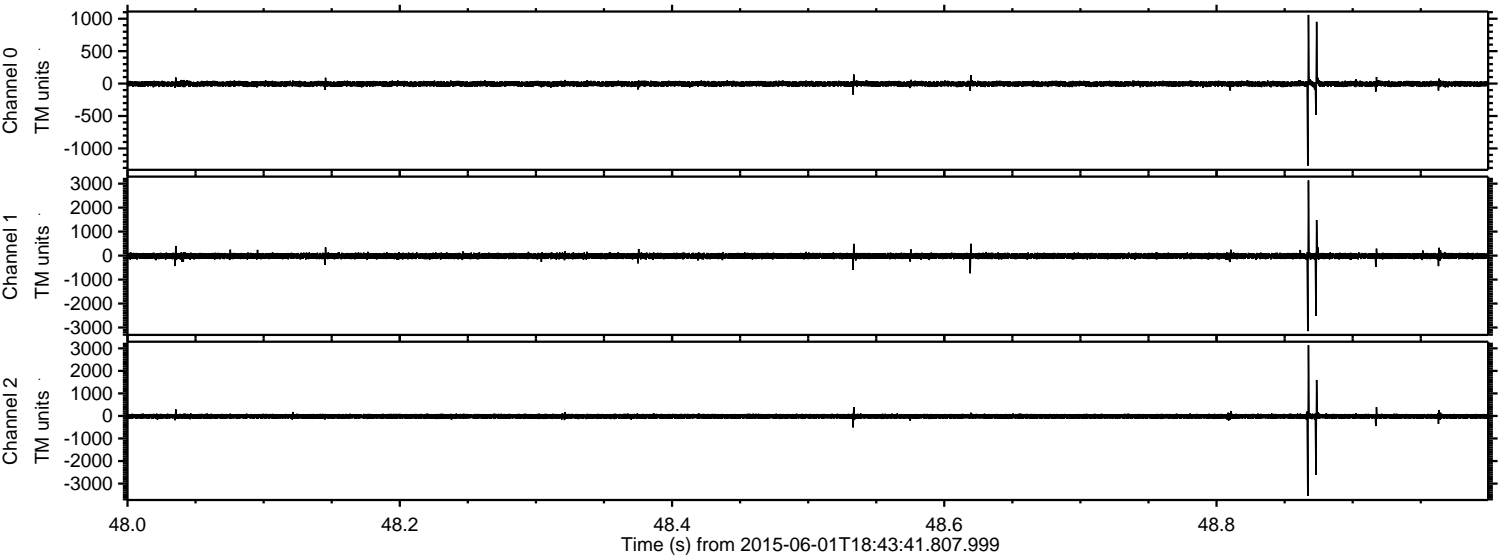
Channel 0
mn: -989
mx: 623
 μ : -4.1
 σ : 22.9

Channel 1
mn: -3601
mx: 2937
 μ : -16.4
 σ : 76.1

Channel 2
mn: -1838
mx: 1237
 μ : -16.7
 σ : 56.6

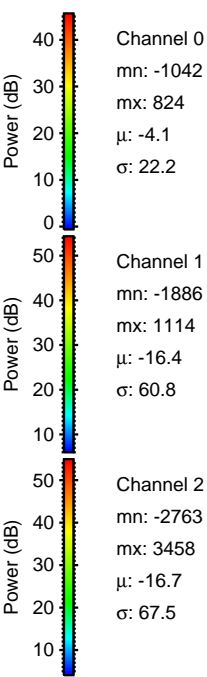
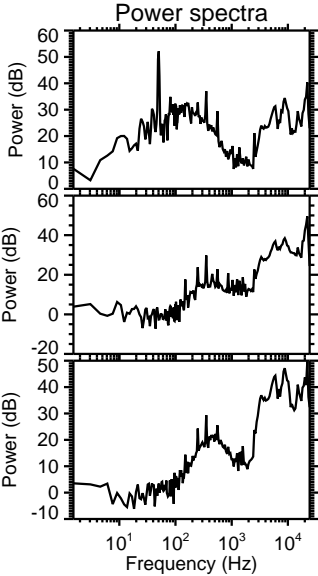
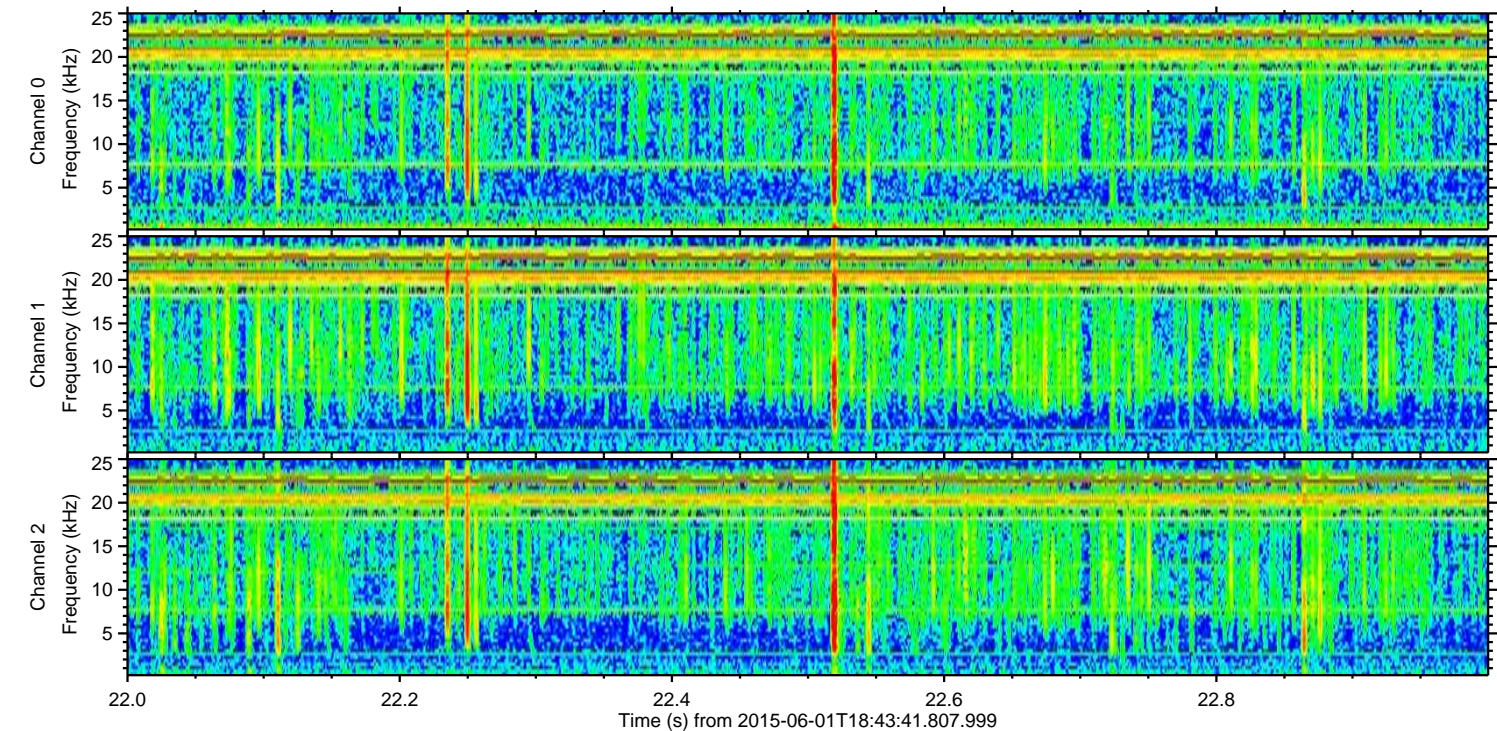
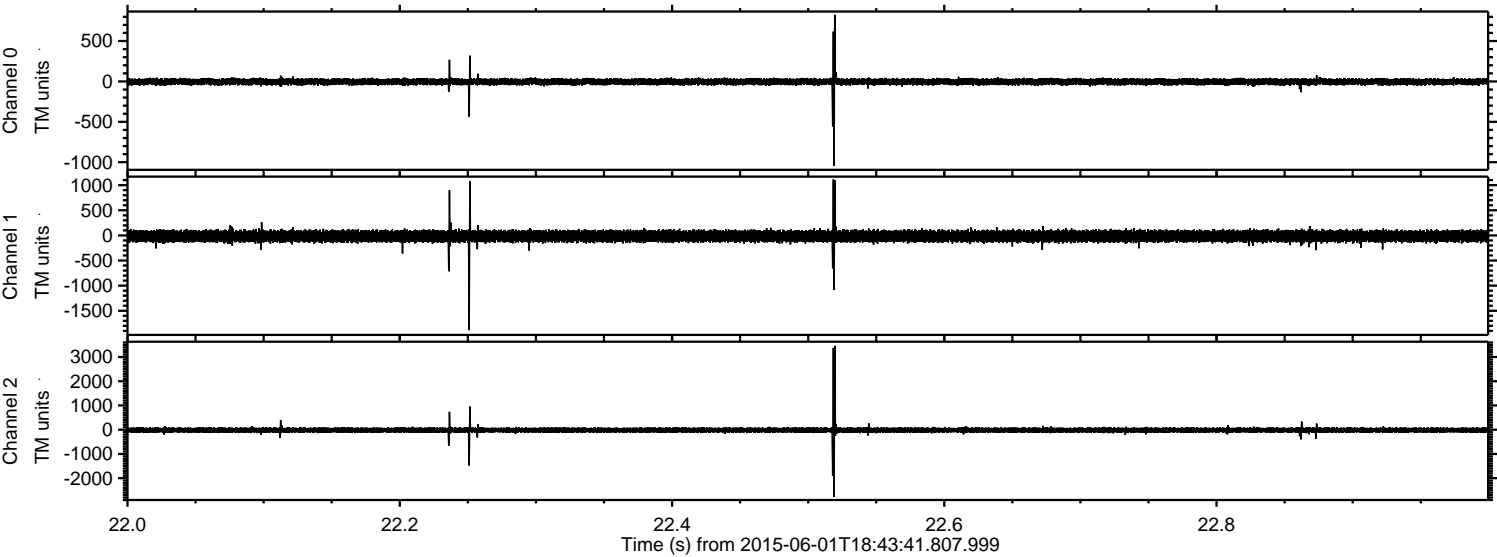
ELMAVAN 3D WAVEFORMS (Measured data sampled at 50 kHz) 49793 packets of 144 samples from 2015-06-01T18:43:41.807.999. Part 49/144

Processed Mon Jun 1 20:51:43 2015 by ELM ver.2012-10-06 from 001__elm20150601_184340__dat00.bin

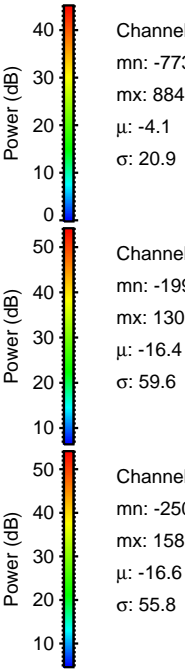
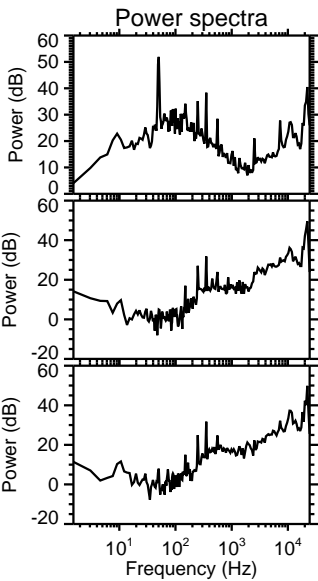
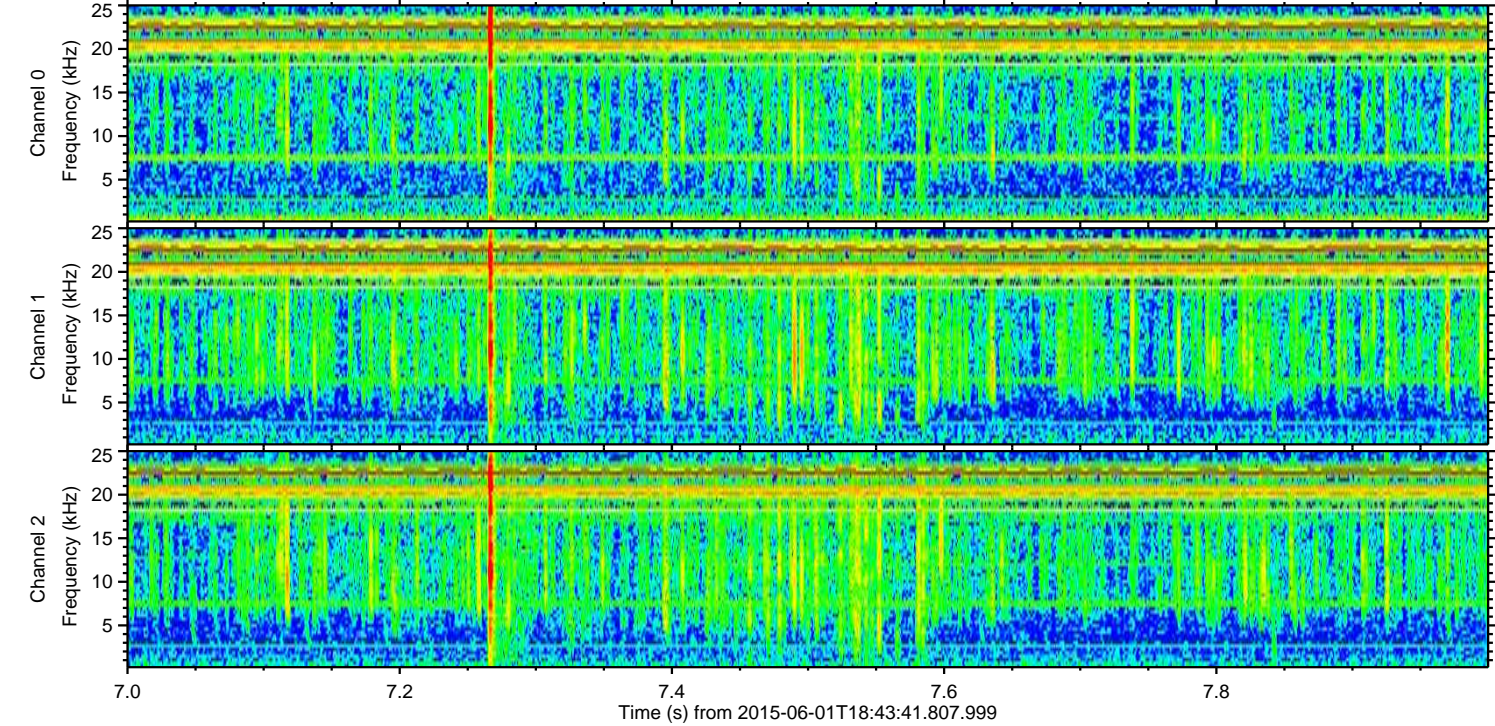
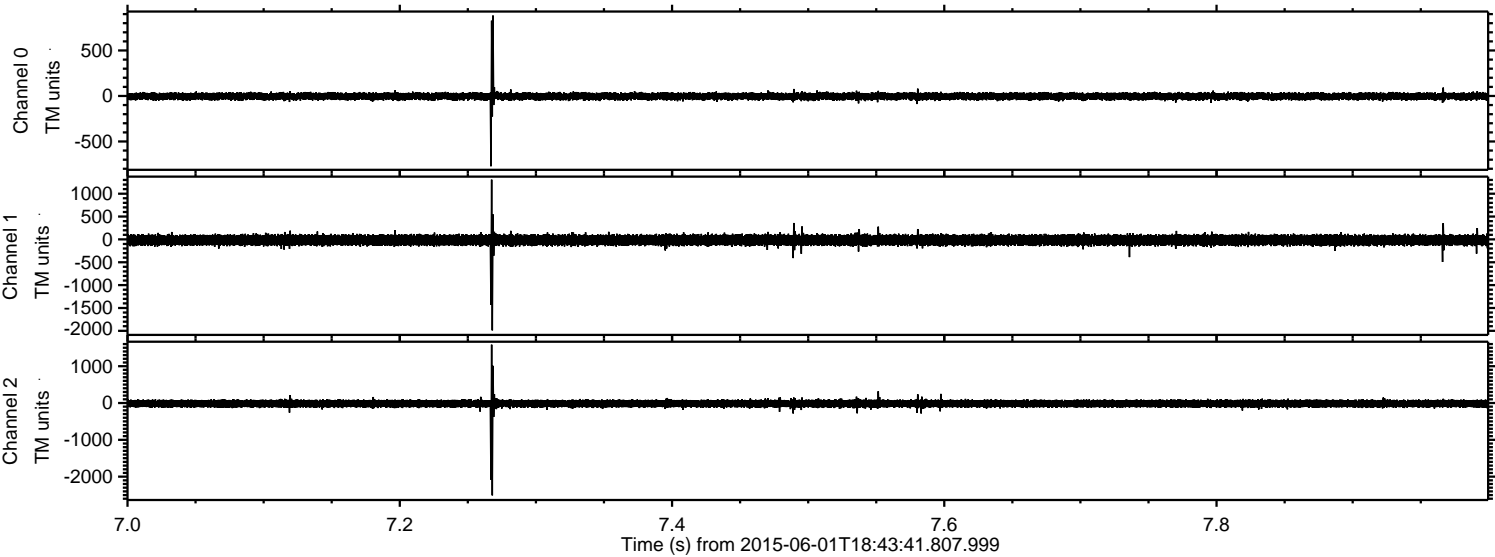


ELMAVAN 3D WAVEFORMS (Measured data sampled at 50 kHz) 49793 packets of 144 samples from 2015-06-01T18:43:41.807.999. Part 23/144

Processed Mon Jun 1 20:51:44 2015 by ELM ver.2012-10-06 from 001__elm20150601_184340__dat00.bin



Processed Mon Jun 1 20:51:45 2015 by ELM ver.2012-10-06 from 001__elm20150601_184340__dat00.bin

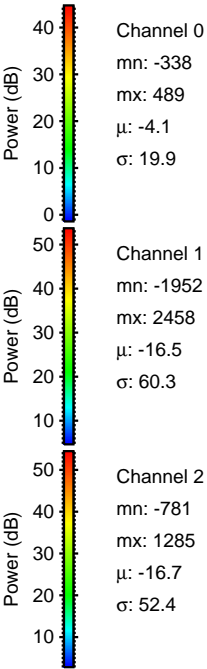
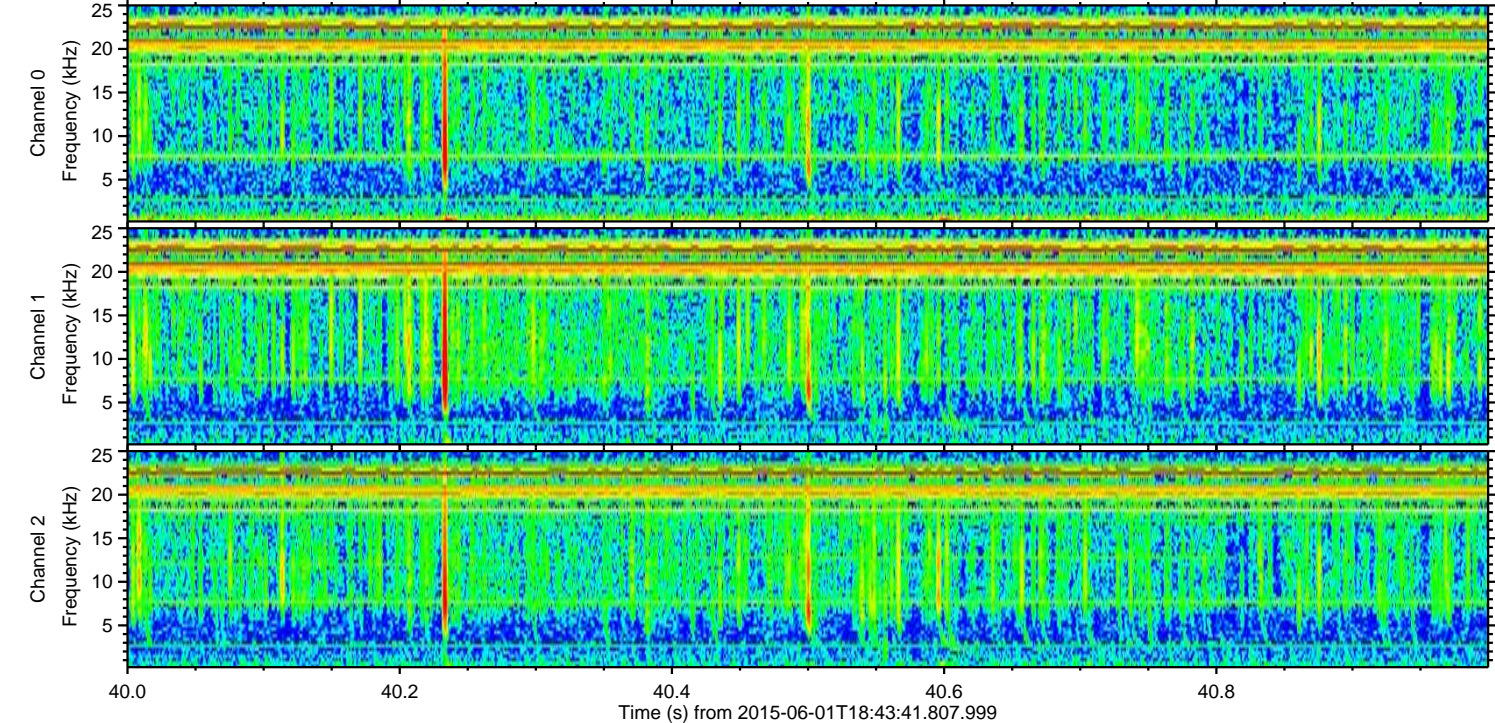
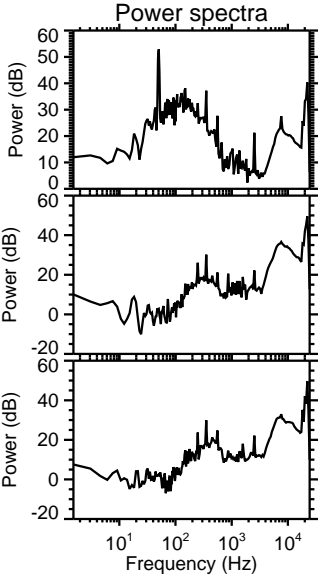
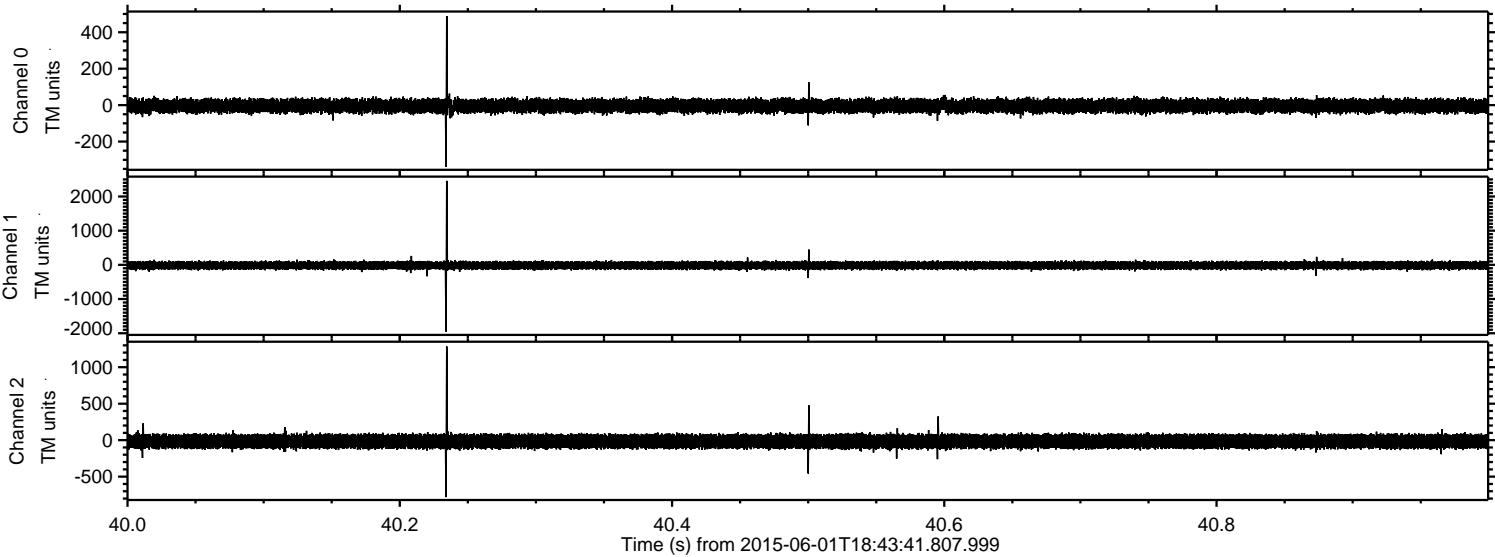


Channel 0
mn: -773
mx: 884
 μ : -4.1
 σ : 20.9

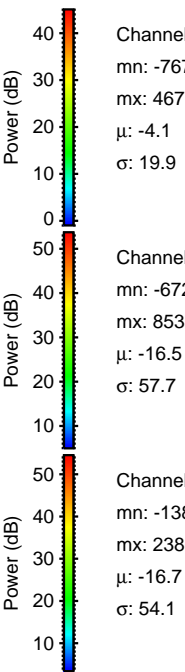
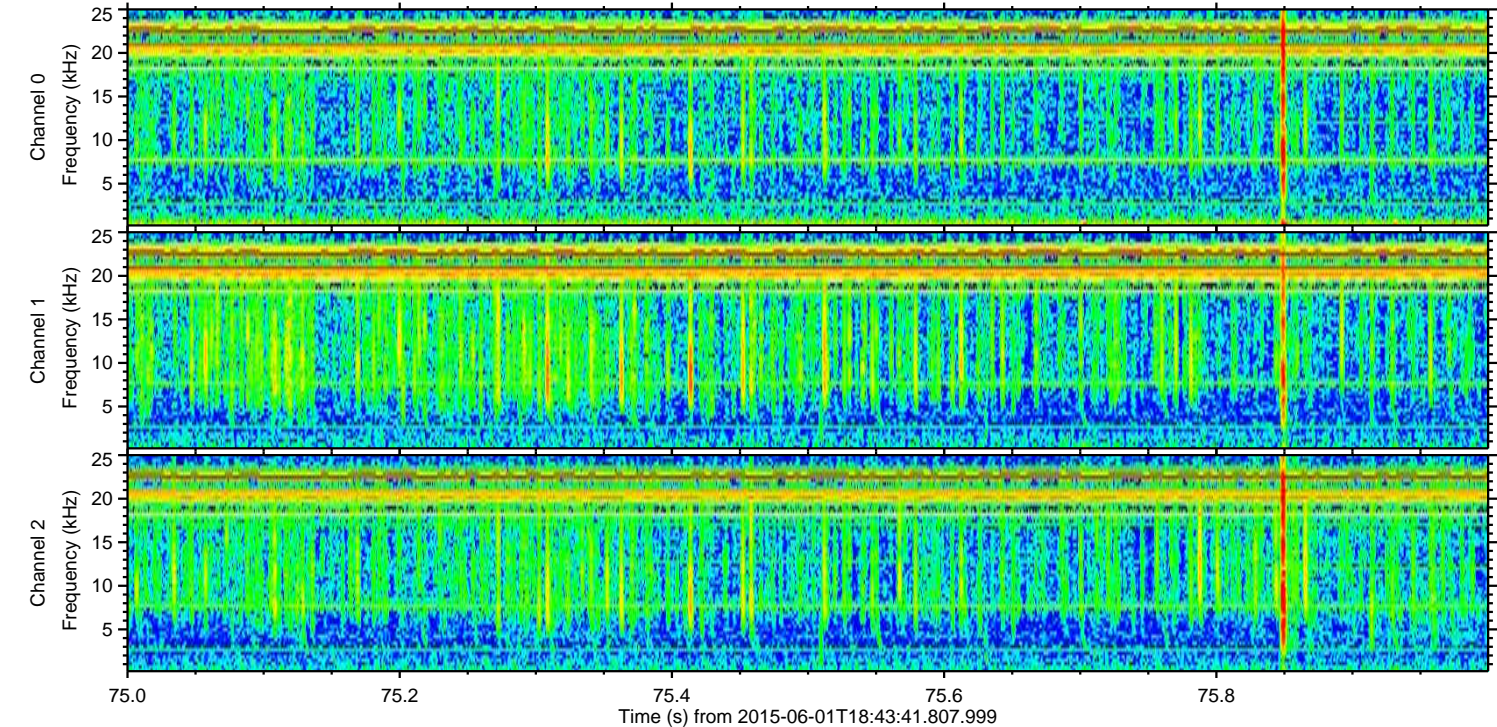
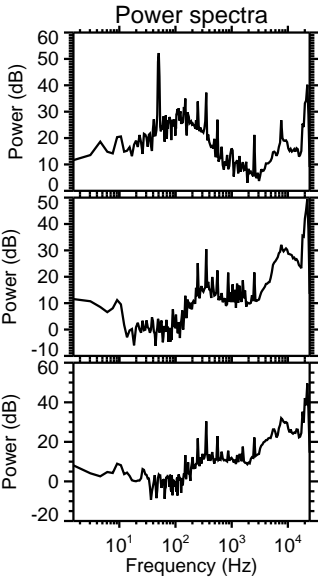
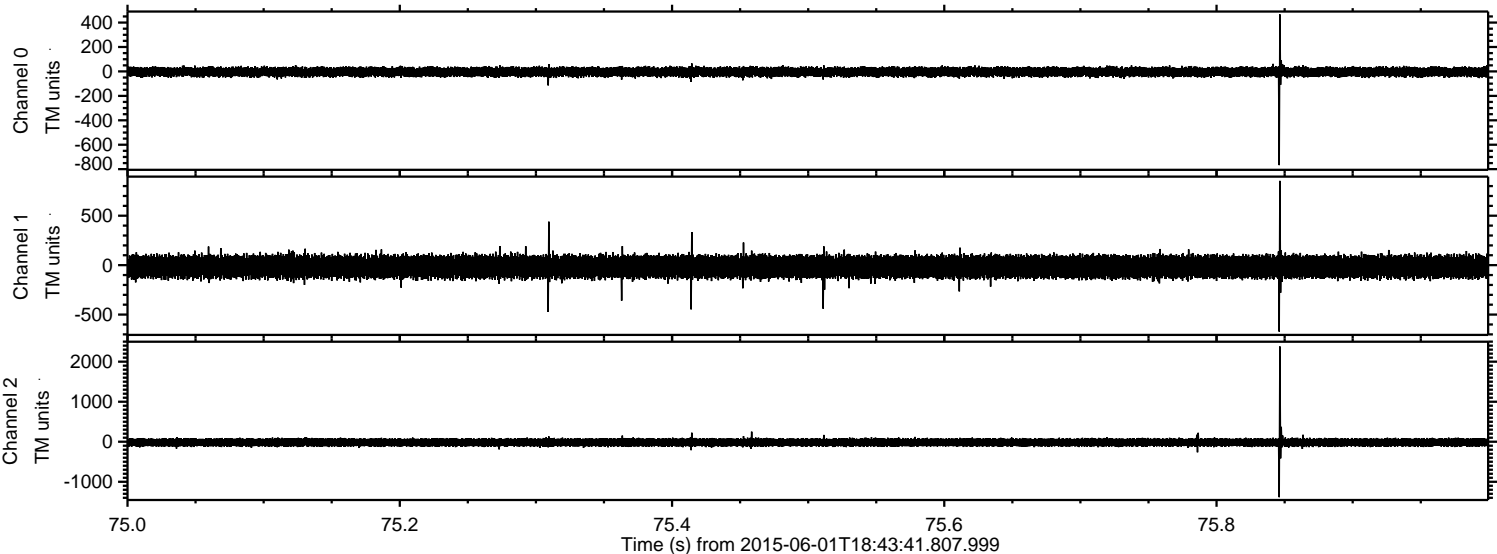
Channel 1
mn: -1990
mx: 1308
 μ : -16.4
 σ : 59.6

Channel 2
mn: -2509
mx: 1585
 μ : -16.6
 σ : 55.8

Processed Mon Jun 1 20:51:46 2015 by ELM ver.2012-10-06 from 001__elm20150601_184340__dat00.bin



Processed Mon Jun 1 20:51:47 2015 by ELM ver.2012-10-06 from 001__elm20150601_184340__dat00.bin



Channel 0
mn: -767
mx: 467
 μ : -4.1
 σ : 19.9

Channel 1
mn: -672
mx: 853
 μ : -16.5
 σ : 57.7

Channel 2
mn: -1386
mx: 2380
 μ : -16.7
 σ : 54.1

ELMAVAN 3D WAVEFORMS (Measured data sampled at 50 kHz) 49793 packets of 144 samples from 2015-06-01T18:43:41.807.999. Part 125/144

Processed Mon Jun 1 20:51:48 2015 by ELM ver.2012-10-06 from 001__elm20150601_184340__dat00.bin

