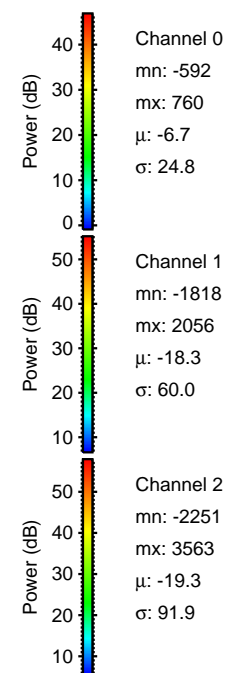
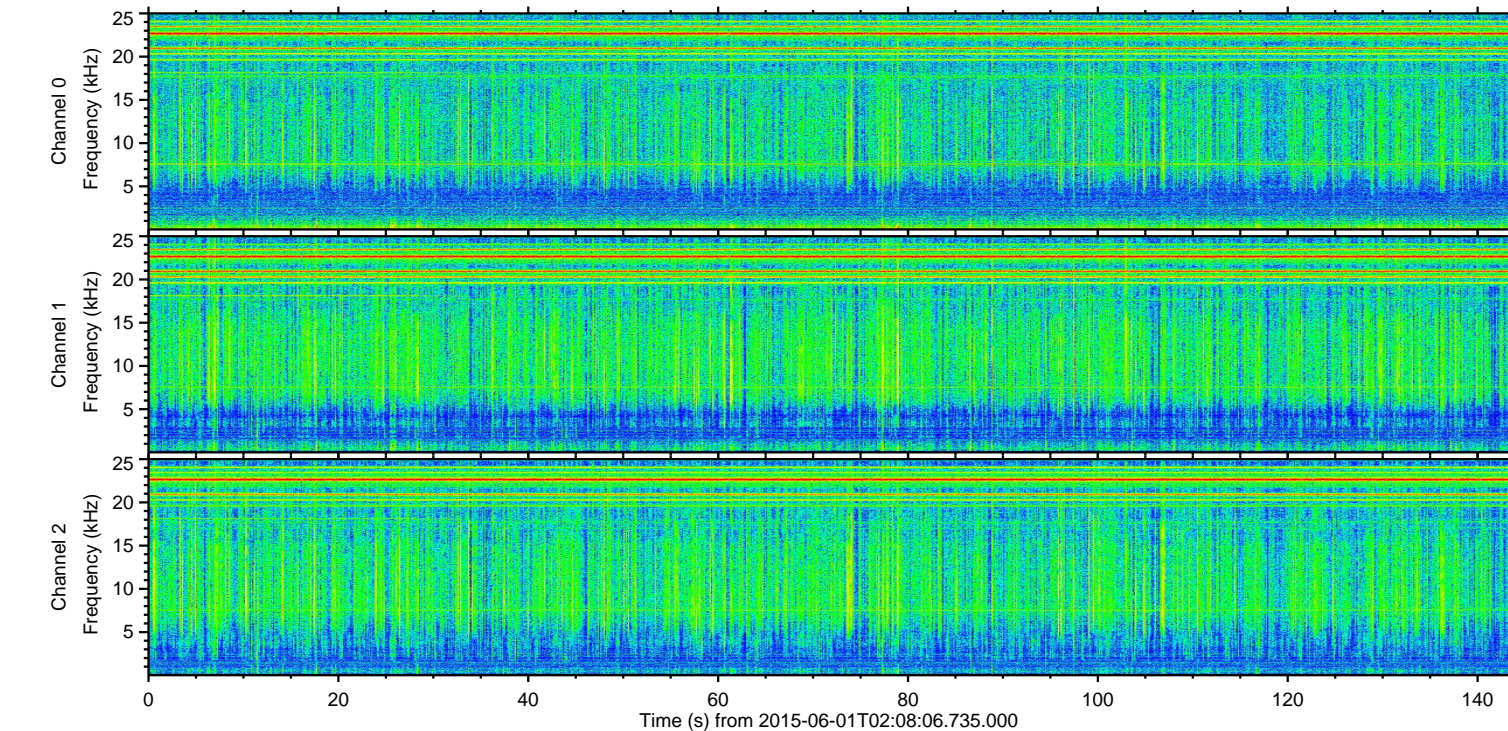
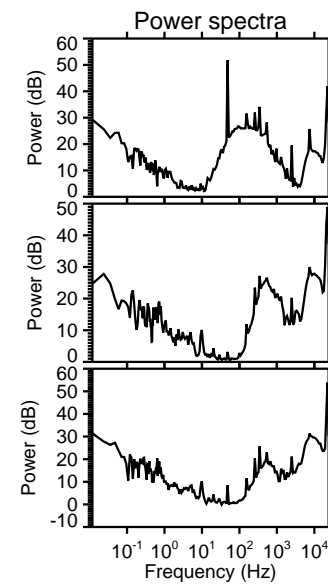
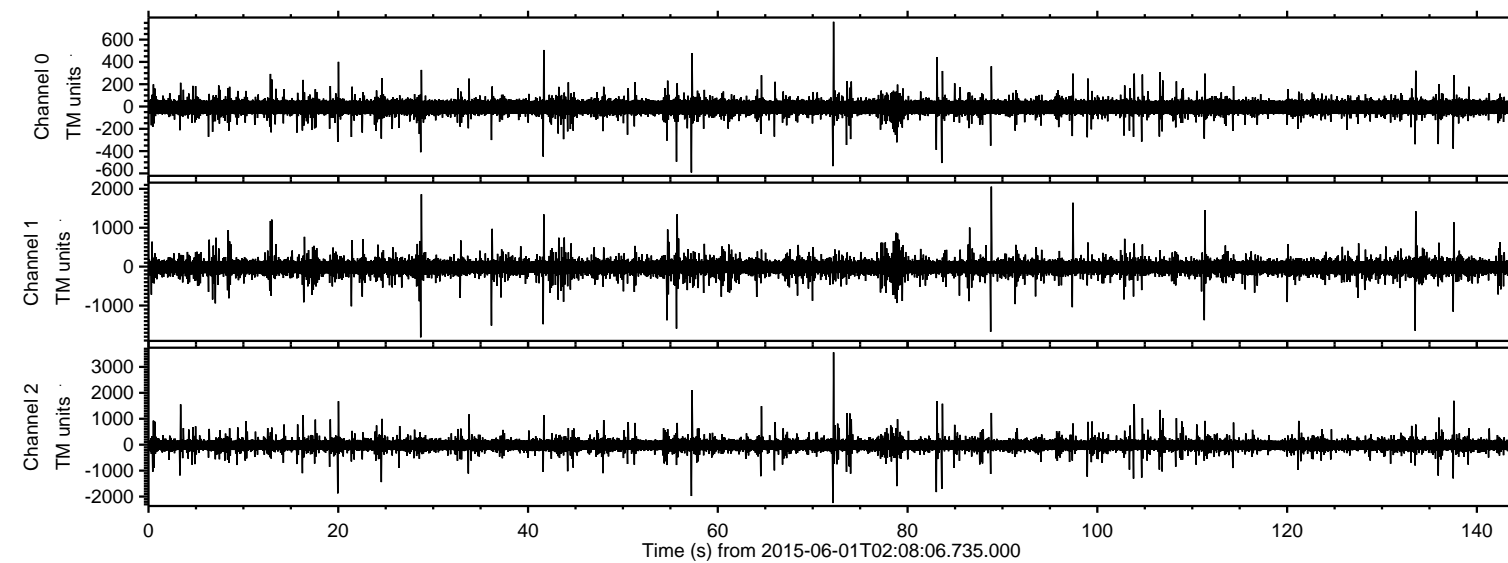
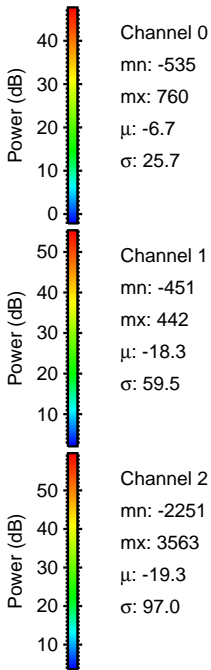
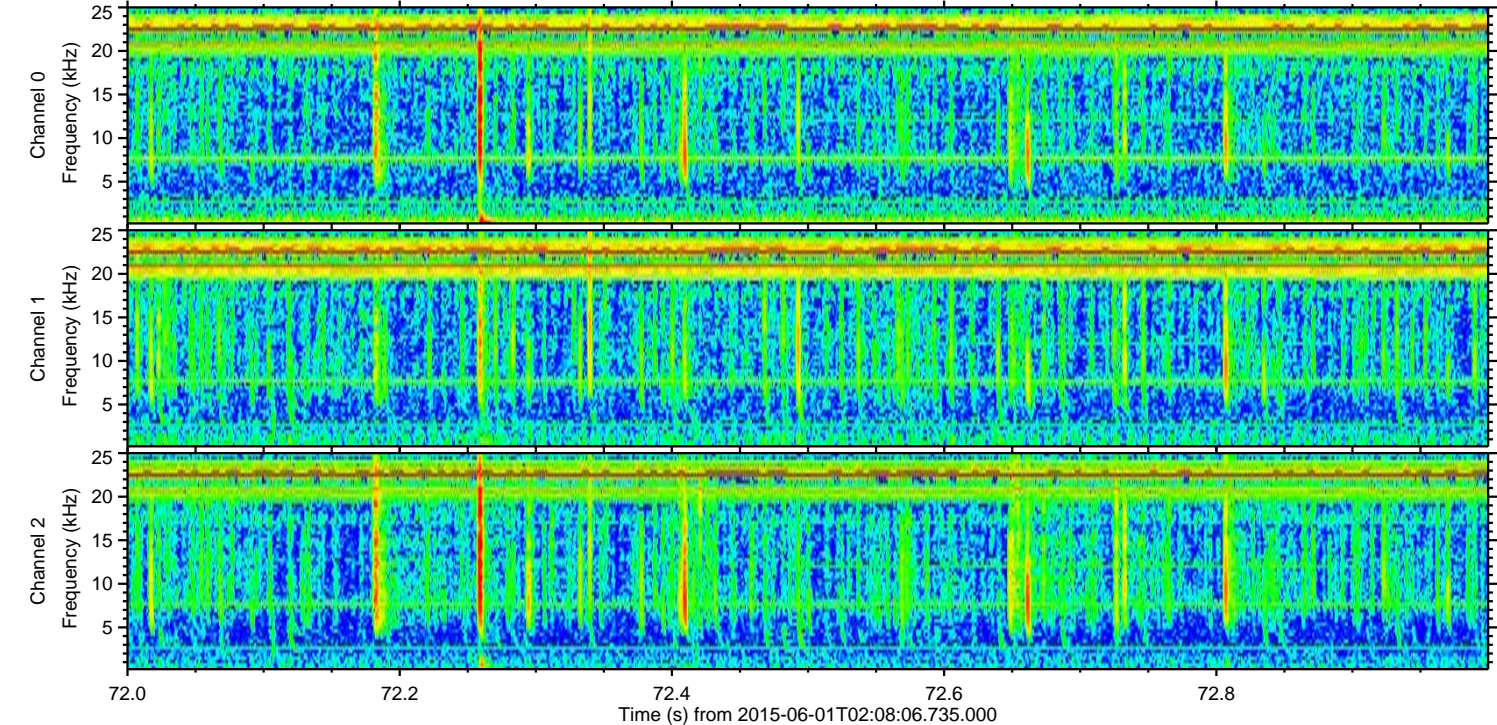
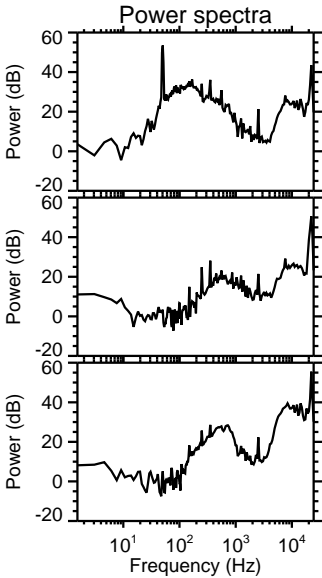
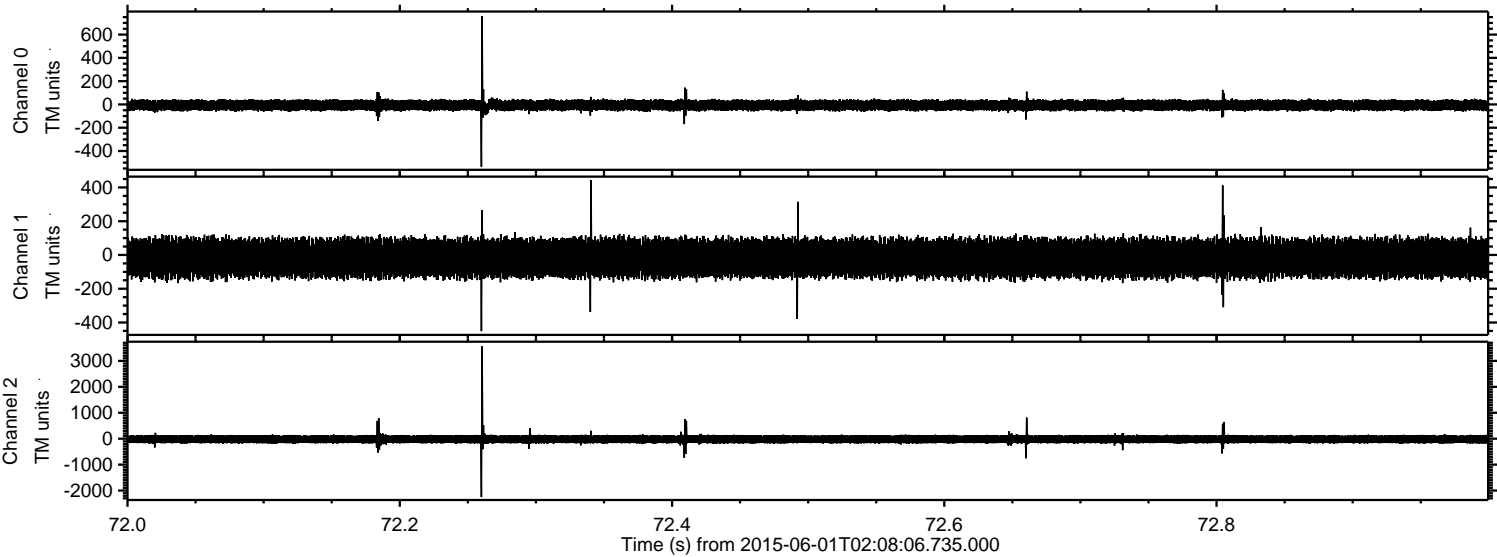


ELMAVAN 3D WAVEFORMS (Measured data sampled at 50 kHz) 49791 packets of 144 samples from 2015-06-01T02:08:06.735.000.

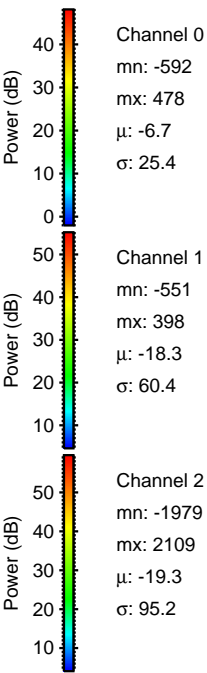
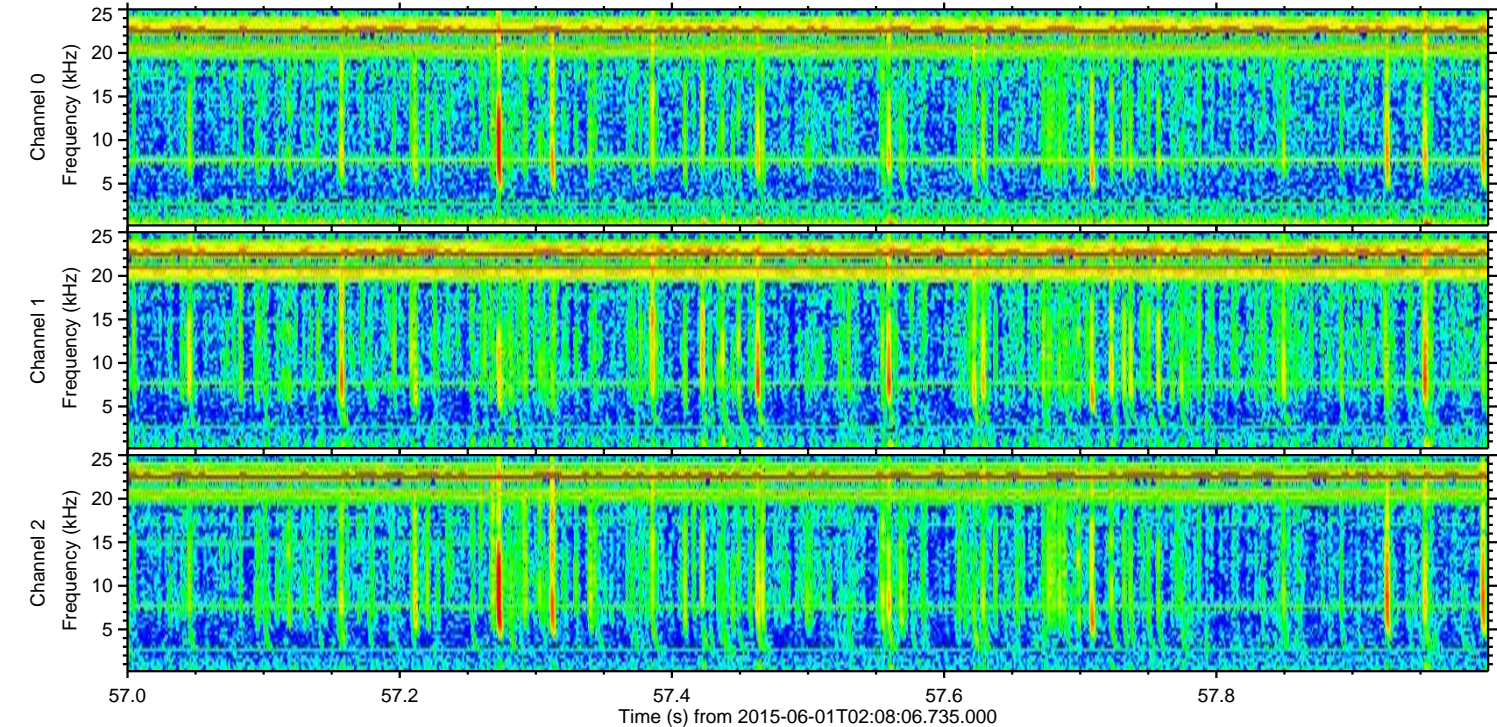
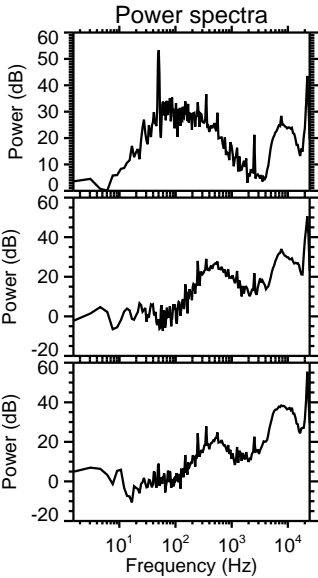
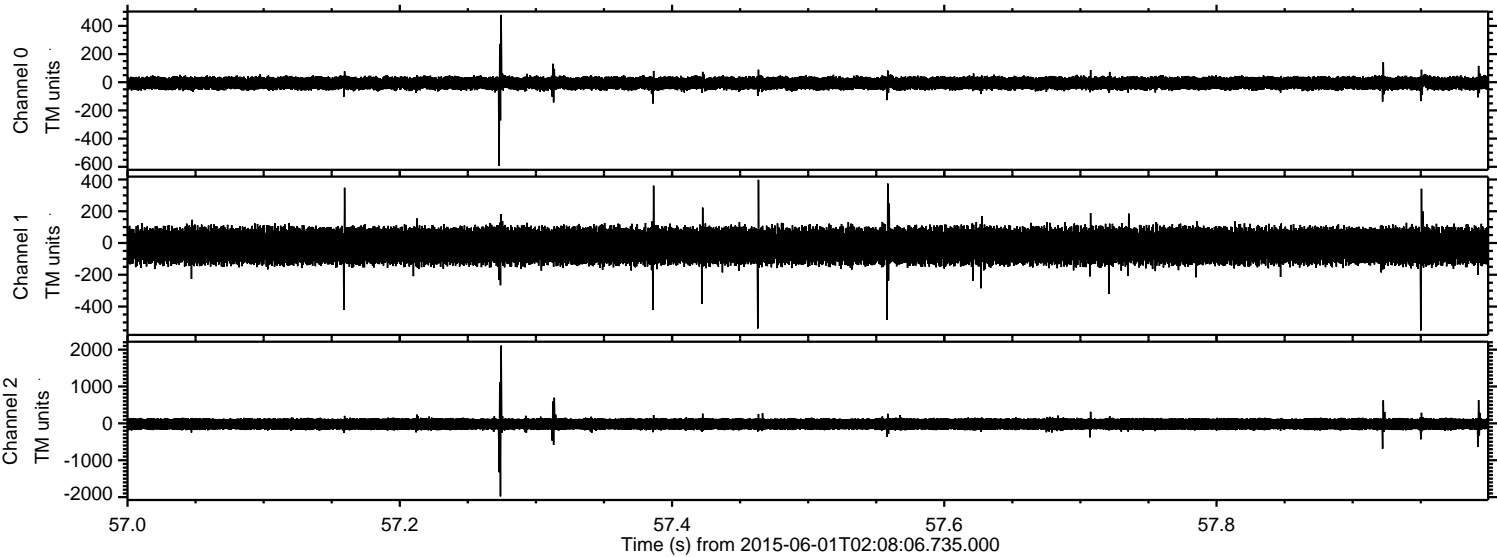
Processed Mon Jun 1 04:26:59 2015 by ELM ver.2012-10-06 from 001__elm20150601_020805__dat00.bin



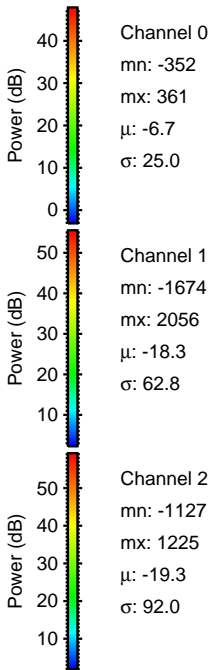
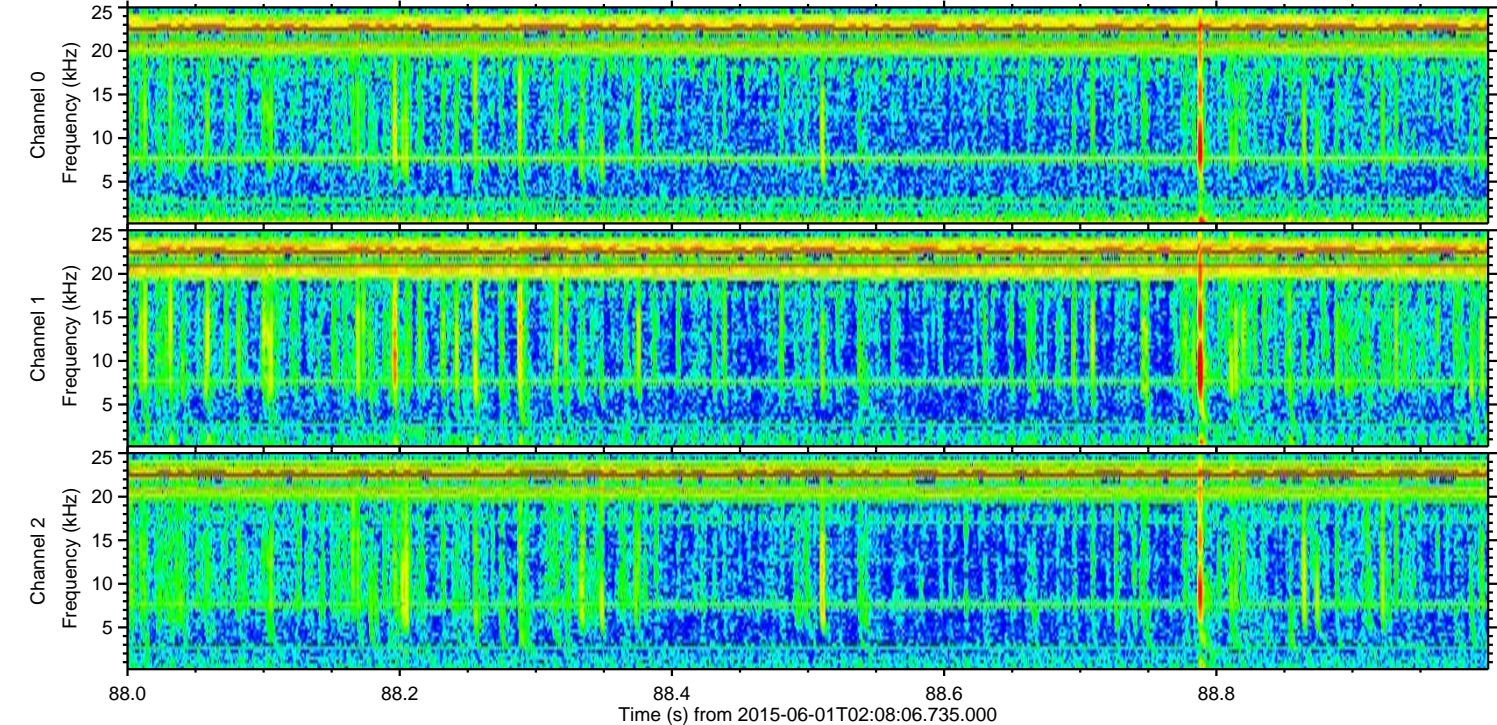
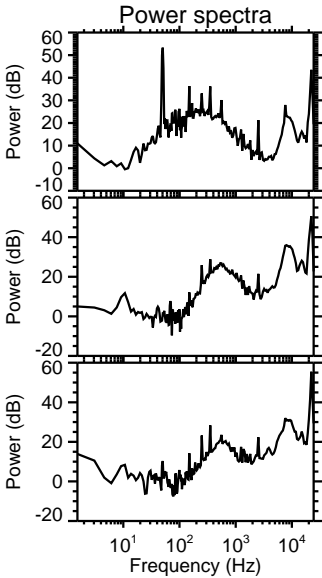
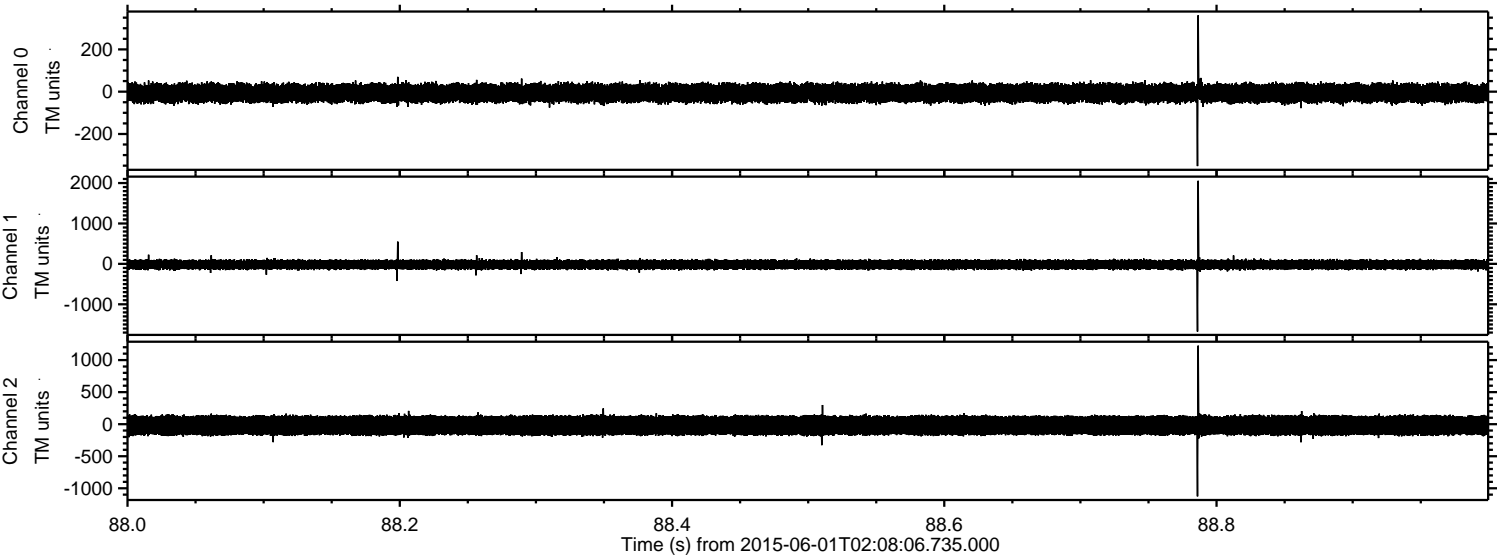
Processed Mon Jun 1 04:27:10 2015 by ELM ver.2012-10-06 from 001__elm20150601_020805__dat00.bin



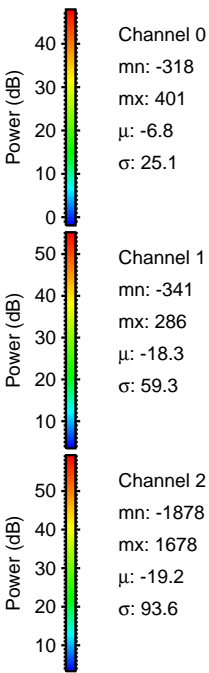
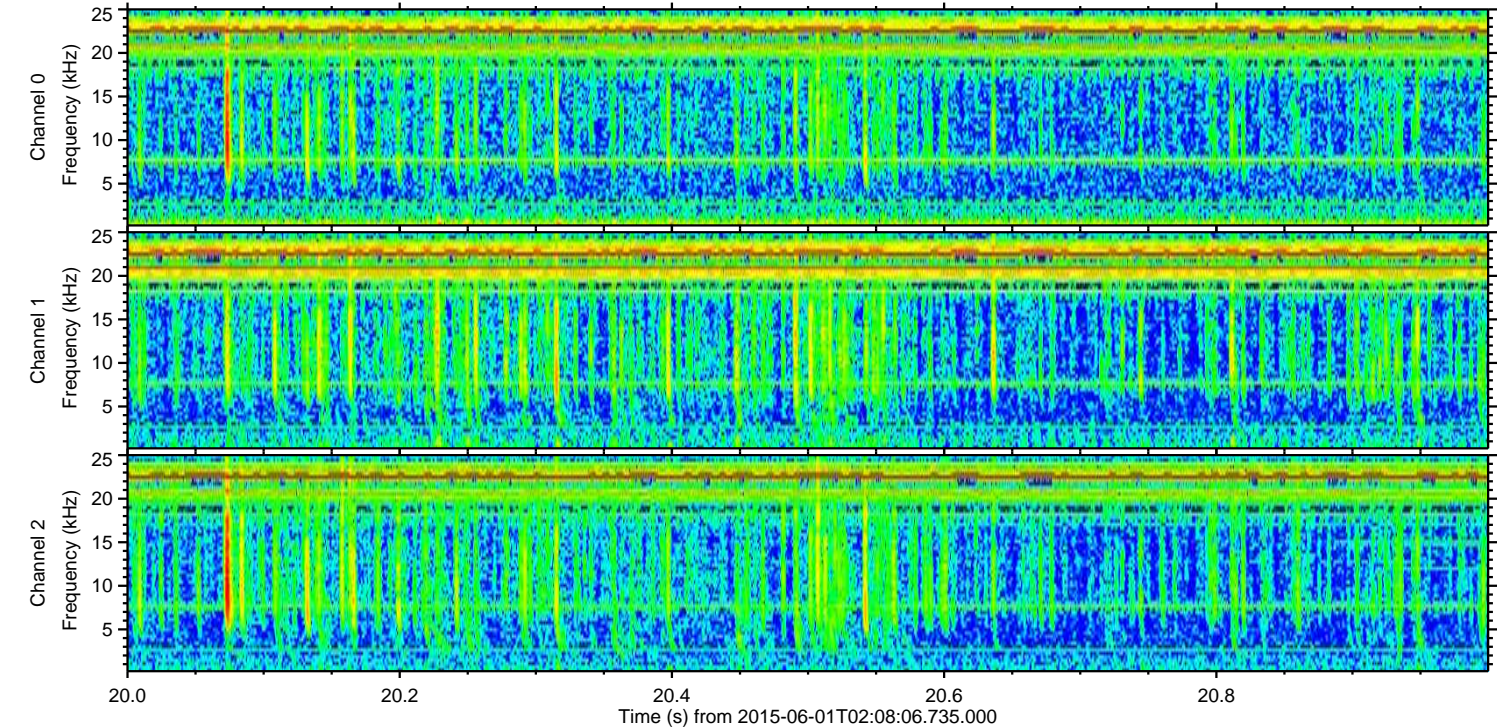
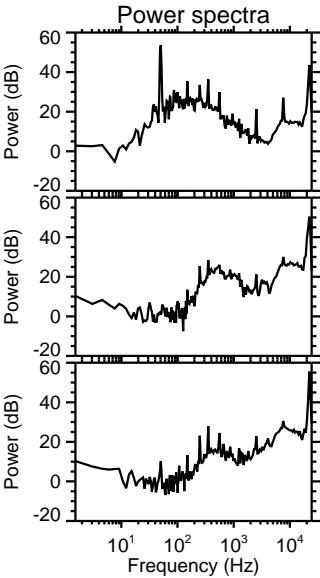
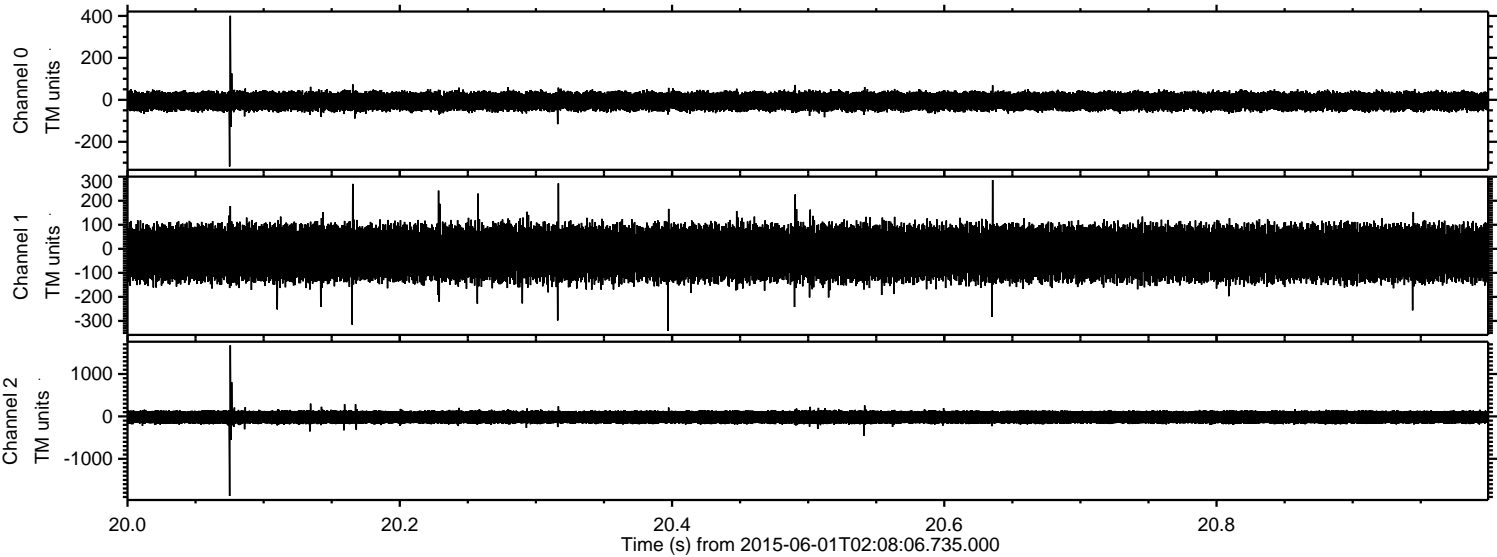
Processed Mon Jun 1 04:27:11 2015 by ELM ver.2012-10-06 from 001__elm20150601_020805__dat00.bin



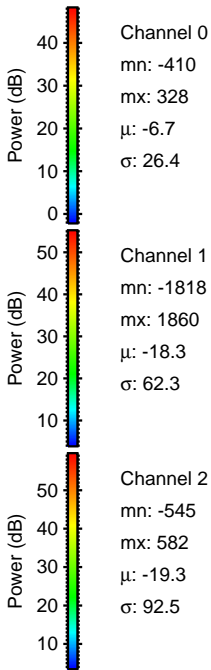
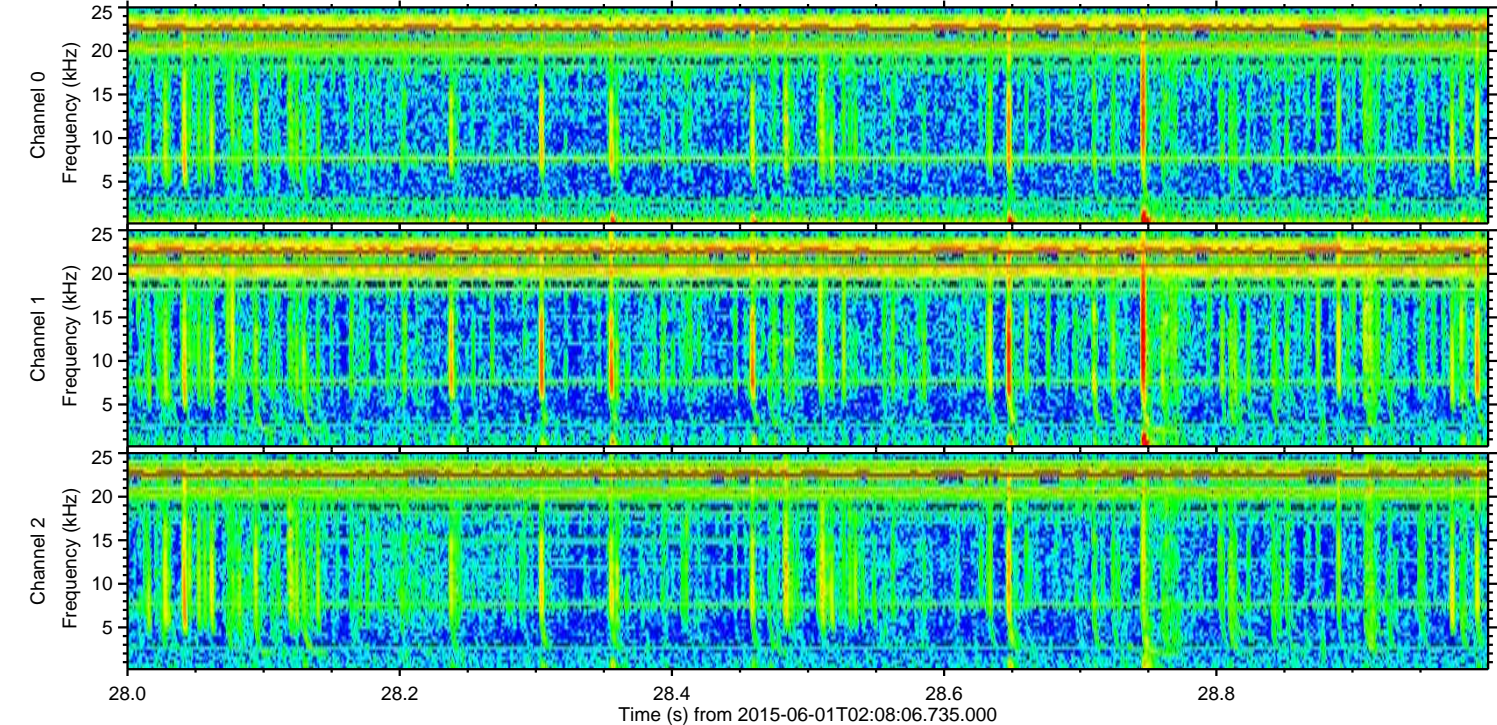
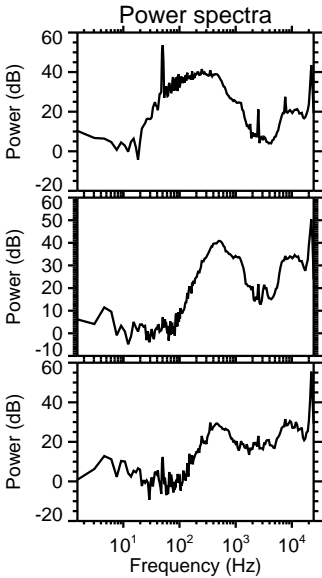
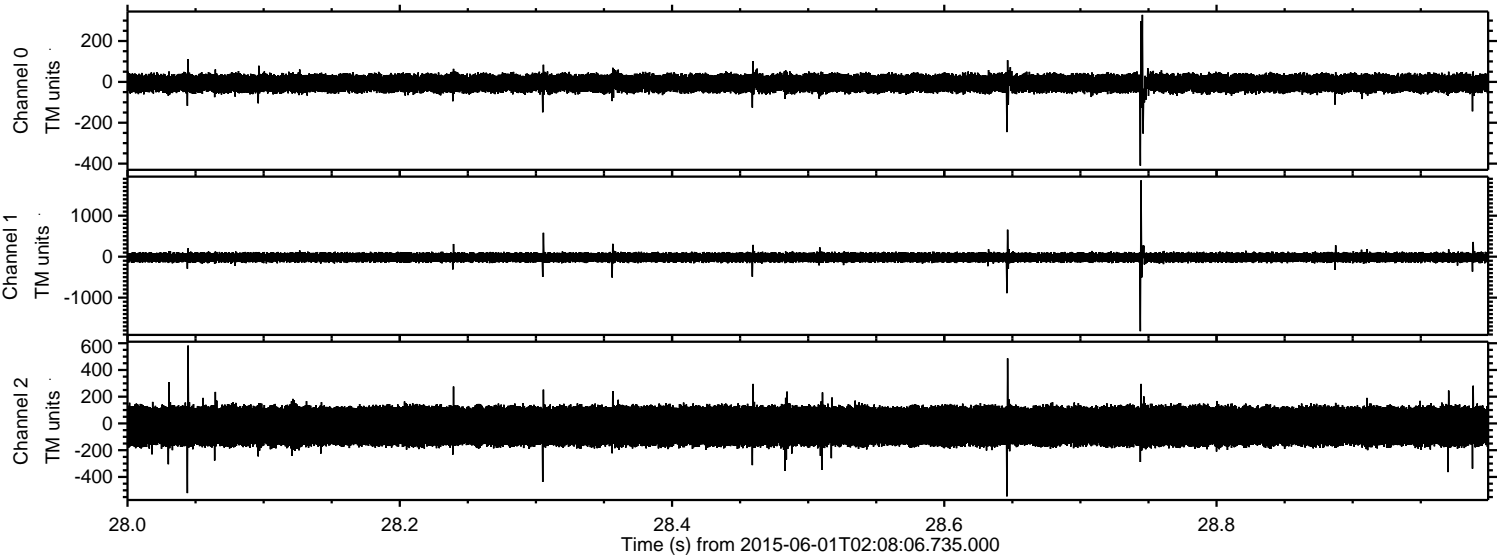
Processed Mon Jun 1 04:27:12 2015 by ELM ver.2012-10-06 from 001__elm20150601_020805__dat00.bin



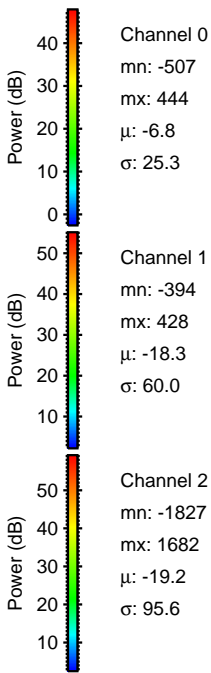
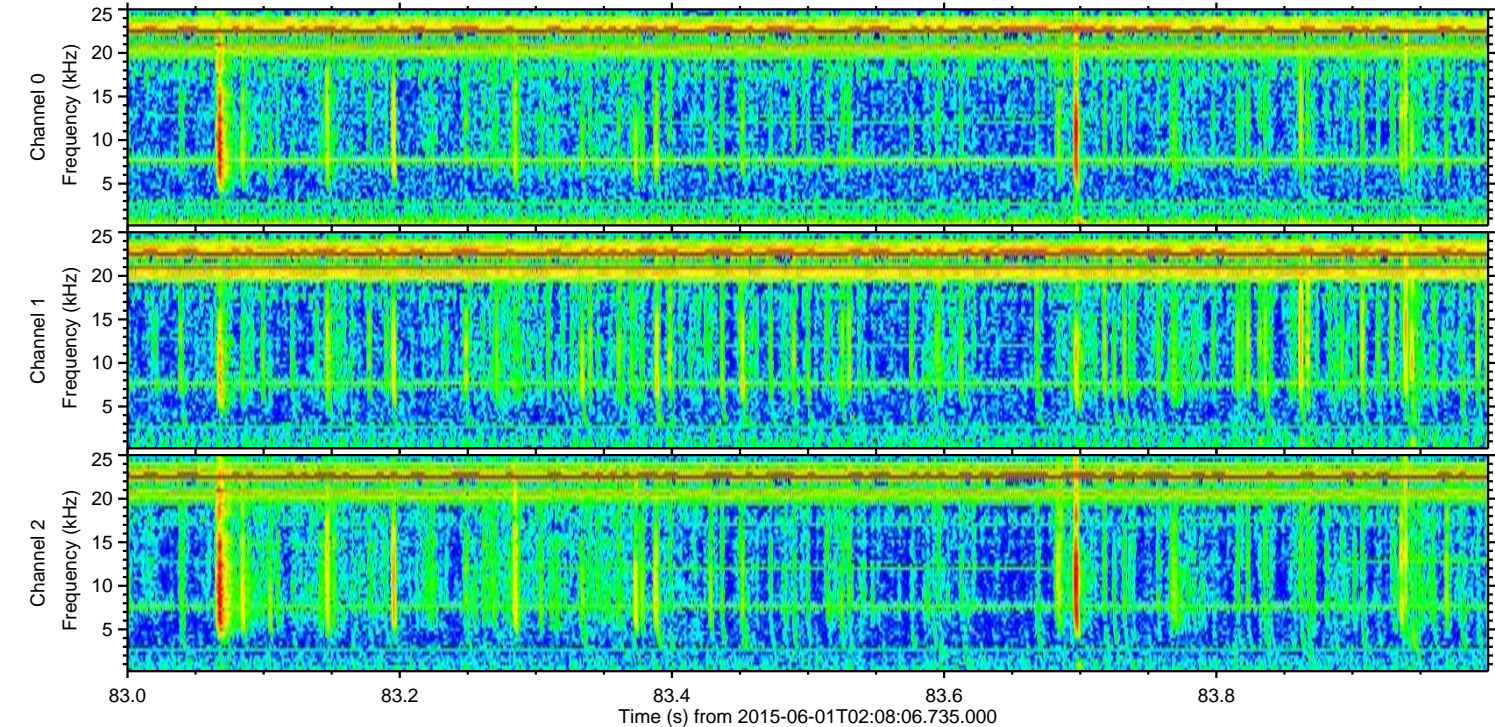
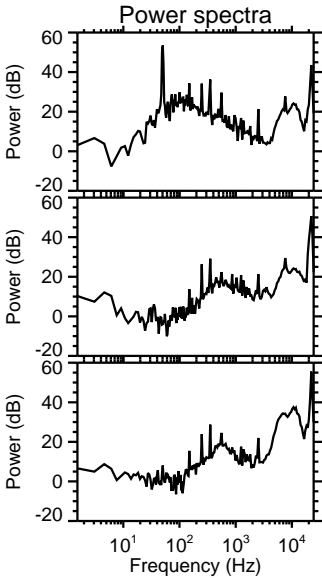
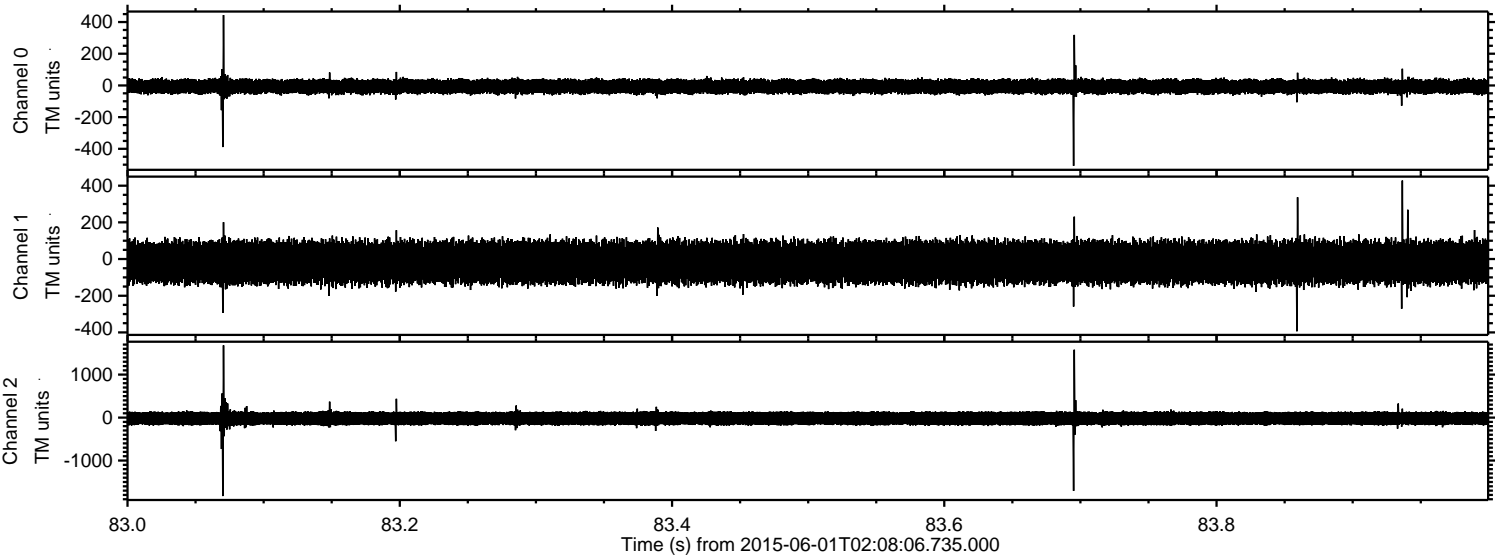
Processed Mon Jun 1 04:27:13 2015 by ELM ver.2012-10-06 from 001__elm20150601_020805__dat00.bin



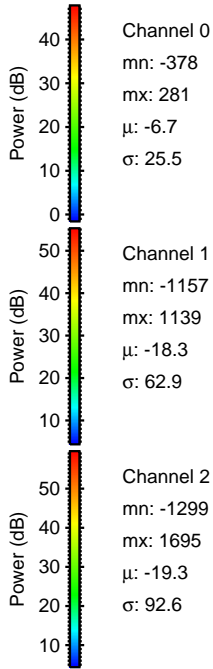
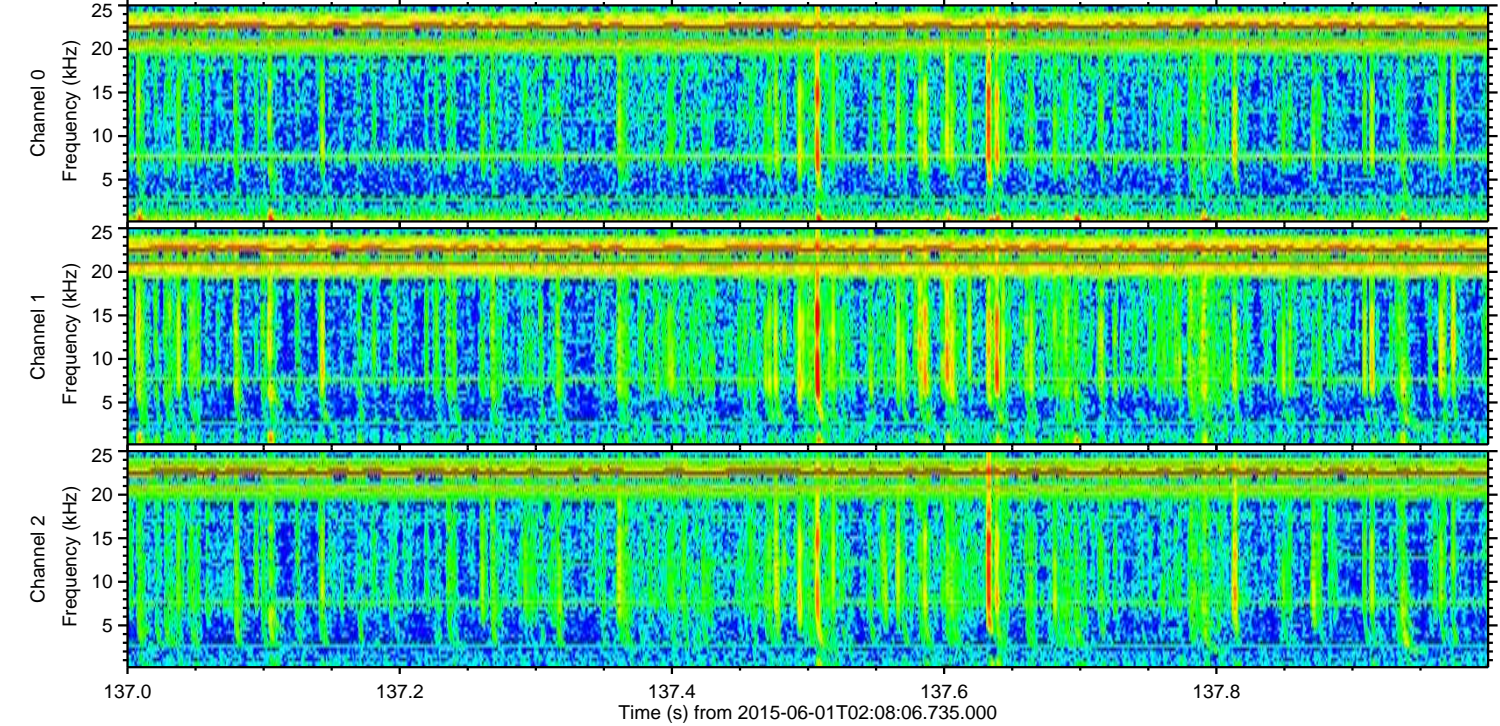
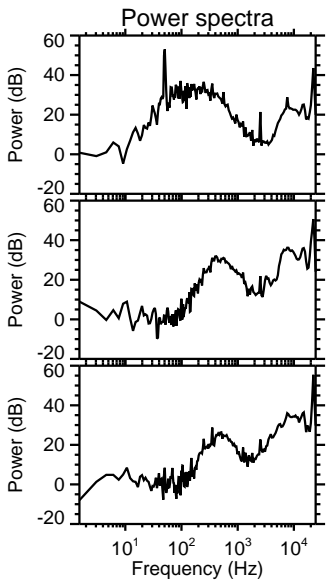
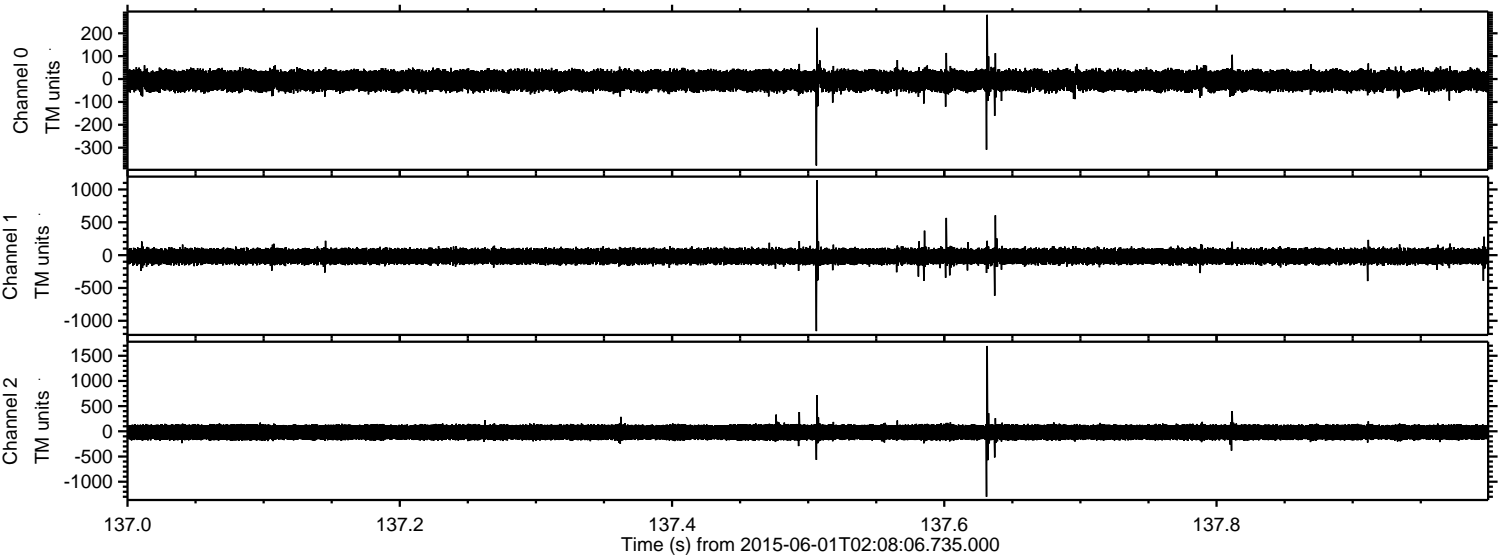
Processed Mon Jun 1 04:27:14 2015 by ELM ver.2012-10-06 from 001__elm20150601_020805__dat00.bin



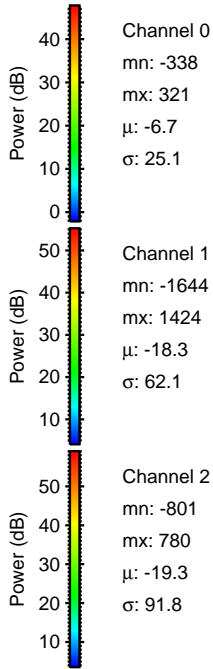
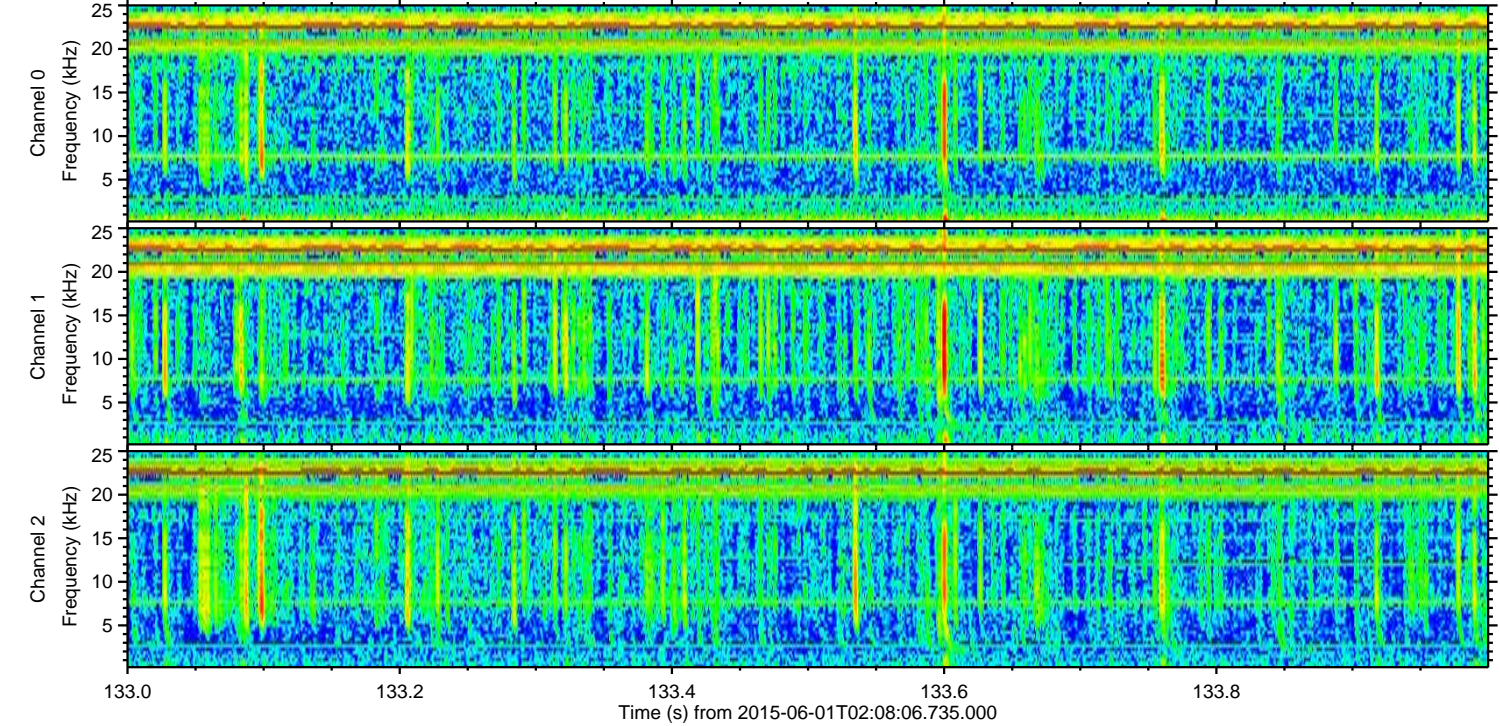
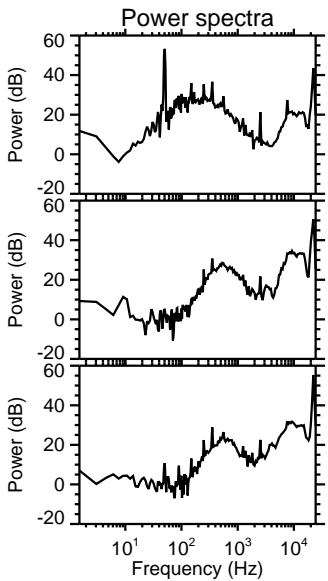
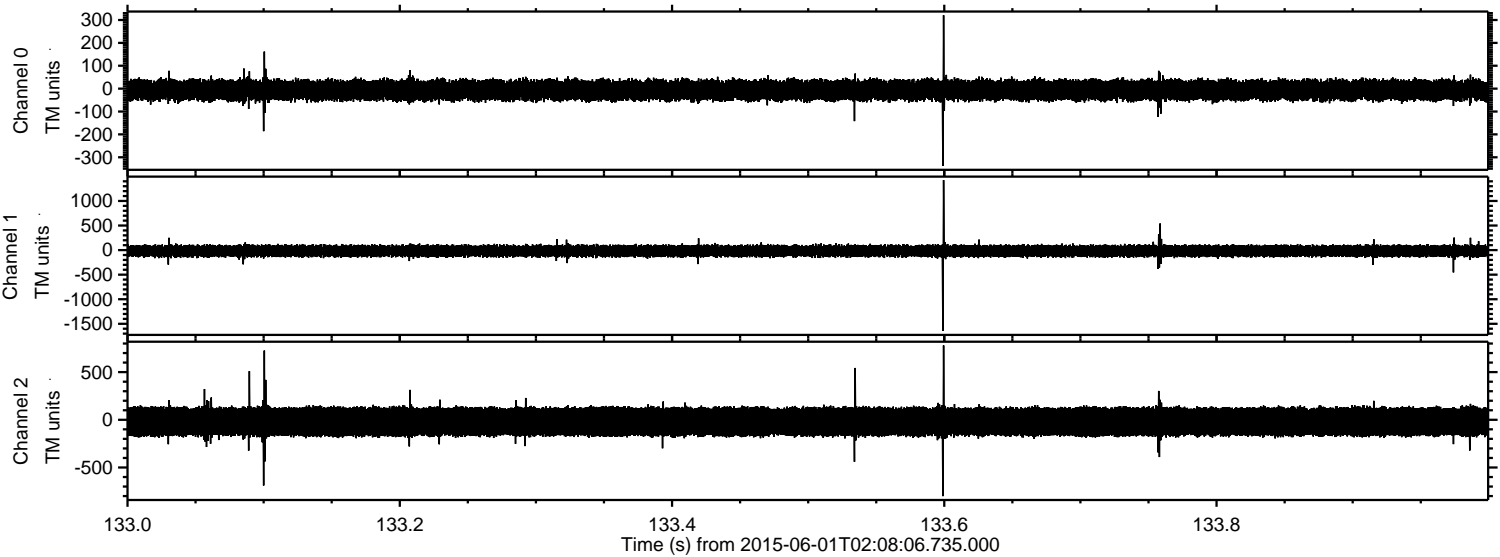
Processed Mon Jun 1 04:27:15 2015 by ELM ver.2012-10-06 from 001__elm20150601_020805__dat00.bin



Processed Mon Jun 1 04:27:16 2015 by ELM ver.2012-10-06 from 001__elm20150601_020805__dat00.bin



Processed Mon Jun 1 04:27:17 2015 by ELM ver.2012-10-06 from 001__elm20150601_020805__dat00.bin

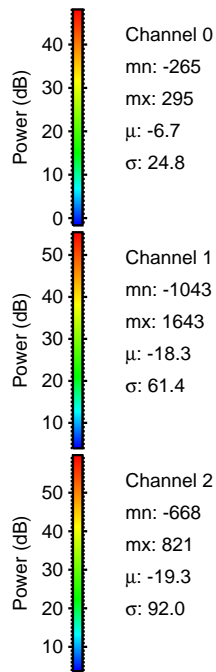
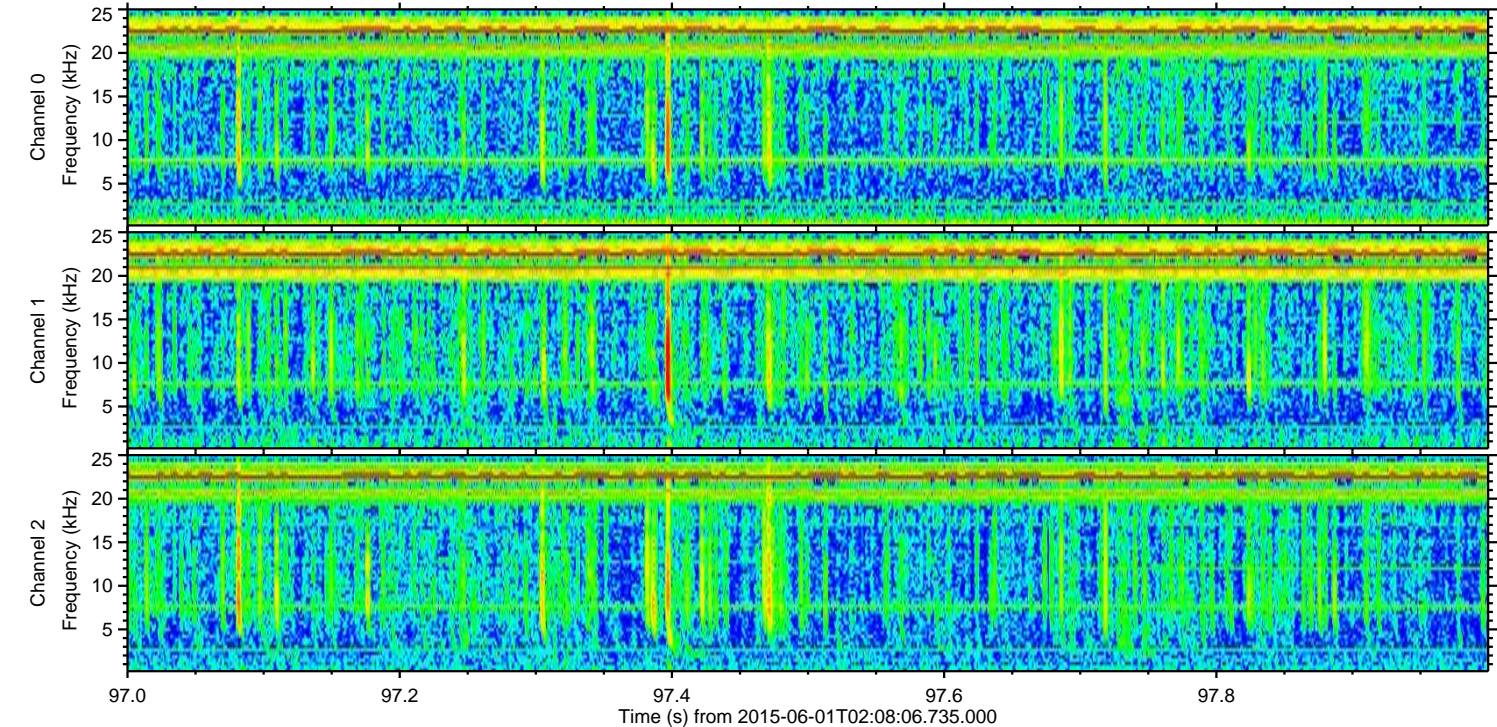
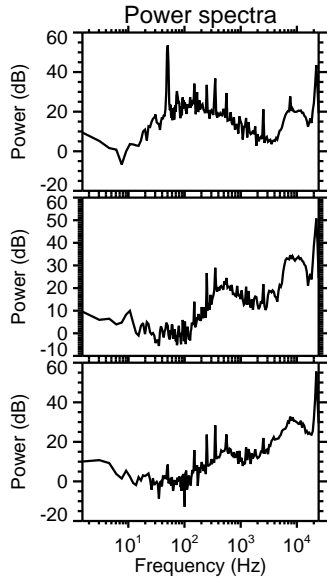
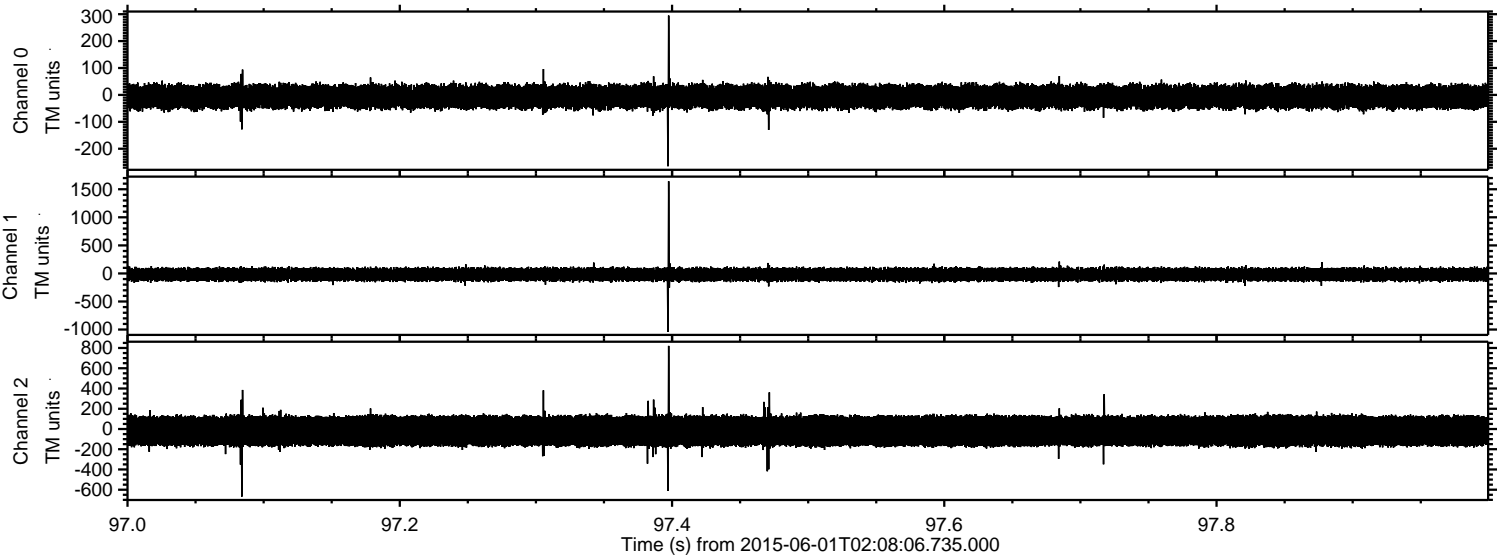


Channel 0
mn: -338
mx: 321
 μ : -6.7
 σ : 25.1

Channel 1
mn: -1644
mx: 1424
 μ : -18.3
 σ : 62.1

Channel 2
mn: -801
mx: 780
 μ : -19.3
 σ : 91.8

Processed Mon Jun 1 04:27:18 2015 by ELM ver.2012-10-06 from 001__elm20150601_020805__dat00.bin



ELMAVAN 3D WAVEFORMS (Measured data sampled at 50 kHz) 49791 packets of 144 samples from 2015-06-01T02:08:06.735.000. Part 118/144

