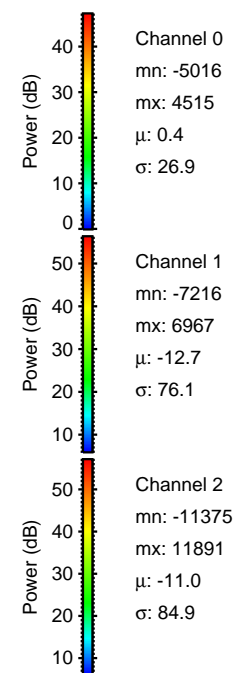
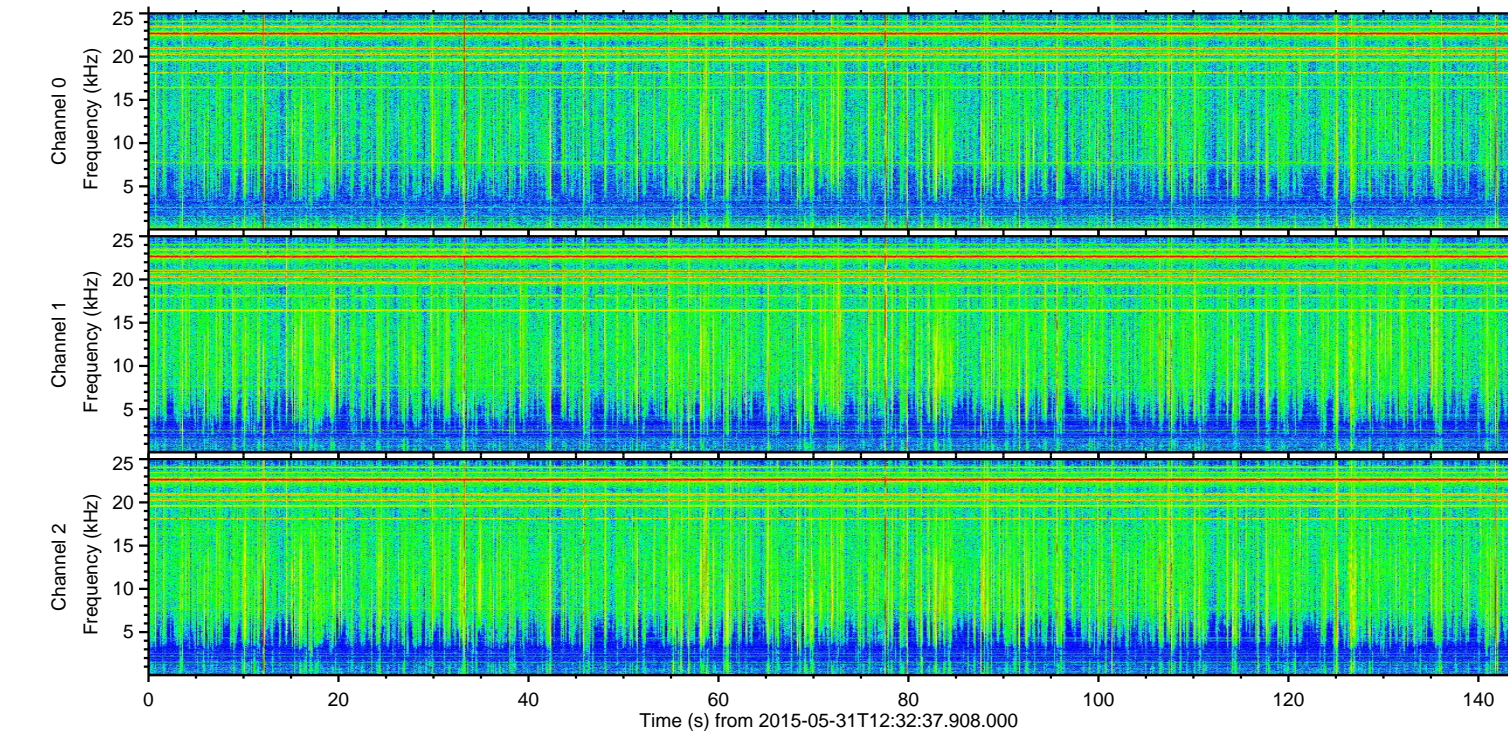
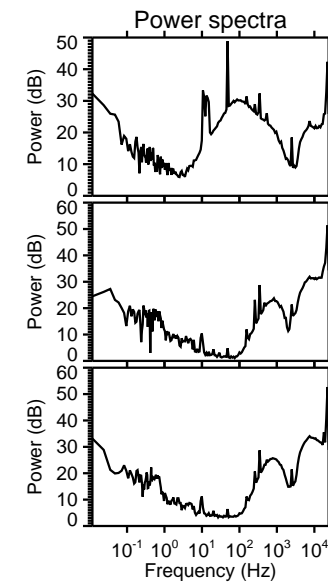
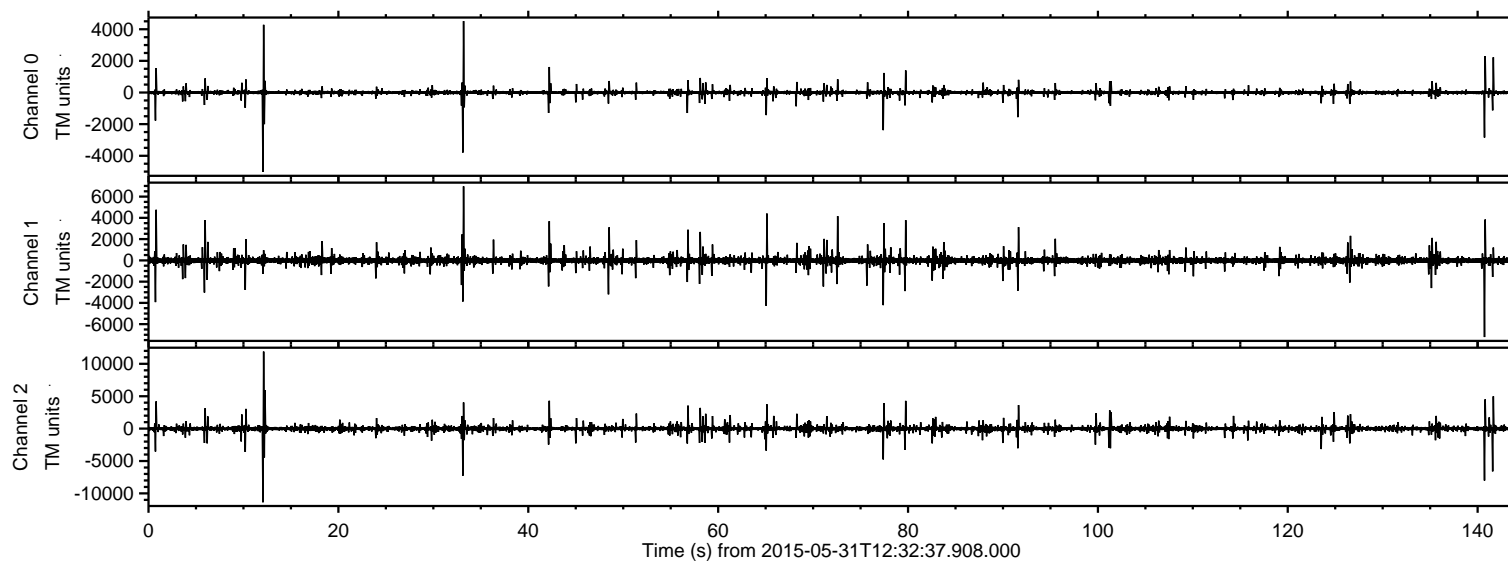
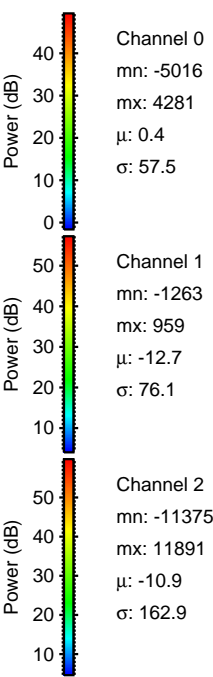
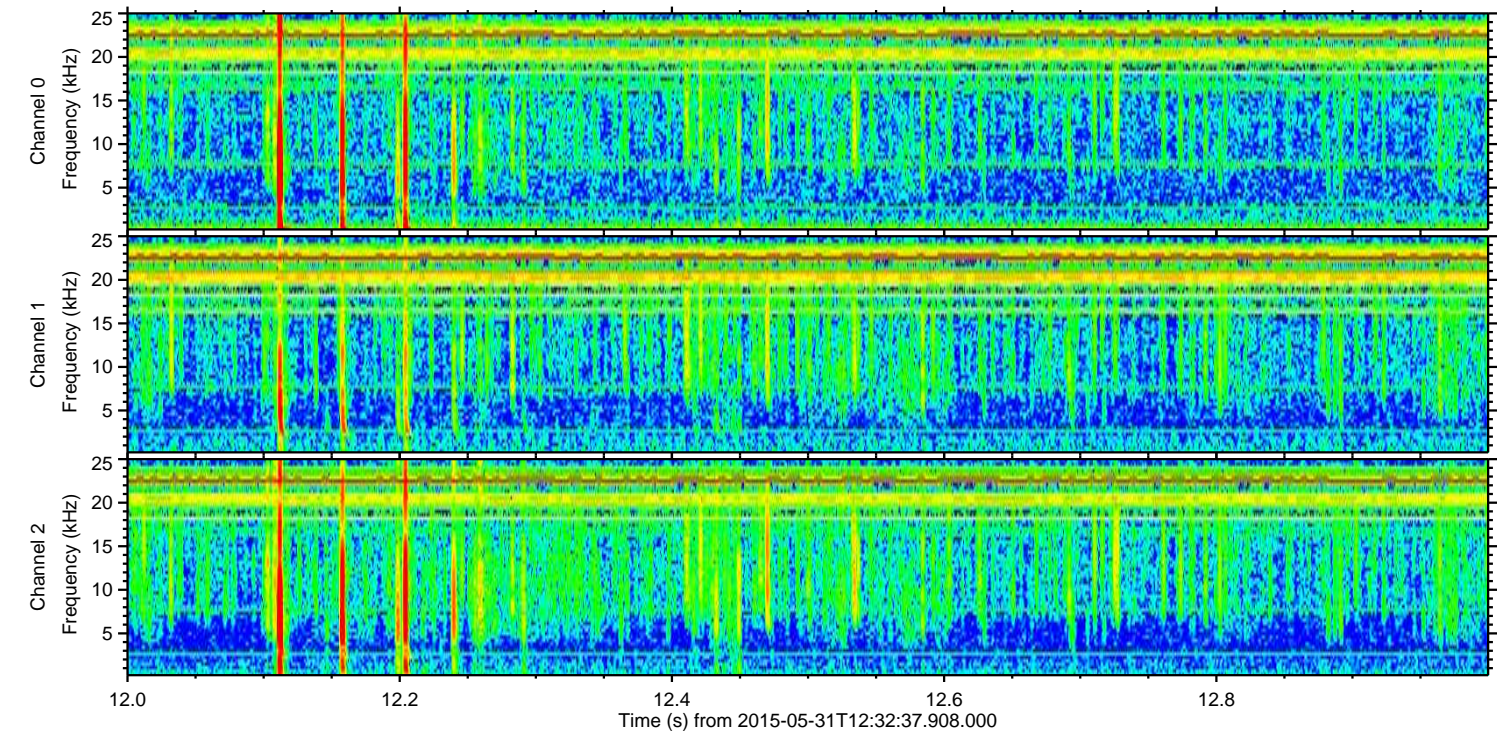
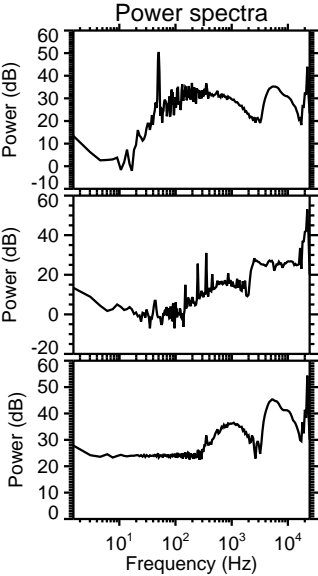
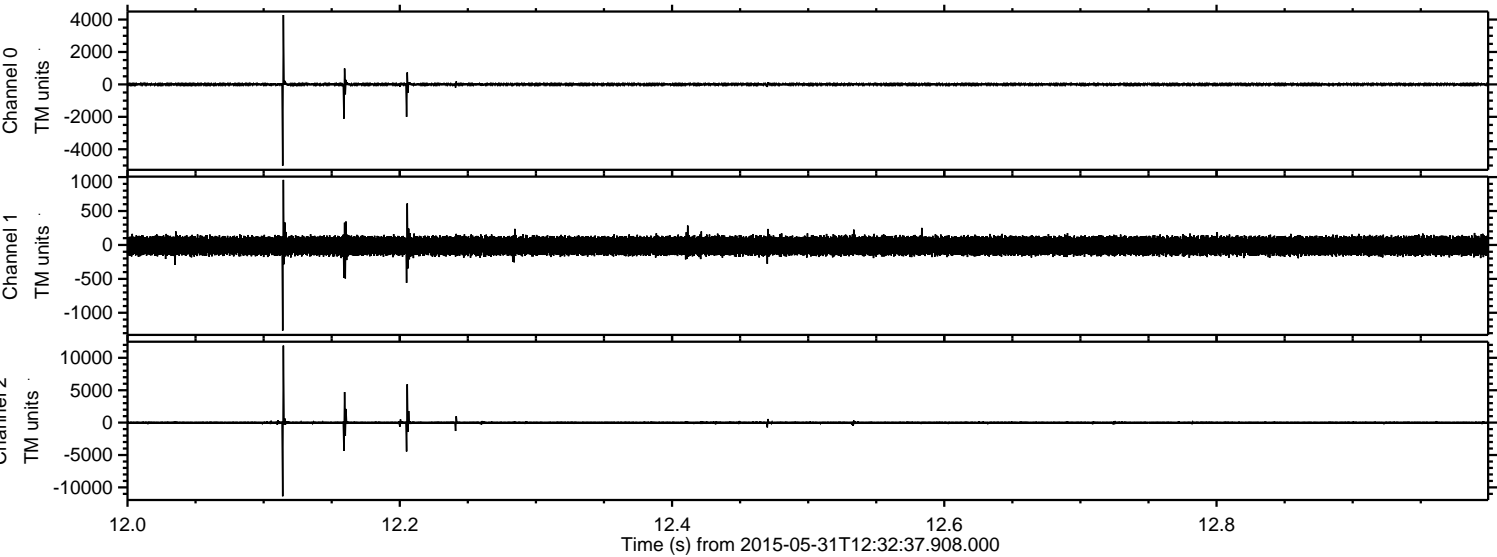


ELMAVAN 3D WAVEFORMS (Measured data sampled at 50 kHz) 49763 packets of 144 samples from 2015-05-31T12:32:37.908.000.

Processed Sun May 31 14:39:46 2015 by ELM ver.2012-10-06 from 001__elm20150531_123236__dat00.bin

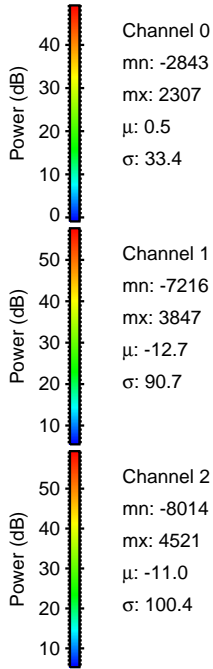
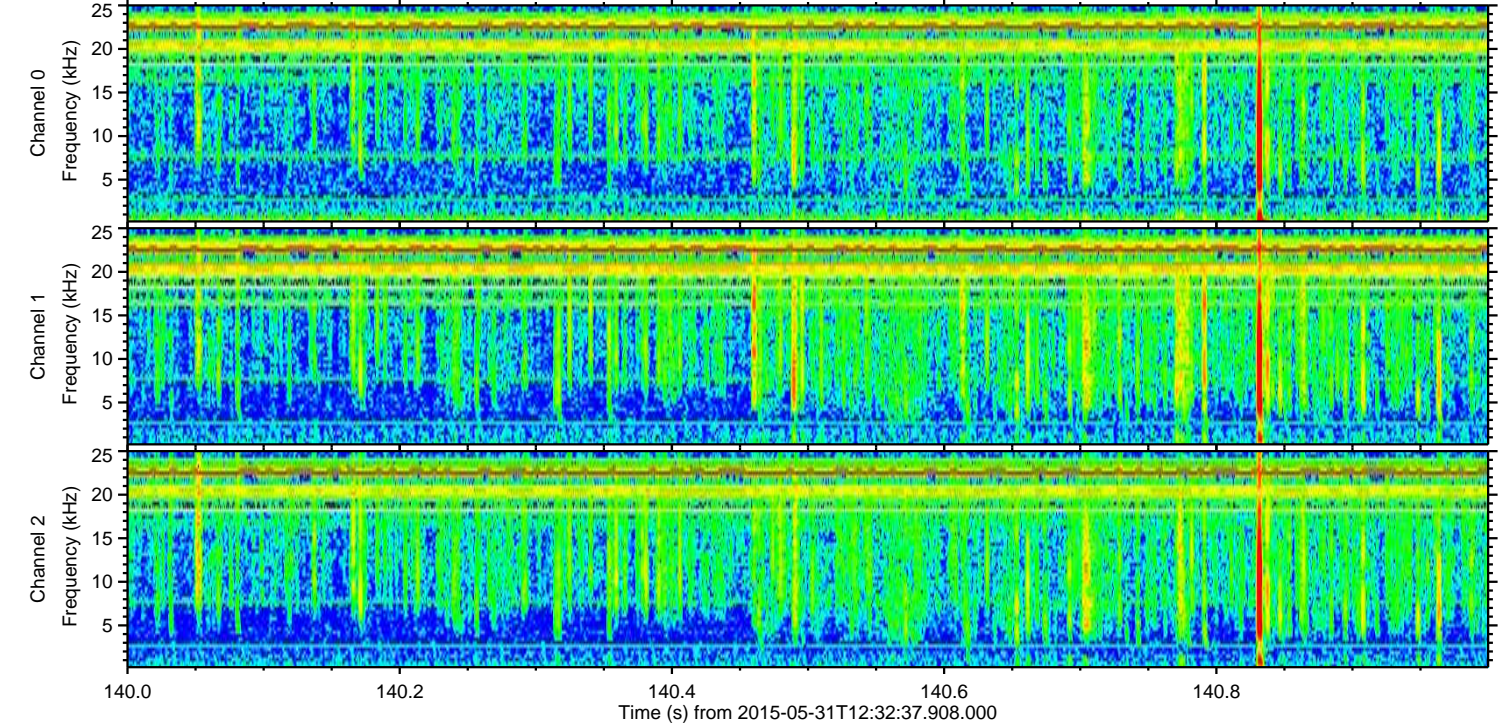
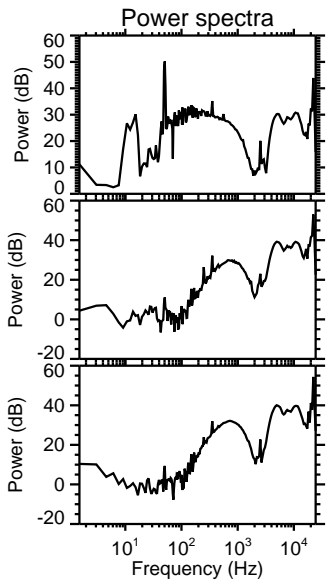
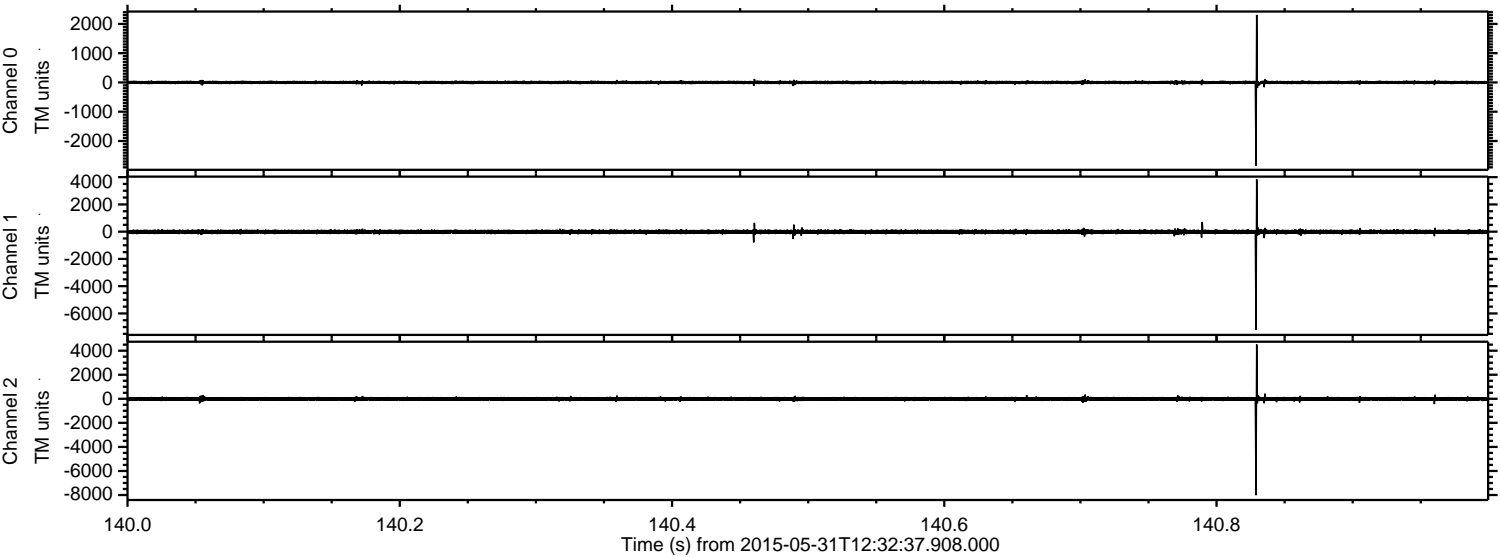


Processed Sun May 31 14:40:02 2015 by ELM ver.2012-10-06 from 001__elm20150531_123236__dat00.bin



ELMAVAN 3D WAVEFORMS (Measured data sampled at 50 kHz) 49763 packets of 144 samples from 2015-05-31T12:32:37.908.000. Part 141/144

Processed Sun May 31 14:40:03 2015 by ELM ver.2012-10-06 from 001__elm20150531_123236__dat00.bin

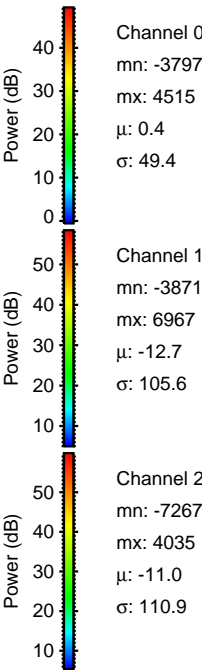
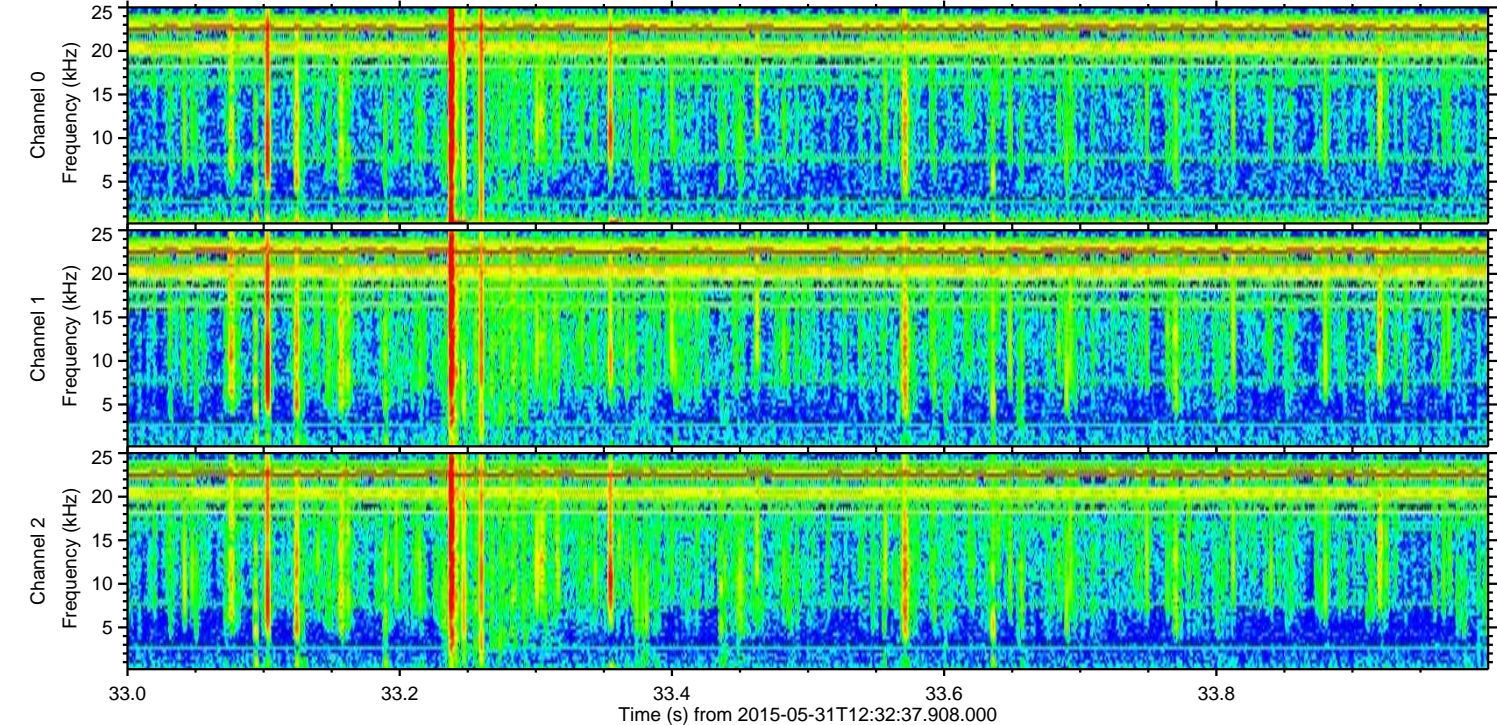
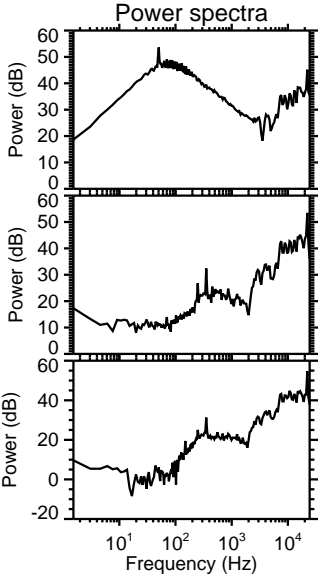
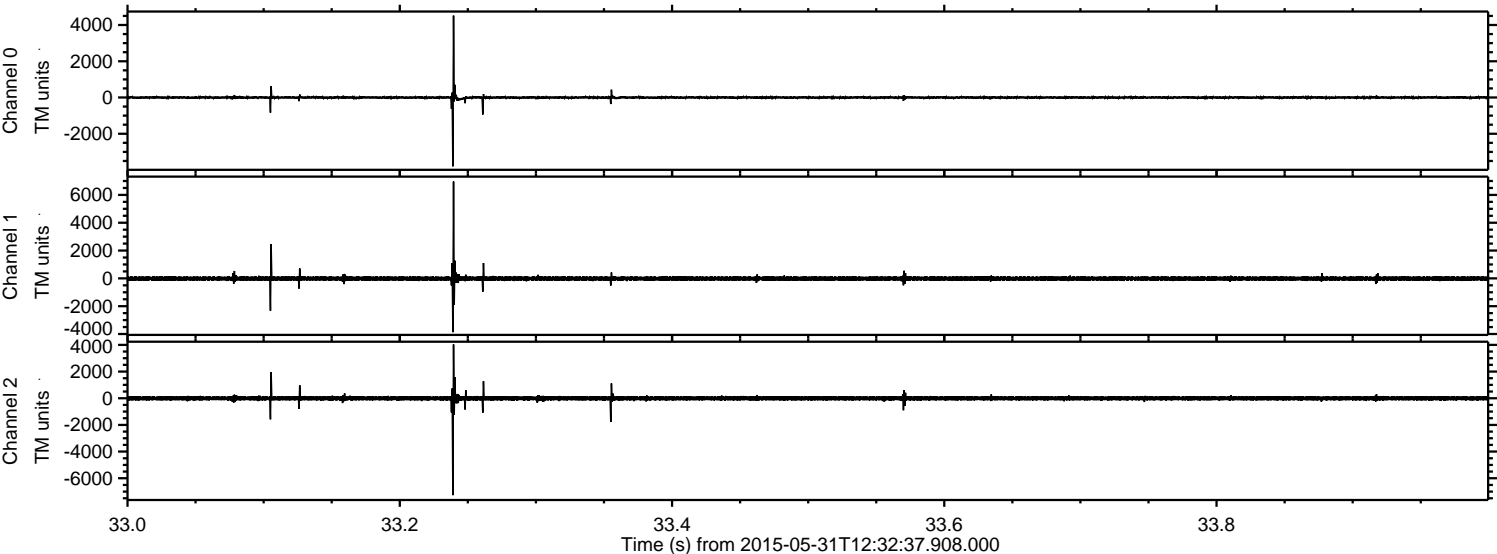


Channel 0
mn: -2843
mx: 2307
 μ : 0.5
 σ : 33.4

Channel 1
mn: -7216
mx: 3847
 μ : -12.7
 σ : 90.7

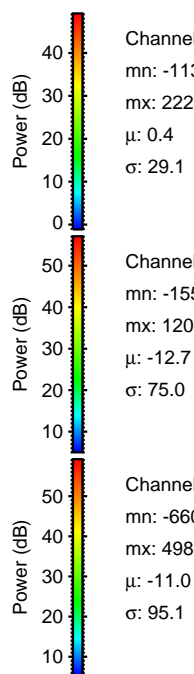
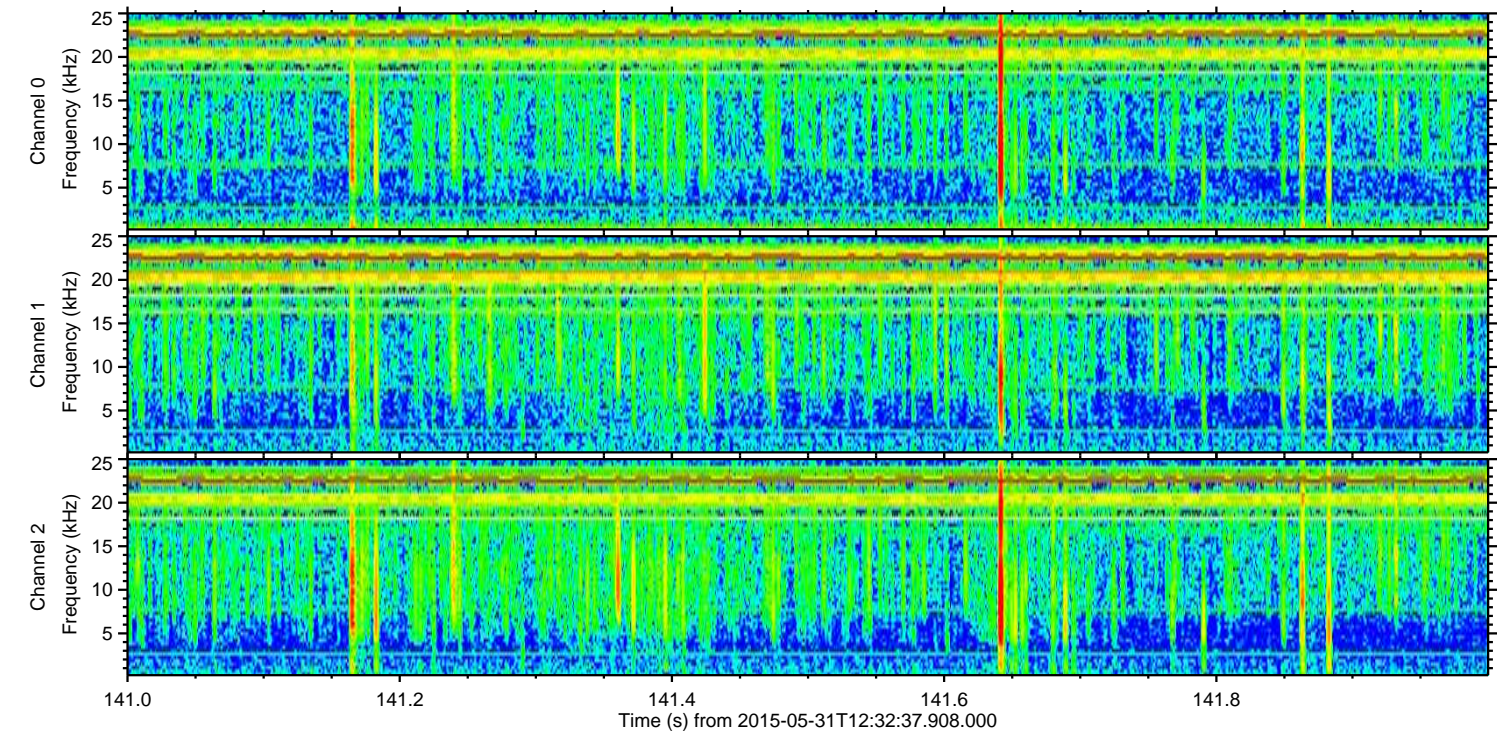
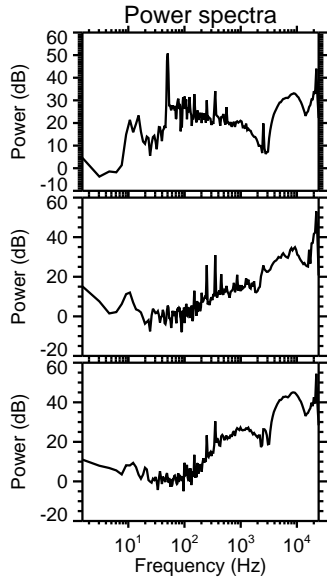
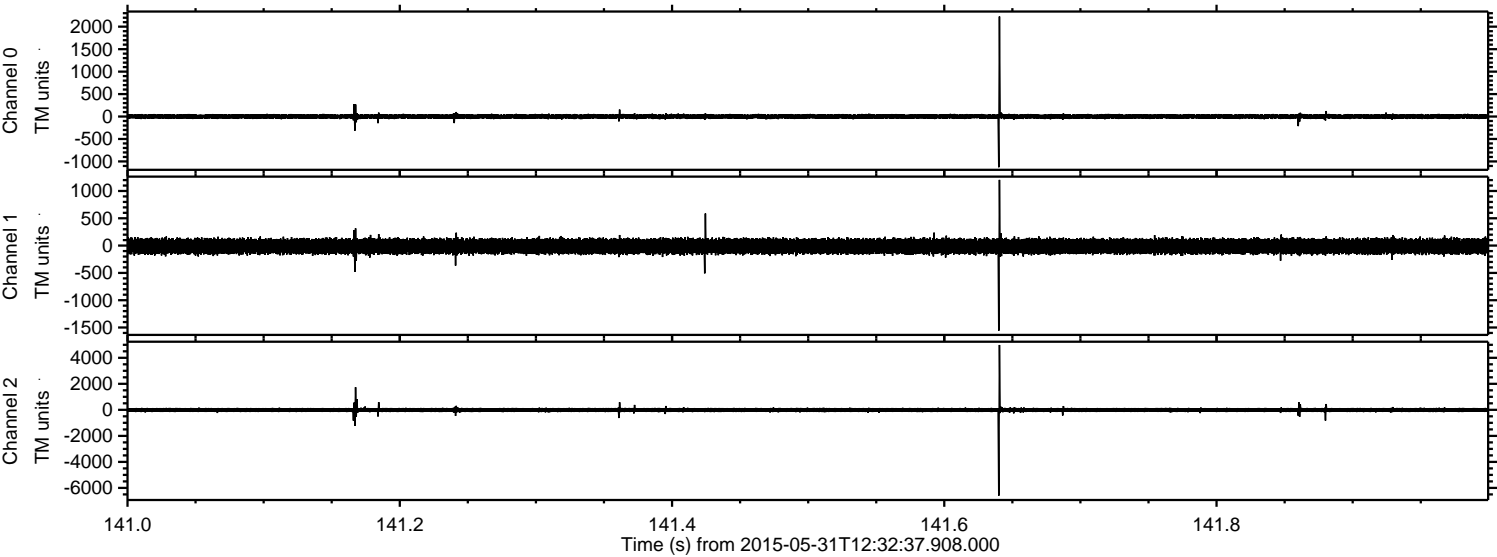
Channel 2
mn: -8014
mx: 4521
 μ : -11.0
 σ : 100.4

Processed Sun May 31 14:40:04 2015 by ELM ver.2012-10-06 from 001__elm20150531_123236__dat00.bin



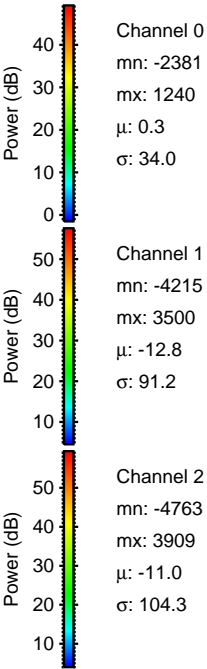
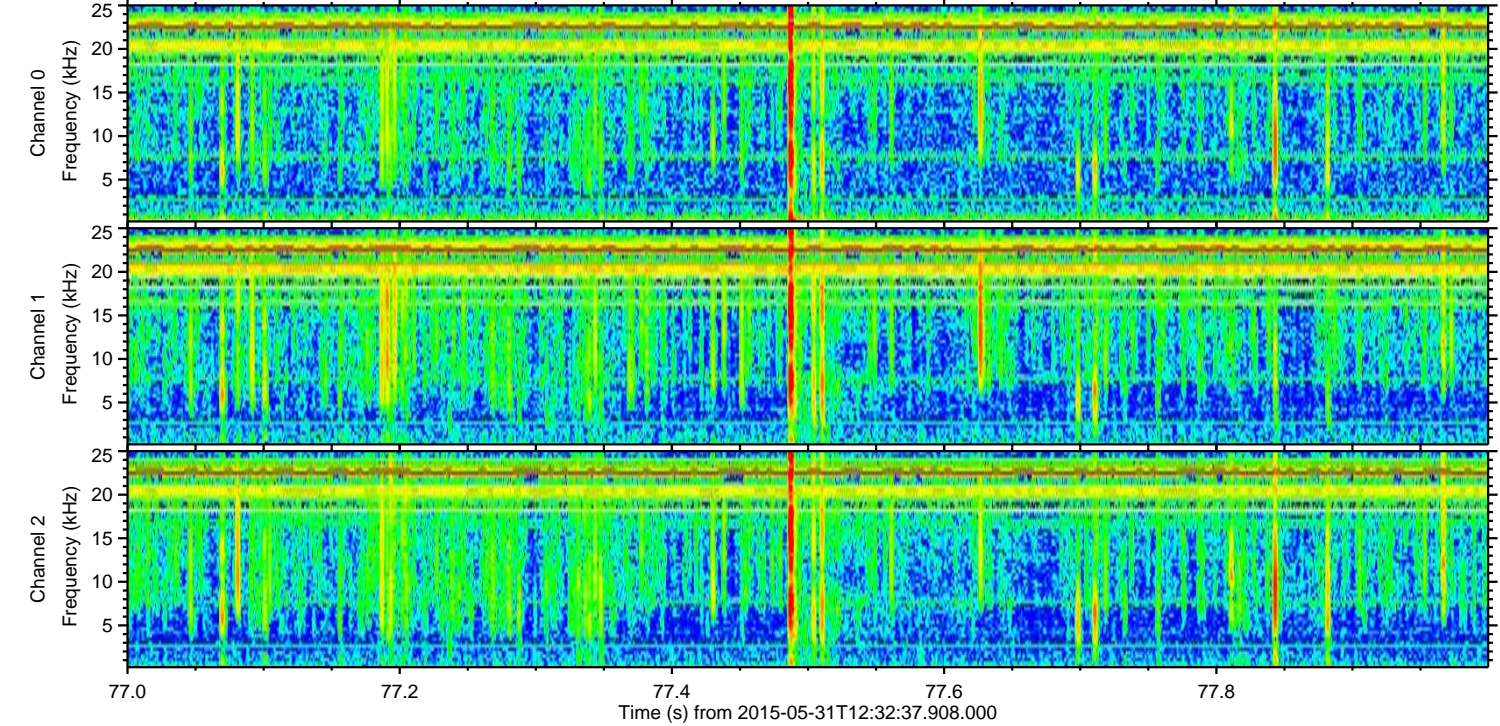
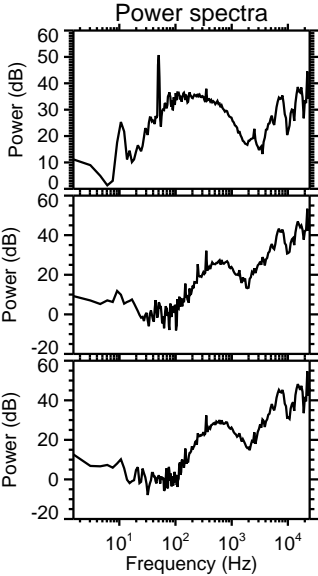
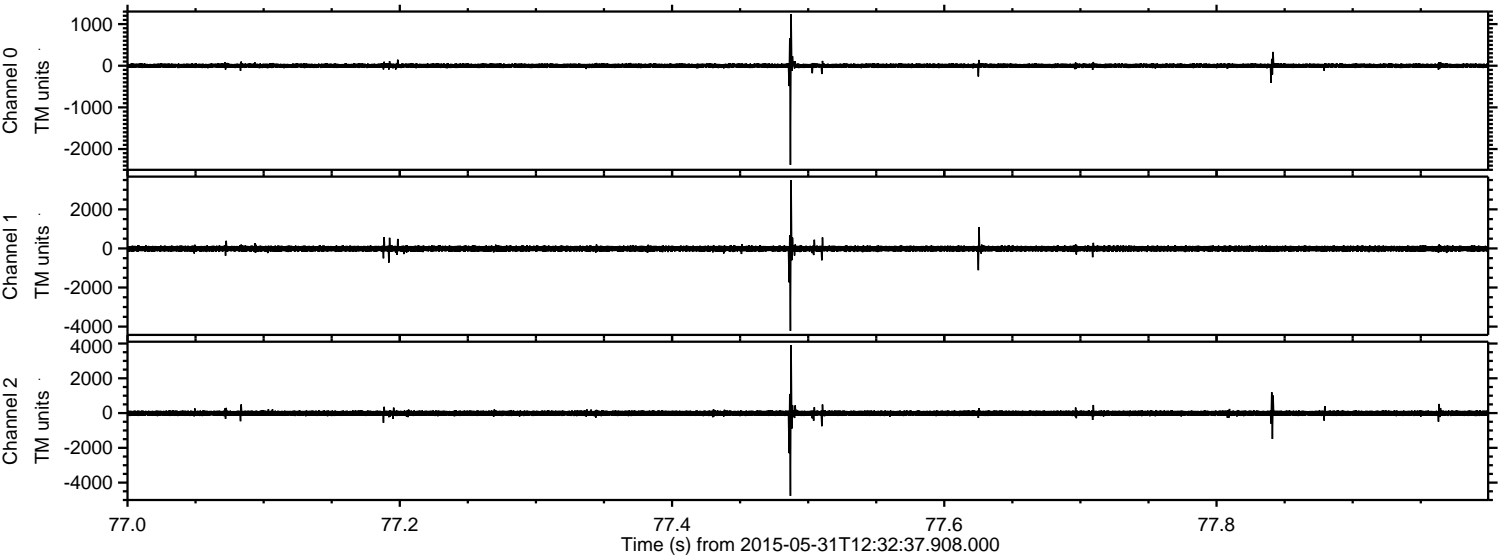
ELMAVAN 3D WAVEFORMS (Measured data sampled at 50 kHz) 49763 packets of 144 samples from 2015-05-31T12:32:37.908.000. Part 142/144

Processed Sun May 31 14:40:05 2015 by ELM ver.2012-10-06 from 001__elm20150531_123236__dat00.bin



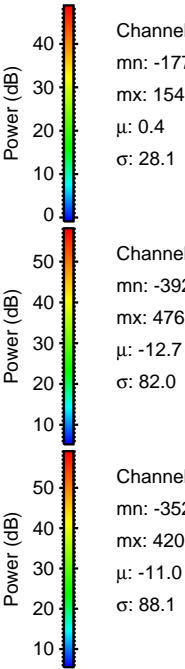
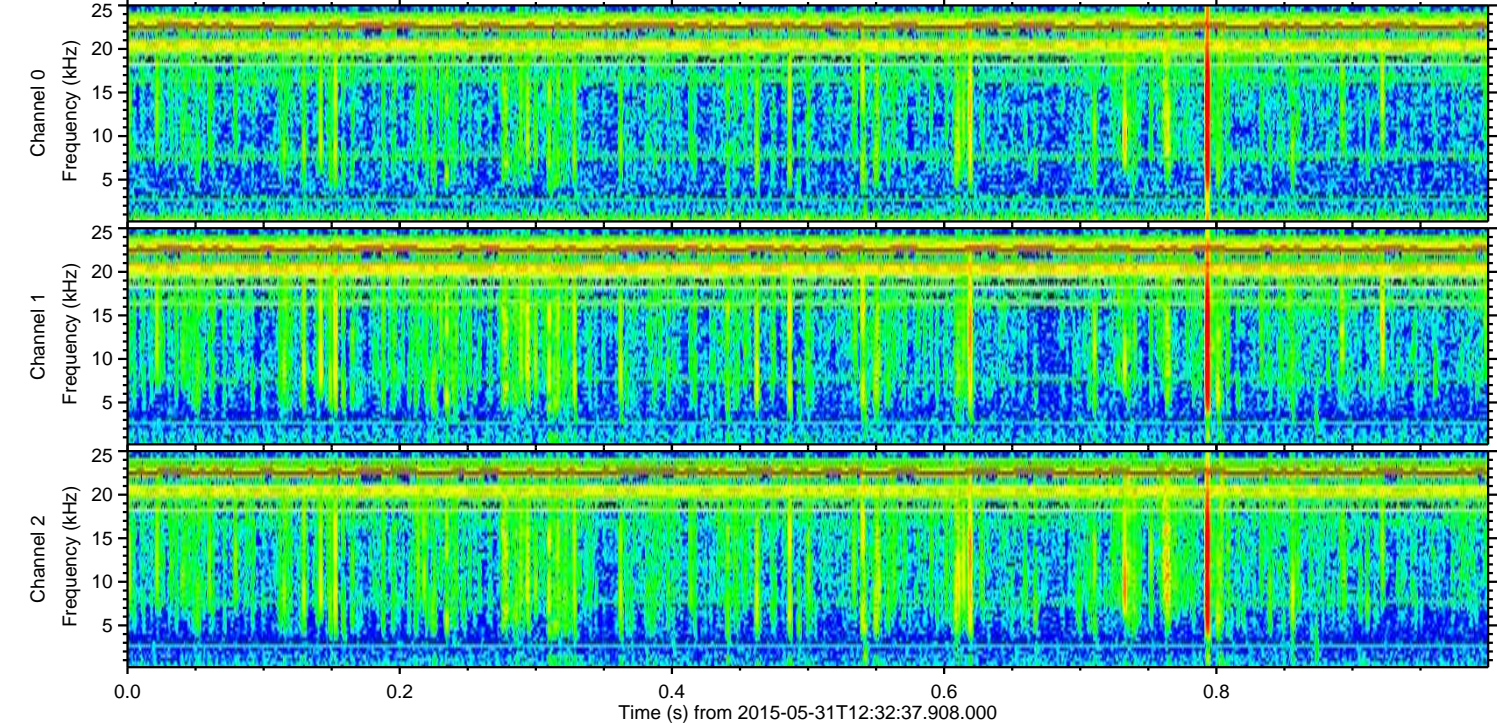
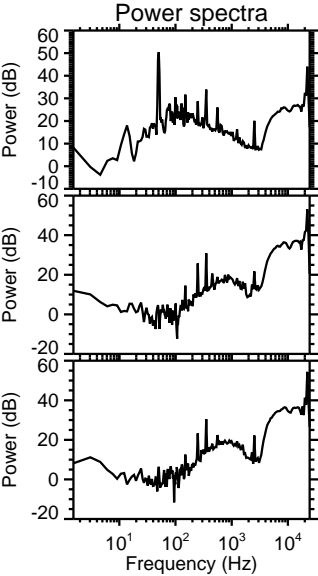
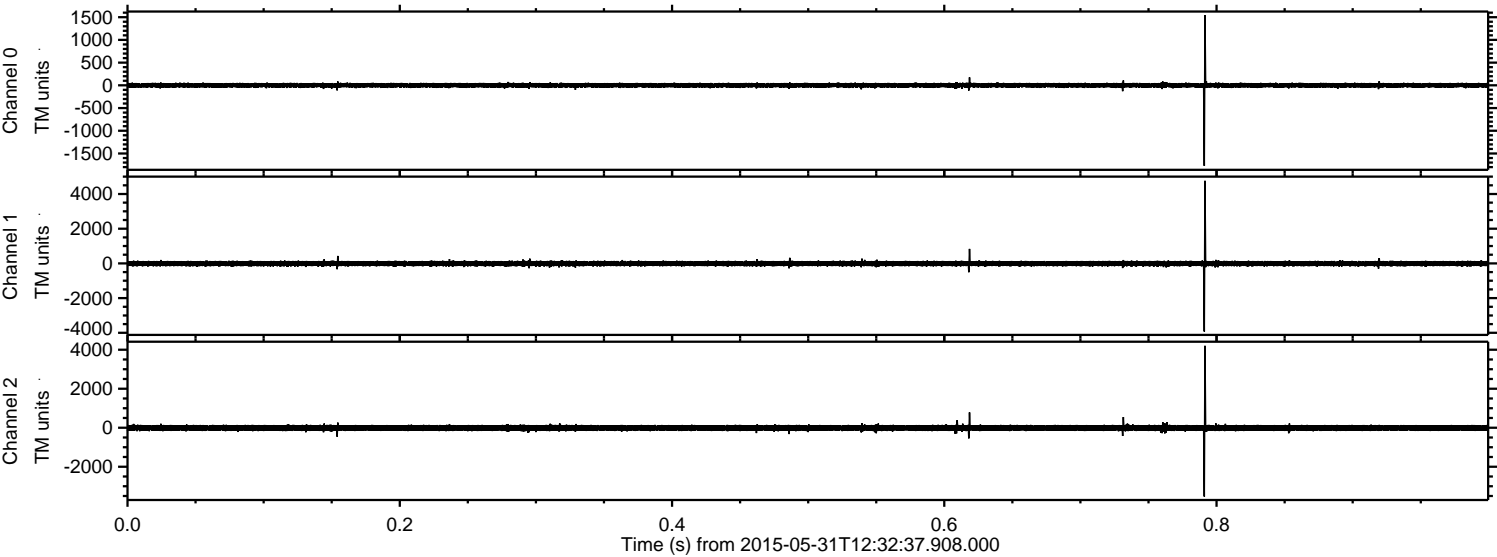
ELMAVAN 3D WAVEFORMS (Measured data sampled at 50 kHz) 49763 packets of 144 samples from 2015-05-31T12:32:37.908.000. Part 78/144

Processed Sun May 31 14:40:06 2015 by ELM ver.2012-10-06 from 001__elm20150531_123236__dat00.bin



ELMAVAN 3D WAVEFORMS (Measured data sampled at 50 kHz) 49763 packets of 144 samples from 2015-05-31T12:32:37.908.000. Part 1/144

Processed Sun May 31 14:40:07 2015 by ELM ver.2012-10-06 from 001__elm20150531_123236__dat00.bin

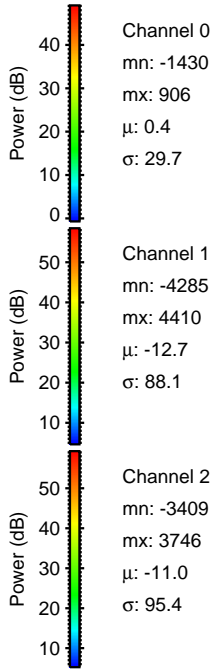
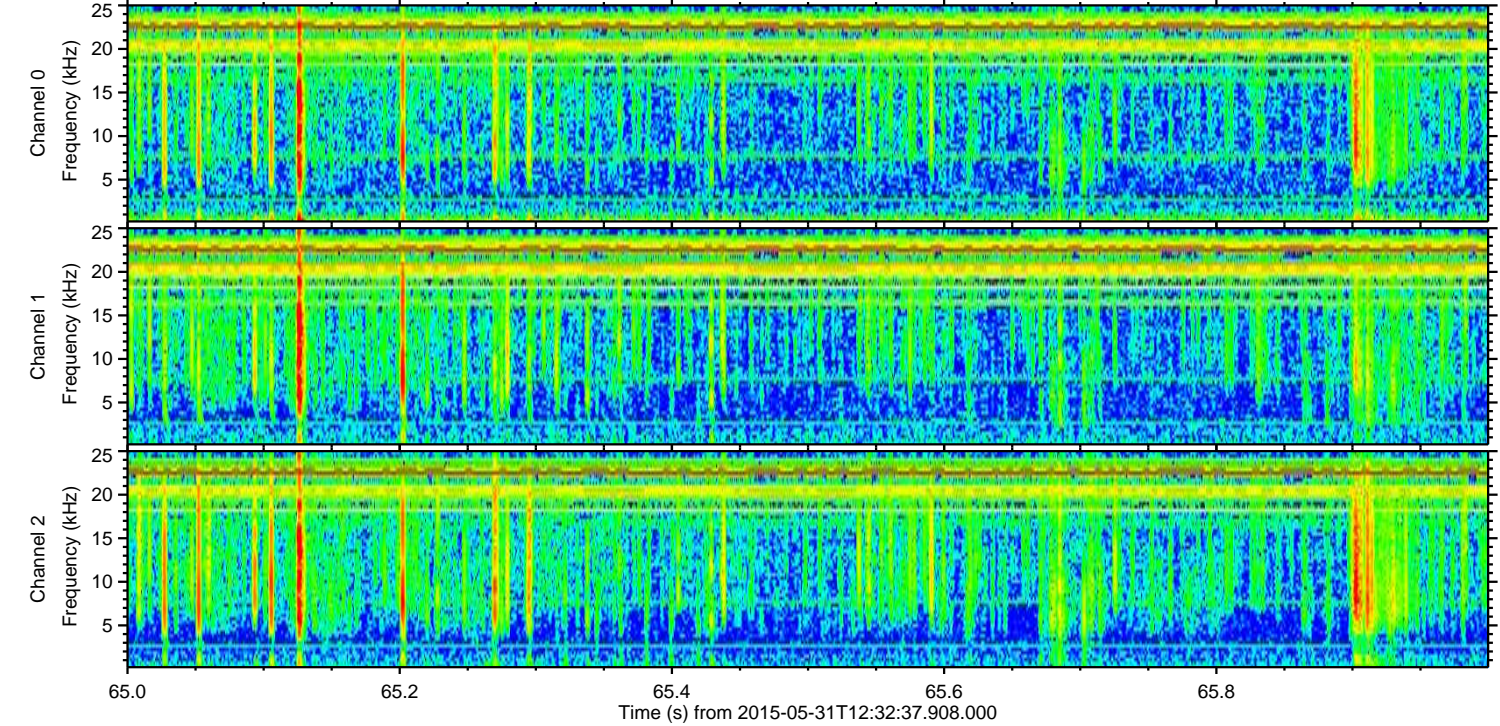
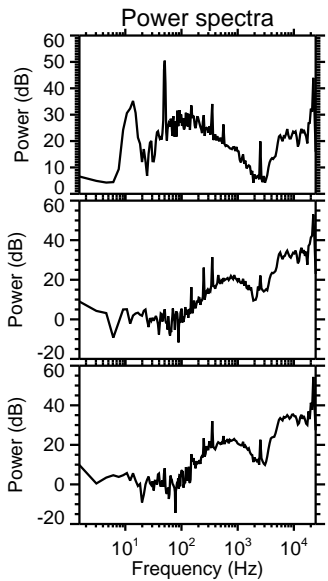
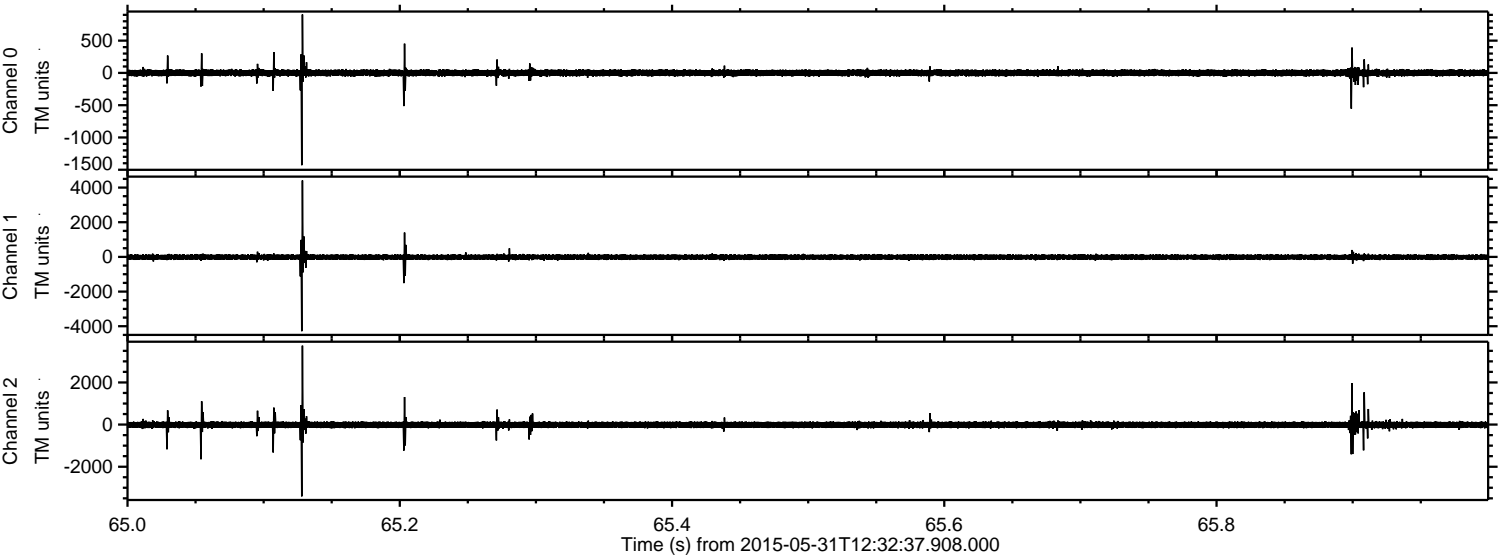


Channel 0
mn: -1771
mx: 1547
 μ : 0.4
 σ : 28.1

Channel 1
mn: -3925
mx: 4762
 μ : -12.7
 σ : 82.0

Channel 2
mn: -3528
mx: 4201
 μ : -11.0
 σ : 88.1

Processed Sun May 31 14:40:08 2015 by ELM ver.2012-10-06 from 001__elm20150531_123236__dat00.bin

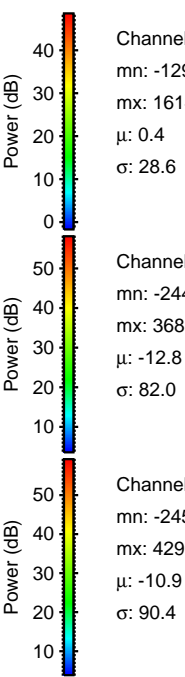
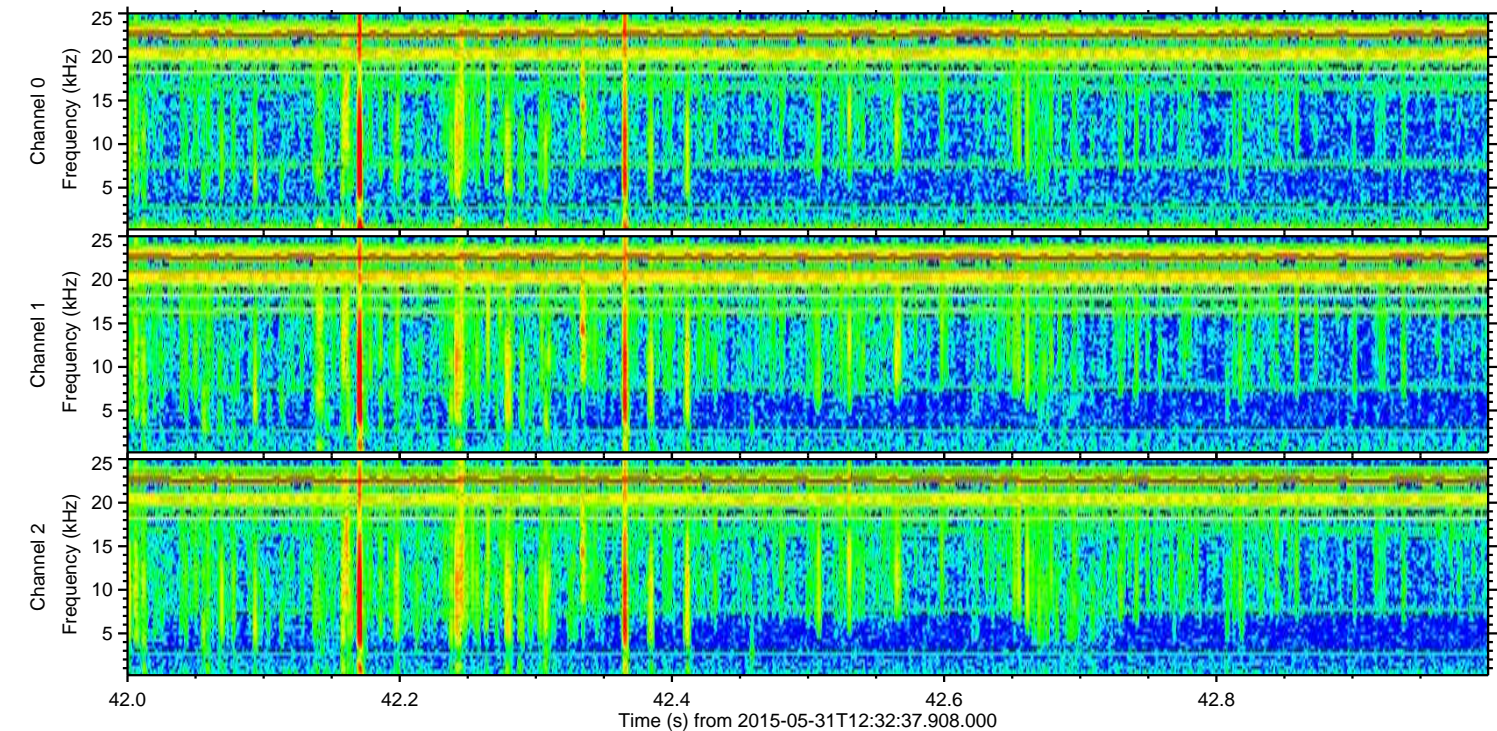
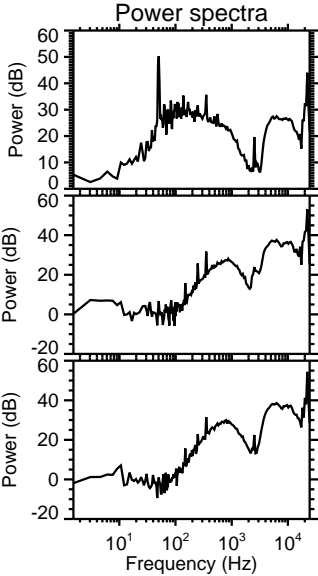
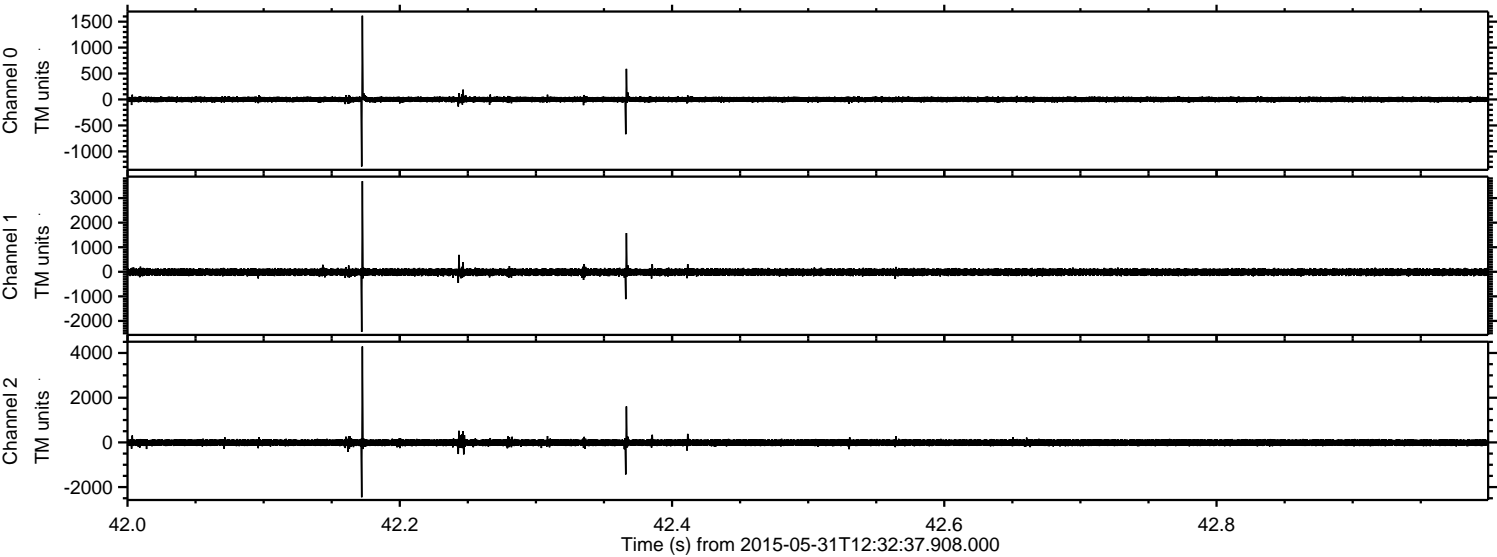


Channel 0
mn: -1430
mx: 906
 μ : 0.4
 σ : 29.7

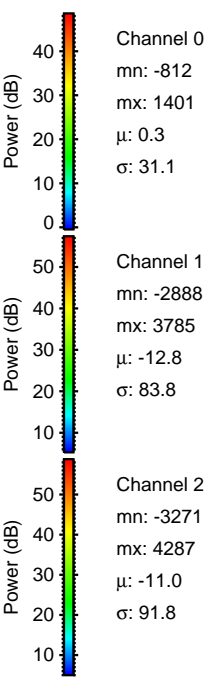
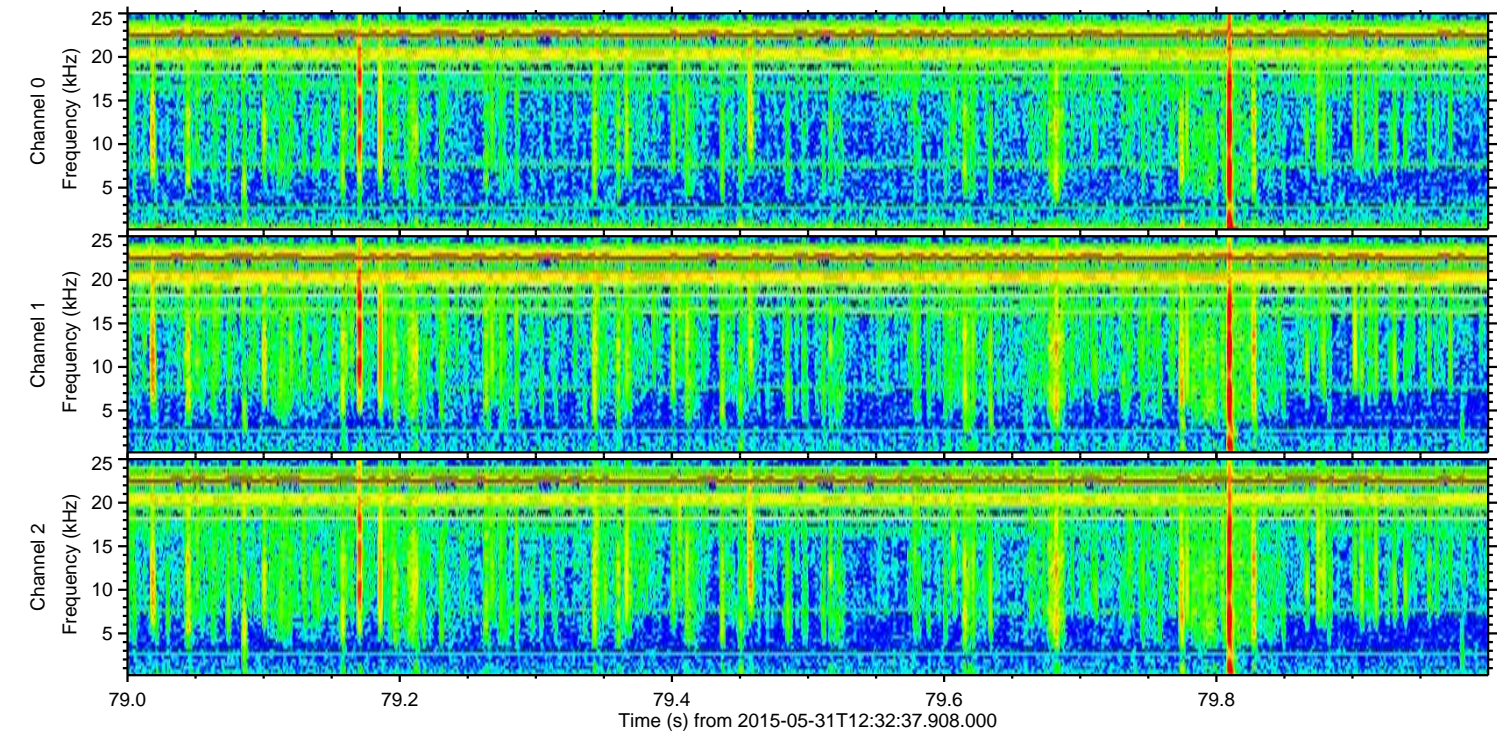
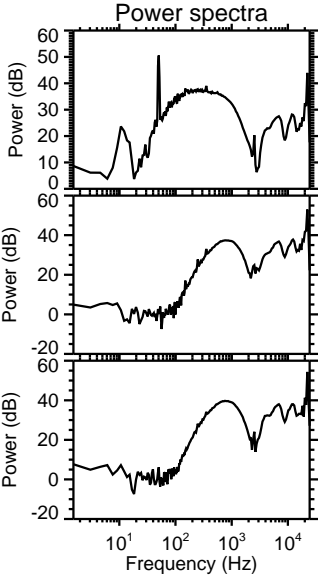
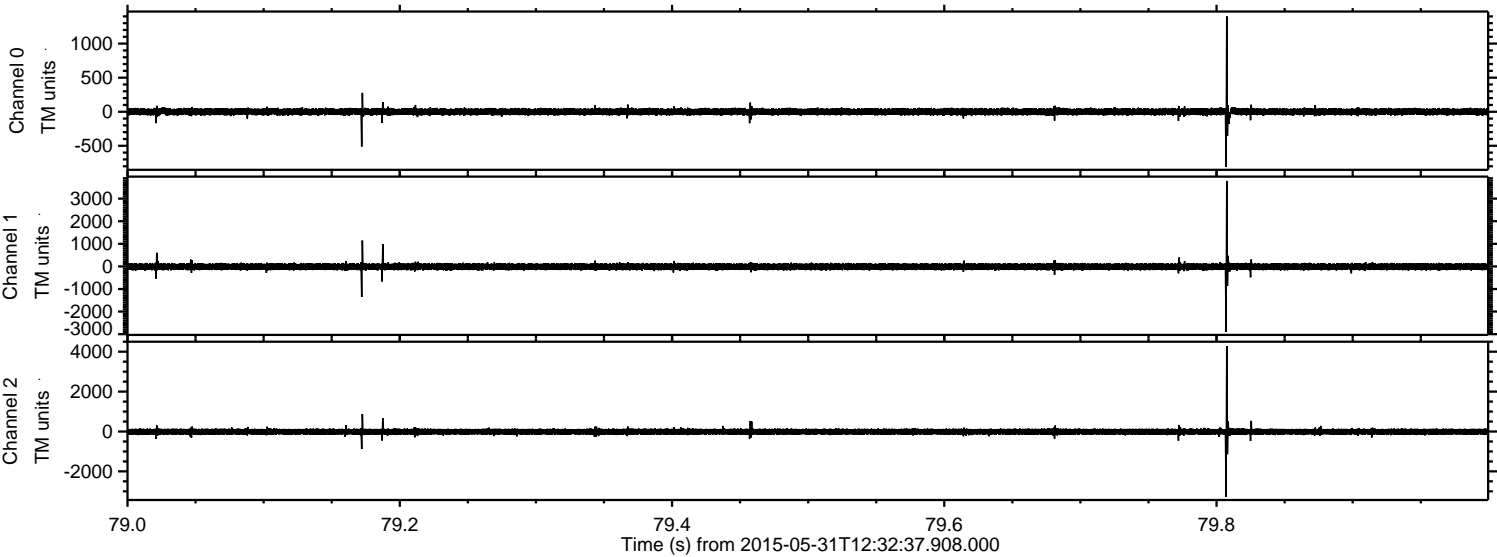
Channel 1
mn: -4285
mx: 4410
 μ : -12.7
 σ : 88.1

Channel 2
mn: -3409
mx: 3746
 μ : -11.0
 σ : 95.4

Processed Sun May 31 14:40:10 2015 by ELM ver.2012-10-06 from 001__elm20150531_123236__dat00.bin



Processed Sun May 31 14:40:11 2015 by ELM ver.2012-10-06 from 001__elm20150531_123236__dat00.bin



Processed Sun May 31 14:40:12 2015 by ELM ver.2012-10-06 from 001__elm20150531_123236__dat00.bin

