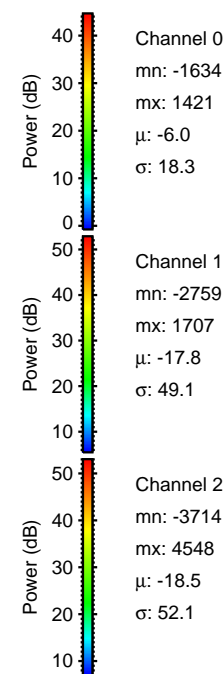
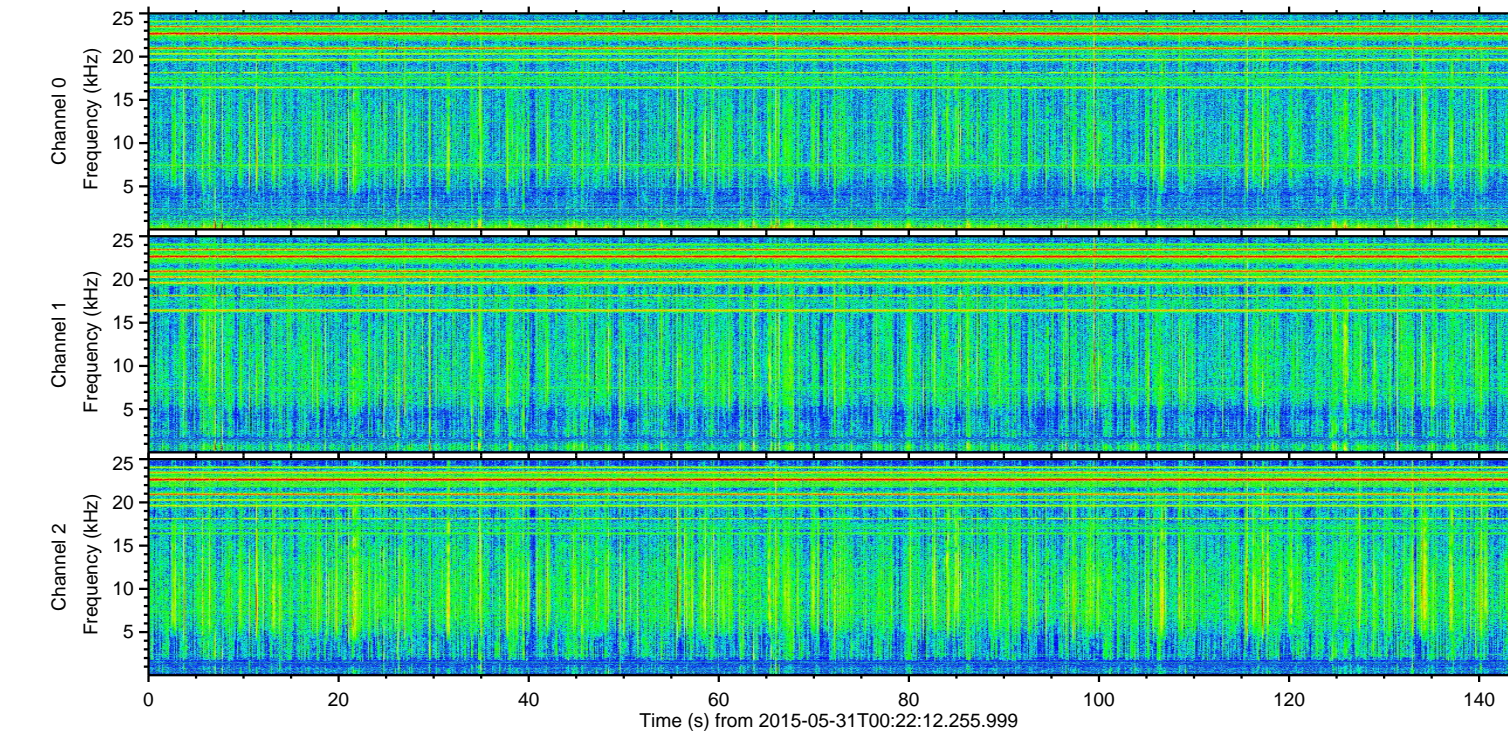
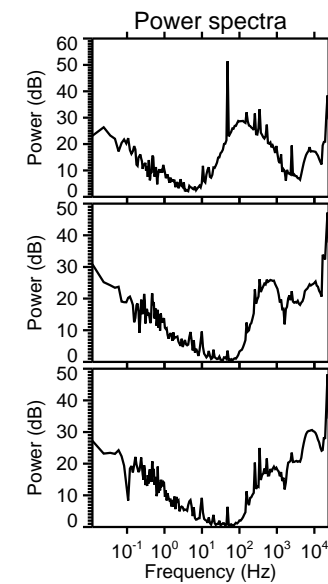
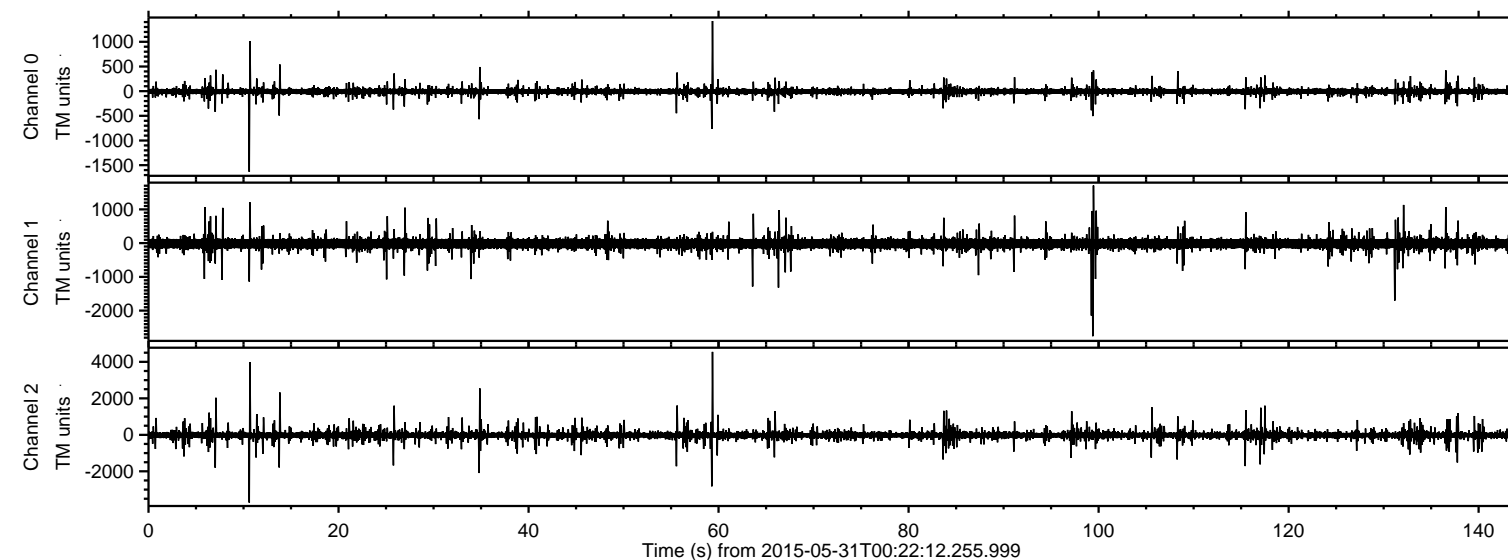


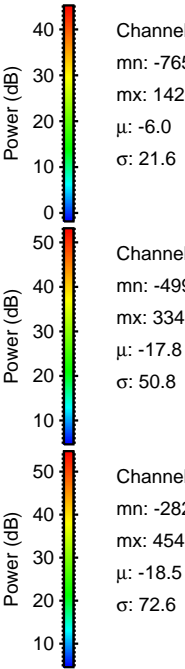
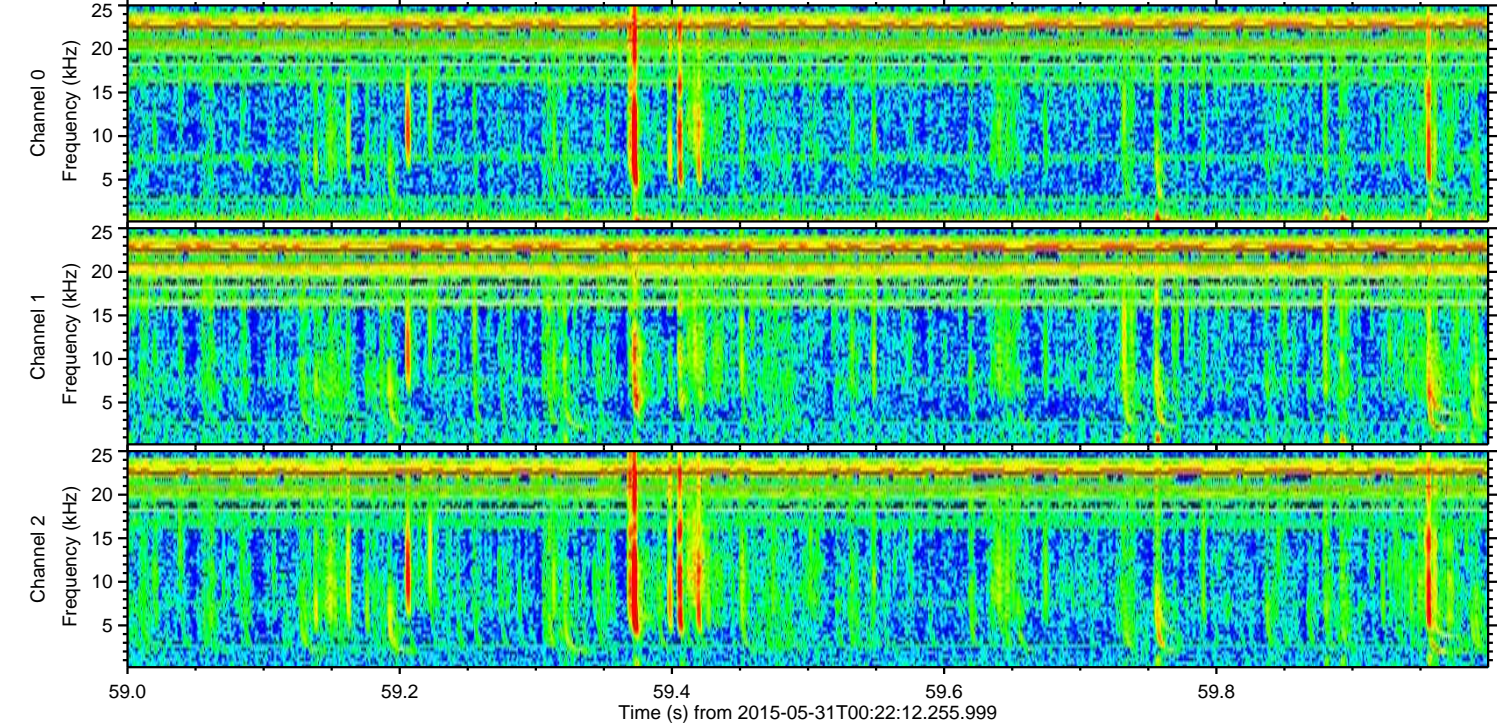
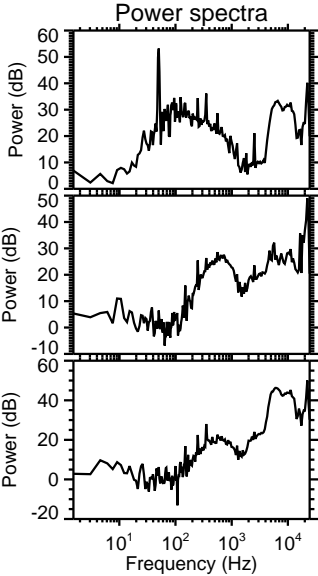
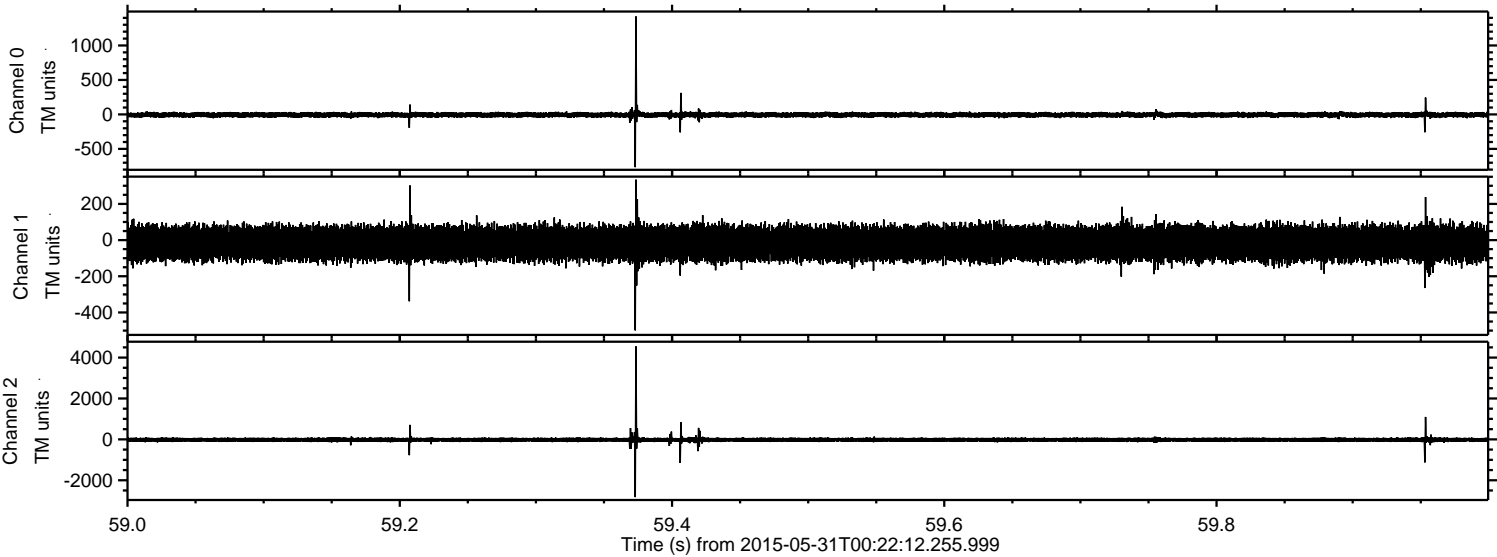
ELMAVAN 3D WAVEFORMS (Measured data sampled at 50 kHz) 49726 packets of 144 samples from 2015-05-31T00:22:12.255.999.

Processed Sun May 31 02:29:43 2015 by ELM ver.2012-10-06 from 001\_\_elm20150531\_002211\_\_dat00.bin





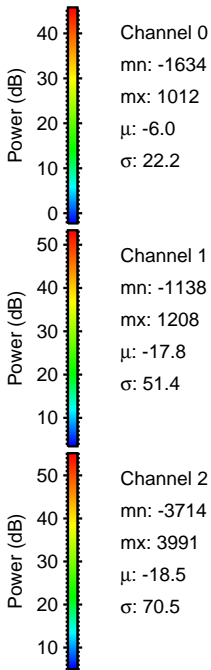
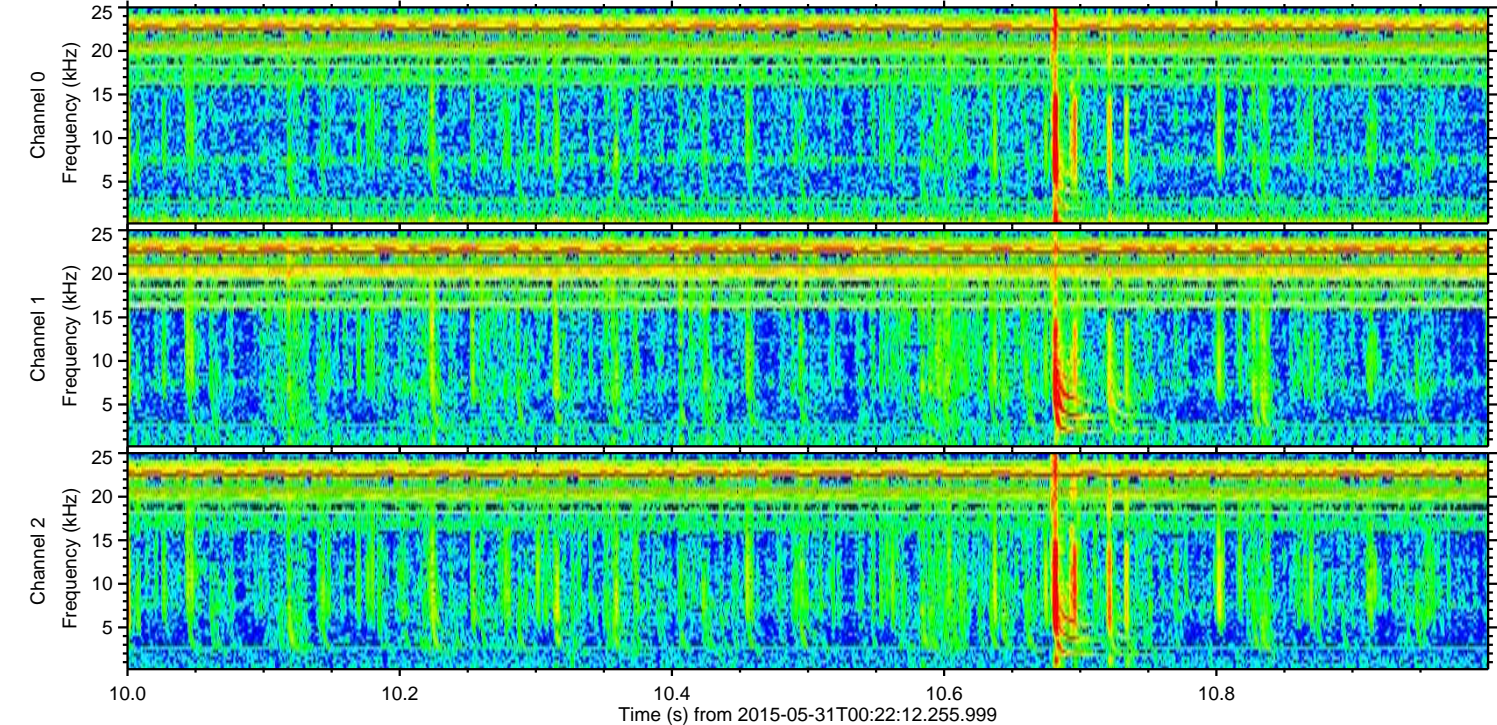
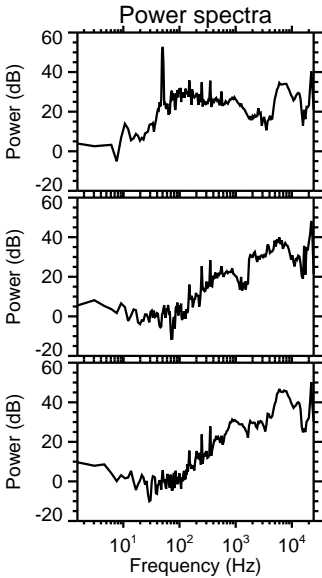
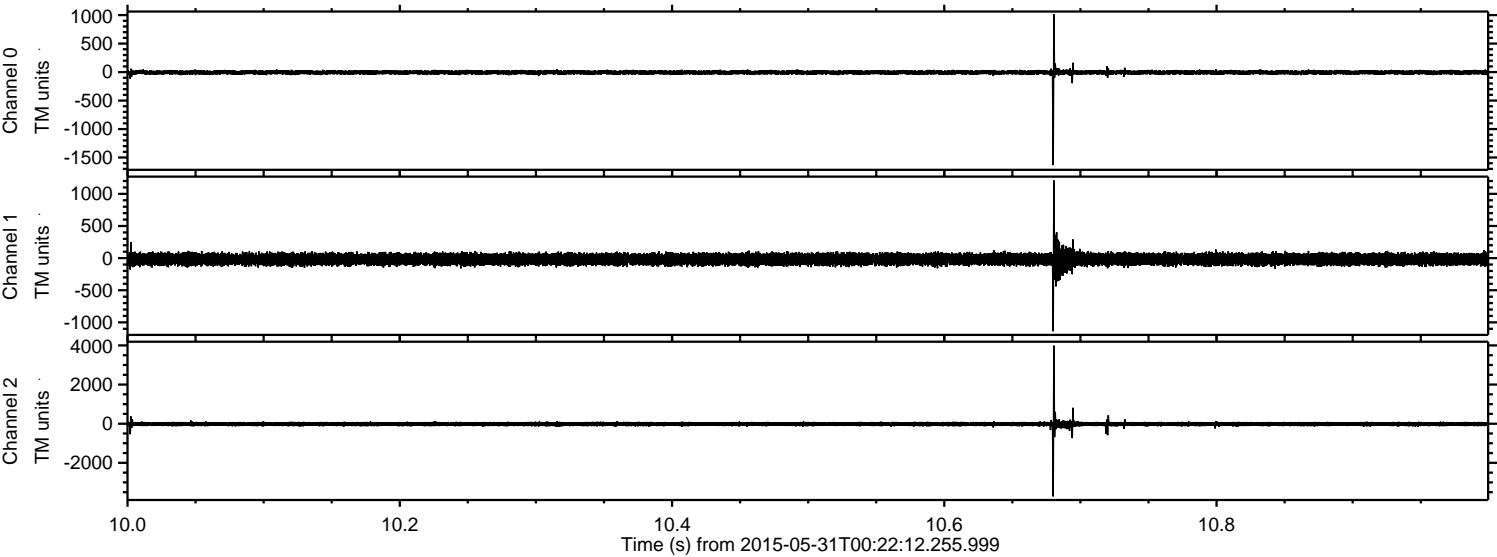
Processed Sun May 31 02:30:00 2015 by ELM ver.2012-10-06 from 001\_\_elm20150531\_002211\_\_dat00.bin





ELMAVAN 3D WAVEFORMS (Measured data sampled at 50 kHz) 49726 packets of 144 samples from 2015-05-31T00:22:12.255.999. Part 11/144

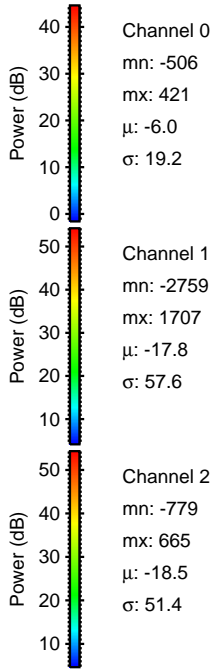
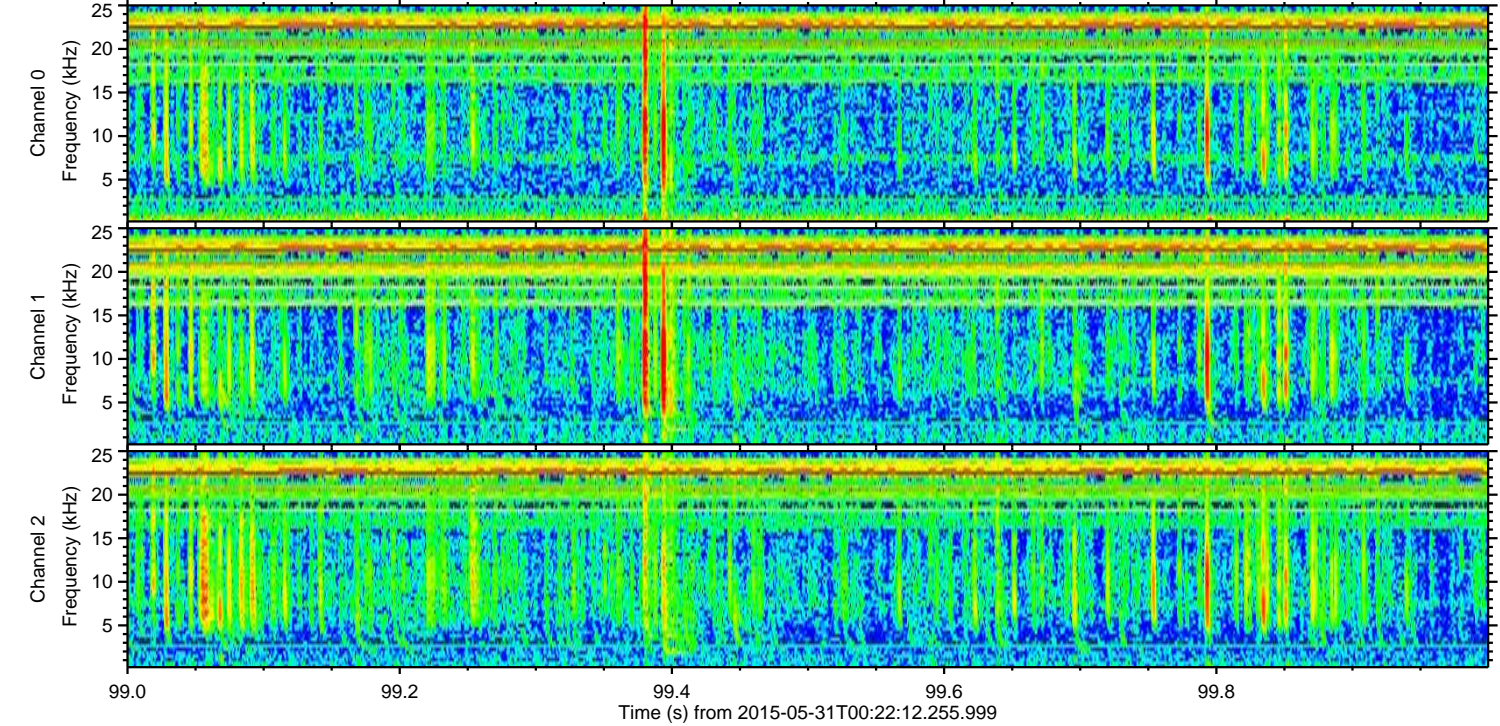
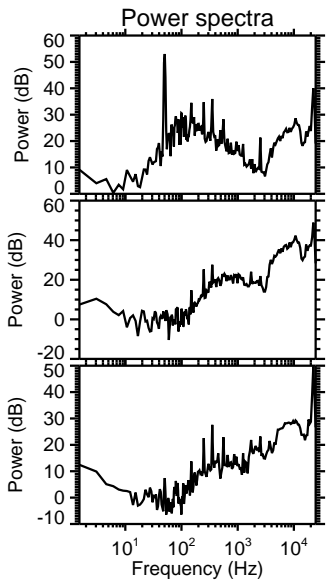
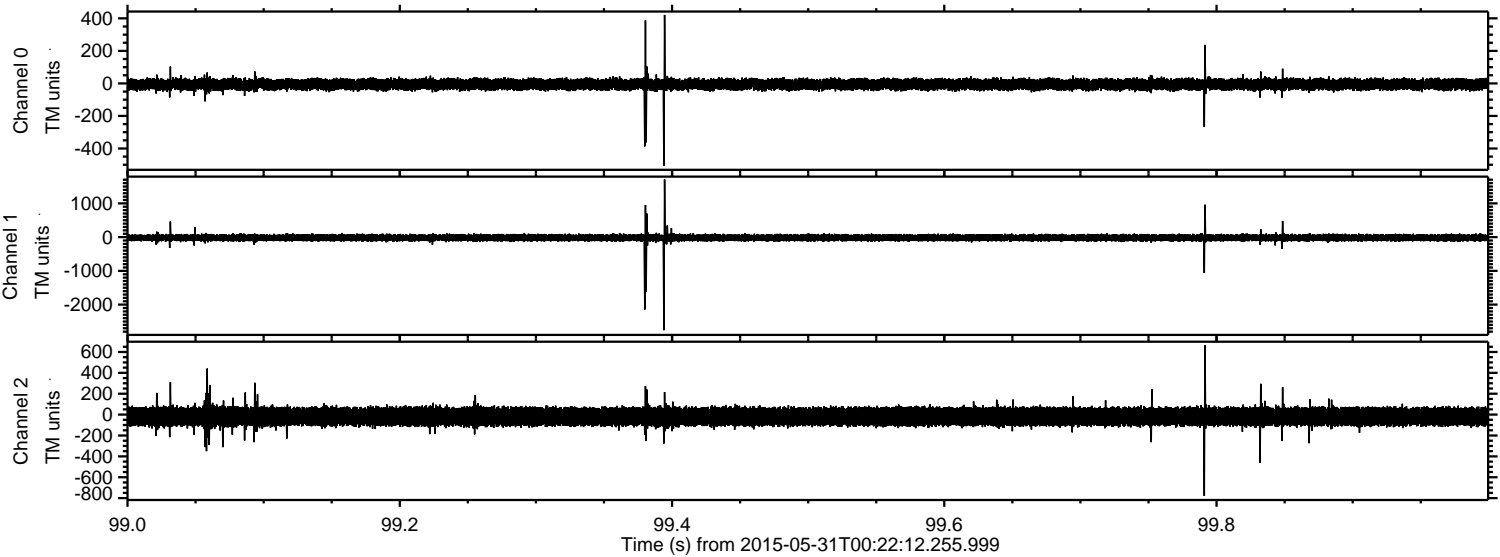
Processed Sun May 31 02:30:01 2015 by ELM ver.2012-10-06 from 001\_\_elm20150531\_002211\_\_dat00.bin





ELMAVAN 3D WAVEFORMS (Measured data sampled at 50 kHz) 49726 packets of 144 samples from 2015-05-31T00:22:12.255.999. Part 100/144

Processed Sun May 31 02:30:02 2015 by ELM ver.2012-10-06 from 001\_\_elm20150531\_002211\_\_dat00.bin



Channel 0  
mn: -506  
mx: 421  
 $\mu$ : -6.0  
 $\sigma$ : 19.2

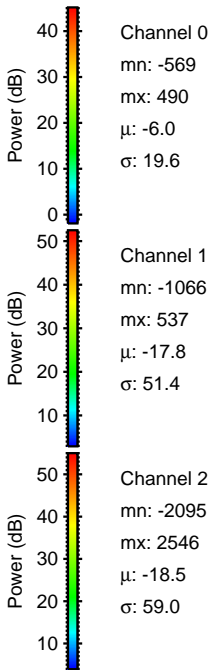
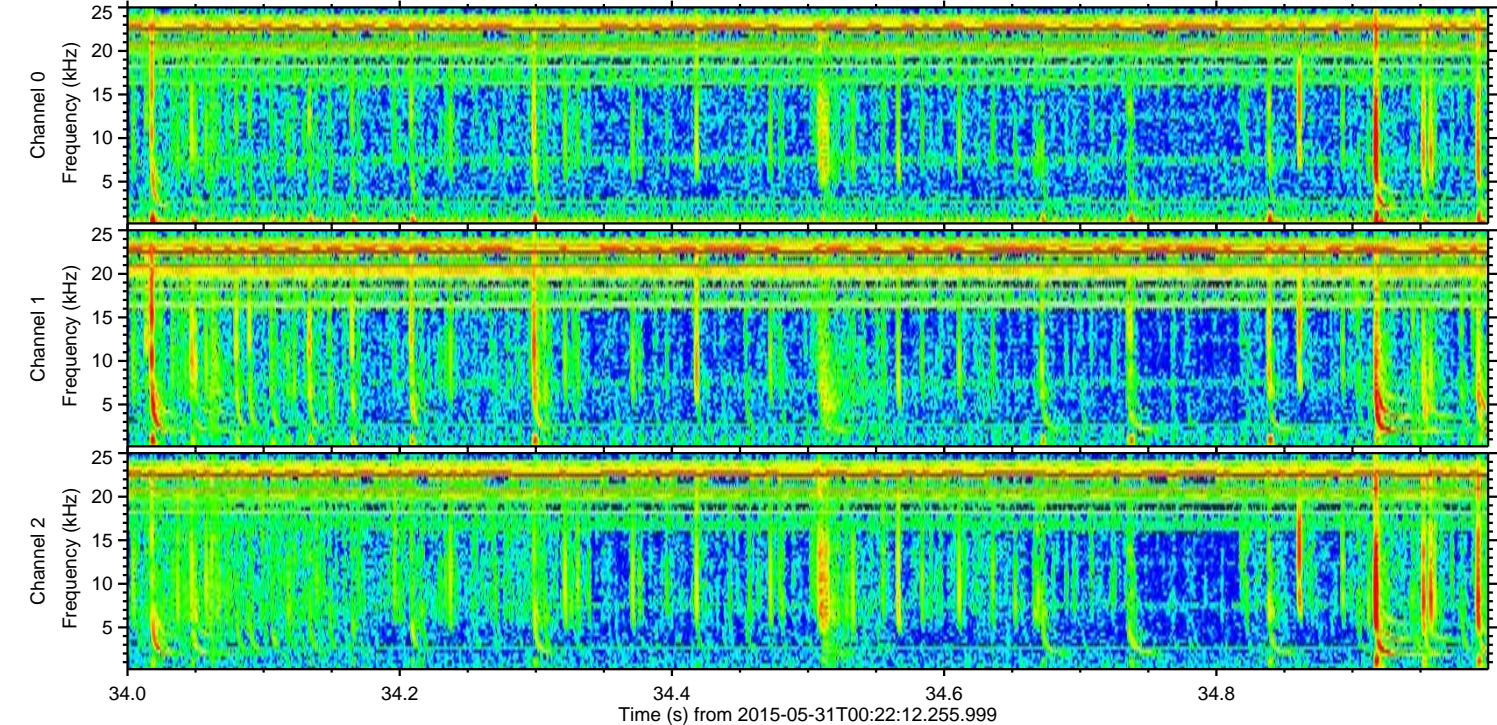
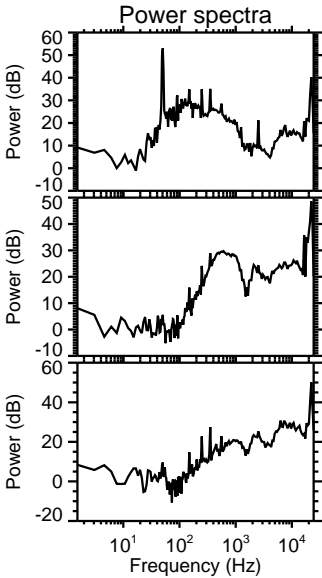
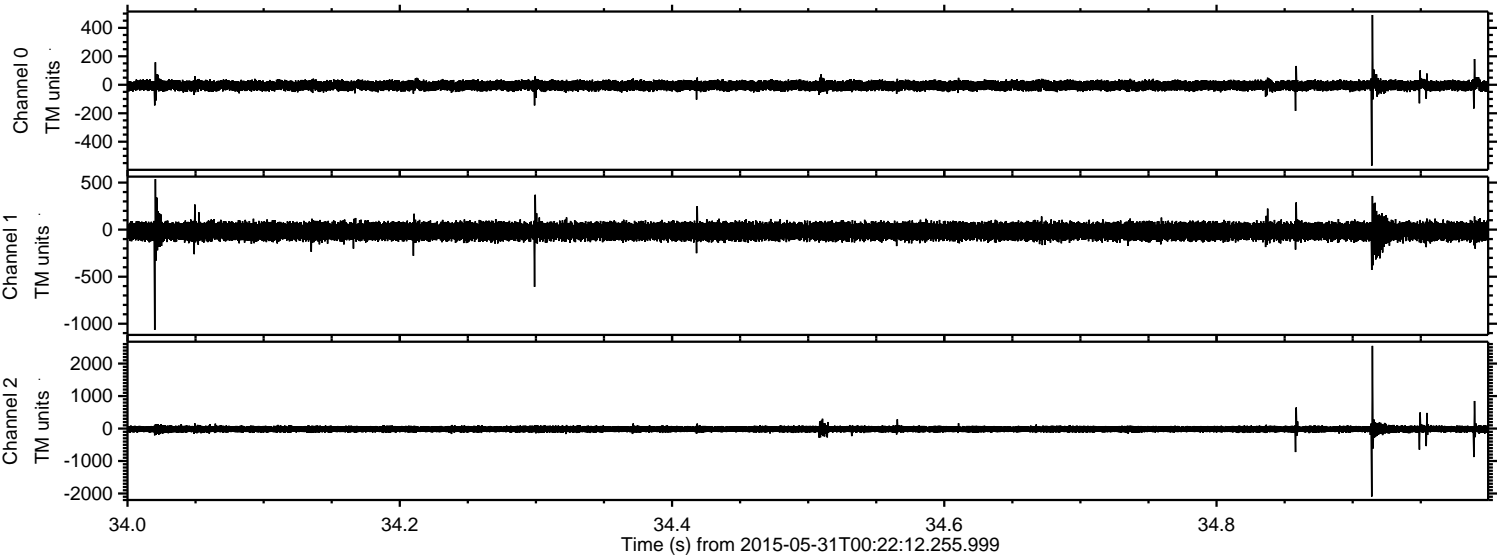
Channel 1  
mn: -2759  
mx: 1707  
 $\mu$ : -17.8  
 $\sigma$ : 57.6

Channel 2  
mn: -779  
mx: 665  
 $\mu$ : -18.5  
 $\sigma$ : 51.4



ELMAVAN 3D WAVEFORMS (Measured data sampled at 50 kHz) 49726 packets of 144 samples from 2015-05-31T00:22:12.255.999. Part 35/144

Processed Sun May 31 02:30:03 2015 by ELM ver.2012-10-06 from 001\_\_elm20150531\_002211\_\_dat00.bin



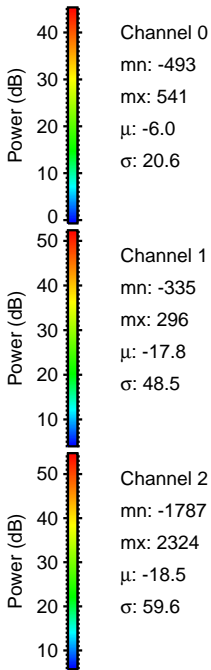
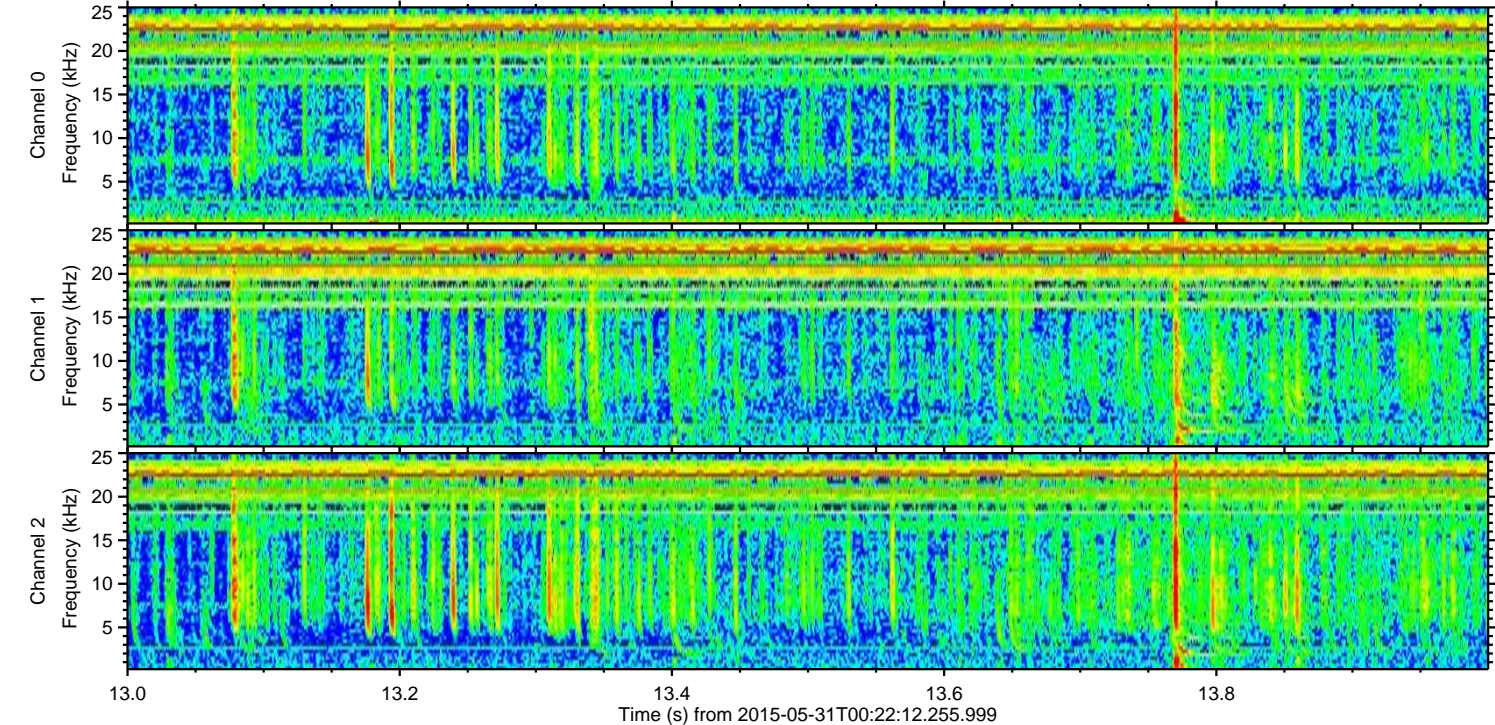
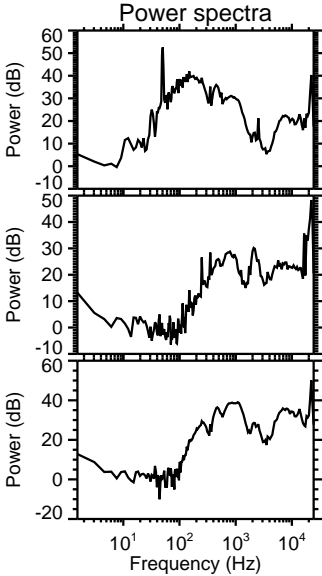
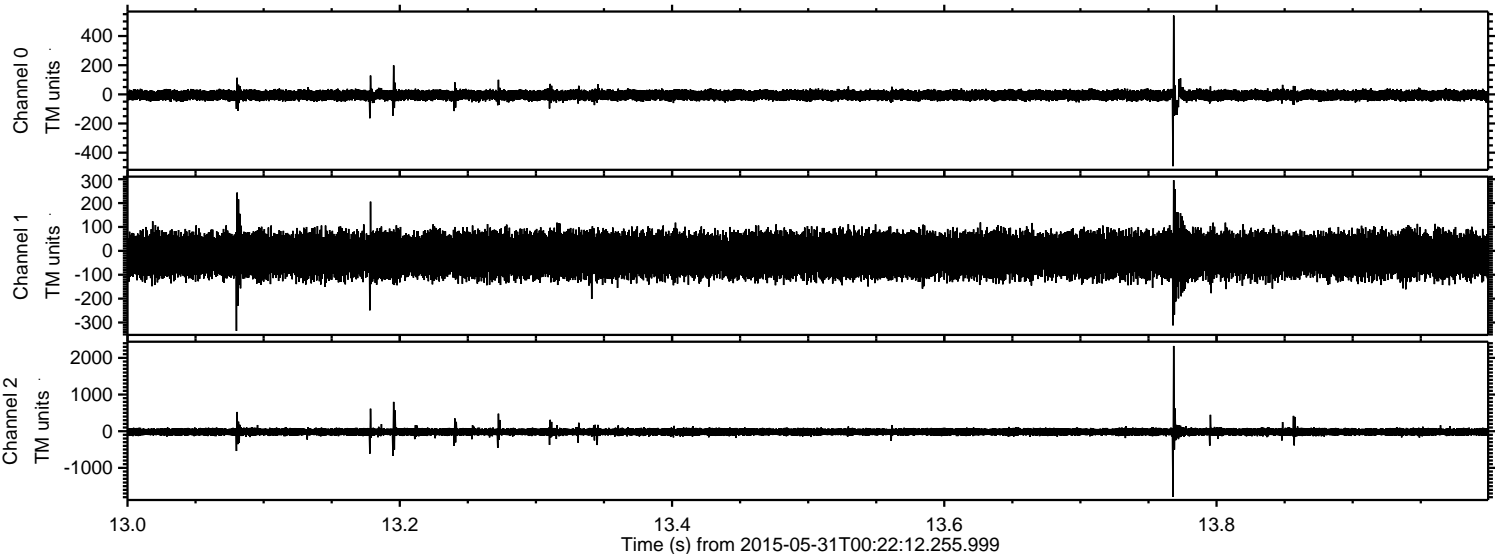
Channel 0  
mn: -569  
mx: 490  
 $\mu$ : -6.0  
 $\sigma$ : 19.6

Channel 1  
mn: -1066  
mx: 537  
 $\mu$ : -17.8  
 $\sigma$ : 51.4

Channel 2  
mn: -2095  
mx: 2546  
 $\mu$ : -18.5  
 $\sigma$ : 59.0

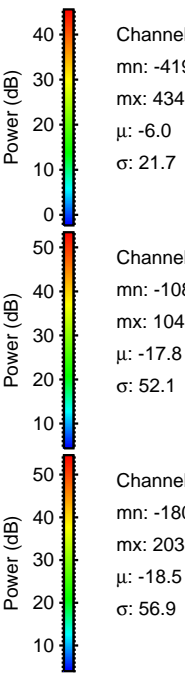
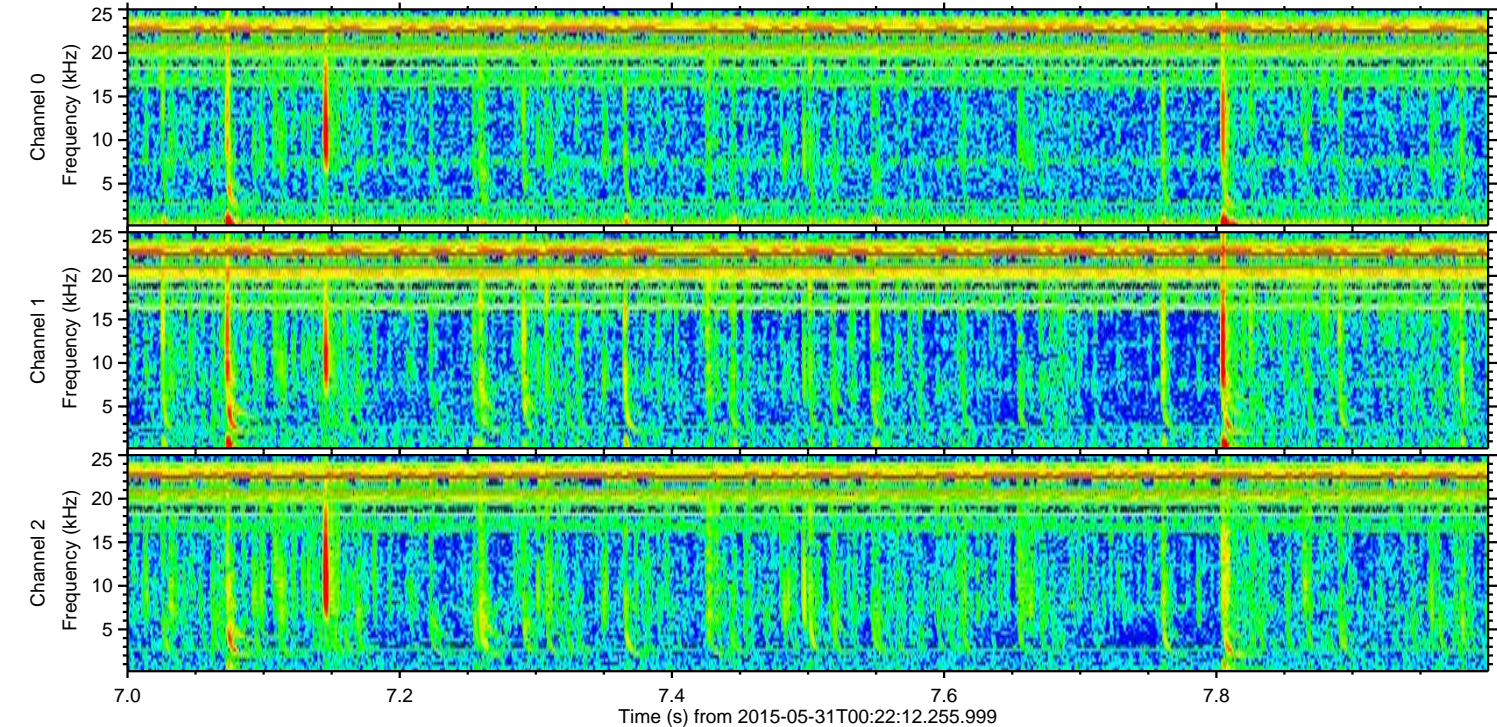
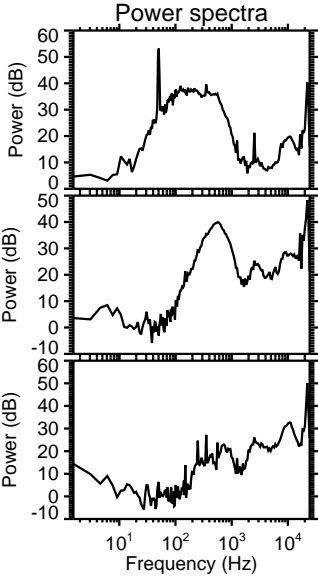
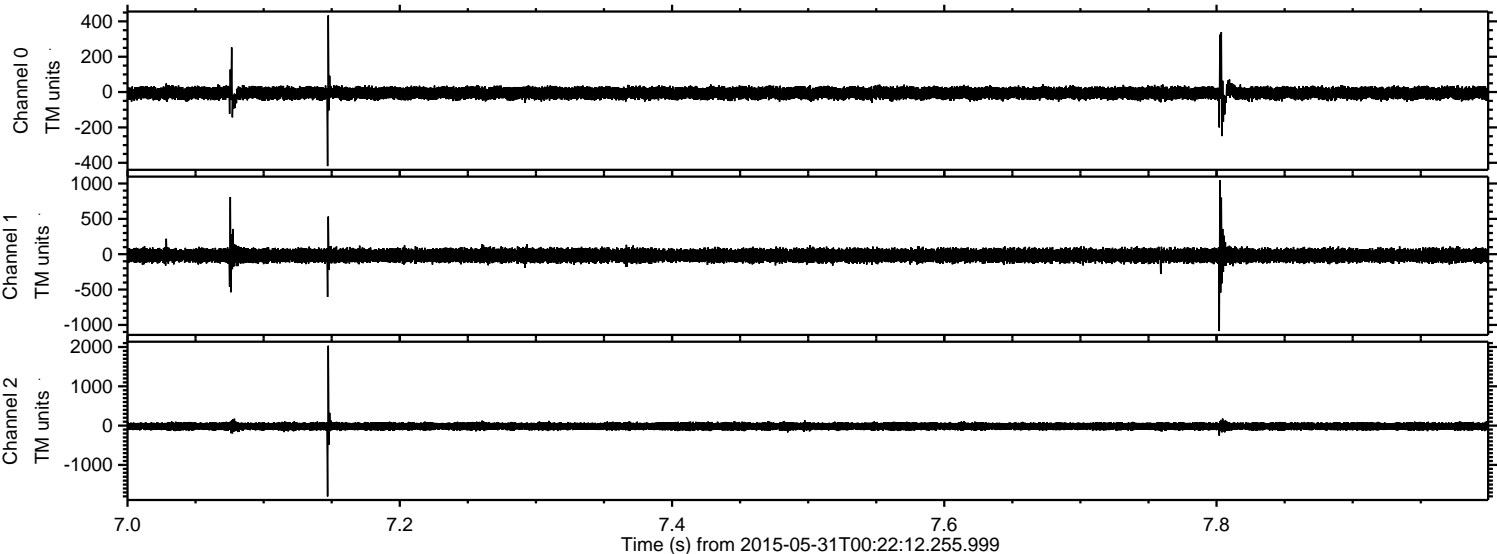


Processed Sun May 31 02:30:04 2015 by ELM ver.2012-10-06 from 001\_\_elm20150531\_002211\_\_dat00.bin





Processed Sun May 31 02:30:05 2015 by ELM ver.2012-10-06 from 001\_\_elm20150531\_002211\_\_dat00.bin



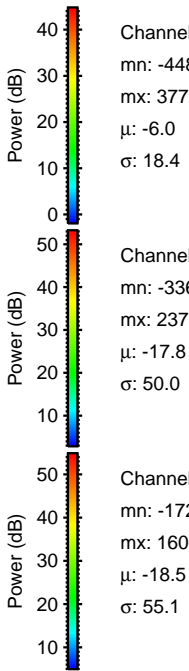
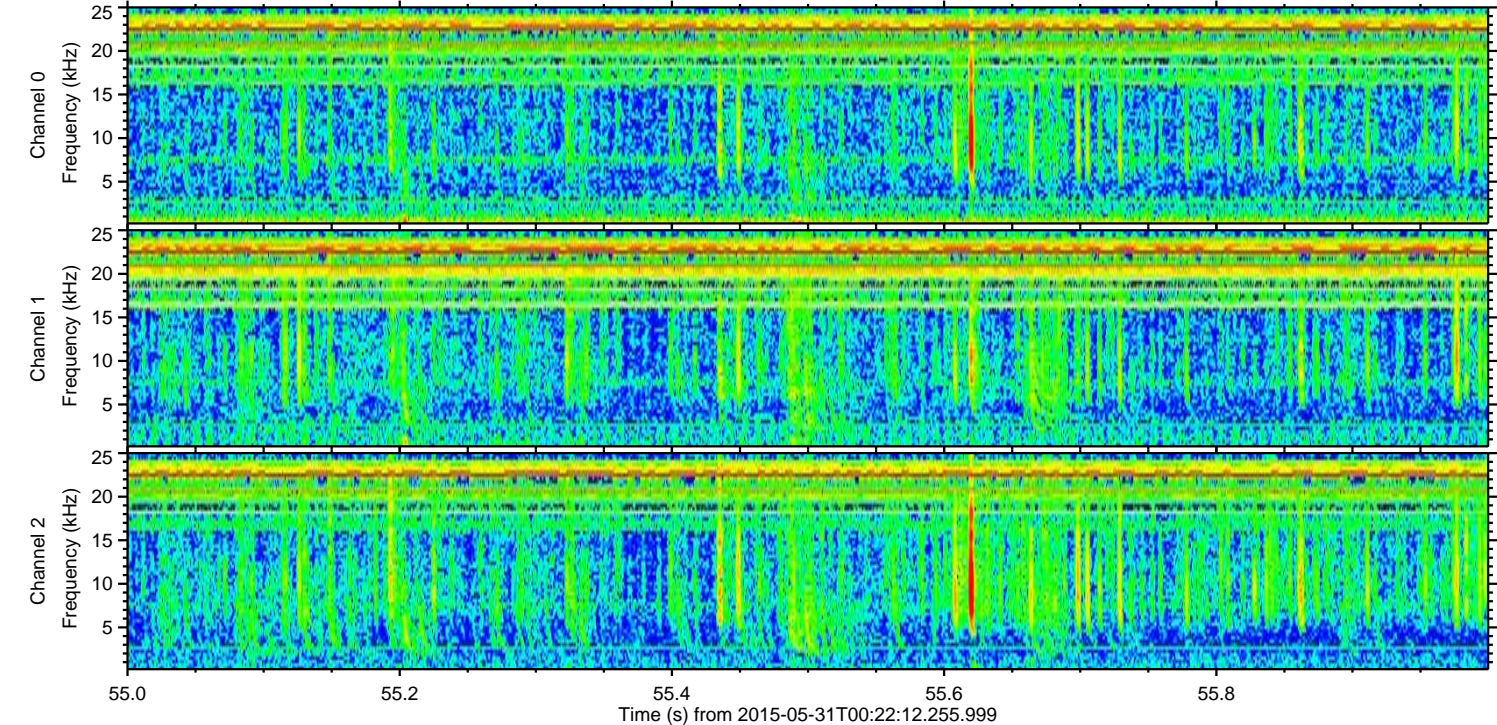
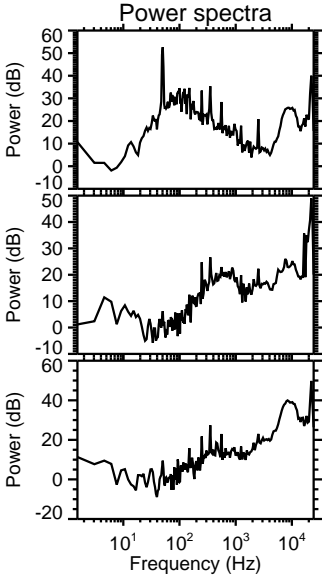
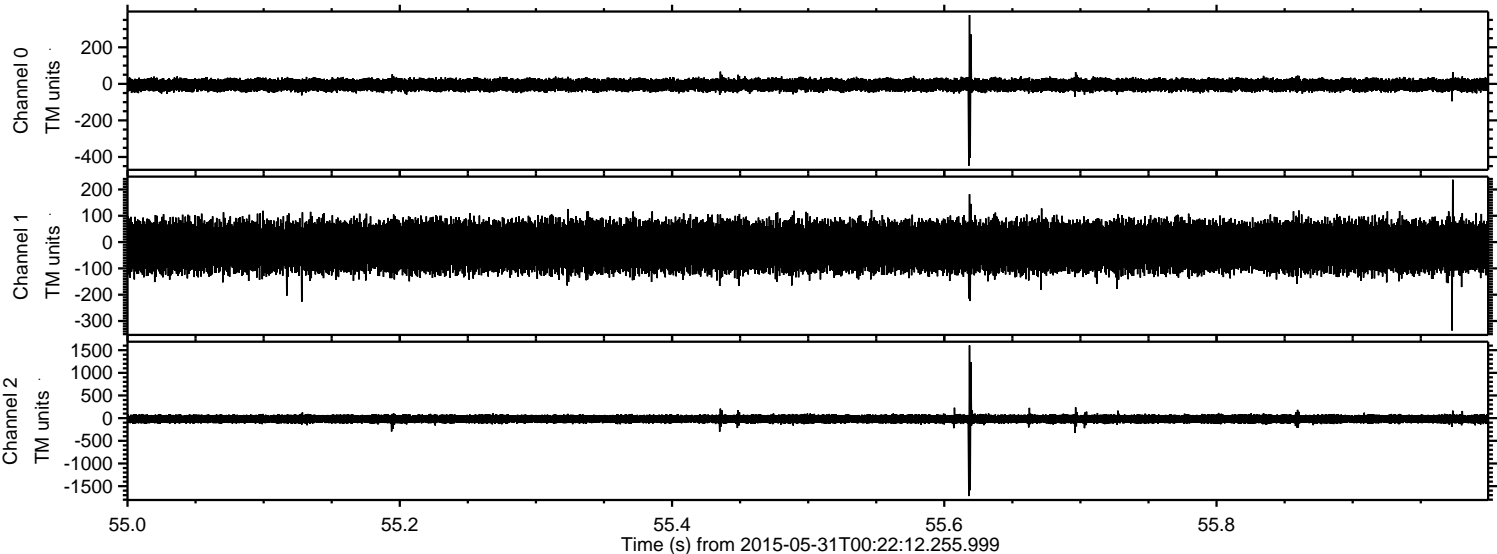
Channel 0  
mn: -419  
mx: 434  
 $\mu$ : -6.0  
 $\sigma$ : 21.7

Channel 1  
mn: -1087  
mx: 1045  
 $\mu$ : -17.8  
 $\sigma$ : 52.1

Channel 2  
mn: -1803  
mx: 2033  
 $\mu$ : -18.5  
 $\sigma$ : 56.9



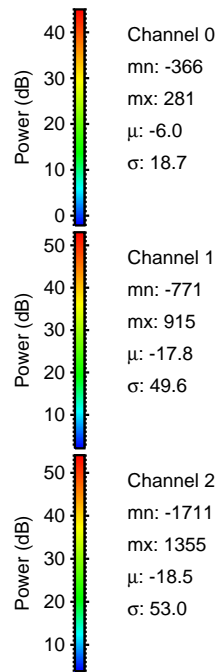
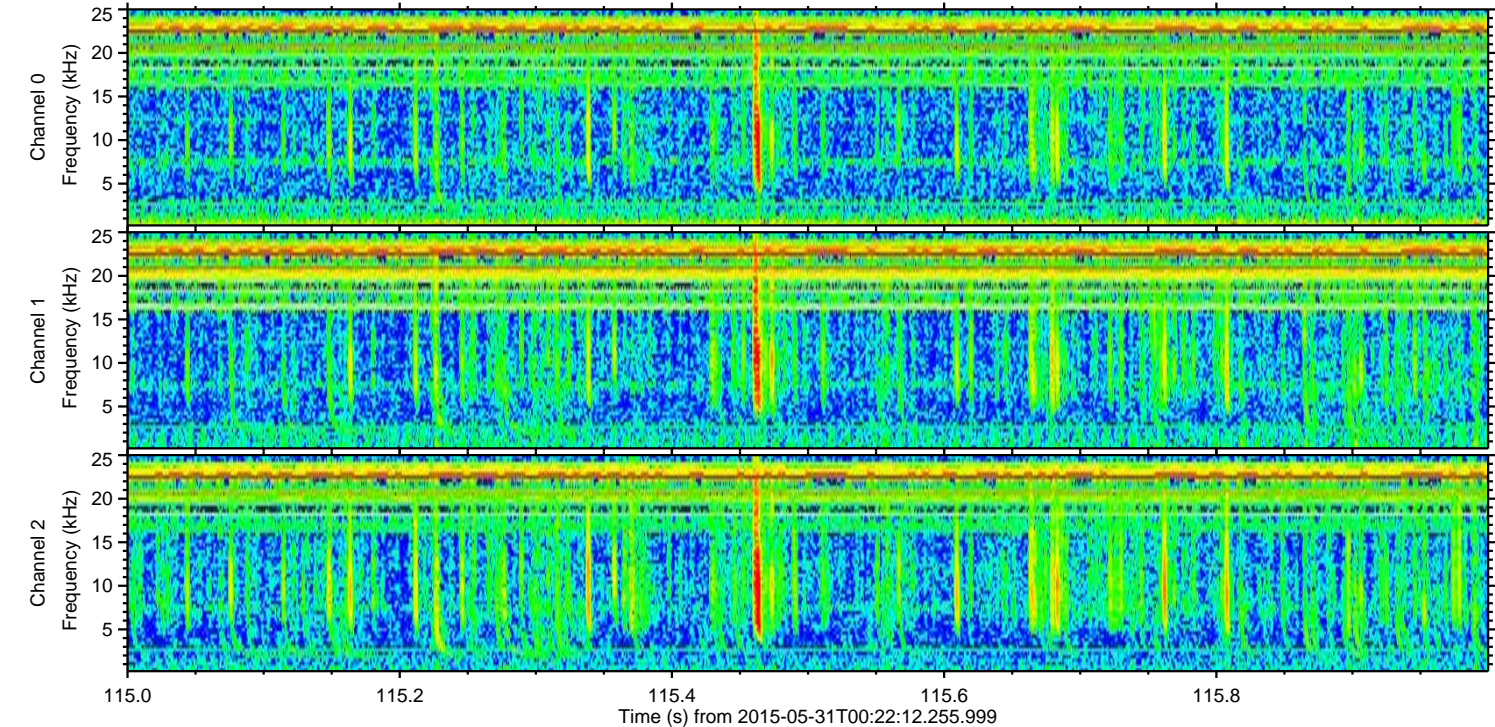
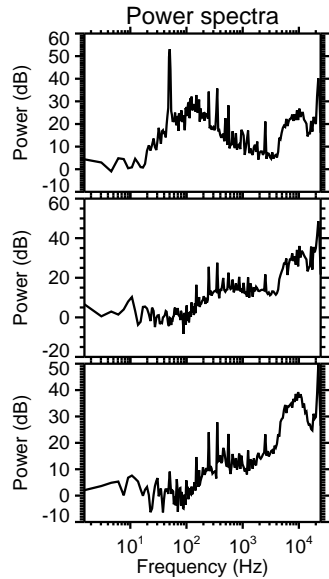
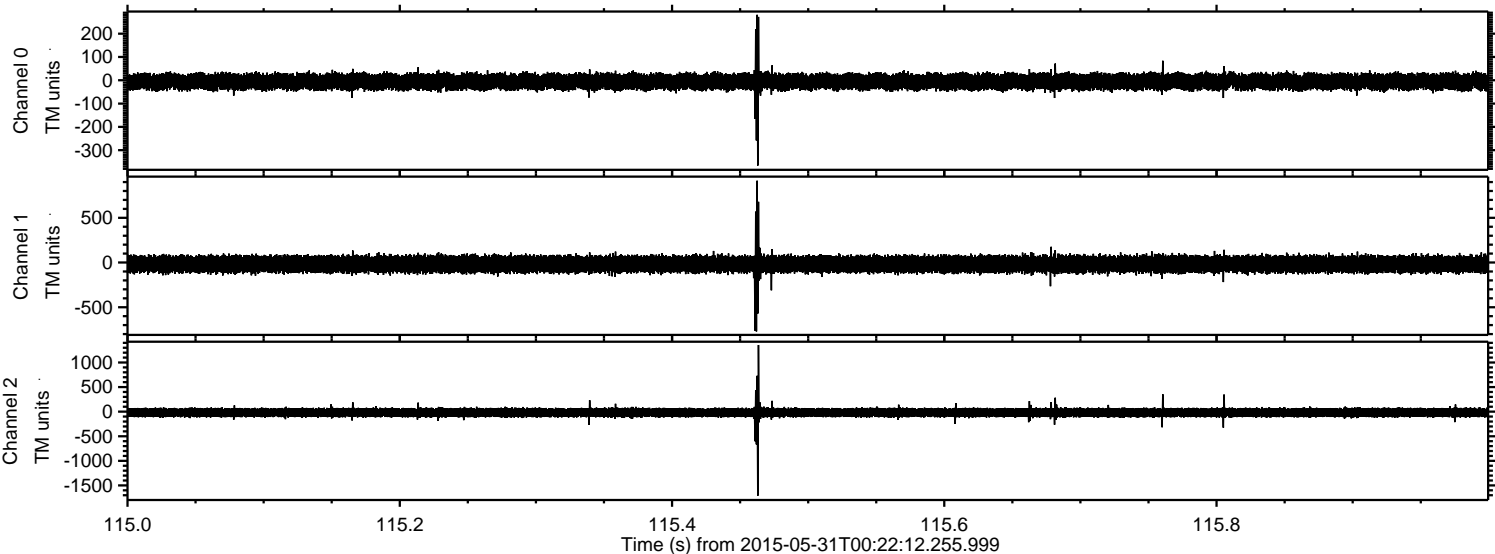
Processed Sun May 31 02:30:06 2015 by ELM ver.2012-10-06 from 001\_\_elm20150531\_002211\_\_dat00.bin





ELMAVAN 3D WAVEFORMS (Measured data sampled at 50 kHz) 49726 packets of 144 samples from 2015-05-31T00:22:12.255.999. Part 116/144

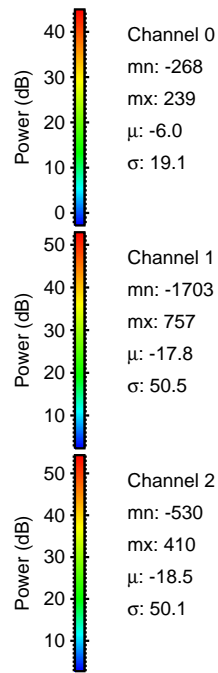
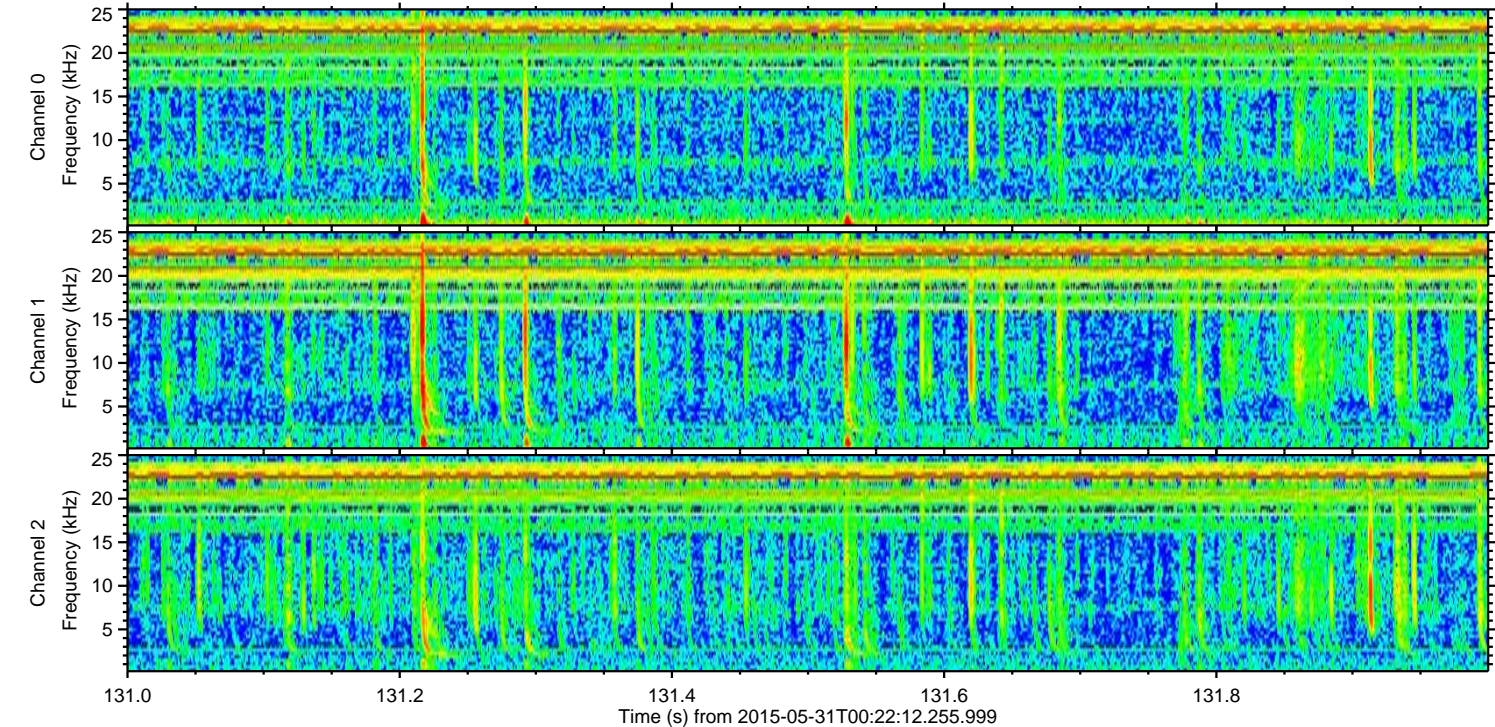
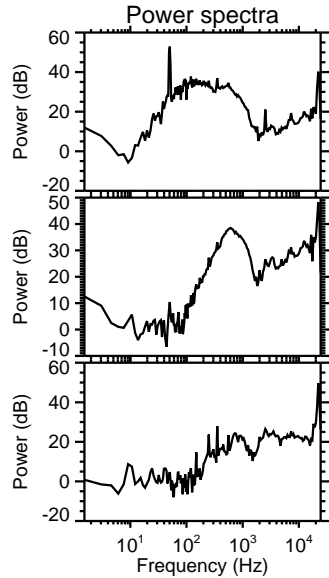
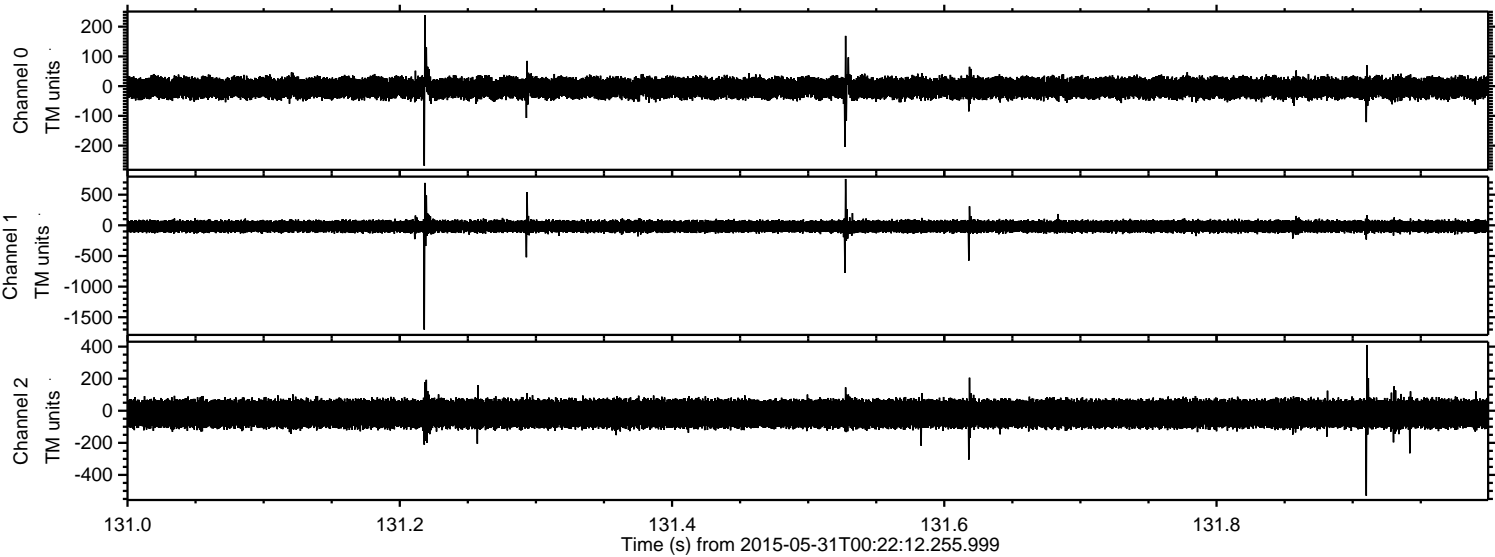
Processed Sun May 31 02:30:07 2015 by ELM ver.2012-10-06 from 001\_\_elm20150531\_002211\_\_dat00.bin





ELMAVAN 3D WAVEFORMS (Measured data sampled at 50 kHz) 49726 packets of 144 samples from 2015-05-31T00:22:12.255.999. Part 132/144

Processed Sun May 31 02:30:08 2015 by ELM ver.2012-10-06 from 001\_\_elm20150531\_002211\_\_dat00.bin





Processed Sun May 31 02:30:09 2015 by ELM ver.2012-10-06 from 001\_\_elm20150531\_002211\_\_dat00.bin

