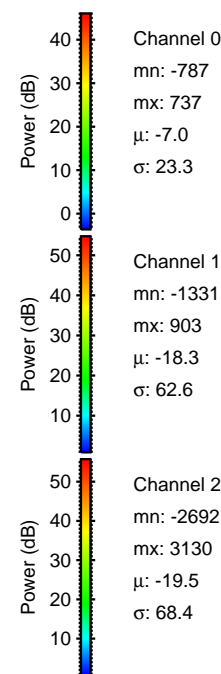
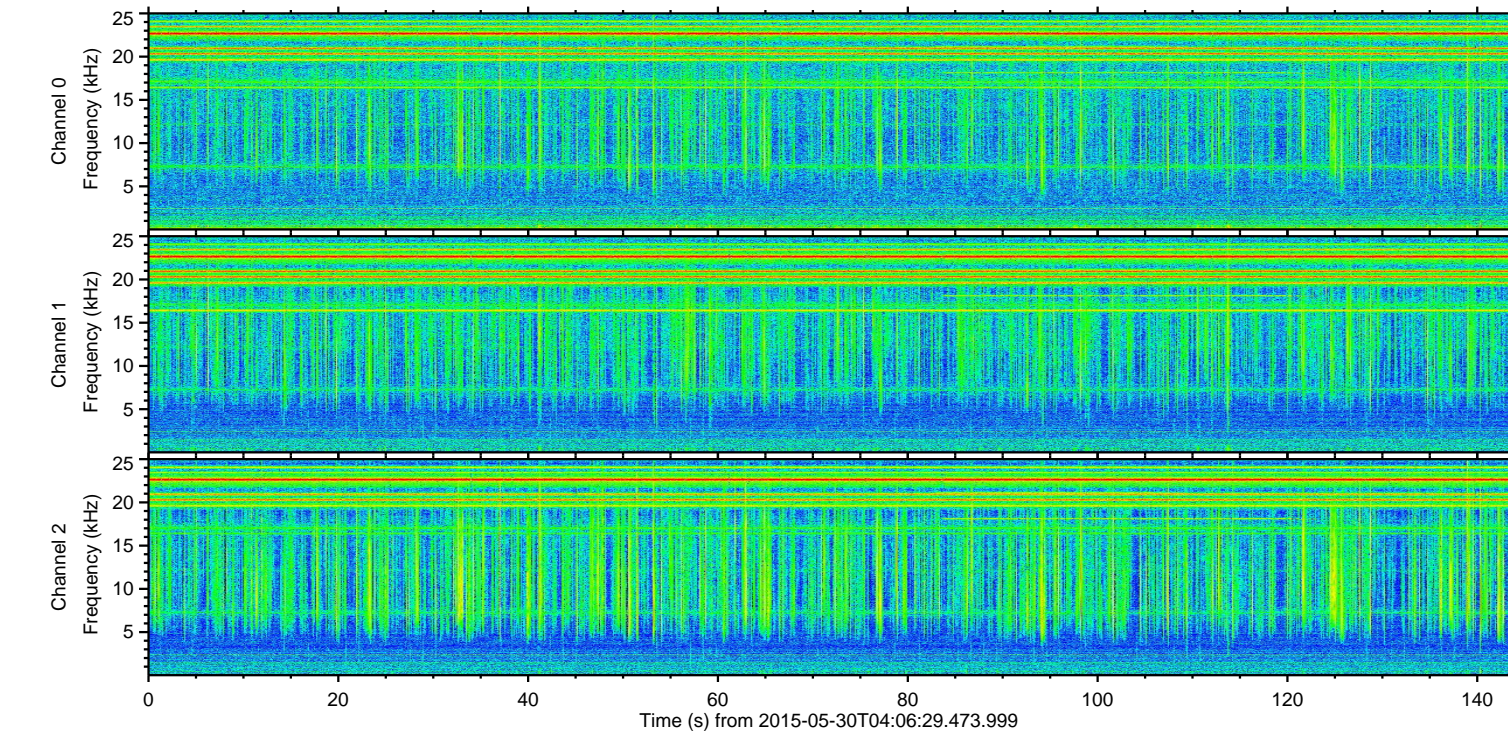
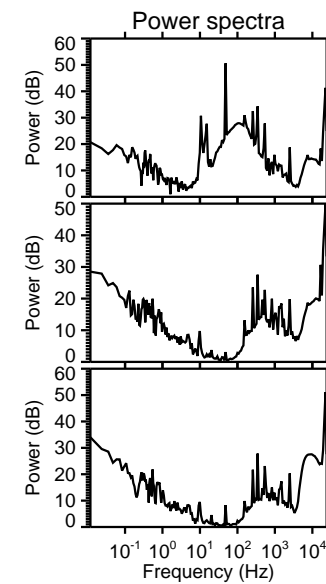
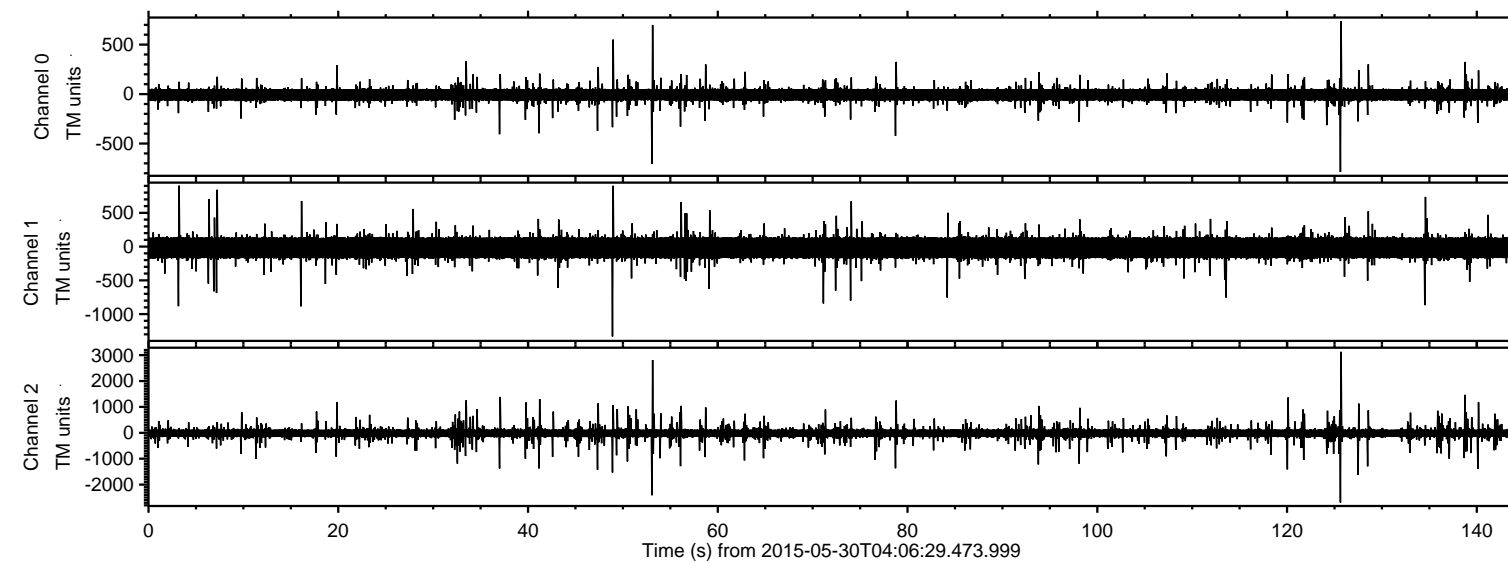


ELMAVAN 3D WAVEFORMS (Measured data sampled at 50 kHz) 49794 packets of 144 samples from 2015-05-30T04:06:29.473.999.

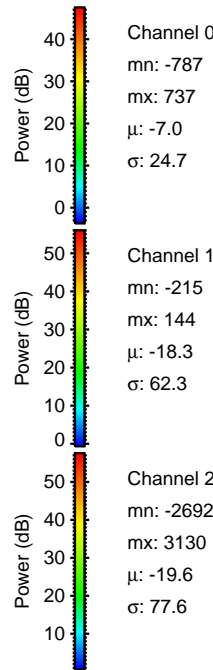
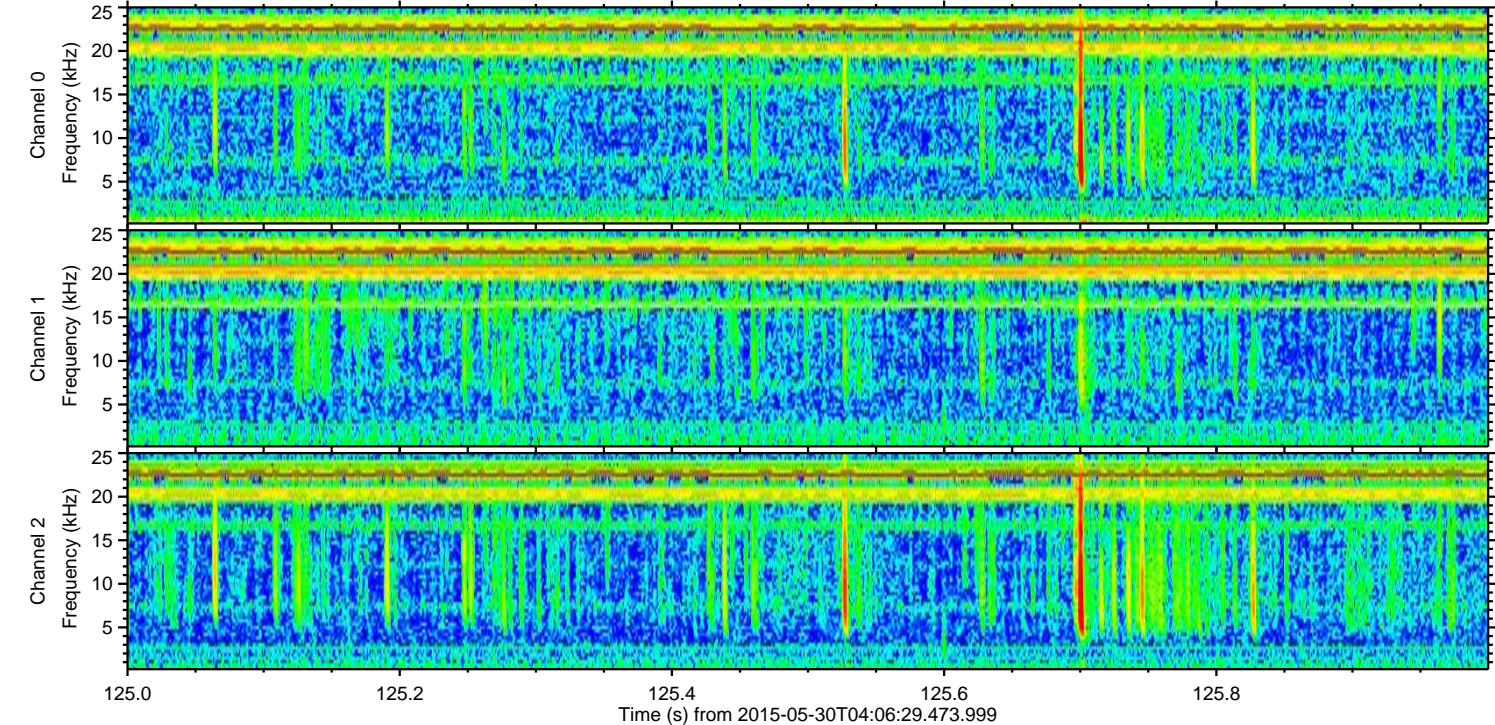
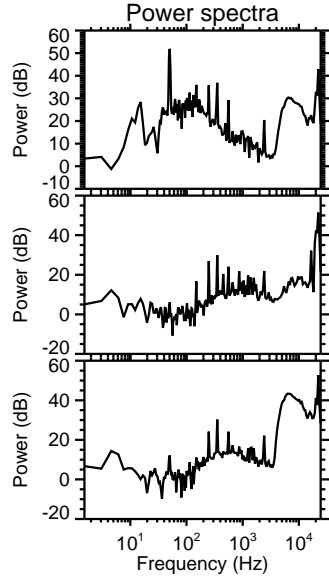
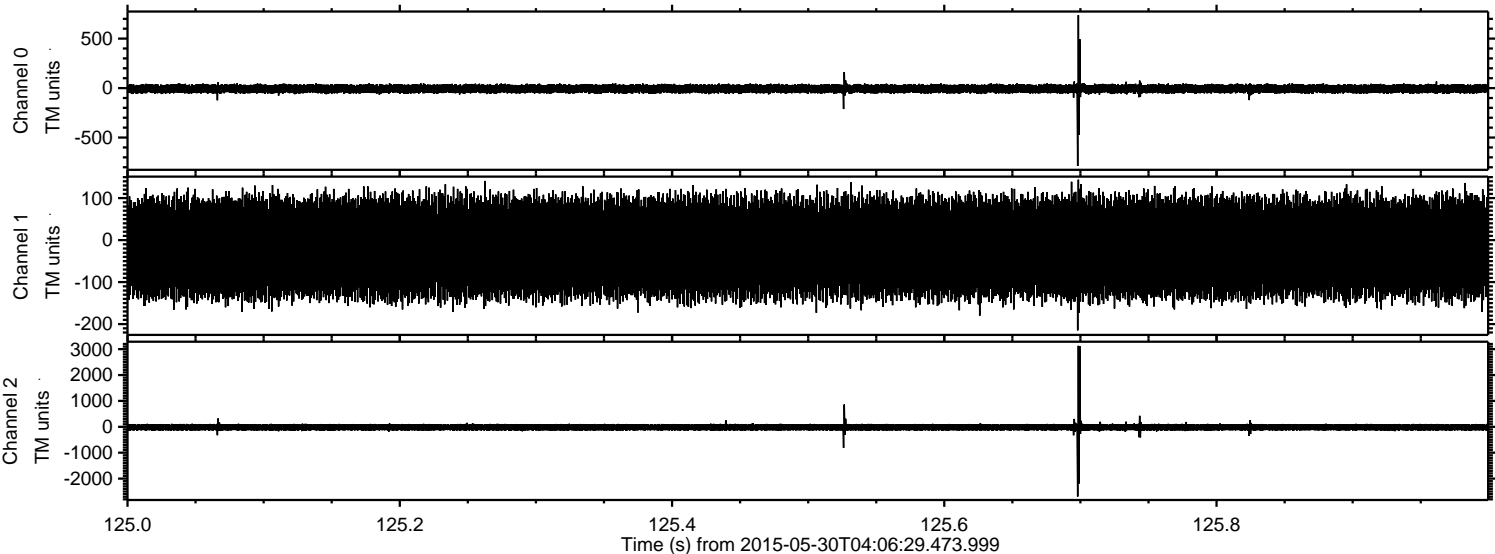
Processed Sat May 30 06:14:06 2015 by ELM ver.2012-10-06 from 001\_\_elm20150530\_040628\_\_dat00.bin





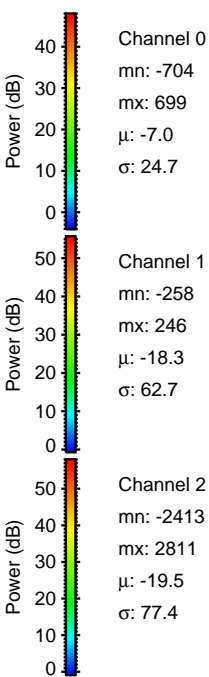
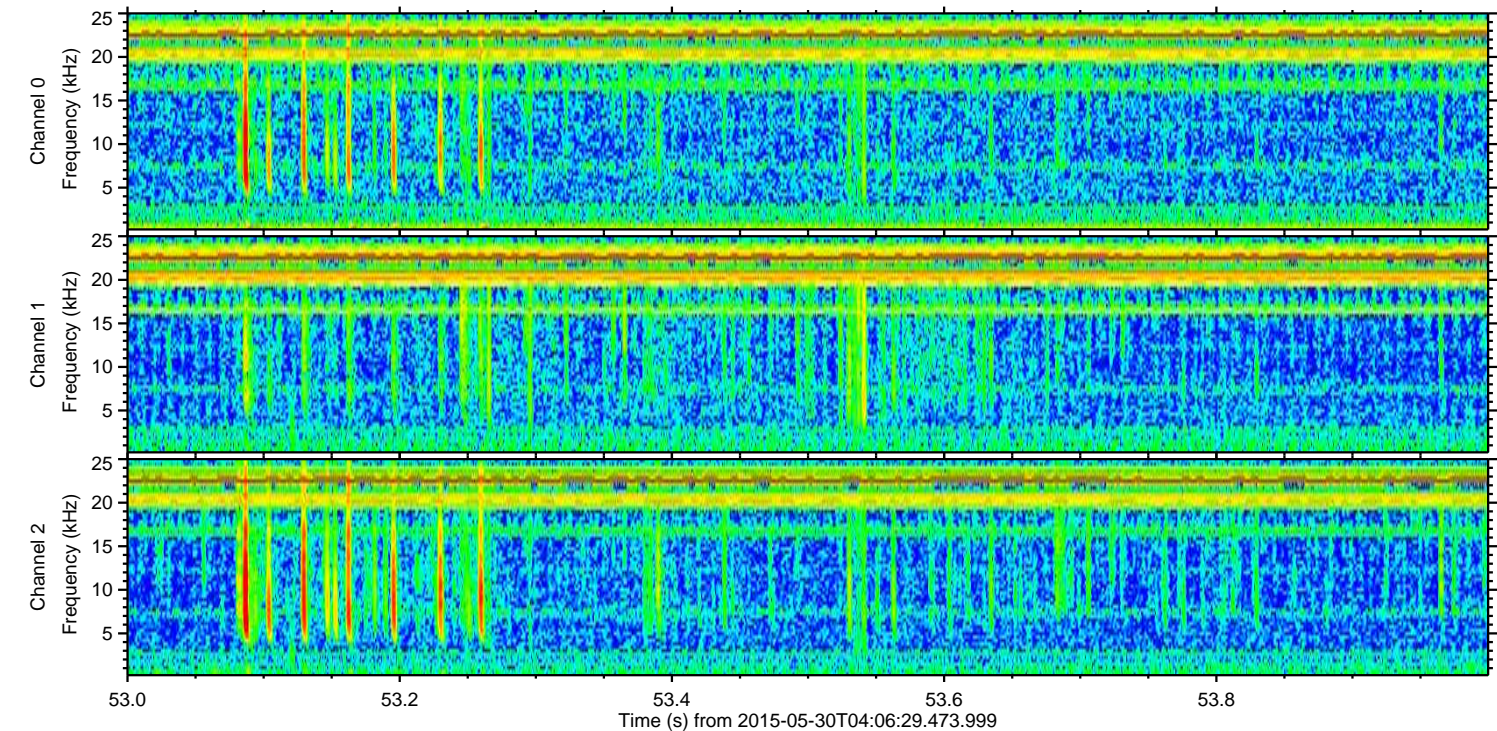
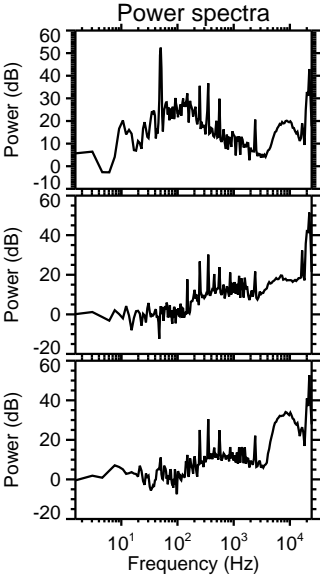
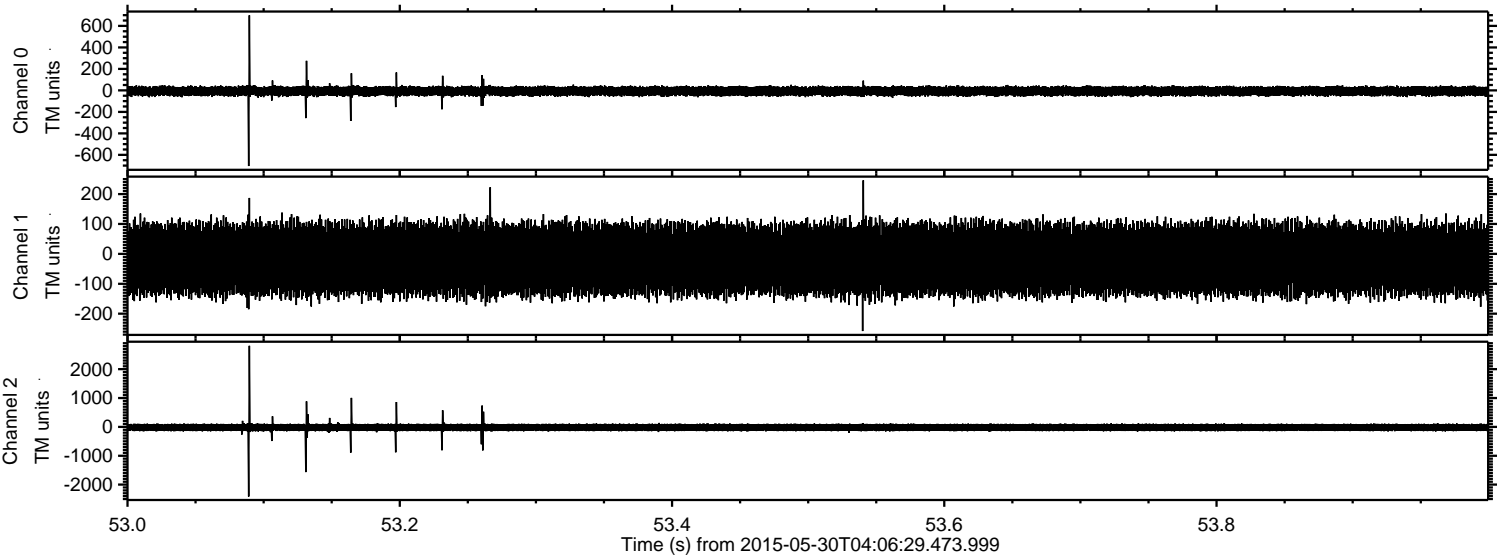
ELMAVAN 3D WAVEFORMS (Measured data sampled at 50 kHz) 49794 packets of 144 samples from 2015-05-30T04:06:29.473.999. Part 126/144

Processed Sat May 30 06:14:17 2015 by ELM ver.2012-10-06 from 001\_\_elm20150530\_040628\_\_dat00.bin





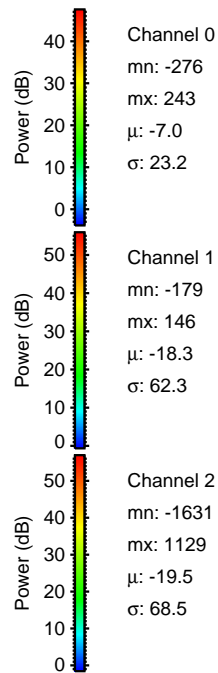
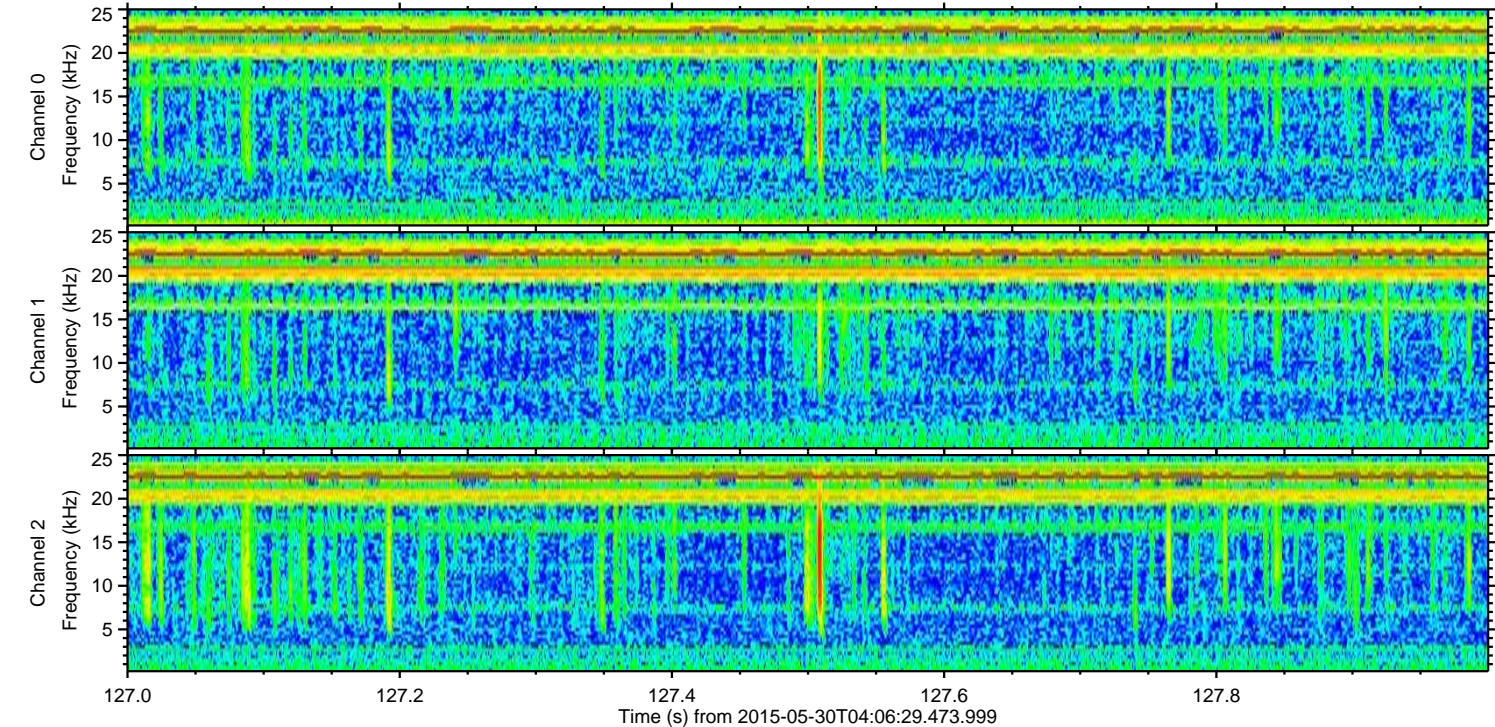
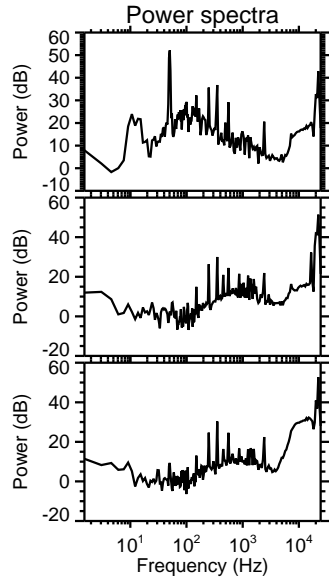
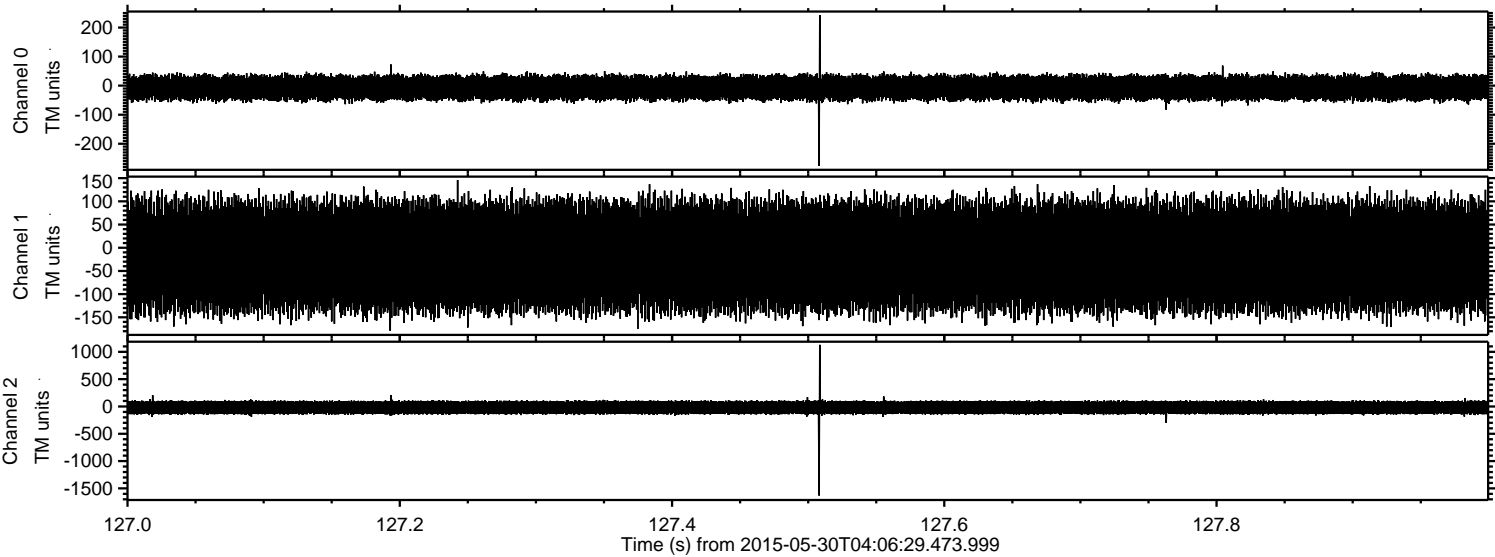
Processed Sat May 30 06:14:18 2015 by ELM ver.2012-10-06 from 001\_\_elm20150530\_040628\_\_dat00.bin





ELMAVAN 3D WAVEFORMS (Measured data sampled at 50 kHz) 49794 packets of 144 samples from 2015-05-30T04:06:29.473.999. Part 128/144

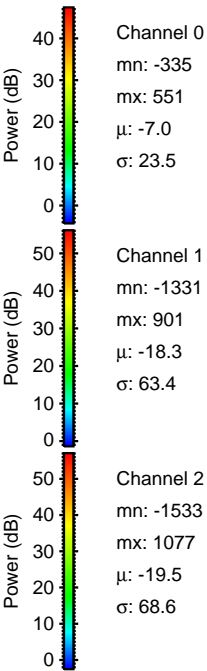
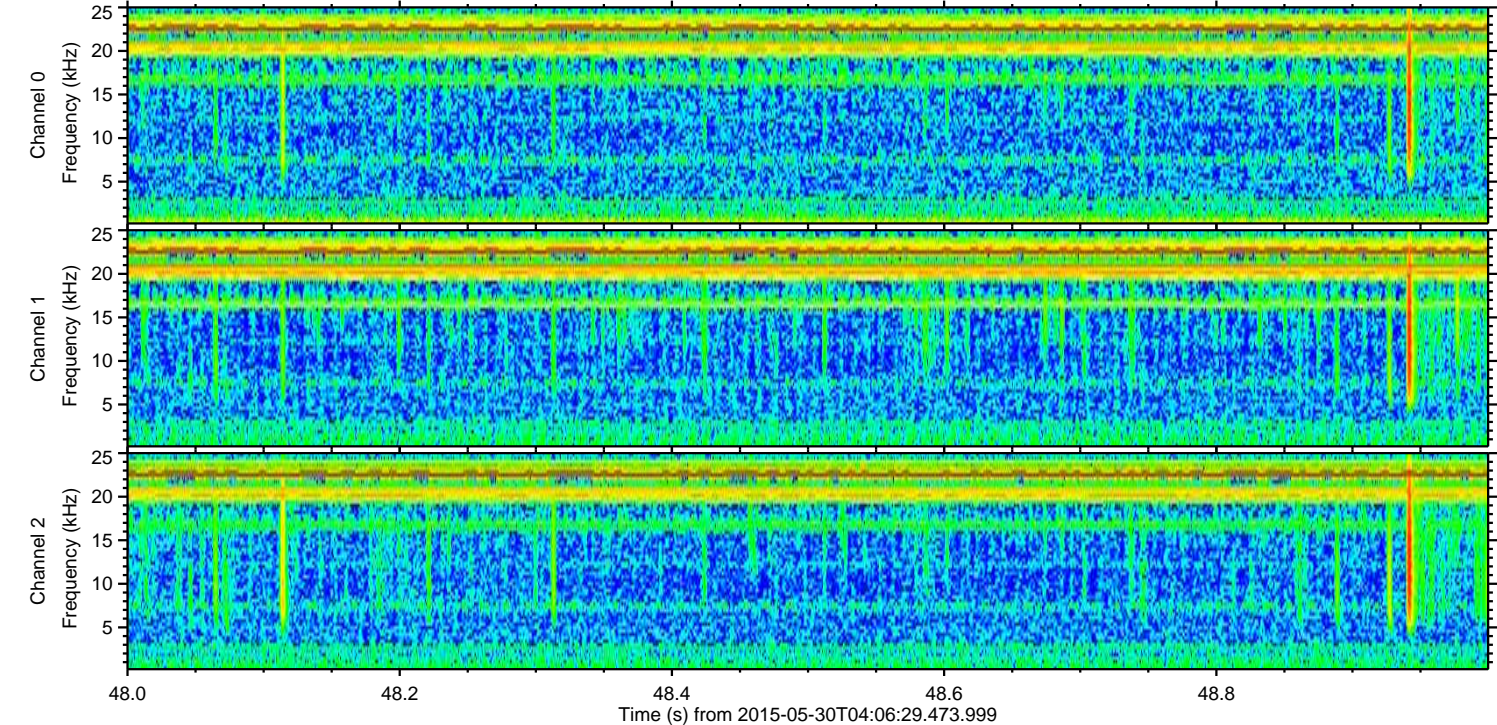
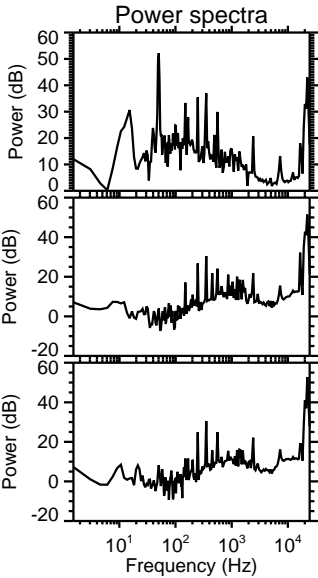
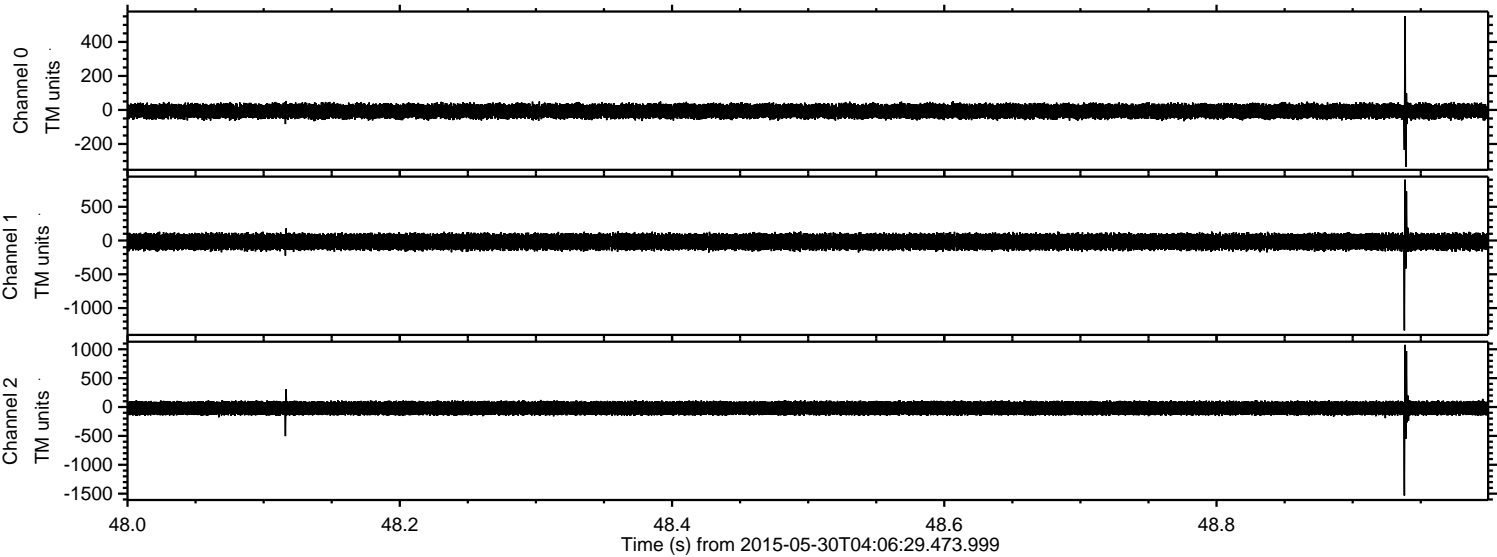
Processed Sat May 30 06:14:19 2015 by ELM ver.2012-10-06 from 001\_\_elm20150530\_040628\_\_dat00.bin





ELMAVAN 3D WAVEFORMS (Measured data sampled at 50 kHz) 49794 packets of 144 samples from 2015-05-30T04:06:29.473.999. Part 49/144

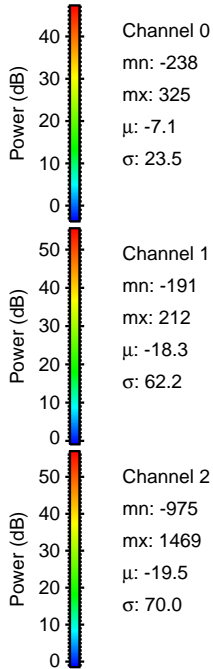
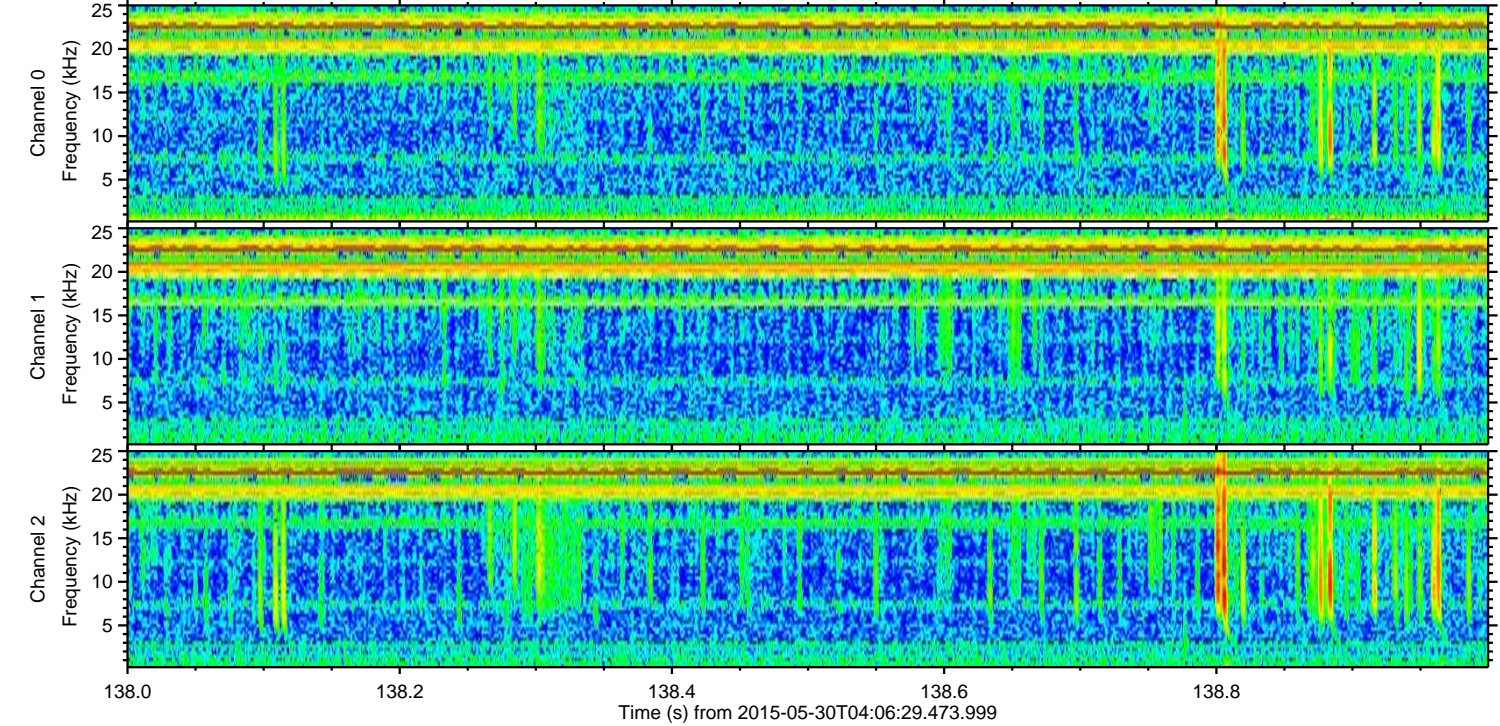
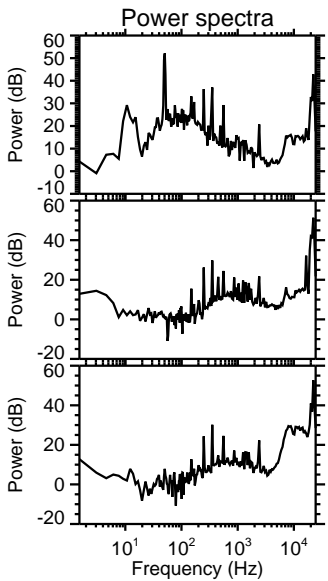
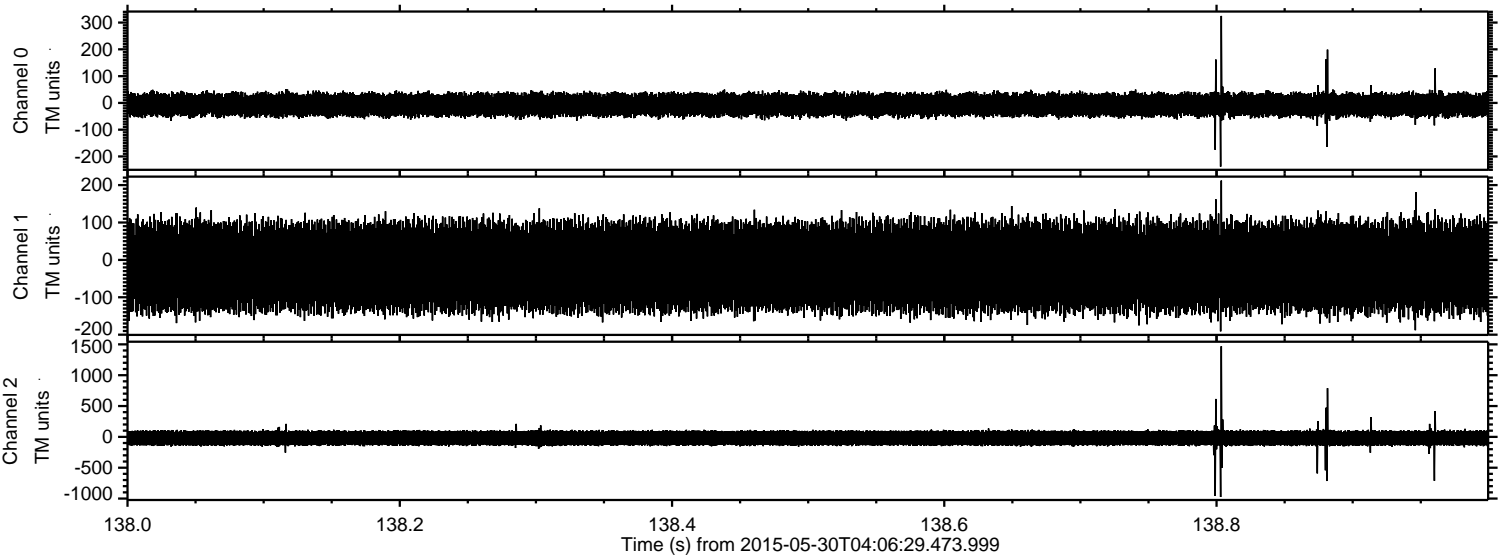
Processed Sat May 30 06:14:20 2015 by ELM ver.2012-10-06 from 001\_\_elm20150530\_040628\_\_dat00.bin





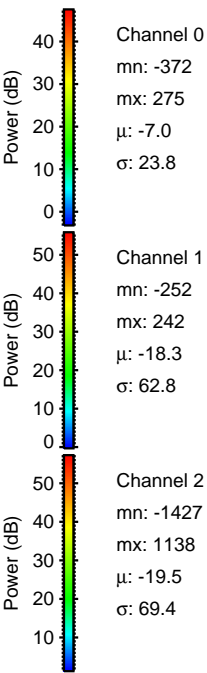
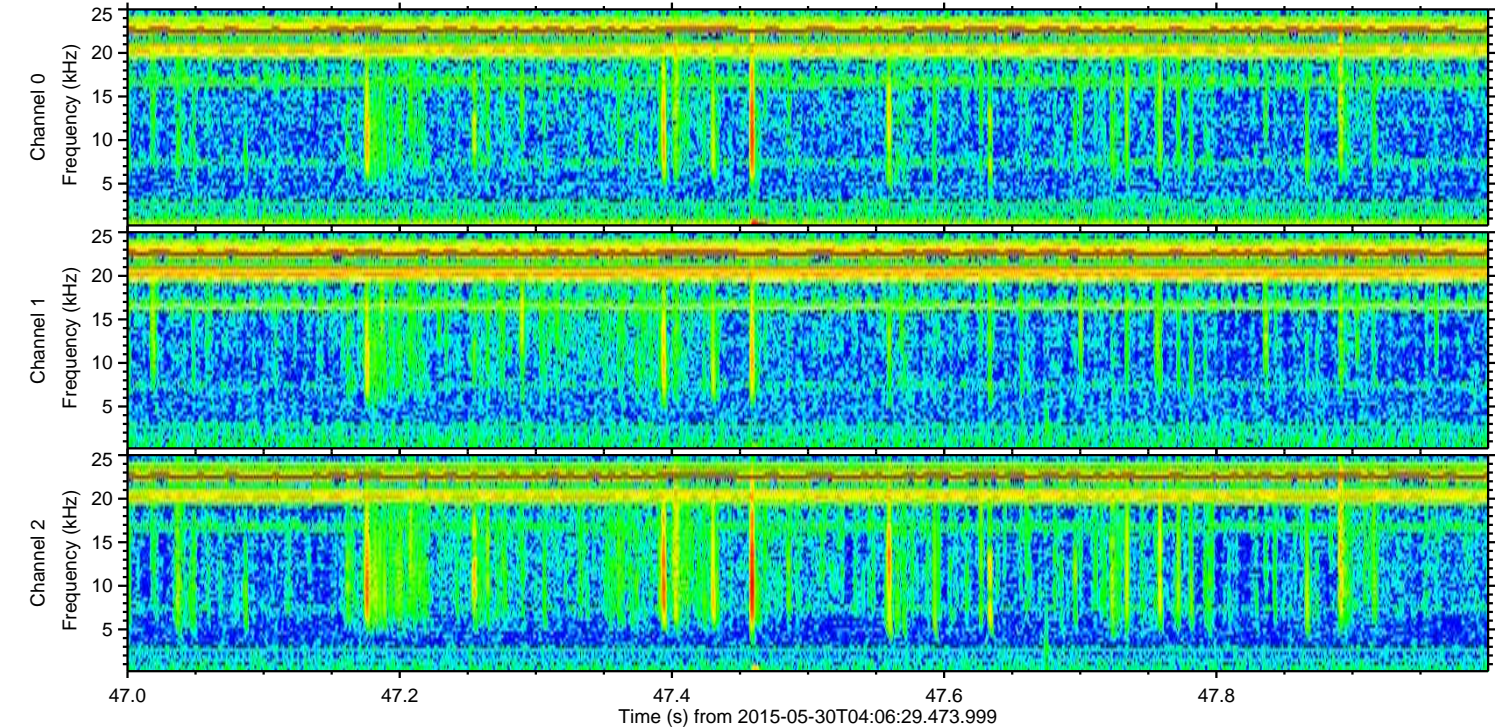
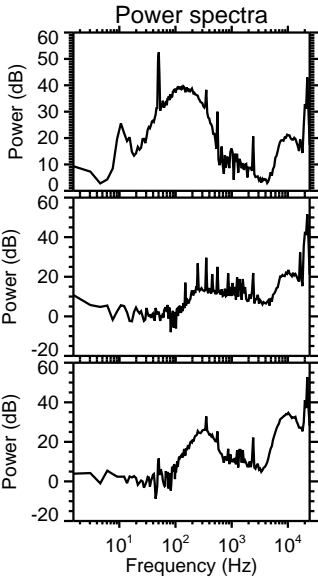
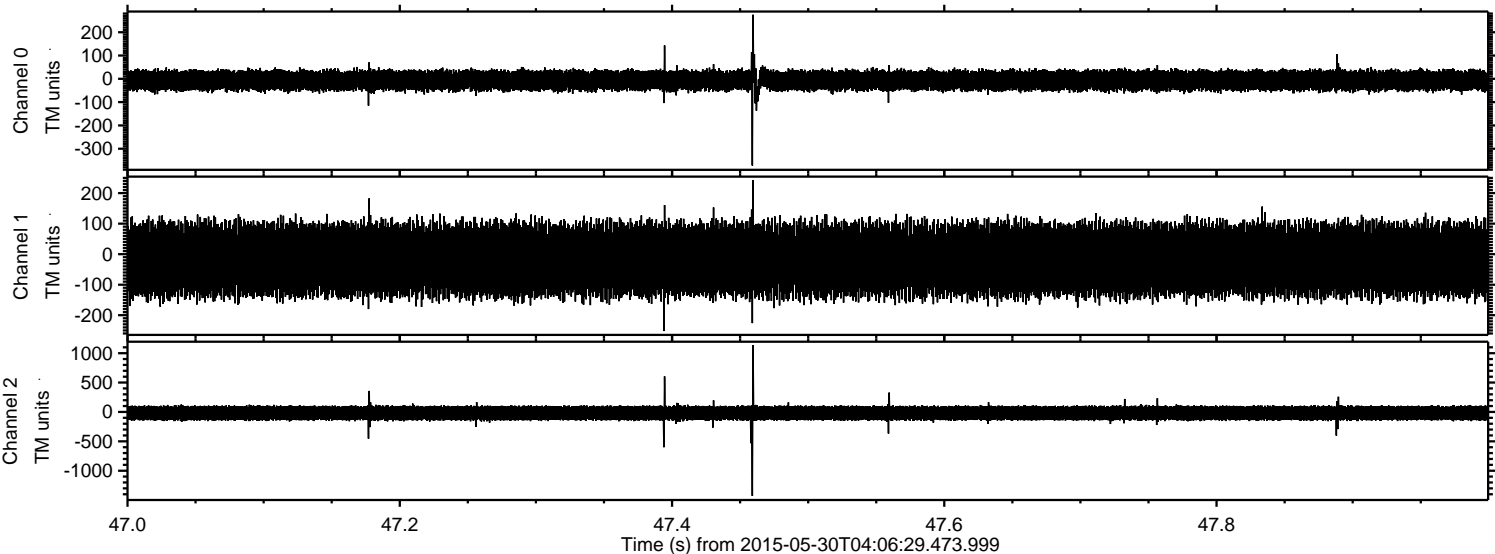
ELMAVAN 3D WAVEFORMS (Measured data sampled at 50 kHz) 49794 packets of 144 samples from 2015-05-30T04:06:29.473.999. Part 139/144

Processed Sat May 30 06:14:21 2015 by ELM ver.2012-10-06 from 001\_\_elm20150530\_040628\_\_dat00.bin





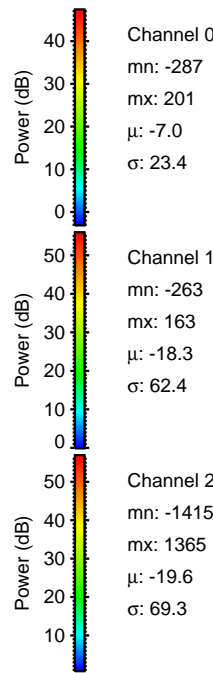
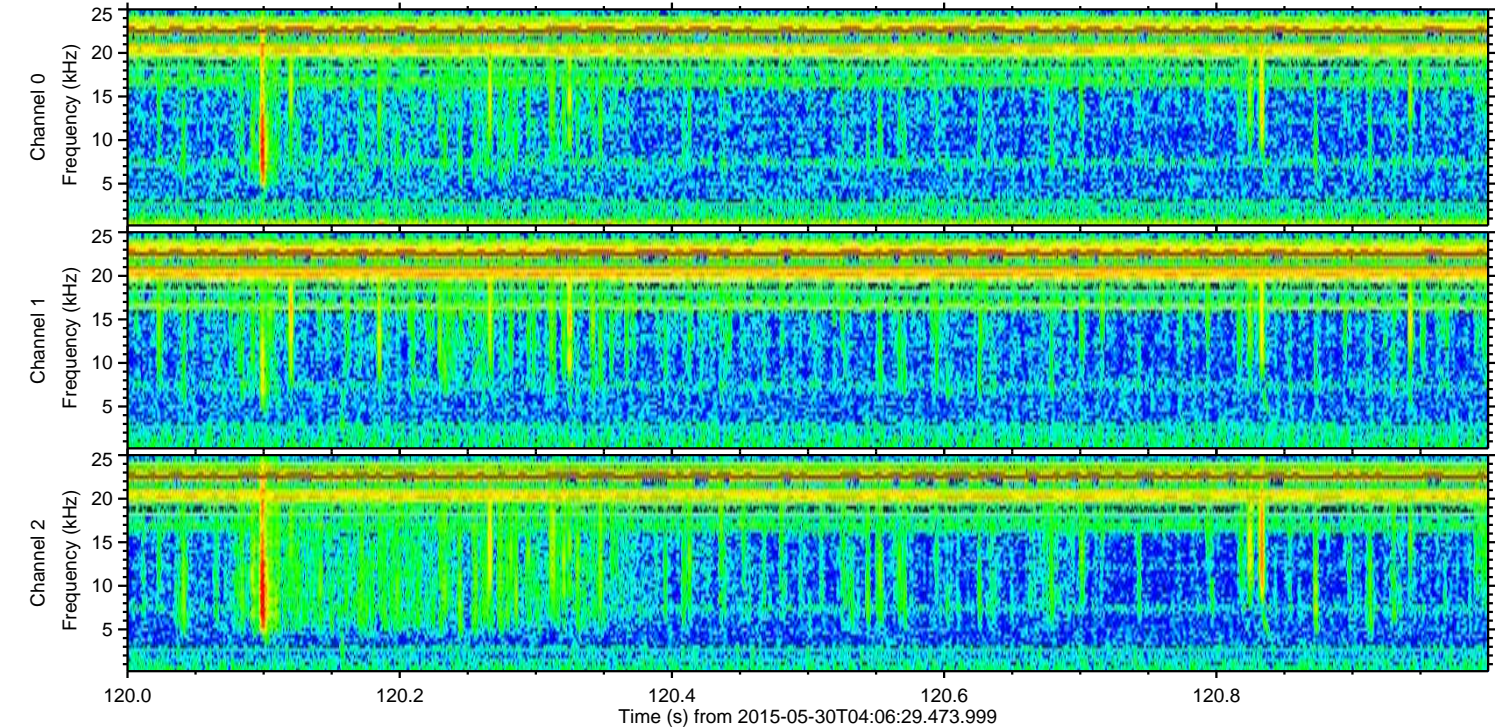
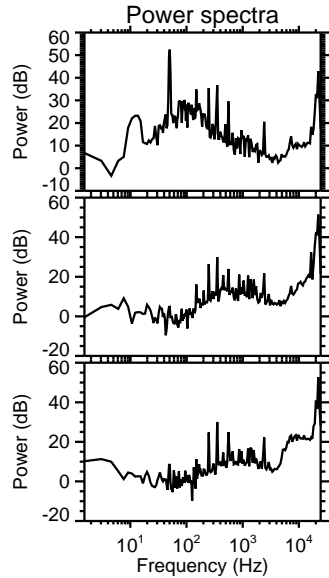
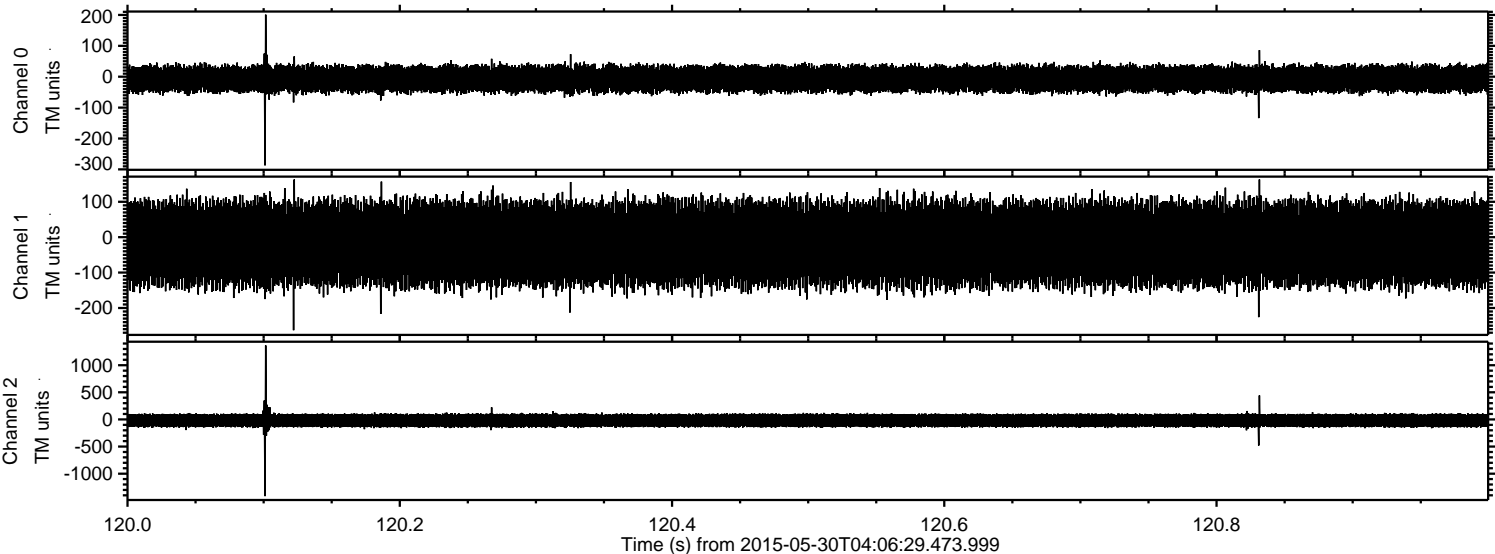
Processed Sat May 30 06:14:22 2015 by ELM ver.2012-10-06 from 001\_\_elm20150530\_040628\_\_dat00.bin





ELMAVAN 3D WAVEFORMS (Measured data sampled at 50 kHz) 49794 packets of 144 samples from 2015-05-30T04:06:29.473.999. Part 121/144

Processed Sat May 30 06:14:23 2015 by ELM ver.2012-10-06 from 001\_\_elm20150530\_040628\_\_dat00.bin



Channel 0  
mn: -287  
mx: 201  
 $\mu$ : -7.0  
 $\sigma$ : 23.4

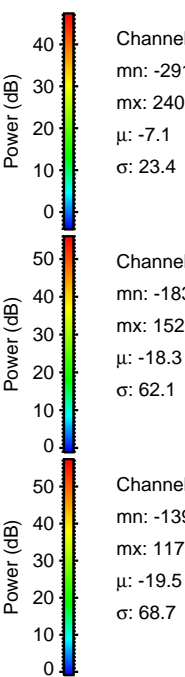
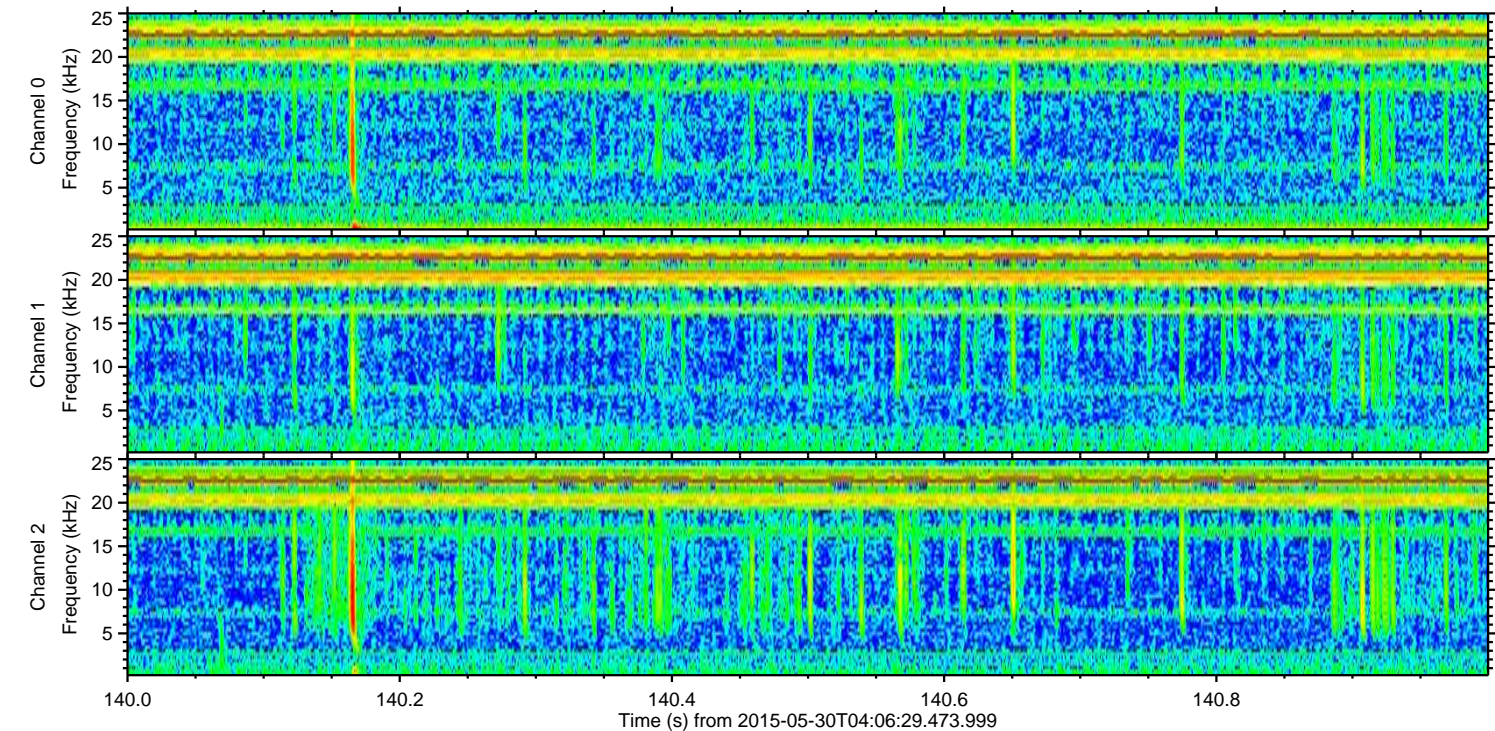
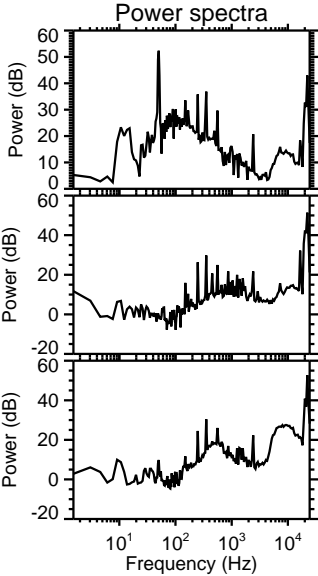
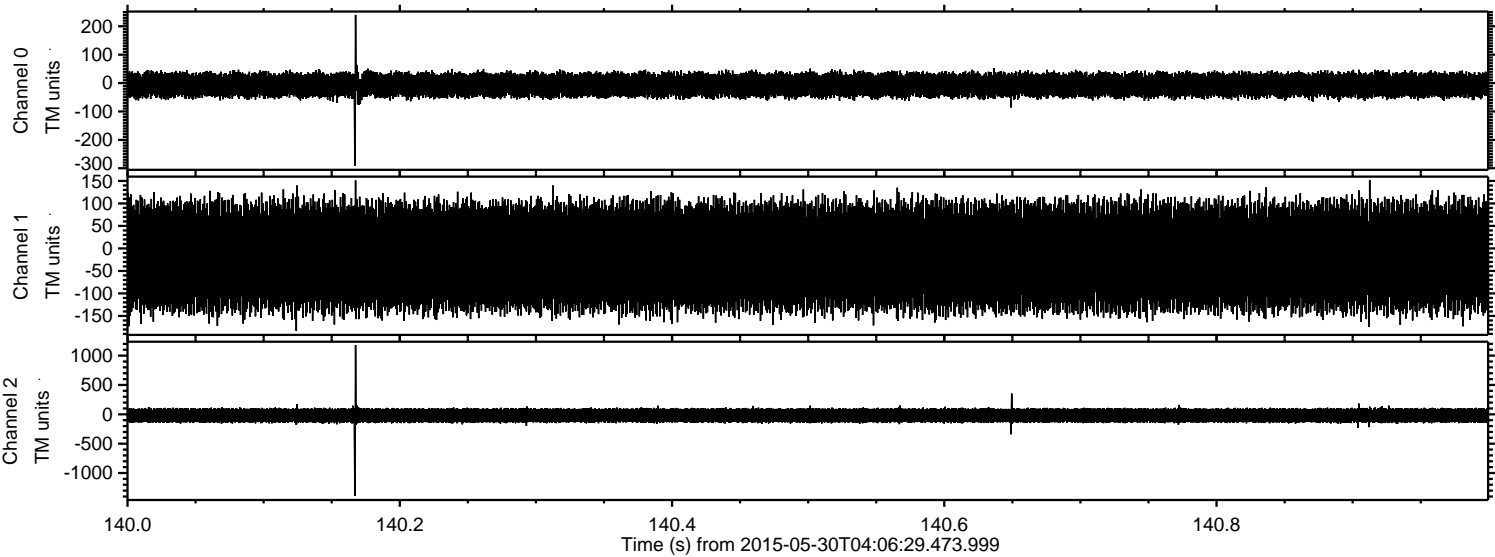
Channel 1  
mn: -263  
mx: 163  
 $\mu$ : -18.3  
 $\sigma$ : 62.4

Channel 2  
mn: -1415  
mx: 1365  
 $\mu$ : -19.6  
 $\sigma$ : 69.3



ELMAVAN 3D WAVEFORMS (Measured data sampled at 50 kHz) 49794 packets of 144 samples from 2015-05-30T04:06:29.473.999. Part 141/144

Processed Sat May 30 06:14:24 2015 by ELM ver.2012-10-06 from 001\_\_elm20150530\_040628\_\_dat00.bin



Channel 0  
mn: -291  
mx: 240  
 $\mu$ : -7.1  
 $\sigma$ : 23.4

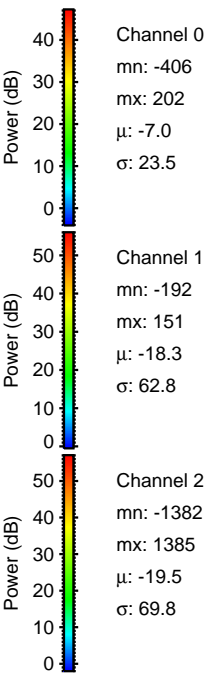
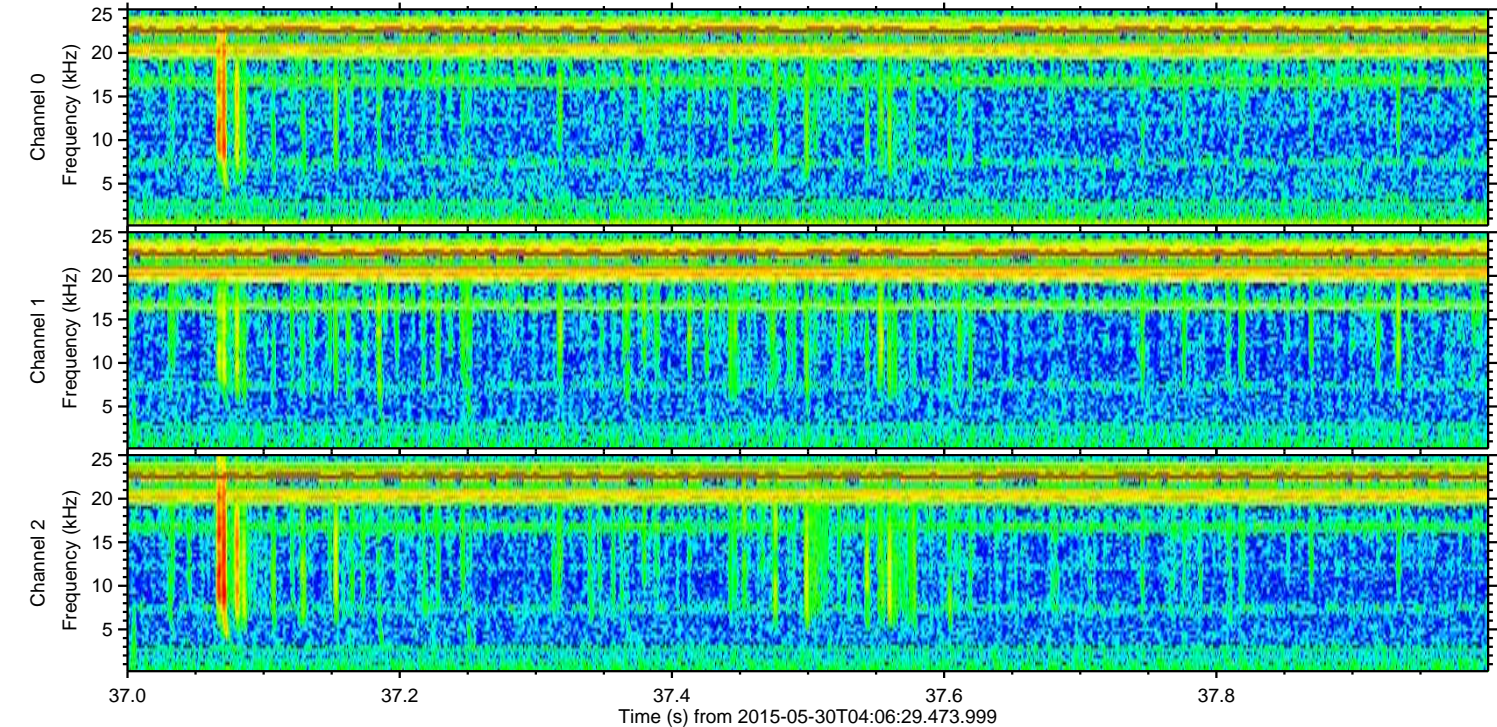
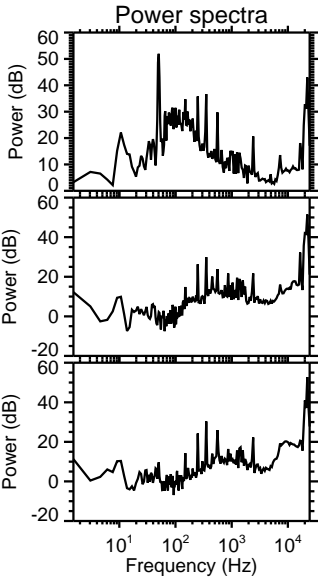
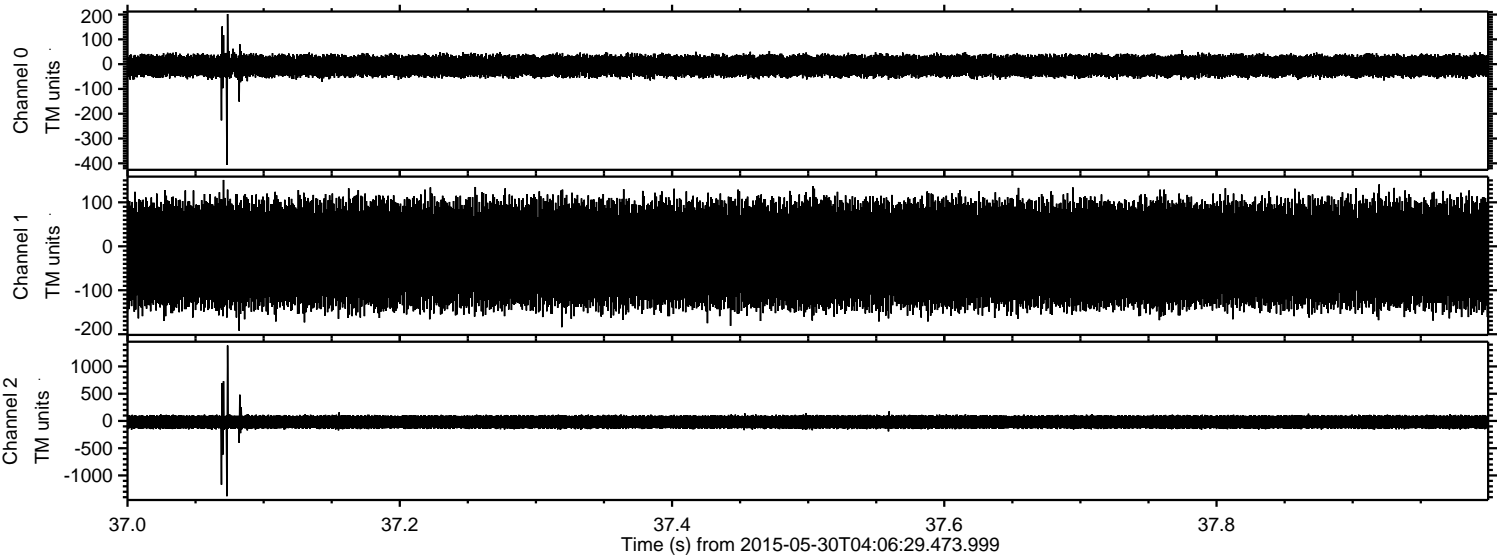
Channel 1  
mn: -183  
mx: 152  
 $\mu$ : -18.3  
 $\sigma$ : 62.1

Channel 2  
mn: -1390  
mx: 1178  
 $\mu$ : -19.5  
 $\sigma$ : 68.7



ELMAVAN 3D WAVEFORMS (Measured data sampled at 50 kHz) 49794 packets of 144 samples from 2015-05-30T04:06:29.473.999. Part 38/144

Processed Sat May 30 06:14:25 2015 by ELM ver.2012-10-06 from 001\_\_elm20150530\_040628\_\_dat00.bin





ELMAVAN 3D WAVEFORMS (Measured data sampled at 50 kHz) 49794 packets of 144 samples from 2015-05-30T04:06:29.473.999. Part 132/144

