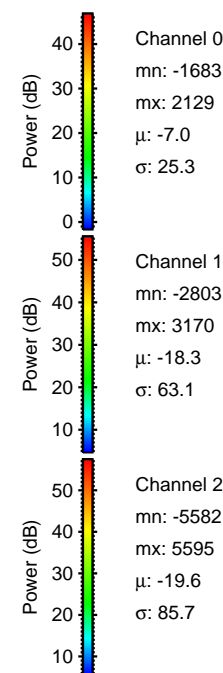
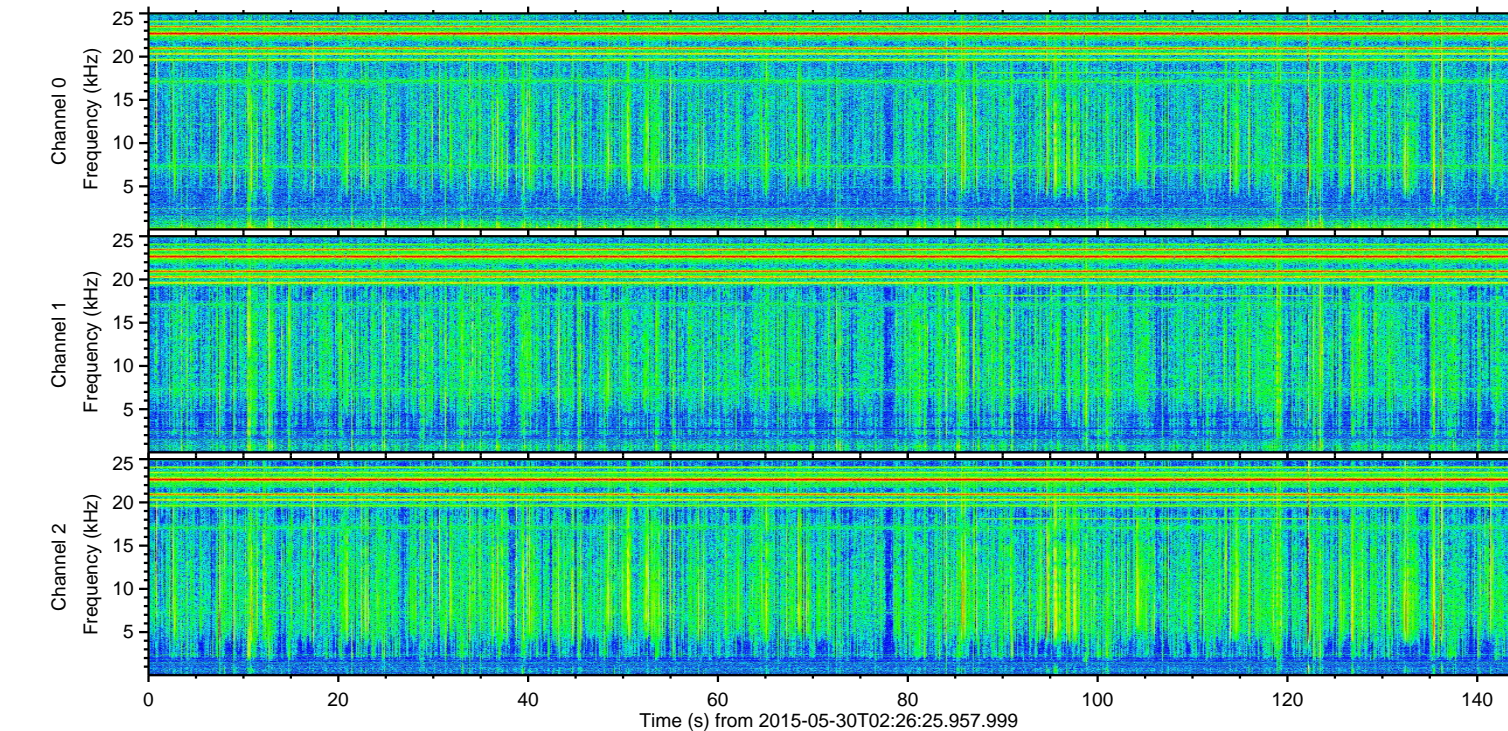
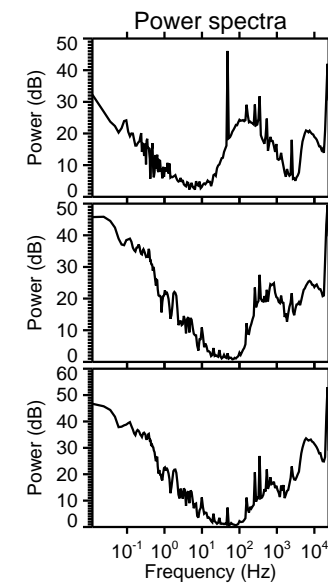
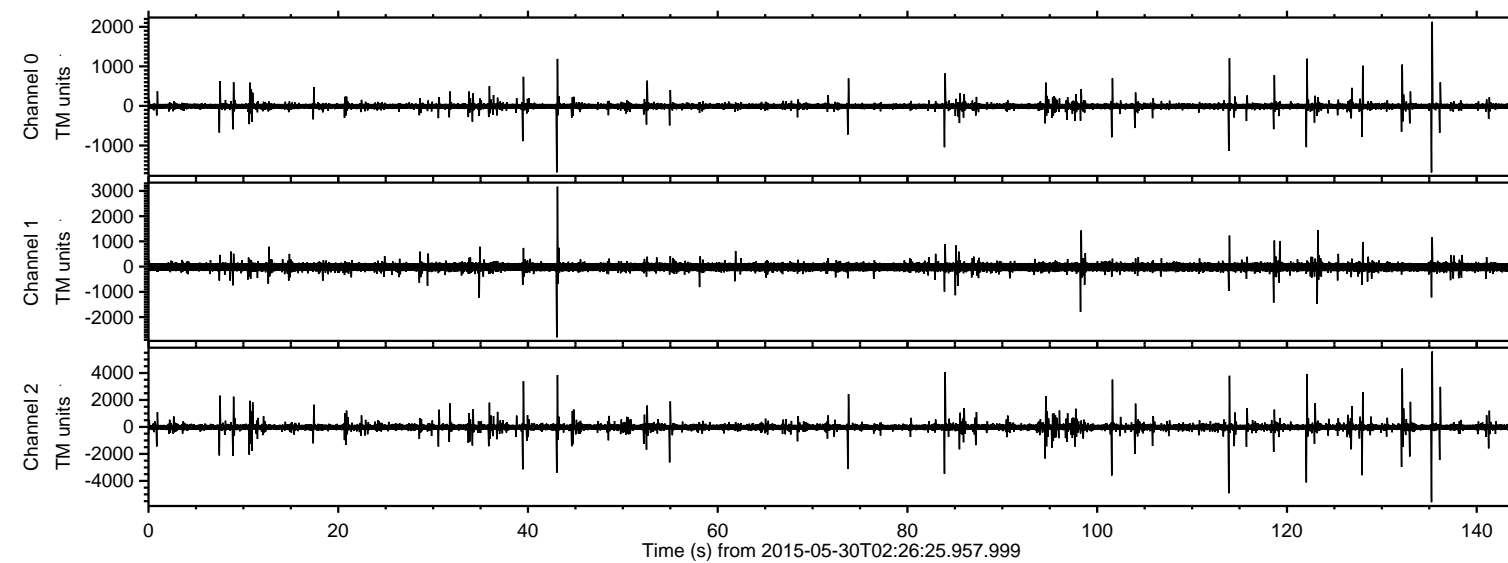


ELMAVAN 3D WAVEFORMS (Measured data sampled at 50 kHz) 49799 packets of 144 samples from 2015-05-30T02:26:25.957.999.

Processed Sat May 30 05:41:50 2015 by ELM ver.2012-10-06 from 001__elm20150530_022624__dat00.bin



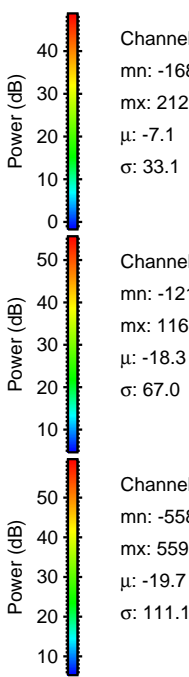
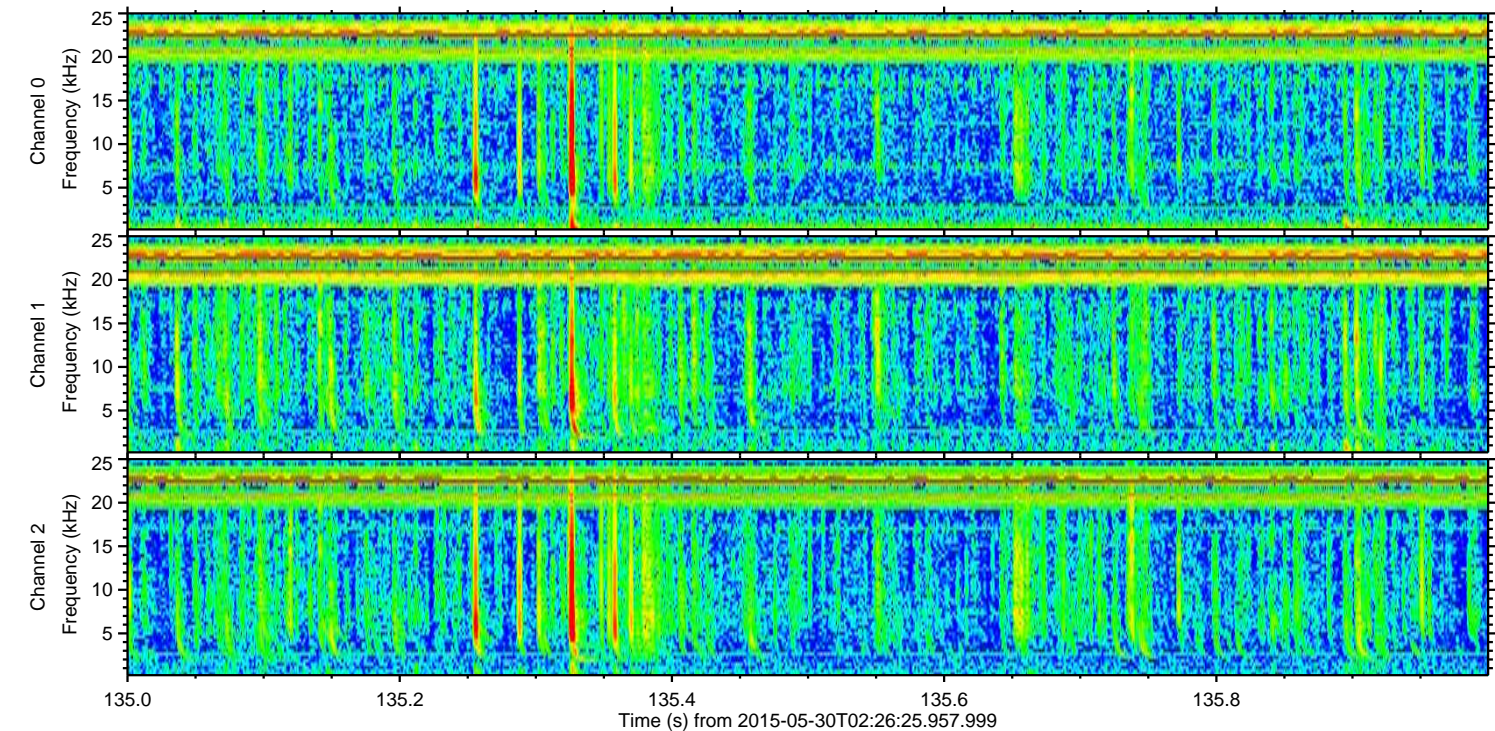
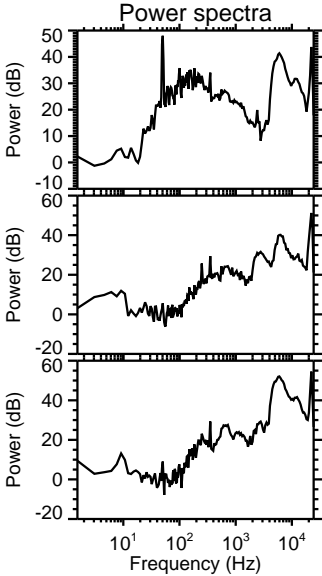
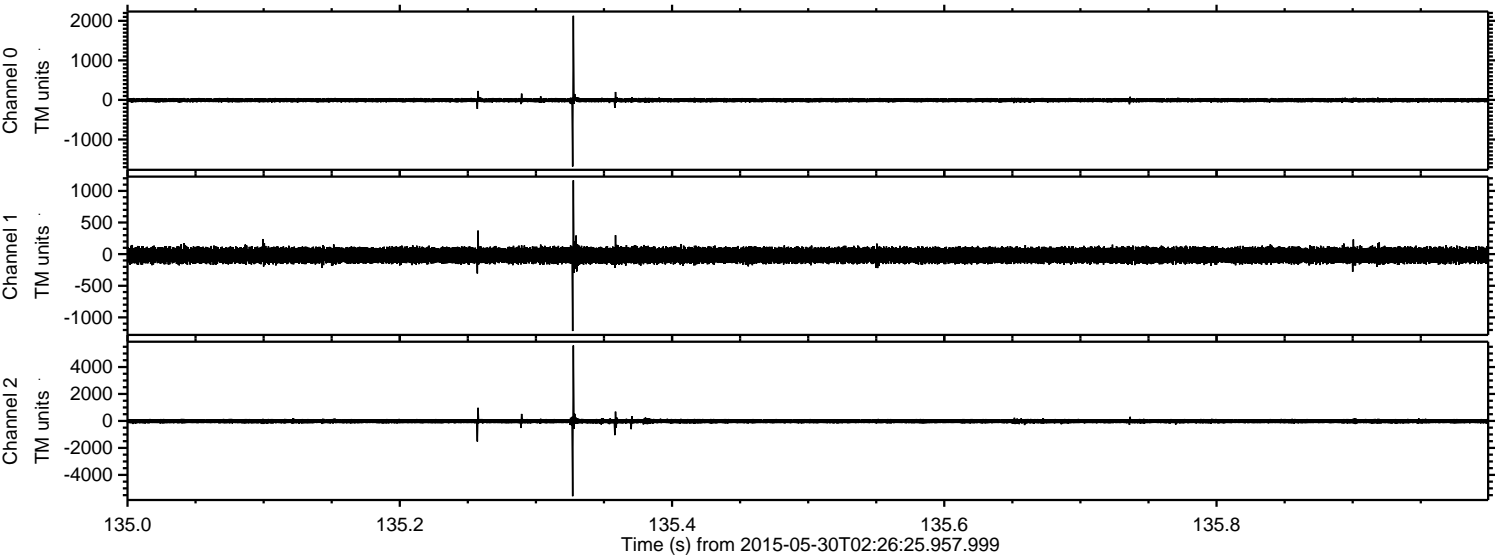
Channel 0
mn: -1683
mx: 2129
 μ : -7.0
 σ : 25.3

Channel 1
mn: -2803
mx: 3170
 μ : -18.3
 σ : 63.1

Channel 2
mn: -5582
mx: 5595
 μ : -19.6
 σ : 85.7

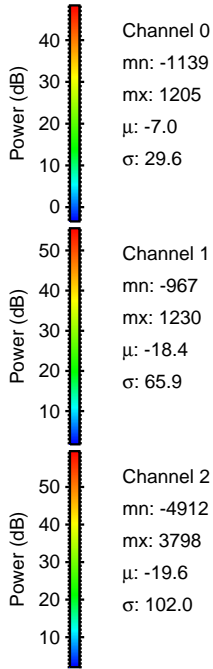
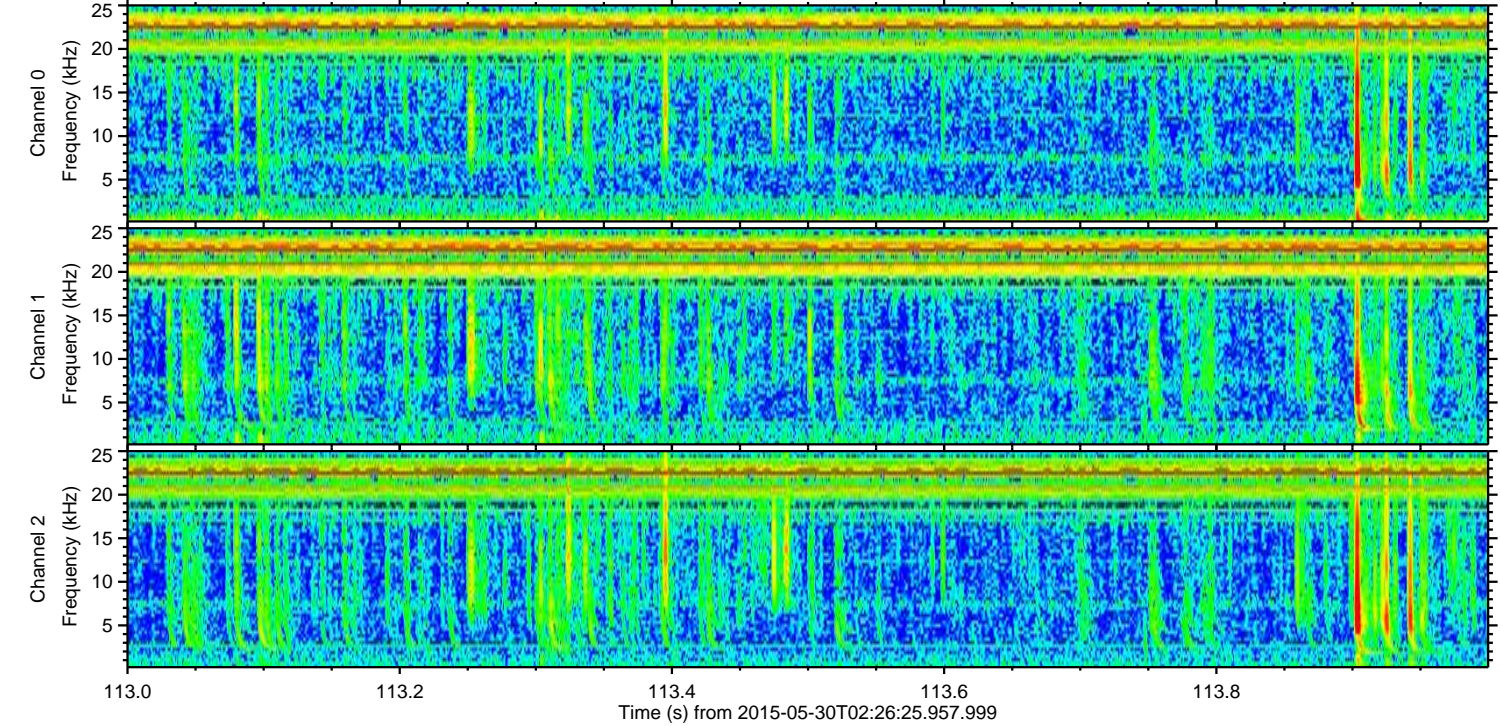
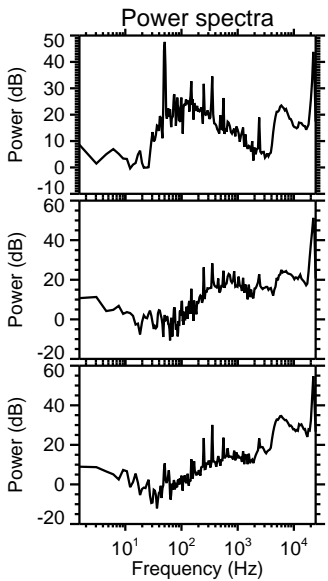
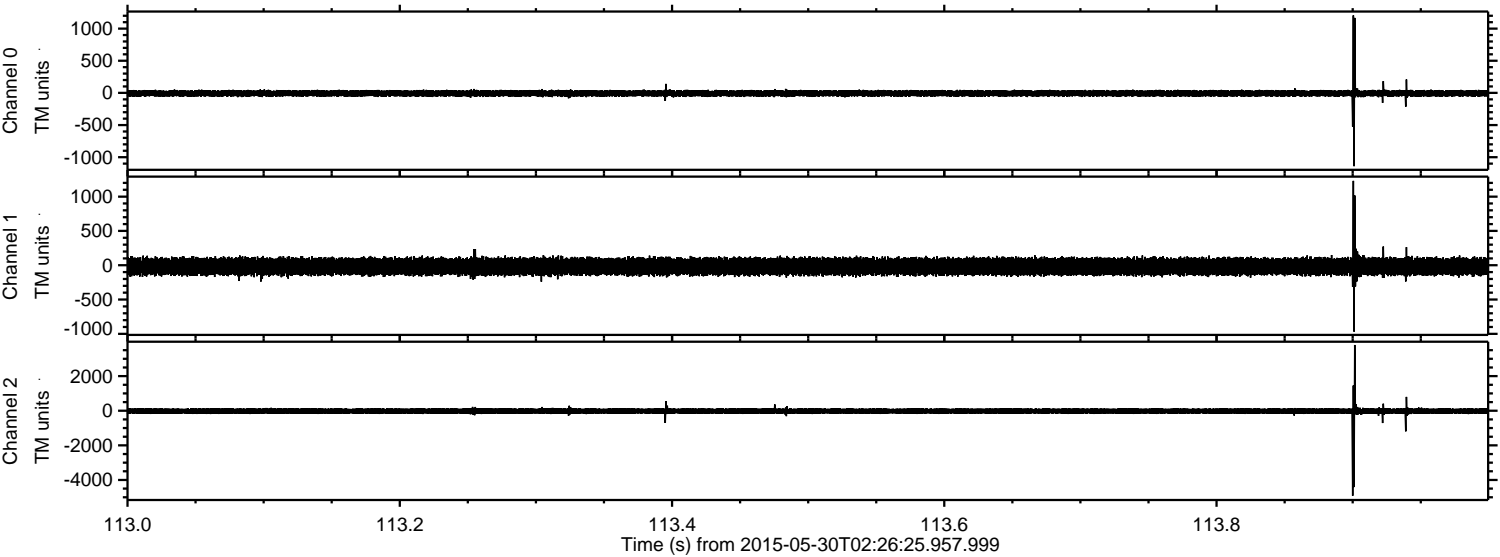
ELMAVAN 3D WAVEFORMS (Measured data sampled at 50 kHz) 49799 packets of 144 samples from 2015-05-30T02:26:25.957.999. Part 136/144

Processed Sat May 30 05:42:05 2015 by ELM ver.2012-10-06 from 001__elm20150530_022624__dat00.bin



ELMAVAN 3D WAVEFORMS (Measured data sampled at 50 kHz) 49799 packets of 144 samples from 2015-05-30T02:26:25.957.999. Part 114/144

Processed Sat May 30 05:42:08 2015 by ELM ver.2012-10-06 from 001__elm20150530_022624__dat00.bin



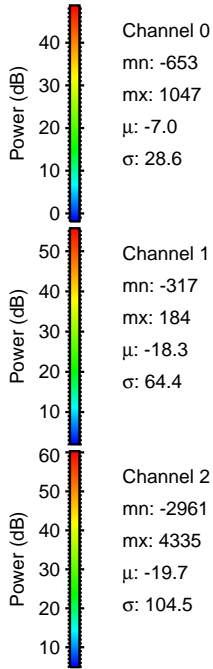
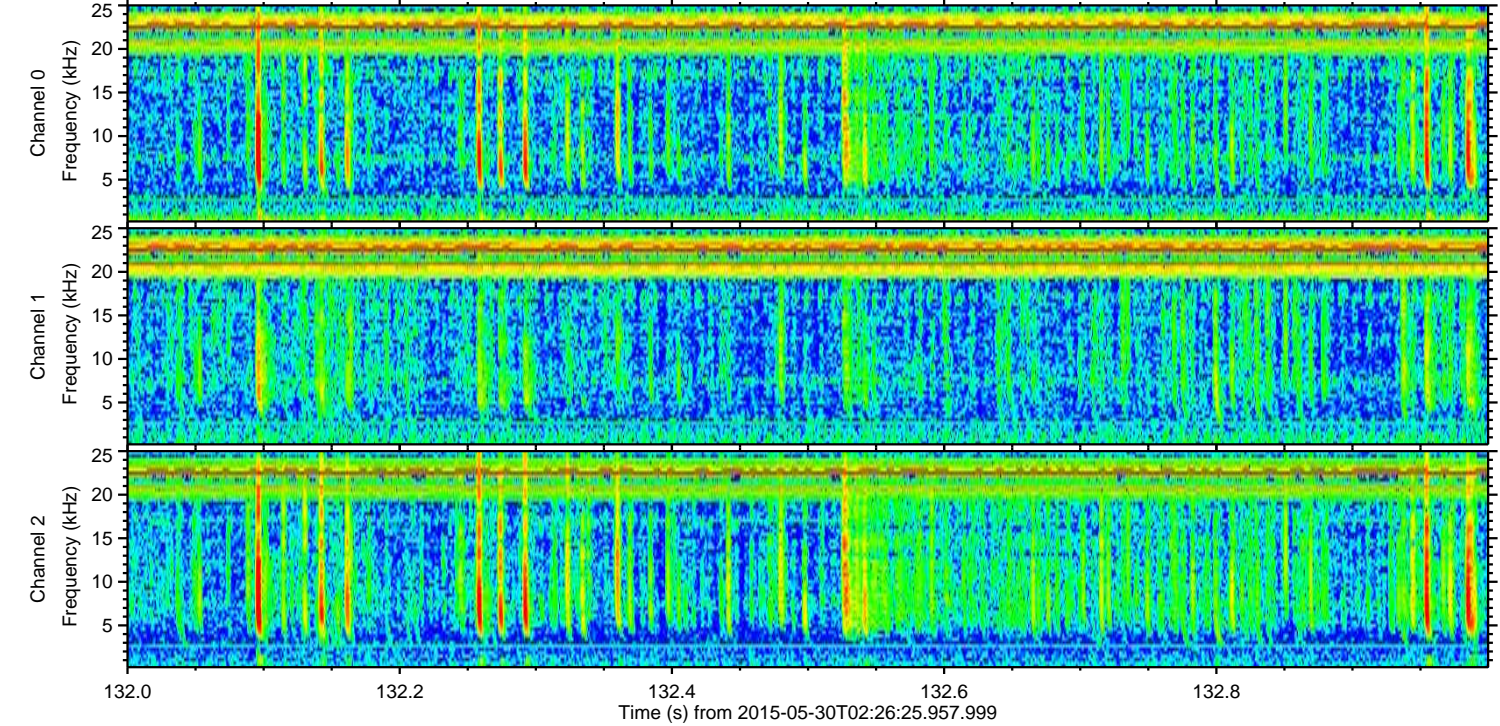
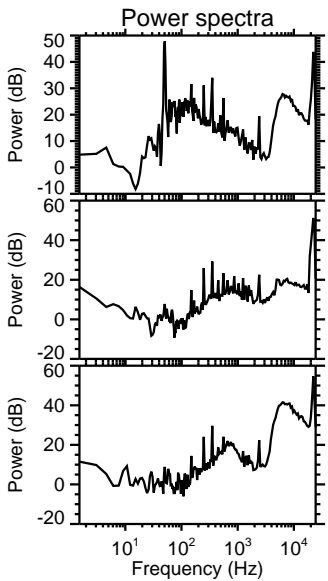
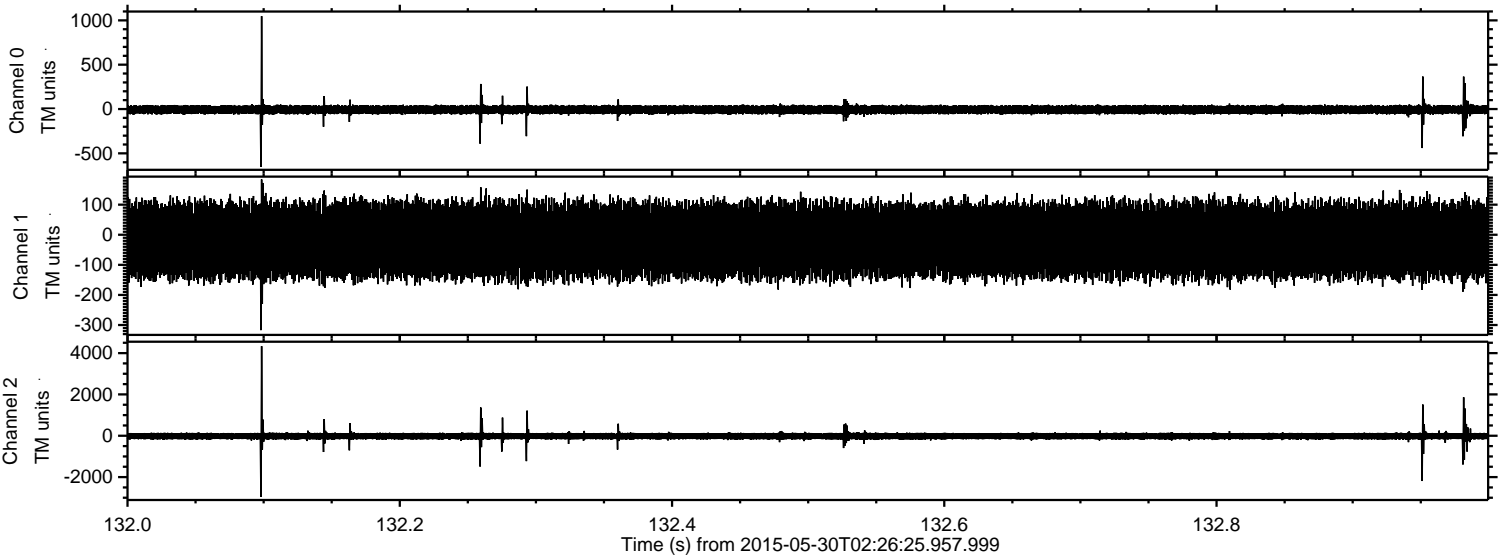
Channel 0
mn: -1139
mx: 1205
 μ : -7.0
 σ : 29.6

Channel 1
mn: -967
mx: 1230
 μ : -18.4
 σ : 65.9

Channel 2
mn: -4912
mx: 3798
 μ : -19.6
 σ : 102.0

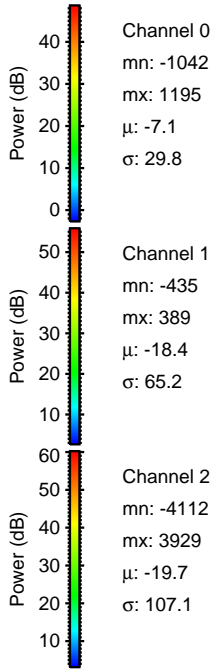
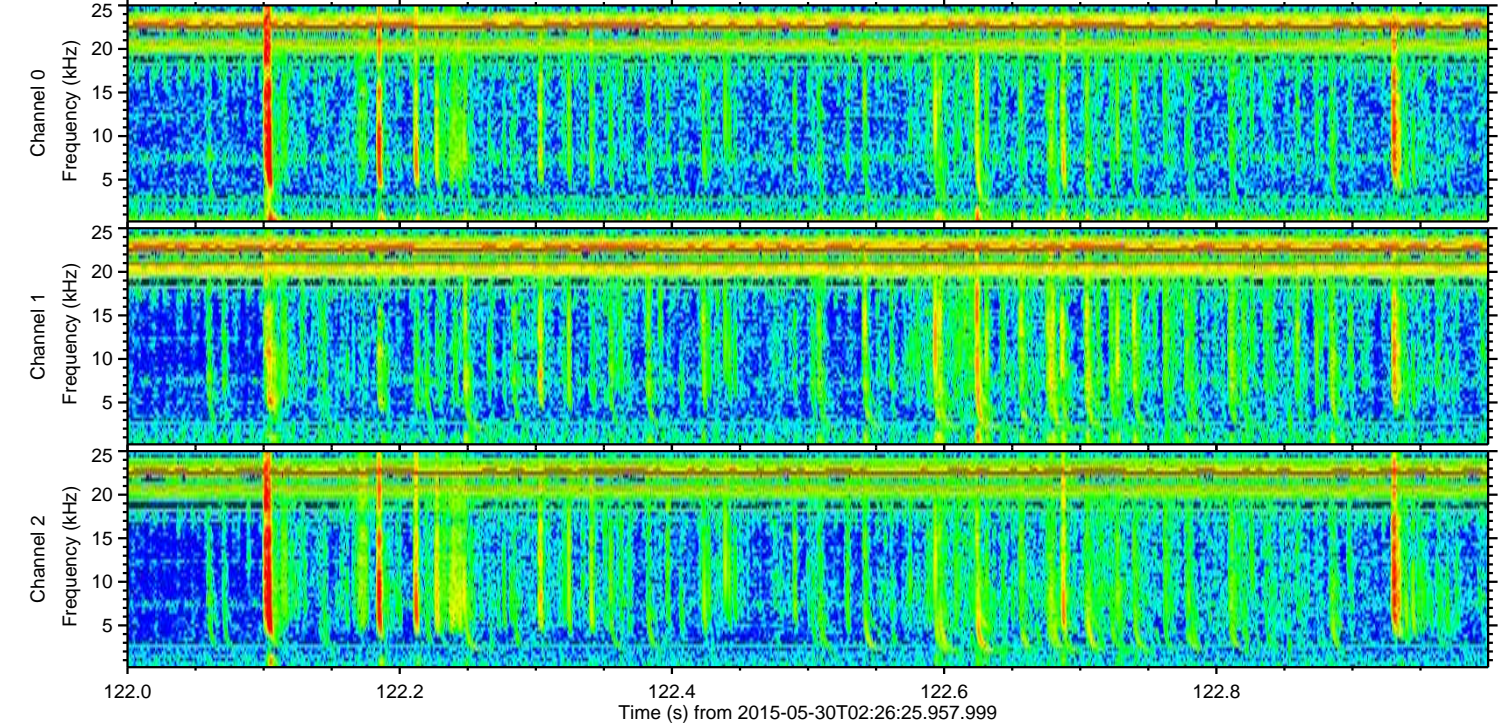
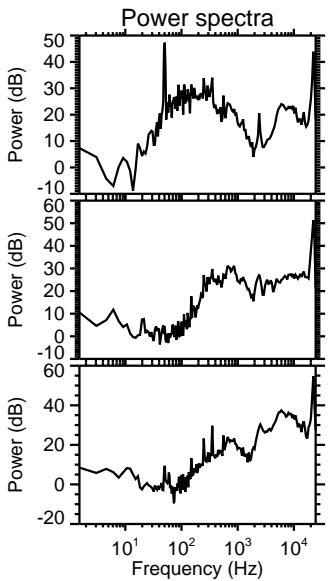
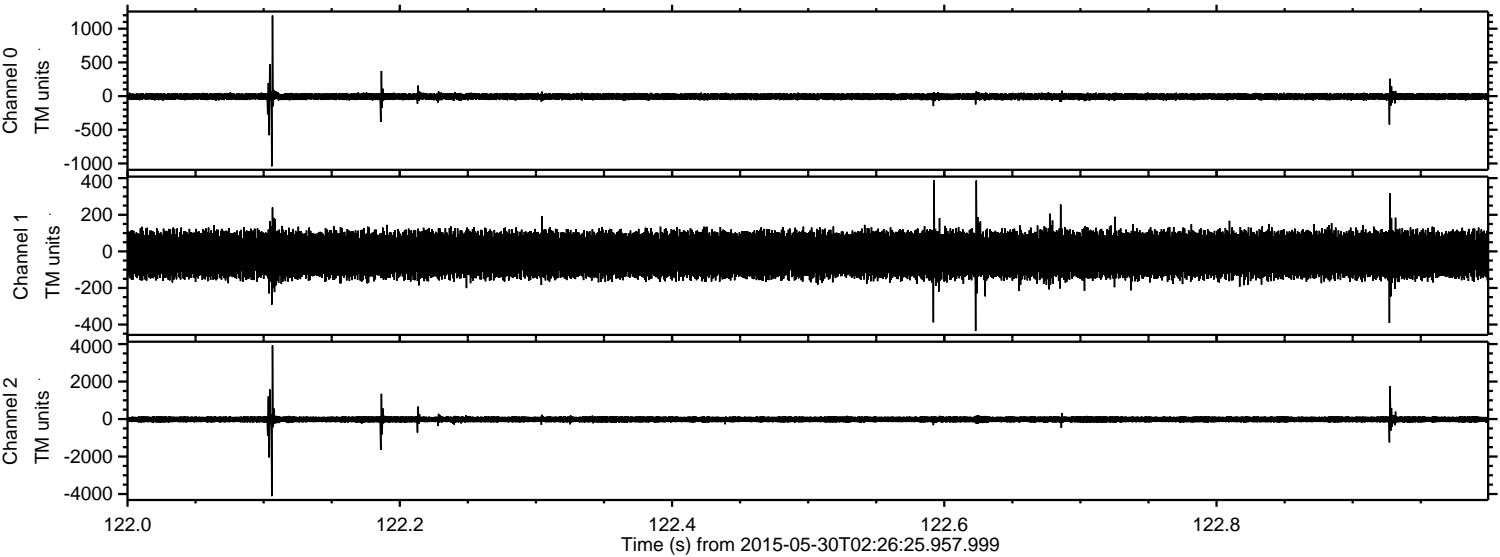
ELMAVAN 3D WAVEFORMS (Measured data sampled at 50 kHz) 49799 packets of 144 samples from 2015-05-30T02:26:25.957.999. Part 133/144

Processed Sat May 30 05:42:10 2015 by ELM ver.2012-10-06 from 001__elm20150530_022624__dat00.bin

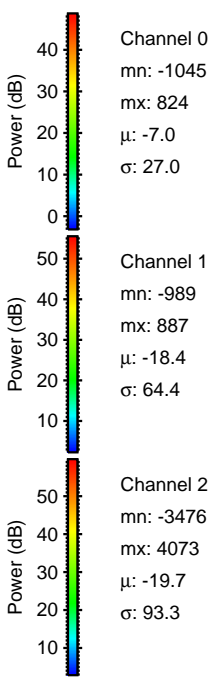
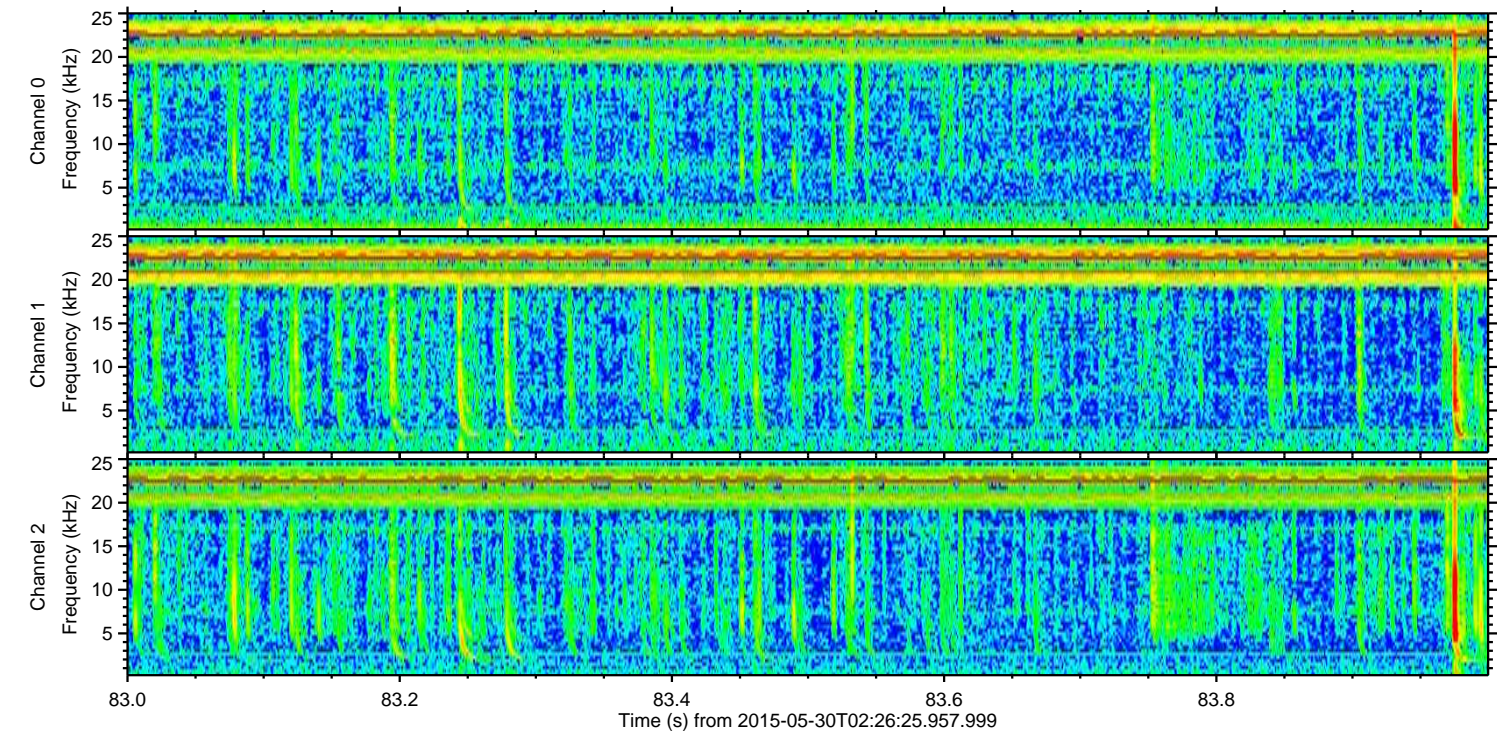
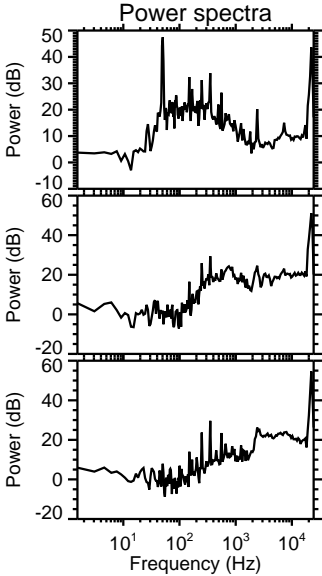
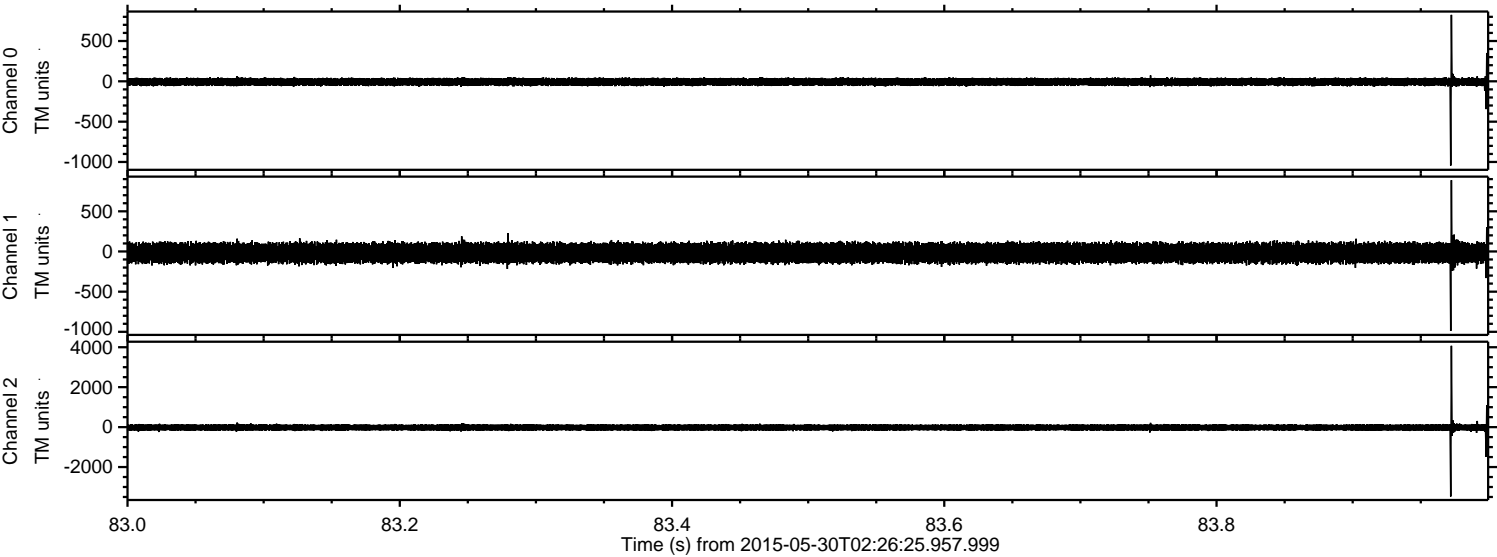


ELMAVAN 3D WAVEFORMS (Measured data sampled at 50 kHz) 49799 packets of 144 samples from 2015-05-30T02:26:25.957.999. Part 123/144

Processed Sat May 30 05:42:11 2015 by ELM ver.2012-10-06 from 001__elm20150530_022624__dat00.bin

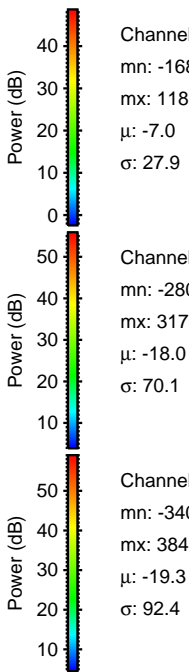
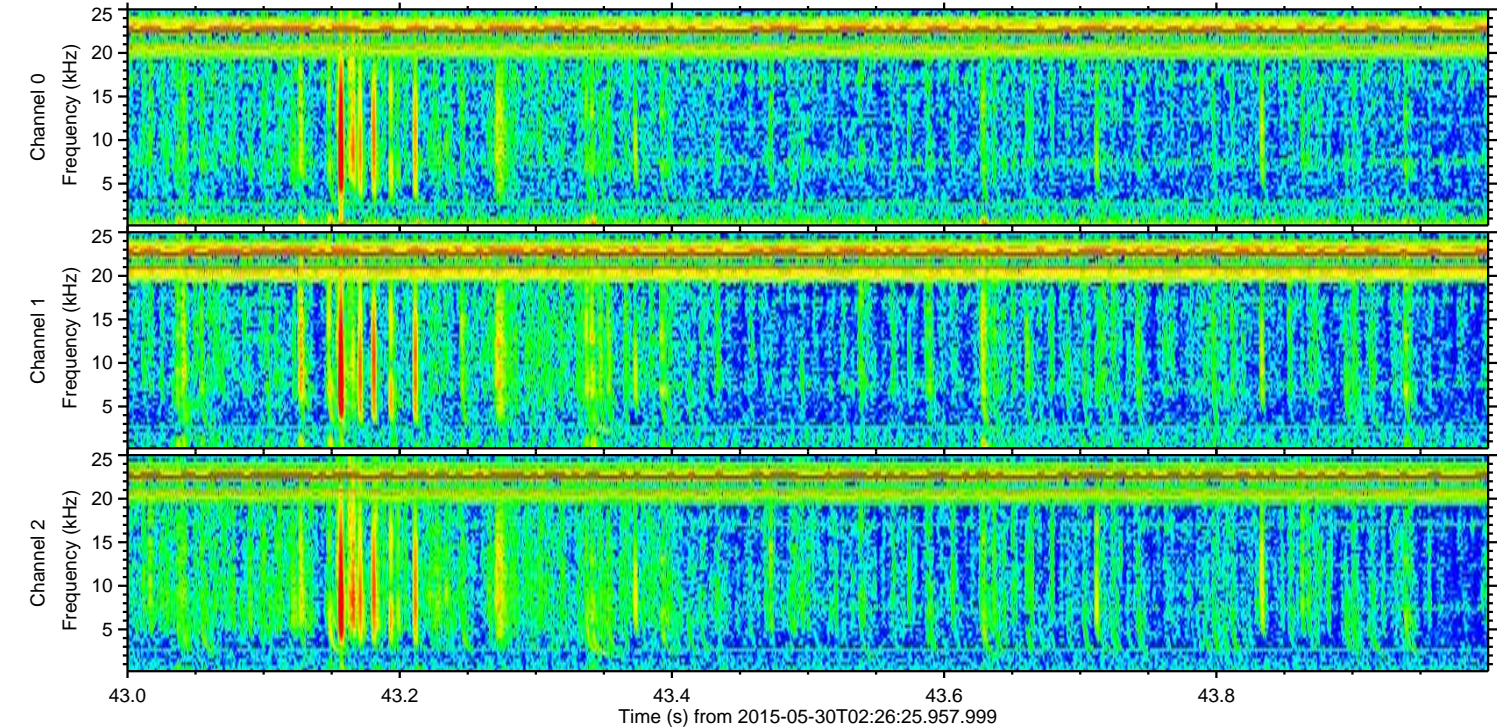
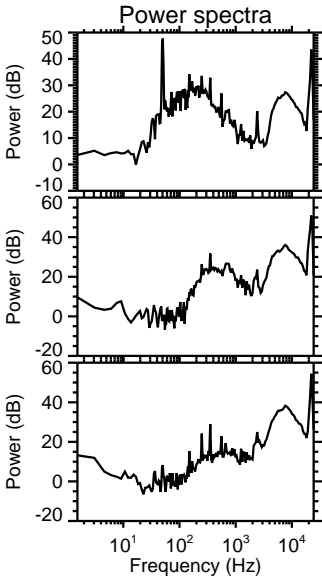
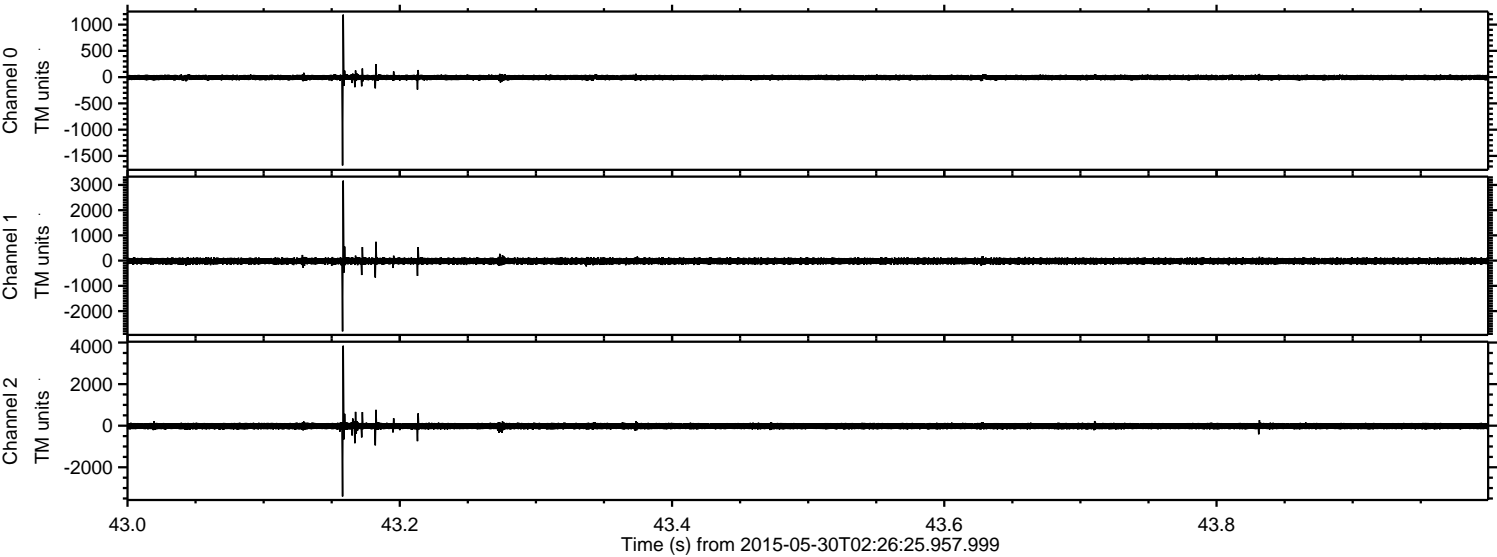


Processed Sat May 30 05:42:13 2015 by ELM ver.2012-10-06 from 001__elm20150530_022624__dat00.bin



ELMAVAN 3D WAVEFORMS (Measured data sampled at 50 kHz) 49799 packets of 144 samples from 2015-05-30T02:26:25.957.999. Part 44/144

Processed Sat May 30 05:42:16 2015 by ELM ver.2012-10-06 from 001__elm20150530_022624__dat00.bin



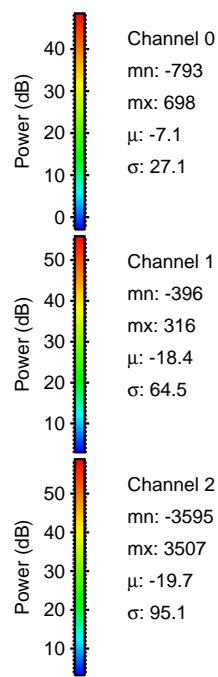
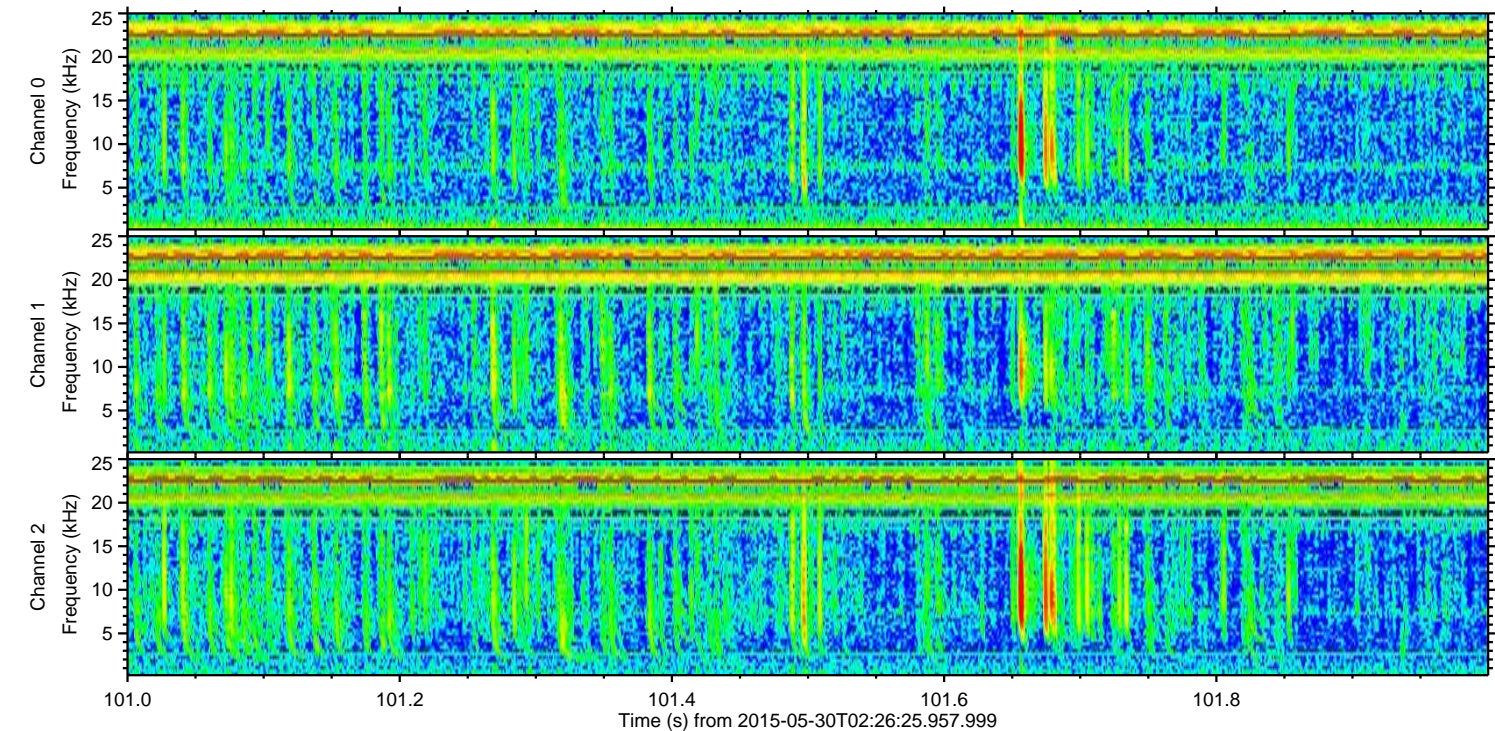
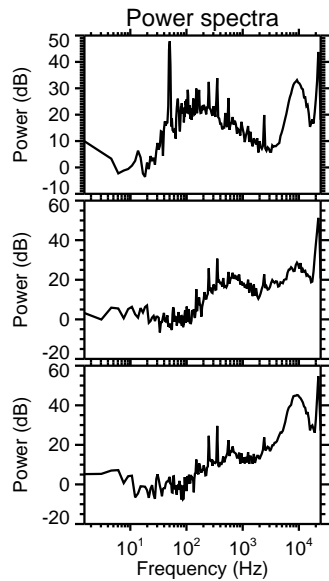
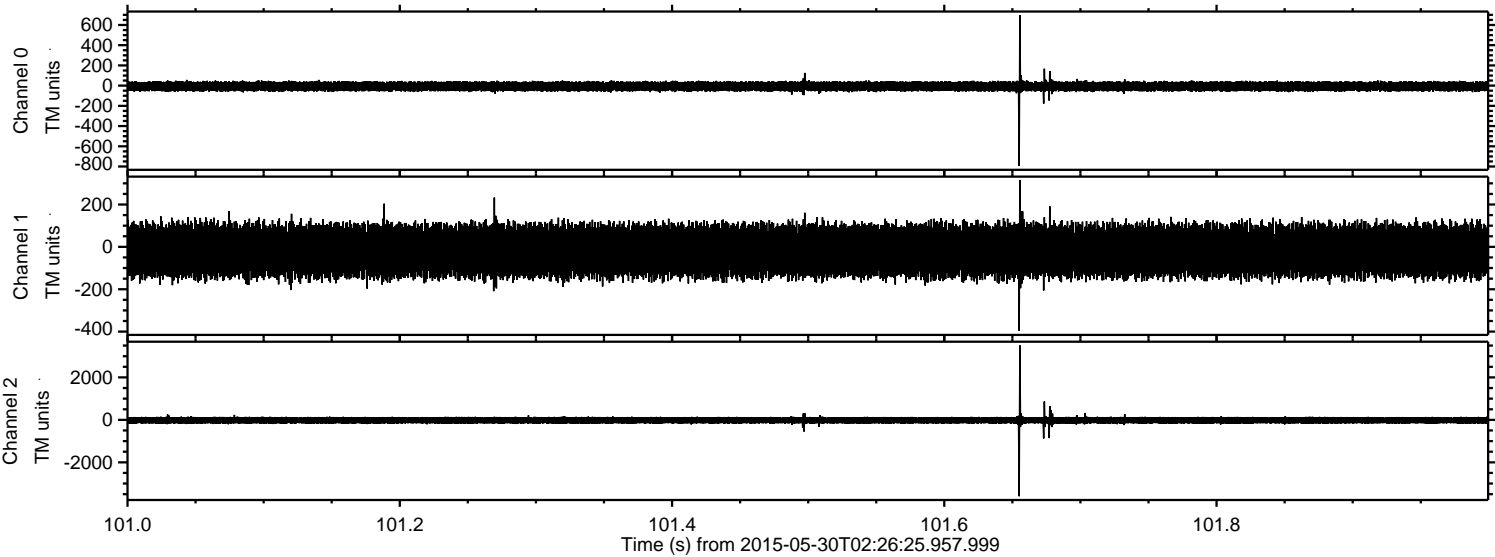
Channel 0
mn: -1680
mx: 1189
 μ : -7.0
 σ : 27.9

Channel 1
mn: -2803
mx: 3170
 μ : -18.0
 σ : 70.1

Channel 2
mn: -3403
mx: 3848
 μ : -19.3
 σ : 92.4

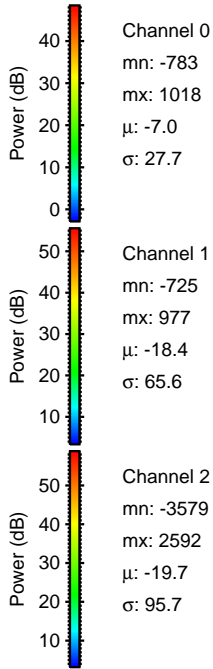
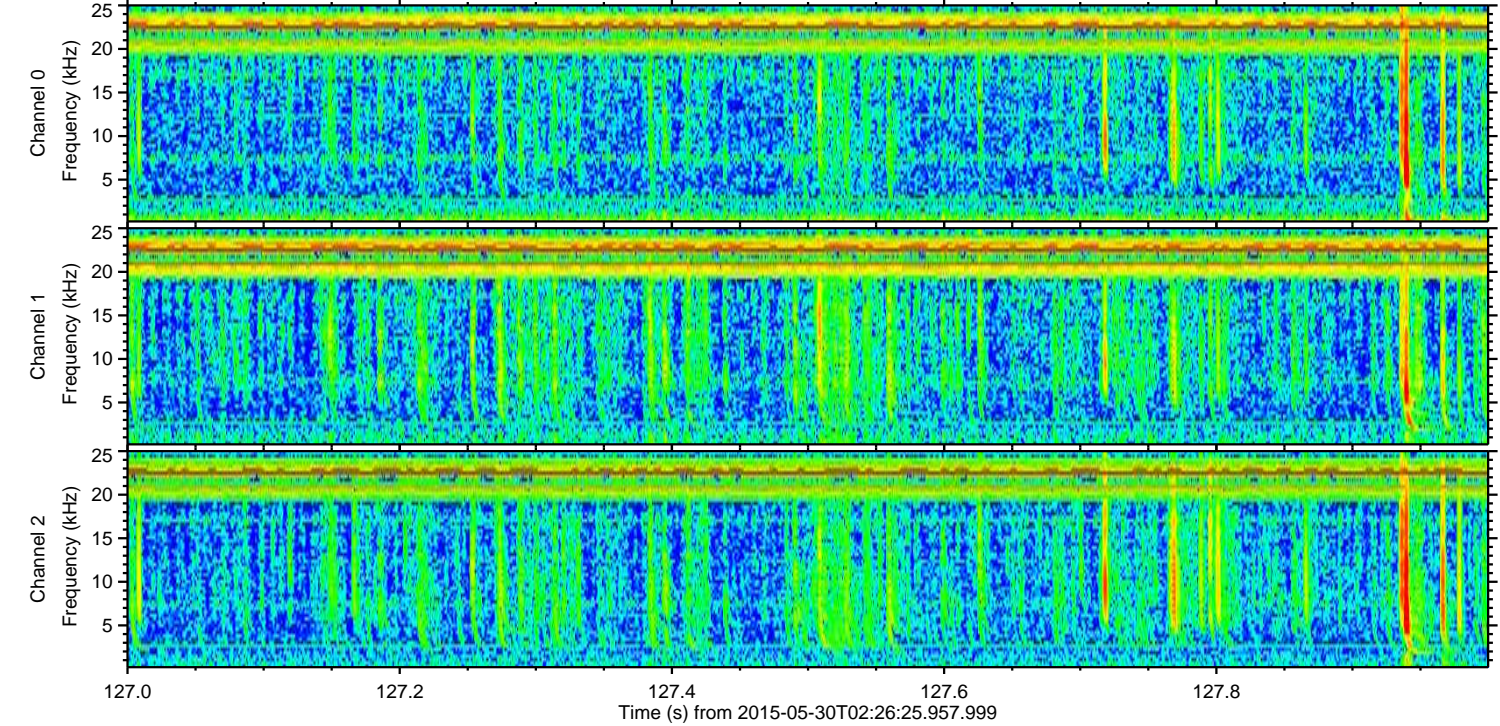
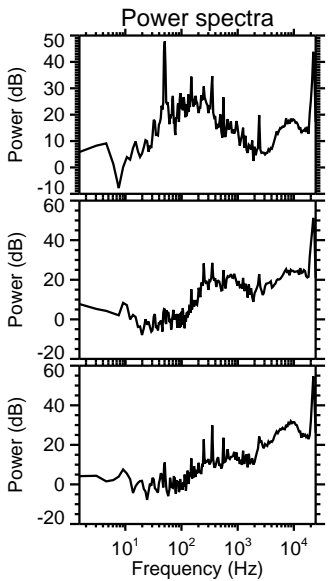
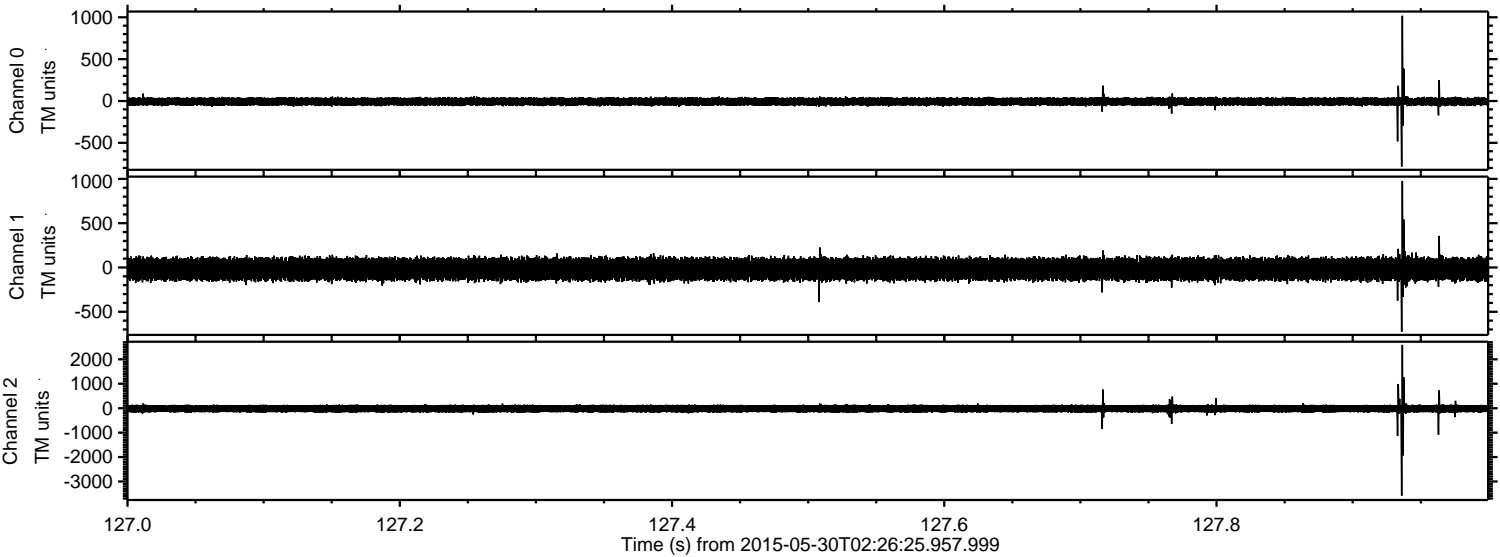
ELMAVAN 3D WAVEFORMS (Measured data sampled at 50 kHz) 49799 packets of 144 samples from 2015-05-30T02:26:25.957.999. Part 102/144

Processed Sat May 30 05:42:17 2015 by ELM ver.2012-10-06 from 001__elm20150530_022624__dat00.bin



ELMAVAN 3D WAVEFORMS (Measured data sampled at 50 kHz) 49799 packets of 144 samples from 2015-05-30T02:26:25.957.999. Part 128/144

Processed Sat May 30 05:42:18 2015 by ELM ver.2012-10-06 from 001__elm20150530_022624__dat00.bin



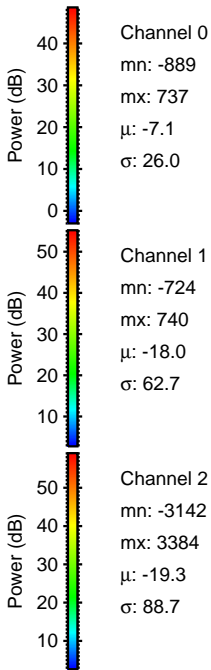
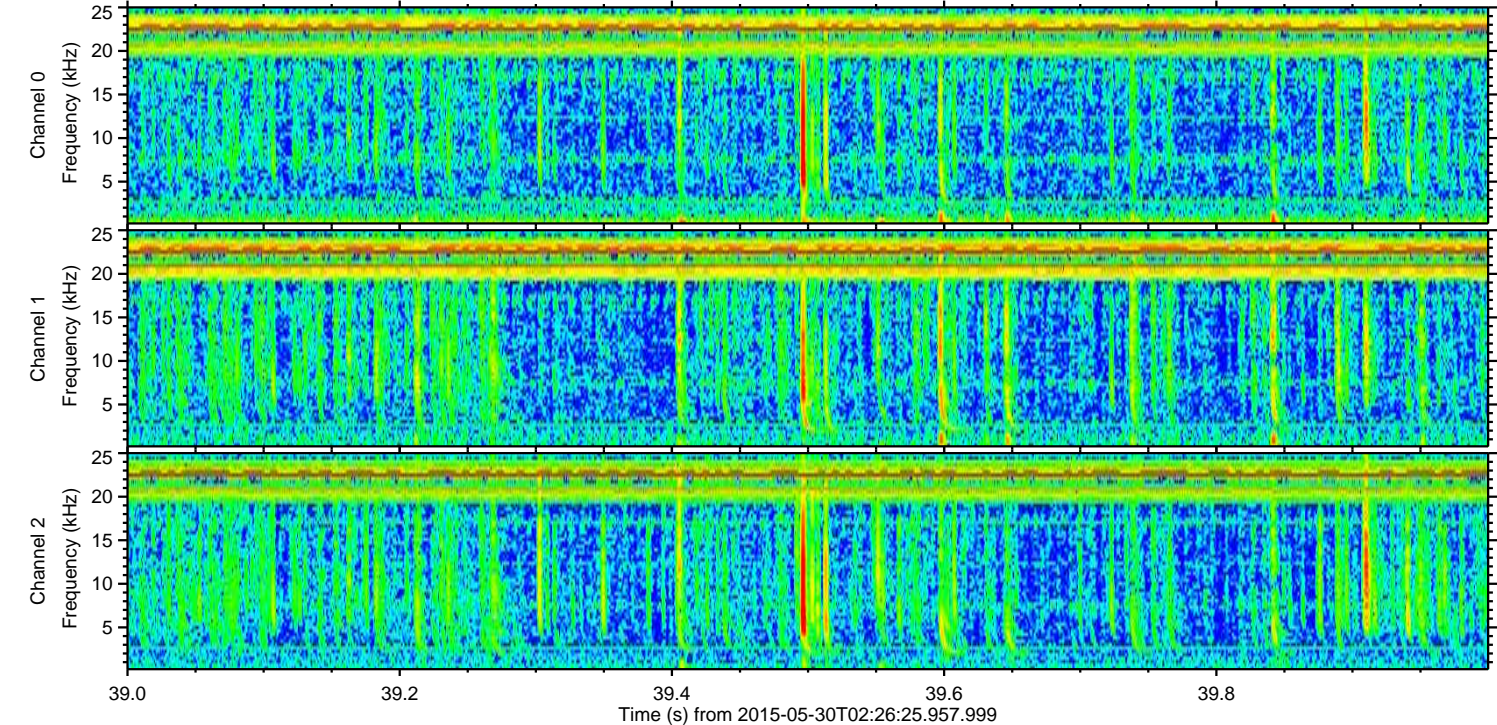
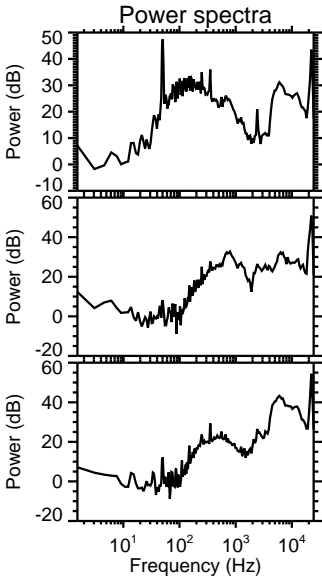
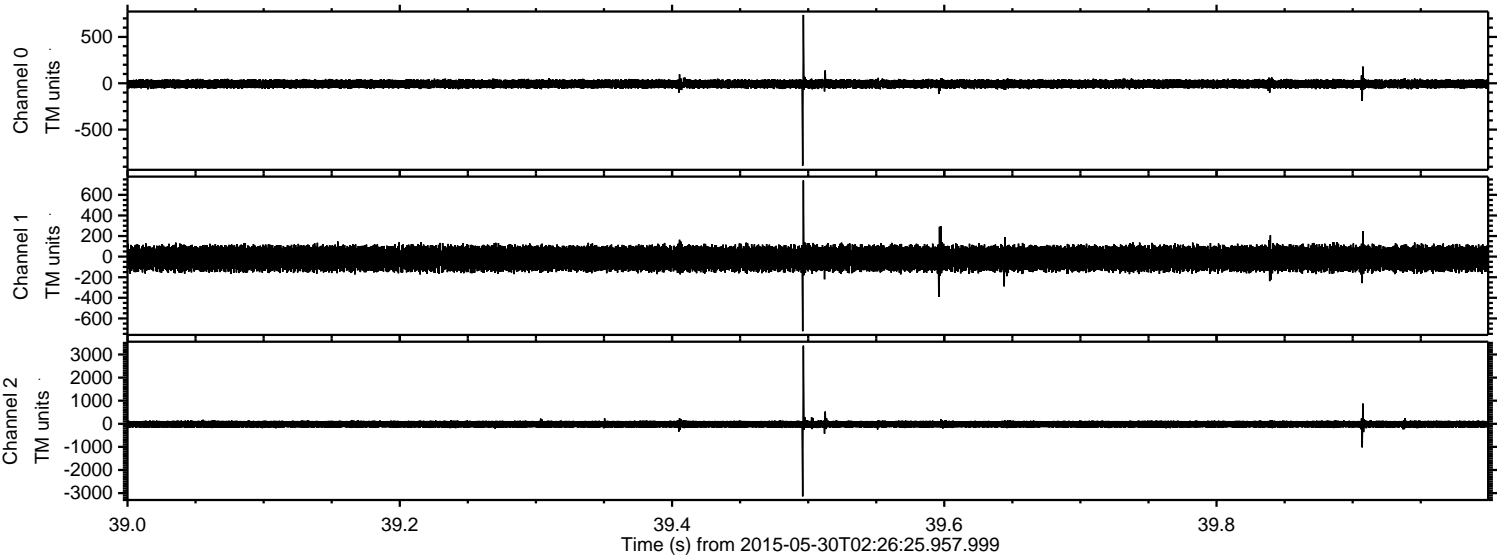
Channel 0
mn: -783
mx: 1018
 μ : -7.0
 σ : 27.7

Channel 1
mn: -725
mx: 977
 μ : -18.4
 σ : 65.6

Channel 2
mn: -3579
mx: 2592
 μ : -19.7
 σ : 95.7

ELMAVAN 3D WAVEFORMS (Measured data sampled at 50 kHz) 49799 packets of 144 samples from 2015-05-30T02:26:25.957.999. Part 40/144

Processed Sat May 30 05:42:19 2015 by ELM ver.2012-10-06 from 001__elm20150530_022624__dat00.bin



ELMAVAN 3D WAVEFORMS (Measured data sampled at 50 kHz) 49799 packets of 144 samples from 2015-05-30T02:26:25.957.999. Part 2/144

Processed Sat May 30 05:42:20 2015 by ELM ver.2012-10-06 from 001__elm20150530_022624__dat00.bin

