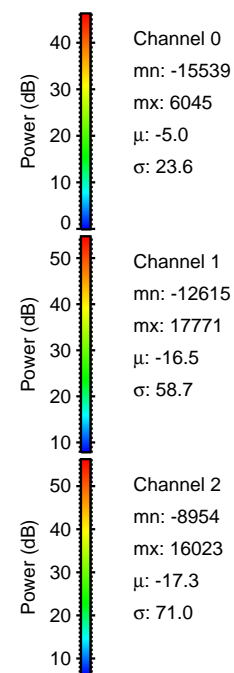
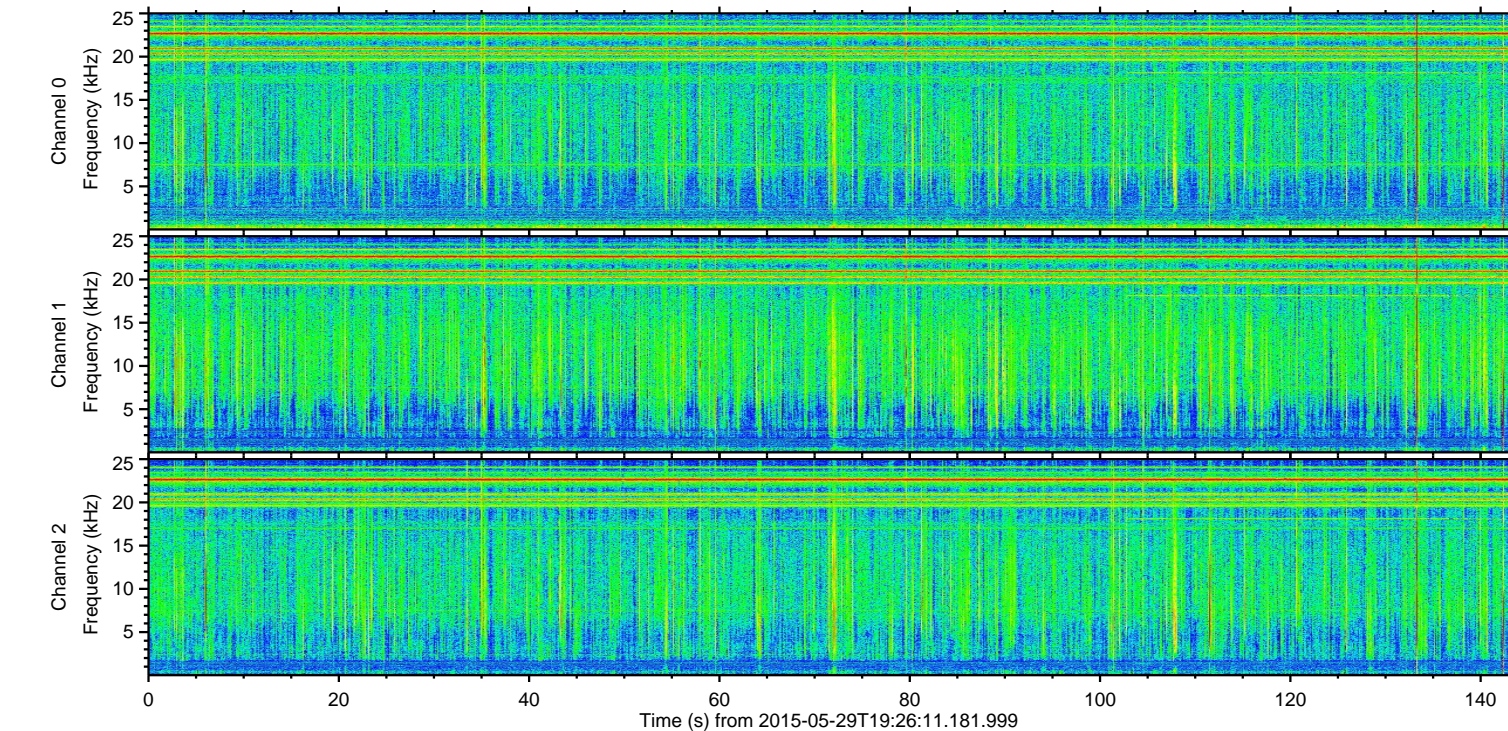
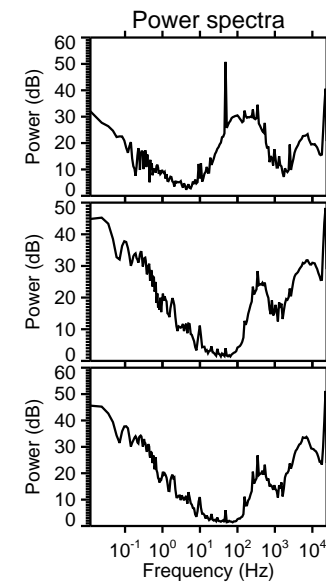
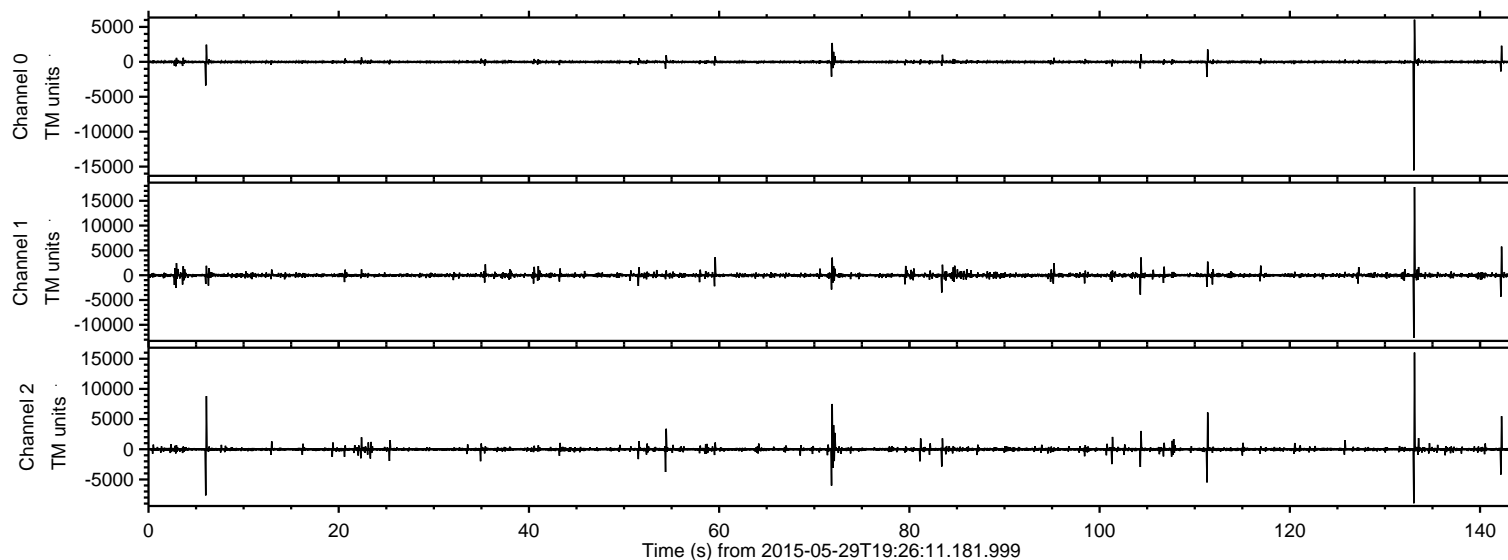


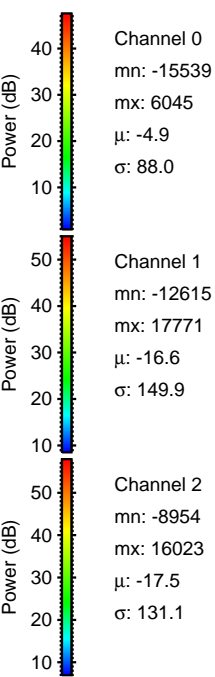
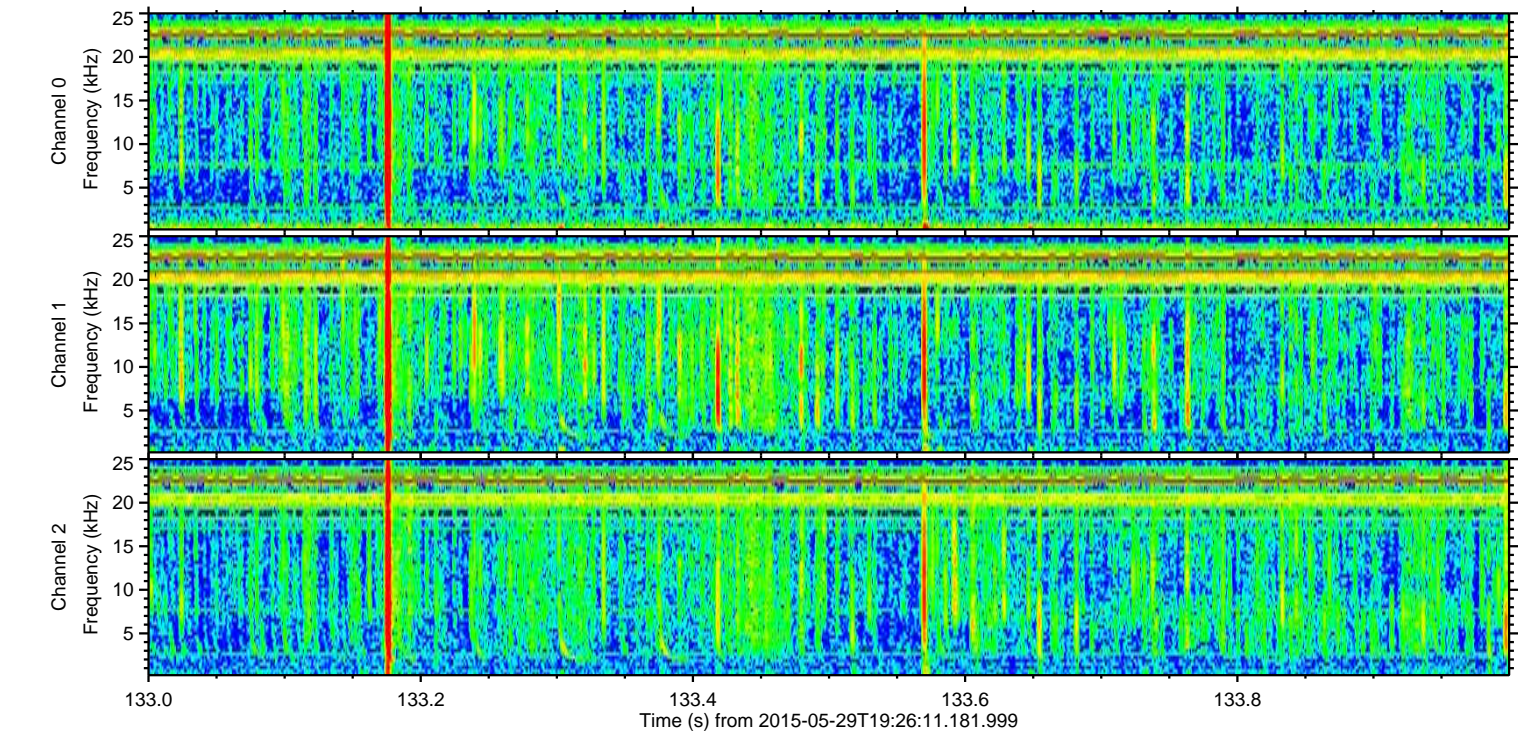
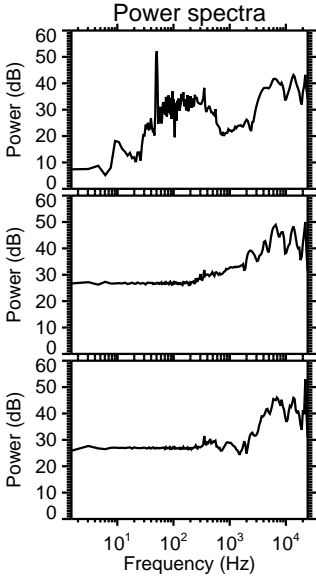
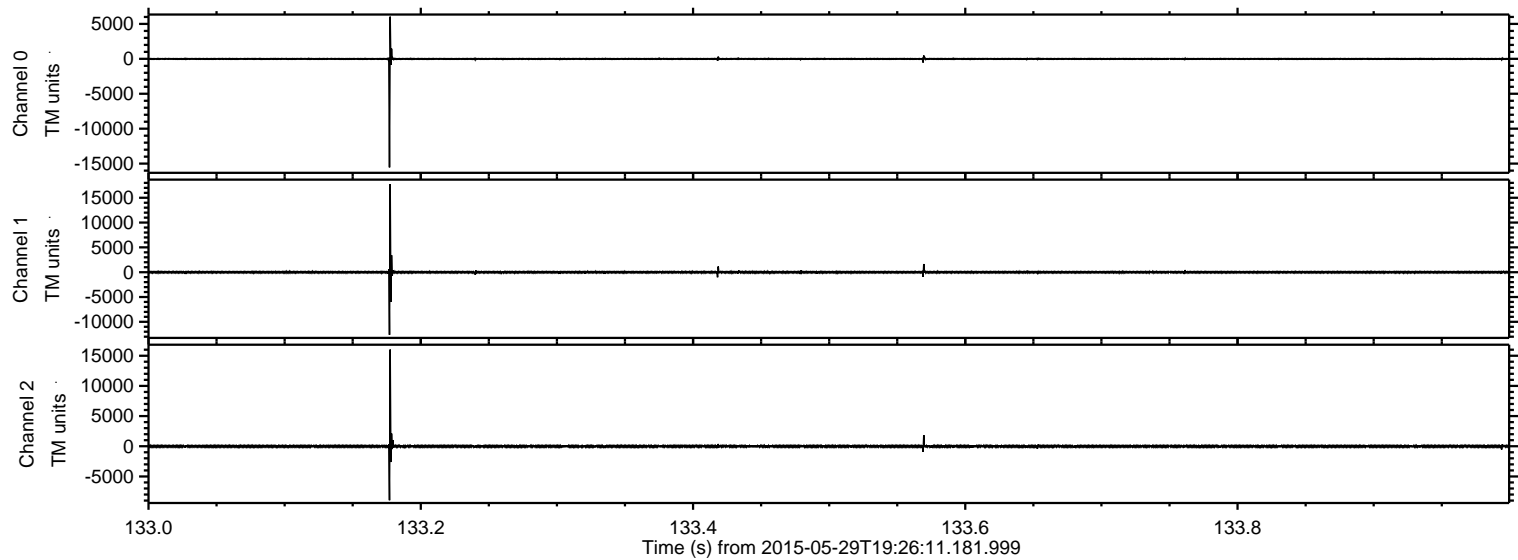
ELMAVAN 3D WAVEFORMS (Measured data sampled at 50 kHz) 49673 packets of 144 samples from 2015-05-29T19:26:11.181.999.

Processed Fri May 29 21:39:10 2015 by ELM ver.2012-10-06 from 001__elm20150529_192610__dat00.bin

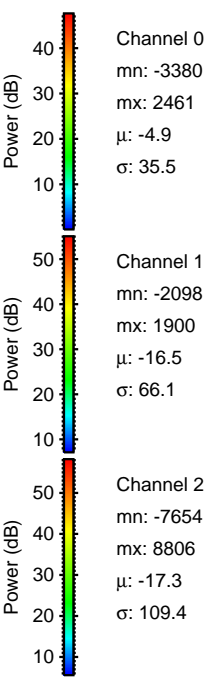
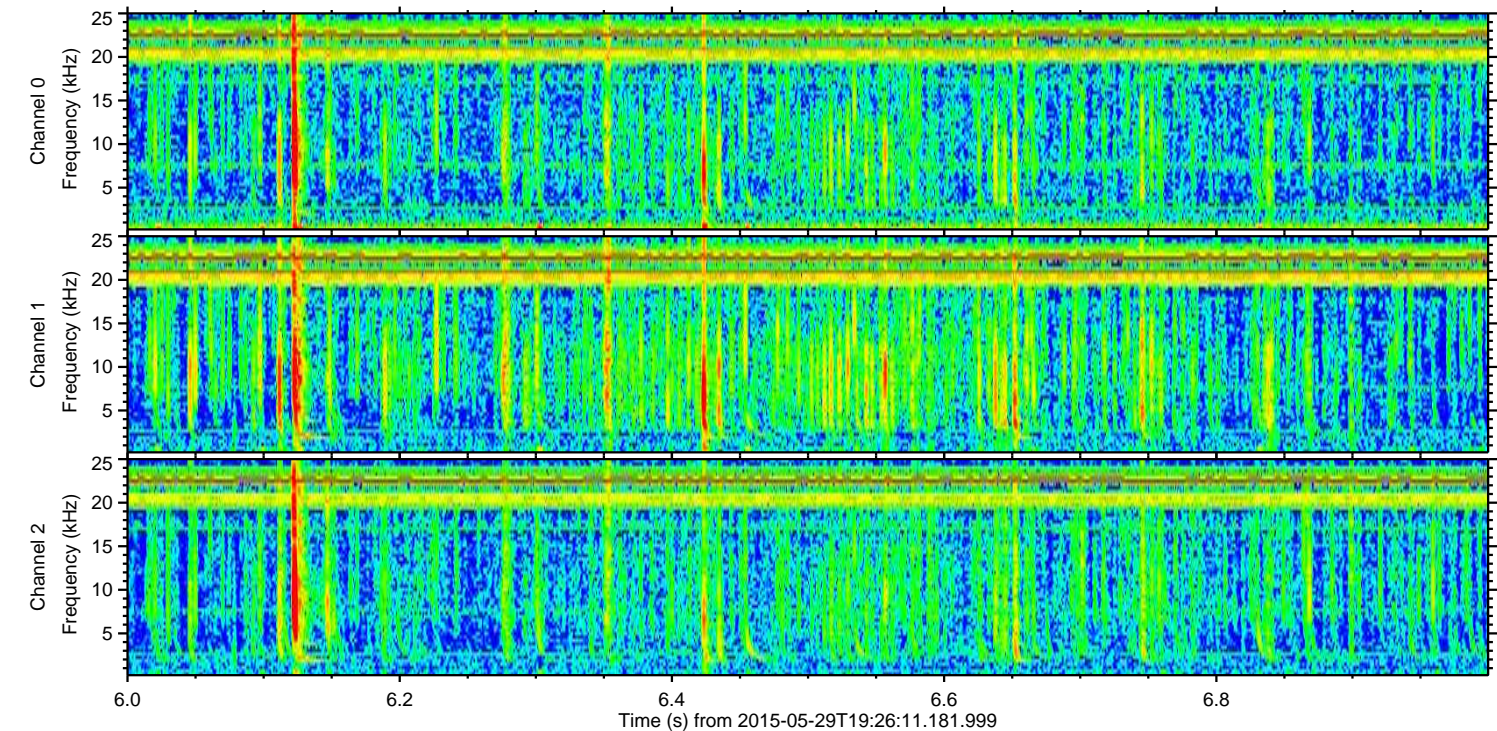
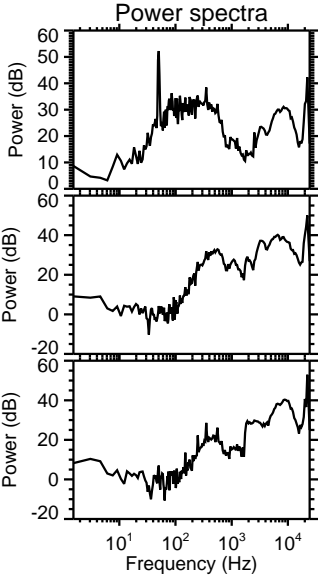
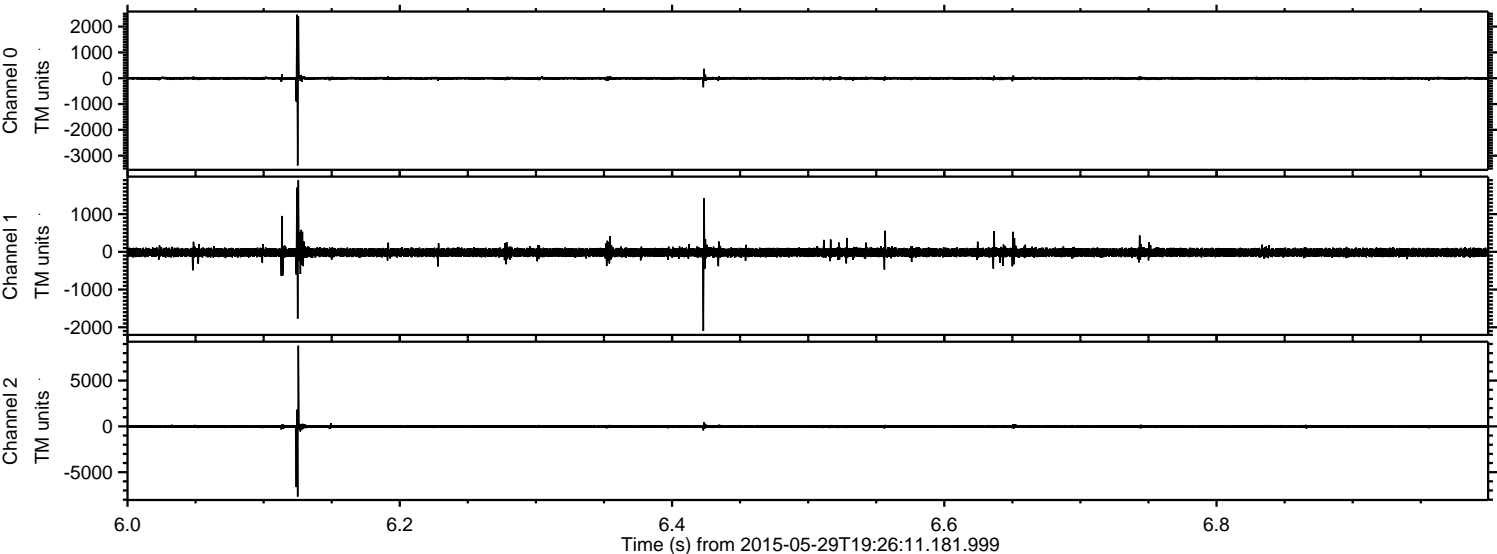


ELMAVAN 3D WAVEFORMS (Measured data sampled at 50 kHz) 49673 packets of 144 samples from 2015-05-29T19:26:11.181.999. Part 134/144

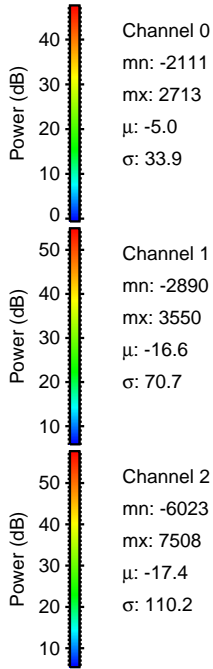
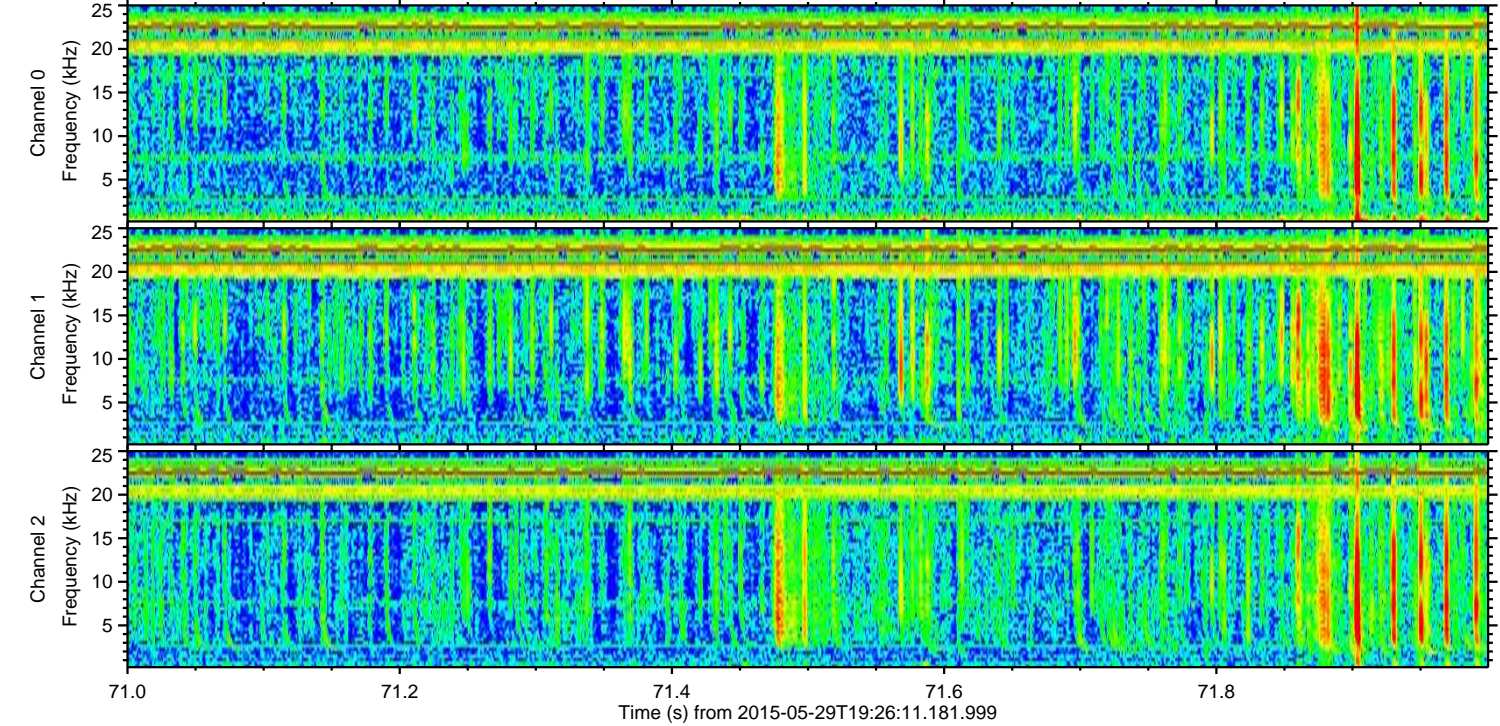
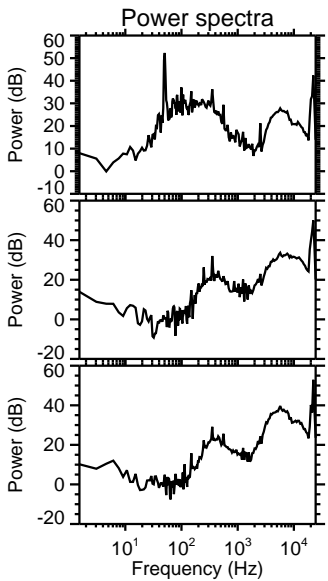
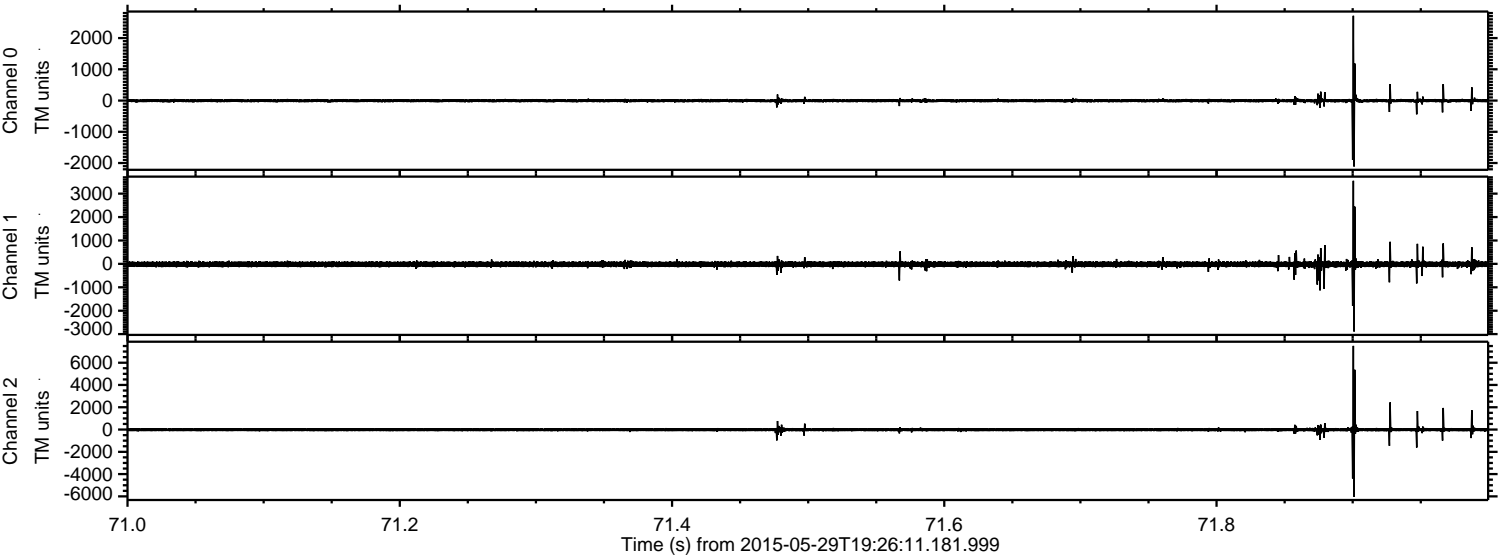
Processed Fri May 29 21:39:25 2015 by ELM ver.2012-10-06 from 001__elm20150529_192610__dat00.bin



Processed Fri May 29 21:39:26 2015 by ELM ver.2012-10-06 from 001__elm20150529_192610__dat00.bin

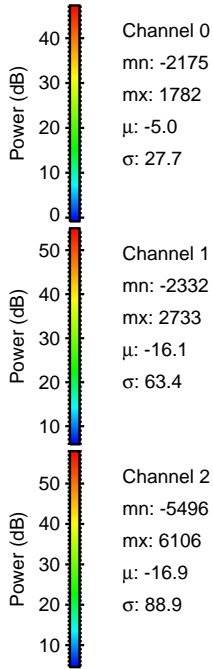
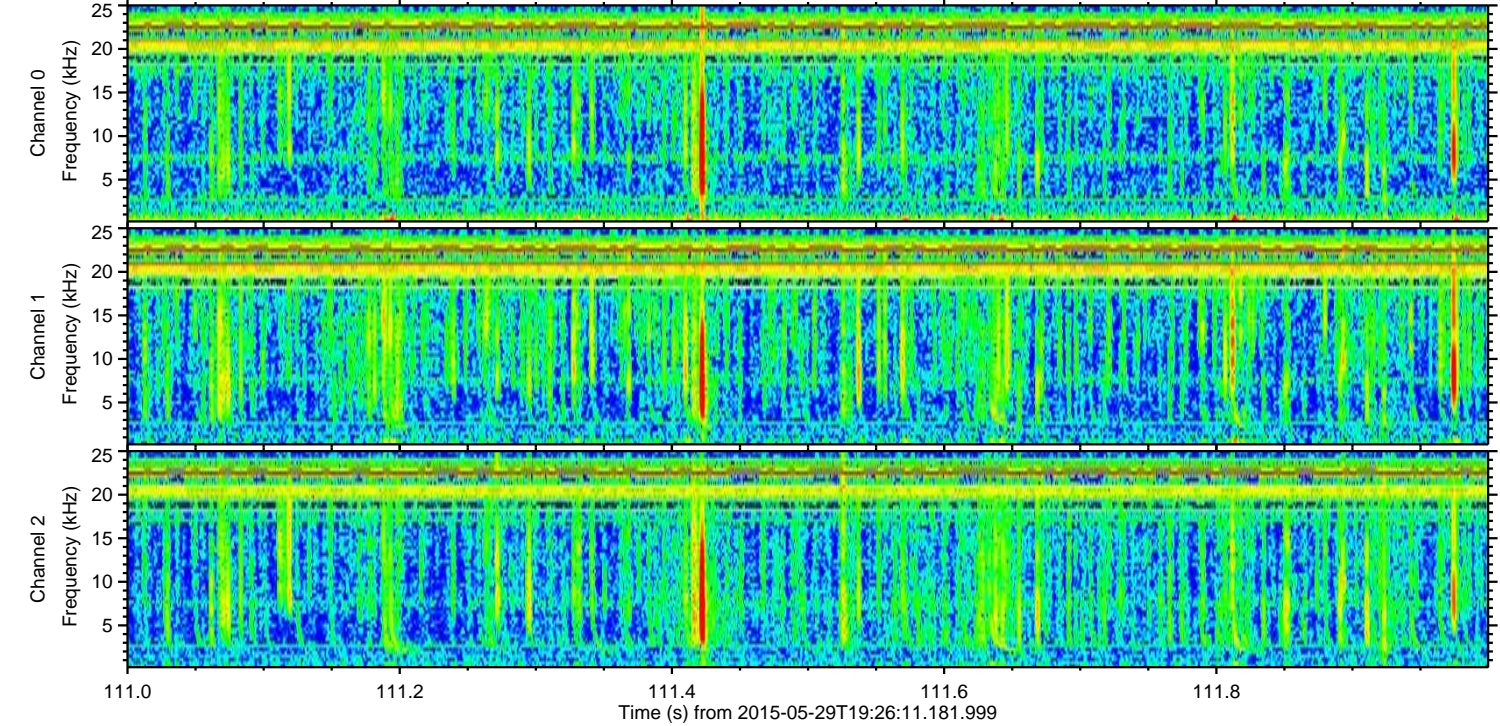
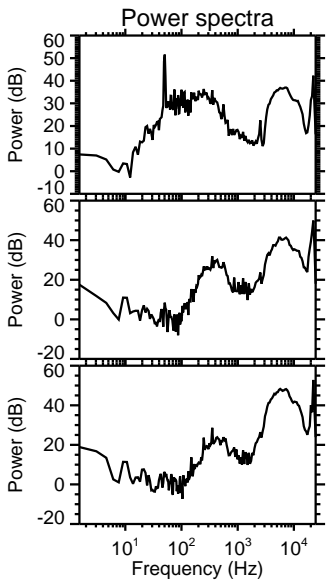
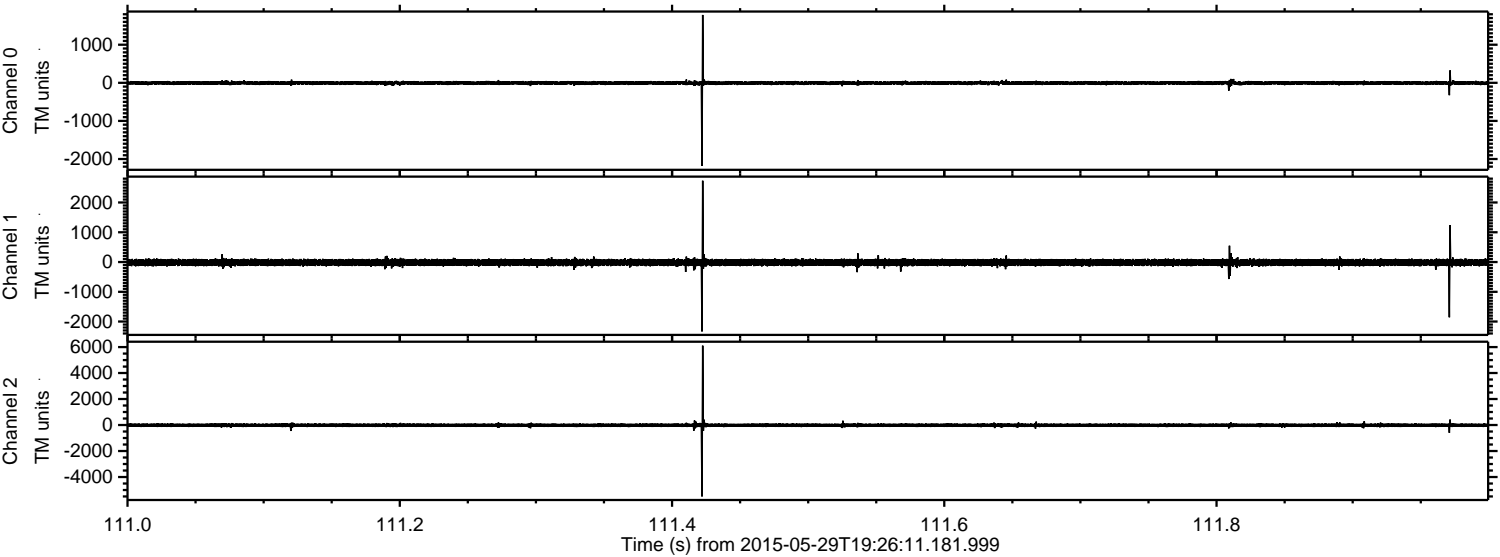


Processed Fri May 29 21:39:27 2015 by ELM ver.2012-10-06 from 001__elm20150529_192610__dat00.bin



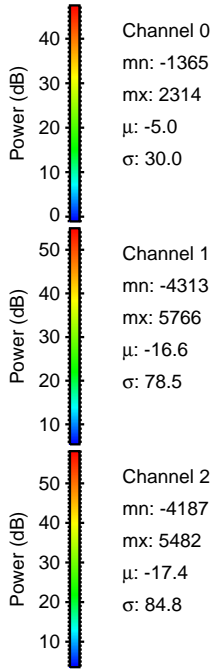
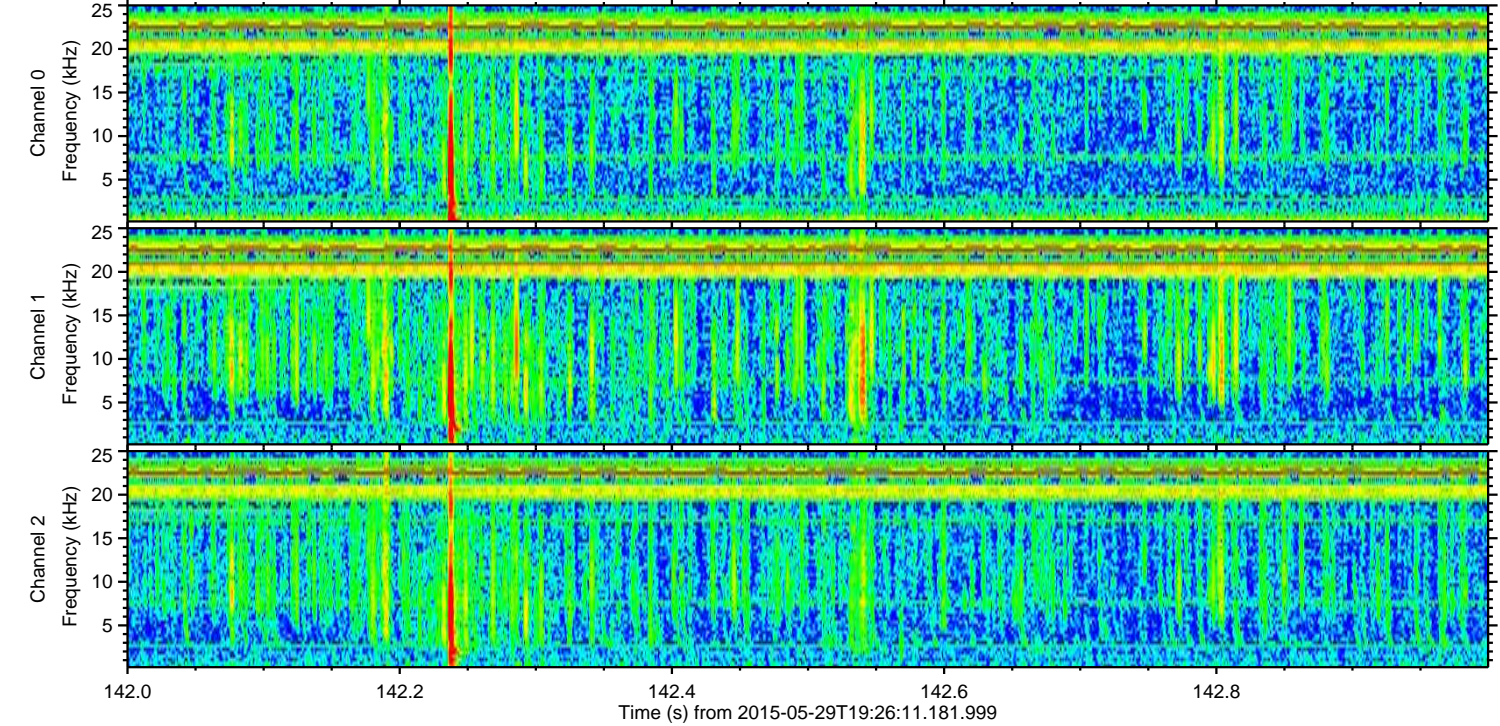
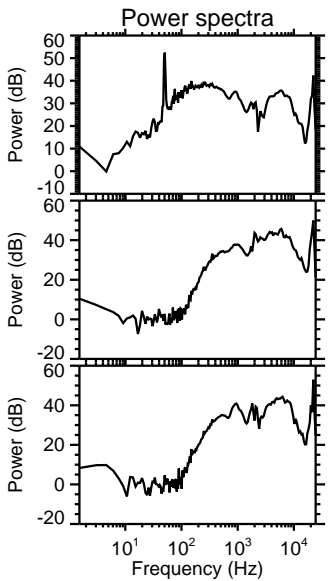
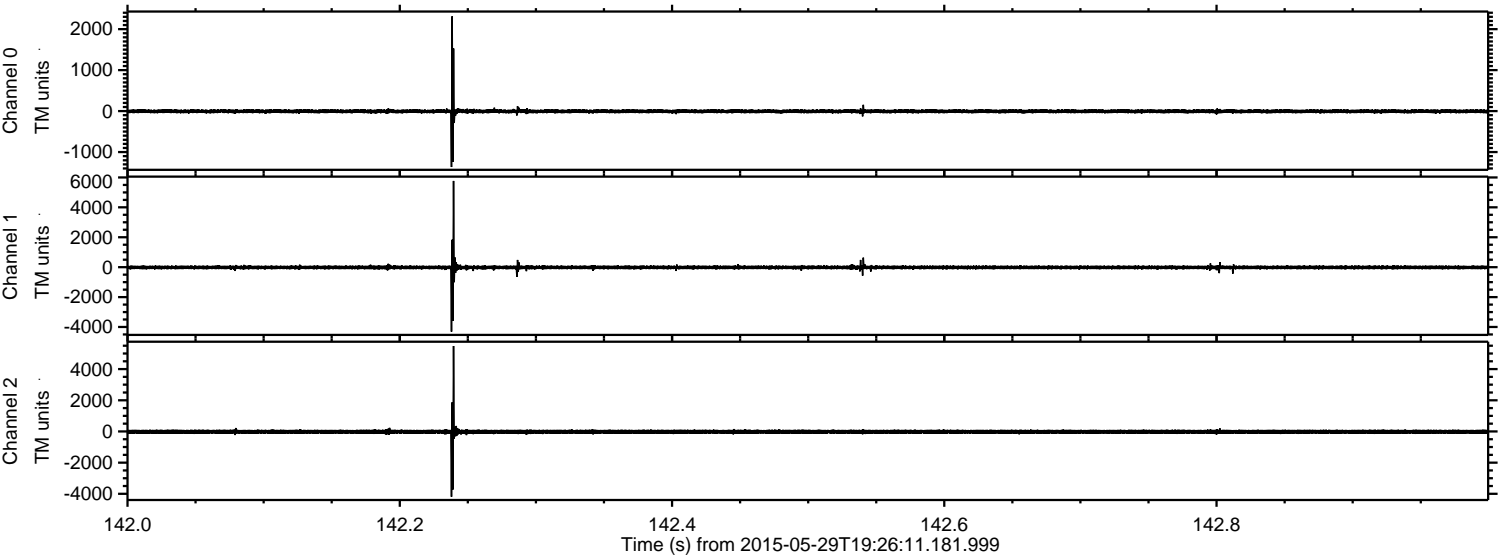
ELMAVAN 3D WAVEFORMS (Measured data sampled at 50 kHz) 49673 packets of 144 samples from 2015-05-29T19:26:11.181.999. Part 112/144

Processed Fri May 29 21:39:28 2015 by ELM ver.2012-10-06 from 001__elm20150529_192610__dat00.bin

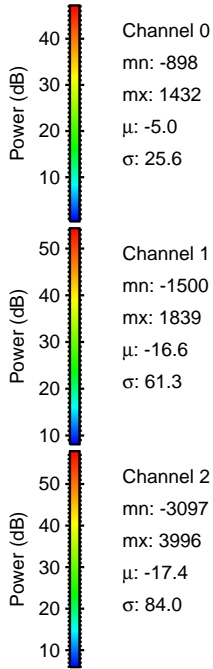
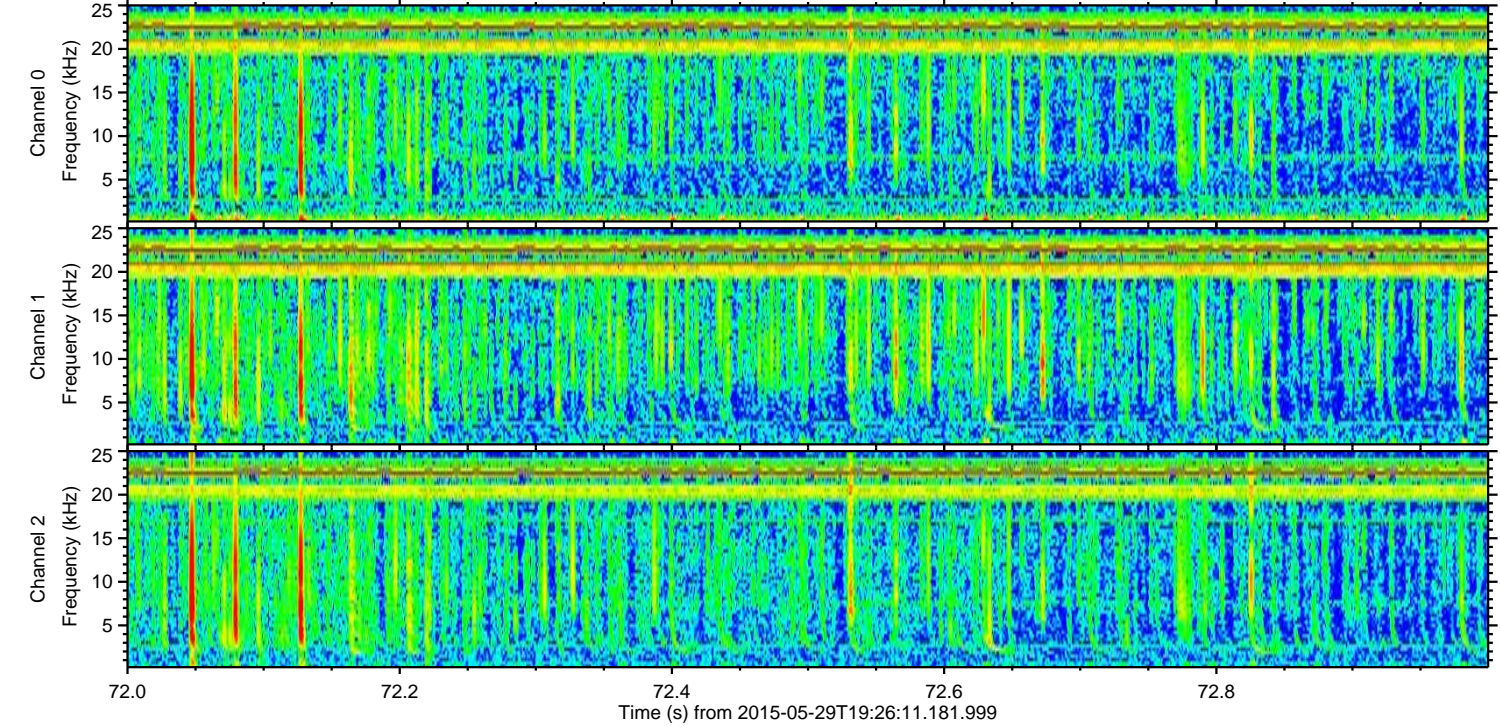
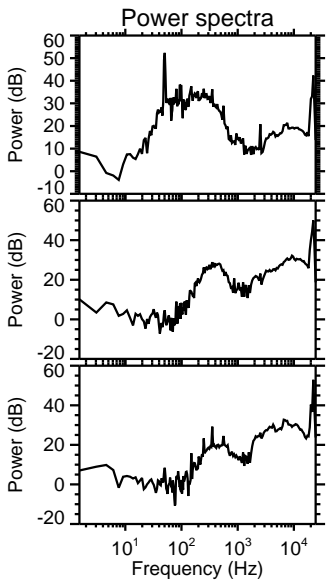
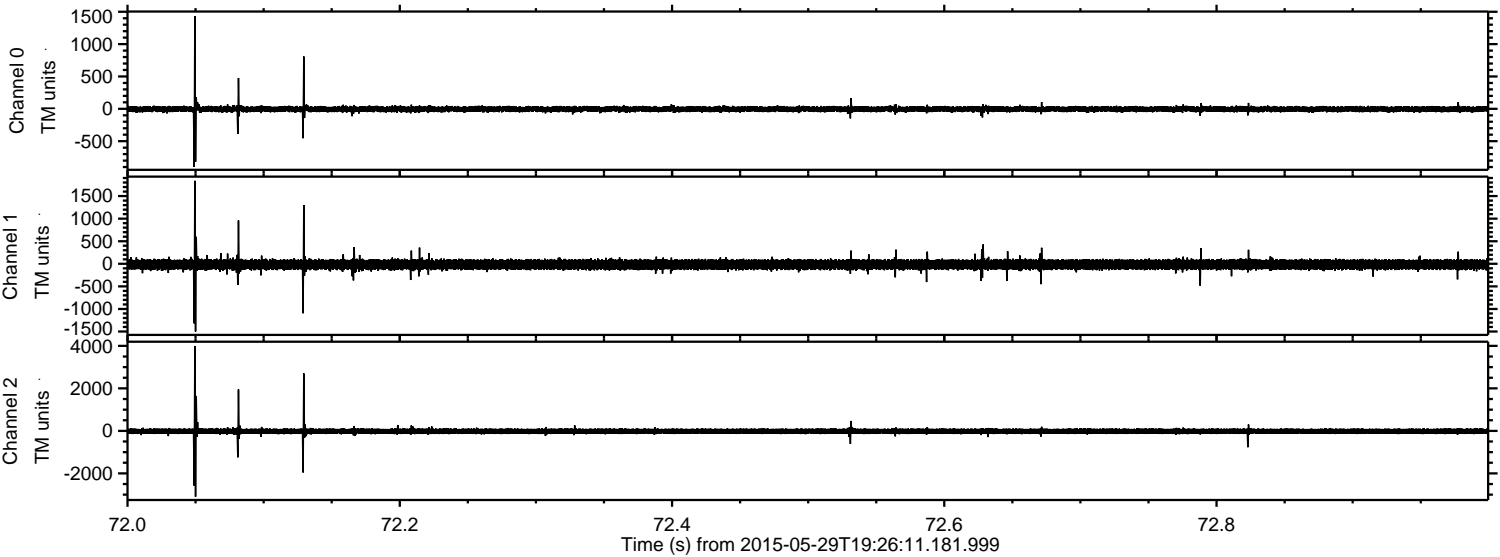


ELMAVAN 3D WAVEFORMS (Measured data sampled at 50 kHz) 49673 packets of 144 samples from 2015-05-29T19:26:11.181.999. Part 143/144

Processed Fri May 29 21:39:29 2015 by ELM ver.2012-10-06 from 001__elm20150529_192610__dat00.bin



Processed Fri May 29 21:39:30 2015 by ELM ver.2012-10-06 from 001__elm20150529_192610__dat00.bin



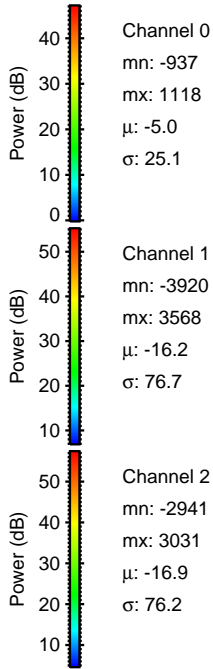
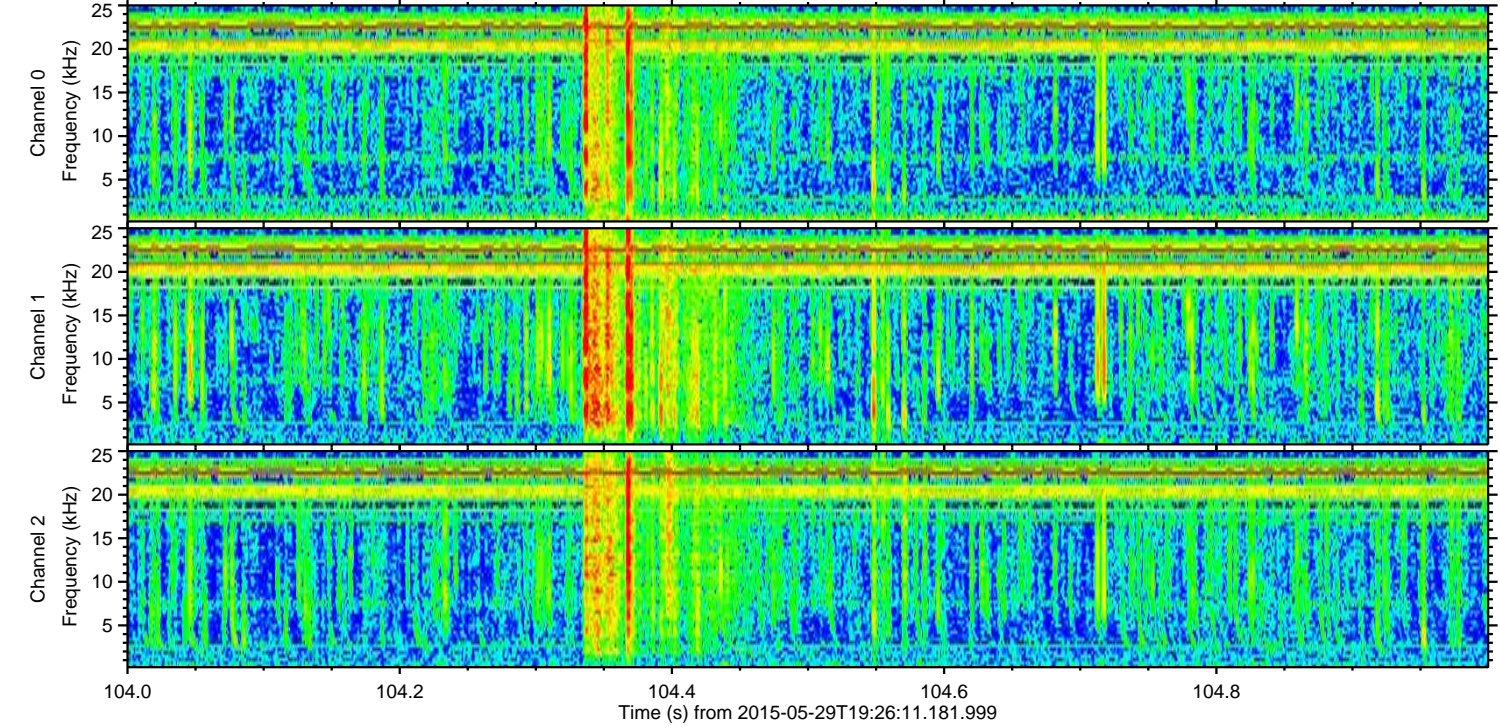
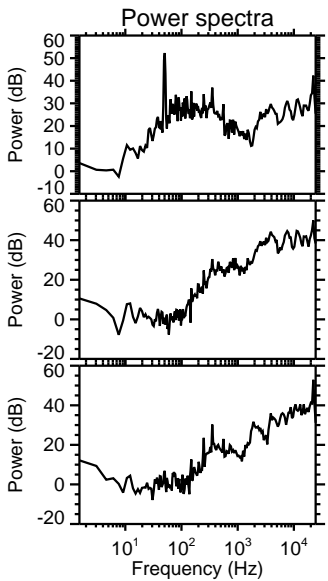
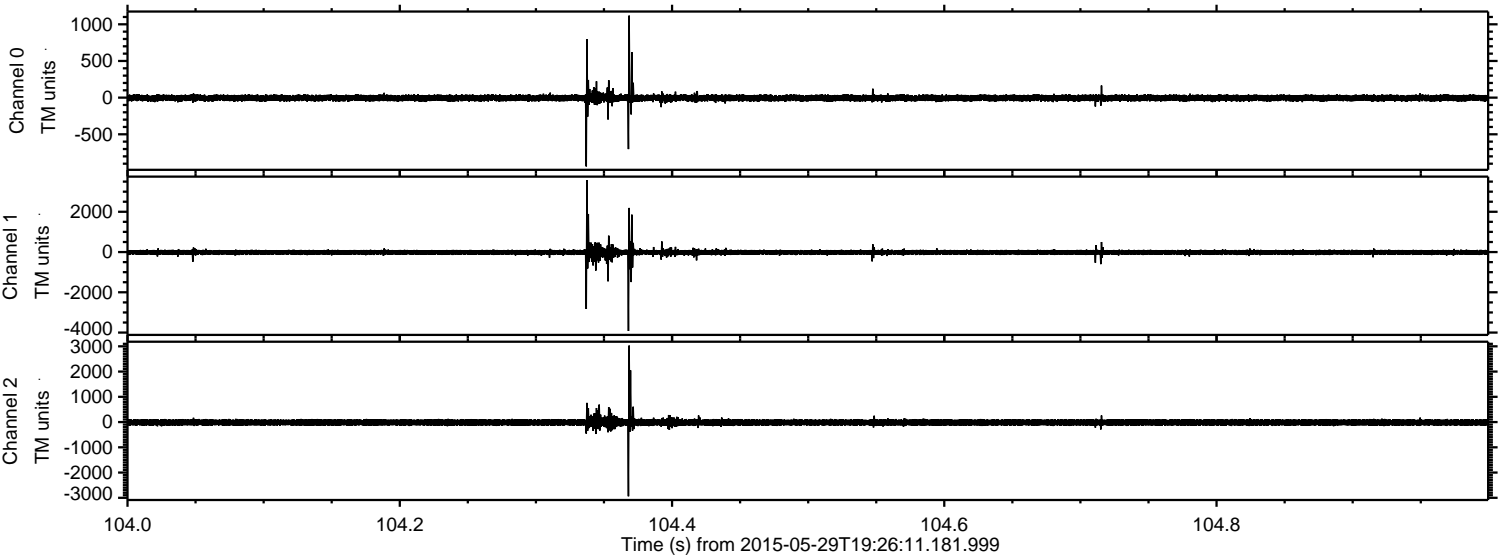
Channel 0
mn: -898
mx: 1432
 μ : -5.0
 σ : 25.6

Channel 1
mn: -1500
mx: 1839
 μ : -16.6
 σ : 61.3

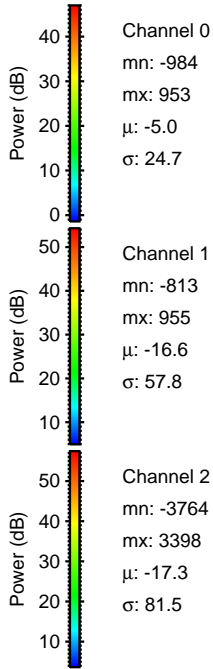
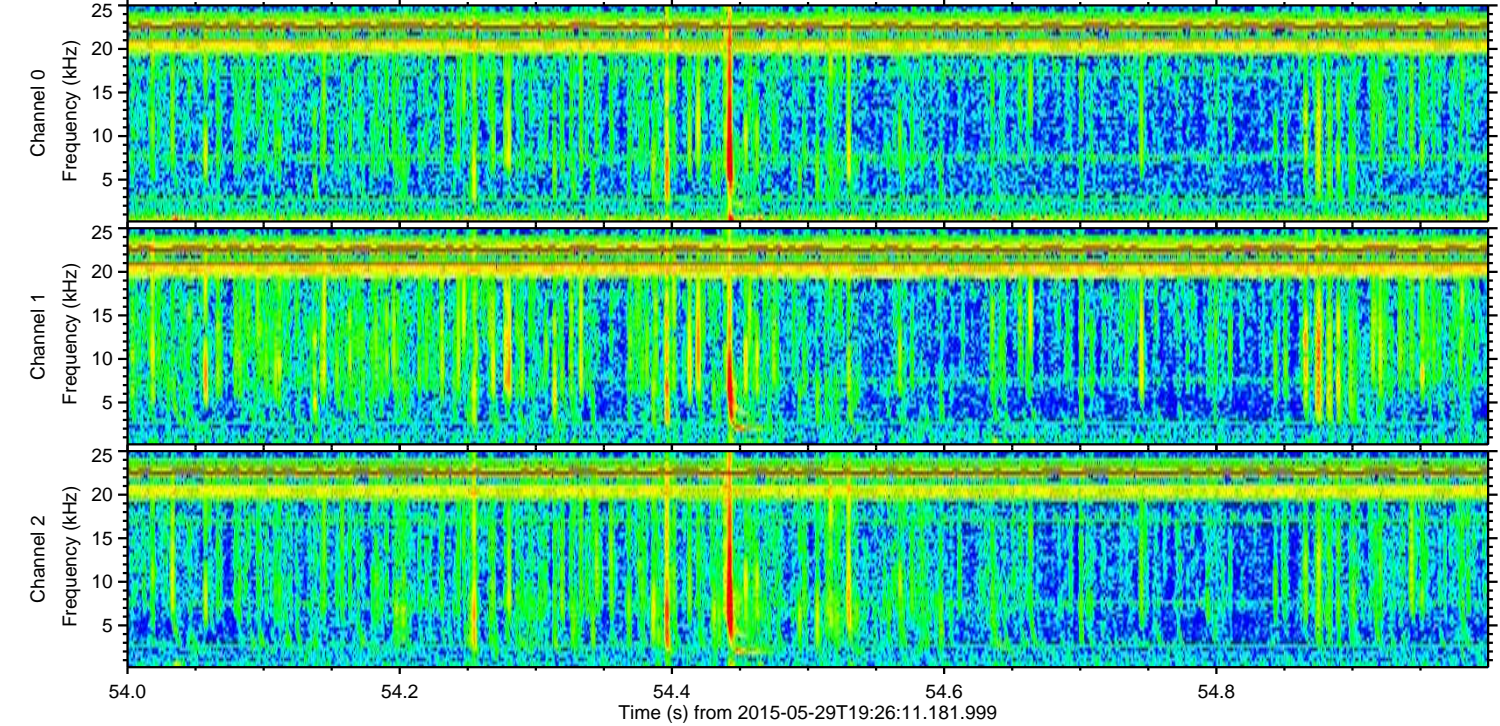
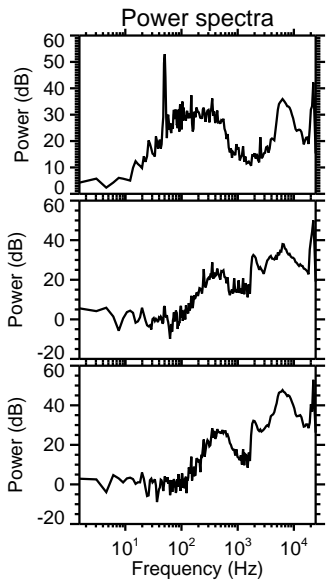
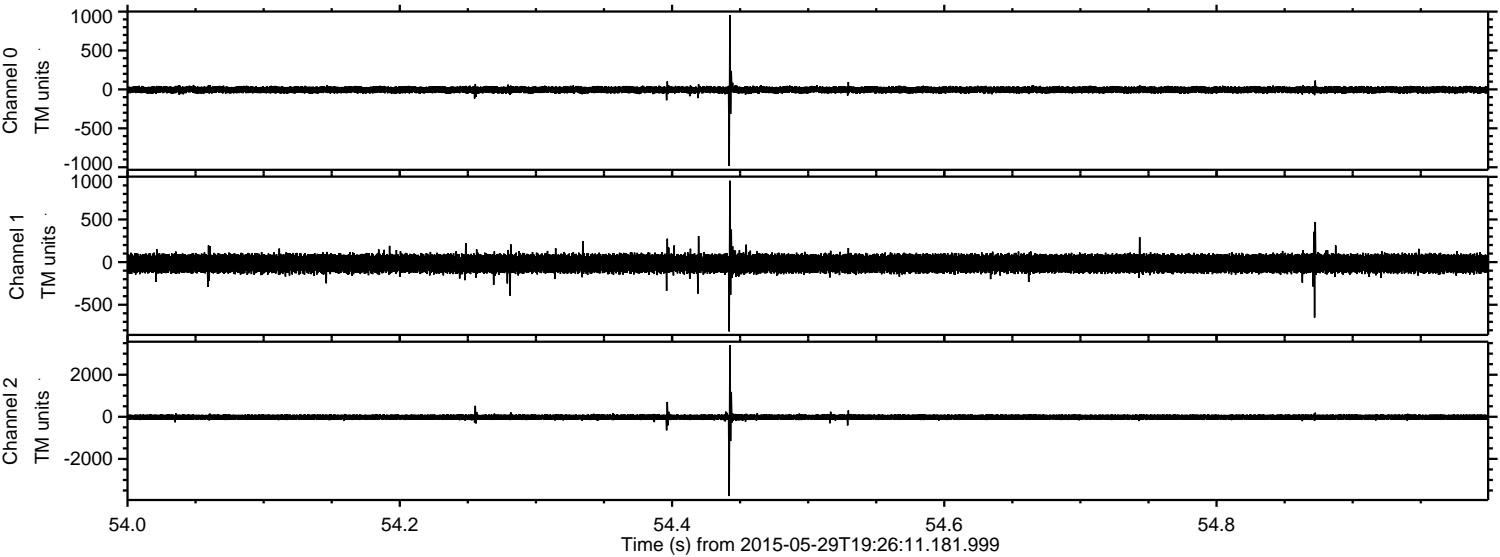
Channel 2
mn: -3097
mx: 3996
 μ : -17.4
 σ : 84.0

ELMAVAN 3D WAVEFORMS (Measured data sampled at 50 kHz) 49673 packets of 144 samples from 2015-05-29T19:26:11.181.999. Part 105/144

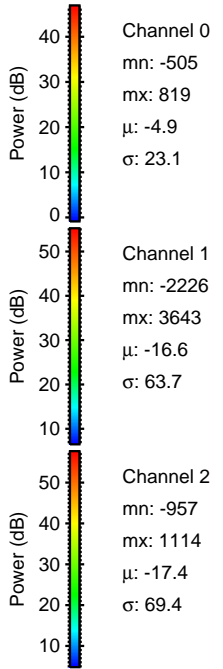
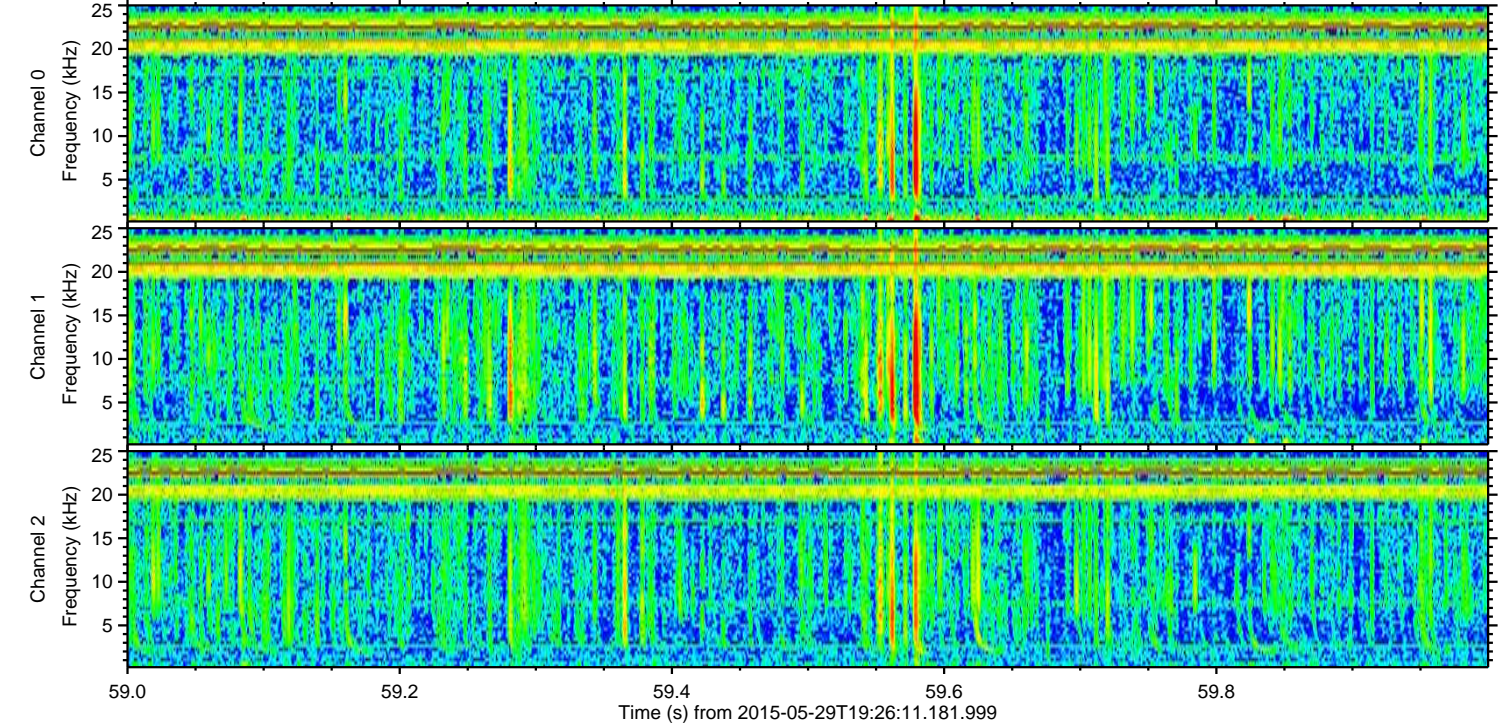
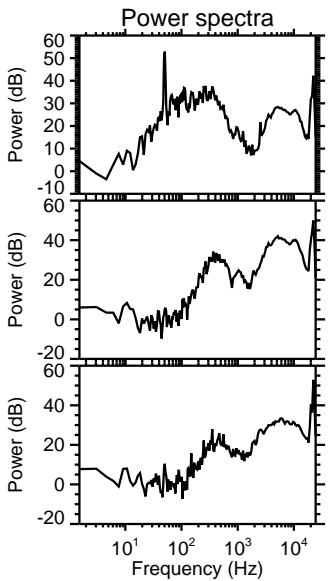
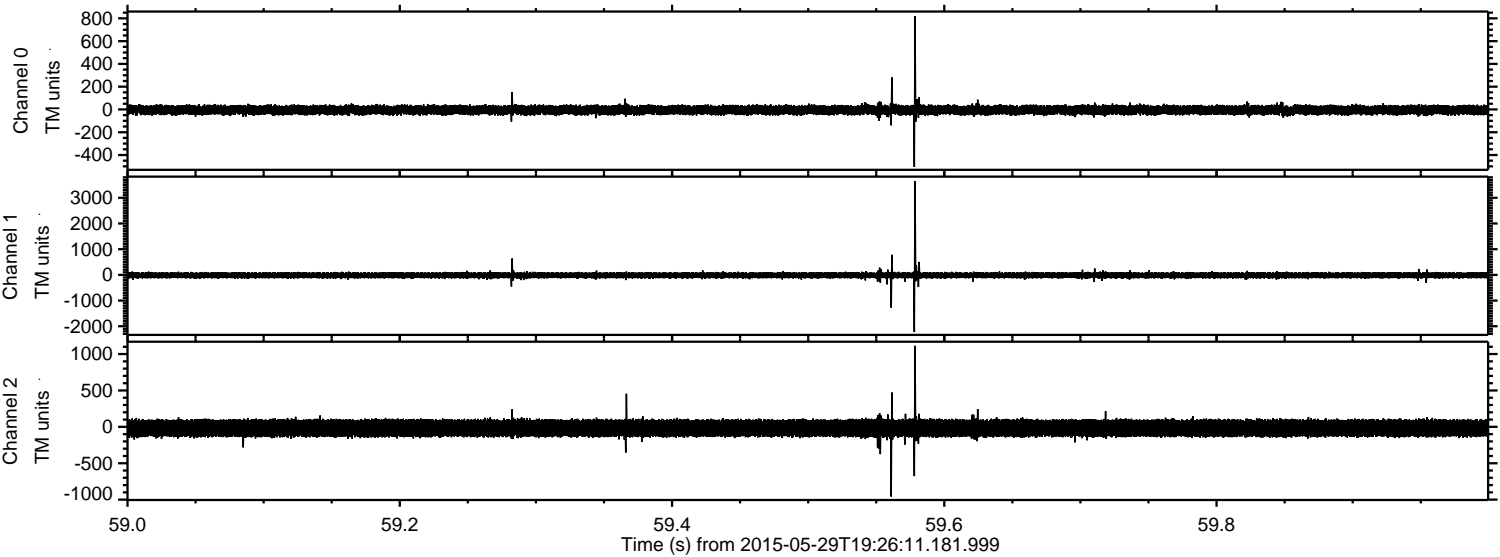
Processed Fri May 29 21:39:31 2015 by ELM ver.2012-10-06 from 001__elm20150529_192610__dat00.bin



Processed Fri May 29 21:39:32 2015 by ELM ver.2012-10-06 from 001__elm20150529_192610__dat00.bin



Processed Fri May 29 21:39:34 2015 by ELM ver.2012-10-06 from 001__elm20150529_192610__dat00.bin



Channel 0
mn: -505
mx: 819
 μ : -4.9
 σ : 23.1

Channel 1
mn: -2226
mx: 3643
 μ : -16.6
 σ : 63.7

Channel 2
mn: -957
mx: 1114
 μ : -17.4
 σ : 69.4

Processed Fri May 29 21:39:35 2015 by ELM ver.2012-10-06 from 001__elm20150529_192610__dat00.bin

