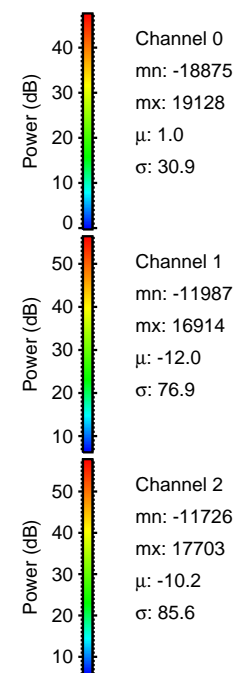
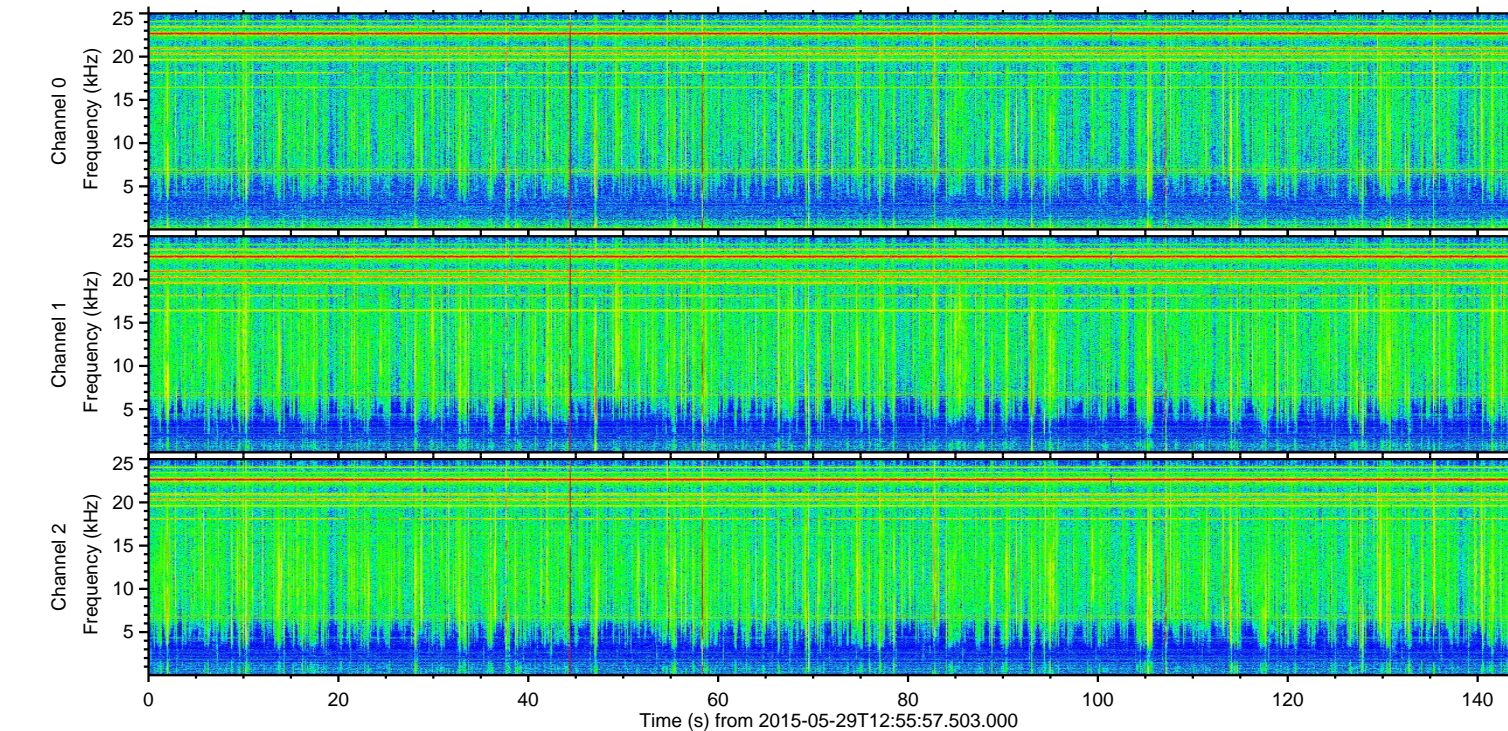
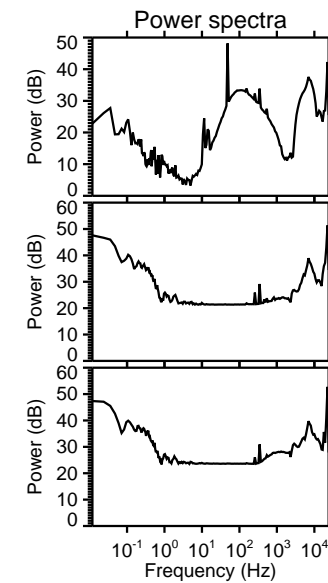
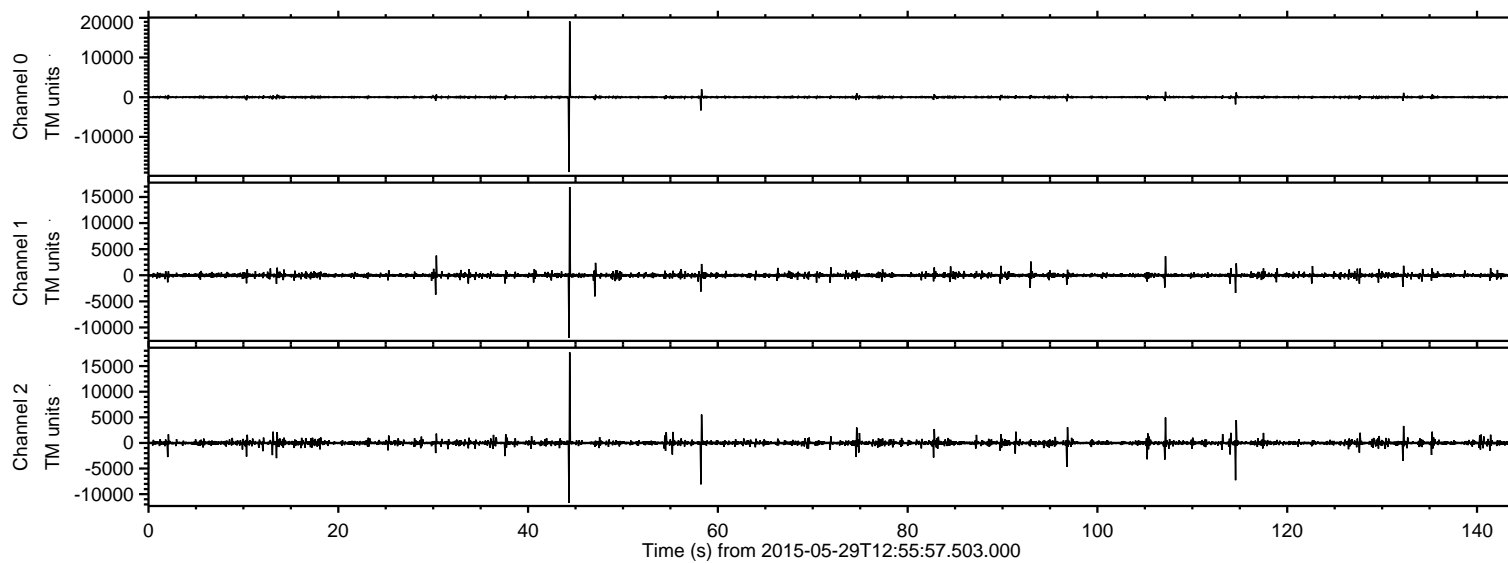


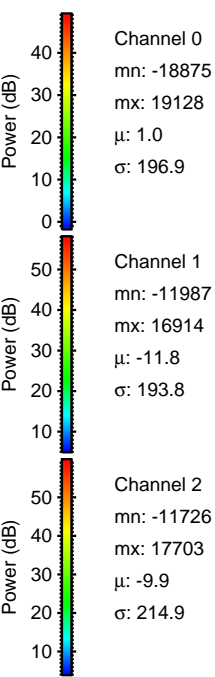
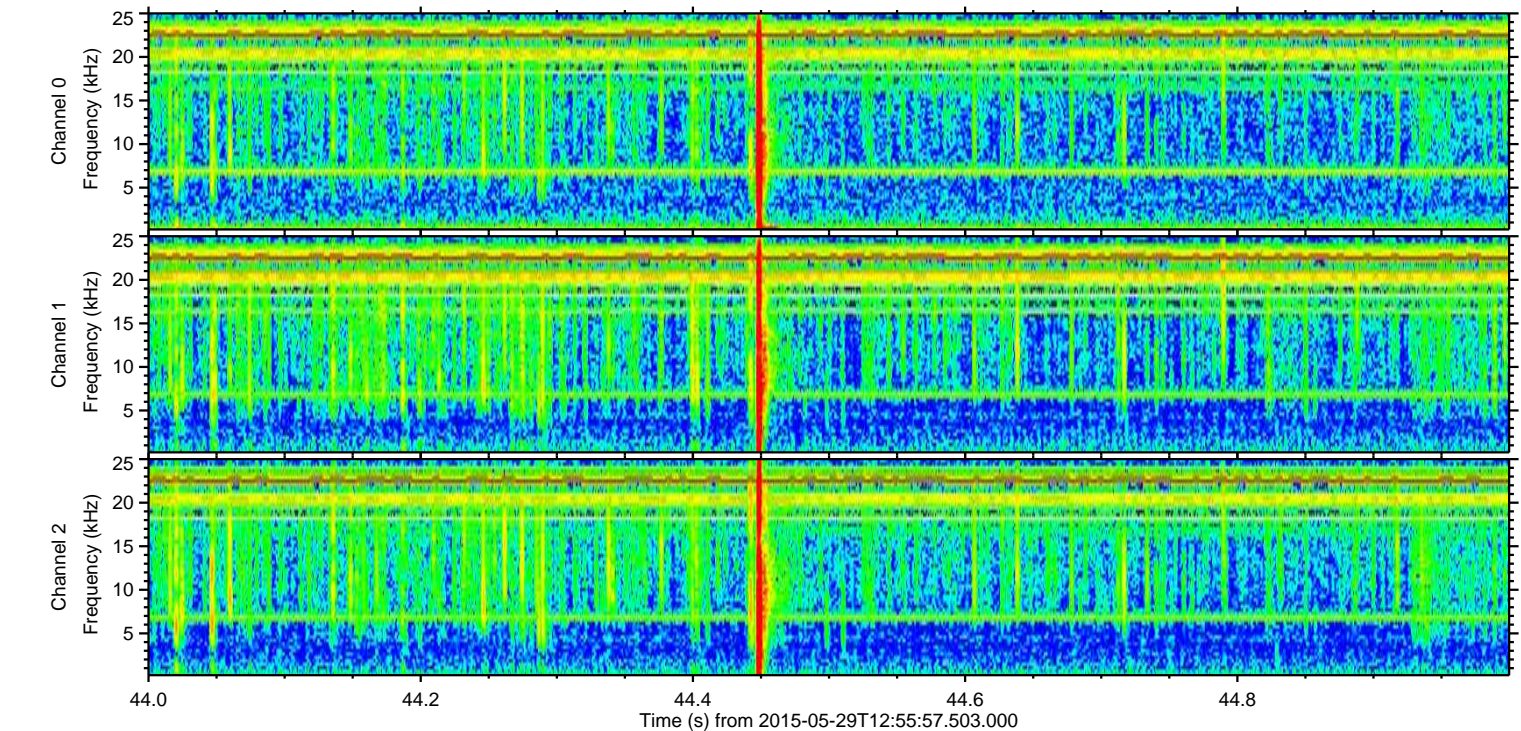
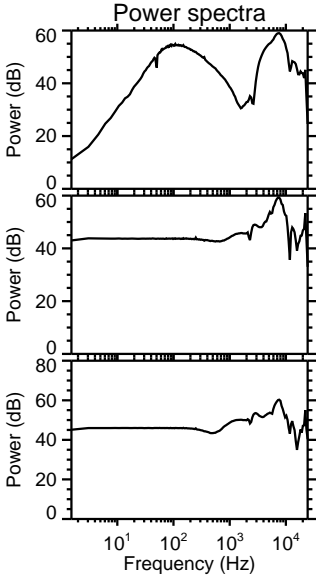
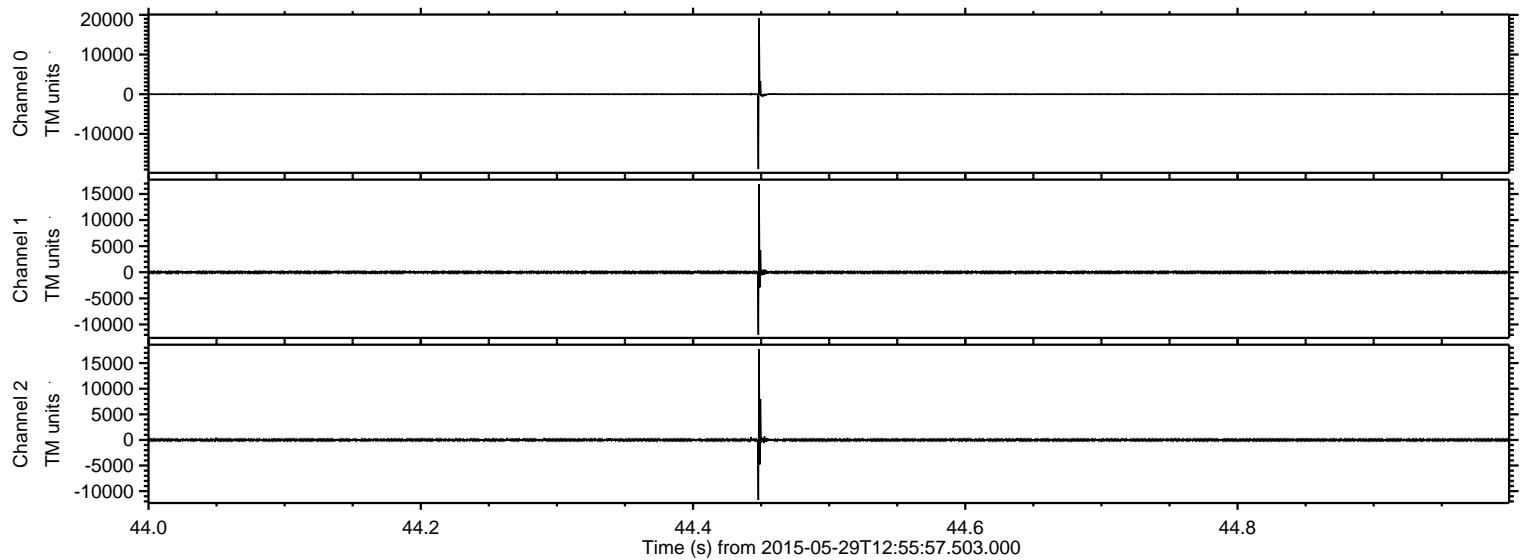
# ELMAVAN 3D WAVEFORMS (Measured data sampled at 50 kHz) 49787 packets of 144 samples from 2015-05-29T12:55:57.503.000.

Processed Fri May 29 15:04:02 2015 by ELM ver.2012-10-06 from 001\_\_elm20150529\_125556\_\_dat00.bin





Processed Fri May 29 15:04:14 2015 by ELM ver.2012-10-06 from 001\_\_elm20150529\_125556\_\_dat00.bin



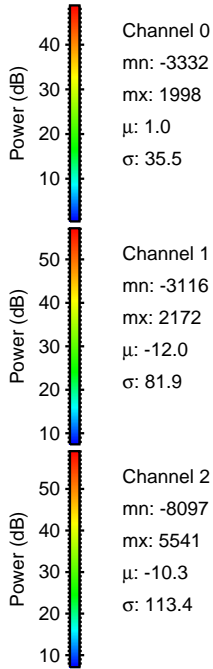
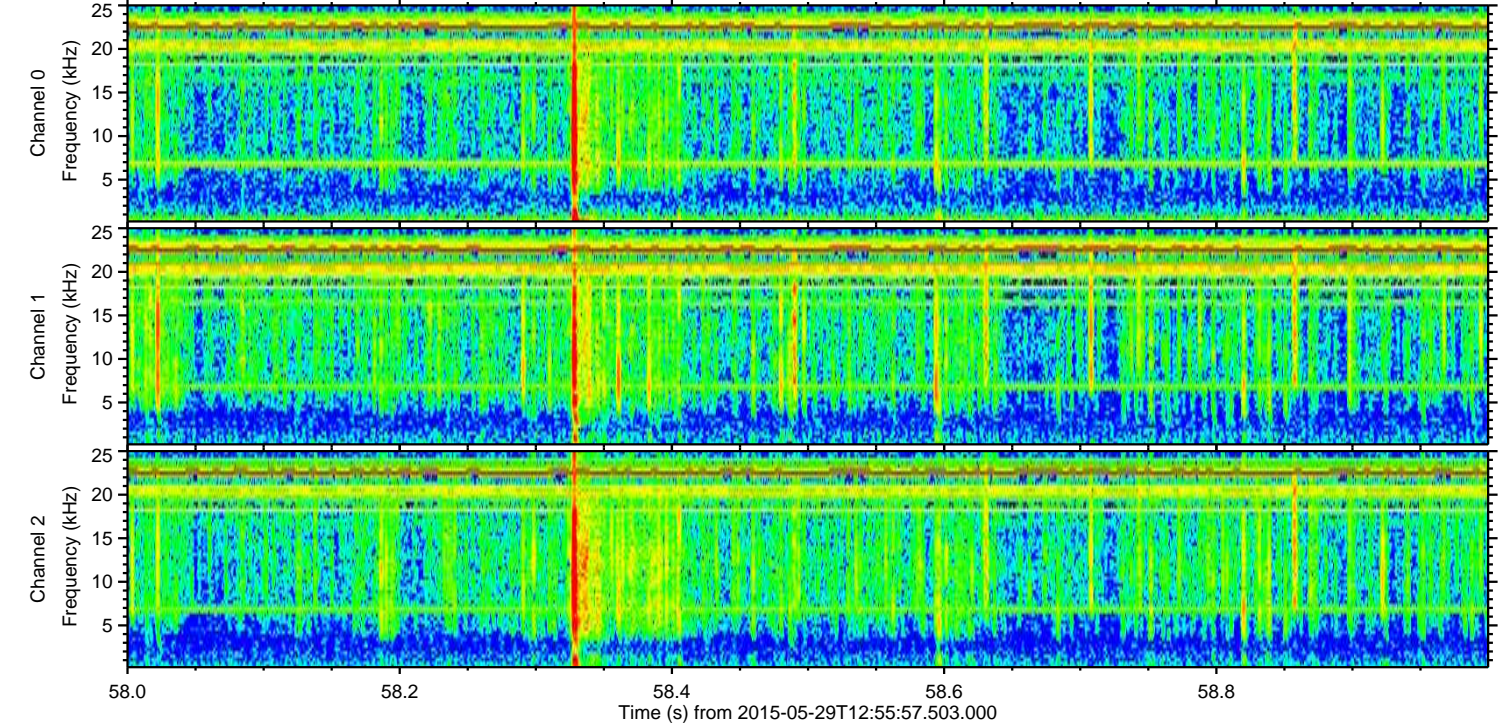
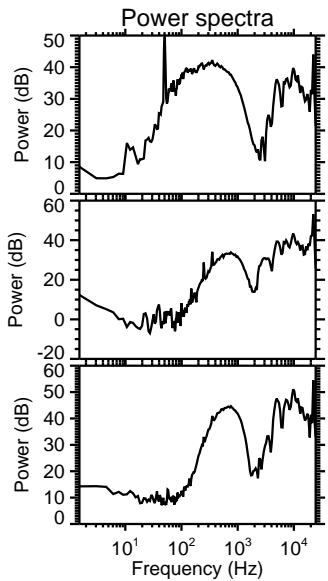
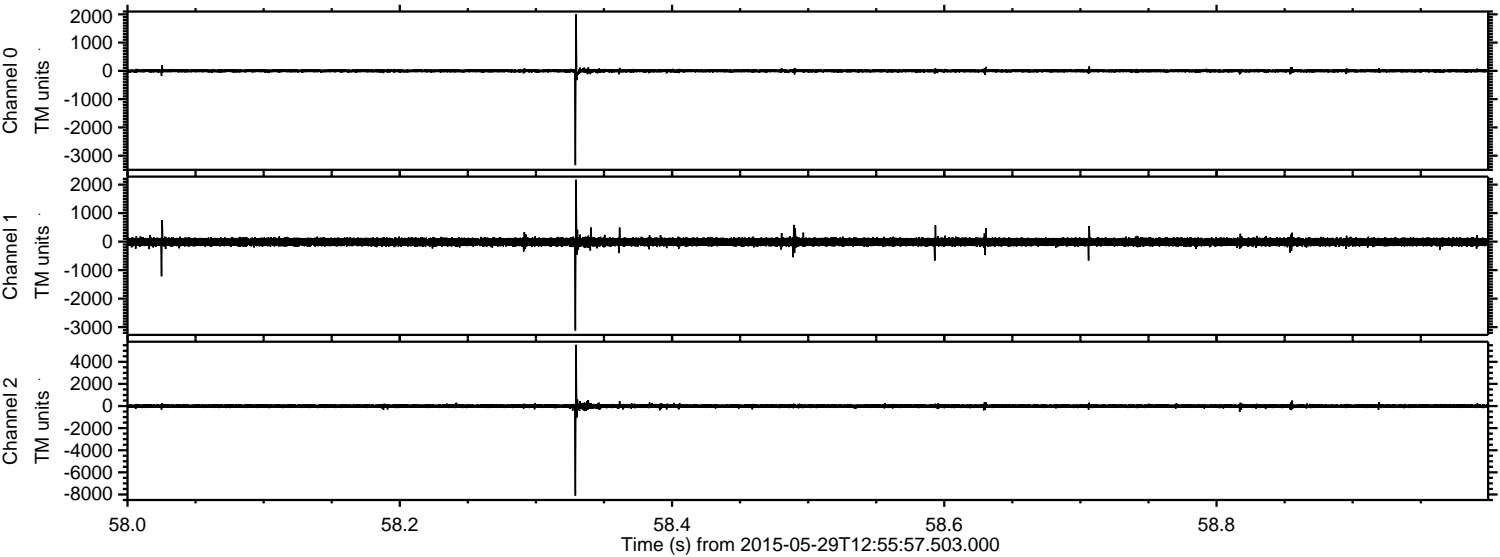
Channel 0  
mn: -18875  
mx: 19128  
 $\mu$ : 1.0  
 $\sigma$ : 196.9

Channel 1  
mn: -11987  
mx: 16914  
 $\mu$ : -11.8  
 $\sigma$ : 193.8

Channel 2  
mn: -11726  
mx: 17703  
 $\mu$ : -9.9  
 $\sigma$ : 214.9



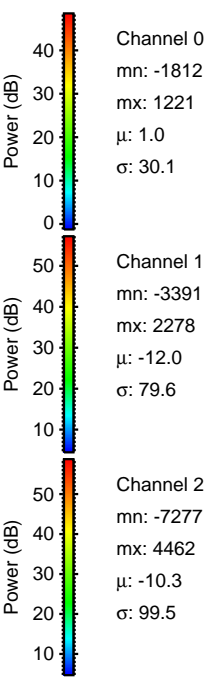
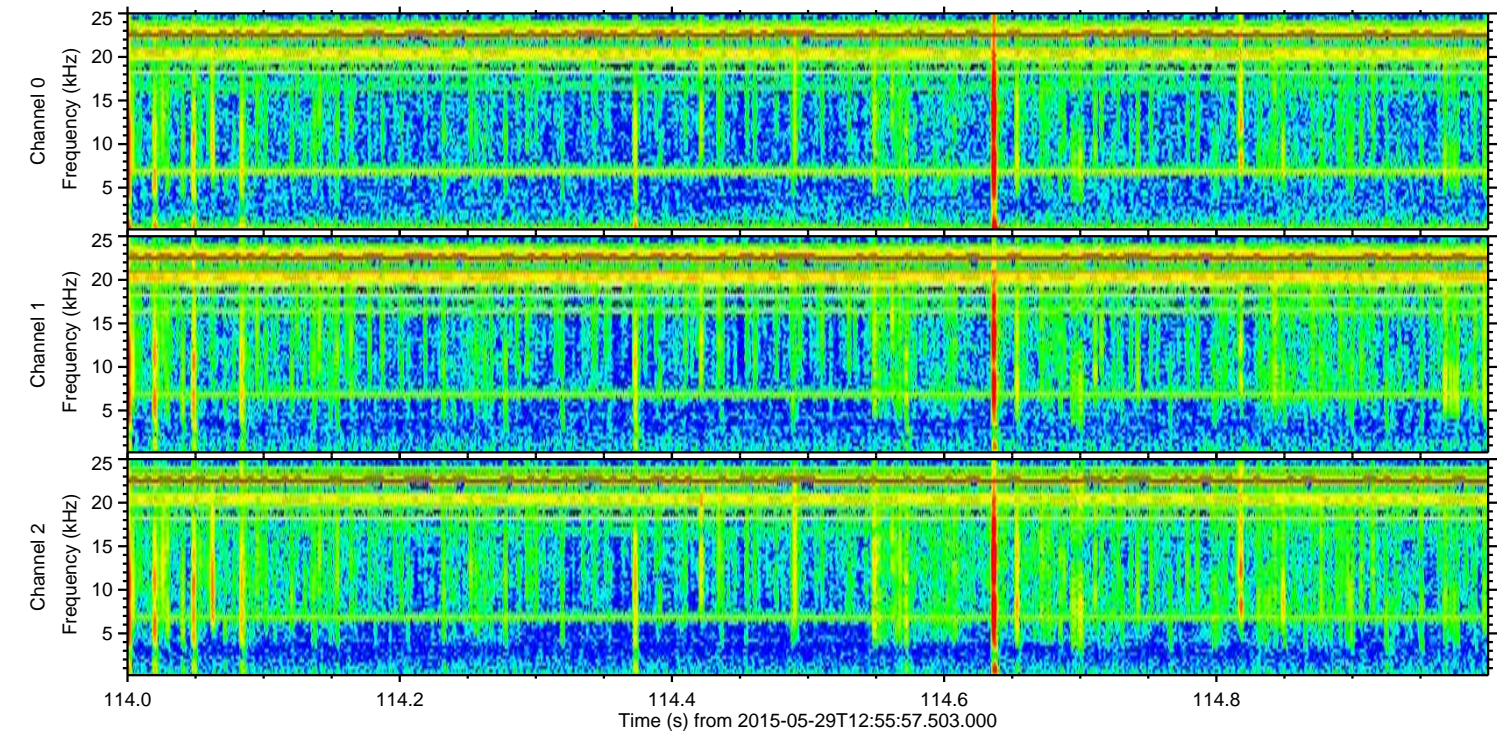
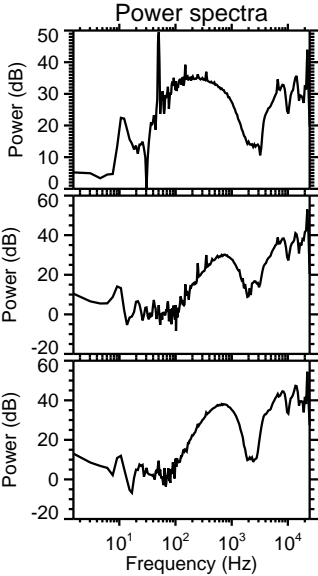
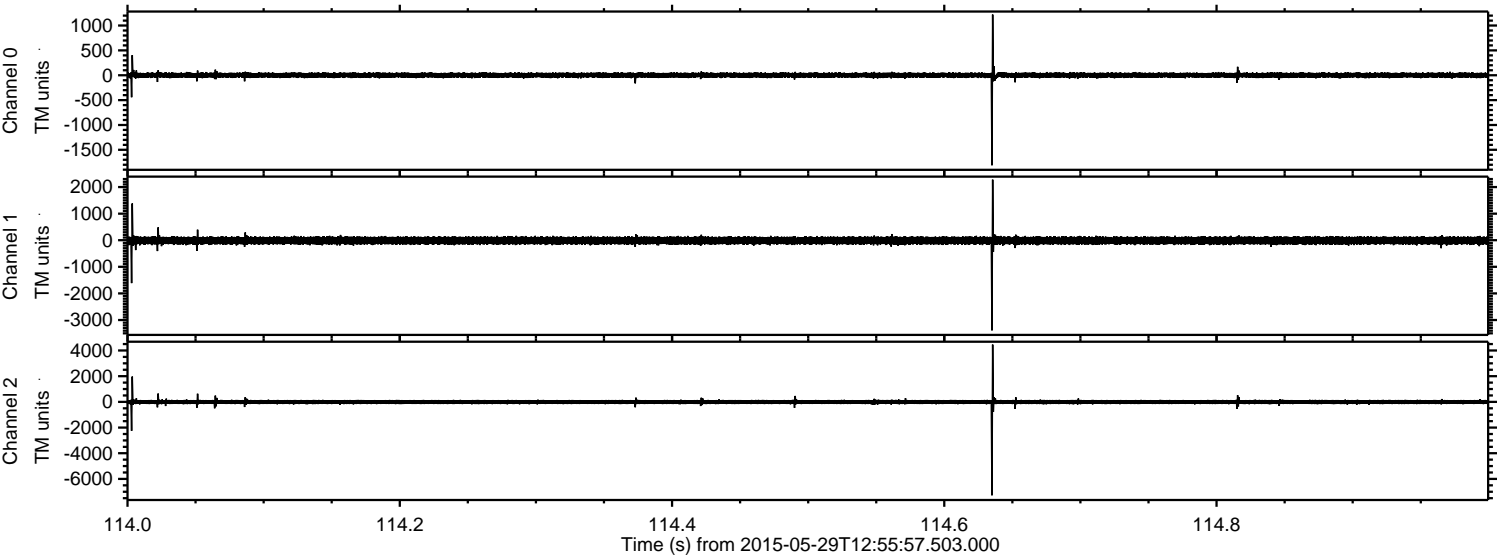
Processed Fri May 29 15:04:15 2015 by ELM ver.2012-10-06 from 001\_\_elm20150529\_125556\_\_dat00.bin





ELMAVAN 3D WAVEFORMS (Measured data sampled at 50 kHz) 49787 packets of 144 samples from 2015-05-29T12:55:57.503.000. Part 115/144

Processed Fri May 29 15:04:16 2015 by ELM ver.2012-10-06 from 001\_\_elm20150529\_125556\_\_dat00.bin



Channel 0  
mn: -1812  
mx: 1221  
 $\mu$ : 1.0  
 $\sigma$ : 30.1

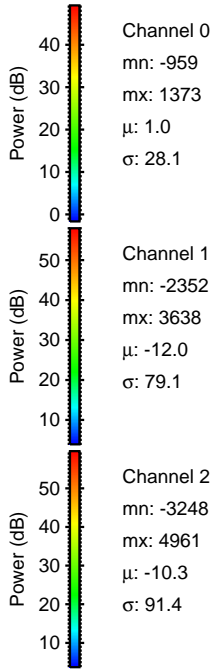
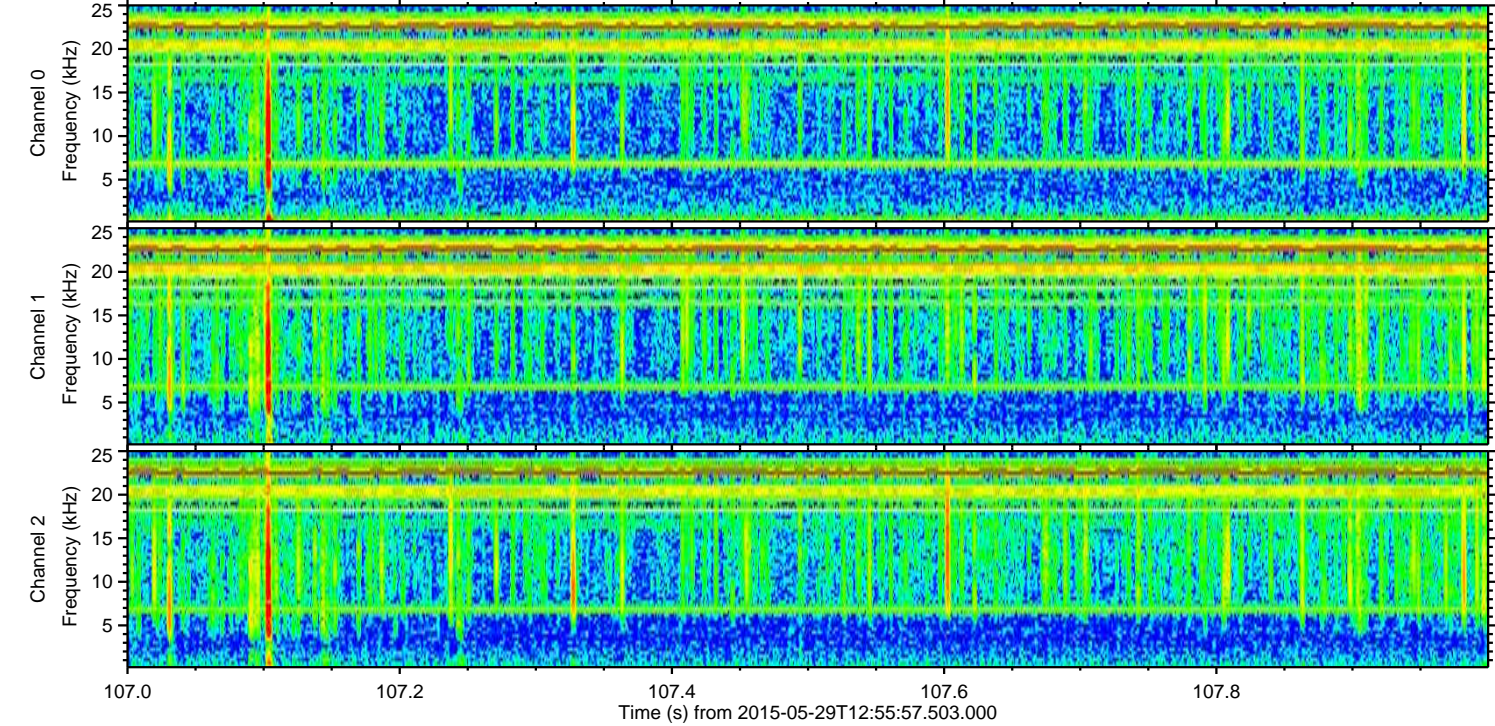
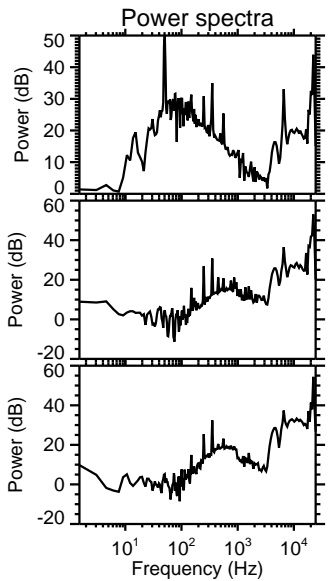
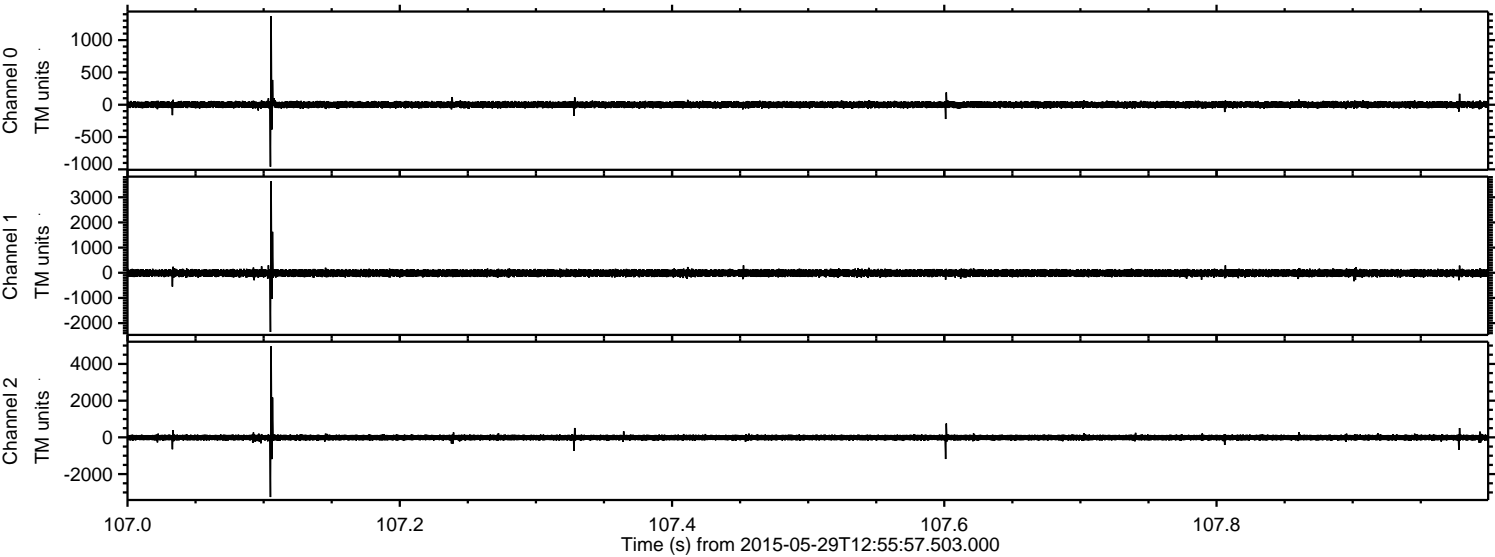
Channel 1  
mn: -3391  
mx: 2278  
 $\mu$ : -12.0  
 $\sigma$ : 79.6

Channel 2  
mn: -7277  
mx: 4462  
 $\mu$ : -10.3  
 $\sigma$ : 99.5



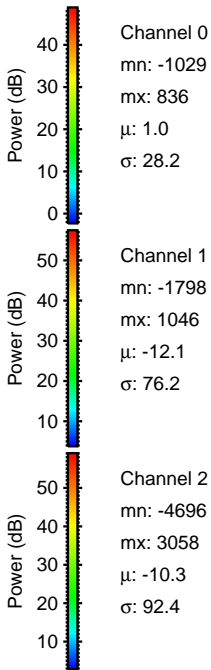
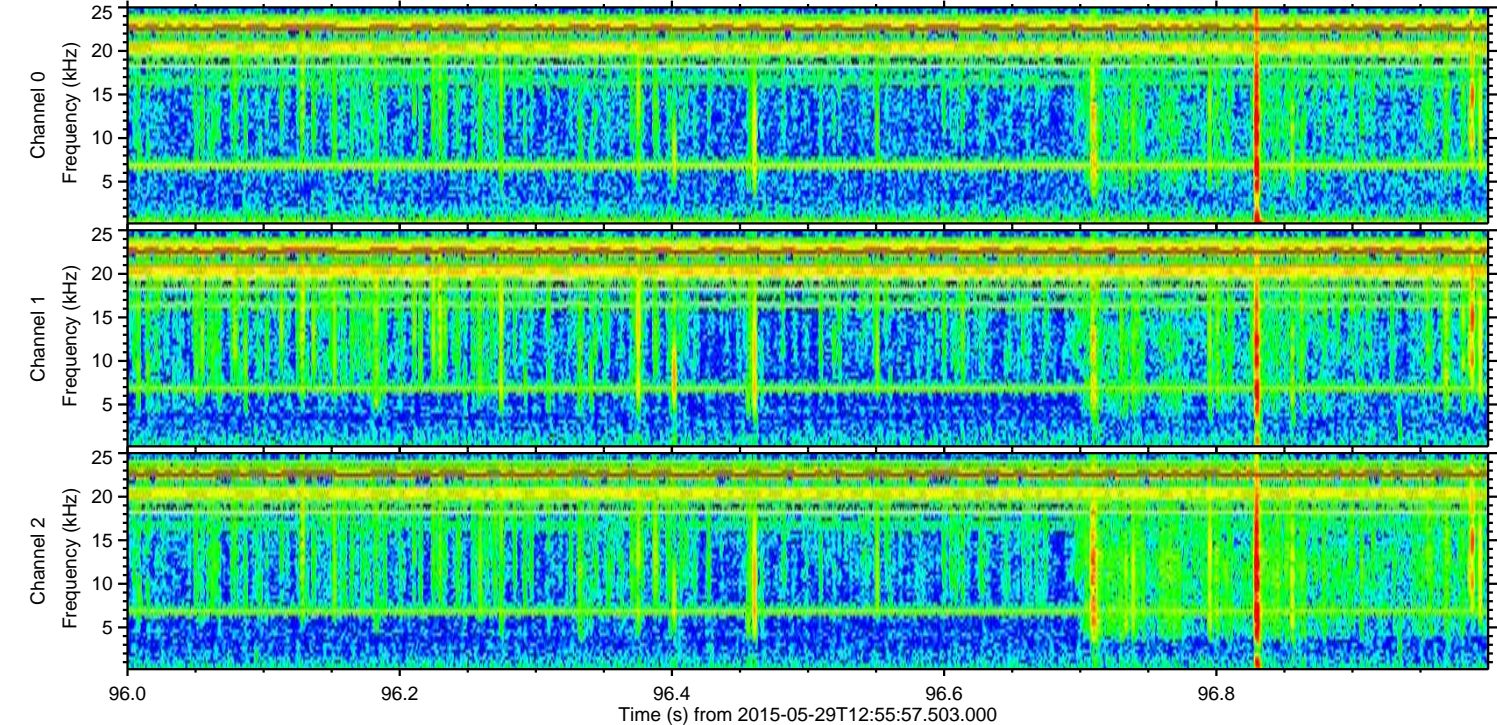
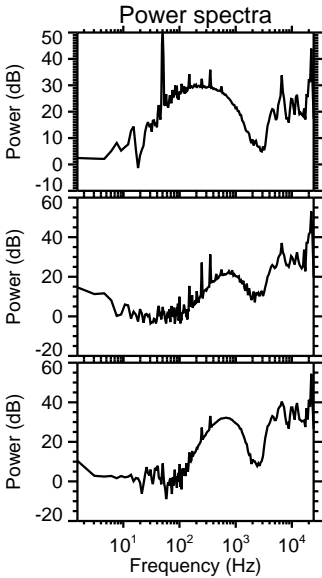
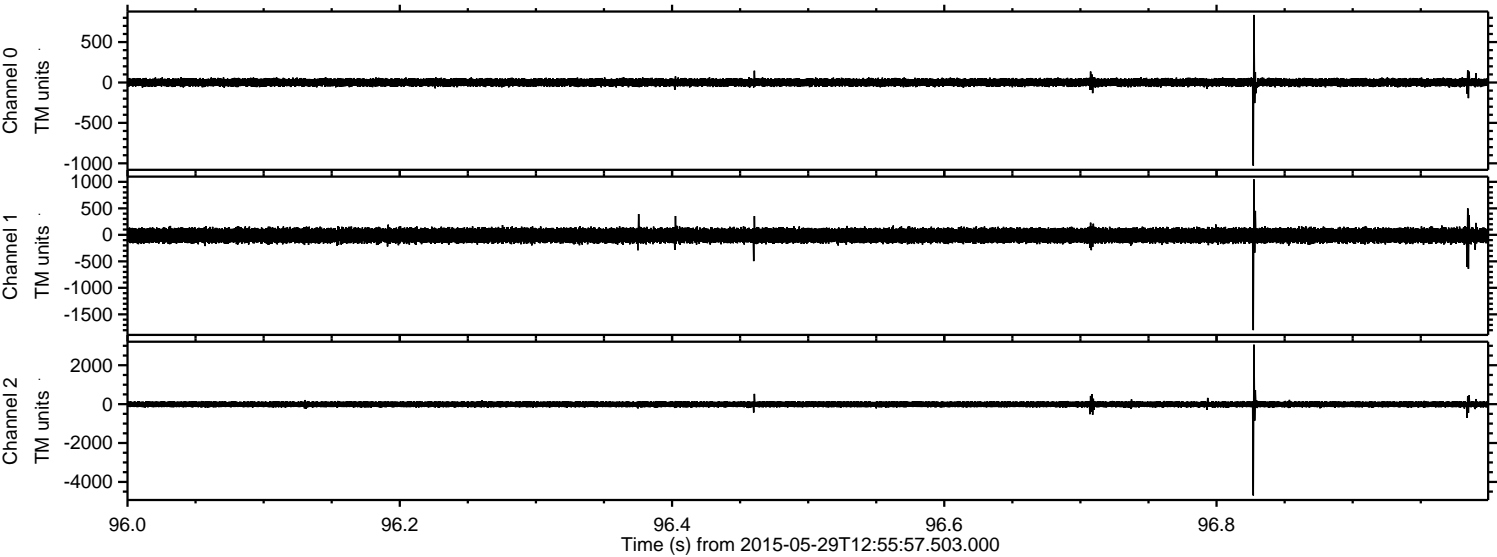
ELMAVAN 3D WAVEFORMS (Measured data sampled at 50 kHz) 49787 packets of 144 samples from 2015-05-29T12:55:57.503.000. Part 108/144

Processed Fri May 29 15:04:16 2015 by ELM ver.2012-10-06 from 001\_\_elm20150529\_125556\_\_dat00.bin



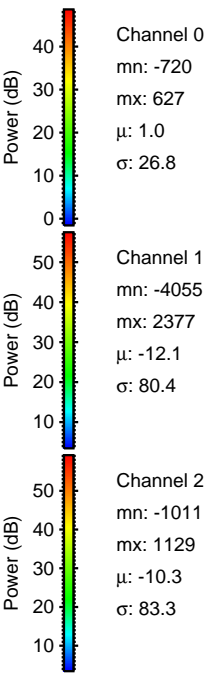
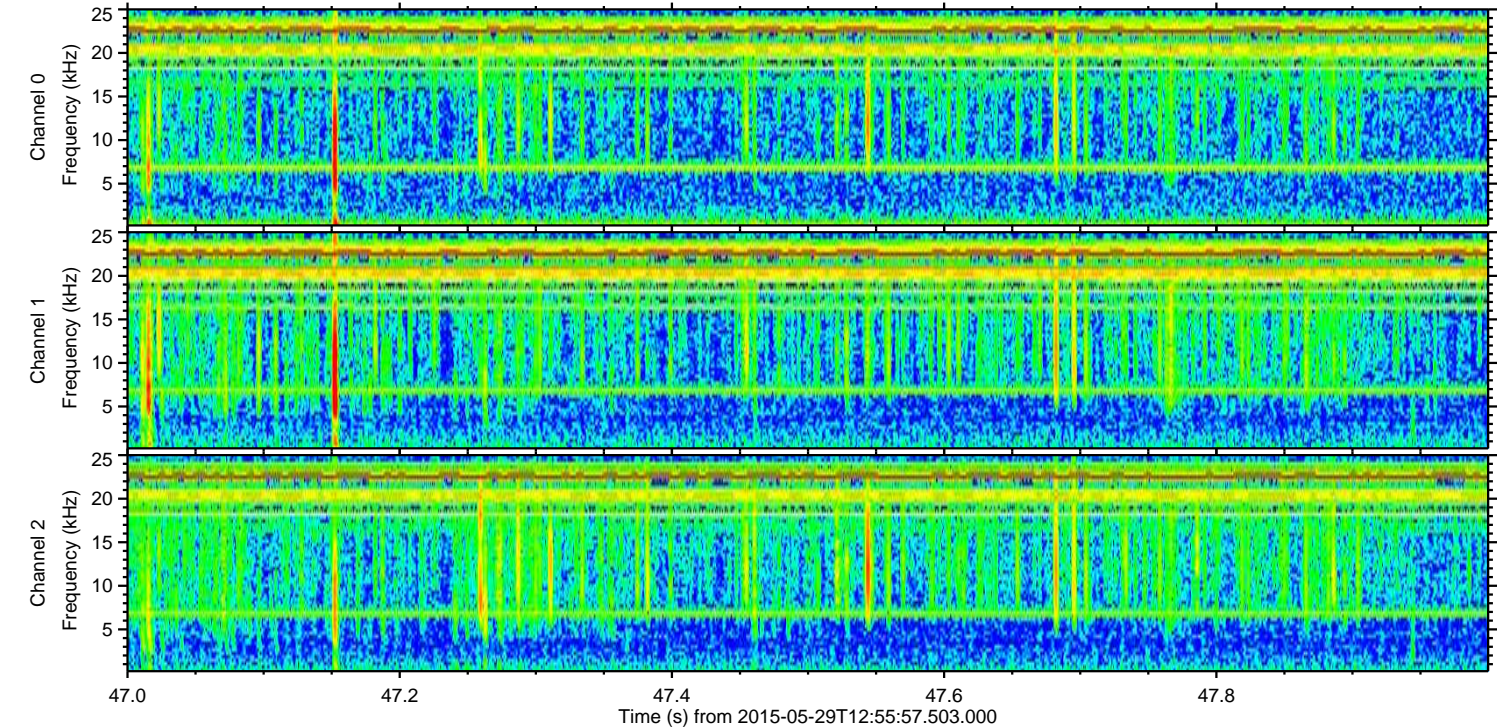
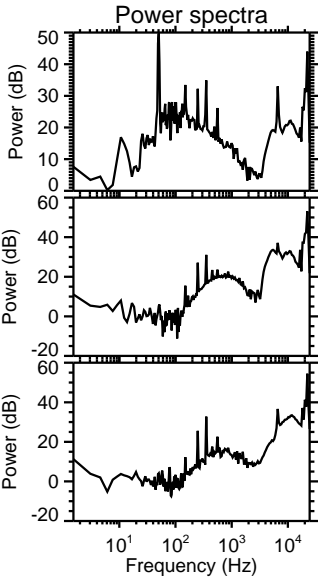
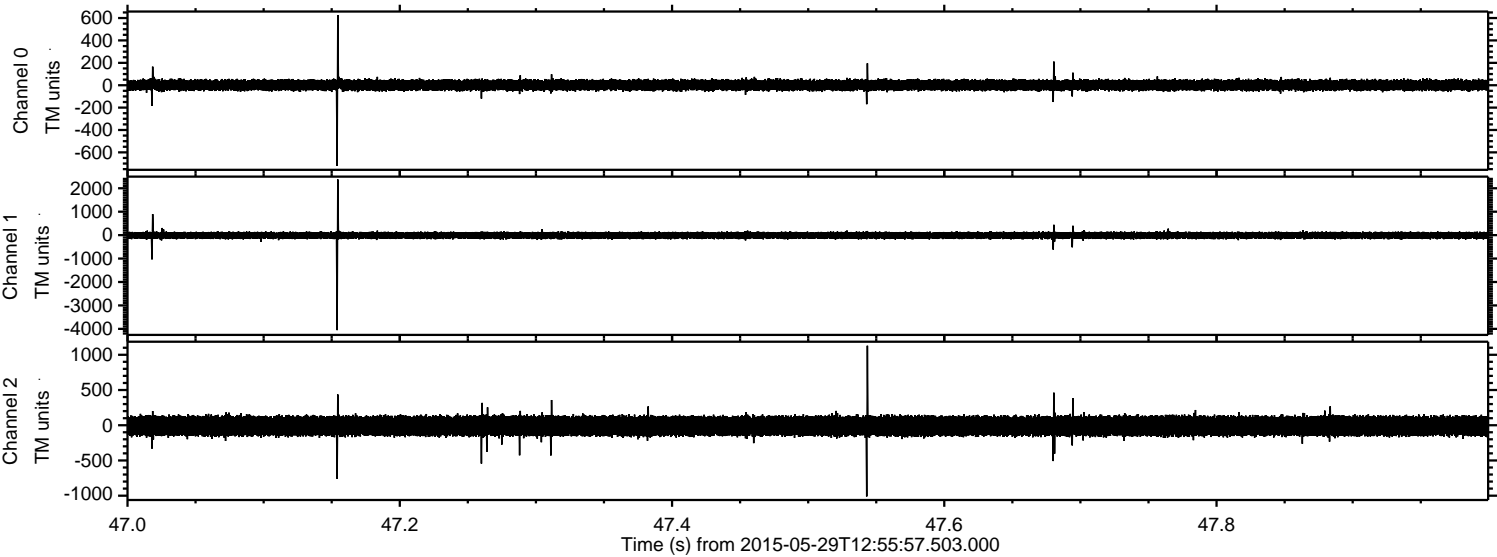


Processed Fri May 29 15:04:17 2015 by ELM ver.2012-10-06 from 001\_\_elm20150529\_125556\_\_dat00.bin





Processed Fri May 29 15:04:18 2015 by ELM ver.2012-10-06 from 001\_\_elm20150529\_125556\_\_dat00.bin



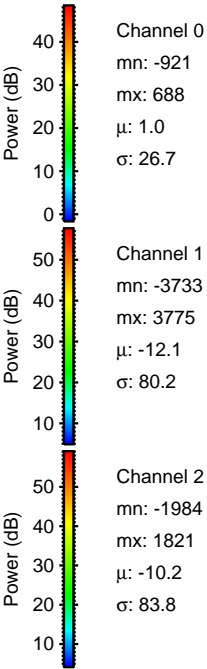
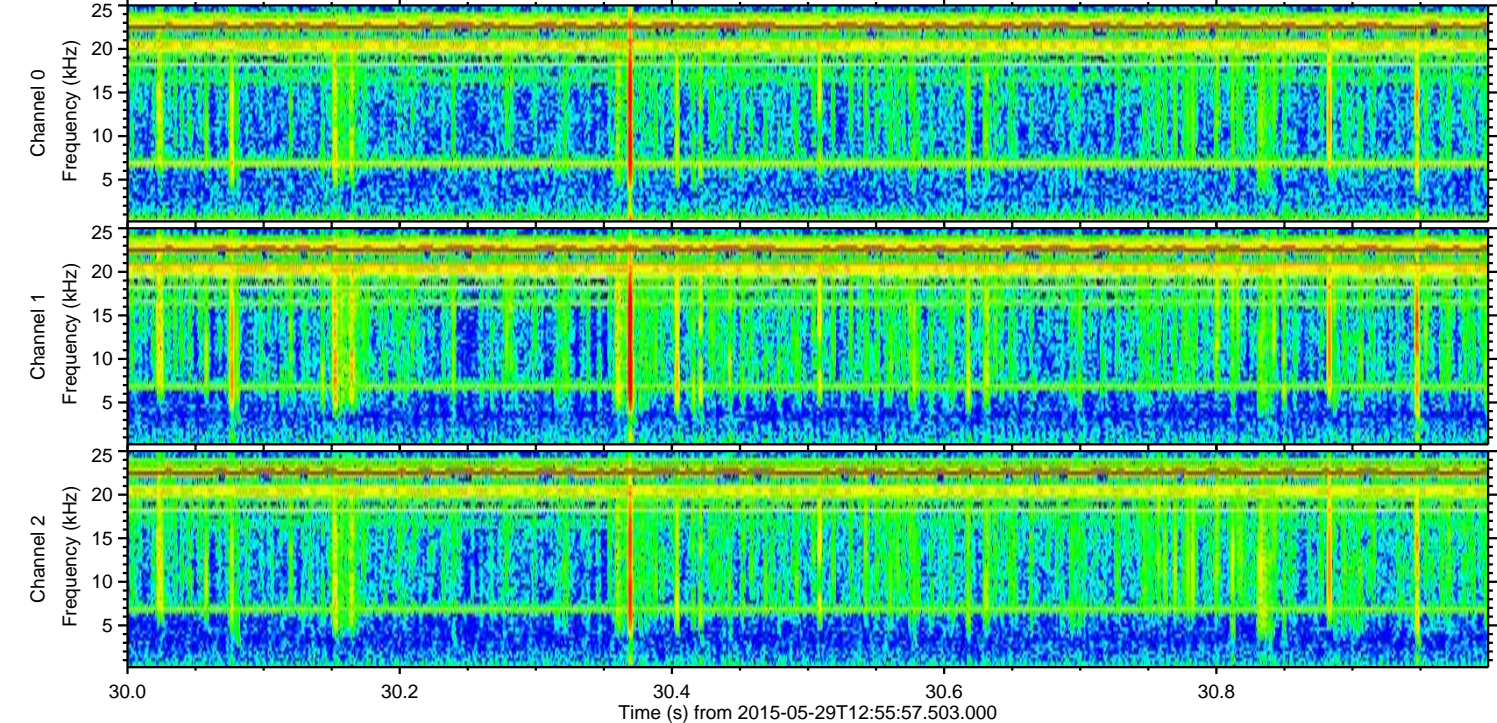
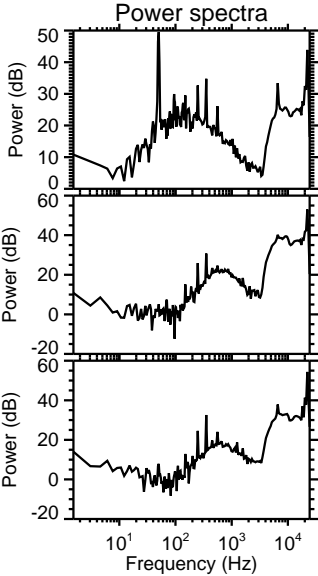
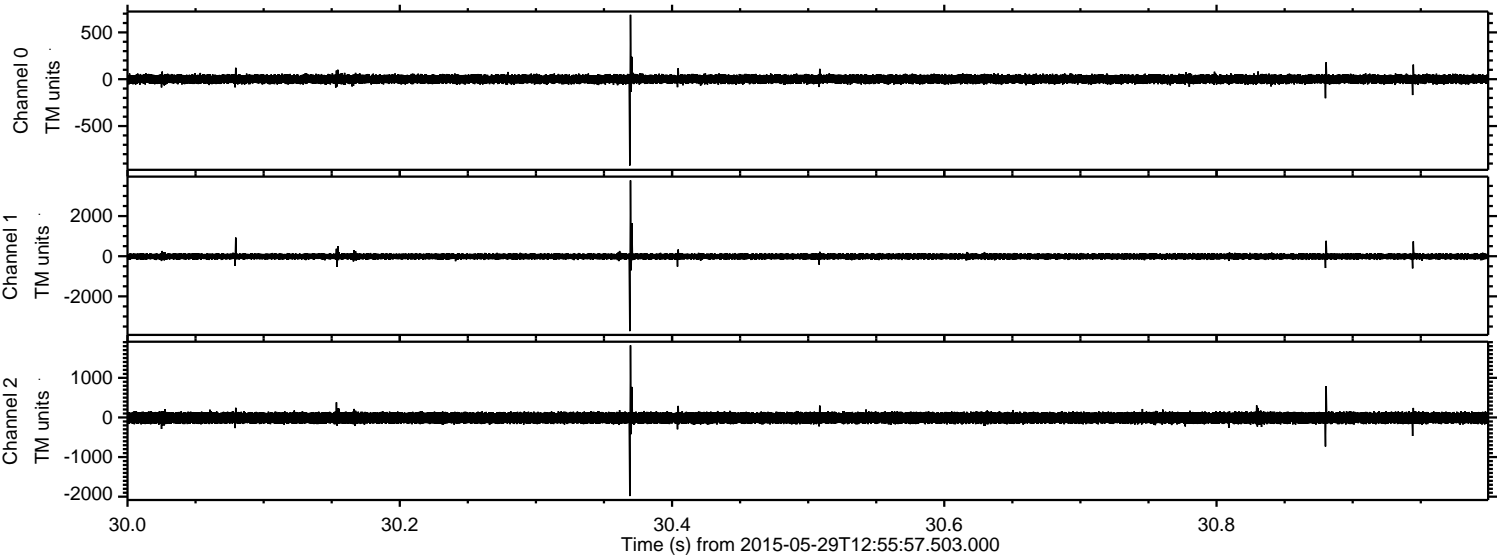
Channel 0  
mn: -720  
mx: 627  
 $\mu$ : 1.0  
 $\sigma$ : 26.8

Channel 1  
mn: -4055  
mx: 2377  
 $\mu$ : -12.1  
 $\sigma$ : 80.4

Channel 2  
mn: -1011  
mx: 1129  
 $\mu$ : -10.3  
 $\sigma$ : 83.3



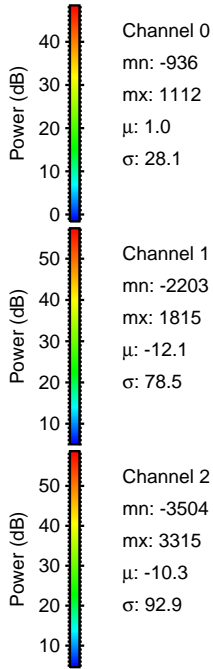
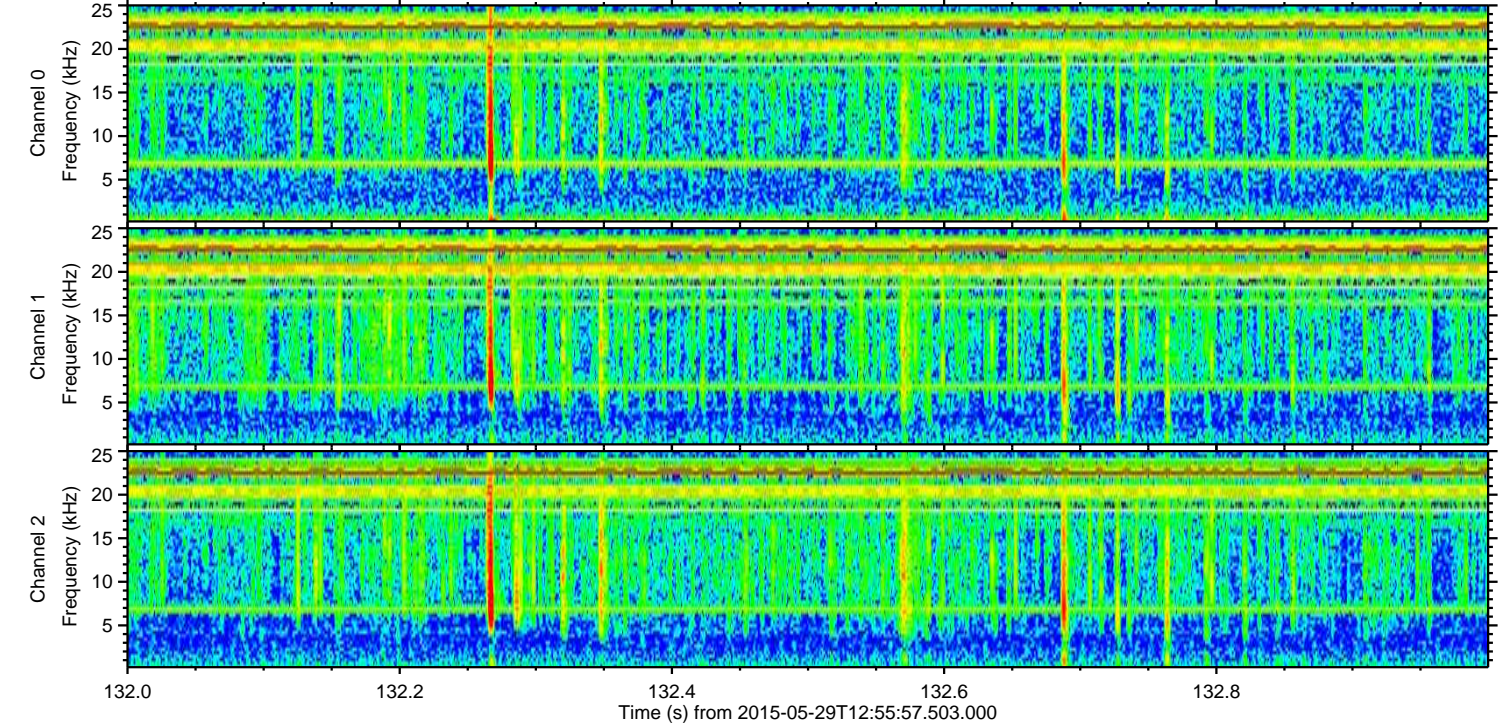
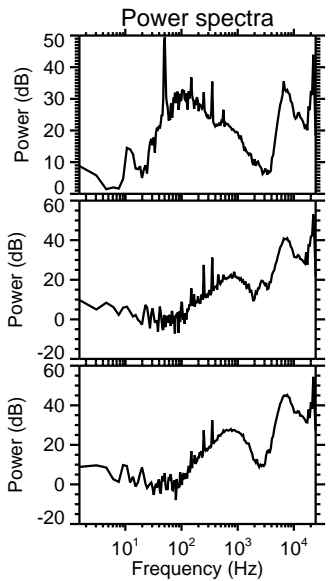
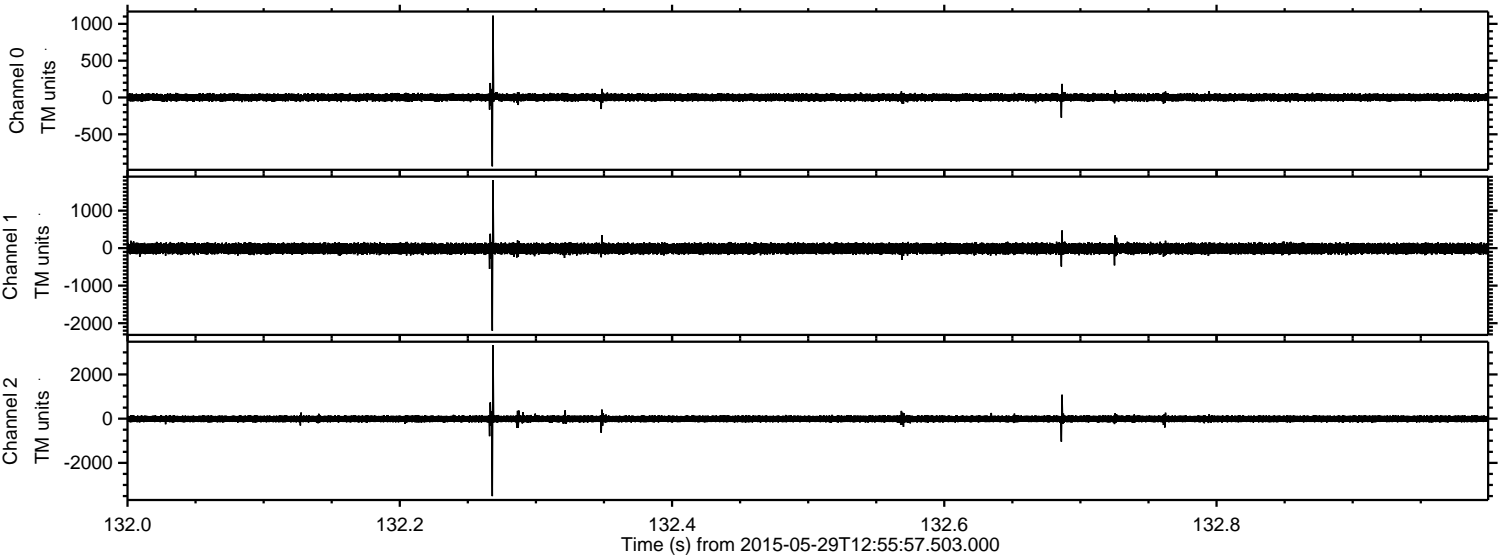
Processed Fri May 29 15:04:19 2015 by ELM ver.2012-10-06 from 001\_\_elm20150529\_125556\_\_dat00.bin





ELMAVAN 3D WAVEFORMS (Measured data sampled at 50 kHz) 49787 packets of 144 samples from 2015-05-29T12:55:57.503.000. Part 133/144

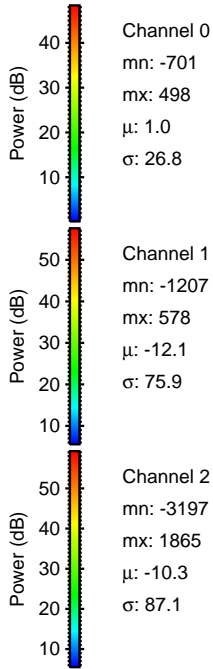
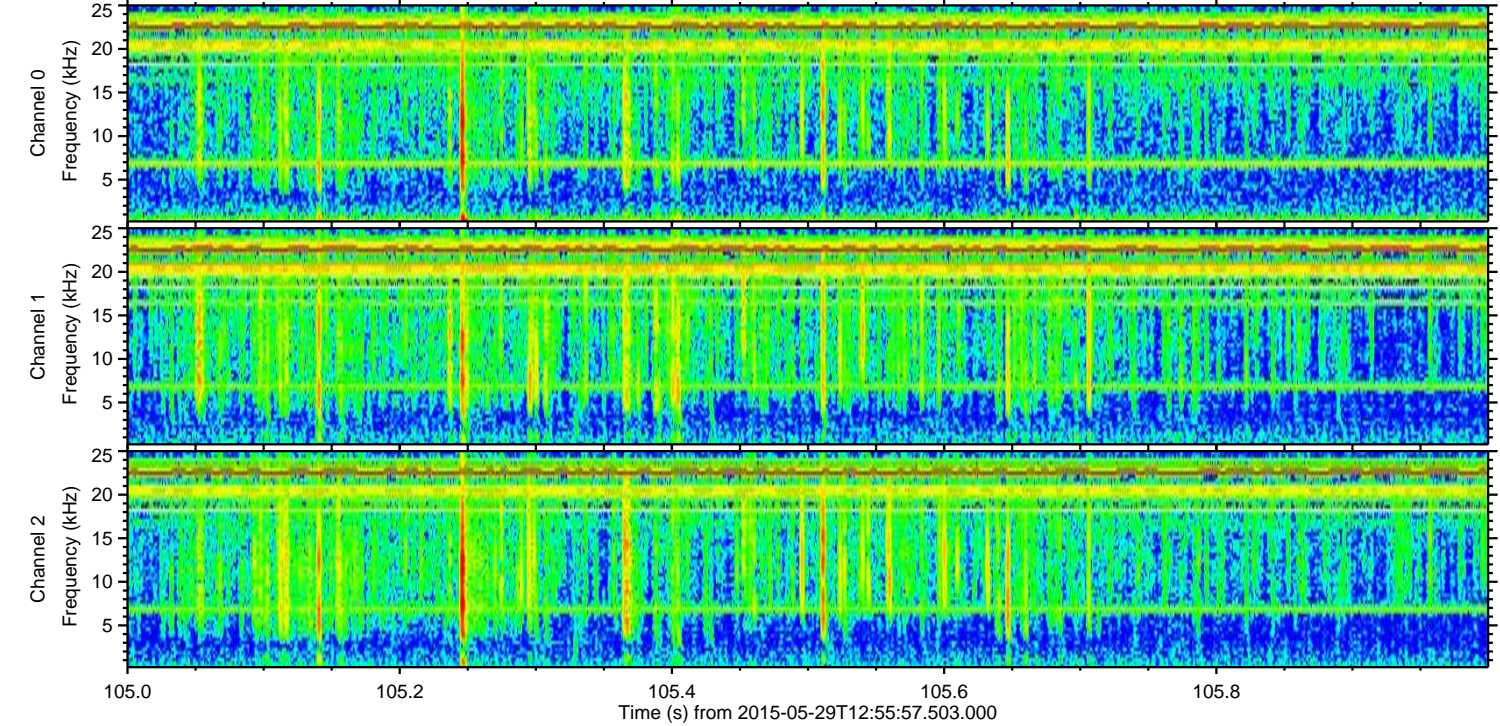
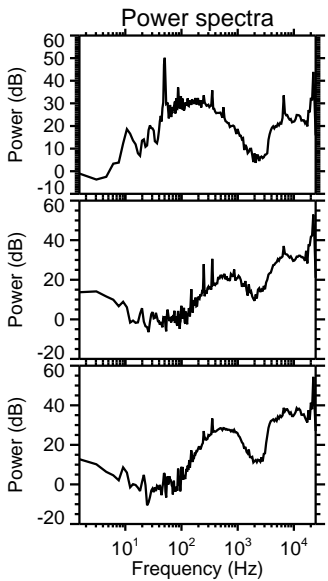
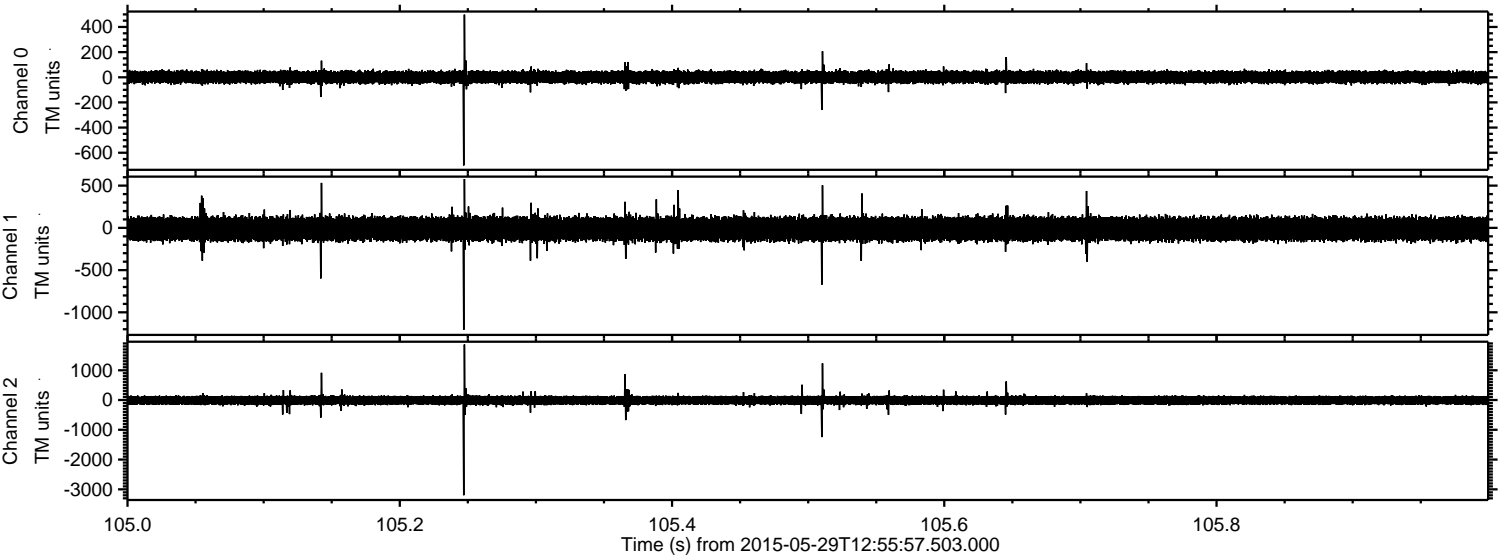
Processed Fri May 29 15:04:20 2015 by ELM ver.2012-10-06 from 001\_\_elm20150529\_125556\_\_dat00.bin





ELMAVAN 3D WAVEFORMS (Measured data sampled at 50 kHz) 49787 packets of 144 samples from 2015-05-29T12:55:57.503.000. Part 106/144

Processed Fri May 29 15:04:21 2015 by ELM ver.2012-10-06 from 001\_\_elm20150529\_125556\_\_dat00.bin





ELMAVAN 3D WAVEFORMS (Measured data sampled at 50 kHz) 49787 packets of 144 samples from 2015-05-29T12:55:57.503.000. Part 47/144

Processed Fri May 29 15:04:22 2015 by ELM ver.2012-10-06 from 001\_\_elm20150529\_125556\_\_dat00.bin

