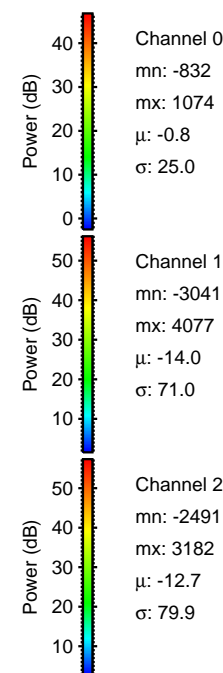
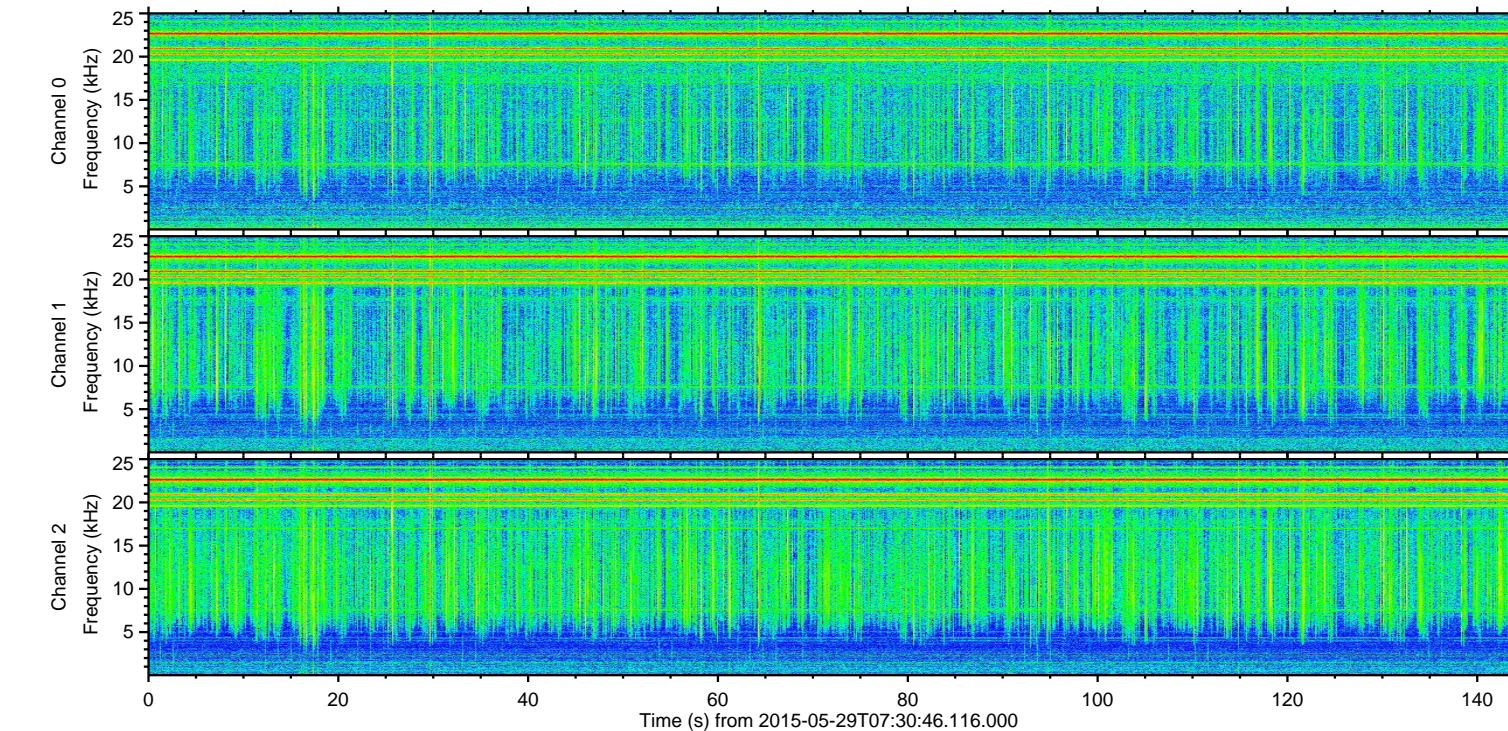
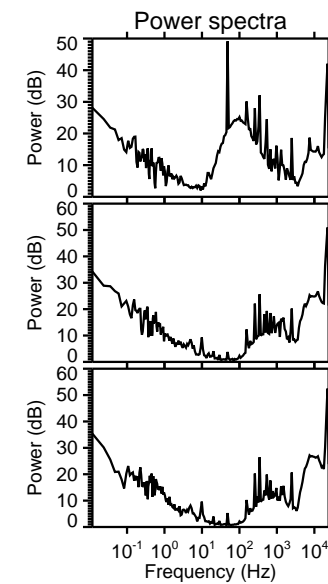
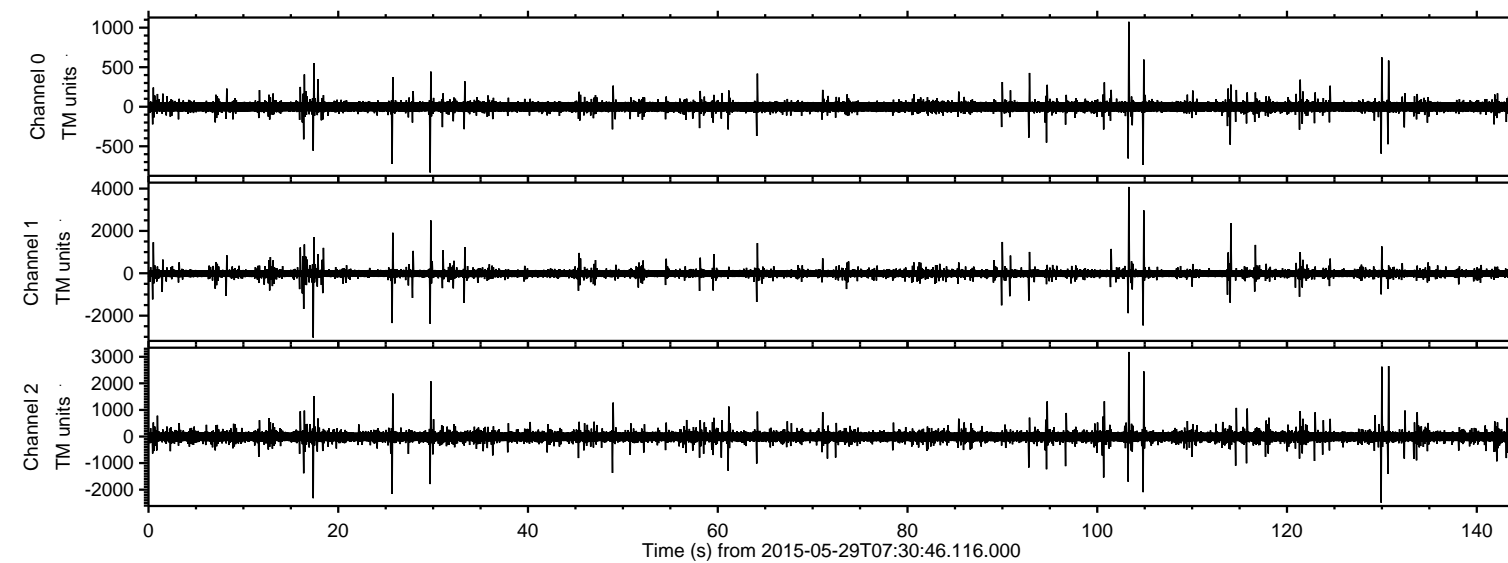


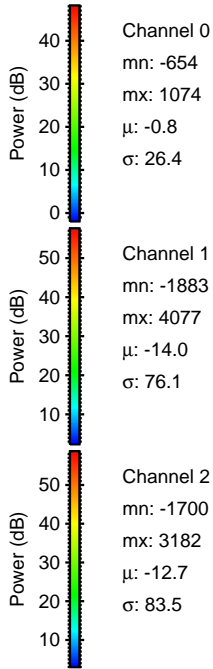
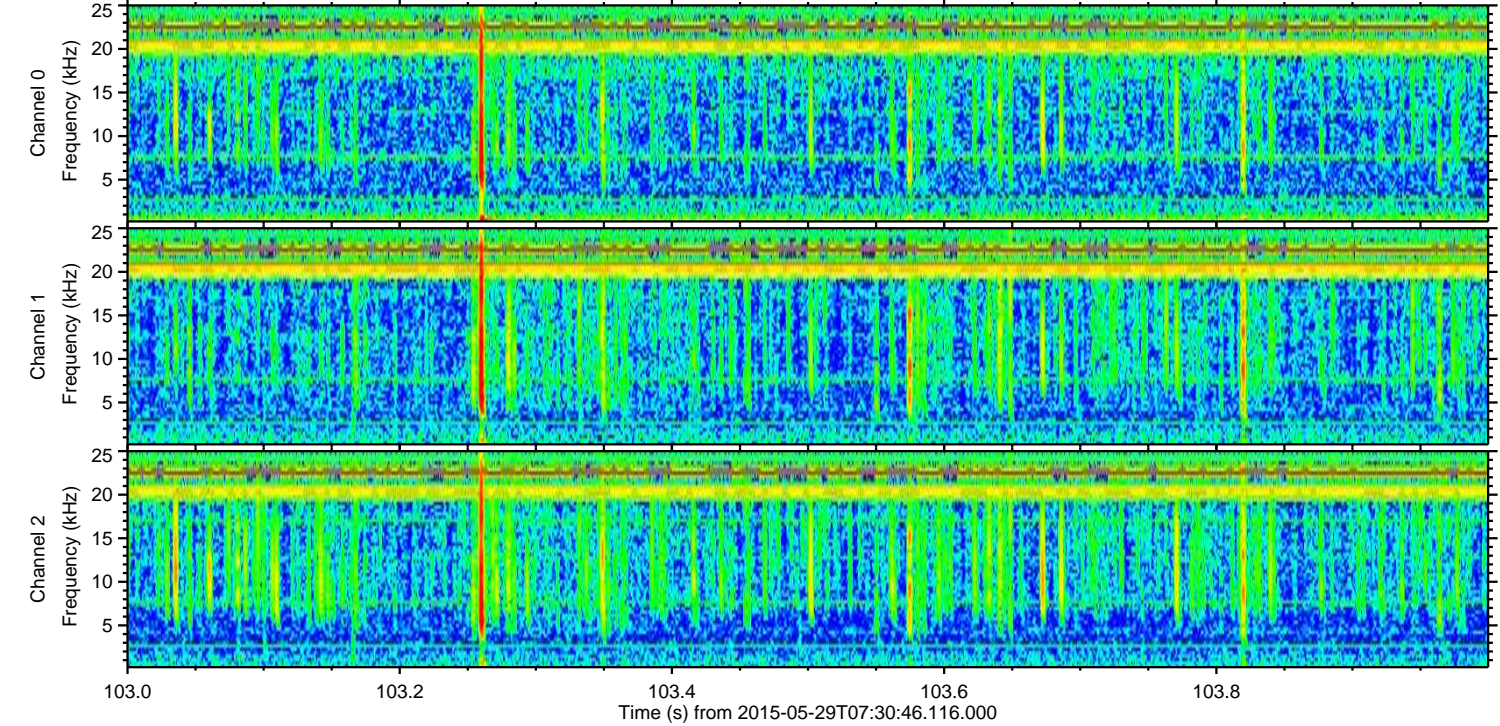
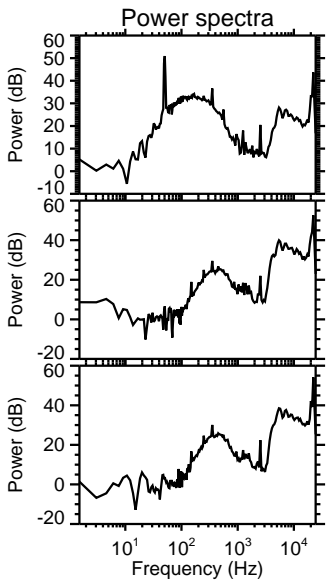
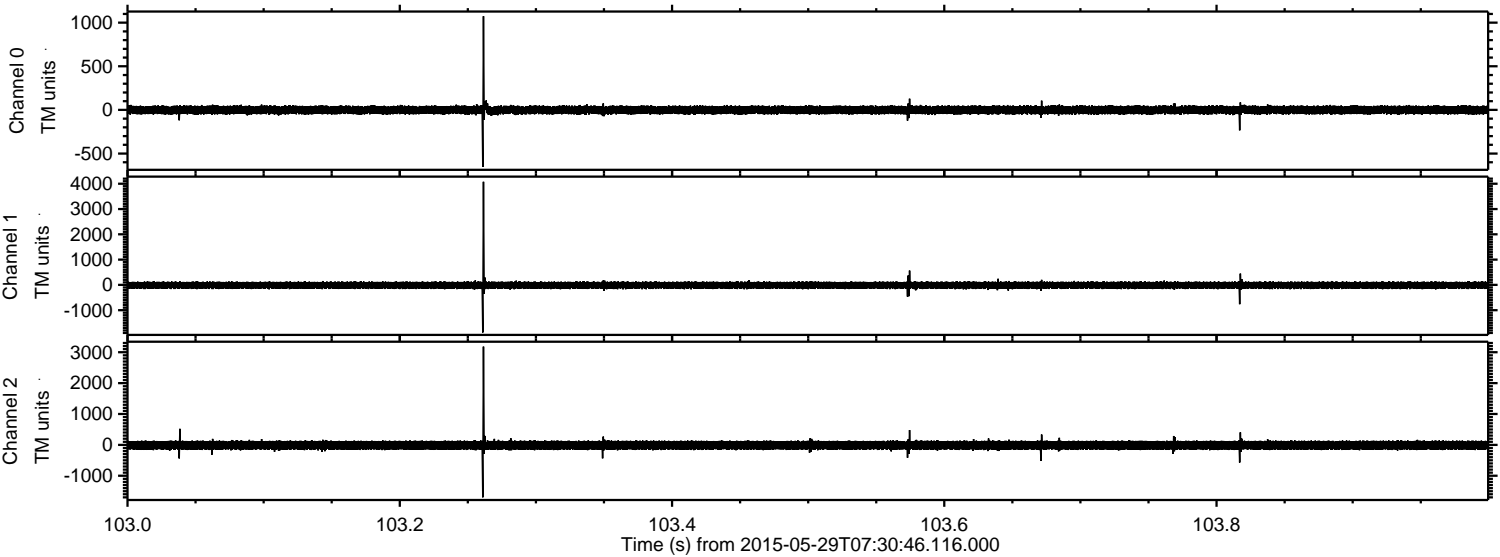
ELMAVAN 3D WAVEFORMS (Measured data sampled at 50 kHz) 49796 packets of 144 samples from 2015-05-29T07:30:46.116.000.

Processed Fri May 29 09:38:44 2015 by ELM ver.2012-10-06 from 001__elm20150529_073045__dat00.bin

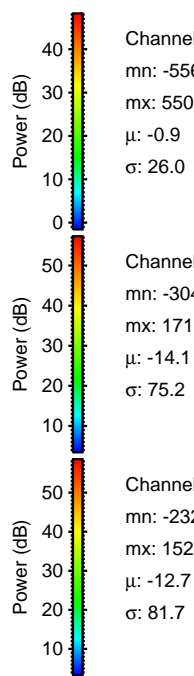
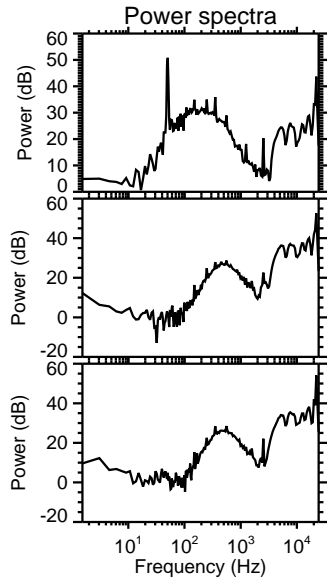
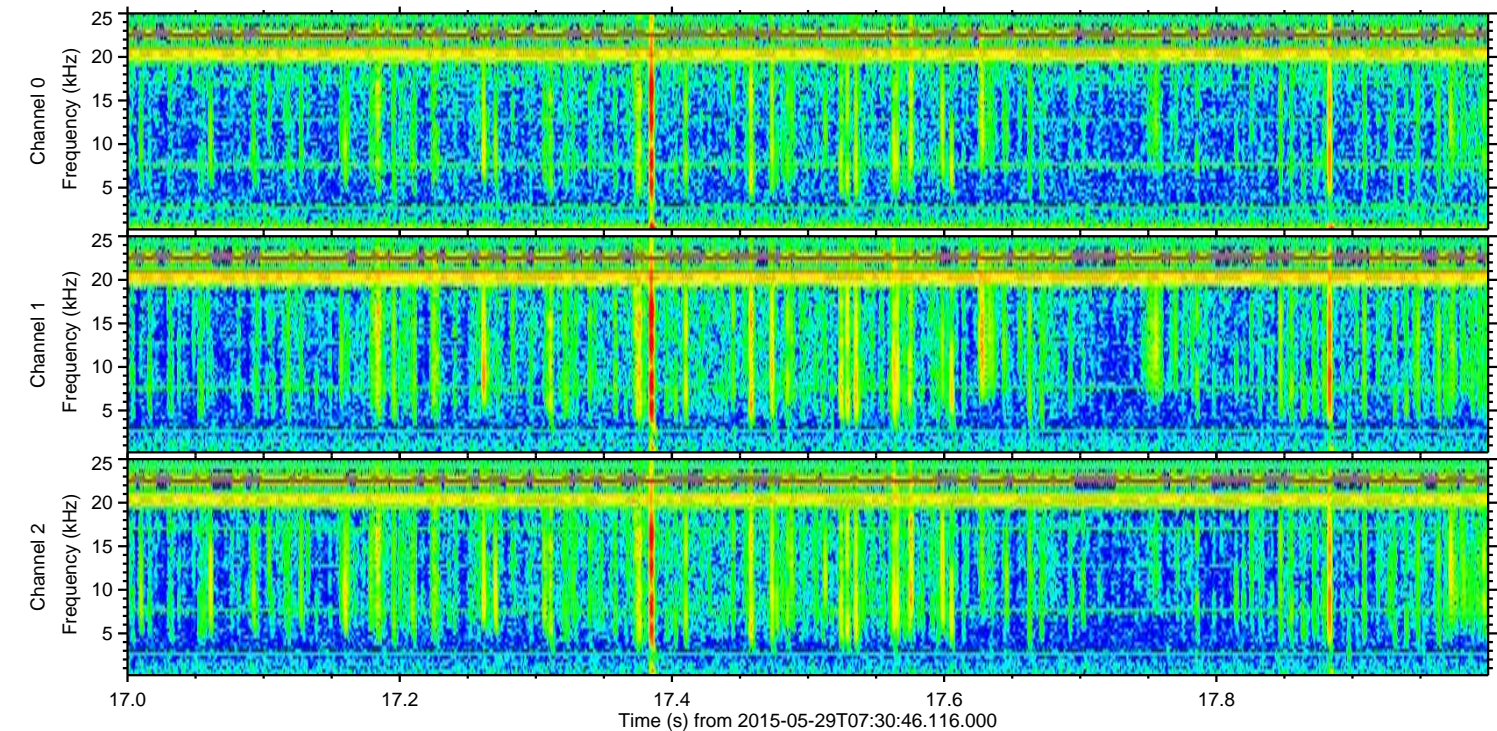
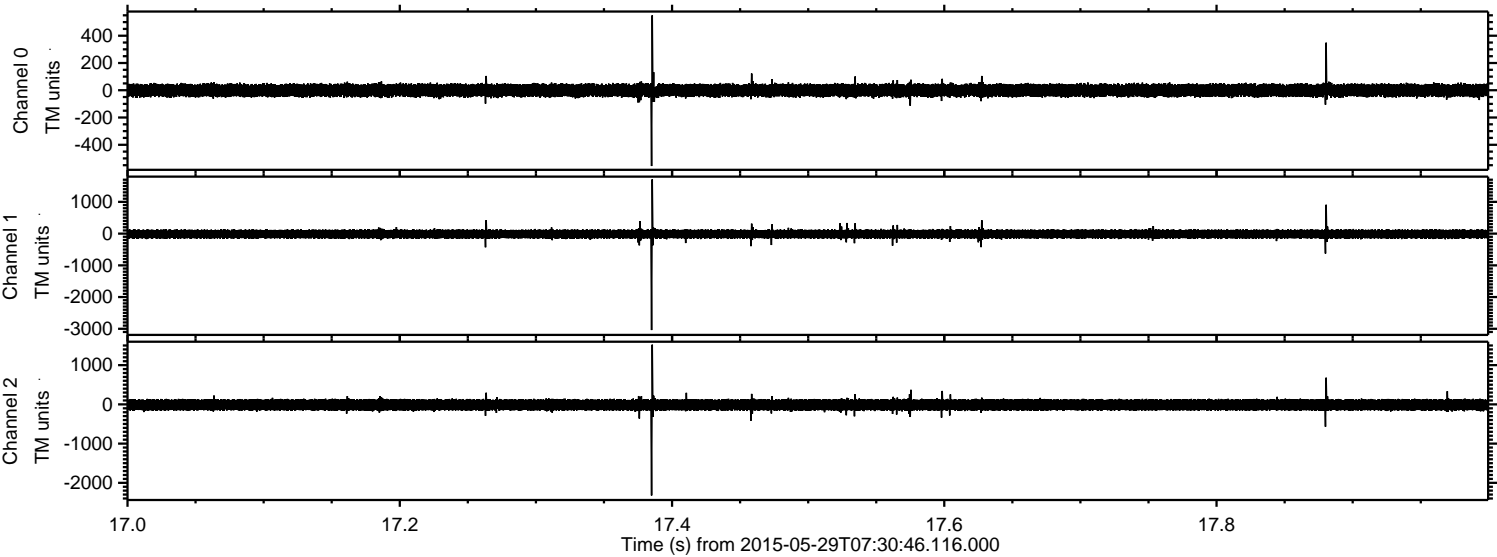


ELMAVAN 3D WAVEFORMS (Measured data sampled at 50 kHz) 49796 packets of 144 samples from 2015-05-29T07:30:46.116.000. Part 104/144

Processed Fri May 29 09:38:56 2015 by ELM ver.2012-10-06 from 001__elm20150529_073045__dat00.bin



Processed Fri May 29 09:38:57 2015 by ELM ver.2012-10-06 from 001__elm20150529_073045__dat00.bin



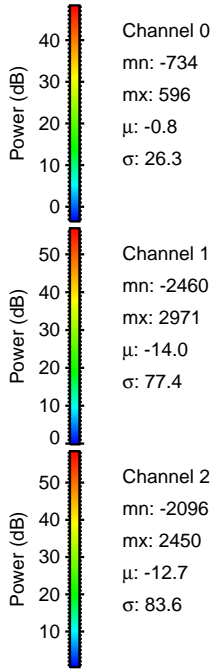
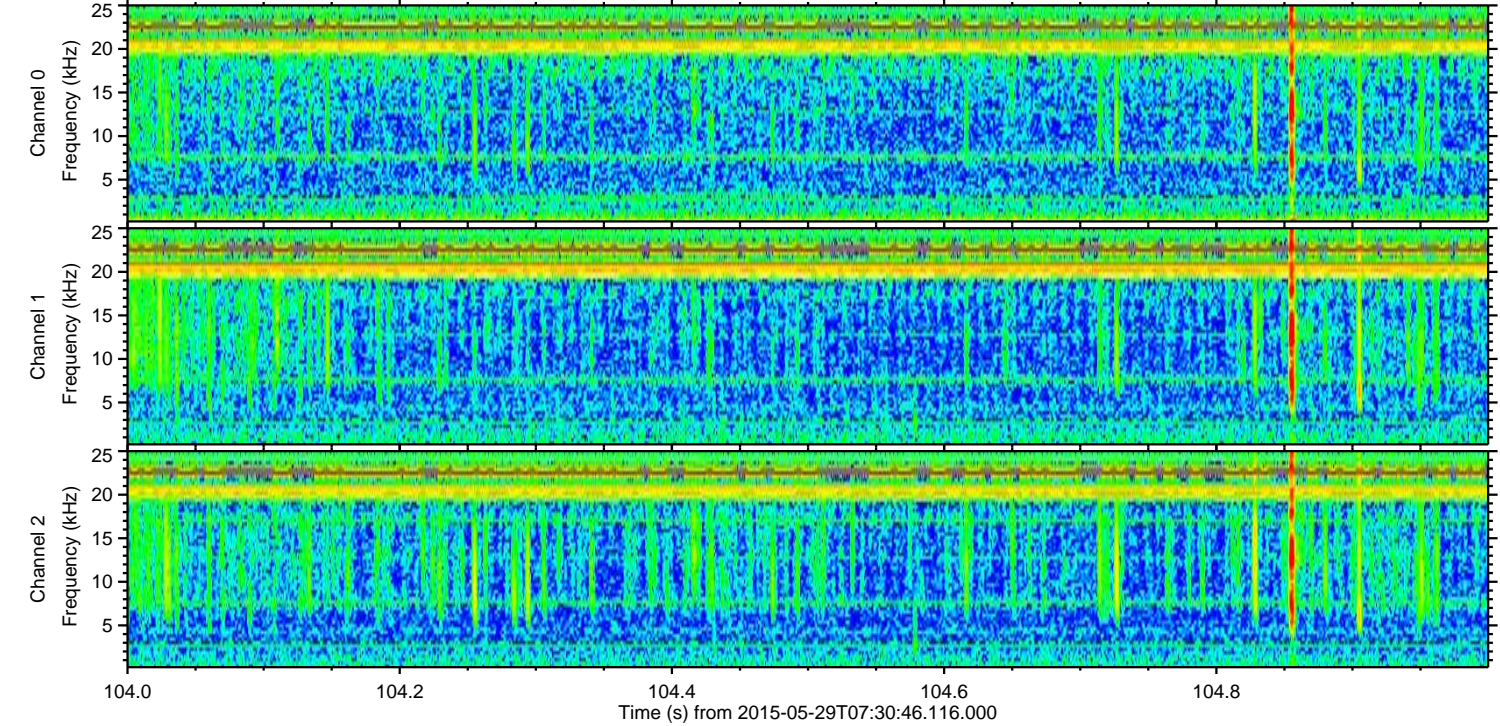
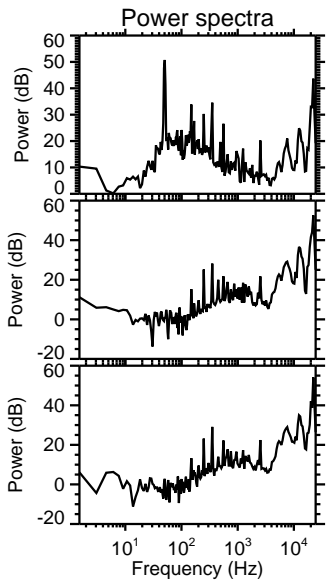
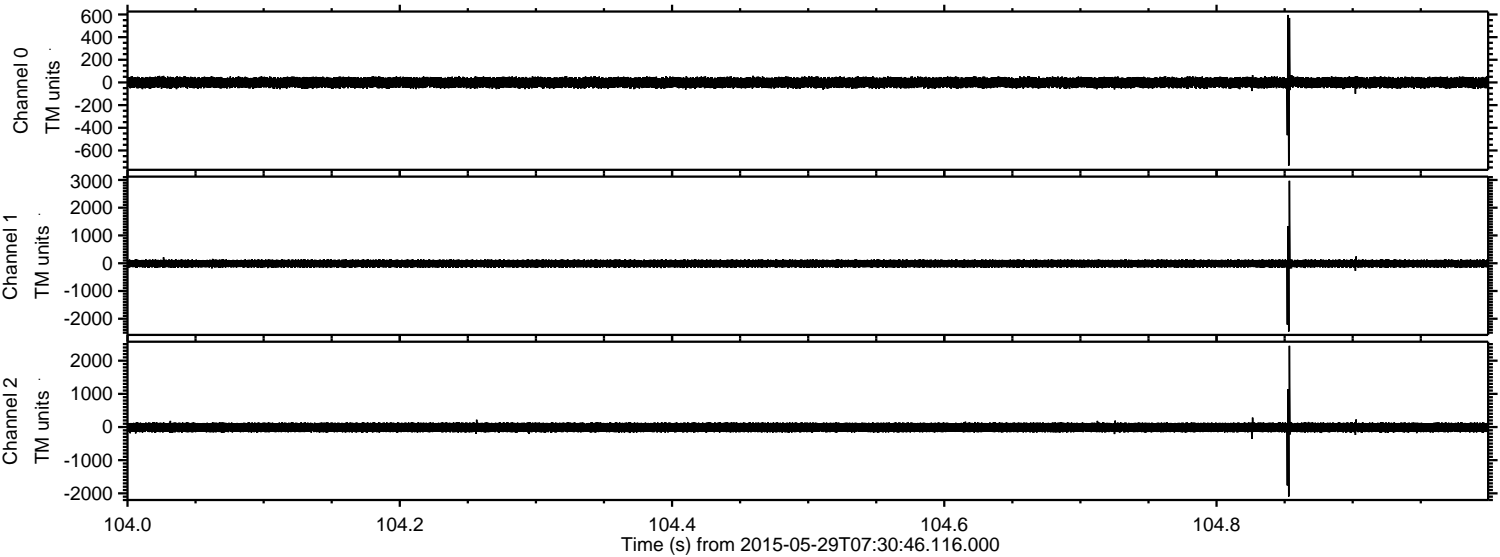
Channel 0
mn: -556
mx: 550
 μ : -0.9
 σ : 26.0

Channel 1
mn: -3041
mx: 1711
 μ : -14.1
 σ : 75.2

Channel 2
mn: -2322
mx: 1521
 μ : -12.7
 σ : 81.7

ELMAVAN 3D WAVEFORMS (Measured data sampled at 50 kHz) 49796 packets of 144 samples from 2015-05-29T07:30:46.116.000. Part 105/144

Processed Fri May 29 09:38:58 2015 by ELM ver.2012-10-06 from 001__elm20150529_073045__dat00.bin



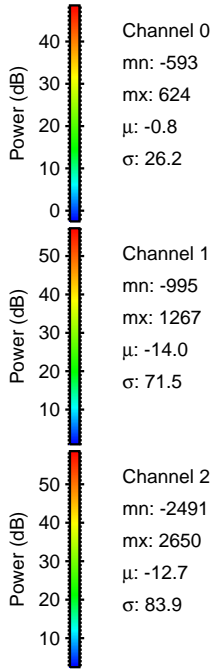
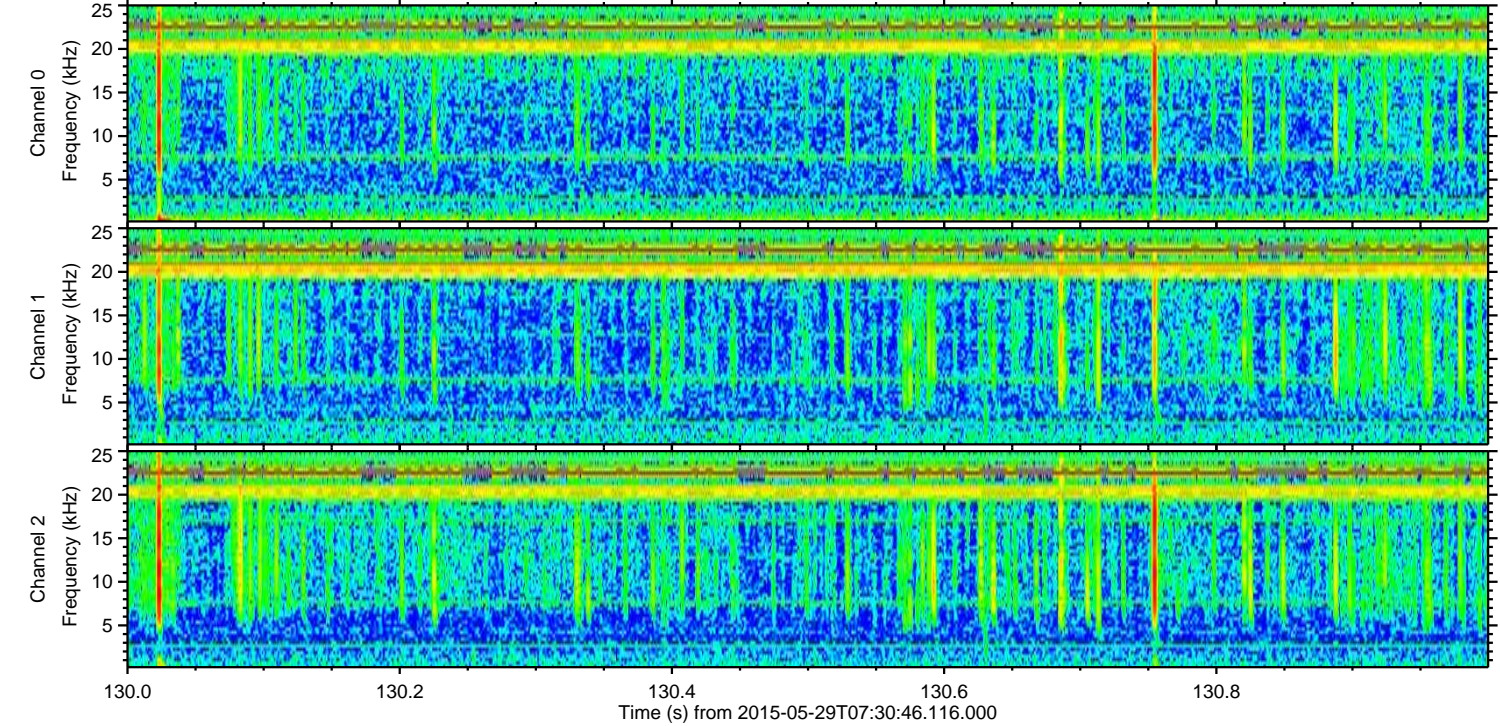
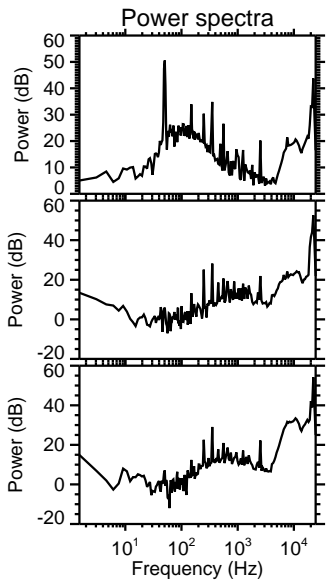
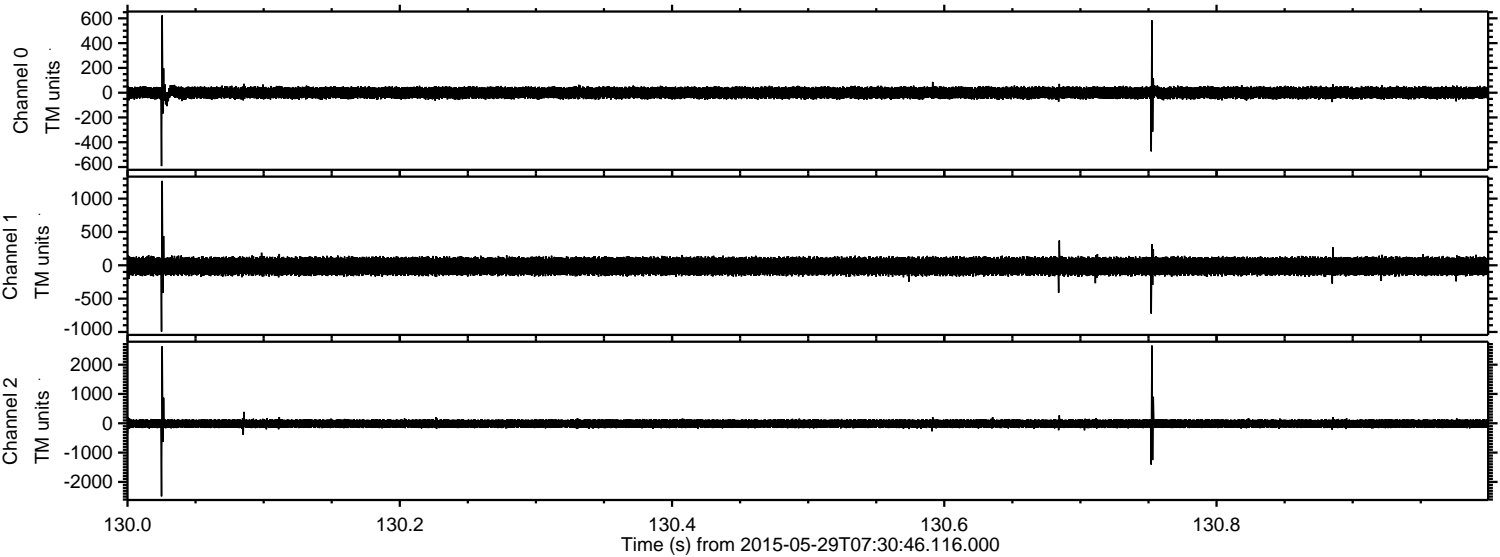
Channel 0
mn: -734
mx: 596
 μ : -0.8
 σ : 26.3

Channel 1
mn: -2460
mx: 2971
 μ : -14.0
 σ : 77.4

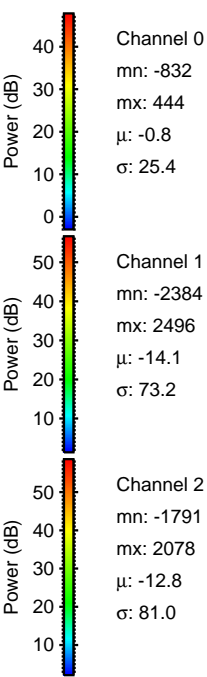
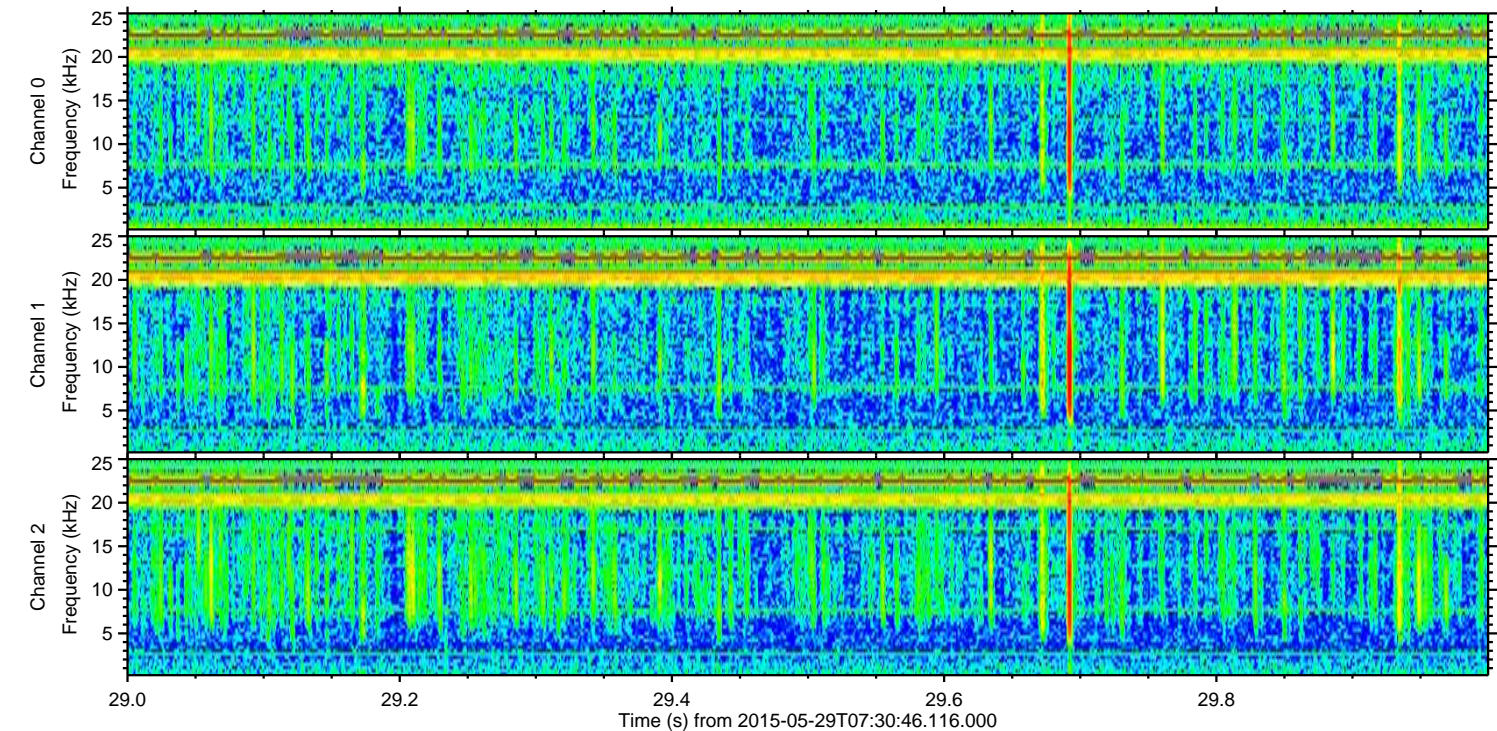
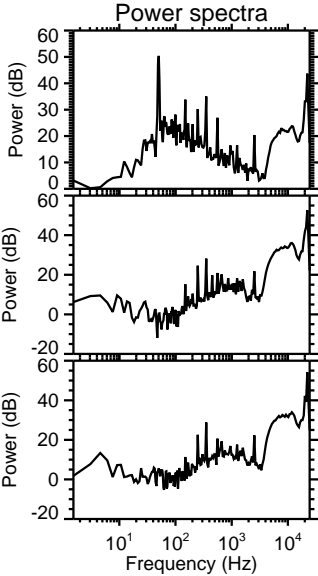
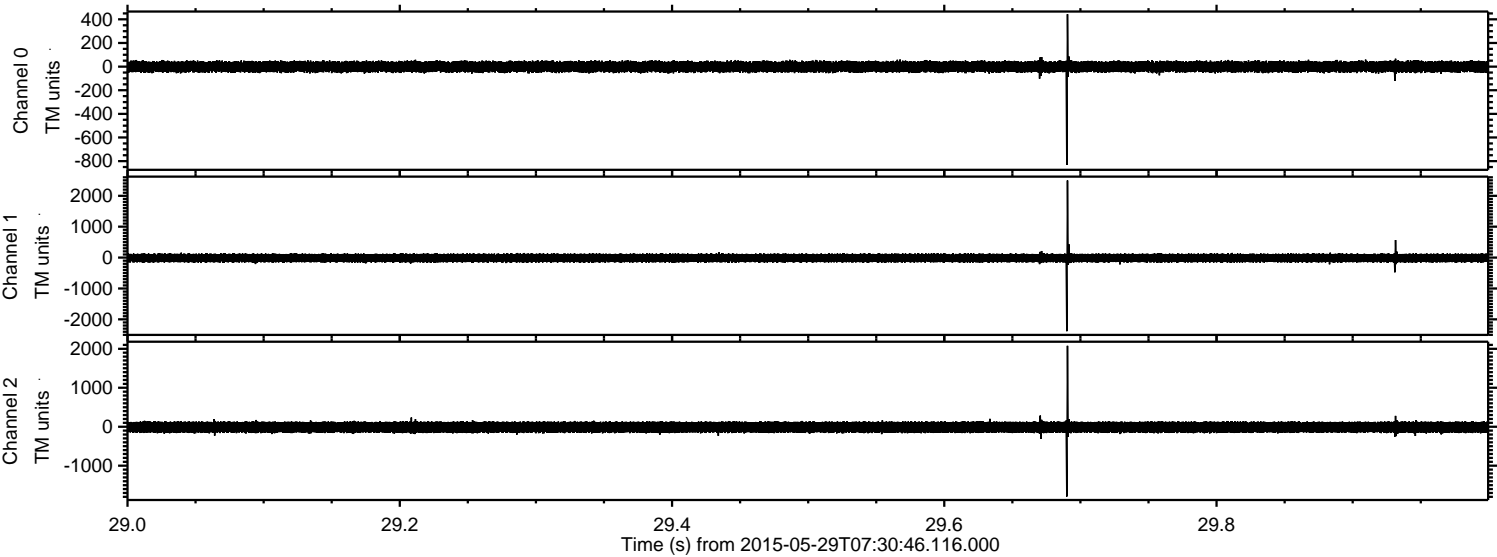
Channel 2
mn: -2096
mx: 2450
 μ : -12.7
 σ : 83.6

ELMAVAN 3D WAVEFORMS (Measured data sampled at 50 kHz) 49796 packets of 144 samples from 2015-05-29T07:30:46.116.000. Part 131/144

Processed Fri May 29 09:38:59 2015 by ELM ver.2012-10-06 from 001__elm20150529_073045__dat00.bin



Processed Fri May 29 09:38:59 2015 by ELM ver.2012-10-06 from 001__elm20150529_073045__dat00.bin



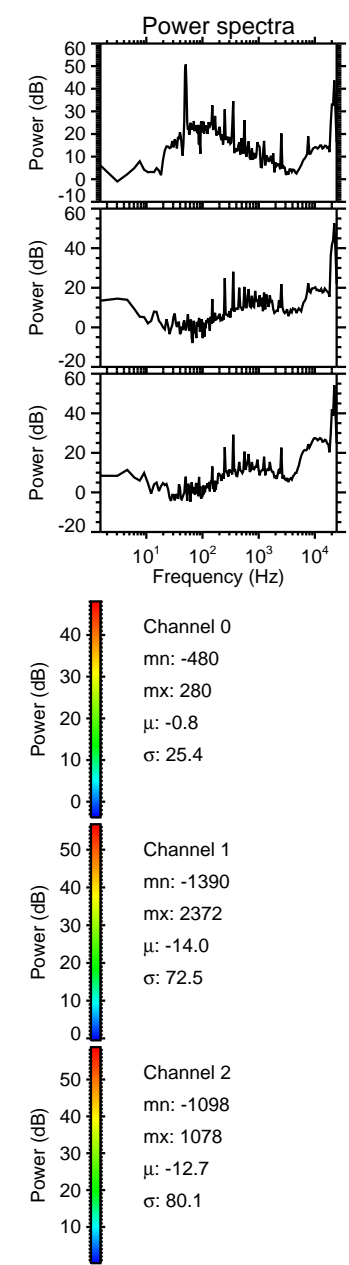
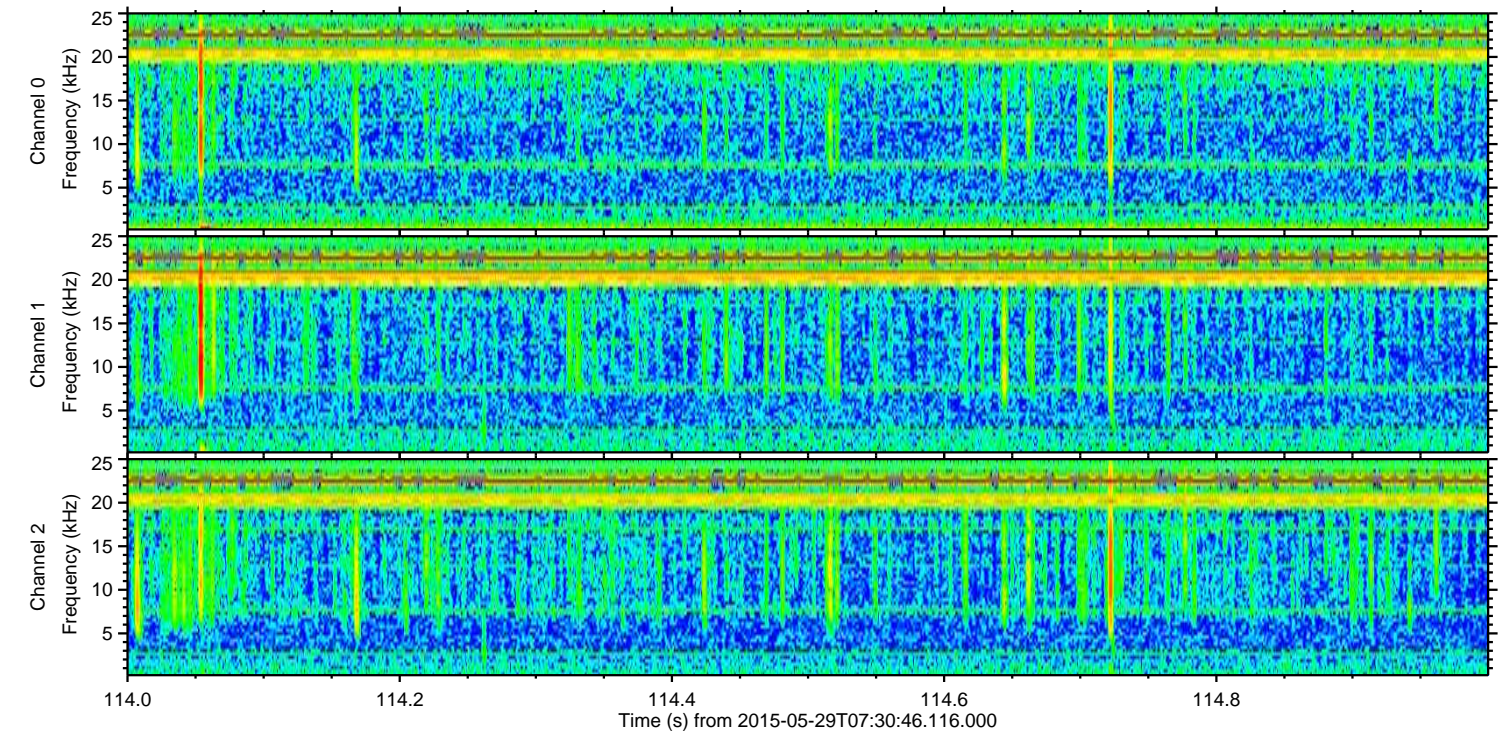
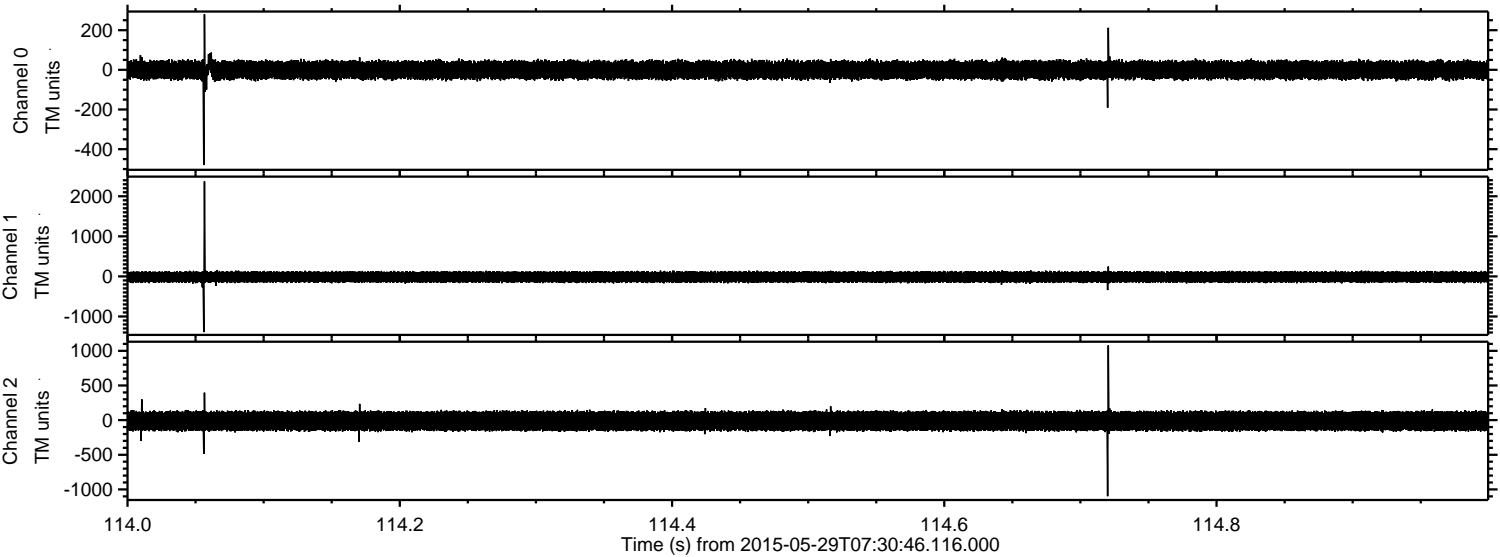
Channel 0
mn: -832
mx: 444
 μ : -0.8
 σ : 25.4

Channel 1
mn: -2384
mx: 2496
 μ : -14.1
 σ : 73.2

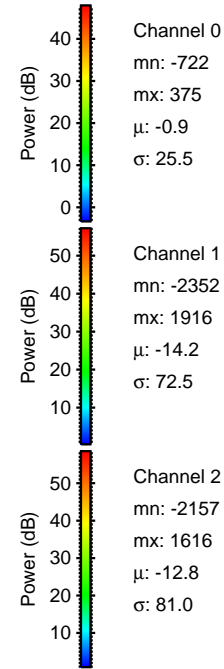
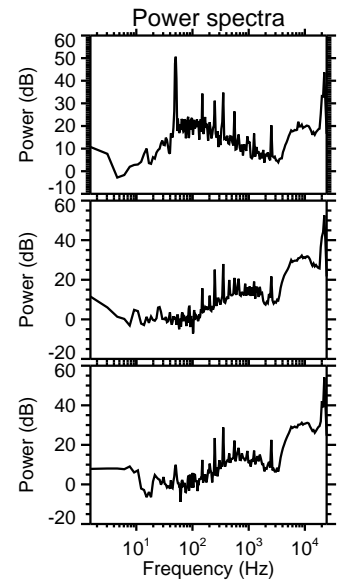
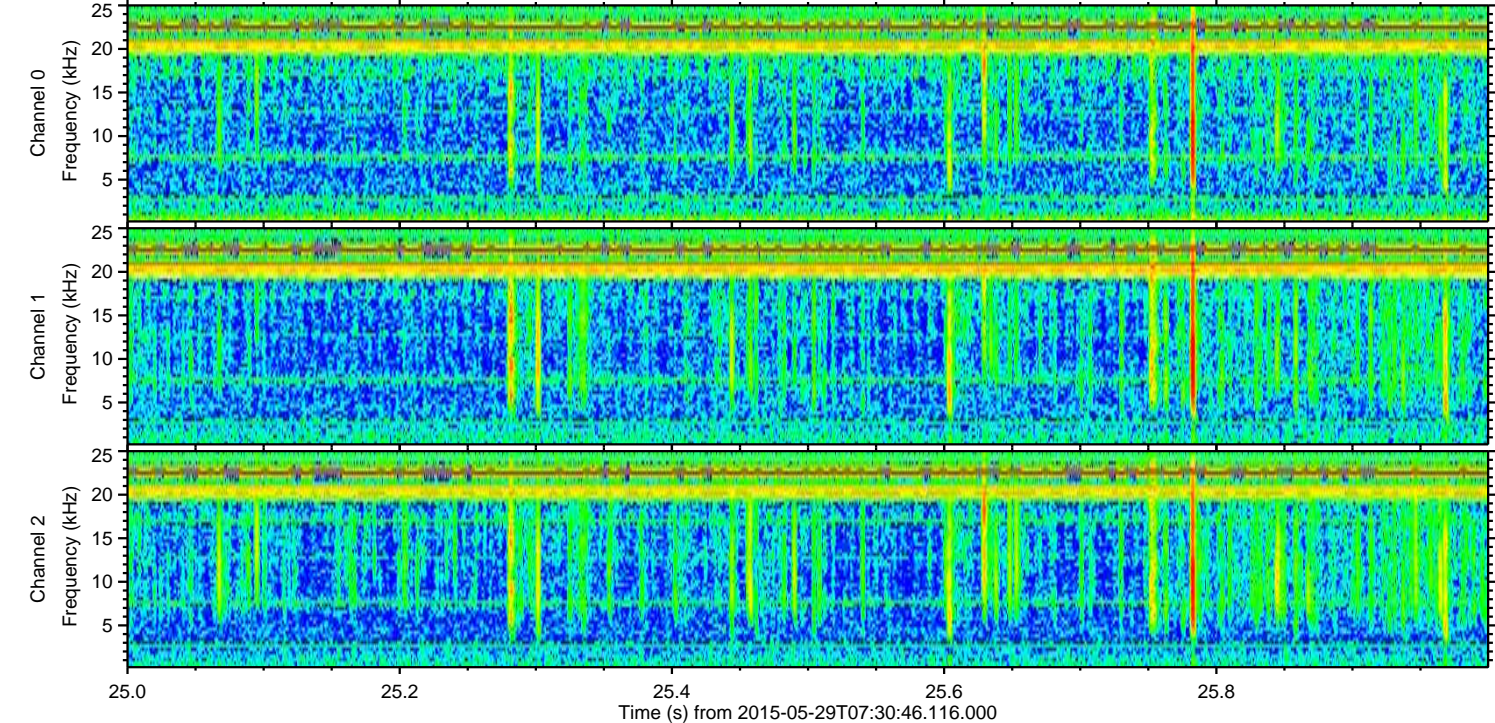
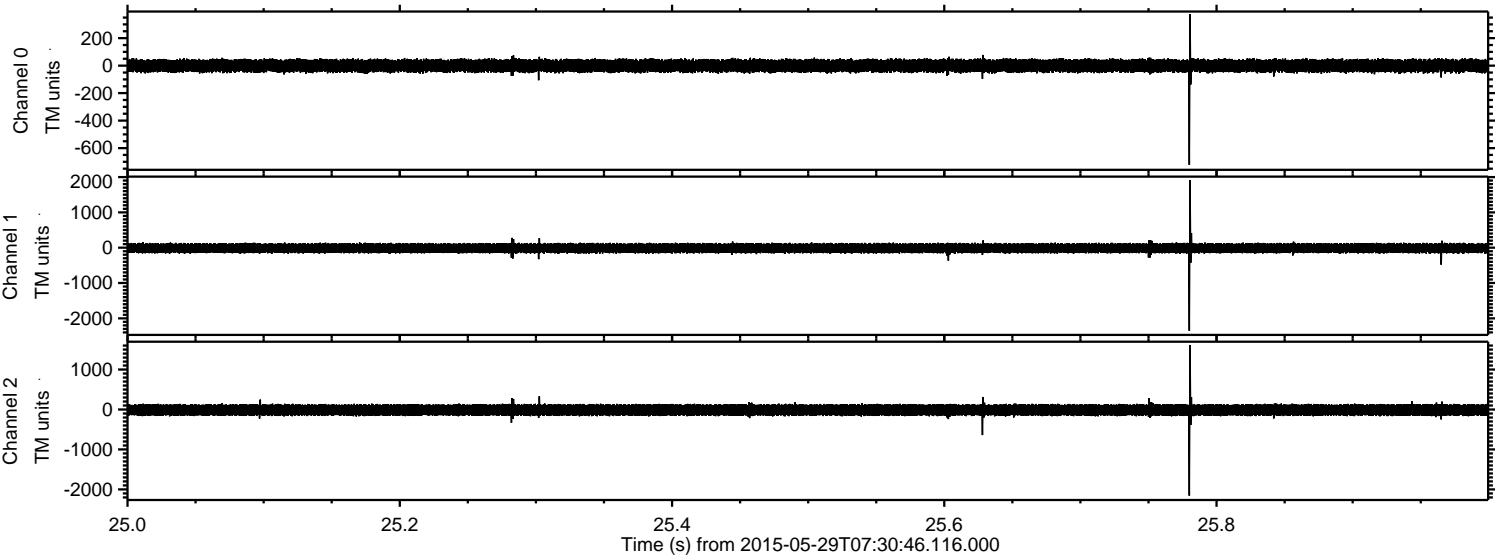
Channel 2
mn: -1791
mx: 2078
 μ : -12.8
 σ : 81.0

ELMAVAN 3D WAVEFORMS (Measured data sampled at 50 kHz) 49796 packets of 144 samples from 2015-05-29T07:30:46.116.000. Part 115/144

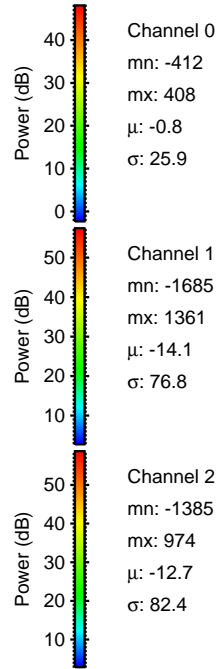
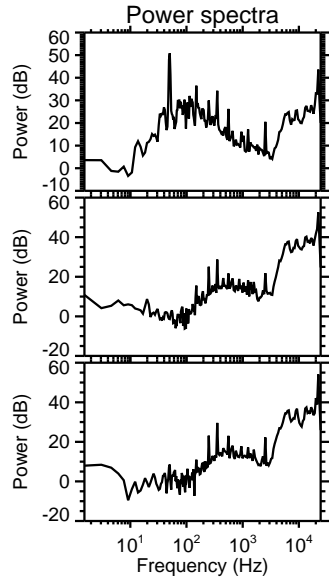
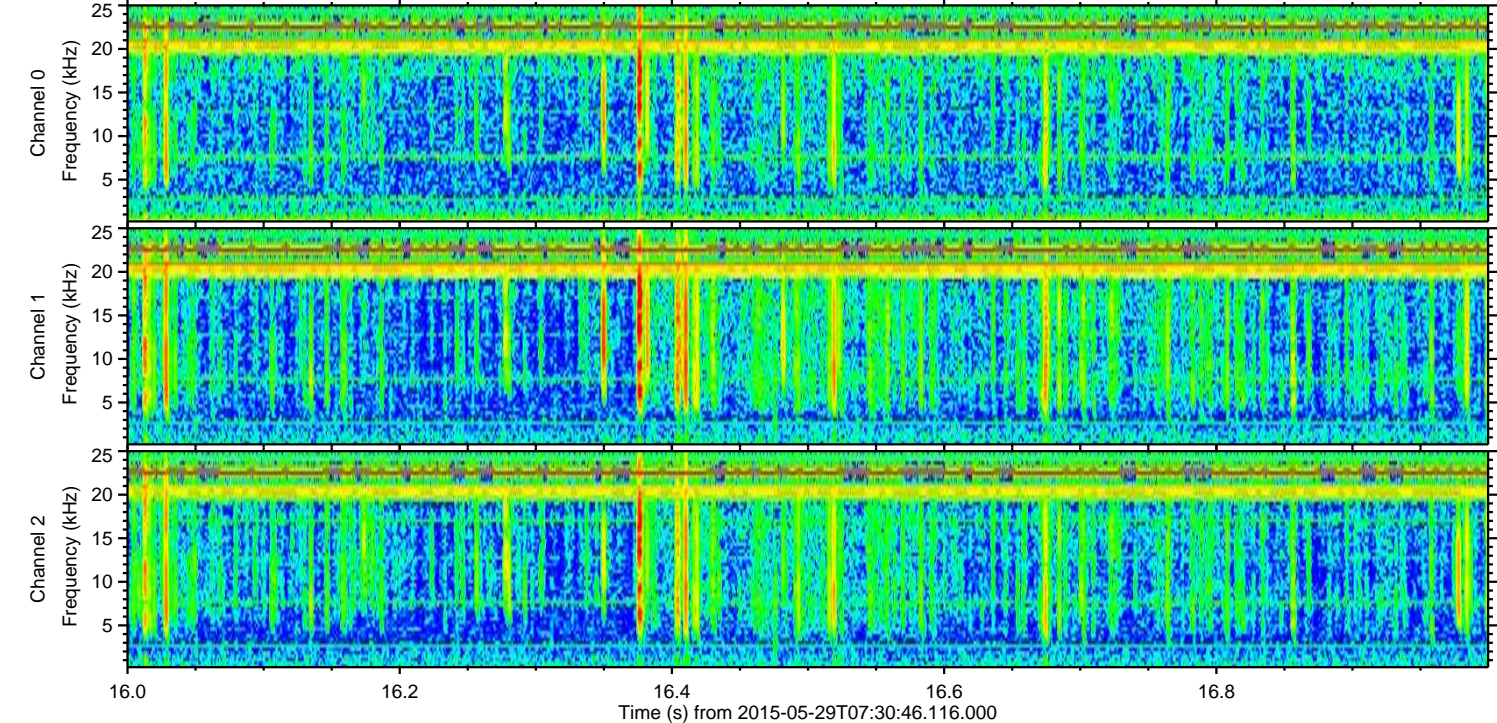
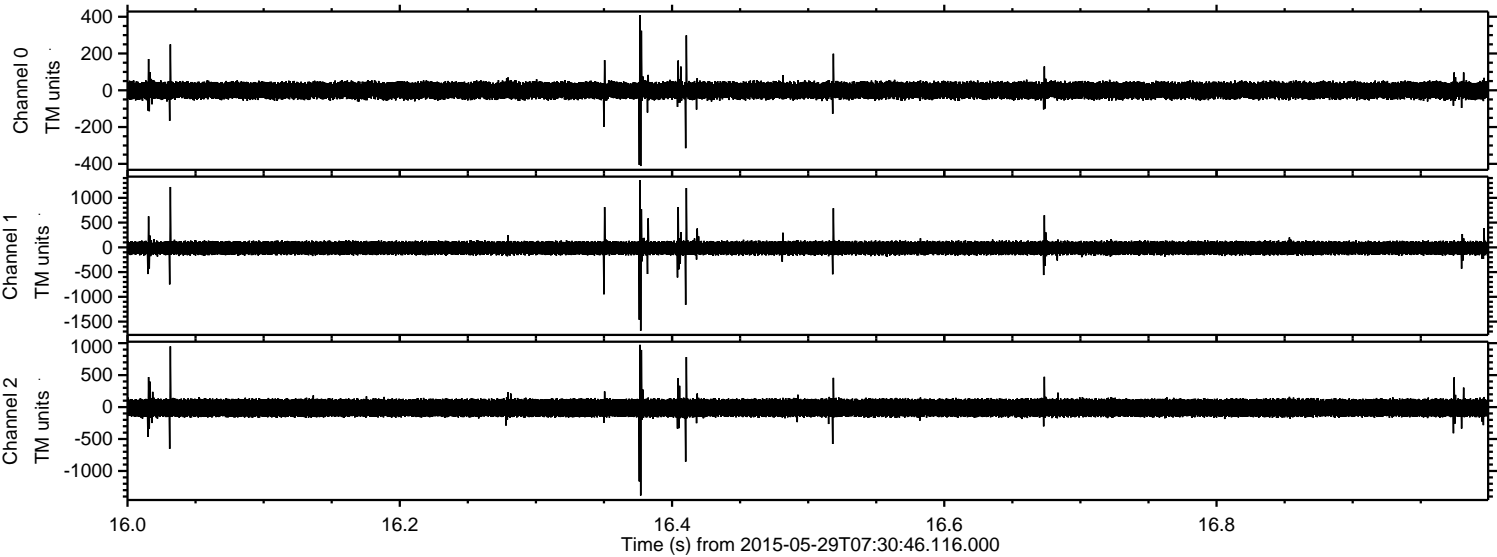
Processed Fri May 29 09:39:00 2015 by ELM ver.2012-10-06 from 001__elm20150529_073045__dat00.bin



Processed Fri May 29 09:39:01 2015 by ELM ver.2012-10-06 from 001__elm20150529_073045__dat00.bin

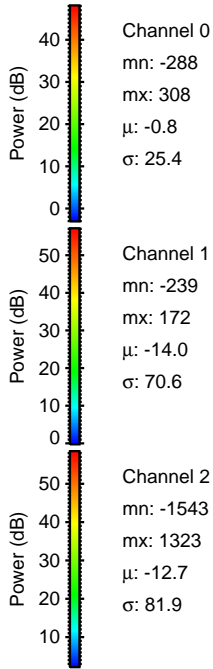
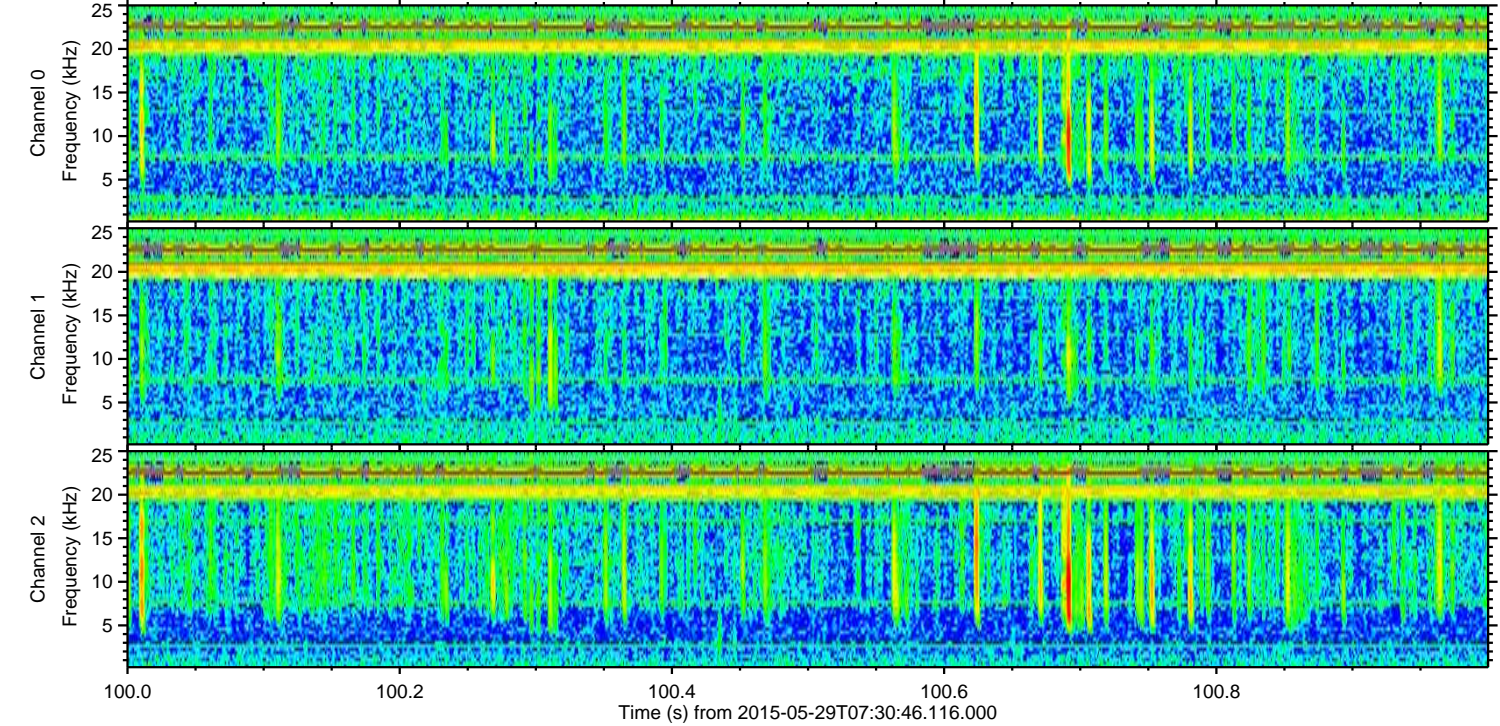
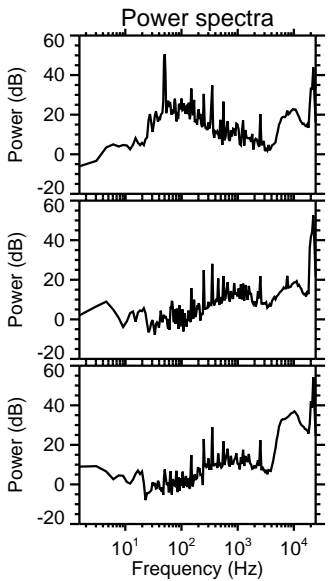
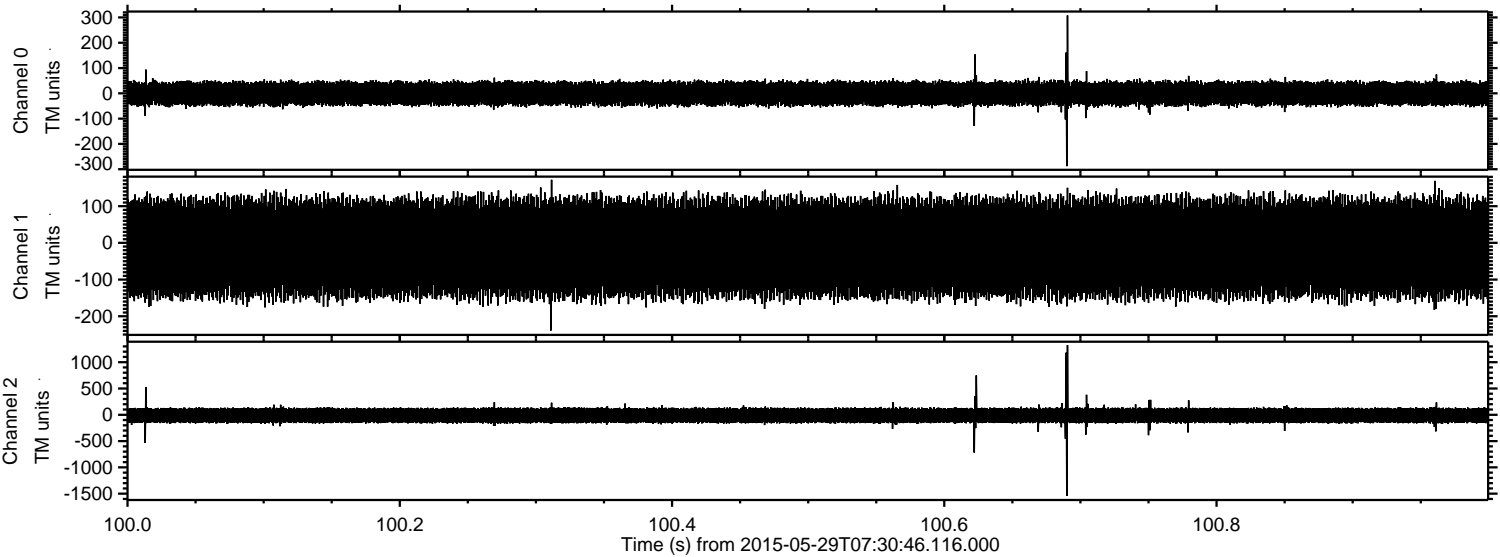


Processed Fri May 29 09:39:02 2015 by ELM ver.2012-10-06 from 001__elm20150529_073045__dat00.bin



ELMAVAN 3D WAVEFORMS (Measured data sampled at 50 kHz) 49796 packets of 144 samples from 2015-05-29T07:30:46.116.000. Part 101/144

Processed Fri May 29 09:39:03 2015 by ELM ver.2012-10-06 from 001__elm20150529_073045__dat00.bin



Channel 0
mn: -288
mx: 308
 μ : -0.8
 σ : 25.4

Channel 1
mn: -239
mx: 172
 μ : -14.0
 σ : 70.6

Channel 2
mn: -1543
mx: 1323
 μ : -12.7
 σ : 81.9

ELMAVAN 3D WAVEFORMS (Measured data sampled at 50 kHz) 49796 packets of 144 samples from 2015-05-29T07:30:46.116.000. Part 56/144

Processed Fri May 29 09:39:04 2015 by ELM ver.2012-10-06 from 001__elm20150529_073045__dat00.bin

