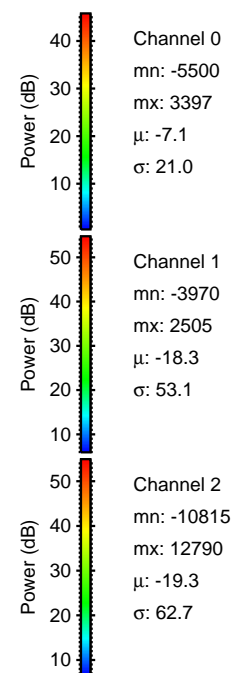
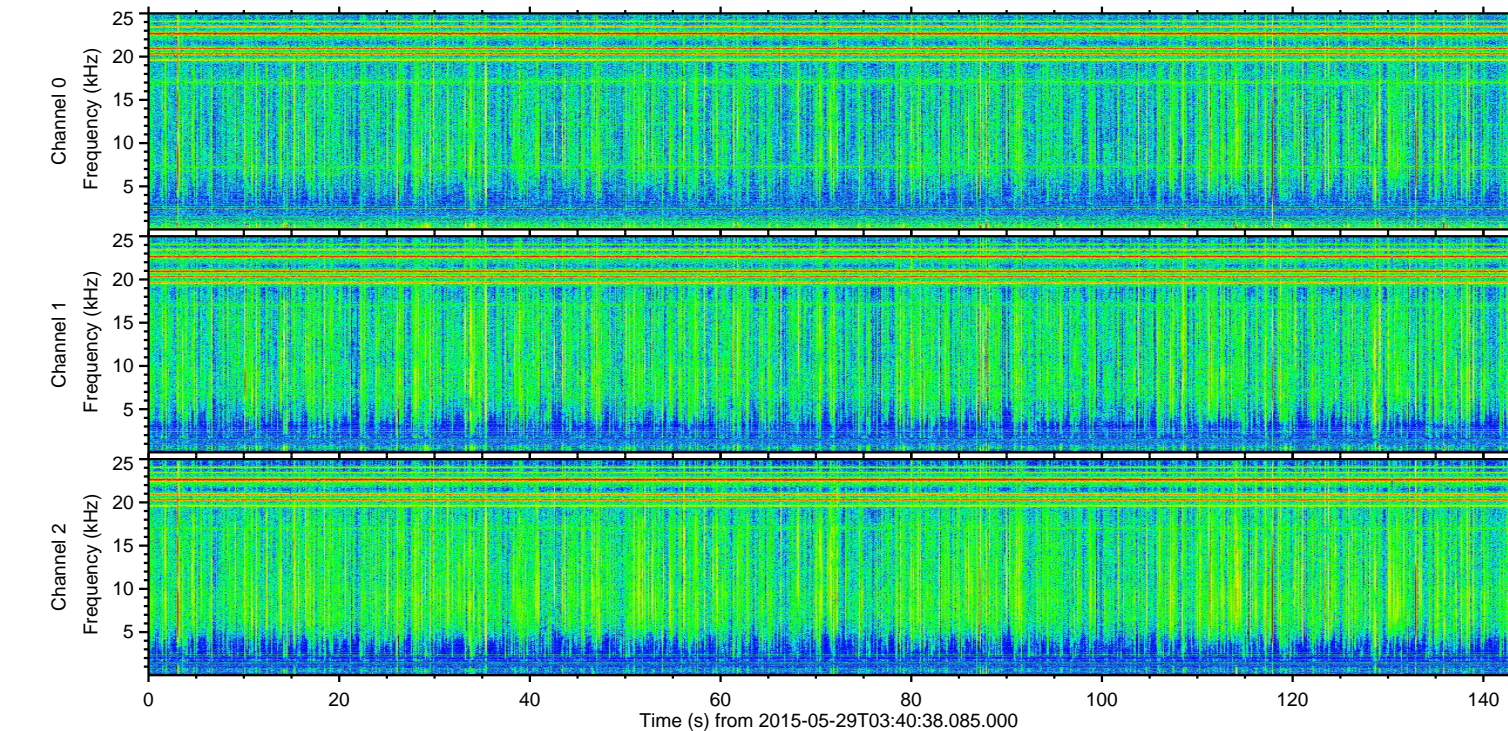
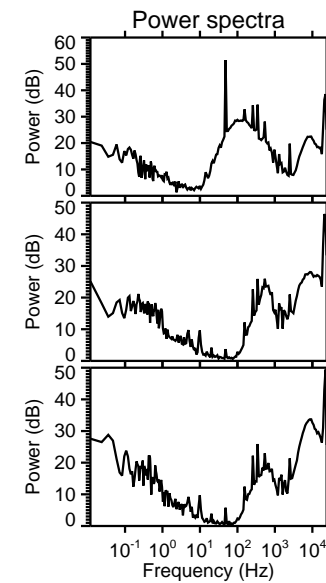
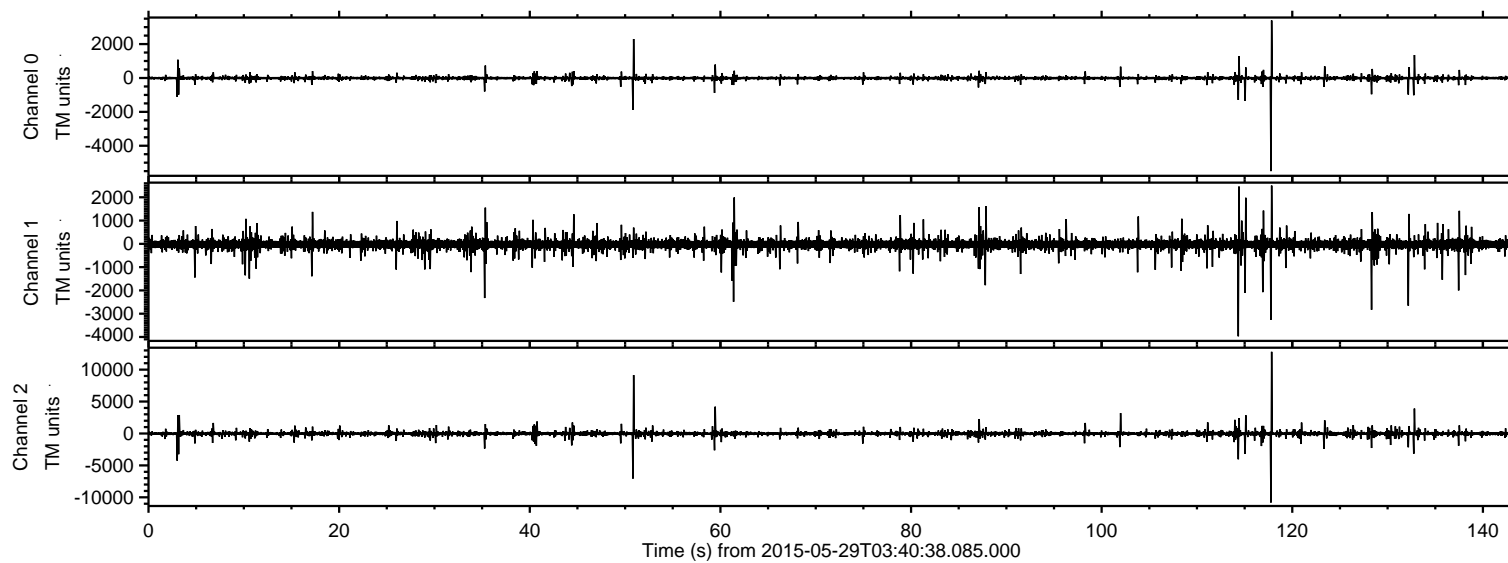


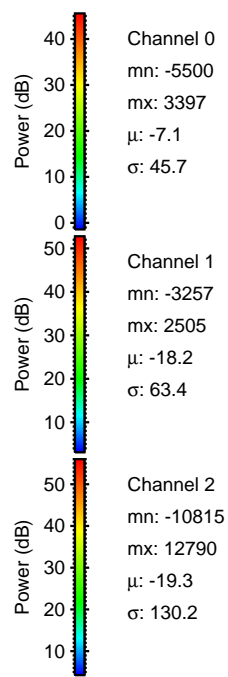
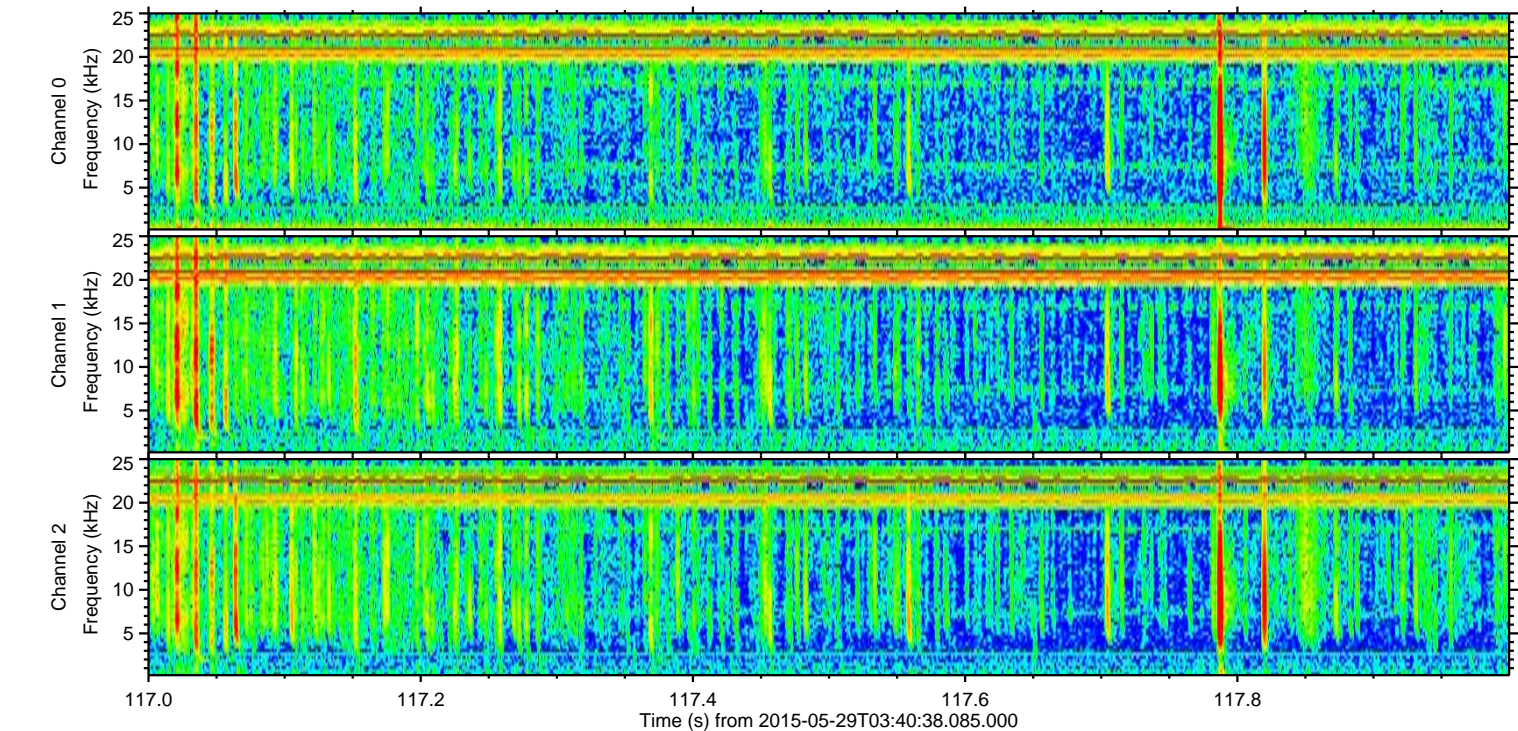
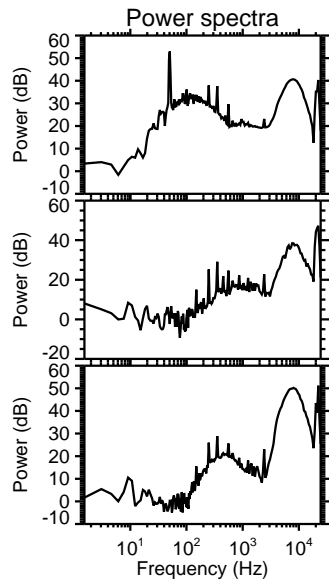
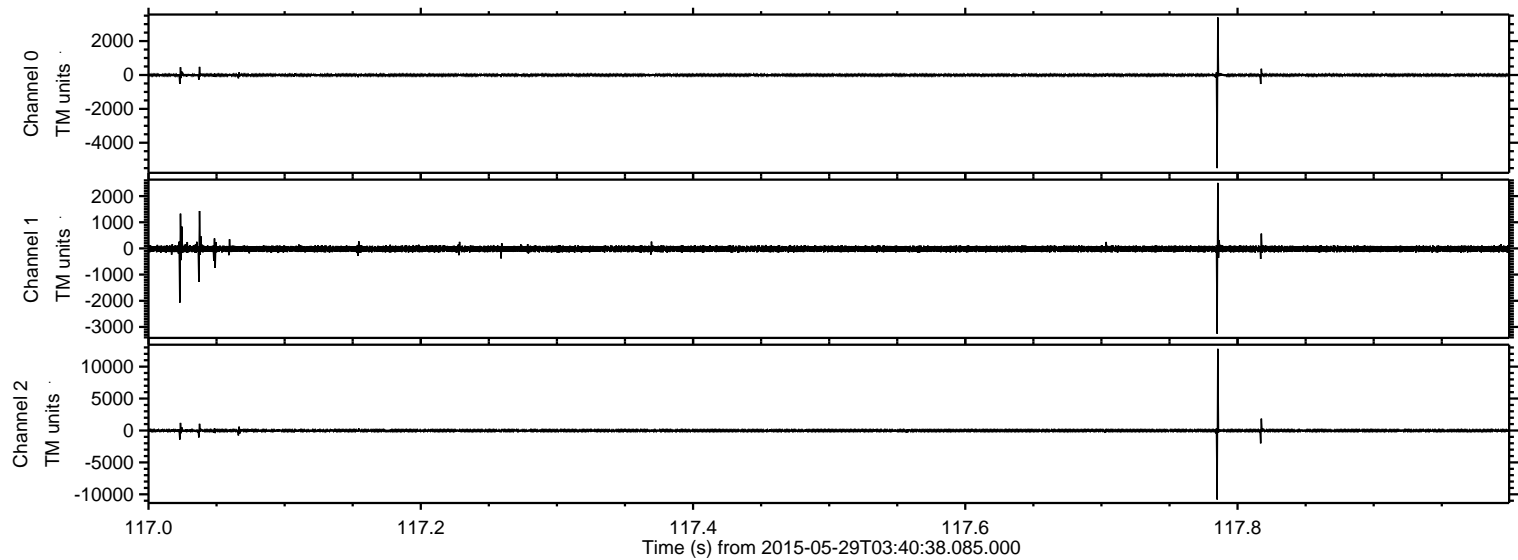
ELMAVAN 3D WAVEFORMS (Measured data sampled at 50 kHz) 49566 packets of 144 samples from 2015-05-29T03:40:38.085.000.

Processed Fri May 29 05:55:37 2015 by ELM ver.2012-10-06 from 001__elm20150529_034037__dat00.bin



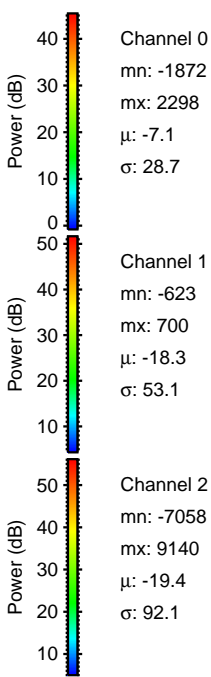
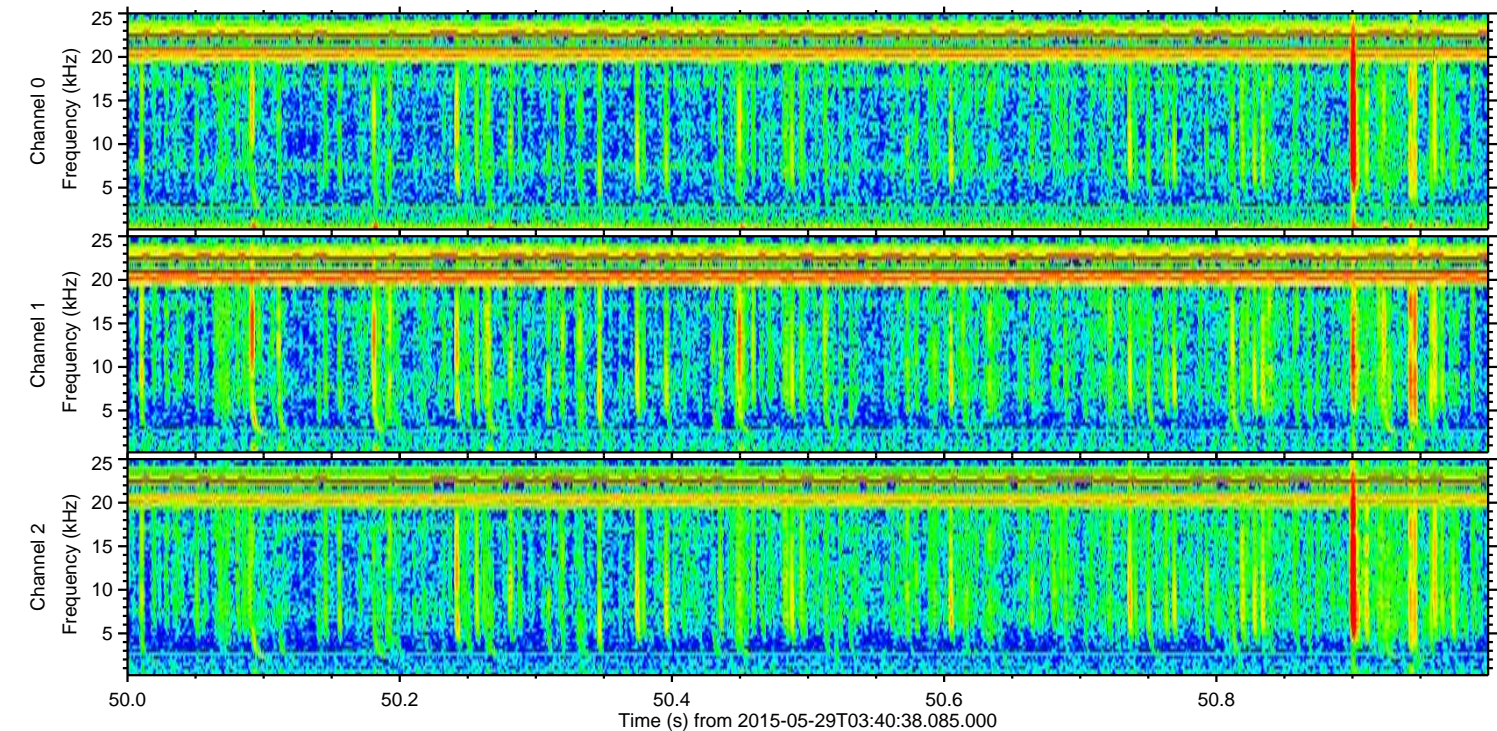
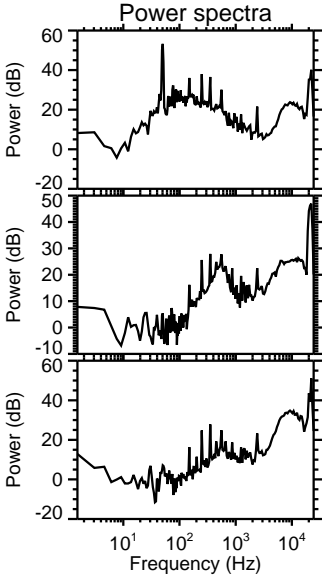
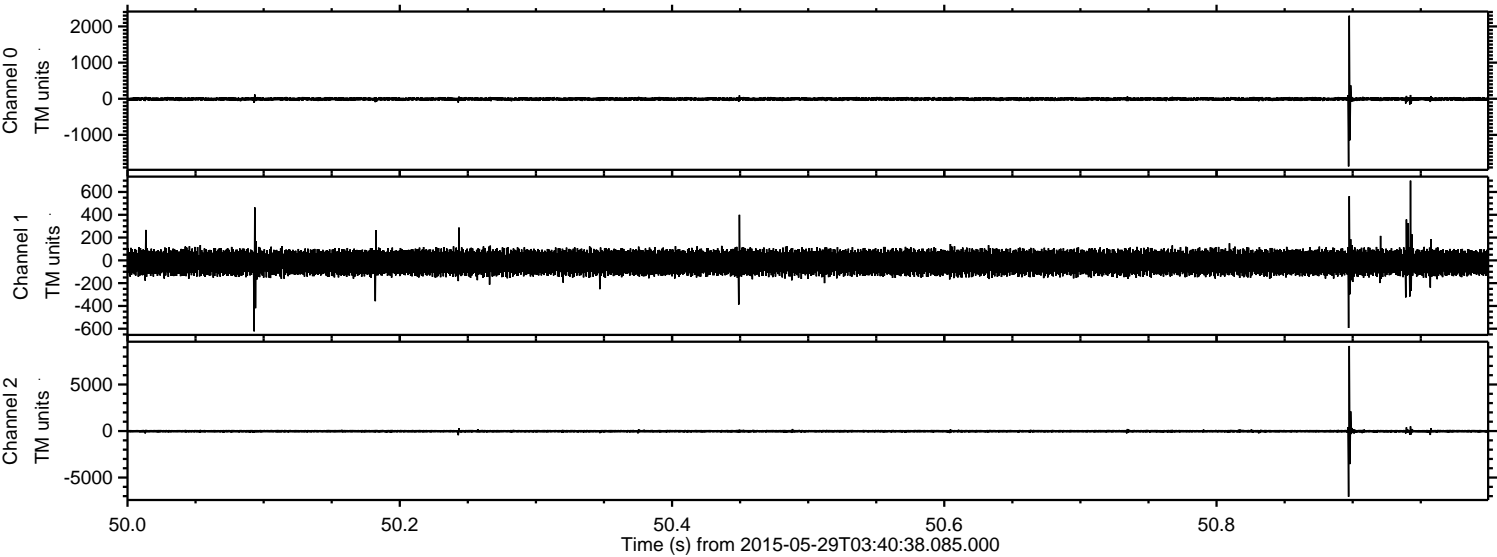
ELMAVAN 3D WAVEFORMS (Measured data sampled at 50 kHz) 49566 packets of 144 samples from 2015-05-29T03:40:38.085.000. Part 118/143

Processed Fri May 29 05:55:48 2015 by ELM ver.2012-10-06 from 001__elm20150529_034037__dat00.bin



ELMAVAN 3D WAVEFORMS (Measured data sampled at 50 kHz) 49566 packets of 144 samples from 2015-05-29T03:40:38.085.000. Part 51/143

Processed Fri May 29 05:55:49 2015 by ELM ver.2012-10-06 from 001__elm20150529_034037__dat00.bin

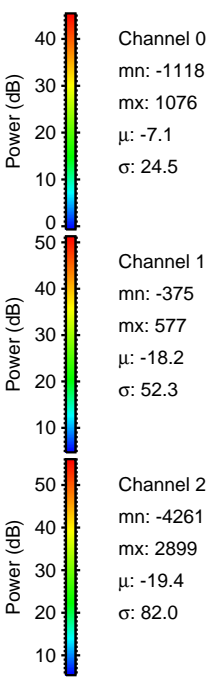
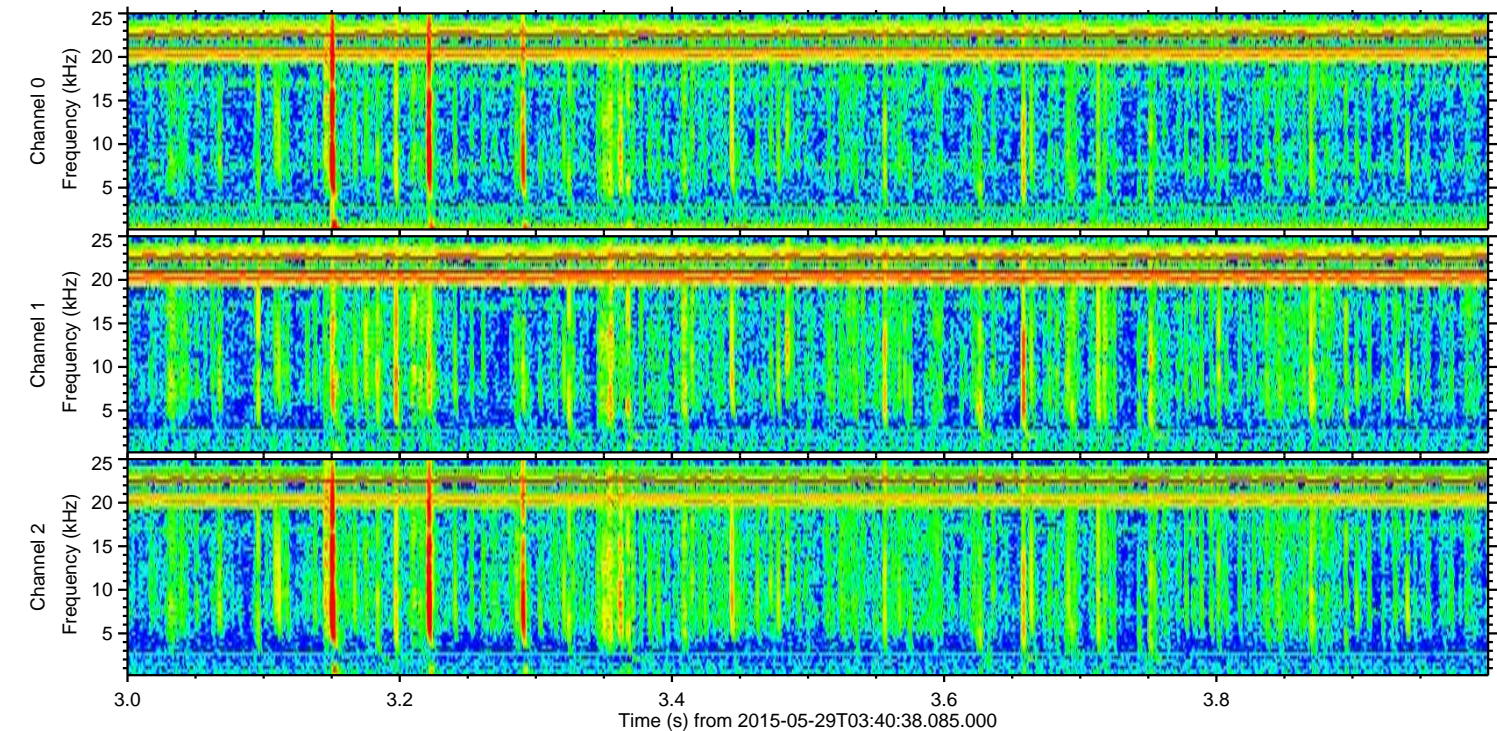
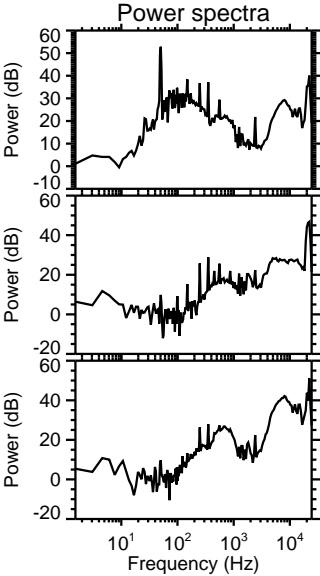
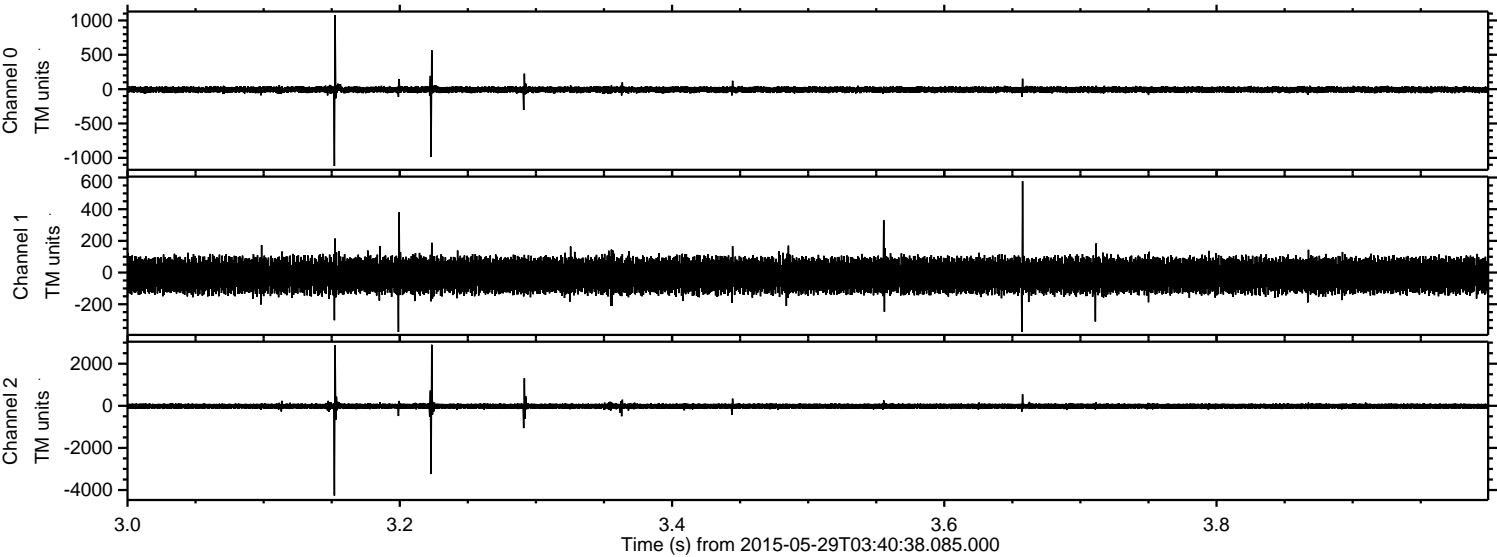


Channel 0
mn: -1872
mx: 2298
 μ : -7.1
 σ : 28.7

Channel 1
mn: -623
mx: 700
 μ : -18.3
 σ : 53.1

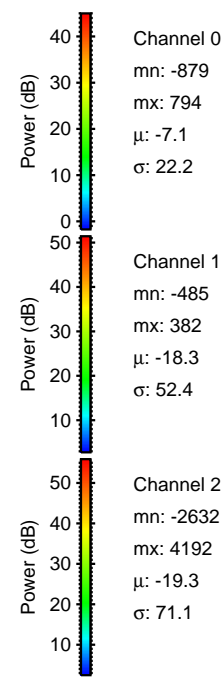
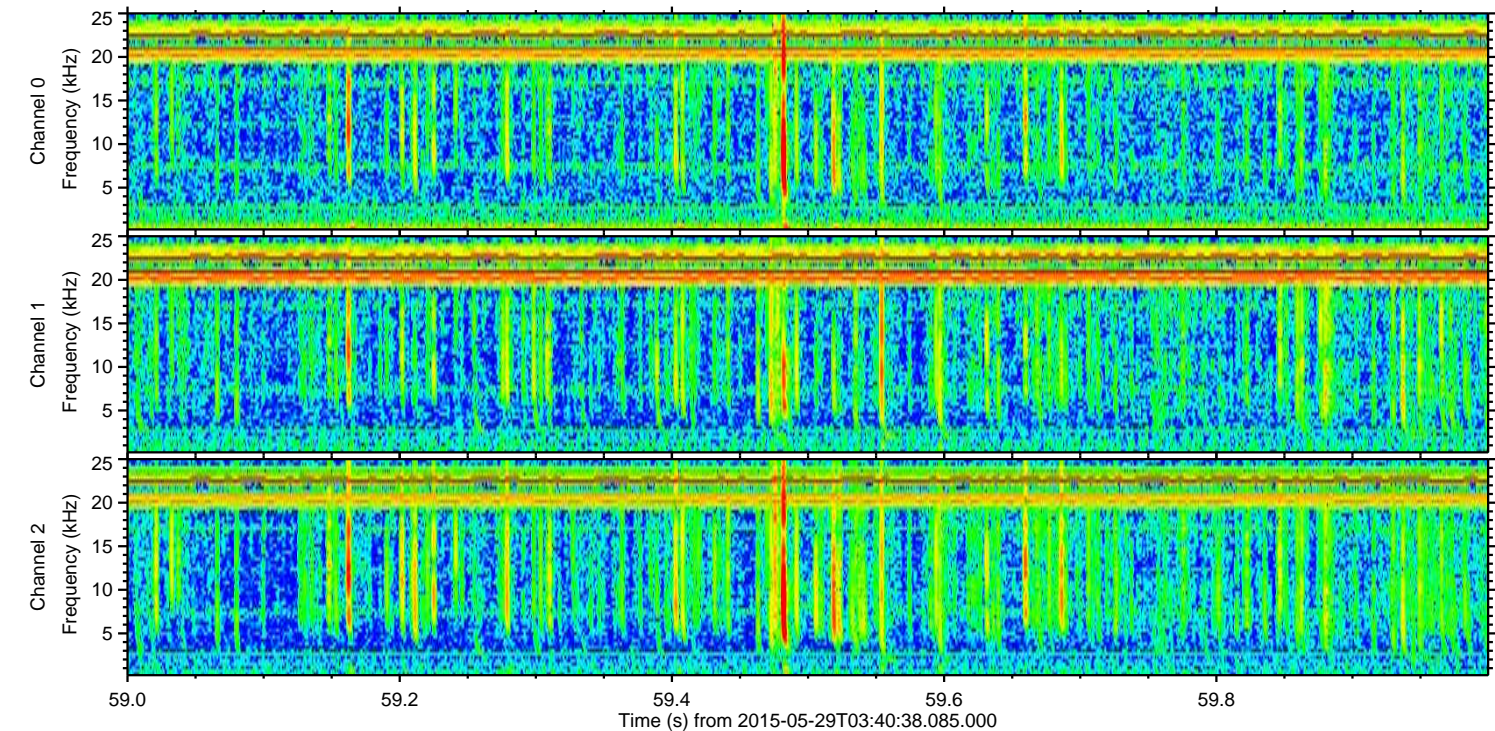
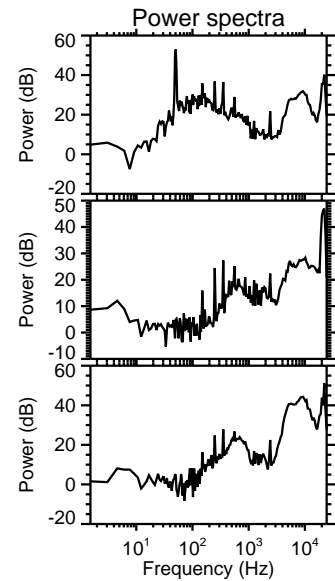
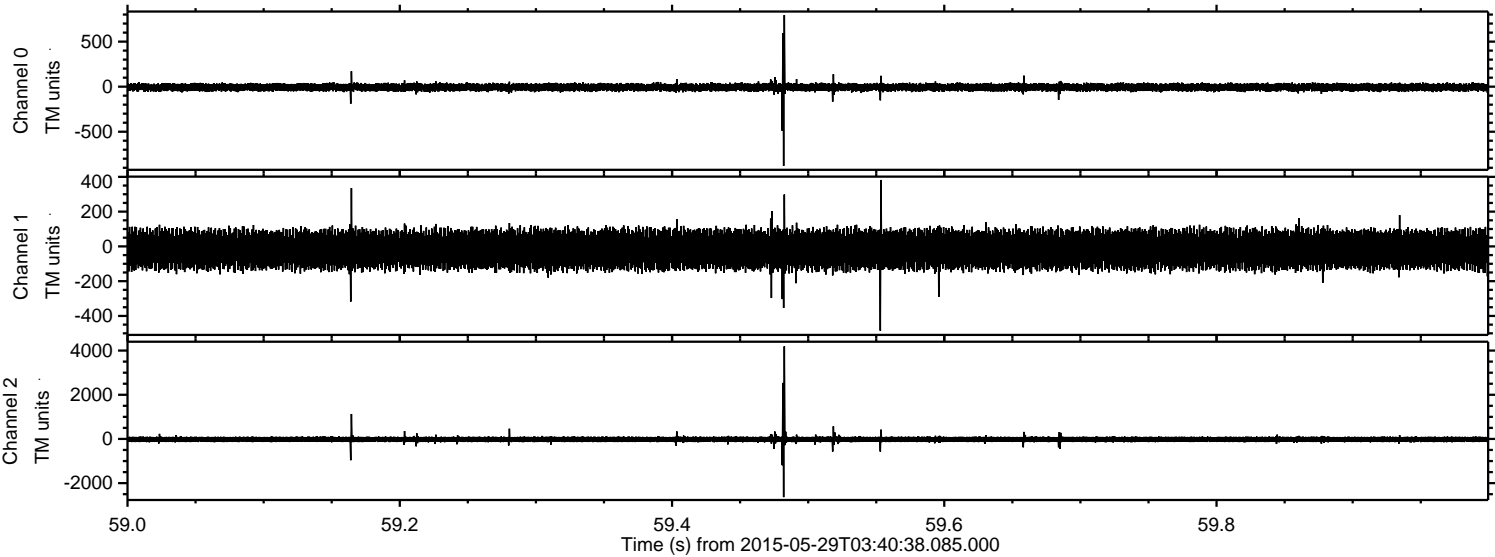
Channel 2
mn: -7058
mx: 9140
 μ : -19.4
 σ : 92.1

Processed Fri May 29 05:55:50 2015 by ELM ver.2012-10-06 from 001__elm20150529_034037__dat00.bin



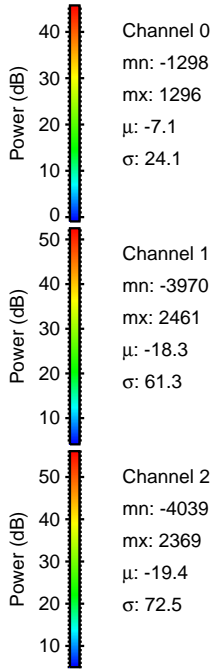
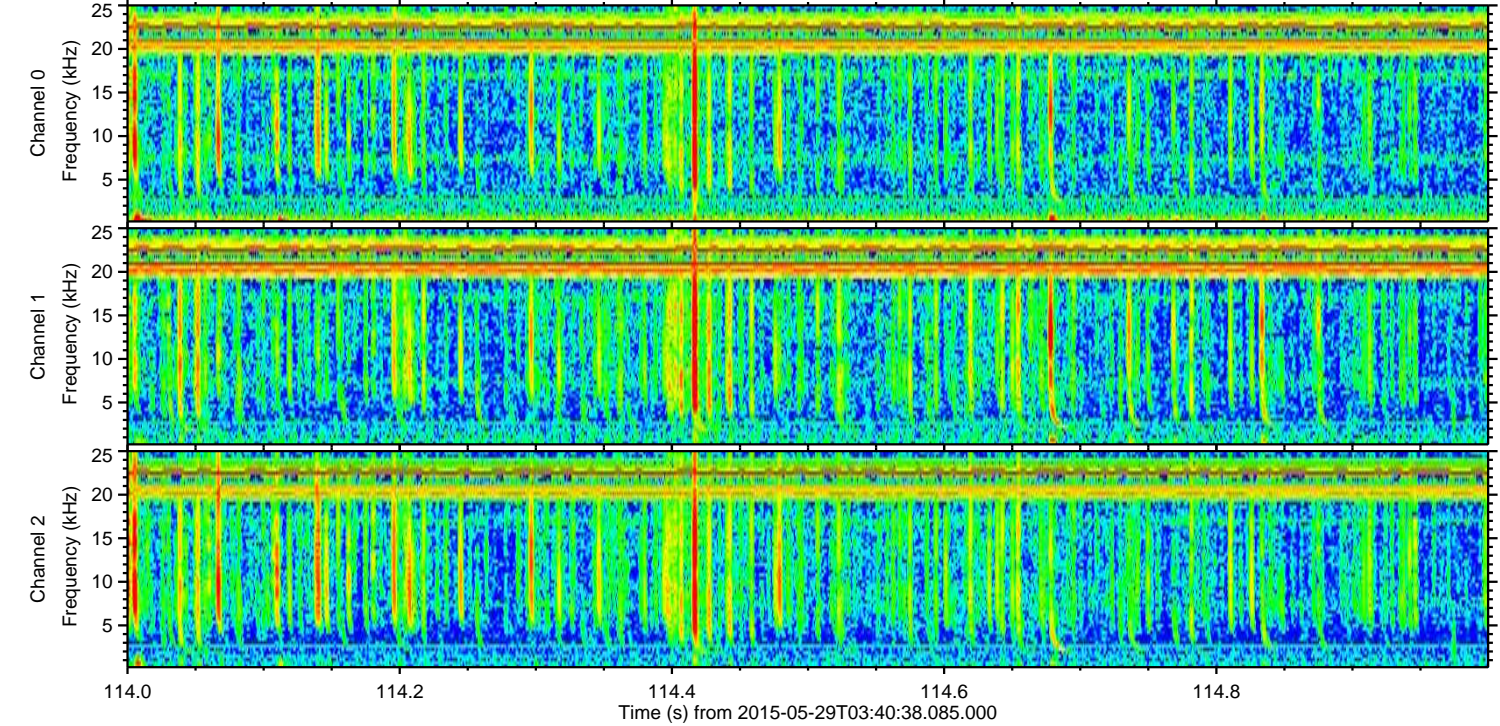
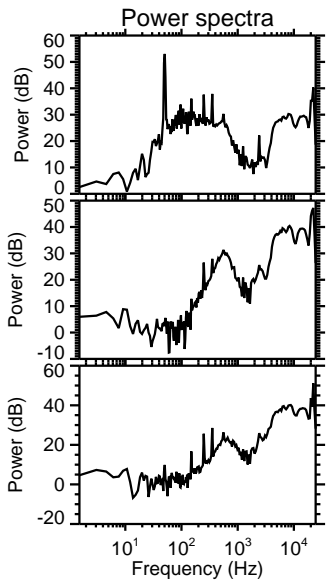
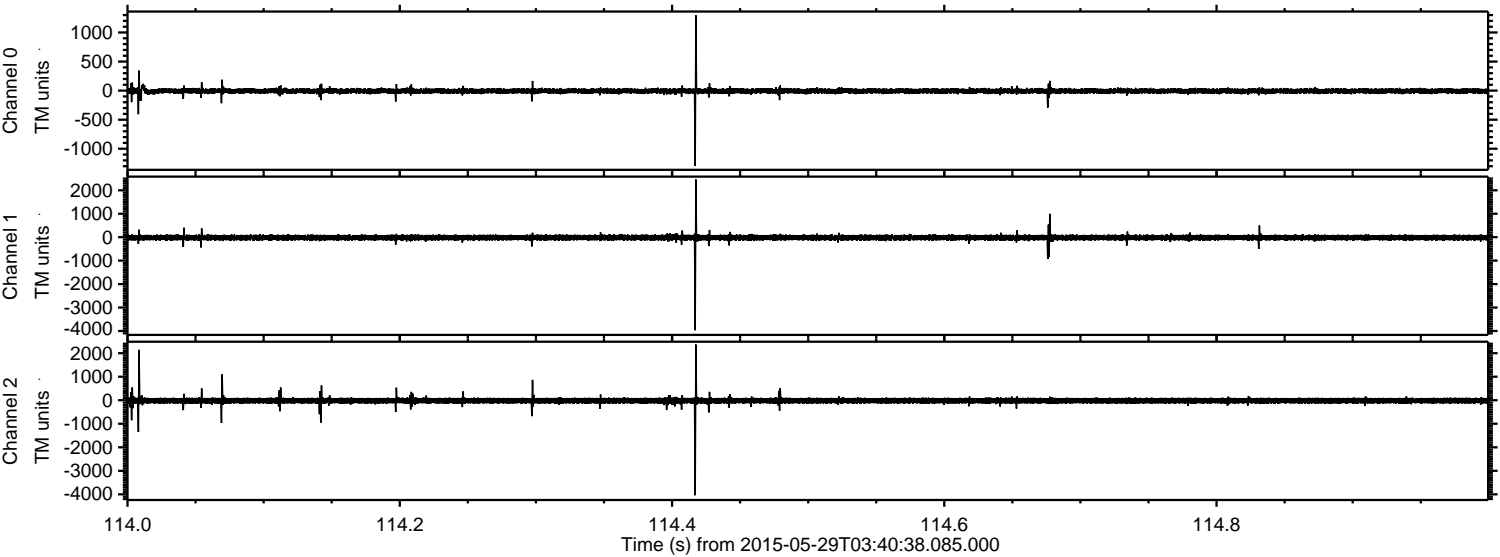
ELMAVAN 3D WAVEFORMS (Measured data sampled at 50 kHz) 49566 packets of 144 samples from 2015-05-29T03:40:38.085.000. Part 60/143

Processed Fri May 29 05:55:51 2015 by ELM ver.2012-10-06 from 001__elm20150529_034037__dat00.bin



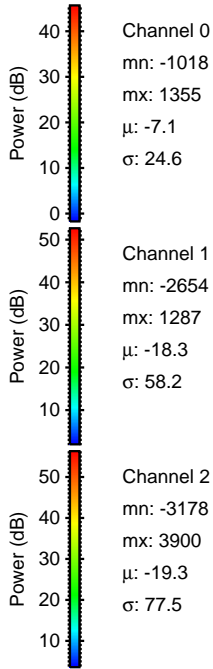
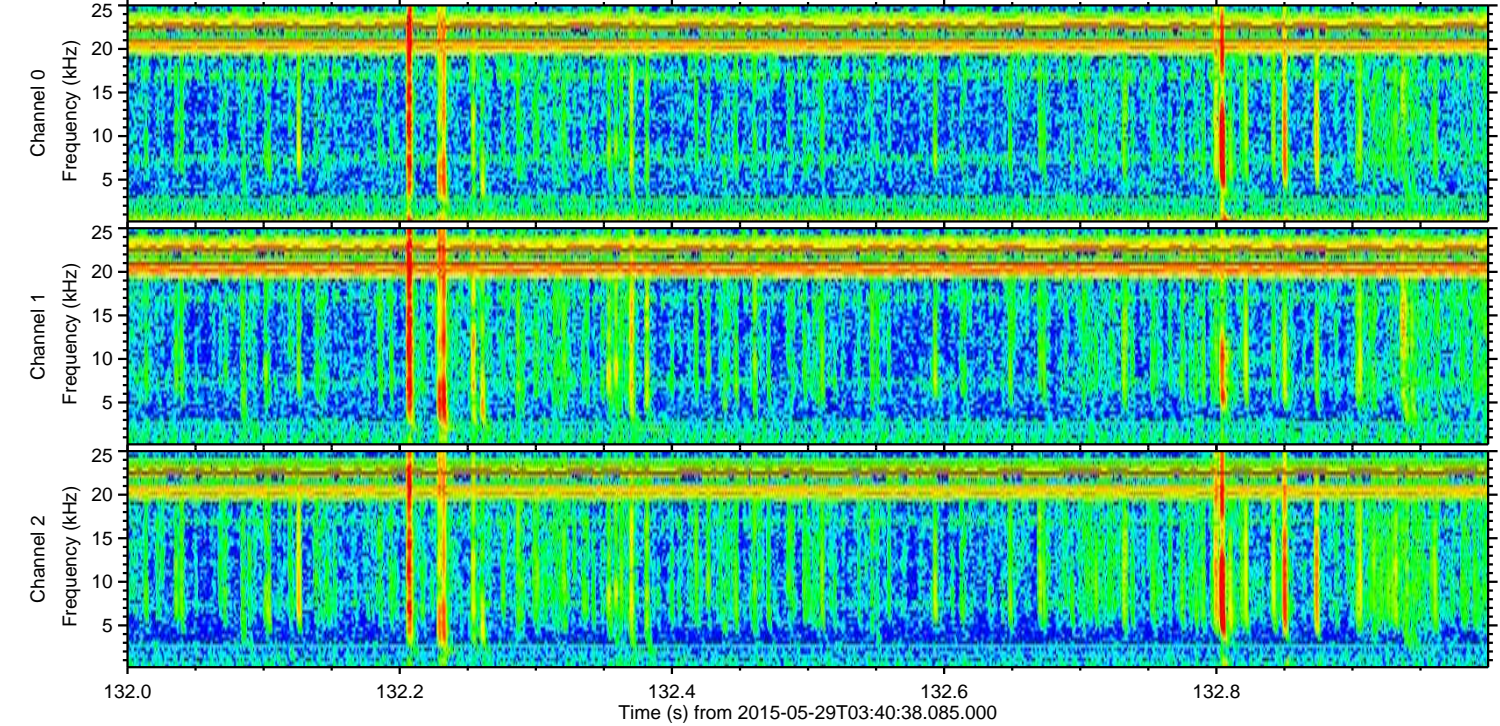
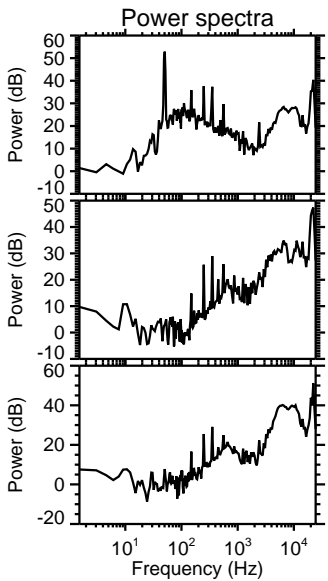
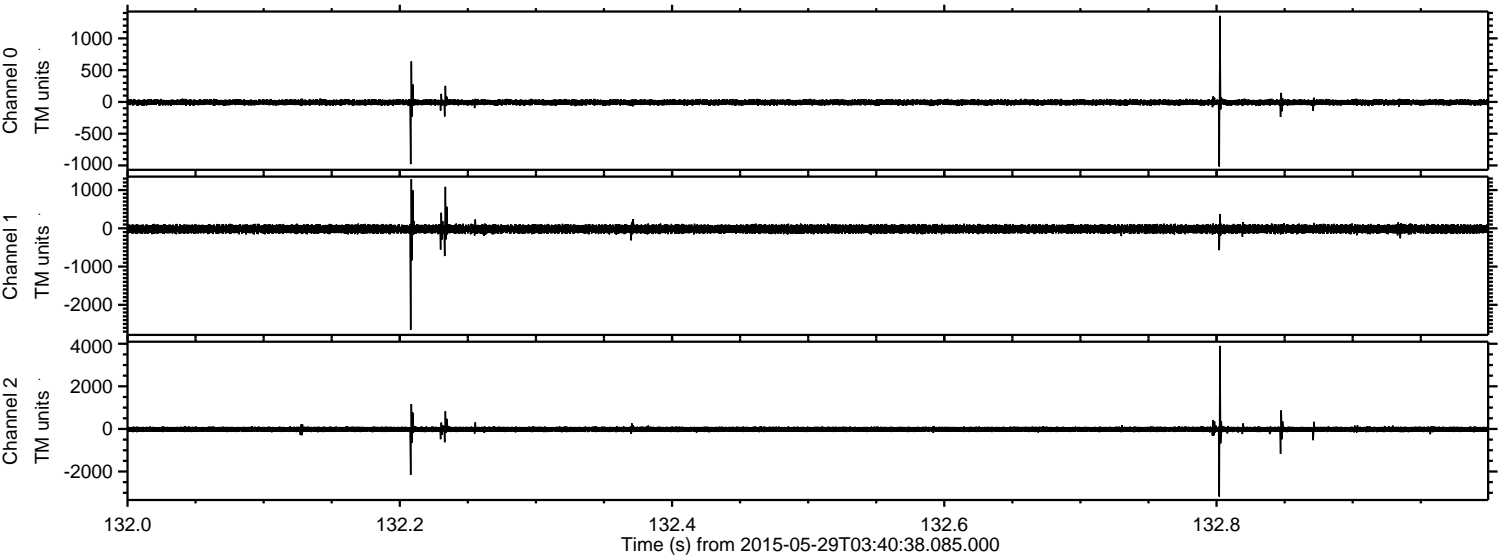
ELMAVAN 3D WAVEFORMS (Measured data sampled at 50 kHz) 49566 packets of 144 samples from 2015-05-29T03:40:38.085.000. Part 115/143

Processed Fri May 29 05:55:52 2015 by ELM ver.2012-10-06 from 001__elm20150529_034037__dat00.bin



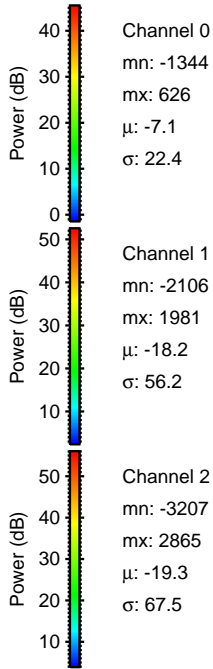
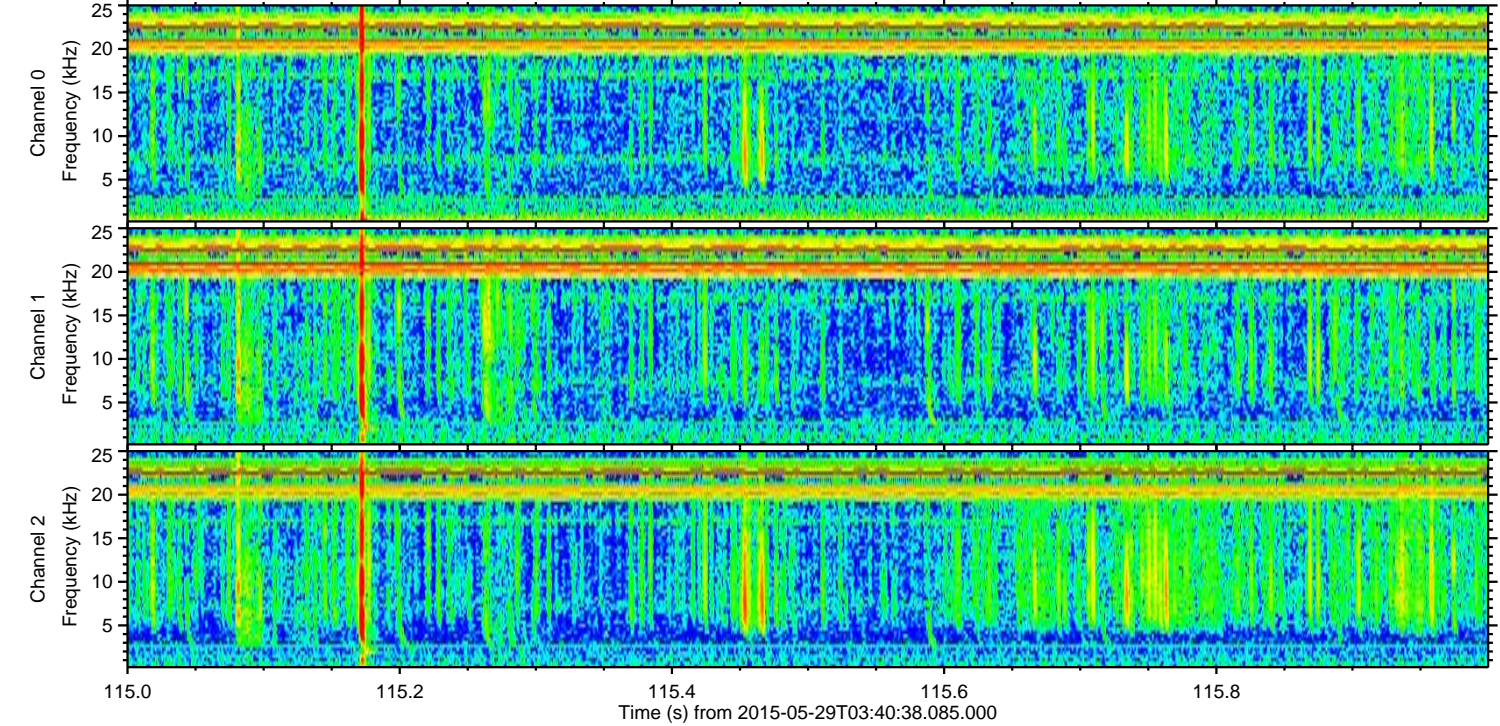
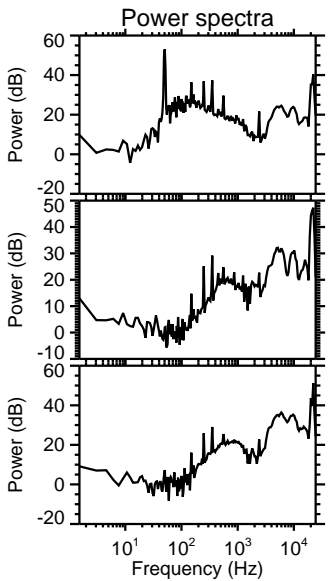
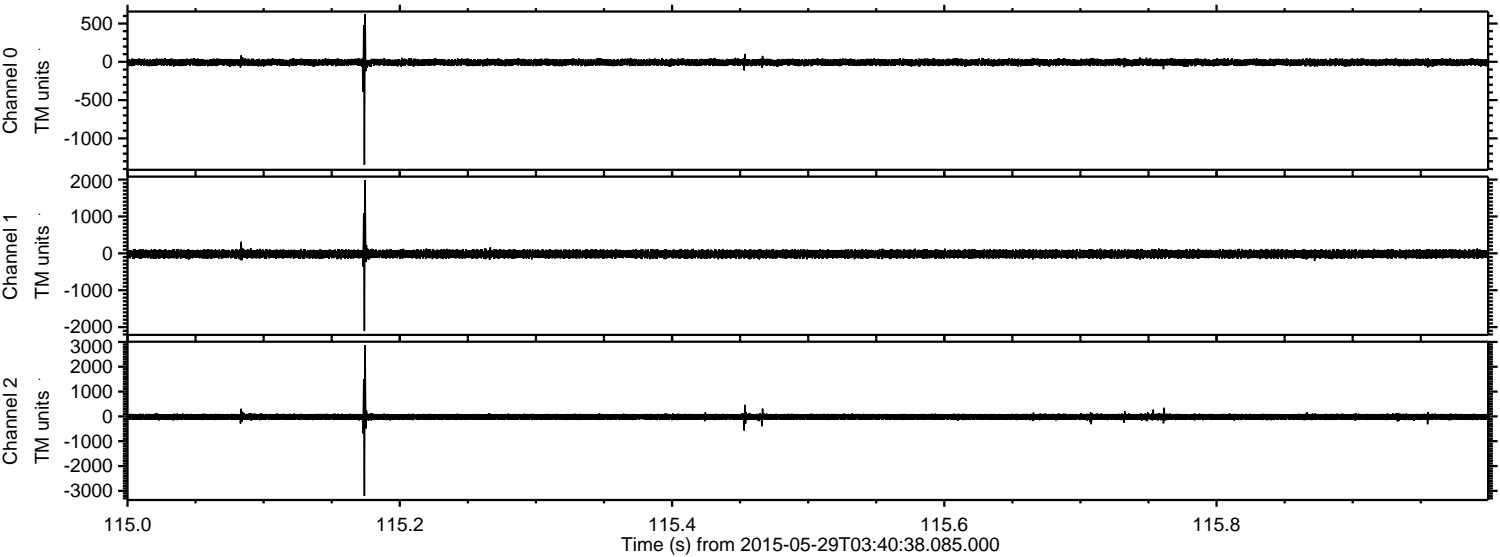
ELMAVAN 3D WAVEFORMS (Measured data sampled at 50 kHz) 49566 packets of 144 samples from 2015-05-29T03:40:38.085.000. Part 133/143

Processed Fri May 29 05:55:53 2015 by ELM ver.2012-10-06 from 001__elm20150529_034037__dat00.bin



ELMAVAN 3D WAVEFORMS (Measured data sampled at 50 kHz) 49566 packets of 144 samples from 2015-05-29T03:40:38.085.000. Part 116/143

Processed Fri May 29 05:55:54 2015 by ELM ver.2012-10-06 from 001__elm20150529_034037__dat00.bin



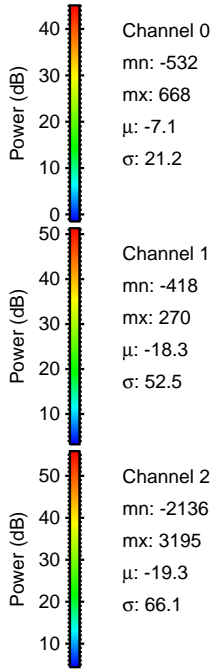
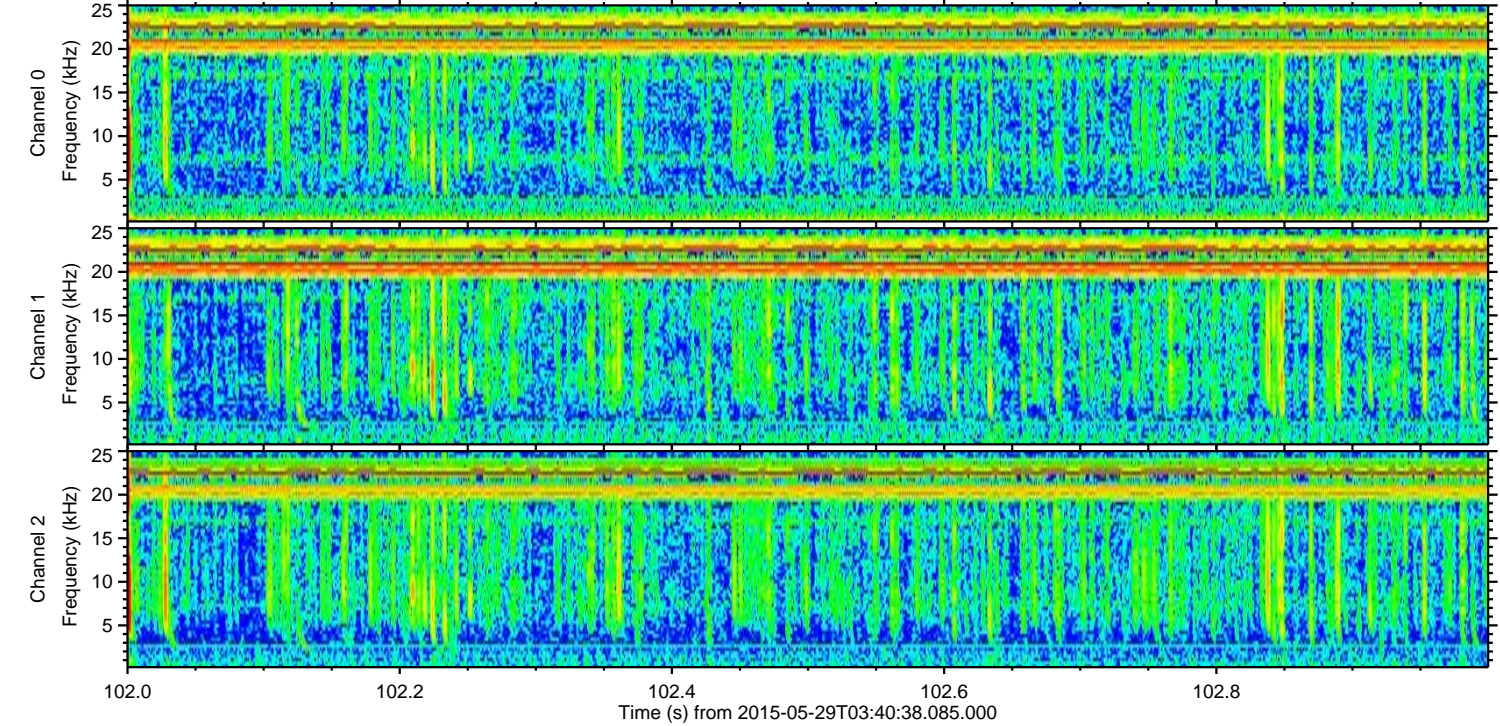
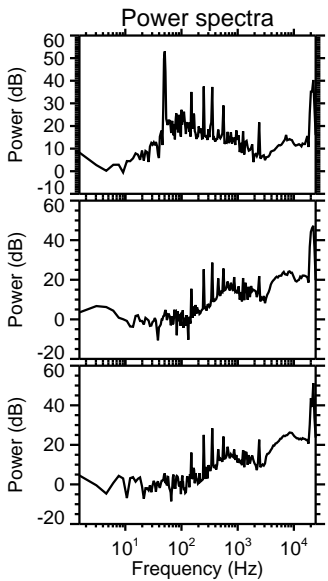
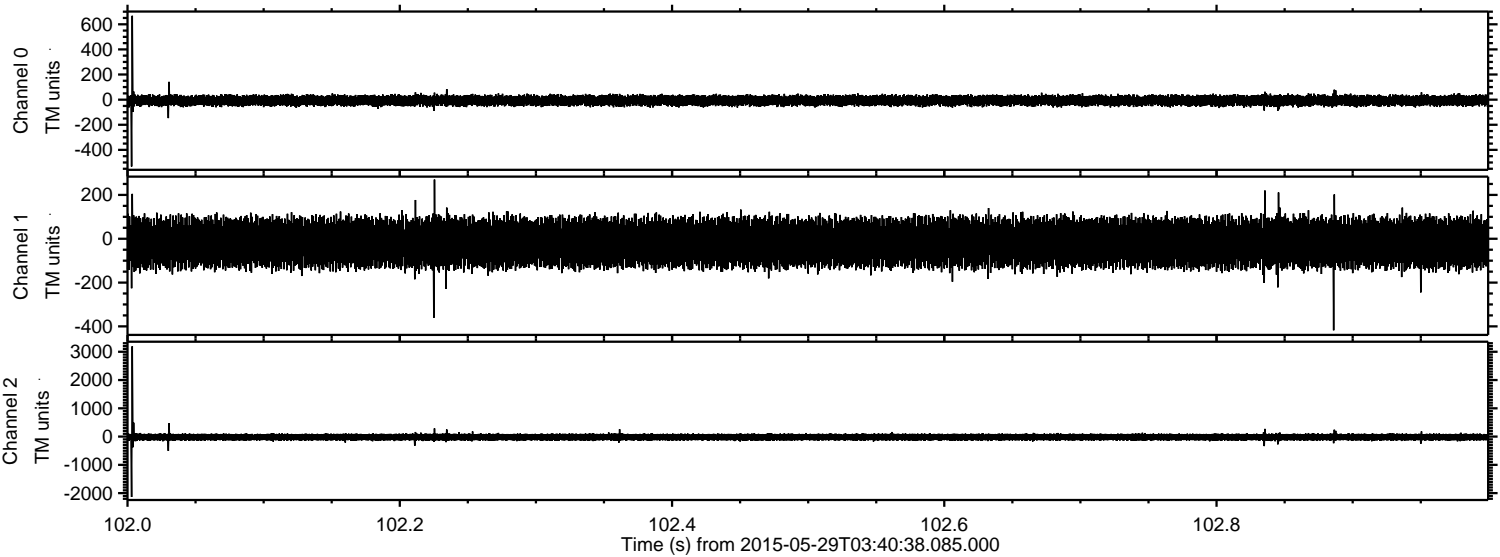
Channel 0
mn: -1344
mx: 626
 μ : -7.1
 σ : 22.4

Channel 1
mn: -2106
mx: 1981
 μ : -18.2
 σ : 56.2

Channel 2
mn: -3207
mx: 2865
 μ : -19.3
 σ : 67.5

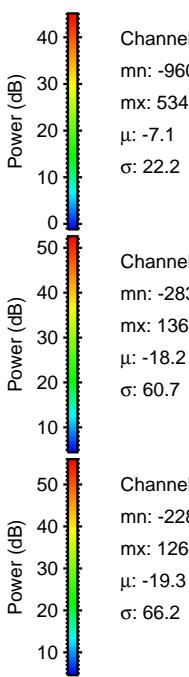
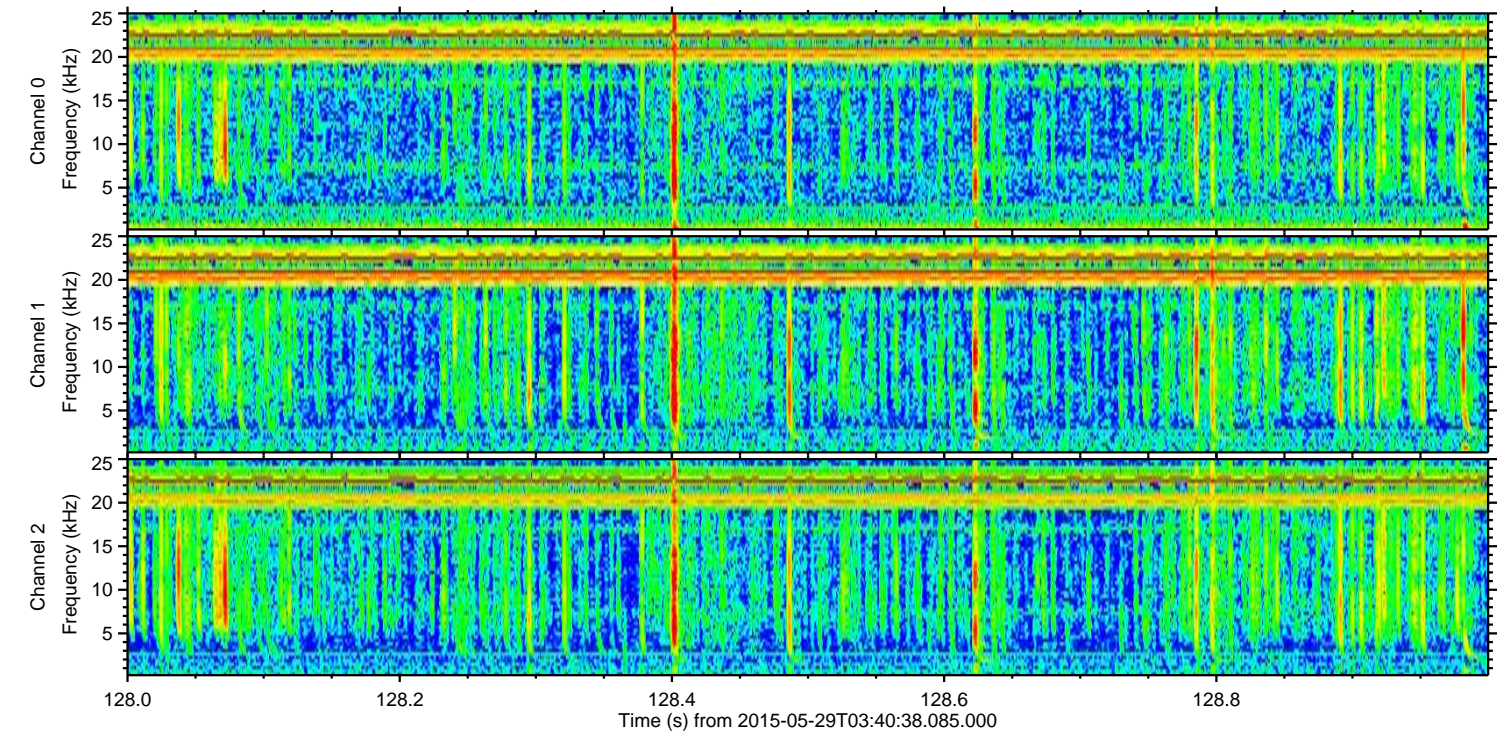
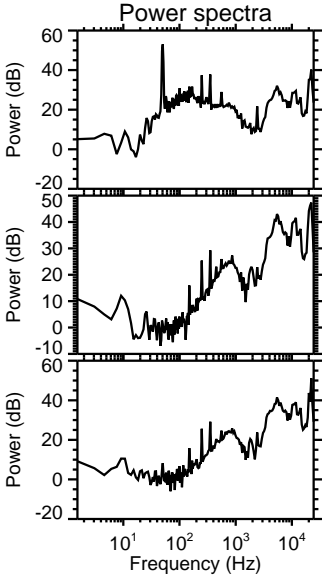
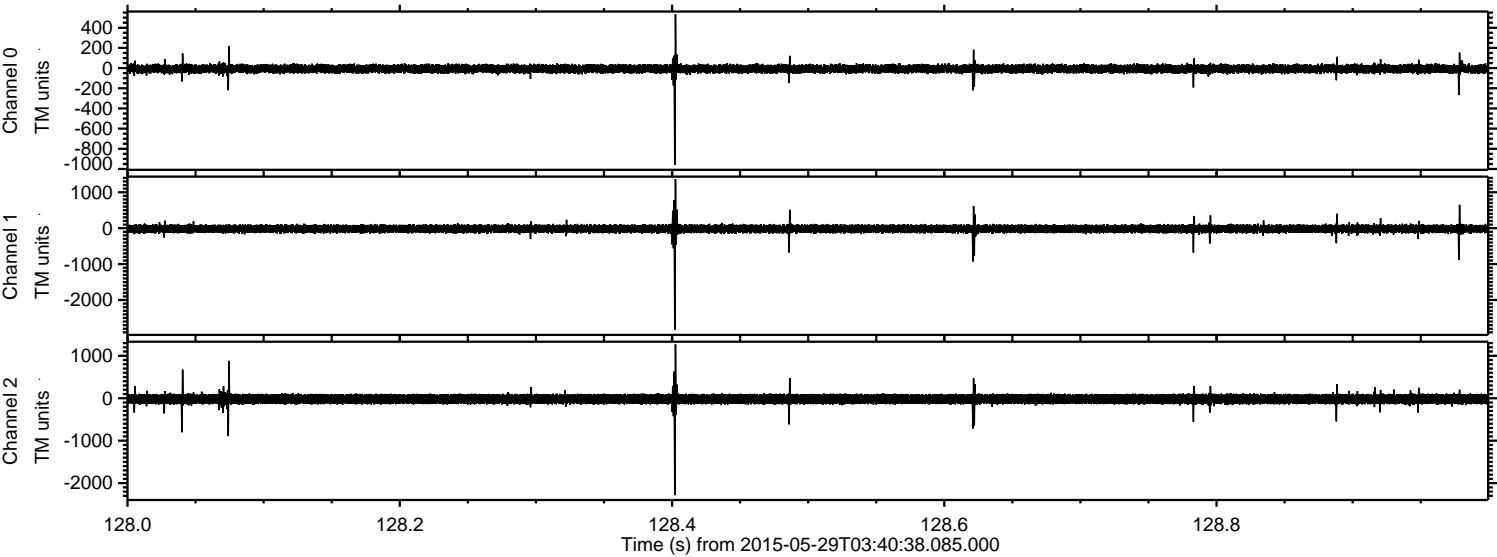
ELMAVAN 3D WAVEFORMS (Measured data sampled at 50 kHz) 49566 packets of 144 samples from 2015-05-29T03:40:38.085.000. Part 103/143

Processed Fri May 29 05:55:55 2015 by ELM ver.2012-10-06 from 001__elm20150529_034037__dat00.bin



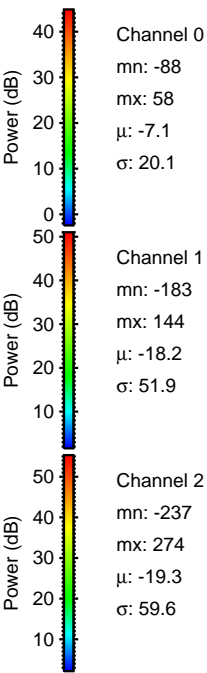
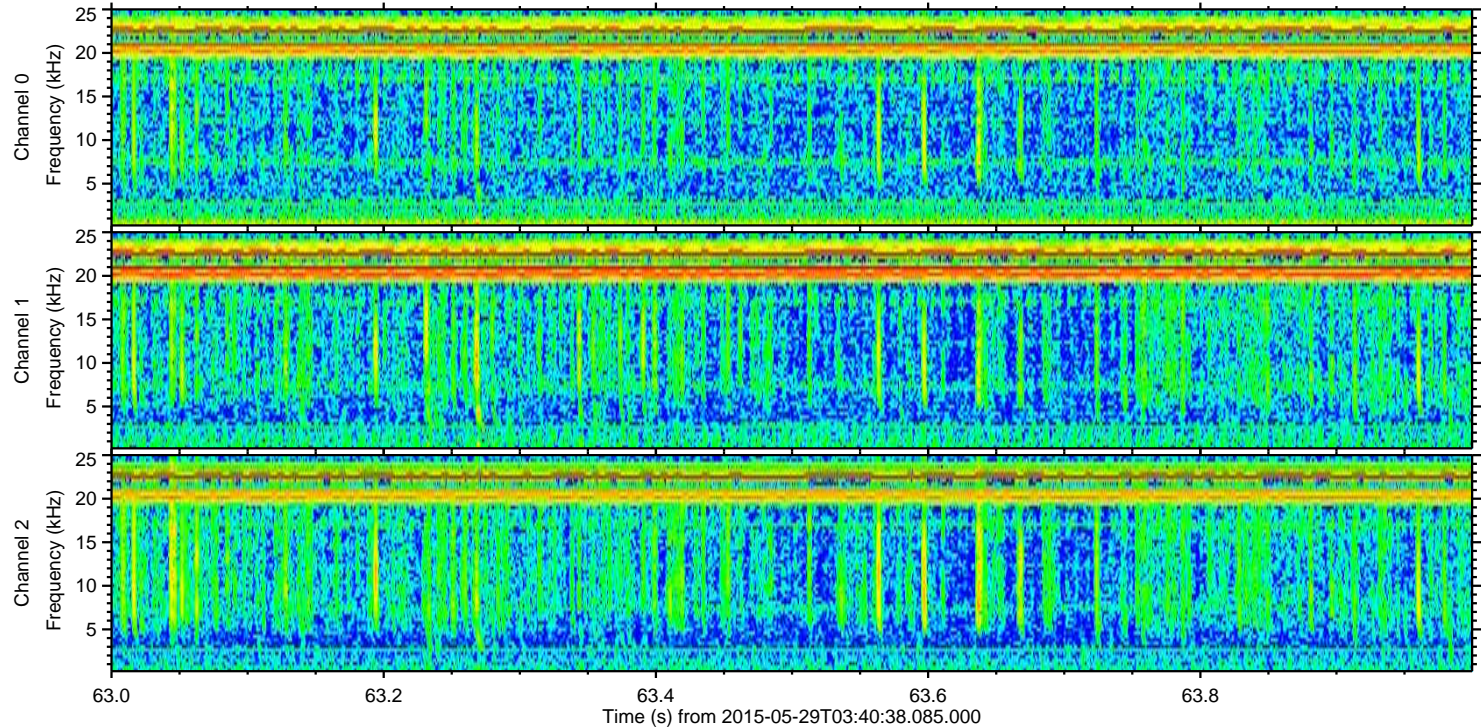
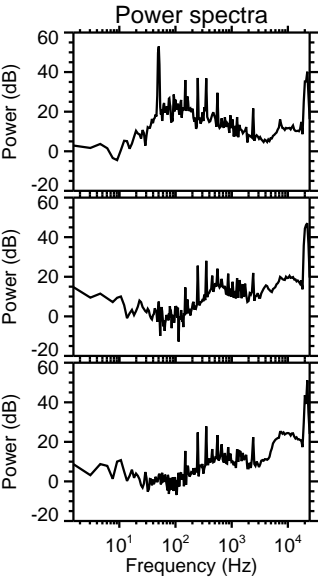
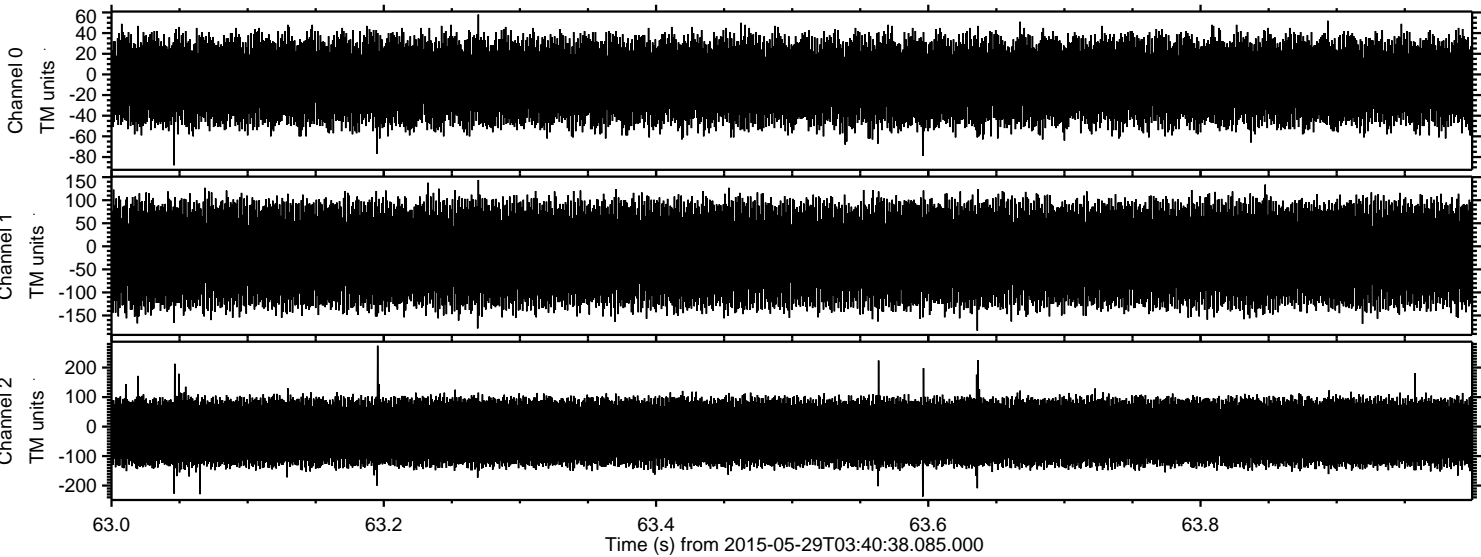
ELMAVAN 3D WAVEFORMS (Measured data sampled at 50 kHz) 49566 packets of 144 samples from 2015-05-29T03:40:38.085.000. Part 129/143

Processed Fri May 29 05:55:56 2015 by ELM ver.2012-10-06 from 001__elm20150529_034037__dat00.bin



ELMAVAN 3D WAVEFORMS (Measured data sampled at 50 kHz) 49566 packets of 144 samples from 2015-05-29T03:40:38.085.000. Part 64/143

Processed Fri May 29 05:55:57 2015 by ELM ver.2012-10-06 from 001__elm20150529_034037__dat00.bin



Power spectra

Channel 0
mn: -88
mx: 58
 μ : -7.1
 σ : 20.1

Channel 1
mn: -183
mx: 144
 μ : -18.2
 σ : 51.9

Channel 2
mn: -237
mx: 274
 μ : -19.3
 σ : 59.6