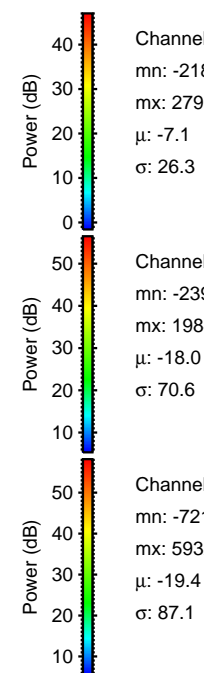
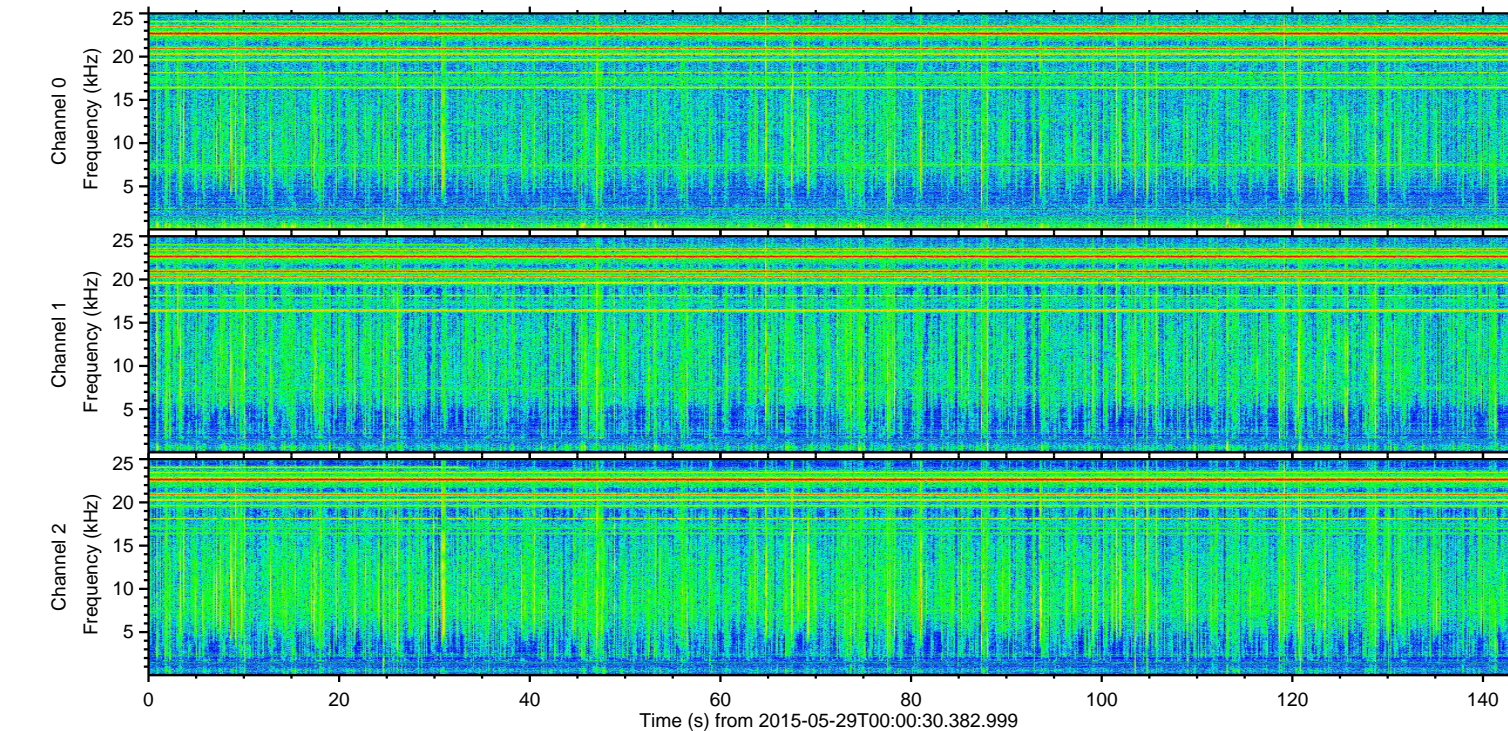
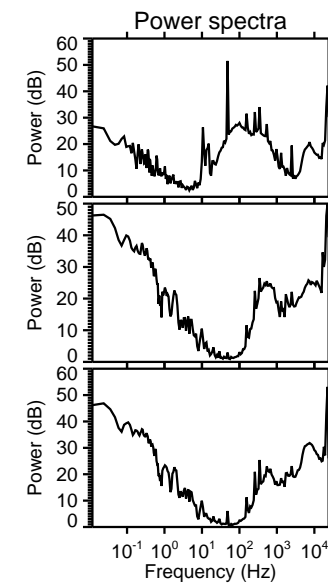
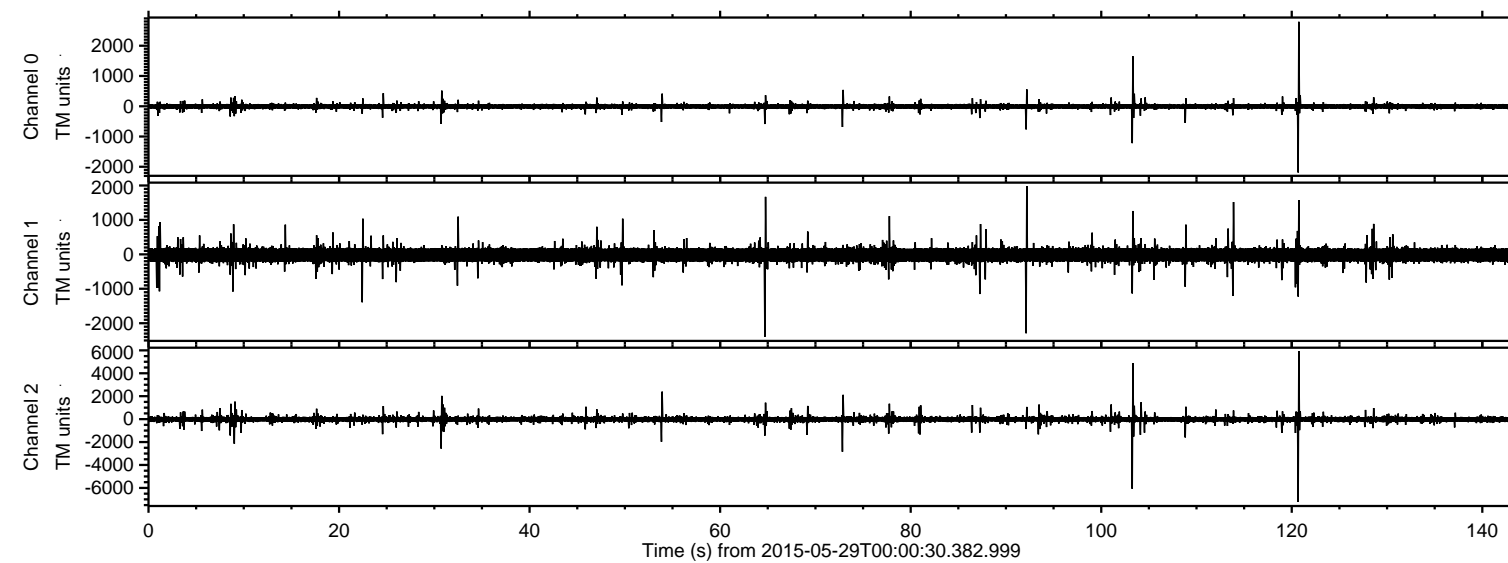


ELMAVAN 3D WAVEFORMS (Measured data sampled at 50 kHz) 49589 packets of 144 samples from 2015-05-29T00:00:30.382.999.

Processed Fri May 29 02:08:30 2015 by ELM ver.2012-10-06 from 001\_\_elm20150529\_000029\_\_dat00.bin



Channel 0  
mn: -2189  
mx: 2791  
 $\mu$ : -7.1  
 $\sigma$ : 26.3

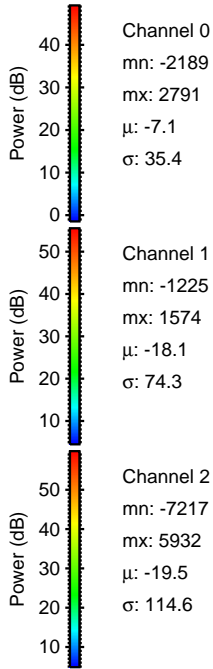
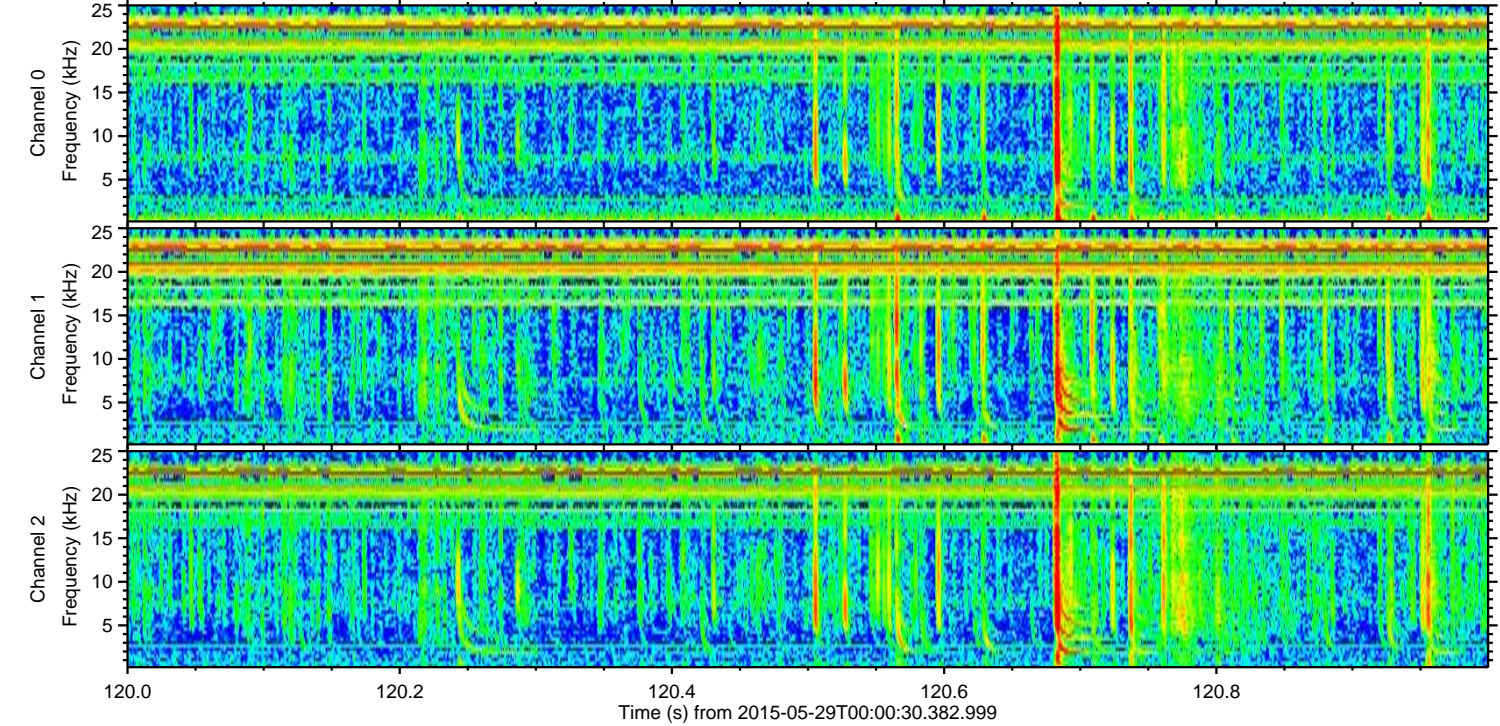
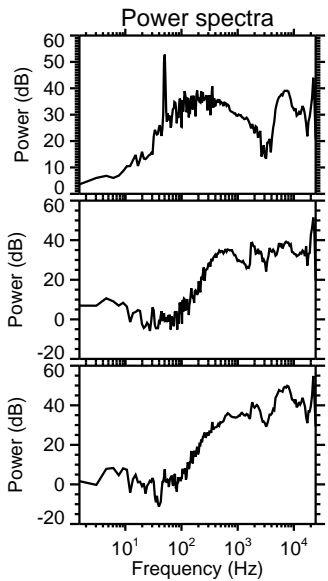
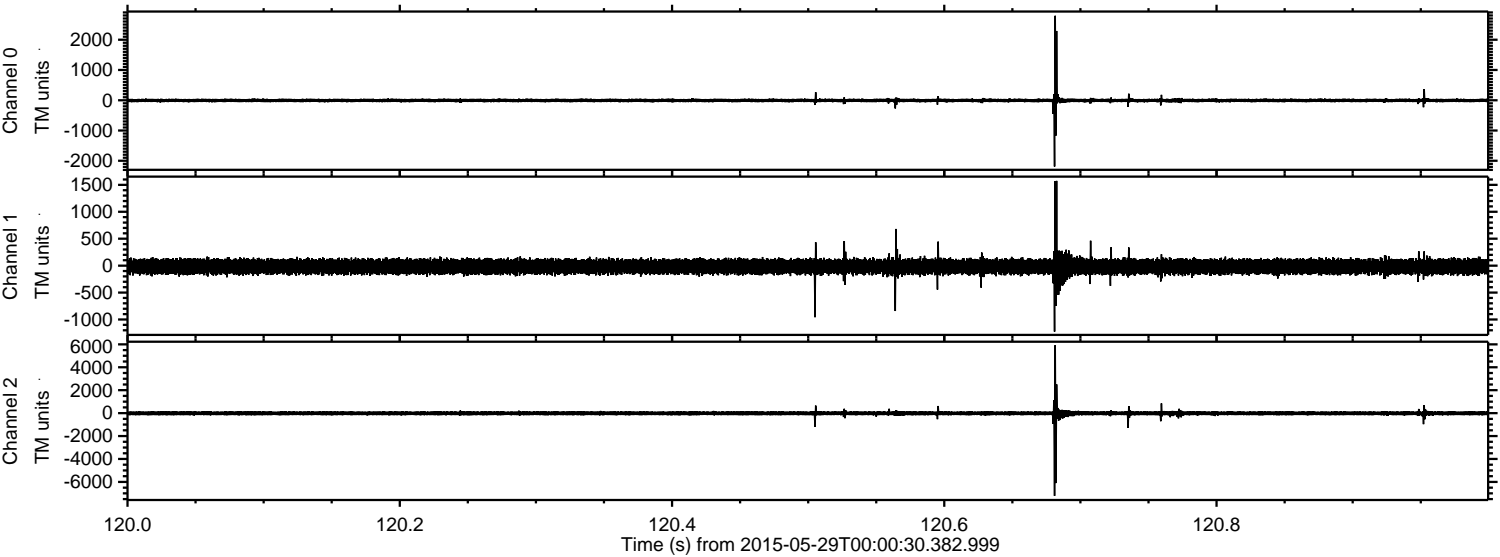
Channel 1  
mn: -2394  
mx: 1984  
 $\mu$ : -18.0  
 $\sigma$ : 70.6

Channel 2  
mn: -7217  
mx: 5932  
 $\mu$ : -19.4  
 $\sigma$ : 87.1



ELMAVAN 3D WAVEFORMS (Measured data sampled at 50 kHz) 49589 packets of 144 samples from 2015-05-29T00:00:30.382.999. Part 121/143

Processed Fri May 29 02:08:45 2015 by ELM ver.2012-10-06 from 001\_\_elm20150529\_000029\_\_dat00.bin



Channel 0  
mn: -2189  
mx: 2791  
 $\mu$ : -7.1  
 $\sigma$ : 35.4

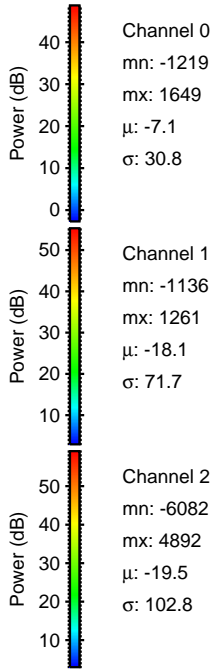
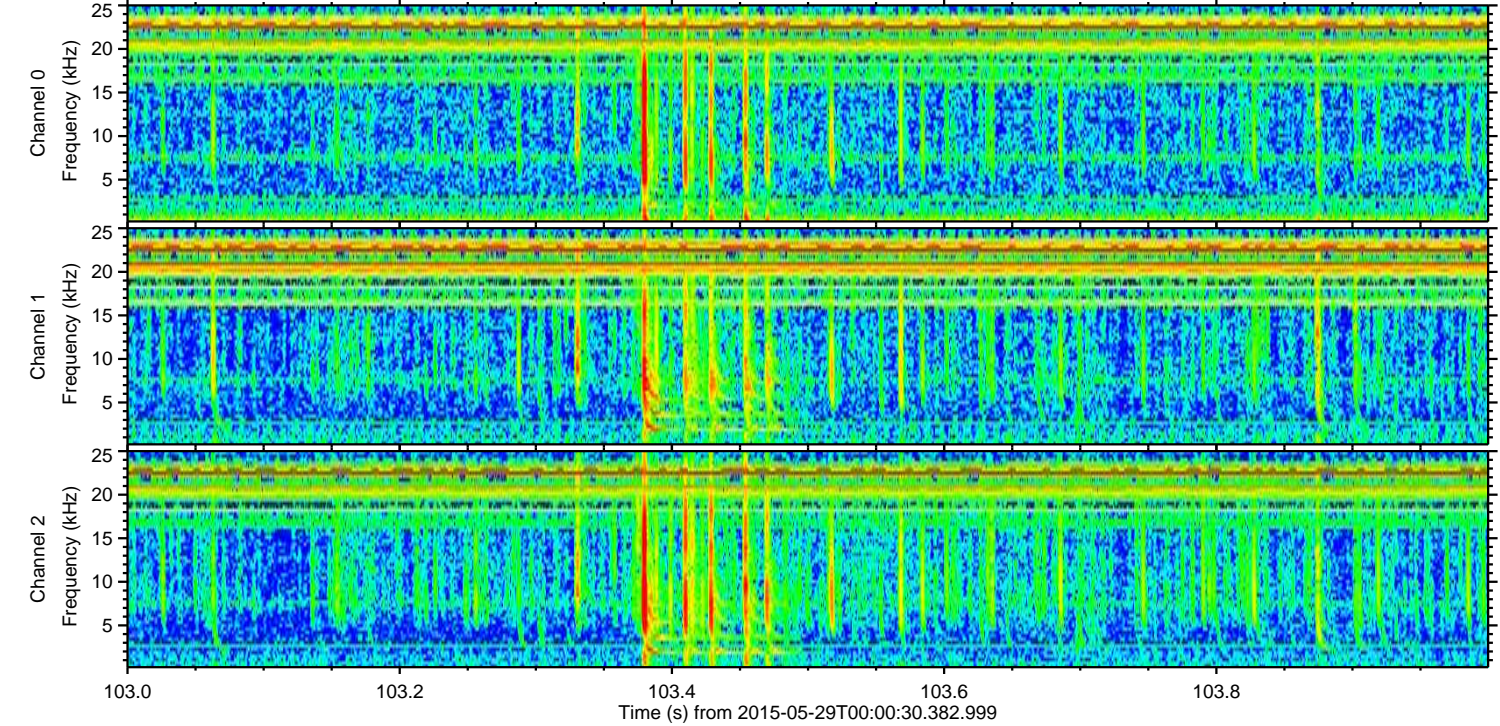
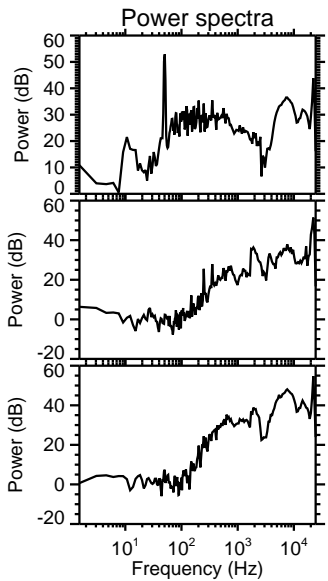
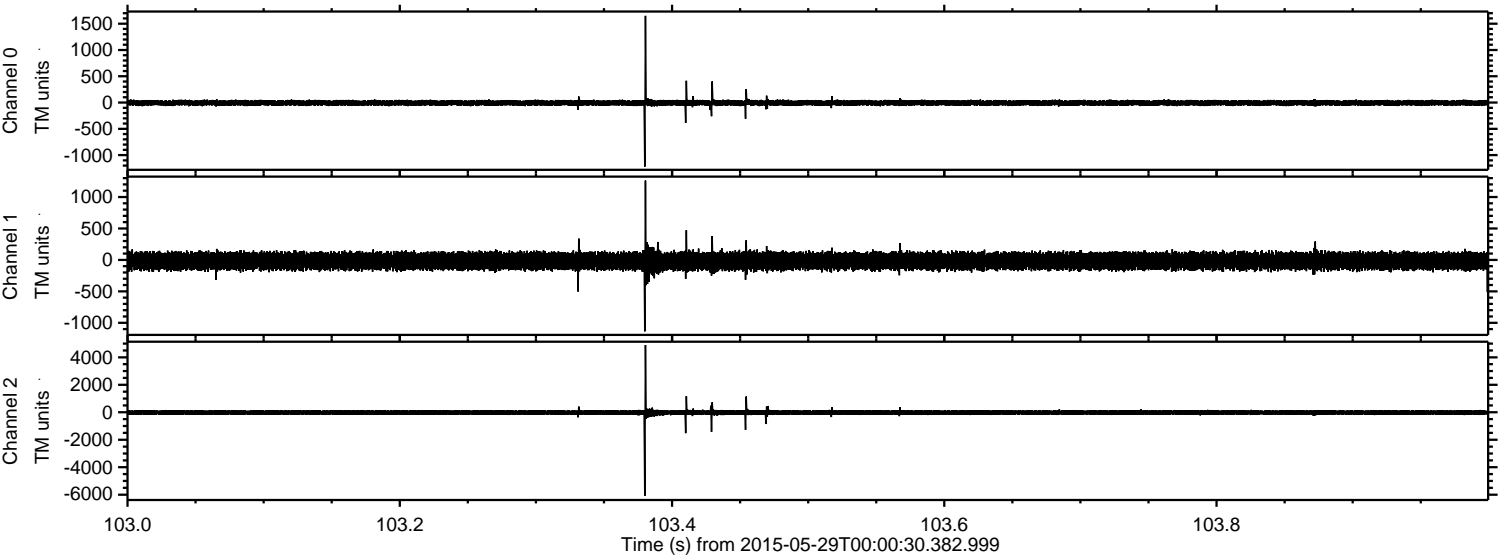
Channel 1  
mn: -1225  
mx: 1574  
 $\mu$ : -18.1  
 $\sigma$ : 74.3

Channel 2  
mn: -7217  
mx: 5932  
 $\mu$ : -19.5  
 $\sigma$ : 114.6



ELMAVAN 3D WAVEFORMS (Measured data sampled at 50 kHz) 49589 packets of 144 samples from 2015-05-29T00:00:30.382.999. Part 104/143

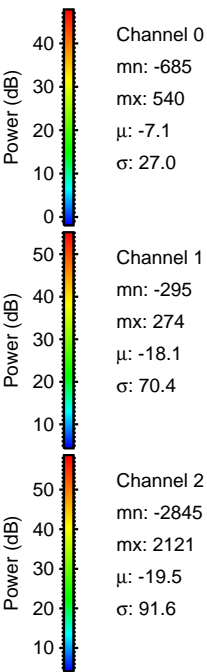
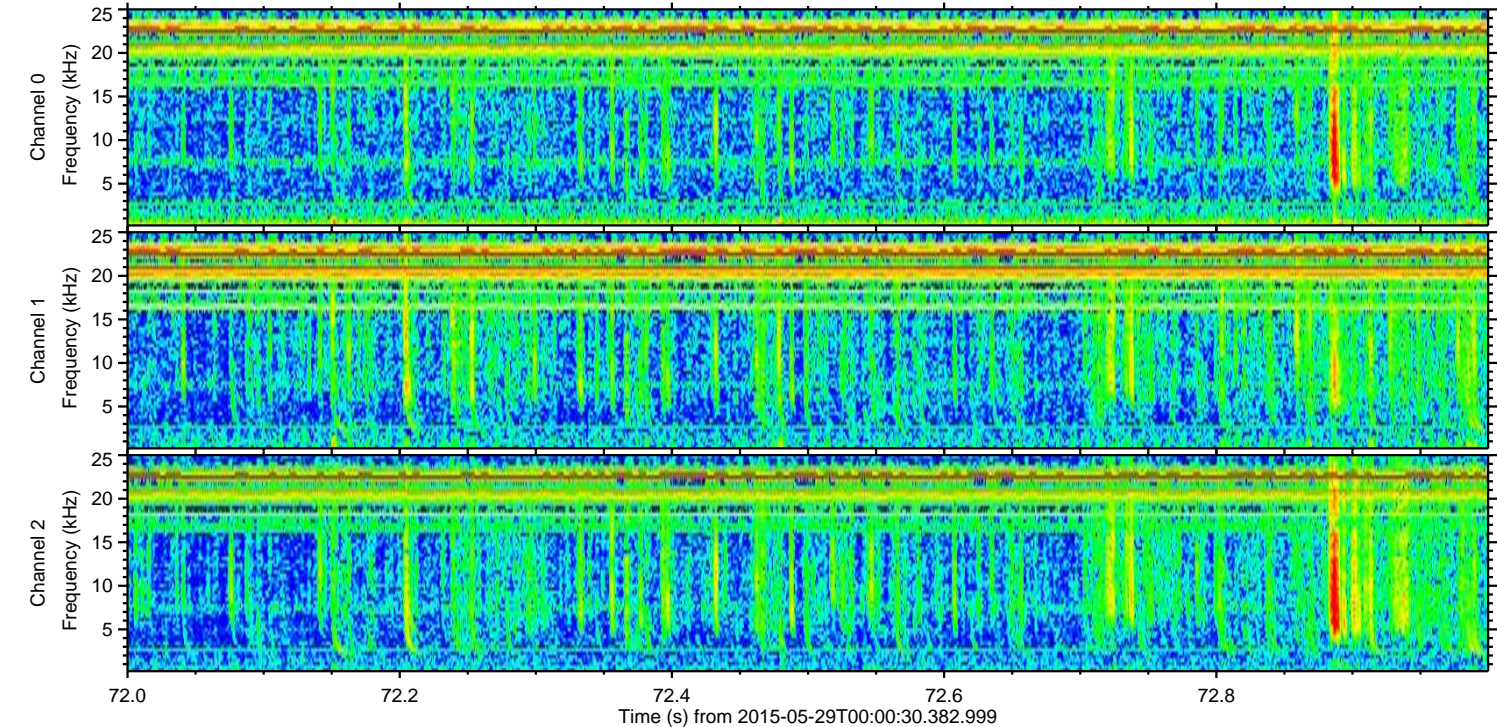
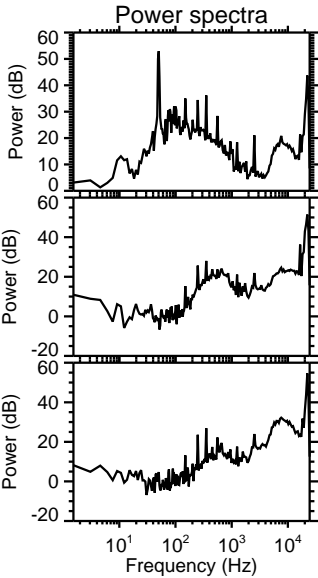
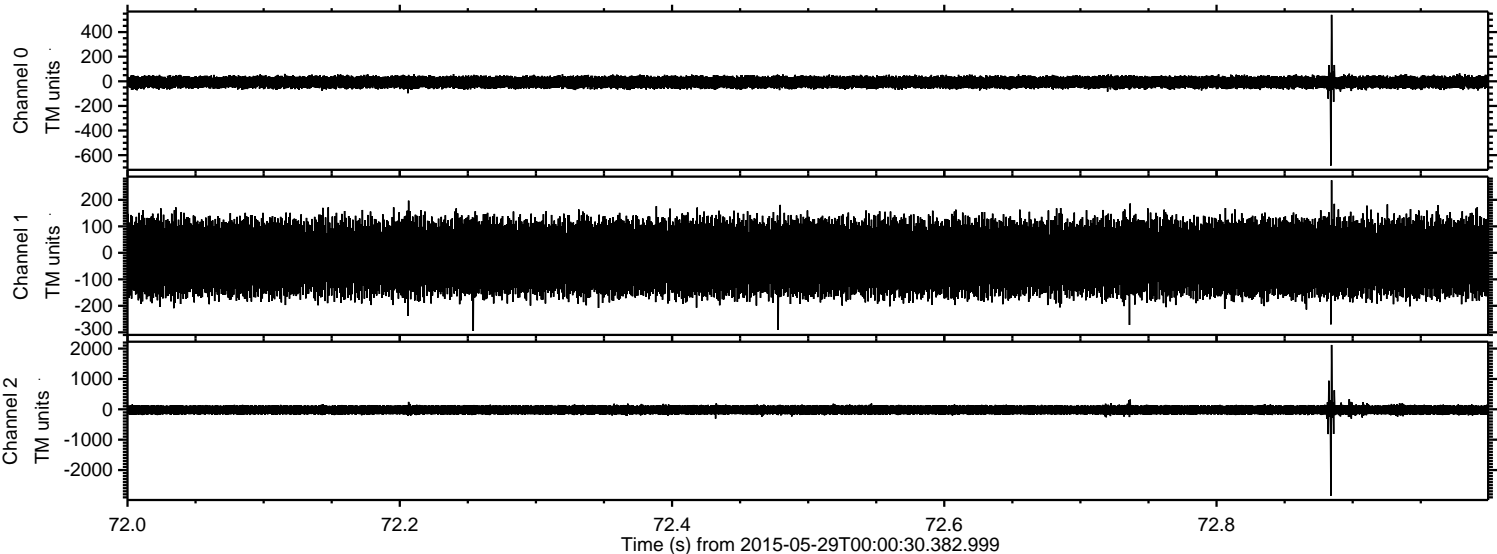
Processed Fri May 29 02:08:46 2015 by ELM ver.2012-10-06 from 001\_\_elm20150529\_000029\_\_dat00.bin





ELMAVAN 3D WAVEFORMS (Measured data sampled at 50 kHz) 49589 packets of 144 samples from 2015-05-29T00:00:30.382.999. Part 73/143

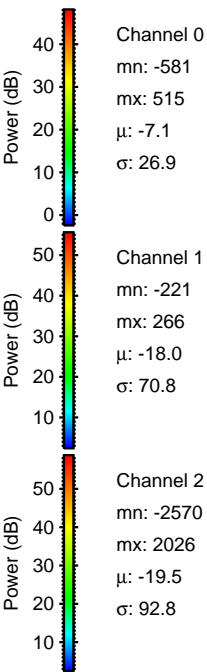
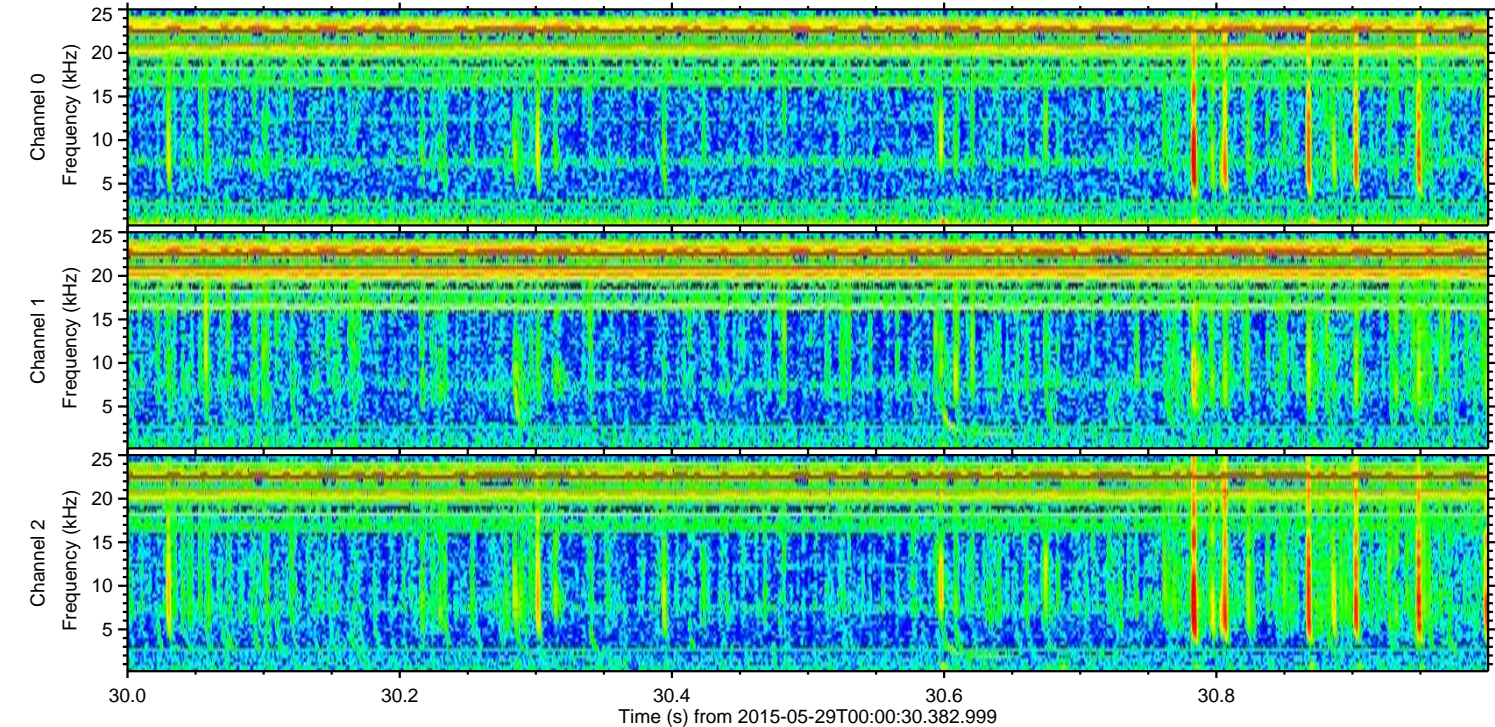
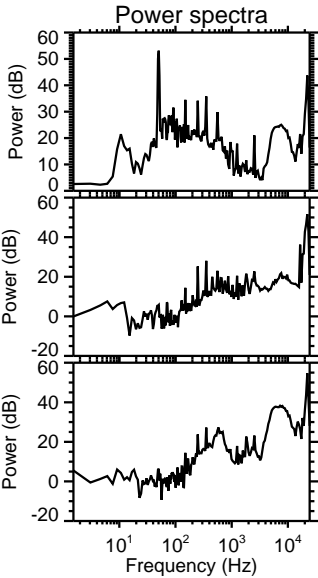
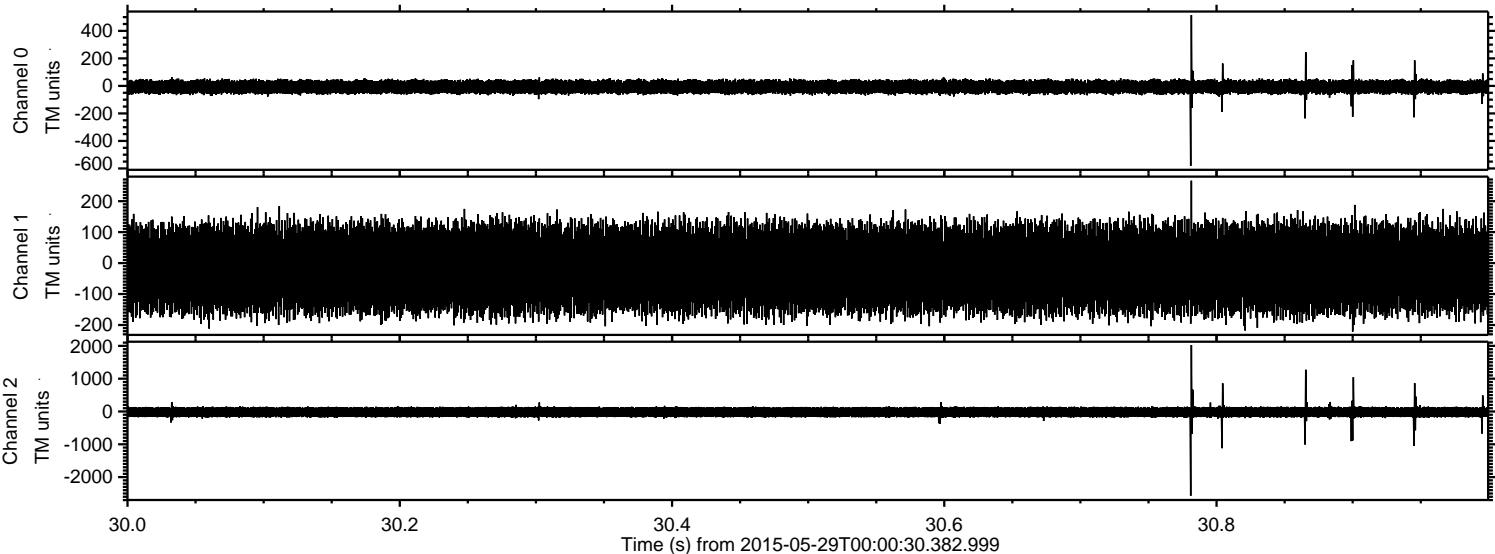
Processed Fri May 29 02:08:47 2015 by ELM ver.2012-10-06 from 001\_\_elm20150529\_000029\_\_dat00.bin





ELMAVAN 3D WAVEFORMS (Measured data sampled at 50 kHz) 49589 packets of 144 samples from 2015-05-29T00:00:30.382.999. Part 31/143

Processed Fri May 29 02:08:49 2015 by ELM ver.2012-10-06 from 001\_\_elm20150529\_000029\_\_dat00.bin



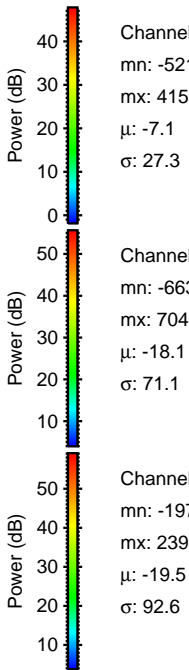
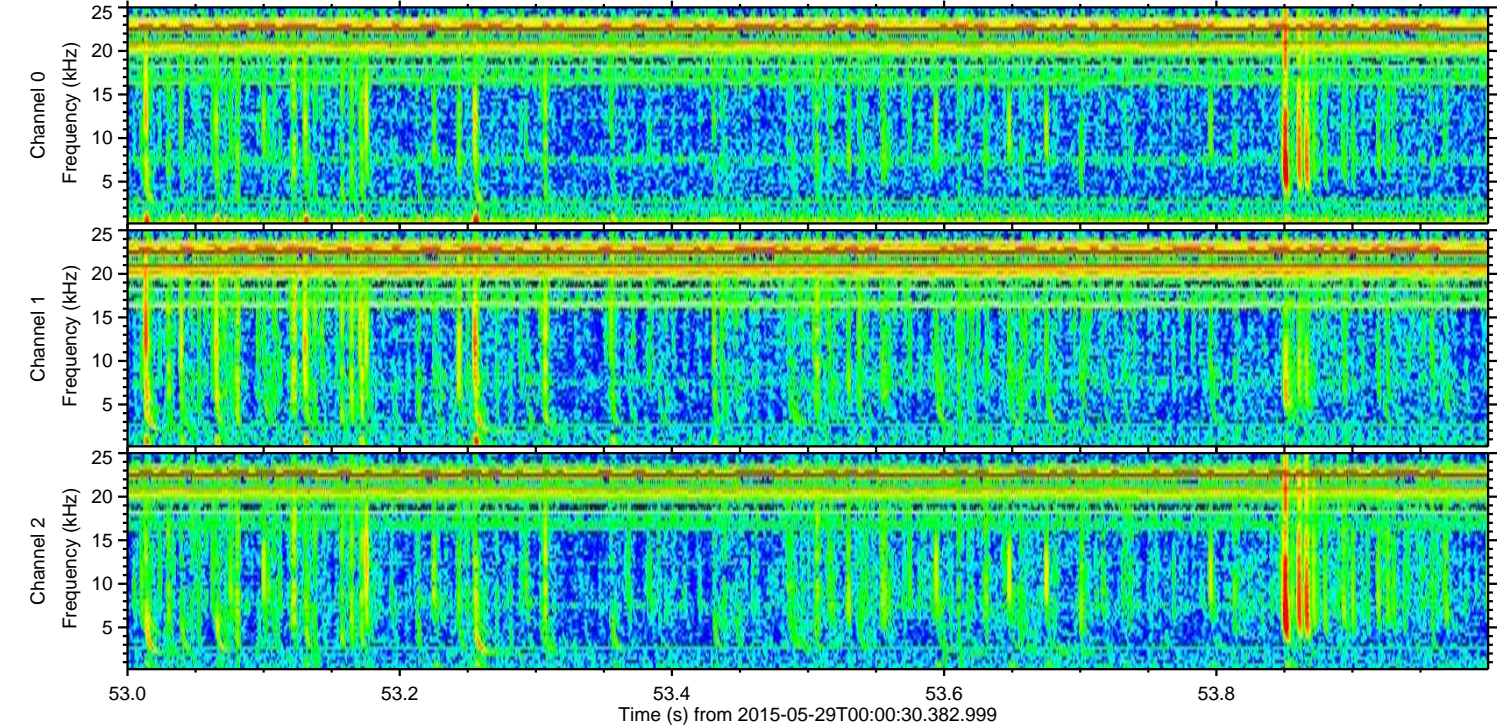
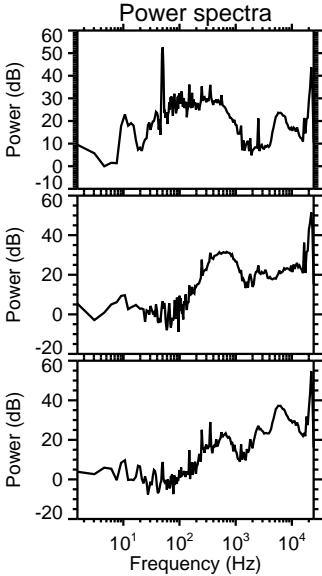
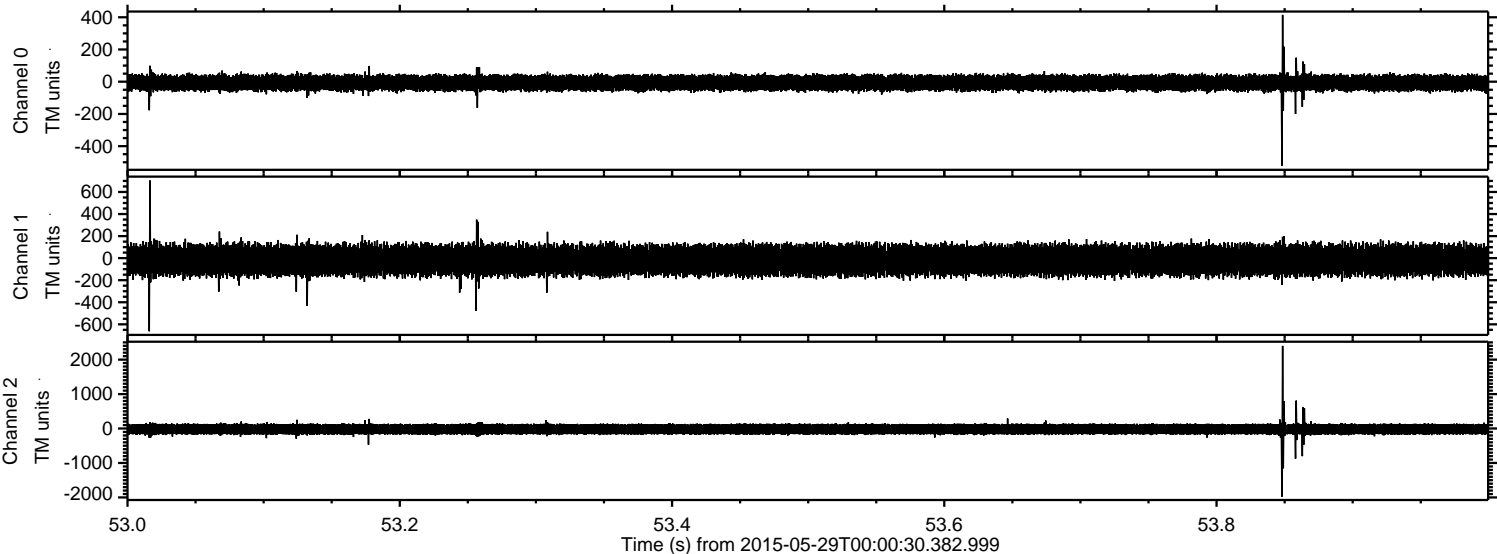
Channel 0  
mn: -581  
mx: 515  
 $\mu$ : -7.1  
 $\sigma$ : 26.9

Channel 1  
mn: -221  
mx: 266  
 $\mu$ : -18.0  
 $\sigma$ : 70.8

Channel 2  
mn: -2570  
mx: 2026  
 $\mu$ : -19.5  
 $\sigma$ : 92.8

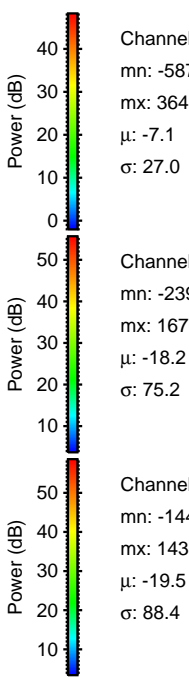
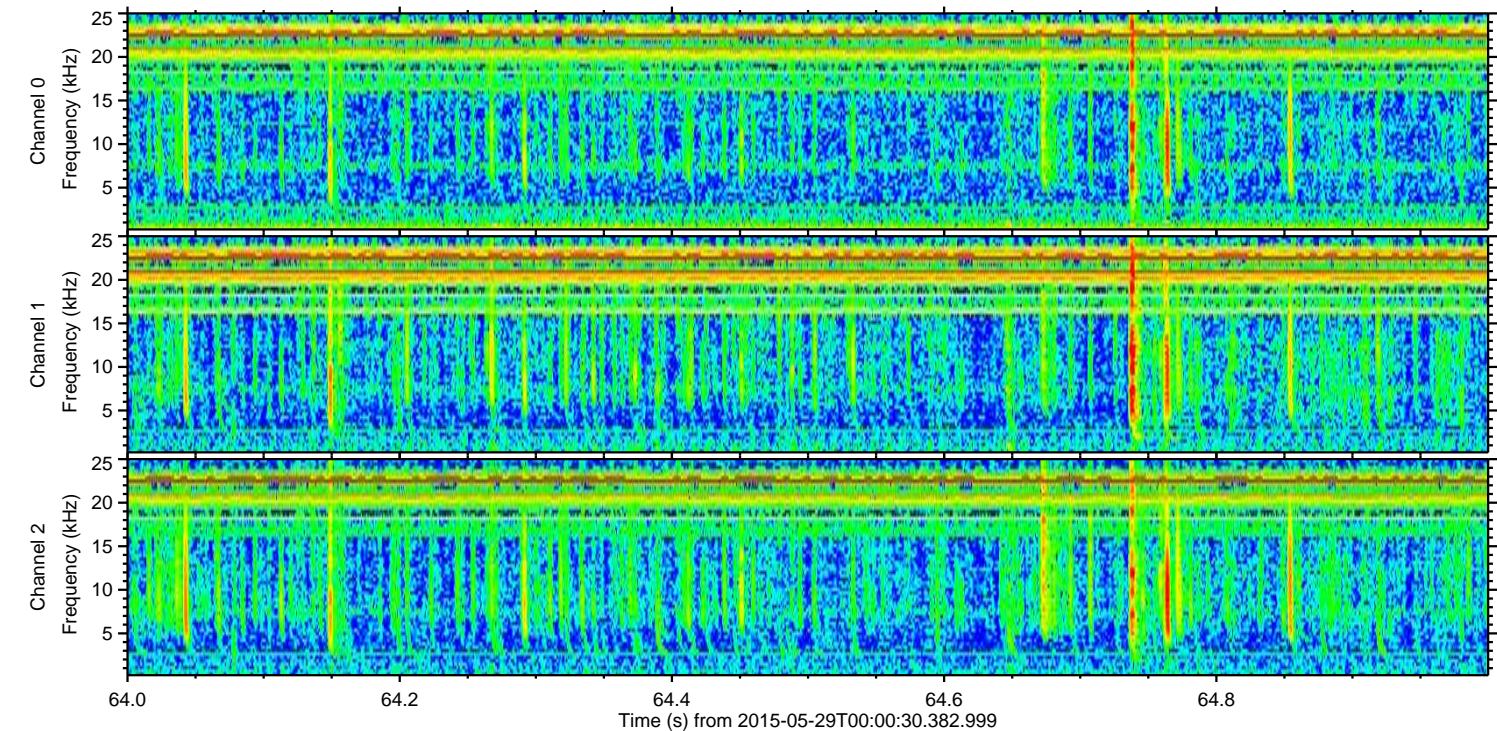
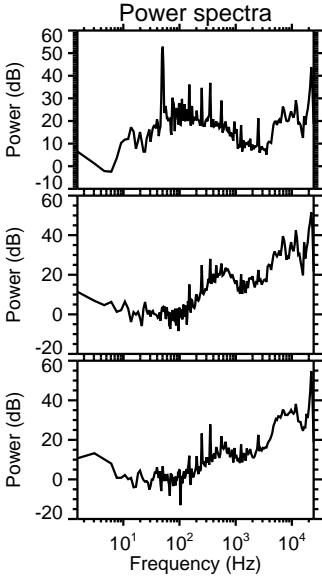
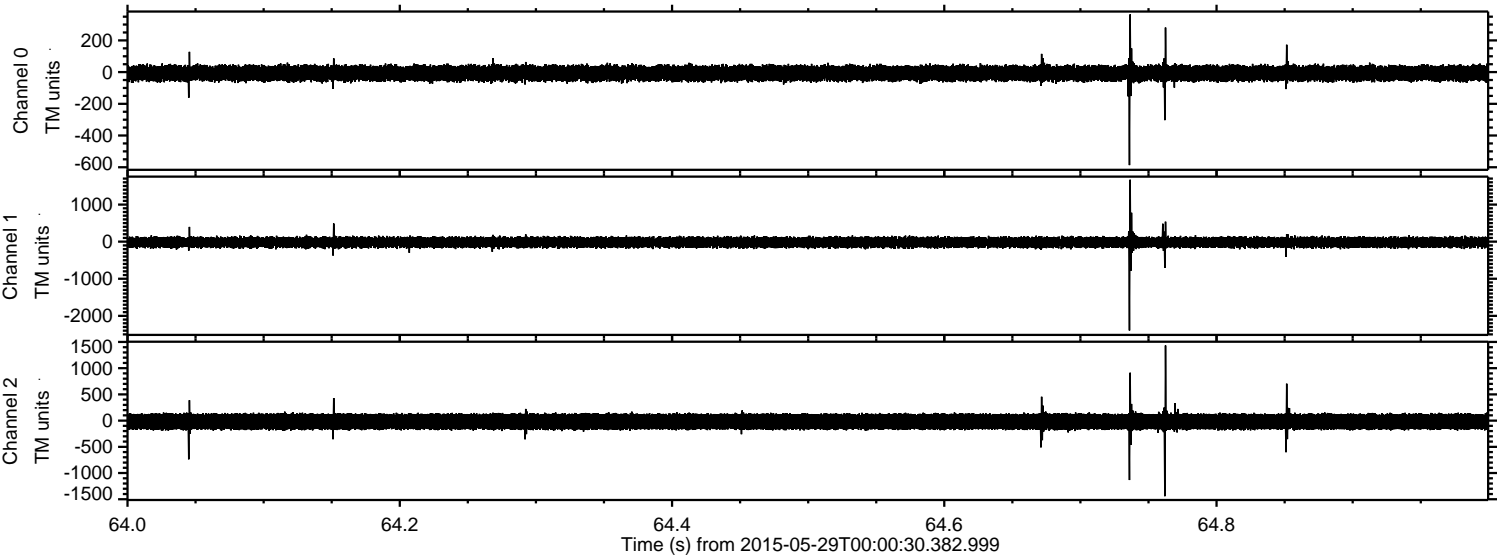


Processed Fri May 29 02:08:50 2015 by ELM ver.2012-10-06 from 001\_\_elm20150529\_000029\_\_dat00.bin





Processed Fri May 29 02:08:51 2015 by ELM ver.2012-10-06 from 001\_\_elm20150529\_000029\_\_dat00.bin



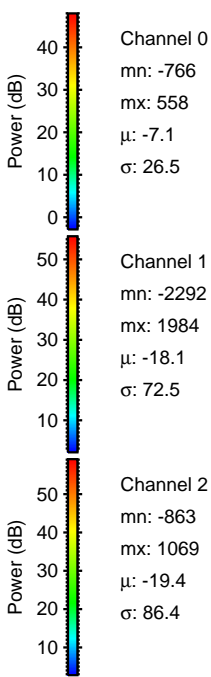
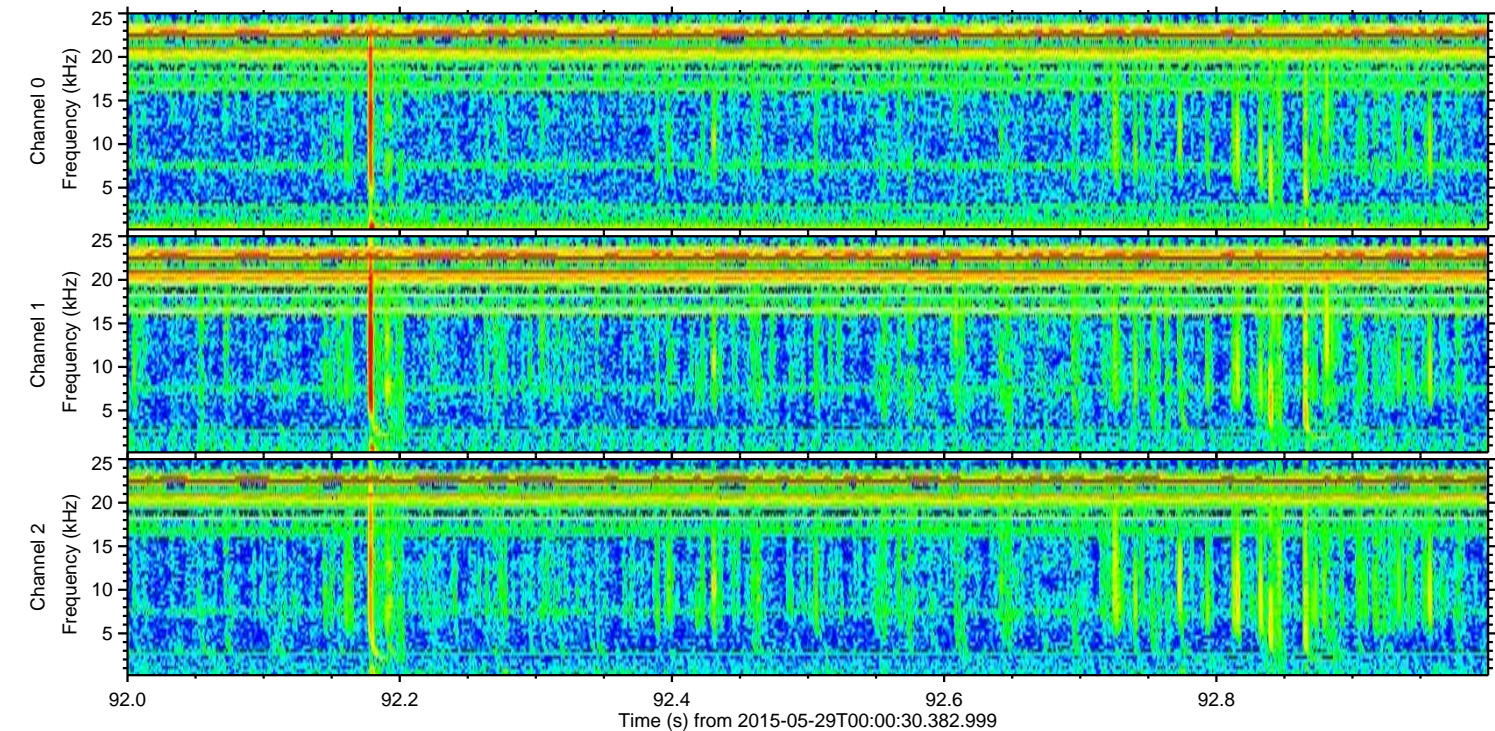
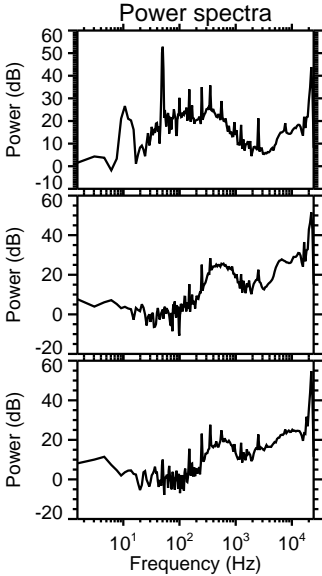
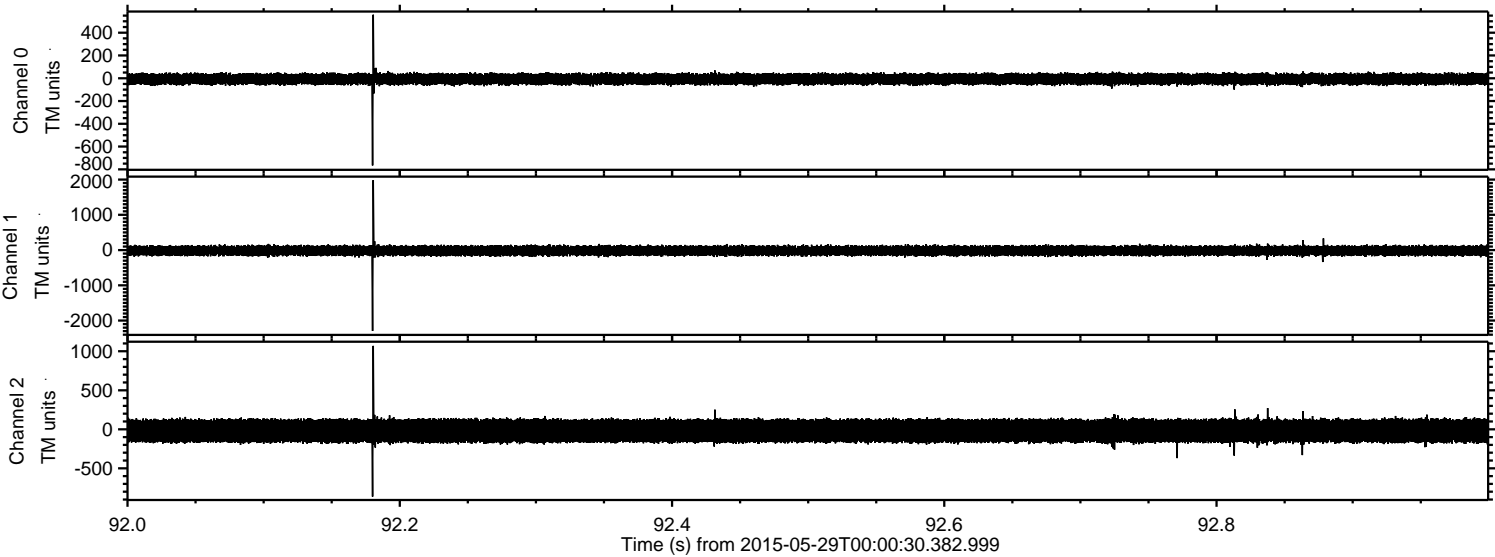
Channel 0  
mn: -587  
mx: 364  
 $\mu$ : -7.1  
 $\sigma$ : 27.0

Channel 1  
mn: -2394  
mx: 1670  
 $\mu$ : -18.2  
 $\sigma$ : 75.2

Channel 2  
mn: -1442  
mx: 1433  
 $\mu$ : -19.5  
 $\sigma$ : 88.4

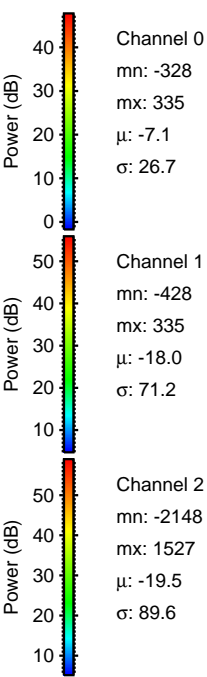
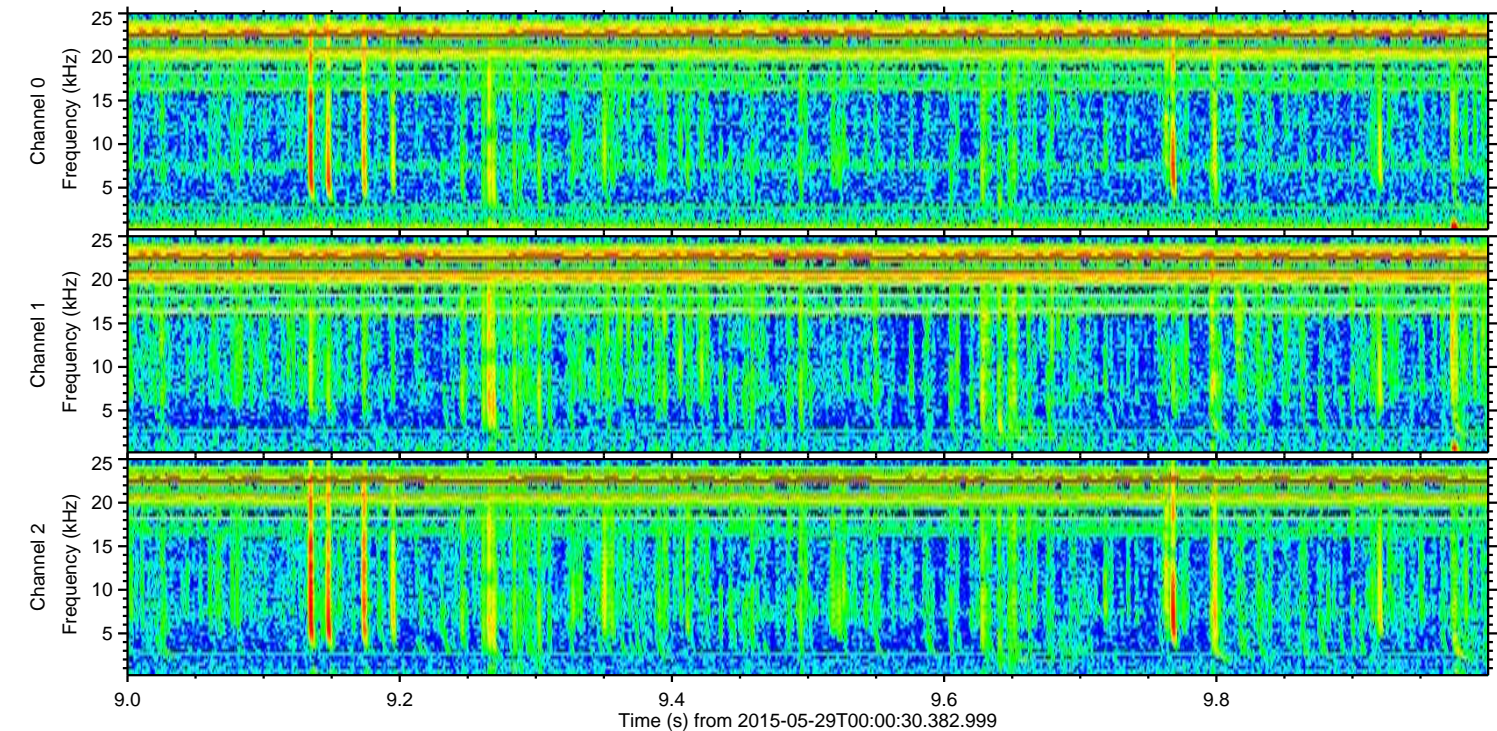
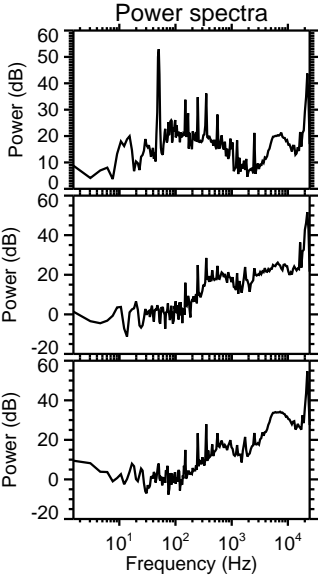
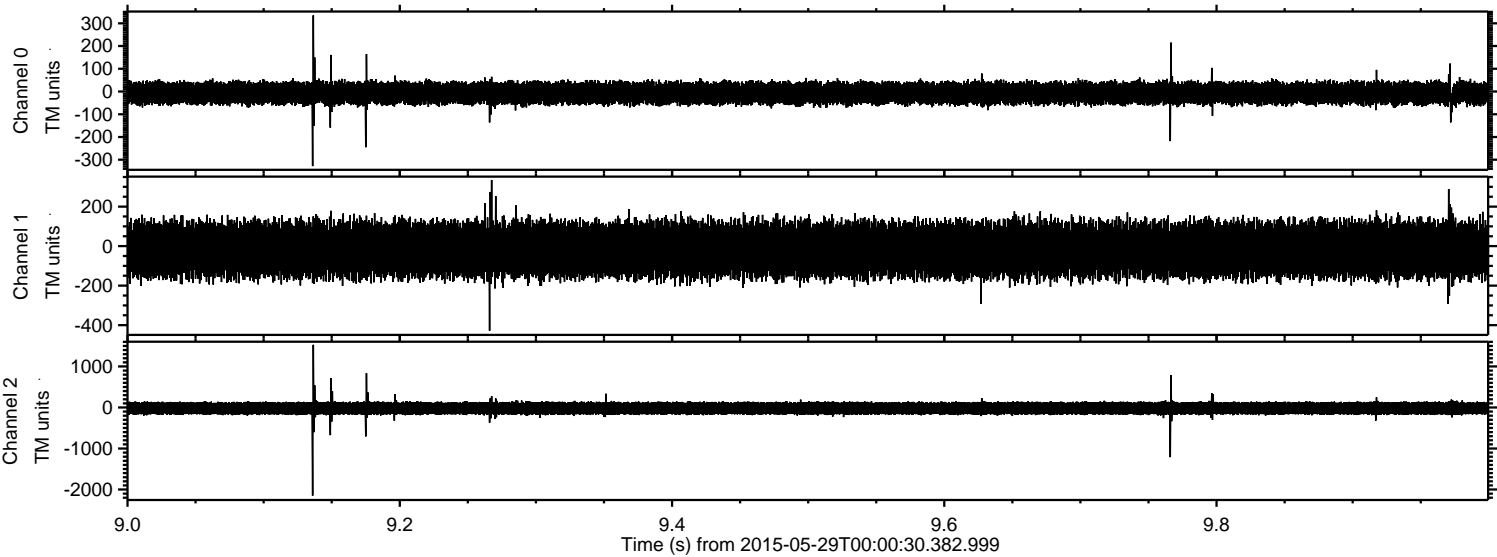


Processed Fri May 29 02:08:52 2015 by ELM ver.2012-10-06 from 001\_\_elm20150529\_000029\_\_dat00.bin





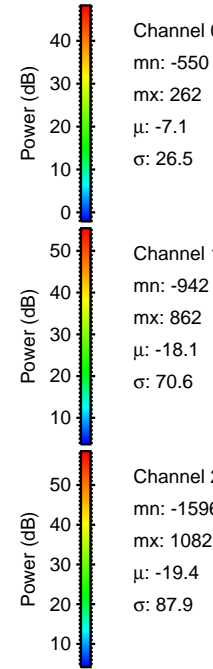
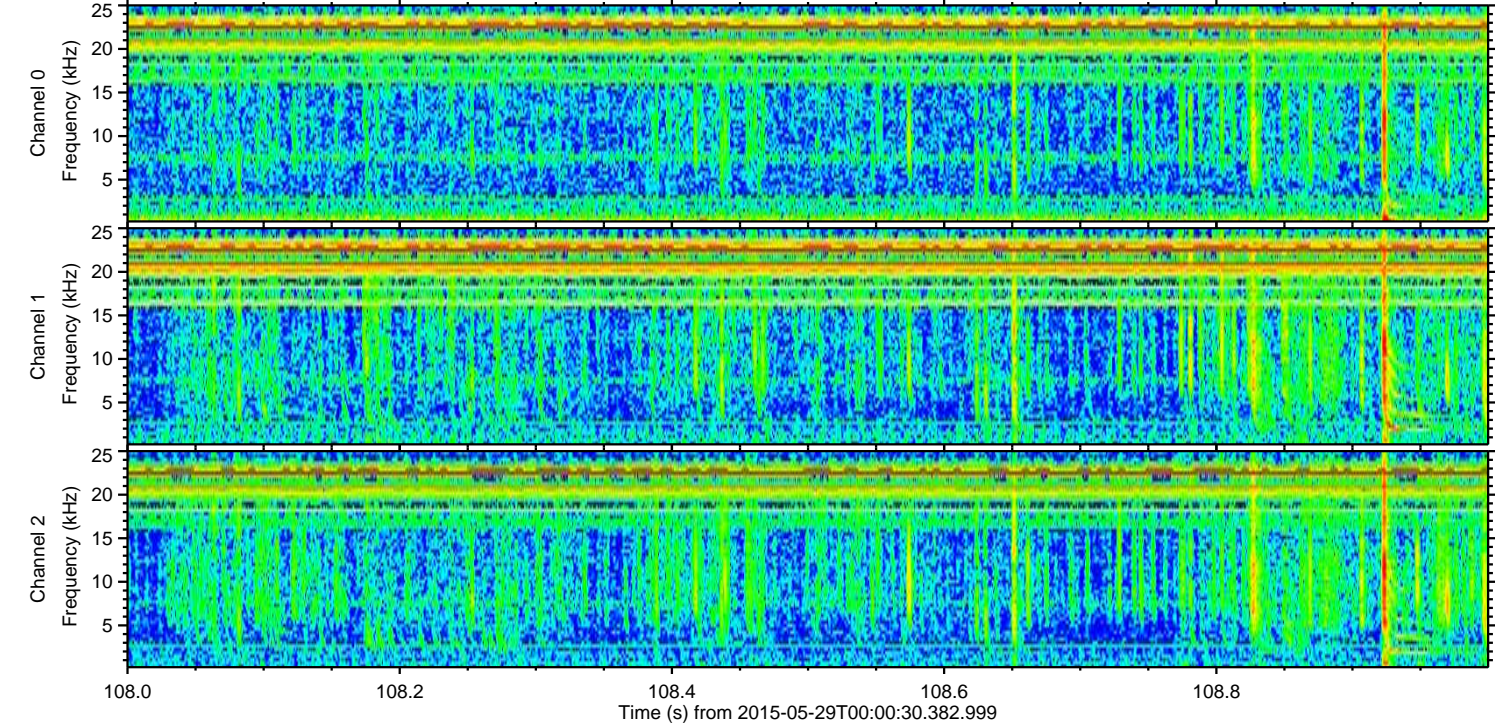
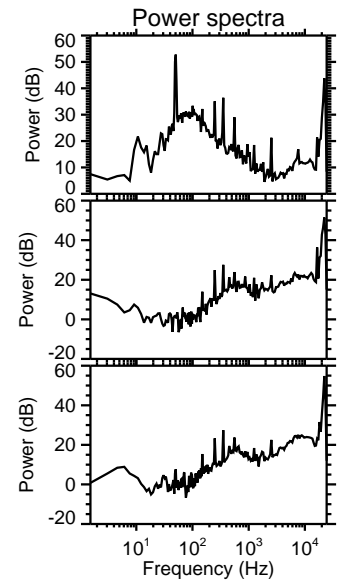
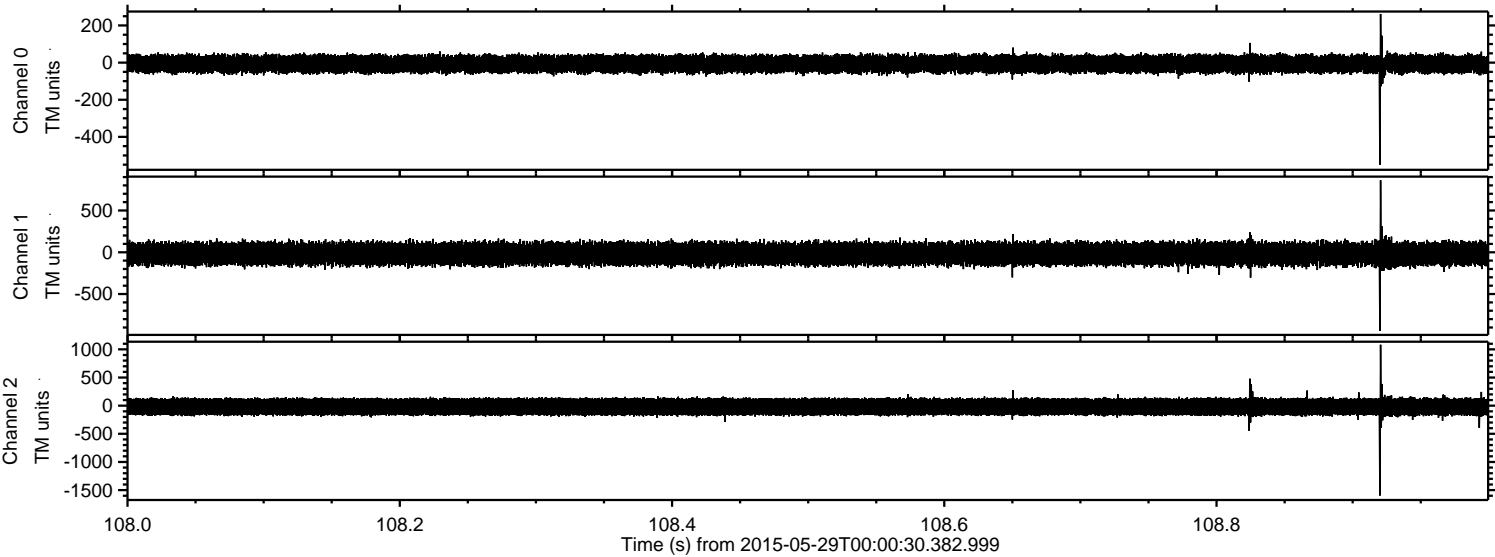
Processed Fri May 29 02:08:53 2015 by ELM ver.2012-10-06 from 001\_\_elm20150529\_000029\_\_dat00.bin





ELMAVAN 3D WAVEFORMS (Measured data sampled at 50 kHz) 49589 packets of 144 samples from 2015-05-29T00:00:30.382.999. Part 109/143

Processed Fri May 29 02:08:54 2015 by ELM ver.2012-10-06 from 001\_\_elm20150529\_000029\_\_dat00.bin





ELMAVAN 3D WAVEFORMS (Measured data sampled at 50 kHz) 49589 packets of 144 samples from 2015-05-29T00:00:30.382.999. Part 122/143

Processed Fri May 29 02:08:55 2015 by ELM ver.2012-10-06 from 001\_\_elm20150529\_000029\_\_dat00.bin

