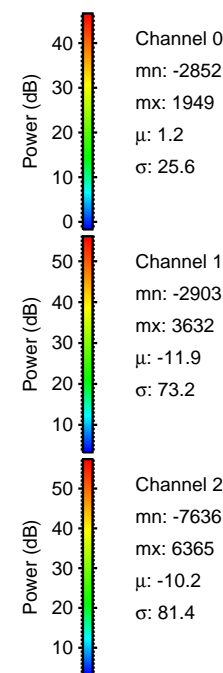
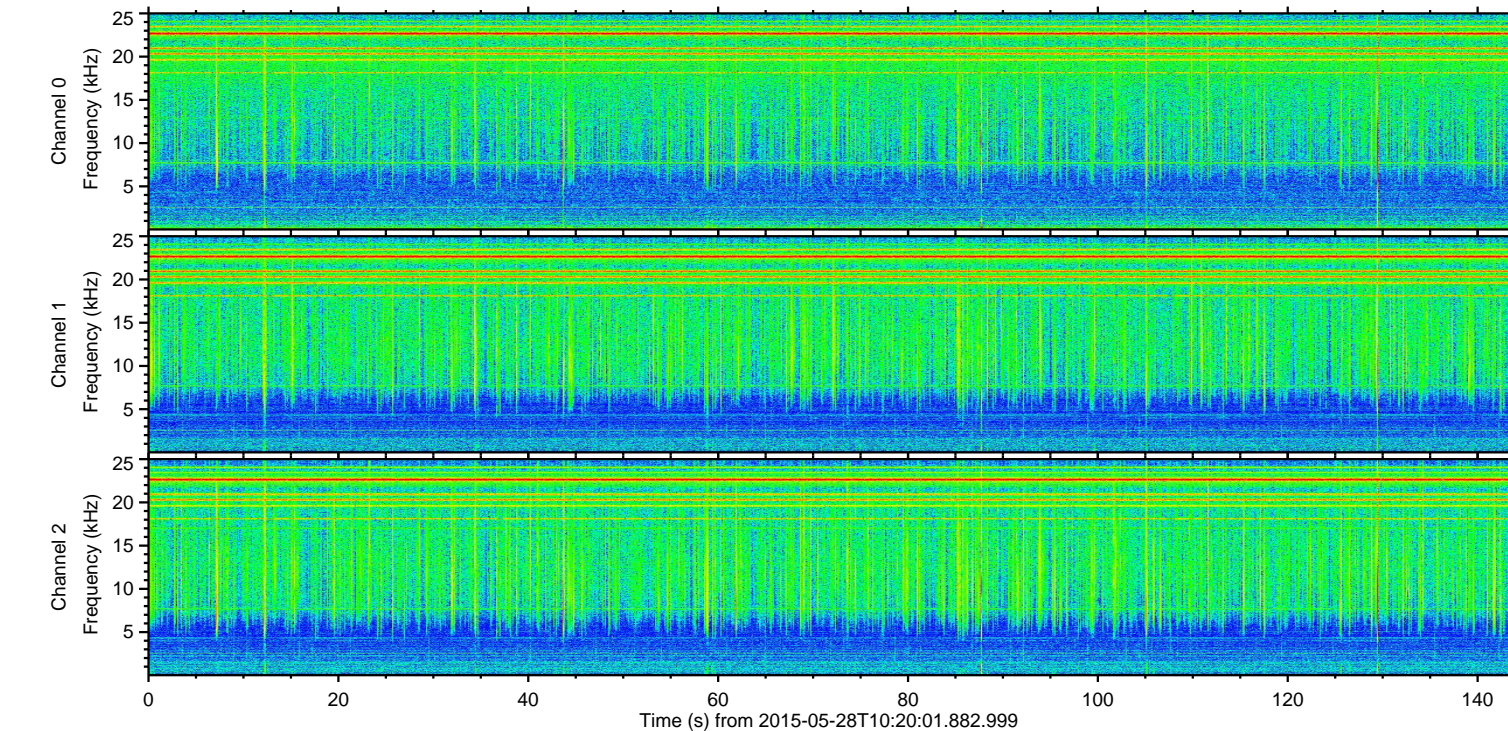
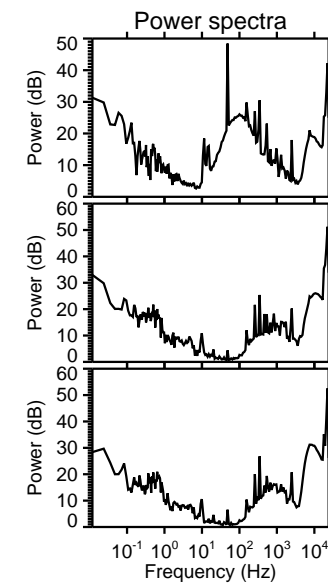
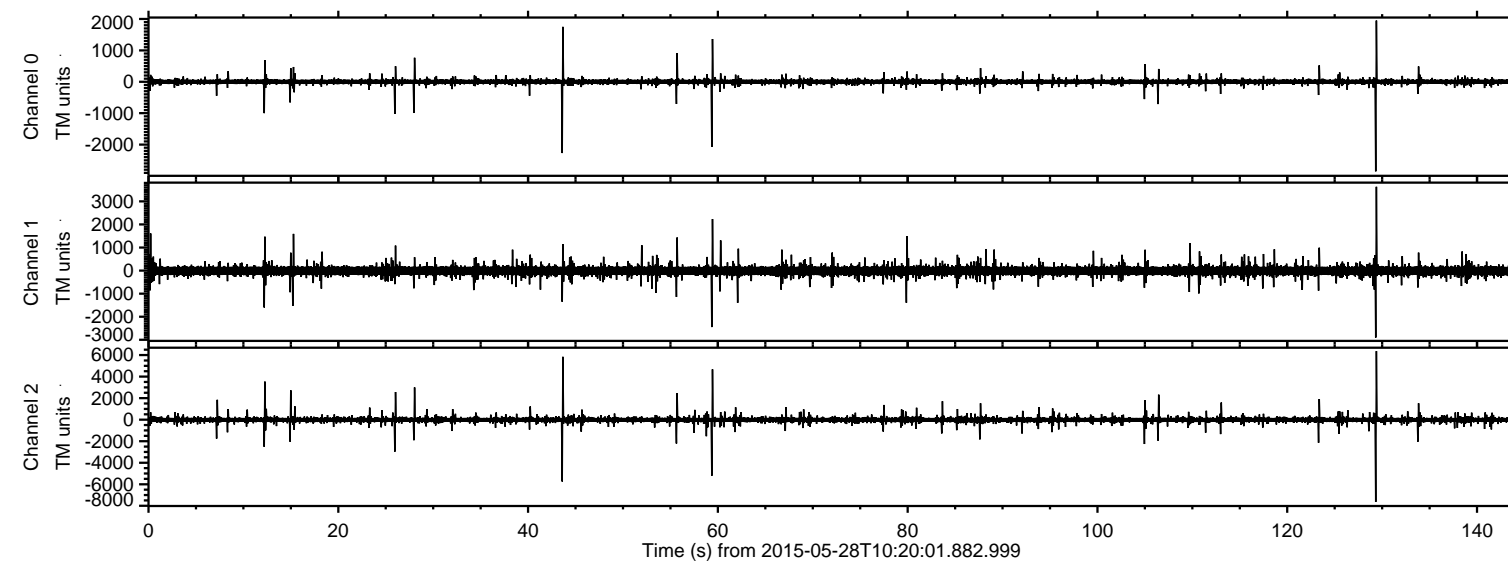


ELMAVAN 3D WAVEFORMS (Measured data sampled at 50 kHz) 49786 packets of 144 samples from 2015-05-28T10:20:01.882.999.

Processed Thu May 28 12:27:27 2015 by ELM ver.2012-10-06 from 001\_\_elm20150528\_102000\_\_dat00.bin



Channel 0  
mn: -2852  
mx: 1949  
 $\mu$ : 1.2  
 $\sigma$ : 25.6

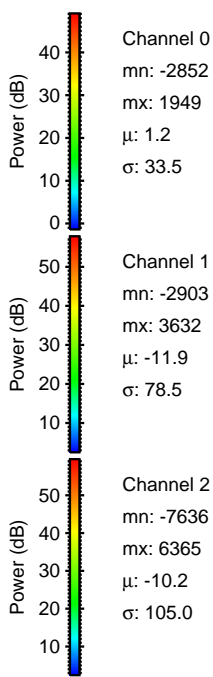
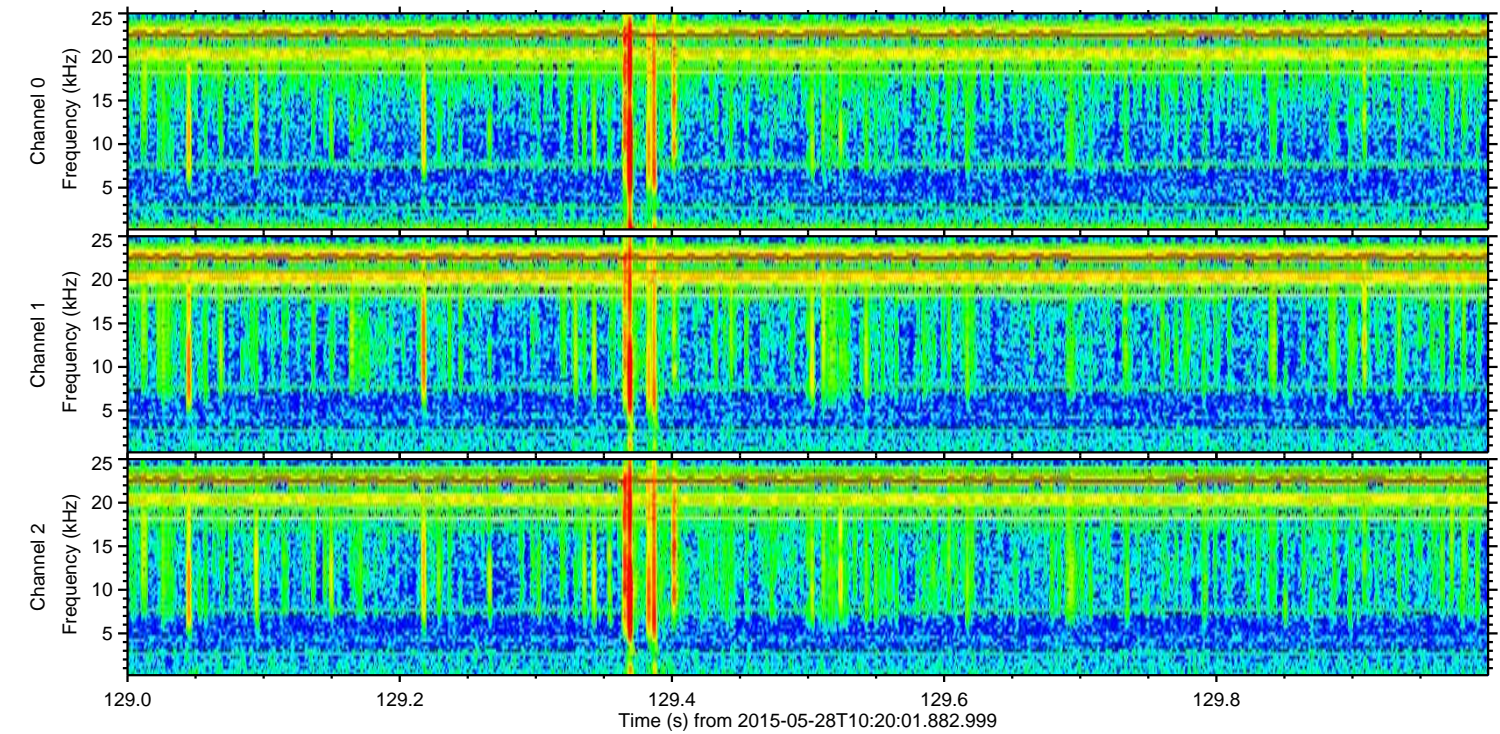
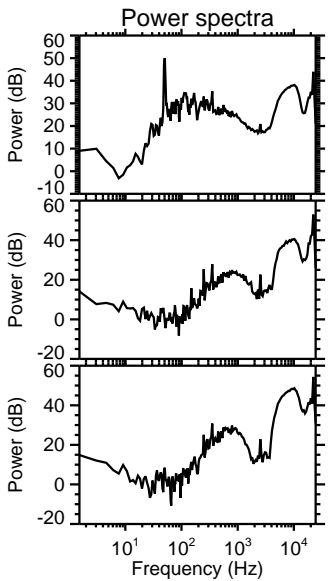
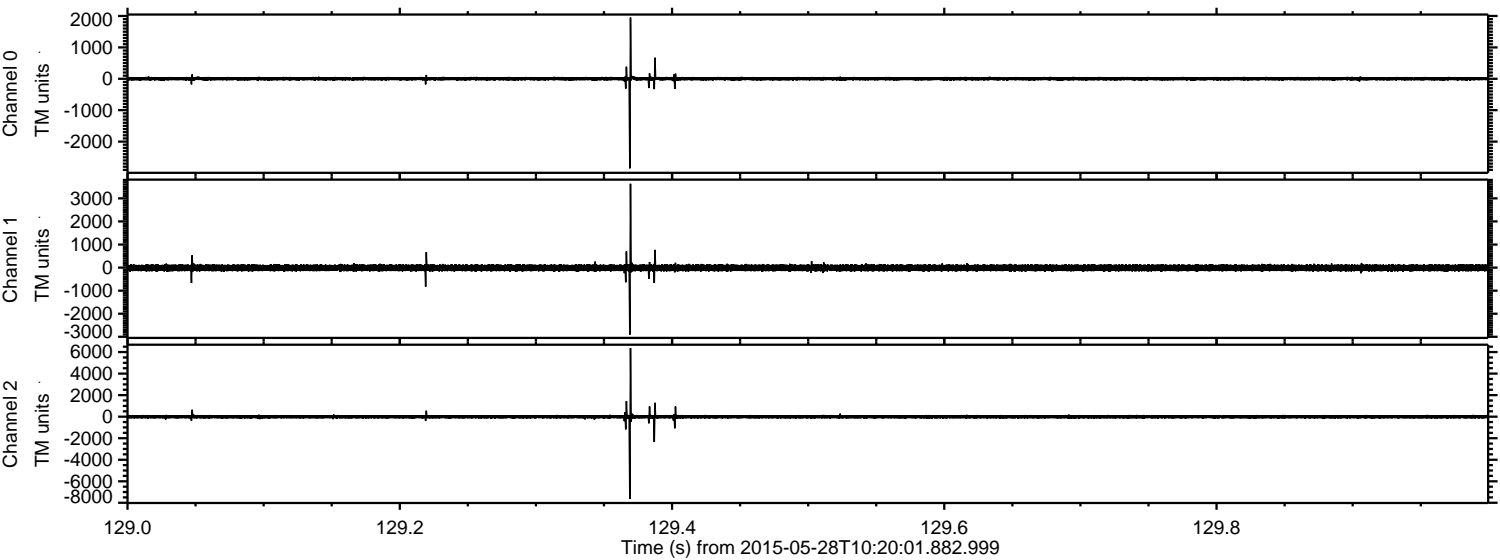
Channel 1  
mn: -2903  
mx: 3632  
 $\mu$ : -11.9  
 $\sigma$ : 73.2

Channel 2  
mn: -7636  
mx: 6365  
 $\mu$ : -10.2  
 $\sigma$ : 81.4



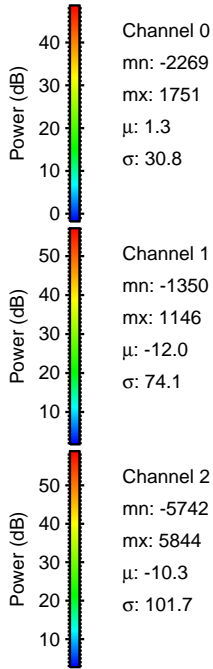
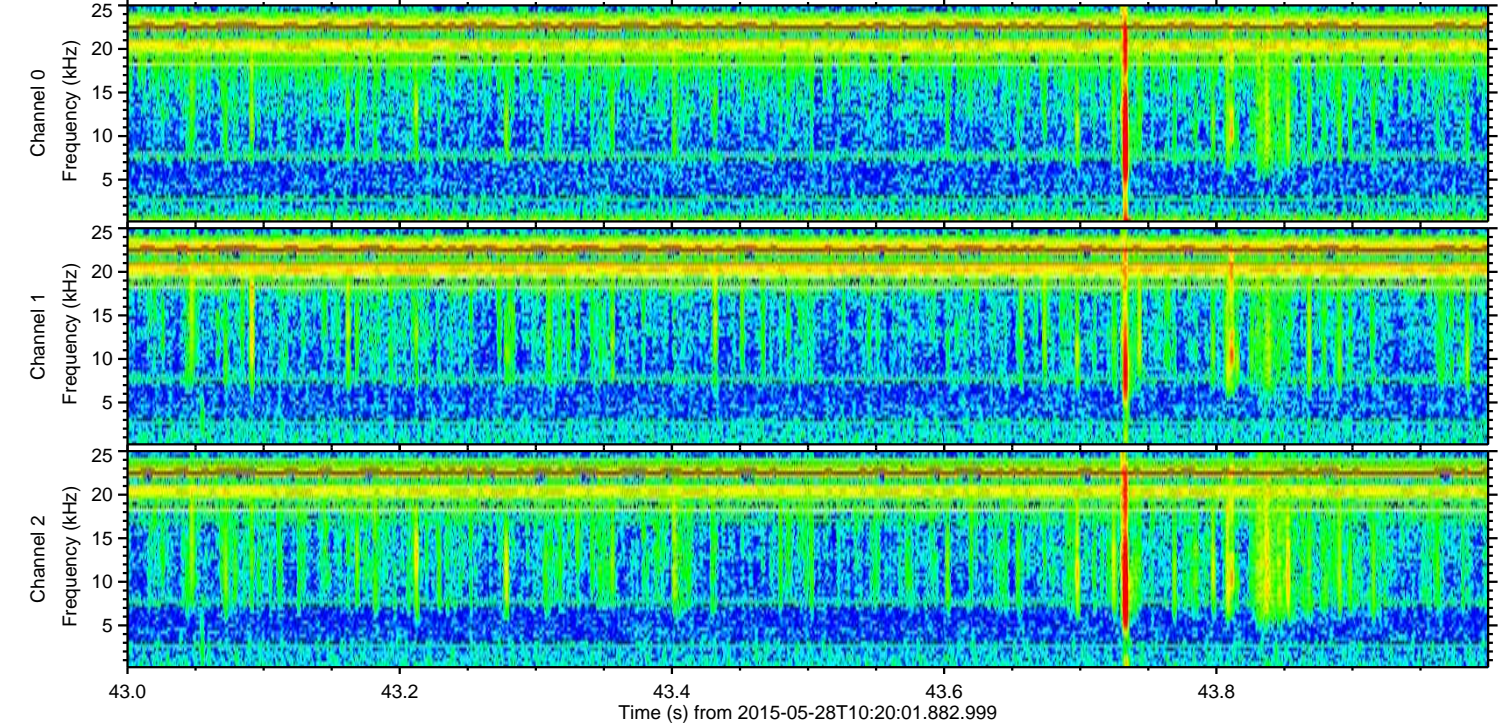
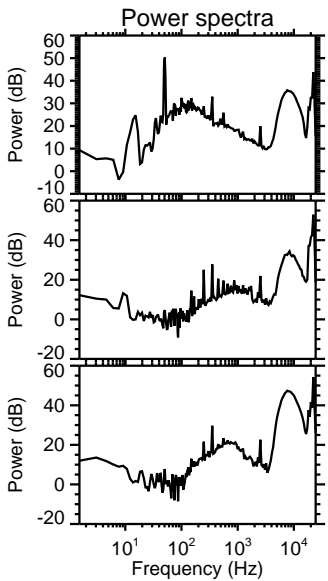
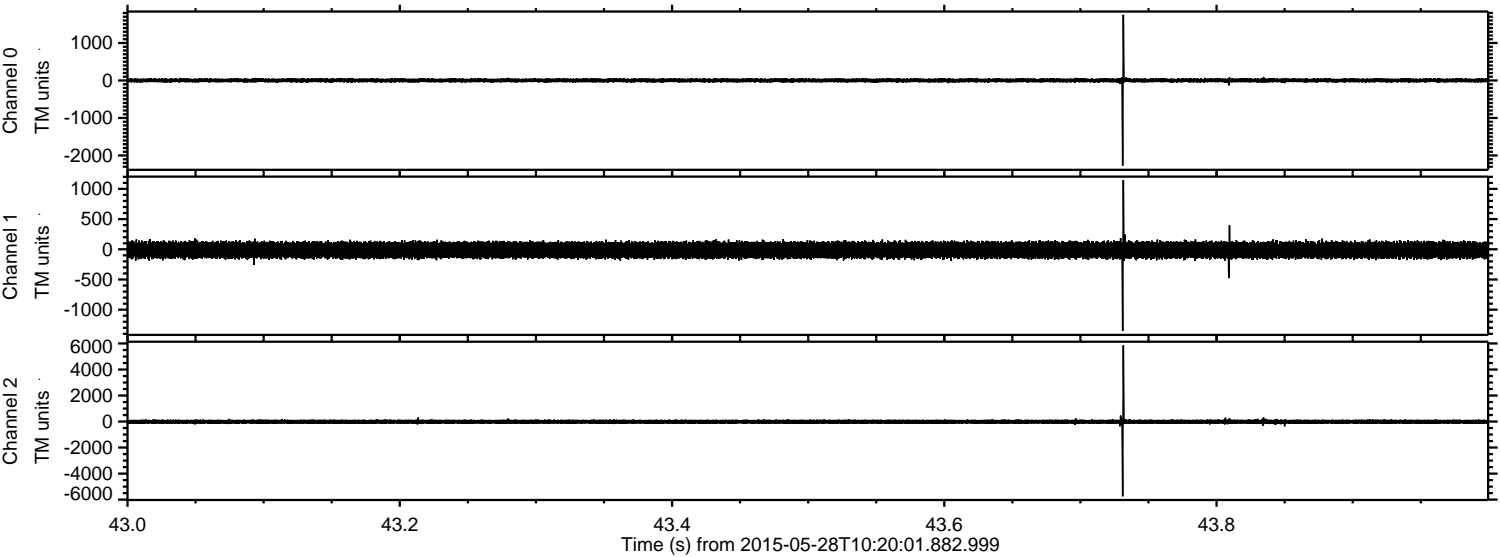
ELMAVAN 3D WAVEFORMS (Measured data sampled at 50 kHz) 49786 packets of 144 samples from 2015-05-28T10:20:01.882.999. Part 130/144

Processed Thu May 28 12:27:38 2015 by ELM ver.2012-10-06 from 001\_\_elm20150528\_102000\_\_dat00.bin





Processed Thu May 28 12:27:39 2015 by ELM ver.2012-10-06 from 001\_\_elm20150528\_102000\_\_dat00.bin



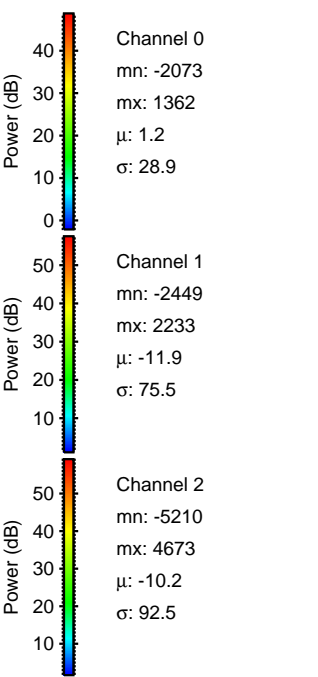
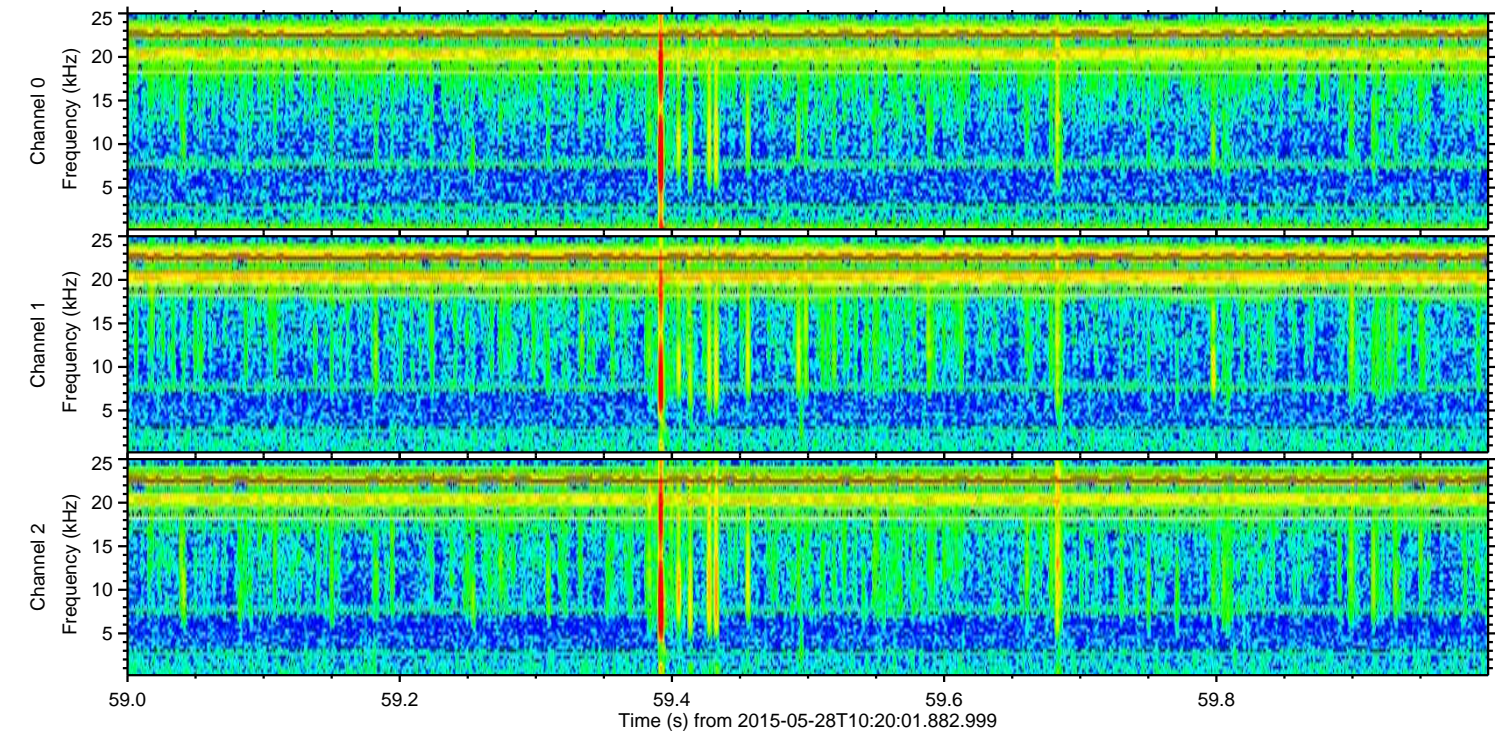
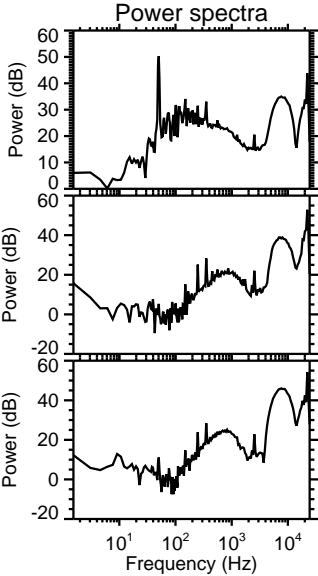
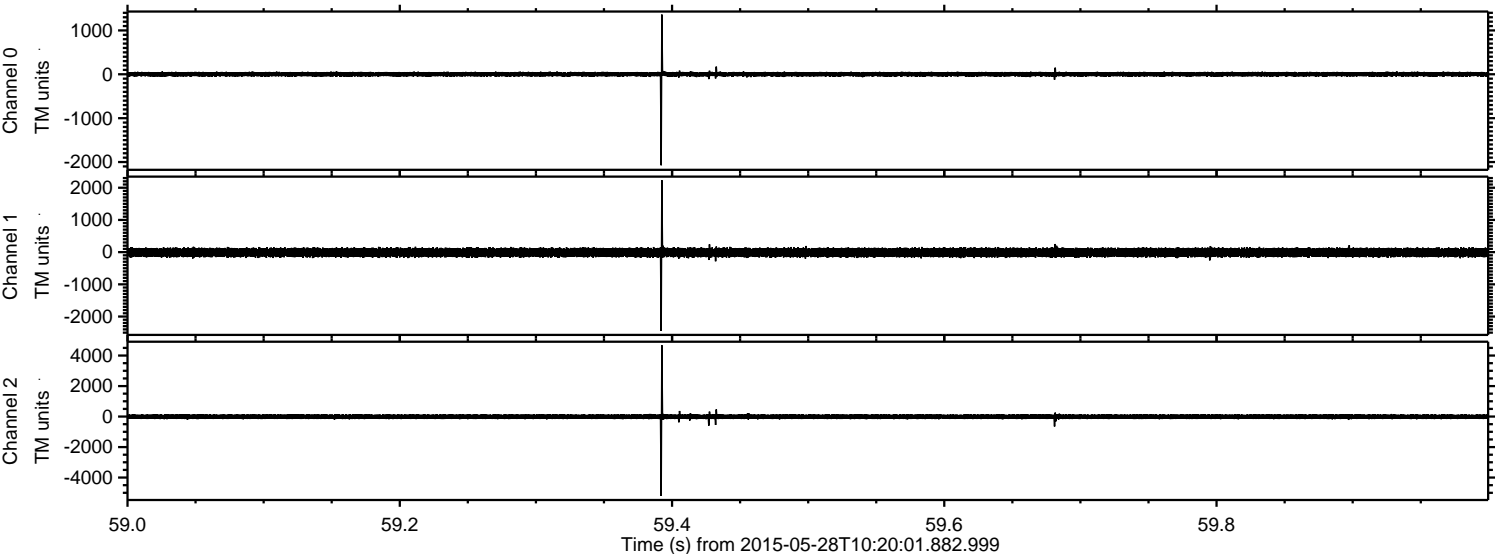
Channel 0  
mn: -2269  
mx: 1751  
 $\mu$ : 1.3  
 $\sigma$ : 30.8

Channel 1  
mn: -1350  
mx: 1146  
 $\mu$ : -12.0  
 $\sigma$ : 74.1

Channel 2  
mn: -5742  
mx: 5844  
 $\mu$ : -10.3  
 $\sigma$ : 101.7

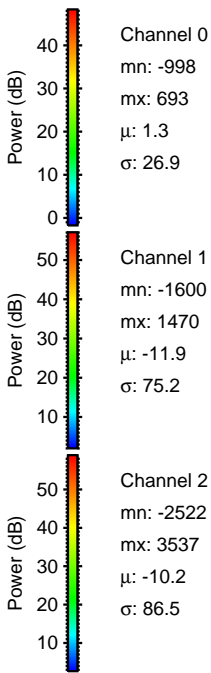
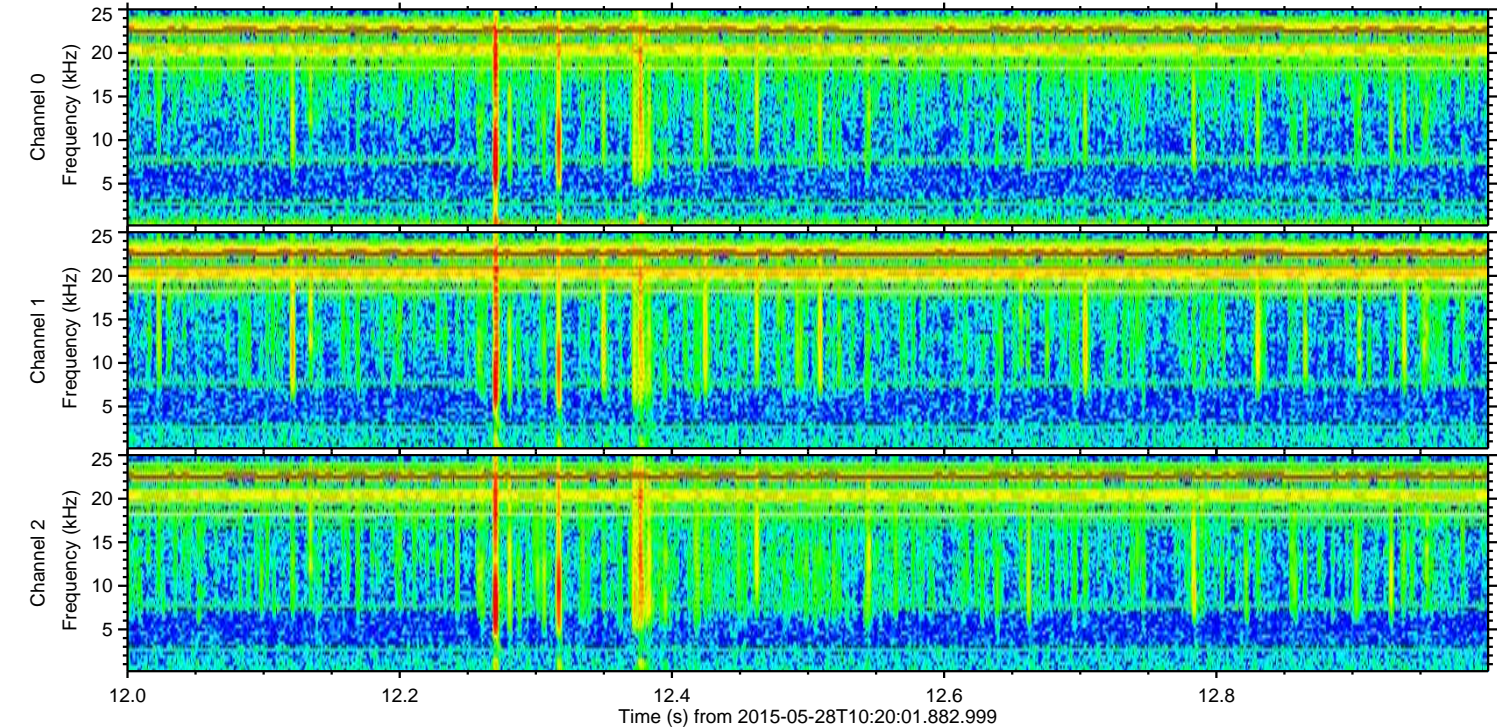
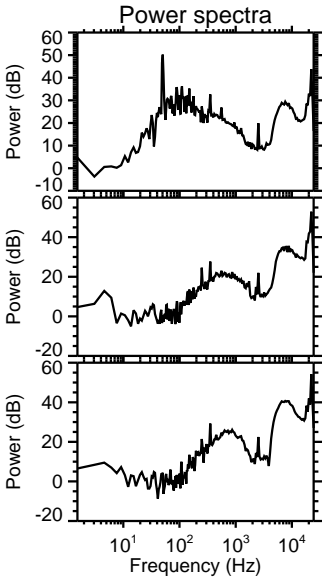
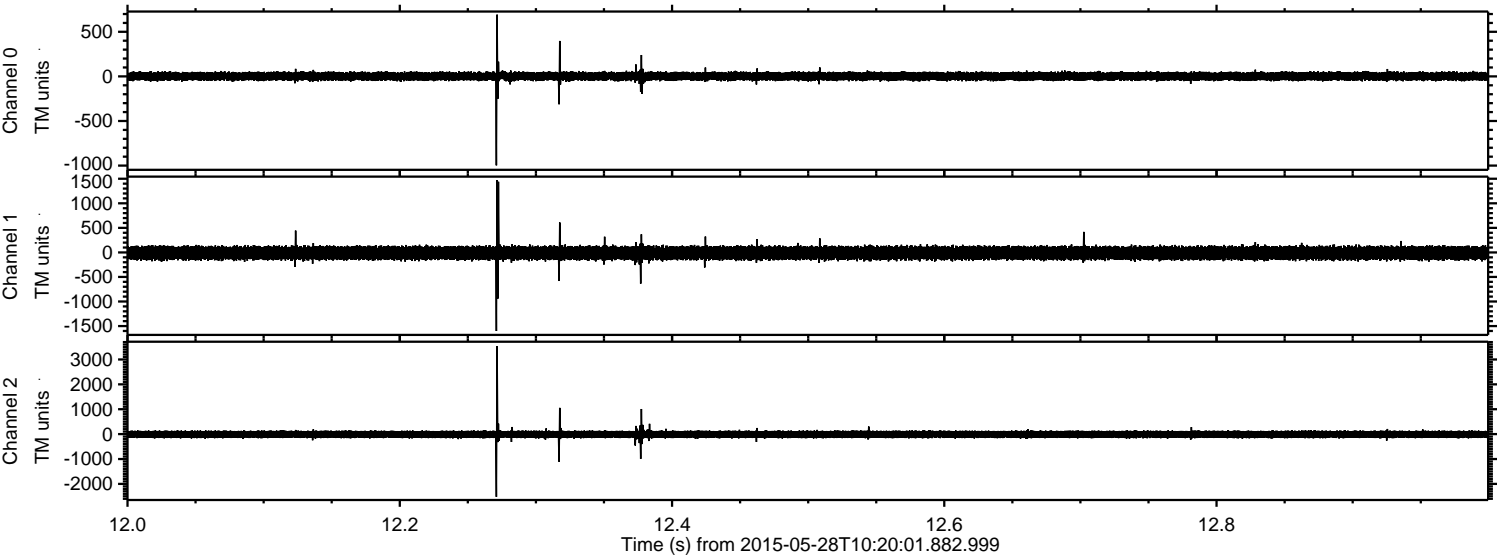


Processed Thu May 28 12:27:40 2015 by ELM ver.2012-10-06 from 001\_\_elm20150528\_102000\_\_dat00.bin



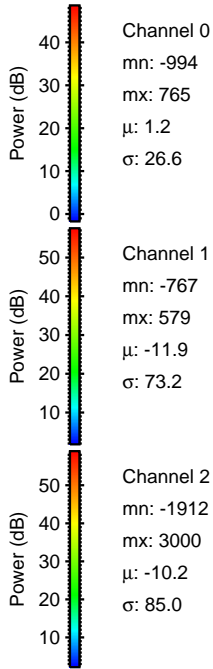
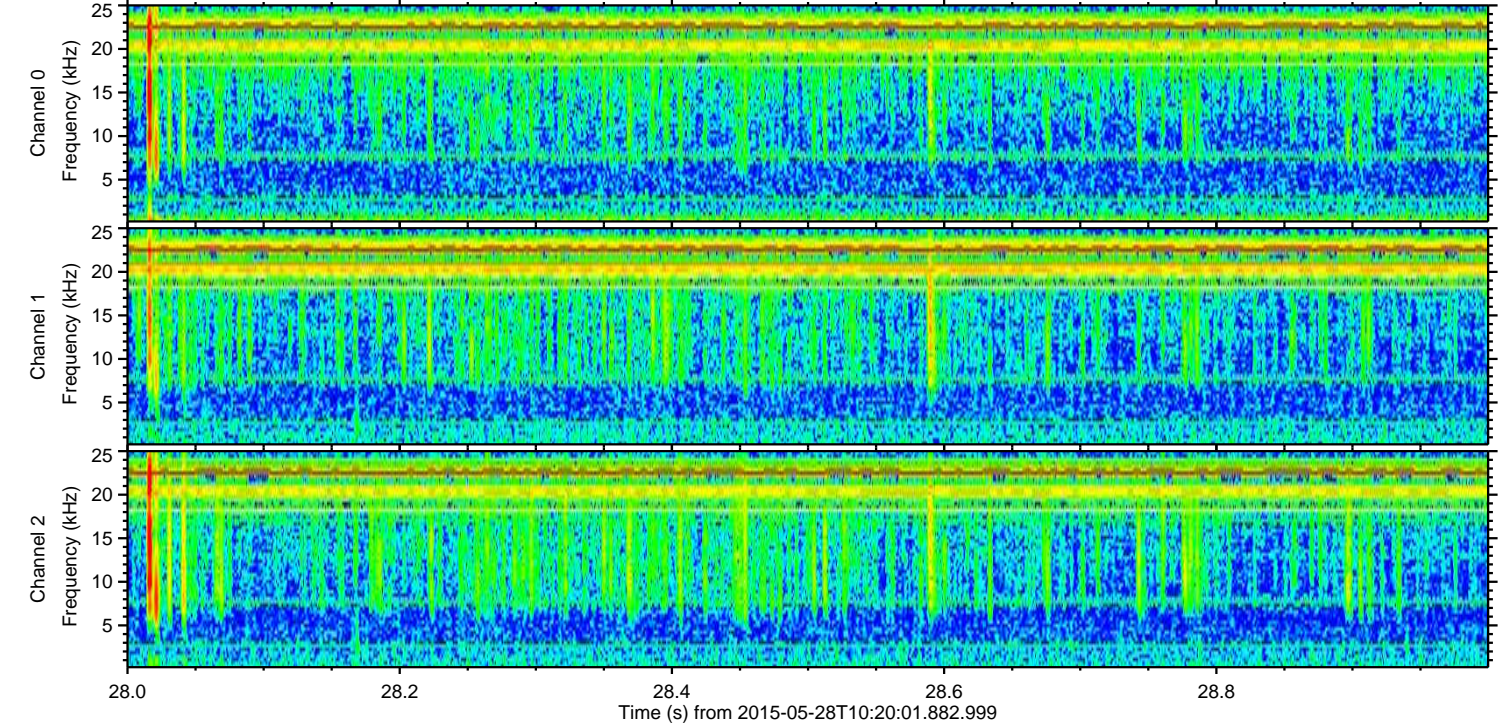
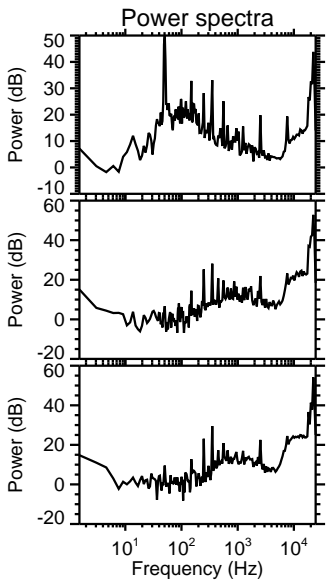
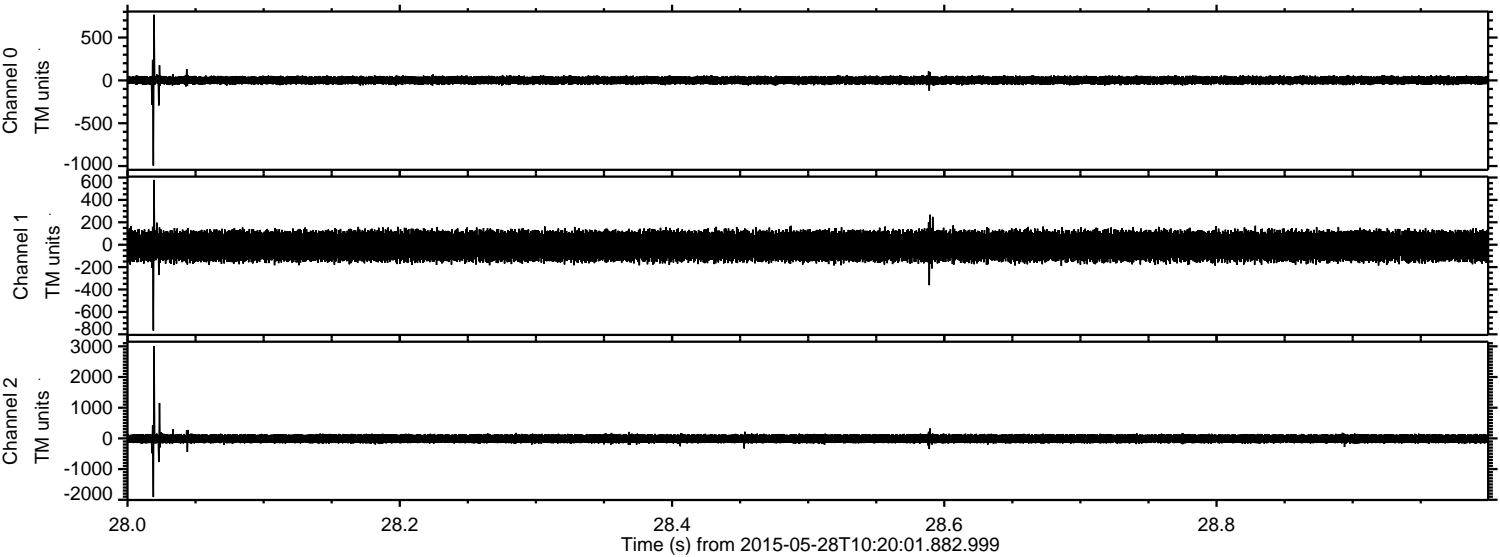


Processed Thu May 28 12:27:41 2015 by ELM ver.2012-10-06 from 001\_\_elm20150528\_102000\_\_dat00.bin



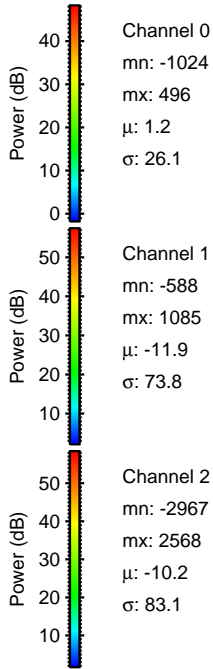
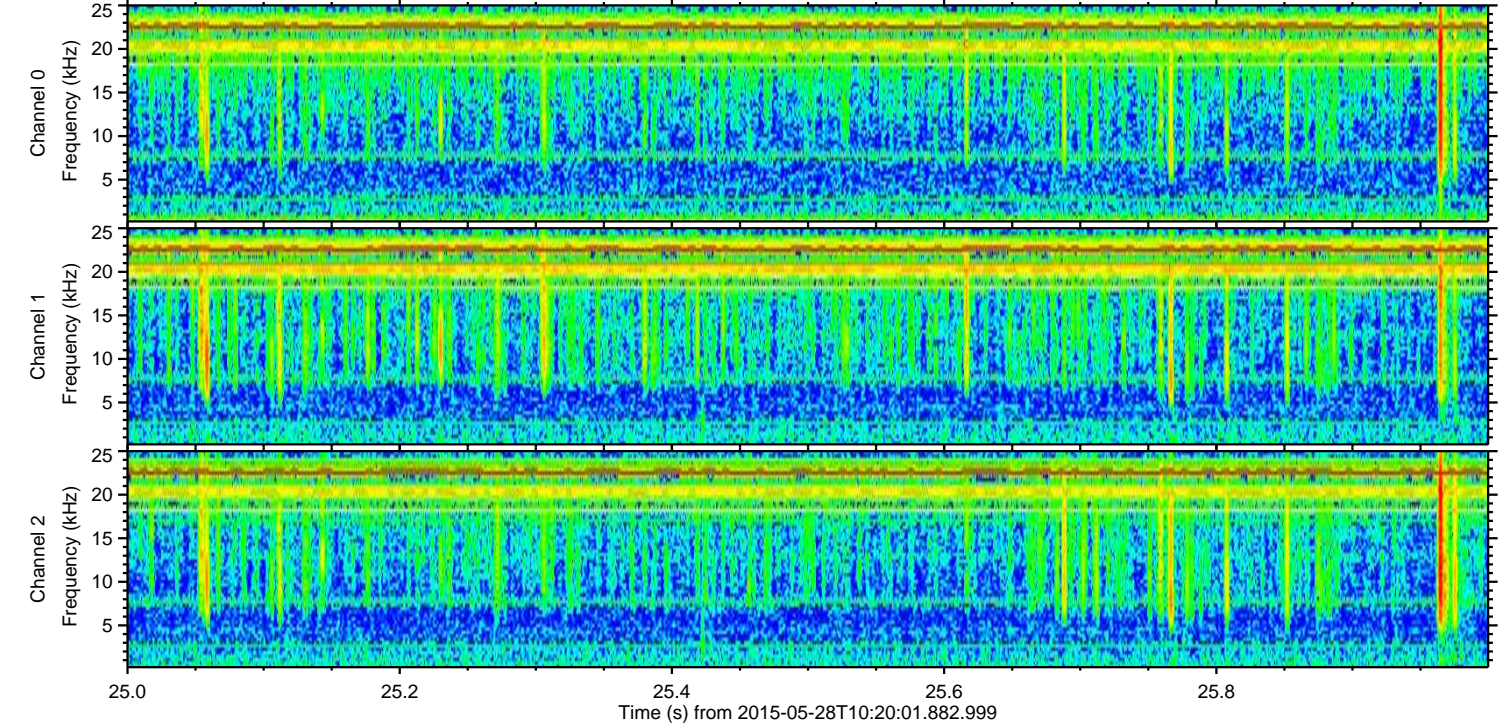
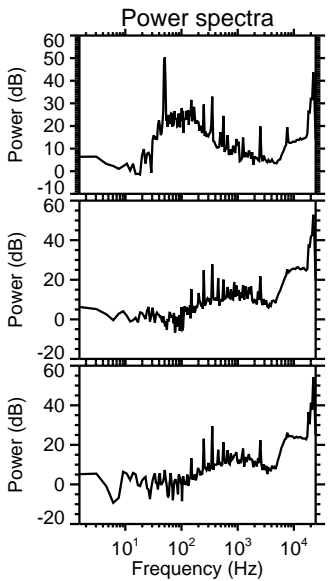
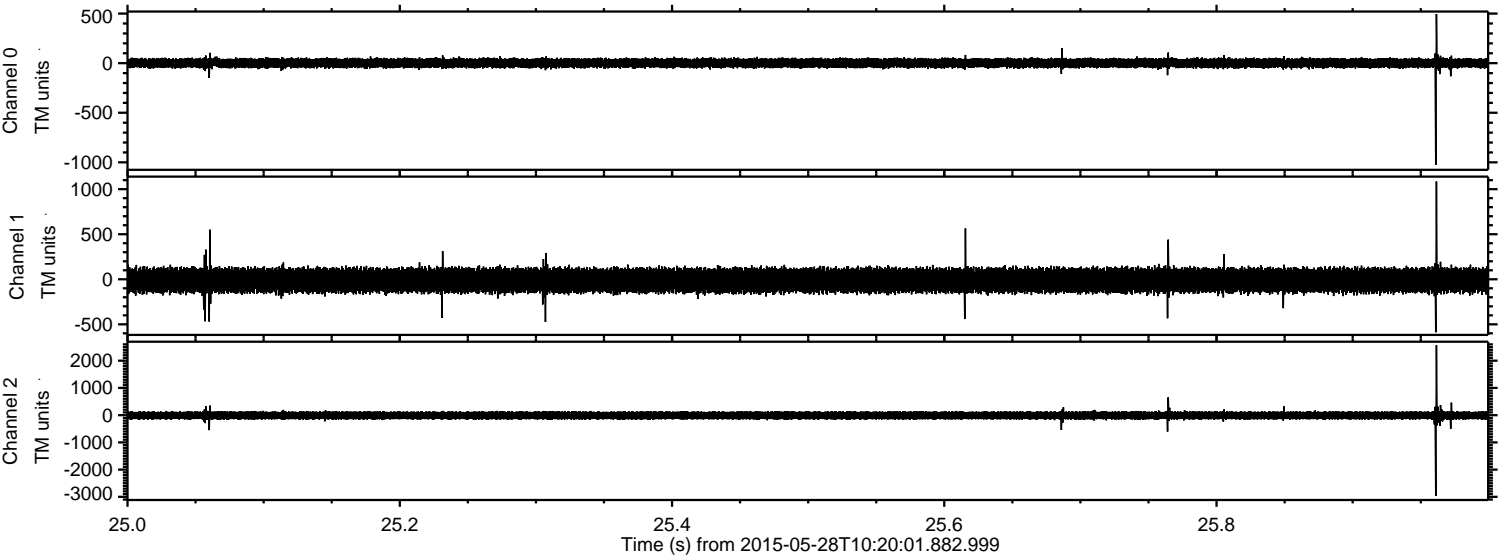


Processed Thu May 28 12:27:42 2015 by ELM ver.2012-10-06 from 001\_\_elm20150528\_102000\_\_dat00.bin



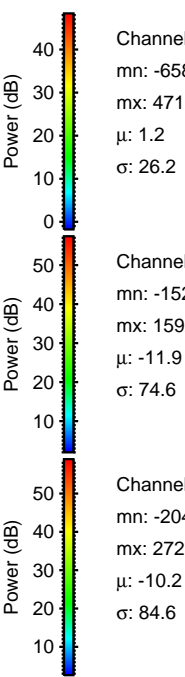
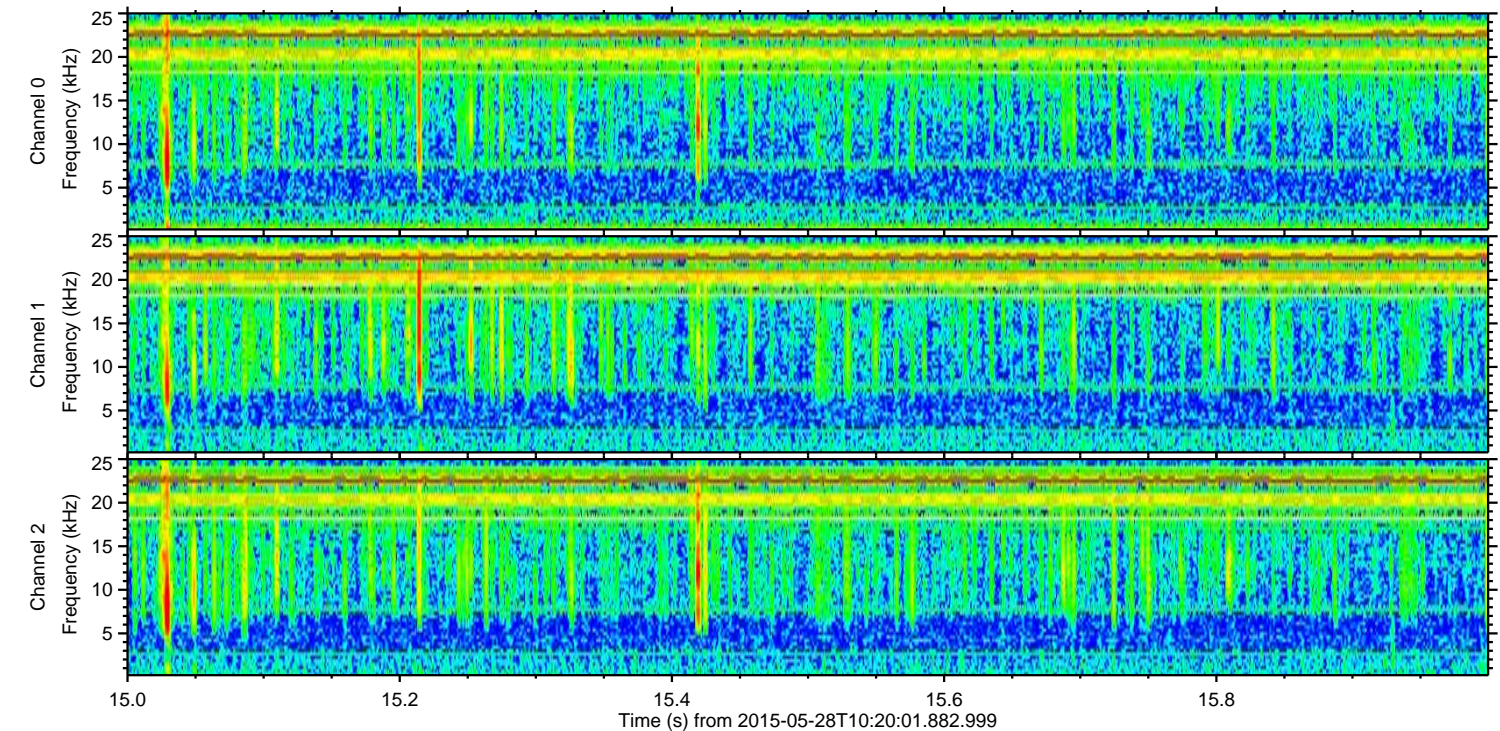
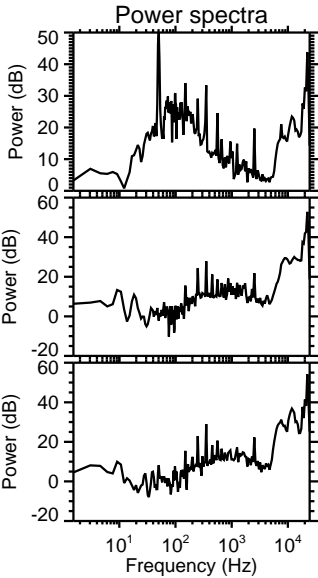
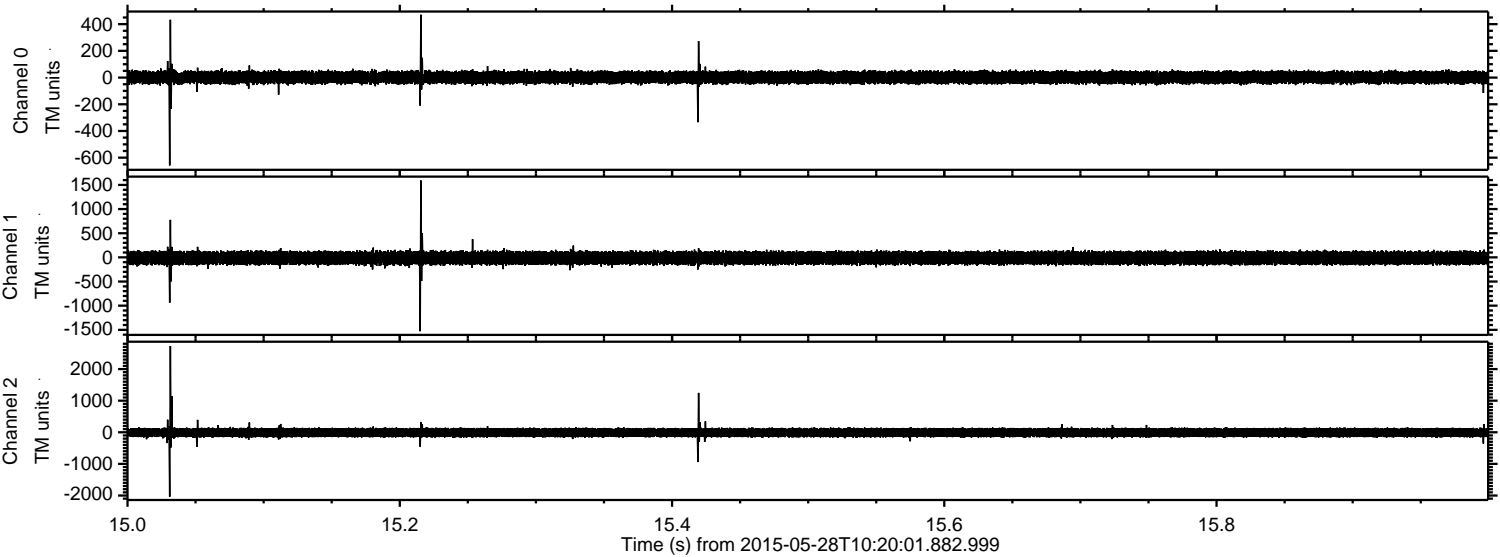


Processed Thu May 28 12:27:43 2015 by ELM ver.2012-10-06 from 001\_\_elm20150528\_102000\_\_dat00.bin



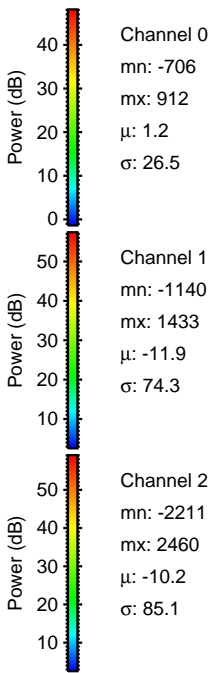
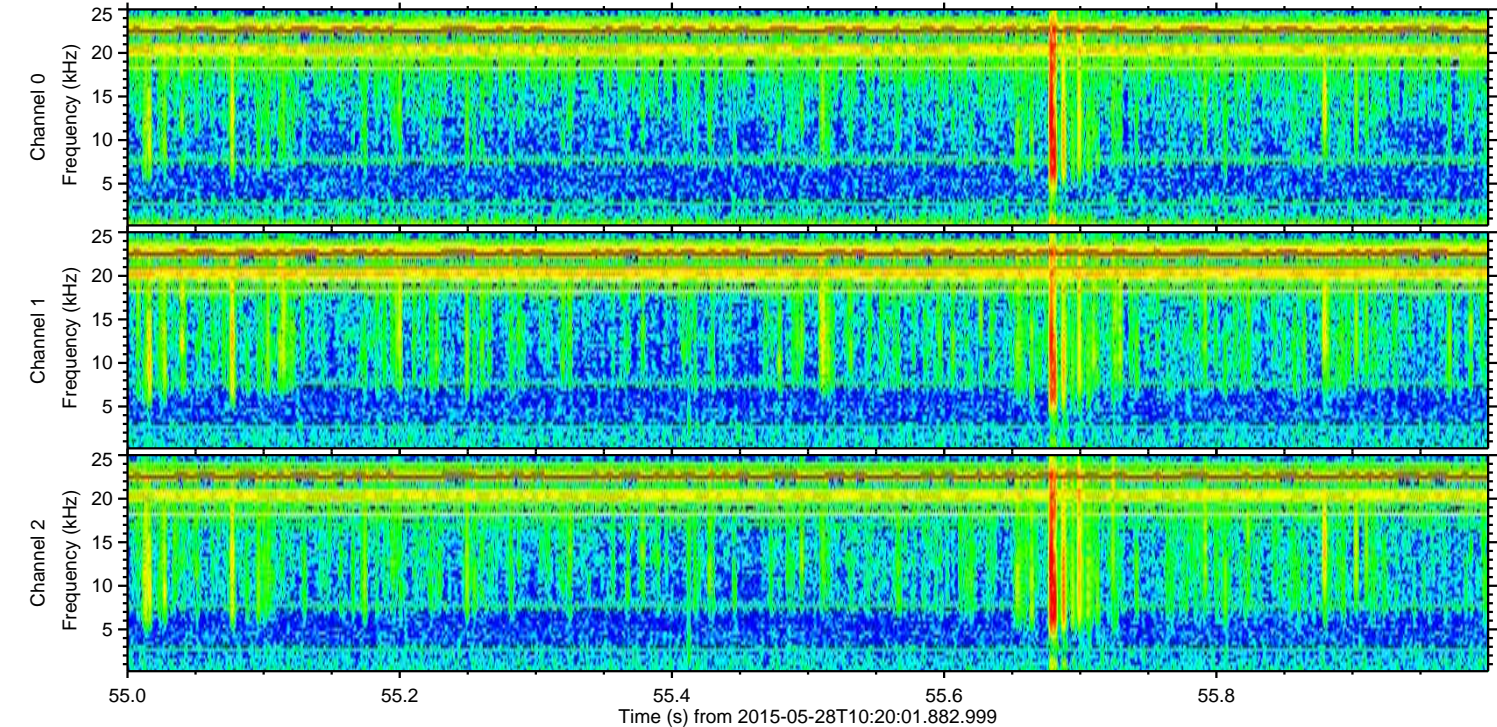
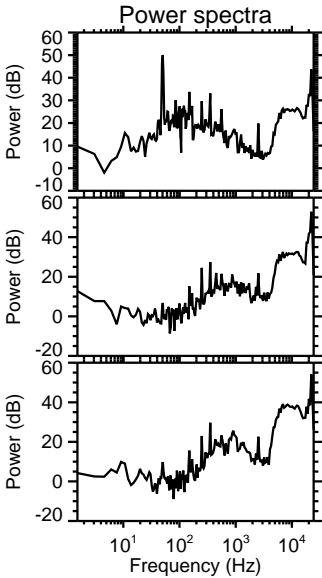
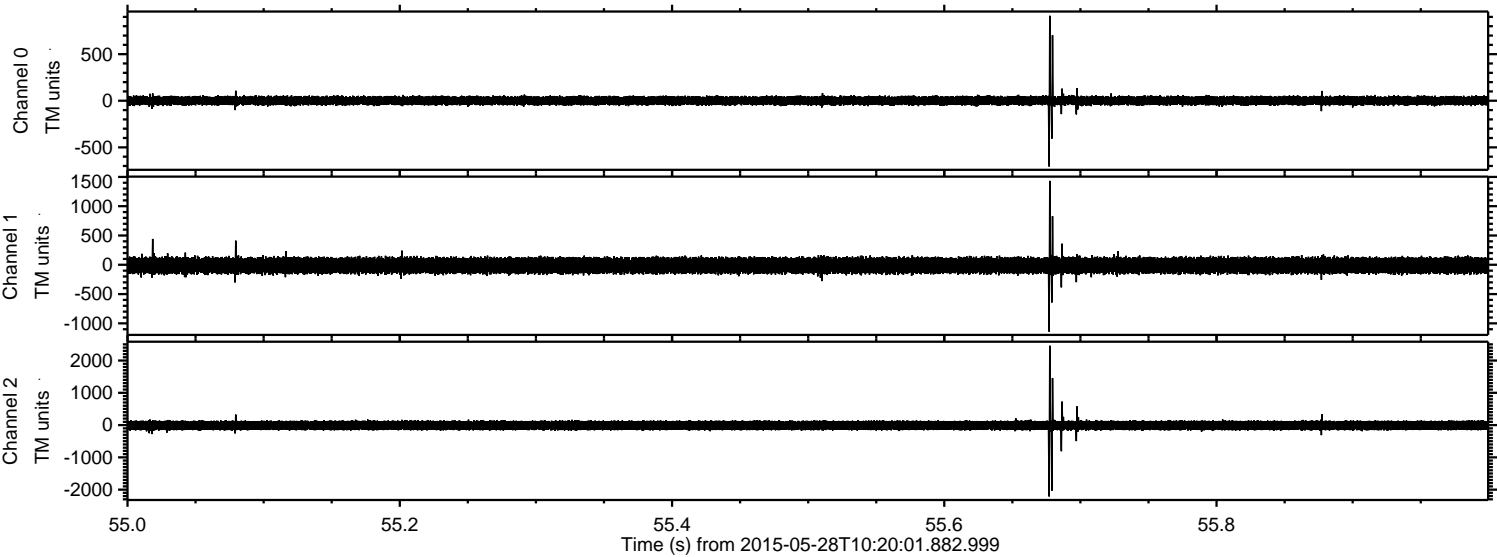


Processed Thu May 28 12:27:44 2015 by ELM ver.2012-10-06 from 001\_\_elm20150528\_102000\_\_dat00.bin





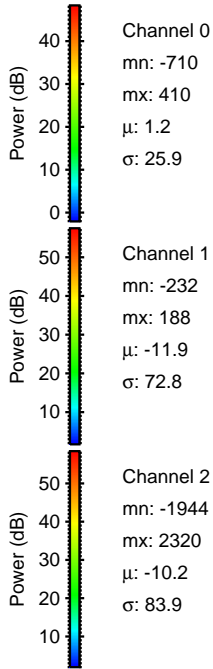
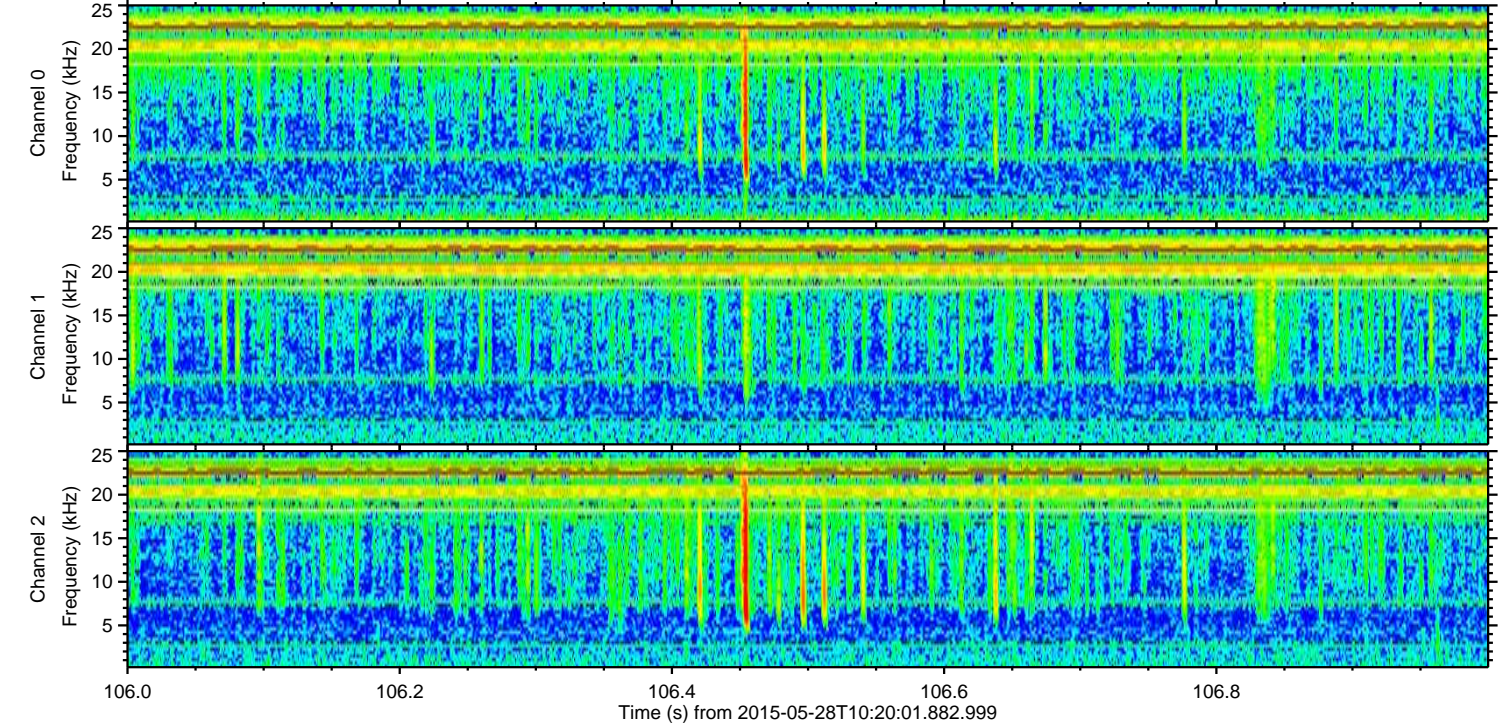
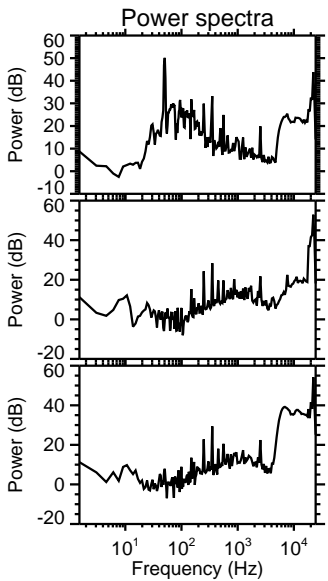
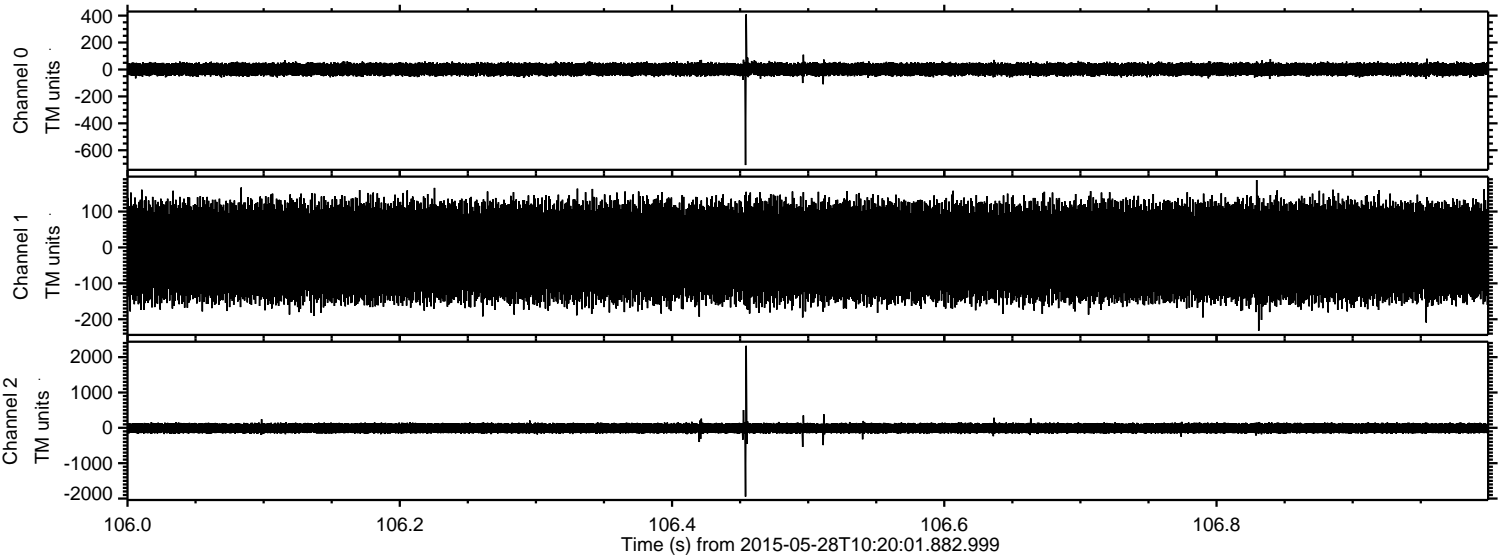
Processed Thu May 28 12:27:45 2015 by ELM ver.2012-10-06 from 001\_\_elm20150528\_102000\_\_dat00.bin





ELMAVAN 3D WAVEFORMS (Measured data sampled at 50 kHz) 49786 packets of 144 samples from 2015-05-28T10:20:01.882.999. Part 107/144

Processed Thu May 28 12:27:46 2015 by ELM ver.2012-10-06 from 001\_\_elm20150528\_102000\_\_dat00.bin



Channel 0  
mn: -710  
mx: 410  
 $\mu$ : 1.2  
 $\sigma$ : 25.9

Channel 1  
mn: -232  
mx: 188  
 $\mu$ : -11.9  
 $\sigma$ : 72.8

Channel 2  
mn: -1944  
mx: 2320  
 $\mu$ : -10.2  
 $\sigma$ : 83.9



ELMAVAN 3D WAVEFORMS (Measured data sampled at 50 kHz) 49786 packets of 144 samples from 2015-05-28T10:20:01.882.999. Part 104/144

Processed Thu May 28 12:27:46 2015 by ELM ver.2012-10-06 from 001\_\_elm20150528\_102000\_\_dat00.bin

