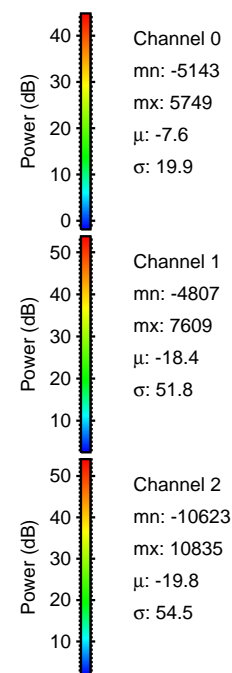
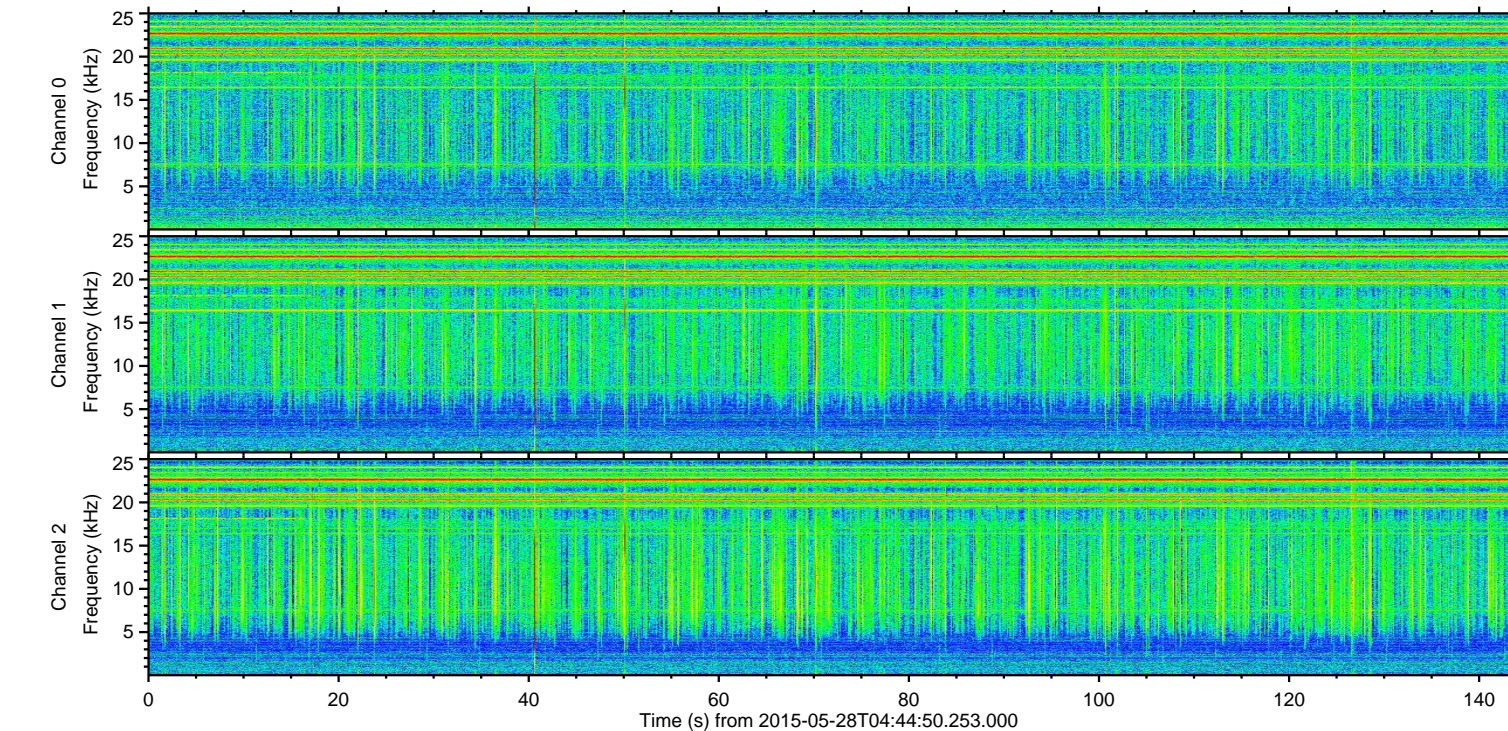
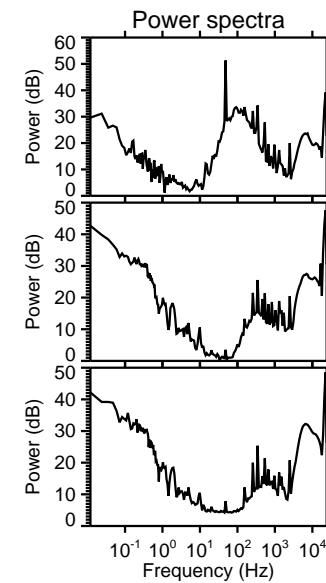
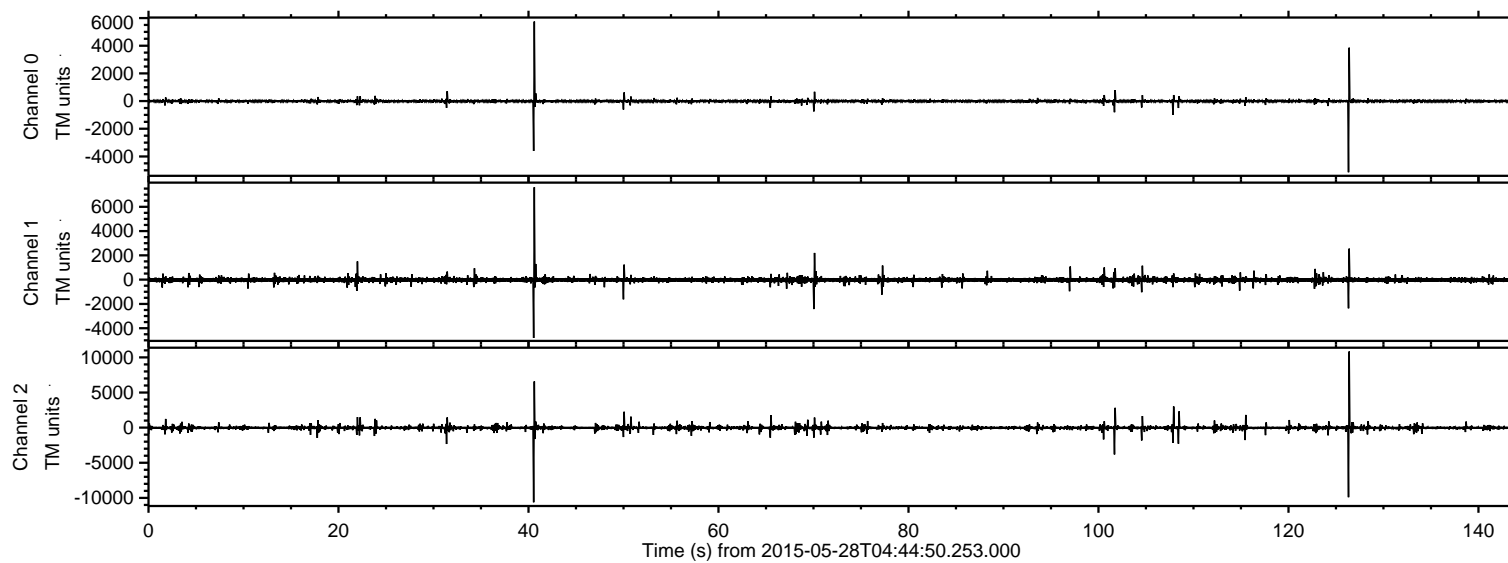


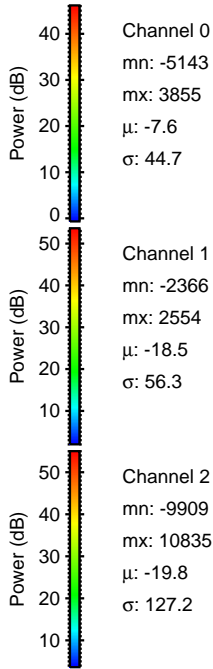
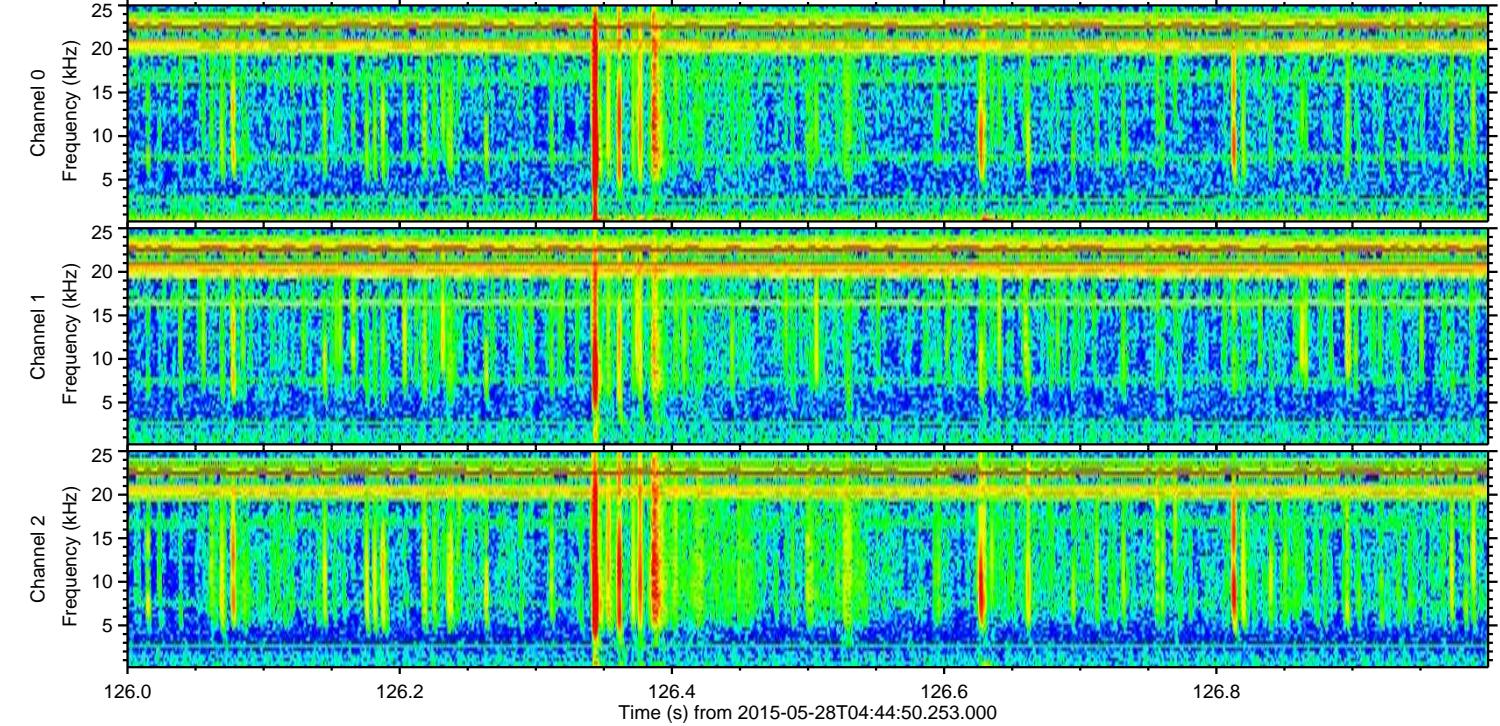
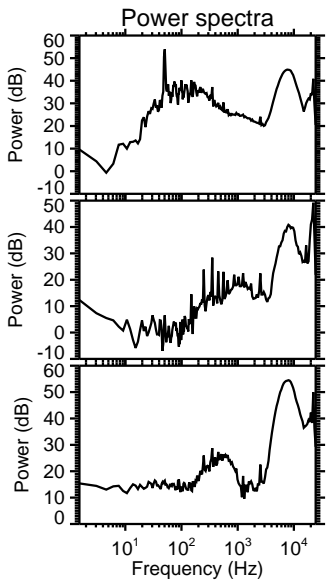
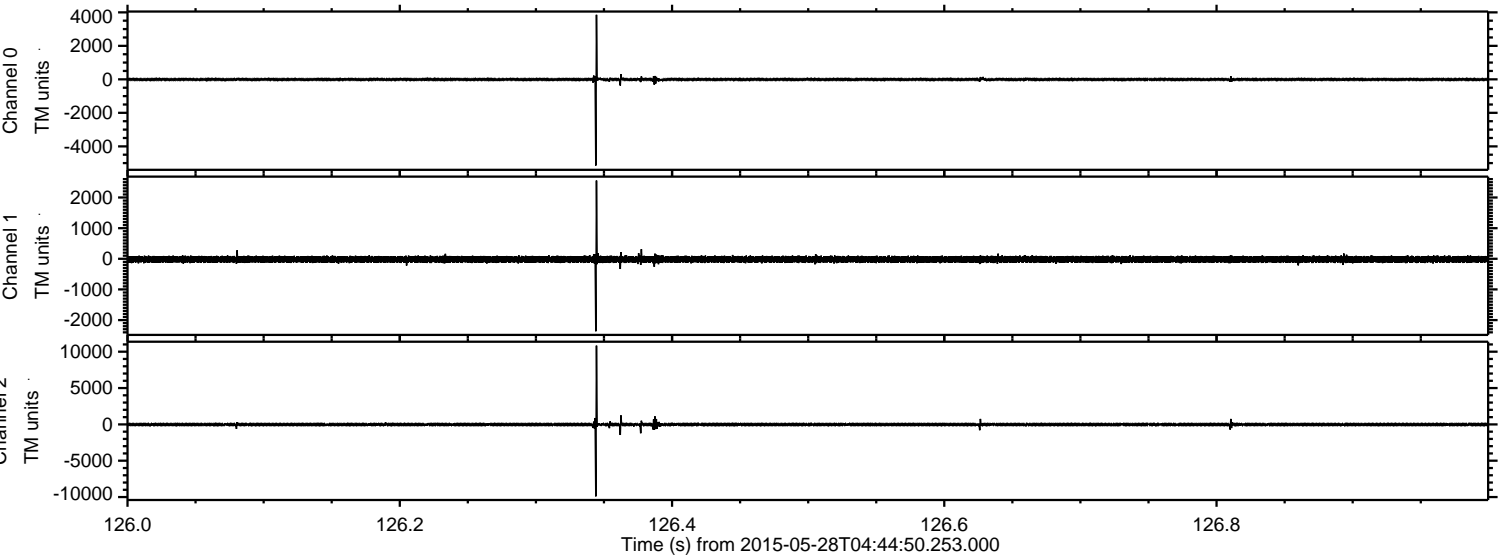
ELMAVAN 3D WAVEFORMS (Measured data sampled at 50 kHz) 49733 packets of 144 samples from 2015-05-28T04:44:50.253.000.

Processed Thu May 28 06:52:15 2015 by ELM ver.2012-10-06 from 001__elm20150528_044449__dat00.bin

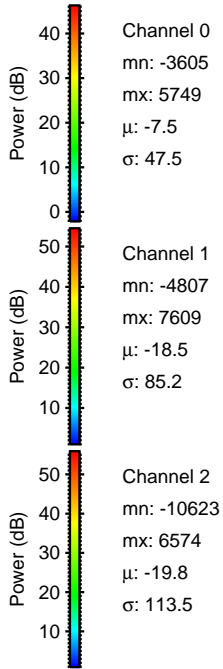
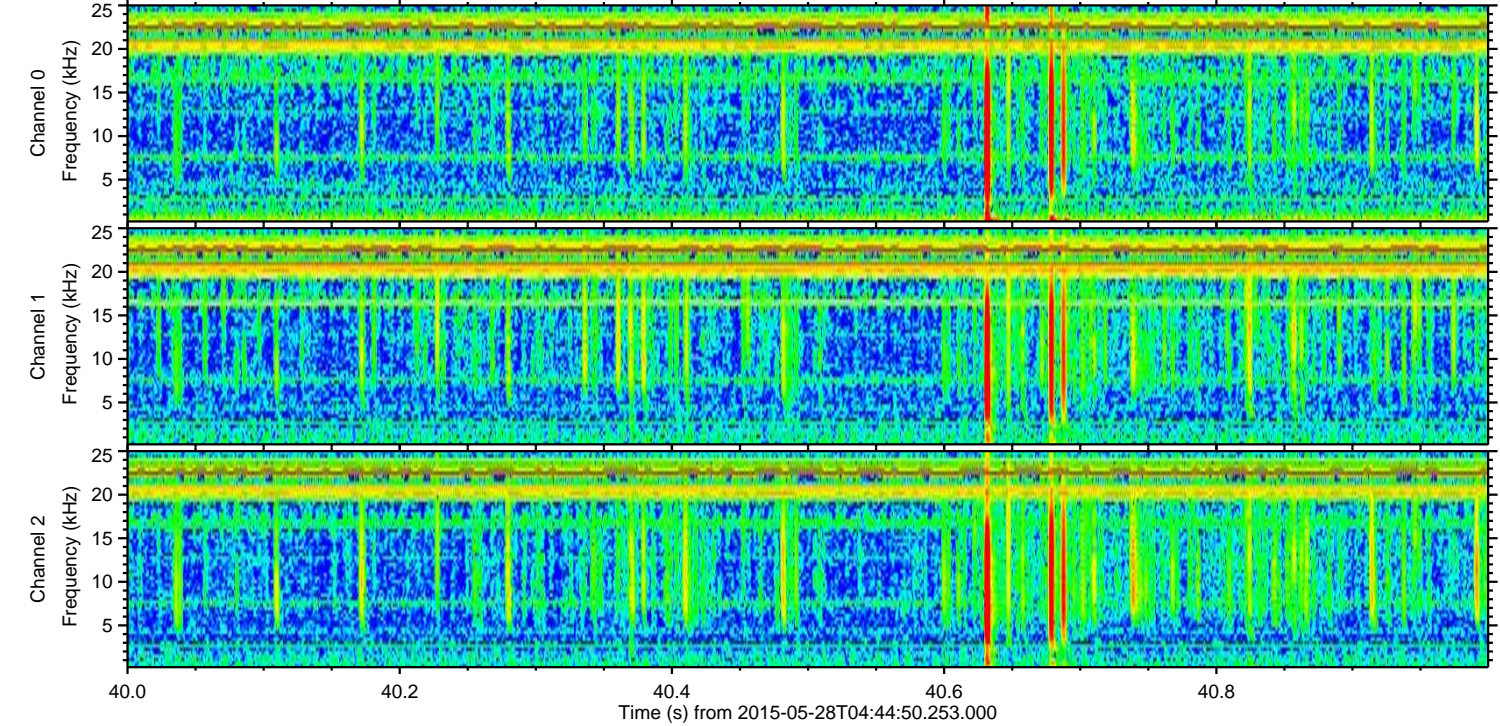
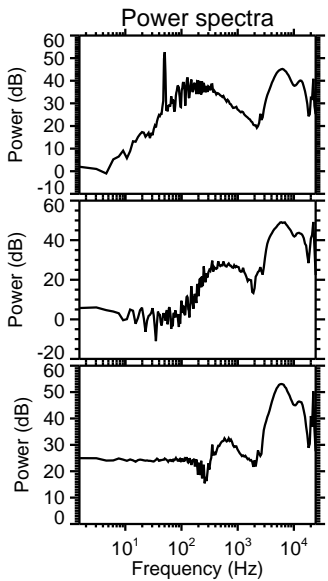
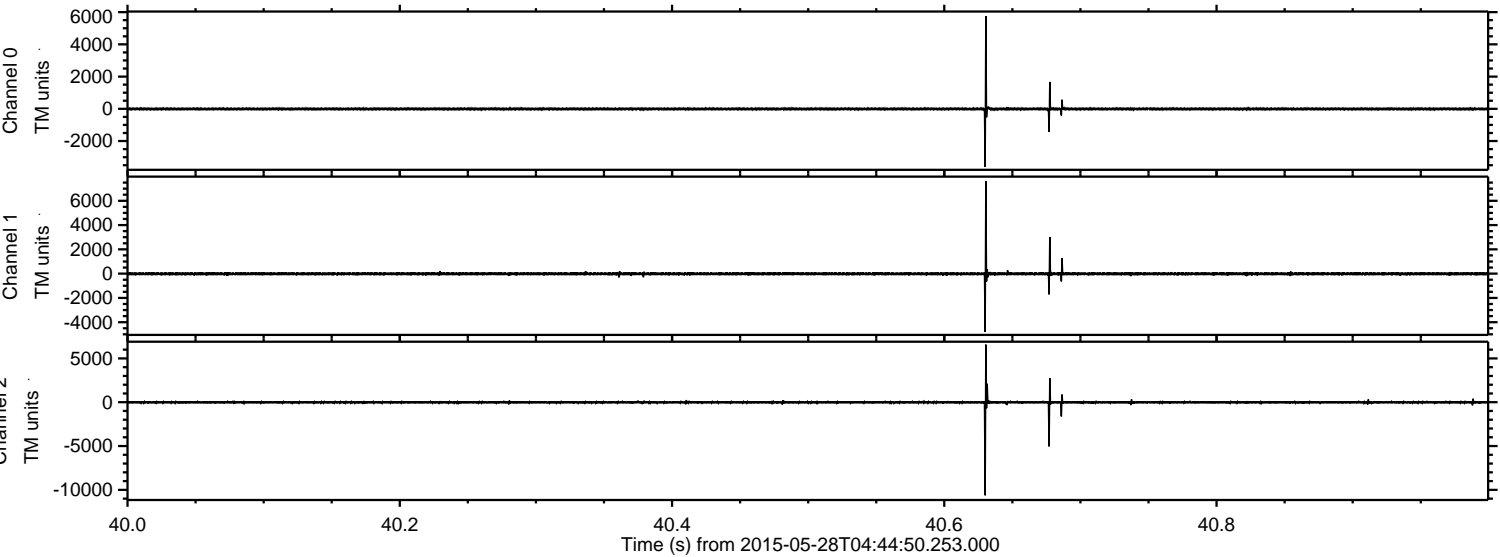


ELMAVAN 3D WAVEFORMS (Measured data sampled at 50 kHz) 49733 packets of 144 samples from 2015-05-28T04:44:50.253.000. Part 127/144

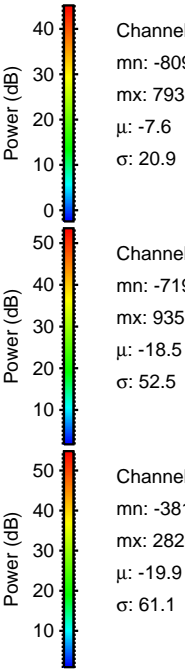
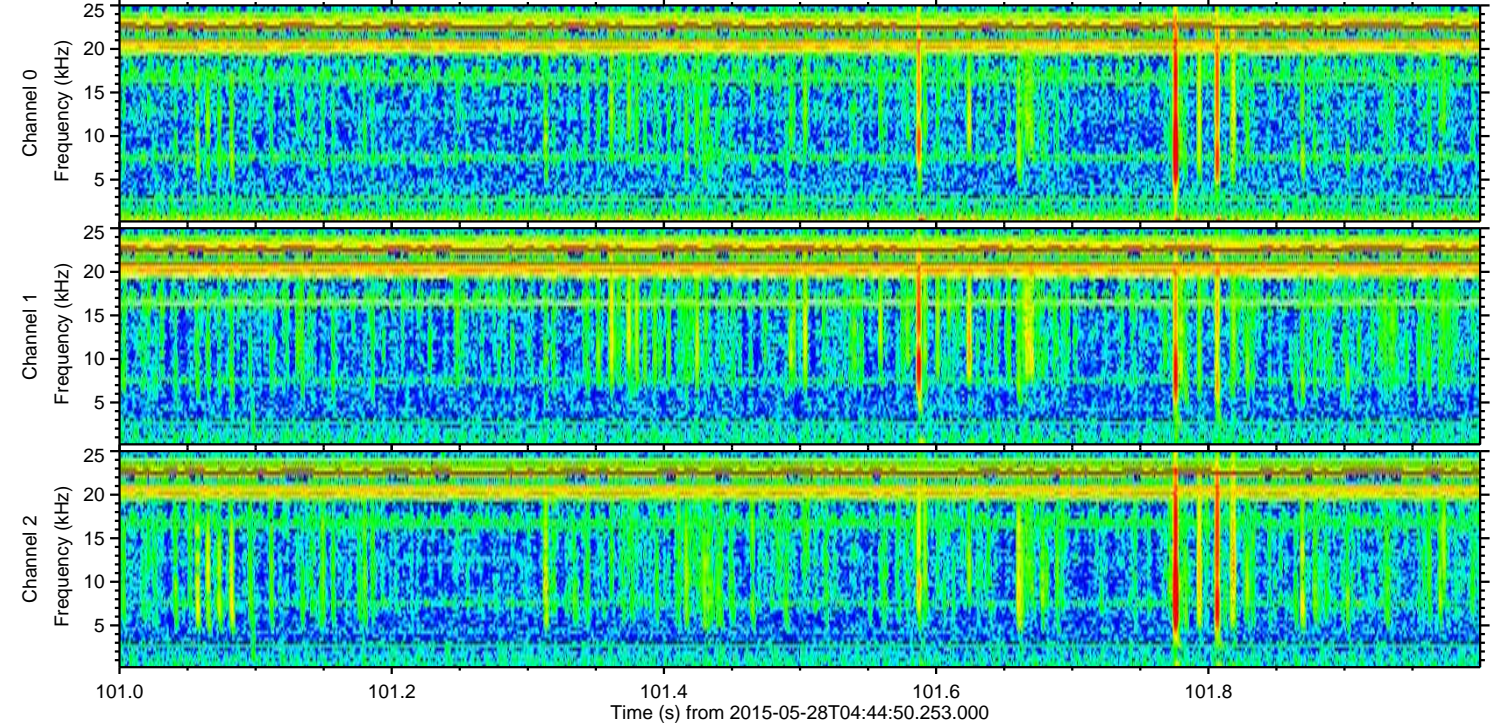
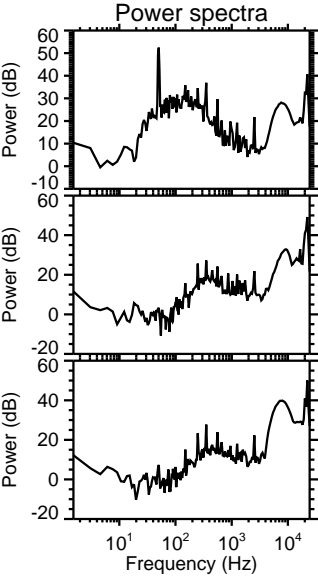
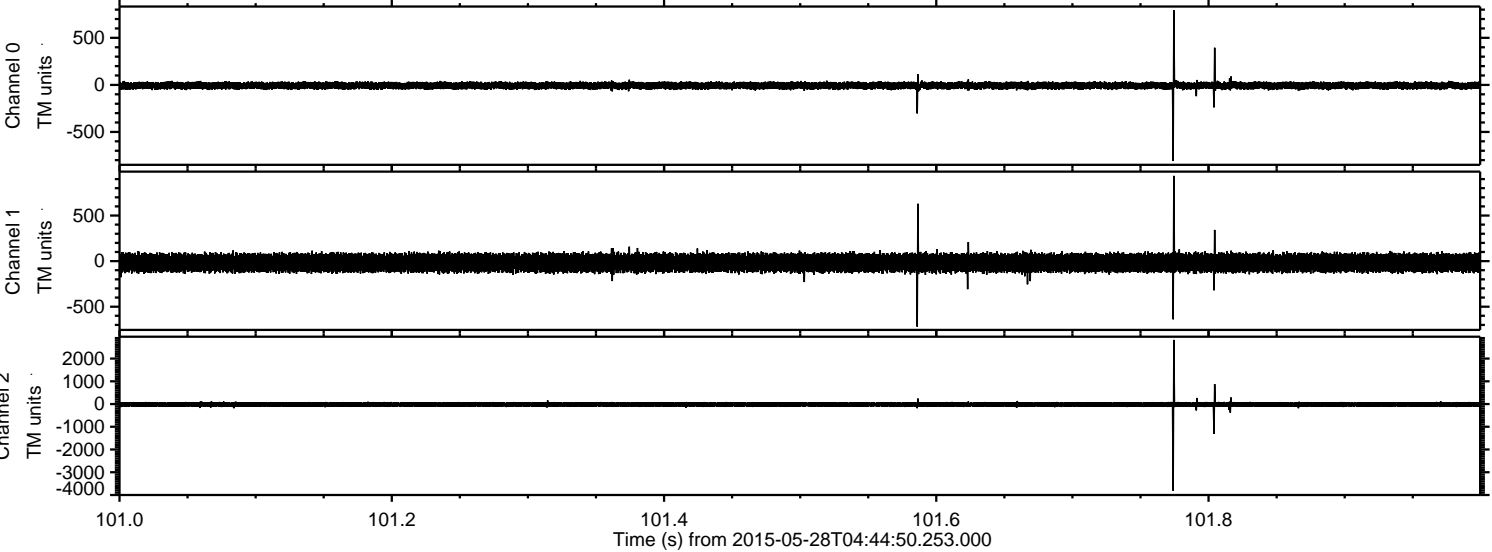
Processed Thu May 28 06:52:26 2015 by ELM ver.2012-10-06 from 001__elm20150528_044449__dat00.bin



Processed Thu May 28 06:52:27 2015 by ELM ver.2012-10-06 from 001__elm20150528_044449__dat00.bin

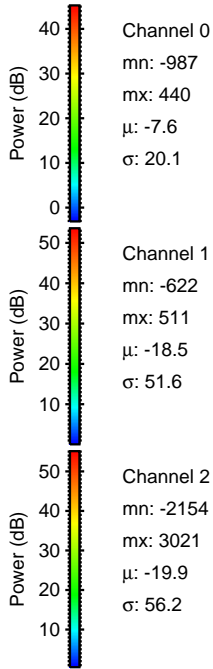
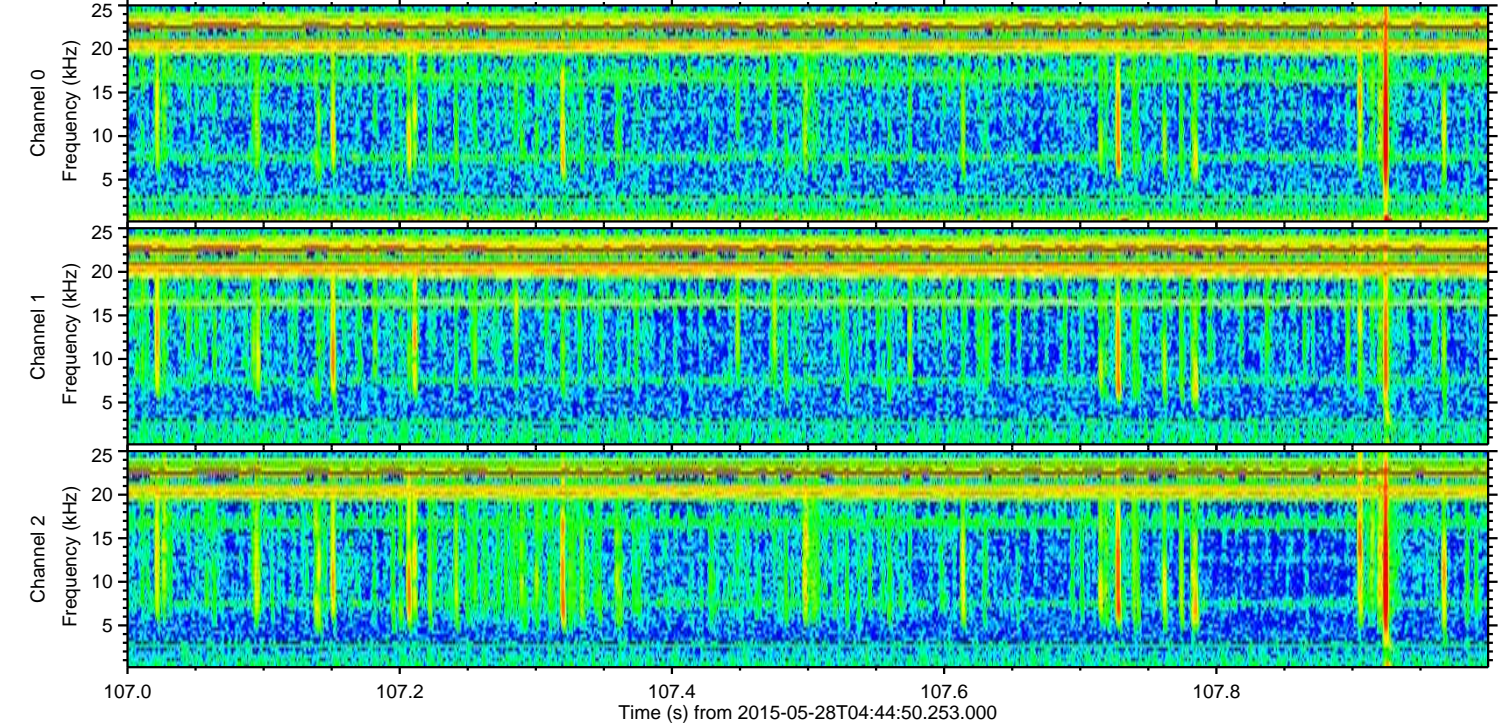
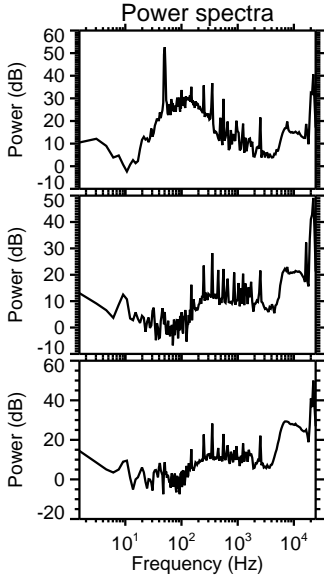
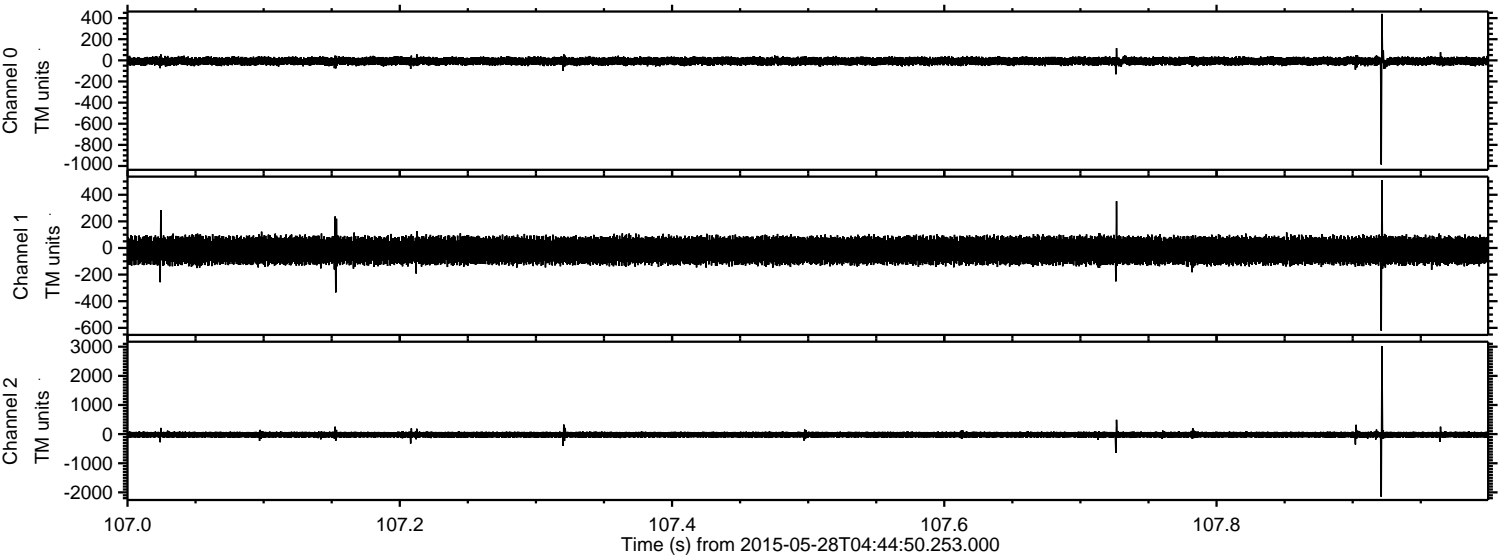


Processed Thu May 28 06:52:28 2015 by ELM ver.2012-10-06 from 001__elm20150528_044449__dat00.bin



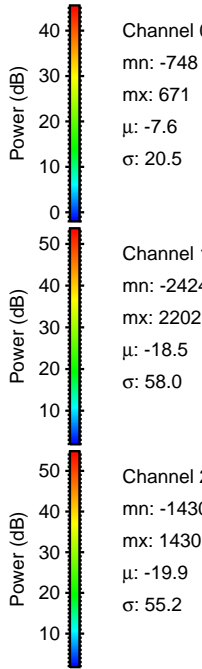
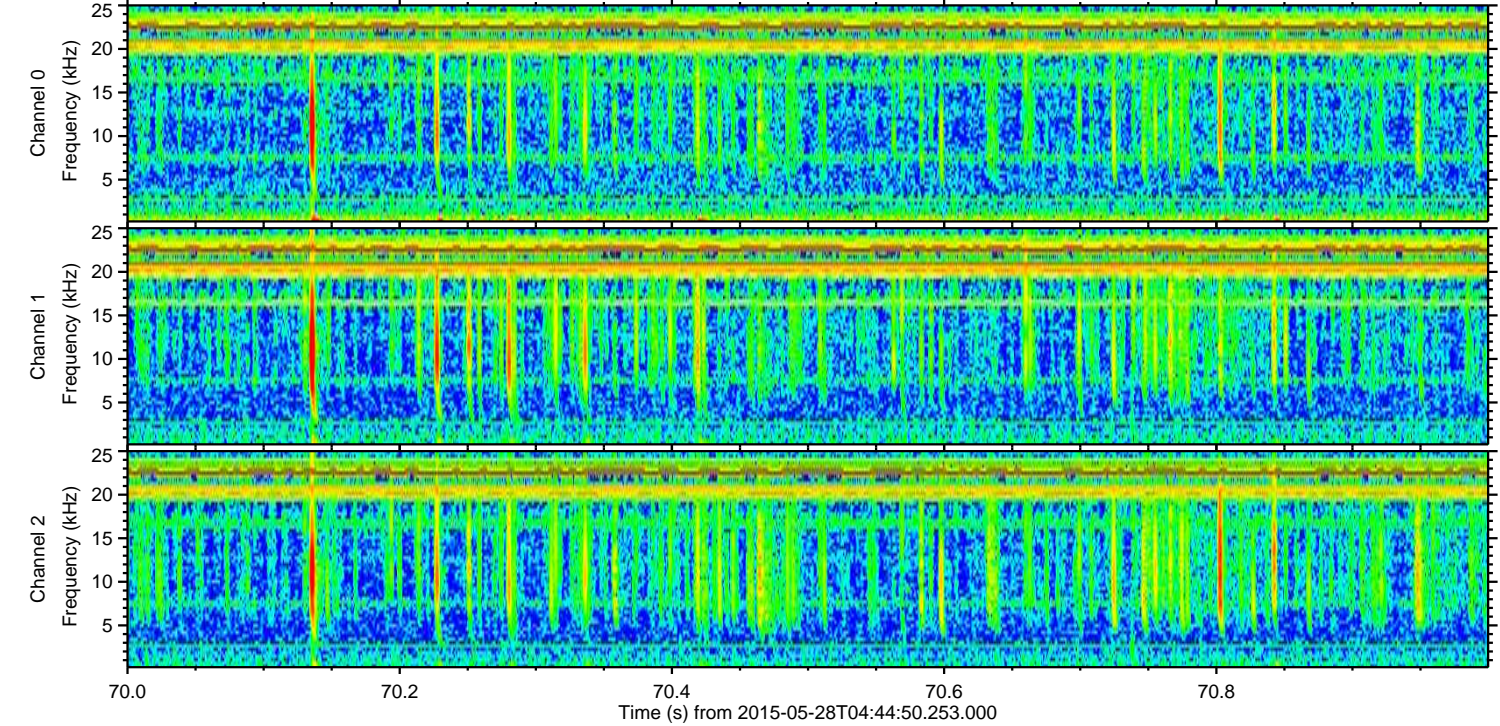
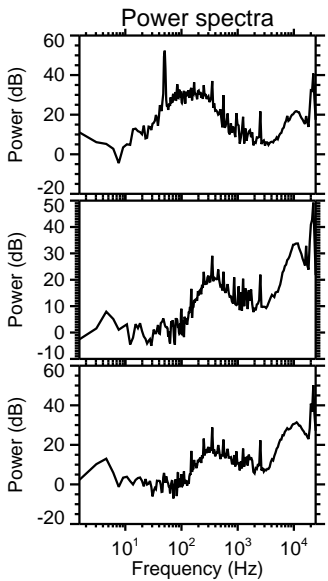
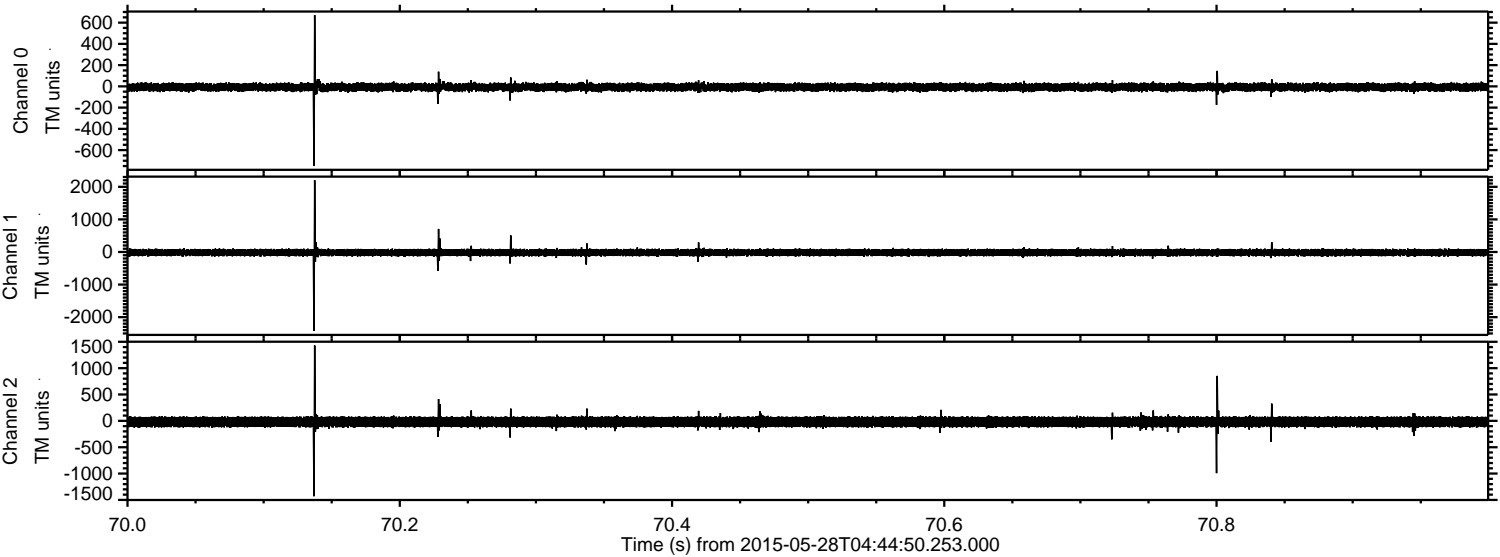
ELMAVAN 3D WAVEFORMS (Measured data sampled at 50 kHz) 49733 packets of 144 samples from 2015-05-28T04:44:50.253.000. Part 108/144

Processed Thu May 28 06:52:29 2015 by ELM ver.2012-10-06 from 001__elm20150528_044449__dat00.bin



ELMAVAN 3D WAVEFORMS (Measured data sampled at 50 kHz) 49733 packets of 144 samples from 2015-05-28T04:44:50.253.000. Part 71/144

Processed Thu May 28 06:52:30 2015 by ELM ver.2012-10-06 from 001__elm20150528_044449__dat00.bin

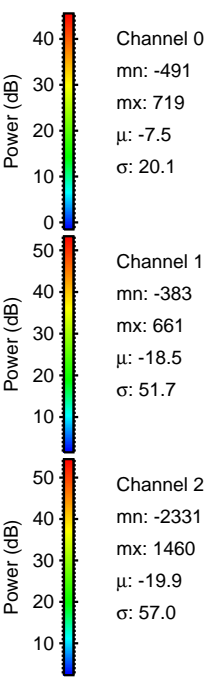
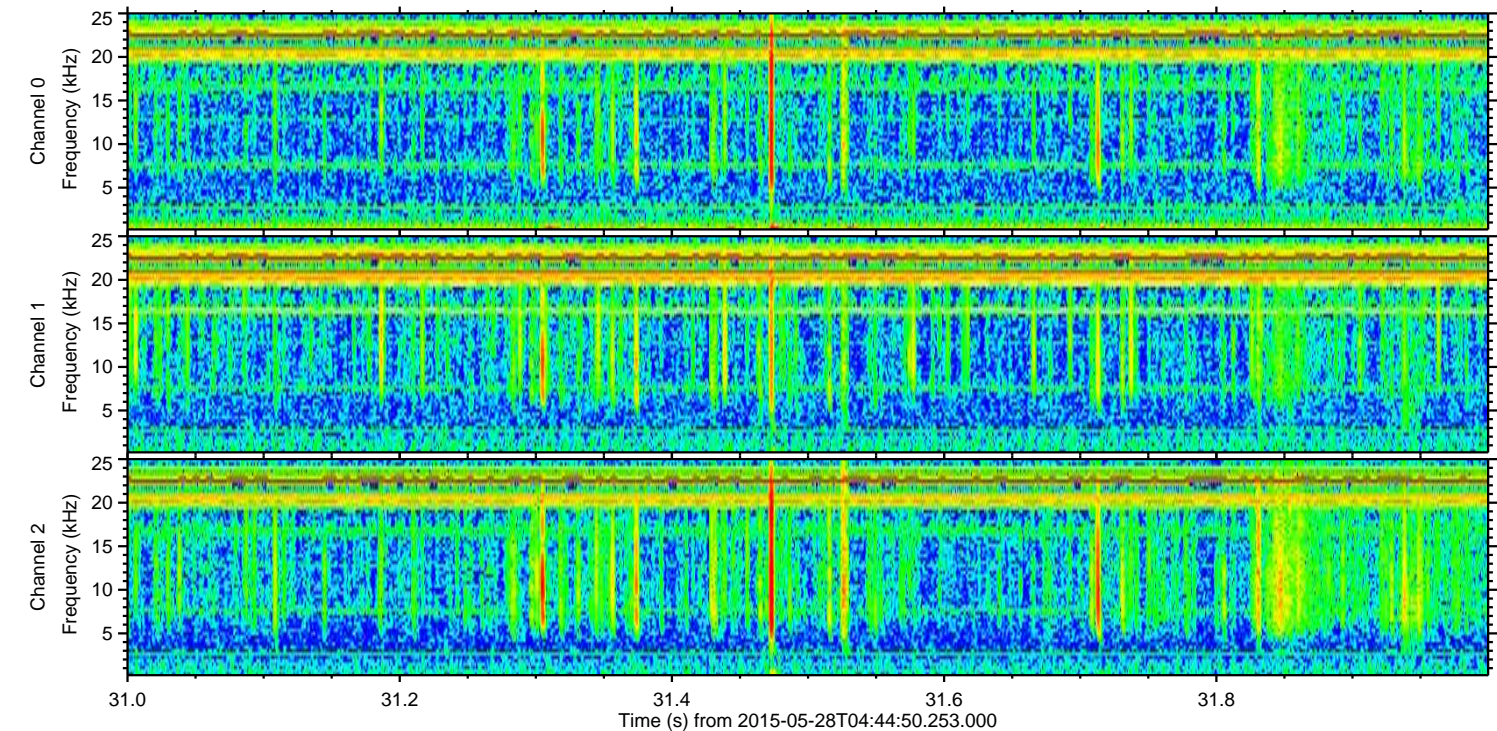
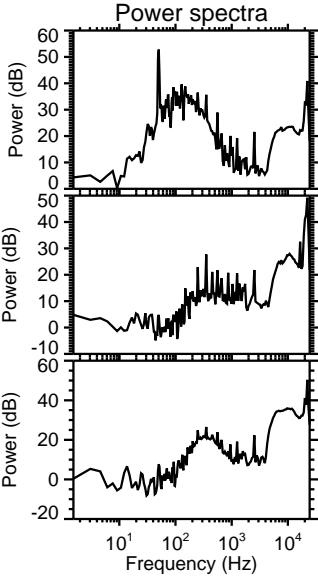
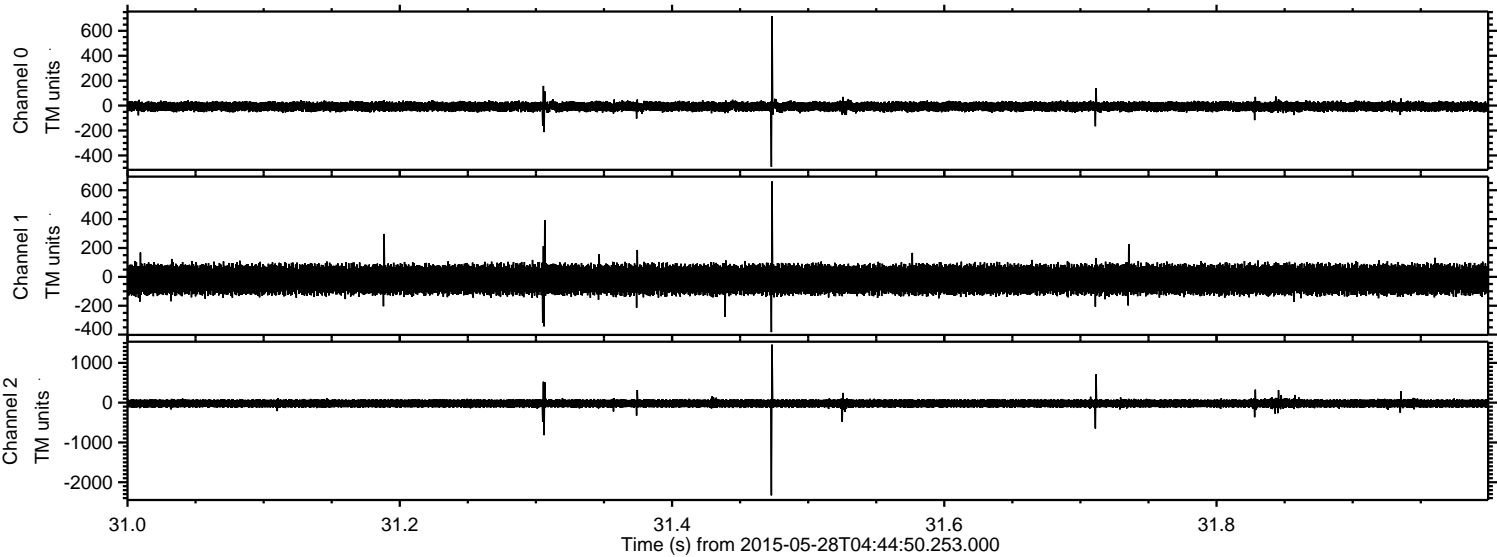


Channel 0
mn: -748
mx: 671
 μ : -7.6
 σ : 20.5

Channel 1
mn: -2424
mx: 2202
 μ : -18.5
 σ : 58.0

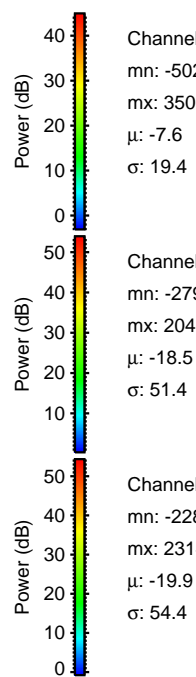
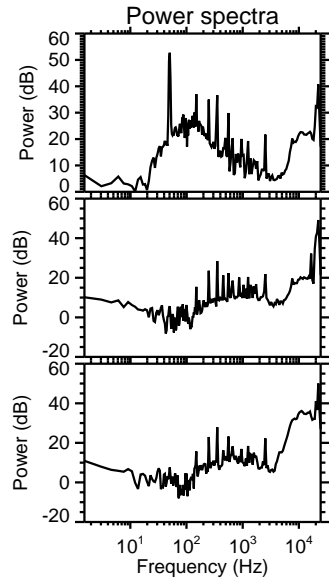
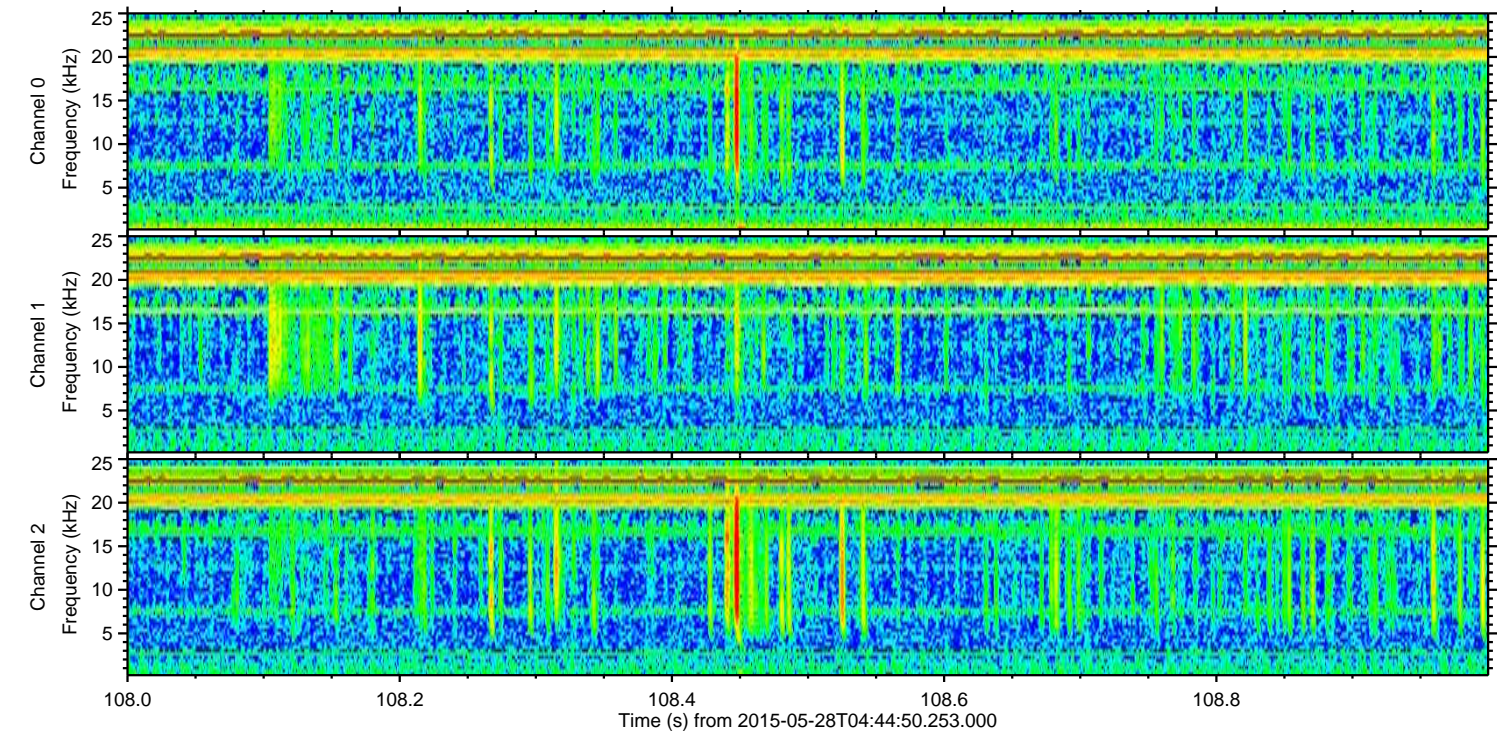
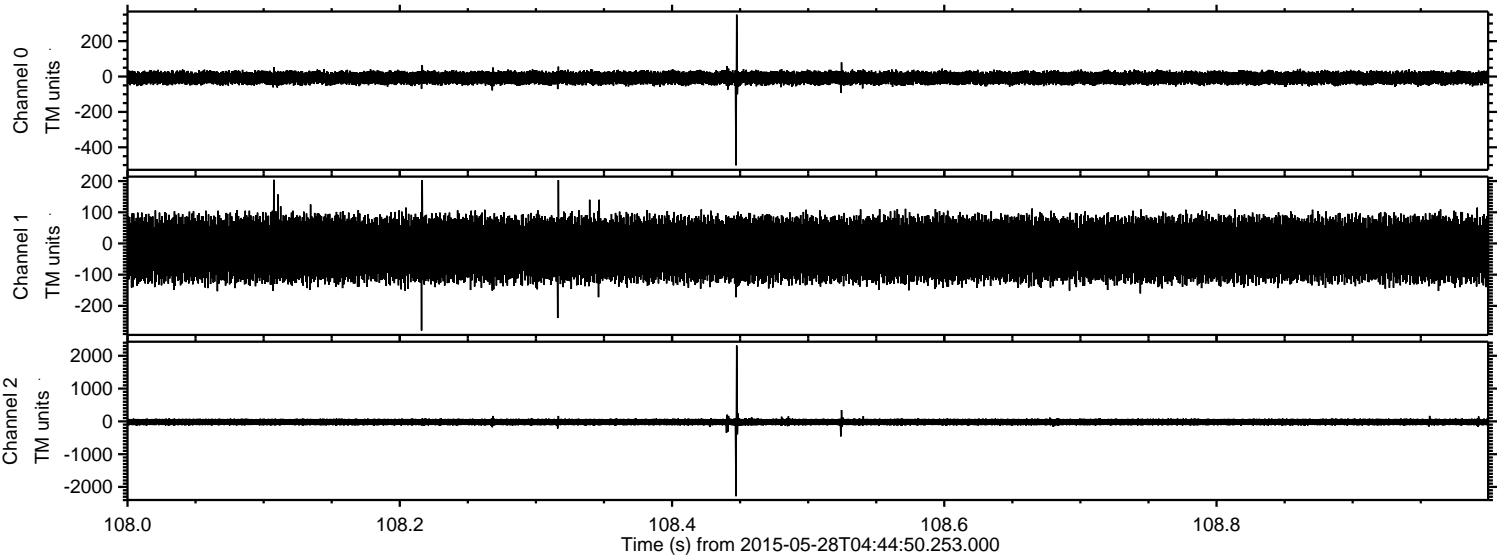
Channel 2
mn: -1430
mx: 1430
 μ : -19.9
 σ : 55.2

Processed Thu May 28 06:52:31 2015 by ELM ver.2012-10-06 from 001__elm20150528_044449__dat00.bin



ELMAVAN 3D WAVEFORMS (Measured data sampled at 50 kHz) 49733 packets of 144 samples from 2015-05-28T04:44:50.253.000. Part 109/144

Processed Thu May 28 06:52:32 2015 by ELM ver.2012-10-06 from 001__elm20150528_044449__dat00.bin

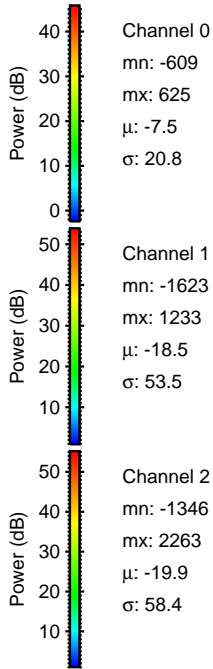
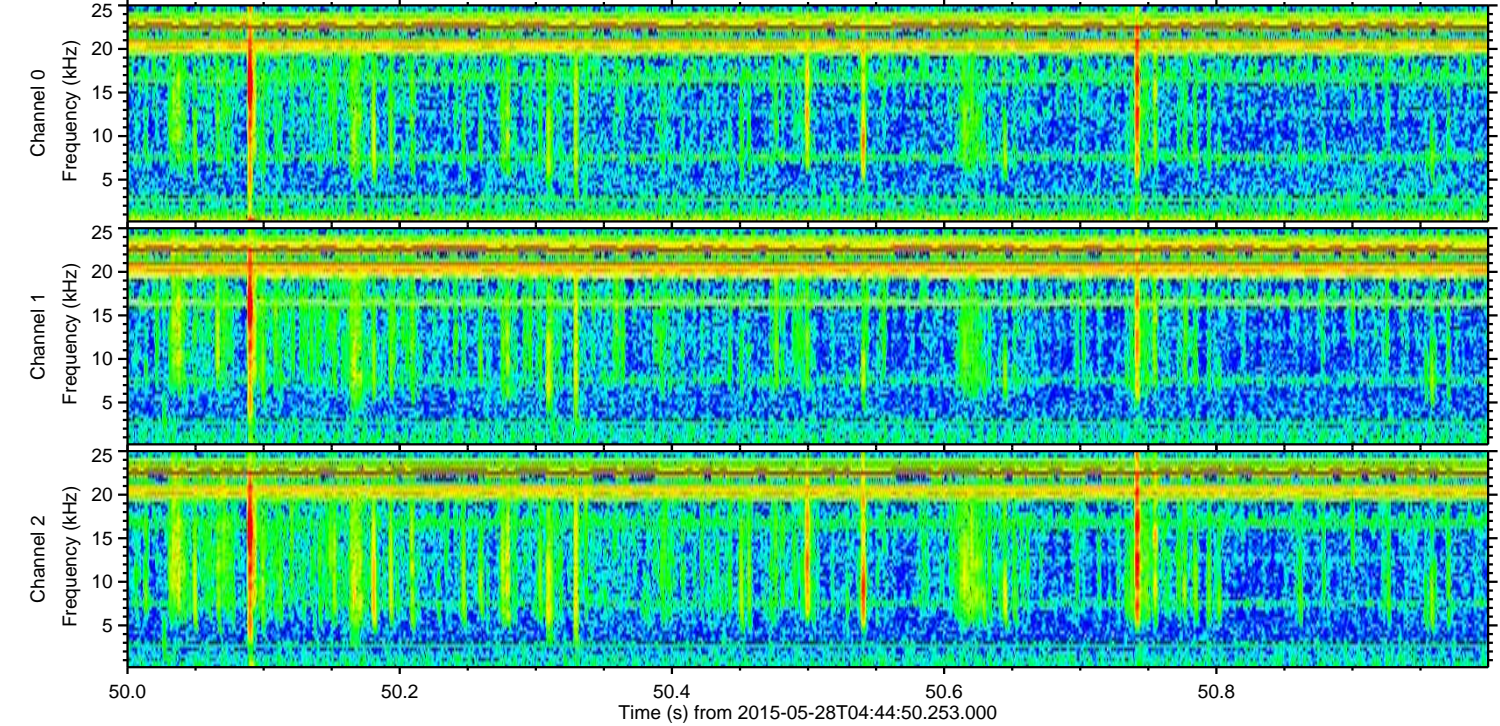
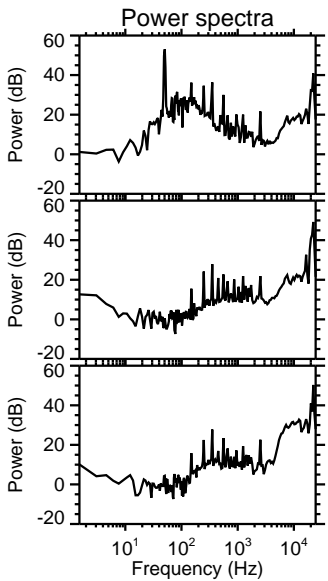
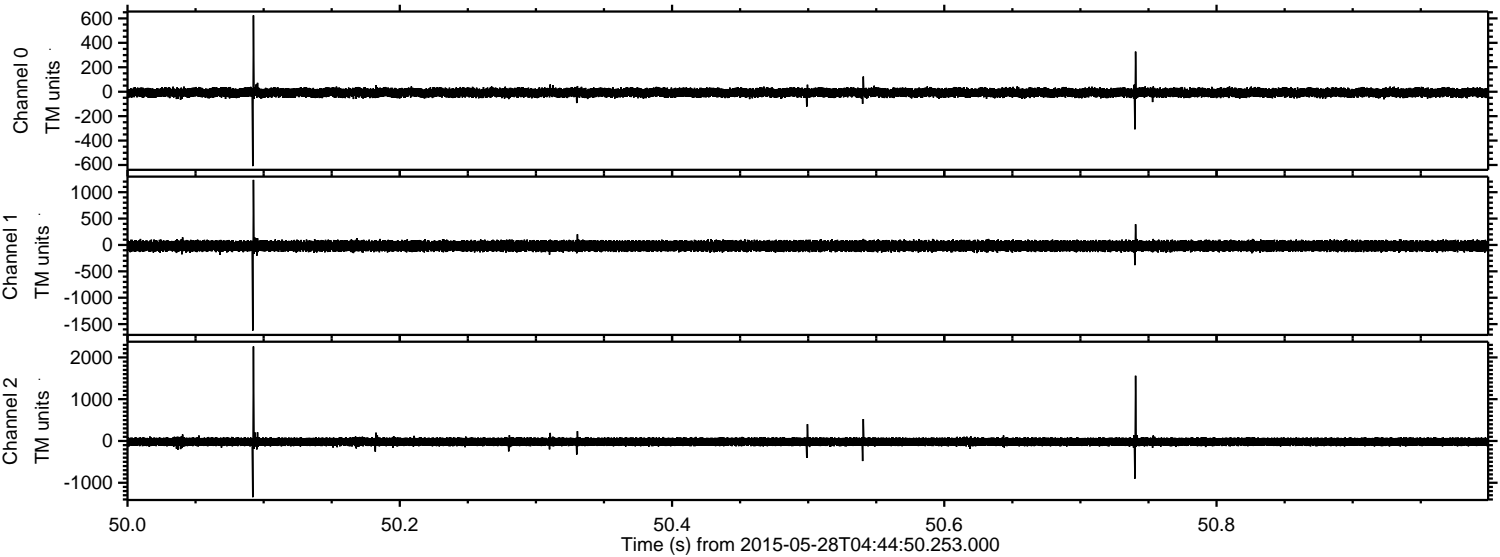


Channel 0
mn: -502
mx: 350
 μ : -7.6
 σ : 19.4

Channel 1
mn: -279
mx: 204
 μ : -18.5
 σ : 51.4

Channel 2
mn: -2284
mx: 2314
 μ : -19.9
 σ : 54.4

Processed Thu May 28 06:52:33 2015 by ELM ver.2012-10-06 from 001__elm20150528_044449__dat00.bin

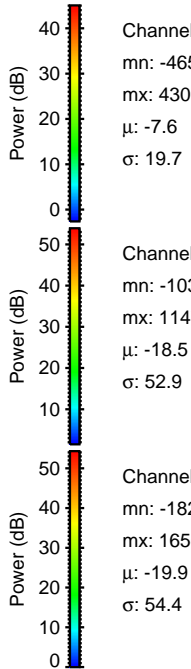
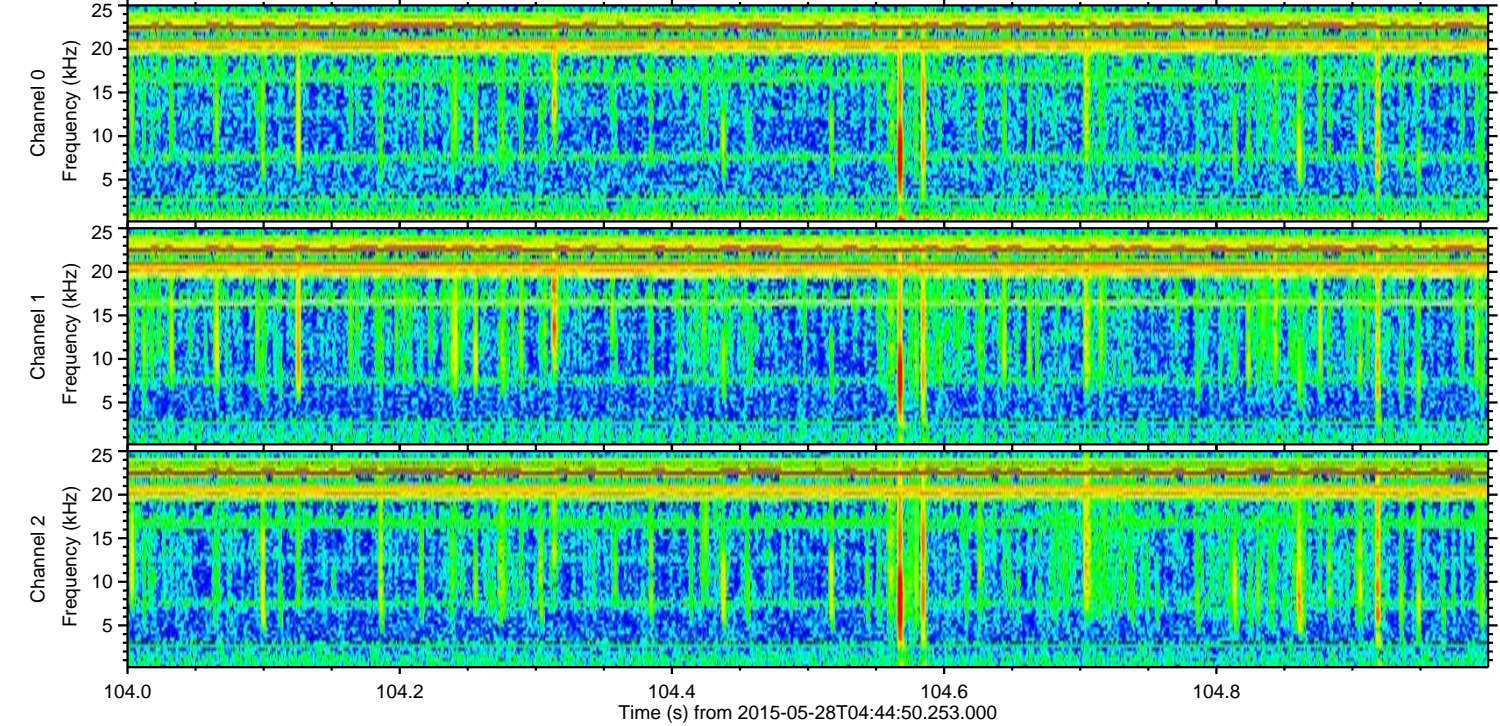
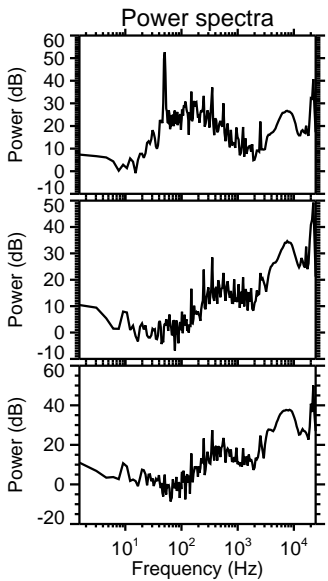
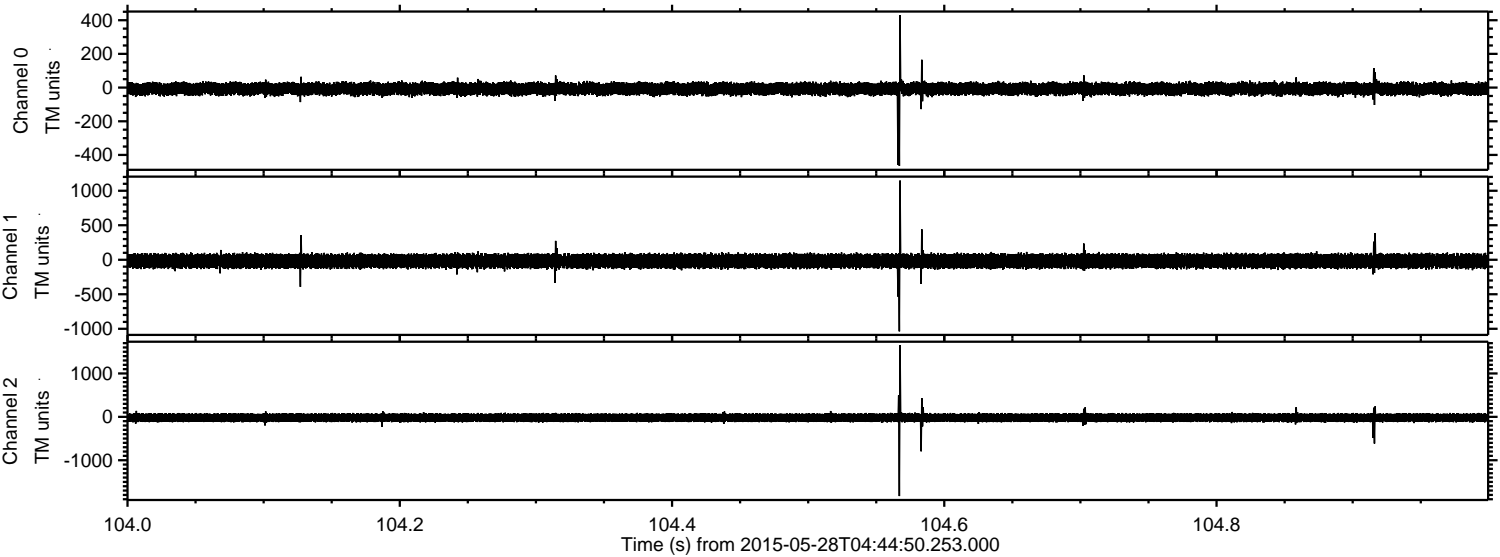


Channel 0
mn: -609
mx: 625
 μ : -7.5
 σ : 20.8

Channel 1
mn: -1623
mx: 1233
 μ : -18.5
 σ : 53.5

Channel 2
mn: -1346
mx: 2263
 μ : -19.9
 σ : 58.4

Processed Thu May 28 06:52:34 2015 by ELM ver.2012-10-06 from 001__elm20150528_044449__dat00.bin



Channel 0
mn: -465
mx: 430
 μ : -7.6
 σ : 19.7

Channel 1
mn: -1037
mx: 1147
 μ : -18.5
 σ : 52.9

Channel 2
mn: -1826
mx: 1650
 μ : -19.9
 σ : 54.4

Processed Thu May 28 06:52:35 2015 by ELM ver.2012-10-06 from 001__elm20150528_044449__dat00.bin

