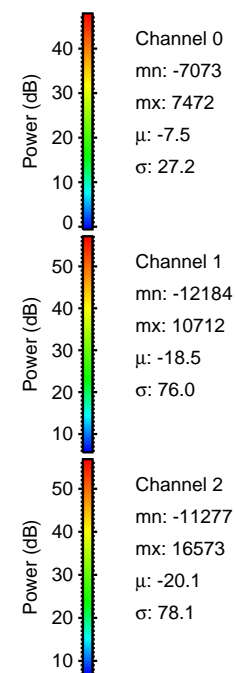
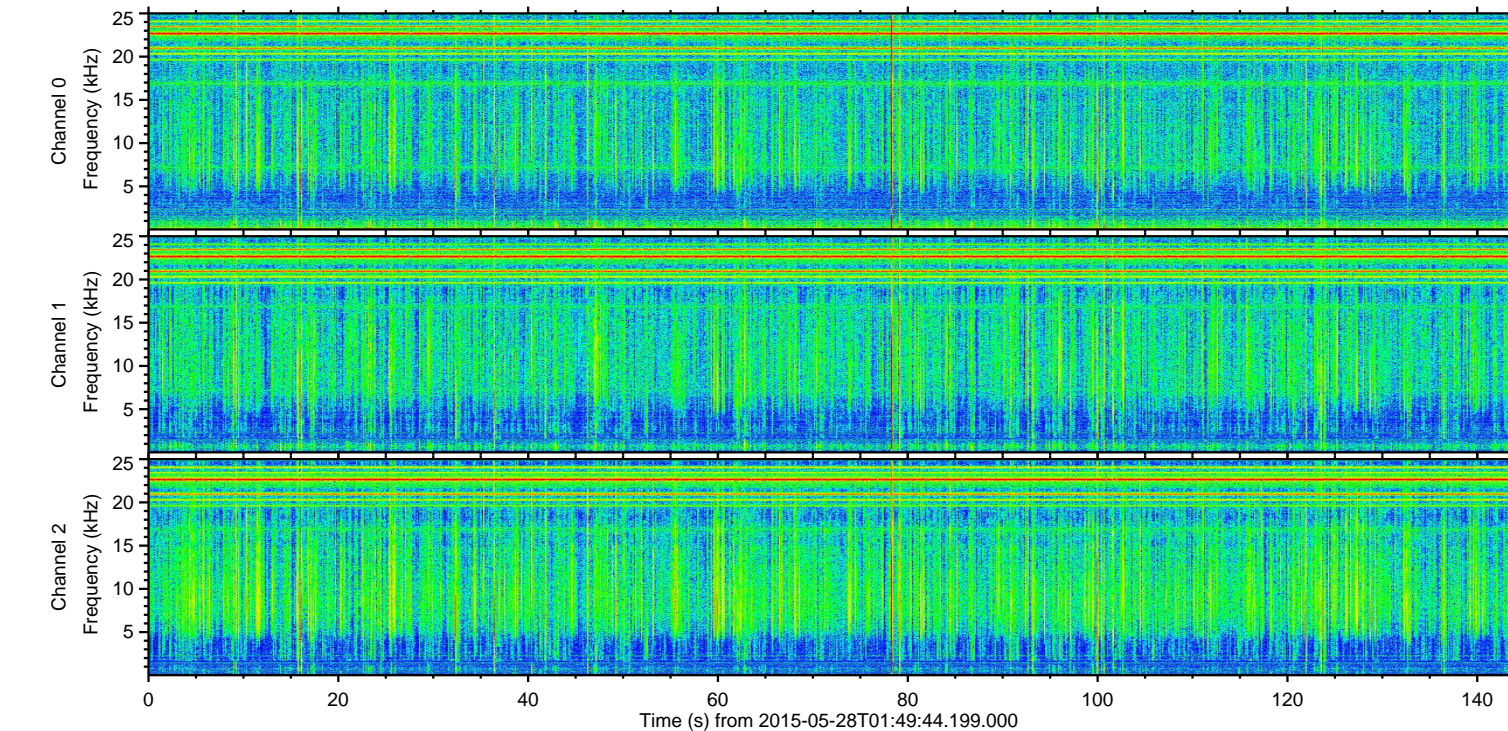
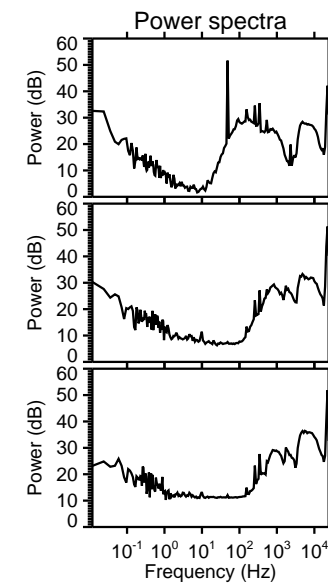
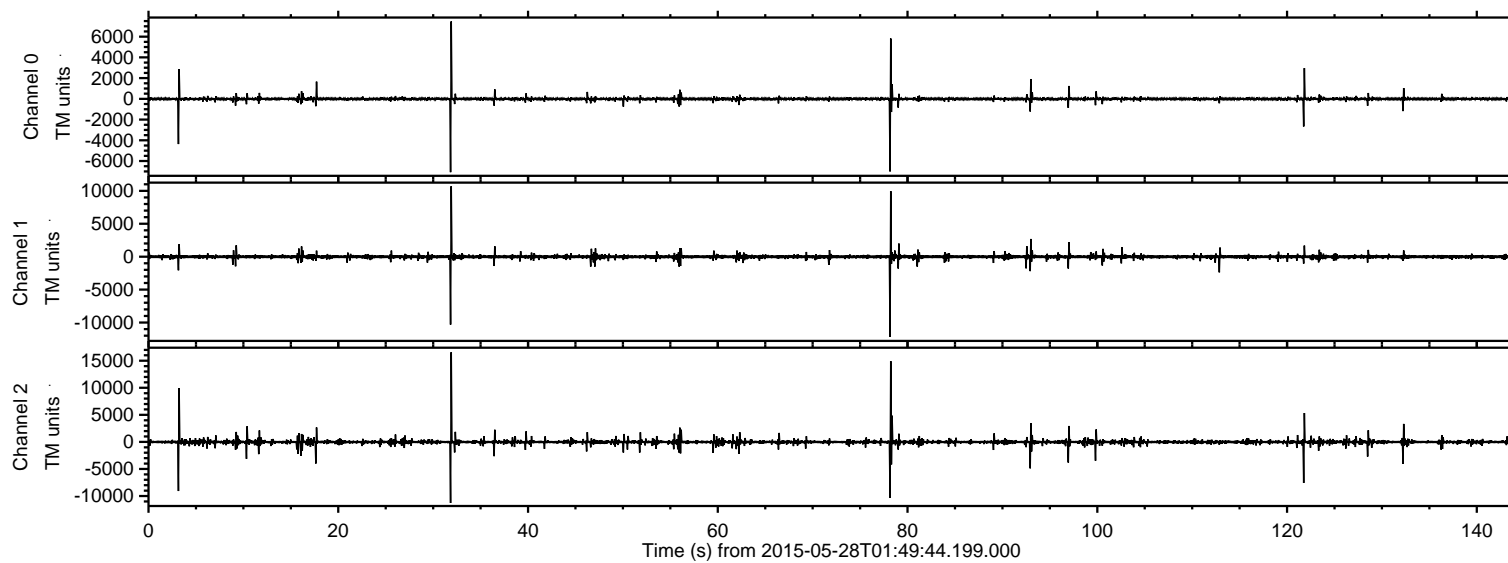
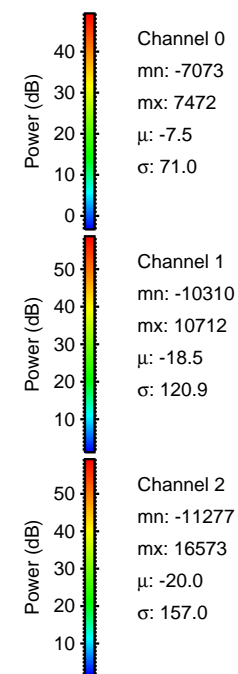
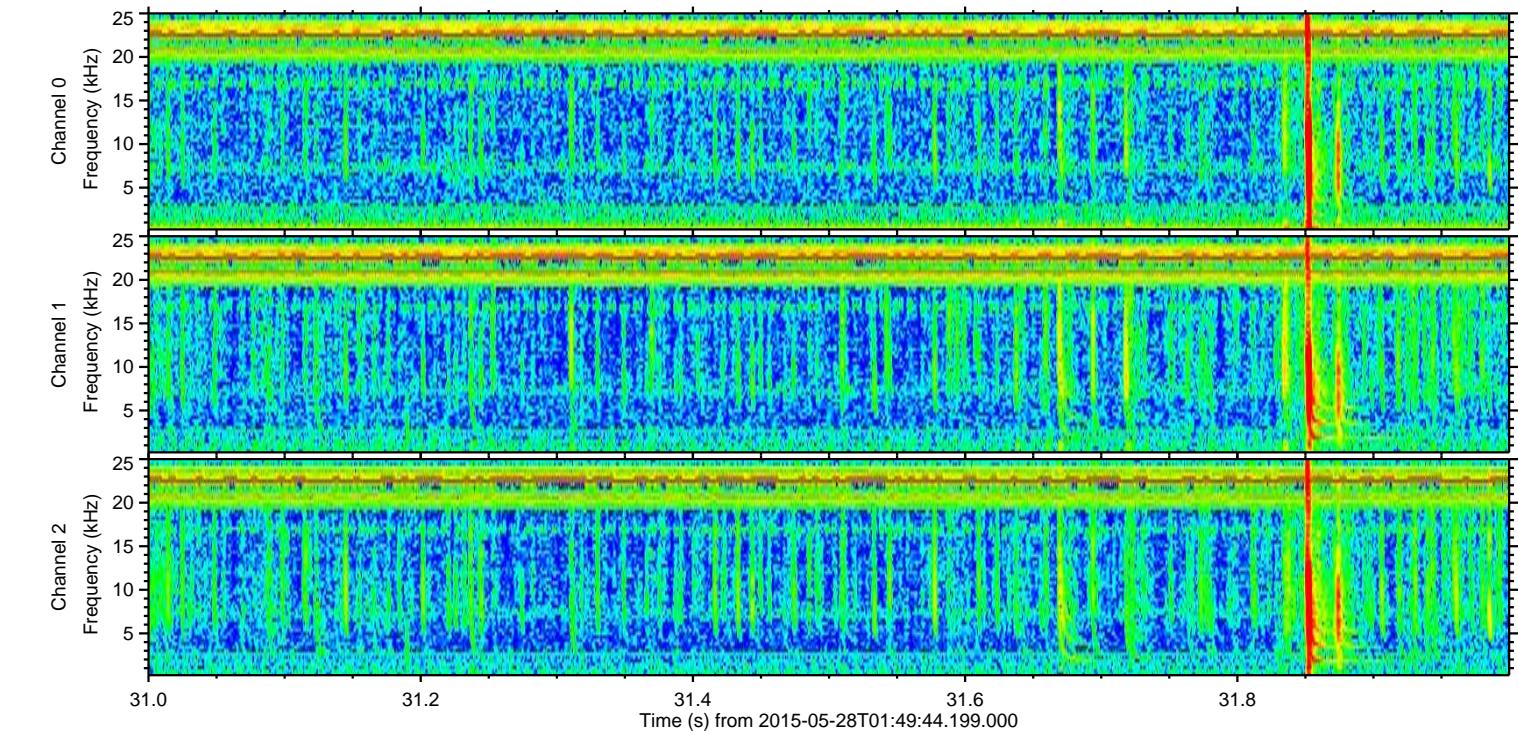
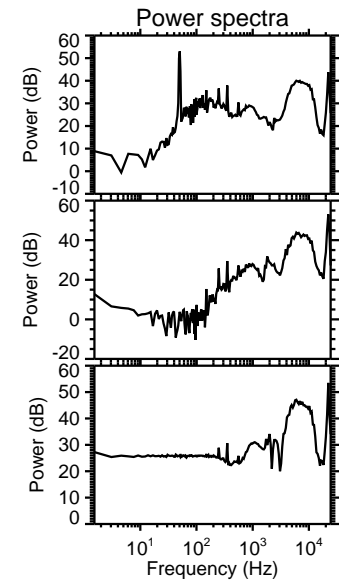
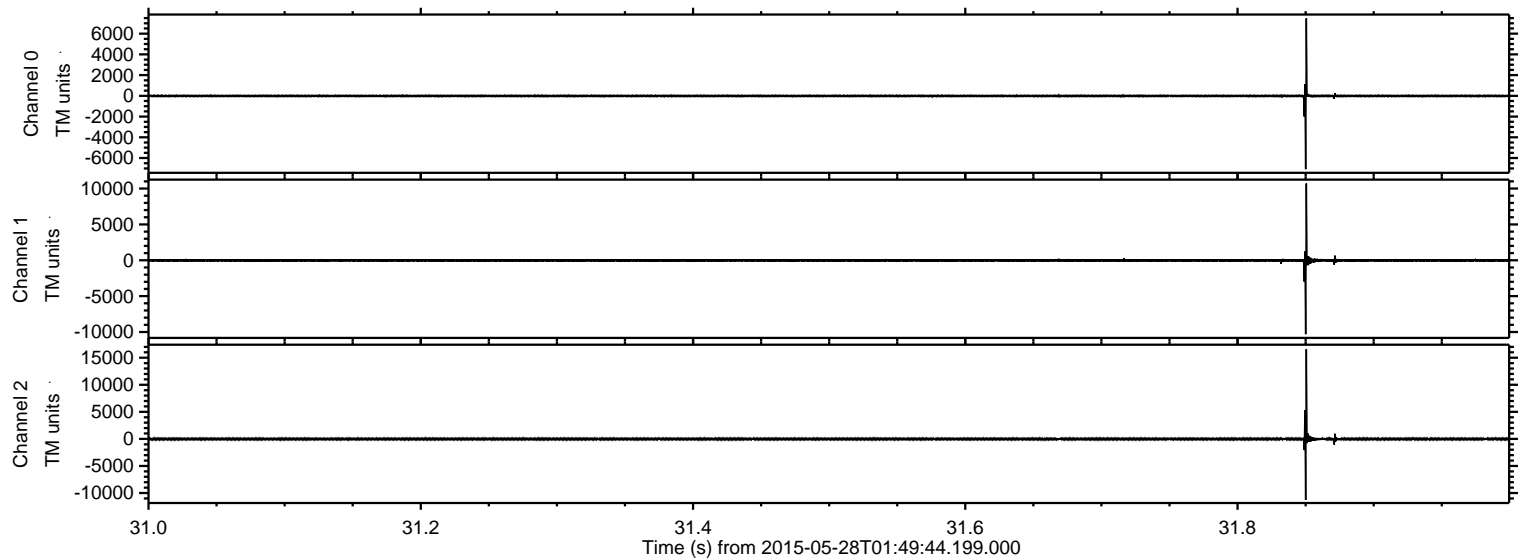


ELMAVAN 3D WAVEFORMS (Measured data sampled at 50 kHz) 49794 packets of 144 samples from 2015-05-28T01:49:44.199.000.

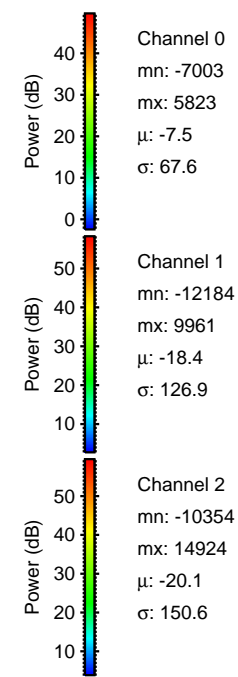
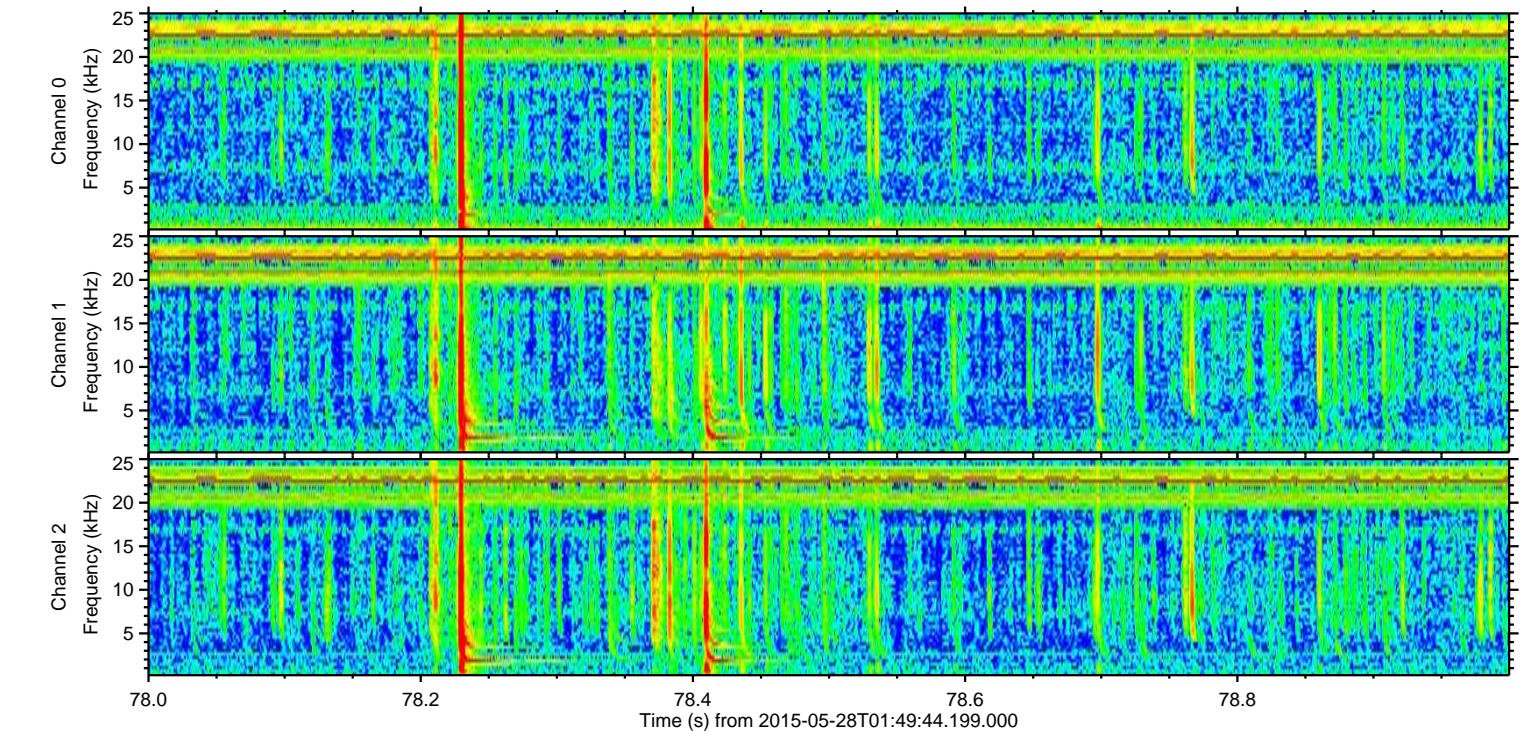
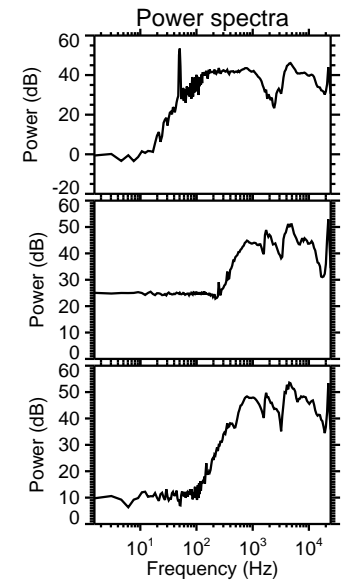
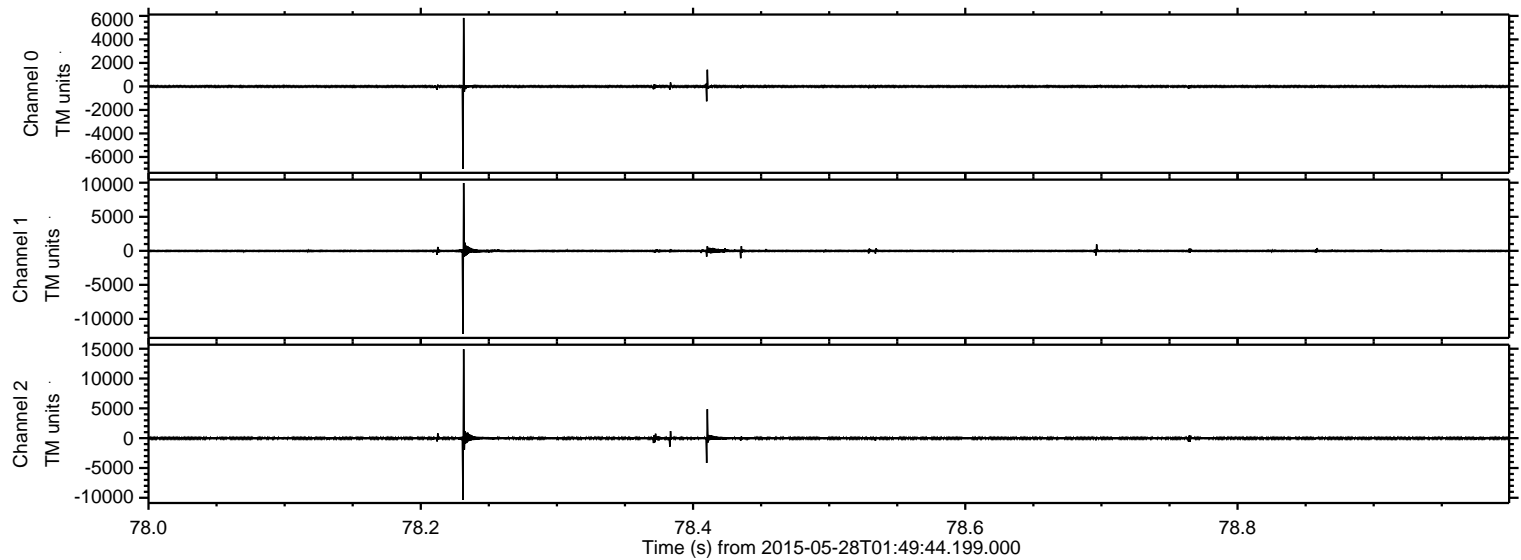
Processed Thu May 28 03:56:53 2015 by ELM ver.2012-10-06 from 001__elm20150528_014943__dat00.bin



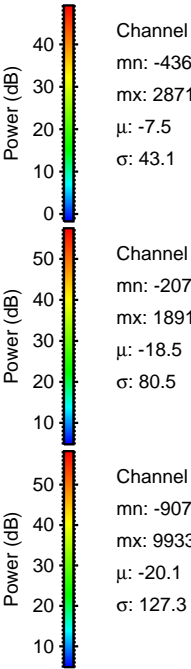
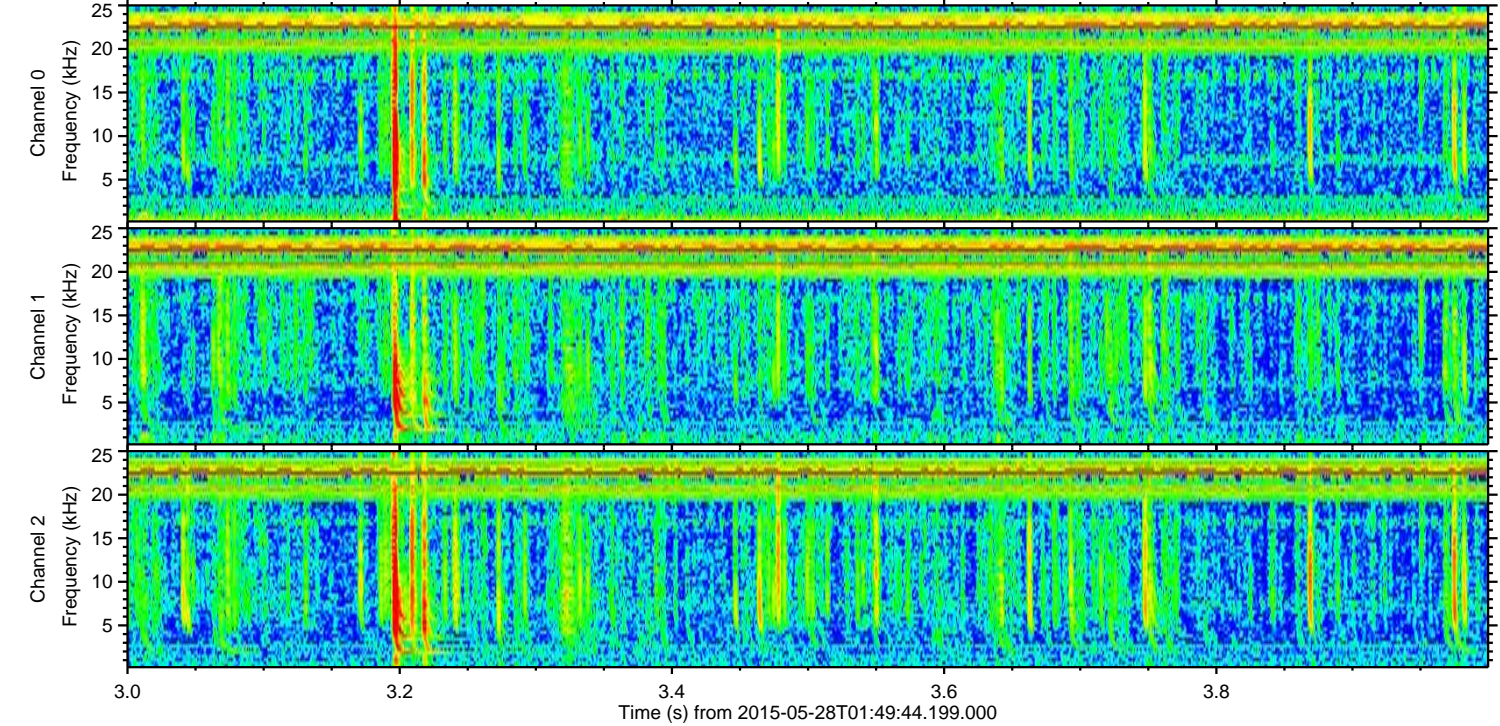
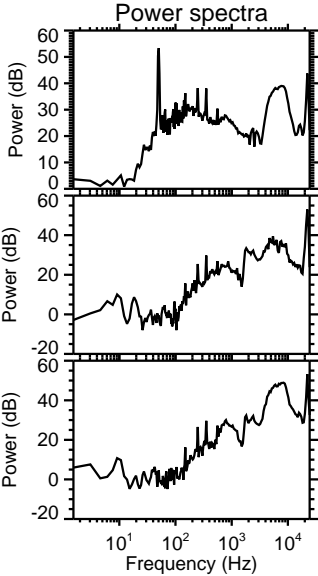
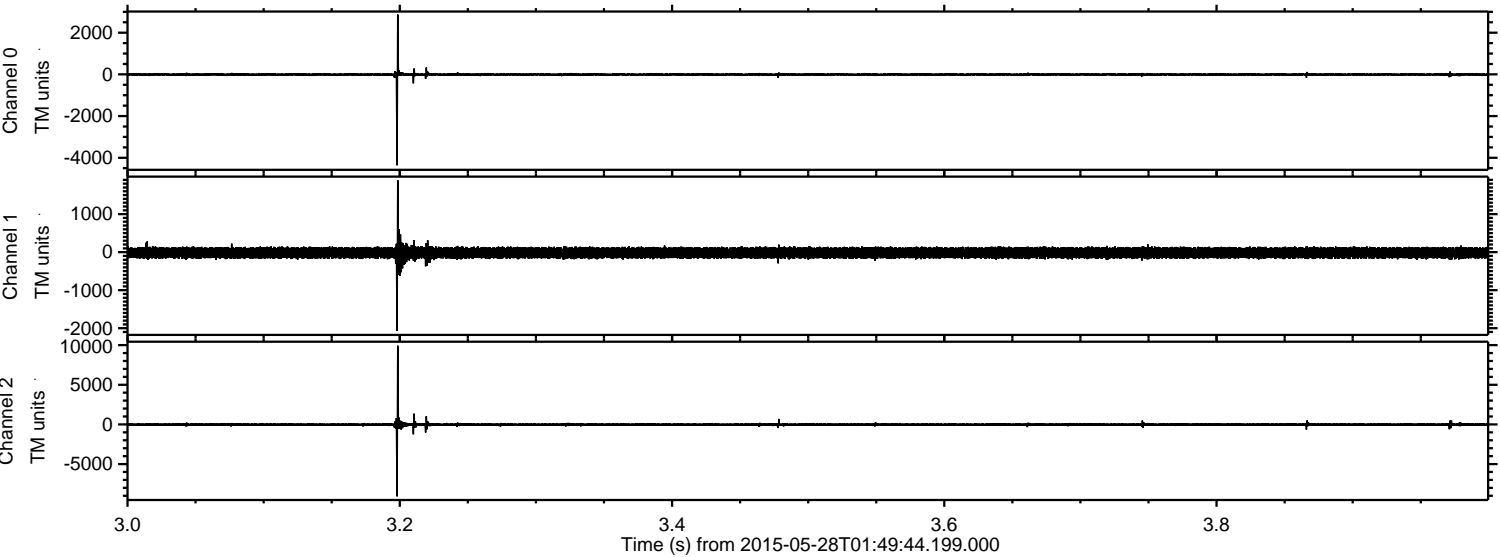
Processed Thu May 28 03:57:04 2015 by ELM ver.2012-10-06 from 001__elm20150528_014943__dat00.bin



Processed Thu May 28 03:57:05 2015 by ELM ver.2012-10-06 from 001__elm20150528_014943__dat00.bin

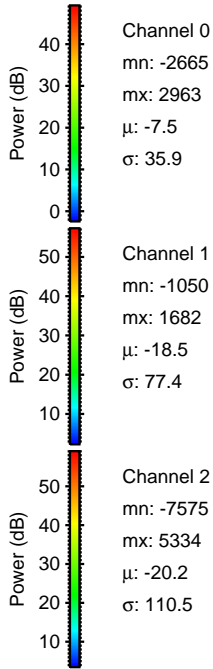
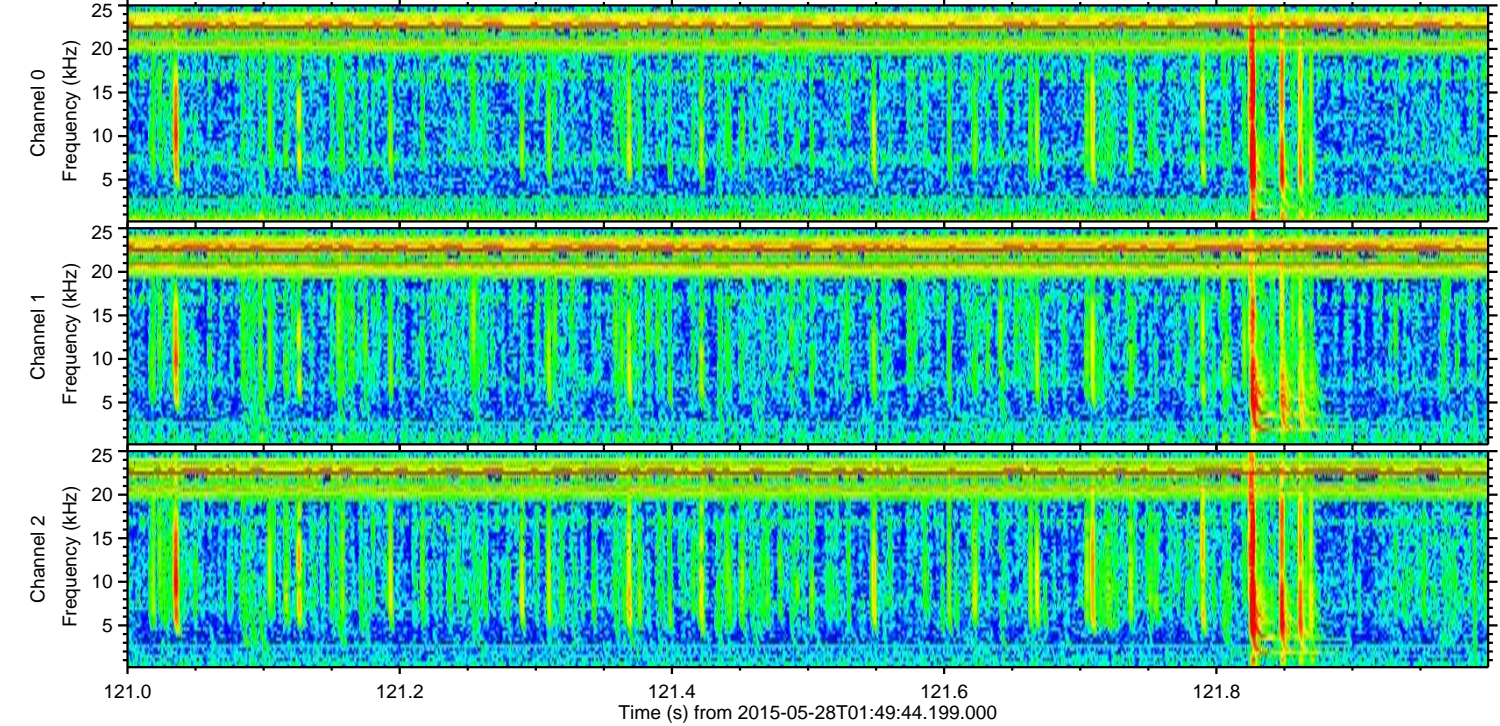
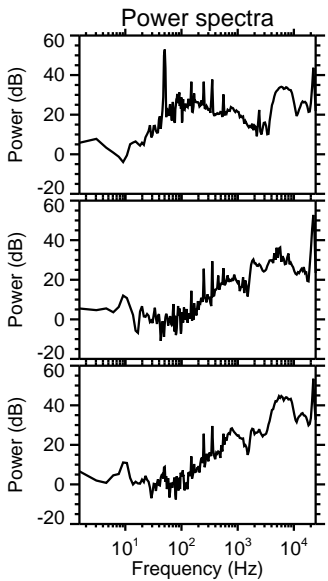
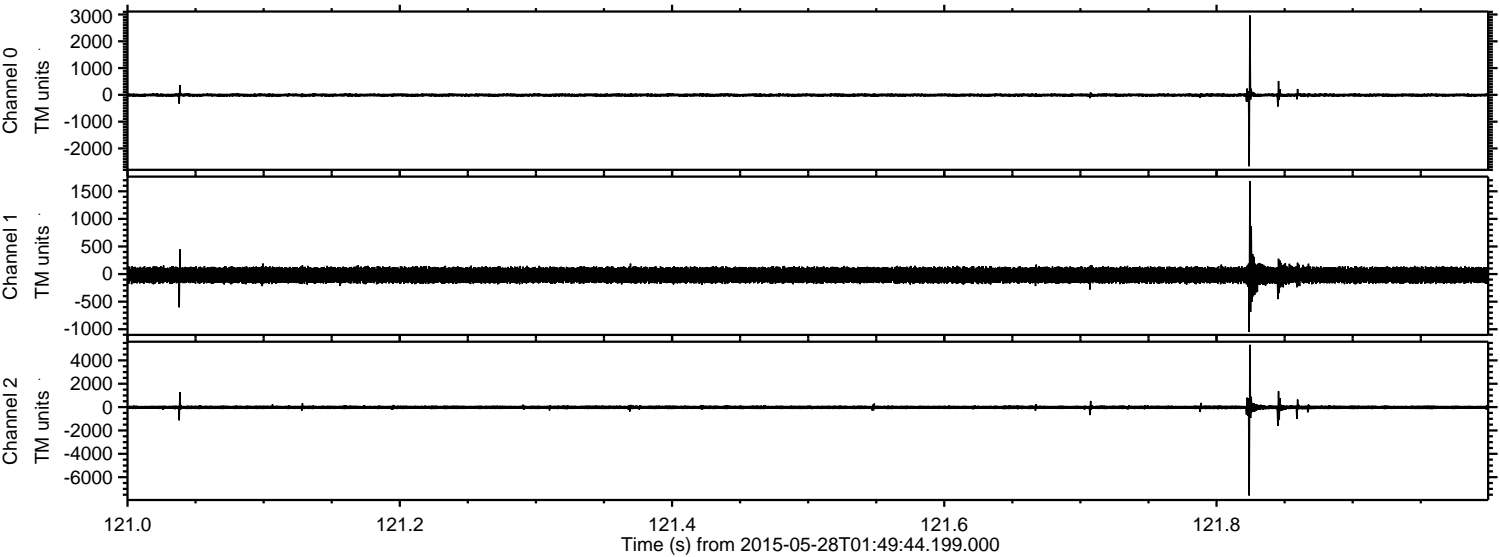


Processed Thu May 28 03:57:06 2015 by ELM ver.2012-10-06 from 001__elm20150528_014943__dat00.bin

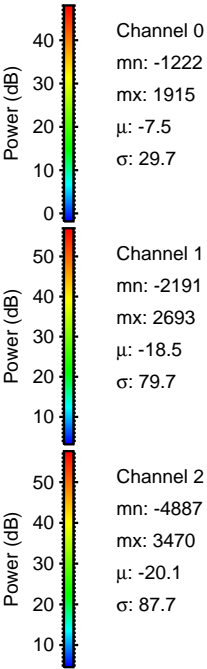
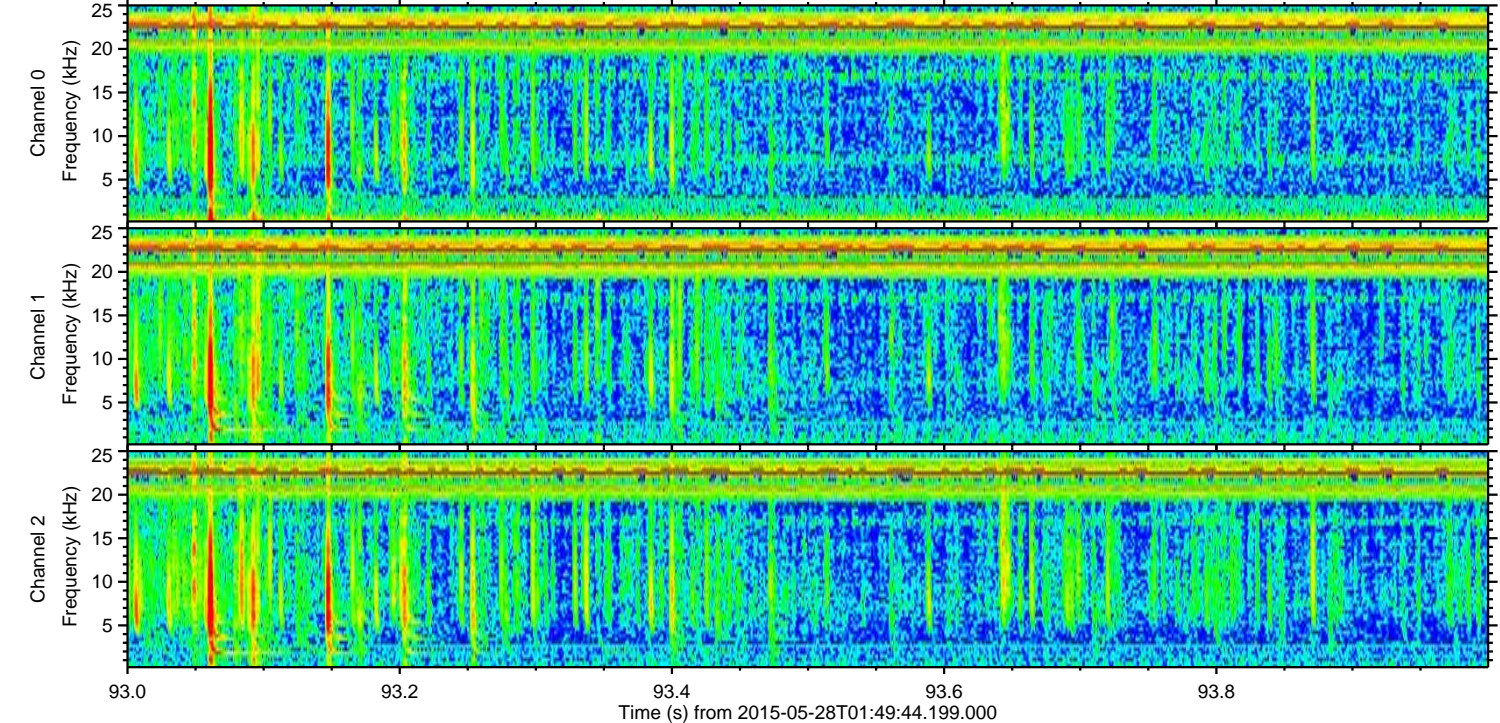
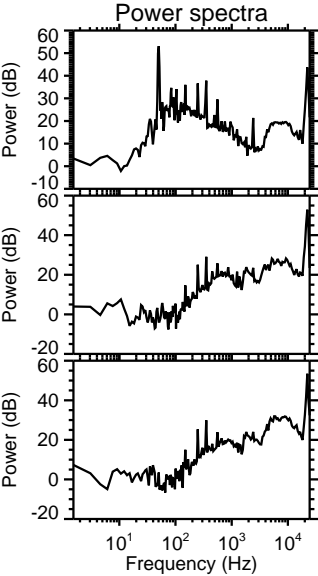
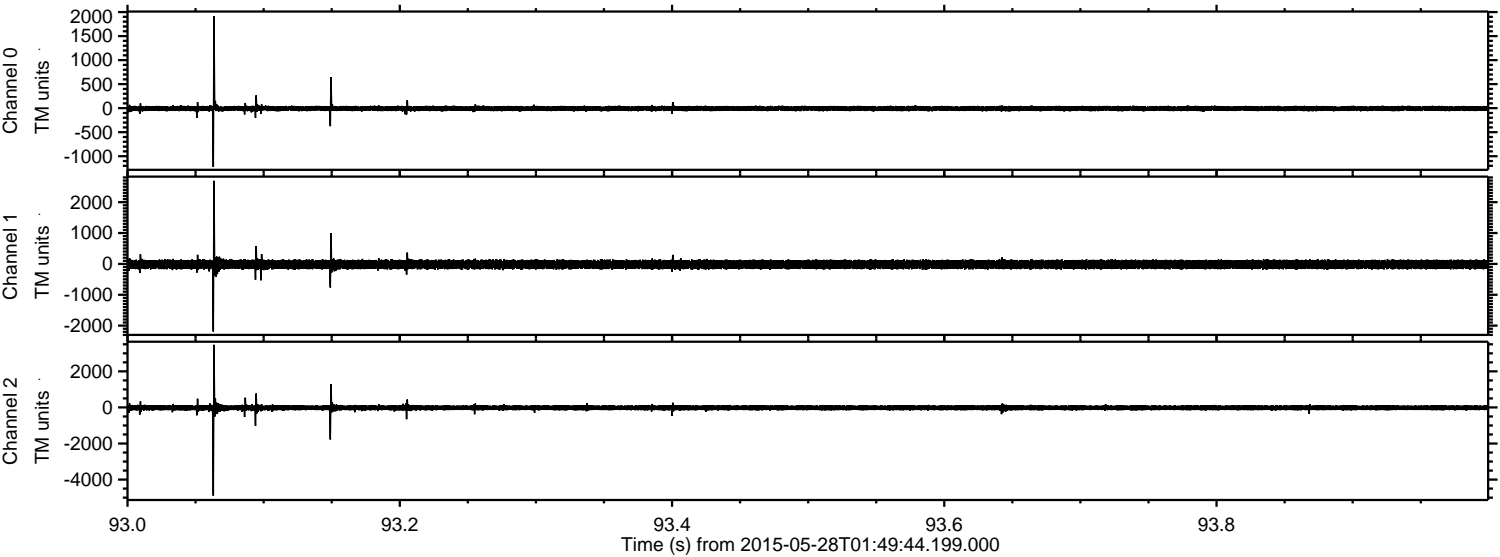


ELMAVAN 3D WAVEFORMS (Measured data sampled at 50 kHz) 49794 packets of 144 samples from 2015-05-28T01:49:44.199.000. Part 122/144

Processed Thu May 28 03:57:07 2015 by ELM ver.2012-10-06 from 001__elm20150528_014943__dat00.bin

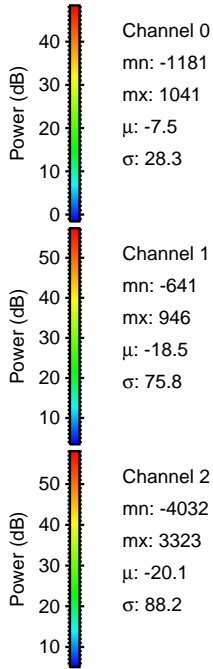
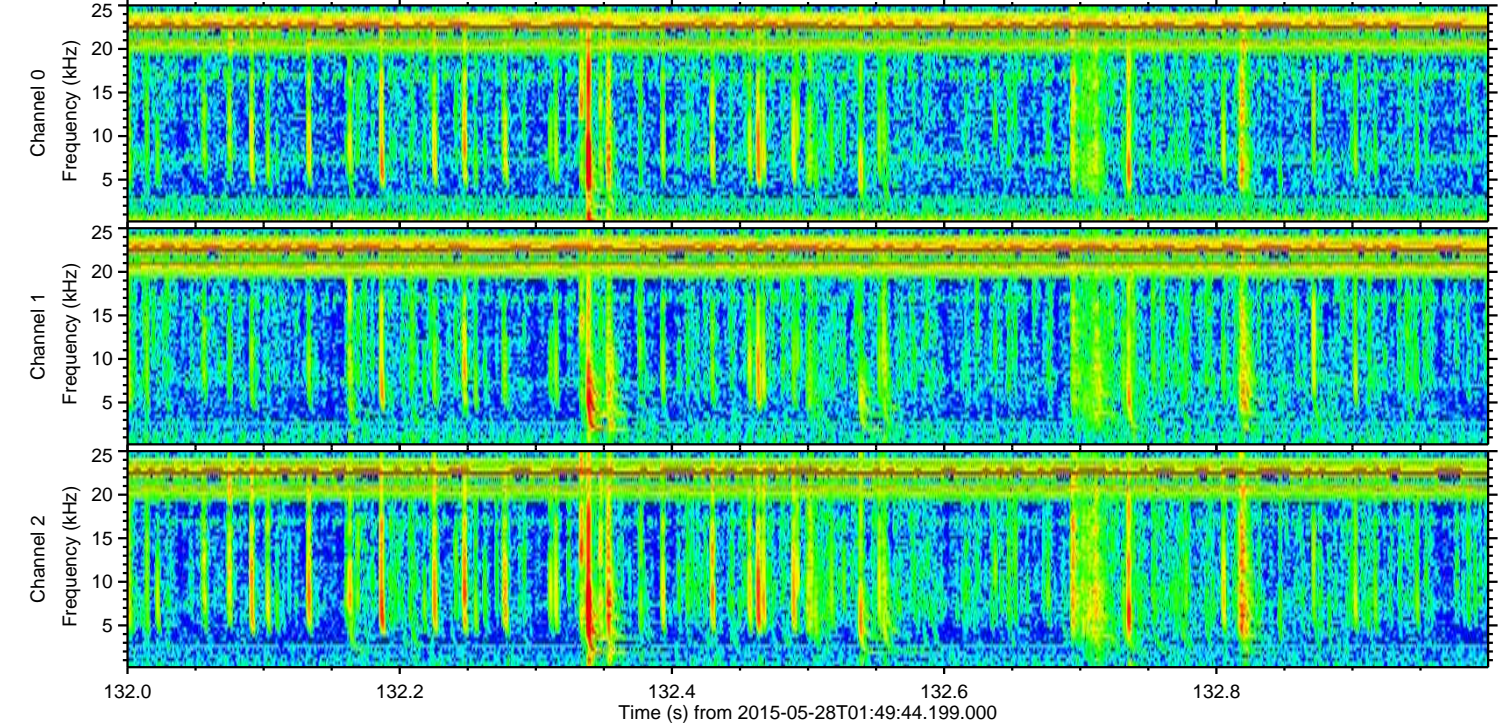
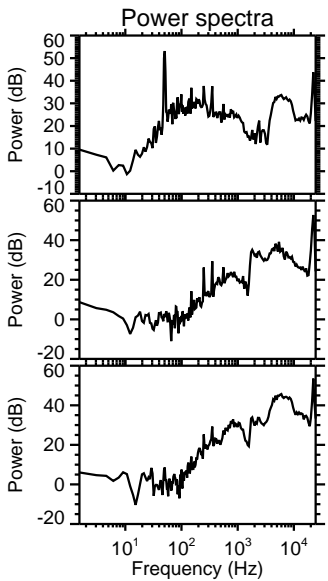
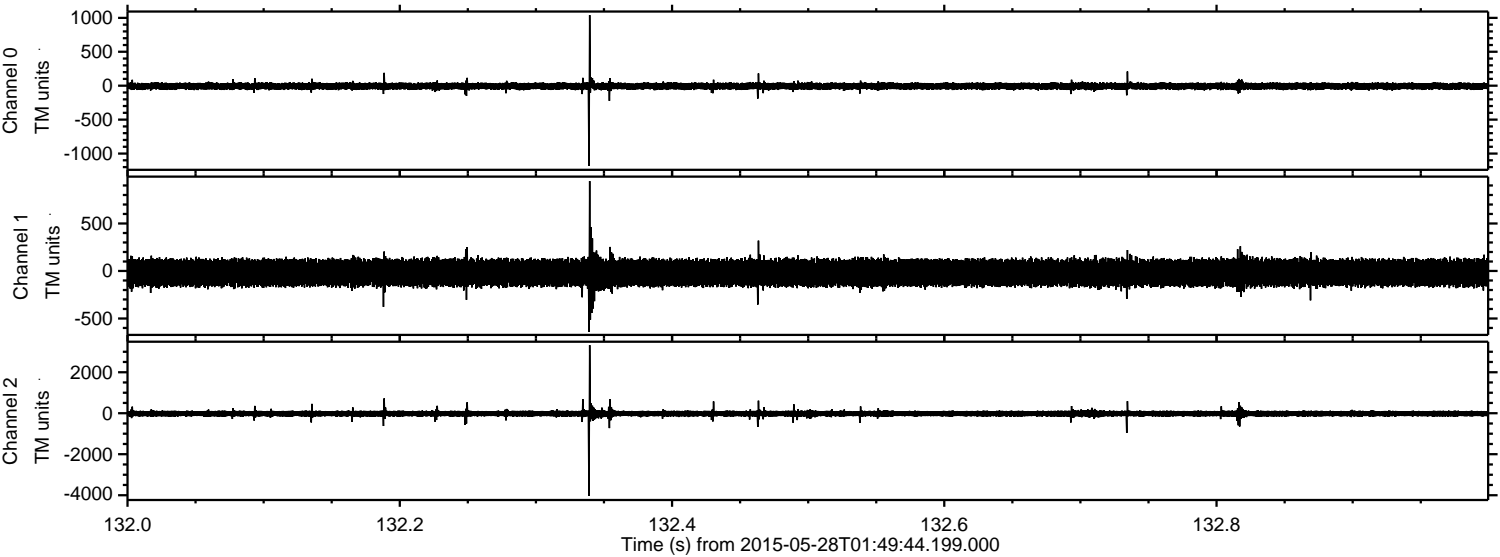


Processed Thu May 28 03:57:08 2015 by ELM ver.2012-10-06 from 001__elm20150528_014943__dat00.bin

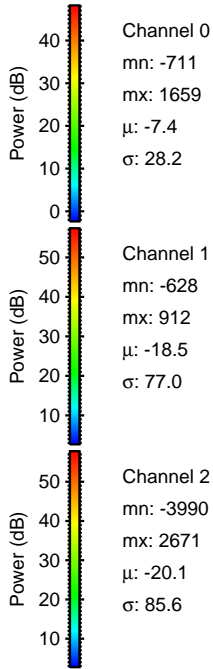
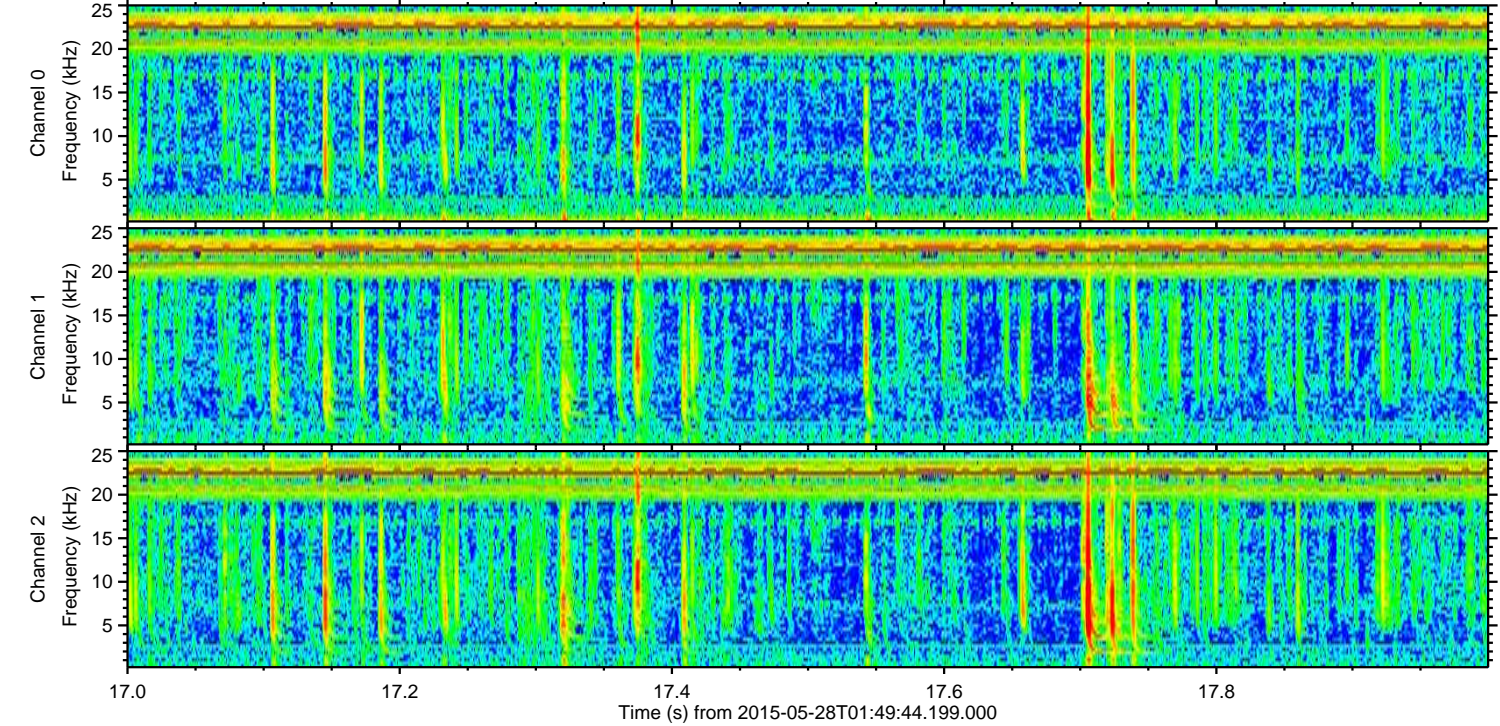
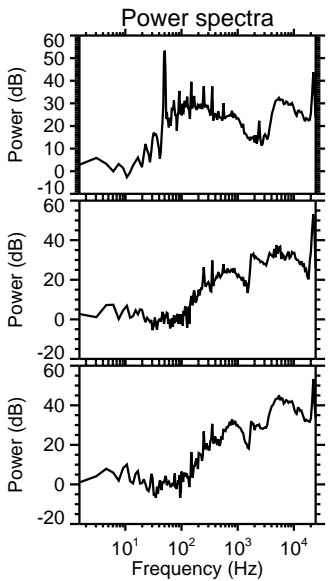
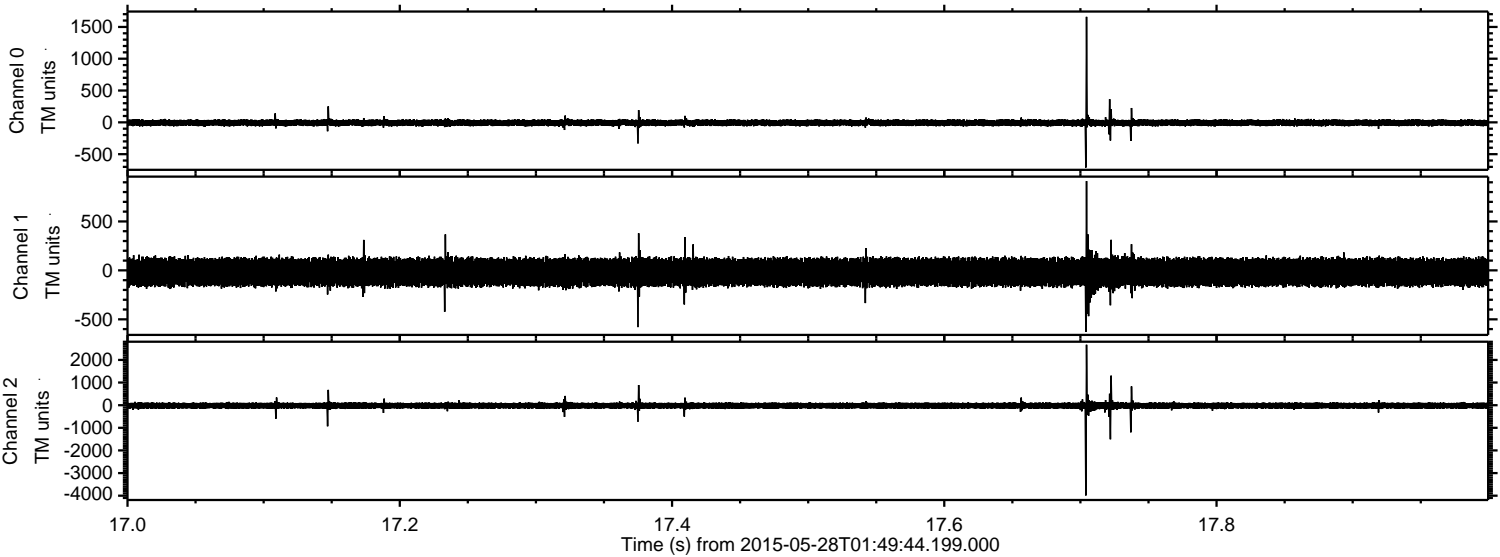


ELMAVAN 3D WAVEFORMS (Measured data sampled at 50 kHz) 49794 packets of 144 samples from 2015-05-28T01:49:44.199.000. Part 133/144

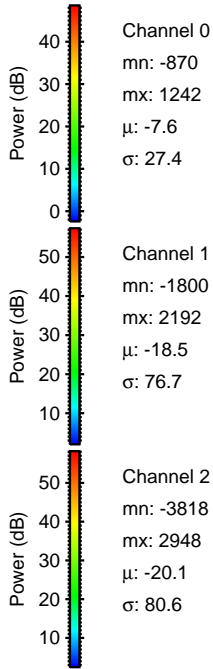
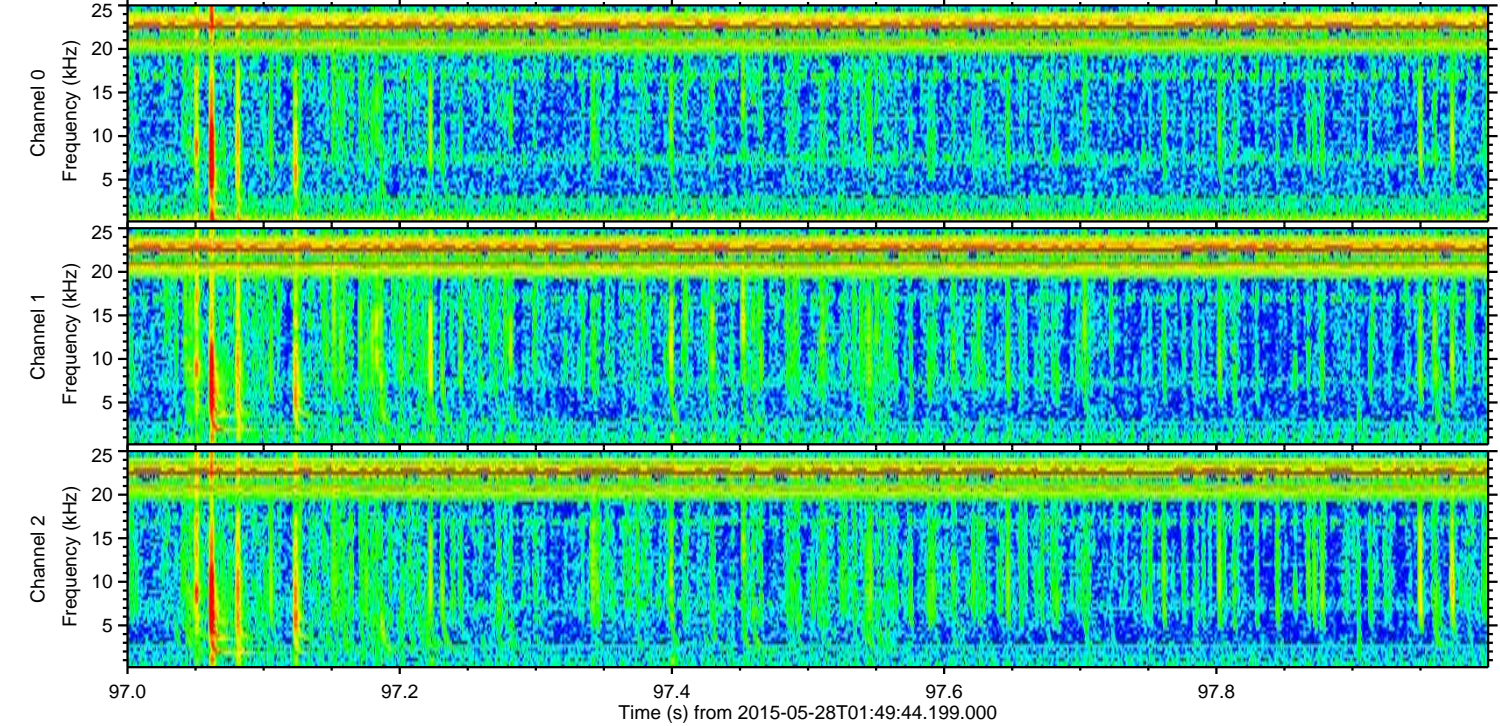
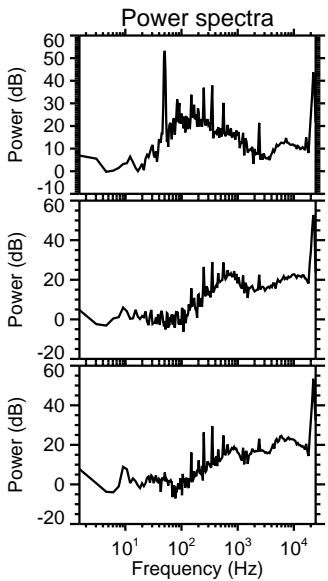
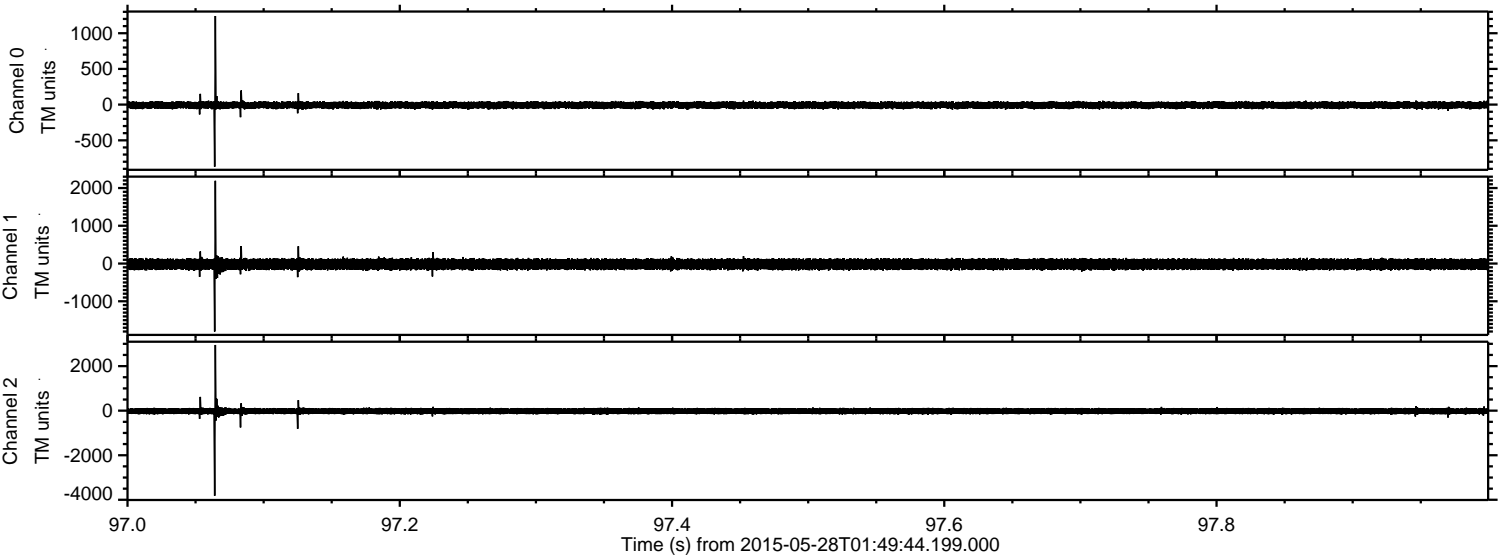
Processed Thu May 28 03:57:09 2015 by ELM ver.2012-10-06 from 001__elm20150528_014943__dat00.bin



Processed Thu May 28 03:57:10 2015 by ELM ver.2012-10-06 from 001__elm20150528_014943__dat00.bin

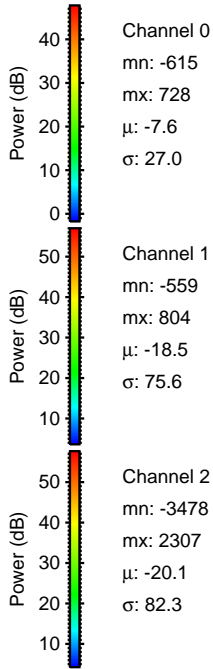
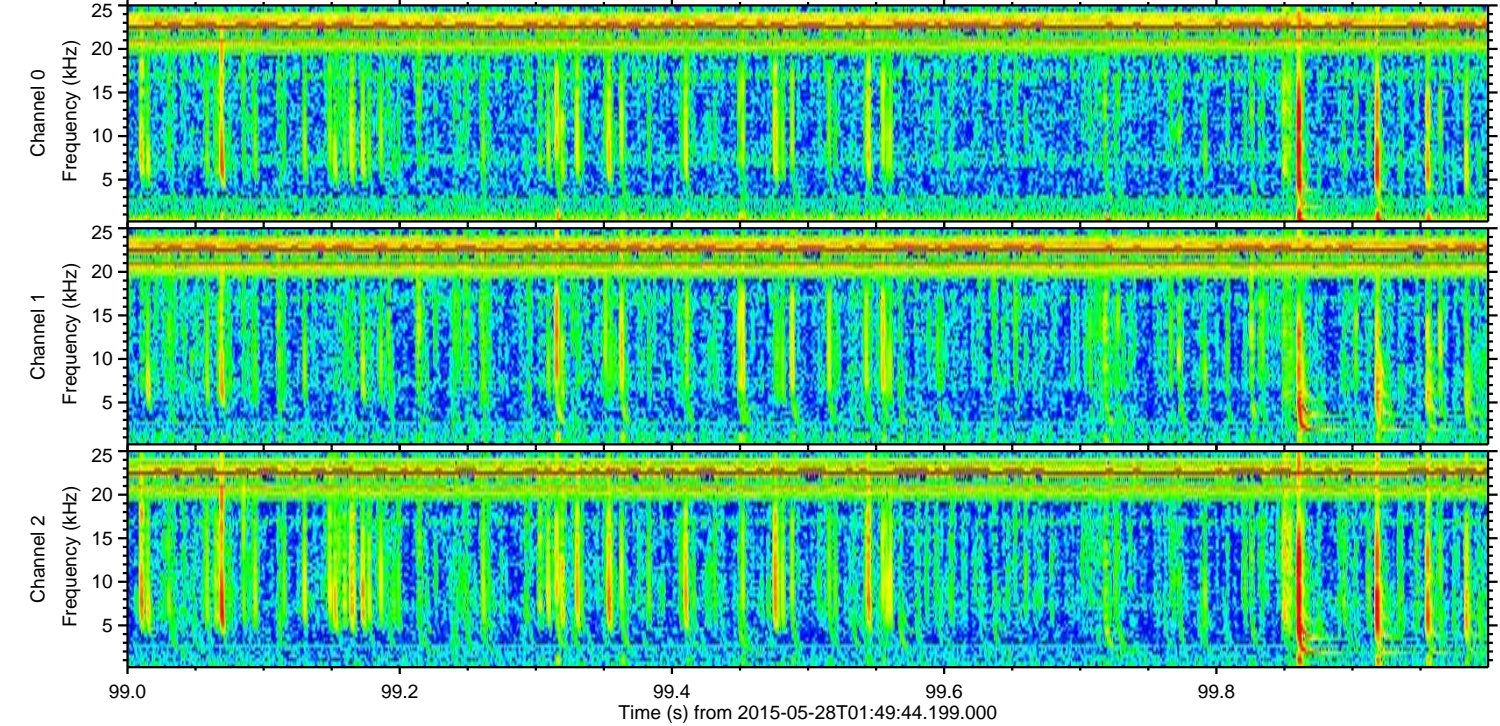
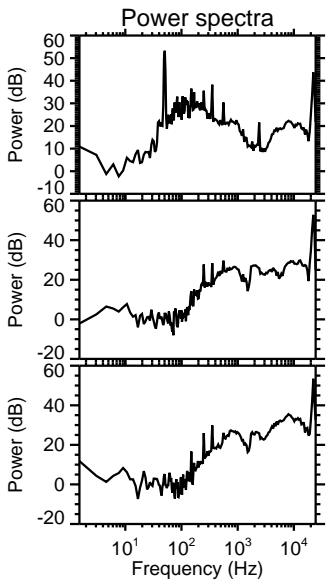
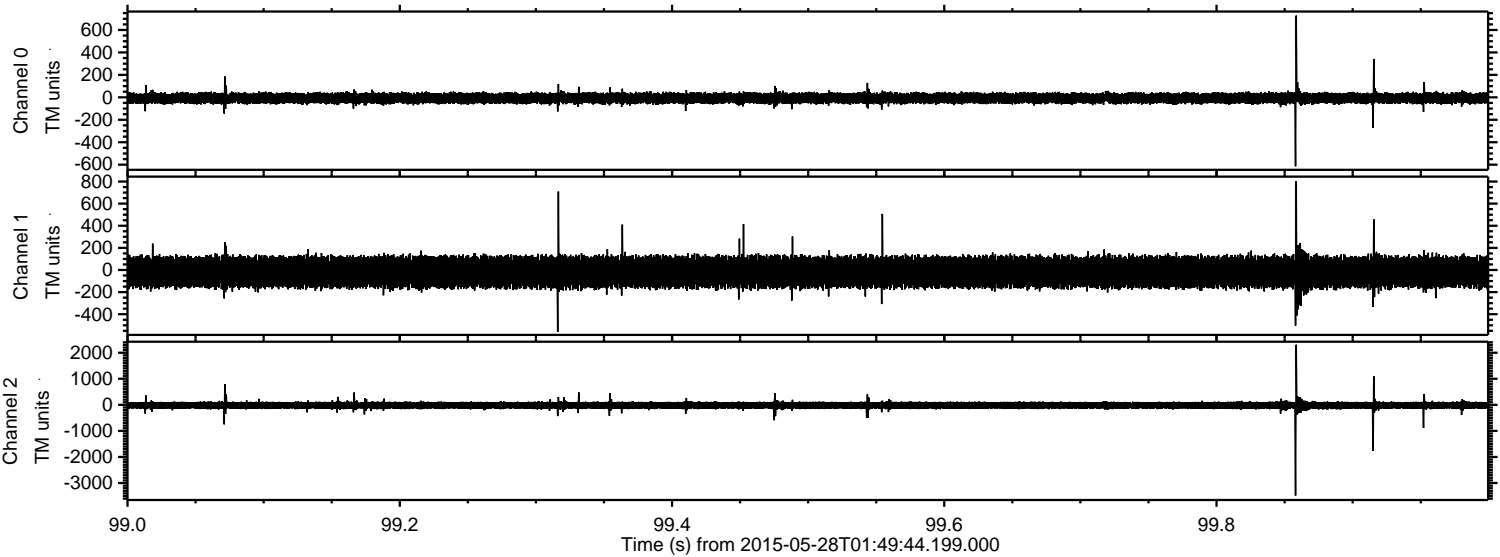


Processed Thu May 28 03:57:11 2015 by ELM ver.2012-10-06 from 001__elm20150528_014943__dat00.bin



ELMAVAN 3D WAVEFORMS (Measured data sampled at 50 kHz) 49794 packets of 144 samples from 2015-05-28T01:49:44.199.000. Part 100/144

Processed Thu May 28 03:57:11 2015 by ELM ver.2012-10-06 from 001__elm20150528_014943__dat00.bin



Channel 0
mn: -615
mx: 728
 μ : -7.6
 σ : 27.0

Channel 1
mn: -559
mx: 804
 μ : -18.5
 σ : 75.6

Channel 2
mn: -3478
mx: 2307
 μ : -20.1
 σ : 82.3

Processed Thu May 28 03:57:12 2015 by ELM ver.2012-10-06 from 001__elm20150528_014943__dat00.bin

