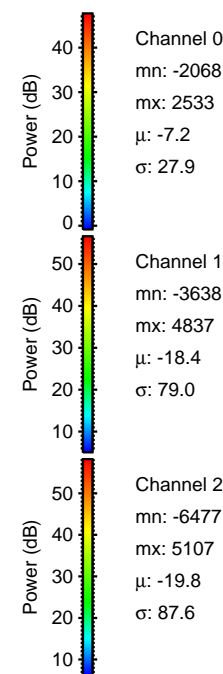
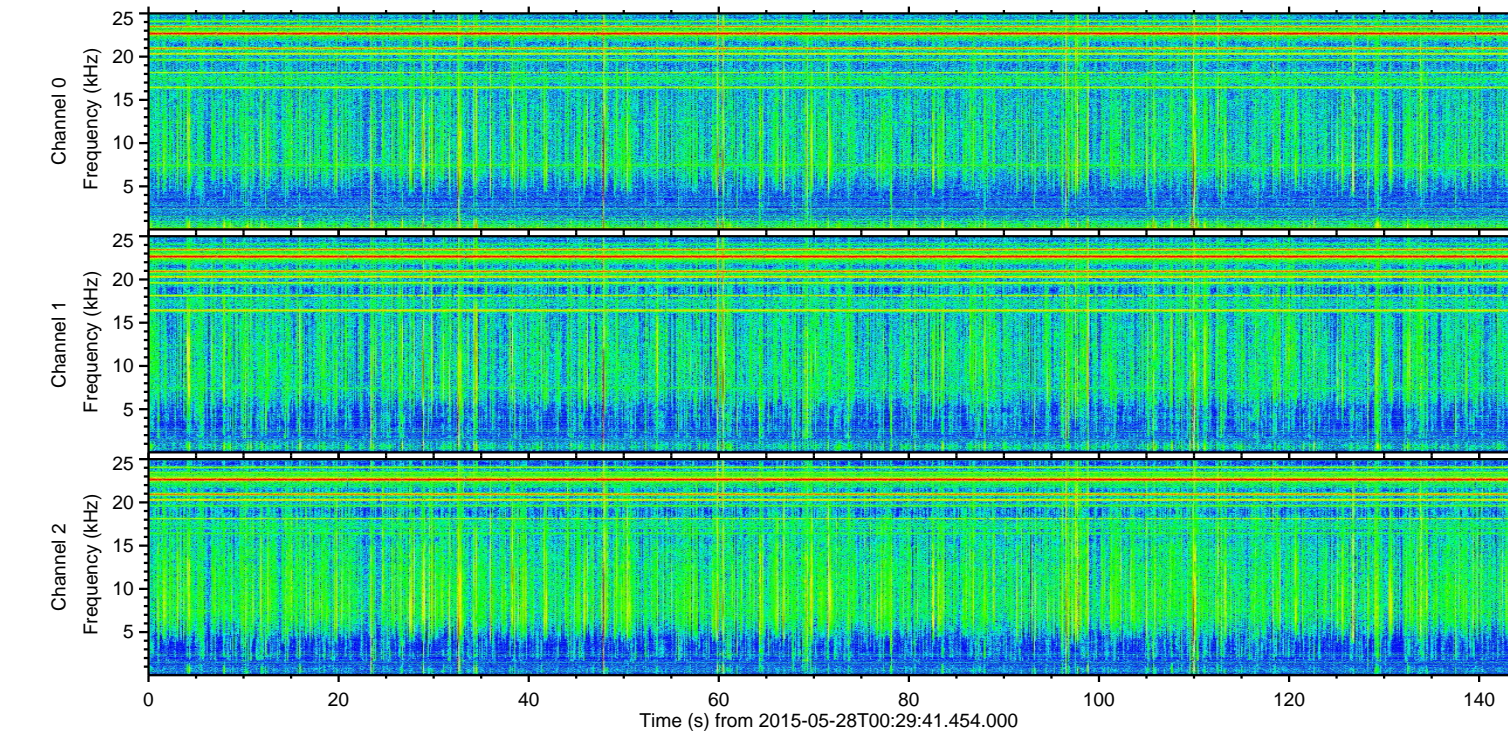
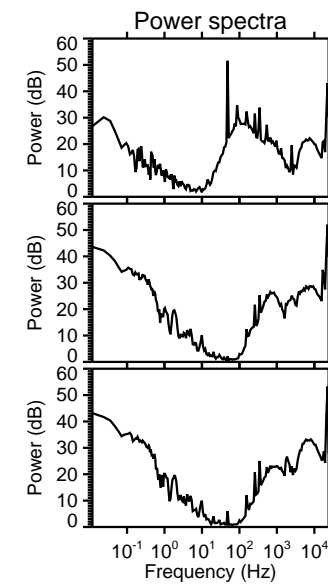
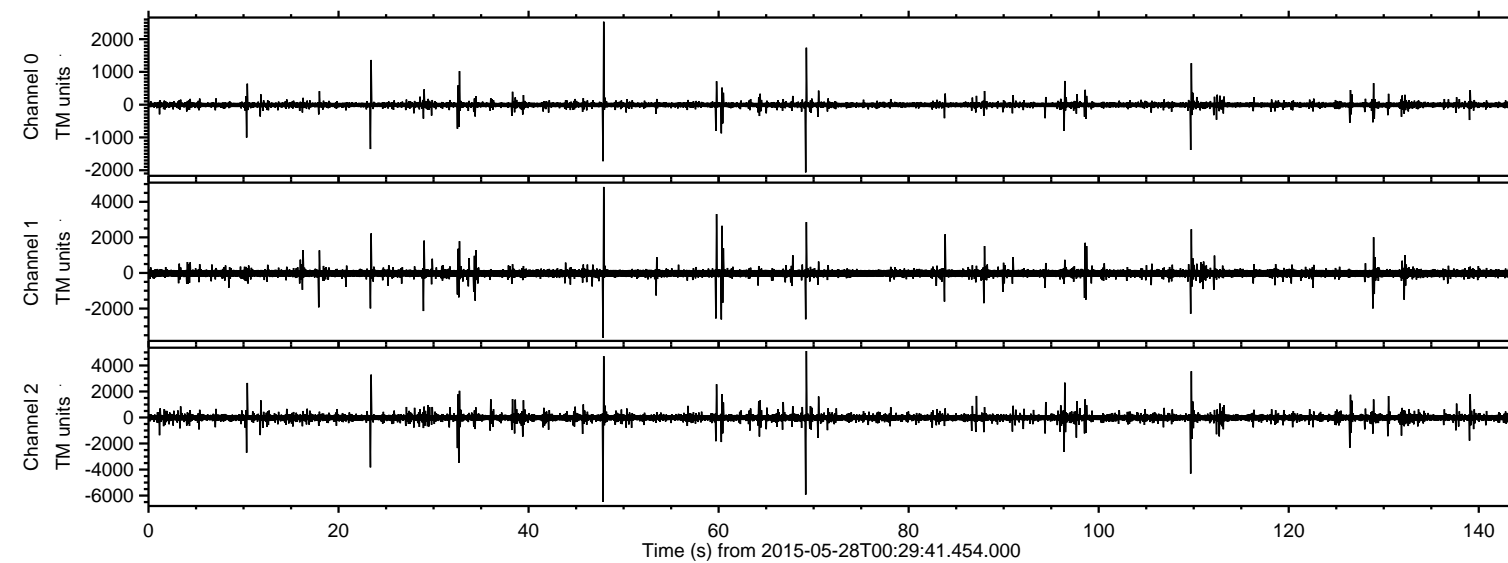


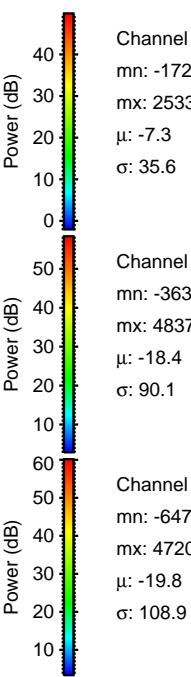
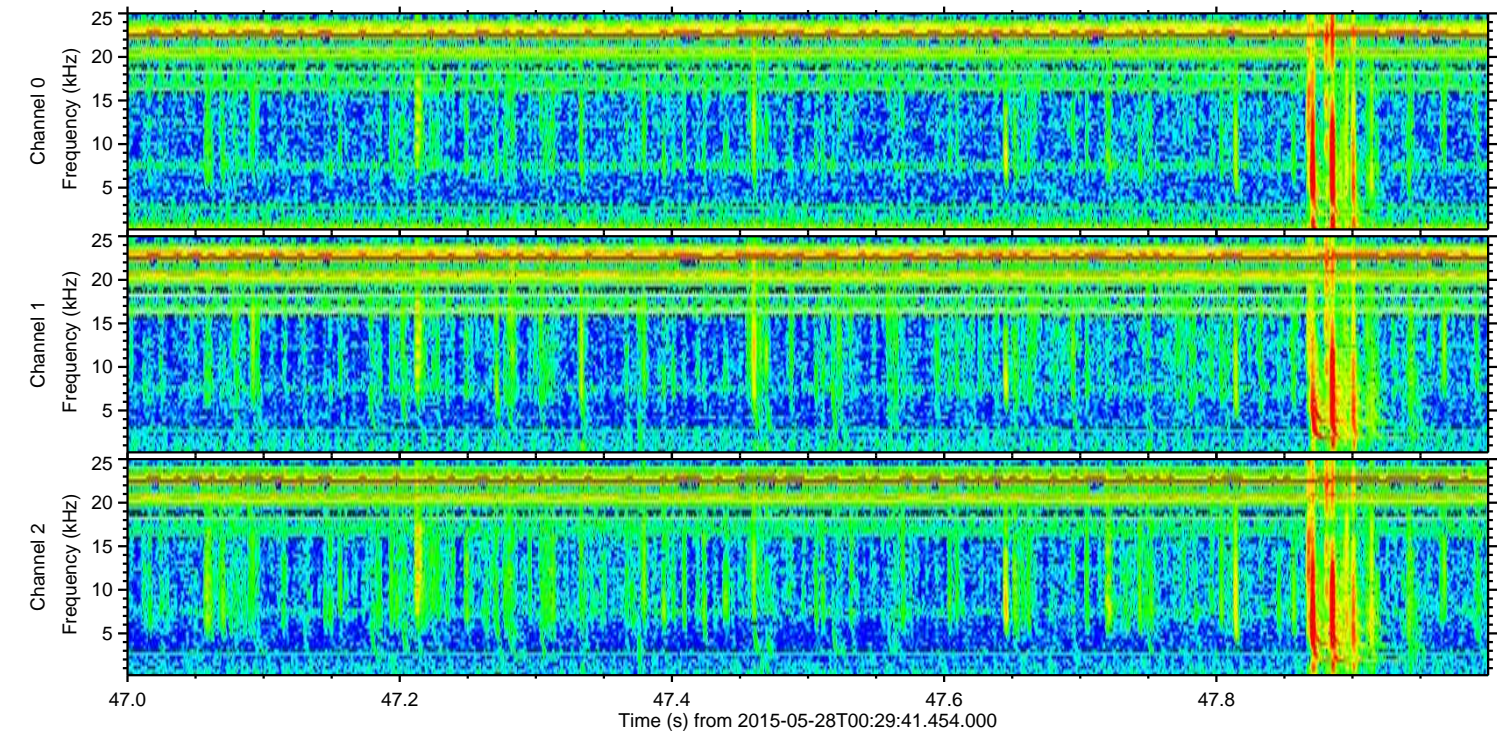
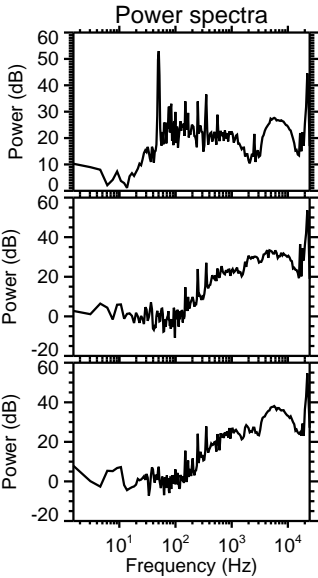
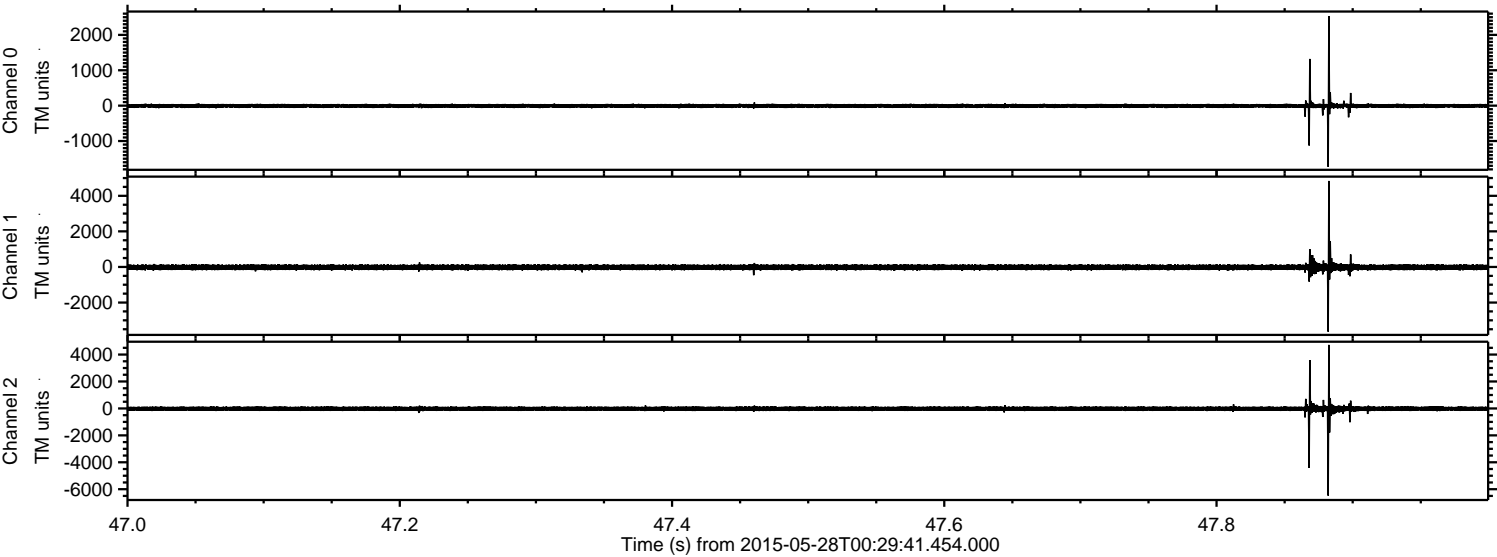
ELMAVAN 3D WAVEFORMS (Measured data sampled at 50 kHz) 49721 packets of 144 samples from 2015-05-28T00:29:41.454.000.

Processed Thu May 28 02:37:14 2015 by ELM ver.2012-10-06 from 001__elm20150528_002940__dat00.bin

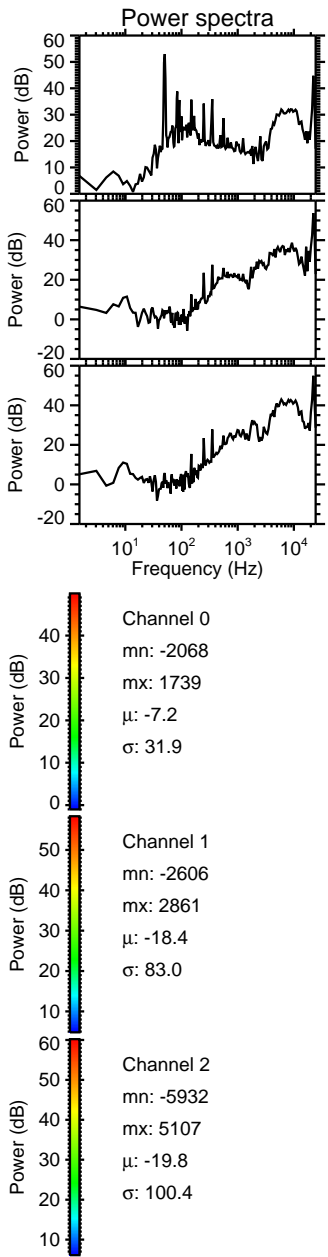
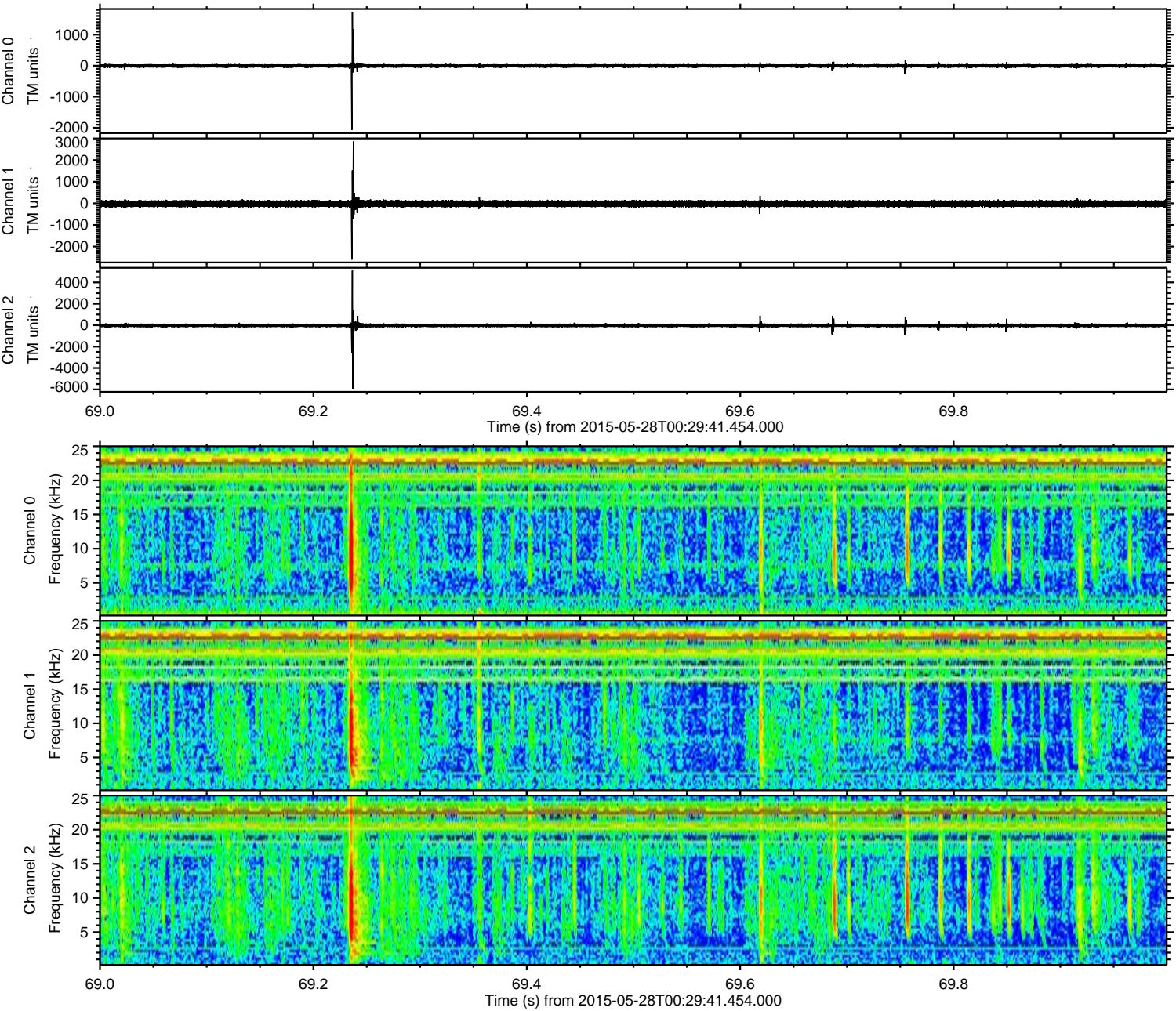


ELMAVAN 3D WAVEFORMS (Measured data sampled at 50 kHz) 49721 packets of 144 samples from 2015-05-28T00:29:41.454.000. Part 48/144

Processed Thu May 28 02:37:26 2015 by ELM ver.2012-10-06 from 001__elm20150528_002940__dat00.bin

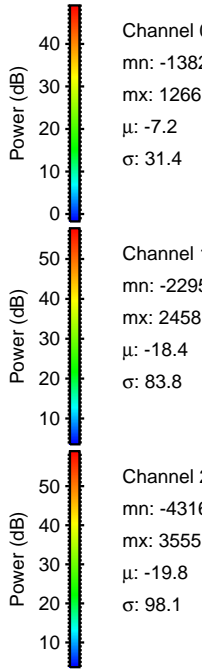
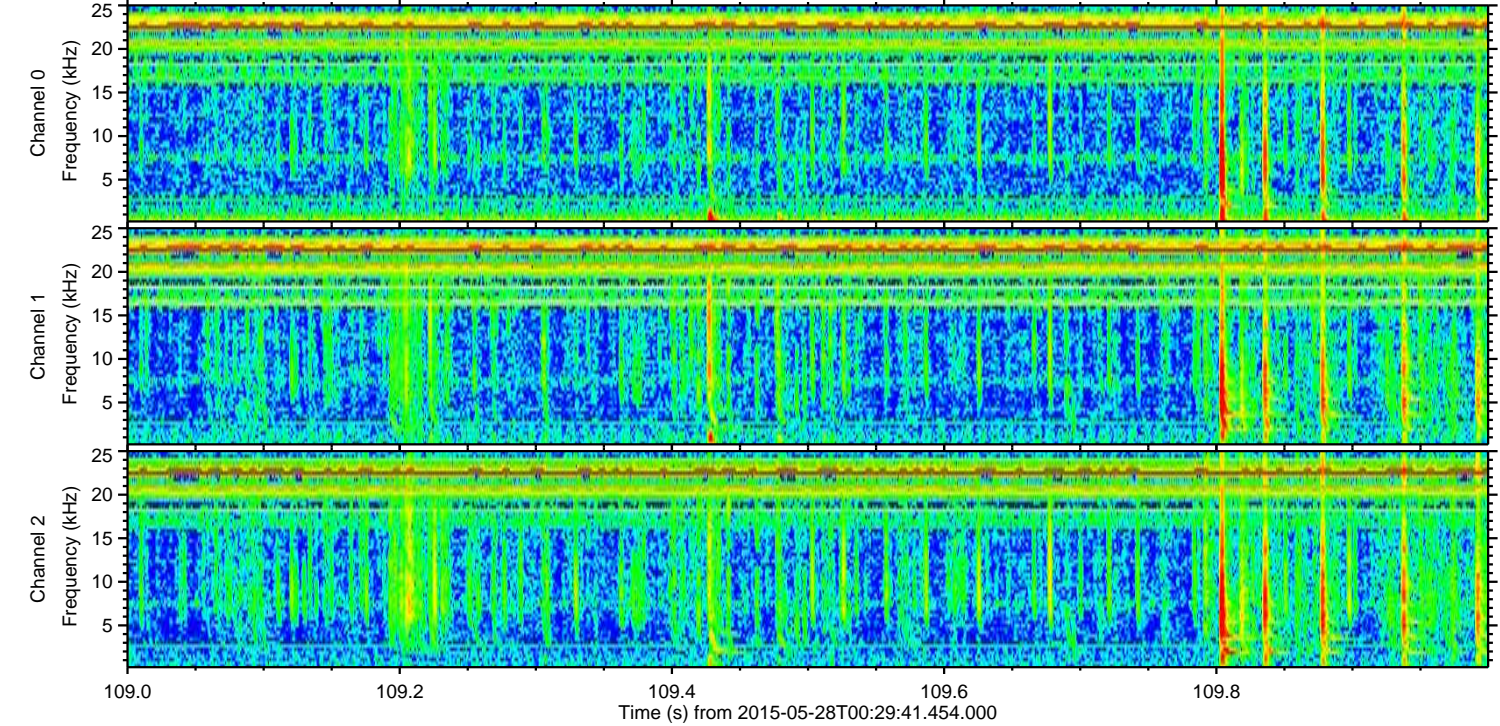
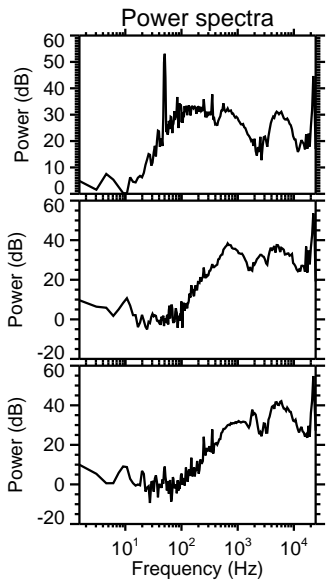
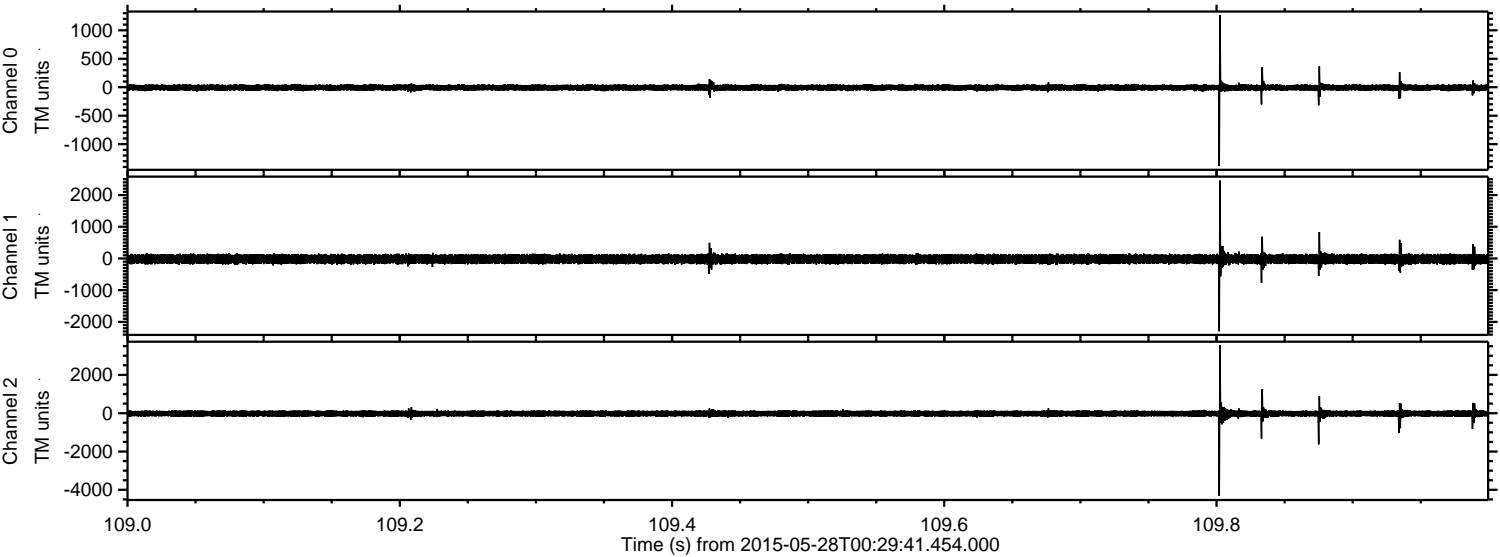


Processed Thu May 28 02:37:26 2015 by ELM ver.2012-10-06 from 001__elm20150528_002940__dat00.bin



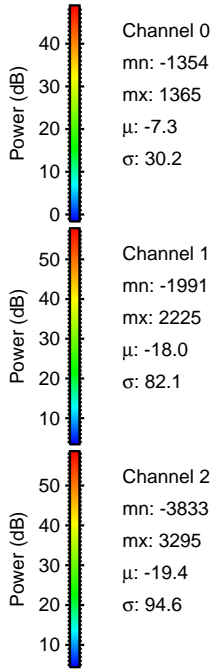
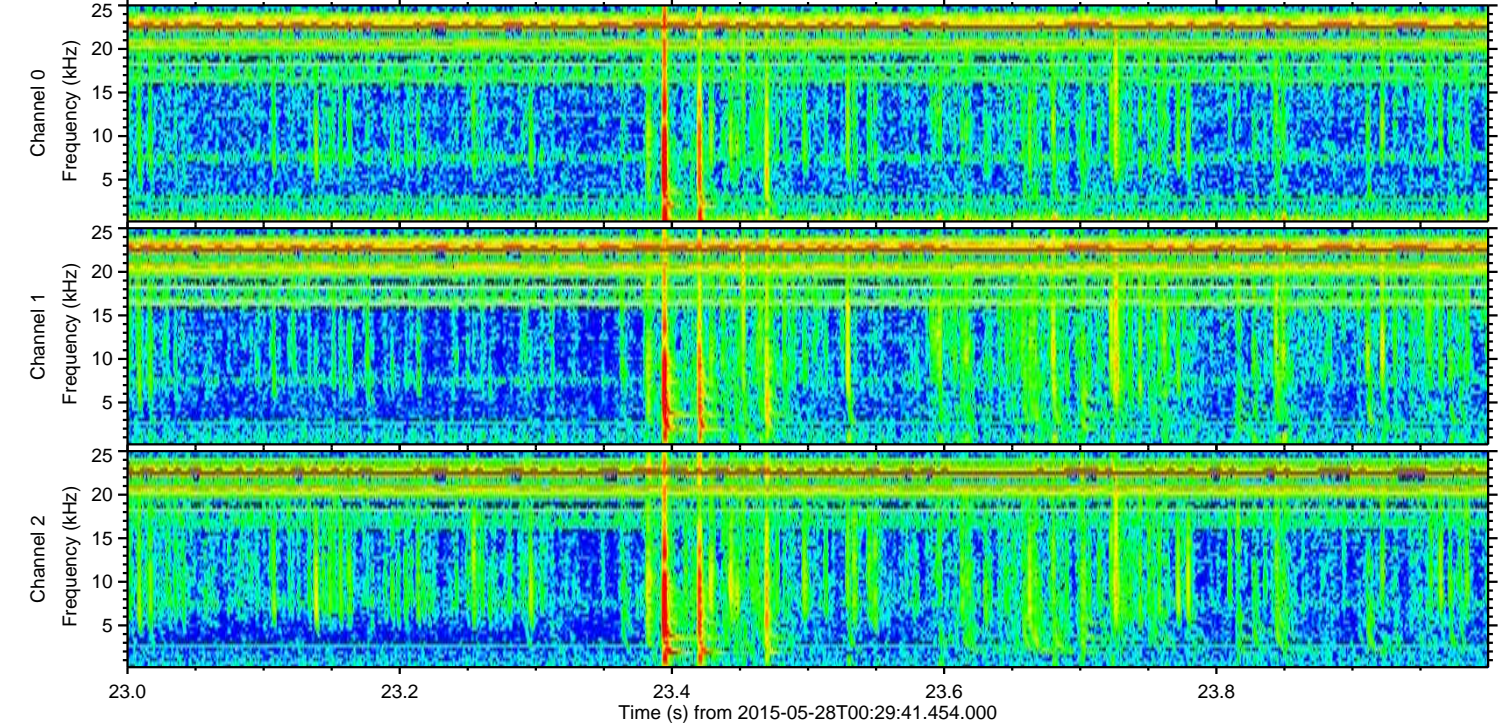
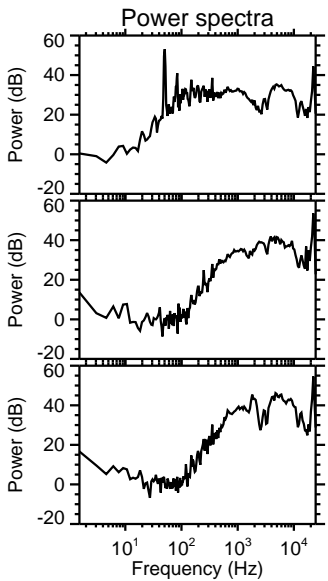
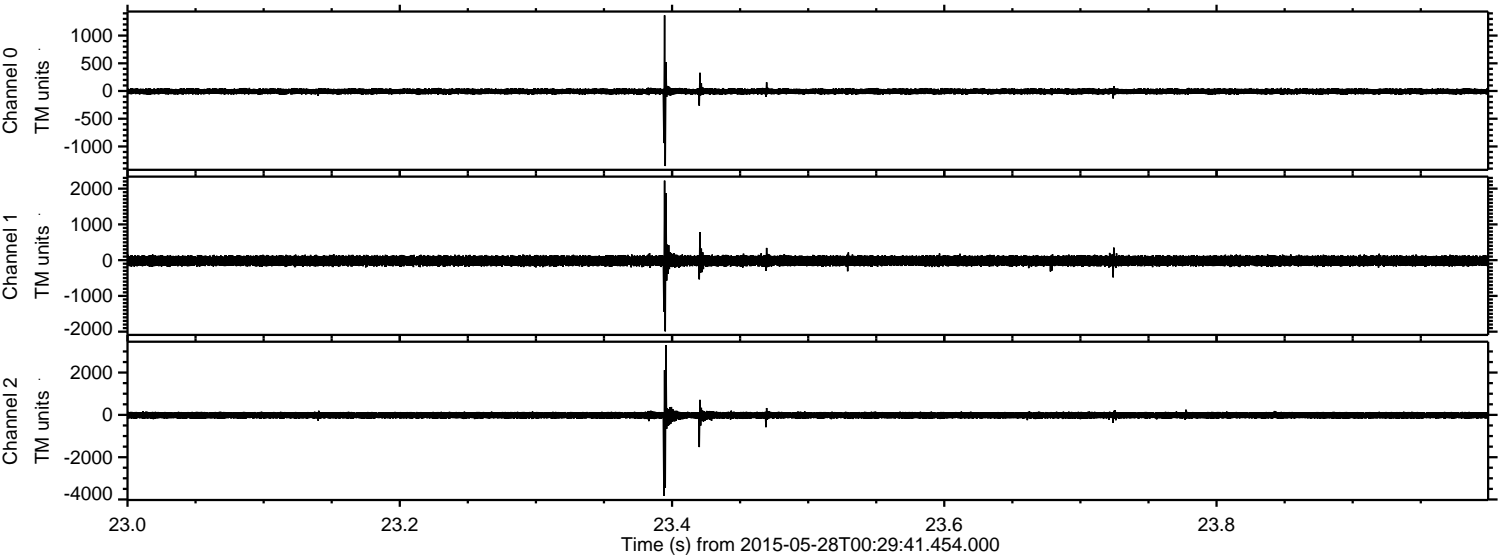
ELMAVAN 3D WAVEFORMS (Measured data sampled at 50 kHz) 49721 packets of 144 samples from 2015-05-28T00:29:41.454.000. Part 110/144

Processed Thu May 28 02:37:27 2015 by ELM ver.2012-10-06 from 001__elm20150528_002940__dat00.bin



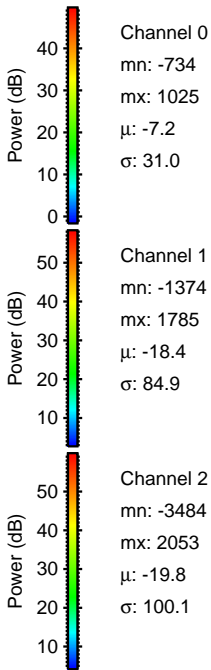
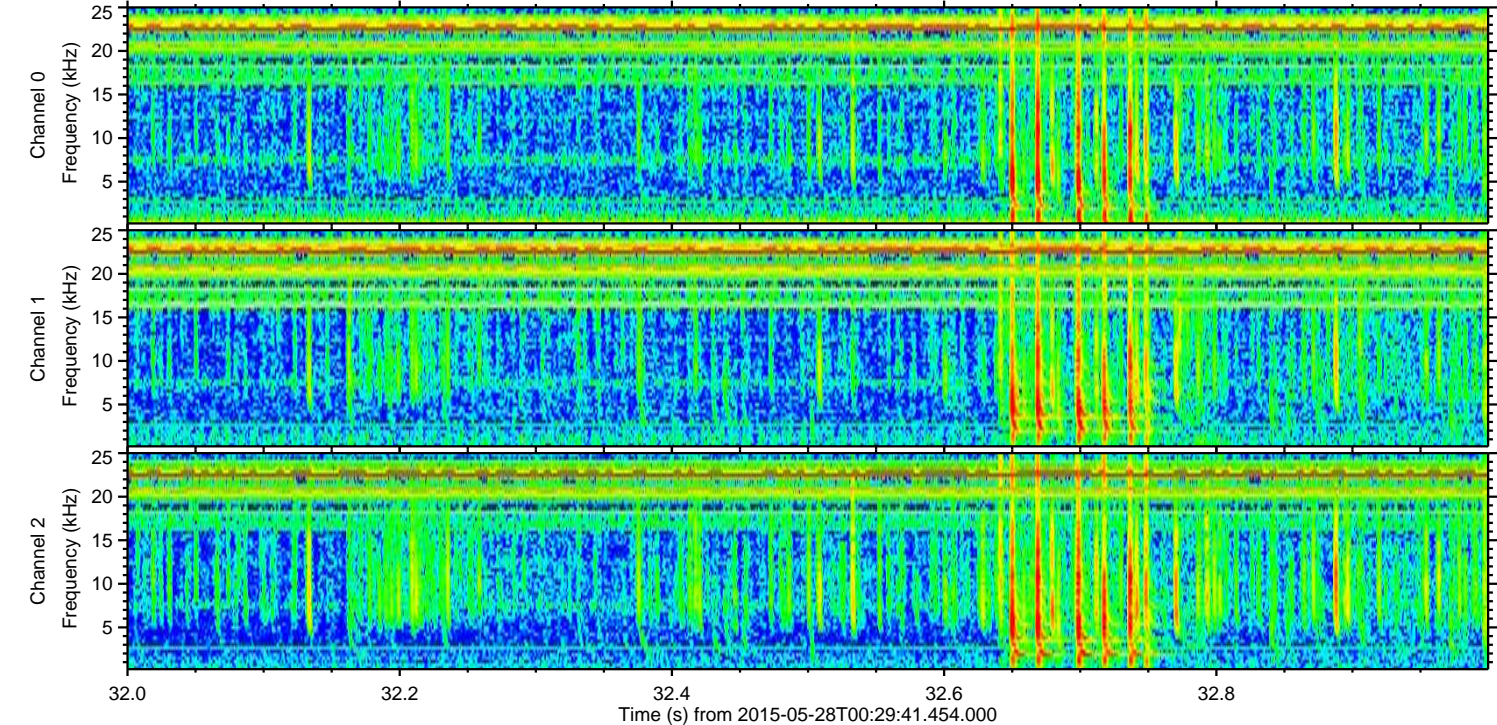
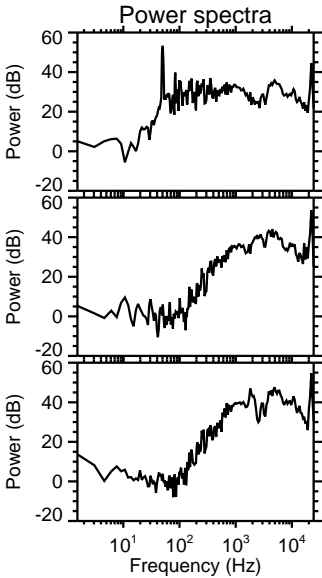
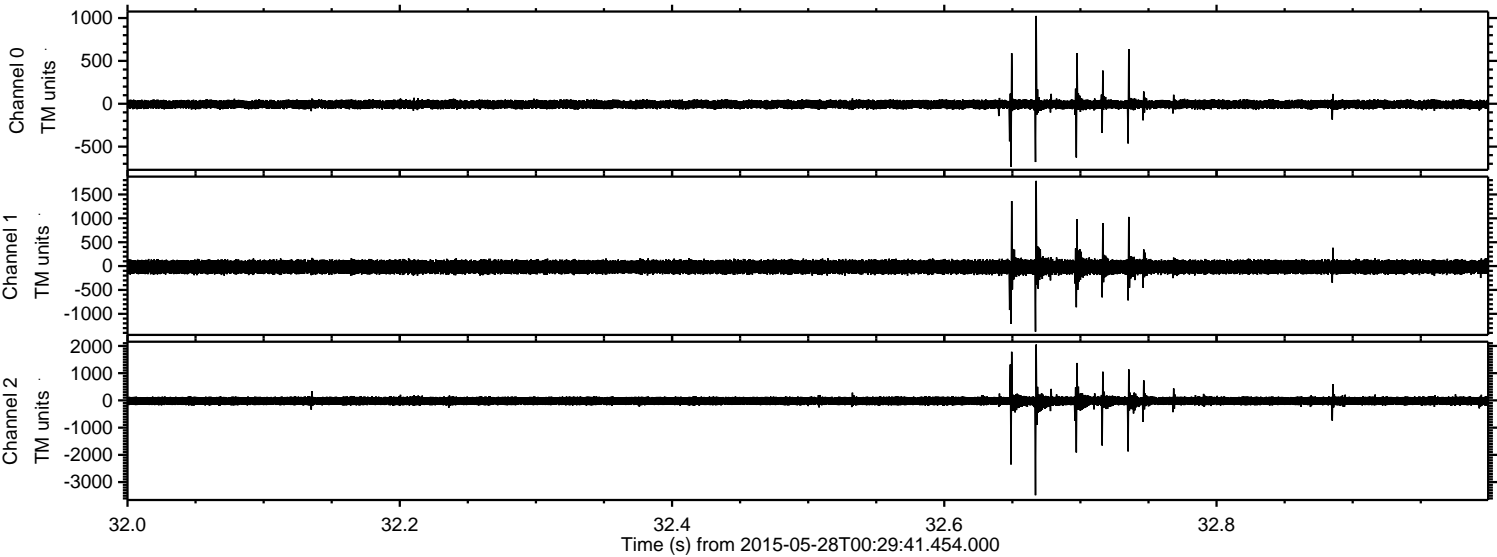
ELMAVAN 3D WAVEFORMS (Measured data sampled at 50 kHz) 49721 packets of 144 samples from 2015-05-28T00:29:41.454.000. Part 24/144

Processed Thu May 28 02:37:28 2015 by ELM ver.2012-10-06 from 001__elm20150528_002940__dat00.bin

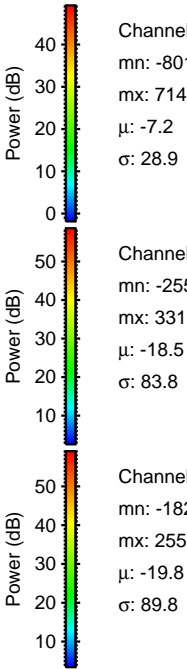
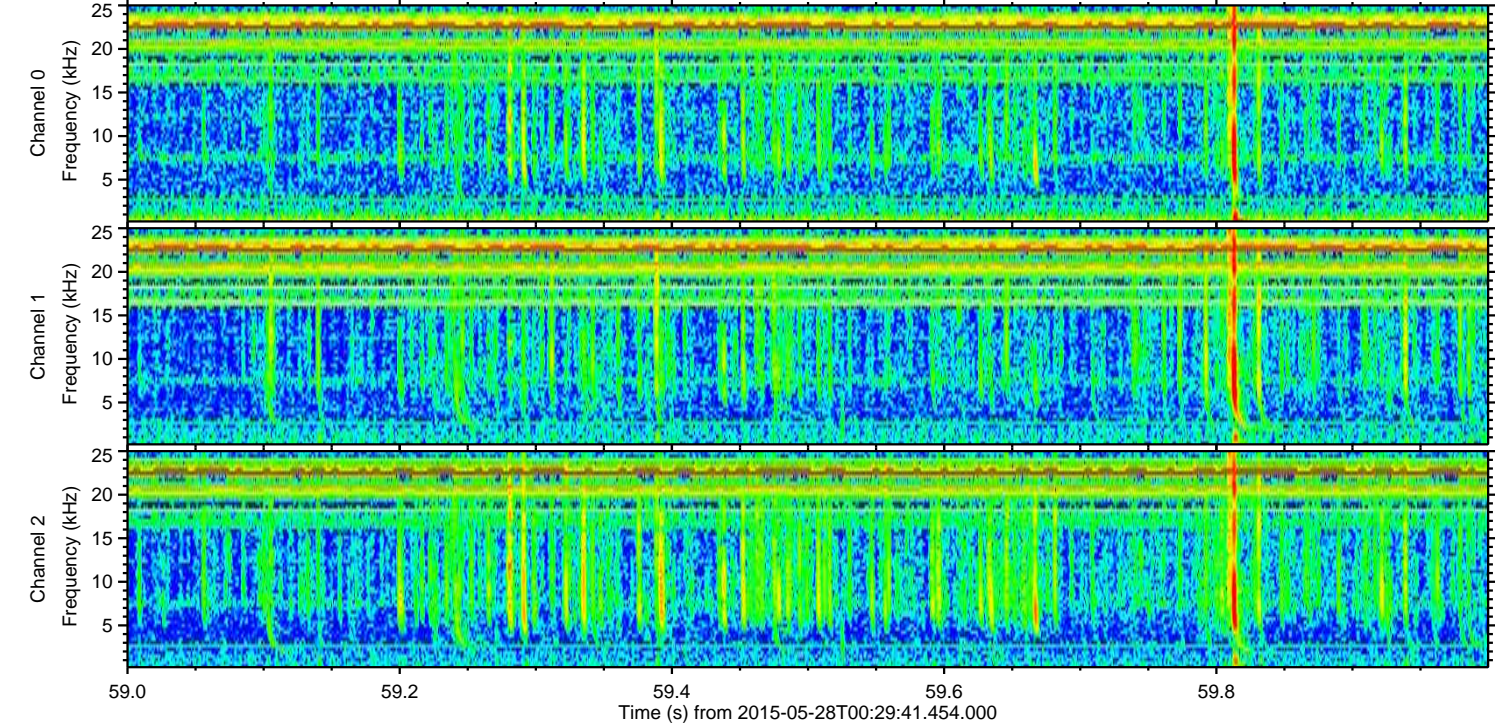
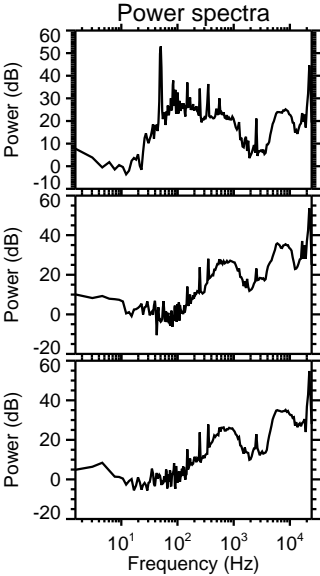
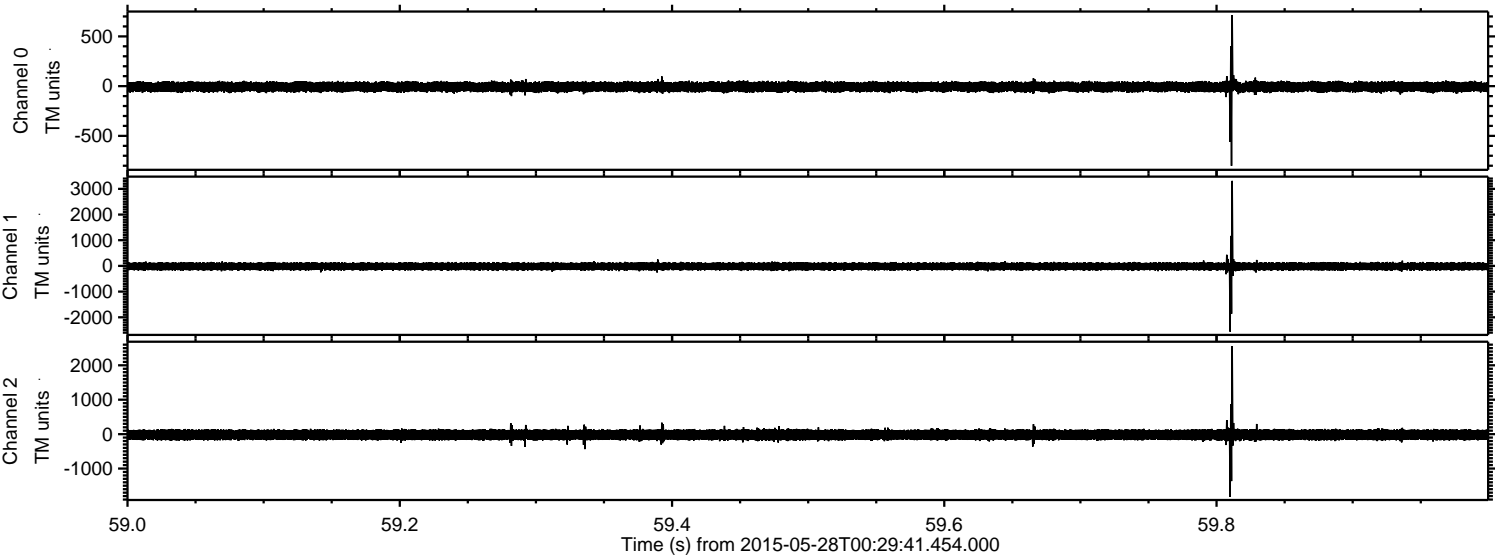


ELMAVAN 3D WAVEFORMS (Measured data sampled at 50 kHz) 49721 packets of 144 samples from 2015-05-28T00:29:41.454.000. Part 33/144

Processed Thu May 28 02:37:29 2015 by ELM ver.2012-10-06 from 001__elm20150528_002940__dat00.bin

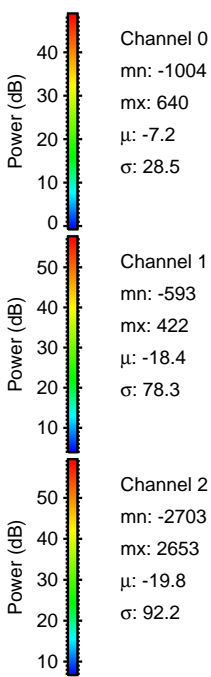
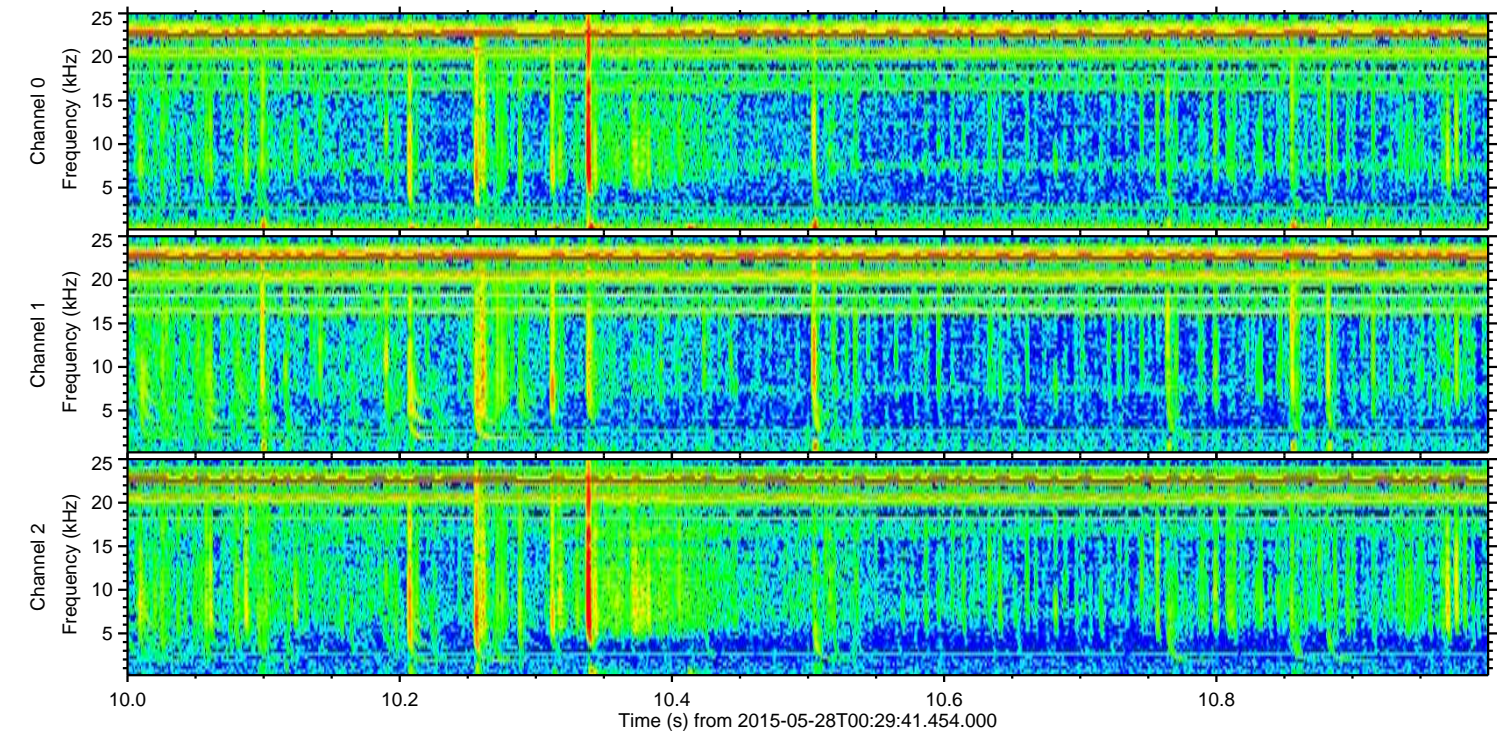
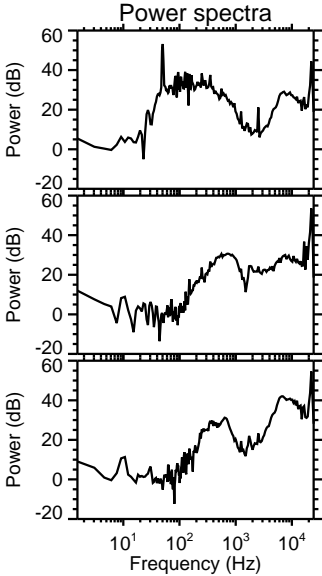
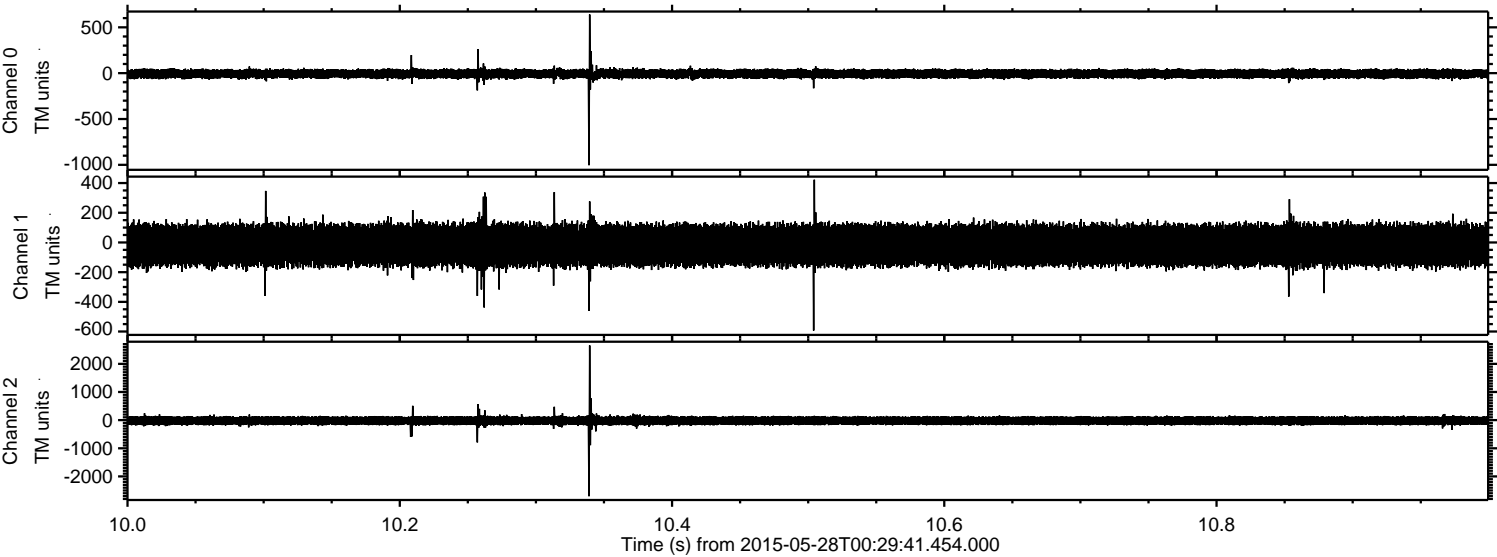


Processed Thu May 28 02:37:30 2015 by ELM ver.2012-10-06 from 001__elm20150528_002940__dat00.bin

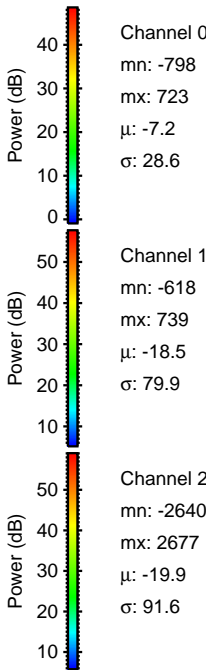
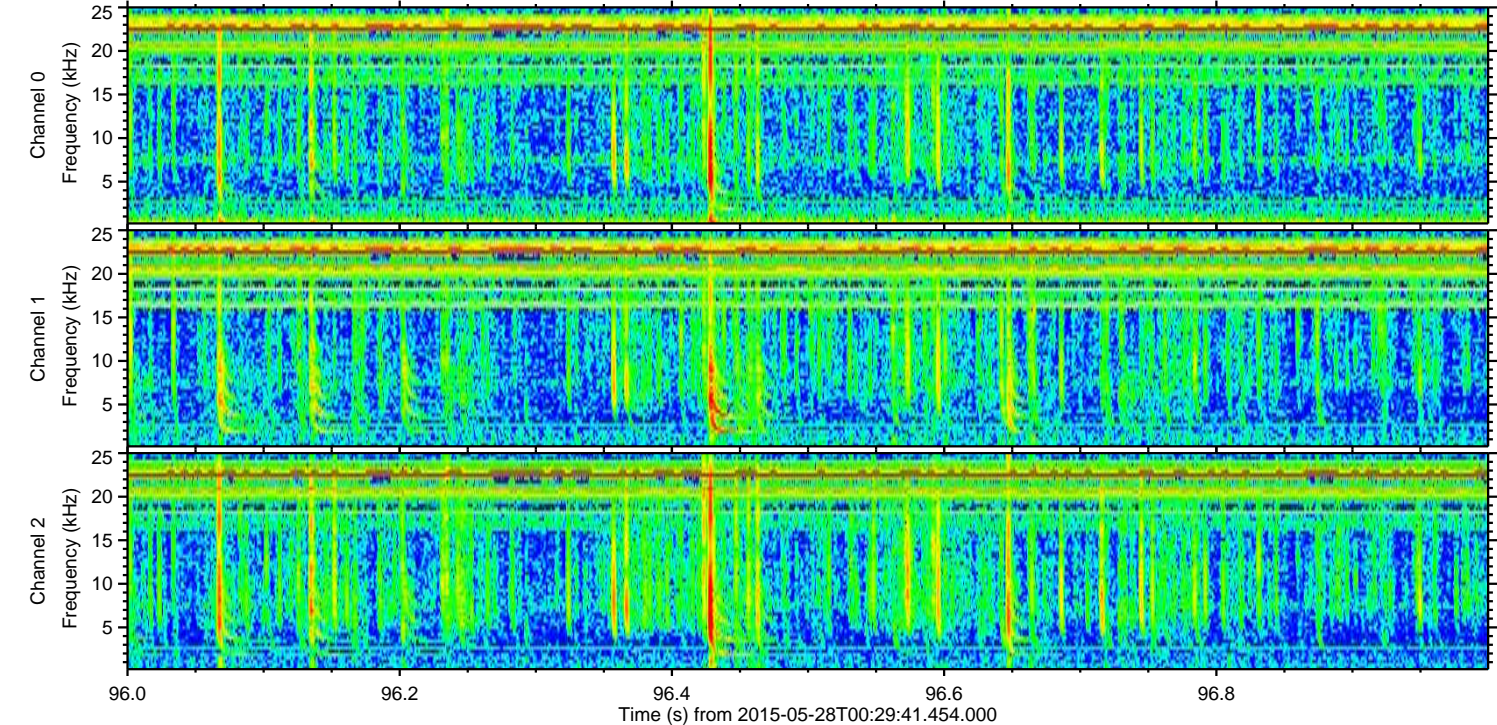
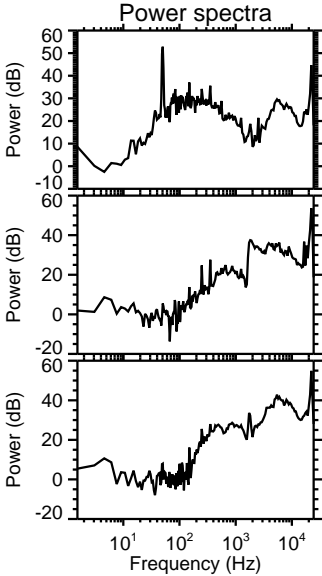
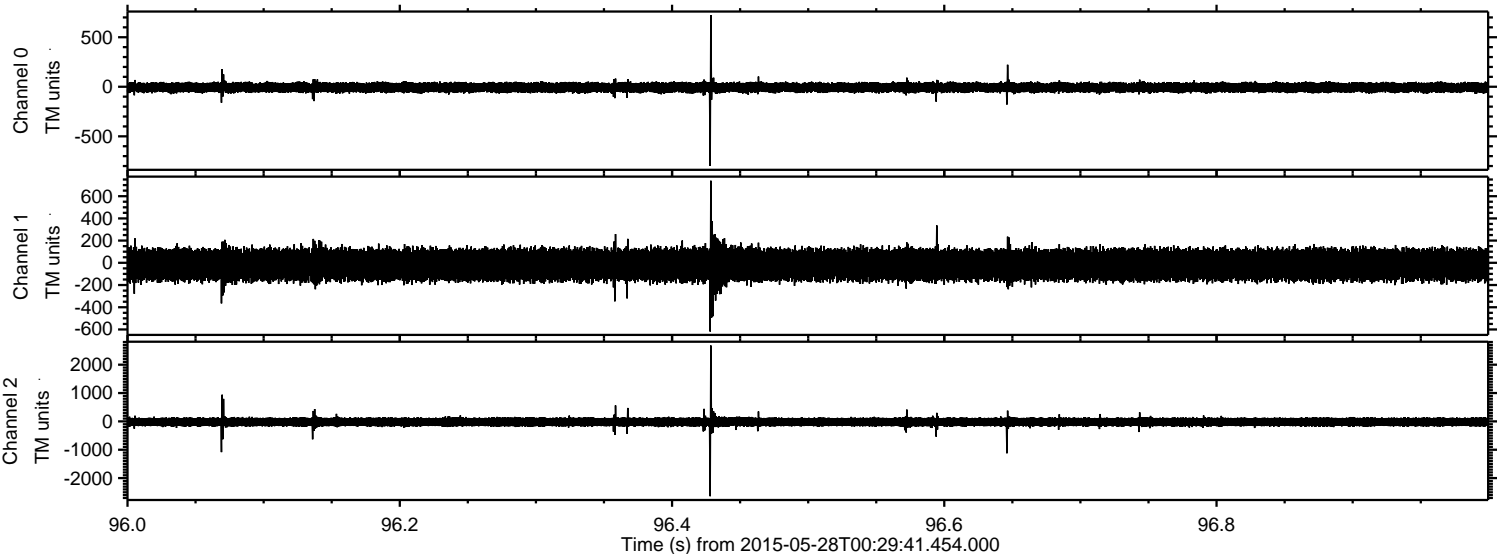


ELMAVAN 3D WAVEFORMS (Measured data sampled at 50 kHz) 49721 packets of 144 samples from 2015-05-28T00:29:41.454.000. Part 11/144

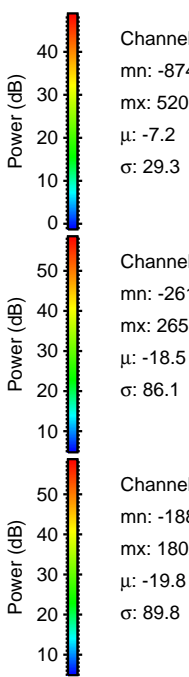
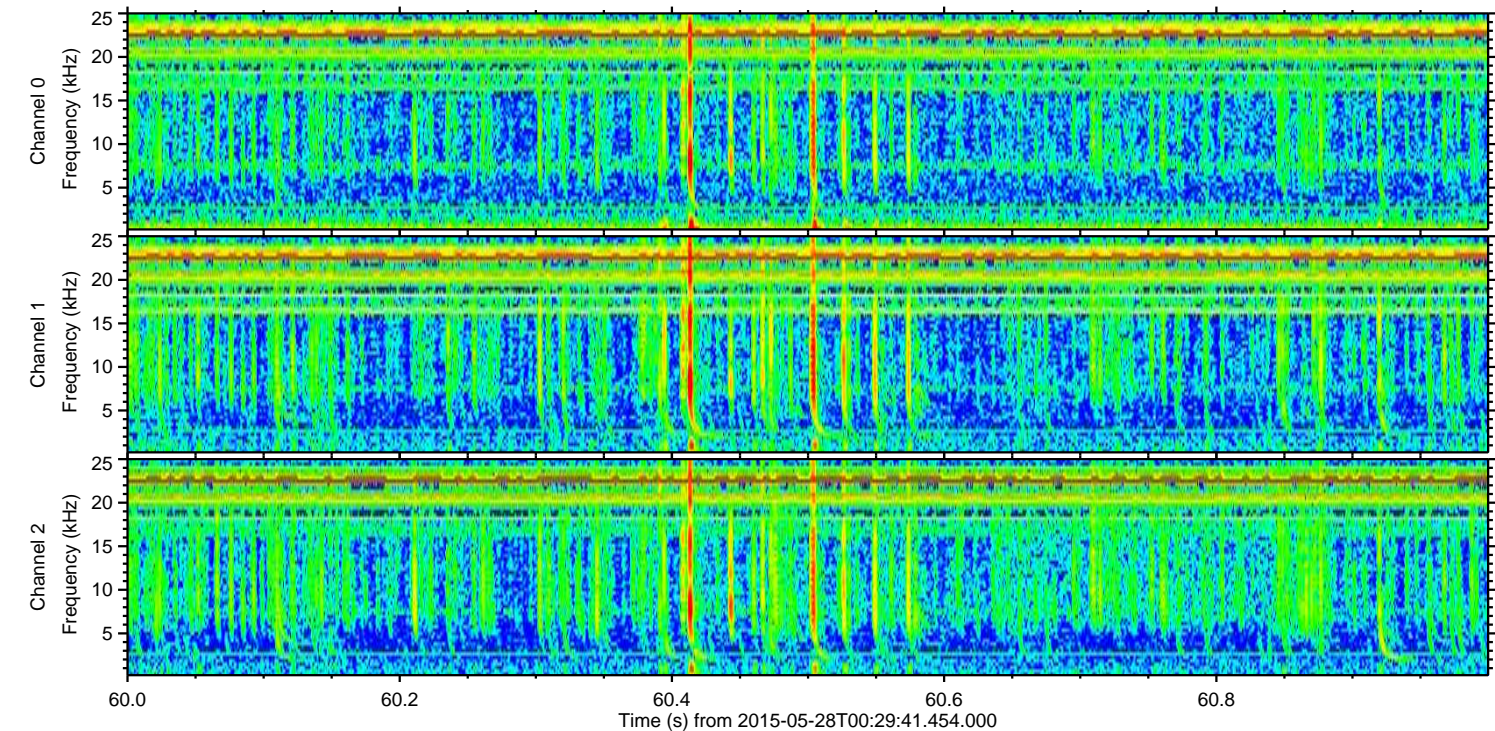
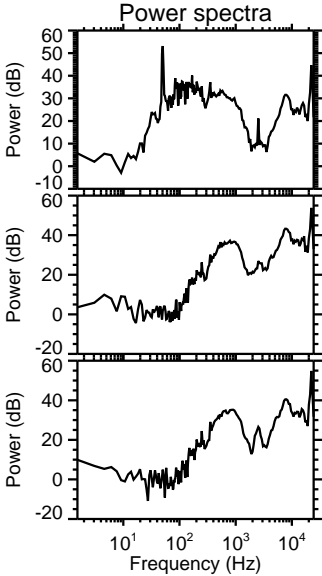
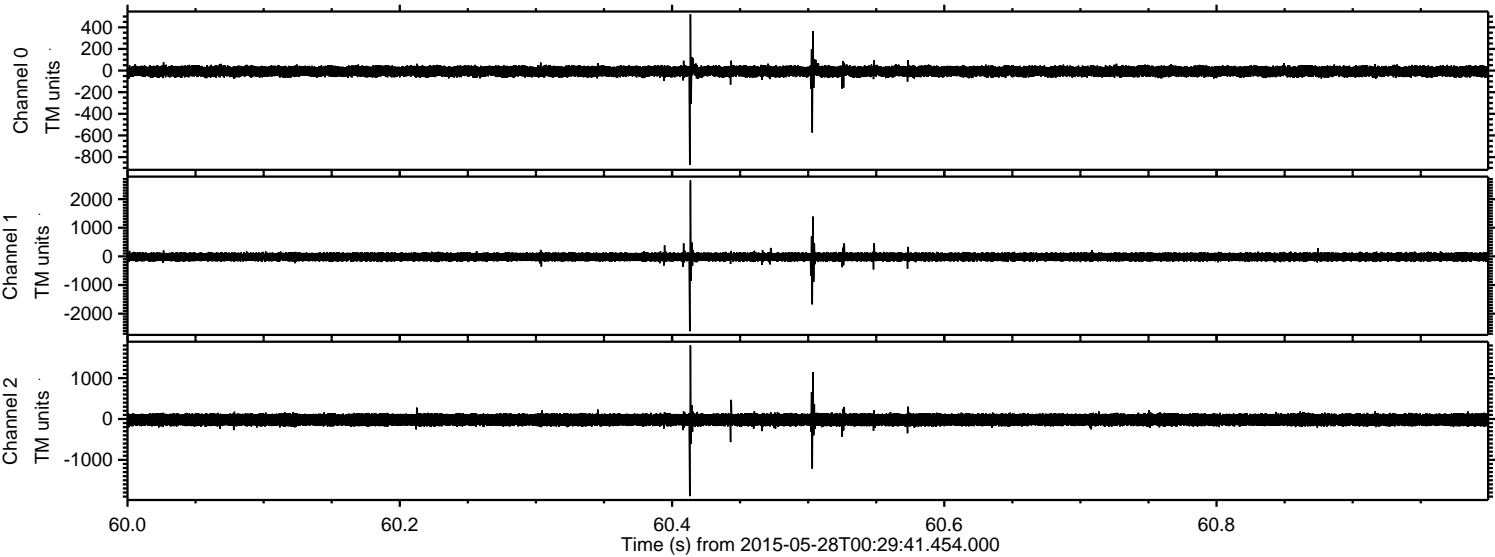
Processed Thu May 28 02:37:31 2015 by ELM ver.2012-10-06 from 001__elm20150528_002940__dat00.bin



Processed Thu May 28 02:37:32 2015 by ELM ver.2012-10-06 from 001__elm20150528_002940__dat00.bin



Processed Thu May 28 02:37:33 2015 by ELM ver.2012-10-06 from 001__elm20150528_002940__dat00.bin



Channel 0
mn: -874
mx: 520
 μ : -7.2
 σ : 29.3

Channel 1
mn: -2612
mx: 2653
 μ : -18.5
 σ : 86.1

Channel 2
mn: -1889
mx: 1802
 μ : -19.8
 σ : 89.8

Processed Thu May 28 02:37:34 2015 by ELM ver.2012-10-06 from 001__elm20150528_002940__dat00.bin

