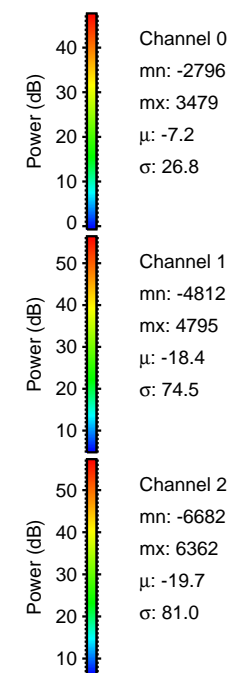
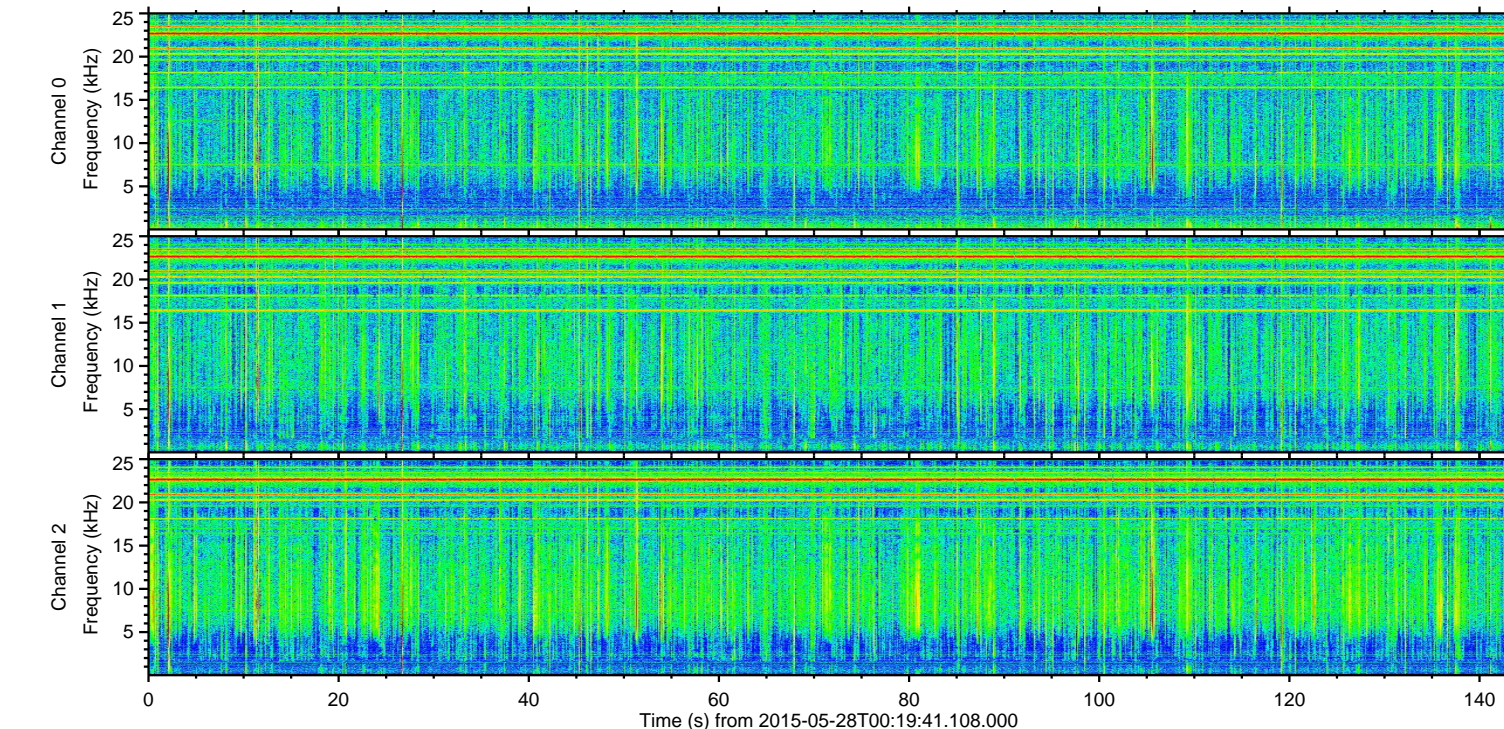
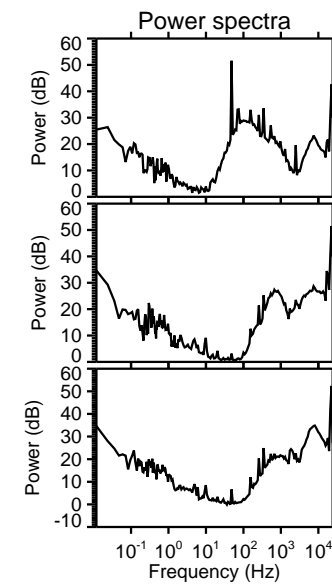
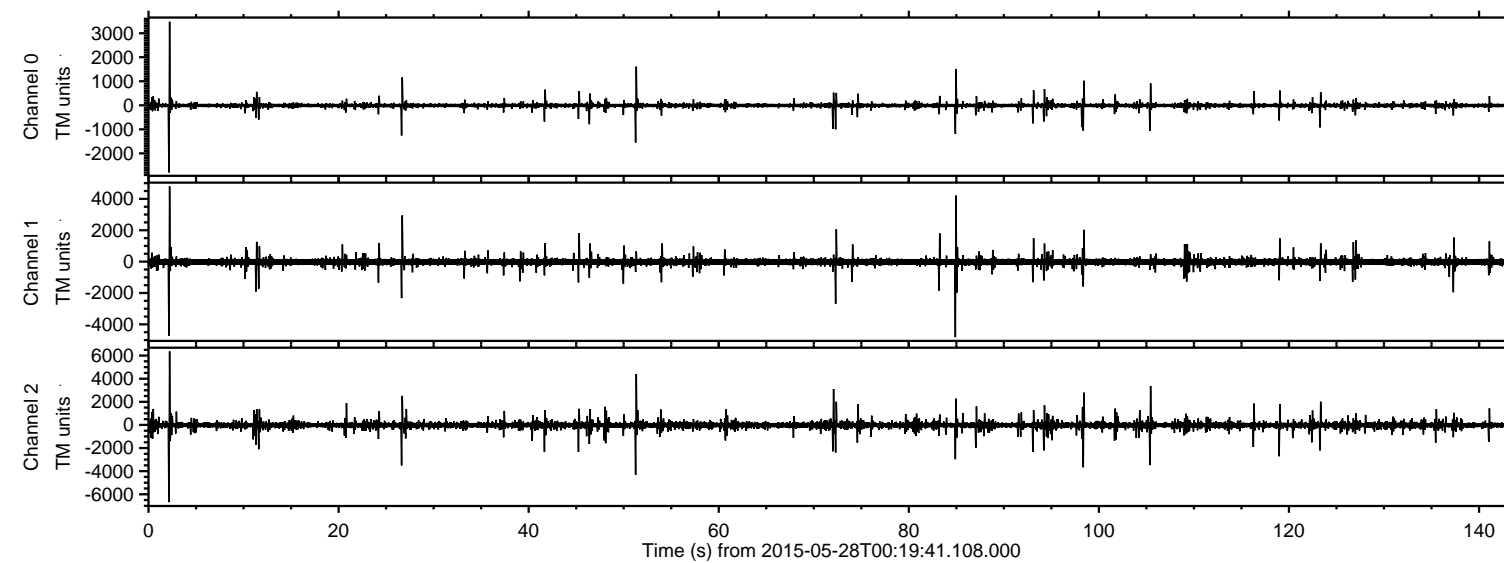


# ELMAVAN 3D WAVEFORMS (Measured data sampled at 50 kHz) 49711 packets of 144 samples from 2015-05-28T00:19:41.108.000.

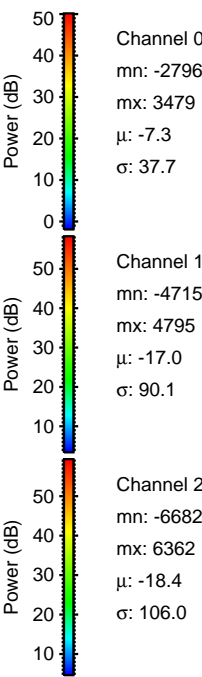
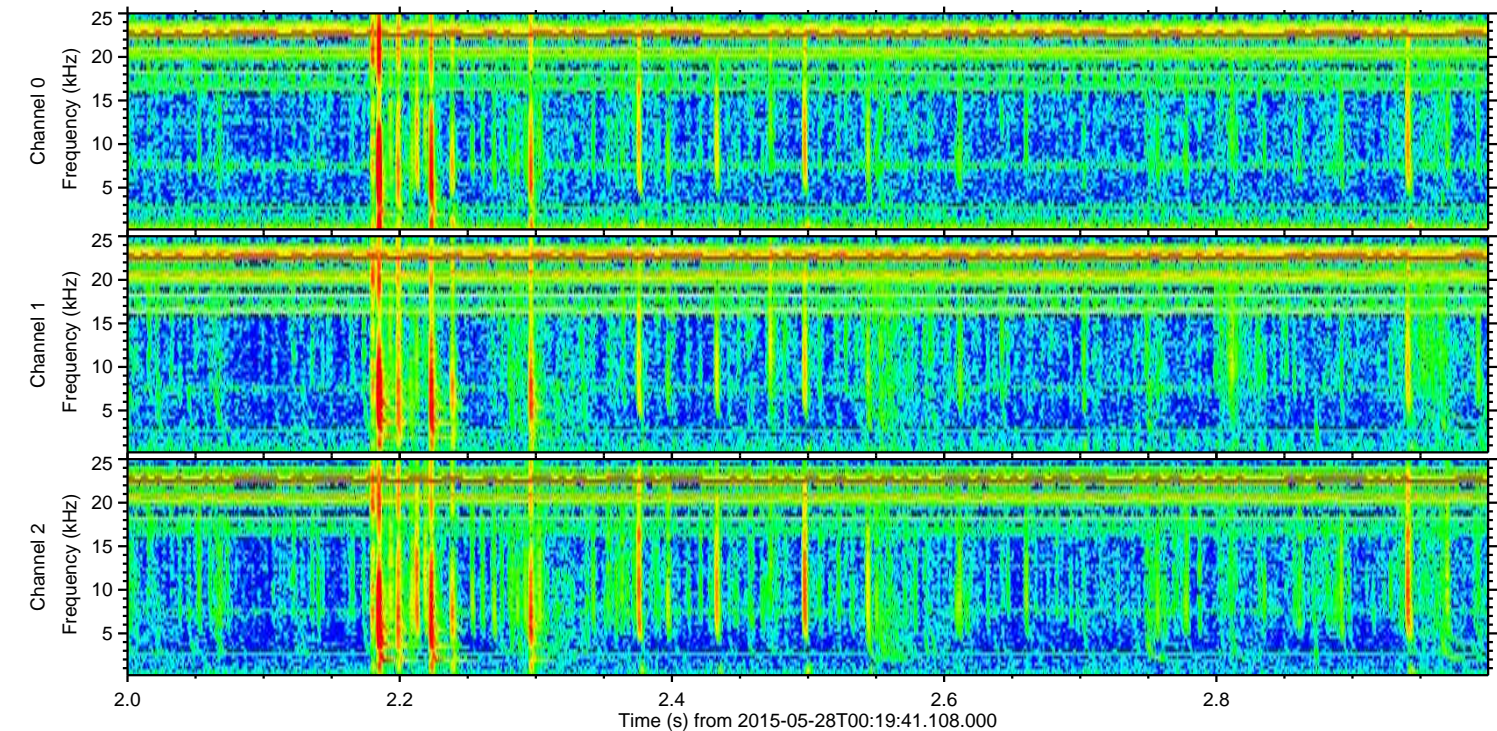
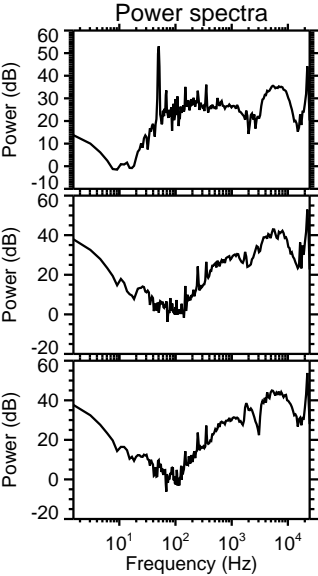
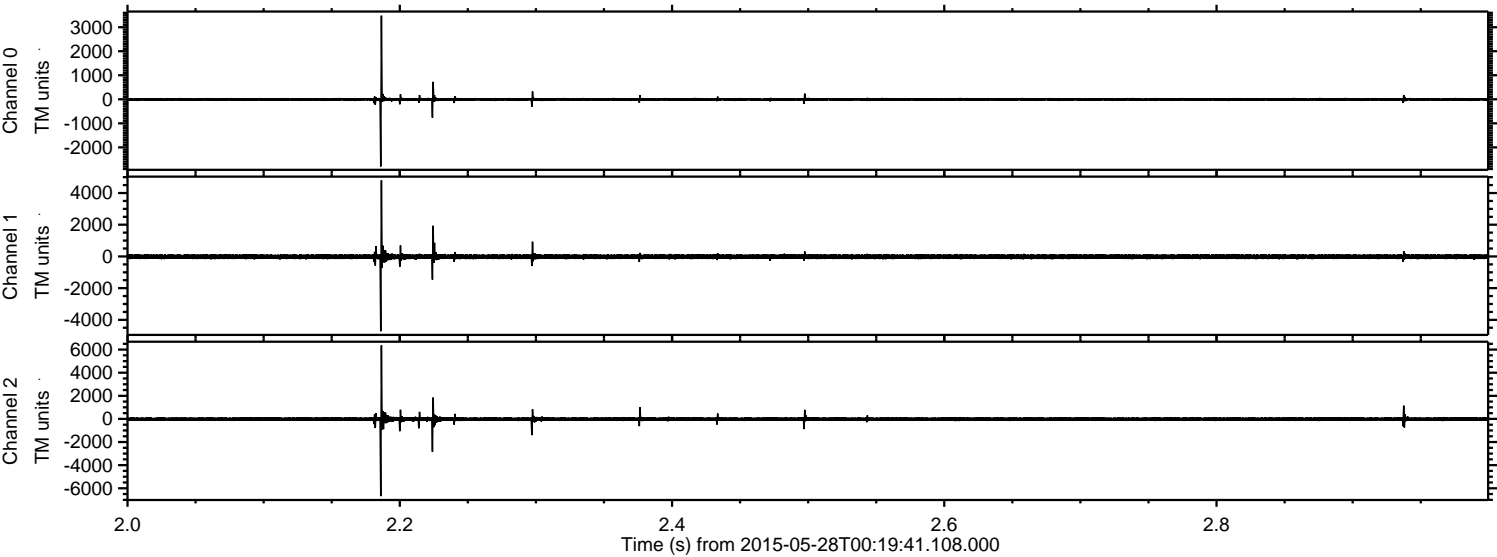
Processed Thu May 28 02:28:31 2015 by ELM ver.2012-10-06 from 001\_\_elm20150528\_001940\_\_dat00.bin





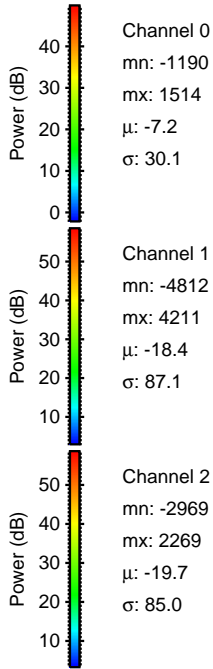
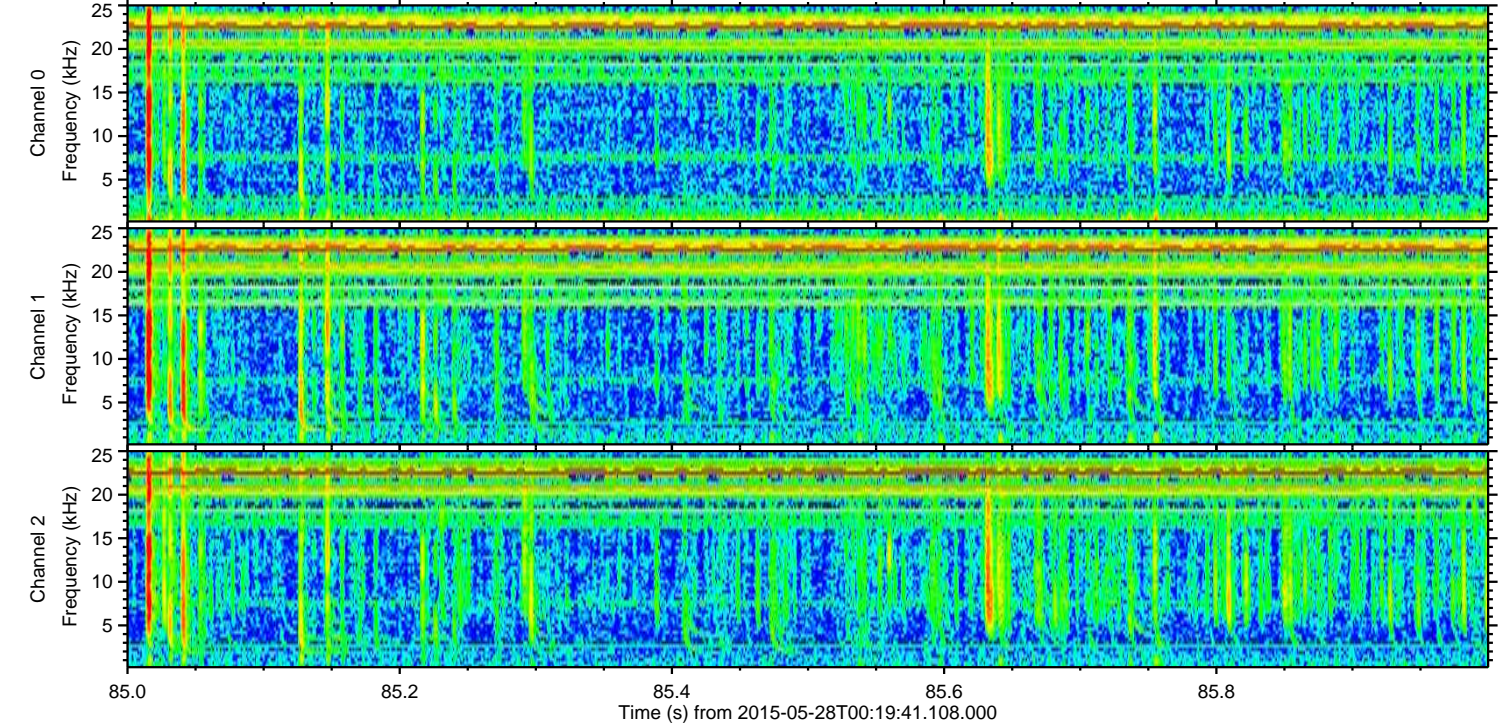
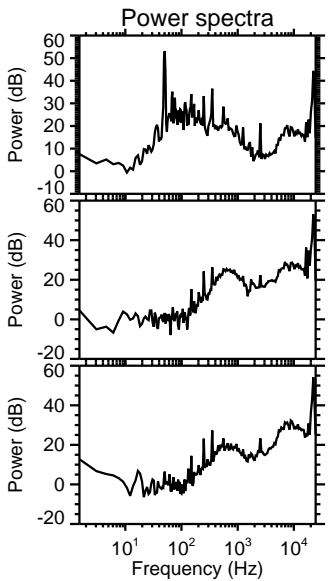
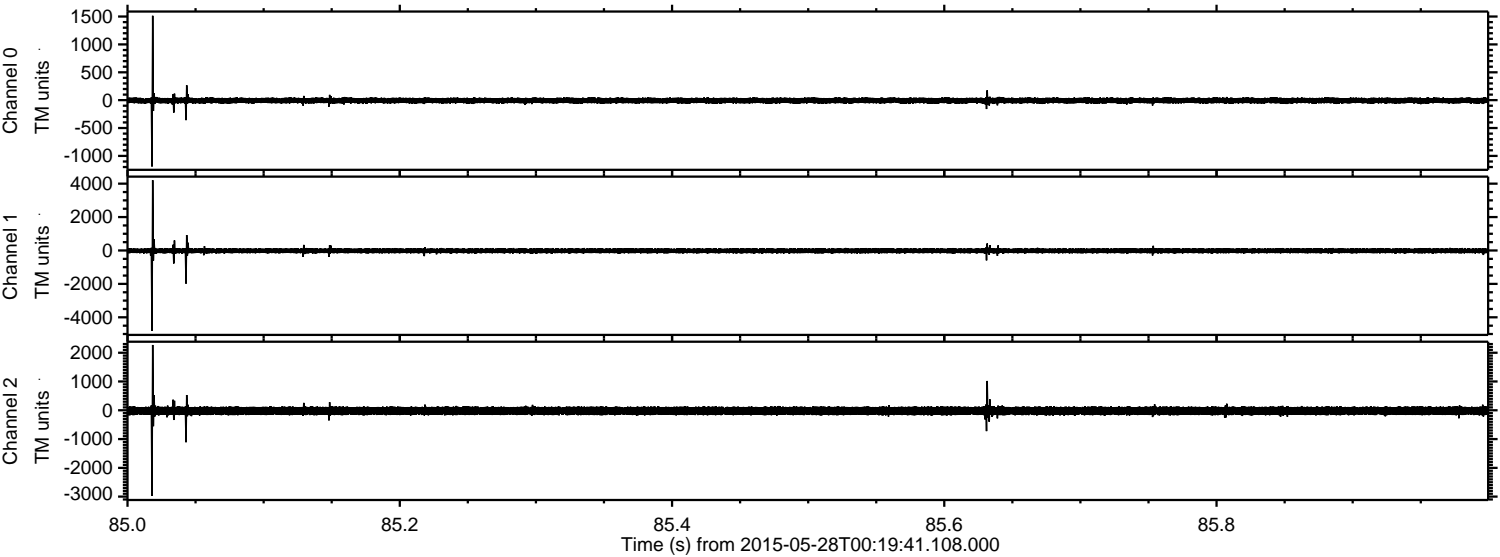
ELMAVAN 3D WAVEFORMS (Measured data sampled at 50 kHz) 49711 packets of 144 samples from 2015-05-28T00:19:41.108.000. Part 3/144

Processed Thu May 28 02:28:46 2015 by ELM ver.2012-10-06 from 001\_\_elm20150528\_001940\_\_dat00.bin





Processed Thu May 28 02:28:47 2015 by ELM ver.2012-10-06 from 001\_\_elm20150528\_001940\_\_dat00.bin



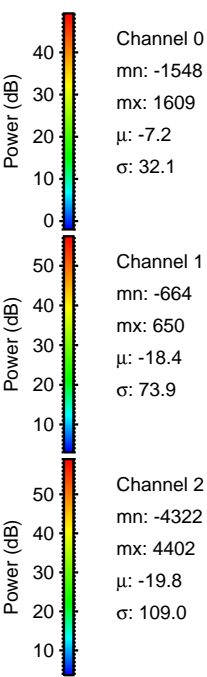
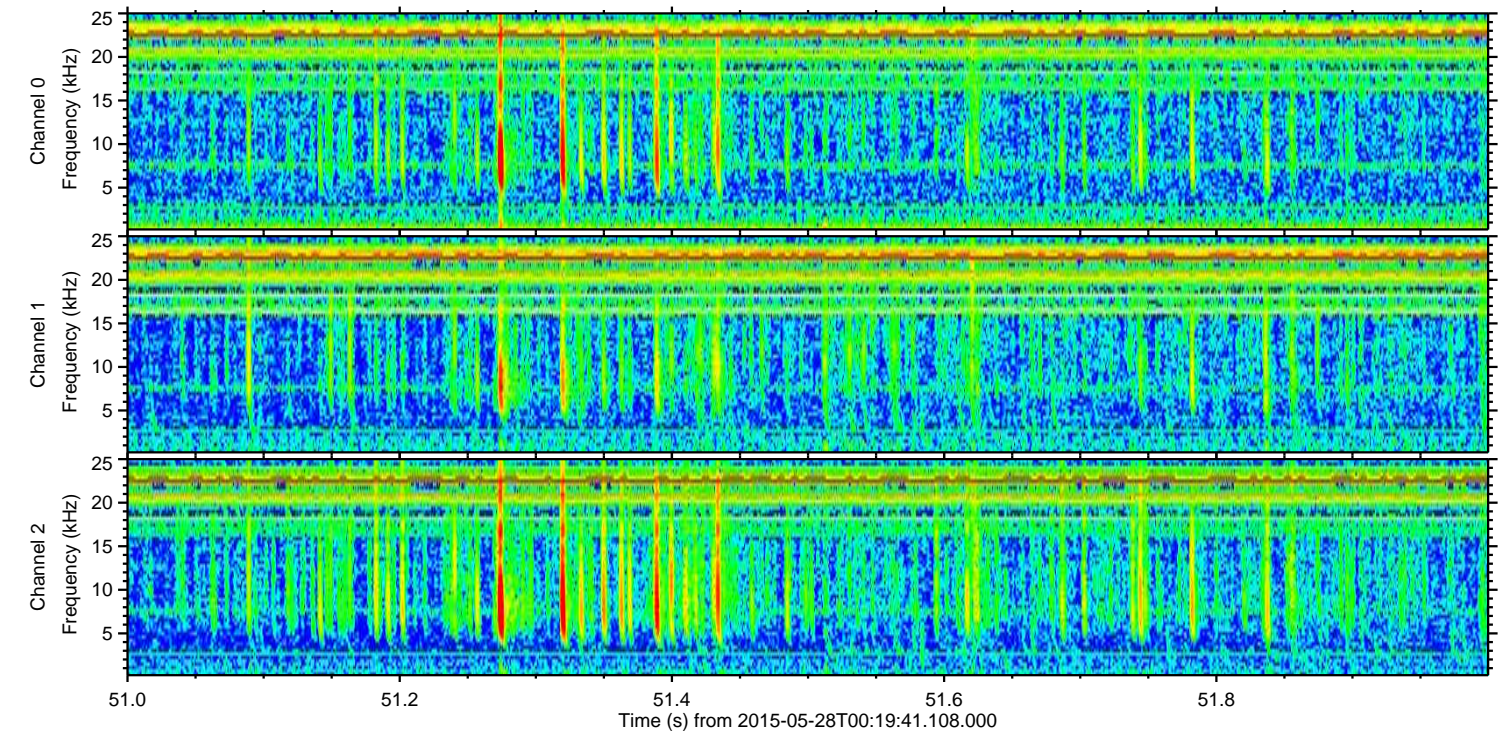
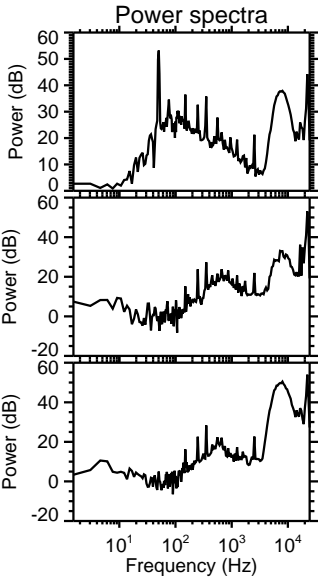
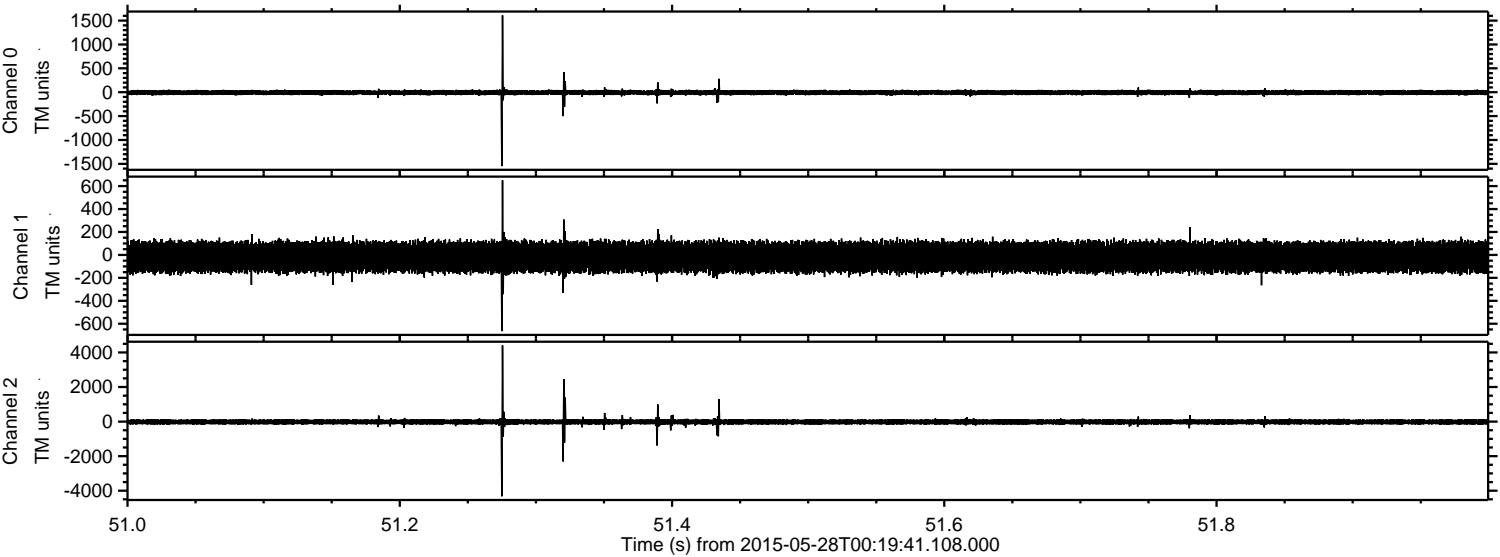
Channel 0  
mn: -1190  
mx: 1514  
 $\mu$ : -7.2  
 $\sigma$ : 30.1

Channel 1  
mn: -4812  
mx: 4211  
 $\mu$ : -18.4  
 $\sigma$ : 87.1

Channel 2  
mn: -2969  
mx: 2269  
 $\mu$ : -19.7  
 $\sigma$ : 85.0



Processed Thu May 28 02:28:48 2015 by ELM ver.2012-10-06 from 001\_\_elm20150528\_001940\_\_dat00.bin



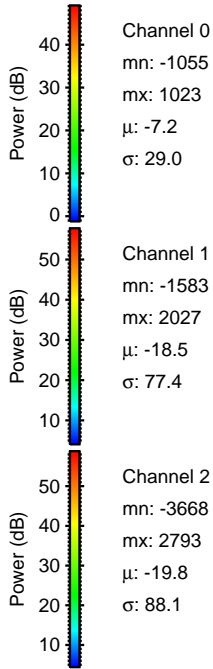
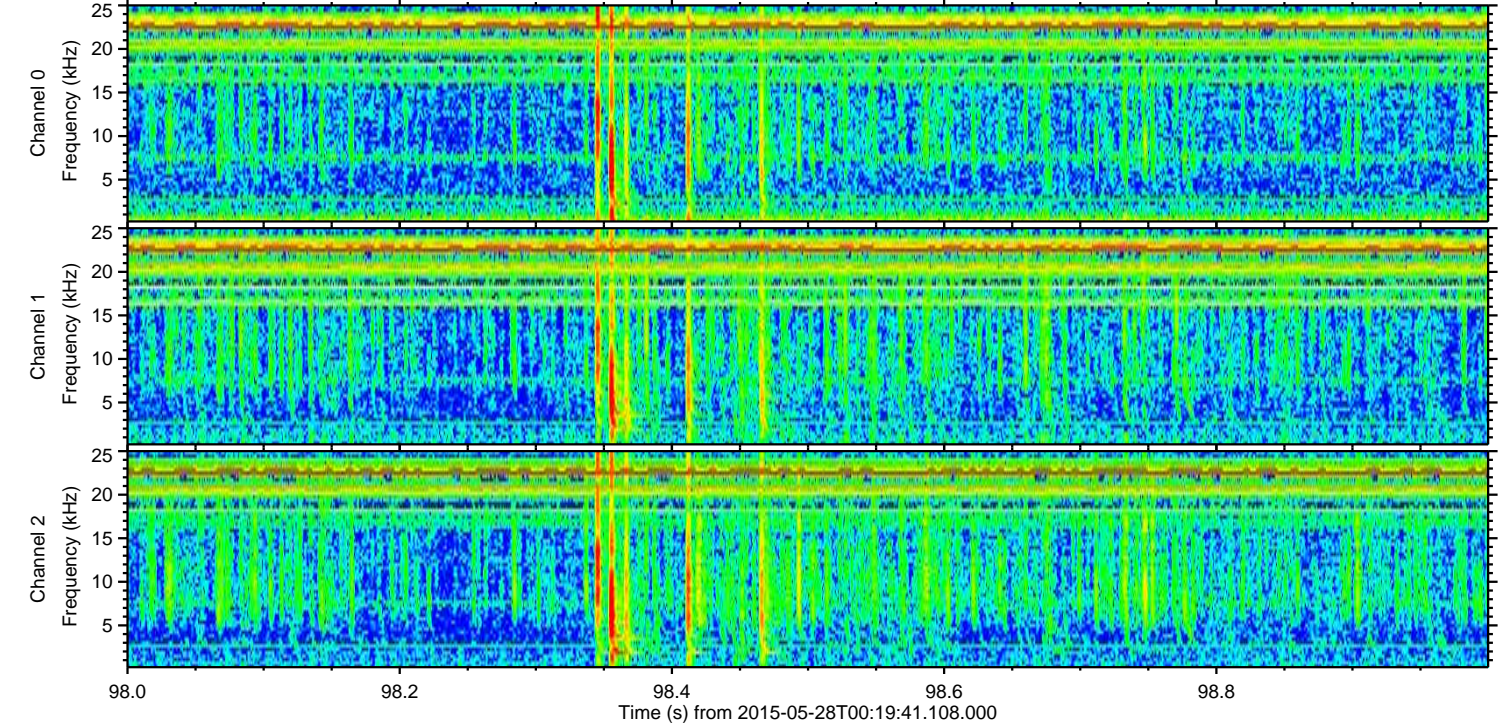
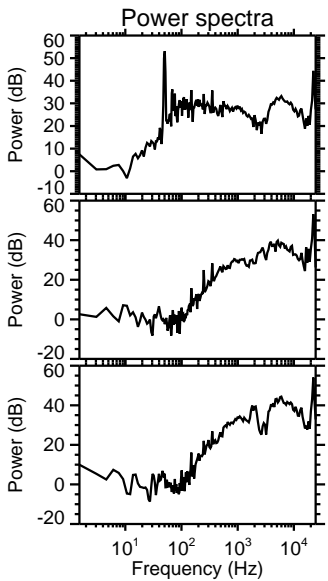
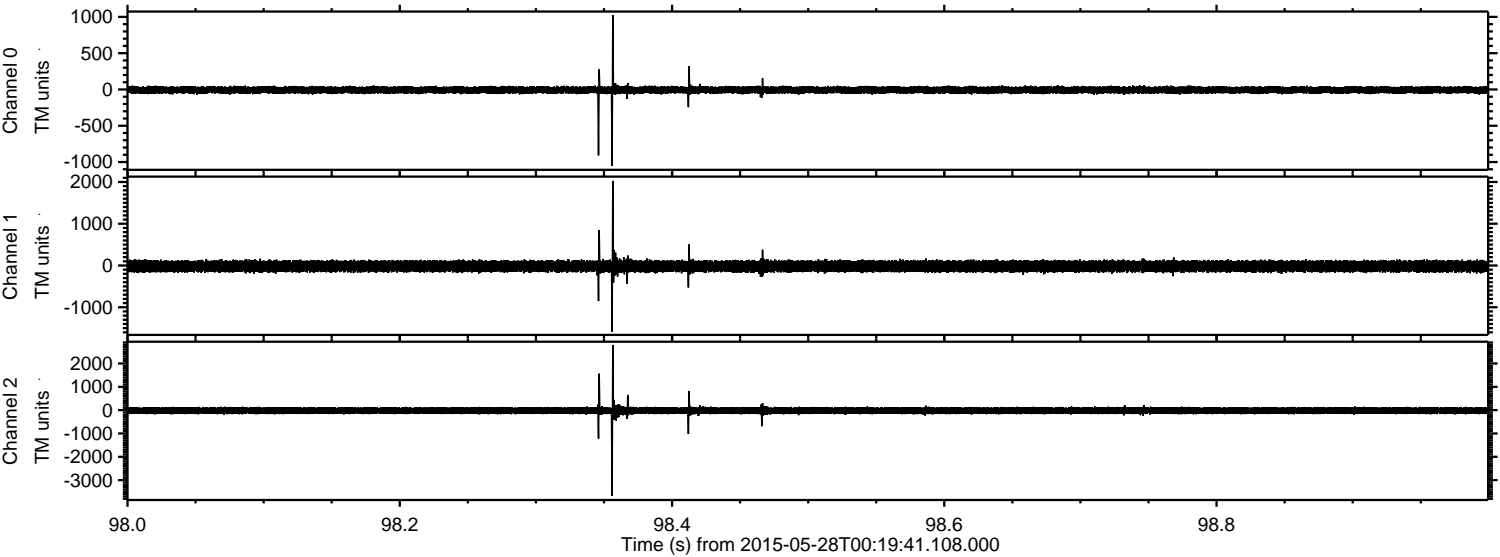
Channel 0  
mn: -1548  
mx: 1609  
 $\mu$ : -7.2  
 $\sigma$ : 32.1

Channel 1  
mn: -664  
mx: 650  
 $\mu$ : -18.4  
 $\sigma$ : 73.9

Channel 2  
mn: -4322  
mx: 4402  
 $\mu$ : -19.8  
 $\sigma$ : 109.0



Processed Thu May 28 02:28:50 2015 by ELM ver.2012-10-06 from 001\_\_elm20150528\_001940\_\_dat00.bin



Channel 0  
mn: -1055  
mx: 1023  
 $\mu$ : -7.2  
 $\sigma$ : 29.0

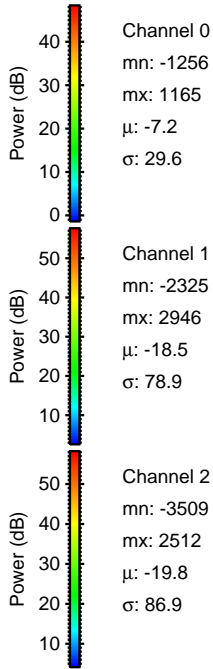
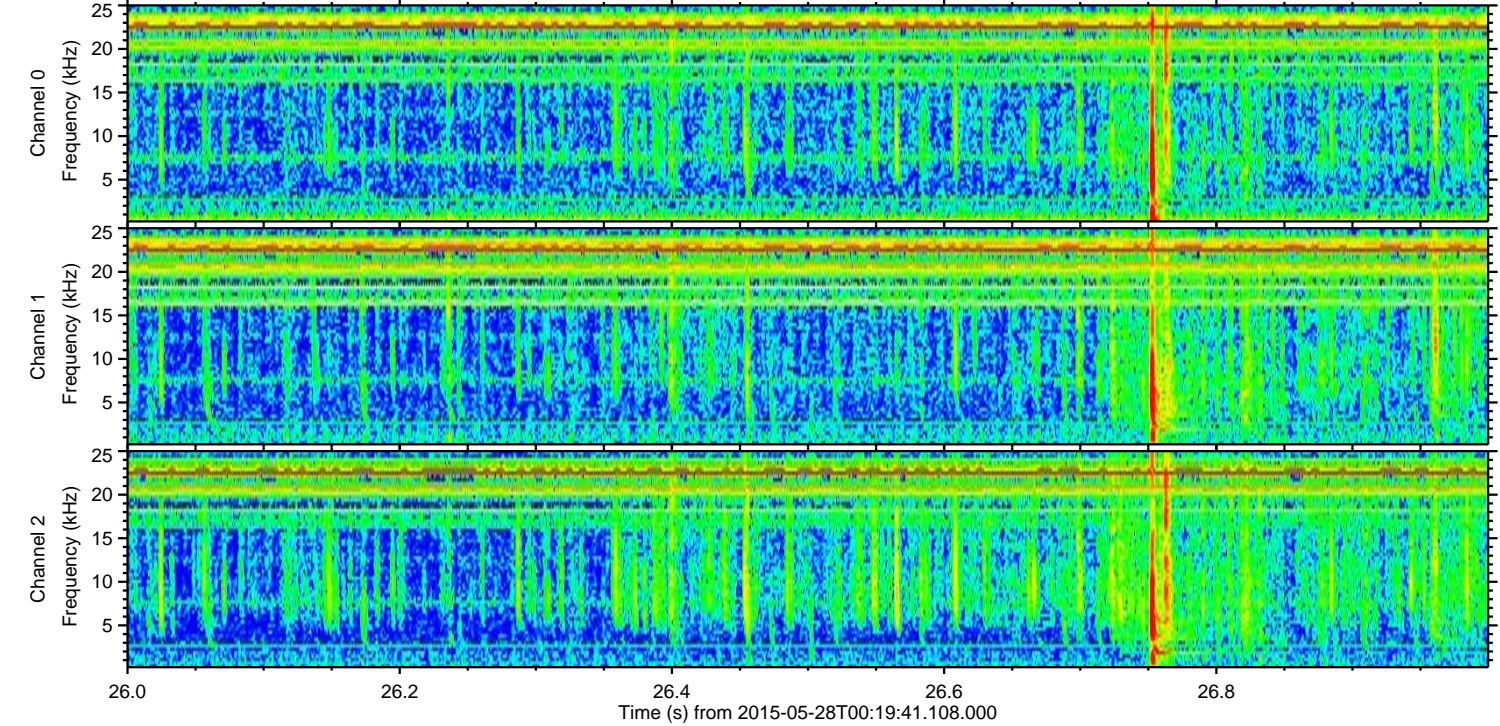
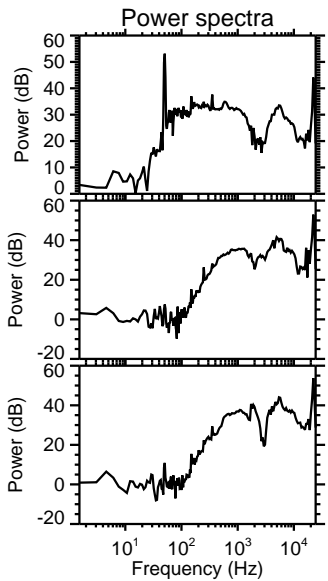
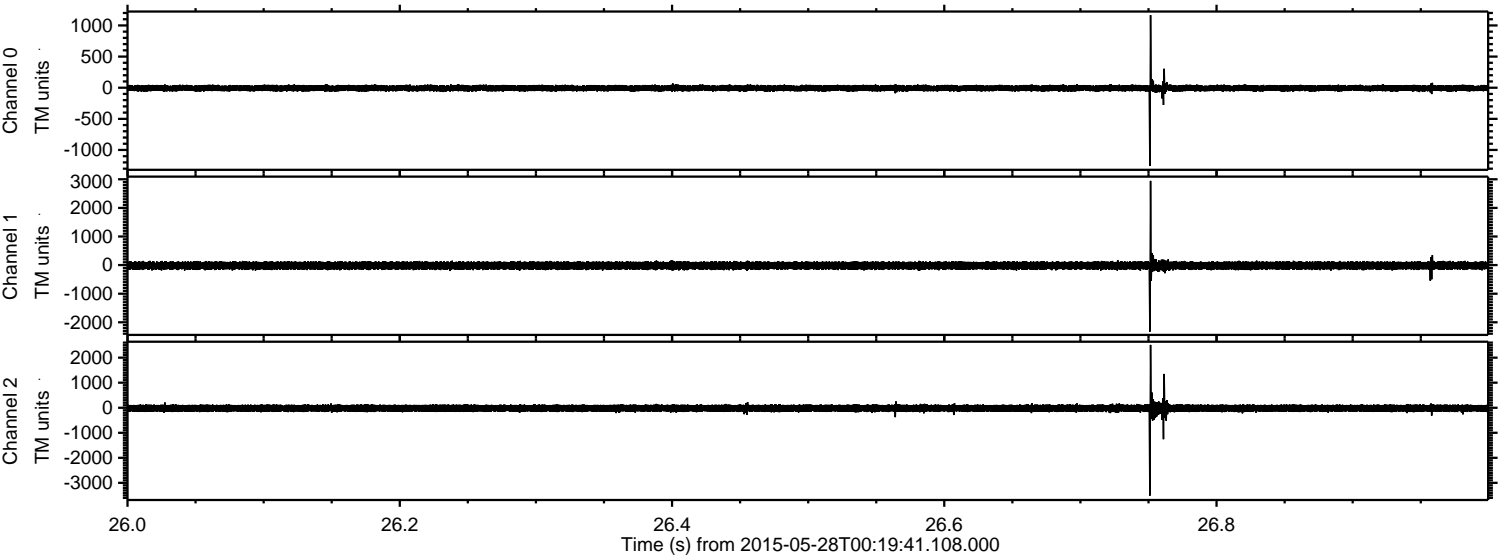
Channel 1  
mn: -1583  
mx: 2027  
 $\mu$ : -18.5  
 $\sigma$ : 77.4

Channel 2  
mn: -3668  
mx: 2793  
 $\mu$ : -19.8  
 $\sigma$ : 88.1



ELMAVAN 3D WAVEFORMS (Measured data sampled at 50 kHz) 49711 packets of 144 samples from 2015-05-28T00:19:41.108.000. Part 27/144

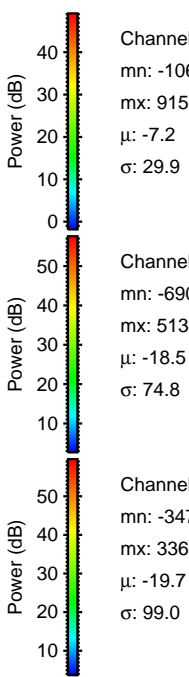
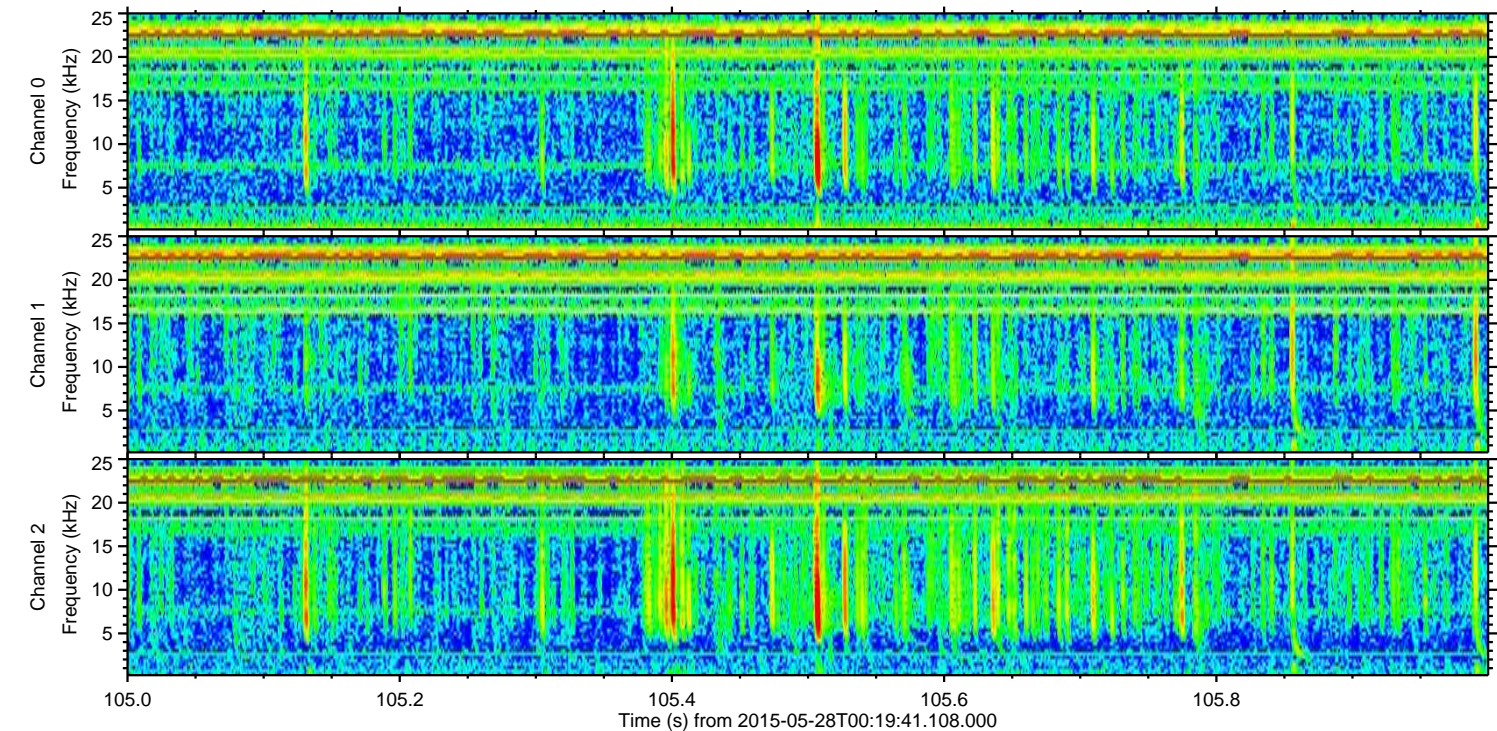
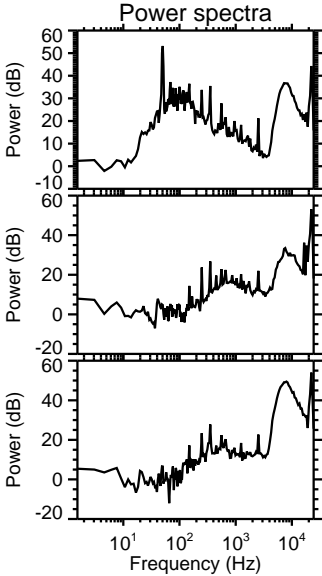
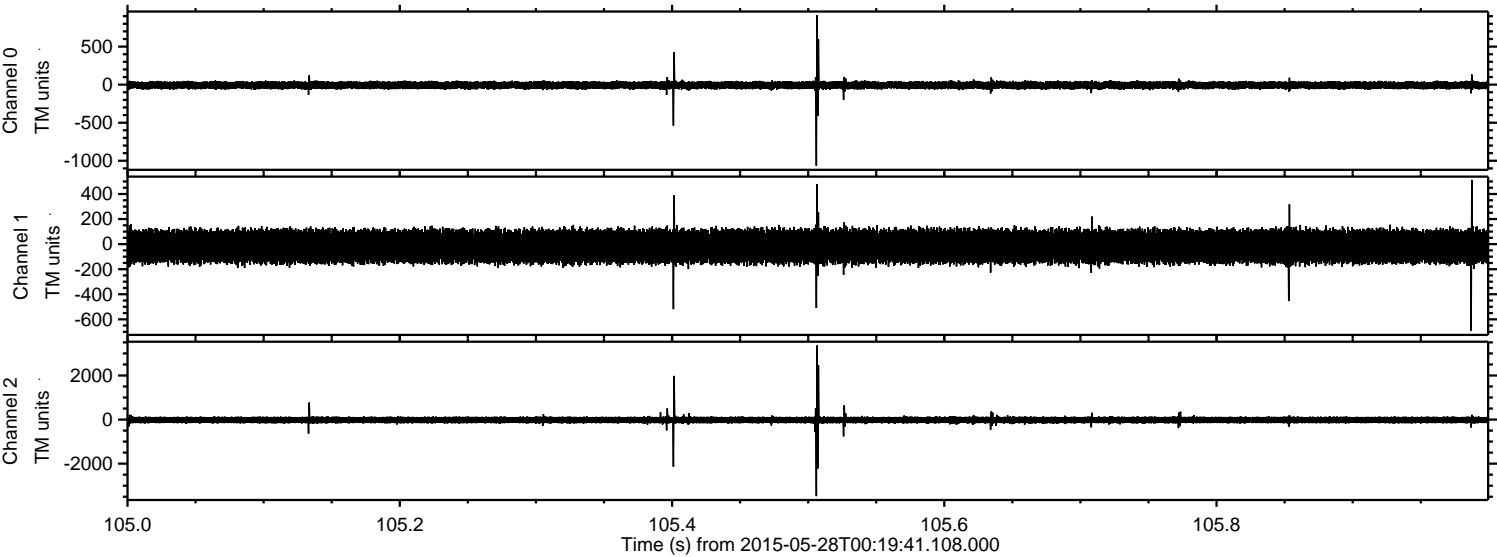
Processed Thu May 28 02:28:51 2015 by ELM ver.2012-10-06 from 001\_\_elm20150528\_001940\_\_dat00.bin





ELMAVAN 3D WAVEFORMS (Measured data sampled at 50 kHz) 49711 packets of 144 samples from 2015-05-28T00:19:41.108.000. Part 106/144

Processed Thu May 28 02:28:52 2015 by ELM ver.2012-10-06 from 001\_\_elm20150528\_001940\_\_dat00.bin



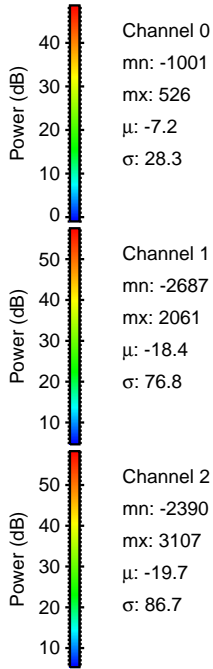
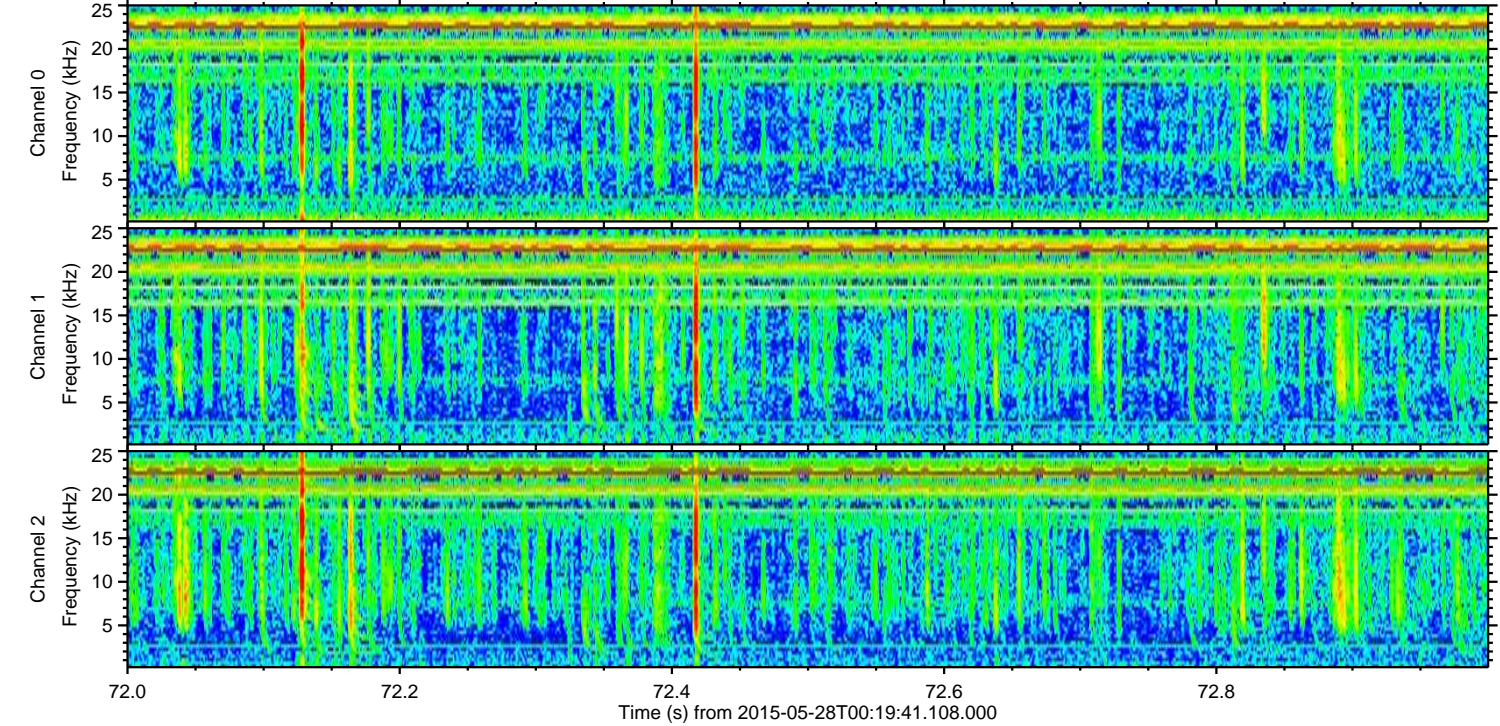
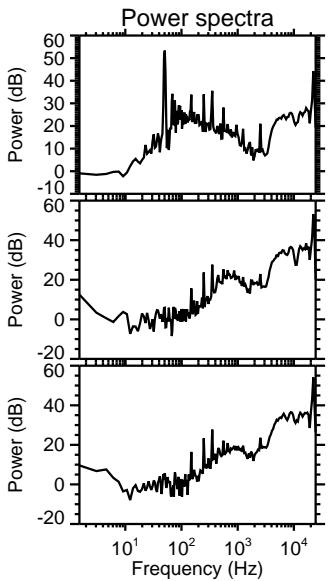
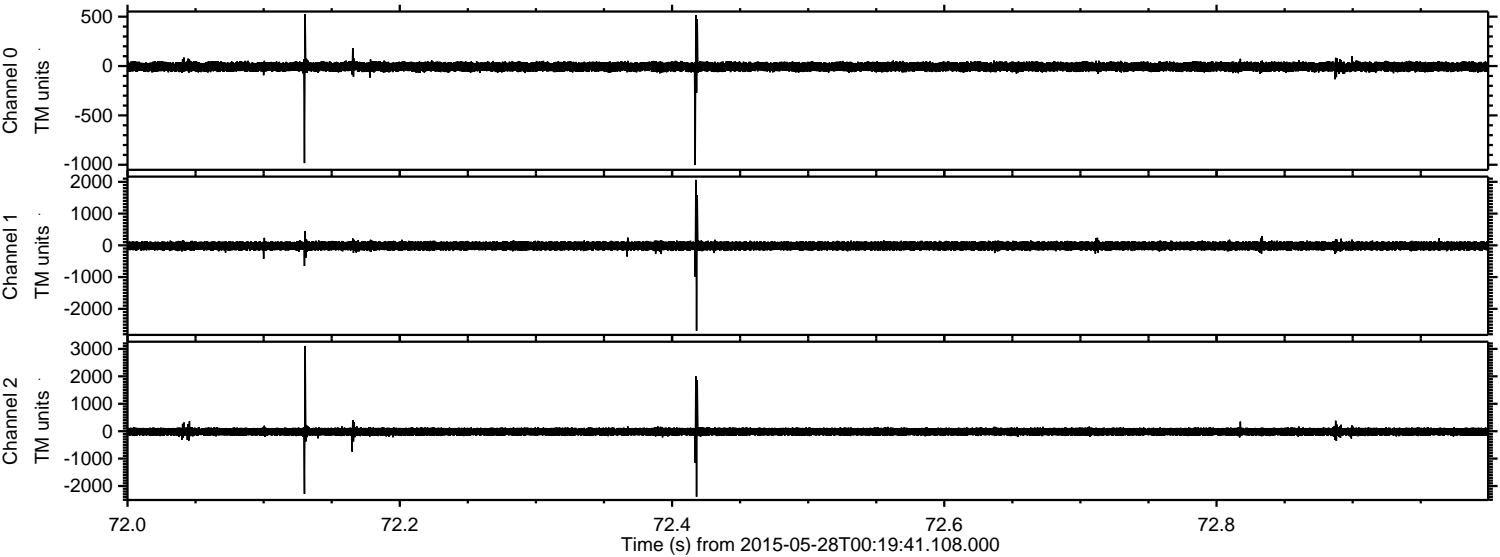
Channel 0  
mn: -1066  
mx: 915  
 $\mu$ : -7.2  
 $\sigma$ : 29.9

Channel 1  
mn: -690  
mx: 513  
 $\mu$ : -18.5  
 $\sigma$ : 74.8

Channel 2  
mn: -3475  
mx: 3363  
 $\mu$ : -19.7  
 $\sigma$ : 99.0



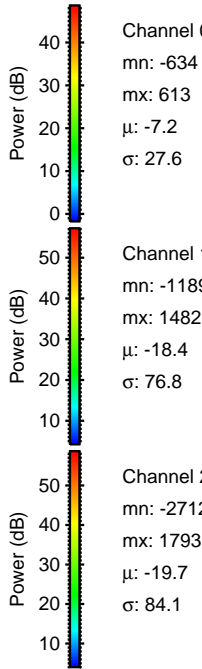
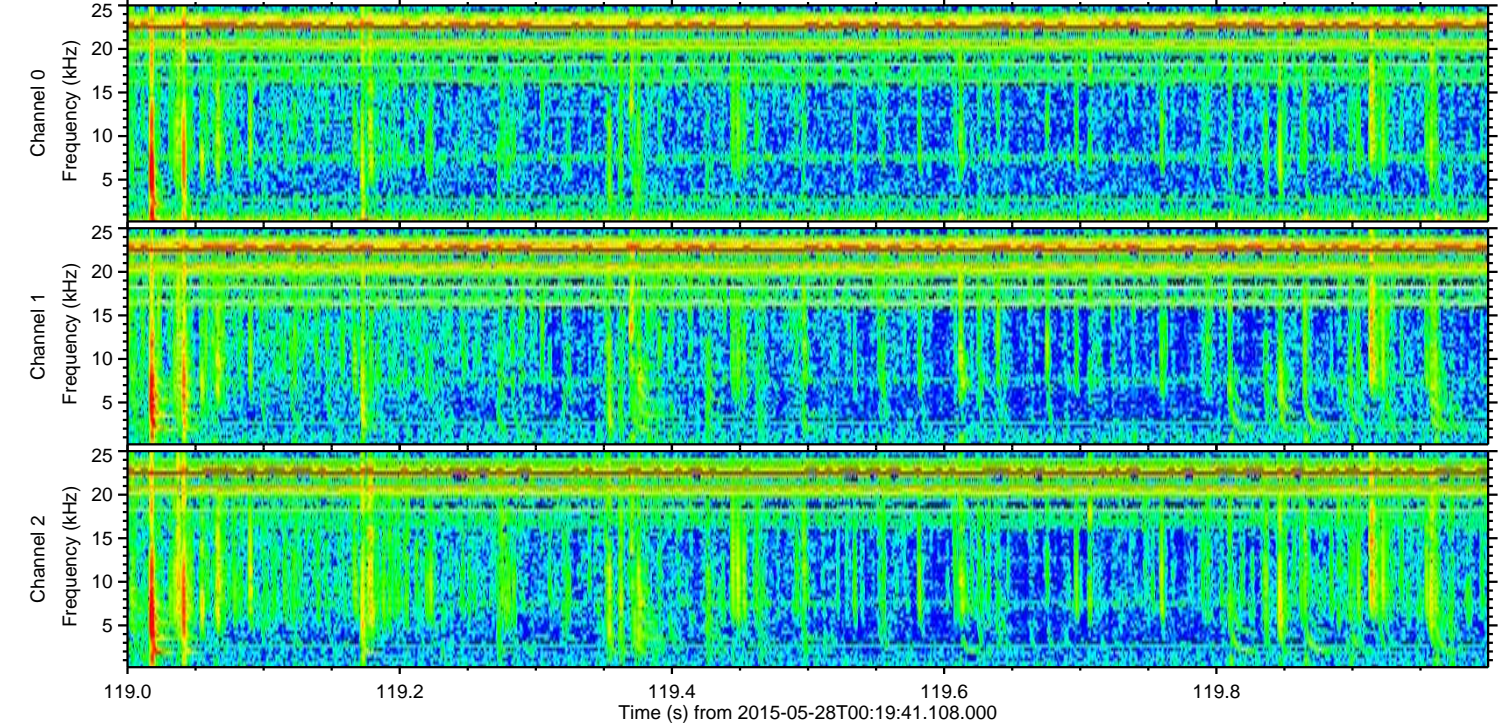
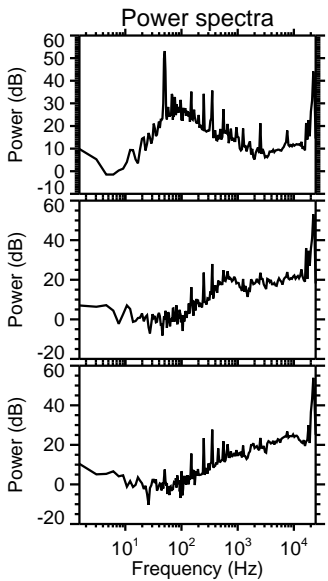
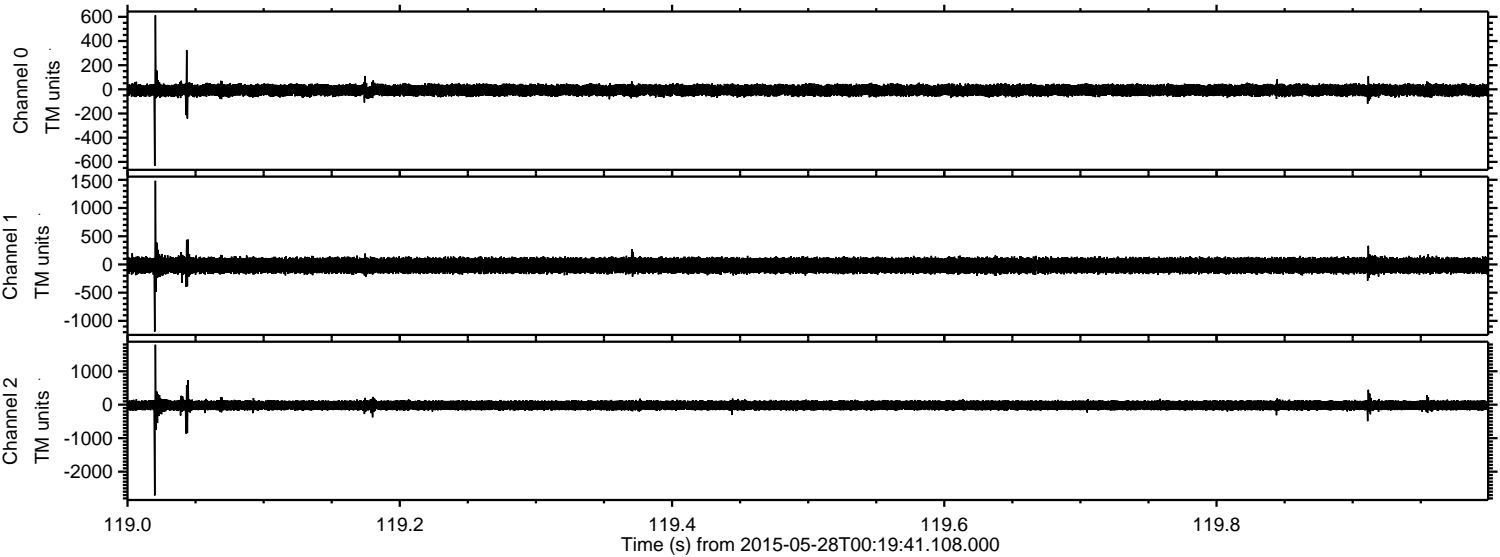
Processed Thu May 28 02:28:53 2015 by ELM ver.2012-10-06 from 001\_\_elm20150528\_001940\_\_dat00.bin





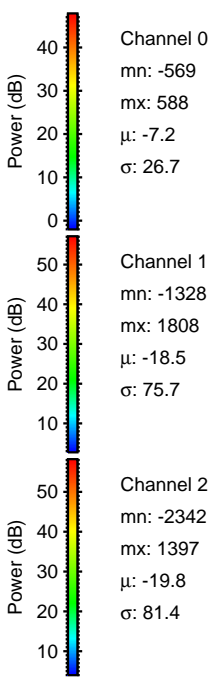
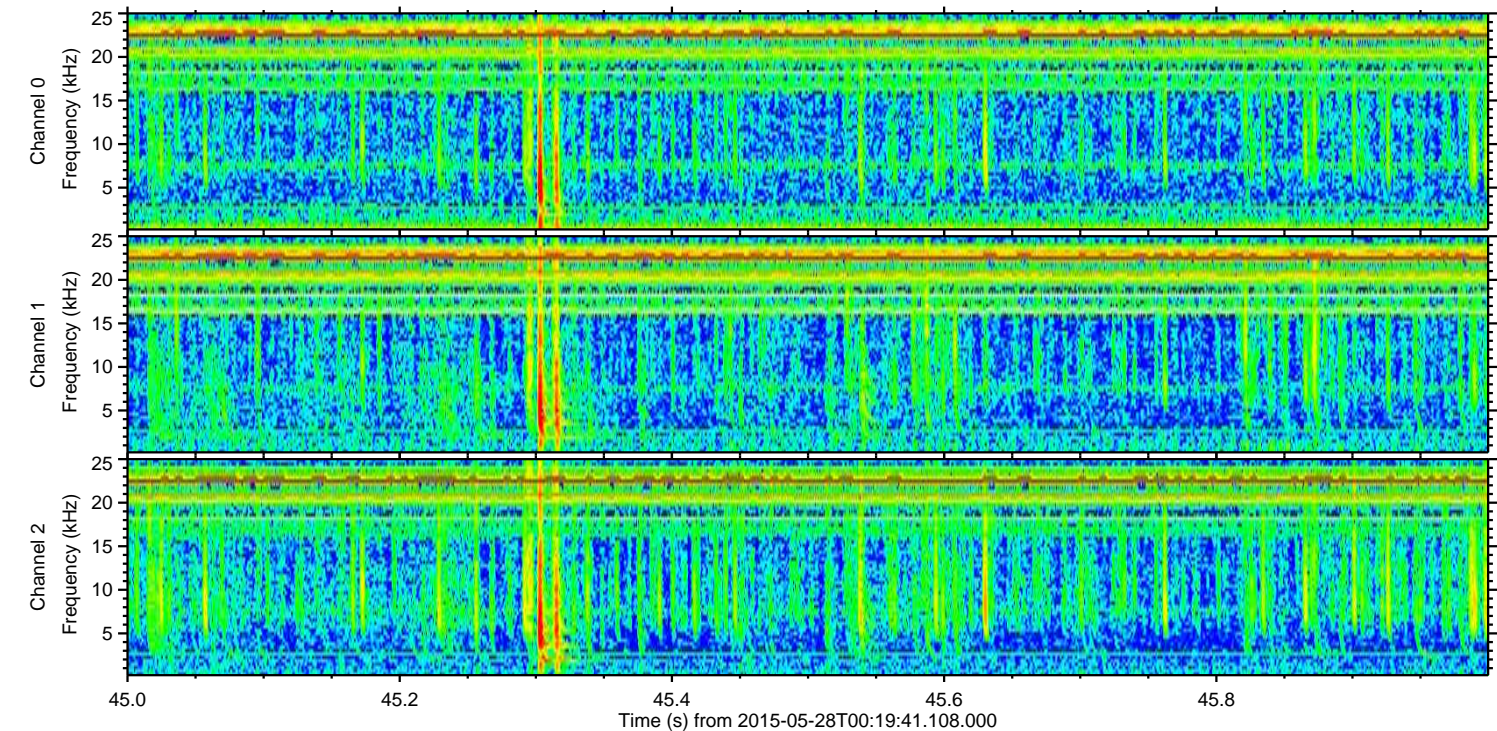
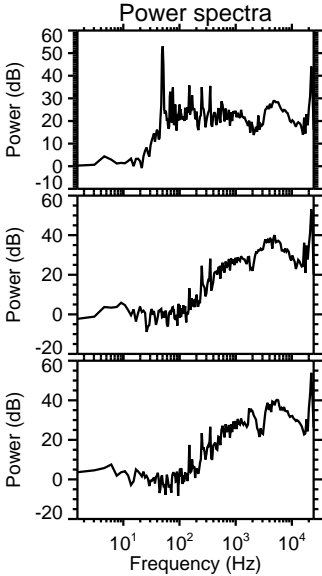
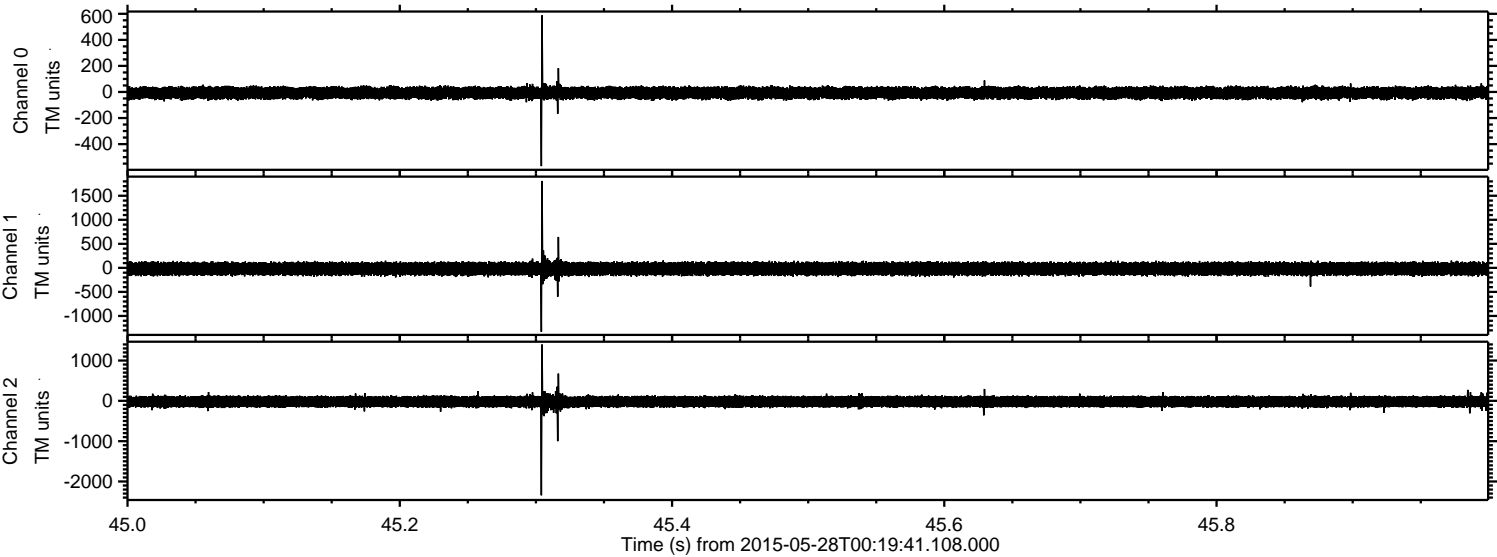
ELMAVAN 3D WAVEFORMS (Measured data sampled at 50 kHz) 49711 packets of 144 samples from 2015-05-28T00:19:41.108.000. Part 120/144

Processed Thu May 28 02:28:54 2015 by ELM ver.2012-10-06 from 001\_\_elm20150528\_001940\_\_dat00.bin





Processed Thu May 28 02:28:55 2015 by ELM ver.2012-10-06 from 001\_\_elm20150528\_001940\_\_dat00.bin



Channel 0  
mn: -569  
mx: 588  
 $\mu$ : -7.2  
 $\sigma$ : 26.7

Channel 1  
mn: -1328  
mx: 1808  
 $\mu$ : -18.5  
 $\sigma$ : 75.7

Channel 2  
mn: -2342  
mx: 1397  
 $\mu$ : -19.8  
 $\sigma$ : 81.4



Processed Thu May 28 02:28:56 2015 by ELM ver.2012-10-06 from 001\_\_elm20150528\_001940\_\_dat00.bin

