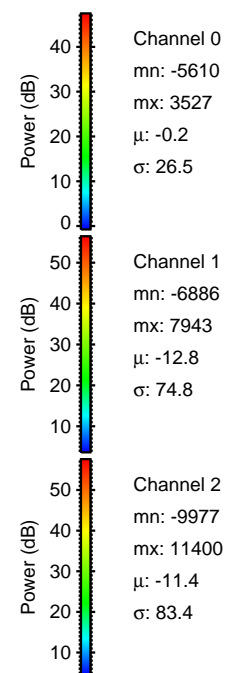
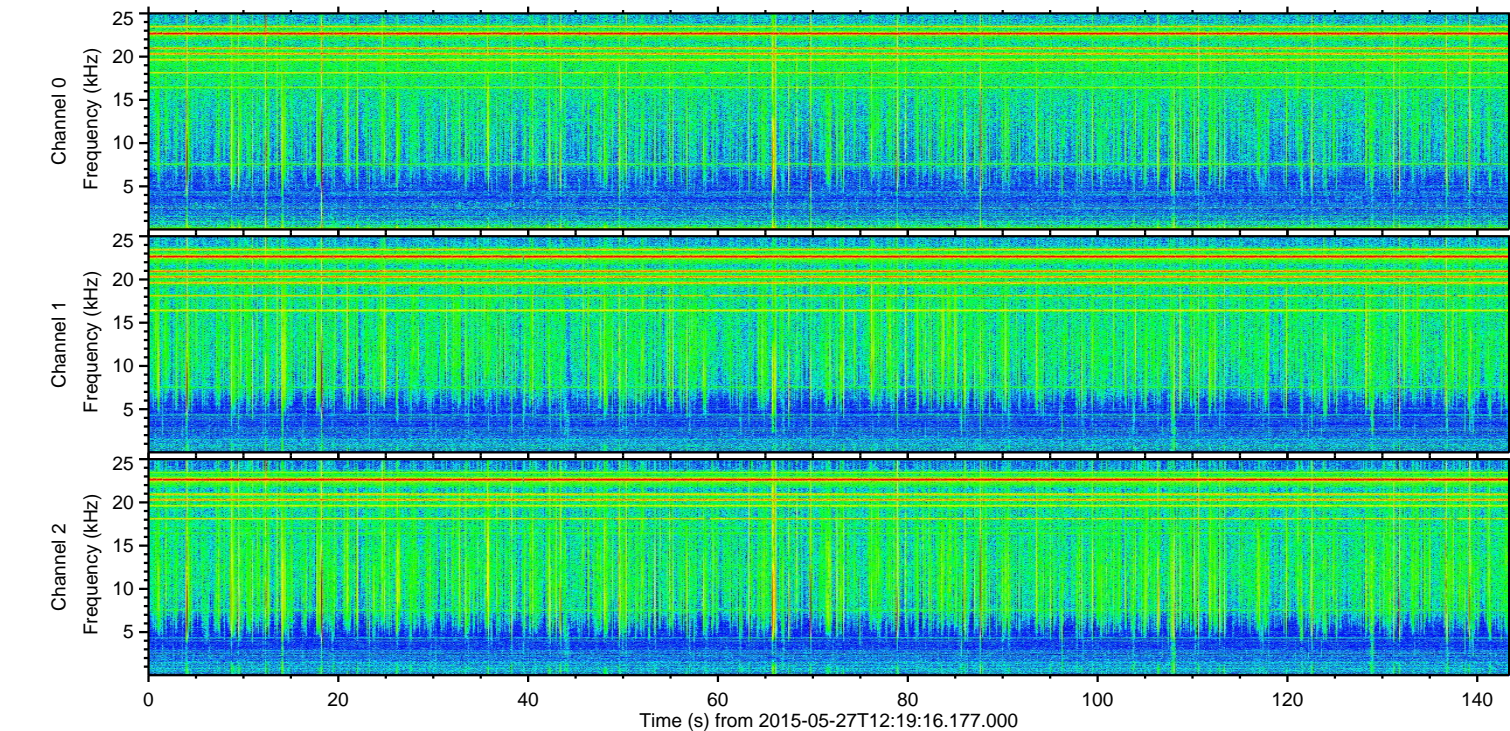
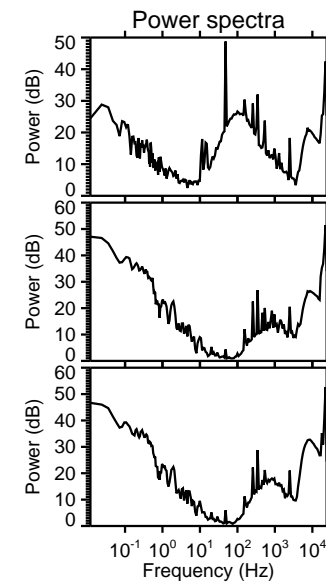
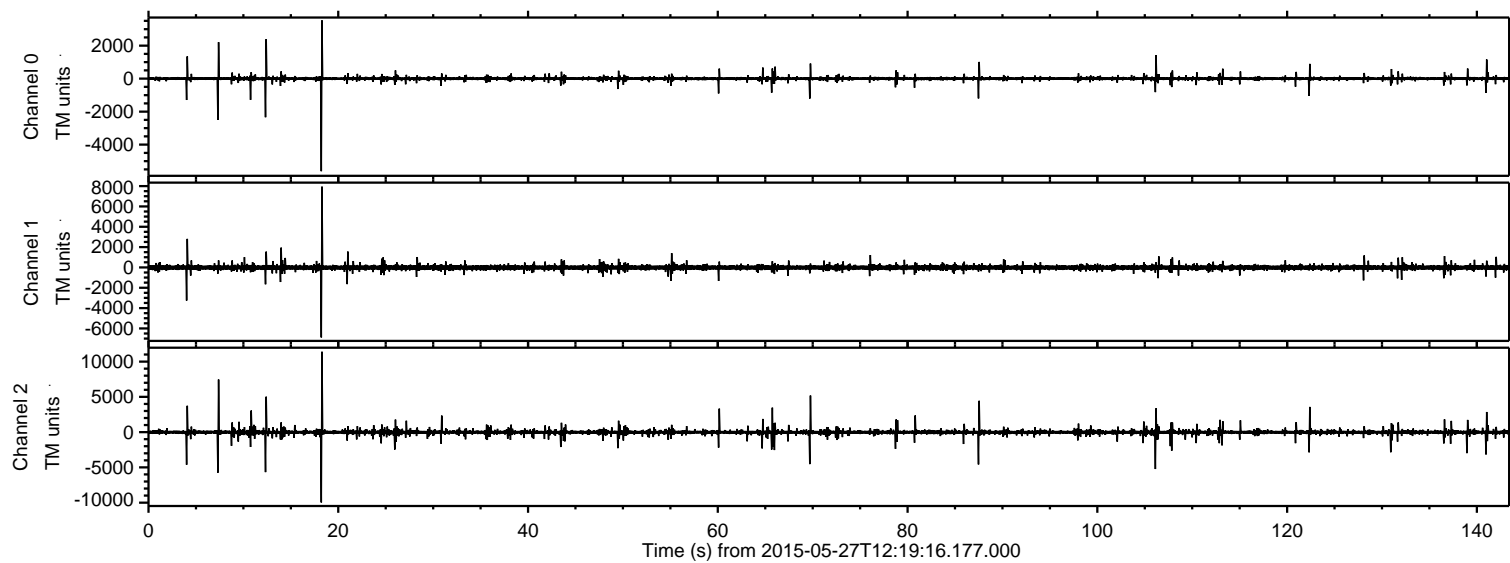
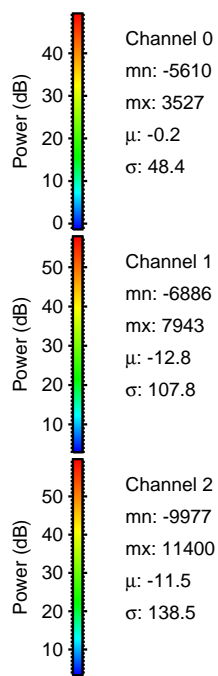
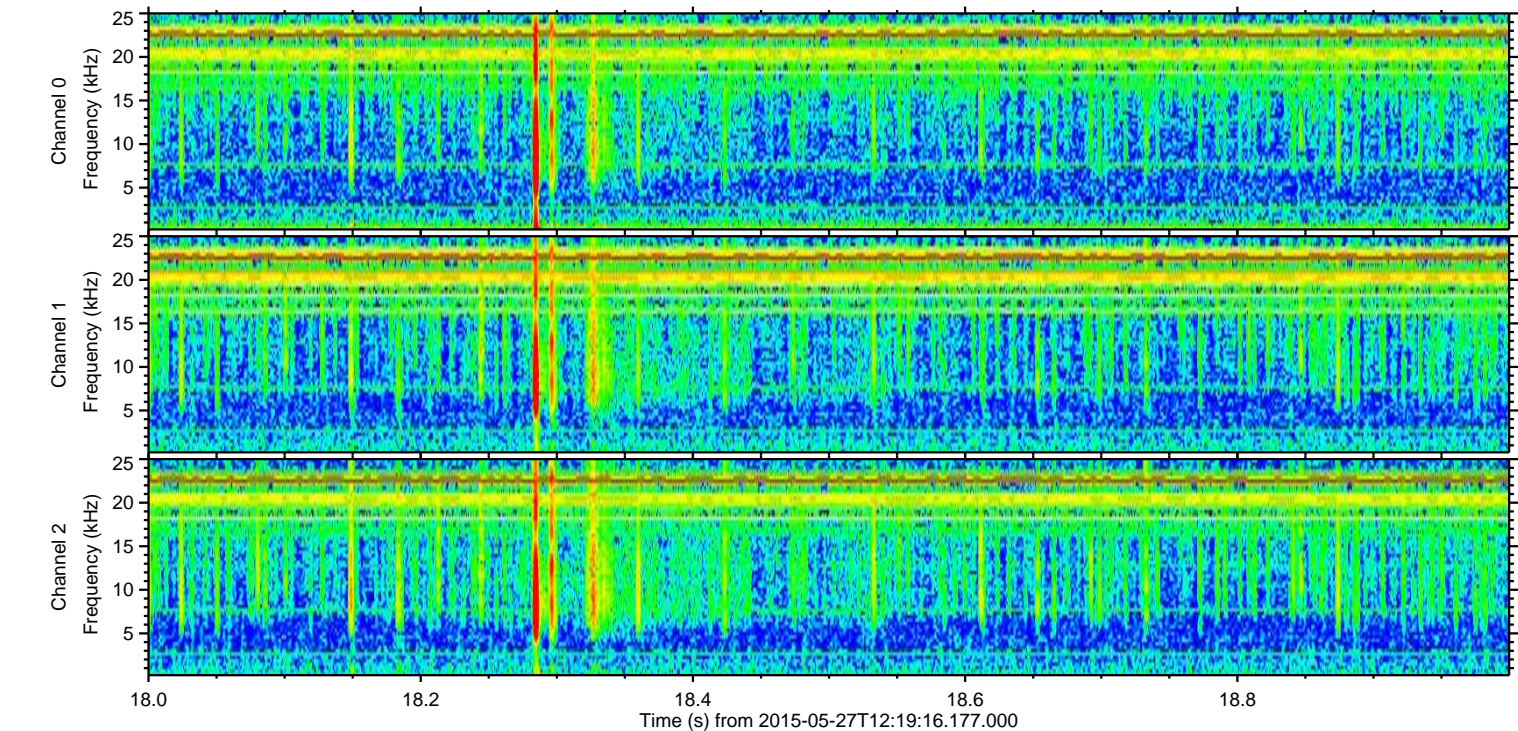
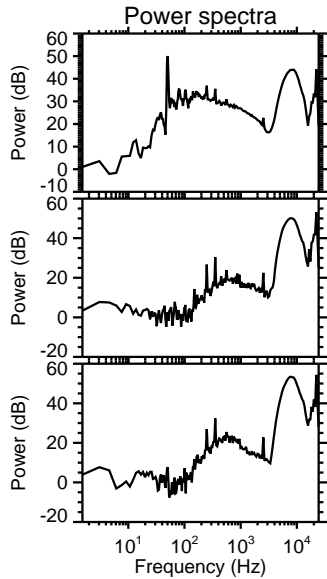
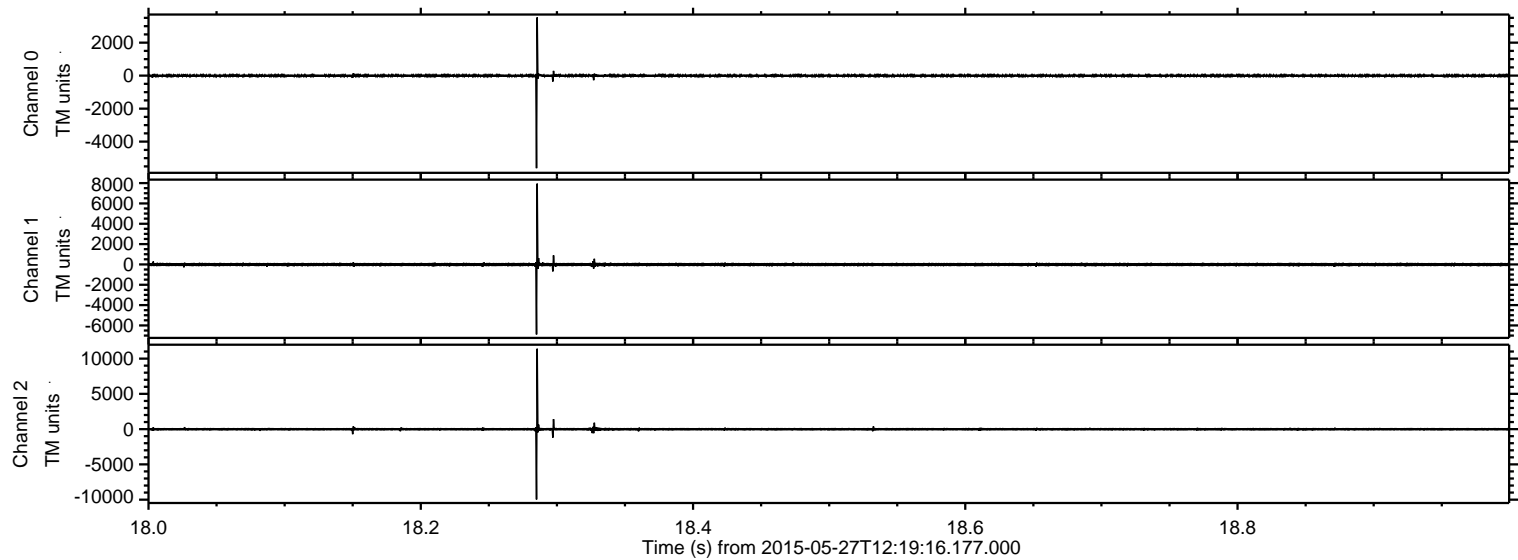


ELMAVAN 3D WAVEFORMS (Measured data sampled at 50 kHz) 49792 packets of 144 samples from 2015-05-27T12:19:16.177.000.

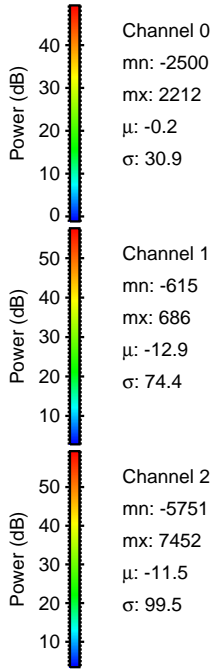
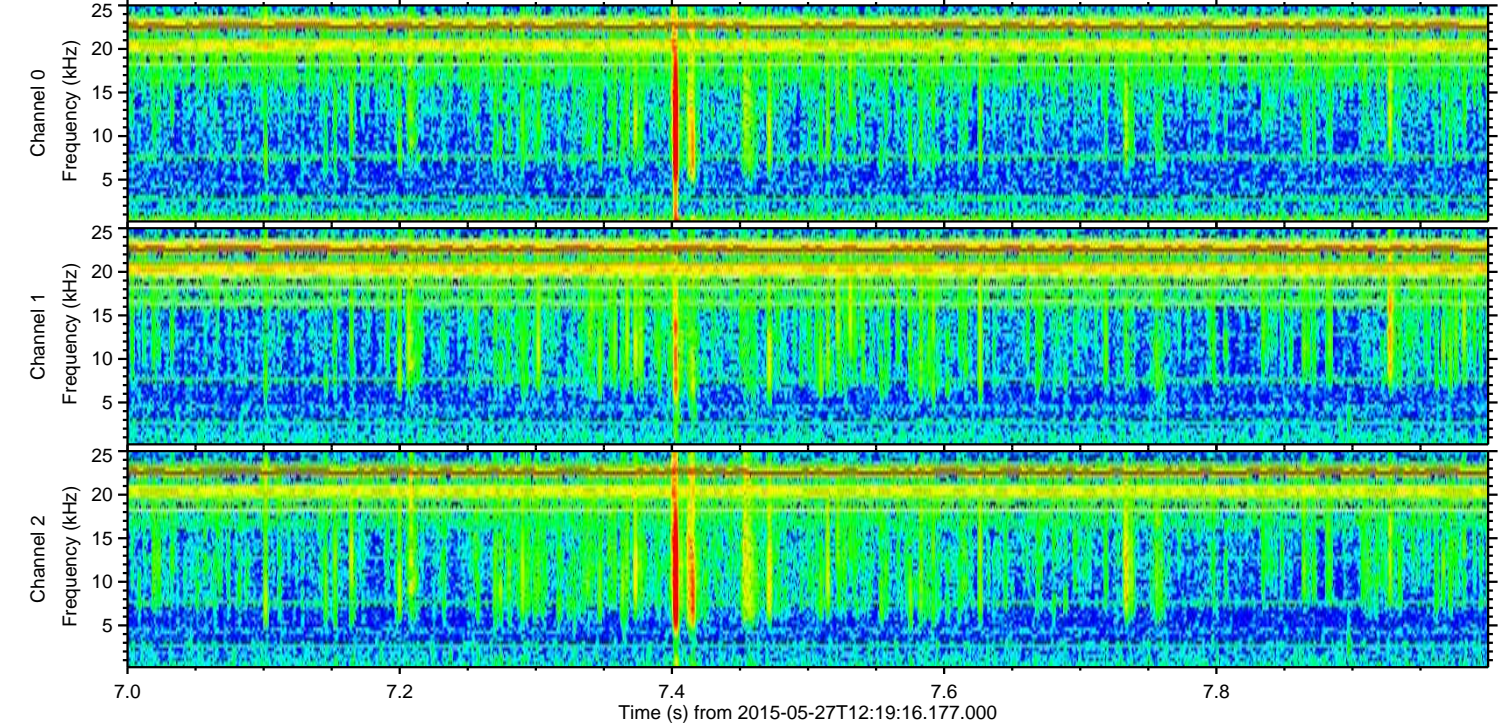
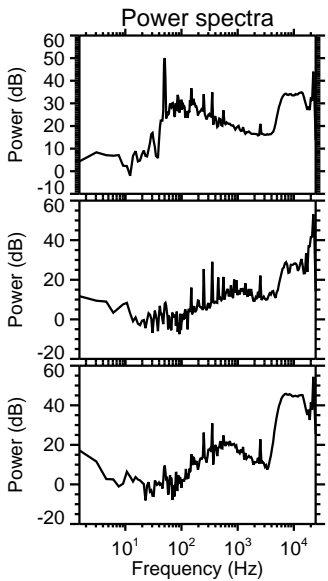
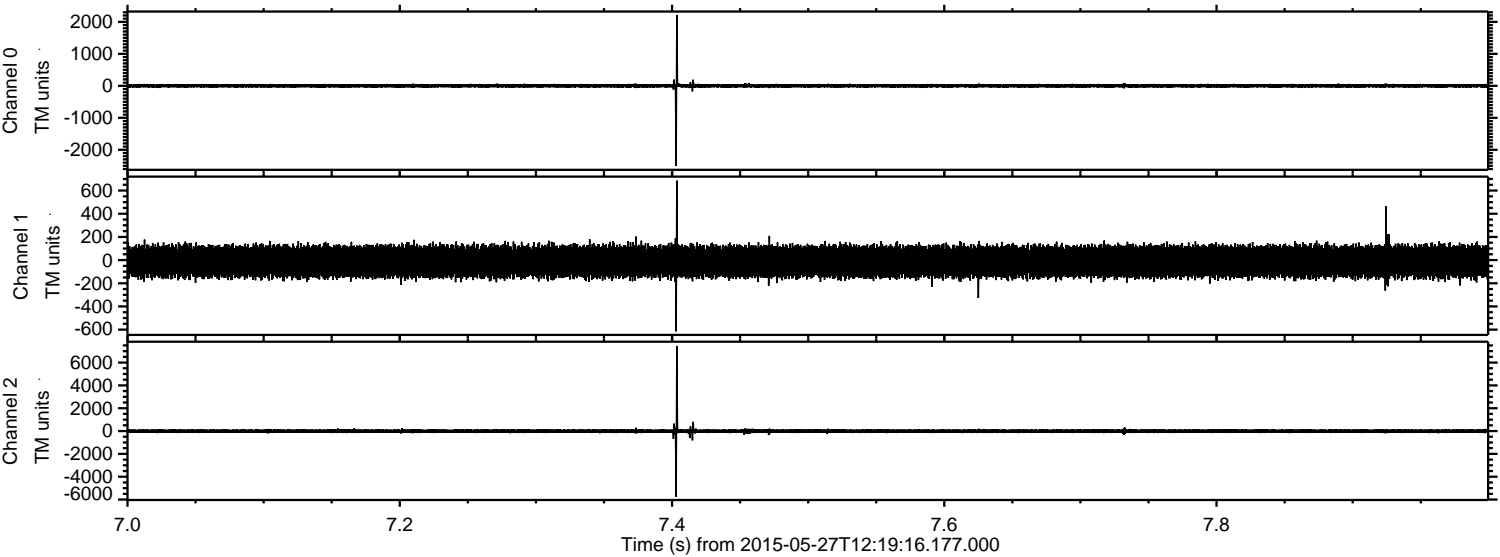
Processed Wed May 27 14:25:51 2015 by ELM ver.2012-10-06 from 001__elm20150527_121915__dat00.bin



Processed Wed May 27 14:26:03 2015 by ELM ver.2012-10-06 from 001__elm20150527_121915__dat00.bin

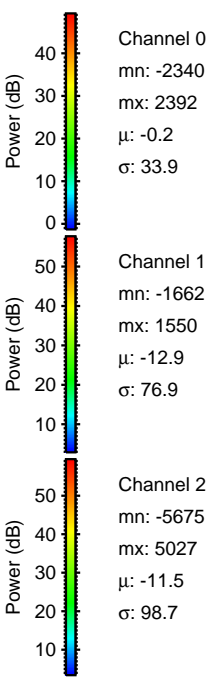
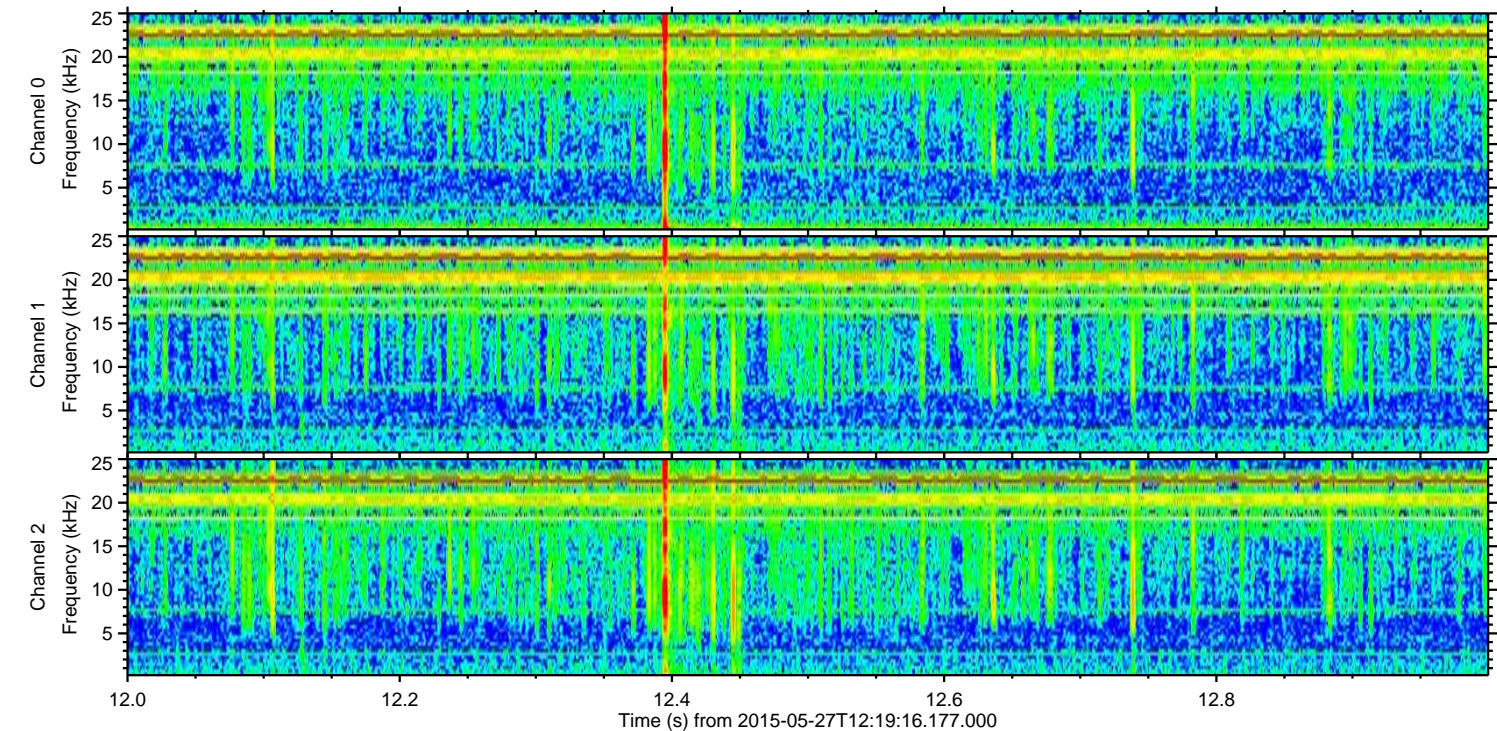
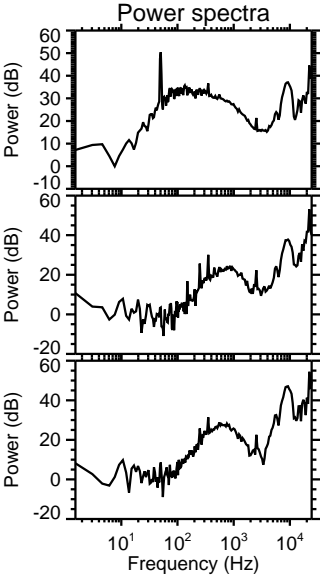
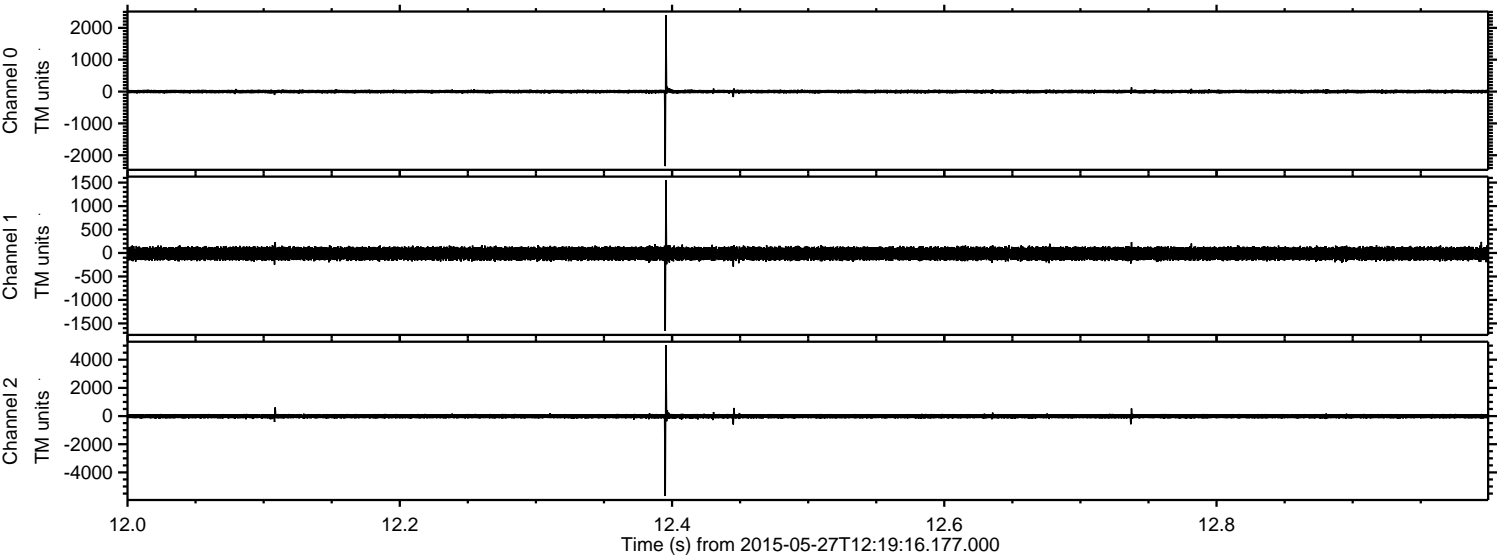


Processed Wed May 27 14:26:04 2015 by ELM ver.2012-10-06 from 001__elm20150527_121915__dat00.bin



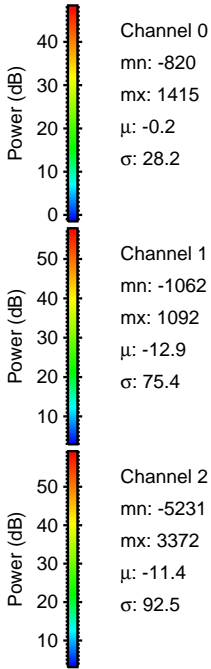
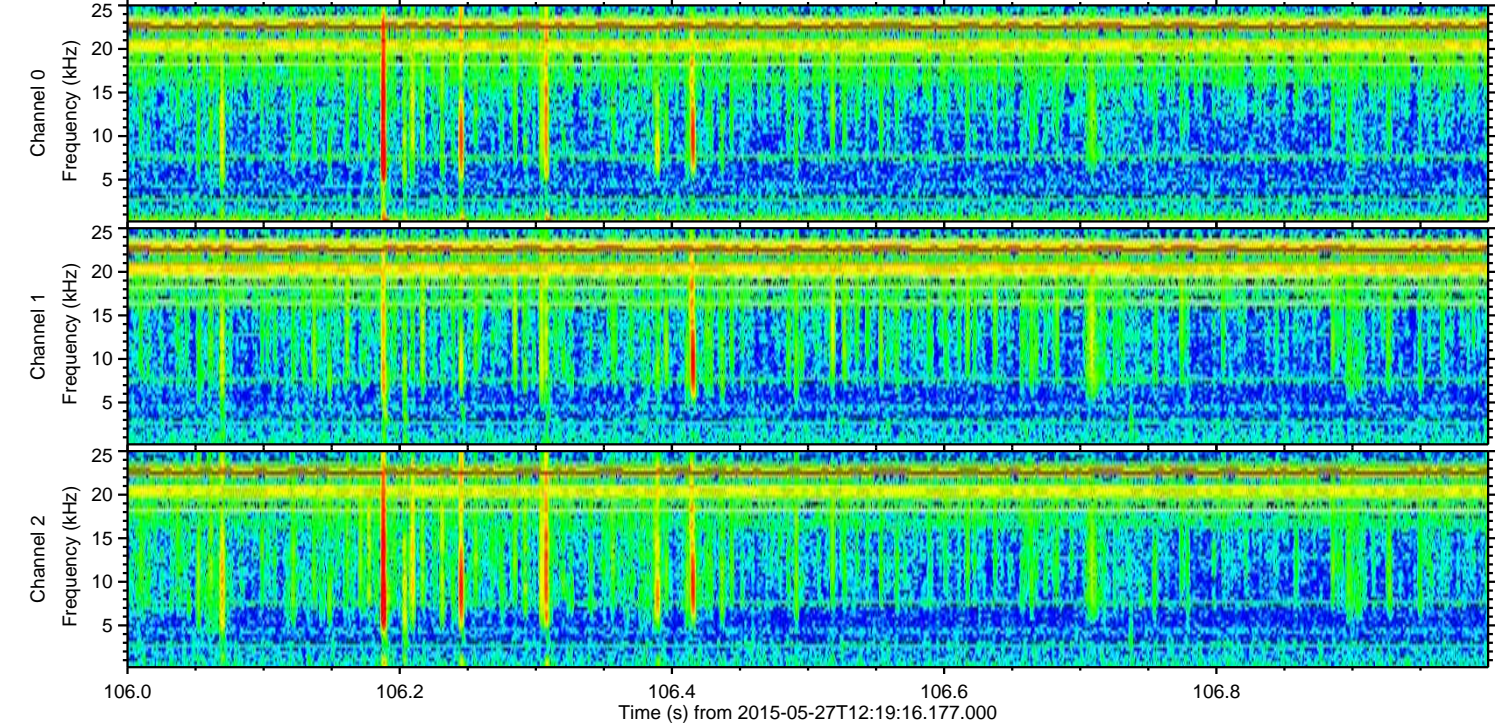
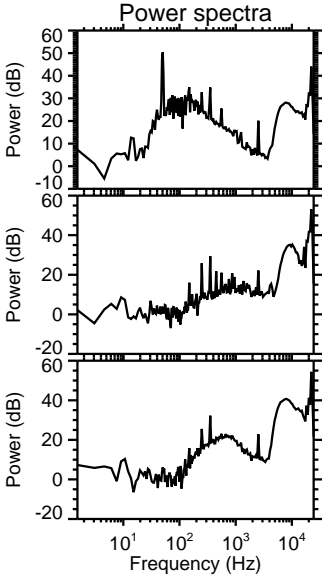
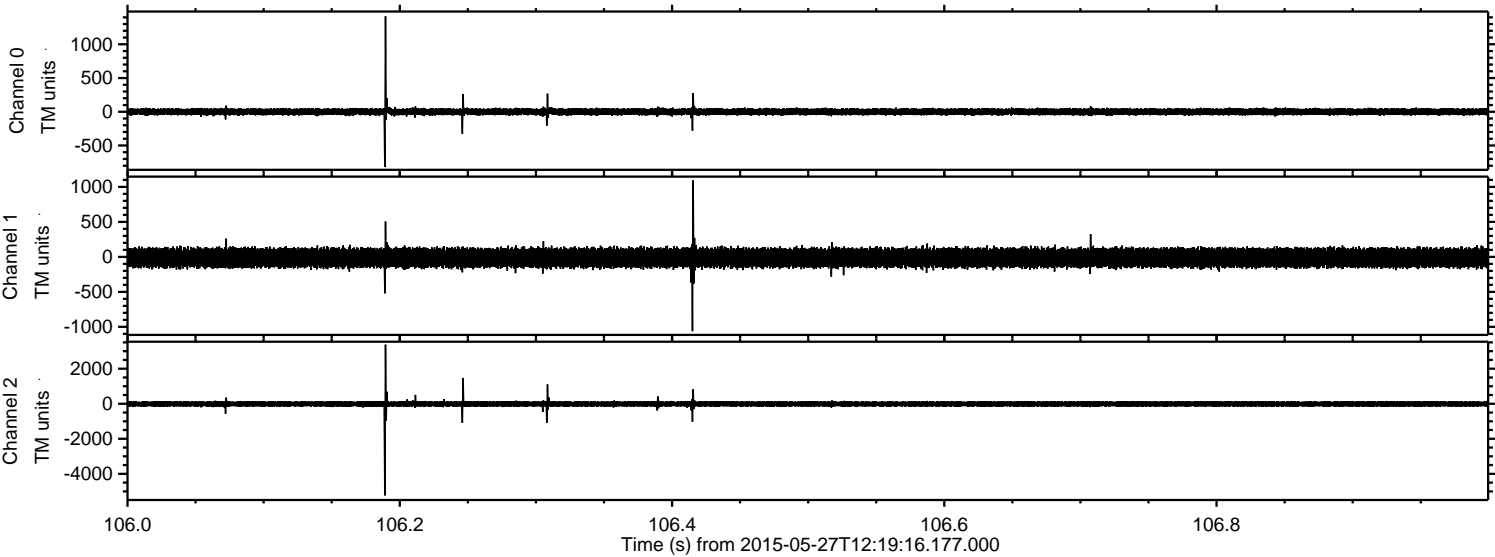
ELMAVAN 3D WAVEFORMS (Measured data sampled at 50 kHz) 49792 packets of 144 samples from 2015-05-27T12:19:16.177.000. Part 13/144

Processed Wed May 27 14:26:05 2015 by ELM ver.2012-10-06 from 001__elm20150527_121915__dat00.bin

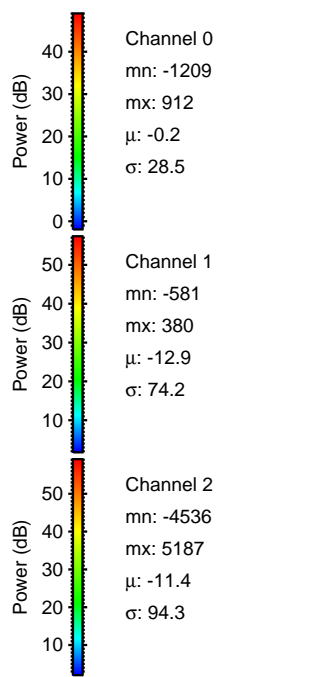
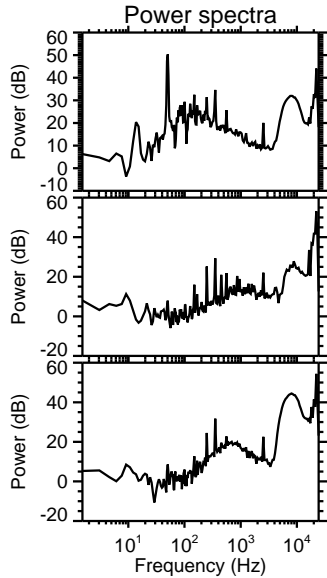
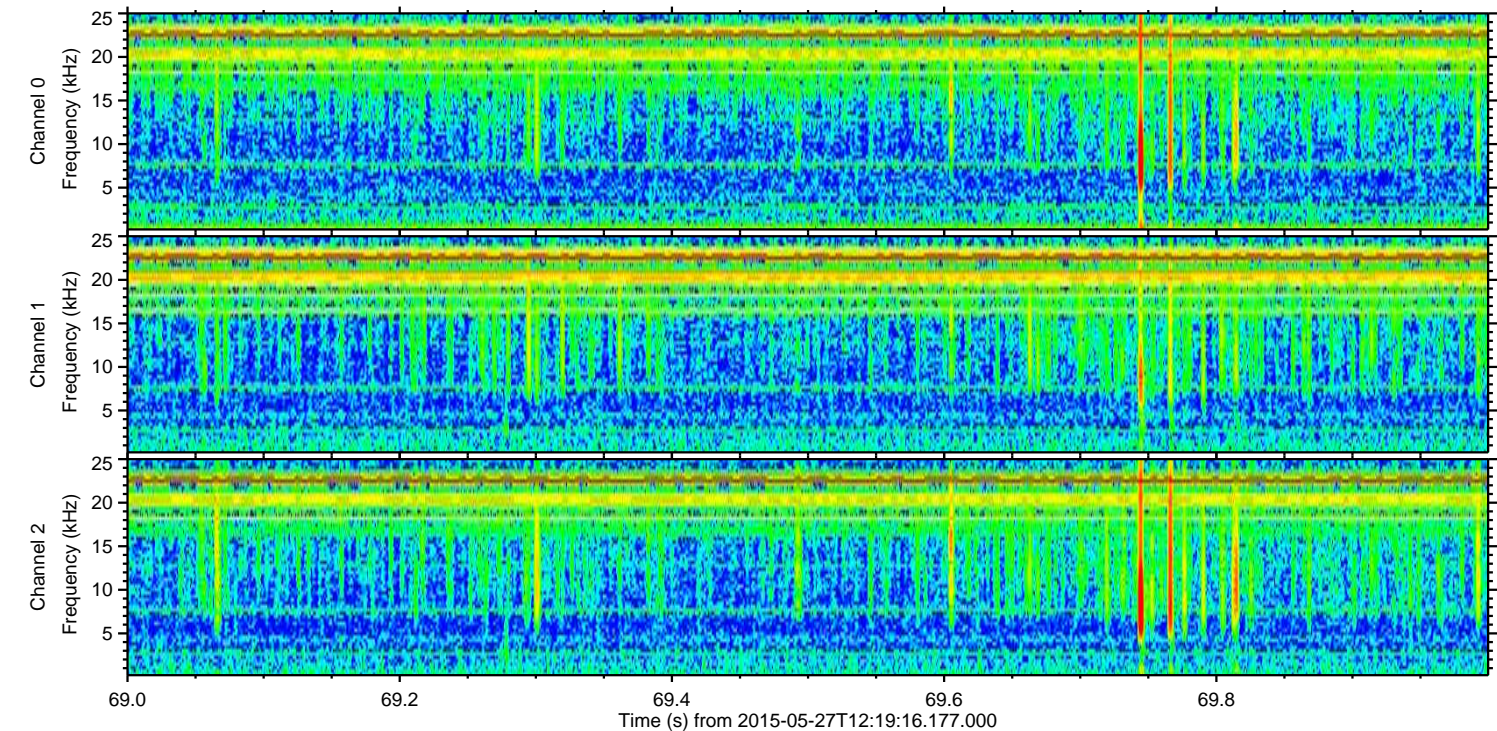
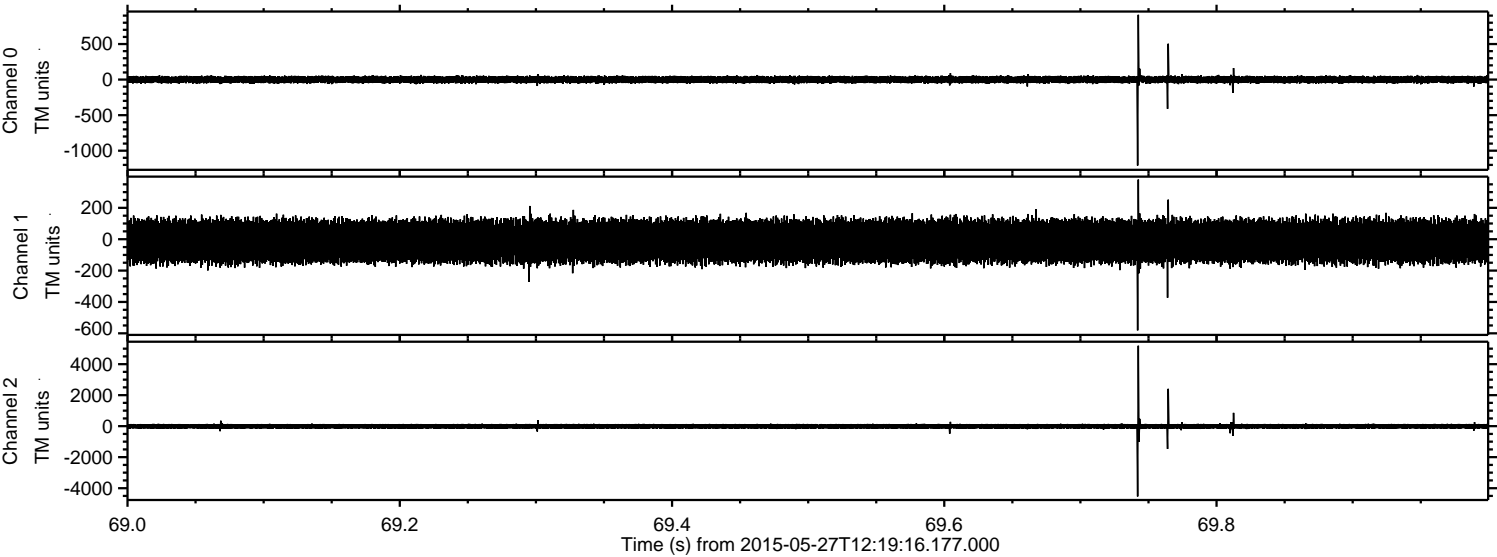


ELMAVAN 3D WAVEFORMS (Measured data sampled at 50 kHz) 49792 packets of 144 samples from 2015-05-27T12:19:16.177.000. Part 107/144

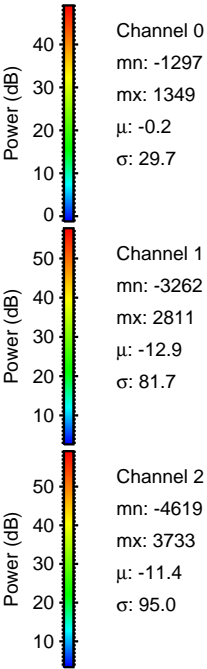
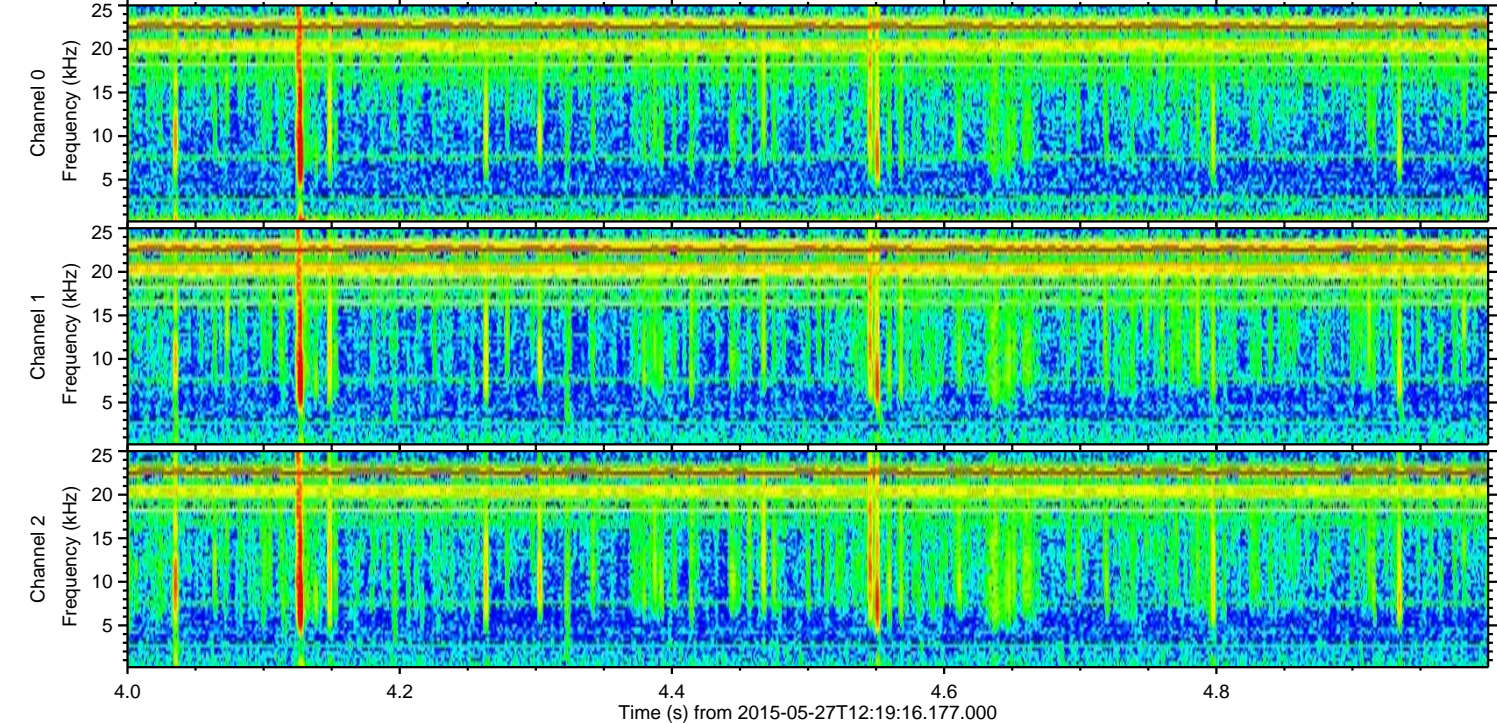
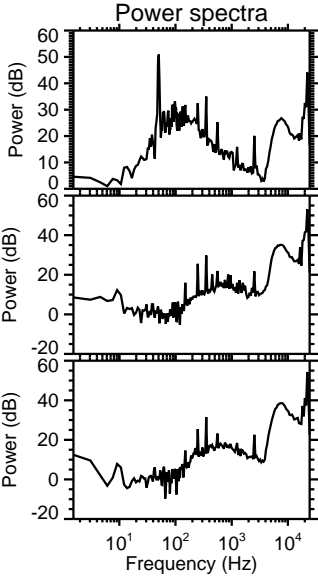
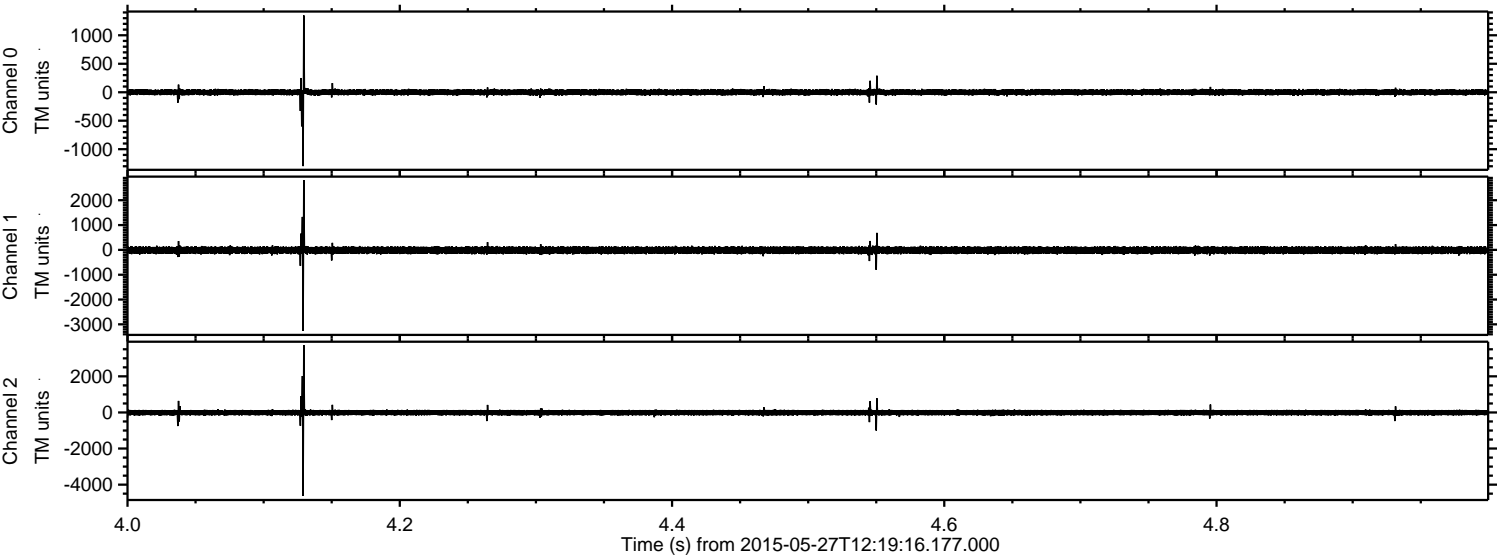
Processed Wed May 27 14:26:06 2015 by ELM ver.2012-10-06 from 001__elm20150527_121915__dat00.bin



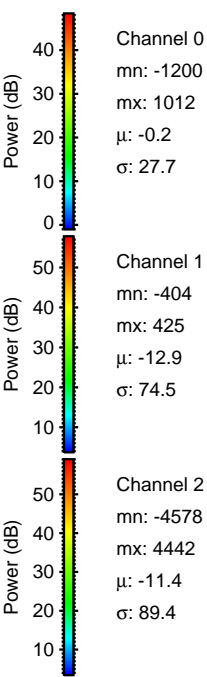
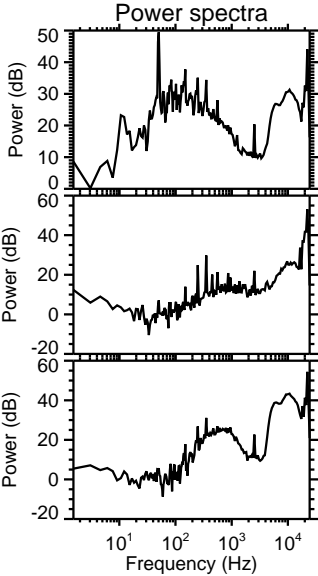
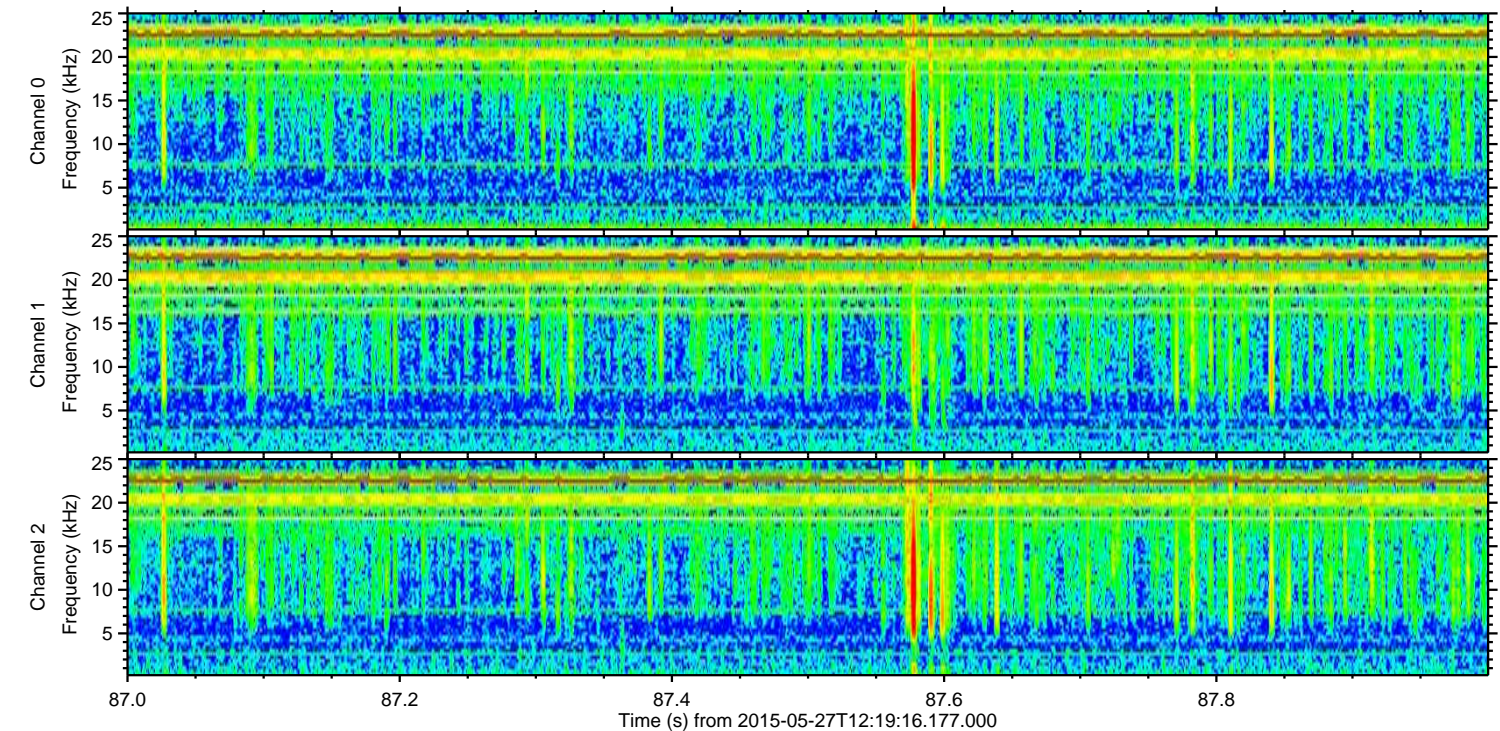
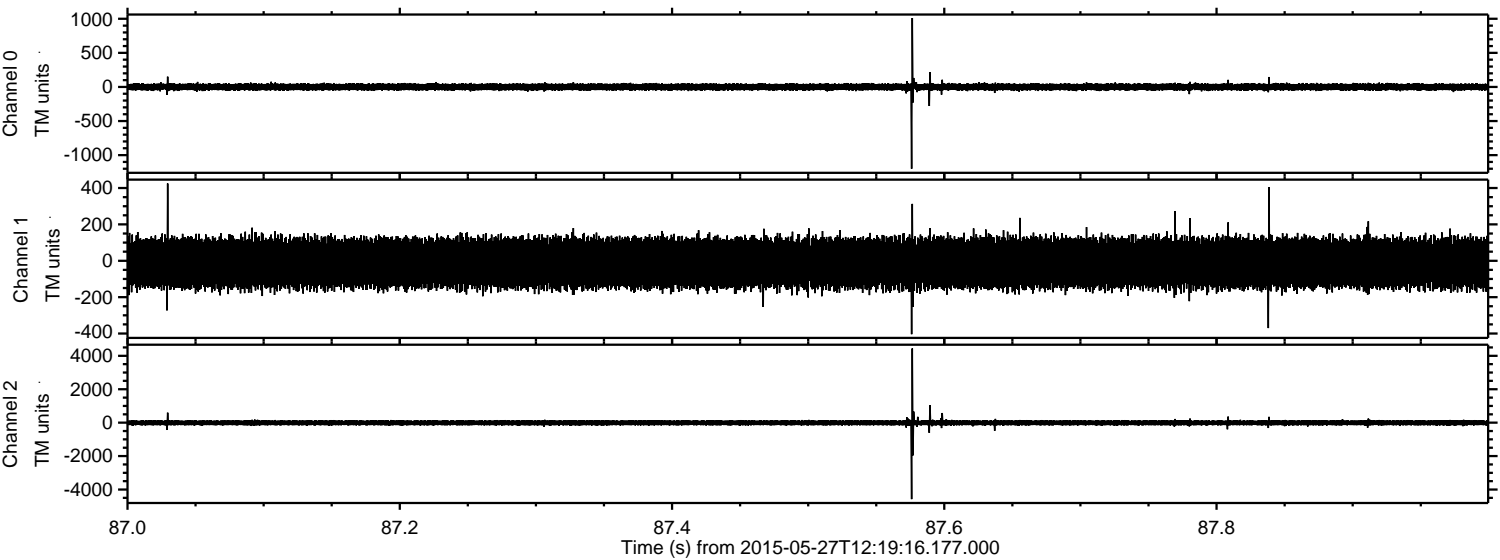
Processed Wed May 27 14:26:06 2015 by ELM ver.2012-10-06 from 001__elm20150527_121915__dat00.bin



Processed Wed May 27 14:26:07 2015 by ELM ver.2012-10-06 from 001__elm20150527_121915__dat00.bin

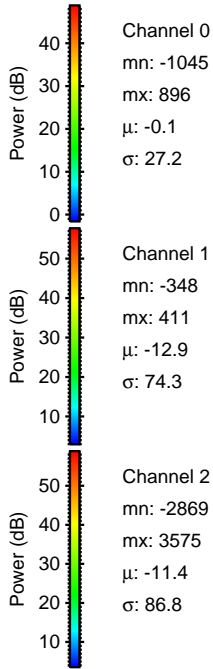
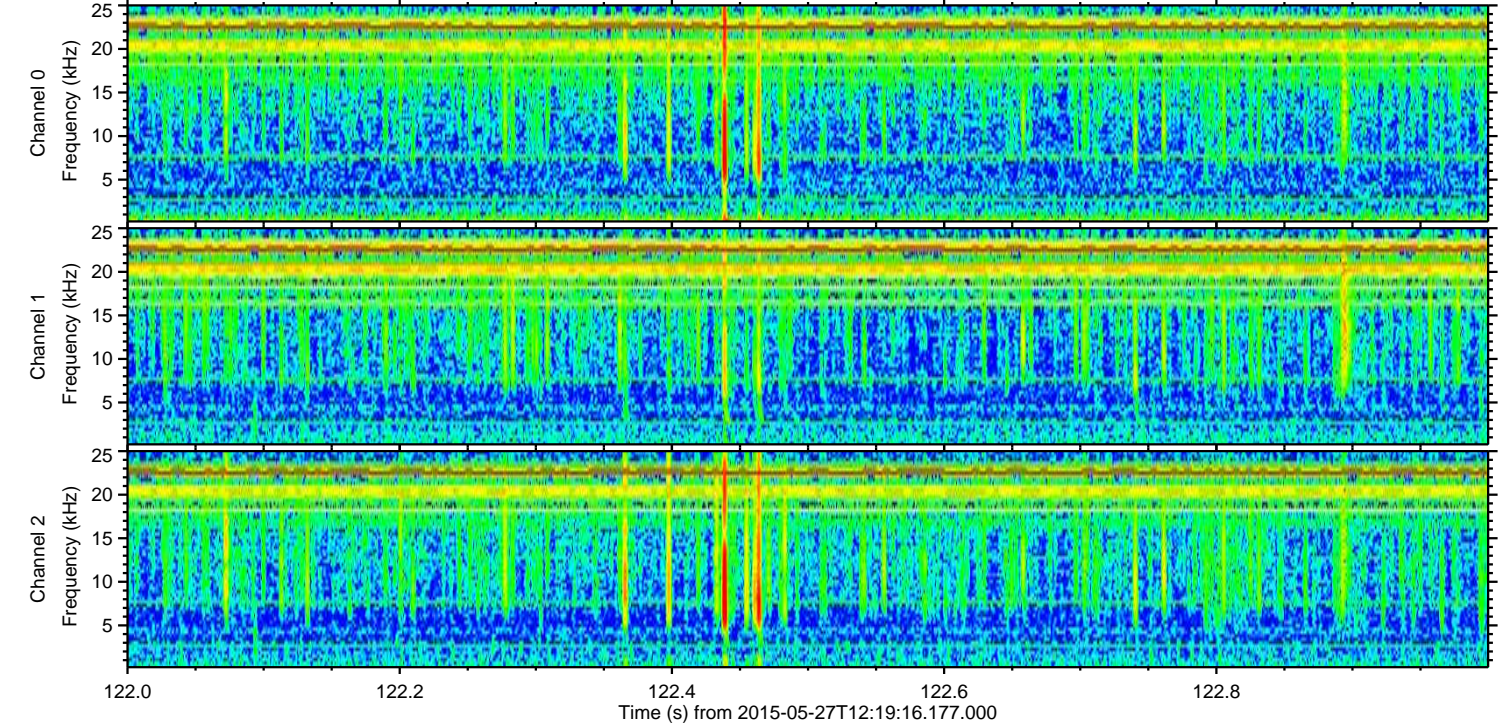
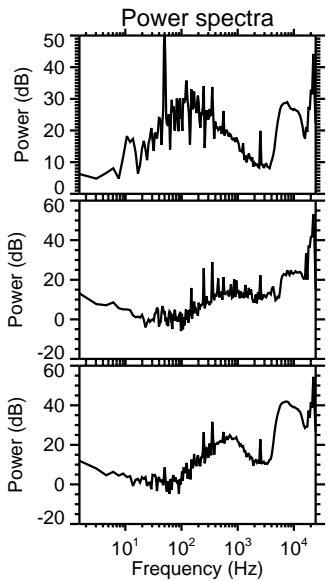
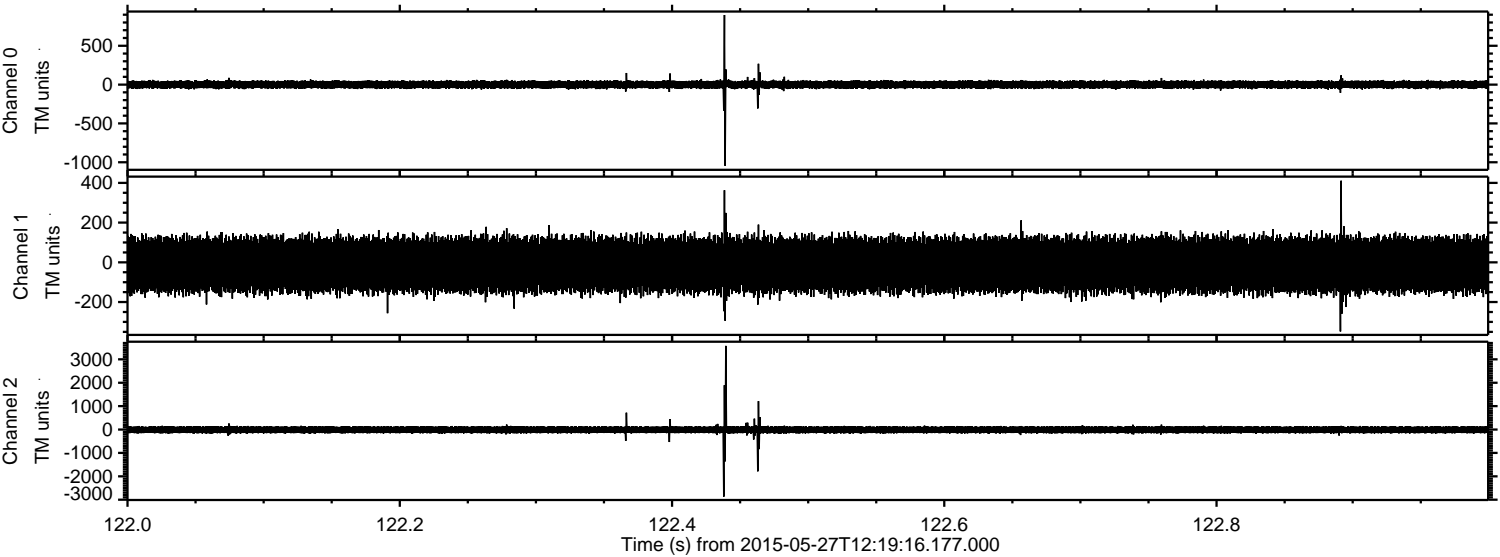


Processed Wed May 27 14:26:08 2015 by ELM ver.2012-10-06 from 001__elm20150527_121915__dat00.bin



ELMAVAN 3D WAVEFORMS (Measured data sampled at 50 kHz) 49792 packets of 144 samples from 2015-05-27T12:19:16.177.000. Part 123/144

Processed Wed May 27 14:26:09 2015 by ELM ver.2012-10-06 from 001__elm20150527_121915__dat00.bin



Channel 0
mn: -1045
mx: 896
 μ : -0.1
 σ : 27.2

Channel 1
mn: -348
mx: 411
 μ : -12.9
 σ : 74.3

Channel 2
mn: -2869
mx: 3575
 μ : -11.4
 σ : 86.8

Processed Wed May 27 14:26:10 2015 by ELM ver.2012-10-06 from 001__elm20150527_121915__dat00.bin

