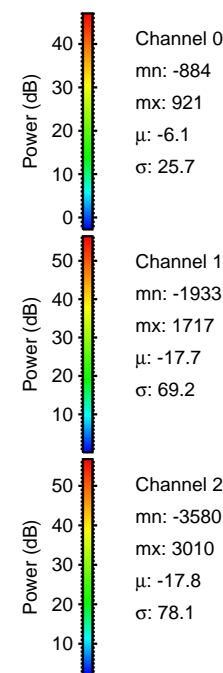
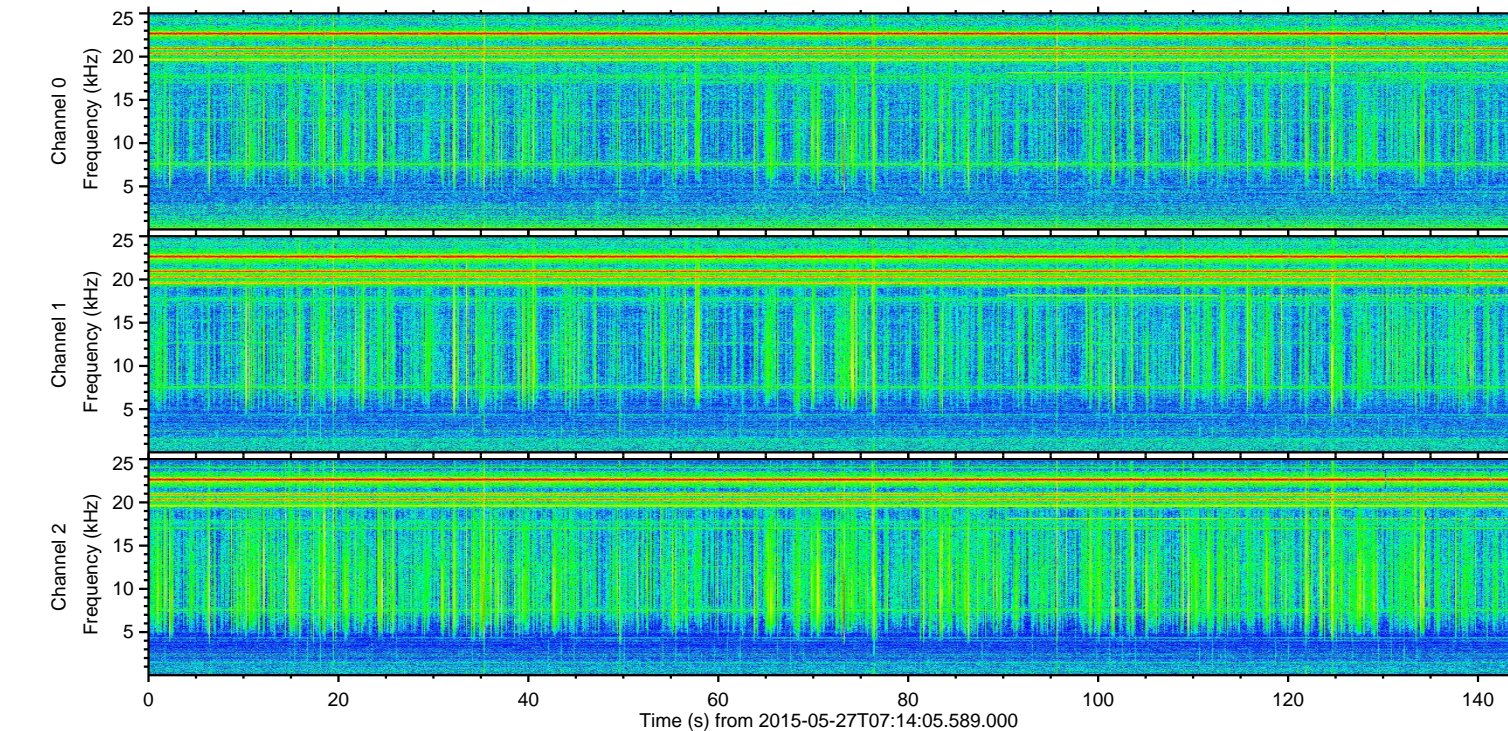
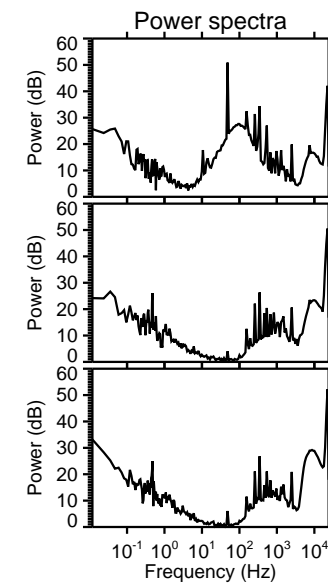
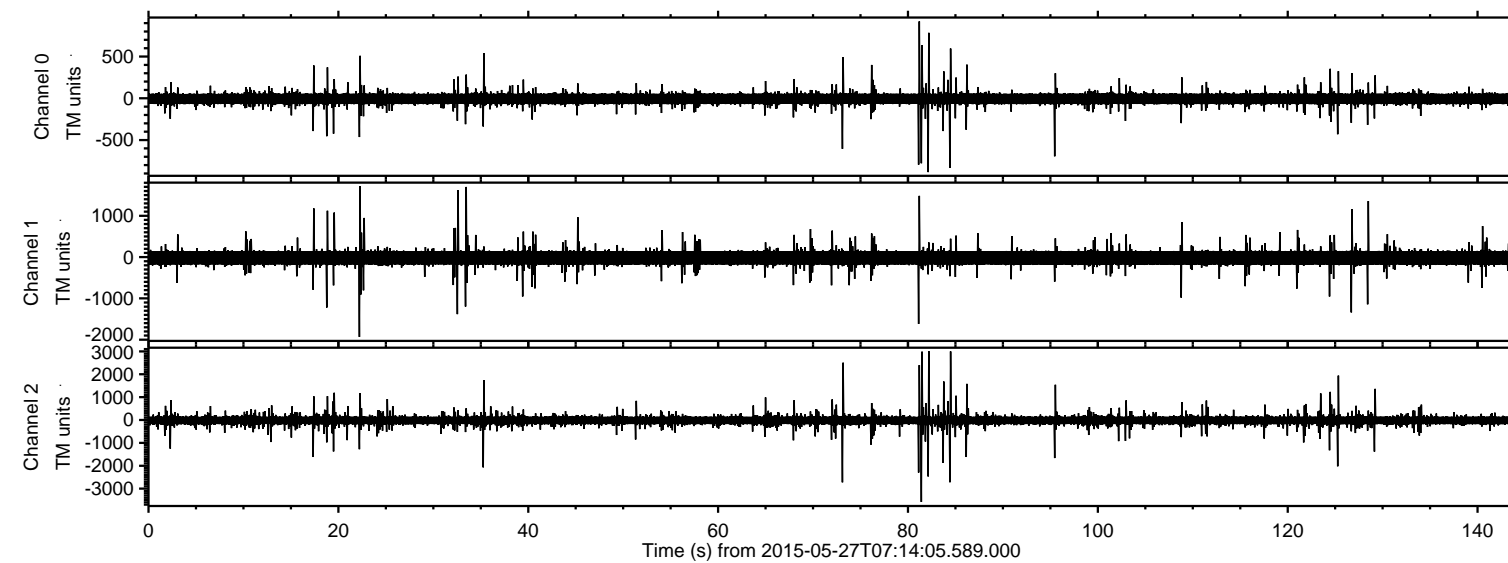


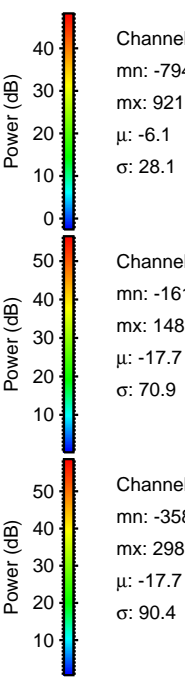
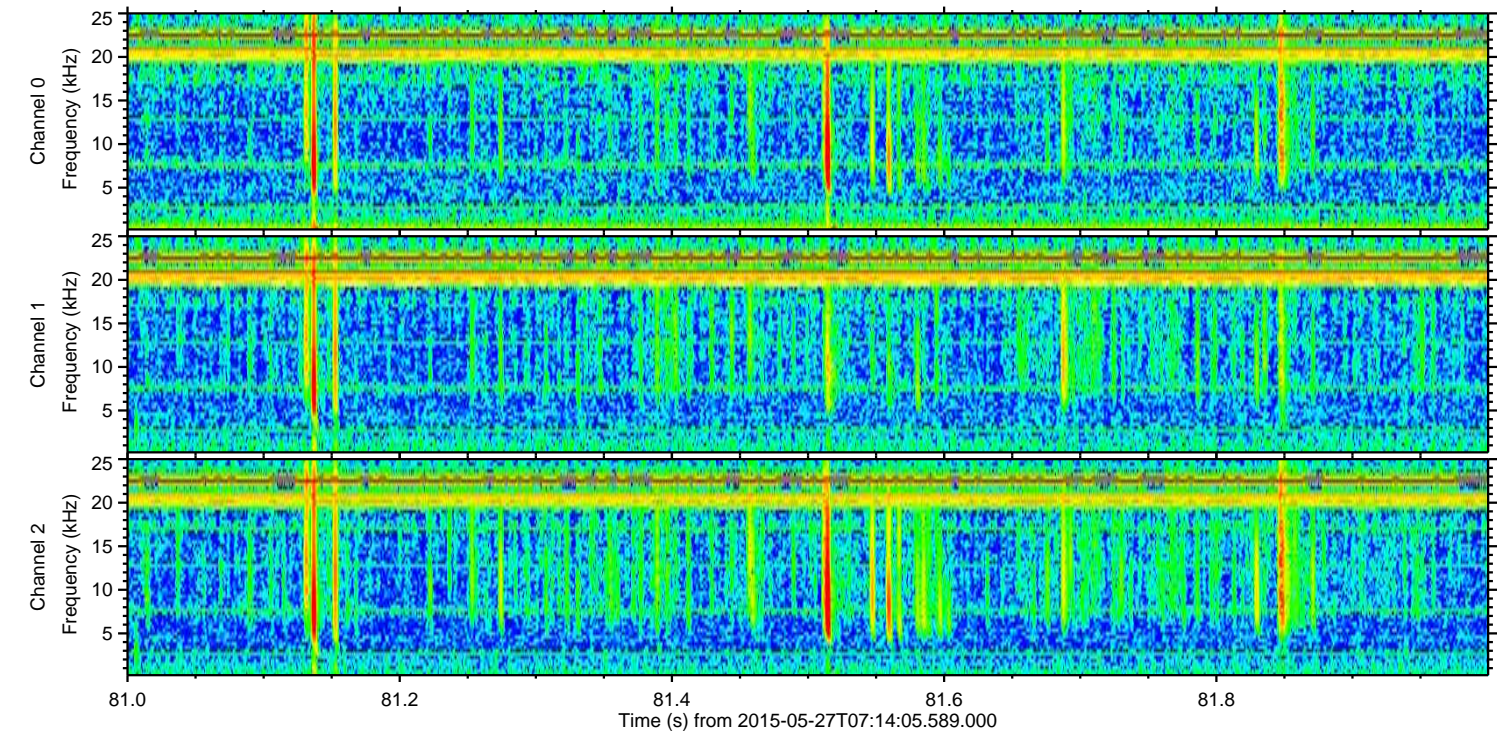
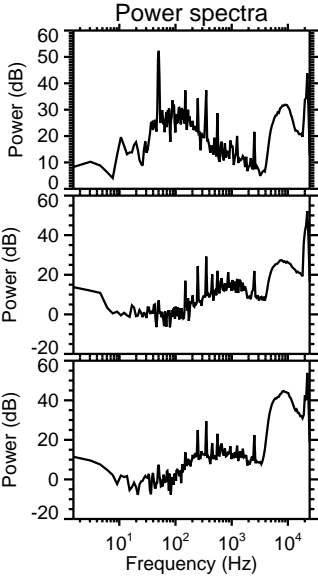
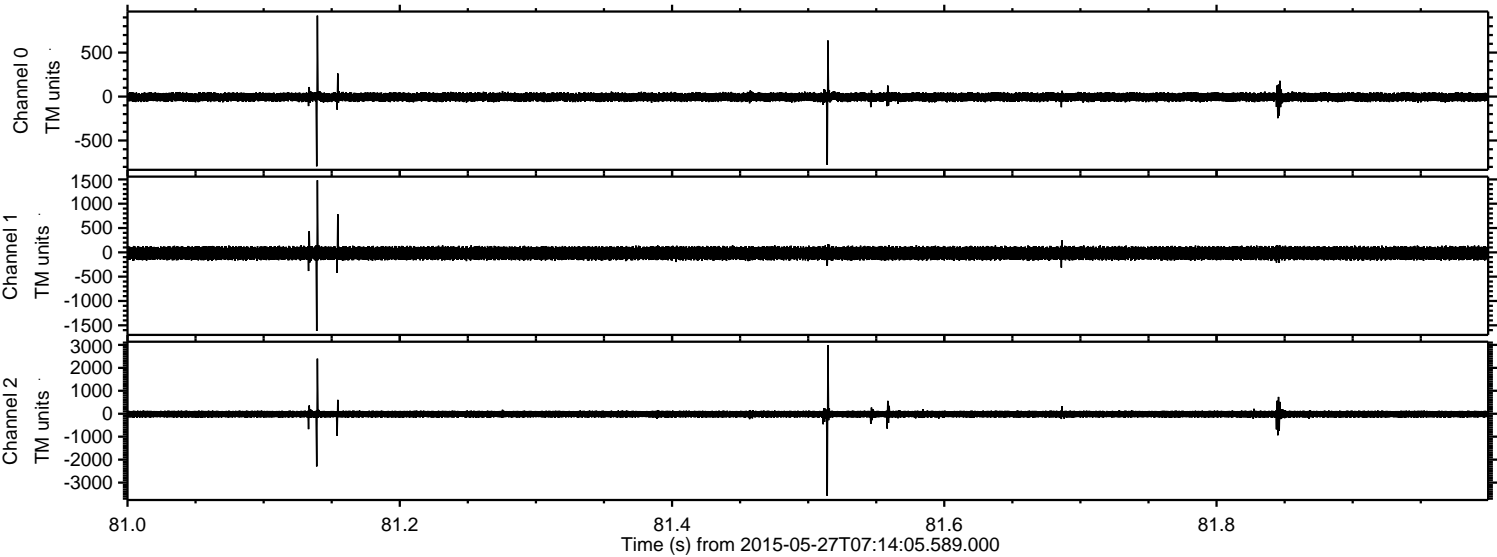
# ELMAVAN 3D WAVEFORMS (Measured data sampled at 50 kHz) 49766 packets of 144 samples from 2015-05-27T07:14:05.589.000.

Processed Wed May 27 09:20:57 2015 by ELM ver.2012-10-06 from 001\_\_elm20150527\_071404\_\_dat00.bin





Processed Wed May 27 09:21:09 2015 by ELM ver.2012-10-06 from 001\_\_elm20150527\_071404\_\_dat00.bin



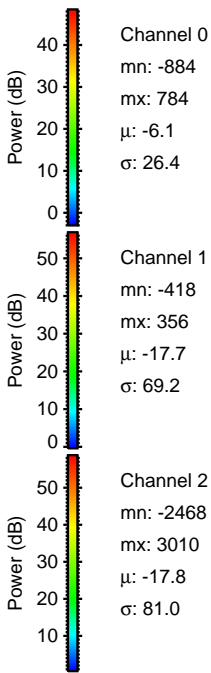
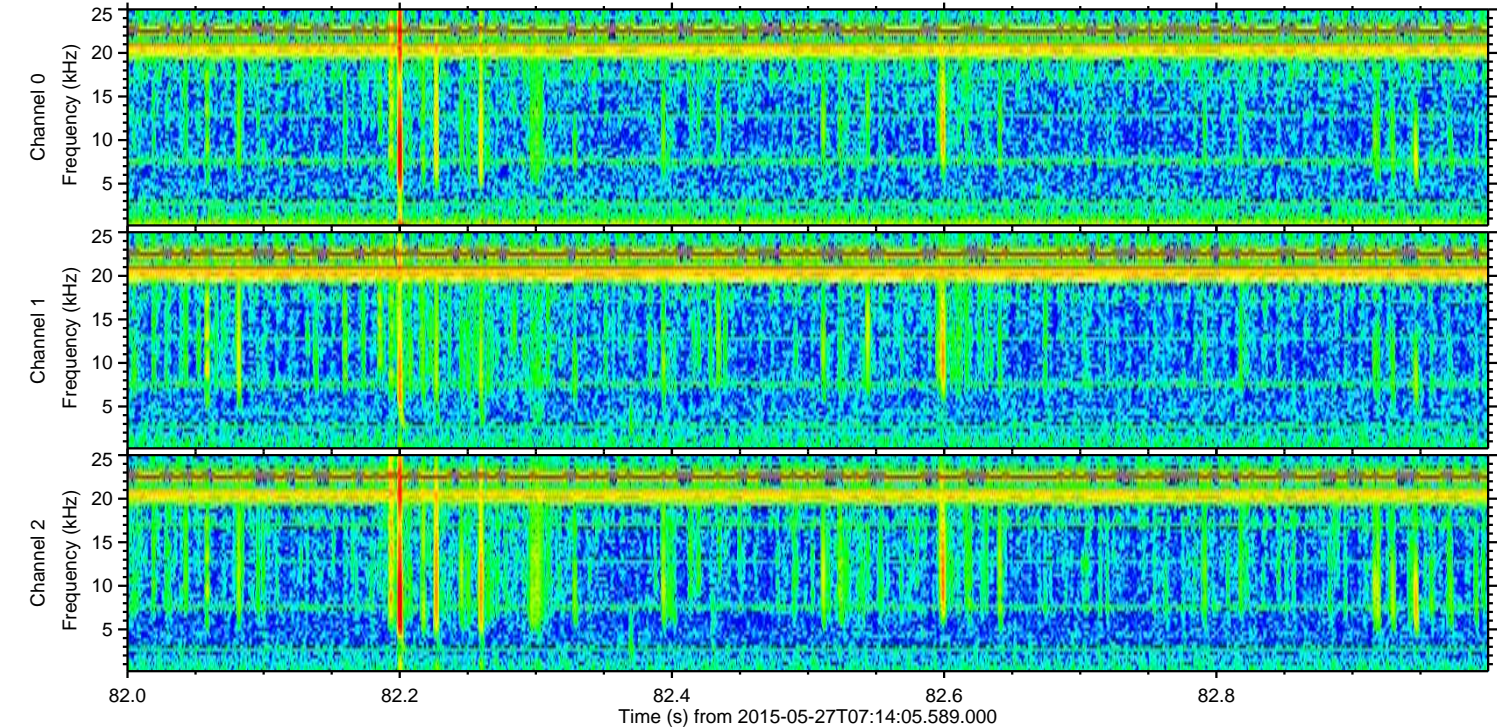
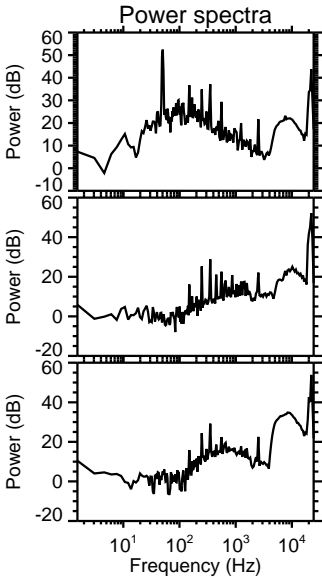
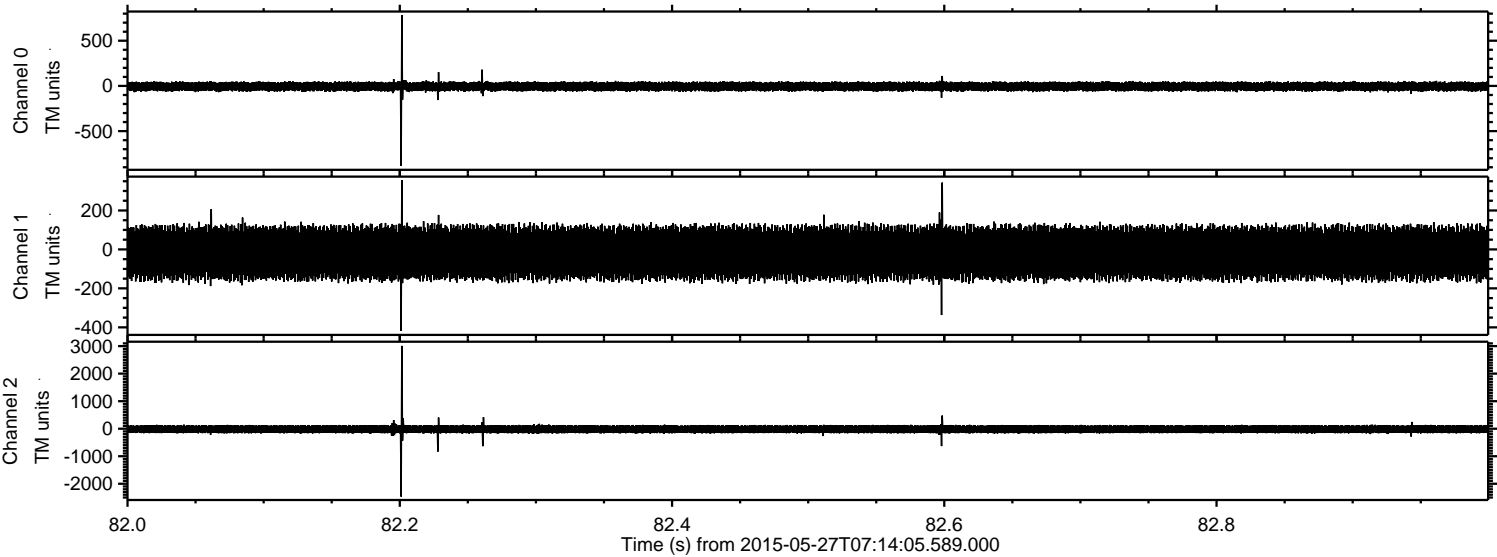
Channel 0  
mn: -794  
mx: 921  
 $\mu$ : -6.1  
 $\sigma$ : 28.1

Channel 1  
mn: -1617  
mx: 1483  
 $\mu$ : -17.7  
 $\sigma$ : 70.9

Channel 2  
mn: -3580  
mx: 2989  
 $\mu$ : -17.7  
 $\sigma$ : 90.4

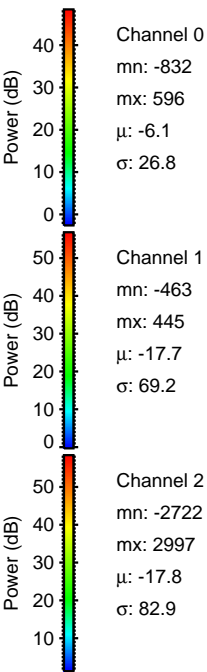
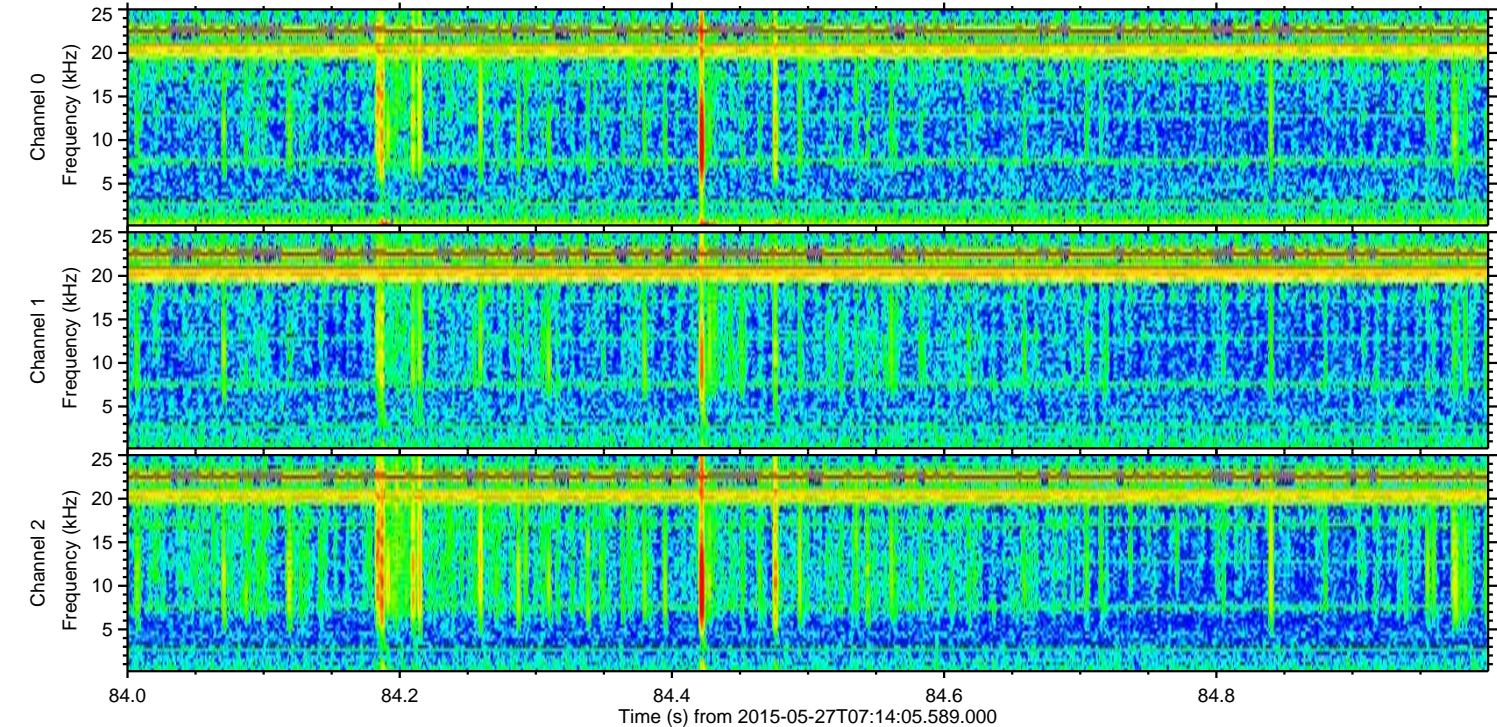
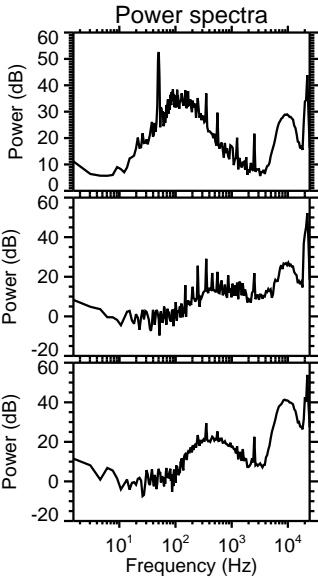
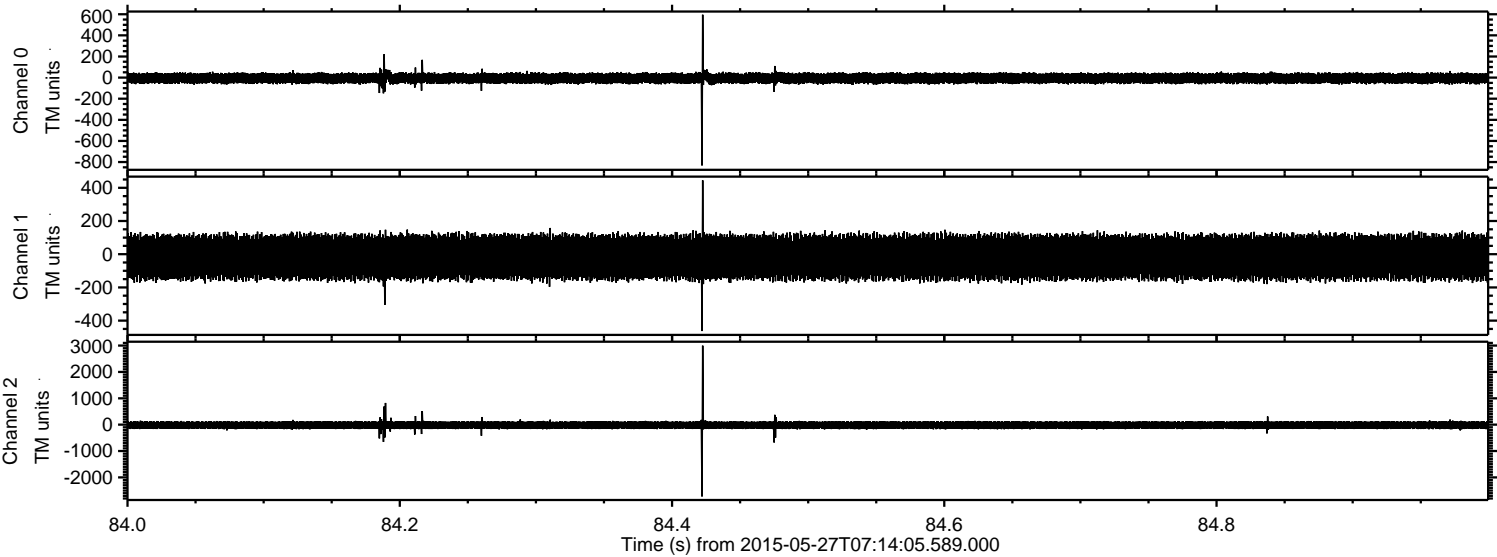


Processed Wed May 27 09:21:10 2015 by ELM ver.2012-10-06 from 001\_\_elm20150527\_071404\_\_dat00.bin



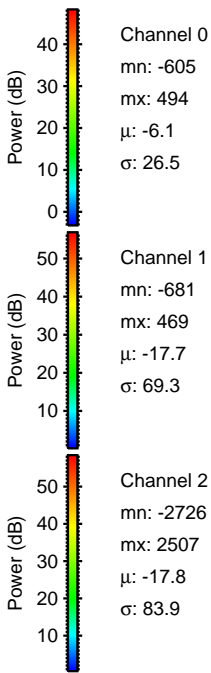
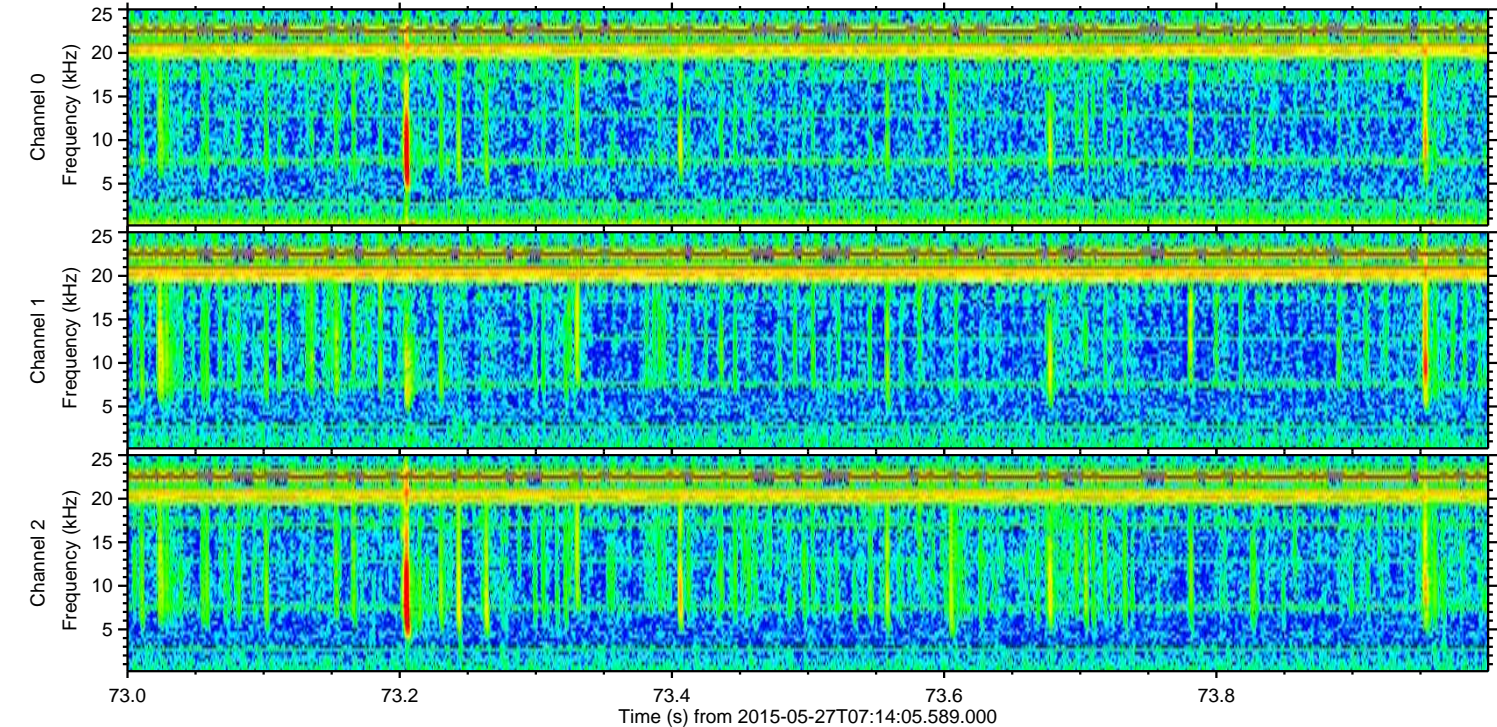
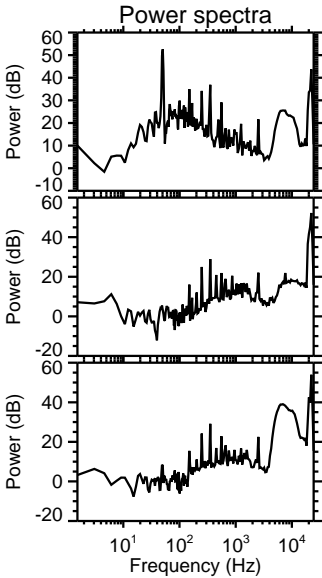
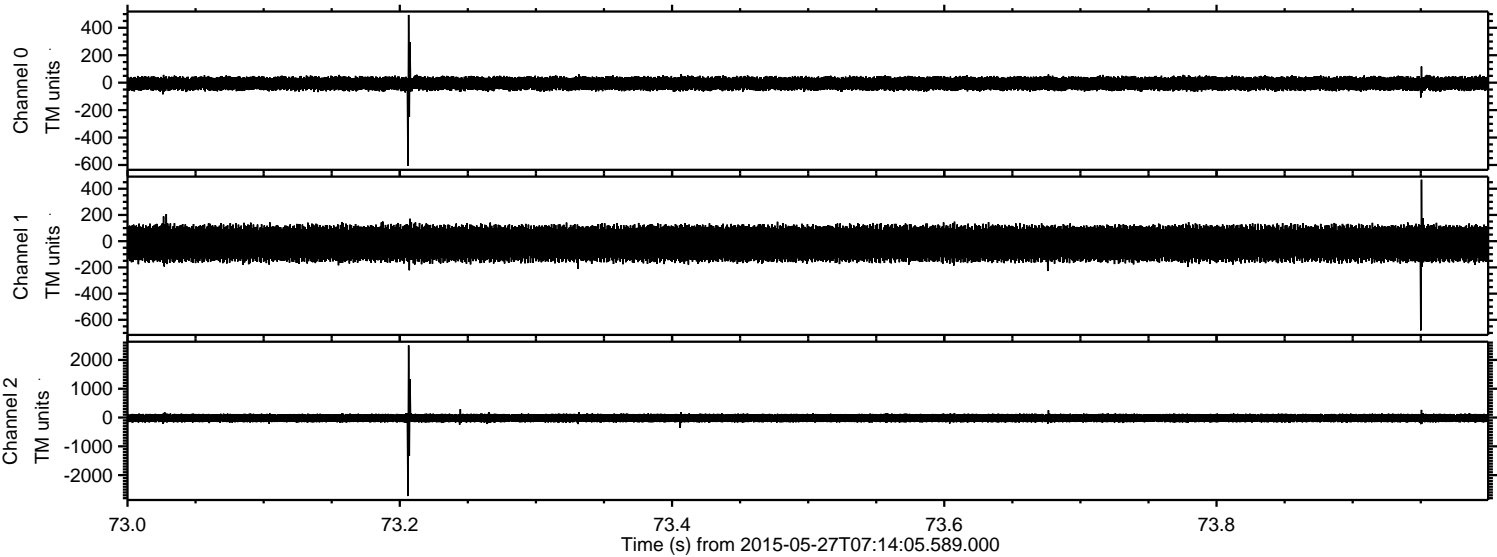


Processed Wed May 27 09:21:11 2015 by ELM ver.2012-10-06 from 001\_\_elm20150527\_071404\_\_dat00.bin



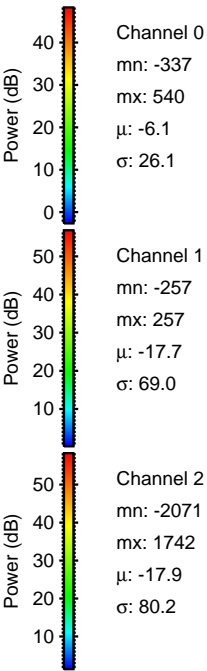
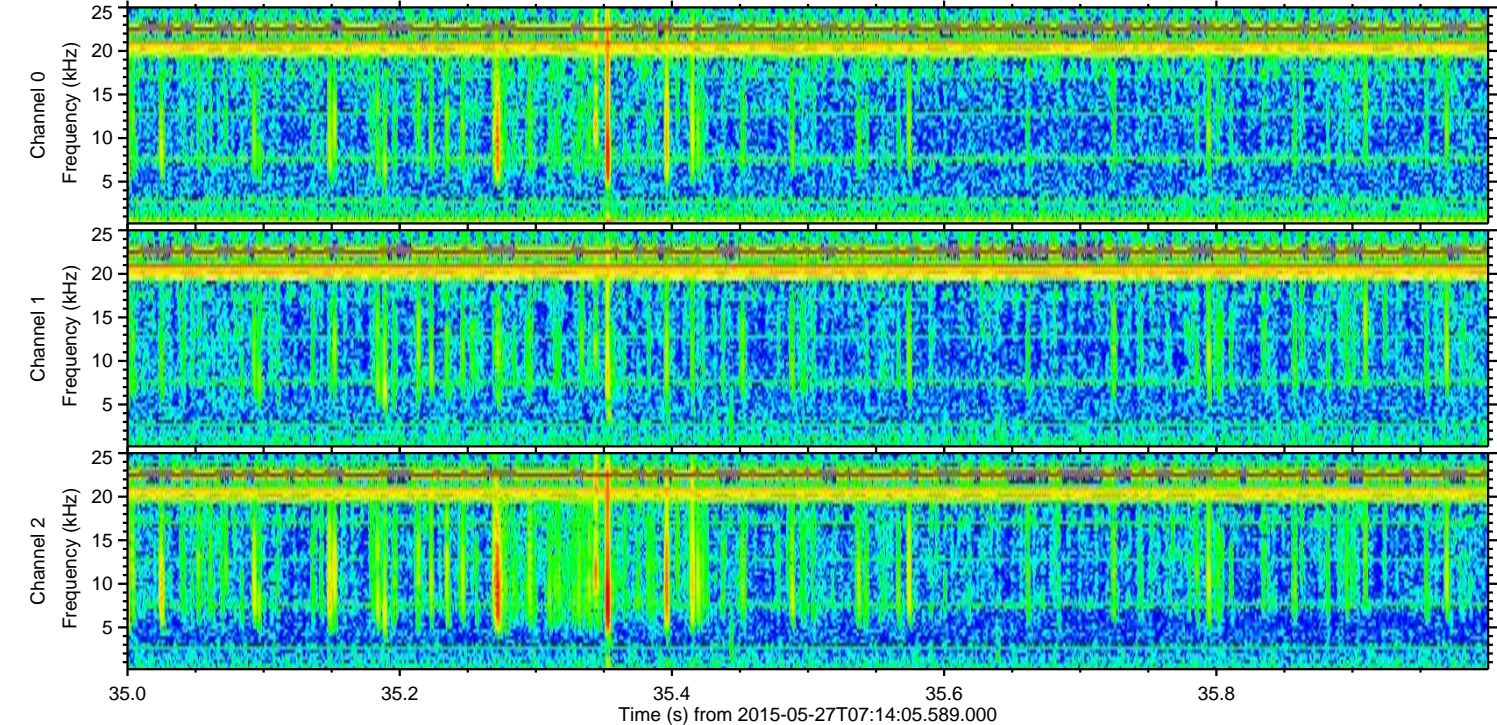
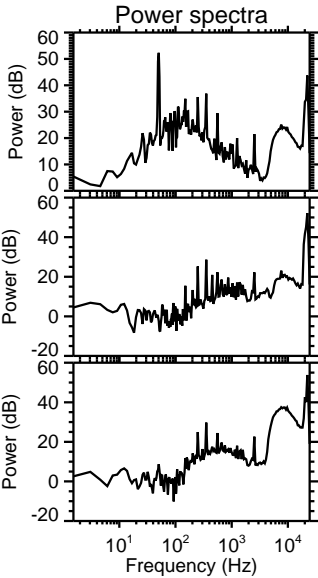
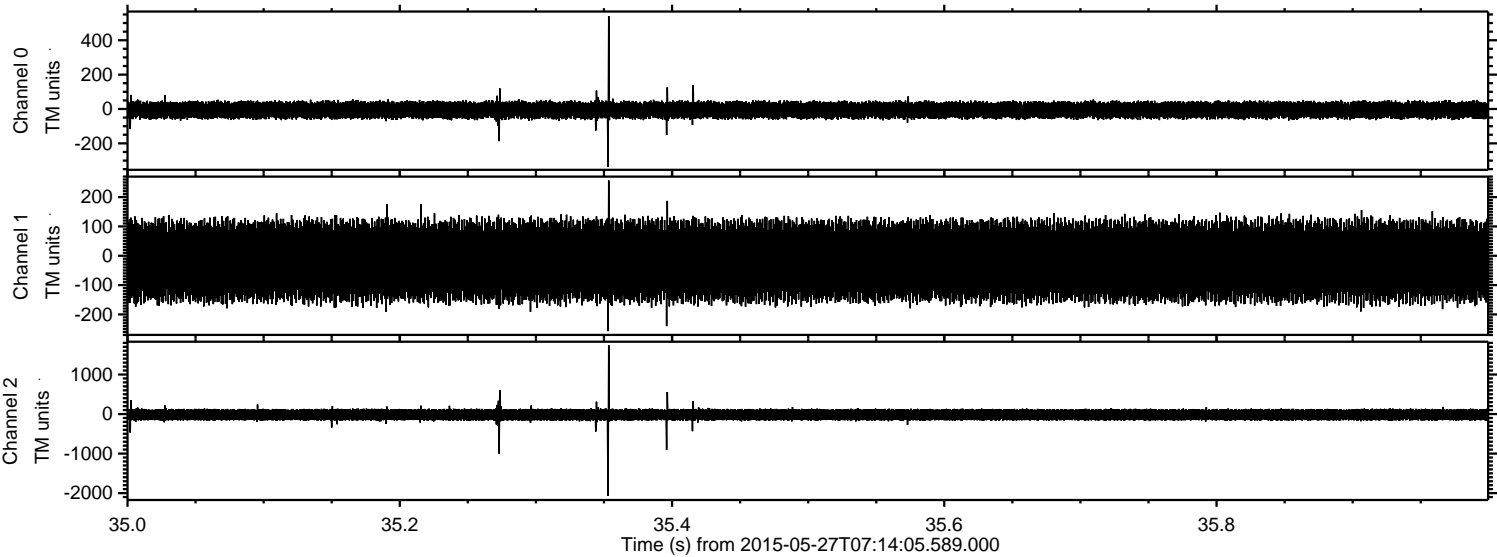


Processed Wed May 27 09:21:12 2015 by ELM ver.2012-10-06 from 001\_\_elm20150527\_071404\_\_dat00.bin





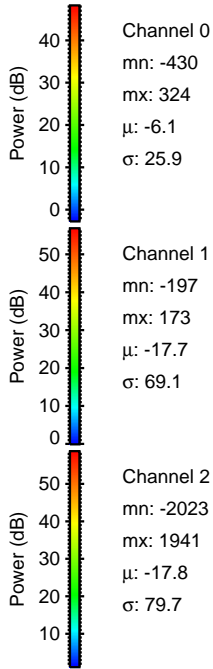
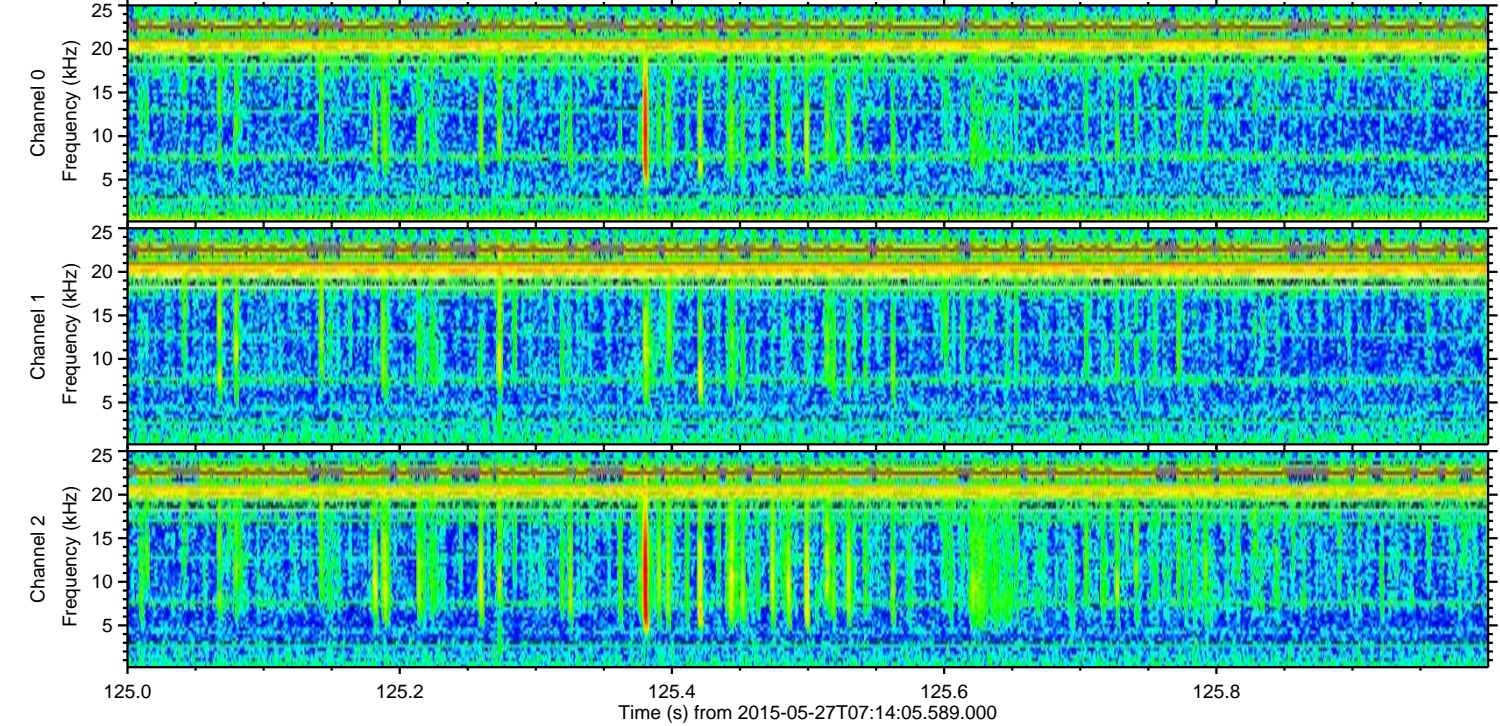
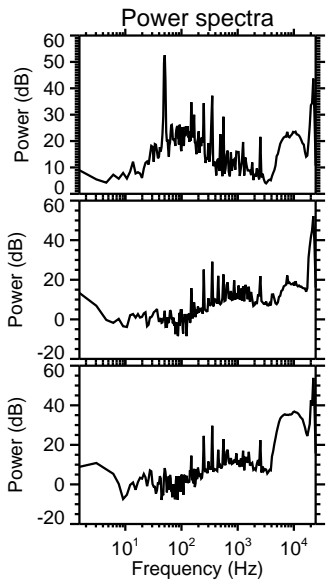
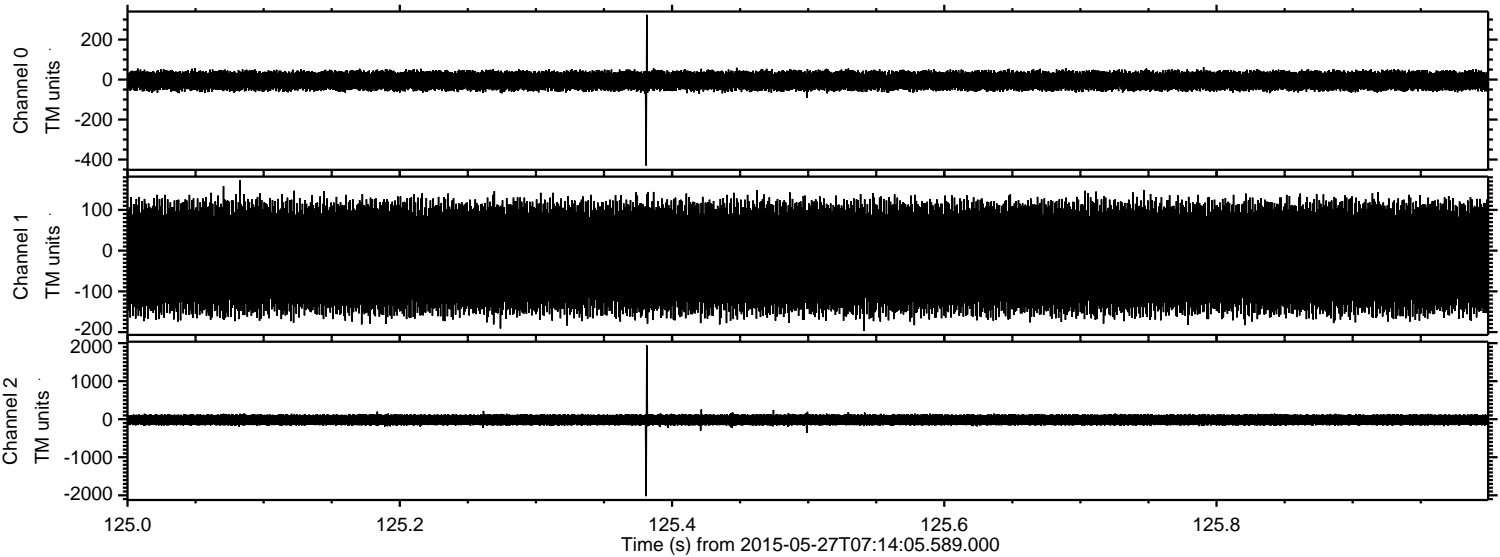
Processed Wed May 27 09:21:13 2015 by ELM ver.2012-10-06 from 001\_\_elm20150527\_071404\_\_dat00.bin





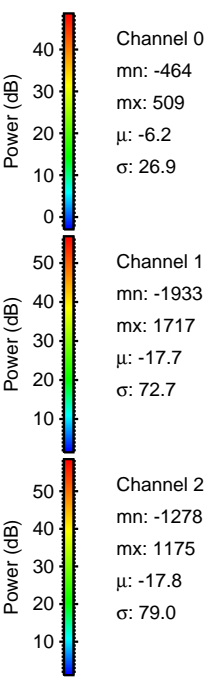
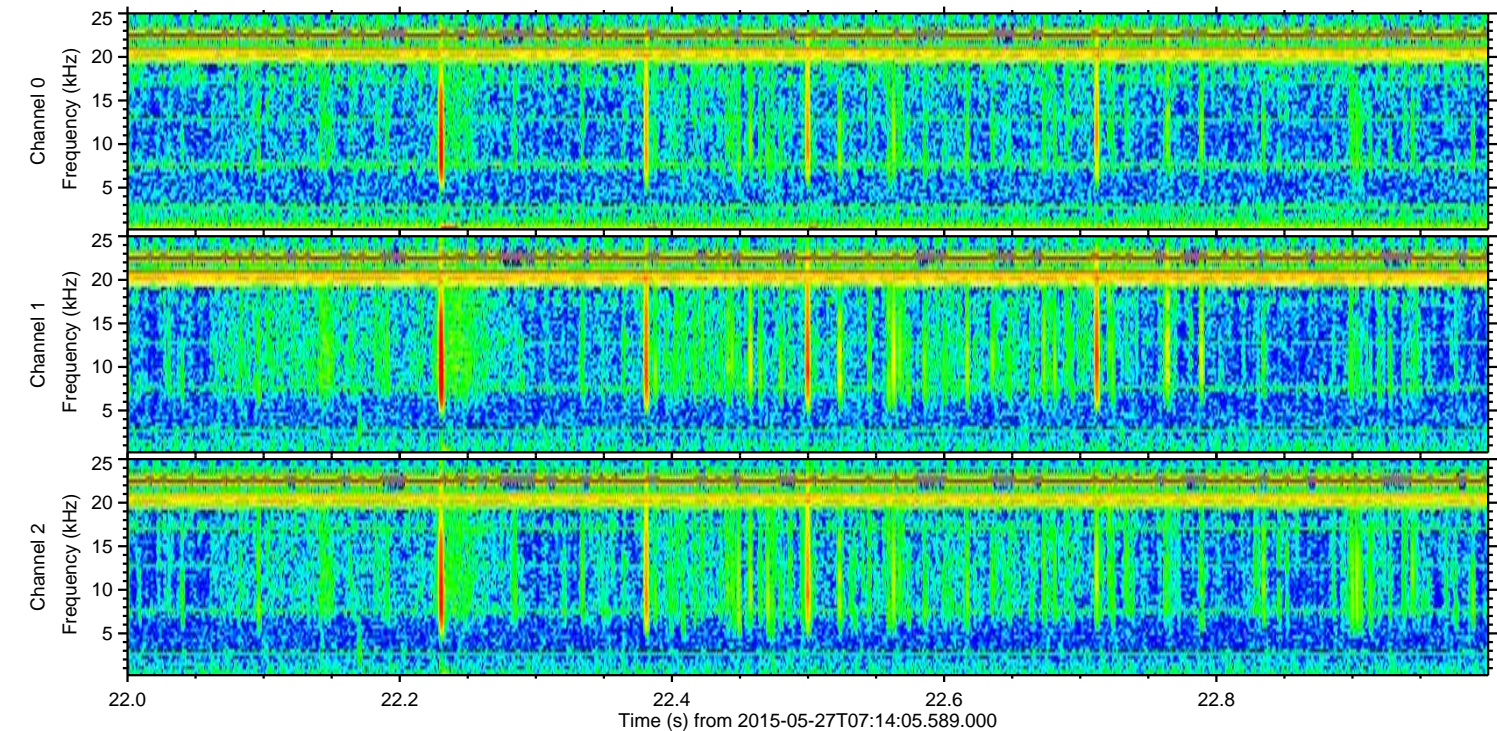
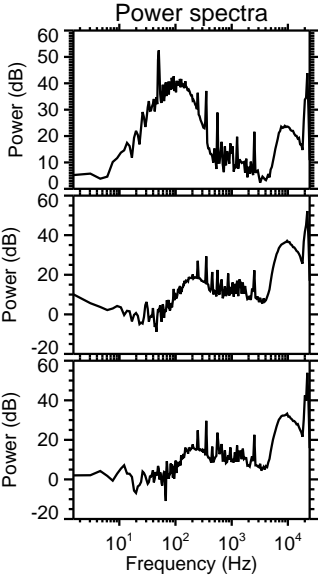
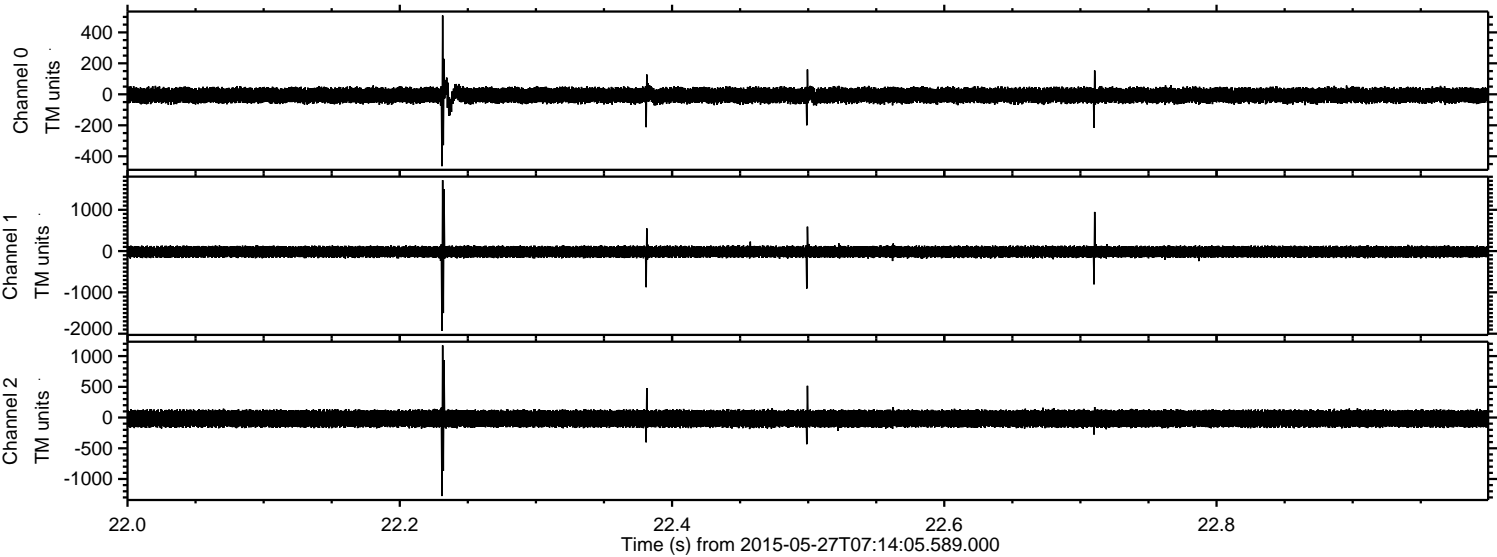
ELMAVAN 3D WAVEFORMS (Measured data sampled at 50 kHz) 49766 packets of 144 samples from 2015-05-27T07:14:05.589.000. Part 126/144

Processed Wed May 27 09:21:13 2015 by ELM ver.2012-10-06 from 001\_\_elm20150527\_071404\_\_dat00.bin



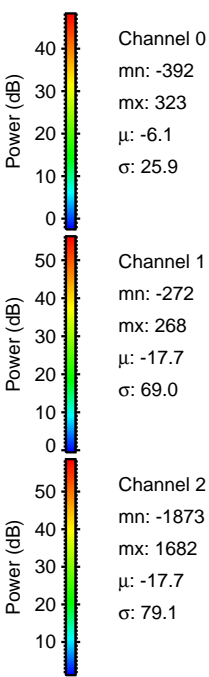
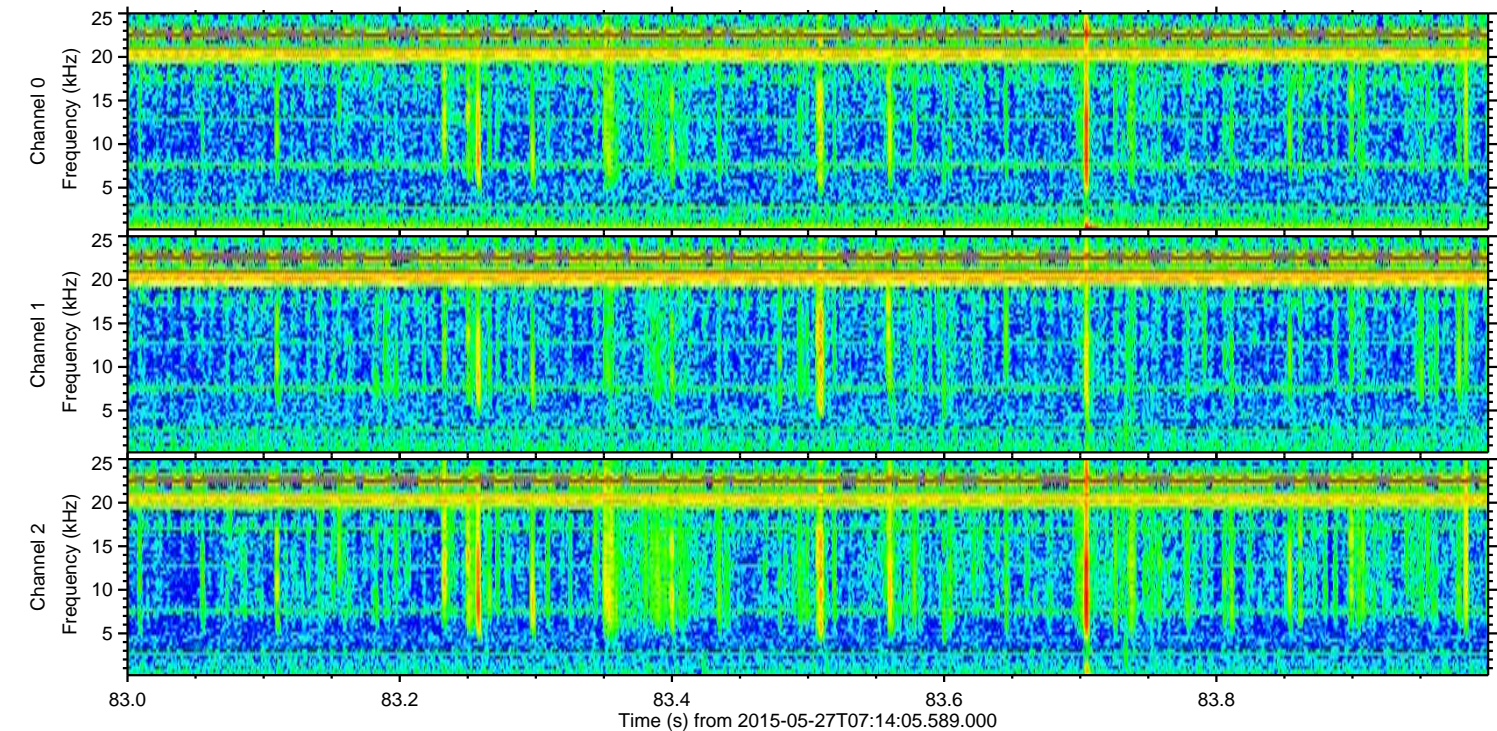
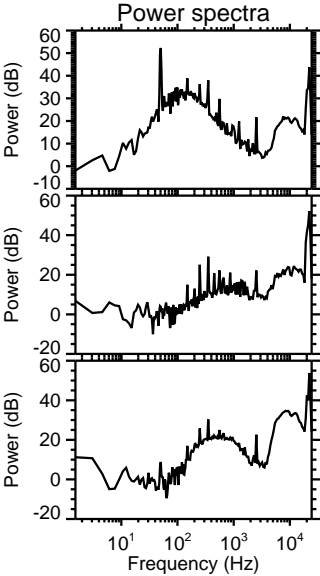
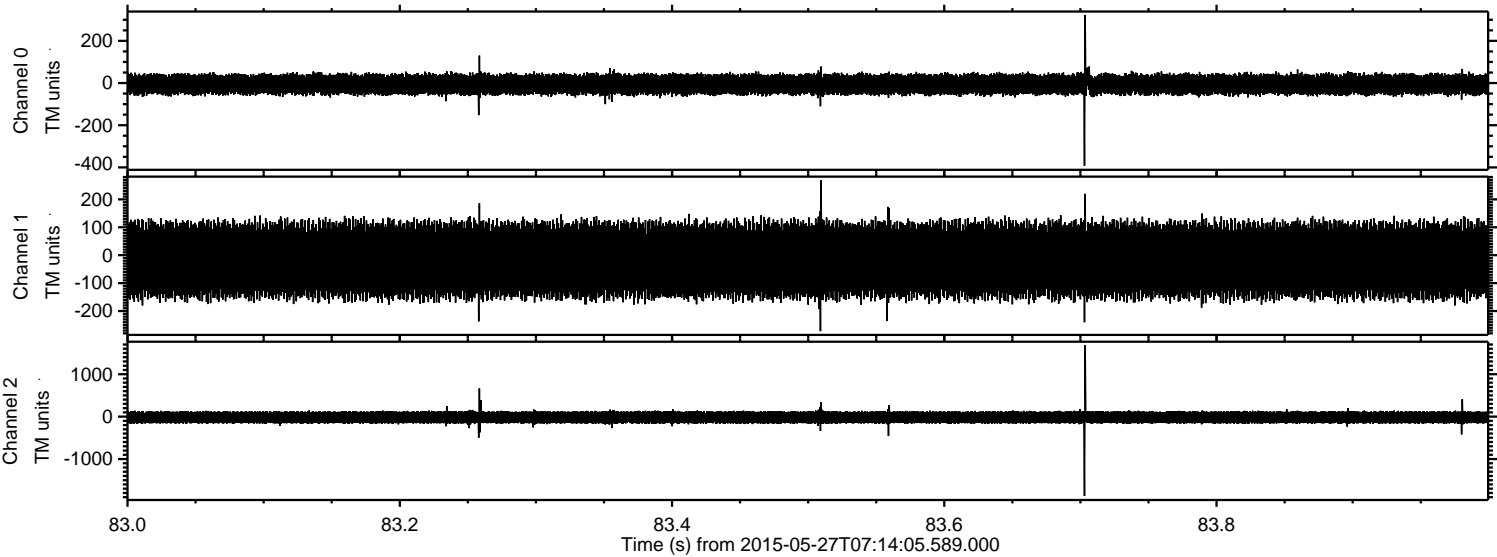


Processed Wed May 27 09:21:14 2015 by ELM ver.2012-10-06 from 001\_\_elm20150527\_071404\_\_dat00.bin





Processed Wed May 27 09:21:16 2015 by ELM ver.2012-10-06 from 001\_\_elm20150527\_071404\_\_dat00.bin



Channel 0  
mn: -392  
mx: 323  
 $\mu$ : -6.1  
 $\sigma$ : 25.9

Channel 1  
mn: -272  
mx: 268  
 $\mu$ : -17.7  
 $\sigma$ : 69.0

Channel 2  
mn: -1873  
mx: 1682  
 $\mu$ : -17.7  
 $\sigma$ : 79.1



Processed Wed May 27 09:21:17 2015 by ELM ver.2012-10-06 from 001\_\_elm20150527\_071404\_\_dat00.bin

