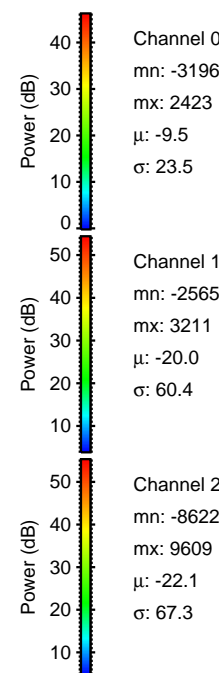
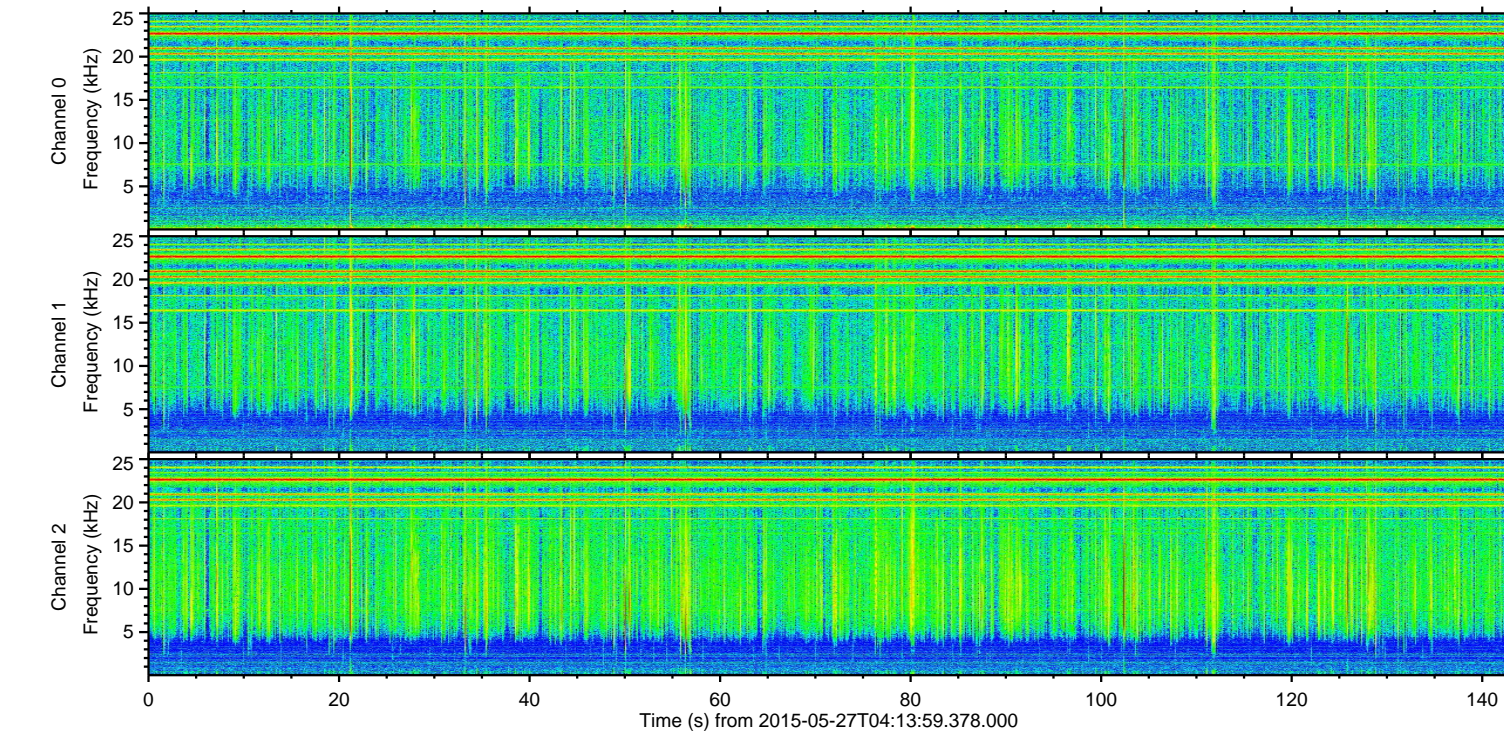
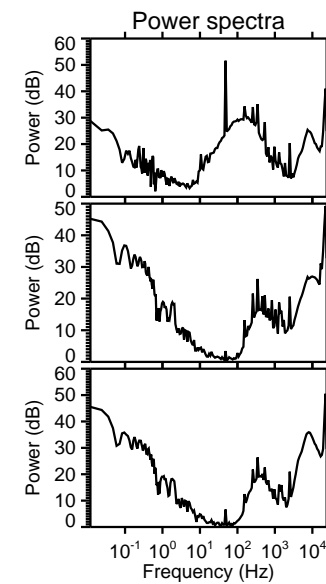
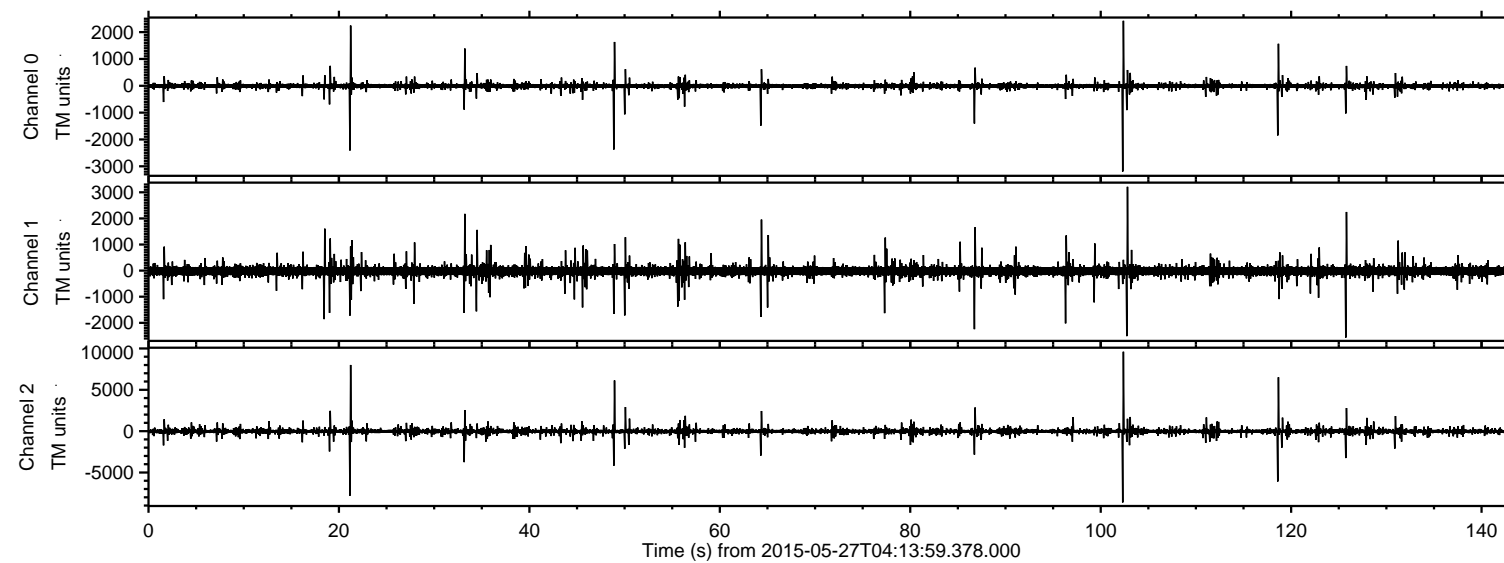


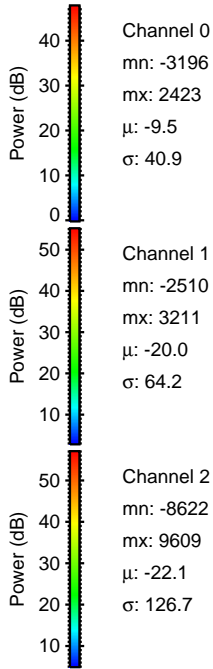
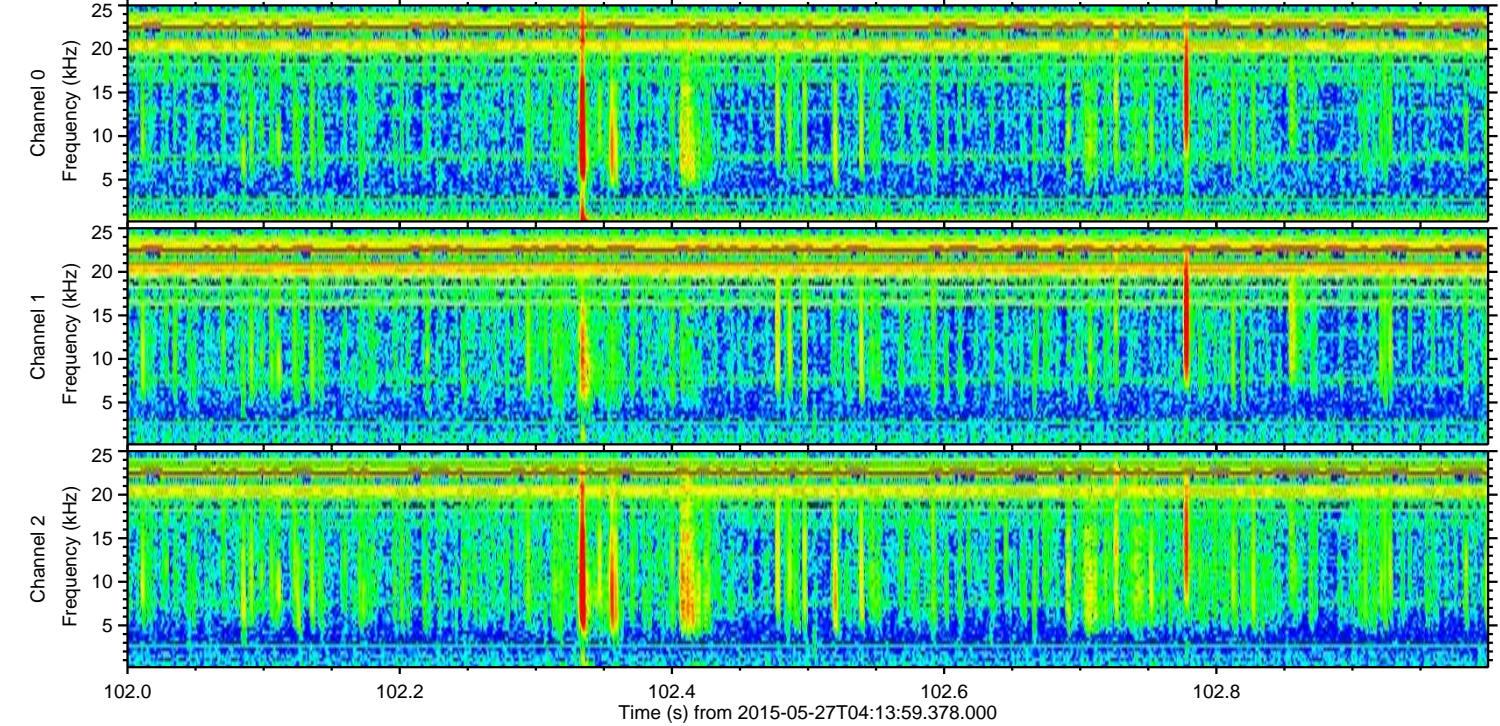
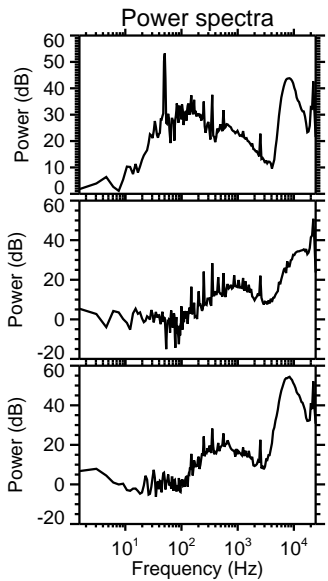
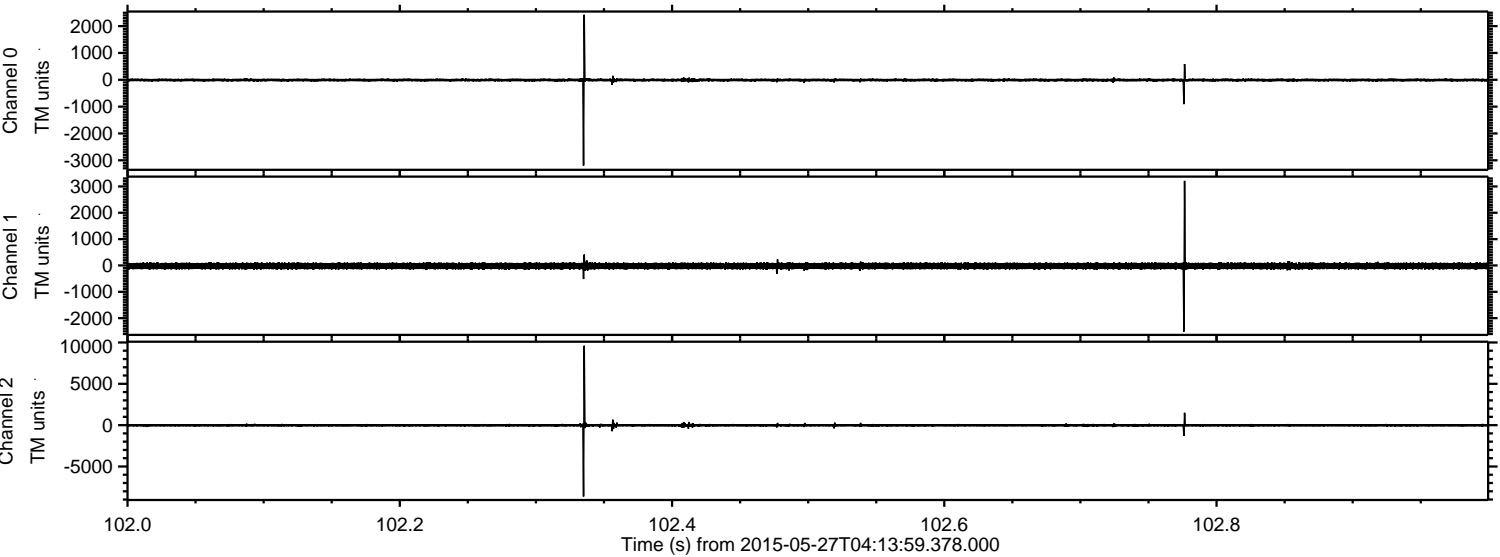
ELMAVAN 3D WAVEFORMS (Measured data sampled at 50 kHz) 49616 packets of 144 samples from 2015-05-27T04:13:59.378.000.

Processed Wed May 27 06:20:51 2015 by ELM ver.2012-10-06 from 001__elm20150527_041358__dat00.bin



ELMAVAN 3D WAVEFORMS (Measured data sampled at 50 kHz) 49616 packets of 144 samples from 2015-05-27T04:13:59.378.000. Part 103/143

Processed Wed May 27 06:21:07 2015 by ELM ver.2012-10-06 from 001__elm20150527_041358__dat00.bin



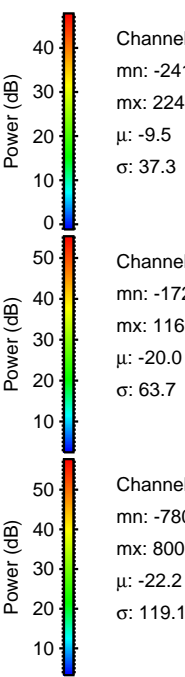
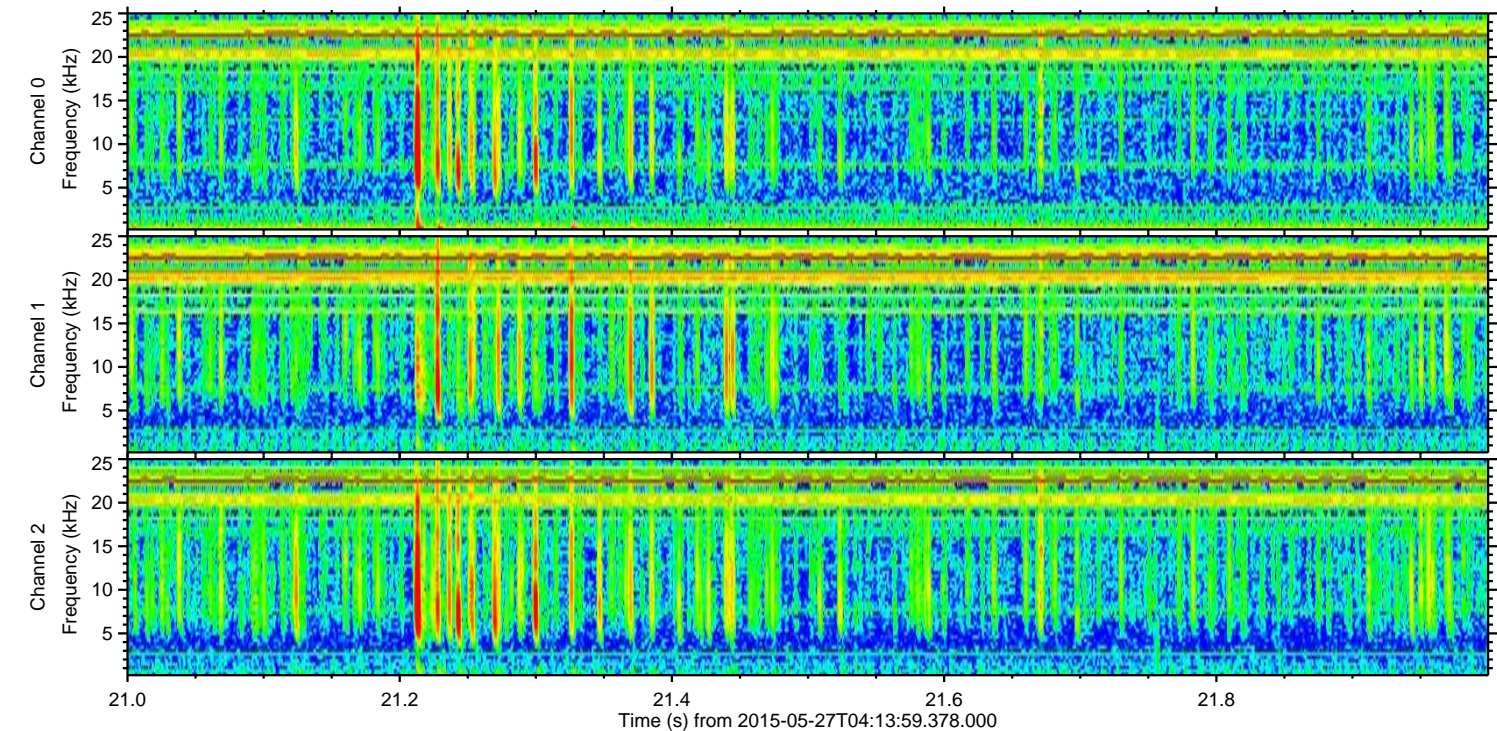
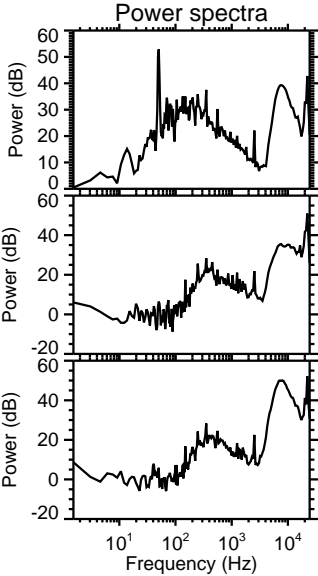
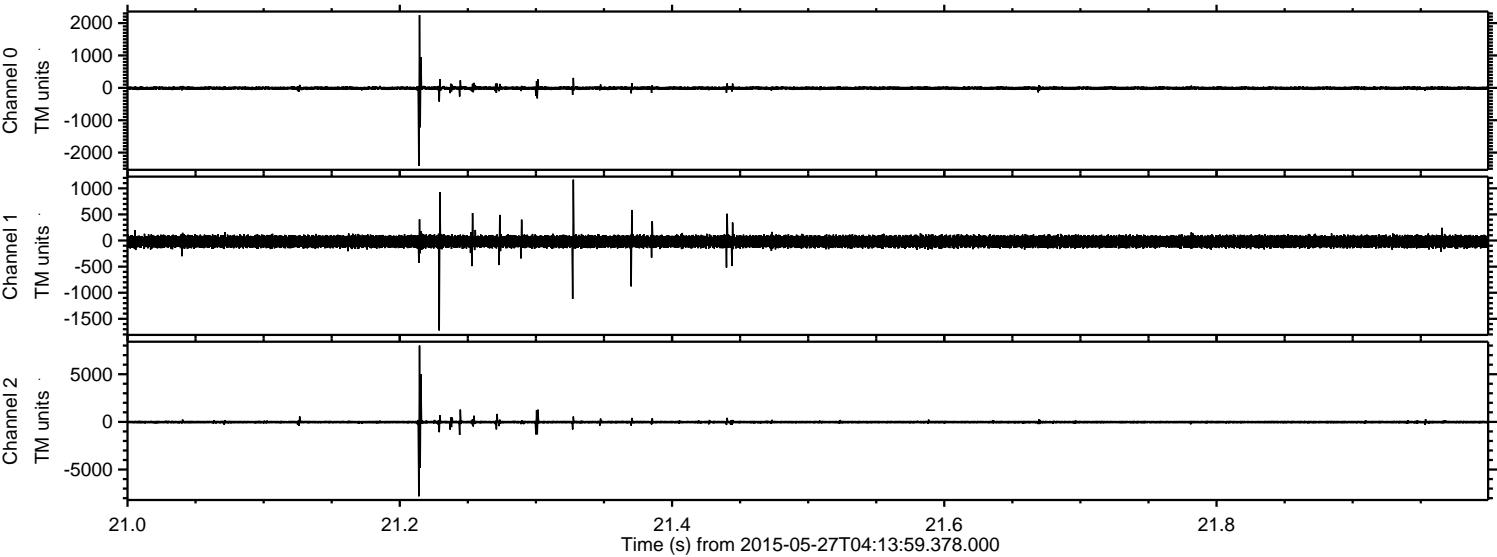
Channel 0
mn: -3196
mx: 2423
 μ : -9.5
 σ : 40.9

Channel 1
mn: -2510
mx: 3211
 μ : -20.0
 σ : 64.2

Channel 2
mn: -8622
mx: 9609
 μ : -22.1
 σ : 126.7

ELMAVAN 3D WAVEFORMS (Measured data sampled at 50 kHz) 49616 packets of 144 samples from 2015-05-27T04:13:59.378.000. Part 22/143

Processed Wed May 27 06:21:08 2015 by ELM ver.2012-10-06 from 001__elm20150527_041358__dat00.bin



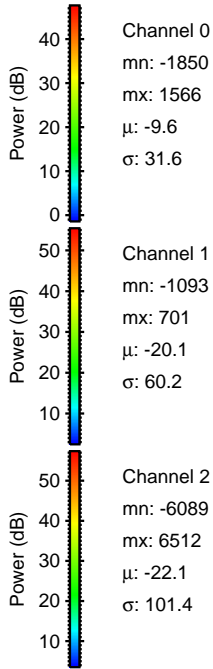
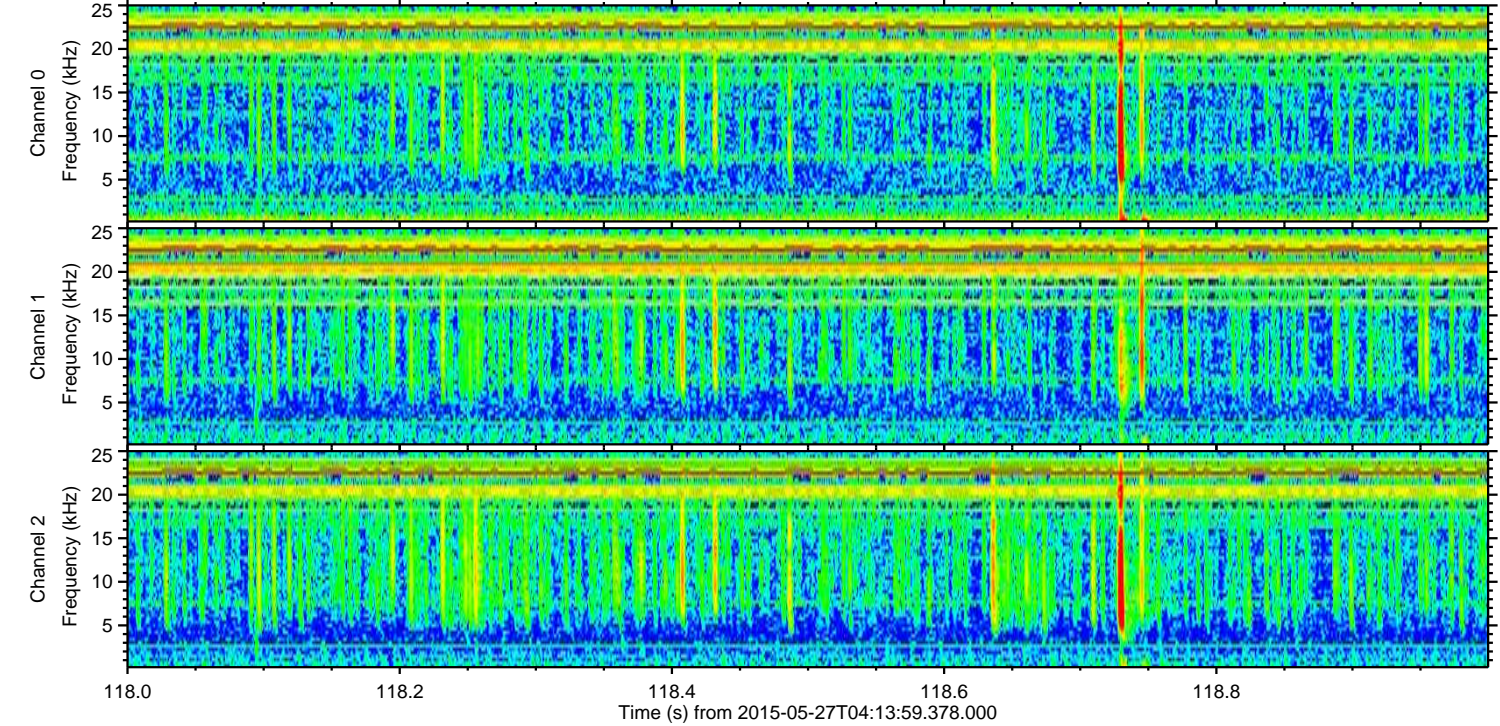
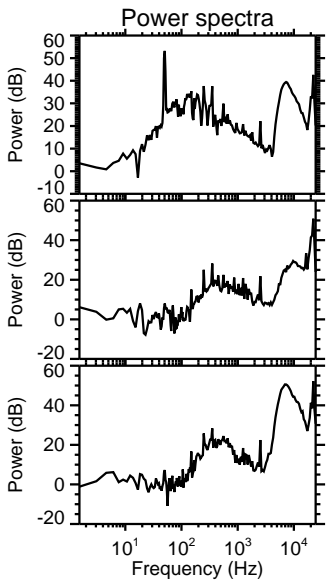
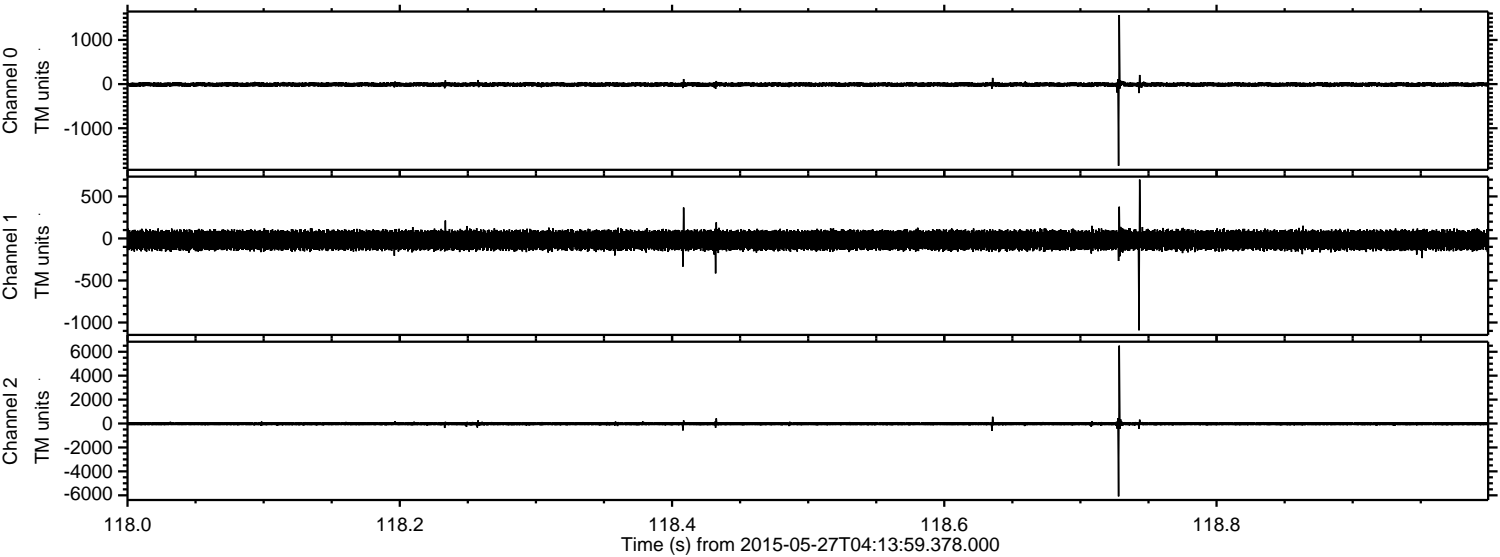
Channel 0
mn: -2411
mx: 2245
μ: -9.5
σ: 37.3

Channel 1
mn: -1722
mx: 1166
μ: -20.0
σ: 63.7

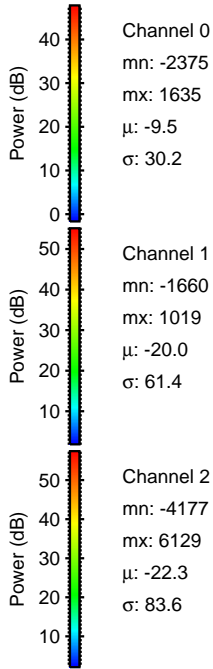
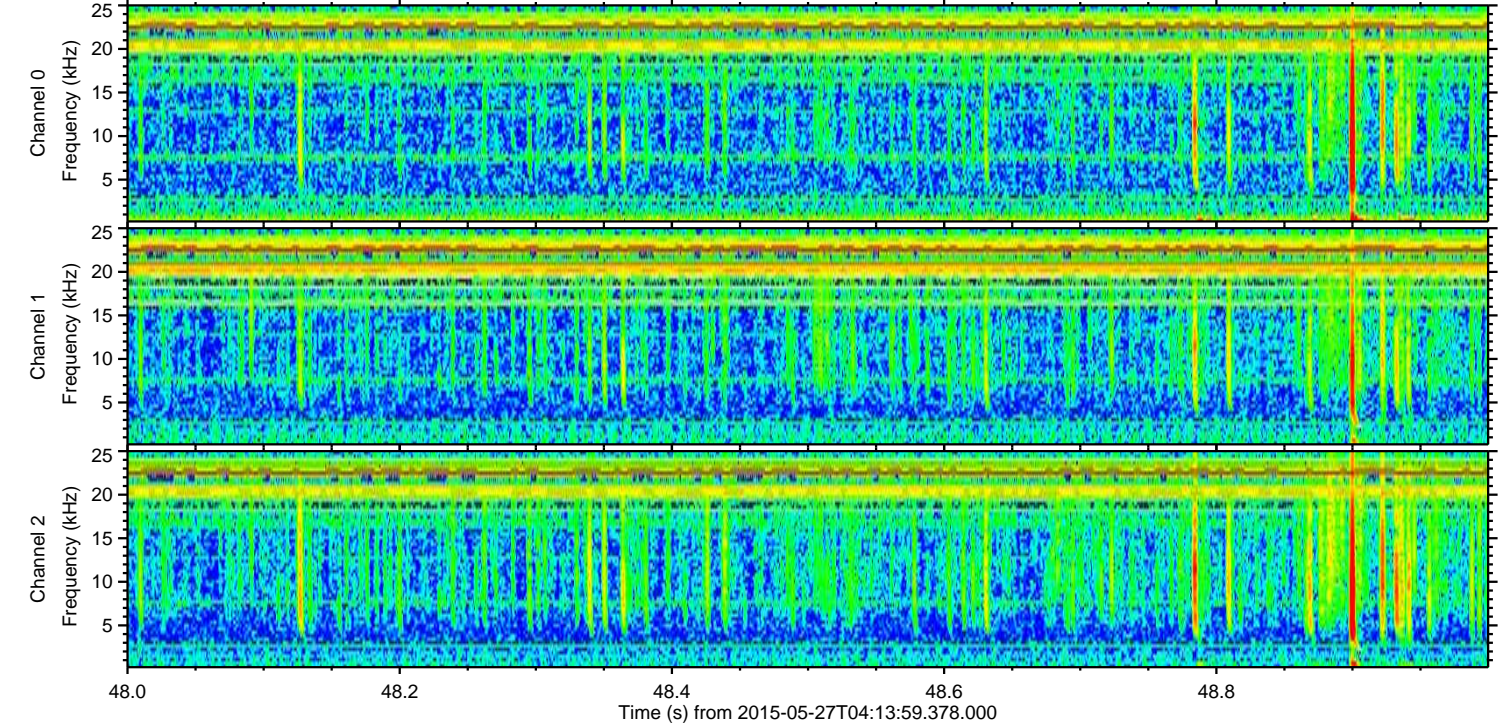
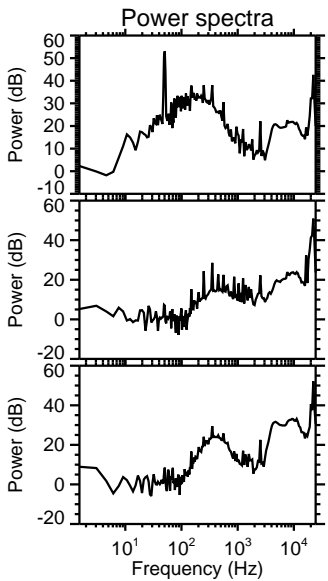
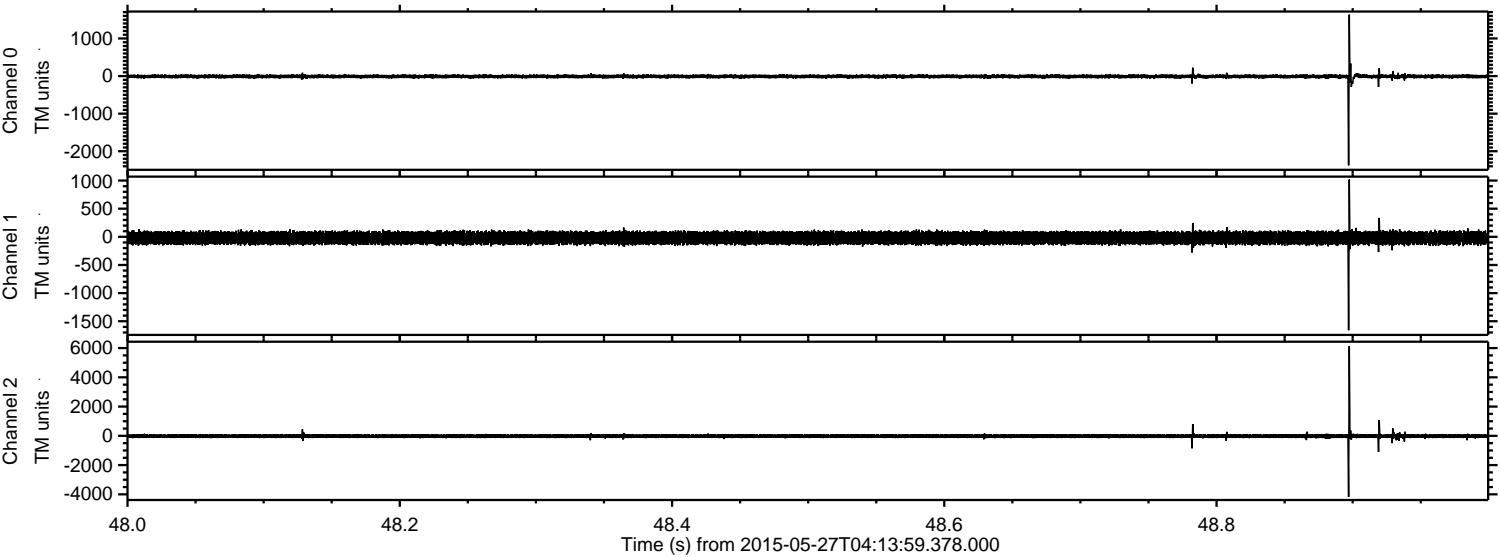
Channel 2
mn: -7803
mx: 8007
μ: -22.2
σ: 119.1

ELMAVAN 3D WAVEFORMS (Measured data sampled at 50 kHz) 49616 packets of 144 samples from 2015-05-27T04:13:59.378.000. Part 119/143

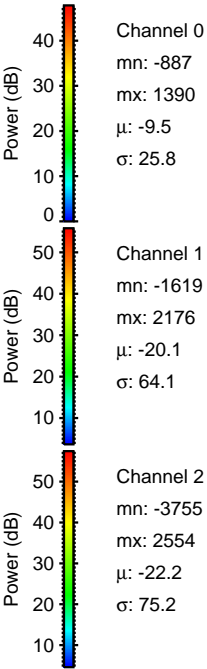
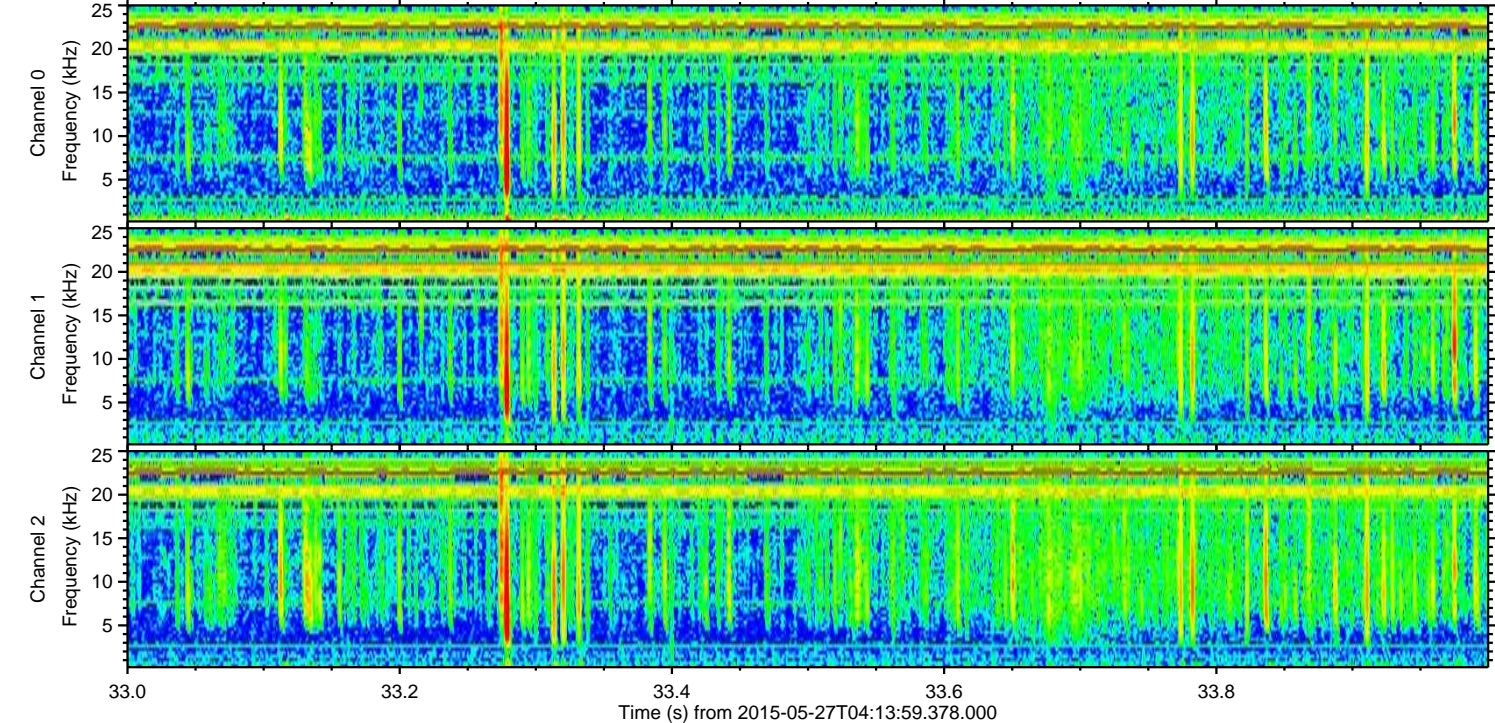
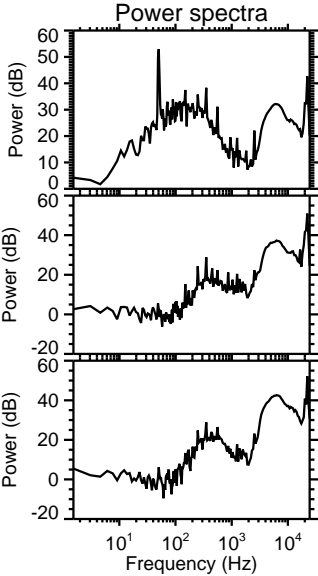
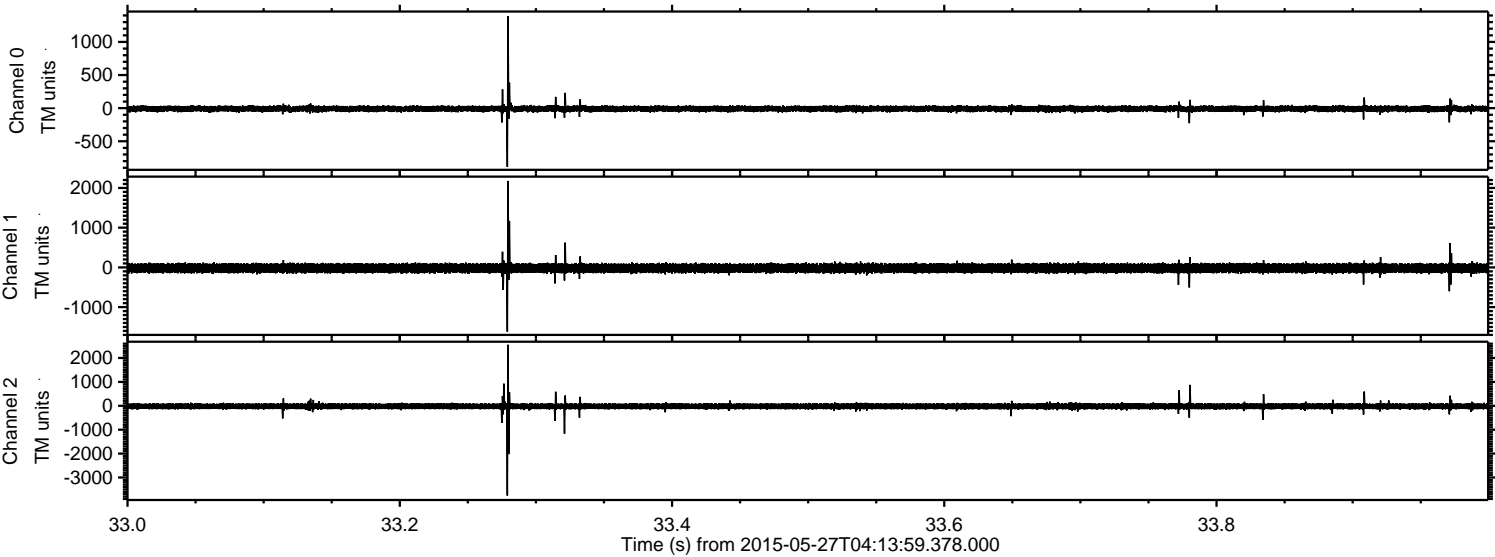
Processed Wed May 27 06:21:09 2015 by ELM ver.2012-10-06 from 001__elm20150527_041358__dat00.bin



Processed Wed May 27 06:21:10 2015 by ELM ver.2012-10-06 from 001__elm20150527_041358__dat00.bin

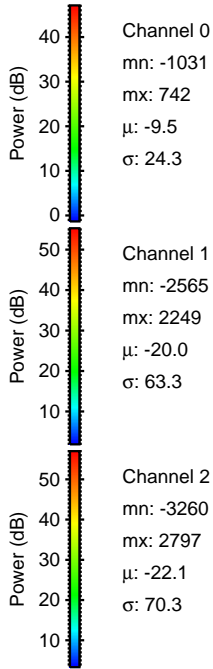
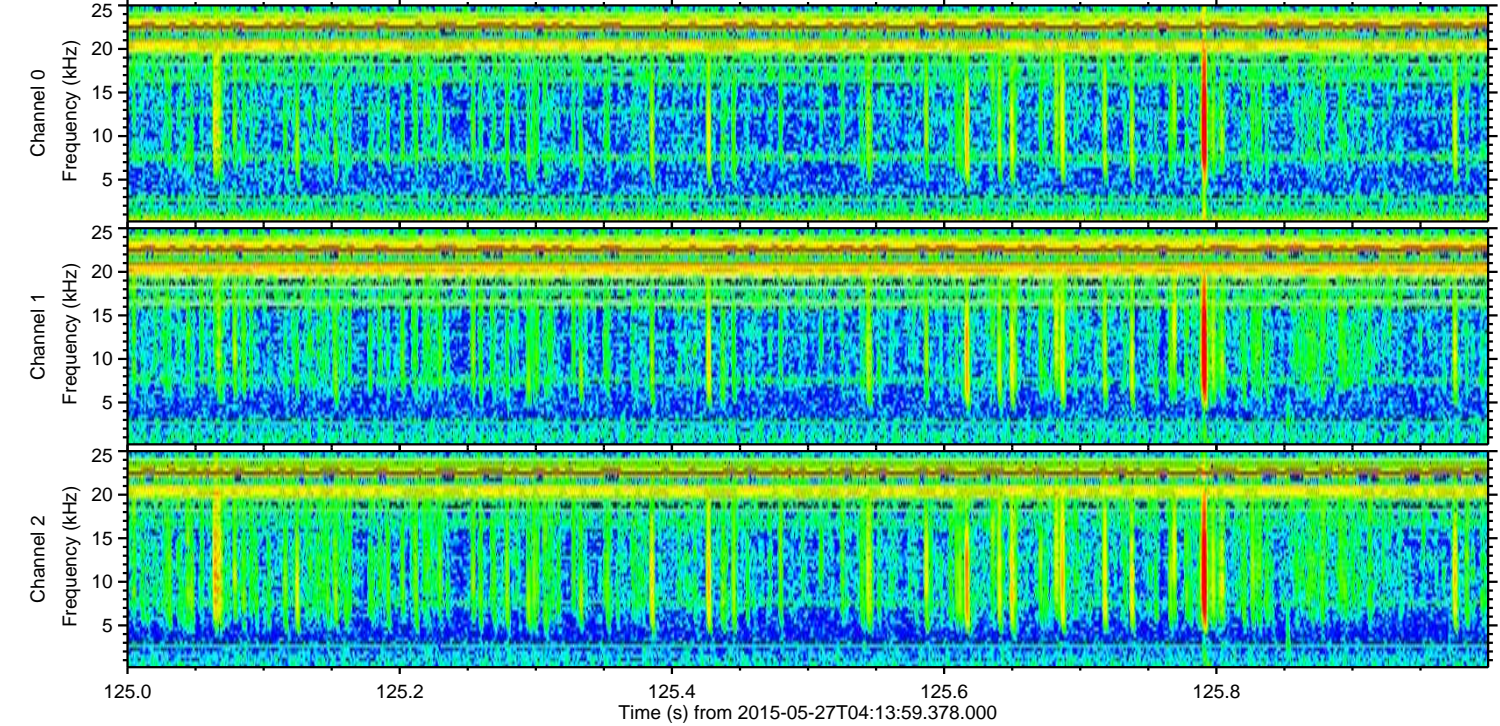
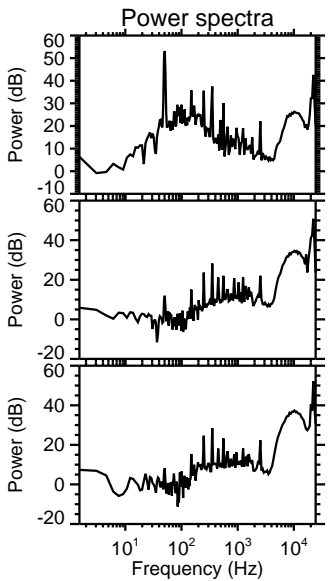
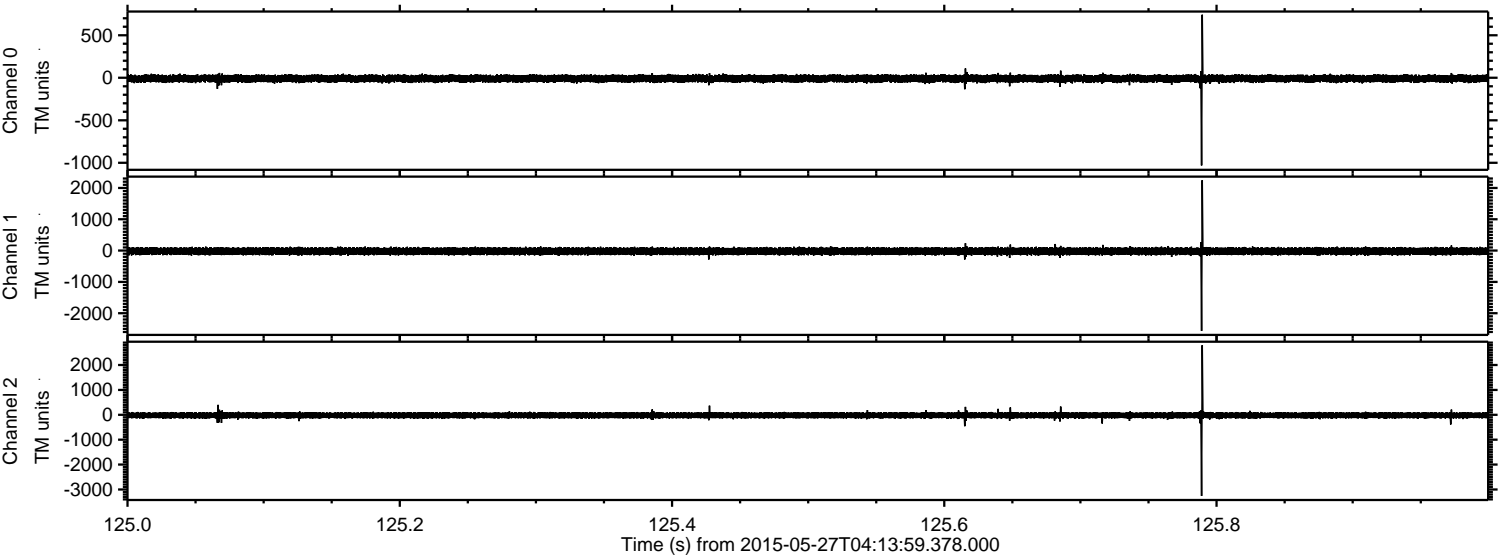


Processed Wed May 27 06:21:12 2015 by ELM ver.2012-10-06 from 001__elm20150527_041358__dat00.bin



ELMAVAN 3D WAVEFORMS (Measured data sampled at 50 kHz) 49616 packets of 144 samples from 2015-05-27T04:13:59.378.000. Part 126/143

Processed Wed May 27 06:21:13 2015 by ELM ver.2012-10-06 from 001__elm20150527_041358__dat00.bin

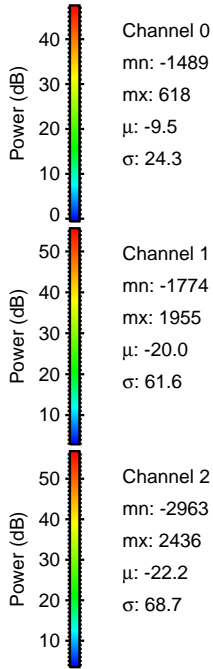
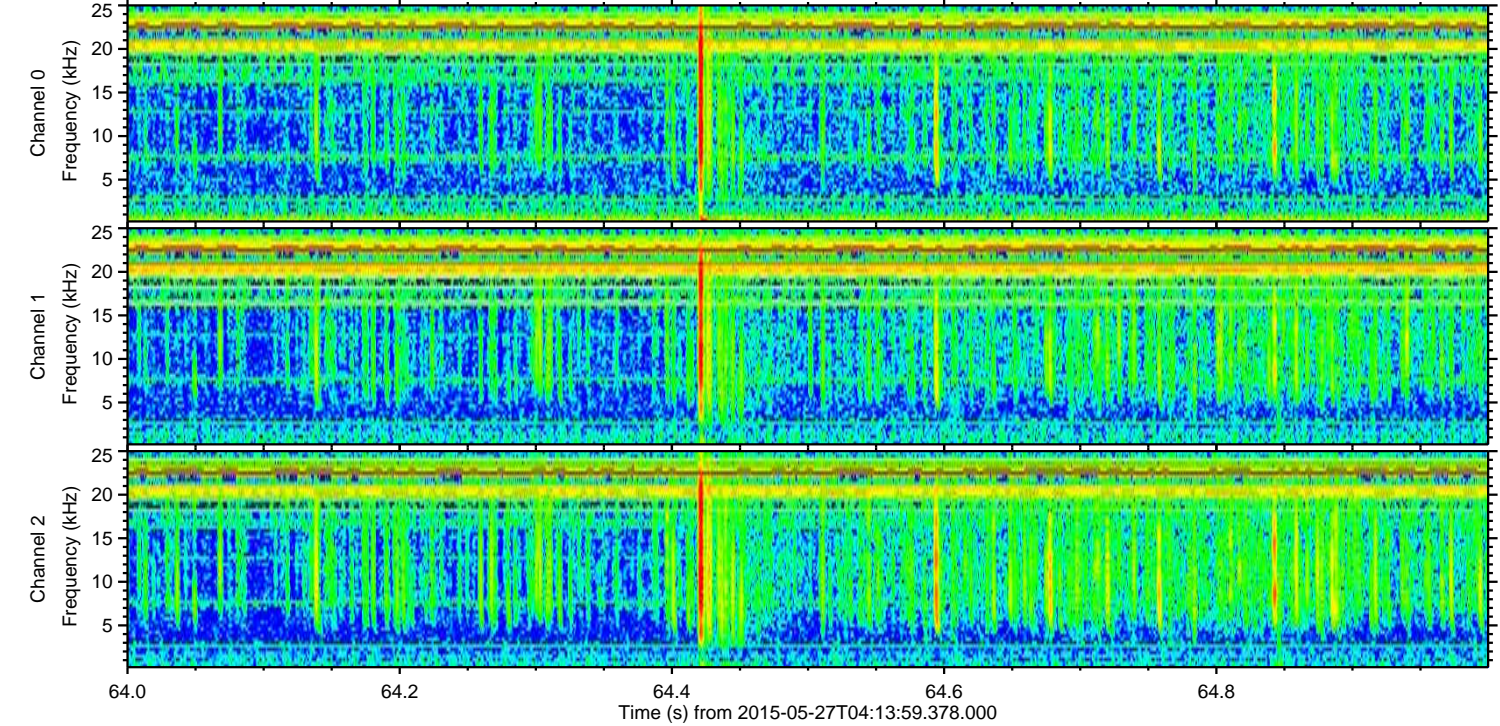
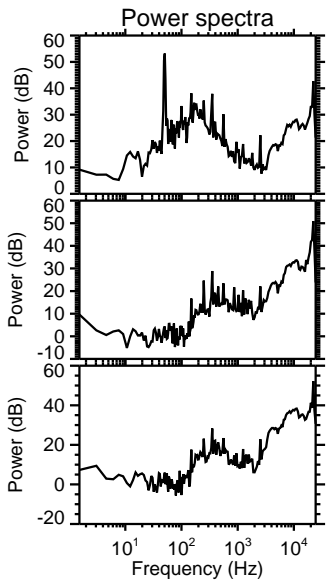
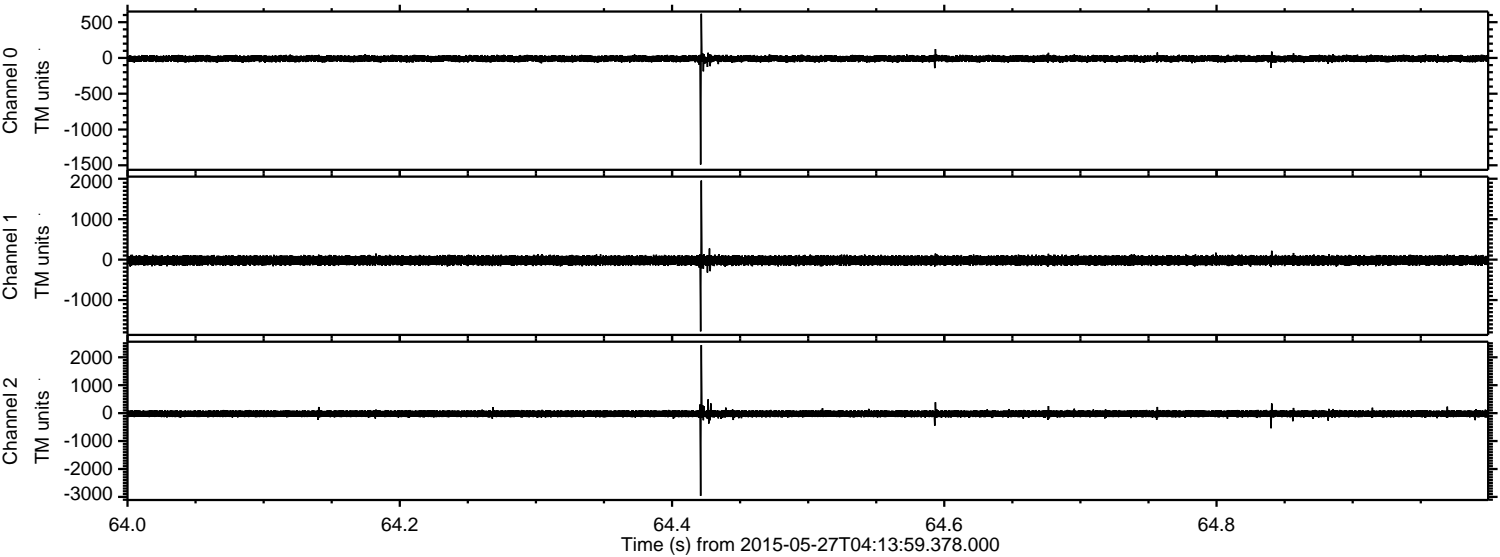


Channel 0
mn: -1031
mx: 742
 μ : -9.5
 σ : 24.3

Channel 1
mn: -2565
mx: 2249
 μ : -20.0
 σ : 63.3

Channel 2
mn: -3260
mx: 2797
 μ : -22.1
 σ : 70.3

Processed Wed May 27 06:21:14 2015 by ELM ver.2012-10-06 from 001__elm20150527_041358__dat00.bin

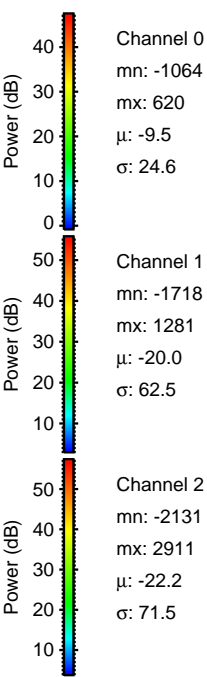
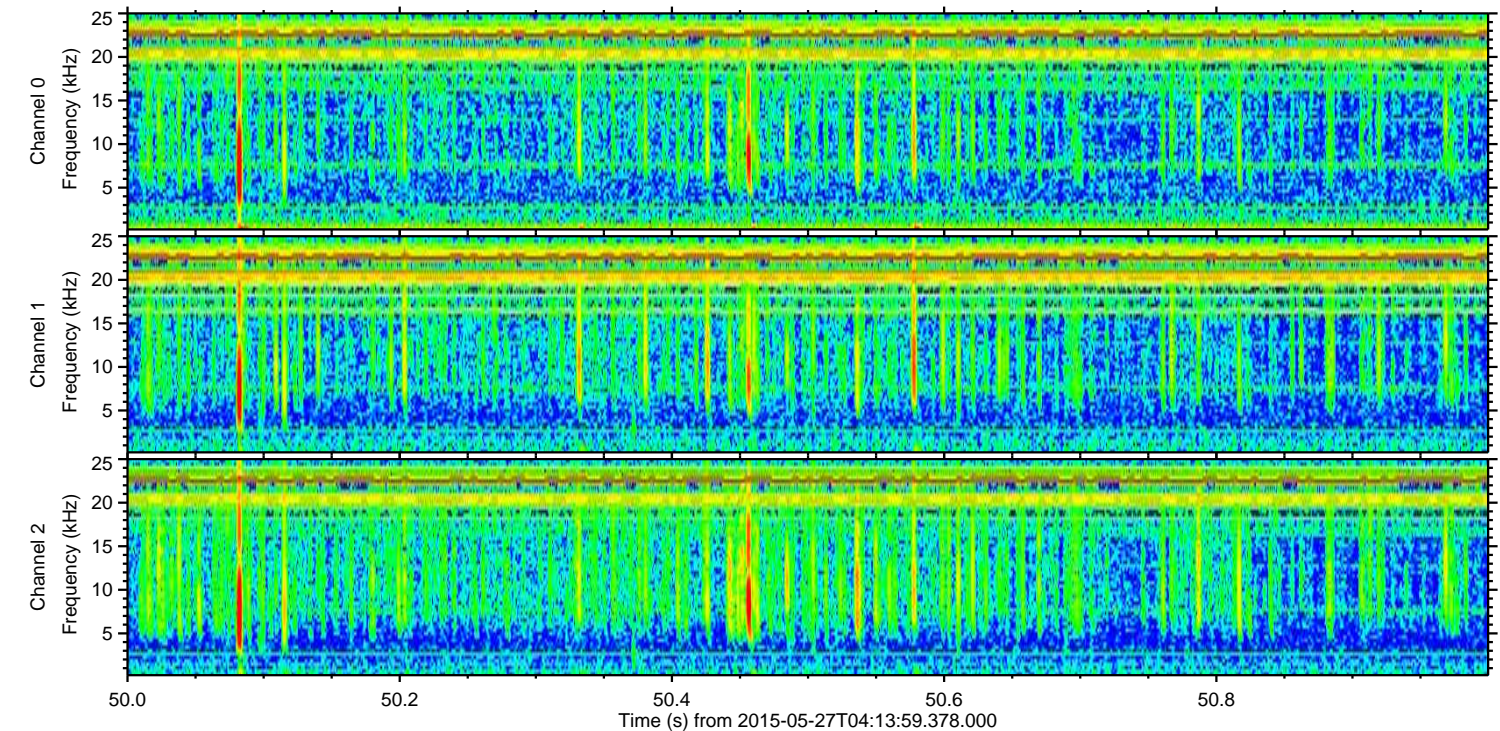
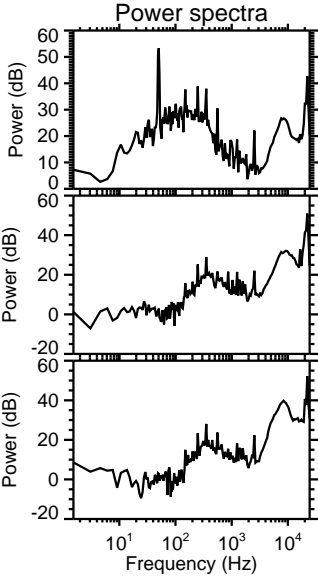
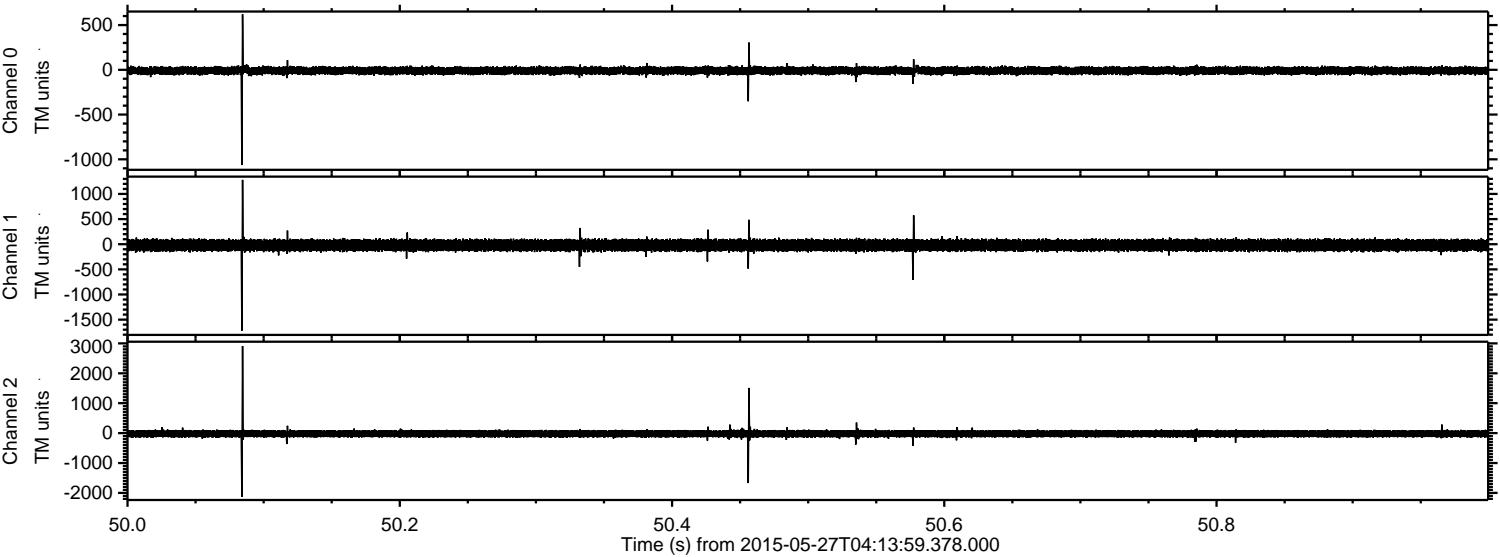


Channel 0
mn: -1489
mx: 618
 μ : -9.5
 σ : 24.3

Channel 1
mn: -1774
mx: 1955
 μ : -20.0
 σ : 61.6

Channel 2
mn: -2963
mx: 2436
 μ : -22.2
 σ : 68.7

Processed Wed May 27 06:21:15 2015 by ELM ver.2012-10-06 from 001__elm20150527_041358__dat00.bin

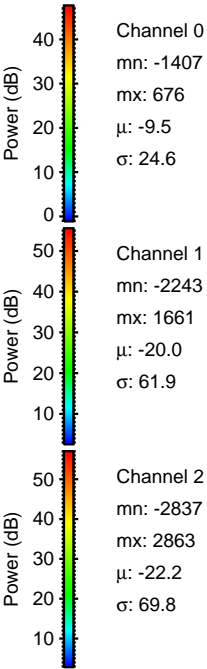
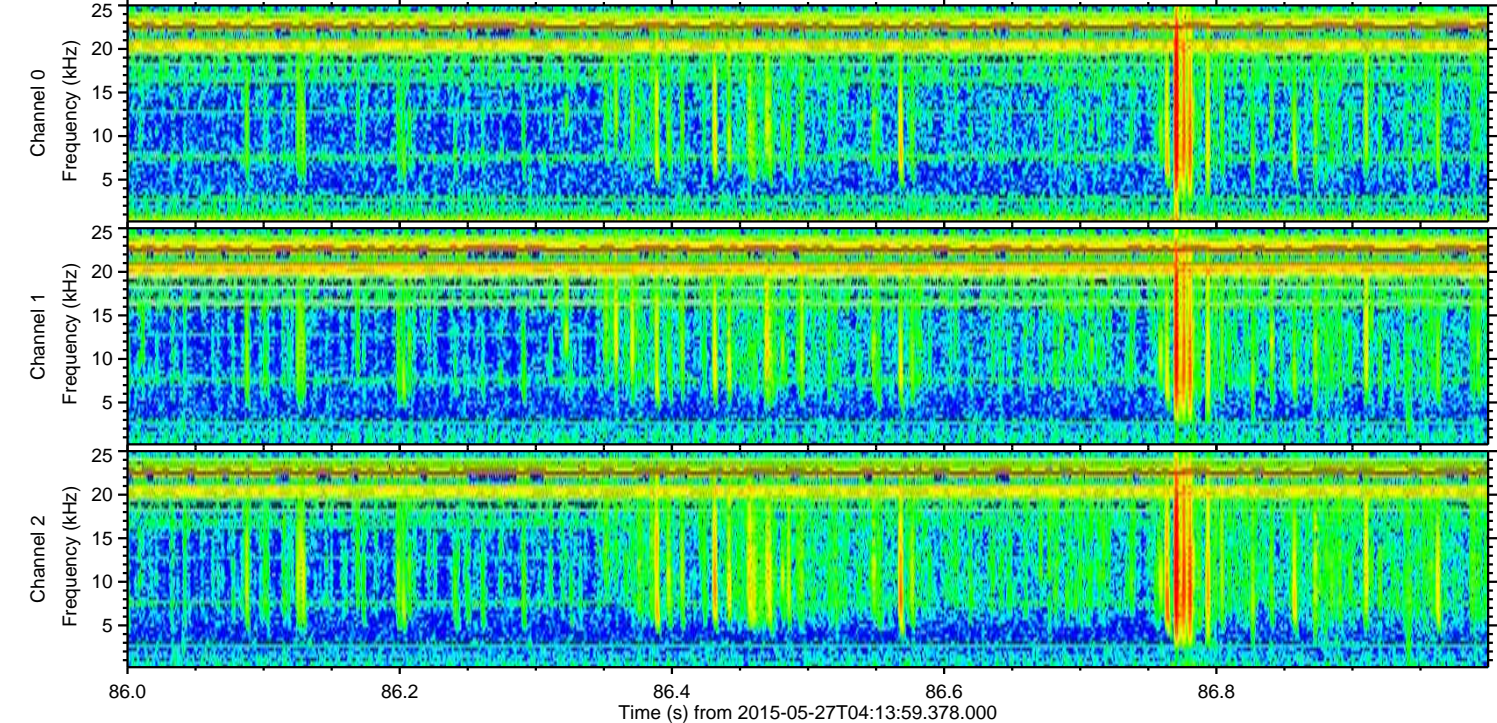
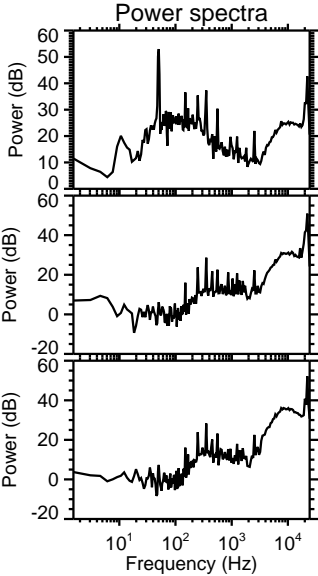
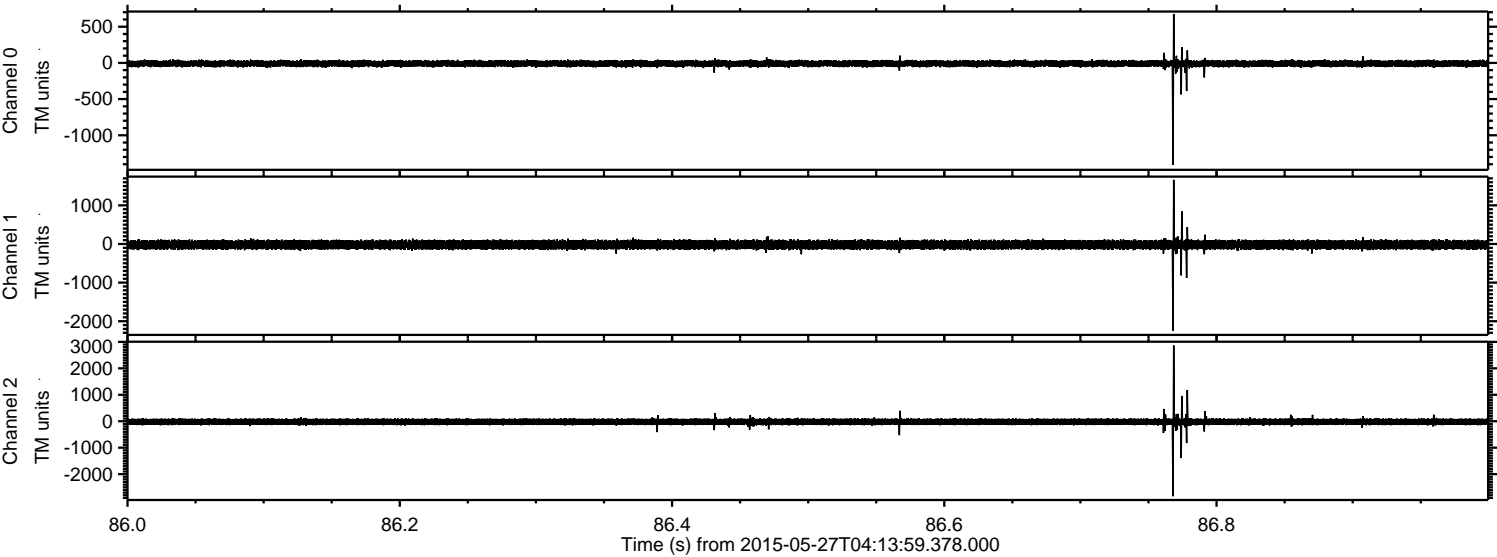


Channel 0
mn: -1064
mx: 620
 μ : -9.5
 σ : 24.6

Channel 1
mn: -1718
mx: 1281
 μ : -20.0
 σ : 62.5

Channel 2
mn: -2131
mx: 2911
 μ : -22.2
 σ : 71.5

Processed Wed May 27 06:21:16 2015 by ELM ver.2012-10-06 from 001__elm20150527_041358__dat00.bin



Processed Wed May 27 06:21:17 2015 by ELM ver.2012-10-06 from 001__elm20150527_041358__dat00.bin

