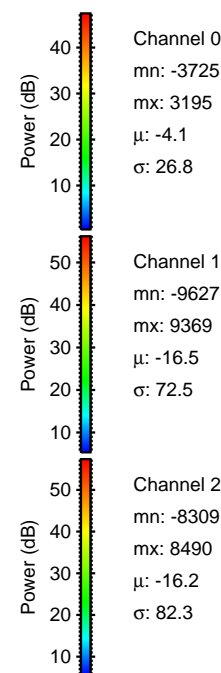
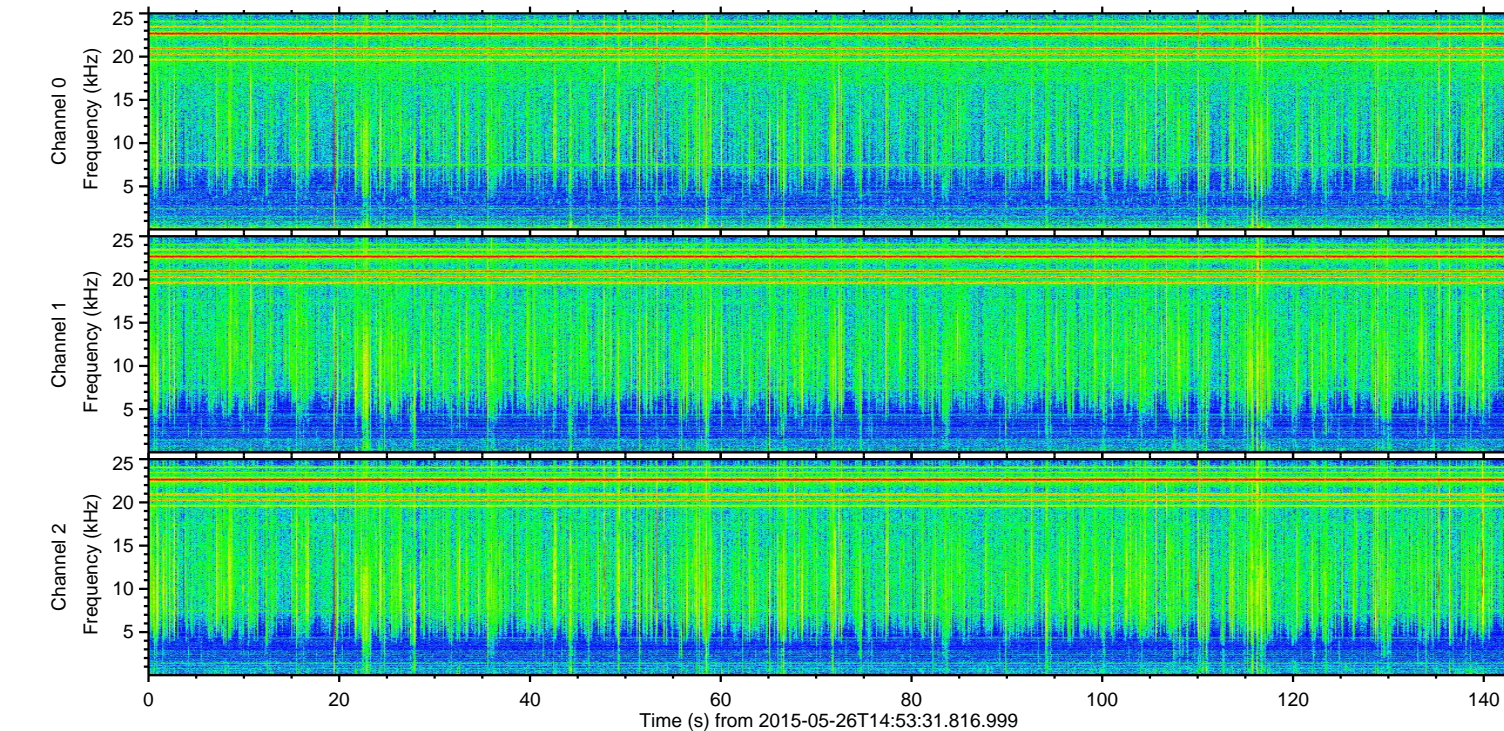
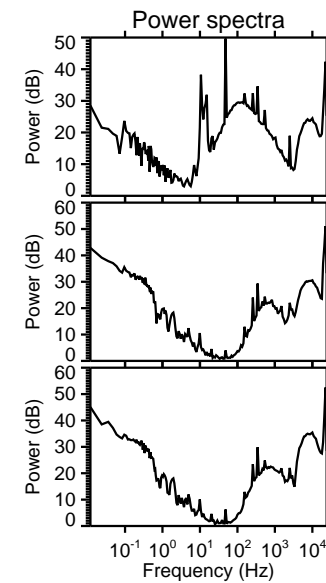
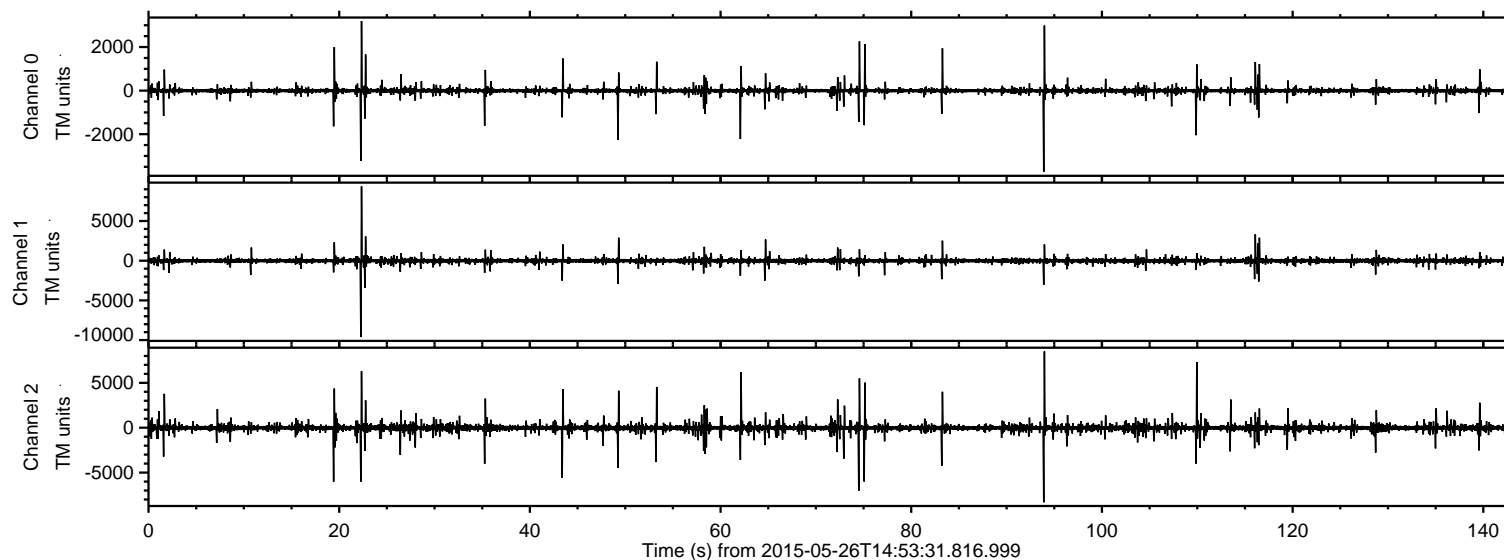
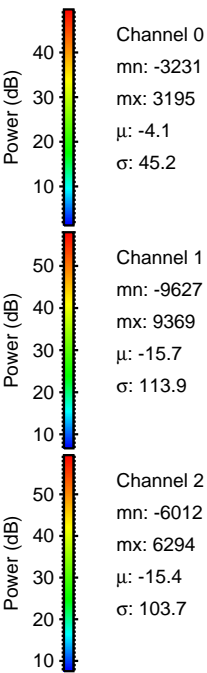
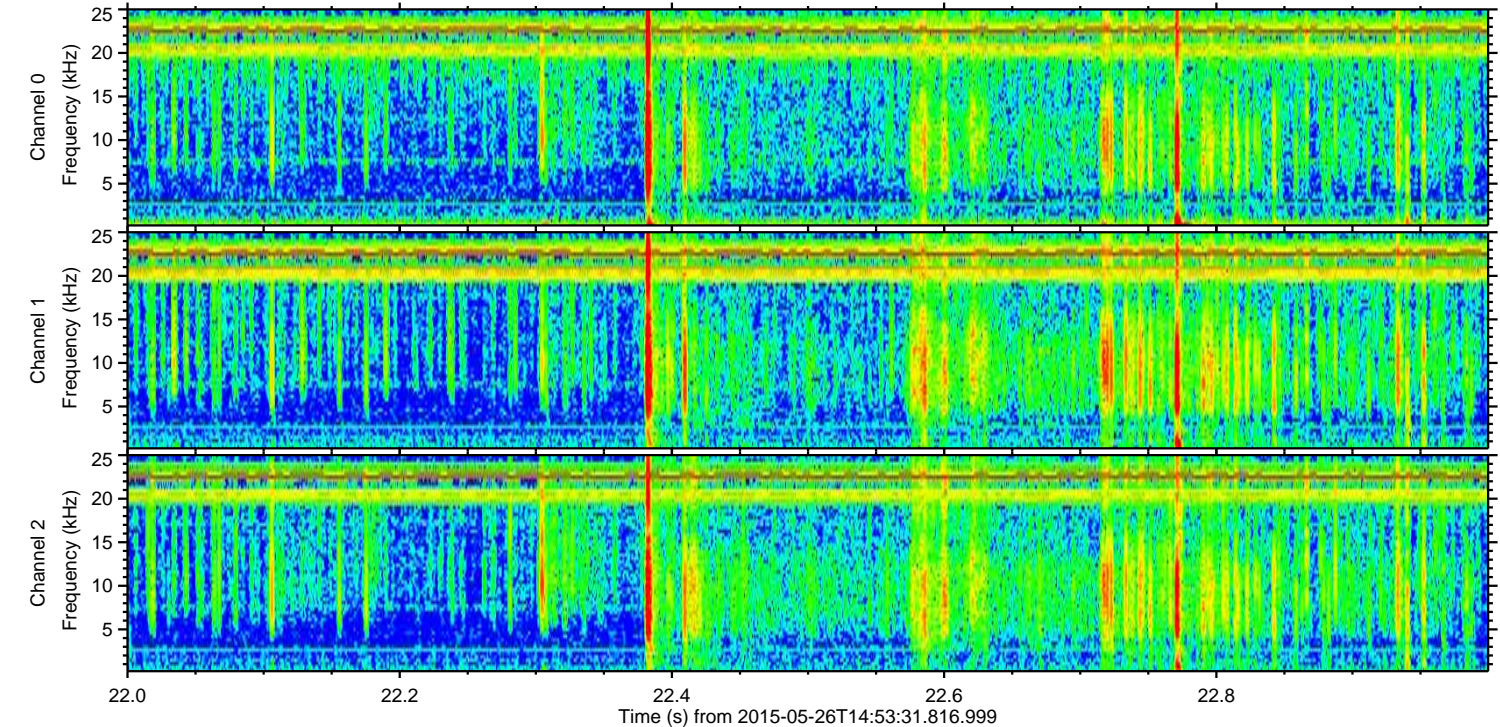
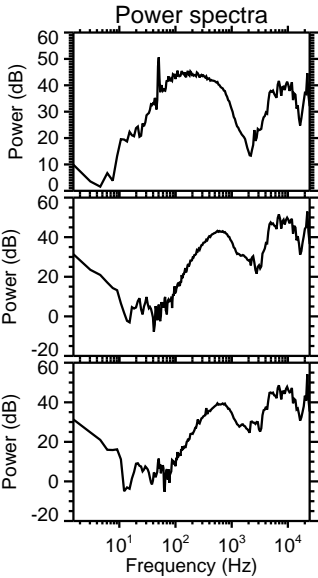
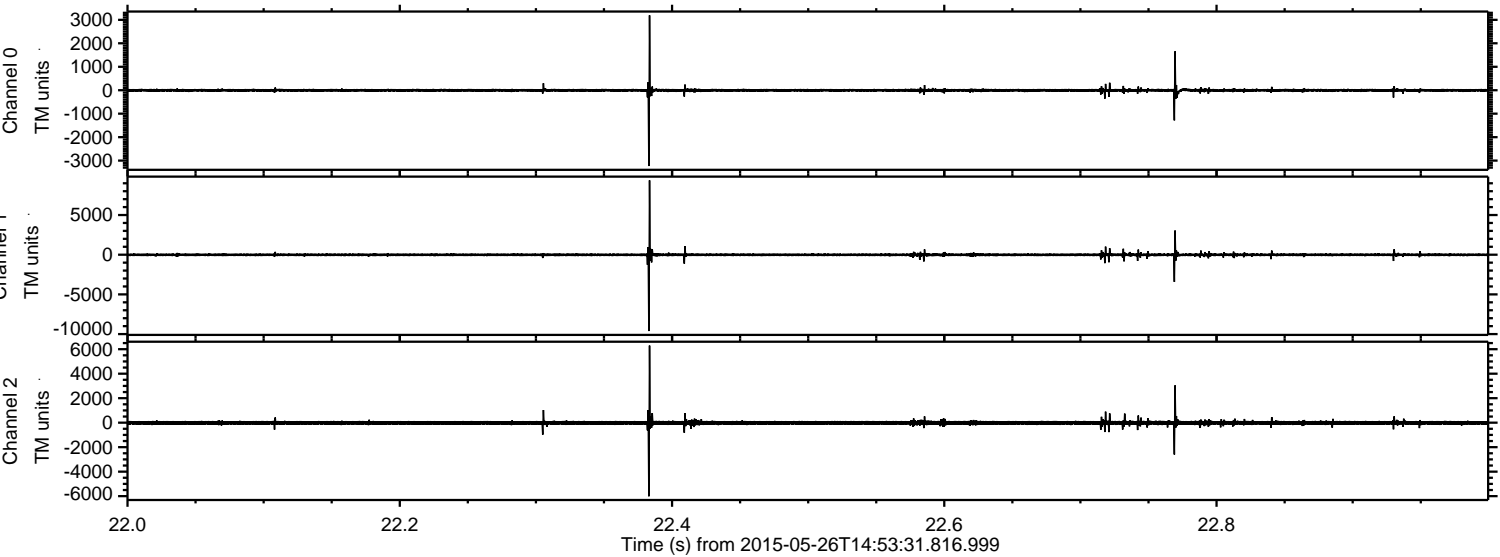


ELMAVAN 3D WAVEFORMS (Measured data sampled at 50 kHz) 49552 packets of 144 samples from 2015-05-26T14:53:31.816.999.

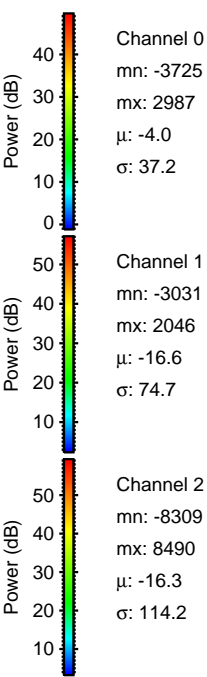
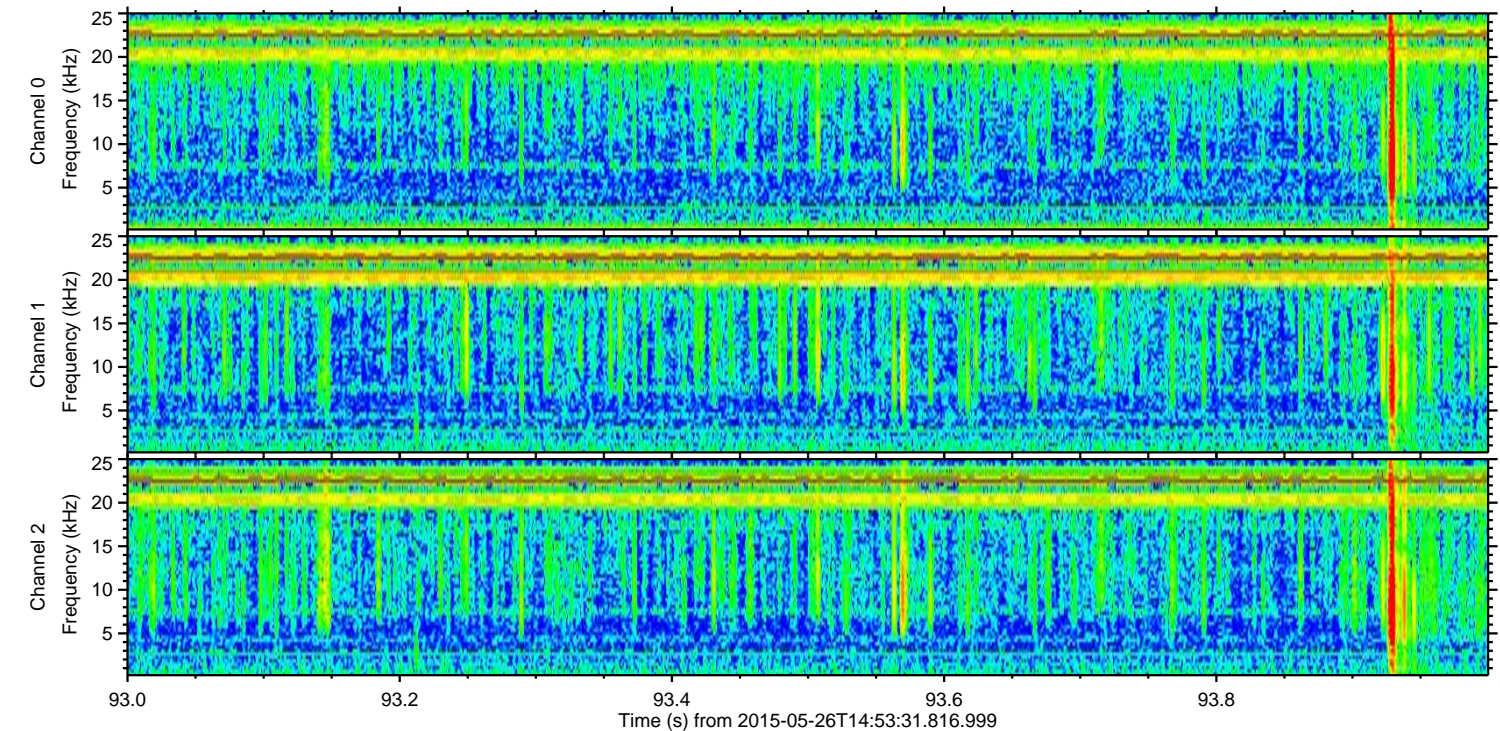
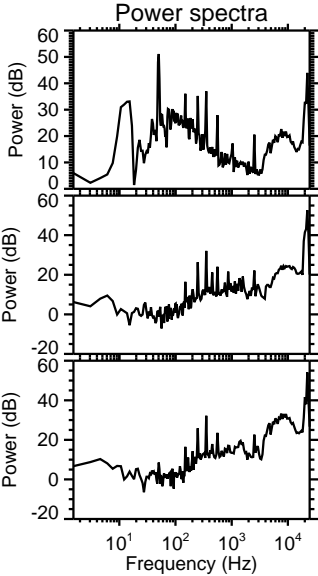
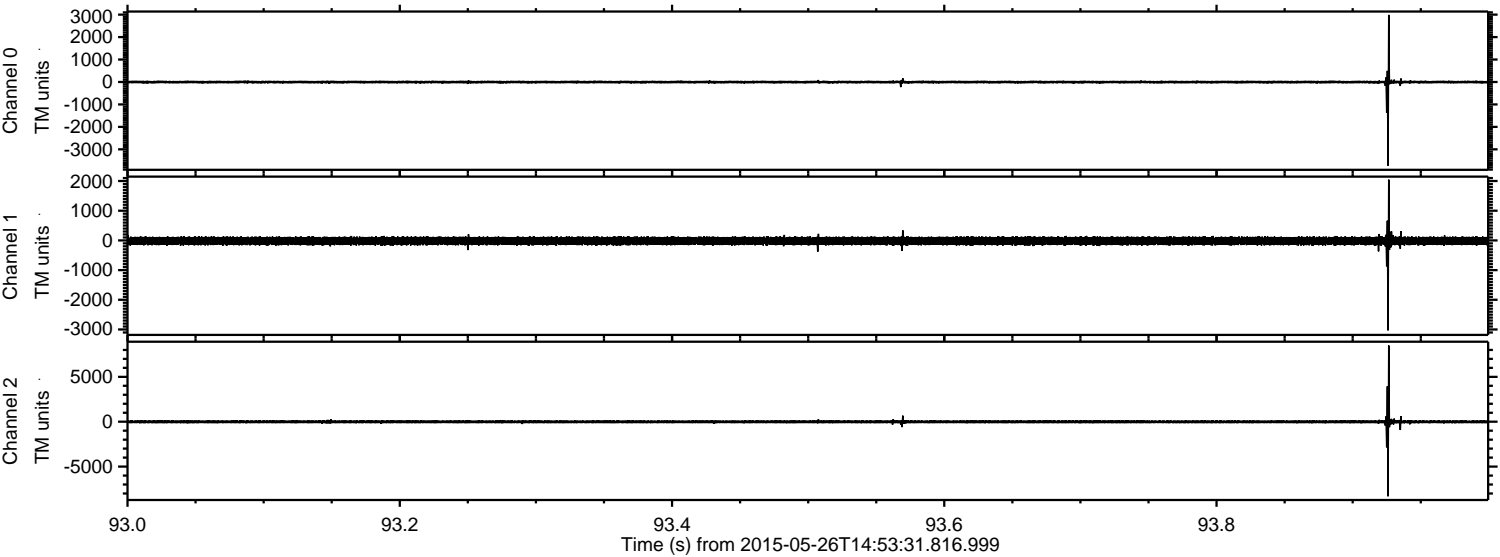
Processed Tue May 26 17:00:40 2015 by ELM ver.2012-10-06 from 001__elm20150526_145330__dat00.bin



Processed Tue May 26 17:00:55 2015 by ELM ver.2012-10-06 from 001__elm20150526_145330__dat00.bin

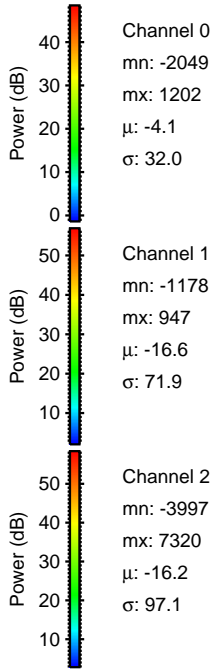
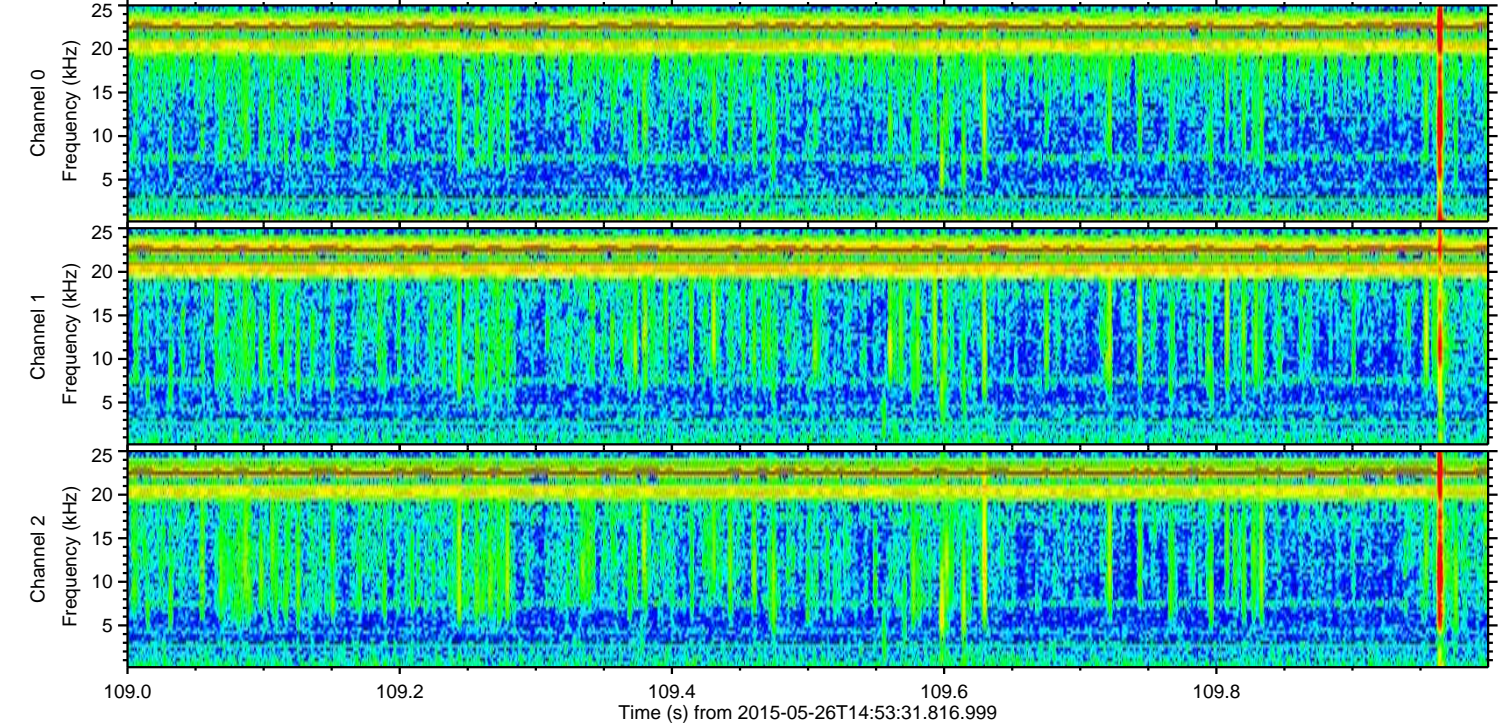
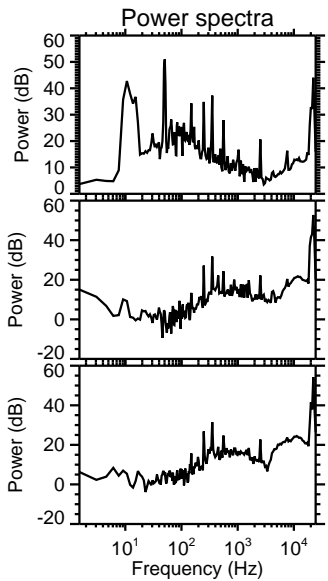
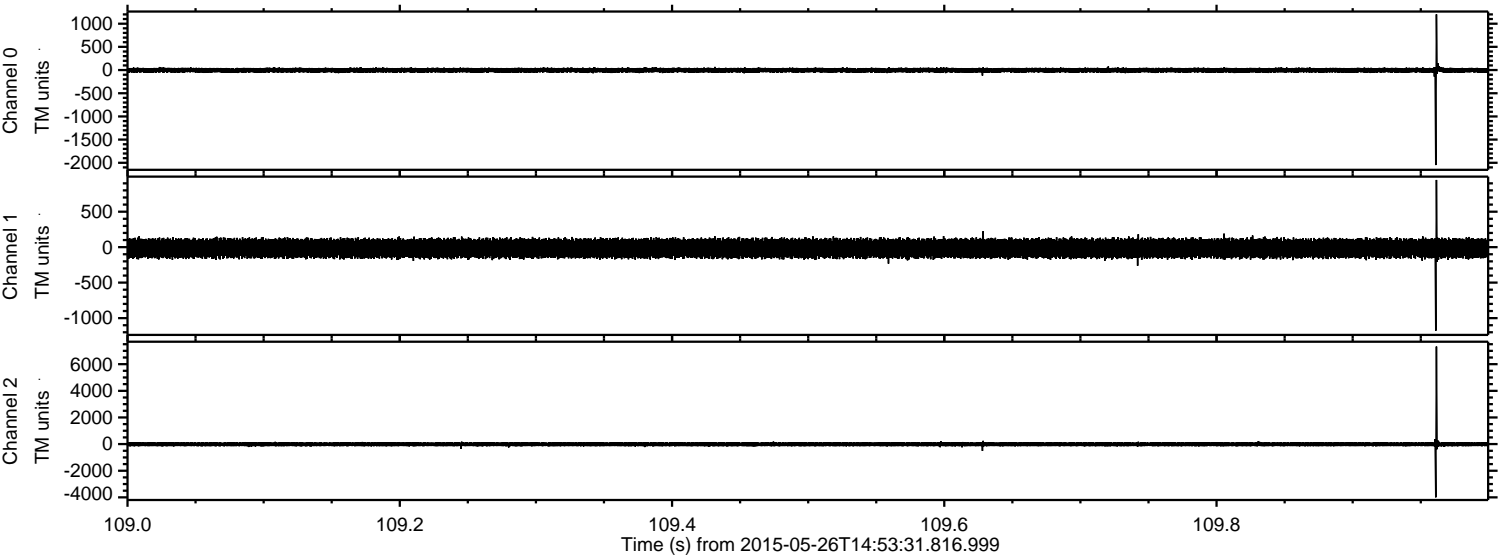


Processed Tue May 26 17:00:56 2015 by ELM ver.2012-10-06 from 001__elm20150526_145330__dat00.bin



ELMAVAN 3D WAVEFORMS (Measured data sampled at 50 kHz) 49552 packets of 144 samples from 2015-05-26T14:53:31.816.999. Part 110/143

Processed Tue May 26 17:00:57 2015 by ELM ver.2012-10-06 from 001__elm20150526_145330__dat00.bin

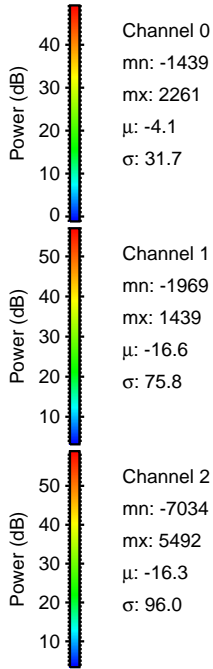
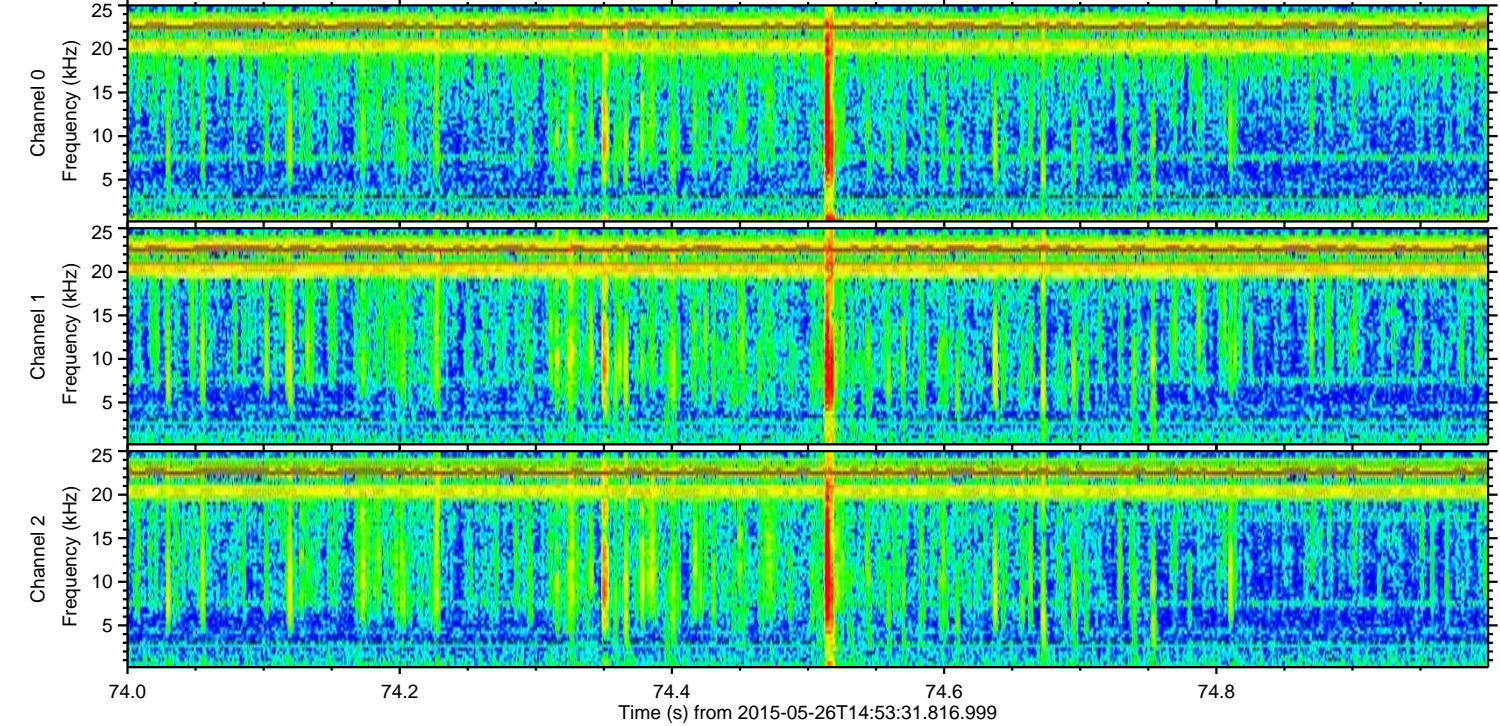
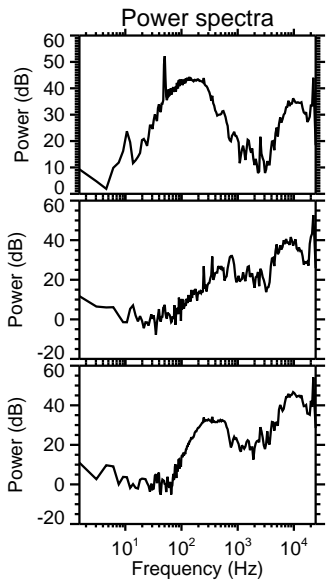
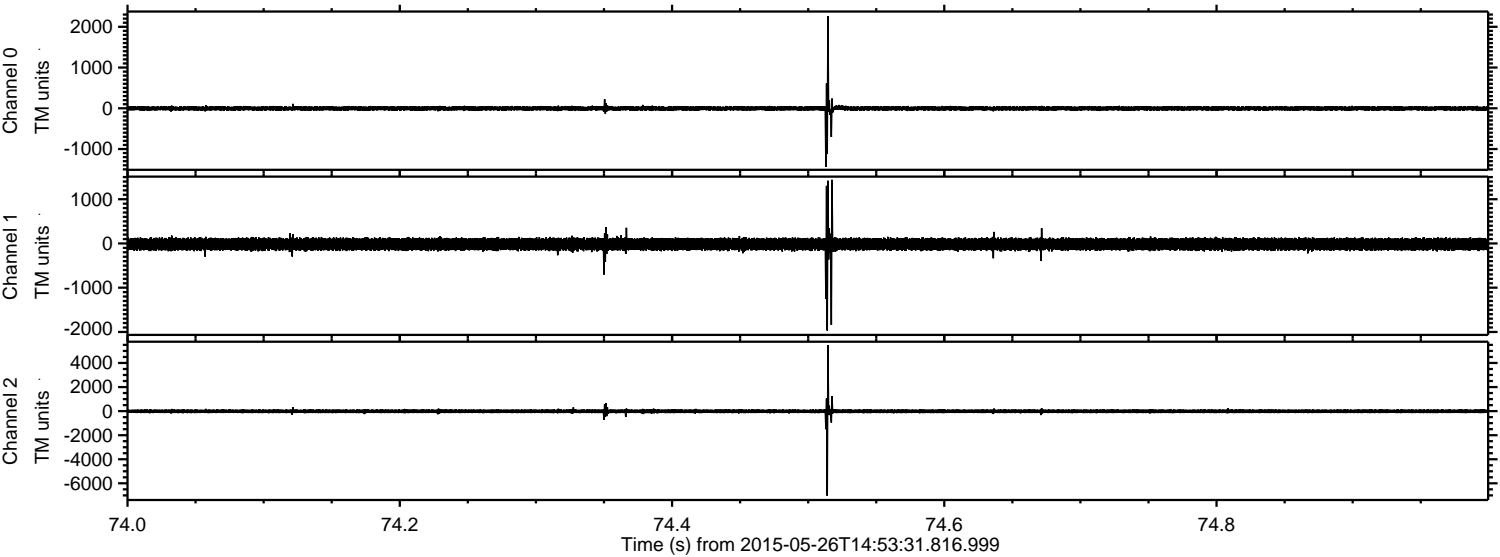


Channel 0
mn: -2049
mx: 1202
 μ : -4.1
 σ : 32.0

Channel 1
mn: -1178
mx: 947
 μ : -16.6
 σ : 71.9

Channel 2
mn: -3997
mx: 7320
 μ : -16.2
 σ : 97.1

Processed Tue May 26 17:00:58 2015 by ELM ver.2012-10-06 from 001__elm20150526_145330__dat00.bin

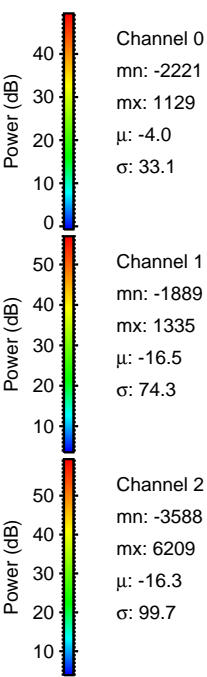
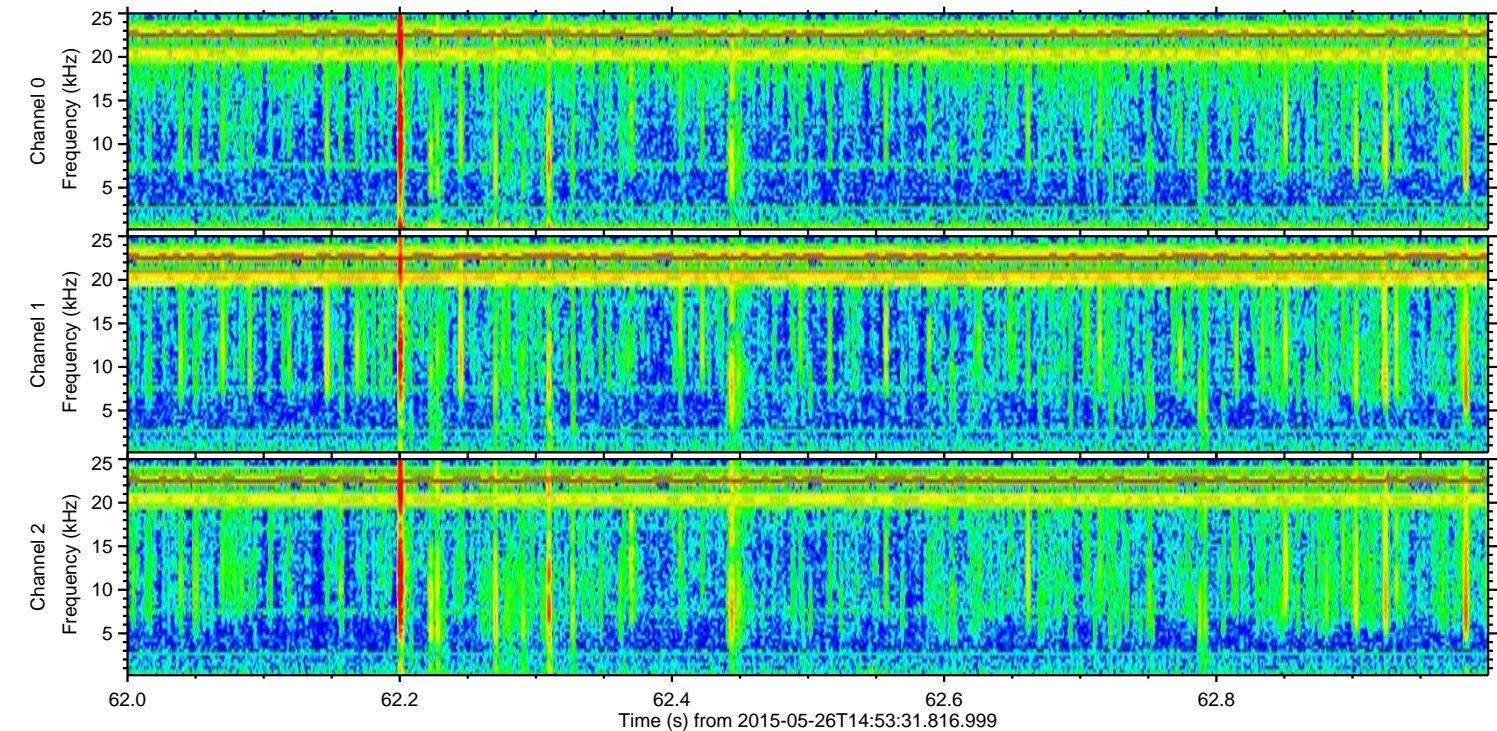
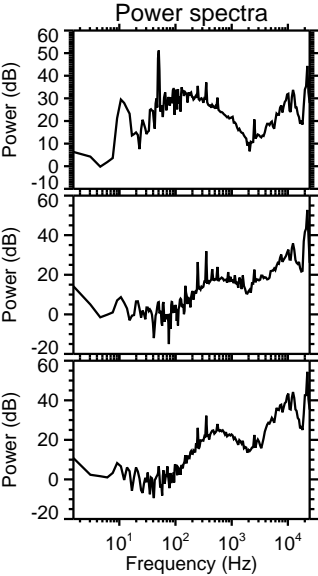
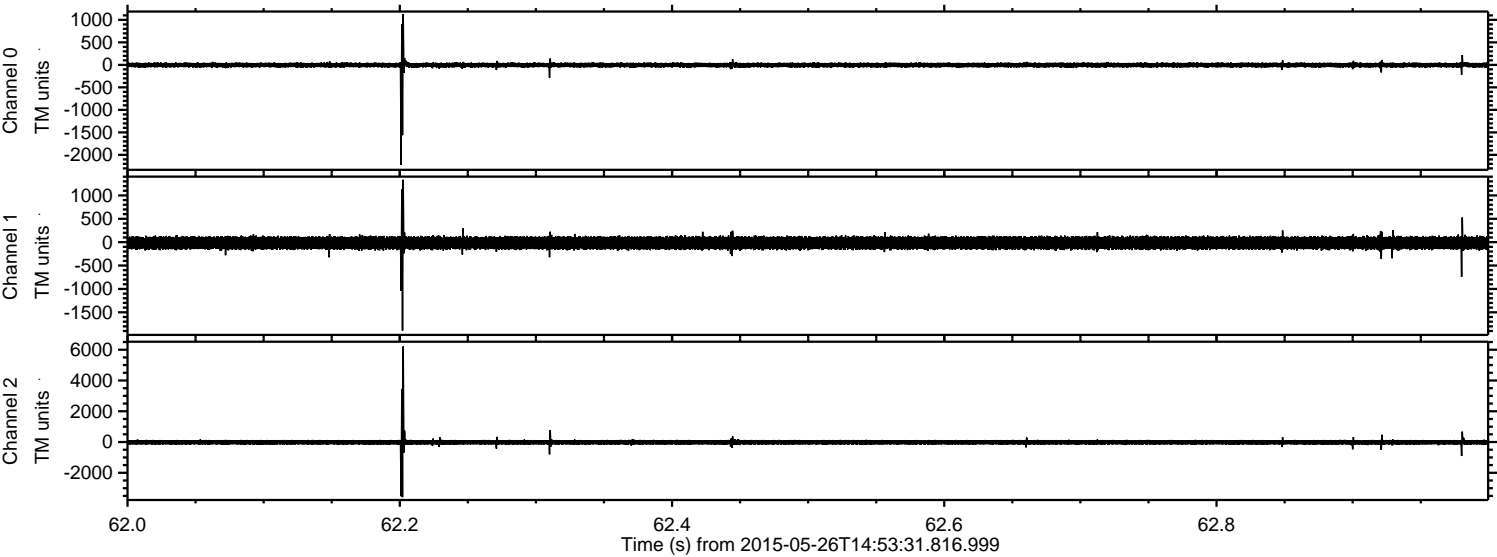


Channel 0
mn: -1439
mx: 2261
 μ : -4.1
 σ : 31.7

Channel 1
mn: -1969
mx: 1439
 μ : -16.6
 σ : 75.8

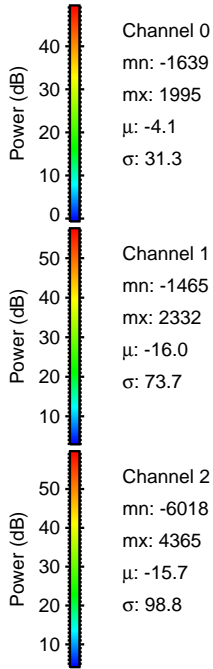
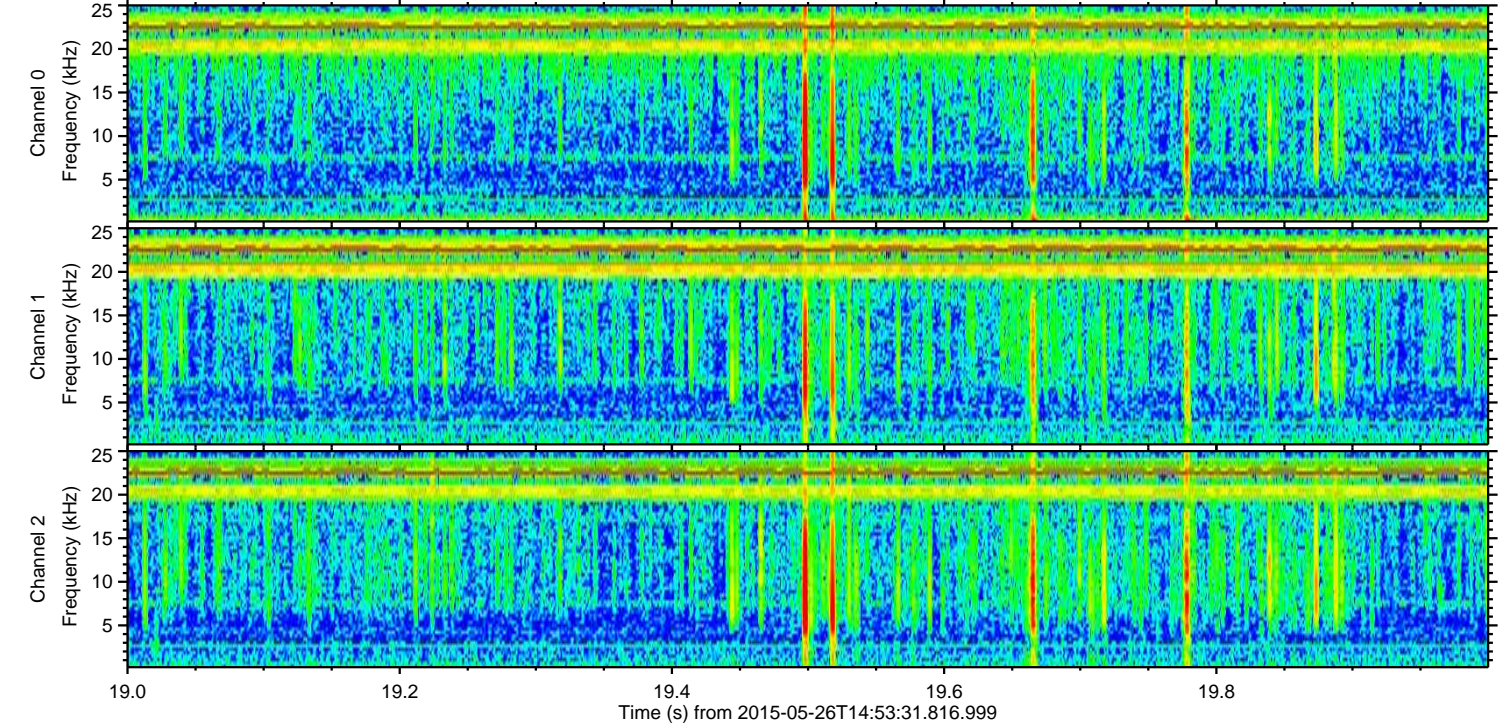
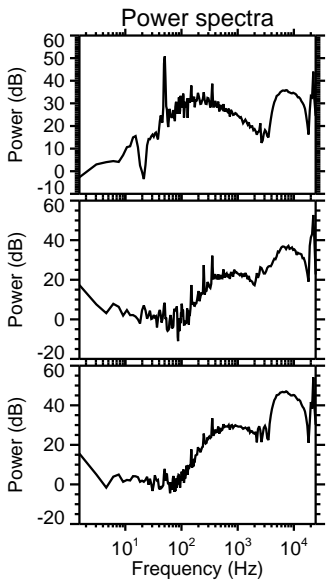
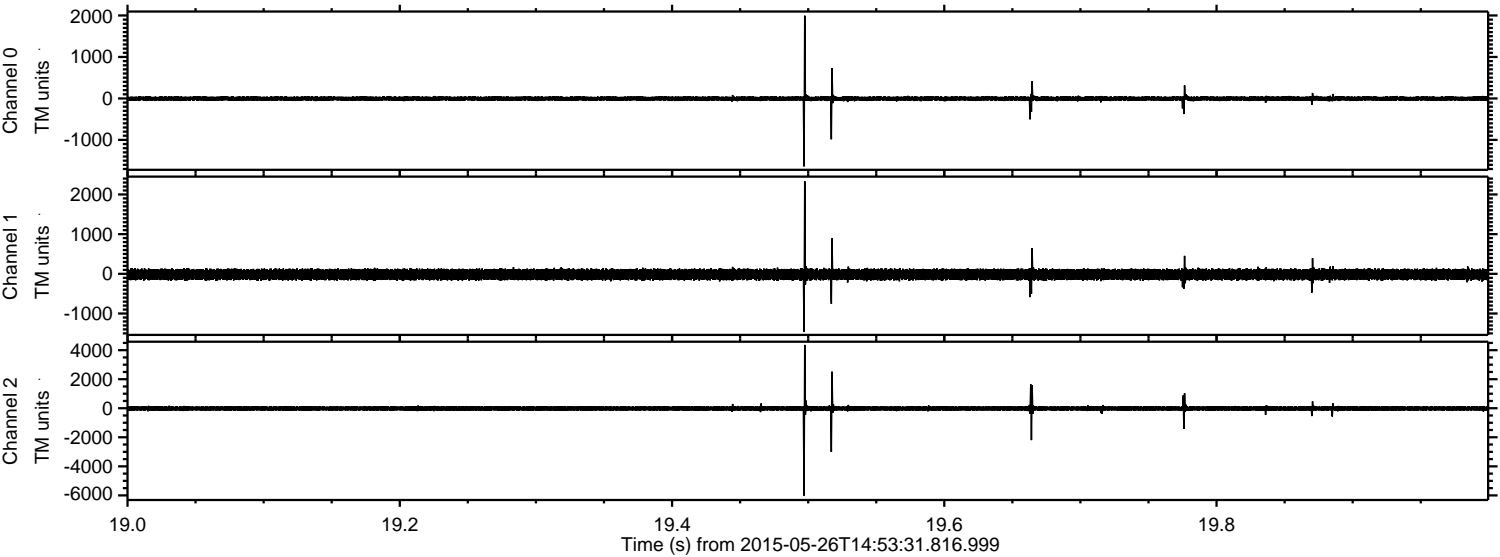
Channel 2
mn: -7034
mx: 5492
 μ : -16.3
 σ : 96.0

Processed Tue May 26 17:00:59 2015 by ELM ver.2012-10-06 from 001__elm20150526_145330__dat00.bin



ELMAVAN 3D WAVEFORMS (Measured data sampled at 50 kHz) 49552 packets of 144 samples from 2015-05-26T14:53:31.816.999. Part 20/143

Processed Tue May 26 17:01:00 2015 by ELM ver.2012-10-06 from 001__elm20150526_145330__dat00.bin

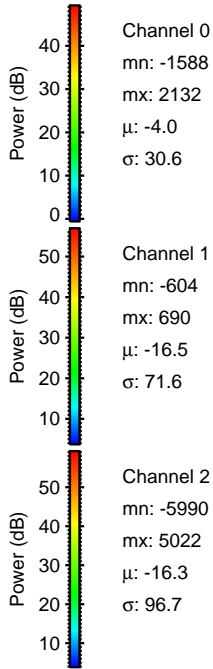
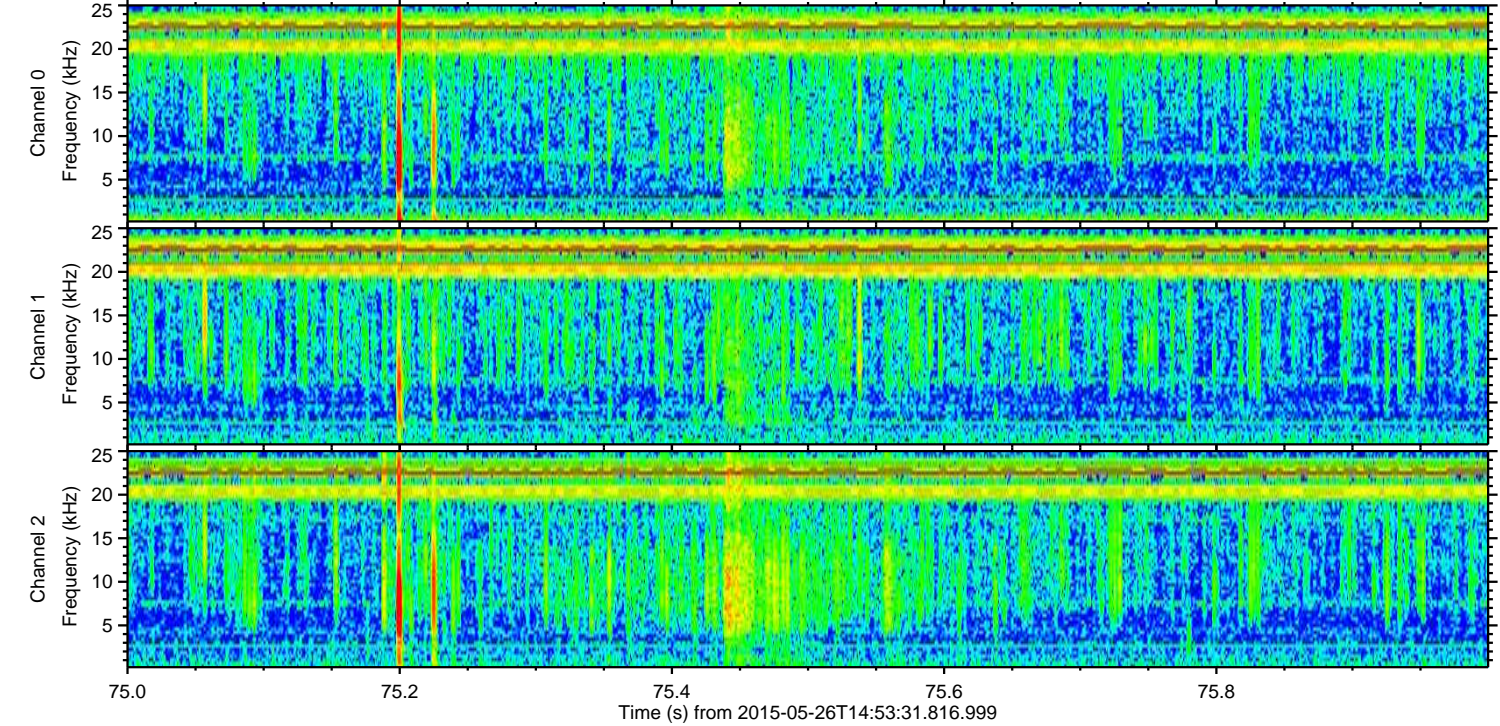
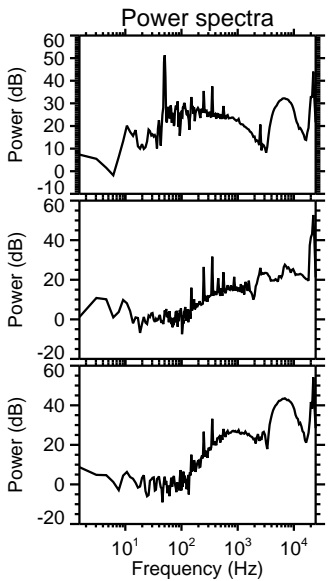
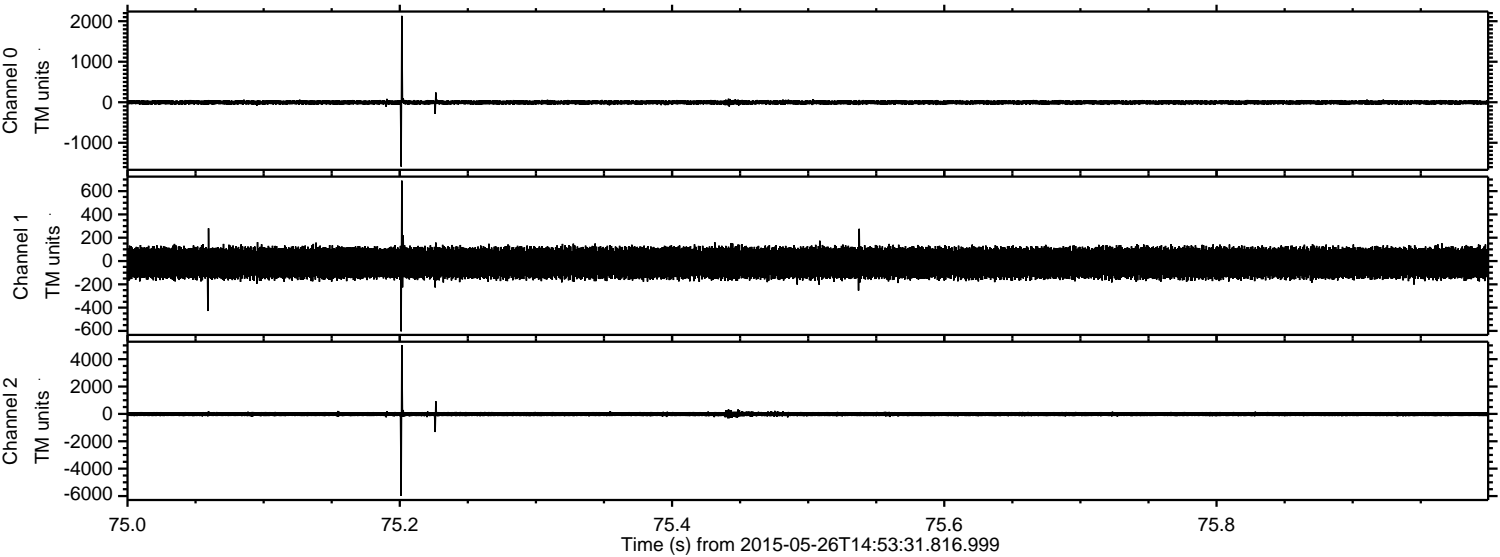


Channel 0
mn: -1639
mx: 1995
 μ : -4.1
 σ : 31.3

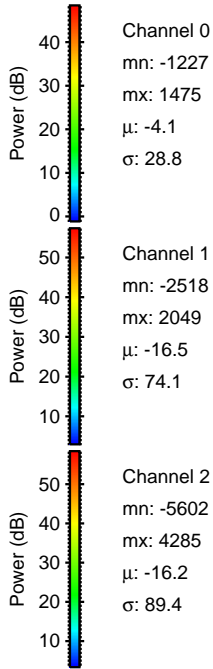
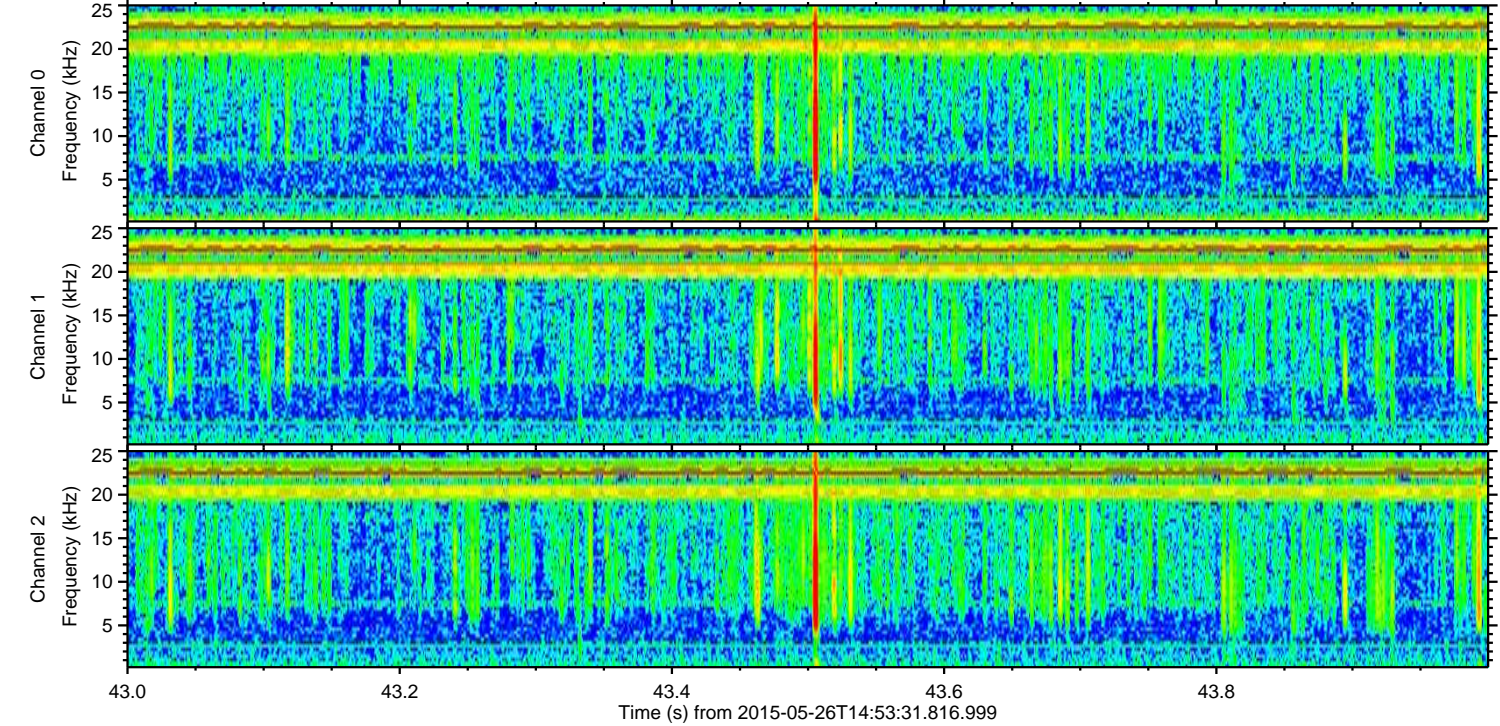
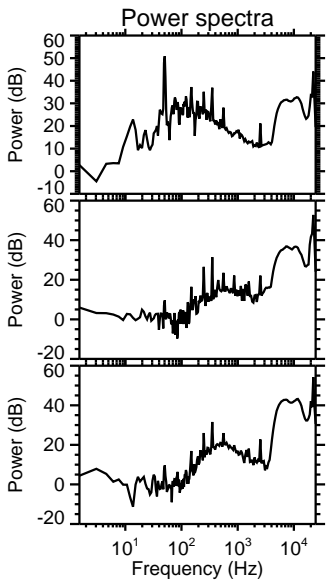
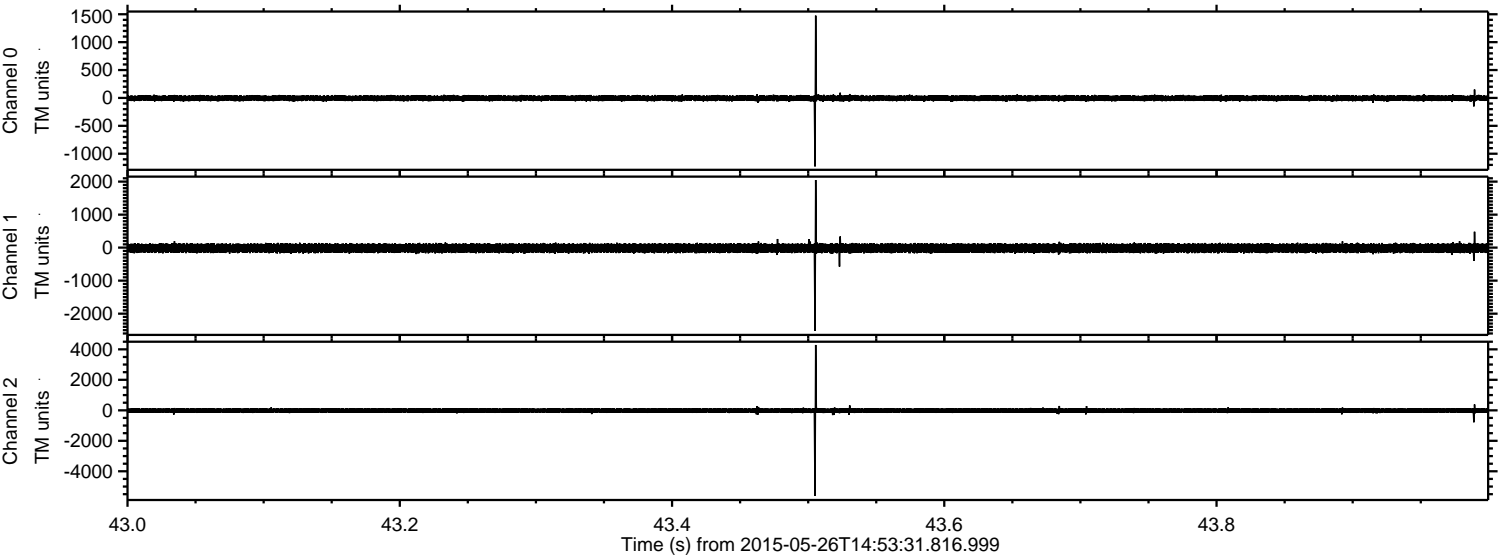
Channel 1
mn: -1465
mx: 2332
 μ : -16.0
 σ : 73.7

Channel 2
mn: -6018
mx: 4365
 μ : -15.7
 σ : 98.8

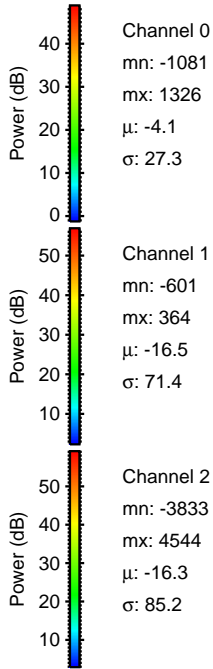
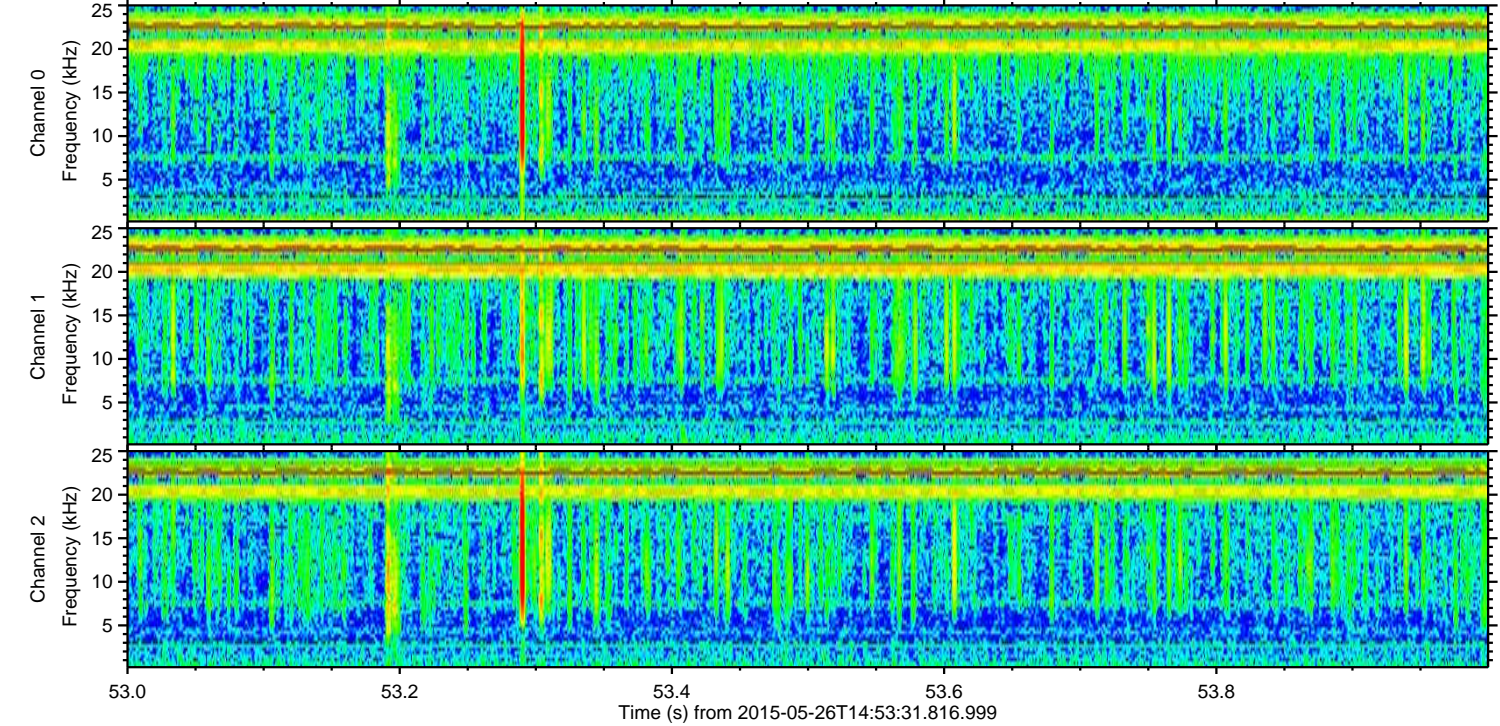
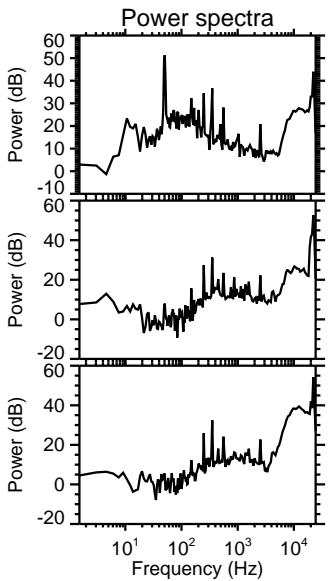
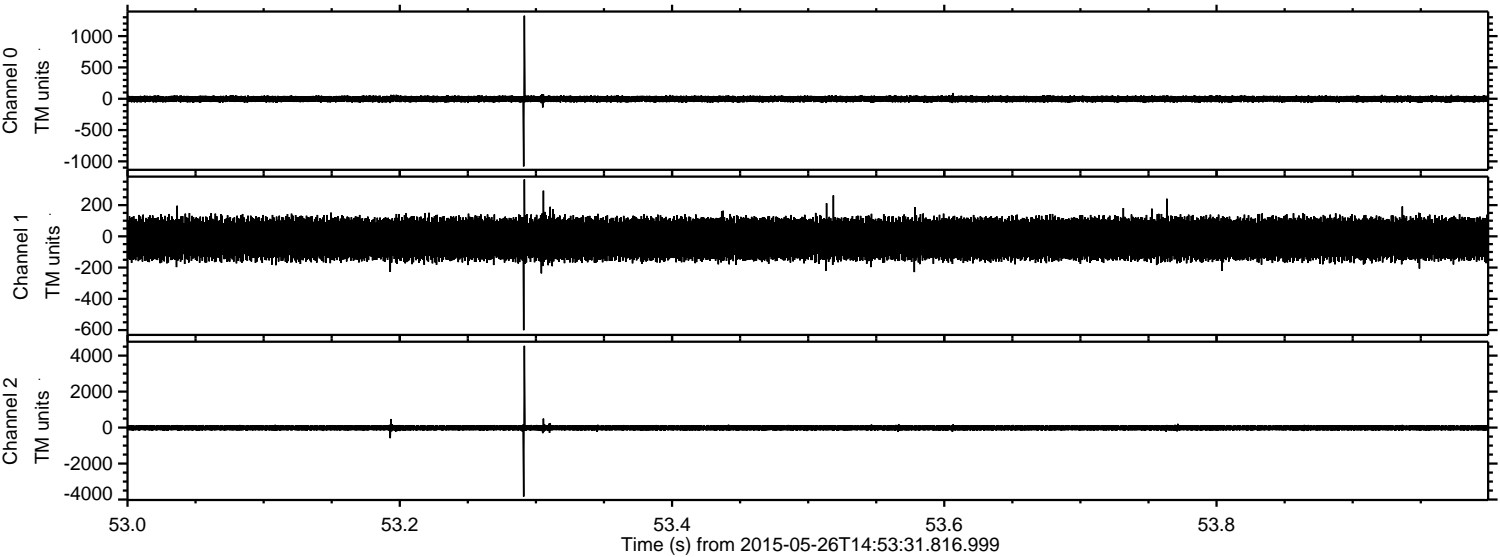
Processed Tue May 26 17:01:01 2015 by ELM ver.2012-10-06 from 001__elm20150526_145330__dat00.bin



Processed Tue May 26 17:01:02 2015 by ELM ver.2012-10-06 from 001__elm20150526_145330__dat00.bin



Processed Tue May 26 17:01:04 2015 by ELM ver.2012-10-06 from 001__elm20150526_145330__dat00.bin



Processed Tue May 26 17:01:05 2015 by ELM ver.2012-10-06 from 001__elm20150526_145330__dat00.bin

