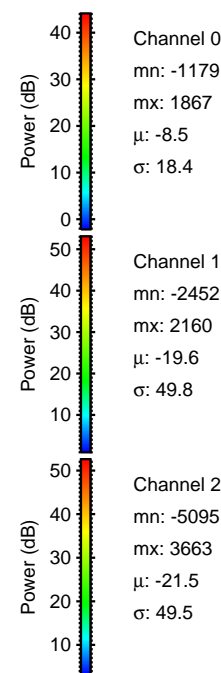
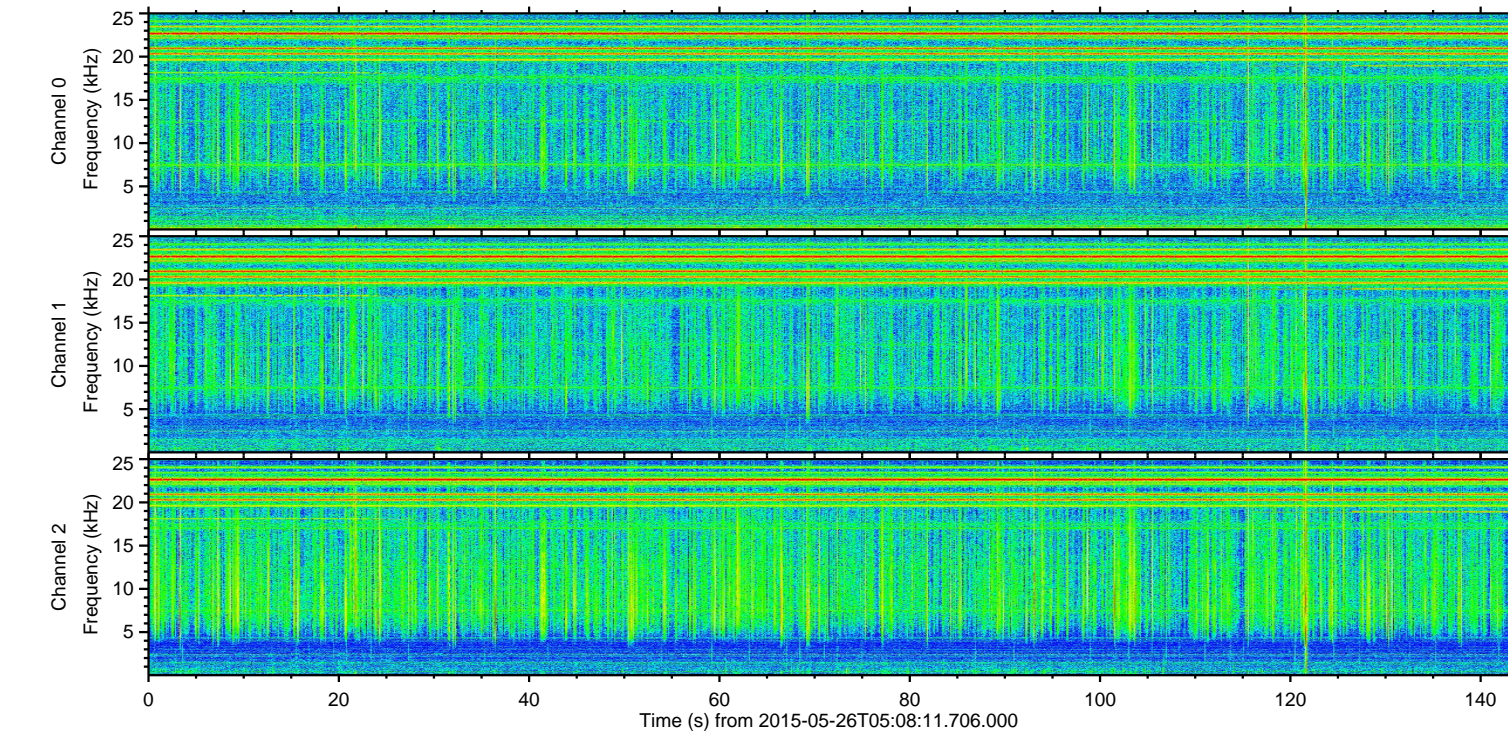
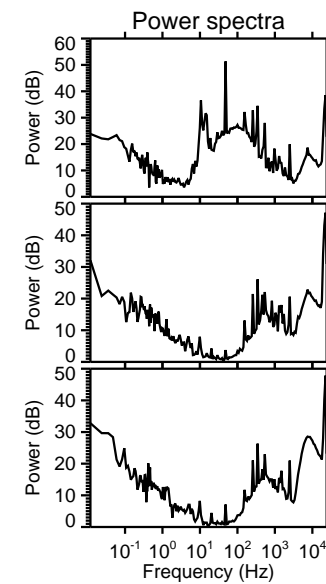
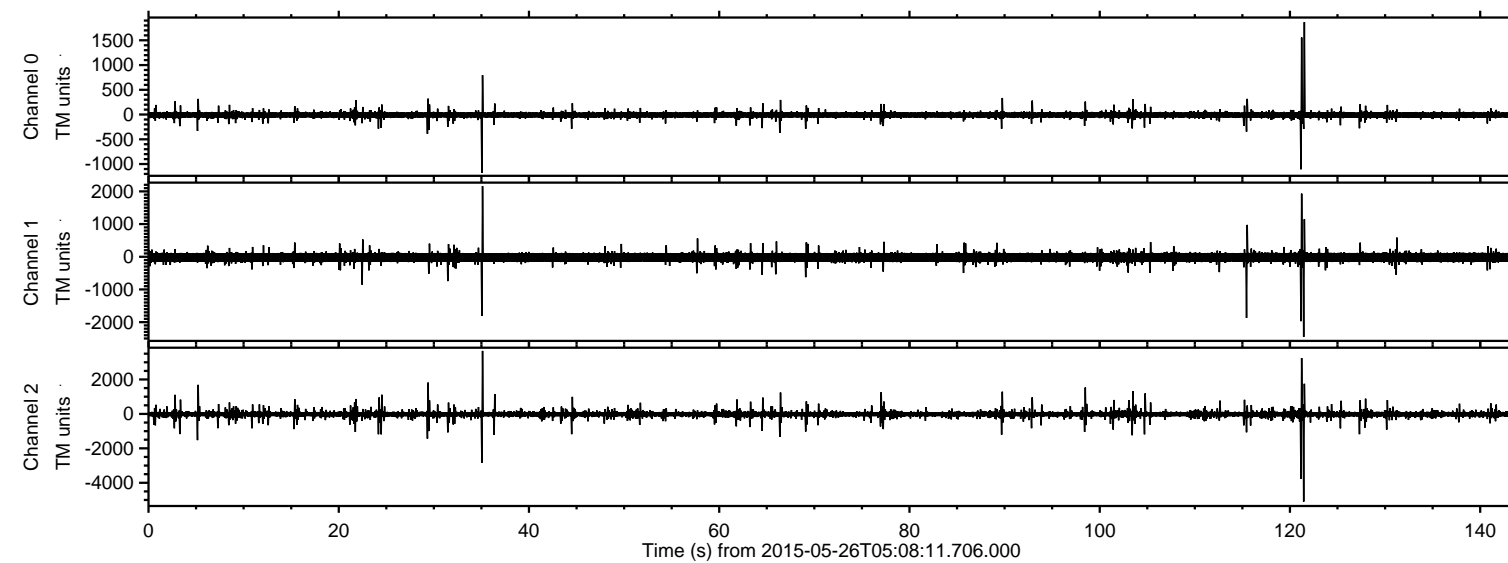


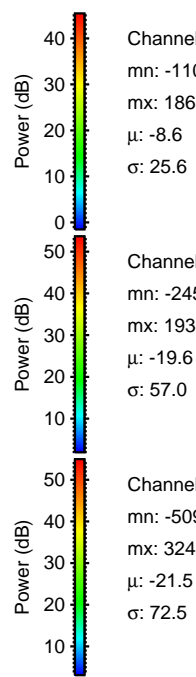
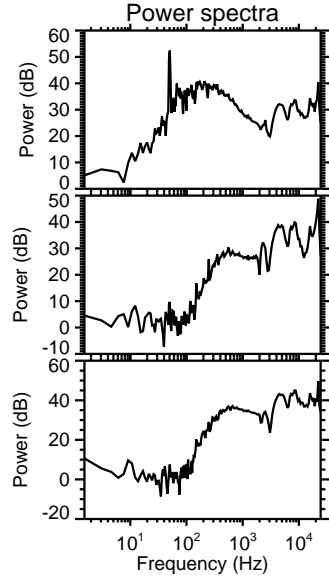
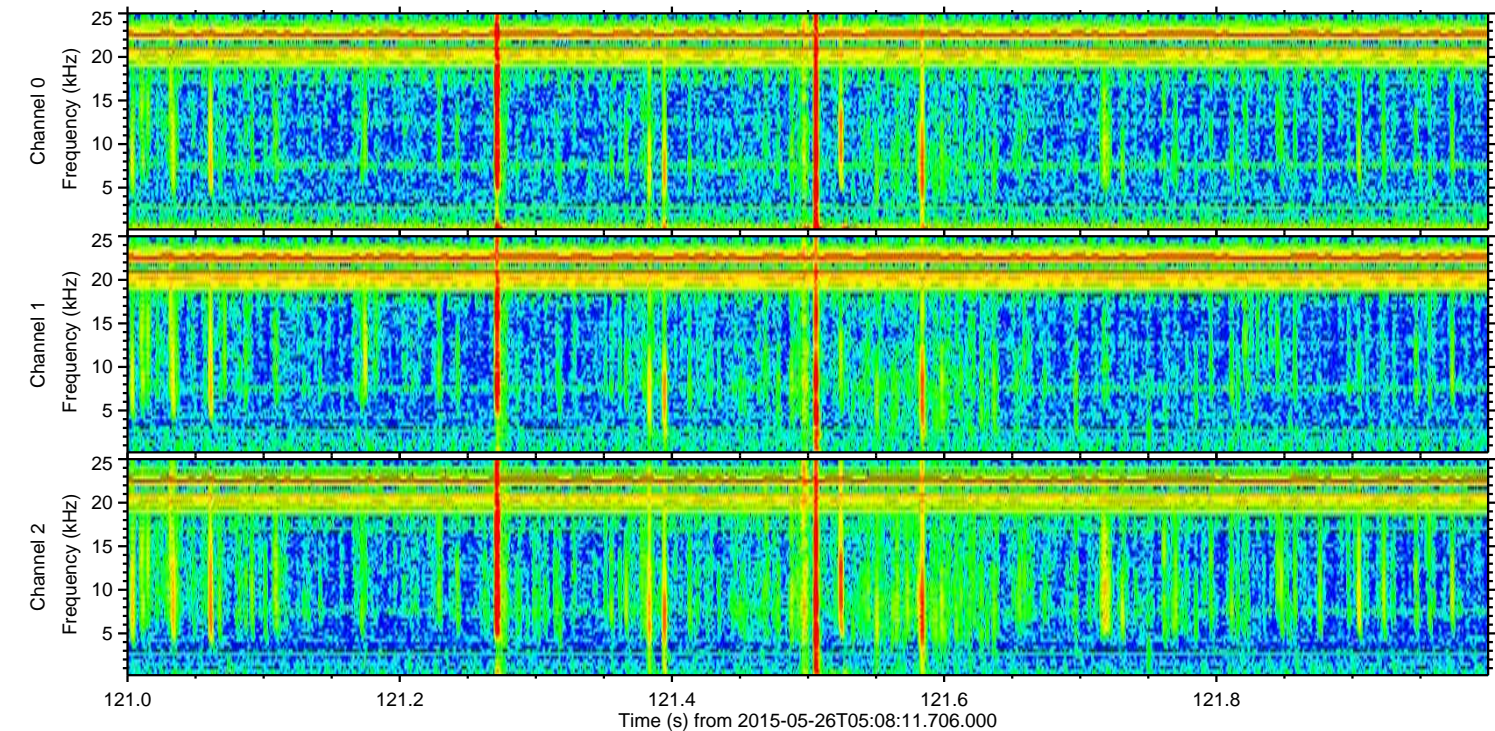
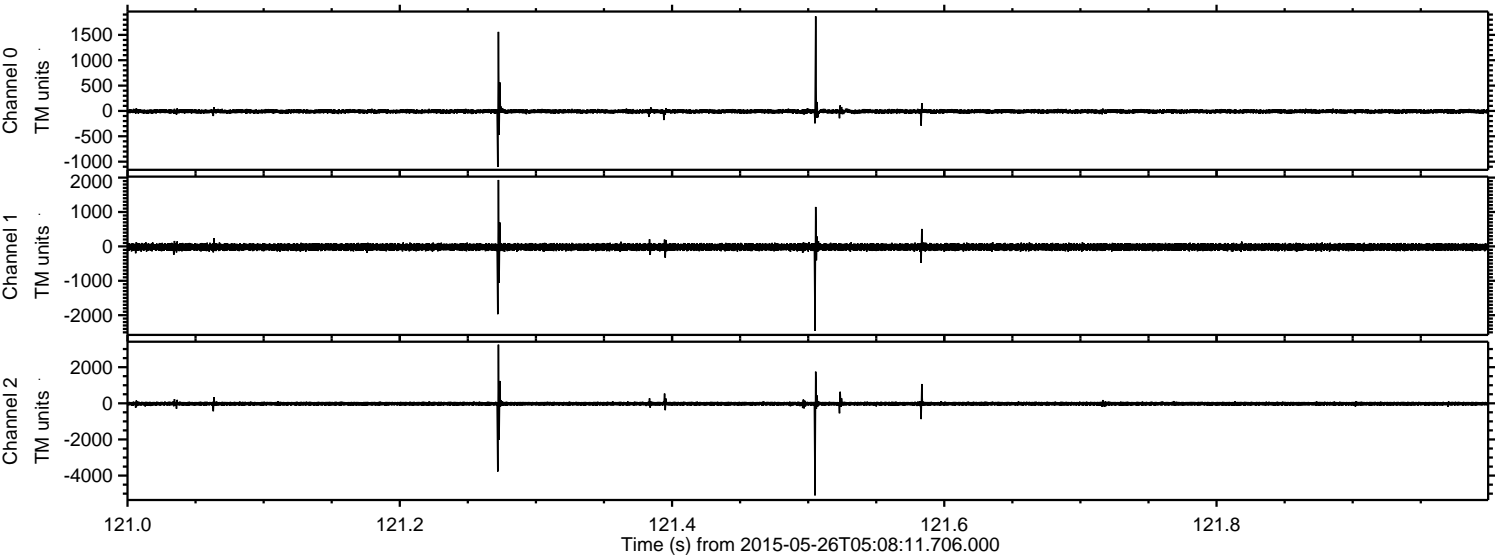
ELMAVAN 3D WAVEFORMS (Measured data sampled at 50 kHz) 49668 packets of 144 samples from 2015-05-26T05:08:11.706.000.

Processed Tue May 26 07:15:25 2015 by ELM ver.2012-10-06 from 001__elm20150526_050810__dat00.bin

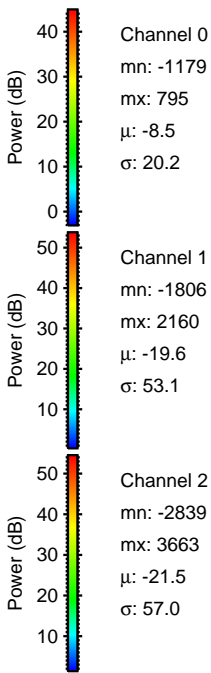
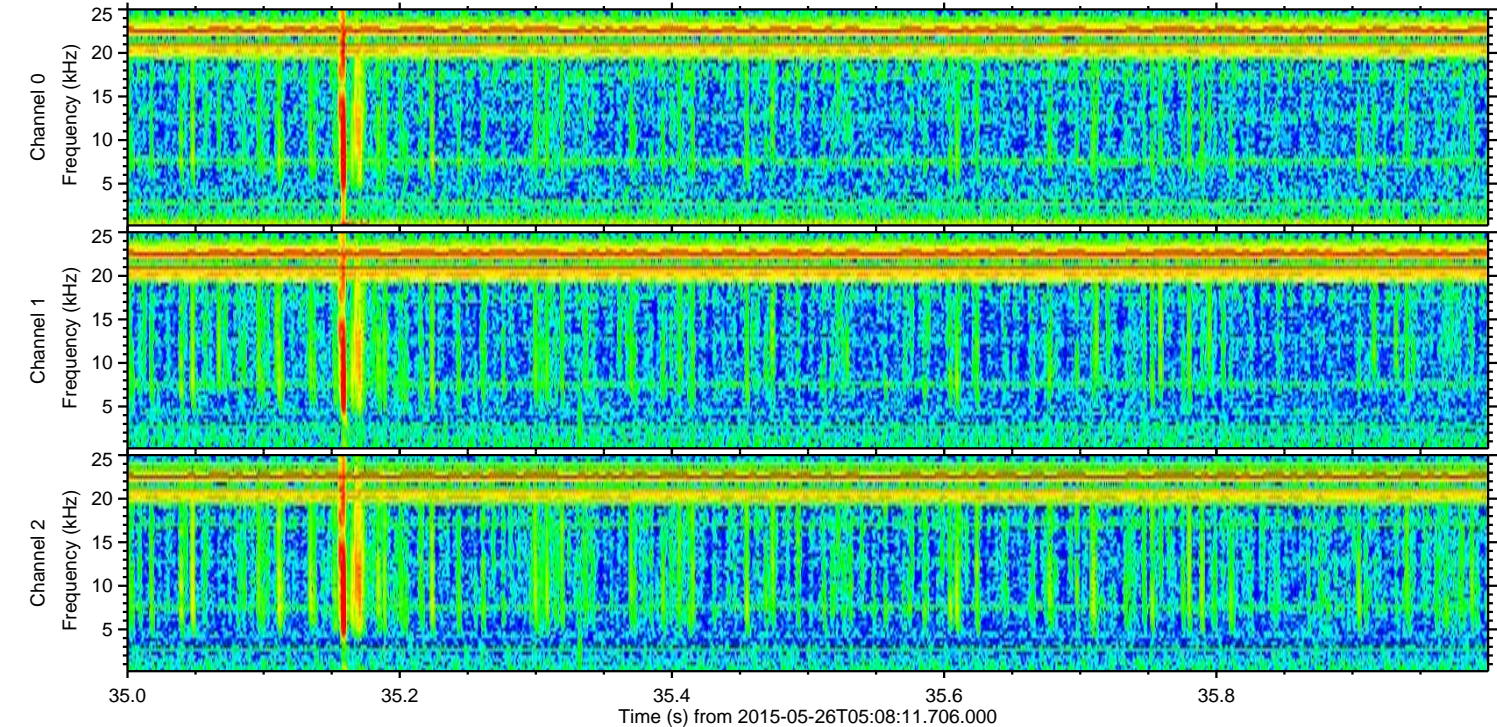
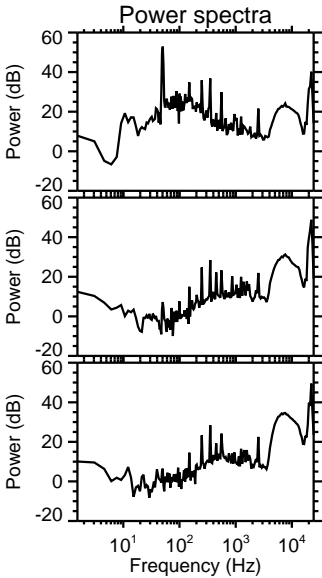
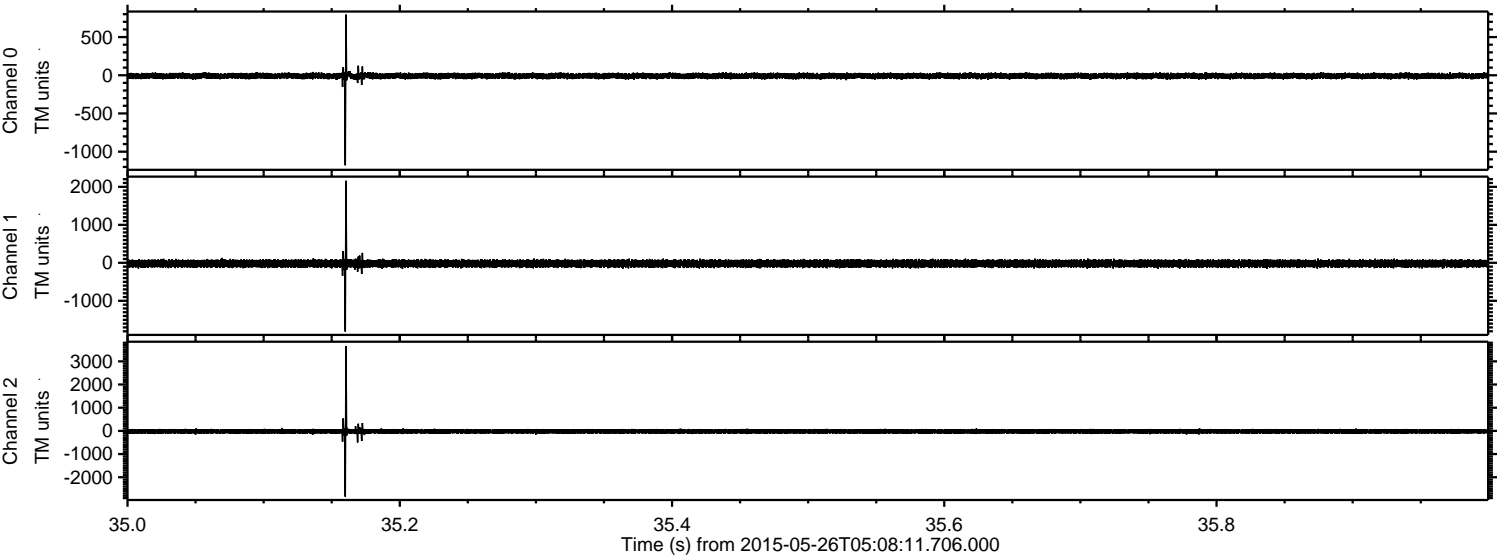


ELMAVAN 3D WAVEFORMS (Measured data sampled at 50 kHz) 49668 packets of 144 samples from 2015-05-26T05:08:11.706.000. Part 122/144

Processed Tue May 26 07:15:40 2015 by ELM ver.2012-10-06 from 001__elm20150526_050810__dat00.bin

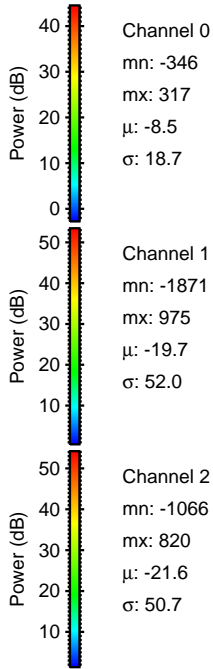
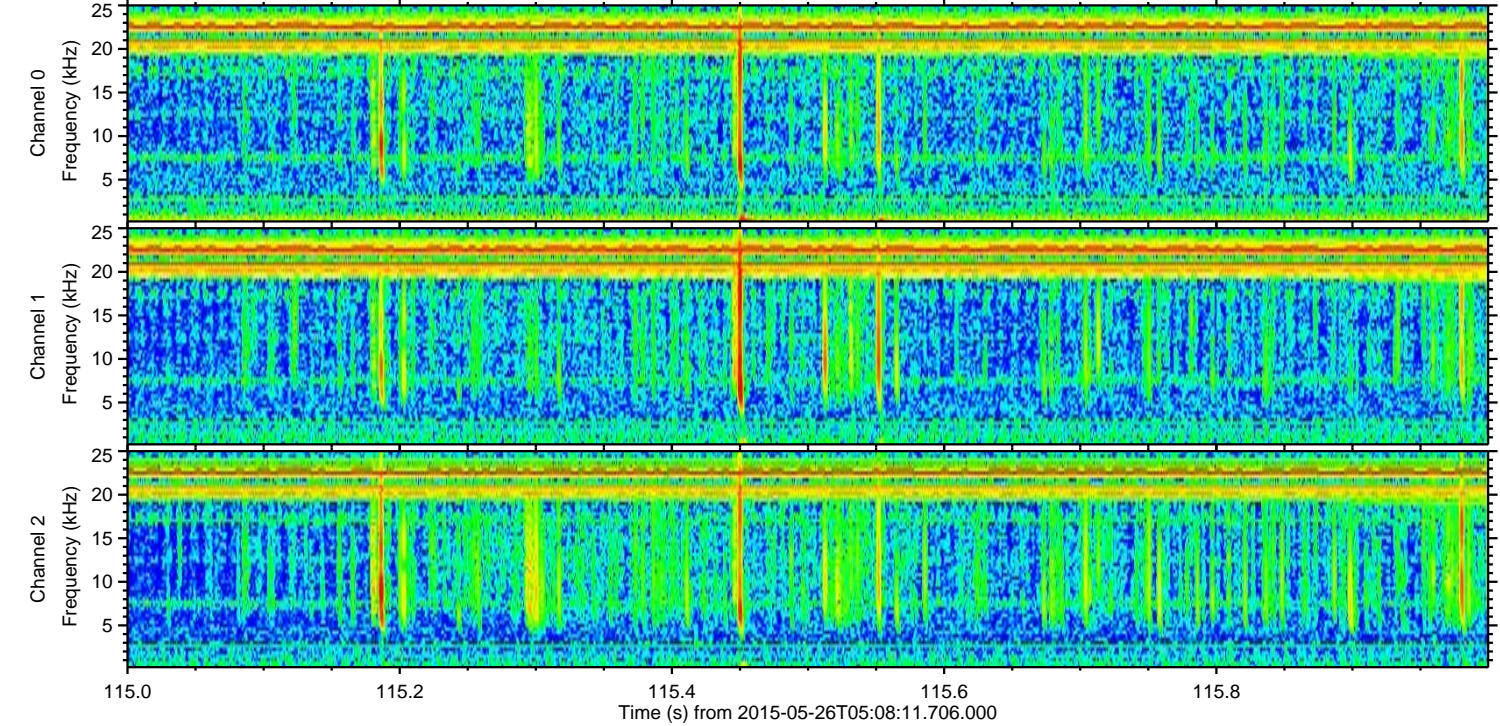
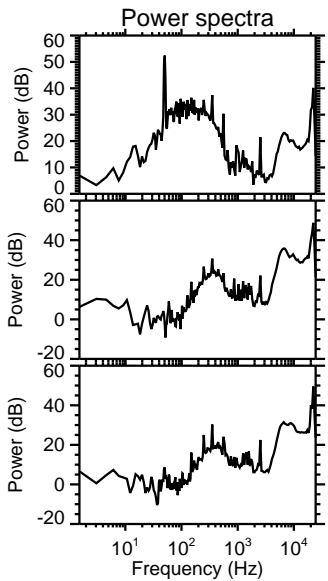
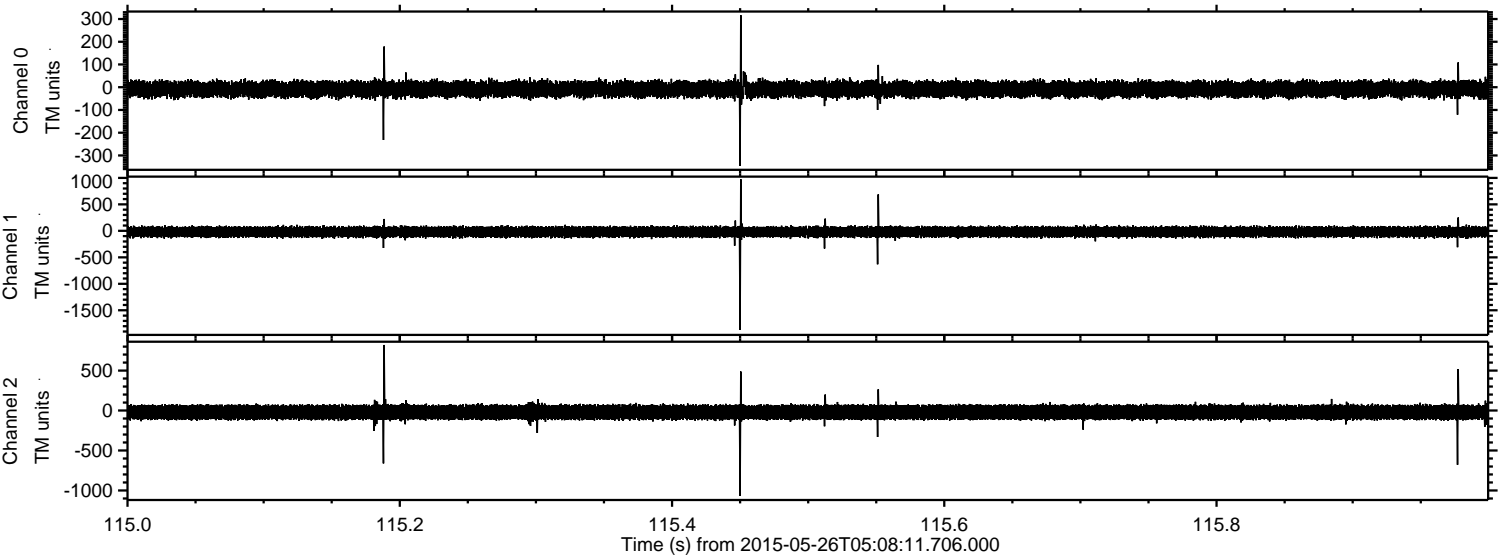


Processed Tue May 26 07:15:41 2015 by ELM ver.2012-10-06 from 001__elm20150526_050810__dat00.bin



ELMAVAN 3D WAVEFORMS (Measured data sampled at 50 kHz) 49668 packets of 144 samples from 2015-05-26T05:08:11.706.000. Part 116/144

Processed Tue May 26 07:15:42 2015 by ELM ver.2012-10-06 from 001__elm20150526_050810__dat00.bin

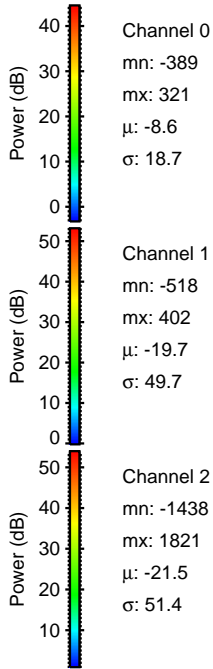
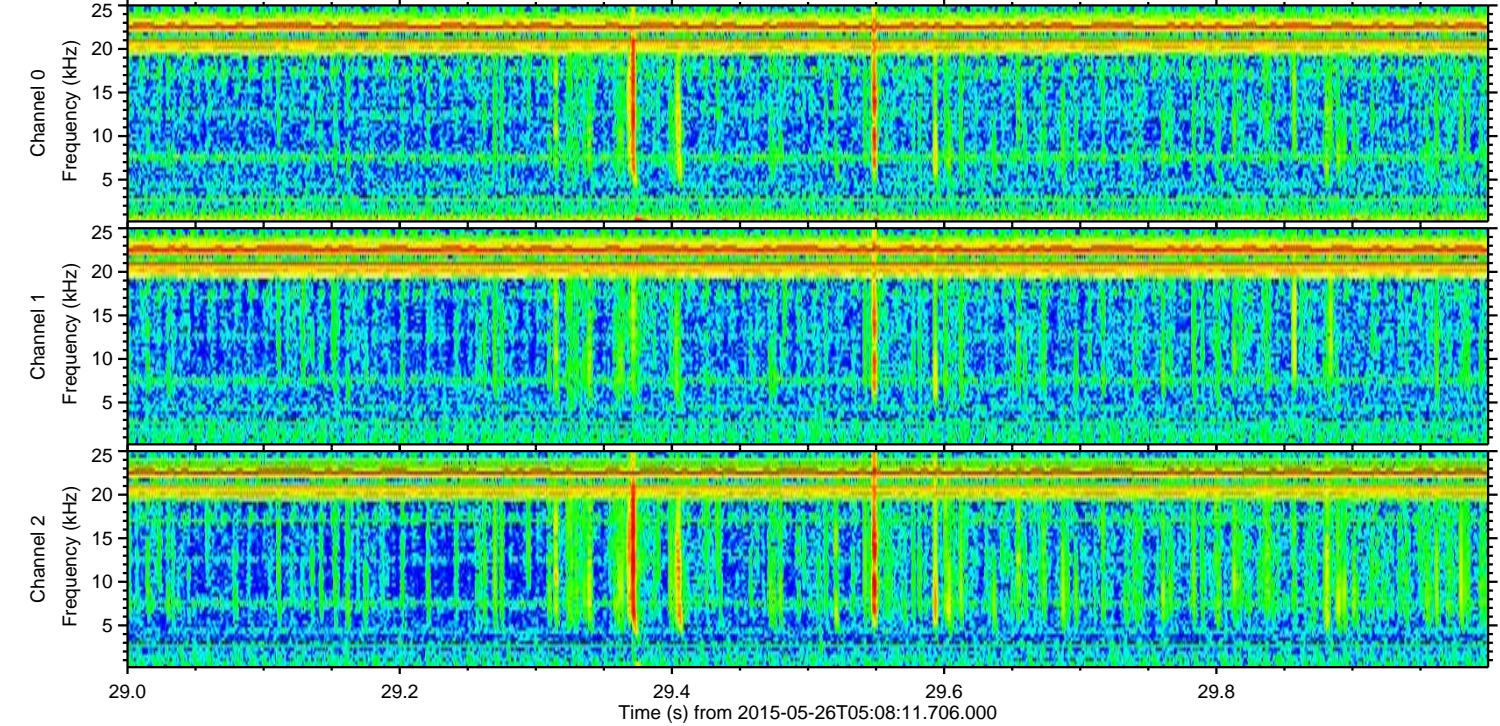
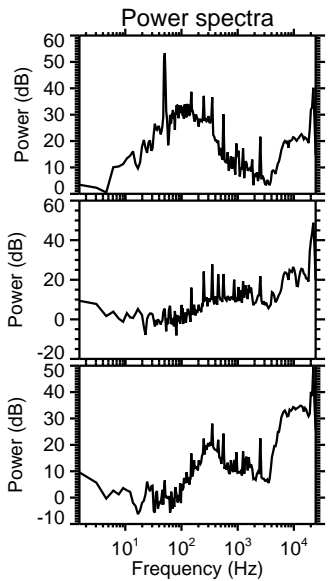
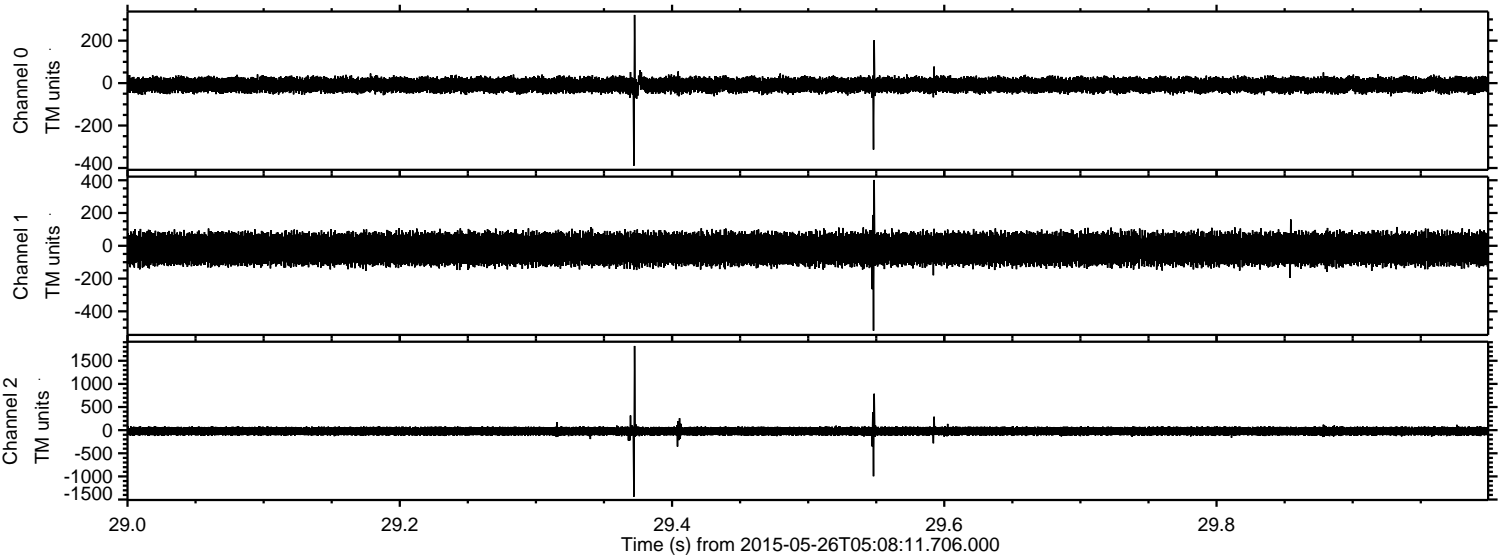


Channel 0
mn: -346
mx: 317
 μ : -8.5
 σ : 18.7

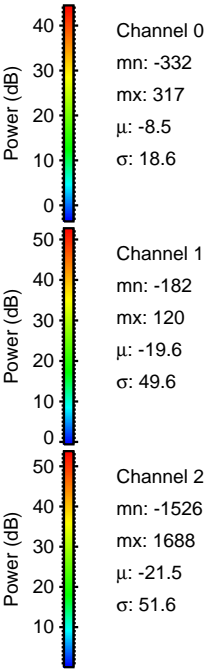
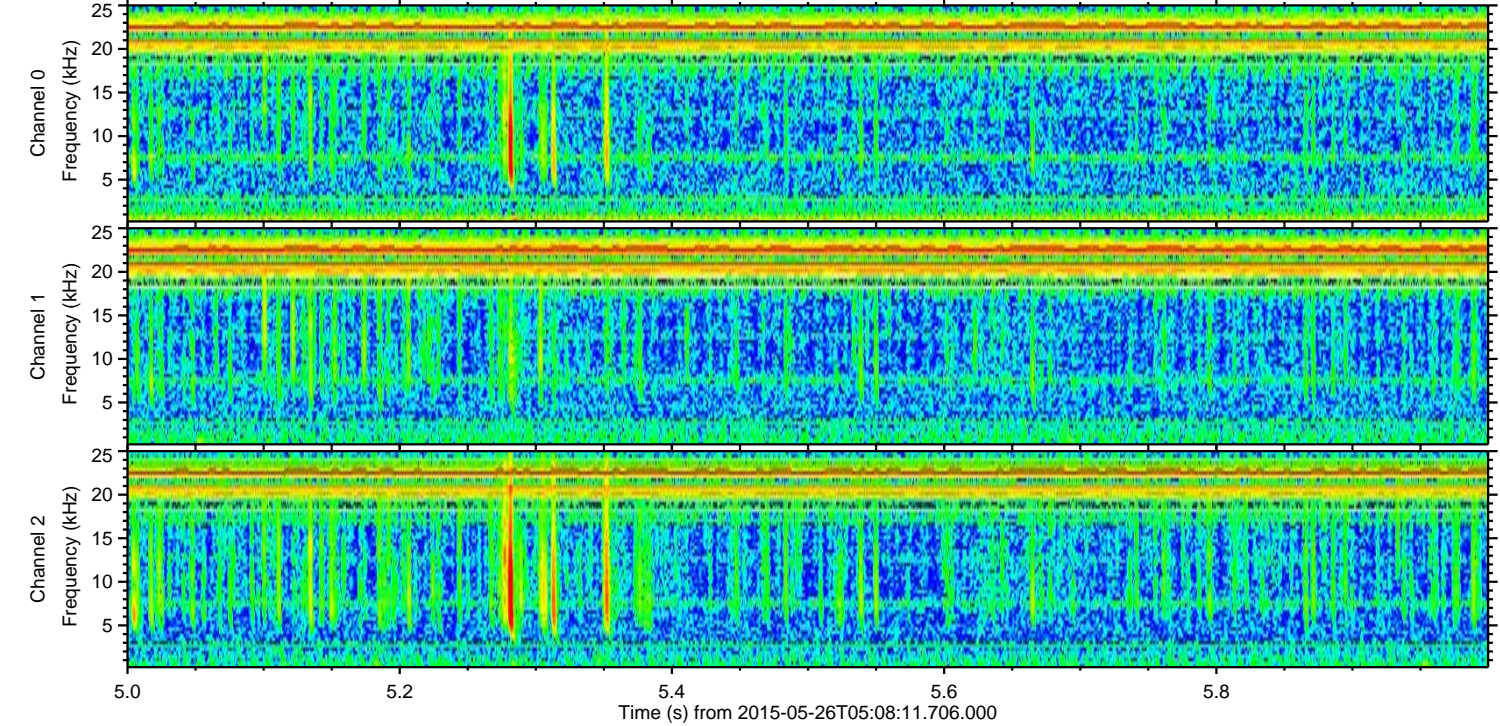
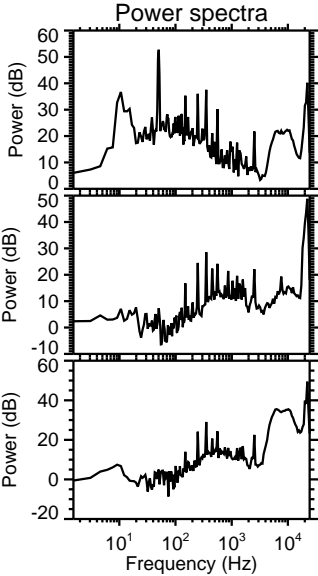
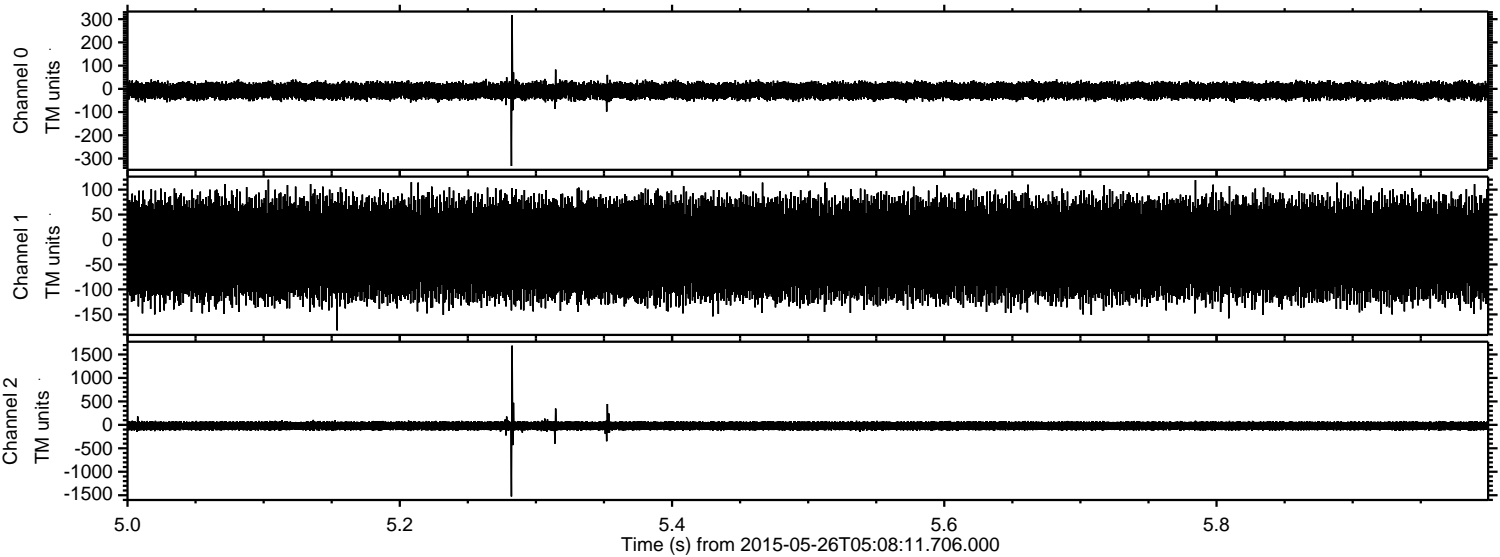
Channel 1
mn: -1871
mx: 975
 μ : -19.7
 σ : 52.0

Channel 2
mn: -1066
mx: 820
 μ : -21.6
 σ : 50.7

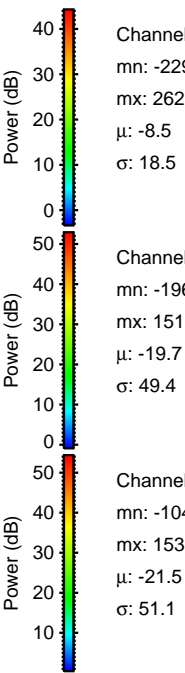
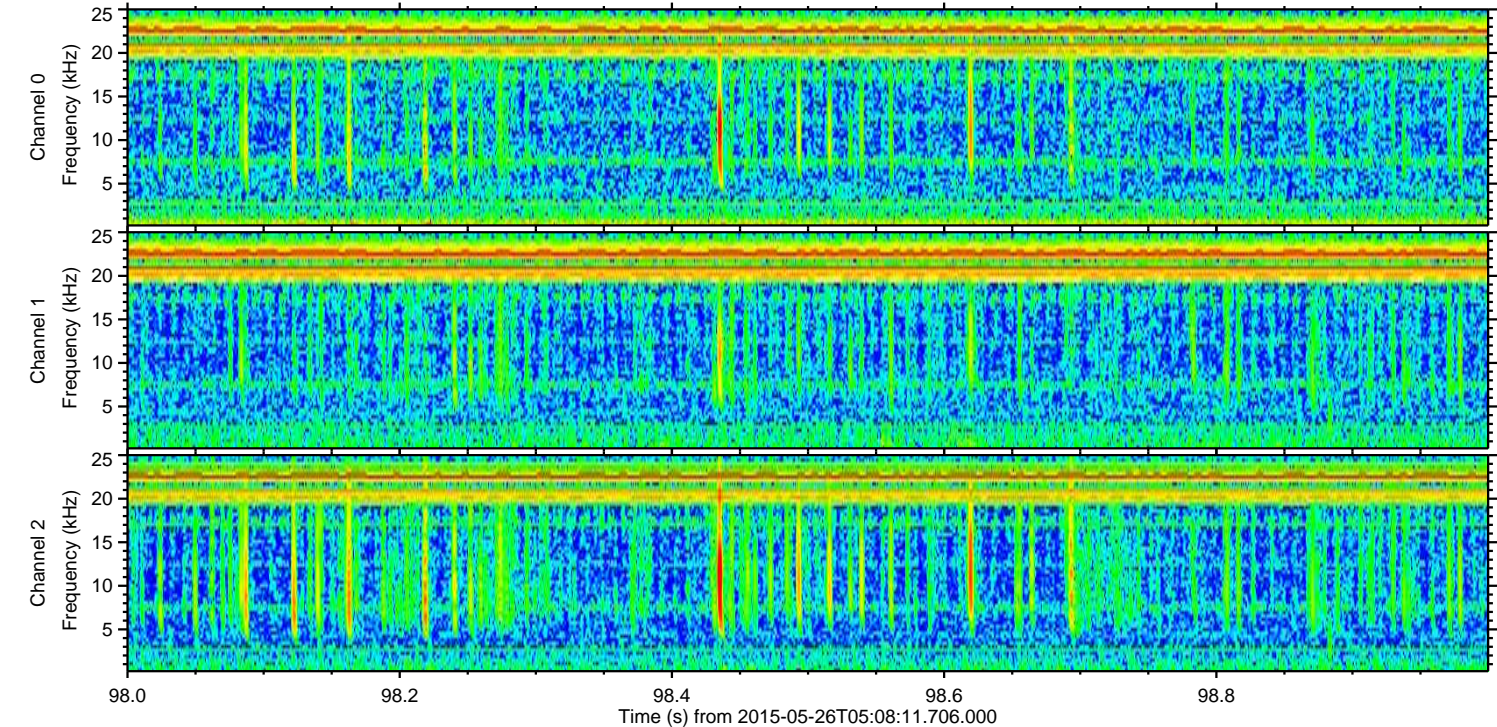
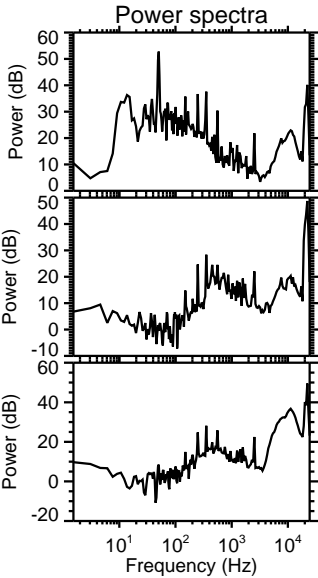
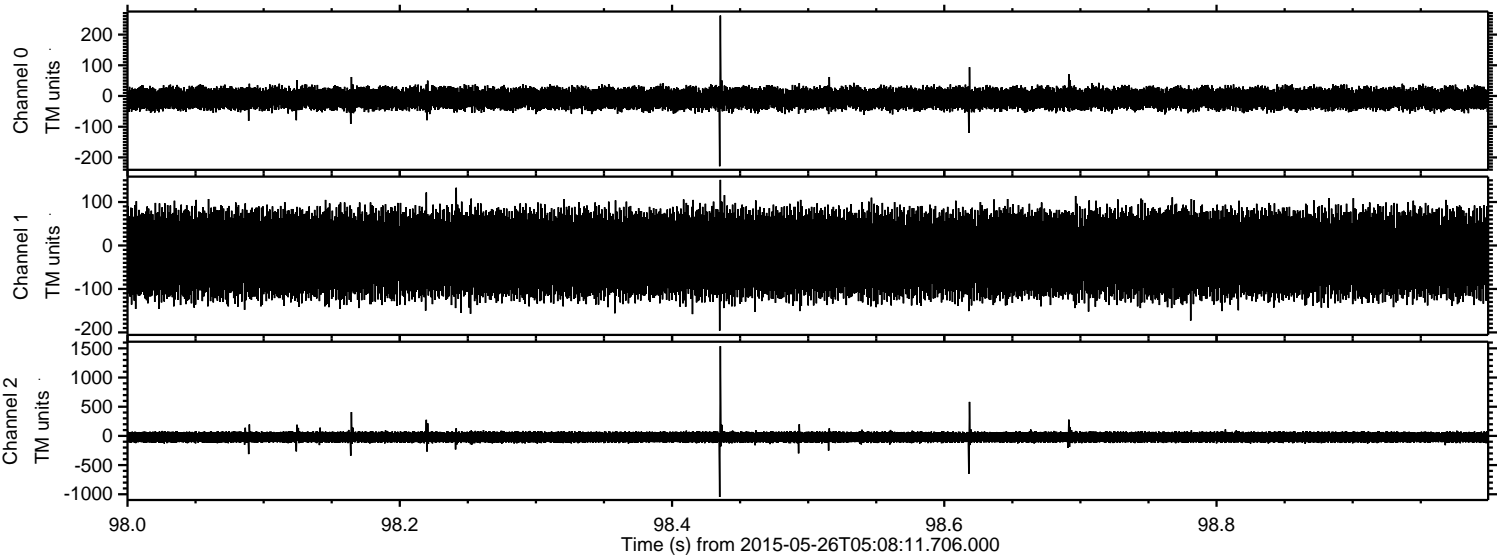
Processed Tue May 26 07:15:43 2015 by ELM ver.2012-10-06 from 001__elm20150526_050810__dat00.bin



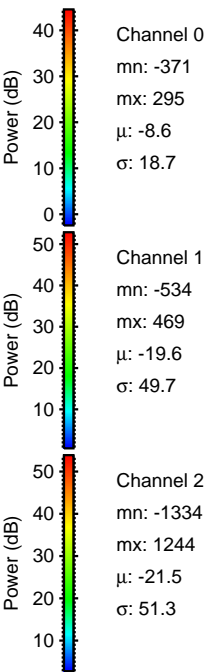
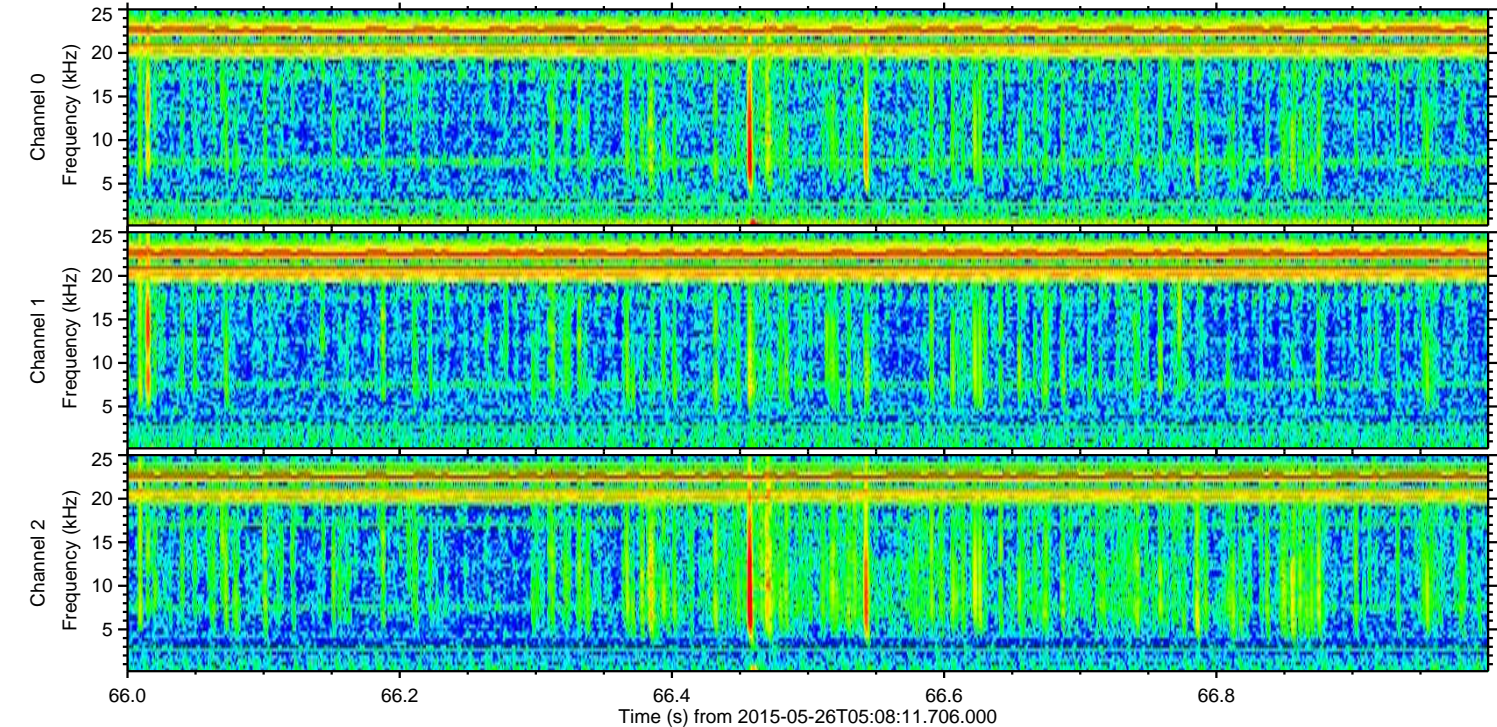
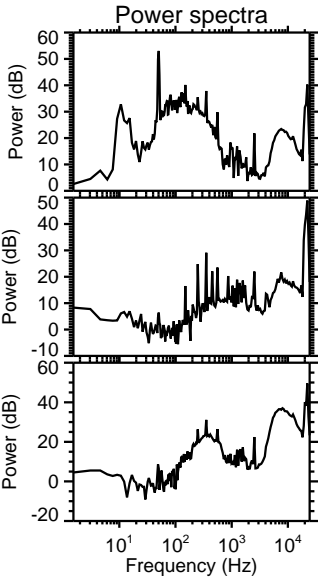
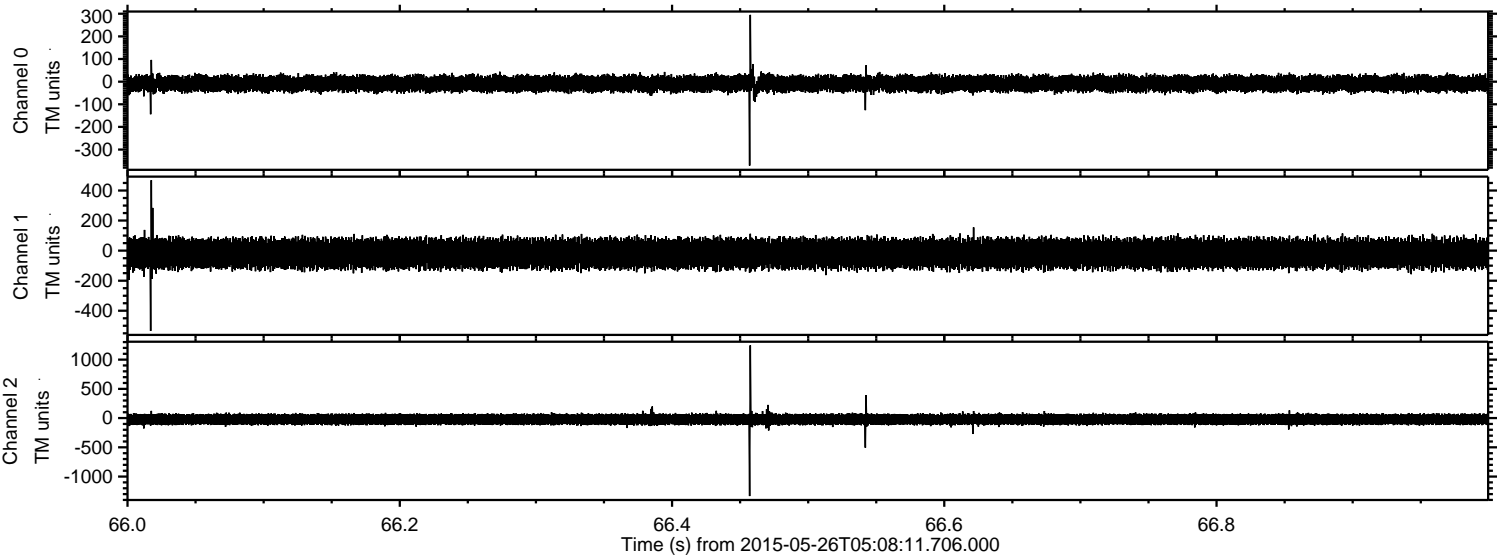
Processed Tue May 26 07:15:44 2015 by ELM ver.2012-10-06 from 001__elm20150526_050810__dat00.bin



Processed Tue May 26 07:15:45 2015 by ELM ver.2012-10-06 from 001__elm20150526_050810__dat00.bin

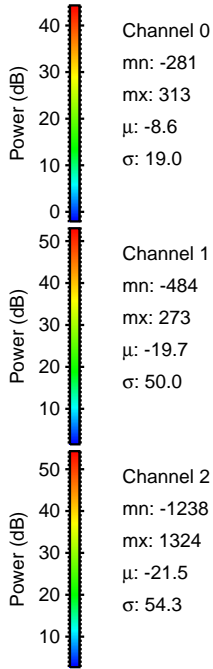
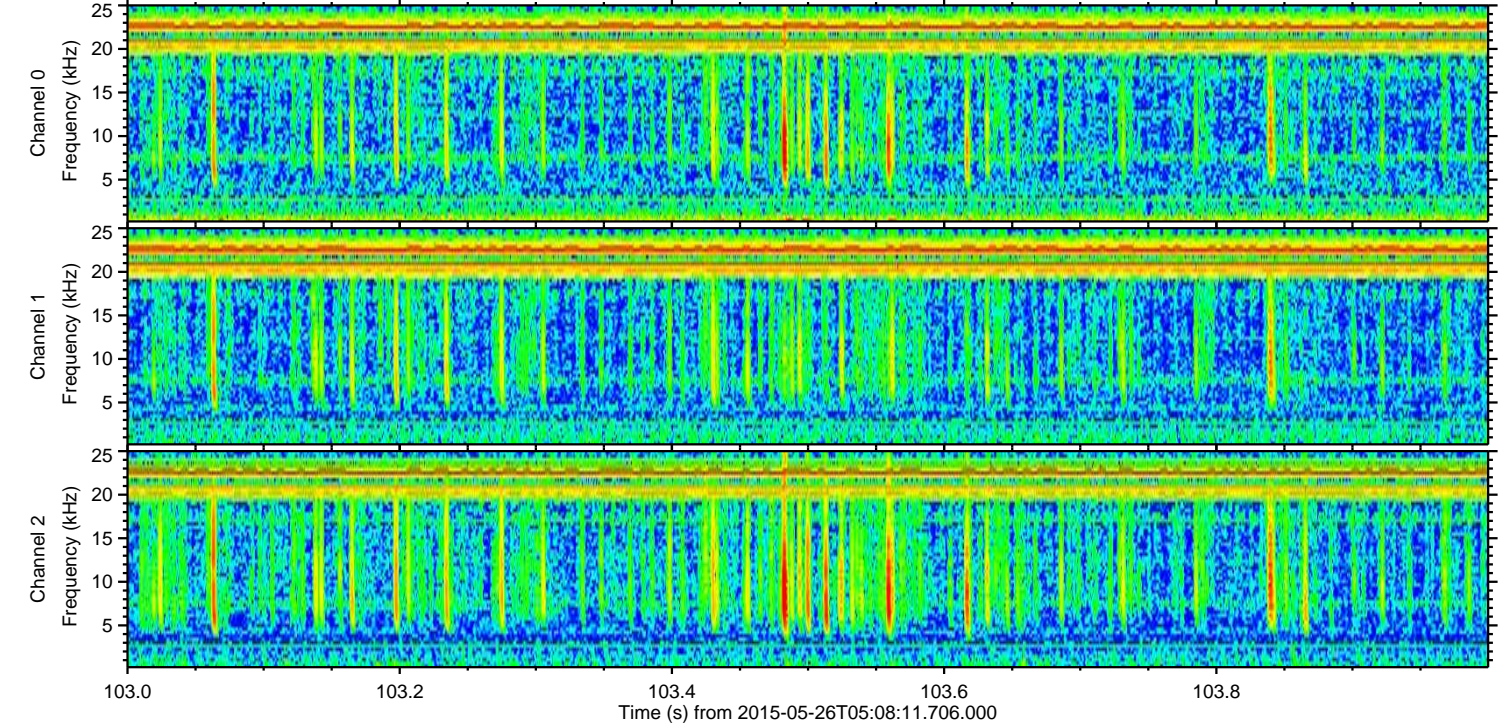
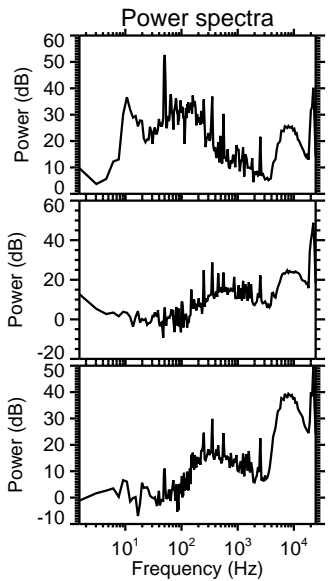
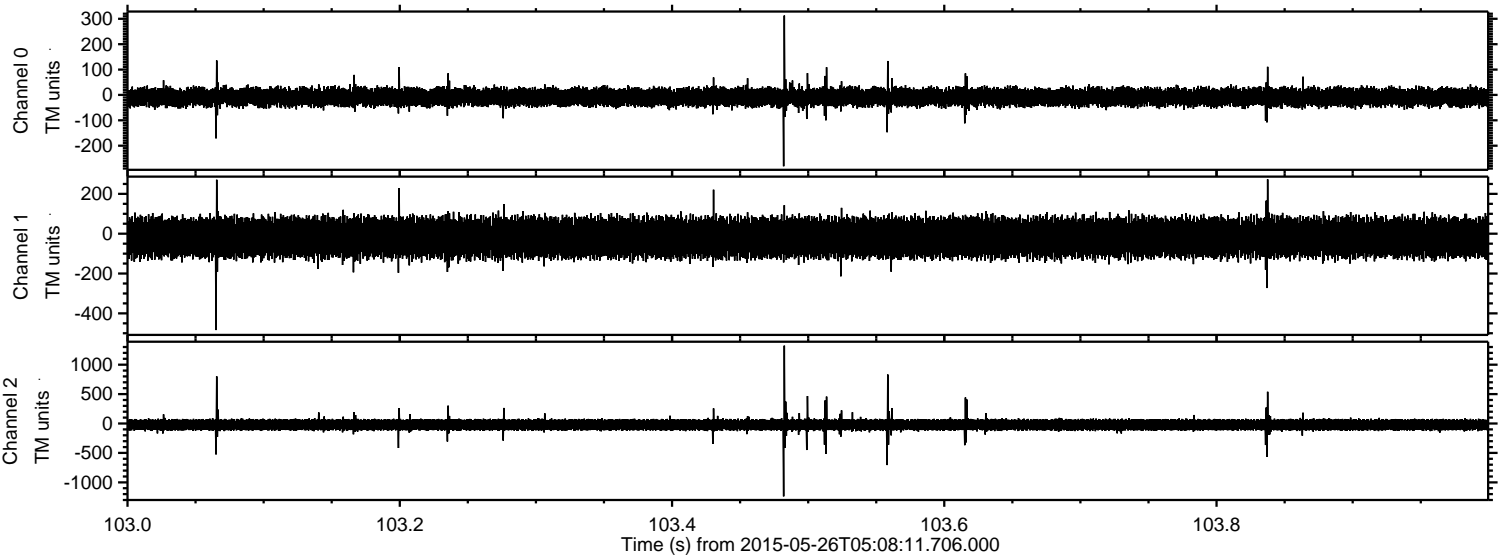


Processed Tue May 26 07:15:46 2015 by ELM ver.2012-10-06 from 001__elm20150526_050810__dat00.bin

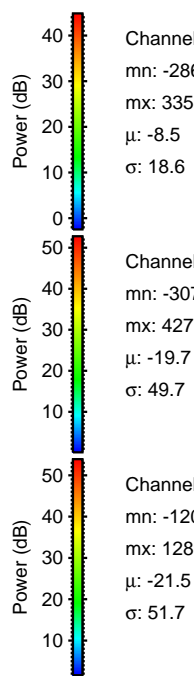
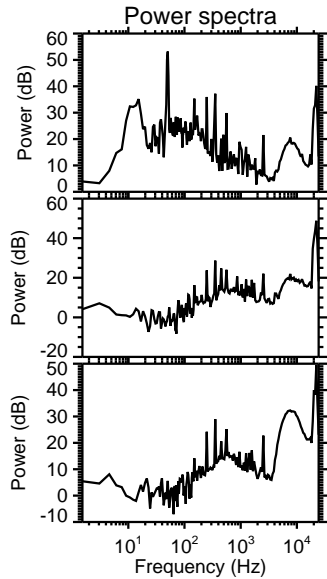
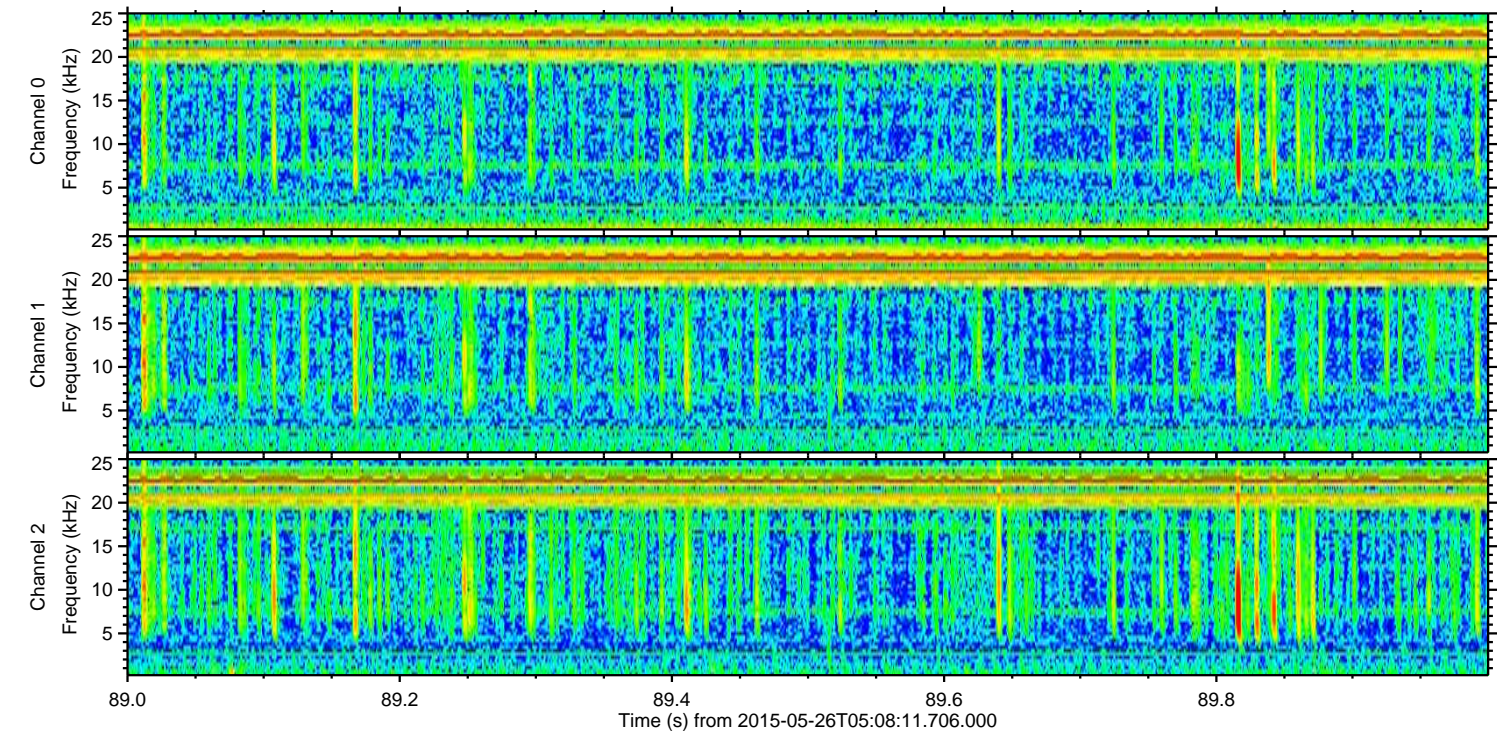
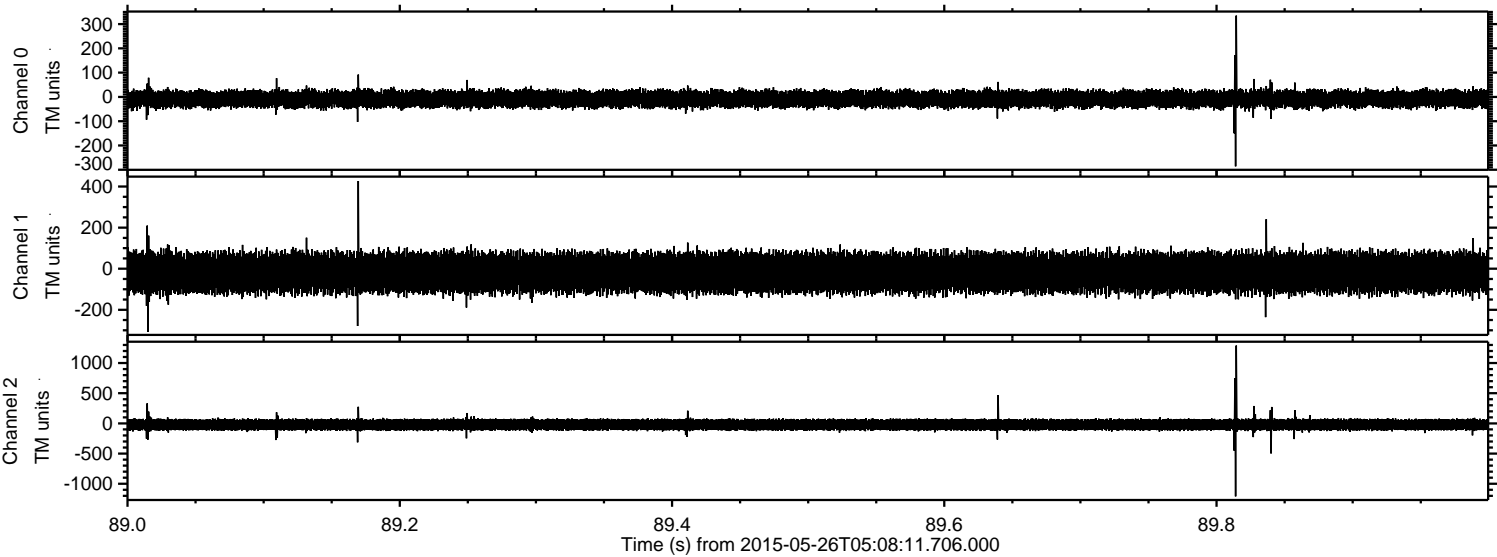


ELMAVAN 3D WAVEFORMS (Measured data sampled at 50 kHz) 49668 packets of 144 samples from 2015-05-26T05:08:11.706.000. Part 104/144

Processed Tue May 26 07:15:47 2015 by ELM ver.2012-10-06 from 001__elm20150526_050810__dat00.bin



Processed Tue May 26 07:15:49 2015 by ELM ver.2012-10-06 from 001__elm20150526_050810__dat00.bin



Channel 0
mn: -286
mx: 335
 μ : -8.5
 σ : 18.6

Channel 1
mn: -307
mx: 427
 μ : -19.7
 σ : 49.7

Channel 2
mn: -1209
mx: 1289
 μ : -21.5
 σ : 51.7

Processed Tue May 26 07:15:50 2015 by ELM ver.2012-10-06 from 001__elm20150526_050810__dat00.bin

