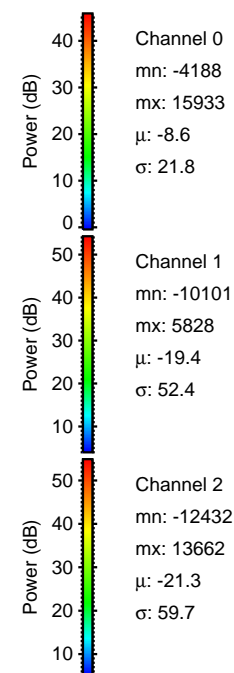
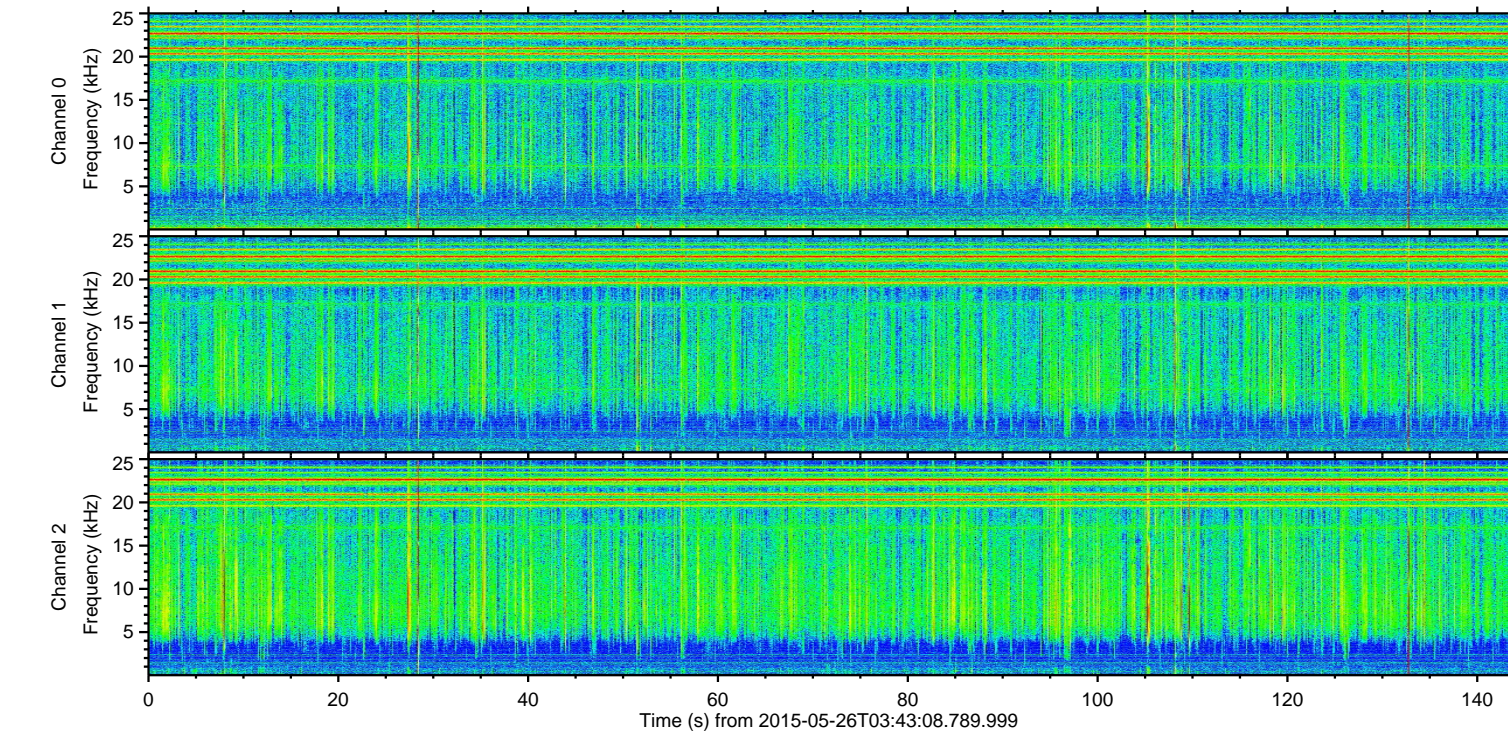
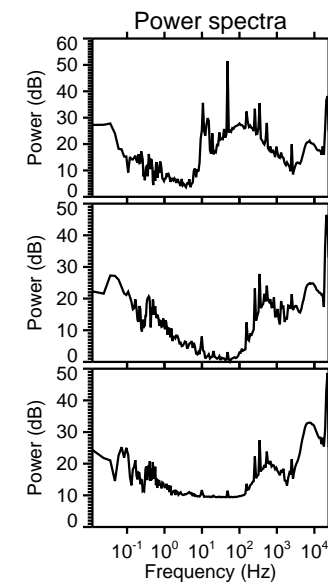
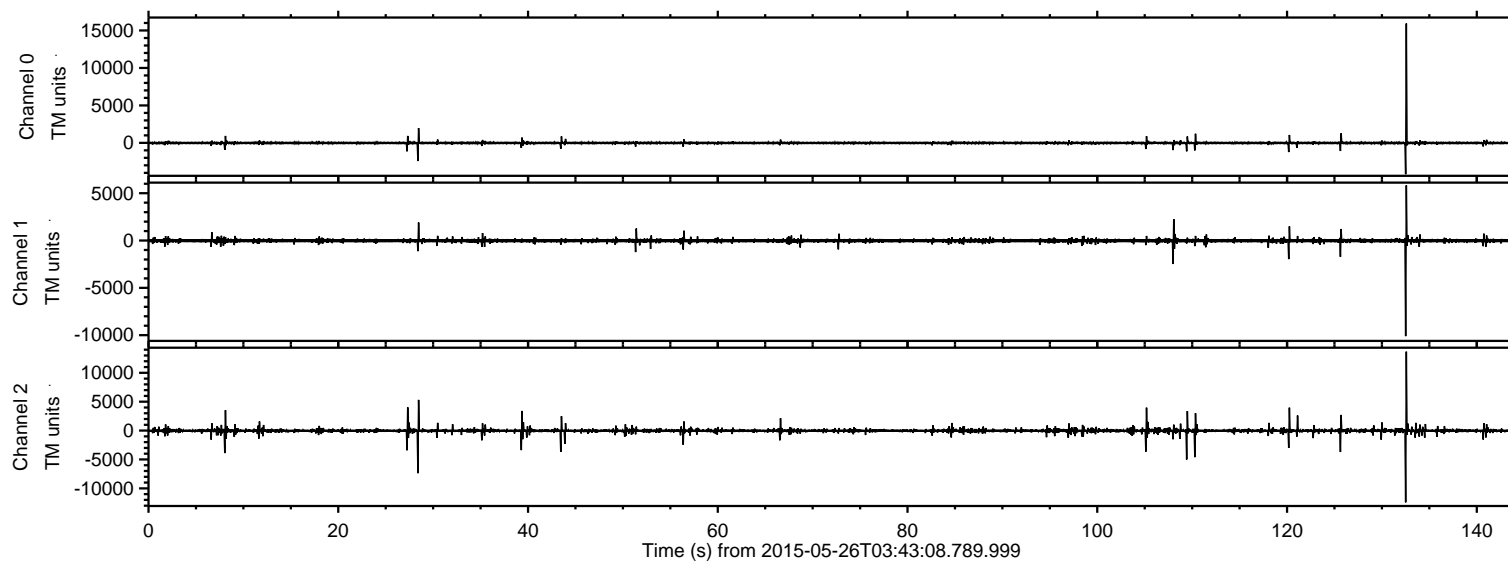


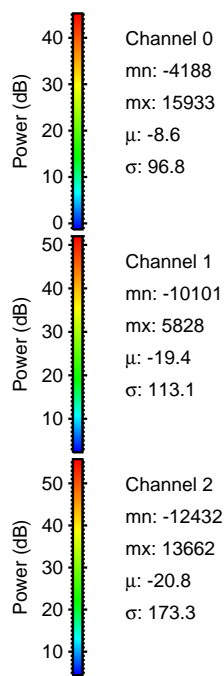
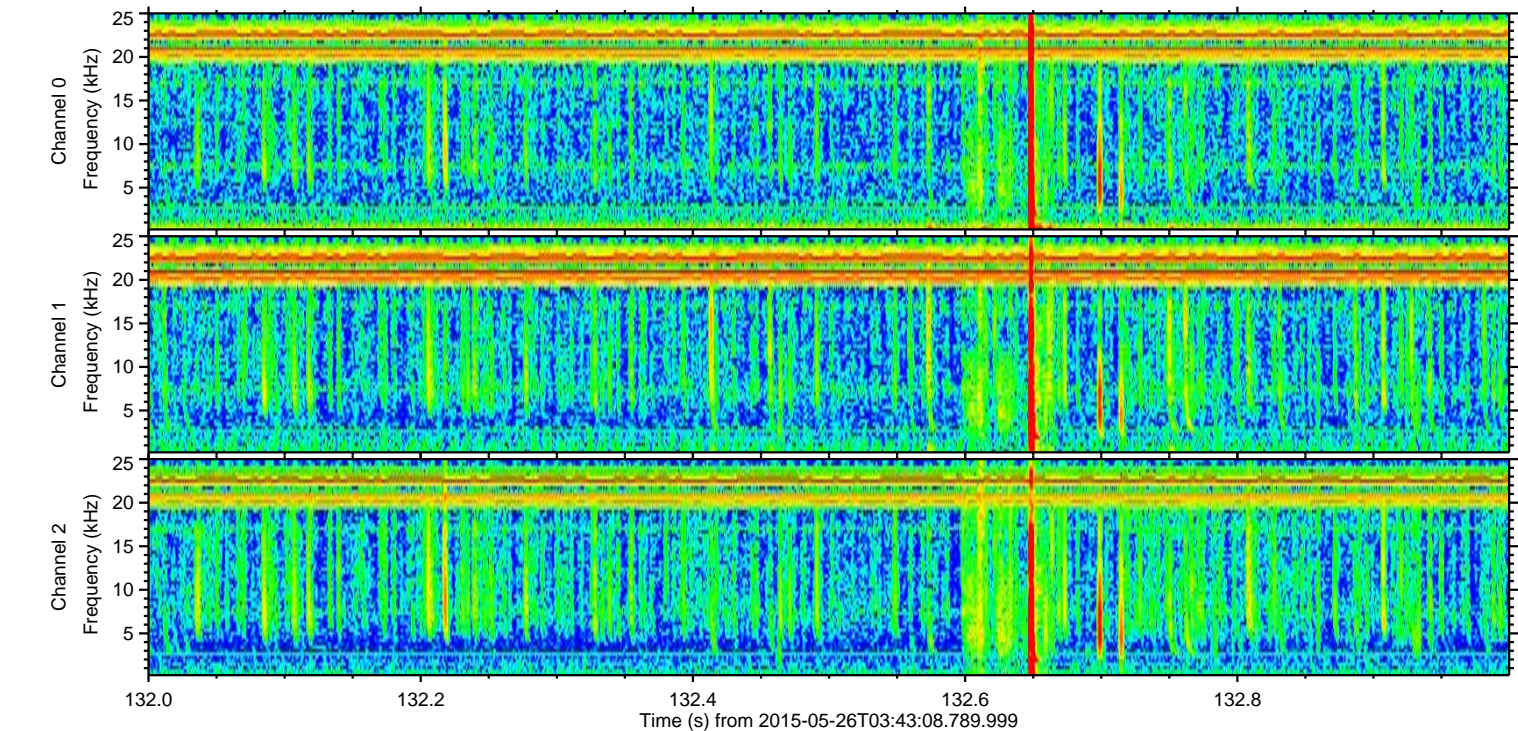
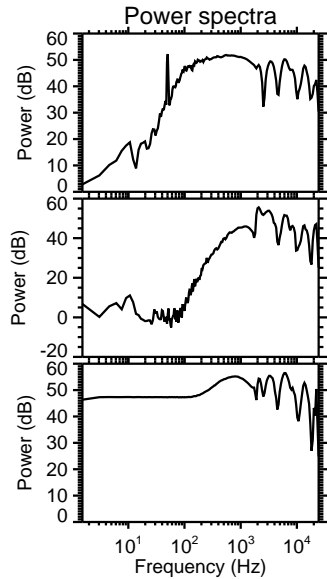
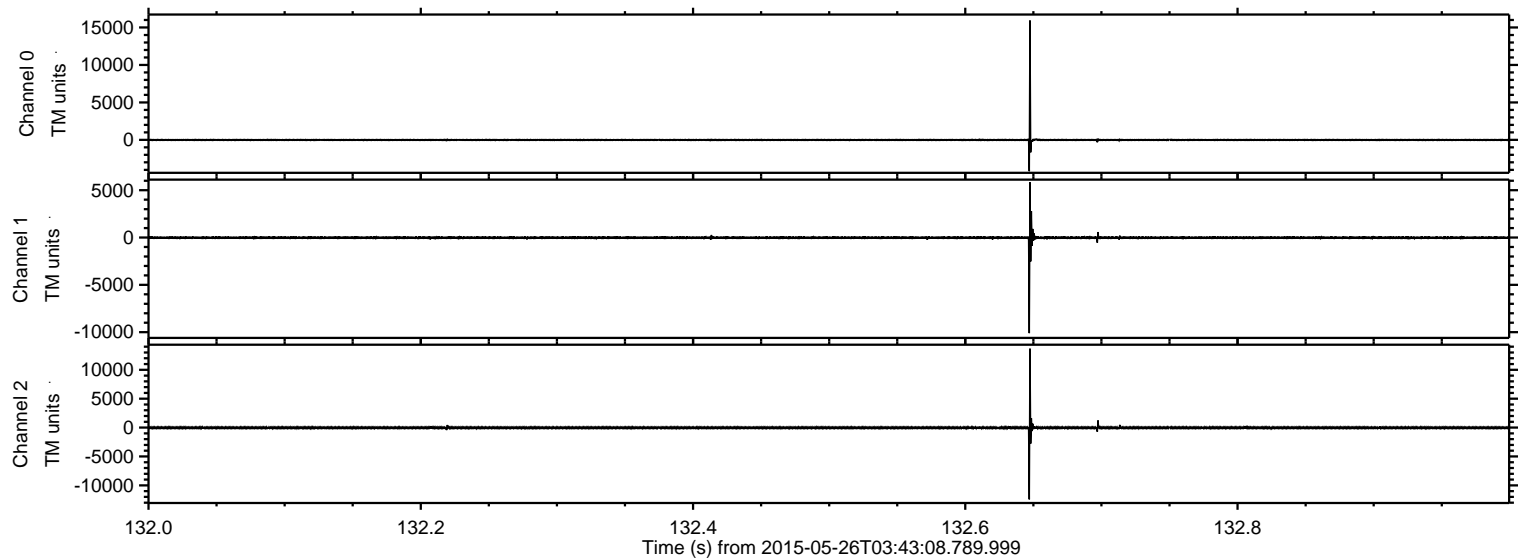
ELMAVAN 3D WAVEFORMS (Measured data sampled at 50 kHz) 49795 packets of 144 samples from 2015-05-26T03:43:08.789.999.

Processed Tue May 26 05:49:19 2015 by ELM ver.2012-10-06 from 001__elm20150526_034307__dat00.bin

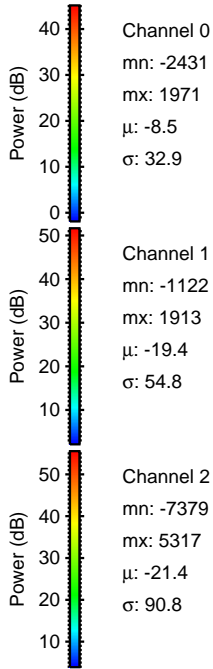
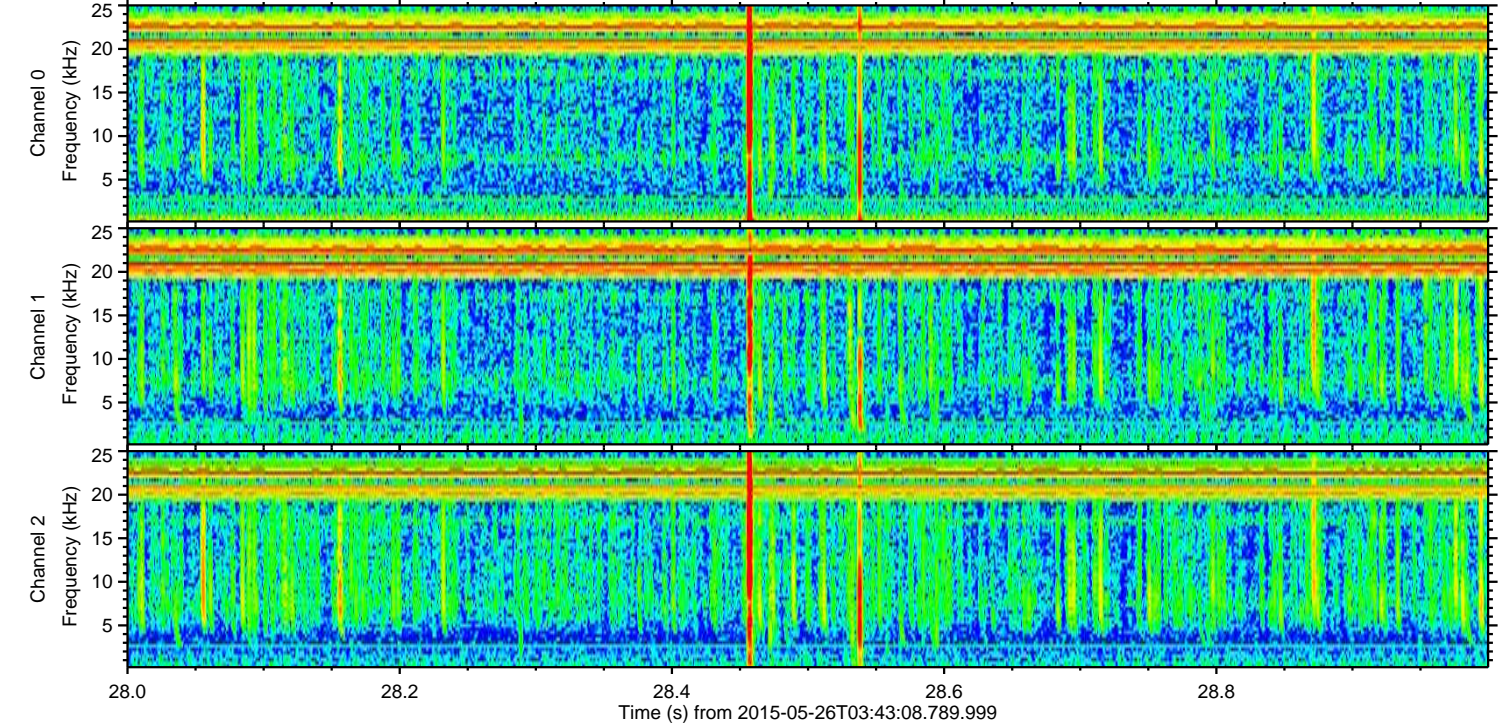
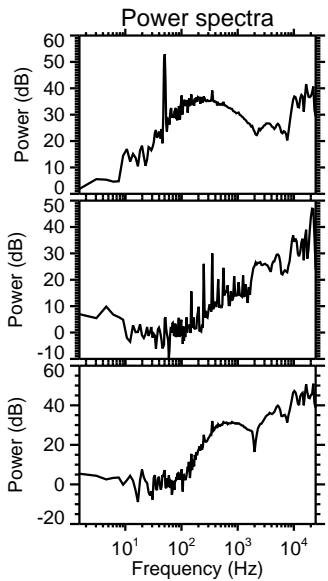
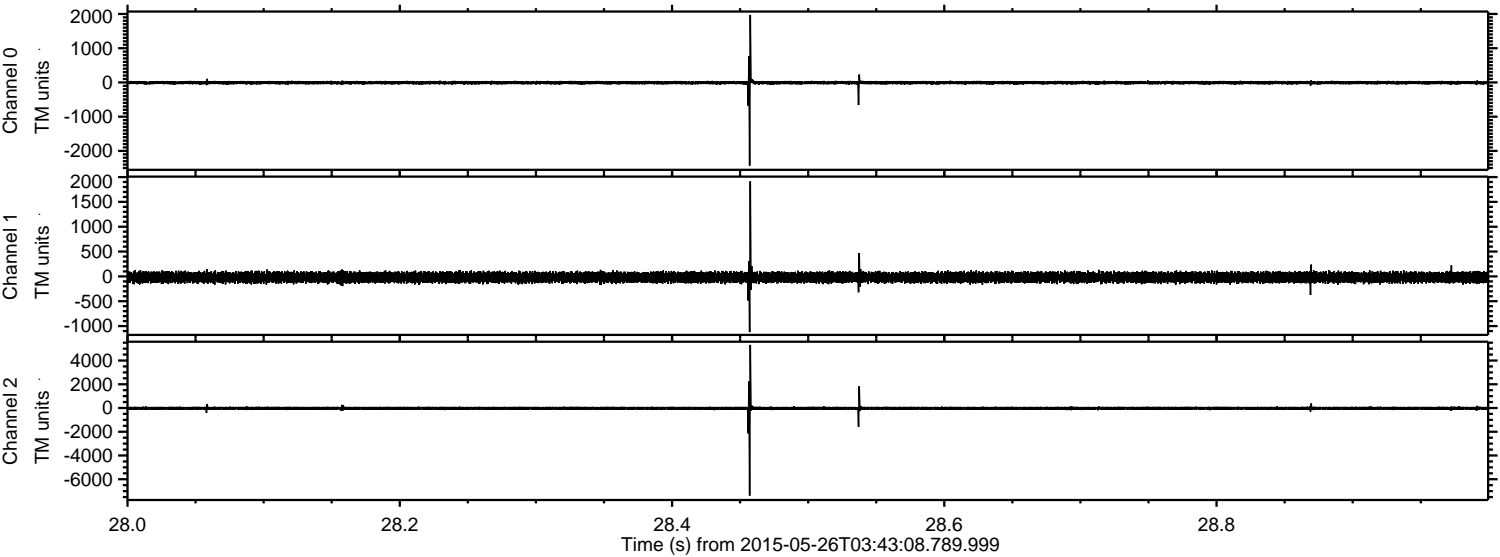


ELMAVAN 3D WAVEFORMS (Measured data sampled at 50 kHz) 49795 packets of 144 samples from 2015-05-26T03:43:08.789.999. Part 133/144

Processed Tue May 26 05:49:30 2015 by ELM ver.2012-10-06 from 001__elm20150526_034307__dat00.bin



Processed Tue May 26 05:49:31 2015 by ELM ver.2012-10-06 from 001__elm20150526_034307__dat00.bin



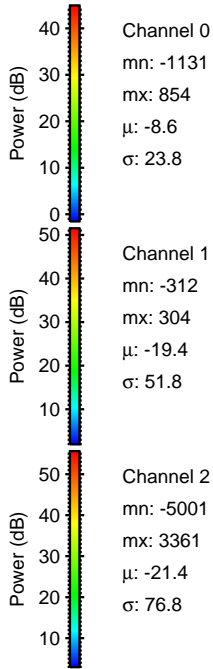
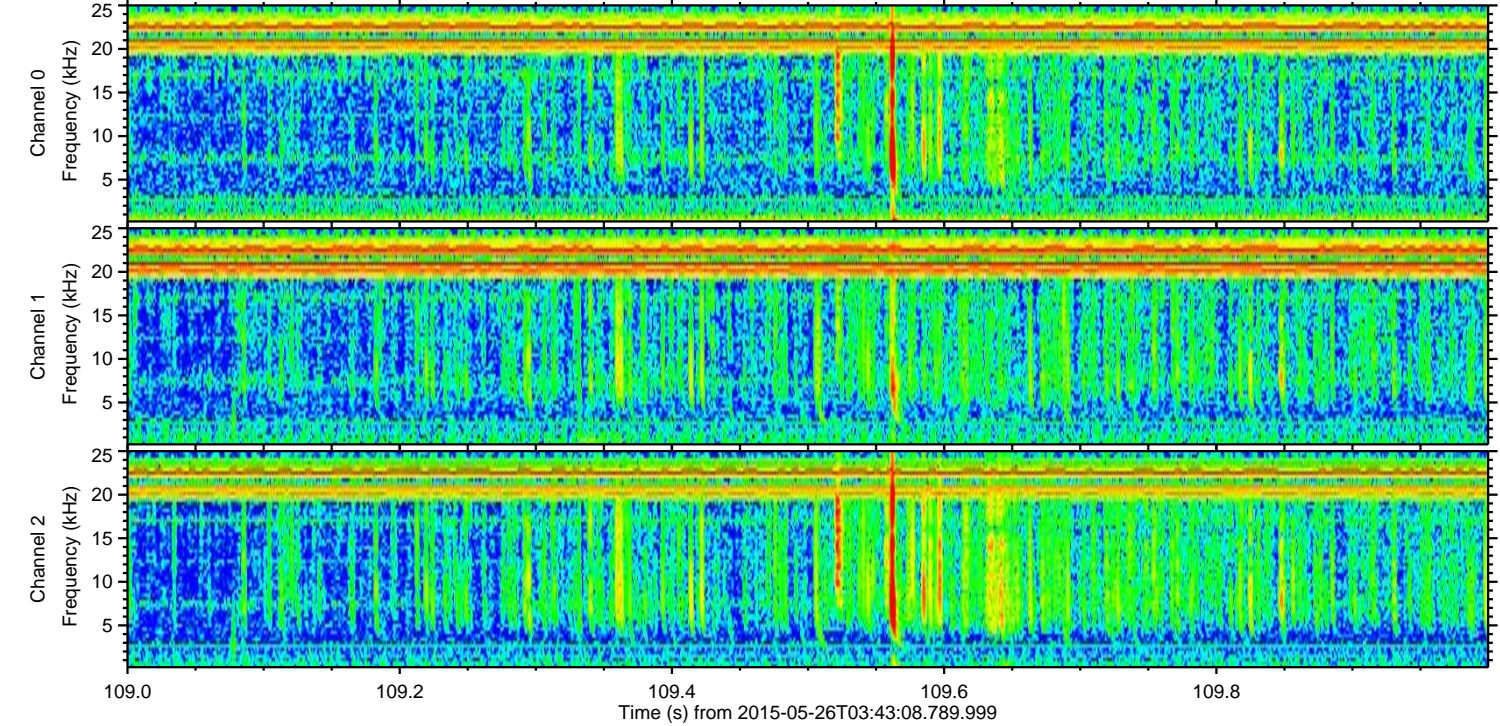
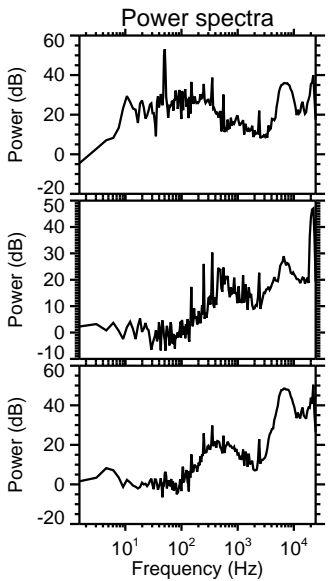
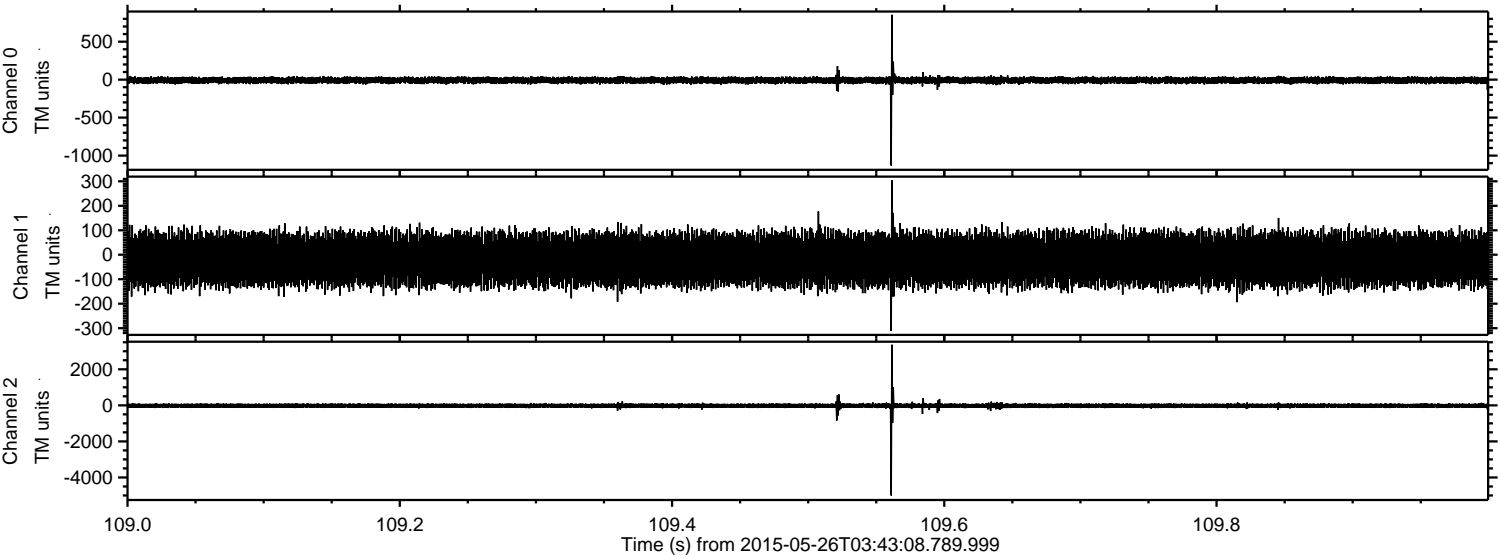
Channel 0
mn: -2431
mx: 1971
 μ : -8.5
 σ : 32.9

Channel 1
mn: -1122
mx: 1913
 μ : -19.4
 σ : 54.8

Channel 2
mn: -7379
mx: 5317
 μ : -21.4
 σ : 90.8

ELMAVAN 3D WAVEFORMS (Measured data sampled at 50 kHz) 49795 packets of 144 samples from 2015-05-26T03:43:08.789.999. Part 110/144

Processed Tue May 26 05:49:32 2015 by ELM ver.2012-10-06 from 001__elm20150526_034307__dat00.bin



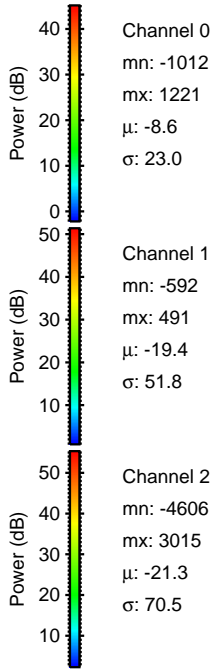
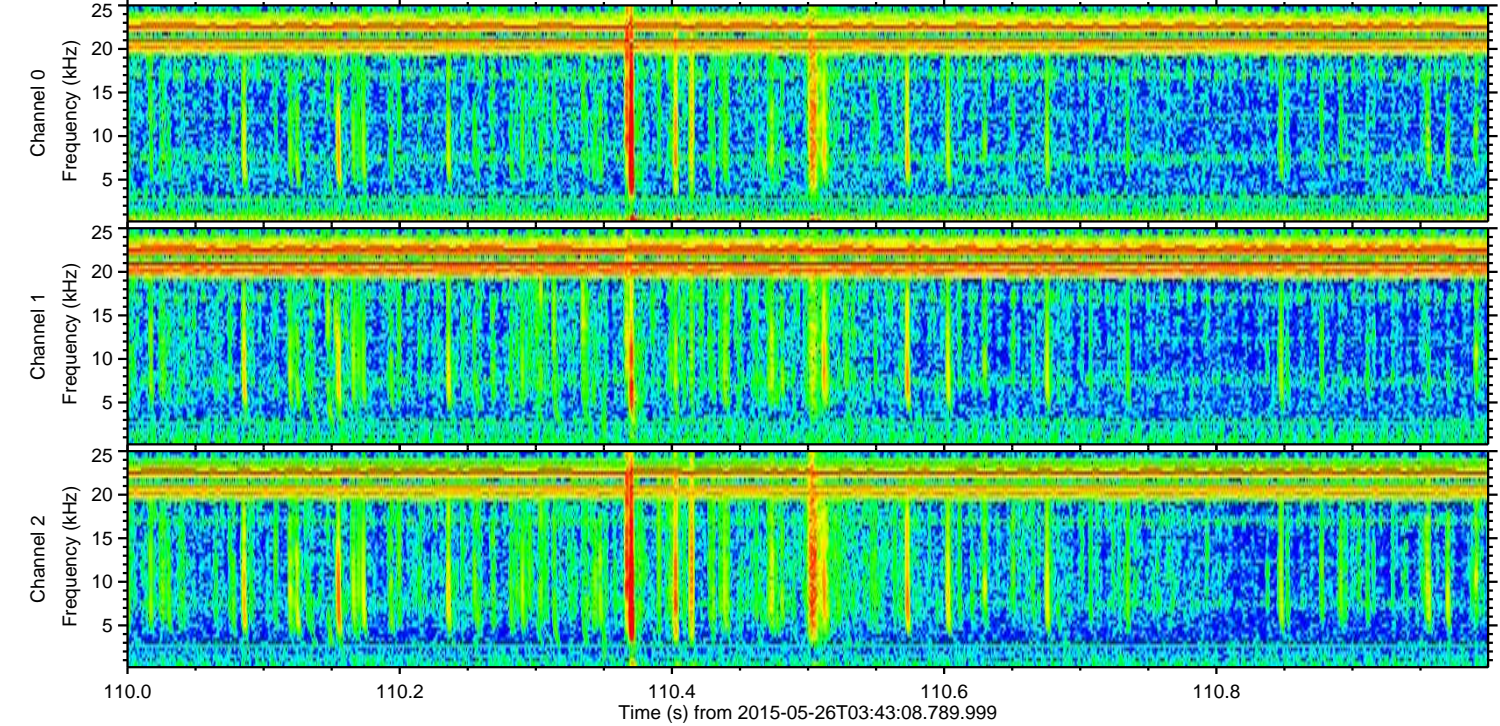
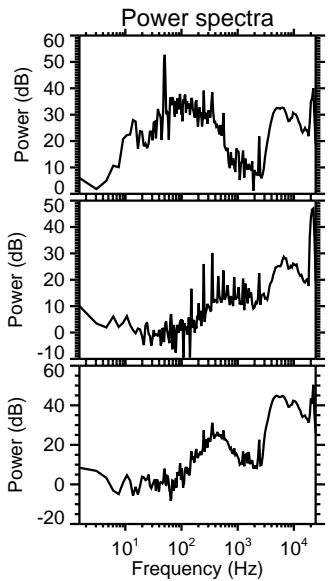
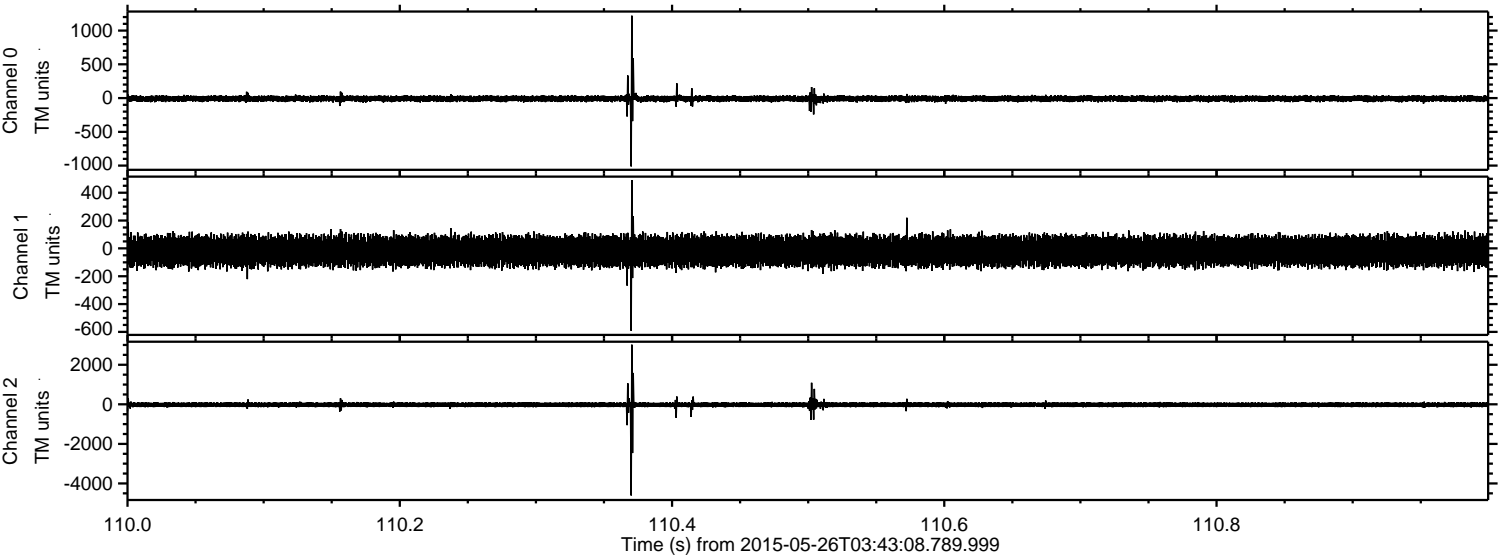
Channel 0
mn: -1131
mx: 854
 μ : -8.6
 σ : 23.8

Channel 1
mn: -312
mx: 304
 μ : -19.4
 σ : 51.8

Channel 2
mn: -5001
mx: 3361
 μ : -21.4
 σ : 76.8

ELMAVAN 3D WAVEFORMS (Measured data sampled at 50 kHz) 49795 packets of 144 samples from 2015-05-26T03:43:08.789.999. Part 111/144

Processed Tue May 26 05:49:33 2015 by ELM ver.2012-10-06 from 001__elm20150526_034307__dat00.bin

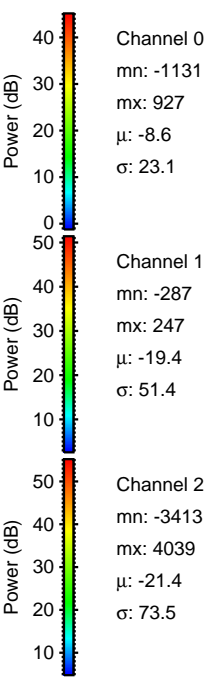
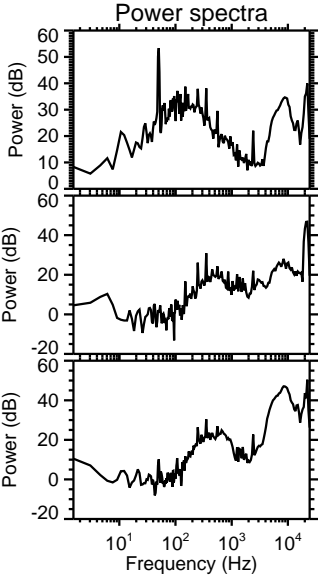
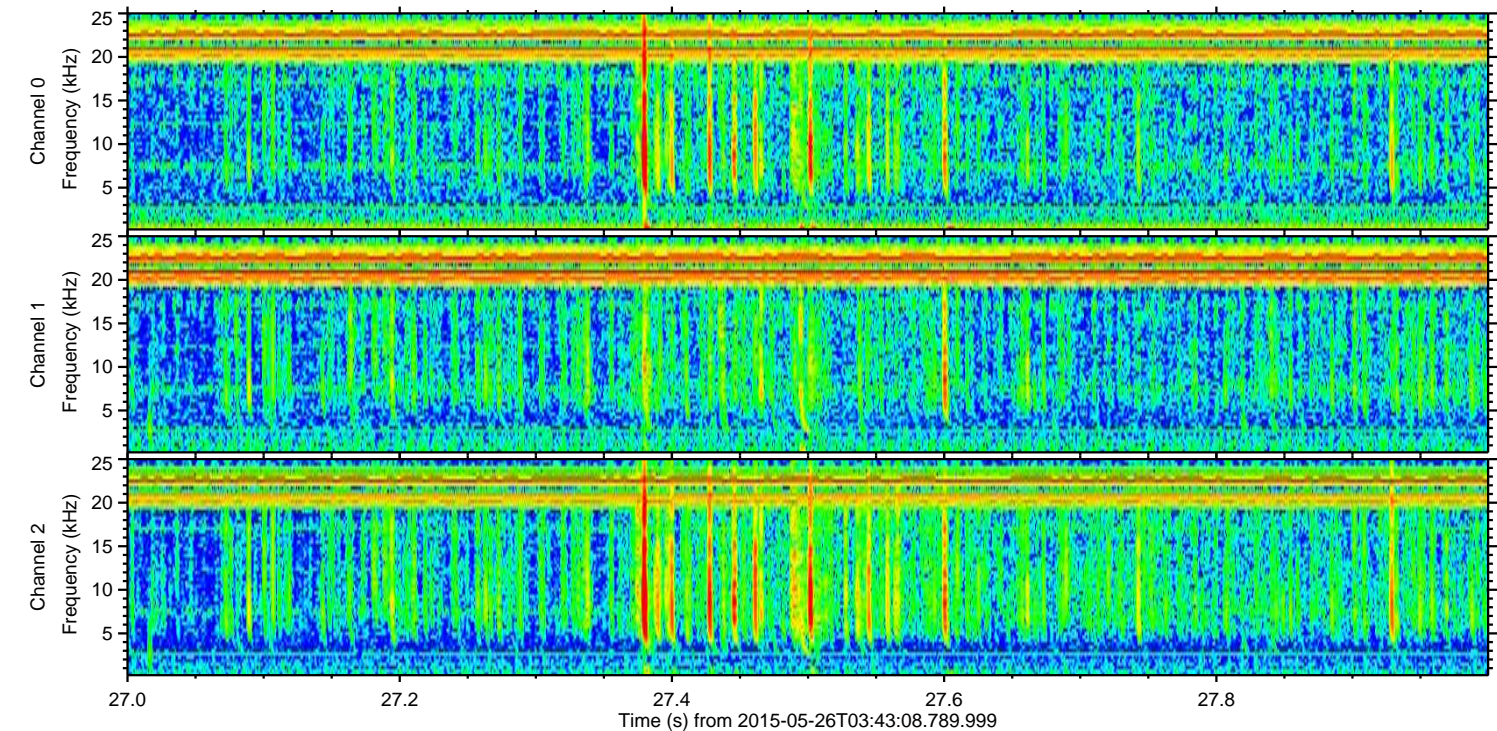
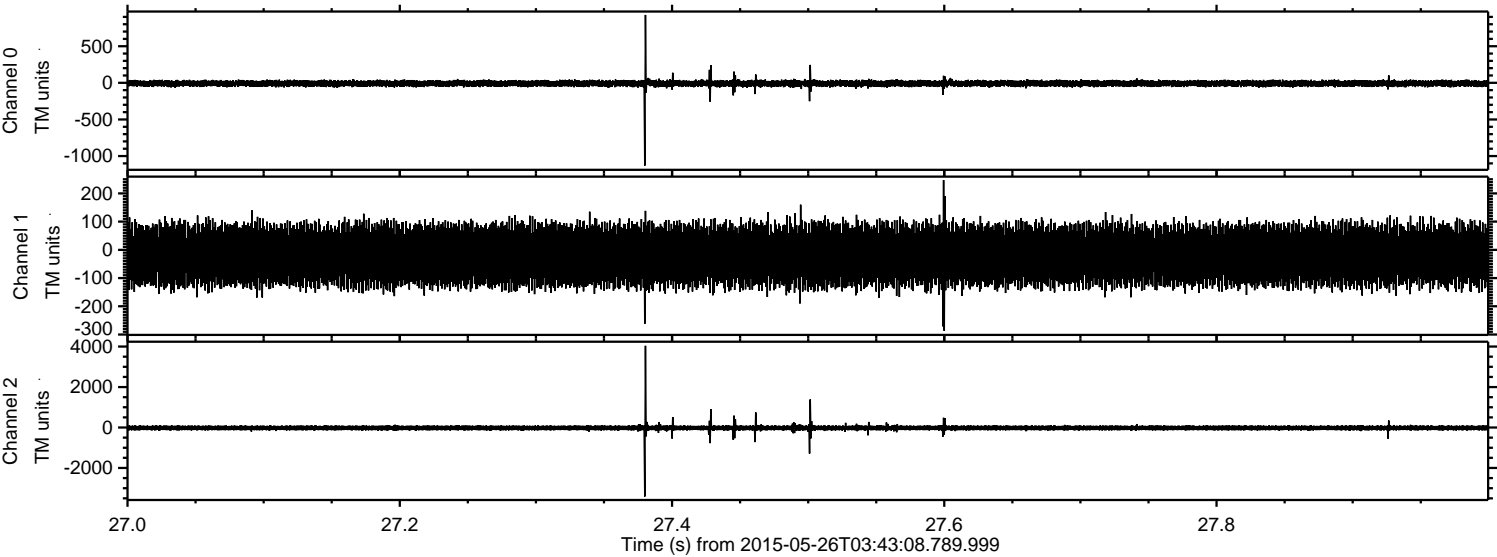


Channel 0
mn: -1012
mx: 1221
 μ : -8.6
 σ : 23.0

Channel 1
mn: -592
mx: 491
 μ : -19.4
 σ : 51.8

Channel 2
mn: -4606
mx: 3015
 μ : -21.3
 σ : 70.5

Processed Tue May 26 05:49:34 2015 by ELM ver.2012-10-06 from 001__elm20150526_034307__dat00.bin



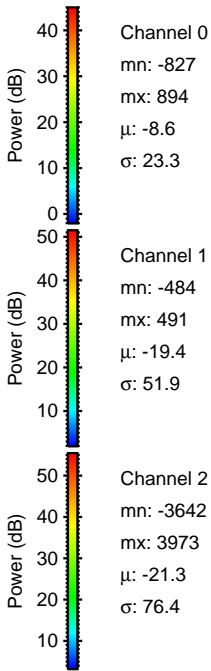
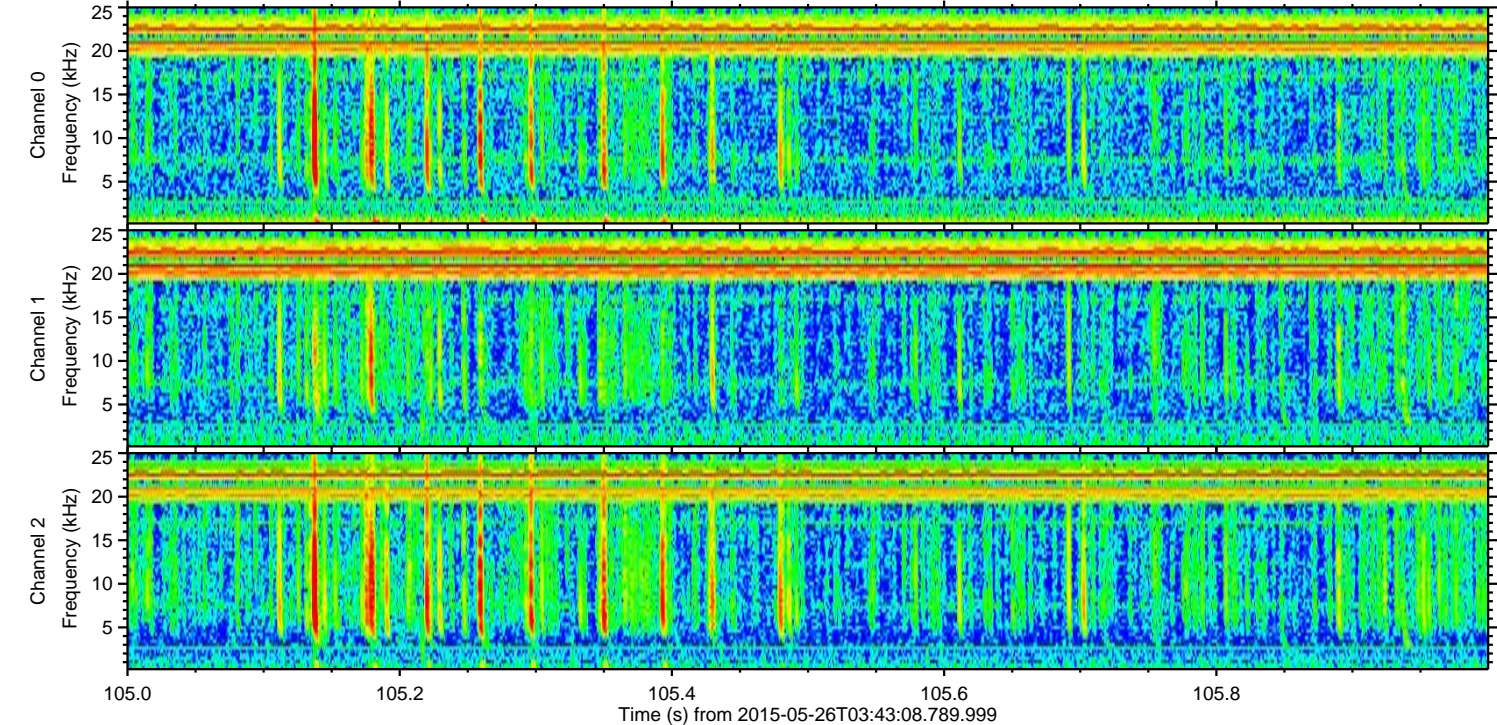
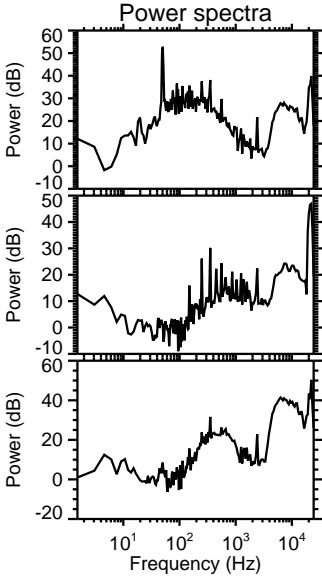
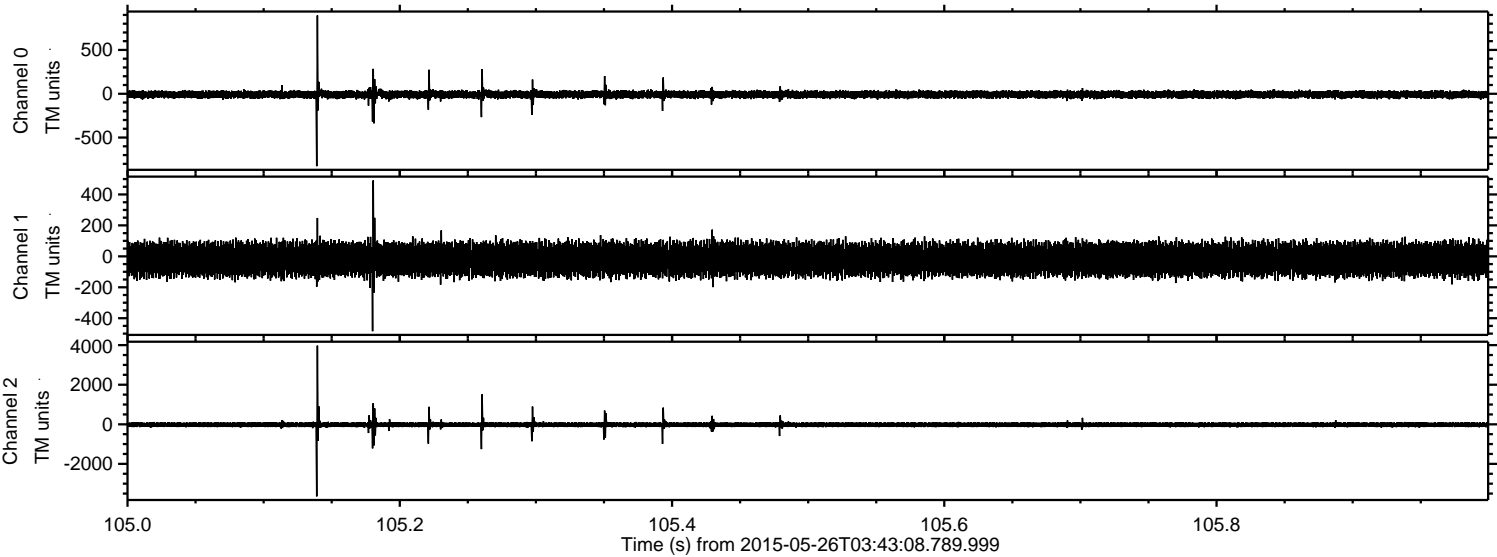
Channel 0
mn: -1131
mx: 927
 μ : -8.6
 σ : 23.1

Channel 1
mn: -287
mx: 247
 μ : -19.4
 σ : 51.4

Channel 2
mn: -3413
mx: 4039
 μ : -21.4
 σ : 73.5

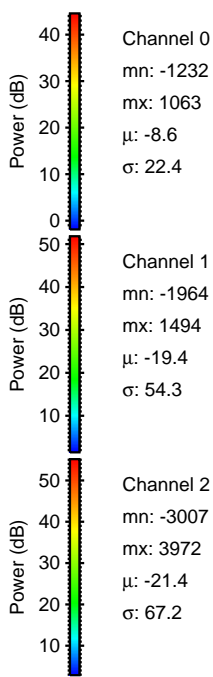
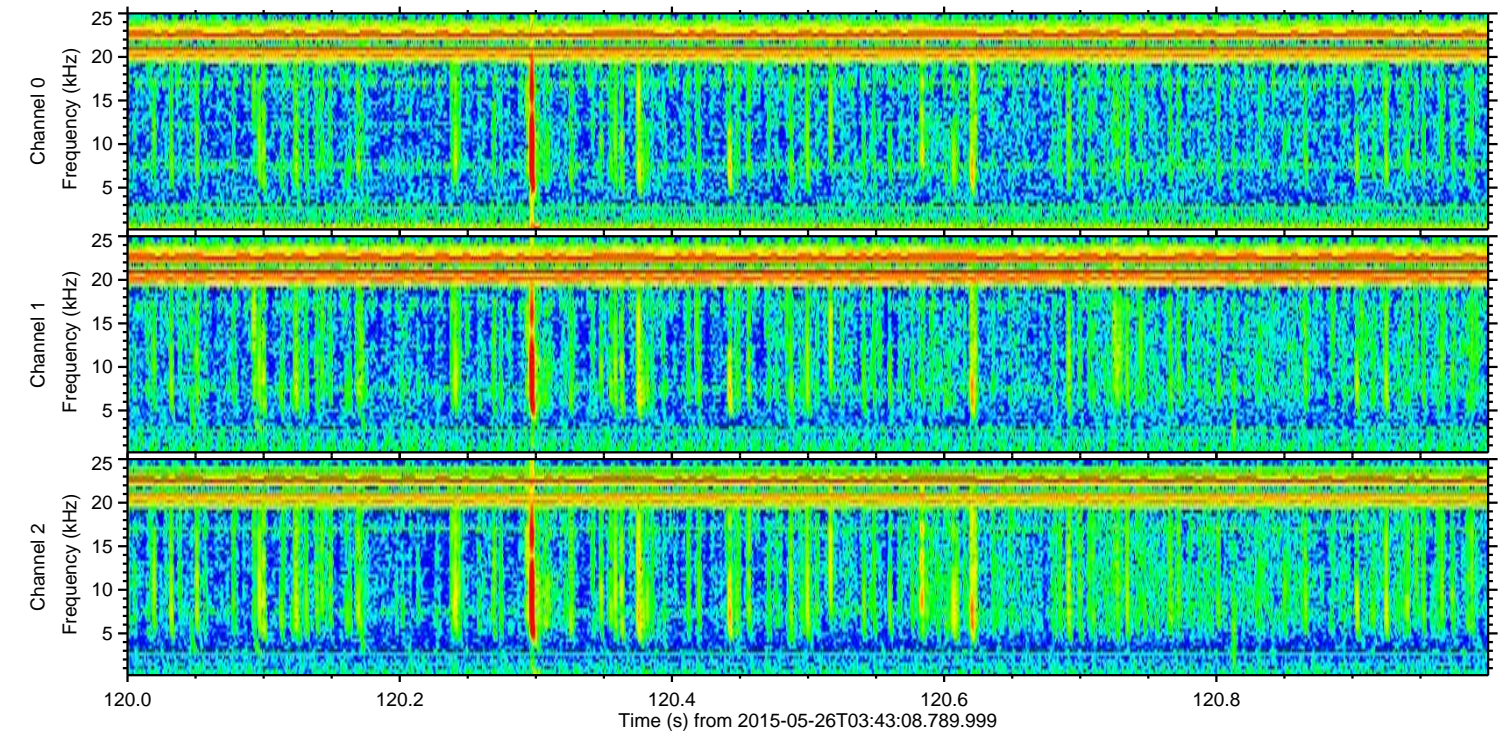
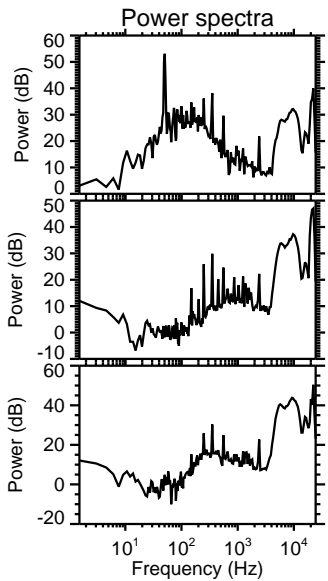
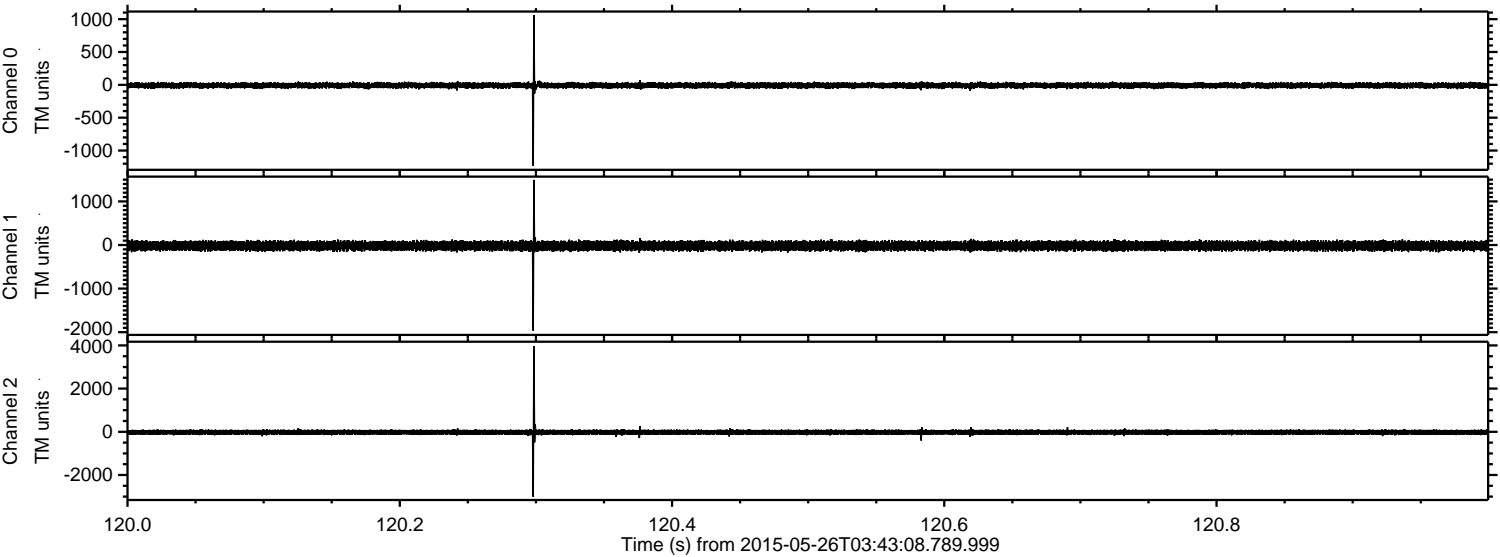
ELMAVAN 3D WAVEFORMS (Measured data sampled at 50 kHz) 49795 packets of 144 samples from 2015-05-26T03:43:08.789.999. Part 106/144

Processed Tue May 26 05:49:35 2015 by ELM ver.2012-10-06 from 001__elm20150526_034307__dat00.bin



ELMAVAN 3D WAVEFORMS (Measured data sampled at 50 kHz) 49795 packets of 144 samples from 2015-05-26T03:43:08.789.999. Part 121/144

Processed Tue May 26 05:49:36 2015 by ELM ver.2012-10-06 from 001__elm20150526_034307__dat00.bin

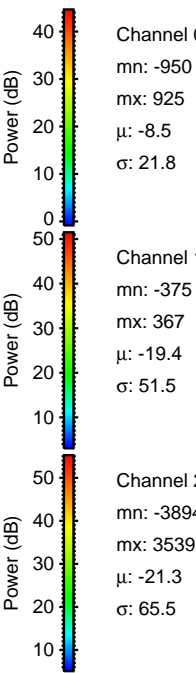
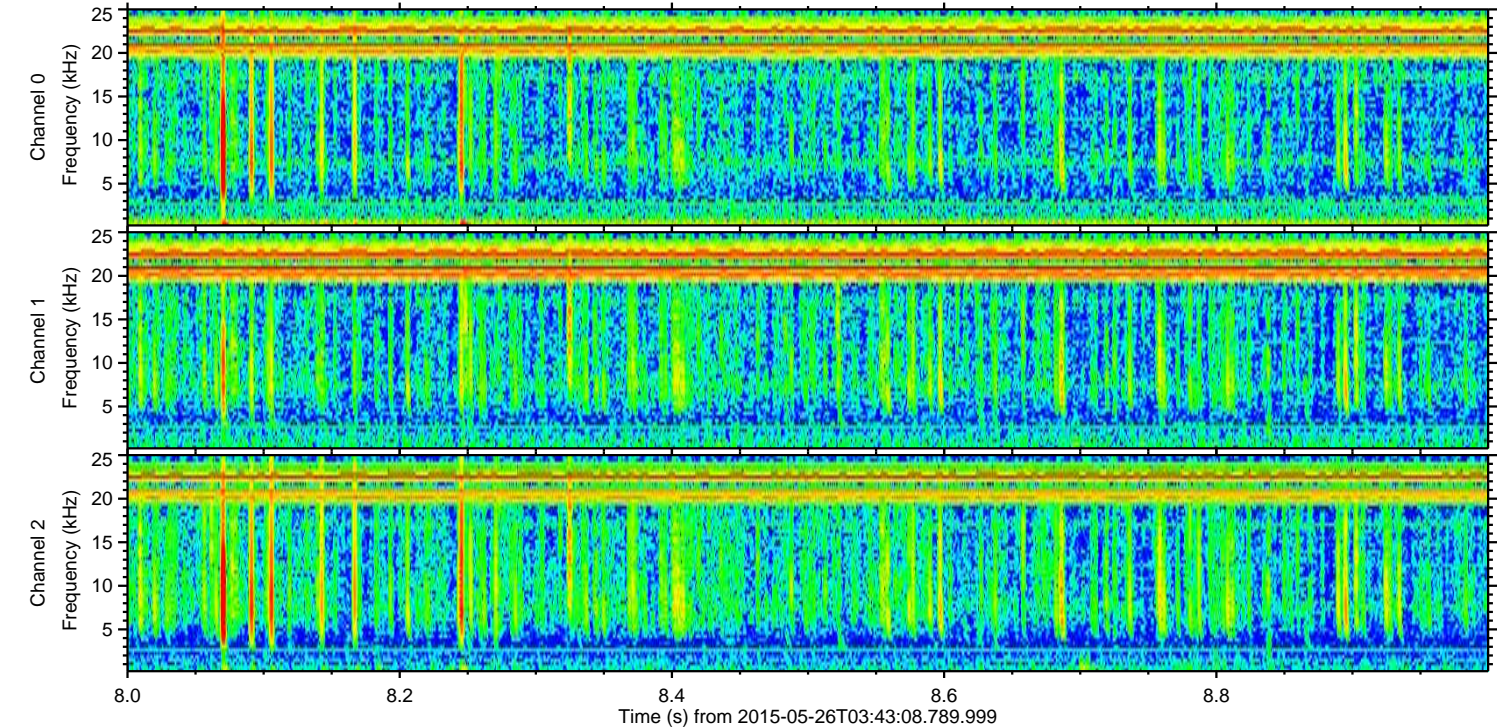
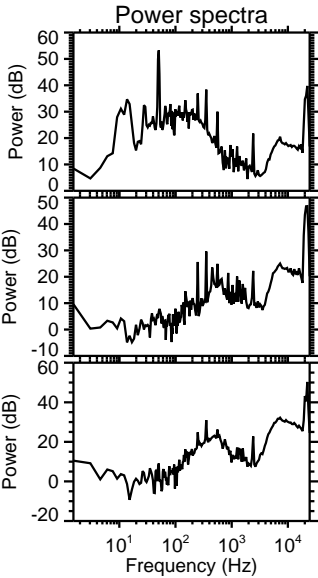
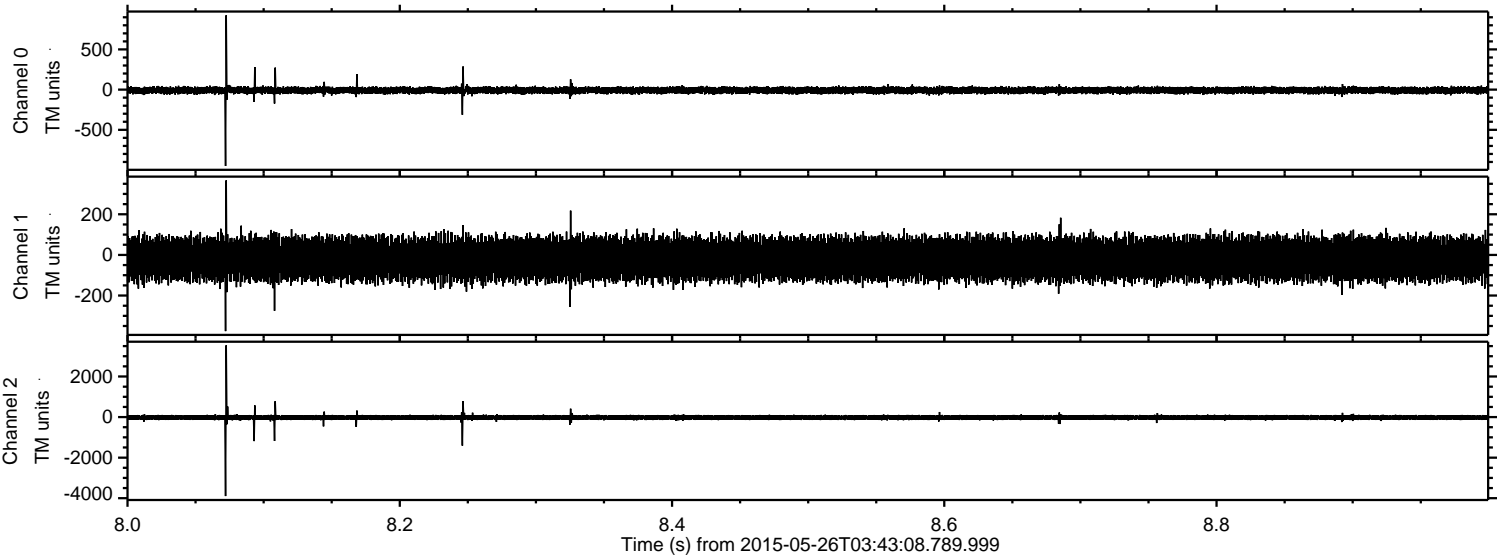


Channel 0
mn: -1232
mx: 1063
 μ : -8.6
 σ : 22.4

Channel 1
mn: -1964
mx: 1494
 μ : -19.4
 σ : 54.3

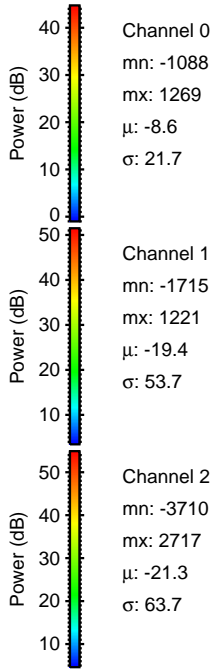
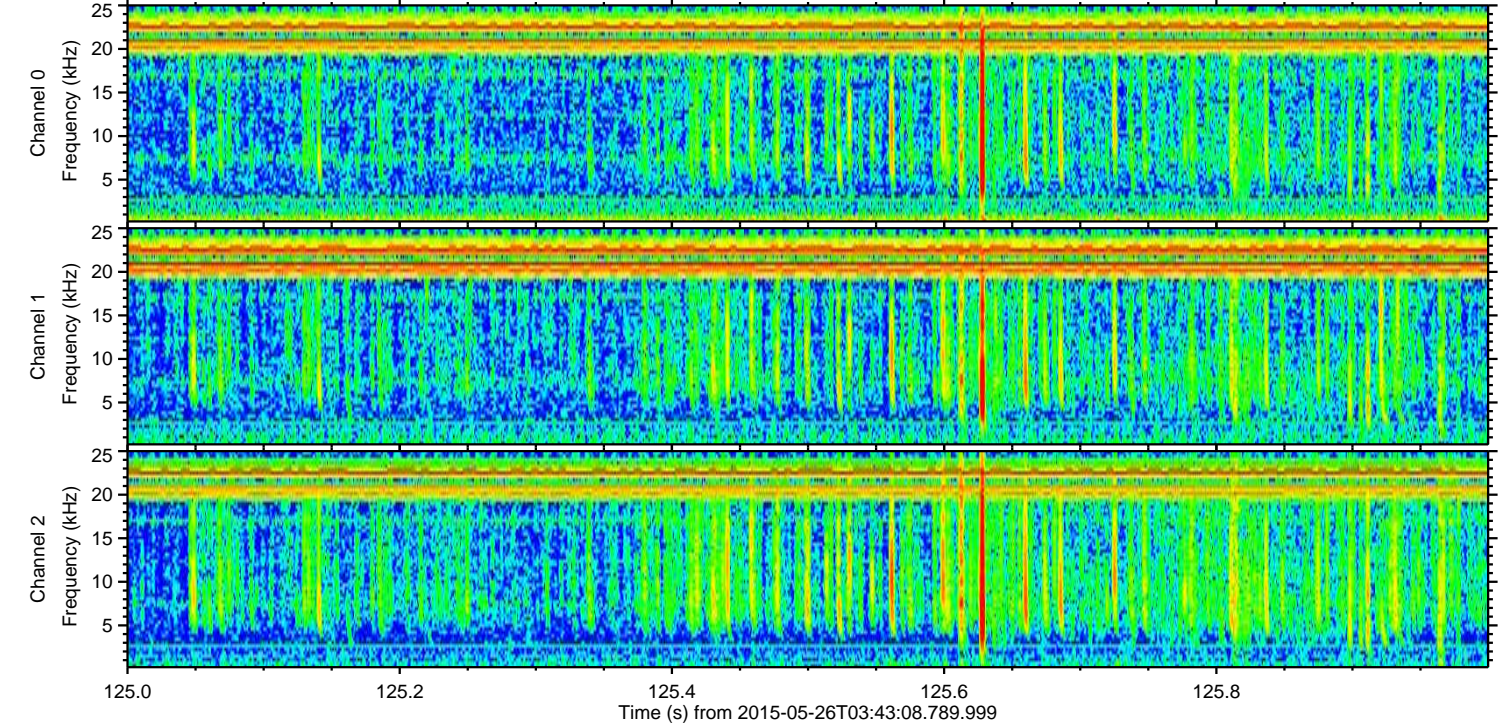
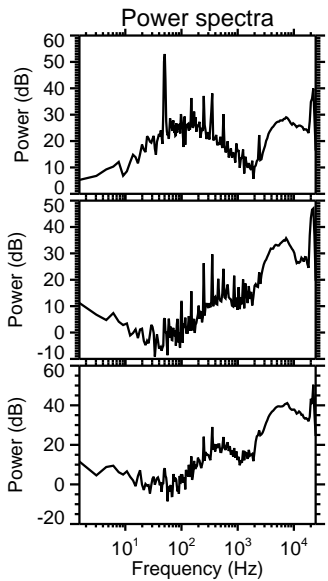
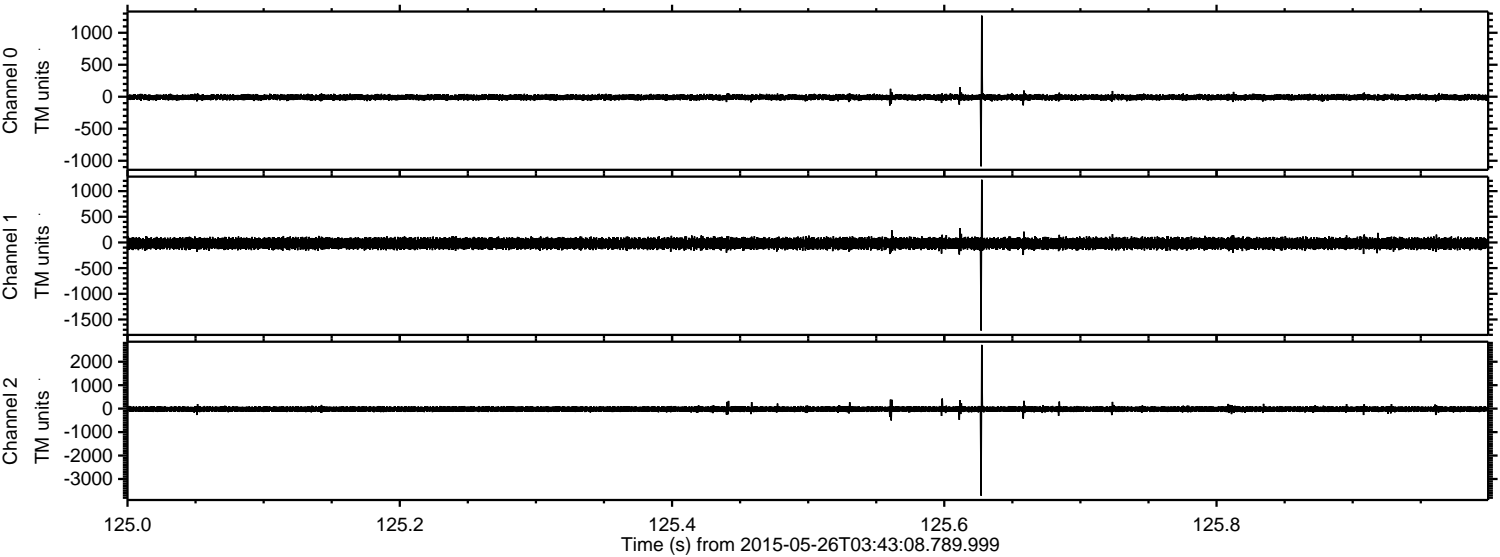
Channel 2
mn: -3007
mx: 3972
 μ : -21.4
 σ : 67.2

Processed Tue May 26 05:49:37 2015 by ELM ver.2012-10-06 from 001__elm20150526_034307__dat00.bin



ELMAVAN 3D WAVEFORMS (Measured data sampled at 50 kHz) 49795 packets of 144 samples from 2015-05-26T03:43:08.789.999. Part 126/144

Processed Tue May 26 05:49:38 2015 by ELM ver.2012-10-06 from 001__elm20150526_034307__dat00.bin



Processed Tue May 26 05:49:39 2015 by ELM ver.2012-10-06 from 001__elm20150526_034307__dat00.bin

