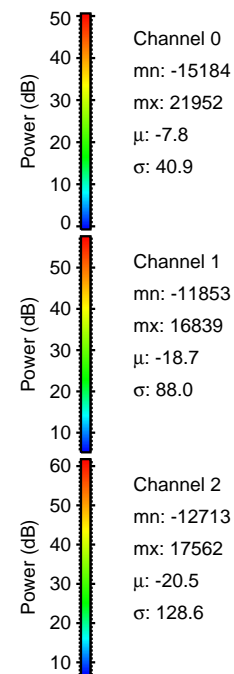
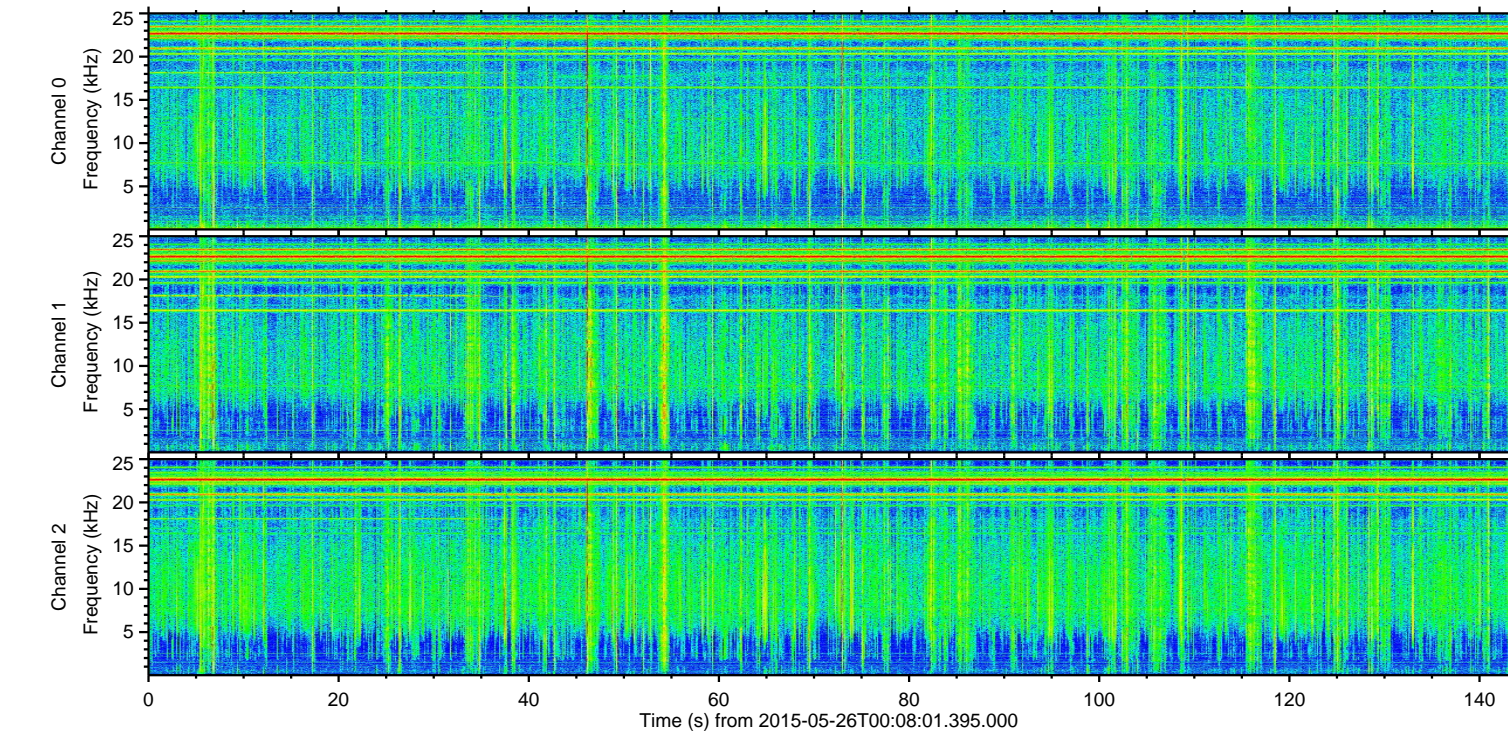
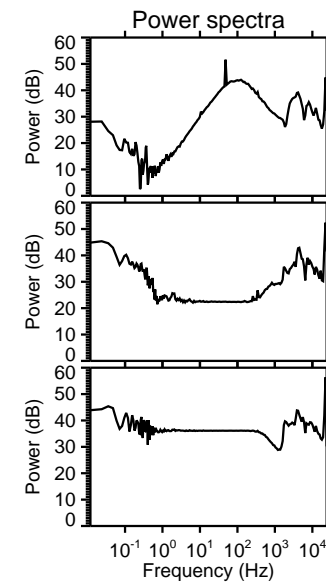
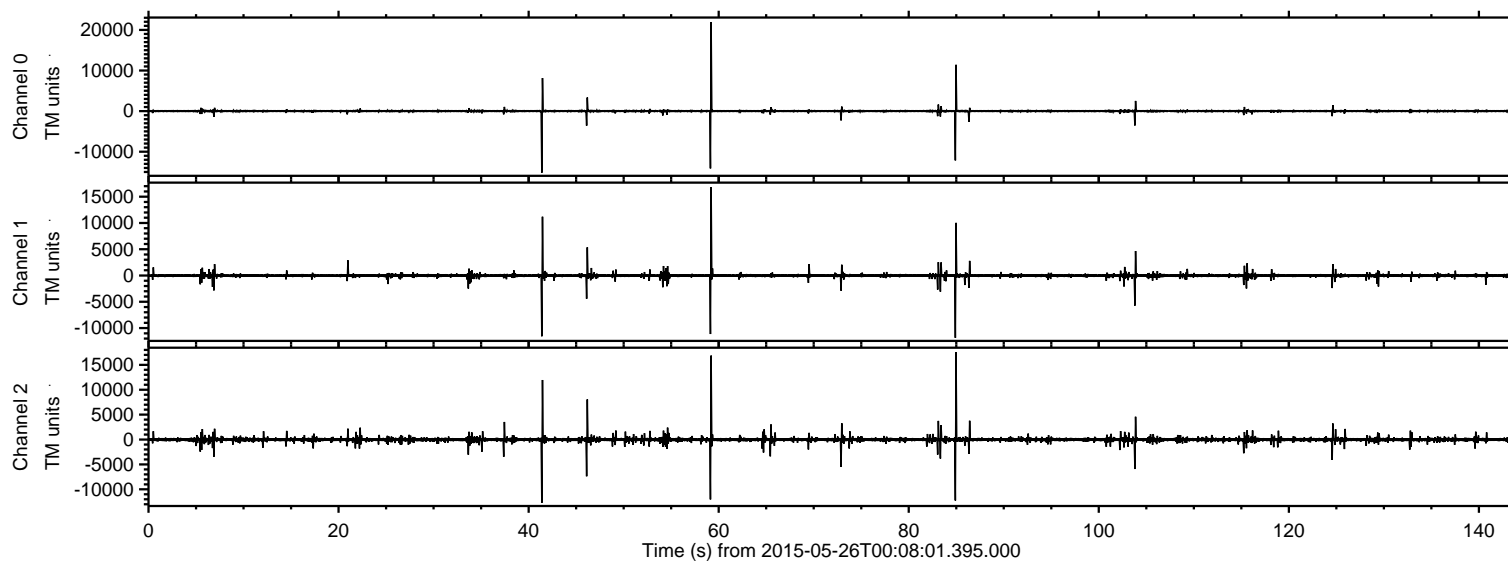
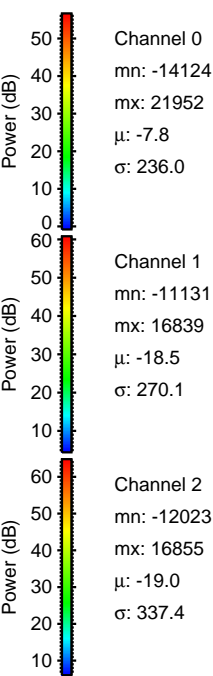
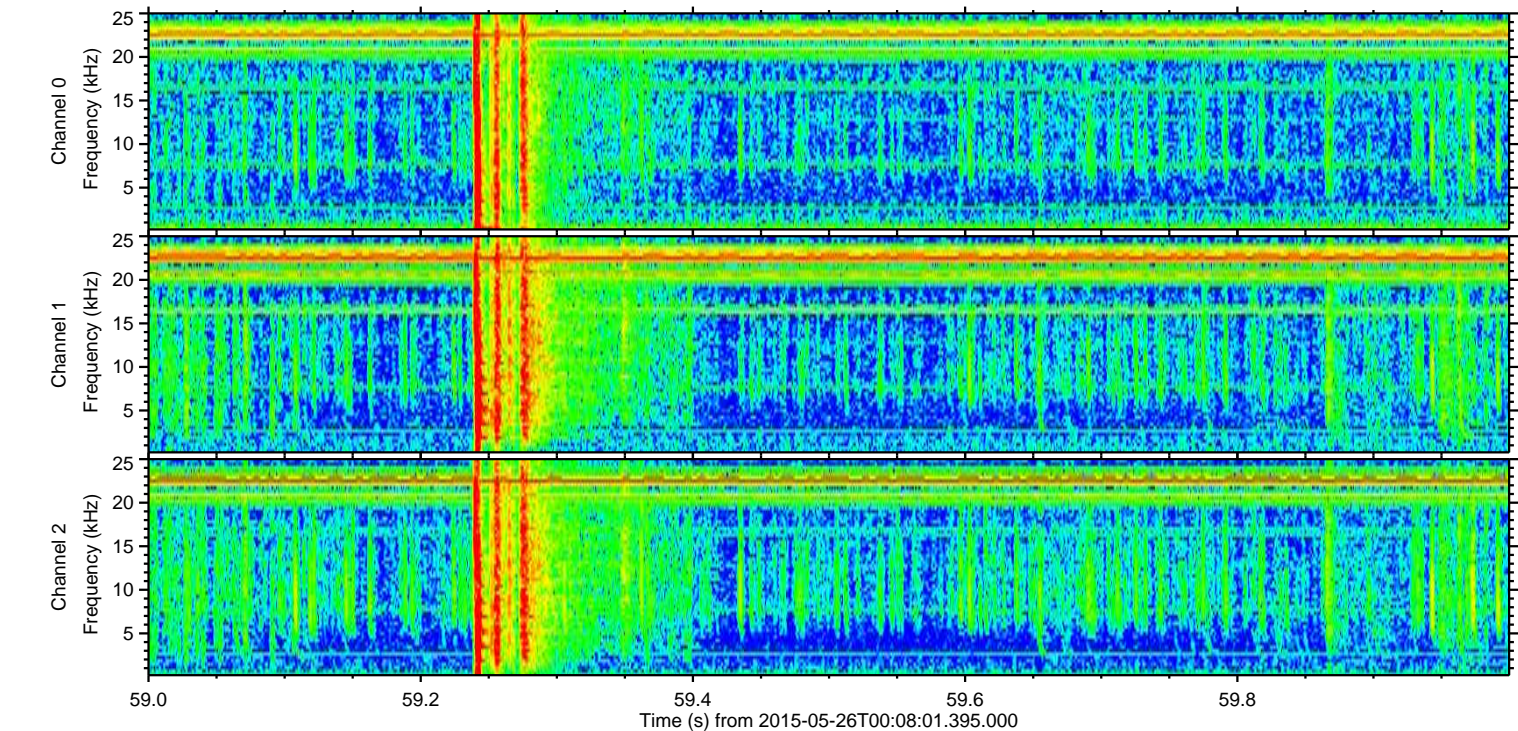
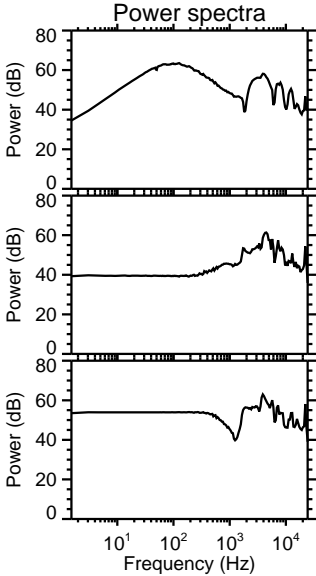
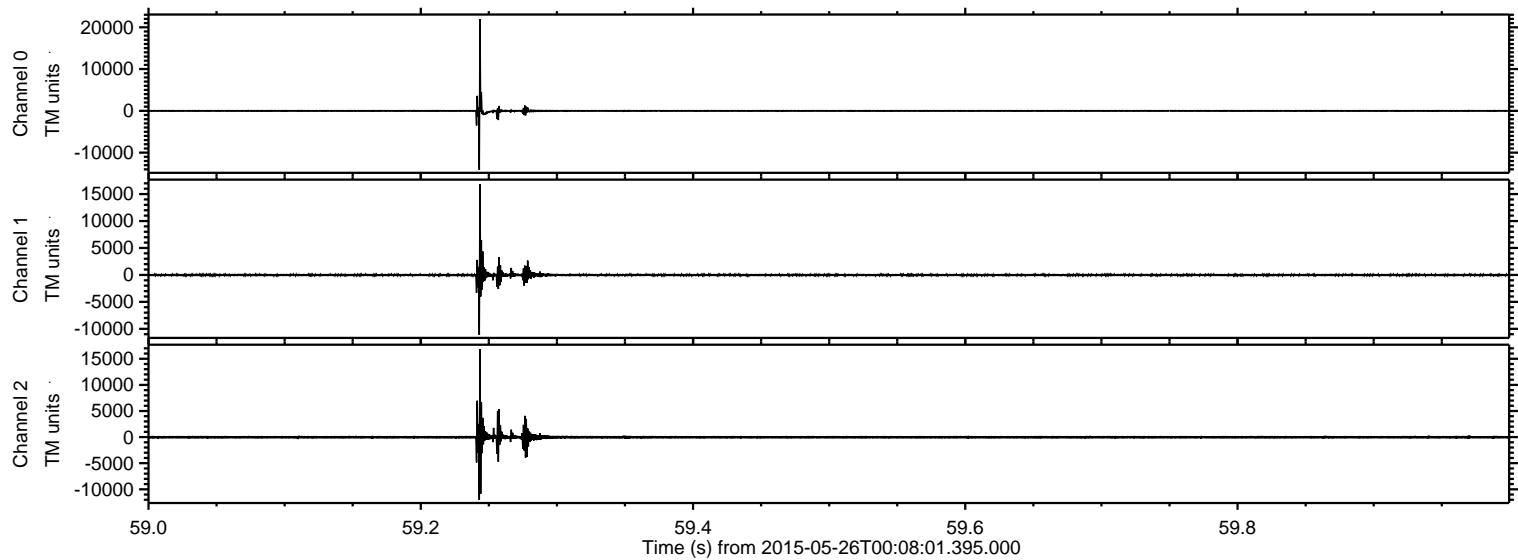


ELMAVAN 3D WAVEFORMS (Measured data sampled at 50 kHz) 49716 packets of 144 samples from 2015-05-26T00:08:01.395.000.

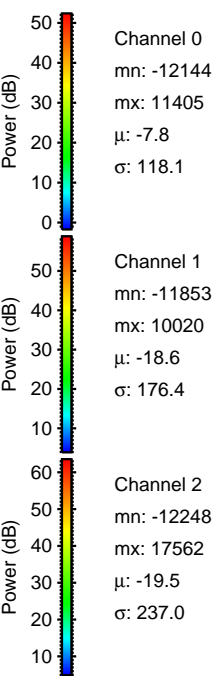
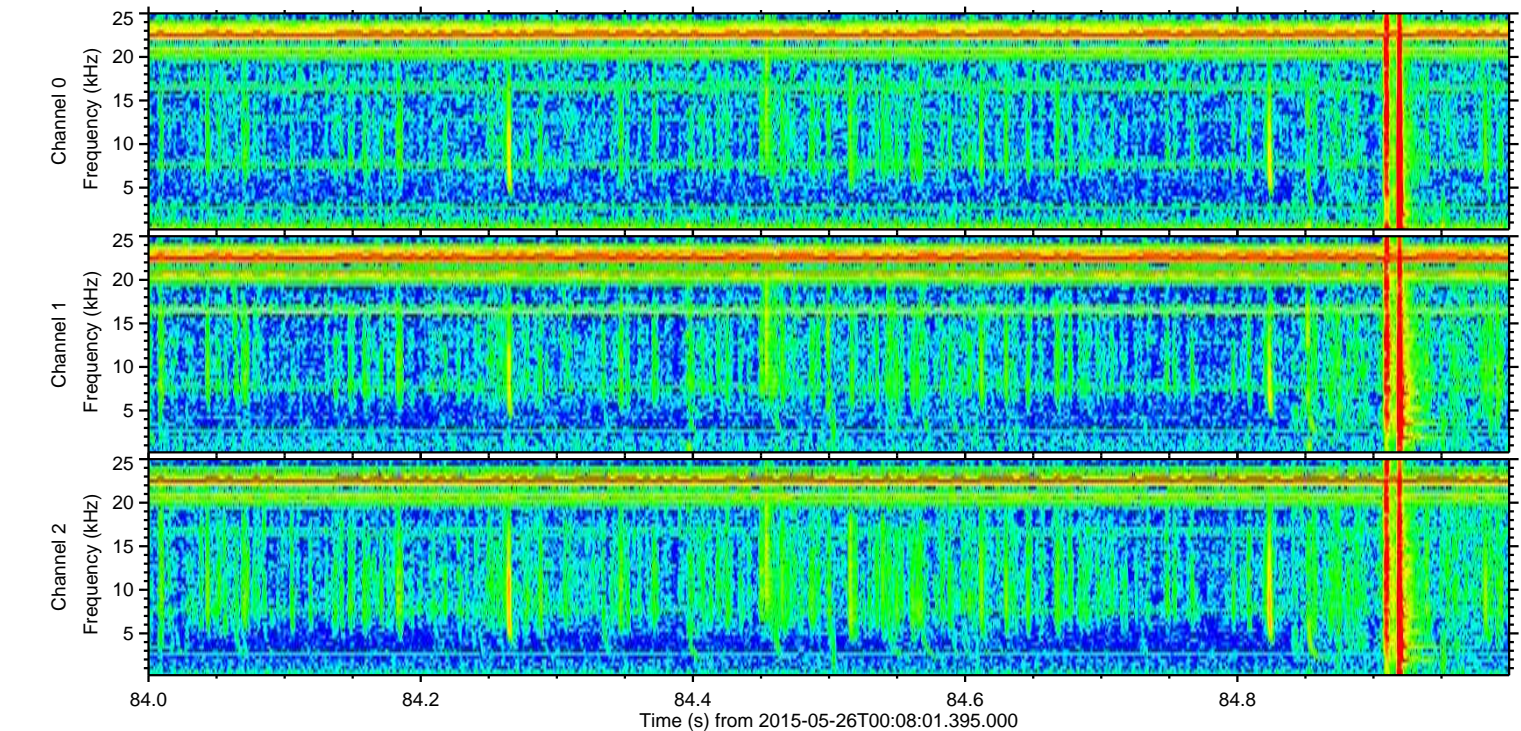
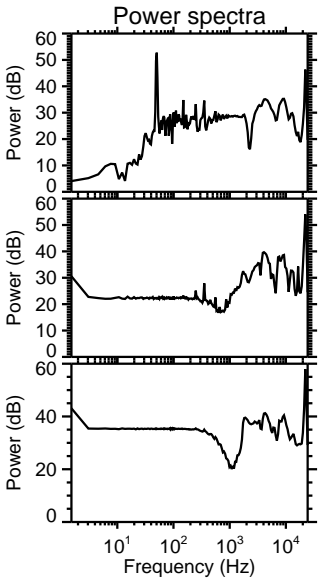
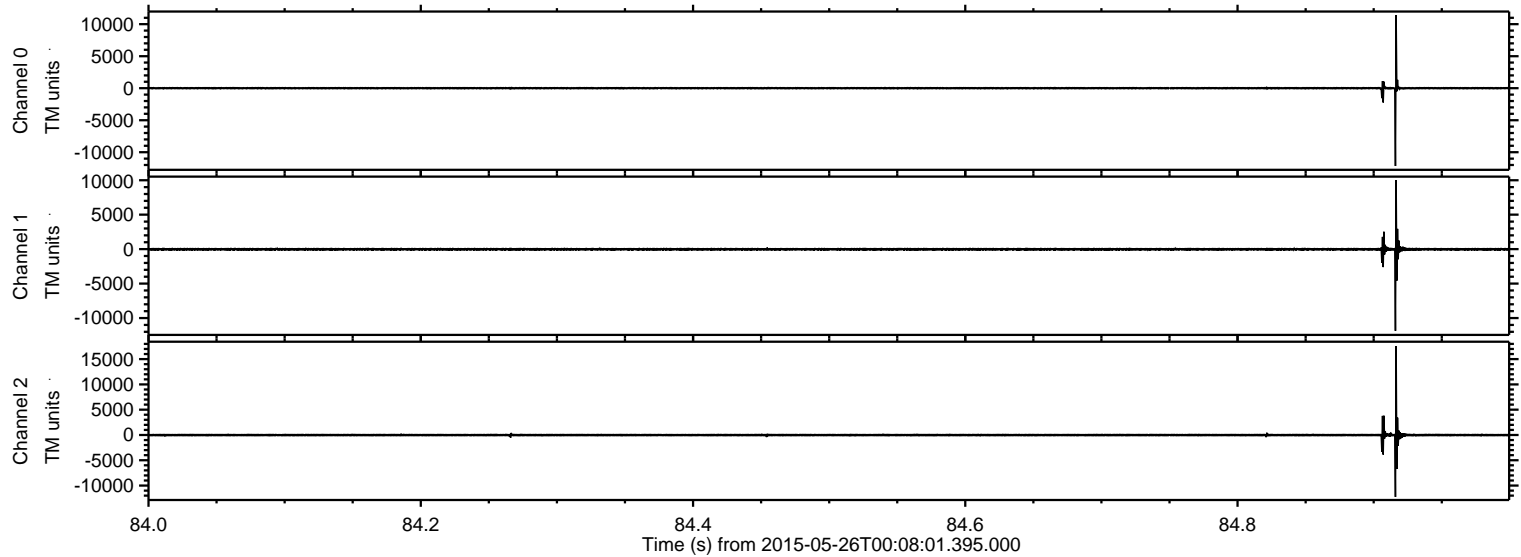
Processed Tue May 26 02:14:32 2015 by ELM ver.2012-10-06 from 001__elm20150526_000800__dat00.bin



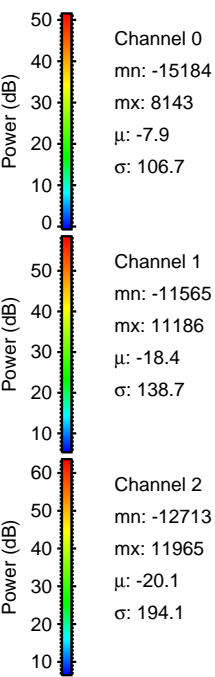
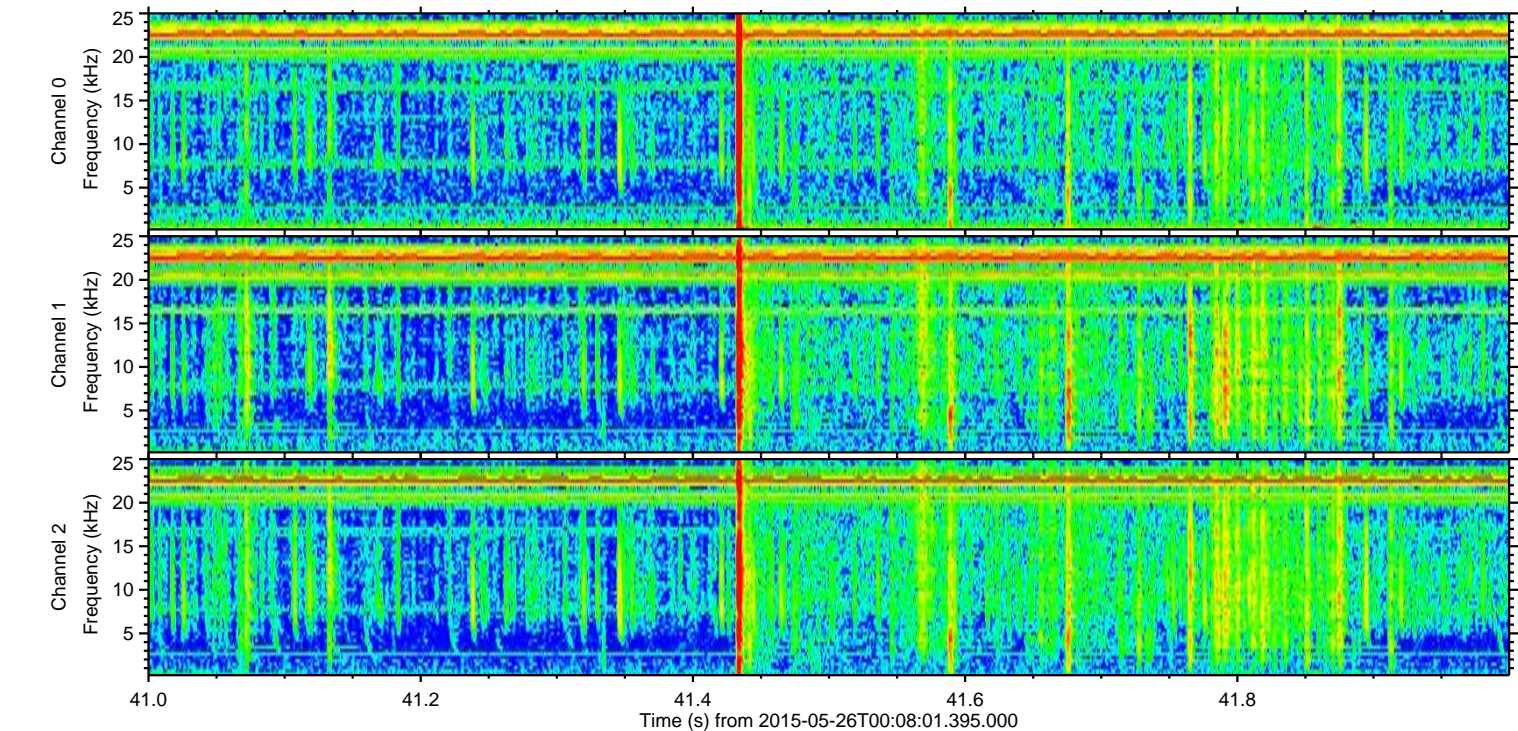
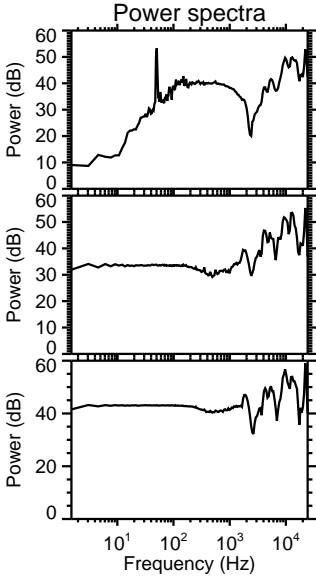
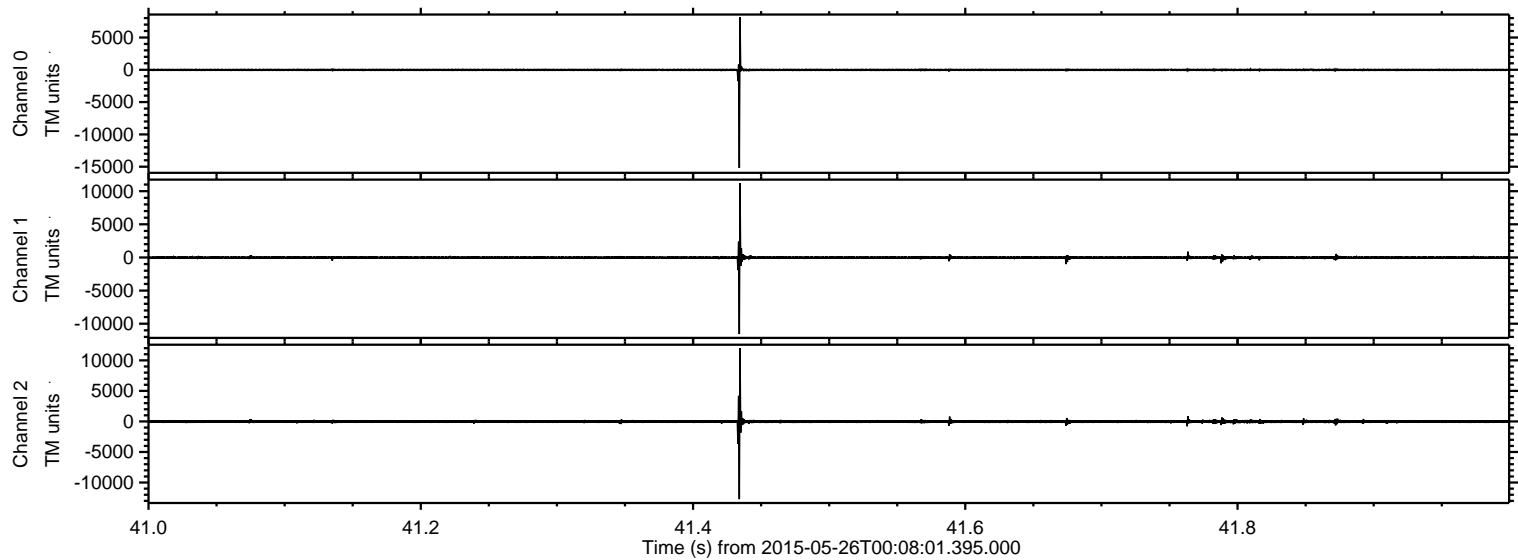
Processed Tue May 26 02:14:44 2015 by ELM ver.2012-10-06 from 001__elm20150526_000800__dat00.bin



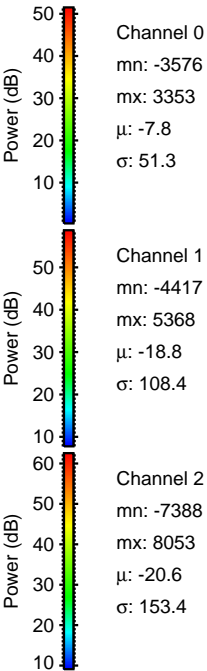
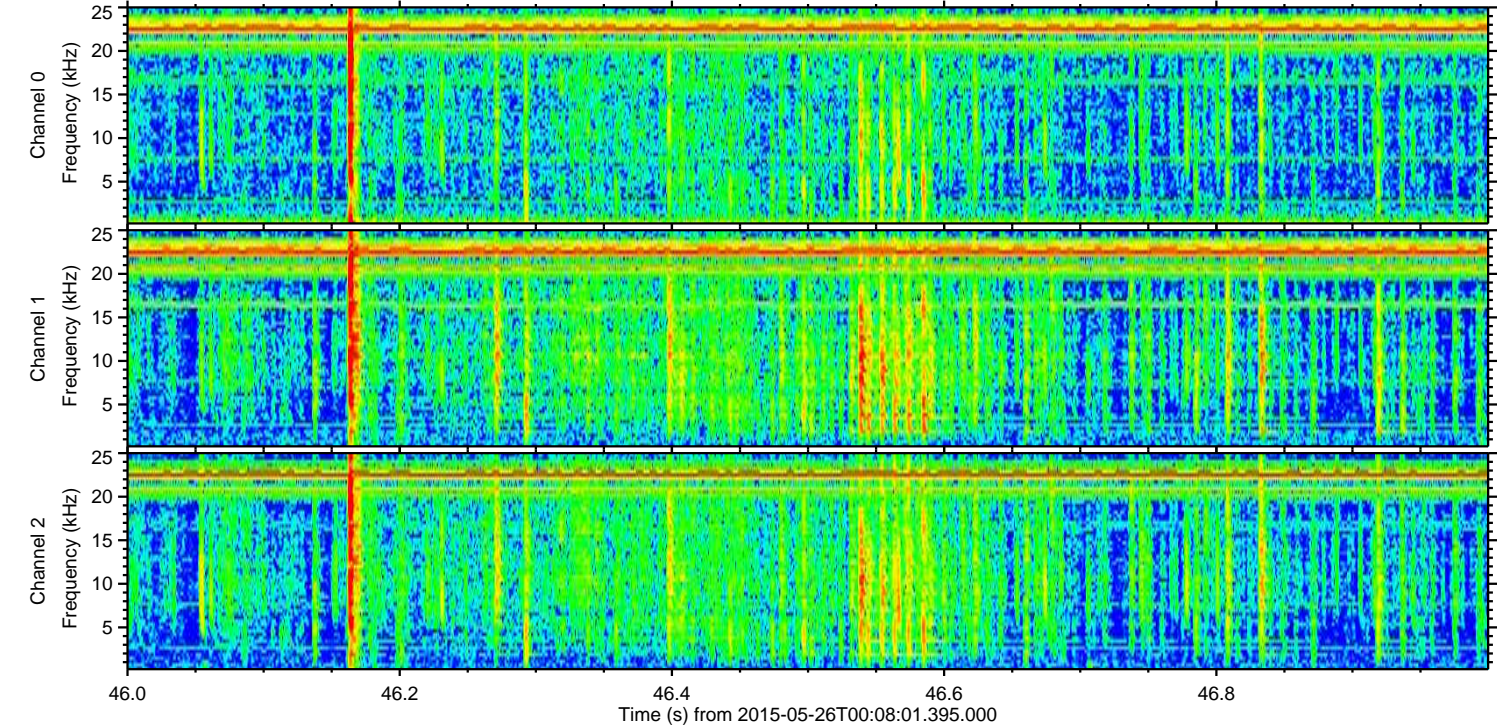
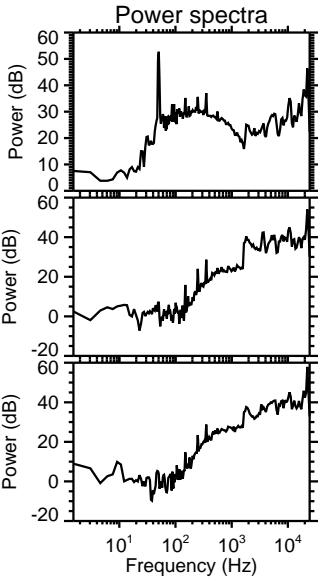
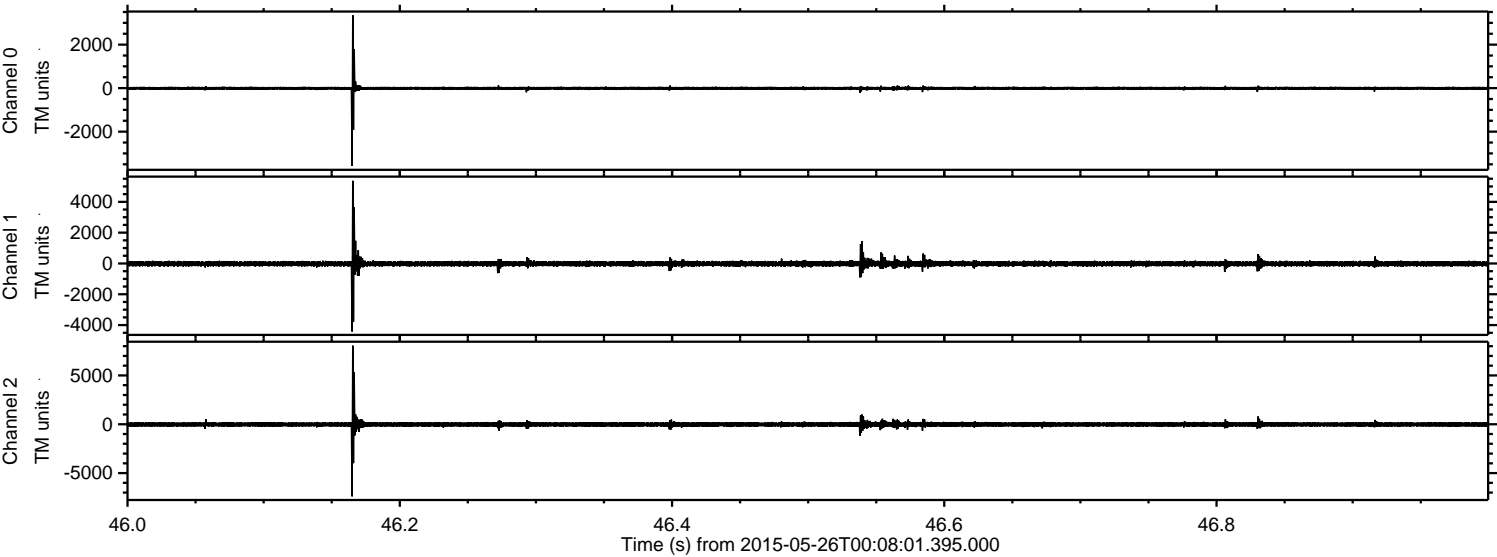
Processed Tue May 26 02:14:45 2015 by ELM ver.2012-10-06 from 001__elm20150526_000800__dat00.bin



Processed Tue May 26 02:14:46 2015 by ELM ver.2012-10-06 from 001__elm20150526_000800__dat00.bin

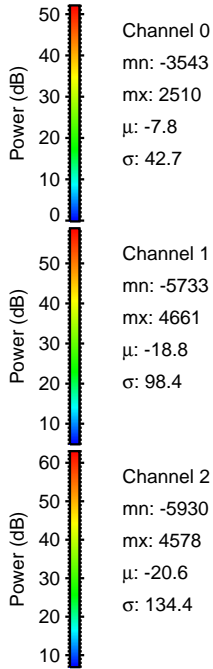
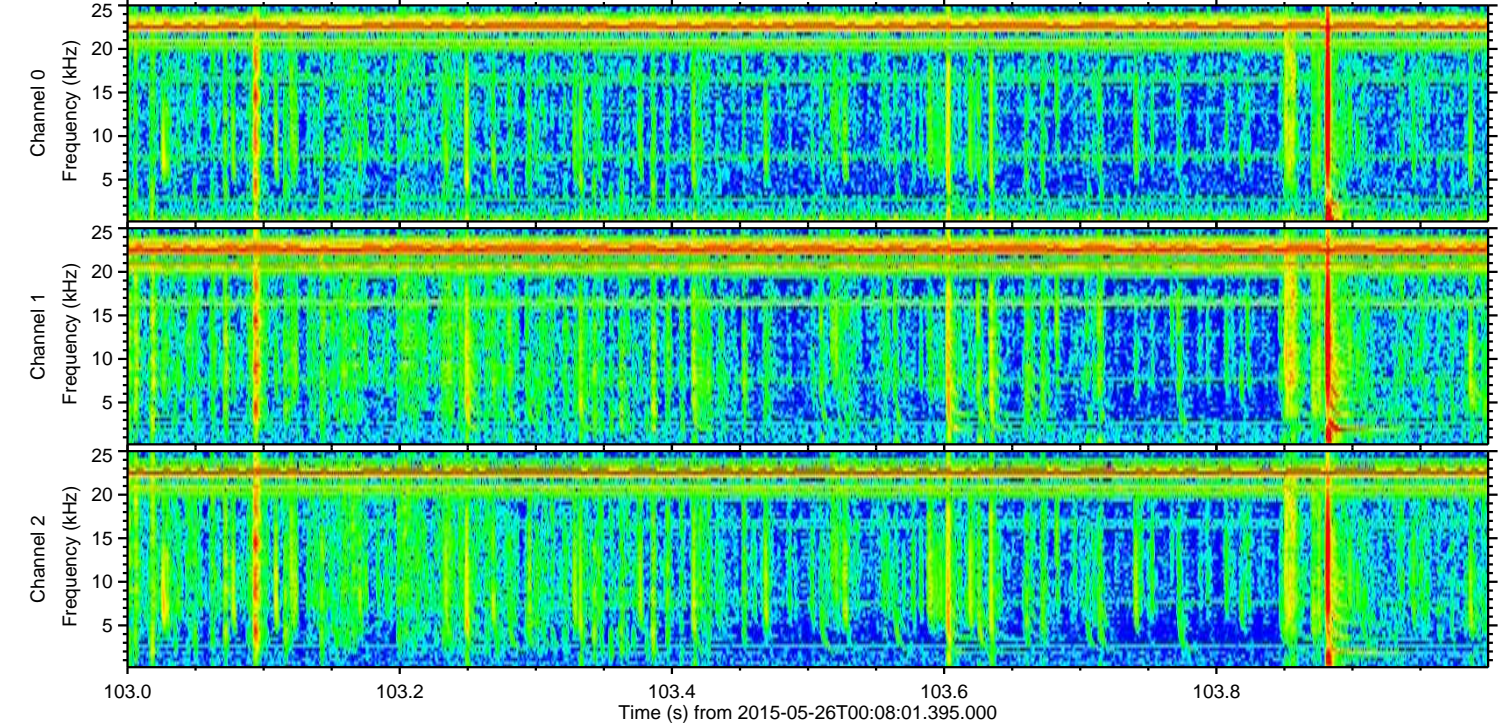
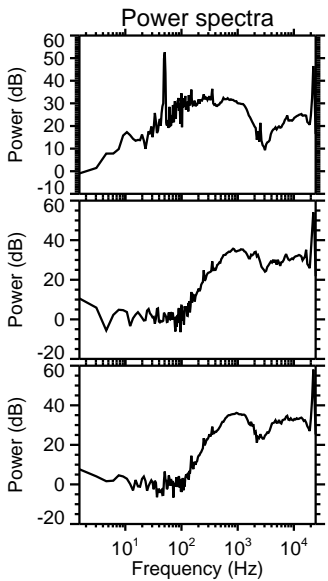
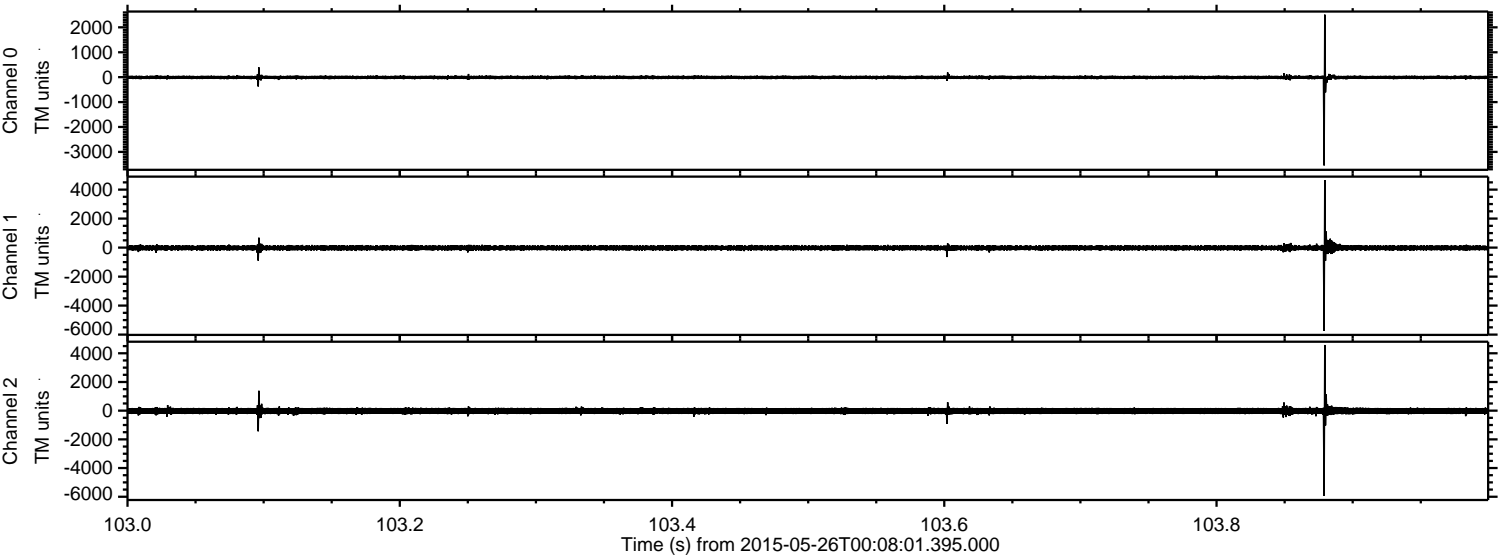


Processed Tue May 26 02:14:47 2015 by ELM ver.2012-10-06 from 001__elm20150526_000800__dat00.bin



ELMAVAN 3D WAVEFORMS (Measured data sampled at 50 kHz) 49716 packets of 144 samples from 2015-05-26T00:08:01.395.000. Part 104/144

Processed Tue May 26 02:14:48 2015 by ELM ver.2012-10-06 from 001__elm20150526_000800__dat00.bin

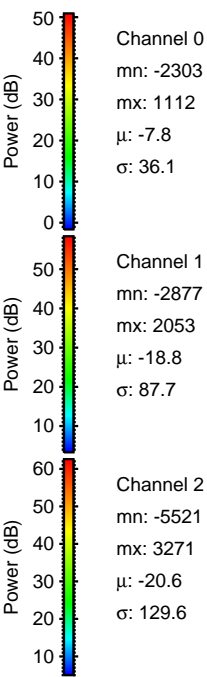
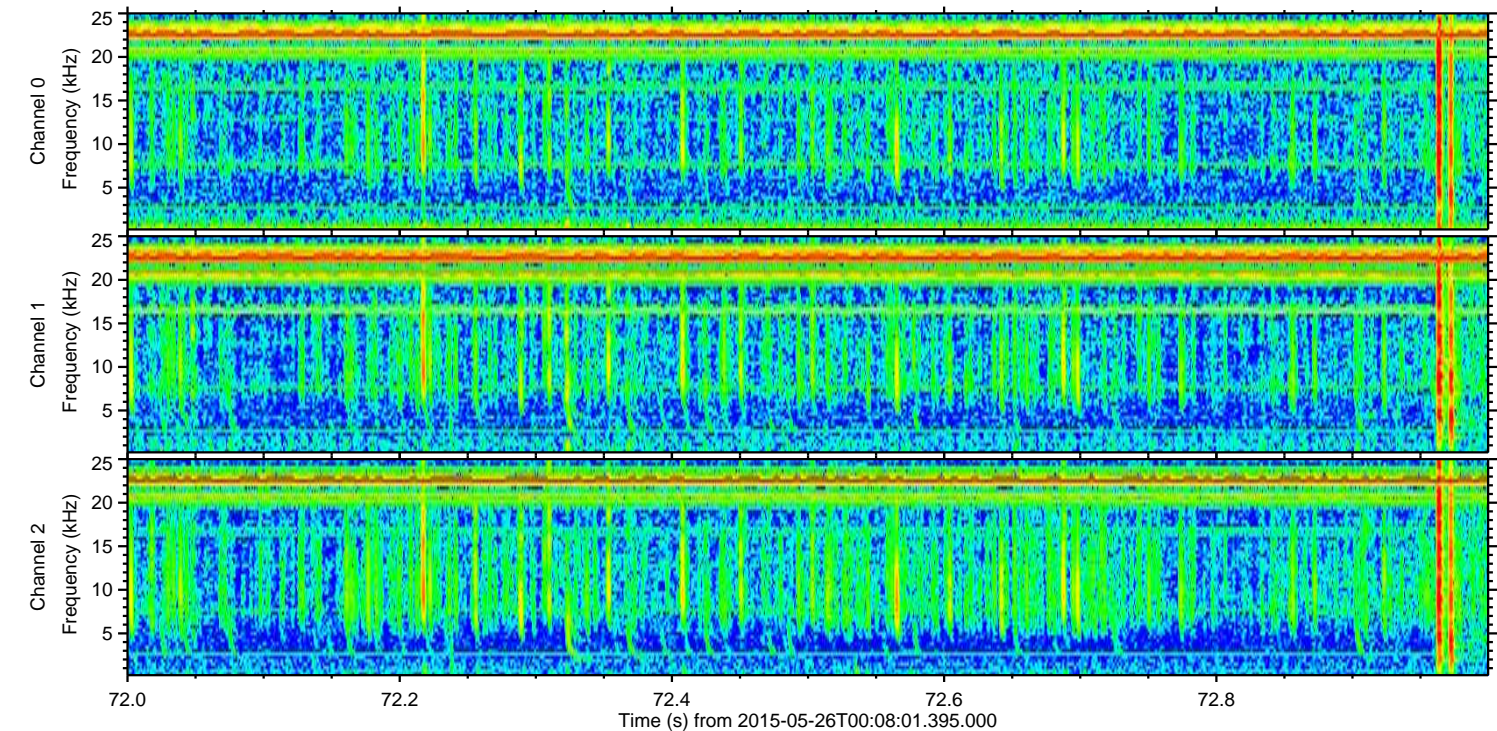
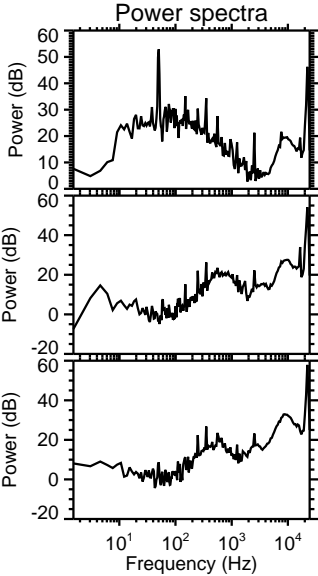
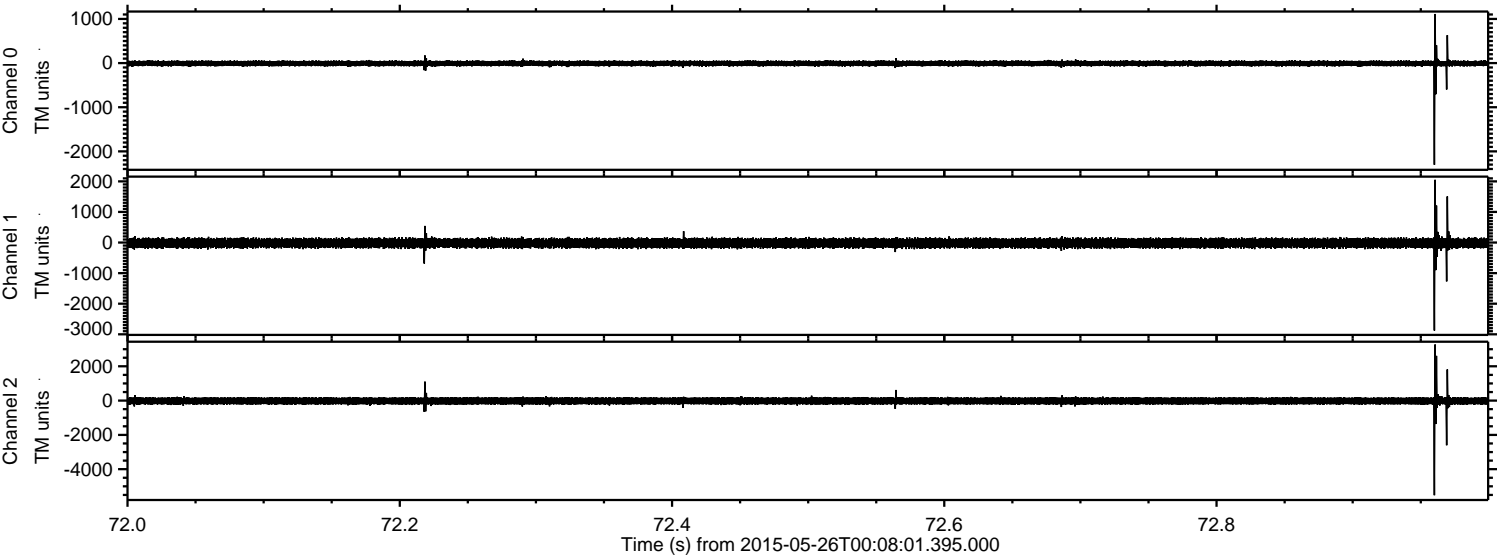


Channel 0
mn: -3543
mx: 2510
 μ : -7.8
 σ : 42.7

Channel 1
mn: -5733
mx: 4661
 μ : -18.8
 σ : 98.4

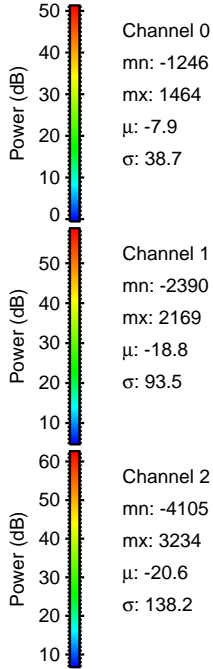
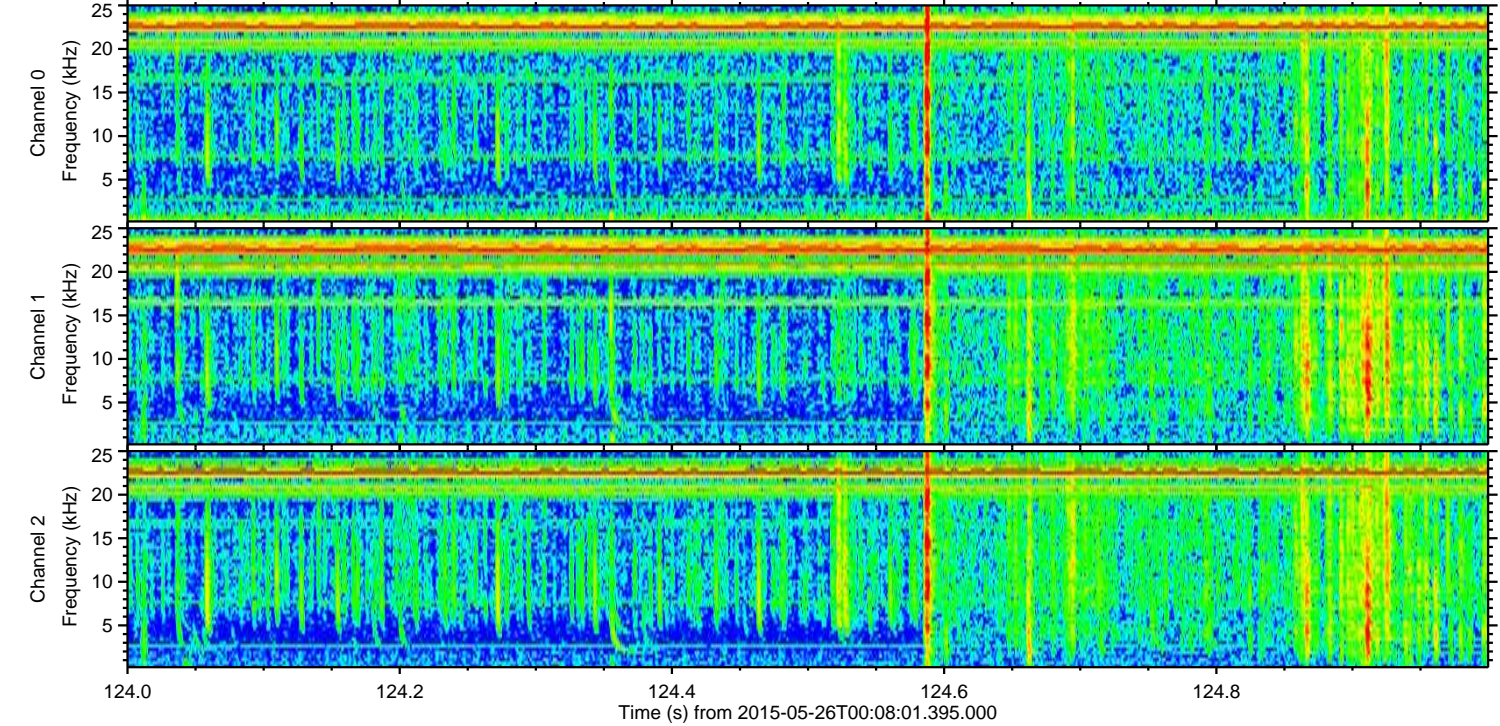
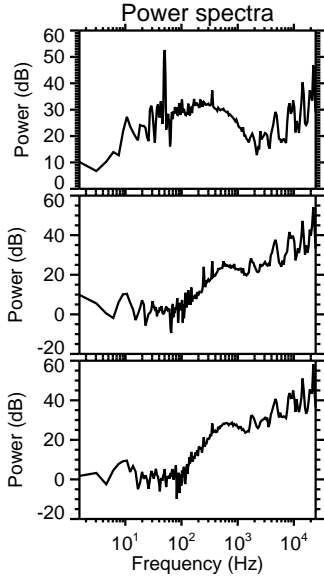
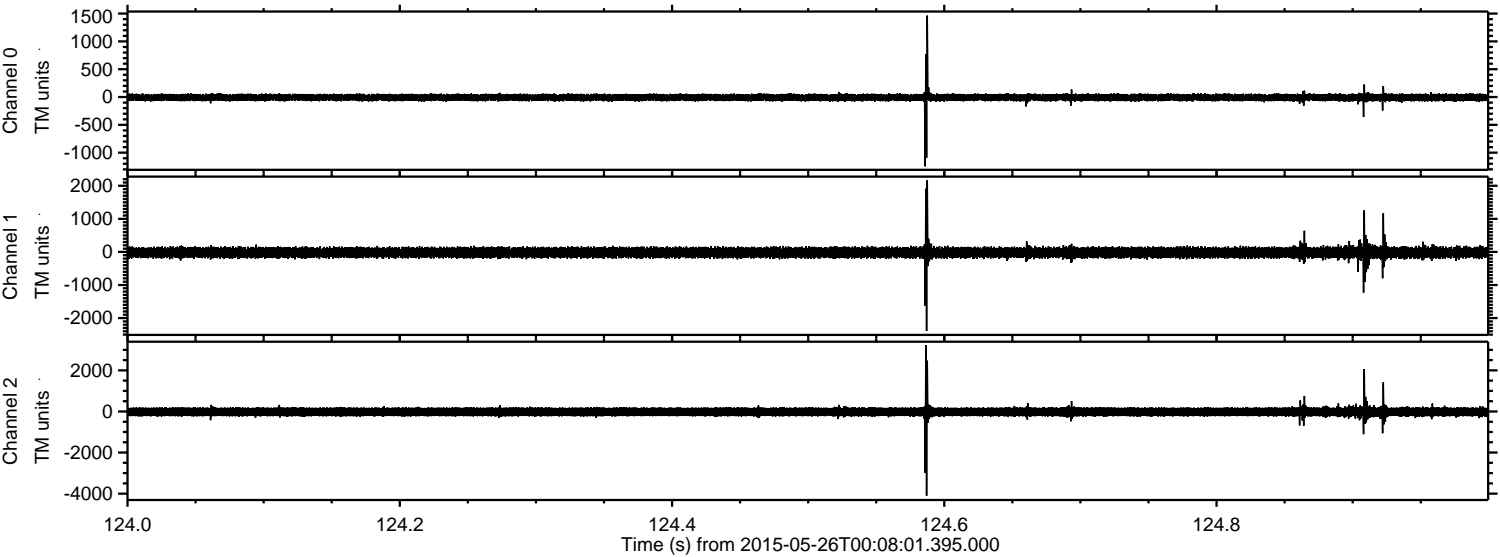
Channel 2
mn: -5930
mx: 4578
 μ : -20.6
 σ : 134.4

Processed Tue May 26 02:14:48 2015 by ELM ver.2012-10-06 from 001__elm20150526_000800__dat00.bin



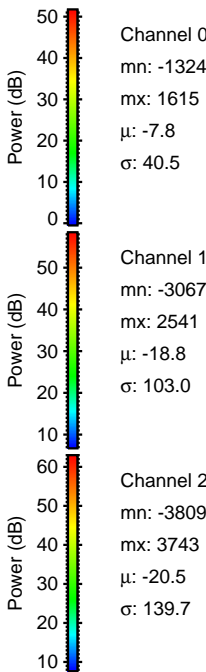
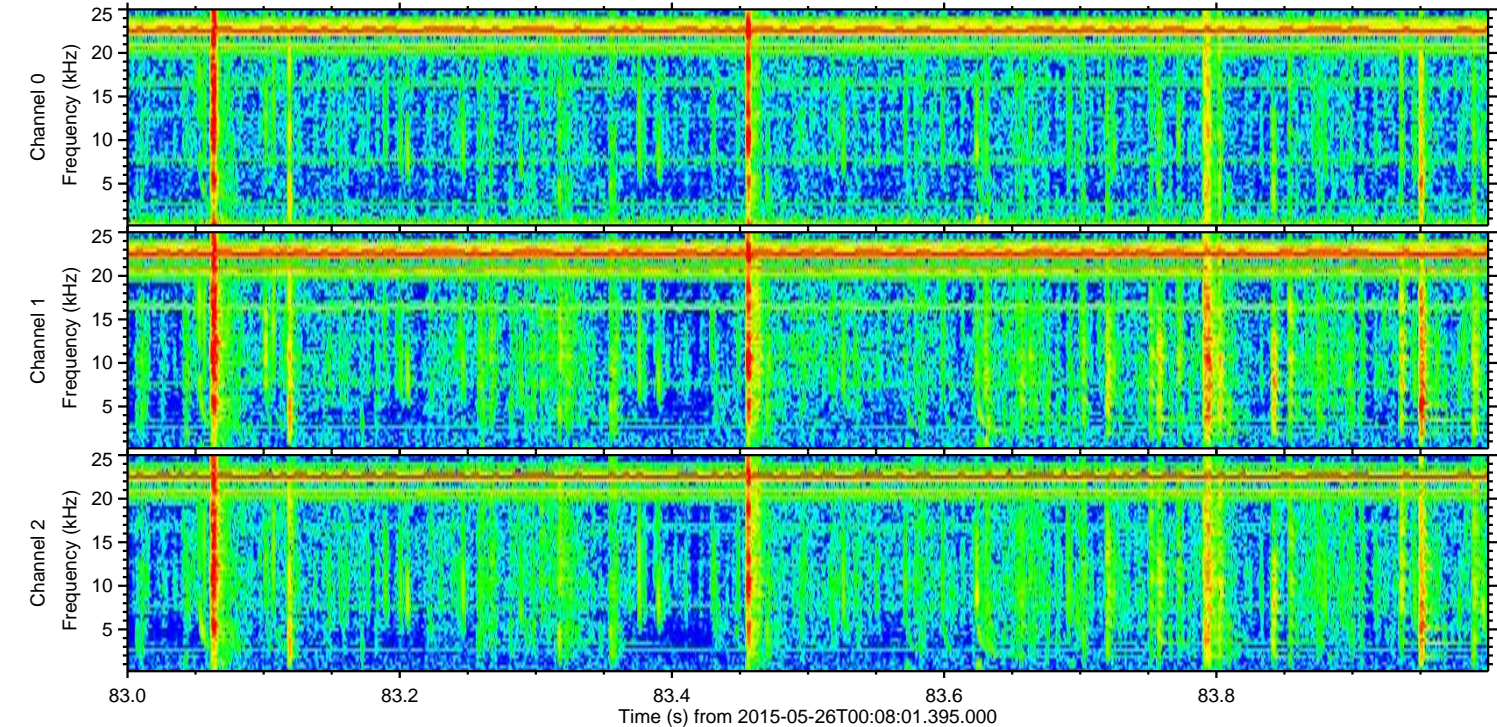
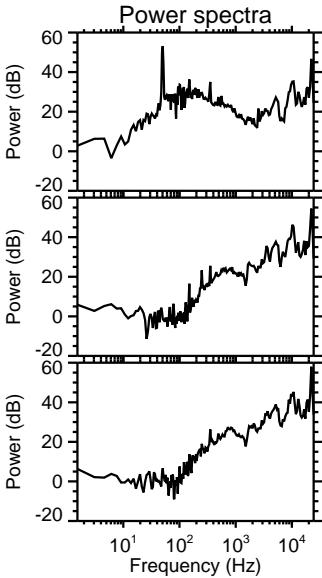
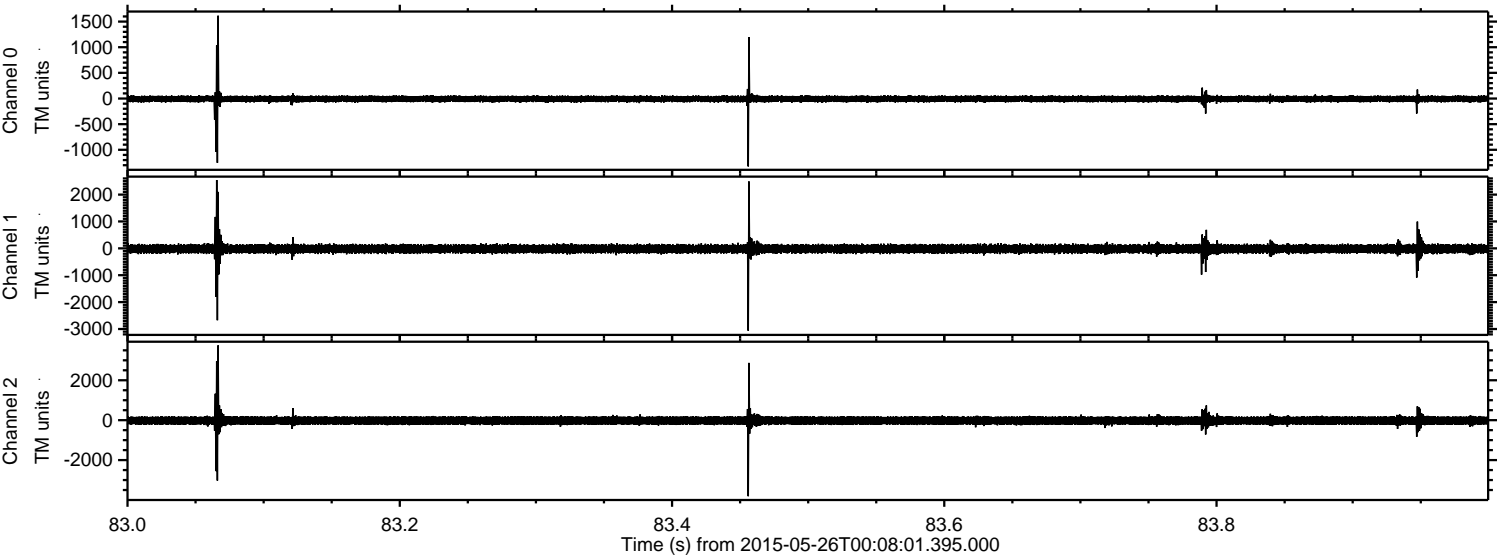
ELMAVAN 3D WAVEFORMS (Measured data sampled at 50 kHz) 49716 packets of 144 samples from 2015-05-26T00:08:01.395.000. Part 125/144

Processed Tue May 26 02:14:49 2015 by ELM ver.2012-10-06 from 001__elm20150526_000800__dat00.bin



ELMAVAN 3D WAVEFORMS (Measured data sampled at 50 kHz) 49716 packets of 144 samples from 2015-05-26T00:08:01.395.000. Part 84/144

Processed Tue May 26 02:14:50 2015 by ELM ver.2012-10-06 from 001__elm20150526_000800__dat00.bin



Processed Tue May 26 02:14:51 2015 by ELM ver.2012-10-06 from 001__elm20150526_000800__dat00.bin

