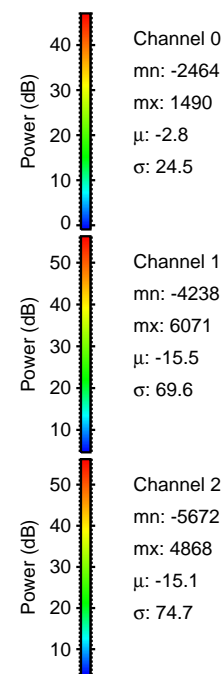
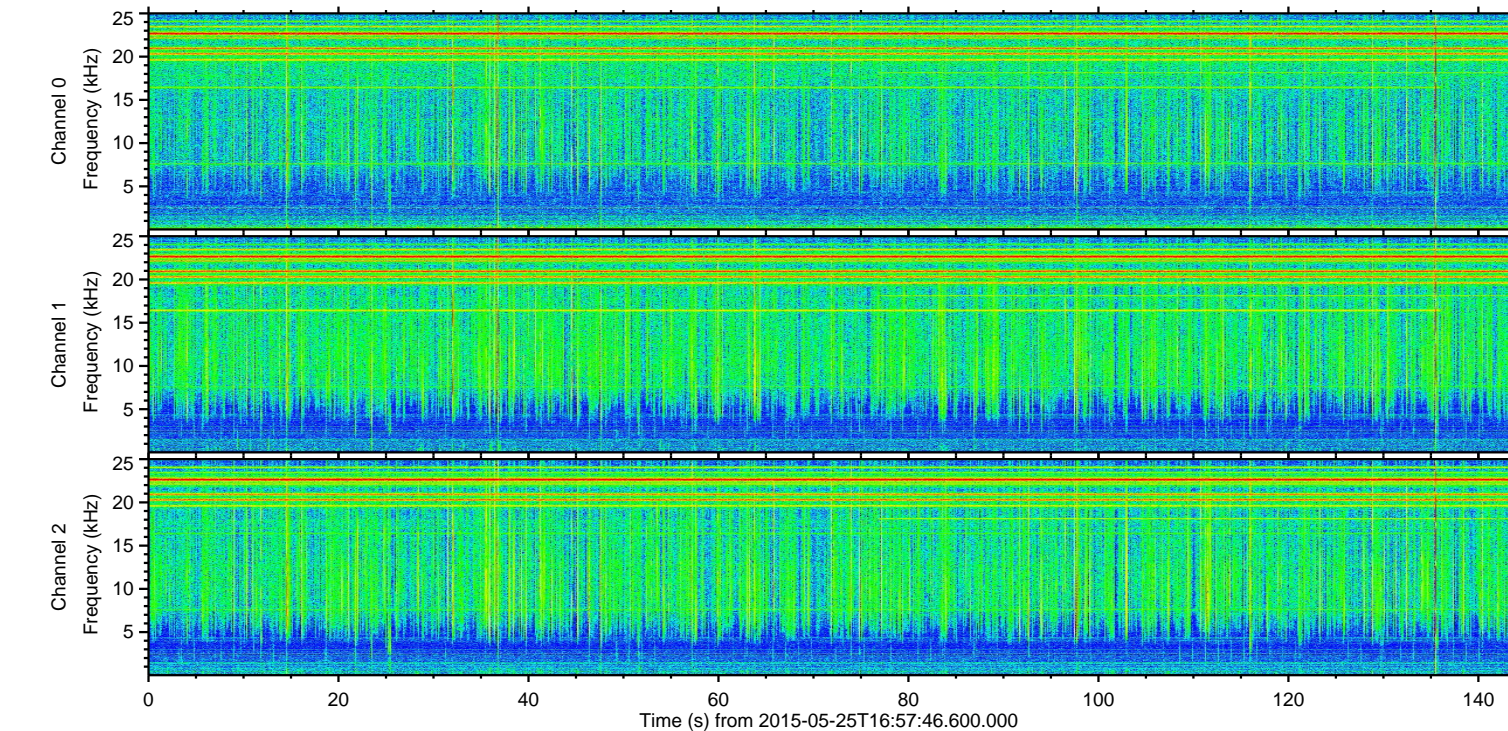
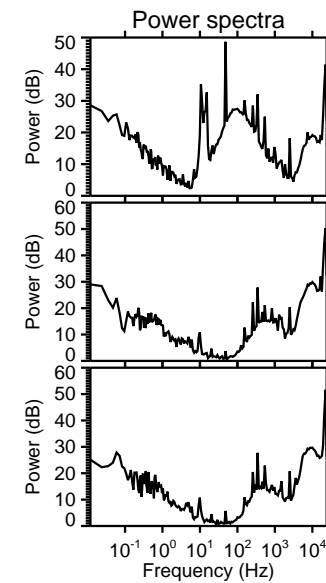
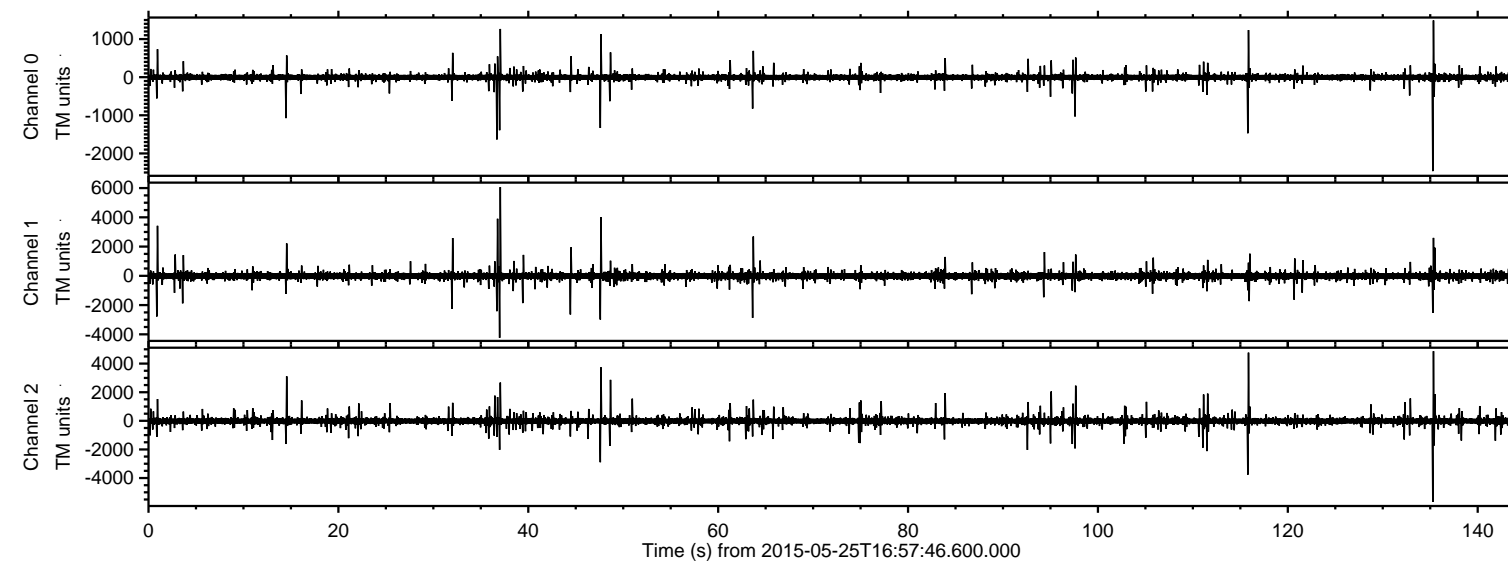


ELMAVAN 3D WAVEFORMS (Measured data sampled at 50 kHz) 49760 packets of 144 samples from 2015-05-25T16:57:46.600.000.

Processed Mon May 25 19:04:15 2015 by ELM ver.2012-10-06 from 001__elm20150525_165745__dat00.bin

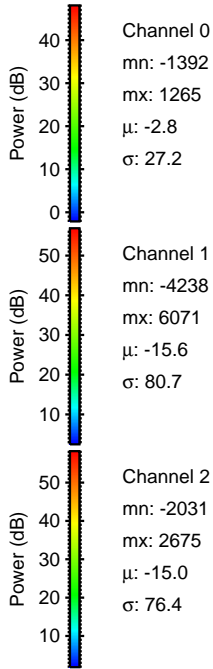
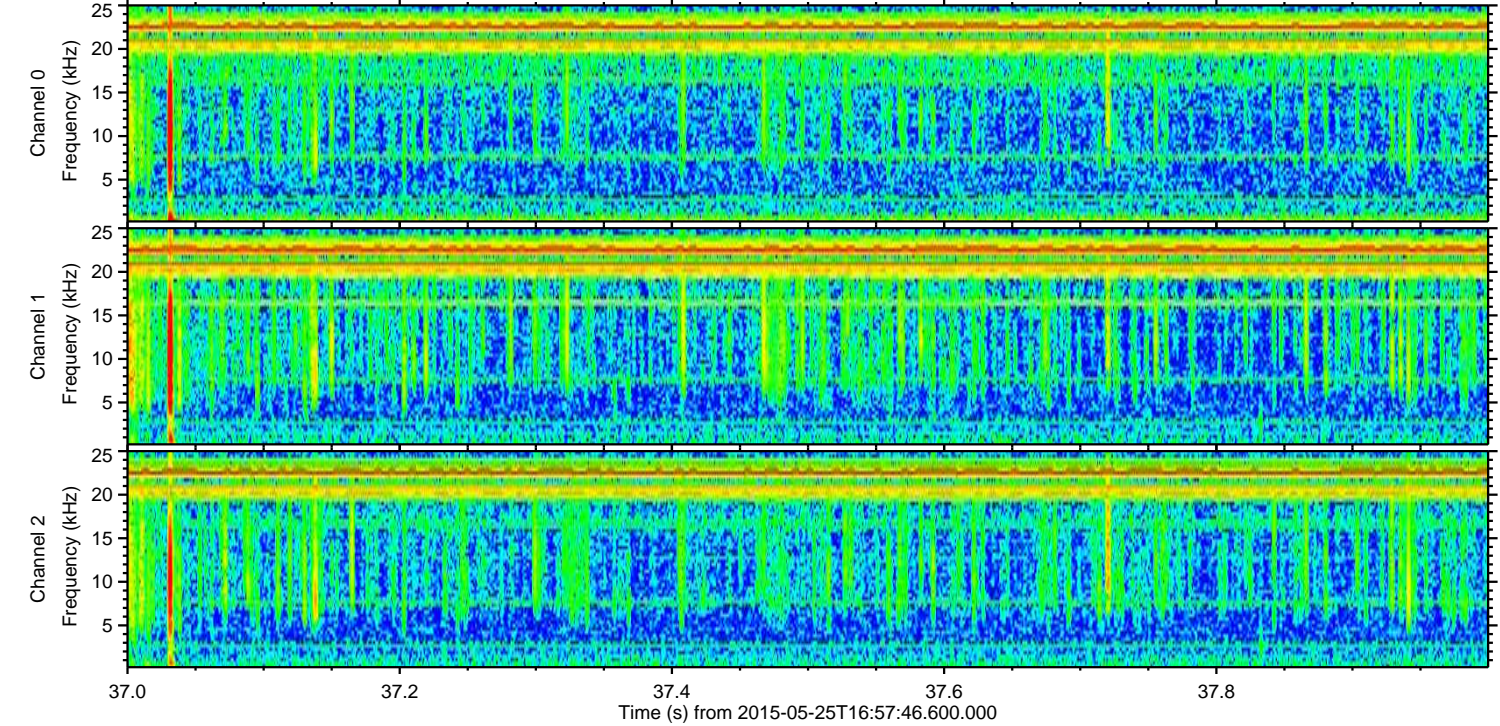
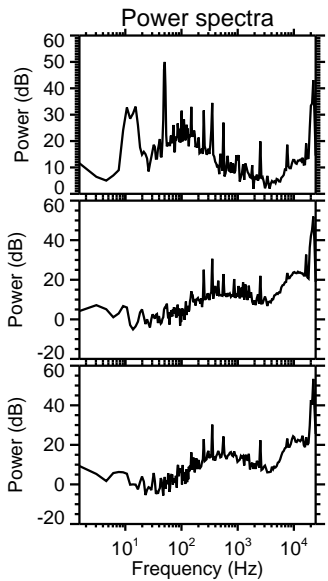
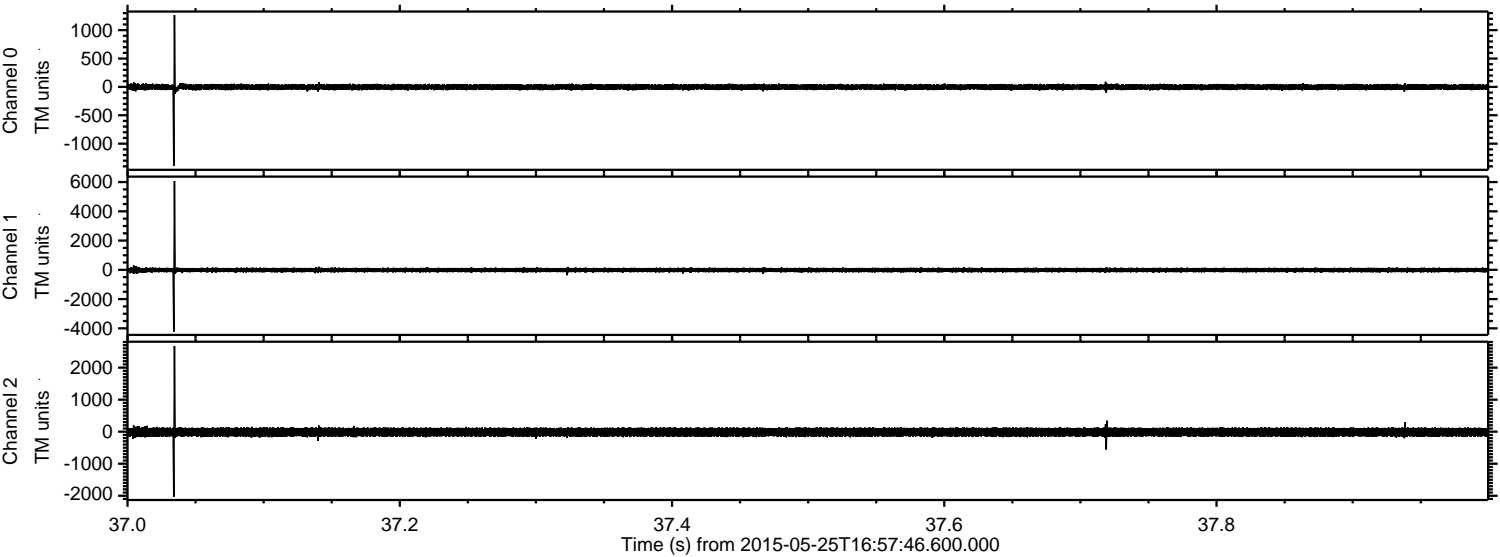


Channel 0
mn: -2464
mx: 1490
 μ : -2.8
 σ : 24.5

Channel 1
mn: -4238
mx: 6071
 μ : -15.5
 σ : 69.6

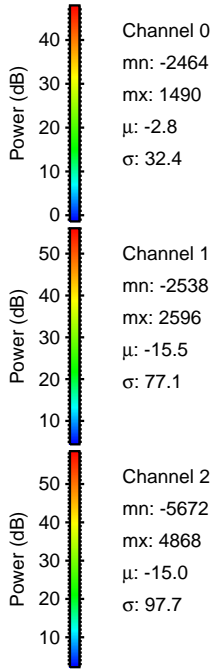
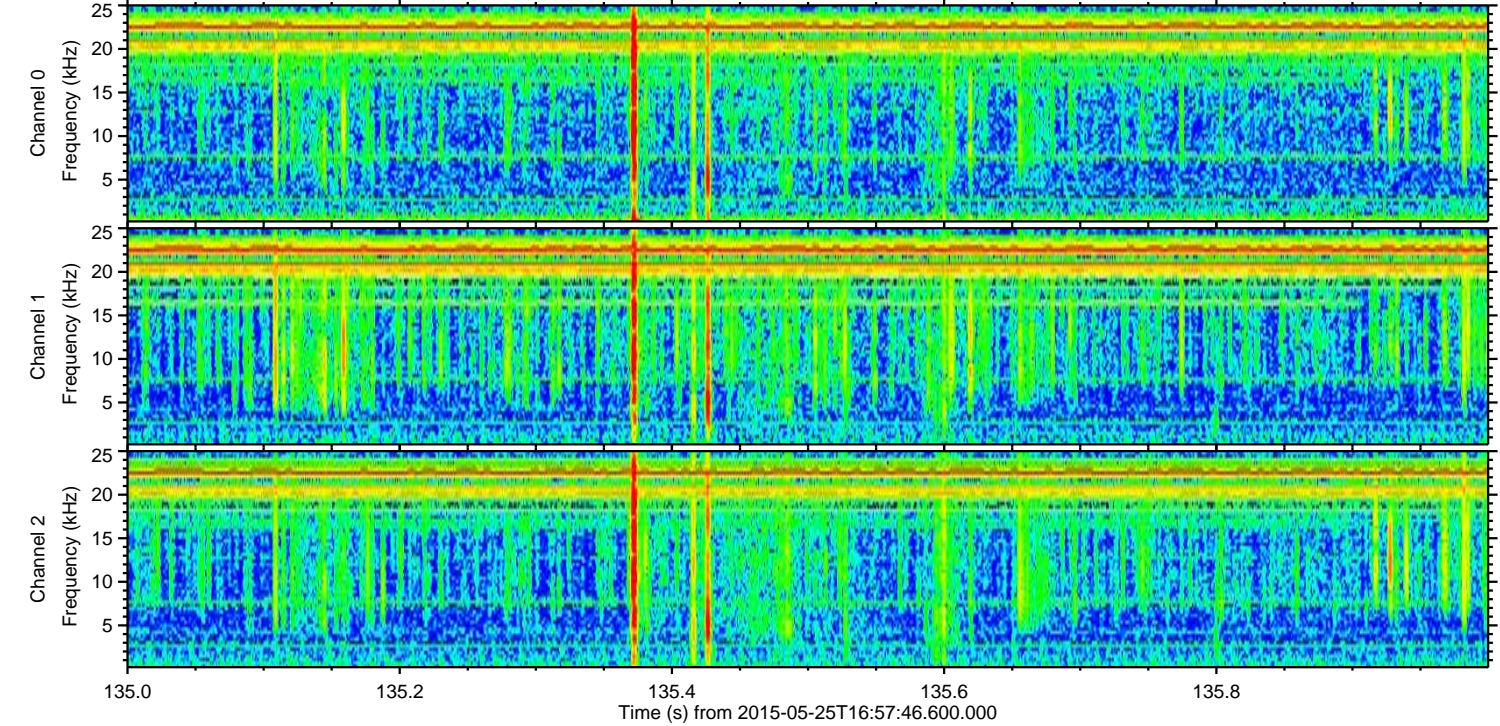
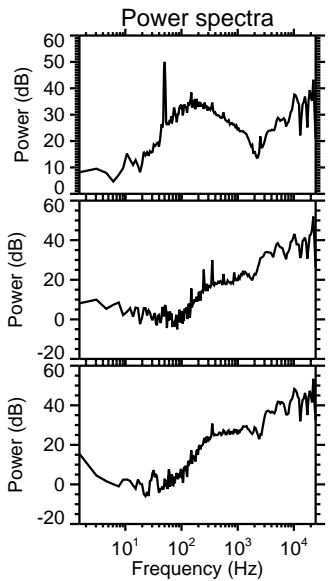
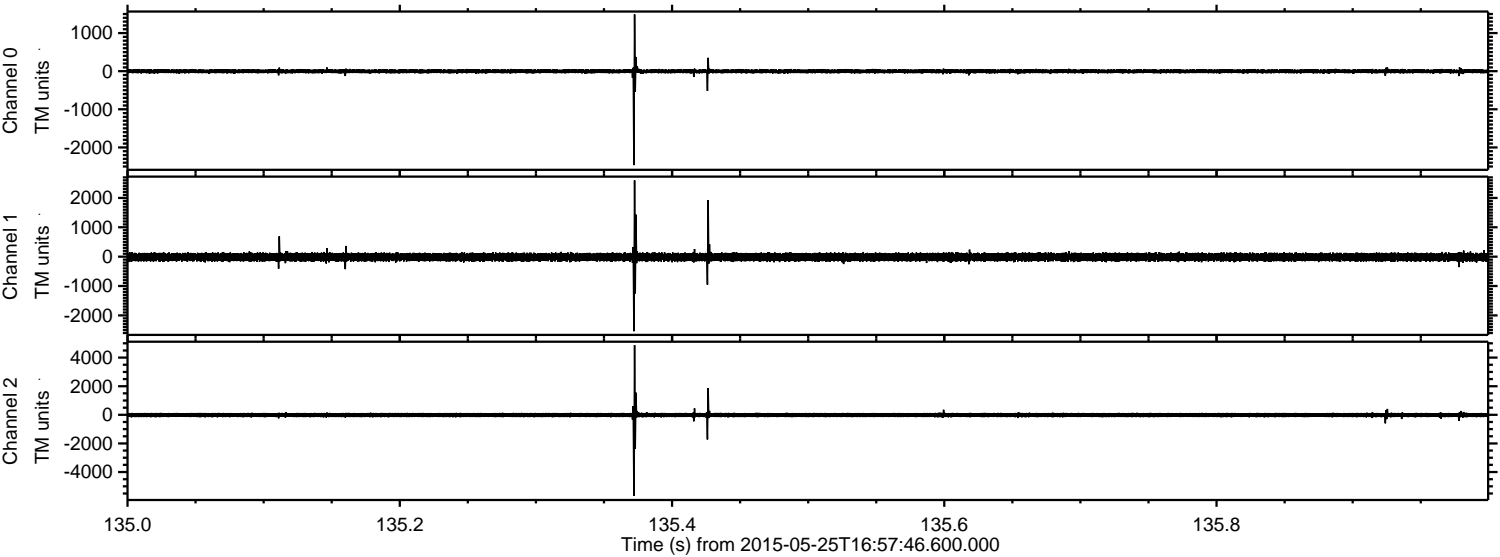
Channel 2
mn: -5672
mx: 4868
 μ : -15.1
 σ : 74.7

Processed Mon May 25 19:04:27 2015 by ELM ver.2012-10-06 from 001__elm20150525_165745__dat00.bin



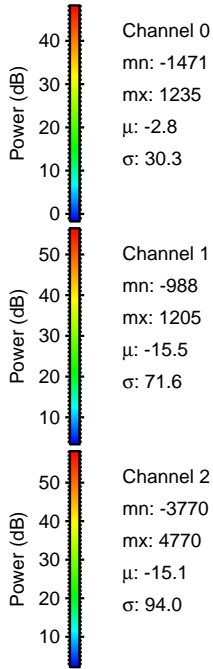
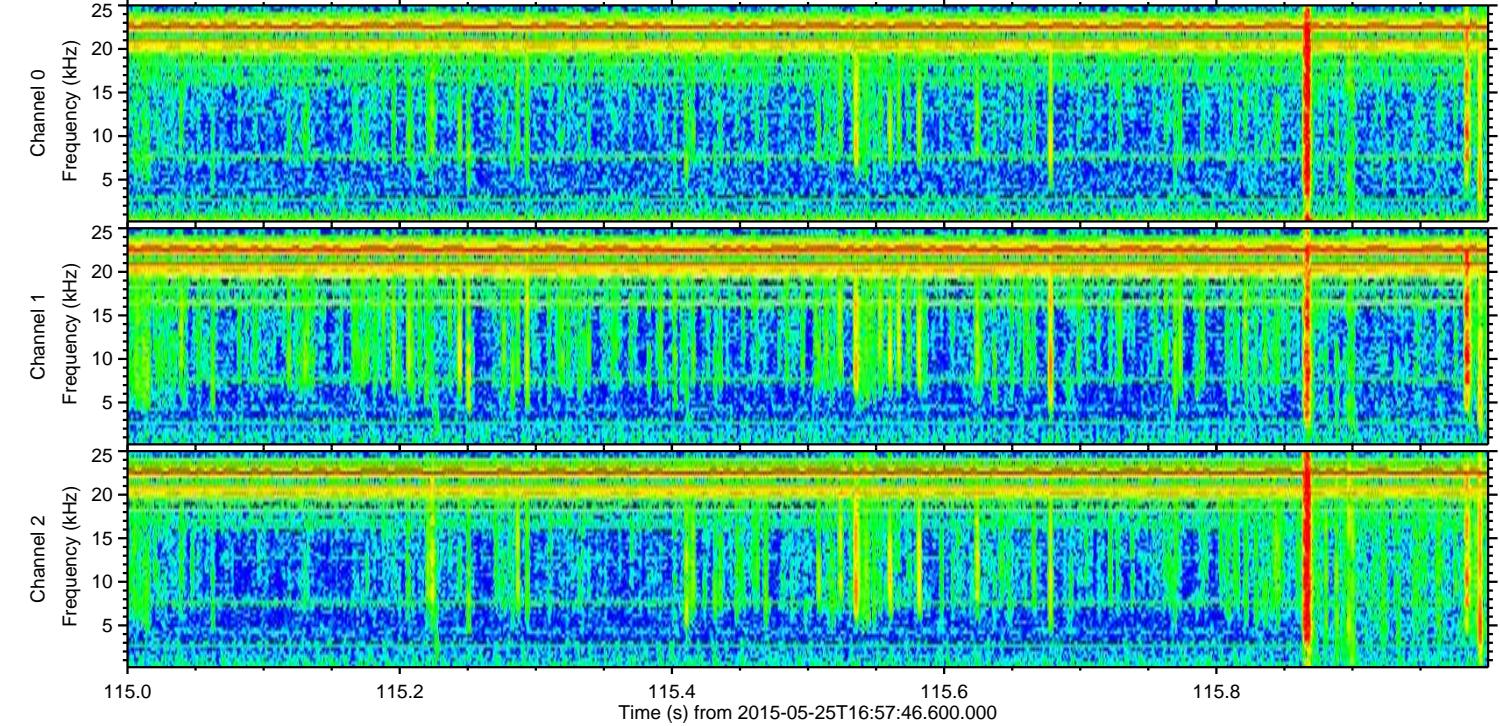
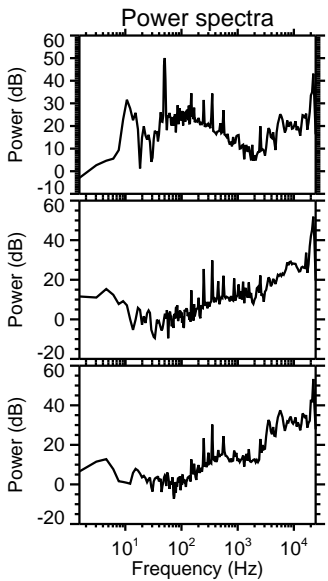
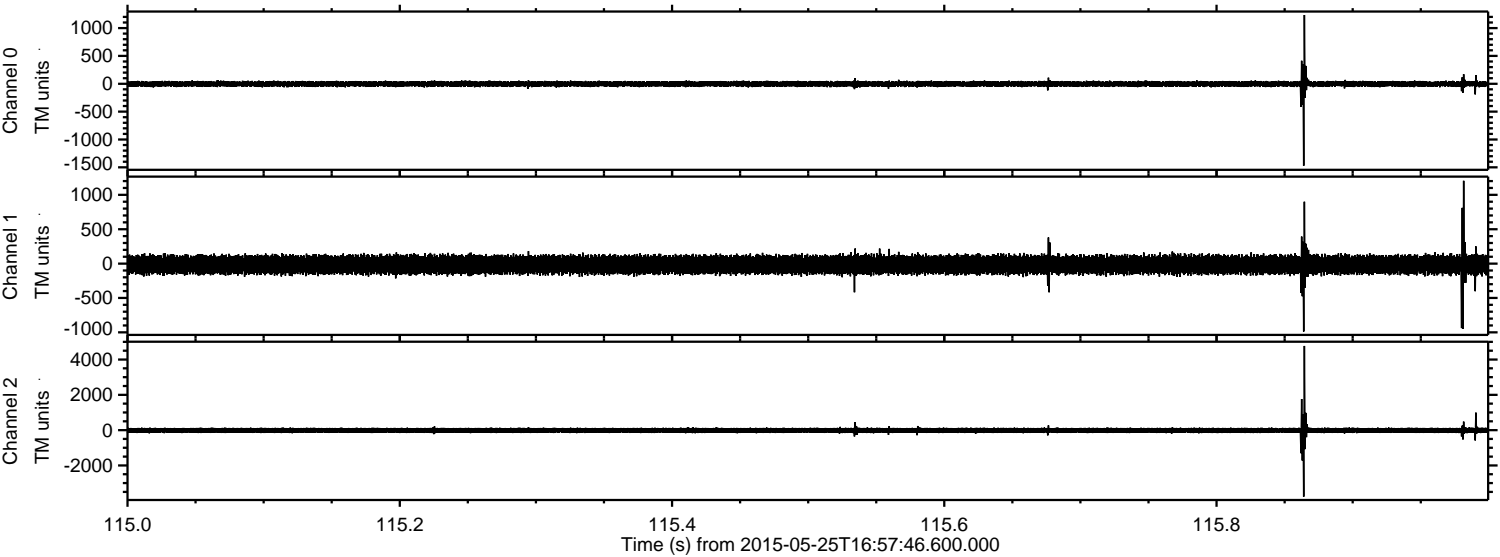
ELMAVAN 3D WAVEFORMS (Measured data sampled at 50 kHz) 49760 packets of 144 samples from 2015-05-25T16:57:46.600.000. Part 136/144

Processed Mon May 25 19:04:28 2015 by ELM ver.2012-10-06 from 001__elm20150525_165745__dat00.bin

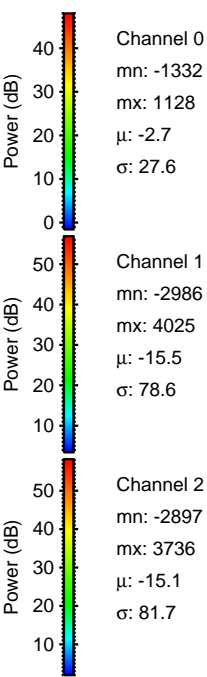
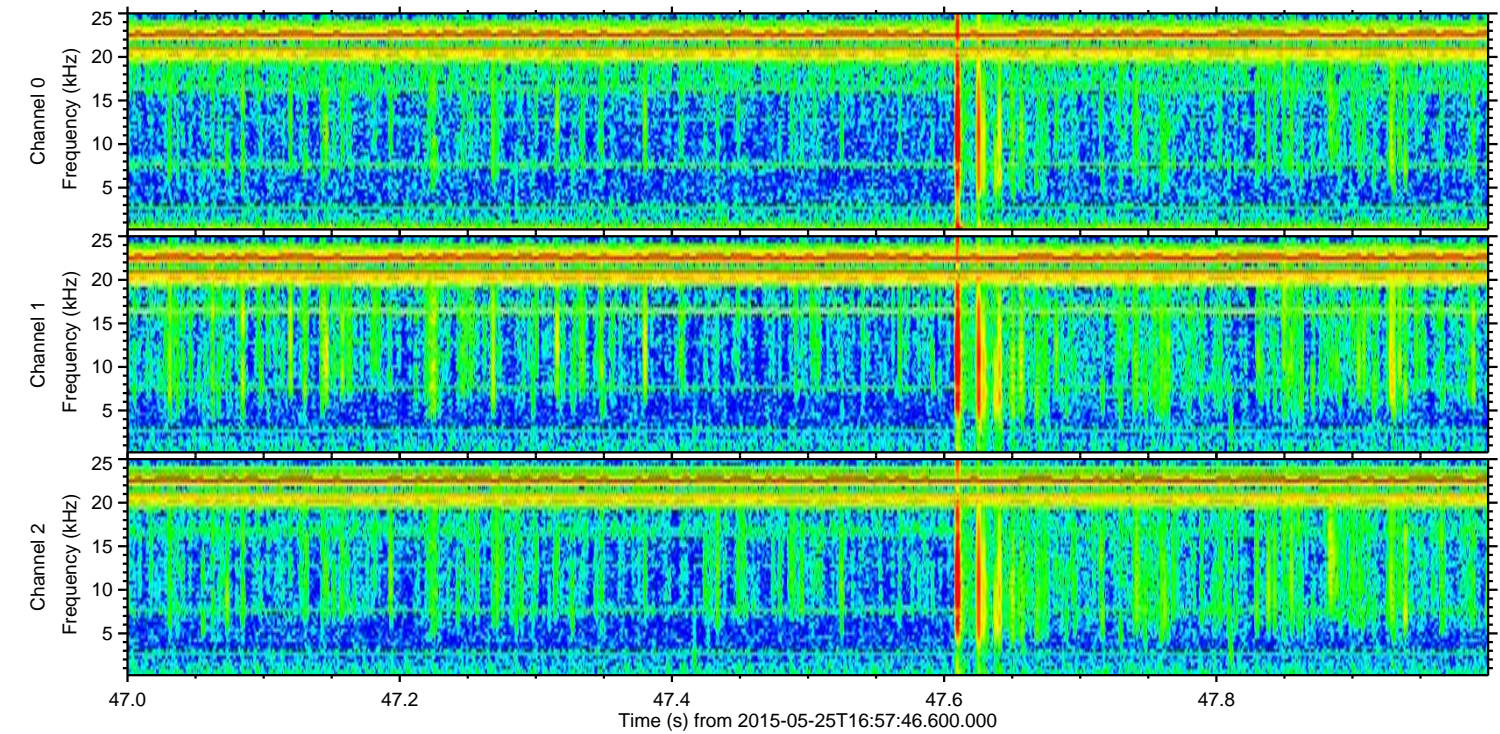
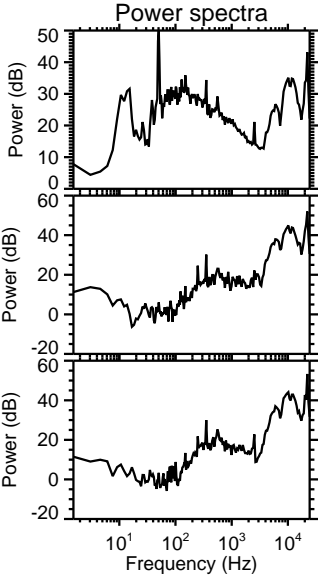
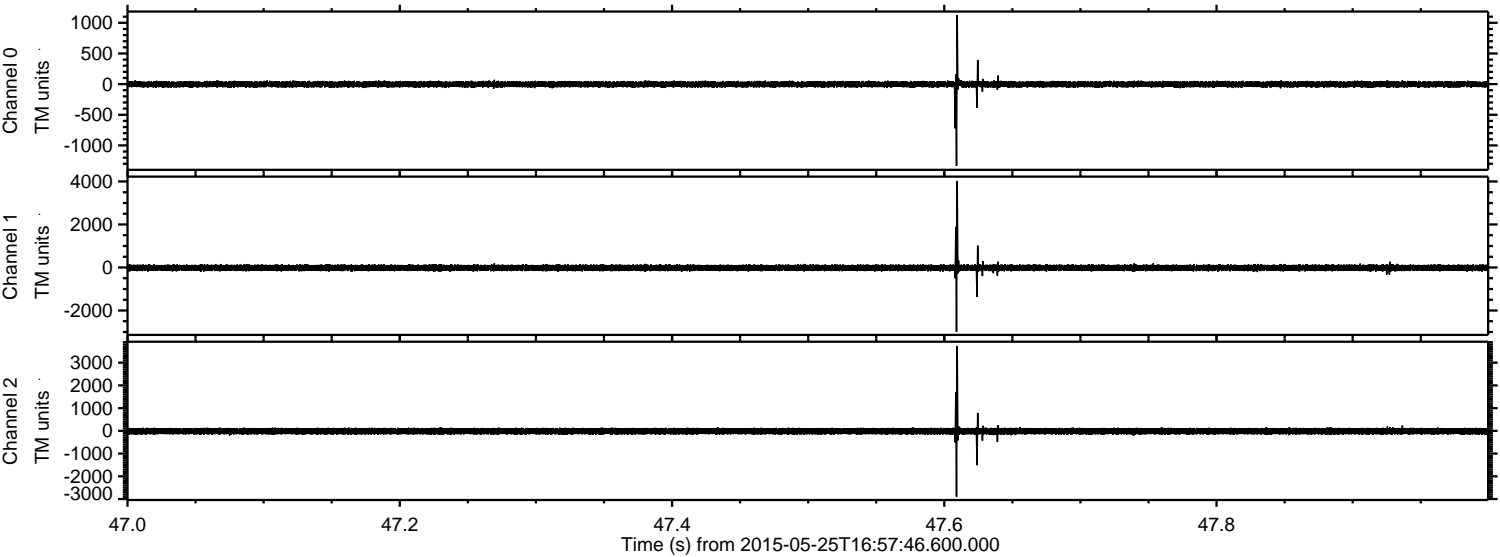


ELMAVAN 3D WAVEFORMS (Measured data sampled at 50 kHz) 49760 packets of 144 samples from 2015-05-25T16:57:46.600.000. Part 116/144

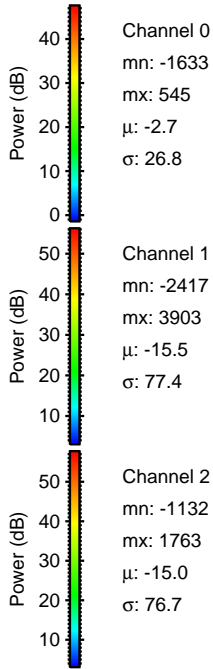
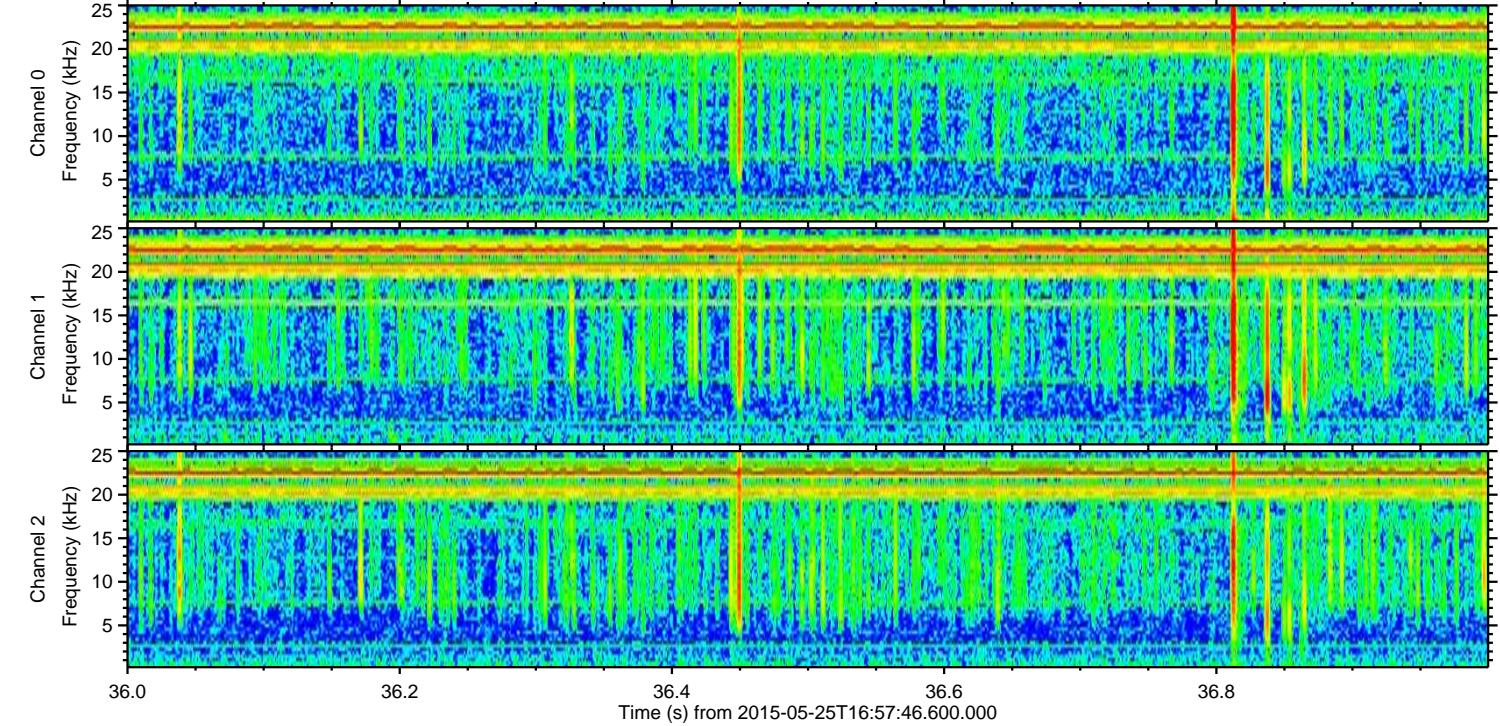
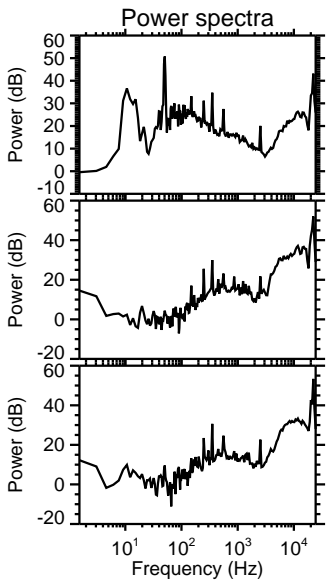
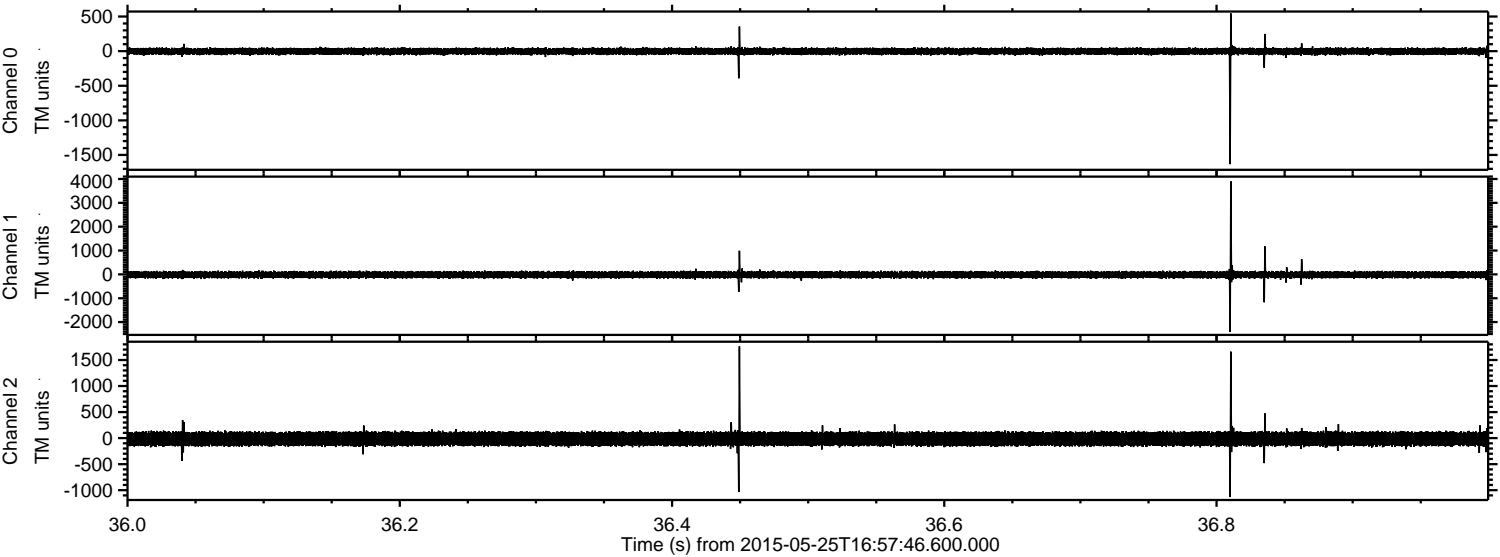
Processed Mon May 25 19:04:29 2015 by ELM ver.2012-10-06 from 001__elm20150525_165745__dat00.bin



Processed Mon May 25 19:04:30 2015 by ELM ver.2012-10-06 from 001__elm20150525_165745__dat00.bin

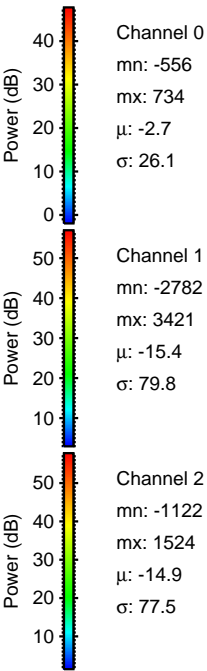
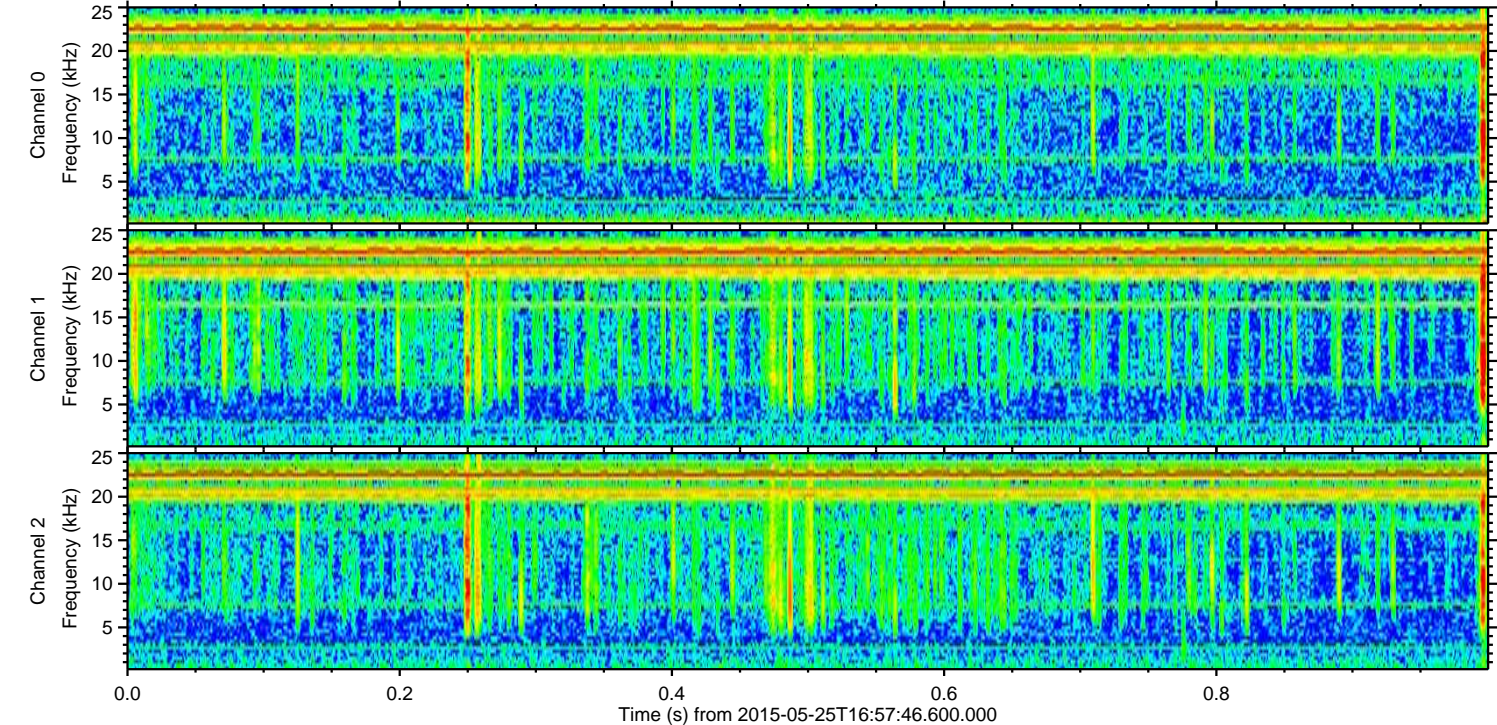
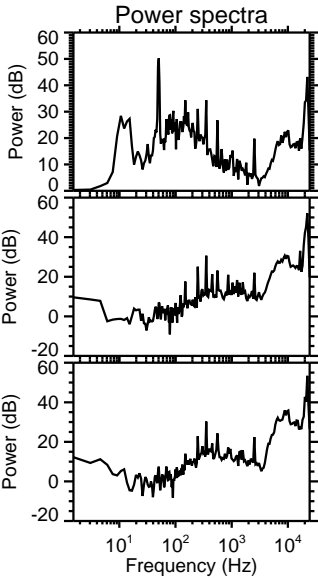
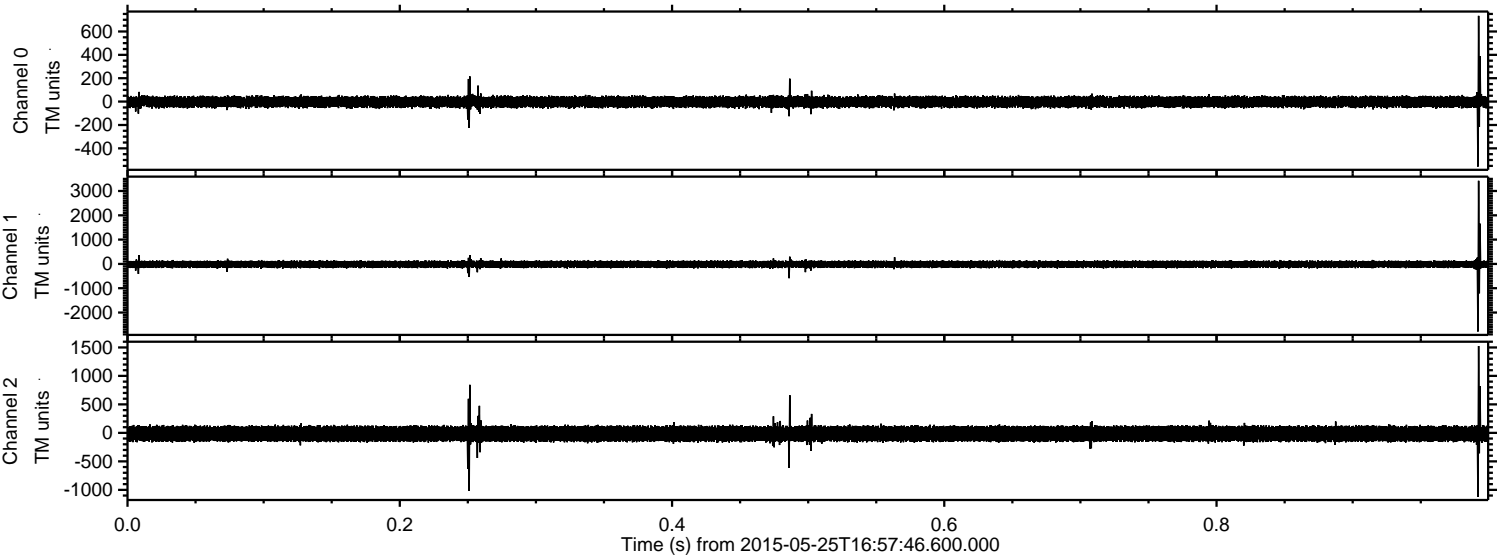


Processed Mon May 25 19:04:31 2015 by ELM ver.2012-10-06 from 001__elm20150525_165745__dat00.bin



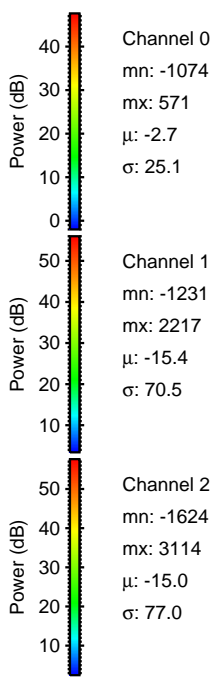
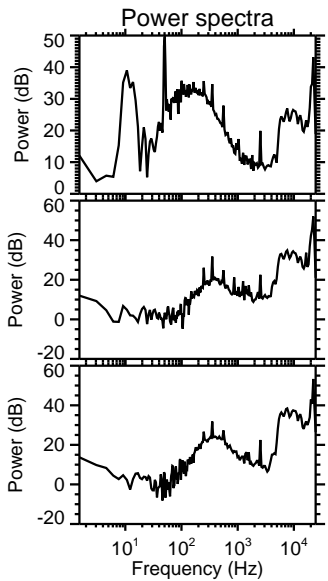
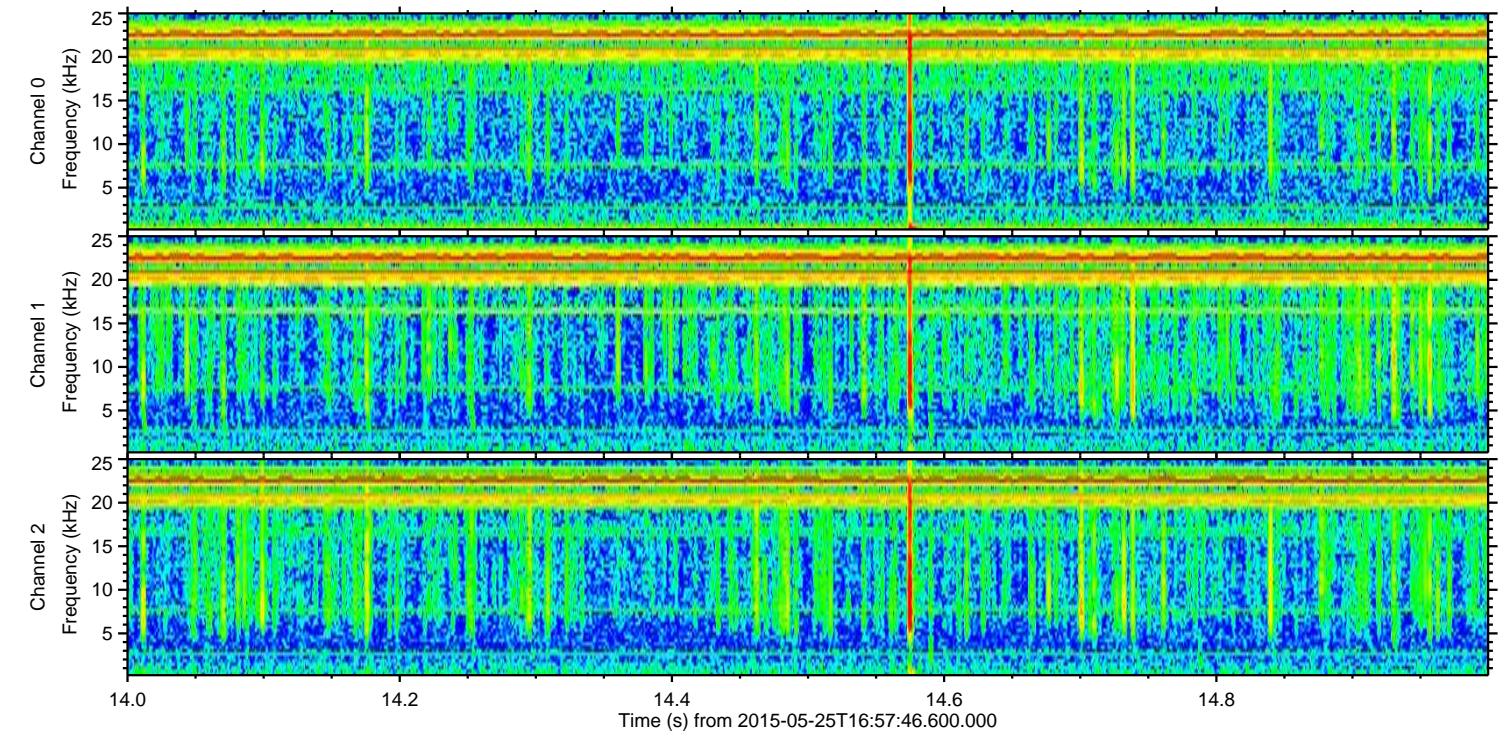
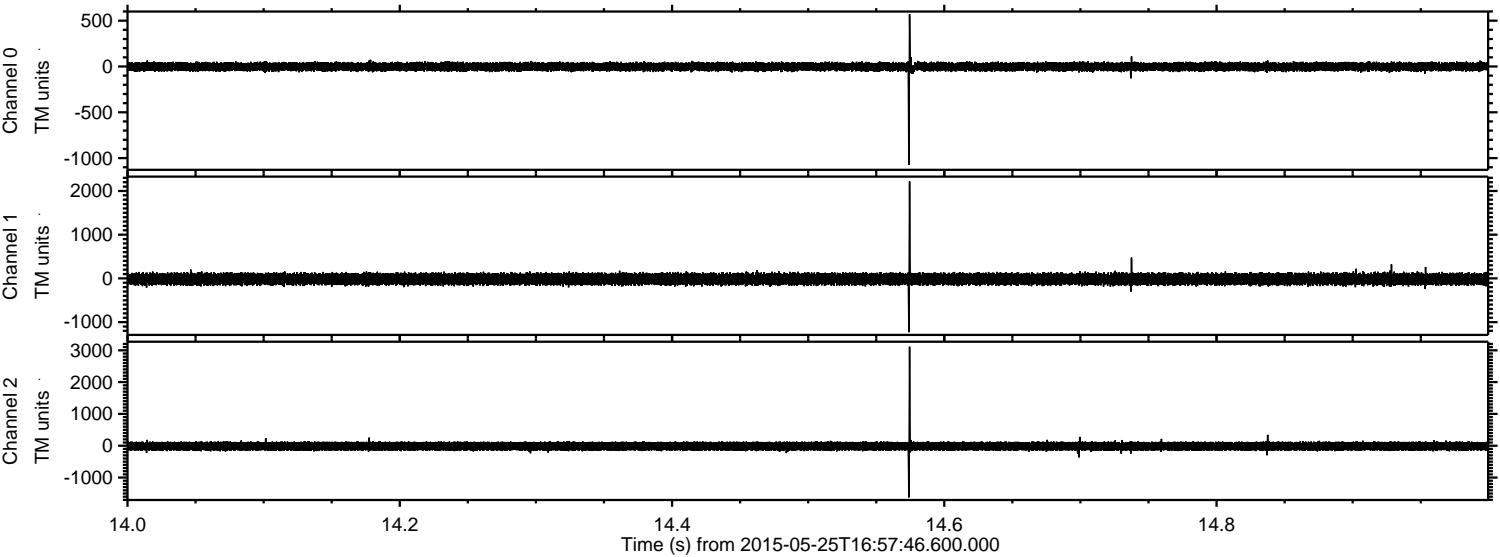
ELMAVAN 3D WAVEFORMS (Measured data sampled at 50 kHz) 49760 packets of 144 samples from 2015-05-25T16:57:46.600.000. Part 1/144

Processed Mon May 25 19:04:31 2015 by ELM ver.2012-10-06 from 001__elm20150525_165745__dat00.bin



ELMAVAN 3D WAVEFORMS (Measured data sampled at 50 kHz) 49760 packets of 144 samples from 2015-05-25T16:57:46.600.000. Part 15/144

Processed Mon May 25 19:04:32 2015 by ELM ver.2012-10-06 from 001__elm20150525_165745__dat00.bin

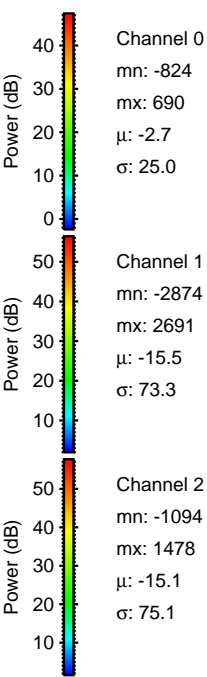
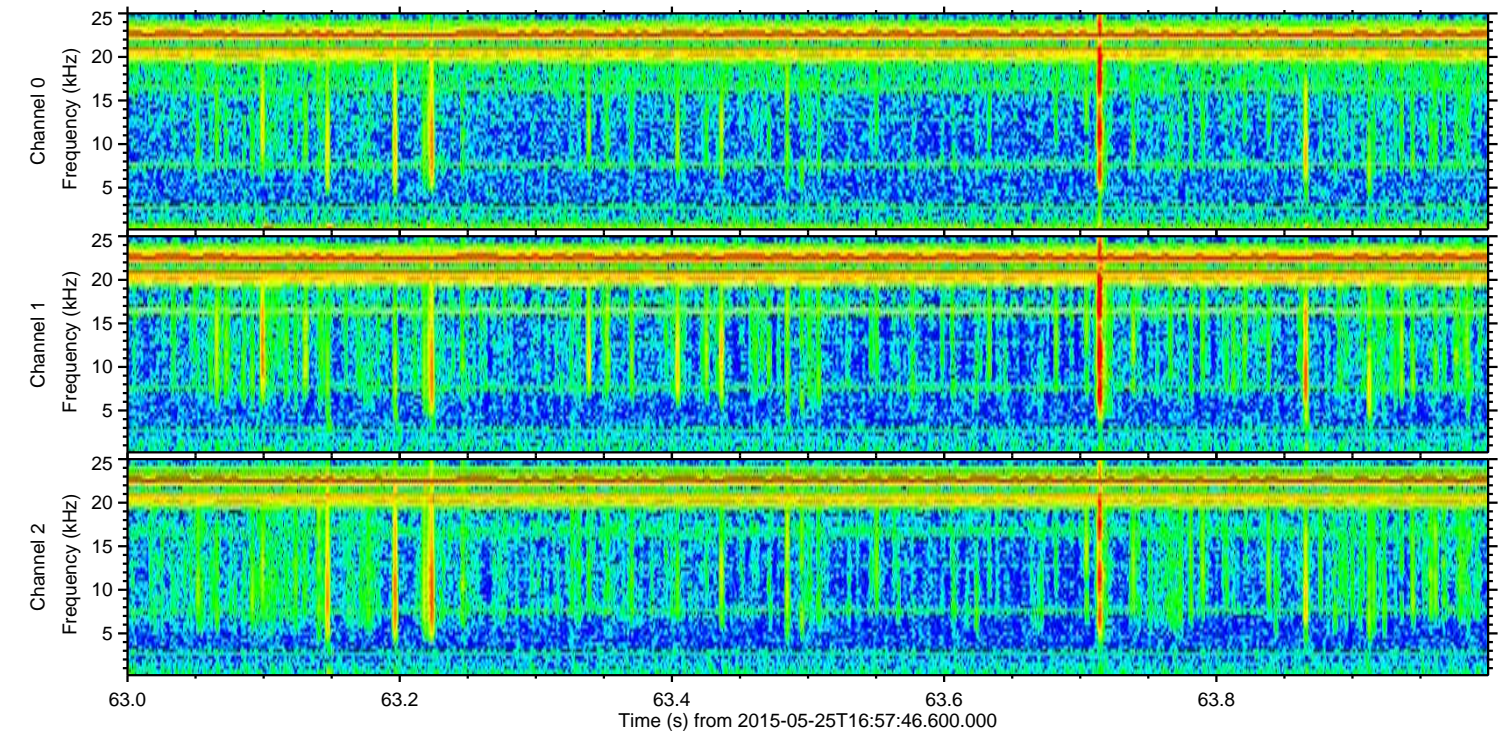
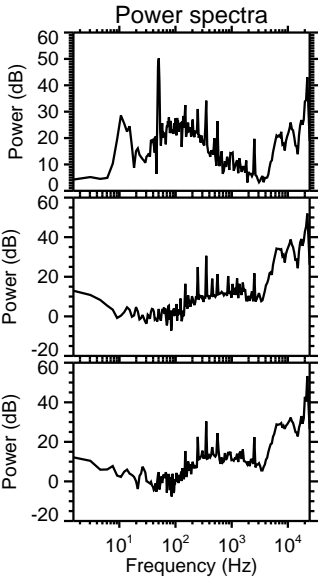
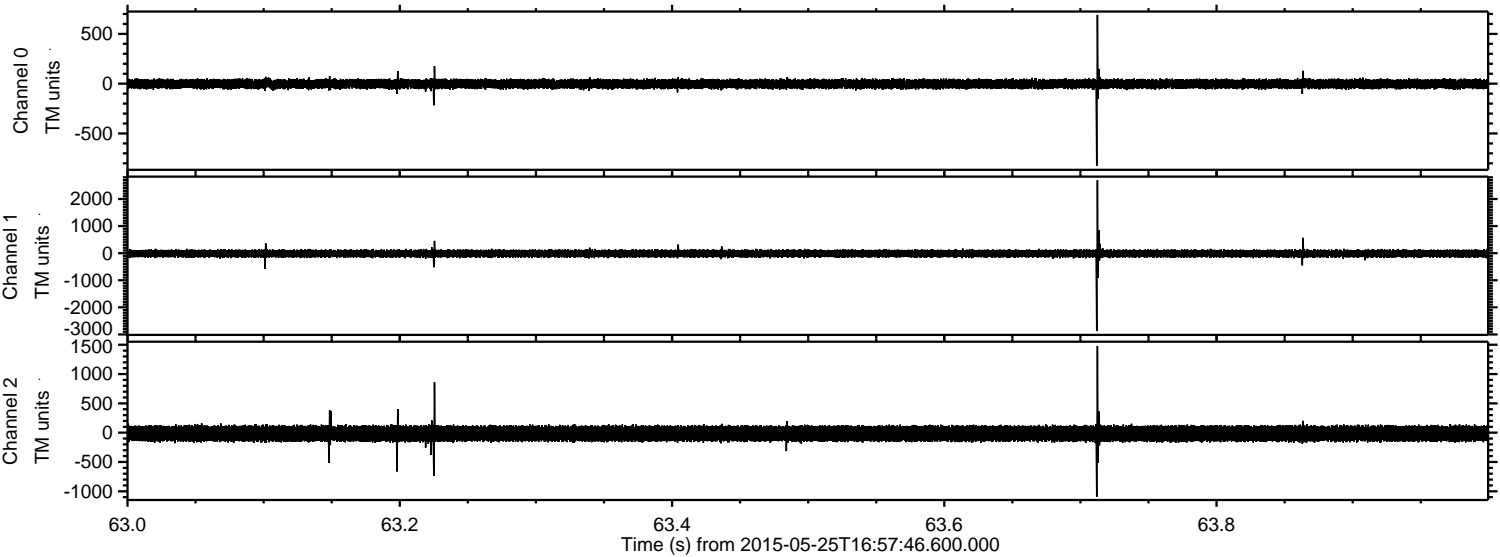


Channel 0
mn: -1074
mx: 571
 μ : -2.7
 σ : 25.1

Channel 1
mn: -1231
mx: 2217
 μ : -15.4
 σ : 70.5

Channel 2
mn: -1624
mx: 3114
 μ : -15.0
 σ : 77.0

Processed Mon May 25 19:04:33 2015 by ELM ver.2012-10-06 from 001__elm20150525_165745__dat00.bin

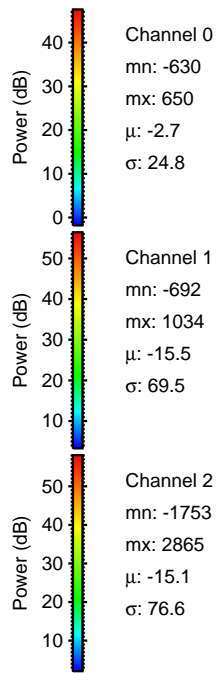
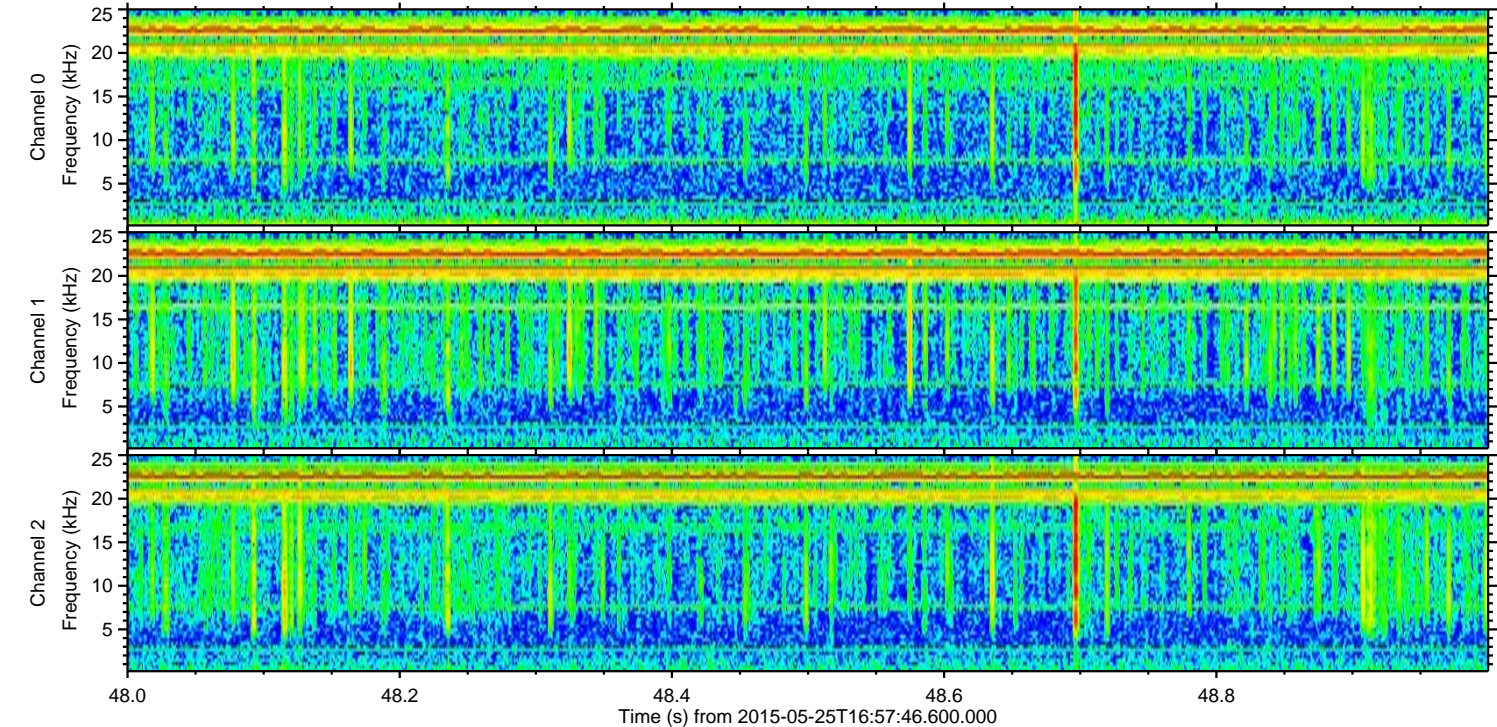
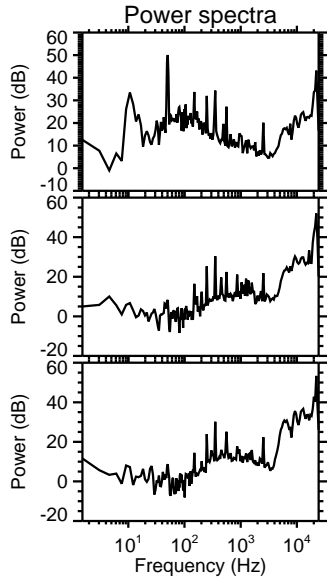
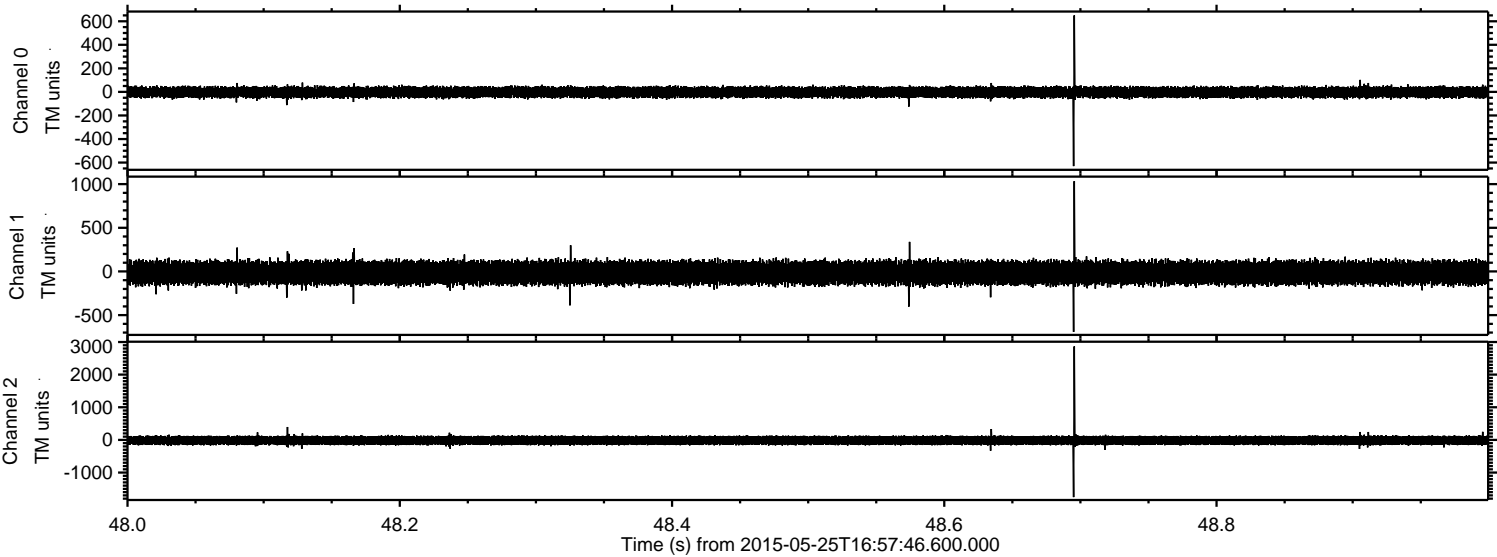


Channel 0
mn: -824
mx: 690
 μ : -2.7
 σ : 25.0

Channel 1
mn: -2874
mx: 2691
 μ : -15.5
 σ : 73.3

Channel 2
mn: -1094
mx: 1478
 μ : -15.1
 σ : 75.1

Processed Mon May 25 19:04:34 2015 by ELM ver.2012-10-06 from 001__elm20150525_165745__dat00.bin



Processed Mon May 25 19:04:35 2015 by ELM ver.2012-10-06 from 001__elm20150525_165745__dat00.bin

