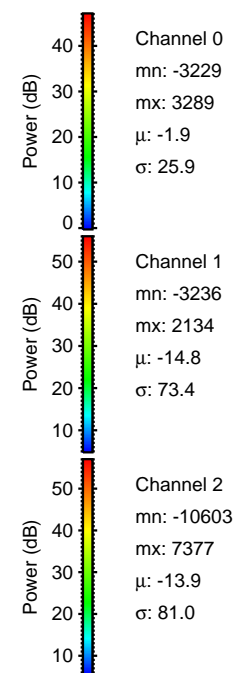
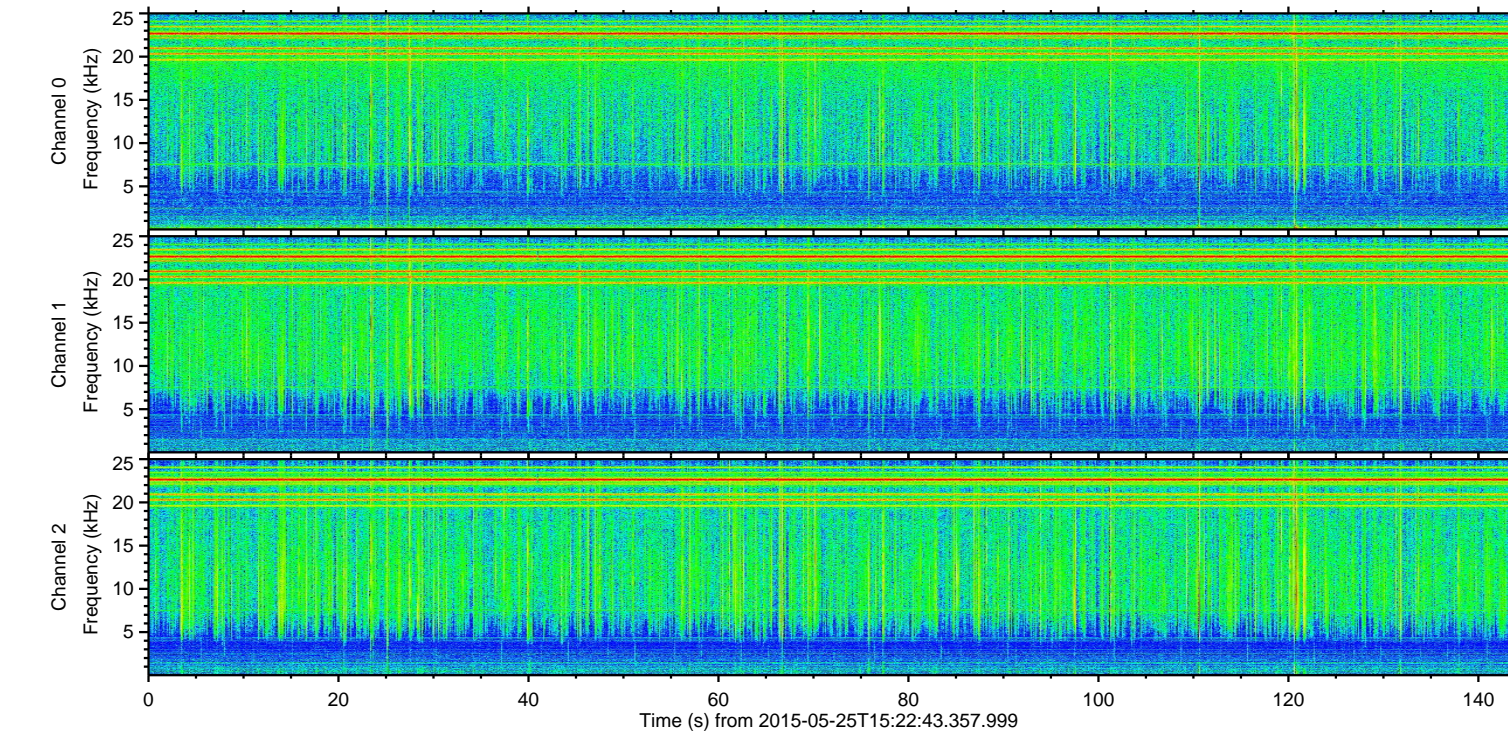
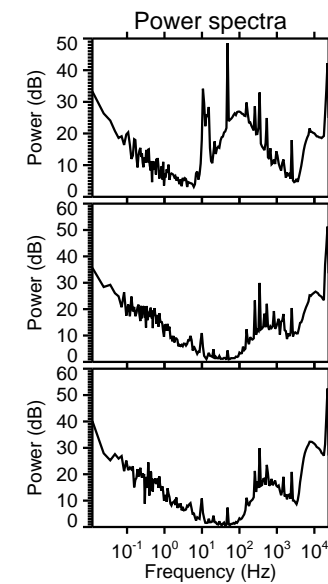
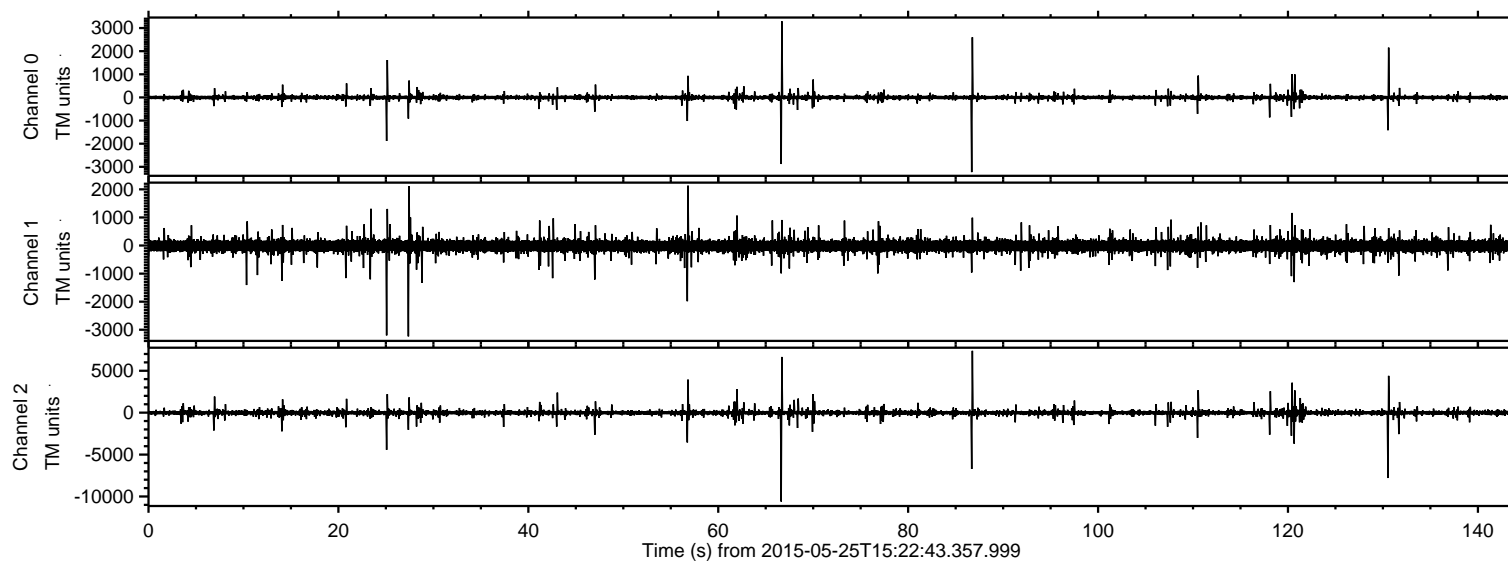
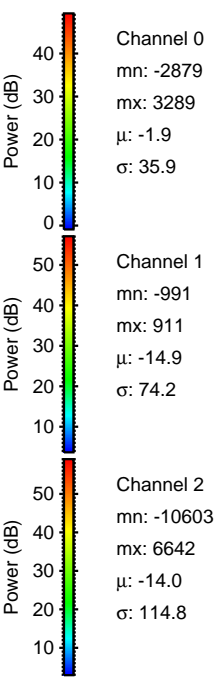
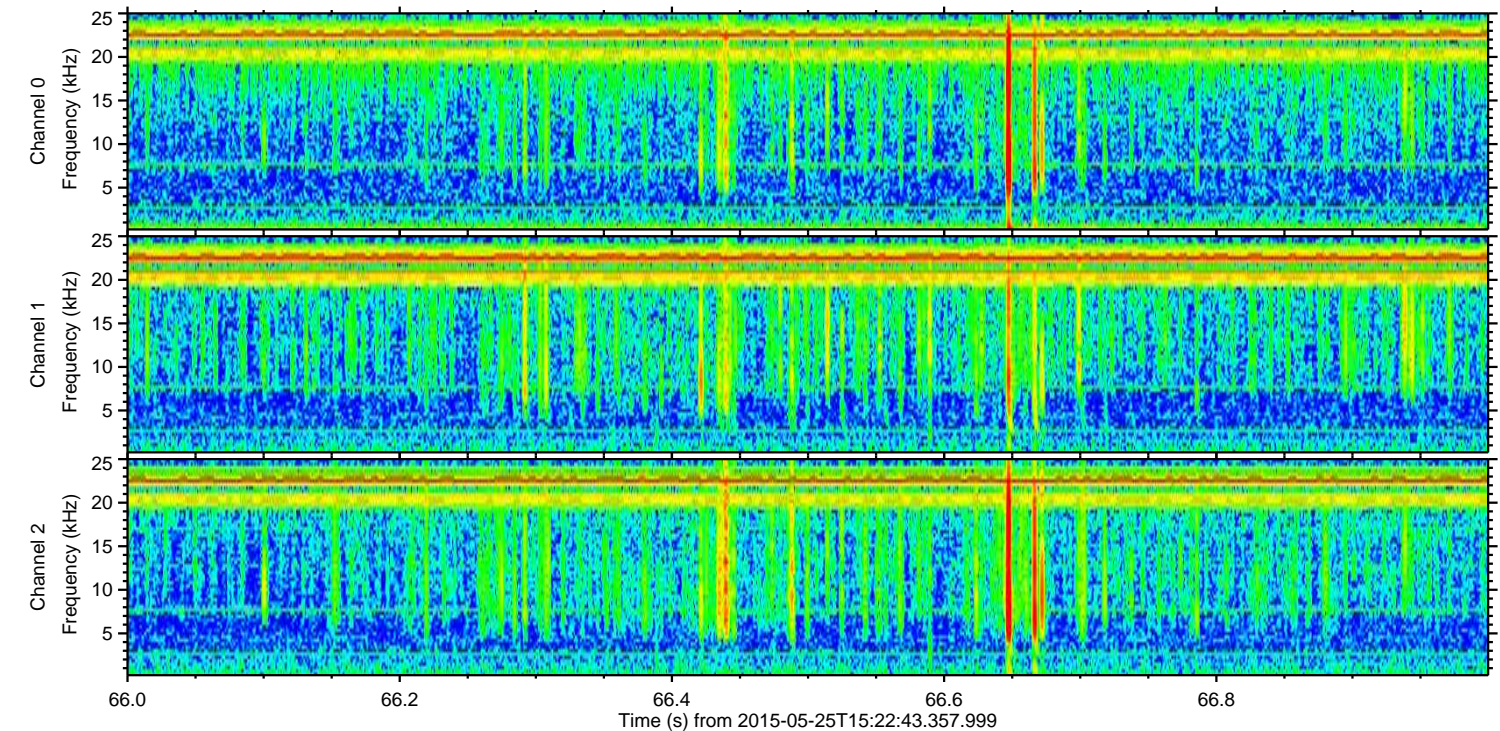
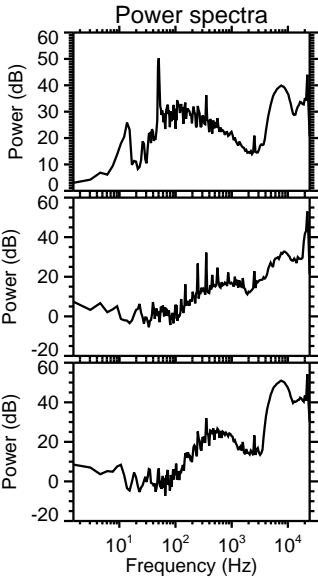
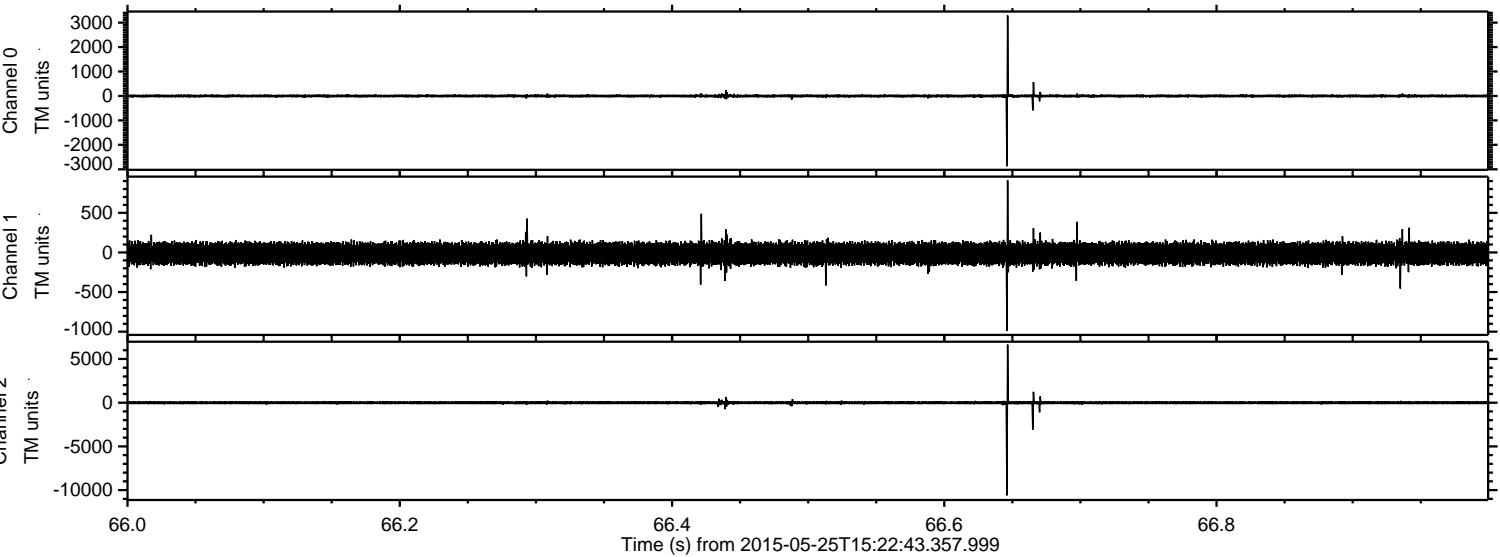


ELMAVAN 3D WAVEFORMS (Measured data sampled at 50 kHz) 49754 packets of 144 samples from 2015-05-25T15:22:43.357.999.

Processed Mon May 25 17:29:25 2015 by ELM ver.2012-10-06 from 001__elm20150525_152242__dat00.bin

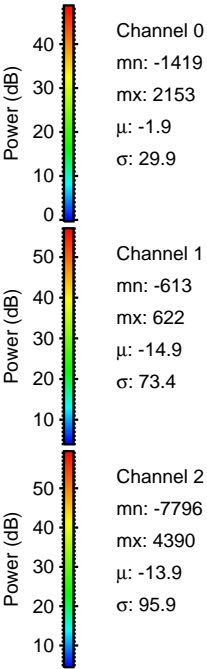
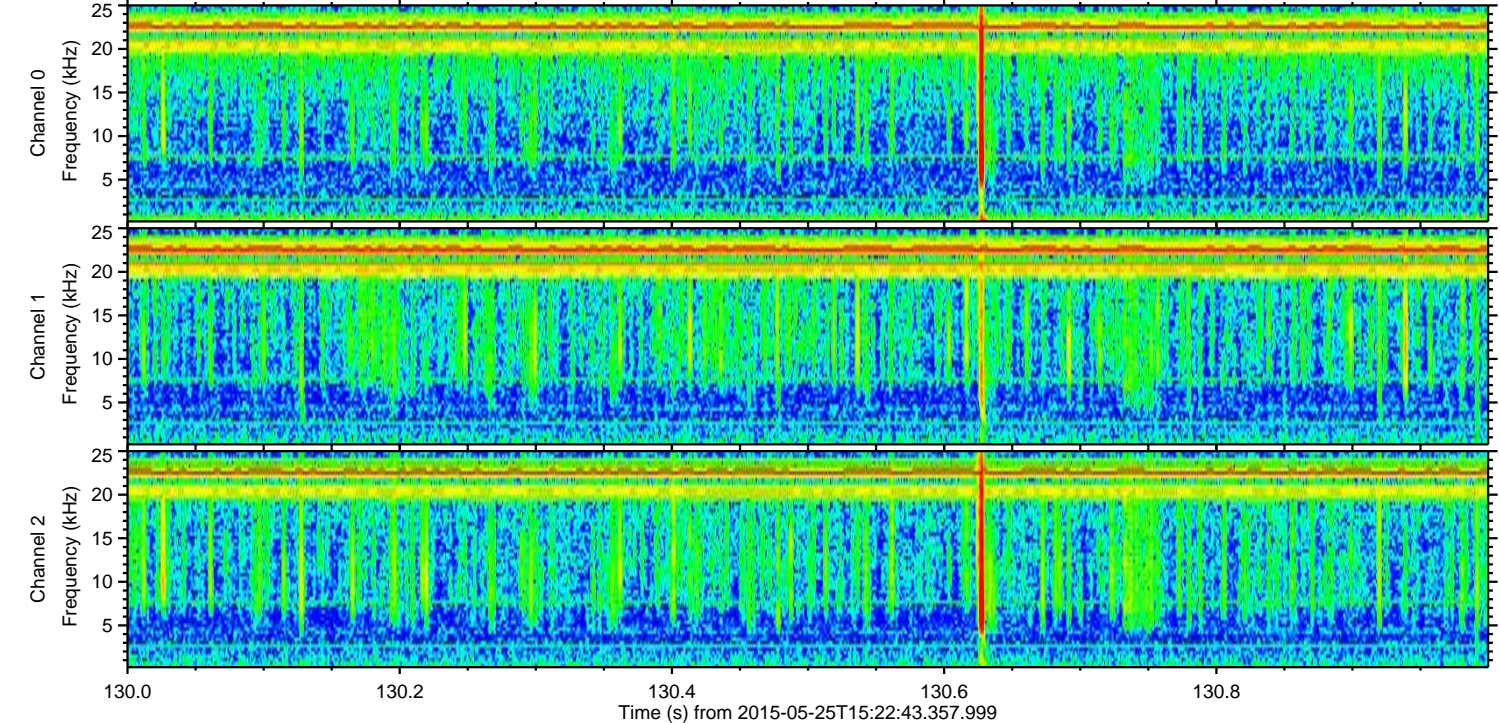
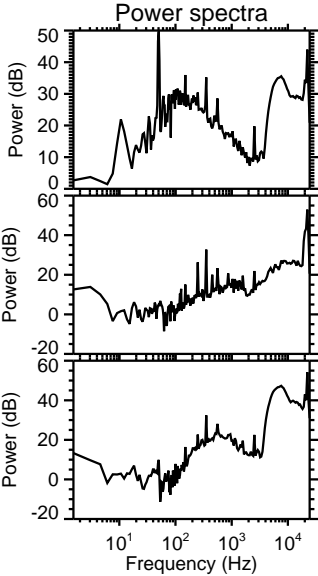
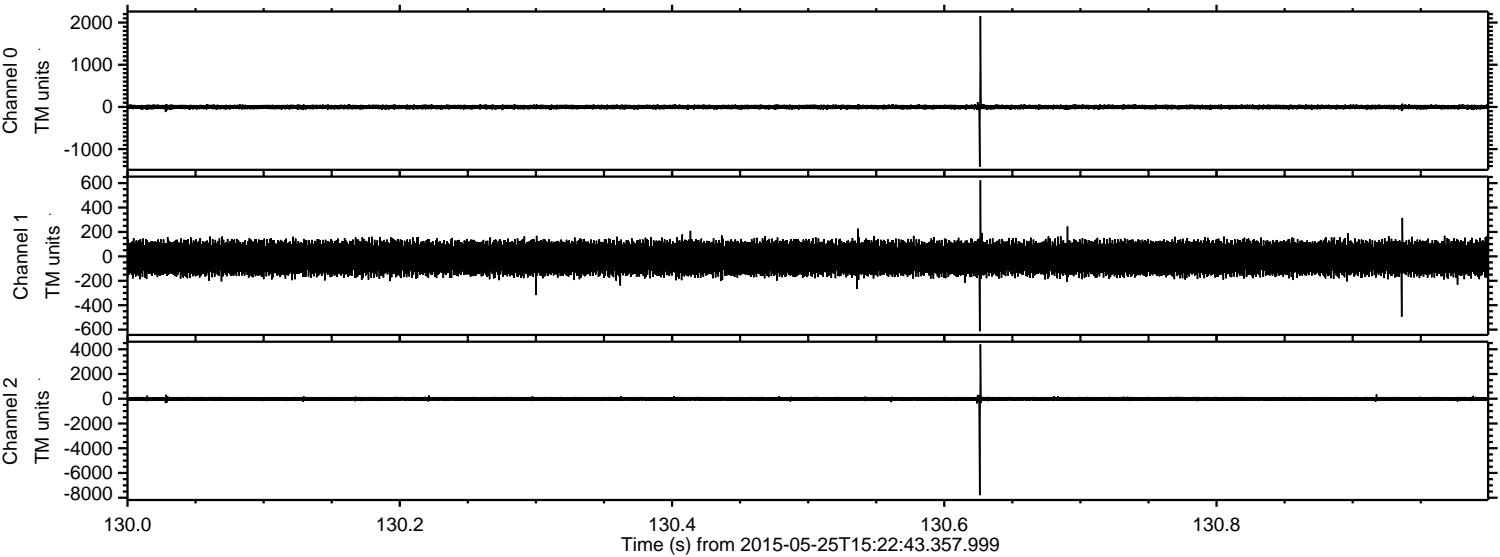


Processed Mon May 25 17:29:36 2015 by ELM ver.2012-10-06 from 001__elm20150525_152242__dat00.bin

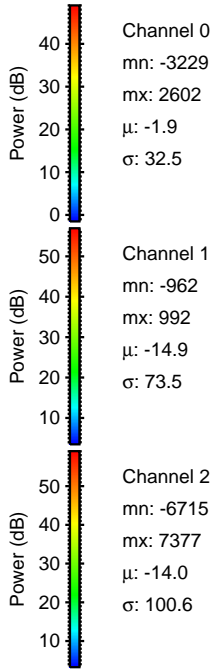
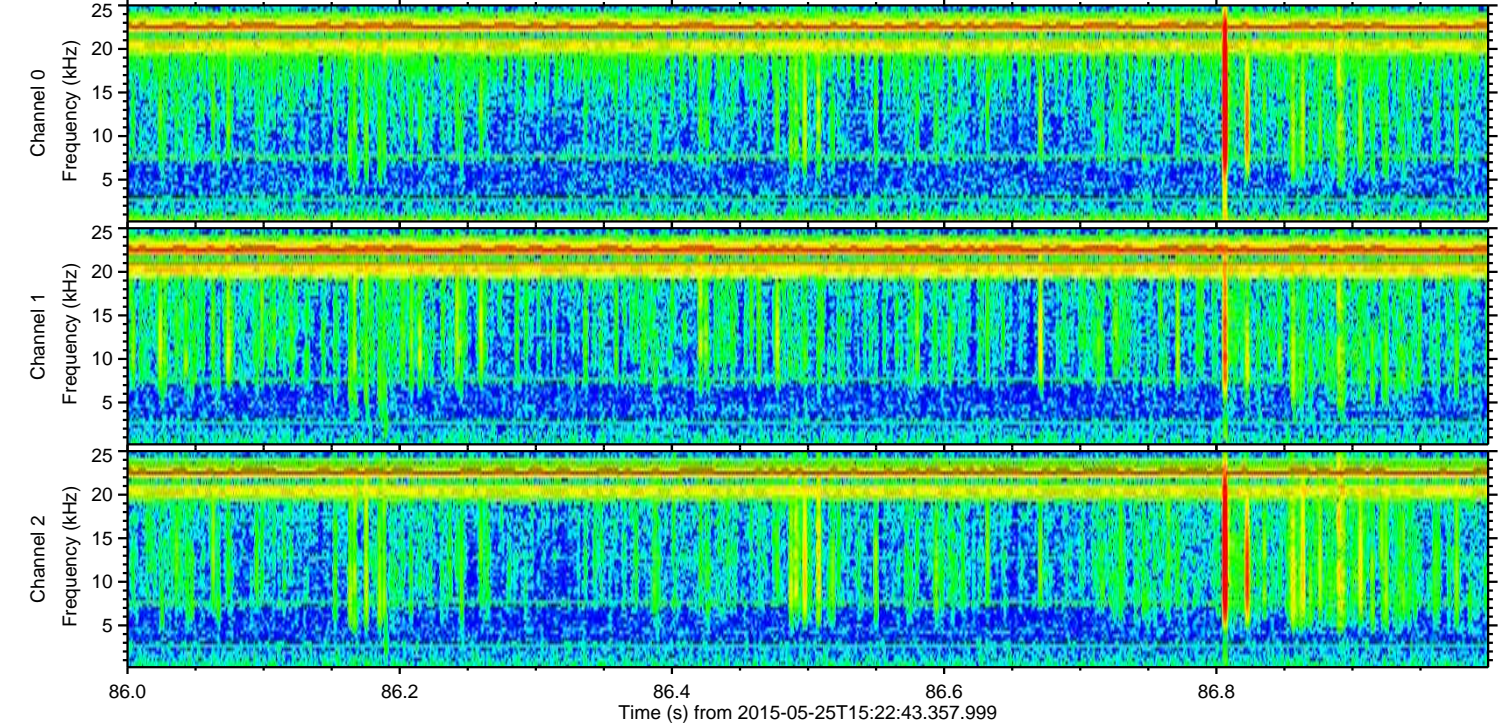
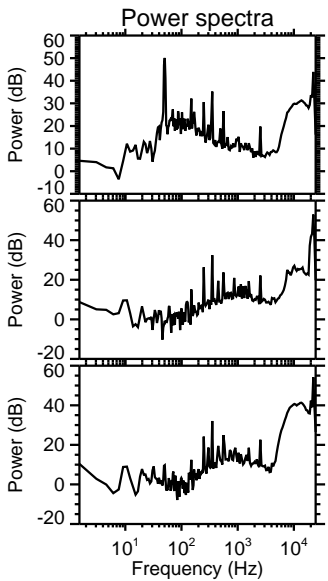
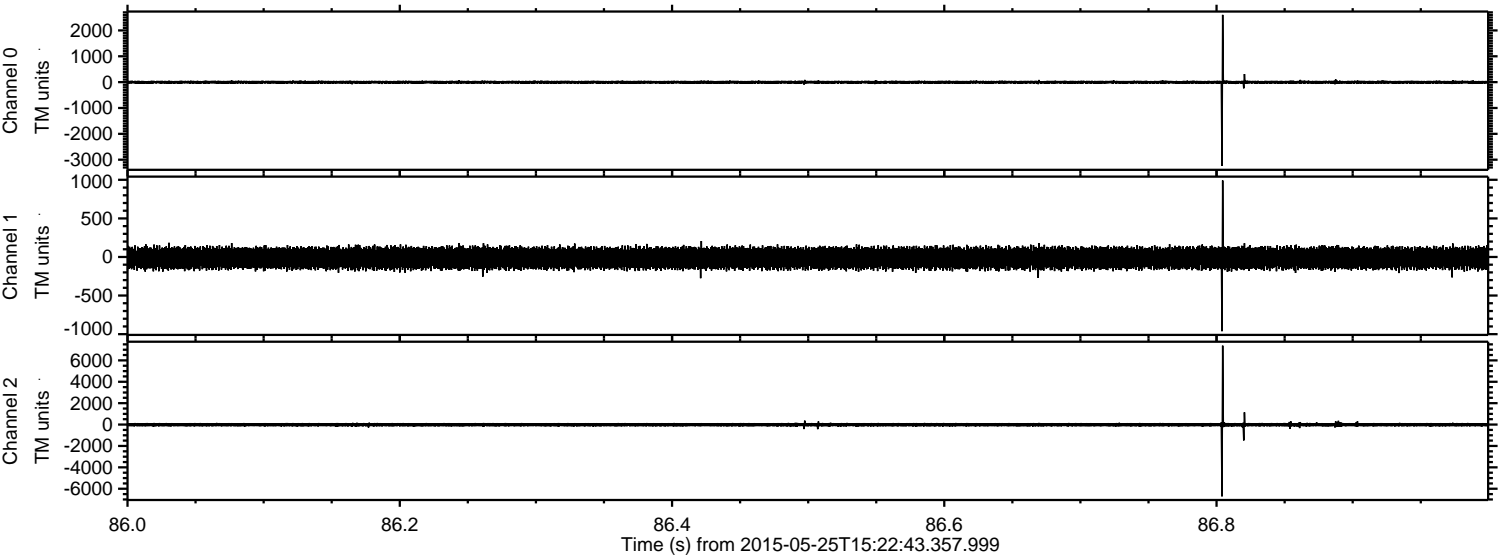


ELMAVAN 3D WAVEFORMS (Measured data sampled at 50 kHz) 49754 packets of 144 samples from 2015-05-25T15:22:43.357.999. Part 131/144

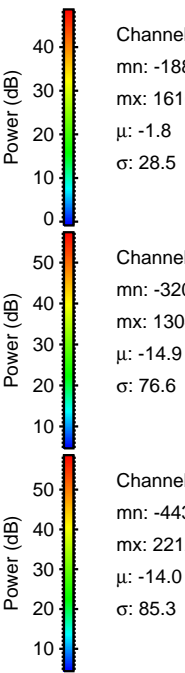
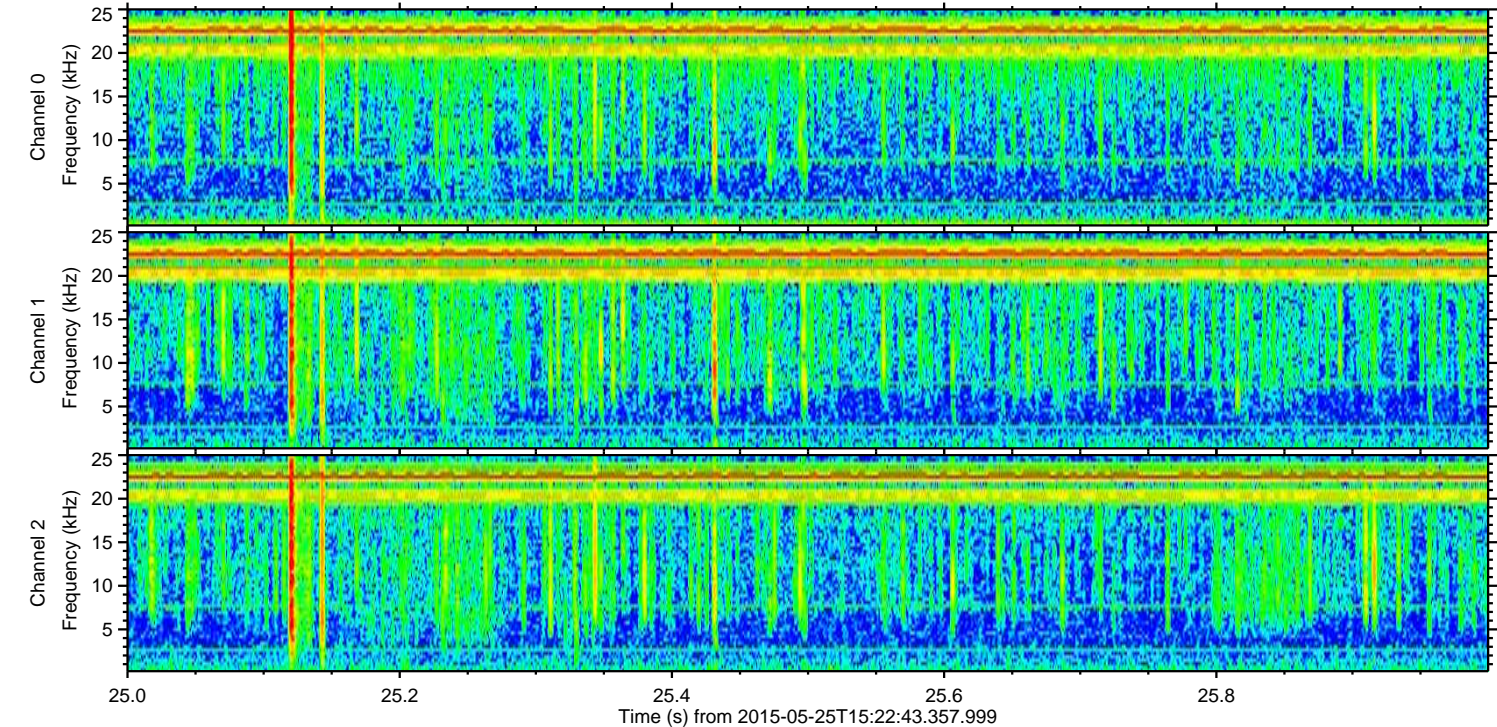
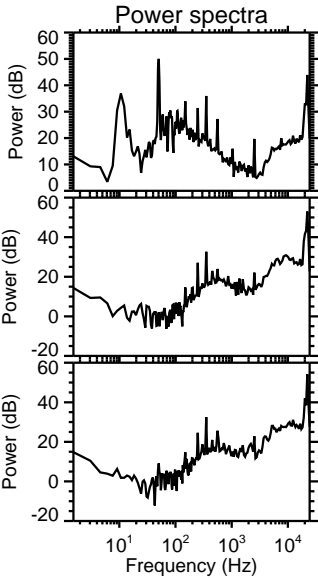
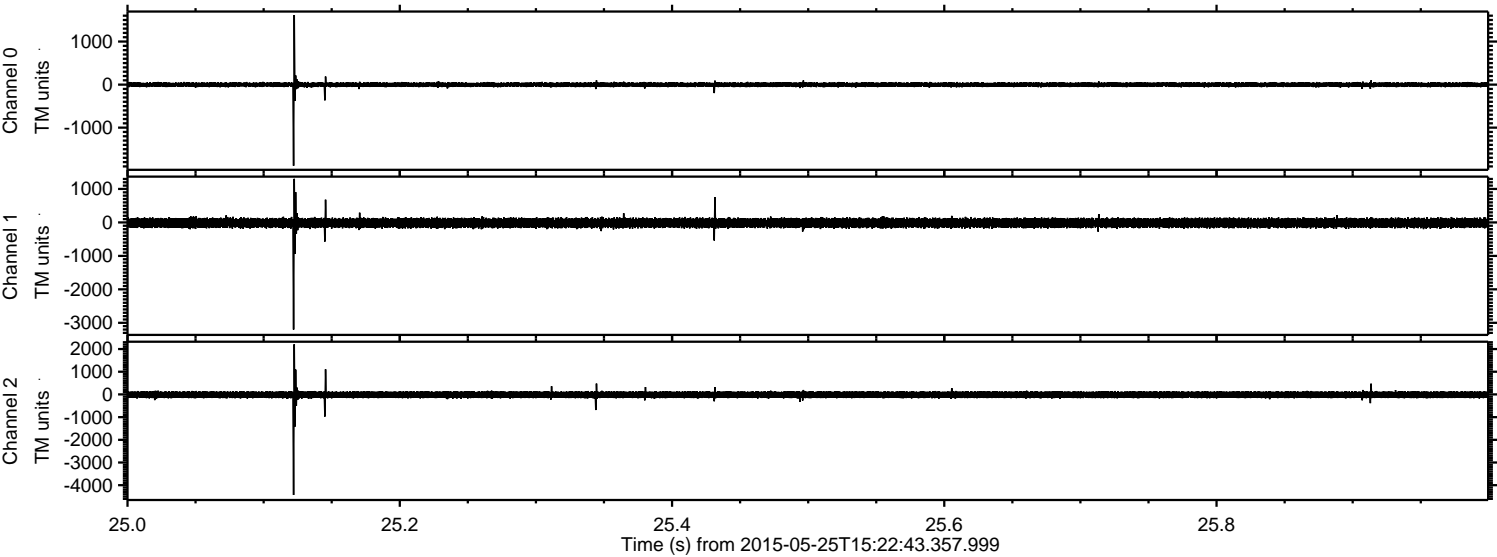
Processed Mon May 25 17:29:37 2015 by ELM ver.2012-10-06 from 001__elm20150525_152242__dat00.bin



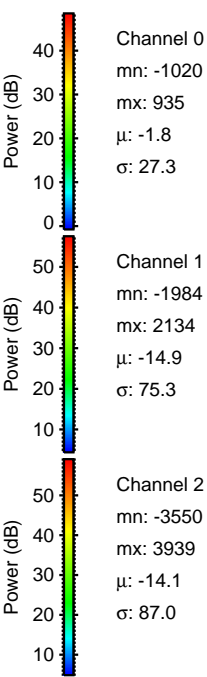
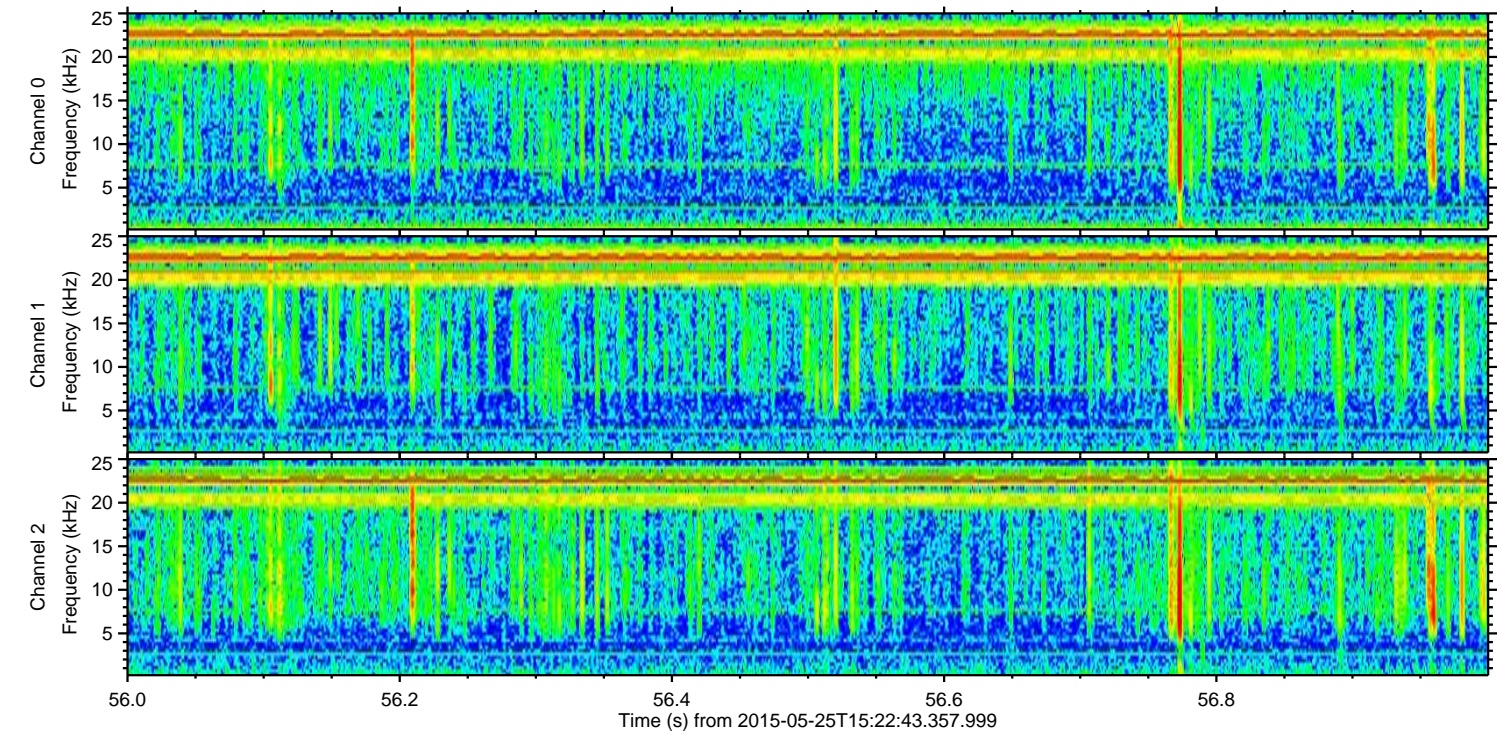
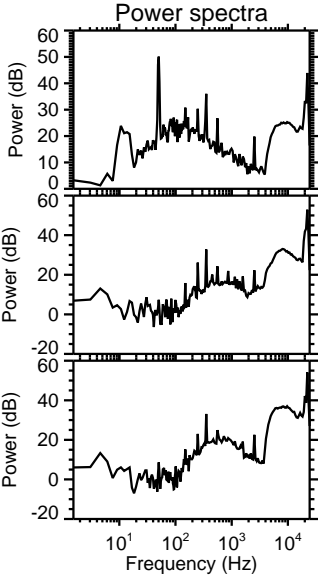
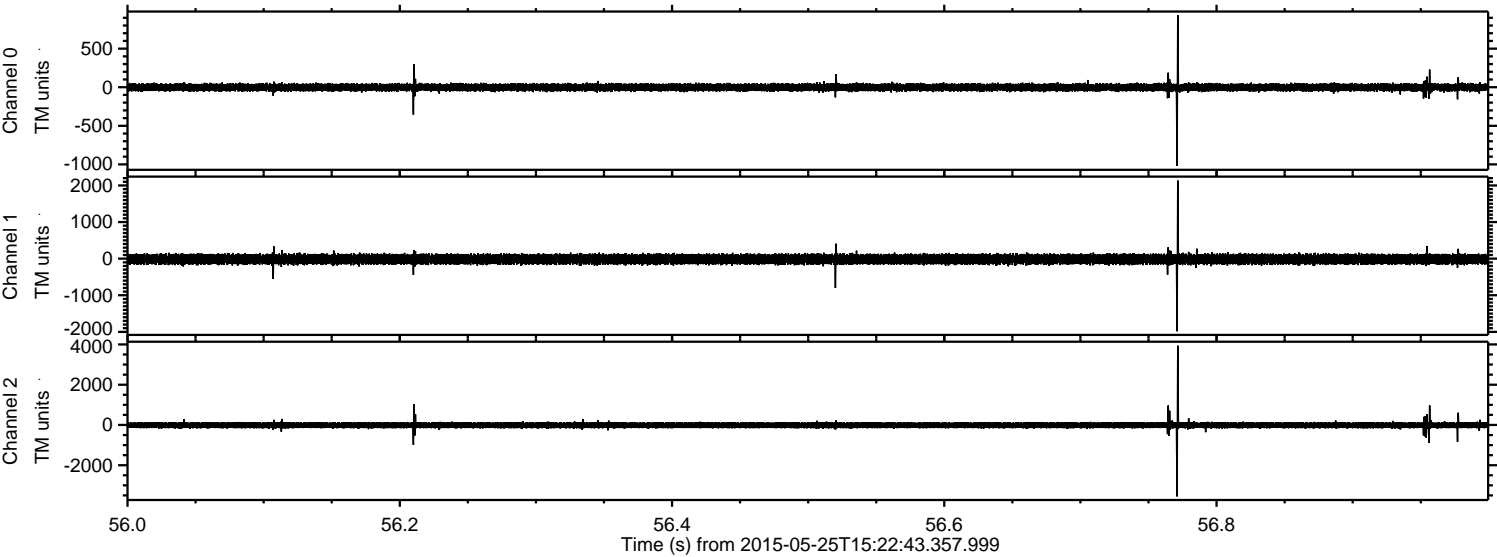
Processed Mon May 25 17:29:38 2015 by ELM ver.2012-10-06 from 001__elm20150525_152242__dat00.bin



Processed Mon May 25 17:29:39 2015 by ELM ver.2012-10-06 from 001__elm20150525_152242__dat00.bin

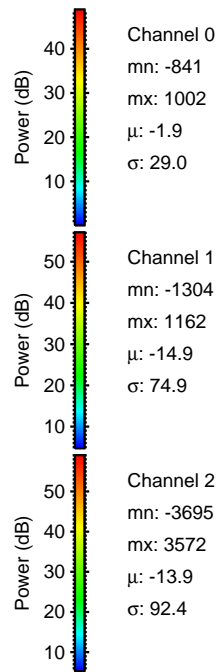
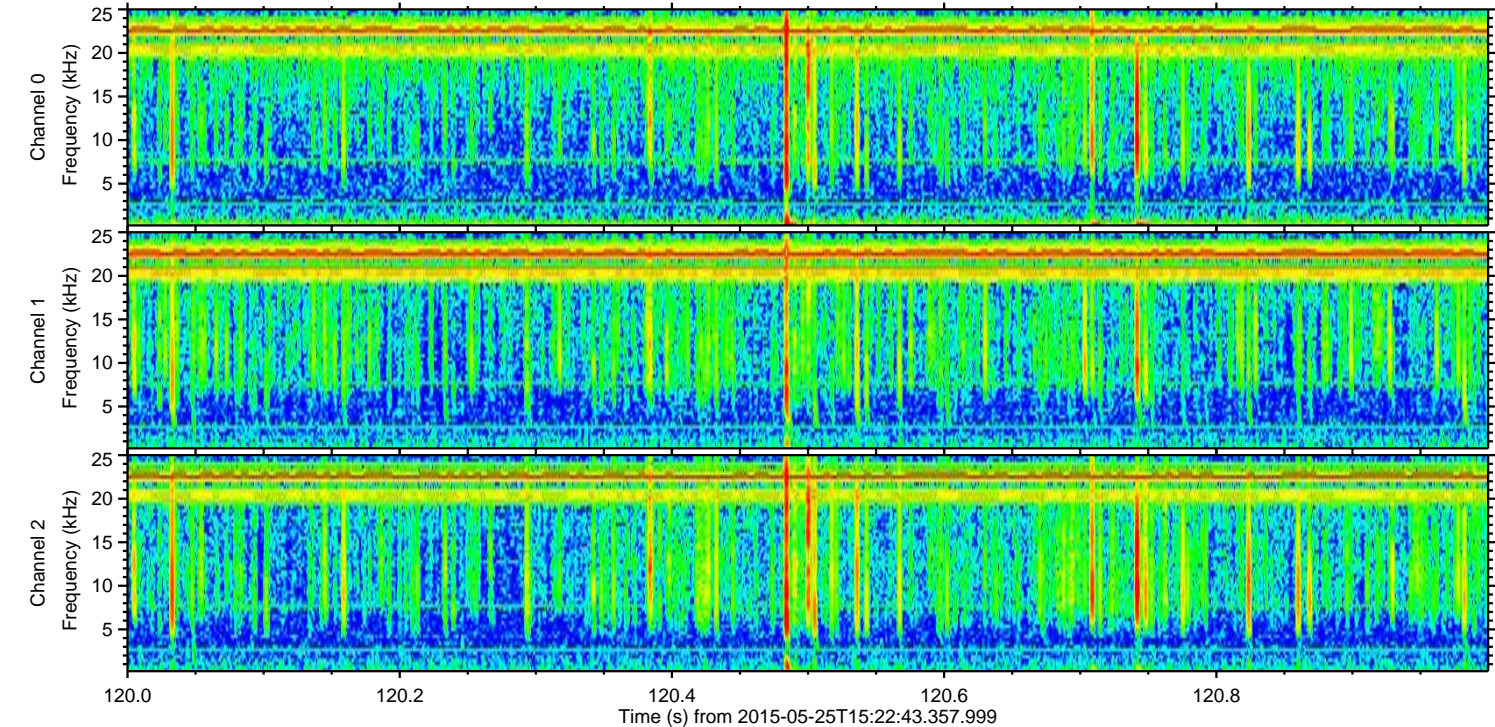
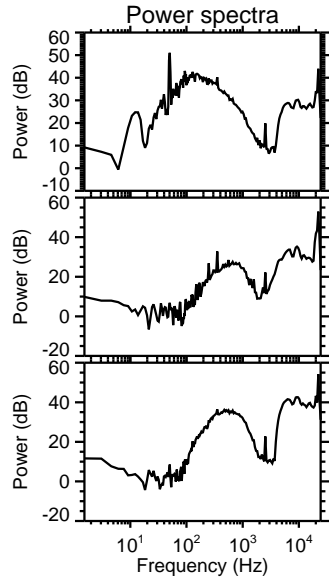
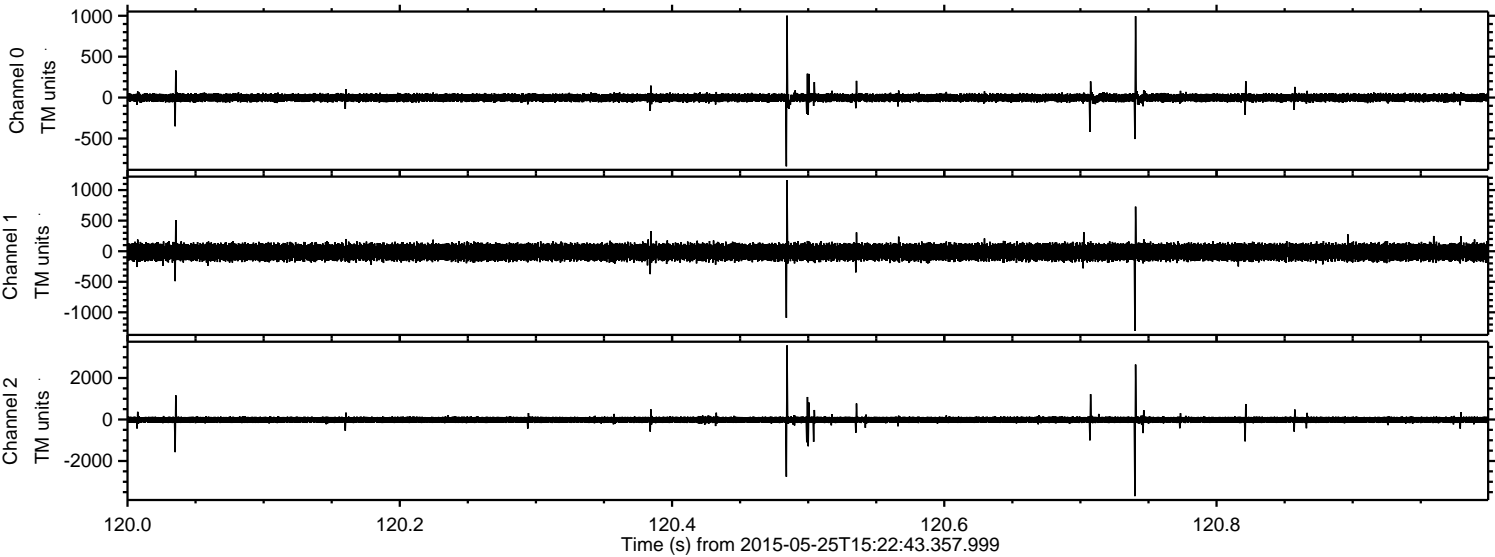


Processed Mon May 25 17:29:40 2015 by ELM ver.2012-10-06 from 001__elm20150525_152242__dat00.bin

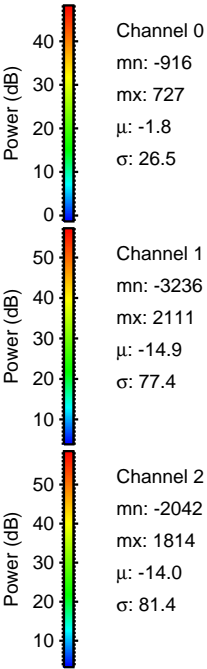
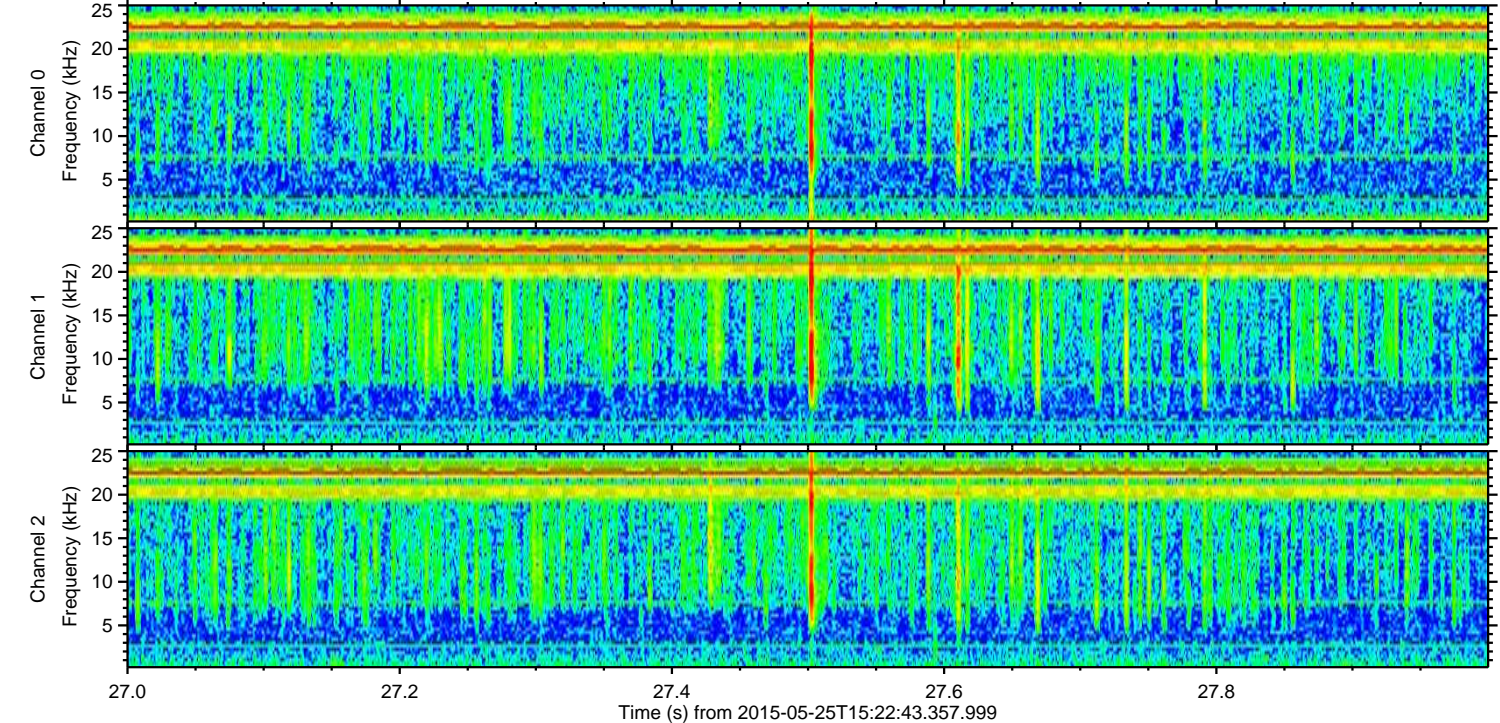
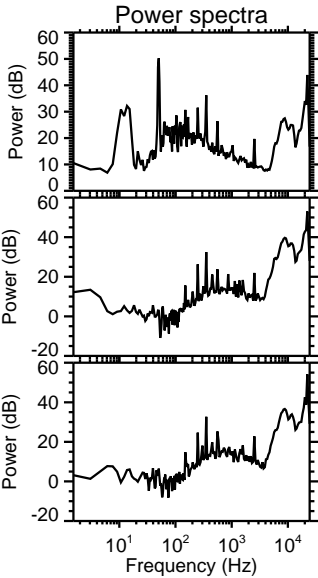
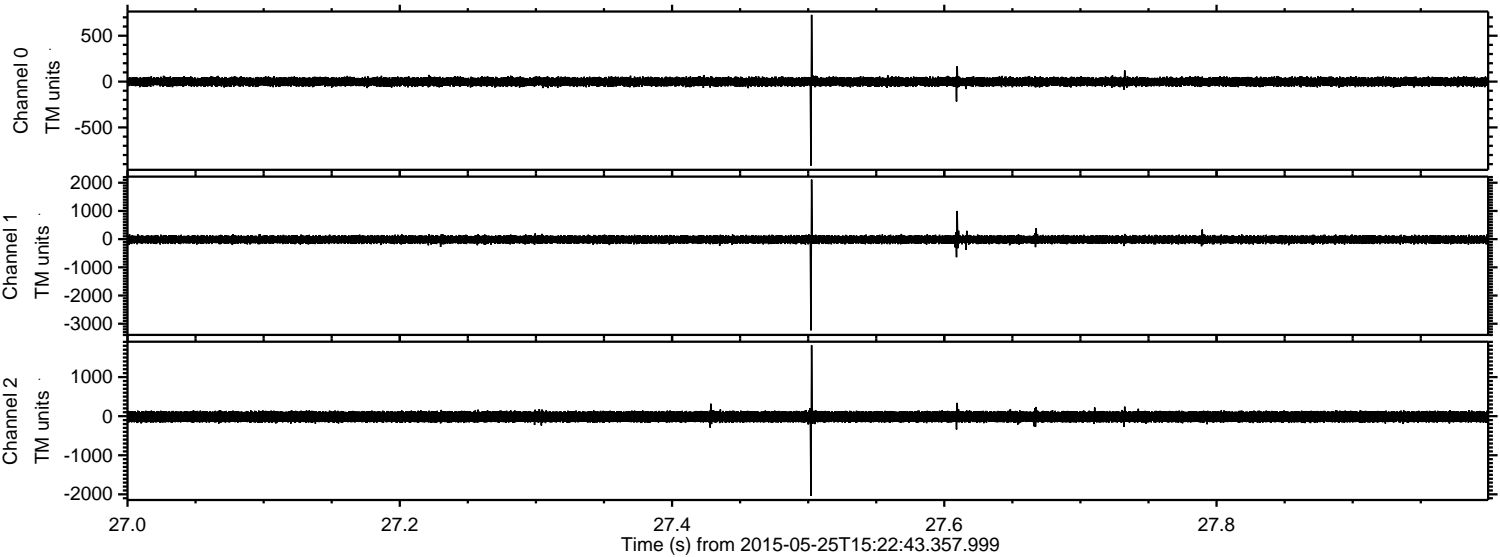


ELMAVAN 3D WAVEFORMS (Measured data sampled at 50 kHz) 49754 packets of 144 samples from 2015-05-25T15:22:43.357.999. Part 121/144

Processed Mon May 25 17:29:41 2015 by ELM ver.2012-10-06 from 001__elm20150525_152242__dat00.bin

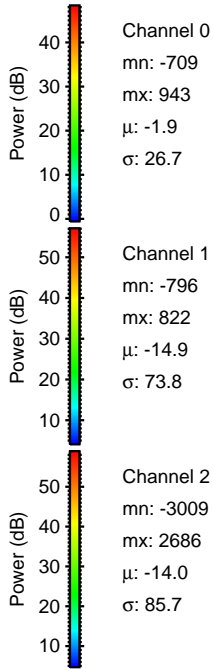
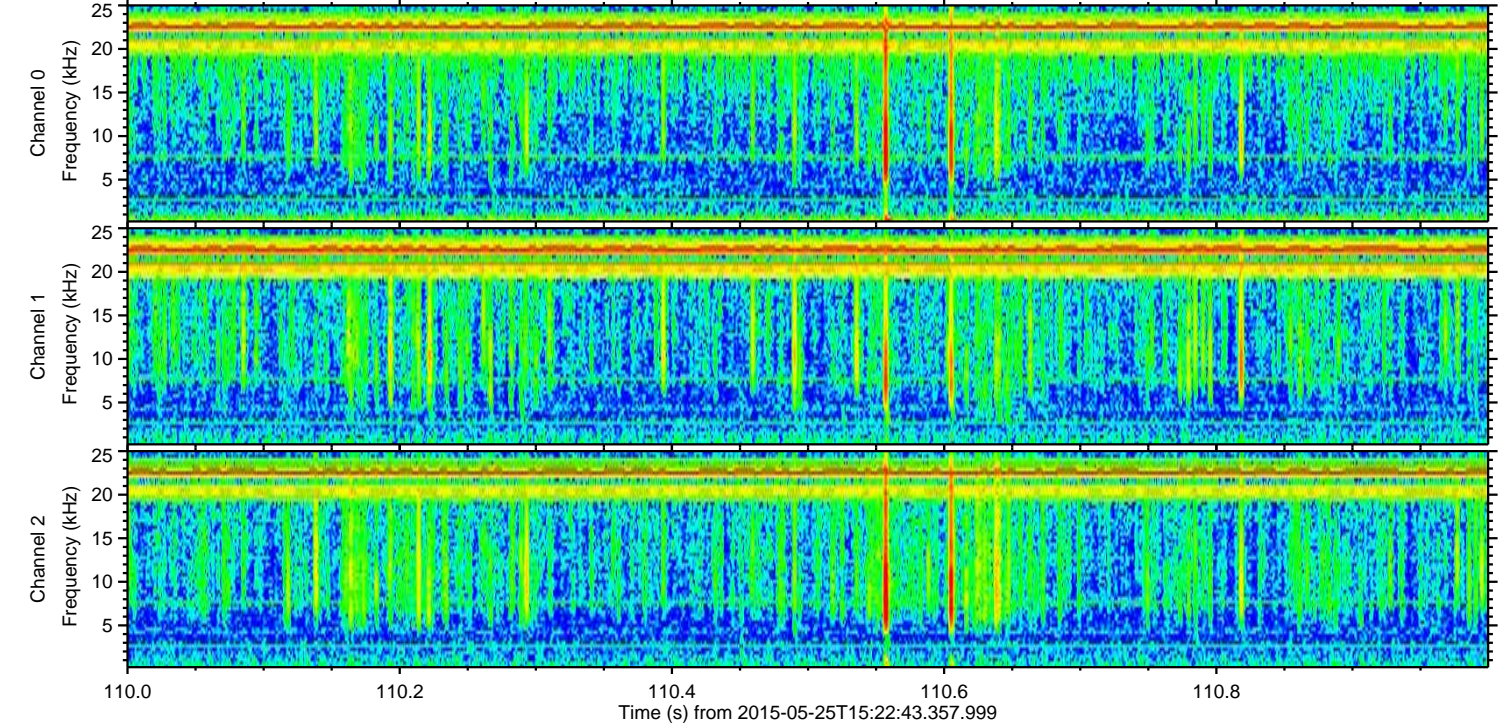
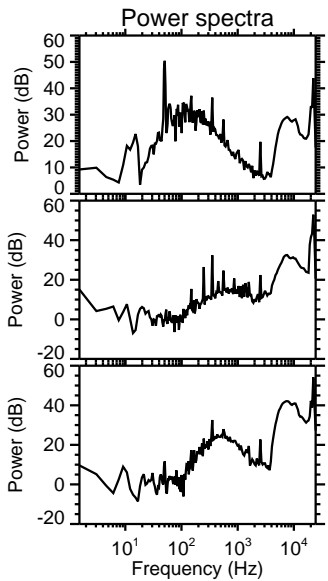
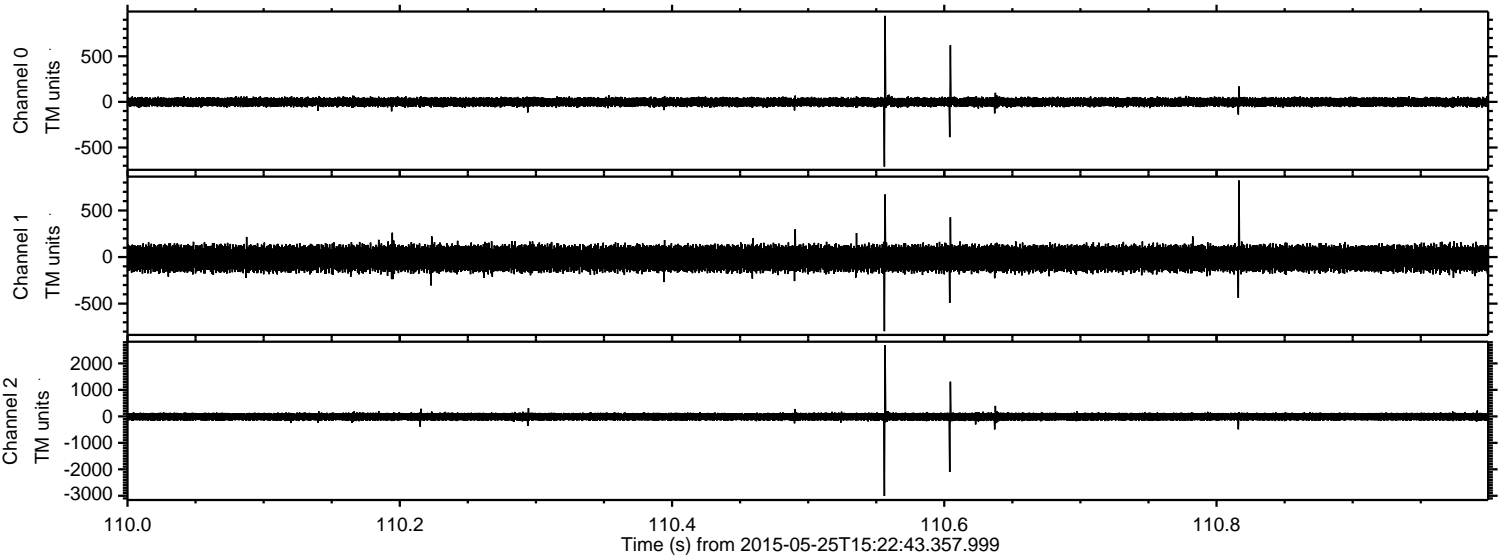


Processed Mon May 25 17:29:42 2015 by ELM ver.2012-10-06 from 001__elm20150525_152242__dat00.bin



ELMAVAN 3D WAVEFORMS (Measured data sampled at 50 kHz) 49754 packets of 144 samples from 2015-05-25T15:22:43.357.999. Part 111/144

Processed Mon May 25 17:29:43 2015 by ELM ver.2012-10-06 from 001__elm20150525_152242__dat00.bin



Channel 0
mn: -709
mx: 943
 μ : -1.9
 σ : 26.7

Channel 1
mn: -796
mx: 822
 μ : -14.9
 σ : 73.8

Channel 2
mn: -3009
mx: 2686
 μ : -14.0
 σ : 85.7

Processed Mon May 25 17:29:44 2015 by ELM ver.2012-10-06 from 001__elm20150525_152242__dat00.bin

