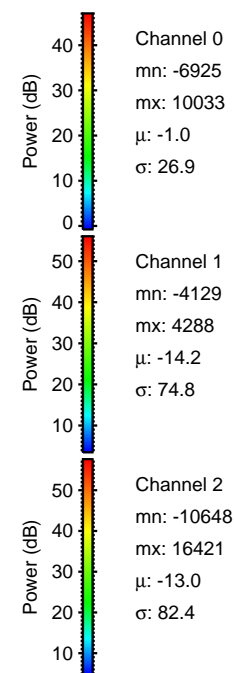
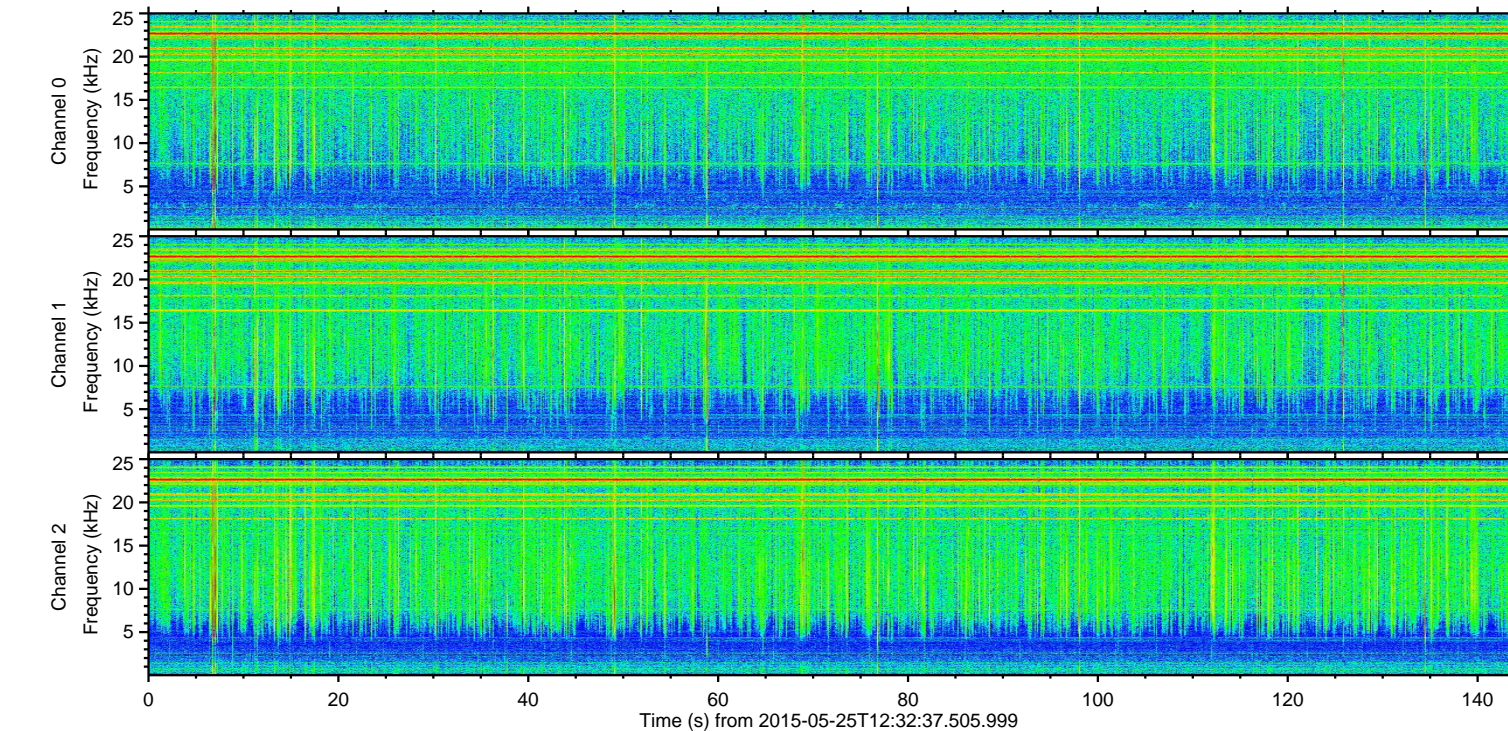
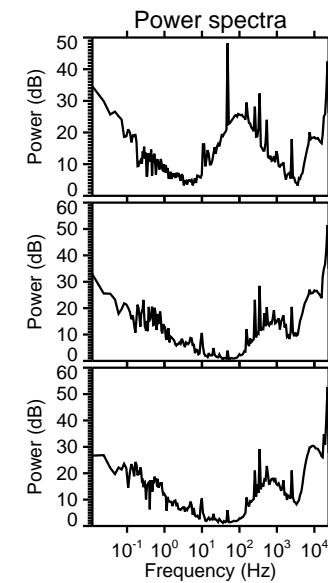
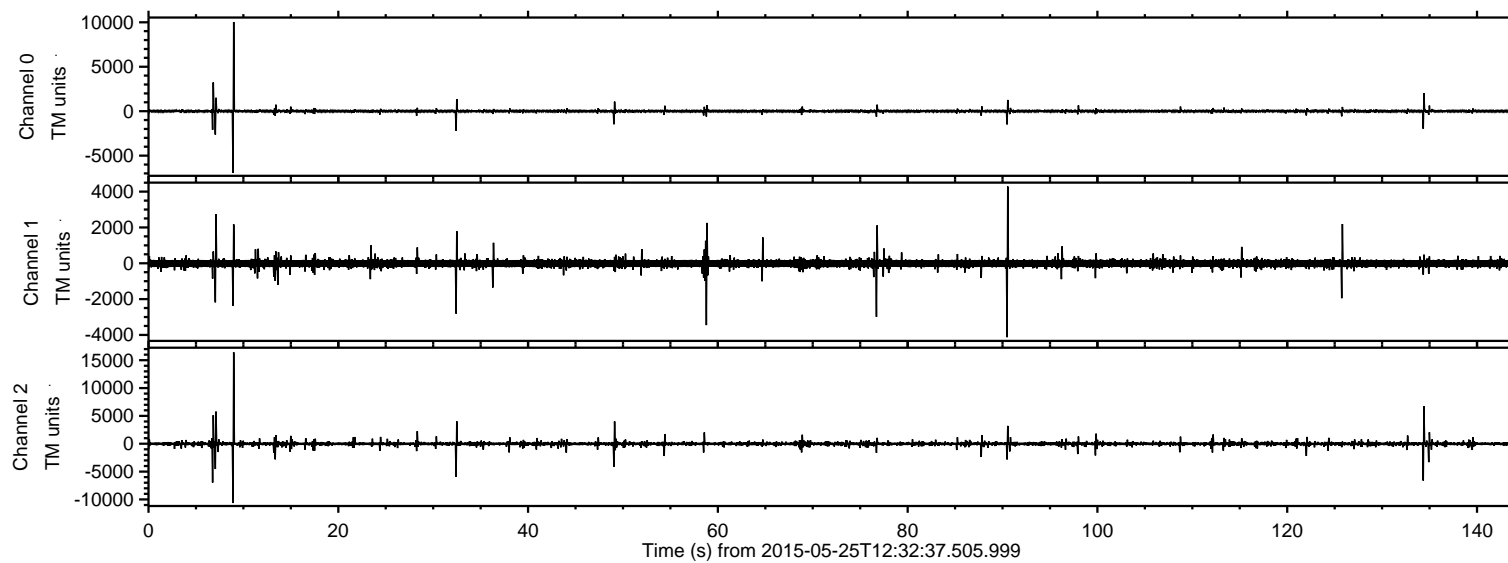
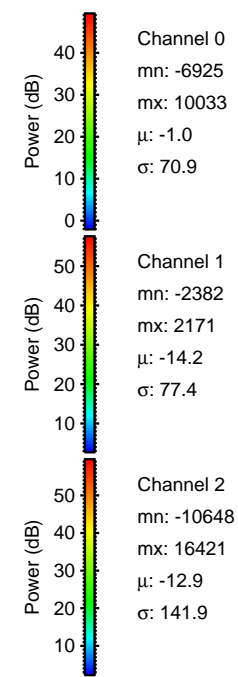
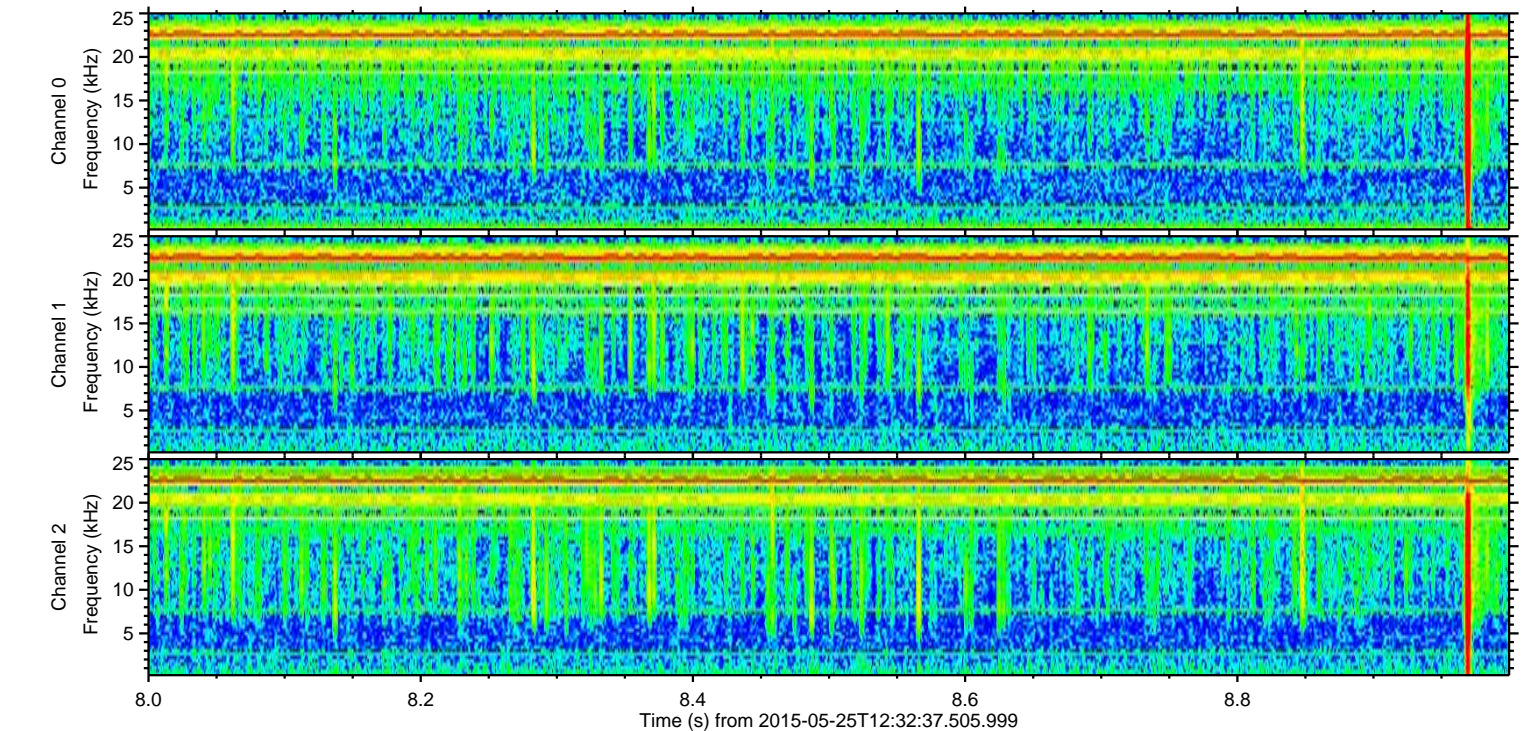
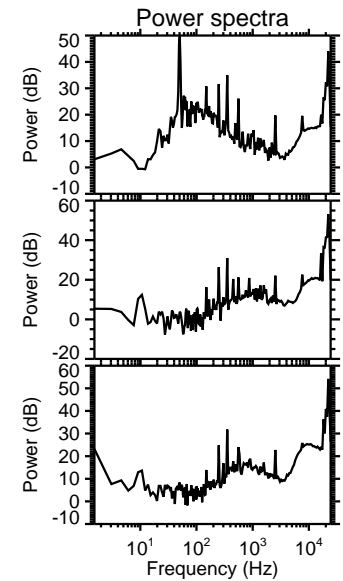
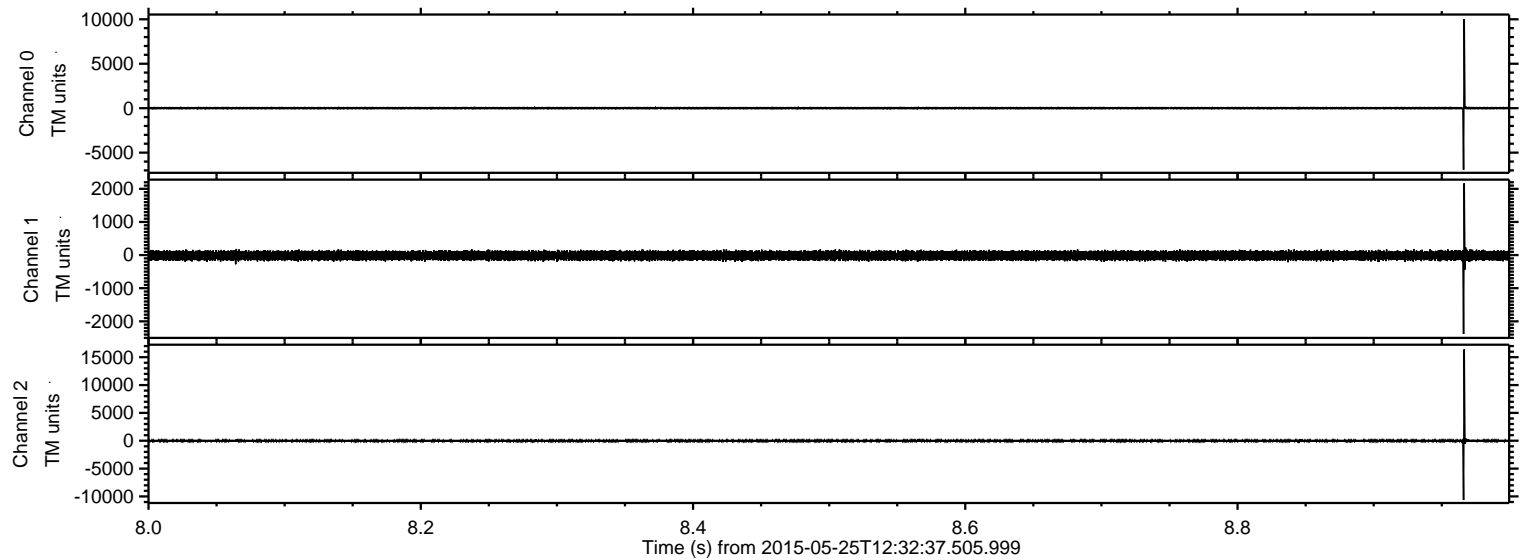


ELMAVAN 3D WAVEFORMS (Measured data sampled at 50 kHz) 49788 packets of 144 samples from 2015-05-25T12:32:37.505.999.

Processed Mon May 25 14:39:42 2015 by ELM ver.2012-10-06 from 001__elm20150525_123236__dat00.bin

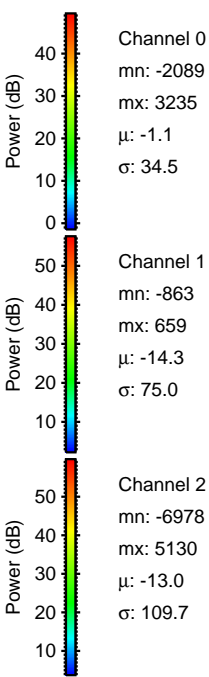
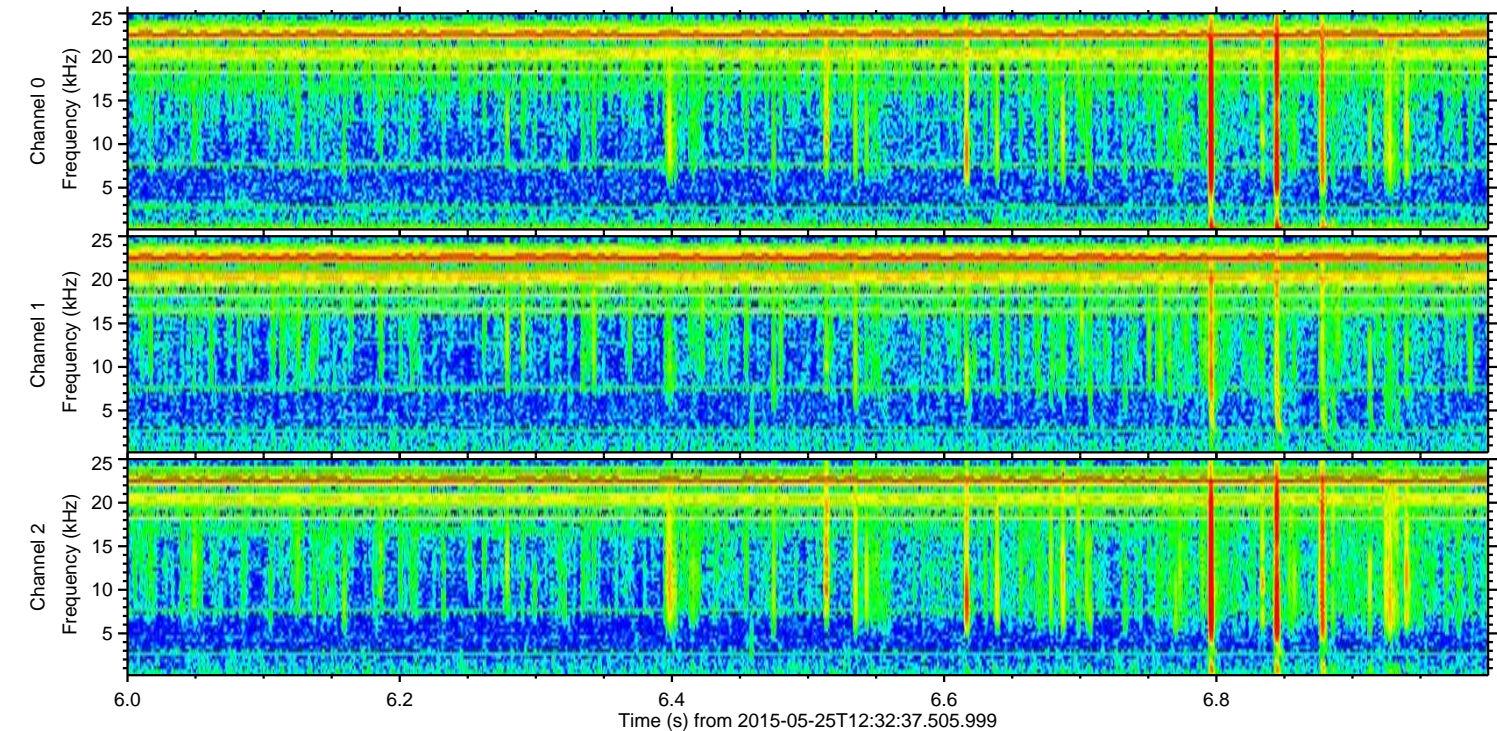
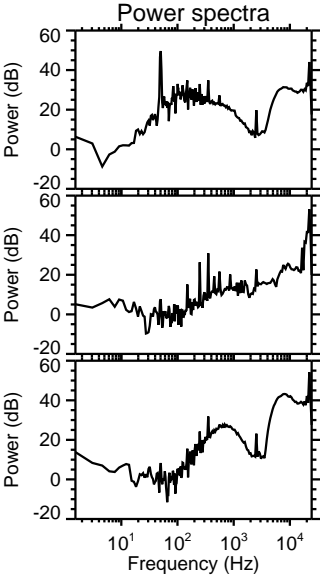
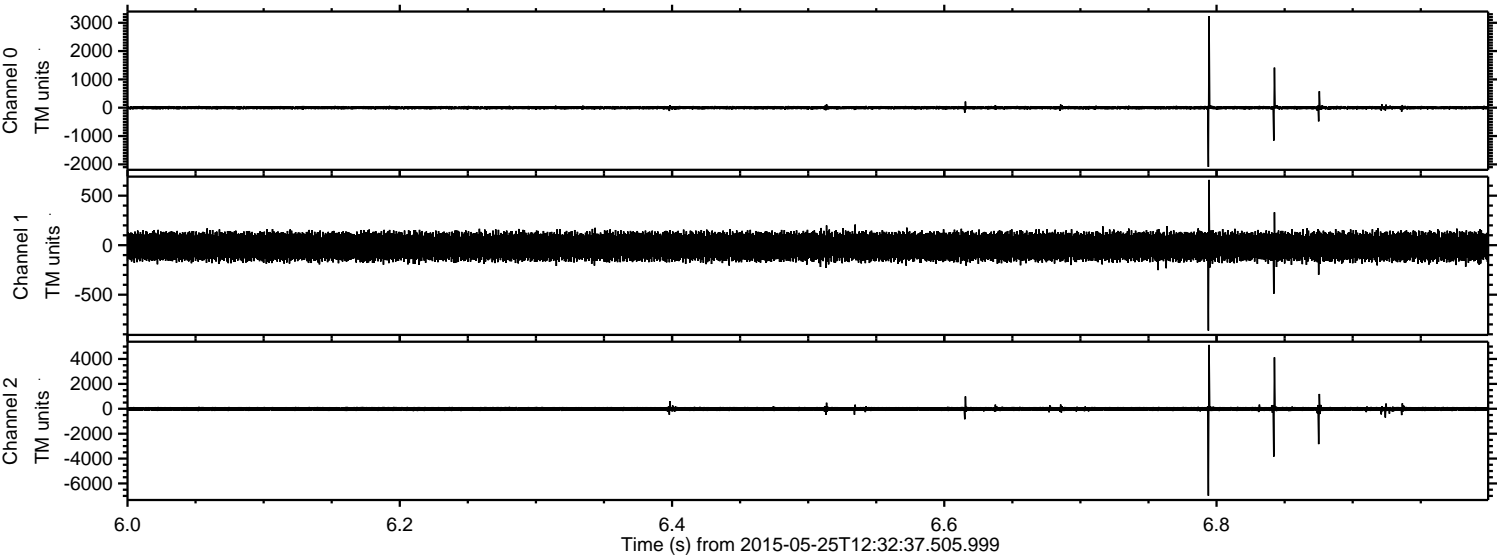


Processed Mon May 25 14:39:54 2015 by ELM ver.2012-10-06 from 001__elm20150525_123236__dat00.bin



ELMAVAN 3D WAVEFORMS (Measured data sampled at 50 kHz) 49788 packets of 144 samples from 2015-05-25T12:32:37.505.999. Part 7/144

Processed Mon May 25 14:39:55 2015 by ELM ver.2012-10-06 from 001__elm20150525_123236__dat00.bin



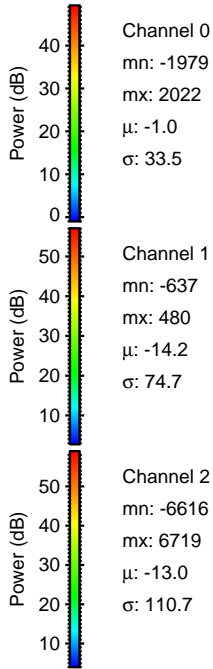
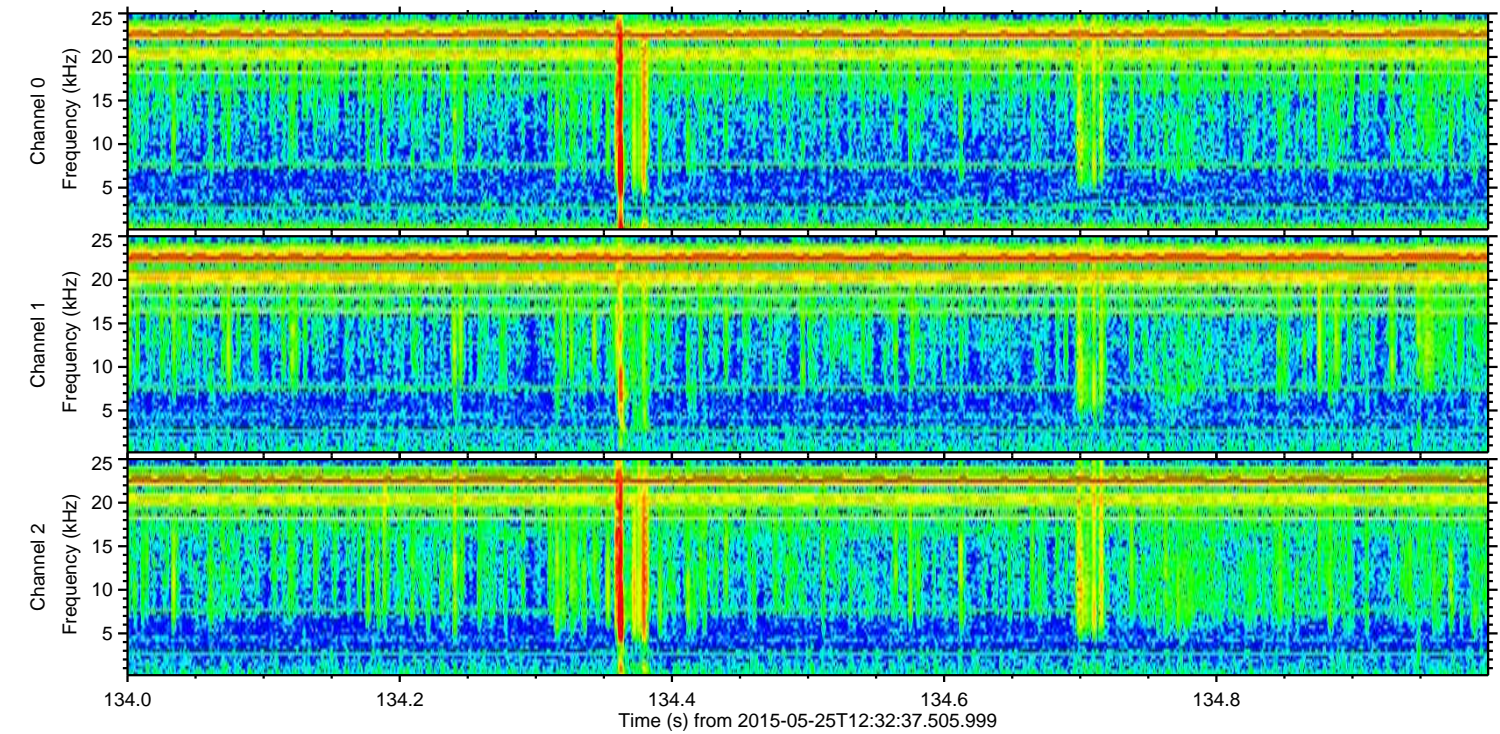
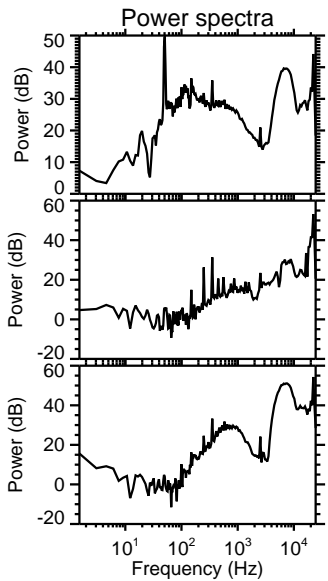
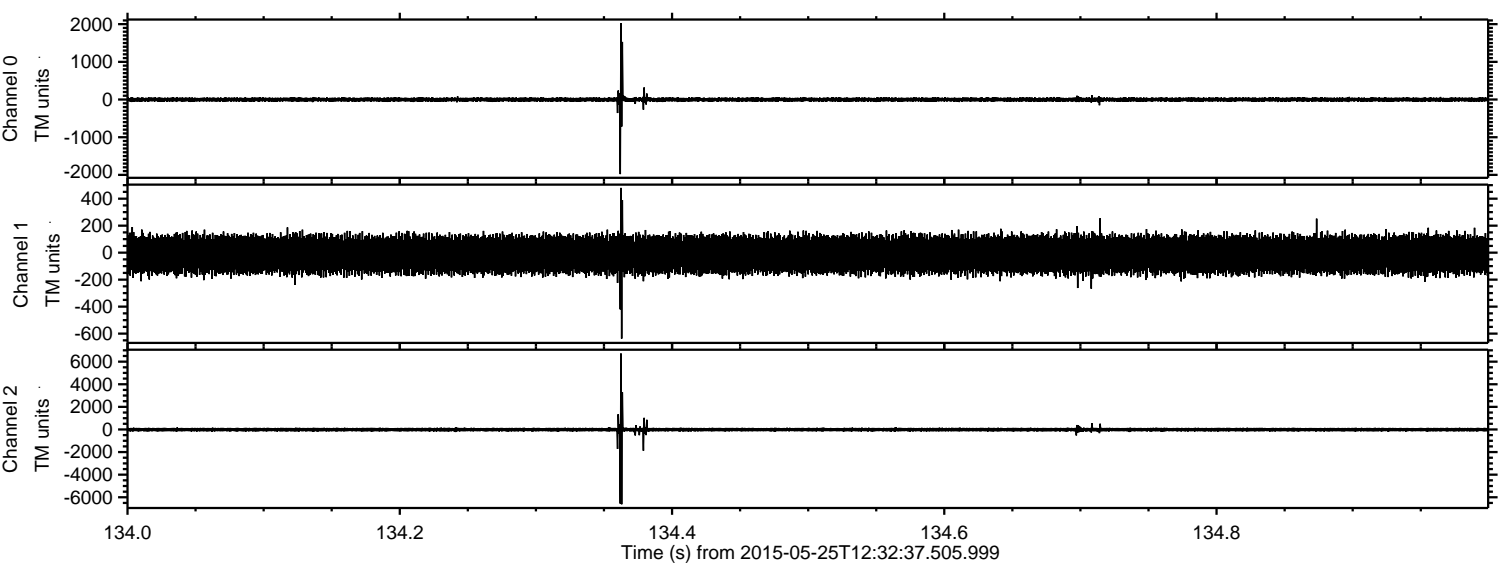
Channel 0
mn: -2089
mx: 3235
 μ : -1.1
 σ : 34.5

Channel 1
mn: -863
mx: 659
 μ : -14.3
 σ : 75.0

Channel 2
mn: -6978
mx: 5130
 μ : -13.0
 σ : 109.7

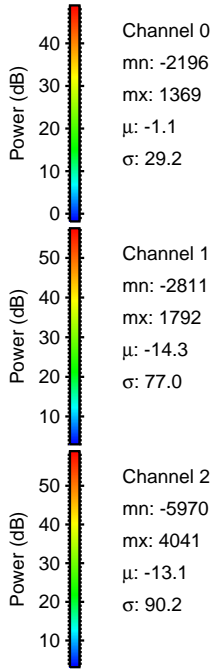
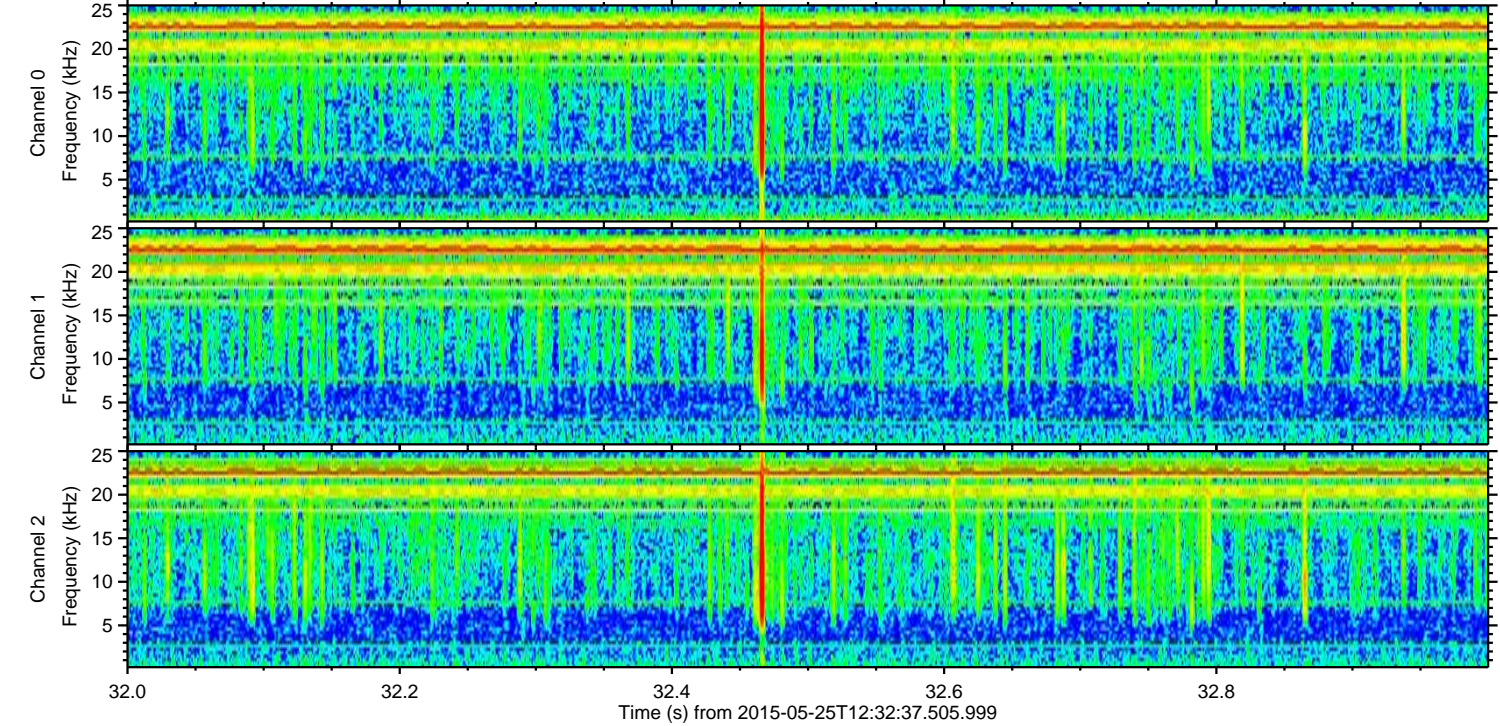
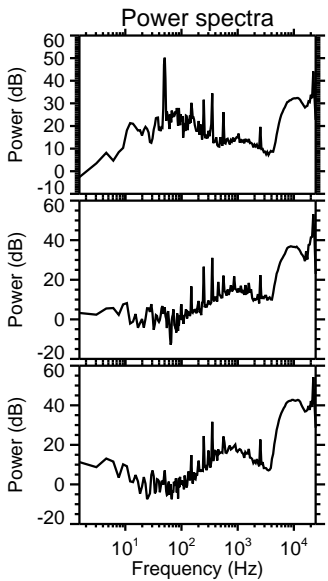
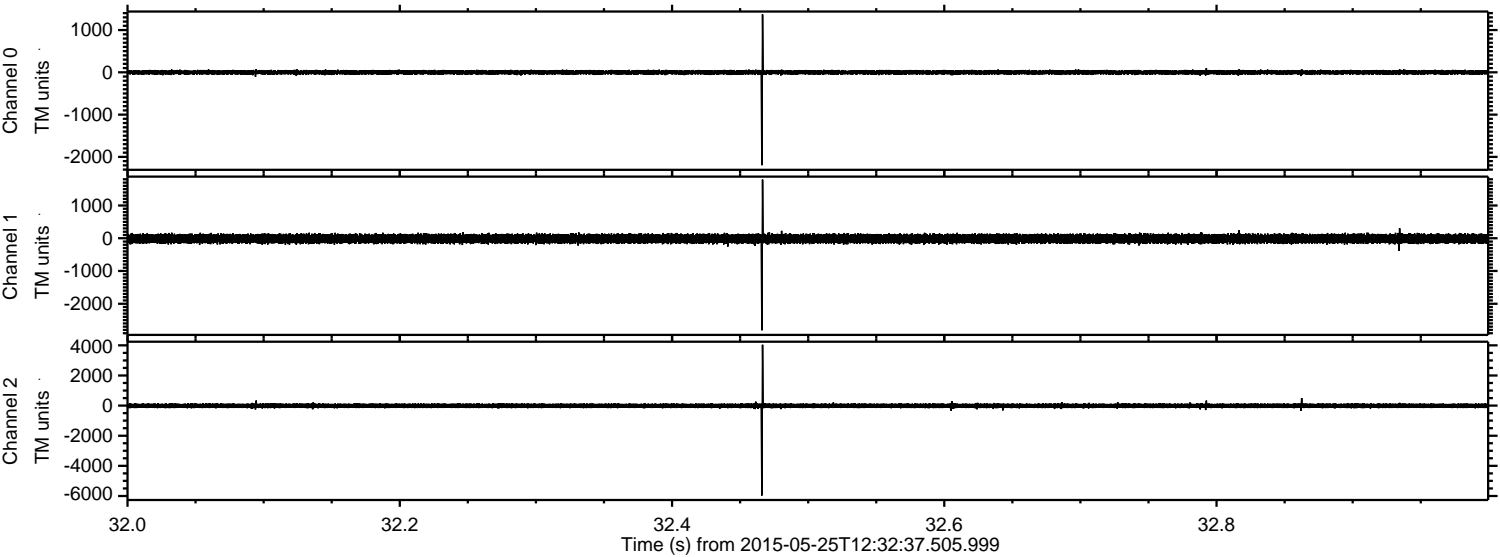
ELMAVAN 3D WAVEFORMS (Measured data sampled at 50 kHz) 49788 packets of 144 samples from 2015-05-25T12:32:37.505.999. Part 135/144

Processed Mon May 25 14:39:56 2015 by ELM ver.2012-10-06 from 001__elm20150525_123236__dat00.bin



ELMAVAN 3D WAVEFORMS (Measured data sampled at 50 kHz) 49788 packets of 144 samples from 2015-05-25T12:32:37.505.999. Part 33/144

Processed Mon May 25 14:39:57 2015 by ELM ver.2012-10-06 from 001__elm20150525_123236__dat00.bin

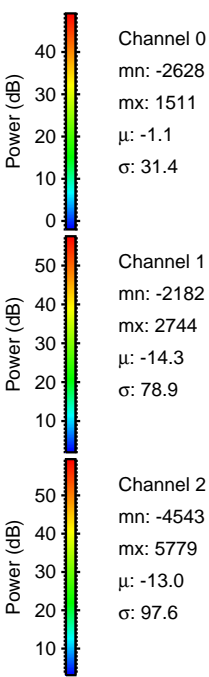
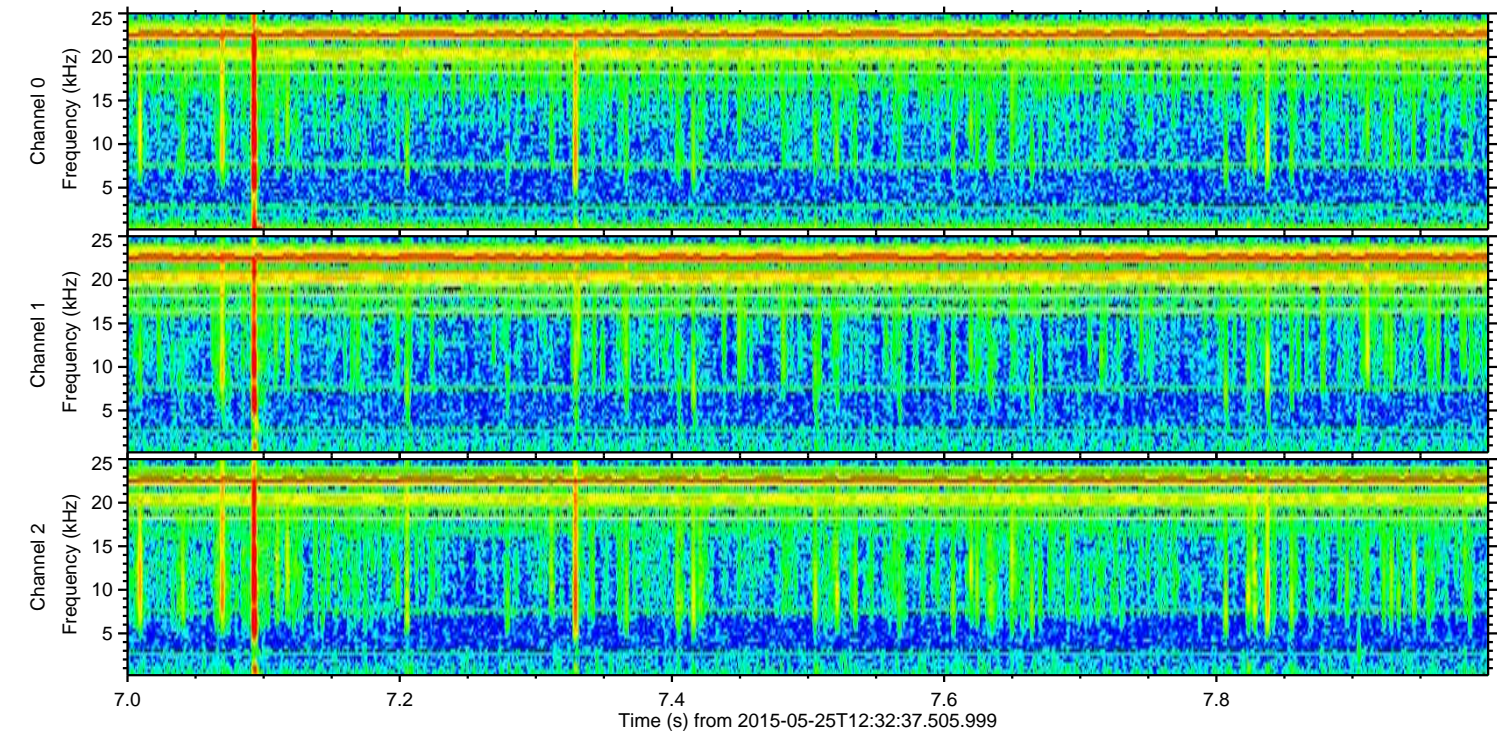
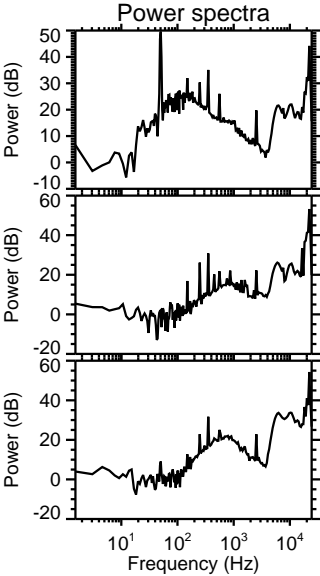
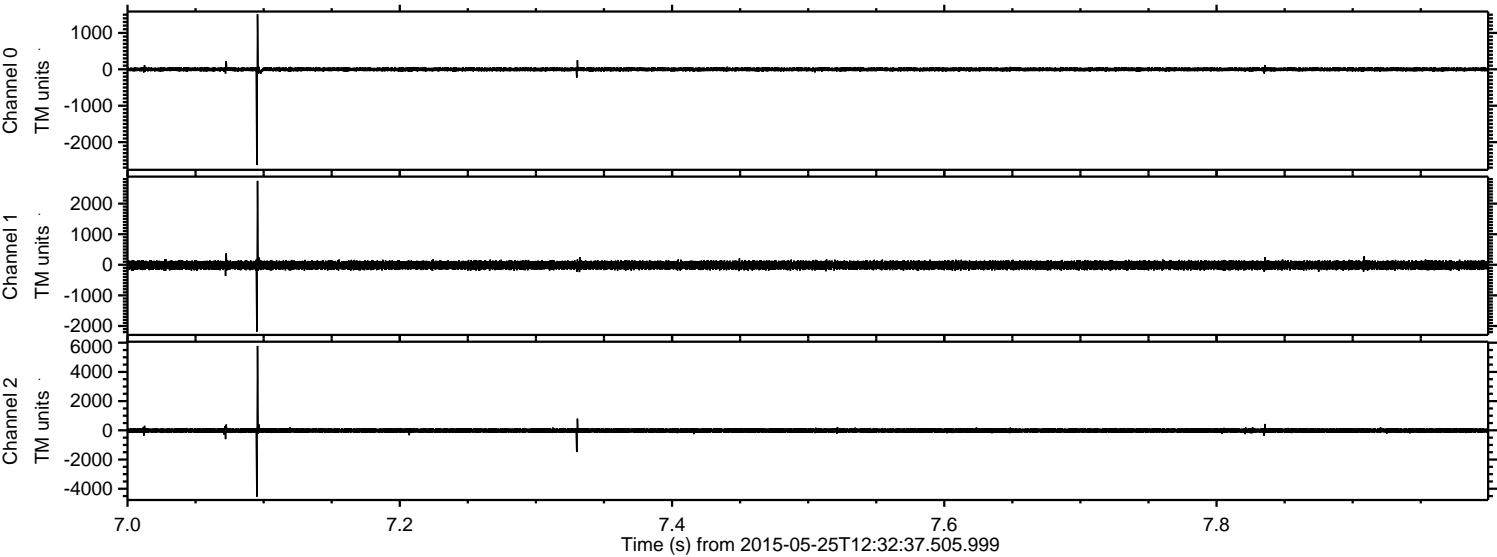


Channel 0
mn: -2196
mx: 1369
 μ : -1.1
 σ : 29.2

Channel 1
mn: -2811
mx: 1792
 μ : -14.3
 σ : 77.0

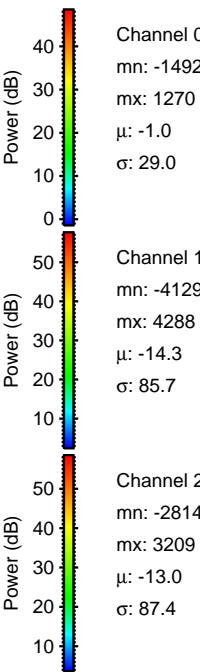
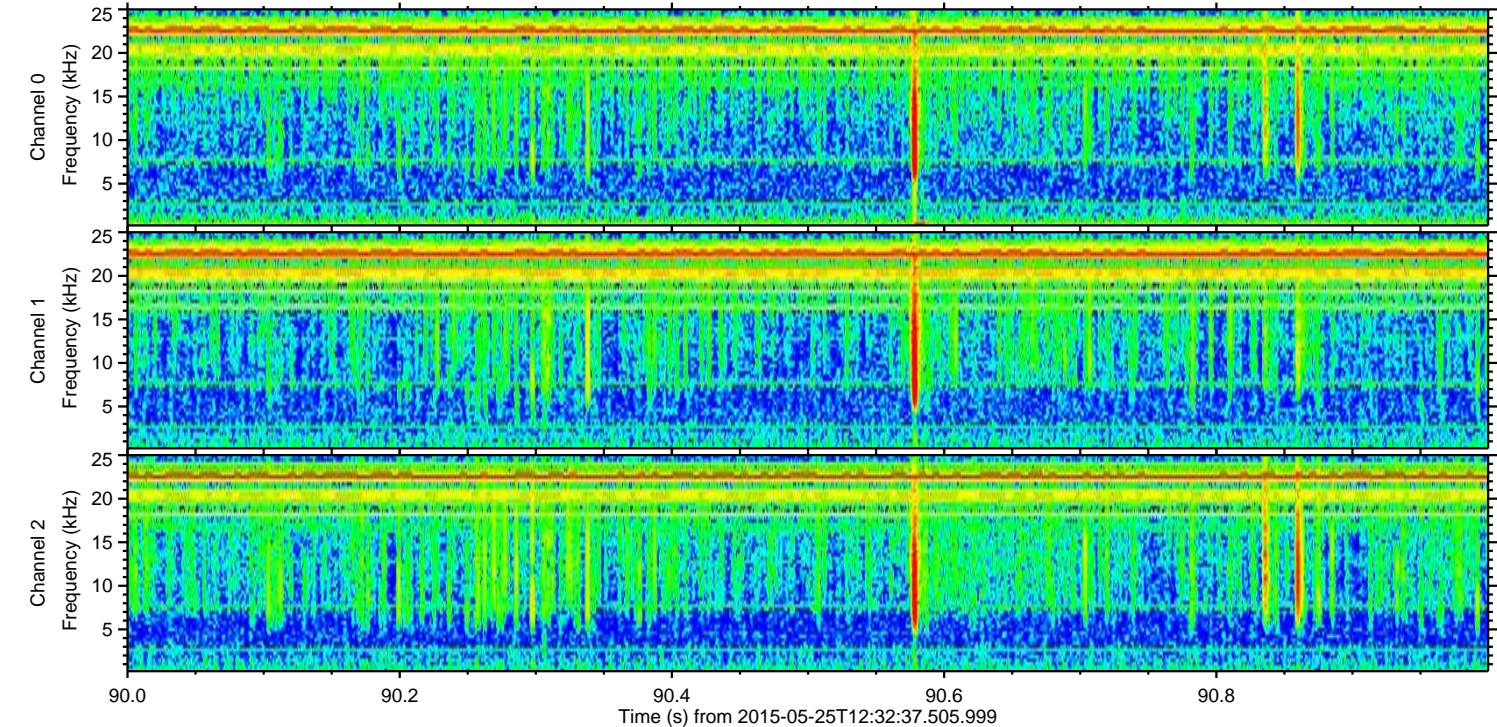
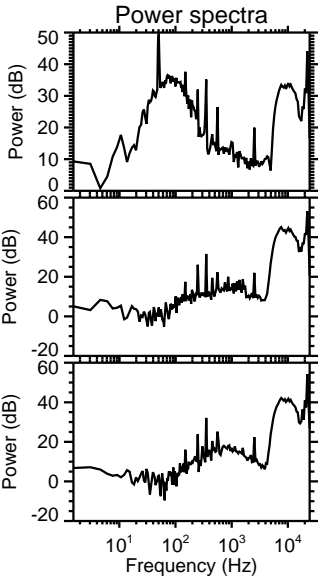
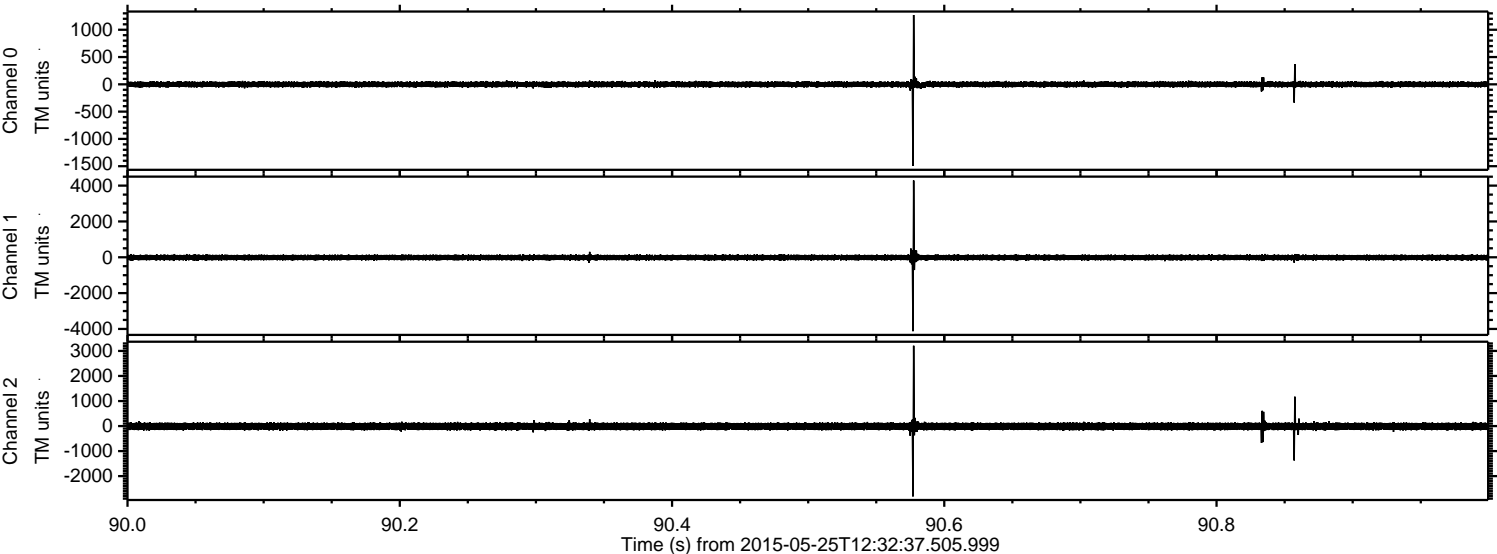
Channel 2
mn: -5970
mx: 4041
 μ : -13.1
 σ : 90.2

Processed Mon May 25 14:39:58 2015 by ELM ver.2012-10-06 from 001__elm20150525_123236__dat00.bin

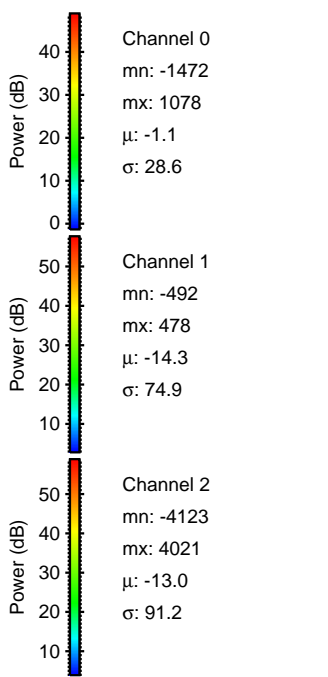
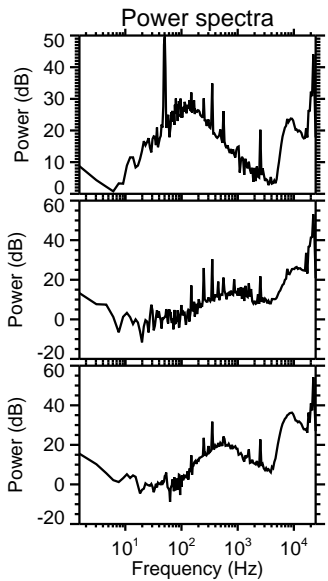
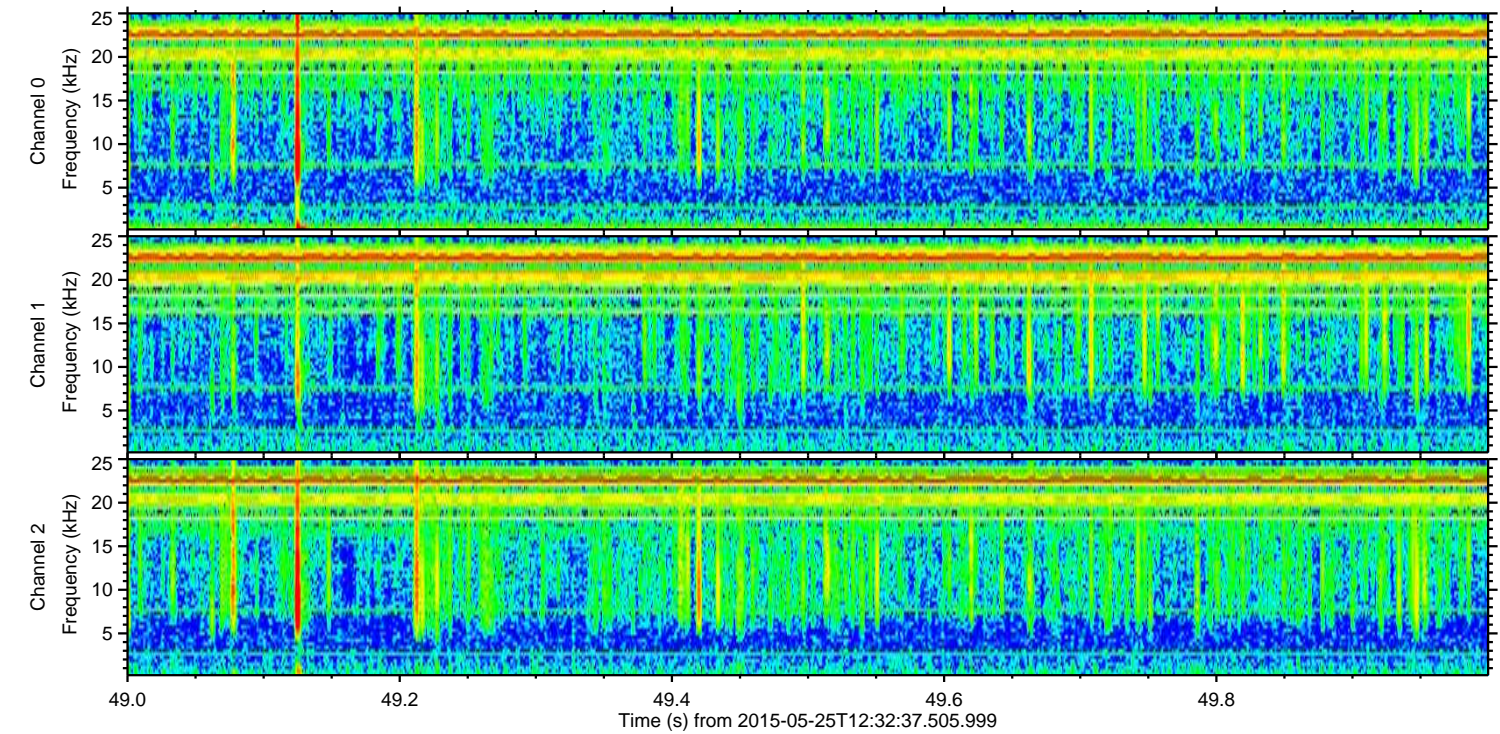
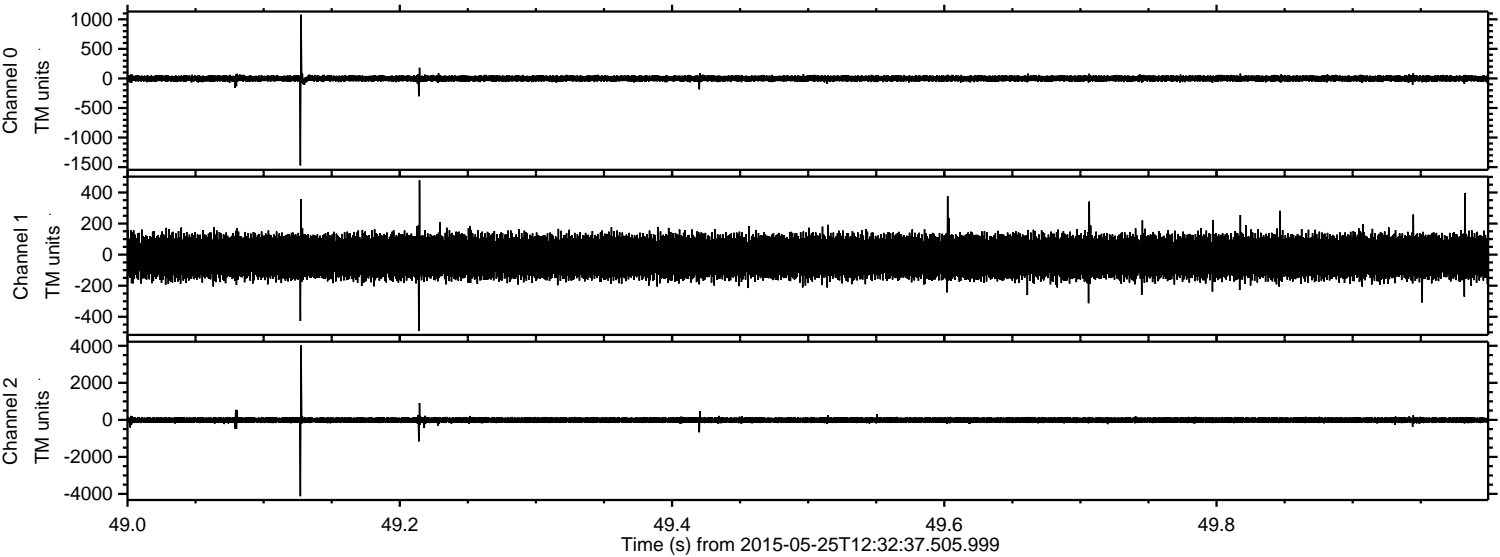


ELMAVAN 3D WAVEFORMS (Measured data sampled at 50 kHz) 49788 packets of 144 samples from 2015-05-25T12:32:37.505.999. Part 91/144

Processed Mon May 25 14:39:58 2015 by ELM ver.2012-10-06 from 001__elm20150525_123236__dat00.bin



Processed Mon May 25 14:39:59 2015 by ELM ver.2012-10-06 from 001__elm20150525_123236__dat00.bin



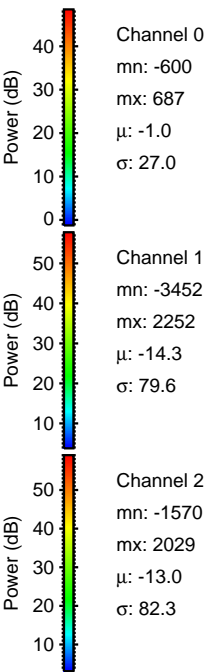
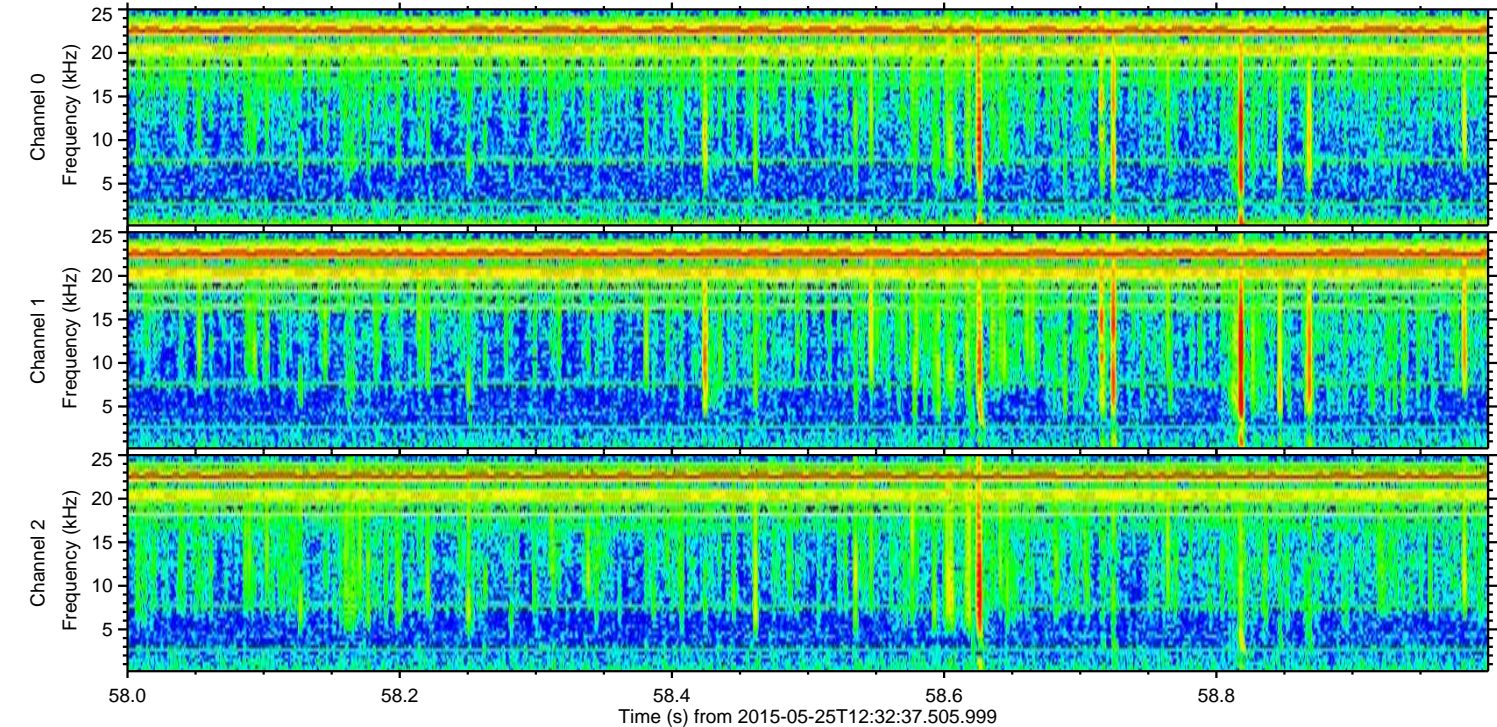
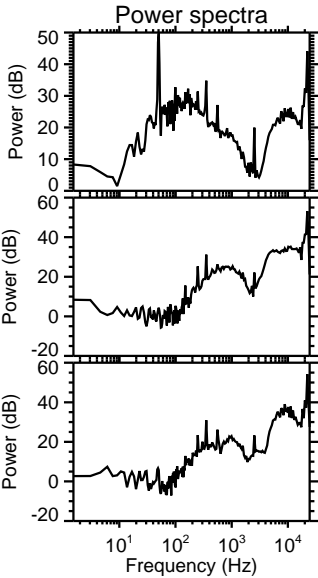
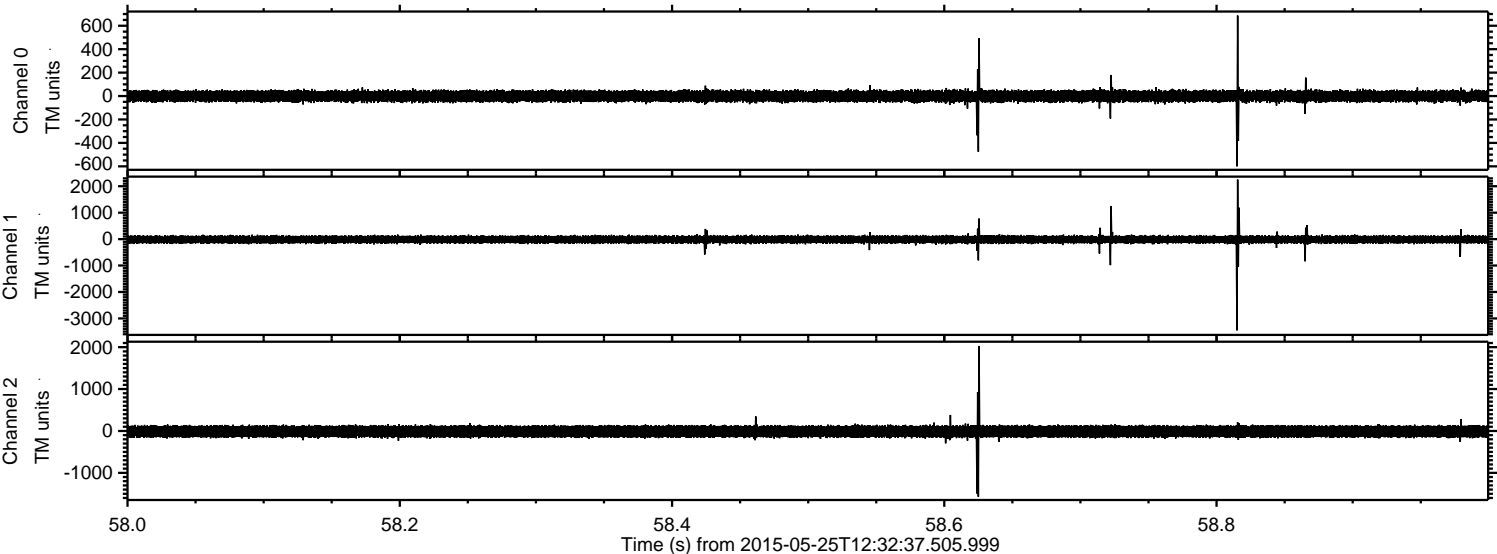
Channel 0
mn: -1472
mx: 1078
 μ : -1.1
 σ : 28.6

Channel 1
mn: -492
mx: 478
 μ : -14.3
 σ : 74.9

Channel 2
mn: -4123
mx: 4021
 μ : -13.0
 σ : 91.2

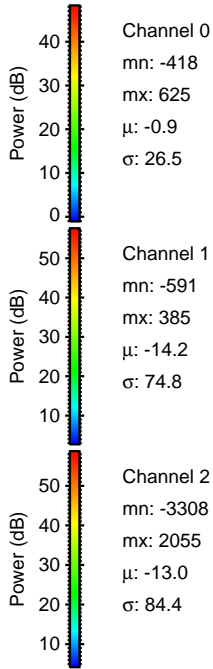
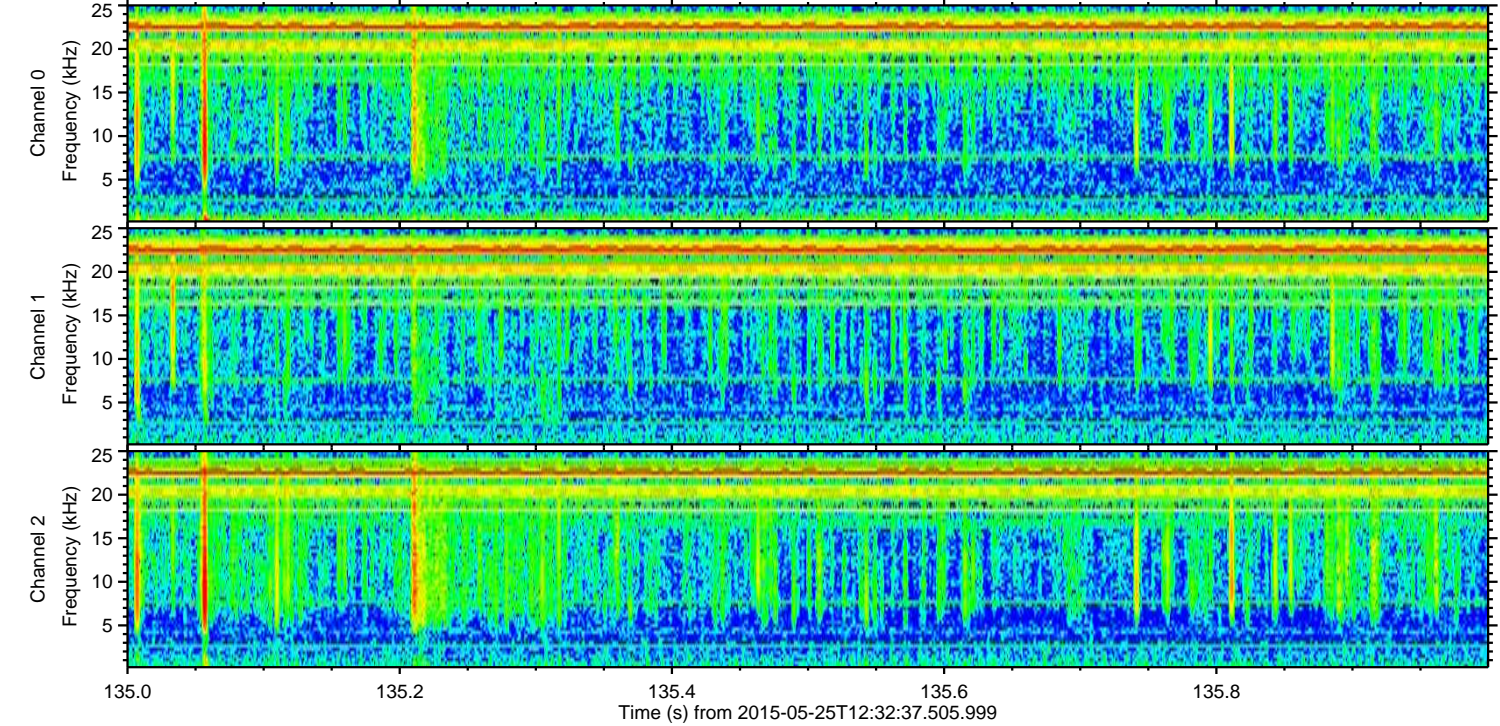
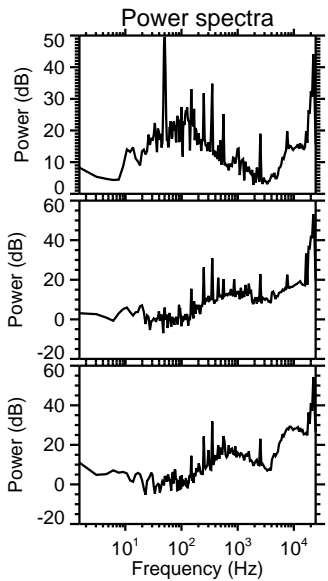
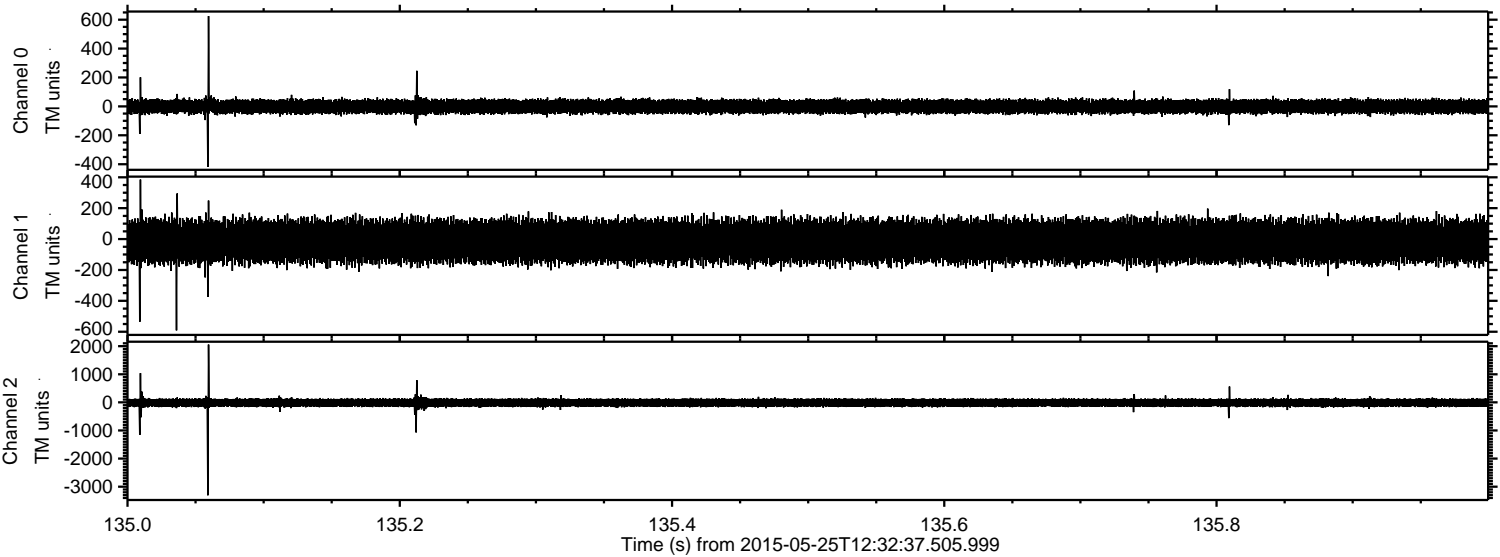
ELMAVAN 3D WAVEFORMS (Measured data sampled at 50 kHz) 49788 packets of 144 samples from 2015-05-25T12:32:37.505.999. Part 59/144

Processed Mon May 25 14:40:00 2015 by ELM ver.2012-10-06 from 001__elm20150525_123236__dat00.bin



ELMAVAN 3D WAVEFORMS (Measured data sampled at 50 kHz) 49788 packets of 144 samples from 2015-05-25T12:32:37.505.999. Part 136/144

Processed Mon May 25 14:40:01 2015 by ELM ver.2012-10-06 from 001__elm20150525_123236__dat00.bin



ELMAVAN 3D WAVEFORMS (Measured data sampled at 50 kHz) 49788 packets of 144 samples from 2015-05-25T12:32:37.505.999. Part 23/144

Processed Mon May 25 14:40:02 2015 by ELM ver.2012-10-06 from 001__elm20150525_123236__dat00.bin

