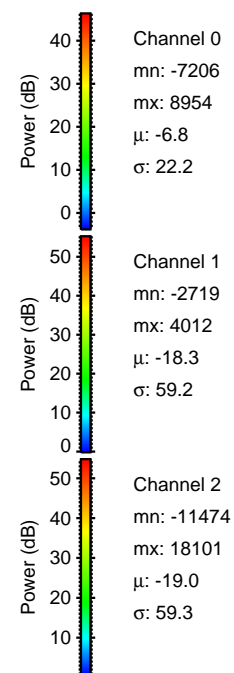
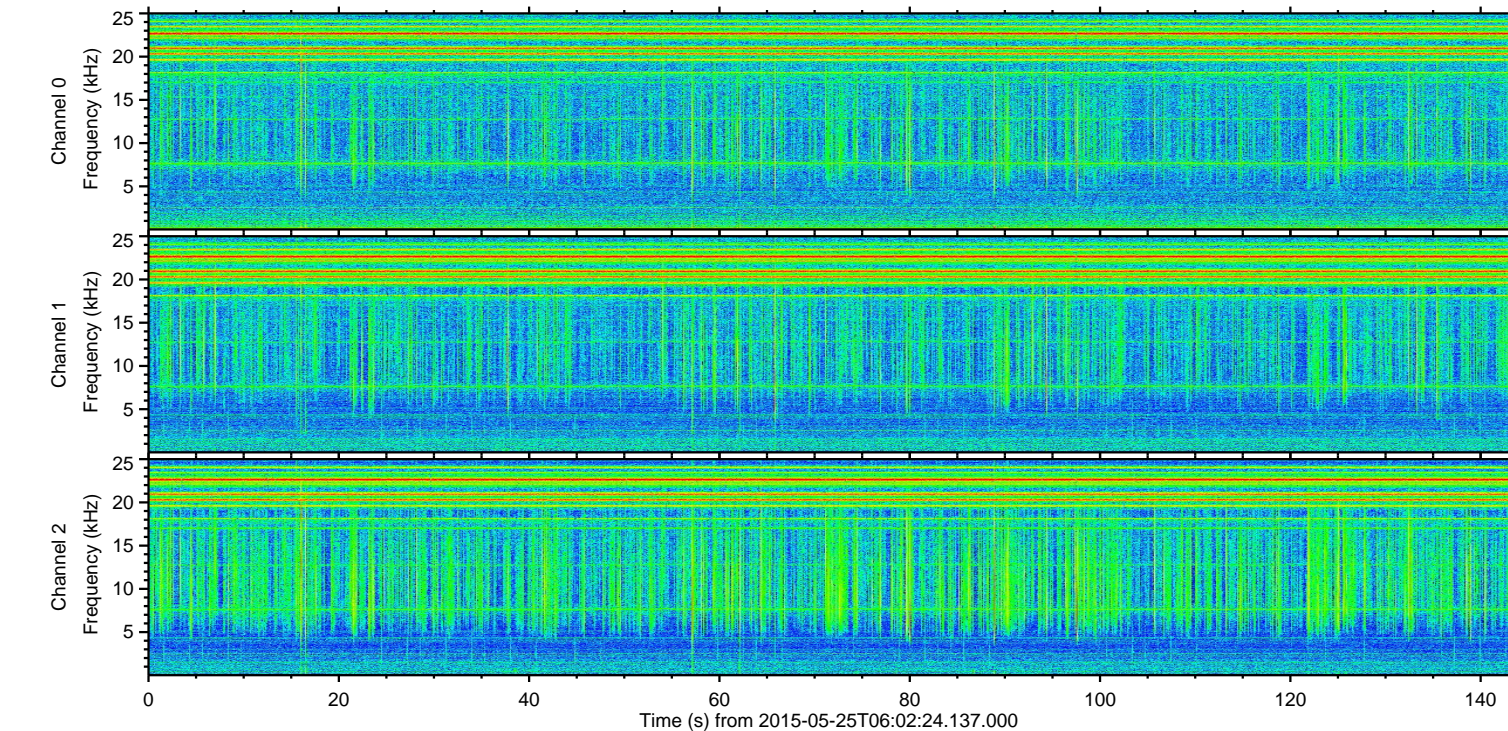
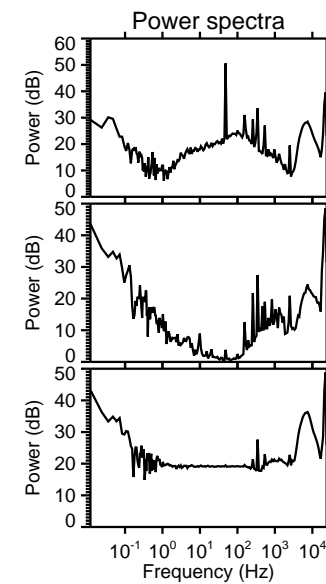
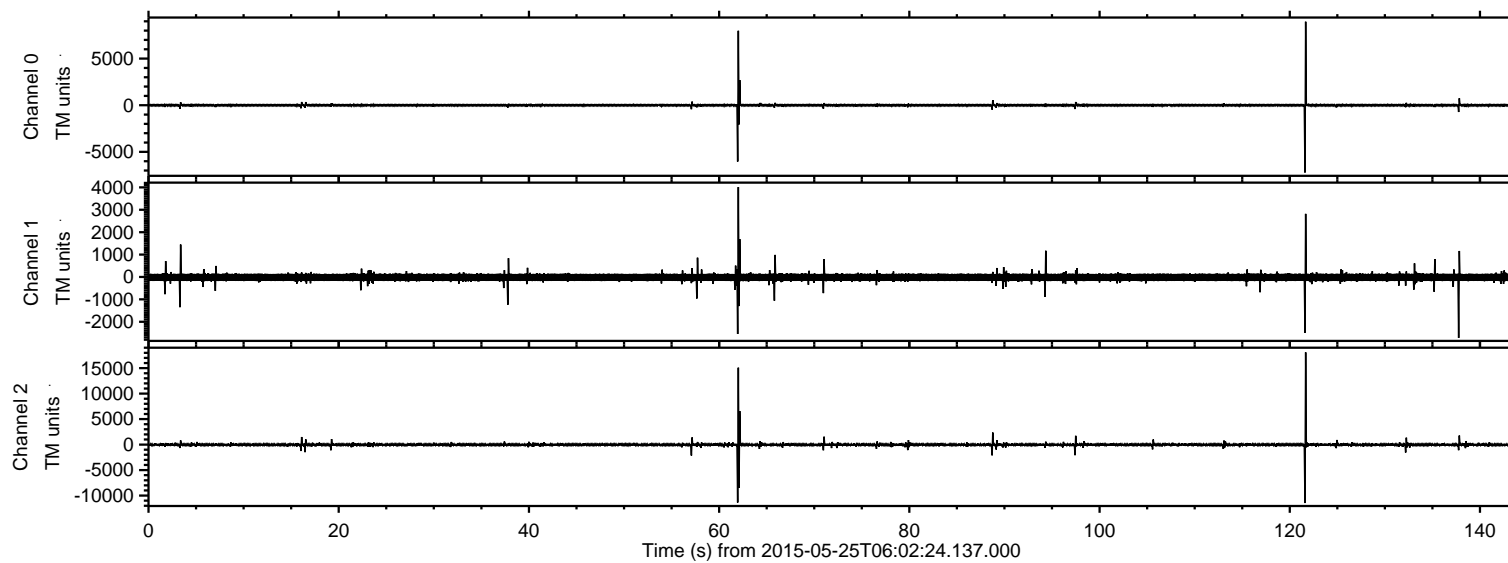


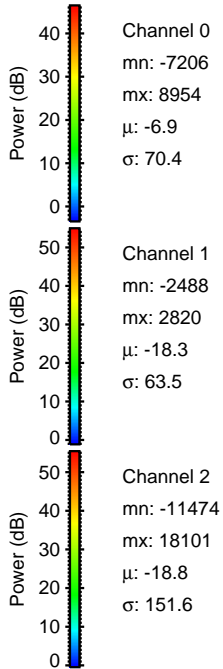
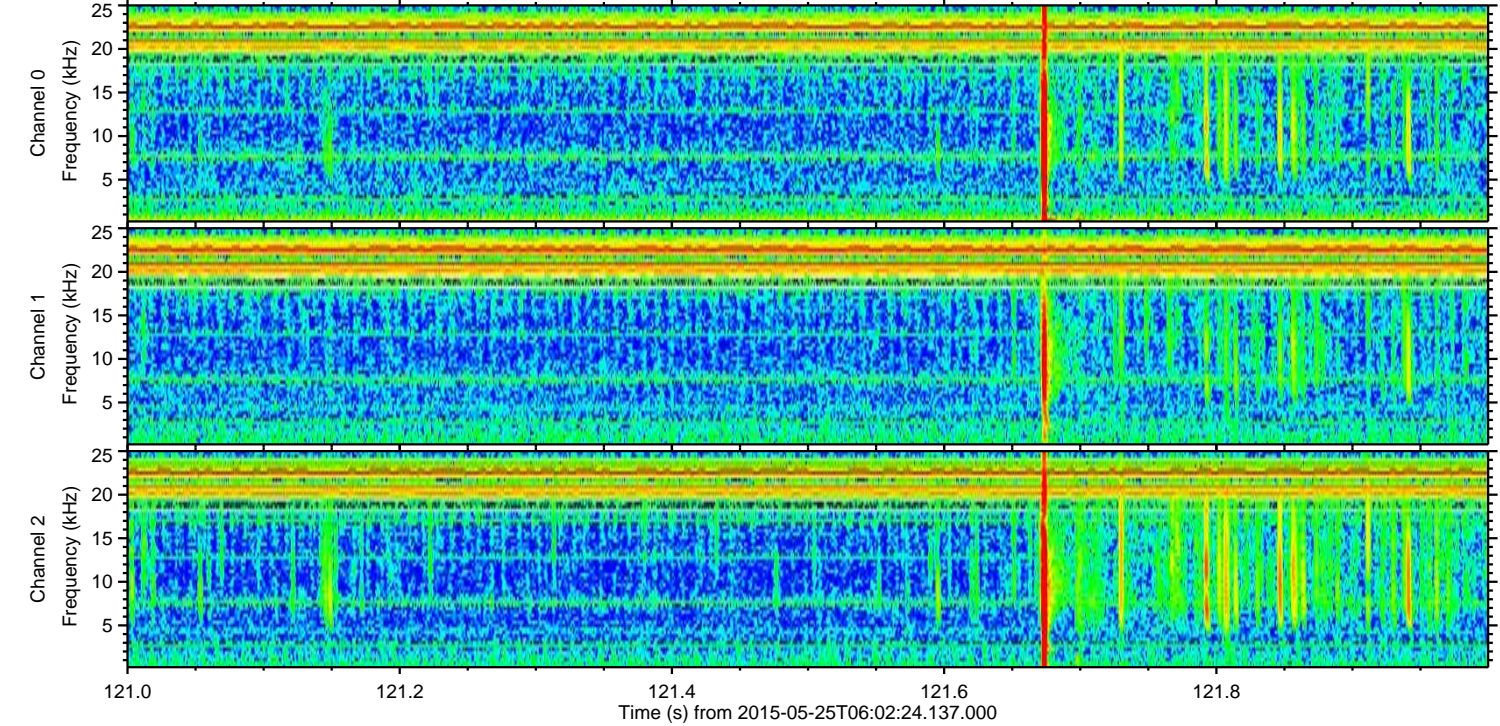
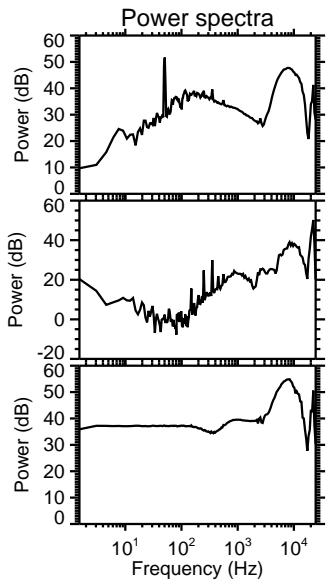
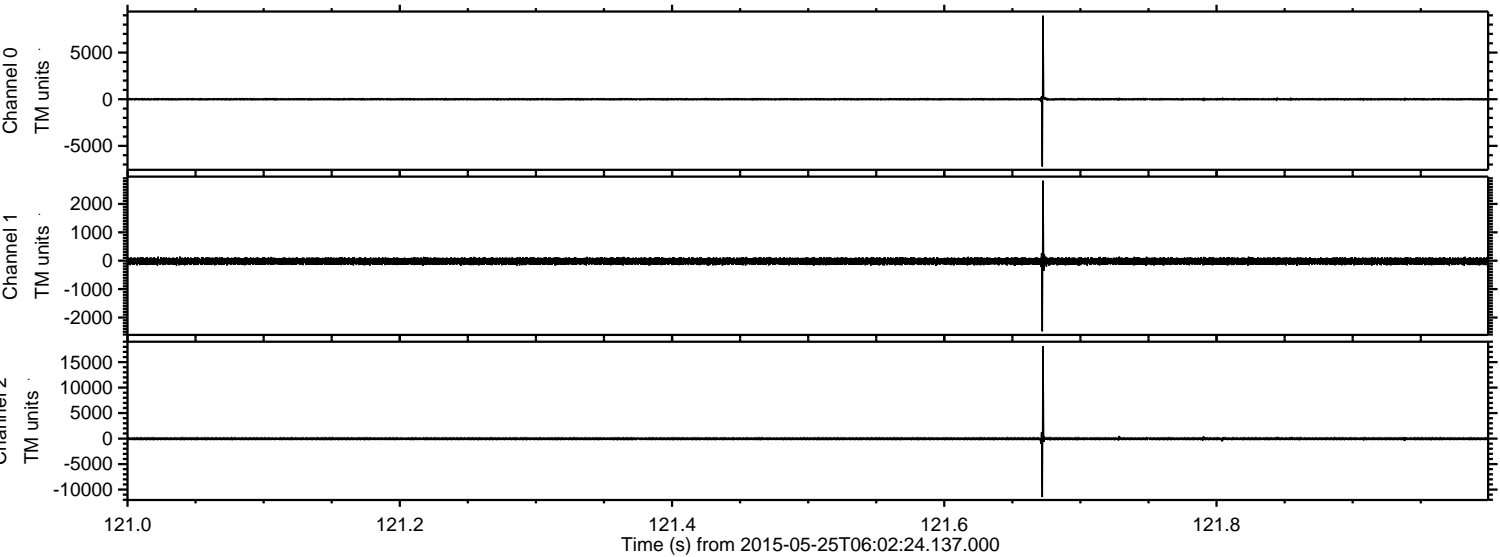
ELMAVAN 3D WAVEFORMS (Measured data sampled at 50 kHz) 49676 packets of 144 samples from 2015-05-25T06:02:24.137.000.

Processed Mon May 25 08:09:34 2015 by ELM ver.2012-10-06 from 001__elm20150525_060223__dat00.bin

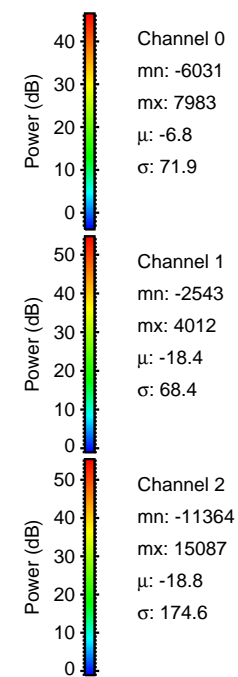
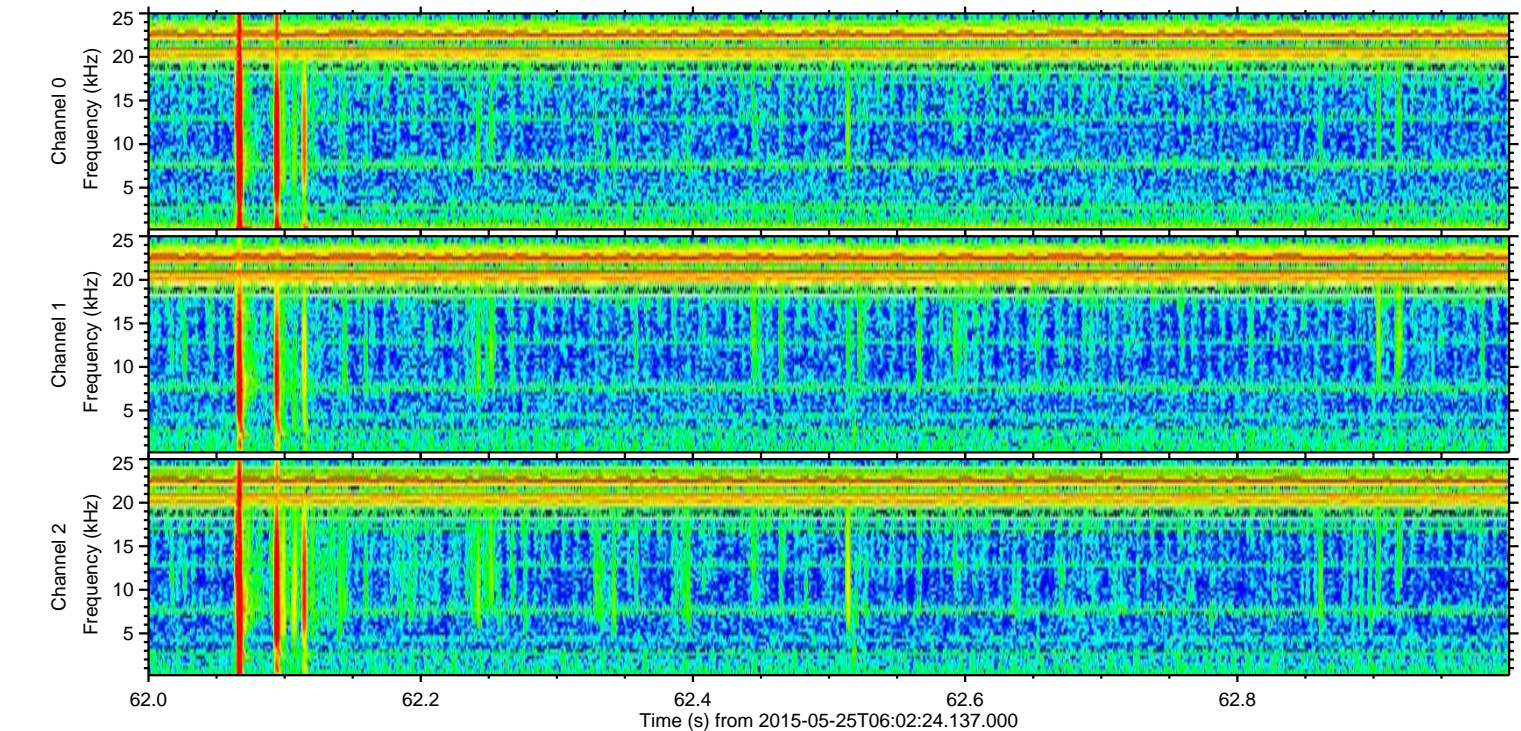
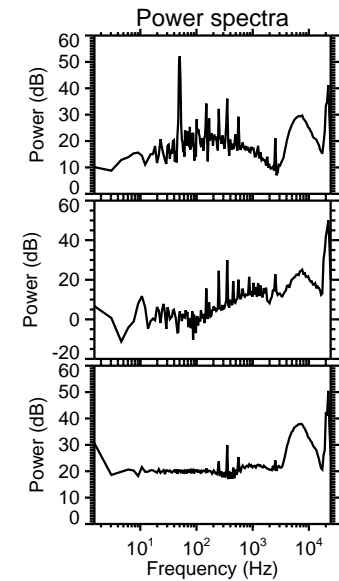
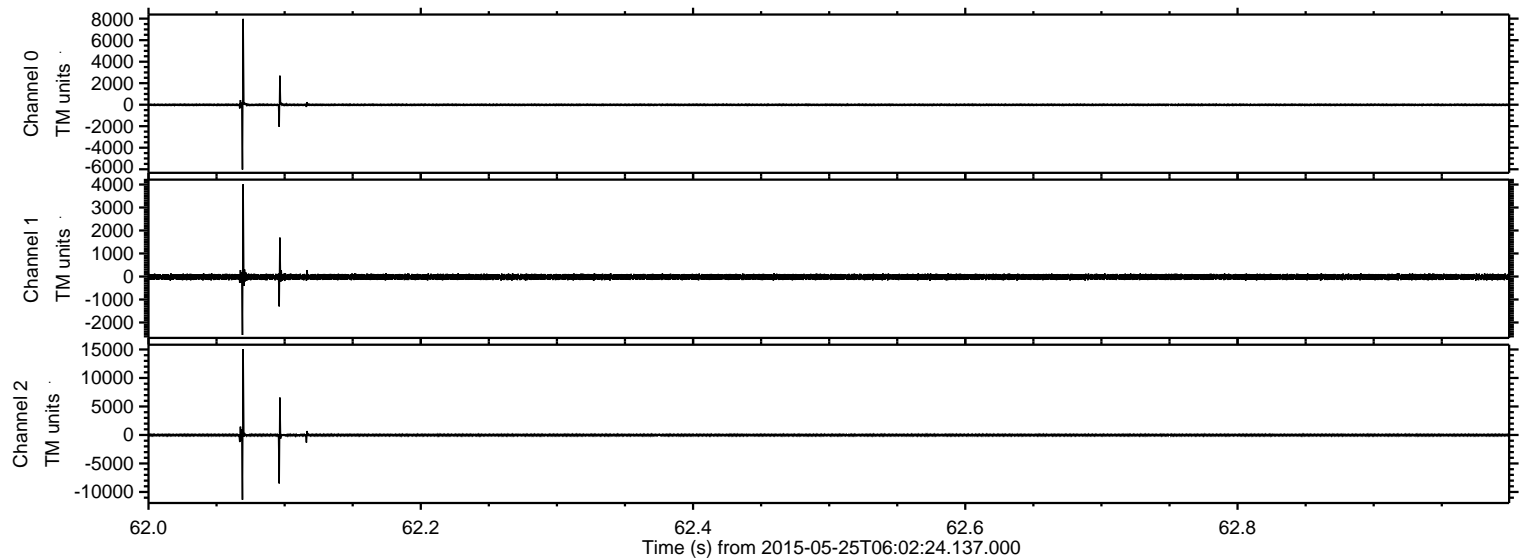


ELMAVAN 3D WAVEFORMS (Measured data sampled at 50 kHz) 49676 packets of 144 samples from 2015-05-25T06:02:24.137.000. Part 122/144

Processed Mon May 25 08:09:45 2015 by ELM ver.2012-10-06 from 001__elm20150525_060223__dat00.bin

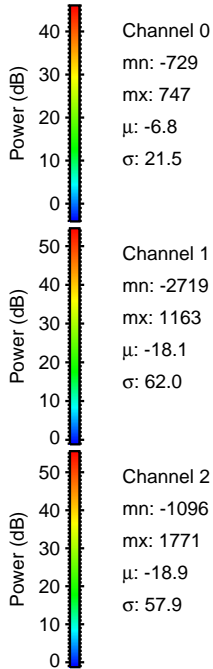
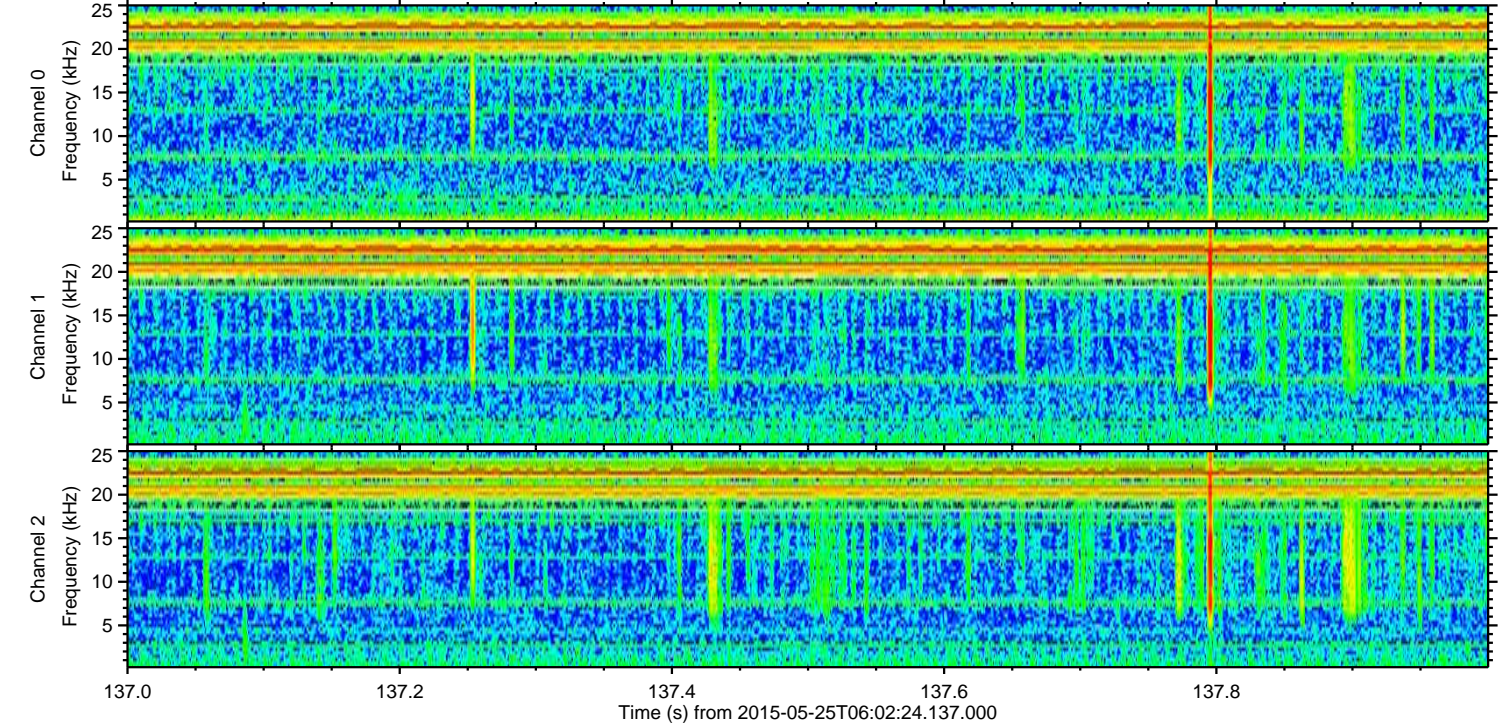
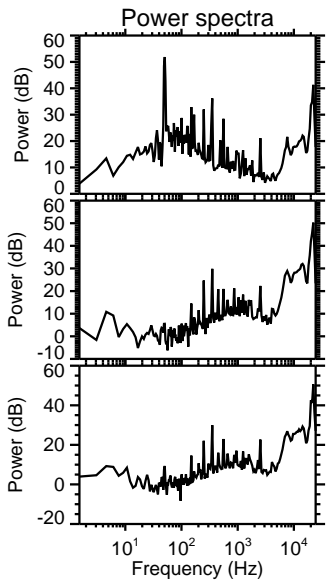
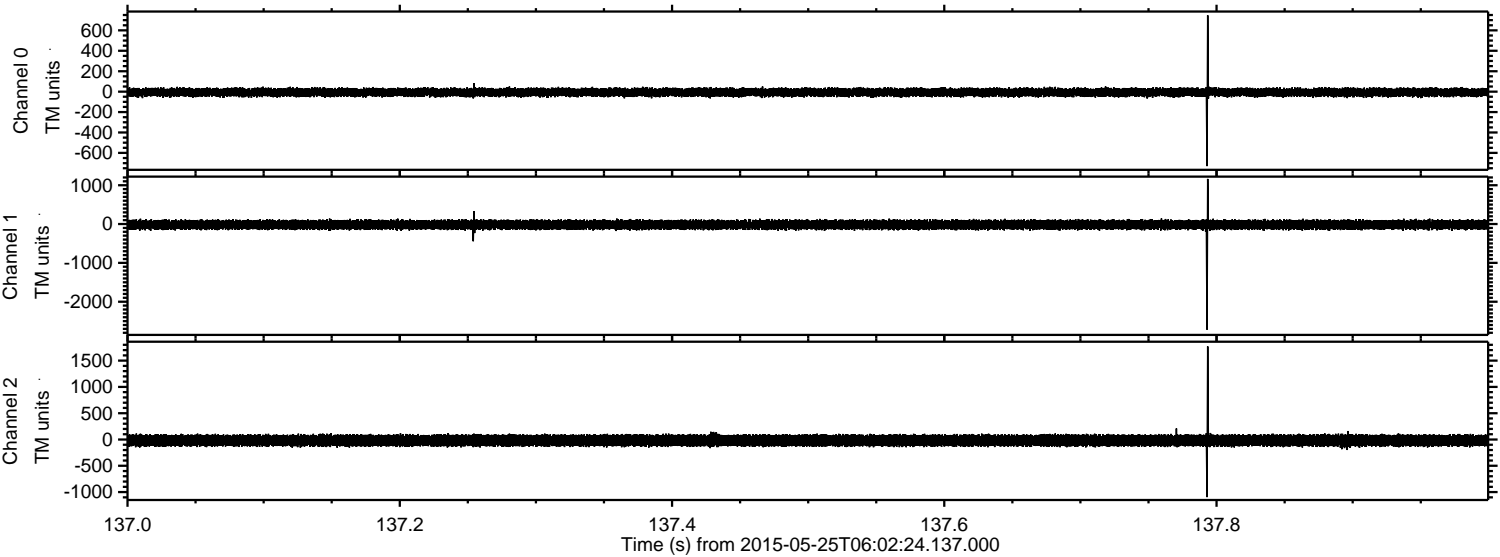


Processed Mon May 25 08:09:46 2015 by ELM ver.2012-10-06 from 001__elm20150525_060223__dat00.bin

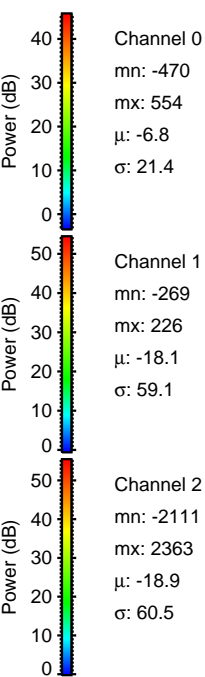
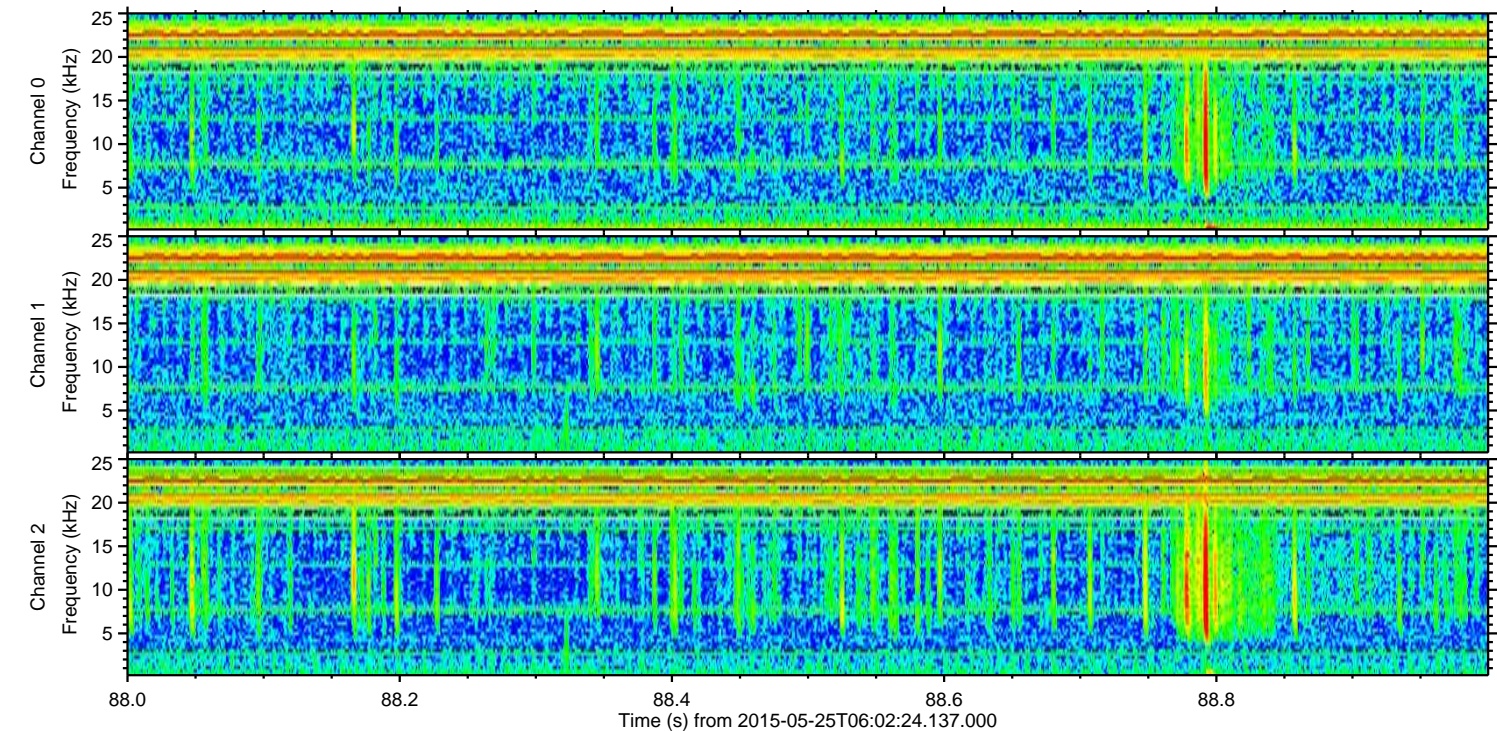
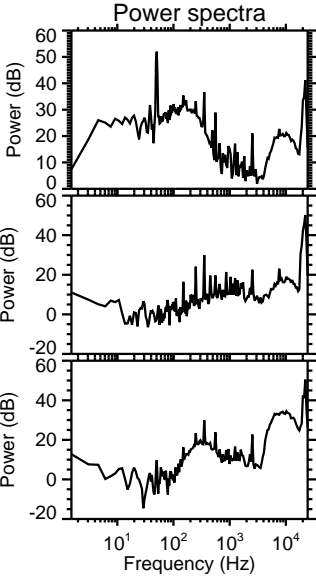
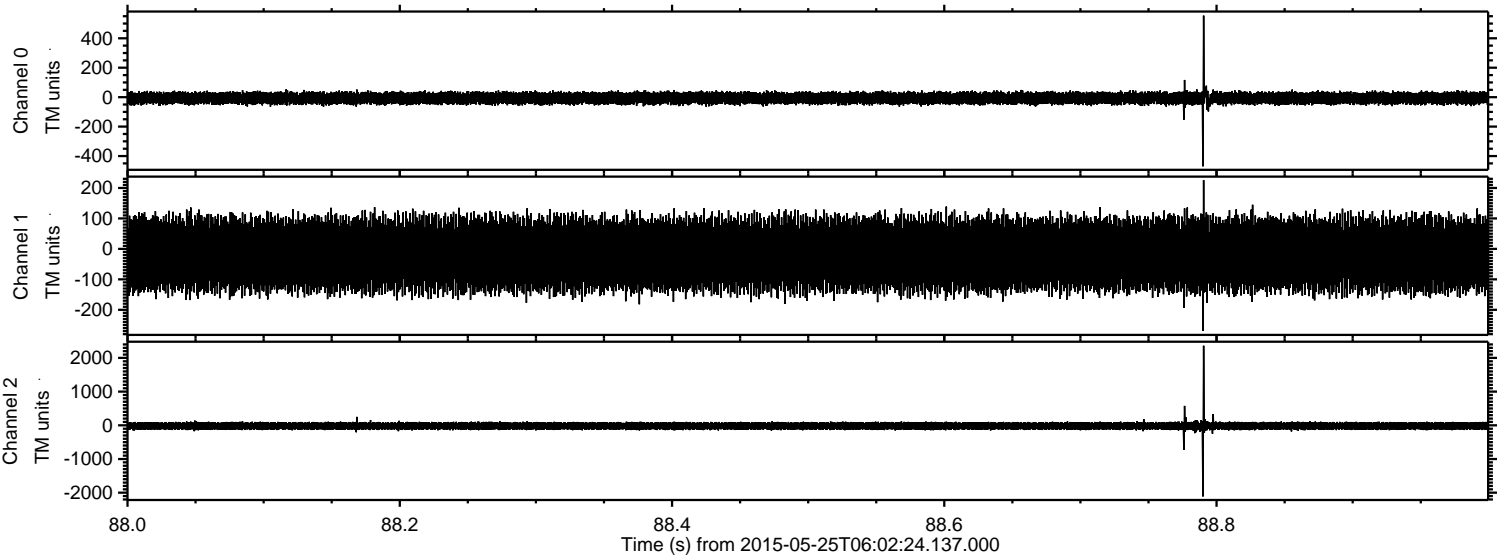


ELMAVAN 3D WAVEFORMS (Measured data sampled at 50 kHz) 49676 packets of 144 samples from 2015-05-25T06:02:24.137.000. Part 138/144

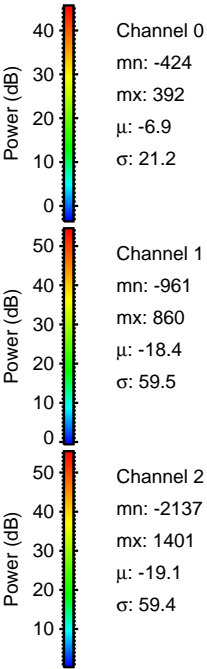
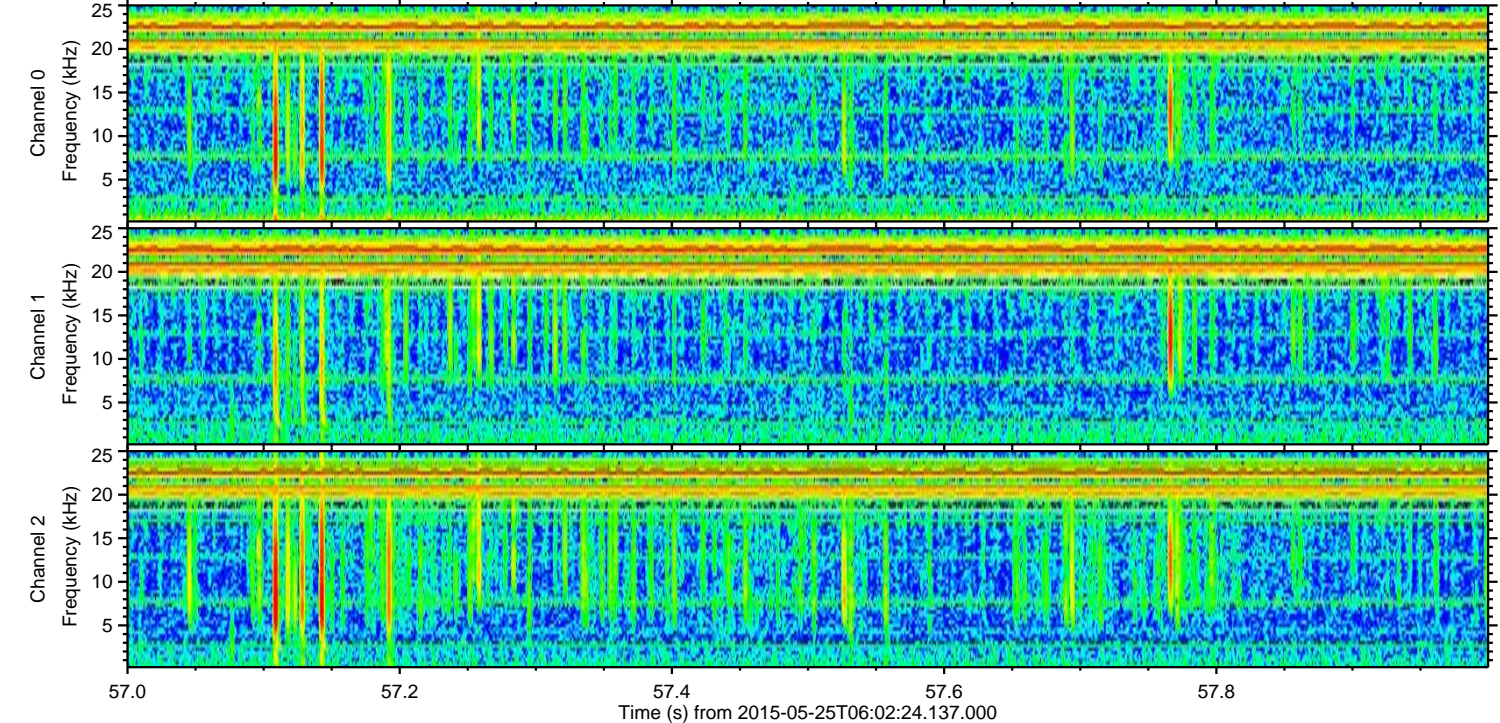
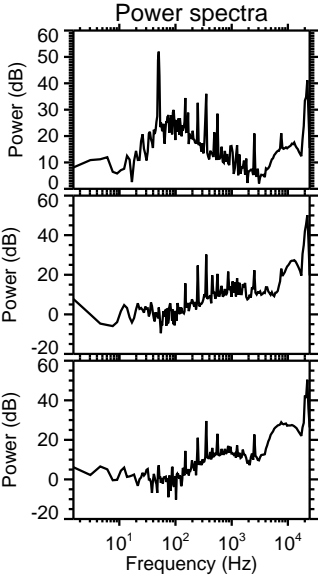
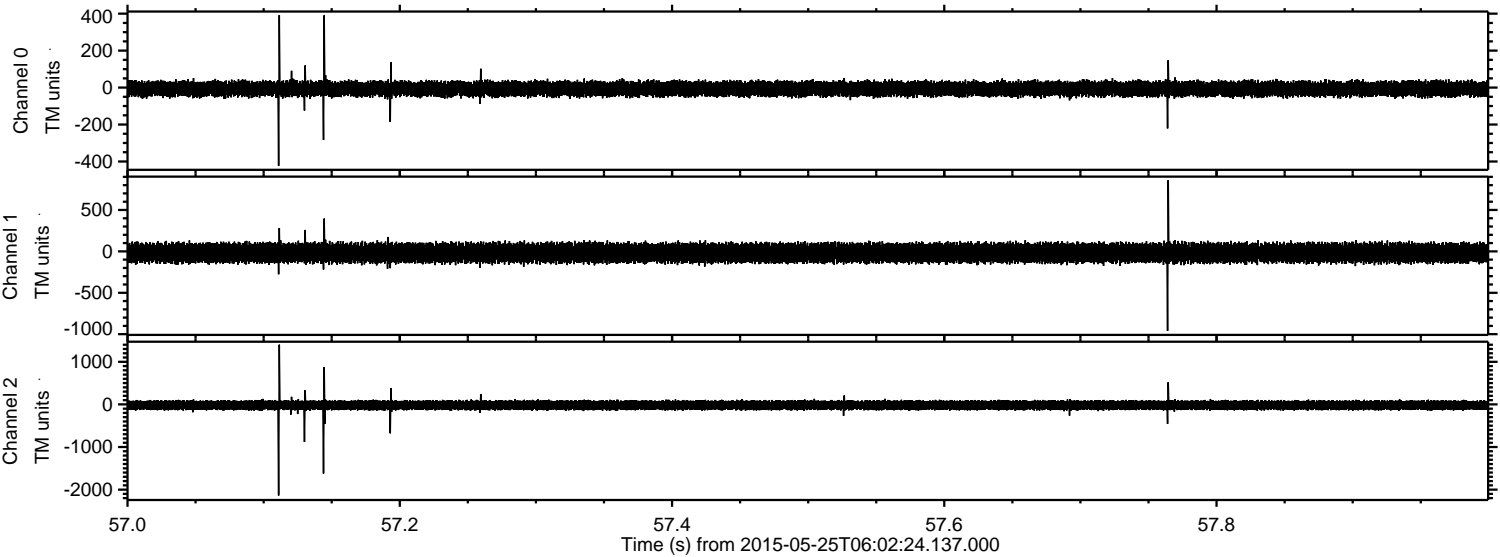
Processed Mon May 25 08:09:47 2015 by ELM ver.2012-10-06 from 001__elm20150525_060223__dat00.bin



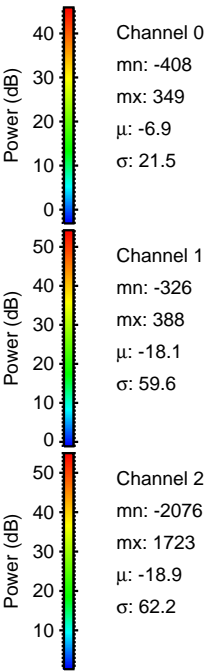
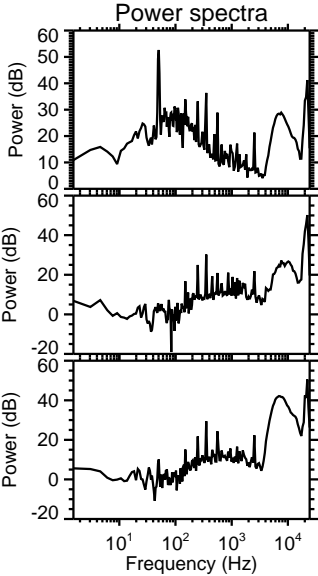
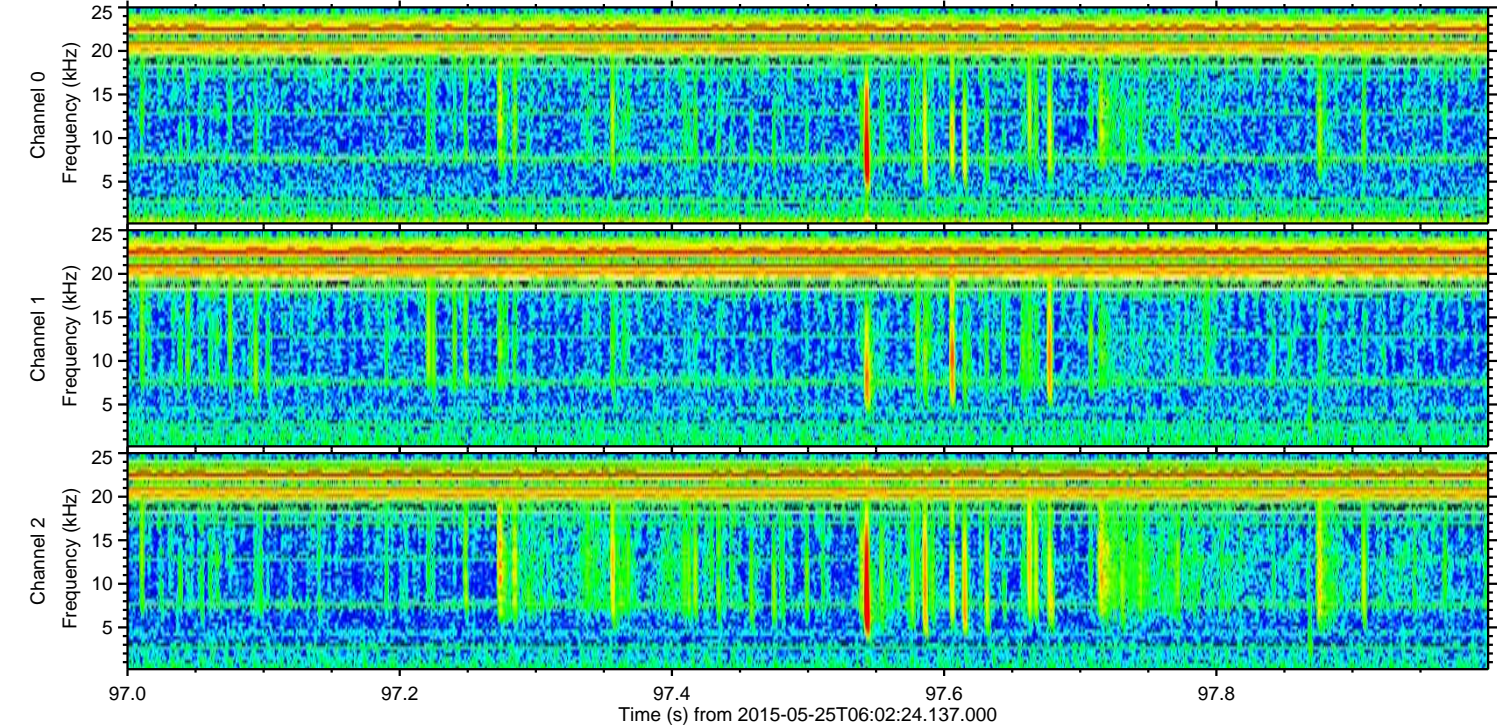
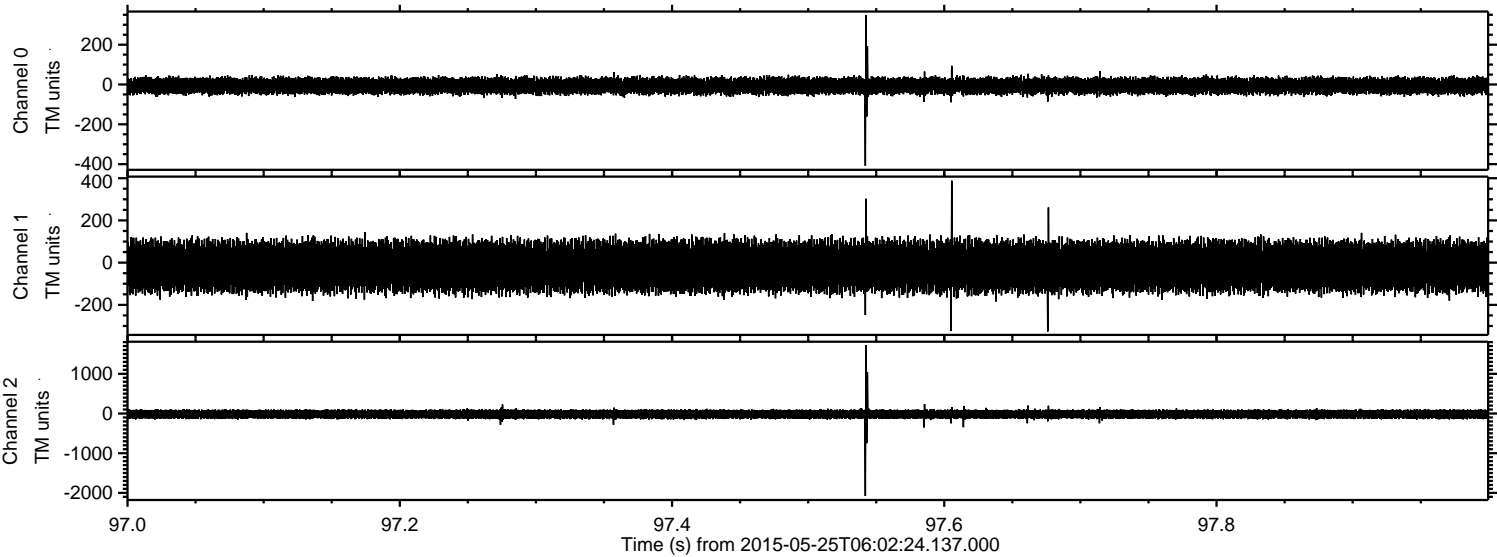
Processed Mon May 25 08:09:48 2015 by ELM ver.2012-10-06 from 001__elm20150525_060223__dat00.bin



Processed Mon May 25 08:09:49 2015 by ELM ver.2012-10-06 from 001__elm20150525_060223__dat00.bin

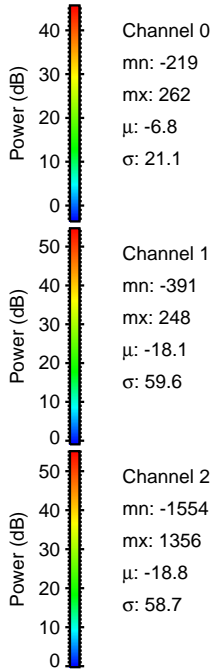
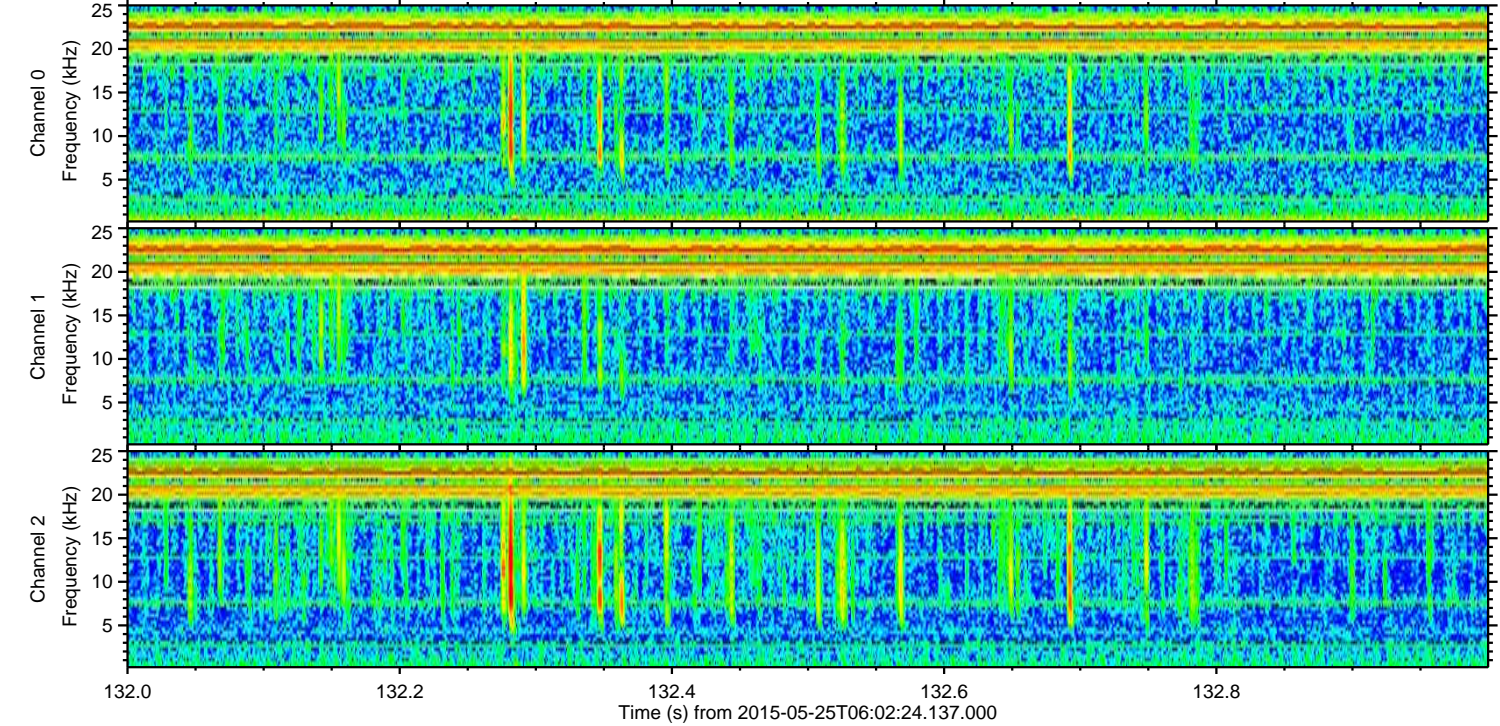
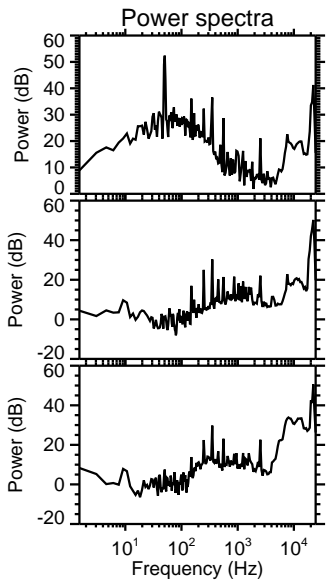
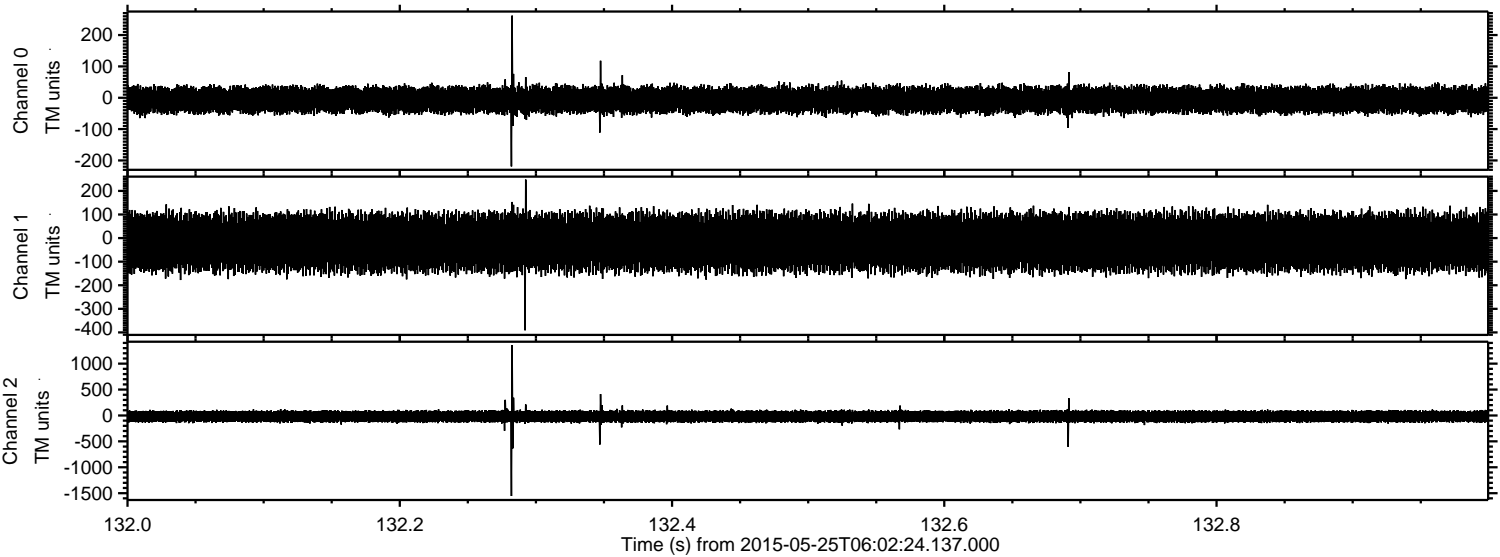


Processed Mon May 25 08:09:50 2015 by ELM ver.2012-10-06 from 001__elm20150525_060223__dat00.bin



ELMAVAN 3D WAVEFORMS (Measured data sampled at 50 kHz) 49676 packets of 144 samples from 2015-05-25T06:02:24.137.000. Part 133/144

Processed Mon May 25 08:09:51 2015 by ELM ver.2012-10-06 from 001__elm20150525_060223__dat00.bin

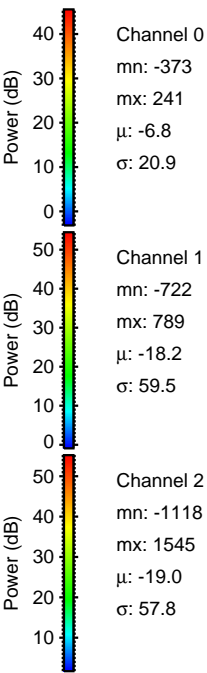
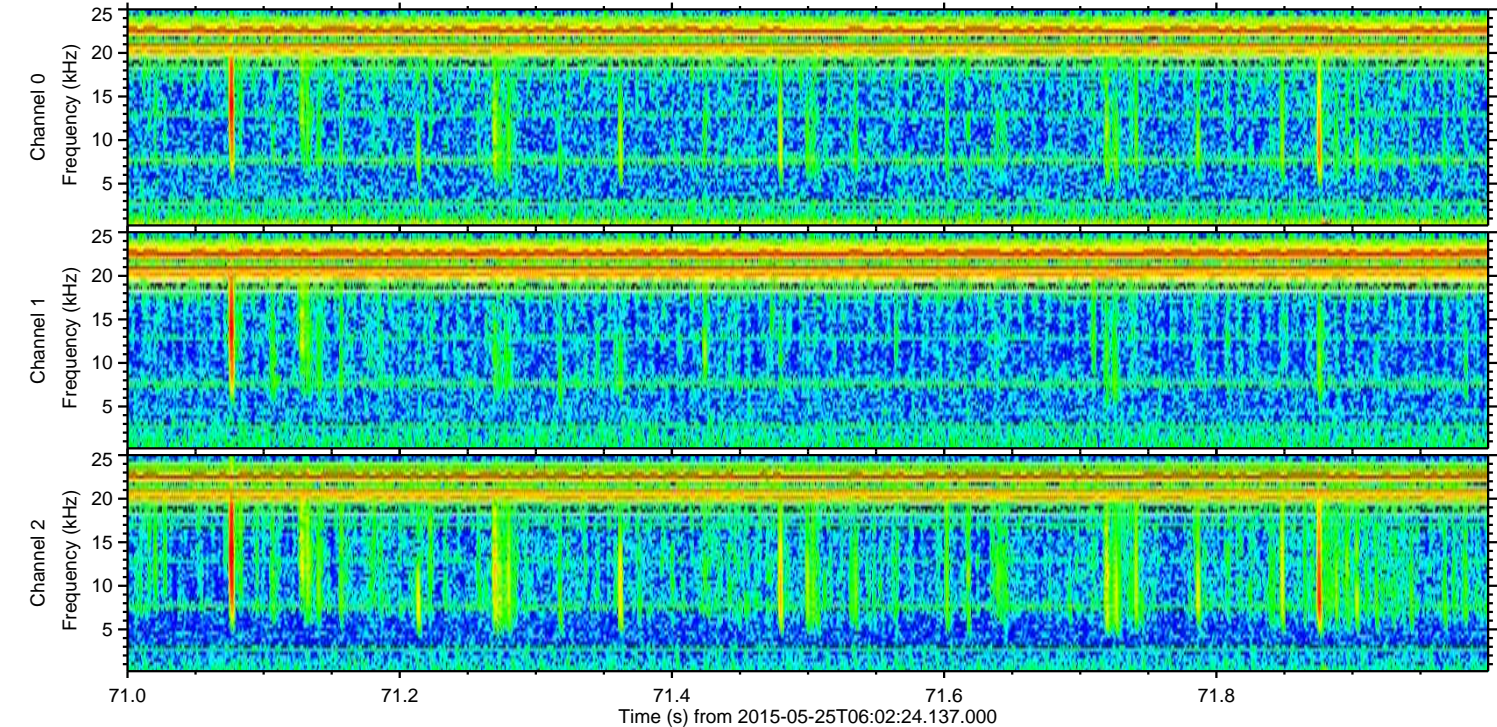
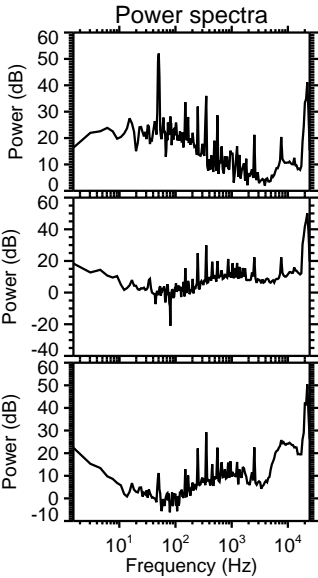
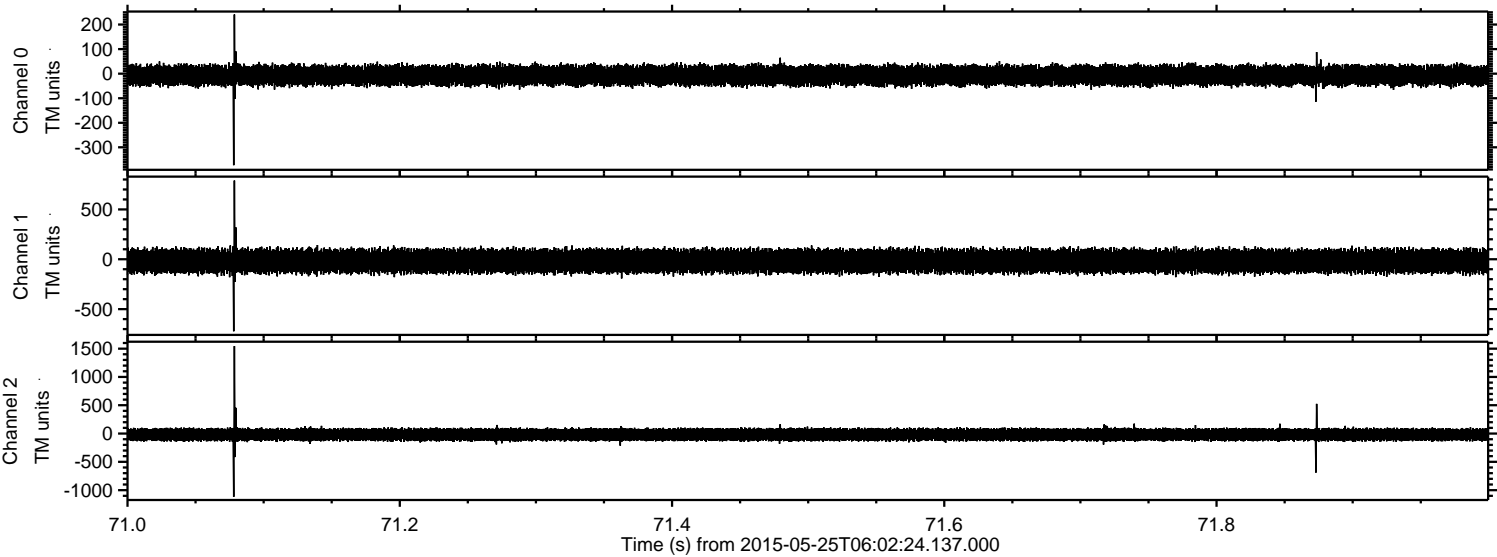


Channel 0
mn: -219
mx: 262
 μ : -6.8
 σ : 21.1

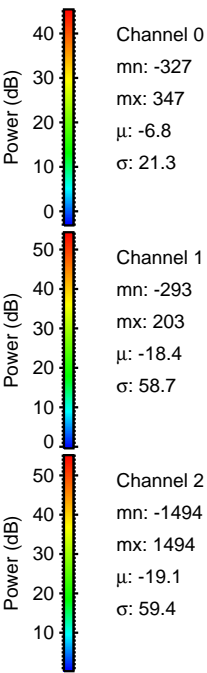
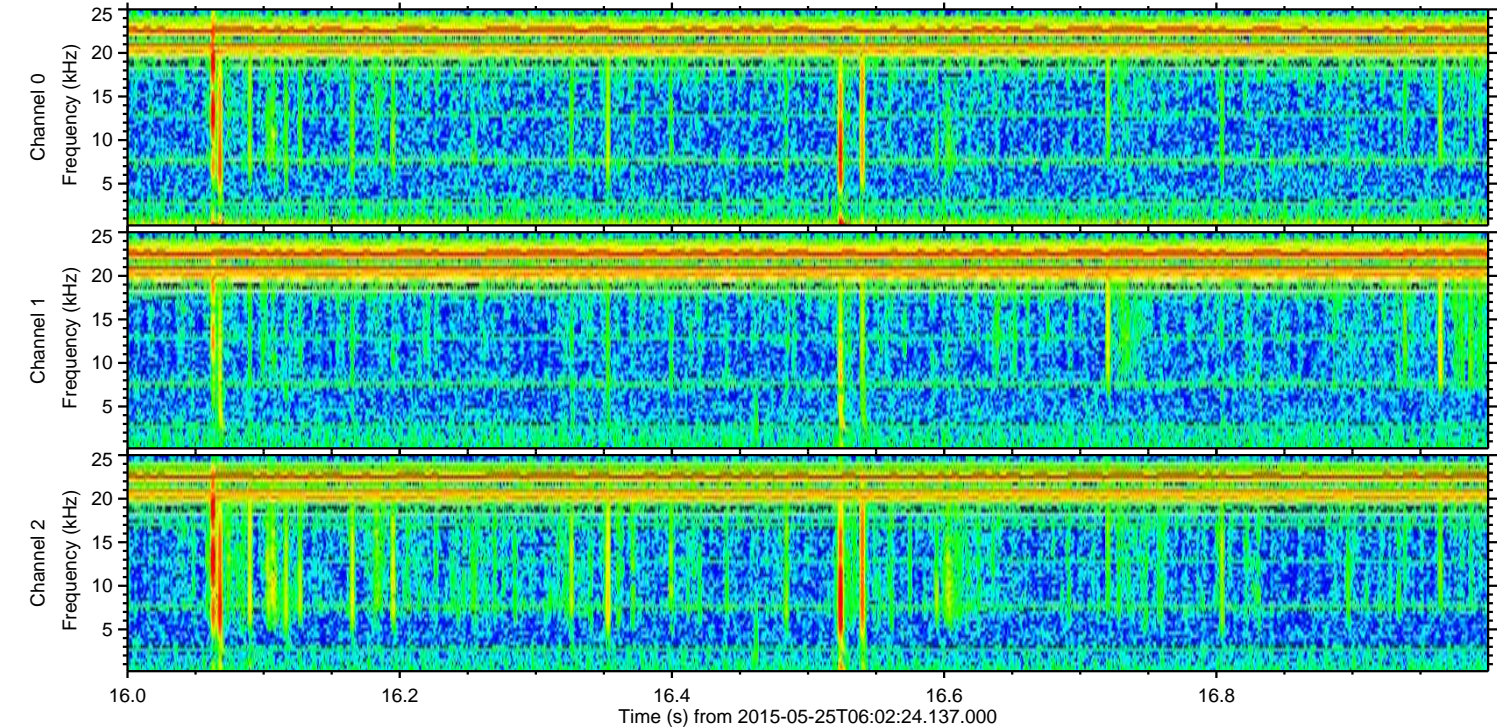
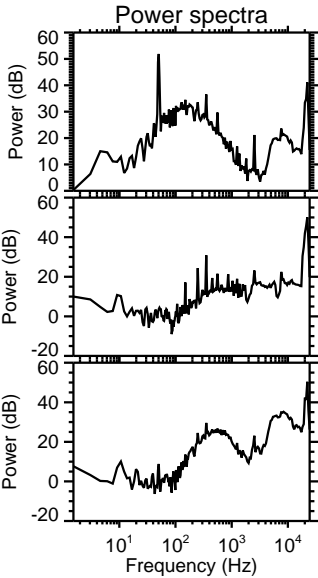
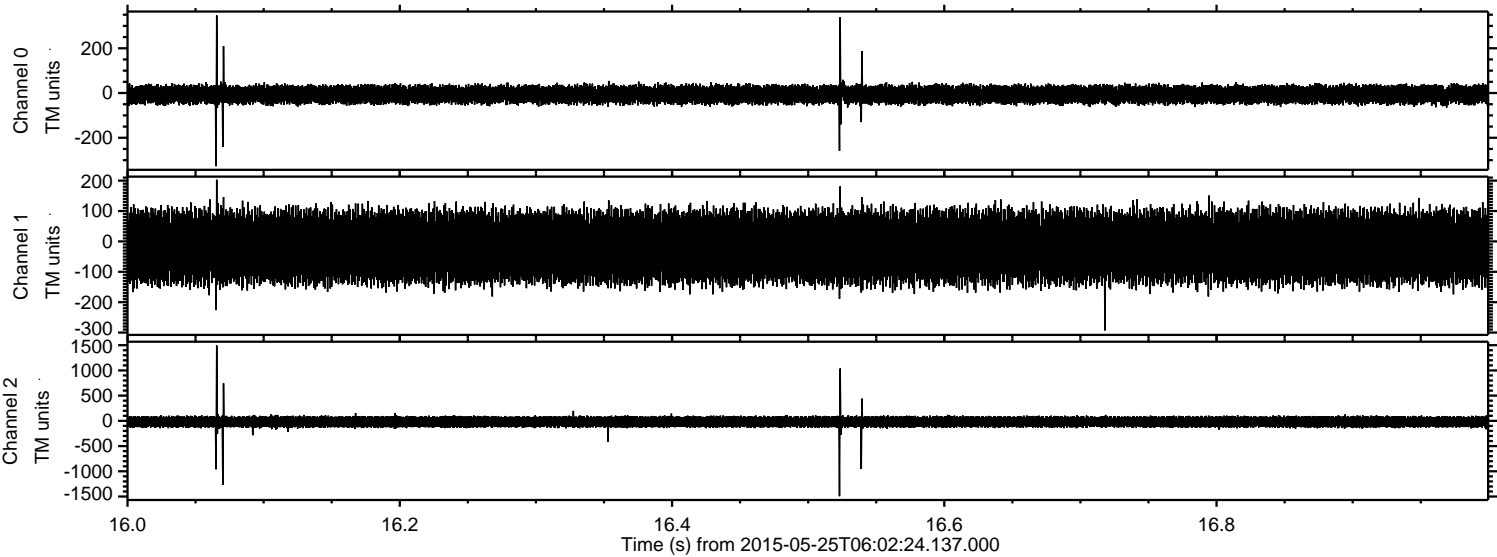
Channel 1
mn: -391
mx: 248
 μ : -18.1
 σ : 59.6

Channel 2
mn: -1554
mx: 1356
 μ : -18.8
 σ : 58.7

Processed Mon May 25 08:09:52 2015 by ELM ver.2012-10-06 from 001__elm20150525_060223__dat00.bin



Processed Mon May 25 08:09:53 2015 by ELM ver.2012-10-06 from 001__elm20150525_060223__dat00.bin



Processed Mon May 25 08:09:54 2015 by ELM ver.2012-10-06 from 001__elm20150525_060223__dat00.bin

