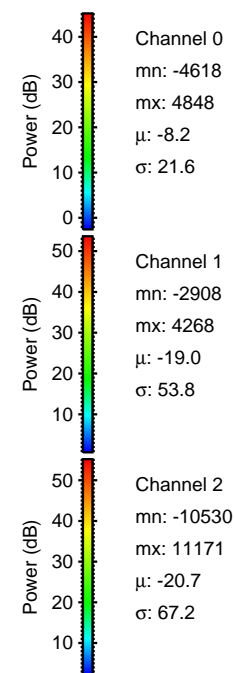
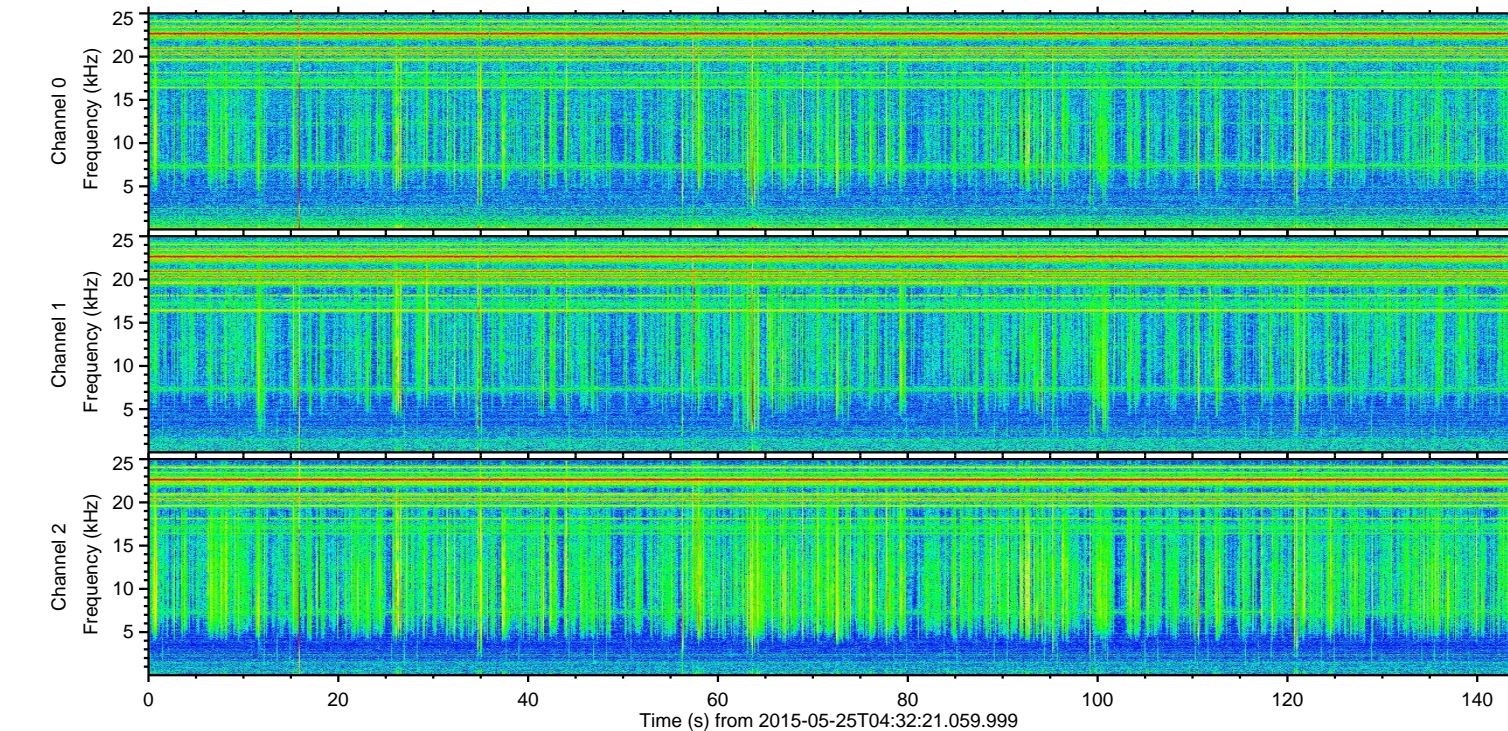
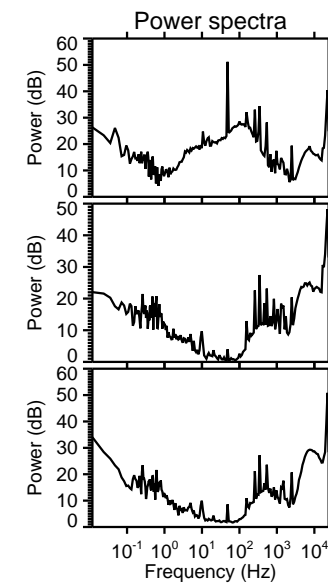
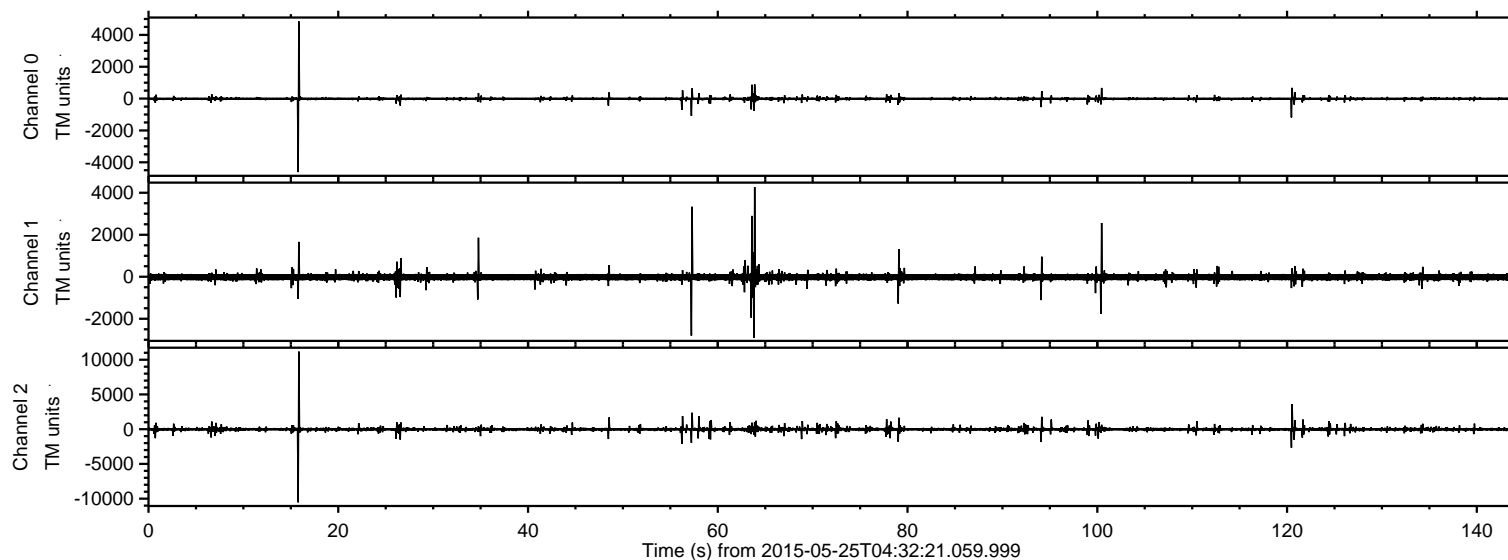


# ELMAVAN 3D WAVEFORMS (Measured data sampled at 50 kHz) 49794 packets of 144 samples from 2015-05-25T04:32:21.059.999.

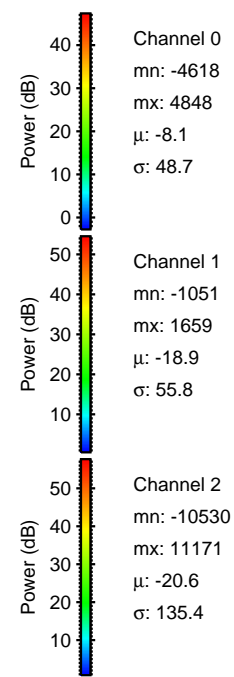
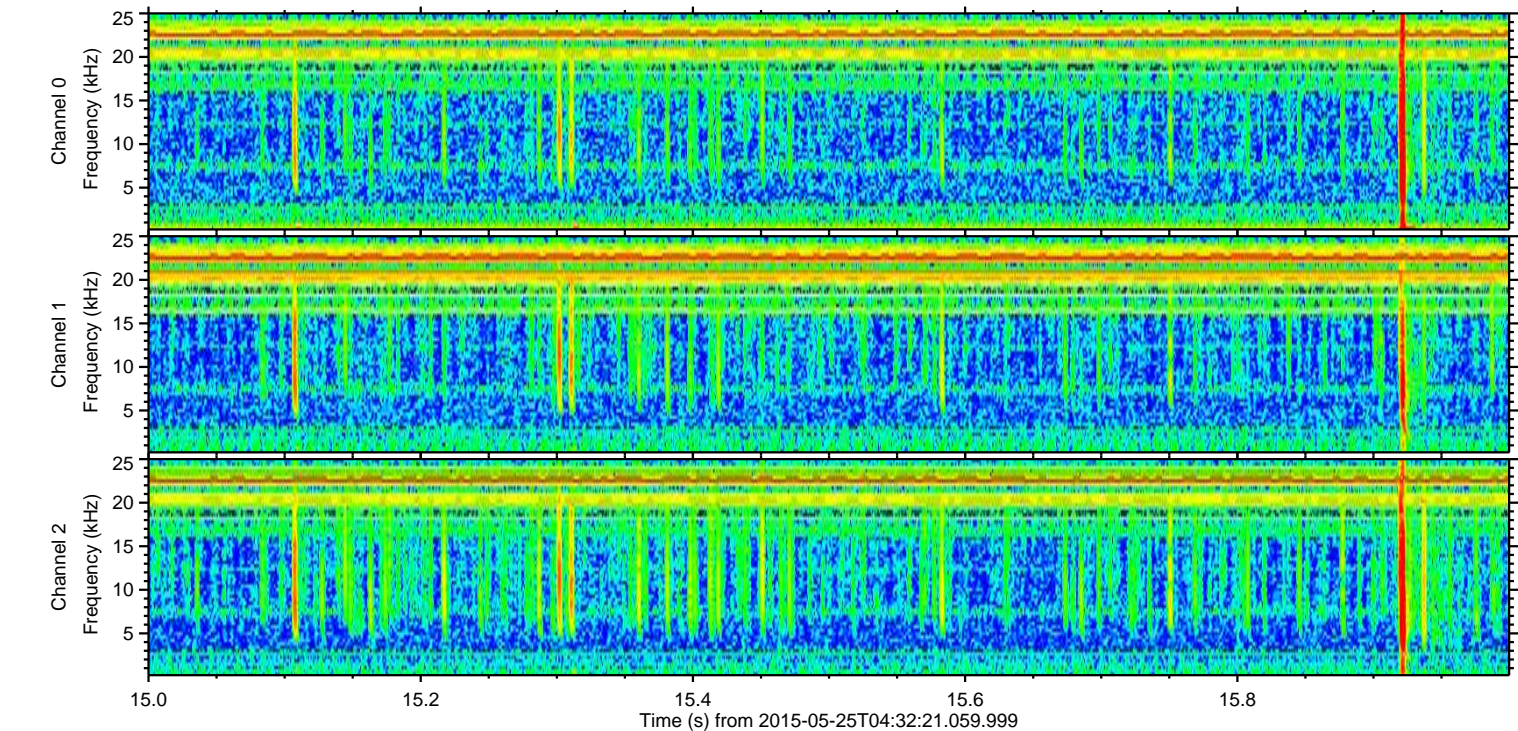
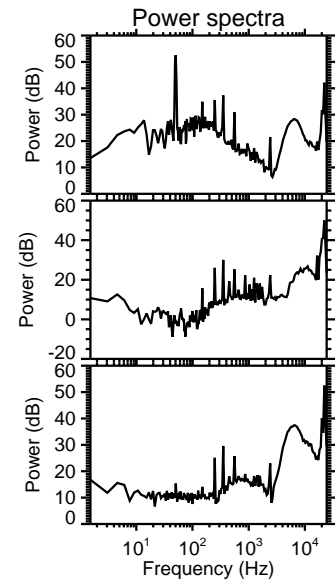
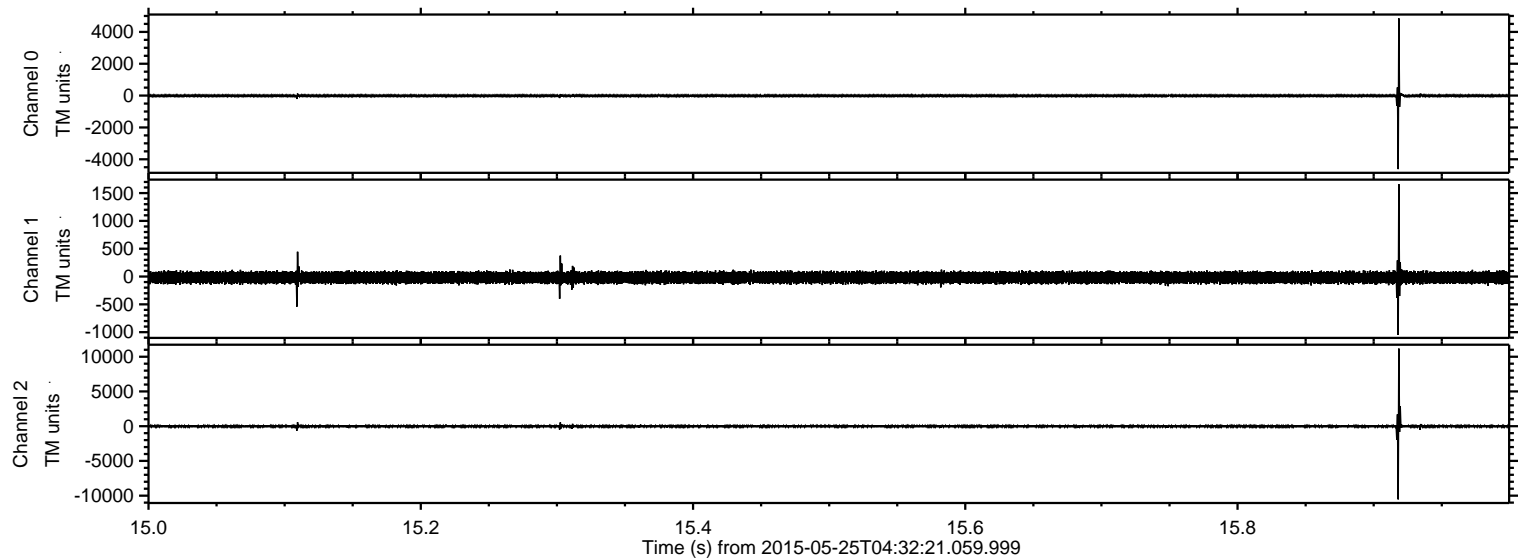
Processed Mon May 25 06:38:58 2015 by ELM ver.2012-10-06 from 001\_\_elm20150525\_043220\_\_dat00.bin





ELMAVAN 3D WAVEFORMS (Measured data sampled at 50 kHz) 49794 packets of 144 samples from 2015-05-25T04:32:21.059.999. Part 16/144

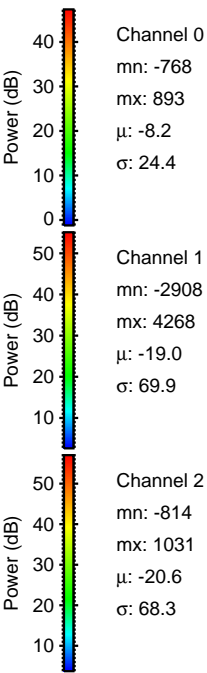
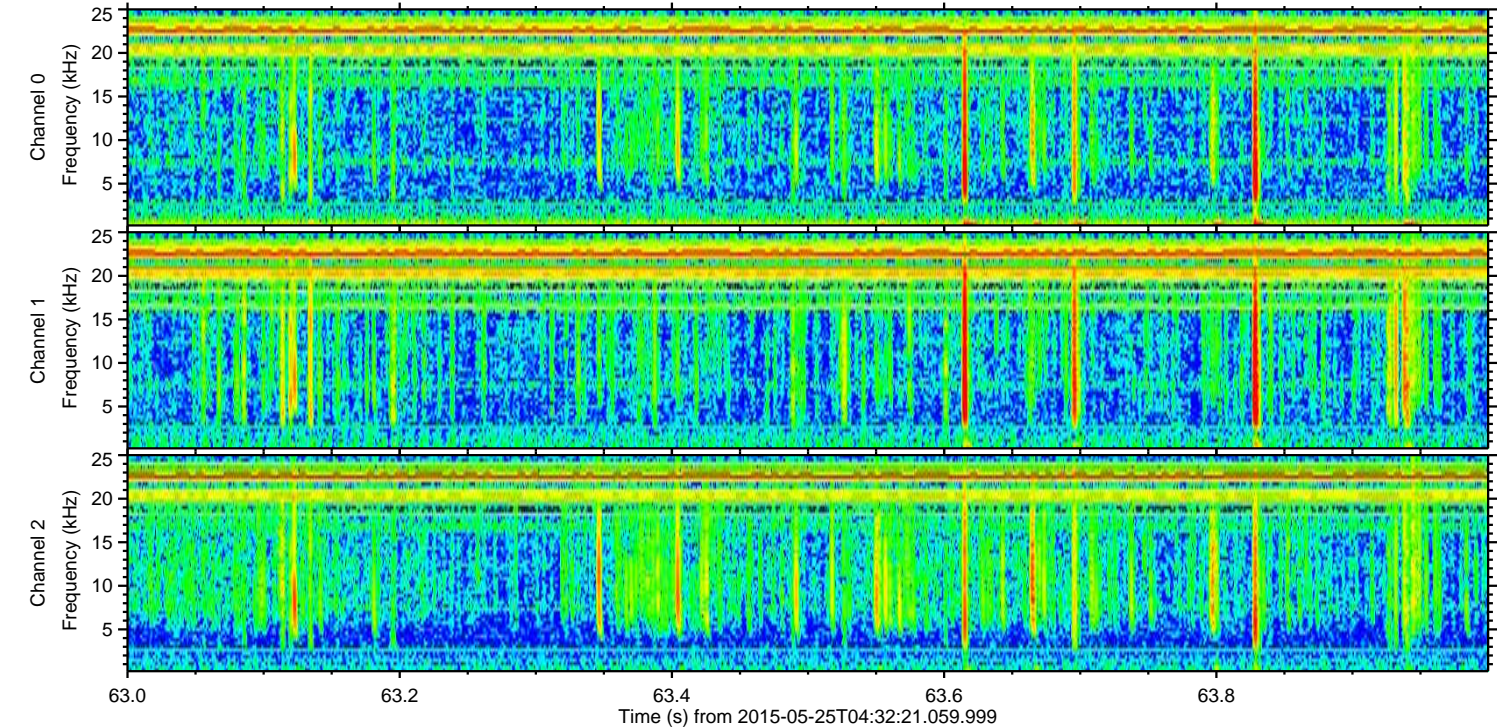
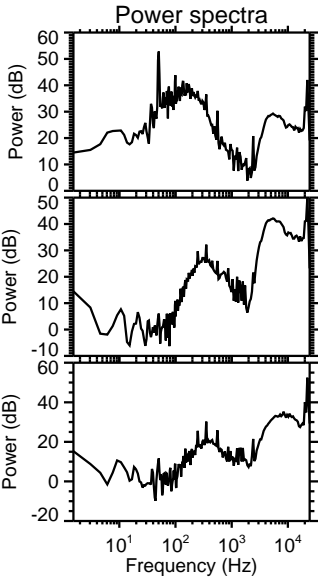
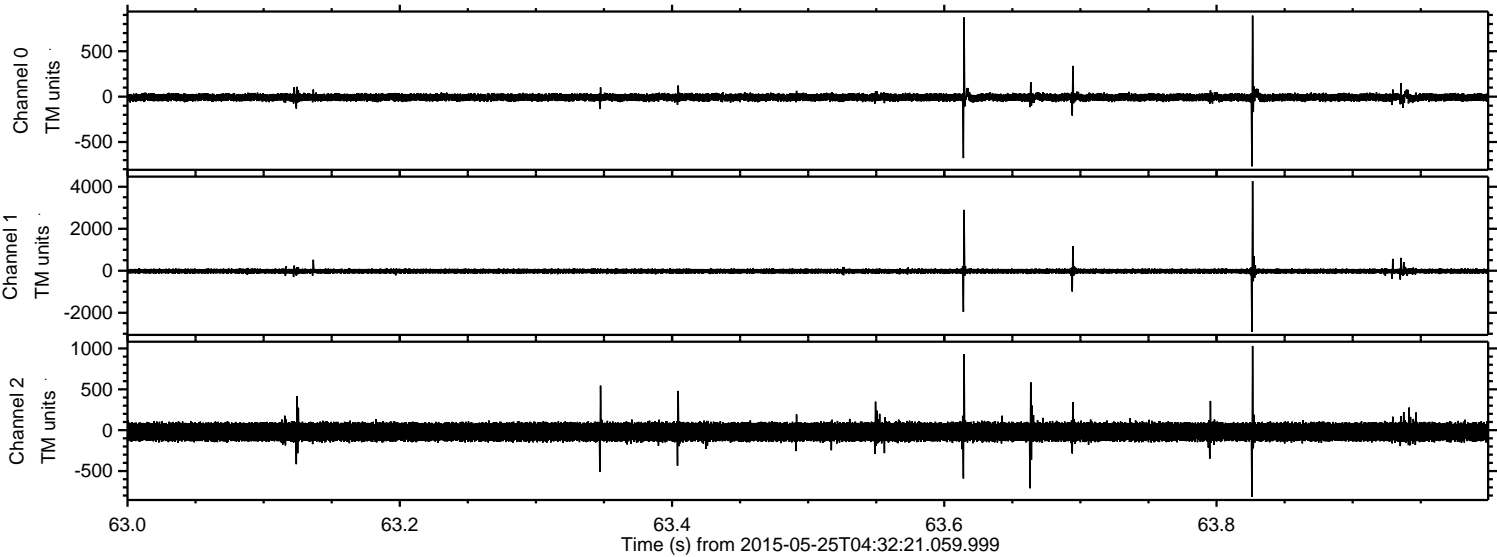
Processed Mon May 25 06:39:09 2015 by ELM ver.2012-10-06 from 001\_\_elm20150525\_043220\_\_dat00.bin





ELMAVAN 3D WAVEFORMS (Measured data sampled at 50 kHz) 49794 packets of 144 samples from 2015-05-25T04:32:21.059.999. Part 64/144

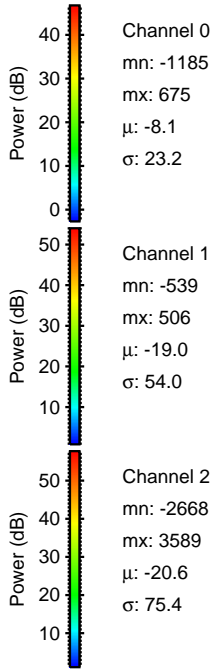
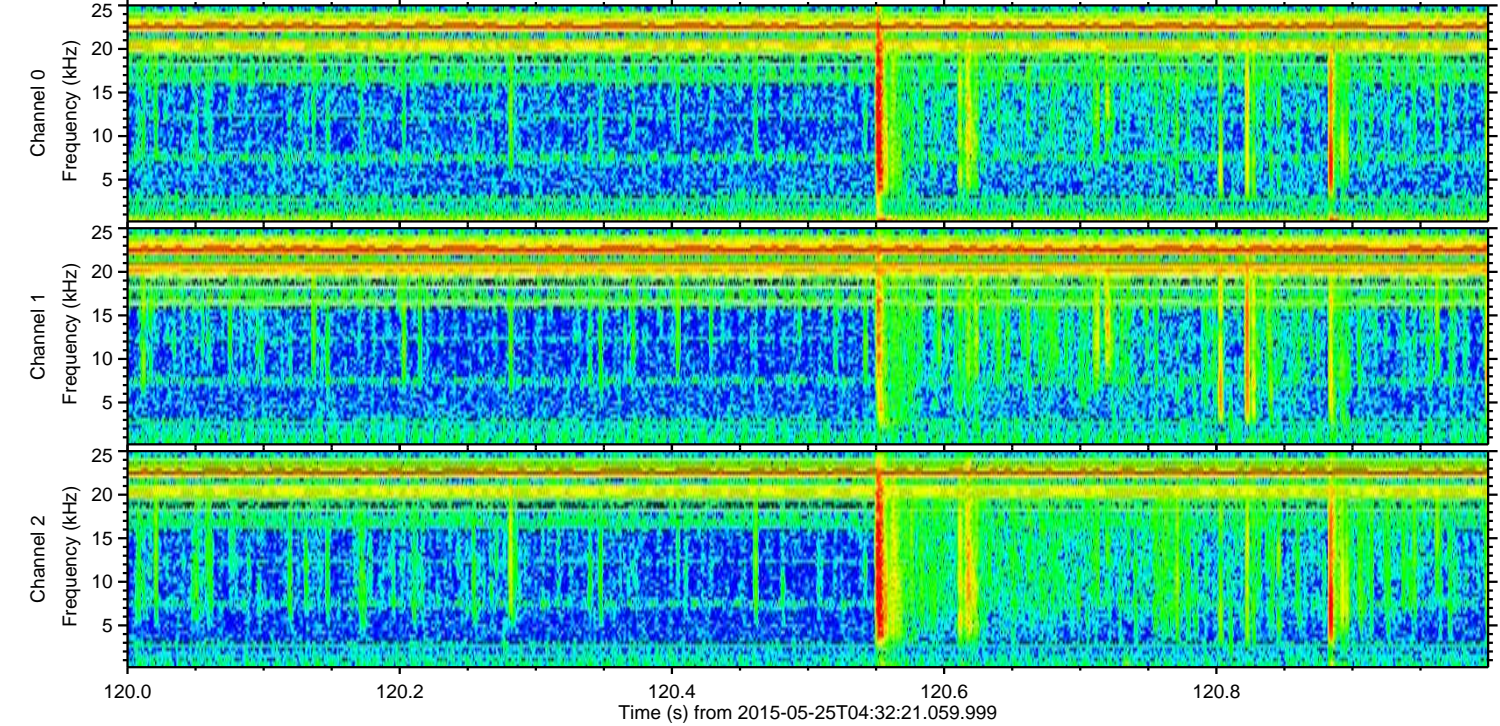
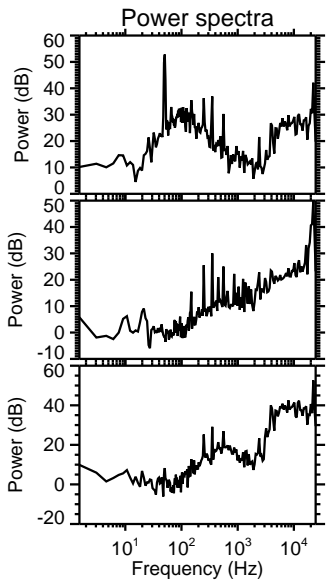
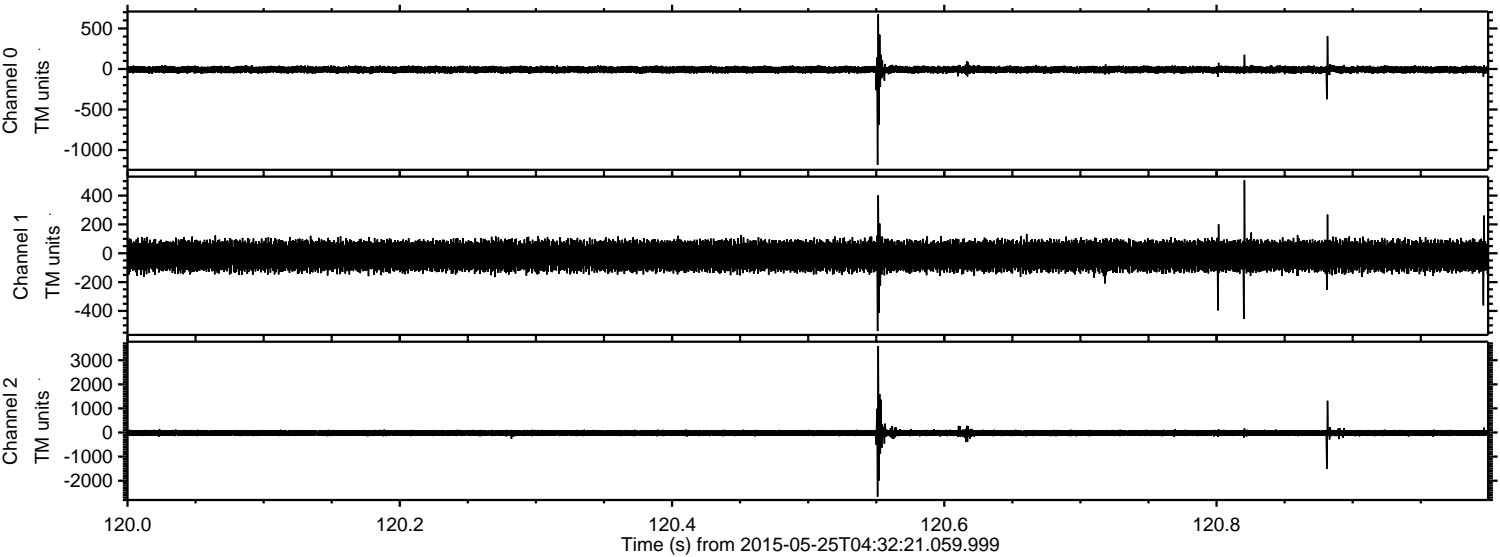
Processed Mon May 25 06:39:10 2015 by ELM ver.2012-10-06 from 001\_\_elm20150525\_043220\_\_dat00.bin





ELMAVAN 3D WAVEFORMS (Measured data sampled at 50 kHz) 49794 packets of 144 samples from 2015-05-25T04:32:21.059.999. Part 121/144

Processed Mon May 25 06:39:11 2015 by ELM ver.2012-10-06 from 001\_\_elm20150525\_043220\_\_dat00.bin



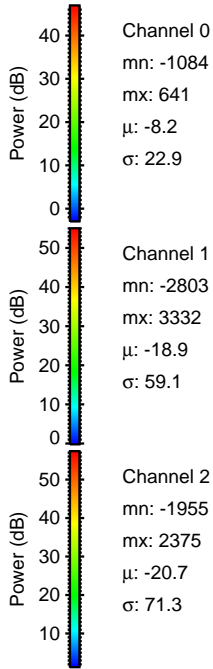
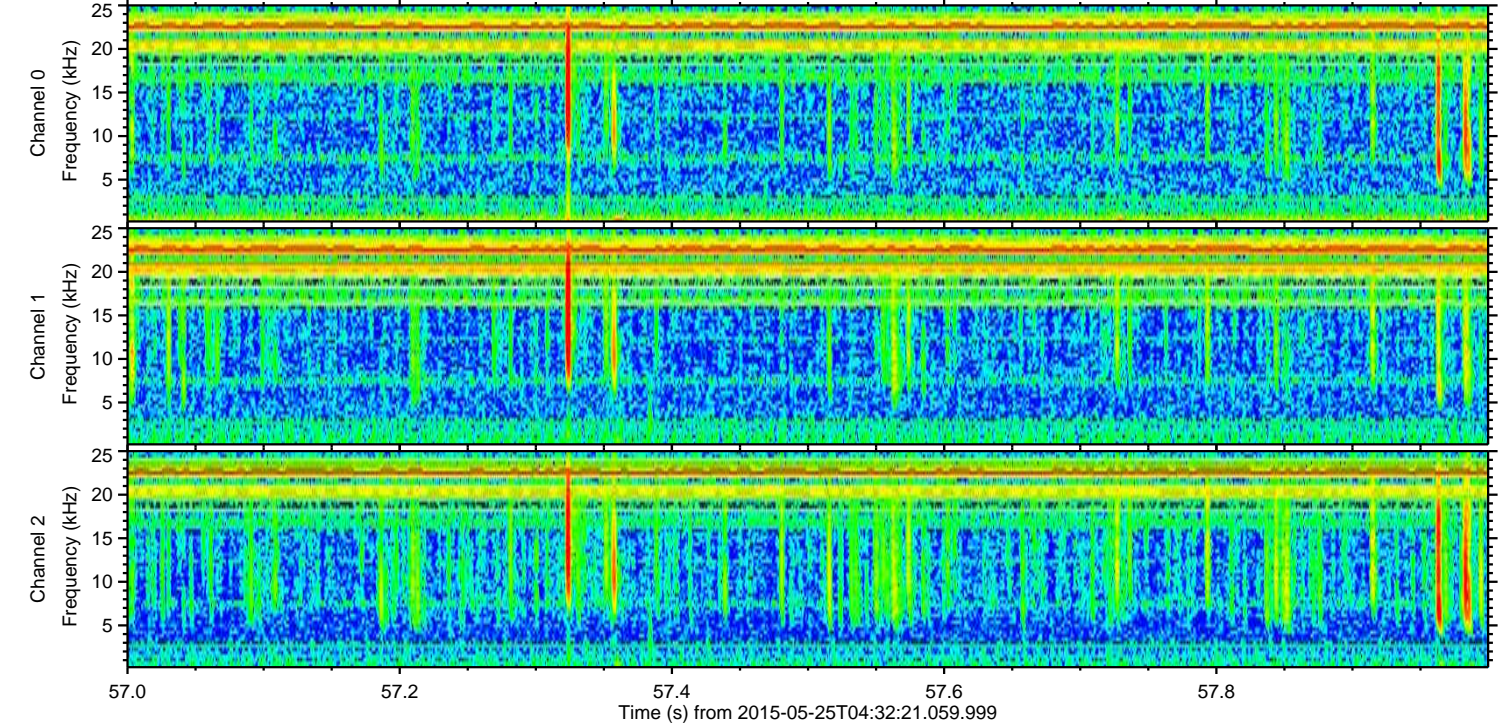
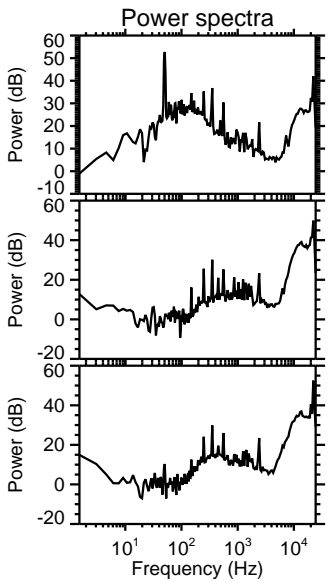
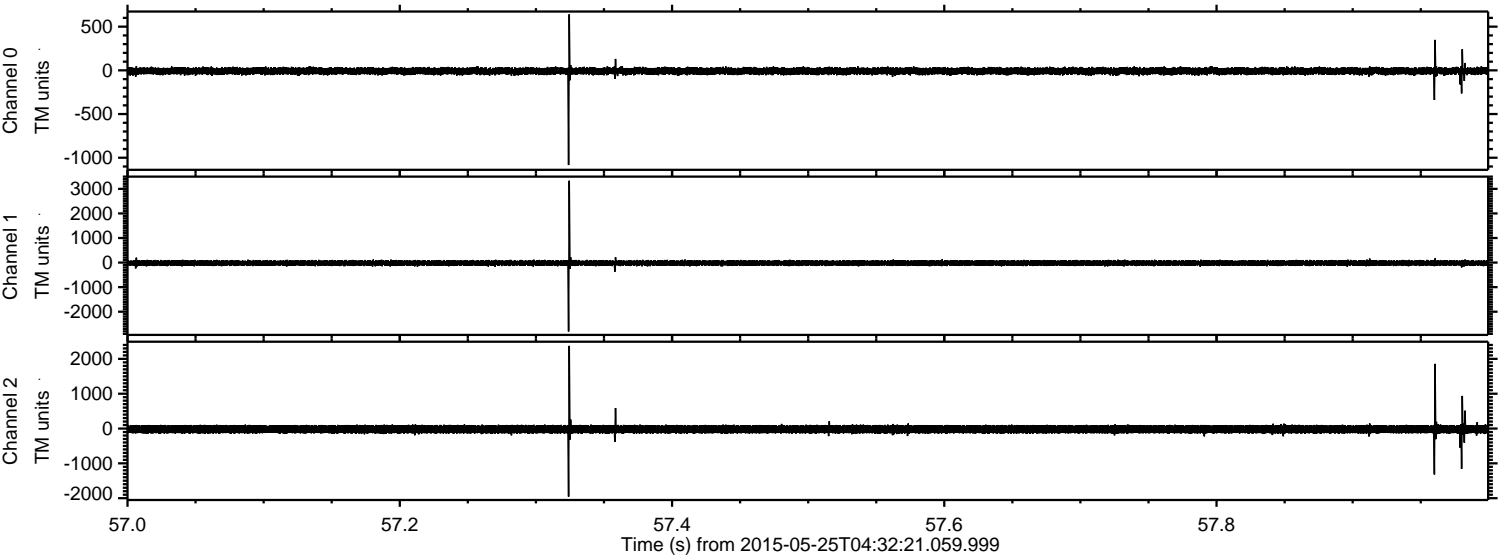
Channel 0  
mn: -1185  
mx: 675  
 $\mu$ : -8.1  
 $\sigma$ : 23.2

Channel 1  
mn: -539  
mx: 506  
 $\mu$ : -19.0  
 $\sigma$ : 54.0

Channel 2  
mn: -2668  
mx: 3589  
 $\mu$ : -20.6  
 $\sigma$ : 75.4



Processed Mon May 25 06:39:12 2015 by ELM ver.2012-10-06 from 001\_\_elm20150525\_043220\_\_dat00.bin



Channel 0  
mn: -1084  
mx: 641  
 $\mu$ : -8.2  
 $\sigma$ : 22.9

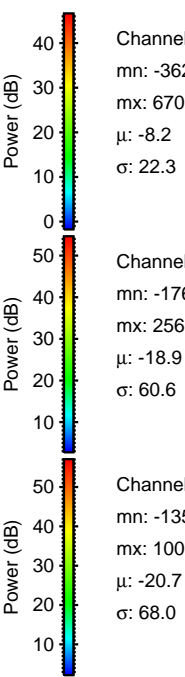
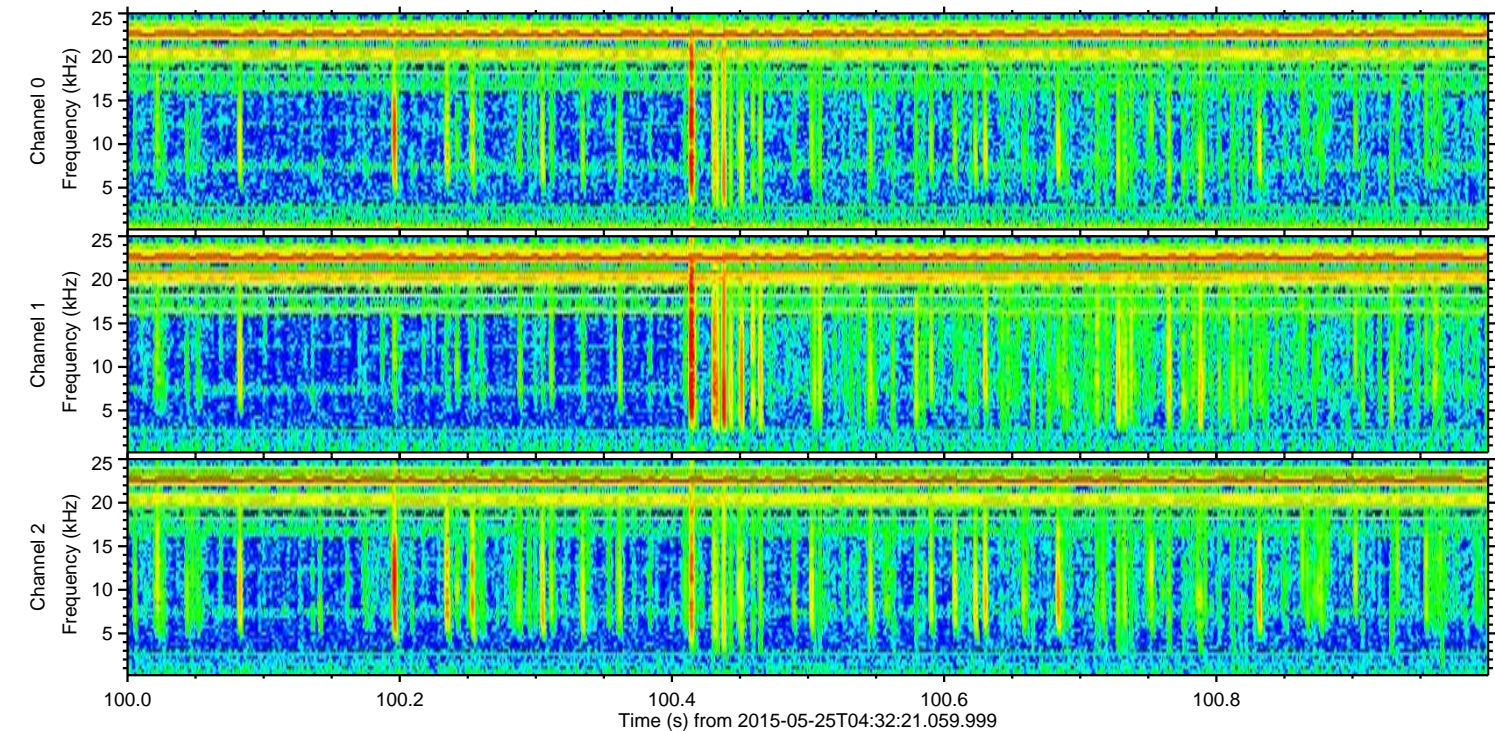
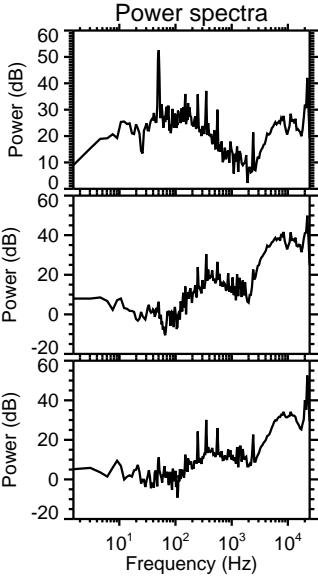
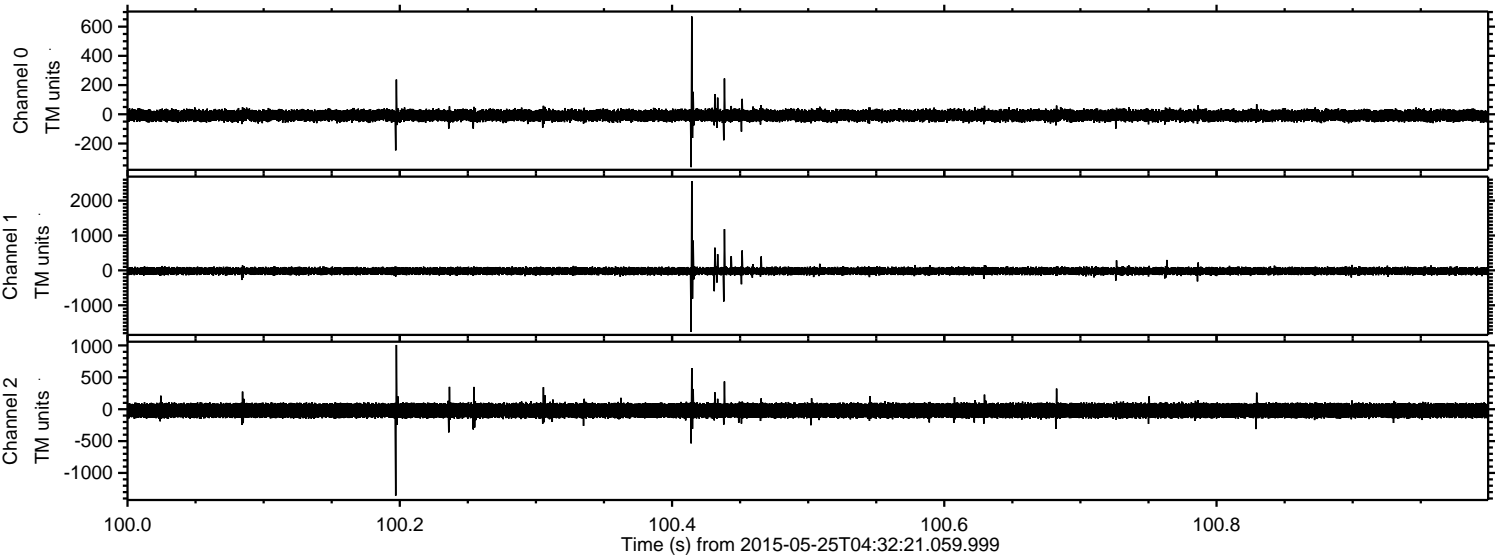
Channel 1  
mn: -2803  
mx: 3332  
 $\mu$ : -18.9  
 $\sigma$ : 59.1

Channel 2  
mn: -1955  
mx: 2375  
 $\mu$ : -20.7  
 $\sigma$ : 71.3



ELMAVAN 3D WAVEFORMS (Measured data sampled at 50 kHz) 49794 packets of 144 samples from 2015-05-25T04:32:21.059.999. Part 101/144

Processed Mon May 25 06:39:13 2015 by ELM ver.2012-10-06 from 001\_\_elm20150525\_043220\_\_dat00.bin



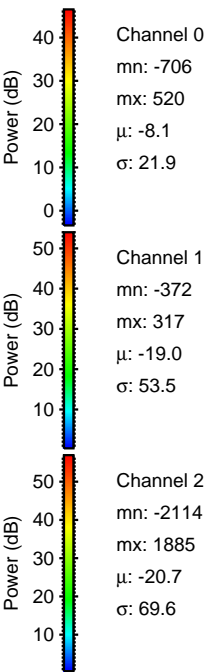
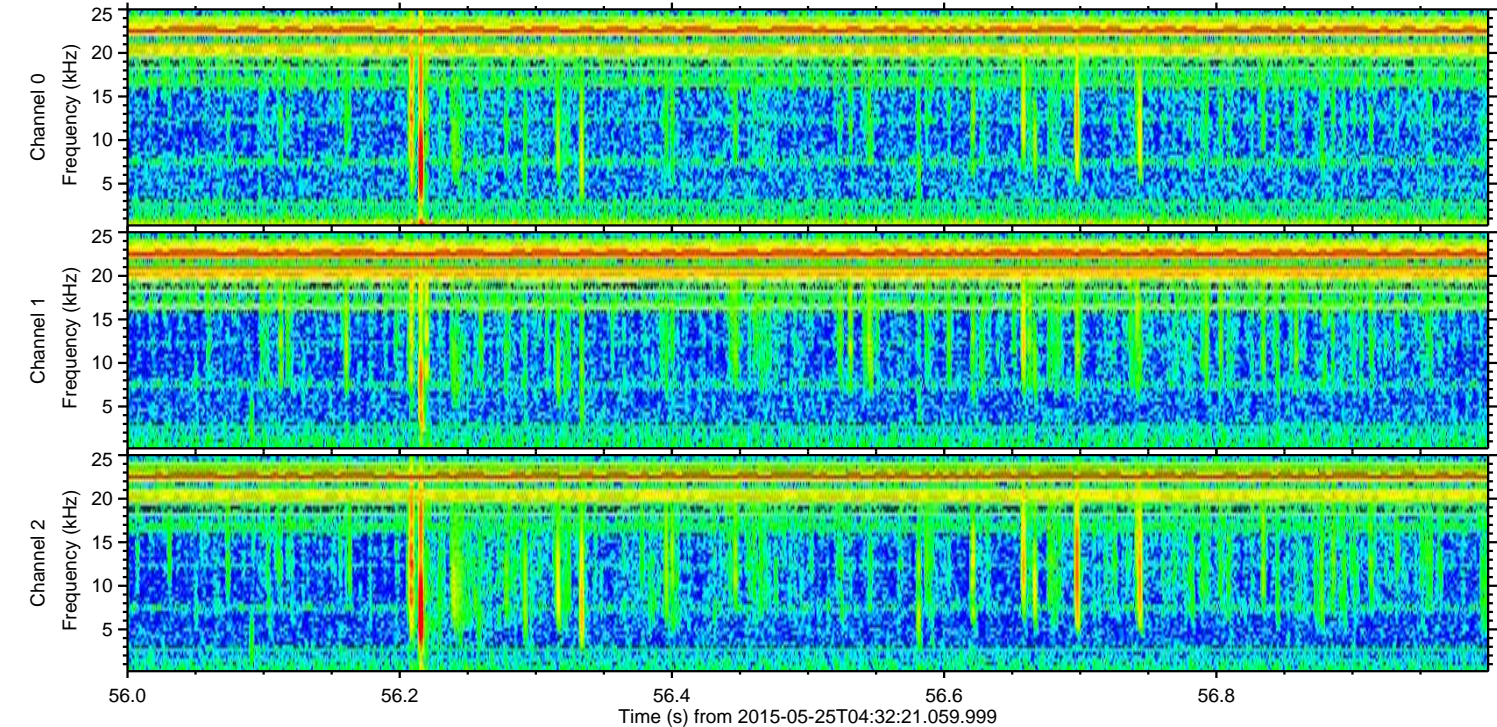
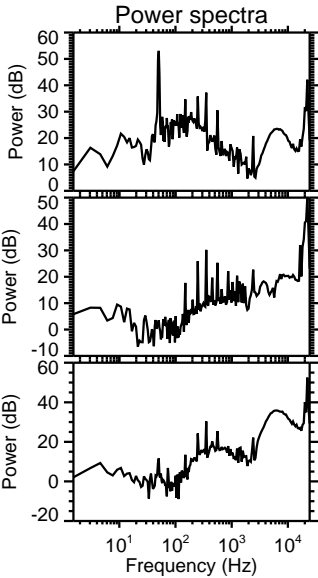
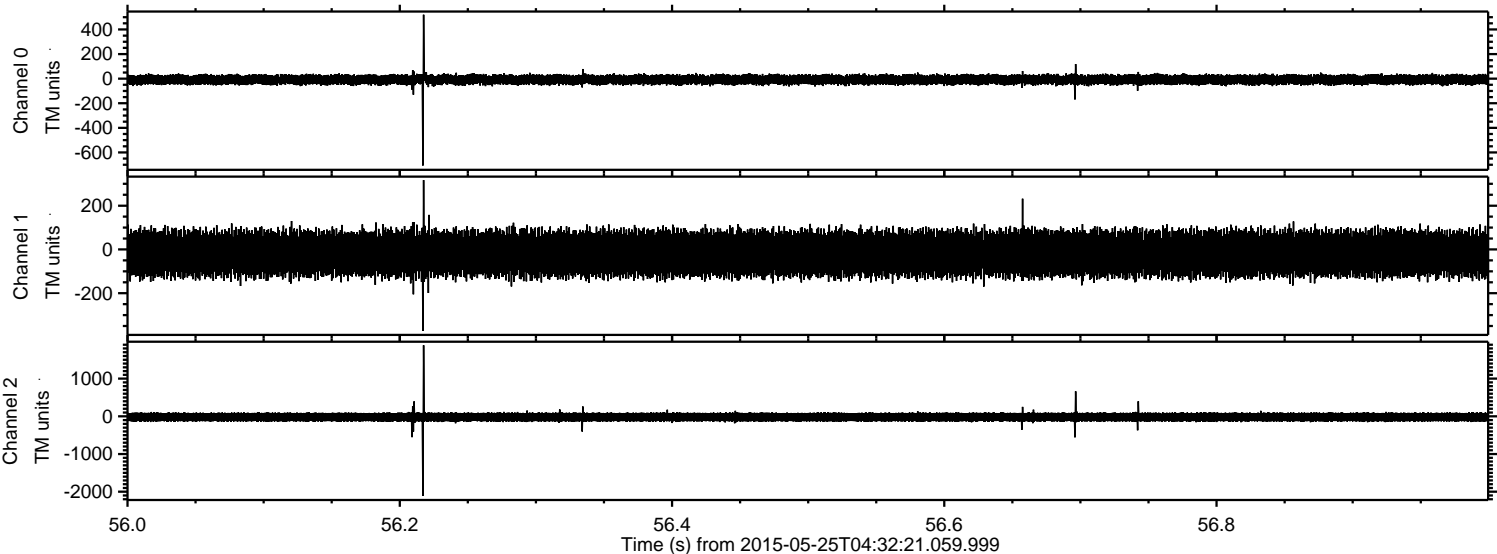
Channel 0  
mn: -362  
mx: 670  
 $\mu$ : -8.2  
 $\sigma$ : 22.3

Channel 1  
mn: -1762  
mx: 2560  
 $\mu$ : -18.9  
 $\sigma$ : 60.6

Channel 2  
mn: -1356  
mx: 1008  
 $\mu$ : -20.7  
 $\sigma$ : 68.0

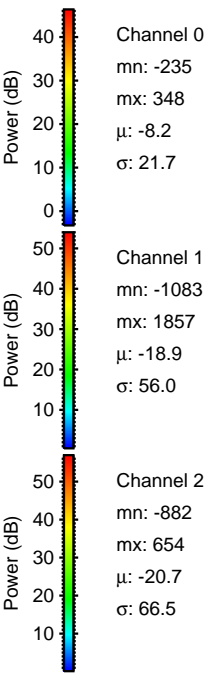
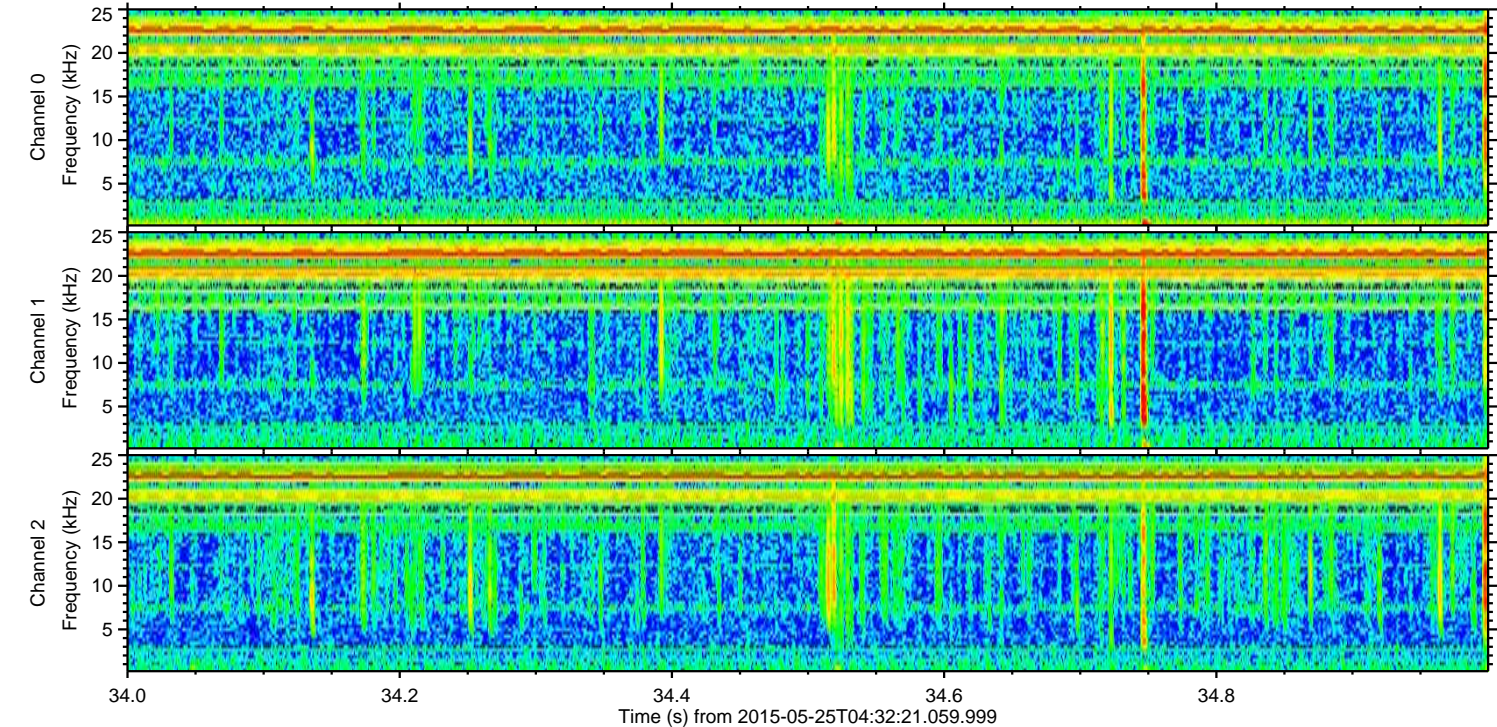
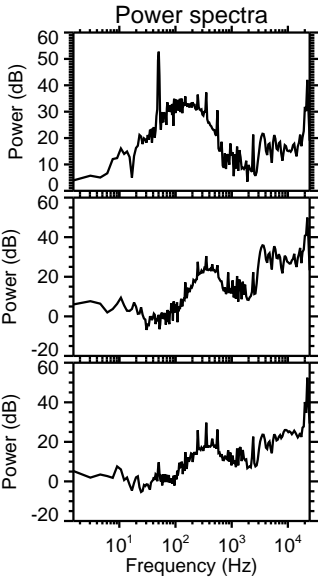
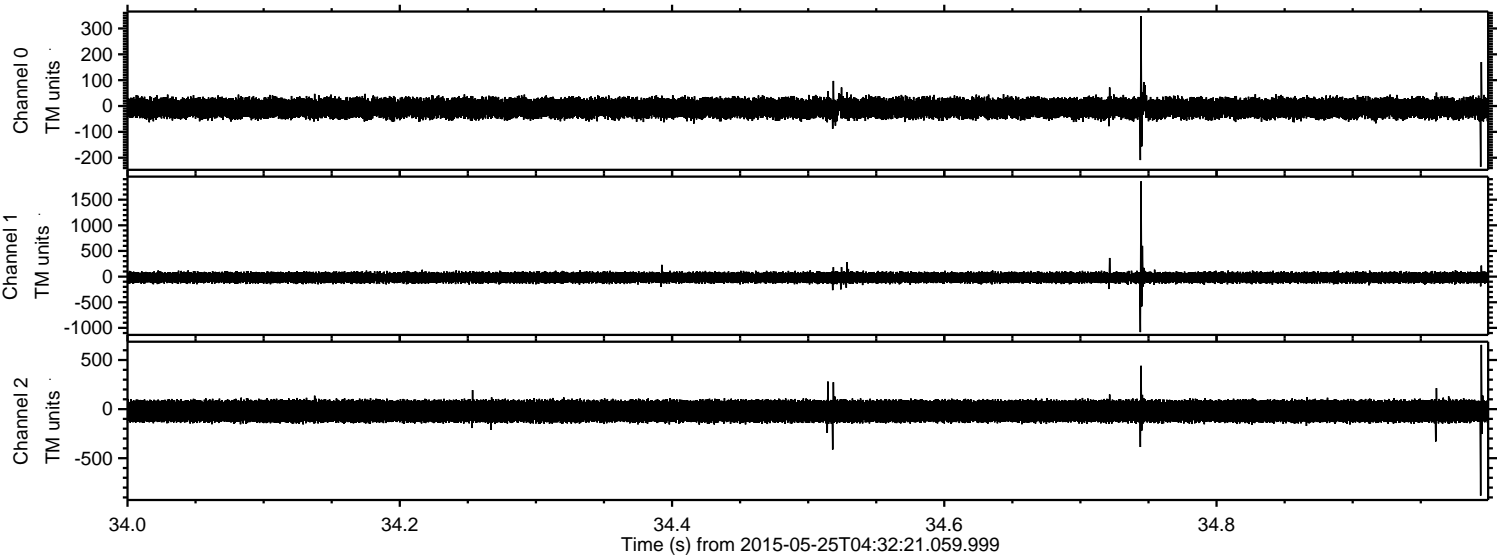


Processed Mon May 25 06:39:14 2015 by ELM ver.2012-10-06 from 001\_\_elm20150525\_043220\_\_dat00.bin



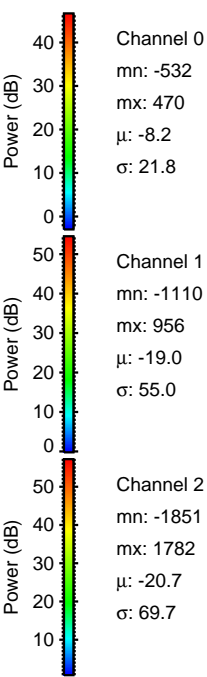
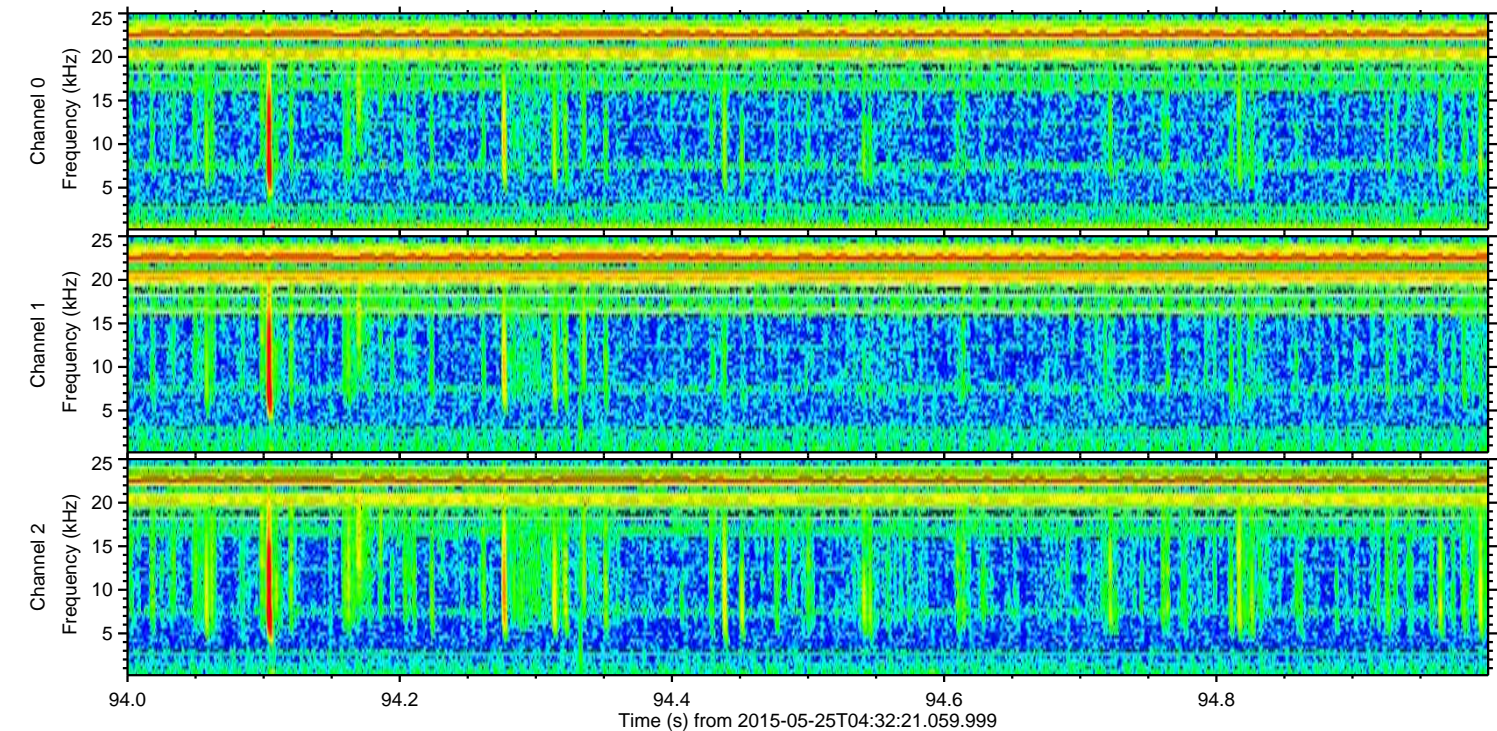
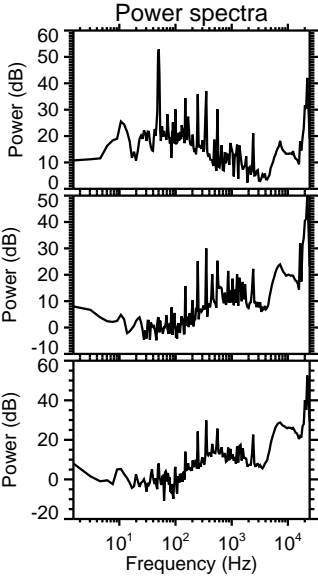
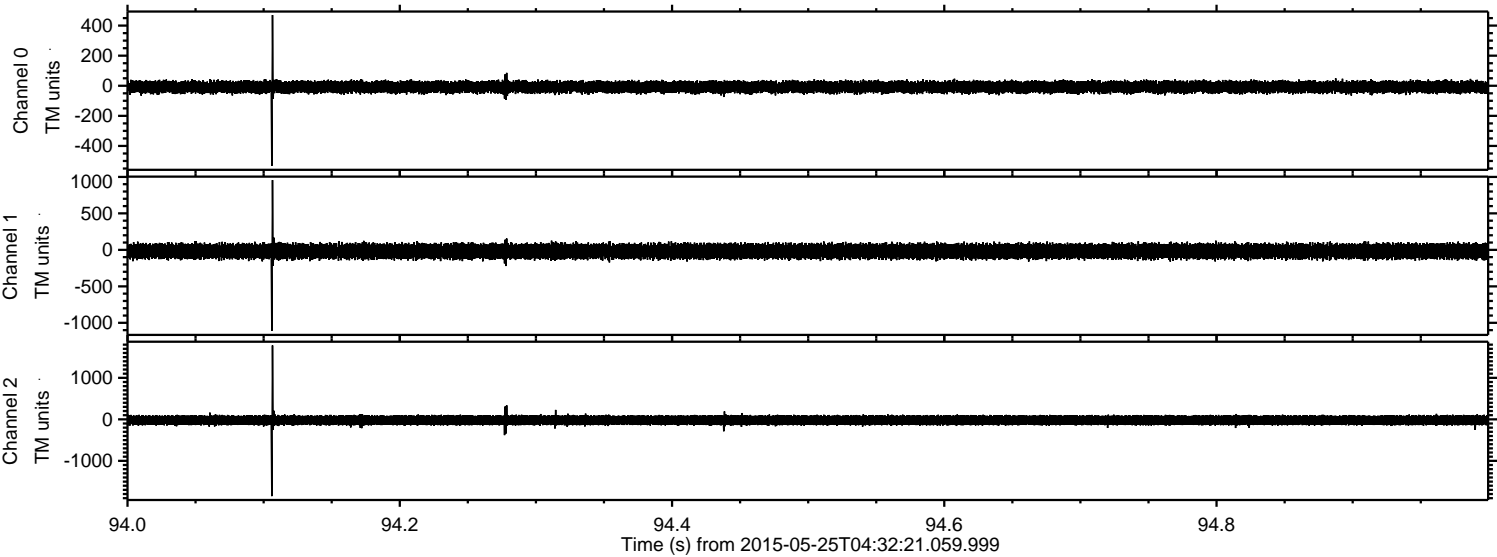


Processed Mon May 25 06:39:15 2015 by ELM ver.2012-10-06 from 001\_\_elm20150525\_043220\_\_dat00.bin





Processed Mon May 25 06:39:16 2015 by ELM ver.2012-10-06 from 001\_\_elm20150525\_043220\_\_dat00.bin



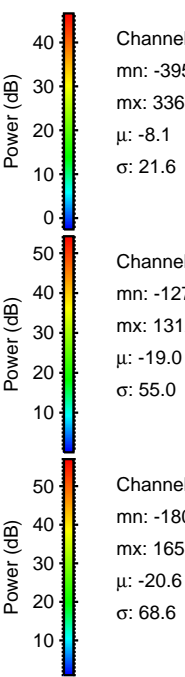
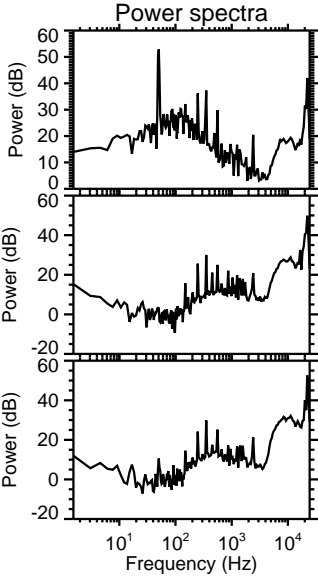
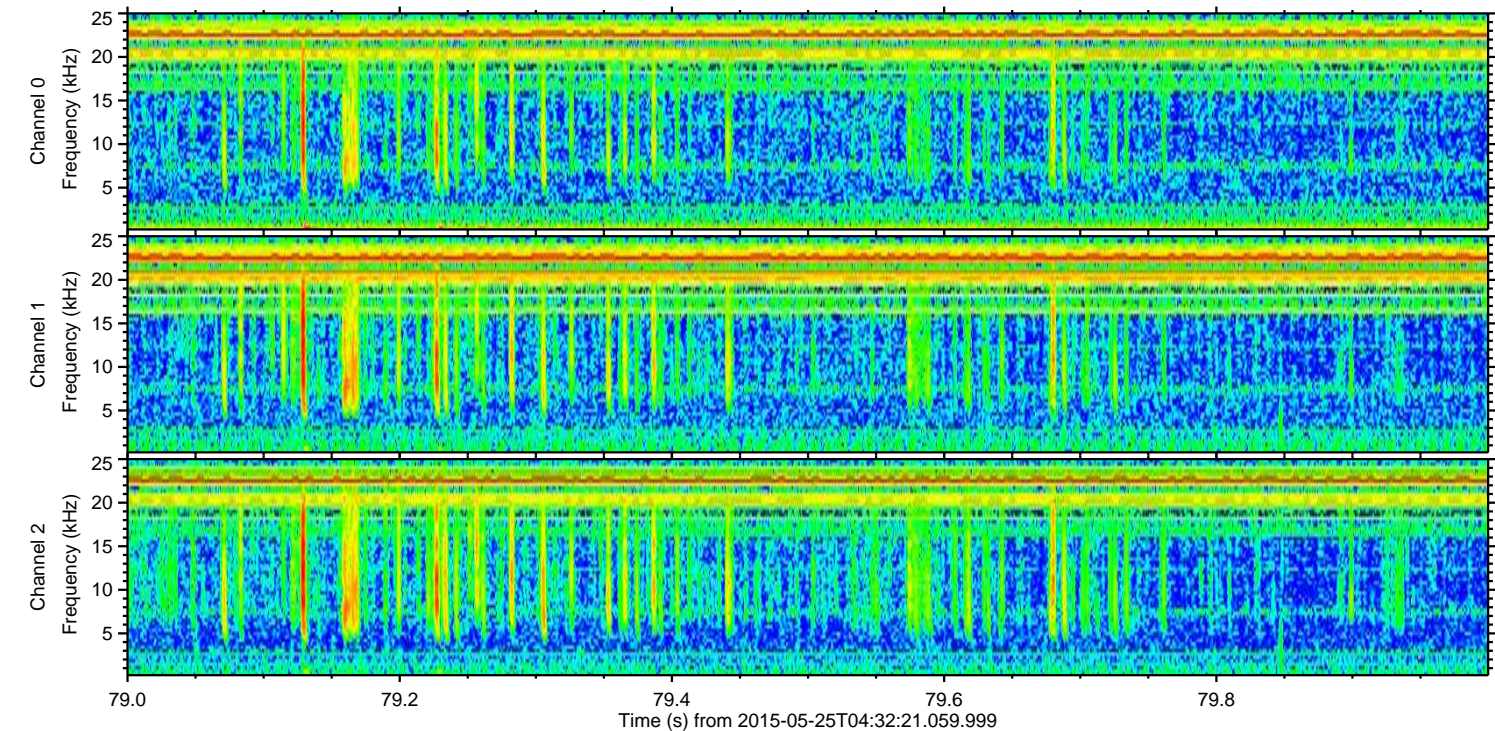
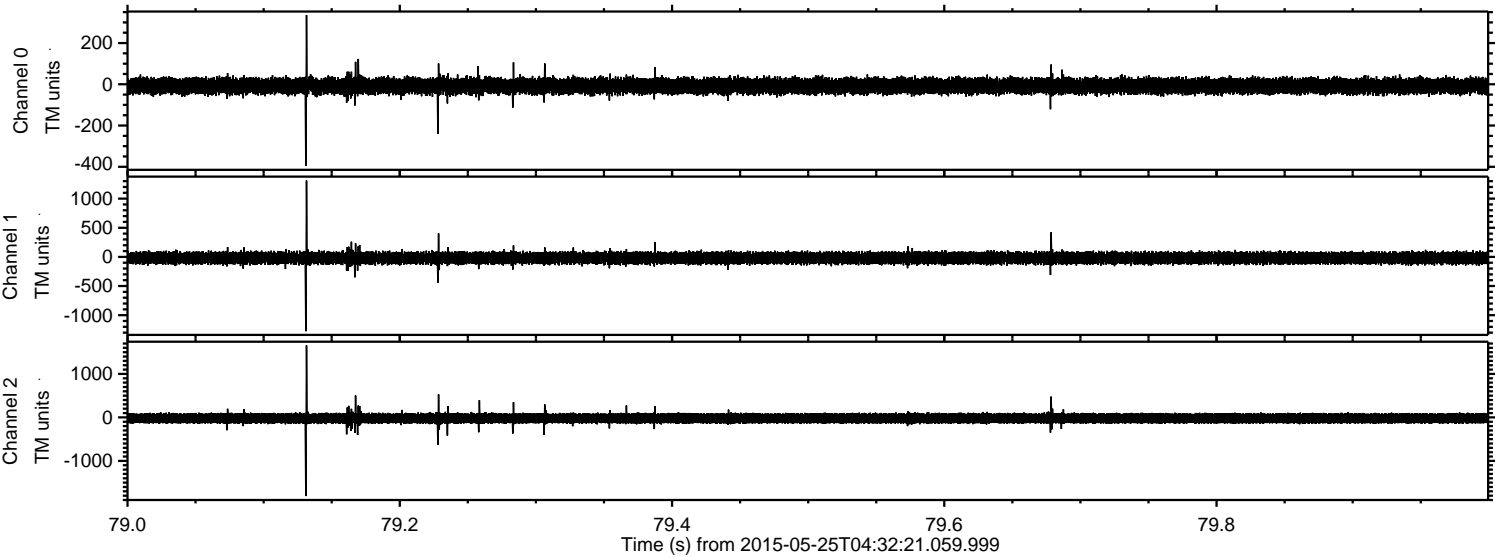
Channel 0  
mn: -532  
mx: 470  
 $\mu$ : -8.2  
 $\sigma$ : 21.8

Channel 1  
mn: -1110  
mx: 956  
 $\mu$ : -19.0  
 $\sigma$ : 55.0

Channel 2  
mn: -1851  
mx: 1782  
 $\mu$ : -20.7  
 $\sigma$ : 69.7



Processed Mon May 25 06:39:17 2015 by ELM ver.2012-10-06 from 001\_\_elm20150525\_043220\_\_dat00.bin





Processed Mon May 25 06:39:18 2015 by ELM ver.2012-10-06 from 001\_\_elm20150525\_043220\_\_dat00.bin

