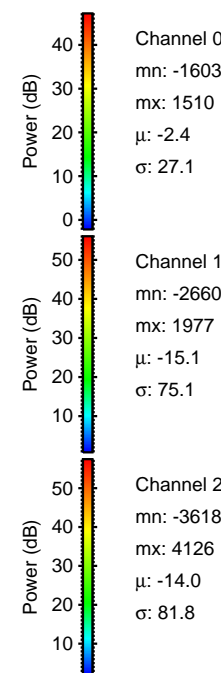
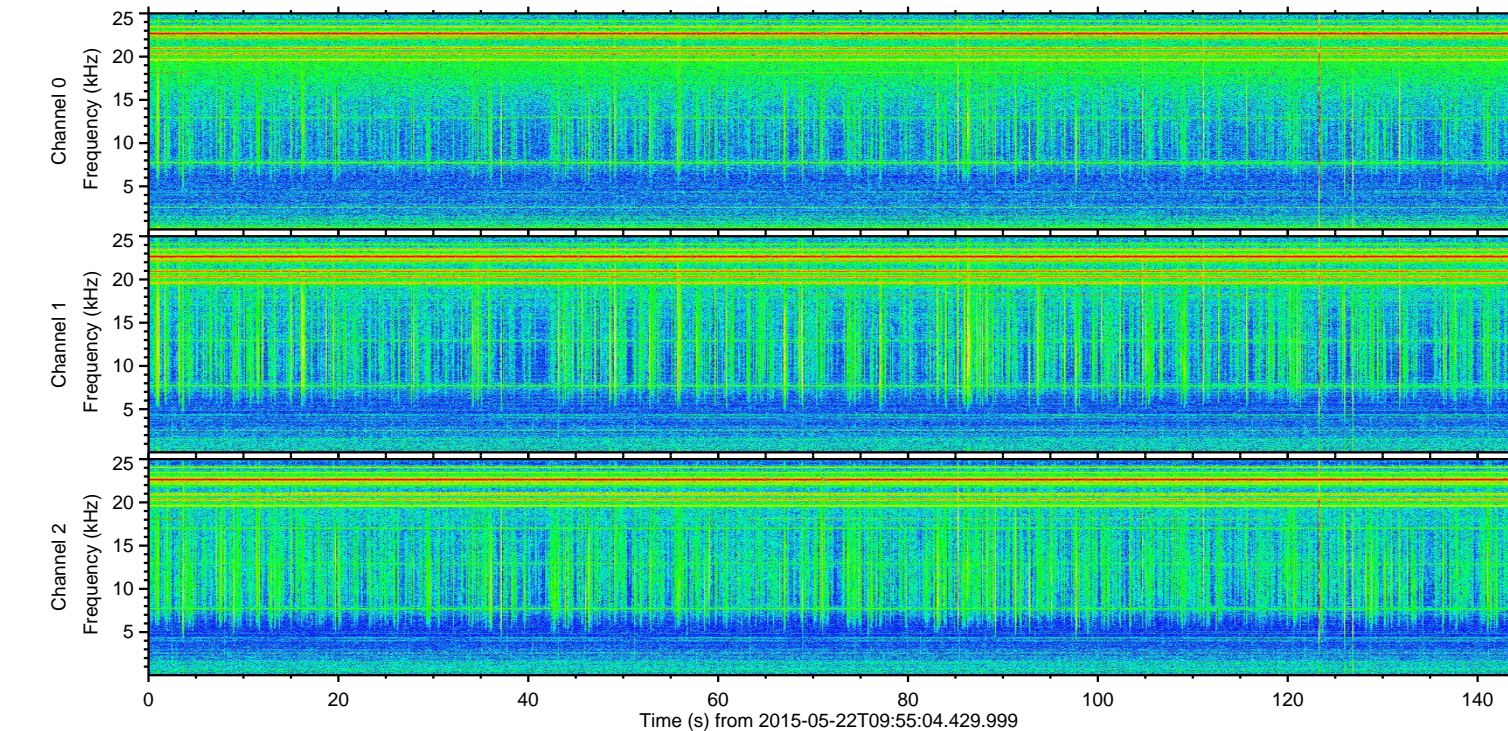
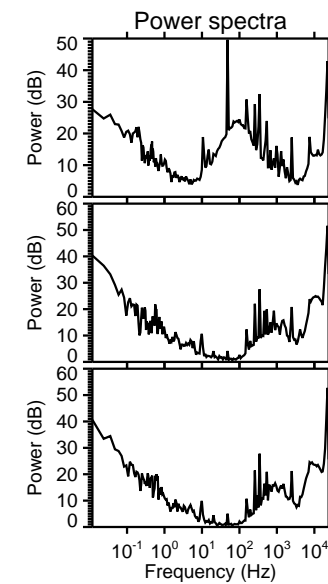
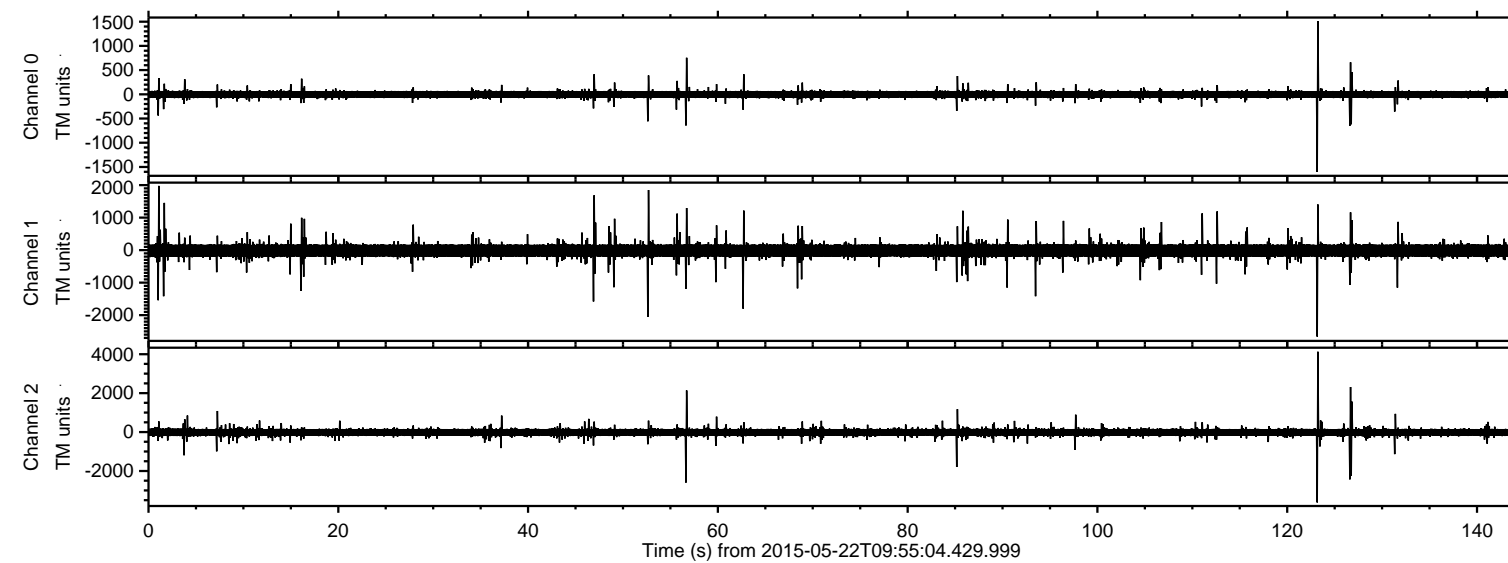


# ELMAVAN 3D WAVEFORMS (Measured data sampled at 50 kHz) 49788 packets of 144 samples from 2015-05-22T09:55:04.429.999.

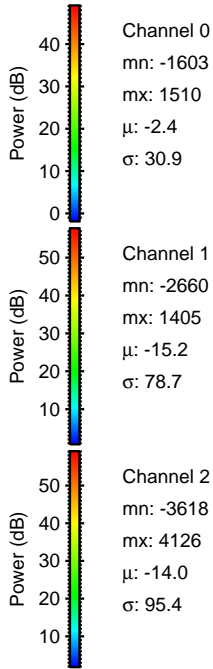
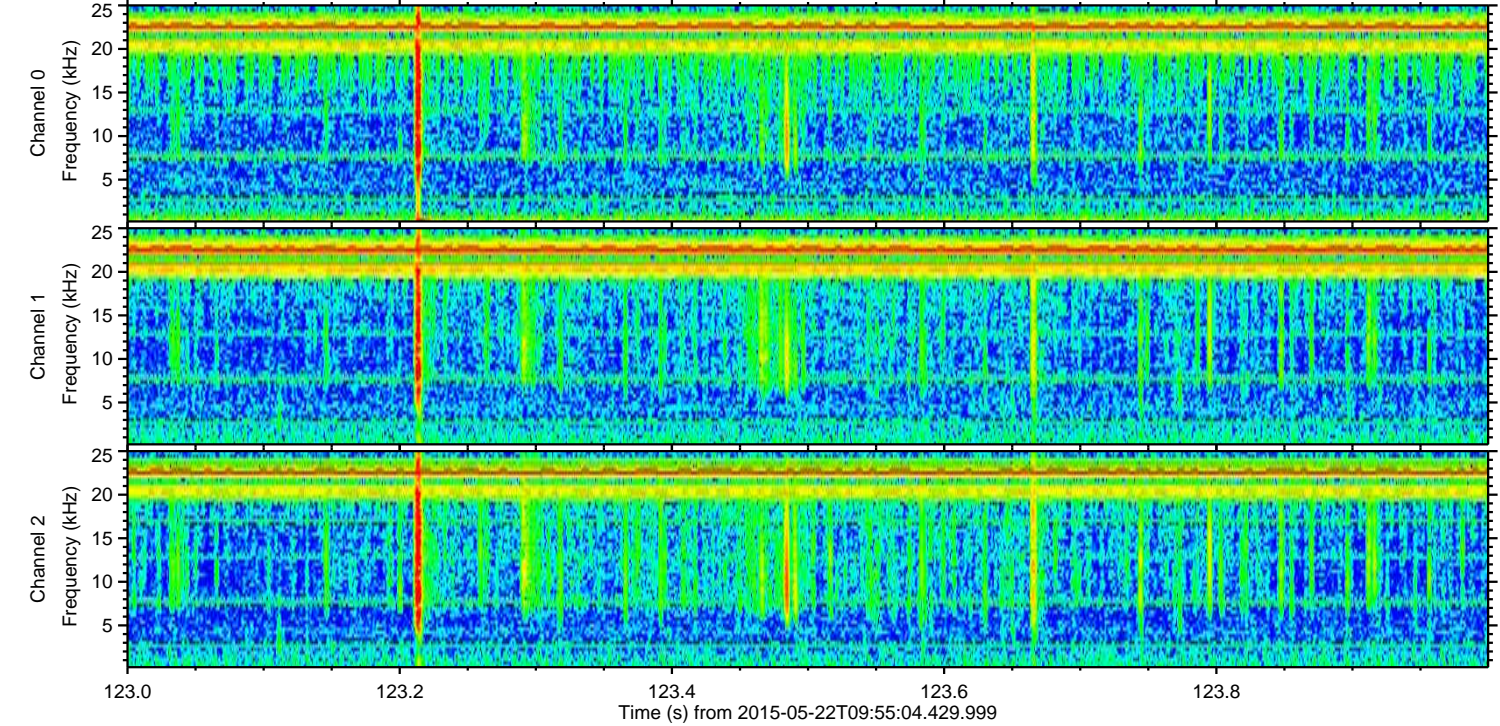
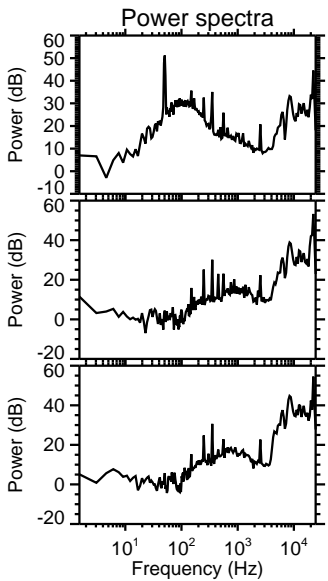
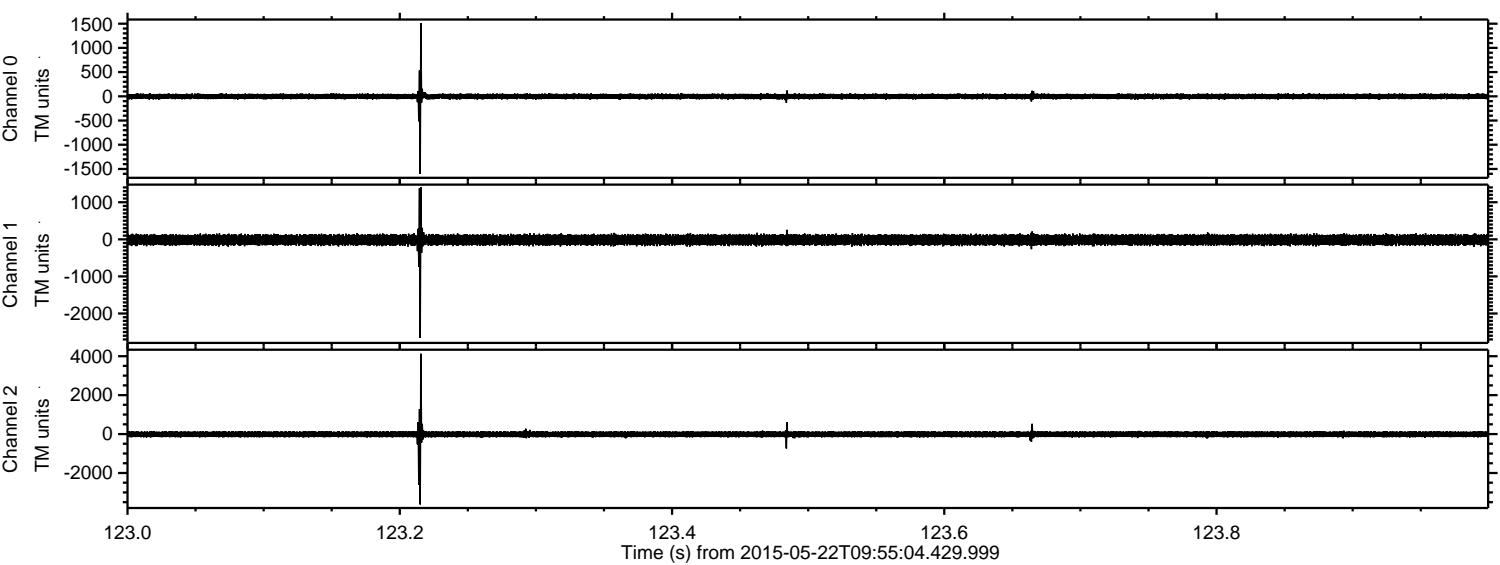
Processed Fri May 22 12:01:30 2015 by ELM ver.2012-10-06 from 001\_\_elm20150522\_095503\_\_dat00.bin





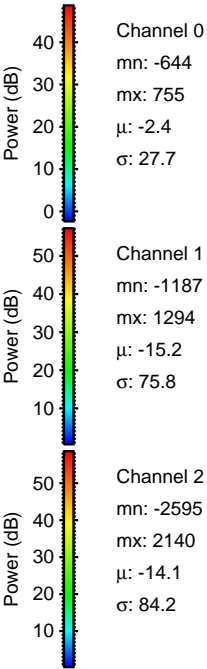
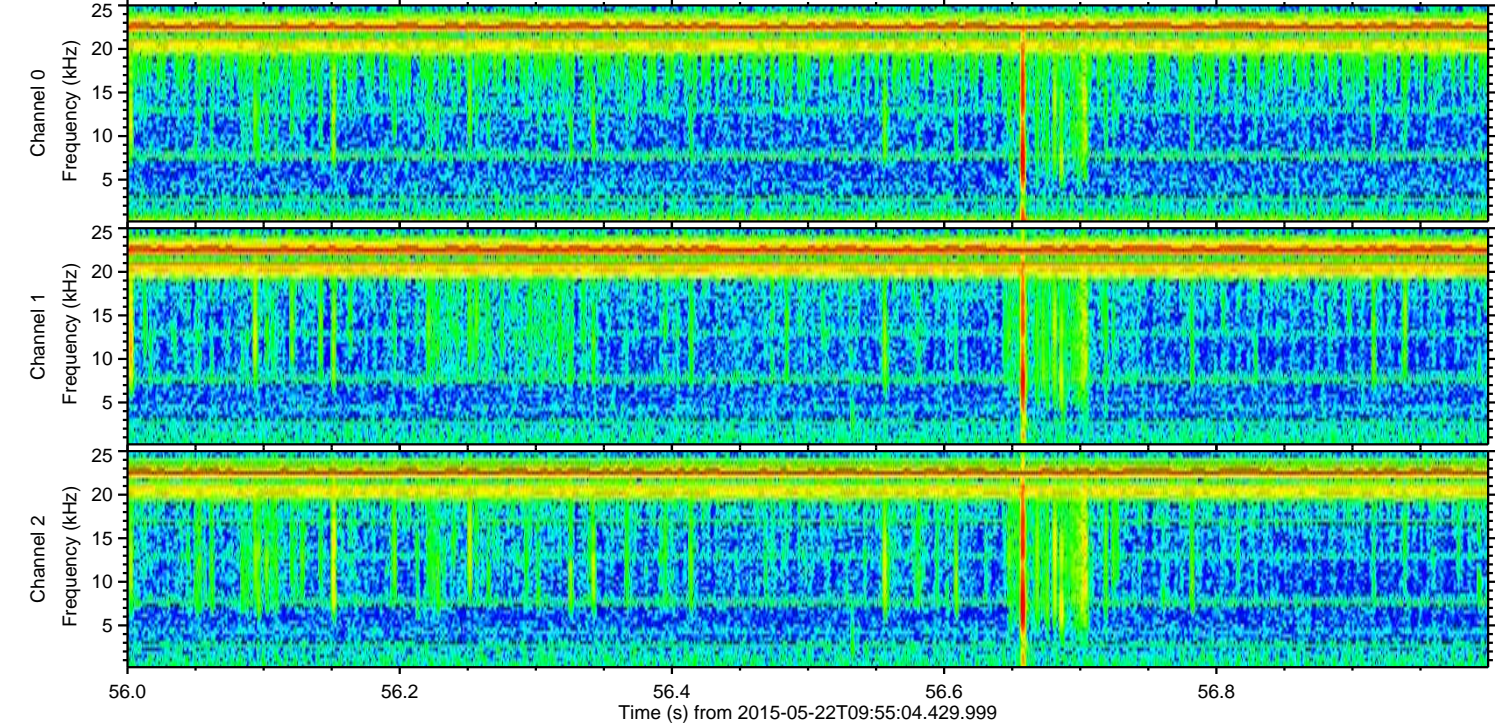
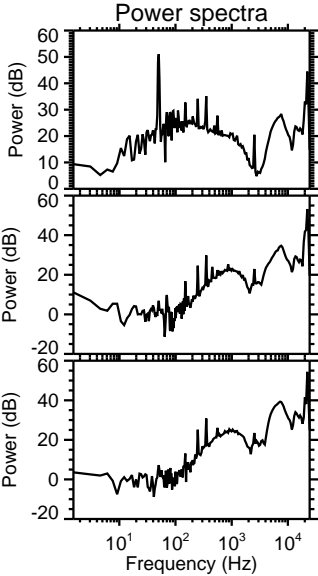
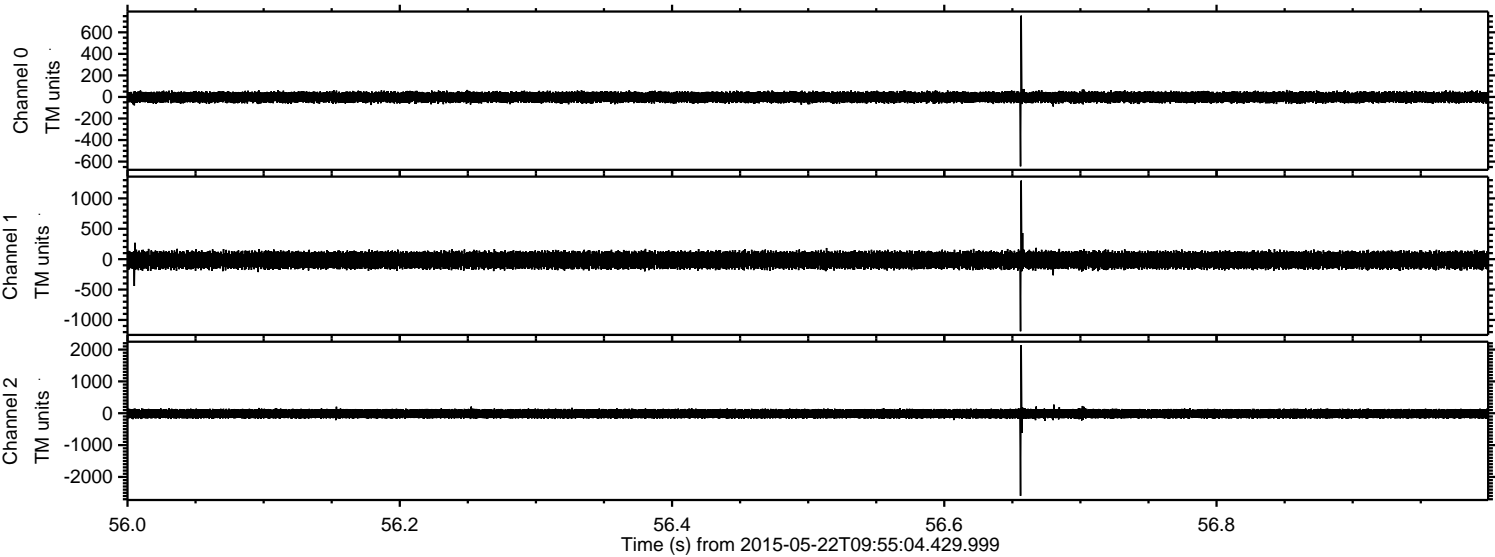
ELMAVAN 3D WAVEFORMS (Measured data sampled at 50 kHz) 49788 packets of 144 samples from 2015-05-22T09:55:04.429.999. Part 124/144

Processed Fri May 22 12:01:41 2015 by ELM ver.2012-10-06 from 001\_\_elm20150522\_095503\_\_dat00.bin





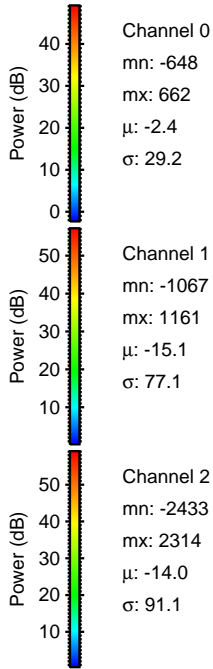
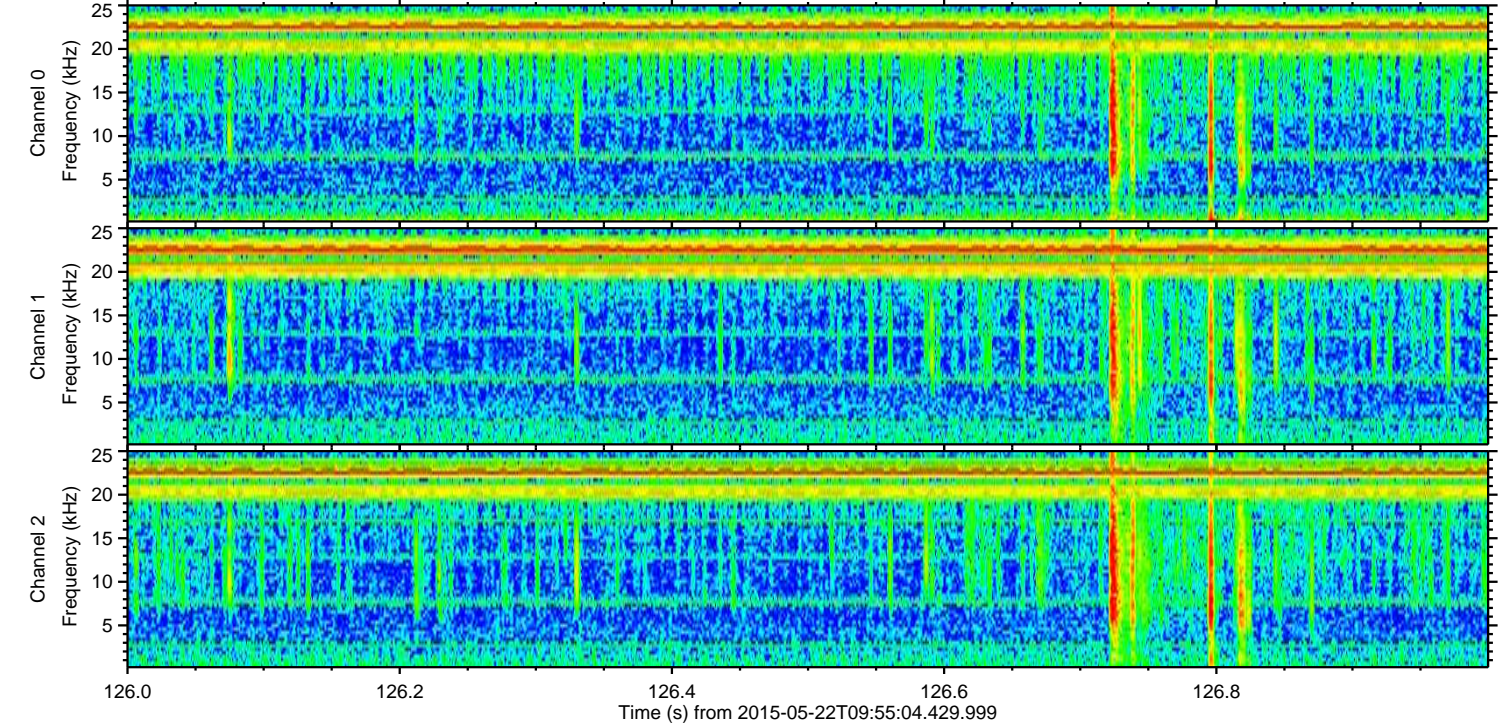
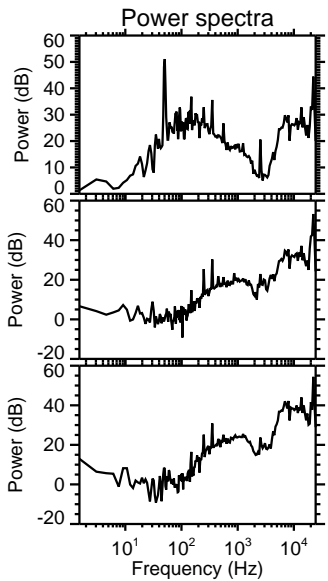
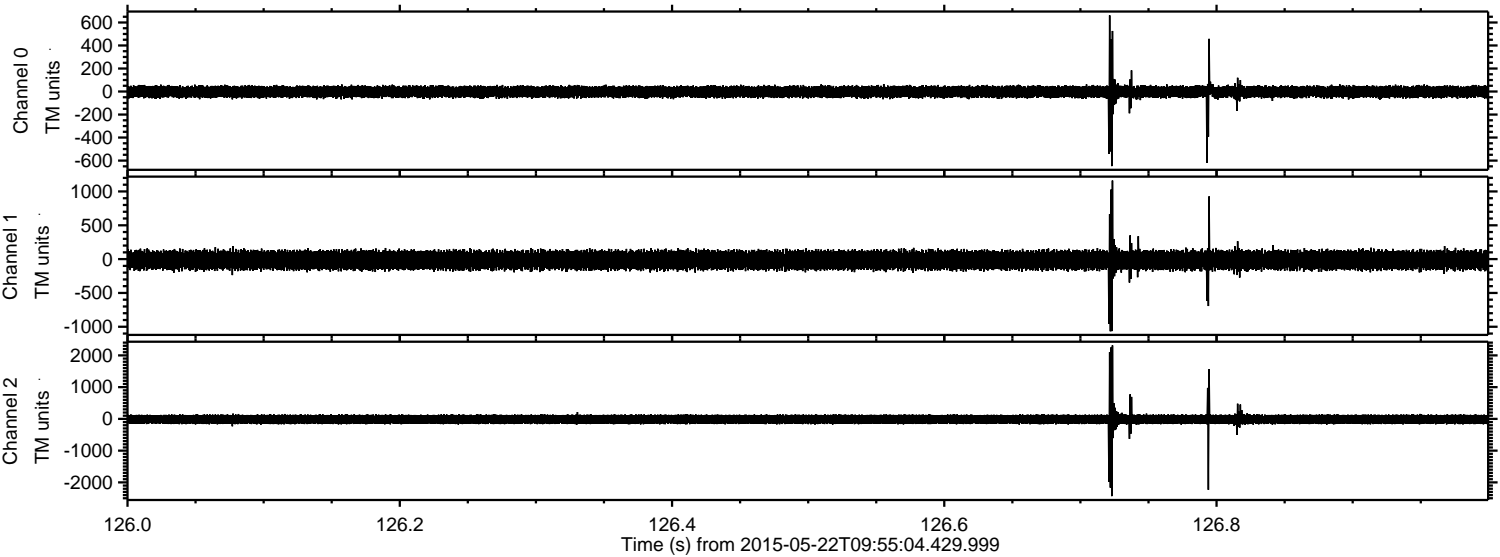
Processed Fri May 22 12:01:42 2015 by ELM ver.2012-10-06 from 001\_\_elm20150522\_095503\_\_dat00.bin





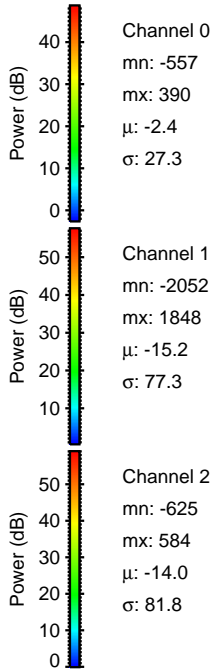
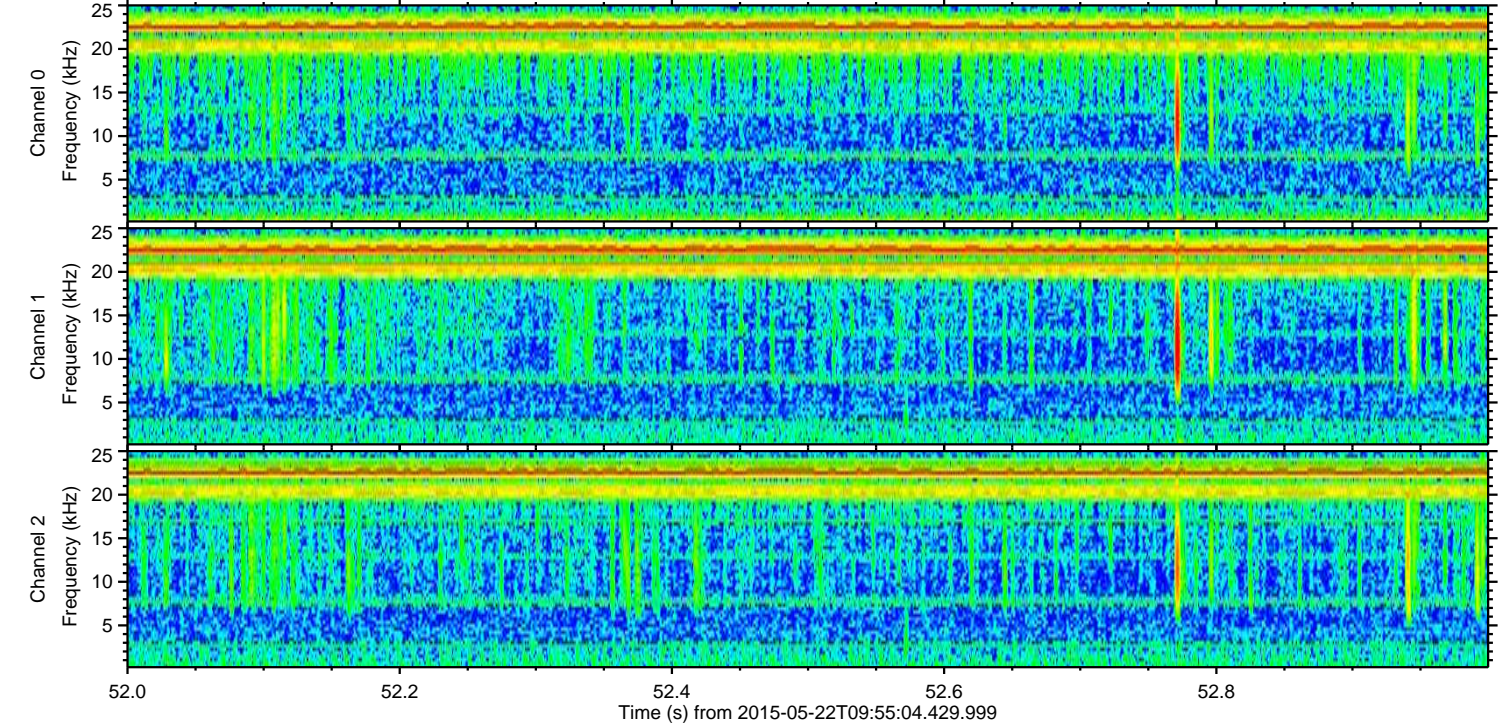
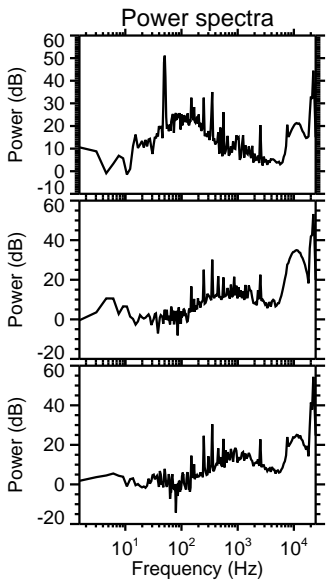
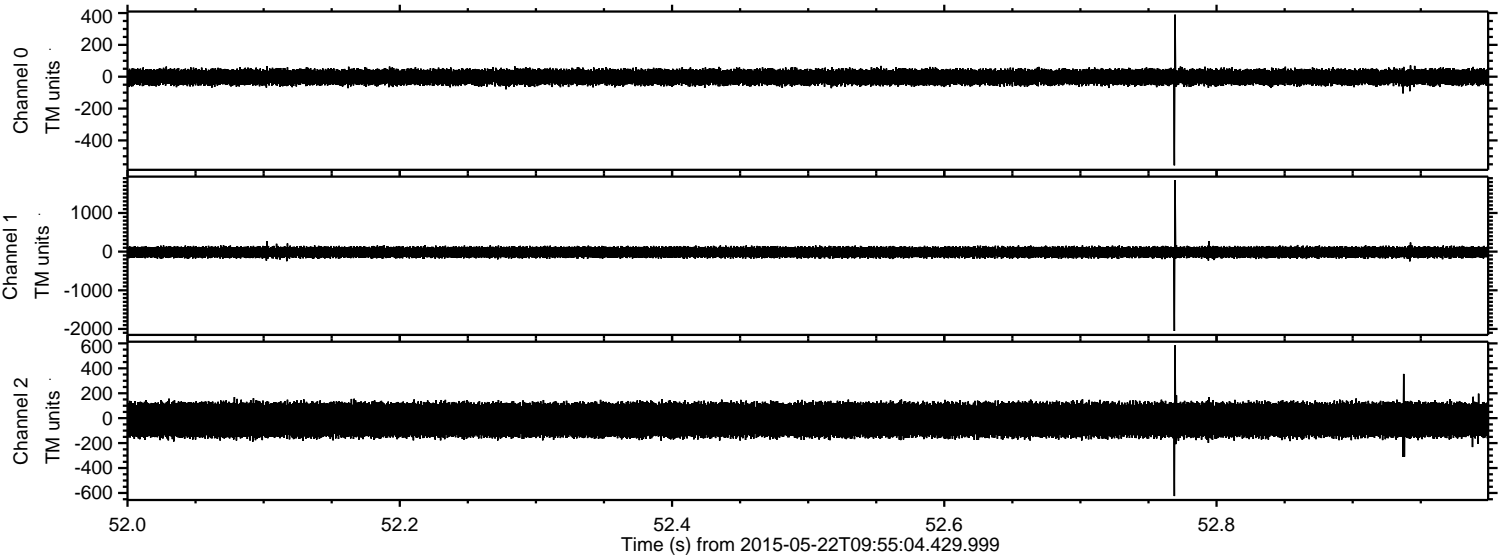
ELMAVAN 3D WAVEFORMS (Measured data sampled at 50 kHz) 49788 packets of 144 samples from 2015-05-22T09:55:04.429.999. Part 127/144

Processed Fri May 22 12:01:43 2015 by ELM ver.2012-10-06 from 001\_\_elm20150522\_095503\_\_dat00.bin





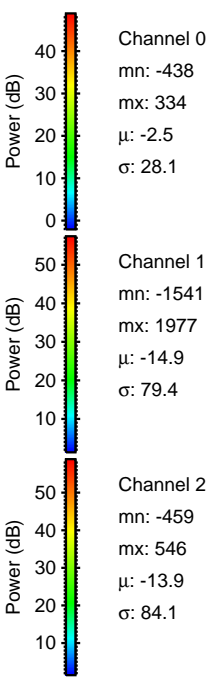
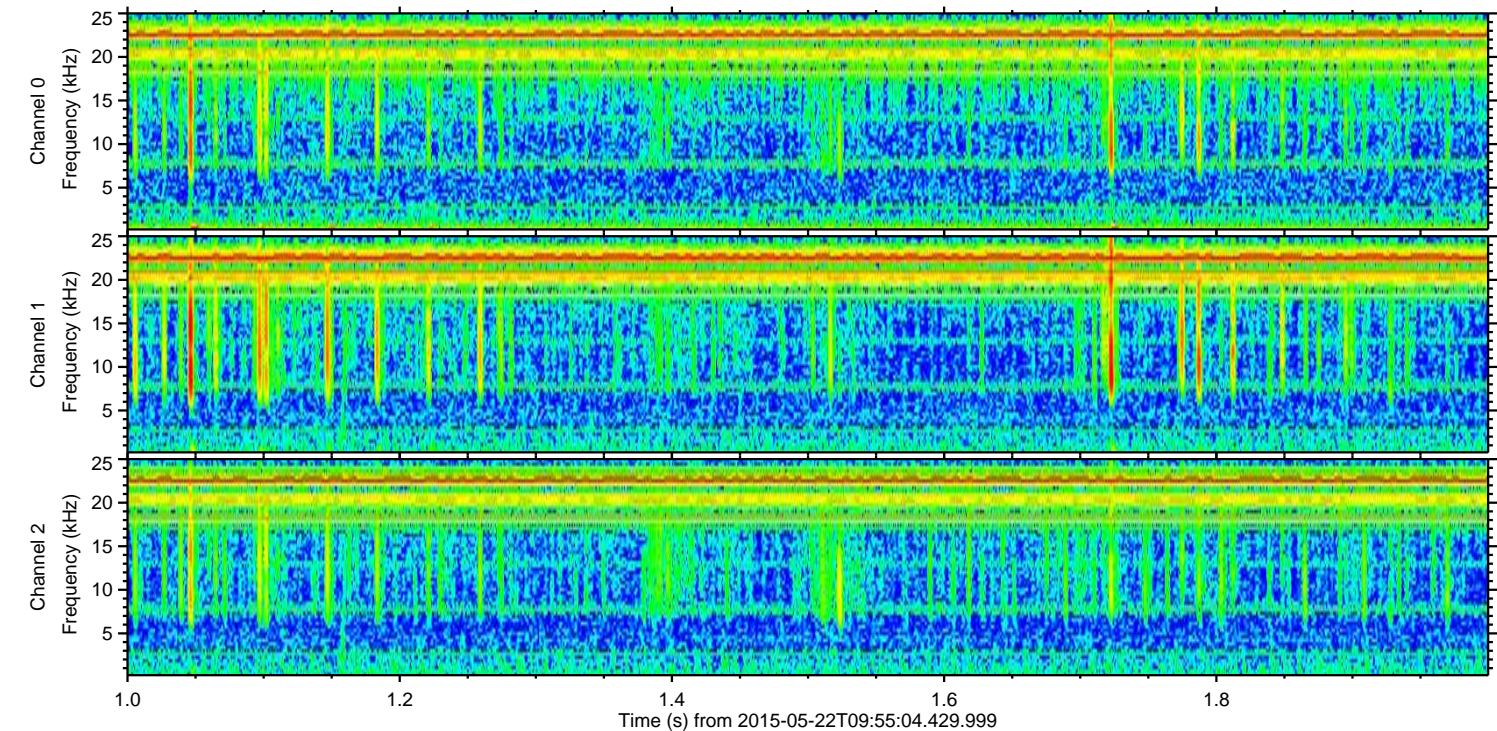
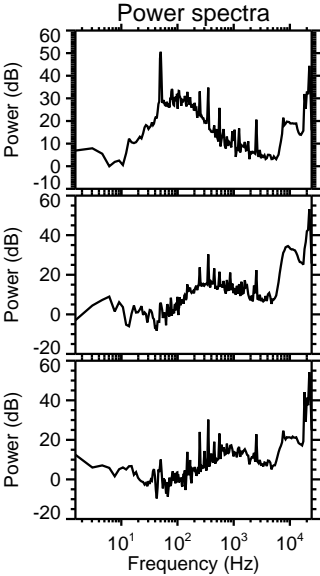
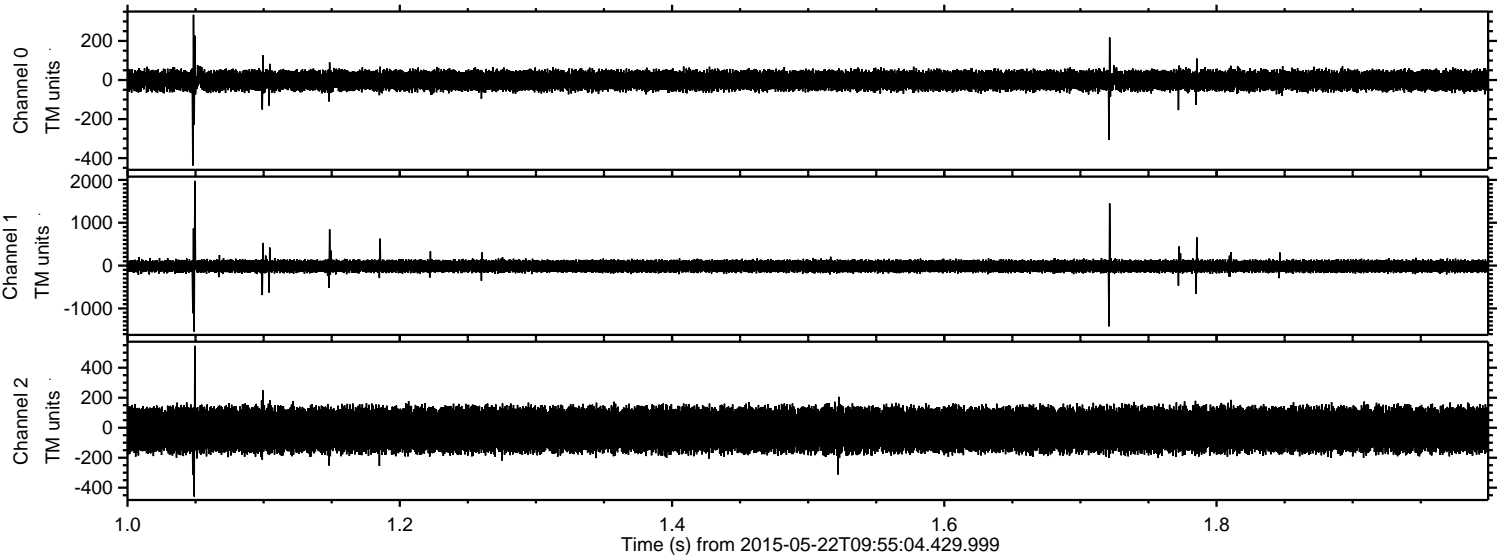
Processed Fri May 22 12:01:44 2015 by ELM ver.2012-10-06 from 001\_\_elm20150522\_095503\_\_dat00.bin





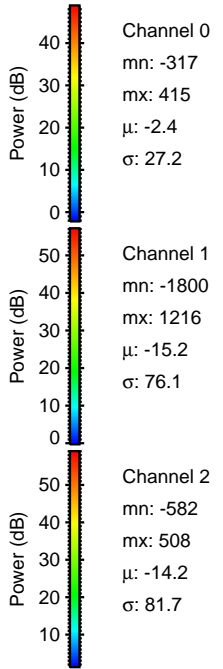
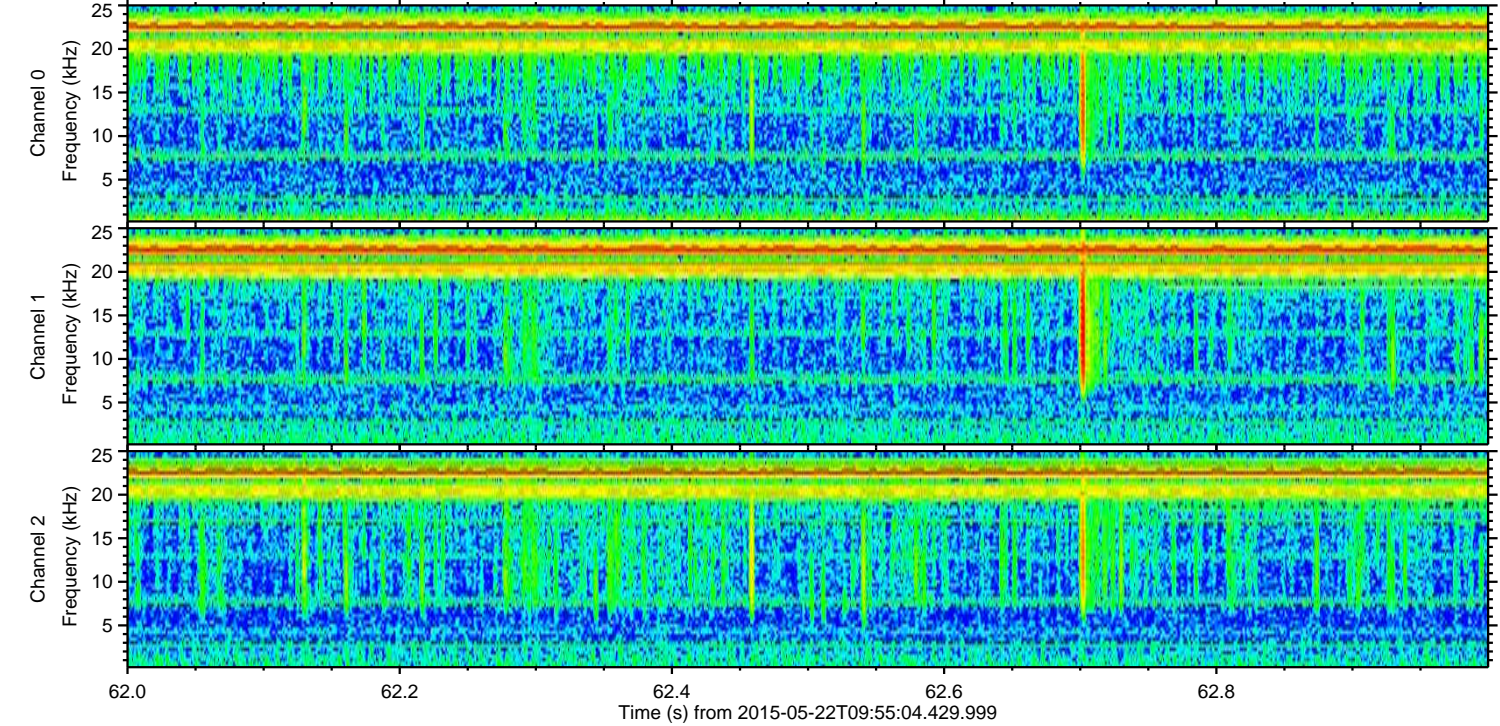
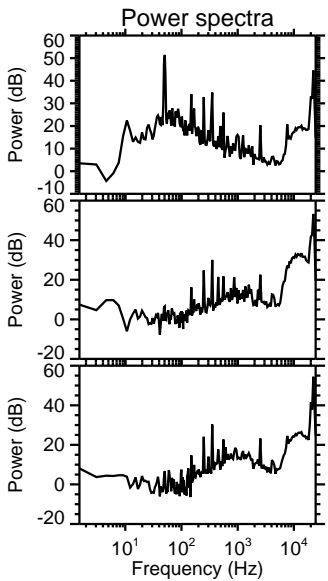
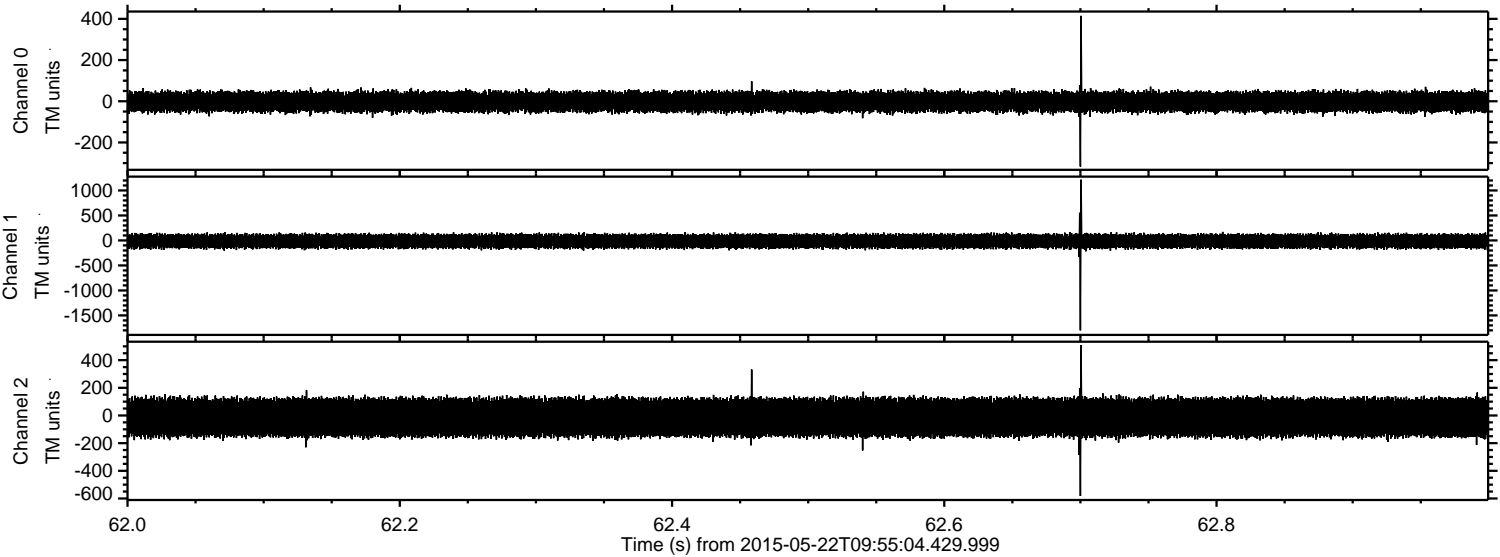
ELMAVAN 3D WAVEFORMS (Measured data sampled at 50 kHz) 49788 packets of 144 samples from 2015-05-22T09:55:04.429.999. Part 2/144

Processed Fri May 22 12:01:45 2015 by ELM ver.2012-10-06 from 001\_\_elm20150522\_095503\_\_dat00.bin



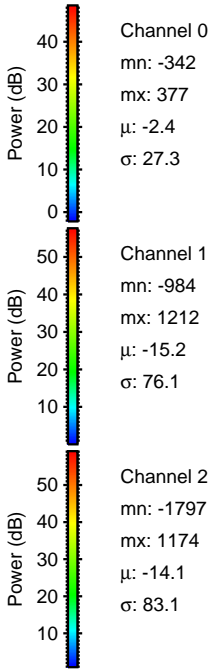
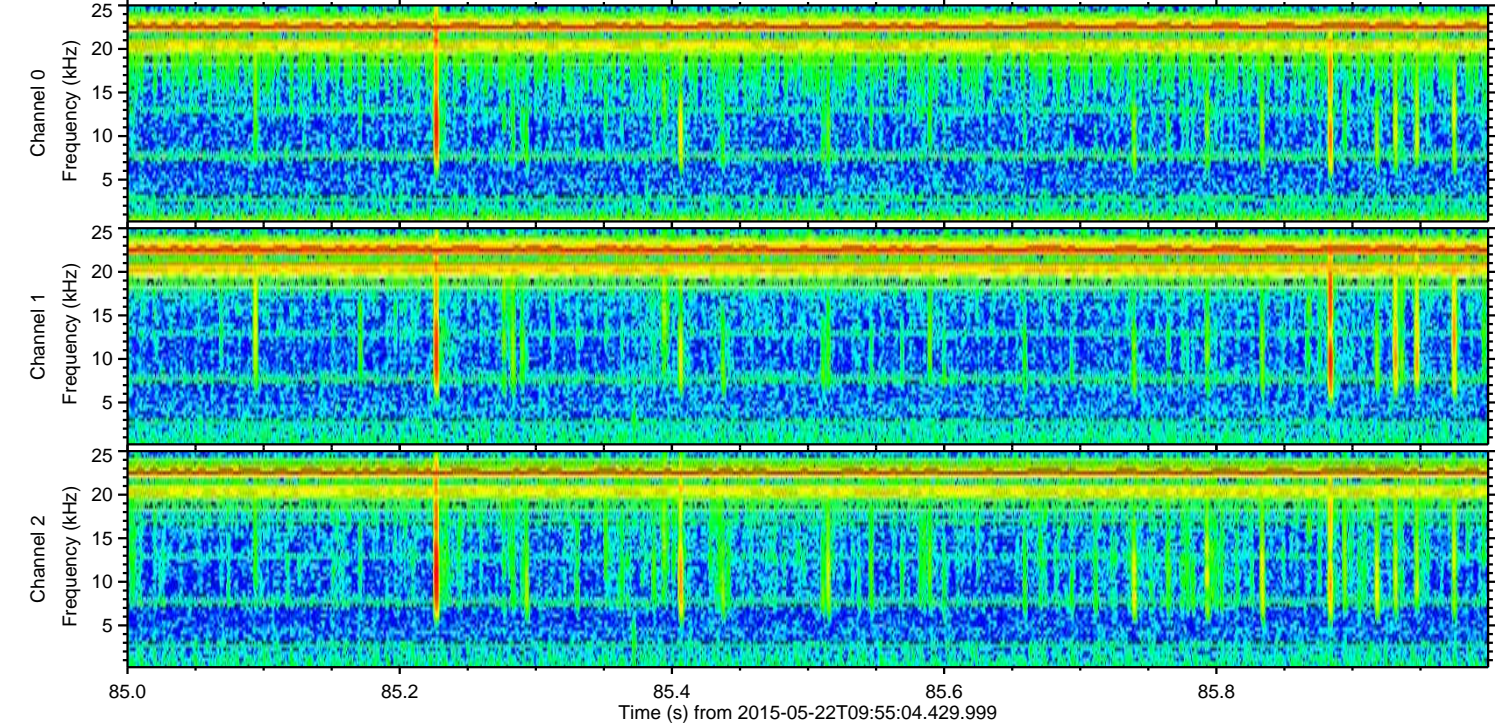
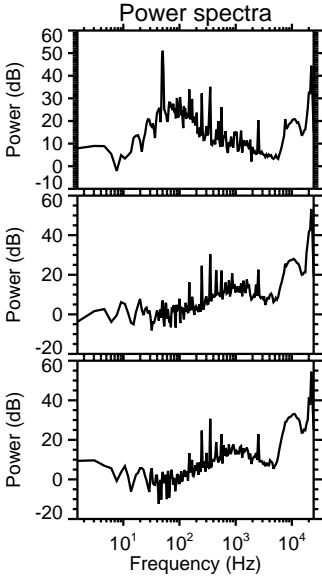
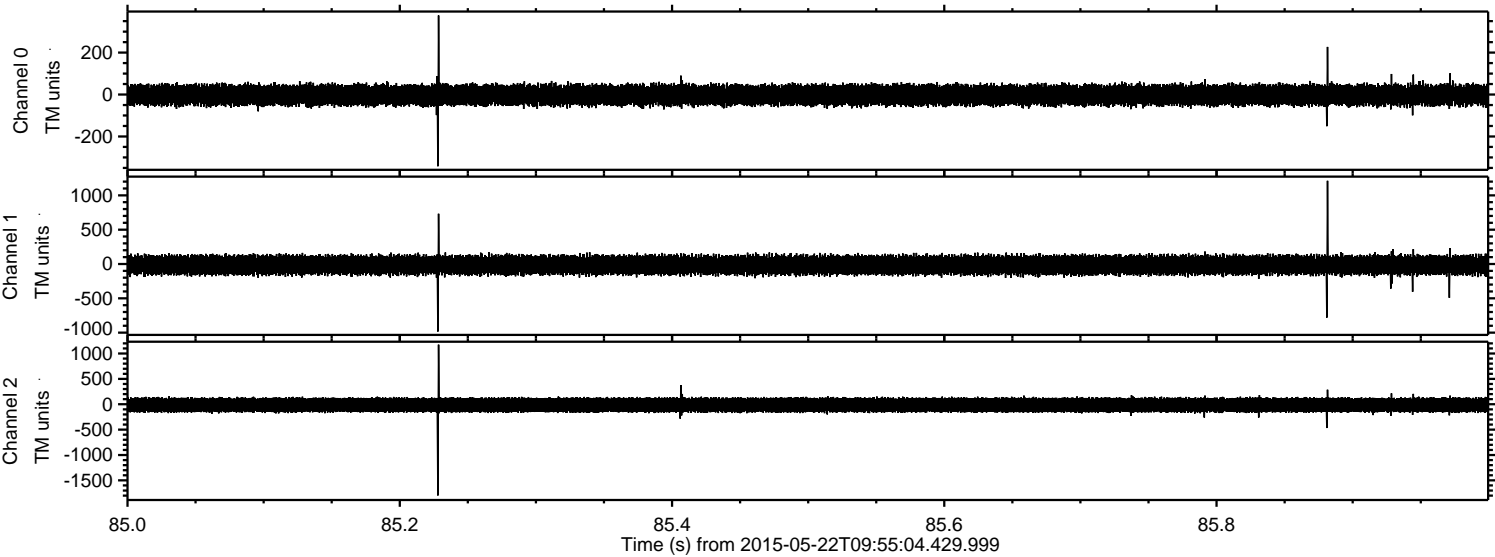


Processed Fri May 22 12:01:46 2015 by ELM ver.2012-10-06 from 001\_\_elm20150522\_095503\_\_dat00.bin





Processed Fri May 22 12:01:47 2015 by ELM ver.2012-10-06 from 001\_\_elm20150522\_095503\_\_dat00.bin



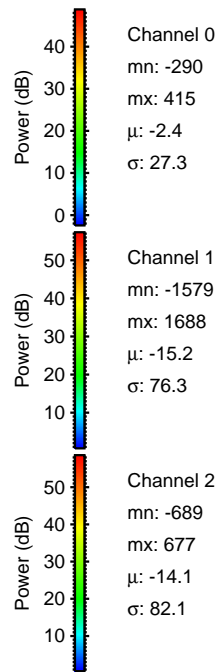
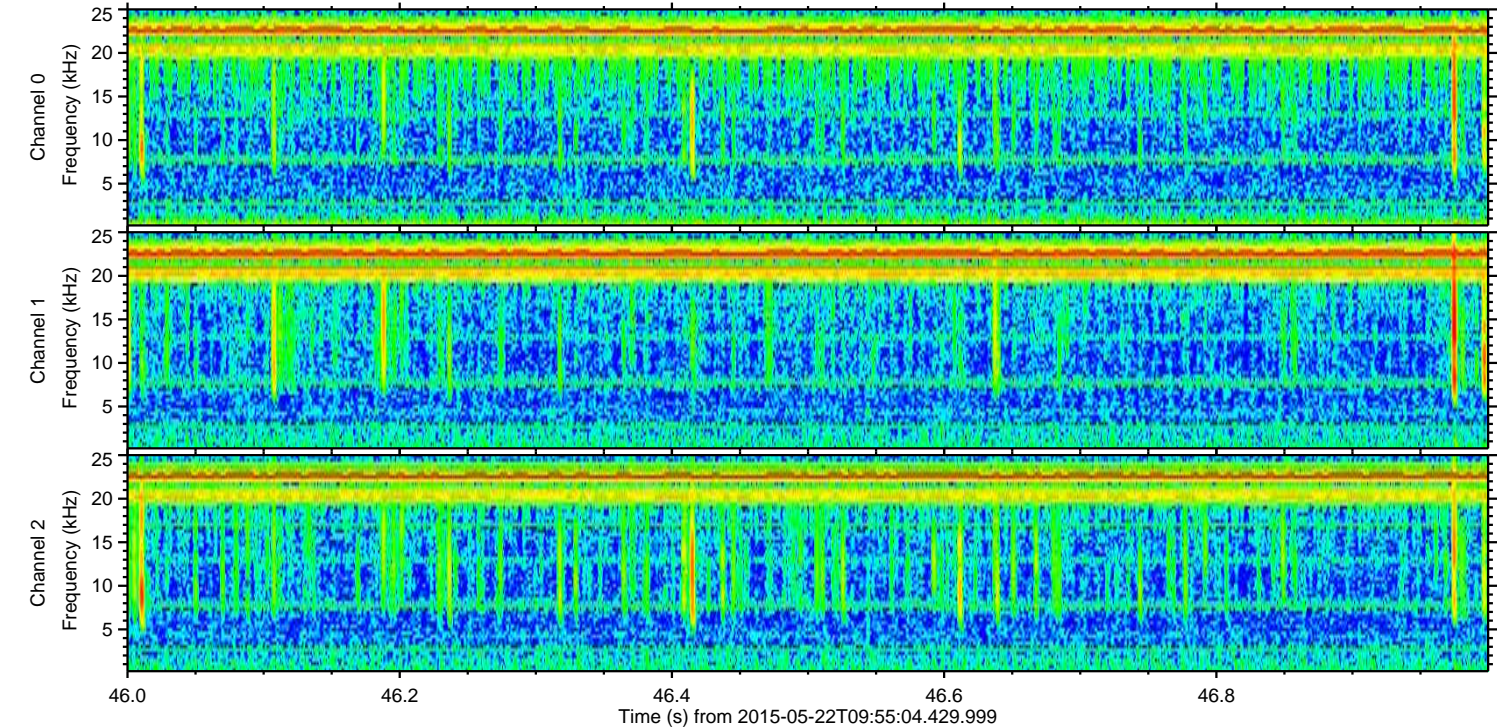
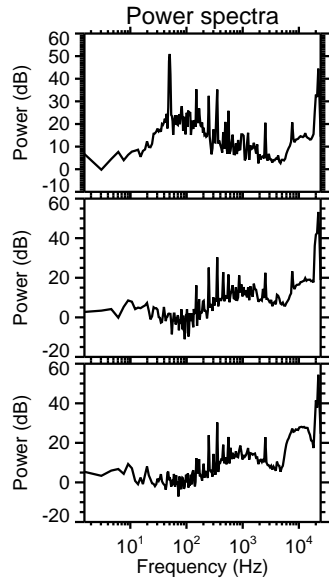
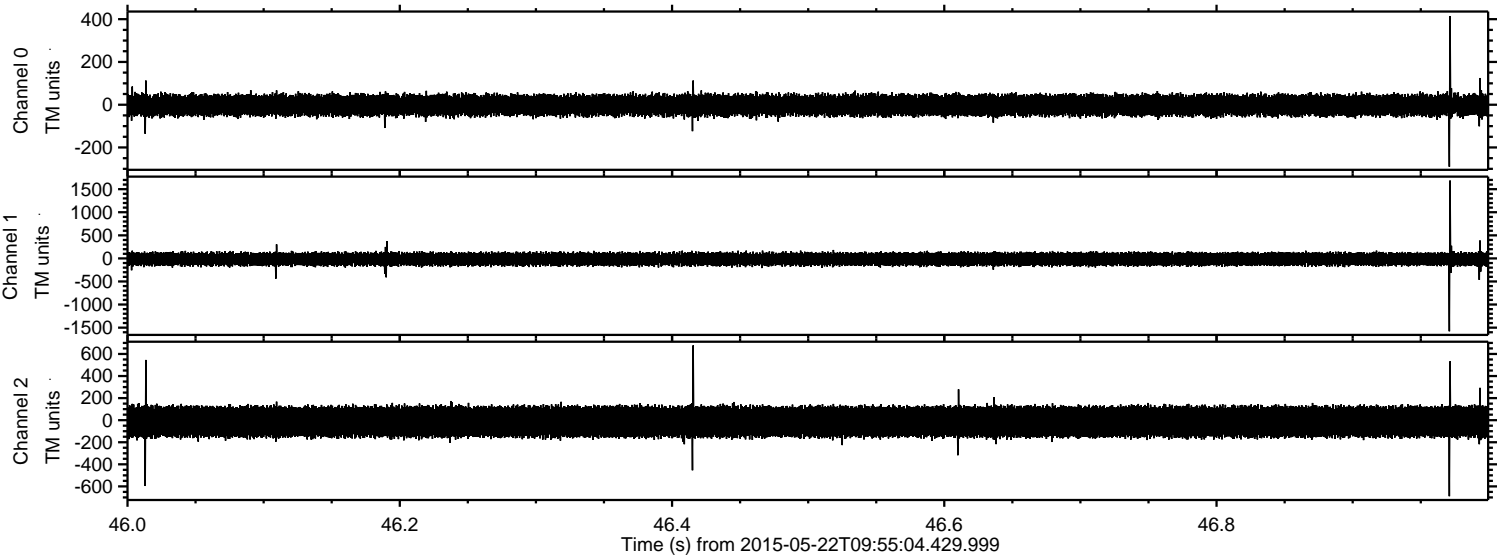
Channel 0  
mn: -342  
mx: 377  
 $\mu$ : -2.4  
 $\sigma$ : 27.3

Channel 1  
mn: -984  
mx: 1212  
 $\mu$ : -15.2  
 $\sigma$ : 76.1

Channel 2  
mn: -1797  
mx: 1174  
 $\mu$ : -14.1  
 $\sigma$ : 83.1



Processed Fri May 22 12:01:48 2015 by ELM ver.2012-10-06 from 001\_\_elm20150522\_095503\_\_dat00.bin





Processed Fri May 22 12:01:49 2015 by ELM ver.2012-10-06 from 001\_\_elm20150522\_095503\_\_dat00.bin

