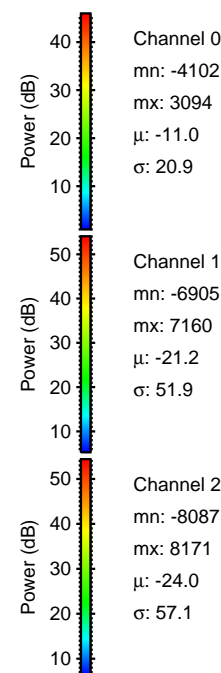
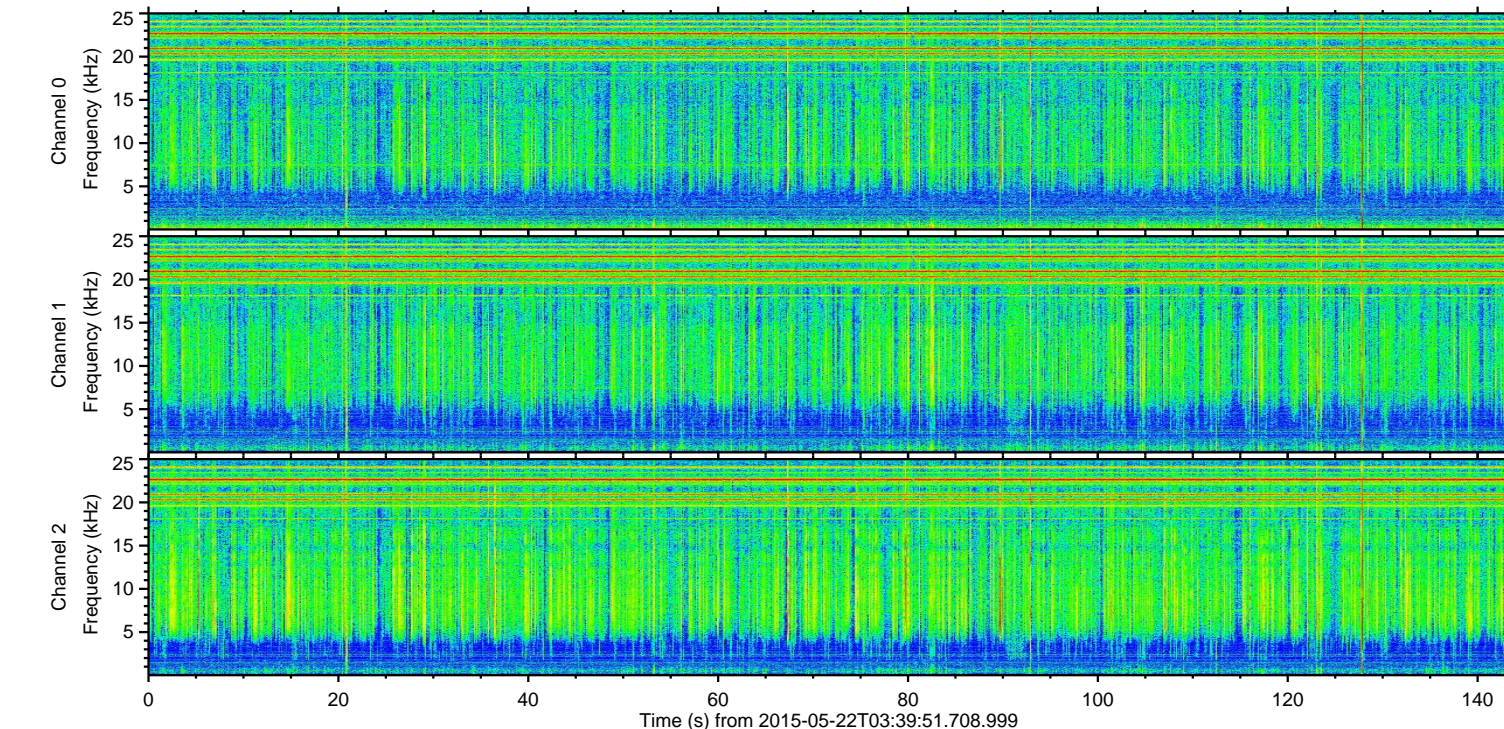
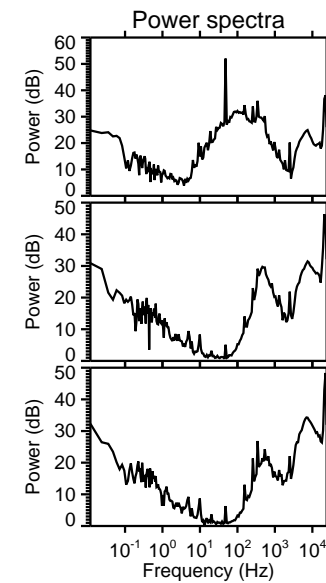
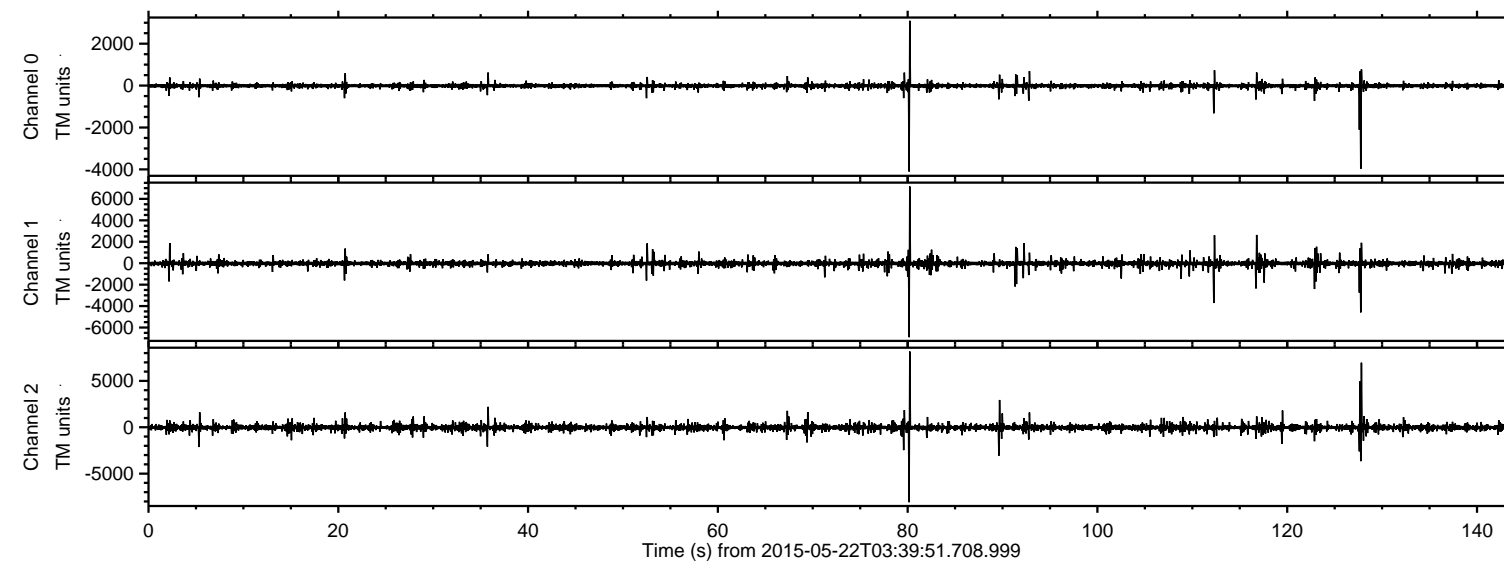


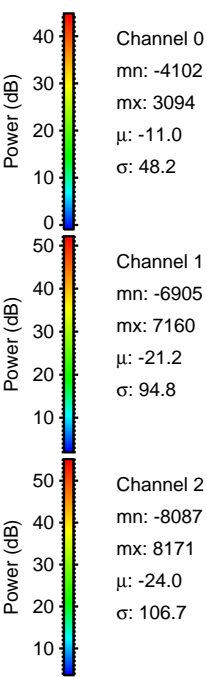
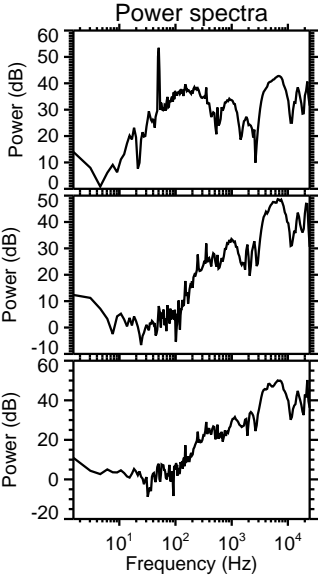
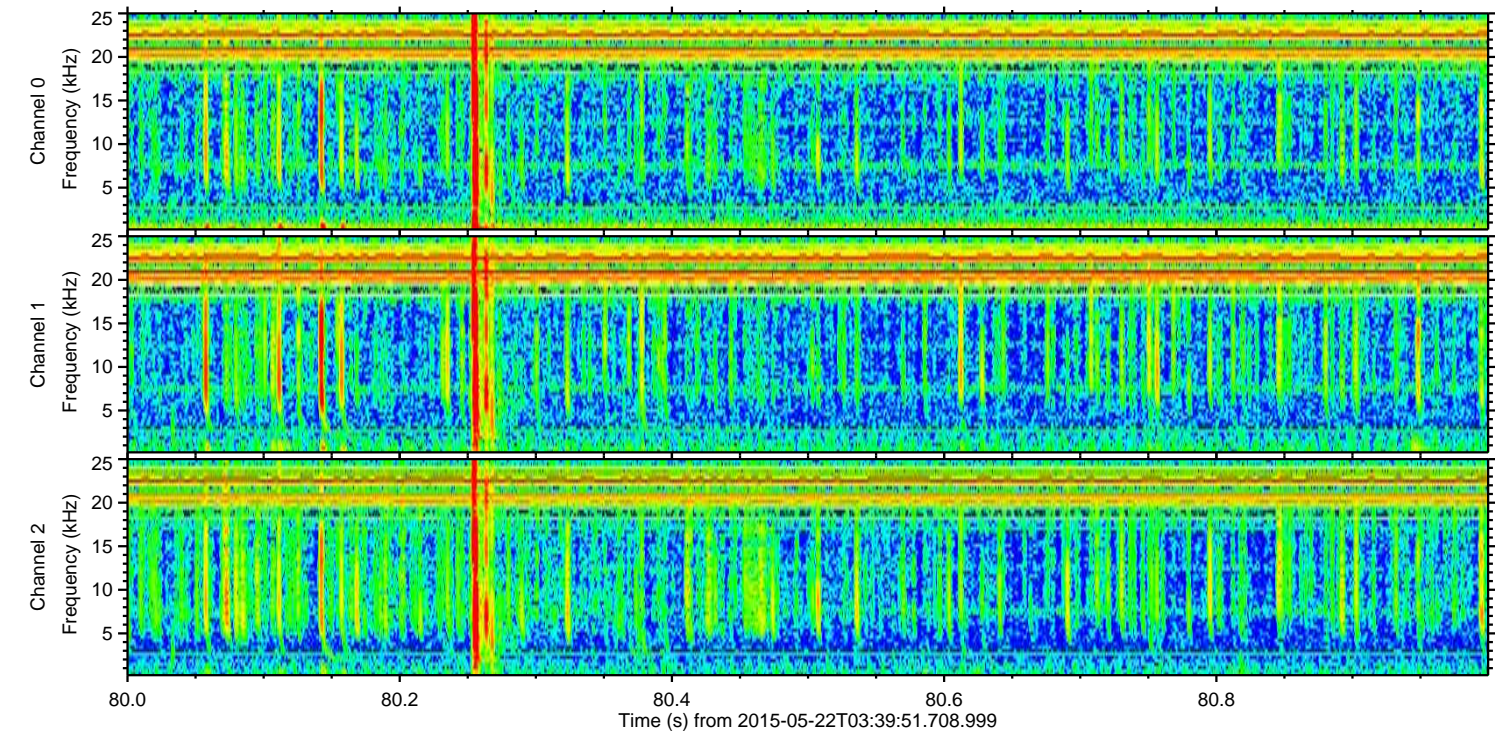
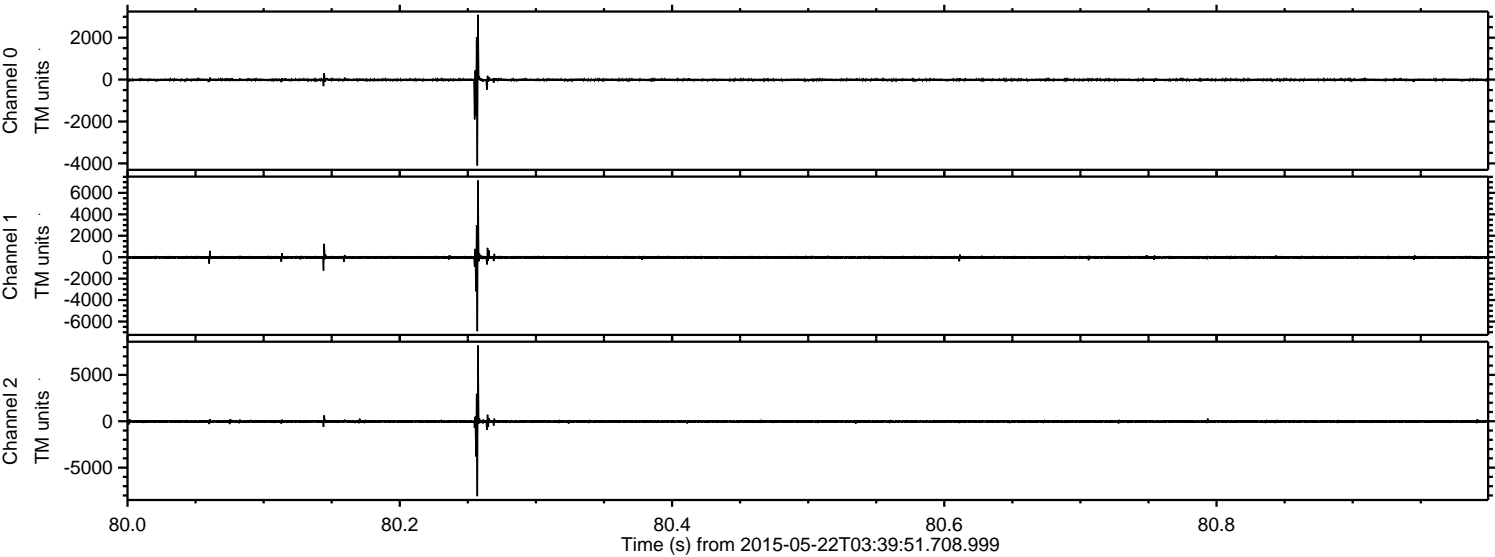
# ELMAVAN 3D WAVEFORMS (Measured data sampled at 50 kHz) 49788 packets of 144 samples from 2015-05-22T03:39:51.708.999.

Processed Fri May 22 05:46:45 2015 by ELM ver.2012-10-06 from 001\_\_elm20150522\_033950\_\_dat00.bin





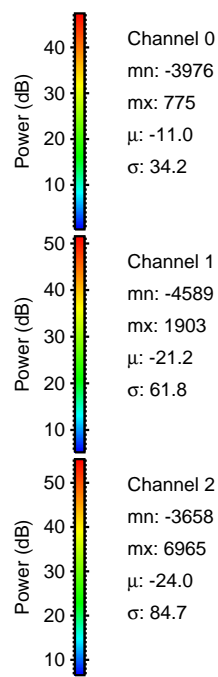
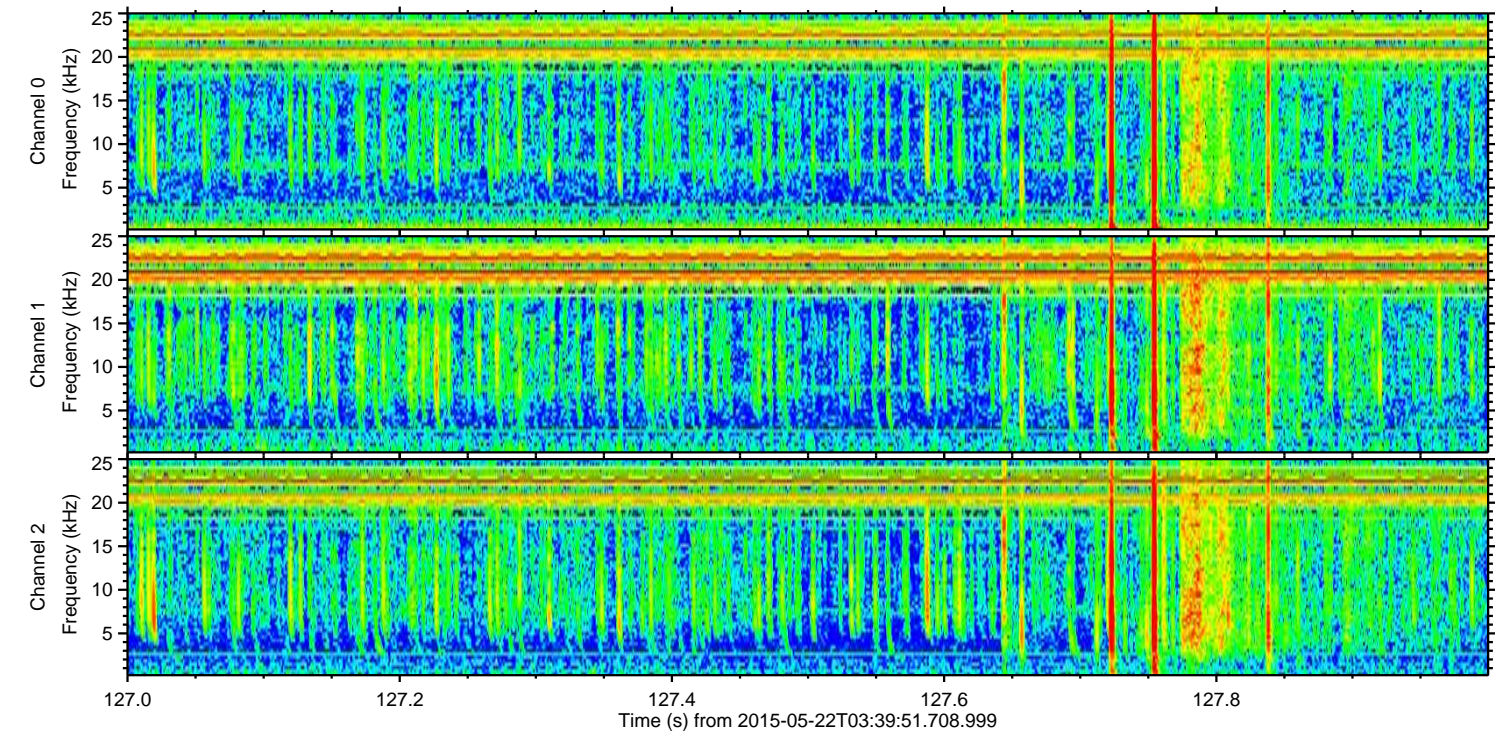
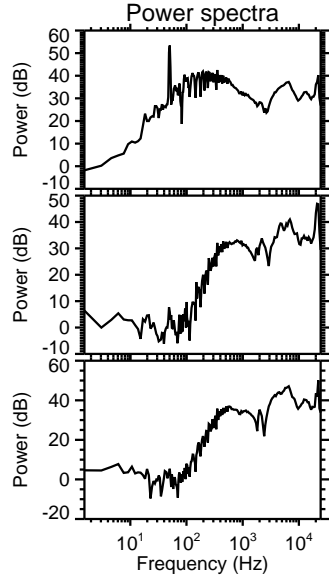
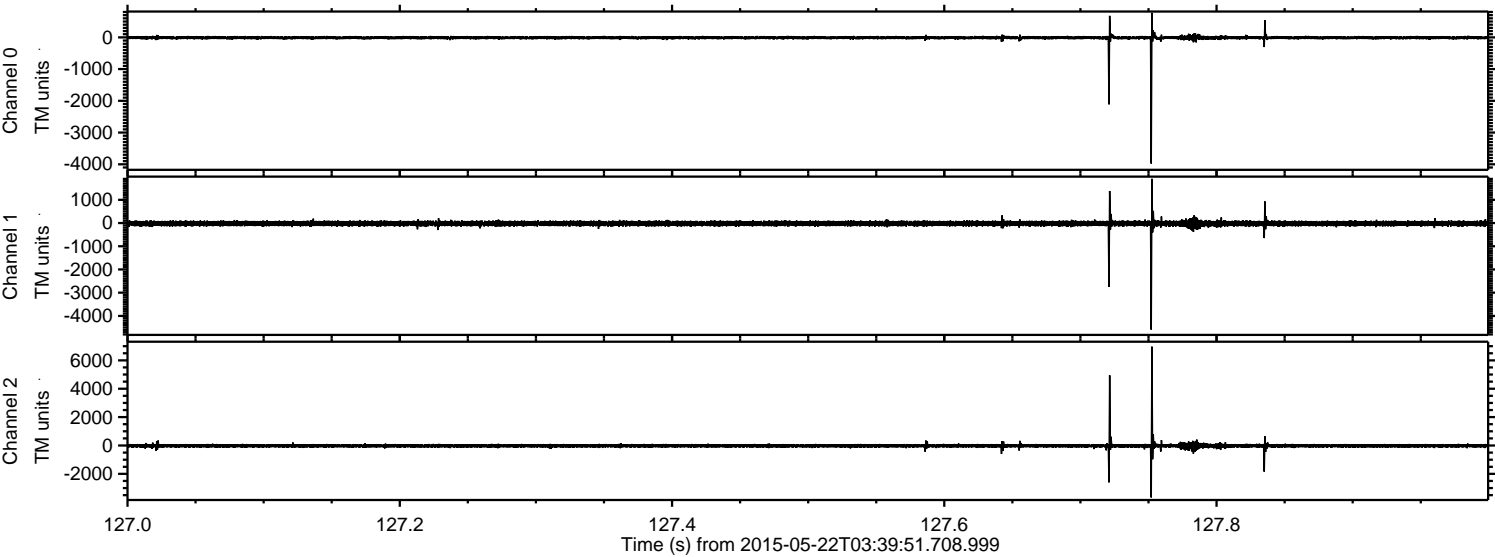
Processed Fri May 22 05:46:56 2015 by ELM ver.2012-10-06 from 001\_\_elm20150522\_033950\_\_dat00.bin





ELMAVAN 3D WAVEFORMS (Measured data sampled at 50 kHz) 49788 packets of 144 samples from 2015-05-22T03:39:51.708.999. Part 128/144

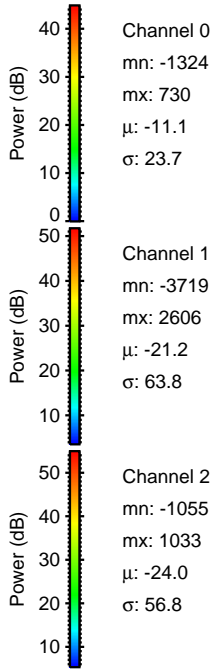
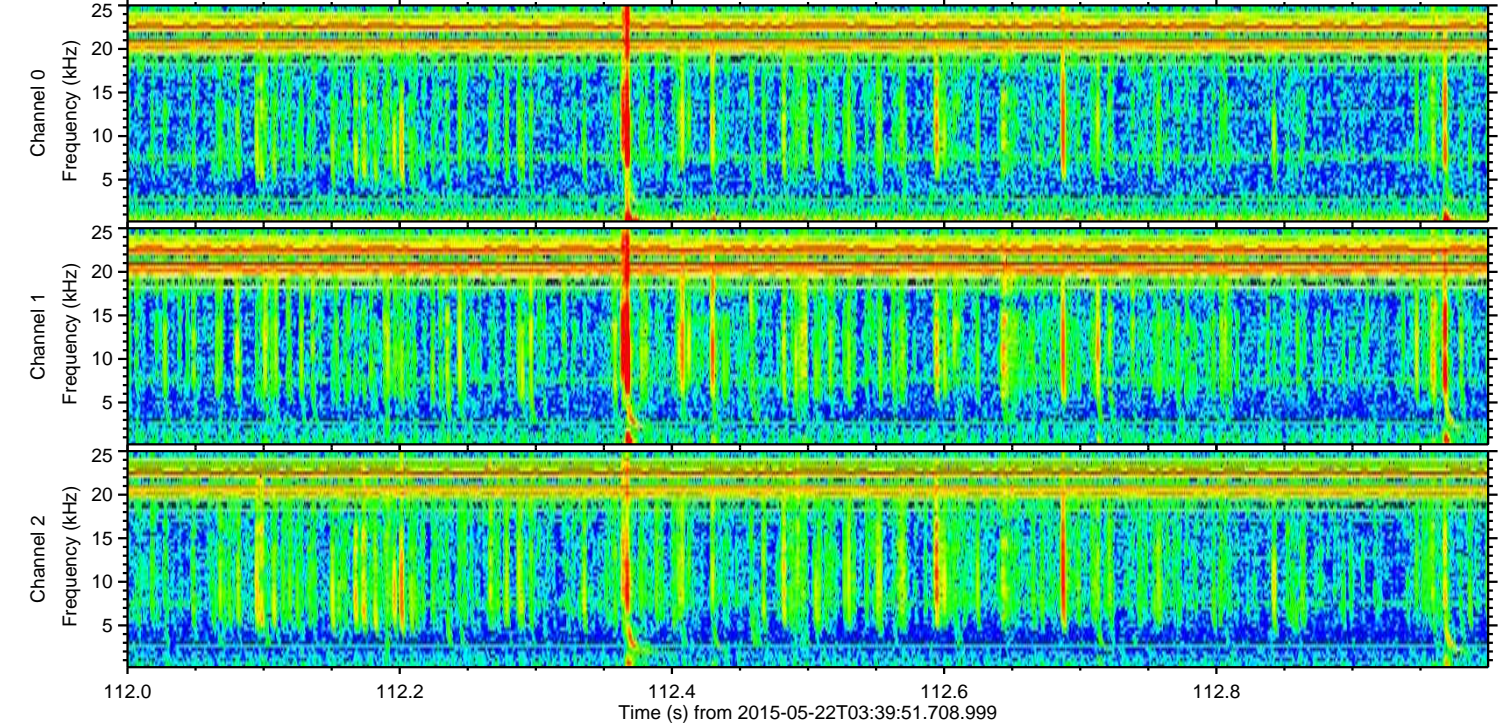
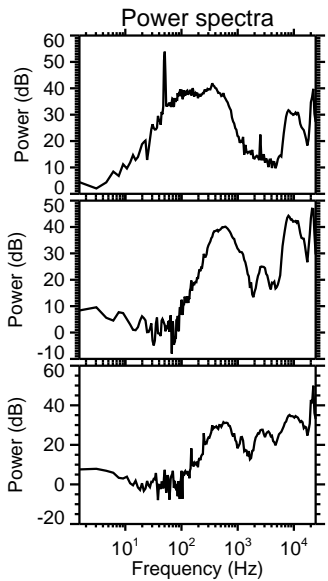
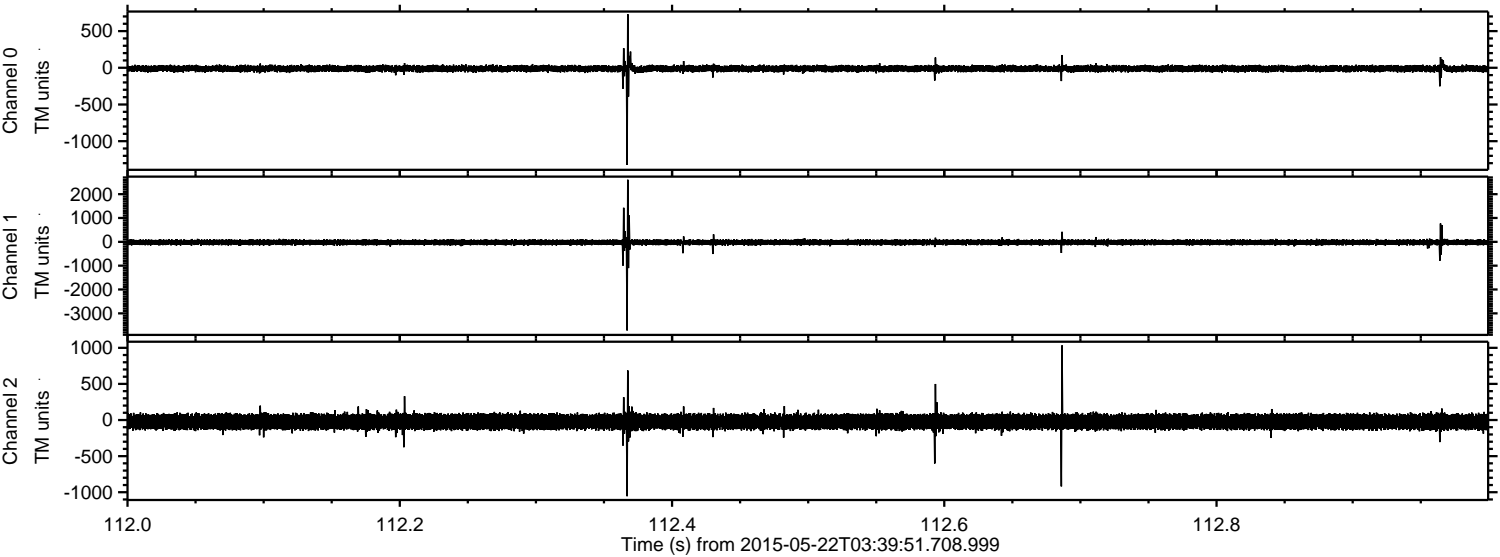
Processed Fri May 22 05:46:57 2015 by ELM ver.2012-10-06 from 001\_\_elm20150522\_033950\_\_dat00.bin





ELMAVAN 3D WAVEFORMS (Measured data sampled at 50 kHz) 49788 packets of 144 samples from 2015-05-22T03:39:51.708.999. Part 113/144

Processed Fri May 22 05:46:58 2015 by ELM ver.2012-10-06 from 001\_\_elm20150522\_033950\_\_dat00.bin



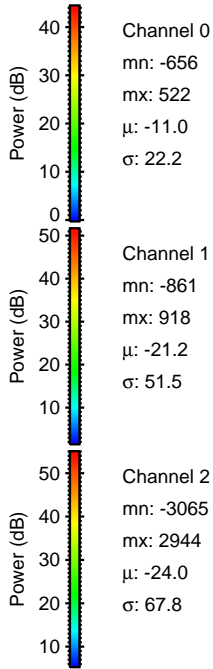
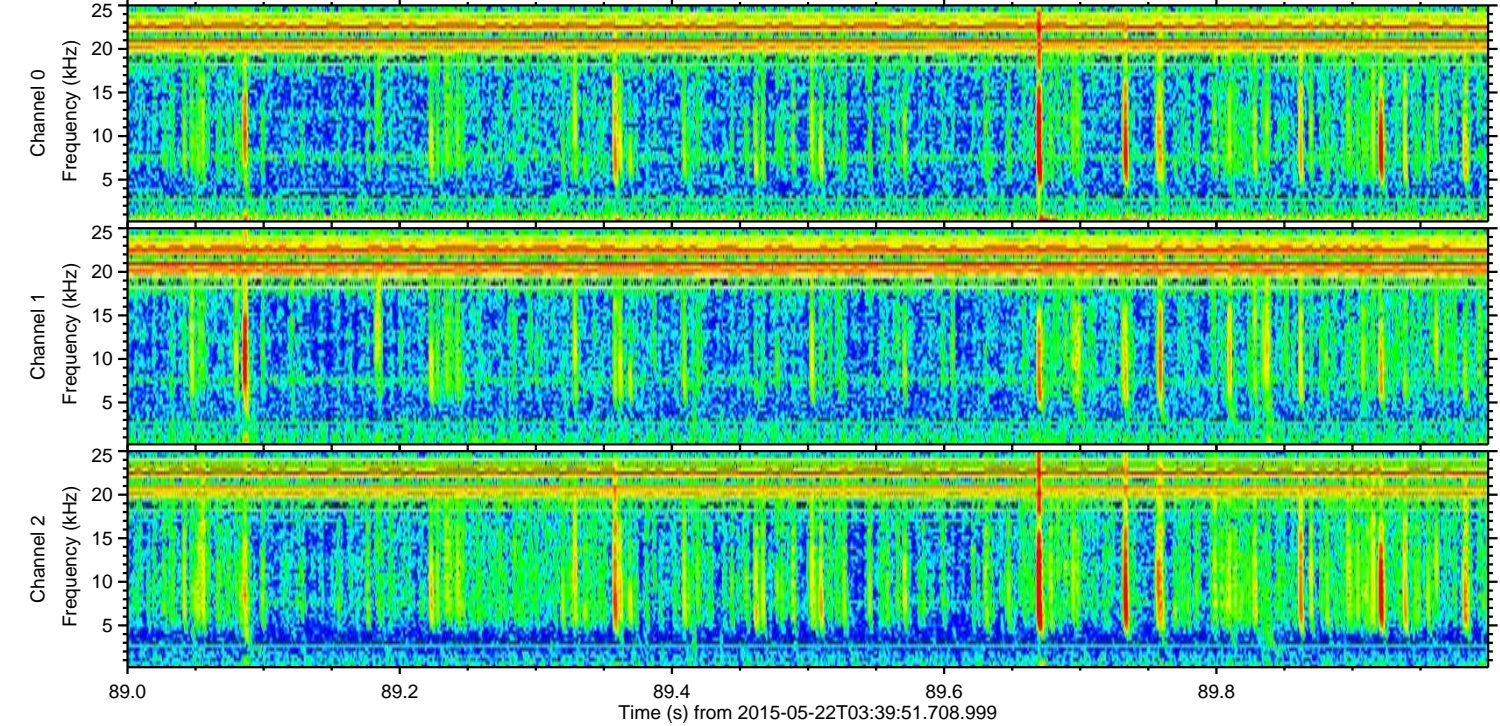
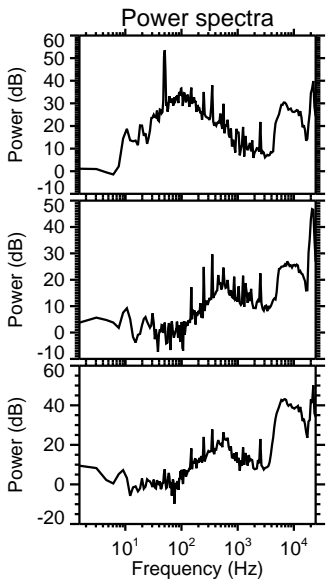
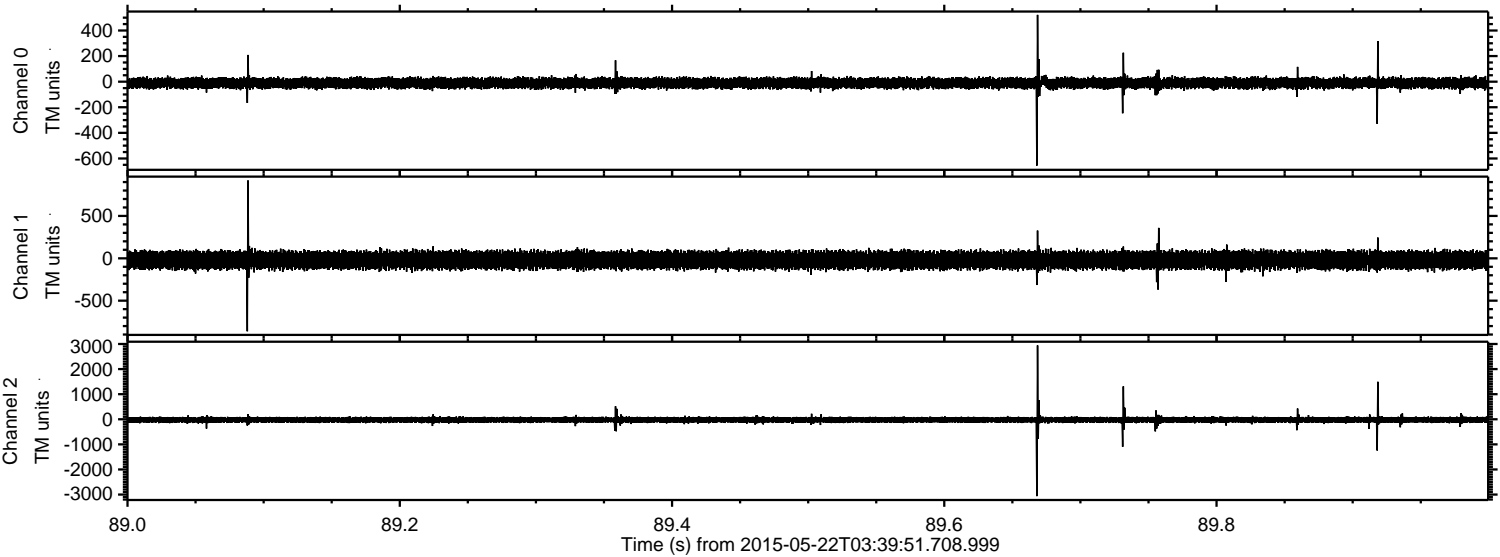
Channel 0  
mn: -1324  
mx: 730  
 $\mu$ : -11.1  
 $\sigma$ : 23.7

Channel 1  
mn: -3719  
mx: 2606  
 $\mu$ : -21.2  
 $\sigma$ : 63.8

Channel 2  
mn: -1055  
mx: 1033  
 $\mu$ : -24.0  
 $\sigma$ : 56.8



Processed Fri May 22 05:46:59 2015 by ELM ver.2012-10-06 from 001\_\_elm20150522\_033950\_\_dat00.bin



Channel 0  
mn: -656  
mx: 522  
 $\mu$ : -11.0  
 $\sigma$ : 22.2

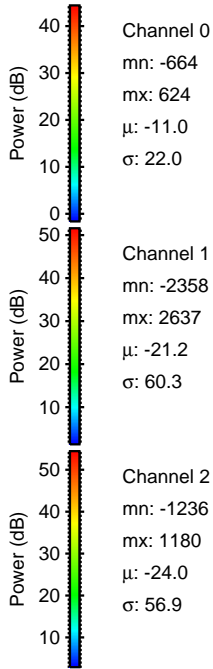
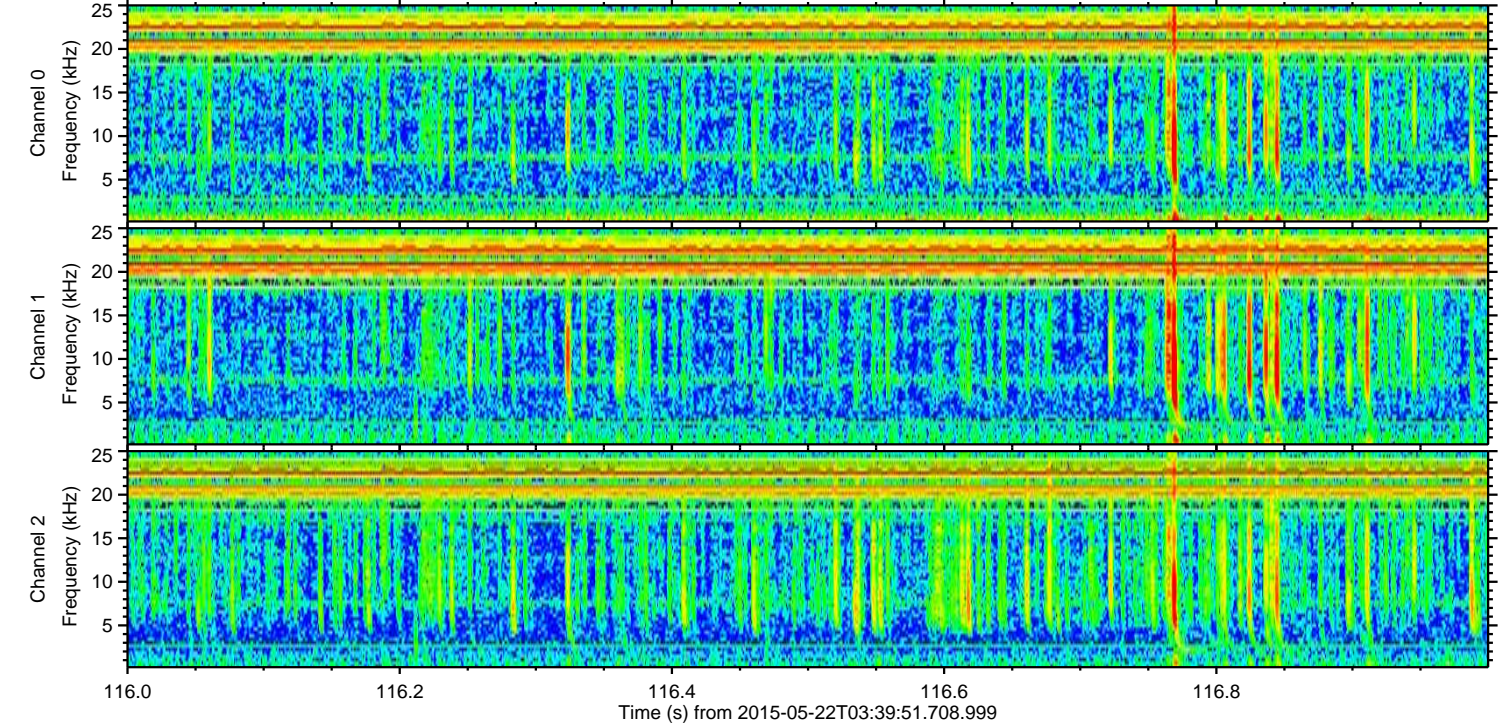
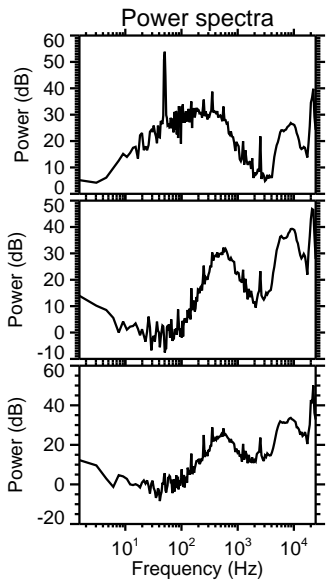
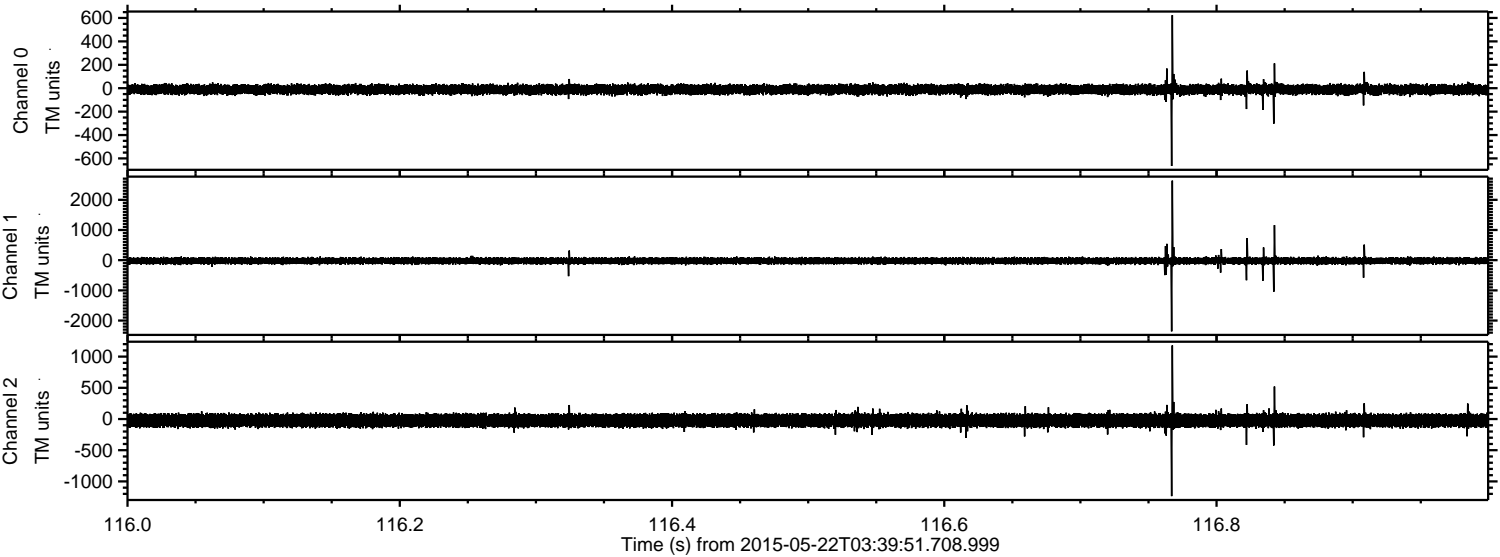
Channel 1  
mn: -861  
mx: 918  
 $\mu$ : -21.2  
 $\sigma$ : 51.5

Channel 2  
mn: -3065  
mx: 2944  
 $\mu$ : -24.0  
 $\sigma$ : 67.8



ELMAVAN 3D WAVEFORMS (Measured data sampled at 50 kHz) 49788 packets of 144 samples from 2015-05-22T03:39:51.708.999. Part 117/144

Processed Fri May 22 05:47:00 2015 by ELM ver.2012-10-06 from 001\_\_elm20150522\_033950\_\_dat00.bin



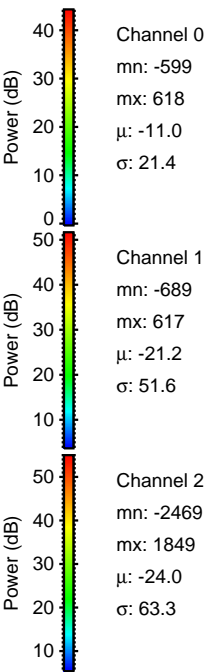
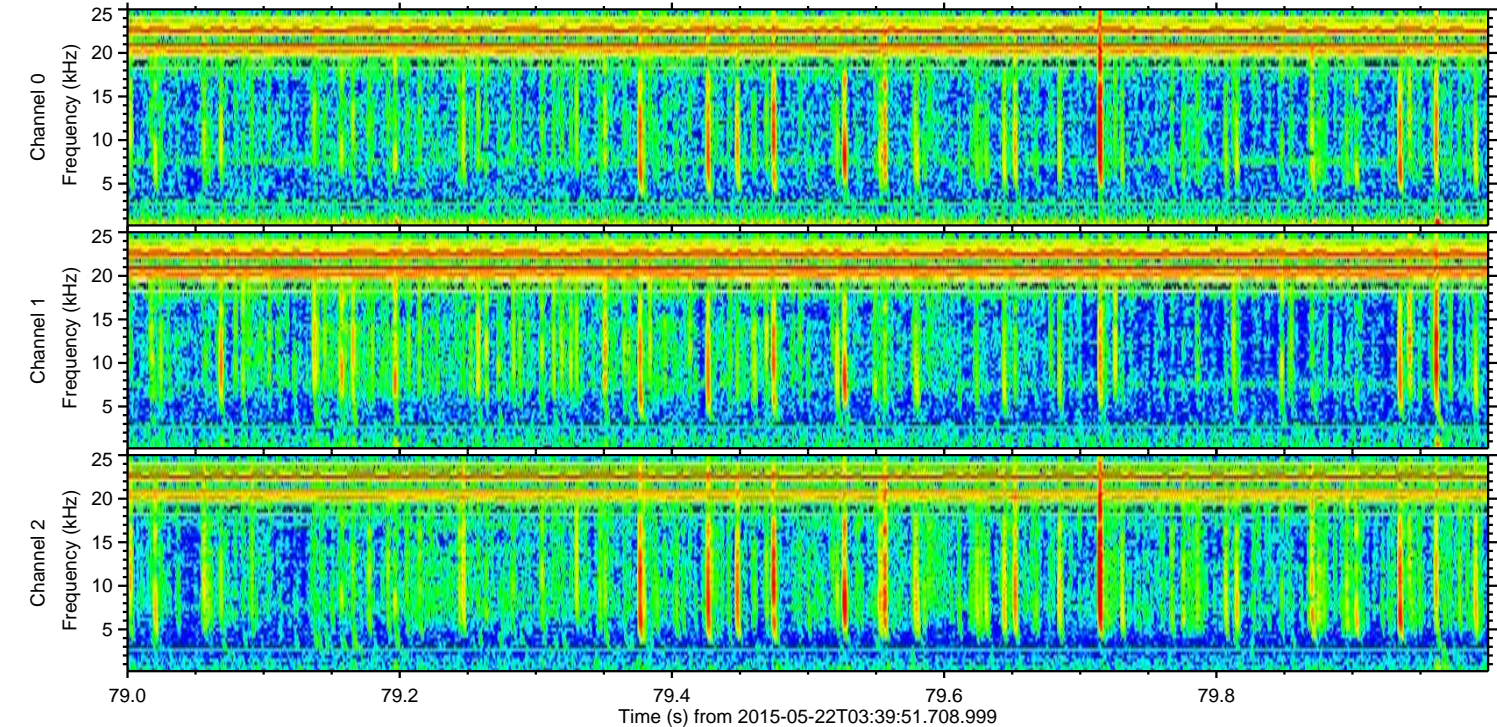
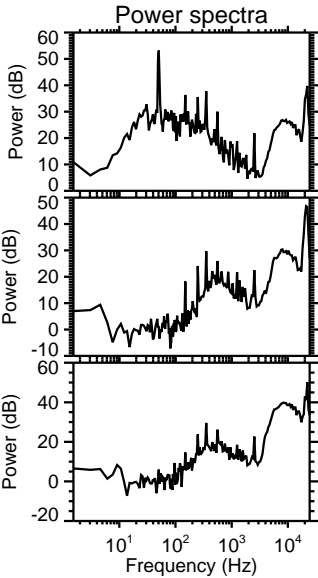
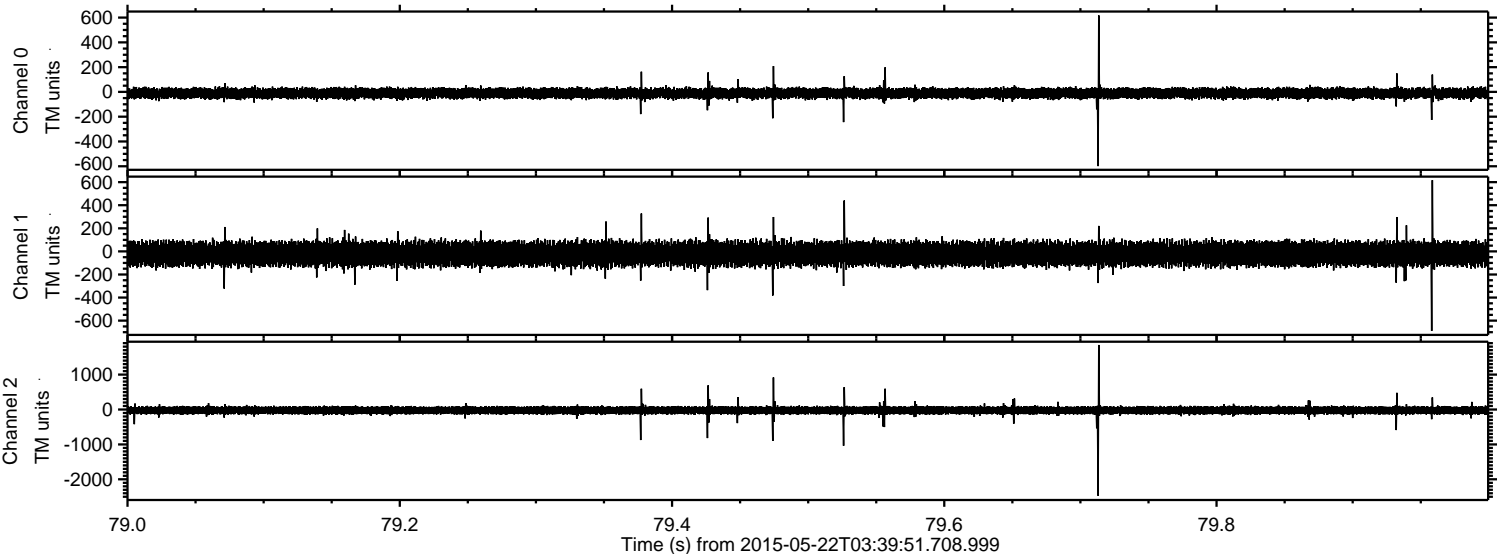
Channel 0  
mn: -664  
mx: 624  
 $\mu$ : -11.0  
 $\sigma$ : 22.0

Channel 1  
mn: -2358  
mx: 2637  
 $\mu$ : -21.2  
 $\sigma$ : 60.3

Channel 2  
mn: -1236  
mx: 1180  
 $\mu$ : -24.0  
 $\sigma$ : 56.9



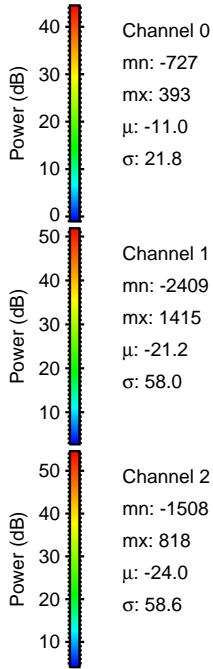
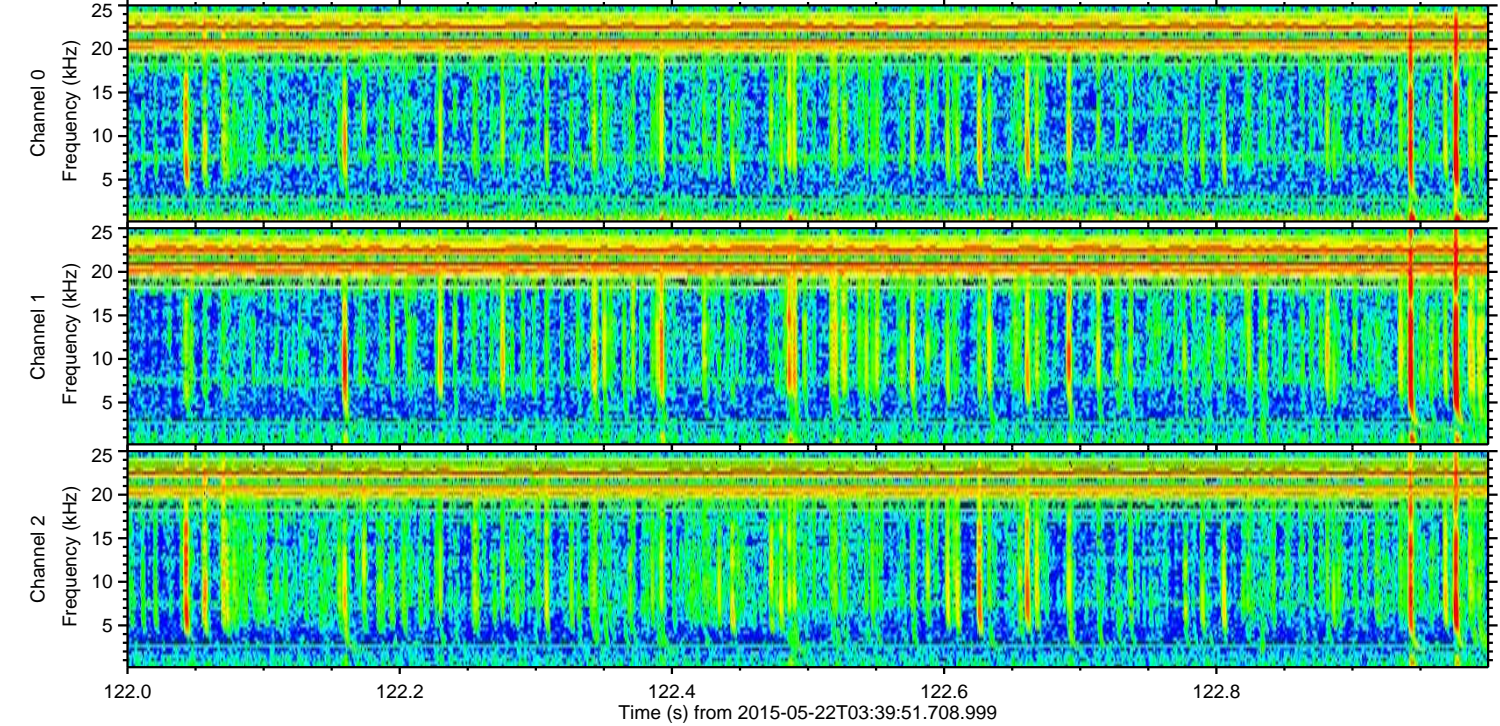
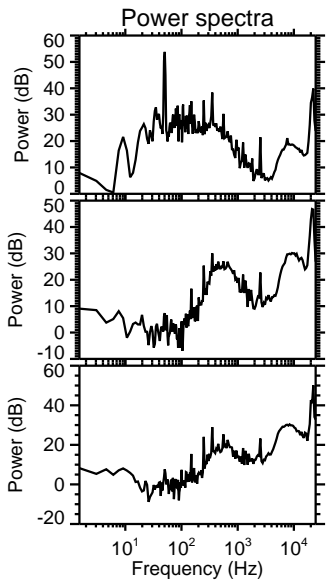
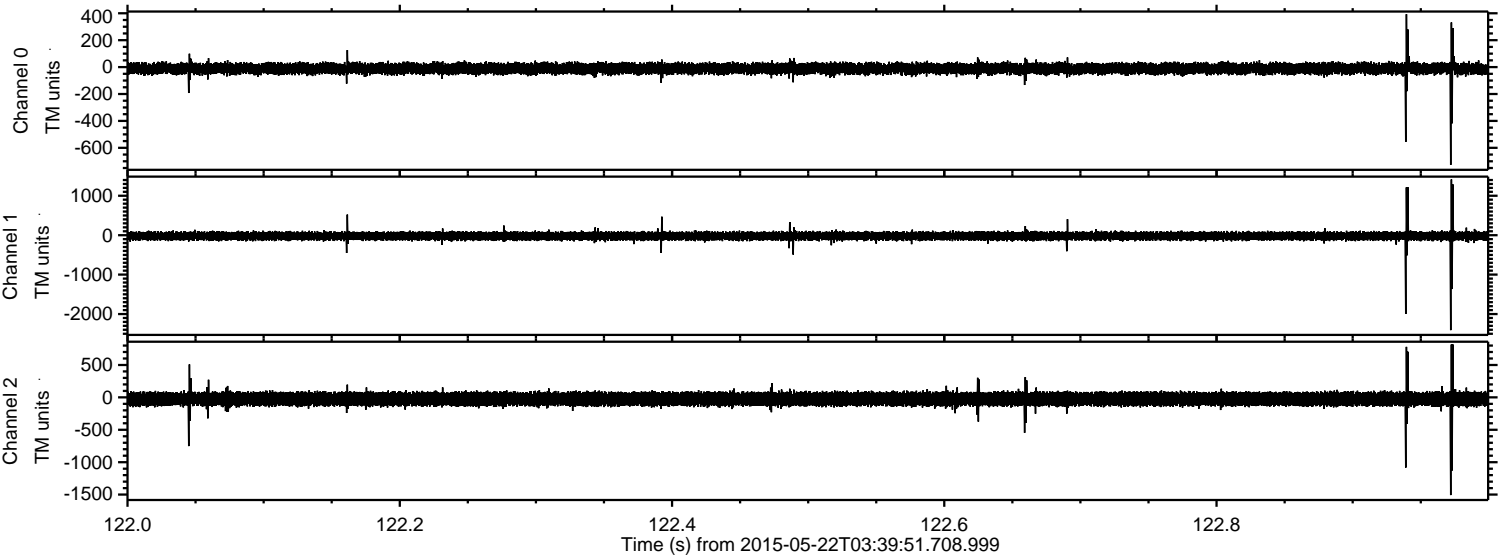
Processed Fri May 22 05:47:01 2015 by ELM ver.2012-10-06 from 001\_\_elm20150522\_033950\_\_dat00.bin





ELMAVAN 3D WAVEFORMS (Measured data sampled at 50 kHz) 49788 packets of 144 samples from 2015-05-22T03:39:51.708.999. Part 123/144

Processed Fri May 22 05:47:02 2015 by ELM ver.2012-10-06 from 001\_\_elm20150522\_033950\_\_dat00.bin



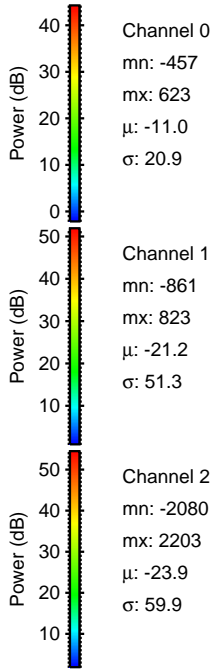
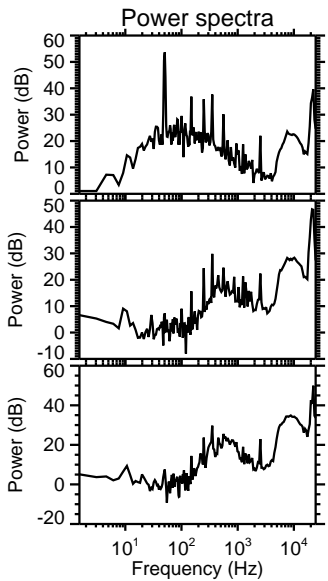
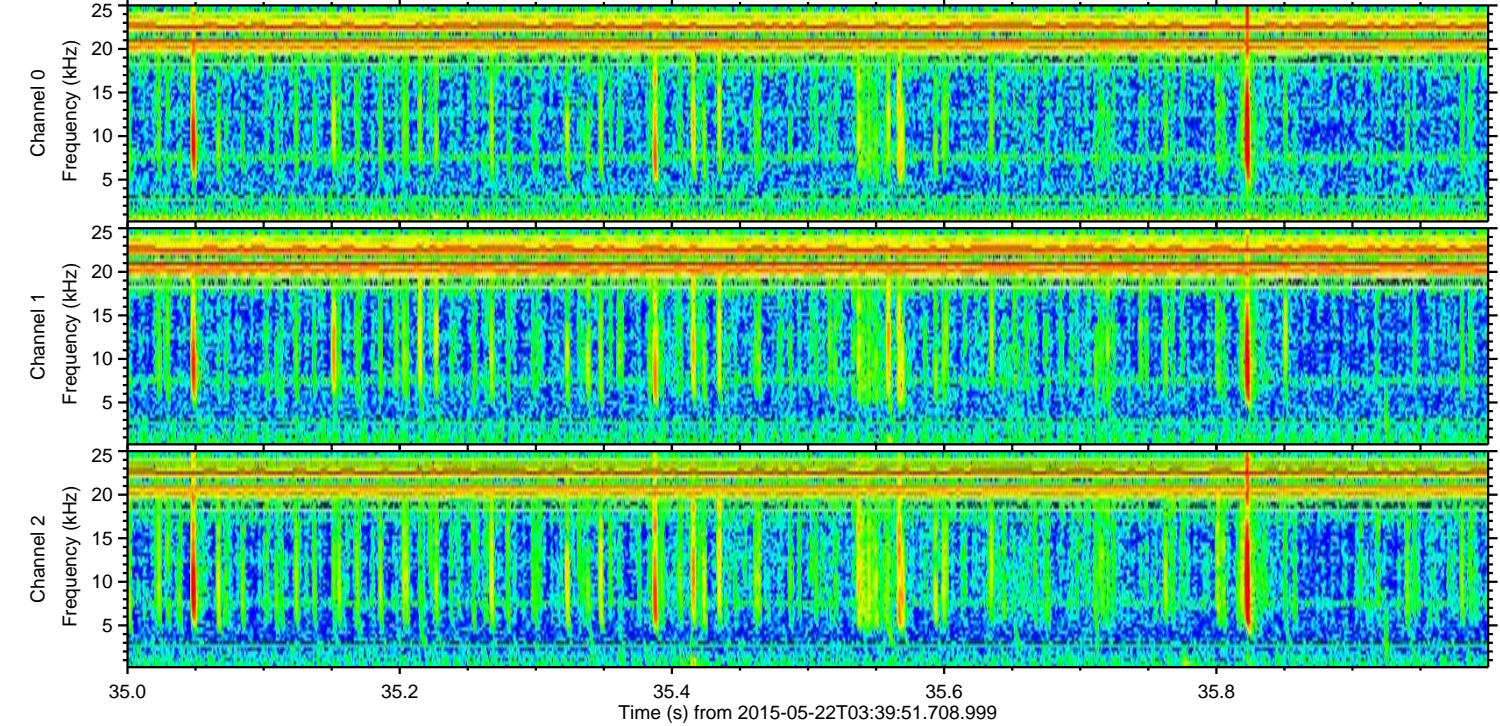
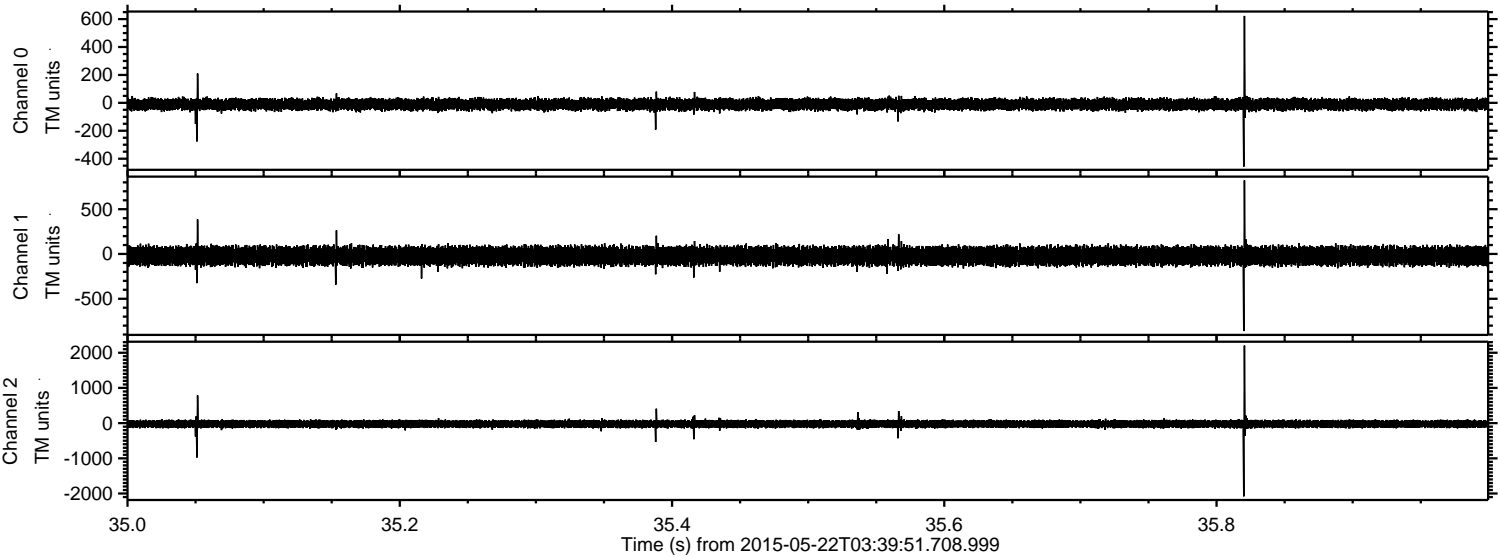
Channel 0  
mn: -727  
mx: 393  
 $\mu$ : -11.0  
 $\sigma$ : 21.8

Channel 1  
mn: -2409  
mx: 1415  
 $\mu$ : -21.2  
 $\sigma$ : 58.0

Channel 2  
mn: -1508  
mx: 818  
 $\mu$ : -24.0  
 $\sigma$ : 58.6



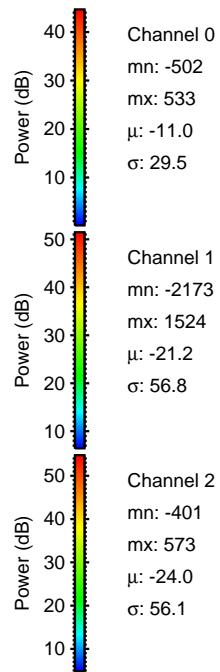
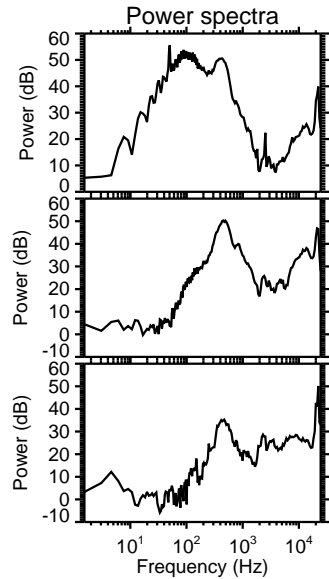
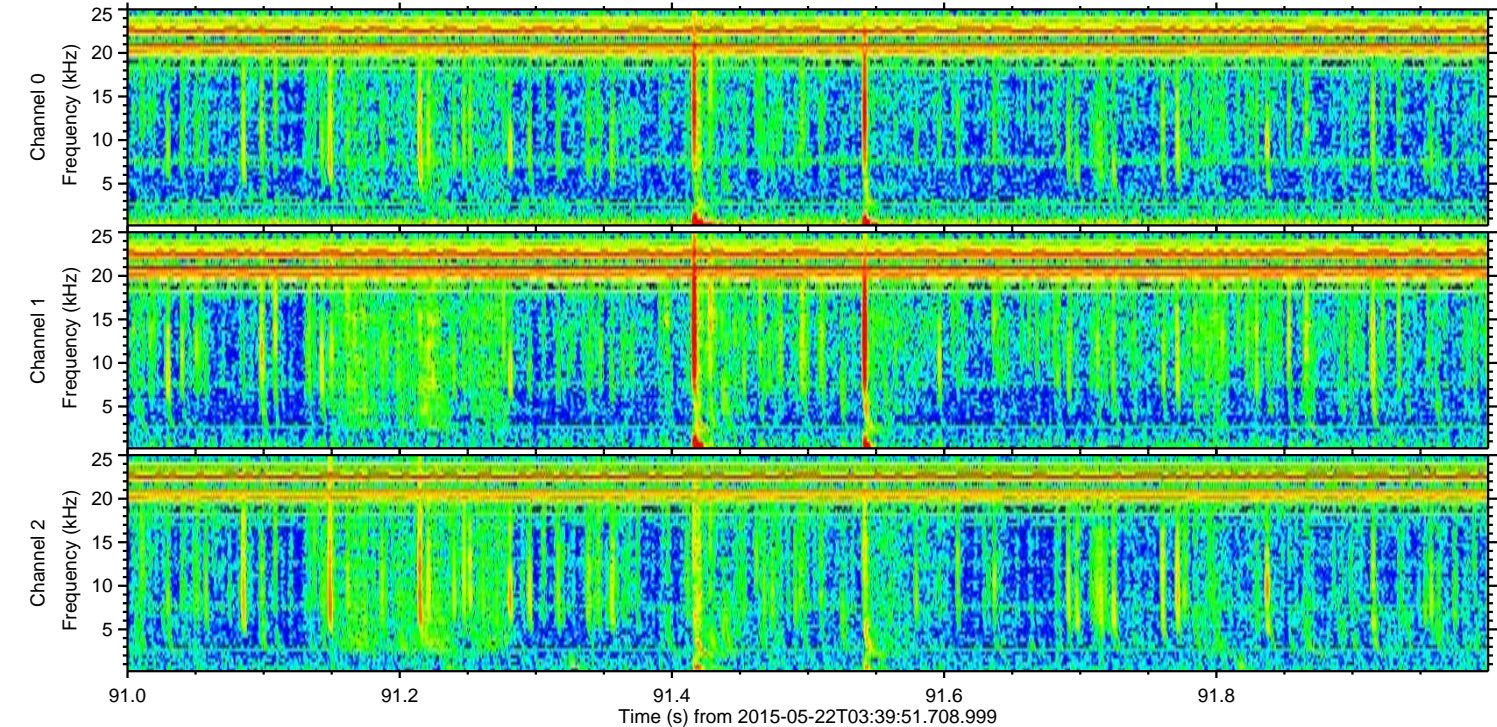
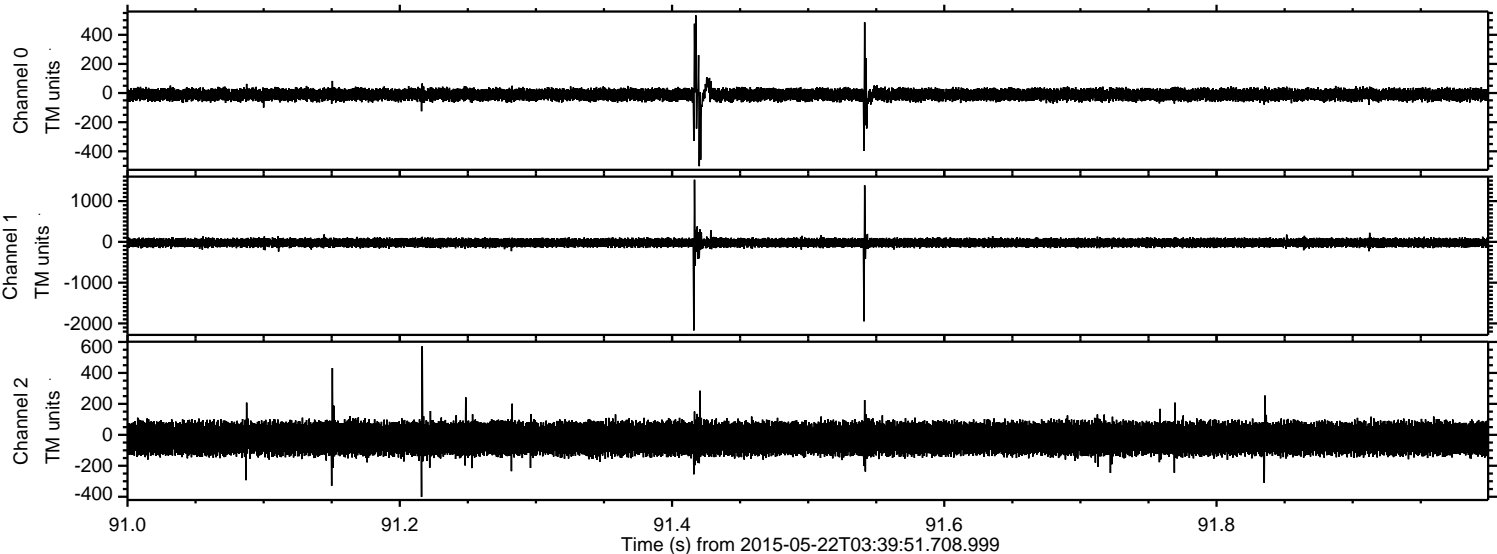
Processed Fri May 22 05:47:03 2015 by ELM ver.2012-10-06 from 001\_\_elm20150522\_033950\_\_dat00.bin





ELMAVAN 3D WAVEFORMS (Measured data sampled at 50 kHz) 49788 packets of 144 samples from 2015-05-22T03:39:51.708.999. Part 92/144

Processed Fri May 22 05:47:04 2015 by ELM ver.2012-10-06 from 001\_\_elm20150522\_033950\_\_dat00.bin



Channel 0  
mn: -502  
mx: 533  
 $\mu$ : -11.0  
 $\sigma$ : 29.5

Channel 1  
mn: -2173  
mx: 1524  
 $\mu$ : -21.2  
 $\sigma$ : 56.8

Channel 2  
mn: -401  
mx: 573  
 $\mu$ : -24.0  
 $\sigma$ : 56.1



ELMAVAN 3D WAVEFORMS (Measured data sampled at 50 kHz) 49788 packets of 144 samples from 2015-05-22T03:39:51.708.999. Part 115/144

