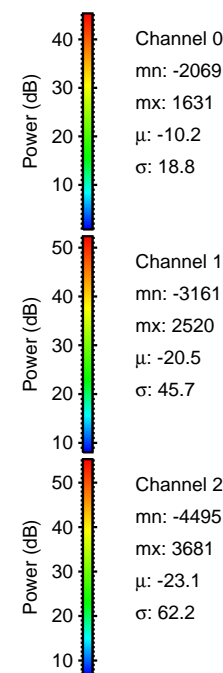
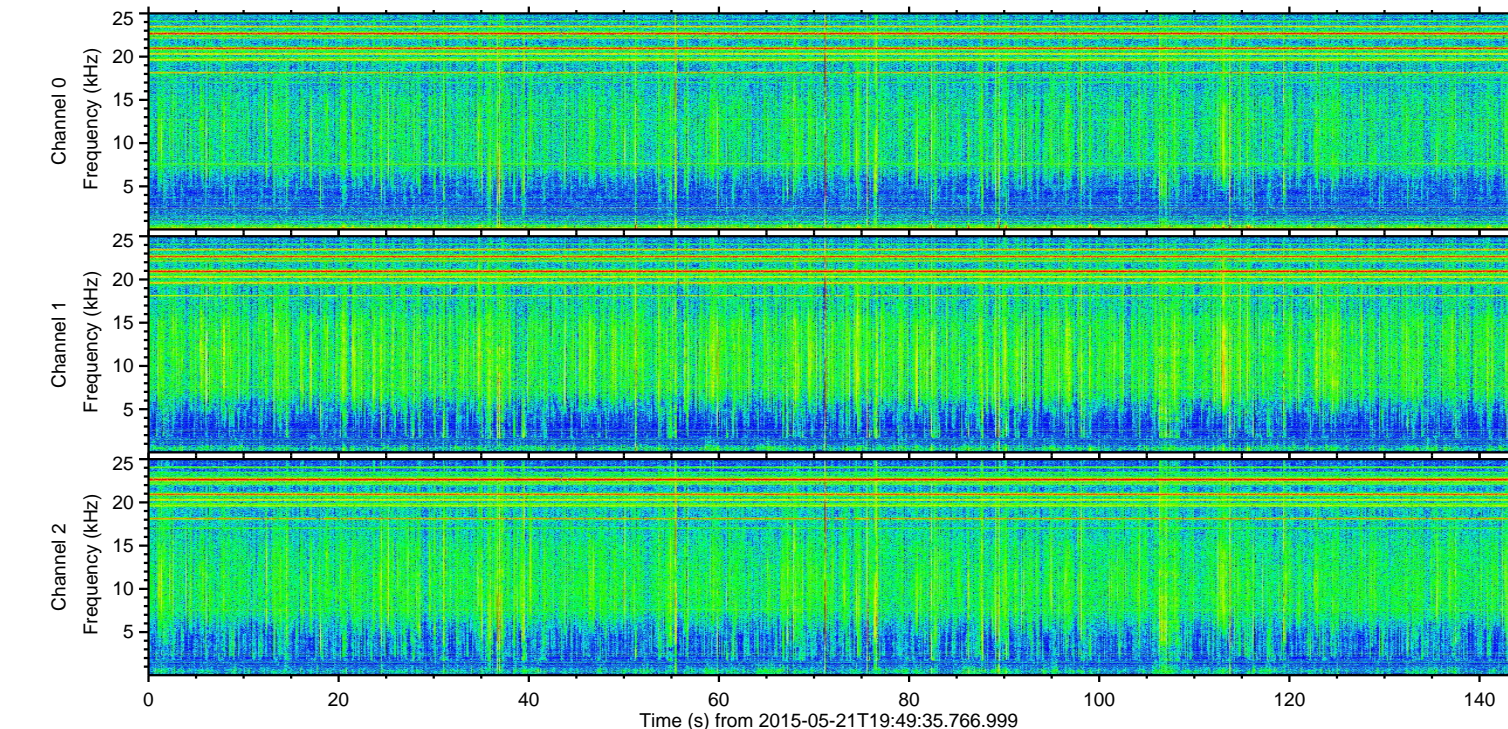
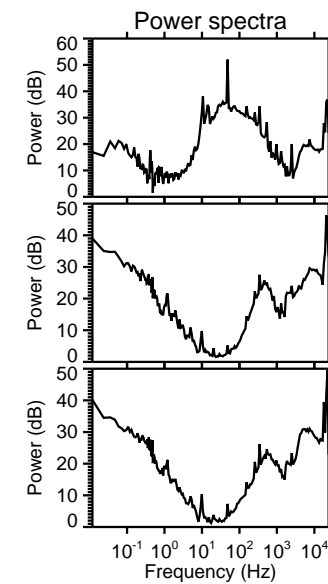
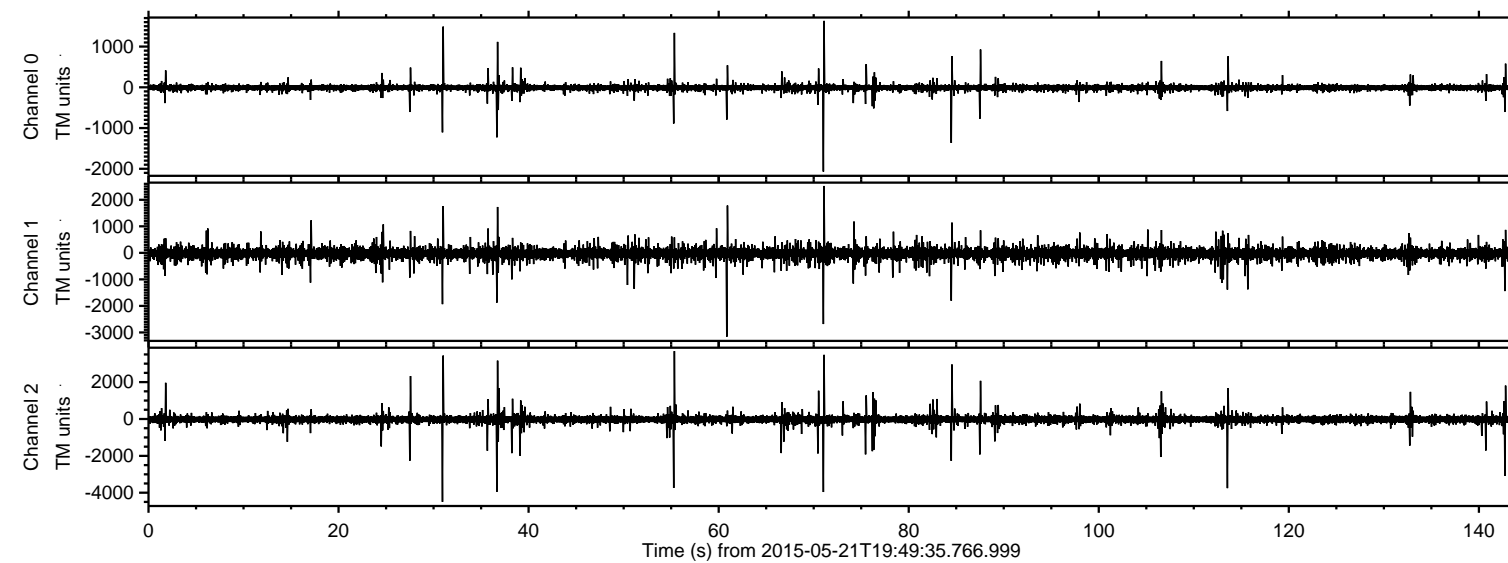
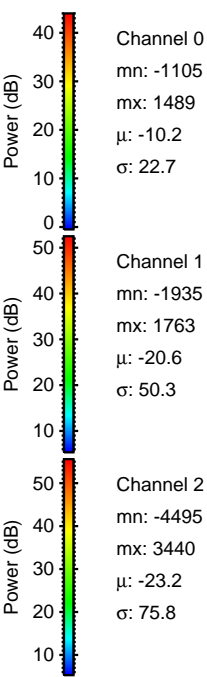
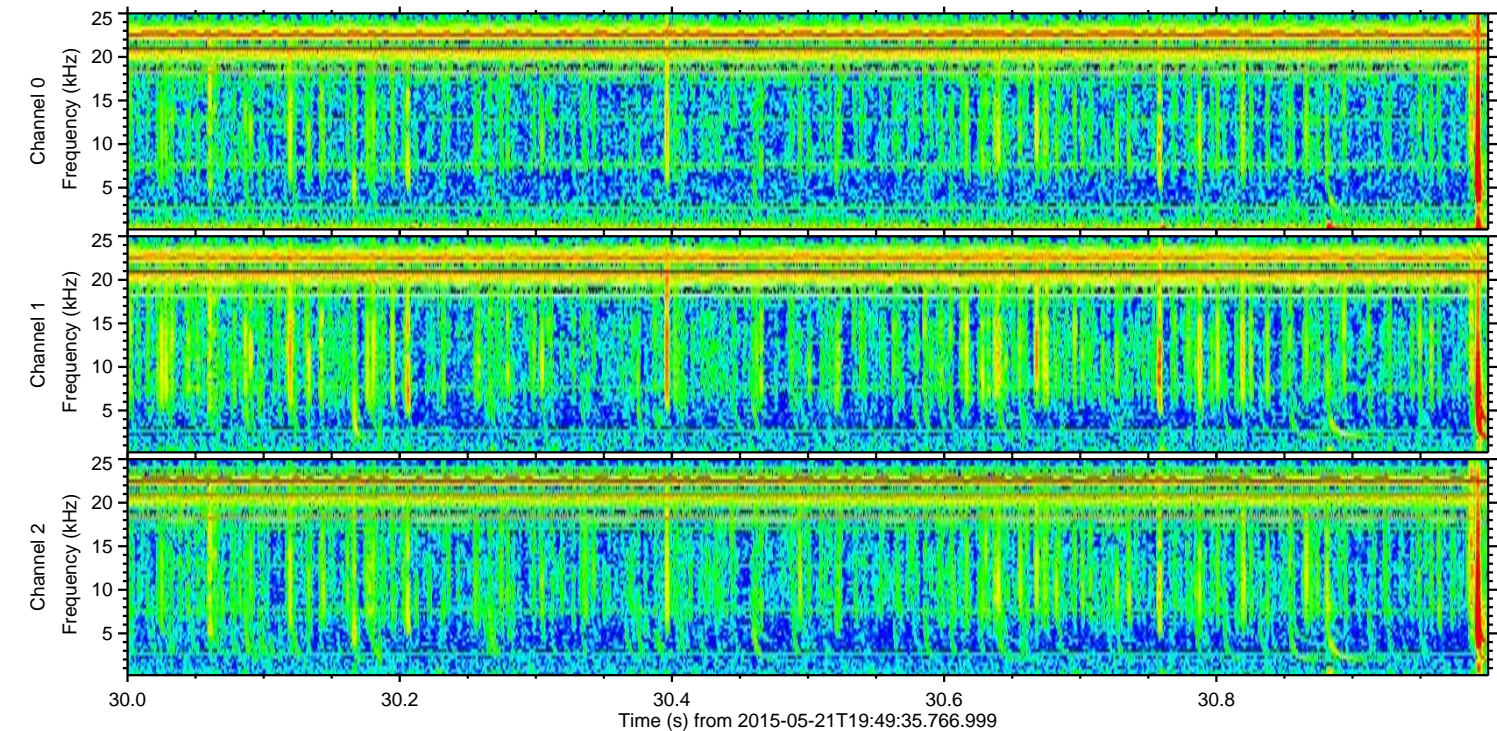
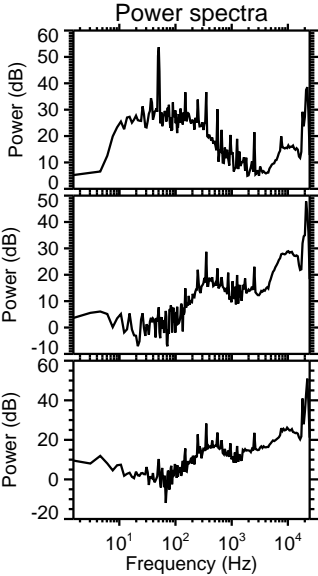
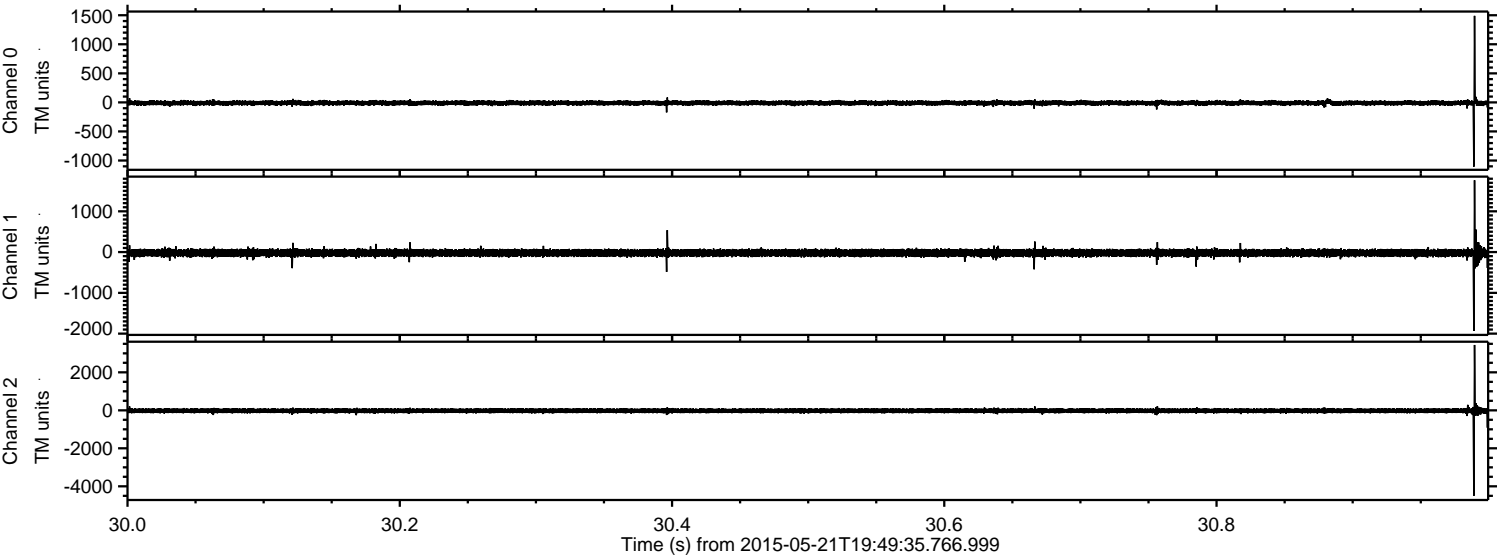


ELMAVAN 3D WAVEFORMS (Measured data sampled at 50 kHz) 49717 packets of 144 samples from 2015-05-21T19:49:35.766.999.

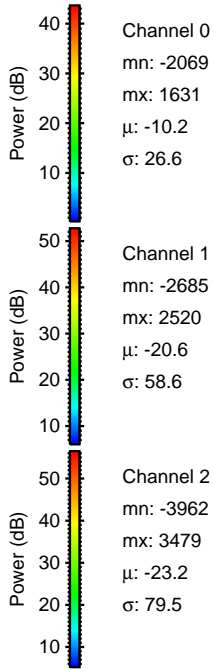
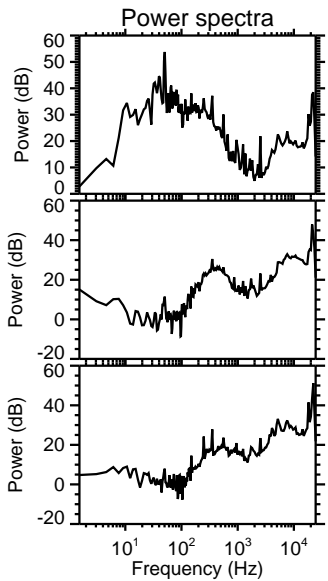
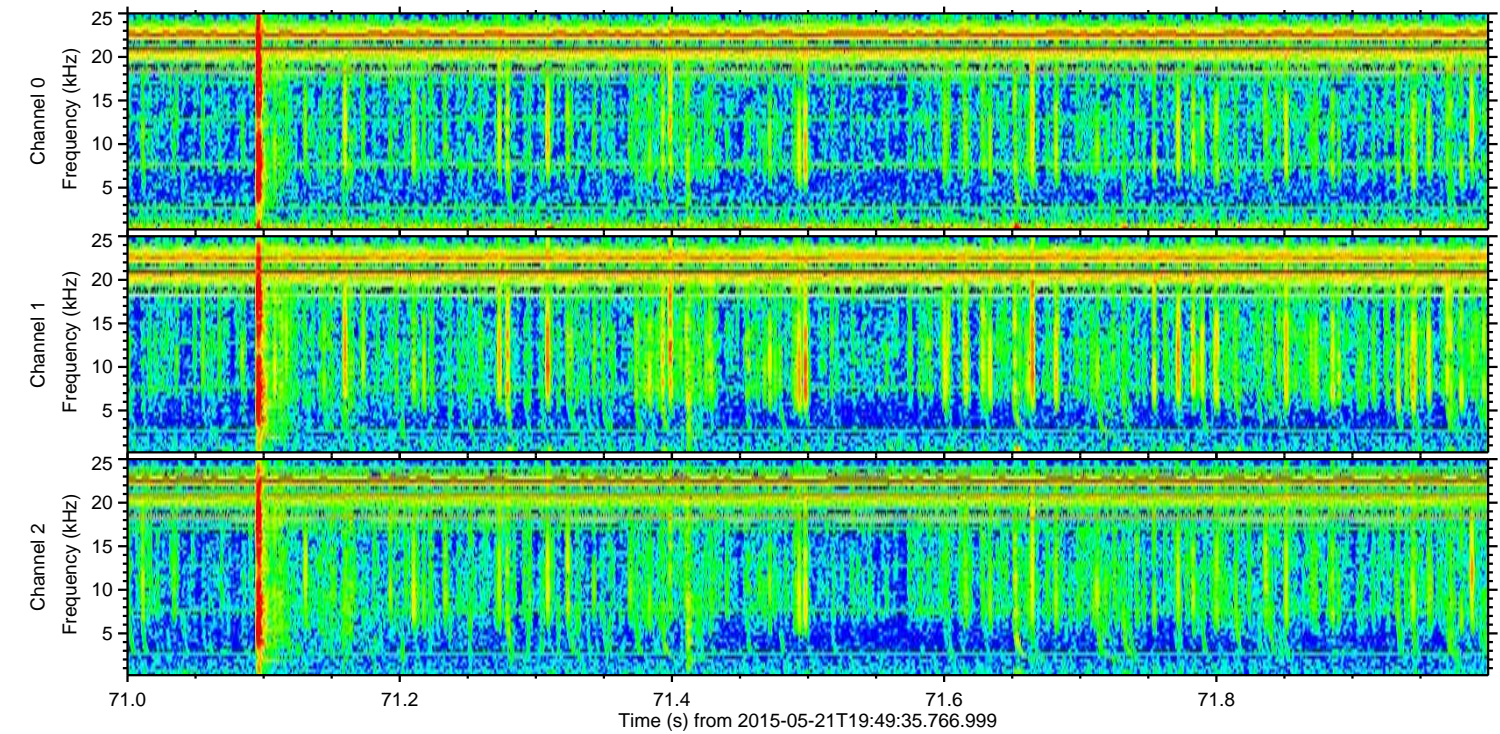
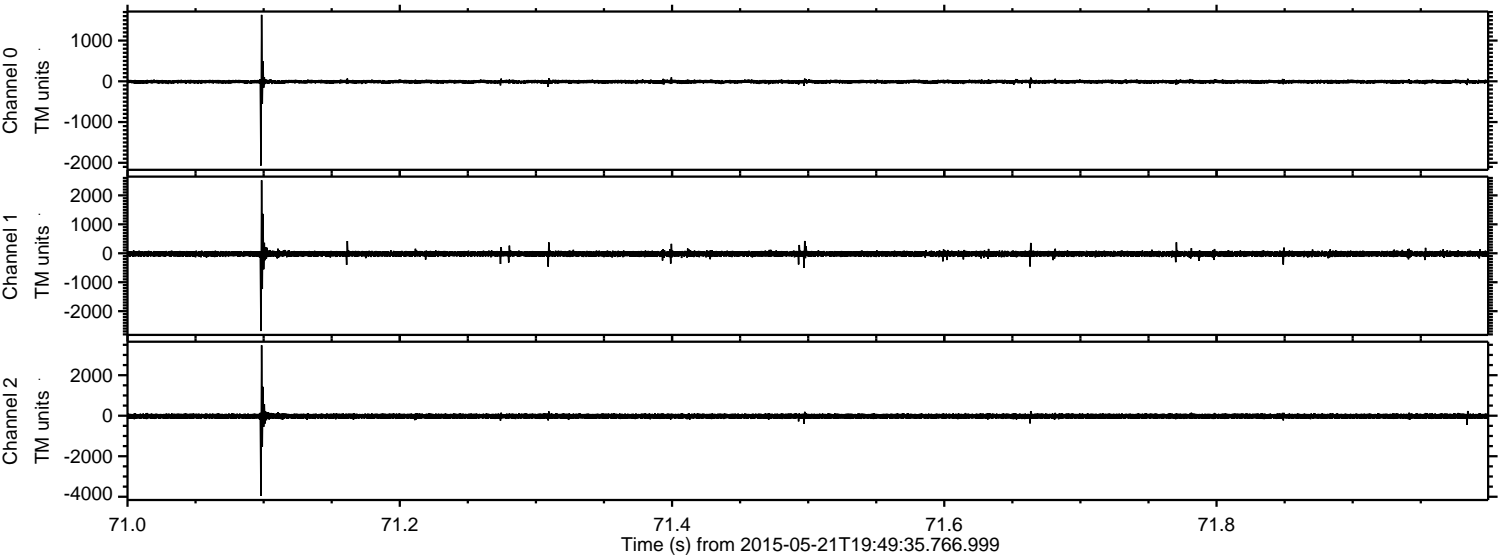
Processed Thu May 21 21:56:38 2015 by ELM ver.2012-10-06 from 001__elm20150521_194934__dat00.bin



Processed Thu May 21 21:56:49 2015 by ELM ver.2012-10-06 from 001__elm20150521_194934__dat00.bin

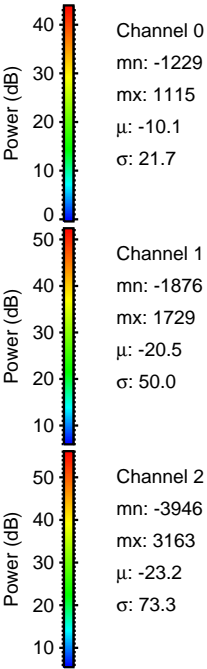
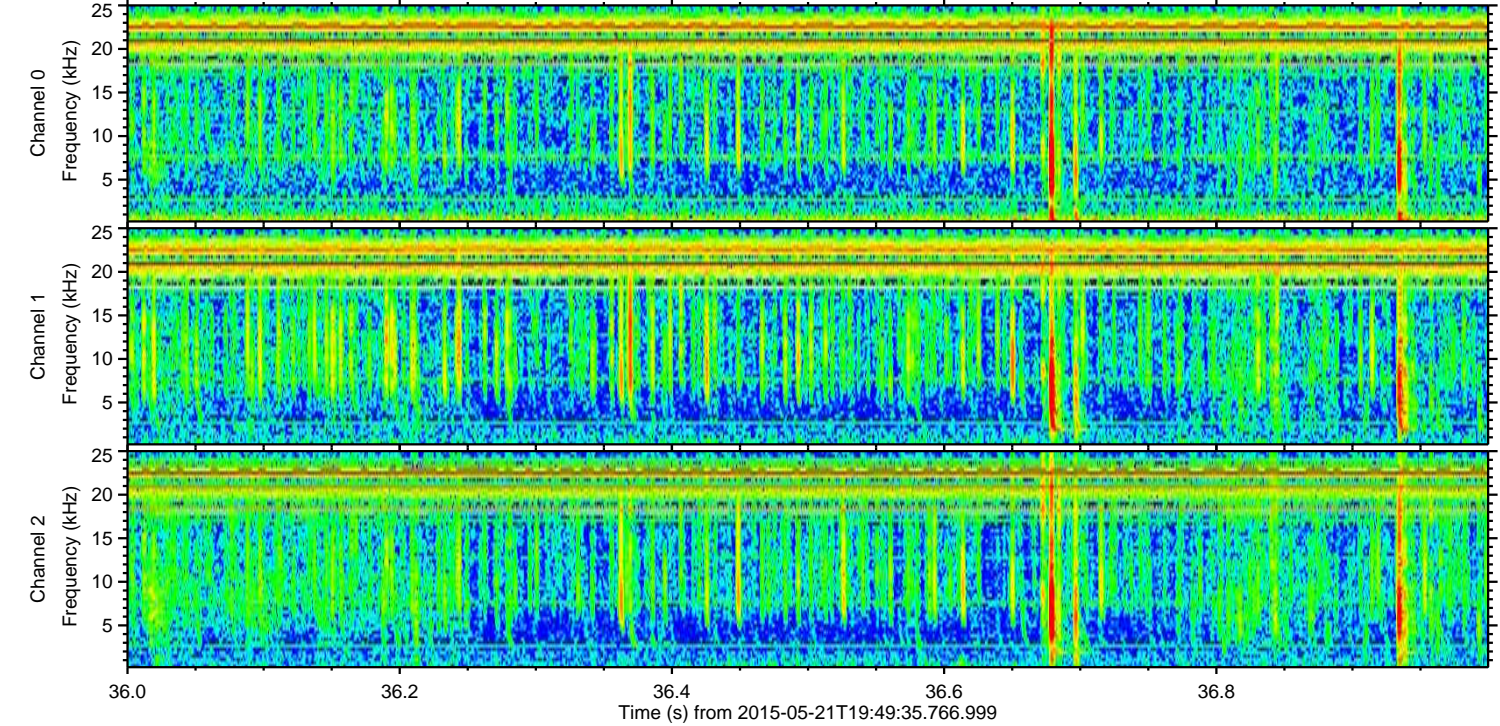
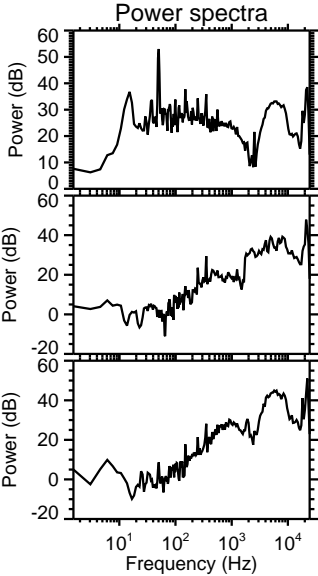
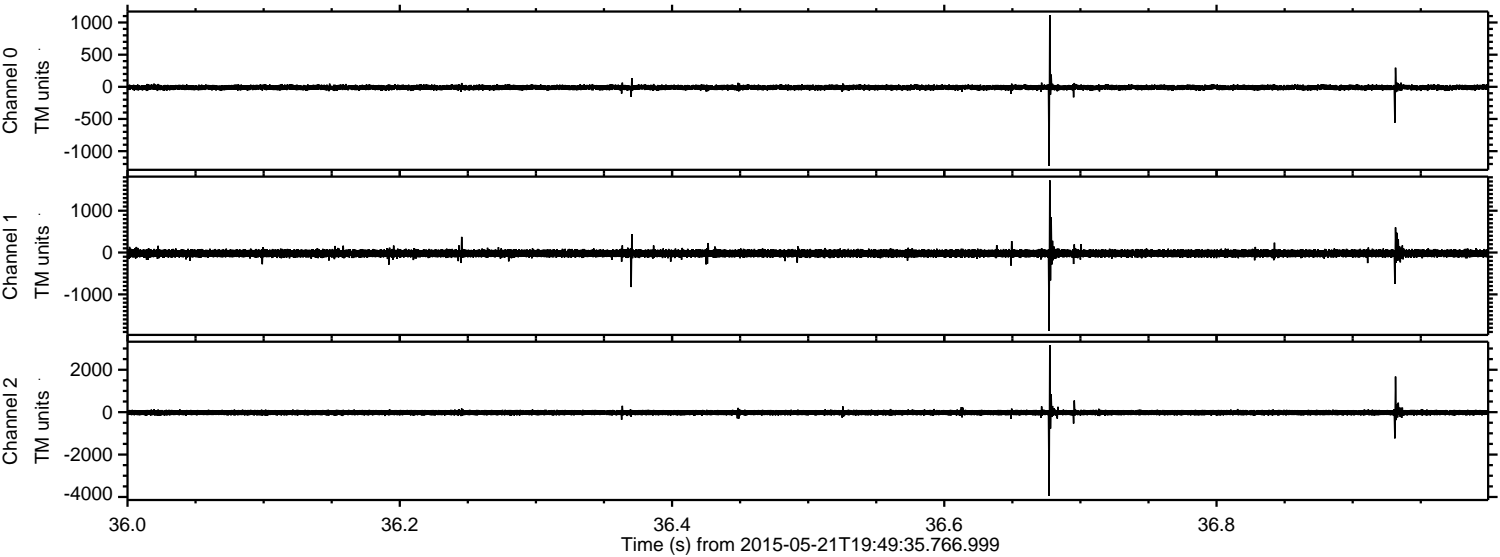


Processed Thu May 21 21:56:50 2015 by ELM ver.2012-10-06 from 001__elm20150521_194934__dat00.bin



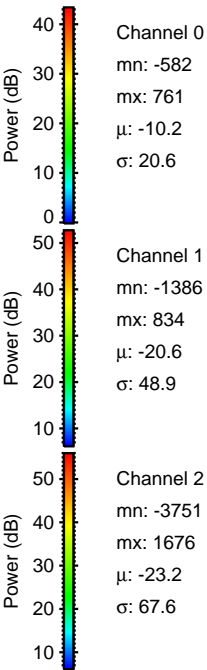
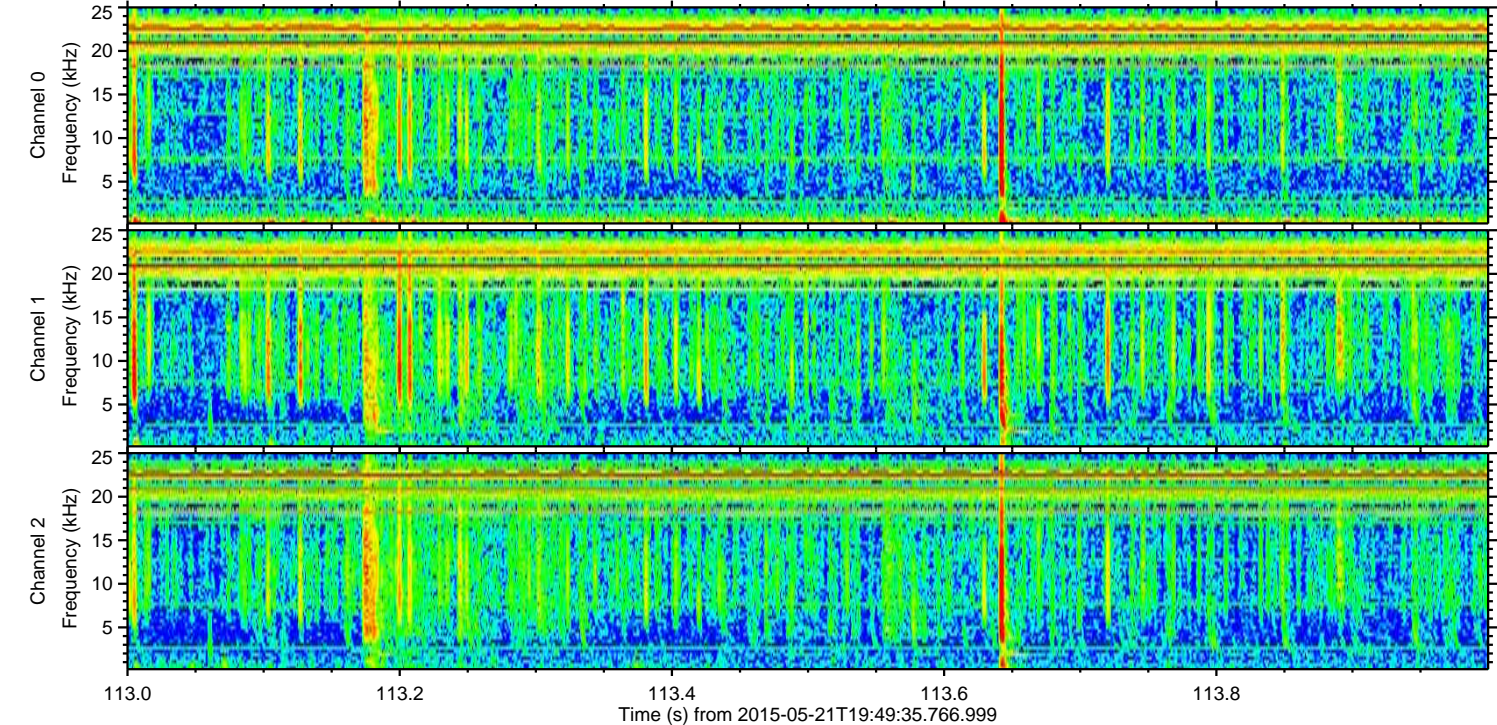
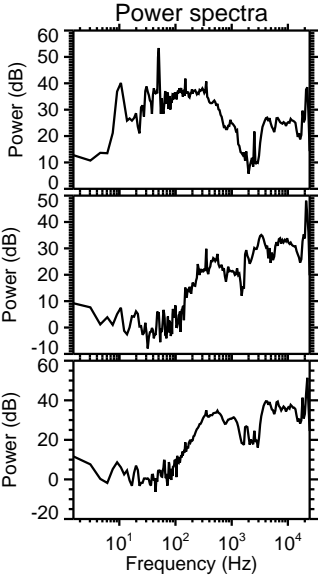
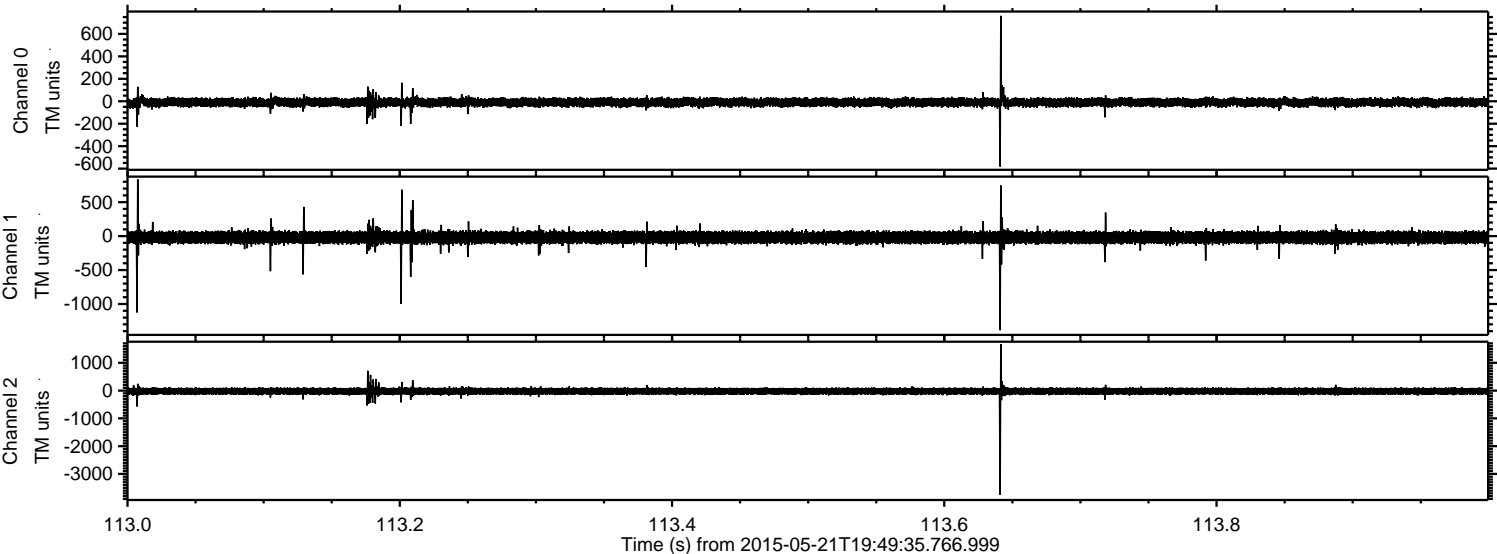
ELMAVAN 3D WAVEFORMS (Measured data sampled at 50 kHz) 49717 packets of 144 samples from 2015-05-21T19:49:35.766.999. Part 37/144

Processed Thu May 21 21:56:51 2015 by ELM ver.2012-10-06 from 001__elm20150521_194934__dat00.bin

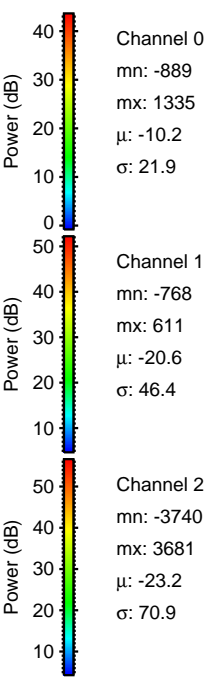
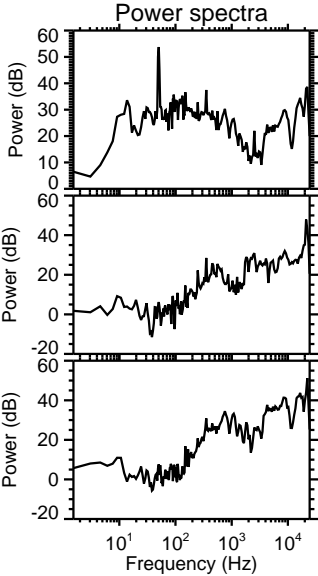
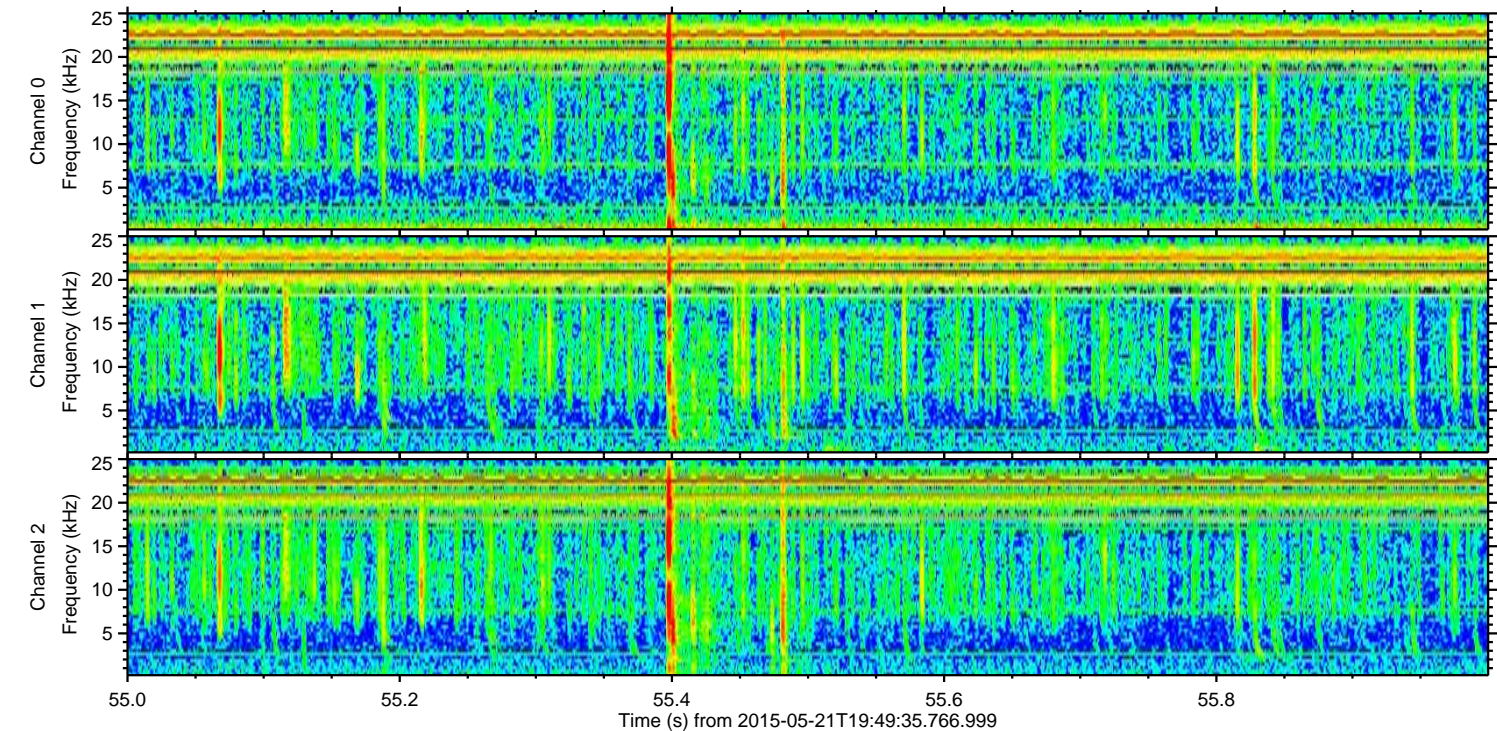
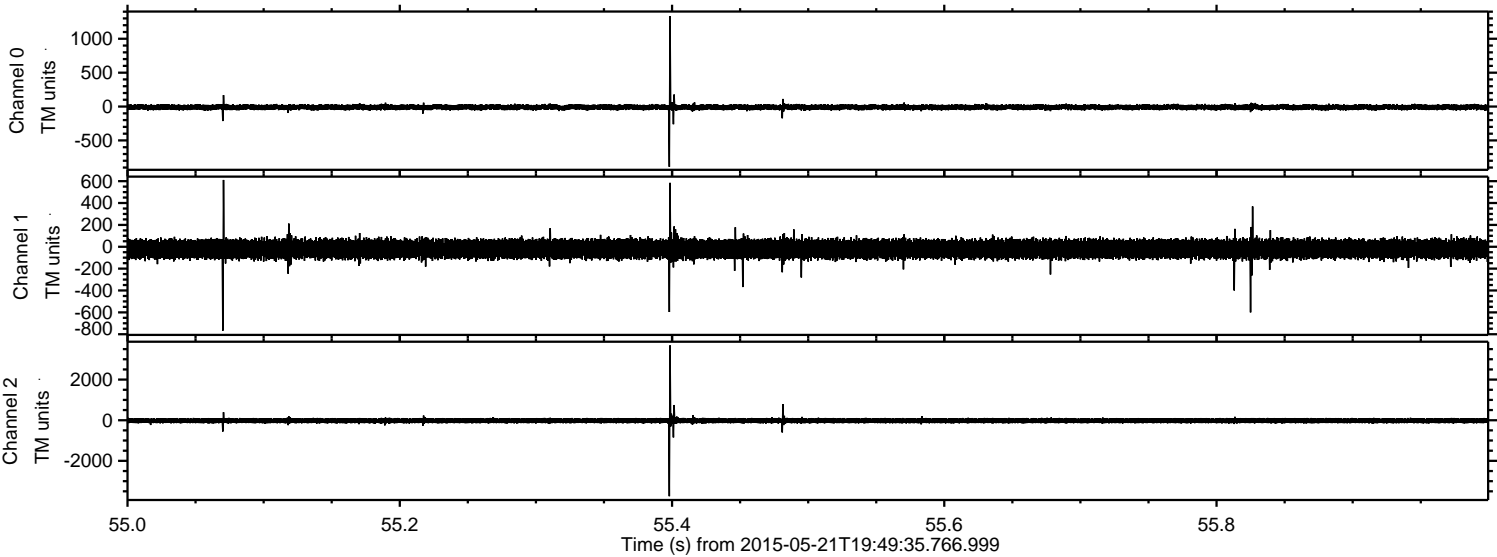


ELMAVAN 3D WAVEFORMS (Measured data sampled at 50 kHz) 49717 packets of 144 samples from 2015-05-21T19:49:35.766.999. Part 114/144

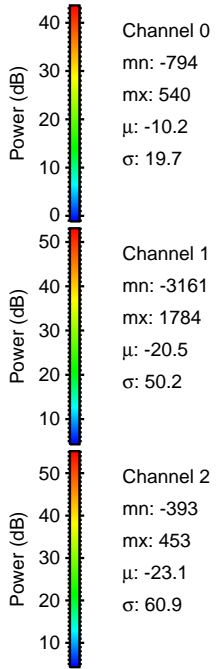
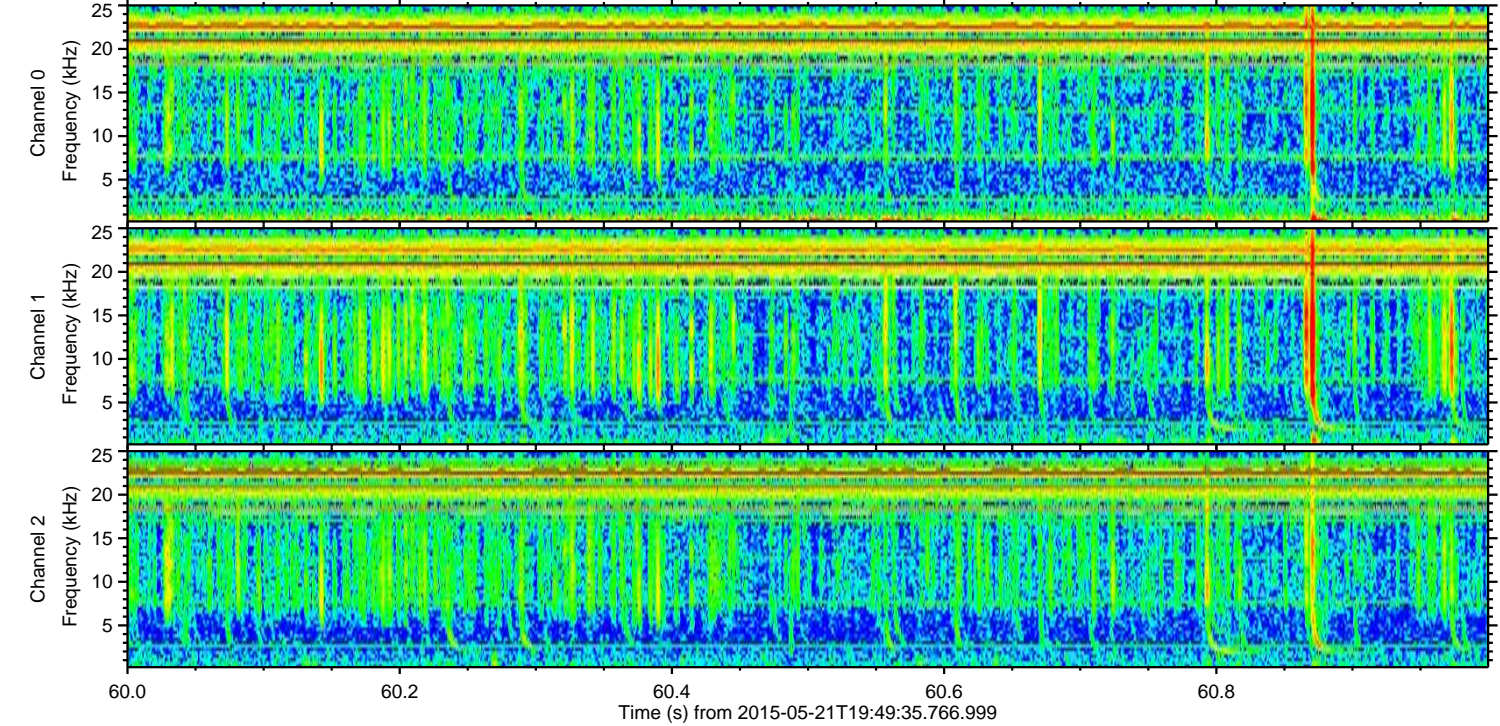
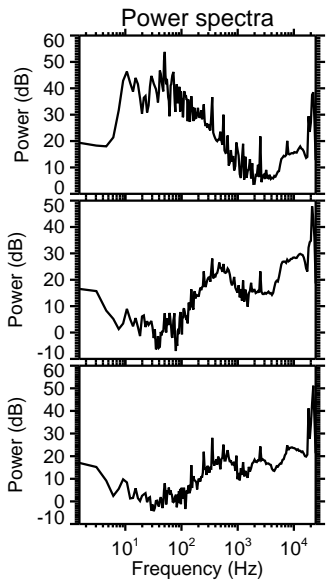
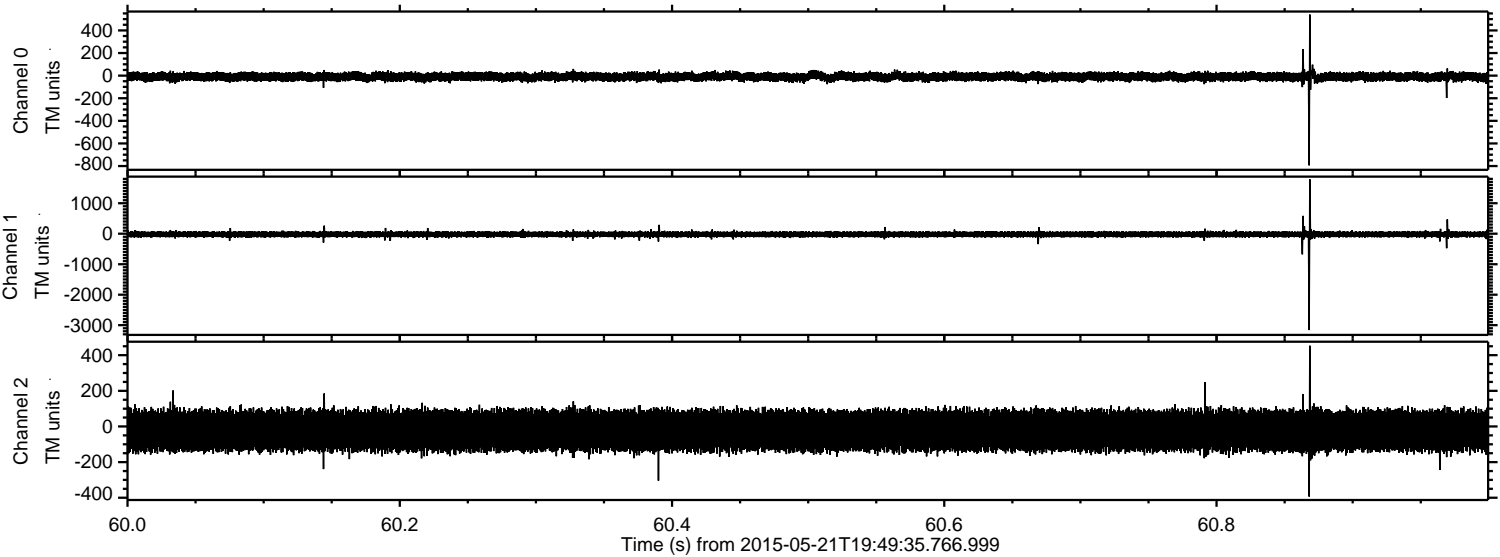
Processed Thu May 21 21:56:52 2015 by ELM ver.2012-10-06 from 001__elm20150521_194934__dat00.bin



Processed Thu May 21 21:56:53 2015 by ELM ver.2012-10-06 from 001__elm20150521_194934__dat00.bin

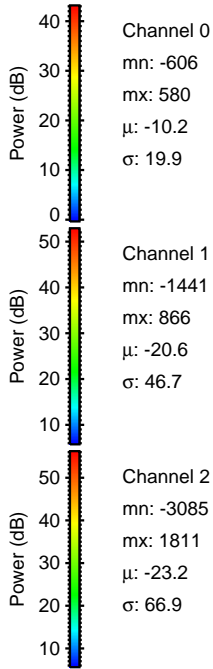
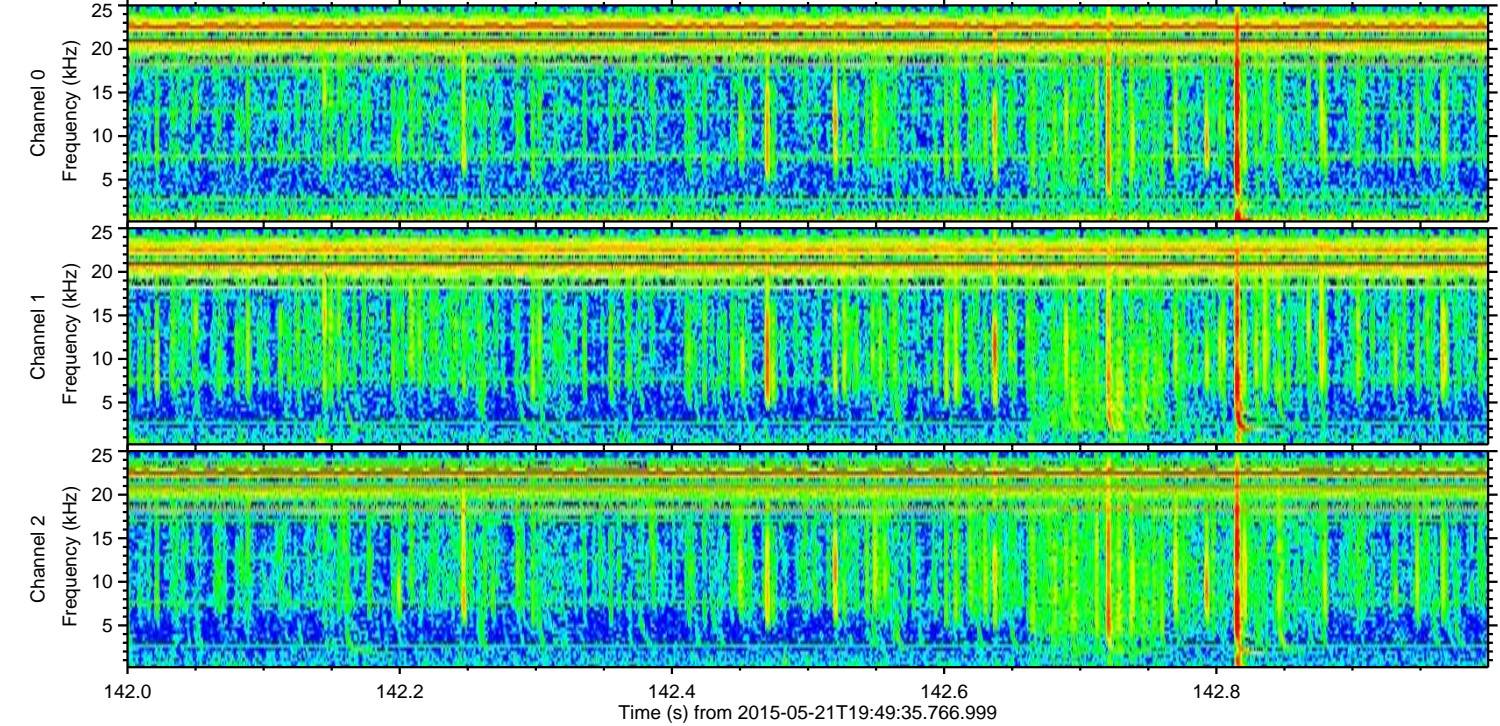
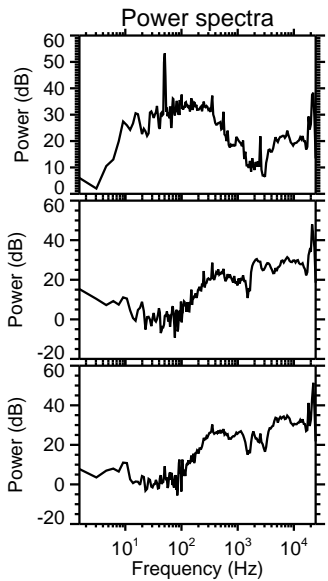
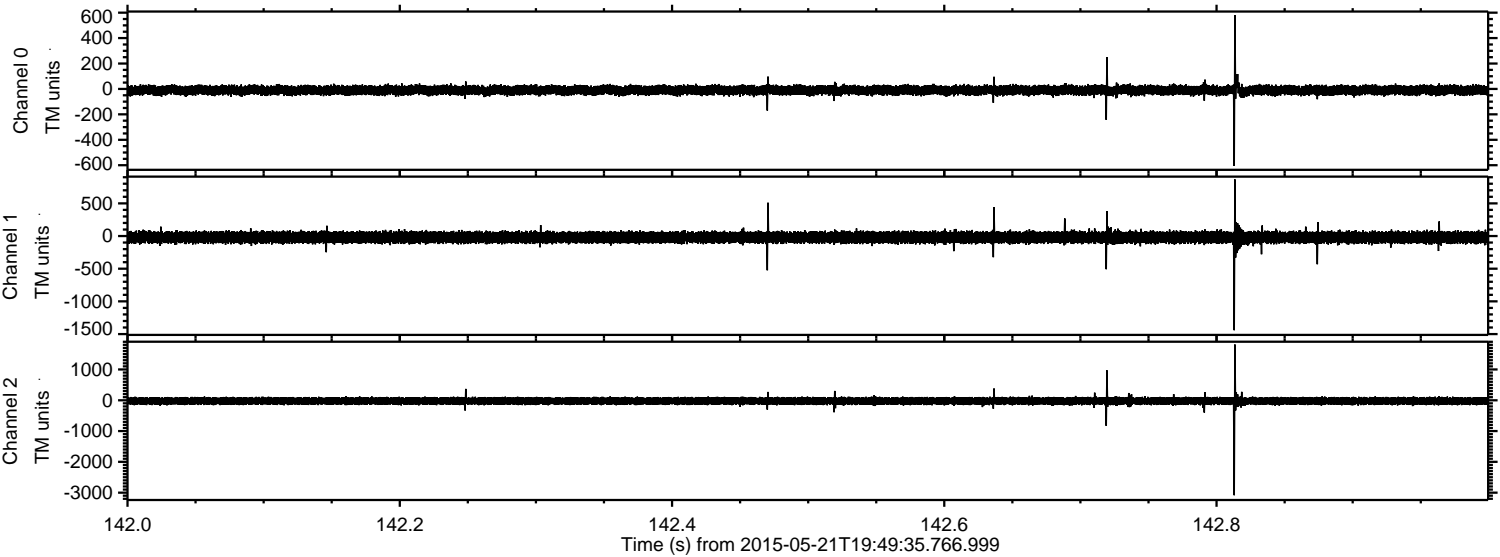


Processed Thu May 21 21:56:54 2015 by ELM ver.2012-10-06 from 001__elm20150521_194934__dat00.bin



ELMAVAN 3D WAVEFORMS (Measured data sampled at 50 kHz) 49717 packets of 144 samples from 2015-05-21T19:49:35.766.999. Part 143/144

Processed Thu May 21 21:56:55 2015 by ELM ver.2012-10-06 from 001__elm20150521_194934__dat00.bin

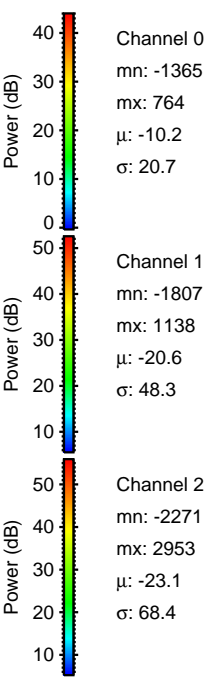
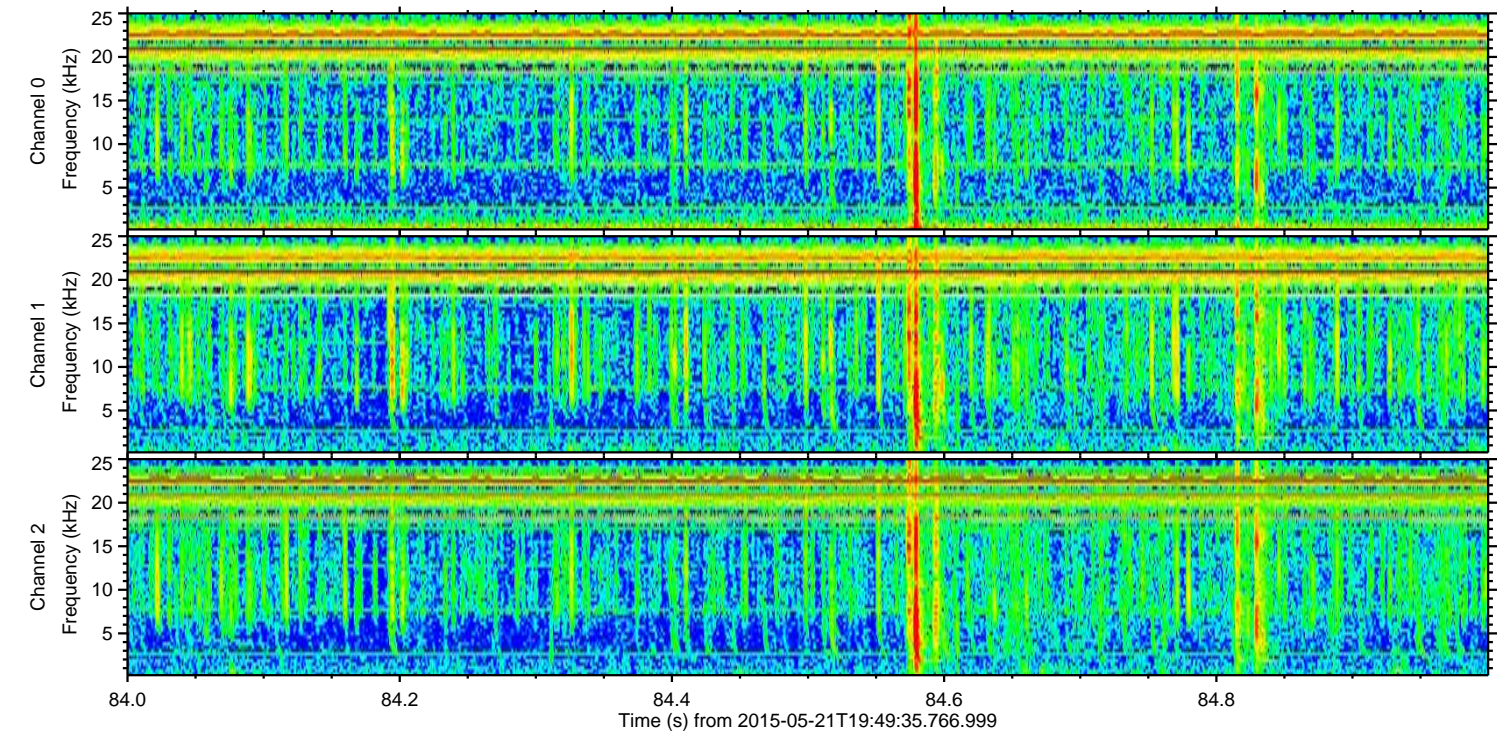
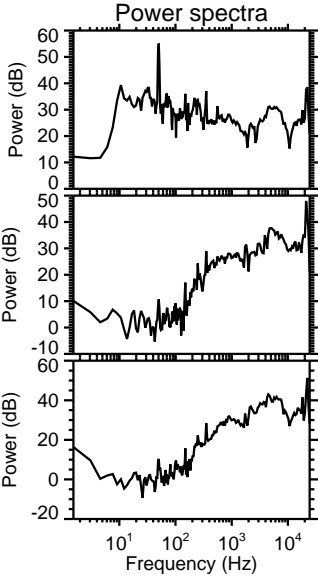
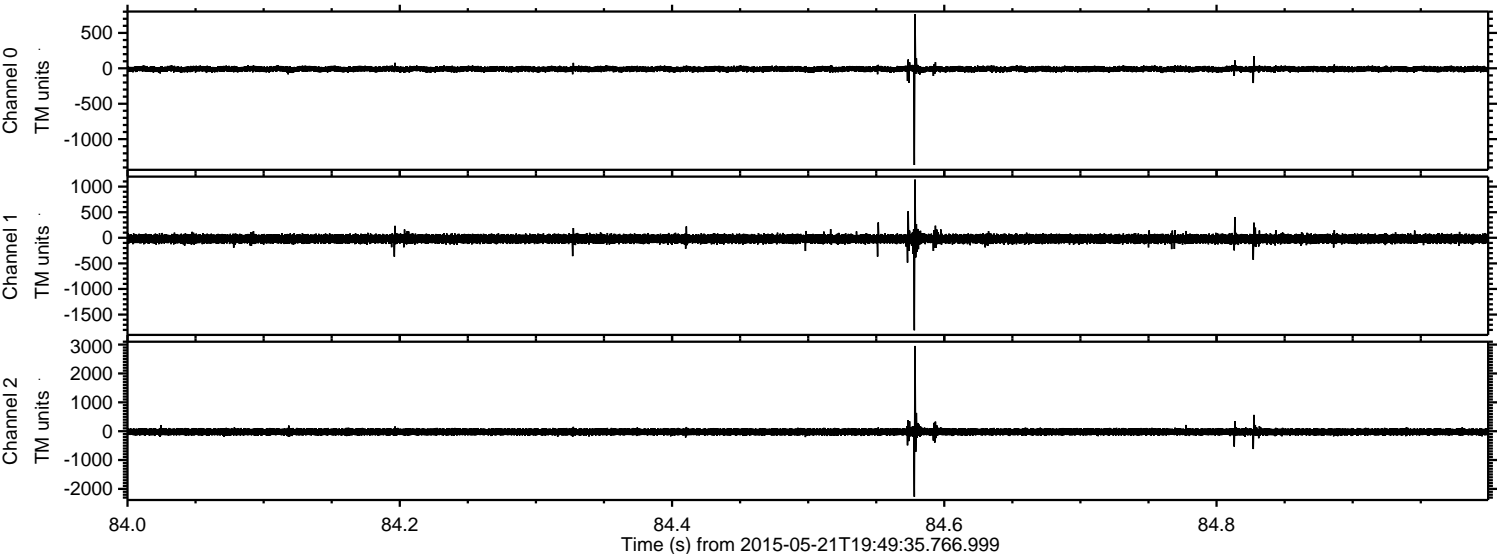


Channel 0
mn: -606
mx: 580
 μ : -10.2
 σ : 19.9

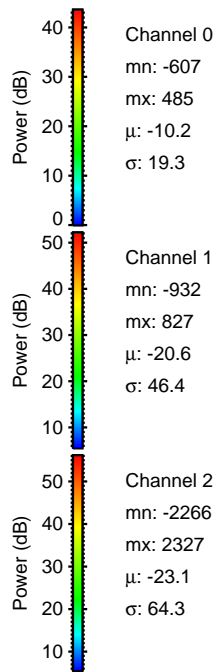
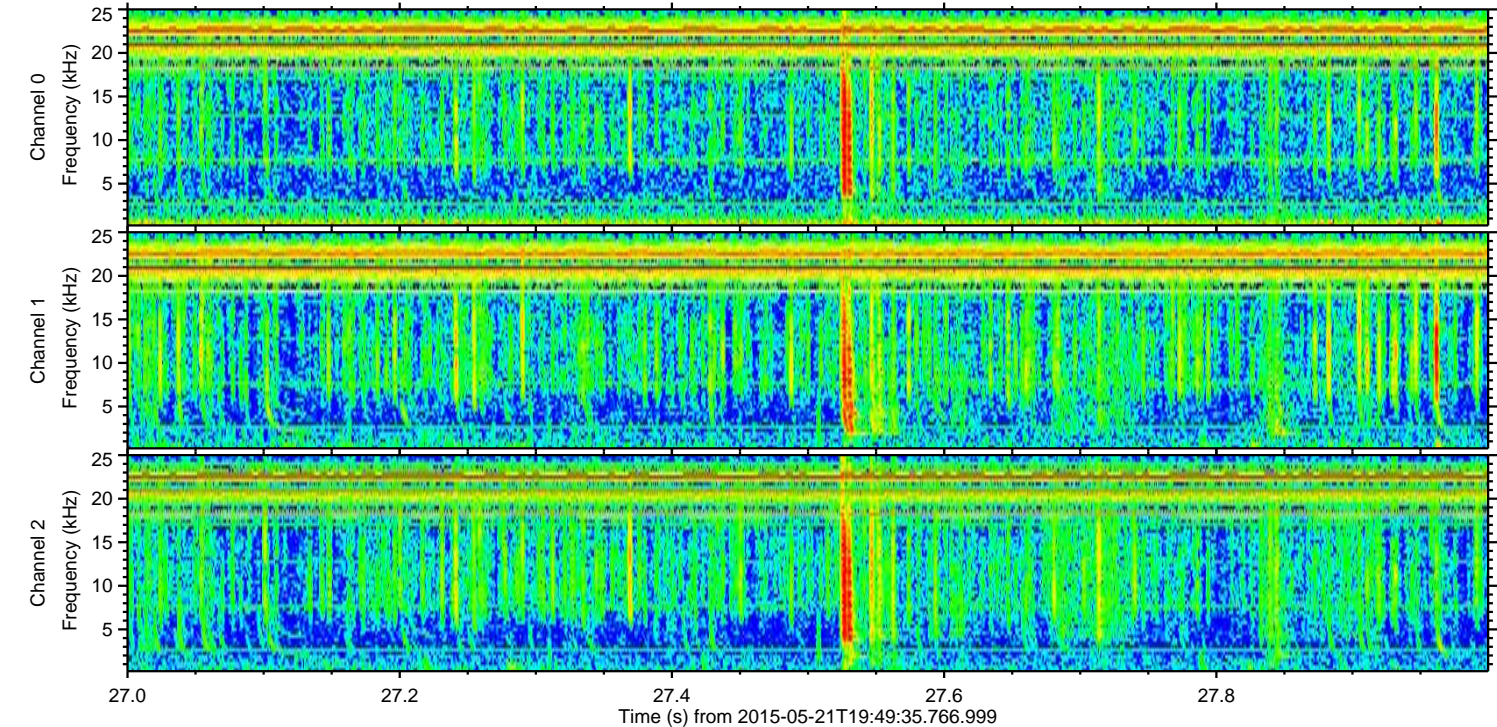
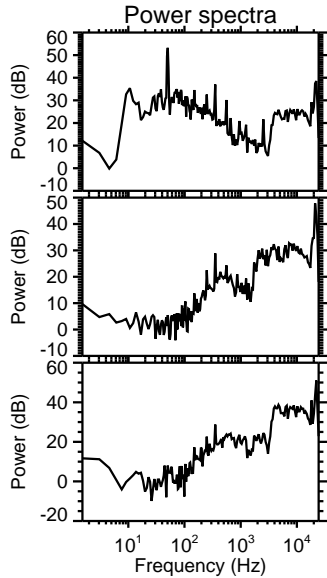
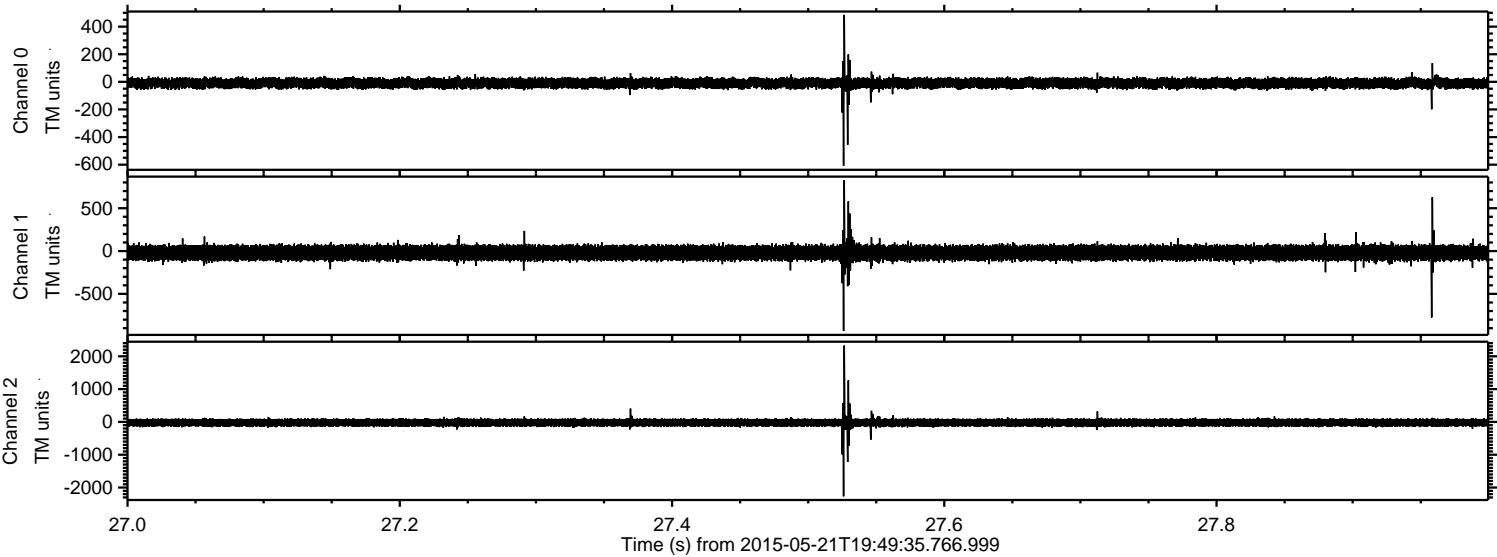
Channel 1
mn: -1441
mx: 866
 μ : -20.6
 σ : 46.7

Channel 2
mn: -3085
mx: 1811
 μ : -23.2
 σ : 66.9

Processed Thu May 21 21:56:56 2015 by ELM ver.2012-10-06 from 001__elm20150521_194934__dat00.bin



Processed Thu May 21 21:56:57 2015 by ELM ver.2012-10-06 from 001__elm20150521_194934__dat00.bin



Processed Thu May 21 21:56:58 2015 by ELM ver.2012-10-06 from 001__elm20150521_194934__dat00.bin

