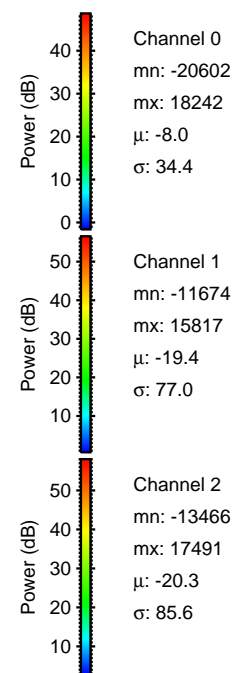
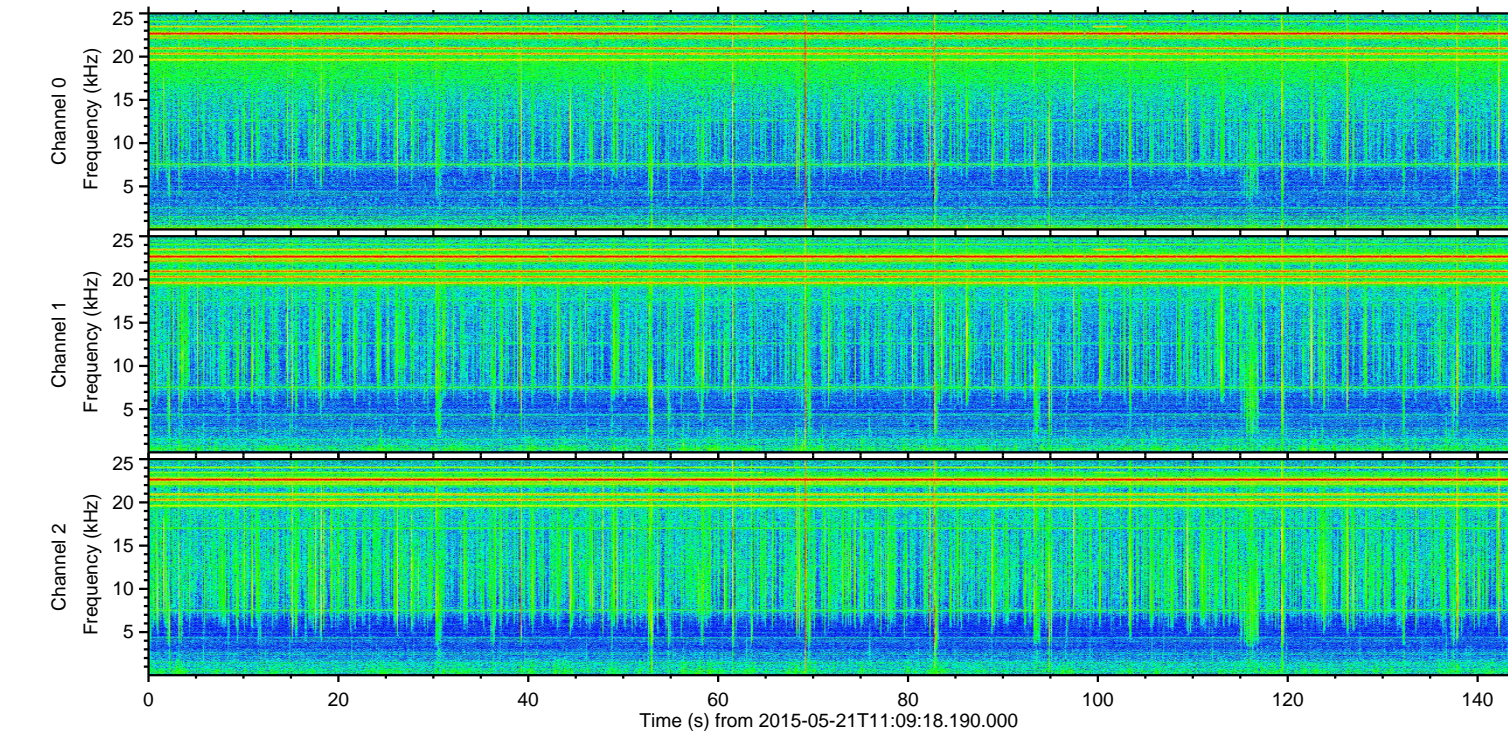
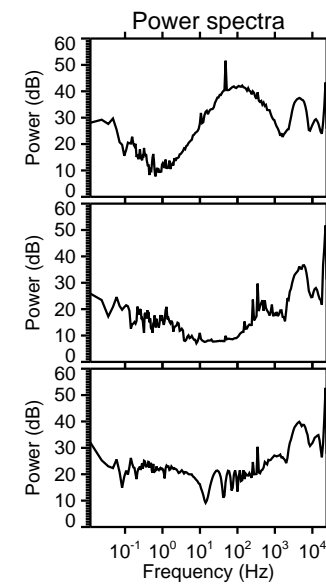
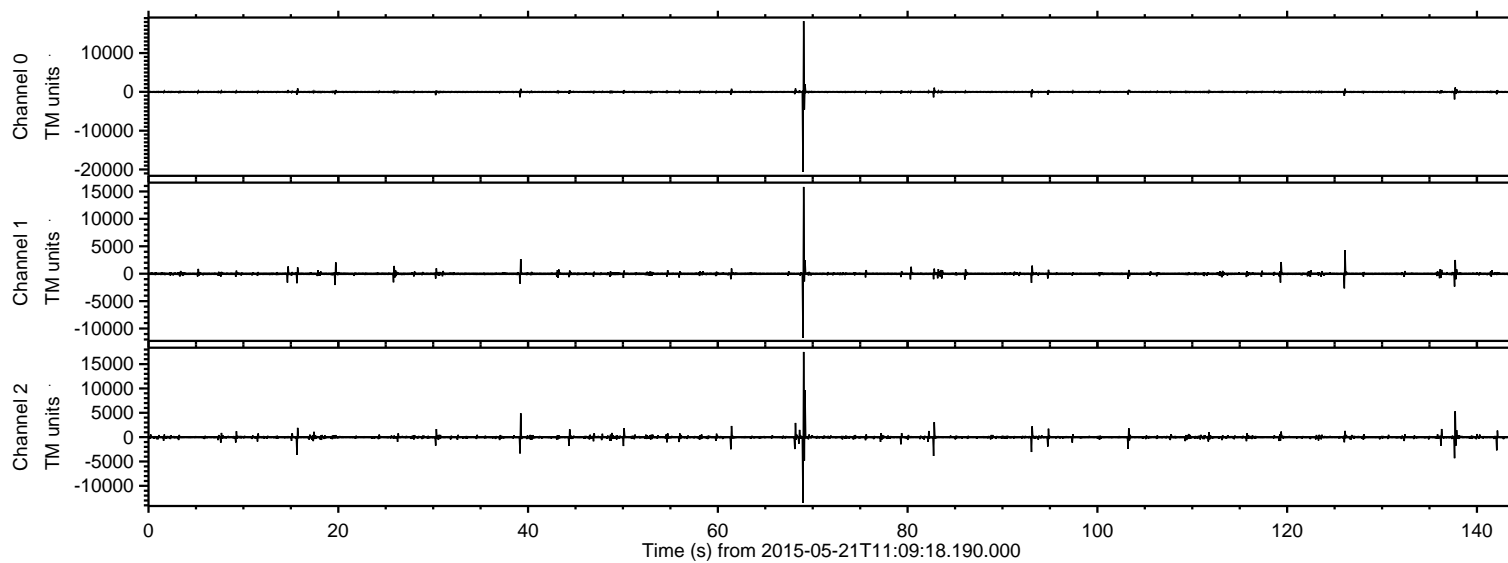


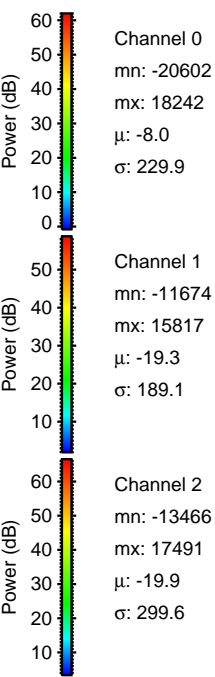
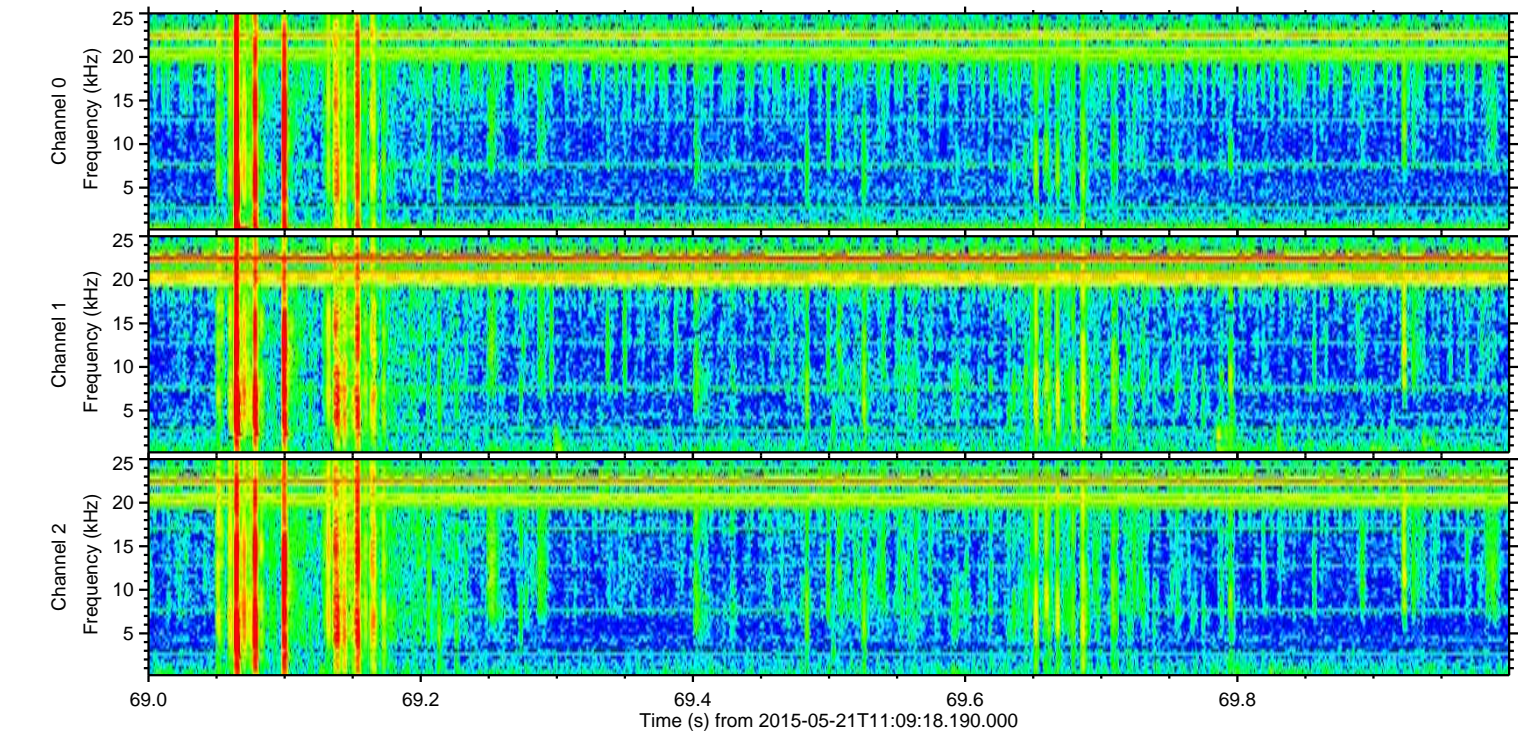
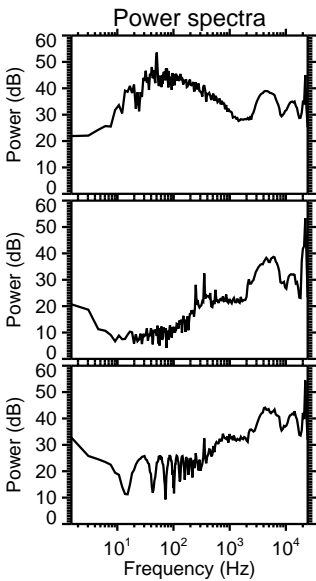
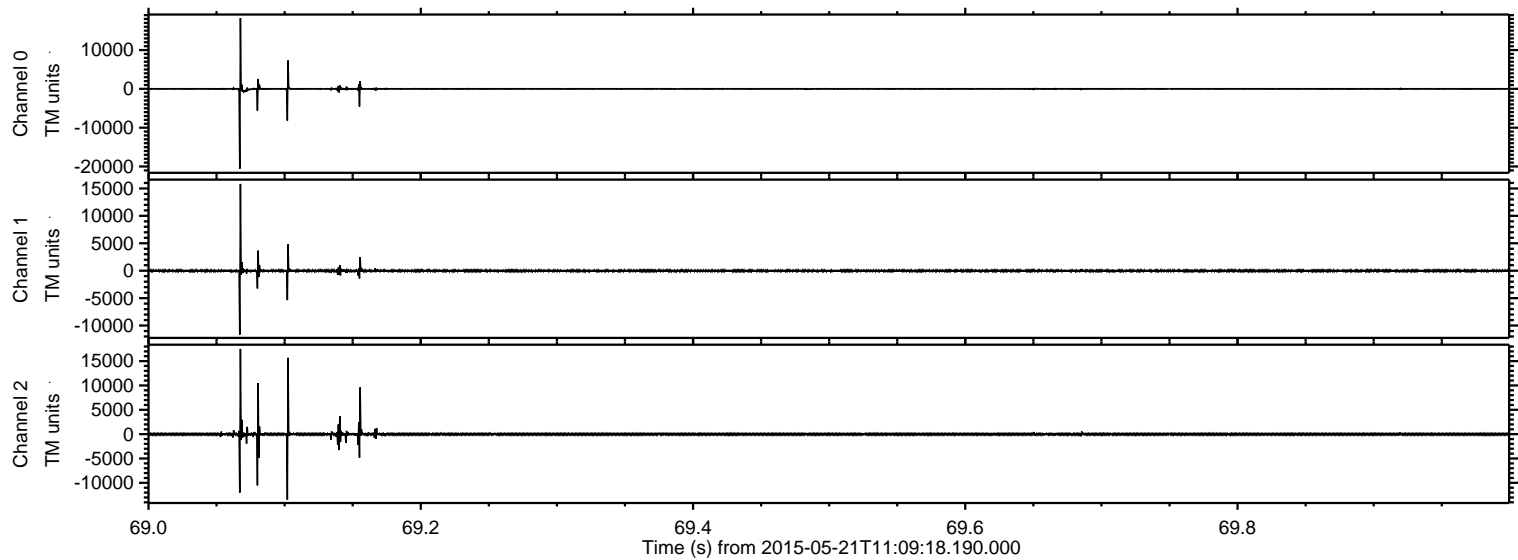
# ELMAVAN 3D WAVEFORMS (Measured data sampled at 50 kHz) 49790 packets of 144 samples from 2015-05-21T11:09:18.190.000.

Processed Thu May 21 13:15:43 2015 by ELM ver.2012-10-06 from 001\_\_elm20150521\_110917\_\_dat00.bin





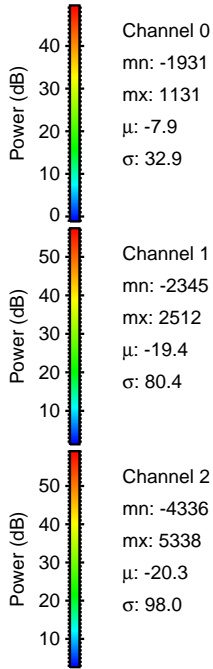
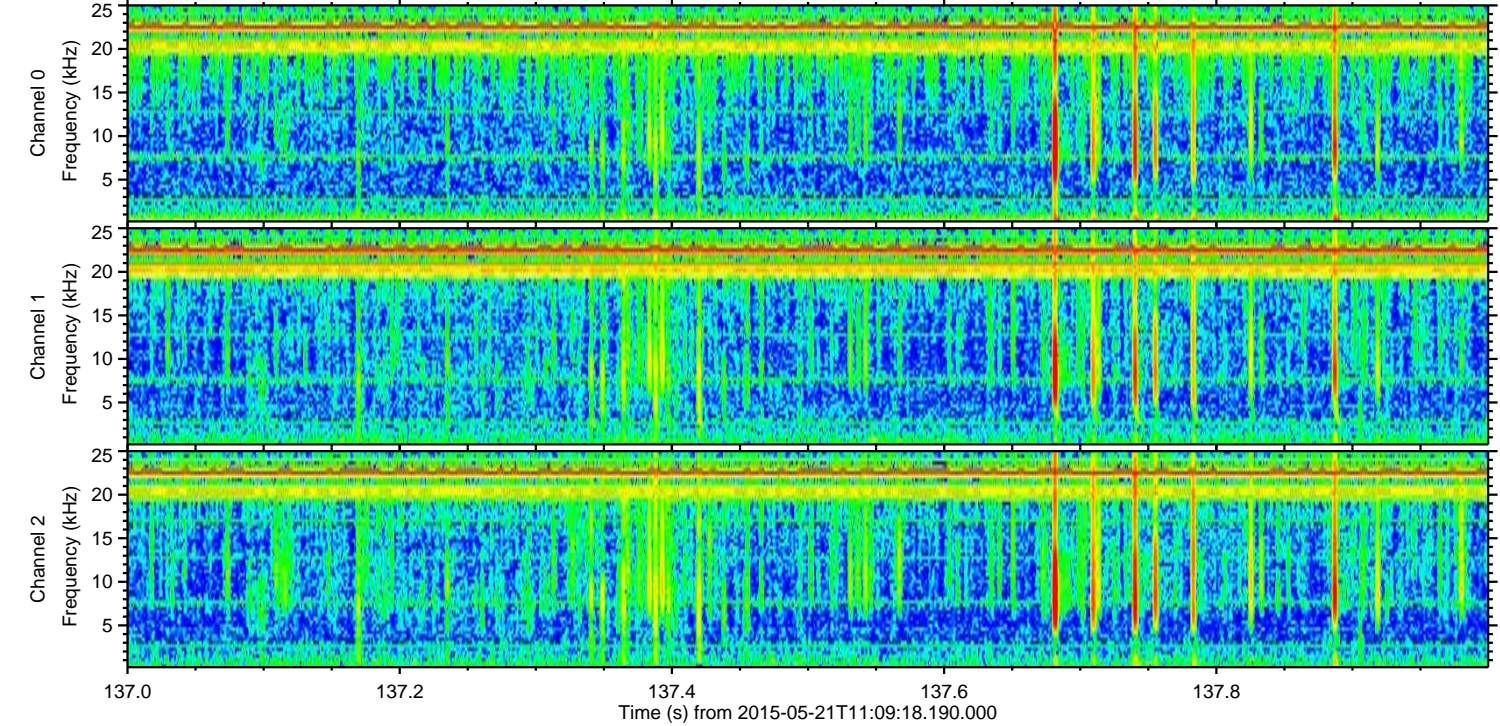
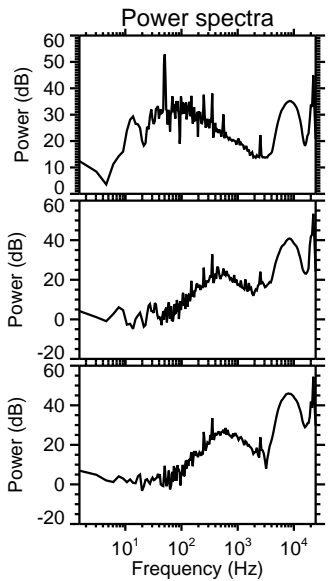
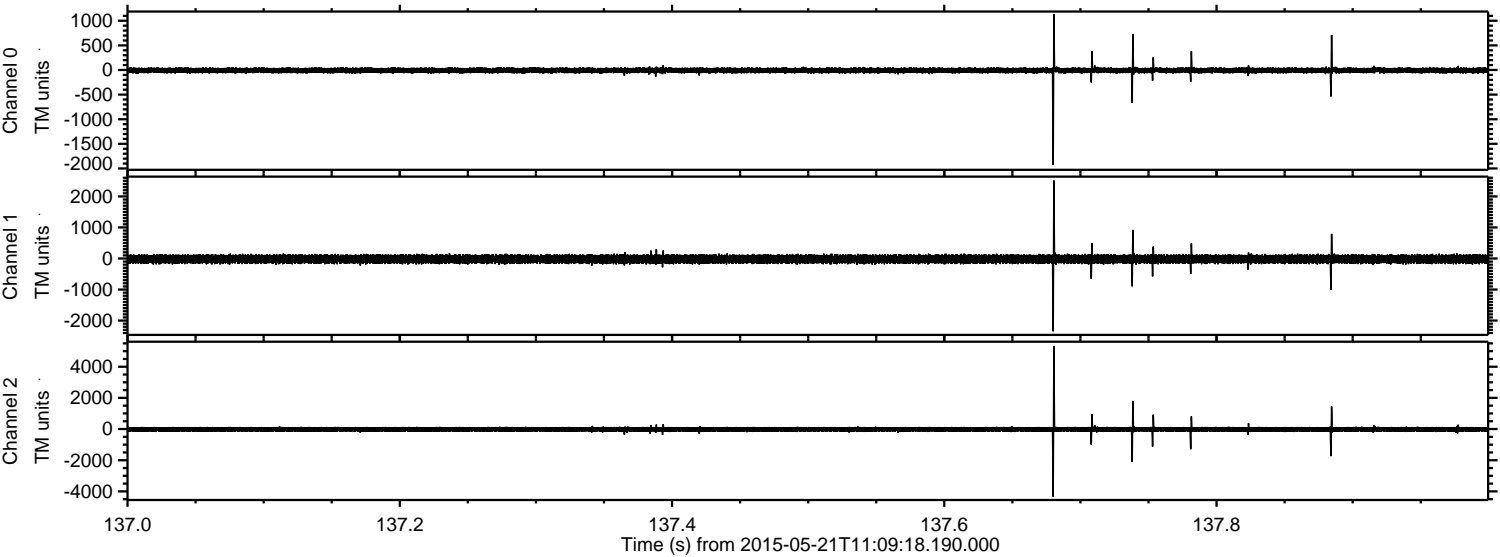
Processed Thu May 21 13:15:54 2015 by ELM ver.2012-10-06 from 001\_\_elm20150521\_110917\_\_dat00.bin





ELMAVAN 3D WAVEFORMS (Measured data sampled at 50 kHz) 49790 packets of 144 samples from 2015-05-21T11:09:18.190.000. Part 138/144

Processed Thu May 21 13:15:55 2015 by ELM ver.2012-10-06 from 001\_\_elm20150521\_110917\_\_dat00.bin



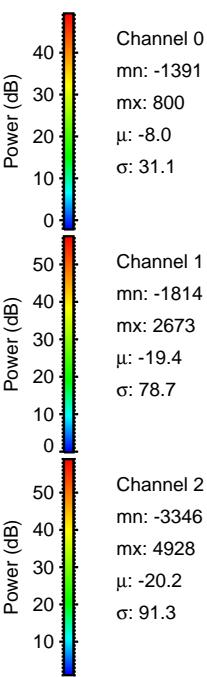
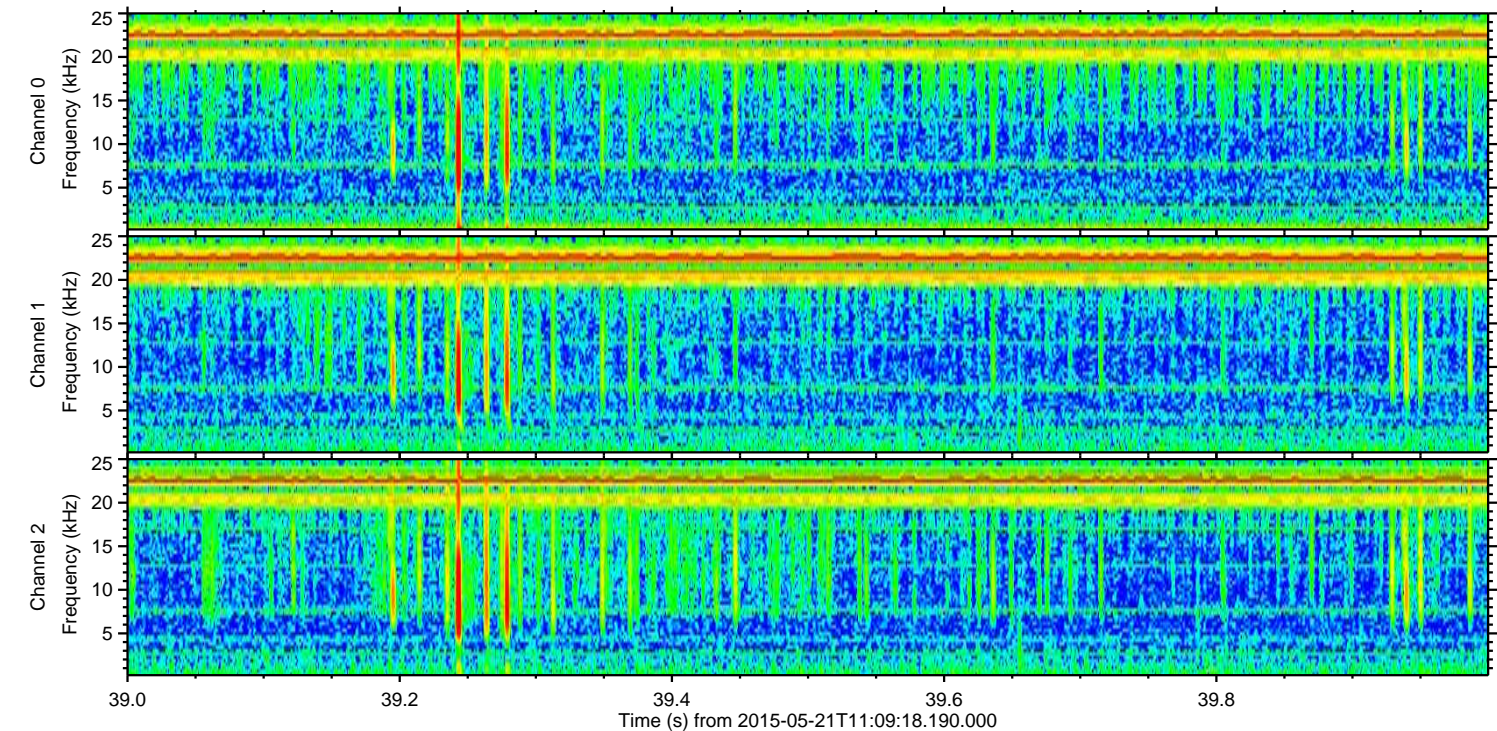
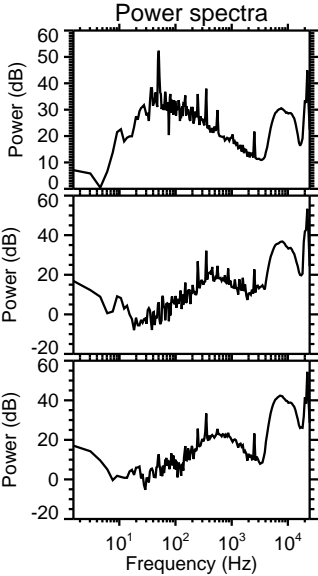
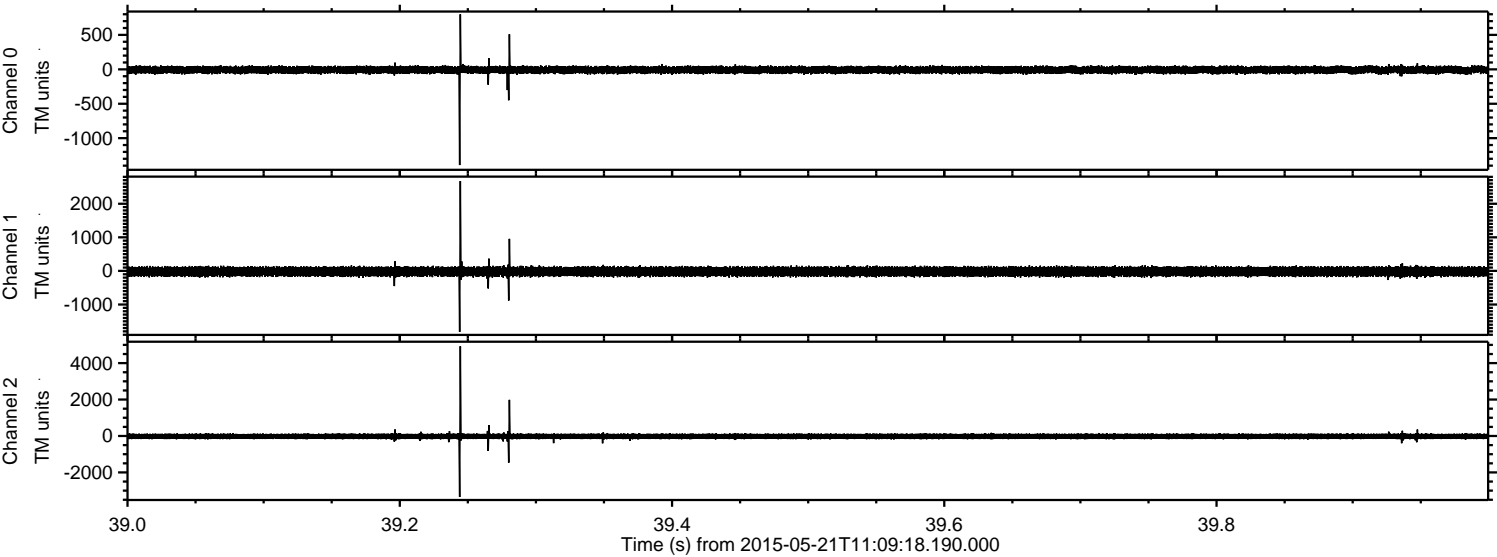
Channel 0  
mn: -1931  
mx: 1131  
 $\mu$ : -7.9  
 $\sigma$ : 32.9

Channel 1  
mn: -2345  
mx: 2512  
 $\mu$ : -19.4  
 $\sigma$ : 80.4

Channel 2  
mn: -4336  
mx: 5338  
 $\mu$ : -20.3  
 $\sigma$ : 98.0



Processed Thu May 21 13:15:56 2015 by ELM ver.2012-10-06 from 001\_\_elm20150521\_110917\_\_dat00.bin



Channel 0  
mn: -1391  
mx: 800  
 $\mu$ : -8.0  
 $\sigma$ : 31.1

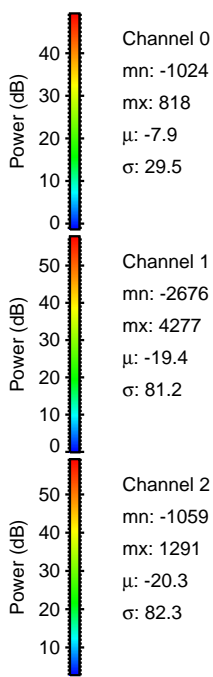
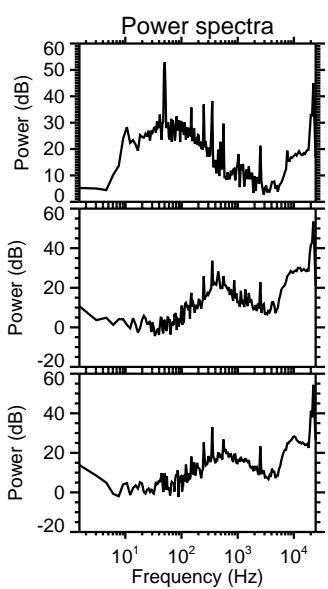
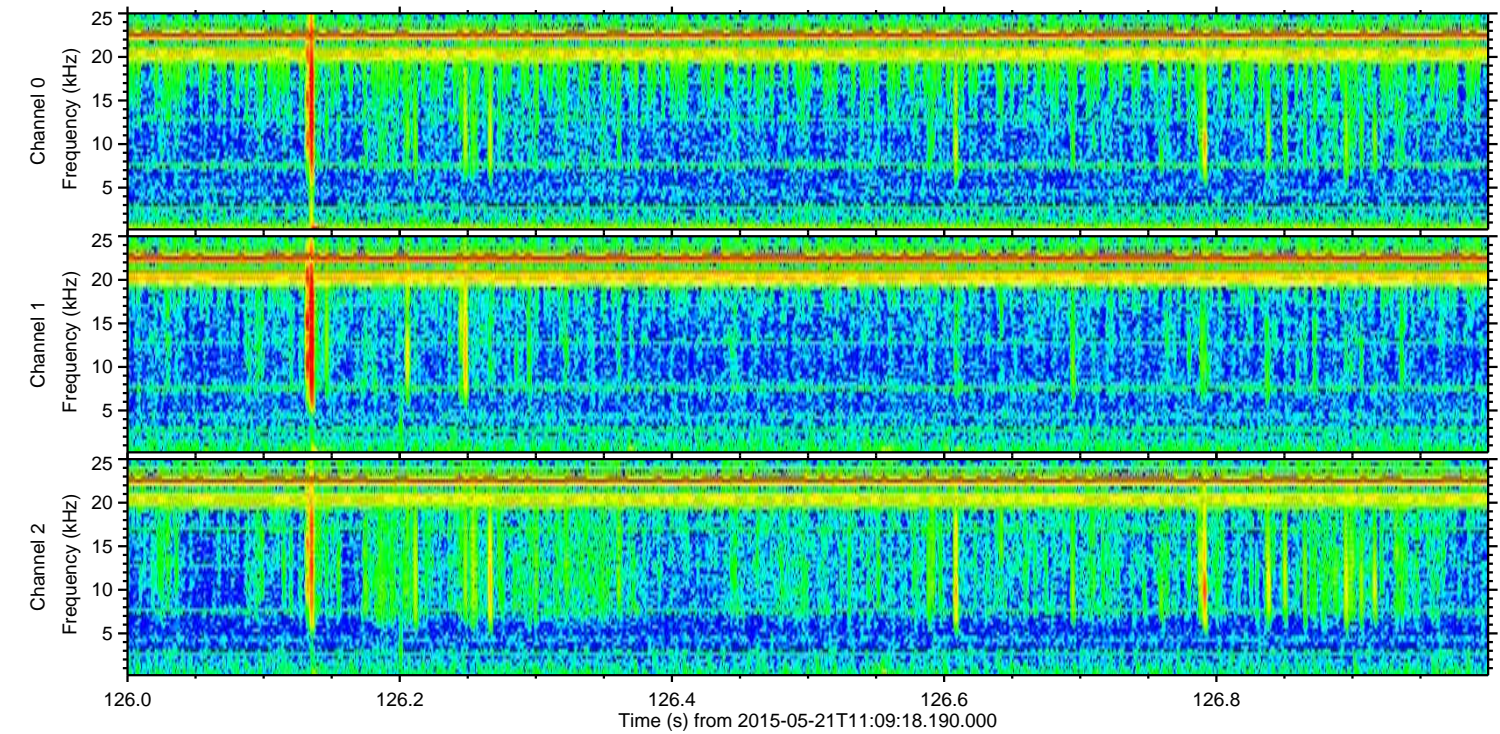
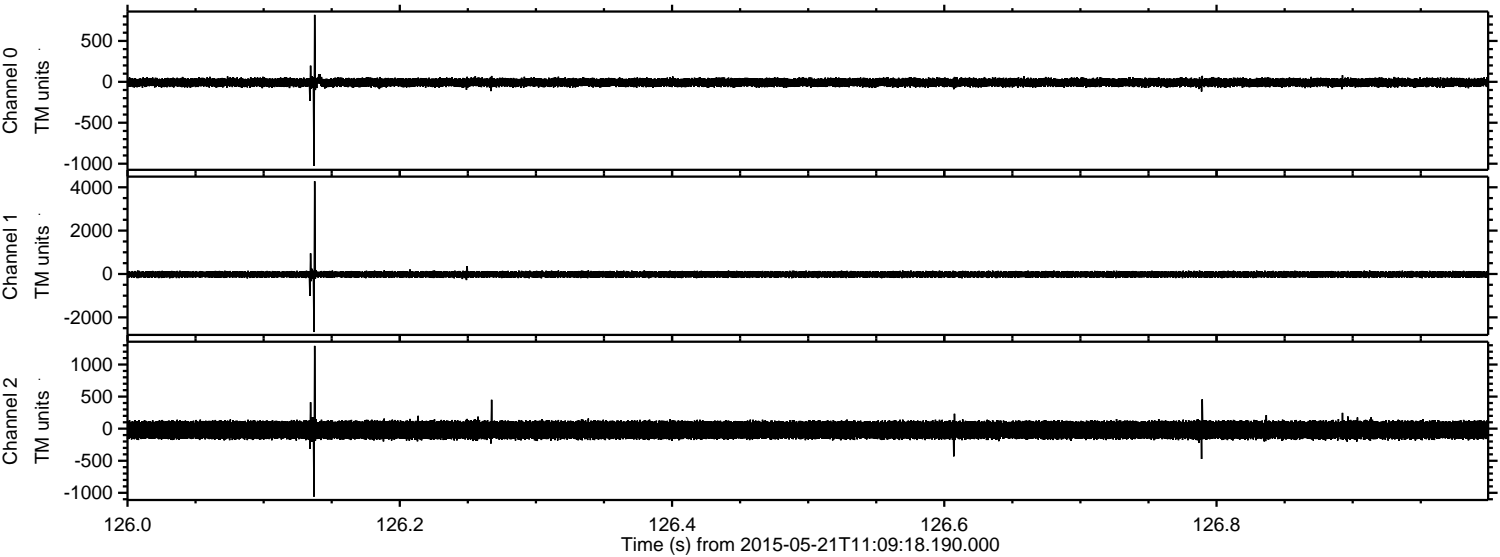
Channel 1  
mn: -1814  
mx: 2673  
 $\mu$ : -19.4  
 $\sigma$ : 78.7

Channel 2  
mn: -3346  
mx: 4928  
 $\mu$ : -20.2  
 $\sigma$ : 91.3



ELMAVAN 3D WAVEFORMS (Measured data sampled at 50 kHz) 49790 packets of 144 samples from 2015-05-21T11:09:18.190.000. Part 127/144

Processed Thu May 21 13:15:57 2015 by ELM ver.2012-10-06 from 001\_\_elm20150521\_110917\_\_dat00.bin



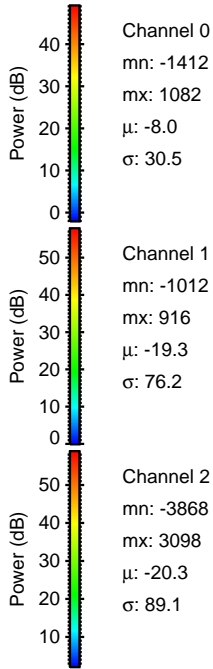
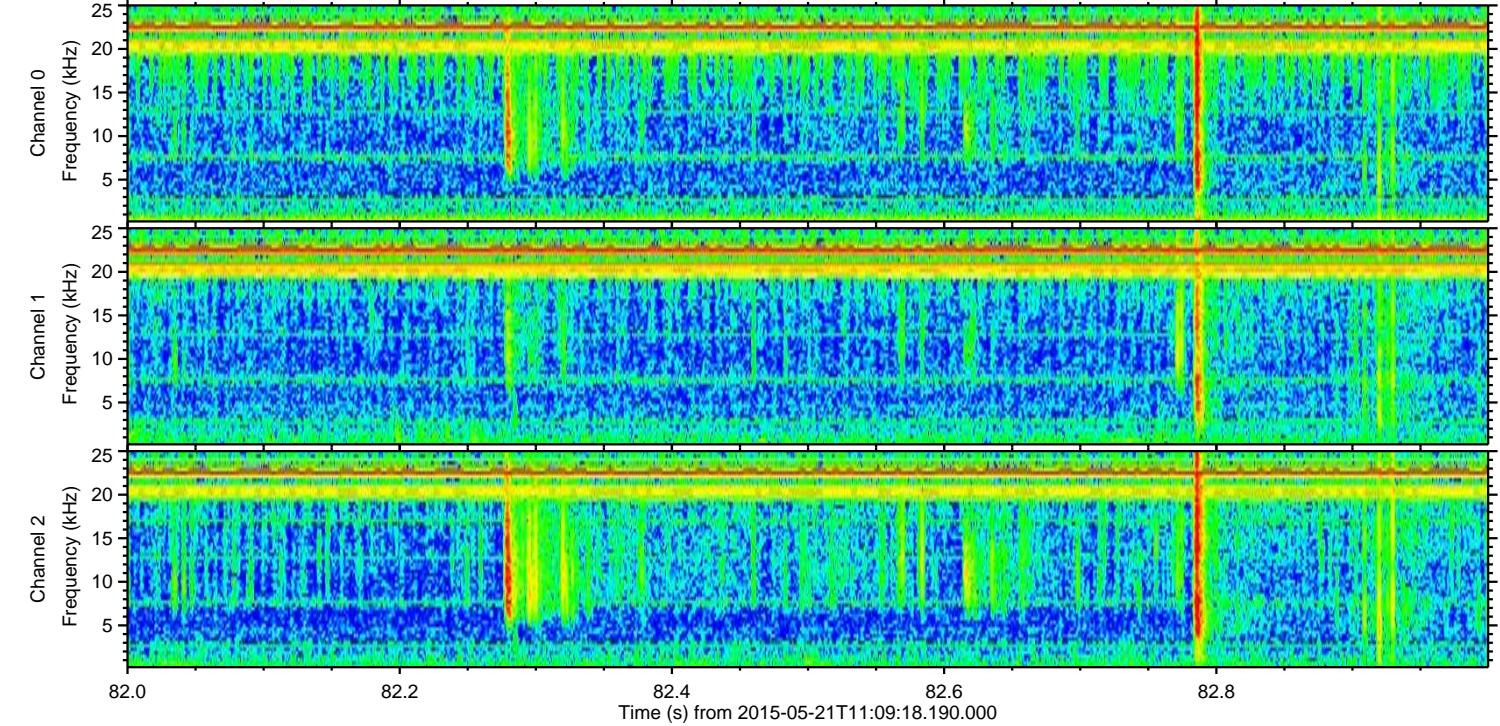
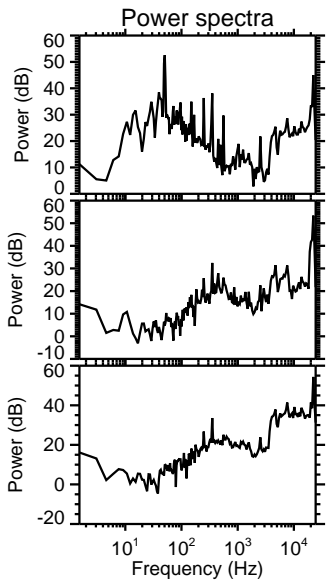
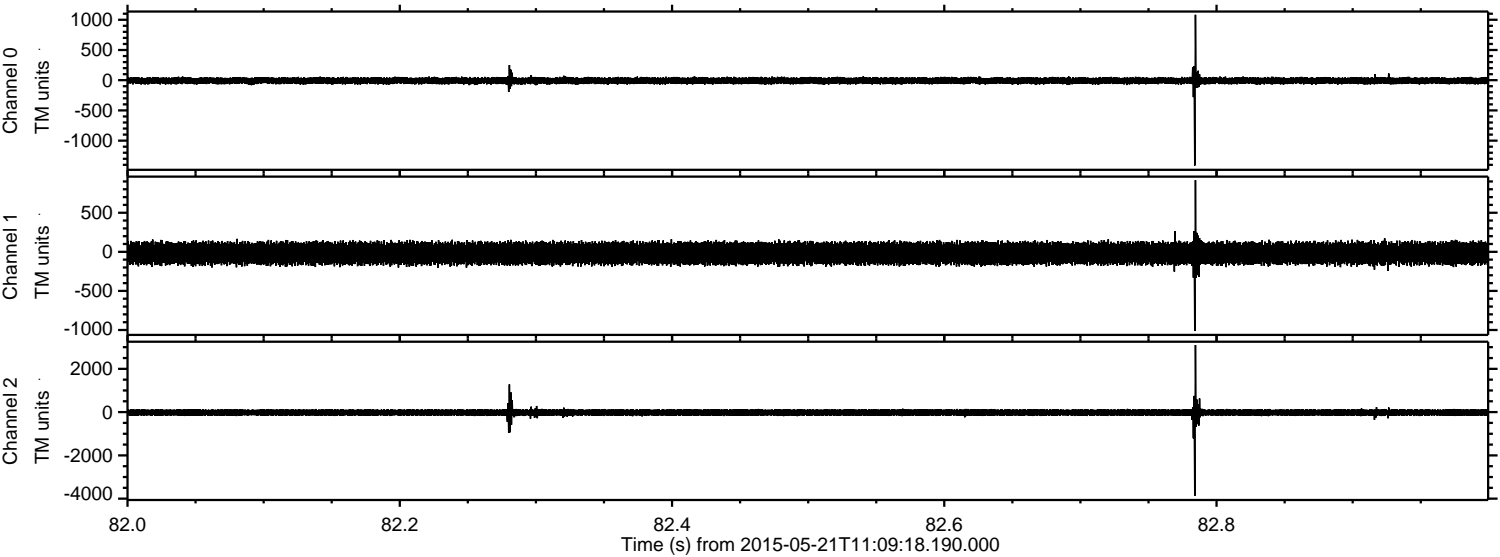
Channel 0  
mn: -1024  
mx: 818  
 $\mu$ : -7.9  
 $\sigma$ : 29.5

Channel 1  
mn: -2676  
mx: 4277  
 $\mu$ : -19.4  
 $\sigma$ : 81.2

Channel 2  
mn: -1059  
mx: 1291  
 $\mu$ : -20.3  
 $\sigma$ : 82.3

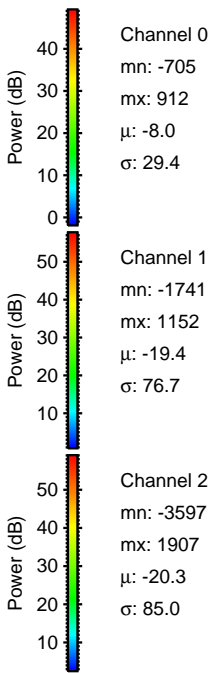
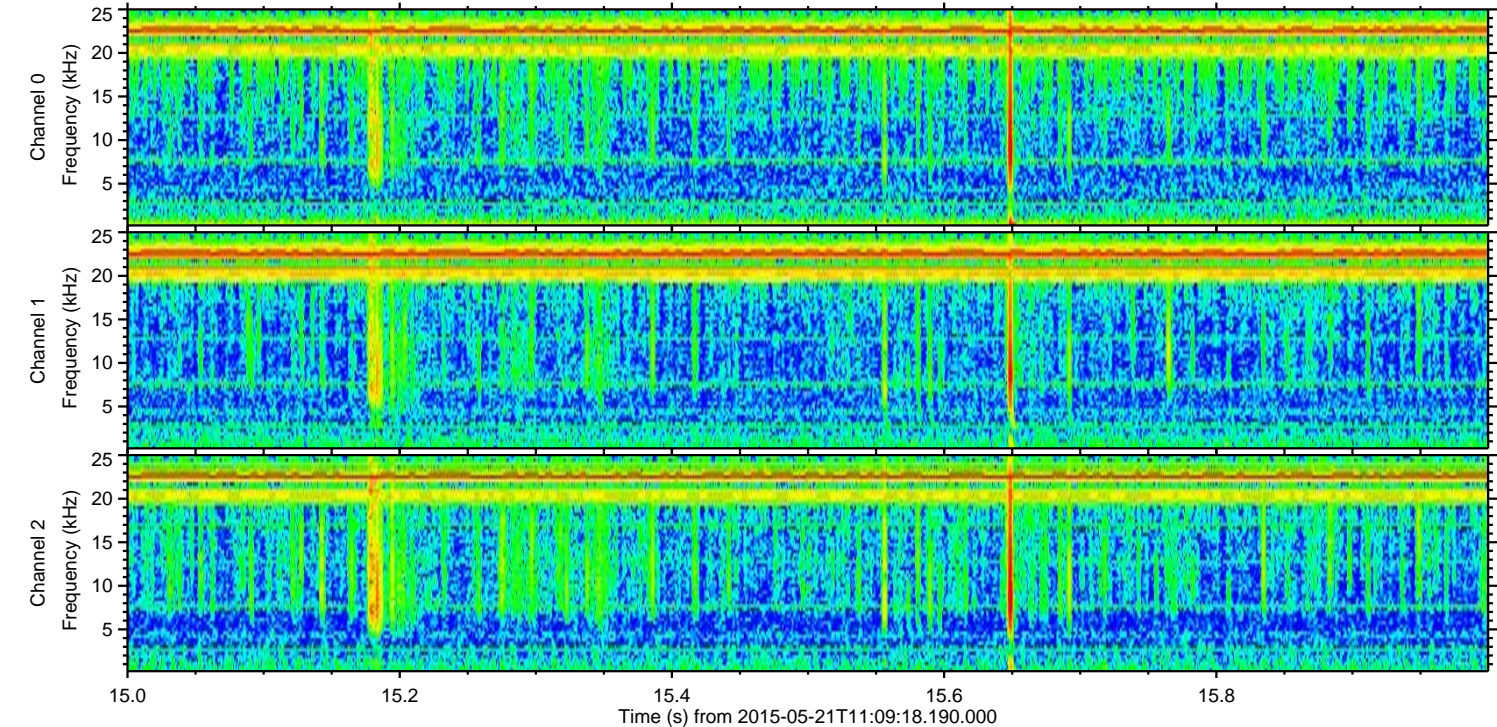
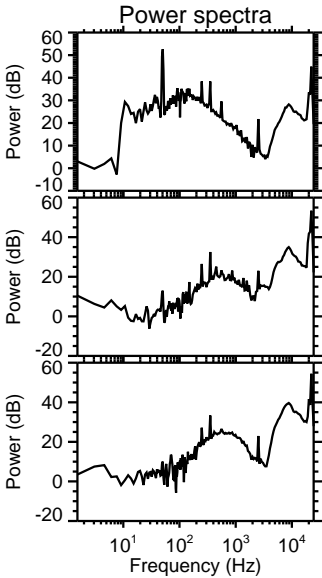
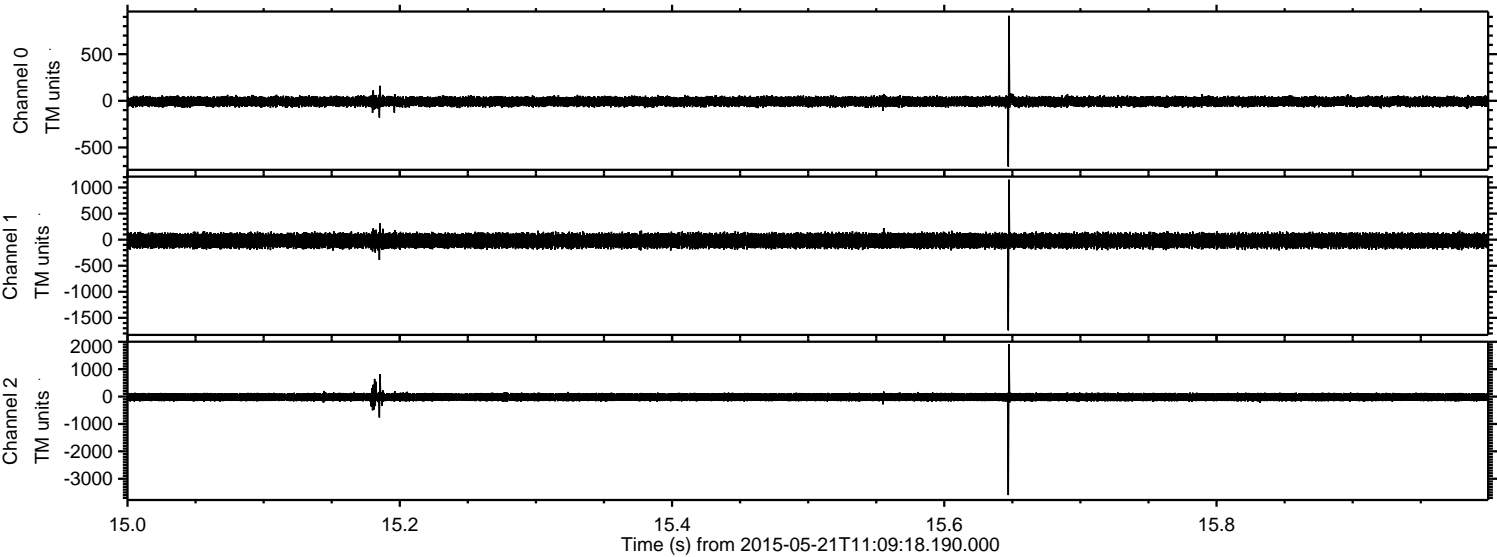


Processed Thu May 21 13:15:58 2015 by ELM ver.2012-10-06 from 001\_\_elm20150521\_110917\_\_dat00.bin



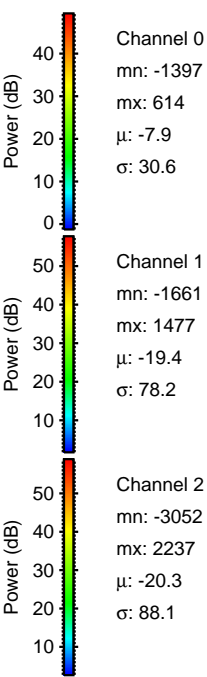
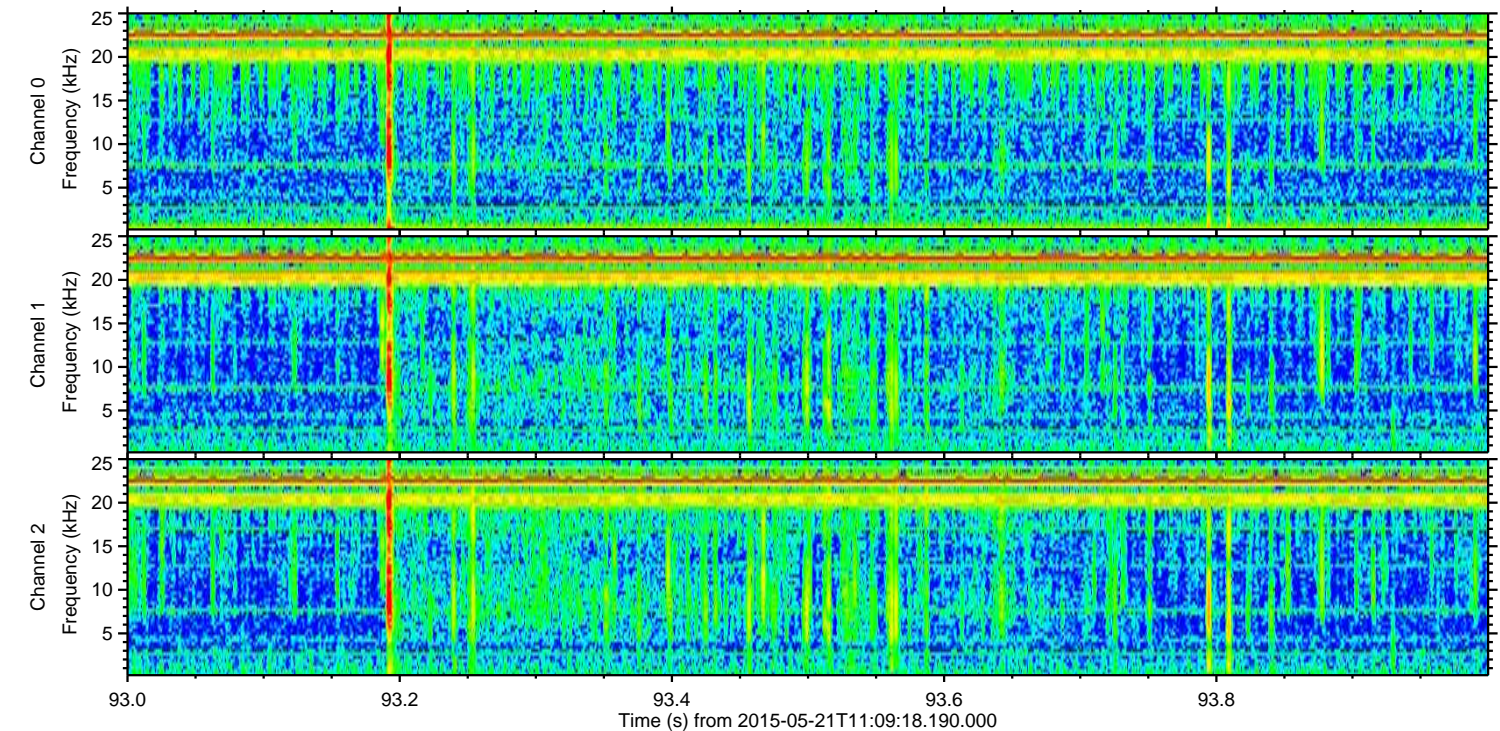
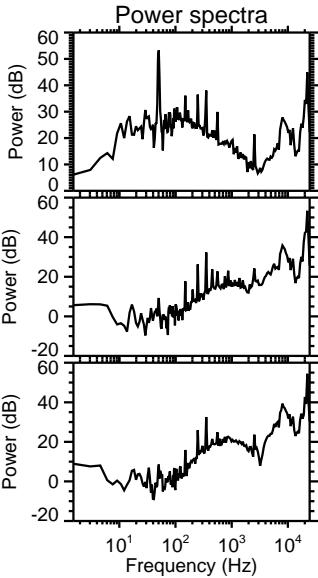
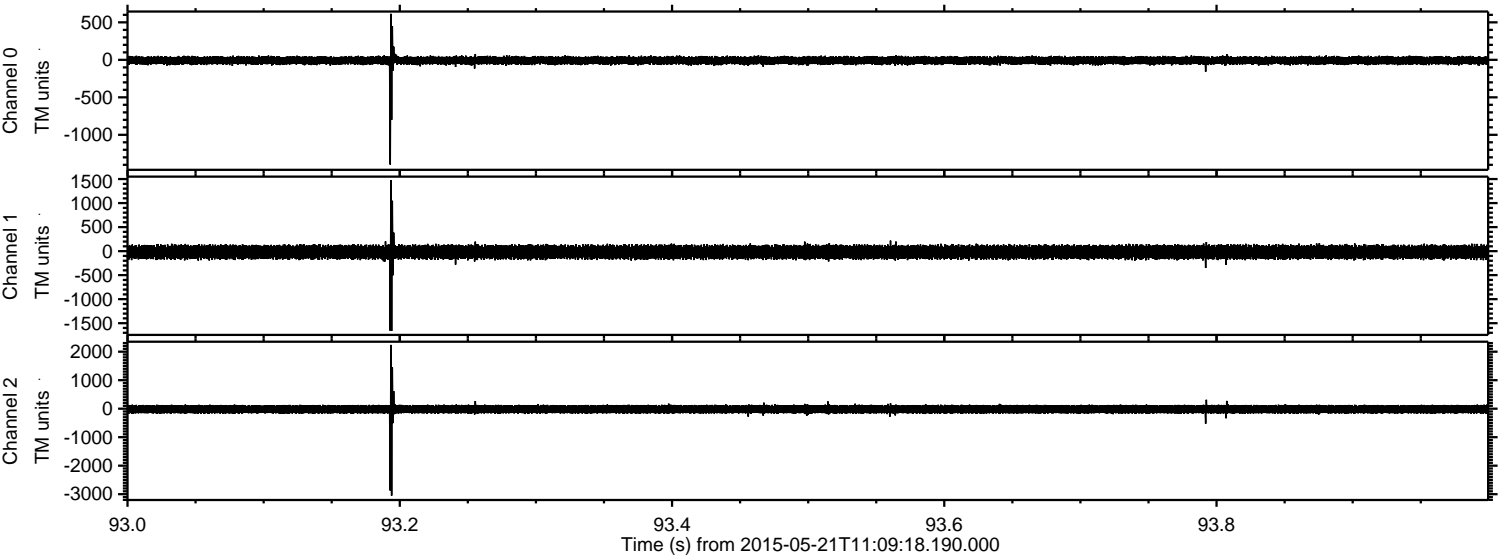


Processed Thu May 21 13:15:59 2015 by ELM ver.2012-10-06 from 001\_\_elm20150521\_110917\_\_dat00.bin





Processed Thu May 21 13:16:00 2015 by ELM ver.2012-10-06 from 001\_\_elm20150521\_110917\_\_dat00.bin



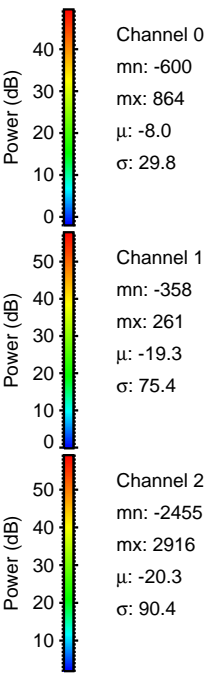
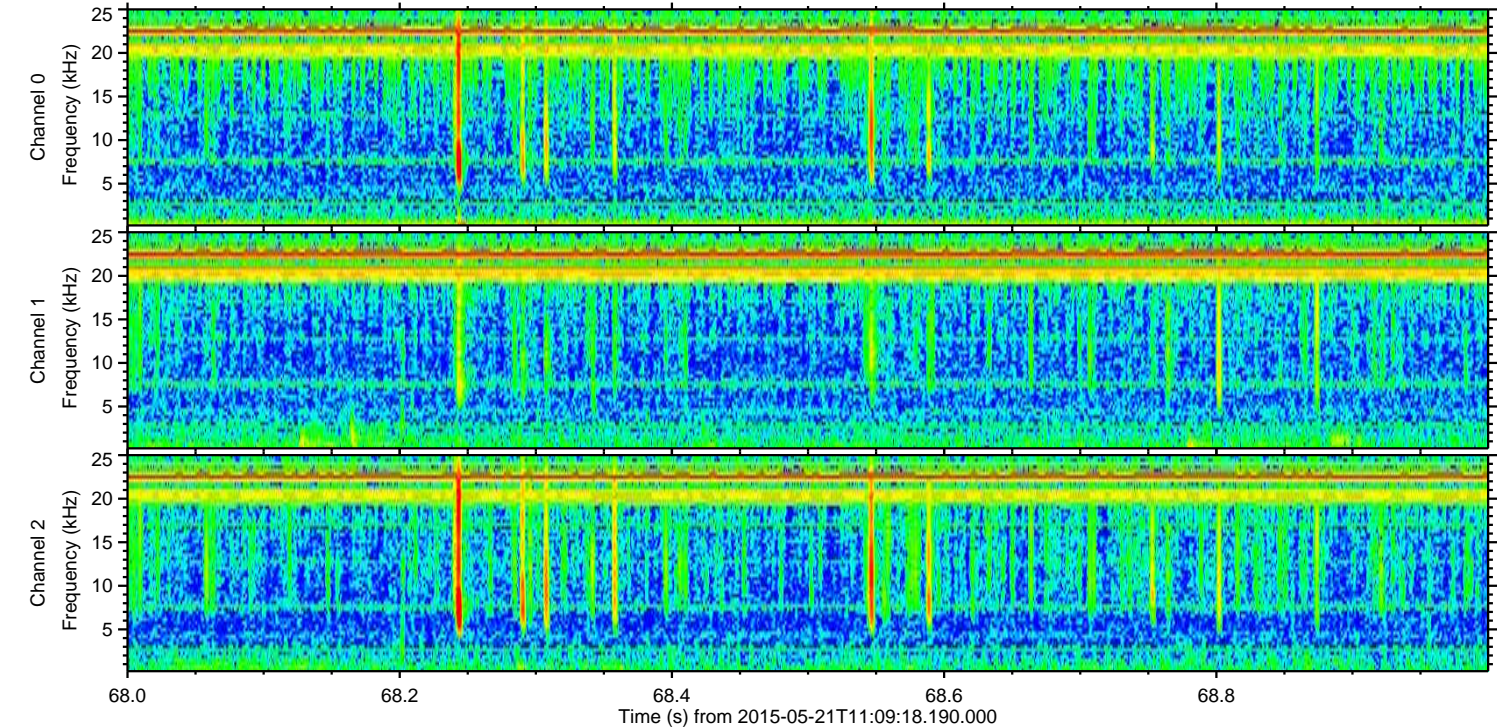
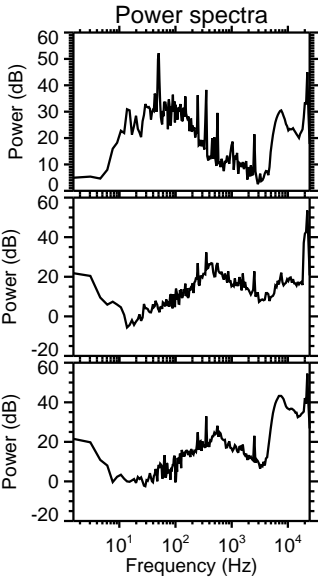
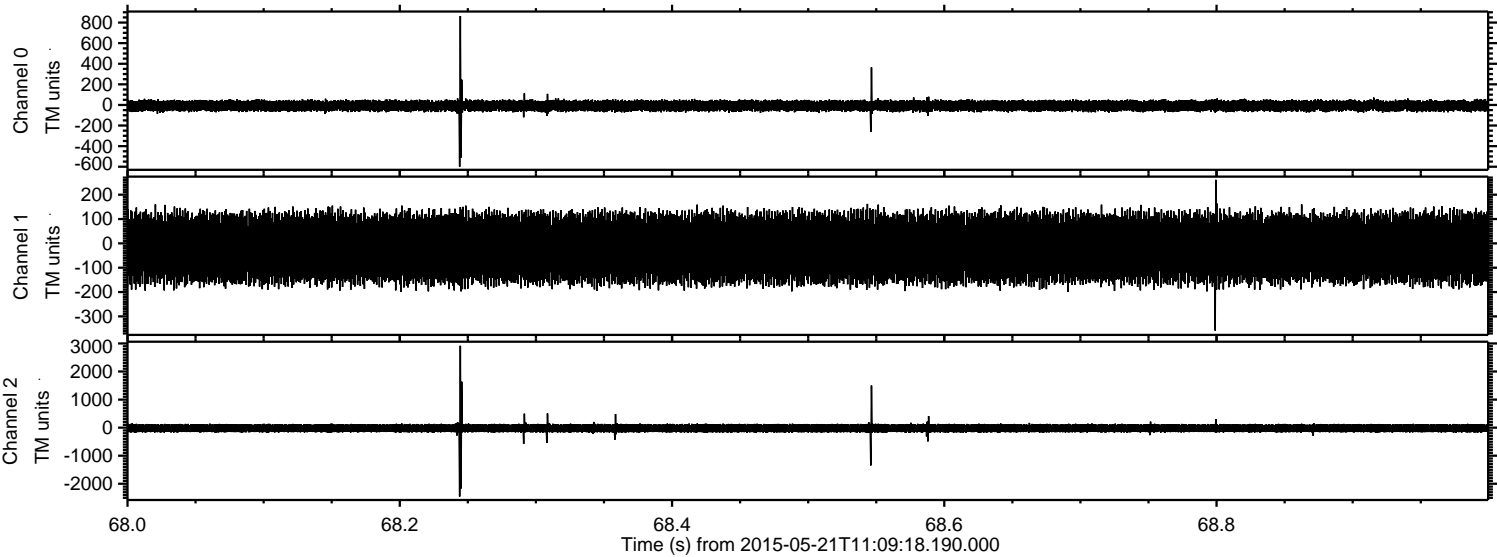
Channel 0  
mn: -1397  
mx: 614  
 $\mu$ : -7.9  
 $\sigma$ : 30.6

Channel 1  
mn: -1661  
mx: 1477  
 $\mu$ : -19.4  
 $\sigma$ : 78.2

Channel 2  
mn: -3052  
mx: 2237  
 $\mu$ : -20.3  
 $\sigma$ : 88.1



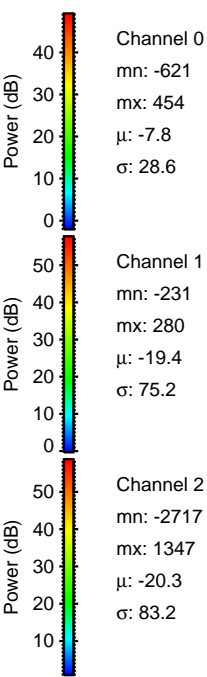
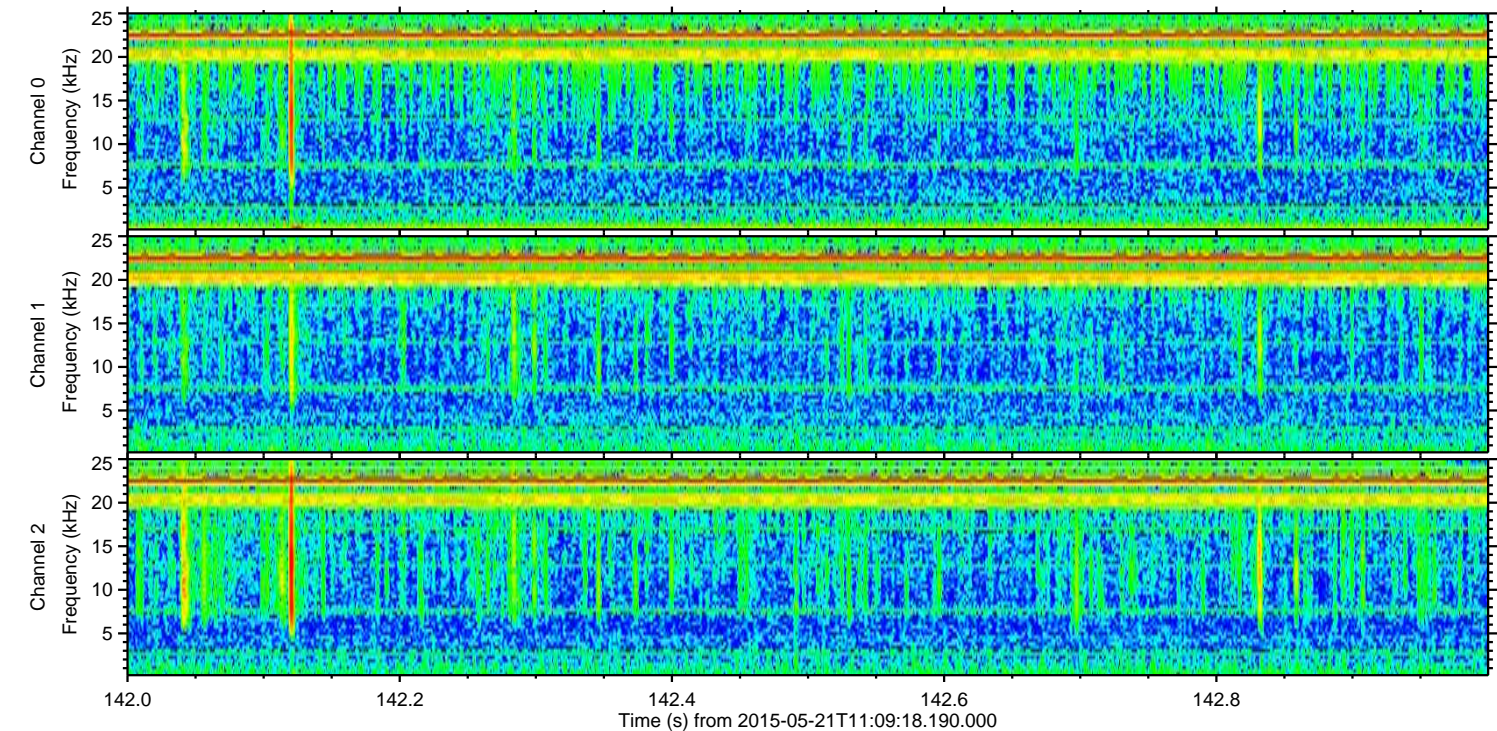
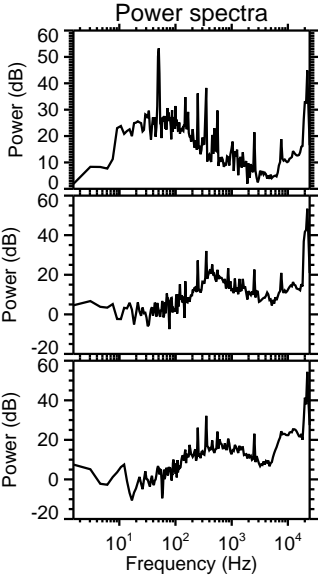
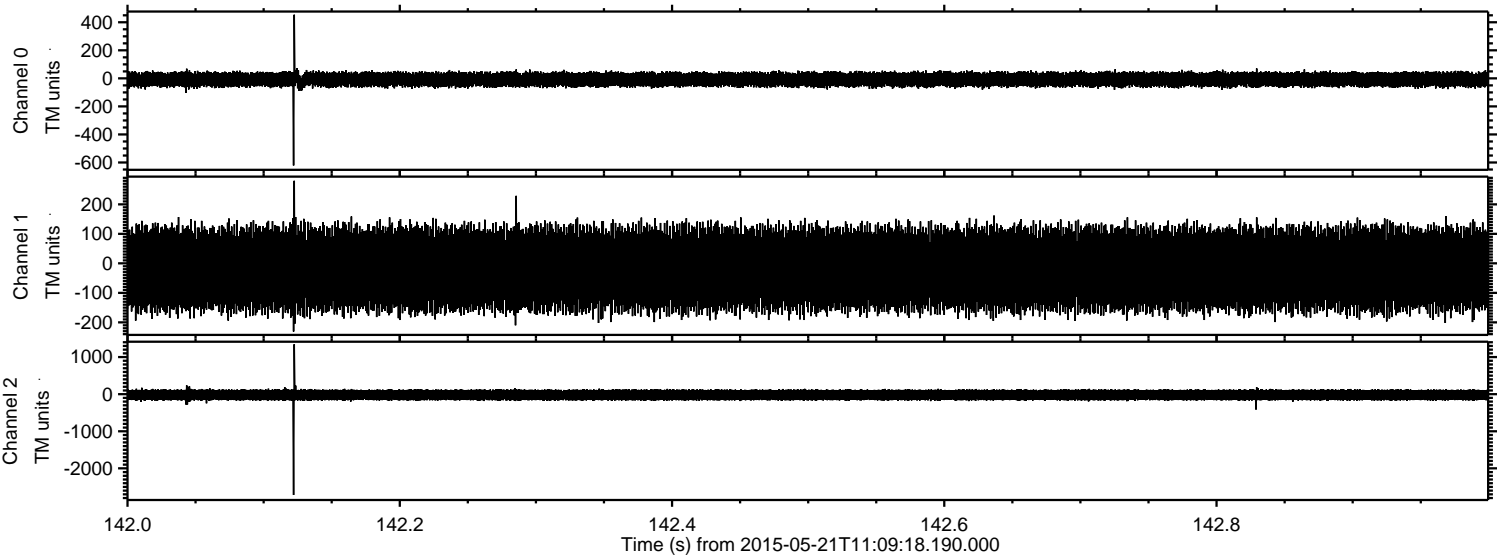
Processed Thu May 21 13:16:01 2015 by ELM ver.2012-10-06 from 001\_\_elm20150521\_110917\_\_dat00.bin





ELMAVAN 3D WAVEFORMS (Measured data sampled at 50 kHz) 49790 packets of 144 samples from 2015-05-21T11:09:18.190.000. Part 143/144

Processed Thu May 21 13:16:02 2015 by ELM ver.2012-10-06 from 001\_\_elm20150521\_110917\_\_dat00.bin





Processed Thu May 21 13:16:03 2015 by ELM ver.2012-10-06 from 001\_\_elm20150521\_110917\_\_dat000.bin

