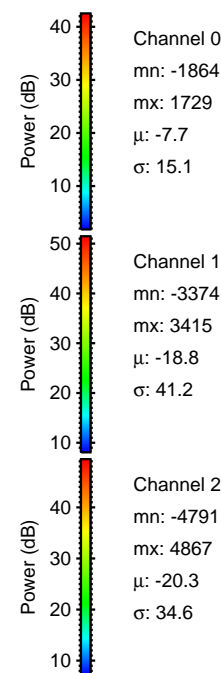
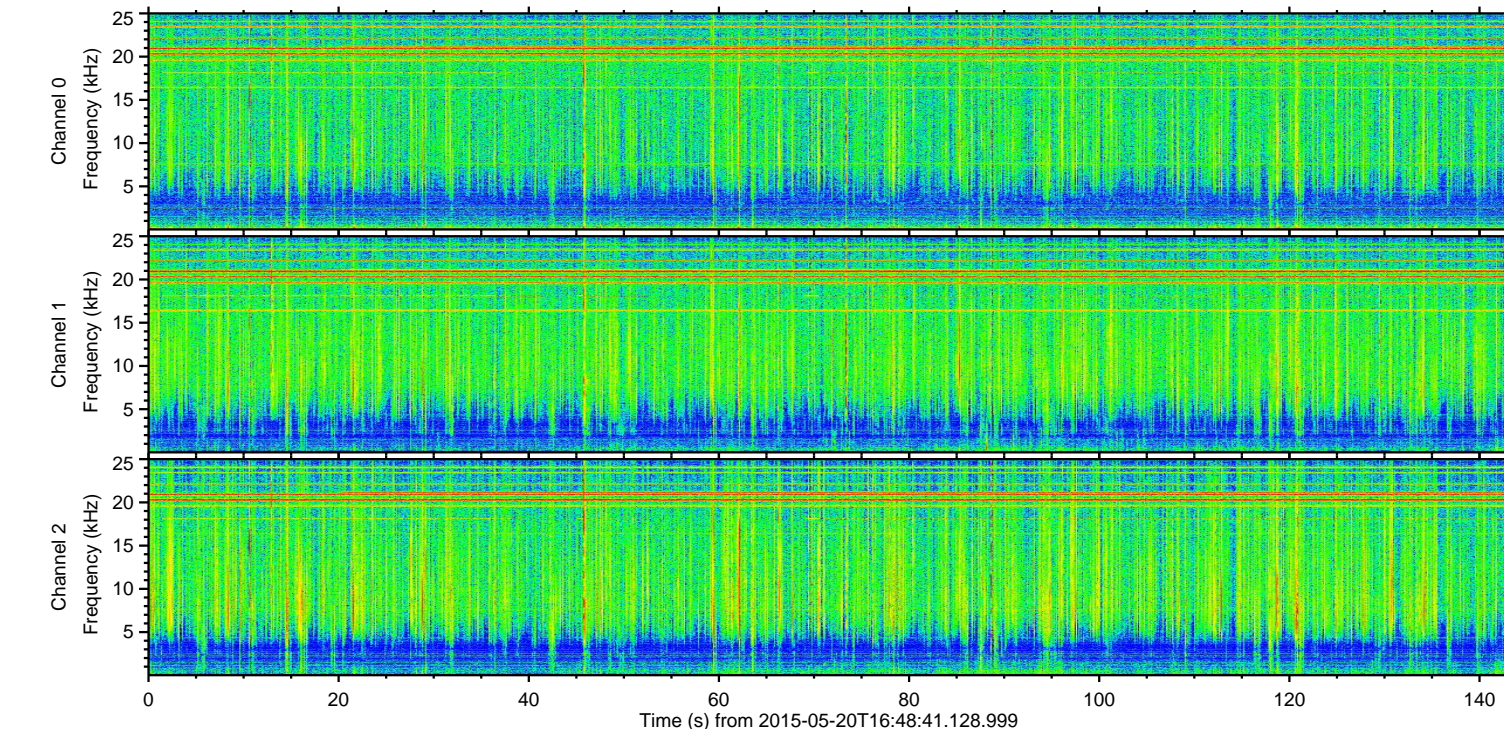
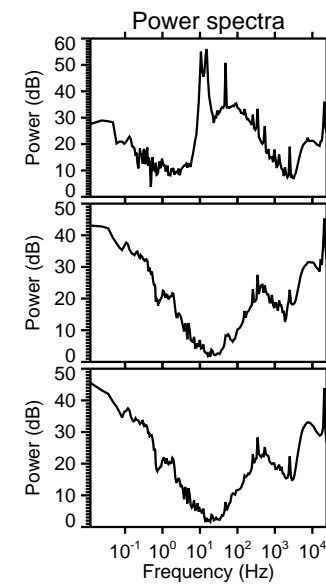
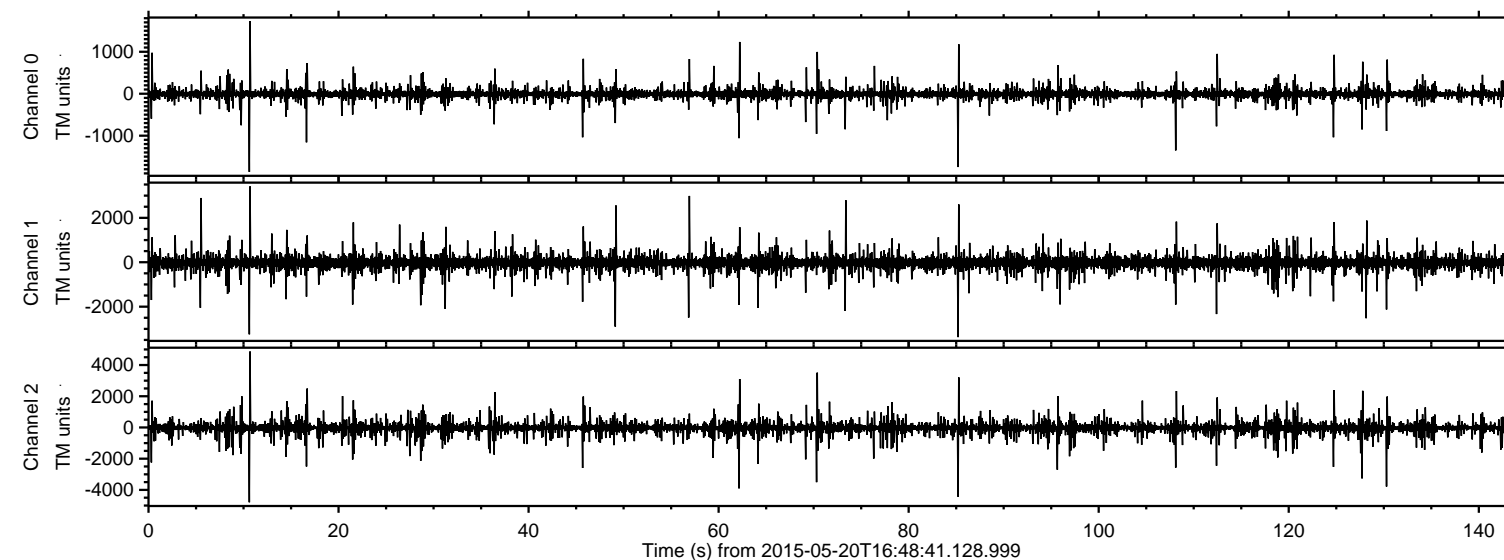
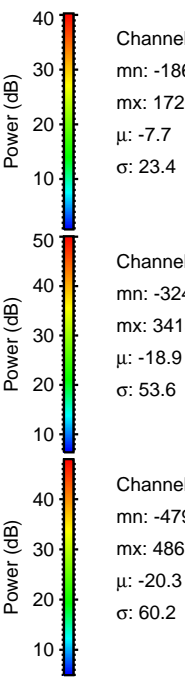
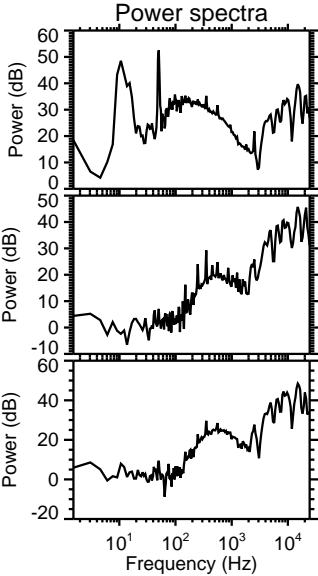
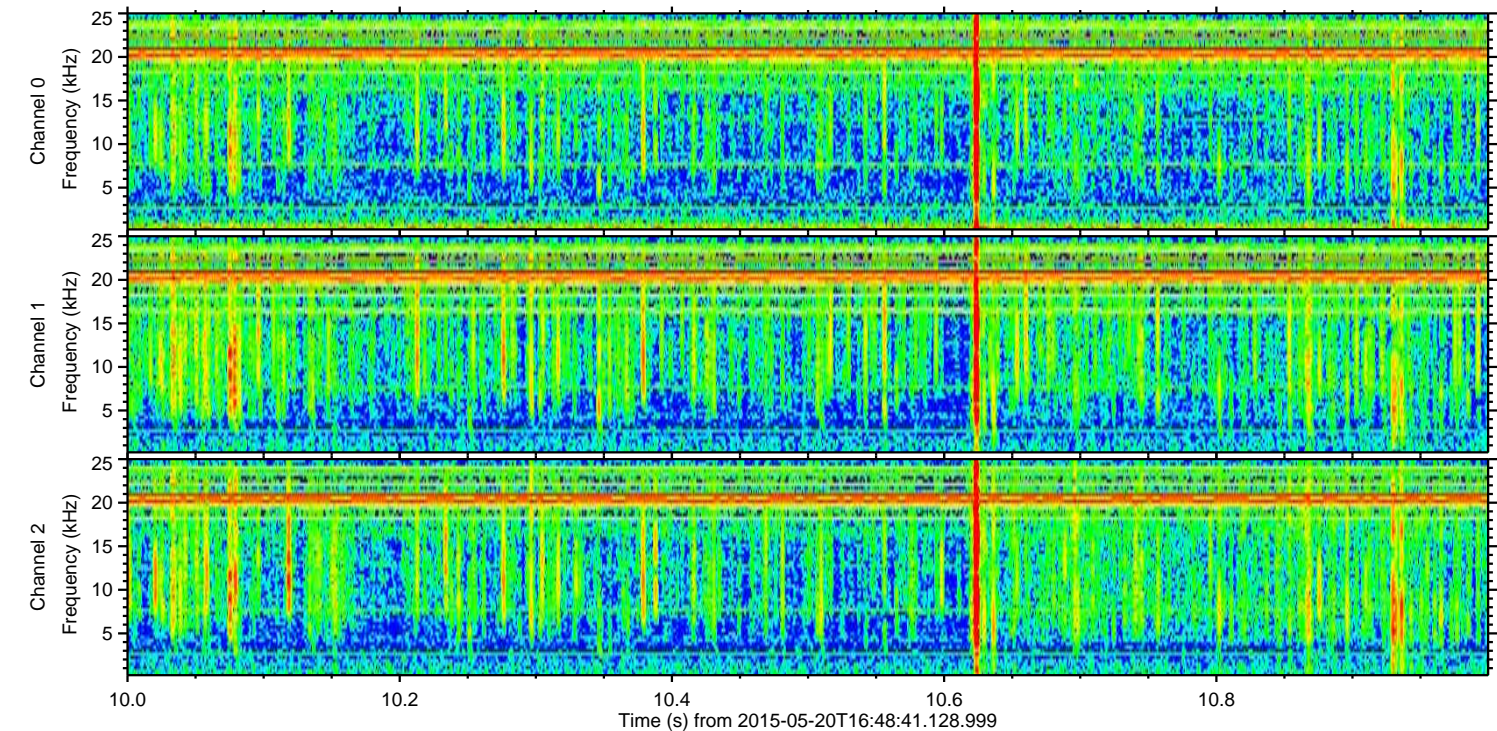
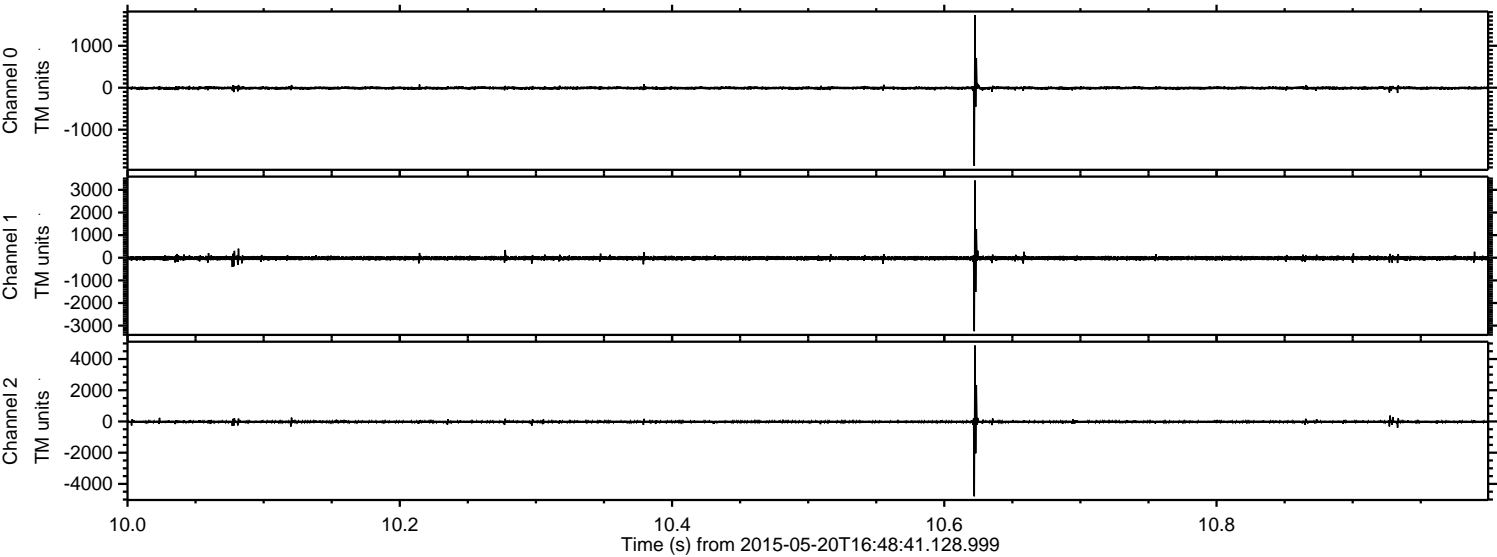


ELMAVAN 3D WAVEFORMS (Measured data sampled at 50 kHz) 49720 packets of 144 samples from 2015-05-20T16:48:41.128.999.

Processed Wed May 20 18:55:54 2015 by ELM ver.2012-10-06 from 001__elm20150520_164840__dat00.bin



Processed Wed May 20 18:56:06 2015 by ELM ver.2012-10-06 from 001__elm20150520_164840__dat00.bin

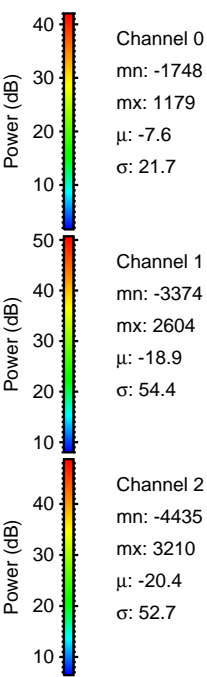
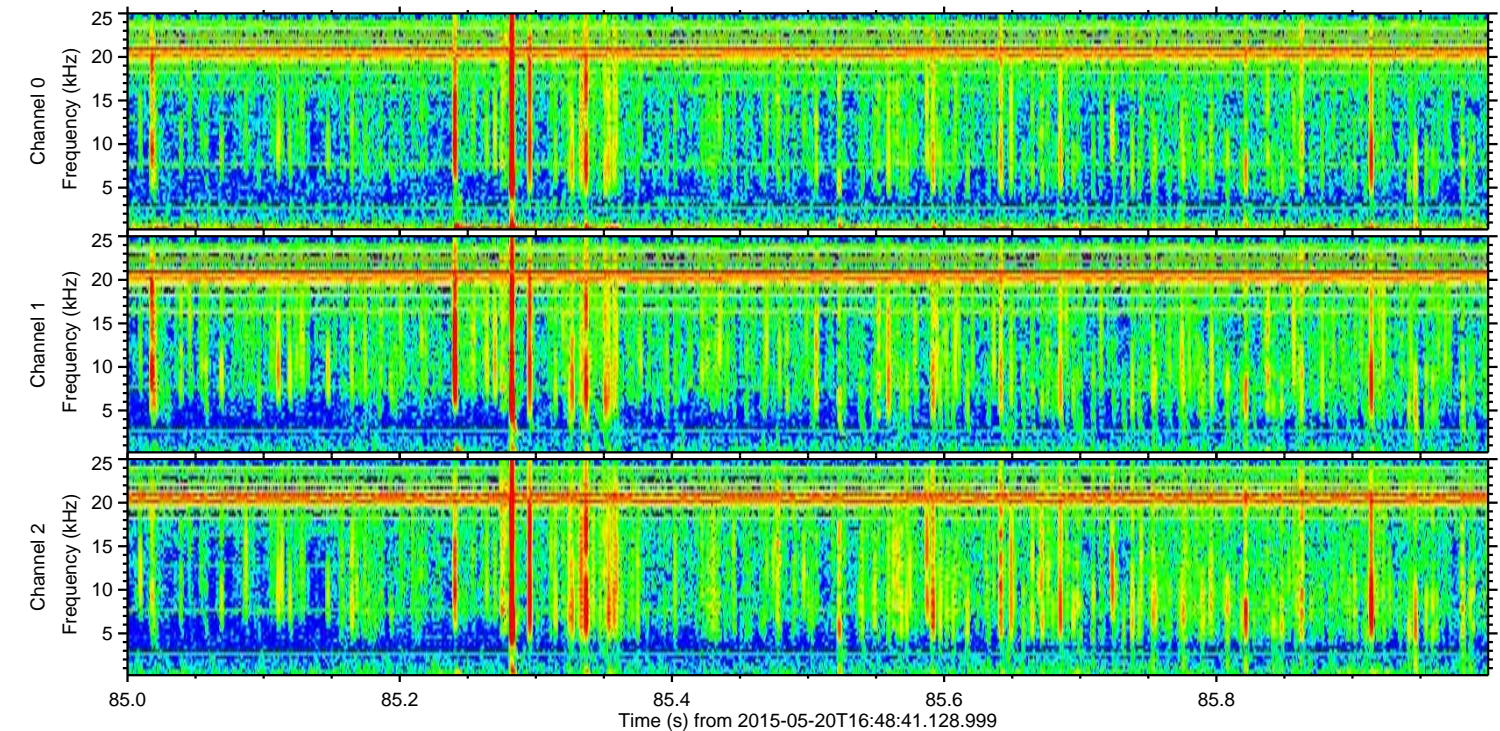
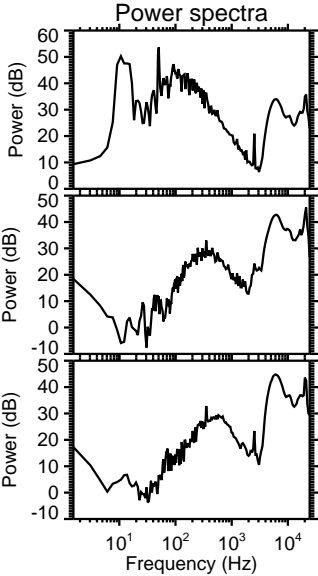
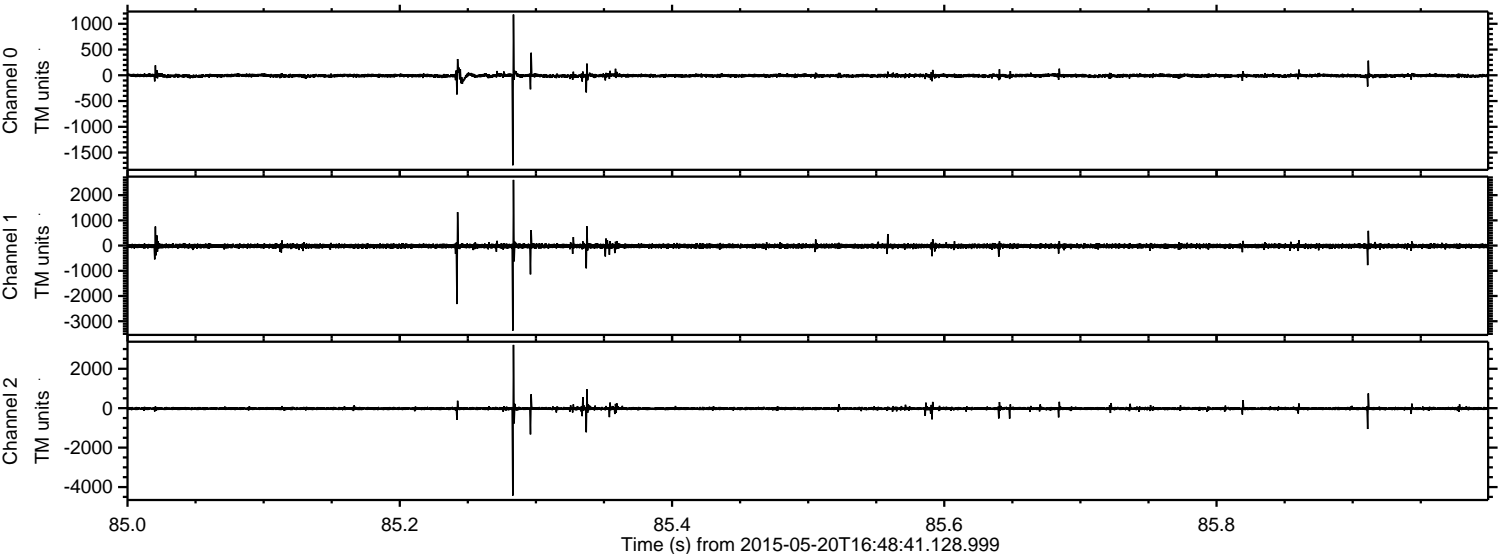


Channel 0
mn: -1864
mx: 1729
 μ : -7.7
 σ : 23.4

Channel 1
mn: -3248
mx: 3415
 μ : -18.9
 σ : 53.6

Channel 2
mn: -4791
mx: 4867
 μ : -20.3
 σ : 60.2

Processed Wed May 20 18:56:07 2015 by ELM ver.2012-10-06 from 001__elm20150520_164840__dat00.bin



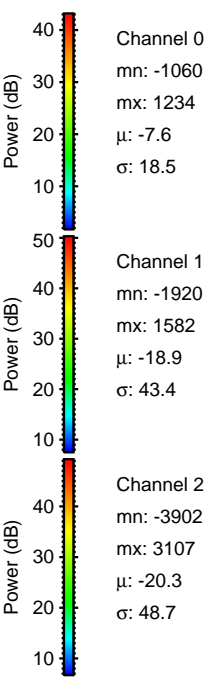
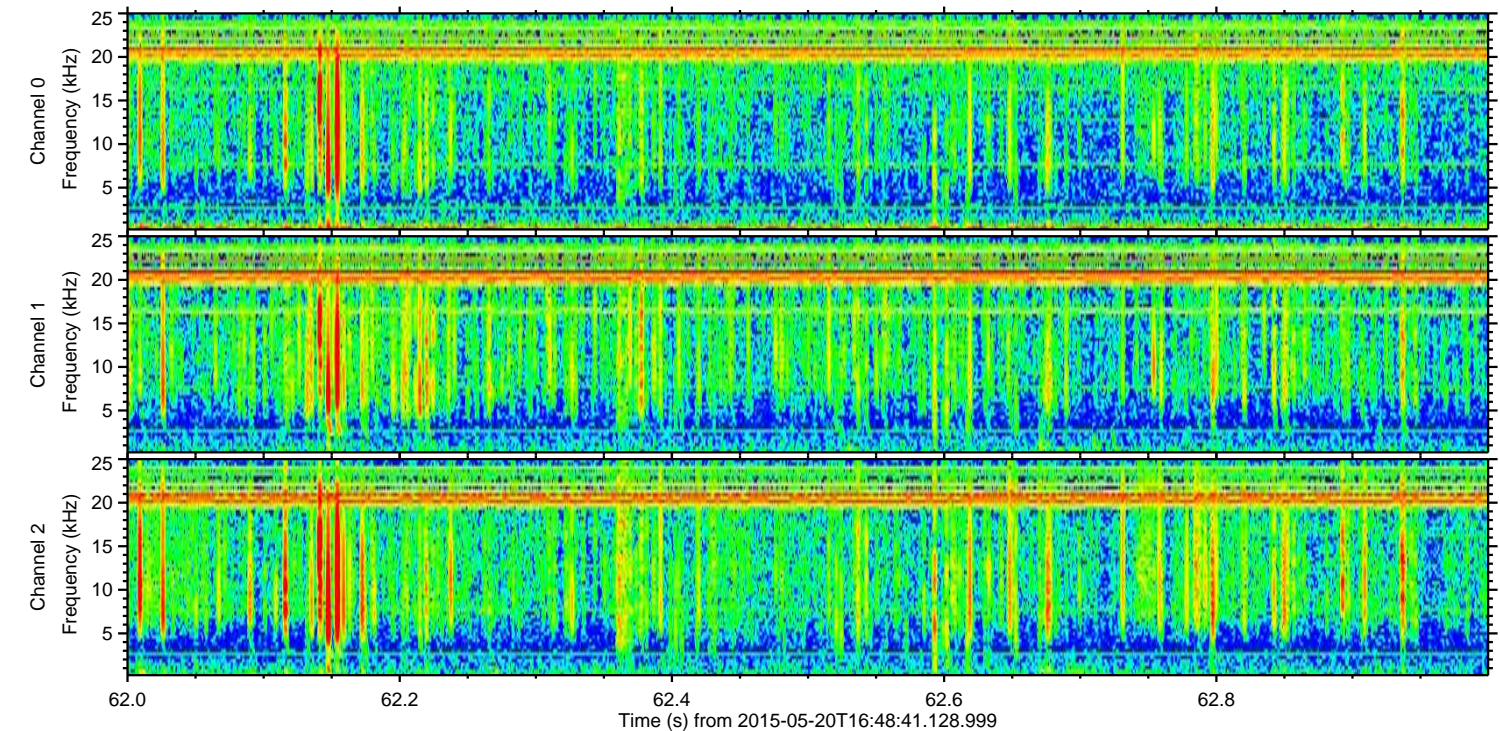
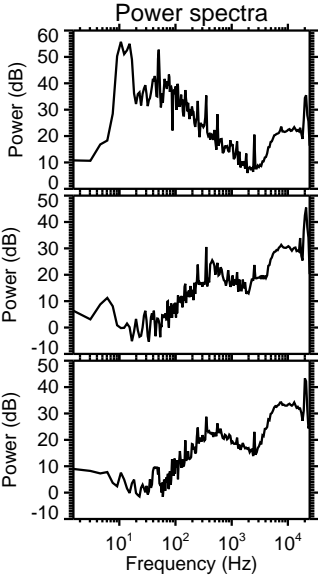
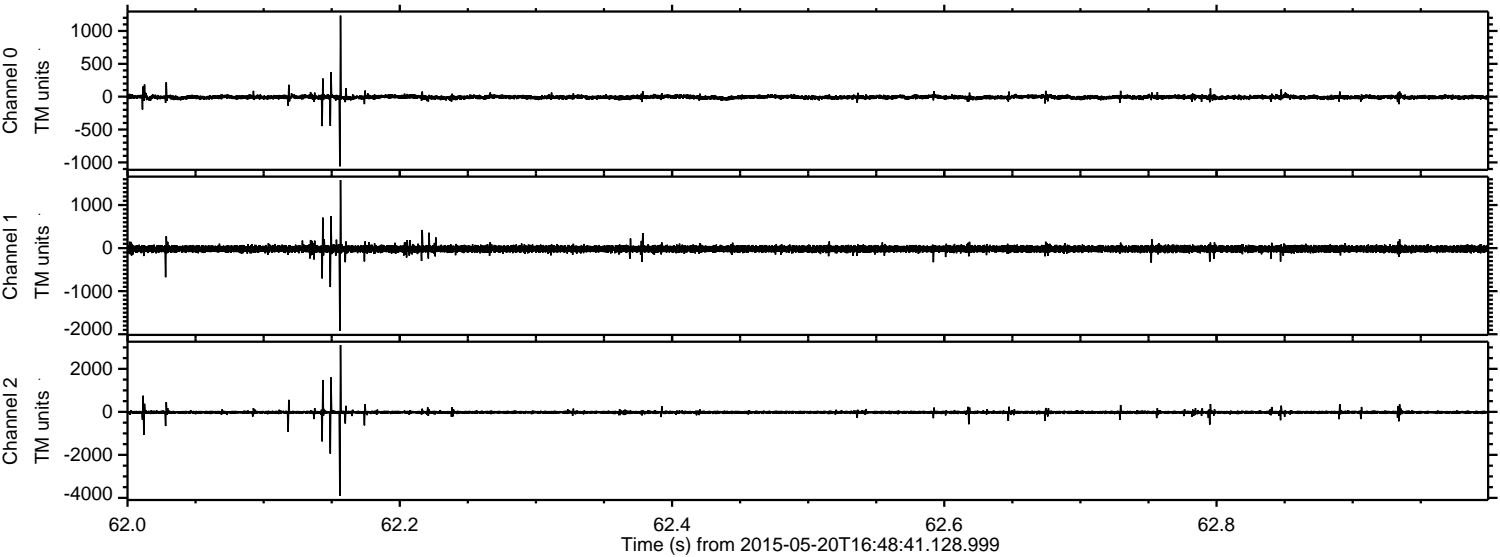
Channel 0
mn: -1748
mx: 1179
 μ : -7.6
 σ : 21.7

Channel 1
mn: -3374
mx: 2604
 μ : -18.9
 σ : 54.4

Channel 2
mn: -4435
mx: 3210
 μ : -20.4
 σ : 52.7

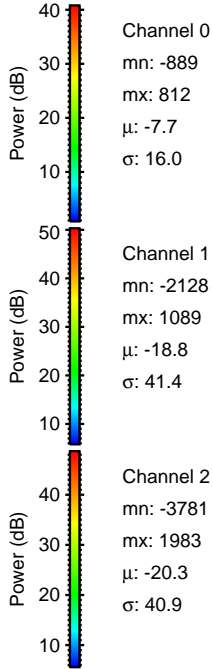
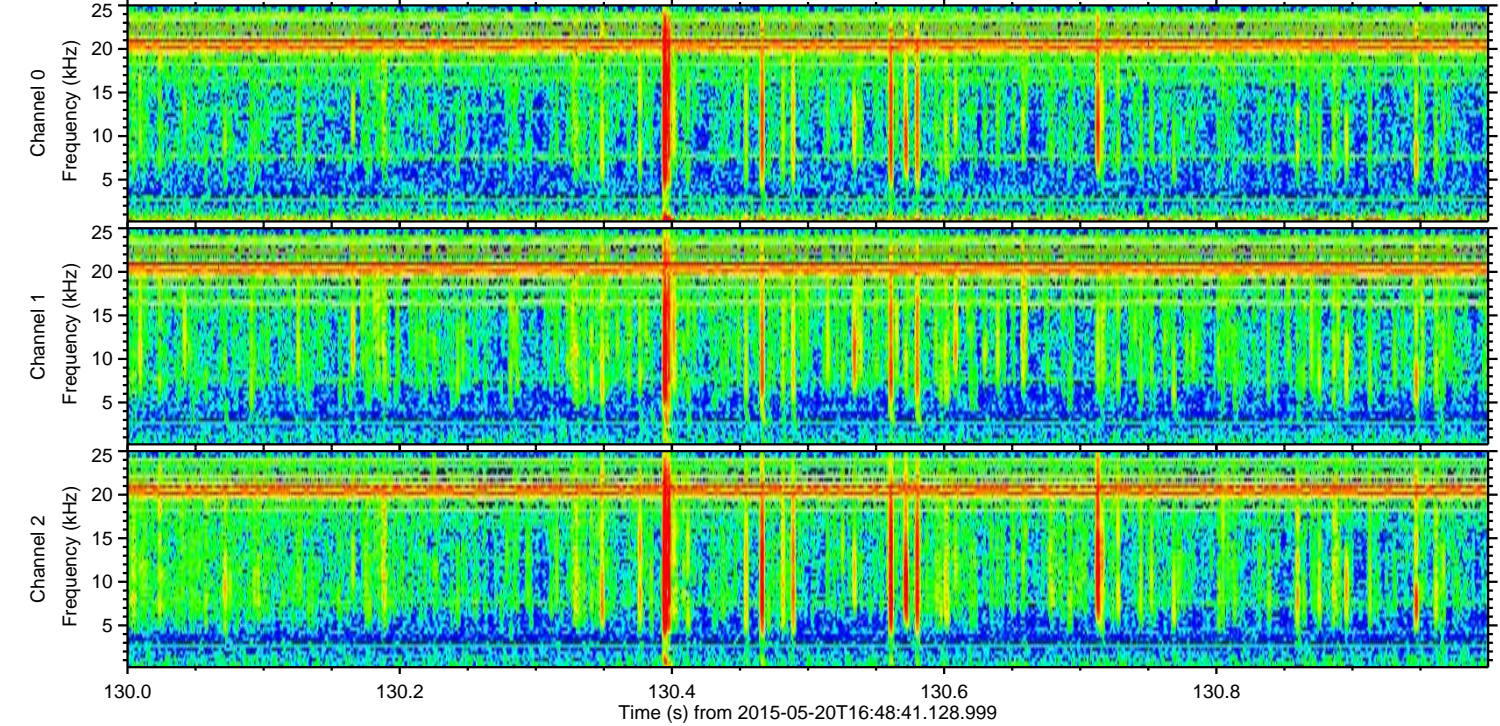
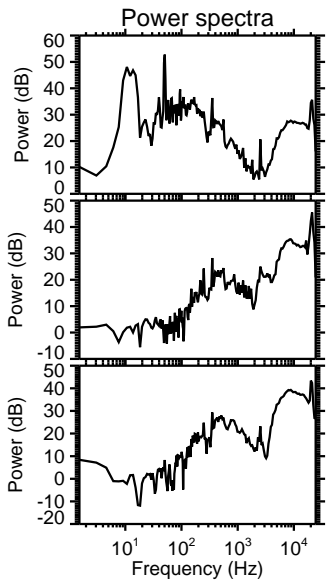
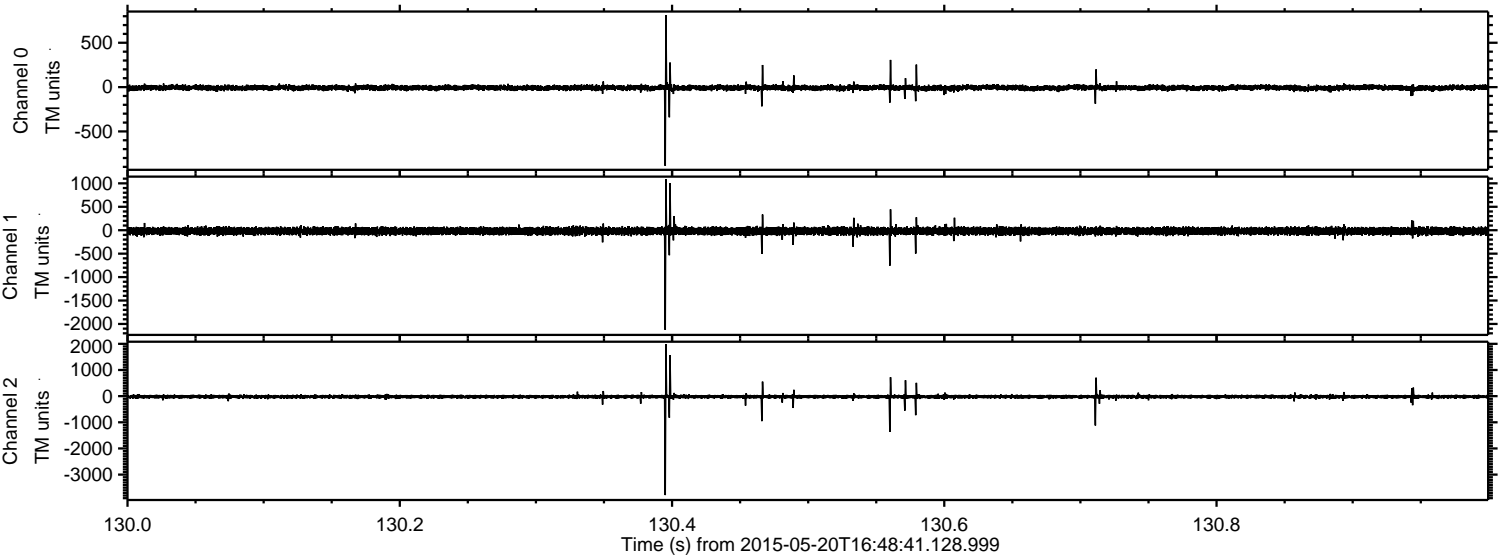
ELMAVAN 3D WAVEFORMS (Measured data sampled at 50 kHz) 49720 packets of 144 samples from 2015-05-20T16:48:41.128.999. Part 63/144

Processed Wed May 20 18:56:08 2015 by ELM ver.2012-10-06 from 001__elm20150520_164840__dat00.bin



ELMAVAN 3D WAVEFORMS (Measured data sampled at 50 kHz) 49720 packets of 144 samples from 2015-05-20T16:48:41.128.999. Part 131/144

Processed Wed May 20 18:56:08 2015 by ELM ver.2012-10-06 from 001__elm20150520_164840__dat00.bin

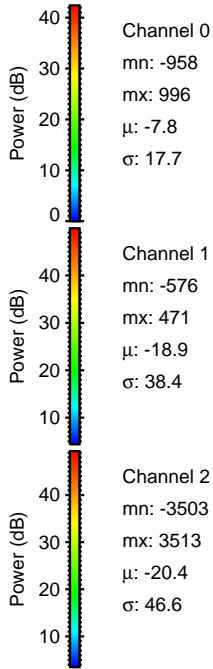
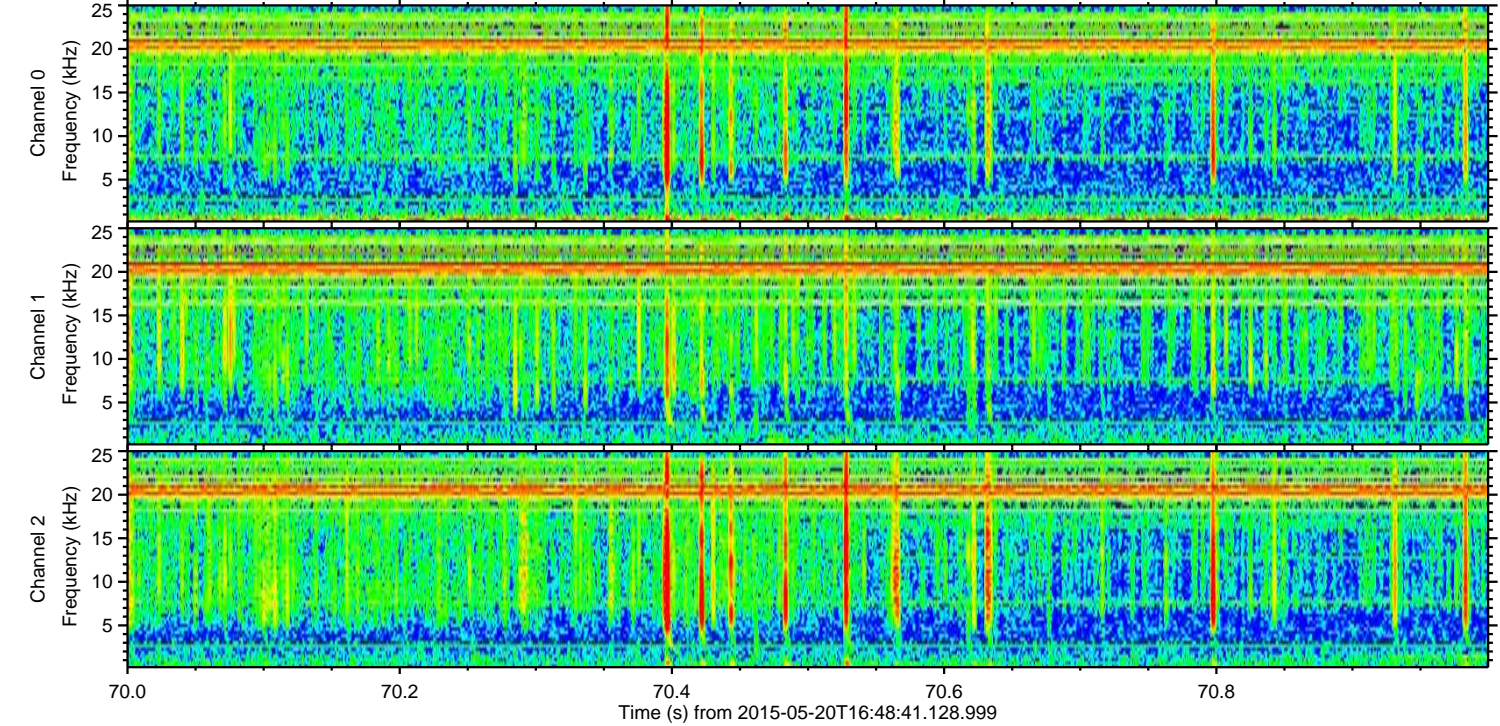
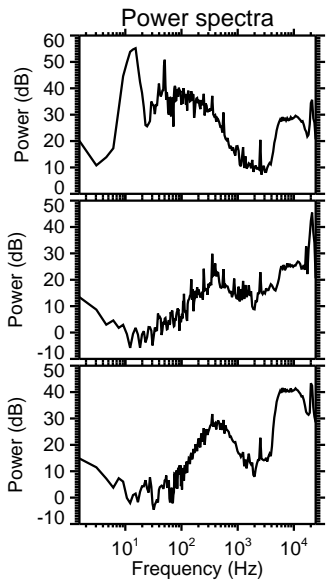
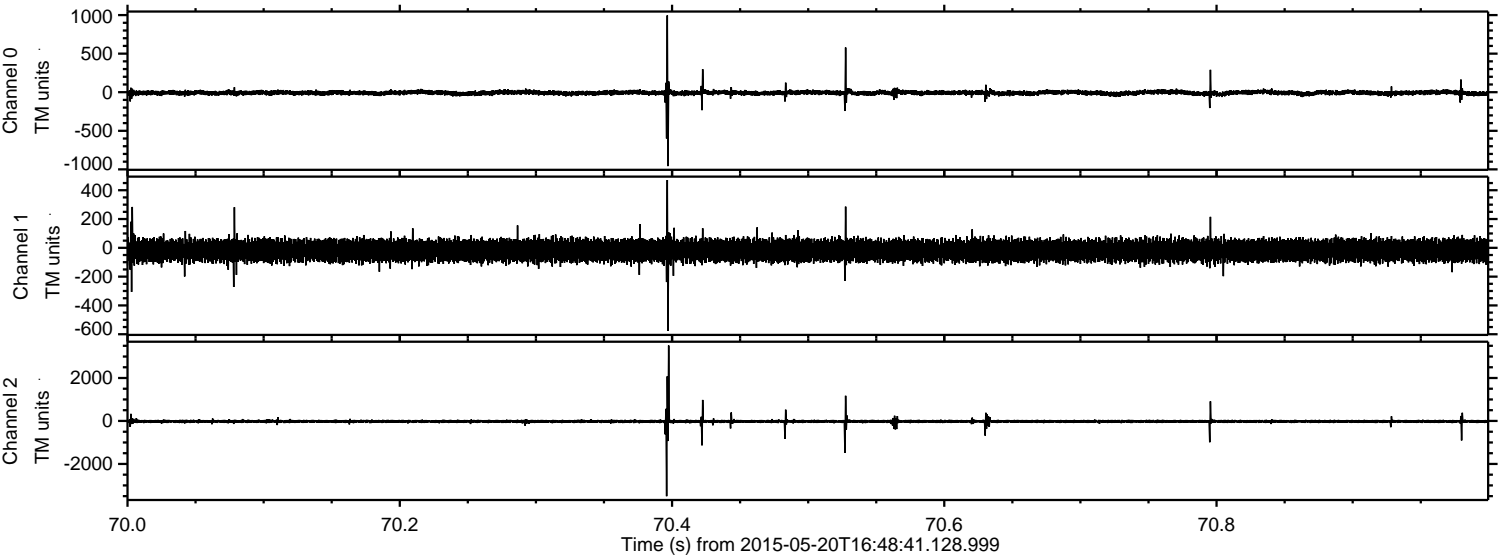


Channel 0
mn: -889
mx: 812
 μ : -7.7
 σ : 16.0

Channel 1
mn: -2128
mx: 1089
 μ : -18.8
 σ : 41.4

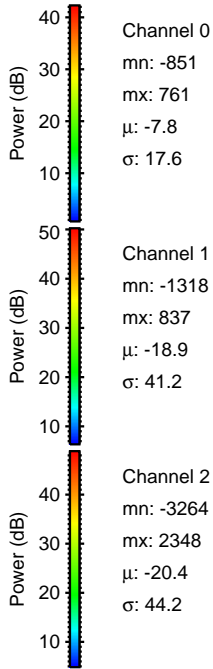
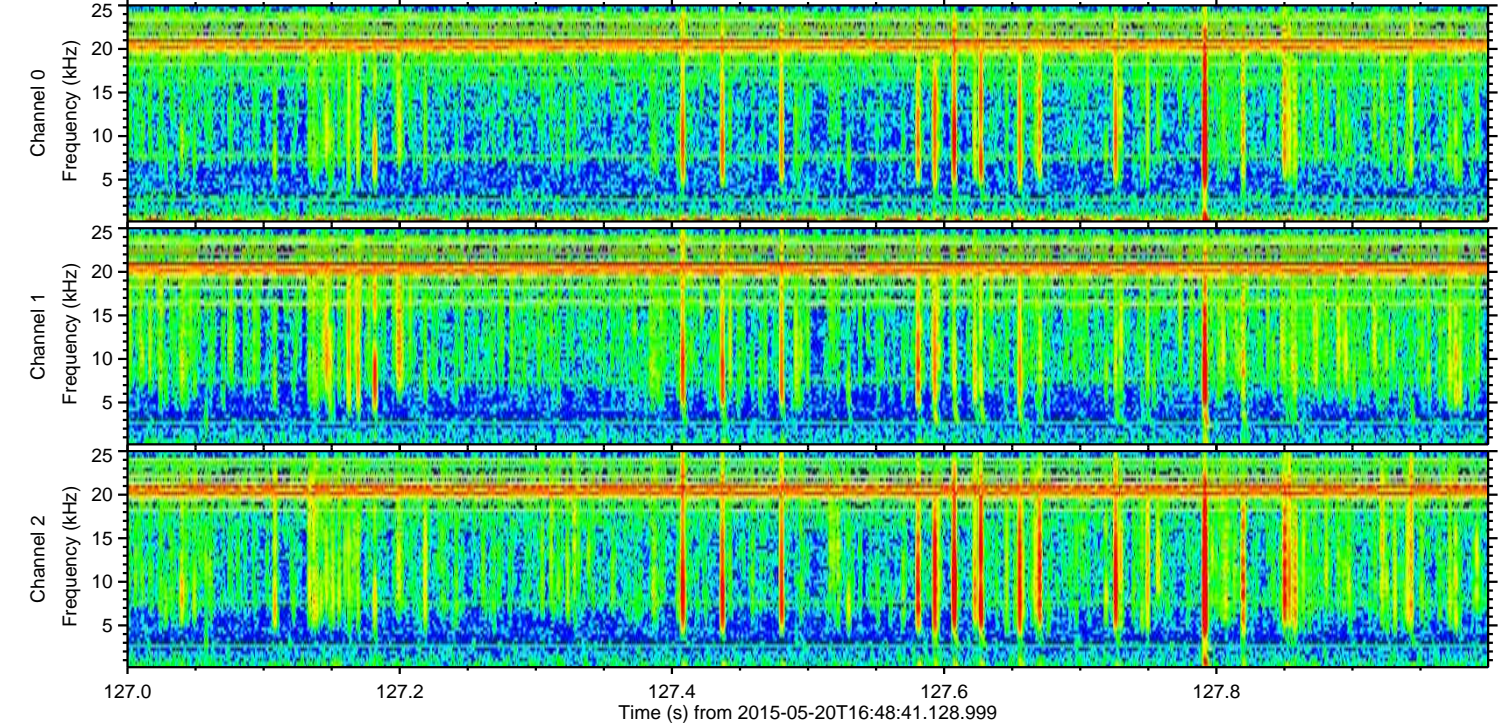
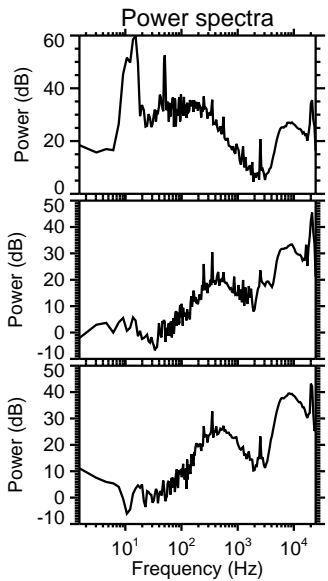
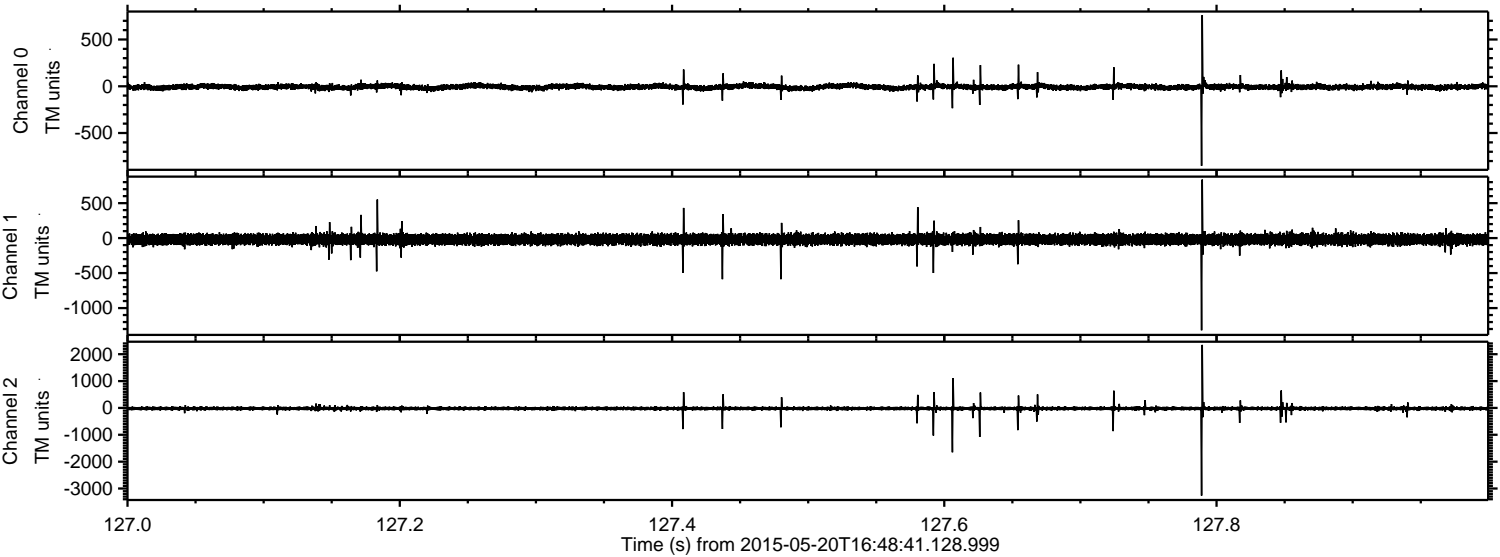
Channel 2
mn: -3781
mx: 1983
 μ : -20.3
 σ : 40.9

Processed Wed May 20 18:56:09 2015 by ELM ver.2012-10-06 from 001__elm20150520_164840__dat00.bin



ELMAVAN 3D WAVEFORMS (Measured data sampled at 50 kHz) 49720 packets of 144 samples from 2015-05-20T16:48:41.128.999. Part 128/144

Processed Wed May 20 18:56:10 2015 by ELM ver.2012-10-06 from 001__elm20150520_164840__dat00.bin

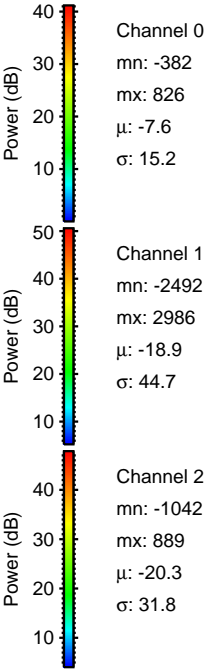
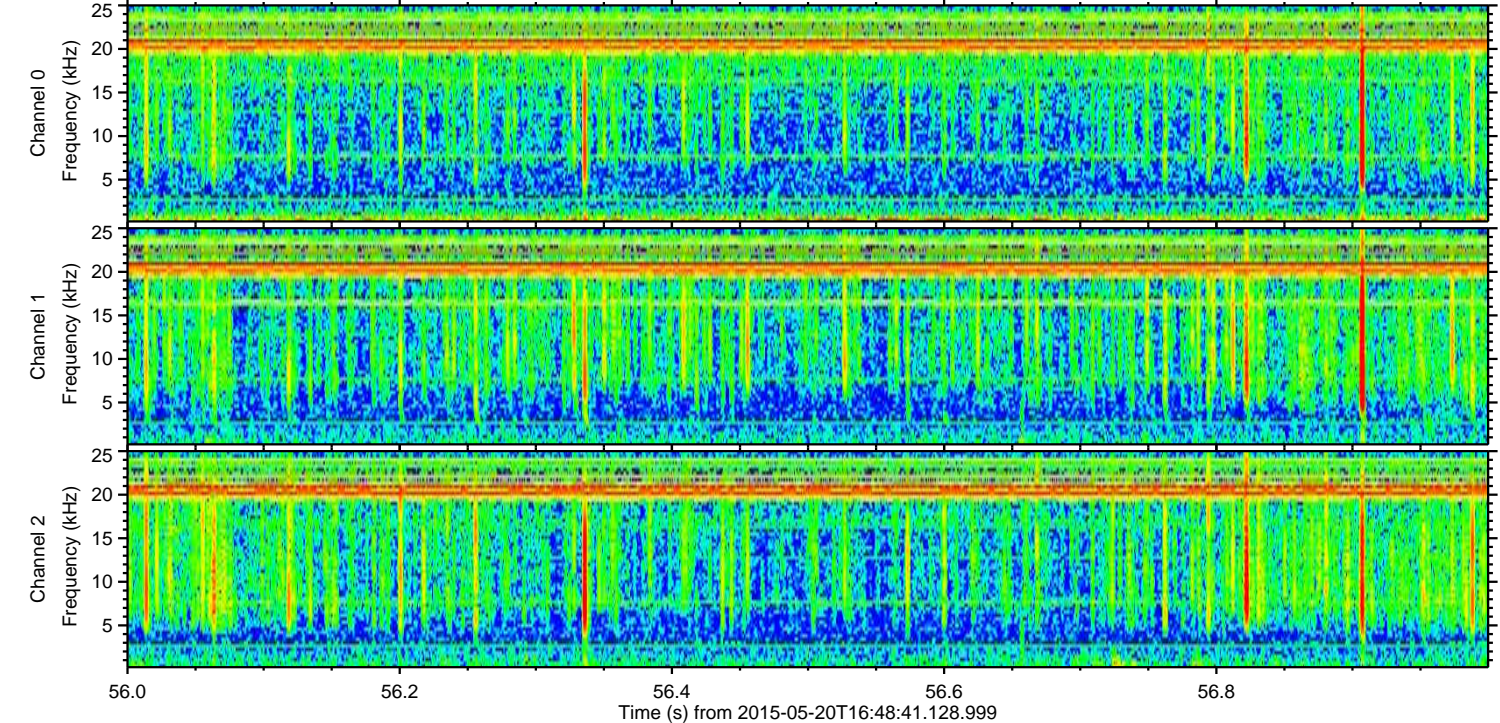
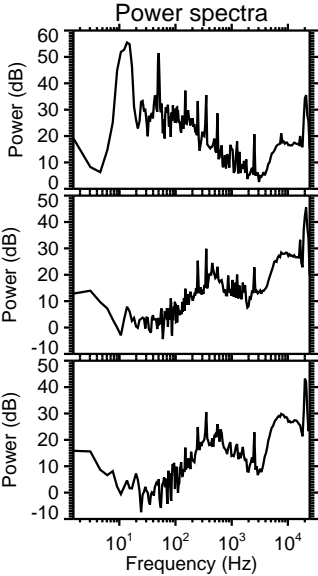
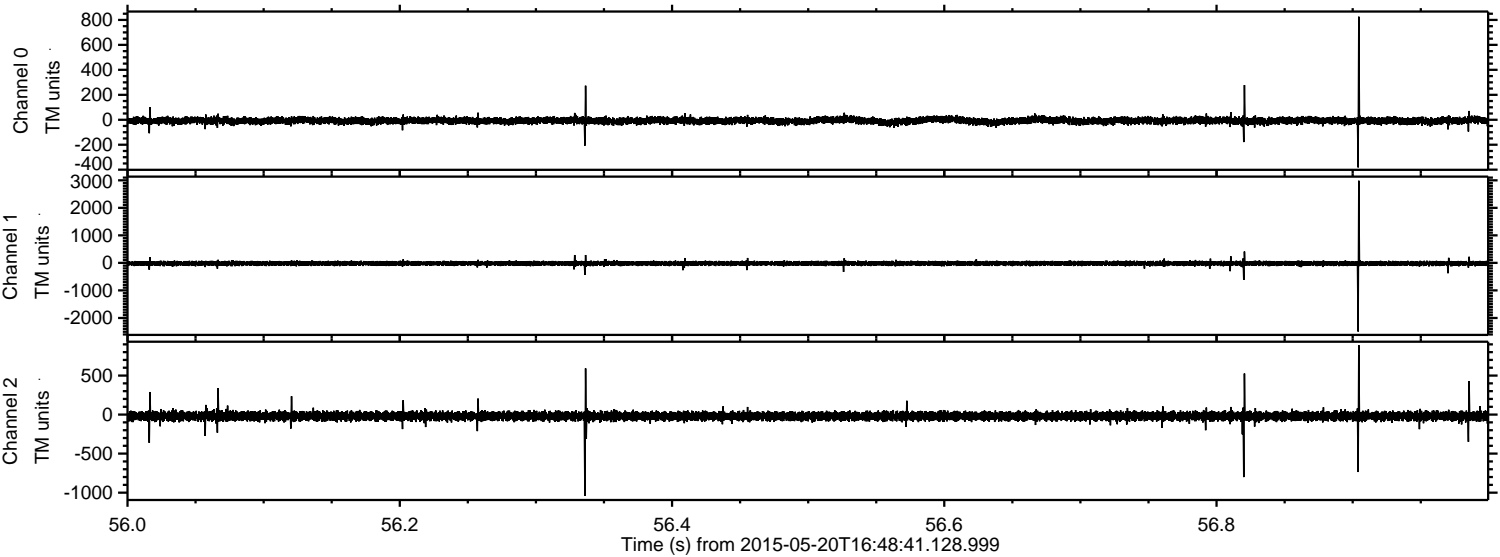


Channel 0
mn: -851
mx: 761
 μ : -7.8
 σ : 17.6

Channel 1
mn: -1318
mx: 837
 μ : -18.9
 σ : 41.2

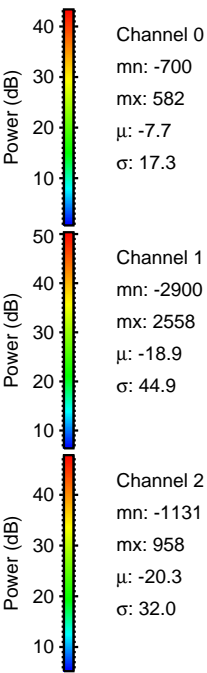
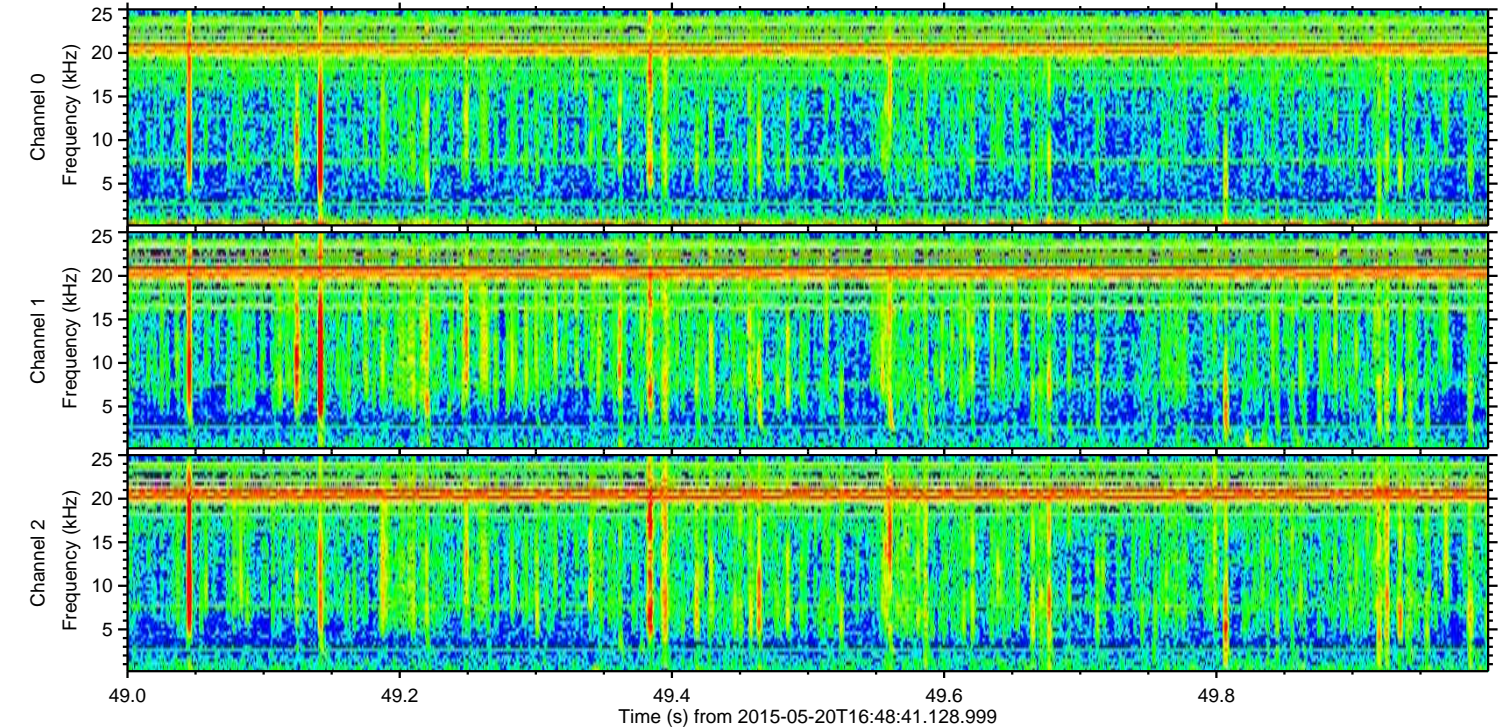
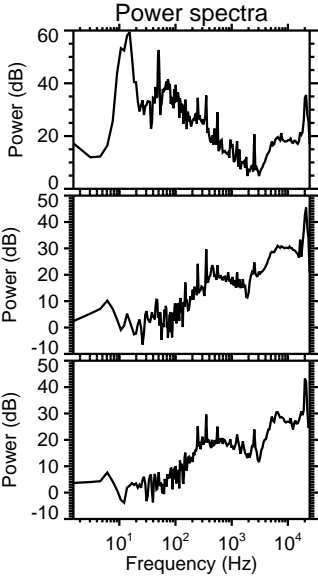
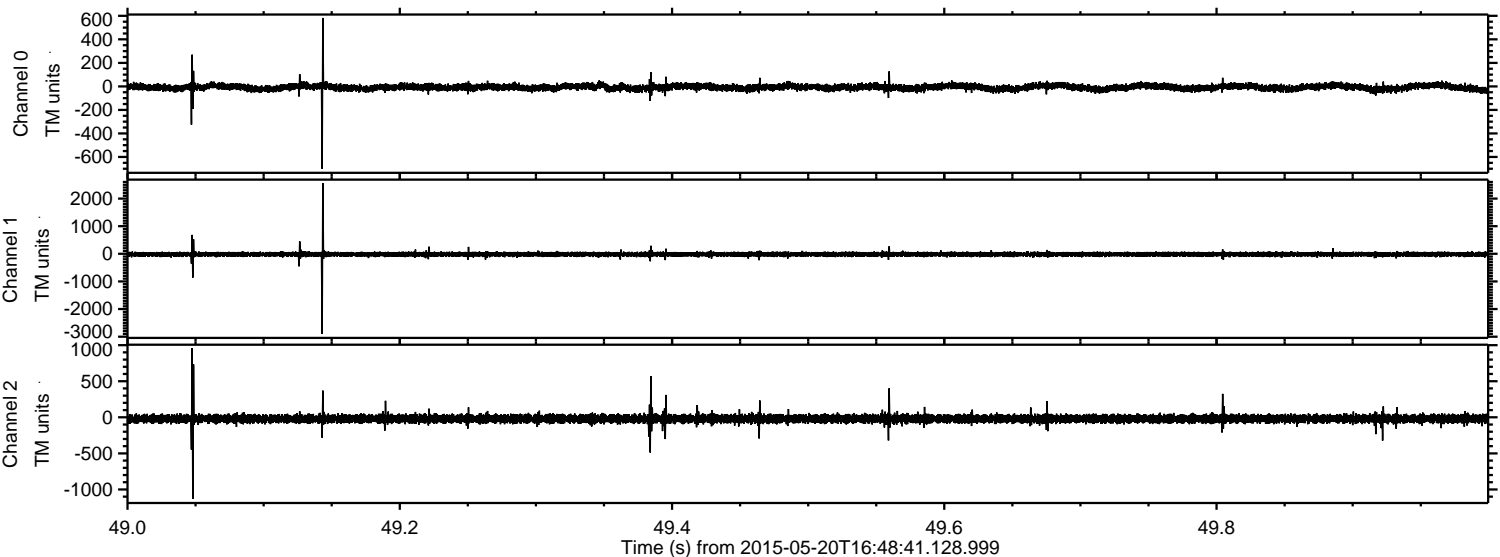
Channel 2
mn: -3264
mx: 2348
 μ : -20.4
 σ : 44.2

Processed Wed May 20 18:56:11 2015 by ELM ver.2012-10-06 from 001__elm20150520_164840__dat00.bin

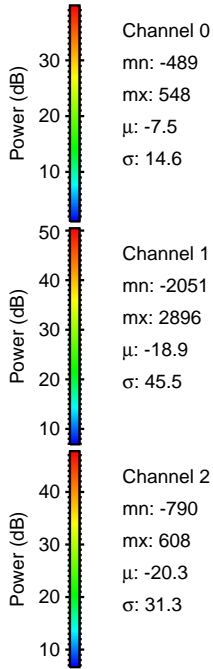
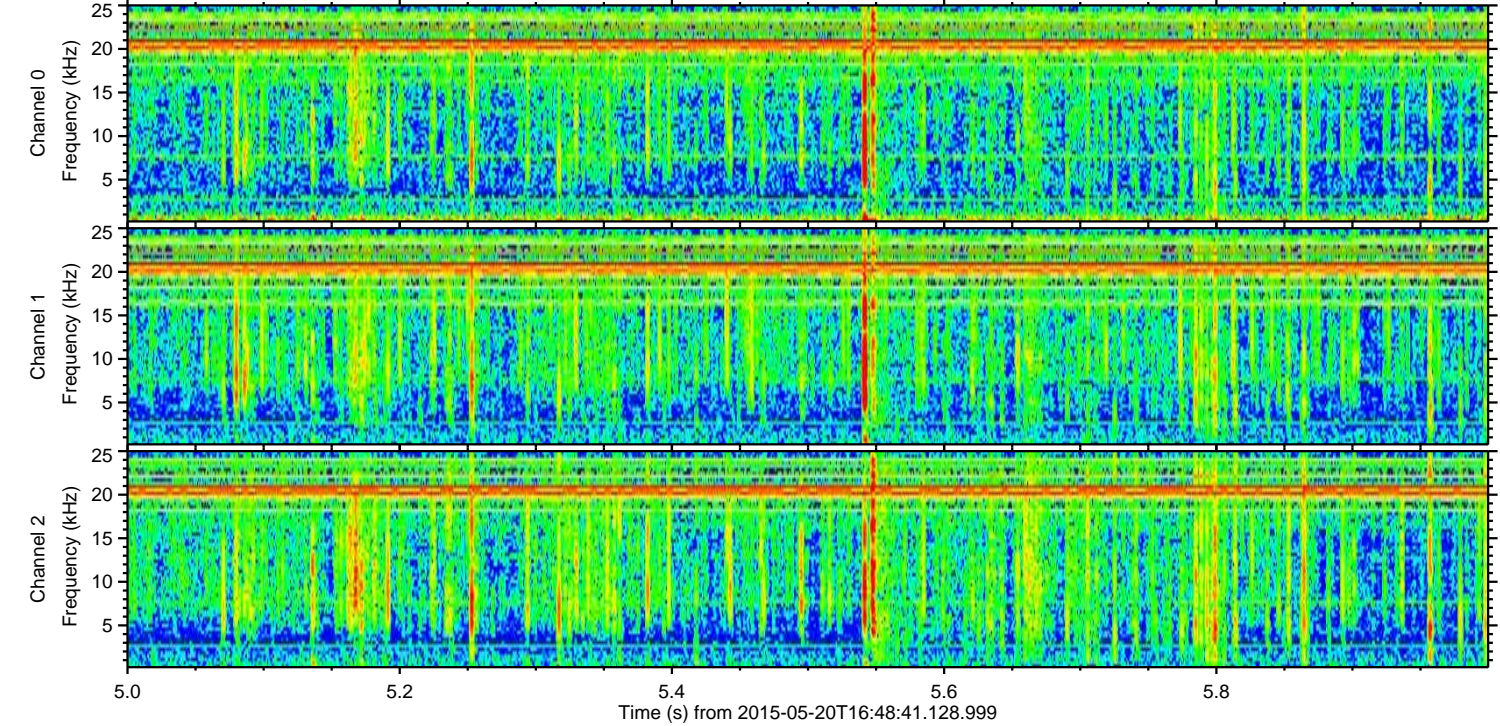
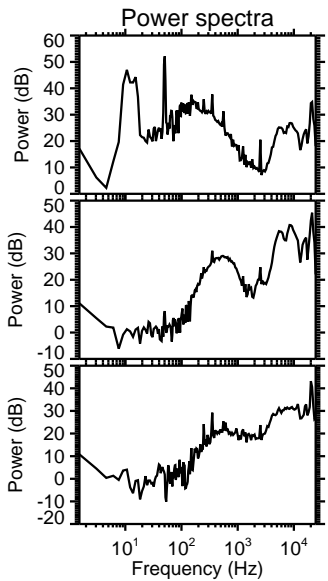
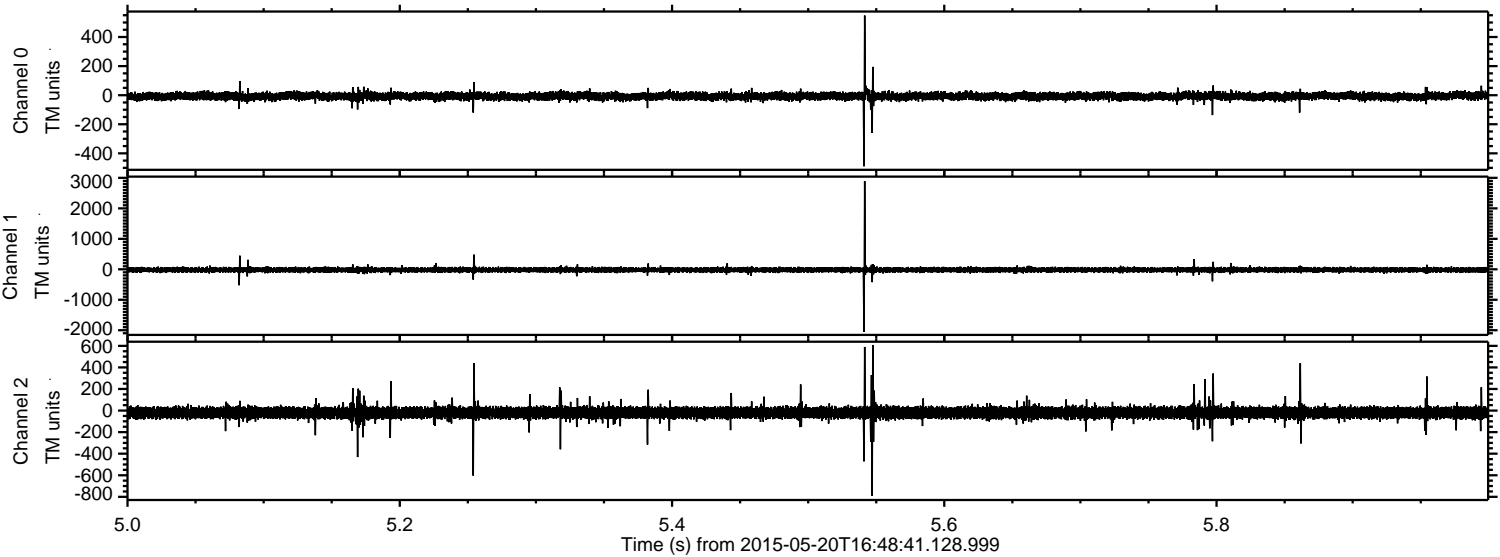


ELMAVAN 3D WAVEFORMS (Measured data sampled at 50 kHz) 49720 packets of 144 samples from 2015-05-20T16:48:41.128.999. Part 50/144

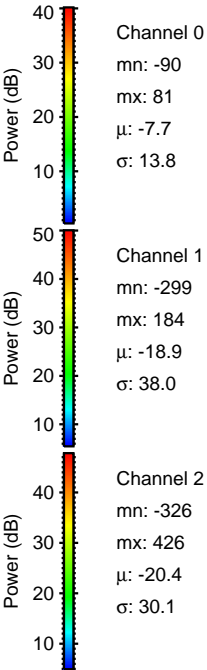
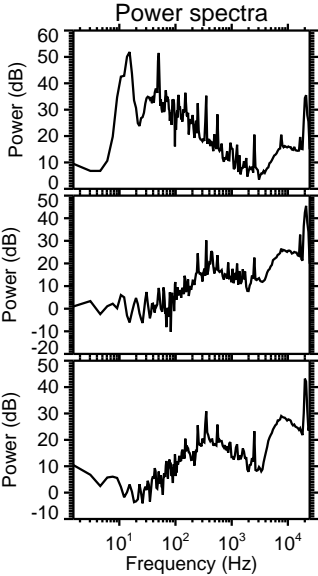
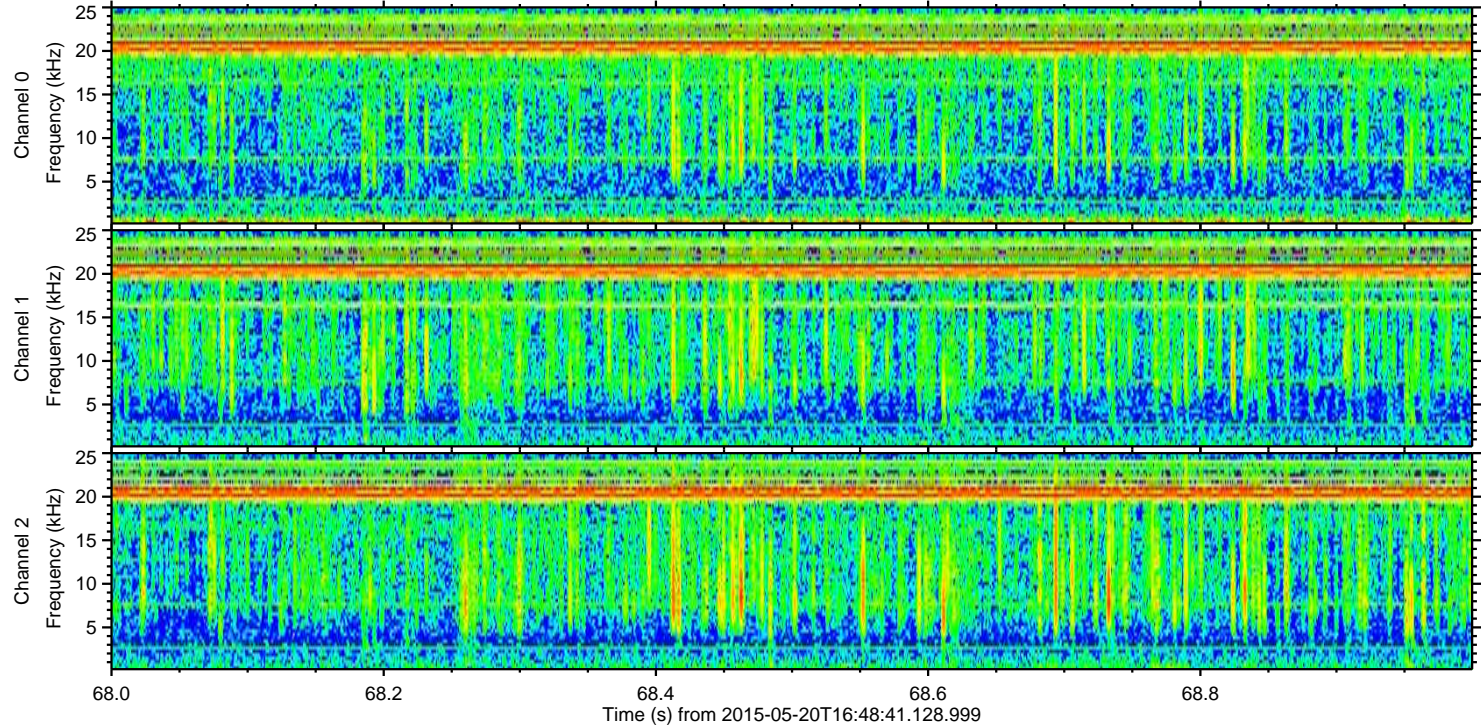
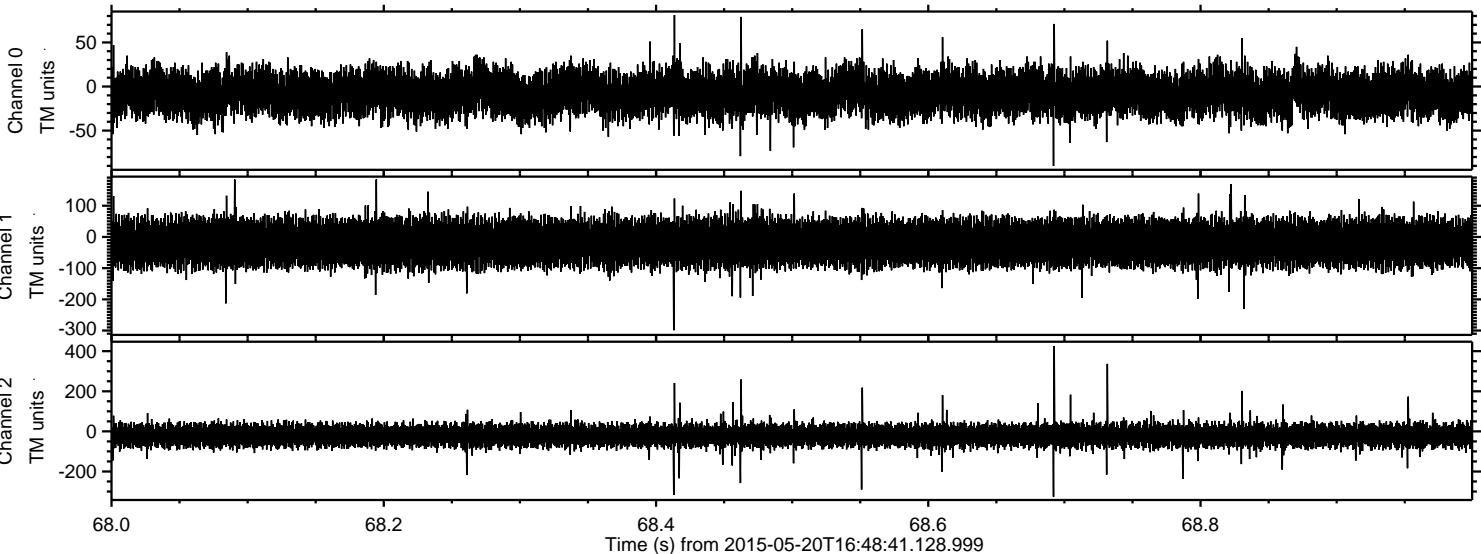
Processed Wed May 20 18:56:12 2015 by ELM ver.2012-10-06 from 001__elm20150520_164840__dat00.bin



Processed Wed May 20 18:56:13 2015 by ELM ver.2012-10-06 from 001__elm20150520_164840__dat00.bin



Processed Wed May 20 18:56:14 2015 by ELM ver.2012-10-06 from 001__elm20150520_164840__dat00.bin



Channel 0
mn: -90
mx: 81
 μ : -7.7
 σ : 13.8

Channel 1
mn: -299
mx: 184
 μ : -18.9
 σ : 38.0

Channel 2
mn: -326
mx: 426
 μ : -20.4
 σ : 30.1