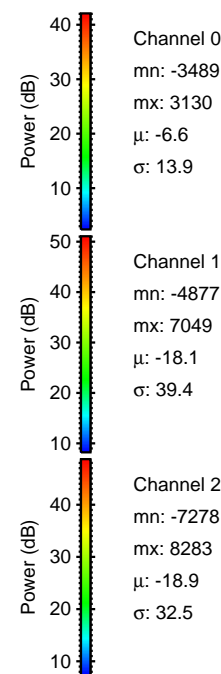
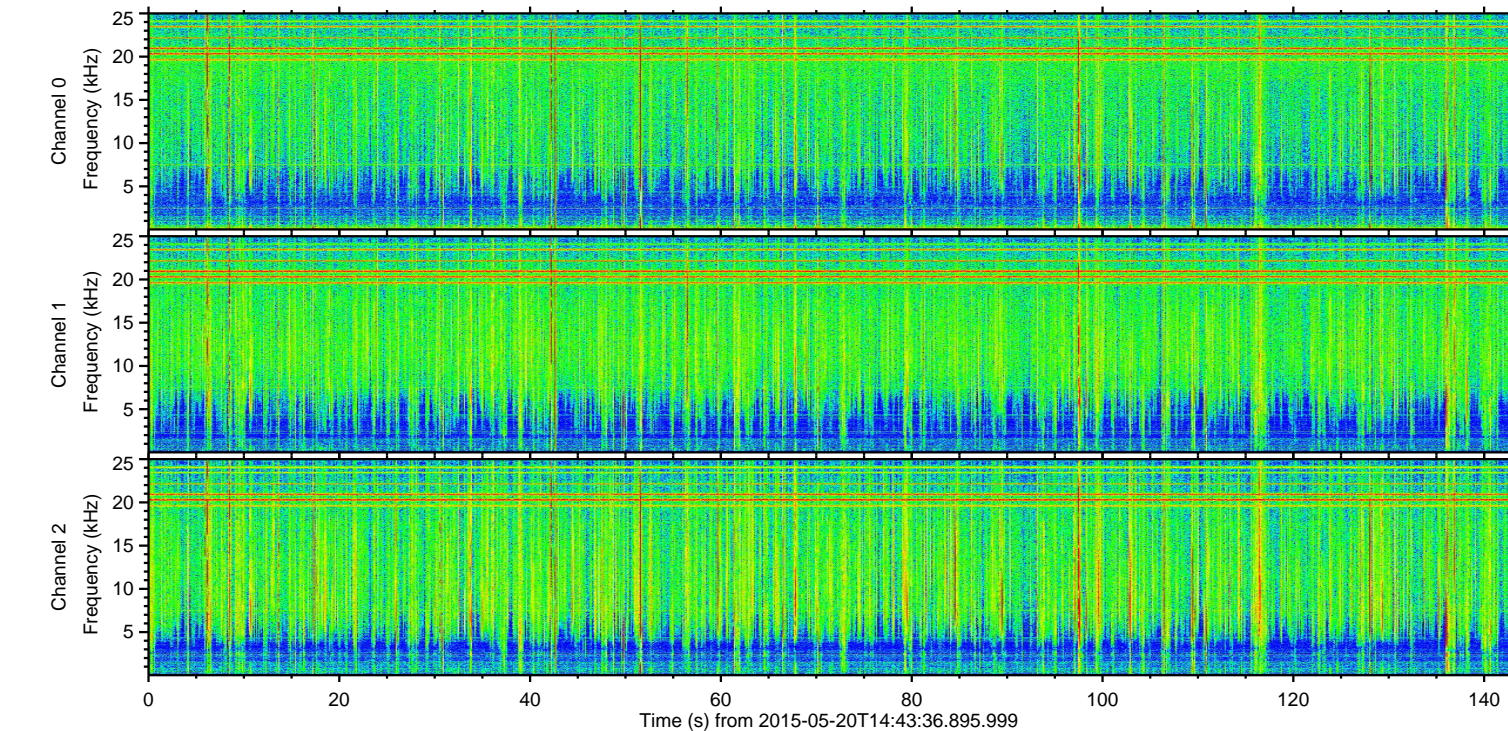
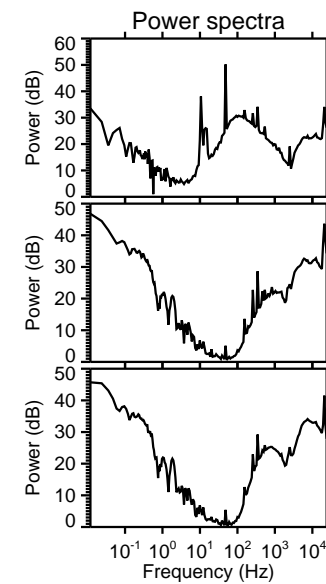
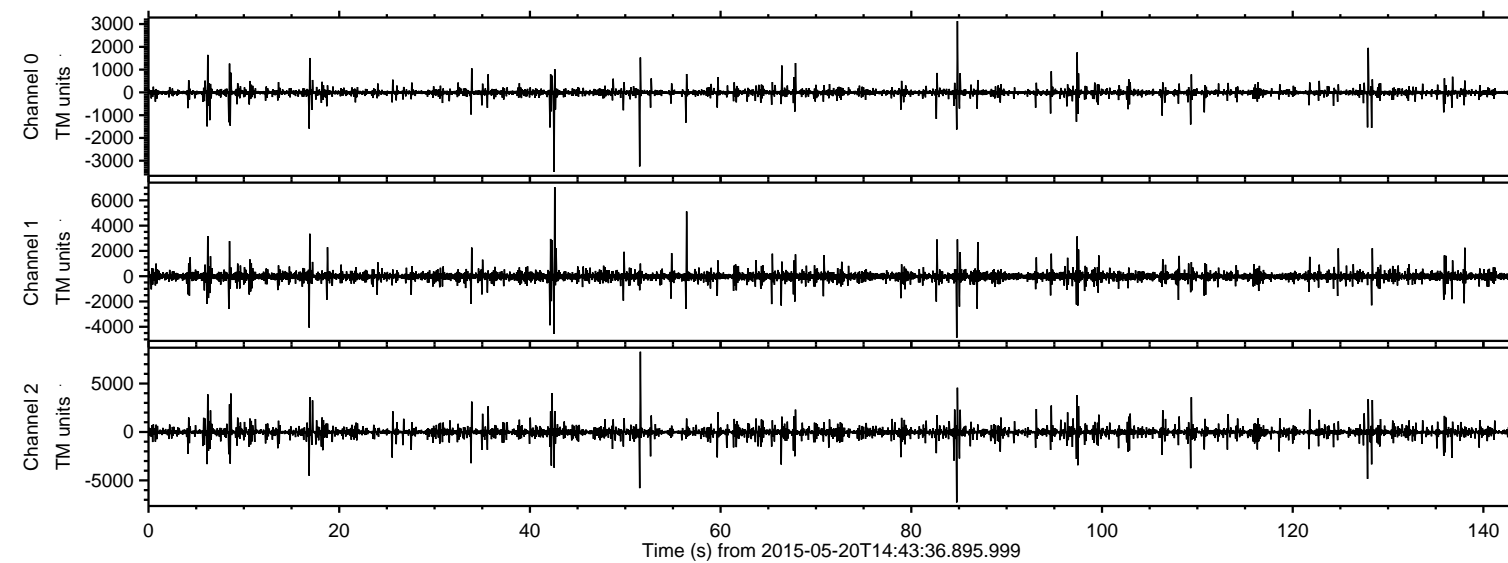


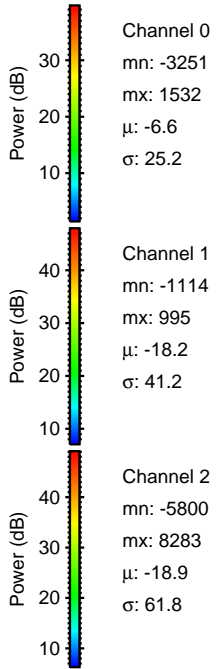
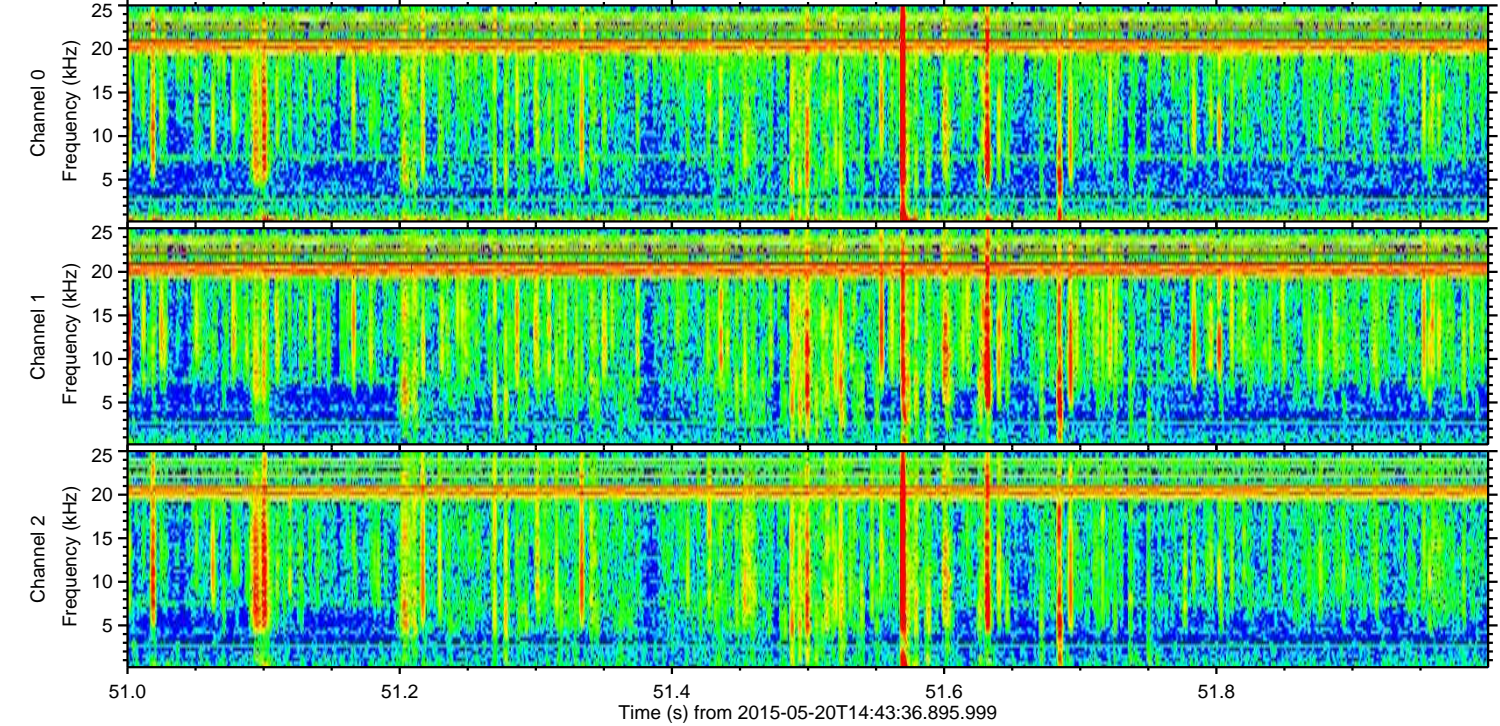
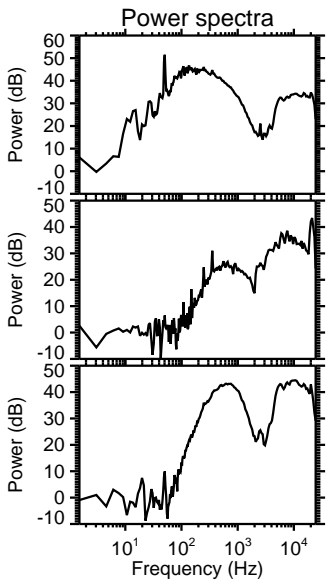
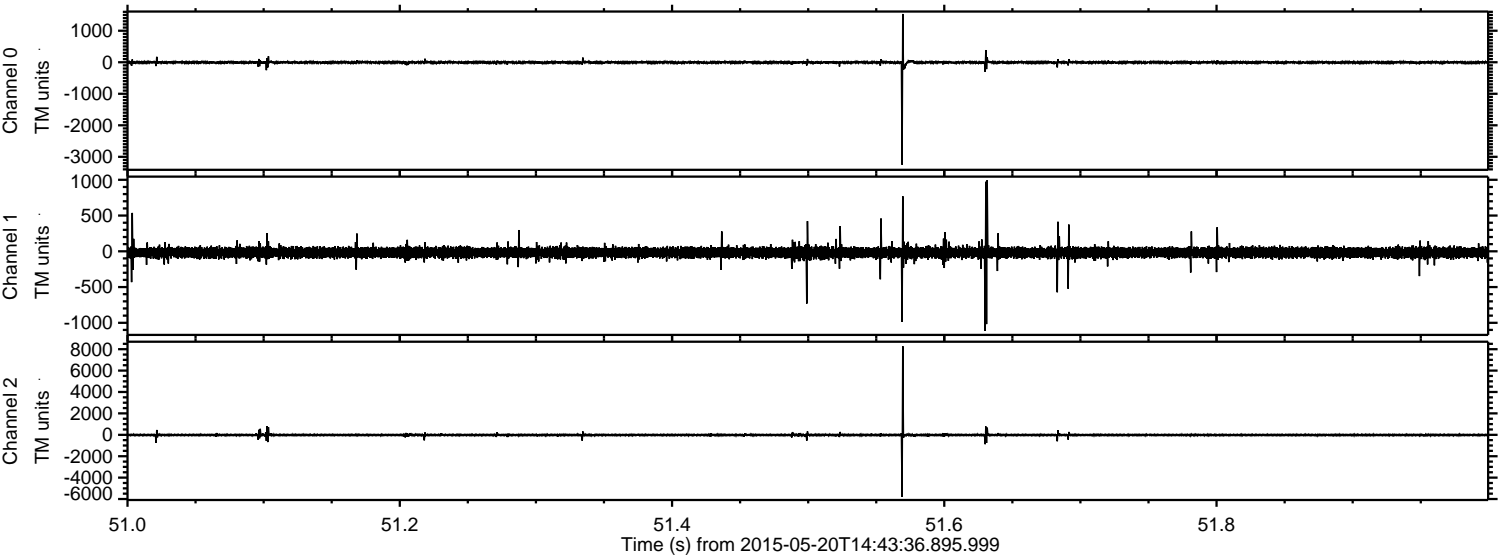
ELMAVAN 3D WAVEFORMS (Measured data sampled at 50 kHz) 49549 packets of 144 samples from 2015-05-20T14:43:36.895.999.

Processed Wed May 20 16:50:30 2015 by ELM ver.2012-10-06 from 001__elm20150520_144335__dat00.bin

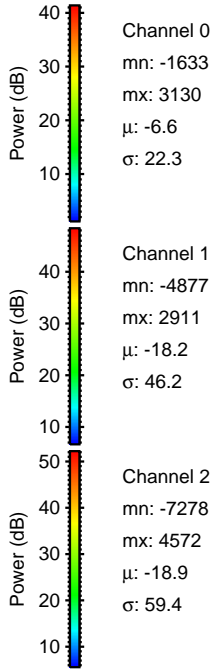
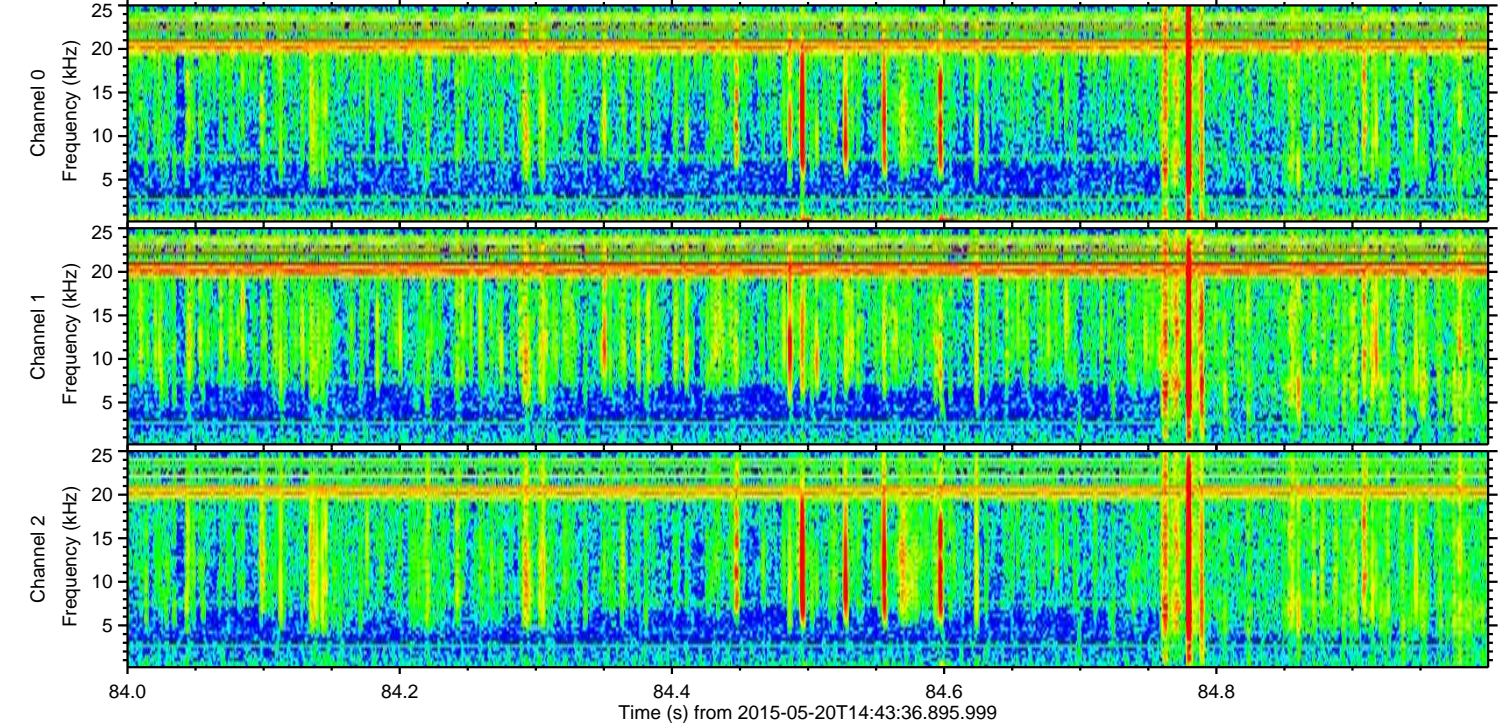
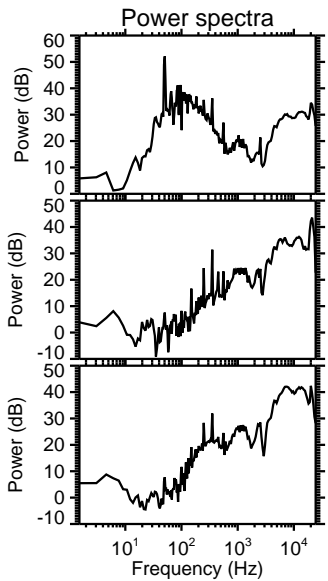
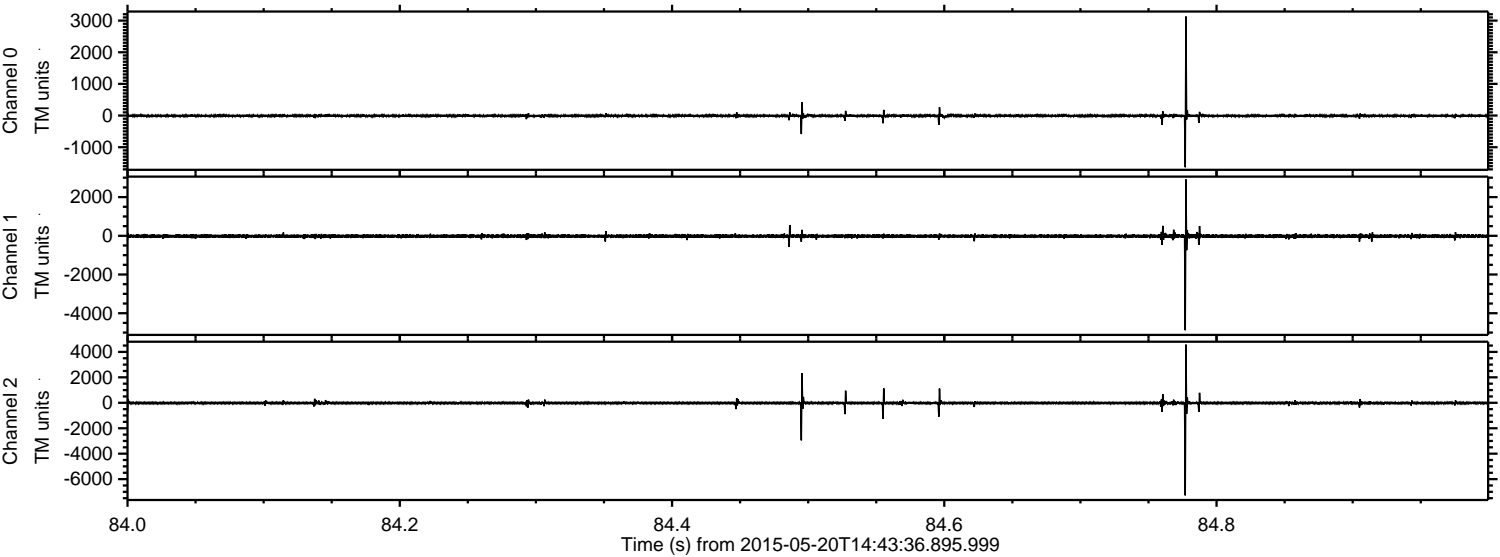


ELMAVAN 3D WAVEFORMS (Measured data sampled at 50 kHz) 49549 packets of 144 samples from 2015-05-20T14:43:36.895.999. Part 52/143

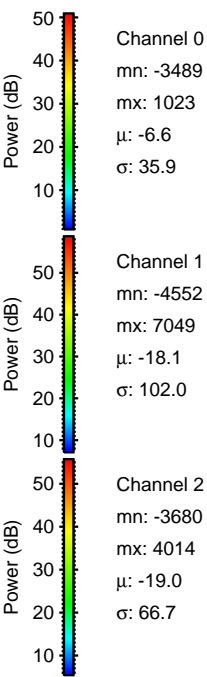
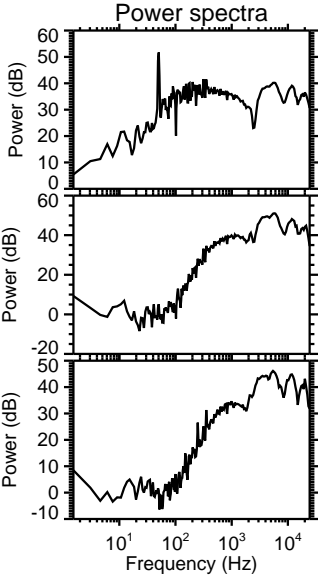
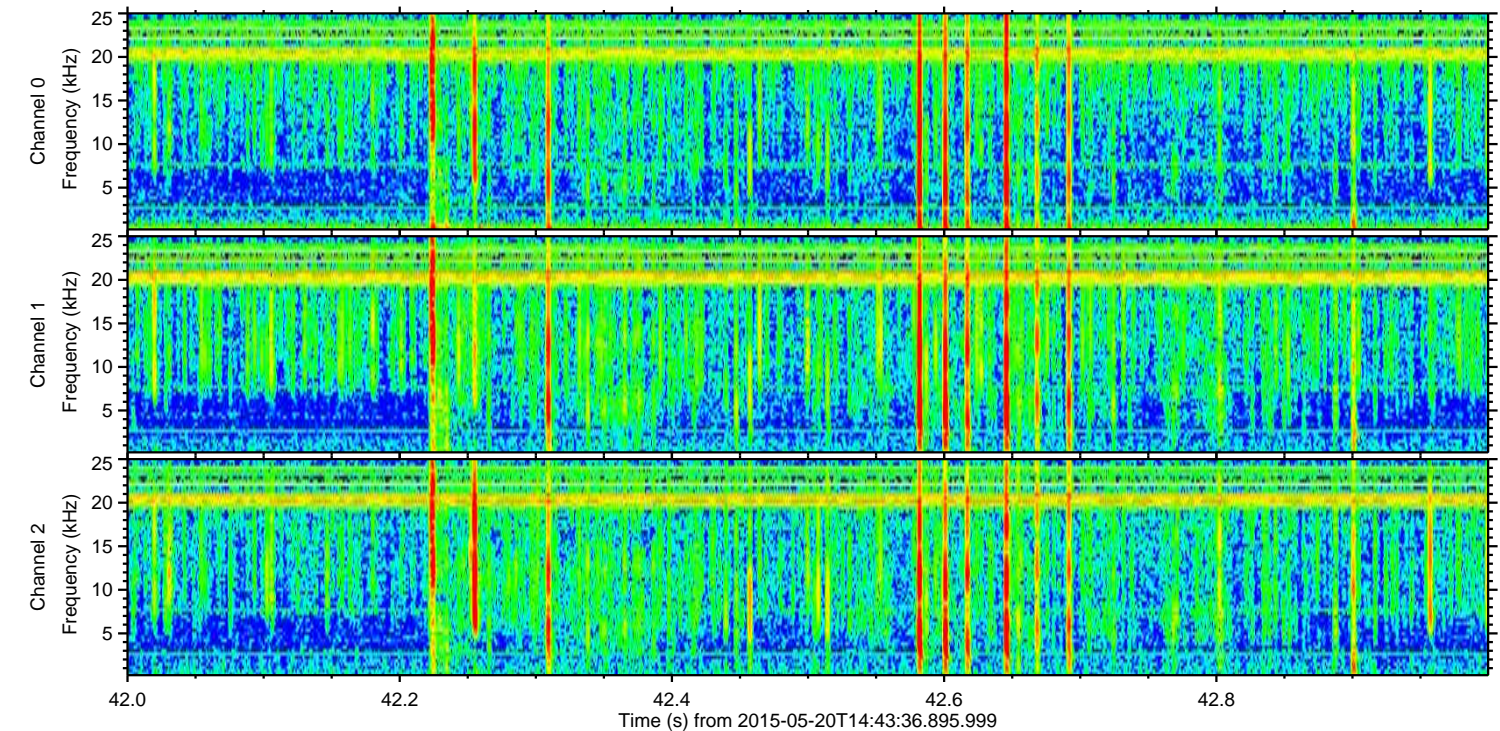
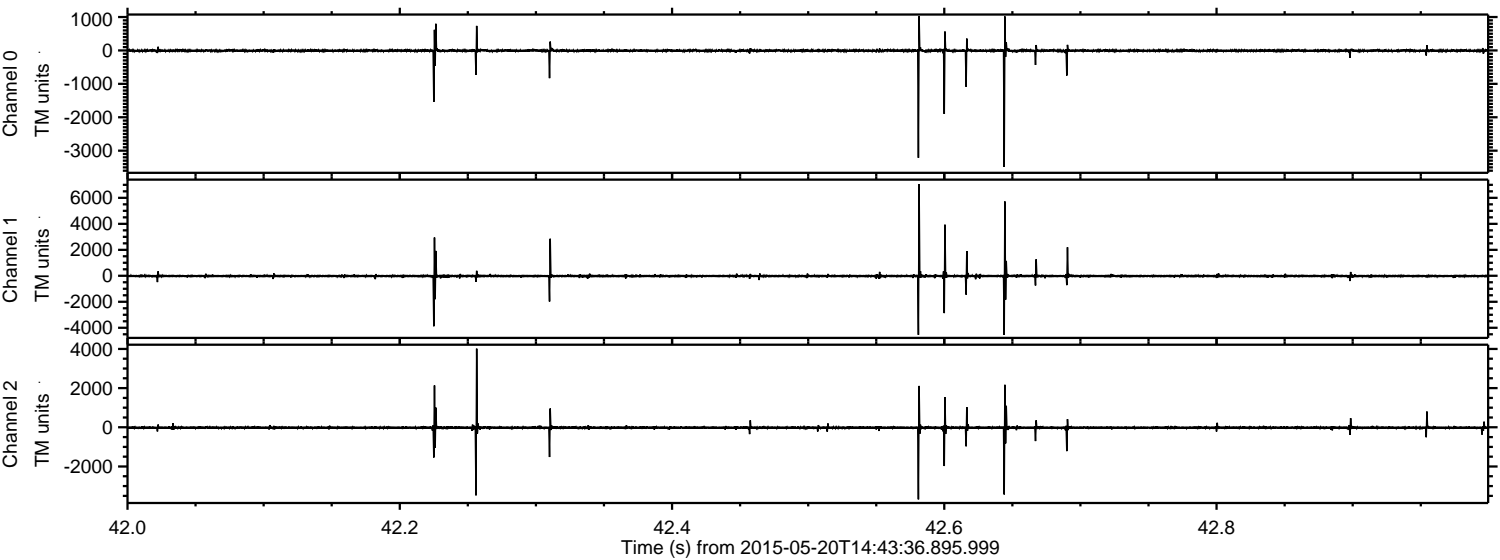
Processed Wed May 20 16:50:45 2015 by ELM ver.2012-10-06 from 001__elm20150520_144335__dat00.bin



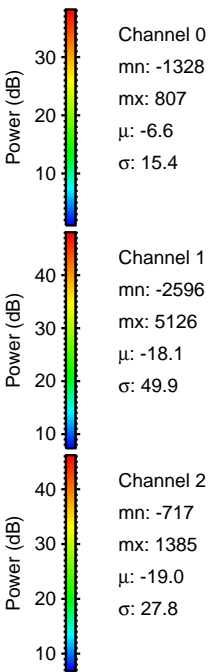
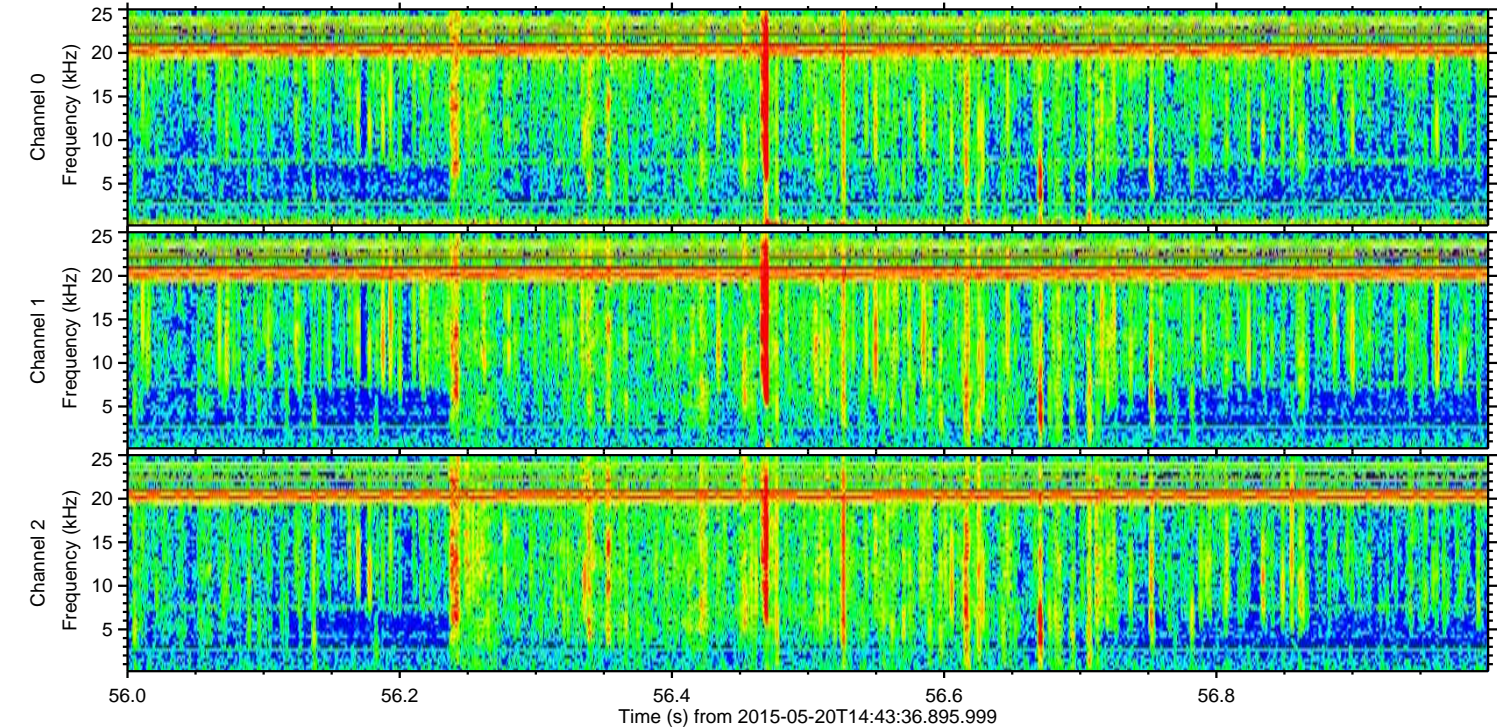
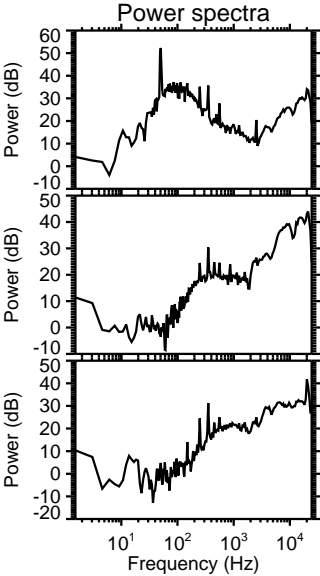
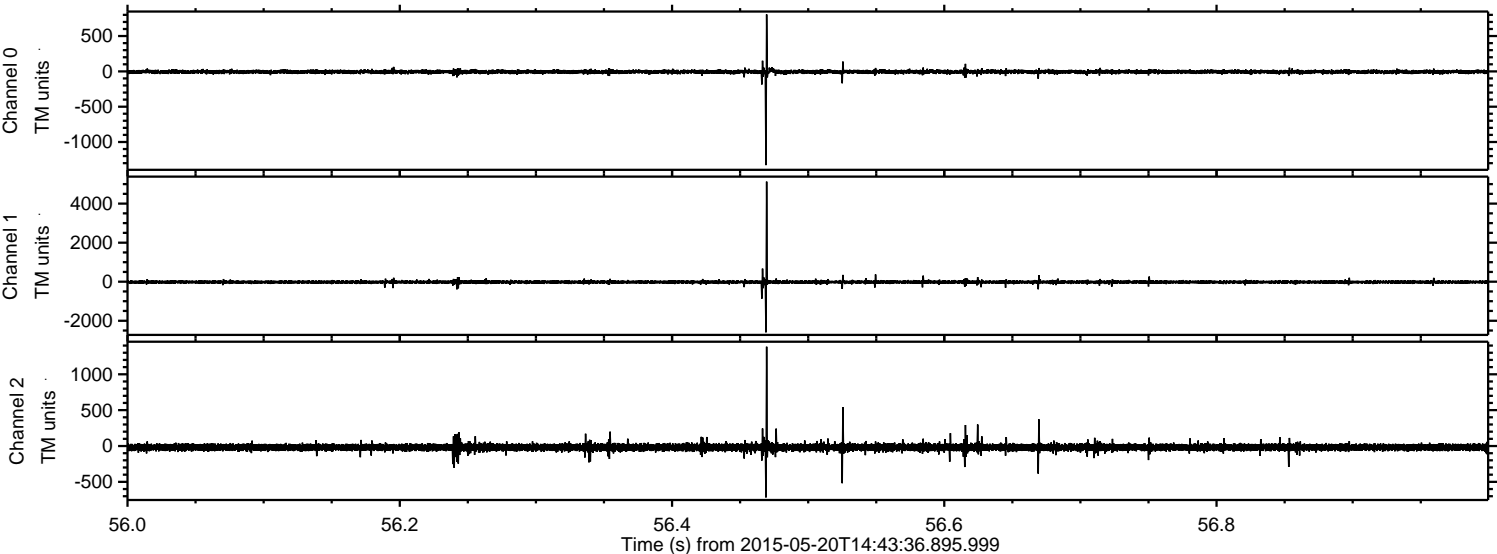
Processed Wed May 20 16:50:46 2015 by ELM ver.2012-10-06 from 001__elm20150520_144335__dat00.bin



Processed Wed May 20 16:50:48 2015 by ELM ver.2012-10-06 from 001__elm20150520_144335__dat00.bin

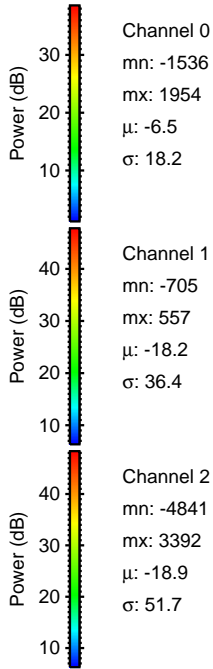
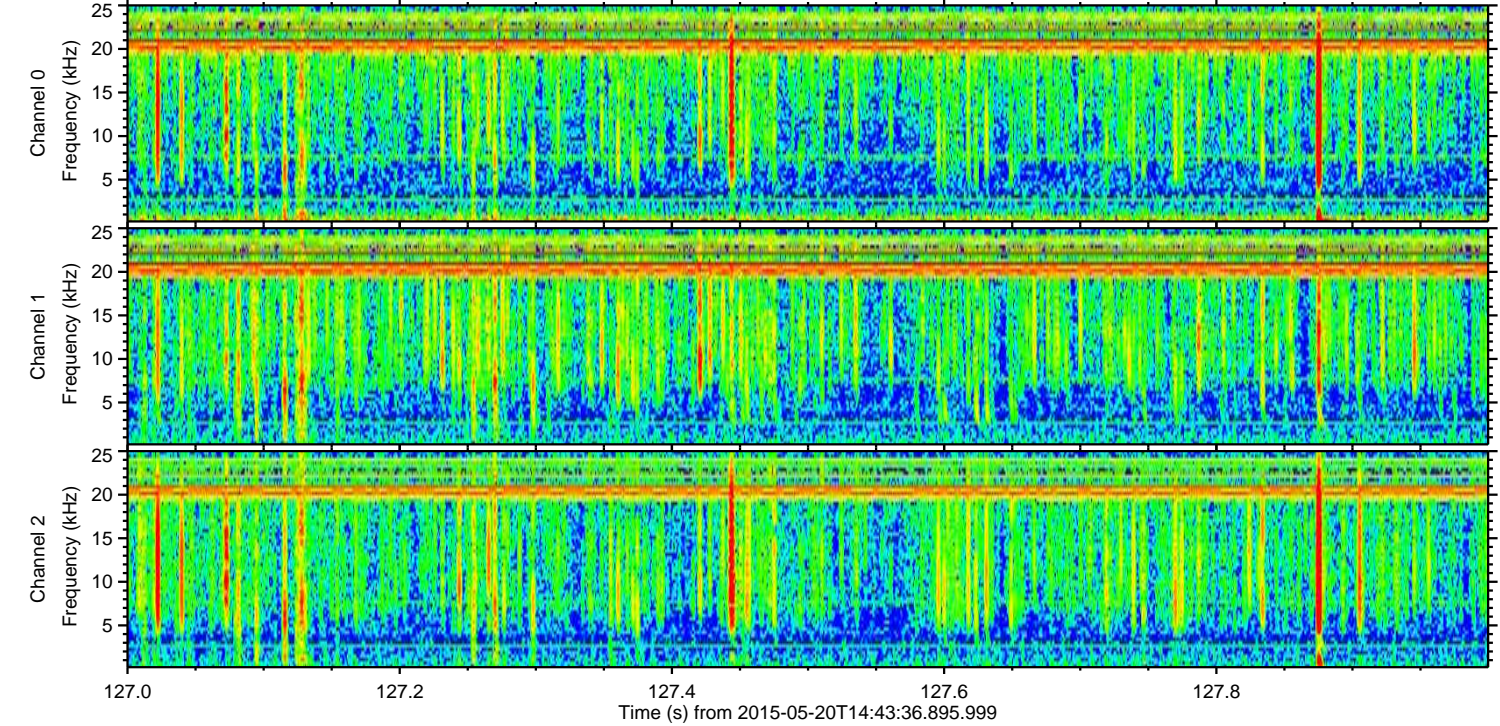
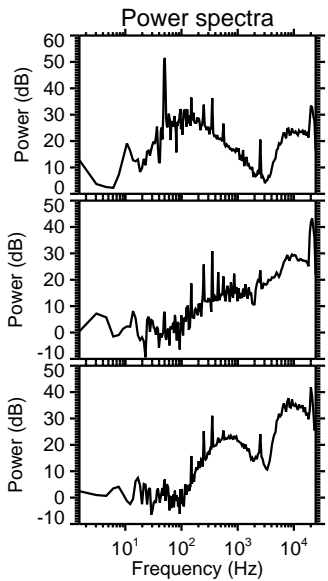
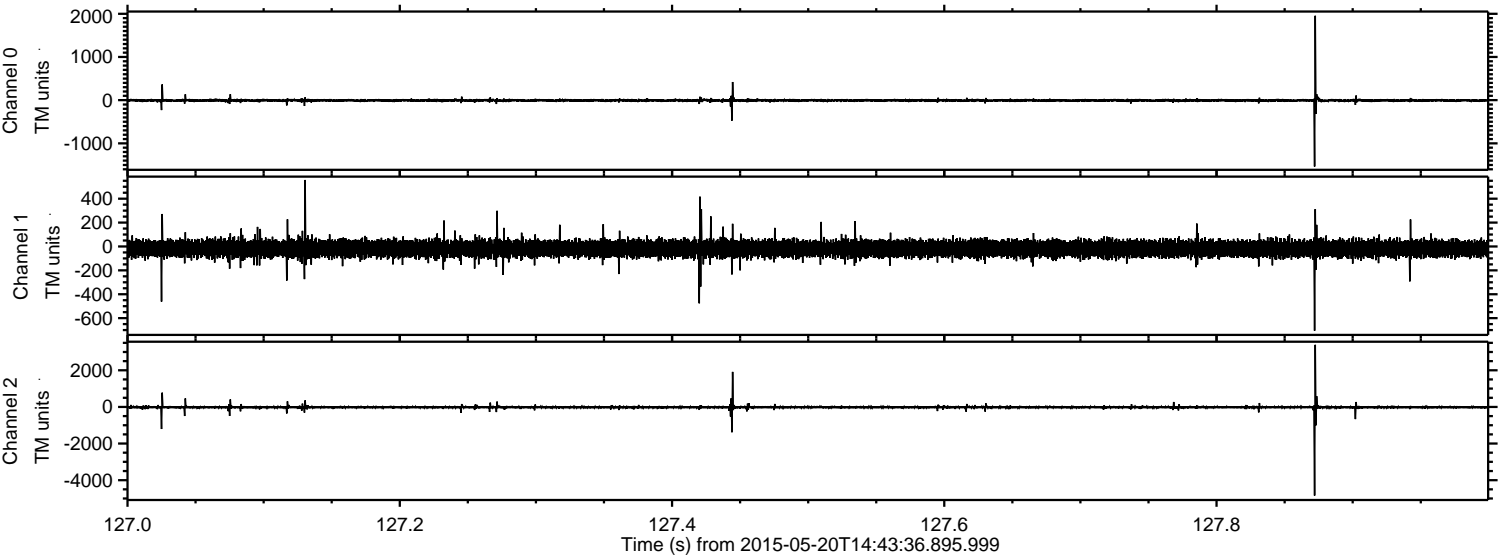


Processed Wed May 20 16:50:49 2015 by ELM ver.2012-10-06 from 001__elm20150520_144335__dat00.bin

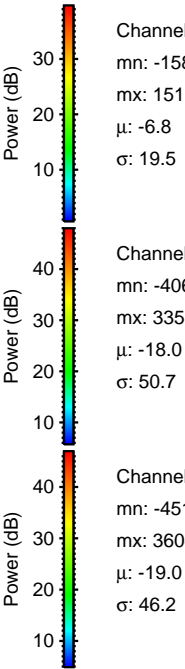
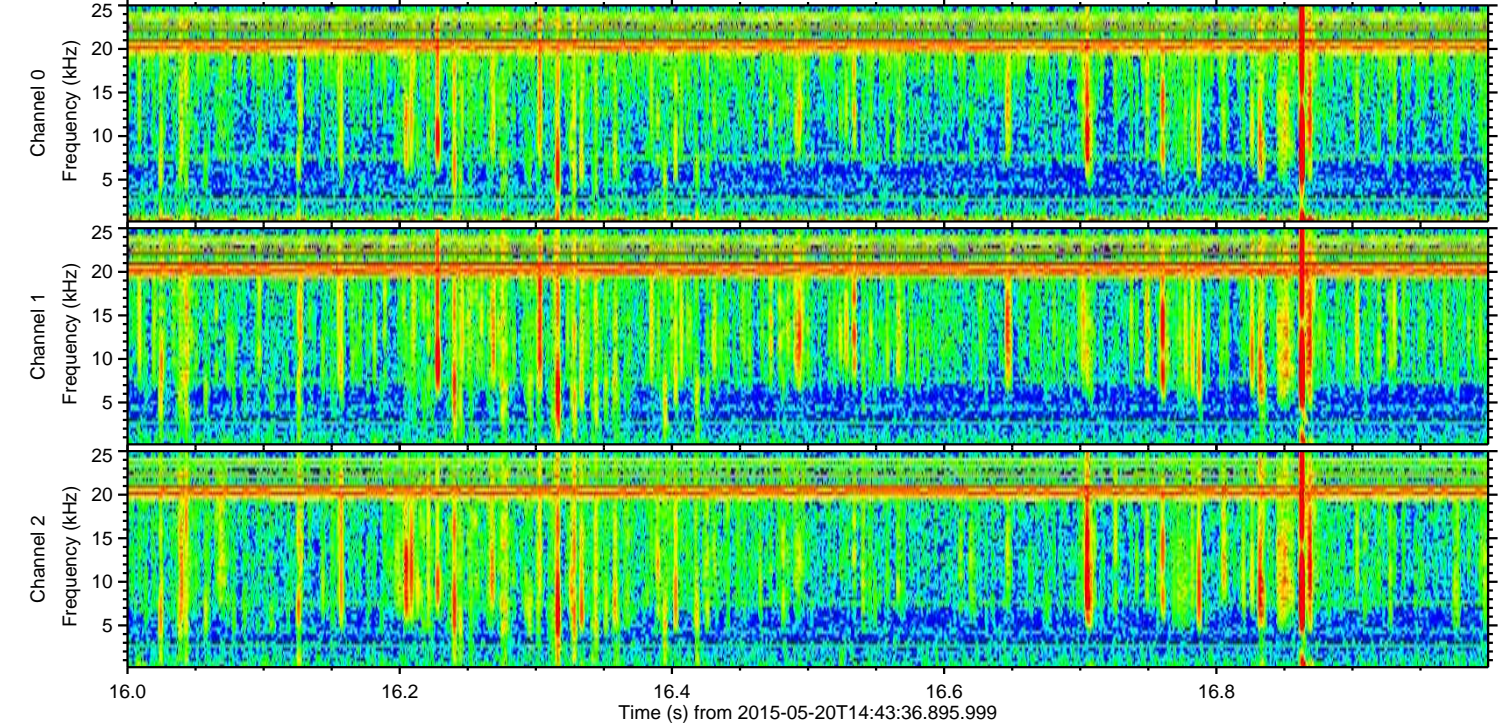
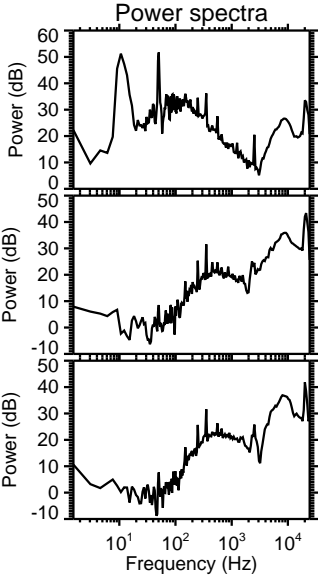
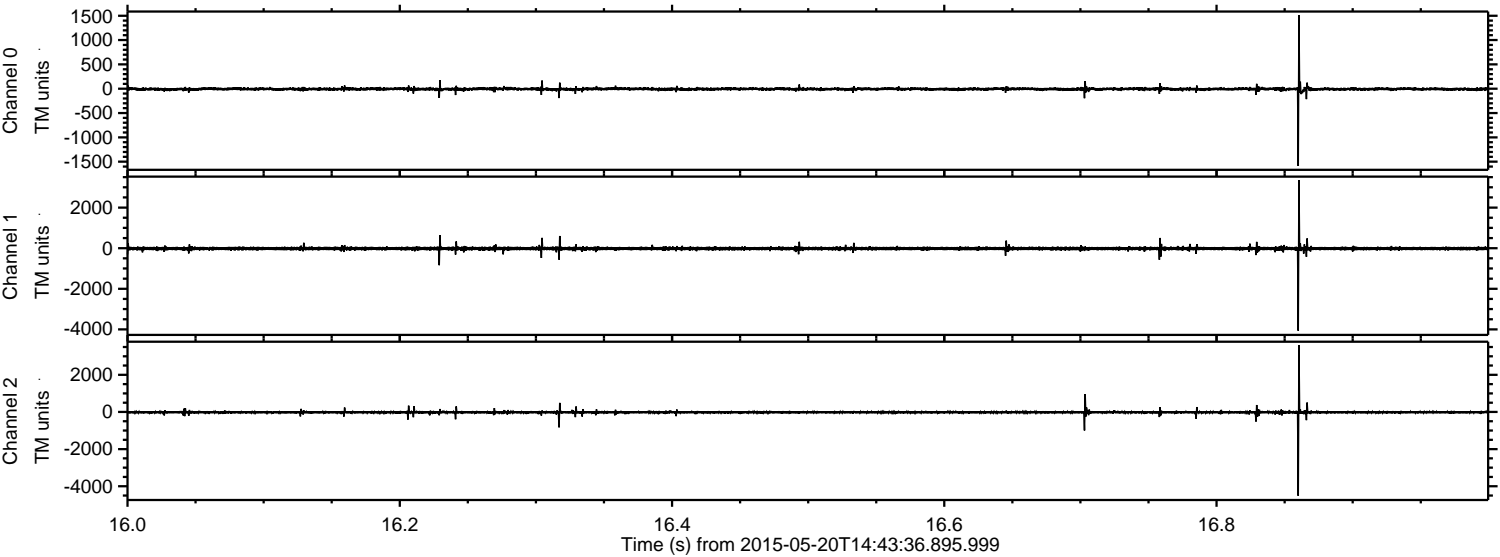


ELMAVAN 3D WAVEFORMS (Measured data sampled at 50 kHz) 49549 packets of 144 samples from 2015-05-20T14:43:36.895.999. Part 128/143

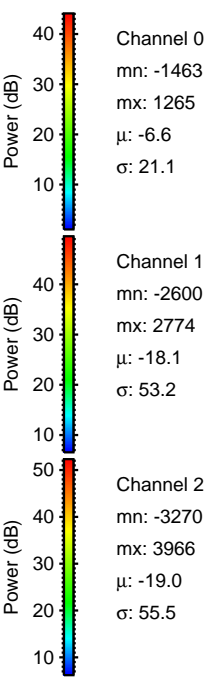
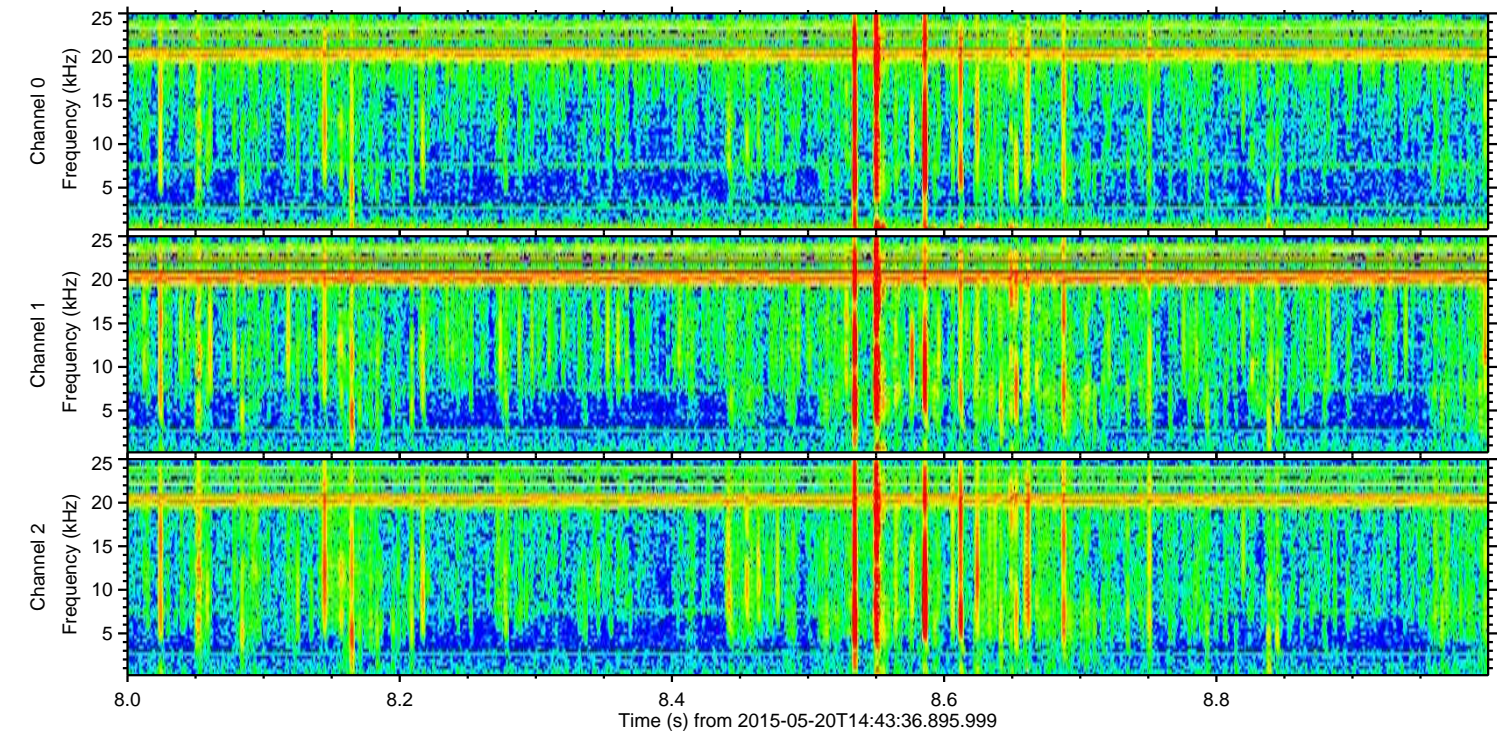
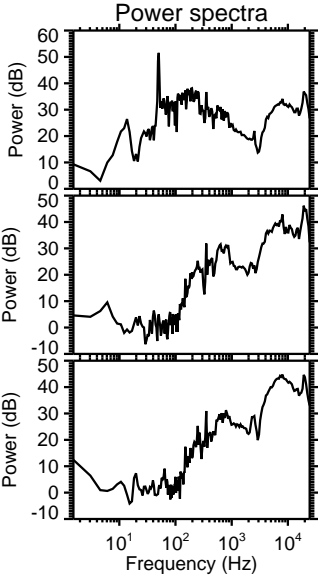
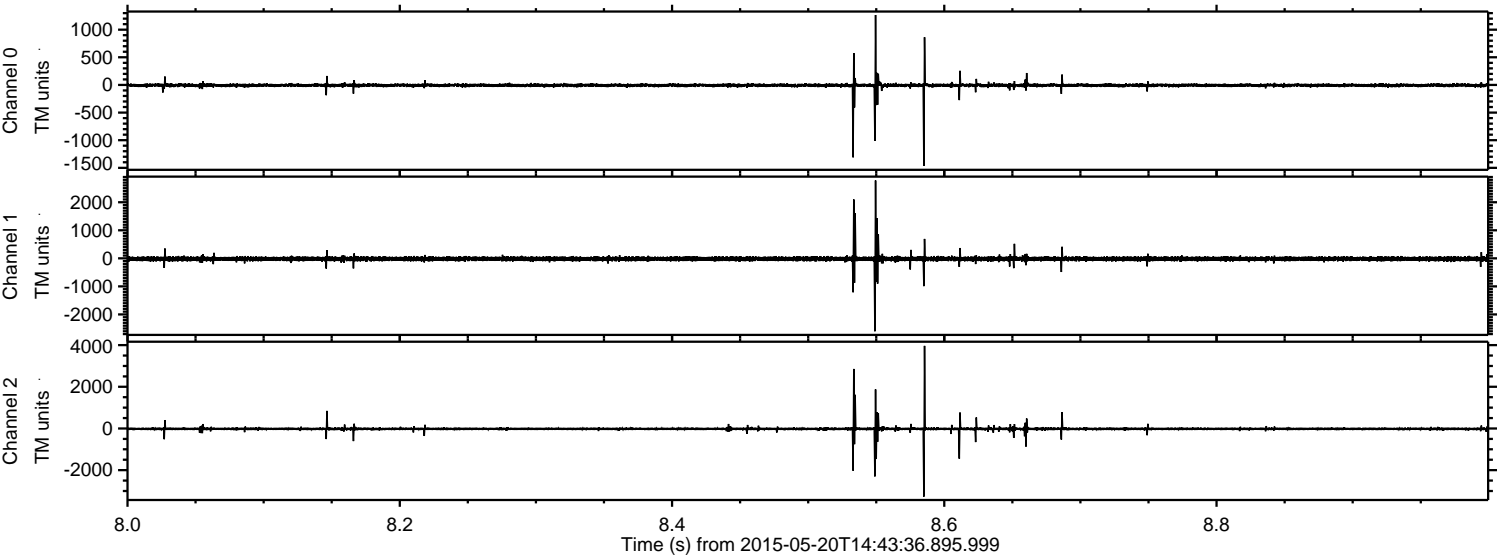
Processed Wed May 20 16:50:50 2015 by ELM ver.2012-10-06 from 001__elm20150520_144335__dat00.bin



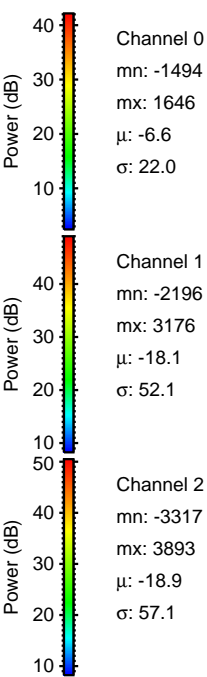
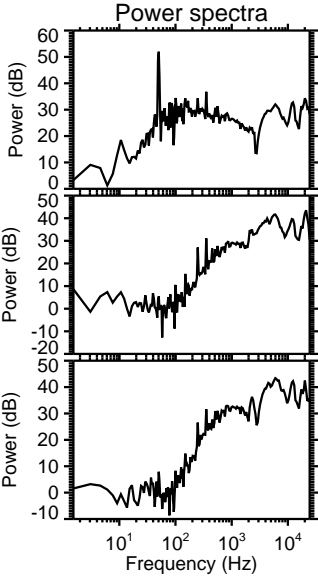
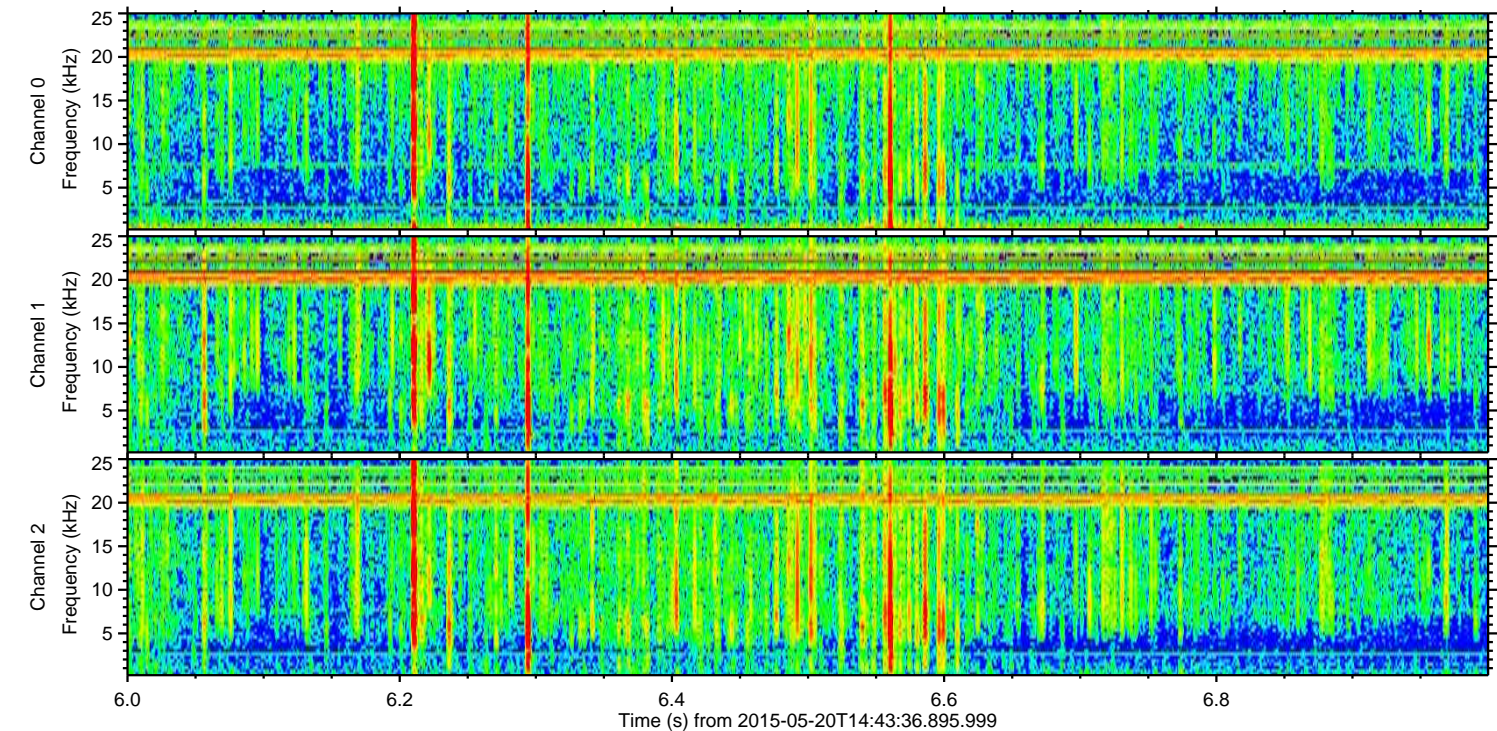
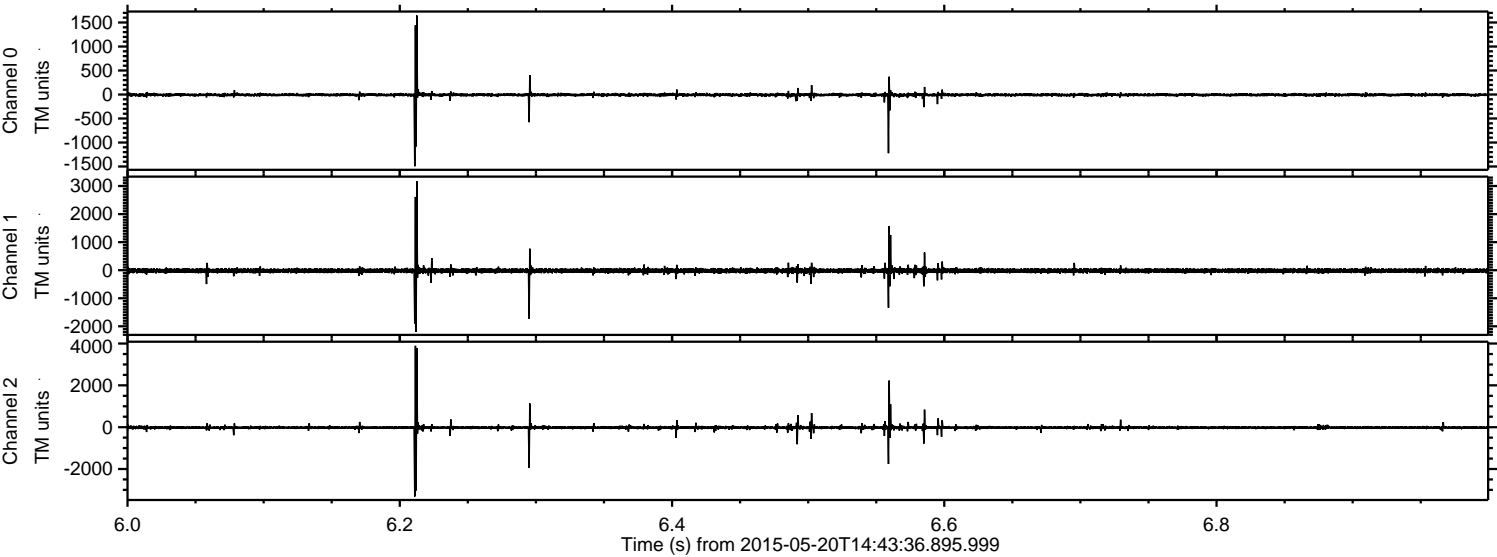
Processed Wed May 20 16:50:51 2015 by ELM ver.2012-10-06 from 001__elm20150520_144335__dat00.bin



Processed Wed May 20 16:50:52 2015 by ELM ver.2012-10-06 from 001__elm20150520_144335__dat00.bin



Processed Wed May 20 16:50:54 2015 by ELM ver.2012-10-06 from 001__elm20150520_144335__dat00.bin

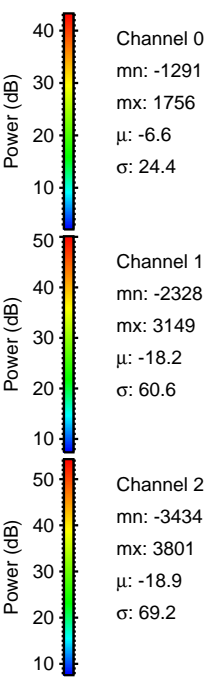
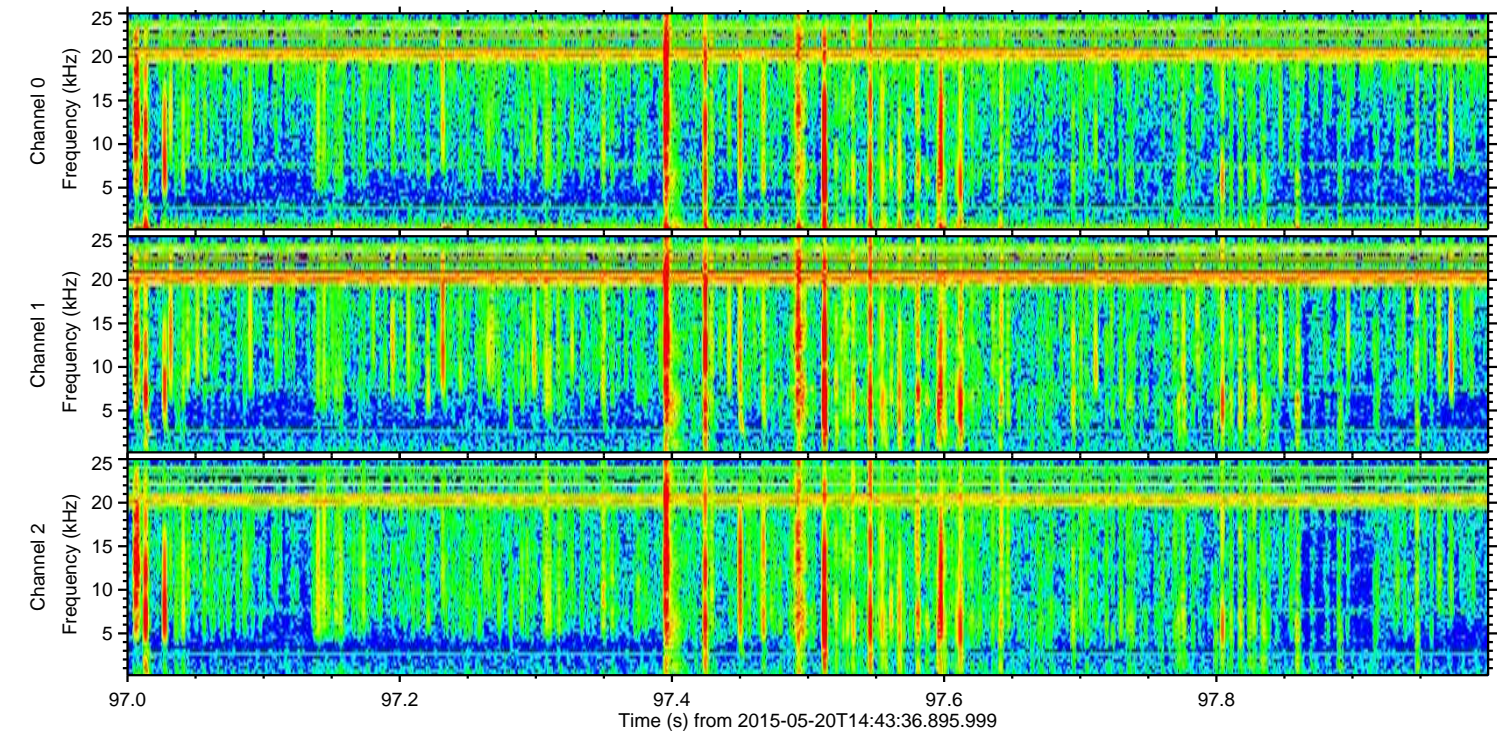
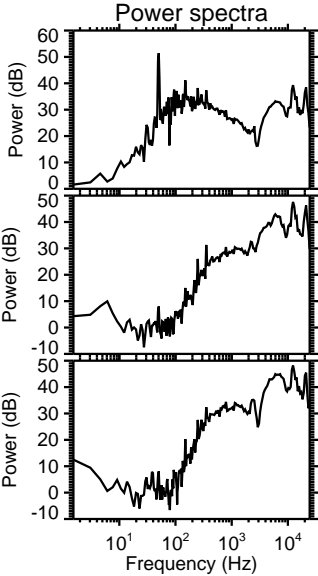
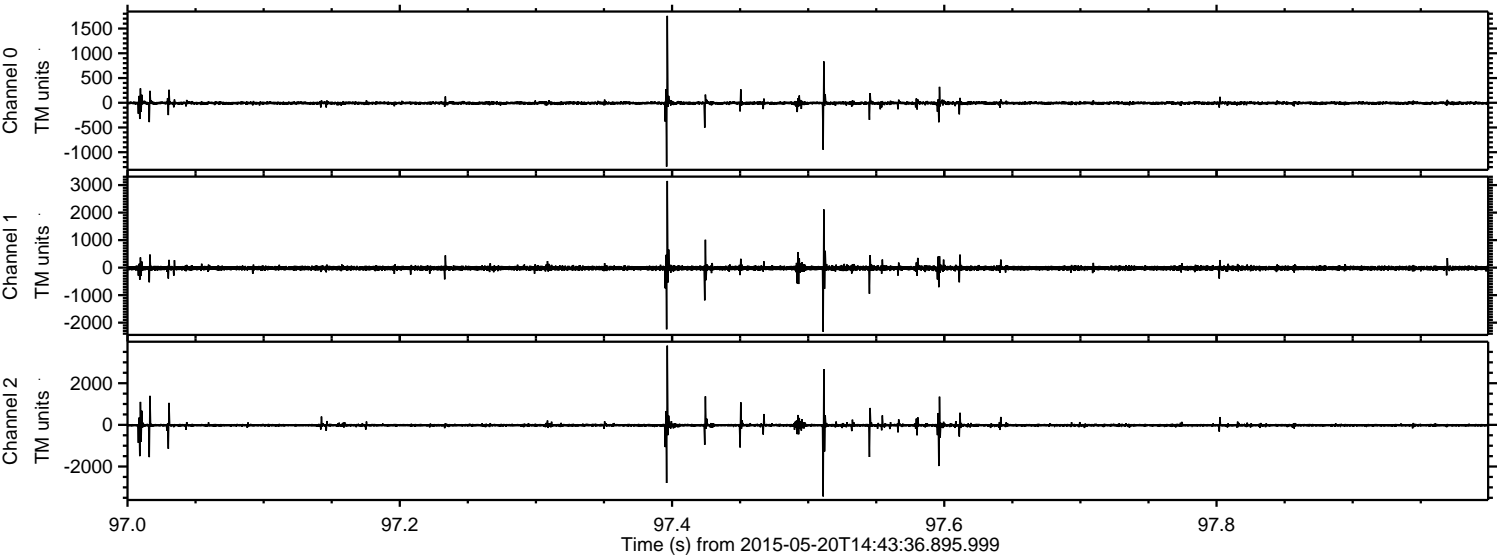


Channel 0
mn: -1494
mx: 1646
 μ : -6.6
 σ : 22.0

Channel 1
mn: -2196
mx: 3176
 μ : -18.1
 σ : 52.1

Channel 2
mn: -3317
mx: 3893
 μ : -18.9
 σ : 57.1

Processed Wed May 20 16:50:55 2015 by ELM ver.2012-10-06 from 001__elm20150520_144335__dat00.bin



Channel 0
mn: -1291
mx: 1756
 μ : -6.6
 σ : 24.4

Channel 1
mn: -2328
mx: 3149
 μ : -18.2
 σ : 60.6

Channel 2
mn: -3434
mx: 3801
 μ : -18.9
 σ : 69.2

Processed Wed May 20 16:50:56 2015 by ELM ver.2012-10-06 from 001__elm20150520_144335__dat00.bin

