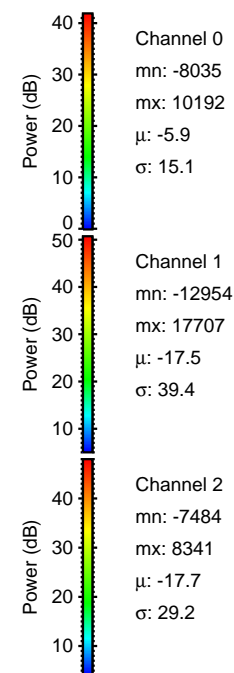
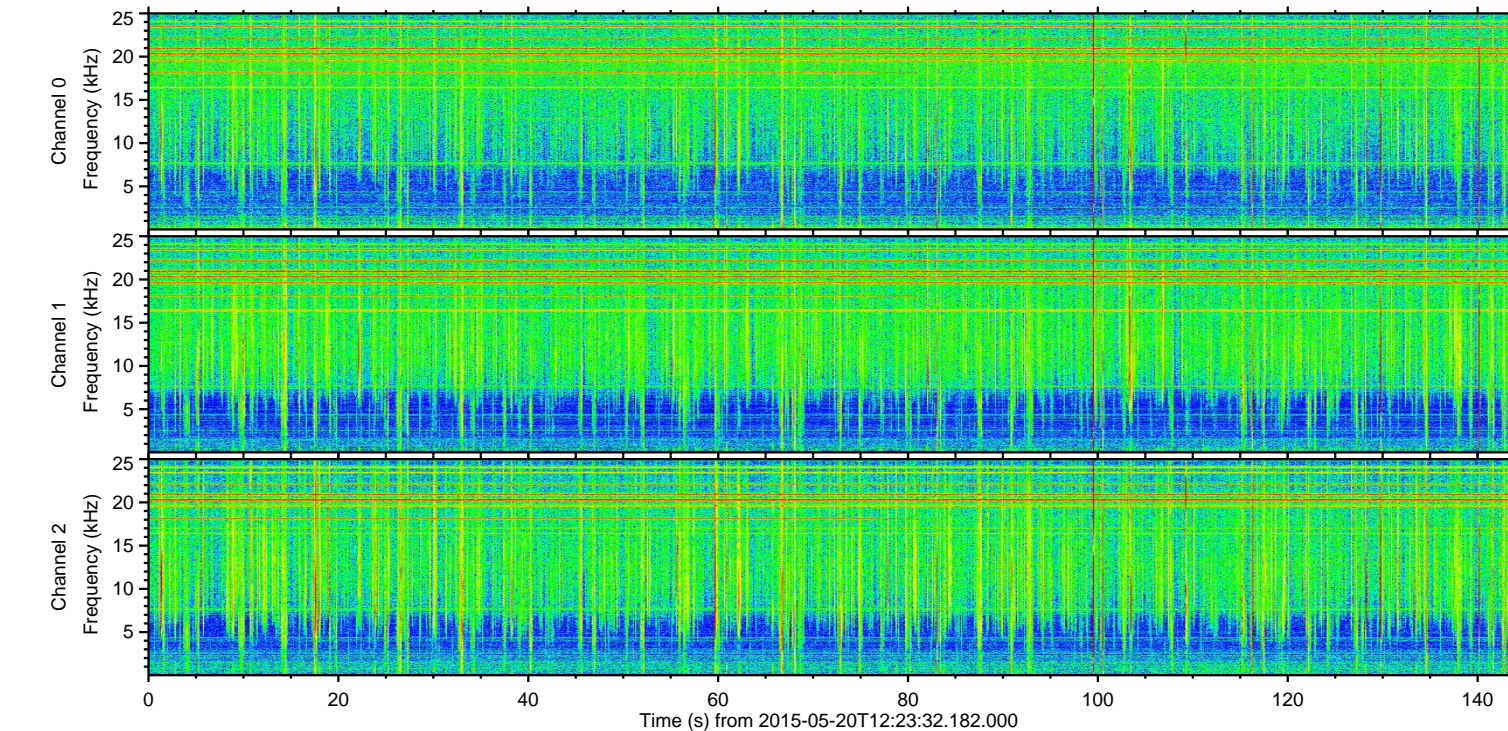
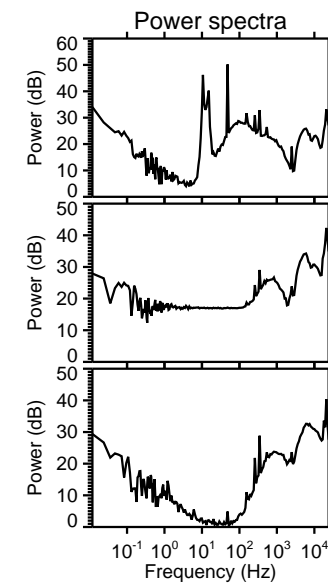
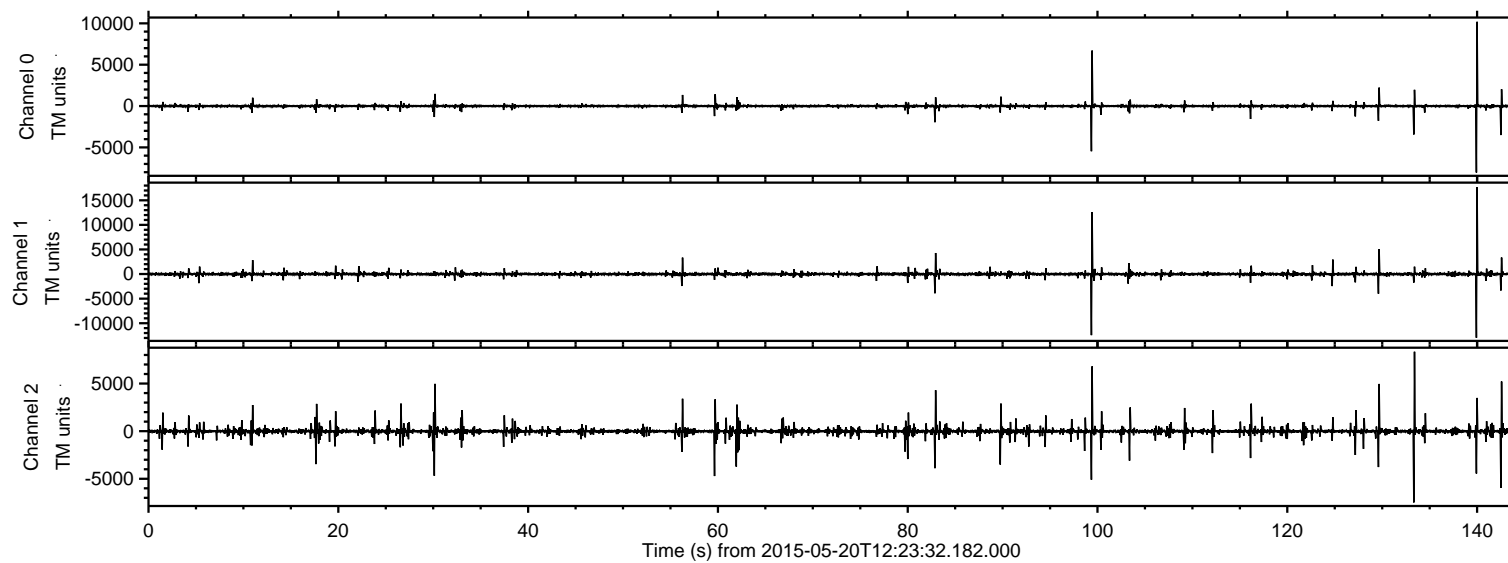
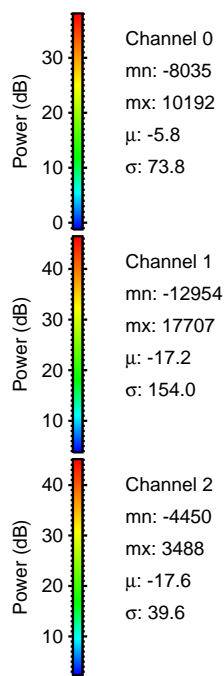
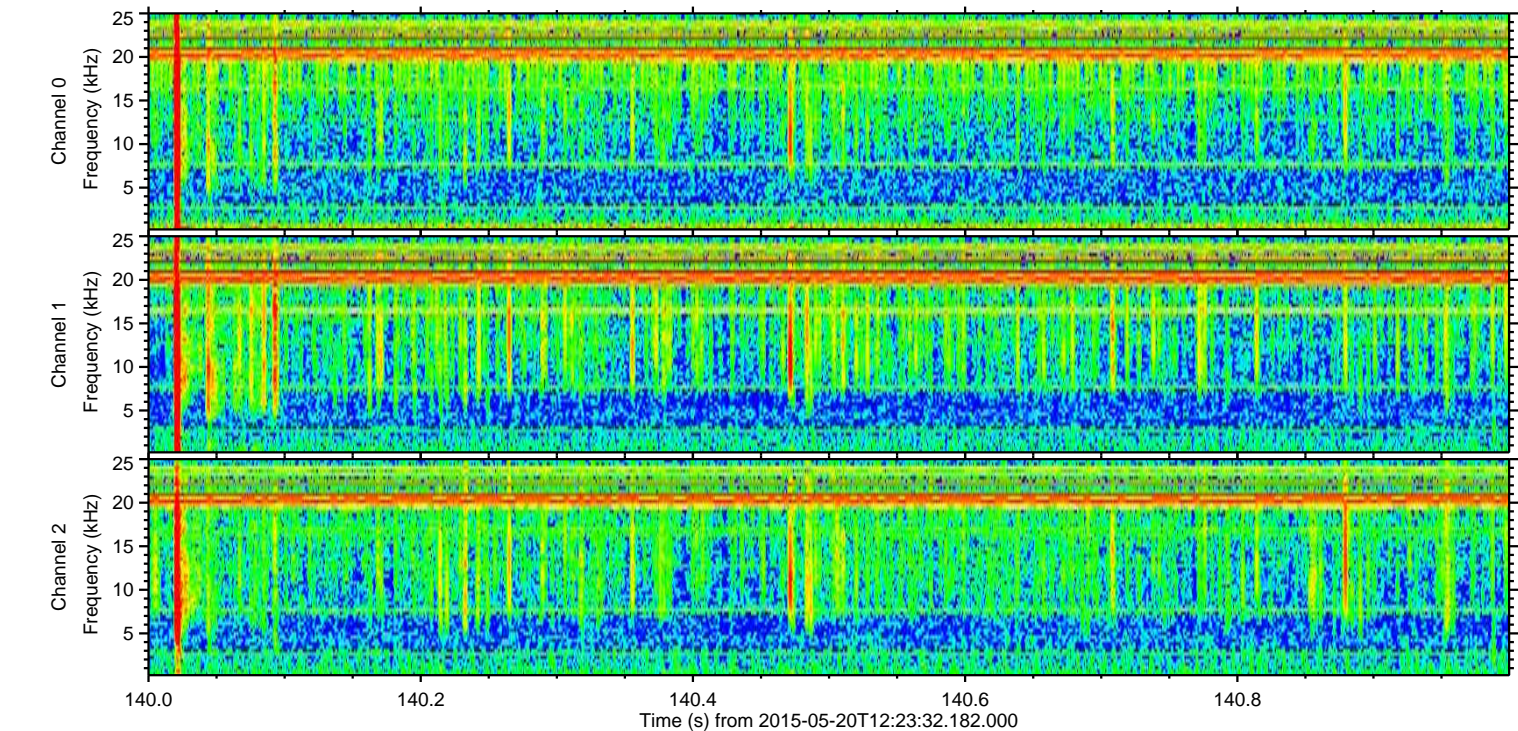
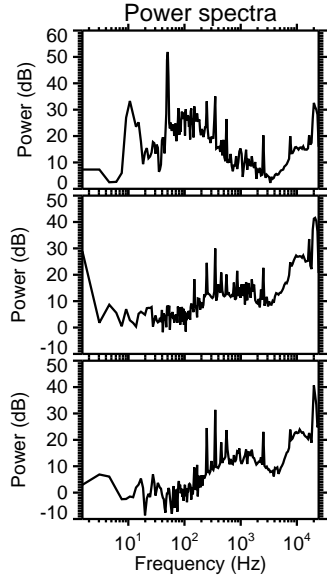
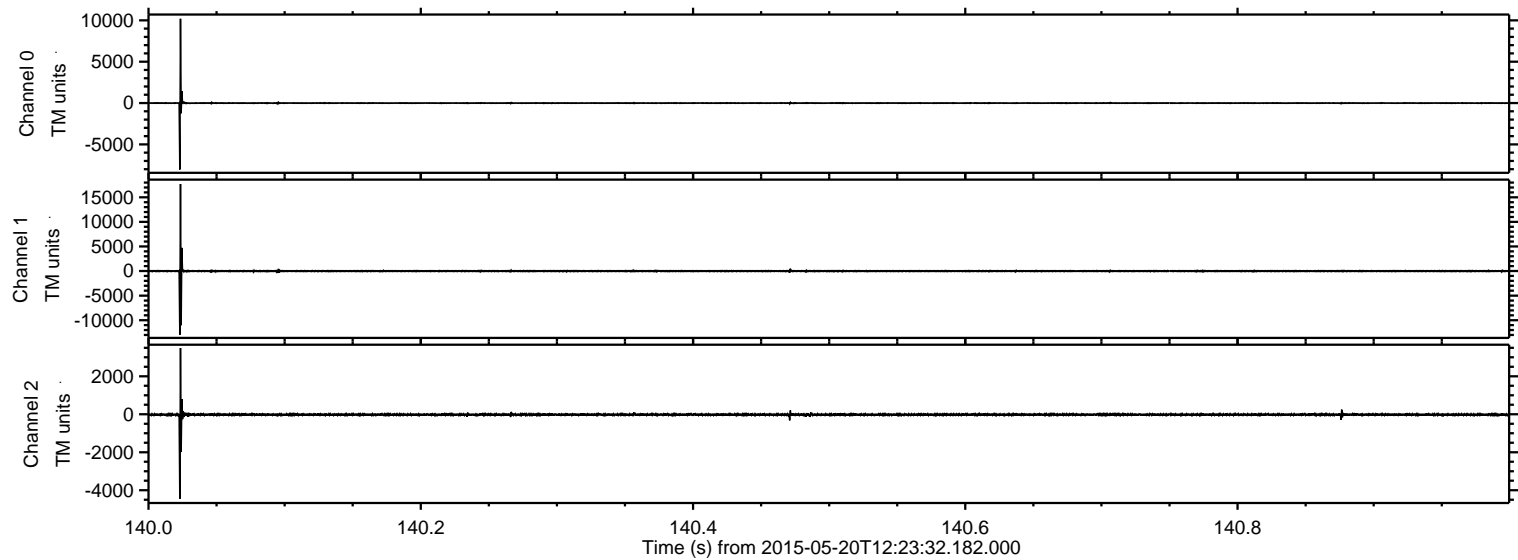


ELMAVAN 3D WAVEFORMS (Measured data sampled at 50 kHz) 49783 packets of 144 samples from 2015-05-20T12:23:32.182.000.

Processed Wed May 20 14:30:10 2015 by ELM ver.2012-10-06 from 001__elm20150520_122331__dat00.bin

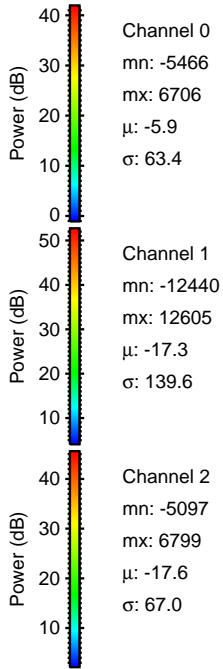
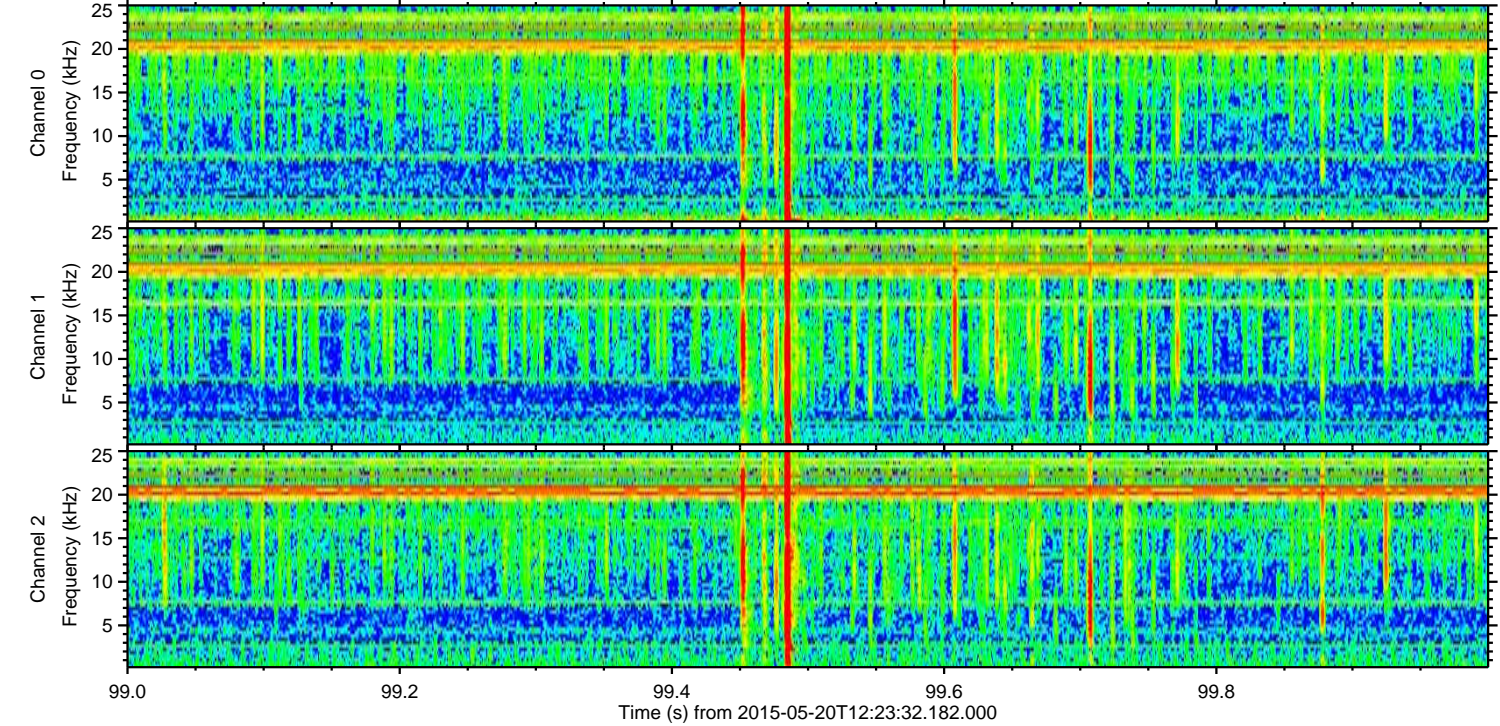
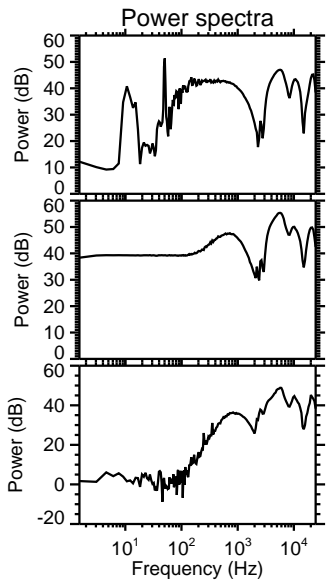
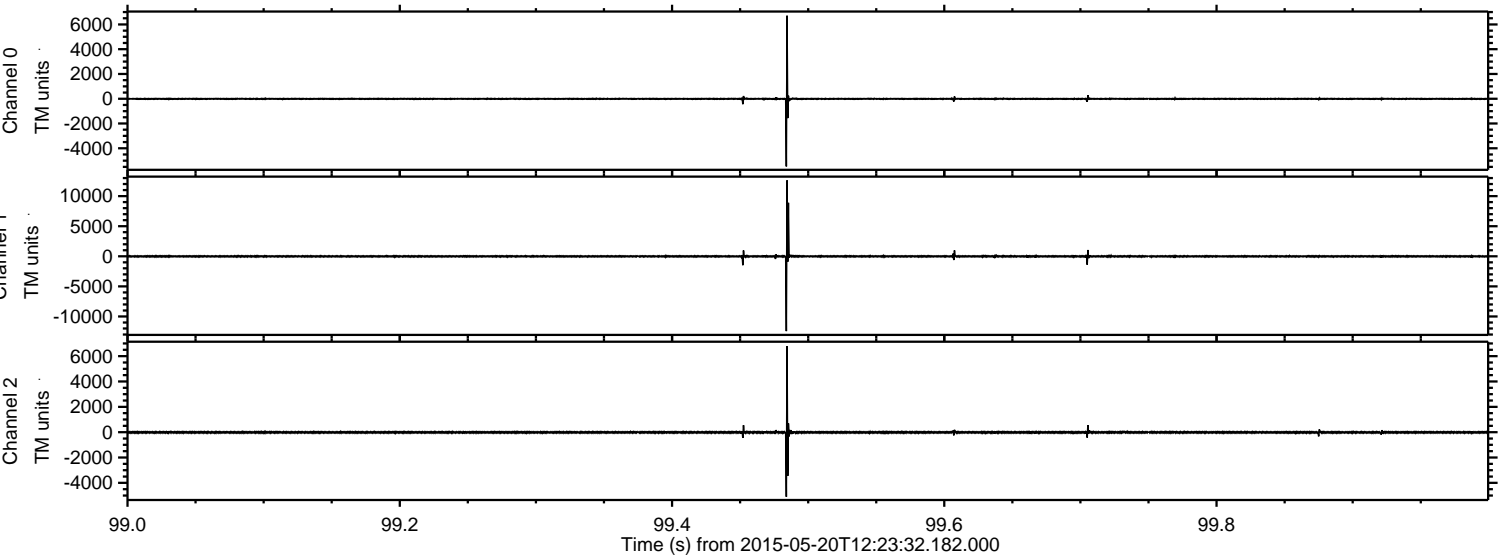


Processed Wed May 20 14:30:22 2015 by ELM ver.2012-10-06 from 001__elm20150520_122331__dat00.bin



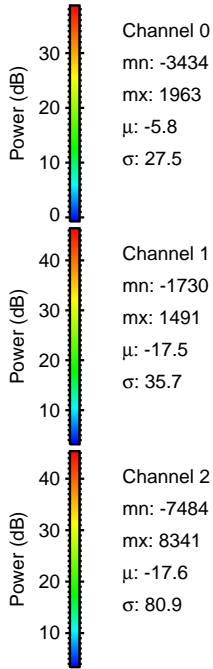
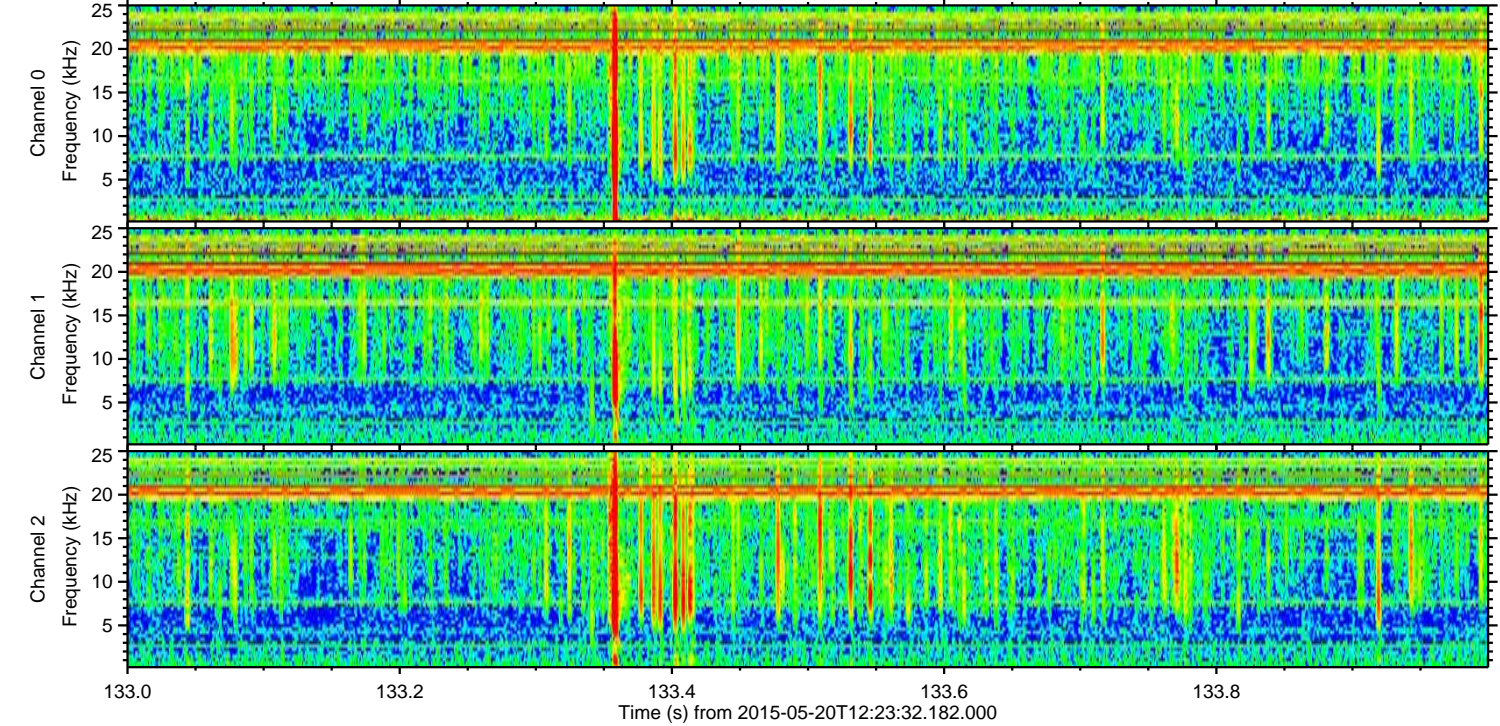
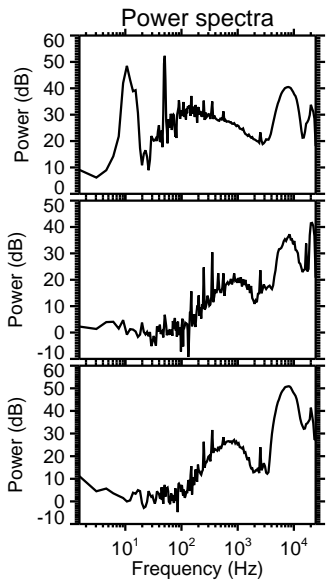
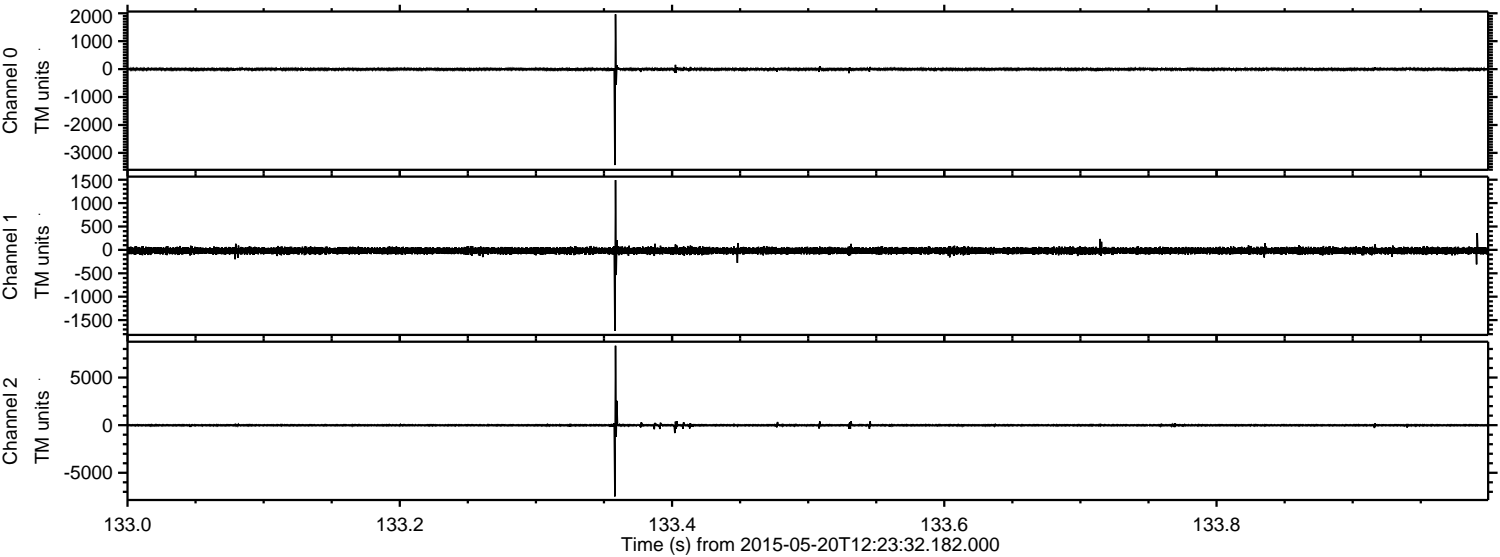
ELMAVAN 3D WAVEFORMS (Measured data sampled at 50 kHz) 49783 packets of 144 samples from 2015-05-20T12:23:32.182.000. Part 100/144

Processed Wed May 20 14:30:23 2015 by ELM ver.2012-10-06 from 001__elm20150520_122331__dat00.bin



ELMAVAN 3D WAVEFORMS (Measured data sampled at 50 kHz) 49783 packets of 144 samples from 2015-05-20T12:23:32.182.000. Part 134/144

Processed Wed May 20 14:30:24 2015 by ELM ver.2012-10-06 from 001__elm20150520_122331__dat00.bin



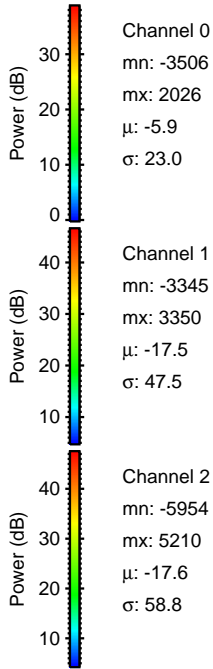
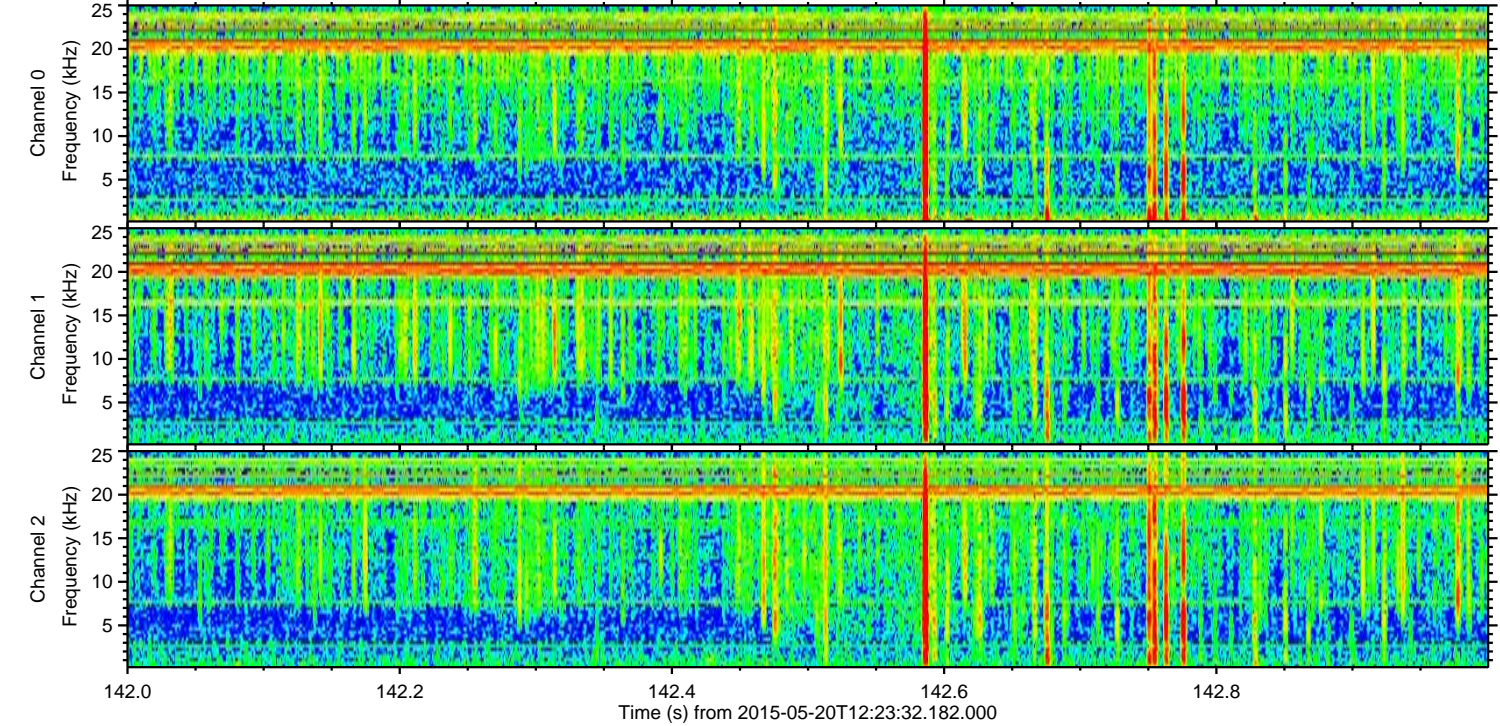
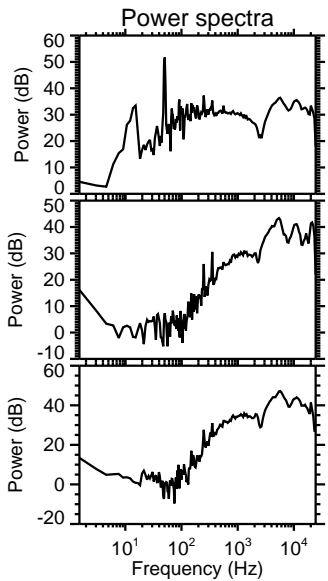
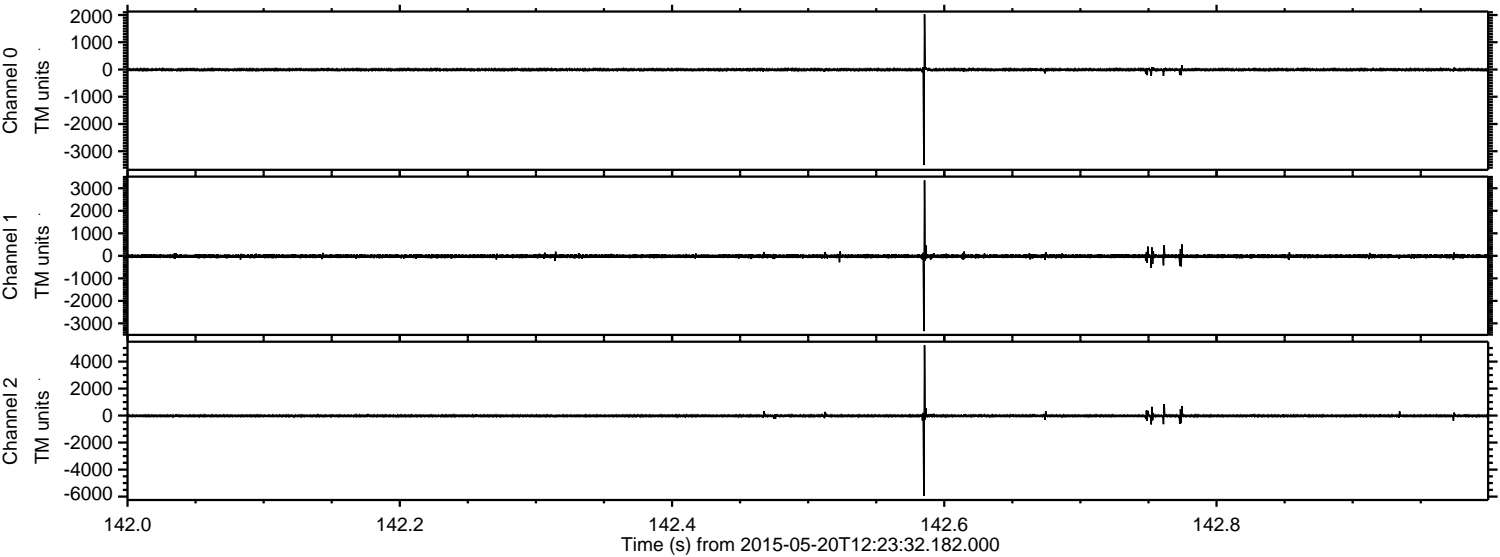
Channel 0
mn: -3434
mx: 1963
 μ : -5.8
 σ : 27.5

Channel 1
mn: -1730
mx: 1491
 μ : -17.5
 σ : 35.7

Channel 2
mn: -7484
mx: 8341
 μ : -17.6
 σ : 80.9

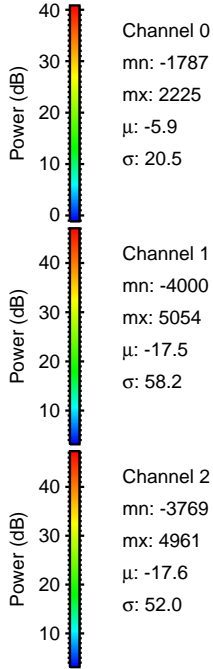
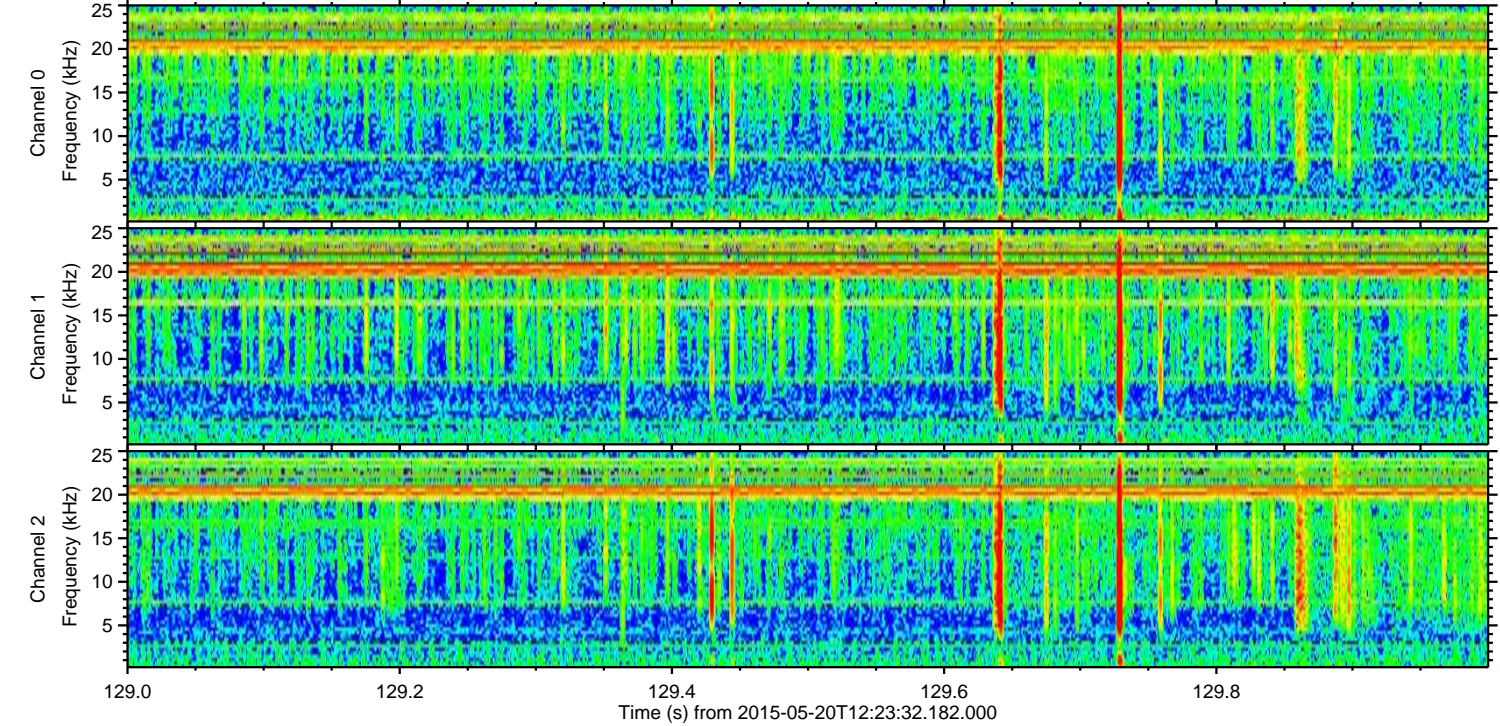
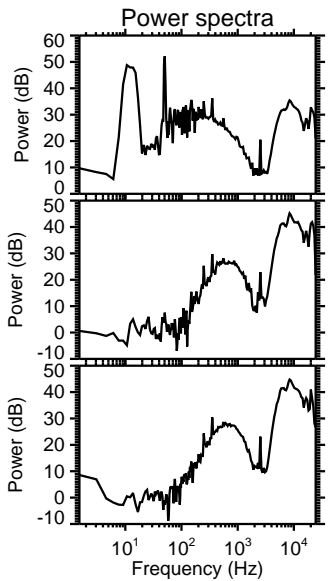
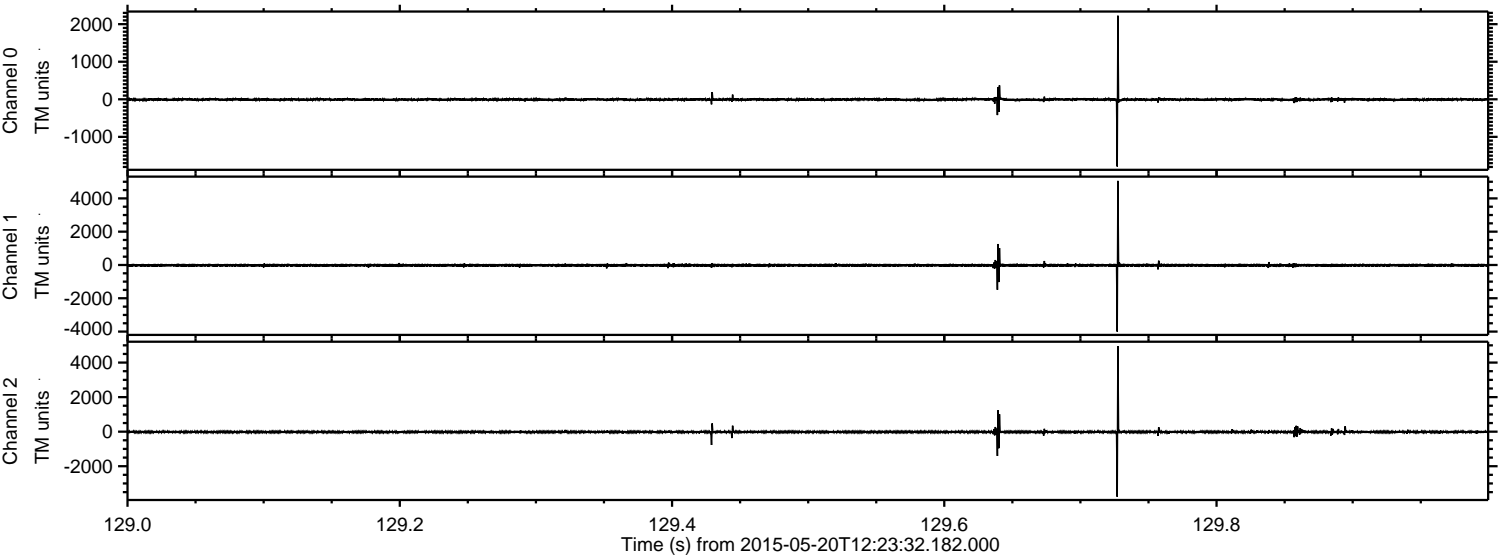
ELMAVAN 3D WAVEFORMS (Measured data sampled at 50 kHz) 49783 packets of 144 samples from 2015-05-20T12:23:32.182.000. Part 143/144

Processed Wed May 20 14:30:25 2015 by ELM ver.2012-10-06 from 001__elm20150520_122331__dat00.bin

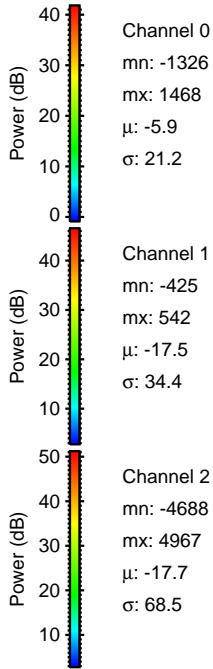
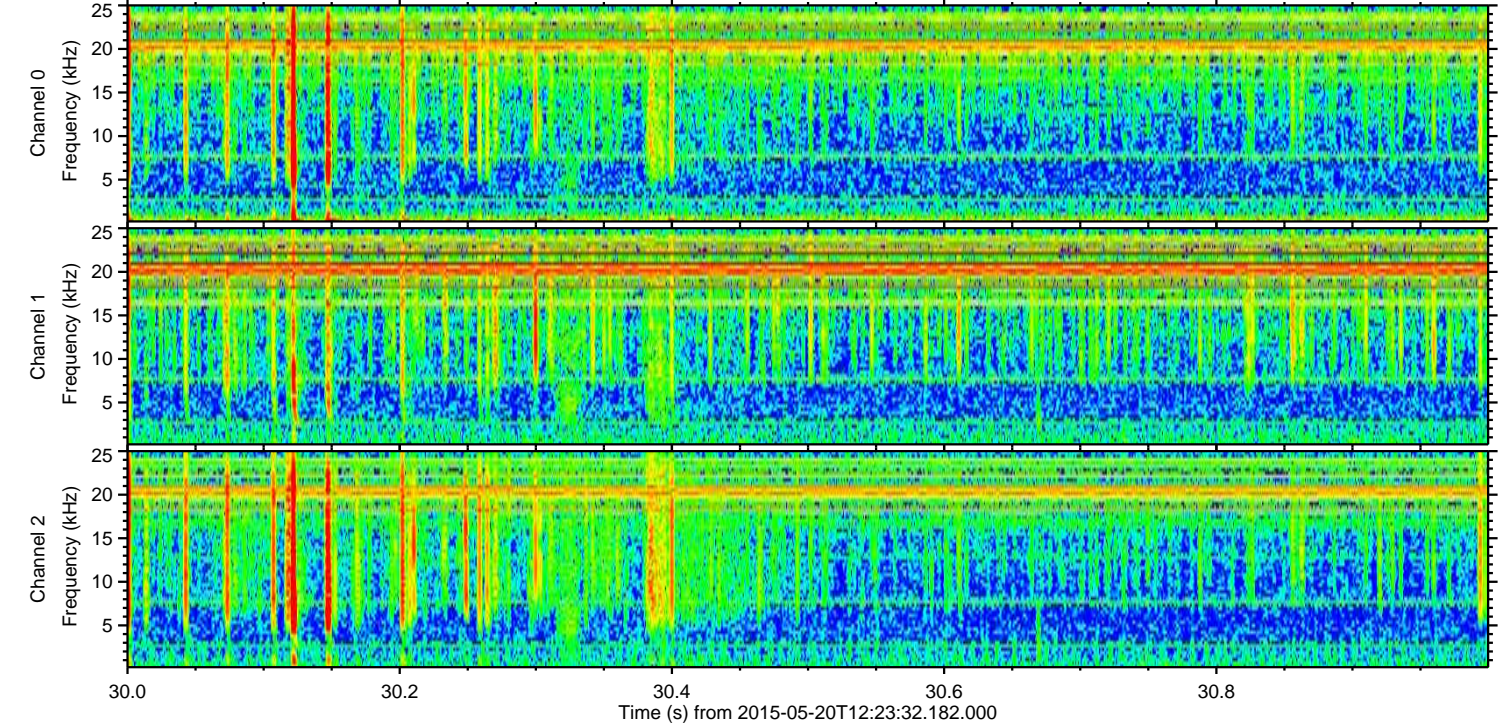
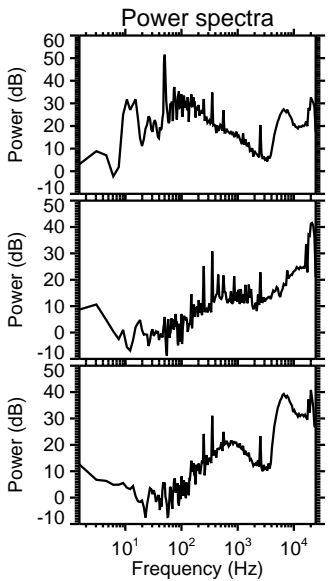
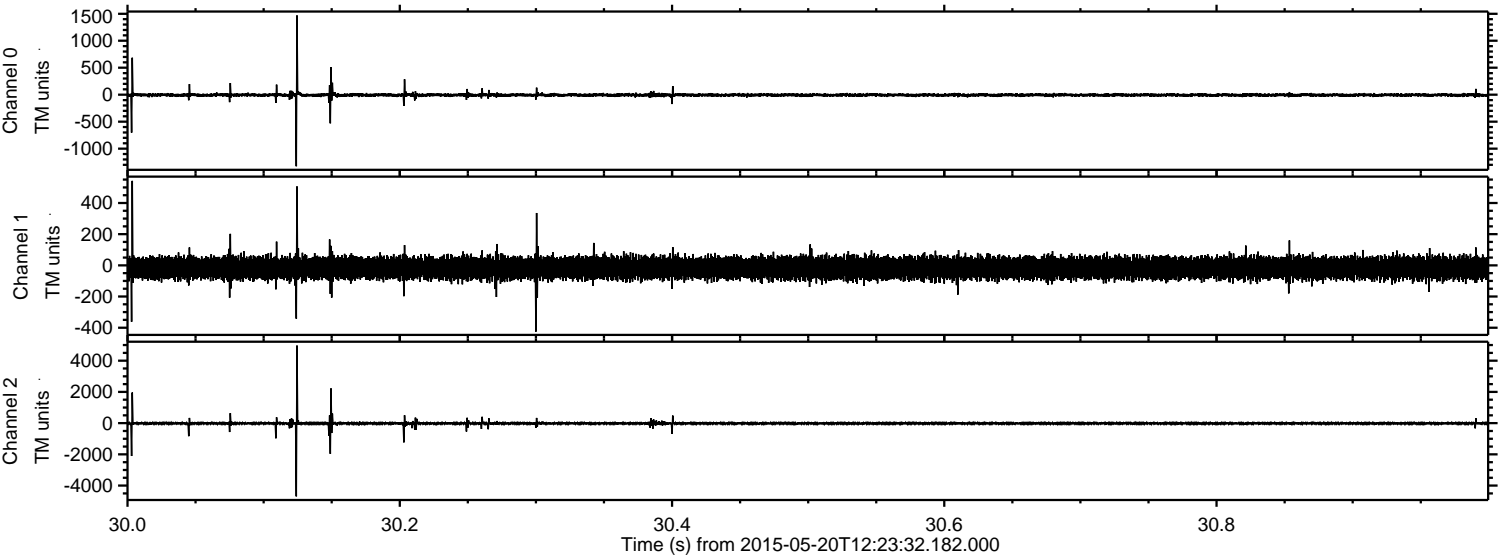


ELMAVAN 3D WAVEFORMS (Measured data sampled at 50 kHz) 49783 packets of 144 samples from 2015-05-20T12:23:32.182.000. Part 130/144

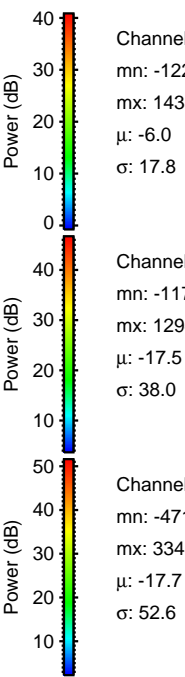
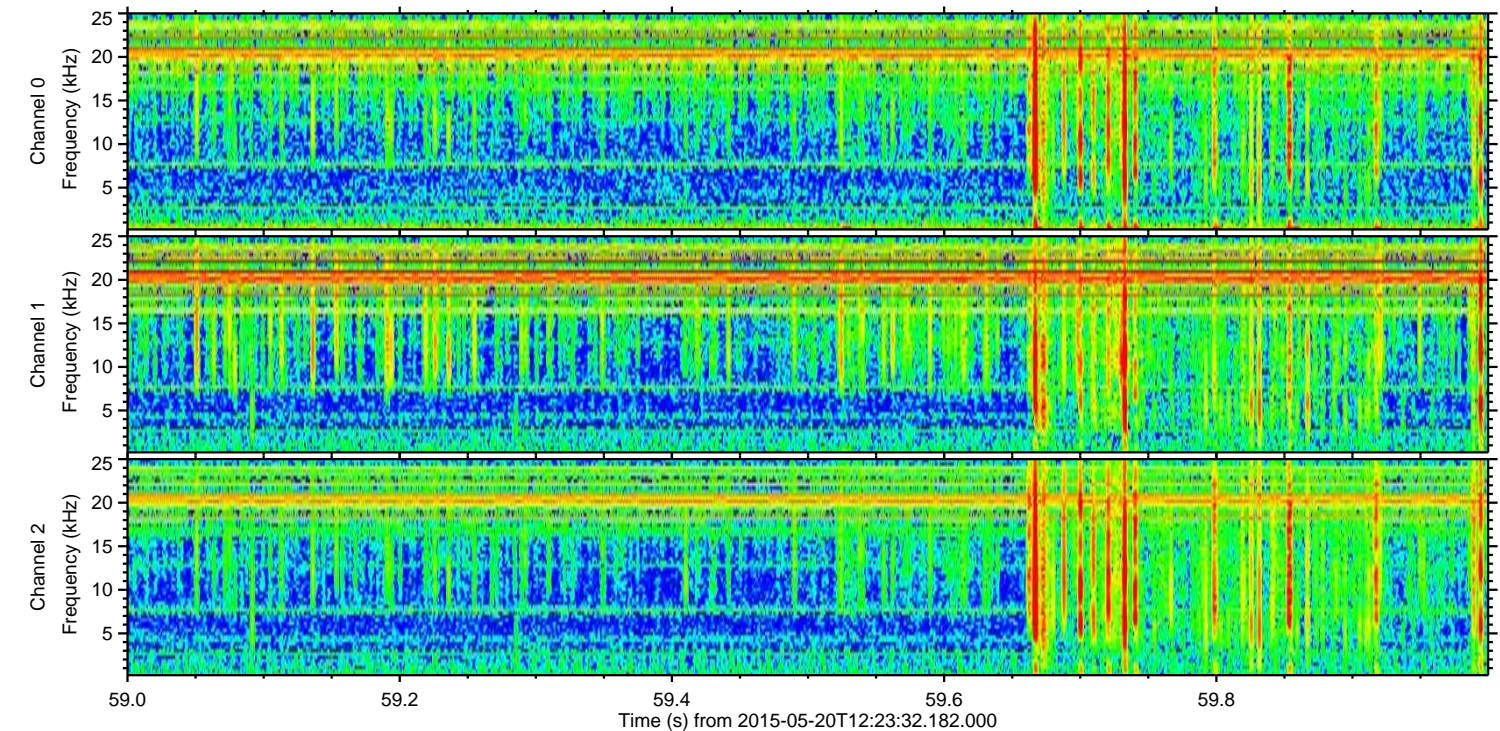
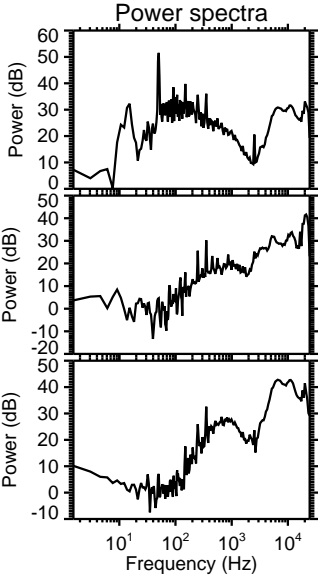
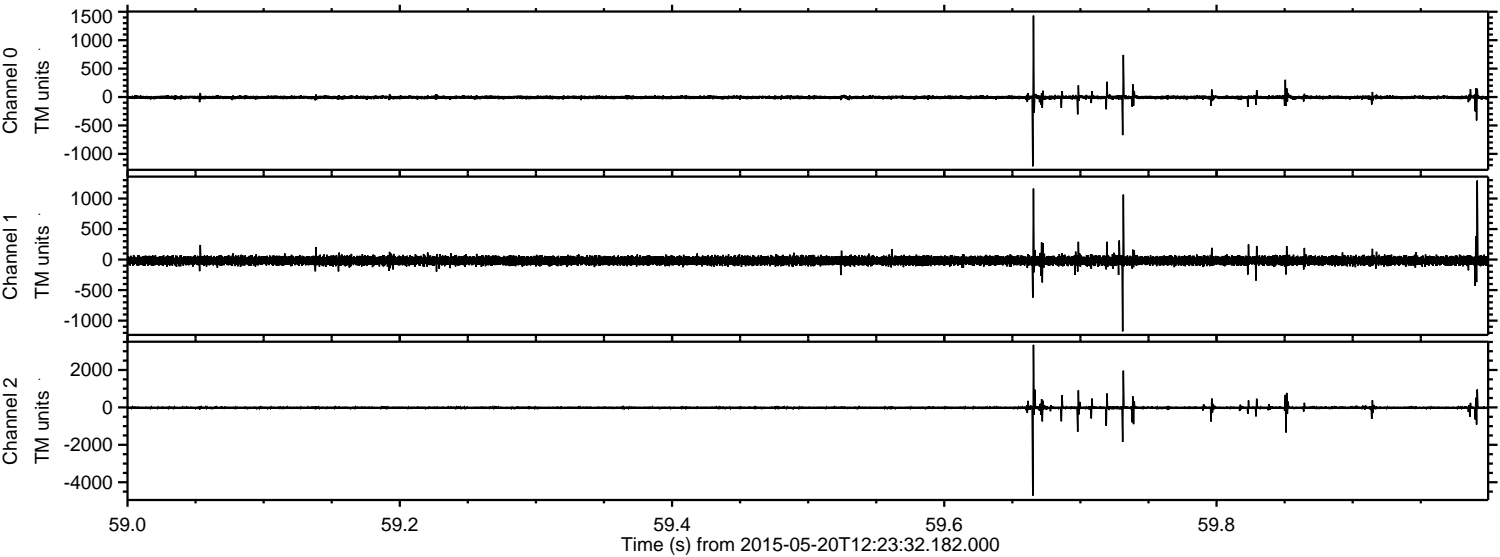
Processed Wed May 20 14:30:26 2015 by ELM ver.2012-10-06 from 001__elm20150520_122331__dat00.bin



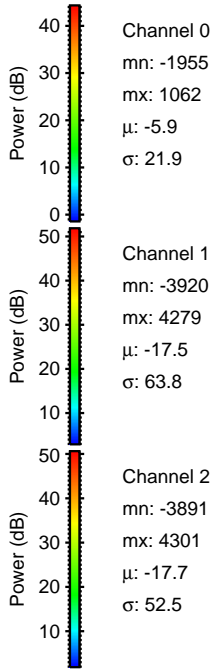
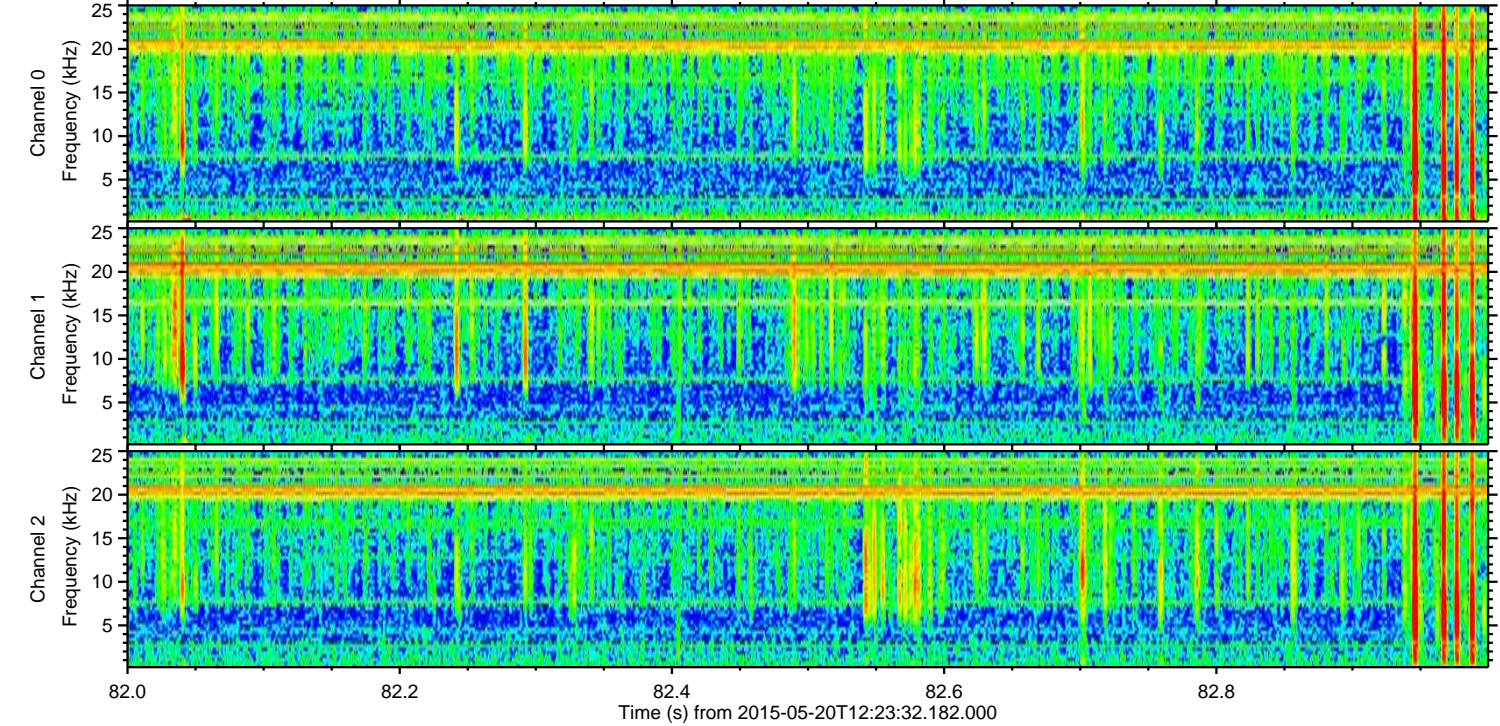
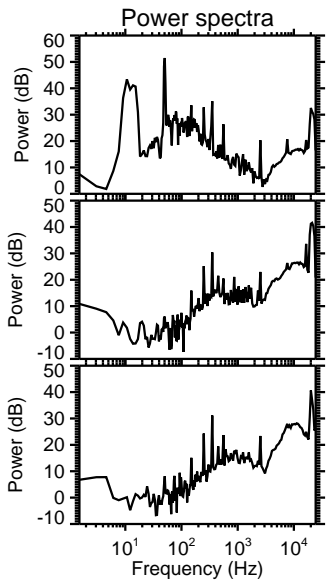
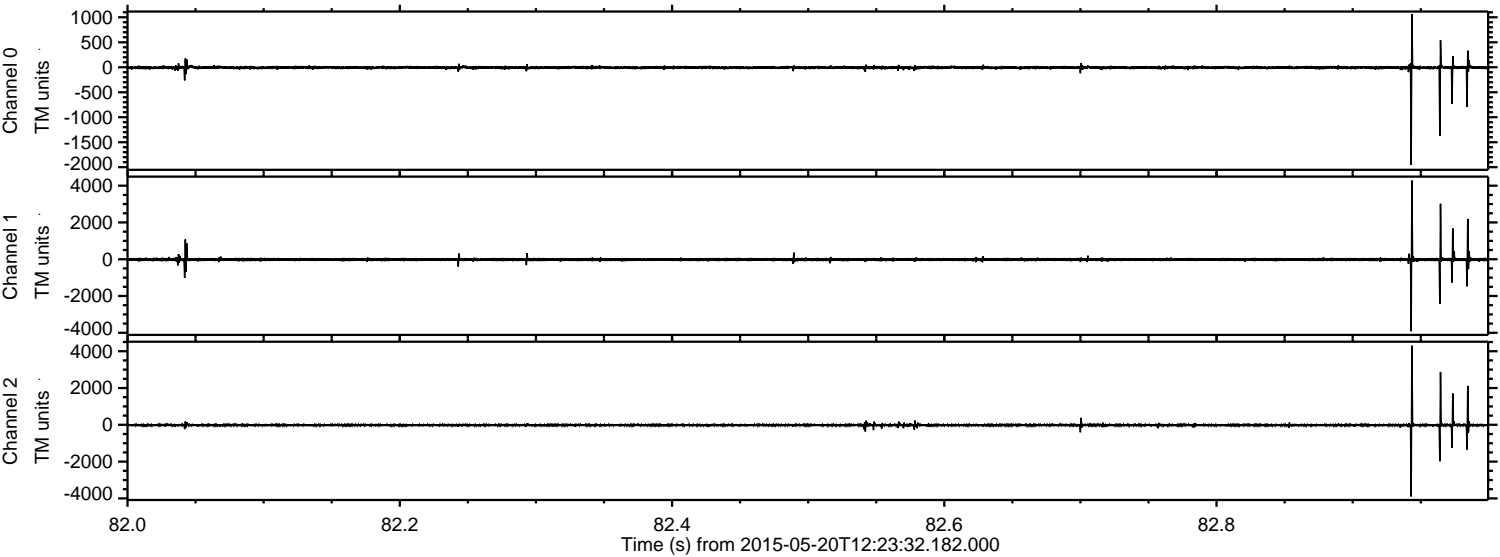
Processed Wed May 20 14:30:27 2015 by ELM ver.2012-10-06 from 001__elm20150520_122331__dat00.bin



Processed Wed May 20 14:30:27 2015 by ELM ver.2012-10-06 from 001__elm20150520_122331__dat00.bin



Processed Wed May 20 14:30:28 2015 by ELM ver.2012-10-06 from 001__elm20150520_122331__dat00.bin



Channel 0
mn: -1955
mx: 1062
 μ : -5.9
 σ : 21.9

Channel 1
mn: -3920
mx: 4279
 μ : -17.5
 σ : 63.8

Channel 2
mn: -3891
mx: 4301
 μ : -17.7
 σ : 52.5

Processed Wed May 20 14:30:29 2015 by ELM ver.2012-10-06 from 001__elm20150520_122331__dat00.bin

