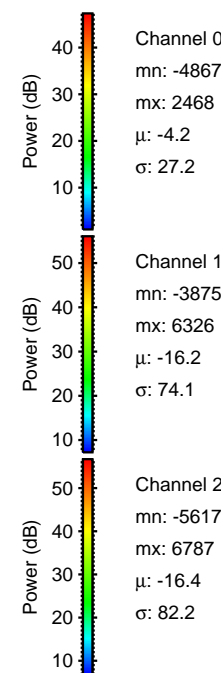
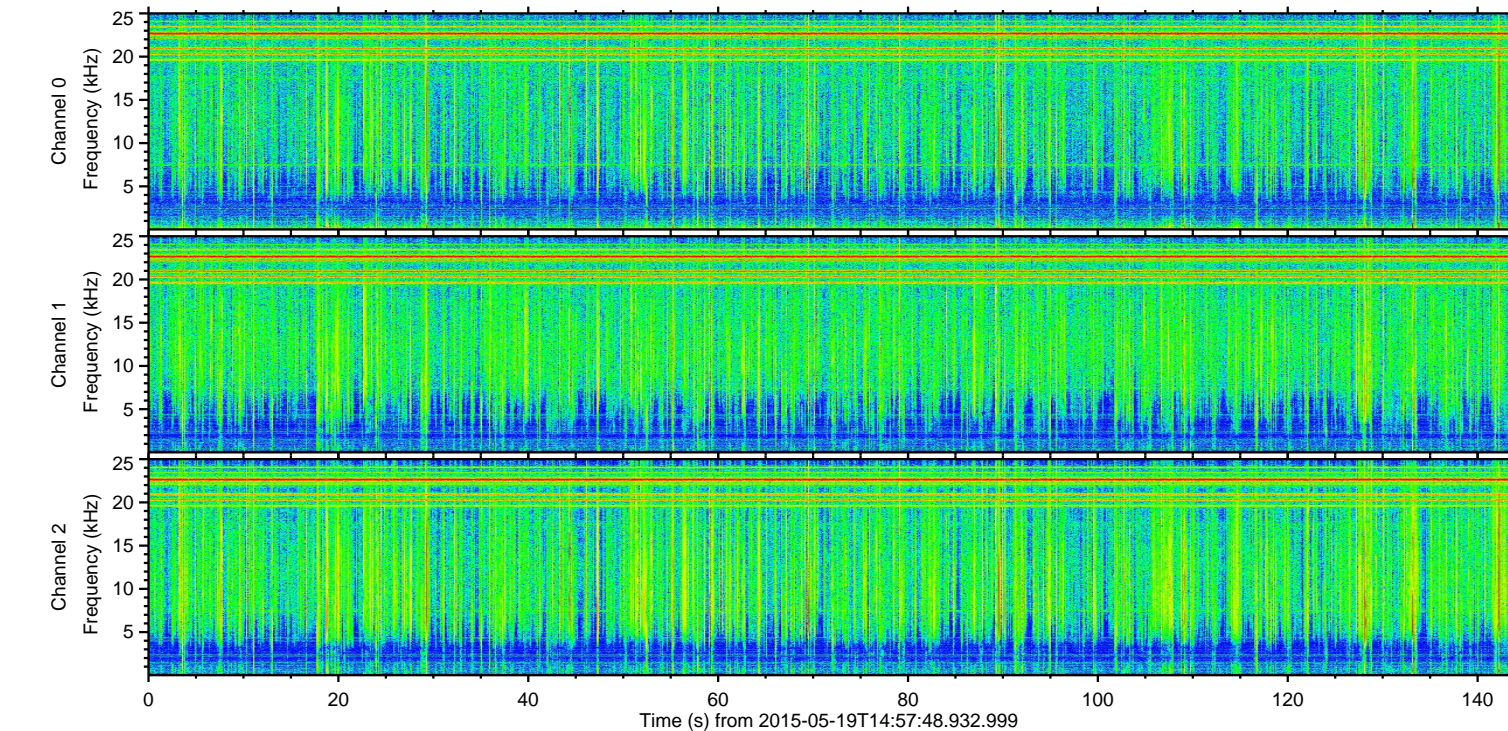
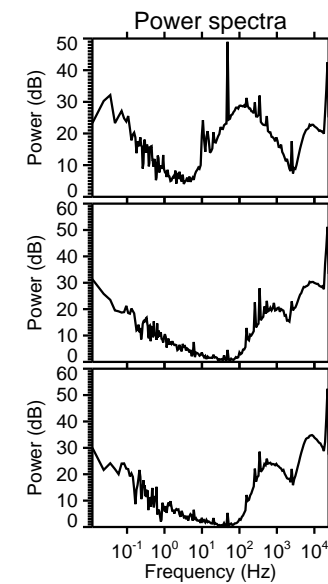
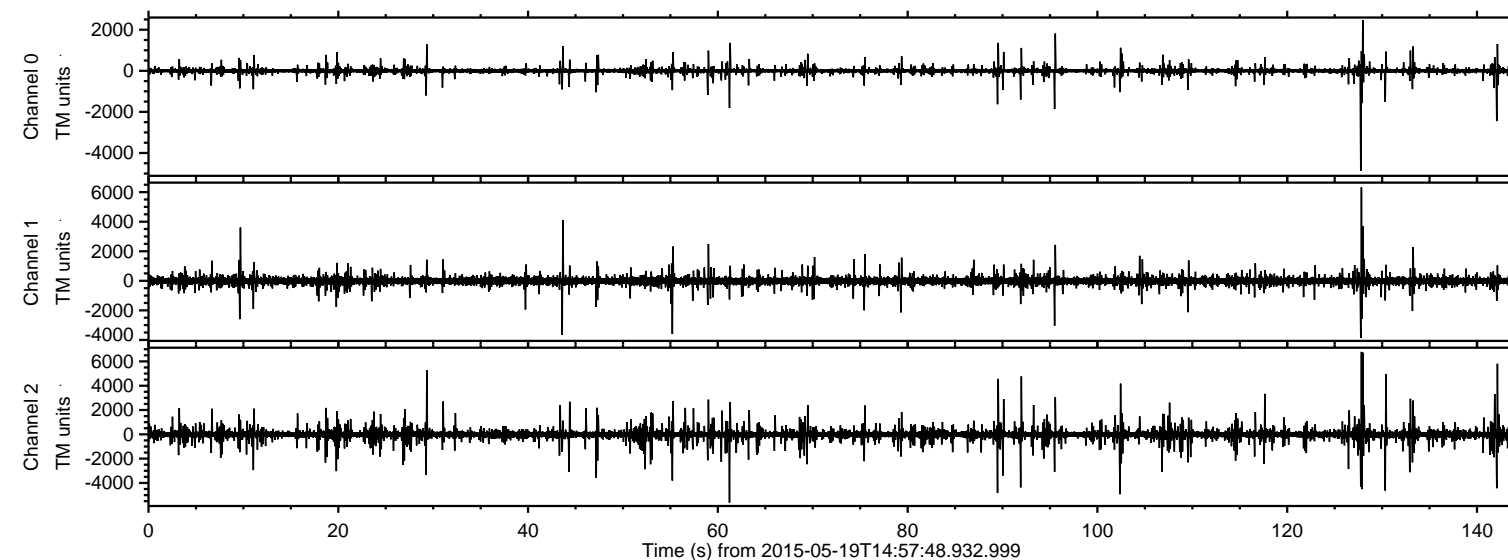


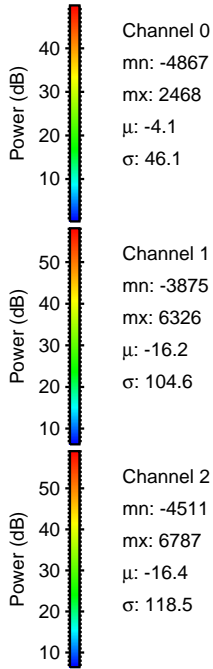
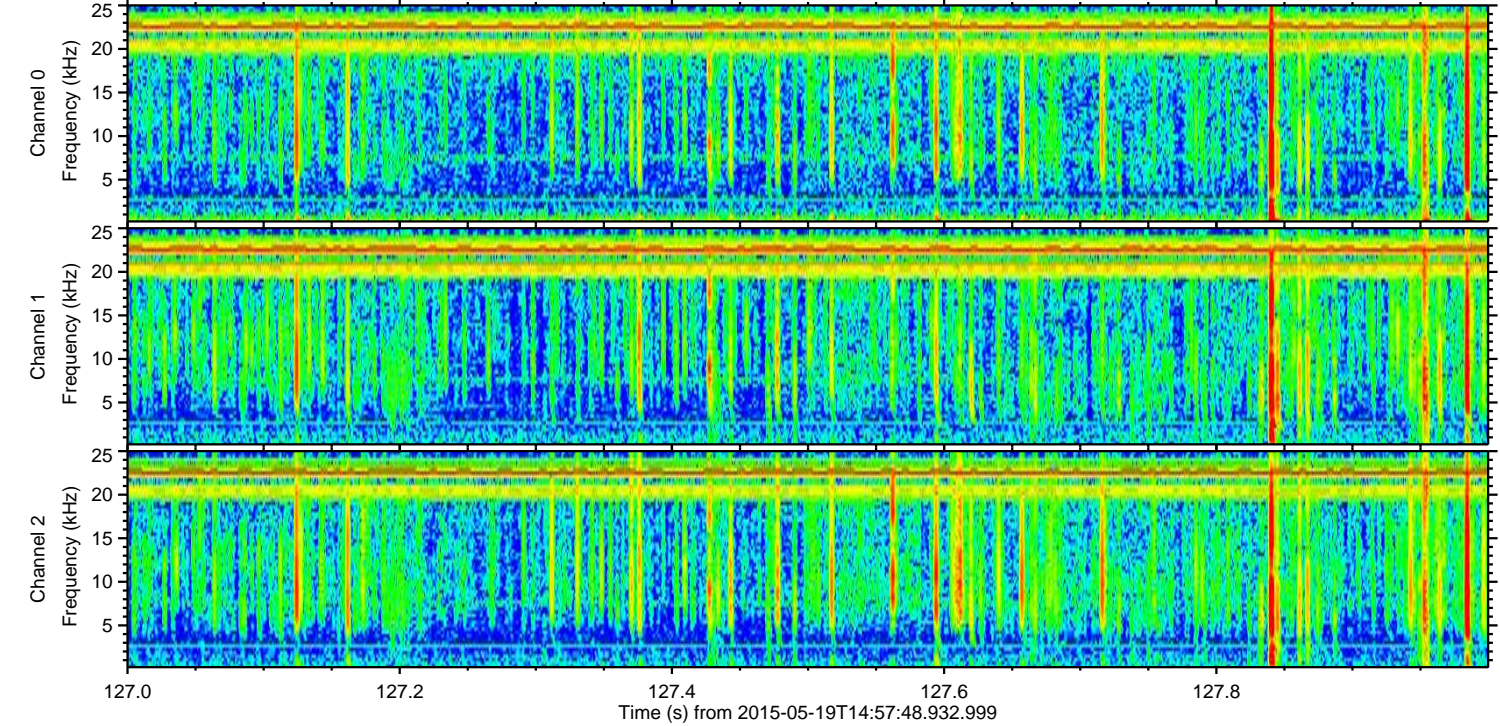
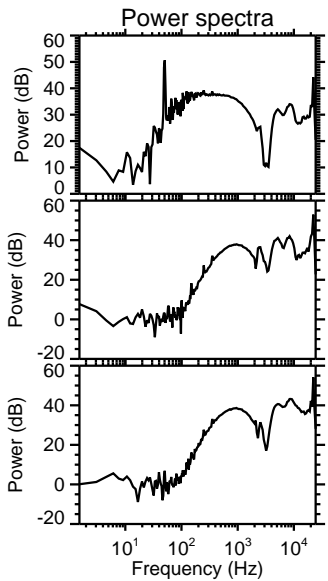
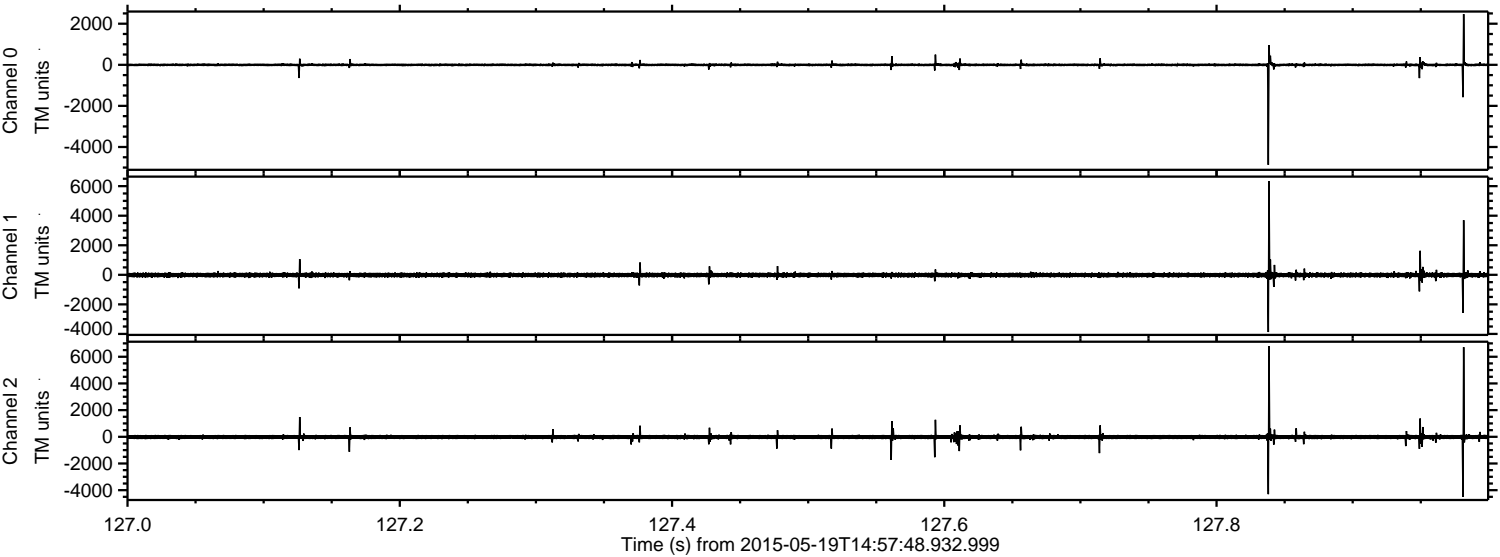
ELMAVAN 3D WAVEFORMS (Measured data sampled at 50 kHz) 49787 packets of 144 samples from 2015-05-19T14:57:48.932.999.

Processed Tue May 19 17:04:21 2015 by ELM ver.2012-10-06 from 001__elm20150519_145747__dat00.bin



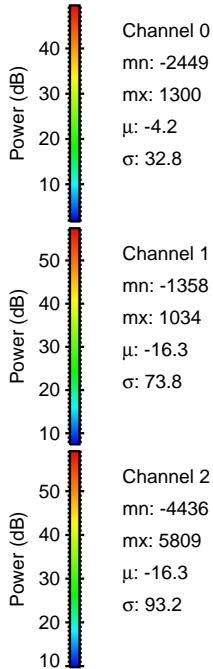
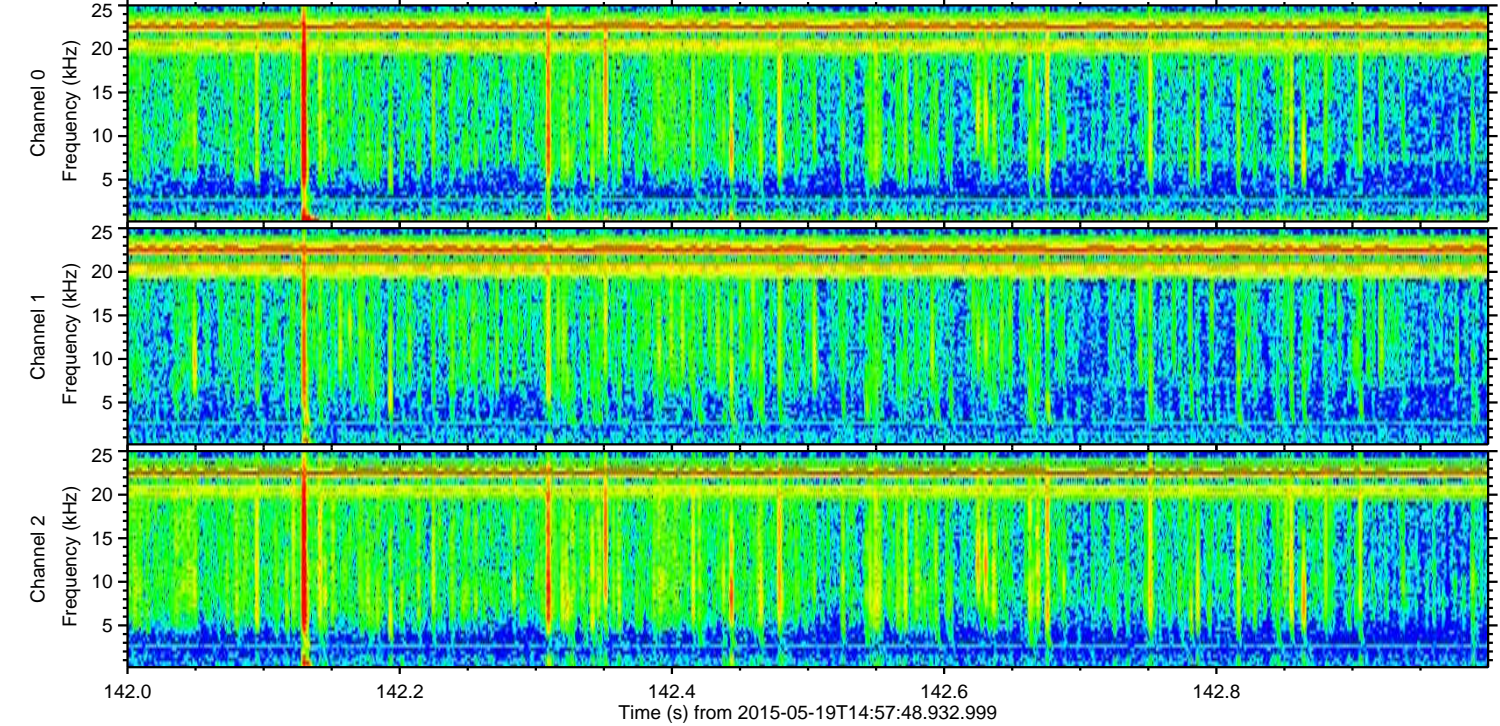
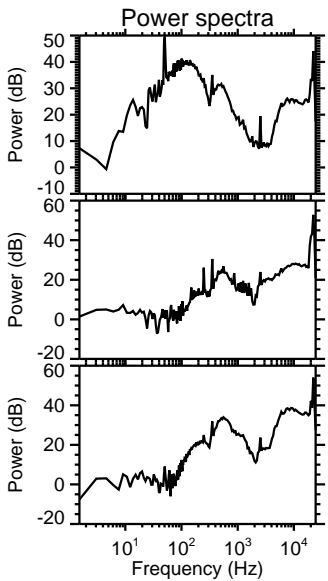
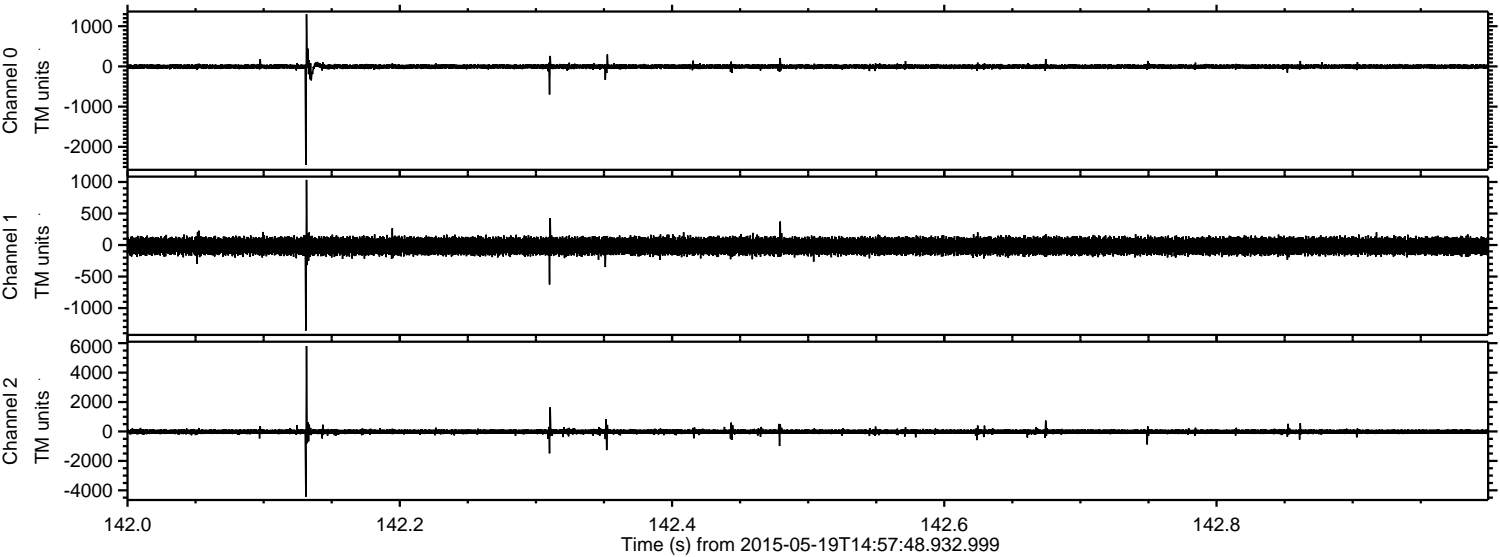
ELMAVAN 3D WAVEFORMS (Measured data sampled at 50 kHz) 49787 packets of 144 samples from 2015-05-19T14:57:48.932.999. Part 128/144

Processed Tue May 19 17:04:33 2015 by ELM ver.2012-10-06 from 001__elm20150519_145747__dat00.bin

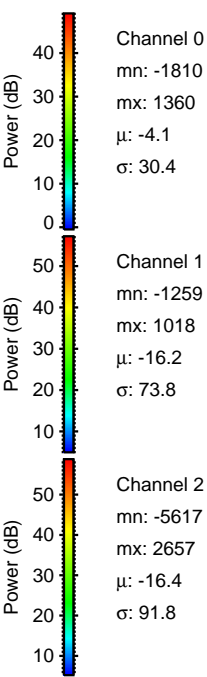
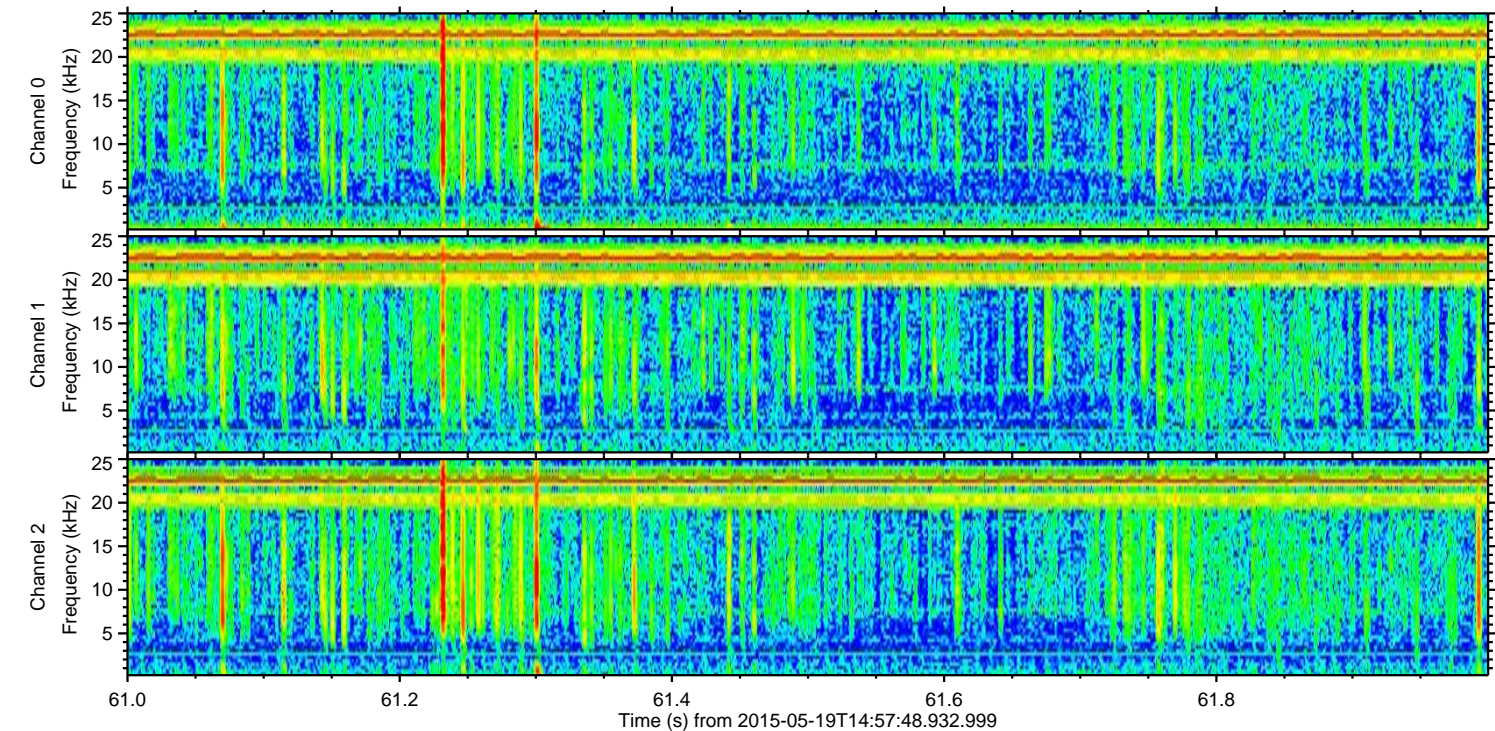
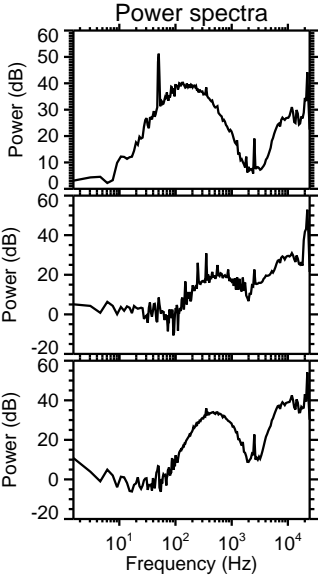
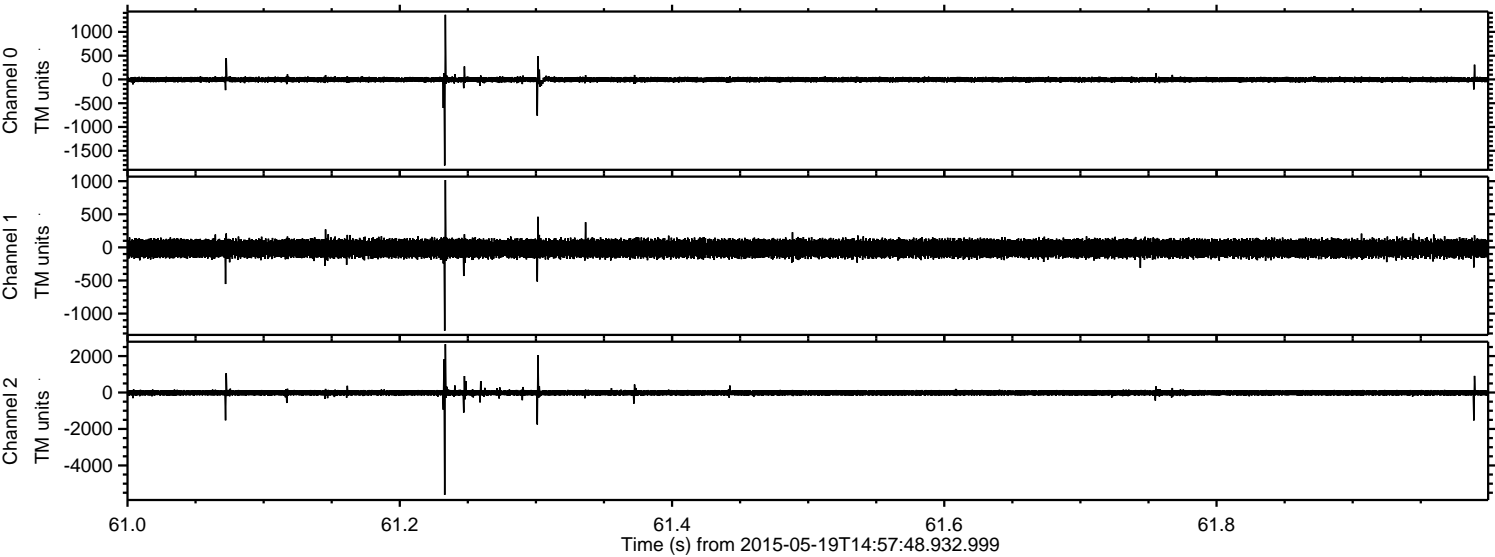


ELMAVAN 3D WAVEFORMS (Measured data sampled at 50 kHz) 49787 packets of 144 samples from 2015-05-19T14:57:48.932.999. Part 143/144

Processed Tue May 19 17:04:33 2015 by ELM ver.2012-10-06 from 001__elm20150519_145747__dat00.bin



Processed Tue May 19 17:04:34 2015 by ELM ver.2012-10-06 from 001__elm20150519_145747__dat00.bin

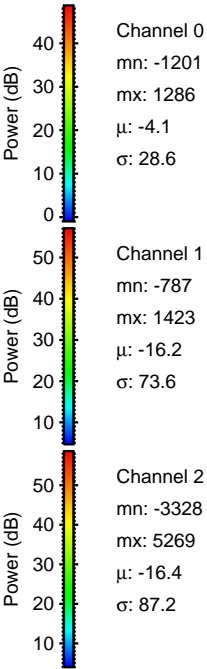
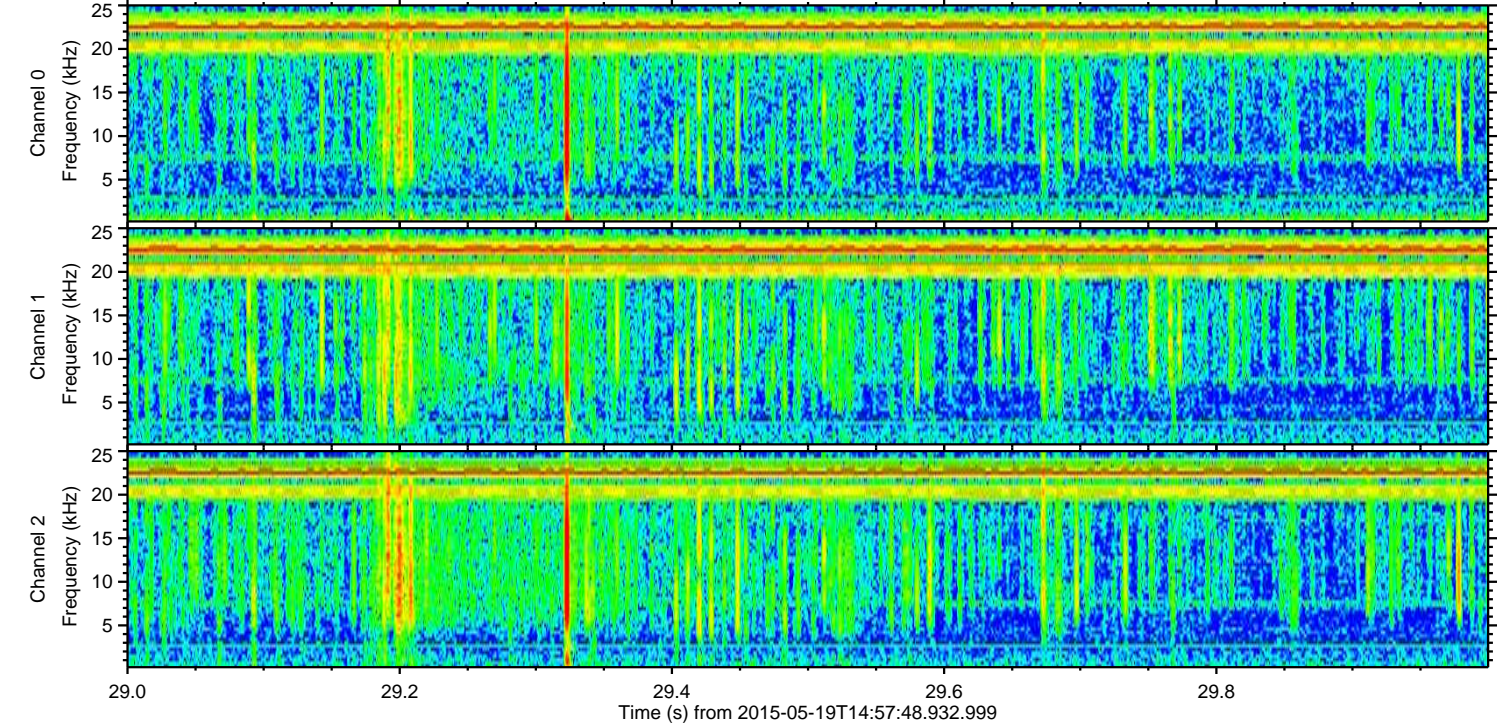
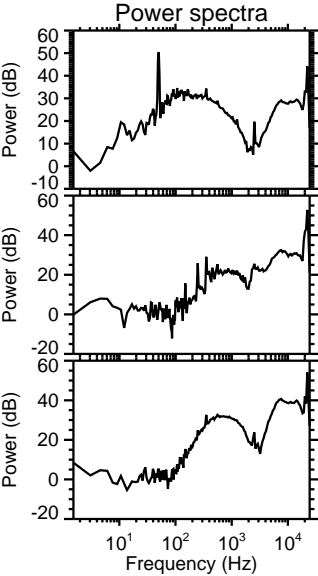
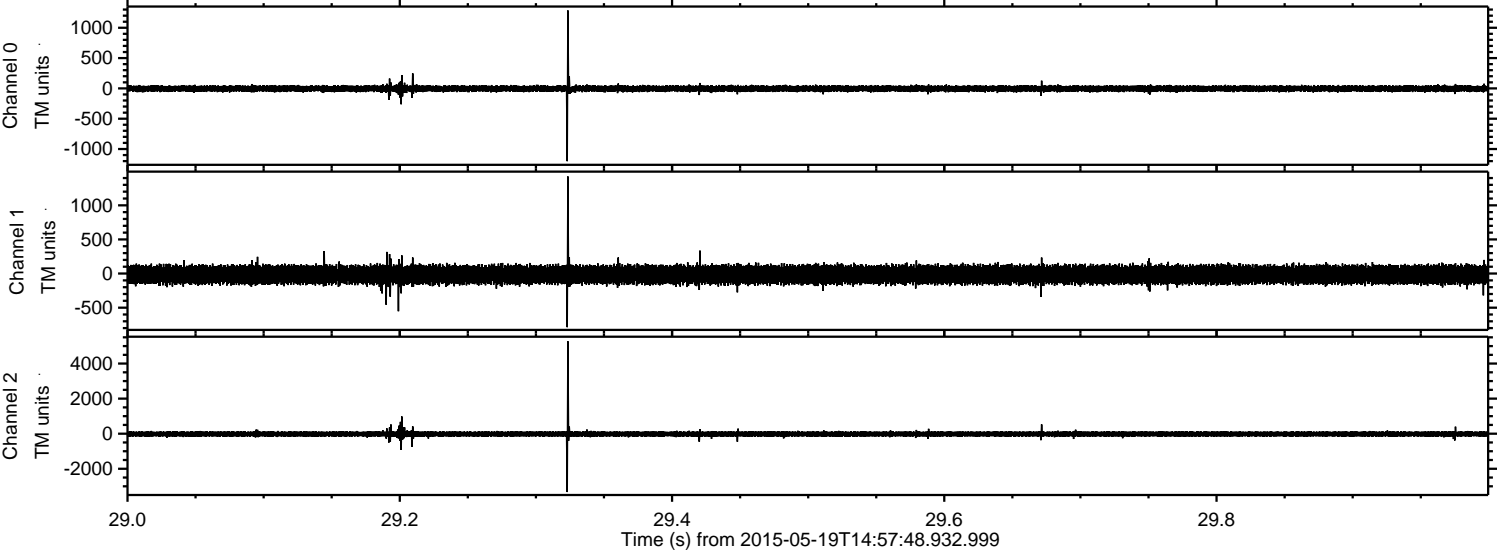


Channel 0
mn: -1810
mx: 1360
 μ : -4.1
 σ : 30.4

Channel 1
mn: -1259
mx: 1018
 μ : -16.2
 σ : 73.8

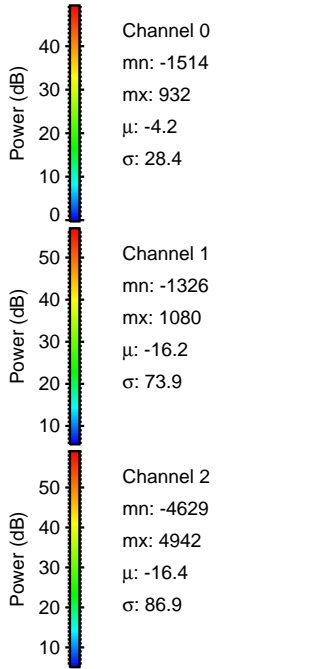
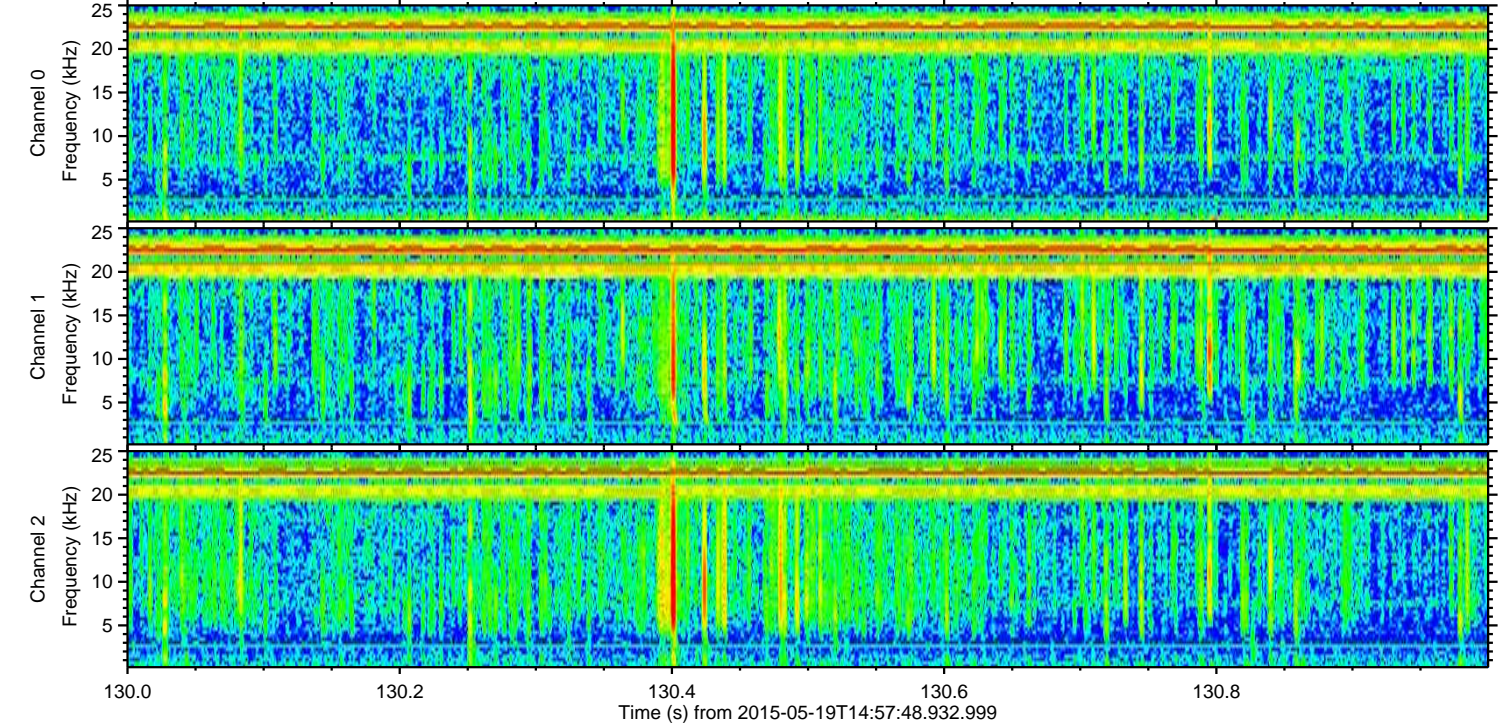
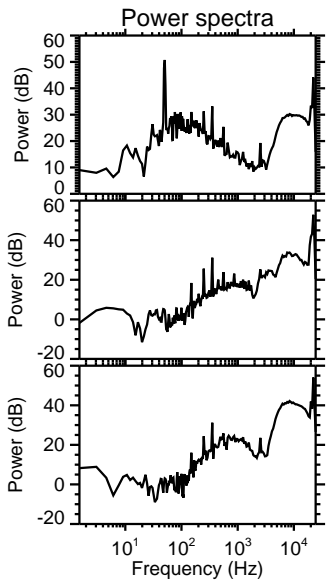
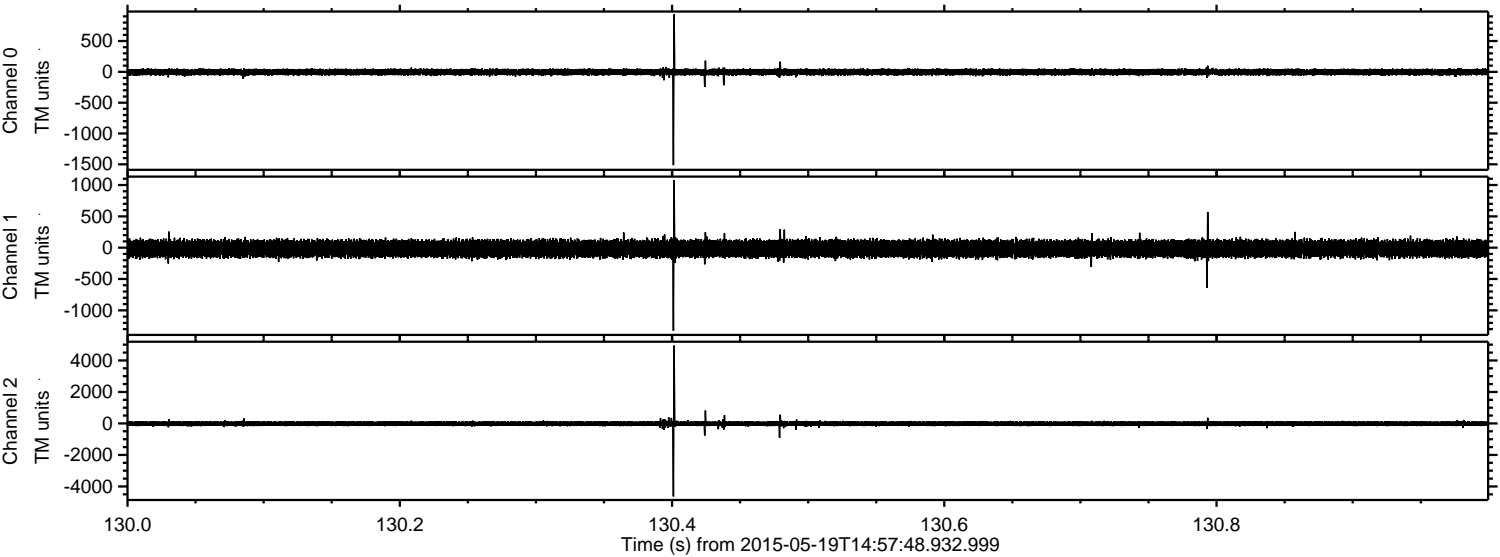
Channel 2
mn: -5617
mx: 2657
 μ : -16.4
 σ : 91.8

Processed Tue May 19 17:04:35 2015 by ELM ver.2012-10-06 from 001__elm20150519_145747__dat00.bin



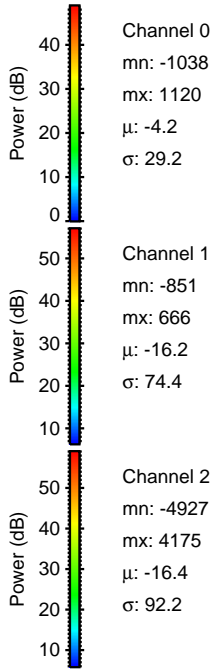
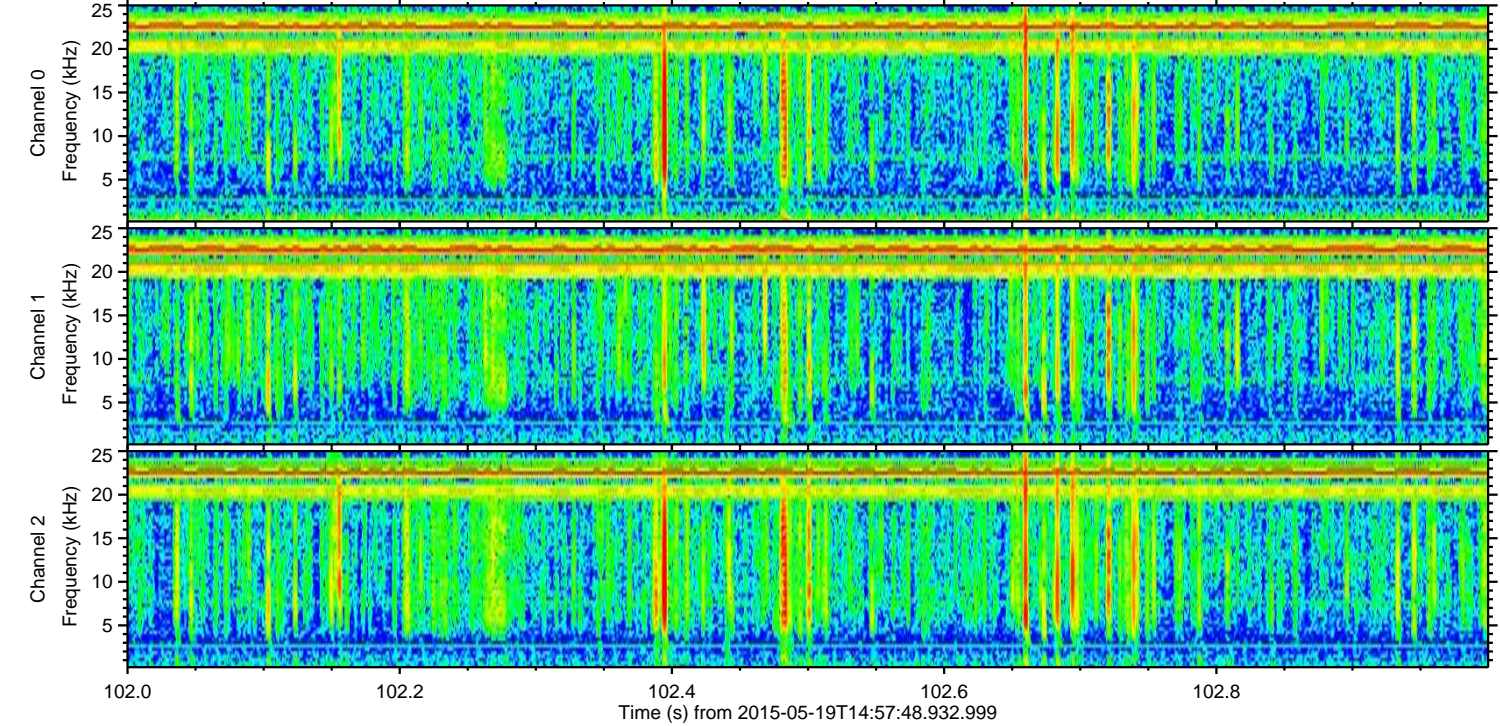
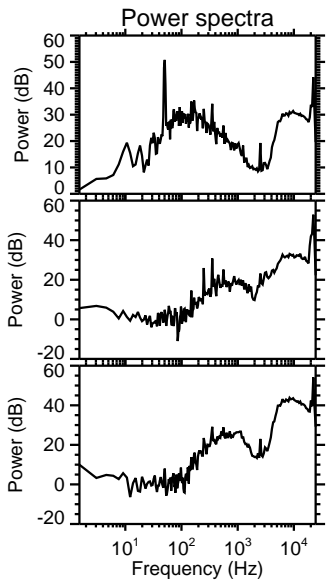
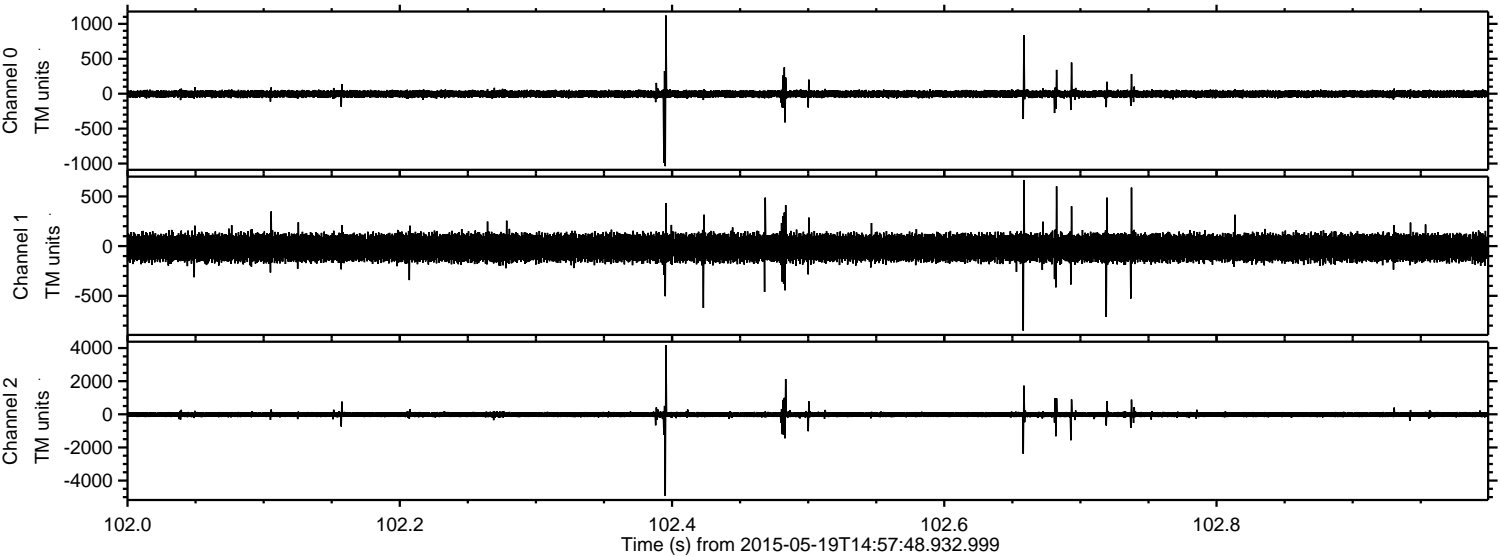
ELMAVAN 3D WAVEFORMS (Measured data sampled at 50 kHz) 49787 packets of 144 samples from 2015-05-19T14:57:48.932.999. Part 131/144

Processed Tue May 19 17:04:36 2015 by ELM ver.2012-10-06 from 001__elm20150519_145747__dat00.bin

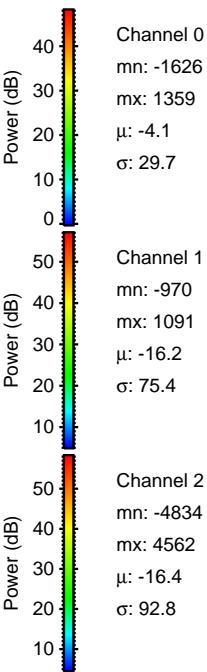
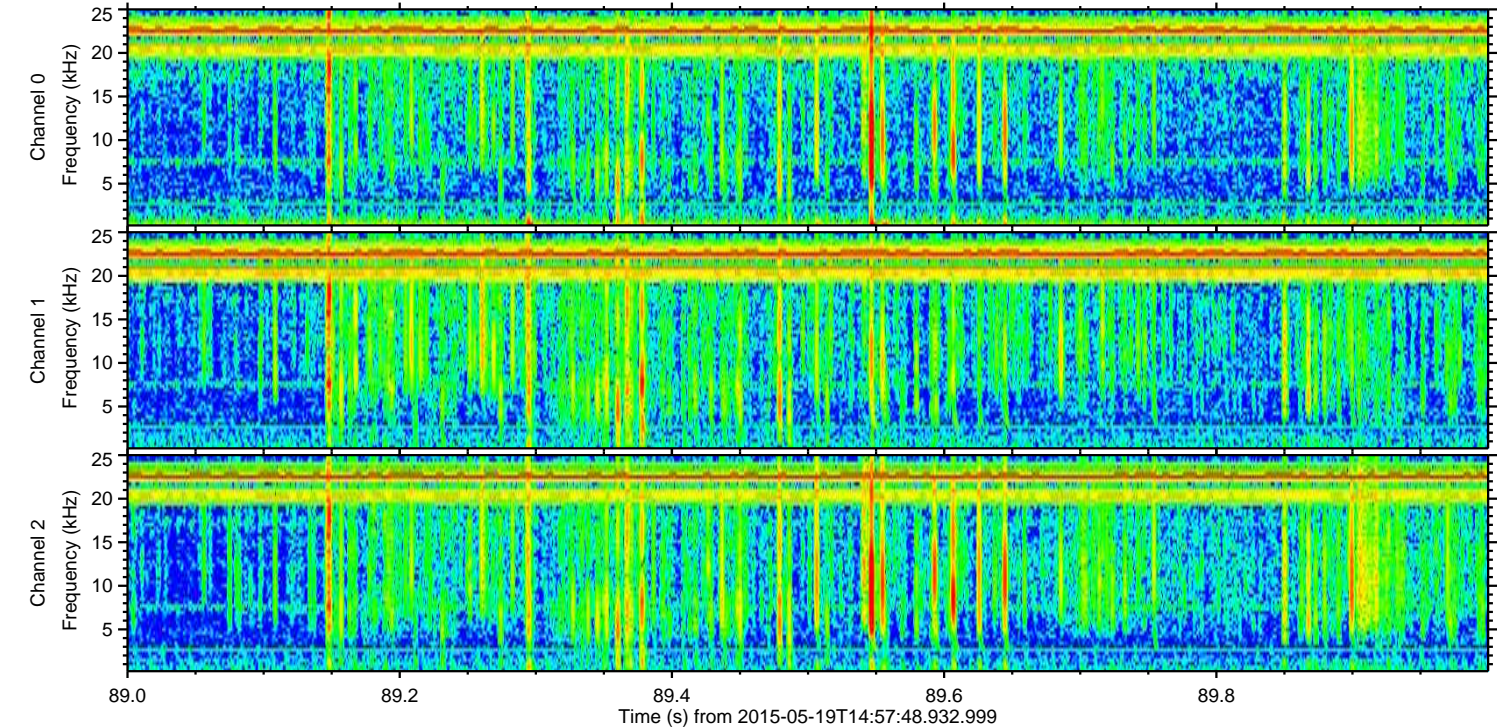
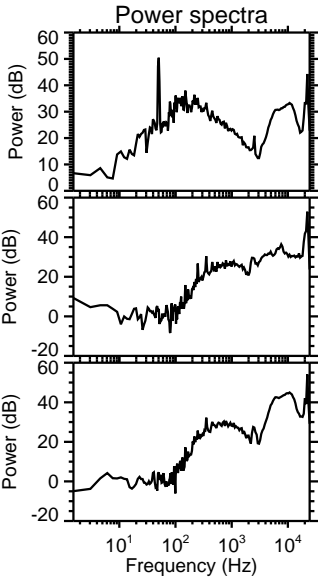
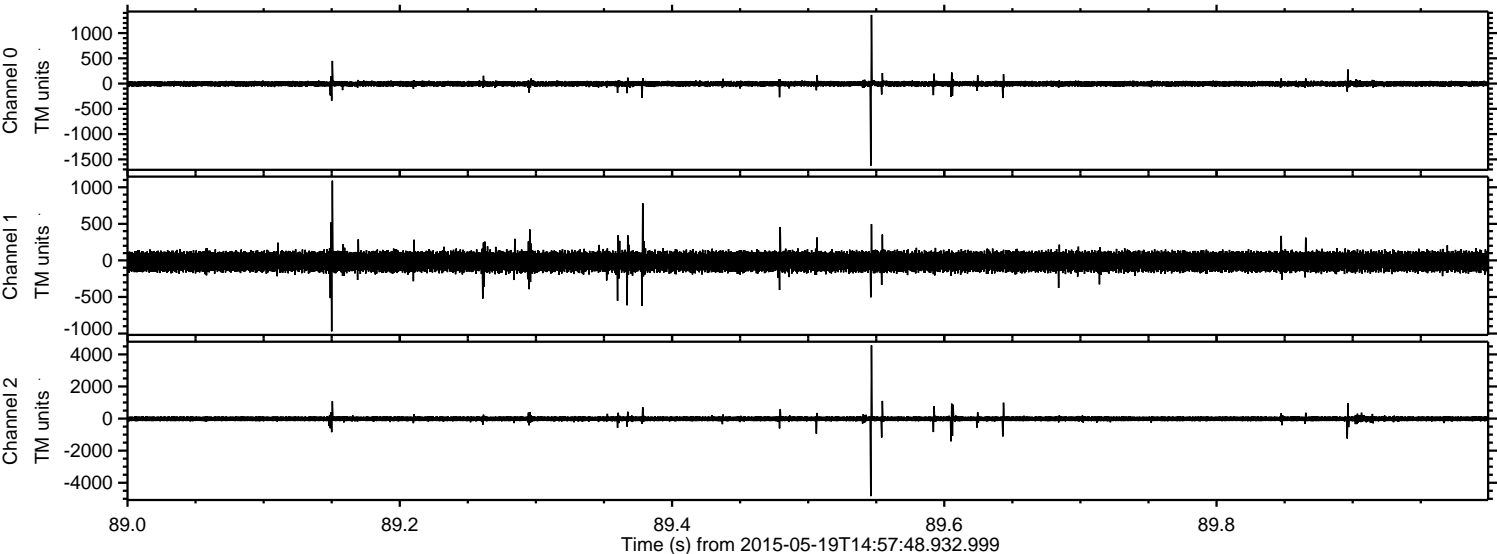


ELMAVAN 3D WAVEFORMS (Measured data sampled at 50 kHz) 49787 packets of 144 samples from 2015-05-19T14:57:48.932.999. Part 103/144

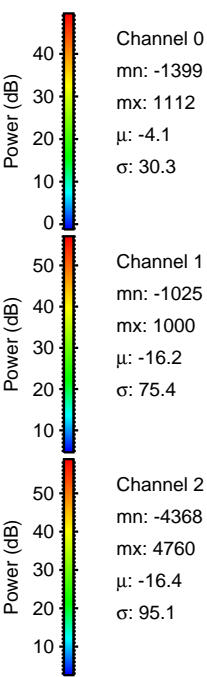
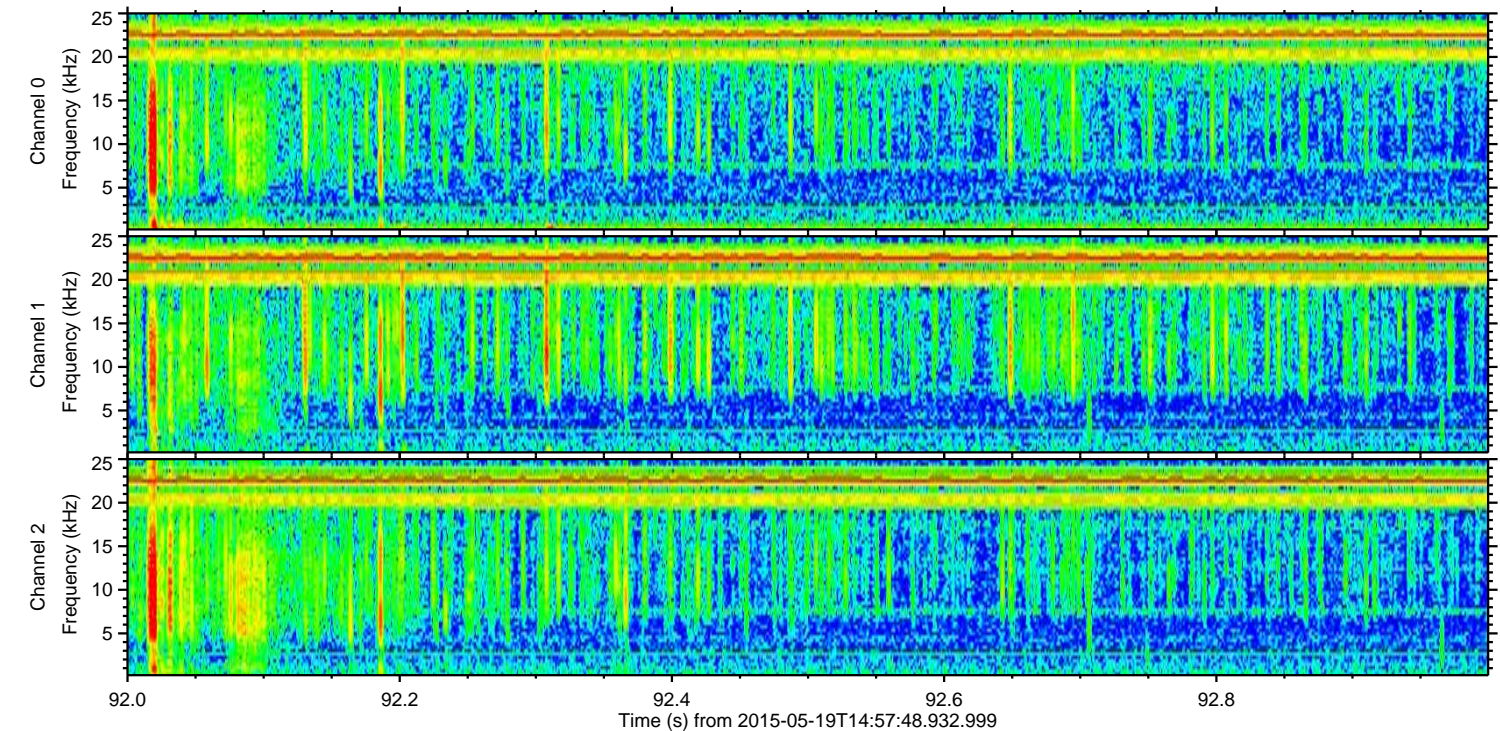
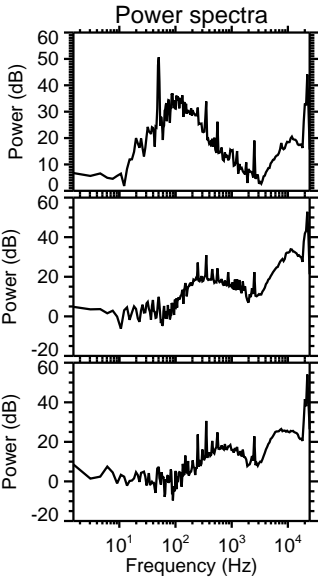
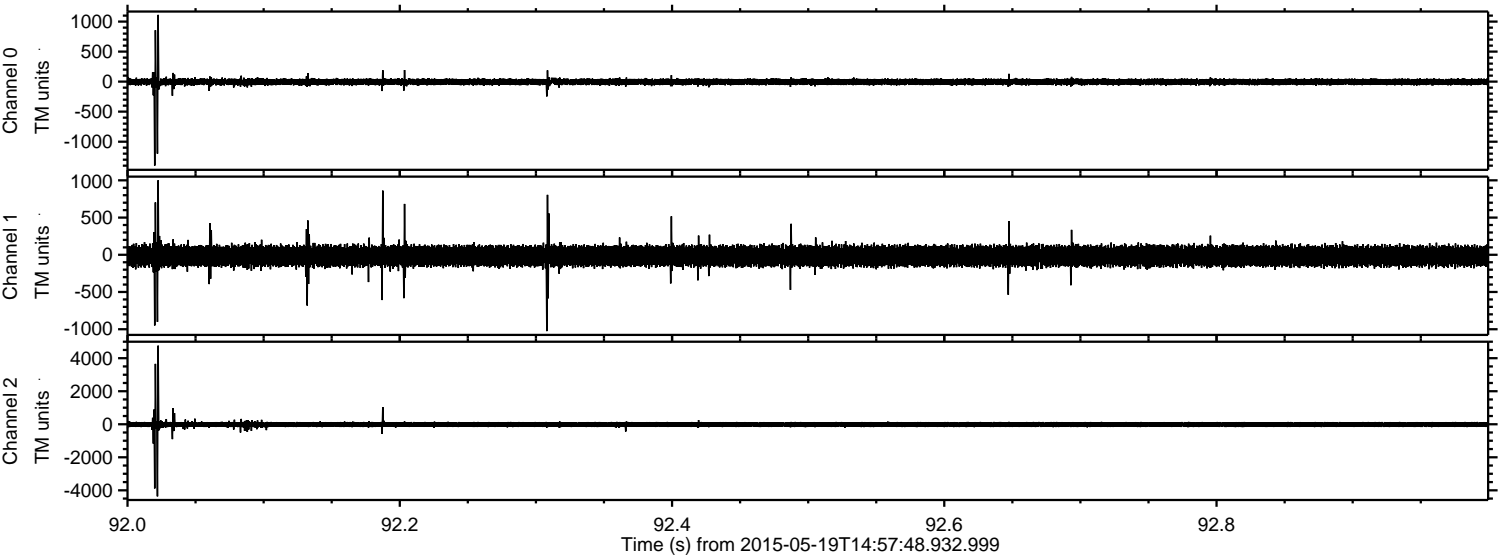
Processed Tue May 19 17:04:37 2015 by ELM ver.2012-10-06 from 001__elm20150519_145747__dat00.bin



Processed Tue May 19 17:04:38 2015 by ELM ver.2012-10-06 from 001_elm20150519_145747__dat00.bin



Processed Tue May 19 17:04:39 2015 by ELM ver.2012-10-06 from 001__elm20150519_145747__dat00.bin

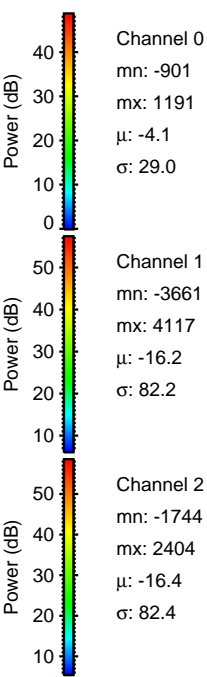
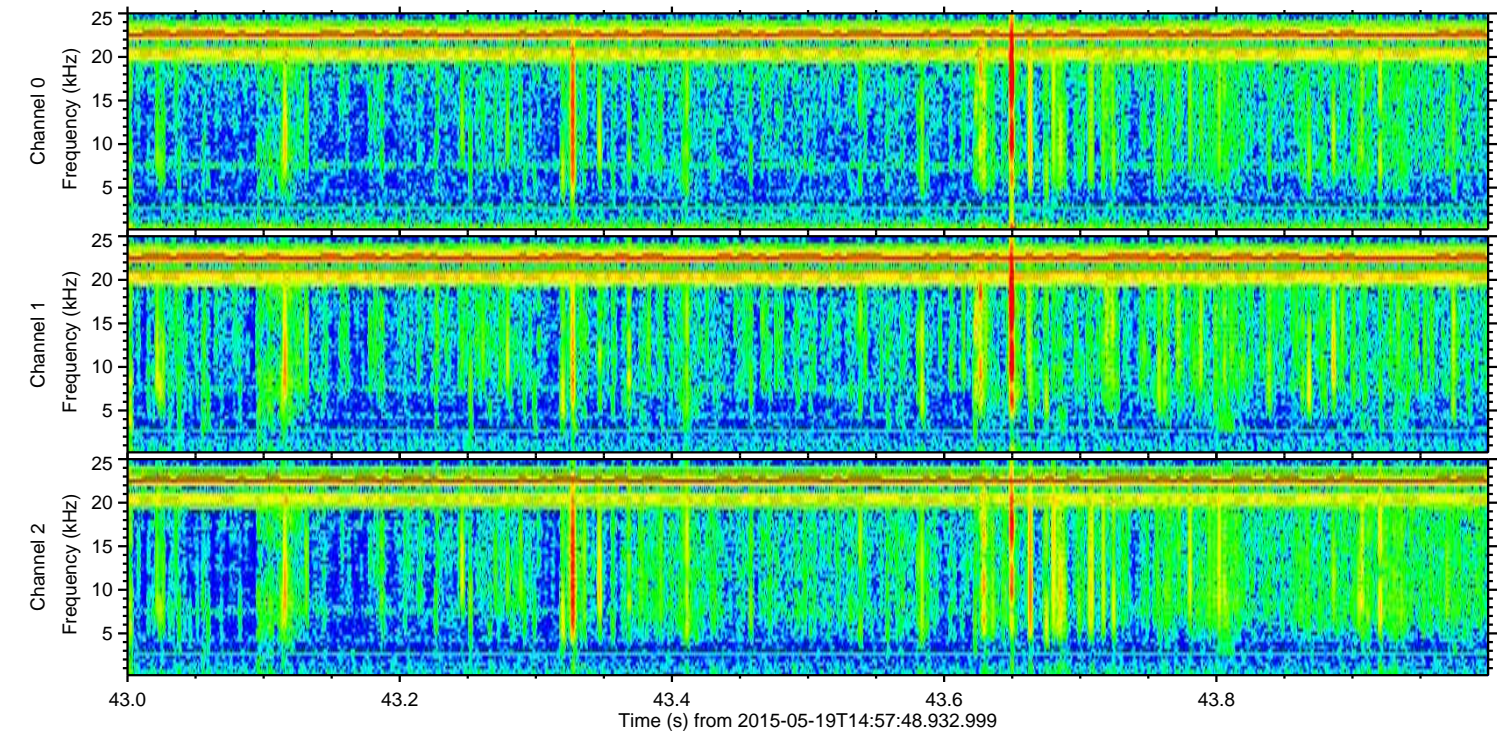
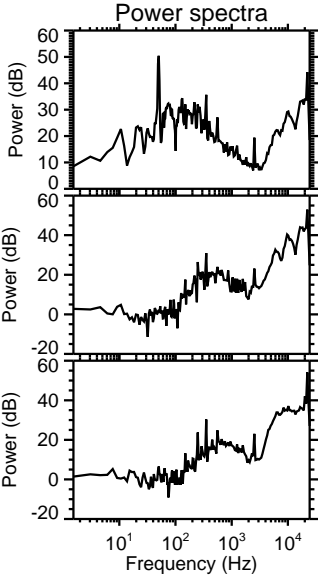
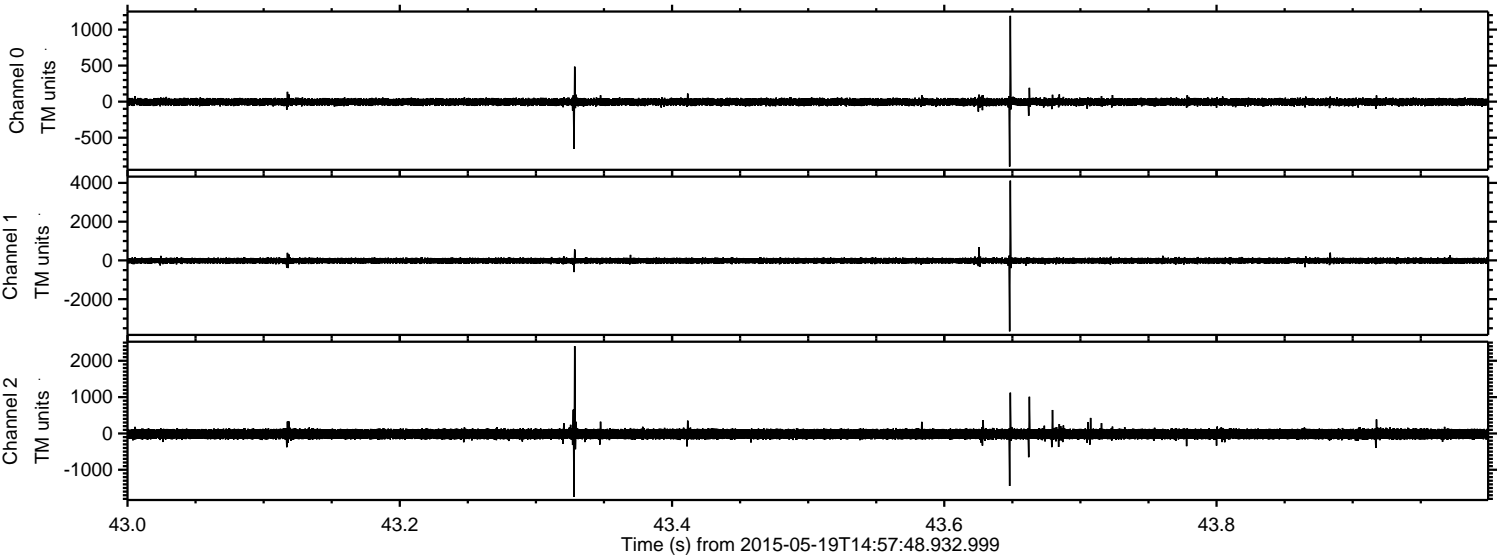


Channel 0
mn: -1399
mx: 1112
 μ : -4.1
 σ : 30.3

Channel 1
mn: -1025
mx: 1000
 μ : -16.2
 σ : 75.4

Channel 2
mn: -4368
mx: 4760
 μ : -16.4
 σ : 95.1

Processed Tue May 19 17:04:40 2015 by ELM ver.2012-10-06 from 001__elm20150519_145747__dat00.bin



Processed Tue May 19 17:04:41 2015 by ELM ver.2012-10-06 from 001__elm20150519_145747__dat00.bin

