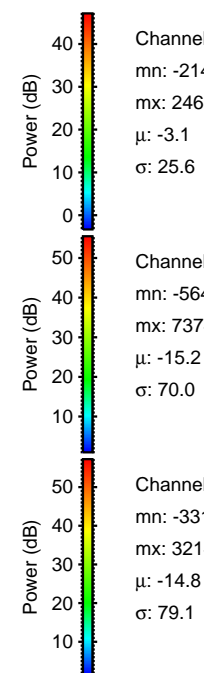
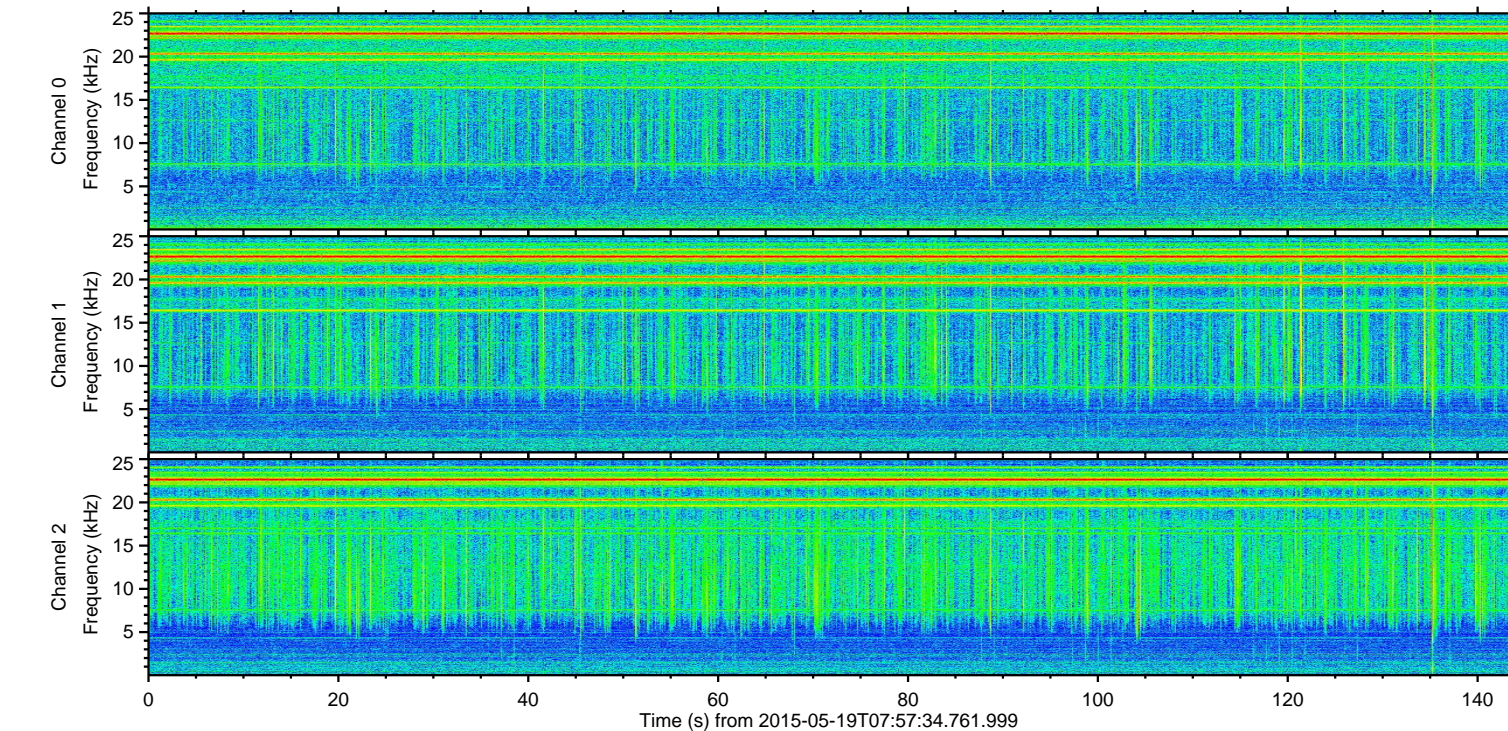
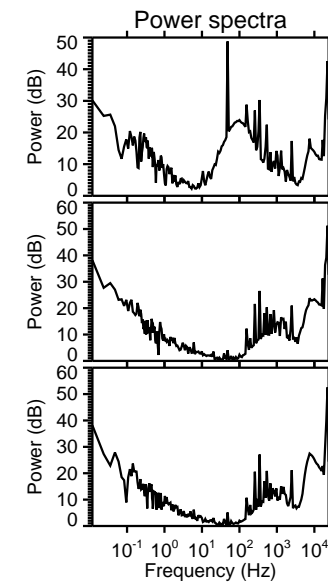
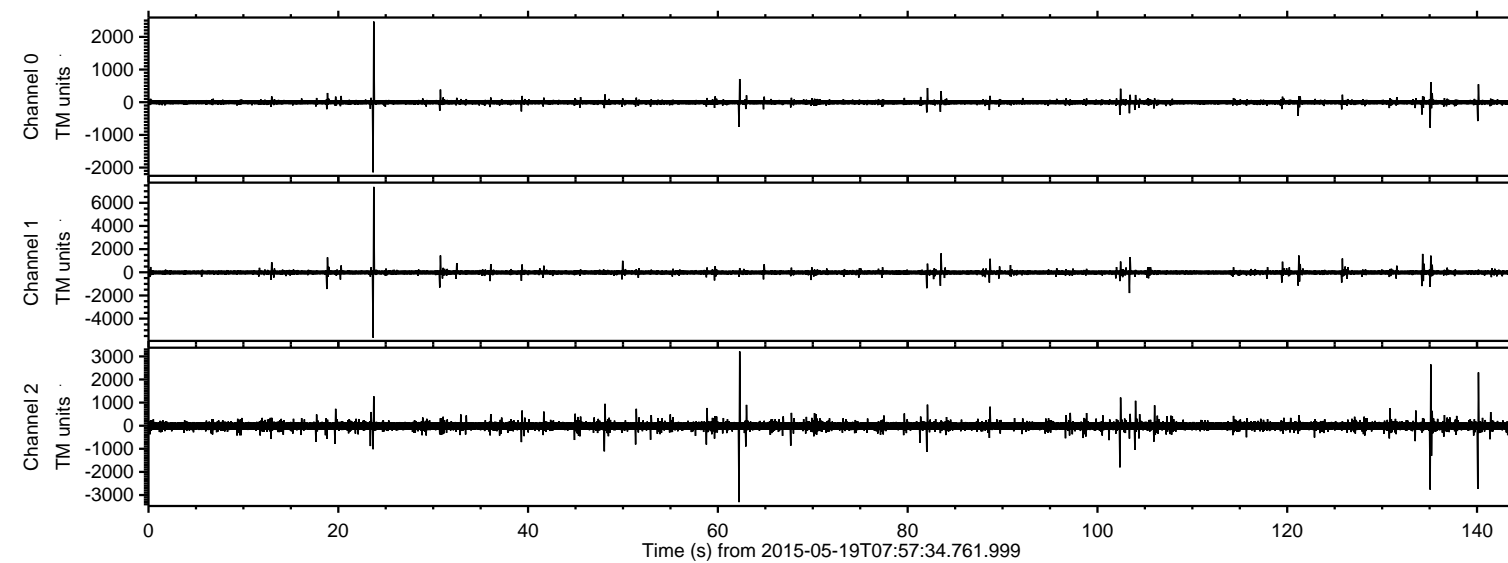


# ELMAVAN 3D WAVEFORMS (Measured data sampled at 50 kHz) 49786 packets of 144 samples from 2015-05-19T07:57:34.761.999.

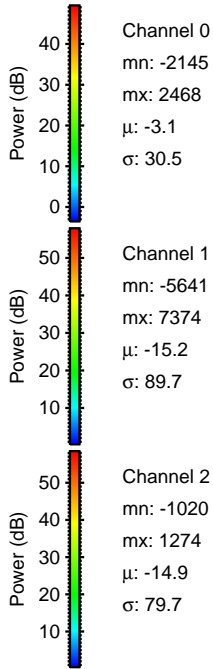
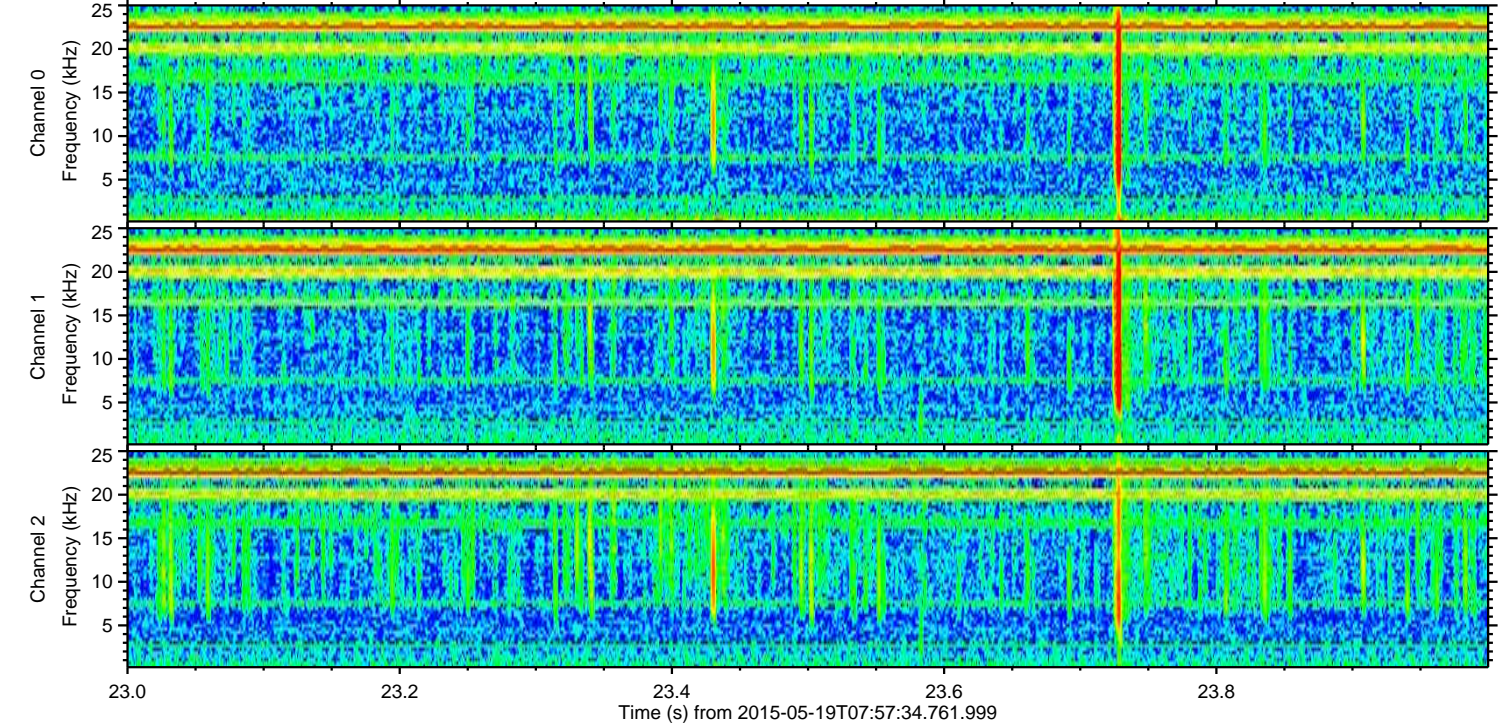
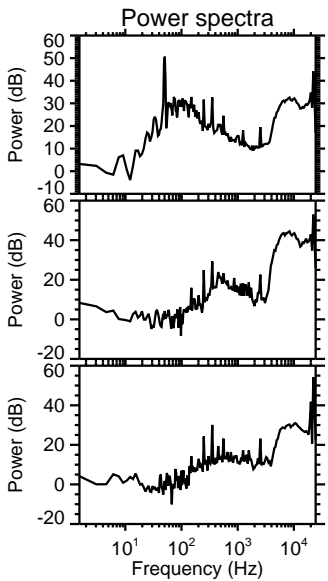
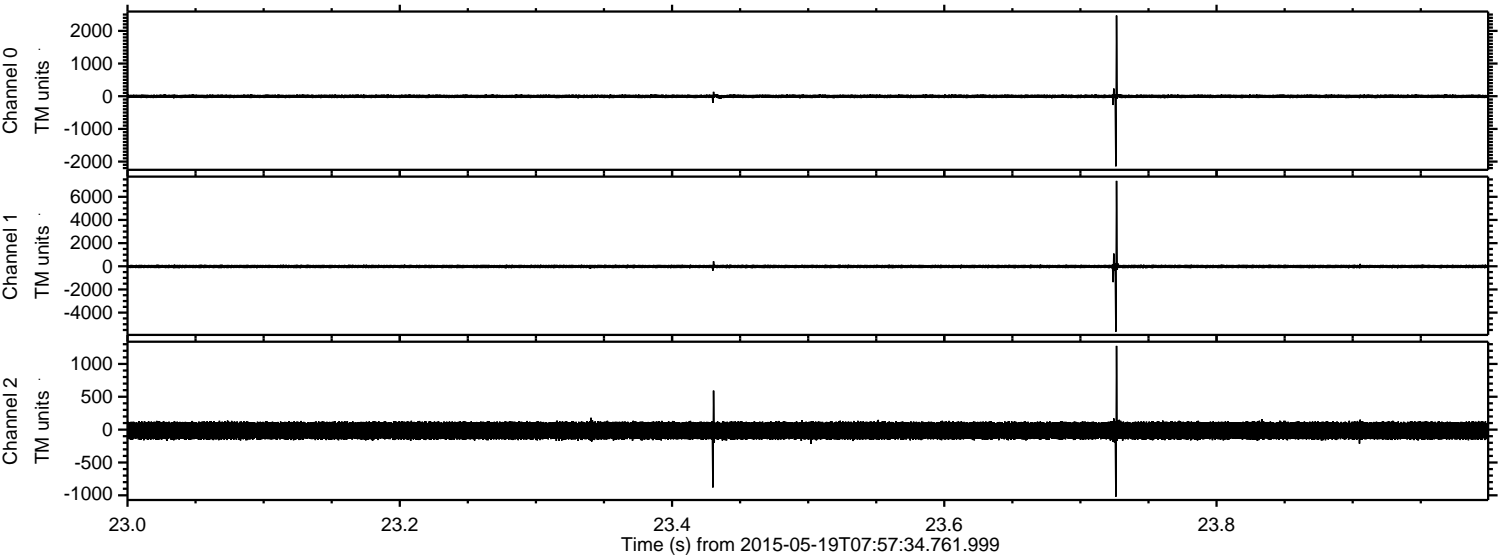
Processed Tue May 19 10:04:24 2015 by ELM ver.2012-10-06 from 001\_\_elm20150519\_075733\_\_dat00.bin





ELMAVAN 3D WAVEFORMS (Measured data sampled at 50 kHz) 49786 packets of 144 samples from 2015-05-19T07:57:34.761.999. Part 24/144

Processed Tue May 19 10:04:35 2015 by ELM ver.2012-10-06 from 001\_\_elm20150519\_075733\_\_dat00.bin



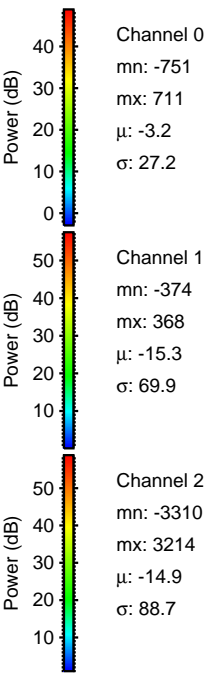
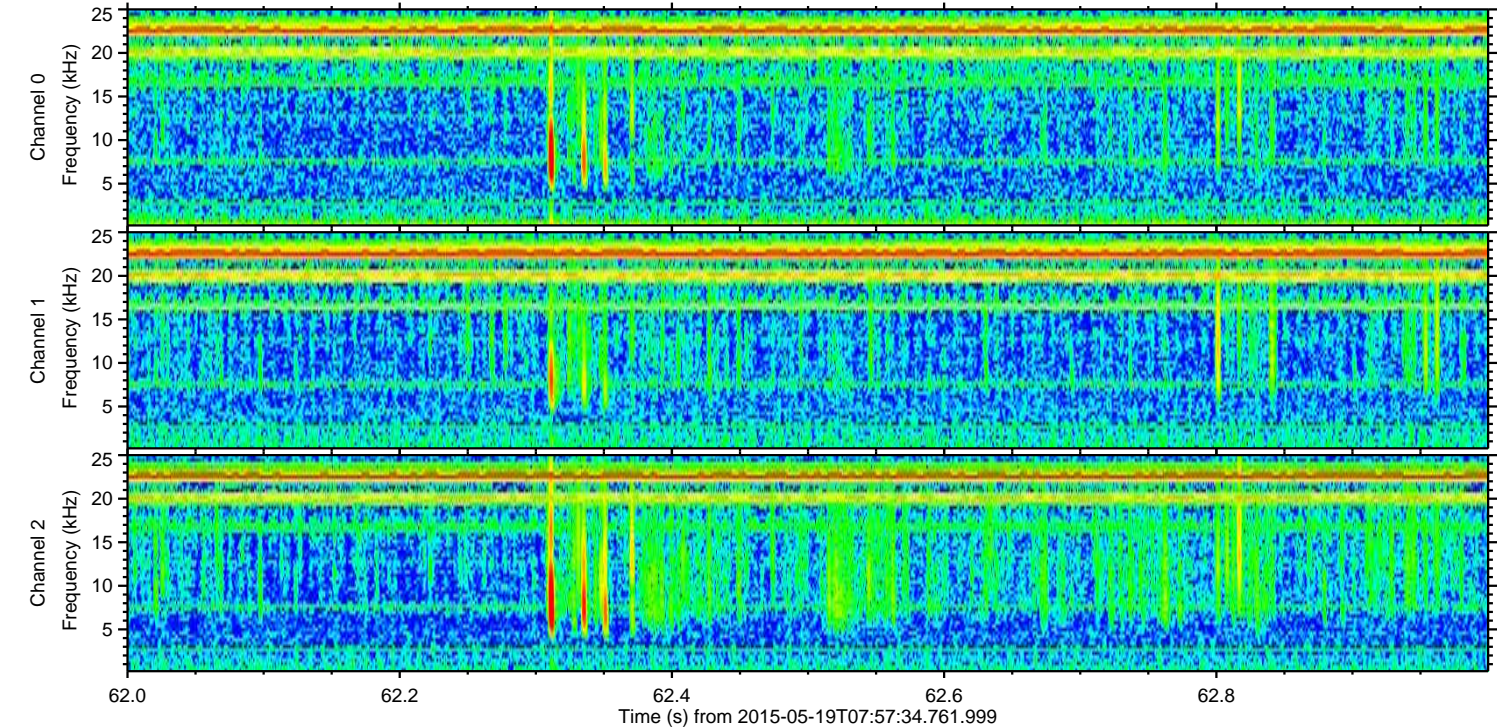
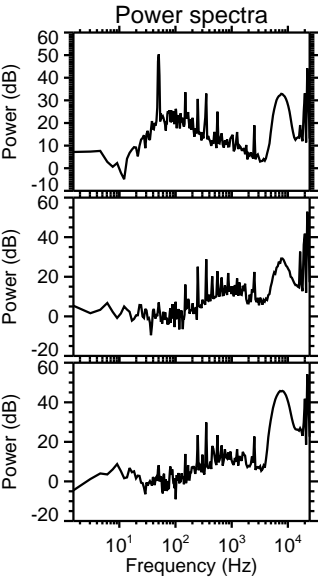
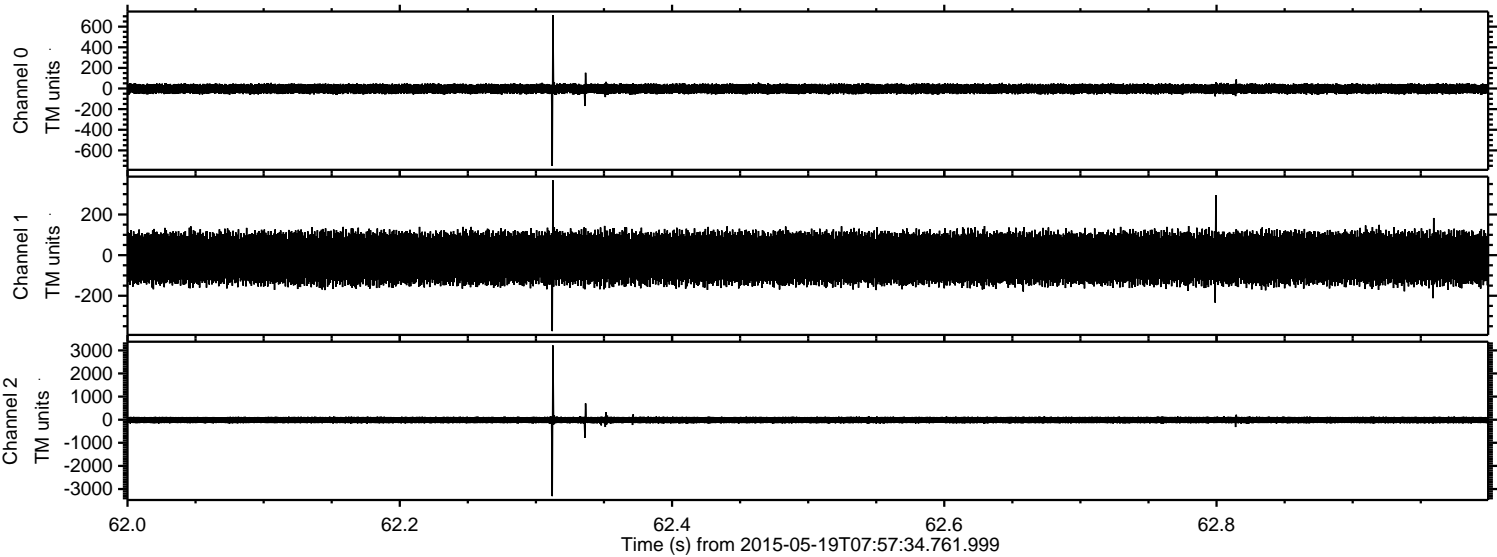
Channel 0  
mn: -2145  
mx: 2468  
 $\mu$ : -3.1  
 $\sigma$ : 30.5

Channel 1  
mn: -5641  
mx: 7374  
 $\mu$ : -15.2  
 $\sigma$ : 89.7

Channel 2  
mn: -1020  
mx: 1274  
 $\mu$ : -14.9  
 $\sigma$ : 79.7



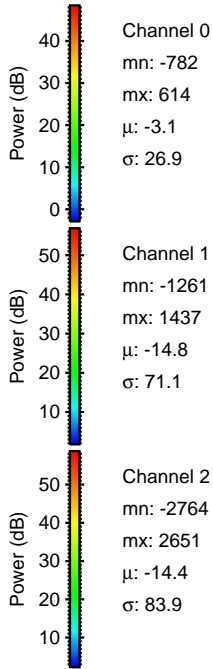
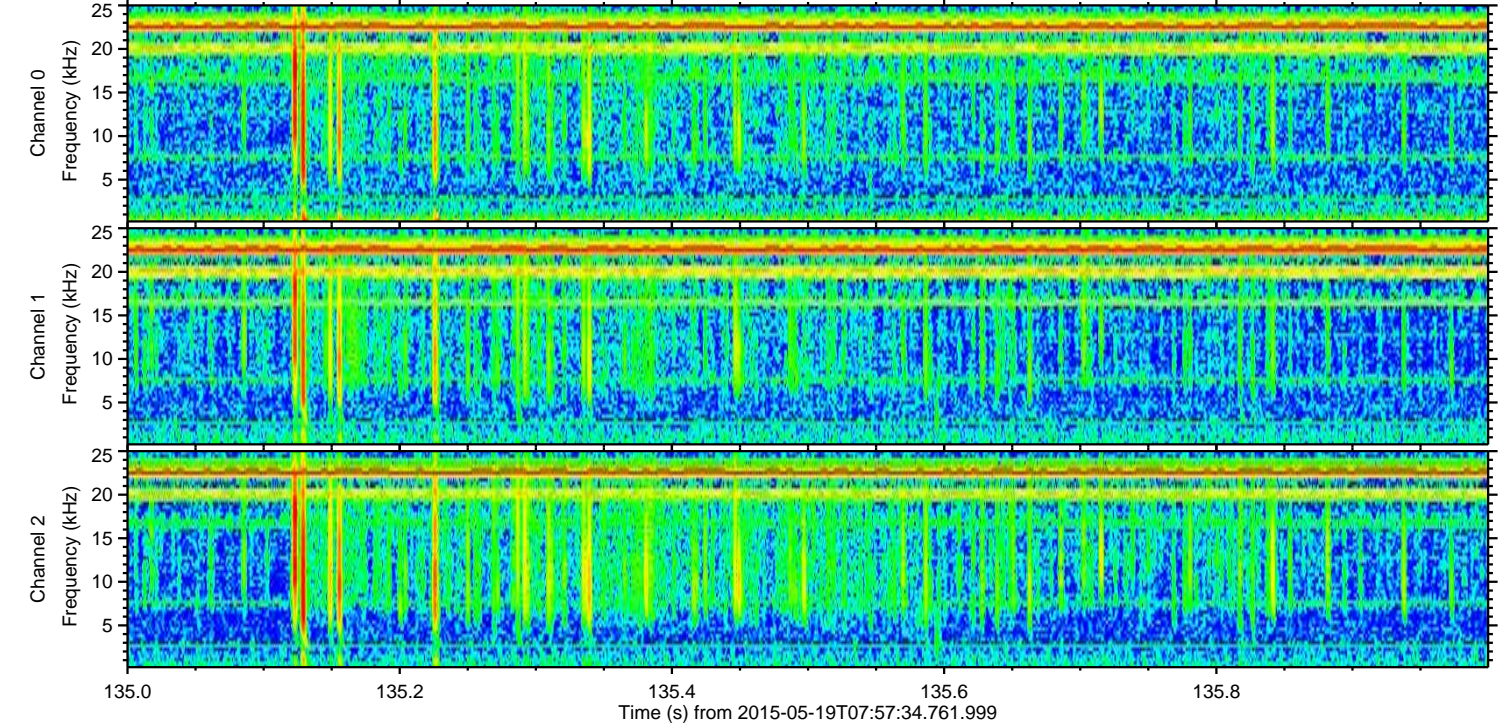
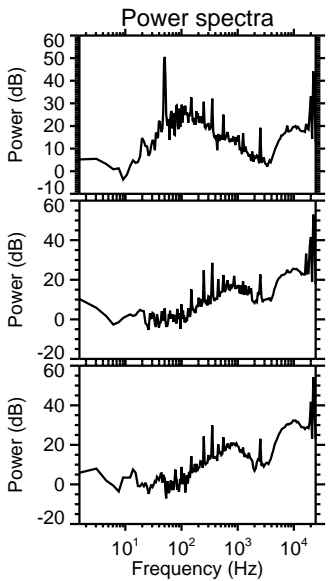
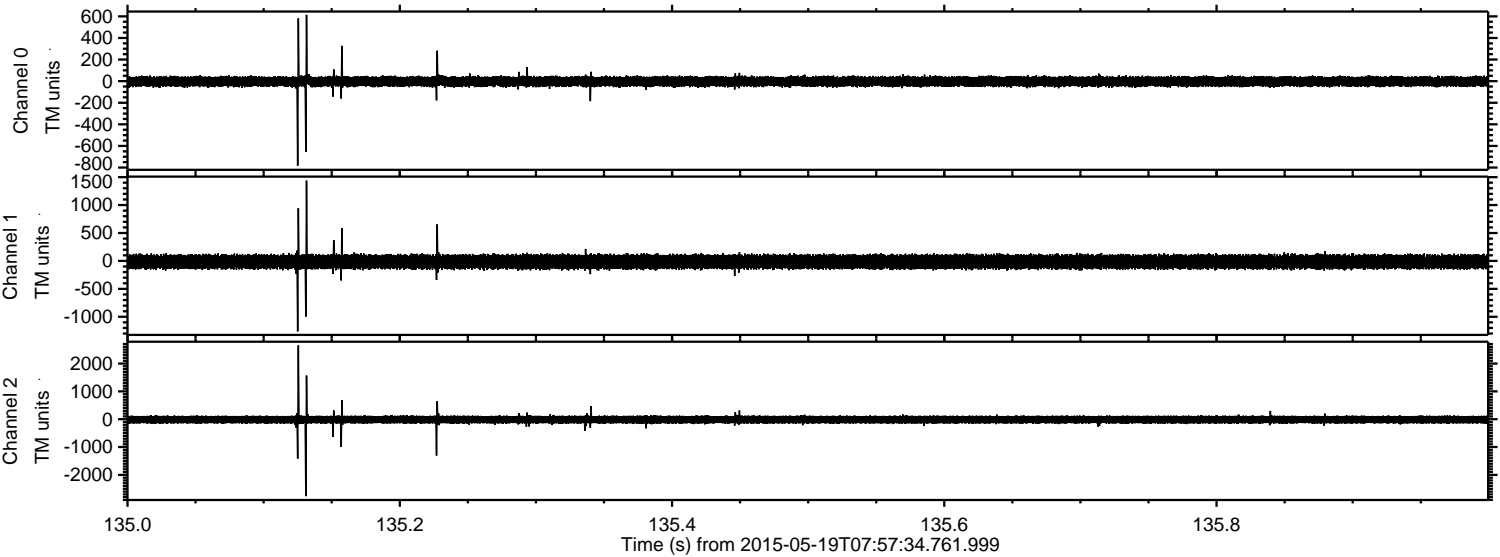
Processed Tue May 19 10:04:36 2015 by ELM ver.2012-10-06 from 001\_\_elm20150519\_075733\_\_dat00.bin





ELMAVAN 3D WAVEFORMS (Measured data sampled at 50 kHz) 49786 packets of 144 samples from 2015-05-19T07:57:34.761.999. Part 136/144

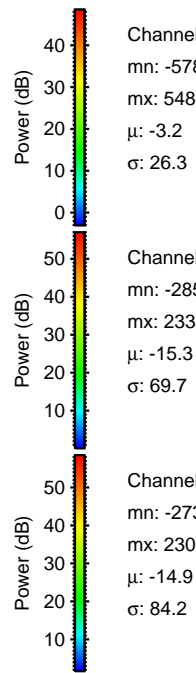
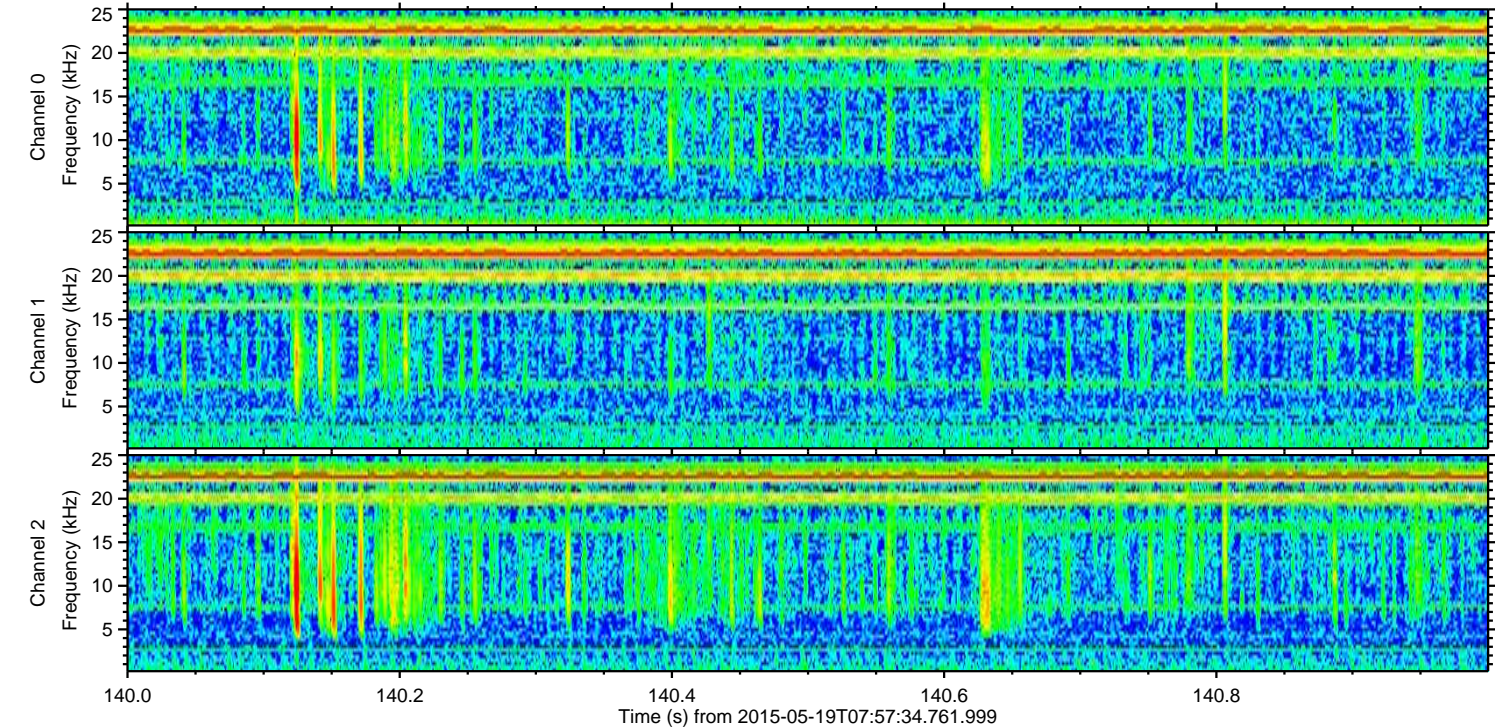
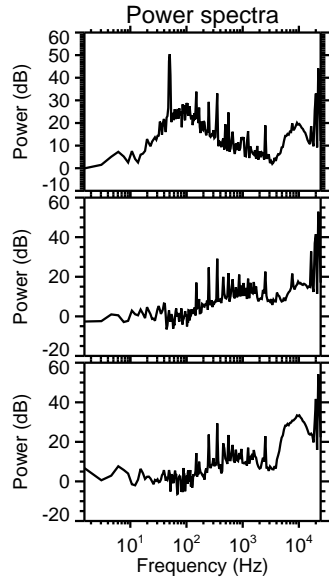
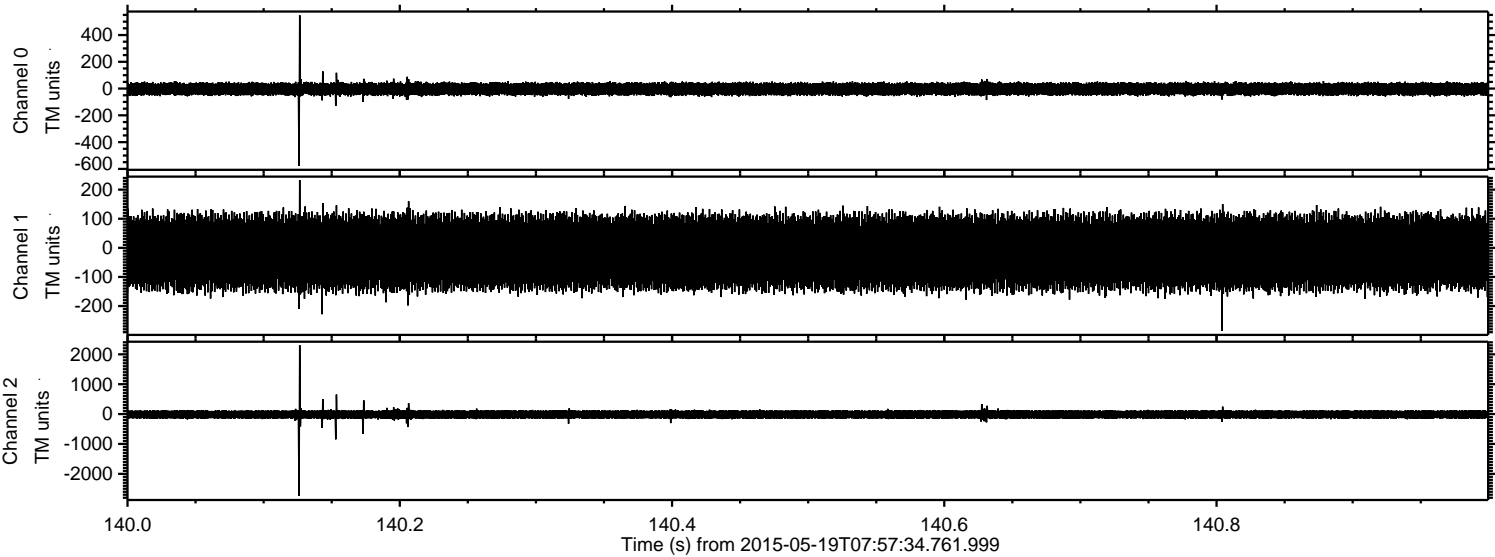
Processed Tue May 19 10:04:37 2015 by ELM ver.2012-10-06 from 001\_\_elm20150519\_075733\_\_dat00.bin





ELMAVAN 3D WAVEFORMS (Measured data sampled at 50 kHz) 49786 packets of 144 samples from 2015-05-19T07:57:34.761.999. Part 141/144

Processed Tue May 19 10:04:38 2015 by ELM ver.2012-10-06 from 001\_\_elm20150519\_075733\_\_dat00.bin



Channel 0  
mn: -578  
mx: 548  
 $\mu$ : -3.2  
 $\sigma$ : 26.3

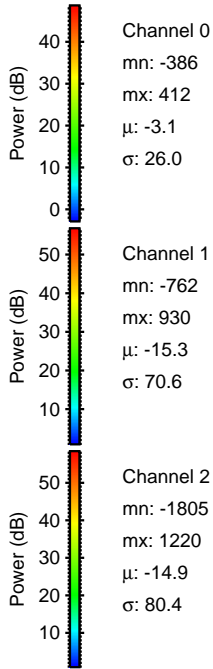
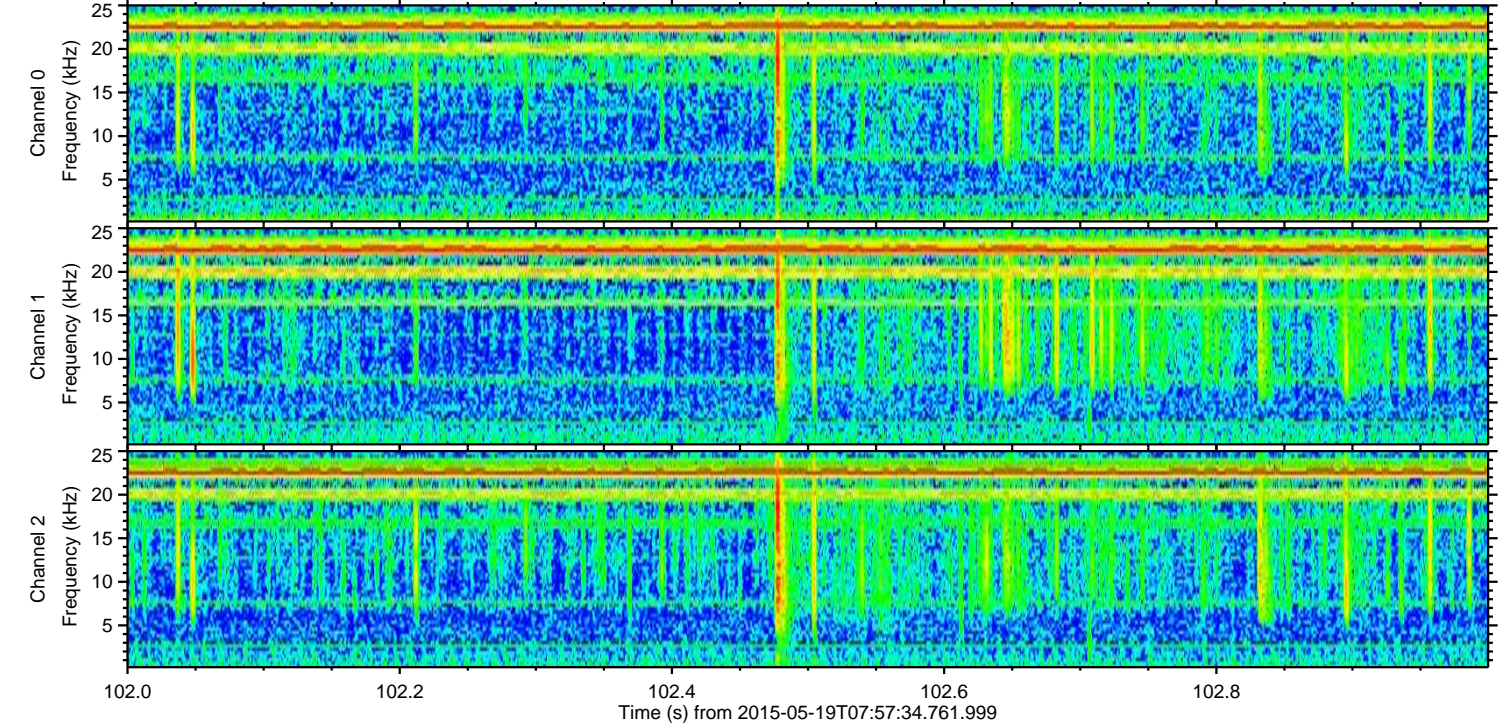
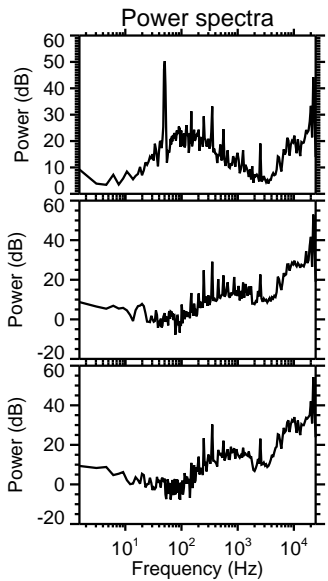
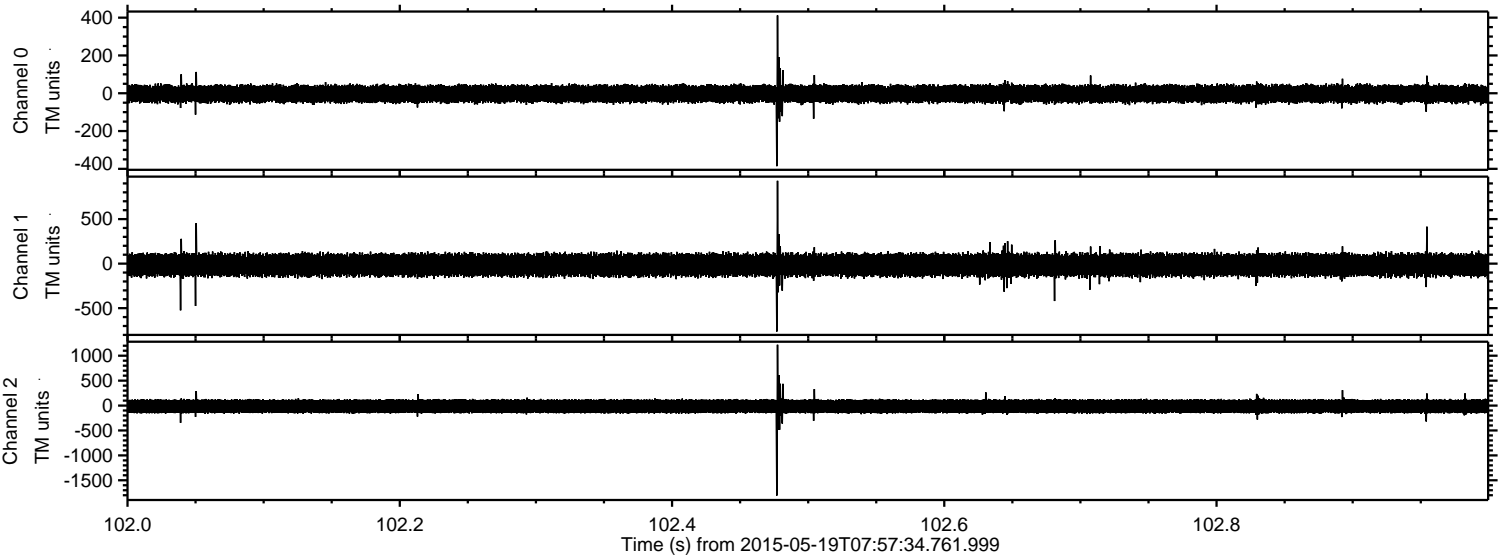
Channel 1  
mn: -285  
mx: 233  
 $\mu$ : -15.3  
 $\sigma$ : 69.7

Channel 2  
mn: -2739  
mx: 2306  
 $\mu$ : -14.9  
 $\sigma$ : 84.2



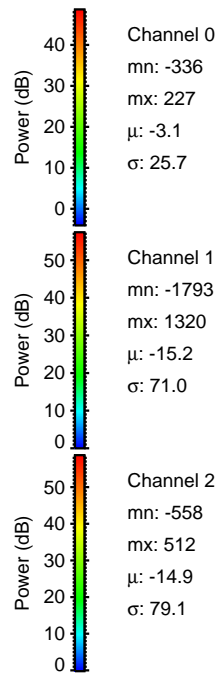
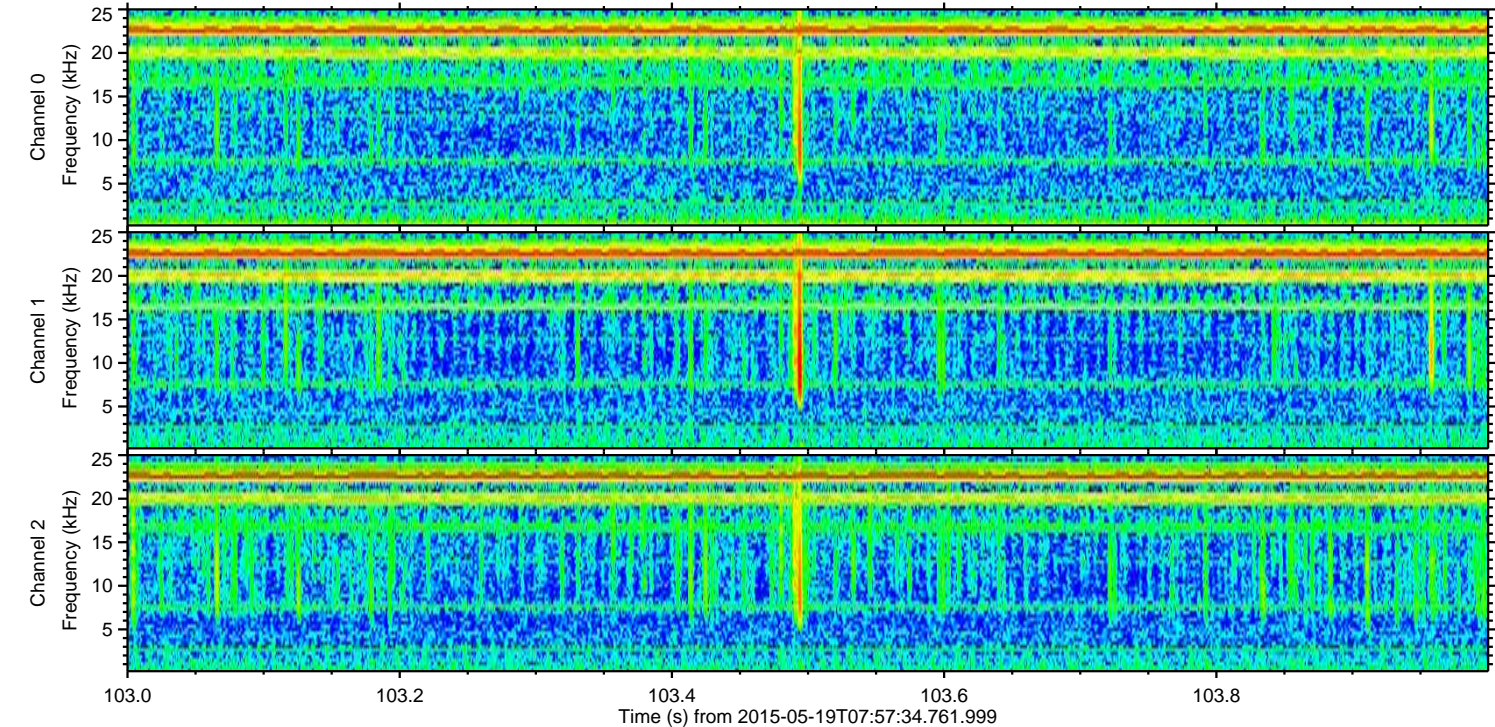
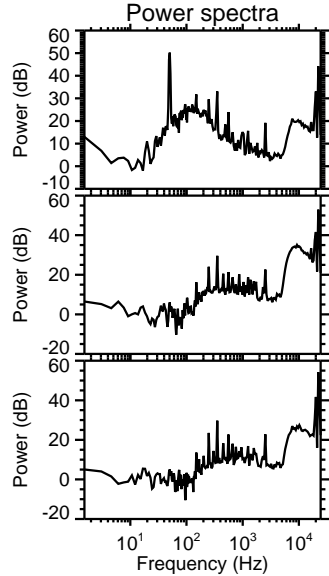
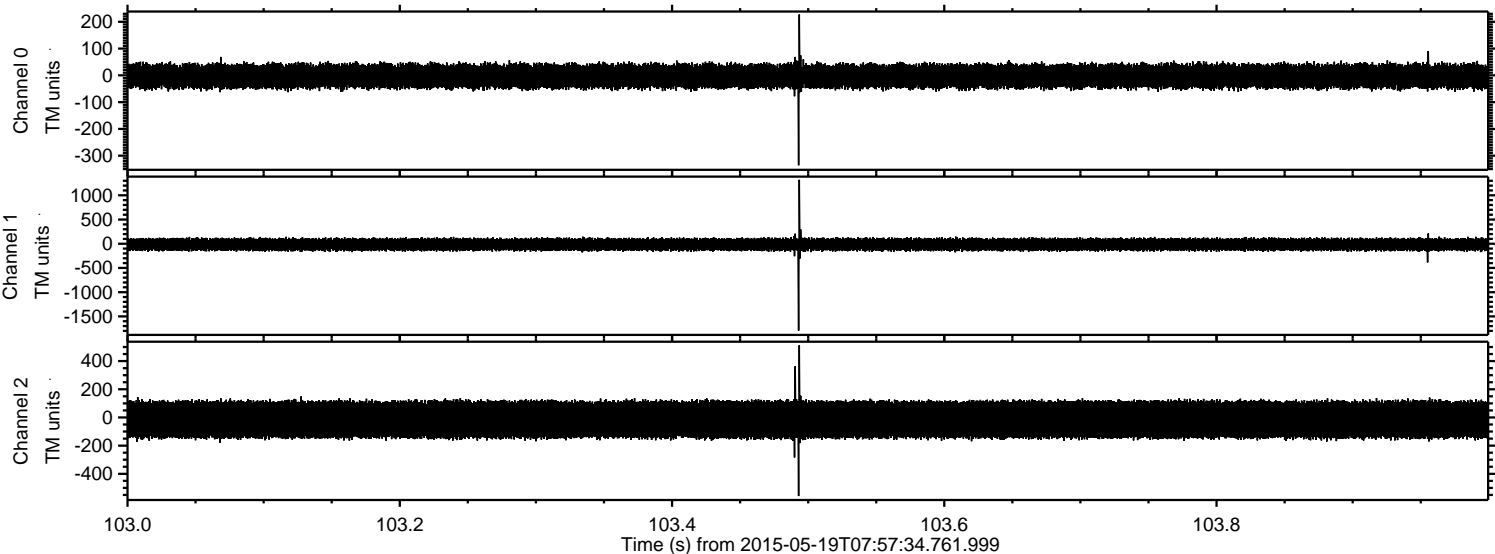
ELMAVAN 3D WAVEFORMS (Measured data sampled at 50 kHz) 49786 packets of 144 samples from 2015-05-19T07:57:34.761.999. Part 103/144

Processed Tue May 19 10:04:39 2015 by ELM ver.2012-10-06 from 001\_\_elm20150519\_075733\_\_dat00.bin





Processed Tue May 19 10:04:40 2015 by ELM ver.2012-10-06 from 001\_\_elm20150519\_075733\_\_dat00.bin



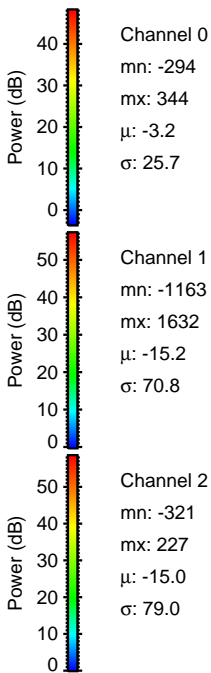
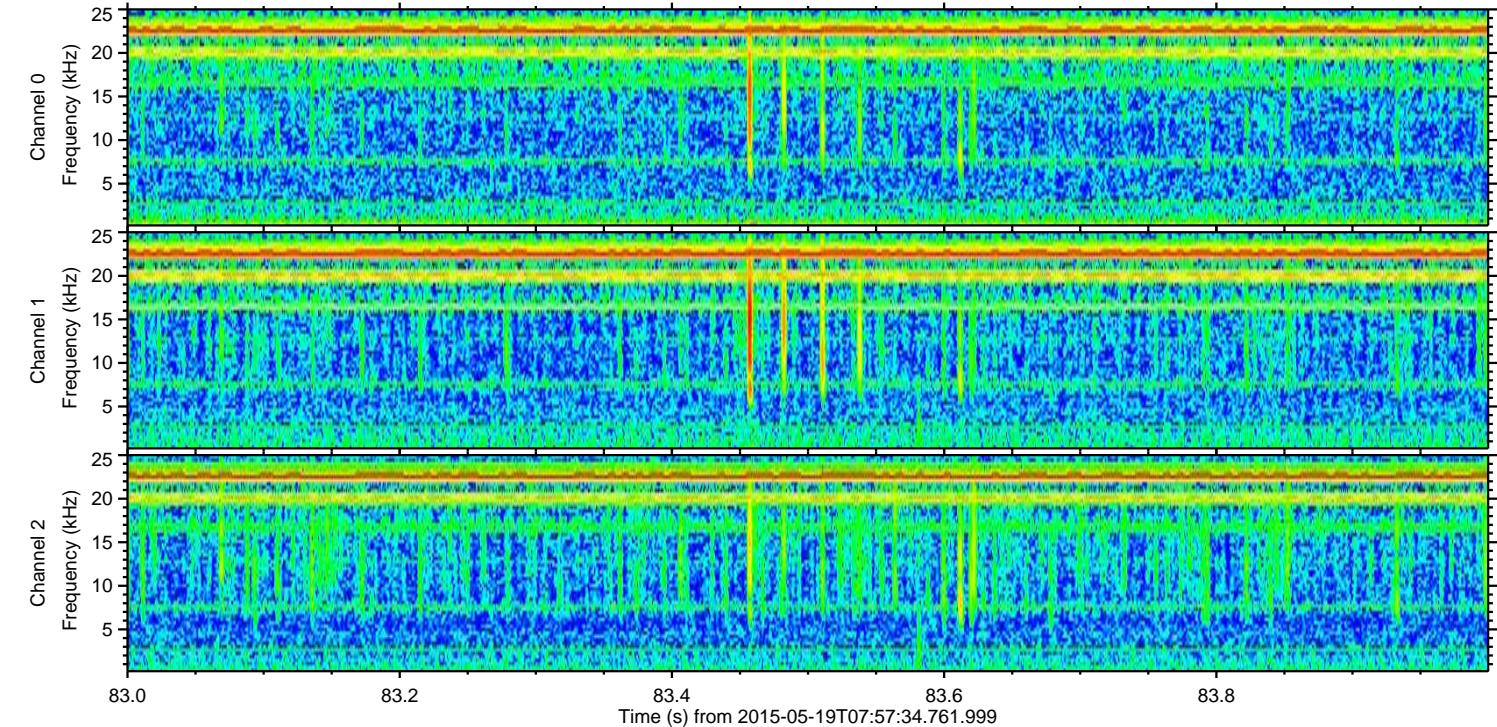
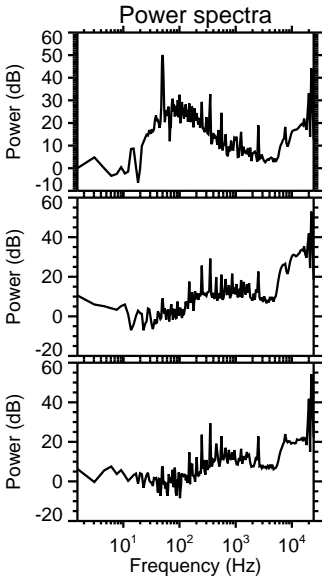
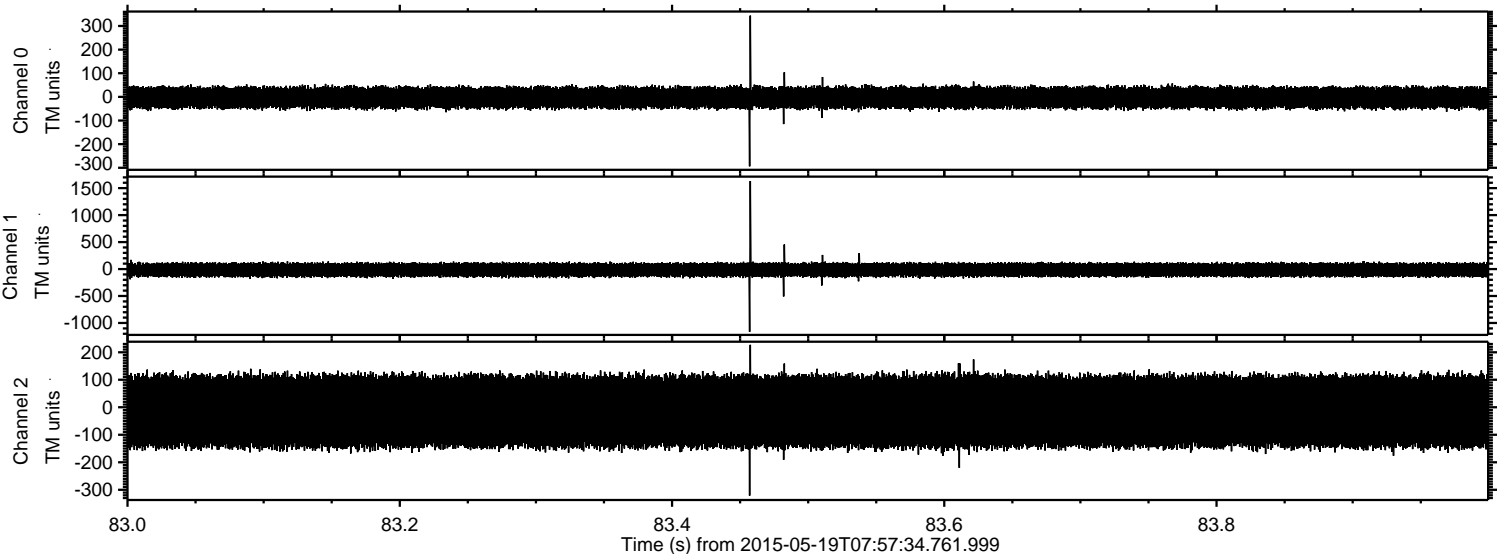
Channel 0  
mn: -336  
mx: 227  
 $\mu$ : -3.1  
 $\sigma$ : 25.7

Channel 1  
mn: -1793  
mx: 1320  
 $\mu$ : -15.2  
 $\sigma$ : 71.0

Channel 2  
mn: -558  
mx: 512  
 $\mu$ : -14.9  
 $\sigma$ : 79.1

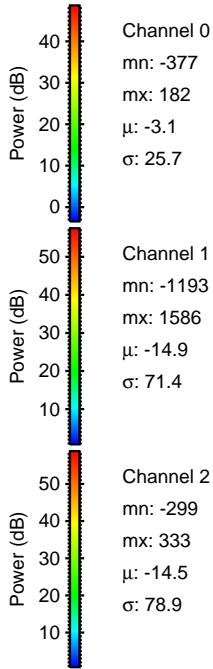
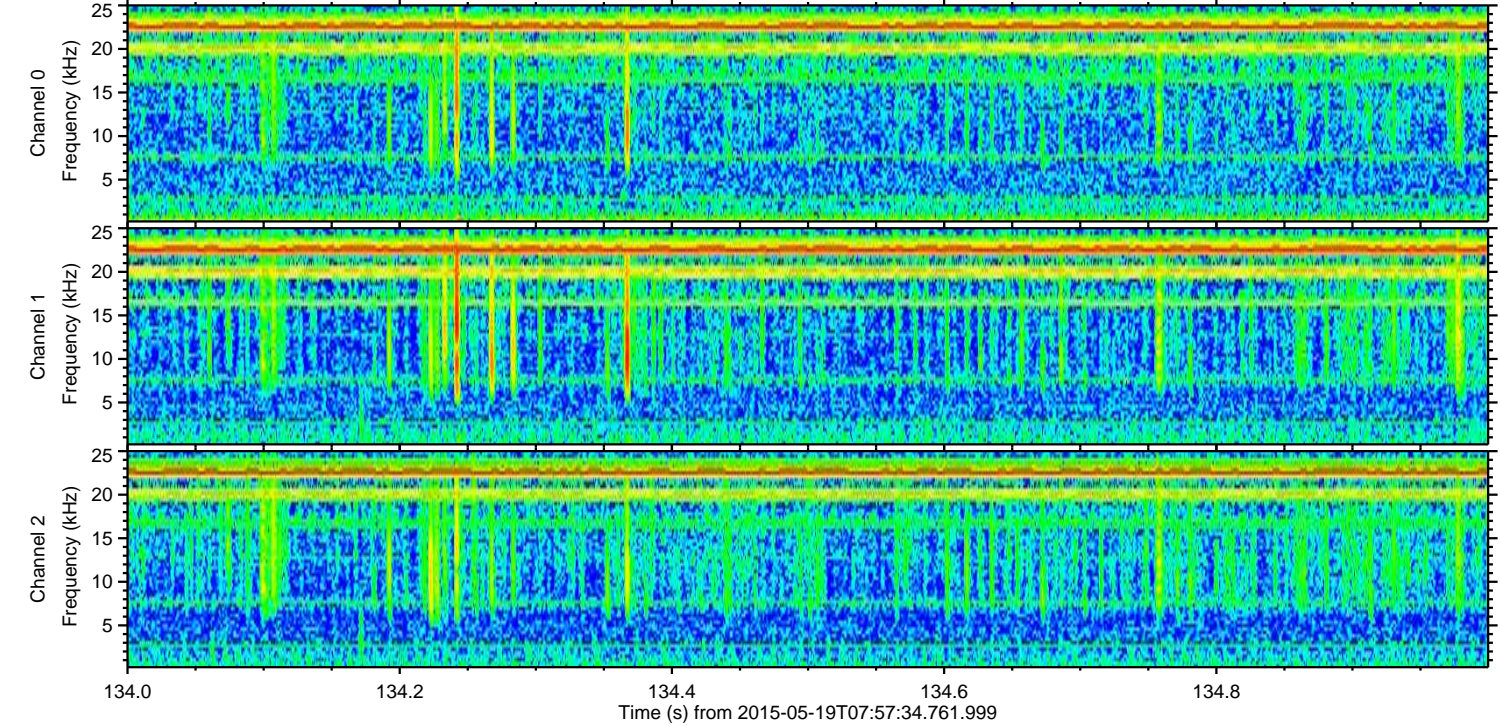
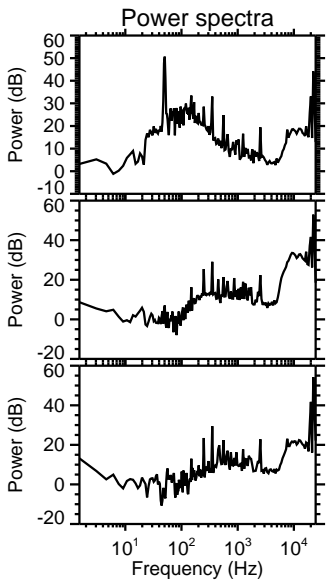
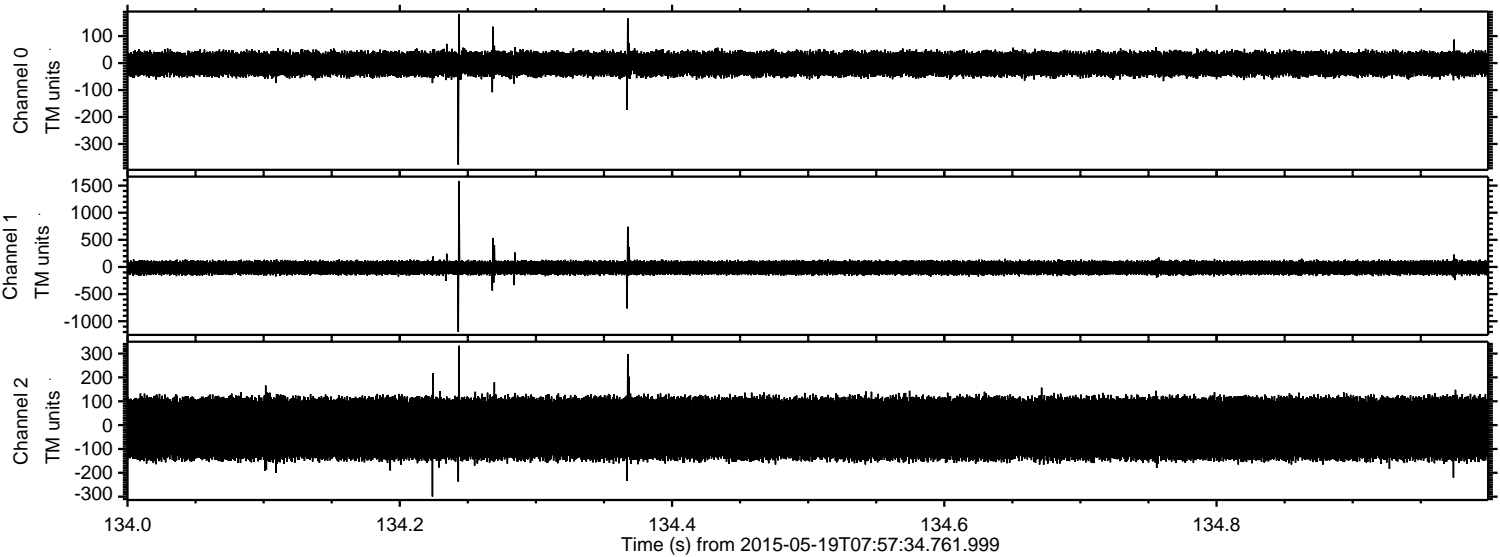


Processed Tue May 19 10:04:41 2015 by ELM ver.2012-10-06 from 001\_\_elm20150519\_075733\_\_dat00.bin





Processed Tue May 19 10:04:42 2015 by ELM ver.2012-10-06 from 001\_\_elm20150519\_075733\_\_dat00.bin





Processed Tue May 19 10:04:43 2015 by ELM ver.2012-10-06 from 001\_\_elm20150519\_075733\_\_dat00.bin

