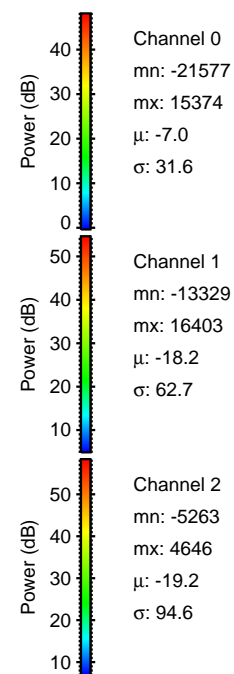
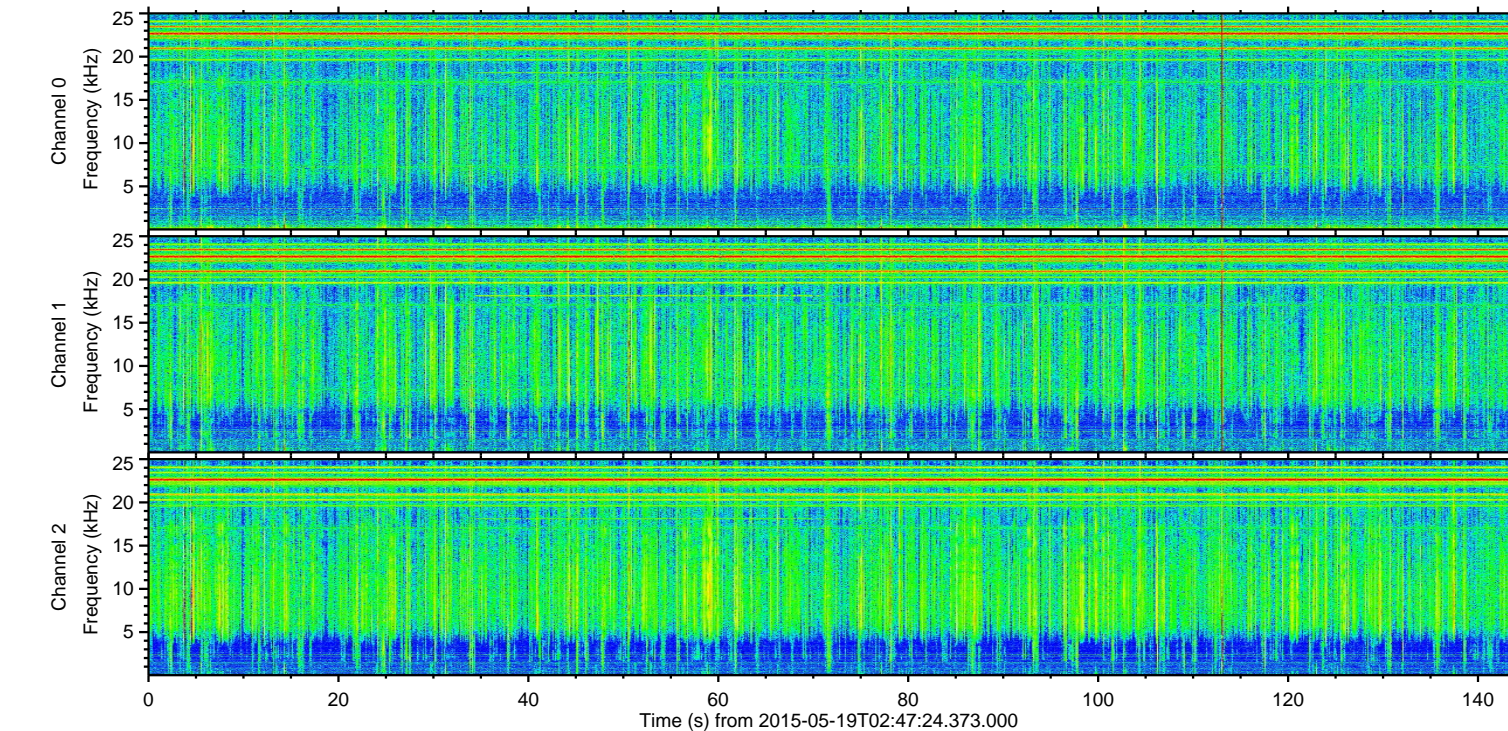
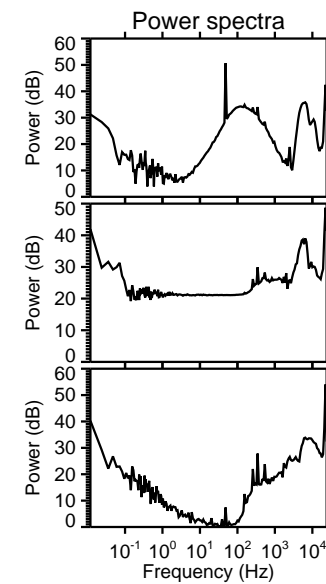
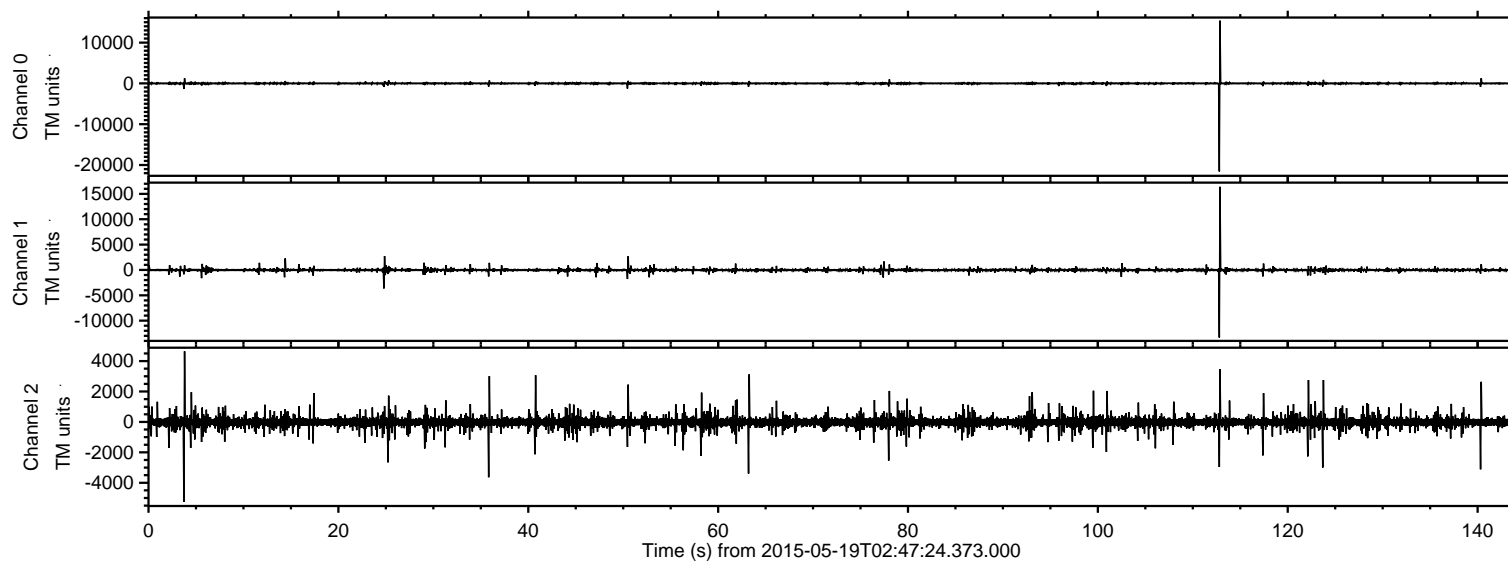


# ELMAVAN 3D WAVEFORMS (Measured data sampled at 50 kHz) 49764 packets of 144 samples from 2015-05-19T02:47:24.373.000.

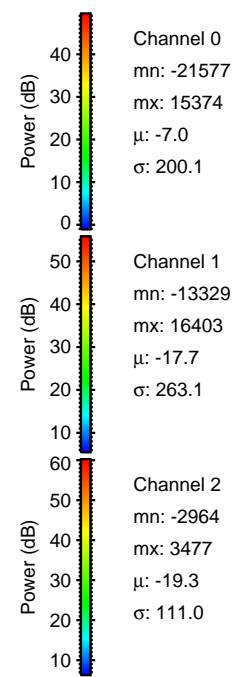
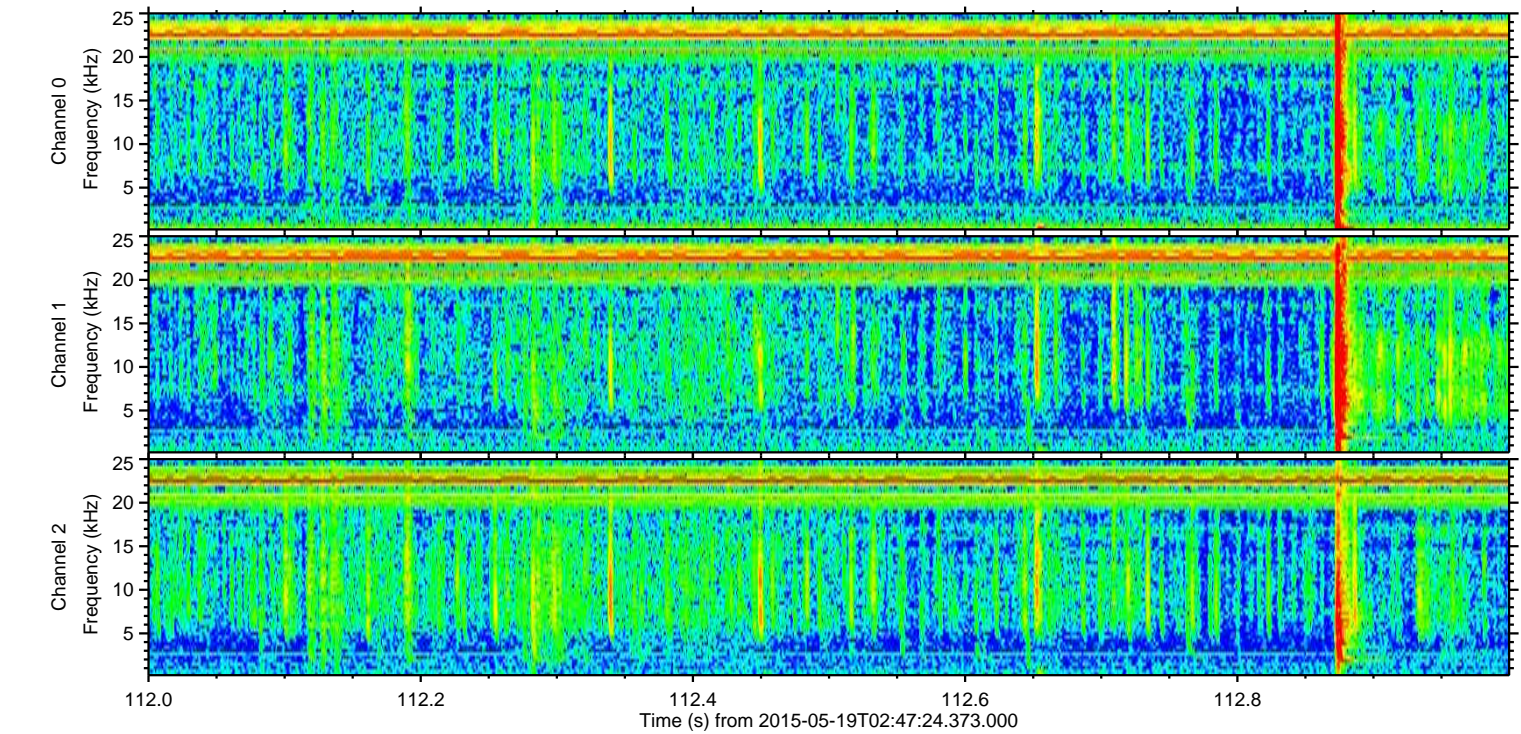
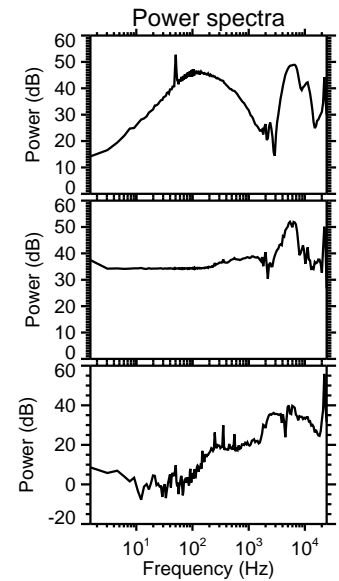
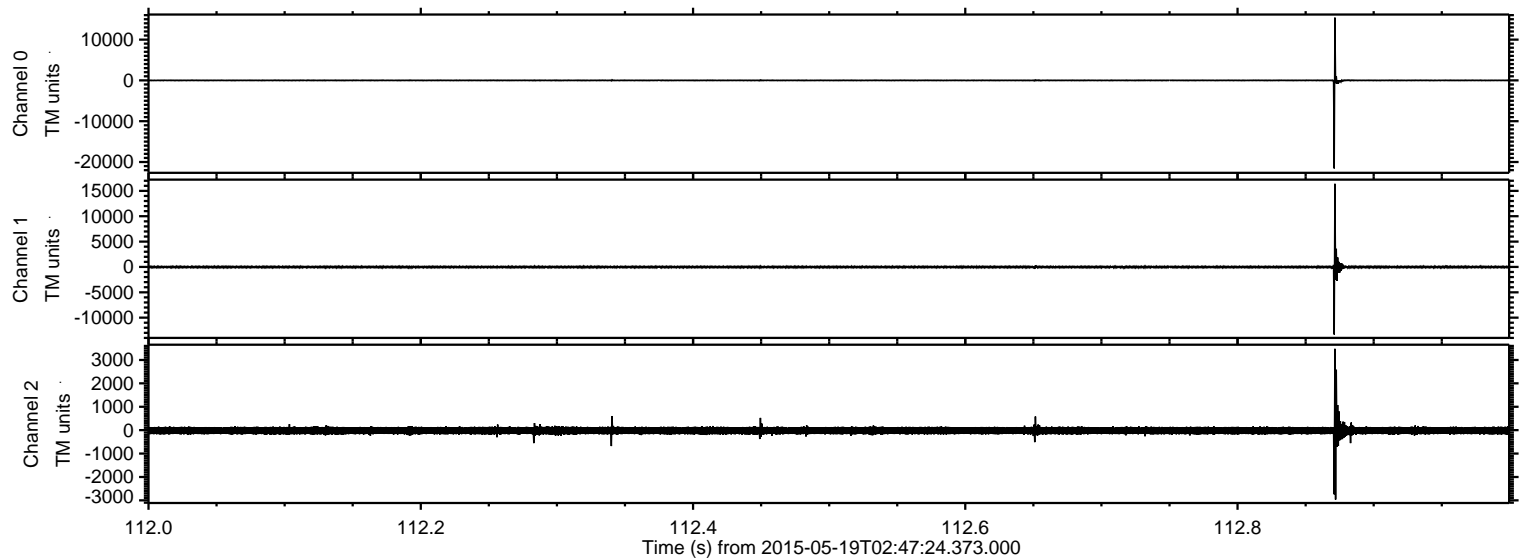
Processed Tue May 19 04:53:57 2015 by ELM ver.2012-10-06 from 001\_\_elm20150519\_024723\_\_dat00.bin





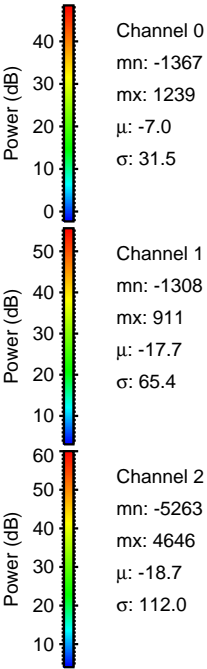
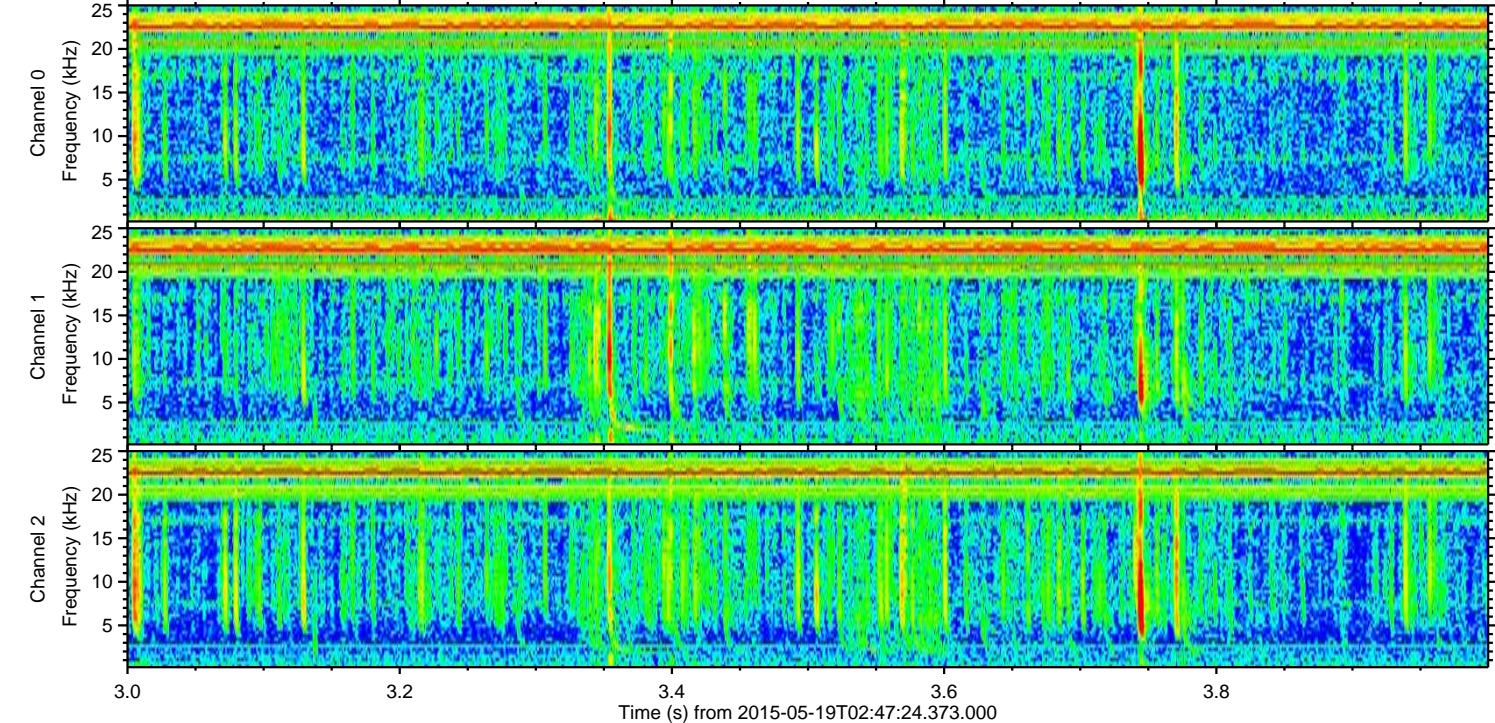
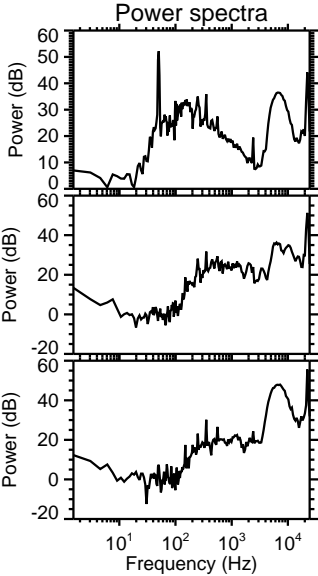
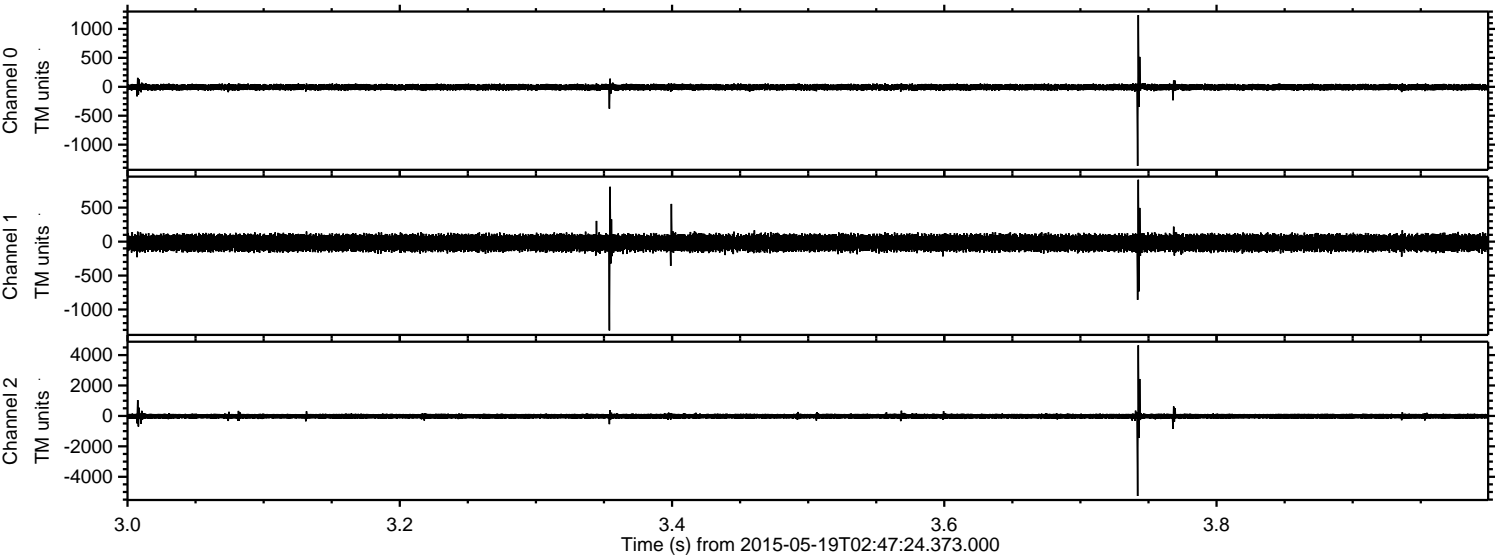
ELMAVAN 3D WAVEFORMS (Measured data sampled at 50 kHz) 49764 packets of 144 samples from 2015-05-19T02:47:24.373.000. Part 113/144

Processed Tue May 19 04:54:08 2015 by ELM ver.2012-10-06 from 001\_\_elm20150519\_024723\_\_dat00.bin



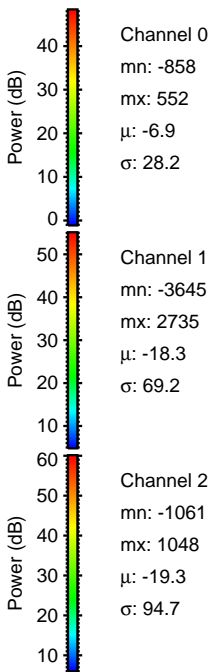
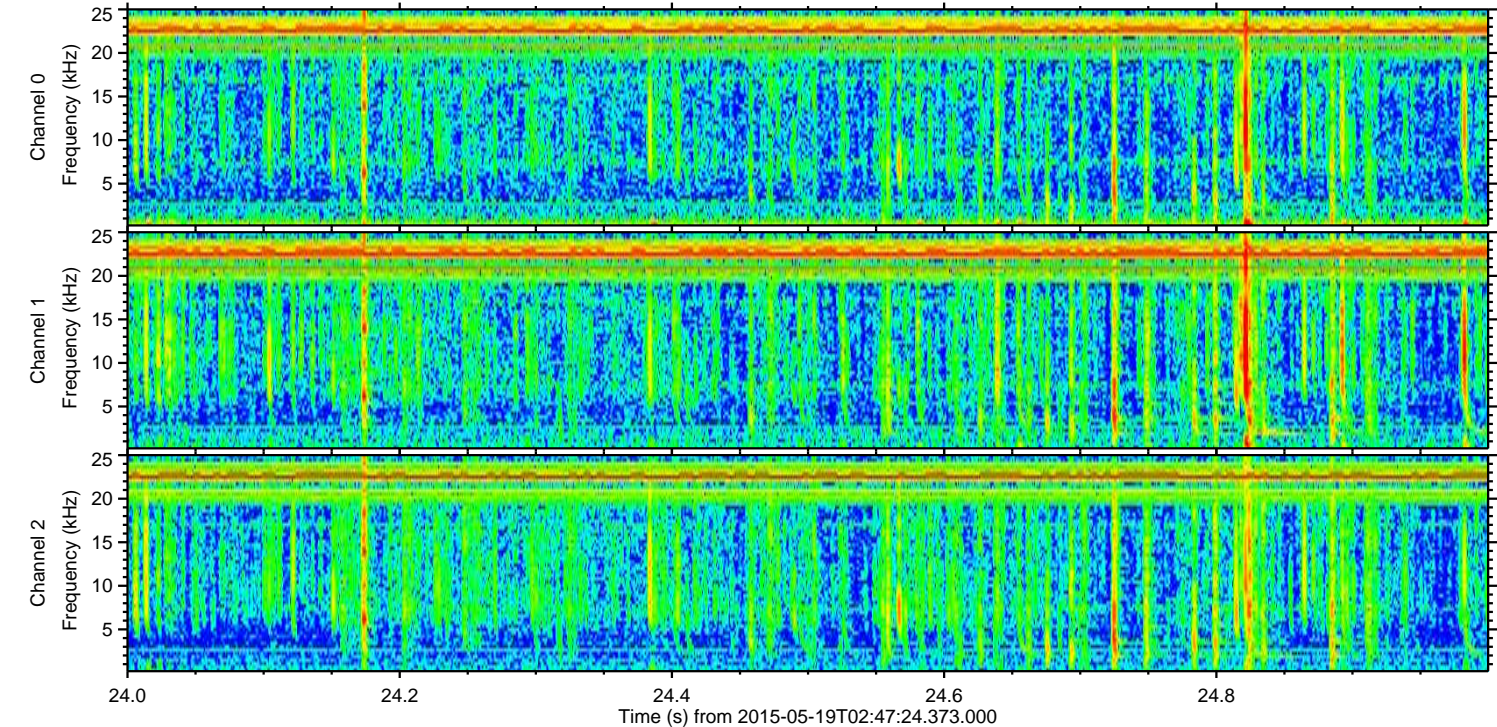
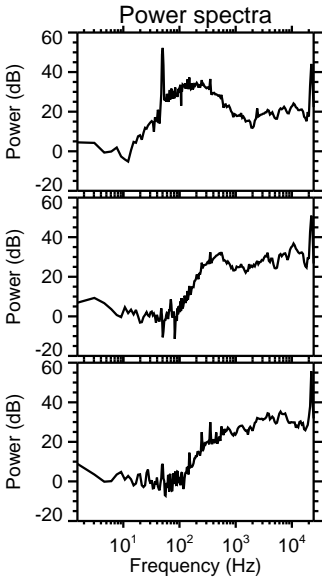
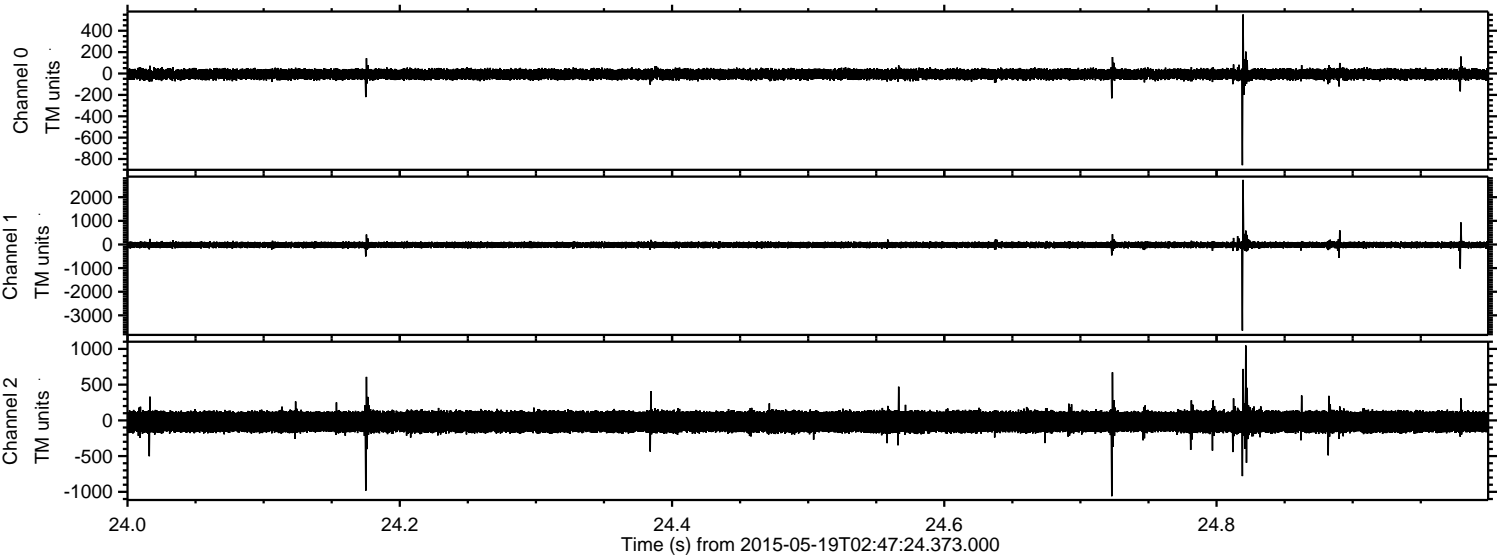


Processed Tue May 19 04:54:09 2015 by ELM ver.2012-10-06 from 001\_\_elm20150519\_024723\_\_dat00.bin



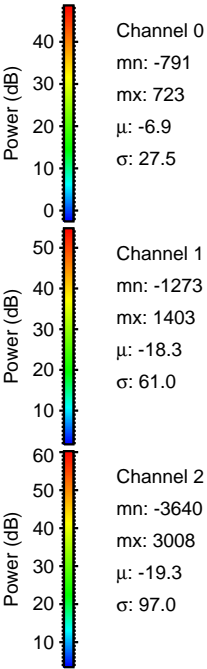
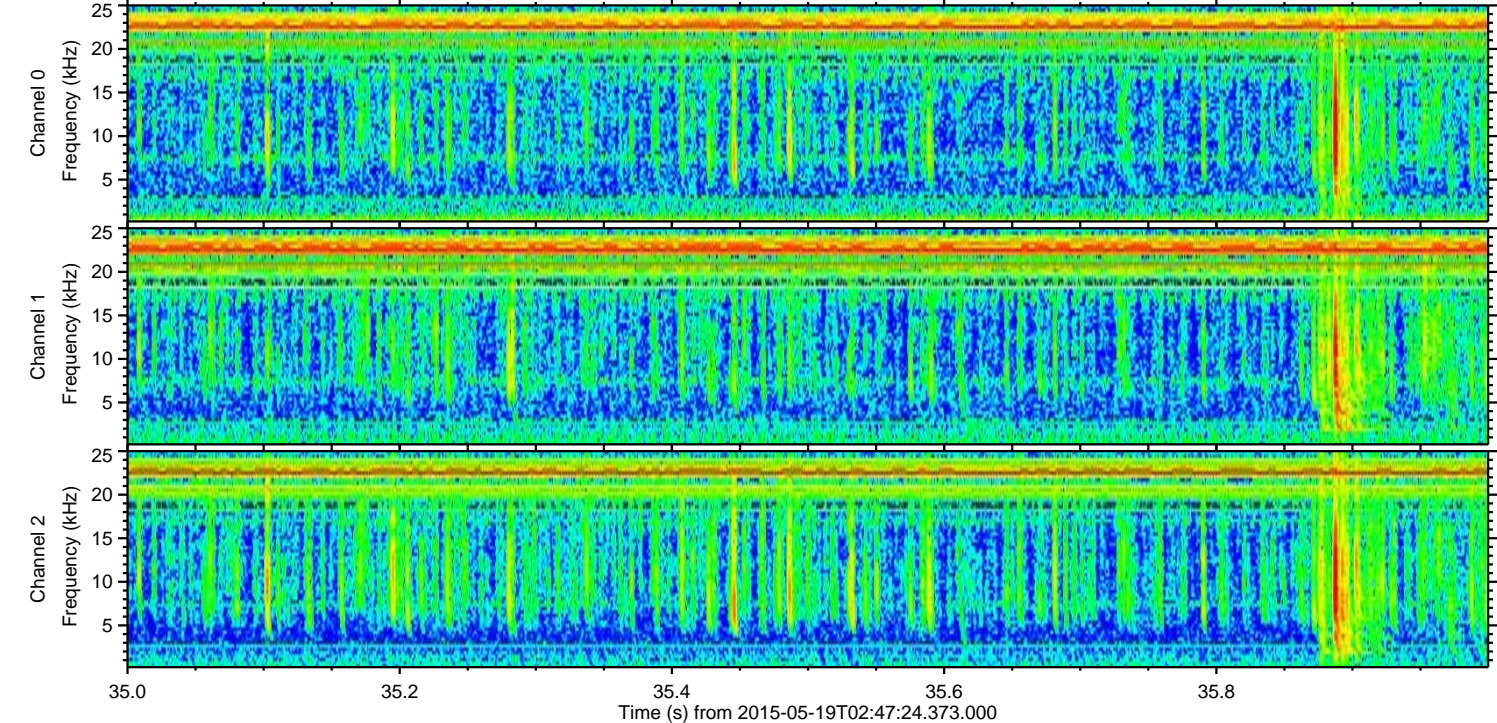
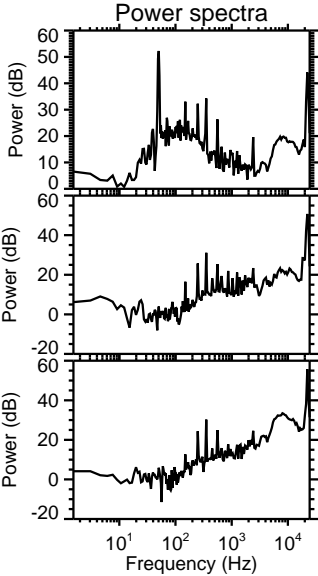
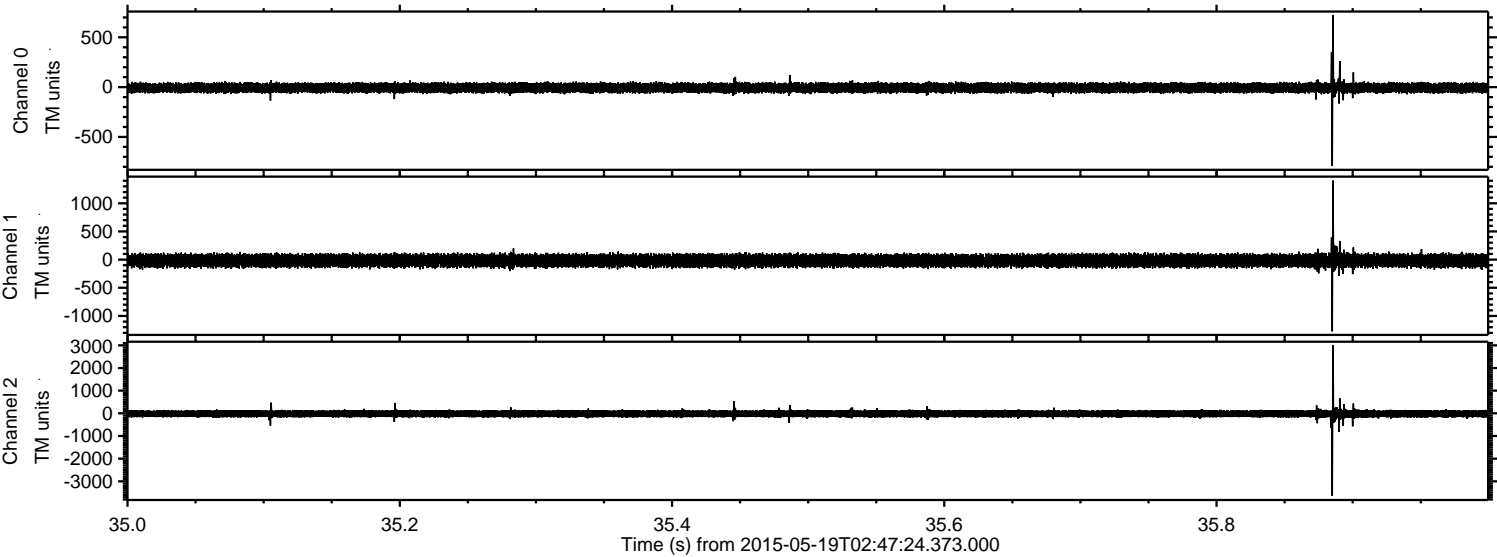


Processed Tue May 19 04:54:10 2015 by ELM ver.2012-10-06 from 001\_\_elm20150519\_024723\_\_dat00.bin



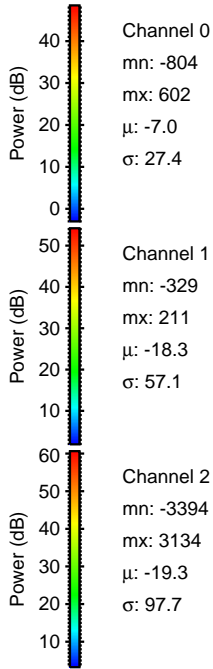
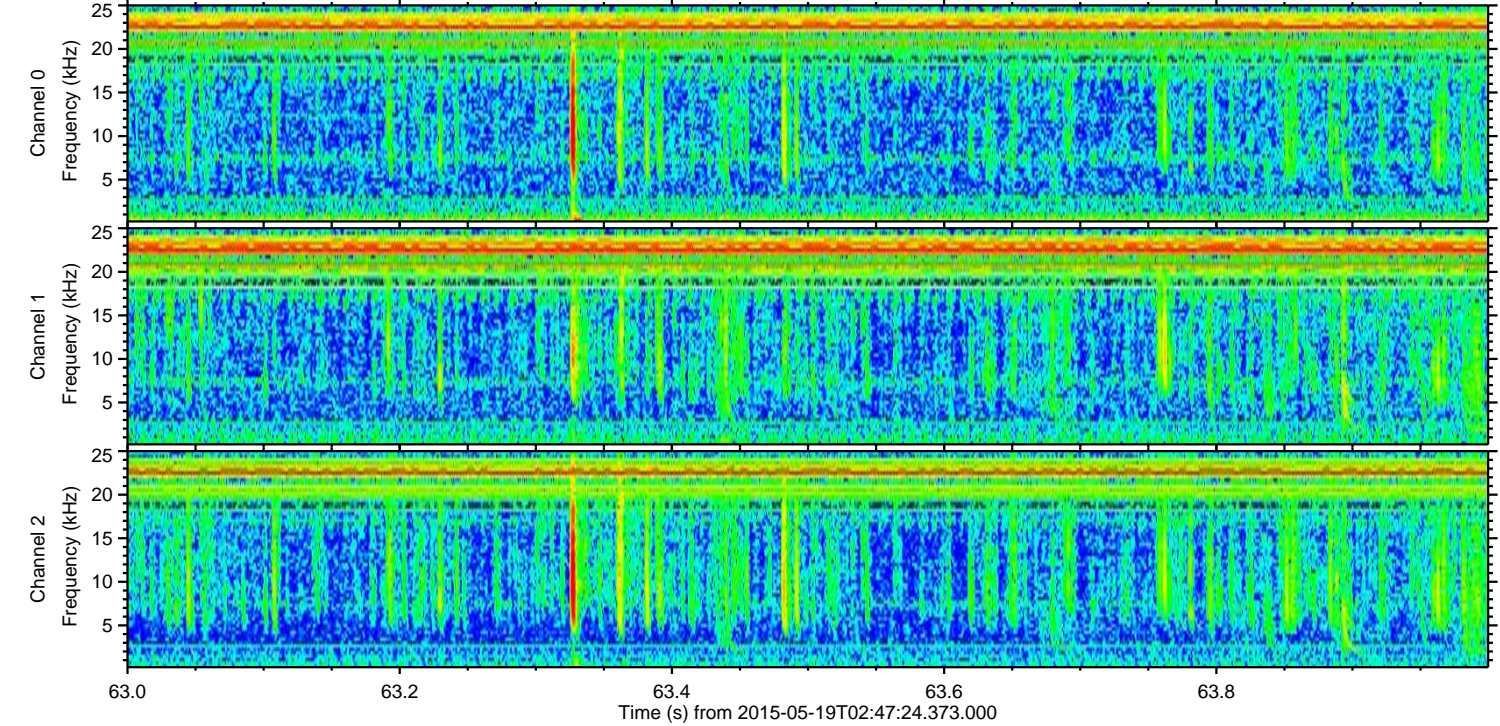
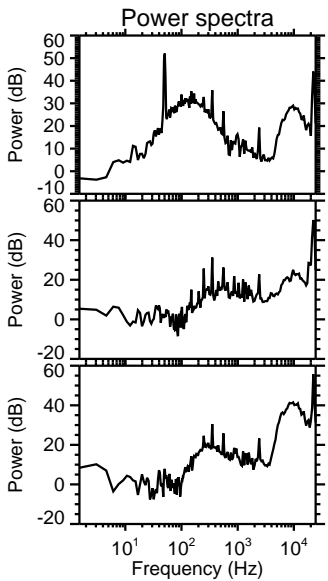
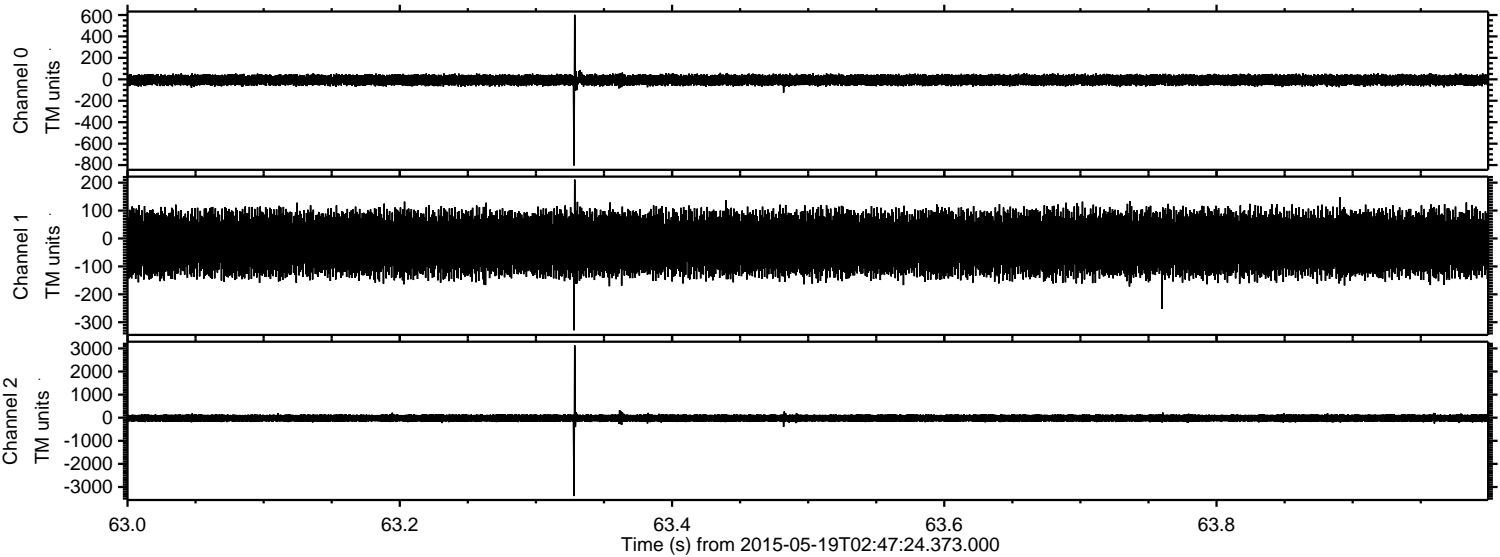


Processed Tue May 19 04:54:11 2015 by ELM ver.2012-10-06 from 001\_\_elm20150519\_024723\_\_dat00.bin





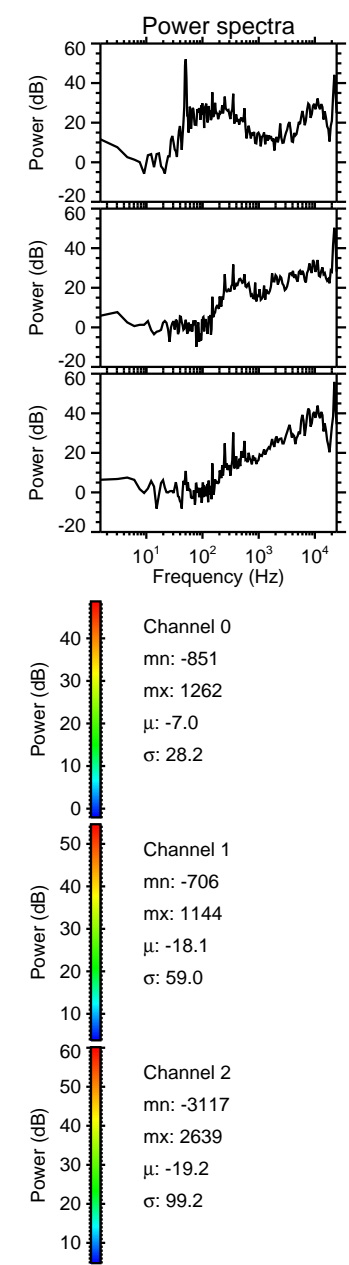
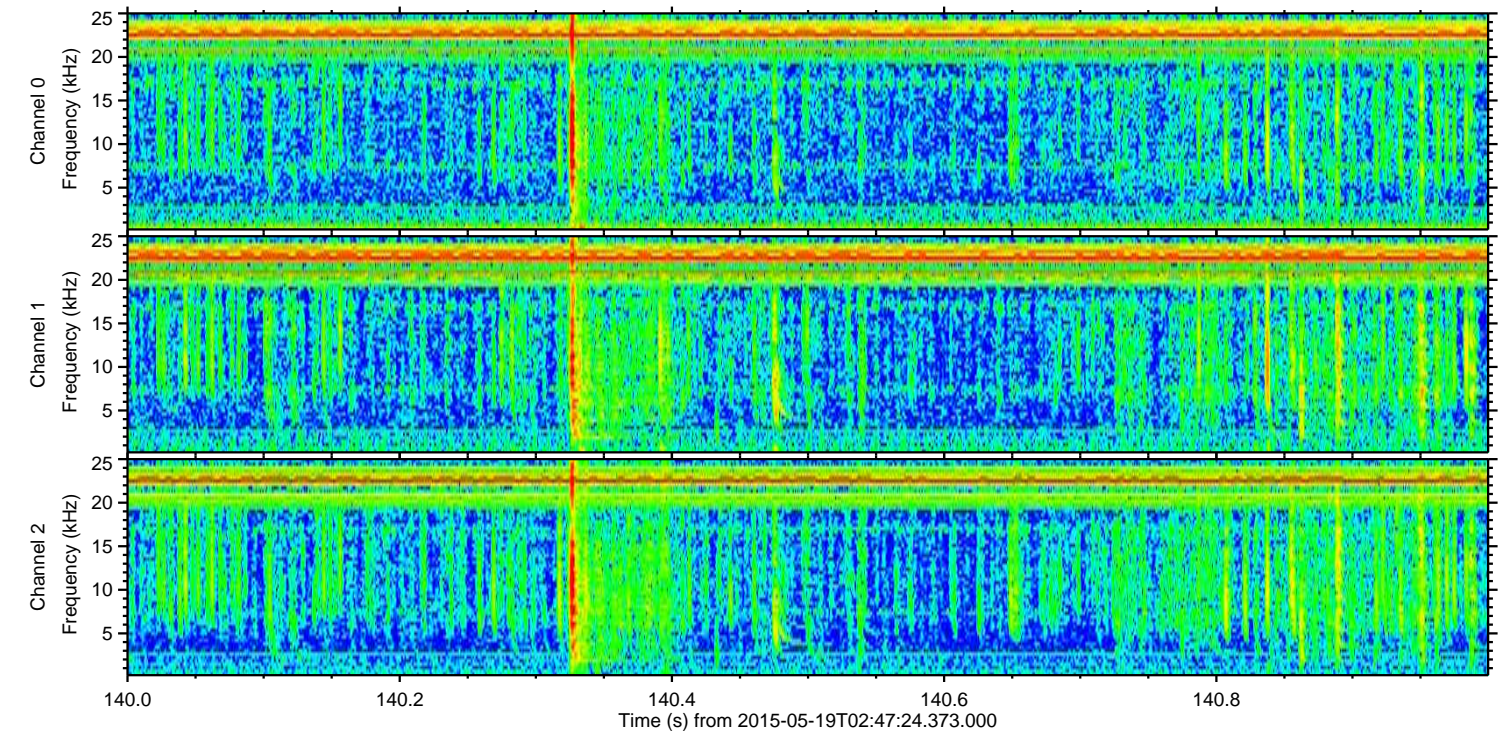
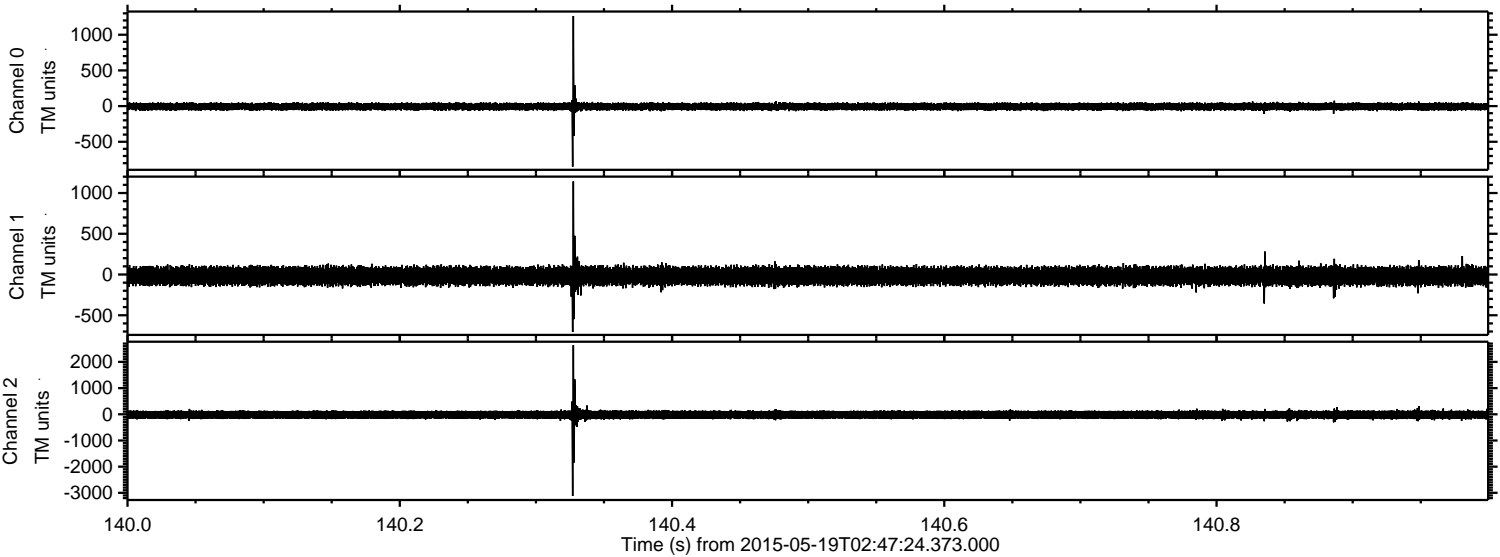
Processed Tue May 19 04:54:12 2015 by ELM ver.2012-10-06 from 001\_\_elm20150519\_024723\_\_dat00.bin





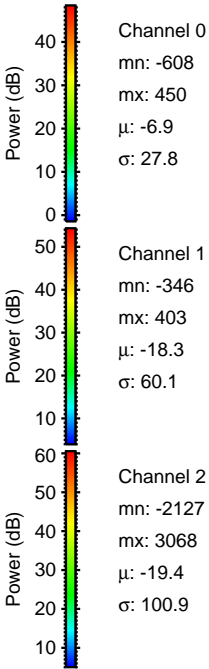
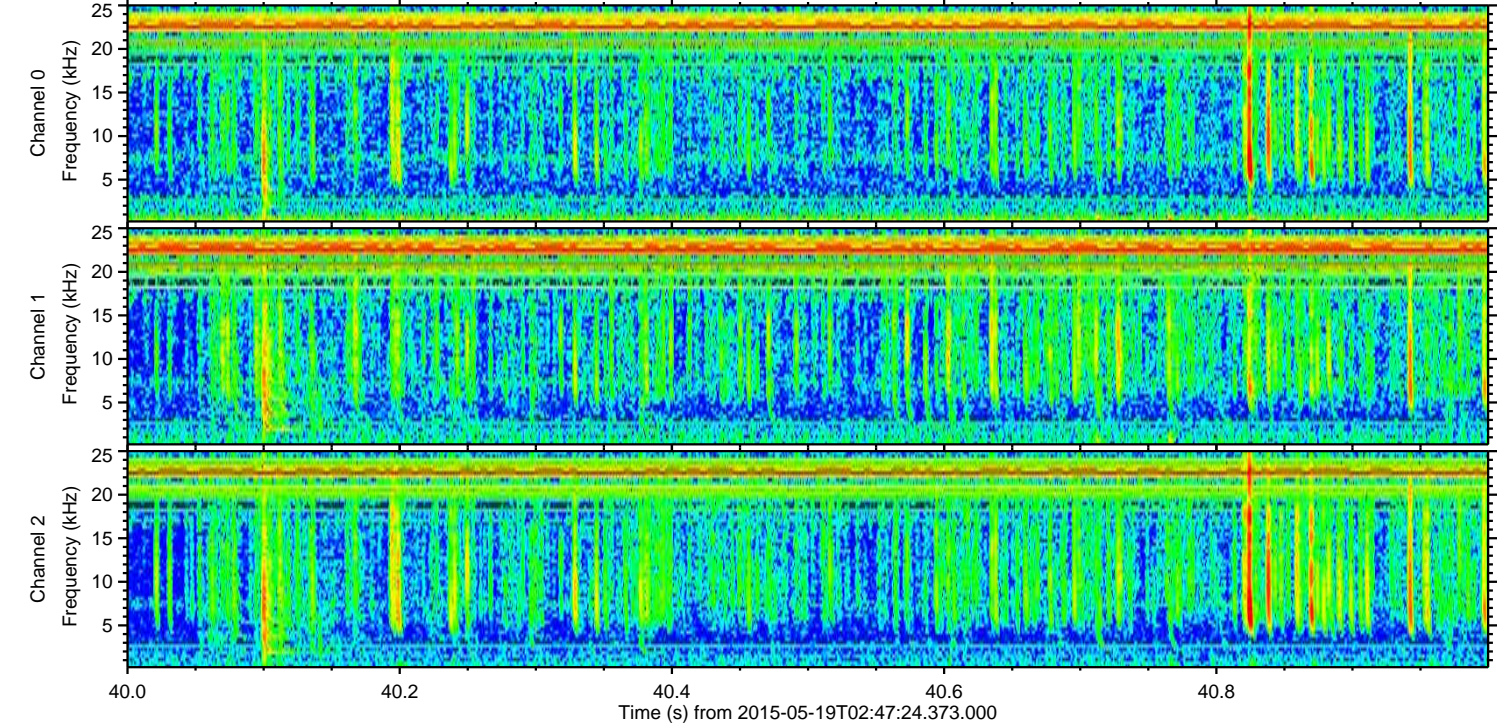
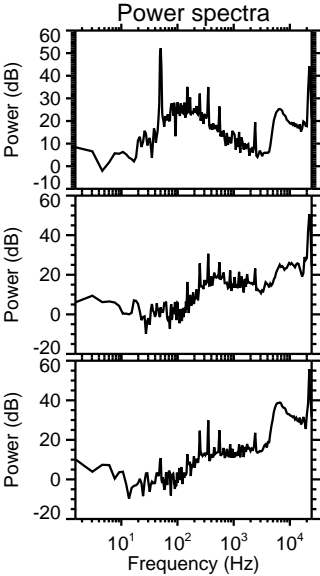
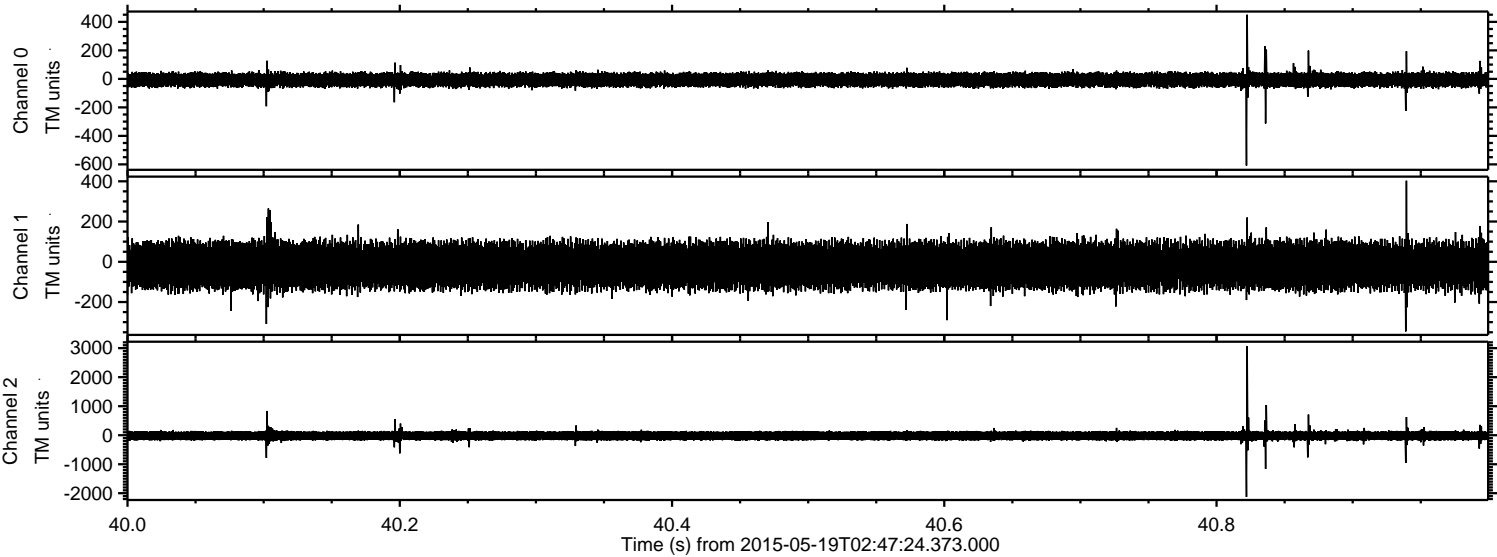
ELMAVAN 3D WAVEFORMS (Measured data sampled at 50 kHz) 49764 packets of 144 samples from 2015-05-19T02:47:24.373.000. Part 141/144

Processed Tue May 19 04:54:13 2015 by ELM ver.2012-10-06 from 001\_\_elm20150519\_024723\_\_dat00.bin



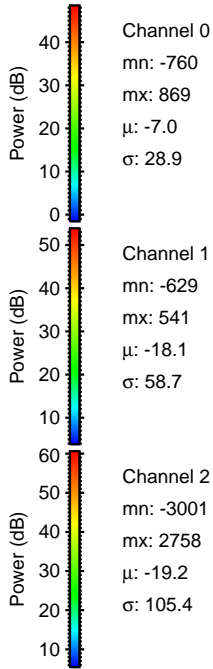
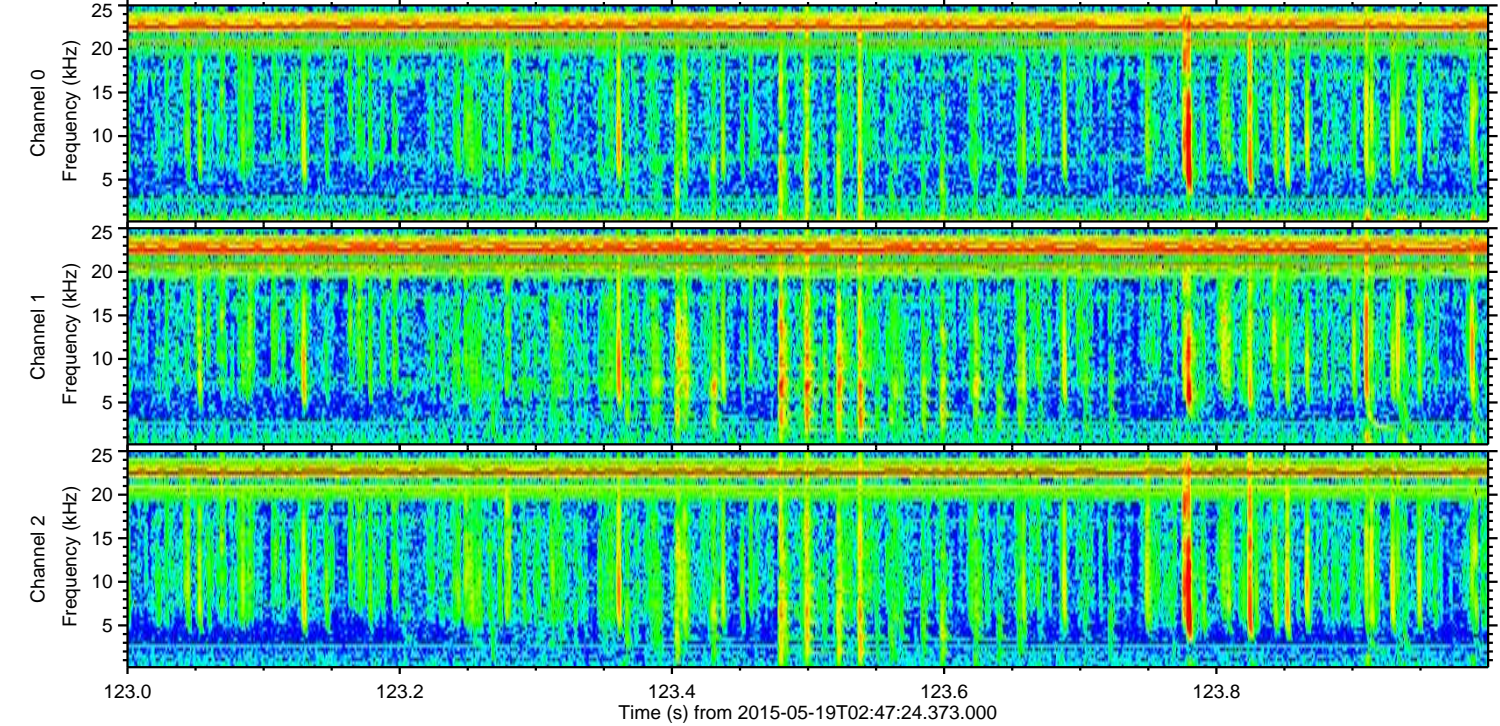
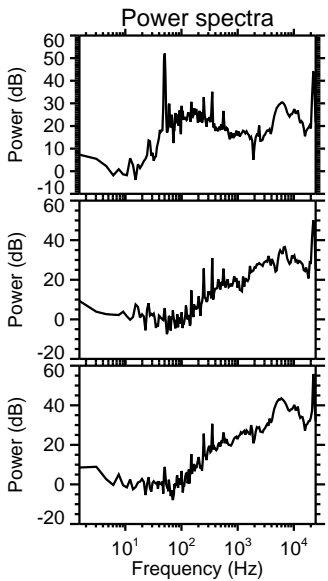
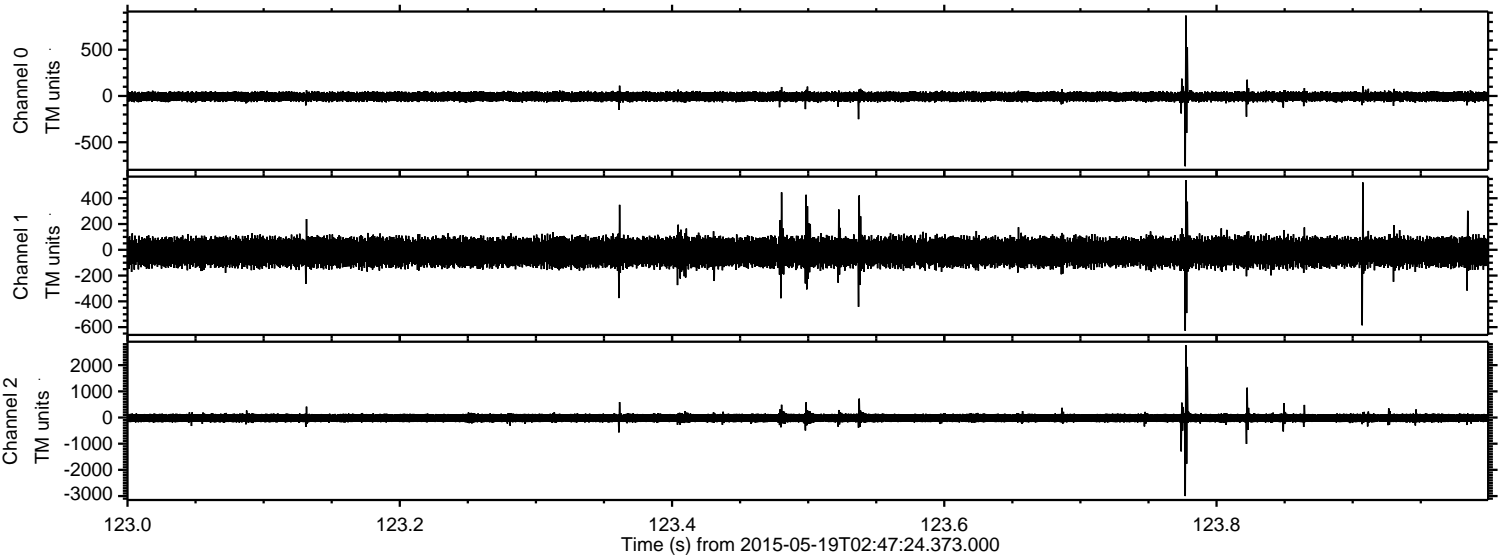


Processed Tue May 19 04:54:14 2015 by ELM ver.2012-10-06 from 001\_\_elm20150519\_024723\_\_dat00.bin





Processed Tue May 19 04:54:15 2015 by ELM ver.2012-10-06 from 001\_\_elm20150519\_024723\_\_dat00.bin



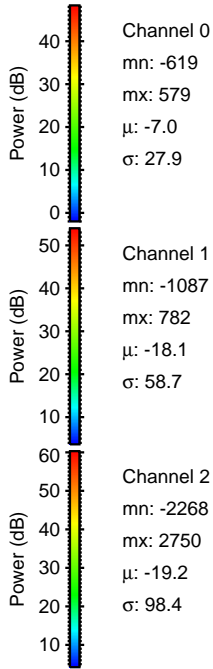
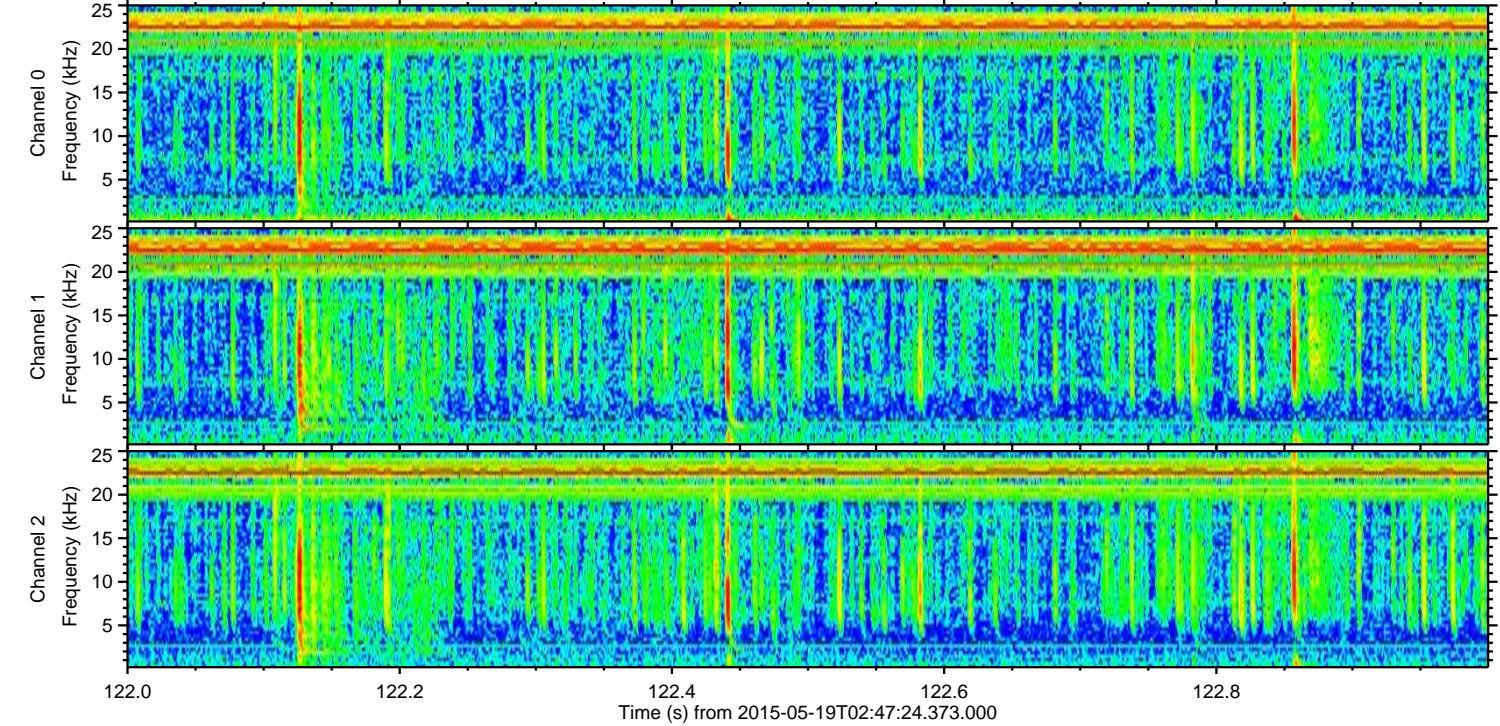
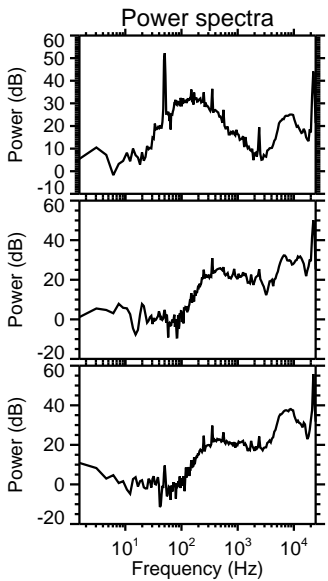
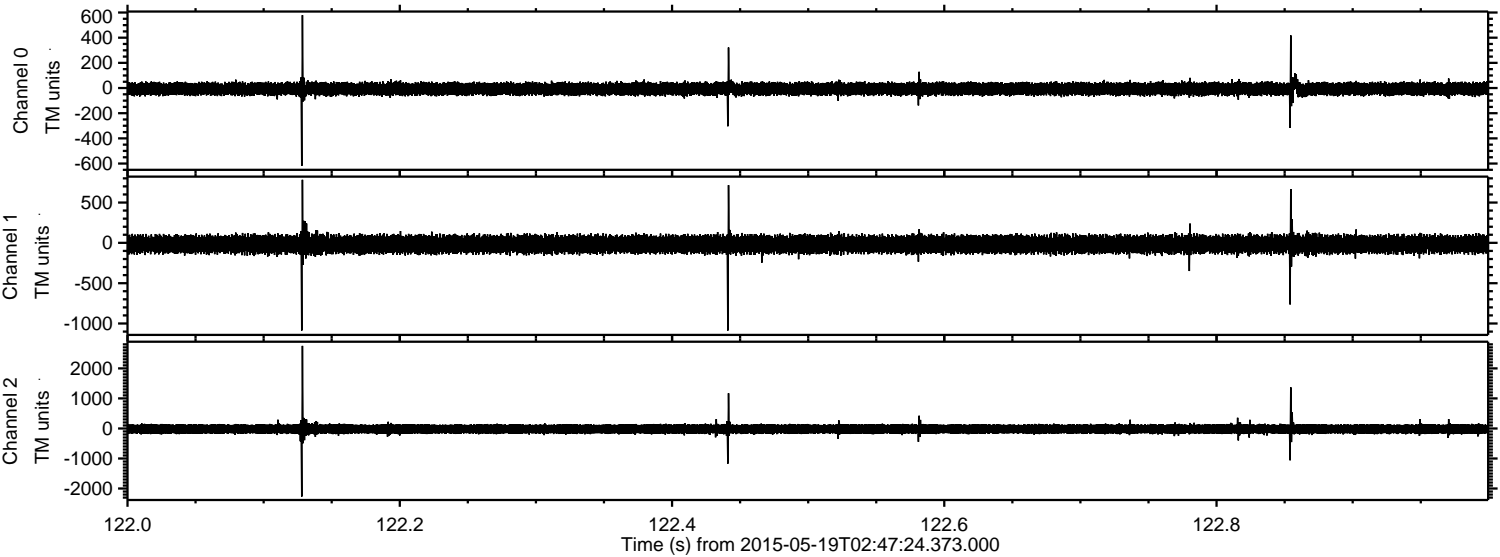
Channel 0  
mn: -760  
mx: 869  
 $\mu$ : -7.0  
 $\sigma$ : 28.9

Channel 1  
mn: -629  
mx: 541  
 $\mu$ : -18.1  
 $\sigma$ : 58.7

Channel 2  
mn: -3001  
mx: 2758  
 $\mu$ : -19.2  
 $\sigma$ : 105.4



Processed Tue May 19 04:54:16 2015 by ELM ver.2012-10-06 from 001\_\_elm20150519\_024723\_\_dat00.bin





Processed Tue May 19 04:54:17 2015 by ELM ver.2012-10-06 from 001\_\_elm20150519\_024723\_\_dat00.bin

