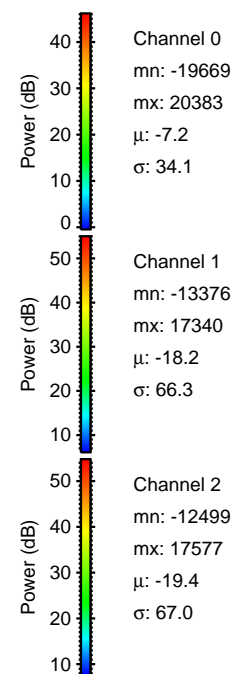
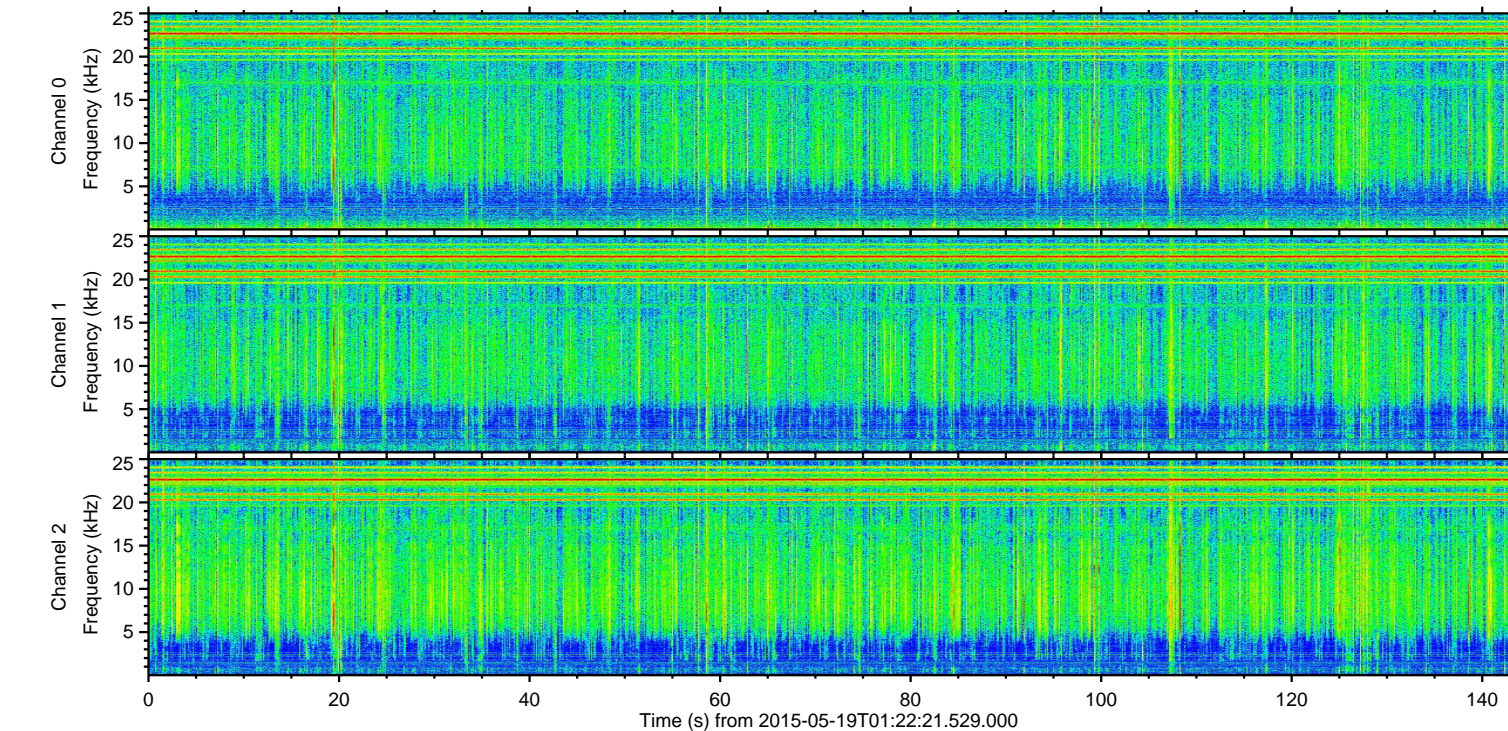
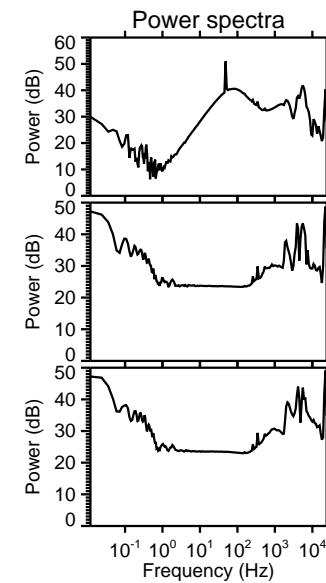
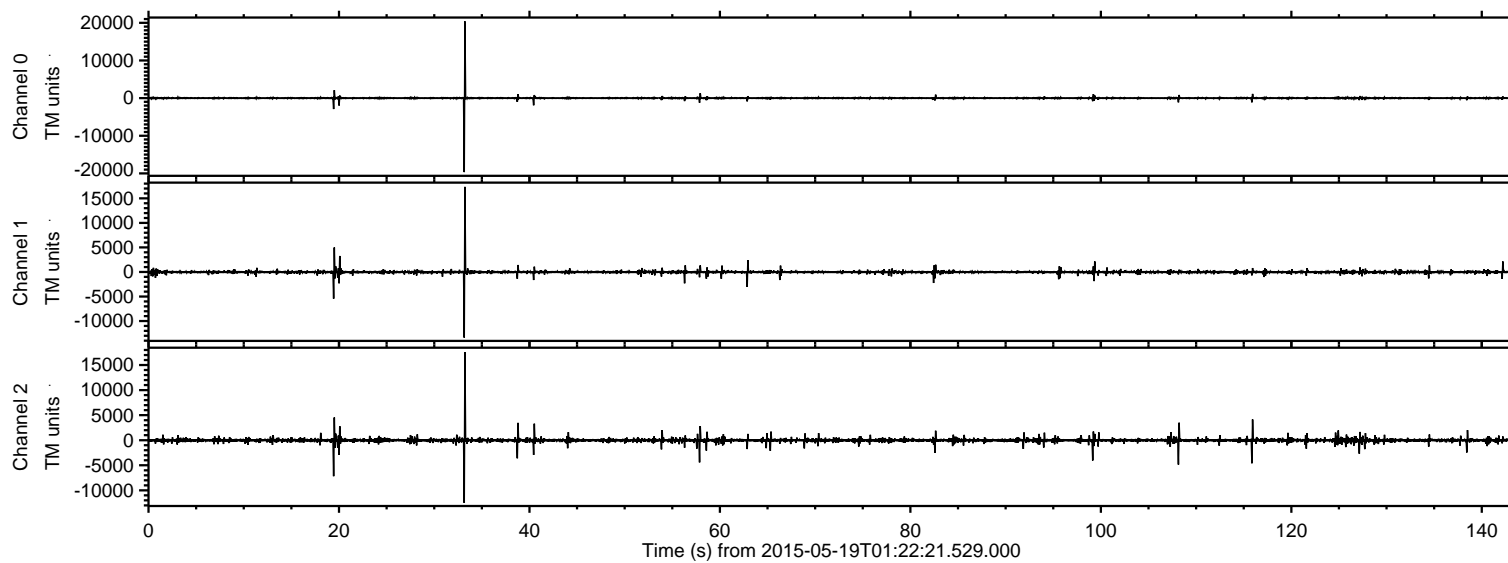
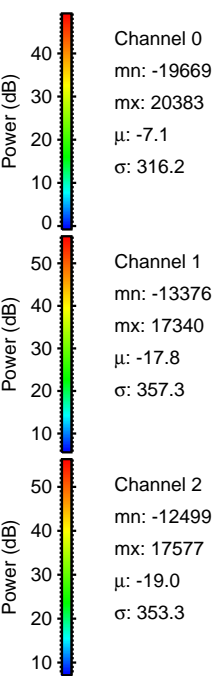
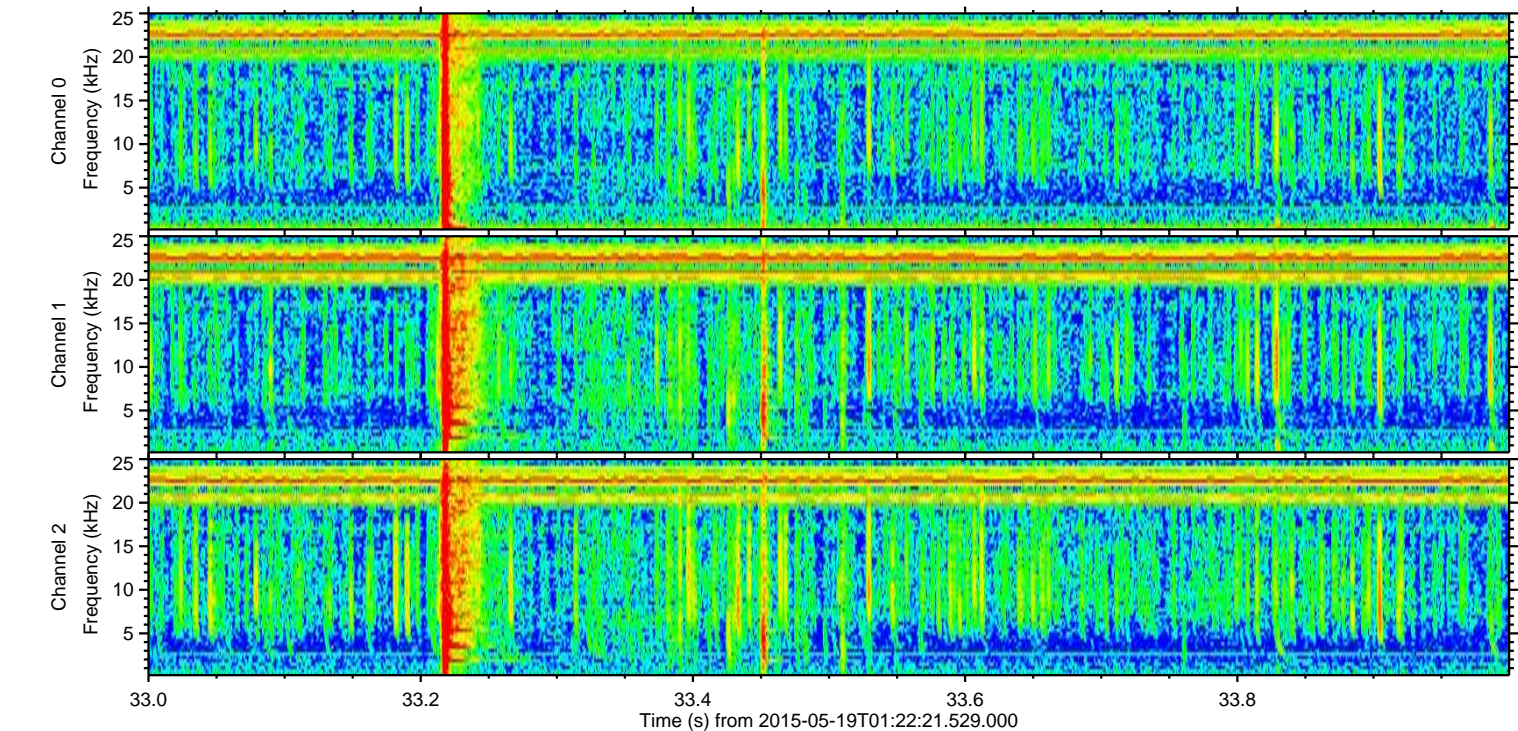
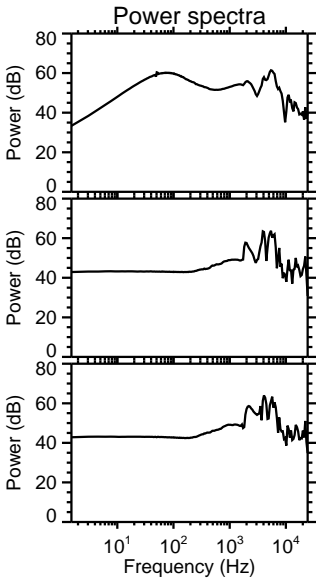
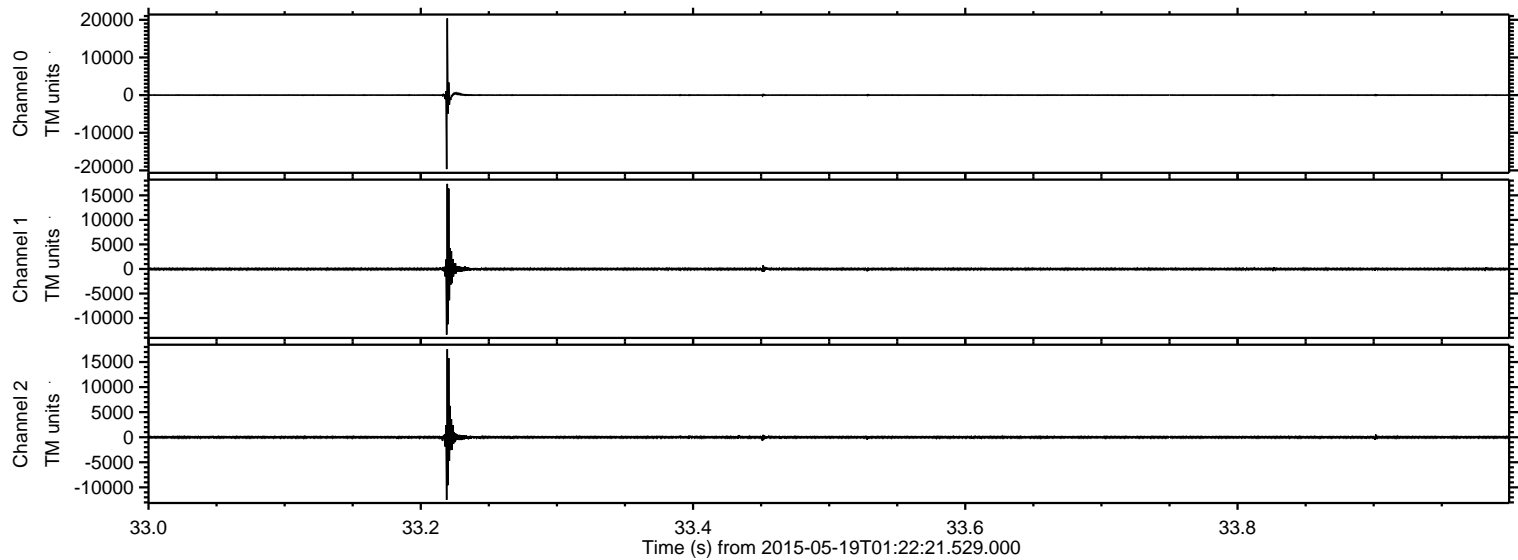


ELMAVAN 3D WAVEFORMS (Measured data sampled at 50 kHz) 49608 packets of 144 samples from 2015-05-19T01:22:21.529.000.

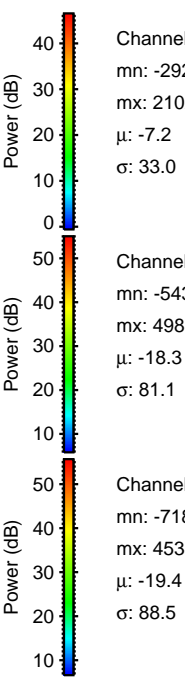
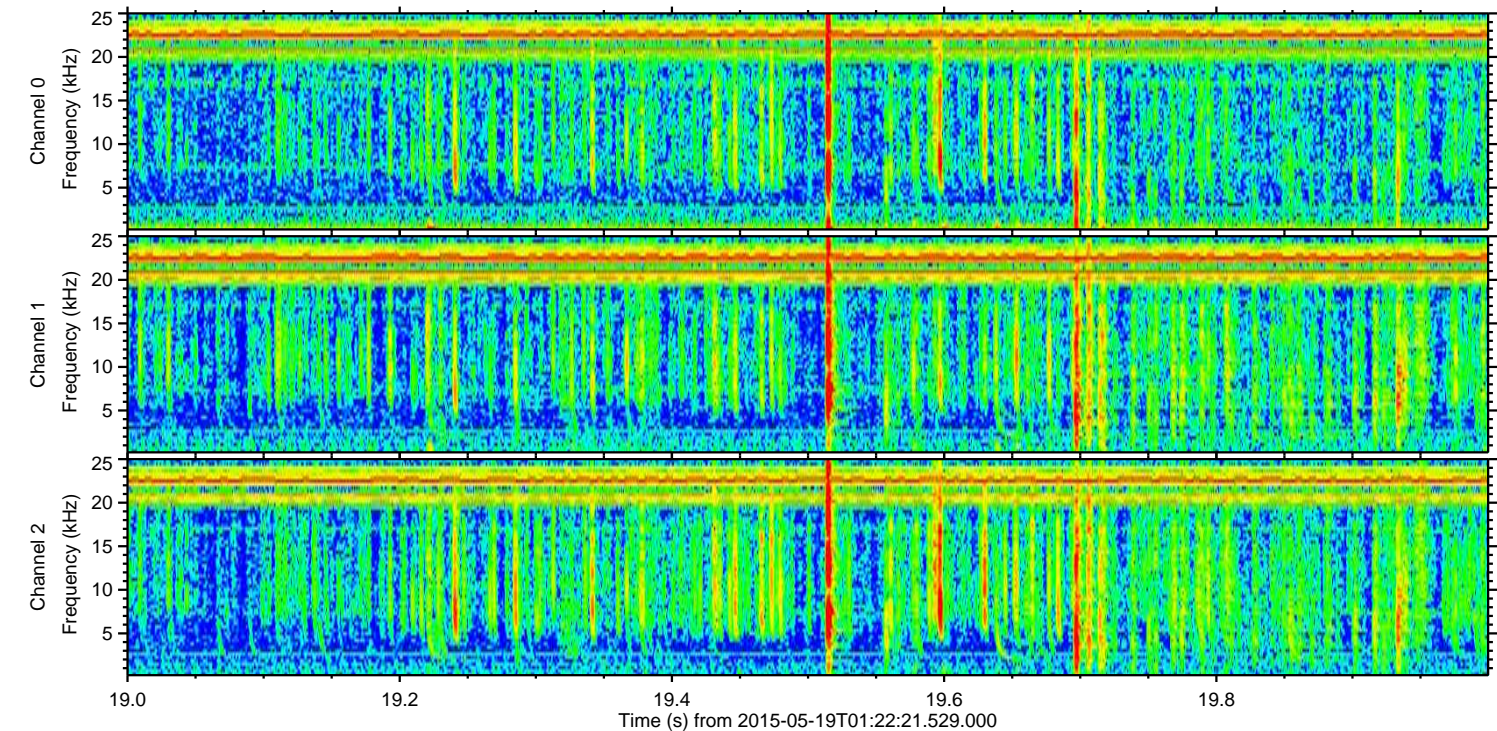
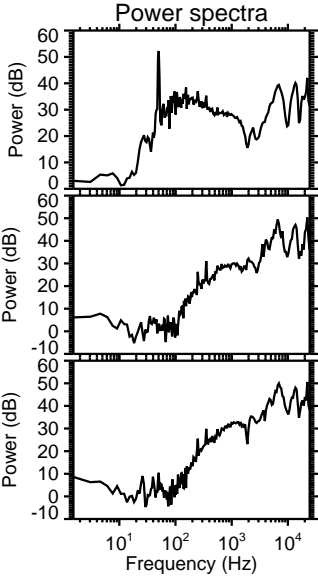
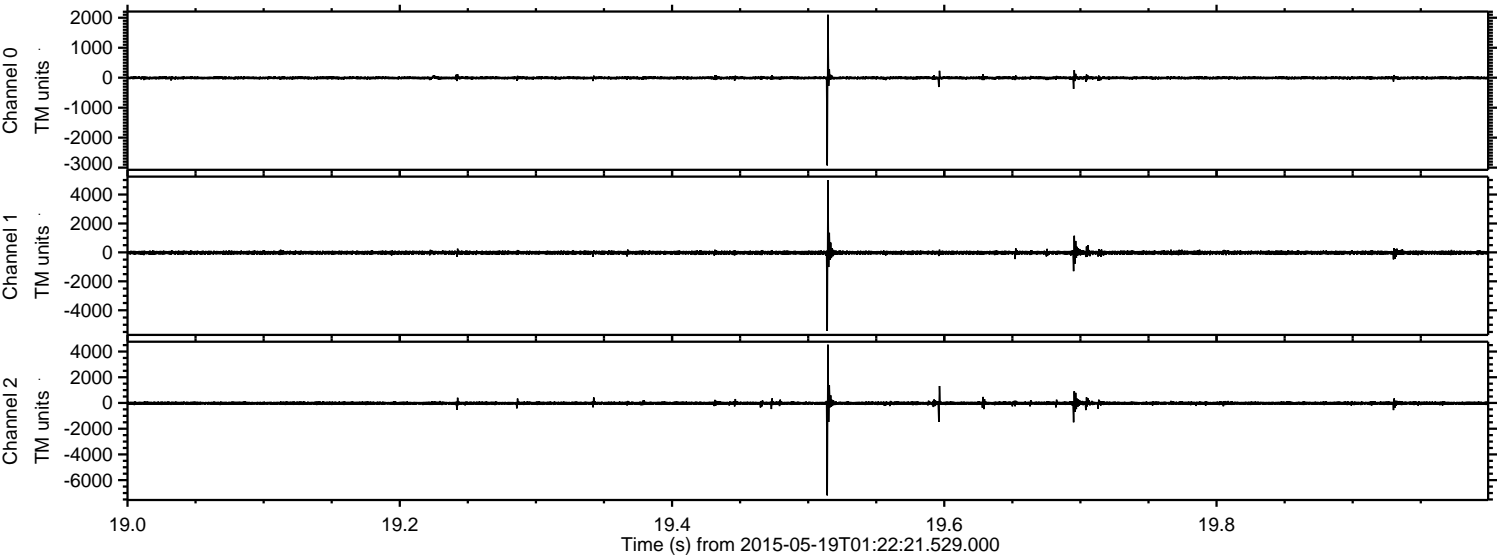
Processed Tue May 19 03:29:26 2015 by ELM ver.2012-10-06 from 001__elm20150519_012220__dat00.bin



Processed Tue May 19 03:29:41 2015 by ELM ver.2012-10-06 from 001__elm20150519_012220__dat00.bin



Processed Tue May 19 03:29:42 2015 by ELM ver.2012-10-06 from 001__elm20150519_012220__dat00.bin

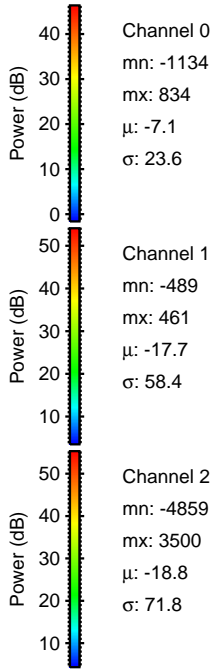
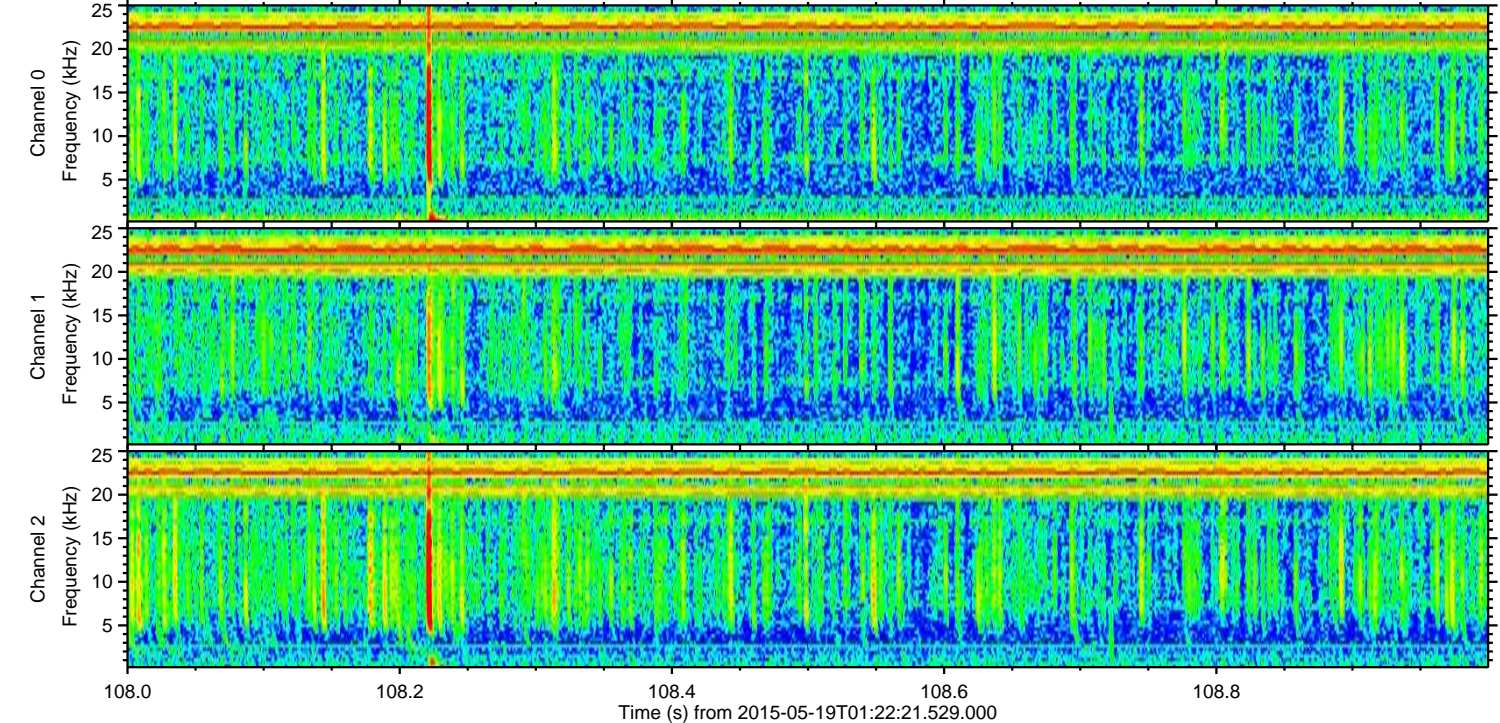
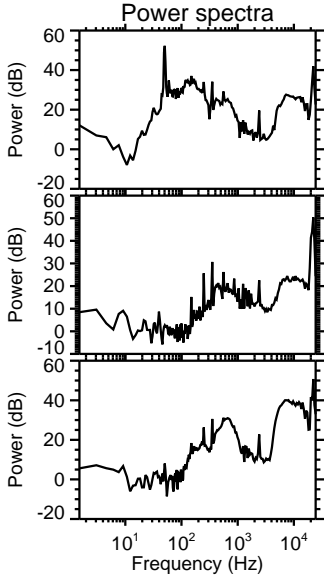
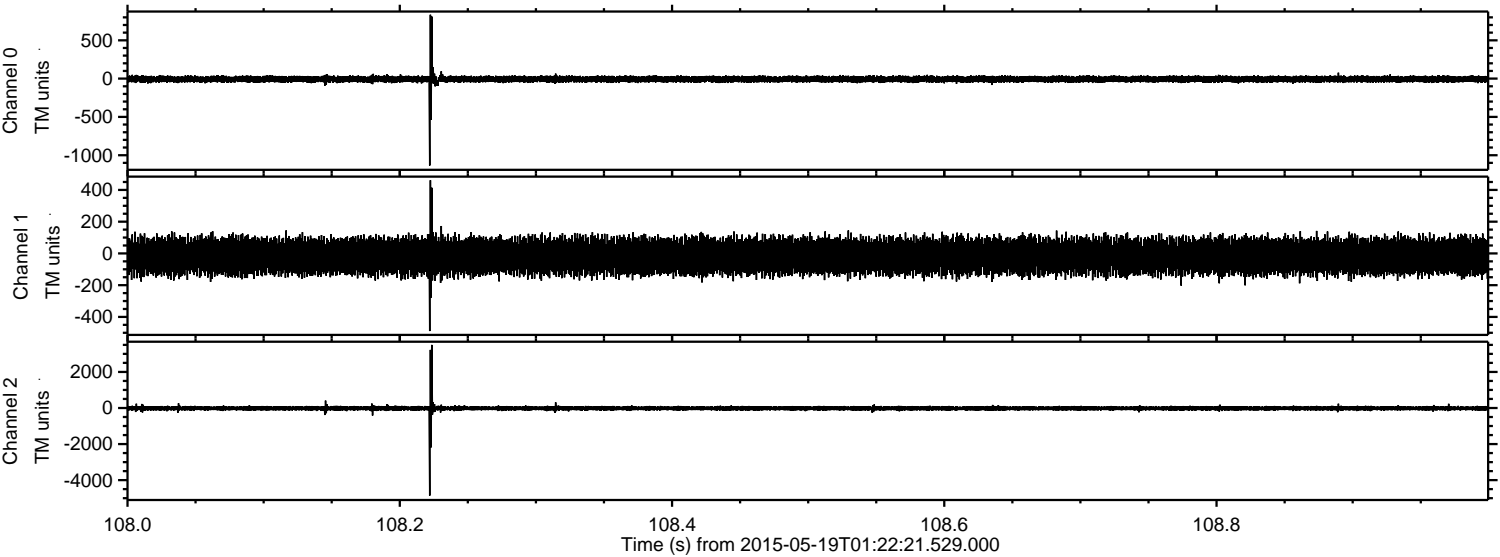


Channel 0
mn: -2927
mx: 2102
 μ : -7.2
 σ : 33.0

Channel 1
mn: -5431
mx: 4988
 μ : -18.3
 σ : 81.1

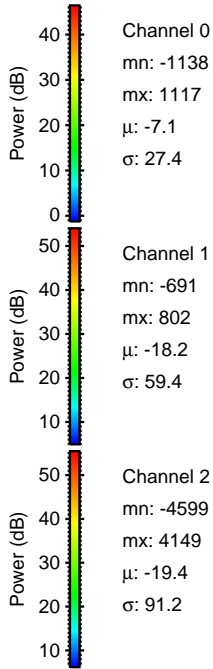
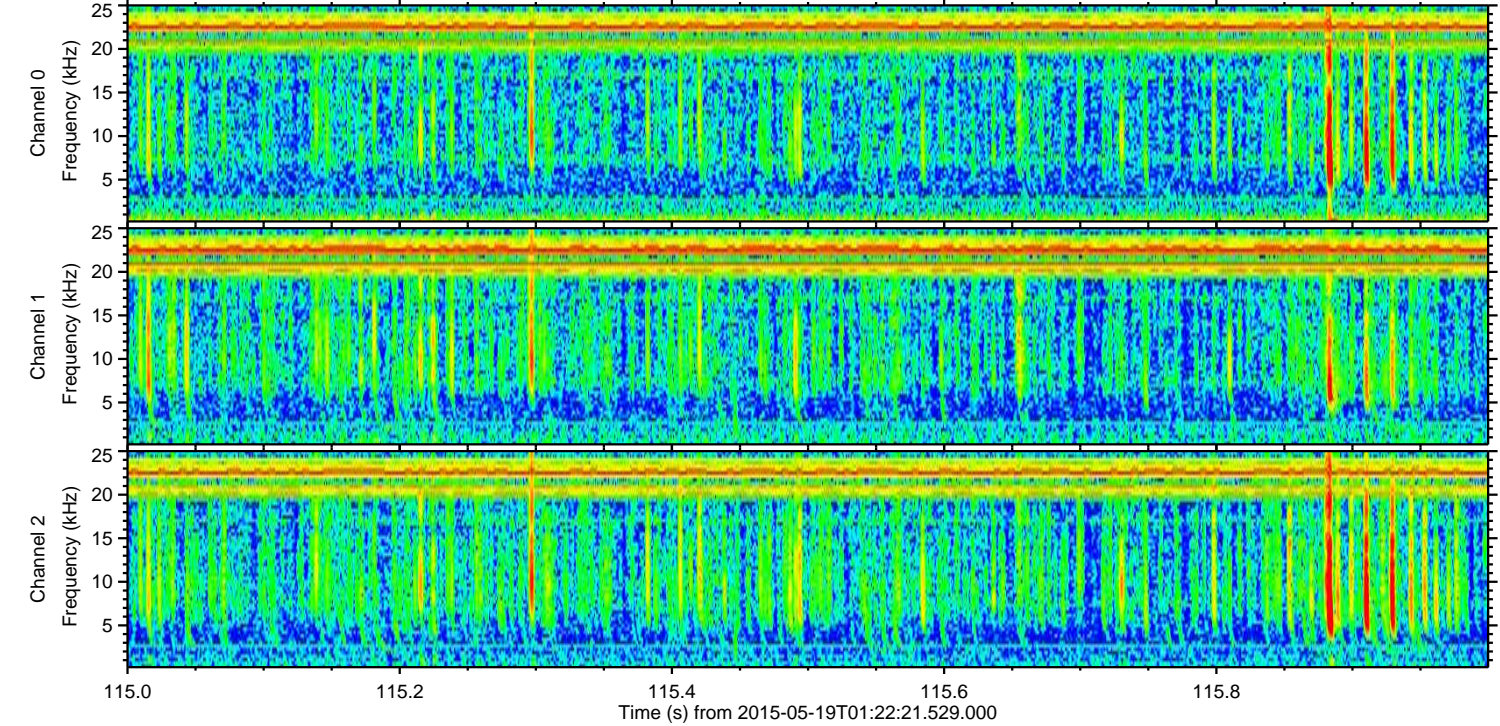
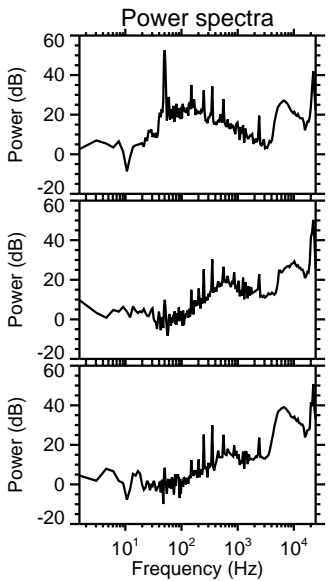
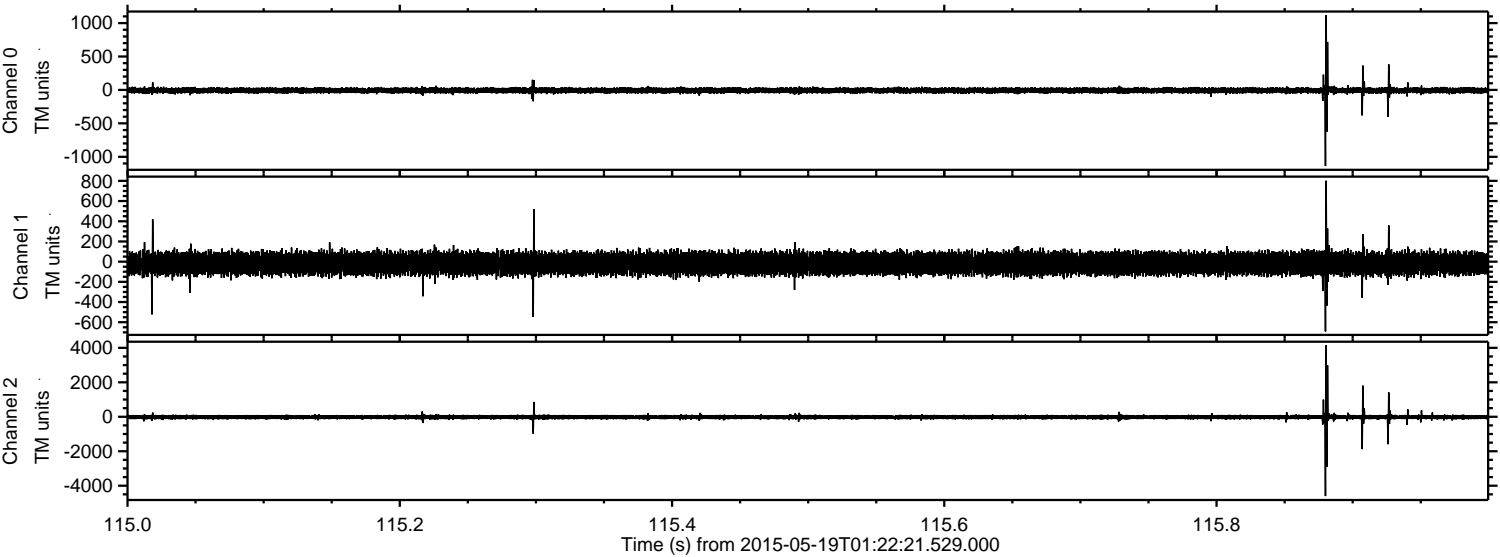
Channel 2
mn: -7184
mx: 4535
 μ : -19.4
 σ : 88.5

Processed Tue May 19 03:29:43 2015 by ELM ver.2012-10-06 from 001__elm20150519_012220__dat00.bin

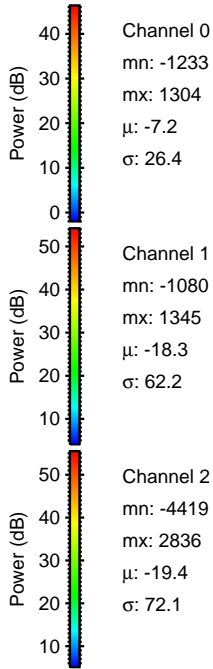
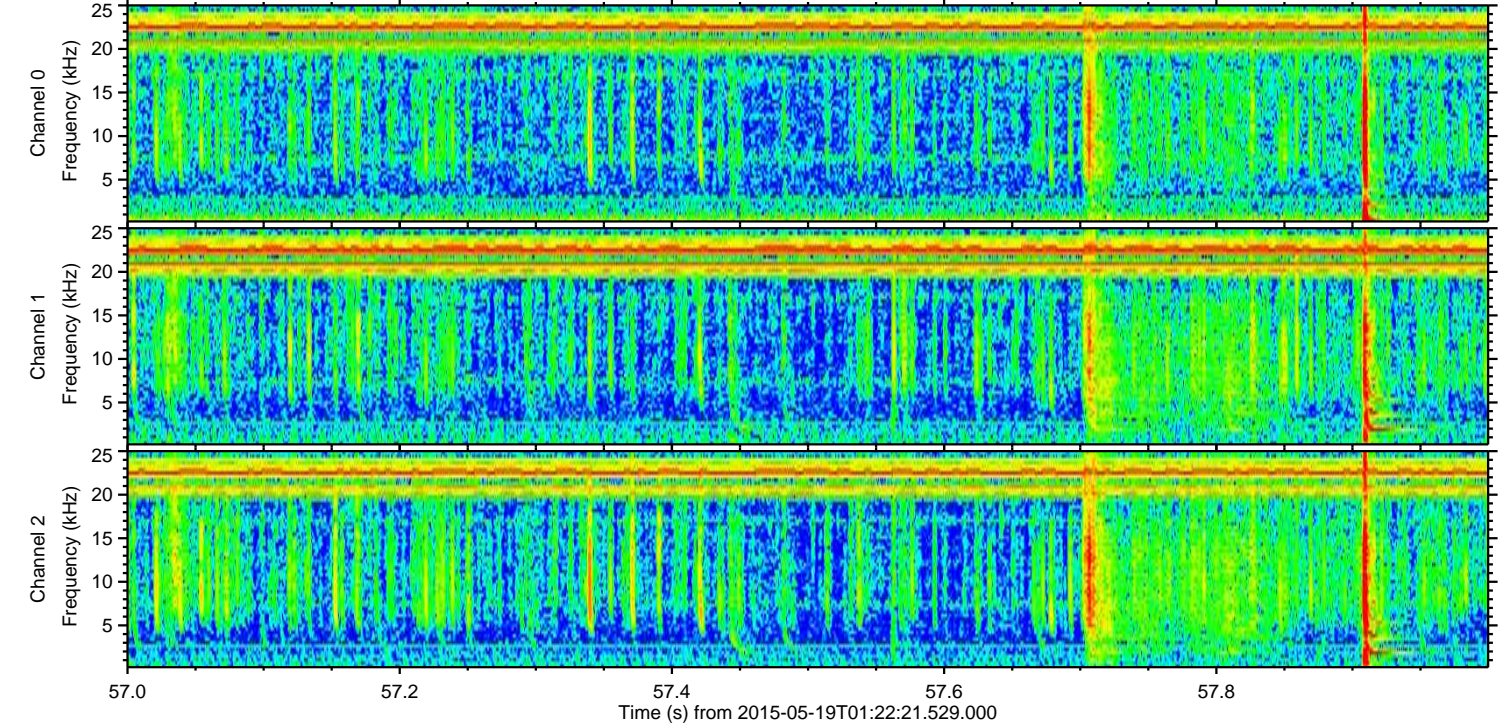
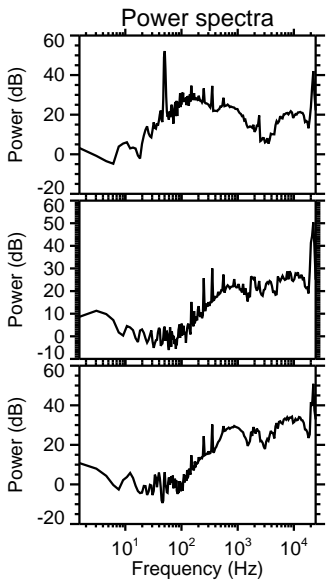
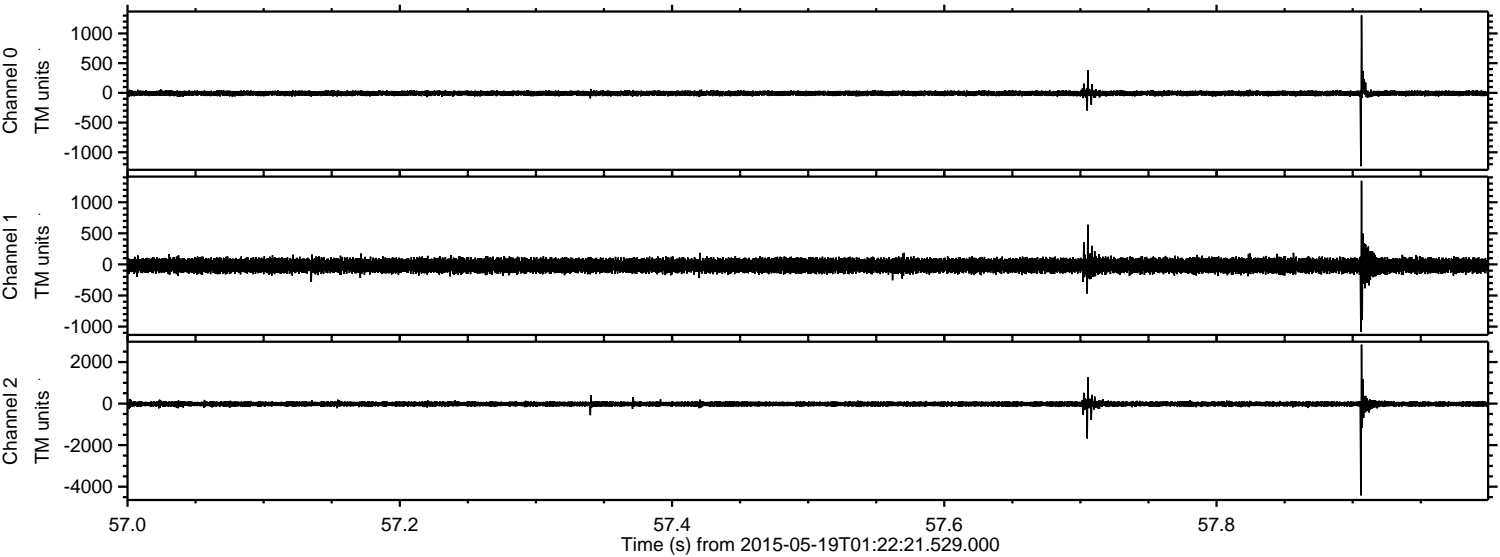


ELMAVAN 3D WAVEFORMS (Measured data sampled at 50 kHz) 49608 packets of 144 samples from 2015-05-19T01:22:21.529.000. Part 116/143

Processed Tue May 19 03:29:44 2015 by ELM ver.2012-10-06 from 001__elm20150519_012220__dat00.bin



Processed Tue May 19 03:29:45 2015 by ELM ver.2012-10-06 from 001__elm20150519_012220__dat00.bin



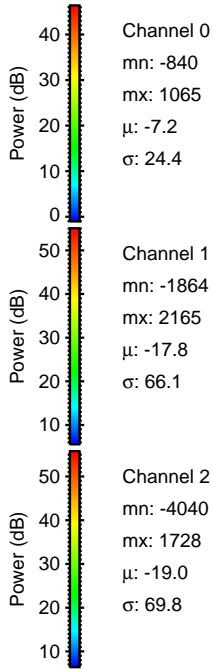
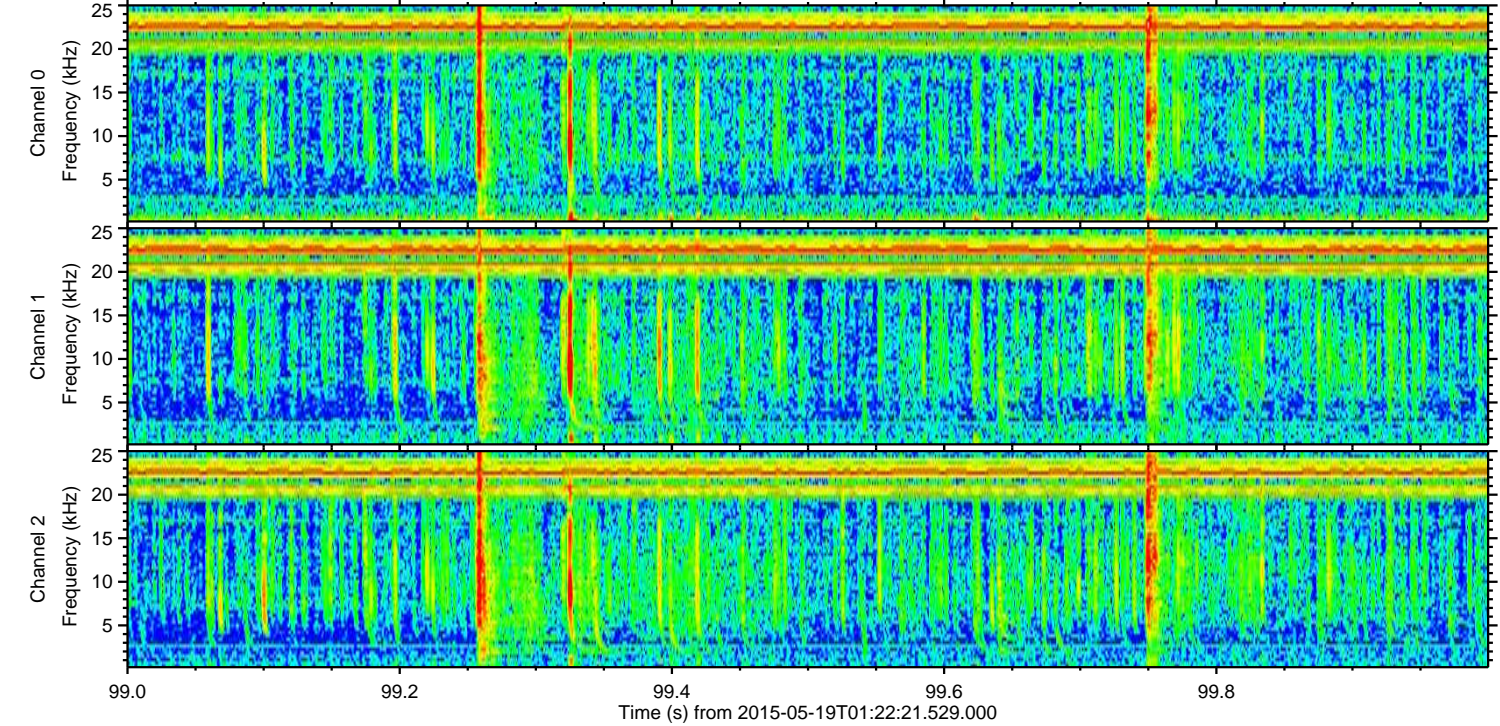
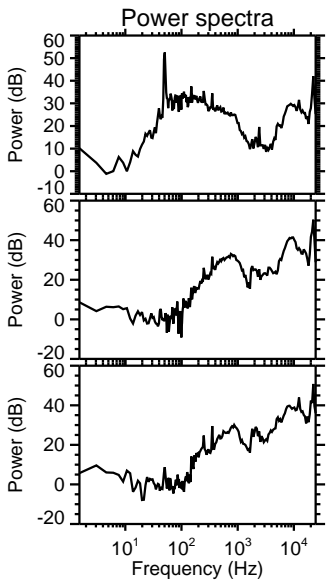
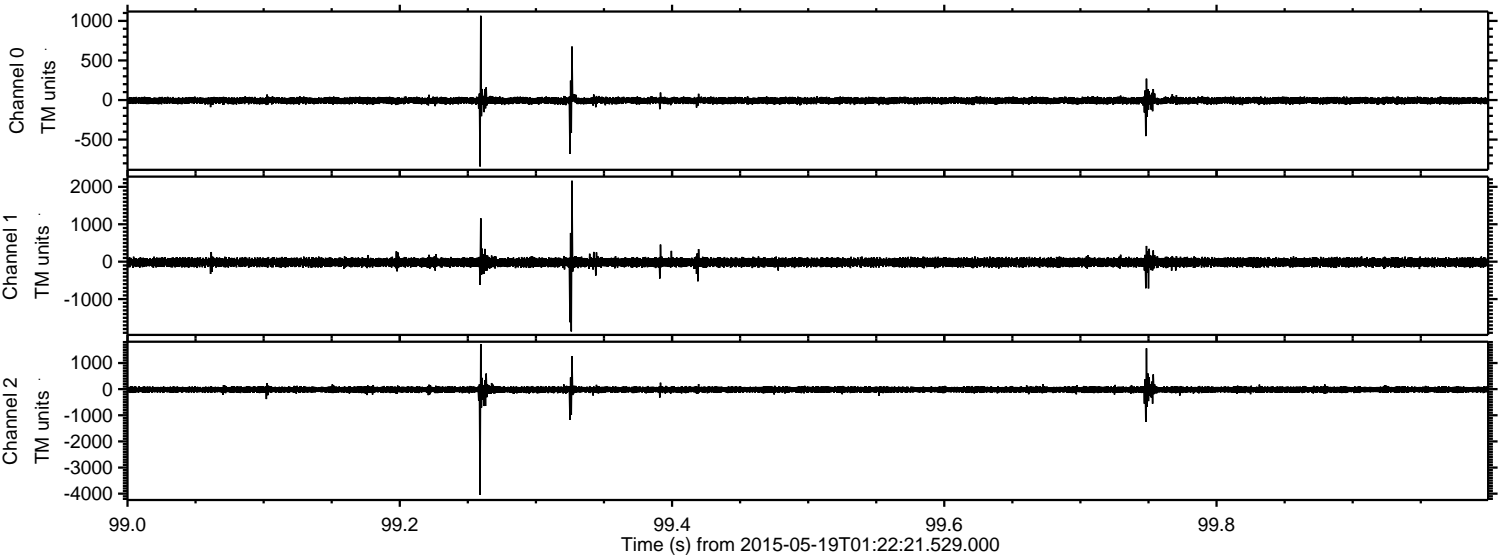
Channel 0
mn: -1233
mx: 1304
 μ : -7.2
 σ : 26.4

Channel 1
mn: -1080
mx: 1345
 μ : -18.3
 σ : 62.2

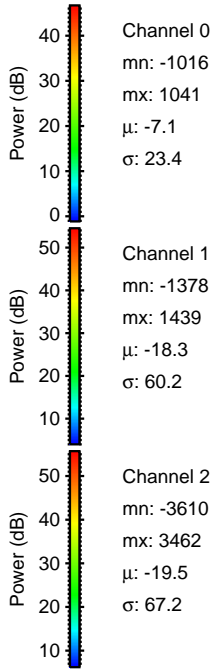
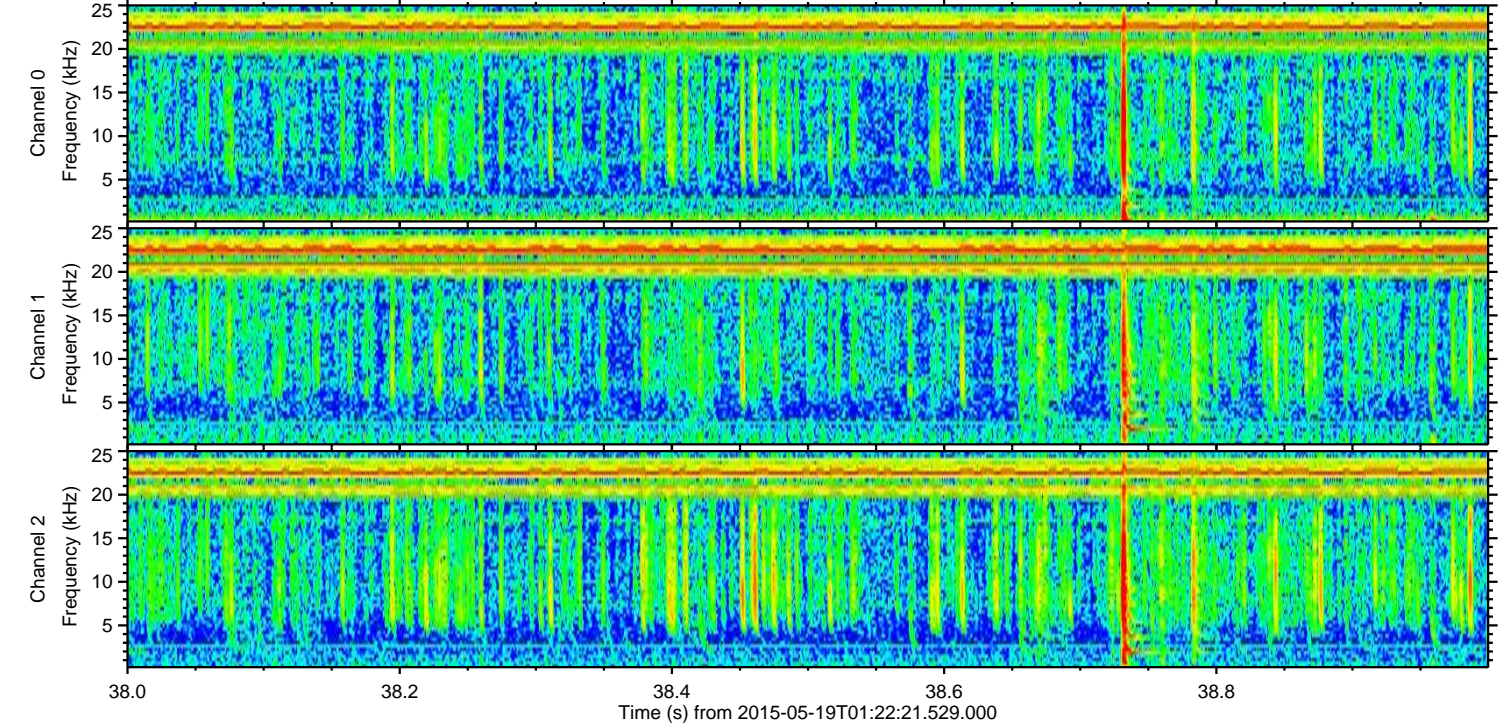
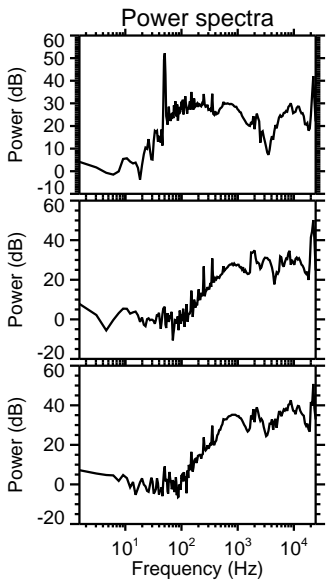
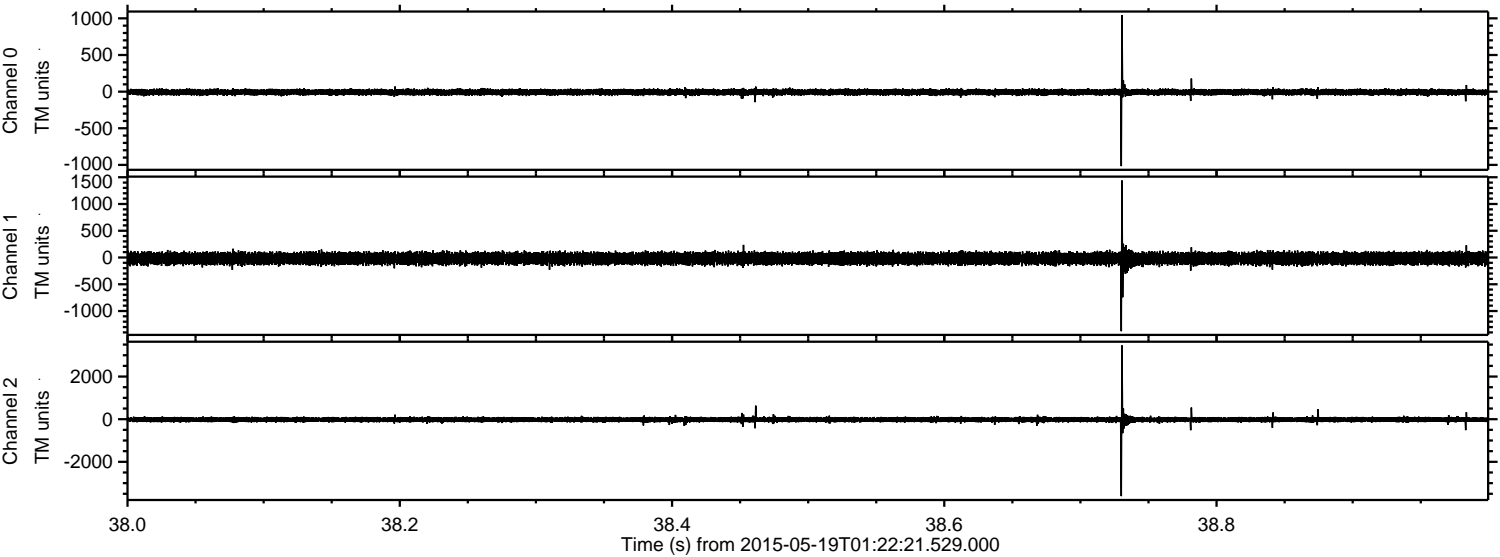
Channel 2
mn: -4419
mx: 2836
 μ : -19.4
 σ : 72.1

ELMAVAN 3D WAVEFORMS (Measured data sampled at 50 kHz) 49608 packets of 144 samples from 2015-05-19T01:22:21.529.000. Part 100/143

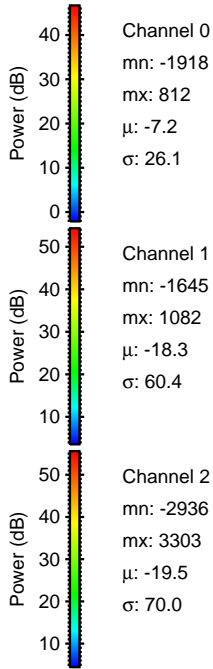
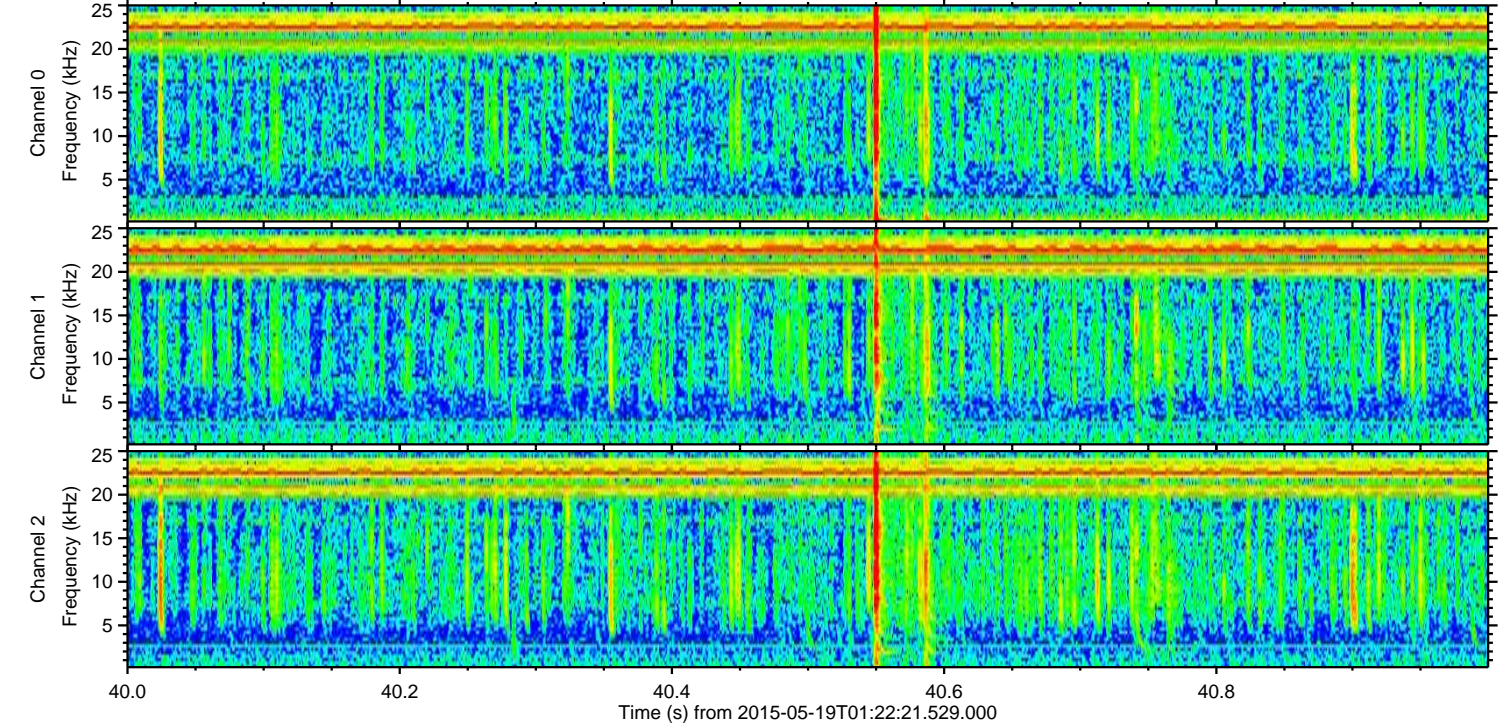
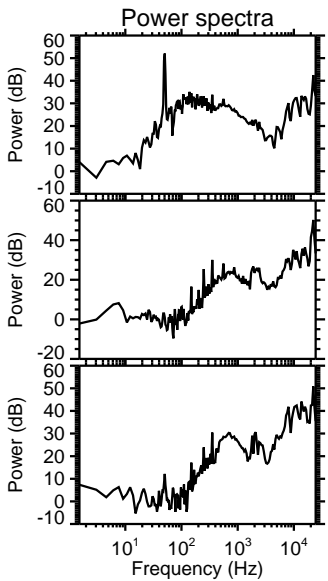
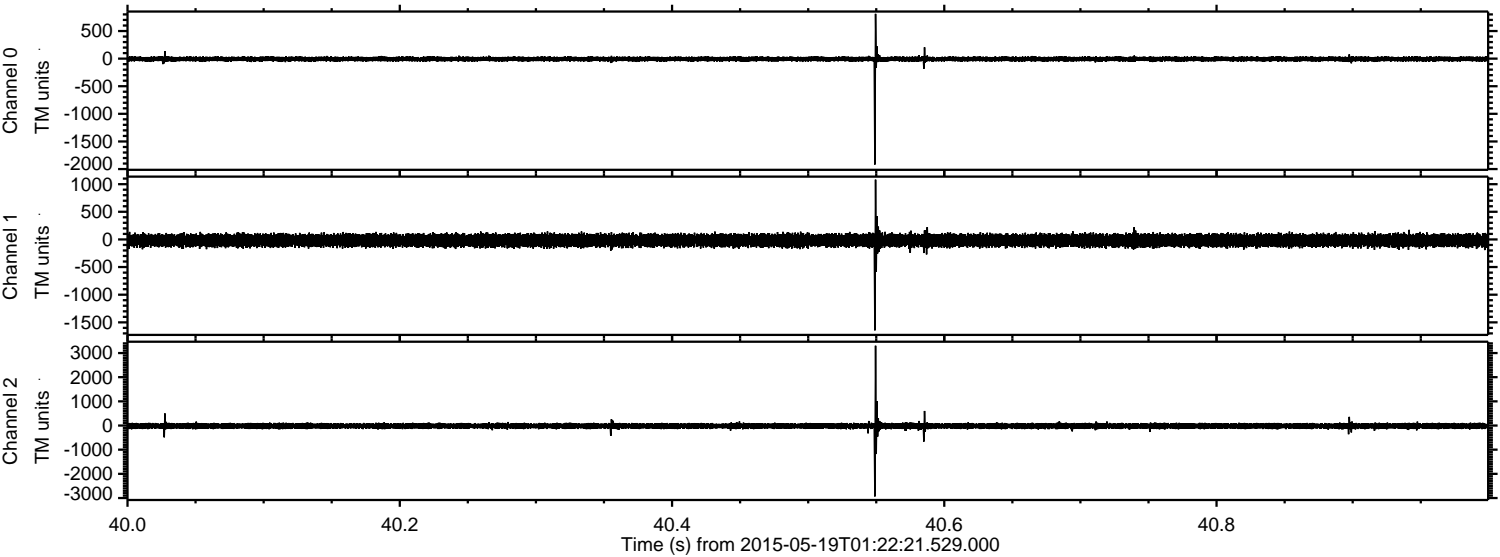
Processed Tue May 19 03:29:46 2015 by ELM ver.2012-10-06 from 001__elm20150519_012220__dat00.bin



Processed Tue May 19 03:29:47 2015 by ELM ver.2012-10-06 from 001__elm20150519_012220__dat00.bin



Processed Tue May 19 03:29:48 2015 by ELM ver.2012-10-06 from 001__elm20150519_012220__dat00.bin

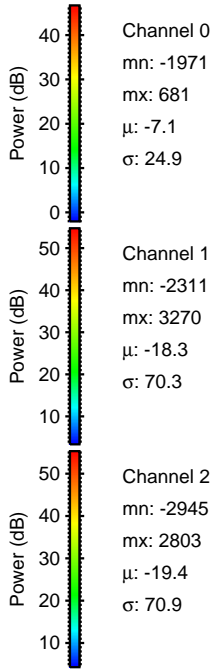
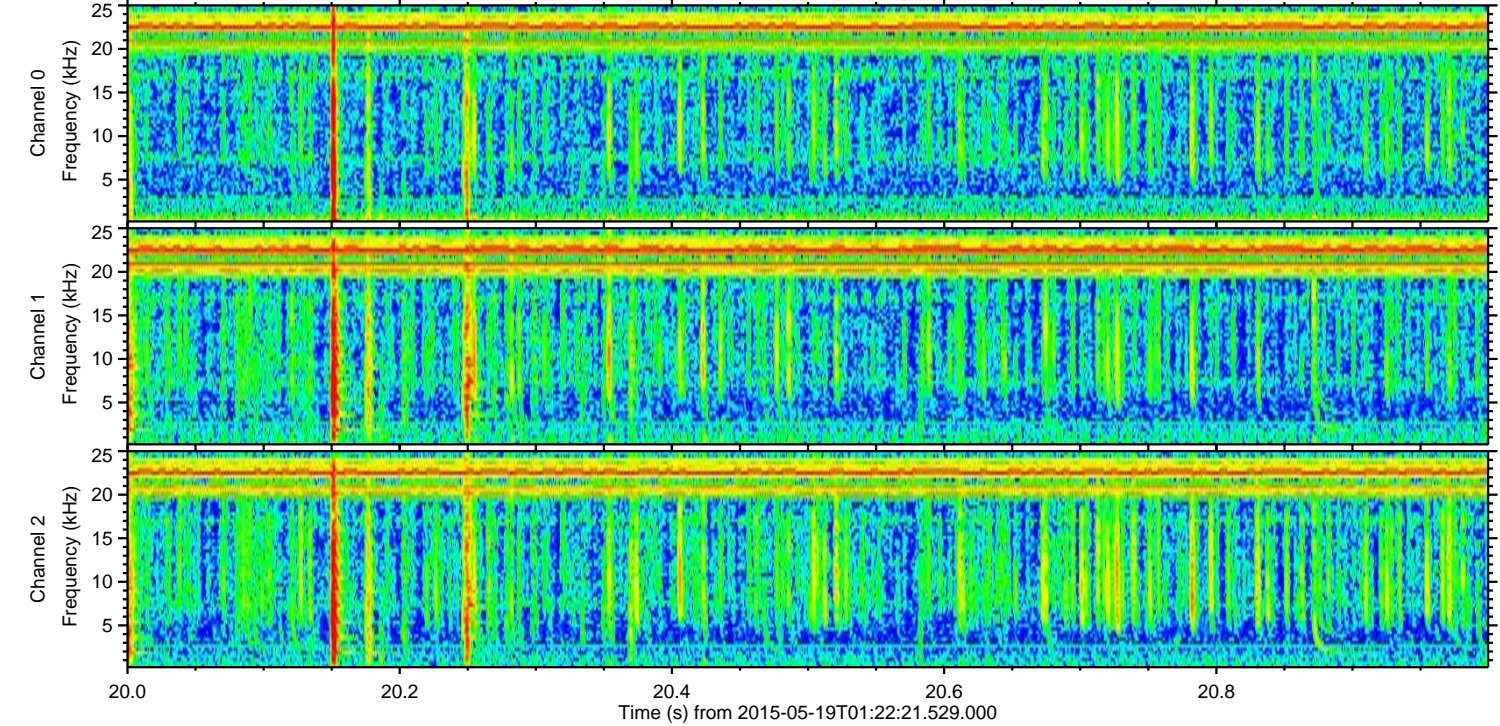
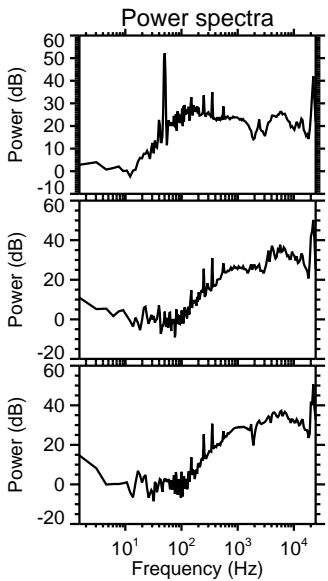
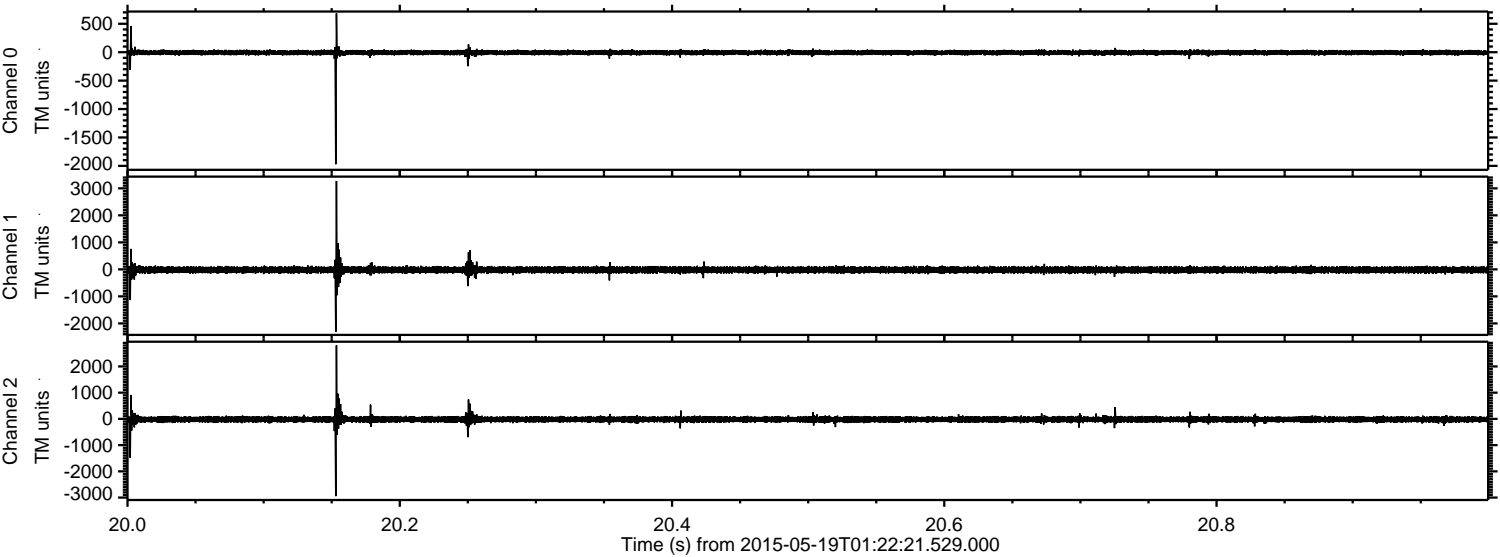


Channel 0
mn: -1918
mx: 812
 μ : -7.2
 σ : 26.1

Channel 1
mn: -1645
mx: 1082
 μ : -18.3
 σ : 60.4

Channel 2
mn: -2936
mx: 3303
 μ : -19.5
 σ : 70.0

Processed Tue May 19 03:29:49 2015 by ELM ver.2012-10-06 from 001__elm20150519_012220__dat00.bin



Channel 0
mn: -1971
mx: 681
 μ : -7.1
 σ : 24.9

Channel 1
mn: -2311
mx: 3270
 μ : -18.3
 σ : 70.3

Channel 2
mn: -2945
mx: 2803
 μ : -19.4
 σ : 70.9

Processed Tue May 19 03:29:50 2015 by ELM ver.2012-10-06 from 001__elm20150519_012220__dat00.bin

