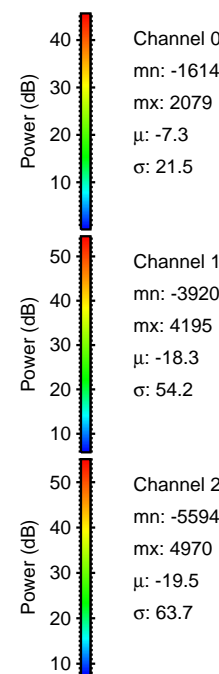
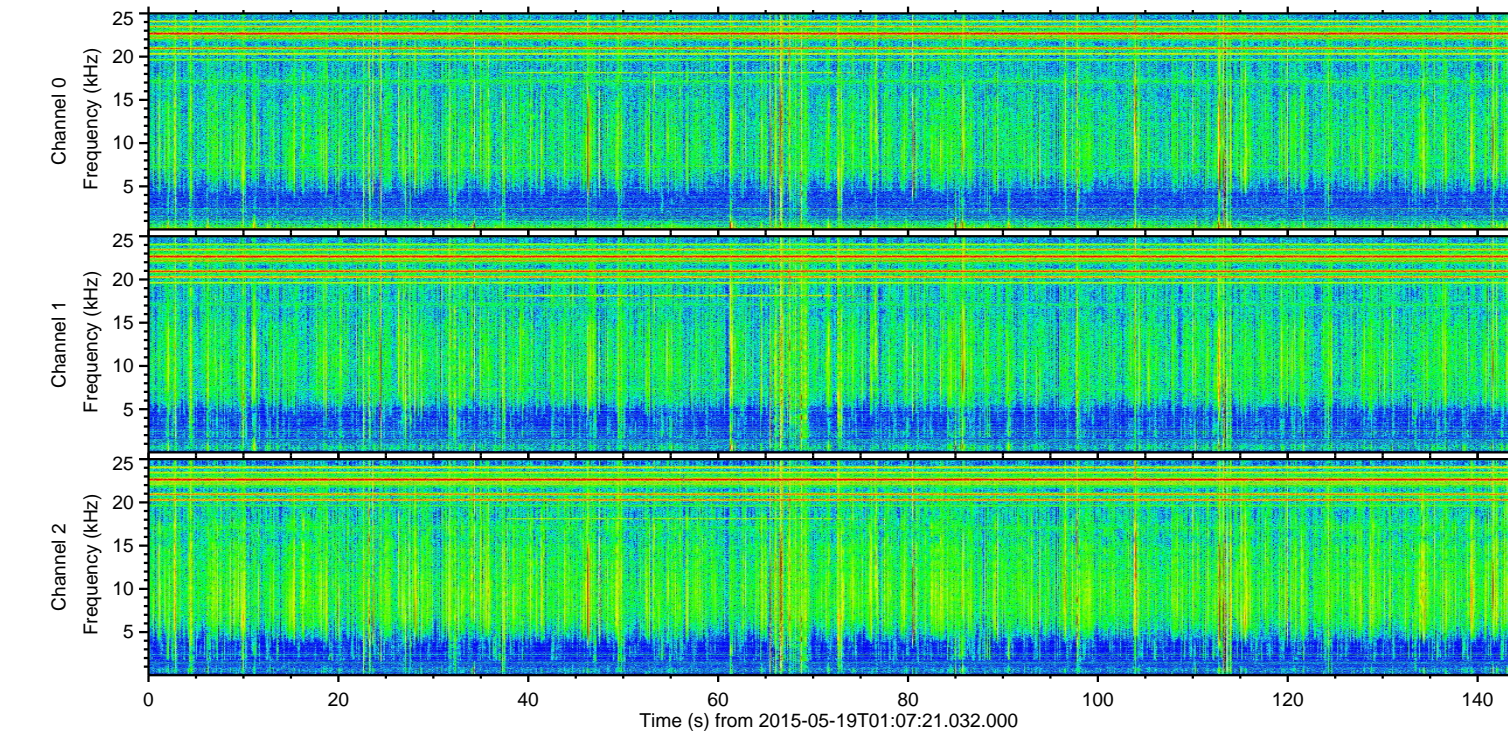
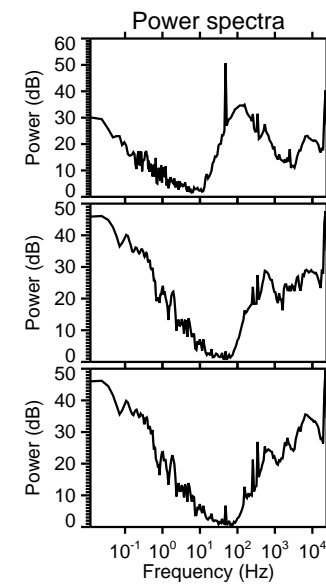
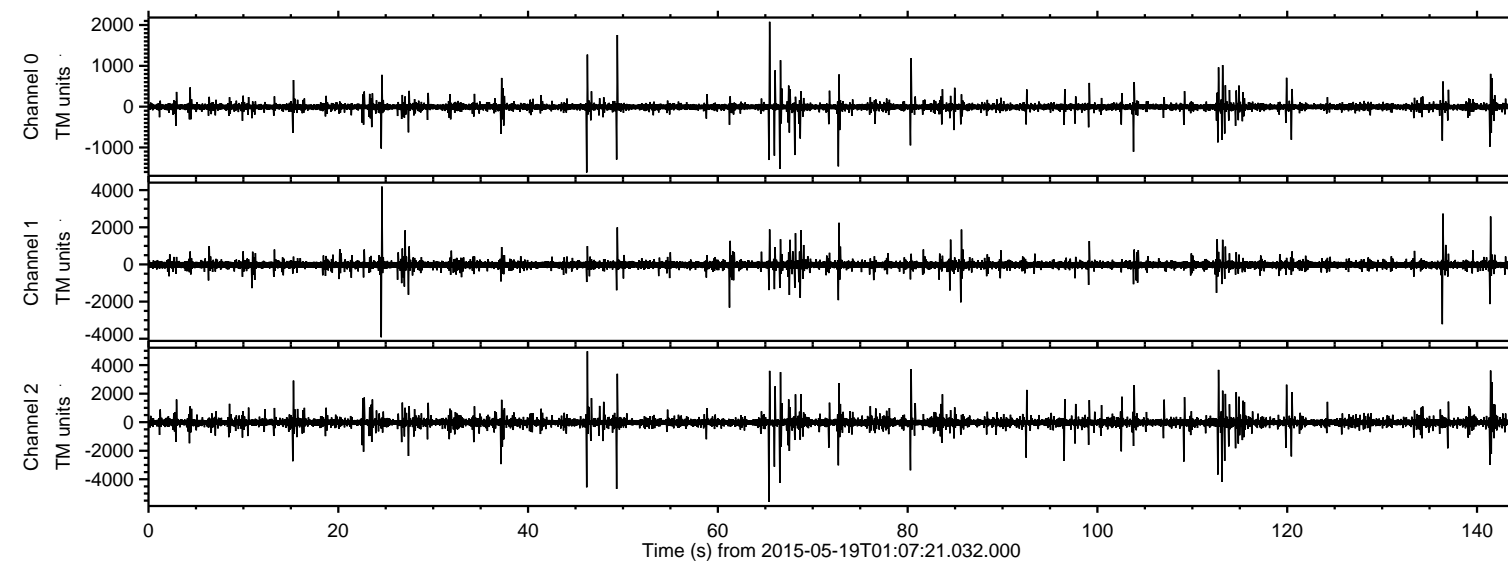


ELMAVAN 3D WAVEFORMS (Measured data sampled at 50 kHz) 49787 packets of 144 samples from 2015-05-19T01:07:21.032.000.

Processed Tue May 19 03:14:04 2015 by ELM ver.2012-10-06 from 001\_\_elm20150519\_010720\_\_dat00.bin



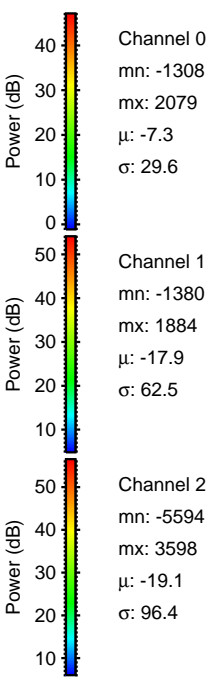
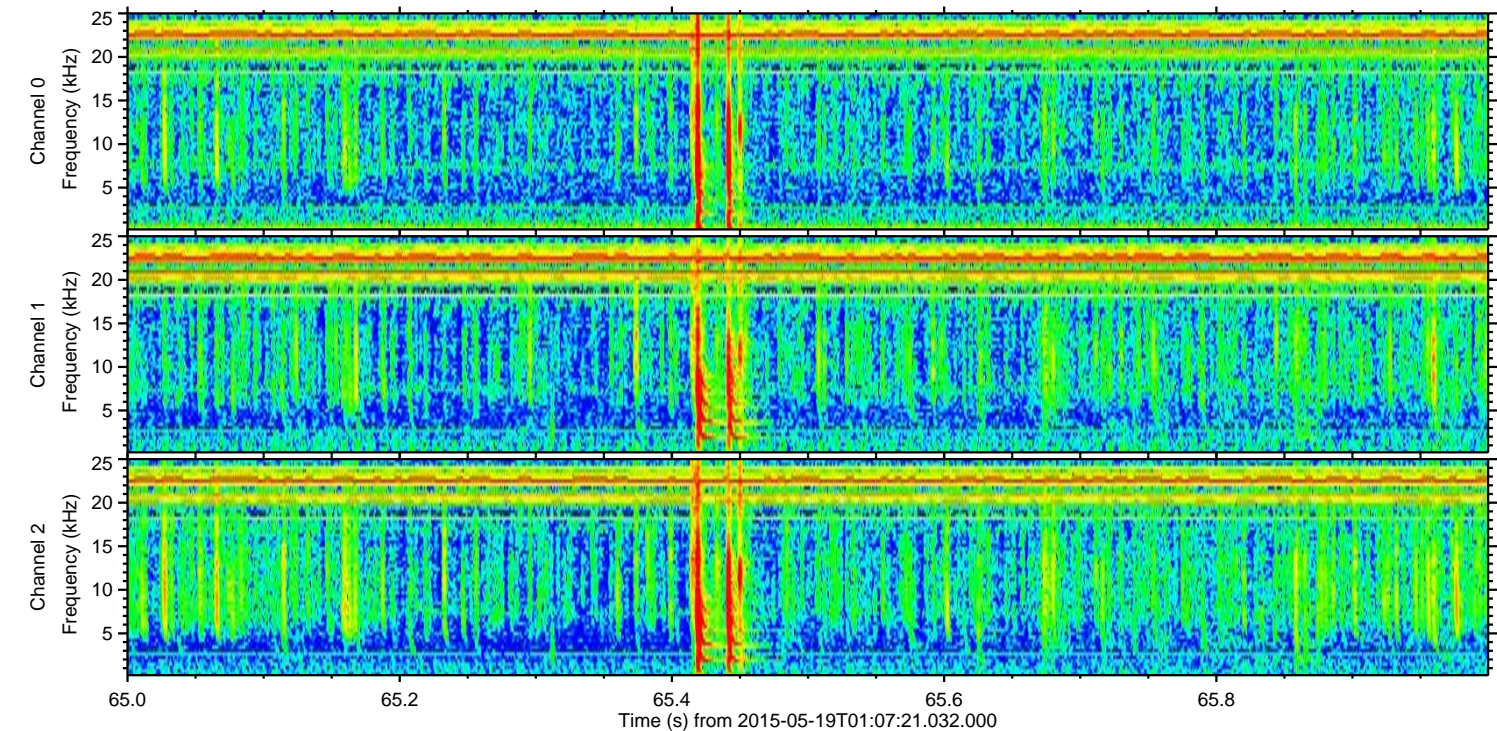
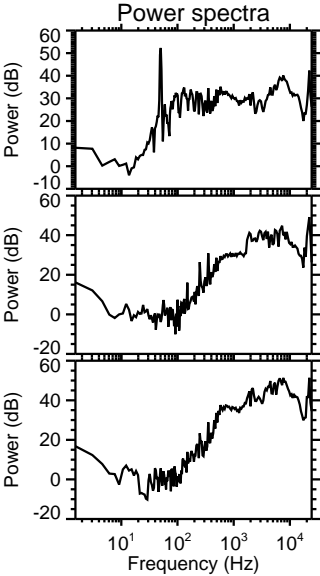
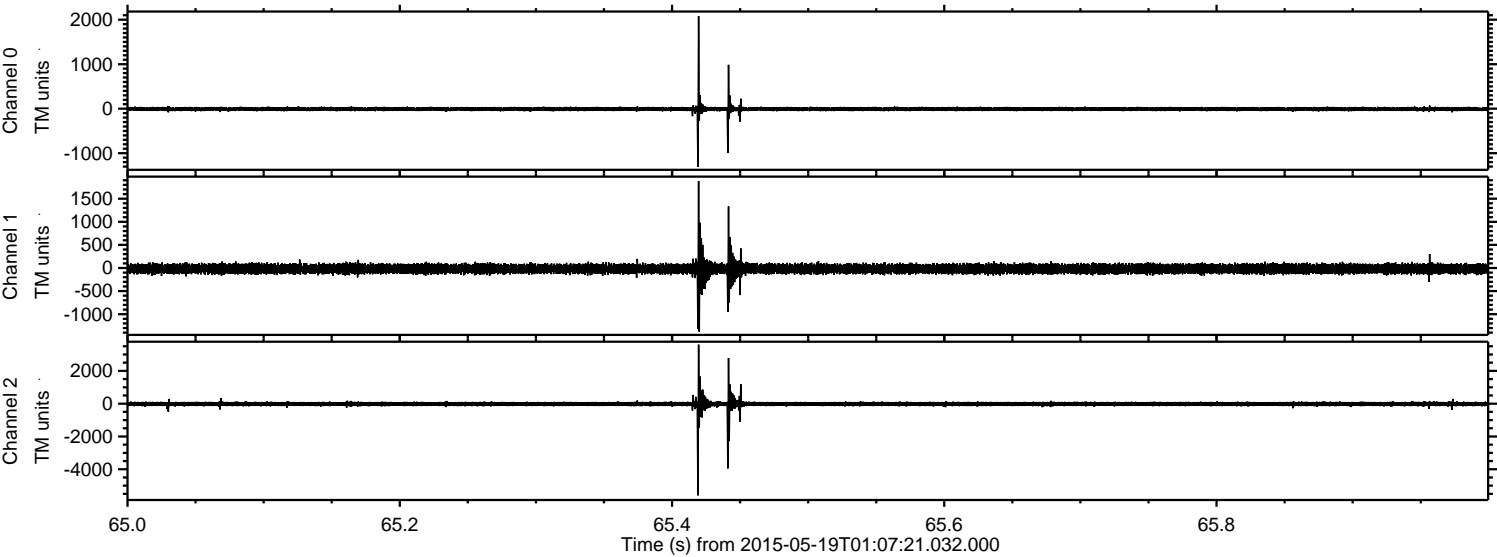
Channel 0  
mn: -1614  
mx: 2079  
 $\mu$ : -7.3  
 $\sigma$ : 21.5

Channel 1  
mn: -3920  
mx: 4195  
 $\mu$ : -18.3  
 $\sigma$ : 54.2

Channel 2  
mn: -5594  
mx: 4970  
 $\mu$ : -19.5  
 $\sigma$ : 63.7

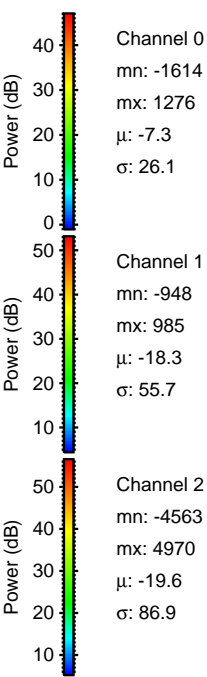
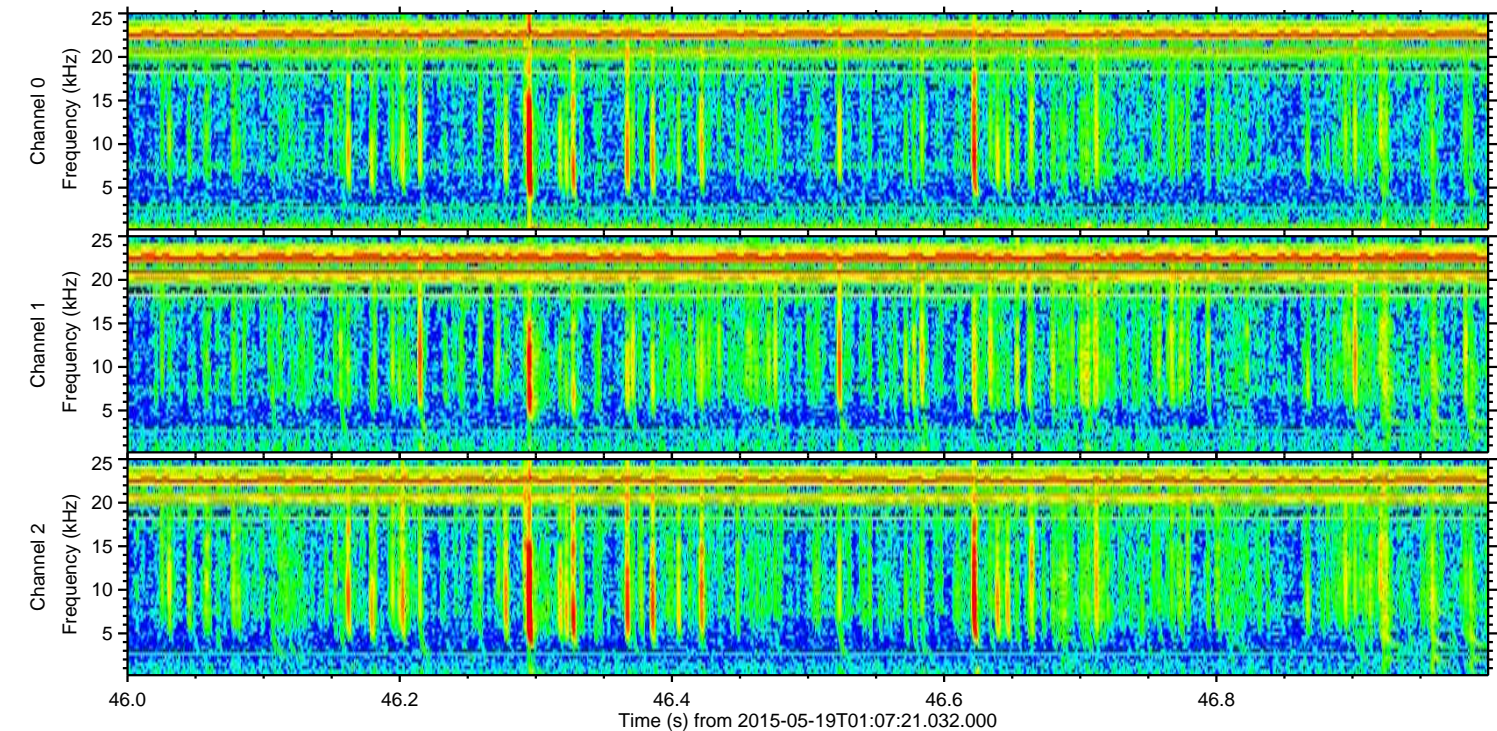
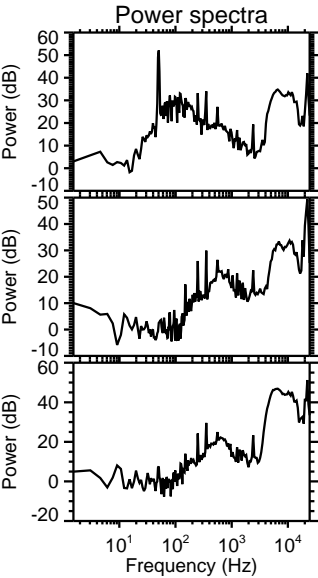
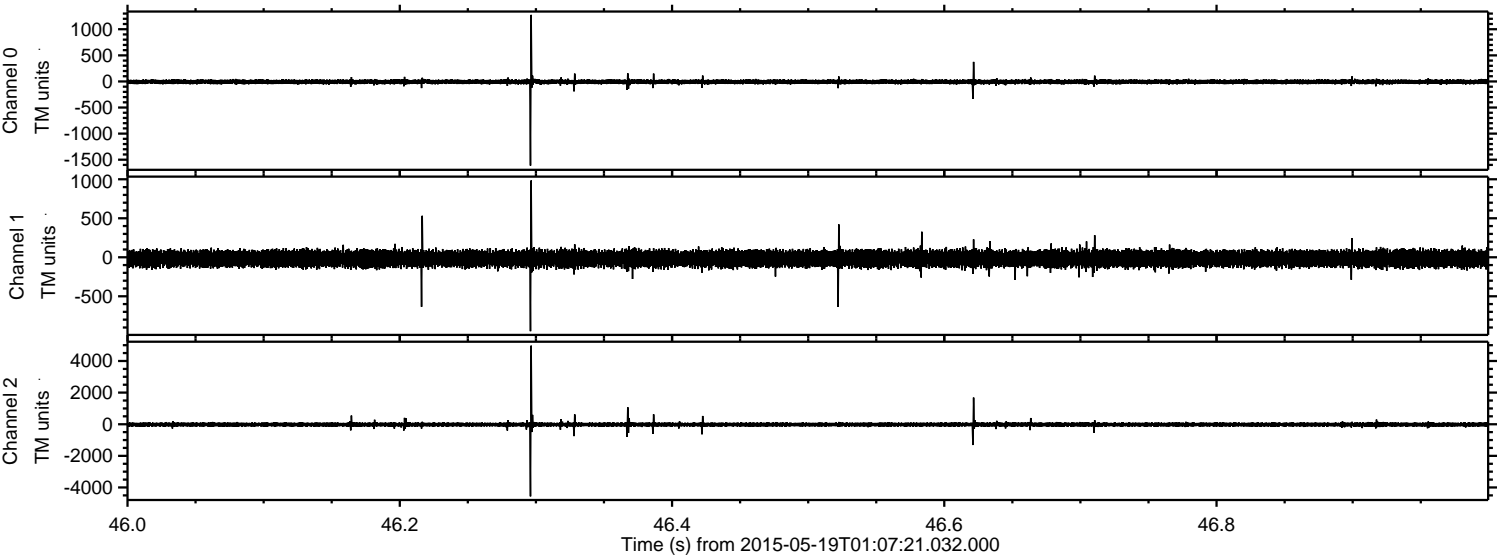


Processed Tue May 19 03:14:16 2015 by ELM ver.2012-10-06 from 001\_\_elm20150519\_010720\_\_dat00.bin



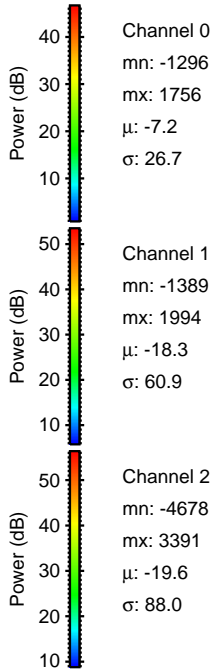
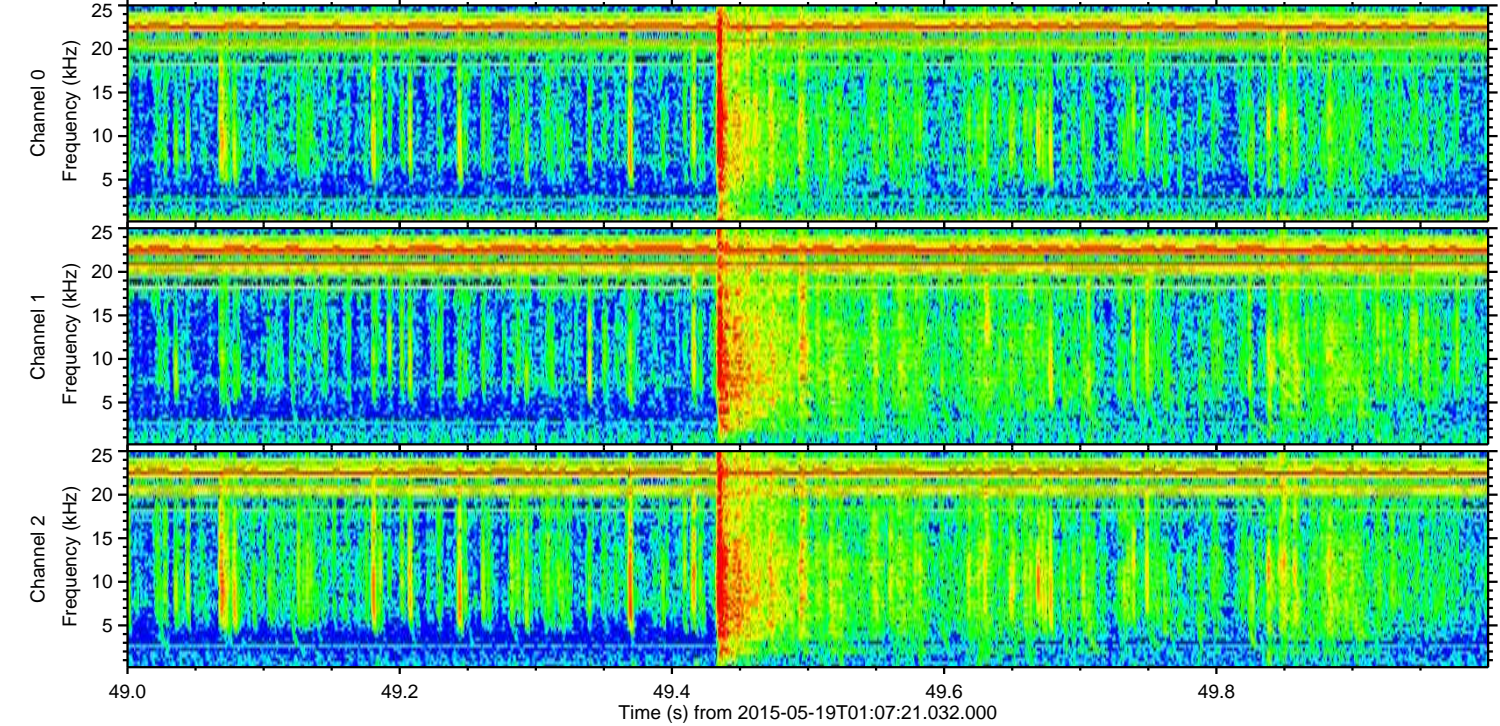
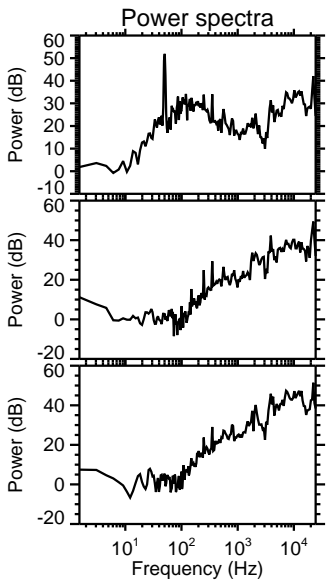
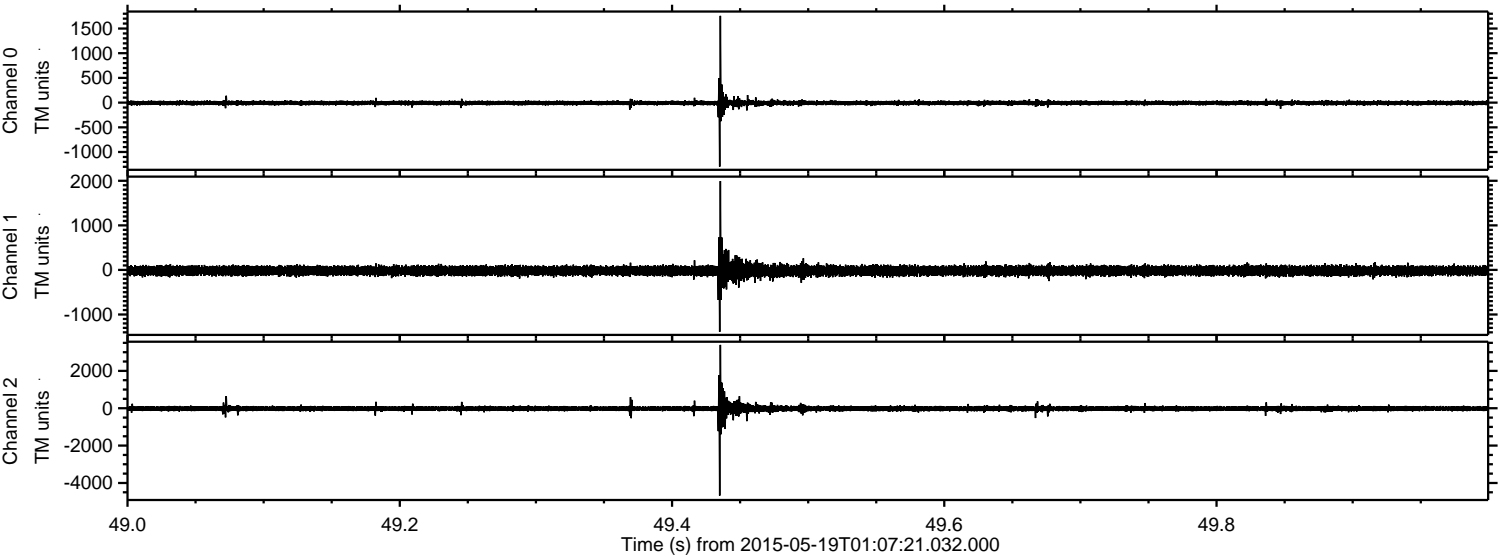


Processed Tue May 19 03:14:17 2015 by ELM ver.2012-10-06 from 001\_\_elm20150519\_010720\_\_dat00.bin





Processed Tue May 19 03:14:18 2015 by ELM ver.2012-10-06 from 001\_\_elm20150519\_010720\_\_dat00.bin



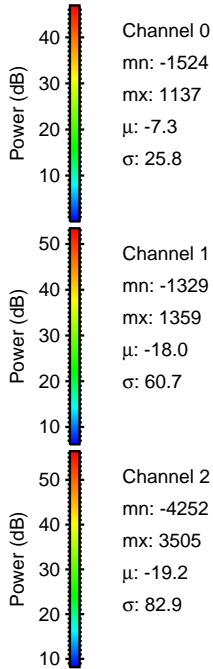
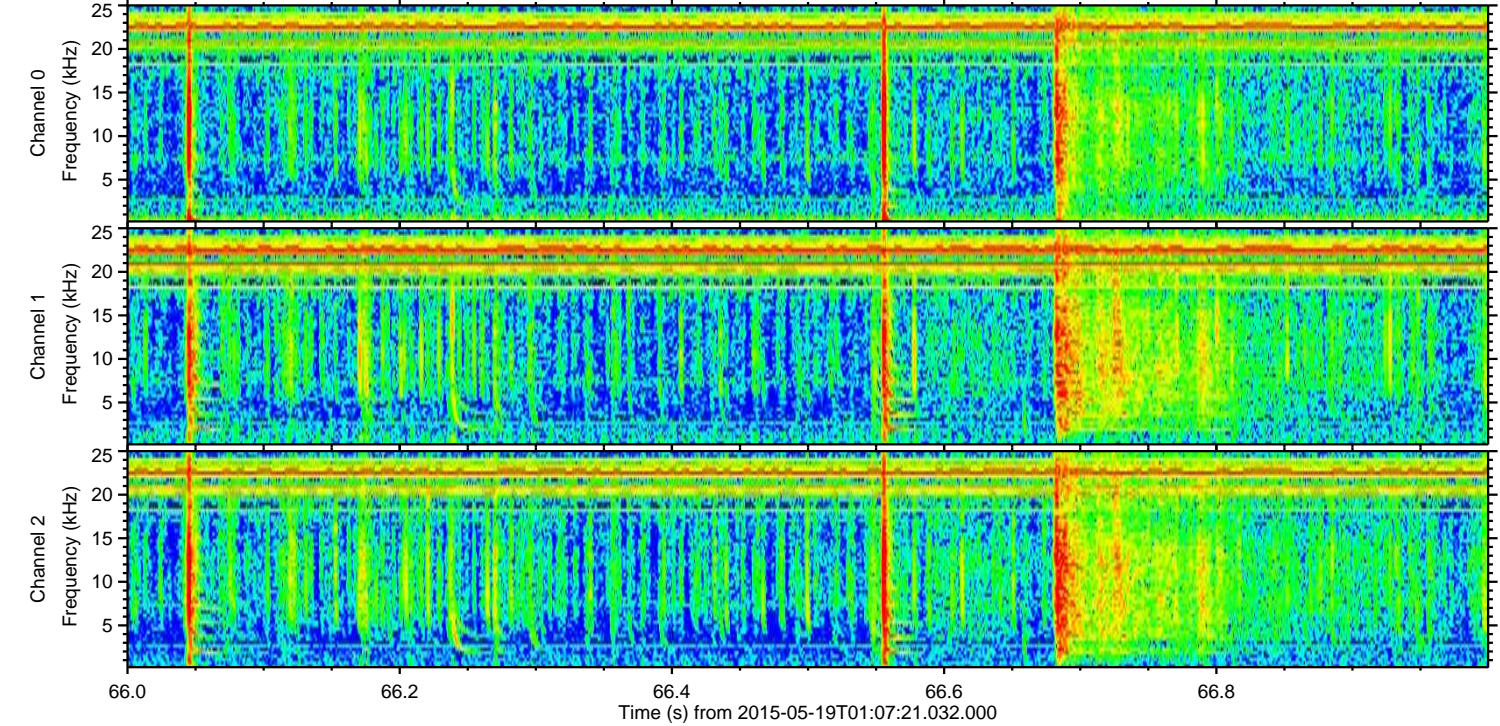
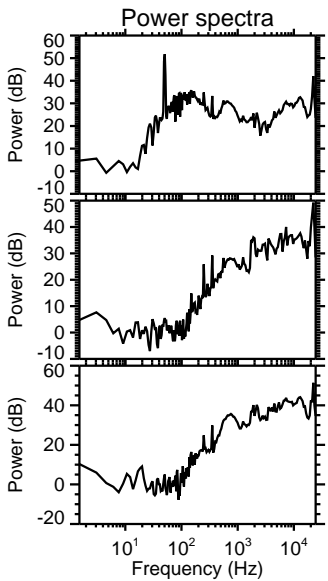
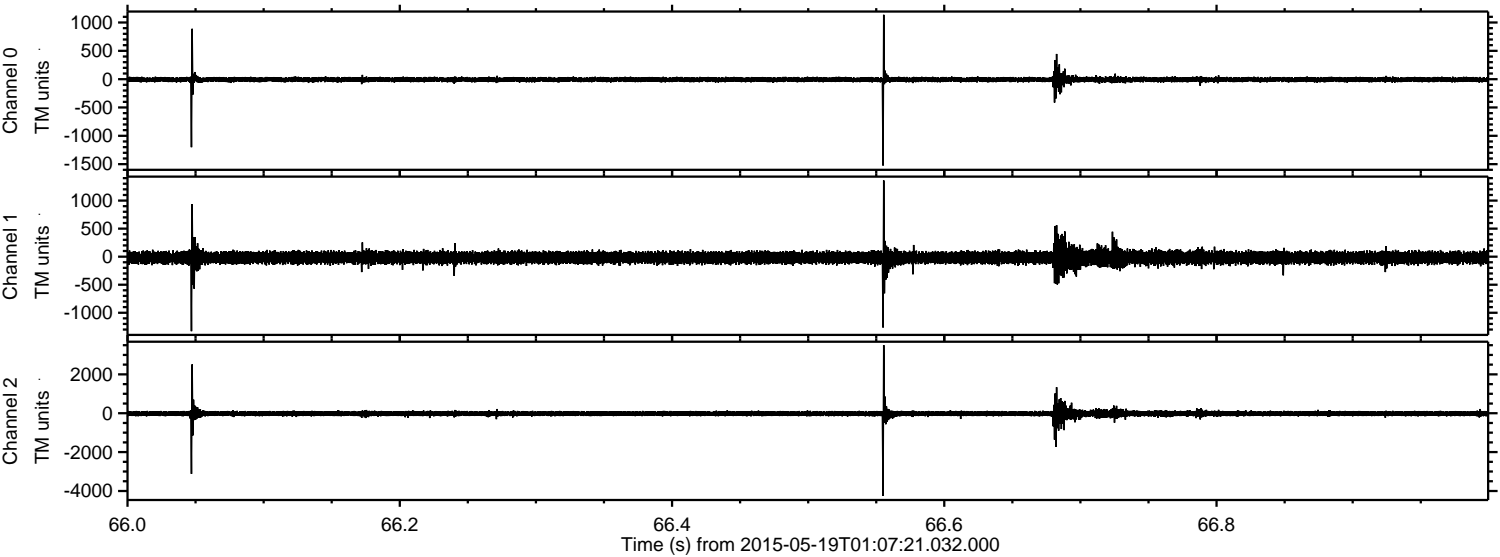
Channel 0  
mn: -1296  
mx: 1756  
 $\mu$ : -7.2  
 $\sigma$ : 26.7

Channel 1  
mn: -1389  
mx: 1994  
 $\mu$ : -18.3  
 $\sigma$ : 60.9

Channel 2  
mn: -4678  
mx: 3391  
 $\mu$ : -19.6  
 $\sigma$ : 88.0

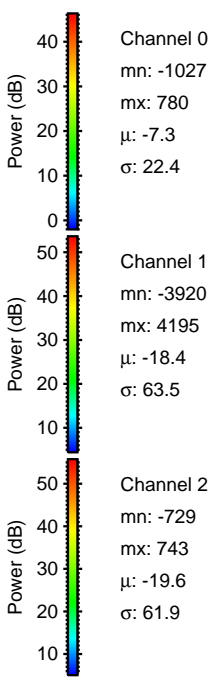
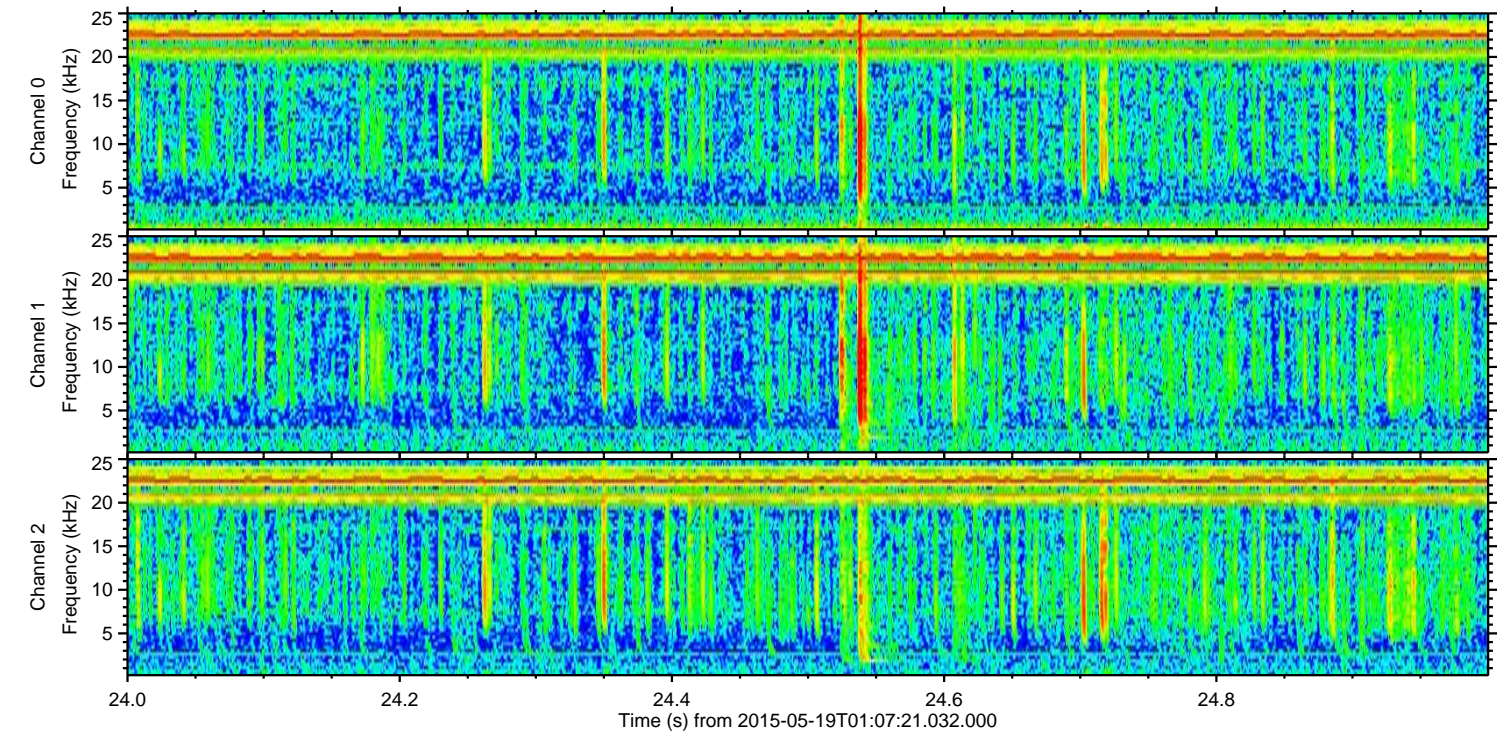
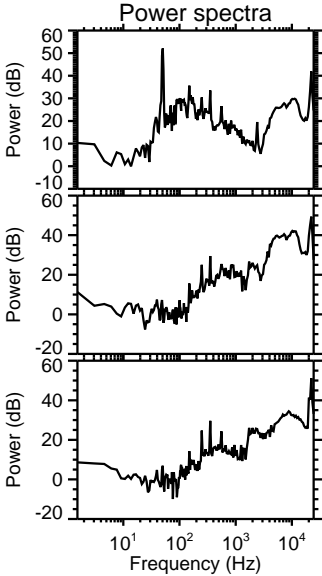
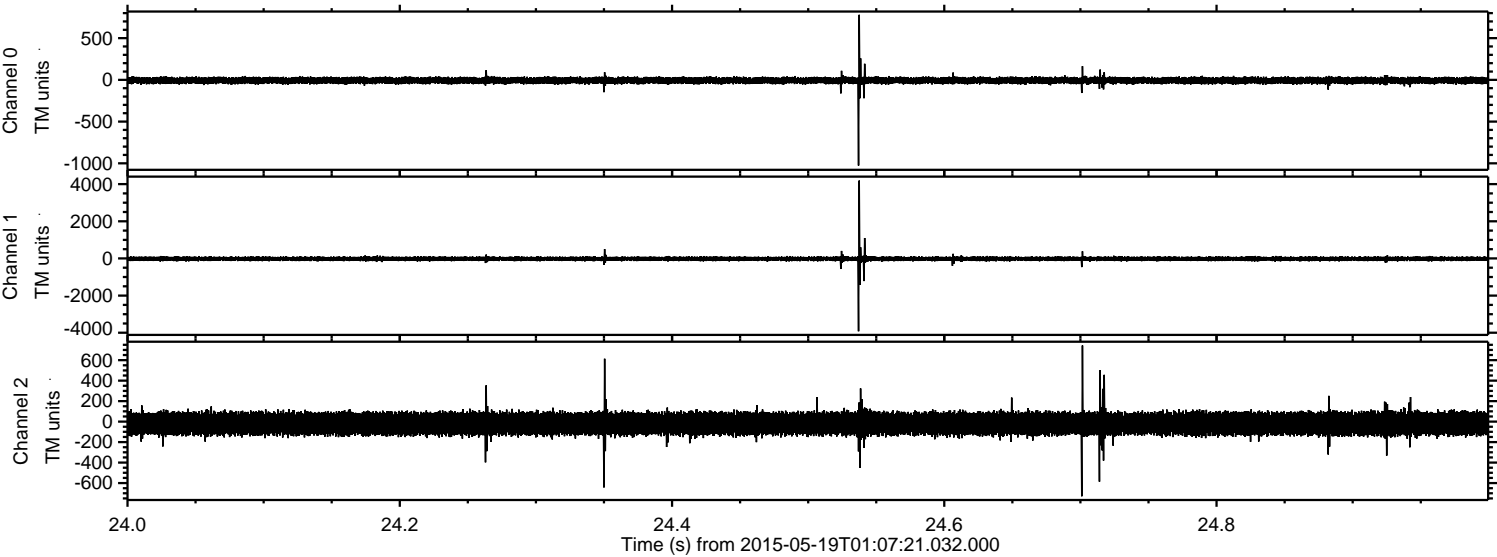


Processed Tue May 19 03:14:18 2015 by ELM ver.2012-10-06 from 001\_\_elm20150519\_010720\_\_dat00.bin





Processed Tue May 19 03:14:19 2015 by ELM ver.2012-10-06 from 001\_\_elm20150519\_010720\_\_dat00.bin



Channel 0  
mn: -1027  
mx: 780  
 $\mu$ : -7.3  
 $\sigma$ : 22.4

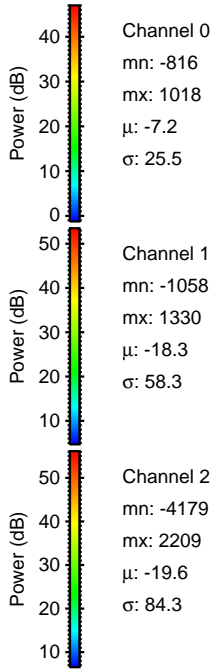
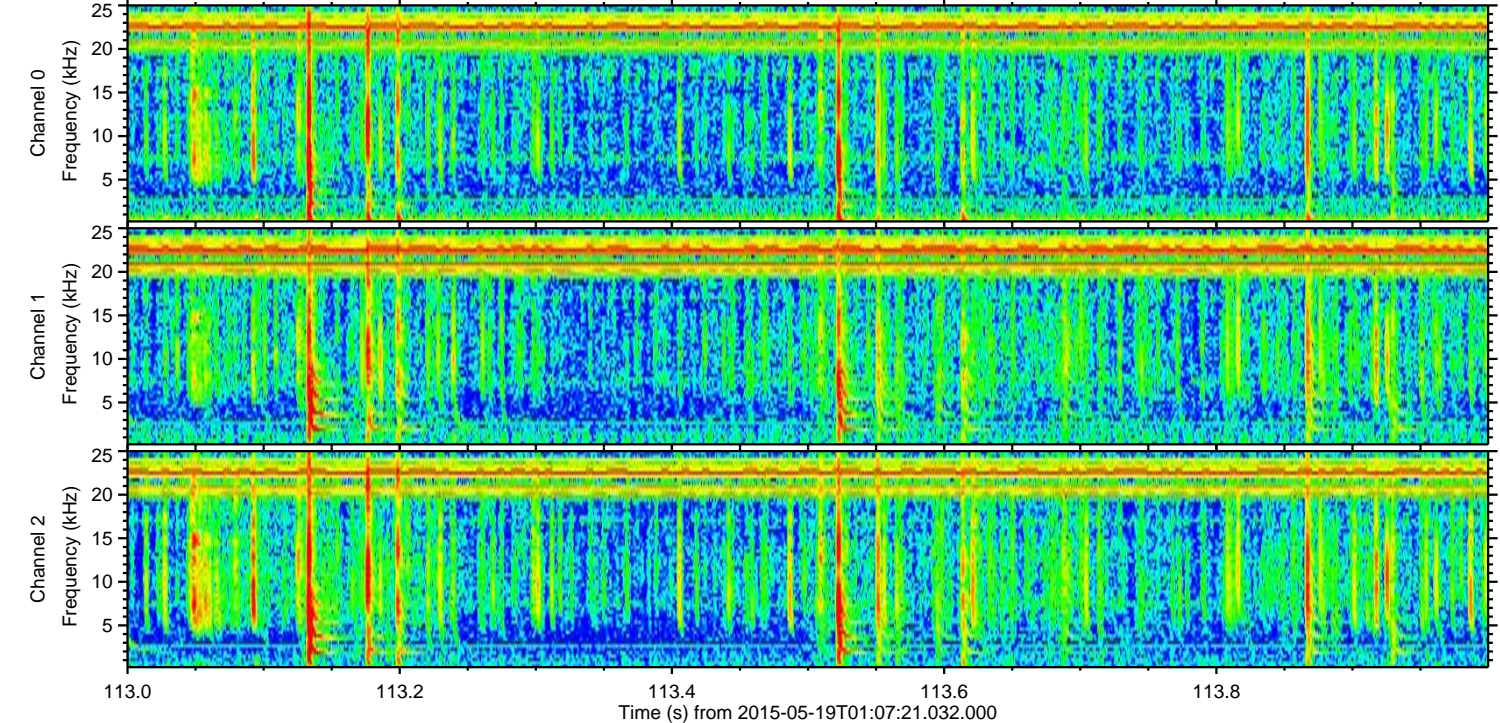
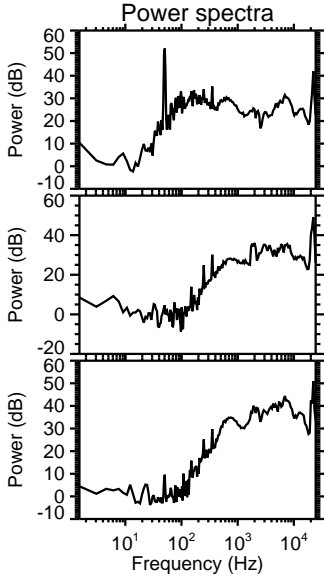
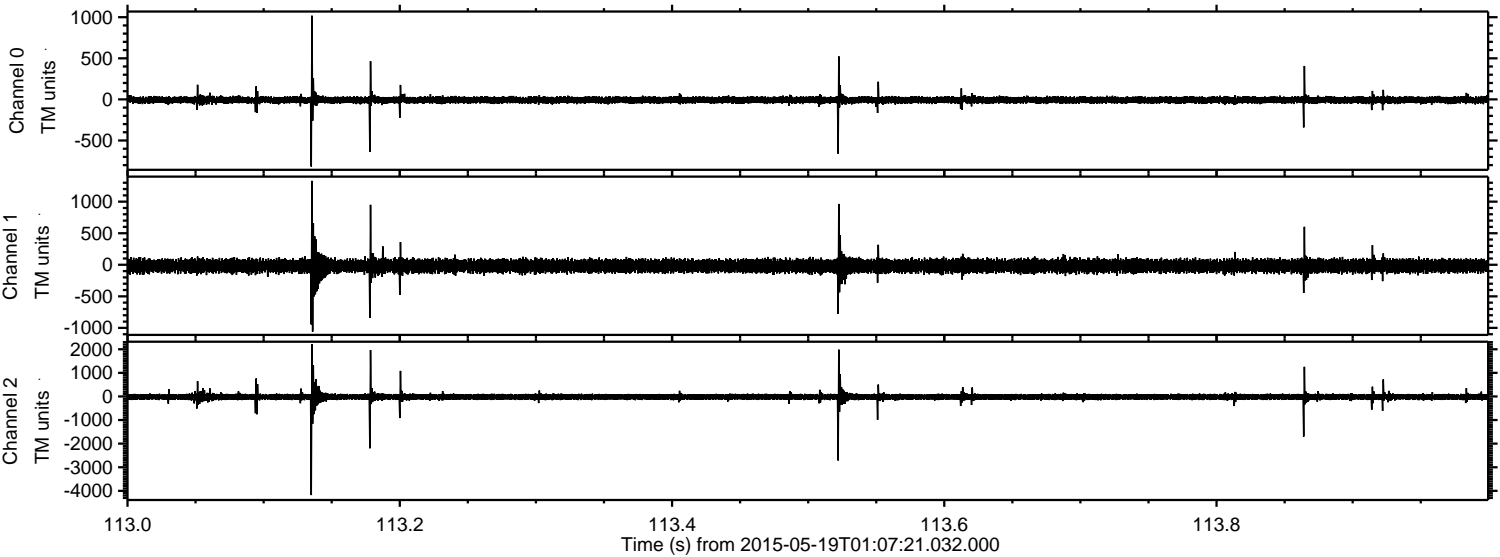
Channel 1  
mn: -3920  
mx: 4195  
 $\mu$ : -18.4  
 $\sigma$ : 63.5

Channel 2  
mn: -729  
mx: 743  
 $\mu$ : -19.6  
 $\sigma$ : 61.9



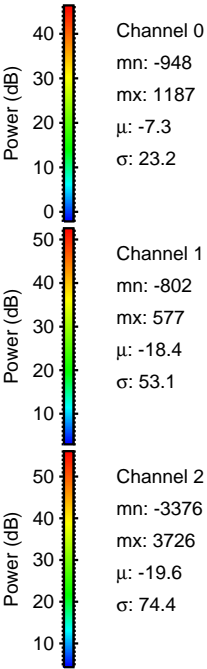
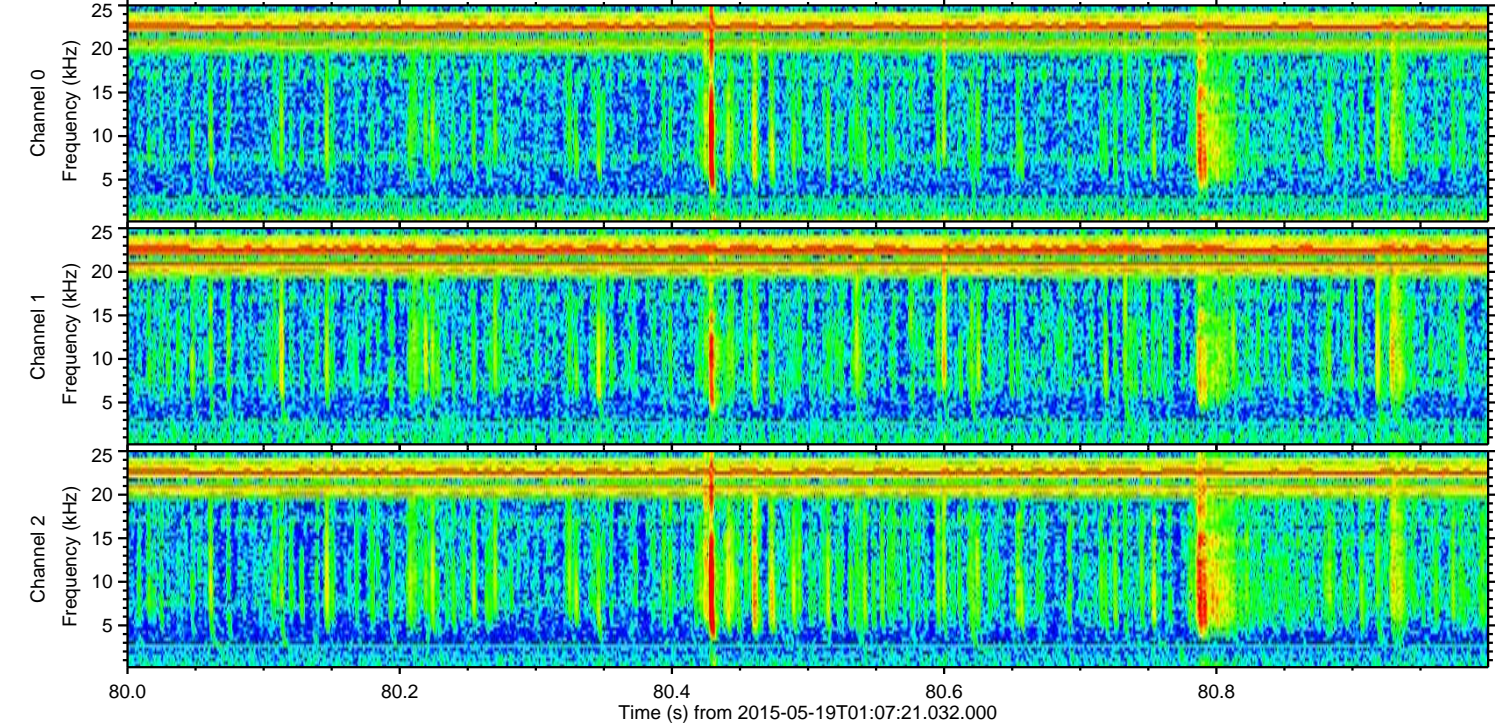
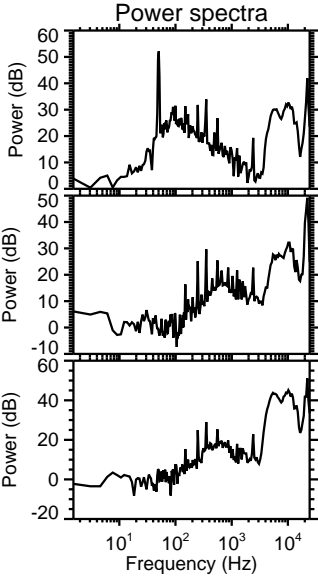
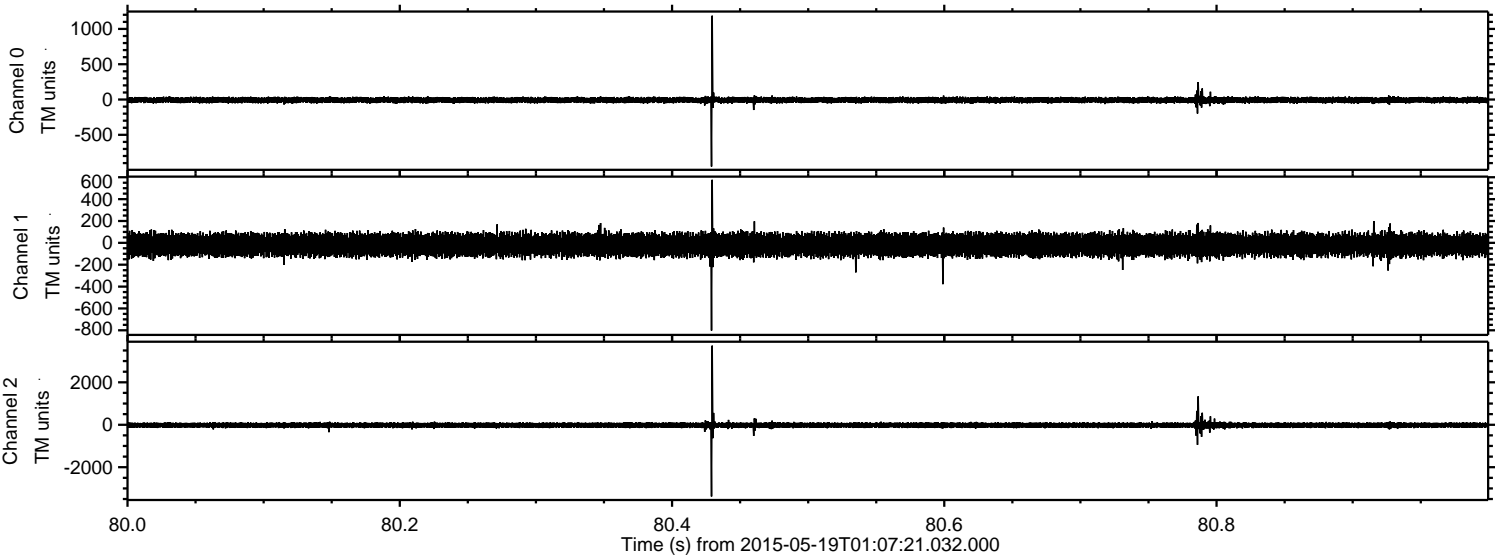
ELMAVAN 3D WAVEFORMS (Measured data sampled at 50 kHz) 49787 packets of 144 samples from 2015-05-19T01:07:21.032.000. Part 114/144

Processed Tue May 19 03:14:20 2015 by ELM ver.2012-10-06 from 001\_\_elm20150519\_010720\_\_dat00.bin





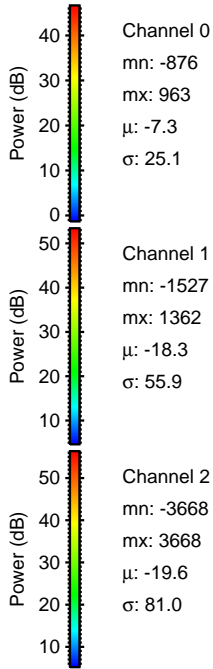
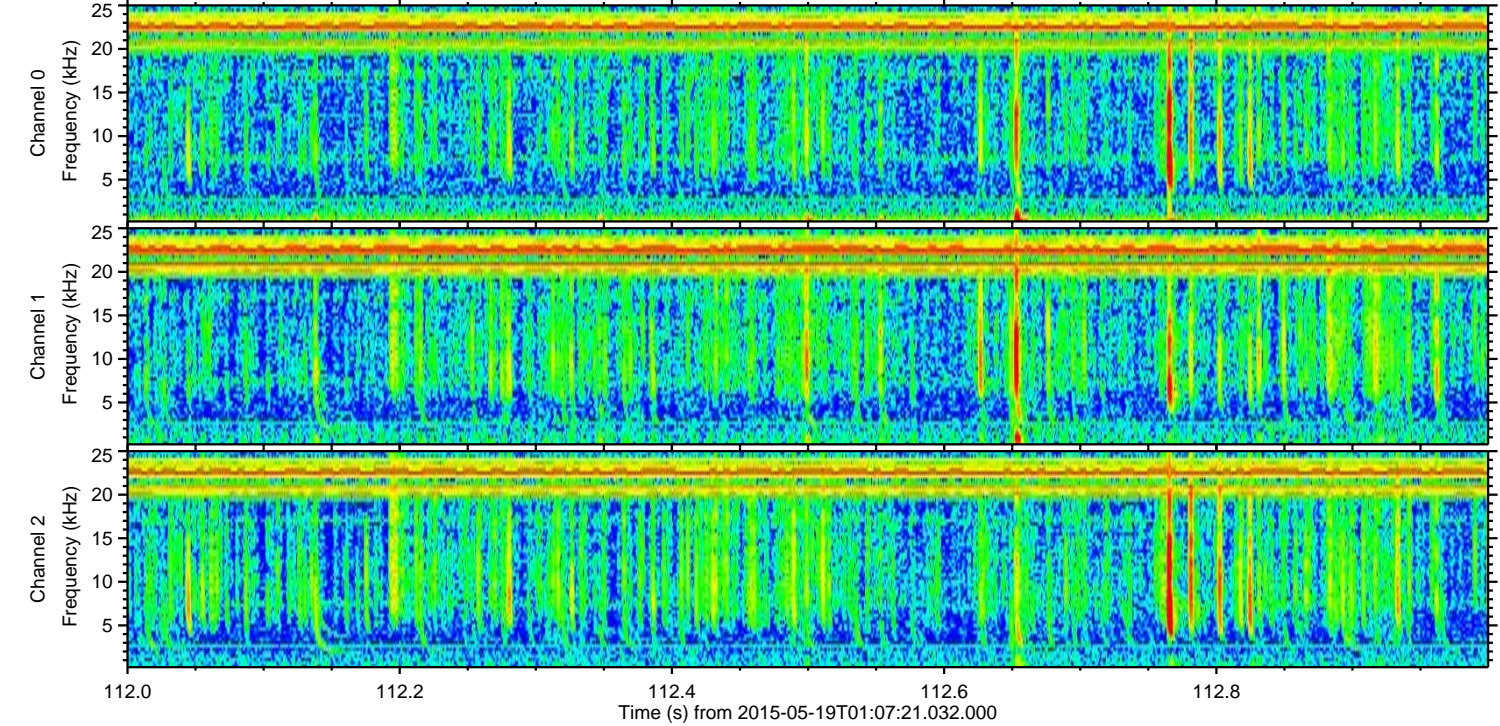
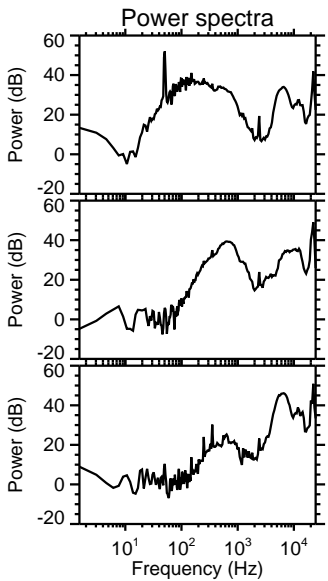
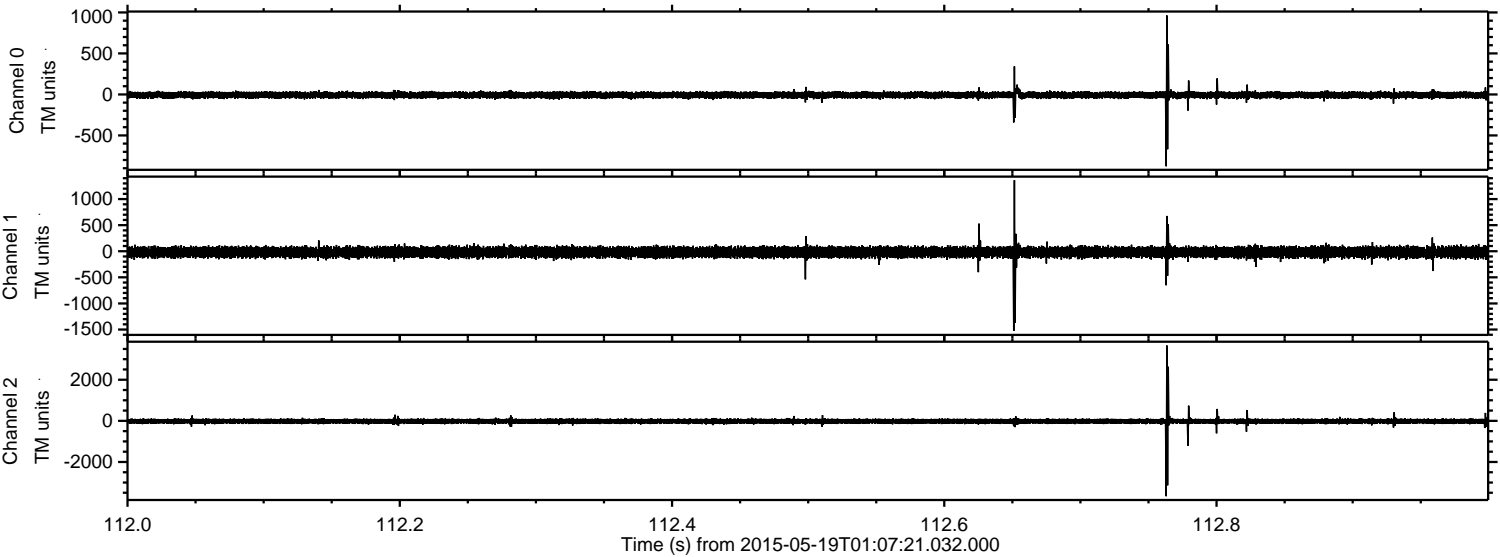
Processed Tue May 19 03:14:21 2015 by ELM ver.2012-10-06 from 001\_\_elm20150519\_010720\_\_dat00.bin





ELMAVAN 3D WAVEFORMS (Measured data sampled at 50 kHz) 49787 packets of 144 samples from 2015-05-19T01:07:21.032.000. Part 113/144

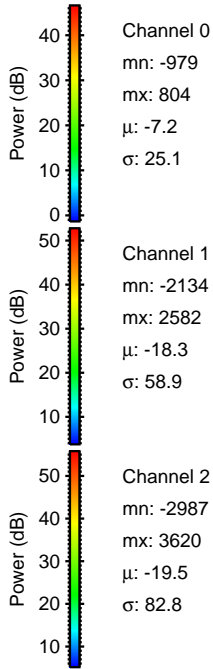
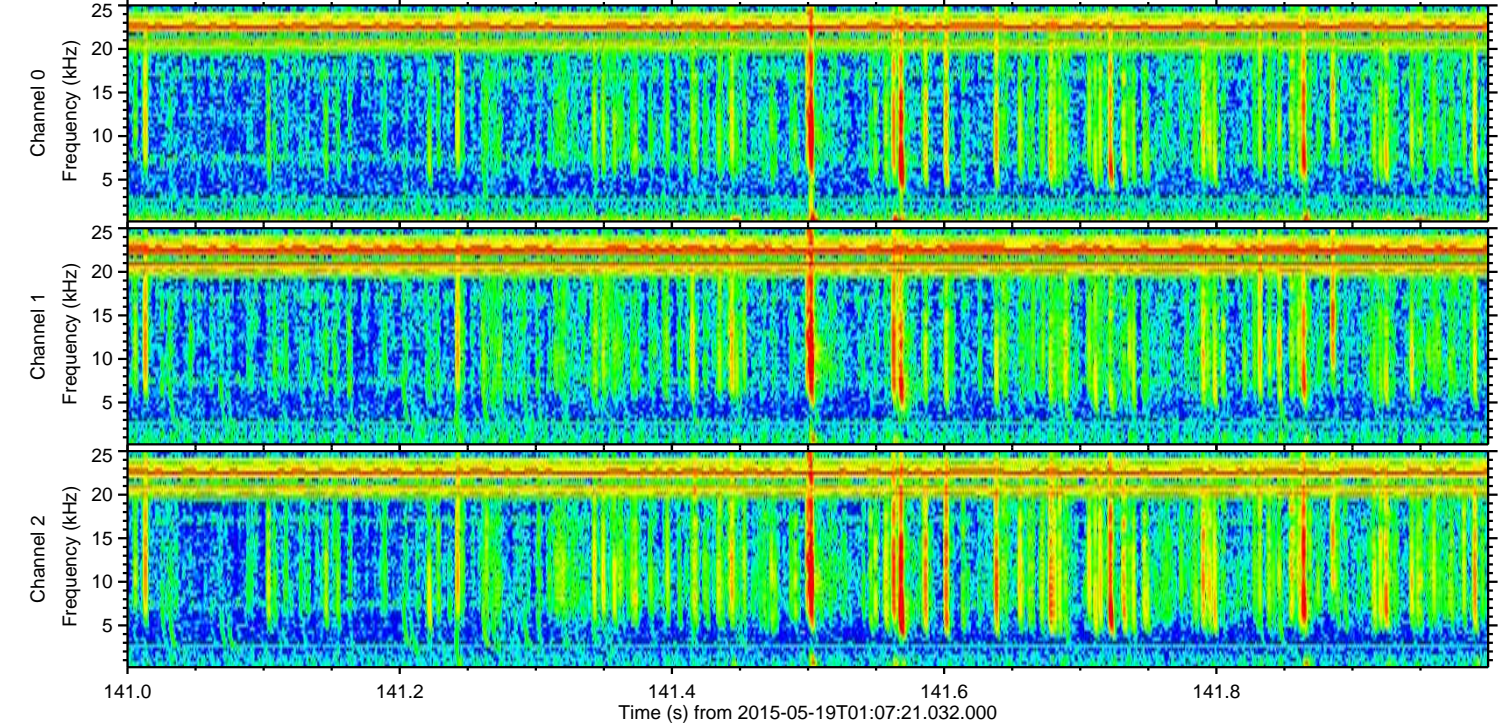
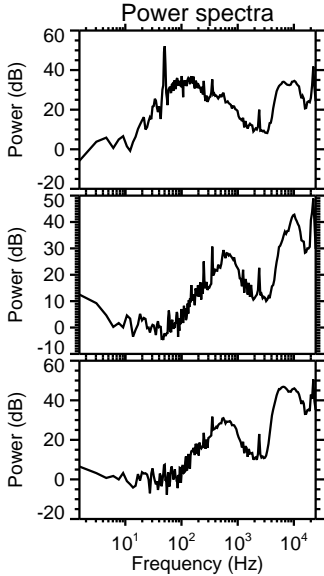
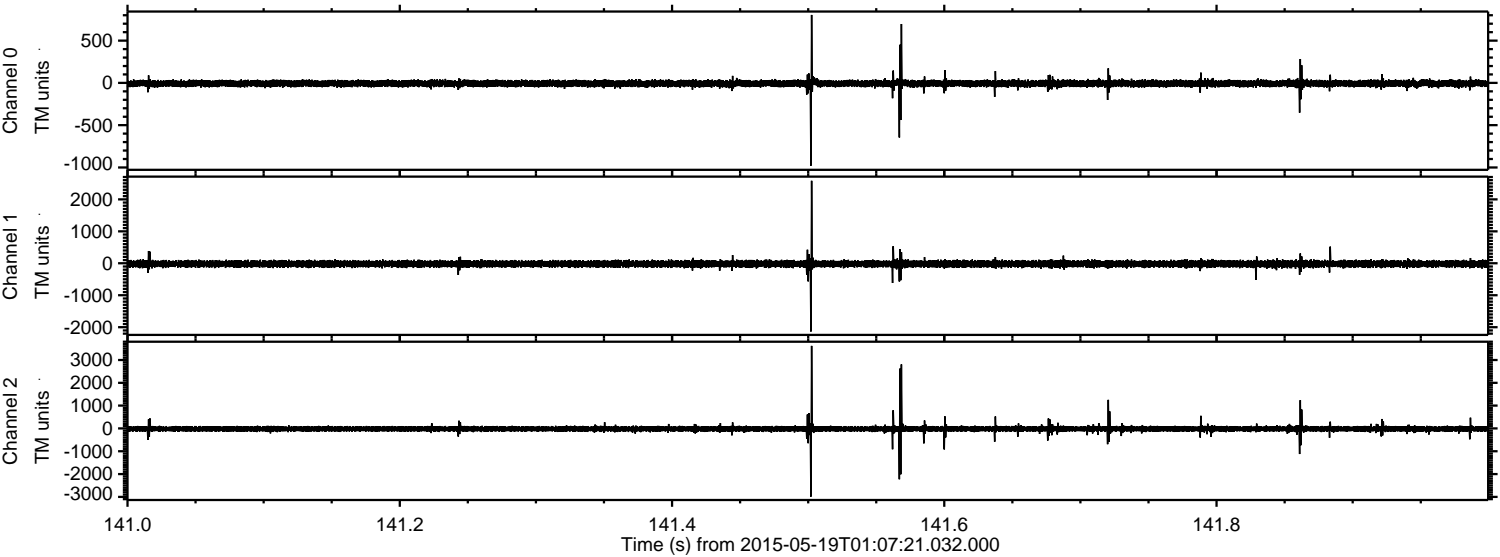
Processed Tue May 19 03:14:22 2015 by ELM ver.2012-10-06 from 001\_\_elm20150519\_010720\_\_dat00.bin





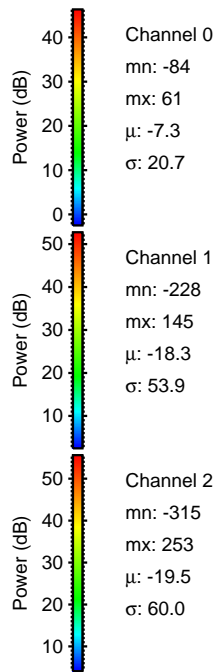
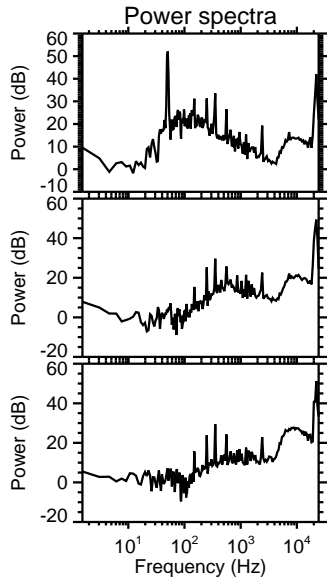
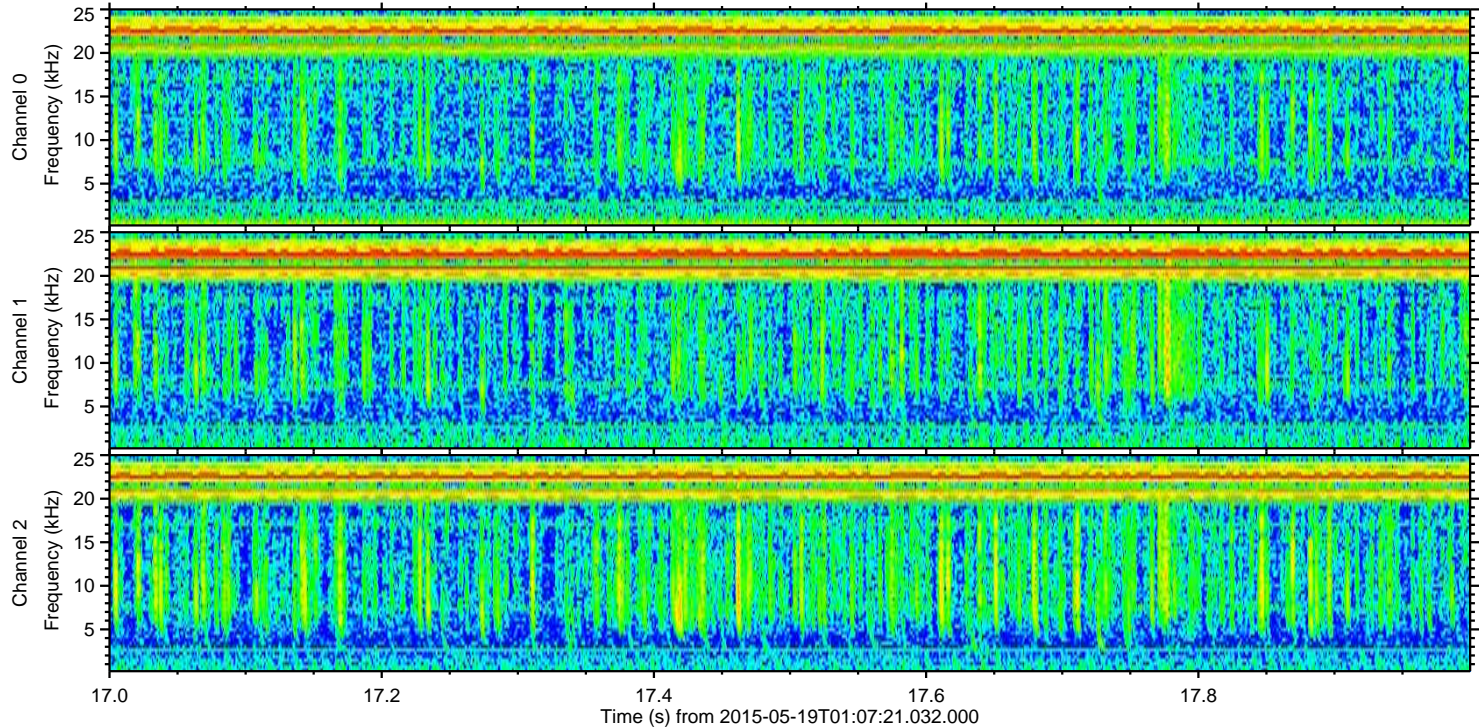
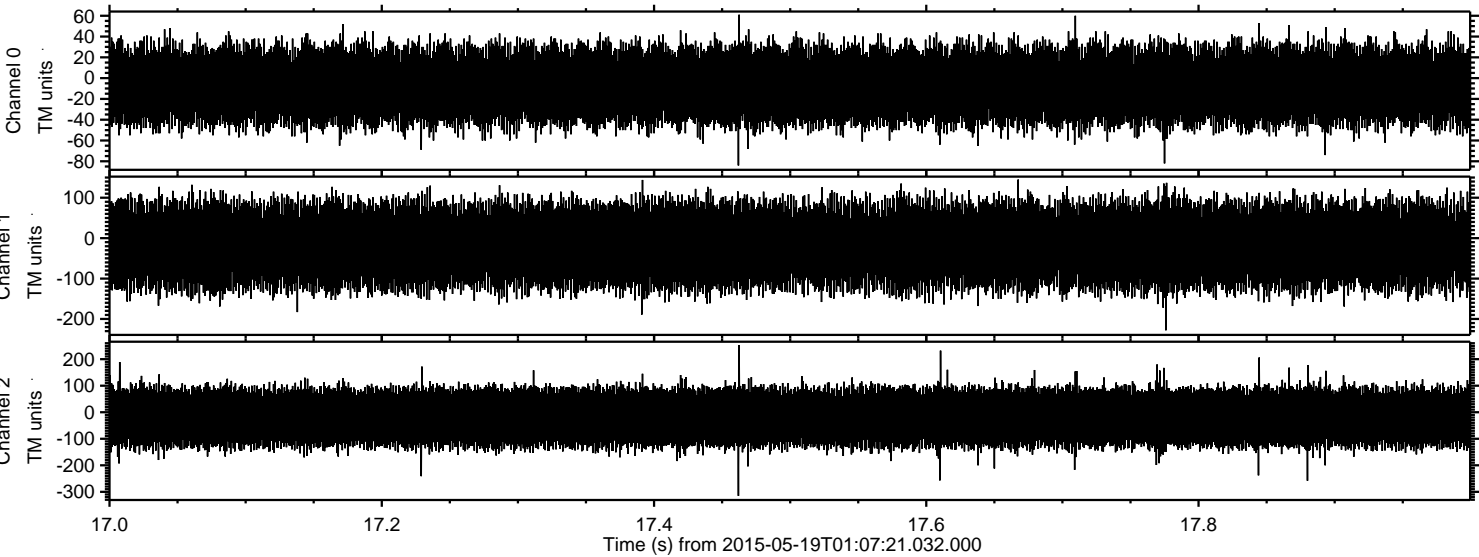
ELMAVAN 3D WAVEFORMS (Measured data sampled at 50 kHz) 49787 packets of 144 samples from 2015-05-19T01:07:21.032.000. Part 142/144

Processed Tue May 19 03:14:23 2015 by ELM ver.2012-10-06 from 001\_\_elm20150519\_010720\_\_dat00.bin





Processed Tue May 19 03:14:24 2015 by ELM ver.2012-10-06 from 001\_\_elm20150519\_010720\_\_dat00.bin



Channel 0  
mn: -84  
mx: 61  
 $\mu$ : -7.3  
 $\sigma$ : 20.7

Channel 1  
mn: -228  
mx: 145  
 $\mu$ : -18.3  
 $\sigma$ : 53.9

Channel 2  
mn: -315  
mx: 253  
 $\mu$ : -19.5  
 $\sigma$ : 60.0