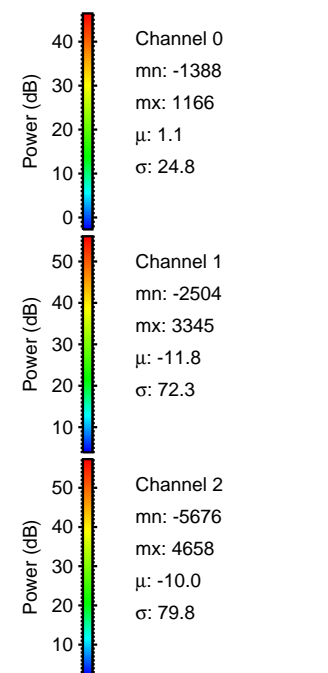
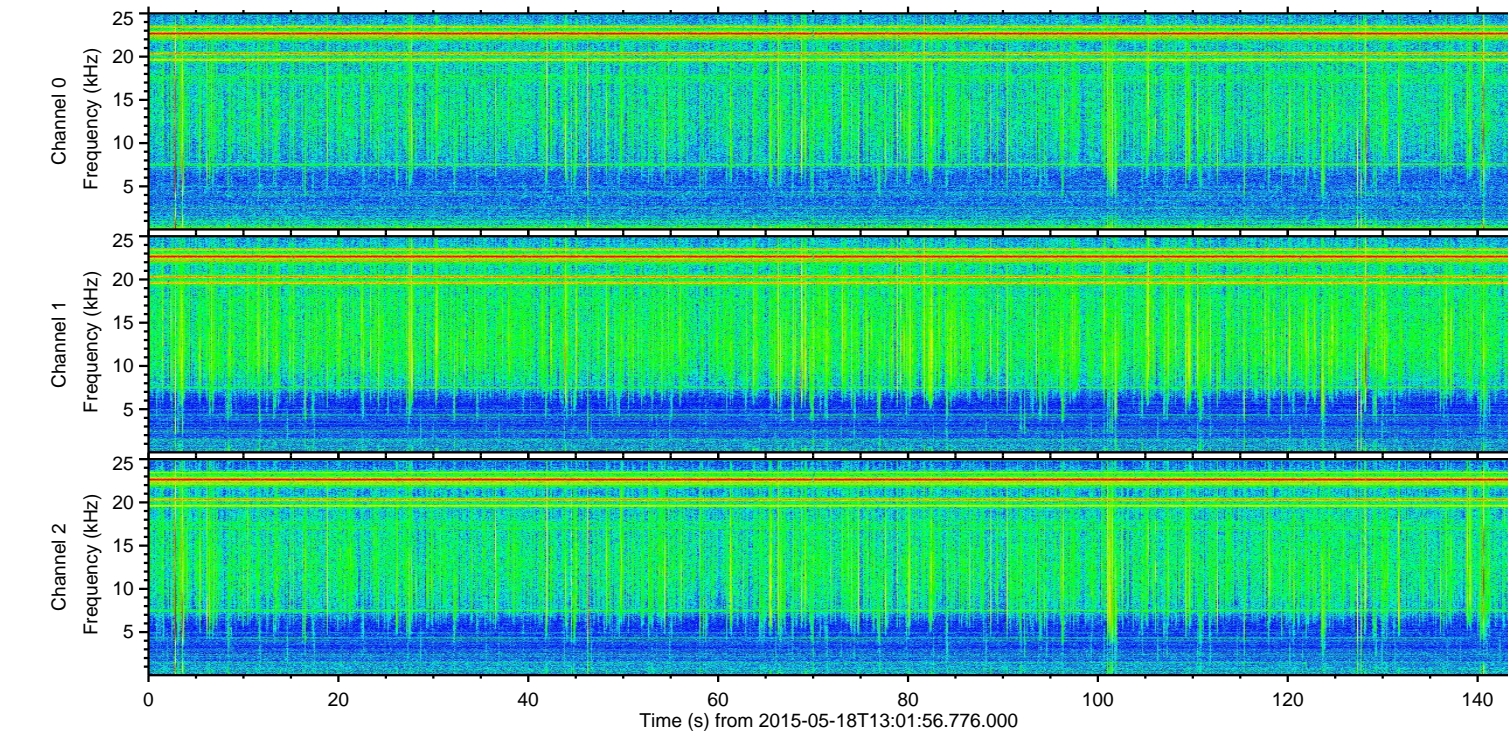
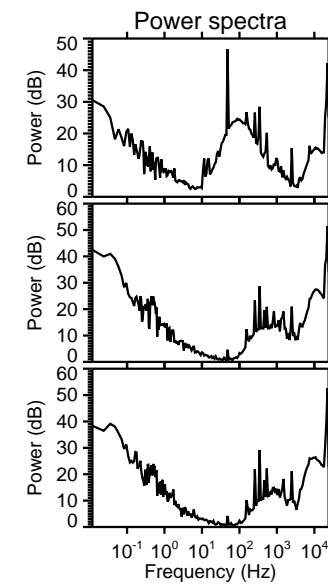
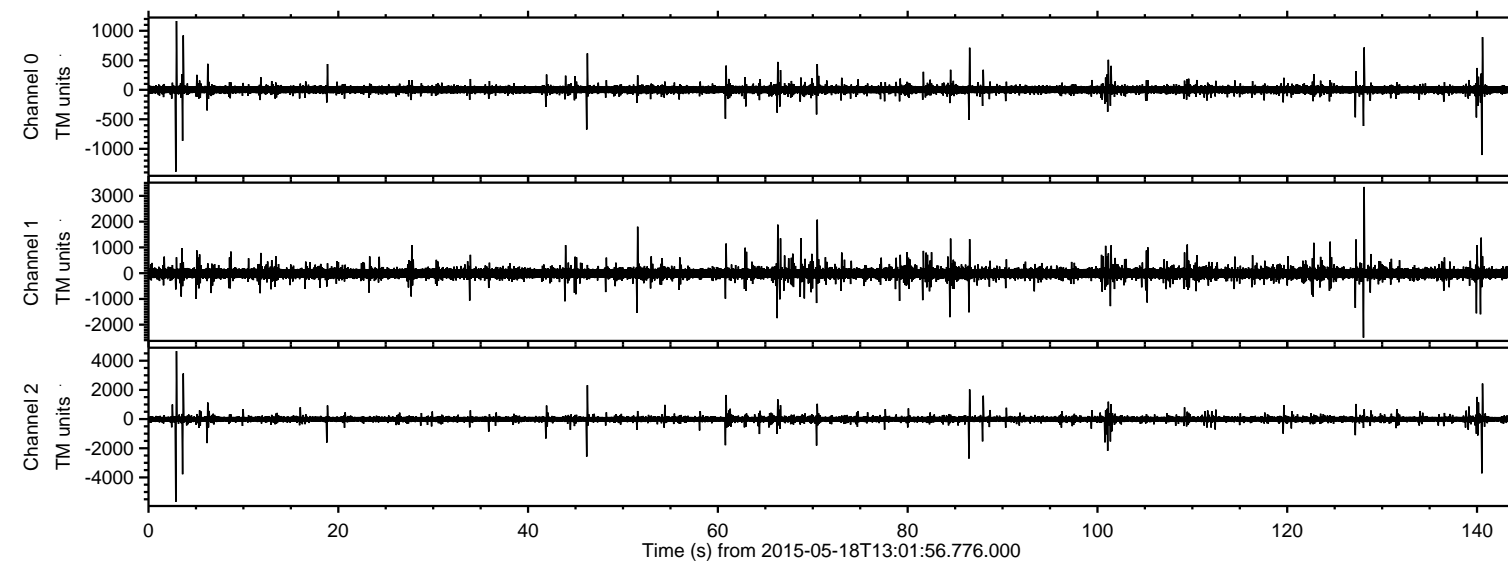


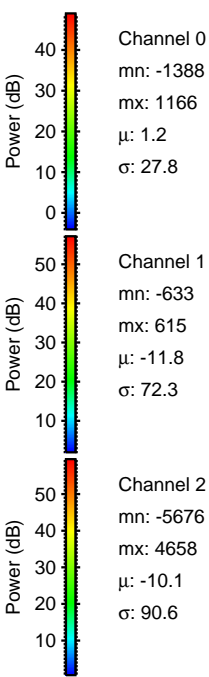
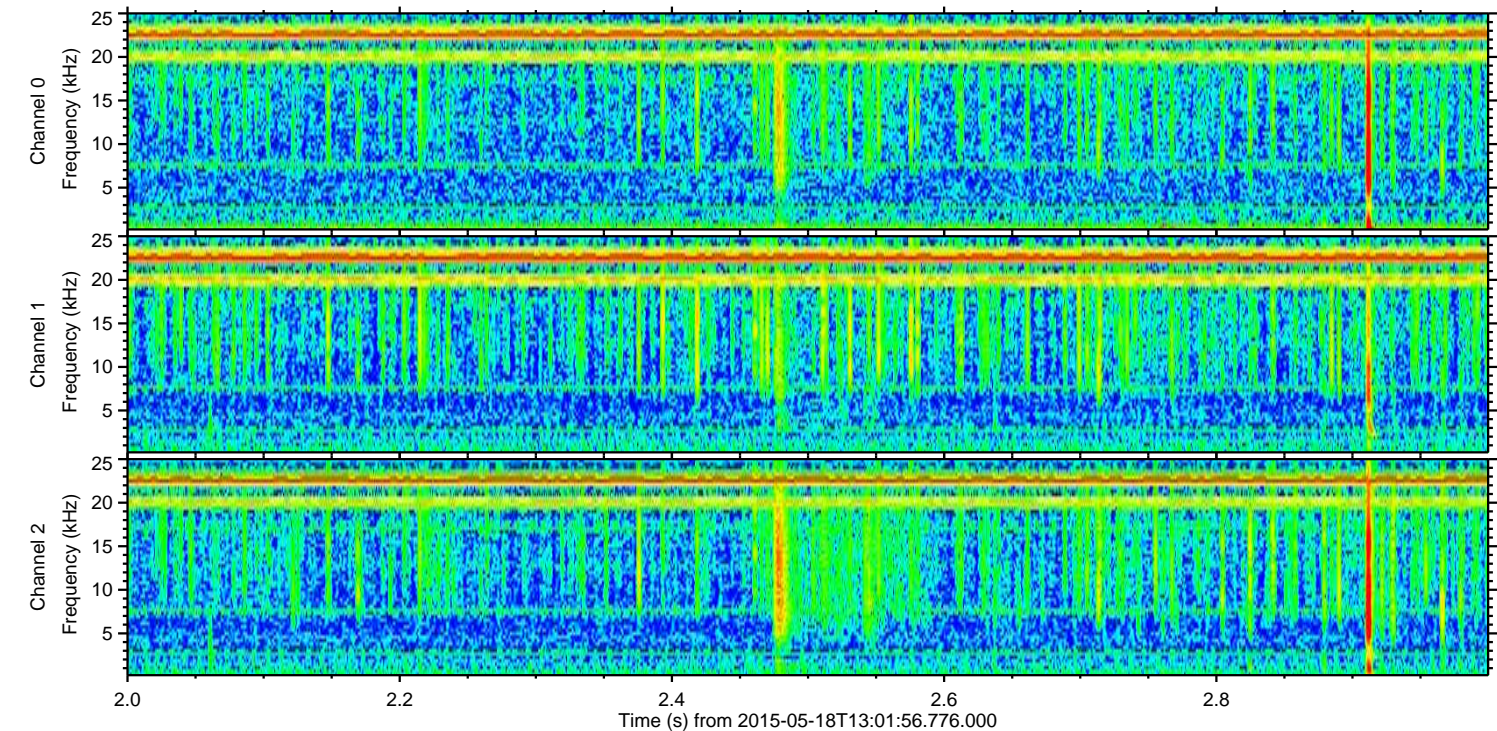
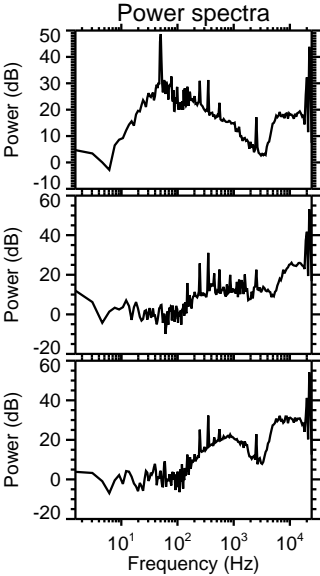
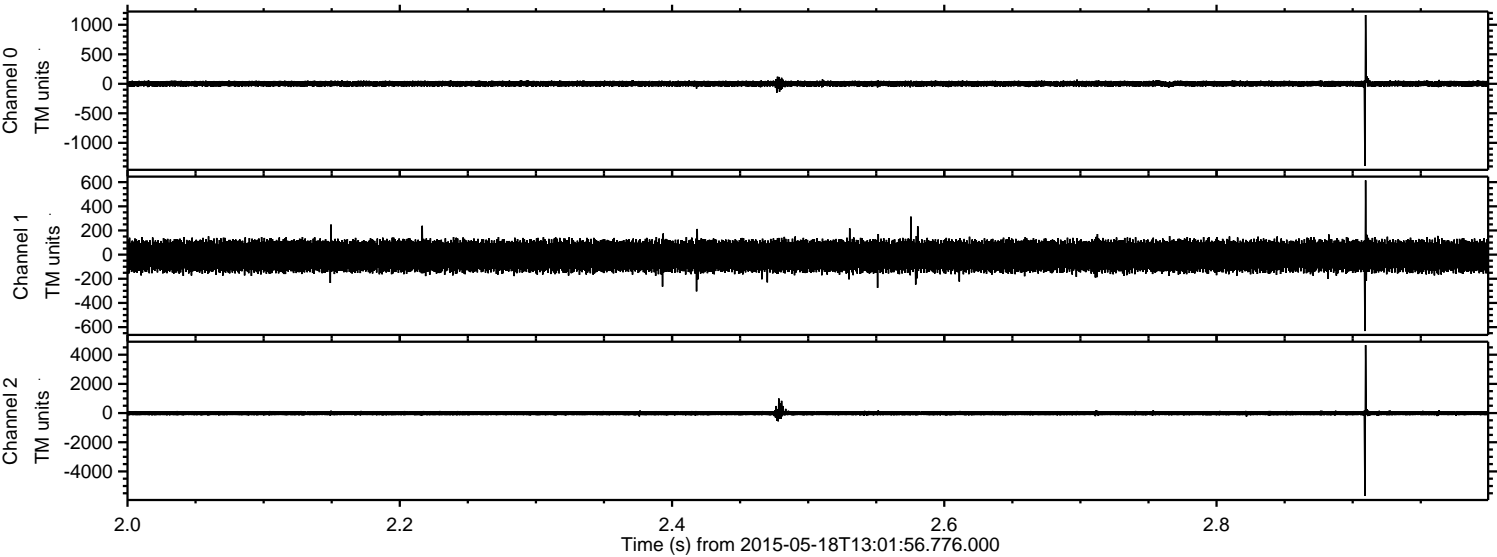
ELMAVAN 3D WAVEFORMS (Measured data sampled at 50 kHz) 49786 packets of 144 samples from 2015-05-18T13:01:56.776.000.

Processed Mon May 18 15:08:27 2015 by ELM ver.2012-10-06 from 001__elm20150518_130155__dat00.bin

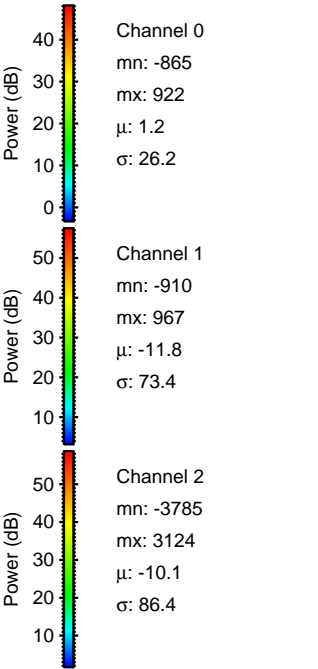
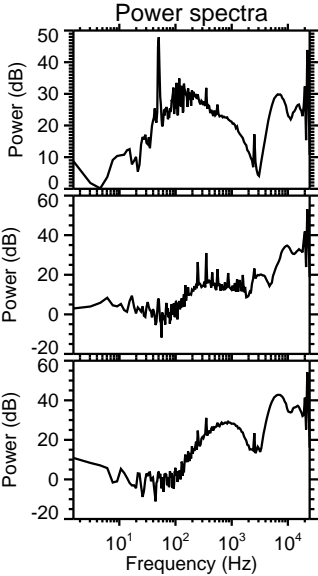
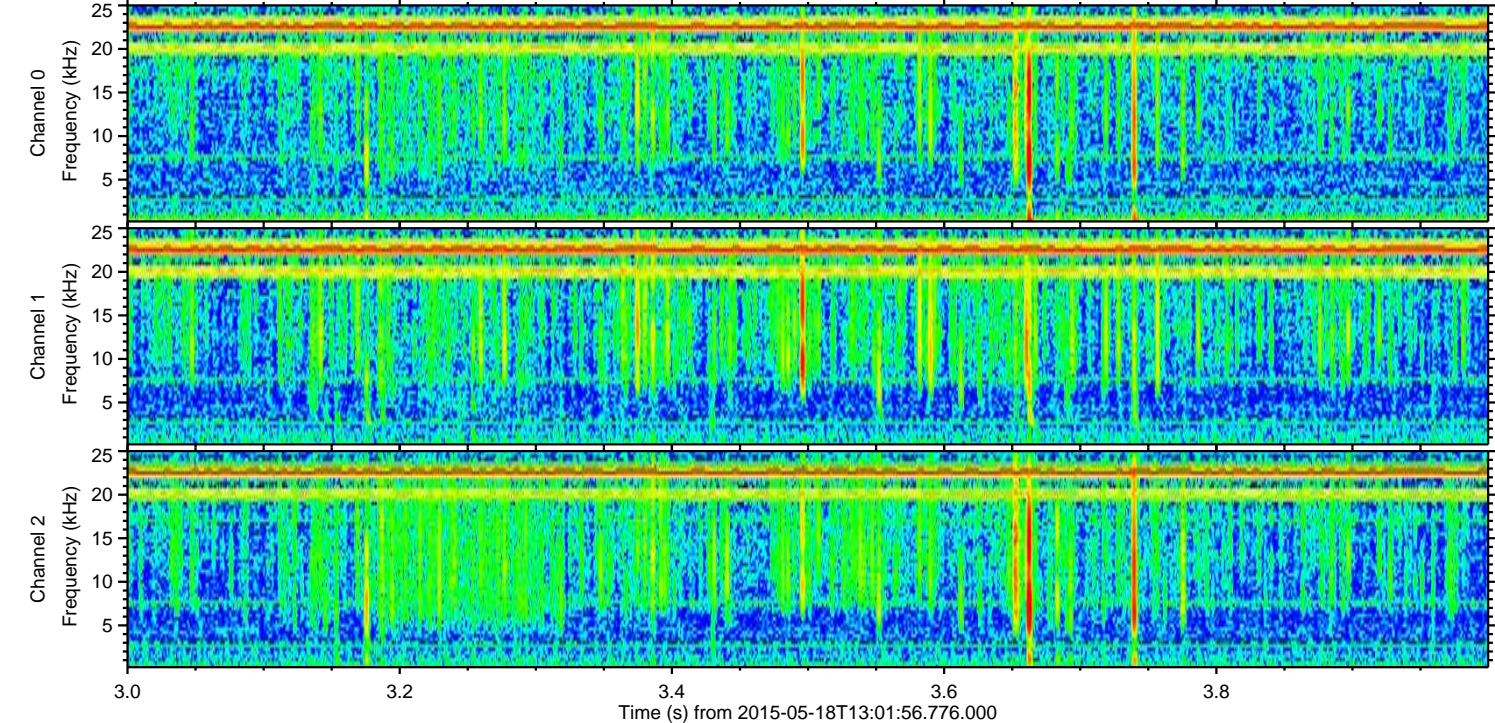
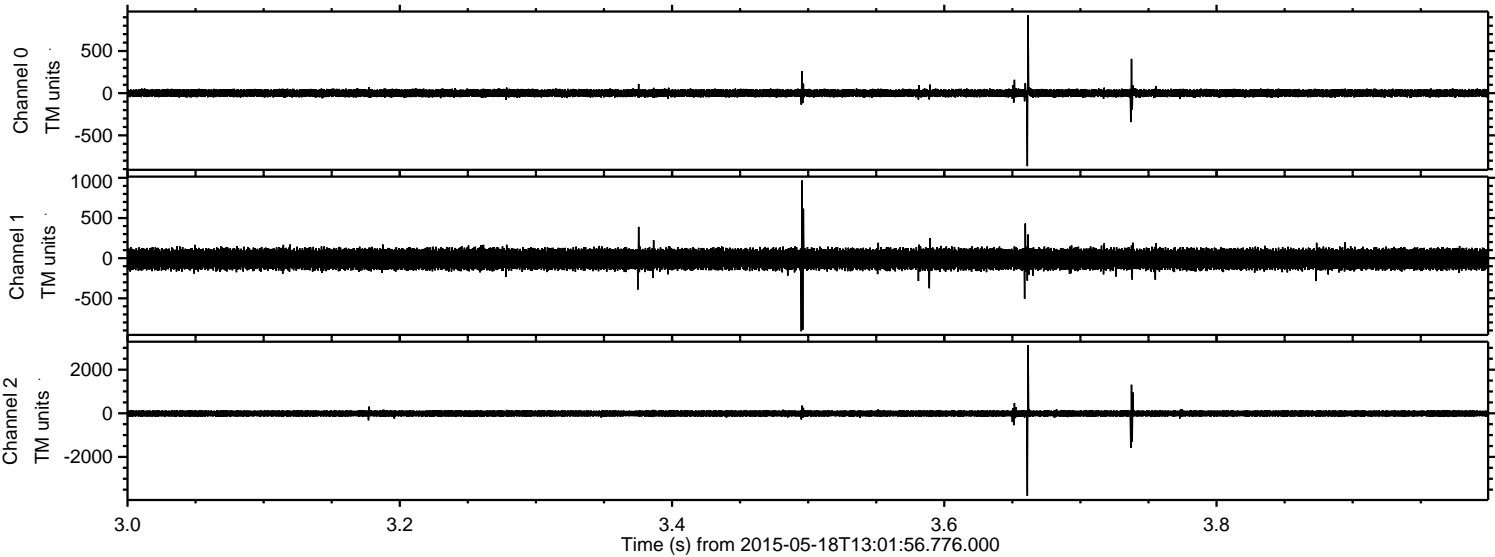


ELMAVAN 3D WAVEFORMS (Measured data sampled at 50 kHz) 49786 packets of 144 samples from 2015-05-18T13:01:56.776.000. Part 3/144

Processed Mon May 18 15:08:38 2015 by ELM ver.2012-10-06 from 001__elm20150518_130155__dat00.bin

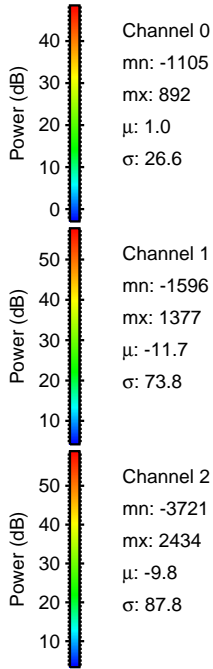
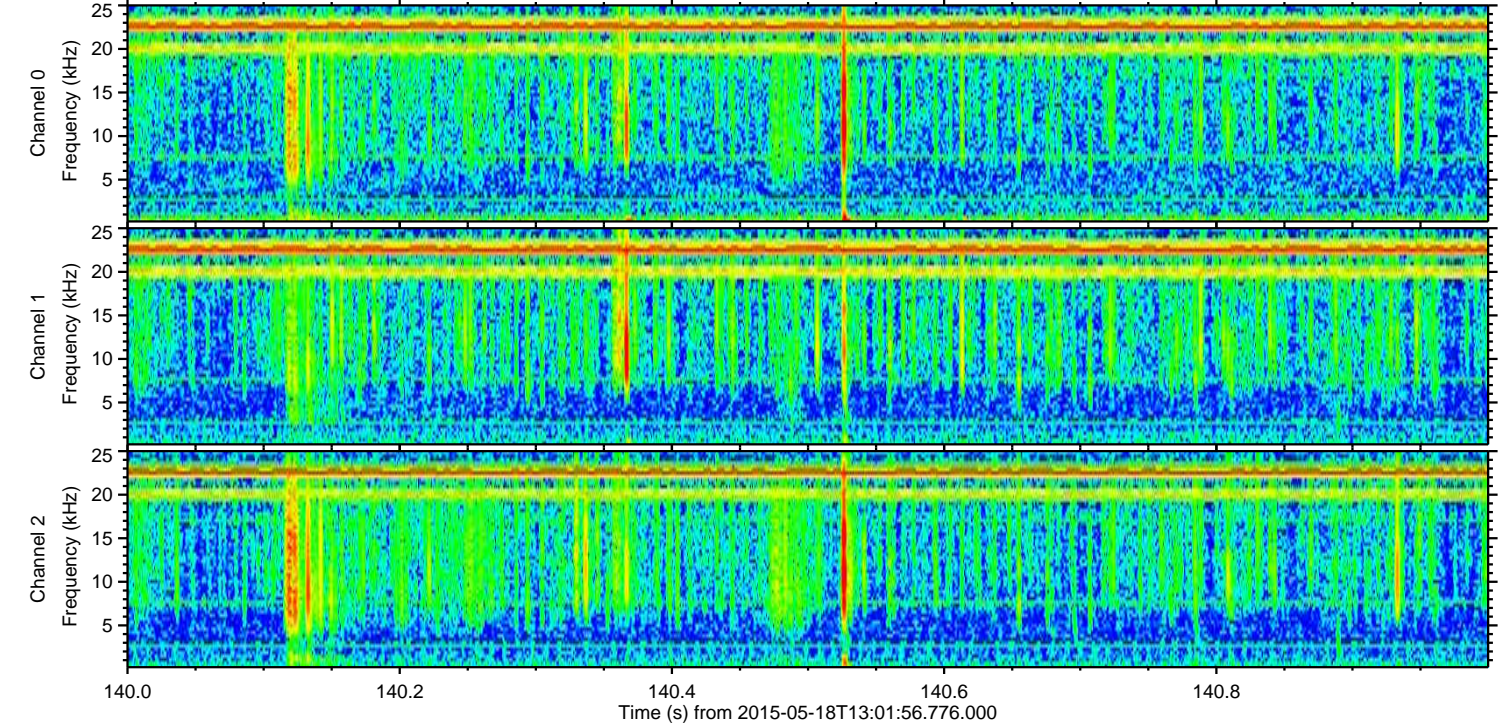
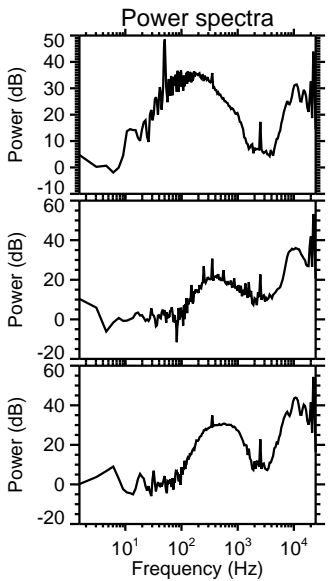
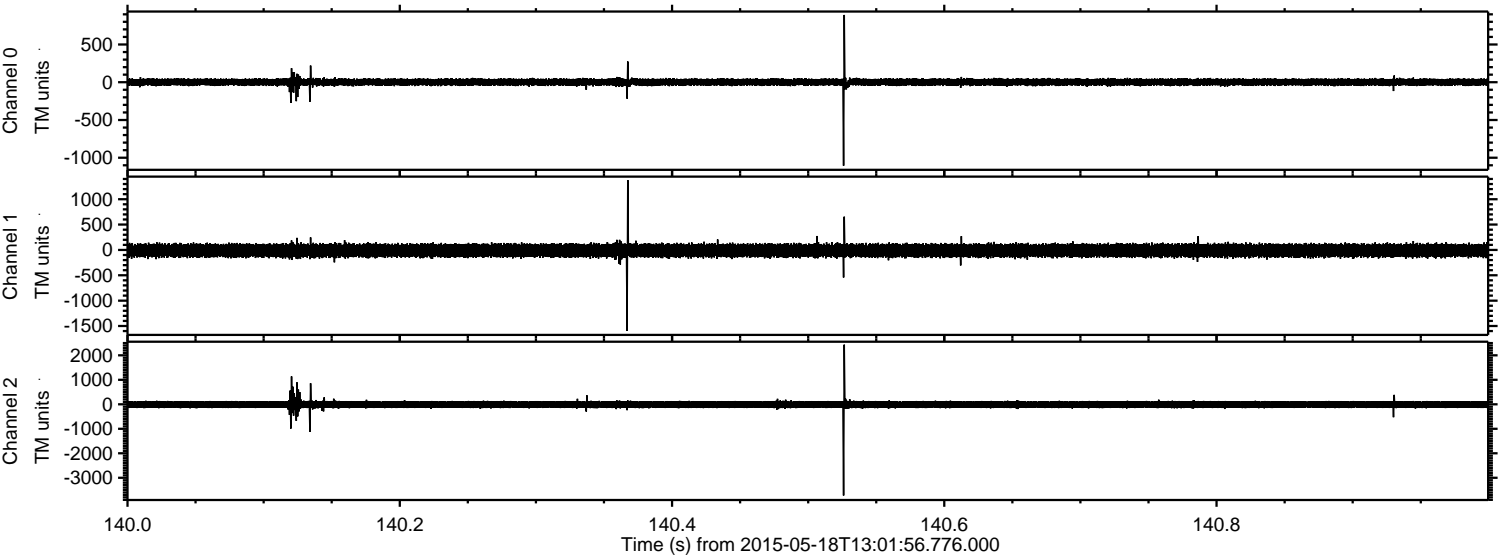


Processed Mon May 18 15:08:39 2015 by ELM ver.2012-10-06 from 001__elm20150518_130155__dat00.bin



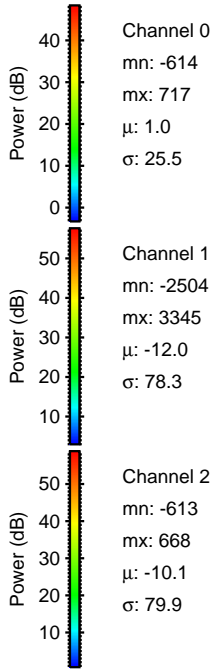
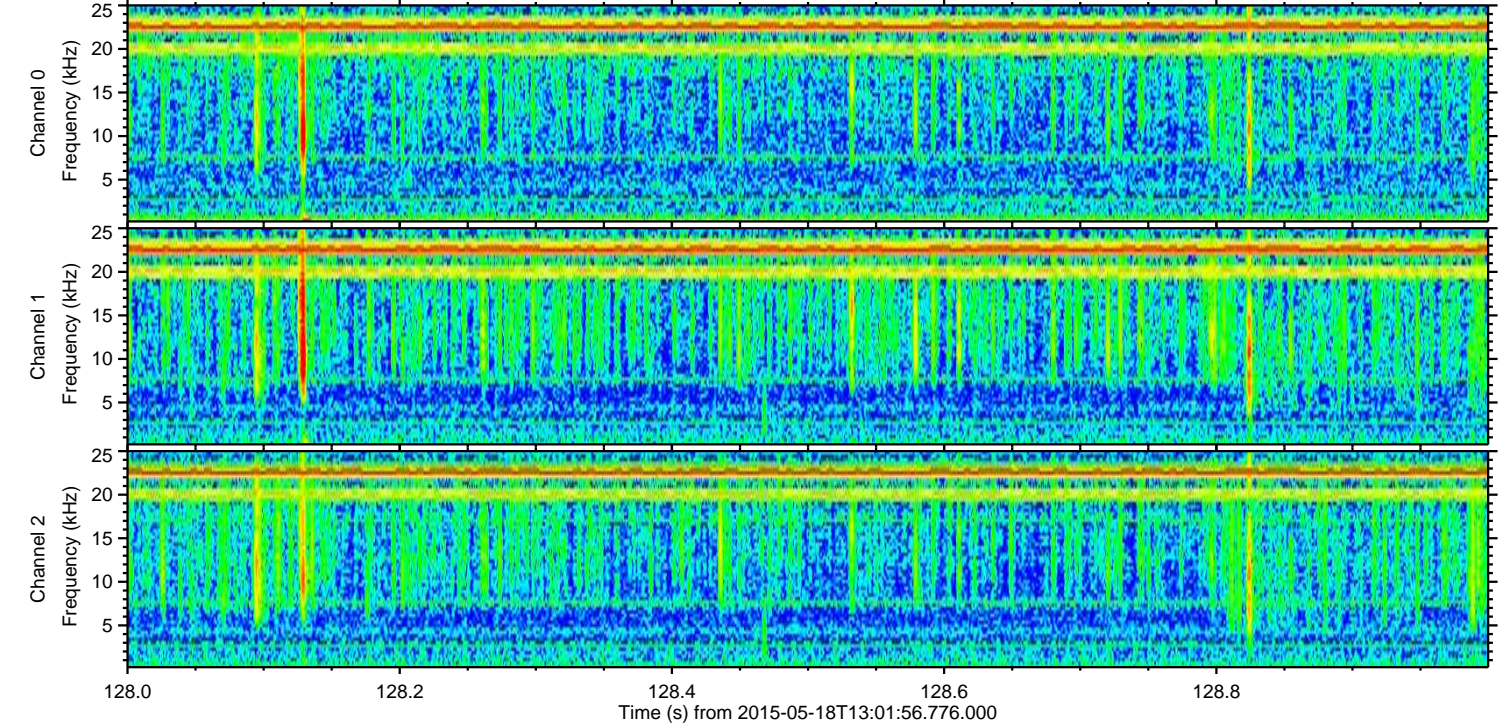
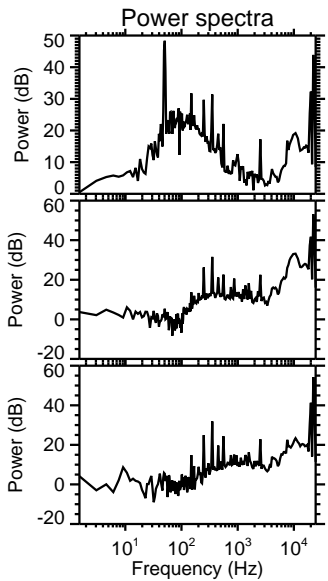
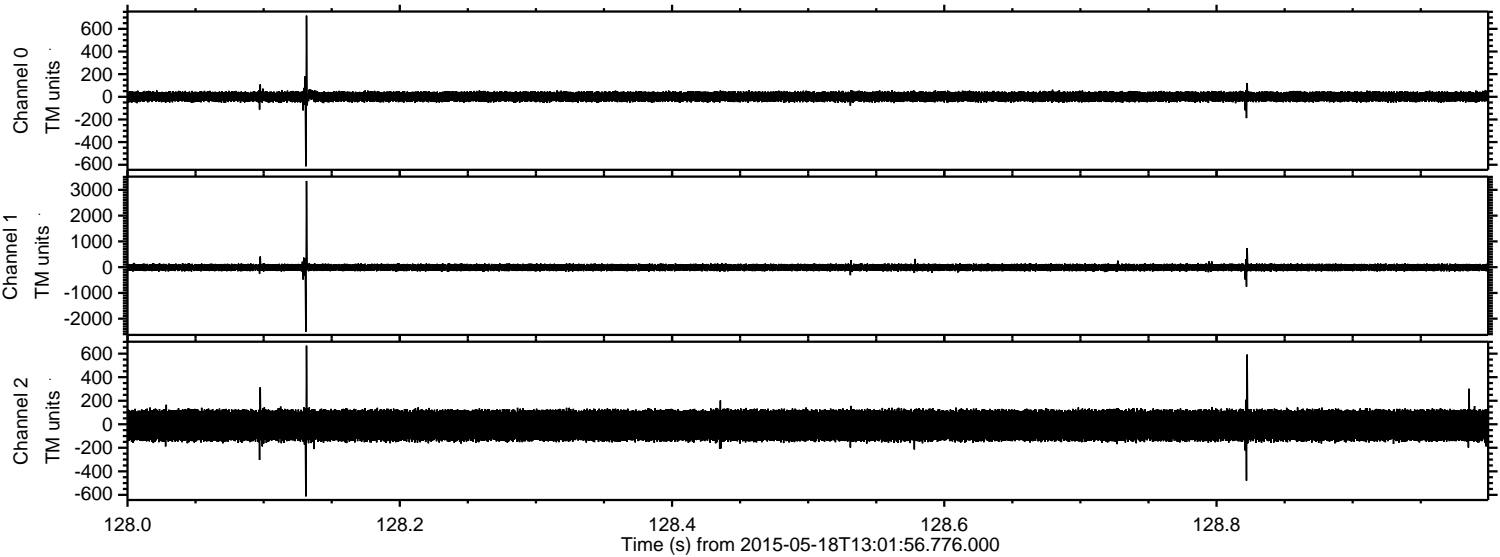
ELMAVAN 3D WAVEFORMS (Measured data sampled at 50 kHz) 49786 packets of 144 samples from 2015-05-18T13:01:56.776.000. Part 141/144

Processed Mon May 18 15:08:40 2015 by ELM ver.2012-10-06 from 001__elm20150518_130155__dat00.bin

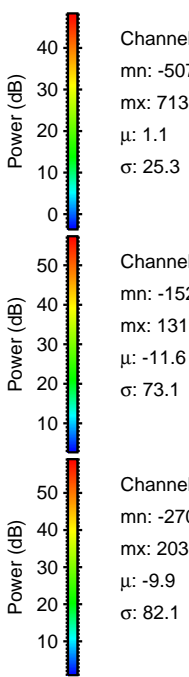
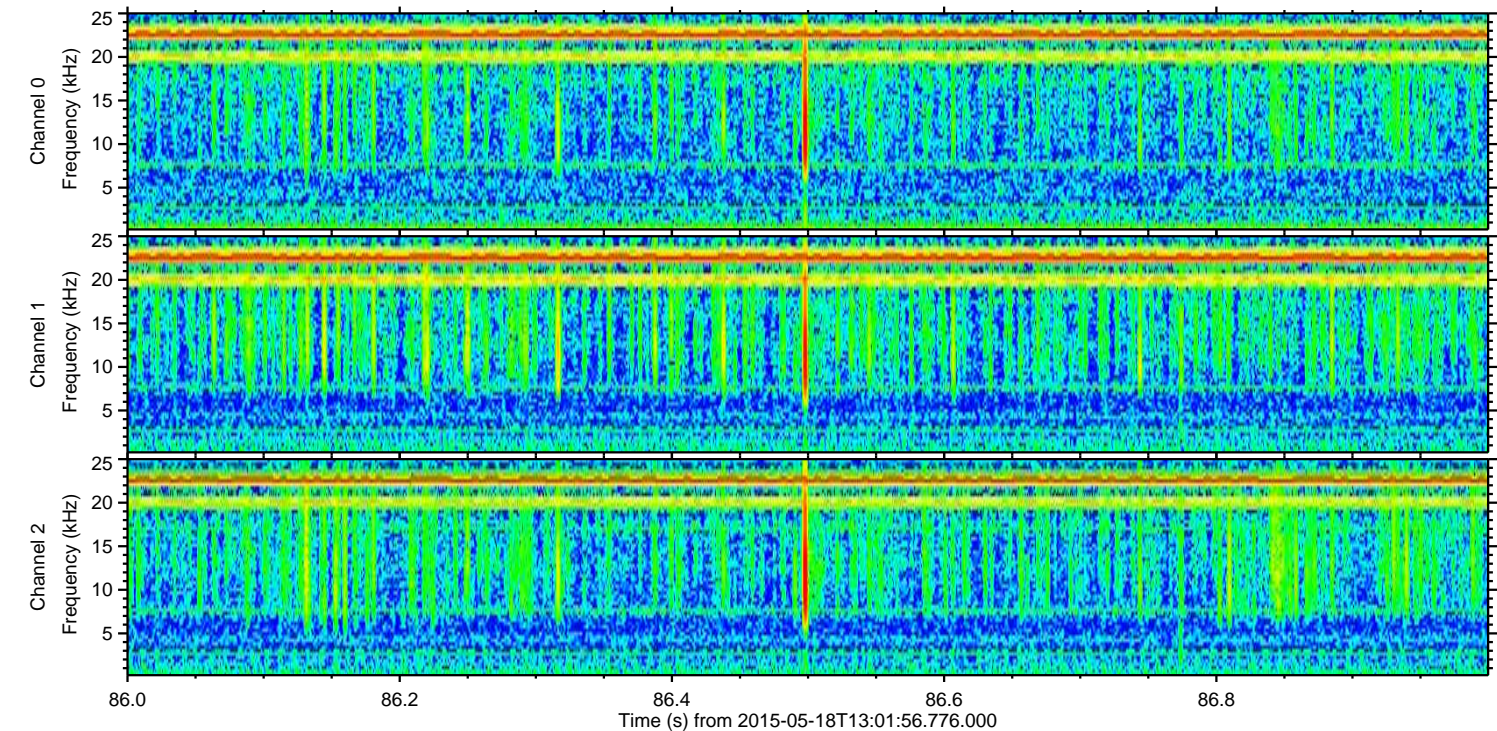
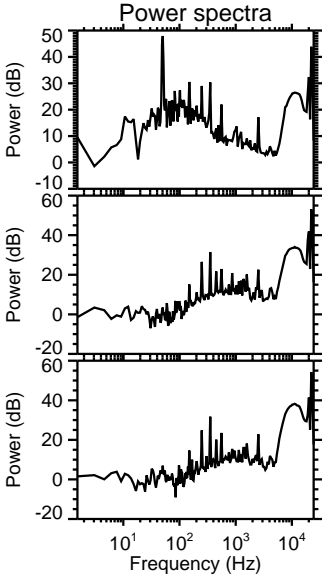
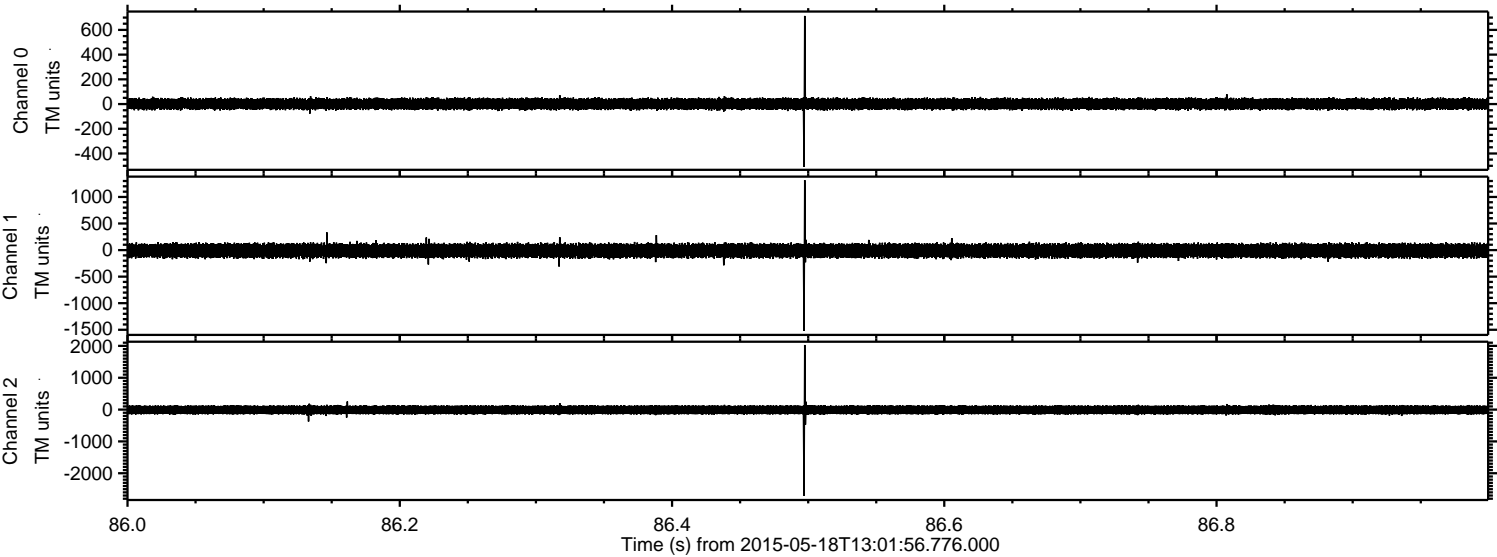


ELMAVAN 3D WAVEFORMS (Measured data sampled at 50 kHz) 49786 packets of 144 samples from 2015-05-18T13:01:56.776.000. Part 129/144

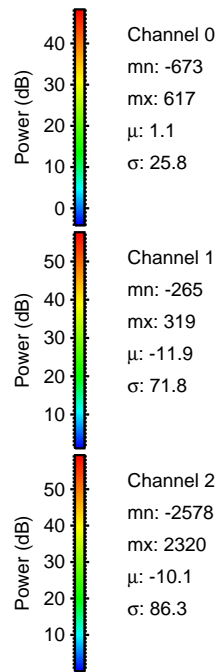
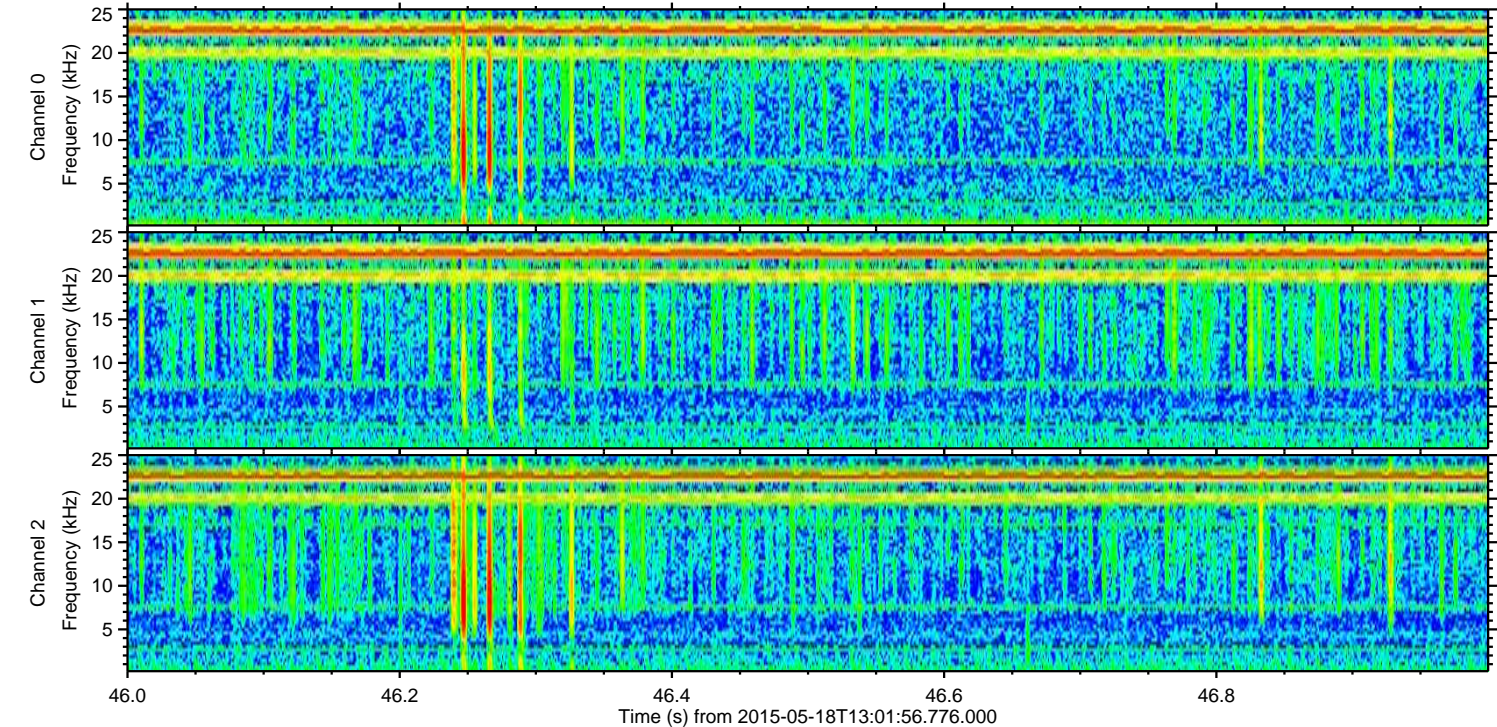
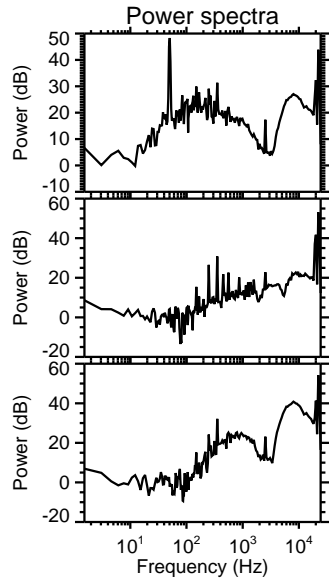
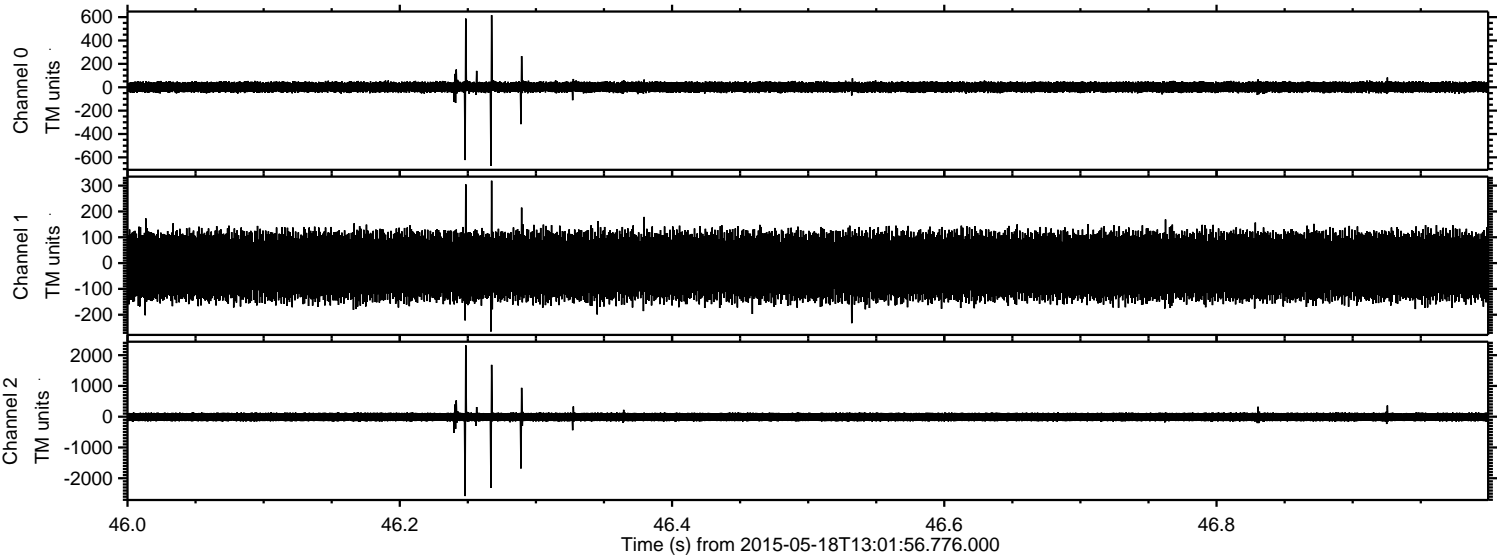
Processed Mon May 18 15:08:41 2015 by ELM ver.2012-10-06 from 001__elm20150518_130155__dat00.bin



Processed Mon May 18 15:08:42 2015 by ELM ver.2012-10-06 from 001__elm20150518_130155__dat00.bin

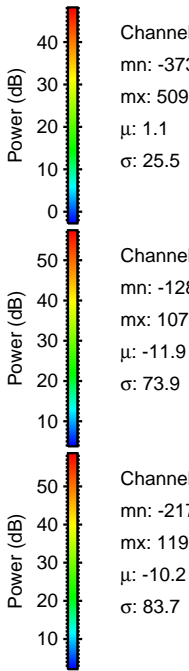
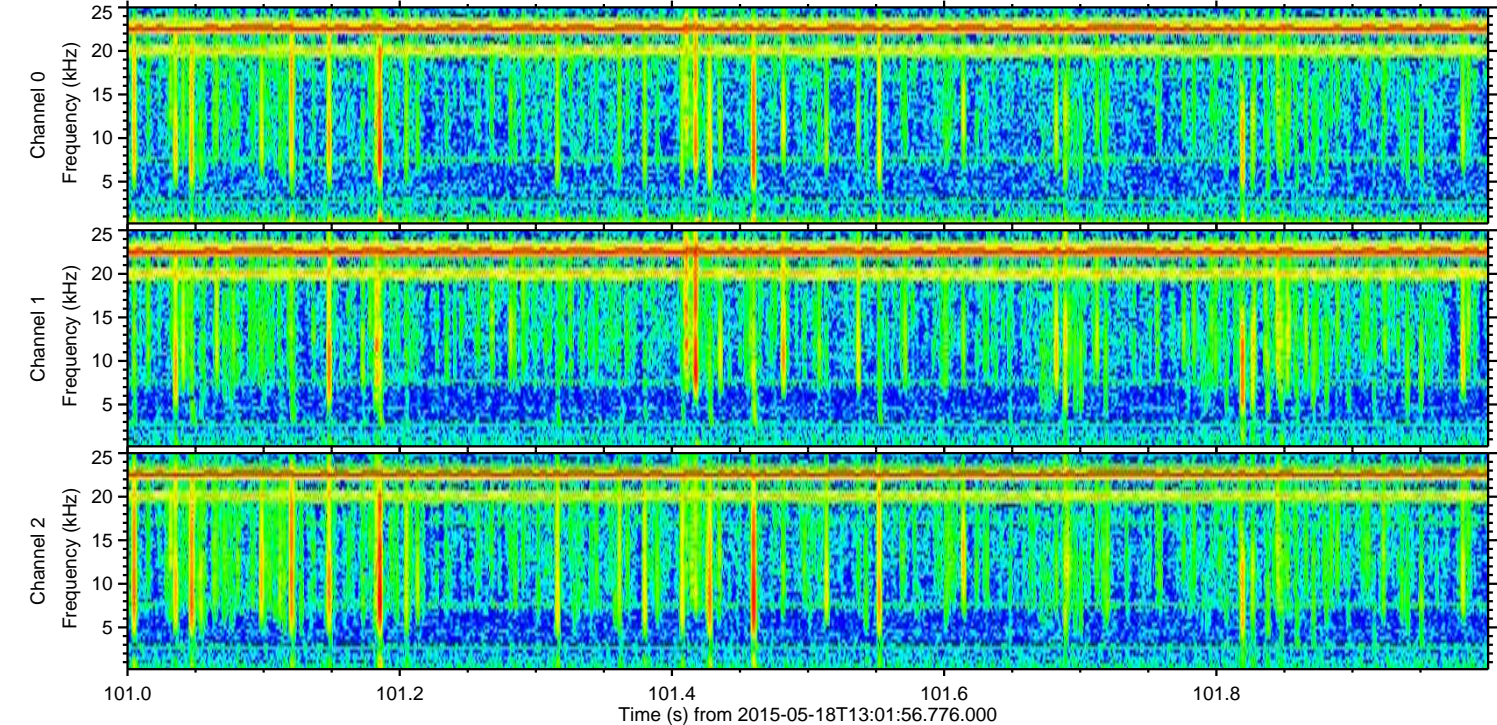
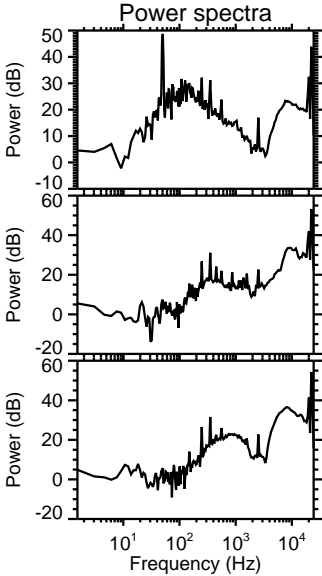
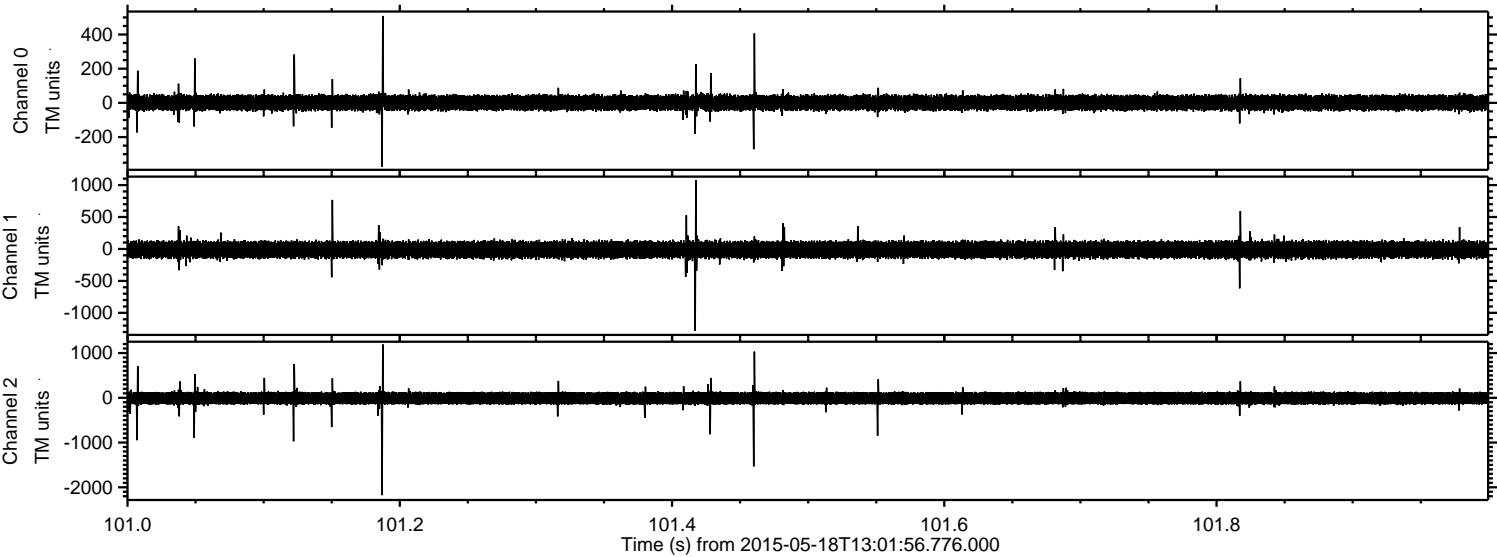


Processed Mon May 18 15:08:43 2015 by ELM ver.2012-10-06 from 001__elm20150518_130155__dat00.bin



ELMAVAN 3D WAVEFORMS (Measured data sampled at 50 kHz) 49786 packets of 144 samples from 2015-05-18T13:01:56.776.000. Part 102/144

Processed Mon May 18 15:08:44 2015 by ELM ver.2012-10-06 from 001__elm20150518_130155__dat00.bin

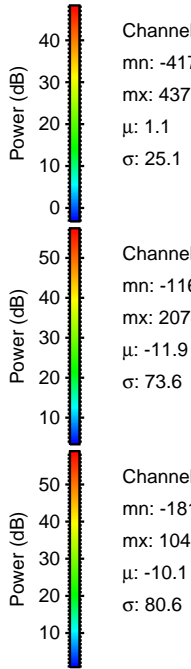
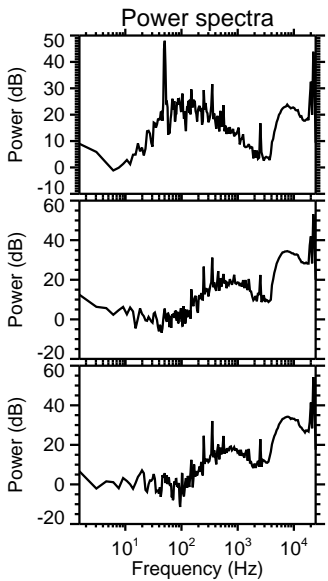
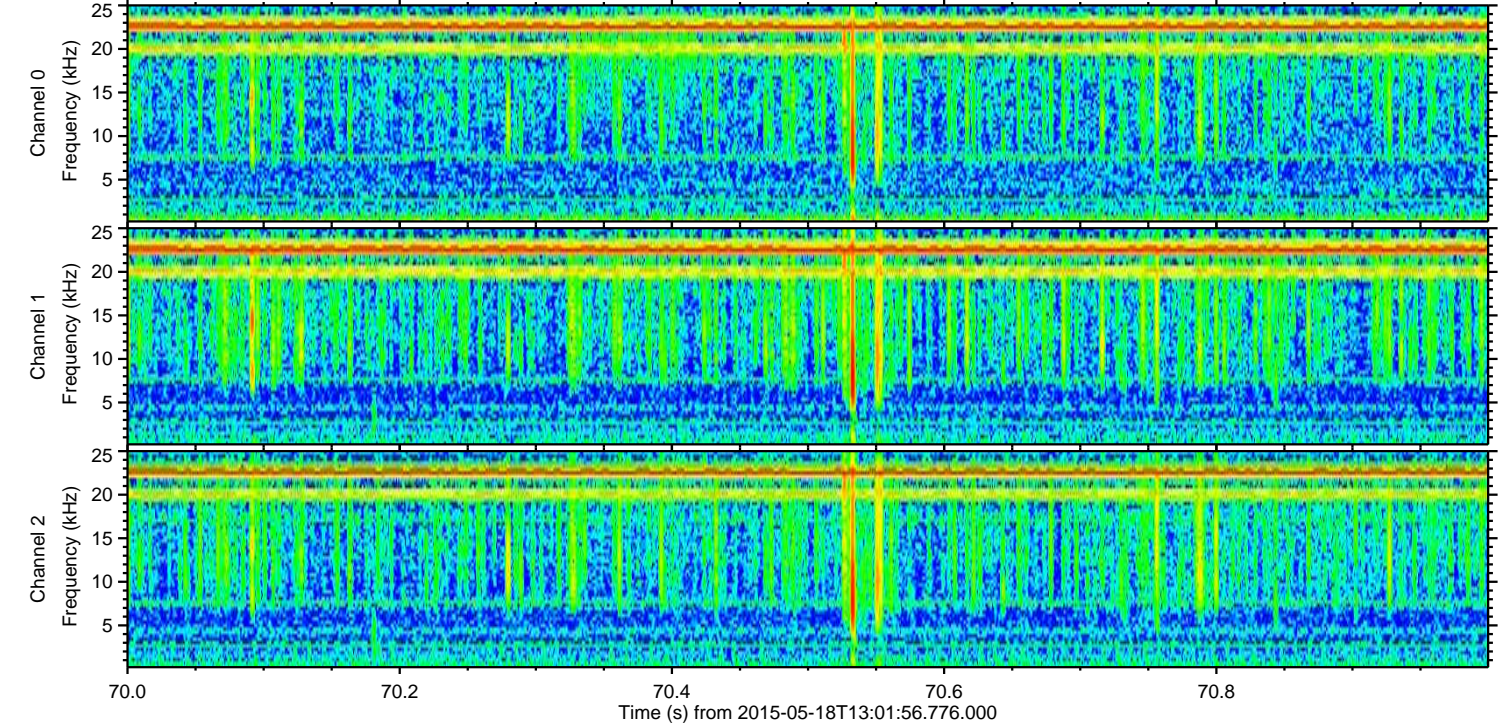
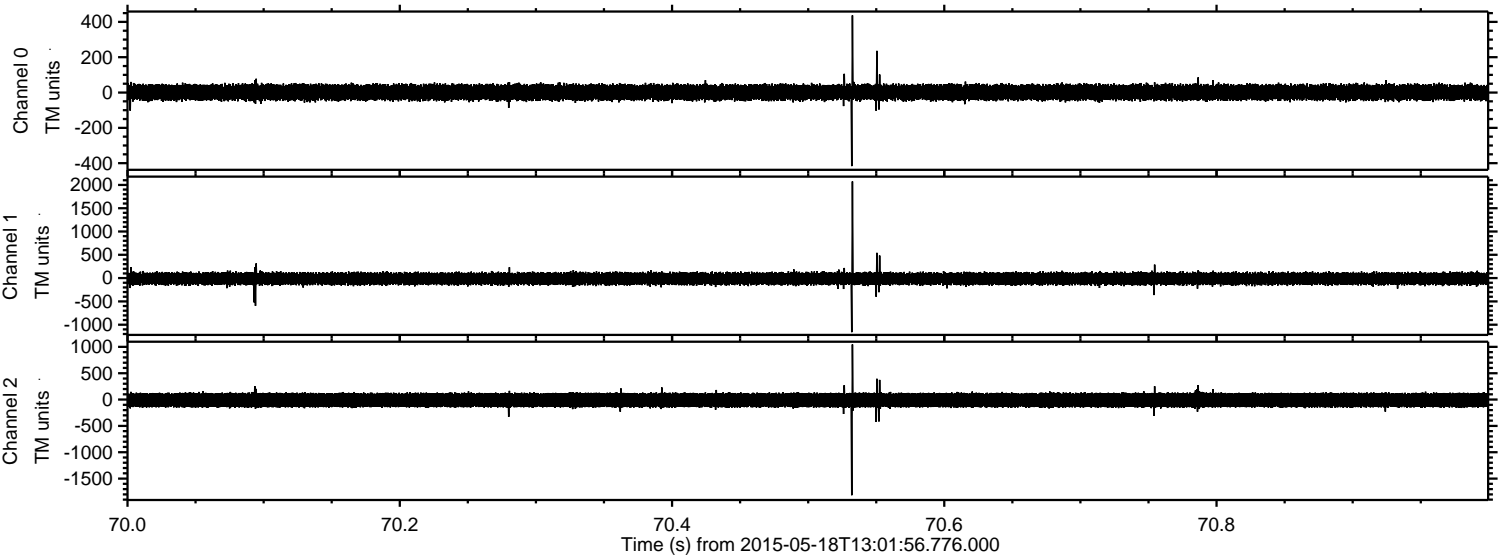


Channel 0
mn: -373
mx: 509
 μ : 1.1
 σ : 25.5

Channel 1
mn: -1281
mx: 1078
 μ : -11.9
 σ : 73.9

Channel 2
mn: -2175
mx: 1193
 μ : -10.2
 σ : 83.7

Processed Mon May 18 15:08:45 2015 by ELM ver.2012-10-06 from 001__elm20150518_130155__dat00.bin



Processed Mon May 18 15:08:46 2015 by ELM ver.2012-10-06 from 001__elm20150518_130155__dat00.bin

