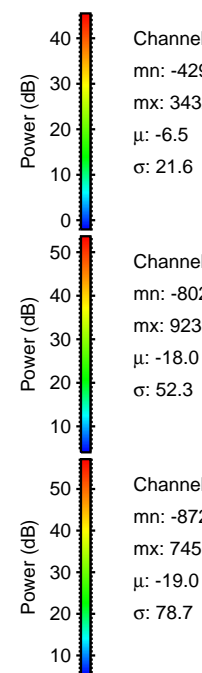
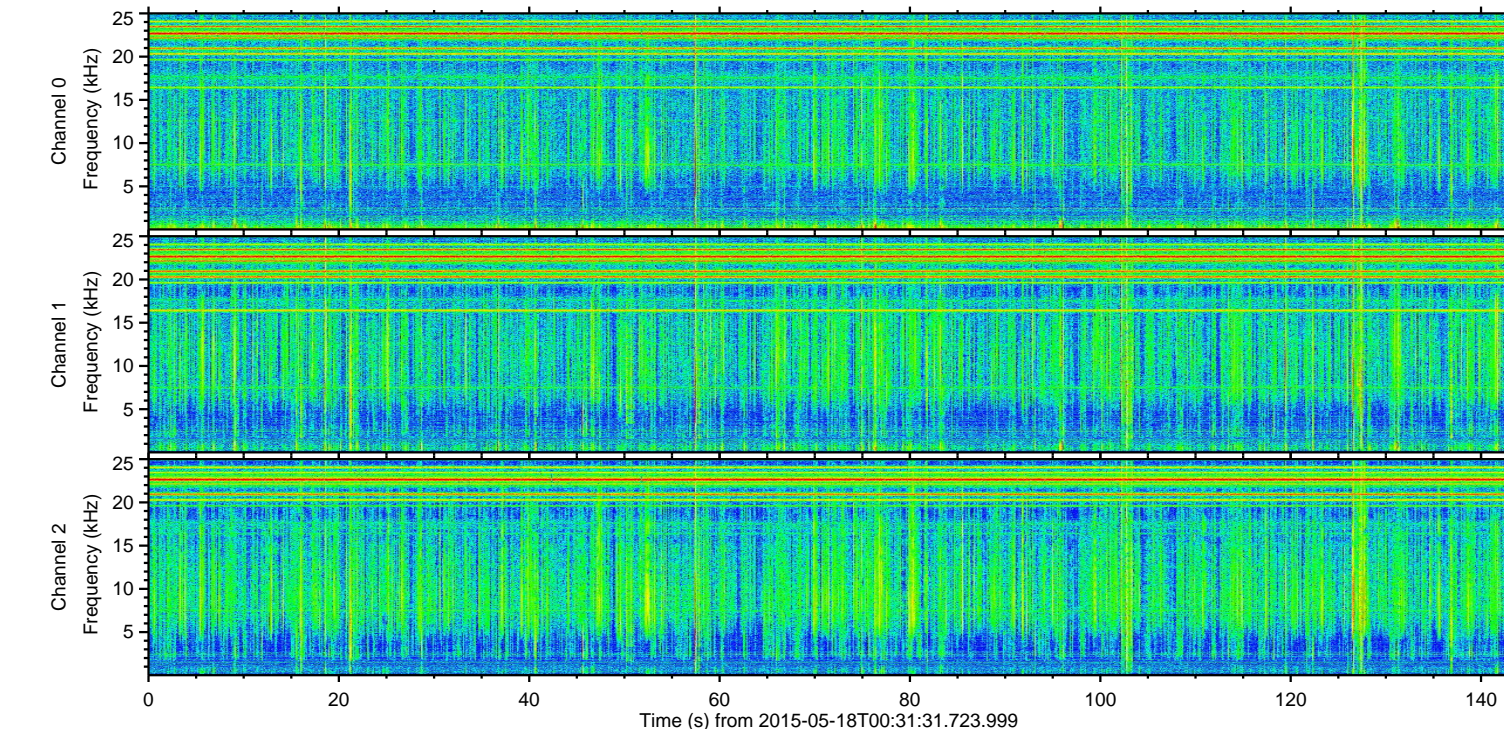
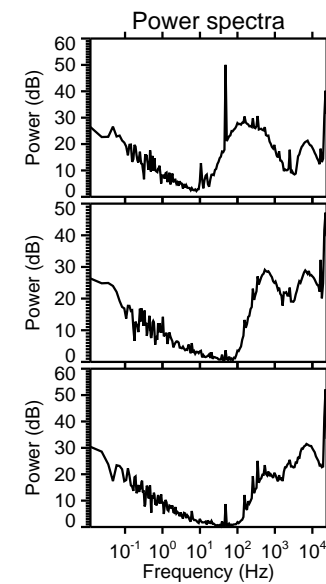
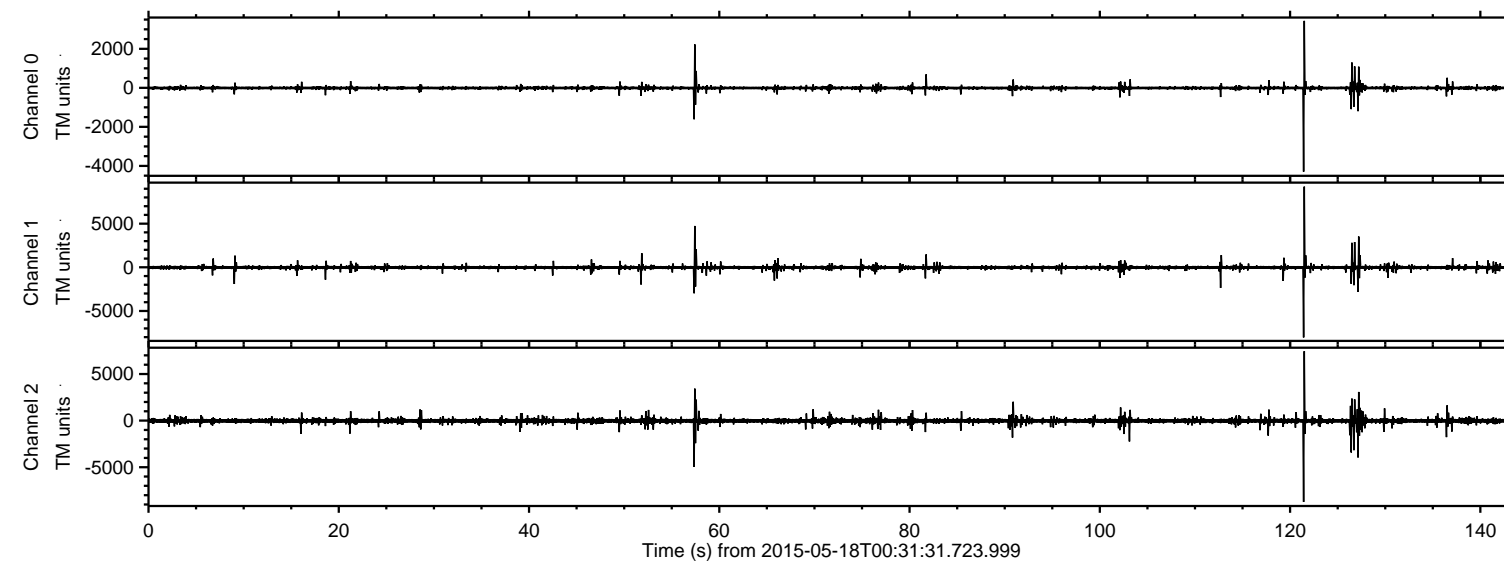


ELMAVAN 3D WAVEFORMS (Measured data sampled at 50 kHz) 49661 packets of 144 samples from 2015-05-18T00:31:31.723.999.

Processed Mon May 18 02:38:17 2015 by ELM ver.2012-10-06 from 001__elm20150518_003130__dat00.bin



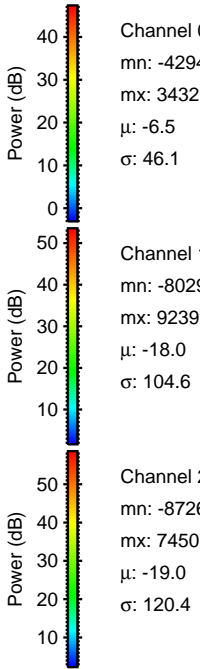
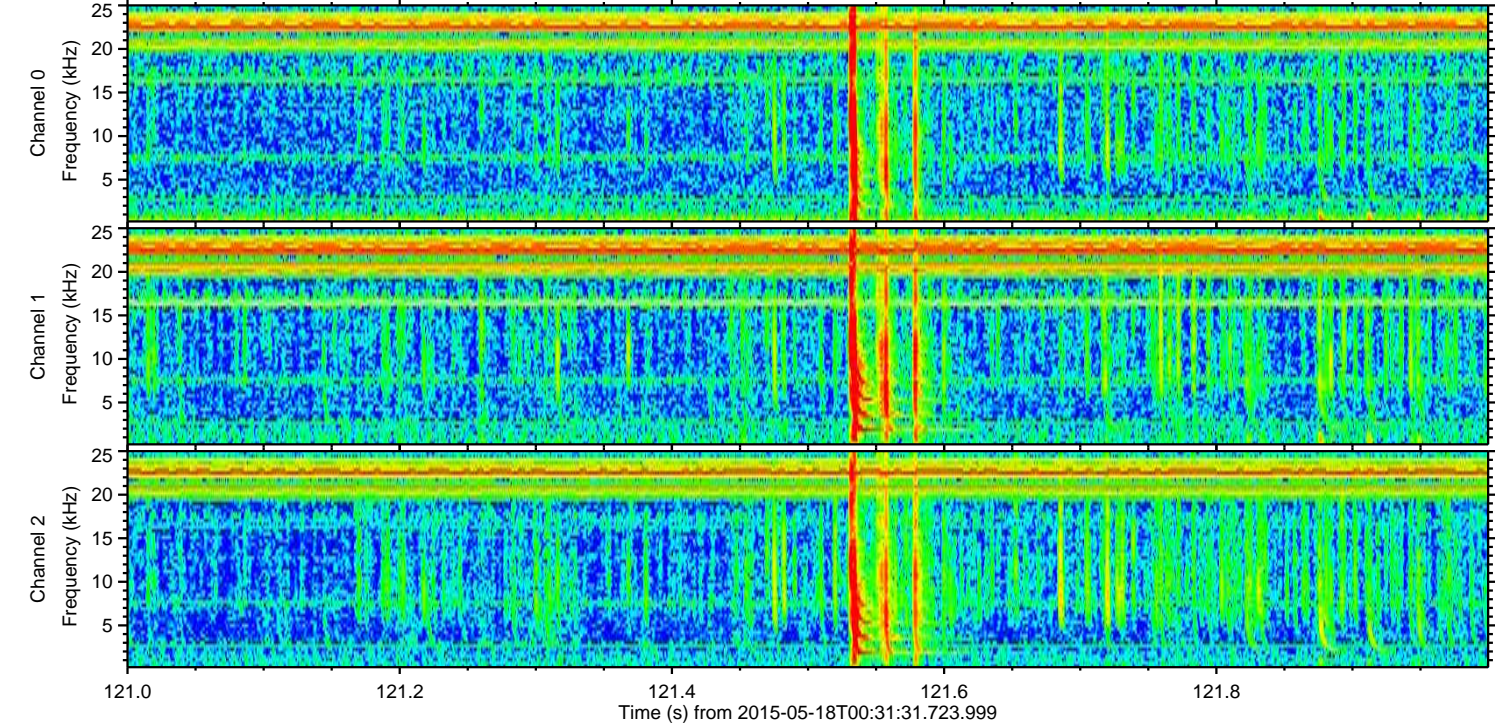
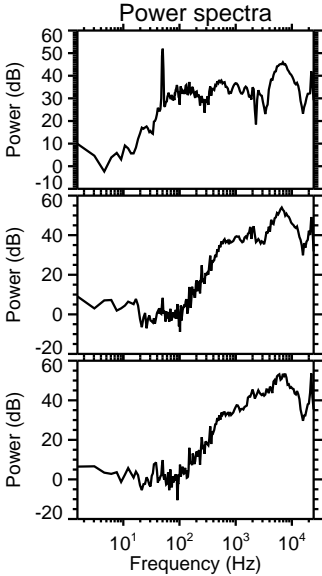
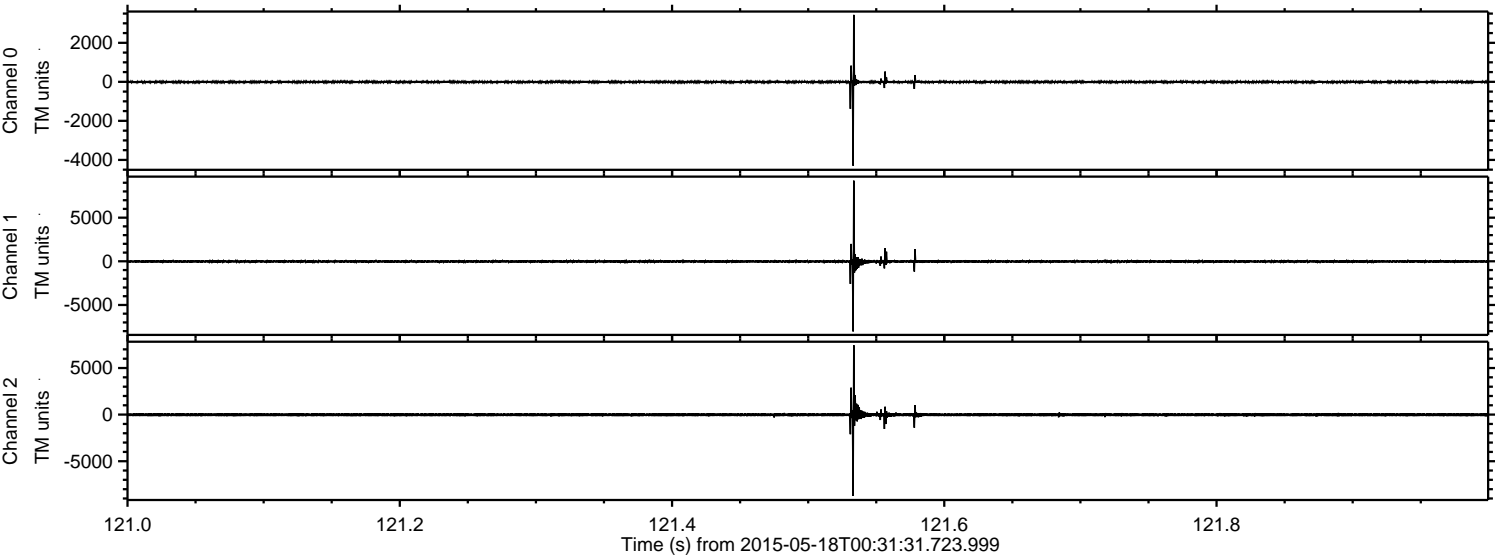
Channel 0
mn: -4294
mx: 3432
 μ : -6.5
 σ : 21.6

Channel 1
mn: -8029
mx: 9239
 μ : -18.0
 σ : 52.3

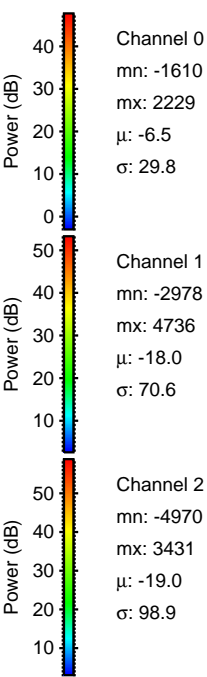
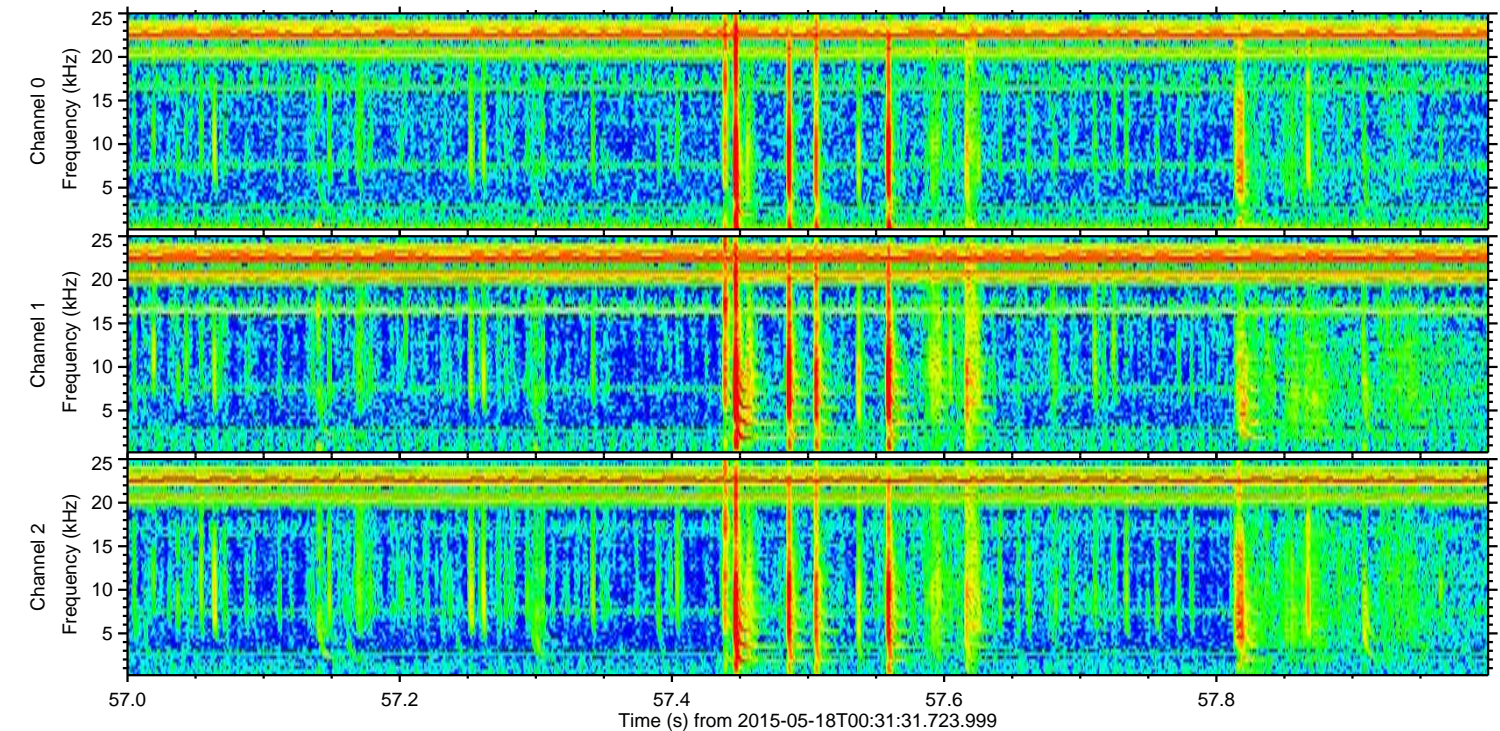
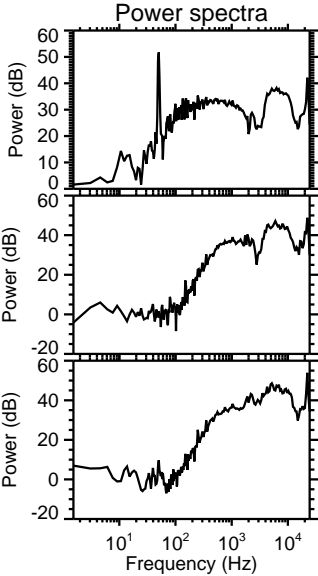
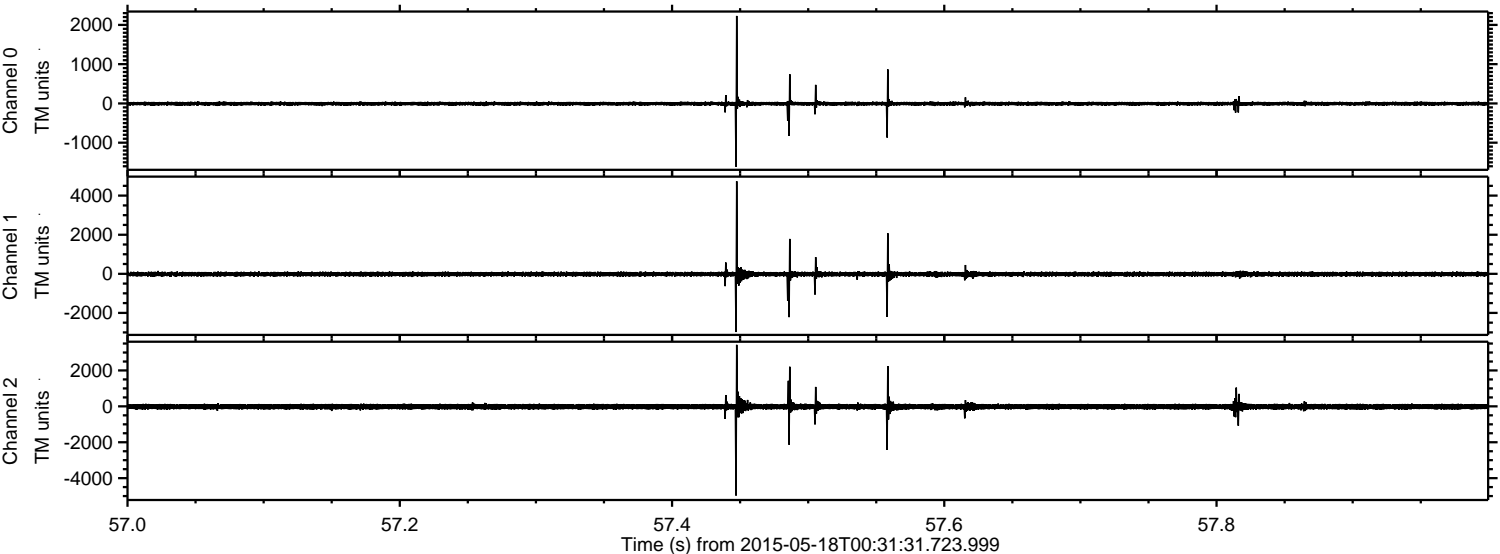
Channel 2
mn: -8726
mx: 7450
 μ : -19.0
 σ : 78.7

ELMAVAN 3D WAVEFORMS (Measured data sampled at 50 kHz) 49661 packets of 144 samples from 2015-05-18T00:31:31.723.999. Part 122/144

Processed Mon May 18 02:38:29 2015 by ELM ver.2012-10-06 from 001__elm20150518_003130__dat00.bin



Processed Mon May 18 02:38:29 2015 by ELM ver.2012-10-06 from 001__elm20150518_003130__dat00.bin



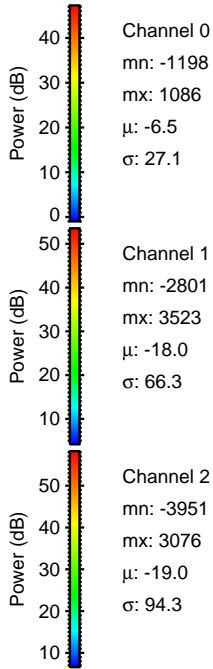
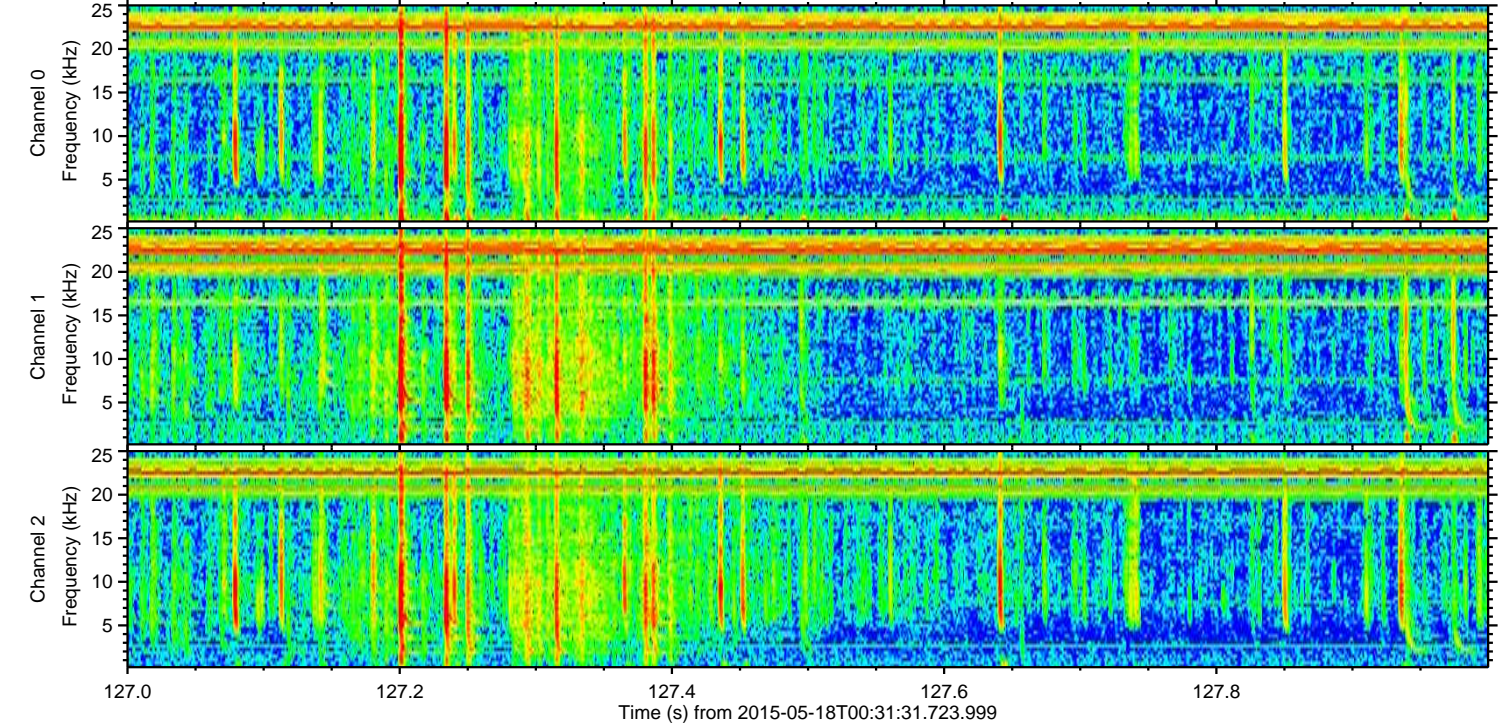
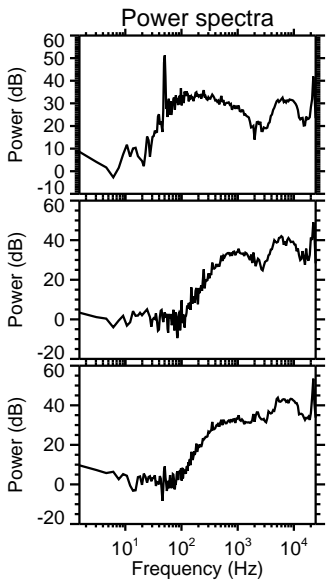
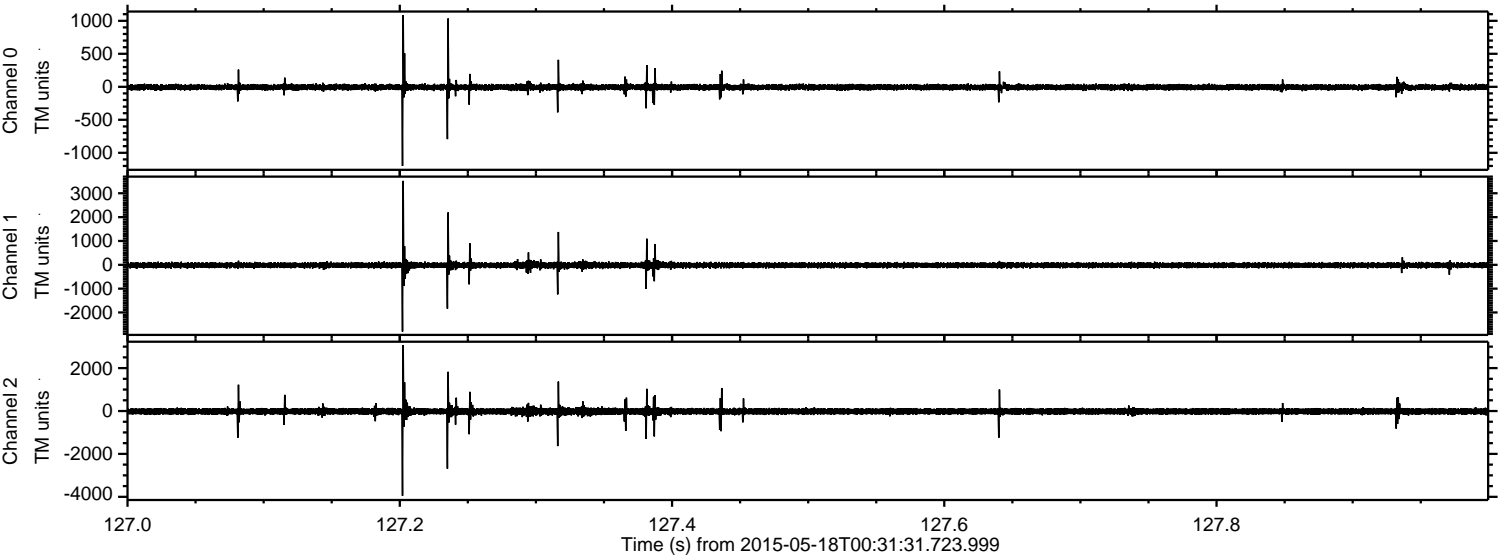
Channel 0
mn: -1610
mx: 2229
 μ : -6.5
 σ : 29.8

Channel 1
mn: -2978
mx: 4736
 μ : -18.0
 σ : 70.6

Channel 2
mn: -4970
mx: 3431
 μ : -19.0
 σ : 98.9

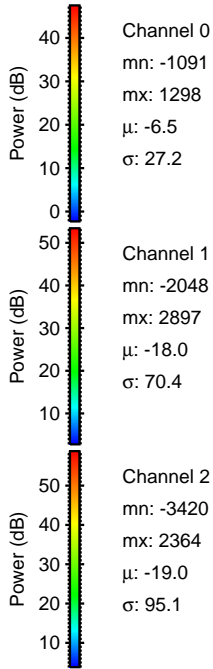
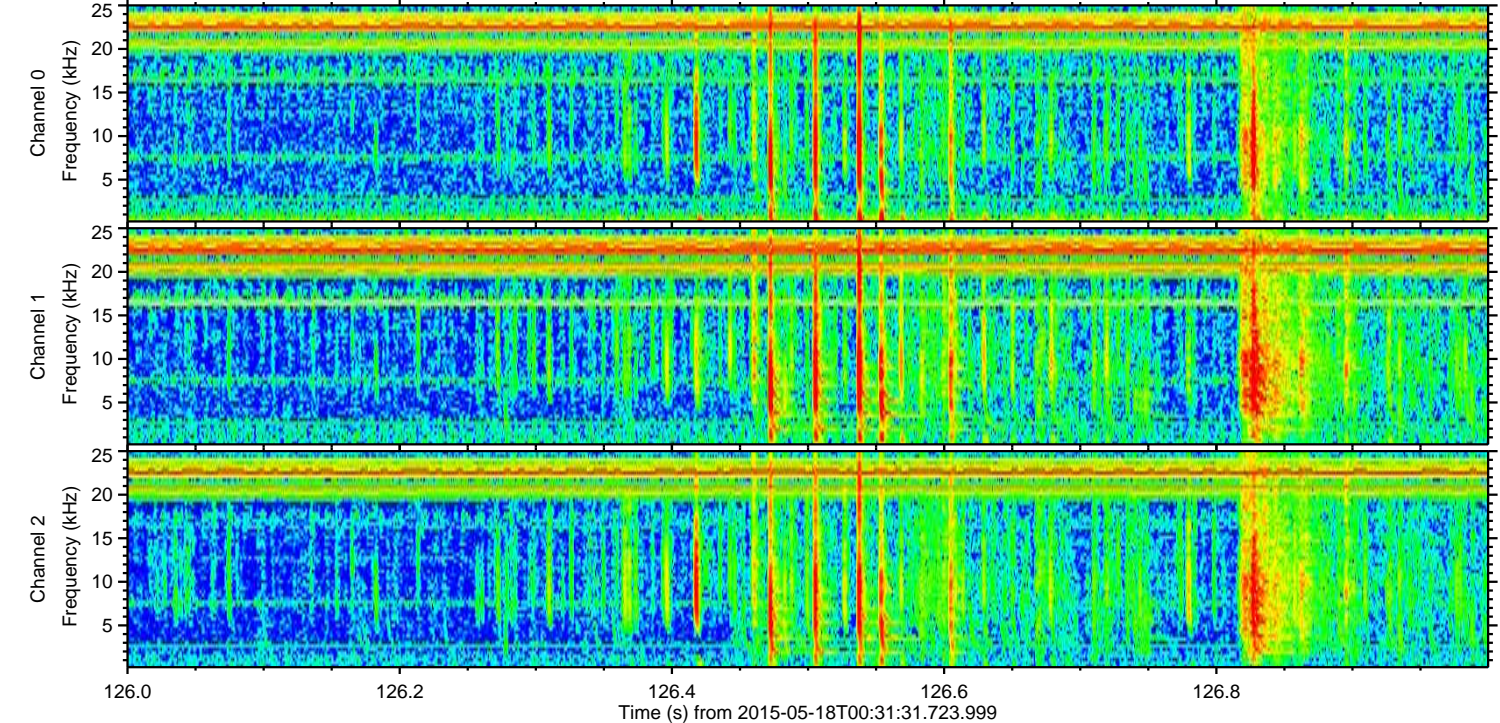
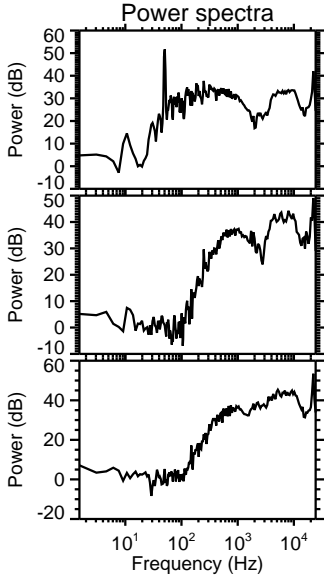
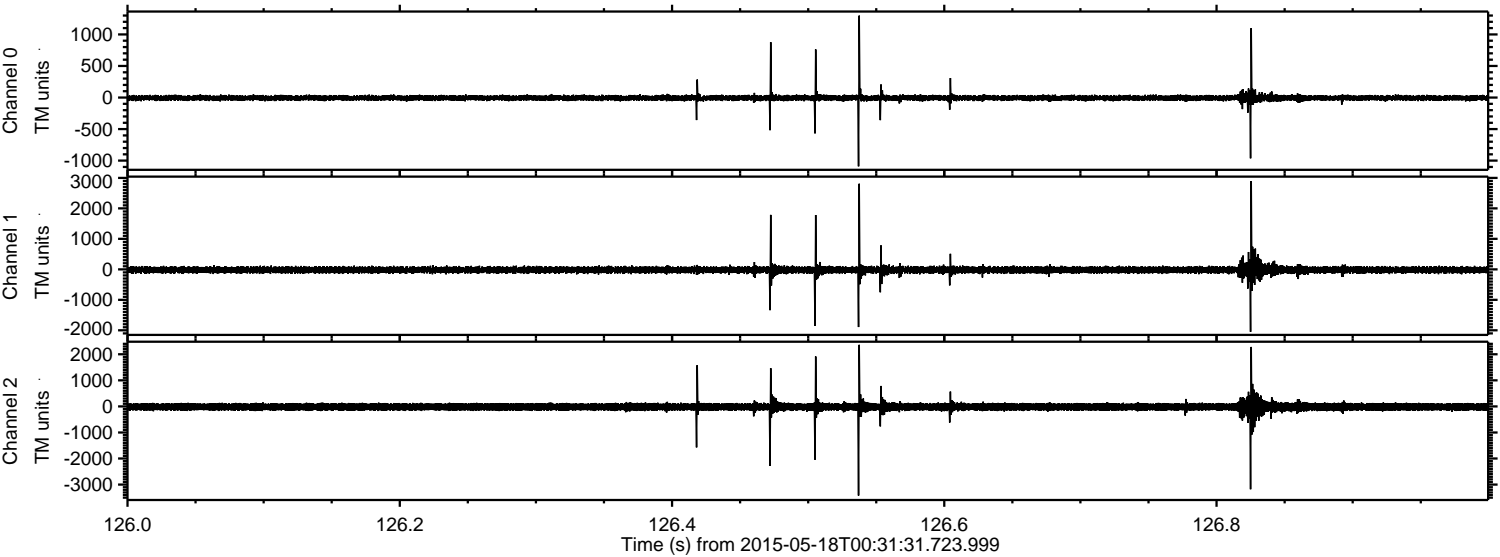
ELMAVAN 3D WAVEFORMS (Measured data sampled at 50 kHz) 49661 packets of 144 samples from 2015-05-18T00:31:31.723.999. Part 128/144

Processed Mon May 18 02:38:30 2015 by ELM ver.2012-10-06 from 001__elm20150518_003130__dat00.bin



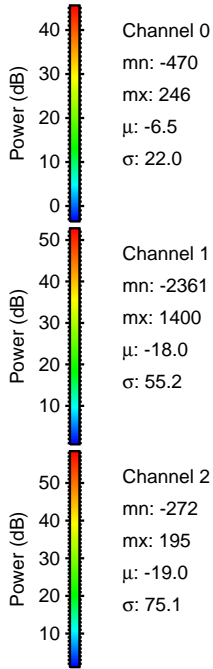
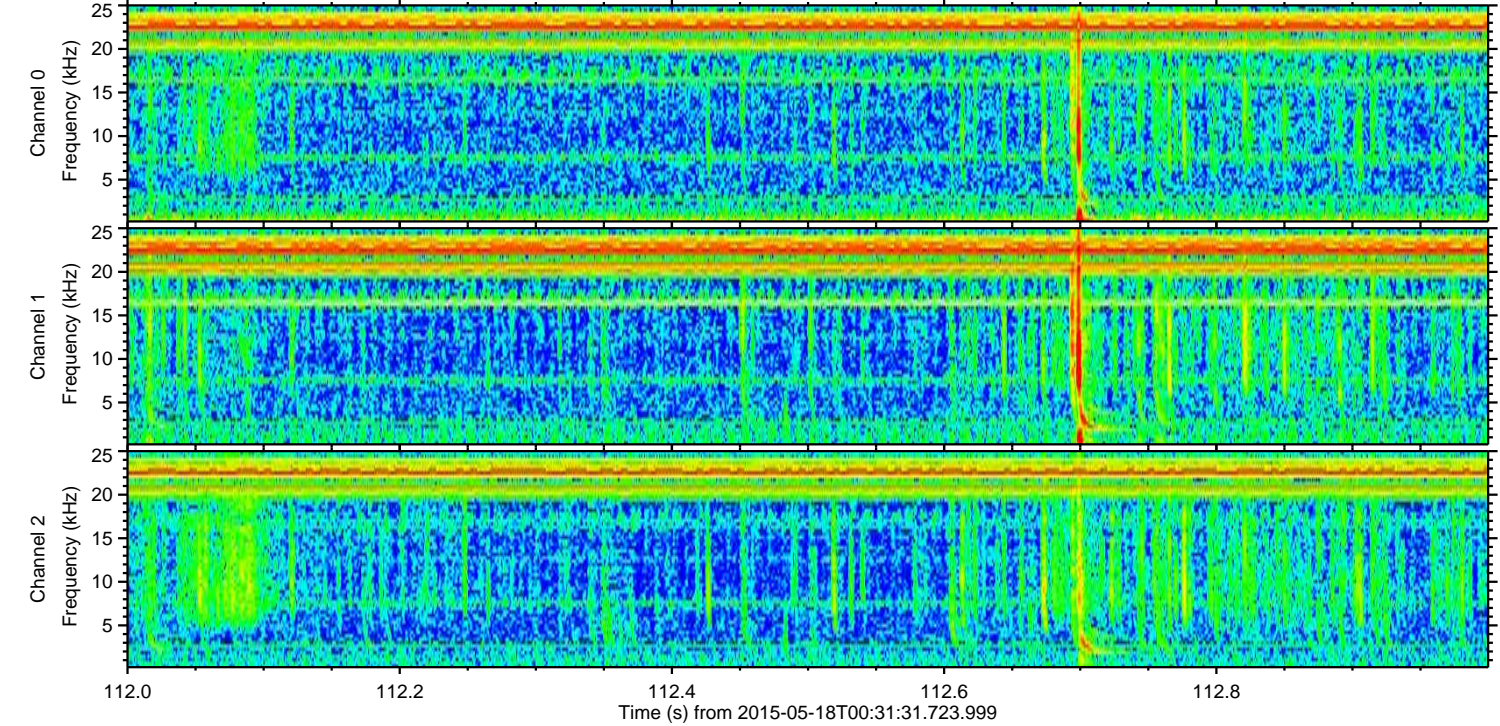
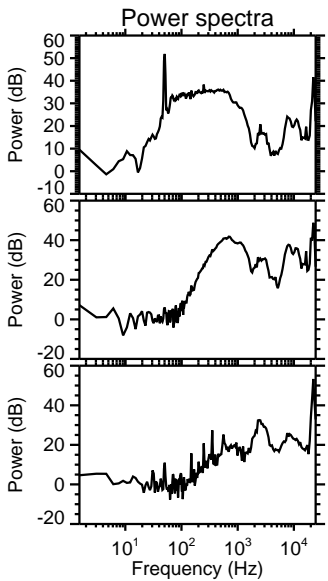
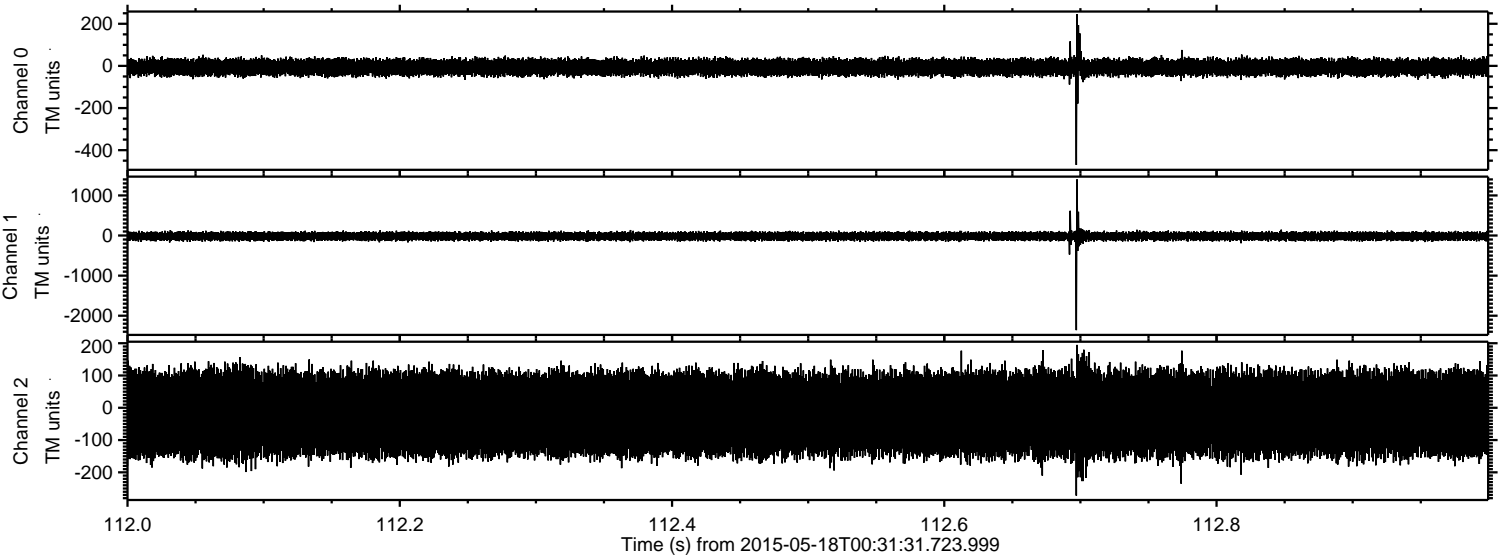
ELMAVAN 3D WAVEFORMS (Measured data sampled at 50 kHz) 49661 packets of 144 samples from 2015-05-18T00:31:31.723.999. Part 127/144

Processed Mon May 18 02:38:31 2015 by ELM ver.2012-10-06 from 001__elm20150518_003130__dat00.bin

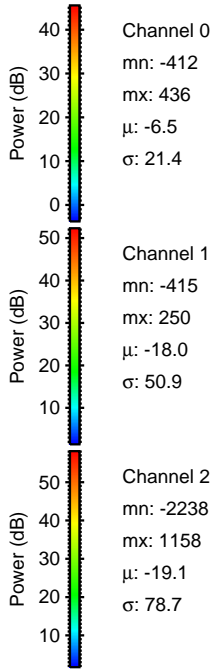
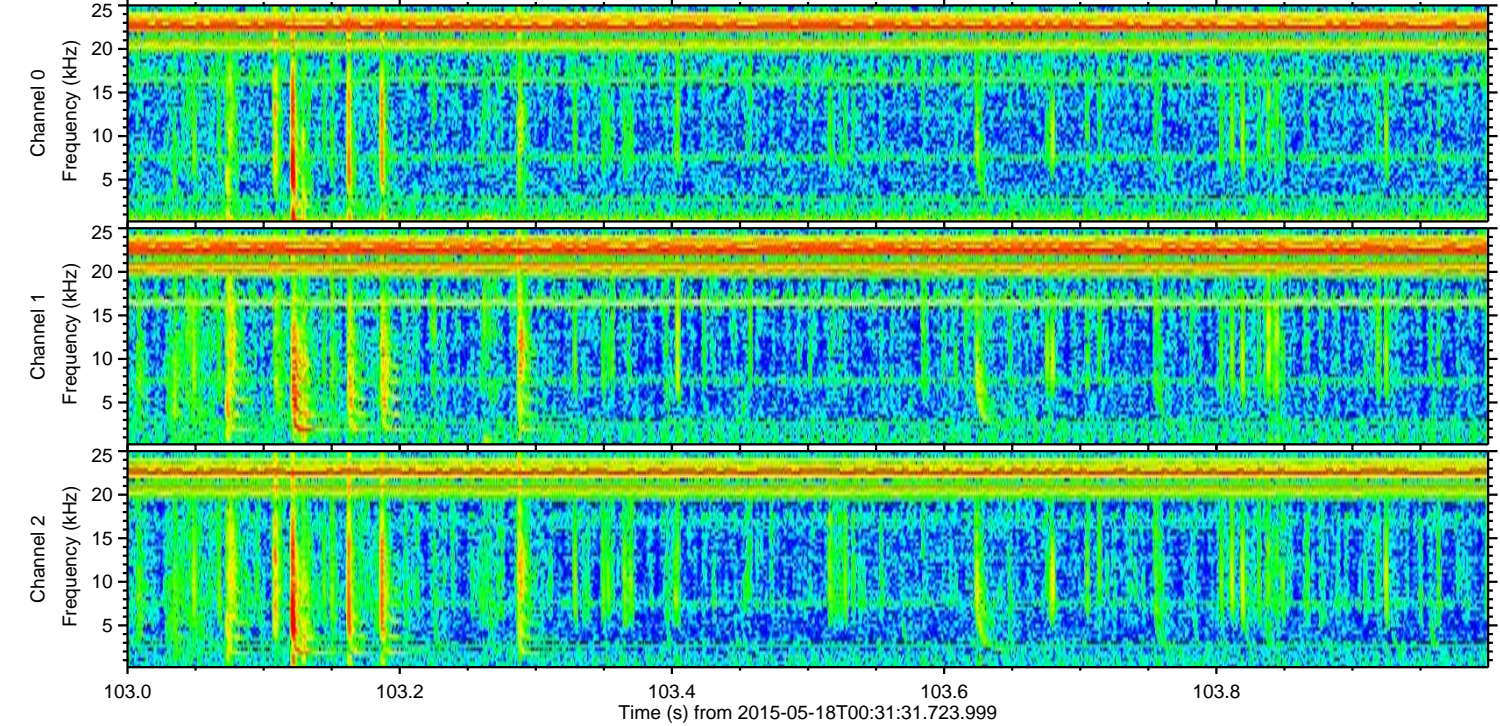
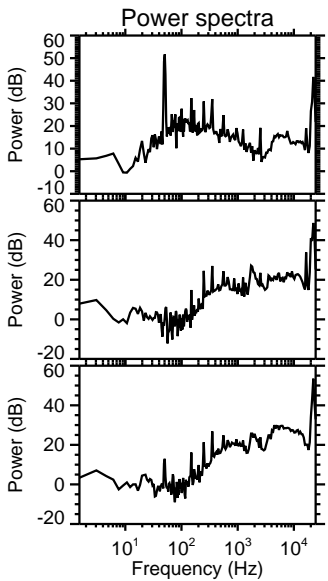
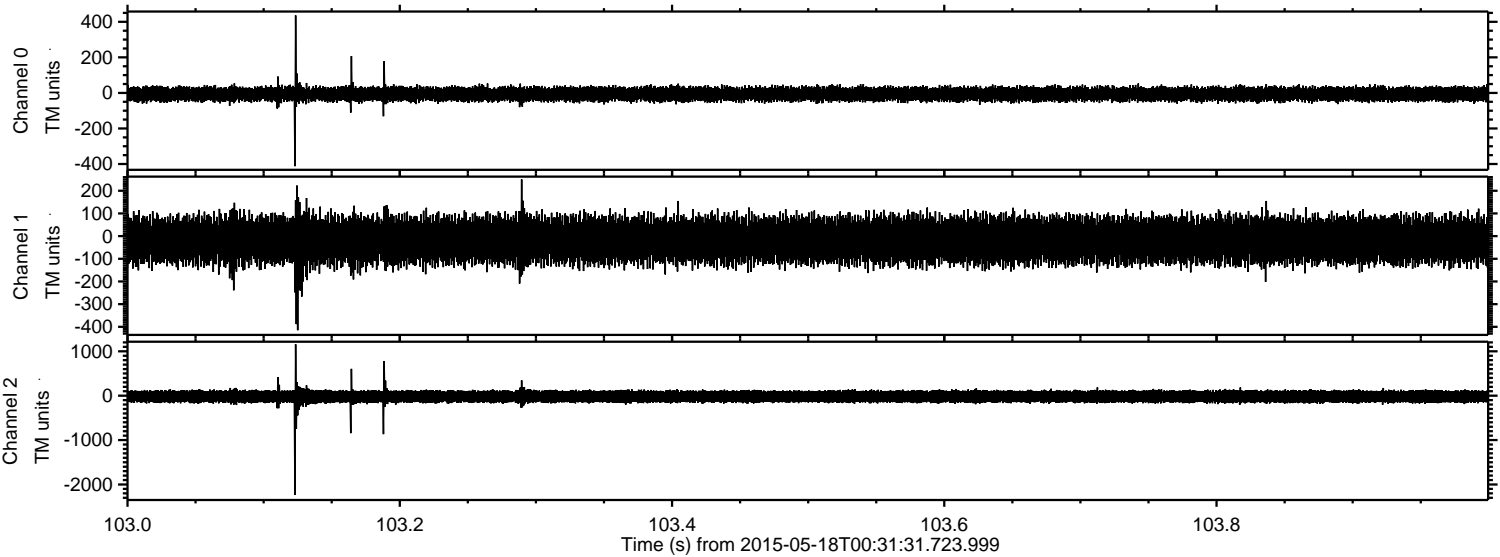


ELMAVAN 3D WAVEFORMS (Measured data sampled at 50 kHz) 49661 packets of 144 samples from 2015-05-18T00:31:31.723.999. Part 113/144

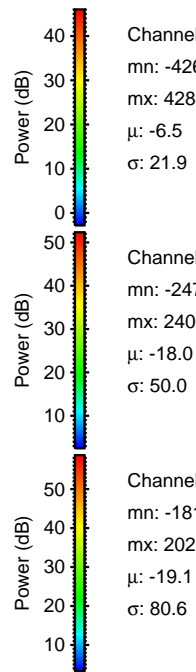
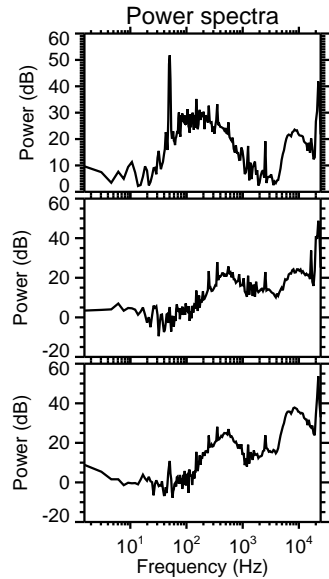
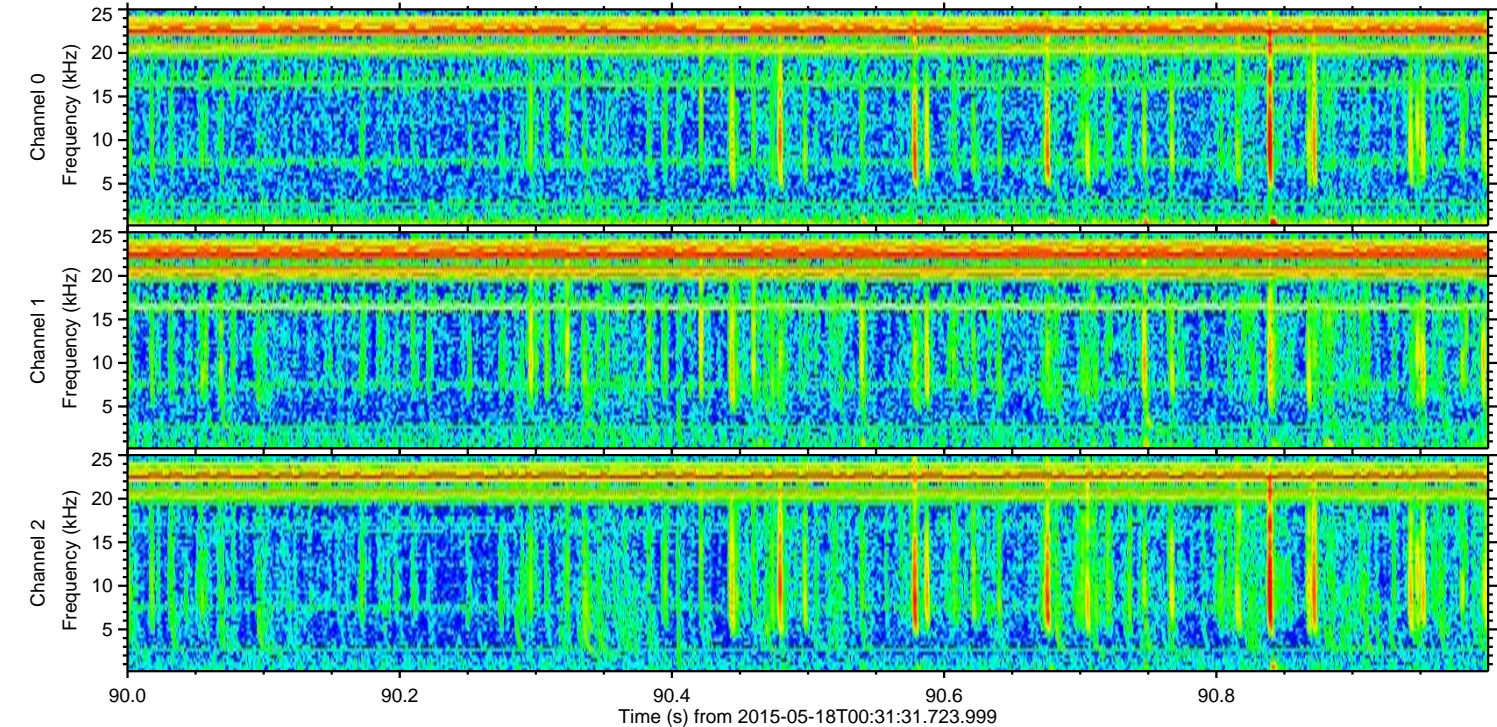
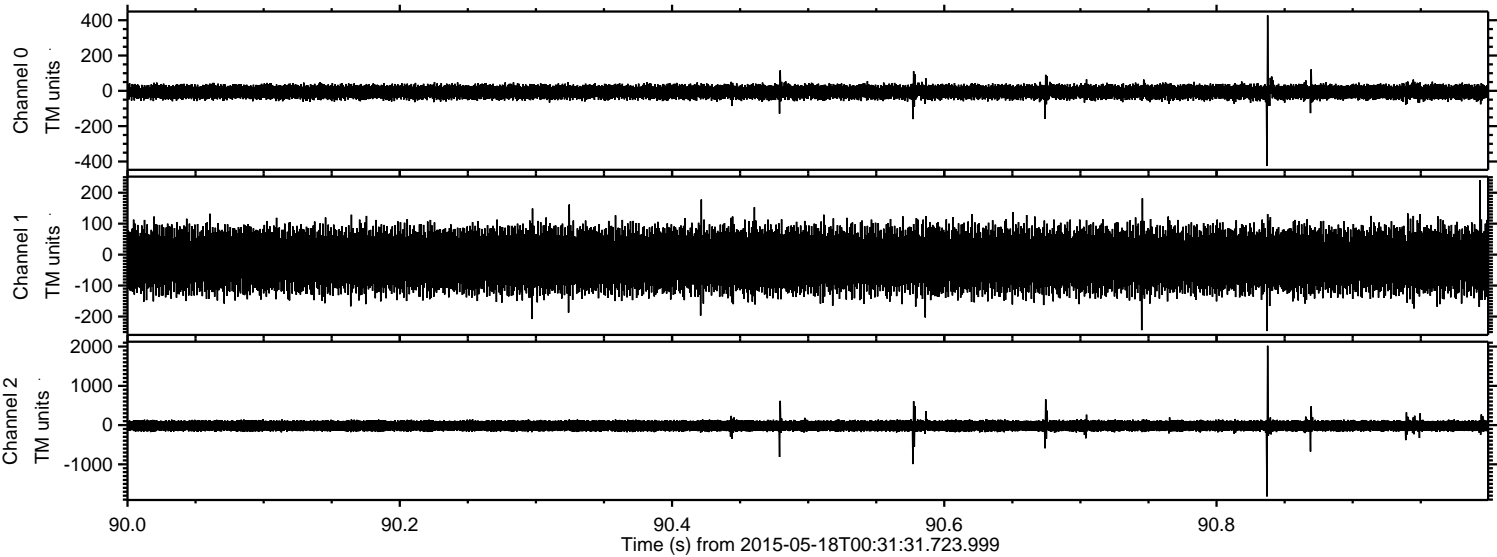
Processed Mon May 18 02:38:32 2015 by ELM ver.2012-10-06 from 001__elm20150518_003130__dat00.bin



Processed Mon May 18 02:38:33 2015 by ELM ver.2012-10-06 from 001__elm20150518_003130__dat00.bin



Processed Mon May 18 02:38:34 2015 by ELM ver.2012-10-06 from 001__elm20150518_003130__dat00.bin



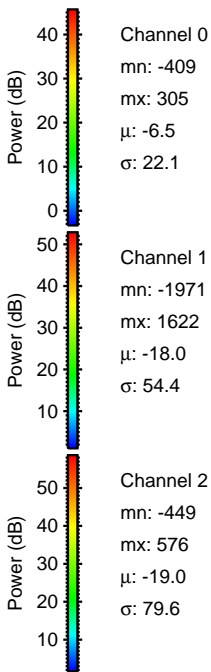
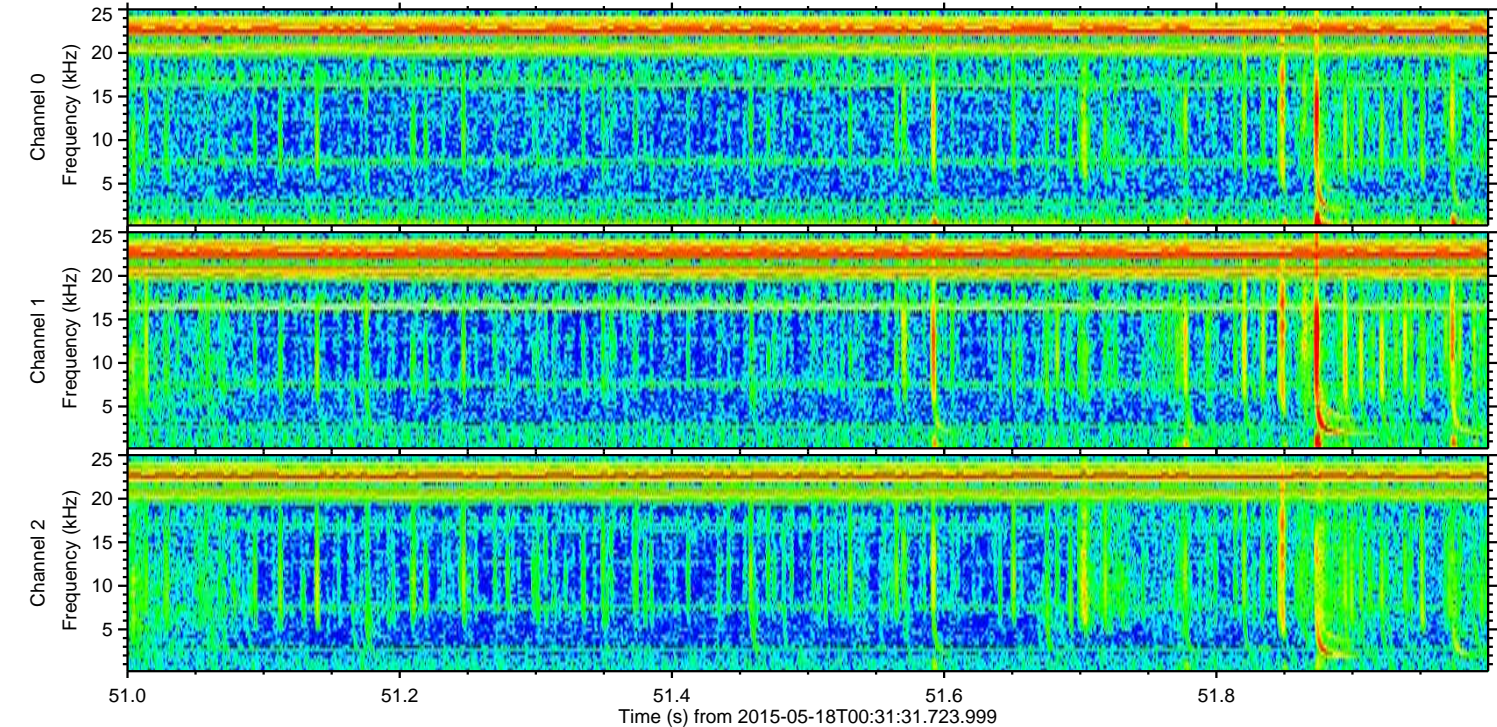
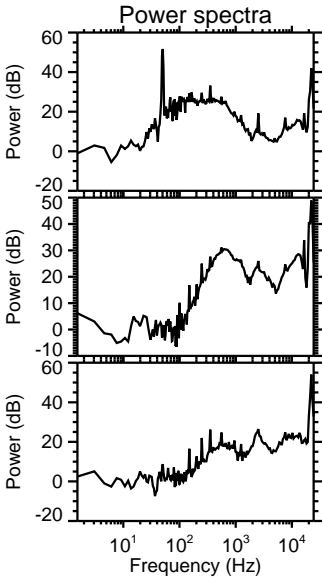
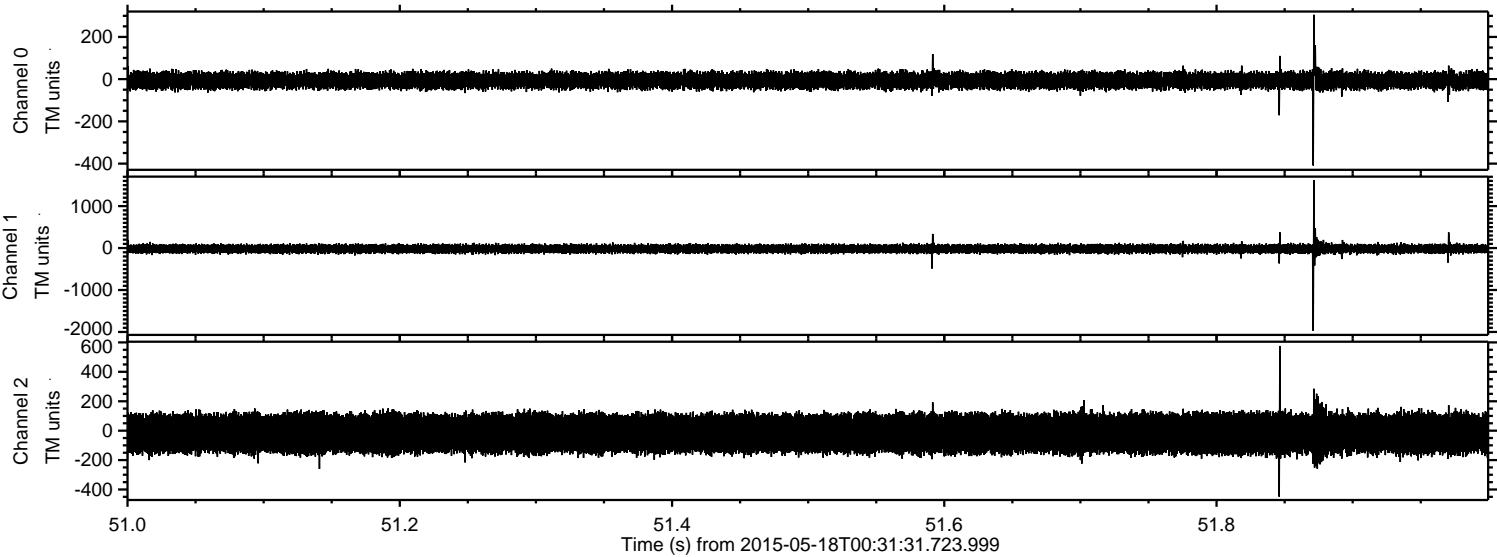
Power spectra

Channel 0
mn: -426
mx: 428
 μ : -6.5
 σ : 21.9

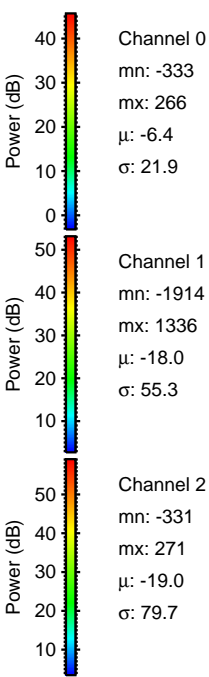
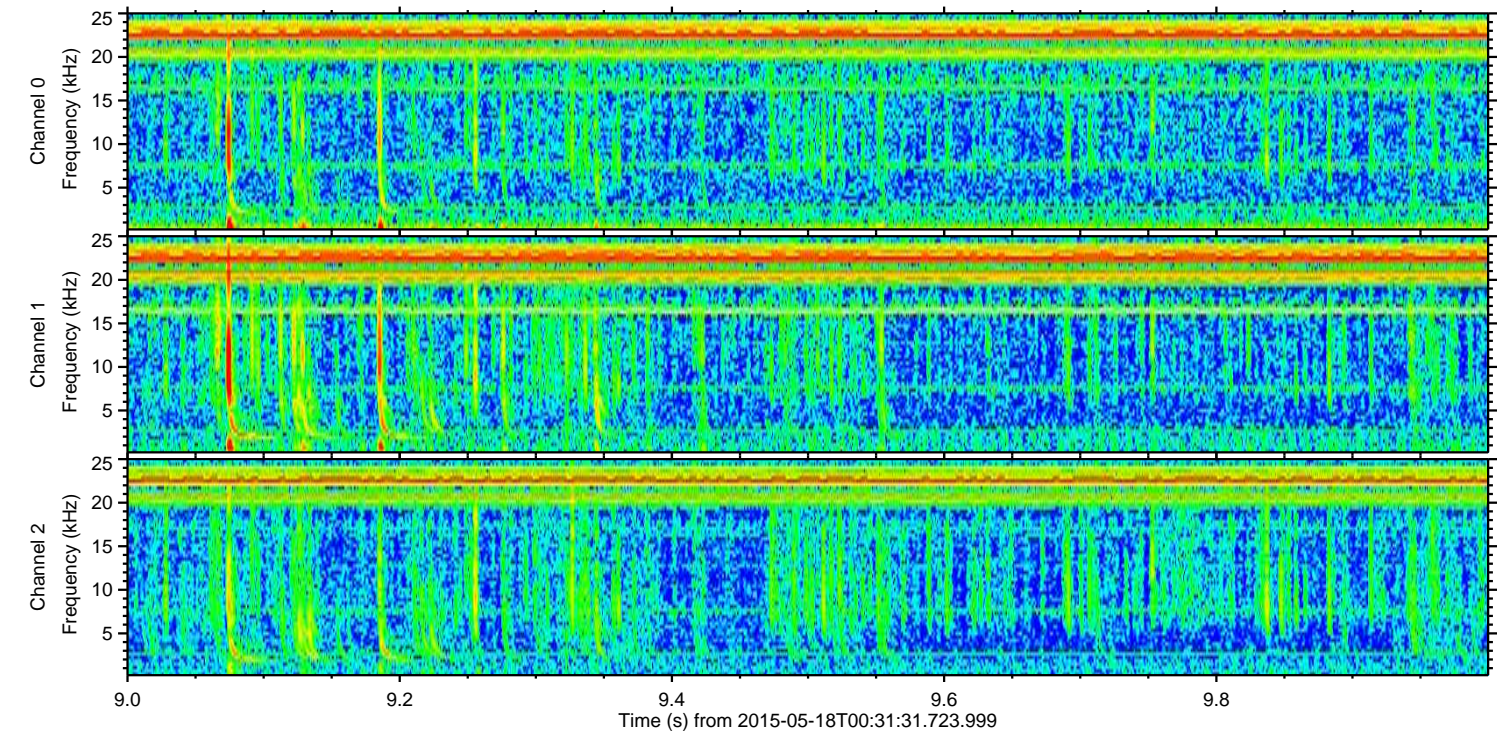
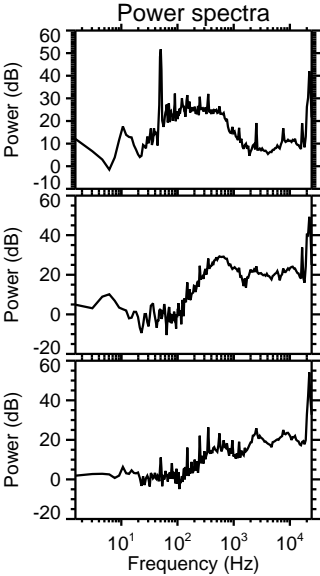
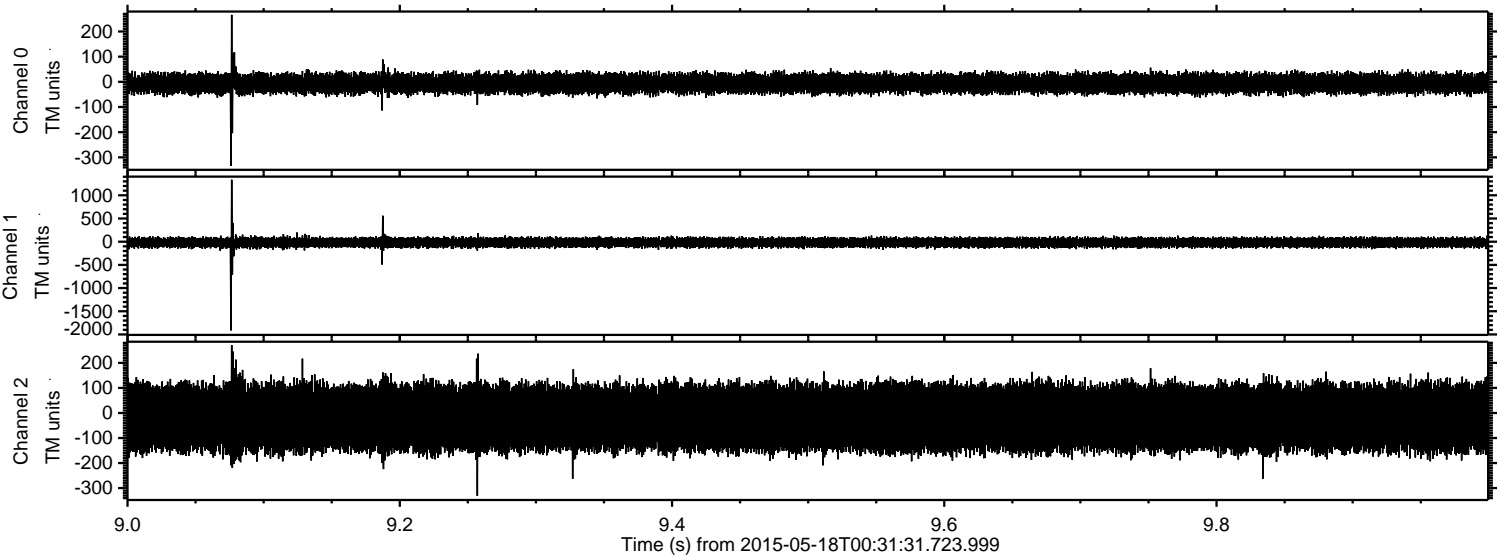
Channel 1
mn: -247
mx: 240
 μ : -18.0
 σ : 50.0

Channel 2
mn: -1819
mx: 2023
 μ : -19.1
 σ : 80.6

Processed Mon May 18 02:38:35 2015 by ELM ver.2012-10-06 from 001__elm20150518_003130__dat00.bin



Processed Mon May 18 02:38:36 2015 by ELM ver.2012-10-06 from 001__elm20150518_003130__dat00.bin



Processed Mon May 18 02:38:37 2015 by ELM ver.2012-10-06 from 001__elm20150518_003130__dat00.bin

